

Table 1
Railway Occurrence and Casualty

	July			January to July		
	2012	2011	2007-2011 Average	2012	2011	2007-2011 Average
Accidents	89	85	104	569	627	663
Main-Track Train Collisions	1	0	0	6	1	3
Main-Track Train Derailments - 1-2 cars	2	4	5	19	35	35
Main-Track Train Derailments - 3 or more cars	3	8	6	26	44	34
Crossings	16	13	17	111	89	109
Non-Main-Track Train Collisions	8	7	7	46	50	56
Non-Main-Track Train Derailments - 1-2 cars	30	24	34	206	239	246
Non-Main-Track Train Derailments - 3 or more cars	9	10	12	61	64	74
Collisions/Derailments Involving Track Units	2	4	5	9	19	20
Employee/Passenger	2	3	2	4	9	7
Trespassers	11	9	9	51	36	45
Fires/Explosions	1	2	3	10	17	12
Other	3	1	2	18	24	22
Incidents	24	22	21	114	125	120
Dangerous Goods Leaker	7	3	6	38	32	40
Main-track Switch in Abnormal Position	0	1	1	4	3	3
Movement Exceeds Limits of Authority	16	13	11	64	75	65
Runaway Rolling Stock	1	4	3	5	7	6
Others	0	1	1	3	8	6
Million Train-miles (a)				50.25	48.96	50.38
Accidents/Million Train-miles				11.32	12.81	13.16
Accidents Involving Dangerous Goods	11	8	10	69	83	91
Main-track Train Derailments	0	3	2	4	18	15
Crossings	0	0	1	2	1	3
Non-Main-Track Train Collisions	2	1	2	11	13	19
Non-Main-Track Train Derailments	9	4	6	51	47	50
All Others	0	0	0	1	4	5
Accidents with a DG Release	0	1	1	1	3	2
Accidents Involving Passenger Trains	6	9	8	27	41	43
Fatalities	10	9	9	55	37	43
Crossings	3	2	3	21	15	15
Trespassers	7	6	6	31	21	26
All Others	0	1	0	3	1	1
Serious Injuries	7	6	6	49	32	32
Crossings	4	1	2	21	9	13
Trespassers	2	3	2	15	14	13
All Others	1	2	2	13	9	7

Data extracted August 21, 2012.

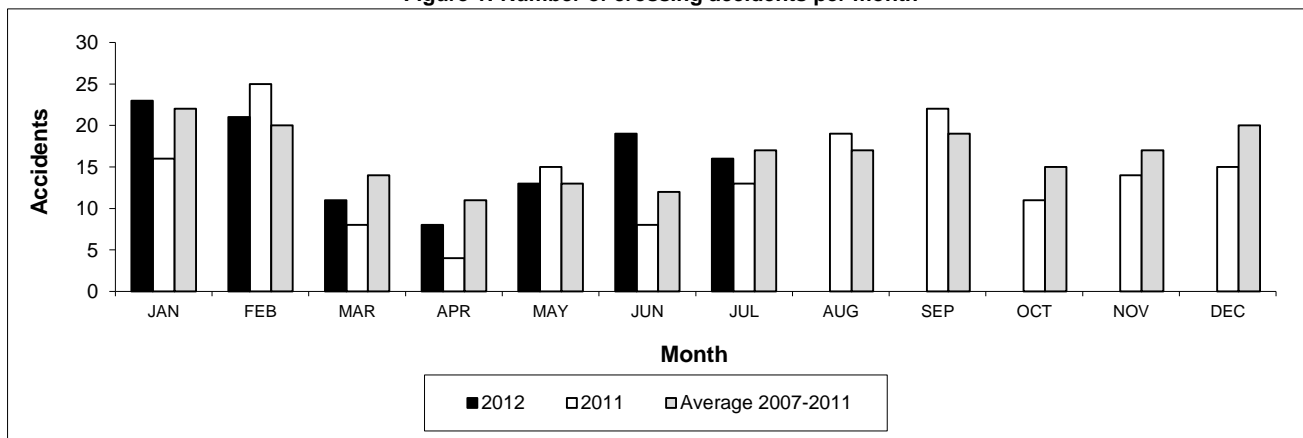
All 5-year averages have been rounded. The totals sometimes do not coincide to the sum of these averages.

a. Train-miles estimated. (Source: Transport Canada)

Table 2
Railway crossing and trespasser accidents by province

	Crossings with Type Recorded				All Crossings		Trespasser		
	2012 - Year To Date*				Year To Date*		Year To Date*		
	Public Automated	Public Passive	Private	Farm	2012	2011	2012	2011	
Newfoundland									
Accidents	0	0	0	0	0	1	0	0	
Fatalities	0	0	0	0	0	0	0	0	
Serious Injuries	0	0	0	0	0	0	0	0	
Nova Scotia									
Accidents	0	0	1	0	1	0	1	0	
Fatalities	0	0	0	0	0	0	0	0	
Serious Injuries	0	0	0	0	0	0	2	0	
New Brunswick									
Accidents	2	0	0	1	3	4	1	1	
Fatalities	1	0	0	0	1	0	1	0	
Serious Injuries	0	0	0	0	0	0	0	1	
Quebec									
Accidents	7	3	2	0	13	9	7	3	
Fatalities	1	0	0	0	1	3	3	3	
Serious Injuries	1	0	0	0	1	1	2	0	
Ontario									
Accidents	14	7	3	0	25	20	23	19	
Fatalities	6	2	0	0	8	7	13	13	
Serious Injuries	1	5	1	0	7	1	9	6	
Manitoba									
Accidents	7	6	0	0	15	3	2	1	
Fatalities	1	1	0	0	2	2	2	1	
Serious Injuries	2	2	0	0	4	1	0	0	
Saskatchewan									
Accidents	4	8	1	1	15	12	4	2	
Fatalities	0	2	0	1	3	0	2	1	
Serious Injuries	1	0	1	0	2	2	0	1	
Alberta									
Accidents	13	12	1	0	26	28	8	3	
Fatalities	4	0	0	0	4	2	7	1	
Serious Injuries	4	2	0	0	6	3	1	1	
British Columbia									
Accidents	7	3	3	0	13	12	5	7	
Fatalities	2	0	0	0	2	1	3	2	
Serious Injuries	0	1	0	0	1	1	1	5	
Northwest Territories									
Accidents	0	0	0	0	0	0	0	0	
Fatalities	0	0	0	0	0	0	0	0	
Serious Injuries	0	0	0	0	0	0	0	0	
Canada									
Accidents	54	39	11	2	111	89	51	36	
Fatalities	15	5	0	1	21	15	31	21	
Serious Injuries	9	10	2	0	21	9	15	14	

Figure 1: Number of crossing accidents per month



Data extracted August 21, 2012.

*Year to date is from January to July.

Table 3
Main-track train derailments by province

	January to July			Deraillments with DG Involvement January to July		
	2012	2011	2007-2011 Average	2012	2011	2007-2011 Average
Canada	45	79	69	4	18	15
Newfoundland	0	1	1	0	0	0
Nova Scotia	0	0	0	0	0	0
New Brunswick	0	0	1	0	0	1
Quebec	3	6	6	1	1	1
Ontario	6	16	19	1	4	5
Manitoba	4	9	6	0	0	0
Saskatchewan	3	11	8	1	0	1
Alberta	14	17	13	1	7	4
British Columbia	15	19	15	0	6	3
Northwest Territories	0	0	0	0	0	0

* There were no occurrences with dangerous goods release to date in 2012 and 1 in 2011.

Figure 1: Number of main-track train derailments per month

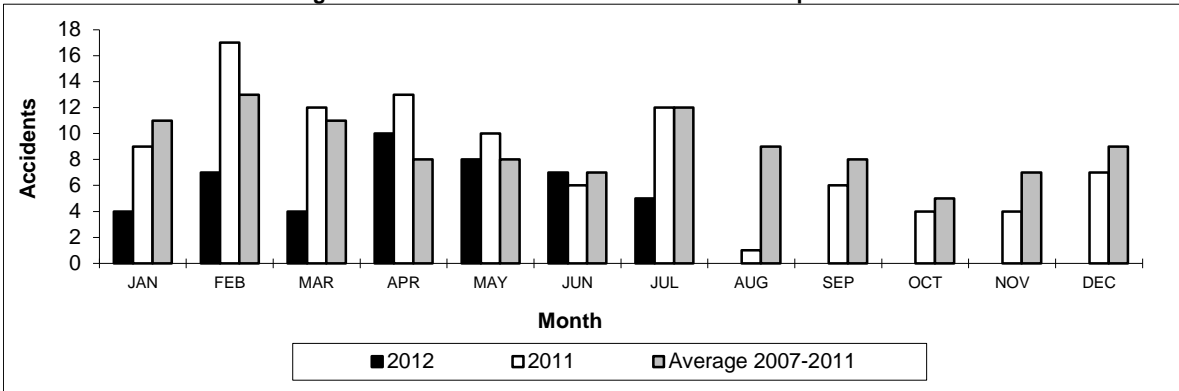
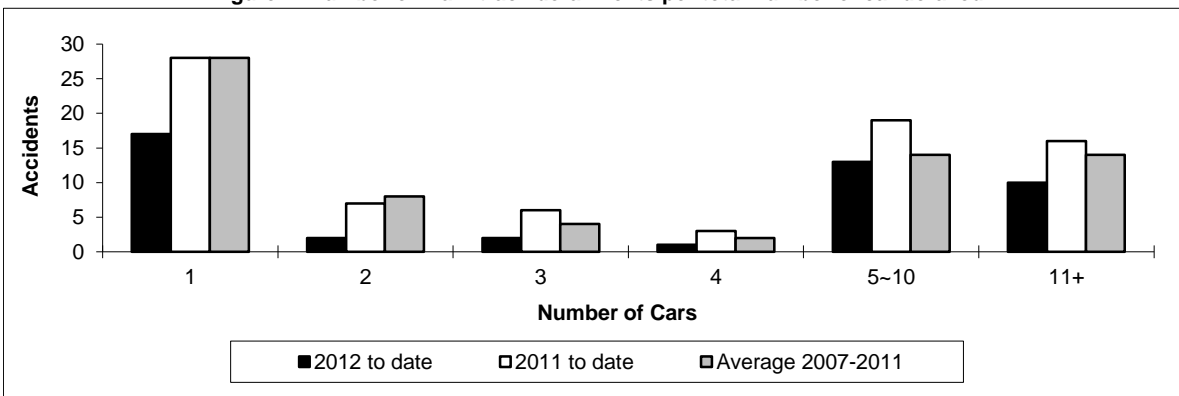


Figure 2: Number of main-track derailments per total number of car derailed



Data extracted August 21, 2012.

Table 4
Non main-track train collisions by province

	January to July			Collisions with DG Involvement January to July		
	2012	2011	2007-2011 Average	2012	2011	2007-2011 Average
	Canada	46	50	56	11	13
Newfoundland	0	0	0	0	0	0
Nova Scotia	0	0	0	0	0	0
New Brunswick	0	1	1	0	0	0
Quebec	3	8	6	2	1	2
Ontario	5	8	14	0	5	6
Manitoba	11	6	7	2	1	2
Saskatchewan	5	3	4	1	0	1
Alberta	15	11	13	4	2	5
British Columbia	7	13	11	2	4	3
Northwest Territories	0	0	0	0	0	0

* There were no occurrences with dangerous goods release to date in 2012 or in 2011.

Figure 1: Number of non main-track train collisions per month

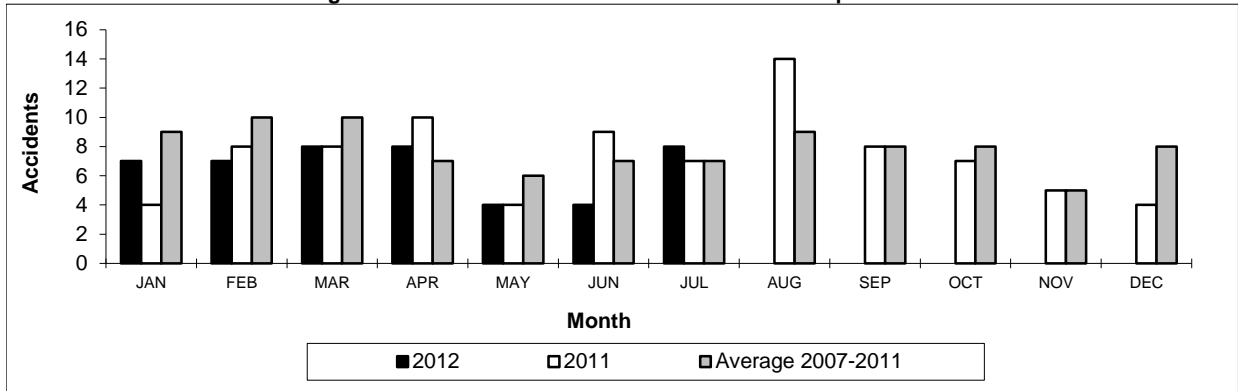
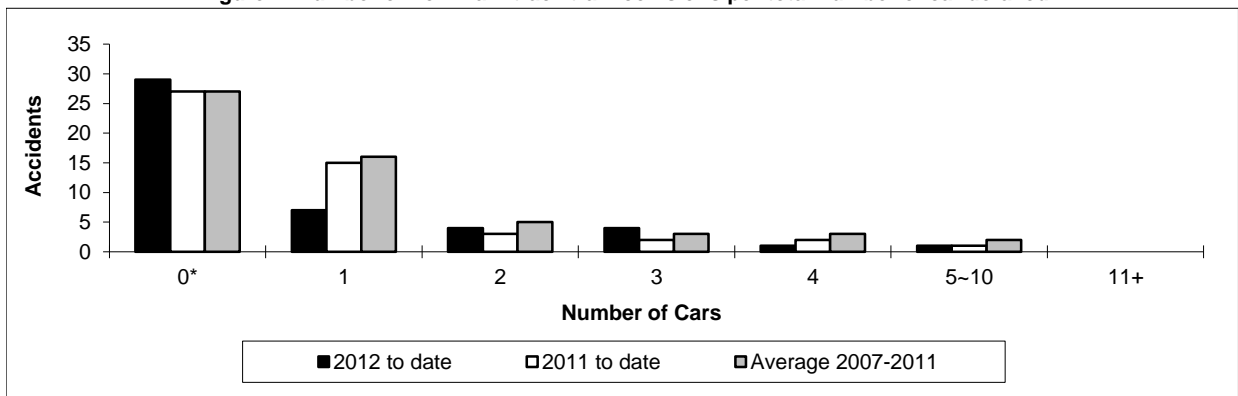


Figure 2: Number of non main-track train collisions per total number of car derailed



Data extracted August 21, 2012.

*Number of collisions with no derailments.

Table 5
Non main-track train derailments by province

	January to July			Derailments with DG Involvement January to July		
	2012	2011	2007-2011 Average	2012	2011	2007-2011 Average
	Canada	267	303	320	51	47
Newfoundland	0	0	0	0	0	0
Nova Scotia	1	0	2	0	0	0
New Brunswick	3	9	6	0	1	1
Quebec	30	37	34	3	10	7
Ontario	53	64	73	10	11	11
Manitoba	35	28	35	6	2	6
Saskatchewan	35	56	36	5	2	2
Alberta	78	60	72	23	16	13
British Columbia	32	49	60	4	5	8
Northwest Territories	0	0	0	0	0	0

* There were no occurrences with dangerous goods release to date in 2012 and 1 in 2011.

Figure 1: Number of non main-track train derailments per month

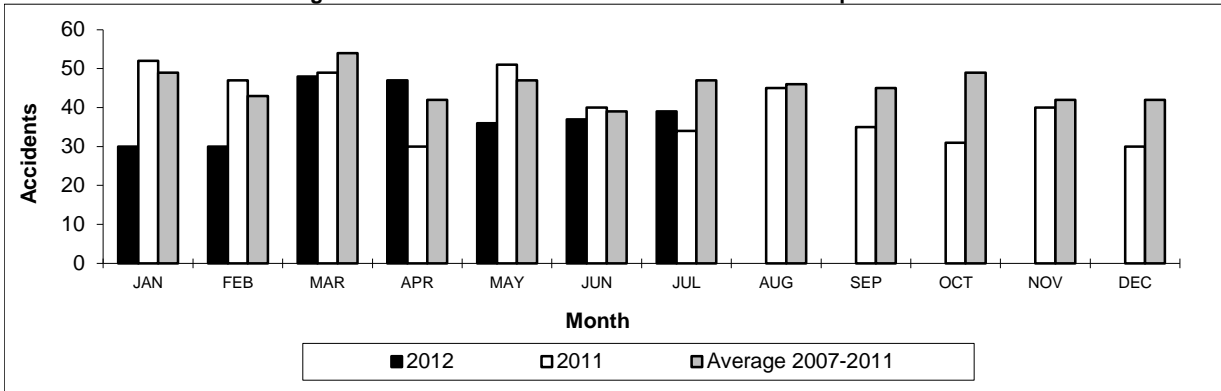
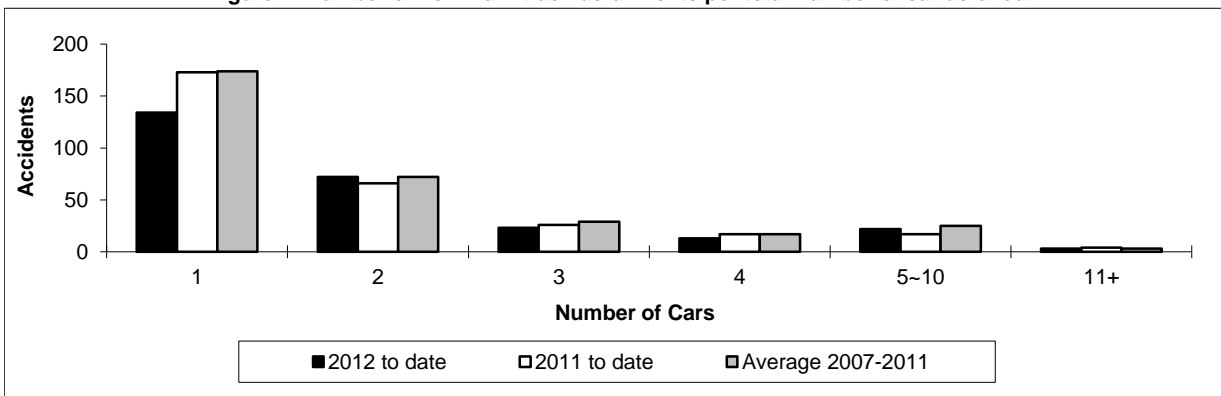


Figure 2: Number of non main-track derailments per total number of car derailed



Data extracted August 21, 2012.