

Table 1
Railway Occurrence and Casualty

	August			January to August		
	2012	2011	2007-2011 Average	2012	2011	2007-2011 Average
Accidents	83	92	97	655	719	760
Main-Track Train Collisions	0	0	0	6	1	3
Main-Track Train Derailments - 1-2 cars	2	0	4	21	35	39
Main-Track Train Derailments - 3 or more cars	2	1	5	28	45	39
Crossings	12	19	17	124	108	125
Non-Main-Track Train Collisions	11	14	9	57	64	65
Non-Main-Track Train Derailments - 1-2 cars	30	28	34	237	267	280
Non-Main-Track Train Derailments - 3 or more cars	10	17	12	71	81	86
Collisions/Derailments Involving Track Units	5	4	5	14	23	24
Employee/Passenger	1	2	1	5	11	9
Trespassers	6	4	7	57	40	52
Fires/Explosions	2	0	2	12	17	14
Other	2	3	2	22	27	24
Incidents	31	13	16	146	138	137
Dangerous Goods Leaker	10	7	5	49	39	45
Main-track Switch in Abnormal Position	1	0	1	5	3	4
Movement Exceeds Limits of Authority	16	6	9	80	81	74
Runaway Rolling Stock	3	0	1	8	7	7
Others	1	0	1	4	8	7
Million Train-miles (a)				57.55	56.16	57.79
Accidents/Million Train-miles				11.38	12.80	13.15
Accidents Involving Dangerous Goods	11	11	13	80	94	104
Main-track Train Derailments	1	0	1	5	18	16
Crossings	0	0	0	2	1	3
Non-Main-Track Train Collisions	3	1	3	14	14	21
Non-Main-Track Train Derailments	7	9	9	58	56	58
All Others	0	1	0	1	5	5
Accidents with a DG Release	0	0	0	1	3	2
Accidents Involving Passenger Trains	3	5	6	31	46	48
Fatalities	8	8	7	63	45	50
Crossings	4	5	2	25	20	17
Trespassers	4	3	5	35	24	31
All Others	0	0	0	3	1	1
Serious Injuries	5	4	4	54	36	37
Crossings	1	3	2	22	12	15
Trespassers	2	1	2	17	15	15
All Others	2	0	1	15	9	7

Data extracted September 17, 2012.

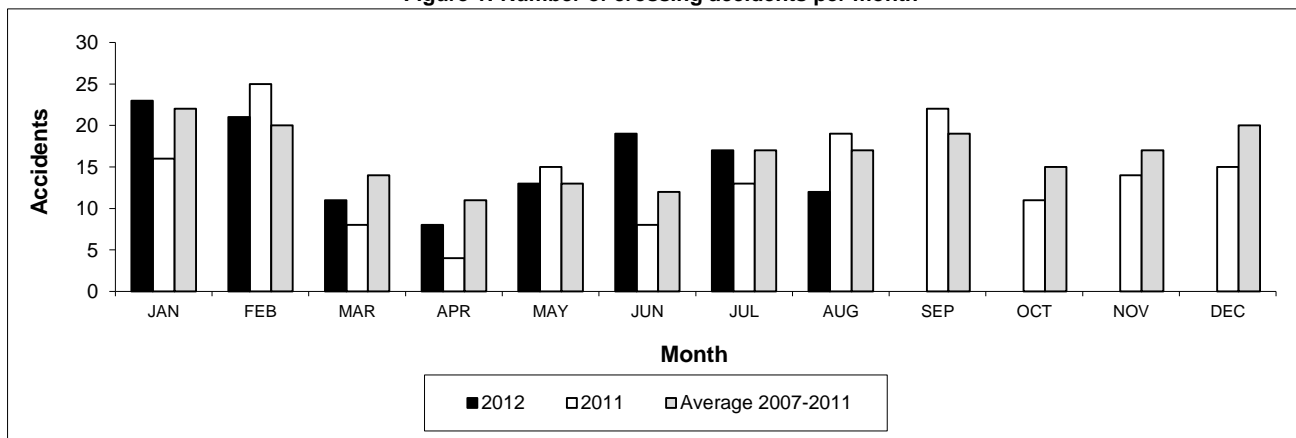
All 5-year averages have been rounded. The totals sometimes do not coincide to the sum of these averages.

a. Train-miles estimated. (Source: Transport Canada)

Table 2
Railway crossing and trespasser accidents by province

	Crossings with Type Recorded				All Crossings		Trespasser		
	2012 - Year To Date*				Year To Date*		Year To Date*		
	Public Automated	Public Passive	Private	Farm	2012	2011	2012	2011	
Newfoundland									
Accidents	0	0	0	0	0	1	0	0	
Fatalities	0	0	0	0	0	0	0	0	
Serious Injuries	0	0	0	0	0	0	0	0	
Nova Scotia									
Accidents	0	0	1	0	1	0	1	0	
Fatalities	0	0	0	0	0	0	0	0	
Serious Injuries	0	0	0	0	0	0	2	0	
New Brunswick									
Accidents	2	0	0	1	3	6	1	2	
Fatalities	1	0	0	0	1	2	1	1	
Serious Injuries	0	0	0	0	0	0	0	1	
Quebec									
Accidents	7	3	2	0	13	11	7	5	
Fatalities	1	0	0	0	1	3	3	4	
Serious Injuries	1	0	0	0	1	1	2	1	
Ontario									
Accidents	15	8	3	0	27	25	25	19	
Fatalities	6	2	0	0	8	8	15	13	
Serious Injuries	1	5	1	0	7	4	9	6	
Manitoba									
Accidents	7	6	0	0	15	3	2	1	
Fatalities	1	1	0	0	2	2	2	1	
Serious Injuries	2	2	0	0	4	1	0	0	
Saskatchewan									
Accidents	5	9	1	1	18	14	5	2	
Fatalities	0	6	0	1	7	0	3	1	
Serious Injuries	1	1	1	0	3	2	0	1	
Alberta									
Accidents	16	14	1	0	32	35	10	4	
Fatalities	4	0	0	0	4	3	8	2	
Serious Injuries	4	2	0	0	6	3	2	1	
British Columbia									
Accidents	8	3	3	0	14	13	6	7	
Fatalities	2	0	0	0	2	2	3	2	
Serious Injuries	0	1	0	0	1	1	2	5	
Northwest Territories									
Accidents	0	0	0	0	0	0	0	0	
Fatalities	0	0	0	0	0	0	0	0	
Serious Injuries	0	0	0	0	0	0	0	0	
Canada									
Accidents	60	43	11	2	124	108	57	40	
Fatalities	15	9	0	1	25	20	35	24	
Serious Injuries	9	11	2	0	22	12	17	15	

Figure 1: Number of crossing accidents per month



Data extracted September 17, 2012.

*Year to date is from January to August.

Table 3
Main-track train derailments by province

	January to August			Deraillments with DG Involvement January to August		
	2012	2011	2007-2011 Average	2012	2011	2007-2011 Average
Canada	49	80	78	5	18	16
Newfoundland	0	1	1	0	0	0
Nova Scotia	0	0	0	0	0	0
New Brunswick	0	0	2	0	0	1
Quebec	4	6	7	1	1	2
Ontario	6	17	21	1	4	5
Manitoba	5	9	7	0	0	0
Saskatchewan	3	11	9	1	0	1
Alberta	16	17	15	2	7	4
British Columbia	15	19	15	0	6	3
Northwest Territories	0	0	0	0	0	0

* There were no occurrences with dangerous goods release to date in 2012 and 1 in 2011.

Figure 1: Number of main-track train derailments per month

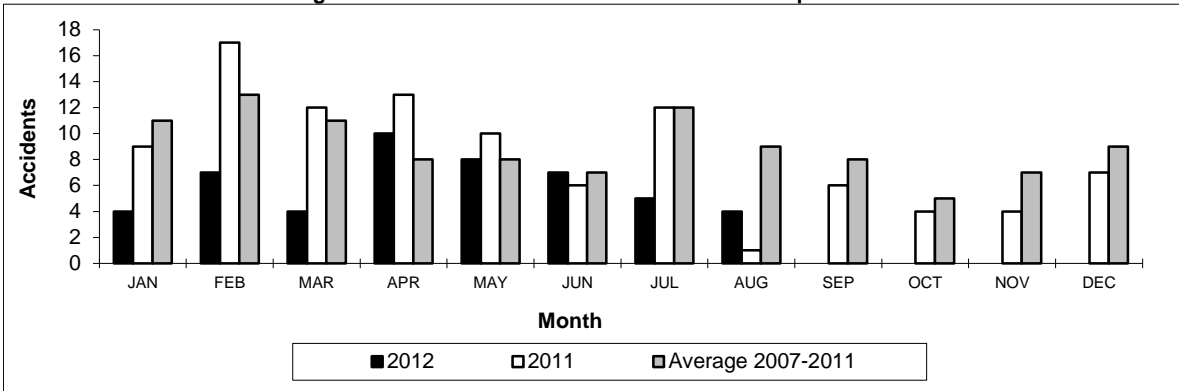
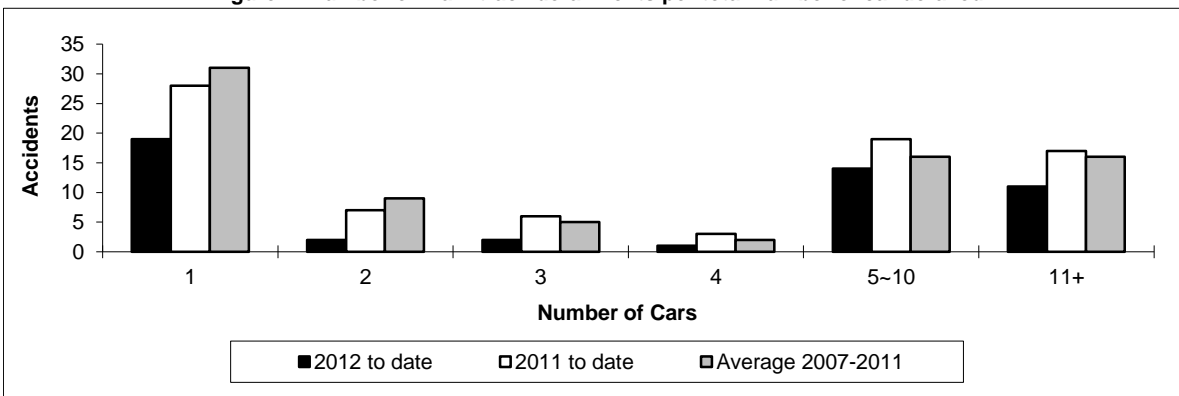


Figure 2: Number of main-track derailments per total number of car derailed



Data extracted September 17, 2012.

Table 4
Non main-track train collisions by province

	January to August			Collisions with DG Involvement January to August		
	2012	2011	2007-2011 Average	2012	2011	2007-2011 Average
	Canada	57	64	65	14	14
Newfoundland	0	0	0	0	0	0
Nova Scotia	0	0	0	0	0	0
New Brunswick	1	1	1	0	0	0
Quebec	4	11	7	2	2	2
Ontario	6	12	16	0	5	7
Manitoba	13	10	9	3	1	2
Saskatchewan	7	3	4	1	0	1
Alberta	18	13	15	5	2	7
British Columbia	8	14	12	3	4	3
Northwest Territories	0	0	0	0	0	0

* There were no occurrences with dangerous goods release to date in 2012 or in 2011.

Figure 1: Number of non main-track train collisions per month

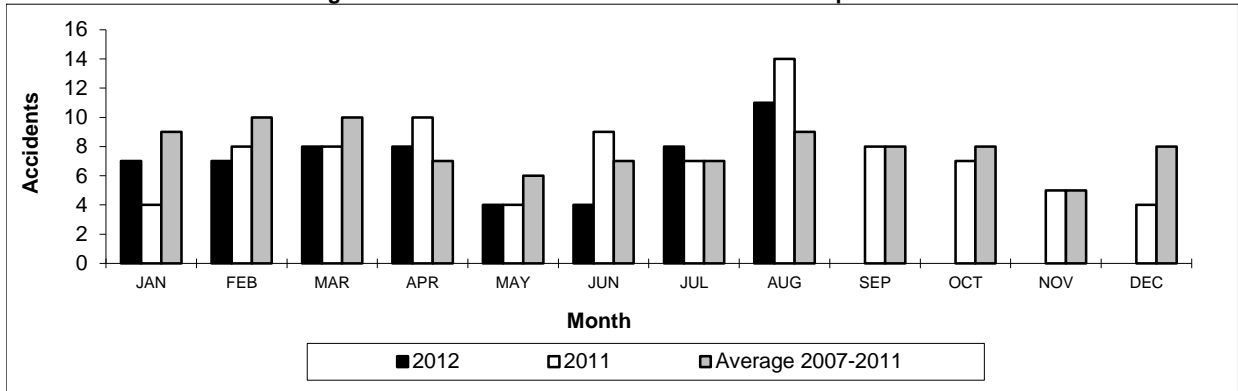
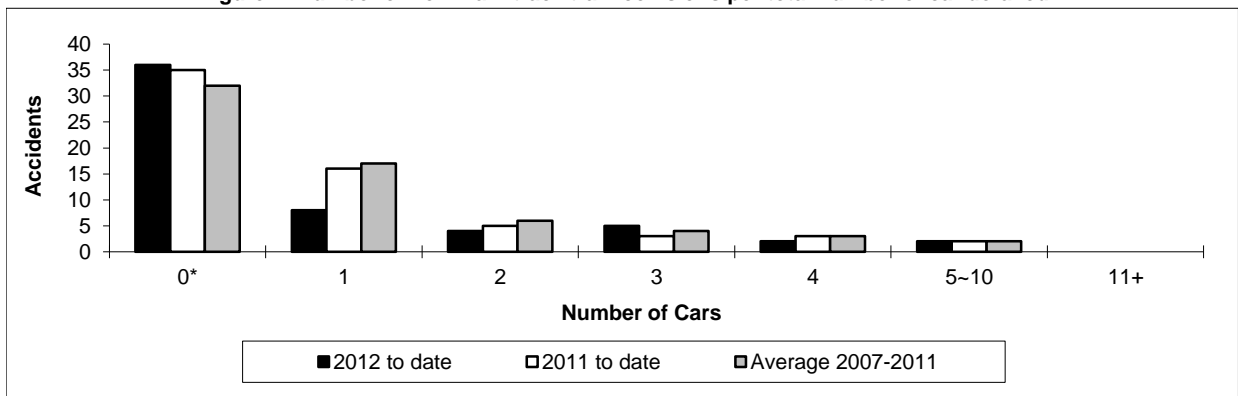


Figure 2: Number of non main-track train collisions per total number of car derailed



Data extracted September 17, 2012.

*Number of collisions with no derailments.

Table 5
Non main-track train derailments by province

	January to August			Derailments with DG Involvement January to August		
	2012	2011	2007-2011 Average	2012	2011	2007-2011 Average
	Canada	308	348	366	58	56
Newfoundland	0	0	0	0	0	0
Nova Scotia	1	2	2	0	1	1
New Brunswick	4	10	7	1	1	1
Quebec	37	42	39	3	12	8
Ontario	62	74	86	10	12	14
Manitoba	39	32	40	7	3	7
Saskatchewan	40	61	41	6	3	3
Alberta	87	72	83	25	18	15
British Columbia	38	54	67	6	5	9
Northwest Territories	0	1	0	0	1	0

* There were no occurrences with dangerous goods release to date in 2012 and 1 in 2011.

Figure 1: Number of non main-track train derailments per month

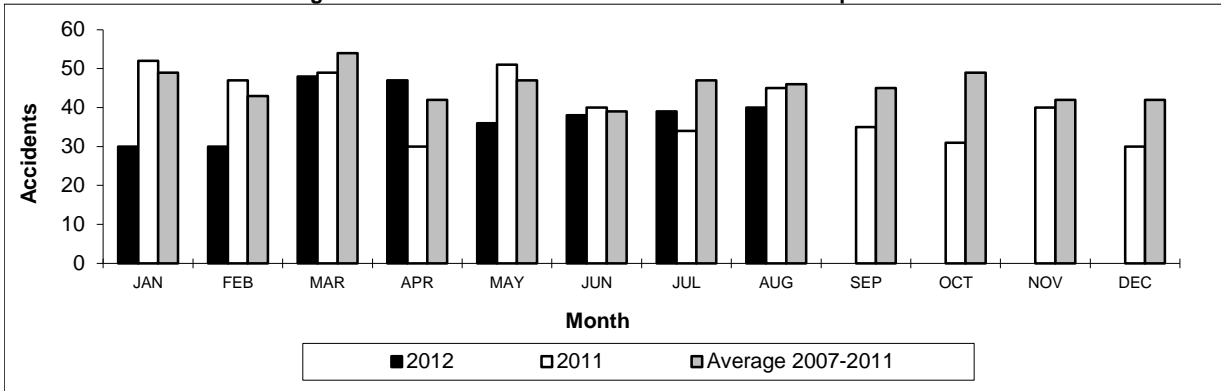
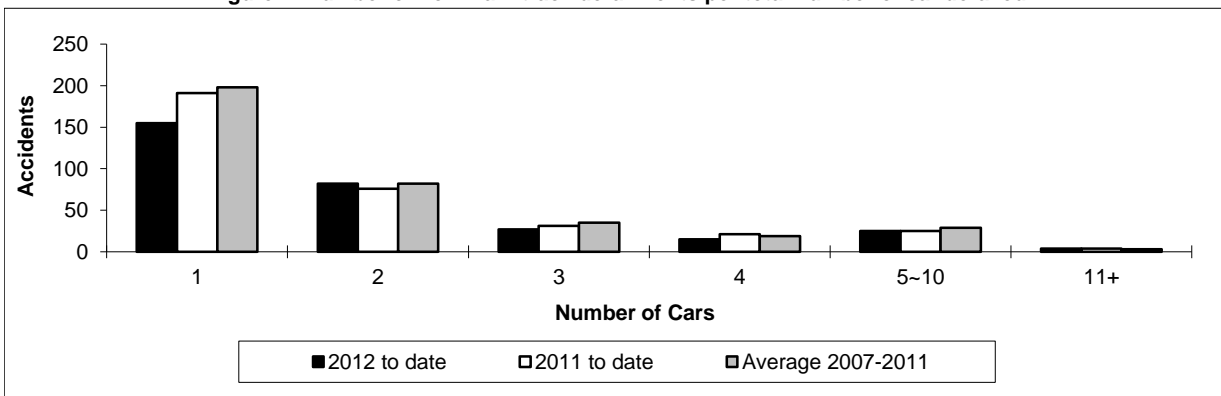


Figure 2: Number of non main-track derailments per total number of car derailed



Data extracted September 17, 2012.