

Table 1
Railway Occurrence and Casualty

	September			January to September		
	2012	2011	2007-2011 Average	2012	2011	2007-2011 Average
Accidents	76	92	98	732	811	857
Main-Track Train Collisions	0	0	0	6	1	3
Main-Track Train Derailments - 1-2 cars	1	1	4	21	36	44
Main-Track Train Derailments - 3 or more cars	2	5	4	30	50	42
Crossings	14	22	19	138	130	144
Non-Main-Track Train Collisions	8	8	8	65	72	73
Non-Main-Track Train Derailments - 1-2 cars	29	26	33	268	293	313
Non-Main-Track Train Derailments - 3 or more cars	11	9	12	82	90	98
Collisions/Derailments Involving Track Units	2	2	3	16	25	28
Employee/Passenger	0	0	0	5	11	9
Trespassers	7	10	9	64	50	61
Fires/Explosions	1	4	2	13	21	16
Other	1	5	3	24	32	27
Incidents	12	17	20	159	155	157
Dangerous Goods Leaker	4	8	8	53	47	53
Main-track Switch in Abnormal Position	0	2	1	4	5	5
Movement Exceeds Limits of Authority	7	5	9	89	86	83
Runaway Rolling Stock	0	2	1	8	9	8
Others	1	0	1	5	8	7
Million Train-miles (a)				64.68	63.29	64.73
Accidents/Million Train-miles				11.32	12.81	13.24
Accidents Involving Dangerous Goods	5	9	9	84	103	113
Main-track Train Derailments	0	1	1	5	19	17
Crossings	1	0	0	3	1	3
Non-Main-Track Train Collisions	1	4	3	14	18	25
Non-Main-Track Train Derailments	3	4	5	61	60	63
All Others	0	0	0	1	5	5
Accidents with a DG Release	0	0	0	1	3	2
Accidents Involving Passenger Trains	2	5	5	33	51	53
Fatalities	7	7	8	70	52	57
Crossings	0	2	2	25	22	19
Trespassers	7	5	5	42	29	37
All Others	0	0	0	3	1	1
Serious Injuries	4	10	7	58	46	43
Crossings	4	6	3	26	18	18
Trespassers	0	4	3	17	19	18
All Others	0	0	0	15	9	8

Data extracted October 23, 2012.

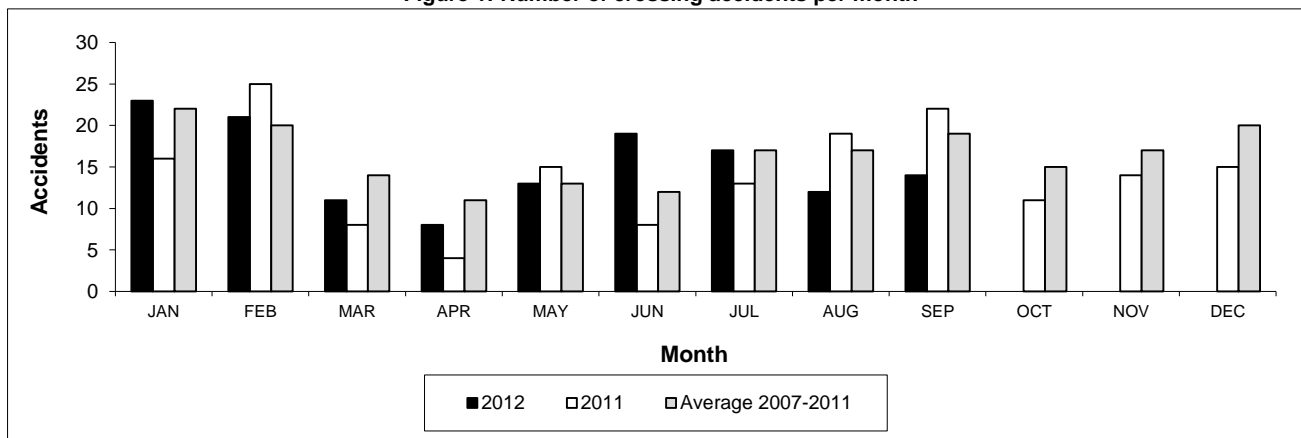
All 5-year averages have been rounded. The totals sometimes do not coincide to the sum of these averages.

a. Train-miles estimated. (Source: Transport Canada)

Table 2
Railway crossing and trespasser accidents by province

	Crossings with Type Recorded				All Crossings		Trespasser		
	2012 - Year To Date*				Year To Date*		Year To Date*		
	Public Automated	Public Passive	Private	Farm	2012	2011	2012	2011	
Newfoundland									
Accidents	0	0	0	0	0	1	0	0	
Fatalities	0	0	0	0	0	0	0	0	
Serious Injuries	0	0	0	0	0	0	0	0	
Nova Scotia									
Accidents	0	0	1	0	1	0	1	1	
Fatalities	0	0	0	0	0	0	0	0	
Serious Injuries	0	0	0	0	0	0	2	0	
New Brunswick									
Accidents	2	0	0	1	3	6	1	2	
Fatalities	1	0	0	0	1	2	1	1	
Serious Injuries	0	0	0	0	0	0	0	1	
Quebec									
Accidents	7	4	2	0	13	14	7	7	
Fatalities	1	0	0	0	1	3	3	5	
Serious Injuries	1	0	0	0	1	2	2	2	
Ontario									
Accidents	16	9	3	0	29	29	28	22	
Fatalities	6	2	0	0	8	8	18	16	
Serious Injuries	1	5	1	0	7	5	9	6	
Manitoba									
Accidents	7	9	0	0	18	6	3	1	
Fatalities	1	1	0	0	2	2	3	1	
Serious Injuries	2	5	0	0	7	1	0	0	
Saskatchewan									
Accidents	7	11	1	1	24	17	6	2	
Fatalities	0	6	0	1	7	1	4	1	
Serious Injuries	1	1	1	0	3	2	0	1	
Alberta									
Accidents	18	14	1	0	35	40	10	7	
Fatalities	4	0	0	0	4	4	8	2	
Serious Injuries	5	2	0	0	7	4	2	4	
British Columbia									
Accidents	8	3	3	0	14	17	8	8	
Fatalities	2	0	0	0	2	2	5	3	
Serious Injuries	0	1	0	0	1	4	2	5	
Northwest Territories									
Accidents	0	0	0	0	0	0	0	0	
Fatalities	0	0	0	0	0	0	0	0	
Serious Injuries	0	0	0	0	0	0	0	0	
Canada									
Accidents	65	50	11	2	138	130	64	50	
Fatalities	15	9	0	1	25	22	42	29	
Serious Injuries	10	14	2	0	26	18	17	19	

Figure 1: Number of crossing accidents per month



Data extracted October 23, 2012.

*Year to date is from January to September.

Table 3
Main-track train derailments by province

	January to September			Derailments with DG Involvement January to September		
	2012	2011	2007-2011 Average	2012	2011	2007-2011 Average
Canada	51	86	86	5	19	17
Newfoundland	1	1	1	0	0	0
Nova Scotia	0	0	1	0	0	0
New Brunswick	0	0	2	0	0	1
Quebec	3	8	9	1	2	2
Ontario	6	19	23	1	4	5
Manitoba	5	10	8	0	0	0
Saskatchewan	3	11	10	1	0	1
Alberta	17	18	17	2	7	5
British Columbia	16	19	16	0	6	3
Northwest Territories	0	0	0	0	0	0

* There were no occurrences with dangerous goods release to date in 2012 and 1 in 2011.

Figure 1: Number of main-track train derailments per month

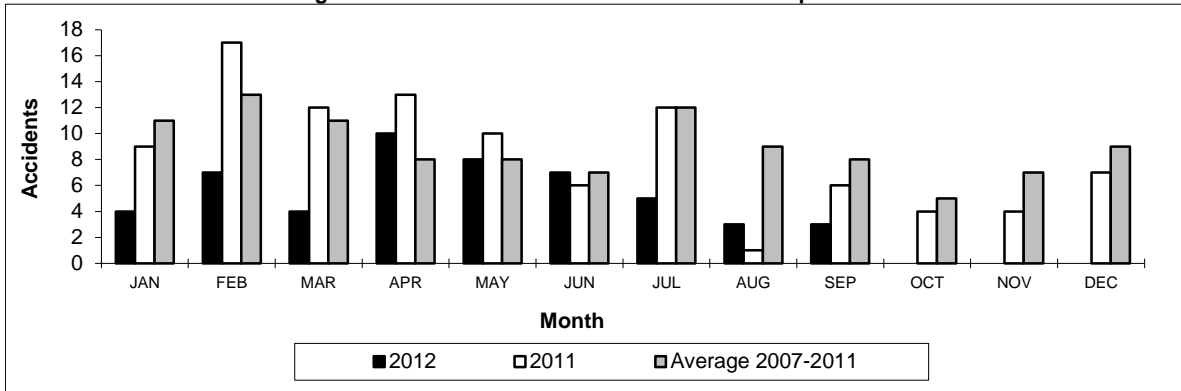
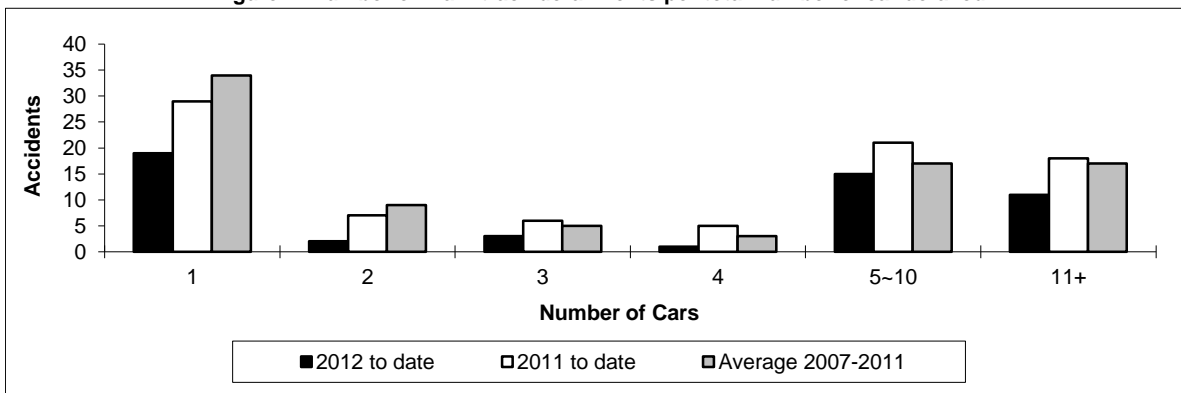


Figure 2: Number of main-track derailments per total number of car derailed



Data extracted October 23, 2012.

Table 4
Non main-track train collisions by province

	January to September			Collisions with DG Involvement January to September		
	2012	2011	2007-2011 Average	2012	2011	2007-2011 Average
	Canada	65	72	73	14	18
Newfoundland	0	0	0	0	0	0
Nova Scotia	0	0	0	0	0	0
New Brunswick	1	1	1	0	0	0
Quebec	5	11	8	2	2	2
Ontario	8	12	18	0	5	8
Manitoba	15	12	10	3	2	3
Saskatchewan	9	4	5	1	0	1
Alberta	18	16	17	4	4	8
British Columbia	9	16	14	4	5	3
Northwest Territories	0	0	0	0	0	0

* There were no occurrences with dangerous goods release to date in 2012 or in 2011.

Figure 1: Number of non main-track train collisions per month

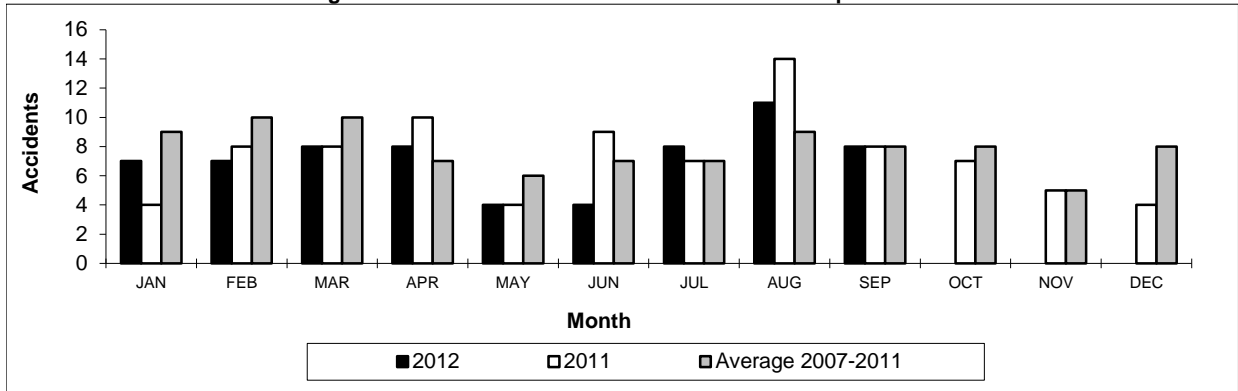
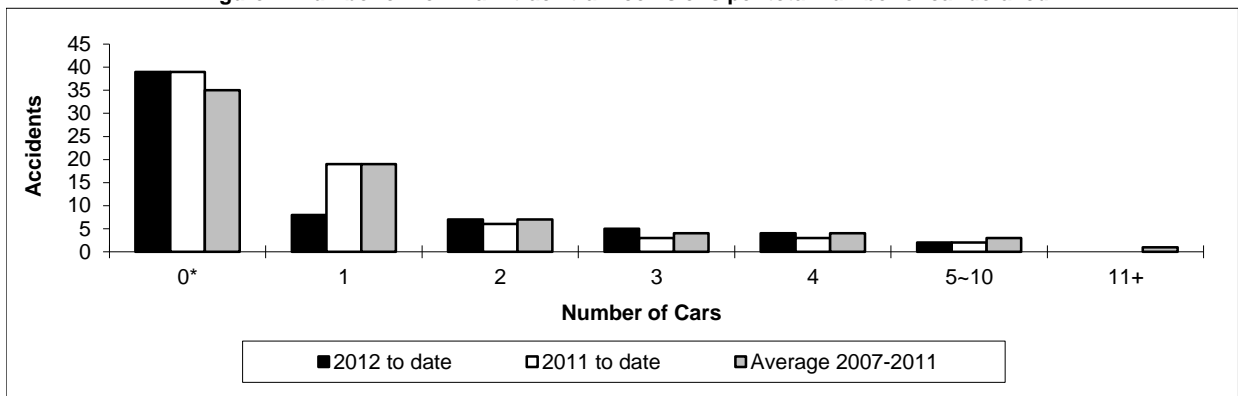


Figure 2: Number of non main-track train collisions per total number of car derailed



Data extracted October 23, 2012.

*Number of collisions with no derailments.

Table 5
Non main-track train derailments by province

	January to September			Deraillments with DG Involvement January to September		
	2012	2011	2007-2011 Average	2012	2011	2007-2011 Average
	Canada	350	383	411	61	60
Newfoundland	0	0	0	0	0	0
Nova Scotia	1	2	3	0	1	1
New Brunswick	5	11	8	1	1	2
Quebec	41	49	46	4	14	9
Ontario	73	81	95	11	12	15
Manitoba	44	35	44	7	3	7
Saskatchewan	43	63	46	6	3	3
Alberta	97	87	96	26	20	17
British Columbia	46	54	73	6	5	9
Northwest Territories	0	1	0	0	1	0

* There were no occurrences with dangerous goods release to date in 2012 and 1 in 2011.

Figure 1: Number of non main-track train derailments per month

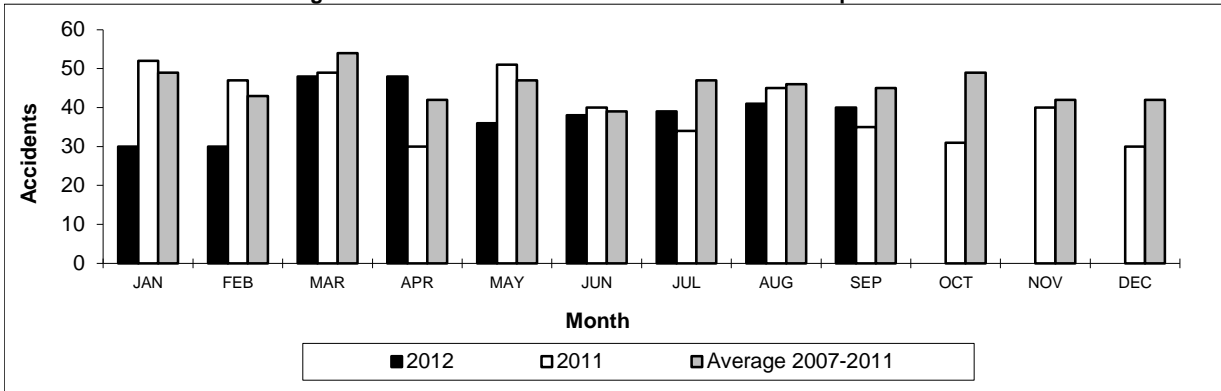
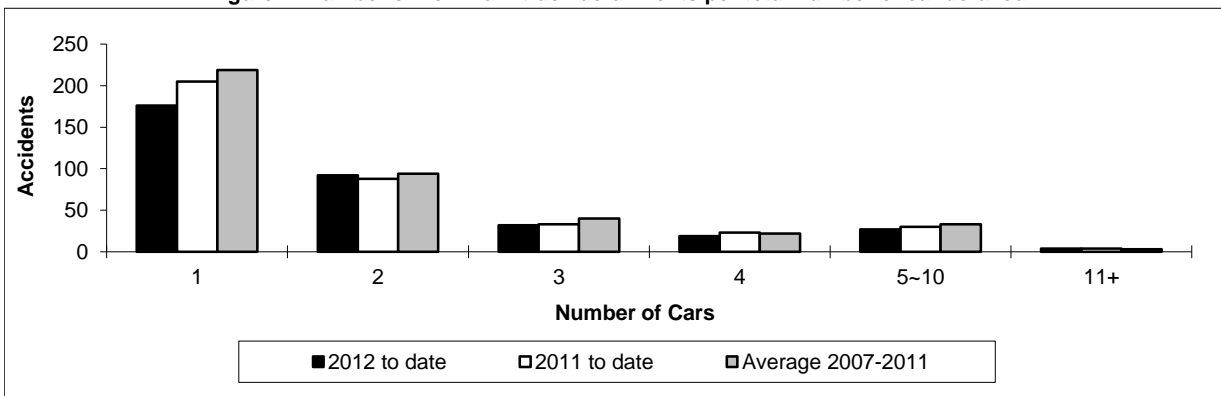


Figure 2: Number of non main-track derailments per total number of car derailed



Data extracted October 23, 2012.