



EASTERN EDITION OF NOTICES TO MARINERS

Published monthly by the

CANADIAN COAST GUARD

NOTICES

1300 to 1353

CONTENTS

	Page
SEC. I Safety and General Information	1 - 22
SEC. II Chart Corrections	23 - 34
SEC. III Radio Aids to Marine Navigation Corrections	NIL
SEC. IV Sailing Directions and Small Craft Guide Corrections.....	35 - 55
SEC. V Light List Corrections	57 - 65

Marine Navigation Services
Directorate
Marine Aids

RECYCLED PAPER

Internet: <http://www.notmar.com>

ADVISORY

NOTICES TO SHIPPING (WRITTEN AND BROADCAST)

The Canadian Coast Guard is implementing a number of changes to the aids to navigation system in Canada.

These changes are advertised as Notices to Shipping (Broadcast and Written) by the Canadian Coast Guard and are followed up with Notices to Mariners, then charts are updated by hand correction, reprints or new editions.

The publication of Notices to Mariners and chart revisions are being delayed by the volume of changes that are taking place.

Mariners are advised that all relevant Written Notices to Shipping should be kept until superseded by Notices to Mariners or through revised charts issued by the Canadian Hydrographic Service.

Written Notices to Shipping are published weekly and are available from local Canadian Coast Guard Offices.

The Canadian Hydrographic Service is reviewing the impact of these changes with the Canadian Coast Guard and together we are preparing an action plan on the issuing of chart revisions.

For further information contact your local Canadian Coast Guard office.

Newfoundland

St. John's MCTS Centre
Phone: (709) 772-2083
Fax: (709) 772-6285

Maritimes

Maritimes Regional Operations Centre
Toll Free in Maritimes 1-800-565-1633
Phone: (902) 426-6030
Fax: (902) 426-6334
<http://www.mar.dfo.mpo.gc.ca/cg/ops/roc.htm>
Website E-Mail: ROCWeb@mar.dfo-mpo.gc.ca

Laurentienne

Québec MCTS Centre
Phone: (418) 648-5410
Fax: (418) 648-7244
E-Mail: XLAUSCTM@dfo-mpo.gc.ca

Central & Arctic

Sarnia MCTS Centre
Toll Free in Ontario 1-800-265-0237
Phone: (519) 337-6360
Fax: (519) 337-2498

Pacific

Vancouver Regional Marine Information Centre
Phone: (604) 666-6011
Fax: (604) 666-8453

EXPLANATORY NOTES

Geographical positions refer directly to the graduations of the largest scale Canadian Hydrographic chart unless otherwise indicated.

Bearings refer to the true compass and are measured clockwise from 000° (North) clockwise to 359°; those relating to lights are from seaward.

Visibility of lights is that in clear weather.

Depths - The units used for soundings (metres, fathoms or feet) are stated in the title of each chart.

Elevations are normally given above Higher High Water, Large Tides unless otherwise indicated.

Original Canadian Information - A star (*) adjacent to the Notice number indicates that this notice is based on original Canadian information.

Distances may be calculated as follows:

1 nautical mile	= 1 852 metres (6,076.1 feet)
1 statute mile	= 1 609.3 metres (5,280 feet)
1 metre	= 3.28 feet

Temporary & Preliminary Notices are indicated by a (T) or a (P) after the Notice number. Nautical charts and publications are not hand amended for Temporary (T) and Preliminary (P) Notices to Mariners. Listings of Charts Affected by Temporary and Preliminary Notices to Mariners are revised and promulgated quarterly, in Section I. Reference should be made to the latest published listing and to the monthly editions of Notices to Mariners published subsequently.

Please note that, in addition to the temporary and preliminary changes normally advertised as (T) and (P) Notices, there are a significant number of permanent changes to navigational aids that have been advertised as Preliminary Notices to Mariners while charts are being updated for new editions.

Marine Information Report & Suggestion Sheet - Mariners are requested to notify the responsible authorities when new or suspected dangers to navigation are discovered, changes observed in aids to navigation or corrections to publications are seen to be necessary. Such communications can be made using the *Marine Information Report & Suggestion Sheet* inserted on the last page of each monthly edition of *Notices to Mariners*.

Monthly edition of Notices to Mariners - *Notices to Mariners* are issued free of charge on a monthly basis. Mariners now have a choice between specific *Regional* issue(s) they wish to receive. Requests to be placed on or removed from the mailing list should be made by using the form inserted on page *xiii* of each monthly edition. Notification of changes to the mailing addresses, regional issues and/or number of copies required should also be transmitted by means of this form.

Canadian Nautical Charts & Publications - A source list of *Canadian Nautical Charts & publications* is published in *Notice No. 14* of the current *Annual Edition of Notices to Mariners*. The source supply and the prices effective at the time of printing are listed. This list is periodically updated in the monthly edition of *Notices to Mariners*.

NOTE: Cette publication est aussi disponible en français.

DGPS INITIAL OPERATIONAL SERVICE

The Canadian Coast Guard (CCG) announces that the Differential Global Positioning Service (DGPS) Initial Operational Service (IOS) is available for positioning and navigation.

IOS means the service will provide a DGPS broadcast using the type 9 RTCM message for pseudorange corrections at a data transmission rate of 200 baud. Refer to Radio Aids to Marine Navigation (RAMN) for estimated advertised coverage for each differential station.

Although the service is IOS, users may experience service interruptions without advance notice. Further, CCG advises that IOS DGPS broadcasts should not be used under any circumstances where a sudden system failure or inaccuracy could constitute a safety hazard. Following a one year verification period, the DGPS service will be declared as being a Full Operational Service (FOS).

Users are also advised that differential corrections are based on the NAD 83 datum position of the reference station antenna and positions obtained using DGPS should be referenced to this coordinate system only. DGPS receivers must be set to the WGS 84 datum in order to obtain optimum positioning accuracy.

Table of Stage 1 DGPS Reference Stations					
Station Name	Id Nos of Ref. Stations	DGPS Station ID	Geogr. Pos. Latitude Longitude	Frequency [khz]	Bits/sec.
Alert Bay BC	300,301	909	50 35 N 126 55 W	309	200
Amphitrite Pt BC	302,303	908	48 55 N 125 32 W	315	200
Cardinal ON	308,309	919	44 47 N 75 25 W	306	200
St. Jean Richelieu QUÉ	312,313	929	45 19 N 73 18 W	296	200
Lauzon QUÉ	316,317	927	46 48 N 71 09 W	309	200
Partridge Island NB	326,327	939	45 14 N 66 03 W	295	200
Pt. Escuminac NB	332,333	936	47 04 N 64 47 W	319	200
Fox Island NS	336,337	934	45 19 N 61 04 W	307	200
Cape Race NFLD	338,339	940	46 39 N 53 04 W	315	200
Cape Ray NFLD	340,341	942	47 34 N 59 09 W	290	200

DGPS USER ALERT

Currently, ten Phase 1 DGPS stations are providing Initial Operational Service (IOS) which was declared by Regional Notices to Mariners issued in September 1996. Another eight DGPS stations will be installed in 1997. Extensive validation of operational performance is being conducted throughout 1997. Full Operational Service (FOS) will follow after successful validation.

The Canadian Coast Guard has recently received reports of DGPS receivers apparently ignoring the broadcast alarm which should signal the immediate discontinuation of a particular satellite correction. Reports indicate that some user equipment does not properly recognize this "do-not-use" correction flag and as a result erroneously processes it as a correction. This can result in position errors as large as 15 kilometers while the receiver is in DGPS mode. DGPS users are advised that they should contact the manufacturer of their equipment immediately to determine if they require a receiver upgrade.

Apart from this, no major difficulties with DGPS implementation have been experienced to date nor are any expected in the future.

DISCREPANCY REPORT FOR DGPS USERS.

The Canadian Coast Guard is currently implementing the Differential Global Positioning System in Canada. In August 1996, 10 DGPS stations were announced as providing an Initial Operational Service (IOS). Eight (8) additional DGPS stations will be implemented in the fall of 1997.

Following a service validation period, it is expected that the DGPS service will be announced as providing a Full Operational Service (FOS) in December 1997. The fully operational DGPS service is expected to meet the advertised Levels of Service standards and all service guarantees will be provided with FOS.

Throughout the service validation period, the Coast Guard will be conducting numerous tests of the differential service. To assist the Coast Guard in this validation testing, mariners are requested to complete the attached anomaly report. Please take note of any DGPS service anomalies you experience and forward the completed form to the Director Marine Aids, Fisheries and Oceans Canada, 200 Kent Street, Station 5130, Ottawa, ON, K1A 0E6.

DGPS station anomaly report / Rapport d'anomalie des stations DGPS

With the purpose of constantly evaluating the quality of the DGPS service offered, the Canadian Coast Guard is providing the mariner with the following anomaly report. This report will allow us to get well-supported information concerning the anomaly and thus, will facilitate the identification of the origin of the problem. Please fill accordingly each section of this report and forward it by the suggested ways. You will find a legend at the end of this document.

Avec le souci d'évaluer constamment la qualité du service DGPS offert, la Garde côtière met à la disposition du navigateur le présent rapport d'anomalie. Ce rapport servira à bien documenter l'anomalie et, de ce fait, facilitera l'identification ou la recherche de la source du problème. Nous vous prions de bien remplir chaque section de ce rapport et de l'acheminer de la façon suggérée. Vous trouverez une légende à la fin de ce document.

User informations / Renseignements sur l'utilisateur

Vessel name / Nom du navire: _____ Destination: _____
Vessel position at the beginning of the anomaly /
Position du navire au début de l'anomalie : _____
Vessel position at the end of the anomaly /
Position du navire à la fin de l'anomalie : _____

Anomaly report / Rapport d'anomalie

Date and time of the anomaly / Date et heure de l'anomalie: _____ Duration / Durée: _____
Number of satellites tracked on GPS receiver / Nombre de satellites reçu par le récepteur: _____
DGPS site using / Station DGPS utilisée: Freq.: _____ kHz SS: _____ dB SNR: _____ dB
DOP Geometry / Géométrie DOP : _____
User receiver operates correctly with other DGPS sites? /
Votre équipement DGPS fonctionne-t-il normalement à l'utilisation d'autres stations DGPS?: Yes/ Oui _____
No / Non _____
Comments / Commentaires: _____

Point of contact / Personne-ressource: Name/ Nom: _____
Phone / Téléphone : _____

Weather conditions / Conditions météo

Winds / Vents : Direction: _____ Speed / Vitesse: _____ KTS
Temp. °C: _____ VIS: _____ N.M.
Sea State / État de la mer : _____
Bearing and range to electrical storm /
Direction et distance de l'orage : _____
Time of the storm / Heure de l'orage: _____ UTC

Essential informations on user equipment to fill / Renseignements indispensables sur l'équipement à remplir:

User equipment informations / Renseignements sur l'équipement

GPS receiver / Récepteur GPS: Make / Fabricant: _____ Model: _____
DGPS beacon receiver / Démodulateur DGPS: Make / Fabricant : _____ Model: _____
Gyro interface with GPS / Gyro intégré avec le GPS? Yes / Oui : _____ No / Non : _____
DGPS interfaced with an ECDIS / DGPS intégré dans un SVCEI? Yes / Oui: _____ No / Non : _____

If yes, please fill below / Si oui, S.V.P. compléter ci-dessous:

ECDIS / SVCEI: Make / Fabricant: _____ Model: _____
Radar image interfaced / Image radar intégrée?: Yes / Oui: _____ No / Non: _____
Gyro interfaced with ECDIS / Gyro intégré avec SVCEI? Yes / Oui: _____ No / Non: _____
Permanent installation or in evaluation / Installation permanente ou en évaluation: _____

This report can be sent the following ways / Ce rapport peut être acheminé selon les façons suivantes:

- 1) Fax / Par télécopieur : 613-998-8428 attention AWAD.
- 2) Mail / Par la poste: Director Marine Aids
Fisheries and Oceans Canada
200 Kent Street, Station 5130
Ottawa, ON
K1A 0E6.

Canada

**Legend/
Légende**

Position	:	Position can be provided by latitude, longitude, bearing and distance, location of a buoy, etc. La position peut être donnée en latitude, longitude, relèvement et distance, emplacement de bouée, etc.
KTS	:	Wind speed in knots / Vitesse du vent en noeuds.
N.M.	:	Visibility in Nautical Miles / Visibilité en milles nautiques.
Freq. kHz	:	Frequency in kilohertz / Fréquence en kilohertz .
SS	:	Signal strength in decibel / Force de signal en décibel.
SNR	:	Signal to noise ratio in decibel / Rapport signal-bruit en décibel .
DOP (dilution of precision):		Measure of the geometrical «strength» of the GPS satellite configuration. The DOP is measured on a scale of 1 to 10 / Mesure de la «force» géométrique de la configuration satellite. Le DOP est mesuré sur une échelle de 1 à 10
SVCEI / ECDIS	:	Electronic Chart Display and Information System / Système de Visualisation de Cartes Electroniques et d'Information .

IMPORTANT NOTICE TO USERS

The Canadian Coast Guard Marine Aids Modernization Program

- The Canadian Coast Guard is initiating an aids to navigation modernization program which takes advantage of modern technology and will result in a more equitable, safe, cost-effective and environmentally friendly service across Canada. Low maintenance buoys, solar power, the elimination of diesel power and the application of national provision and design standards, will be used to realize these objectives.
- In consultation with local users, aids to navigation which are redundant, exceed the national standards or should not be publicly funded, will be downsized, privatized or discontinued.
- Regional plans as well as detailed Notices to Shipping and Notices to Mariners will be issued and distributed in the usual manner in advance of all changes to aids to navigation. All users are encouraged to participate in local consultations and to monitor these Notices. It will be every user's responsibility to adapt to the changes and to take the appropriate measures.

1. Redundant Aids to Navigation

Many conventional aids to navigation were established for commercial mariners who now use radar. As a result these users no longer require as many landfall shore lights, large lighted buoys and fog signals and support their discontinuance.

However, before these commercially redundant marine aids are removed, the Coast Guard is assessing, where required, the local needs of small craft operators and redesigning the old commercial aids to meet these needs within national provision policies and design standards.

Coast Guard policy does not provide for the retention of fog horns for pleasure craft, due to the high cost to provide such a service across Canada. However, where practical and where there is local support, the existing redundant fog horns are being transferred to local authorities at no cost.

The conversion of lightstations to solar power allows major economic and environmental benefits by allowing removal of fuel tanks and diesel generators. Although this eliminates the need for many structures, the Coast Guard will protect all heritage lightstations through continued operation or transfer to provincial, municipal or other authorities for local use.

2. Aids to Navigation Standards

In consultation with local users, all aids to navigation systems across Canada are under review. National system design standards will be used to assess these systems. Systems that do not meet these standards will be upgraded; those systems that exceed them will be downsized.

Adjustments in some channels will result in an increase or a decrease in the number of buoys and/or the conversion of some lighted buoys to unlighted buoys displaying reflective material.

3. Private Aids to Navigation

Although Coast Guard policy does not provide for the establishment of aids to navigation in inadequately charted waters, or where the traffic volume does not justify the cost of the system, some have been established in the past. These aids to navigation will be transferred to local authorities at no cost, with Coast Guard retaining design and regulatory authority under the *Private Buoy Regulations*.

NEW INITIATIVES

The Canadian Coast Guard is also introducing a new differential correction service to augment the satellite-based Global Positioning System (GPS), with 18 transmitting stations fully operational in 1998.

This Differential Global Positioning System (DGPS), will improve the accuracy and integrity of GPS and will enable mariners who are equipped with the appropriate receivers to identify their precise position in most major southern Canadian waters, including the Great Lakes and the St. Lawrence River.

The use of DGPS in conjunction with Electronic Chart Display and Information Systems (ECDIS), will greatly improve navigation accuracy. The expanding use of this new technology is expected to increase marine safety and thus provide greater environmental protection to Canadian waters. It is also believed that implementation of DGPS will allow further adjustment to conventional aids in the future.

All mariners and shipowners are encouraged to equip their vessels with GPS receivers which have the capability to receive the Differential signals, particularly where there is frequent risk of reduced visibility.

The Canadian Coast Guard believes that the availability of GPS, particularly when augmented by the Differential service, will make Loran C obsolete. Consultations are underway to assess the impact of discontinuing Loran C in Canada.

NEWFOUNDLAND REGION

The Canadian Coast Guard is planning to further modernize its marine aids to navigation service. Changes will include adjusting all service levels to national standards between 1997 and the year 2000 and reducing some conventional aids services based on the availability of the Global Positioning System, Differential Global Positioning System (DGPS) and the Electronic Chart Display Information System (ECDIS). The new electronic systems will supplement the remaining conventional aids system, permitting continued maintenance of a safe service at lower cost.

More detailed information concerning each of these proposed changes will be provided in each region or geographic area by Notices to Shipping and Notices to Mariners, allowing users time to comment prior to finalizing planned changes. Further Notices to Shipping and Notices to Mariners will also be issued at the time of all changes.

Mariners and representatives of user groups wishing to provide comments or recommendations on this or any subsequent notice may write to:

Aids to Navigation Superintendent
Department of Fisheries & Oceans
Canadian Coast Guard Directorate
P.O. Box 5667
St. John's, NFLD.
A1C 5X1

MARITIMES REGION

The Canadian Coast Guard is planning to further modernize its marine aids to navigation service. Changes will include adjusting all service levels to national standards between 1997 and the year 2000 and reducing some conventional aids services based on the availability of the Global Positioning System, Differential Global Positioning System (DGPS) and the Electronic Chart Display Information System (ECDIS). The new electronic systems will supplement the remaining conventional aids system, permitting continued maintenance of a safe service at lower cost

IMPLEMENTATION OF THE FOLLOWING CHANGES WILL BEGIN WITHIN COAST GUARD MARITIMES REGION ON APRIL 1, 1997.

MEASURES
1) Privatization of aids systems in pleasure craft channels and/or conversion of some lighted buoys to unlighted buoys and removal of some aids in pleasure craft channels.
2) Privatization of aids systems in inadequately and uncharted waters and where there is a low volume of users.
3) Aids to navigation systems in Saint-John and Yarmouth Harbours will be restructured to meet national standards.
4) Decommissioning of some lightstations (major reference lights) and downsizing of others to minor lights.
5) Discontinuance of some fog horns.
6) Removal of some coastal fixed and floating aids.

Over the next year, more detailed information concerning each of these proposed changes will be provided in each region or geographic area by Notices to Shipping and Notices to Mariners, allowing users time to comment prior to finalizing planned changes. Further Notices to Shipping and Notices to Mariners will also be issued at the time of all changes.

Mariners and representatives of user groups wishing to provide comments or recommendations on this or any subsequent notice may write to:

Regional Superintendent
Aids to Navigation
P.O. Box 1000
Dartmouth, N.S.
B2Y 3Z8
(902) 426-3151

LAURENTIAN REGION

The Canadian Coast Guard is planning to further modernize its marine aids to navigation service. During the period between 1997 and year 2000, these changes will include levels of service adjustments to meet the national standards as well as the reduction of some conventional aids services based on the availability of the Global Positioning System, Differential Global Positioning System (DGPS) and the Electronic Chart Display Information System (ECDIS). The new electronic systems will supplement the remaining conventional aids system, permitting continued maintenance of a safe service at lower cost.

The following table shows an update of changes already implemented in 1997/98 and hypothetical service cuts considered until year 2000:

IDENTITY OF MEASURES	97/98	98/99	99/00
1) <u>Introduction of a DGPS service (5 stations)</u>	5	-	-
2a) <u>25% reduction of main commercial channel buoy service</u> (79 lighted buoys removed and 75 changed for unlighted spar buoys).	79 buoys removed; 56 changed for unlit	19 buoys to be changed (unlit)	-
2b) <u>5 % reduction of main commercial channel buoy service</u> (29 lighted buoys changed for unlighted spar buoys)	-	29	29
3) <u>Removal or privatization of 12 major reference lights</u> <u>in commercial and/or fishing channels</u>	8 (one will no longer be removed)	3	-
4) <u>Privatization or removal of 272 aids to navigation</u> (unique users and/or in inadequately charted waters)	187	85	-
5) <u>33% reduction (50) of reference lights or fog signals</u> <u>in commercial and/or fishing channels</u>	6 (2 fixed aids + 4 fog signals)	25	19
6) <u>Removal of 20 fixed aids or fog signals</u> <u>in pleasure craft channels</u>	5 (including 2 fog signals)	-	15

NOTE: - measures for 1997/98 and 1998/99 will be implemented after adjustment *levels of service*
- measures for 1999/2000 will be implemented after adjustment *levels of service* and/or according to availability of DGPS/ECDIS technologies.

In the following month, more details about these changes will be provided by *Notices to Shipping* and *Notices to Mariners*. The Canadian Coast Guard will delay implementation of measures allowing users enough time to comment on planned changes. Further *Notices to Shipping* and *Notices to Mariners* will be issued when changes are implemented.

Mariners and representatives of users groups wishing to transmit their comments or recommendations on this Notice may do so by writing to:

AIDS TO NAVIGATION SUPERINTENDENT
101 CHAMPLAIN BOULEVARD, QUÉBEC (QUÉ), G1K 7Y7

CENTRAL & ARCTIC REGION

The Canadian Coast Guard is planning to further modernize its marine aids to navigation service. Changes will include adjusting all service levels to national standards between 1997 and the year 2000 and reducing some conventional aids services based on the availability of the Global Positioning System, Differential Global Positioning System (DGPS) and the Electronic Chart Display Information System (ECDIS). The new electronic systems will supplement the remaining conventional aids system, permitting continued maintenance of a safe service at lower cost

Implementation of the following changes will begin within Coast Guard Central and Arctic region on April 1, 1997.

MEASURES
1) Upgrading DGPS sites at Cardinal and Wiarton to Initial Operating Service to provide, with the United States Coast Guard, to provide complete coverage of the Great Lakes/St. Lawrence Seaway by December 1997.
2) Removal or divestiture of 700 floating and fixed aids to navigation in the Athabasca River System.
3) Removal of approximately 20 floating aids in the Western Arctic in Simpson Strait, Cambridge Bay, Gjoa Haven and Spence Bay.
4) Privatization of 30 buoys in the Napanee River and approximately 120 fixed and floating aids to navigation in Northern Ontario due to uncharted or inadequately charted waters .
5) Removal or divestiture of approximately 30 reference or wharf-lights in conjunction with Small Craft Harbours, or Ports and Harbours Canada initiatives.
6) Conversion of approximately 20 lighted buoys to unlighted buoys in pleasure craft channels.
7) Removal of 50 floating aids to navigation in commercial channels.
8) Divestiture of 1 light house and associated property.
9) Removal or transfer of 14 fog horns on Lake Superior.
10) Removal or downsizing of 31 large lighted floating aids to navigation on the Great Lakes.

Over the next year, more detailed information concerning each of these proposed changes will be provided in each region or geographic area by Notices to Shipping and Notices to Mariners, allowing users time to comment prior to finalizing planned changes. Further Notices to Shipping and Notices to Mariners will also be issued at the time of all changes.

Mariners and representatives of user groups wishing to provide comments or recommendations on this or any subsequent notice may write to:

Superintendent Marine Aids Program
Central and Arctic Region
201 Front Street North, Suite 703
Sarnia, Ontario, N7T 8B1
Telephone (519)383-1816
Facsimile (519)383-1995

MONTHLY EDITION OF NOTICES TO MARINERS

MAILING LIST CHANGES

Director General,
Marine Navigation Services Directorate,
Canadian Coast Guard,
Department of Fisheries and Oceans,
Ottawa, Ontario,
K1A 0E6

Telephone - (613) 990-3037
Facsimile - (613) 998-8428

Please indicate which edition you would like to receive.

EASTERN EDITION (will be comprised of Arctic, Newfoundland, Maritimes, Gulf & River St. Lawrence and Central areas) _____

WESTERN EDITION(will be comprised of Arctic and Pacific areas) _____

ADD _____ **AMEND** _____ **REMOVE** _____ **NO. OF COPIES** _____

OLD ADDRESS

NAME

STREET **APT**

CITY **POSTAL CODE**

PROVINCE **COUNTRY**

NEW ADDRESS

NAME

STREET **APT**

CITY **POSTAL CODE**

PROVINCE **COUNTRY**

ID number above address on label

or

Attach complete address label to this sheet

NATIONAL

ERRATUM - ST. LAWRENCE RIVER - CANAL DE BEAUHARNOIS - Buoy.....	1331	30
- KINGSTON HARBOUR AND APPROACHES - Aids to navigation.....	1330	2
CANADA - List of charts affected by (T) and (P) notices in effect June 26, 1998.	1346	15-18
- NEWFOUNDLAND - Terra Nova Project.....	1353	20-22
- Notice to Shipowners and Operators of Canadian Safety Convention Ships.	1334	3,4
- Summary of (T) and (P) Notices in effect June 26, 1998.....	1345	4-15
CANADIAN HYDROGRAPHIC SERVICE Charts.....	1351	1
- Information about CHS chart dealers.....	1336	18-20

ARCTIC

HUDSON BAY - DAWSON INLET TO MARBLE ISLAND - Rocks.....	1310	32,33
--	------	-------

NEWFOUNDLAND

LABRADOR COAST - APPROACHES TO CURLEW HARBOUR - TINKER ROCK - Buoy.	1344	24
- LABRADOR SEA - OFF BLACK BEAR ISLAND - Chart amendment.....	1327	24
NEWFOUNDLAND, SOUTH COAST - CONNAIGRE BAY - SEAL COVE - Buoys.	1304	23
- PLACENTIA BAY - PARADISE SOUND - SOUTHEAST BIGHT AND PETITE FORTE - Aids and wharf.....	1328	23
NEWFOUNDLAND, SOUTHEAST COAST - TREPASSEY BAY - POWLES HEAD - Fog signal.	1349	23

MARITIMES

NOVA SCOTIA, SOUTHEAST COAST - SHELBURNE HARBOUR - BIRCHTOWN BAY - Buoys.....	1318	26,27
- EASTERN WAY - Buoy.....	1314	26
- SHELBURNE HARBOUR AND WESTERN WAY - Buoys.....	1317	26
NOVA SCOTIA, SOUTHWEST COAST - CAPE SABLE ISLAND - STONEY ISLAND AND SHELBURNE HARBOUR APPROACHES - Lights and buoys.....	1306	27,28
- YARMOUTH HARBOUR AND NEGRO HARBOUR - Buoys and lights..	1307	28

GULF & RIVER ST. LAWRENCE

CHALEUR BAY- L'ANSE-À-BEAUFILS - Buoy	1337	25
- POKESUDIE ISLAND - Lights.....	1312	25,26
GULF OF ST. LAWRENCE- ÎLES-DE-LA-MADELEINE - POINTE DE L'EST -		
Light and Racon.....	1339	24,25
- SANDY HOOK - Buoy.....	1338	25
- STRAIT OF BELLE ISLE - L'ANSE AU LOUP - Light.....	1324	24
NEWFOUNDLAND, NORTH COAST- HA! HA! BAY - RALEIGH - PITON		
POINT - Wharf and light.	1329	23
QUÉBEC - Quebec historic canals - Hours of operation for 1998	1300	2
- RIVIÈRE SAGUENAY - BAIE DES HA! HA! - Depths.....	1332	28
- BATTURE AUX LOUPS MARINS - Range lights.....	1348	29

GULF & RIVER ST. LAWRENCE (Cont'd)

ST. LAWRENCE RIVER- CONTRECOEUR - Buoy	1333	29
- MONTMAGNY - Buoy.....	1316	1
- PORT DE MONTRÉAL TO PORT DE SOREL - Buoy.....	1335	29,30

CENTRAL

LAKE ERIE- PEELE PASSAGE - Buoy	1322	32
- PORT COLBORNE - Lights.....	1343	31,32
- Wellheads.	1342	32
LAKE HURON - GEORGIAN BAY- NORTH CHANNEL - Buoy	1309	32
LAKE ONTARIO- COBOURG - Light	1325	31
- KINGSTON HARBOUR - COLLINS BAY - Bridge.....	1320	31
MANITOBA - LAKE WINNIPEG - MONTREAL POINT TO KETTLE ISLAND -	1341	33
Buoys.		
- LAKE WINNIPEG TO PLAYGREEN LAKE - Buoy.....	1340	33,34
ONTARIO - RIDEAU CANAL - Hours of Operation - 1998	1321	2,3
QUÉBEC - LAC DES DEUX MONTAGNES - POINTE AUX ANGLAIS - Private	1347	31
light.		
ST. LAWRENCE SEAWAY- BEAUHARNOIS CANAL - Light buoy	1311	30,31

**INDEX
PAGE**

NOTICE #

- LAC SAINT-LOUIS - CANAL DE LA RIVE - Buoy.....	1303	30
- NEAR BEAUHARNOIS CANAL - Chart amendment.....	1323	30
UNITED STATES- ST. CLAIR RIVER - Light.....	1326	2

NOTICES 1305 AND 1350 ARE NOT PUBLISHED

NUMERICAL INDEX OF CANADIAN CHARTS AFFECTED

Chart No.	Notice # Page	Page	Chart No.	Notice # Page	Page	Chart No.	Notice #
1202	1332	28	LC 4002	1339	24,25	4509	1329 23
1209	1348	28	LC 4011	1307	28	4615	1328 23
1310	1335	29,30	LC 4012	1306	27,28	4619	1328 23
1338	1333	29		1307	28	LC 4622	1328 23
	1335	29,30	LC 4015	1304	23	4668	1324 24
1339	1333	29	LC 4016	1304	23	LC 4844	1349 23
1410	1303	30	LC 4020	1324	24	LC 4913	1312 25,26
	1323	30	LC 4022	1339	24,25	4921	1337 25
1411	1311	30,31	LC 4024	1339	24,25	LC 4951	1338 25
	1331	30				LC 4952	1339 24,25
1510	1347	31	4209	1314	26	5044	1327 24
2017	1320	31		1317	26	5133	1344 24
2018	1320	31		1318	26,27	5134	1344 24
2042	1343	31,32	LC 4230	1306	27,28	5138	1351 1
2054	1325	31		1307	28	5397	1310 32,33
LC 2058	1325	31		1314	26	5398	1310 32,33
LC 2100	1342	32		1317	26	6258	1340 33,34
LC 2110	1351	1		1318	26,27	1341	33
LC 2120	1342	32	LC 4241	1306	27,28	6259	1340 33,34
LC 2121	1342	32		1307	28	LC 8006	1307 28
LC 2122	1342	32	LC 4242	1306	27,28		
LC 2123	1322	32	LC 4243	1307	28		
2251	1309	32	4278	1351	1		
2297	1309	32	LC 4406	1351	1		
LC 2300	1351	1	LC 4451	1338	25		
				1339	24,25		
			LC 4485	1337	25		
			LC 4486	1312	25,26		
				1337	25		

***1351 CANADIAN HYDROGRAPHIC SERVICE - Charts**

CHART	TITLE & CONTENTS	SCALE	DATED	CAT #	PRICE
1. New chart.					
	<u>Lake Superior/Lac Supérieur</u>				
LC 2300	Lake Superior	1:600 000	April 24/98	3	\$20.00
	Limit(s): 46°00'00" N 92°25'00" W 49°20'00" N 92°25'00" W 49°20'00" N 84°00'00" W 46°00'00" N 84°00'00" W				
	and inset: (1) Superior Shoal	1:70 000			
	Limit(s): 48°01'30" N 87°15'18" W 48°07'12" N 87°15'18" W 48°07'12" N 87°03'42" W 48°01'30" N 87°03'42" W				
2. New Editions.					
	<u>Lake Erie/Lac Érié</u>				
LC 2110	Lake Erie - Long Point Bay	1:50 000	May 29/98	3	20.00
	NOTE: This chart is affected by Notice 121(P)/94.				
	<u>Nova Scotia/Nouvelle-Écosse</u>				
4278	Great Bras D'Or and/et St. Patricks Channel	1:40 000	March 20/98	1	20.00
	NOTE: This chart is affected by Notices 648(P)/97 and 1149(P)/98.				
	<u>Northumberland Strait/Détroit de Northumberland</u>				
LC 4406	Tryon Shoals to Cape Egmont	1:75 574	Feb. 27/98	1	20.00
	<u>Labrador</u>				
5138	Sandwich Bay	1:50 000	June 5/98	1	20.00

(AMA8035-10-35)

(DFO-H98-065)

***1316 ST. LAWRENCE RIVER - MONTMAGNY - Buoy.**

Montmagny bifurcation can buoy, located in the Montmagny Approach Channel, has been permanently discontinued.

(AMA8035-10-5-9)

(CCG-L98-046)

***1300 QUEBEC - Quebec historic canals - Hours of operation for 1998.**

The Department of Canadian Heritage, Parks Canada, Montreal District, is pleased to announce the opening of the boating season on Quebec's historic canals for 1998.

For the four historic canals, Chambly, Saint-Ours, Carillon and Sainte-Anne-de-Bellevue, the boating season will open on Friday, May 15, and close on Monday, October 12, 1998.

For the detailed schedule for each canal, obtain a copy of the pamphlet "Tarification et Horaire", available at canal fee collection stations, or contact canal staff at the following numbers:

During the boating season

Chambly Historic Canal :

Lock No. 1 in Chambly: (450) 658-6525

Lock No. 9 in Saint-Jean-sur-Richelieu: (450) 348-3392

Saint-Ours Historic Canal: (450) 785-2212

Sainte-Anne-de-Bellevue Historic Canal: (514) 457-5546

Carillon Canal: (450) 537-3534

Outside the boating season

Feel free to contact us at (450) 447-4847, or write to us at the following address:

Parcs Canada
District de Montréal
1899 boulevard Périgny
Chambly (Québec)
J3L 4C3

(AMA8035-10-1)

(CCG-H98-031)

***1330 ERRATUM - ST. LAWRENCE RIVER - KINGSTON HARBOUR AND APPROACHES - Aids to navigation.**

Reference: Notice 957(P) 98.

Chart 1438

Wolfe Island Cut green spar buoy PV3 should have been repositioned from 44°14'09" N 76°10'49" W to 44°14'14" N 76°10'52".5 W

(AMA8035-10-5-12)

(CCG-H98-033)

1326 UNITED STATES - ST. CLAIR RIVER - Light.

This information is applicable to US chart 14853, sheet 40.

Squirrel Island front range light (L.L. 732)(42°33'12" N 82°34'58" W) has been changed to "Iso Y 2s".

(AMA8035-10-7-14)

(CCG-B98-026)

***1321 ONTARIO - RIDEAU CANAL - Hours of Operation - 1998**

Charts 1512 and 1513

Rideau Canal

1998 Navigation Season & Hours of Operation

The Rideau Canal opens for navigation on Friday, May 15th, 1998. The hours of operation are listed below.

May 15 - June 11

Monday to Thursday 8:30 to 16:30

Friday to Sunday, Victoria Day 8:30 to 19:30

June 12 - Sept.7

Weekdays & Weekends

8:30 to 19:30

Sept. 8 - Sept. 13

Weekdays & Weekends

8:30 to 16:30

Sept. 14 - Oct. 14

Monday to Friday

9:30 to 15:30

Saturday & Sunday

8:30 to 16:30

Rideau Canal staff are continuing their efforts to clear the waterway of any debris as a result

of the ice storm this past winter, therefore, boaters are advised to exercise caution while traversing the waterway. As well, navigational aids may be missing, and/or displaced due to ice movement and high spring flows.

For further information, please contact Mr. Kerry McGonegal, Water Management Officer at (613) 283-5170.

(AMA8035-10-1)

(CCG-B98-020)

***1334 CANADA - Notice to Shipowners and Operators of Canadian Safety Convention Ships.**

Shipowners and operators of Canadian Safety Convention ships are reminded that under SOLAS Chapter IV, and the Canadian Ship Station Radio Regulations section 11, their ships will have to be fully fitted for the GMDSS and have on board suitably trained and certified officers for the GMDSS by February 1, 1999. To ensure compliance, SOLAS radio certificates issued in 1998 to ships not already in compliance with the GMDSS will not be valid after January 31, 1999. For this reason, these certificates are being endorsed to expire on this date.

In addition, owing to an expected heavy demand for GMDSS equipment and training courses, shipowners and operators are advised to take early action in making the necessary arrangements to become GMDSS compliant.

Questions on this notice may be directed to:

Allen Williams
Marine Safety
Tower C, Place de Ville
330 Sparks Street
Ottawa, K1A 0N8
Telephone: (613) 991-2061
Facsimile: (613) 993-8196
E-mail: williaa@tc.gc.ca

Procedures for arranging a radio inspection, and a list of Canadian Coast Guard ship radio inspection contacts can be found in a correction to the Radio Aids to Marine Navigation published in Notices to Mariners Edn #10/97.

(AMA8035-10-1)

(CCG-H98-035)

***1345 SUMMARY OF TEMPORARY AND PRELIMINARY NOTICES IN EFFECT JUNE 26, 1998**

(Revised and promulgated quarterly)
Reference: Notice 757/98 cancelled.

NOTICE	CHART	LOCALITY AND SUBJECT
(1) MISCELLANEOUS		
342(P)/97	- - - -	Canada - Loran-C lattices on nautical charts.
633(T)/97	- - - -	Canada - Safety of offshore exploration and exploitation vessels.
(2) CANADIAN ARCTIC AND WEST COAST OF GREENLAND		
847(P)/89	7740, 7083	Northwest Territories - Larsen Sound - Boothia Peninsula - Results of surveys.
634(P)/96	7371	Northwest Territories - Ellesmere Island - Alexandra Fiord - Off Skraeling Island - Result of survey.
658(P)/96	- - - -	Northwest Territories - Hay River - Lights and light buoys to be discontinued.
666(P)/96	- - - -	Western Arctic - Great Slave Lake - Curtis Island - Light to be discontinued.
738(P)/96	6311	Northwest Territories - Lake Athabasca - Range lights to be discontinued.
751(P)/96	6311	Northwest Territories - Lake Athabasca - Range lights to be discontinued.
222(P)/97	- - - -	Northwest Territories - Simpson Strait - Spar buoys to be discontinued.
223(P)/97	- - - -	Northwest Territories - McClintock Bay - Spar buoys to be discontinued.
233(P)/97	- - - -	Northwest Territories - Spence Bay - Spar buoys to be discontinued.
328(P)/98	- - - -	Northwest Territories - Fort Chipewyan to Fort McMurray - Changes to the buoyage system - 1998.
(3) HUDSON BAY INCLUDING FOXE CHANNEL, HUDSON STRAIT AND LABRADOR		
292(T)/88	4728	Labrador Coast - Lake Melville - Goose Bay Narrows - Off Brûlé Point - Shoal reported - Caution.
591(T)/93	5031	Labrador Coast - St. Mary's Harbour - Wharf under reconstruction - Caution.
804(P)/93	5048, L/C 8047, L/C 4730	Labrador Coast - Off Cape Harrigan - Nanuktok (Farmyard) Islands - Information about depth.
163(T)/94	4703, 5133, 4732, L/C 8048, L/C 4730, L/C 4700, L/C 4001(INT404)	Labrador Coast - East of South Wolf Island - Scientific subsurface mooring established temporarily.
703(T)/94	5031	Labrador Coast - St. Lewis Sound - Battle Harbour - Depth - Submerged wharf in ruins.

761(T)/94	5001(INT 405)	Labrador Coast - Labrador Sea - Current meter established temporarily.
680(P)/95	5049	Labrador Coast - Uyagaksuak Island - Result of survey.
345(P)/96	4702	Labrador Coast - Martin Bay - Result of survey.
687(P)/96	4702, 4703	Labrador Coast - South of Frenchman Island - Result of survey.
(4) BAY OF FUNDY AND ATLANTIC COAST SOUTH TO 40° N., NOVA SCOTIA AND NEWFOUNDLAND		
193(T)/87	4587	Newfoundland - Placentia Bay - Mortier Bay - Off Spanish Room Point - Anchor chains stored temporarily - Caution.
323(P)/88	L/C 4624, L/C 4016, L/C 4047	Newfoundland - Placentia Bay - South of Jude Island - Shoal reported.
413(T)/88	L/C 4832	Newfoundland - Fortune Bay - Fortune Harbour - Fortune Barasway - Shoal reported - Caution.
356(P)/90	L/C 4622, L/C 4624, L/C 4016	Newfoundland - Placentia Bay - South of Jude Island - Shoal reported.
568(T)/90	4843, L/C 4817	Newfoundland - St. Mary's Harbour - Graven Beach - Sunken barge - Caution.
55(T)/91	- - - -	Newfoundland - Bonavista Bay - Newman Sound - Wharf under reconstruction - Light discontinued temporarily.
191(T)/91	L/C 4851	Newfoundland - Trinity Bay - Bull Arm - Current meter established temporarily - Caution.
103(T)/92	4849	Newfoundland - Conception Bay - Harbour Grace - Spires removed temporarily.
474(P)/92	L/C 4118	Nova Scotia - St. Marys Bay - Weymouth Harbour - Results of survey.
782(T)/92	4848, L/C 4847	Newfoundland - Conception Bay - Long Pond - Information concerning breakwater - Caution.
805(P)/92	L/C 4234, L/C 4235, L/C 4227	Nova Scotia - Ecum Secum - Results of survey.
70(P)/93	L/C 4010	Bay of Fundy - Minas Channel - Île Haute - Light relocated.
619(T)/93	4830, L/C 4832, L/C 4016	Newfoundland - Fortune Bay - Sagona Island - Fog signal discontinued temporarily.
649(P)/93	4448, L/C 4462	Cape Breton Island - Port Hood - Port Hood Island - Light to be discontinued.
707(T)/93	L/C 8010, L/C 4001(INT 404)	Off Newfoundland - Current meters established temporarily.
737(P)/93	4637	Newfoundland - The Burgeo Islands - Graley Rock - Shoal reported.
815(P)/93	4142	Bay of Fundy - Saint John River - Newcastle Creek - Lights discontinued - Light established.

47(T)/94	L/C 4520, L/C 8015	Newfoundland - Subsurface mooring established temporarily.
73(P)/94	4124, 4331	Bay of Fundy - Deer Island - Lords Cove - Radar reflector changed.
75(T)/94	L/C 4017, L/C 8015	Off Newfoundland - Subsurface mooring established temporarily.
76(T)/94	L/C 4520, L/C 4017, L/C 8014, L/C 8015, L/C 8049	Off Newfoundland - Subsurface mooring established temporarily.
104(T)/94	L/C 4844	Newfoundland - Renews Harbour - Range light discontinued temporarily.
105(T)/94	L/C 4844, L/C 4817, L/C 4016, L/C 8011, L/C 4047, L/C 4049	Newfoundland - Off Cape Race - Subsurface mooring established temporarily.
108(T)/94	L/C 4016, L/C 4047	Newfoundland - Placentia Bay Approach - Subsurface mooring established temporarily.
236(P)/94	----	Nova Scotia - Cape Breton Island - Bras D'Or Lakes - Cape St. Lawrence to Guyon Island - Review of aids to navigation.
276(P)/94	----	Bay of Fundy - Grand Manan - St. Croix River to Maces Bay - Review of aids to navigation.
350(P)/94	L/C 4010	Bay of Fundy - Off Mosse Island - Light established.
359(T)/94	L/C 4846, L/C 4016, L/C 4017, L/C 8014, L/C 4049	Newfoundland - Off Cape Spear - Subsurface moorings established temporarily.
373(T)/94	4245	Nova Scotia - Yarmouth Harbour - Information about depths in maintain area.
423(P)/94	L/C 4850	Newfoundland - Bay de Verde - Information about light.
427(P)/94	4619, L/C 4622	Newfoundland - Placentia Bay - West Head - Information about light.
459(P)/94	4342, L/C 4340	Bay of Fundy - Grand Manan - Off White Head Island - Information about depth.
461(T)/94	L/C 4235	Nova Scotia - East River - Light buoy established temporarily.
463(P)/94	4635	Newfoundland - Wreck Island - Information about light.
522(P)/94	L/C 4844, L/C 4817	Newfoundland - Trepassey Bay - Portugal Cove - Fog signal repositioned.
569(P)/94	4328, 4384	Nova Scotia - Lunenburg Bay - Recreational diving area.
594(T)/94	4641, 4635	Newfoundland - Port aux Basques and Approaches - Buoys established temporarily.
613(P)/94	4546	Newfoundland, East Coast - Trinity Bay - Random Sound - Northwest Arm - Off Bottom Bluff - Result of survey.
678(T)/94	LC 4017, LC 8015, LC 4001(INT 404)	Newfoundland, East Coast - Scientific subsurface mooring established temporarily.

717(T)/94	L/C 4235	Nova Scotia - East River - Sheet Harbour - Wreck.
820(T)/94	4201(INT 4634)	Nova Scotia, Southeast Coast - Halifax Harbour - Bedford Basin - Wrights Point -Results of survey.
64(T)/95	4851	Newfoundland, East Coast - Trinity Bay - Bull Arm - Pontoons established temporarily.
181(T)/95	4332, 4331	Bay of Fundy - Passamaquoddy Bay - St. Andrews - Light discontinued temporarily.
192(T)/95	4635, LC 4015, LC 4022	Newfoundland, South Coast - Port aux Basques - Channel Head - Experimental DGPS Reference Station established temporarily.
201(T)/95	4277	Cape Breton Island - Great Bras D'Or - Duffus Point - Light discontinued temporarily.
284(P)/95	- - - -	Bay of Fundy - Saint John River - Aids to navigation to be discontinued.
288(P)/95	- - - -	Bay of Fundy - Saint John River - Aids to navigation to be discontinued.
290(P)/95	- - - -	Bay of Fundy - Saint John River - Aids to navigation to be discontinued.
346(T)/95	4211	Nova Scotia, Southeast Coast - Medway Harbour - Light buoy established temporarily.
384(T)/95	LC 4851, LC 4017	Newfoundland, East Coast - Trinity Bay - Bull Arm - Buoy established temporarily.
420(P)/95	LC 4010	Nova Scotia - Scots Bay - Cape Blominden - Radar reflector.
507(T)/95	4124, 4331	Bay of Fundy - Back Bay - Cailiff Rocks - Light buoy relocated temporarily.
529(P)/95	LC 4098, LC 4099, LC 8007, LC 4013, LC 4045, LC 4003, LC 4001(INT 404), LC 4006, 4000	Nova Scotia, Southeast Coast - Sable Island - Radiobeacon to be discontinued.
534(T)/95	4245	Nova Scotia, Southwest Coast - Yarmouth Harbour - Buoys established temporarily.
553(P)/95	- - - -	Nova Scotia - Northumberland Strait - Little Harbour - Buoys to be discontinued.
623(T)/95	- - - -	Newfoundland - Strait of Belle Isle - Pistolet Bay - Experimental DGPS established temporarily.
690(T)/95	4332, 4331	Bay of Fundy - Passamaquoddy Bay - St. Andrews - Light buoy established temporarily.
734(P)/95	4210, LC 4230	Nova Scotia - Wood's Harbour - Angels Island - Light.
120(P)/96	4637	Newfoundland, Southwest Coast - Burgeo Short Reach - Buoys to be discontinued.
141(T)/96	4381	Nova Scotia, Southeast Coast - Mahone Bay - East Ironbound Island - Light temporarily discontinued.

154(P)/96	4644	Newfoundland, South Coast - Bonne Bay - Results of surveys.
217(P)/96	LC 4118	Bay of Fundy - Grand Passage - Peter Island - Fog signal to be discontinued.
237(T)/96	4394	Nova Scotia, Southeast Coast - LaHave - Crooked Channel - Spar buoy temporarily repositioned.
444(P)/96	LC 4831, LC 4832, LC 4016	Newfoundland, Southeast Coast - Belle Bay - St. Jacques Island - Fog signal to be discontinued.
533(P)/96	4379	Nova Scotia, Southeast Coast - Liverpool Harbour - Off Fort Point - Dredged channel.
727(P)/96	- - - -	Nova Scotia - Shelburne - Buoys and lights to be discontinued.
748(T)/96	4140	Bay of Fundy - Minas Basin - Approaches to Hantsport - Results of survey.
115(T)/97	- - - -	Northumberland Strait - Navigation Route.
130(P)/97	- - - -	New Brunswick - Changes to the buoyage system - 1997.
239(P)/97	4635	Newfoundland, Southwest Coast - Rose Blanche - Spar buoy.
277(P)/97	4849	Newfoundland, Southeast Coast - Bonavista Bay - Bonavista Harbour - Results of survey.
291(P)/97	LC 4841, LC 4622	Newfoundland, South Coast - Placentia Bay - Light buoy to be discontinued.
319(P)/97	- - - -	Northumberland Strait - Changes to the buoyage system - 1997.
471(P)/97	- - - -	New Brunswick - Changes to the buoyage system - 1997.
648(P)/97	4278	Cape Breton Island, Atlantic Coast - Great Bras d'Or and St. Patricks Channel - Buoys.
128(P)/98	4396	Bay of Fundy - Annapolis basin - Digby - Light to be discontinued.
518(P)/98	- - - -	Nova Scotia, Southwest Coast - Yarmouth Sound - Buoys to be discontinued.
519(P)/98	4245, LC 4243, LC 4230, LC 4011, LC 4012	Nova Scotia, Southwest Coast - Yarmouth Harbour and Cape Forchu - East Cape - Fog signals to be discontinued.
535(P)/98	LC 4847	Newfoundland, East Coast - Conception Bay - Port de Grave - Breakwater and lights.
765(T)/98	4644	Newfoundland, South Coast - Bay D'Espoir and Roti Bay - Current meters.
768(P)/98	- - - -	Northumberland Strait - Fog signals to be discontinued.
769(P)/98	- - - -	Bay of Fundy - Lights and light buoy to be discontinued.

1105(P)/98	- - - -	New Brunswick - Halifax Harbour - Point Pleasant to Bedford Basin - Buoy to be discontinued.
1149(P)/98	4277, 4278	Cape Breton Island - St. Anns Bay - Great Bras d'Or - St. Andrews Channel - St. Patricks Channel - Aids.
1161(P)/98	- - - -	Northumberland Strait - Richibucto Harbour - Lights to be discontinued.
(5) GULF AND RIVER ST. LAWRENCE TO MONTREAL, INCLUDING PRINCE EDWARD ISLAND AND WEST COASTS OF NEWFOUNDLAND AND CAPE BRETON ISLAND		
196(T)/87	1351	Québec - Rivière Richelieu - Customs wharf - Shoal reported.
769(P)/90	4456	Gulf of St. Lawrence - Off Rocher de la Garde - Information about depth.
68(P)/91	1339	Montréal Harbour - Information about shoals.
75(T)/92	1338, 1339	St. Lawrence River - Montréal Harbour - Contrecoeur - Information about shoals.
170(T)/92	1314	St. Lawrence River - Québec Harbour to Trois-Rivières Harbour - Deschailions-sur-Saint-Laurent - Wharf damaged - Docking prohibited - Caution.
347(T)/92	- - - -	Newfoundland - Stephenville Entrance Channel and Turning Basin - Information about shoaling.
433(T)/92	4456	Gulf of St. Lawrence - Îles Mingan - Havre Saint-Charles - Information about reported sandbank.
133(T)/93	1203	St. Lawrence River - Saguenay River - Anse Saint-Jean - Light discontinued temporarily - Wharf damaged - Caution.
195(T)/93	4954	Gulf of St. Lawrence - Îles de la Madeleine - Chenal du Havre de la Grande-Entrée - Information about depths.
358(T)/93	4912	Gulf of St. Lawrence - Miramichi River - Information about depths and channel width restrictions.
632(P)/93	1202	St. Lawrence River - Saguenay River - Baie des Ha!Ha! - Light charted.
636(P)/93	1351	Québec - Rivière Richelieu - Bassin de Chambly - Anemometer tower.
793(P)/93	4469	Gulf of St. Lawrence - Tête-à-la-Baleine - Information about wharf.
845(P)/93	4460	Gulf of St. Lawrence - Prince Edward Island - Charlottetown - Light established.
103(T)/94	4426	Chaleur Bay - Restigouche River - Dalhousie - Results of survey.
240(P)/94	1317	St. Lawrence River - Cap Rouge - Shoal depth.
299(P)/94	L/C 4020	Strait of Belle Isle - Green Island Brook - Light established.
374(T)/94	L/C 4026	St. Lawrence River - Marsoui - Wharf under construction.
582(P)/94	4921	Gulf of St. Lawrence - Chaleur Bay - Côte Nord - L'Anse-à-Beaufils - Breakwater extension.

583(P)/94	L/C 4464, L/C 4022	Cape Breton Island - Pleasant Bay - Light.
612(T)/94	4483	Gulf of St. Lawrence - Caribou Harbour - Results of survey.
783(P)/94	4920, L/C 4913	Gulf of St. Lawrence - Chaleur Bay - Middle Caraquet - Lights to be discontinued.
798(P)/94	L/C 4486	Gulf of St. Lawrence - Chaleur Bay - Anse-Bleue - Range lights to be discontinued.
818(T)/94	4957	Gulf of St. Lawrence - Îles de la Madeleine - Havre-Aubert - Wreck.
65(T)/95	1313	St. Lawrence River - Cap-de-la-Madeleine - Wharf partially closed.
261(T)/95	4430	Gulf of St. Lawrence - Île D'Anticosti - Baie Ellis - Shoal.
348(P)/95	- - - -	Gulf of St. Lawrence - Restigouche River - Buoys to be changed and to be established.
526(P)/95	4437	Gulf of St. Lawrence - Pictou Harbour - Light and breakwater.
595(T)/95	4920	Gulf of St. Lawrence - Chaleur Bay - Bathurst Harbour and Approaches - Shoaling.
603(T)/95	4921, LC 4485, LC 4486	Gulf of St. Lawrence - Anse-à-Beaufils - Buoys established temporarily.
65(T)/96	4491	Prince Edward Island - Darnley Basin - Light buoy discontinued temporarily.
306(P)/96	LC 4486	Gulf of St. Lawrence - Chaleur Bay - Jacquet River - Light to be discontinued.
351(P)/96	4483, LC 4405, LC 4404, LC 4023, LC 4013	Gulf of St. Lawrence - Caribou - Fog signal to be discontinued.
364(P)/96	- - - -	Gulf of St. Lawrence - Chaleur Bay - Jacquet River - Light buoy to be discontinued.
433(T)/96	1351	Québec - Rivière Richelieu - Île aux Noix - Shoal reported.
434(T)/96	4921	Chaleur Bay - Grande Rivière - Shoal reported.
690(T)/96	LC 4485, LC 4486	Gulf of St. Lawrence - Chaleur Bay - Marine farm.
855(P)/96	4912	Gulf of St. Lawrence - Miramichi River - Black River - Pier.
859(P)/96	- - - -	Laurentian Region - Changes to the buoyage system - 1997.
129(P)/97	LC 1235	St. Lawrence River - Escoumins - Shoal depths.
131(P)/97	- - - -	Prince Edward Island - Changes to the buoyage system - 1997.
180(P)/97	- - - -	Prince Edward Island - Aids to navigation to be changed.
182(P)/97	- - - -	Prince Edward Island - Changes to the buoyage system - 1997.

187(P)/97	- - - -	Prince Edward Island - Changes to the buoyage system - 1997.
221(T)/97	- - - -	St. Lawrence River - Upstream from Sorel - Aids obstructed - Caution.
299(P)/97	1409	St. Lawrence River - Canal de la Rive Sud - Sainte-Catherine and Saint-Lambert - Dredged areas.
430(T)/97	1316	St. Lawrence River - Québec Harbour - Maintained area remains temporarily reduced.
546(T)/97	1315	St. Lawrence River - Neuville - Wharf.
616(T)/97	1310	St. Lawrence River - Montréal Harbour - Depth.
679(P)/97	1314	St. Lawrence River - Portneuf - Shoal depths.
115(P)/98	4954	Gulf of St. Lawrence - Îles de la Madeleine - Grande Entrée - Sector light.
116(P)/98	4954	Gulf of St. Lawrence - Îles de la Madeleine - Shoal depths.
140(P)/98	1233	St. Lawrence River - Cap aux Oies to Sault-aux-Cochons - Île aux Coudres - Shoal depths.
142(T)/98	1310	St. Lawrence River - Montréal Harbour - Île aux Cerfeuil - Submerged obstacle.
144(P)/98	1314	St. Lawrence River - Cap-Santé - Range lights - Beacon.
510(P)/98	1351	Québec - Rivière Richelieu - Île Goyer - Rocks.
517(P)/98	- - - -	Québec - Rivières Richelieu, des Prairies, des Outaouais - Vertical clearances under cables - Caution.
703(P)/98	1233	St. Lawrence River - Île aux Coudres - Shoal depths.
711(P)/98	4920	Gulf of St. Lawrence - Chaleur Bay - Bathurst Harbour and Approaches - Buoys.
719(P)/98	LC 1236	St. Lawrence River - Matane - Depths.
767(P)/98	- - - -	Prince Edward Island - Fog signals to be discontinued.
771(P)/98	- - - -	Cape Breton Island - Enragée Point and Beach Point - Fog signal and light to be discontinued.
772(P)/98	- - - -	Chaleur Bay - Miscou Island - Fog signal to be discontinued.
956(P)/98	- - - -	St. Lawrence River - Thousand Islands, Brockville to Kingston - Buoys and light.
957(P)/98	- - - -	St. Lawrence River - Kingston Harbour and Approaches - Aids to navigation.
958(P)/98	4920	Gulf of St. Lawrence - Shippegan Gully - Buoys.

1122(T)/98	1316	St. Lawrence River - Pointe de la Martinière - Light buoy.
1137(P)/98	1339, 1338	St. Lawrence River - Île Bouchard - Shoal depths.
1140(P)/98	1312, 1338	St. Lawrence River - Lac Saint-Pierre - Sorel - Shoal depths.
1144(P)/98	4920	Chaleur Bay - Bathurst Harbour - Middle River - Lights.
1150(P)/98	1230	St. Lawrence River - Péninsule de la Gaspésie - Cap-Chat - Breakwaters.
1151(P)/98	1339	St. Lawrence River - Varennes - Shoal depths.
1159(P)/98	- - - -	Gulf of St. Lawrence - Miramichi Bay and River - Range lights to be discontinued.
1160(P)/98	- - - -	Gulf of St. Lawrence - Miramichi Bay and River - Range lights to be discontinued.

(6) ST. LAWRENCE SEAWAY, GREAT LAKES AND THE INLAND LAKES AND RIVERS

826(T)/85	2028	Ontario - Lake Simcoe - Cook's Bay - Maskinongé (Jersey) River Entrance - Light established temporarily.
367(T)/88	2222, 2239, 2202	Lake Huron - Georgian Bay - Midland Bay - Tiffin Basin - Wye River Approach - Shoal reported.
90(T)/90	L/C 2077, 2086	Lake Ontario - Off Long Branch - Temporarily cautionary light discontinued - Cautionary lights established temporarily.
610(T)/90	6242	Manitoba - Red River - Lockport - St. Andrews Lock - Bascule lift non-operational - Caution.
150(T)/91	- - - -	Québec - Rivière des Prairies - Booms established temporarily - Caution.
380(P)/91	2268, 2257, 2299	Lake Huron - North Channel - East of Arnold Rock - Shoal reported.
651(T)/91	2022	Ontario - Trent-Severn Waterway - Rice Lake - South of Birdsalls Point - Light buoy established temporarily.
725(T)/91	2181	Lake Erie - Port Stanley - Information about depths.
769(T)/91	2291	Lake Huron - Goderich Harbour - Results of survey.
811(P)/91	2202	Lake Huron - Georgian Bay - Moon Bay - Information about shoals.
965(T)/91	L/C 2228, 2260	Lake Huron - Grand Bend - St. Joseph - Submerged obstruction reported.
123(P)/92	2202	Lake Huron - Georgian Bay - Parry Island - Off Wynn Island - Shoal depth reported.
186(P)/92	- - - -	Inland Waters - Great Lakes - Lake Huron - St. Mary's River - Lake Superior - Lake of the Woods - Lake Winnipeg - Review of aids to navigation.
214(P)/92	1510	Québec - Lac des Deux Montagnes - Rivière des Prairies - Île Bigras - Information about height of bridge.
355(P)/92	6218, 6212, 6201	Ontario - Lake of the Woods - From Devils Gap to Lunny's Island - Light

		and spar buoys to be discontinued - Spar buoys to be established.
525(T)/92	2023	Ontario - Trent-Severn Waterway - Otonabee River - Lakefield - Pier under reconstruction - Caution.
563(P)/92	1510	Québec - Ottawa River - Lac des Deux Montagnes - Rivère des Prairies - Plage Noël - Information about new pipeline.
667(P)/92	6218	Ontario - Lake of the Woods - Off Kenora - Spar buoy to be discontinued.
703(T)/92	2251	Lake Huron - St. Joseph Channel - Thessalon - Light discontinued temporarily -Light buoy established temporarily.
812(T)/92	L/C 2122, L/C 2123, L/C 2100	Lake Erie - Pelee Passage - Southeast Shoal - Radiobeacon discontinued temporarily.
172(P)/93	2202	Lake Huron - Georgian Bay - Severn Sound - Information about depths.
481(P)/93	- - - -	St. Lawrence River above Cornwall - Lake Ontario - Bay of Quinte - Review of aids to navigation.
51(P)/94	2304	Lake Superior - Patterson Island - Lawrence Bay - Information about shoal.
53(P)/94	2268, 2259, 2299	Lake Huron - North Channel - Whalesback Channel - Beardrop Harbour - Shoal reported.
54(P)/94	2202	Lake Huron - Georgian Bay - Anker Pint Islet - Moon Bay - Shoals reported.
115(P)/94	L/C 2245, L/C 2201, 2204, 2205	Lake Huron - Georgian Bay - Red Rock Point - Fog signal to be discontinued.
121(P)/94	2181, L/C 2110	Lake Erie - Port Dover - Fog signal to be discontinued.
162(P)/94	L/C 2123	Lake Erie - Pelee Island - Information about fish haven.
175(P)/94	L/C 2228, L/C 2200, 2260	Lake Huron - Grand Bend - Fog signal to be discontinued.
176(P)/94	L/C 2228, L/C 2200, 2260, 2261	Lake Huron - Bayfield - Fog signal to be discontinued.
177(P)/94	2291, L/C 2228, 2261	Lake Huron - Goderich Harbour - Fog signal to be discontinued.
178(P)/94	2291, L/C 2228, L/C 2200, 2261	Lake Huron - Kincardine - Fog signal to be discontinued.
179(P)/94	2292	Lake Huron - Saugeen River - Fog signal to be discontinued.
180(P)/94	2273, 2235, 2298, L/C 2200	Lake Huron - South Baymouth - Fog signal to be discontinued.
182(P)/94	2235, 2282, L/C 2201	Lake Huron - Georgian Bay - Cabot Head - Fog signal to be discontinued.
476(T)/94	L/C 2058, L/C 2077	Lake Ontario - Off Port Darlington - Temporarily scientific spar buoys established.
648(T)/94	- - -	Inland Waters - System reviews.

99(P)/95	- - - -	Lake Superior - Systems review of lightstations.
244(T)/95	2181, LC 2121	Lake Erie - Port Burwell - Light changed temporarily.
312(P)/95	- - - -	Manitoba - Lake Winnipeg - Mukutawa River and Approaches - Lights and buoy to be discontinued.
315(P)/95	- - - -	Manitoba - Lake Winnipeg - Bradbury River - Buoy to be discontinued.
317(P)/95	- - - -	Great Lakes - Lake St. Clair - Chenal Écarté - Range lights to be discontinued.
650(P)/95	2069	Ontario - Bay of Quinte - Trenton - Mooring rafts - Light - Spar buoy.
683(P)/95	2085, 2086, LC 2077	Lake Ontario - Toronto Harbour - Toronto Harbour Aquatic Park - Light and racon to be discontinued.
736(P)/95	2292	Lake Huron - Saugeen River - Light.
739(P)/95	2085, LC 2077, 2086	Lake Ontario - Western Gap - Range lights to be discontinued.
219(P)/96	2054	Lake Ontario - Cobourg Harbour - Light.
303(P)/96	LC 2120	Lake Erie - Port Colborne - Light buoy to be discontinued.
305(P)/96	- - - -	Great Lakes - Detroit River - Amherstburg - Fog signal to be discontinued.
461(P)/96	- - - -	Lake Huron - Georgian Bay - Buoys and beacons.
480(P)/96	- - - -	Lake Superior - Fog signal to be discontinued.
507(P)/96	LC 2123	Great Lakes - Detroit River - Light to be changed.
576(P)/96	- - - -	Ontario - Jay Island - Beacon ranges to be discontinued.
601(P)/96	- - - -	Lake Ontario - Bay of Quinte - Napanee River - Spar buoys to be discontinued.
603(T)/96	2067, 2086, LC 2077	Lake Ontario - Burlington Canal Entrance - Light buoy established temporarily.
624(P)/96	2085, 2086, LC 2077	Lake Ontario - Toronto Harbour - Light buoy to be changed.
747(P)/96	2069, 2021	Lake Ontario - Bay of Quinte - Result of survey.
856(P)/96	- - - -	Lake Erie - Wheatley - Rear range light to be discontinued.
857(P)/96	- - - -	Great Lakes - Detroit River - Livingstone Channel - Light to be altered.
85(P)/97	- - - -	Ontario - Lake Superior - Thunder Bay Harbour and Approaches - Aids to navigation changes - 1997.
93(P)/97	- - - -	Ontario - Lake Temagami - Amendments to the aids to navigation level of service - 1997.
106(P)/97	1409	St. Lawrence Seaway - Canal de la Rive Sud - LaSalle and Île des Soeurs - - Buoys.

120(P)/97	1409	St. Lawrence Seaway - Canal de la Rive Sud - Sainte-Catherine - Outfall.
133(P)/97	- - - -	Lake Huron - Cove Island - Light buoy to be discontinued.
136(P)/97	- - - -	Lake Huron - Surprise Shoal - Light buoy to be replaced.
141(P)/97	- - - -	Lake Huron - Campbell Rock - Light buoy to be replaced.
256(P)/97	- - - -	Lake Erie - Amendments to the aids to navigation level of service - 1997.
257(P)/97	- - - -	Lake Ontario - Amendments to the aids to navigation level of service - 1997.
258(P)/97	- - - -	Lake Ontario - Amendments to the aids to navigation level of service - 1997.
259(P)/97	- - - -	Lake Erie - Amendments to the aids to navigation level of service - 1997.
332(P)/97	2202	Lake Huron - Georgian Bay - Port Severn to Parry Sound - Depths.
333(P)/97	2239	Lake Huron - Georgian Bay - Port Severn to Hope Island - Depths.
334(P)/97	2289	Lake Huron - Georgian Bay - Giants Tomb Island to Lone Rock - Depths.
335(P)/97	2289	Lake Huron - Georgian Bay - Giants Tombs Island to Lone Rock - Depths.
336(P)/97	2239	Lake Huron - Georgian Bay - Port Severn to Hope Island - Depths.
361(P)/97	2250	Lake Huron - St. Joseph Channel - Richards Landing - Breakwater.
367(P)/97	LC 2100, LC 2122	Lake Erie - Pointe aux Pins - Light to be changed.
368(P)/97	2251, 2297	Lake Huron - Cockburn Island - Tolsmaville - Light to be discontinued.
369(T)/97	2251, 2297	Lake Huron - Cockburn Island - Light temporarily discontinued.
370(P)/97	- - - -	Lake Ontario - Bay of Quinte - Picton Harbour, Belleville Harbour, Trenton Harbour - Levels of service.
403(P)/97	2239, 2202	Lake Huron - Georgian Bay - Beausoleil Island to Giants Tomb Island - Buoys.
407(T)/97	1510	Québec - Lac des Deux Montagnes - Anse de Vaudreuil - Shoal reported.
439(P)/97	2312	Lake Superior - Nipigon Bay - Lights.
446(P)/97	- - - -	Ontario - Wiarton - DGPS Initial Operational Service (IOS).
450(P)/97	2305, 2303, 2312, 2304	Lake Superior - Nipigon Bay - Jackfish Bay, Simpson Island, MacInnes Point - Lights to be discontinued.
484(P)/97	2054, LC 2058, 2061	Lake Ontario - Cobourg Harbour - Light to be changed.
489(P)/97	- - - -	Lake Ontario - Oshawa Harbour - Changes to the buoyage system - 1997.
490(P)/97	- - - -	Lake Erie - Nanticoke - Changes to the buoyage system - 1997.

491(P)/97	- - - -	Lake Huron - Georgian Bay - Matchedash Bay Approach - Amendments to the aids to navigation level of service - 1997.
527(P)/97	- - - -	Lake Huron - Georgian Bay - Collingwood Harbour - Levels of service.
531(P)/97	1553	Québec - Ottawa River - Desjardinsville - Light.
533(P)/97	2239, 2289	Lake Huron - Georgian Bay - Cognashene By Pass - The Whalesback - Buoys.
593(P)/97	- - - -	Great Lakes , Georgian Bay and St. Lawrence Seaway - Changes to the buoyage system - 1997.
625(P)/97	- - - -	St. Lawrence Seaway - Crysler Park - Spar buoys.
103(P)/98	- - - -	Lake Superior - Fog signals to be privatized.
104(P)/98	- - - -	Lake Erie - Port Colborne - Front range light to be discontinued.
505(P)/98	LC 2123	Lake Erie - Pelee Passage - Buoys to be relocated and discontinued.
506(T)/98	2085, LC 2077, 2086	Lake Ontario - Humber River Entrance - Construction.
723(P)/98	- - - -	Ontario - Kenora - Amendments to the aids to navigation level of service - 1998.
764(P)/98	- - - -	Québec - Ottawa River - Rivière Gatineau - Lac Leamy - Buoyed channel and wharf.
1109(P)/98	- - - -	Lake Ontario - Presqu'île Bay - Buoys and range lights.
1125(P)/98	2069, 2021	Lake Ontario - Bay of Quinte - Trenton - Results of survey.
1148(T)/98	LC 2282	Lake Huron - Georgian Bay - Colpoy's Bay - Barge.
(AMA8035-10-1)		(CCG-H98-036)

*** 1346 LIST OF CHARTS AFFECTED BY (T) AND (P) NOTICES IN EFFECT JUNE 26, 1998**

(Revised and promulgated quarterly)

(Reference: Notice 756/98 cancelled)

CHARTS		(T) and (P) NOTICES
1202	632(P)/93	
1203	133(T)/93	
1230	1150(P)/98	
1233	140(P)/98, 703(P)/98	
L/C 1235	129(P)/97	
L/C 1236	719(P)/98	
1310	616(T)/97, 142(T)/98	
1312	1140(P)/98	
1313	65(T)/95	

1314	170(T)/92, 679(P)/97, 144(P)/98
1315	546(T)/97
1316	430(T)/97, 1122(T)/98
1317	240(P)/94
1338	75(T)/92, 1137(P)/98, 1140(P)/98
1339	68(P)/91, 75(T)/92, 1137(P)/98, 1151(P)/98
1351	196(T)/87, 636(P)/93, 433(T)/96, 510(P)/98
1409	106(P)/97, 120(P)/97, 299(P)/97
1510	214(P)/92, 563(P)/92, 407(T)/97
1553	531(P)/97
2021	747(P)/96, 1125(P)/98
2022	651(T)/91
2023	525(T)/92
2028	826(T)/85
2054	219(P)/96, 484(P)/97
L/C 2058	476(T)/94, 484(P)/97
2061	484(P)/97
2067	603(T)/96
2069	650(P)/95, 747(P)/96, 1125(P)/98
L/C 2077	90(T)/90, 476(T)/94, 683(P)/95, 739(P)/95, 603(T)/96, 624(P)/96, 506(T)/98
2085	683(P)/95, 739(P)/95, 624(P)/96, 506(T)/98
2086	90(T)/90, 683(P)/95, 739(P)/95, 603(T)/96, 624(P)/96, 506(T)/98
L/C 2100	812(T)/92, 367(P)/97
L/C 2110	121(P)/94
L/C 2120	303(P)/96
L/C 2121	244(T)/95
L/C 2122	812(T)/92, 367(P)/97
L/C 2123	812(T)/92, 162(P)/94, 507(P)/96
2181	725(T)/91, 121(P)/94, 244(T)/95
L/C 2200	175(P)/94, 176(P)/94, 178(P)/94, 180(P)/94
L/C 2201	115(P)/94, 182(P)/94
2202	367(T)/88, 811(P)/91, 123(P)/92, 172(P)/93, 54(P)/94, 332(P)/97, 403(P)/97
2204	115(P)/94
2205	115(P)/94
2222	367(T)/88
L/C 2228	965(T)/91, 175(P)/94, 176(P)/94, 177(P)/94, 178(P)/94
2235	180(P)/94, 182(P)/94
2239	367(T)/88, 333(P)/97, 336(P)/97, 403(P)/97, 533(P)/97
L/C 2245	115(P)/94
2250	361(P)/97
2251	703(T)/92, 368(P)/97, 369(T)/97
2257	380(P)/91
2259	53(P)/94
2260	965(T)/91, 175(P)/94, 176(P)/94
2261	176(P)/94, 177(P)/94, 178(P)/94
2268	380(P)/91, 53(P)/94
2273	180(P)/94
2282	182(P)/94, 1148(T)/98
2289	334(P)/97, 335(P)/97, 533(P)/97
2291	769(T)/91, 177(P)/94, 178(P)/94
2292	179(P)/94, 736(P)/95
2297	368(P)/97, 369(T)/97
2298	180(P)/94
2299	380(P)/91, 53(P)/94
2303	450(P)/97
2304	51(P)/94, 450(P)/97
2305	450(P)/97
2312	439(P)/97, 450(P)/97
4000	529(P)/95

L/C	4001(INT	707(T)/93, 163(T)/94, 678(T)/94, 529(P)/95
404)		
LC 4003		529(P)/95
LC 4006		529(P)/95
L/C 4010		70(P)/93, 350(P)/94, 420(P)/95
LC 4011		519(P)/98
LC 4012		519(P)/98
LC 4013		529(P)/95, 351(P)/96
L/C 4015		192(T)/95
L/C 4016		323(P)/88, 356(P)/90, 619(T)/93, 105(T)/94, 108(T)/94, 359(T)/94, 444(P)/96
L/C 4017		75(T)/94, 76(T)/94, 359(T)/94, 678(T)/94, 384(T)/95
L/C 4020		299(P)/94
L/C 4022		583(P)/94, 192(T)/95
LC 4023		351(P)/96
L/C 4026		374(T)/94
LC 4045		529(P)/95
L/C 4047		323(P)/88, 105(T)/94, 108(T)/94
L/C 4049		105(T)/94, 359(T)/94
LC 4098		529(P)/95
LC 4099		529(P)/95
L/C 4118		474(P)/92, 217(P)/96
4124		73(P)/94, 507(T)/95
4140		748(T)/96
4142		815(P)/93
4201(INT 4634)		820(T)/94
4210		734(P)/95
4211		346(T)/95
L/C 4227		805(P)/92
LC 4230		734(P)/95, 519(P)/98
L/C 4234		805(P)/92
L/C 4235		805(P)/92, 461(T)/94, 717(T)/94
LC 4243		519(P)/98
4245		373(T)/94, 534(T)/95, 519(P)/98
4277		201(T)/95, 1149(P)/98
4278		648(P)/97, 1149(P)/98
4328		569(P)/94
4331		73(P)/94, 181(T)/95, 507(T)/95, 690(T)/95
4332		181(T)/95, 690(T)/95
LC 4340		459(P)/94
4342		459(P)/94
4379		533(P)/96
4381		141(T)/96
4384		569(P)/94
4394		237(T)/96
4396		128(P)/98
LC 4404		351(P)/96
LC 4405		351(P)/96
4426		103(T)/94
4430		261(T)/95
4437		526(P)/95
4448		649(P)/93
4456		769(P)/90, 433(T)/92
4460		845(P)/93
L/C 4462		649(P)/93
L/C 4464		583(P)/94
4469		793(P)/93
4483		612(T)/94, 351(P)/96
L/C 4485		603(T)/95, 690(T)/96
L/C 4486		798(P)/94, 603(T)/95, 306(P)/96, 690(T)/96

4491	65(T)/96
L/C 4520	47(T)/94, 76(T)/94
4546	613(P)/94
4587	193(T)/87
4619	427(P)/94
L/C 4622	356(P)/90, 427(P)/94, 291(P)/97
L/C 4624	323(P)/88, 356(P)/90
4635	463(P)/94, 594(T)/94, 192(T)/95, 239(P)/97
4637	737(P)/93, 120(P)/96
4641	594(T)/94
4644	154(P)/96, 765(T)/98
L/C 4700	163(T)/94
4702	345(P)/96, 687(P)/96
4703	163(T)/94, 687(P)/96
4728	292(T)/88
L/C 4730	804(P)/93, 163(T)/94
4732	163(T)/94
L/C 4817	568(T)/90, 105(T)/94, 522(P)/94
4830	619(T)/93
L/C 4831	444(P)/96
L/C 4832	413(T)/88, 619(T)/93, 444(P)/96
LC 4841	291(P)/97
4843	568(T)/90
L/C 4844	104(T)/94, 105(T)/94, 522(P)/94
L/C 4846	359(T)/94
L/C 4847	782(T)/92, 535(P)/98
4848	782(T)/92
4849	103(T)/92, 277(P)/97
L/C 4850	423(P)/94
L/C 4851	191(T)/91, 64(T)/95, 384(T)/95
4912	358(T)/93, 855(P)/96
L/C 4913	783(P)/94
4920	783(P)/94, 595(T)/95, 711(P)/98, 958(P)/98, 1144(P)/98
4921	582(P)/94, 603(T)/95, 434(T)/96
4954	195(T)/93, 115(P)/98, 116(P)/98
4957	818(T)/94
5001(INT 405)	761(T)/94
5031	591(T)/93, 703(T)/94
5048	804(P)/93
5049	680(P)/95
5133	163(T)/94
6201	355(P)/92
6212	355(P)/92
6218	355(P)/92, 667(P)/92
6242	610(T)/90
6311	738(P)/96, 751(P)/96
7083	847(P)/89
7371	634(P)/96
7740	847(P)/89
LC 8007	529(P)/95
L/C 8010	707(T)/93
L/C 8011	105(T)/94
L/C 8014	76(T)/94, 359(T)/94
L/C 8015	47(T)/94, 75(T)/94, 76(T)/94, 678(T)/94
L/C 8047	804(P)/93
L/C 8048	163(T)/94
L/C 8049	76(T)/94

(AMA8035-10-1)

(CCG-H98-037)

*1336 CANADIAN HYDROGRAPHIC SERVICE - Information about CHS chart dealers.

1 - NEWLY APPOINTED CHART DEALERS

Atelier Guy Malouin Enr.
2965 Bas de la Rivière
Nicolet (Québec)
J3T 1E4
Tel: (819) 293-5916
Fax: (819) 293-6333

KP's Fibreglasing & Marine Supplies
559 Main Street, P.O. Box 172
Burin Bay Arm, Newfoundland
A0E 1G0
Tel: (709) 891-2229
Fax: (709) 891-2229

Boathouse
8245 Taschereau, #18A
Brossard, Québec
J4Y 1A4
Tel: (514) 445-9033
Fax: (514) 445-9211

Heritage Foundation for
Terra Nova National Park
Glovertown, Newfoundland
A0G 2L0
Tel: (709) 533-2884
(709) 533-2801, ext. 145
Fax: (709) 533-2706

Crate Marine Sales Limited
290 The Queensway South
Keswick, Ontario
L4P 2B3
Tel: (905) 476-4552
Fax: (905) 476-6308
Email: sales@crates.com
Web: www.crates.com

Vandervoort Hardware
Vandervoort Holdings Ltd.
77 Princess Street, P.O. Box 160
Kingston, Ontario
K7L 4V8
Tel: (613) 548-7783
Fax: (613) 547-5150

Bellingham Chart Printers
7 Parks Bay Drive, Shaw Island
P.O. Box 1728
Friday Harbor, WA 98250, U.S.A.
Tel: (360)468-3900, (800)643-3900
Fax: (360)468-3939
Web: www.tidesend.com
Email: sales@tidesend.com

Dépanneur Roger Jones Enr.
1066, boul. Dr. Camille Marcoux
C.P. 268
Lourdes-de-Blanc-Sablon, Québec
G0G 1W0
Tel: (418) 461-2010
Fax: (418) 461-2362

Hudson Bay Port Company
P.O. Box 217
Churchill, Manitoba
R0B 0E0
Tel: (204) 675-8823
Fax: (204) 675-2550

Brown's Marina Ltd.
7719 County Road, #42
Elgin, Ontario
K0G 1E0
Tel: (613) 272-5466
Fax: (613) 272-3450

Mains'L Marine
Main Highway, P.O. Box 1169
Manuels, Newfoundland
A1W 1N6
Tel: (709) 781-0228
Fax: (709) 781-1021

Oxford-Basics
495 Dundas Street
Woodstock, Ontario
N4S 1C3
Tel: (519) 539-9725
Fax: (519) 539-0248

2 - DEALER ADDRESS CHANGE

OLD ADDRESS

Armchair Sailor Books & Charts
 546 Highway 98 E.
 P.O. Box 698
 Destin, FL 32540
 U.S.A.
 Tel: (904) 837-1577
 Fax: (904) 837-1579

City of Belleville
 Parks & Recreation Dept.
 116 Pinnacle Street
 Belleville, Ontario
 K8N 3A4
 Tel: (613) 966-4632
 Fax: (613) 967-2043

The Map Store
 Old Town Plaza
 505 Stillwater Avenue
 Old Town, ME 04468
 U.S.A.
 Tel: (207) 827-4511

Hilton Beach Marina, Village of Hilton Beach
 1 Marks Street, Box 25
 Hilton Beach, Ontario
 P0R 1G0
 Tel: (705) 246-2291, 246-2242
 Fax: (705) 246-2913

Safe Navigation
 820 Long Beach Blvd.
 Long Beach, CA 90813, U.S.A.
 Tel: (562) 590-8744, (800) 723-3628
 Fax: (562) 491-0073
 Email: safenav@internetMCI.com

NEW ADDRESS

The Kayak Experience
 600 Highway 98 E.
 P.O. Box 698
 Destin, FL 32540
 U.S.A.
 Tel: (850) 837-1577
 Fax: (850) 837-1579

City of Belleville
 Parks & Recreation Dept.
 169 Front Street
 Belleville, Ontario
 K8N 2Y8
Physical location
 84 River Road
 Corbyville, Ontario
 K0K 1V0
 Tel: (613) 966-4632
 Fax: (613) 967-3207
 Email: parksrec@city.belleville.on.ca
 Web: www.city.belleville.on.ca

The Map Store
 R.R. #1, Box 182A
 Old Town, ME 04468
 U.S.A.
 Tel: (207) 827-4511

Hilton Beach Marina, Village of Hilton Beach
 3130 Marks Street, Box 25
 Hilton Beach, Ontario
 P0R 1G0
 Tel: (705) 246-2291, 246-2242
 Fax: (705) 246-2913
 Email: Hilton_Beach@hotmail.com
 Web: www.geocities.com/athens/delphi/1245

Safe Navigation
 454 Pacific Avenue
 Long Beach, CA 90802, U.S.A.
 Tel: (562) 590-8744, (800) 723-3628
 Fax: (562) 491-0073
 Email: safenav@internetMCI.com

3 - THE FOLLOWING ARE NO LONGER AUTHORIZED CHS CHART DEALERS

Baker Marine
 P.O. Box 99, Rice Lake
 Gore's Landing, Ontario
 K0K 2E0
 Tel: (416) 342-5664

Dawson's Marina Limited
 294 The Queensway South
 Keswick, Ontario
 L4P 2B5
 Tel: (905) 476-4321
 Fax: (905) 476-5039

Madawaska Marine Ltd.
 210 Riverview Drive
 Arnprior, Ontario
 K7S 3S6
 Tel: (613) 623-2228
 Fax: (613) 623-7173

Sea's Chandlery & Service
 24 Apple Street
 Brockville, Ontario
 K6V 4X8
 Tel: (613) 498-2564
 Fax: (613) 498-2487

McGarr Marine
1204 St. Laurent Street West
Longueuil, Québec
J4K 1E4
Tel: (514) 677-8966
Fax: (514) 677-8681

T.S.O. Marine
114 Mississauga Street East
P.O. Box 2112
Orillia, Ontario
L3V 6R9

M.M.O.S. Inc.
1210 Union Avenue
Montréal, Québec
H3B 3C4
Tel: (514) 866-1146
Fax: (514) 876-7852

(AMA8035-10-35)

(DFO-H98-062)

***1353 CANADA - NEWFOUNDLAND - Terra Nova Project.**

Mariners are advised that during the period from July 1998 to October 1998, the Terra Nova Project will be deploying the dredging barge SEA SORCERESS (length overall 114 metres, width 31.9 metres) to carry out excavation work in four locations on the Grand Banks. The planned schedule of operations and the coordinates of the location are as follows:

<u>DRILL CENTRE No.</u>	<u>Planned Dates</u>	<u>Position</u>
4	July 20, 1998 to August 14, 1998	46°27'42".1 N 48°29' 51" W
1	August 15, 1998 to Sept. 4, 1998	46°29'21".5 N 48°27'37".4 W
3	Sept. 5, 1998 to Sept. 25, 1998	46°29'26".1 N 48°29'11".6 W
2	Sept. 26, 1998 to Sept. 9, 1998	46°27'19".7 N 48°27'41".6 W

The dredging barge will be positioned using a four point all wire anchor mooring system. Four anchors will be used, one of each bow and one of each quarter. Mooring lines will each be a maximum of 1463 metres in length. A 300-metres long floating slurry discharge hose will trail from the dredger's stern during dredging operations. The extreme end of the hose will be anchored to the seabed and marked by a buoy (see accompanying diagram).

To ensure safety during these operations, a temporary safety zone of 3,150 metres in diameter will be established around the anchored dredger, as shown in the accompanying diagram.

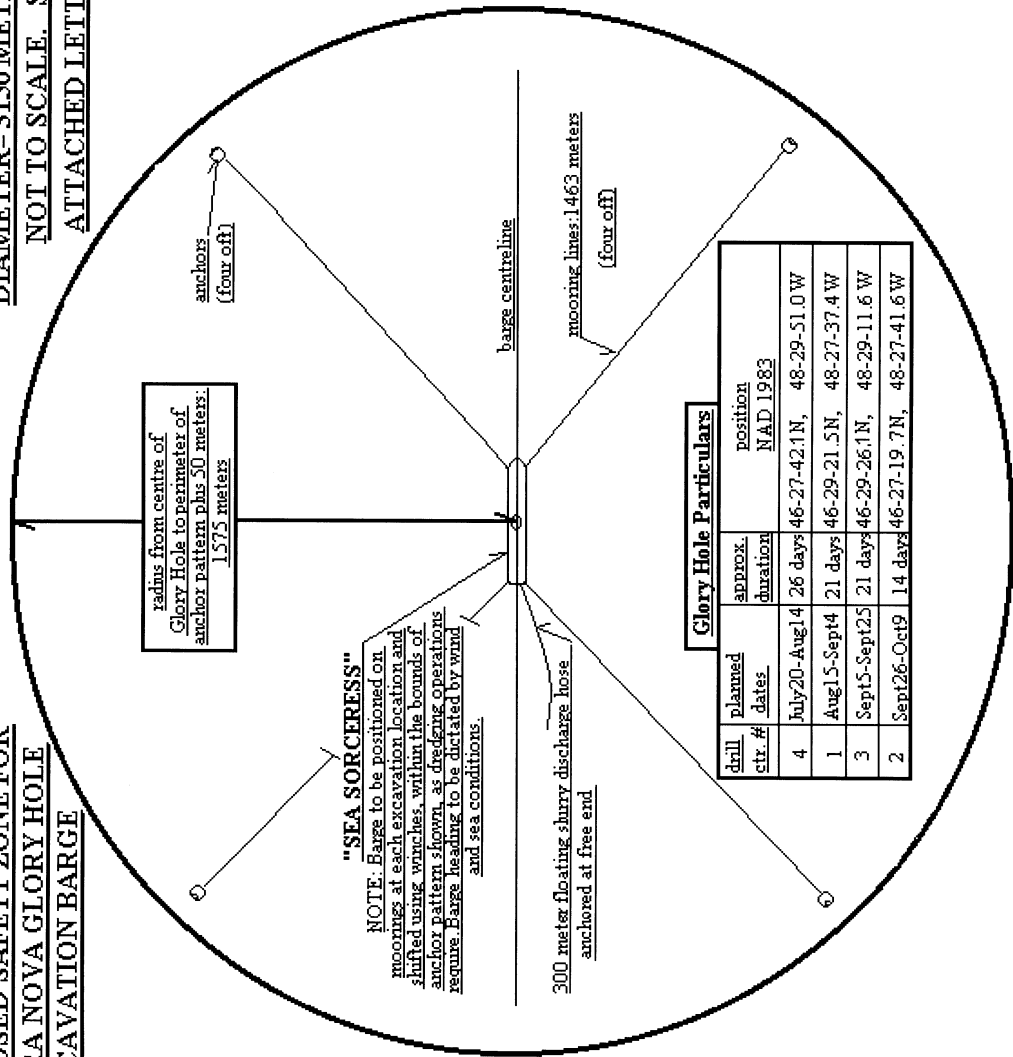
All vessels not directly involved in these operations should remain clear of these zones and navigate with caution in the vicinity.

(AMA8035-10-13)

(CCG-H98-038)

PROPOSED SAFETY ZONE FOR
TERRA NOVA GLORY HOLE
EXCAVATION BARGE

DIAMETER= 3150 METERS
NOT TO SCALE. SEE
ATTACHED LETTER



***1349 NEWFOUNDLAND, SOUTHEAST COAST - TREPASSEY BAY - POWLES HEAD - Fog signal.**

Chart (Last correction) - LC 4844(NAD 27)(1)(552/97) - LC 4844(Inset, Trepassey Harbour)(NAD 27)(1)(552/97)

1. Amend Fog Sig 60s to read "Fog Sig 30s" 46°41'25".2 N 53°24'09".2 W

NOTE: Digital data products 4844R/M and 76107(4844) may also be affected. Contact Nautical Data International Inc. (NDI) or your local Value Added Remarketers (VAR) for updates.

(AMA8035-10-21)

(CCG-N98-127, DFO-A98-026)

***1328 NEWFOUNDLAND, SOUTH COAST - PLACENTIA BAY - PARADISE SOUND - SOUTHEAST BIGHT AND PETITE FORTE - Aids and wharf.**

Charts (Last correction) - 4615(NAD 27)(1)(New Edn., May/87) - 4619(Continuation, Paradise Sound)(NAD 27)(2-4)(816/93) - LC 4622(NAD 27)(1,4)(587/97)

1. Add light "FI R" 47°23'48".7 N 54°40'08" W

2. Add red lighted spar buoy, "QR", marked "PE10" 47 23 45 N 54 34 42 W

3. Add wharf joining 47 23 41 N 54 34 42 W
and 47 23 41.7 N 54 34 42.2 W

4. Add light "FI R" 47 23 41.7 N 54 34 42.2 W

NOTE: Digital data products 4615R/M, 4619R/M, 4622R/M, 76173(4622) and 76228(4615) may also be affected. Contact Nautical Data International Inc. (NDI) or your local Value Added Remarketers (VAR) for updates.

(AMA8035-10-7-2)

(CCG-N98-144,158,160)

***1329 NEWFOUNDLAND, NORTH COAST - HA! HA! BAY - RALEIGH - PITON POINT - Wharf and light.**

Chart (Last correction) - 4509(Plan, Pistolet Bay)(1,2)(390/96)

1. Add wharf joining 51°34'13".4 N 55°44'15" W
51 34 12 N 55 44 17 W
and 51 34 10 N 55 44 18 W

2. Add light "FI R" 51 34 10 N 55 44 18 W (approx)

(AMA8035-10-7-2)

(CCG-N93-109, DFO-A97-060)

***1304 NEWFOUNDLAND, SOUTH COAST - CONNAIGRE BAY - SEAL COVE - Buoys.**

Charts (Last correction) - LC 4015(NAD 27)(1,2)(576/97) - LC 4016(NAD 27)(1,2)(272/97)

1. Add red light buoy "Q R", marked "V30" 47°28'57" N 56°01'29" W

2. Add green spar buoy, marked "V25" 47 28 59 N 56 02 39 W

NOTE: Digital data products 4015R/M, 4016R/M, 76274(4016) and 76284(4015) may also be affected. Contact Nautical Data International Inc. (NDI) or your local Value Added Remarketers (VAR) for updates.

(AMA8035-10-5-2)

(CCG-N98-100,103, DFO-A98-036)

***1344 LABRADOR COAST - APPROACHES TO CURLEW HARBOUR - TINKER ROCK - Buoy.**

Charts (Last correction) - 5133(1,2)(764/98) - 5134(3,4)(1131/98)

- | | | |
|--------|---|------------------------------------|
| 1. Add | south cardinal light buoy, "VQ (6) + LFI 10s", "YB", marked "NCT" | 53°48'44".5 N 56°35'01" W (approx) |
| 2. Add | "PA" against 3 fathoms 2 feet | 53 48 48 N 56 35 01 W |
| 3. Add | south cardinal light buoy, "VQ (6) + LFI 10s", "YB", marked "NCT" | 53 48 45 N 56 35 02 W |
| 4. Add | "PA" against 3 fathoms 2 feet | 53 48 48 N 56 35 02.5 W |

(AMA8035-10-5-2)

(CCG-N98-119, DFO-A98-019)

***1324 GULF OF ST. LAWRENCE - STRAIT OF BELLE ISLE - L'ANSE AU LOUP - Light.**

Charts (Last correction) - 4668(Plan, Anse à Loup)(1)(910/98) - LC 4020(NAD 27)(2)(915/98)

- | | | |
|--------|-------------|--|
| 1. Add | light "F R" | 342°20' 15.2 cables (approx.) from Schooner Cove Flagstaff (51°29'40" N 56°48'00" W) |
| 2. Add | light "F R" | 51°31'04" N 56°49'38" W |

NOTE: Digital data products 4020R/M and 76094(4020) may also be affected. Contact Nautical Data International Inc. (NDI) or your local Value Added Remarketers (VAR) for updates.

(AMA8035-10-7-2)

(CCG-N98-031, DFO-A98-017)

***1327 LABRADOR COAST - LABRADOR SEA - OFF BLACK BEAR ISLAND - Chart amendment.**

Chart (Last correction) - 5044(1,2)(721/96)

Reference: Notice 82/94.

On certain copies.

- | | | |
|-----------|---|-------------------------|
| 1. Delete | submerged rock Rep (1993)
Breakwaters/Brisants | 54°57'02" N 58°34'24" W |
| 2. Delete | submerged rock Rep (1993)
Breakers/Brisants | 55 02 02 N 58 34 24 W |

(AMA8035-10-35)

(DFO-H98-053)

***1339 GULF OF ST. LAWRENCE - ÎLES-DE-LA-MADELEINE - POINTE DE L'EST - Light and Racon.**

Charts (Last correction) - LC 4952(NAD 83)(1)(160/97) - LC 4451(NAD 27)(2)(1338/98) - LC 4022(NAD 27)(2)(743/98) - LC 4024(NAD 27)(2)(743/98) - LC 4002(NAD 27)(2)(954/98)

1. Reposition	light and racon	from	47°37'26" N 61°23'37".4 W
		to	47 36 58 N 61 23 25.7 W

2. Reposition	light and racon	from	47°37'25".8 N 61°23'40" W
		to	47 36 57.8 N 61 23 28.3 W

NOTE: Digital data products 4002R/M, 4022R/M, 4024R/M, 4451R/M, 4952R/M, 76271(4022), 79075(4024), 79076(4002), 79083(4451) and 79088(4952) may also be affected. Contact Nautical Data International Inc. (NDI) or your local Value Added Remarketers (VAR) for updates.

(AMA8035-10-7-9)

(CCG-L98-069, DFO-Q98-090)

***1338 GULF OF ST. LAWRENCE - ÎLES-DE-LA-MADELEINE SANDY HOOK - Buoys.**

Charts (Last correction) - LC 4951(NAD 83)(1,2)(914/98) - LC 4451(NAD 27)(3,4)(913/98)

1. Reposition	red spar buoy YM4	from	47°15'42" N 61°43'03".2 W
		to	47 15 43.2 N 61 43 00 W

2. Reposition	green light buoy YM7	from	47 15 48.1 N 61 43 23 W
		to	47 15 57 N 61 43 24 W

3. Reposition	red spar buoy YM4	from	47 15 41.7 N 61 43 05.7 W
		to	47 15 43 N 61 43 02.6 W

4. Reposition	green light buoy YM7	from	47 15 47.9 N 61 43 25.6 W
		to	47 15 56.8 N 61 43 26.6 W

NOTE: Digital data products 4451R/M, 4951R/M, 79083(4451) and 79092(4951) may also be affected. Contact Nautical Data International Inc. (NDI) or your local Value Added Remarketers (VAR) for updates.

(AMA8035-10-5-9)

(CCG-L98-068, DFO-Q98-089)

***1337 CHALEUR BAY - L'ANSE-À-BEAUFILS - Buoys.**

Charts (Last correction) - LC 4485(NAD 83)(1,2)(717/98) - LC 4486(NAD 27)(1,2)(1312/98) - 4921(Plan, L'Anse-à-Beaufils)(NAD 83)(3)(New Edn., March/98)

Reference: Notice 603(T)/95 cancelled.

1. Add	green lighted pillar buoy FI G marked "AF-1"	48°28'14" N 64°18'07" W
--------	--	-------------------------

- | | | |
|------------|--|---------------------------|
| 2. Add | green lighted pillar buoy FI G
marked "AF-3" | 48 28 18.3 N 64 18 20.1 W |
| 3. Replace | green can buoy AF-3 with a green
lighted pillar buoy FI G, marked
"AF-3" | 48 28 18.3 N 64 18 20.1 W |

NOTE: Digital data products 4485R/M, 4486R/M, 4921R/M, 76187(4486), 79062(4921) and 79086(4485) may also be affected. Contact Nautical Data International Inc. (NDI) or your local Value Added Remarketers (VAR) for updates.

(AMA8035-10-5-9)

(CCG-L98-070, DFO-Q98-088)

***1312 CHALEUR BAY - POKESUDIE ISLAND - Light.**

Charts (Last correction) - LC 4913(NAD 83)(1)(668/97) - LC 4486(NAD 27)(2)(717/98)

- | | | |
|----------|--|--------------------------------------|
| 1. Amend | FI 3s 11m 8M to read "Iso 4s 11m
10M" | 47°49'10".2 N 64°45'15".6 W (approx) |
| 2. Amend | FI to read "Iso" | 47 49 10.2 N 64 45 15.6 W (approx) |

NOTE: Digital data products 4486R/M, 4913R/M, 76187(4486) and 76275(4913) may also be affected. Contact Nautical Data International Inc. (NDI) or your local Value Added Remarketers (VAR) for updates.

(AMA8035-10-7-6)

(CCG-G97-128A, DFO-A98-033)

***1314 NOVA SCOTIA, SOUTHEAST COAST - SHELburne HARBOUR - EASTERN WAY - Buoy.**

Charts (Last correction) - 4209(Plan, Shelburne Harbour)(NAD 83)(1)(737/96) - LC 4241
(NAD 83)(1)(1307/98) - LC 4230(NAD 83)(1)(1307/98)

- | | | |
|-----------|--|-----------------------------|
| 1. Delete | red and white fairway light buoy,
SAA | 43°38'56".3 N 65°15'33".9 W |
|-----------|--|-----------------------------|

NOTE: Digital data products 4209R/M, 4230R/M, 4241R/M, 76039(4209), 76044(4230) and 76047(4241) may also be affected. Contact Nautical Data International Inc. (NDI) or your local Value Added Remarketers (VAR) for updates.

(AMA8035-10-5-7)

(CCG-F97-016, DFO-A97-069)

***1317 NOVA SCOTIA, SOUTHEAST COAST - SHELburne HARBOUR AND WESTERN WAY - Buoys.**

Charts (Last correction) - 4209(Inset, Shelburne)(NAD 83)(1-5)(1314/98) - LC 4241(NAD 83)
(6,7)(1314/98)

- | | | |
|-----------|--|-----------------------------|
| 1. Amend | SE51 to read "SD53" against green
spar buoy | 43°45'31".3 N 65°19'31".4 W |
| 2. Delete | red spar buoy S74 | 43 45 28.8 N 65 19 37.3 W |
| 3. Delete | red spar buoy S76 | 43 45 39.3 N 65 19 41.5 W |

4. Delete	red spar buoy S78	43 45 49.7 N 65 19 44.2 W
5. Delete	green spar buoy SF51	43 45 40.3 N 65 19 31.4 W
6. Delete	green spar buoy SH53	43 37 08 N 65 18 24 W
7. Delete	red spar buoy SJ56	43 38 28 N 65 18 36 W

NOTE: Digital data products 4209R/M, 4241R/M, 76041(4209) and 76047(4241) may also be affected. Contact Nautical Data International Inc. (NDI) or your local Value Added Remarketers (VAR) for updates.

(AMA8035-10-5-7)

(CCG-F97-022, 025, DFO-A97-070)

***1318 NOVA SCOTIA, SOUTHEAST COAST - SHELBURNE HARBOUR BIRCHTOWN BAY - Buoys.**

Charts (Last correction) - 4209(Plan, Shelburne Harbour)(NAD 83)(1-10)(1317/98) - LC 4241(NAD 83) (1-10)(1317/98)

Reference: Notice 727(P)/96 cancelled.

1. Delete	red light buoy SB50	43°42'56".3 N 65°21'19".9 W (approx)
2. Delete	bifurcation light buoy SAB	43 40 37.3 N 65 18 56.9 W (approx)
3. Add	red light buoy "FI R", marked "S52"	43 40 34.8 N 65 18 50.4 W
4. Amend	FI R to read "Q R" against red light and bell buoy S54	43 41 25.3 N 65 19 39.9 W (approx)
5. Delete	red spar buoy S56	43 42 20.3 N 65 19 38.9 W
6. Add	red light buoy "FI R", marked "S56"	43 42 22.8 N 65 19 38.4 W
7. Delete	green spar buoy SA51	43 40 59.6 N 65 20 16.9 W
8. Add	green light buoy "FI G", marked "SA51"	43 41 00.1 N 65 20 01.8 W
9. Delete	range lights	43 40 47 N 65 19 59 W (approx)
10. Amend	F R to read "F R (Priv)"	43 41 29.3 N 65 19 31.5 W

NOTE: Digital data products 4209R/M, 4241R/M, 76039(4209) and 76047(4241) may also be affected. Contact Nautical Data International Inc. (NDI) or your local Value Added Remarketers (VAR) for updates.

(AMA8035-10-5-7;7-7)

(CCG-F97-014,015,019,021,023,024,026,027, F98-075)

***1306 NOVA SCOTIA, SOUTHWEST COAST - CAPE SABLE ISLAND - STONEY ISLAND AND SHELBURNE HARBOUR APPROACHES - Lights and buoys.**

Charts (Last correction) - LC 4230(NAD 83)(1,2,5-8)(1154/98) - LC 4241(NAD 83)(1-8)(737/96) -

LC 4242(NAD 83)(1-4)(962/98) - LC 4012(NAD 27)(8)(916/98)

Reference: Notice 315/94.

1. Delete	light F R		43°28'05" N 65°34'00".1 W
2. Add	light "FI G 12 s 10 m"		43 28 06.4 N 65 33 56.1 W
3. Delete	1 metre 2 decimetres		43 28 05 N 65 33 57 W
4. Add	breakwater	joining	43 28 03.7 N 65 34 00.2 W 43 28 02 N 65 33 56.5 W 43 28 04.7 N 65 33 55.3 W and 43 28 06.4 N 65 33 56.1 W
5. Add	south cardinal spar buoy "YB", marked "KSA"		43 39 00 N 65 14 07.8 W
6. Reposition	bifurcation light buoy SAC		43 38 18 N 65 12 54 W 43 38 18 N 65 13 12 W
7. Add	legend "BELL" against bifurcation light buoy SAC		43 38 18 N 65 13 12 W
8. Reposition	light and whistle buoy S	from to	43°36'54" N 65°11'30" W 43 37 36 N 65 13 51 W

NOTE: Digital data products 4012R/M, 4230R/M, 4241R/M, 4242R/M, 76014(4242), 76044(4230), 76047(4241) and 76198(4012) may also be affected. Contact Nautical Data International Inc. (NDI) or your local Value Added Remarketers (VAR) for updates.

(AMA8035-10-5-7; 7-7)

(CCG-M96-037, F97-017, 018, 020, F98-079)

***1307 NOVA SCOTIA, SOUTHWEST COAST - YARMOUTH HARBOUR AND NEGRO HARBOUR - Buoys and lights.**

Charts (Last correction) - LC 4243(NAD 27)(1,2)(962/98) - LC 4241(NAD 83)(3,5)(1306/98) - LC 4230(NAD 83)(1-3,5)(1306/98) - LC 4011(NAD 83)(1)(916/98) - LC 4012(NAD 27)(1,4,6)(1306/98) - LC 8006(NAD 27)(4,6)(410/96)

Reference: Notice 130(P)/97.

1. Delete	fairway light and whistle buoy YA		43°45'30" N 66°14'11" W
2. Delete	red light and whistle buoy N8		43 48 13 N 66 12 06 W
3. Amend	FI 15s 17m 16M to read "LFI 12s 17m 16M"		43 28 07.7 N 65 22 43.3 W
4. Amend	FI 15s 55ft 16M to read "LFI 12s 55ft 16M"		43 28 07.7 N 65 22 43.3 W
5. Amend	F 28m 16M to read "FI (2) 15s 28m 16M"		43 30 26.2 N 65 20 44.2 W
6. Amend	F 91ft 16M to read "FI (2) 91ft 16M"		43 30 26.2 N 65 20 44.2 W

NOTE: Digital data products 4011R/M, 4012R/M, 4230R/M, 4241R/M, 4243R/M, 8006R/M,

76018(4243), 76019(4011), 76044(4230), 76047(4241), 76060(4243) and 76198(4012) may also be affected. Contact Nautical Data International Inc. (NDI) or your local Value Added Remarketers (VAR) for updates.

(AMA8035-10-5-7; 7-7)

(CCG-F98-049, 048, 05, 07)

***1332 QUÉBEC - RIVIÈRE SAGUENAY - BAIE DES HA! HA! - Depths.**

Chart (Last correction) - 1202(Inset, Baie des Ha! Ha!)(NAD 27)(1-3)(150/98)

- | | | |
|------------|---|-----------------------------|
| 1. Replace | 4 fathoms 5 feet with 6 fathoms
3 feet | 48°20'04".4 N 70°52'07".7 W |
| 2. Replace | 5 fathoms 4 feet with 5 fathoms
3 feet | 48 20 02.1 N 70 52 08.4 W |
| 3. Replace | 5 fathoms 5 feet with 5 fathoms
4 feet | 48 20 02.1 N 70 52 01.5 W |

NOTE: Digital data products 1202R/M and 79079(1202) may also be affected. Contact Nautical Data International Inc. (NDI) or your local Value Added Remarketers (VAR) for updates.

(AMA8035-10-35)

(DFO-Q98-086)

***1348 QUÉBEC - RIVIÈRE SAGUENAY - BATTURE AUX LOUPS MARINS - Range lights.**

Chart (Last correction) - 1209(NAD 27)(1)(301/98)

- | | | |
|-----------|--------------|--------------------------------------|
| 1. Delete | range lights | 48°25'30".3 N 70°55'39".3 W (approx) |
|-----------|--------------|--------------------------------------|

NOTE: Digital data products 1209R/M and 79077(1209) may also be affected. Contact Nautical Data International Inc. (NDI) or your local Value Added Remarketers (VAR) for updates.

(AMA8035-10-7-9)

(CCG-L98-063, DFO-Q98-084)

***1333 ST. LAWRENCE RIVER - CONTRECOEUR - Buoys.**

Charts (Last correction) - 1338(NAD 27)(1)(912/98) - 1339(NAD 27)(1,2)(1103/98)

- | | | |
|-----------|------------------------|---------------------------|
| 1. Delete | yellow pillar buoy VEA | 45°49'47".4 N 73°17'18" W |
| 2. Delete | yellow pillar buoy VEB | 45 49 40.2 N 73 17 29.3 W |

NOTE: Digital data products 1338R/M, 1339R/M, 79010(1338) and 79013(1339) may also be affected. Contact Nautical Data International Inc. (NDI) or your local Value Added Remarketers (VAR) for updates.

(AMA8035-10-5-9)

(CCG-L98-064, DFO-Q98-083)

***1335 ST. LAWRENCE RIVER - PORT DE MONTRÉAL TO PORT DE SOREL - Buoys.**

Charts (Last correction) - 1310(Inset, Quai Alexandra)(NAD 83)(1)(948/98) - 1310(Compartment B-C)(NAD 83)(1-6)(948/98) - 1310(Compartment A-B)(NAD 83)(4-8)(948/98) - 1338(NAD 27)(9-11) (1333/98)

1. Replace	green light buoy M207 with a green spar buoy marked "M207"	45°30'09".1 N 73°32'42".1 W
2. Replace	green light buoy M193 with a green spar buoy marked "M193"	45 31 50 N 73 32 10 W
3. Replace	yellow light buoy Longueuil A with a yellow spar buoy marked "Longueuil A"	45 33 38.6 N 73 30 32.6 W
4. Replace	yellow light buoy MEA with a yellow spar buoy marked "MEA"	45 36 53.5 N 73 29 40.9 W
5. Replace	yellow light buoy PAT H with a yellow spar buoy marked "PAT H"	45 37 49.1 N 73 29 07.8 W
6. Replace	yellow light buoy PAT E with a yellow spar buoy marked "PAT E"	45 38 03.1 N 73 28 52.8 W
7. Replace	yellow light buoy PAT C with a yellow spar buoy marked "PAT C"	45 38 26.6 N 73 28 37.3 W
8. Replace	red light buoy M152 with a red spar buoy marked "M152"	45 38 20.6 N 73 29 05.3 W
9. Replace	red light buoy M10 with a red spar buoy marked "M10"	45°55'46".5 N 73°12'55".4 W
10. Replace	green light buoy M9 with a green spar buoy marked "M9"	45 55 45.1 N 73 12 44.5 W
11. Replace	yellow light buoy Lano A with a yellow spar buoy marked "Lano A"	46 00 02.5 N 73 10 57.1 W

NOTE: Digital data products 1310R/M, 1338R/M, 79001(1310), 79002(1310), 79010(1338) and 79080(1310) may also be affected. Contact Nautical Data International Inc. (NDI) or your local Value Added Remarketers (VAR) for updates.

(AMA8035-10-5-9)

(CCG-L98-067, DFO-Q98-087)

***1303 ST. LAWRENCE SEAWAY - LAC SAINT-LOUIS - CANAL DE LA RIVE - Buoy.**

Chart (Last correction) - 1410(NAD 83)(1)(1155/98)

1. Reposition	green light buoy A1	from 45 24 27 N 73 43 13.5 W
		to 45 24 26.2 N 73 43 11.3 W

NOTE: Digital data product 1410R/M may also be affected. Contact Nautical Data International Inc. (NDI) or your local Value Added Remarketers (VAR) for updates.

(AMA8035-10-35)

(DFO-Q98-080)

***1323 ST. LAWRENCE SEAWAY - NEAR BEAUHARNOIS CANAL - Chart amendment.**

Chart (Last correction) - 1410(NAD 83)(1)(1303/98)

1. Replace	red light buoy symbol against buoy A51 with a green light buoy symbol	45°20'29".1 N 73°52'56".5 W
------------	---	-----------------------------

NOTE: Digital data products 1410R/M and 79045(1410) may also be affected. Contact Nautical Data International Inc. (NDI) or your local Value Added Remarketers (VAR) for updates.
(AMA8035-10-35) (DFO-H98-051)

***1331 ERRATUM - ST. LAWRENCE RIVER - CANAL DE BEAUHARNOIS - Buoy.**

Charts (Last correction) - 1411(NAD 27)(1)(919/98)

Reference: Notice 919/98.

1. Delete red spar buoy C4 45°16'40" N 73°56'48" W

(AMA8035-10-5-9) (CCG-H98-034)

***1311 ST. LAWRENCE SEAWAY - BEAUHARNOIS CANAL - Light buoys.**

Chart (Last correction) - 1411(NAD 27)(1)(920/98) - 1411(Inset, Port de Valleyfield)(NAD 27)(2)(920/98)

1. Reposition red light buoy C30 from 45°13'20" N 74°04'31" W
to 45 13 20.8 N 74 05 06 W

2. Amend C34 to read "C30" against red light buoy 45°13'20".8 N 74°05'06" W

NOTE: Digital data products 1411R/M, 73022(1411) and 73023(1411) may also be affected. Contact Nautical Data International Inc. (NDI) or your local Value Added Remarketers (VAR) for updates.

(AMA8035-10-5-14) (CCG-B98-019, DFO-C98-110)

***1347 QUÉBEC - LAC DES DEUX MONTAGNES - POINTE AUX ANGLAIS - Private light.**

Chart - 1510(Sheet 1)(Compartment A-B)(Carillon au Lac Saint-Louis)(NAD 27)(1)

1. Add light "Iso R 11m (Priv)" 45°29'37".6 N 74°10'47".1 W

NOTE: Digital data product 1510R/M may also be affected. Contact Nautical Data International Inc. (NDI) or your local Value Added Remarketers (VAR) for updates.

(AMA8035-10-7-9) (CCG-L98-062, DFO-Q98-082)

***1320 LAKE ONTARIO - KINGSTON HARBOUR - COLLINS BAY - Bridge.**

Charts (Last correction) - 2017(NAD 83)(1)(526/97) - 2018(NAD 83)(351/97)

1. Amend bridge clearance to read "2.8m" 44°14'19" N 76°36'56" W (approx)

NOTE: Digital data products 2017R/M, 2018R/M, 73037(2018), 73038(2018) and 73118(2017) may also be affected. Contact Nautical Data International Inc. (NDI) or your local Value Added Remarketers (VAR) for updates.

(AMA8035-10-35) (DFO-C98-113)

***1325 LAKE ONTARIO - COBOURG - Light.**

Charts (Last correction) - 2054(NAD 27)(1)(158/96) - LC 2058(2)(905/98)

Reference: Notice 484(P)/97.

- | | | |
|----------|--|-----------------------------|
| 1. Amend | FI R 10s 15m 8M to read "Iso R 2s
15m 8M" | 43°57'08".2 N 78°09'53".4 W |
| 2. Amend | FI R 10s 50ft 8M to read "Iso R 2s
49ft 8M" | 43 57 08.2 N 78 09 53.4 W |

NOTE: Digital data products 2054R/M, 2058R/M and 73064(2058) may also be affected. Contact Nautical Data International Inc. (NDI) or your local Value Added Remarketers (VAR) for updates.

(AMA8035-10-7-14)

(CCG-B98-024, DFO-C98-114)

***1343 LAKE ERIE - PORT COLBORNE - Lights.**

Chart (Last correction) - 2042(Continuation D-E)(NAD 83)(1,2)(460/97)

- | | | |
|--------|--------------|------------------------------------|
| 1. Add | light "FI G" | 42°52'20" N 79°15'17".5 W (approx) |
| 2. Add | light "FI R" | 42 52 22 N 79 15 13.5 W |

NOTE: Digital data products 2042R/M and 73010(2042) may also be affected. Contact Nautical Data International Inc. (NDI) or your local Value Added Remarketers (VAR) for updates.

(AMA8035-10-7-14)

(CCG-B98-027, 028, DFO-C98-119)

***1342 LAKE ERIE - Wellheads.**

Charts (Last correction) - LC 2100(NAD 27)(1-6)(904/98) - LC 2120(NAD 27)(1)(953/98) - LC 2121(NAD 27)(3-6)(524/97) - LC 2122(NAD 27)(2-4)(109/98)

- | | | |
|--------|----------|-------------------------|
| 1. Add | wellhead | 42°42'52" N 79°19'18" W |
| 2. Add | wellhead | 42 04 25 N 82 16 35.2 W |
| 3. Add | wellhead | 42 12 10 N 81 35 55 W |
| 4. Add | wellhead | 42 10 24.9 N 81 29 10 W |
| 5. Add | wellhead | 42 18 33 N 80 48 54 W |
| 6. Add | wellhead | 42 25 09 N 80 51 12 W |

NOTE: Digital data products 2100R/M, 2120R/M, 2121R/M, 2122R/M, 73088(2121), 73090(2122), 73093(2120) and 73094(2100) may also be affected. Contact Nautical Data International Inc. (NDI) or your local Value Added Remarketers (VAR) for updates.

(AMA8035-10-35)

(DFO-C98-118)

***1322 LAKE ERIE - PELEE PASSAGE - Buoy.**

Chart (Last correction) - LC 2123(NAD 27)(1)(1126/98)

1. Amend	Q R to read "FI R" against red light buoy E10	41°53'09" N 82°38'44" W (approx)
----------	--	----------------------------------

NOTE: Digital data products 2123R/M and 73089(2123) may also be affected. Contact Nautical Data International Inc. (NDI) or your local Value Added Remarketers (VAR) for updates.

(AMA8035-10-5-14)

(CCG-B98-023, DFO-C98-112)

***1309 LAKE HURON - GEORGIAN BAY - NORTH CHANNEL - Buoys.**

Charts (Last correction) - 2297(1,2)(475/95) - 2251(NAD 27)(1,2)(462/97)

1. Delete	red conical buoy 2	45°56'38".7 N 83°52'17".5 W
-----------	--------------------	-----------------------------

2. Add	red light buoy "FI R", marked "2"	45 56 34.4 N 83 52 33.9 W
--------	-----------------------------------	---------------------------

NOTE: Digital data products 2251R/M, 73060(2251) and 73075(2297) may also be affected. Contact Nautical Data International Inc. (NDI) or your local Value Added Remarketers (VAR) for updates.

(AMA8035-10-35)

(DFO-C98-105)

***1310 HUDSON BAY - DAWSON INLET TO MARBLE ISLAND - Rocks.**

Charts (Last correction) - 5397(1-3)(1127/98) - 5398(4)(1121/98)

1. Add	rock awash	61°58'12".7 N 92°37'30".3 W
--------	------------	-----------------------------

2. Add	rock with drying height of 1 foot	61 58 32.7 N 92 25 05.6 W
--------	-----------------------------------	---------------------------

3. Replace	1 fathom, 2 feet with rock with known depth of 1 fathom	62 13 58.7 N 91 49 02.1 W
------------	--	---------------------------

4. Add	rock awash	61 58 12.7 N 92 37 30.3 W
--------	------------	---------------------------

(AMA8035-10-35)

(DFO-C98-109)

***1341 MANITOBA - LAKE WINNIPEG - MONTREAL POINT TO KETTLE ISLAND - Buoys.**

Chart - 6258(NAD 83)(1-9)

Reference: Notice 343/92.

1. Delete	red spar buoy C8	53°40'38" N 97°52'28" W
-----------	------------------	-------------------------

2. Delete	green can buoy C15	53 39 40 N 97 53 30 W
-----------	--------------------	-----------------------

3. Delete	green can buoy C21	53 39 04 N 97 54 08 W
-----------	--------------------	-----------------------

4. Delete	red spar buoy C22	53 39 07 N 97 54 12 W
5. Delete	green can buoy CA1	53 39 38 N 97 53 30 W
6. Delete	red spar buoy CA2	53 39 33 N 97 53 22 W
7. Delete	red spar buoy CA4	53 39 30 N 97 53 24 W
8. Delete	red spar buoy CA6	53 39 22 N 97 53 36 W
9. Delete	red spar buoy CA8	53 39 13 N 97 53 51 W

(AMA8035-10-5-13)

(CCG-D98-002, DFO-C98-115)

***1340 MANITOBA - LAKE WINNIPEG TO PLAYGREEN LAKE - Buoys.**

Charts - 6259(NAD 83)(1-10) - 6258(NAD 83)(11-13)

1. Delete	green can buoy P25	53°51'36" N 97°59'48" W
2. Delete	green can buoy P23	53 51 45 N 97 59 46 W
3. Delete	red spar buoy P22	53 51 49 N 97 59 49 W
4. Delete	green can buoy P21	53 51 48 N 97 59 44 W
5. Delete	red spar buoy P20	53 51 55 N 97 59 35 W
6. Delete	green can buoy P17	53 52 28 N 97 59 22 W
7. Delete	green can buoy P15	53 52 33 N 97 59 26 W
8. Delete	red spar buoy P14	53 52 54 N 97 59 35 W
9. Delete	red spar buoy P12	53°53'14" N 97°59'29" W
10. Delete	green can buoy P11	53 53 11 N 97 59 26 W
11. Delete	green can buoy P89	53 43 20 N 97 52 09 W
12. Delete	red spar buoy P84	53 43 30 N 97 52 05 W
13. Delete	green can buoy P83	53 43 34 N 97 52 00 W

(AMA8035-10-7-13)

(CCG-D98-001, DFO-C98-117)

Arctic Canada, Volume 3, Fifth Edition, 1994 —

Page 78 - Paragraph 298, line 2 – After ‘advised.’

Insert: **Note.** – Supplements for *Charts 7780 and 7781*, which include data from the 1994 and 1997 surveys, are available from the Canadian Hydrographic Service.

(P23/98)

Page 88 – Paragraph 388, line 3 After ‘required.’

Insert: **Note.** – A supplement for *Chart 7781*, which includes data from the 1994 and 1997 surveys, is available from the Canadian Hydrographic Service.

(P23/98)

Page 105 — Before paragraph 249 -After7731

Add: 7784

(P22/98)

Page 108 – Delete paragraph 64

Replace by: 64 **Shoals.** – A depth of 30 feet (9.1 m) lies 3 miles east of Peffer River. Two shoals (one reported 1981) with 32 feet (9.4 m) over them lie 4.5 miles ESE of James Ross Point. A depth of 35 feet (10.7 m) lies 3 miles SSW of James Ross Point. Depths of 23 and 22 feet (7 and 6.7 m) lie 1.8 miles SE and 5.5 miles SSE, respectively, of James Ross Point.

(P21/98)

Page 111 – Paragraph 114, line 5 – After “islands.”

Insert: A depth of 1 foot (0.3 m) lies 1.25 miles SW and a 19 foot (5.8 m) depth is 1.25 miles NE of the west Hovgaard Island.

(P21/98)

Page 112 – Paragraph 134, line 4

Delete: 6 miles

Replace by: 7 miles

(P21/98)

Page 112 – Paragraph 139, line 5

Delete: 5 miles

Replace by: 7 miles

(P21/98)

Page 123 — Before paragraph 1 - After7830

Add: 7784

(P22/98)

Page 123 — Paragraph 2, line 1
Delete: Victoria Strait and

(P22/98)

Page 123 — Before paragraph 7
Delete: *Chart 7083*
Replace by: *Chart 7784*

(P22/98)

Page 123 — Delete paragraph 7.

(P22/98)

Page 123 — Paragraph 12, lines 1 to 3
Delete: "The only" to end of paragraph
Replace by: Inside the magenta pecked lines the soundings are
from the 1993/94 survey and are more complete than
the surrounding areas.

(P22/98)

Page 126 — Top of left column
Delete: *Chart 7083*
Replace by: *Chart 7784*

(P22/98)

Page 126 — After paragraph 25
Insert: *Chart 7083*

(P22/98)

Page 126 — Before paragraph 31
Insert: *Chart 7784*

(P22/98)

Page 126 — Before paragraph 39
Insert: *Chart 7083*

(P22/98)

Labrador and Hudson Bay, Sixth Edition, 1988 —

Page 174 — Paragraph 174, line 3 (Re: Correction Promulgated in
Notices to Mariners Bi-weekly Edition No. 13/94)
Delete: (7.1 m)
Replace by: (6.9 m)

(N26/98)

Page 174 – Paragraph 174, line 10 (Re: Correction Promulgated in Notices to Mariners Bi-weekly Edition No. 13/94)

Delete: (5 m)

Replace by: (4.8 m)

(N26/98)

Page 185 - Paragraph 326, last line

Add : South Cardinal light **buoy** NCT (284.1) marks Tinker Rock.

Pages 226 and 229 – Delete paragraph 120

Replace by: 120 **Wharves**. - The berthing facilities at Makkovik are located close west of **Trap Point**. A Ro-Ro ramp 6 m (20 ft) wide is located on the inner end of the west side of the Public wharf. A freight shed, a fish plant and a marine service centre are located near the Public wharf.

(N26/98)

Page 229 – Delete paragraph 121.

(N26/98)

Page 229 – Paragraph 122, lines 3 and 4 (Re: Correction promulgated in Notices to Mariners Bi-Weekly Edition No. 13/94)

Delete: with a depth of 3 m (10 ft)

(N26/98)

Page 229 – After paragraph 122

Add Diagram MAKKOVIK, included in **Section IV** of this Monthly Edition.

(N26/98)

Page 234 – Paragraph 172 (Re: Correction Promulgated in Notices to Mariners Bi-Weekly Edition No. 7/95)

Delete: 5.8 m (19 ft)

Replace by: 6.2 m (20 ft)

(N26/98)

Page 248 – After paragraph 325

Add: 325.1 A shoal bark with a least depth of 0.4 m (1 ft) is located about 1.1 miles WSW of the SW tip of Lopsided (Uvingiayuk) Island.

(N26/98)

Page 253 – Before paragraph 379
Add Diagram NAIN, included in **Section IV** of this Monthly
Edition.

(N26/98)

Page 253 – Delete paragraph 379
Replace by: 379 The wharf at Nain is U-shaped and of wood
and steel pile construction. A floating wharf
extends from the south side of the south pier. A
50 foot (15 m) wide Ro-Ro ramp is located at the
inner end of the north side of the north pier.
Gasoline and diesel fuel in limited quantities is
available in the community.

(N26/98)

Page 256 - After paragraph 406
Insert: *Charts 5052, 4775, 4730*)

406.1 A bay locally known as Anaktalak Bay is entered
between Taktok Bluff and Sentinel Hill, 2.4 miles NW.
This bay extends westward about 24 miles with a reported
least mid-channel depth of 72 feet (22 m). Several shoals
dangerous to navigation described later exist close NW of
Tabor Island about 8.5 miles within the entrance to the
bay.

406.2 **John Hayes Harbour** with depths of 39 to 74 feet
(11.9 to 22.5 m) and located about 4.3 miles west of
Taktok Bluff has an islet 10 feet (3 m) in elevation lying
0.4 mile off its entrance. A shoal with a depth of 3 feet (1
m) is situated 0.3 mile WNW of another islet 13 foot (4 m)
in elevation off the western entrance point to John Hayes
Harbour. On the north side of the bay about 5 miles within
the entrance, a narrow channel which has not been
extensively surveyed and containing some reported shoals
separates Palungitak Island from Satosoak Island about 1
mile west; caution is advised.

406.3 Tabor Island lies close off the NW corner of
Kikkertavak Island. A drying ledge extends from the SW
corner of the Tabor Island to the mainland.

406.4 About 2.3 miles WNW of Tabor Island there is an
unnamed island about 492 feet (150 m) in elevation having
an islet close off its east extremity. An extensive shoal
bank about 0.4 mile wide in an east/west direction with a
least depth of 6 feet (1.8 m) is located about 0.95 mile east
of the islet; caution is advised. The area between the
shoal bank and the south side of Satosoak Island about 0.8
mile north is reported free of dangers.

406.5 Reported mid-channel depths of 82 to 131 feet (25 to 40 m) lie between the previously mentioned unnamed island and Satosoak Island, close NE. Tidal streams in the passage are reported with rates of 2 knots running NW on the flood and SE on the ebb at spring tides. During periods of average to neap tides one half the previous rates should be expected. The passage south and west of the unnamed island is reported to have a mid-channel depth of 38 feet (11.7 m). A drying reef with two small islets extends about 0.2 mile north from the south shore near midway through the passage. Two shoals with reported depths of 33 and 40 feet (10 and 12.3 m) are reported to lie about 0.2 and 0.74 mile NW and north respectively of the north tip of the unnamed island.

406.6 Another unnamed island 689 feet (210 m) lies in mid-channel near the west end of Anaktalak Bay. Tidal streams about 0.8 mile SE of the island are reported to be very weak to non-existent with the strongest rate being 0.1 knot and exhibiting irregular directional behavior. Depths in excess of 82 feet (25 m) are reported between the two previously unnamed islands.

(N26/98)

Page 438 – INDEX, after “John Bull Island ...213”
 Insert: John Hayes Harbour 256

(N26/98)

ATL 101 — Newfoundland — Northeast and East Coasts, First Edition, 1997 —

Page 49 - Paragraph 326, line 8 – after, “mud.”

Add: An **anchorage** area has been established for a safe haven for small craft on the west side of the island at the entrance to St. Johns Harbour. The area is bounded on the north side by a line extending 0.35 miles at 32° from the north end of the previously mentioned island, 200 feet (61 m) in elevation and bounded on the south side by a line extending 0.2 mile at 240° from the SW tip of the same island.

(N29/98)

Page 91 – Paragraph 343, line 11, after – “section.”

Add: A **light** (439.1) is shown from a mast on the outer end of the L-shaped Public wharf.

(N31/98)

ATL 102 — Newfoundland — East and South Coasts, First Edition, 1995 —

Page 35 – Paragraph 344, lines 2 to 4

Delete: “, and in North...sand.”

(N28/98)

Page 55 – Paragraph 119, line 3

Delete : minute

Replace by : 30 seconds

Page 73 – Paragraph 88, lines 4 to 7

Delete: “**Anchorage**...gravel.”

(N28/98)

Page 73 – Paragraph 88

Delete anchorage pictograph.

(N28/98)

Page 89 - Paragraph 240, line 9 - after, “advised.” (Re: Correction promulgated in Notices to Mariners Monthly Edition No. 4/97)

Add: Starboard hand light **buoy** PE 10 (51.65) marks the previous shoal. A **light** (51.7) is shown from a mast on the outer end of the Public wharf at Southeast Bight.

(N30/98)

ATL 103 — Newfoundland — Southwest Coast, First Edition, 1995—

Page 25 – Paragraph 203, lines 4 to 6

Delete: “There...10 fm).”

(N27/98)

Page 44 - Paragraph 54, lines 3 to 5

Delete: “The...winds.”

(N27/98)

ATL 111 — St. Lawrence River — Île Verte to Québec, First Edition, 1992 —

Page 53 — Delete paragraph 110.

(L31/98)

ATL 112 — St. Lawrence River — Cap-Rouge to Montréal, First Edition, 1992 —

Page 20 — Paragraph 31, line 5 (re: correction promulgated in
Weekly Edition No. 41/92)
Delete: buoys S 67 and S 81
Replace by: the rear light of Yamachiche Curve West range and
buoy S 81

(L33/98)

Page 27 — Delete paragraph 118, line 3
Delete : lighted

(L32/98)

Nova Scotia (Atlantic Coast) and Bay of Fundy, First Edition, 1990 —

Page 237 — Paragraph 152, lines 4 to 6
Delete: "Light ... Point."

Page 238 — Paragraph 158, line 3 — after **light**
Insert: (privately maintained)

Page 238 — Delete paragraph 160.

Page 257 — Delete paragraph 119.

Page 263 — Paragraph 32, line 1
Delete: SE
Replace by: SW

Gulf of St. Lawrence, First Edition, 1992 —

Page 46 — Paragraph 109, lines 2 and 3 (re: corrections
promulgated in Bi-weekly Edition No.24/95 and Weekly Edition
No.47/92)
Delete: 1.7 m (6 ft) alongside en 1992.
Replace by: 1.5 m (5 ft) alongside en 1997.

(L22/98)

Page 52 — Paragraph 49, line 4 — after "bay"
Insert: An L-shaped wharf is situated on the west side of Piton
Point.

Page NOTES — End of the book
Delete Diagram ÎLE D'ENTRÉE and replace it by the new
diagram included in **Section IV** of this Monthly Edition.

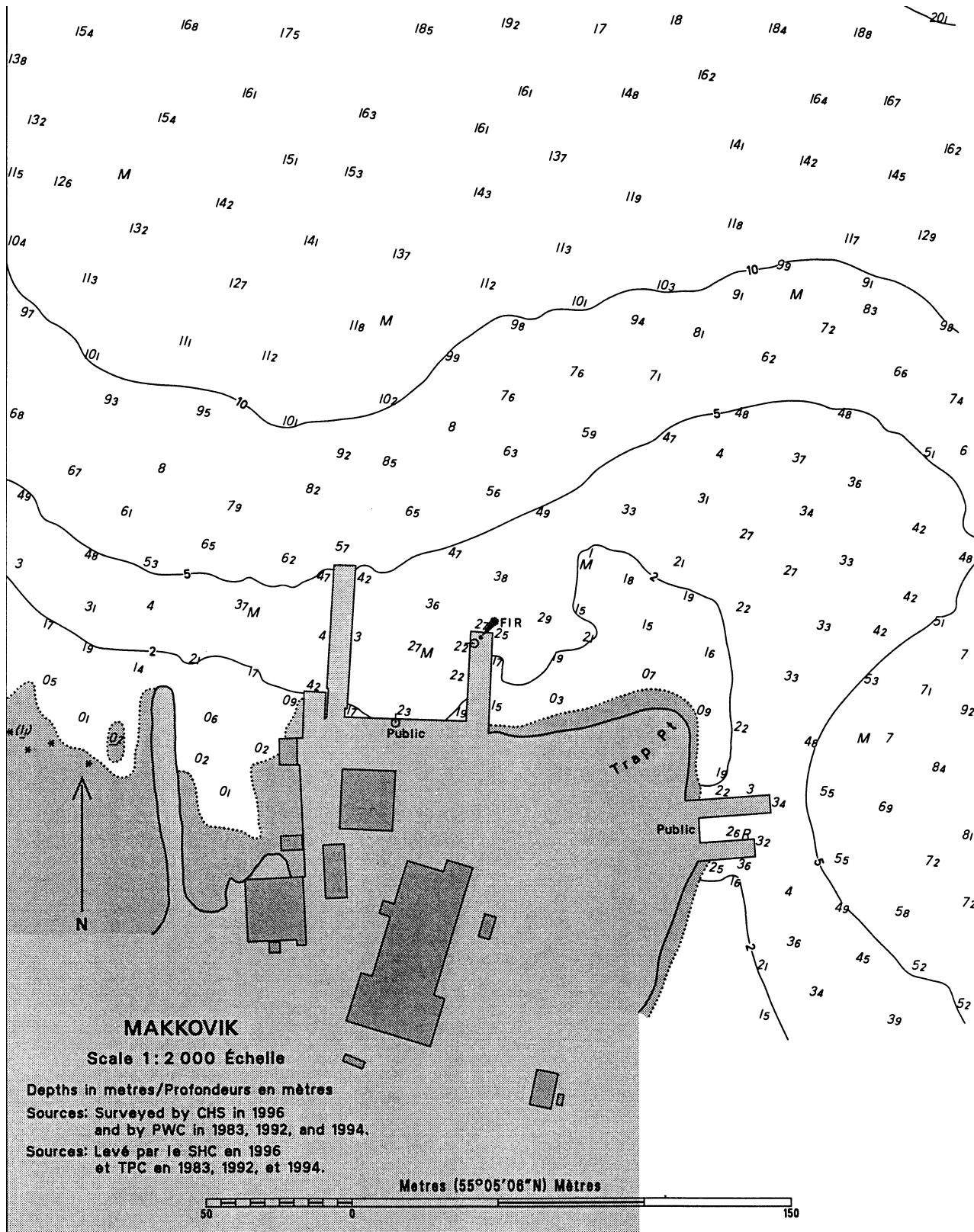
(L22/98)

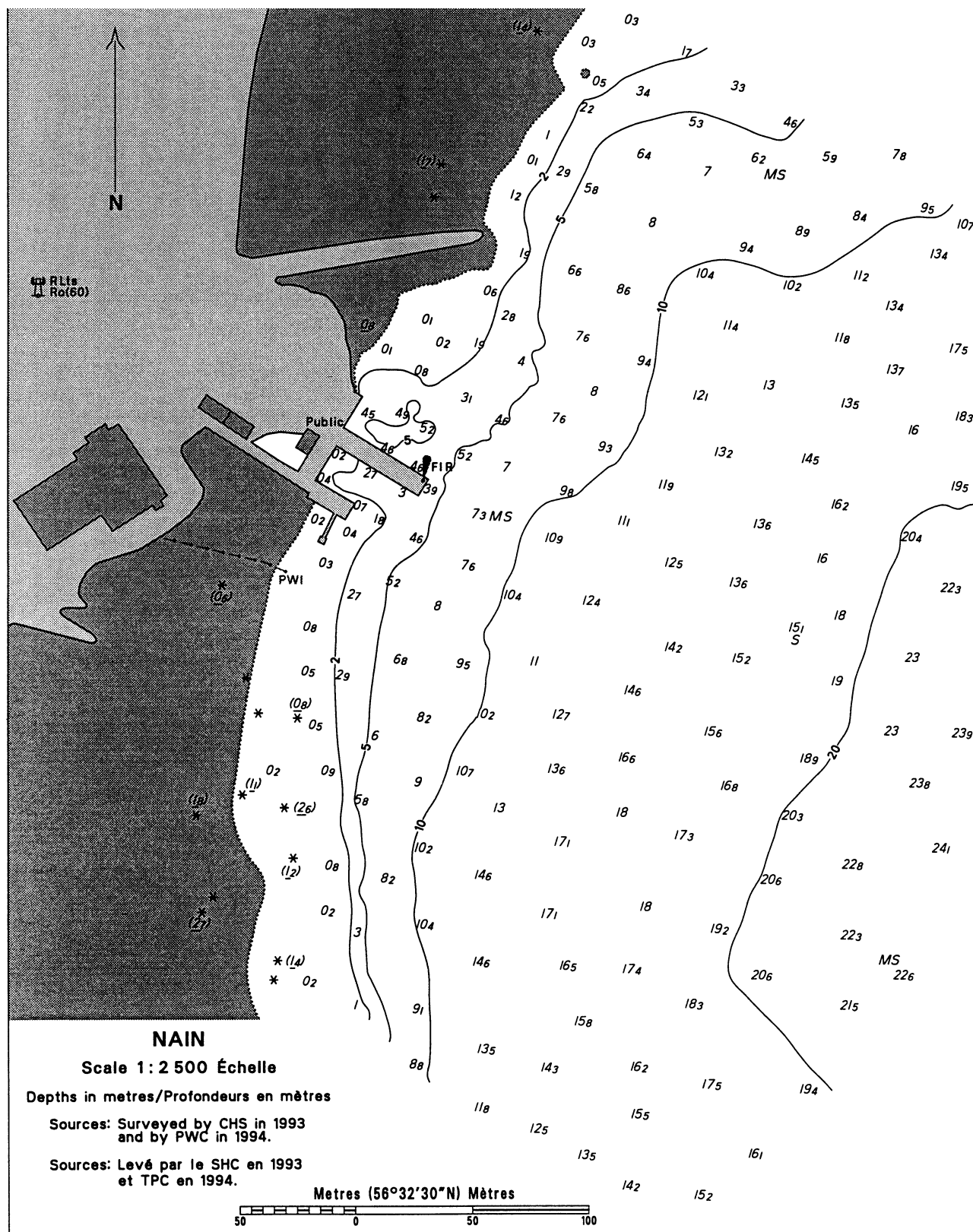
Small Craft Guide, Rideau Waterway and Ottawa River, Second Edition —

Chapter VIII — Delete paragraph 45.1

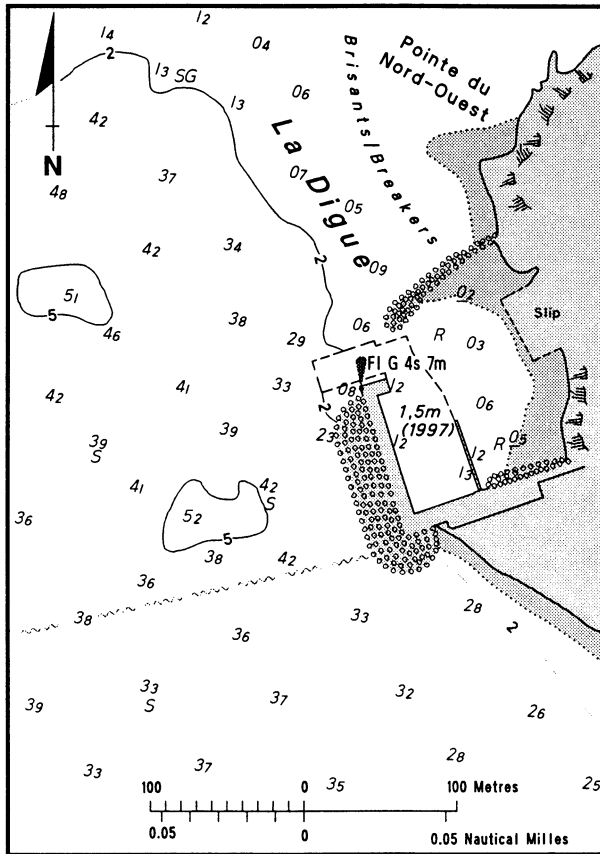
Replace by: 45.1 **Light.** — Pointe aux Anglais light (private)
is shown at an elevation of 36 feet (11 m) from
a white square tower, 22 feet (6.7 m) high,
situated on a concrete structure on a drying
shoal 0.3 miles off the point.

(L30/98)





ÎLE D'ENTRÉE (Scale 1:5 000)



SOURCES: Surveyed by the CHS 1983-84 and by the Department of Public Works and Government Services, 1991-92, 1997.

No.	Name	Position ----- Latitude N. Longitude W.	Light Characteristics	Focal Height in m. above water	Nomi- nal Range	Description ----- Height in meters above ground	Remarks ----- Fog Signals
-----	------	--	--------------------------	--	-----------------------	--	---------------------------------

Newfoundland

5	Powles Head	Entrance to Trepassey Harbour. 46 41 25.2 53 24 09.2	Fl W 6s	30.8	12	Red octagonal tower. 2.1	Emergency light. Year round. Horn - Blast 3s; sil. 27s. Horn points 183°. Chart:4844 1349/98
51.65	Wharf Rock light buoy PE10	47 23 45 54 34 42	Q R 1s	Red, marked "PE10".	Year round. Chart:4622 1328/98
51.7	Southeast Bight, wharf	47 23 41.7 55 34 42.2	Fl R 4s	Circular mast. 2.1	Flash 0.5 s; eclipse 3.5 s. Year round. Chart:4622 1328/98
53.5	Petite Forte, wharf	47 23 48.7 54 40 08	Fl R 4s	Circular mast. 2.1	Year round. Chart:4622 1328/98
130.32	Sunker Rock light buoy V30	47 28 57 56 01 28.8	Q R 1s	Red spar, marked "V30".	Year round. Chart:4015 1304/98
139 H266	Harbour Island	E. side of Island. 47 22 54 56 59 15	Fl W 10s	21.9	6	White square tower. 4.3	Flash 2 s; eclipse 8 s. Year round. Chart:4633 Edn. 7/98
219.5	Raleigh breakwater	51 34 10 55 44 18	Fl R 3s	Mast. 2.1	Year round. Chart:4509 1329/98
231	L'Anse Au Loup, wharf	51 31 03.8 56 49 46.4	F R	Tower. 2.1	Year round. Chart:4668 1324/98
284.1	Tinker Rock South Cardinal light buoy NCT	53 48 44.5 56 35 01 (approx.)	VQ(6)+ W LFI	10s	Yellow and black, marked "NCT".	Seasonal. Chart:5134 1344/98
332.2	Macks Island	On rock N. of Macks Island. 49 38 37 55 46 31	Fl G 4s	3.4	Square skeleton tower, green and white horizontal bands. 3.6	Flash 0.5 s; eclipse 3.5 s. Seasonal. Chart:4592 Edn. 7/98
372	Tickle Point	49 40 08 54 24 53	Fl G 6s	9.4	Square tower, green and white horizontal bands. 3.6	Flash 0.5 s; eclipse 5.5 s. Visible from 028° to 088°. Seasonal. Chart:4531 Edn. 7/98
440	Salvage Harbour	Harbour entrance. 48 41 24 53 38 06	Fl G 4s	3.7	Square tower, green and white horizontal bands on three sides. 3.6	Flash 0.5 s; eclipse 3.5 s. Seasonal. Chart:4520 Edn. 7/98

Atlantic

257.5	Cape Forchu light and whistle buoy N8						Delete from List. Chart:4243 1307/98
258	Yarmouth Fairway light and whistle buoy YA						Delete from List.
	Racon --.. (Z) X Band						Chart:4243 1307/98

No.	Name	Position ----- Latitude N. Longitude W.	Light Characteristics	Focal Height in m. above water	Nomi- nal Range	Description ----- Height in meters above ground	Remarks ----- Fog Signals
-----	------	--	--------------------------	--	-----------------------	--	---------------------------------

Atlantic (Con't)

331.2 H3787.4	Stony Island Outer breakwater	On outer end of breakwater. 43 28 06.4 65 33 56.1	FI G 12s	10.0	7	Skeleton tower. 6.6	Flash 2 s; eclipse 10 s. Year round. Chart:4241 1306/98
348 H3778	The Salvages	SE. end of Island. 43 28 07.7 65 22 43.4	LFI W 12s	16.8	15	White block. 14.9	Flash 2.5 s; eclipse 9.5 s. Emergency light. Year round. Horn - Blast 2s; sil. 3s; blast 2s; sil. 3s; blast 2s; sil. 48s. Horn points 116°. Chart:4241 1307/98
349 H3774	Cape Negro Island	On SE. end of island. 43 30 26.2 65 20 44.2	FI(2) W 15s	27.7	16	White tower. 12.8	Visible from 187° through W., N. and E. to 106°30'. Emergency light. Year round. Horn - Blast 6s; sil. 54s. Chart:4241 1307/98
357	Shelburne light and whistle buoy S	Off entrance to Shelburne Harbour. 43 37 36 65 13 51	Mo(A) W	Red and white vertical stripes, marked "S".	Year round. Chart:4241 1306/98
357.5	Bifurcation light and bell buoy SAC	43 38 18 65 13 12	FI R (2+1)	6s	Red, green and red, marked "SAC".	Year round. Chart:4241 1306/98
358	Shelburne Harbour light and bell buoy SAA						Delete from List. Chart:4209 1314/98
360	Middle Rock bifurcation light buoy SAB						Delete from List. Chart:4209 1318/98
360.01	Gunning Cove light buoy SA51	43 41 00.1 65 20 01.8	FI G 4s	Green, marked "SA51".	Chart:4209 1318/98
360.02	Sandy Point Inner light buoy S56	43 42 22.8 65 19 38.4	FI R 4s	Red, marked "S56".	Chart:4209 1318/98
360.1	Middle Rock light buoy S52	43 40 34.8 65 18 50.4	FI R 4s	Red, marked "S52".	Chart:4209 1318/98
360.2 H3767	Surf Point range						Delete from list. Chart: 4209 1318/98
360.3							
362.8	Sandy Point light and bell buoy S54	SE. Coast, Shelburne Harbour. 43 41 25.3 65 19 39.9	Q R 1s	Red, marked "S54".	Year round. Chart:4209 1318/98
363 H3764	Sandy Point	E. side of entrance to Shelburne Harbour. 43 41 29.3 65 19 32.9	F R	14.3	11	White structure. 13.4	Visible from 310° through N., E., and S. to 188°. Year round. Privately maintained. Chart:4209 1318/98
364	Birchtown Bay light buoy SB50						Delete from list. Chart:4209 1318/98

No.	Name	Position ----- Latitude N. Longitude W.	Light Characteristics	Focal Height in m. above water	Nomi- nal Range	Description ----- Height in meters above ground	Remarks ----- Fog Signals
-----	------	--	--------------------------	--	-----------------------	--	---------------------------------

Atlantic (Con't)

1306 H1566	Pointe de Pokesudie	NE. point of island. 47 49 11.2 64 45 15.6	Iso W 4s	10.7	8	White tower, red and white daymark. 10.4	Flash 2 s; eclipse 2 s. Seasonal. Chart:4913 1312/98
1404	Light buoy AF-1	48 28 14 64 18 07	Fl G 4s	Green, marked "AF-1".	Chart:4485 1337/98
1404.1	Light buoy AF-3	48 28 18.3 64 18 20.1	Fl G 4s	Green, marked "AF-3".	Chart:4485 1337/98
1479.5 H887	Pointe de l'Est Racon --. (G) X Band	47 36 58 61 23 25.7	Fl W 4s	15.5	6	Square skeleton tower. 6.4	Emergency light. Year round. Chart:4952 1339/98
1507.5	Sandy Hook Channel light buoy YM7	E. of Sandy Hook. 47 15 57 61 43 24	Fl G 4s	Green, marked "YM7".	Year round. Winter spar. Chart:4951 1338/98
1804.1 H2143.2	Batture aux Loups Marins range						Delete from List.
1804.2 H2143.21							Chart:1209 1348/98
2184 H2428	Sorel Basin (Lancôt Basin) range						Delete from List.
2185 H2428.1							Chart:1312 Edn. 7/98
2276	Lano A Anchorage light buoy						Delete from List. Chart:1338 1335/98
2280.6	Course Île Saint- Ours light buoy M10						Delete from List. Chart:1338 1335/98
2280.7	Course Île Saint- Ours light buoy M9						Delete from List. Chart:1338 1335/98
2349.14	Light buoy M152						Delete from List. Chart:1310 1335/98
2349.2	Pointe-aux- Trembles Anchorage light buoy C						Delete from List. Chart:1310 1335/98
2349.4	Pointe-aux- Trembles Anchorage light buoy E						Delete from List. Chart:1310 1335/98
2351	Pointe-aux- Trembles Anchorage light buoy H						Delete from List. Chart:1310 1335/98
2354.3	Montréal East Anchorage light buoy A						Delete from List. Chart:1310 1335/98

No.	Name	Position ----- Latitude N. Longitude W.	Light Characteristics	Focal Height in m. above water	Nomi- nal Range	Description ----- Height in meters above ground	Remarks ----- Fog Signals
-----	------	--	--------------------------	--	-----------------------	--	---------------------------------

Atlantic (Con't)

2373	Longueuil Anchorage light buoy A						Delete from List. Chart:1310 1335/98
2380.1	Light buoy M193						Delete from List. Chart:1310 1335/98
2385.5	Alexandra Pier light buoy M207						Delete from List. Chart:1310 1335/98

Inland Waters

5.2	Kahnawake Dyke light buoy	45 24 26.2 73 43 11.3	Fl G 4s	Green, marked "A1".	Winter spar. Year round.	Chart:1409 1303/98
6	Light buoy A3	45 24 17.1 73 43 44.1	Q G 1s	Green, marked "A3".	Winter spar. Year round.	Chart:1409 Edn. 7/98
7	Light buoy A4	45 24 22.7 73 43 51.9	Q R 1s	Red, marked "A4".	Winter spar. Year round.	Chart:1409 Edn. 7/98
65	Light buoy C30	45 13 20.8 74 05 06	Fl R 4s	Red, marked "C30".	Winter spar. Year round.	Chart:1411 1311/98
493	Cobourg East Pierhead	On outer end of E. pier. 43 57 08.2 78 09 53.4	Iso R 2s	15.0	8	White square structure. 12.2	Flash 1.0 s; eclipse 1.0 s. Seasonal.	Chart:2054 1325/98
557.1	Sugarloaf Marina West	42 52 20 79 15 17.5	Fl G 4s	9.0	White mast. 6.0	Flash 0.5 s; eclipse 3.5 s. Seasonal. Privately maintained by Sugarloaf Harbour Marina.	Chart:2042 1343/98
557.2	Sugarloaf Marina East	42 52 22 79 15 14	Fl R 4s	9.0	White mast. 6.0	Flash 0.5 s; eclipse 3.5 s. Seasonal. Privately maintained by Sugarloaf Harbour Marina.	Chart:2042 1343/98
609	Pelee Passage Turning light buoy E10	NE. of Lighthouse Point. 41 53 09 82 38 44	Fl R 4s	Red, marked "E10".	Winter spar. Year round.	Chart:2123 1322/98
732		42 33 12 82 34 58	Iso Y 2s	9.1	White square skeleton tower, fluorescent orange triangular daymark, black vertical stripe.	Flash 1 s; eclipse 1 s. Visible in line of range. Year round.	
733	Squirrel Island range	064°15' 1068.6m from front.	F Y	25.7	White square skeleton tower, fluorescent orange inverted triangular daymark, black vertical stripe. 24.3	Visible in line of range. Year round.	Chart:14853(U.S.) 1326/98

No.	Name	Position ----- Latitude N. Longitude W.	Light Characteristics	Focal Height in m. above water	Nomi- nal Range	Description ----- Height in meters above ground	Remarks ----- Fog Signals
-----	------	--	--------------------------	--	-----------------------	--	---------------------------------

Inland Waters (Cont'd)

1193	Club West Cardinal light buoy	45 25 49.2 73 41 21.9	Q(9) W 15s	Yellow, black and yellow, marked "CLUB".	Privately maintained by Société de Gestion Nauberges of Lachine. Seasonal. Chart:1409 Edn. 7/98
1194	Lachine range	On outer end of wharf. 45 25 56.1 73 41 41.7	F G	9.0	White circular tower, fluorescent red daymark, black vertical stripe. 7.4	Visible in line of range. Seasonal.
1195		On mainland, 067°05' 250.6m from front.	F G	17.9	White circular tower, fluorescent red daymark, black vertical stripe. 16.6	Visible in line of range. Seasonal. Chart:1409 Edn. 7/98
1196	Lachine light buoy AC20	On N. side of channel. 45 25 54.7 73 41 51.3	Fl R 4s	Red, marked "AC20".	Winter spar. Year round. Chart:1409 Edn. 7/98
1197	Light buoy AC28	N. side of channel. 45 25 40.5 73 42 38.9	Fl R 4s	Red, marked "AC28".	Winter spar. Year round. Chart:1409 Edn. 7/98
1198	Light buoy AC38	N. side of channel. 45 25 20.4 73 43 46.4	Fl R 4s	Red, marked "AC38".	Winter spar. Year round. Chart:1409 Edn. 7/98
1245	Pointe aux Anglais	45 29 37.6 74 10 47.1	Iso R 2s	10.9	5	White square tower, 6.8	Privately maintained by Club de Voile des Laurentides. Chart:1510 1347/98
1777.5	Mile 526.8 range	64 56 03 126 01 03	F W	18.6	Square skeleton tower, white daymark, red vertical stripe. 6.1	Visible in line of range. Year round.
1777.6		288.5° 75m from front.	F W	30.4	Square skeleton tower, white daymark, red vertical stripe. 12.2	Visible in line of range. Year round. Chart:6417 Edn. 06/98

**CANADIAN COAST GUARD
MARINE INFORMATION REPORT AND SUGGESTION SHEET**

Navigating Officer or Observer: _____ Captain: _____

Ship (or address) _____

If Merchant Vessel add Line or Company with Head Office address: _____

General locality: _____

Subject: _____

Approx. position: _____ Lat. _____ Long. _____

Chart No. used to plot: _____ (Corrected to N/N No. _____ of 19 _____)

Publications affected: (Quote Volume and page) _____

* Full details (Attach additional sheets as necessary)

Time (UTC) _____ Date _____

INSTRUCTIONS:

Mariners are requested to notify the responsible authorities when new or suspected dangers to navigation are discovered, changes are observed in aids to navigation, or corrections to publications are seen to be necessary.

** In the case of new or suspected dangers to navigation, it is important that all details be given in order to aid with future investigations. Items of interest include heights, depths, physical description, type of bottom and equipment method used to position the item. It is helpful to mark details on chart, which will be promptly replaced by the Canadian Hydrographic Service.*

Reports should be made to the nearest Marine Communications and Traffic Services Centre and should be confirmed in writing to:

Director General, Marine Navigation Services Directorate,
Canadian Coast Guard,
Department of Fisheries and Oceans,
Ottawa, Ontario, K1A 0E6

In the case of information concerning
navigational aids or the List of Lights,
Buoys and Fog Signals.

OR

Dominion Hydrographer,
Canadian Hydrographic Service,
Department of Fisheries and Oceans,
Ottawa, Ontario, K1A 0E6

In the case of new or suspected
dangers to navigation, or where
corrections to "Sailing Directions"
appear to be necessary.