

Catalogue no. 63-007-X

New Motor Vehicle Sales

December 2011



Statistics
Canada

Statistique
Canada

Canada

How to obtain more information

For information about this product or the wide range of services and data available from Statistics Canada, visit our website at www.statcan.gc.ca, e-mail us at infostats@statcan.gc.ca, or telephone us, Monday to Friday from 8:30 a.m. to 4:30 p.m., at the following numbers:

Statistics Canada's National Contact Centre

Toll-free telephone (Canada and the United States):

Inquiries line	1-800-263-1136
National telecommunications device for the hearing impaired	1-800-363-7629
Fax line	1-877-287-4369

Local or international calls:

Inquiries line	1-613-951-8116
Fax line	1-613-951-0581

Depository Services Program

Inquiries line	1-800-635-7943
Fax line	1-800-565-7757

To access this product

This product, Catalogue no. 63-007-X, is available free in electronic format. To obtain a single issue, visit our website at www.statcan.gc.ca and browse by "Key resource" > "Publications."

Standards of service to the public

Statistics Canada is committed to serving its clients in a prompt, reliable and courteous manner. To this end, Statistics Canada has developed *standards of service* that its employees observe. To obtain a copy of these service standards, please contact Statistics Canada toll-free at 1-800-263-1136. The service standards are also published on www.statcan.gc.ca under "About us" > "The agency" > "Providing services to Canadians."

Statistics Canada
Distributive Trades Division

New Motor Vehicle Sales

December 2011

Published by authority of the Minister responsible for Statistics Canada

© Minister of Industry, 2012

All rights reserved. Use of this publication is governed by the *Statistics Canada Open License Agreement*.

<http://www.statcan.gc.ca/reference/copyright-droit-auteur-eng.htm>

February 2012

Catalogue no. 63-007-X, vol. 83, no. 12

ISSN 1209-1146

Frequency: Monthly

Ottawa

Cette publication est également disponible en français.

Note of appreciation

Canada owes the success of its statistical system to a long-standing partnership between Statistics Canada, the citizens of Canada, its businesses, governments and other institutions. Accurate and timely statistical information could not be produced without their continued cooperation and goodwill.

User information

Symbols

The following standard symbols are used in Statistics Canada publications:

- . not available for any reference period
- .. not available for a specific reference period
- ... not applicable
- 0 true zero or a value rounded to zero
- 0^s value rounded to 0 (zero) where there is a meaningful distinction between true zero and the value that was rounded
- p preliminary
- r revised
- x suppressed to meet the confidentiality requirements of the *Statistics Act*
- E use with caution
- F too unreliable to be published
- * significantly different from reference category ($p < 0.05$)

Note to users

Figures may not add up to totals because of rounding.

Acknowledgements

This publication was prepared under the direction of:

- **Mary Beth Garneau**, Director, Distributive Trades Division
- **S. Grenier**, Assistant Director, Distributive Trades Division
- **J. Winters**, Retail Sub-annuals surveys chief, Distributive Trades Division
- **J. Aston**, Analyst Retail Sub-annuals surveys section, Distributive Trades Division

Table of contents

Highlights	5
Analysis – December 2011	6
Truck sales decline in December	6
Sales decrease most in Ontario and Alberta	7
Related products	9
Statistical tables	
1 Monthly sales of new motor vehicles, by type and origin	11
1-1 in units	11
1-2 in dollars	13
2 Average monthly prices of passenger cars, by origin	15
3 Monthly market share of new passenger car sales (units), by origin, Canada	16
4 Provincial sales of new motor vehicles, by type and origin, in units and dollars, December	17
5 Year to date provincial sales of new motor vehicles, by type and origin	19
5-1 in units, January to December	19
5-2 in dollars, January to December	21
6 Annual sales of new motor vehicles, by type and origin, in units and dollars, Canada	23
7 Canada, monthly sales of new motor vehicles, in units, by type and origin, seasonally adjusted	24
8 Monthly sales of new motor vehicles, in units, by province, seasonally adjusted	25
Data quality, concepts and methodology	
Definitions	27
Appendix	
I Scope of the survey	28
II List of North American motor vehicle manufacturers	31

Table of contents – continued

Charts

1. New motor vehicle sales, seasonally adjusted, in units, 2008 to 2011	6
2. Truck, van and bus sales, seasonally adjusted, in units, 2008 to 2011	6
3. Passenger car sales, seasonally adjusted, in units, 2008 to 2011	7
4. Monthly distribution of the Canadian motor vehicle market (passenger cars), by origin, 2008 to 2011	7
5. Cumulative sales of new passenger cars, by origin, in units, 2009 to 2011	8

Highlights

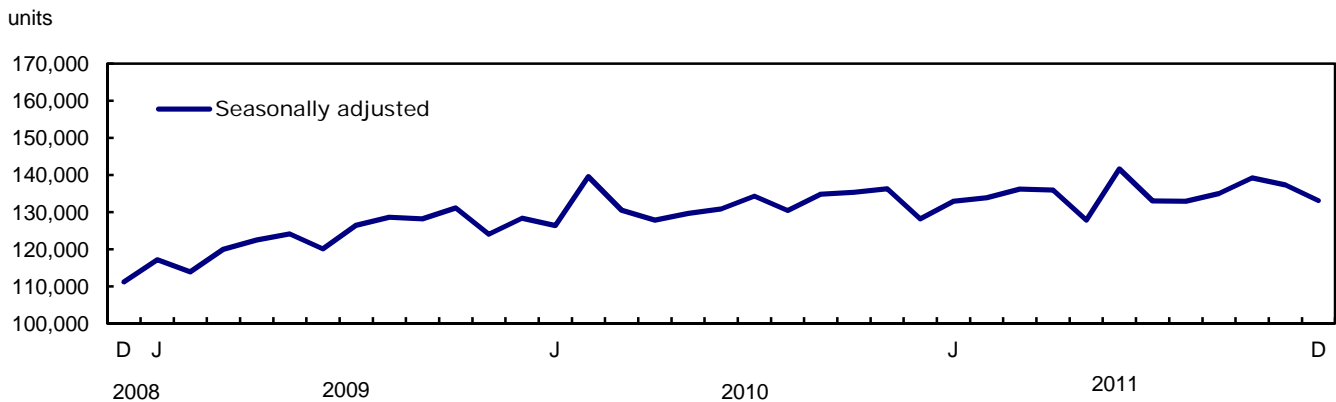
December 2011

The number of new motor vehicles sold declined for a second consecutive month, down 3.0% in December to 133,146 units. Weaker sales in Ontario and Alberta accounted for the decrease.

Analysis – December 2011

The number of new motor vehicles sold declined for a second consecutive month, down 3.0% in December to 133,146 units. Weaker sales in Ontario and Alberta accounted for the decrease.

Chart 1
New motor vehicle sales, seasonally adjusted, in units, 2008 to 2011

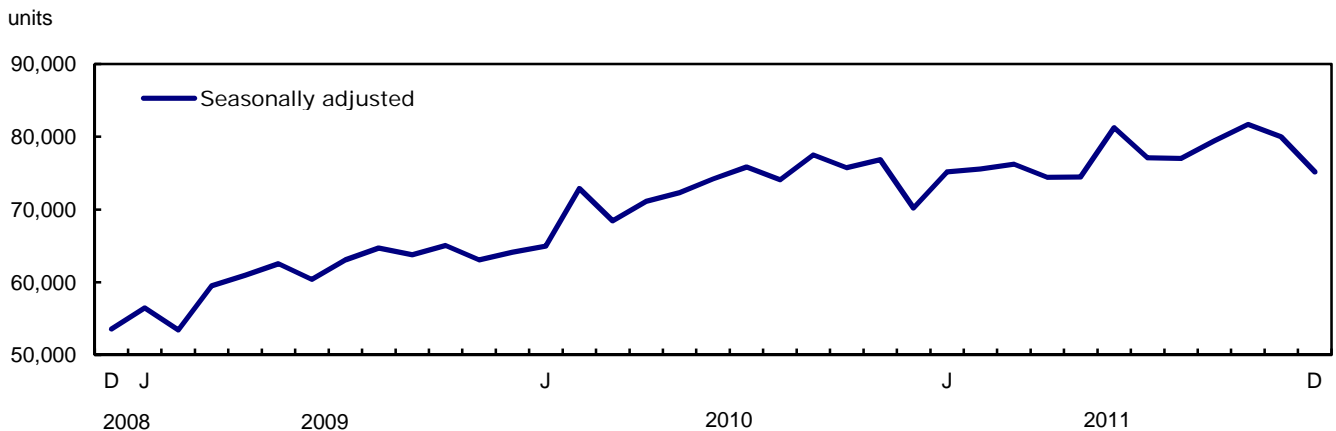


Preliminary industry data indicate that the number of new motor vehicles sold in January 2012 increased 16% on the strength of passenger cars.

Truck sales decline in December

Sales of trucks (which include minivans, sport-utility vehicles, light and heavy trucks, vans and buses) decreased 6.0% to 75,175 units in December. Truck sales were relatively stable in the second half of 2011 following an upward trend earlier in the year.

Chart 2
Truck, van and bus sales, seasonally adjusted, in units, 2008 to 2011



Passenger car sales rose 1.1% to 57,971 units. Following a downward trend that began in early 2010, sales of overseas-built passenger cars (+3.3%) rose for a fourth consecutive month. Sales of North-American built passenger cars edged down 0.2%.

Sales decrease most in Ontario and Alberta

Sales were down in five provinces in December.

Ontario (-6.1%) reported the largest decrease in the number of new motor vehicles sold. This was Ontario's first decline in five months.

Sales of new motor vehicles fell for a second consecutive month in Alberta (-6.6%). This province registered the highest growth in units sold among all provinces in 2011.

Quebec's (+0.9%) sales of new motor vehicles advanced for the fourth month in a row. These gains offset the downward trend in sales observed in early 2011.

Chart 3
Passenger car sales, seasonally adjusted, in units, 2008 to 2011

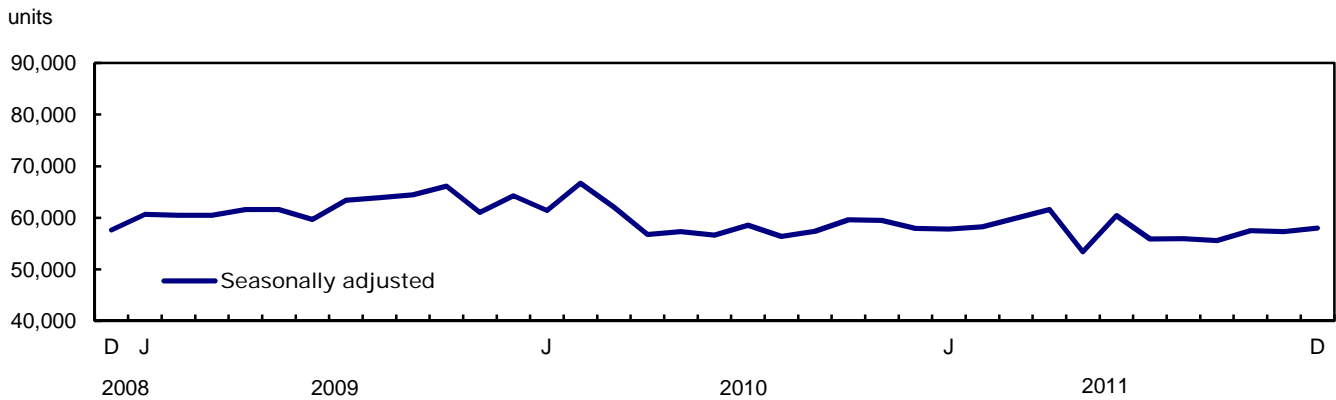


Chart 4
Monthly distribution of the Canadian motor vehicle market (passenger cars), by origin, 2008 to 2011

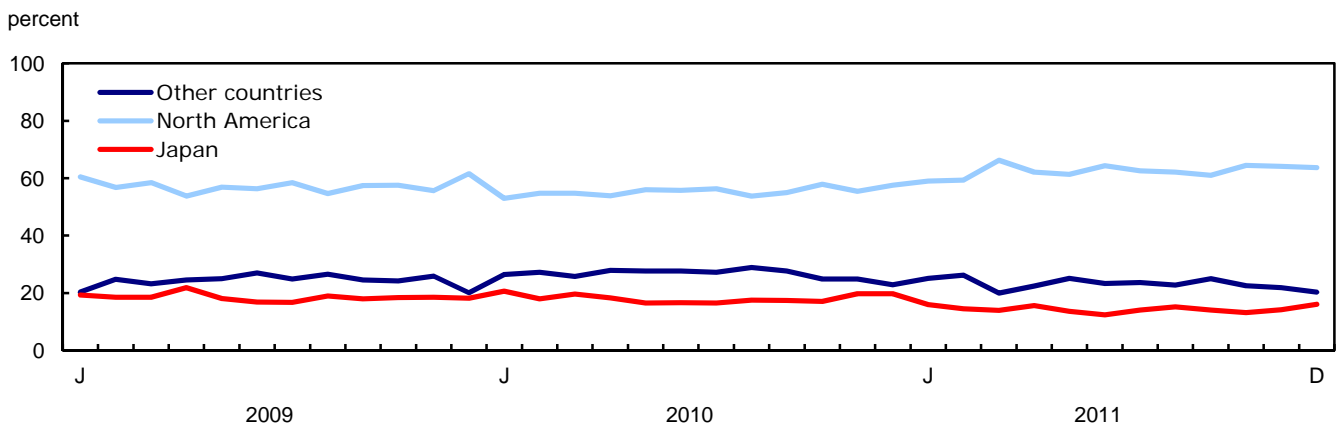
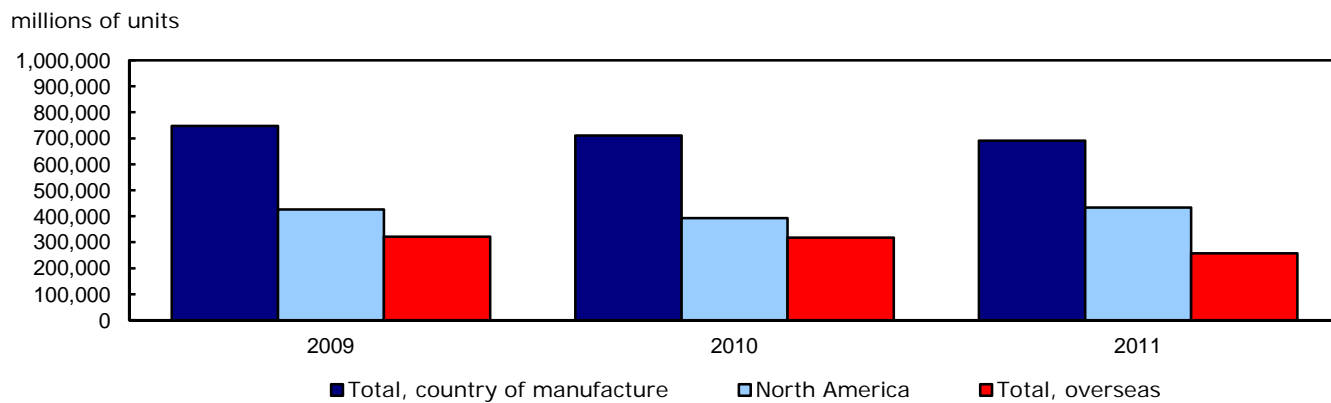


Chart 5
Cumulative sales of new passenger cars, by origin, in units, 2009 to 2011
January to December



Related products

Selected publications from Statistics Canada

63-005-X	Retail Trade
63-210-X	Retail Chain and Department Stores
63-236-X	Wholesaling and Retailing in Canada
63-541-X	Retail Commodity Survey, 1989
63F0006X	New Motor Vehicle Sales Seasonal Factors

Selected CANSIM tables from Statistics Canada

079-0003	New motor vehicle sales, Canada, provinces and territories, monthly
----------	---

Selected surveys from Statistics Canada

2402	New Motor Vehicle Sales Survey
------	--------------------------------

Selected summary tables from Statistics Canada

- *New motor vehicle sales, by province (monthly)*
- *Economic indicators, by province and territory (monthly and quarterly)*
- *New motor vehicle sales*
- *New motor vehicle sales, by province*

Statistical tables

Table 1-1
Monthly sales of new motor vehicles, by type and origin in units

	Total new motor vehicles		Passenger cars							
			North America		Japan		Other countries		Total	
	Units	Year/year change	Units	Year/year change	Units	Year/year change	Units	Year/year change	Units	Year/year change
	number	%	number	%	number	%	number	%	number	%
2009										
January	78,817	-25.3	21,581	-37.5	6,907	-18.2	7,255	-16.8	35,743	-30.9
February	82,039	-28.0	23,129	-38.1	7,559	-23.2	10,098	-8.2	40,786	-29.9
March	129,831	-15.4	38,347	-23.7	12,138	-21.9	15,210	6.4	65,695	-18.0
April	146,026	-18.6	40,460	-32.7	16,423	-12.0	18,449	-5.6	75,332	-23.4
May	156,025	-17.1	47,369	-29.7	15,020	-29.8	20,792	0.7	83,181	-24.0
June	140,442	-13.9	41,654	-29.6	12,407	-32.1	19,967	7.6	74,028	-22.9
July	141,621	-7.3	42,908	-19.0	12,228	-29.1	18,289	17.2	73,425	-14.4
August	136,971	-8.4	37,309	-25.9	12,947	-16.5	18,127	20.3	68,383	-15.5
September	131,275	-4.5	38,747	-15.0	12,175	-17.1	16,547	16.2	67,469	-9.4
October	123,607	-1.9	35,303	-11.1	11,284	-2.3	14,842	21.2	61,429	-3.3
November	104,589	-2.9	28,504	-10.7	9,477	2.9	13,280	31.3	51,261	0.0
December	113,613	16.9	31,398	12.1	9,295	22.4	10,246	12.3	50,939	13.9
Year	1,484,856	-11.3	426,709	-23.4	137,860	-17.9	183,102	8.2	747,671	-16.4
2010										
January	83,512	6.0	18,910	-12.4	7,361	6.6	9,403	29.6	35,674	-0.2
February	101,788	24.1	24,871	7.5	8,180	8.2	12,366	22.5	45,417	11.4
March	148,052	14.0	38,427	0.2	13,746	13.2	18,079	18.9	70,252	6.9
April	152,187	4.2	37,922	-6.3	12,908	-21.4	19,682	6.7	70,512	-6.4
May	157,082	0.7	41,793	-11.8	12,296	-18.1	20,591	-1.0	74,680	-10.2
June	156,891	11.7	40,601	-2.5	12,069	-2.7	20,212	1.2	72,882	-1.5
July	150,800	6.5	38,018	-11.4	11,170	-8.7	18,394	0.6	67,582	-8.0
August	138,210	0.9	32,796	-12.1	10,669	-17.6	17,632	-2.7	61,097	-10.7
September	137,349	4.6	32,803	-15.3	10,398	-14.6	16,449	-0.6	59,650	-11.6
October	125,731	1.7	32,086	-9.1	9,496	-15.8	13,809	-7.0	55,391	-9.8
November	118,521	13.3	28,371	-0.5	10,069	6.2	12,763	-3.9	51,203	-0.1
December	114,376	0.7	26,372	-16.0	9,027	-2.9	10,475	2.2	45,874	-9.9
Year	1,584,499	6.7	392,970	-7.9	127,389	-7.6	189,855	3.7	710,214	-5.0
2011										
January	86,320	3.4	18,983	0.4	5,131	-30.3	8,069	-14.2	32,183	-9.8
February	98,147	-3.6	23,456	-5.7	5,735	-29.9	10,388	-16.0	39,579	-12.9
March	156,452	5.7	45,830	19.3	9,636	-29.9	13,789	-23.7	69,255	-1.4
April	162,613	6.9	46,962	23.8	11,774	-8.8	16,948	-13.9	75,684	7.3
May	152,064	-3.2	42,526	1.8	9,433	-23.3	17,444	-15.3	69,403	-7.1
June	168,119	7.2	49,009	20.7	9,482	-21.4	17,782	-12.0	76,273	4.7
July	144,171	-4.4	39,273	3.3	8,776	-21.4	14,819	-19.4	62,868	-7.0
August	143,653	3.9	37,489	14.3	9,164	-14.1	13,733	-22.1	60,386	-1.2
September	137,660	0.2	34,587	5.4	7,934	-23.7	14,154	-14.0	56,675	-5.0
October	129,049	2.6	33,743	5.2	6,860	-27.8	11,761	-14.8	52,364	-5.5
November	124,466	5.0	32,521	14.6	7,134	-29.1	11,108	-13.0	50,763	-0.9
December	117,863	3.0	29,073	10.2	7,327	-18.8	9,246	-11.7	45,646	-0.5
Year	1,620,577	2.3	433,452	10.3	98,386	-22.8	159,241	-16.1	691,079	-2.7

See notes at the end of the table.

Table 1-1 – continued

Monthly sales of new motor vehicles, by type and origin in units

	Total new motor vehicles		Trucks ¹					
			North America		Overseas		Total	
	Units	Year/year change	Units	Year/year change	Units	Year/year change	Units	Year/year change
	number	%	number	%	number	%	number	%
2009								
January	78,817	-25.3	36,985	-21.0	6,089	-12.9	43,074	-20.0
February	82,039	-28.0	34,939	-27.7	6,314	-14.1	41,253	-25.9
March	129,831	-15.4	56,103	-10.6	8,033	-24.3	64,136	-12.6
April	146,026	-18.6	61,884	-10.5	8,810	-25.4	70,694	-12.7
May	156,025	-17.1	63,116	-6.3	9,728	-14.4	72,844	-7.5
June	140,442	-13.9	57,060	-0.8	9,354	-1.9	66,414	-1.0
July	141,621	-7.3	58,572	2.0	9,624	1.9	68,196	2.0
August	136,971	-8.4	59,643	1.3	8,945	-9.0	68,588	-0.1
September	131,275	-4.5	55,050	3.1	8,756	-9.0	63,806	1.3
October	123,607	-1.9	54,058	3.6	8,120	-21.6	62,178	-0.6
November	104,589	-2.9	46,165	-4.1	7,163	-13.6	53,328	-5.5
December	113,613	16.9	55,731	23.5	6,943	-4.7	62,674	19.5
Year	1,484,856	-11.3	639,306	-4.2	97,879	-13.0	737,185	-5.4
2010								
January	83,512	6.0	41,566	12.4	6,272	3.0	47,838	11.1
February	101,788	24.1	49,174	40.7	7,197	14.0	56,371	36.6
March	148,052	14.0	67,511	20.3	10,289	28.1	77,800	21.3
April	152,187	4.2	71,606	15.7	10,069	14.3	81,675	15.5
May	157,082	0.7	72,163	14.3	10,239	5.3	82,402	13.1
June	156,891	11.7	73,745	29.2	10,264	9.7	84,009	26.5
July	150,800	6.5	72,977	24.6	10,241	6.4	83,218	22.0
August	138,210	0.9	67,408	13.0	9,705	8.5	77,113	12.4
September	137,349	4.6	68,393	24.2	9,306	6.3	77,699	21.8
October	125,731	1.7	60,511	11.9	9,829	21.0	70,340	13.1
November	118,521	13.3	57,748	25.1	9,570	33.6	67,318	26.2
December	114,376	0.7	58,530	5.0	9,972	43.6	68,502	9.3
Year	1,584,499	6.7	761,332	19.1	112,953	15.4	874,285	18.6
2011								
January	86,320	3.4	45,268	8.9	8,869	41.4	54,137	13.2
February	98,147	-3.6	49,028	-0.3	9,540	32.6	58,568	3.9
March	156,452	5.7	74,065	9.7	13,132	27.6	87,197	12.1
April	162,613	6.9	73,899	3.2	13,030	29.4	86,929	6.4
May	152,064	-3.2	70,239	-2.7	12,422	21.3	82,661	0.3
June	168,119	7.2	78,349	6.2	13,497	31.5	91,846	9.3
July	144,171	-4.4	69,086	-5.3	12,217	19.3	81,303	-2.3
August	143,653	3.9	70,217	4.2	13,050	34.5	83,267	8.0
September	137,660	0.2	67,039	-2.0	13,946	49.9	80,985	4.2
October	129,049	2.6	64,002	5.8	12,683	29.0	76,685	9.0
November	124,466	5.0	60,398	4.6	13,305	39.0	73,703	9.5
December	117,863	3.0	61,451	5.0	10,766	8.0	72,217	5.4
Year	1,620,577	2.3	783,041	2.9	146,457	29.7	929,498	6.3

1. Trucks include minivans, sport-utility vehicles, light and heavy trucks, vans and buses.
Note(s): Percentage change are year-over-year changes.

Table 1-2
Monthly sales of new motor vehicles, by type and origin in dollars

	Total new motor vehicles		Passenger cars							
			North America		Japan		Other countries		Total	
	Units	Year/year change	Units	Year/year change	Units	Year/year change	Units	Year/year change	Units	Year/year change
	\$'000	%	\$'000	%	\$'000	%	\$'000	%	\$'000	%
2009										
January	2,474,417	-26.9	507,228	-40.4	165,705	-18.5	211,478	-15.5	884,410	-32.2
February	2,555,416	-28.2	551,107	-39.1	180,252	-20.5	292,192	-2.1	1,023,552	-28.4
March	4,023,591	-15.7	925,045	-23.3	286,613	-22.3	470,337	15.7	1,681,996	-15.1
April	4,414,203	-19.8	976,849	-32.1	367,461	-18.9	527,386	-7.5	1,871,697	-24.0
May	4,824,893	-13.6	1,155,227	-27.6	358,324	-29.1	613,272	-0.8	2,126,824	-21.8
June	4,461,372	-9.6	1,030,140	-26.9	303,416	-30.0	616,397	5.3	1,949,953	-19.7
July	4,372,313	-5.0	1,027,236	-17.3	305,041	-24.6	545,203	15.0	1,877,480	-11.5
August	4,365,353	-2.7	903,862	-23.4	316,646	-11.7	547,004	24.1	1,767,513	-10.7
September	4,166,515	-0.7	924,120	-14.2	292,836	-12.8	499,958	19.2	1,716,914	-6.3
October	4,036,810	2.0	870,534	-6.9	272,213	-2.2	469,490	18.4	1,612,237	0.1
November	3,437,215	1.3	706,632	-5.9	234,744	6.8	414,588	23.6	1,355,965	3.8
December	3,805,490	19.4	768,379	14.5	223,785	24.9	327,706	6.8	1,319,870	14.0
Year	46,937,588	-9.0	10,346,359	-22.0	3,307,036	-16.6	5,535,011	8.5	19,188,411	-14.1
2010										
January	2,834,682	14.6	469,745	-7.4	177,970	7.4	288,085	36.2	935,801	5.8
February	3,307,185	29.4	608,747	10.5	198,112	9.9	379,243	29.8	1,186,103	15.9
March	4,817,510	19.7	942,317	1.9	340,711	18.9	572,310	21.7	1,855,338	10.3
April	4,974,619	12.7	949,951	-2.8	323,502	-12.0	629,029	19.3	1,902,482	1.6
May	4,990,170	3.4	1,023,559	-11.4	304,179	-15.1	650,251	6.0	1,977,988	-7.0
June	5,090,394	14.1	991,474	-3.8	310,286	2.3	655,935	6.4	1,957,694	0.4
July	4,853,046	11.0	933,565	-9.1	280,458	-8.1	584,975	7.3	1,798,998	-4.2
August	4,521,798	3.6	798,994	-11.6	259,445	-18.1	558,506	2.1	1,616,945	-8.5
September	4,549,860	9.2	797,687	-13.7	254,411	-13.1	540,414	8.1	1,592,511	-7.2
October	4,216,887	4.5	778,456	-10.6	238,846	-12.3	475,029	1.2	1,492,330	-7.4
November	4,054,432	18.0	709,588	0.4	245,589	4.6	449,176	8.3	1,404,353	3.6
December	4,105,026	7.9	654,931	-14.8	222,015	-0.8	384,946	17.5	1,261,892	-4.4
Year	52,315,609	11.5	9,659,014	-6.6	3,155,524	-4.6	6,167,899	11.4	18,982,435	-1.1
2011										
January	2,965,868	4.6	466,626	-0.7	126,283	-29.0	270,123	-6.2	863,031	-7.8
February	3,359,312	1.6	568,105	-6.7	138,885	-29.9	349,046	-8.0	1,056,037	-11.0
March	5,159,286	7.1	1,069,637	13.5	239,552	-29.7	491,505	-14.1	1,800,694	-2.9
April	5,325,409	7.1	1,131,746	19.1	283,427	-12.4	588,270	-6.5	2,003,443	5.3
May	5,051,223	1.2	1,049,241	2.5	225,002	-26.0	586,880	-9.7	1,861,123	-5.9
June	5,541,638	8.9	1,222,406	23.3	211,350	-31.9	599,971	-8.5	2,033,727	3.9
July	4,693,564	-3.3	981,319	5.1	198,025	-29.4	489,348	-16.3	1,668,693	-7.2
August	4,780,998	5.7	939,098	17.5	206,380	-20.5	462,090	-17.3	1,607,567	-0.6
September	4,669,021	2.6	853,035	6.9	196,997	-22.6	485,911	-10.1	1,535,943	-3.6
October	4,437,146	5.2	818,568	5.2	177,322	-25.8	420,205	-11.5	1,416,094	-5.1
November	4,167,963	2.8	771,669	8.7	169,779	-30.9	410,139	-8.7	1,351,587	-3.8
December	3,974,503	-3.2	698,069	6.6	172,526	-22.3	339,879	-11.7	1,210,474	-4.1
Year	54,125,931	3.5	10,569,519	9.4	2,345,528	-25.7	5,493,367	-10.9	18,408,413	-3.0

See notes at the end of the table.

Table 1-2 – continued

Monthly sales of new motor vehicles, by type and origin in dollars

	Total new motor vehicles		Trucks ¹					
			North America		Overseas		Total	
	Units	Year/year change	Units	Year/year change	Units	Year/year change	Units	Year/year change
	\$'000	%	\$'000	%	\$'000	%	\$'000	%
2009								
January	2,474,417	-26.9	1,354,960	-25.2	235,048	-13.0	1,590,007	-23.6
February	2,555,416	-28.2	1,287,928	-30.4	243,936	-13.0	1,531,864	-28.1
March	4,023,591	-15.7	2,027,588	-15.6	314,007	-20.1	2,341,595	-16.2
April	4,414,203	-19.8	2,195,008	-15.6	347,498	-20.7	2,542,506	-16.4
May	4,824,893	-13.6	2,315,522	-5.5	382,547	-7.9	2,698,069	-5.8
June	4,461,372	-9.6	2,139,679	-0.3	371,740	2.8	2,511,419	0.2
July	4,372,313	-5.0	2,119,983	-1.0	374,850	9.6	2,494,833	0.5
August	4,365,353	-2.7	2,243,426	4.6	354,414	-1.9	2,597,840	3.7
September	4,166,515	-0.7	2,097,077	4.5	352,524	-1.3	2,449,601	3.6
October	4,036,810	2.0	2,092,221	6.9	332,352	-14.5	2,424,573	3.4
November	3,437,215	1.3	1,781,273	0.4	299,977	-4.0	2,081,250	-0.3
December	3,805,490	19.4	2,193,284	25.0	292,335	5.7	2,485,620	22.4
Year	46,937,588	-9.0	23,847,949	-4.7	3,901,228	-7.1	27,749,177	-5.1
2010								
January	2,834,682	14.6	1,645,833	21.5	253,049	7.7	1,898,881	19.4
February	3,307,185	29.4	1,837,516	42.7	283,567	16.2	2,121,082	38.5
March	4,817,510	19.7	2,549,284	25.7	412,888	31.5	2,962,172	26.5
April	4,974,619	12.7	2,671,908	21.7	400,230	15.2	3,072,138	20.8
May	4,990,170	3.4	2,615,304	12.9	396,878	3.7	3,012,182	11.6
June	5,090,394	14.1	2,729,176	27.6	403,524	8.6	3,132,699	24.7
July	4,853,046	11.0	2,647,060	24.9	406,988	8.6	3,054,048	22.4
August	4,521,798	3.6	2,516,585	12.2	388,269	9.6	2,904,853	11.8
September	4,549,860	9.2	2,573,332	22.7	384,017	8.9	2,957,349	20.7
October	4,216,887	4.5	2,326,945	11.2	397,611	19.6	2,724,556	12.4
November	4,054,432	18.0	2,276,030	27.8	374,048	24.7	2,650,078	27.3
December	4,105,026	7.9	2,460,958	12.2	382,176	30.7	2,843,134	14.4
Year	52,315,609	11.5	28,849,931	21.0	4,483,245	14.9	33,333,172	20.1
2011								
January	2,965,868	4.6	1,767,583	7.4	335,254	32.5	2,102,837	10.7
February	3,359,312	1.6	1,937,636	5.4	365,640	28.9	2,303,276	8.6
March	5,159,286	7.1	2,857,077	12.1	501,516	21.5	3,358,593	13.4
April	5,325,409	7.1	2,823,472	5.7	498,495	24.6	3,321,967	8.1
May	5,051,223	1.2	2,714,825	3.8	475,275	19.8	3,190,100	5.9
June	5,541,638	8.9	3,007,699	10.2	500,212	24.0	3,507,911	12.0
July	4,693,564	-3.3	2,579,350	-2.6	445,521	9.5	3,024,871	-1.0
August	4,780,998	5.7	2,695,535	7.1	477,896	23.1	3,173,431	9.2
September	4,669,021	2.6	2,625,290	2.0	507,789	32.2	3,133,079	5.9
October	4,437,146	5.2	2,551,206	9.6	469,846	18.2	3,021,052	10.9
November	4,167,963	2.8	2,324,843	2.1	491,534	31.4	2,816,377	6.3
December	3,974,503	-3.2	2,352,675	-4.4	411,354	7.6	2,764,029	-2.8
Year	54,125,931	3.5	30,237,191	4.8	5,480,332	22.2	35,717,523	7.2

1. Trucks include minivans, sport-utility vehicles, light and heavy trucks, vans and buses.

Note(s): Percentage change are year-over-year changes.

Table 2
Average monthly prices of passenger cars, by origin

Period	Total, country of manufacture		North America		Total, overseas		Japan		Other countries	
	Amount	Change	Amount	Change	Amount	Change	Amount	Change	Amount	Change
	\$	%	\$	%	\$	%	\$	%	\$	%
2009										
January	24,744	-1.9	23,503	-4.6	26,633	0.8	23,991	-0.3	29,149	1.5
February	25,096	2.1	23,828	-1.6	26,757	6.2	23,846	3.5	28,936	6.6
March	25,603	3.5	24,123	0.5	27,678	6.6	23,613	-0.5	30,923	8.8
April	24,846	-0.8	24,144	0.9	25,661	-4.2	22,375	-7.9	28,586	-2.1
May	25,569	2.9	24,388	3.0	27,130	1.5	23,856	1.0	29,496	-1.5
June	26,341	4.1	24,731	3.8	28,412	2.7	24,455	3.1	30,871	-2.1
July	25,570	3.5	23,940	2.1	27,861	4.2	24,946	6.3	29,810	-1.9
August	25,847	5.7	24,226	3.4	27,793	6.3	24,457	5.7	30,176	3.2
September	25,447	3.5	23,850	0.9	27,602	5.7	24,052	5.2	30,214	2.6
October	26,246	3.5	24,659	4.7	28,389	0.1	24,124	0.1	31,633	-2.3
November	26,452	3.8	24,791	5.4	28,533	-0.7	24,770	3.8	31,219	-5.9
December	25,911	0.2	24,472	2.1	28,222	-2.9	24,076	2.0	31,984	-4.9
Year	25,664	2.8	24,247	1.9	27,549	2.4	23,988	1.6	30,229	0.2
2010										
January	26,232	6.0	24,841	5.7	27,801	4.4	24,177	0.8	30,638	5.1
February	26,116	4.1	24,476	2.7	28,101	5.0	24,219	1.6	30,668	6.0
March	26,410	3.2	24,522	1.7	28,689	3.7	24,786	5.0	31,656	2.4
April	26,981	8.6	25,050	3.8	29,228	13.9	25,062	12.0	31,960	11.8
May	26,486	3.6	24,491	0.4	29,021	7.0	24,738	3.7	31,579	7.1
June	26,861	2.0	24,420	-1.3	29,932	5.3	25,709	5.1	32,453	5.1
July	26,619	4.1	24,556	2.6	29,273	5.1	25,108	0.6	31,802	6.7
August	26,465	2.4	24,363	0.6	28,902	4.0	24,318	-0.6	31,676	5.0
September	26,698	4.9	24,318	2.0	29,606	7.3	24,467	1.7	32,854	8.7
October	26,942	2.7	24,262	-1.6	30,632	7.9	25,152	4.3	34,400	8.7
November	27,427	3.7	25,011	0.9	30,429	6.6	24,391	-1.5	35,194	12.7
December	27,508	6.2	24,834	1.5	31,123	10.3	24,595	2.2	36,749	14.9
Year	26,728	4.1	24,580	1.4	29,389	6.7	24,771	3.3	32,487	7.5
2011										
January	26,816	2.2	24,581	-1.0	30,031	8.0	24,612	1.8	33,477	9.3
February	26,682	2.2	24,220	-1.0	30,263	7.7	24,217	0.0	33,601	9.6
March	26,001	-1.5	23,339	-4.8	31,208	8.8	24,860	0.3	35,645	12.6
April	26,471	-1.9	24,099	-3.8	30,349	3.8	24,072	-3.9	34,710	8.6
May	26,816	1.2	24,673	0.7	30,207	4.1	23,853	-3.6	33,644	6.5
June	26,664	-0.7	24,942	2.1	29,758	-0.6	22,290	-13.3	33,740	4.0
July	26,543	-0.3	24,987	1.8	29,132	-0.5	22,564	-10.1	33,022	3.8
August	26,622	0.6	25,050	2.8	29,195	1.0	22,521	-7.4	33,648	6.2
September	27,101	1.5	24,663	1.4	30,918	4.4	24,829	1.5	34,330	4.5
October	27,043	0.4	24,259	0.0	32,089	4.8	25,849	2.8	35,729	3.9
November	26,625	-2.9	23,728	-5.1	31,790	4.5	23,799	-2.4	36,923	4.9
December	26,519	-3.6	24,011	-3.3	30,918	-0.7	23,547	-4.3	36,760	0.0
Year	26,637	-0.3	24,385	-0.8	30,427	3.5	23,840	-3.8	34,497	6.2

Note(s): Percentage changes shown are year-to-year changes.

Table 3
Monthly market share of new passenger car sales (units), by origin, Canada

Period	Total		Passenger cars					
			North America		Japan		Other countries	
	Units	Market share	Units	Market share	Units	Market share	Units	Market share
	number	%	number	%	number	%	number	%
2009								
January	35,743	100.0	21,581	60.4	6,907	19.3	7,255	20.3
February	40,786	100.0	23,129	56.7	7,559	18.5	10,098	24.8
March	65,695	100.0	38,347	58.4	12,138	18.5	15,210	23.2
April	75,332	100.0	40,460	53.7	16,423	21.8	18,449	24.5
May	83,181	100.0	47,369	56.9	15,020	18.1	20,792	25.0
June	74,028	100.0	41,654	56.3	12,407	16.8	19,967	27.0
July	73,425	100.0	42,908	58.4	12,228	16.7	18,289	24.9
August	68,383	100.0	37,309	54.6	12,947	18.9	18,127	26.5
September	67,469	100.0	38,747	57.4	12,175	18.0	16,547	24.5
October	61,429	100.0	35,303	57.5	11,284	18.4	14,842	24.2
November	51,261	100.0	28,504	55.6	9,477	18.5	13,280	25.9
December	50,939	100.0	31,398	61.6	9,295	18.2	10,246	20.1
Year	747,671	100.0	426,709	57.1	137,860	18.4	183,102	24.5
2010								
January	35,674	100.0	18,910	53.0	7,361	20.6	9,403	26.4
February	45,417	100.0	24,871	54.8	8,180	18.0	12,366	27.2
March	70,252	100.0	38,427	54.7	13,746	19.6	18,079	25.7
April	70,512	100.0	37,922	53.8	12,908	18.3	19,682	27.9
May	74,680	100.0	41,793	56.0	12,296	16.5	20,591	27.6
June	72,882	100.0	40,601	55.7	12,069	16.6	20,212	27.7
July	67,582	100.0	38,018	56.3	11,170	16.5	18,394	27.2
August	61,097	100.0	32,796	53.7	10,669	17.5	17,632	28.9
September	59,650	100.0	32,803	55.0	10,398	17.4	16,449	27.6
October	55,391	100.0	32,086	57.9	9,496	17.1	13,809	24.9
November	51,203	100.0	28,371	55.4	10,069	19.7	12,763	24.9
December	45,874	100.0	26,372	57.5	9,027	19.7	10,475	22.8
Year	710,214	100.0	392,970	55.3	127,389	17.9	189,855	26.7
2011								
January	32,183	100.0	18,983	59.0	5,131	15.9	8,069	25.1
February	39,579	100.0	23,456	59.3	5,735	14.5	10,388	26.2
March	69,255	100.0	45,830	66.2	9,636	13.9	13,789	19.9
April	75,684	100.0	46,962	62.1	11,774	15.6	16,948	22.4
May	69,403	100.0	42,526	61.3	9,433	13.6	17,444	25.1
June	76,273	100.0	49,009	64.3	9,482	12.4	17,782	23.3
July	62,868	100.0	39,273	62.5	8,776	14.0	14,819	23.6
August	60,386	100.0	37,489	62.1	9,164	15.2	13,733	22.7
September	56,675	100.0	34,587	61.0	7,934	14.0	14,154	25.0
October	52,364	100.0	33,743	64.4	6,860	13.1	11,761	22.5
November	50,763	100.0	32,521	64.1	7,134	14.1	11,108	21.9
December	45,646	100.0	29,073	63.7	7,327	16.1	9,246	20.3
Year	691,079	100.0	433,452	62.7	98,386	14.2	159,241	23.0

Table 4
Provincial sales of new motor vehicles, by type and origin, in units and dollars, December

Type and origin of vehicles	Canada	Newfoundland and Labrador	Prince Edward Island	Nova Scotia	New Brunswick	Quebec
Total, new motor vehicles						
2009 (number)	113,613	1,807	392	3,439	2,534	25,785
2010 (number)	114,376	1,868	354	2,844	2,483	27,399
2011 (number)	117,863	1,965	403	3,112	2,654	28,142
2011 / 2010 (%)	3.0	5.2	13.8	9.4	6.9	2.7
2009 \$'000	3,805,490	54,696	11,610	104,462	80,994	800,826
2010 \$'000	4,105,026	58,748	9,970	91,944	81,894	880,018
2011 \$'000	3,974,503	57,600	11,959	91,877	82,550	842,049
2011 / 2010 (%)	-3.2	-2.0	19.9	-0.1	0.8	-4.3
Passenger cars, manufactured in North America						
2009 (number)	31,398	459	142	1,057	765	7,599
2010 (number)	26,372	458	119	896	626	7,641
2011 (number)	29,073	533	146	983	712	9,192
2011 / 2010 (%)	10.2	16.4	22.7	9.7	13.7	20.3
2009 \$'000	768,379	10,256	3,341	24,645	17,910	178,967
2010 \$'000	654,931	9,984	2,694	21,107	14,982	178,768
2011 \$'000	698,069	11,314	3,213	22,458	16,455	207,937
2011 / 2010 (%)	6.6	13.3	19.3	6.4	9.8	16.3
Passenger cars, manufactured in Japan						
2009 (number)	9,295	x	x	202	x	3,315
2010 (number)	9,027	x	x	191	x	2,936
2011 (number)	7,327	x	x	199	x	2,605
2011 / 2010 (%)	-18.8	x	x	4.2	x	-11.3
2009 \$'000	223,785	x	x	4,933	x	71,596
2010 \$'000	222,015	x	x	4,438	x	66,843
2011 \$'000	172,526	x	x	4,183	x	55,208
2011 / 2010 (%)	-22.3	x	x	-5.7	x	-17.4
Passenger cars, manufactured in other countries						
2009 (number)	10,246	x	x	473	x	3,122
2010 (number)	10,475	x	x	313	x	3,469
2011 (number)	9,246	x	x	191	x	3,119
2011 / 2010 (%)	-11.7	x	x	-39.0	x	-10.1
2009 \$'000	327,706	x	x	11,181	x	89,941
2010 \$'000	384,946	x	x	7,925	x	113,840
2011 \$'000	339,879	x	x	5,741	x	99,829
2011 / 2010 (%)	-11.7	x	x	-27.6	x	-12.3
Trucks ¹, manufactured in North America						
2009 (number)	55,731	x	x	1,564	1,354	10,030
2010 (number)	58,530	x	x	1,222	1,379	10,544
2011 (number)	61,451	x	x	1,521	1,464	10,410
2011 / 2010 (%)	5.0	x	x	24.5	6.2	-1.3
2009 \$'000	2,193,284	x	x	58,410	52,289	391,762
2010 \$'000	2,460,958	x	x	50,888	53,855	419,997
2011 \$'000	2,352,675	x	x	51,608	52,660	377,006
2011 / 2010 (%)	-4.4	x	x	1.4	-2.2	-10.2
Trucks ¹, manufactured overseas						
2009 (number)	6,943	x	x	143	105	1,719
2010 (number)	9,972	x	x	222	159	2,809
2011 (number)	10,766	x	x	218	186	2,816
2011 / 2010 (%)	8.0	x	x	-1.8	17.0	0.2
2009 \$'000	292,335	x	x	5,292	3,656	68,559
2010 \$'000	382,176	x	x	7,586	5,215	100,570
2011 \$'000	411,354	x	x	7,887	6,331	102,069
2011 / 2010 (%)	7.6	x	x	4.0	21.4	1.5

See notes at the end of the table.

Table 4 – continued

Provincial sales of new motor vehicles, by type and origin, in units and dollars, December

Type and origin of vehicles	Canada	Ontario	Manitoba	Saskatchewan	Alberta	British Columbia and the Territories ²
Total, new motor vehicles						
2009 (number)	113,613	43,360	3,423	3,621	15,874	13,378
2010 (number)	114,376	43,557	3,340	3,719	16,272	12,540
2011 (number)	117,863	42,477	3,859	4,272	17,965	13,014
2011 / 2010 (%)	3.0	-2.5	15.5	14.9	10.4	3.8
2009 \$'000	3,805,490	1,446,979	115,358	130,735	566,473	493,356
2010 \$'000	4,105,026	1,576,981	121,609	134,165	708,830	440,868
2011 \$'000	3,974,503	1,442,319	135,106	158,188	697,303	455,551
2011 / 2010 (%)	-3.2	-8.5	11.1	17.9	-1.6	3.3
Passenger cars, manufactured in North America						
2009 (number)	31,398	13,736	862	707	3,162	2,909
2010 (number)	26,372	10,841	655	524	2,282	2,330
2011 (number)	29,073	11,122	834	592	2,235	2,724
2011 / 2010 (%)	10.2	2.6	27.3	13.0	-2.1	16.9
2009 \$'000	768,379	338,003	21,014	18,052	83,122	73,069
2010 \$'000	654,931	277,657	16,132	13,053	60,372	60,182
2011 \$'000	698,069	275,542	19,559	15,594	59,691	66,306
2011 / 2010 (%)	6.6	-0.8	21.2	19.5	-1.1	10.2
Passenger cars, manufactured in Japan						
2009 (number)	9,295	2,809	189	114	894	1,521
2010 (number)	9,027	3,217	199	114	735	1,425
2011 (number)	7,327	2,597	146	89	527	917
2011 / 2010 (%)	-18.8	-19.3	-26.6	-21.9	-28.3	-35.6
2009 \$'000	223,785	75,672	4,724	2,752	21,707	37,034
2010 \$'000	222,015	86,597	4,847	2,808	18,135	33,630
2011 \$'000	172,526	65,490	3,171	2,116	13,805	23,391
2011 / 2010 (%)	-22.3	-24.4	-34.6	-24.6	-23.9	-30.4
Passenger cars, manufactured in other countries						
2009 (number)	10,246	3,704	174	176	714	1,488
2010 (number)	10,475	3,981	120	113	687	1,393
2011 (number)	9,246	3,567	106	116	642	1,254
2011 / 2010 (%)	-11.7	-10.4	-11.7	2.7	-6.6	-10.0
2009 \$'000	327,706	130,115	4,485	4,777	23,789	54,375
2010 \$'000	384,946	160,668	3,506	3,982	29,104	56,224
2011 \$'000	339,879	144,403	3,205	3,780	25,078	51,206
2011 / 2010 (%)	-11.7	-10.1	-8.6	-5.1	-13.8	-8.9
Trucks¹, manufactured in North America						
2009 (number)	55,731	20,498	2,063	2,476	10,163	6,407
2010 (number)	58,530	21,823	2,117	2,763	11,326	6,137
2011 (number)	61,451	21,163	2,542	3,198	13,160	6,674
2011 / 2010 (%)	5.0	-3.0	20.1	15.7	16.2	8.8
2009 \$'000	2,193,284	789,050	80,091	99,638	396,452	283,404
2010 \$'000	2,460,958	902,514	88,270	106,685	553,369	240,519
2011 \$'000	2,352,675	799,343	100,543	126,452	543,212	257,070
2011 / 2010 (%)	-4.4	-11.4	13.9	18.5	-1.8	6.9
Trucks¹, manufactured overseas						
2009 (number)	6,943	2,613	135	148	941	1,053
2010 (number)	9,972	3,695	249	205	1,242	1,255
2011 (number)	10,766	4,028	231	277	1,401	1,445
2011 / 2010 (%)	8.0	9.0	-7.2	35.1	12.8	15.1
2009 \$'000	292,335	114,139	5,044	5,517	41,403	45,475
2010 \$'000	382,176	149,545	8,854	7,637	47,851	50,313
2011 \$'000	411,354	157,542	8,629	10,247	55,516	57,578
2011 / 2010 (%)	7.6	5.3	-2.5	34.2	16.0	14.4

1. Trucks include minivans, sport-utility vehicles, light and heavy trucks, vans and buses.

2. For reasons of confidentiality, data for the Yukon, the Northwest Territories and Nunavut have been included with the data for British Columbia.

Table 5-1
Year to date provincial sales of new motor vehicles, by type and origin in units, January to December

Province	Total new motor vehicles		Passenger cars							
			North America		Japan		Other countries		Total	
	Units	Year/year change	Units	Year/year change	Units	Year/year change	Units	Year/year change	Units	Year/year change
	number	%	number	%	number	%	number	%	number	%
2009										
Newfoundland and Labrador	28,755	-8.6	8,676	-24.6	x	x	x	x	14,084	-16.3
Prince Edward Island	5,286	-4.0	2,018	-17.8	x	x	x	x	3,050	-12.1
Nova Scotia	47,872	-8.7	16,435	-23.5	3,624	-25.1	6,744	11.7	26,803	-17.2
New Brunswick	35,274	-10.7	10,932	-25.9	x	x	x	x	17,319	-21.4
Quebec	396,574	-8.9	122,197	-21.4	56,459	-15.3	69,959	16.6	248,615	-11.9
Ontario	542,609	-8.4	168,851	-20.2	40,980	-16.5	61,095	7.8	270,926	-14.6
Manitoba	43,995	-8.4	11,772	-24.6	2,489	-18.8	3,217	8.2	17,478	-19.2
Saskatchewan	44,893	-9.3	10,499	-21.1	1,743	-19.1	2,311	-2.4	14,553	-18.3
Alberta	186,768	-21.7	39,390	-34.1	10,872	-26.5	12,552	-9.6	62,814	-29.0
British Columbia and the Territories ¹	152,830	-16.1	35,939	-30.2	16,936	-21.2	19,154	-1.5	72,029	-22.1
Canada	1,484,856	-11.3	426,709	-23.4	137,860	-17.9	183,102	8.2	747,671	-16.4
2010										
Newfoundland and Labrador	31,669	10.1	8,605	-0.8	x	x	x	x	13,947	-1.0
Prince Edward Island	5,783	9.4	1,926	-4.6	x	x	x	x	2,854	-6.4
Nova Scotia	47,643	-0.5	14,671	-10.7	3,343	-7.8	6,242	-7.4	24,256	-9.5
New Brunswick	38,777	9.9	10,579	-3.2	x	x	x	x	16,970	-2.0
Quebec	419,847	5.9	115,399	-5.6	50,535	-10.5	69,673	-0.4	235,607	-5.2
Ontario	586,633	8.1	154,899	-8.3	41,277	0.7	66,139	8.3	262,315	-3.2
Manitoba	45,355	3.1	10,583	-10.1	2,144	-13.9	3,005	-6.6	15,732	-10.0
Saskatchewan	47,599	6.0	8,612	-18.0	1,490	-14.5	2,479	7.3	12,581	-13.6
Alberta	204,537	9.5	35,440	-10.0	9,221	-15.2	13,194	5.1	57,855	-7.9
British Columbia and the Territories ¹	156,656	2.5	32,256	-10.2	15,022	-11.3	20,819	8.7	68,097	-5.5
Canada	1,584,499	6.7	392,970	-7.9	127,389	-7.6	189,855	3.7	710,214	-5.0
2011										
Newfoundland and Labrador	30,816	-2.7	8,401	-2.4	x	x	x	x	12,385	-11.2
Prince Edward Island	5,795	0.2	2,043	6.1	x	x	x	x	2,771	-2.9
Nova Scotia	45,897	-3.7	15,712	7.1	2,706	-19.1	4,924	-21.1	23,342	-3.8
New Brunswick	39,503	1.9	11,426	8.0	x	x	x	x	16,473	-2.9
Quebec	413,545	-1.5	132,800	15.1	38,564	-23.7	56,103	-19.5	227,467	-3.5
Ontario	600,668	2.4	172,875	11.6	31,873	-22.8	58,521	-11.5	263,269	0.4
Manitoba	48,546	7.0	11,577	9.4	1,643	-23.4	2,560	-14.8	15,780	0.3
Saskatchewan	51,078	7.3	8,598	-0.2	1,262	-15.3	2,002	-19.2	11,862	-5.7
Alberta	224,147	9.6	34,653	-2.2	7,606	-17.5	10,825	-18.0	53,084	-8.2
British Columbia and the Territories ¹	160,582	2.5	35,367	9.6	10,960	-27.0	18,319	-12.0	64,646	-5.1
Canada	1,620,577	2.3	433,452	10.3	98,386	-22.8	159,241	-16.1	691,079	-2.7

See notes at the end of the table.

Table 5-1 – continued

Year to date provincial sales of new motor vehicles, by type and origin in units, January to December

Province	Total new motor vehicles		Trucks ²					
			North America		Overseas		Total	
	Units	Year/year change	Units	Year/year change	Units	Year/year change	Units	Year/year change
	number	%	number	%	number	%	number	%
2009								
Newfoundland and Labrador	28,755	-8.6	x	x	x	x	14,671	0.3
Prince Edward Island	5,286	-4.0	x	x	x	x	2,236	9.9
Nova Scotia	47,872	-8.7	18,967	7.1	2,102	-10.6	21,069	5.0
New Brunswick	35,274	-10.7	16,229	4.7	1,726	-13.7	17,955	2.6
Quebec	396,574	-8.9	121,101	-2.5	26,858	-6.7	147,959	-3.3
Ontario	542,609	-8.4	235,364	1.1	36,319	-13.5	271,683	-1.1
Manitoba	43,995	-8.4	24,125	2.6	2,392	-16.7	26,517	0.5
Saskatchewan	44,893	-9.3	28,390	-1.7	1,950	-30.1	30,340	-4.2
Alberta	186,768	-21.7	111,673	-16.3	12,281	-25.9	123,954	-17.3
British Columbia and the Territories ¹	152,830	-16.1	68,342	-10.7	12,459	-4.8	80,801	-9.9
Canada	1,484,856	-11.3	639,306	-4.2	97,879	-13.0	737,185	-5.4
2010								
Newfoundland and Labrador	31,669	10.1	x	x	x	x	17,722	20.8
Prince Edward Island	5,783	9.4	x	x	x	x	2,929	31.0
Nova Scotia	47,643	-0.5	21,008	10.8	2,379	13.2	23,387	11.0
New Brunswick	38,777	9.9	19,809	22.1	1,998	15.8	21,807	21.5
Quebec	419,847	5.9	151,004	24.7	33,236	23.7	184,240	24.5
Ontario	586,633	8.1	283,486	20.4	40,832	12.4	324,318	19.4
Manitoba	45,355	3.1	27,059	12.2	2,564	7.2	29,623	11.7
Saskatchewan	47,599	6.0	32,742	15.3	2,276	16.7	35,018	15.4
Alberta	204,537	9.5	132,447	18.6	14,235	15.9	146,682	18.3
British Columbia and the Territories ¹	156,656	2.5	74,895	9.6	13,664	9.7	88,559	9.6
Canada	1,584,499	6.7	761,332	19.1	112,953	15.4	874,285	18.6
2011								
Newfoundland and Labrador	30,816	-2.7	x	x	x	x	18,431	4.0
Prince Edward Island	5,795	0.2	x	x	x	x	3,024	3.2
Nova Scotia	45,897	-3.7	19,383	-7.7	3,172	33.3	22,555	-3.6
New Brunswick	39,503	1.9	20,386	2.9	2,644	32.3	23,030	5.6
Quebec	413,545	-1.5	143,334	-5.1	42,744	28.6	186,078	1.0
Ontario	600,668	2.4	284,713	0.4	52,686	29.0	337,399	4.0
Manitoba	48,546	7.0	29,295	8.3	3,471	35.4	32,766	10.6
Saskatchewan	51,078	7.3	35,963	9.8	3,253	42.9	39,216	12.0
Alberta	224,147	9.6	152,021	14.8	19,042	33.8	171,063	16.6
British Columbia and the Territories ¹	160,582	2.5	78,874	5.3	17,062	24.9	95,936	8.3
Canada	1,620,577	2.3	783,041	2.9	146,457	29.7	929,498	6.3

1. For reasons of confidentiality, data for the Yukon, the Northwest Territories and Nunavut have been included with the data for British Columbia.

2. Trucks include minivans, sport-utility vehicles, light and heavy trucks, vans and buses.

Note(s): Percentage changes shown are year-to-year changes.

Table 5-2
Year to date provincial sales of new motor vehicles, by type and origin in dollars, January to December

Province	Total new motor vehicles		Passenger cars							
			North America		Japan		Other countries		Total	
	Units	Year/year change	Units	Year/year change	Units	Year/year change	Units	Year/year change	Units	Year/year change
	\$'000	%	\$'000	%	\$'000	%	\$'000	%	\$'000	%
2009										
Newfoundland and Labrador	829,287	-0.6	199,497	-22.9	x	x	x	x	316,569	-13.4
Prince Edward Island	144,666	5.8	45,983	-14.6	x	x	x	x	67,288	-8.2
Nova Scotia	1,393,849	-0.7	391,175	-20.6	82,539	-22.8	160,853	23.0	634,566	-13.1
New Brunswick	1,061,876	-1.4	258,543	-21.3	x	x	x	x	400,882	-16.2
Quebec	11,533,278	-4.4	2,819,376	-20.4	1,239,841	-13.6	1,916,863	20.5	5,976,078	-9.0
Ontario	17,388,667	-7.6	4,170,594	-19.4	1,079,555	-15.1	2,061,531	4.8	7,311,680	-13.1
Manitoba	1,431,933	-7.1	285,038	-22.9	60,236	-17.6	83,610	12.8	428,884	-17.0
Saskatchewan	1,517,381	-9.2	258,760	-19.9	44,407	-17.6	62,786	5.3	365,949	-16.2
Alberta	6,480,242	-20.8	1,022,092	-32.5	285,438	-25.6	407,024	-9.5	1,714,556	-27.0
British Columbia and the Territories ¹	5,156,409	-11.7	895,304	-26.0	414,823	-20.9	661,829	-1.7	1,971,956	-18.1
Canada	46,937,588	-9.0	10,346,359	-22.0	3,307,036	-16.6	5,535,011	8.5	19,188,411	-14.1
2010										
Newfoundland and Labrador	934,774	12.7	190,901	-4.3	x	x	x	x	308,843	-2.4
Prince Edward Island	163,580	13.1	44,142	-4.0	x	x	x	x	63,891	-5.0
Nova Scotia	1,428,618	2.5	338,571	-13.4	78,869	-4.4	158,726	-1.3	576,166	-9.2
New Brunswick	1,207,726	13.7	252,304	-2.4	x	x	x	x	404,421	0.9
Quebec	12,466,670	8.1	2,675,394	-5.1	1,151,850	-7.1	2,038,821	6.4	5,866,063	-1.8
Ontario	19,781,466	13.8	3,914,673	-6.1	1,110,026	2.8	2,396,670	16.3	7,421,369	1.5
Manitoba	1,535,684	7.2	259,346	-9.0	53,006	-12.0	85,490	2.2	397,843	-7.2
Saskatchewan	1,688,446	11.3	213,551	-17.5	38,149	-14.1	71,958	14.6	323,657	-11.6
Alberta	7,651,117	18.1	950,817	-7.0	250,889	-12.1	461,108	13.3	1,662,814	-3.0
British Columbia and the Territories ¹	5,457,533	5.8	819,317	-8.5	375,098	-9.6	762,956	15.3	1,957,370	-0.7
Canada	52,315,609	11.5	9,659,014	-6.6	3,155,524	-4.6	6,167,899	11.4	18,982,435	-1.1
2011										
Newfoundland and Labrador	908,992	-2.8	191,864	0.5	x	x	x	x	281,539	-8.8
Prince Edward Island	162,405	-0.7	46,061	4.3	x	x	x	x	61,379	-3.9
Nova Scotia	1,341,542	-6.1	371,685	9.8	58,237	-26.2	126,433	-20.3	556,353	-3.4
New Brunswick	1,222,097	1.2	270,408	7.2	x	x	x	x	388,994	-3.8
Quebec	12,554,817	0.7	3,073,828	14.9	837,354	-27.3	1,756,109	-13.9	5,667,290	-3.4
Ontario	20,061,966	1.4	4,271,106	9.1	824,397	-25.7	2,226,930	-7.1	7,322,436	-1.3
Manitoba	1,694,392	10.3	286,762	10.6	40,382	-23.8	74,421	-12.9	401,566	0.9
Saskatchewan	1,886,898	11.8	226,166	5.9	31,010	-18.7	62,898	-12.6	320,073	-1.1
Alberta	8,599,490	12.4	929,745	-2.2	202,188	-19.4	392,885	-14.8	1,524,820	-8.3
British Columbia and the Territories ¹	5,693,332	4.3	901,889	10.1	273,524	-27.1	708,550	-7.1	1,883,963	-3.8
Canada	54,125,931	3.5	10,569,519	9.4	2,345,528	-25.7	5,493,367	-10.9	18,408,413	-3.0

See notes at the end of the table.

Table 5-2 – continued

Year to date provincial sales of new motor vehicles, by type and origin in dollars, January to December

Province	Total new motor vehicles		Trucks ²					
			North America		Overseas		Total	
	Units	Year/year change	Units	Year/year change	Units	Year/year change	Units	Year/year change
	\$'000	%	\$'000	%	\$'000	%	\$'000	%
2009								
Newfoundland and Labrador	829,287	-0.6	x	x	x	x	512,717	9.3
Prince Edward Island	144,666	5.8	x	x	x	x	77,379	21.9
Nova Scotia	1,393,849	-0.7	682,541	15.4	76,740	-5.8	759,281	12.8
New Brunswick	1,061,876	-1.4	603,023	13.0	57,972	-10.6	660,995	10.5
Quebec	11,533,278	-4.4	4,539,071	1.6	1,018,128	-1.8	5,557,199	1.0
Ontario	17,388,667	-7.6	8,569,839	-2.5	1,507,146	-6.5	10,076,985	-3.1
Manitoba	1,431,933	-7.1	914,955	-0.9	88,092	-12.3	1,003,048	-2.0
Saskatchewan	1,517,381	-9.2	1,076,524	-5.1	74,906	-25.1	1,151,432	-6.7
Alberta	6,480,242	-20.8	4,269,488	-18.0	496,200	-20.6	4,765,687	-18.3
British Columbia and the Territories ¹	5,156,409	-11.7	2,661,181	-8.7	523,271	1.6	3,184,455	-7.2
Canada	46,937,588	-9.0	23,847,949	-4.7	3,901,228	-7.1	27,749,177	-5.1
2010								
Newfoundland and Labrador	934,774	12.7	x	x	x	x	625,930	22.1
Prince Edward Island	163,580	13.1	x	x	x	x	99,685	28.8
Nova Scotia	1,428,618	2.5	766,041	12.2	86,413	12.6	852,454	12.3
New Brunswick	1,207,726	13.7	734,820	21.9	68,484	18.1	803,302	21.5
Quebec	12,466,670	8.1	5,363,311	18.2	1,237,293	21.5	6,600,605	18.8
Ontario	19,781,466	13.8	10,677,825	24.6	1,682,272	11.6	12,360,097	22.7
Manitoba	1,535,684	7.2	1,041,011	13.8	96,831	9.9	1,137,841	13.4
Saskatchewan	1,688,446	11.3	1,277,213	18.6	87,577	16.9	1,364,790	18.5
Alberta	7,651,117	18.1	5,407,374	26.7	580,929	17.1	5,988,302	25.7
British Columbia and the Territories ¹	5,457,533	5.8	2,916,252	9.6	583,913	11.6	3,500,162	9.9
Canada	52,315,609	11.5	28,849,931	21.0	4,483,245	14.9	33,333,172	20.1
2011								
Newfoundland and Labrador	908,992	-2.8	x	x	x	x	627,455	0.2
Prince Edward Island	162,405	-0.7	x	x	x	x	101,027	1.3
Nova Scotia	1,341,542	-6.1	677,299	-11.6	107,889	24.9	785,188	-7.9
New Brunswick	1,222,097	1.2	746,021	1.5	87,080	27.2	833,102	3.7
Quebec	12,554,817	0.7	5,374,488	0.2	1,513,037	22.3	6,887,527	4.3
Ontario	20,061,966	1.4	10,705,214	0.3	2,034,321	20.9	12,739,531	3.1
Manitoba	1,694,392	10.3	1,169,260	12.3	123,568	27.6	1,292,825	13.6
Saskatchewan	1,886,898	11.8	1,448,531	13.4	118,295	35.1	1,566,829	14.8
Alberta	8,599,490	12.4	6,352,850	17.5	721,820	24.3	7,074,670	18.1
British Columbia and the Territories ¹	5,693,332	4.3	3,113,917	6.8	695,451	19.1	3,809,368	8.8
Canada	54,125,931	3.5	30,237,191	4.8	5,480,332	22.2	35,717,523	7.2

1. For reasons of confidentiality, data for the Yukon, the Northwest Territories and Nunavut have been included with the data for British Columbia.

2. Trucks include minivans, sport-utility vehicles, light and heavy trucks, vans and buses.

Note(s): Percentage changes shown are year-to-year changes.

Table 6
Annual sales of new motor vehicles, by type and origin, in units and dollars, Canada

Year	Total	Passenger cars				Trucks ¹		
		Total	North America	Japan	Other countries	Total	North America	Overseas
number								
1989	1,483,875	988,134	675,340	239,548	73,246	495,741	422,398	73,343
1990	1,317,869	884,564	580,397	239,603	64,564	433,305	361,403	71,902
1991	1,287,790	873,184	573,297	237,701	62,186	414,606	347,671	66,935
1992	1,227,419	798,023	503,460	236,675	57,888	429,396	370,422	58,974
1993	1,192,934	739,049	493,759	196,310	48,980	453,885	402,112	51,773
1994	1,260,056	748,666	573,361	129,547	45,758	511,390	475,444	35,946
1995	1,166,535	670,190	553,265	71,493	45,432	496,345	469,590	26,755
1996	1,204,557	660,769	572,581	47,901	40,287	543,788	517,738	26,050
1997	1,424,380	738,550	629,488	66,297	42,765	685,830	628,214	57,616
1998	1,428,932	740,809	590,667	98,275	51,867	688,123	627,256	60,867
1999	1,542,041	806,450	625,292	103,016	78,142	735,591	672,444	63,147
2000	1,587,561	849,171	640,856	106,937	101,378	738,390	669,492	68,898
2001	1,597,964	868,633	619,810	122,998	125,825	729,331	647,987	81,344
2002	1,733,318	934,704	651,305	144,596	138,803	798,614	698,870	99,744
2003	1,626,468	865,475	604,726	126,908	133,841	760,993	654,136	106,857
2004	1,575,195	820,103	542,814	116,426	160,863	755,092	653,637	101,455
2005	1,630,310	845,222	574,639	123,482	147,101	785,088	673,205	111,883
2006	1,666,327	863,161	573,102	142,159	147,900	803,166	681,244	121,922
2007	1,690,538	859,003	551,001	151,298	156,704	831,535	727,909	103,626
2008	1,674,145	894,506	557,422	167,916	169,168	779,639	667,139	112,500
2009	1,484,856	747,671	426,709	137,860	183,102	737,185	639,306	97,879
2010	1,584,499	710,214	392,970	127,389	189,855	874,285	761,332	112,953
2011	1,620,577	691,079	433,452	98,386	159,241	929,498	783,041	146,457
\$'000								
1989	26,959,378	16,541,801	11,034,684	3,887,341	1,619,774	10,417,577	9,059,482	1,358,095
1990	24,888,751	15,245,831	9,784,293	4,015,958	1,445,580	9,642,918	8,210,502	1,432,416
1991	22,855,626	14,103,545	9,038,584	3,789,001	1,275,960	8,752,081	7,503,659	1,248,422
1992	23,484,455	13,691,746	8,450,516	4,053,782	1,187,451	9,792,709	8,613,984	1,178,725
1993	24,630,359	13,278,180	8,620,649	3,560,913	1,096,620	11,352,180	10,227,082	1,125,101
1994	27,893,795	14,182,894	10,595,001	2,346,168	1,241,727	13,710,902	12,846,447	864,453
1995	28,168,806	13,882,004	11,070,368	1,492,451	1,319,184	14,286,804	13,544,980	741,824
1996	31,485,777	14,510,882	12,062,092	1,118,289	1,330,501	16,974,894	16,115,584	859,309
1997	38,986,224	16,836,615	13,809,161	1,519,604	1,507,852	22,149,610	20,341,263	1,808,346
1998	40,255,777	17,054,244	13,101,703	2,110,330	1,842,211	23,201,534	21,165,239	2,036,296
1999	45,317,914	19,017,278	14,138,902	2,246,522	2,631,853	26,300,638	24,055,653	2,244,986
2000	46,930,514	20,790,660	15,089,665	2,431,251	3,269,743	26,139,852	23,745,933	2,393,922
2001	46,886,252	21,168,628	14,575,745	2,882,386	3,710,497	25,717,623	22,958,458	2,759,162
2002	52,227,499	23,191,483	15,521,295	3,501,294	4,168,898	29,036,014	25,633,136	3,402,877
2003	50,493,308	21,685,587	14,565,218	2,988,274	4,132,093	28,807,720	24,845,915	3,961,804
2004	49,639,223	20,489,761	13,261,753	2,694,970	4,533,035	29,149,463	25,384,561	3,764,904
2005	52,311,147	21,220,807	14,051,867	2,928,424	4,240,519	31,090,339	27,031,615	4,058,725
2006	53,966,261	22,077,502	14,250,869	3,469,392	4,357,245	31,888,757	27,445,267	4,443,494
2007	53,676,866	21,770,114	13,452,878	3,707,820	4,609,417	31,906,752	27,961,186	3,945,567
2008	51,565,539	22,331,952	13,263,053	3,966,400	5,102,499	29,233,586	25,036,422	4,197,166
2009	46,937,588	19,188,411	10,346,359	3,307,036	5,535,011	27,749,177	23,847,949	3,901,228
2010	52,315,609	18,982,435	9,659,014	3,155,524	6,167,899	33,333,172	28,849,931	4,483,245
2011	54,125,931	18,408,413	10,569,519	2,345,528	5,493,367	35,717,523	30,237,191	5,480,332

1. Trucks include minivans, sport-utility vehicles, light and heavy trucks, vans and buses.

Table 7
Canada, monthly sales of new motor vehicles, in units, by type and origin, seasonally adjusted

Period	Total new motor vehicles		Passenger cars				Trucks ¹	
			North America		Overseas		Total	
	Units	Month/month change	Units	Month/month change	Units	Month/month change	Units	Month/month change
	number	%	number	%	number	%	number	%
2009								
January	117,160	5.4	36,472	5.3	24,206	5.3	56,482	5.4
February	113,933	-2.8	34,790	-4.6	25,706	6.2	53,437	-5.4
March	120,004	5.3	34,092	-2.0	26,380	2.6	59,532	11.4
April	122,541	2.1	33,820	-0.8	27,771	5.3	60,950	2.4
May	124,153	1.3	33,696	-0.4	27,921	0.5	62,536	2.6
June	120,084	-3.3	33,085	-1.8	26,590	-4.8	60,409	-3.4
July	126,482	5.3	37,437	13.2	25,984	-2.3	63,061	4.4
August	128,610	1.7	35,439	-5.3	28,449	9.5	64,722	2.6
September	128,246	-0.3	37,377	5.5	27,068	-4.9	63,801	-1.4
October	131,154	2.3	38,268	2.4	27,845	2.9	65,041	1.9
November	124,094	-5.4	34,617	-9.5	26,395	-5.2	63,082	-3.0
December	128,394	3.5	37,616	8.7	26,647	1.0	64,131	1.7
2010								
January	126,380	-1.6	33,140	-11.9	28,280	6.1	64,960	1.3
February	139,562	10.4	36,954	11.5	29,711	5.1	72,897	12.2
March	130,520	-6.5	32,608	-11.8	29,450	-0.9	68,462	-6.1
April	127,903	-2.0	31,676	-2.9	25,100	-14.8	71,127	3.9
May	129,651	1.4	30,926	-2.4	26,396	5.2	72,329	1.7
June	130,887	1.0	30,525	-1.3	26,134	-1.0	74,228	2.6
July	134,368	2.7	32,720	7.2	25,806	-1.3	75,842	2.2
August	130,458	-2.9	31,386	-4.1	24,986	-3.2	74,086	-2.3
September	134,883	3.4	32,370	3.1	25,001	0.1	77,512	4.6
October	135,399	0.4	34,674	7.1	24,954	-0.2	75,771	-2.2
November	136,311	0.7	33,611	-3.1	25,854	3.6	76,846	1.4
December	128,178	-6.0	32,380	-3.7	25,572	-1.1	70,226	-8.6
2011								
January	132,963	3.7	34,938	7.9	22,861	-10.6	75,164	7.0
February	133,863	0.7	35,279	1.0	22,995	0.6	75,589	0.6
March	136,193	1.7	38,665	9.6	21,273	-7.5	76,255	0.9
April	135,994	-0.1	39,549	2.3	22,018	3.5	74,427	-2.4
May	127,887	-6.0	32,230	-18.5	21,174	-3.8	74,483	0.1
June	141,651	10.8	38,993	21.0	21,397	1.1	81,261	9.1
July	133,004	-6.1	34,729	-10.9	21,168	-1.1	77,107	-5.1
August	132,952	0.0	35,566	2.4	20,362	-3.8	77,024	-0.1
September	135,046	1.6	34,878	-1.9	20,709	1.7	79,459	3.2
October	139,236	3.1	36,646	5.1	20,878	0.8	81,712	2.8
November	137,320	-1.4	36,049	-1.6	21,288	2.0	79,983	-2.1
December	133,146	-3.0	35,972	-0.2	21,999	3.3	75,175	-6.0

1. Trucks include minivans, sport-utility vehicles, light and heavy trucks, vans and buses.

Note(s): Percentage changes shown are month-to-month changes.

Table 8
Monthly sales of new motor vehicles, in units, by province, seasonally adjusted

Period	Canada	Newfoundland and Labrador	Prince Edward Island	Nova Scotia	New Brunswick	Quebec
number						
2009						
January	117,160	2,003	427	3,451	2,749	30,317
February	113,933	1,923	381	3,488	2,433	31,250
March	120,004	2,238	418	3,748	2,722	33,278
April	122,541	2,467	479	3,962	2,861	33,184
May	124,153	2,599	418	4,222	3,114	33,068
June	120,084	2,469	423	4,070	2,796	33,033
July	126,482	2,493	447	4,311	2,956	33,044
August	128,610	2,471	444	4,314	3,130	33,765
September	128,246	2,719	483	4,079	3,337	33,775
October	131,154	2,661	446	4,360	3,195	33,841
November	124,094	2,179	404	3,650	2,895	33,817
December	128,394	2,533	516	4,217	3,086	34,202
2010						
January	126,380	2,663	496	4,050	3,072	34,052
February	139,562	2,665	475	4,538	3,558	37,856
March	130,520	2,667	486	3,929	3,143	36,129
April	127,903	2,511	463	4,155	3,263	33,666
May	129,651	2,564	497	3,990	3,142	33,061
June	130,887	2,718	473	4,432	3,123	33,881
July	134,368	2,675	487	3,714	3,311	34,875
August	130,458	2,551	461	3,773	3,152	34,146
September	134,883	2,591	480	4,056	3,299	34,638
October	135,399	2,790	504	3,826	3,232	36,245
November	136,311	2,657	516	3,747	3,465	35,961
December	128,178	2,617	445	3,433	3,017	35,337
2011						
January	132,963	2,762	432	3,798	3,222	35,466
February	133,863	2,607	471	3,863	2,989	34,254
March	136,193	2,572	520	3,927	3,446	34,322
April	135,994	2,383	482	3,617	3,259	34,780
May	127,887	2,315	433	3,470	3,239	32,851
June	141,651	2,445	492	3,847	3,522	35,088
July	133,004	2,366	473	3,899	3,164	33,742
August	132,952	2,531	494	3,774	3,320	32,365
September	135,046	2,617	475	3,795	3,203	34,035
October	139,236	2,793	524	4,251	3,478	34,802
November	137,320	2,725	491	3,813	3,351	35,589
December	133,146	2,705	499	3,870	3,321	35,912

Table 8 – continued

Monthly sales of new motor vehicles, in units, by province, seasonally adjusted

Period	Canada	Ontario	Manitoba	Saskatchewan	Alberta	British Columbia and the Territories
	number					
2009						
January	117,160	41,623	3,603	3,690	16,632	12,665
February	113,933	42,274	3,254	3,483	14,286	11,161
March	120,004	43,871	3,491	3,737	14,724	11,777
April	122,541	44,393	3,740	3,743	15,417	12,295
May	124,153	44,977	3,931	3,998	15,278	12,548
June	120,084	42,255	3,551	3,429	15,332	12,726
July	126,482	46,941	3,691	3,985	15,800	12,814
August	128,610	48,427	3,802	3,747	15,498	13,012
September	128,246	47,123	3,722	3,867	15,743	13,398
October	131,154	47,814	3,918	4,261	16,917	13,741
November	124,094	45,548	3,631	3,195	15,289	13,486
December	128,394	47,362	3,661	3,758	15,852	13,207
2010						
January	126,380	45,603	3,536	3,912	15,888	13,108
February	139,562	51,482	4,079	4,612	17,544	12,753
March	130,520	47,990	3,482	3,686	16,350	12,658
April	127,903	47,118	3,647	3,808	16,536	12,736
May	129,651	48,862	3,885	3,747	16,805	13,098
June	130,887	48,392	3,883	3,917	17,021	13,047
July	134,368	50,888	3,979	3,888	17,274	13,277
August	130,458	47,301	3,811	3,987	17,969	13,307
September	134,883	50,013	3,870	4,180	18,313	13,443
October	135,399	50,720	3,681	3,880	17,156	13,365
November	136,311	50,988	3,909	4,077	17,474	13,517
December	128,178	47,277	3,593	3,905	16,207	12,347
2011						
January	132,963	49,031	3,920	4,264	17,088	12,980
February	133,863	50,439	4,015	4,102	17,491	13,632
March	136,193	51,091	4,262	4,299	18,217	13,537
April	135,994	51,756	3,931	4,039	18,031	13,716
May	127,887	47,356	3,833	4,146	17,971	12,273
June	141,651	54,141	4,118	4,408	19,919	13,671
July	133,004	49,451	3,973	4,064	18,491	13,381
August	132,952	49,621	4,104	4,208	19,055	13,480
September	135,046	49,730	3,966	4,268	19,301	13,656
October	139,236	50,263	4,185	4,677	20,158	14,105
November	137,320	50,329	4,029	4,152	19,582	13,259
December	133,146	47,268	4,041	4,370	18,291	12,869

Definitions

Trucks

Trucks include light and heavy trucks, minivans, sport utility vehicles, vans, coaches and buses, regardless of their intended use.

Passenger car

The term passenger car refers to all vehicles whose primary function is to carry passengers, excluding those vehicles classified as a commercial vehicle (see definition above). Passenger cars also include cars used for commercial purposes, i.e. taxis, auto rentals and other car fleets.

Country of origin

New motor vehicles fall into two categories defined on the basis of origin: those manufactured in North America and those manufactured overseas. The latter are imported in a fully assembled state from countries other than the United States or Mexico. All passenger cars and commercial vehicles assembled in Canada, Mexico and the United States and sold in Canada classified are as North American manufactured vehicles.

Motor vehicle sales - units

The number of new motor vehicles sold in Canada.

Motor vehicle sales - dollars

Net sales refers to the selling price to the consumer, i.e., manufacturer's invoice price plus estimated dealer's markup, including charges for standard and optional accessories. Sales taxes are excluded.

Average price of passenger cars

The average price is obtained by dividing the total dollar sales by the number of units sold. Therefore, changes in the average price reflect variations in the models sold as well as price changes. For example, an increase in the average price for passenger cars may reflect both a shift to more expensive models as well as price increases.

Appendix I

Scope of the survey

The interest in and need for detailed statistics on the automobile industry arose years ago, when the industry began playing a prominent role in the Canadian economy. For over 50 years, Statistics Canada has been collecting and disseminating statistical information on the retail sales of new motor vehicles. Not only are these statistics required to produce estimates of Canadian consumer spending for the national accounts and the gross domestic product, but they have also served and continue to serve as one of the most important, most often requested indicators of the health of Canada's economy.¹

However, estimates of the total retail sales volume of new motor vehicles were not sufficient to meet the incessant demand for more information. There came an increasing need for data on the characteristics of the fleet of new vehicles sold at retail, either to learn more about the preferences of Canadian consumers or to assess the penetration of the Canadian market by major foreign manufacturers. Statistics on new motor vehicle sales were expanded in the early 1970s to provide separate figures for Japanese vehicle sales.

The statistics in this report cover exclusively retail sales of new motor vehicles within Canada's borders. Data are derived from a postal survey (a census - see the methodology section at the end of the report for more details).

Other statistics connected with the automobile industry (sales of new and used car dealers, auto parts and accessories stores and so on) are available on the monthly Retail Trade survey (Catalogue No. 63-005). For further information, please contact the Retail Commodity Section, Distributive Trades Division, Statistics Canada, Ottawa, K1A 0T6, (Telephone: 613-951-3549 or toll free at 1-877-421-3067).

Data quality and methodology

This survey is a census of all motor vehicle manufacturers and importers known to be active in Canada.

The value of sales is reported at selling price to consumer (i.e. the manufacturer's invoice price plus estimated dealer's markup, charges for standard equipment and options, less provincial sales tax and federal goods and services tax (G.S.T.) and harmonized sales tax (H.S.T.)).

The response rate for this survey is generally 100%. Minimal estimation is required so there is little bias resulting from non-response introduced in these data.

All attempts have been made to minimize the non-sampling errors: the questionnaires used in the survey have been carefully designed to minimize different interpretations; detailed acceptance testing has been carried out for the different stages of editing and processing.

1. The new motor vehicle sales series is one of ten statistical series making up the leading indicator developed by Statistics Canada for current economic analysis purposes.

Data confidentiality

Statistics Canada is prohibited by law from publishing any statistics which would divulge information relating to any identifiable business without the previous consent in writing of that business.² The disclosure of data likely to reveal specific information on the activity of a particular company is systematically and rigorously controlled and regulated to prevent the publication or disclosure of any information deemed confidential. The rules regarding confidentiality are therefore applied in such a way that no data are shown for cells (or statistical units). If information is withheld for reasons of confidentiality an "X" will appear in the appropriate cell of this publication.

Another way of preserving data confidentiality without having to enter an "X" is to combine (consolidate) the information **from selected regions** (or selected cells) for the same item. The data in question can be aggregated and published in a less detailed, but still confidential, form. For example, the data for the Northwest Territories, the Yukon and Nunavut are included with the British Columbia data.

Seasonal adjustment

Time series contain the elements essential to the description, explanation and forecasting of the behaviour of an economic phenomenon: "They are statistical records of the evolution of economic processes through time."³ Economic time series such as the New Motor Vehicles Sales Survey can be broken down into five main components: the trend-cycle, seasonality, the trading-day effect, the Easter holiday effect and the irregular component.

The trend represents the long-term change in the series, whereas the cycle represents a smooth, quasi-periodical movement about the trend, showing a succession of growth and decline phases (e.g., the business cycle). These two components—the trend and the cycle—are estimated together, and the trend-cycle reflects the fundamental evolution of the series. The other components reflect short-term transient movements.

The seasonal component represents sub-annual, monthly or quarterly fluctuations that recur more or less regularly from one year to the next. Seasonal variations are caused by the direct and indirect effects of the climatic seasons and institutional factors (attributable to social conventions or administrative rules; e.g., Christmas).

The trading-day component originates from the fact that the relative importance of the days varies systematically within the week and that the number of each day of the week in a given month varies from year to year. This effect is present when activity varies with the day of the week. For instance, Sunday is typically less active than the other days, and the number of Sundays, Mondays, etc., in a given month changes from year to year.

The Easter holiday effect is the variation due to the shift of part of April's activity to March when Easter falls in March rather than April.

Lastly, the irregular component includes all other more or less erratic fluctuations not taken into account in the preceding components. It is a residual that includes errors of measurement on the variable itself as well as unusual events (e.g., strikes, drought, floods, major power blackout or other unexpected events causing variations in respondents' activities).

Thus, the latter four components—seasonal, irregular, trading-day and Easter holiday effect—all conceal the fundamental trend-cycle component of the series. Seasonal adjustment (correction of seasonal variation) consists in removing the seasonal, trading-day and Easter holiday effect components from the series, and it thus helps reveal the trend-cycle. While seasonal adjustment permits a better understanding of the underlying trend-cycle of a series, the seasonally adjusted series still contains an irregular component. Slight month-to-month variations in the seasonally adjusted series may be simple irregular movements. To get a better idea of the underlying trend, users should examine several months of the seasonally adjusted series.

2. See Section 17 of the Statistics Act (Chapter 5-19), entitled «Secrecy».

3. «A Note on the Seasonal adjustment of Economic Time Series», Canadian Statistical Review, August 1974.

Since April 2008, New Motor Vehicle Sales Survey data are seasonally adjusted using the X-12-ARIMA⁴ software. The technique that is used essentially consists of first correcting the initial series for all sorts of undesirable effects, such as the trading-day and the Easter holiday effects, by a module called regARIMA. These effects are estimated using regression models with ARIMA errors (auto-regressive integrated moving average models). The series can also be extrapolated for at least one year by using the model. Subsequently, the raw series—pre-adjusted and extrapolated if applicable—is seasonally adjusted by the X-11 method.

The X-11 method is used for analysing monthly and quarterly series. It is based on an iterative principle applied in estimating the different components, with estimation being done at each stage using adequate moving averages.⁵ The moving averages used to estimate the main components—the trend and seasonality—are primarily smoothing tools designed to eliminate an undesirable component from the series. Since moving averages react poorly to the presence of atypical values, the X-11 method includes a tool for detecting and correcting atypical points. This tool is used to clean up the series during the seasonal adjustment. Outlying data points can also be detected and corrected in advance, within the regARIMA module.

Lastly, the annual totals of the seasonally adjusted series are forced to the annual totals of the original series.

Unfortunately, seasonal adjustment removes the sub-annual additivity of a system of series; small discrepancies can be observed between the sum of seasonally adjusted series and the *direct* seasonal adjustment of their total. To insure or restore additivity in a system of series, a reconciliation process is applied or *indirect* seasonal adjustment is used, i.e. the seasonal adjustment of a total is derived by the summation of the individually seasonally adjusted series.

To assist the user, the Months of Cyclical Dominance number, MCD, is provided.⁶ The MCD is the shortest monthly span for which a certain ratio becomes and remains less than one, that is, the ratio for which the absolute average percentage change of the trend-cycle of the seasonally adjusted series becomes greater than the absolute average per cent change of the irregular component. The MCD can be interpreted as the number of months over which a change in the seasonally adjusted series must move in a given direction before one can be reasonably certain that the trend-cycle of that series also has moved in the given direction. Clearly small MCD's are desirable and indicative of a smooth series. Applying a moving average to the seasonally adjusted data of MCD length tends to smooth irregular movements which may obscure the underlying trend-cycle. The MCD moving average provides a method of reducing all types of series to approximately the same degree of smoothness, whatever the size of the irregular component in the original series.

Revision procedures

The seasonally adjusted estimates are revised for the three months preceding the reference period. Monthly unadjusted data are revised for the previous month, when new information is made available to Statistics Canada. In addition, unadjusted new motor vehicle sales are revised each year, for the latest year, in the February issue of this publication. At that time, monthly seasonally adjusted estimates for the latest four years of data are revised.

4. For more information, see X-12-ARIMA Reference Manual Version 0.3 (2007), U.S. Census Bureau.

5. Ladiray, D. and Quenneville, B. (2001). Seasonal Adjustment with the X-11 Method. New York: Springer-Verlag, Lecture Notes in Statistics #158.

6. MCD = 8 for North American passenger cars. MCD = 4 for Overseas passenger cars. MCD = 8 for Commercial vehicles.

Appendix II

List of North American motor vehicle manufacturers

B.M.W. Canada Inc.
Blue Bird Body Co.
Chrysler Canada Inc.
Ford Motor Company of Canada Limited
Freightliner of Canada Ltd.
General Motors of Canada Limited
Honda Canada Inc.
Hyundai Auto Canada Inc.
International Truck and Engine Corporation Canada
Kenworth Div., Paccar of Canada Ltd.
Mack Canada Inc.
Mazda Canada Inc.
Mitsubishi Motor Sales of Canada, Inc.
Motor Coach Industries Limited
New Flyer Industries Ltd.
Nissan Canada Inc.
Nova Bus Corp.
Orion Bus Industries Inc.
Peterbilt Div., Paccar of Canada Ltd.
Prévost Car Inc.
Sterling Heavy Duty Trucks
Subaru Canada Inc.
Suzuki Canada Inc.
Thomas Built Buses of Canada Ltd.

Toyota Canada Ltd.

Volkswagen Canada Inc.

Volvo Trucks Canada Inc.

Western Star Trucks Inc.

List of importers and distributors of overseas manufactured motor vehicles

Japan

General Motors of Canada Ltd.

Hino Diesel Trucks Canada Ltd.

Honda Canada Inc.

Mazda Canada Inc.

Mitsubishi Motor Sales of Canada, Inc.

Nissan Canada Inc.

Subaru Canada Inc.

Suzuki Canada Inc.

Toyota Canada Inc.

Other Countries

B.M.W. Canada Inc.

Ford Motor Company of Canada Limited

General Motors Canada Ltd.

Hyundai Auto Canada Inc.

Jaguar Canada Inc.

Kia Canada Inc.

Land Rover group Canada Inc.

Mercedes-Benz Canada Inc.

Porsche Cars of Canada Ltd.

Volkswagen Canada Inc.

Volvo Cars of Canada Ltd.