

Catalogue no. 65-001-X

Canadian International Merchandise Trade

January 2012



Statistics
Canada

Statistique
Canada

Canada

How to obtain more information

For information about this product or the wide range of services and data available from Statistics Canada, visit our website at www.statcan.gc.ca, e-mail us at infostats@statcan.gc.ca, or telephone us, Monday to Friday from 8:30 a.m. to 4:30 p.m., at the following numbers:

Statistics Canada's National Contact Centre

Toll-free telephone (Canada and the United States):

Inquiries line	1-800-263-1136
National telecommunications device for the hearing impaired	1-800-363-7629
Fax line	1-877-287-4369

Local or international calls:

Inquiries line	1-613-951-8116
Fax line	1-613-951-0581

Depository Services Program

Inquiries line	1-800-635-7943
Fax line	1-800-565-7757

To access this product

This product, Catalogue no. 65-001-X, is available free in electronic format. To obtain a single issue, visit our website at www.statcan.gc.ca and browse by "Key resource" > "Publications."

Standards of service to the public

Statistics Canada is committed to serving its clients in a prompt, reliable and courteous manner. To this end, Statistics Canada has developed *standards of service* that its employees observe. To obtain a copy of these service standards, please contact Statistics Canada toll-free at 1-800-263-1136. The service standards are also published on www.statcan.gc.ca under "About us" > "The agency" > "Providing services to Canadians."

Statistics Canada
International Trade Division

Canadian International Merchandise Trade

January 2012

Published by authority of the Minister responsible for Statistics Canada

© Minister of Industry, 2012

All rights reserved. Use of this publication is governed by the *Statistics Canada
Open License Agreement*.

<http://www.statcan.gc.ca/reference/copyright-droit-auteur-eng.htm>

March 2012

Catalogue no. 65-001-X, vol. 66, no. 1

ISSN 1480-8781

Frequency: Monthly

Ottawa

Cette publication est également disponible en français.

Note of appreciation

Canada owes the success of its statistical system to a long-standing partnership between Statistics Canada, the citizens of Canada, its businesses, governments and other institutions. Accurate and timely statistical information could not be produced without their continued cooperation and goodwill.

User information

Symbols

The following standard symbols are used in Statistics Canada publications:

- . not available for any reference period
- .. not available for a specific reference period
- ... not applicable
- 0 true zero or a value rounded to zero
- 0^s value rounded to 0 (zero) where there is a meaningful distinction between true zero and the value that was rounded
- p preliminary
- r revised
- x suppressed to meet the confidentiality requirements of the *Statistics Act*
- E use with caution
- F too unreliable to be published
- * significantly different from reference category ($p < 0.05$)

Note to users

All totals are calculated from full figures and rounded independently; consequently, totals may not equal the sum of their components.

The data is based on commodity groups (sector, subsector and major group).

Table of contents

Highlights	5
Analysis	7
Related products	11
Statistical tables	
1 Merchandise trade of Canada, balance of payments basis, seasonally adjusted	15
1-1 Current dollars	15
1-2 Constant dollars, 2002	16
1-3 Price indices (Laspeyres)	17
2 Exports by commodity groupings, balance of payments basis, seasonally adjusted	18
2-1 Current dollars	18
2-2 Constant dollars, 2002	20
3 Domestic exports to selected countries, customs basis, not seasonally adjusted	22
3-1 January	22
3-2 Year to date, January to January	23
4 Domestic exports by country, customs basis, not seasonally adjusted	24
5 Exports by province of origin, customs basis, not seasonally adjusted	28
5-1 January	28
5-2 Year to date, January to January	29
6 Imports by commodity groupings, balance of payments basis, seasonally adjusted	30
6-1 Current dollars	30
6-2 Constant dollars, 2002	32
7 Imports from selected countries, customs basis, not seasonally adjusted	34
7-1 January	34
7-2 Year to date, January to January	35
8 Imports by country, customs basis, not seasonally adjusted	36

Table of contents – continued

9	Imports by province of clearance, customs basis, not seasonally adjusted	40
9-1	January	40
9-2	Year to date, January to January	41

Data quality, concepts and methodology

Technical notes	42
-----------------	----

Highlights

Canada's merchandise exports declined 2.3% and imports edged down 0.6%. As a result, Canada's trade surplus narrowed from \$2.9 billion in December 2011 to \$2.1 billion in January 2012. This was the third consecutive monthly trade surplus.

Exports decreased to \$41.4 billion in January, as prices fell 2.2%. Lower exports of precious metals and alloys as well as aircraft, engines and parts largely contributed to the decline in value. Higher exports of crude petroleum partially offset the decrease in exports.

Imports decreased to \$39.3 billion in January, as six out of seven sectors posted declines. Industrial goods and materials followed by energy products contributed the most to the decrease. Overall, import prices fell 0.8%.

Exports to the United States edged up 0.3% to \$30.6 billion in January, largely on the strength of crude petroleum. Imports from the United States declined 0.3% to \$24.5 billion. Consequently, Canada's trade surplus with the United States increased from \$5.9 billion in December to \$6.1 billion in January.

Exports to countries other than the United States fell 9.0% to \$10.8 billion in January, mainly the result of lower exports to the European Union and Japan. Imports from countries other than the United States decreased 0.9% to \$14.8 billion. Canada's trade deficit with countries other than the United States increased from \$3.0 billion in December to \$4.0 billion in January.

Note to readers

Merchandise trade is one component of Canada's international balance of payments (BOP), which also includes trade in services, investment income, current transfers as well as capital and financial flows.

International merchandise trade data by country are available on both a BOP and a customs basis for the United States, Japan and the United Kingdom. Trade data for all other individual countries are available on a customs basis only. BOP data are derived from customs data by making adjustments for factors such as valuation, coverage, timing and residency. These adjustments are made to conform to the concepts and definitions of the Canadian System of National Accounts.

Data in this release are on a BOP basis, seasonally adjusted and in current dollars. Constant dollars are calculated using the Laspeyres volume formula.

Changes to the classification

Statistics Canada has reduced the number of 10-digit Harmonized Commodity Coding and Description System (HS) classification codes that are used to report the commodity detail in Canada's merchandise import trade data. This will improve efficiency, maintain data quality and reduce response burden.

These changes are in effect as of January 2012 and coincide with the World Customs Organization 2012 amendments to the 6-digit HS classification codes as well as with Finance Canada's changes to the 2012 Customs Tariff at the 8-digit HS codes. To obtain an HS 2012 Concordance Table, contact the International Trade Division's Marketing and Client Services Section (trade@statcan.gc.ca).

Chart 1

Exports and imports, seasonally adjusted, on a balance of payments basis

billions of dollars

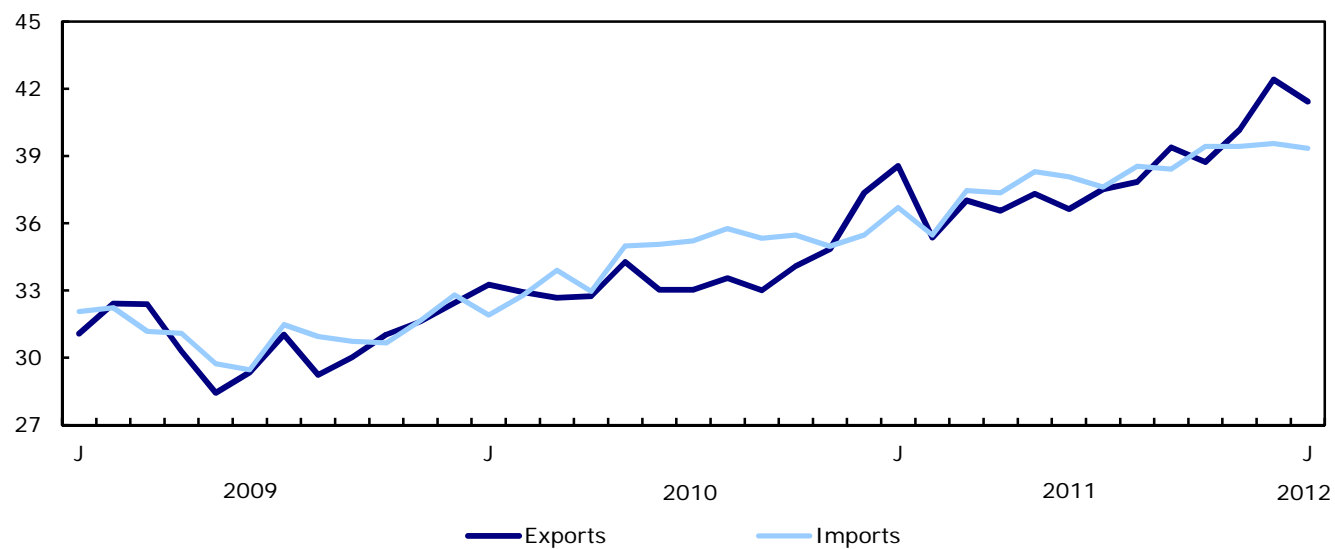
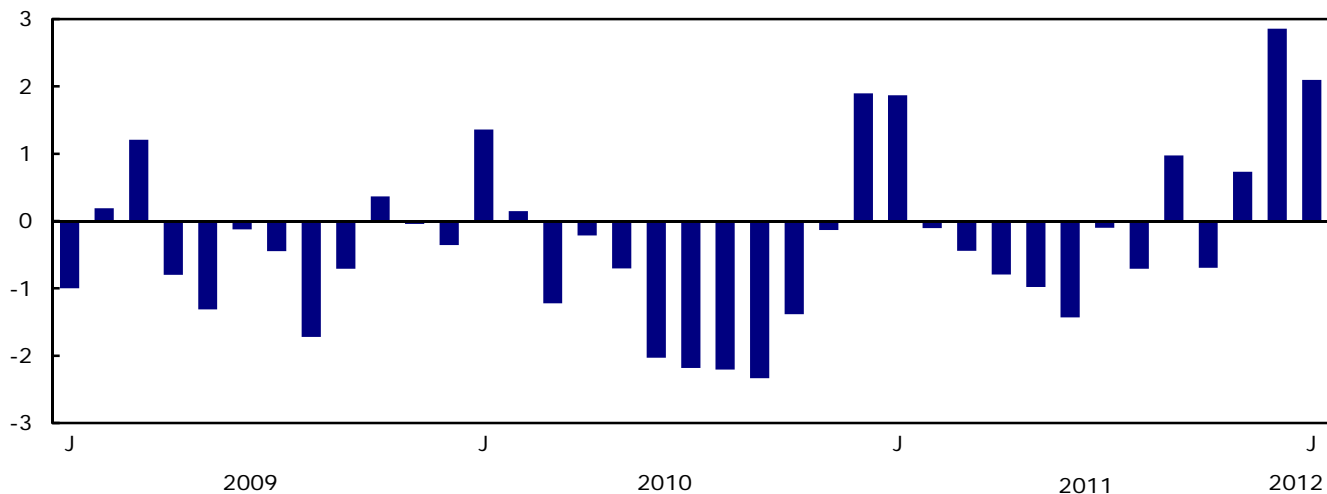


Chart 2

Trade balance, seasonally adjusted, on a balance of payments basis

billions of dollars



Analysis

Industrial goods and materials contribute most to exports' decline

Exports of industrial goods and materials fell 11.9% to \$9.3 billion in January as all subsectors decreased. Both prices and volumes fell 6.1%. Exports of precious metals and alloys, fertilizer and fertilizer materials, as well as copper ores, concentrates and scrap were the main contributors to the sector's decline, a result of lower volumes.

Exports of machinery and equipment fell 11.9% to \$6.6 billion as volumes fell 11.0%. A decrease of 26.1% in exports of aircraft and other transportation equipment was responsible for more than half of the sector's decline.

Exports of energy products grew 8.7% to \$11.6 billion, on the strength of crude petroleum which reached a record high of \$8.2 billion in January. Petroleum and coal products, up 12.8%, also contributed to the increase. Coal and other bituminous substances partly offset the sector's gain, falling 37.1%. The gain in the sector was the result of volumes increasing 11.0%.

Exports of automotive products, up for a fifth consecutive month, rose 6.1% to \$6.2 billion. Volumes grew 8.4%. Passenger autos and chassis increased 9.3% to \$4.4 billion, the highest level since January 2006.

Imports: widespread decreases

Imports of industrial goods and materials decreased 3.8% to \$8.2 billion in January, as prices declined 4.0%. Metals and metal ores led the overall decline in the sector as precious metals and alloys fell 26.2%.

Imports of energy products fell 5.9% to \$4.2 billion as all subsectors posted decreases. Petroleum and coal products led the decline mainly due to lower imports of aviation and diesel fuels.

Imports of machinery and equipment declined 1.7% to \$10.7 billion in January. Lower imports of office machines and equipment, excavating machinery as well as other communication and related equipment contributed the most to the decrease.

The total decline in imports was partially offset by imports of automotive products, up 7.0% to \$6.6 billion. This was the highest level since July 2007. Passenger autos and chassis led the increase, on the strength of volumes, up 14.4%.

Note: In general, merchandise trade data are revised on an ongoing basis for each month of the current year. Current year revisions are reflected in both the customs and balance of payments (BOP) based data.

The previous year's customs data are revised with the release of the January and February reference months as well as on a quarterly basis. The previous two years of customs based data are revised annually and are released in February with the December reference month.

Previous year's BOP based data will be revised with the release of the January, February, March and April 2012 reference months.

Factors influencing revisions include late receipt of import and export documentation, incorrect information on customs forms, replacement of estimates produced for the energy sector with actual figures, changes in classification of merchandise based on more current information, and changes to seasonal adjustment factors.

Revised data are available in the appropriate CANSIM tables.

Chart 1

Exports of industrial goods and materials, seasonally adjusted, on a balance of payments basis

billions of dollars

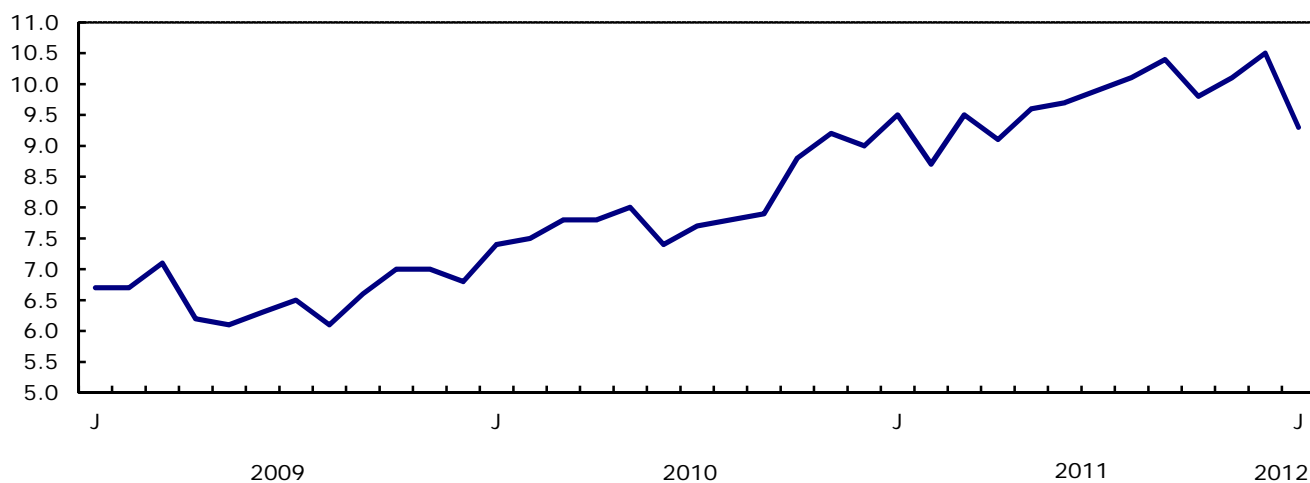


Chart 2

Exports of energy products, seasonally adjusted, on a balance of payments basis

billions of dollars

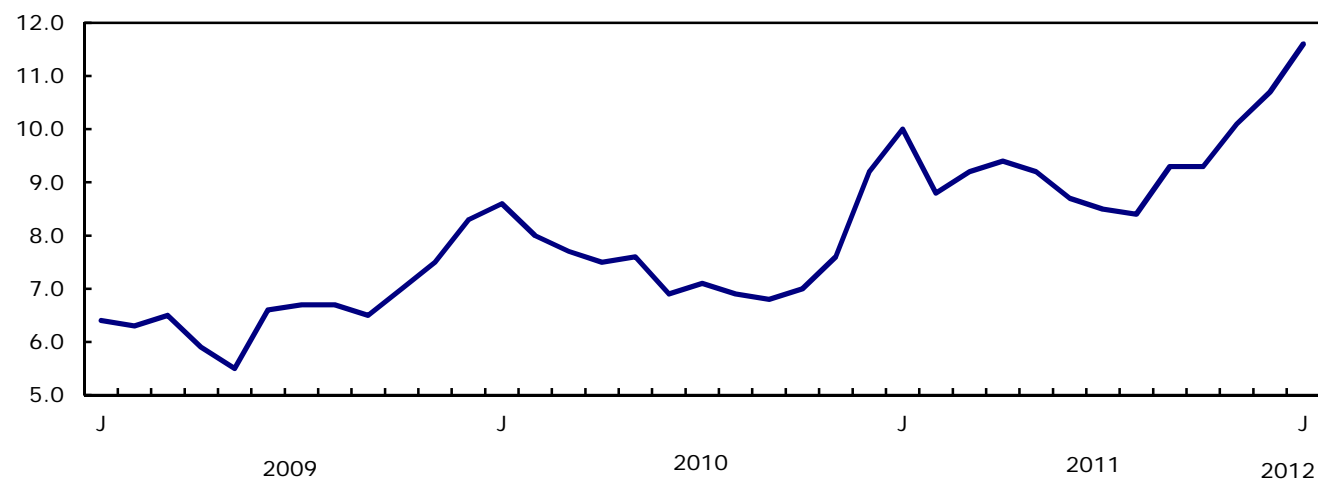
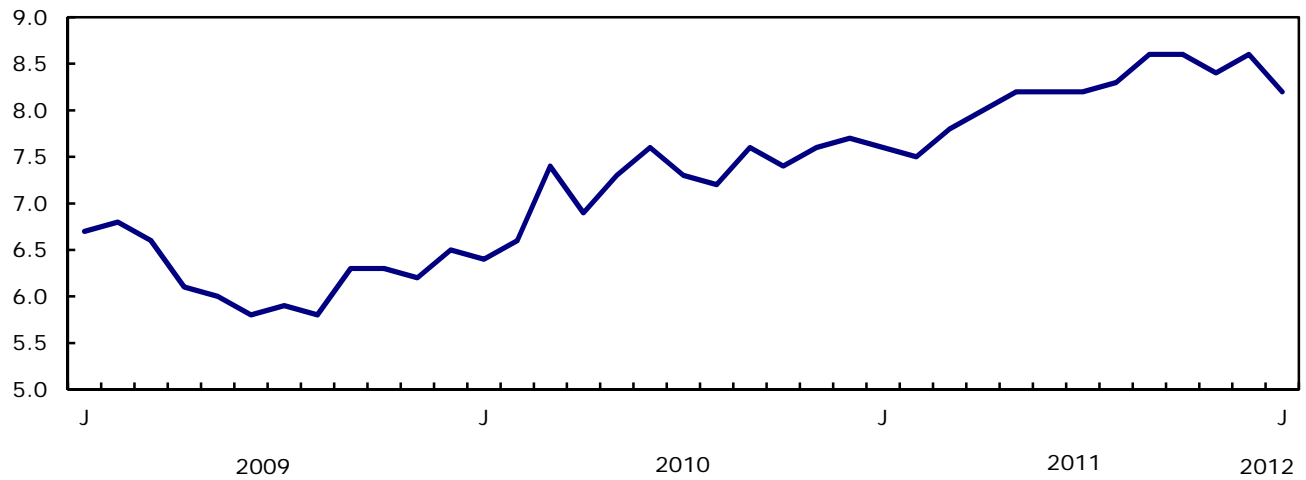
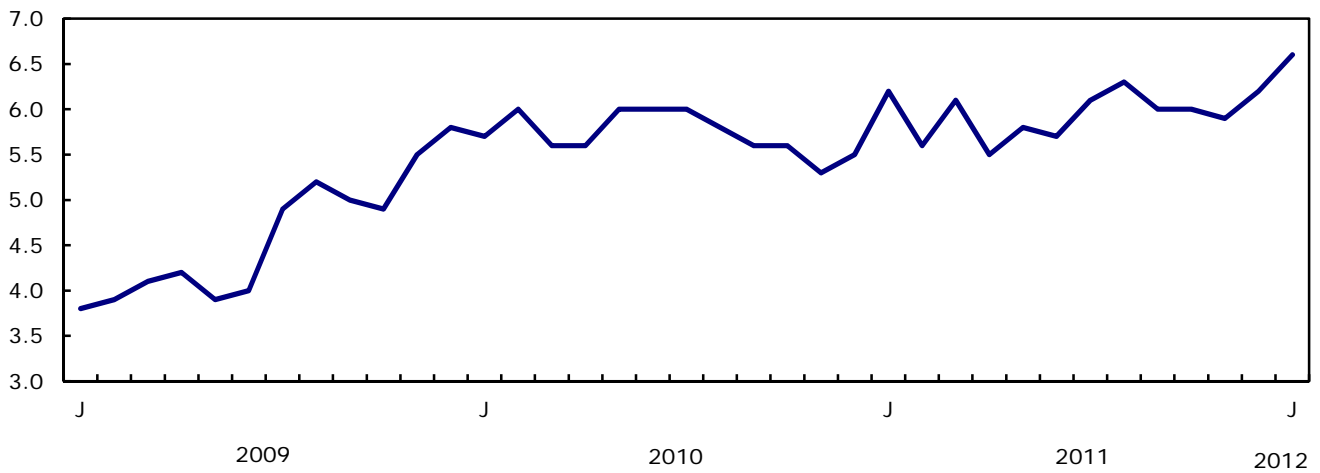


Chart 3**Imports of industrial goods and materials, seasonally adjusted, on a balance of payments basis**

billions of dollars

**Chart 4****Imports of automotive products, seasonally adjusted, on a balance of payments basis**

billions of dollars



Text table 1

Merchandise trade by principal trading area, balance of payments basis, seasonally adjusted

	December 2011	January 2012	Change		Year to date			January 2012/ January 2011	
					2011	2012	Change		
	millions of dollars		percent		millions of dollars		percent		
Export to									
United States	30,513	30,606	93	0.3	28,190	30,606	2,416	8.6	8.6
Japan	1,144	796	-348	-30.4	1,011	796	-215	-21.2	-21.2
European Union ¹	3,953	3,473	-480	-12.2	3,567	3,473	-94	-2.6	-2.6
Other Organisation for Economic Co-operation and Development ²	1,684	1,583	-101	-6.0	1,517	1,583	66	4.3	4.3
Other countries	5,121	4,979	-142	-2.8	4,280	4,979	699	16.3	16.3
Total	42,416	41,437	-979	-2.3	38,565	41,437	2,871	7.4	7.4
Imports from									
United States	24,612	24,535	-77	-0.3	22,968	24,535	1,566	6.8	6.8
Japan	1,052	902	-150	-14.2	836	902	66	8.0	8.0
European Union ¹	3,504	3,449	-55	-1.6	3,746	3,449	-297	-7.9	-7.9
Other Organisation for Economic Co-operation and Development ²	2,819	3,024	205	7.3	2,539	3,024	484	19.1	19.1
Other countries	7,573	7,432	-141	-1.9	6,609	7,432	823	12.5	12.5
Total	39,560	39,342	-218	-0.6	36,698	39,342	2,643	7.2	7.2
Balance									
United States	5,901	6,071	169	...	5,221	6,071	849
Japan	92	-106	-198	...	175	-106	-281
European Union ¹	449	24	-425	...	-179	24	202
Other Organisation for Economic Co-operation and Development ²	-1,135	-1,441	-305	...	-1,023	-1,441	-418
Other countries	-2,451	-2,453	-1	...	-2,328	-2,453	-125
Total	2,855	2,095	-760	...	1,867	2,095	228

1. European Union includes: Austria, Belgium, Bulgaria, Cyprus, Czech Republic, Denmark, Estonia, Finland, France, Germany, Greece, Hungary, Ireland, Italy, Latvia, Lithuania, Luxembourg, Malta, Netherlands, Poland, Portugal, Romania, Slovakia, Slovenia, Spain, Sweden and United Kingdom.

2. Other Organisation for Economic Co-operation and Development includes: Australia, Canada, Iceland, Mexico, New Zealand, Norway, South Korea, Switzerland and Turkey.

Text table 2

Reconciliation of customs and balance of payments trade data, not seasonally adjusted

	2012		2011				2011
	January	December	November	October	September	August	Annual
	millions of dollars						
Exports							
Customs basis	37,272	39,628	39,520	39,027	39,656	38,660	447,767
Balance of payments adjustments	752	1,614	1,358	1,034	289	-24	9,786
Valuation and residency							
Inland freight	583	620	626	621	637	618	7,052
Other valuation and residency	-936	-356	-402	-977	-1,336	-1,635	-10,461
Timing	-13	129	36	48	12	35	512
Coverage	1,118	1,221	1,098	1,342	976	958	12,683
Balance of payments basis	38,024	41,242	40,878	40,061	39,945	38,636	457,553
Imports							
Customs basis	35,643	36,478	39,177	39,937	38,553	39,313	445,912
Balance of payments adjustments	892	1,127	1,457	1,078	817	870	10,457
Valuation and residency							
Inland freight	758	757	812	821	810	833	9,422
Other valuation and residency	-19	49	105	-30	-1	-22	-215
Timing	0	0	0	0	0	0	0
Coverage	153	321	540	287	8	59	1,250
Balance of payments basis	36,535	37,605	40,634	41,015	39,370	40,183	456,369

Related products

Selected publications from Statistics Canada

65-208-X	International Merchandise Trade Annual Review
65-506-X	A Profile of Canadian Exporters
65F0013X	Canadian International Merchandise Trade Database
65F0019X	A Database for Analysis of International Markets
65F0020X	Data Integration - International Trade Data and Manufacturing Shipments Data

Selected CANSIM tables from Statistics Canada

228-0001	Merchandise imports and exports, by major groups and principal trading areas for all countries, monthly
228-0002	Merchandise imports and exports, by major groups and principal trading areas for all countries, quarterly
228-0003	Merchandise imports and exports, by major groups and principal trading areas for all countries, annual
228-0033	Imports, customs-based, by province of clearance, monthly
228-0034	Domestic exports, customs-based, by province of origin, monthly
228-0041	Merchandise imports and exports by sector and sub-sector, customs and balance of payments basis, for all countries, monthly
228-0042	Merchandise imports and exports by sector and sub-sector, customs and balance of payments basis, for all countries, quarterly
228-0043	Merchandise imports and exports by sector and sub-sector, customs and balance of payments basis, for all countries, annual
228-0047	Merchandise imports and exports balance of payments and customs-based price and volume indexes for all countries, monthly
228-0048	Merchandise imports and exports balance of payments and customs-based price and volume indexes for all countries, quarterly
228-0049	Merchandise imports and exports balance of payments and customs-based price and volume indexes for all countries, annual

228-0050	Merchandise imports and exports customs-based price indexes, Canada and United States trade, and Standard International Trade Classification (SITC revision 3) price indexes for all countries and United States, monthly
228-0051	Merchandise imports and exports customs-based price indexes, Canada and United States trade, and Standard International Trade Classification (SITC revision 3) price indexes for all countries and United States, quarterly
228-0052	Merchandise imports and exports customs-based price indexes, Canada and United States trade, and Standard International Trade Classification (SITC revision 3) price indexes for all countries and United States, annual
228-0053	Merchandise import and export price and volume indexes by sector and sub-sector, customs and balance of payments basis, for all countries, monthly
228-0054	Merchandise import and export price and volume indexes by sector and sub-sector, customs and balance of payments basis, for all countries, quarterly
228-0055	Merchandise import and export price and volume indexes by sector and sub-sector, customs and balance of payments basis, for all countries, annual
228-0056	Merchandise imports and exports by sector, balance of payments basis, for all countries, seasonally adjusted, Fisher formula, monthly
228-0057	Merchandise imports and exports by sector, balance of payments basis, for all countries, seasonally adjusted, Fisher formula, quarterly

Selected surveys from Statistics Canada

2201	Canadian International Merchandise Trade (Customs Basis)
2202	Canadian International Merchandise Trade (Balance of Payments Basis)
2203	International Trade Price Indexes

Selected summary tables from Statistics Canada

- *Canada: Economic and financial data*
- *Imports, exports and trade balance of goods on a balance-of-payments basis, by country or country grouping*
- *Exports of goods on a balance-of-payments basis*

- *Imports of goods on a balance-of-payments basis*
- *Merchandise trade of Canada (monthly)*
- *Economic indicators, by province and territory (monthly and quarterly)*
- *Latest statistics (monthly)*

Statistical tables

Table 1-1

Merchandise trade of Canada, balance of payments basis, seasonally adjusted — Current dollars

	Exports	Imports	Trade balance	Period to period change		
				Exports	Imports	Balance
	millions of dollars			percent		millions of dollars
2008	488,754	443,777	44,977	0.0	0.0	0
2009	369,343	374,081	-4,738	-24.4	-15.7	-49,715
2010	404,834	413,833	-8,999	9.6	10.6	-4,261
2011	457,553	456,369	1,184	...	10.3	10,182
2009						
First quarter	95,888	95,487	400	-16.7	-14.9	-2,399
Second quarter	88,071	90,304	-2,234	-8.2	-5.4	-2,634
Third quarter	90,293	93,167	-2,873	2.5	3.2	-639
Fourth quarter	95,092	95,123	-32	5.3	2.1	2,842
2010						
First quarter	98,870	98,583	287	4.0	3.6	318
Second quarter	100,071	103,014	-2,942	1.2	4.5	-3,229
Third quarter	99,592	106,312	-6,720	-0.5	3.2	-3,778
Fourth quarter	106,301	105,924	377	6.7	-0.4	7,097
2011						
First quarter	110,951	109,629	1,322	4.4	3.5	945
Second quarter	110,525	113,725	-3,200	-0.4	3.7	-4,522
Third quarter	114,759	114,592	167	3.8	0.8	3,367
Fourth quarter	121,319	118,424	2,895	5.7	3.3	2,728
2011						
January	38,565	36,698	1,867	3.2	3.5	-28
February	35,368	35,471	-102	-8.3	-3.3	-1,970
March	37,017	37,460	-443	4.7	5.6	-341
April	36,564	37,357	-793	-1.2	-0.3	-350
May	37,321	38,299	-977	2.1	2.5	-184
June	36,640	38,069	-1,429	-1.8	-0.6	-452
July	37,525	37,625	-100	2.4	-1.2	1,329
August	37,845	38,552	-707	0.9	2.5	-607
September	39,388	38,414	974	4.1	-0.4	1,681
October	38,732	39,427	-695	-1.7	2.6	-1,669
November	40,172	39,437	734	3.7	0.0	1,429
December	42,416	39,560	2,855	5.6	0.3	2,121
2012						
January	41,437	39,342	2,095	-2.3	-0.6	-760

Note(s): Because of rounding, monthly data may not add up to quarterly data and quarterly data may not add up to annual data.

Table 1-2
Merchandise trade of Canada, balance of payments basis, seasonally adjusted — Constant dollars, 2002

	Exports	Imports	Trade balance	Period to period change	
				Exports	Imports
millions of dollars					
percent					
2008	412,713	486,735	-74,022	0.0	0.0
2009	346,916	407,679	-60,763	-15.9	-16.2
2010	374,143	470,401	-96,259	7.8	15.4
2011	389,342	509,496	-120,153	4.1	8.3
2009					
First quarter	87,361	98,563	-11,202	-9.7	-13.3
Second quarter	83,432	97,723	-14,290	-4.5	-0.9
Third quarter	86,976	104,165	-17,189	4.2	6.6
Fourth quarter	89,147	107,228	-18,081	2.5	2.9
2010					
First quarter	90,749	111,192	-20,442	1.8	3.7
Second quarter	94,368	117,650	-23,282	4.0	5.8
Third quarter	94,074	120,900	-26,826	-0.3	2.8
Fourth quarter	94,951	120,659	-25,708	0.9	-0.2
2011					
First quarter	96,407	124,562	-28,155	1.5	3.2
Second quarter	94,904	128,606	-33,702	-1.6	3.2
Third quarter	98,025	128,118	-30,092	3.3	-0.4
Fourth quarter	100,005	128,210	-28,204	2.0	0.1
2011					
January	33,548	41,909	-8,361	2.9	4.1
February	30,877	40,398	-9,522	-8.0	-3.6
March	31,983	42,255	-10,272	3.6	4.6
April	31,501	42,720	-11,219	-1.5	1.1
May	32,078	42,638	-10,561	1.8	-0.2
June	31,326	43,247	-11,921	-2.3	1.4
July	32,726	42,971	-10,245	4.5	-0.6
August	32,651	43,213	-10,562	-0.2	0.6
September	32,648	41,934	-9,285	0.0	-3.0
October	32,473	42,597	-10,125	-0.5	1.6
November	32,818	42,532	-9,714	1.1	-0.2
December	34,714	43,081	-8,366	5.8	1.3
2012					
January	34,660	43,201	-8,541	-0.2	0.3

Note(s): Because of rounding, monthly data may not add up to quarterly data and quarterly data may not add up to annual data.

Table 1-3
Merchandise trade of Canada, balance of payments basis, seasonally adjusted — Price indices (Laspeyres)

	2002=100			Period to period change		
	Exports	Imports	Terms of trade	Exports	Imports	Terms of trade
	price indices (Laspeyres)			percent		
2008	116.2	97.2	119.6	0.0	0.0	0.0
2009	105.2	96.2	109.3	-9.5	-1.0	-8.5
2010	106.8	94.1	113.4	1.5	-2.2	3.7
2011	113.7	98.0	116.1	6.6	4.1	2.4
2009						
First quarter	108.8	100.8	107.9	-3.9	-2.8	-1.1
Second quarter	104.6	96.8	108.0	-3.8	-4.0	0.1
Third quarter	102.9	94.1	109.3	-1.6	-2.8	1.2
Fourth quarter	105.3	93.0	113.2	2.3	-1.2	3.5
2010						
First quarter	107.1	93.7	114.2	1.7	0.7	0.9
Second quarter	105.7	93.6	112.9	-1.3	-0.1	-1.2
Third quarter	106.1	94.5	112.3	0.4	0.9	-0.5
Fourth quarter	108.2	94.6	114.4	2.0	0.1	1.9
2011						
First quarter	111.4	95.6	116.5	3.0	1.1	1.9
Second quarter	113.4	97.7	116.1	1.8	2.2	-0.4
Third quarter	114.2	98.3	116.2	0.7	0.6	0.1
Fourth quarter	115.8	100.3	115.5	1.4	2.0	-0.6
2011						
January	111.1	95.6	116.3	0.3	0.2	0.1
February	111.6	96.4	115.8	0.5	0.9	-0.4
March	112.3	96.7	116.2	0.6	0.3	0.3
April	113.2	97.0	116.8	0.8	0.3	0.5
May	113.5	97.3	116.7	0.3	0.3	-0.1
June	113.9	98.2	116.0	0.4	1.0	-0.6
July	112.3	96.0	117.0	-1.4	-2.2	0.8
August	112.7	97.9	115.1	0.3	2.0	-1.7
September	115.5	99.1	116.5	2.5	1.2	1.2
October	115.6	99.9	115.7	0.1	0.8	-0.7
November	116.9	100.8	116.0	1.1	0.9	0.2
December	116.2	100.8	115.3	-0.6	-0.1	-0.6
2012						
January	115.4	101.2	114.1	-0.7	0.4	-1.1

Note(s): Because of rounding, monthly data may not add up to quarterly data and quarterly data may not add up to annual data.

Table 2-1

Exports by commodity groupings, balance of payments basis, seasonally adjusted — Current dollars

	December 2011	January 2012	Change		Year to date			January 2012/ January 2011	
					2011	2012	Change		
	millions of dollars		percent		millions of dollars		percent		
Total	42,416	41,437	-979	-2.3	38,565	41,437	2,871	7.4	7.4
Agricultural and fishing products	3,822	3,750	-71	-1.9	3,210	3,750	541	16.8	16.8
Wheat	553	488	-65	-11.8	388	488	100	25.9	25.9
Other agricultural and fishing products	3,268	3,263	-6	-0.2	2,822	3,263	441	15.6	15.6
Live animals	128	125	-3	-2.6	130	125	-5	-4.2	-4.2
Fish and fish preparations	379	389	10	2.7	341	389	48	14.0	14.0
Barley	31	40	9	29.8	32	40	8	25.6	25.6
Wheat flour	6	6	0	1.0	7	6	-1	-11.1	-11.1
Other cereals unmilled	55	49	-6	-11.0	64	49	-15	-22.9	-22.9
Other cereal preparations	263	267	4	1.5	228	267	39	16.9	16.9
Meat and meat preparations	458	453	-5	-1.0	383	453	71	18.4	18.4
Alcoholic beverages	68	67	-1	-1.6	56	67	11	20.4	20.4
Other food, feed, beverages and tobacco	1,100	1,021	-79	-7.2	971	1,021	50	5.1	5.1
Rapeseed	556	639	82	14.8	379	639	260	68.6	68.6
Other crude vegetable products	224	207	-17	-7.8	232	207	-25	-10.7	-10.7
Energy products	10,672	11,604	932	8.7	9,955	11,604	1,650	16.6	16.6
Crude petroleum	7,204	8,218	1,014	14.1	6,227	8,218	1,990	32.0	32.0
Natural gas	798	734	-64	-8.0	1,229	734	-495	-40.3	-40.3
Other energy products	2,670	2,653	-17	-0.7	2,498	2,653	154	6.2	6.2
Coal and other bituminous substances	677	426	-251	-37.1	387	426	39	10.1	10.1
Petroleum and coal products	1,844	2,079	235	12.8	1,940	2,079	139	7.2	7.2
Electricity	149	147	-2	-1.2	172	147	-24	-14.0	-14.0
Forestry products	1,808	1,808	0	0.0	1,862	1,808	-53	-2.9	-2.9
Lumber and sawmill products	732	718	-15	-2.0	716	718	2	0.2	0.2
Other crude wood products	76	80	4	4.8	63	80	17	26.4	26.4
Lumber	452	438	-14	-3.2	466	438	-28	-6.0	-6.0
Other wood fabricated materials	204	200	-4	-1.9	187	200	13	7.0	7.0
Wood pulp and other wood products	499	511	12	2.4	546	511	-35	-6.5	-6.5
Newsprint and other paper and paperboard	577	580	3	0.5	600	580	-20	-3.3	-3.3
Newsprint paper	276	294	18	6.5	305	294	-11	-3.5	-3.5
Other paper and paperboard	301	286	-15	-5.0	295	286	-9	-3.1	-3.1
Industrial goods and materials	10,506	9,258	-1,248	-11.9	9,505	9,258	-248	-2.6	-2.6
Metal ores	1,620	1,418	-202	-12.5	1,319	1,418	99	7.5	7.5
Iron ores, concentrates and scrap	675	557	-119	-17.6	491	557	66	13.5	13.5
Copper ores, concentrates and scrap	350	165	-185	-52.9	245	165	-80	-32.8	-32.8
Nickel ores, concentrates and scrap	243	269	26	10.6	279	269	-10	-3.5	-3.5
Zinc ores, concentrates and scrap	33	19	-14	-43.1	14	19	5	39.9	39.9
Other ores, concentrates and scrap	319	409	90	28.3	291	409	118	40.5	40.5
Chemicals, plastics and fertilizers	2,995	2,751	-244	-8.2	2,694	2,751	57	2.1	2.1
Inorganic chemicals	502	431	-71	-14.1	431	431	0	-0.1	-0.1
Organic chemicals	576	572	-4	-0.7	557	572	15	2.7	2.7
Fertilizers and fertilizer materials	607	410	-196	-32.4	559	410	-148	-26.6	-26.6
Synthetic rubber and plastics	1,010	997	-12	-1.2	895	997	102	11.4	11.4
Other chemical products	301	340	39	13.1	251	340	89	35.6	35.6
Metals and alloys	4,081	3,378	-703	-17.2	3,972	3,378	-594	-15.0	-15.0
Primary iron and steel	50	29	-21	-41.3	52	29	-23	-44.1	-44.1
Steel bars, rods, plates, sheets	326	328	1	0.4	292	328	35	12.1	12.1
Other iron and steel and alloys	264	253	-11	-4.2	229	253	24	10.4	10.4
Aluminum including alloys	590	595	6	1.0	616	595	-21	-3.4	-3.4
Copper and alloys	212	192	-20	-9.4	253	192	-60	-23.9	-23.9
Nickel and alloys	264	250	-14	-5.4	325	250	-76	-23.3	-23.3
Precious metals and alloys	2,172	1,536	-637	-29.3	1,972	1,536	-436	-22.1	-22.1
Zinc and alloys	98	93	-5	-5.5	119	93	-26	-21.7	-21.7
Other non-ferrous metals and alloys	105	103	-3	-2.5	114	103	-12	-10.1	-10.1

Table 2-1 – continued

Exports by commodity groupings, balance of payments basis, seasonally adjusted — Current dollars

	December 2011	January 2012	Change		Year to date				January 2012/ January 2011
					2011	2012	Change		
	millions of dollars		percent		millions of dollars		percent		
Other industrial goods and materials	1,809	1,710	-99	-5.5	1,520	1,710	190	12.5	12.5
Asbestos unmanufactured	0	0	0	0.0	4	0	-4	-100.0	-100.0
Other crude animal products	80	89	9	11.8	65	89	24	37.0	37.0
Other crude non-metallic minerals	292	346	53	18.2	307	346	39	12.6	12.6
Other crude materials, inedible	64	70	6	9.1	63	70	6	9.6	9.6
Metal fabricated basic products	417	397	-20	-4.8	352	397	45	12.8	12.8
Textile fabricated materials	194	187	-7	-3.7	183	187	4	2.2	2.2
Non-metallic mineral basic products	173	173	0	-0.1	160	173	13	7.8	7.8
Other fabricated materials	589	449	-140	-23.7	385	449	64	16.7	16.7
Machinery and equipment	7,524	6,631	-894	-11.9	6,340	6,631	291	4.6	4.6
Industrial and agricultural machinery	1,853	1,812	-42	-2.3	1,490	1,812	321	21.5	21.5
Industrial machinery	1,647	1,618	-29	-1.8	1,332	1,618	286	21.4	21.4
Agricultural machinery includ. tractors	206	194	-13	-6.2	158	194	35	22.5	22.5
Aircraft and other transportation equipment	1,801	1,332	-470	-26.1	1,460	1,332	-128	-8.8	-8.8
Aircraft, engines, parts	1,358	928	-430	-31.6	1,113	928	-185	-16.6	-16.6
Other transportation equipment	443	403	-40	-9.0	347	403	56	16.3	16.3
Other machinery and equipment	3,870	3,487	-382	-9.9	3,390	3,487	98	2.9	2.9
Television, telecommunication equipment	638	620	-18	-2.8	620	620	0	0.0	0.0
Office machines and equipment	389	353	-36	-9.3	354	353	-1	-0.3	-0.3
Other equipment and tools	1,765	1,651	-113	-6.4	1,551	1,651	100	6.5	6.5
Other end products, inedible	1,078	864	-215	-19.9	865	864	-1	-0.2	-0.2
Automotive products	5,830	6,187	358	6.1	5,494	6,187	694	12.6	12.6
Passenger autos and chassis	4,011	4,384	372	9.3	3,854	4,384	529	13.7	13.7
Trucks and other motor vehicles	313	298	-15	-4.7	216	298	82	37.9	37.9
Motor vehicle parts	1,506	1,506	0	0.0	1,423	1,506	83	5.8	5.8
Other consumer goods	1,443	1,352	-91	-6.3	1,427	1,352	-75	-5.2	-5.2
Special transactions trade	294	336	42	14.3	288	336	48	16.5	16.5
Unallocated balance of payments adjustments	517	510	-7	-1.3	485	510	24	5.0	5.0

Table 2-2

Exports by commodity groupings, balance of payments basis, seasonally adjusted — Constant dollars, 2002

	December 2011	January 2012	Change		Year to date				January 2012/ January 2011
					2011	2012	Change		
	millions of dollars		percent		millions of dollars		percent		
Total	34,714	34,660	-54	-0.2	33,548	34,660	1,113	3.3	3.3
Agricultural and fishing products	3,294	3,292	-1	0.0	3,060	3,292	232	7.6	7.6
Wheat	399	349	-50	-12.5	311	349	38	12.4	12.4
Other agricultural and fishing products	2,895	2,943	48	1.7	2,750	2,943	193	7.0	7.0
Live animals	108	108	0	-0.1	129	108	-21	-16.1	-16.1
Fish and fish preparations	478	483	5	1.0	403	483	80	19.9	19.9
Barley	25	29	4	15.4	24	29	4	18.5	18.5
Wheat flour	5	5	0	2.4	6	5	-1	-14.4	-14.4
Other cereals unmilled	49	43	-6	-11.7	49	43	-6	-12.4	-12.4
Other cereal preparations	218	219	1	0.6	207	219	12	6.0	6.0
Meat and meat preparations	413	435	22	5.3	411	435	24	5.8	5.8
Alcoholic beverages	130	131	1	1.0	110	131	21	19.5	19.5
Other food, feed, beverages and tobacco	918	866	-52	-5.7	948	866	-82	-8.6	-8.6
Rapeseed	382	469	87	22.8	283	469	186	65.7	65.7
Other crude vegetable products	169	155	-14	-8.3	181	155	-26	-14.2	-14.2
Energy products	4,867	5,403	536	11.0	5,316	5,403	87	1.6	1.6
Crude petroleum	2,486	2,894	408	16.4	2,578	2,894	316	12.3	12.3
Natural gas	1,196	1,200	3	0.3	1,476	1,200	-277	-18.7	-18.7
Other energy products	1,185	1,309	125	10.5	1,261	1,309	48	3.8	3.8
Coal and other bituminous substances	146	100	-46	-31.4	116	100	-16	-13.6	-13.6
Petroleum and coal products	823	971	148	18.0	957	971	14	1.4	1.4
Electricity	216	238	22	10.2	188	238	50	26.6	26.6
Forestry products	2,252	2,283	31	1.4	2,246	2,283	37	1.7	1.7
Lumber and sawmill products	971	939	-32	-3.3	925	939	14	1.5	1.5
Other crude wood products	83	88	4	5.3	90	88	-3	-2.8	-2.8
Lumber	641	615	-25	-4.0	620	615	-4	-0.7	-0.7
Other wood fabricated materials	248	236	-11	-4.5	215	236	21	9.7	9.7
Wood pulp and other wood products	646	701	55	8.5	628	701	73	11.6	11.6
Newsprint and other paper and paperboard	634	643	8	1.3	693	643	-50	-7.2	-7.2
Newsprint paper	303	326	23	7.5	354	326	-28	-7.8	-7.8
Other paper and paperboard	331	317	-14	-4.4	339	317	-22	-6.5	-6.5
Industrial goods and materials	6,110	5,737	-373	-6.1	5,812	5,737	-75	-1.3	-1.3
Metal ores	703	656	-48	-6.8	558	656	98	17.6	17.6
Iron ores, concentrates and scrap	227	188	-38	-16.9	200	188	-11	-5.7	-5.7
Copper ores, concentrates and scrap	124	55	-69	-55.8	68	55	-13	-19.2	-19.2
Nickel ores, concentrates and scrap	134	138	4	3.3	113	138	25	22.2	22.2
Zinc ores, concentrates and scrap	20	11	-8	-42.9	7	11	5	68.4	68.4
Other ores, concentrates and scrap	199	263	64	32.0	170	263	93	54.4	54.4
Chemicals, plastics and fertilizers	1,970	1,912	-57	-2.9	1,861	1,912	51	2.7	2.7
Inorganic chemicals	207	189	-19	-9.0	182	189	6	3.4	3.4
Organic chemicals	308	306	-3	-0.8	296	306	10	3.5	3.5
Fertilizers and fertilizer materials	211	147	-64	-30.2	225	147	-79	-34.8	-34.8
Synthetic rubber and plastics	914	902	-12	-1.3	859	902	44	5.1	5.1
Other chemical products	329	368	39	11.9	299	368	69	23.2	23.2

Table 2-2 – continued

Exports by commodity groupings, balance of payments basis, seasonally adjusted — Constant dollars, 2002

	December 2011	January 2012	Change		Year to date			January 2012/ January 2011	
					2011	2012	Change		
	millions of dollars		percent		millions of dollars		percent		
Metals and alloys	2,025	1,825	-201	-9.9	2,059	1,825	-234	-11.4	-11.4
Primary iron and steel	27	18	-9	-34.5	35	18	-17	-49.1	-49.1
Steel bars, rods, plates, sheets	250	247	-3	-1.3	247	247	0	0.0	0.0
Other iron and steel and alloys	205	195	-10	-5.0	191	195	3	1.7	1.7
Aluminum including alloys	625	627	2	0.4	593	627	35	5.8	5.8
Copper and alloys	66	59	-7	-10.7	69	59	-10	-14.0	-14.0
Nickel and alloys	137	132	-5	-3.7	135	132	-3	-2.1	-2.1
Precious metals and alloys	595	435	-160	-27.0	674	435	-239	-35.5	-35.5
Zinc and alloys	62	59	-3	-4.7	66	59	-7	-10.1	-10.1
Other non-ferrous metals and alloys	58	53	-5	-8.0	50	53	3	6.8	6.8
Other industrial goods and materials	1,411	1,344	-67	-4.8	1,334	1,344	10	0.7	0.7
Asbestos unmanufactured	0	0	0	0.0	4	0	-4	-100.0	-100.0
Other crude animal products	82	93	11	13.8	70	93	24	33.7	33.7
Other crude non-metallic minerals	203	222	19	9.6	317	222	-95	-30.0	-30.0
Other crude materials, inedible	58	64	6	11.0	57	64	7	13.0	13.0
Metal fabricated basic products	329	315	-14	-4.2	278	315	37	13.3	13.3
Textile fabricated materials	189	185	-5	-2.4	193	185	-8	-4.2	-4.2
Non-metallic mineral basic products	142	146	4	2.6	133	146	13	9.7	9.7
Other fabricated materials	408	319	-90	-22.0	282	319	36	12.9	12.9
Machinery and equipment	8,175	7,277	-898	-11.0	7,101	7,277	175	2.5	2.5
Industrial and agricultural machinery	1,694	1,671	-22	-1.3	1,391	1,671	280	20.1	20.1
Industrial machinery	1,507	1,495	-12	-0.8	1,243	1,495	252	20.3	20.3
Agricultural machinery includ. tractors	187	176	-11	-5.7	148	176	28	19.0	19.0
Aircraft and other transportation equipment	2,132	1,591	-541	-25.4	1,806	1,591	-215	-11.9	-11.9
Aircraft, engines, parts	1,730	1,205	-525	-30.3	1,455	1,205	-250	-17.2	-17.2
Other transportation equipment	402	386	-17	-4.1	351	386	34	9.8	9.8
Other machinery and equipment	4,349	4,014	-335	-7.7	3,904	4,014	110	2.8	2.8
Television, telecommunication equipment	804	777	-26	-3.3	818	777	-40	-4.9	-4.9
Office machines and equipment	1,077	985	-91	-8.5	951	985	35	3.7	3.7
Other equipment and tools	1,682	1,553	-129	-7.7	1,470	1,553	83	5.6	5.6
Other end products, inedible	786	698	-88	-11.2	665	698	33	4.9	4.9
Automotive products	7,679	8,322	643	8.4	7,515	8,322	806	10.7	10.7
Passenger autos and chassis	5,665	6,302	637	11.2	5,676	6,302	626	11.0	11.0
Trucks and other motor vehicles	374	376	2	0.5	265	376	111	41.9	41.9
Motor vehicle parts	1,639	1,643	4	0.2	1,574	1,643	69	4.4	4.4
Other consumer goods	1,360	1,277	-83	-6.1	1,378	1,277	-101	-7.3	-7.3
Special transactions trade	240	275	35	14.6	245	275	30	12.2	12.2
Unallocated balance of payments adjustments	739	795	56	7.6	873	795	-79	-9.0	-9.0

Table 3-1

Domestic exports to selected countries, customs basis, not seasonally adjusted — January

	Agricultural and fishing products	Energy products	Forestry products	Industrial goods	Machinery and equipment	Automotive products	Consumer goods	Special transactions trade	Total
millions of dollars									
United States									
2011	1,352.6	8,646.1	1,067.9	4,866.1	3,274.0	4,145.2	738.6	221.9	24,312.3
2012	1,603.4	9,960.5	999.8	5,113.2	3,371.7	4,800.0	667.0	223.4	26,739.0
Mexico									
2011	42.7	6.7	10.5	67.3	59.7	55.6	4.0	0.3	246.7
2012	167.2	1.8	7.5	88.6	52.3	61.4	4.5	0.3	383.6
Japan									
2011	308.0	123.1	92.4	222.8	41.5	4.6	5.8	1.5	799.7
2012	266.0	111.1	81.4	121.5	49.0	4.3	13.3	1.2	647.9
European Union									
Germany									
2011	11.8	11.5	4.8	72.8	133.6	1.7	17.0	2.6	255.8
2012	10.4	16.0	6.2	83.9	88.2	4.3	20.0	0.6	229.6
France									
2011	9.2	0.3	7.7	56.0	149.4	1.6	17.1	0.8	242.0
2012	10.4	40.9	9.7	46.9	87.1	3.2	25.0	0.7	223.9
United Kingdom									
2011	26.9	11.8	8.9	1,401.6	97.4	5.6	10.4	6.2	1,568.9
2012	19.2	129.2	7.6	1,064.3	150.0	4.2	13.0	5.1	1,392.7
Italy									
2011	19.0	12.9	18.8	46.0	27.2	0.3	6.3	0.1	130.8
2012	21.2	11.5	15.2	31.7	28.7	0.6	7.2	0.0	116.1
Other European Union									
2011	132.1	109.9	12.1	329.7	271.0	9.5	47.6	3.7	915.6
2012	43.2	179.7	22.8	318.1	147.9	11.4	38.7	2.7	764.6
Total									
2011	199.0	146.3	52.4	1,906.1	678.6	18.7	98.4	13.5	3,113.2
2012	104.4	377.3	61.6	1,544.9	501.8	23.7	104.0	9.1	2,726.8
Newly industrialized countries									
South Korea									
2011	67.5	103.5	38.4	101.4	41.0	0.5	4.9	0.6	357.8
2012	24.5	105.2	28.0	92.4	24.8	0.5	3.6	0.5	279.5
Hong Kong									
2011	26.3	0.1	7.0	283.0	19.5	0.4	8.1	1.0	345.4
2012	31.3	0.0	5.2	84.4	18.8	0.5	5.6	0.3	146.2
Taiwan									
2011	12.2	31.2	21.5	77.9	9.6	0.2	1.9	0.1	154.6
2012	16.0	25.2	15.5	40.0	5.1	0.0	1.5	0.1	103.5
Singapore									
2011	3.2	0.5	1.6	7.0	31.6	2.8	2.2	0.5	49.5
2012	4.4	0.3	0.6	23.5	23.2	3.1	3.2	0.0	58.5
Total									
2011	109.2	135.3	68.4	469.2	101.7	3.9	17.2	2.2	907.3
2012	76.3	130.7	49.3	240.4	72.0	4.1	14.0	0.9	587.6
Other countries									
2011	658.9	308.1	471.5	1,170.2	512.6	60.3	82.3	14.3	3,278.2
2012	902.6	243.2	445.9	1,273.3	797.8	114.9	78.8	11.7	3,868.3
Total									
2011	2,670.4	9,365.5	1,763.2	8,701.8	4,668.1	4,288.3	946.4	253.7	32,657.4
2012	3,120.0	10,824.6	1,645.4	8,381.9	4,844.9	5,008.4	881.5	246.7	34,953.4

Table 3-2

Domestic exports to selected countries, customs basis, not seasonally adjusted — Year to date, January to January

	Agricultural and fishing products	Energy products	Forestry products	Industrial goods	Machinery and equipment	Automotive products	Consumer goods	Special transactions trade	Total
millions of dollars									
United States									
2011	1,352.6	8,646.1	1,067.9	4,866.1	3,274.0	4,145.2	738.6	221.9	24,312.3
2012	1,603.4	9,960.5	999.8	5,113.2	3,371.7	4,800.0	667.0	223.4	26,739.0
Mexico									
2011	42.7	6.7	10.5	67.3	59.7	55.6	4.0	0.3	246.7
2012	167.2	1.8	7.5	88.6	52.3	61.4	4.5	0.3	383.6
Japan									
2011	308.0	123.1	92.4	222.8	41.5	4.6	5.8	1.5	799.7
2012	266.0	111.1	81.4	121.5	49.0	4.3	13.3	1.2	647.9
European Union									
Germany									
2011	11.8	11.5	4.8	72.8	133.6	1.7	17.0	2.6	255.8
2012	10.4	16.0	6.2	83.9	88.2	4.3	20.0	0.6	229.6
France									
2011	9.2	0.3	7.7	56.0	149.4	1.6	17.1	0.8	242.0
2012	10.4	40.9	9.7	46.9	87.1	3.2	25.0	0.7	223.9
United Kingdom									
2011	26.9	11.8	8.9	1,401.6	97.4	5.6	10.4	6.2	1,568.9
2012	19.2	129.2	7.6	1,064.3	150.0	4.2	13.0	5.1	1,392.7
Italy									
2011	19.0	12.9	18.8	46.0	27.2	0.3	6.3	0.1	130.8
2012	21.2	11.5	15.2	31.7	28.7	0.6	7.2	0.0	116.1
Other European Union									
2011	132.1	109.9	12.1	329.7	271.0	9.5	47.6	3.7	915.6
2012	43.2	179.7	22.8	318.1	147.9	11.4	38.7	2.7	764.6
Total									
2011	199.0	146.3	52.4	1,906.1	678.6	18.7	98.4	13.5	3,113.2
2012	104.4	377.3	61.6	1,544.9	501.8	23.7	104.0	9.1	2,726.8
Newly industrialized countries									
South Korea									
2011	67.5	103.5	38.4	101.4	41.0	0.5	4.9	0.6	357.8
2012	24.5	105.2	28.0	92.4	24.8	0.5	3.6	0.5	279.5
Hong Kong									
2011	26.3	0.1	7.0	283.0	19.5	0.4	8.1	1.0	345.4
2012	31.3	0.0	5.2	84.4	18.8	0.5	5.6	0.3	146.2
Taiwan									
2011	12.2	31.2	21.5	77.9	9.6	0.2	1.9	0.1	154.6
2012	16.0	25.2	15.5	40.0	5.1	0.0	1.5	0.1	103.5
Singapore									
2011	3.2	0.5	1.6	7.0	31.6	2.8	2.2	0.5	49.5
2012	4.4	0.3	0.6	23.5	23.2	3.1	3.2	0.0	58.5
Total									
2011	109.2	135.3	68.4	469.2	101.7	3.9	17.2	2.2	907.3
2012	76.3	130.7	49.3	240.4	72.0	4.1	14.0	0.9	587.6
Other countries									
2011	658.9	308.1	471.5	1,170.2	512.6	60.3	82.3	14.3	3,278.2
2012	902.6	243.2	445.9	1,273.3	797.8	114.9	78.8	11.7	3,868.3
Total									
2011	2,670.4	9,365.5	1,763.2	8,701.8	4,668.1	4,288.3	946.4	253.7	32,657.4
2012	3,120.0	10,824.6	1,645.4	8,381.9	4,844.9	5,008.4	881.5	246.7	34,953.4

Table 4
Domestic exports by country, customs basis, not seasonally adjusted

	January		January to January		Change
	2011	2012	2011	2012	January to January 2012/ January to January 2011
	millions of dollars				percent
North America					
Greenland	1.1	1.3	1.1	1.3	21.9
Mexico	246.7	383.6	246.7	383.6	55.5
Saint Pierre and Miquelon	0.8	1.4	0.8	1.4	90.3
United States	24,312.3	26,739.0	24,312.3	26,739.0	10.0
Total	24,560.9	27,125.3	24,560.9	27,125.3	10.4
Western Europe					
Andorra	0.0	0.0	0.0	0.0	...
Austria	10.6	27.3	10.6	27.3	158.3
Belgium	162.8	69.6	162.8	69.6	-57.2
Denmark	12.9	15.2	12.9	15.2	18.2
Faeroe Islands	0.1	0.2	0.1	0.2	246.4
Finland	24.4	24.4	24.4	24.4	-0.2
France	242.0	223.9	242.0	223.9	-7.5
Germany	255.8	229.6	255.8	229.6	-10.3
Gibraltar	0.0	0.0	0.0	0.0	-64.2
Greece	4.8	5.8	4.8	5.8	20.4
Iceland	3.4	3.6	3.4	3.6	7.3
Italy	130.8	116.1	130.8	116.1	-11.2
Luxembourg	1.3	8.3	1.3	8.3	546.9
Malta	0.7	0.6	0.7	0.6	-24.8
Netherlands	370.3	448.3	370.3	448.3	21.1
Norway	209.3	214.7	209.3	214.7	2.6
Portugal	11.1	9.6	11.1	9.6	-13.4
Republic of Ireland (Eire)	33.8	17.8	33.8	17.8	-47.3
Spain	131.4	48.0	131.4	48.0	-63.5
Sweden	21.4	22.9	21.4	22.9	6.7
Switzerland	165.8	142.3	165.8	142.3	-14.2
United Kingdom	1,568.9	1,392.7	1,568.9	1,392.7	-11.2
Total	3,361.5	3,020.9	3,361.5	3,020.9	-10.1
Other Europe					
Albania	3.5	6.2	3.5	6.2	76.4
Armenia	1.6	0.2	1.6	0.2	-86.7
Azerbaijan	0.4	0.9	0.4	0.9	145.6
Belarus	0.1	0.0	0.1	0.0	-100.0
Bosnia and Herzegovina	0.0	0.1	0.0	0.1	...
Bulgaria	18.9	17.7	18.9	17.7	-6.7
Croatia	0.6	1.2	0.6	1.2	98.3
Czech Republic	6.4	6.6	6.4	6.6	3.2
Estonia	55.0	0.8	55.0	0.8	-98.6
Georgia	1.6	1.2	1.6	1.2	-21.1
Hungary	6.6	5.8	6.6	5.8	-11.5
Kazakhstan	6.9	3.2	6.9	3.2	-53.4
Kyrgyzstan	0.1	1.8	0.1	1.8	...
Latvia	22.4	6.7	22.4	6.7	-70.2
Lithuania	5.5	7.6	5.5	7.6	36.8
Macedonia (Former Yugoslav Republic of Macedonia)	1.0	0.4	1.0	0.4	-59.1
Montenegro	0.0	0.0	0.0	0.0	-95.5
Poland	10.4	15.9	10.4	15.9	52.2
Republic of Moldova	0.1	0.0	0.1	0.0	-100.0
Romania	2.5	2.5	2.5	2.5	-2.5
Russian Federation	72.1	117.8	72.1	117.8	63.3
Serbia	0.3	0.5	0.3	0.5	39.7
Slovakia	1.5	2.5	1.5	2.5	65.6
Slovenia	0.4	0.5	0.4	0.5	35.7
Tajikistan	0.0	0.0	0.0	0.0	...
Turkmenistan	1.0	0.4	1.0	0.4	-58.7
Ukraine	10.9	8.2	10.9	8.2	-24.3
Uzbekistan	0.4	0.0	0.4	0.0	-100.0
Total	230.3	208.7	230.3	208.7	-9.4

Table 4 – continued

Domestic exports by country, customs basis, not seasonally adjusted

	January		January to January		Change
	2011	2012	2011	2012	January to January 2012/ January to January 2011
	millions of dollars				percent
Middle East					
Bahrain	2.1	4.5	2.1	4.5	108.8
Cyprus	0.5	0.3	0.5	0.3	-38.2
Egypt	64.4	10.1	64.4	10.1	-84.3
Eritrea	0.0	0.2	0.0	0.2	402.6
Ethiopia	1.2	0.5	1.2	0.5	-60.8
Iran	4.2	3.1	4.2	3.1	-27.8
Iraq	2.7	54.1	2.7	54.1	...
Israel	27.4	20.7	27.4	20.7	-24.4
Jordan	5.5	4.2	5.5	4.2	-23.9
Kuwait	8.6	5.8	8.6	5.8	-32.9
Lebanon	2.6	3.6	2.6	3.6	36.9
Libya	34.0	1.2	34.0	1.2	-96.5
Oman	5.2	8.2	5.2	8.2	59.6
Qatar	3.6	38.7	3.6	38.7	970.8
Saudi Arabia	41.5	189.3	41.5	189.3	355.7
Somalia	0.2	0.0	0.2	0.0	-100.0
Sudan	0.5	0.1	0.5	0.1	-83.2
Syria	3.4	1.7	3.4	1.7	-51.3
Turkey	74.7	51.8	74.7	51.8	-30.6
United Arab Emirates	115.0	87.0	115.0	87.0	-24.3
Yemen	0.5	0.8	0.5	0.8	63.5
Total	398.0	485.7	398.0	485.7	22.0
Other Africa					
Algeria	7.0	2.1	7.0	2.1	-70.5
Angola	4.8	3.8	4.8	3.8	-20.0
Antarctica	0.0	0.0	0.0	0.0	...
Benin	0.4	0.6	0.4	0.6	44.2
Botswana	0.1	0.0	0.1	0.0	-58.0
Burkina Faso	0.5	3.8	0.5	3.8	727.7
Burundi	0.0	0.1	0.0	0.1	694.2
Cameroon	0.5	0.5	0.5	0.5	10.1
Cape Verde	0.7	0.0	0.7	0.0	-94.7
Central African Republic	0.0	0.0	0.0	0.0	-100.0
Chad	0.1	0.1	0.1	0.1	-7.9
Comoros	0.0	0.0	0.0	0.0	...
Congo	0.7	1.7	0.7	1.7	152.7
Democratic Republic of the Congo	0.7	1.0	0.7	1.0	41.2
Djibouti	0.1	0.0	0.1	0.0	-84.2
Equatorial Guinea	0.4	0.5	0.4	0.5	17.2
Gabon	2.6	0.9	2.6	0.9	-66.2
Gambia	0.1	0.0	0.1	0.0	-46.2
Ghana	4.4	17.2	4.4	17.2	287.6
Guinea	1.1	2.0	1.1	2.0	86.0
Guinea-Bissau	0.0	0.0	0.0	0.0	-100.0
Ivory Coast	0.6	2.9	0.6	2.9	411.0
Kenya	2.5	3.7	2.5	3.7	46.0
Lesotho	0.0	0.0	0.0	0.0	0.0
Liberia	1.8	0.5	1.8	0.5	-71.1
Madagascar	0.5	0.9	0.5	0.9	66.3
Malawi	0.3	0.2	0.3	0.2	-31.1
Mali	0.5	3.4	0.5	3.4	622.4
Mauritania	3.3	0.2	3.3	0.2	-92.8
Mauritius	0.5	0.3	0.5	0.3	-42.4
Morocco	13.2	16.3	13.2	16.3	23.8
Mozambique	0.5	5.7	0.5	5.7	980.7
Namibia	0.6	3.1	0.6	3.1	463.1
Niger	0.2	0.3	0.2	0.3	45.4
Nigeria	6.7	10.6	6.7	10.6	57.3
Rwanda	0.1	0.1	0.1	0.1	1.0
Senegal	0.8	2.7	0.8	2.7	224.0
Seychelles	0.1	0.3	0.1	0.3	437.5
Sierra Leone	0.4	0.4	0.4	0.4	8.4
South Africa	21.8	65.1	21.8	65.1	198.8
Swaziland	0.1	0.0	0.1	0.0	-82.4
Togo	0.2	1.6	0.2	1.6	789.3

Table 4 – continued

Domestic exports by country, customs basis, not seasonally adjusted

	January		January to January		Change
	2011	2012	2011	2012	January to January 2012/ January to January 2011
	millions of dollars				percent
Tunisia	2.0	28.3	2.0	28.3	...
Uganda	0.5	0.4	0.5	0.4	-12.0
United Republic of Tanzania	1.9	3.3	1.9	3.3	76.7
Zambia	2.2	1.6	2.2	1.6	-25.3
Zimbabwe	0.2	0.1	0.2	0.1	-48.4
Total	85.6	186.5	85.6	186.5	117.8
Other Asia					
Afghanistan	2.9	2.4	2.9	2.4	-16.3
Bangladesh	15.8	91.6	15.8	91.6	478.7
Bhutan	0.0	0.0	0.0	0.0	-100.0
Brunei Darussalam	0.2	0.3	0.2	0.3	74.9
Cambodia	0.4	0.4	0.4	0.4	-19.2
China	973.0	1,248.4	973.0	1,248.4	28.3
Hong Kong	345.4	146.2	345.4	146.2	-57.7
India	141.3	92.9	141.3	92.9	-34.3
Indonesia	138.2	109.7	138.2	109.7	-20.6
Japan	799.7	647.9	799.7	647.9	-19.0
Laos	0.1	1.0	0.1	1.0	...
Macao	0.2	0.7	0.2	0.7	202.5
Malaysia	39.8	89.8	39.8	89.8	125.6
Maldives	0.2	0.5	0.2	0.5	153.4
Mongolia	3.3	2.6	3.3	2.6	-22.0
Myanmar	0.0	0.0	0.0	0.0	-100.0
Nepal	0.0	0.0	0.0	0.0	-87.2
North Korea	1.1	0.1	1.1	0.1	-90.7
Pakistan	60.7	135.9	60.7	135.9	124.0
Philippines	42.6	26.1	42.6	26.1	-38.6
Singapore	49.5	58.5	49.5	58.5	18.0
South Korea	357.8	279.5	357.8	279.5	-21.9
Sri Lanka	5.0	27.2	5.0	27.2	448.0
Taiwan	154.6	103.5	154.6	103.5	-33.0
Thailand	140.9	33.8	140.9	33.8	-76.0
Viet Nam	30.3	23.5	30.3	23.5	-22.5
Total	3,302.9	3,122.2	3,302.9	3,122.2	-5.5
Oceania					
American Samoa	0.1	0.1	0.1	0.1	-17.2
Australia	136.9	236.2	136.9	236.2	72.5
Christmas Island	0.0	0.1	0.0	0.1	...
Cocos (Keeling) Islands	0.0	0.1	0.0	0.1	...
Fiji	0.1	5.2	0.1	5.2	...
French Polynesia	0.4	0.2	0.4	0.2	-45.3
Guam	0.3	0.1	0.3	0.1	-68.0
Kiribati	0.1	0.0	0.1	0.0	-100.0
New Caledonia	0.8	6.1	0.8	6.1	638.9
New Zealand	24.2	23.9	24.2	23.9	-1.4
Niue	0.0	0.0	0.0	0.0	...
Papua New Guinea	0.3	2.1	0.3	2.1	510.6
Pitcairn	0.0	0.0	0.0	0.0	-100.0
Samoa	0.0	0.0	0.0	0.0	...
Solomon Islands	0.0	0.1	0.0	0.1	...
United States Minor Outlying Islands	0.7	1.0	0.7	1.0	30.0
Vanuatu	0.0	0.1	0.0	0.1	497.2
Total	164.0	275.4	164.0	275.4	67.9
South America					
Argentina	83.4	19.3	83.4	19.3	-76.9
Bolivia	1.1	0.6	1.1	0.6	-43.8
Brazil	156.3	142.4	156.3	142.4	-8.9
Chile	53.2	87.6	53.2	87.6	64.6
Colombia	39.5	41.3	39.5	41.3	4.8
Ecuador	26.9	10.7	26.9	10.7	-60.2
Guyana	2.0	0.9	2.0	0.9	-54.2
Paraguay	0.7	0.2	0.7	0.2	-69.0
Peru	39.2	20.6	39.2	20.6	-47.4
Suriname	0.5	1.0	0.5	1.0	100.3
Uruguay	1.9	1.6	1.9	1.6	-13.8

Table 4 – continued

Domestic exports by country, customs basis, not seasonally adjusted

	January		January to January		Change
	2011	2012	2011	2012	January to January 2012/ January to January 2011
	millions of dollars				percent
Venezuela	26.2	50.9	26.2	50.9	94.5
Total	430.7	377.2	430.7	377.2	-12.4
Central America Antilles					
Anguilla	0.0	0.0	0.0	0.0	9.0
Antigua and Barbuda	0.3	2.5	0.3	2.5	649.0
Aruba	0.2	0.2	0.2	0.2	57.6
Bahamas	23.3	2.4	23.3	2.4	-89.6
Barbados	2.6	2.1	2.6	2.1	-17.4
Belize	0.3	0.5	0.3	0.5	69.1
Bermuda	1.9	1.3	1.9	1.3	-32.6
British Virgin Islands	0.1	0.1	0.1	0.1	51.6
Cayman Islands	0.2	0.4	0.2	0.4	94.3
Costa Rica	6.4	7.3	6.4	7.3	13.1
Cuba	25.4	37.8	25.4	37.8	49.0
Dominica	0.1	0.4	0.1	0.4	272.7
Dominican Republic	13.1	7.4	13.1	7.4	-43.7
El Salvador	3.3	2.2	3.3	2.2	-33.1
Grenada	0.3	0.5	0.3	0.5	80.7
Guatemala	6.1	4.4	6.1	4.4	-27.6
Haiti	1.4	2.2	1.4	2.2	51.8
Honduras	1.9	1.1	1.9	1.1	-43.0
Jamaica	6.8	9.2	6.8	9.2	34.5
Montserrat	0.0	0.0	0.0	0.0	...
Netherlands Antilles	1.4	33.6	1.4	33.6	...
Nicaragua	1.8	1.1	1.8	1.1	-38.5
Panama	5.2	6.0	5.2	6.0	15.7
Saint Kitts and Nevis	0.6	0.4	0.6	0.4	-33.1
Saint Lucia	0.9	0.7	0.9	0.7	-22.1
Saint Vincent and the Grenadines	0.4	0.4	0.4	0.4	-10.8
Trinidad and Tobago	19.5	27.2	19.5	27.2	39.8
Turks and Caicos Islands	0.1	0.1	0.1	0.1	-2.1
Total	123.5	151.5	123.5	151.5	22.6
All countries	32,657.4	34,953.4	32,657.4	34,953.4	7.0

Table 5-1

Exports by province of origin, customs basis, not seasonally adjusted — January

	Agricultural and fishing products	Energy products	Forestry products	Industrial goods	Machinery and equipment	Automotive products	Consumer goods	Special transactions trade	Total
millions of dollars									
Domestic exports									
Newfoundland and Labrador									
2011	20.9	754.5	10.8	108.9	3.5	0.1	0.1	2.0	900.8
2012	25.2	854.7	12.9	123.8	4.1	0.4	0.1	1.8	1,022.8
Prince Edward Island									
2011	33.7	0.0	0.1	1.4	5.7	0.1	2.7	3.3	47.1
2012	35.1	0.0	0.0	2.0	13.0	0.6	3.6	6.9	61.2
Nova Scotia									
2011	68.5	93.0	56.3	41.2	102.3	5.7	4.7	3.0	374.8
2012	76.3	12.1	24.8	47.2	110.0	5.4	4.0	2.8	282.8
New Brunswick									
2011	87.9	904.1	105.0	78.0	24.1	4.3	10.9	3.2	1,217.5
2012	107.7	862.9	106.0	56.5	23.3	5.0	10.4	2.8	1,174.6
Quebec									
2011	406.3	308.7	473.7	1,734.2	1,409.0	128.6	243.2	63.8	4,767.4
2012	391.5	401.5	452.7	1,697.7	1,399.5	164.2	279.3	62.0	4,848.3
Ontario									
2011	575.3	247.3	229.2	4,203.8	2,403.1	4,032.8	607.7	114.2	12,413.4
2012	652.4	275.7	200.4	4,202.4	2,383.3	4,702.1	487.4	109.8	13,013.5
Manitoba									
2011	269.9	46.9	18.7	202.7	170.6	34.8	24.3	20.0	787.9
2012	350.2	104.2	19.8	246.0	195.3	43.4	44.3	21.8	1,025.0
Saskatchewan									
2011	561.4	692.3	21.1	756.2	49.1	3.9	1.5	3.9	2,089.6
2012	682.1	1,339.4	20.4	615.1	70.7	4.0	1.7	3.5	2,736.8
Alberta									
2011	502.5	5,654.5	156.5	823.5	274.4	55.3	11.0	20.4	7,498.1
2012	639.4	6,325.5	142.6	881.7	368.9	58.3	9.3	20.6	8,446.3
British Columbia									
2011	143.8	664.2	691.8	543.1	226.1	22.7	40.1	19.8	2,351.7
2012	159.9	648.6	665.9	495.5	275.0	25.0	41.4	14.5	2,325.9
Yukon, Northwest Territories and Nunavut ¹									
2011	0.1	0.0	0.0	208.8	0.2	0.0	0.1	0.0	209.2
2012	0.2	0.0	0.0	14.0	1.8	0.1	0.0	0.0	16.1
Total									
2011	2,670.4	9,365.5	1,763.2	8,701.8	4,668.1	4,288.3	946.4	253.7	32,657.4
2012	3,120.0	10,824.6	1,645.4	8,381.9	4,844.9	5,008.4	881.5	246.7	34,953.4
Re-exports									
2011	61.4	35.3	5.2	379.6	793.7	86.2	162.9	605.5	2,129.8
2012	80.6	45.2	6.5	260.1	936.0	101.0	205.0	683.6	2,318.1
Total exports									
2011	2,731.8	9,400.8	1,768.3	9,081.4	5,461.9	4,374.6	1,109.2	859.2	34,787.2
2012	3,200.5	10,869.8	1,652.0	8,642.0	5,780.9	5,109.5	1,086.6	930.2	37,271.5

1. Data for the current month do not include some exports from the Harmonized System, Chapter 71, "Natural/cultured pearls, precious stones and metals, coins, etc." for reasons relating to timing.

Table 5-2

Exports by province of origin, customs basis, not seasonally adjusted — Year to date, January to January

	Agricultural and fishing products	Energy products	Forestry products	Industrial goods	Machinery and equipment	Automotive products	Consumer goods	Special transactions trade	Total
millions of dollars									
Domestic exports									
Newfoundland and Labrador									
2011	20.9	754.5	10.8	108.9	3.5	0.1	0.1	2.0	900.8
2012	25.2	854.7	12.9	123.8	4.1	0.4	0.1	1.8	1,022.8
Prince Edward Island									
2011	33.7	0.0	0.1	1.4	5.7	0.1	2.7	3.3	47.1
2012	35.1	0.0	0.0	2.0	13.0	0.6	3.6	6.9	61.2
Nova Scotia									
2011	68.5	93.0	56.3	41.2	102.3	5.7	4.7	3.0	374.8
2012	76.3	12.1	24.8	47.2	110.0	5.4	4.0	2.8	282.8
New Brunswick									
2011	87.9	904.1	105.0	78.0	24.1	4.3	10.9	3.2	1,217.5
2012	107.7	862.9	106.0	56.5	23.3	5.0	10.4	2.8	1,174.6
Quebec									
2011	406.3	308.7	473.7	1,734.2	1,409.0	128.6	243.2	63.8	4,767.4
2012	391.5	401.5	452.7	1,697.7	1,399.5	164.2	279.3	62.0	4,848.3
Ontario									
2011	575.3	247.3	229.2	4,203.8	2,403.1	4,032.8	607.7	114.2	12,413.4
2012	652.4	275.7	200.4	4,202.4	2,383.3	4,702.1	487.4	109.8	13,013.5
Manitoba									
2011	269.9	46.9	18.7	202.7	170.6	34.8	24.3	20.0	787.9
2012	350.2	104.2	19.8	246.0	195.3	43.4	44.3	21.8	1,025.0
Saskatchewan									
2011	561.4	692.3	21.1	756.2	49.1	3.9	1.5	3.9	2,089.6
2012	682.1	1,339.4	20.4	615.1	70.7	4.0	1.7	3.5	2,736.8
Alberta									
2011	502.5	5,654.5	156.5	823.5	274.4	55.3	11.0	20.4	7,498.1
2012	639.4	6,325.5	142.6	881.7	368.9	58.3	9.3	20.6	8,446.3
British Columbia									
2011	143.8	664.2	691.8	543.1	226.1	22.7	40.1	19.8	2,351.7
2012	159.9	648.6	665.9	495.5	275.0	25.0	41.4	14.5	2,325.9
Yukon, Northwest Territories and Nunavut ¹									
2011	0.1	0.0	0.0	208.8	0.2	0.0	0.1	0.0	209.2
2012	0.2	0.0	0.0	14.0	1.8	0.1	0.0	0.0	16.1
Total									
2011	2,670.4	9,365.5	1,763.2	8,701.8	4,668.1	4,288.3	946.4	253.7	32,657.4
2012	3,120.0	10,824.6	1,645.4	8,381.9	4,844.9	5,008.4	881.5	246.7	34,953.4
Re-exports									
2011	61.4	35.3	5.2	379.6	793.7	86.2	162.9	605.5	2,129.8
2012	80.6	45.2	6.5	260.1	936.0	101.0	205.0	683.6	2,318.1
Total exports									
2011	2,731.8	9,400.8	1,768.3	9,081.4	5,461.9	4,374.6	1,109.2	859.2	34,787.2
2012	3,200.5	10,869.8	1,652.0	8,642.0	5,780.9	5,109.5	1,086.6	930.2	37,271.5

1. Data for the current month do not include some exports from the Harmonized System Chapter 71, "Natural/cultured pearls, precious stones and metals, coins, etc." for reasons relating to timing.

Table 6-1

Imports by commodity groupings, balance of payments basis, seasonally adjusted — Current dollars

	December 2011	January 2012	Change		Year to date			January 2012/ January 2011	
					2011	2012	Change		
	millions of dollars		percent		millions of dollars		percent		
Total	39,560	39,342	-218	-0.6	36,698	39,342	2,643	7.2	7.2
Agricultural and fishing products	2,818	2,776	-43	-1.5	2,614	2,776	162	6.2	6.2
Fruits and vegetables	760	758	-2	-0.2	728	758	29	4.0	4.0
Fresh fruits and berries	275	263	-12	-4.4	257	263	6	2.2	2.2
Dried fruits, fruits and fruit preparations	133	133	-1	-0.6	129	133	4	2.9	2.9
Fresh vegetables	179	187	9	5.0	184	187	3	1.7	1.7
Other vegetables and vegetable preparations	173	175	2	1.4	158	175	17	10.7	10.7
Other agricultural and fishing products	2,059	2,018	-41	-2.0	1,885	2,018	133	7.0	7.0
Live animals	18	18	0	-1.9	17	18	1	7.3	7.3
Meat and meat preparations	234	230	-4	-1.7	187	230	43	22.8	22.8
Fish and marine animals	199	192	-7	-3.6	201	192	-9	-4.7	-4.7
Cocoa, coffee, tea and other food preparations	499	501	2	0.4	454	501	48	10.5	10.5
Dairy produce, eggs and honey	54	52	-2	-2.9	50	52	2	3.6	3.6
Corn (maize) shelled	28	34	6	21.6	28	34	6	20.4	20.4
Other cereals and cereal preparations	197	203	7	3.3	176	203	28	15.8	15.8
Sugar and sugar preparations	169	168	-1	-0.8	170	168	-2	-1.3	-1.3
Fodder, feed, excluding unmilled cereal	126	119	-7	-5.4	122	119	-3	-2.2	-2.2
Beverages	335	321	-14	-4.3	316	321	5	1.7	1.7
Tobacco	37	30	-7	-17.8	26	30	5	18.2	18.2
Crude vegetable products	162	148	-14	-8.4	138	148	10	7.4	7.4
Cotton	1	1	0	37.0	1	1	0	3.3	3.3
Energy products	4,461	4,199	-262	-5.9	3,963	4,199	236	5.9	5.9
Crude petroleum	2,441	2,383	-57	-2.3	1,980	2,383	404	20.4	20.4
Other energy products	2,020	1,815	-204	-10.1	1,984	1,815	-168	-8.5	-8.5
Coal and other related products	469	418	-51	-10.9	434	418	-17	-3.8	-3.8
Petroleum and coal products	1,551	1,398	-153	-9.9	1,550	1,398	-152	-9.8	-9.8
Forestry products	230	223	-7	-3.1	206	223	17	8.1	8.1
Forestry products	230	223	-7	-3.1	206	223	17	8.1	8.1
Crude wood products	35	30	-5	-13.6	33	30	-3	-9.8	-9.8
Wood fabricated materials	195	193	-2	-1.2	173	193	20	11.6	11.6
Industrial goods and materials	8,566	8,239	-327	-3.8	7,644	8,239	595	7.8	7.8
Metals and metal ores	3,458	3,158	-300	-8.7	2,978	3,158	180	6.0	6.0
Metals in ores, concentrates and scrap	654	702	48	7.3	630	702	71	11.3	11.3
Steel bars, rods, plates, sheets	619	648	29	4.7	554	648	93	16.8	16.8
Other iron and steel products	472	460	-12	-2.6	357	460	103	28.8	28.8
Precious metals including alloys	1,332	983	-348	-26.2	1,066	983	-83	-7.8	-7.8
Other non-ferrous metals and alloys	382	366	-16	-4.2	371	366	-5	-1.2	-1.2
Chemicals and plastics	2,785	2,732	-53	-1.9	2,536	2,732	196	7.7	7.7
Organic chemicals	686	601	-85	-12.4	586	601	15	2.6	2.6
Plastic materials	967	965	-3	-0.3	869	965	96	11.0	11.0
Other chemicals and related products	1,131	1,166	35	3.1	1,081	1,166	85	7.8	7.8
Other industrial goods and materials	2,323	2,348	25	1.1	2,129	2,348	219	10.3	10.3
Crude animal products	33	43	9	28.2	25	43	18	71.4	71.4
Wool and man-made fibres	22	23	1	5.9	21	23	2	7.8	7.8
Crude non-metallic minerals	77	60	-17	-21.7	70	60	-9	-13.2	-13.2
Textile fabricated materials	211	225	13	6.3	199	225	25	12.8	12.8
Metal fabricated basic products	1,008	996	-11	-1.1	872	996	125	14.3	14.3
Rubber fabricated materials	105	105	0	0.2	94	105	11	11.7	11.7
Oils, fats, animal and vegetable	108	100	-8	-7.3	96	100	4	4.1	4.1
Non-metallic minerals	314	337	24	7.6	302	337	35	11.7	11.7
Other fabricated materials	446	459	13	2.9	450	459	9	1.9	1.9

Table 6-1 – continued

Imports by commodity groupings, balance of payments basis, seasonally adjusted — Current dollars

	December 2011	January 2012	Change		Year to date			January 2012/ January 2011	
					2011	2012	Change		
	millions of dollars		percent		millions of dollars		percent		
Machinery and equipment	10,850	10,665	-185	-1.7	10,015	10,665	650	6.5	6.5
Industrial and agricultural machinery	3,203	3,137	-66	-2.1	2,653	3,137	484	18.2	18.2
Engines, turbines and electric motors	351	391	40	11.4	325	391	67	20.5	20.5
Drilling mining machinery	184	205	20	11.0	157	205	47	29.9	29.9
Excavating machinery	373	315	-58	-15.5	263	315	52	19.7	19.7
Metal working machinery	189	175	-14	-7.4	173	175	2	1.3	1.3
Other industrial machinery	1,651	1,605	-47	-2.8	1,364	1,605	241	17.7	17.7
Agricultural machinery including tractors	454	446	-8	-1.8	371	446	75	20.4	20.4
Aircraft and other transportation equipment	1,188	1,182	-6	-0.5	1,398	1,182	-215	-15.4	-15.4
Aircraft, engines, parts	718	681	-36	-5.1	976	681	-294	-30.2	-30.2
Other transportation equipment and parts	471	501	31	6.5	422	501	79	18.8	18.8
Office machines and equipment	1,185	1,101	-84	-7.1	1,092	1,101	9	0.8	0.8
Other machinery and equipment	5,274	5,246	-29	-0.5	4,873	5,246	373	7.6	7.6
Other communication and related equipment	1,936	1,887	-50	-2.6	1,792	1,887	95	5.3	5.3
Other equipment and tools	3,338	3,359	21	0.6	3,081	3,359	278	9.0	9.0
Automotive products	6,150	6,578	428	7.0	6,171	6,578	406	6.6	6.6
Passenger autos and chassis	1,791	2,048	257	14.3	1,906	2,048	142	7.4	7.4
Trucks and other motor vehicles	1,462	1,558	97	6.6	1,469	1,558	89	6.1	6.1
Motor vehicle parts	2,897	2,971	74	2.6	2,796	2,971	175	6.3	6.3
Other consumer goods	5,162	5,051	-111	-2.2	4,853	5,051	198	4.1	4.1
Apparel and footwear	1,051	1,040	-11	-1.1	991	1,040	48	4.9	4.9
Apparel and apparel accessories	868	856	-12	-1.4	822	856	34	4.1	4.1
Footwear	183	183	1	0.3	169	183	14	8.5	8.5
Miscellaneous consumer goods	4,111	4,011	-100	-2.4	3,862	4,011	149	3.9	3.9
Television, radios, phonographs	139	139	0	-0.3	131	139	8	6.0	6.0
Printed matter	266	276	10	3.8	281	276	-5	-1.8	-1.8
Watches, sporting goods and toys	450	469	19	4.2	516	469	-47	-9.1	-9.1
House furnishings	784	778	-7	-0.8	713	778	65	9.1	9.1
Photographic goods	265	211	-54	-20.4	226	211	-16	-7.0	-7.0
Miscellaneous end products	2,207	2,139	-68	-3.1	1,994	2,139	145	7.3	7.3
Special transactions trade	462	774	312	67.6	451	774	324	71.8	71.8
Unallocated balance of payments adjustments	861	837	-24	-2.8	781	837	56	7.2	7.2

Table 6-2

Imports by commodity groupings, balance of payments basis, seasonally adjusted — Constant dollars, 2002

	December 2011	January 2012	Change		Year to date			January 2012/ January 2011	
					2011	2012	Change		
	millions of dollars		percent		millions of dollars		percent		
Total	43,081	43,201	120	0.3	41,909	43,201	1,292	3.1	3.1
Agricultural and fishing products	2,759	2,687	-72	-2.6	2,586	2,687	100	3.9	3.9
Fruits and vegetables	737	759	22	3.0	733	759	27	3.6	3.6
Fresh fruits and berries	280	278	-2	-0.9	266	278	11	4.3	4.3
Dried fruits, fruits and fruit preparations	114	111	-3	-2.6	126	111	-15	-12.2	-12.2
Fresh vegetables	197	219	21	10.8	186	219	33	17.5	17.5
Other vegetables and vegetable preparations	146	152	6	4.3	154	152	-2	-1.3	-1.3
Other agricultural and fishing products	2,022	1,927	-95	-4.7	1,853	1,927	74	4.0	4.0
Live animals	16	16	0	-0.4	17	16	-1	-4.8	-4.8
Meat and meat preparations	204	199	-5	-2.4	178	199	21	11.5	11.5
Fish and marine animals	248	213	-35	-14.1	271	213	-58	-21.4	-21.4
Cocoa, coffee, tea and other food preparations	580	543	-38	-6.5	432	543	111	25.7	25.7
Dairy produce, eggs and honey	46	49	3	6.5	52	49	-3	-5.0	-5.0
Corn (maize) shelled	16	19	2	15.0	19	19	0	0.2	0.2
Other cereals and cereal preparations	164	178	14	8.3	137	178	41	29.9	29.9
Sugar and sugar preparations	159	151	-8	-5.0	171	151	-20	-11.6	-11.6
Fodder, feed, excluding unmilled cereal	112	103	-9	-8.2	102	103	1	1.0	1.0
Beverages	306	292	-14	-4.5	314	292	-22	-6.9	-6.9
Tobacco	41	34	-7	-17.0	31	34	3	10.6	10.6
Crude vegetable products	128	130	2	1.5	130	130	0	0.3	0.3
Cotton	1	1	0	14.8	1	1	0	-23.5	-23.5
Energy products	1,892	1,773	-119	-6.3	1,984	1,773	-211	-10.6	-10.6
Crude petroleum	783	710	-73	-9.3	745	710	-35	-4.6	-4.6
Other energy products	1,109	1,063	-46	-4.2	1,239	1,063	-176	-14.2	-14.2
Coal and other related products	490	475	-14	-2.9	457	475	18	4.0	4.0
Petroleum and coal products	619	587	-32	-5.2	782	587	-195	-24.9	-24.9
Forestry products	302	294	-8	-2.6	276	294	17	6.3	6.3
Forestry products	302	294	-8	-2.6	276	294	17	6.3	6.3
Crude wood products	48	43	-6	-11.6	47	43	-4	-8.6	-8.6
Wood fabricated materials	254	251	-2	-0.9	230	251	21	9.3	9.3
Industrial goods and materials	6,912	6,923	11	0.2	6,793	6,923	130	1.9	1.9
Metals and metal ores	2,040	2,115	75	3.7	1,994	2,115	121	6.1	6.1
Metals in ores, concentrates and scrap	355	350	-5	-1.3	311	350	39	12.6	12.6
Steel bars, rods, plates, sheets	462	489	28	6.0	480	489	10	2.0	2.0
Other iron and steel products	304	303	-1	-0.5	261	303	41	15.8	15.8
Precious metals including alloys	550	619	69	12.5	591	619	28	4.8	4.8
Other non-ferrous metals and alloys	369	354	-15	-4.2	352	354	2	0.6	0.6
Chemicals and plastics	2,384	2,271	-113	-4.7	2,341	2,271	-70	-3.0	-3.0
Organic chemicals	432	374	-58	-13.5	393	374	-19	-4.8	-4.8
Plastic materials	1,014	927	-87	-8.6	907	927	20	2.2	2.2
Other chemicals and related products	938	971	32	3.4	1,041	971	-71	-6.8	-6.8
Other industrial goods and materials	2,488	2,537	49	2.0	2,458	2,537	79	3.2	3.2
Crude animal products	31	43	12	37.8	26	43	17	64.1	64.1
Wool and man-made fibres	25	27	2	9.5	27	27	0	-0.9	-0.9
Crude non-metallic minerals	66	54	-11	-17.4	59	54	-5	-8.1	-8.1
Textile fabricated materials	268	279	11	4.3	268	279	11	4.0	4.0
Metal fabricated basic products	1,010	1,012	2	0.2	954	1,012	59	6.1	6.1
Rubber fabricated materials	114	115	1	0.9	117	115	-2	-1.8	-1.8
Oils, fats, animal and vegetable	86	89	3	3.4	88	89	1	0.9	0.9
Non-metallic minerals	371	391	21	5.6	383	391	8	2.1	2.1
Other fabricated materials	518	527	8	1.6	535	527	-8	-1.5	-1.5

Table 6-2 – continued

Imports by commodity groupings, balance of payments basis, seasonally adjusted — Constant dollars, 2002

	December 2011	January 2012	Change		Year to date			January 2012/ January 2011	
					2011	2012	Change		
	millions of dollars		percent		millions of dollars		percent		
Machinery and equipment	16,105	15,768	-337	-2.1	15,133	15,768	635	4.2	4.2
Industrial and agricultural machinery	3,781	3,710	-70	-1.9	3,337	3,710	373	11.2	11.2
Engines, turbines and electric motors	424	468	44	10.3	412	468	56	13.5	13.5
Drilling mining machinery	199	221	22	11.0	182	221	39	21.5	21.5
Excavating machinery	433	369	-64	-14.8	344	369	25	7.3	7.3
Metal working machinery	237	217	-19	-8.2	229	217	-12	-5.1	-5.1
Other industrial machinery	1,923	1,878	-46	-2.4	1,685	1,878	193	11.4	11.4
Agricultural machinery including tractors	565	558	-7	-1.2	485	558	72	14.9	14.9
Aircraft and other transportation equipment	1,330	1,355	25	1.9	1,675	1,355	-320	-19.1	-19.1
Aircraft, engines, parts	849	841	-7	-0.9	1,204	841	-363	-30.2	-30.2
Other transportation equipment and parts	481	514	33	6.8	471	514	43	9.0	9.0
Office machines and equipment	3,439	3,061	-378	-11.0	2,792	3,061	269	9.6	9.6
Other machinery and equipment	7,555	7,641	86	1.1	7,329	7,641	313	4.3	4.3
Other communication and related equipment	3,222	3,292	70	2.2	3,138	3,292	153	4.9	4.9
Other equipment and tools	4,334	4,349	16	0.4	4,190	4,349	159	3.8	3.8
Automotive products	7,537	8,064	527	7.0	7,716	8,064	348	4.5	4.5
Passenger autos and chassis	2,074	2,372	298	14.4	2,195	2,372	177	8.1	8.1
Trucks and other motor vehicles	1,698	1,807	109	6.4	1,732	1,807	75	4.3	4.3
Motor vehicle parts	3,765	3,885	120	3.2	3,788	3,885	96	2.5	2.5
Other consumer goods	6,483	6,308	-175	-2.7	6,445	6,308	-137	-2.1	-2.1
Apparel and footwear	1,398	1,384	-14	-1.0	1,453	1,384	-69	-4.7	-4.7
Apparel and apparel accessories	1,153	1,139	-13	-1.2	1,212	1,139	-73	-6.0	-6.0
Footwear	245	245	0	-0.2	240	245	4	1.8	1.8
Miscellaneous consumer goods	5,085	4,924	-161	-3.2	4,992	4,924	-68	-1.4	-1.4
Television, radios, phonographs	235	234	-1	-0.3	223	234	12	5.2	5.2
Printed matter	325	336	12	3.6	356	336	-20	-5.5	-5.5
Watches, sporting goods and toys	584	621	37	6.4	733	621	-112	-15.3	-15.3
House furnishings	973	966	-7	-0.7	930	966	36	3.8	3.8
Photographic goods	551	436	-115	-20.8	461	436	-24	-5.3	-5.3
Miscellaneous end products	2,418	2,331	-87	-3.6	2,290	2,331	41	1.8	1.8
Special transactions trade	517	852	334	64.6	510	852	341	66.9	66.9
Unallocated balance of payments adjustments	574	533	-41	-7.2	465	533	68	14.6	14.6

Table 7-1

Imports from selected countries, customs basis, not seasonally adjusted — January

	Agricultural and fishing products	Energy products	Forestry products	Industrial goods	Machinery and equipment	Automotive products	Consumer goods	Special transactions trade	Total
millions of dollars									
United States									
2011	1,270.6	1,178.2	140.8	4,131.3	3,907.6	3,535.2	1,662.0	270.1	16,095.8
2012	1,399.1	1,339.5	156.0	4,647.9	4,137.2	3,747.4	1,763.3	497.0	17,687.5
Mexico									
2011	169.7	83.7	0.5	190.0	617.3	655.1	89.5	4.7	1,810.7
2012	168.5	34.0	0.3	201.8	667.2	669.1	92.7	3.0	1,836.7
Japan									
2011	5.1	0.4	0.1	101.1	362.6	366.1	88.7	0.4	924.5
2012	6.3	0.5	0.1	92.7	463.2	463.7	83.9	0.3	1,110.7
European Union									
Germany									
2011	21.5	0.9	0.6	167.5	315.6	204.9	146.9	1.7	859.6
2012	24.6	1.2	0.9	173.7	412.7	223.4	155.0	3.0	994.5
France									
2011	44.3	7.7	0.1	52.4	137.5	5.9	96.9	0.2	344.9
2012	45.3	32.0	0.3	70.7	142.9	4.2	115.7	0.5	411.6
United Kingdom									
2011	25.7	296.1	0.0	242.4	213.9	38.3	96.6	1.5	914.7
2012	25.6	37.6	0.0	160.4	182.8	43.3	94.0	1.8	545.5
Italy									
2011	55.2	0.1	1.4	85.4	122.2	12.6	74.1	0.3	351.1
2012	58.2	0.1	1.9	90.1	130.2	16.4	98.8	1.0	396.7
Other European Union									
2011	85.3	308.5	3.4	345.2	335.1	55.8	287.9	0.8	1,421.9
2012	90.1	210.9	3.8	301.9	379.8	66.2	292.5	0.6	1,345.8
Total									
2011	231.8	613.1	5.5	892.9	1,124.2	317.6	702.4	4.6	3,892.2
2012	243.7	281.8	6.9	796.7	1,248.5	353.5	756.0	6.8	3,694.0
Newly industrialized countries									
South Korea									
2011	4.3	2.0	0.0	103.2	215.0	96.0	14.5	0.1	435.0
2012	6.3	4.3	0.0	83.6	189.7	192.7	17.3	0.1	494.0
Hong Kong									
2011	2.9	0.0	0.0	18.7	10.8	0.1	9.1	0.0	41.6
2012	2.3	0.0	0.0	1.9	5.9	0.3	8.8	0.1	19.3
Taiwan									
2011	6.0	0.0	0.4	76.5	219.7	13.4	30.2	0.1	346.3
2012	6.2	0.0	0.4	90.1	233.8	16.3	35.7	0.2	382.6
Singapore									
2011	3.7	47.2	0.2	43.0	40.8	0.3	6.2	0.0	141.4
2012	2.5	0.0	0.0	10.6	65.1	0.7	13.7	0.1	92.7
Total									
2011	16.8	49.2	0.6	241.4	486.2	109.8	60.0	0.3	964.2
2012	17.3	4.3	0.4	186.3	494.4	210.0	75.5	0.4	988.7
Other countries									
2011	778.8	2,311.7	49.3	1,797.5	2,405.5	185.1	1,846.7	29.8	9,404.5
2012	801.8	2,469.5	49.5	2,089.0	2,653.0	242.9	1,985.4	34.5	10,325.6
Total									
2011	2,473.6	4,236.4	196.8	7,354.1	8,903.5	5,169.0	4,449.5	309.9	33,092.7
2012	2,637.0	4,129.7	213.2	8,014.4	9,663.7	5,686.7	4,756.7	542.2	35,643.5

Table 7-2

Imports from selected countries, customs basis, not seasonally adjusted — Year to date, January to January

	Agricultural and fishing products	Energy products	Forestry products	Industrial goods	Machinery and equipment	Automotive products	Consumer goods	Special transactions trade	Total
millions of dollars									
United States									
2011	1,270.6	1,178.2	140.8	4,131.3	3,907.6	3,535.2	1,662.0	270.1	16,095.8
2012	1,399.1	1,339.5	156.0	4,647.9	4,137.2	3,747.4	1,763.3	497.0	17,687.5
Mexico									
2011	169.7	83.7	0.5	190.0	617.3	655.1	89.5	4.7	1,810.7
2012	168.5	34.0	0.3	201.8	667.2	669.1	92.7	3.0	1,836.7
Japan									
2011	5.1	0.4	0.1	101.1	362.6	366.1	88.7	0.4	924.5
2012	6.3	0.5	0.1	92.7	463.2	463.7	83.9	0.3	1,110.7
European Union									
Germany									
2011	21.5	0.9	0.6	167.5	315.6	204.9	146.9	1.7	859.6
2012	24.6	1.2	0.9	173.7	412.7	223.4	155.0	3.0	994.5
France									
2011	44.3	7.7	0.1	52.4	137.5	5.9	96.9	0.2	344.9
2012	45.3	32.0	0.3	70.7	142.9	4.2	115.7	0.5	411.6
United Kingdom									
2011	25.7	296.1	0.0	242.4	213.9	38.3	96.6	1.5	914.7
2012	25.6	37.6	0.0	160.4	182.8	43.3	94.0	1.8	545.5
Italy									
2011	55.2	0.1	1.4	85.4	122.2	12.6	74.1	0.3	351.1
2012	58.2	0.1	1.9	90.1	130.2	16.4	98.8	1.0	396.7
Other European Union									
2011	85.3	308.5	3.4	345.2	335.1	55.8	287.9	0.8	1,421.9
2012	90.1	210.9	3.8	301.9	379.8	66.2	292.5	0.6	1,345.8
Total									
2011	231.8	613.1	5.5	892.9	1,124.2	317.6	702.4	4.6	3,892.2
2012	243.7	281.8	6.9	796.7	1,248.5	353.5	756.0	6.8	3,694.0
Newly industrialized countries									
South Korea									
2011	4.3	2.0	0.0	103.2	215.0	96.0	14.5	0.1	435.0
2012	6.3	4.3	0.0	83.6	189.7	192.7	17.3	0.1	494.0
Hong Kong									
2011	2.9	0.0	0.0	18.7	10.8	0.1	9.1	0.0	41.6
2012	2.3	0.0	0.0	1.9	5.9	0.3	8.8	0.1	19.3
Taiwan									
2011	6.0	0.0	0.4	76.5	219.7	13.4	30.2	0.1	346.3
2012	6.2	0.0	0.4	90.1	233.8	16.3	35.7	0.2	382.6
Singapore									
2011	3.7	47.2	0.2	43.0	40.8	0.3	6.2	0.0	141.4
2012	2.5	0.0	0.0	10.6	65.1	0.7	13.7	0.1	92.7
Total									
2011	16.8	49.2	0.6	241.4	486.2	109.8	60.0	0.3	964.2
2012	17.3	4.3	0.4	186.3	494.4	210.0	75.5	0.4	988.7
Other countries									
2011	778.8	2,311.7	49.3	1,797.5	2,405.5	185.1	1,846.7	29.8	9,404.5
2012	801.8	2,469.5	49.5	2,089.0	2,653.0	242.9	1,985.4	34.5	10,325.6
Total									
2011	2,473.6	4,236.4	196.8	7,354.1	8,903.5	5,169.0	4,449.5	309.9	33,092.7
2012	2,637.0	4,129.7	213.2	8,014.4	9,663.7	5,686.7	4,756.7	542.2	35,643.5

Table 8
Imports by country, customs basis, not seasonally adjusted

	January		January to January		Change
	2011	2012	2011	2012	January to January 2012/ January to January 2011
	millions of dollars				percent
North America					
Canada	308.2	277.3	308.2	277.3	-10.1
Greenland	0.0	0.0	0.0	0.0	774.0
Mexico	1,810.7	1,836.7	1,810.7	1,836.7	1.4
Saint Pierre and Miquelon	0.0	0.0	0.0	0.0	-100.0
United States	16,095.8	17,687.5	16,095.8	17,687.5	9.9
Total	18,214.8	19,801.4	18,214.8	19,801.4	8.7
Western Europe					
Andorra	0.1	0.0	0.1	0.0	-91.6
Austria	97.1	103.1	97.1	103.1	6.1
Belgium	164.7	93.2	164.7	93.2	-43.4
Denmark	122.2	69.8	122.2	69.8	-42.9
Faeroe Islands	0.6	0.4	0.6	0.4	-32.7
Finland	147.6	59.5	147.6	59.5	-59.7
France	344.9	411.6	344.9	411.6	19.3
Germany	859.6	994.5	859.6	994.5	15.7
Gibraltar	0.0	0.0	0.0	0.0	206.1
Greece	11.1	8.5	11.1	8.5	-23.5
Iceland	2.6	3.2	2.6	3.2	27.2
Italy	351.1	396.7	351.1	396.7	13.0
Luxembourg	7.6	13.9	7.6	13.9	81.3
Malta	2.0	1.2	2.0	1.2	-39.7
Netherlands	120.7	305.0	120.7	305.0	152.6
Norway	325.6	523.5	325.6	523.5	60.8
Portugal	22.7	23.3	22.7	23.3	2.3
Republic of Ireland (Eire)	84.2	90.7	84.2	90.7	7.7
Spain	148.8	151.1	148.8	151.1	1.5
Sweden	190.1	174.0	190.1	174.0	-8.5
Switzerland	315.4	337.4	315.4	337.4	7.0
United Kingdom	914.7	545.5	914.7	545.5	-40.4
Total	4,233.5	4,306.1	4,233.5	4,306.1	1.7
Other Europe					
Albania	0.9	0.3	0.9	0.3	-66.1
Armenia	3.2	6.5	3.2	6.5	101.6
Azerbaijan	68.0	0.0	68.0	0.0	-100.0
Belarus	0.3	0.3	0.3	0.3	1.7
Bosnia and Herzegovina	0.7	0.8	0.7	0.8	15.6
Bulgaria	5.5	18.5	5.5	18.5	238.6
Croatia	1.9	2.6	1.9	2.6	34.9
Czech Republic	19.4	39.4	19.4	39.4	102.5
Estonia	4.6	2.6	4.6	2.6	-44.0
Georgia	10.4	8.1	10.4	8.1	-22.1
Hungary	30.6	34.9	30.6	34.9	14.0
Kazakhstan	248.0	258.9	248.0	258.9	4.4
Kyrgyzstan	0.1	0.0	0.1	0.0	-94.9
Latvia	1.1	2.0	1.1	2.0	88.6
Lithuania	50.0	4.1	50.0	4.1	-91.8
Macedonia (Former Yugoslav Republic of Macedonia)	0.6	0.8	0.6	0.8	26.5
Montenegro	0.1	0.0	0.1	0.0	-58.8
Poland	150.5	100.9	150.5	100.9	-33.0
Republic of Moldova	0.1	0.3	0.1	0.3	274.9
Romania	20.6	17.6	20.6	17.6	-14.8
Russian Federation	228.2	36.6	228.2	36.6	-83.9
Serbia	2.0	0.9	2.0	0.9	-53.3
Slovakia	13.8	22.3	13.8	22.3	61.9
Slovenia	6.6	10.1	6.6	10.1	53.3
Tajikistan	0.0	0.0	0.0	0.0	470.4
Turkmenistan	0.0	0.0	0.0	0.0	-90.7
Ukraine	10.8	16.1	10.8	16.1	49.5
Uzbekistan	0.2	0.1	0.2	0.1	-75.0
Total	878.2	584.9	878.2	584.9	-33.4

Table 8 – continued

Imports by country, customs basis, not seasonally adjusted

	January		January to January		Change
	2011	2012	2011	2012	January to January 2012/ January to January 2011
	millions of dollars				percent
Middle East					
Bahrain	0.4	0.2	0.4	0.2	-49.5
Cyprus	0.1	0.0	0.1	0.0	-89.3
Egypt	30.2	33.2	30.2	33.2	10.0
Eritrea	0.0	35.8	0.0	35.8	...
Ethiopia	1.3	1.1	1.3	1.1	-20.1
Iran	3.1	2.5	3.1	2.5	-20.0
Iraq	288.8	319.5	288.8	319.5	10.6
Israel	84.6	87.5	84.6	87.5	3.4
Jordan	1.4	1.7	1.4	1.7	22.2
Kuwait	0.0	0.0	0.0	0.0	642.7
Lebanon	1.8	1.6	1.8	1.6	-12.7
Libya	0.1	0.1	0.1	0.1	-9.0
Oman	1.6	2.2	1.6	2.2	36.9
Qatar	99.6	24.4	99.6	24.4	-75.5
Saudi Arabia	192.8	229.6	192.8	229.6	19.1
Somalia	0.0	0.0	0.0	0.0	121.2
Sudan	11.0	3.8	11.0	3.8	-65.1
Syria	0.4	0.4	0.4	0.4	13.4
Turkey	64.1	92.1	64.1	92.1	43.8
United Arab Emirates	38.5	4.9	38.5	4.9	-87.2
Yemen	0.0	0.0	0.0	0.0	...
Total	819.9	840.7	819.9	840.7	2.5
Other Africa					
Algeria	303.3	476.6	303.3	476.6	57.1
Angola	215.1	213.9	215.1	213.9	-0.5
Antarctica	0.2	0.0	0.2	0.0	-98.8
Benin	0.0	0.0	0.0	0.0	...
Botswana	0.0	0.0	0.0	0.0	...
Bouvet Island	0.0	0.0	0.0	0.0	-100.0
Burkina Faso	0.0	0.0	0.0	0.0	-82.2
Burundi	0.0	0.0	0.0	0.0	-49.1
Cameroon	0.2	0.5	0.2	0.5	141.8
Cape Verde	0.0	0.0	0.0	0.0	-44.9
Central African Republic	0.0	0.1	0.0	0.1	...
Chad	0.0	0.1	0.0	0.1	781.0
Comoros	0.0	0.2	0.0	0.2	...
Congo	0.1	0.1	0.1	0.1	-54.8
Democratic Republic of the Congo	0.0	0.0	0.0	0.0	34.5
Djibouti	0.0	0.0	0.0	0.0	330.8
Equatorial Guinea	168.3	79.7	168.3	79.7	-52.6
Gabon	0.1	0.2	0.1	0.2	128.9
Gambia	0.0	0.0	0.0	0.0	230.2
Ghana	3.3	0.3	3.3	0.3	-90.0
Guinea	3.5	6.9	3.5	6.9	100.0
Guinea-Bissau	0.0	0.0	0.0	0.0	310.9
Ivory Coast	24.0	15.0	24.0	15.0	-37.4
Kenya	2.1	1.4	2.1	1.4	-34.4
Lesotho	1.5	1.0	1.5	1.0	-32.2
Liberia	3.7	3.2	3.7	3.2	-12.6
Madagascar	0.3	6.3	0.3	6.3	...
Malawi	0.1	0.1	0.1	0.1	-43.2
Mali	0.0	0.0	0.0	0.0	-26.6
Mauritania	0.0	0.0	0.0	0.0	-77.0
Mauritius	0.6	1.0	0.6	1.0	63.8
Morocco	14.0	18.4	14.0	18.4	31.5
Mozambique	0.1	0.0	0.1	0.0	-60.9
Namibia	0.1	16.0	0.1	16.0	...
Niger	0.1	0.0	0.1	0.0	-58.4
Nigeria	103.9	205.4	103.9	205.4	97.7
Rwanda	0.1	0.3	0.1	0.3	127.2
Saint Helena	0.0	0.0	0.0	0.0	...
Sao Tome and Principe	0.0	0.0	0.0	0.0	...
Senegal	0.1	0.1	0.1	0.1	-27.0
Seychelles	0.0	0.2	0.0	0.2	...

Table 8 – continued

Imports by country, customs basis, not seasonally adjusted

	January		January to January		Change
	2011	2012	2011	2012	January to January 2012/ January to January 2011
	millions of dollars				percent
Sierra Leone	0.1	0.0	0.1	0.0	-19.6
South Africa	60.3	60.0	60.3	60.0	-0.5
Swaziland	0.1	0.1	0.1	0.1	66.0
Togo	0.1	0.0	0.1	0.0	-51.2
Tunisia	3.6	4.5	3.6	4.5	25.6
Uganda	0.6	0.4	0.6	0.4	-26.6
United Republic of Tanzania	0.4	0.9	0.4	0.9	95.9
Western Sahara	0.0	0.0	0.0	0.0	...
Zambia	0.1	0.1	0.1	0.1	4.3
Zimbabwe	1.2	0.6	1.2	0.6	-54.2
Total	911.5	1,113.9	911.5	1,113.9	22.2
Other Asia					
Afghanistan	0.1	0.0	0.1	0.0	-42.3
Bangladesh	86.8	90.2	86.8	90.2	3.9
Bhutan	0.0	0.0	0.0	0.0	...
British Indian Ocean Territory	0.0	0.0	0.0	0.0	75.3
Brunei Darussalam	0.0	0.7	0.0	0.7	...
Cambodia	39.7	53.6	39.7	53.6	34.9
China	3,670.0	4,125.2	3,670.0	4,125.2	12.4
Hong Kong	41.6	19.3	41.6	19.3	-53.5
India	199.0	300.9	199.0	300.9	51.2
Indonesia	103.7	114.5	103.7	114.5	10.4
Japan	924.5	1,110.7	924.5	1,110.7	20.1
Laos	0.4	0.7	0.4	0.7	75.8
Macao	0.7	1.2	0.7	1.2	73.4
Malaysia	158.4	176.4	158.4	176.4	11.4
Maldives	0.1	0.0	0.1	0.0	-66.4
Mongolia	2.7	7.1	2.7	7.1	160.3
Myanmar	0.0	0.0	0.0	0.0	-98.5
Nepal	0.7	0.8	0.7	0.8	18.3
North Korea	0.0	0.0	0.0	0.0	-43.0
Pakistan	20.2	20.8	20.2	20.8	3.3
Philippines	64.2	76.1	64.2	76.1	18.5
Singapore	141.4	92.7	141.4	92.7	-34.4
South Korea	435.0	494.0	435.0	494.0	13.5
Sri Lanka	12.3	16.5	12.3	16.5	33.5
Taiwan	346.3	382.6	346.3	382.6	10.5
Thailand	196.1	199.3	196.1	199.3	1.6
Timor-Leste	0.0	0.0	0.0	0.0	-47.6
Viet Nam	109.9	132.4	109.9	132.4	20.5
Total	6,553.7	7,415.9	6,553.7	7,415.9	13.2
Oceania					
American Samoa	0.0	0.0	0.0	0.0	-33.2
Australia	87.2	238.5	87.2	238.5	173.6
Christmas Island	0.0	0.0	0.0	0.0	-83.2
Cocos (Keeling) Islands	0.0	0.0	0.0	0.0	986.6
Cook Islands	0.0	0.0	0.0	0.0	...
Fiji	0.1	0.5	0.1	0.5	418.4
French Polynesia	0.0	0.1	0.0	0.1	...
Guam	0.0	0.0	0.0	0.0	-96.9
Heard Island and McDonald Islands	0.0	0.0	0.0	0.0	...
Kiribati	0.0	0.0	0.0	0.0	...
Nauru	0.0	0.0	0.0	0.0	118.0
New Caledonia	0.0	0.0	0.0	0.0	371.0
New Zealand	35.9	39.3	35.9	39.3	9.6
Niue	0.0	0.0	0.0	0.0	186.4
Norfolk Island	0.0	0.0	0.0	0.0	...
Papua New Guinea	0.1	0.1	0.1	0.1	18.6
Pitcairn	0.0	0.0	0.0	0.0	1.4
Samoa	0.0	0.0	0.0	0.0	853.5

Table 8 – continued

Imports by country, customs basis, not seasonally adjusted

	January		January to January		Change
	2011	2012	2011	2012	January to January 2012/ January to January 2011
	millions of dollars				percent
Solomon Islands	0.0	0.0	0.0	0.0	...
Tonga	0.0	0.0	0.0	0.0	...
United States Minor Outlying Islands	0.1	0.3	0.1	0.3	128.3
Vanuatu	0.0	0.0	0.0	0.0	-91.8
Wallis and Futuna	0.0	0.0	0.0	0.0	...
Total	123.4	278.8	123.4	278.8	125.9
South America					
Argentina	120.1	143.0	120.1	143.0	19.0
Bolivia	22.9	9.7	22.9	9.7	-57.7
Brazil	335.6	282.4	335.6	282.4	-15.8
Chile	163.1	142.1	163.1	142.1	-12.8
Colombia	47.3	54.0	47.3	54.0	14.0
Ecuador	23.3	17.6	23.3	17.6	-24.1
Falkland Islands (Malvinas)	0.0	0.2	0.0	0.2	...
Guyana	23.1	54.9	23.1	54.9	137.9
Paraguay	0.4	1.2	0.4	1.2	212.2
Peru	285.5	325.1	285.5	325.1	13.9
Suriname	55.7	0.1	55.7	0.1	-99.8
Uruguay	1.4	6.5	1.4	6.5	357.7
Venezuela	39.5	0.5	39.5	0.5	-98.8
Total	1,117.8	1,037.2	1,117.8	1,037.2	-7.2
Central America Antilles					
Anguilla	0.0	0.0	0.0	0.0	17.4
Antigua and Barbuda	0.0	0.3	0.0	0.3	...
Aruba	0.1	0.0	0.1	0.0	-99.3
Bahamas	1.2	3.7	1.2	3.7	204.5
Barbados	0.5	0.7	0.5	0.7	41.3
Belize	0.9	0.4	0.9	0.4	-55.5
Bermuda	0.1	0.1	0.1	0.1	21.8
British Virgin Islands	0.0	0.1	0.0	0.1	414.5
Cayman Islands	0.0	0.0	0.0	0.0	-92.0
Costa Rica	32.2	37.8	32.2	37.8	17.5
Cuba	47.5	31.7	47.5	31.7	-33.1
Dominica	0.0	0.0	0.0	0.0	-11.3
Dominican Republic	12.2	11.5	12.2	11.5	-5.7
El Salvador	6.8	8.2	6.8	8.2	20.9
Grenada	0.0	0.3	0.0	0.3	...
Guatemala	32.3	43.1	32.3	43.1	33.4
Haiti	1.9	2.1	1.9	2.1	6.3
Honduras	13.9	16.5	13.9	16.5	18.8
Jamaica	19.6	10.8	19.6	10.8	-44.8
Montserrat	0.0	0.0	0.0	0.0	283.1
Netherlands Antilles	0.0	0.1	0.0	0.1	...
Nicaragua	21.4	20.1	21.4	20.1	-6.0
Panama	5.5	7.3	5.5	7.3	31.6
Saint Kitts and Nevis	0.6	0.6	0.6	0.6	2.3
Saint Lucia	0.0	0.0	0.0	0.0	141.6
Saint Vincent and the Grenadines	0.0	0.0	0.0	0.0	-73.9
Trinidad and Tobago	43.0	69.1	43.0	69.1	60.8
Turks and Caicos Islands	0.0	0.0	0.0	0.0	-28.5
Total	239.8	264.6	239.8	264.6	10.3
All countries	33,092.7	35,643.5	33,092.7	35,643.5	7.7

Table 9-1
Imports by province of clearance, customs basis, not seasonally adjusted — January

	Agricultural and fishing products	Energy products	Forestry products	Industrial goods	Machinery and equipment	Automotive products	Consumer goods	Special transactions trade	Total
millions of dollars									
Newfoundland and Labrador									
2011	3.1	328.3	0.0	4.6	15.9	0.0	0.4	0.1	352.4
2012	2.8	451.7	0.0	7.0	8.9	0.0	0.4	0.0	470.8
Prince Edward Island									
2011	0.2	0.0	0.0	0.0	0.0	0.0	0.0	0.0	0.2
2012	0.3	0.0	0.0	0.0	0.1	0.0	0.0	0.0	0.5
Nova Scotia									
2011	49.7	236.6	1.1	127.6	79.6	230.6	17.0	1.0	743.1
2012	37.7	176.7	0.8	68.4	80.9	153.4	14.0	1.8	533.7
New Brunswick									
2011	38.4	781.3	9.2	78.3	49.0	29.6	13.5	0.4	999.6
2012	30.9	476.2	8.8	79.5	63.4	20.2	12.7	0.2	692.1
Quebec									
2011	408.0	1,856.0	53.8	1,439.0	1,338.0	151.8	816.0	14.5	6,077.2
2012	395.2	1,662.4	56.8	1,311.5	1,513.2	220.0	871.5	18.7	6,049.3
Ontario									
2011	1,341.1	626.4	68.7	4,151.1	5,059.7	4,233.1	2,841.2	268.6	18,590.0
2012	1,477.1	504.8	74.5	4,689.4	5,333.4	4,635.3	2,986.8	502.2	20,203.6
Manitoba									
2011	78.5	49.1	5.7	297.0	444.1	112.9	124.9	4.6	1,116.7
2012	88.1	49.2	9.3	413.3	562.9	144.9	134.6	3.1	1,405.5
Saskatchewan									
2011	32.6	45.2	2.1	183.5	303.1	111.3	16.7	6.6	701.1
2012	32.8	132.2	5.6	216.8	342.2	111.3	25.6	0.6	867.1
Alberta									
2011	148.0	107.6	9.7	456.3	812.0	87.5	97.8	2.6	1,721.5
2012	153.6	397.9	9.1	556.5	745.1	125.3	140.6	7.9	2,136.0
British Columbia									
2011	374.0	205.2	46.5	616.5	796.4	212.1	521.9	11.5	2,784.1
2012	418.4	277.1	48.2	671.7	1,012.9	276.3	570.4	7.6	3,282.6
Yukon, Northwest Territories and Nunavut									
2011	0.1	0.7	0.0	0.2	5.7	0.0	0.0	0.0	6.7
2012	0.0	1.5	0.0	0.1	0.7	0.0	0.0	0.0	2.4
Total									
2011	2,473.6	4,236.4	196.8	7,354.1	8,903.5	5,169.0	4,449.5	309.9	33,092.7
2012	2,637.0	4,129.7	213.2	8,014.4	9,663.7	5,686.7	4,756.7	542.2	35,643.5

Table 9-2

Imports by province of clearance, customs basis, not seasonally adjusted — Year to date, January to January

	Agricultural and fishing products	Energy products	Forestry products	Industrial goods	Machinery and equipment	Automotive products	Consumer goods	Special transactions trade	Total
millions of dollars									
Newfoundland and Labrador									
2011	3.1	328.3	0.0	4.6	15.9	0.0	0.4	0.1	352.4
2012	2.8	451.7	0.0	7.0	8.9	0.0	0.4	0.0	470.8
Prince Edward Island									
2011	0.2	0.0	0.0	0.0	0.0	0.0	0.0	0.0	0.2
2012	0.3	0.0	0.0	0.0	0.1	0.0	0.0	0.0	0.5
Nova Scotia									
2011	49.7	236.6	1.1	127.6	79.6	230.6	17.0	1.0	743.1
2012	37.7	176.7	0.8	68.4	80.9	153.4	14.0	1.8	533.7
New Brunswick									
2011	38.4	781.3	9.2	78.3	49.0	29.6	13.5	0.4	999.6
2012	30.9	476.2	8.8	79.5	63.4	20.2	12.7	0.2	692.1
Quebec									
2011	408.0	1,856.0	53.8	1,439.0	1,338.0	151.8	816.0	14.5	6,077.2
2012	395.2	1,662.4	56.8	1,311.5	1,513.2	220.0	871.5	18.7	6,049.3
Ontario									
2011	1,341.1	626.4	68.7	4,151.1	5,059.7	4,233.1	2,841.2	268.6	18,590.0
2012	1,477.1	504.8	74.5	4,689.4	5,333.4	4,635.3	2,986.8	502.2	20,203.6
Manitoba									
2011	78.5	49.1	5.7	297.0	444.1	112.9	124.9	4.6	1,116.7
2012	88.1	49.2	9.3	413.3	562.9	144.9	134.6	3.1	1,405.5
Saskatchewan									
2011	32.6	45.2	2.1	183.5	303.1	111.3	16.7	6.6	701.1
2012	32.8	132.2	5.6	216.8	342.2	111.3	25.6	0.6	867.1
Alberta									
2011	148.0	107.6	9.7	456.3	812.0	87.5	97.8	2.6	1,721.5
2012	153.6	397.9	9.1	556.5	745.1	125.3	140.6	7.9	2,136.0
British Columbia									
2011	374.0	205.2	46.5	616.5	796.4	212.1	521.9	11.5	2,784.1
2012	418.4	277.1	48.2	671.7	1,012.9	276.3	570.4	7.6	3,282.6
Yukon, Northwest Territories and Nunavut									
2011	0.1	0.7	0.0	0.2	5.7	0.0	0.0	0.0	6.7
2012	0.0	1.5	0.0	0.1	0.7	0.0	0.0	0.0	2.4
Total									
2011	2,473.6	4,236.4	196.8	7,354.1	8,903.5	5,169.0	4,449.5	309.9	33,092.7
2012	2,637.0	4,129.7	213.2	8,014.4	9,663.7	5,686.7	4,756.7	542.2	35,643.5

Technical notes

The Canadian international merchandise trade statistical program

Introduction

The objective of this text is to provide a general overview of the Canadian International Merchandise Trade Statistical Program, with special reference to concepts and definitions. The text is intended for the general user and simplicity is emphasized.

Conceptual framework

1. Objectives and coverage: The primary objective of the Canadian International Merchandise Trade Statistical Program is to measure the change in the stock of material resources of Canada resulting from the movement of merchandise into or out of the country. Information on imports and exports are inputs into the System of National Accounts, particularly in the balance of payments and gross domestic product, and are used in the formulation of trade and budgetary policies. Governments, importers, exporters, manufacturers and shipping companies use international merchandise trade statistics to:

- monitor import penetration and export performance,
- monitor commodity price and volume changes,
- examine transport implications.

2. Trade statistics (customs basis / balance of payments basis): Merchandise trade statistics are reported and presented on two different bases: customs basis and balance of payment basis.

When goods are imported into or exported from Canada, declarations must be filed with customs, giving such information as description and value of the goods, origin and port of clearance of commodities and mode of transport. Most of this information is required for the purposes of customs administration. Statistics developed from administrative records of customs are commonly referred to as customs-based trade statistics.

Customs-based trade statistics are more accurate at measuring imports than they are at measuring exports. This is the case because customs are typically more vigilant with respect to goods entering the country than they are with goods leaving the country.

Customs-based export statistics may understate or incorrectly portray the destination of exports. Export statistics are understated when the proper documentation is not filed with Customs. Exports are incorrectly portrayed when the country of final destination is inaccurately reported on the customs documentation. This occurs most frequently when goods are routed through an intermediary country before continuing on to their final destination.

Statistics Canada does not have a measure of undercoverage but periodically conducts reconciliation exercises with its major trading partners, excluding the United States.

On January 1, 1990, Canada entered into a memorandum of understanding with the United States concerning the exchange of import data. As a consequence, each administration is using the other's import data to replace its own export data. Canada's international merchandise trade statistics are, therefore, no longer derived exclusively from the administrative records of the Canada Border Services Agency, but from United States Customs records as well.

Customs-based information is adjusted to conform with the National Accounts concepts and definitions. The adjustments to derive balance of payments-based trade data include adjustments related to trade definition, valuation and timing. The principal difference between the two trade concepts is that customs-based merchandise trade statistics cover the physical movement of goods as they are reflected in customs documents while balance of payments-adjusted data are intended to cover all economic transactions that involve merchandise trade between residents and non-residents. The present document describes the concepts and processes pertaining to the customs-based trade statistics only. (For further information on balance of payments-adjusted data, see the publication *Canada's Balance of International Payments*, Statistics Canada (Catalogue no. 67-001-X).

3. System of trade: Canadian trade statistics are compiled according to the general system of trade, as defined by the United Nations Statistical Office. Under this system, imports include all goods that have crossed Canada's territorial boundary, whether for immediate consumption in Canada or for storage in bonded customs warehouses. Domestic exports include goods grown, extracted or manufactured in Canada, including goods of foreign origin that have been materially transformed in Canada. Re-exports are exports of goods of foreign origin that have not been materially transformed in Canada, including foreign goods withdrawn for export from bonded customs warehouses. Total exports are the sum of domestic exports and re-exports. Thus the general trade system, in principal, presents all goods entering the country (imports) and all goods leaving the country (exports). It differs from the special system of trade in the treatment of imported goods into bonded customs warehouses. Under the 'special' system, these goods are counted only if and when they are withdrawn from customs warehouses for home consumption. They are not counted in export statistics unless they have first cleared customs.

Conceptually, under the general system, the statistical frontier coincides with the geographical boundary, while under the 'special' system, it coincides with the customs boundary.

4. Valuation: For customs purposes, imports are recorded at values established according to the provisions of the Customs Act, which, since January 1, 1985, reflects valuation methods based on the General Agreement on Tariffs and Trade (GATT) Valuation Code System. In general, the value for duty of imported goods must be equivalent to the transaction value or the price actually paid.

To determine the transaction value of imported goods, all transportation and associated costs arising in respect of the goods being appraised prior to and at the place of direct shipment to Canada, are to be added to the price of the goods. Therefore, Canadian imports are valued Free on Board (FOB), place of direct shipment to Canada. It excludes freight and insurance costs in bringing the goods to Canada from the point of direct shipment.

Countries other than the United States, exports are, in principal, valued or recorded at the values declared on export documents, which usually reflect the transaction value, i.e., actual selling price or, in the case of a non-arm's length transaction, the transfer price used for company accounting purposes. Canadian exports to overseas countries are valued at F.O.B. port of exit, including domestic freight charges to that point but net of discounts and allowances. As of January, 1990, Canadian exports to the U.S. are valued F.O.B. point of exit from Canada. Prior to 1990, they were valued F.O.B. place of lading net of freight charges, discounts and allowances.

5. Statistical period: The reference period is the calendar month and the calendar year. The closing of the statistical month for imports and Canadian exports to the United States is defined as the last calendar day of the month, based as closely as practicable on the date of clearance from customs.

The closing of the statistical month for exports, to countries other than the United States, is also defined as the last calendar day of the month. Those export documents that are received too late for incorporation in the current month are assigned to the month the transaction took place. If a monthly summary report from a high volume exporter is not received on time, the data are imputed for the current month and revised with the trade value in the following statistical month.

6. Trading partner attribution (country of origin/destination): Exports are attributed to the country, which is the last known destination of the goods at the time of export. Exports to the United States are attributed to the state of destination.

Imports are attributed to their country of origin, that is, the country in which the goods were grown, extracted or manufactured in accordance to the rules of origin administered by the Canada Border Services Agency. Imports from the United States are attributed to the state of origin. Prior to 1988, most imports were attributed to the country of export/consignment, with the exception of imports from Central and South America.

7. Principal trading areas: The 'principal trading areas' are country groupings defined as follows:

United States: includes trade with Puerto Rico and the U.S. Virgin Islands

Japan

European Union (EU): Austria, Belgium, Bulgaria, Cyprus, Czech Republic, Denmark, Estonia, Finland, France, Germany, Greece, Hungary, Ireland, Italy, Latvia, Lithuania, Luxembourg, Malta, Netherlands, Poland, Portugal, Romania, Slovakia, Slovenia, Spain, Sweden and United Kingdom

Other Organisation for Economic Co-operation and Development (OECD): Australia, Canada, Iceland, Mexico, New Zealand, Norway, South Korea, Switzerland, and Turkey. (The EU countries, United States, and Japan are also members of OECD)

Other countries: all countries and territories other than the United States, Japan, EU and other OECD

8. Legal framework: Import and export statistics with countries other than the United States are derived from information contained in administrative records collected by the Canada Border Services Agency under the Customs Act. Copies of these documents (or information therefrom) are sent to Statistics Canada in accordance with Section 25 of the Statistics Act. It follows that the disclosure of trade statistics is governed by both the Customs Act and the Statistics Act and is subject to the provisions of Section 17(2)(a) of the latter. Disclosure of export statistics to the United States is now governed by a memorandum of understanding that provides for the exchange of detailed import statistics between Canada and the United States.

Contact information

Telephone: 1-800-263-1136 or 613-951-8116

Facsimile: 1-877-287-4369 or 613-951-0581

Internet: infostats@statcan.gc.ca