

Catalogue no. 71-001-X

Labour Force Information

Not for release before 7 A.M EST
Friday, March 9, 2012

February 12 to 18, 2012



Statistics
Canada

Statistique
Canada

Canada

How to obtain more information

For information about this product or the wide range of services and data available from Statistics Canada, visit our website at www.statcan.gc.ca, e-mail us at infostats@statcan.gc.ca, or telephone us, Monday to Friday from 8:30 a.m. to 4:30 p.m., at the following numbers:

Statistics Canada's National Contact Centre

Toll-free telephone (Canada and the United States):

Inquiries line	1-800-263-1136
National telecommunications device for the hearing impaired	1-800-363-7629
Fax line	1-877-287-4369

Local or international calls:

Inquiries line	1-613-951-8116
Fax line	1-613-951-0581

Depository Services Program

Inquiries line	1-800-635-7943
Fax line	1-800-565-7757

To access this product

This product, Catalogue no. 71-001-X, is available free in electronic format. To obtain a single issue, visit our website at www.statcan.gc.ca and browse by "Key resource" > "Publications."

Standards of service to the public

Statistics Canada is committed to serving its clients in a prompt, reliable and courteous manner. To this end, Statistics Canada has developed *standards of service* that its employees observe. To obtain a copy of these service standards, please contact Statistics Canada toll-free at 1-800-263-1136. The service standards are also published on www.statcan.gc.ca under "About us" > "The agency" > "Providing services to Canadians."

Statistics Canada
Labour Statistics Division
Labour Force Survey Program

Labour Force Information

February 12 to 18, 2012

Published by authority of the Minister responsible for Statistics Canada

© Minister of Industry, 2012

All rights reserved. Use of this publication is governed by the *Statistics Canada Open License Agreement*.

<http://www.statcan.gc.ca/reference/copyright-droit-auteur-eng.htm>

March 2012

Catalogue no. 71-001-X

ISSN 1492-5478

Frequency: Monthly

Ottawa

Cette publication est également disponible en français.

Note of appreciation

Canada owes the success of its statistical system to a long-standing partnership between Statistics Canada, the citizens of Canada, its businesses, governments and other institutions. Accurate and timely statistical information could not be produced without their continued cooperation and goodwill.

User information

Symbols

The following standard symbols are used in Statistics Canada publications:

- . not available for any reference period
- .. not available for a specific reference period
- ... not applicable
- 0 true zero or a value rounded to zero
- 0s value rounded to 0 (zero) where there is a meaningful distinction between true zero and the value that was rounded
- p preliminary
- r revised
- x suppressed to meet the confidentiality requirements of the *Statistics Act*
- E use with caution
- F too unreliable to be published
- * significantly different from reference category ($p < 0.05$)

Special requests (\$)

Custom tabulations can be arranged on an ad hoc or regular basis. This service enables you to specify tables and time series to meet your own requirements. The cost varies according to the request. For more information, contact us toll-free at 1-866-873-8788 or e-mail us at labour@statcan.gc.ca.

Schedule of LFS releases

Reference period - Week ending	Release date
November 12, 2011	December 2, 2011
December 10, 2011	January 6, 2012
January 14, 2012	February 3, 2012
February 18, 2012	March 9, 2012
March 17, 2012	April 5, 2012
April 21, 2012	May 11, 2012
May 19, 2012	June 8, 2012
June 16, 2012	July 6, 2012
July 21, 2012	August 10, 2012
August 18, 2012	September 7, 2012
September 15, 2012	October 5, 2012
October 13, 2012	November 2, 2012
November 10, 2012	December 7, 2012
December 8, 2012	January 4, 2013

Latest LFS release in *The Daily* (free)

Table of contents

Highlights	5
Analysis — February 2012	6
Charts	
1. Employment and unemployment indicators, Canada, seasonally adjusted	8
2. Employment and unemployment indicators, Canada, seasonally adjusted	9
3. Index of employment by industry, Canada, seasonally adjusted, January 2009=100	10
4. Index of employment by industry, Canada, seasonally adjusted, January 2009=100	11
5. Index of employment by industry, Canada, seasonally adjusted, January 2009=100	12
6. Index of employment by province, seasonally adjusted, January 2009=100	13
7. Index of employment by province, seasonally adjusted, January 2009=100	14
Related products	15
Statistical tables	
1 Labour force characteristics by age and sex, Canada, seasonally adjusted	25
2 Employment by class of worker and industry, Canada, seasonally adjusted	27
3 Labour force characteristics by province, seasonally adjusted	28
4 Selected labour force characteristics (seasonally adjusted)	30
4-1 Newfoundland and Labrador	30
4-2 Prince Edward Island	31
4-3 Nova Scotia	32
4-4 New Brunswick	33
4-5 Quebec	34
4-6 Ontario	35
4-7 Manitoba	36
4-8 Saskatchewan	37
4-9 Alberta	38
4-10 British Columbia	39
5 Labour force characteristics by census metropolitan area (seasonally adjusted)	40
5-1 3 month moving average	40
5-2 Monthly	45

Table of contents – continued

6	Labour force characteristics	46
6-1	by province and economic region, unadjusted for seasonality, 3 month moving average ending in February 2011 and February 2012	46
6-2	by territories, unadjusted for seasonality, 3 month moving average ending in February 2011 and February 2012	51
7	Average usual hours and wages of employees by selected characteristics, Canada, unadjusted for seasonality	52
8	Regional unemployment rates used by the Employment Insurance Program, seasonally adjusted, 3 month moving average	53

Data quality, concepts and methodology

Data quality	55
--------------	----

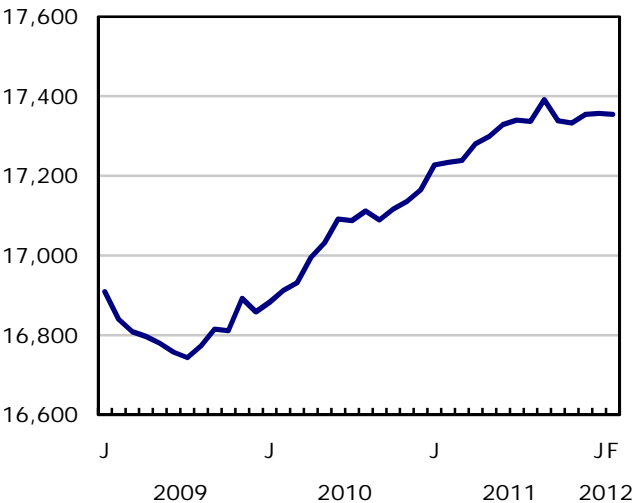
Highlights

Employment was unchanged in February. A decline in the number of people searching for work pushed the unemployment rate down 0.2 percentage points to 7.4%. Compared to 12 months earlier, employment was up by 121,000 (+0.7%), with the bulk of the increase occurring in the first half of this period.

Chart 1
Employment and unemployment rates, Canada, seasonally adjusted

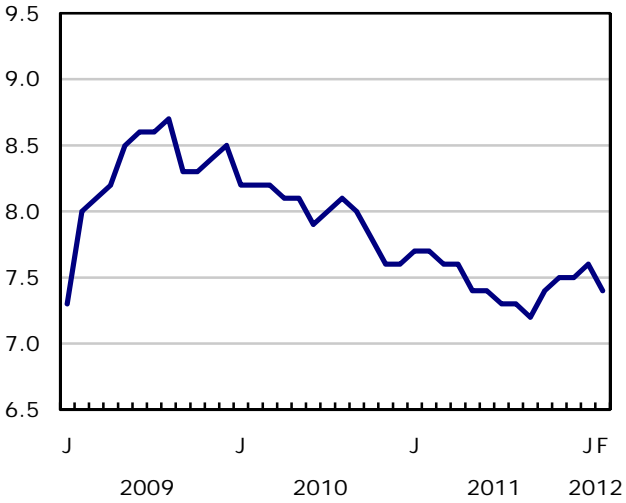
Employment

thousands



Unemployment rate

percent



Analysis — February 2012

Employment was unchanged in February. A decline in the number of people searching for work pushed the unemployment rate down 0.2 percentage points to 7.4%. Compared to 12 months earlier, employment was up by 121,000 (+0.7%), with the bulk of the increase occurring in the first half of this period.

There was little change in full-time and part-time employment in February. Compared with 12 months earlier, the number of full-time workers was up 1.5% (+204,000), while part-time employment declined by 2.5% (-83,000). At the same time, the total number of hours worked grew by 1.7%, with all of the increase occurring in the first half of the period.

Employment for the month declined in retail and wholesale trade; transportation and warehousing; health care and social assistance; and public administration. These declines were offset by increases in finance, insurance, real estate and leasing; educational services; and business, building and other support services.

Provincially, there was little employment change in February, with the exception of a decline in New Brunswick.

Employment in February fell among youths aged 15 to 24, while it increased among people aged 55 and over. For those aged 25 to 54, employment was unchanged.

Employment was little changed among employees and the self-employed. Compared with 12 months earlier, all of the growth has been among private sector employees (+1.4%), while both self-employment (-0.7%) and public sector employment (-0.5%) were down slightly.

Industry perspective

Employment in retail and wholesale trade fell by 37,000 in February. The trend in this industry has been relatively flat over the past three years, with employment fluctuating between 2.6 and 2.7 million over the period.

The number of people working in transportation and warehousing declined by 22,000, bringing employment in this industry down to a level similar to that of 12 months earlier.

Health care and social assistance also posted a decline in employment, down 22,000, leaving employment in this industry at its level of 12 months earlier.

Employment in public administration declined by 15,000 in February. As a result, employment in this industry was down 1.3% (-12,000) compared with 12 months earlier.

Employment in finance, insurance, real estate and leasing increased by 41,000, offsetting half of the declines that had occurred over the previous five months. The number of people working in this industry was 1.2% (-13,000) below the level recorded 12 months earlier.

Employment in educational services increased 17,000 in February, bringing employment growth in this industry to 2.7% (+34,000) over the previous 12 months.

The number of people working in business, building and other support services rose by 16,000 in February. With this increase, employment in the industry was 1.7% (+12,000) higher than 12 months earlier.

Employment in natural resources edged up in February, bringing growth over the past 12 months to 10.2% (+34,000), the highest rate of all industries.

There was little change in construction and manufacturing employment in February. Over the past 12 months, employment in construction increased by 26,000 (+2.1%), while in manufacturing, it declined by 41,000 (-2.3%).

Provincial summary

Employment in New Brunswick declined by 2,600 in February, pushing the unemployment rate up 0.6 percentage points to 10.1%. As a result of this decline, employment in the province was similar to its level of 12 months earlier.

While employment in Ontario was little changed in February, the unemployment rate fell 0.5 percentage points to 7.6%, the result of a decline in the number of people seeking work. Over the past 12 months, employment in Ontario has risen by 0.8% (+54,000), with the growth occurring entirely in the first half of this period.

Employment in Quebec was unchanged in February, as was the unemployment rate, which stood at 8.4%. Compared with 12 months earlier, employment in the province was down 1.2% (-49,000).

The number of people working in Alberta was little changed in February, and the unemployment rate was 5.0%, one of the lowest in the country. Over the past 12 months, employment in the province was up 2.8% (+58,000), the highest growth rate of all provinces.

Declines among youths and gains among people 55 and over

Employment among youths aged 15 to 24 fell for the fifth consecutive month, down 27,000 in February, and their unemployment rate was 14.7%. Compared with February 2011, youth employment was down 69,000 (-2.8%). With fewer youths participating in the labour market, their participation rate in February was 63.3%, down from the most recent peak of 68.1% in September 2008.

Among people aged 55 and over, employment rose by 24,000 in February, with most of the increase among men. Over the past 12 months, employment for this age group has grown by 4.0%, the highest rate of growth among all demographic groups, and mostly due to population aging.

For people aged 25 to 54, employment was unchanged in February. Compared with 12 months earlier, employment for this group was up 0.6% (+67,000).

Note to readers

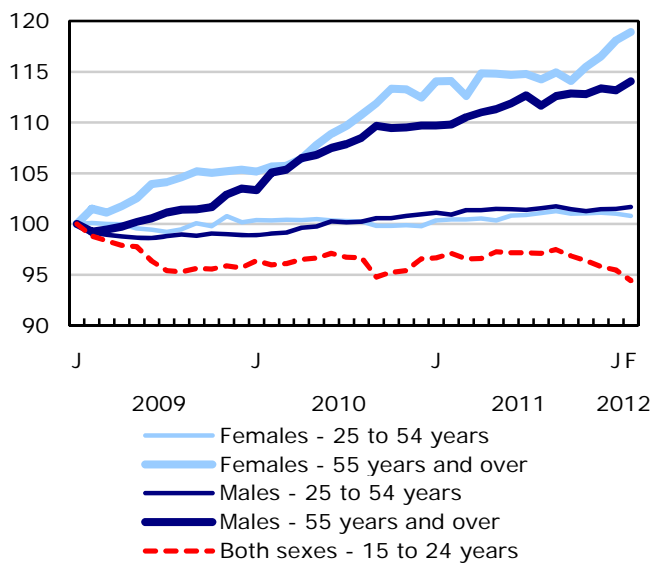
The Labour Force Survey (LFS) estimates are based on a sample, and are therefore subject to sampling variability. Estimates for smaller geographic areas or industries will have more variability. For an explanation of sampling variability of estimates, and how to use standard errors to assess this variability, consult the "Data quality" section of the publication *Labour Force Information* (71-001-X, free).

Unless otherwise stated, this release presents seasonally adjusted data, which facilitates comparisons by removing the effects of seasonal variations. For general information on seasonal adjustment, see *Seasonal adjustment and identifying economic trends*.

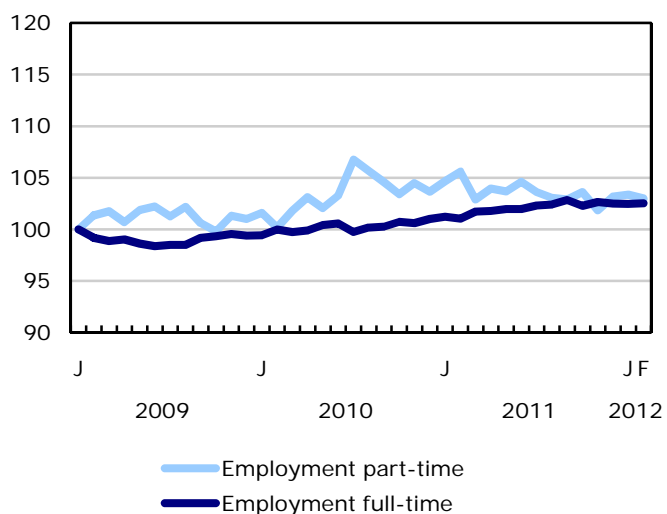
Statistics Canada is moving to one release time, 8:30 a.m., for all data releases in The Daily. This will mean a change in the release time for the LFS, which is currently 7:00 a.m. This change will be implemented with the release of LFS data on April 5, 2012.

Chart 1
Employment and unemployment indicators, Canada, seasonally adjusted

Employment index, January 2009=100



Employment index, January 2009=100



Employment index, January 2009=100

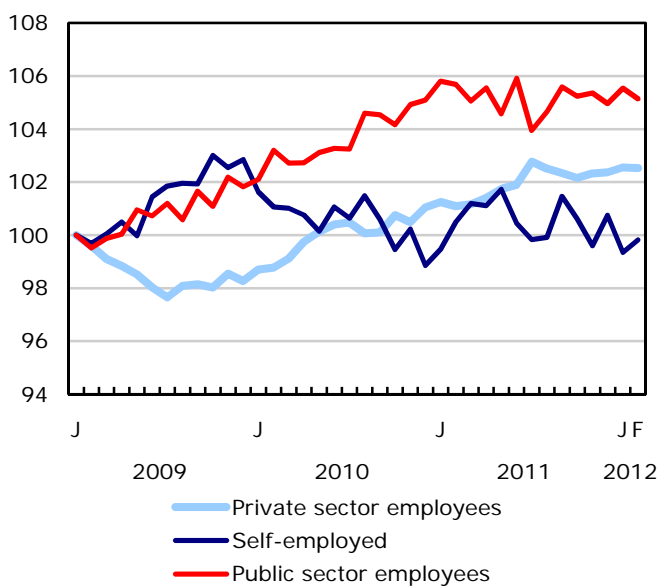
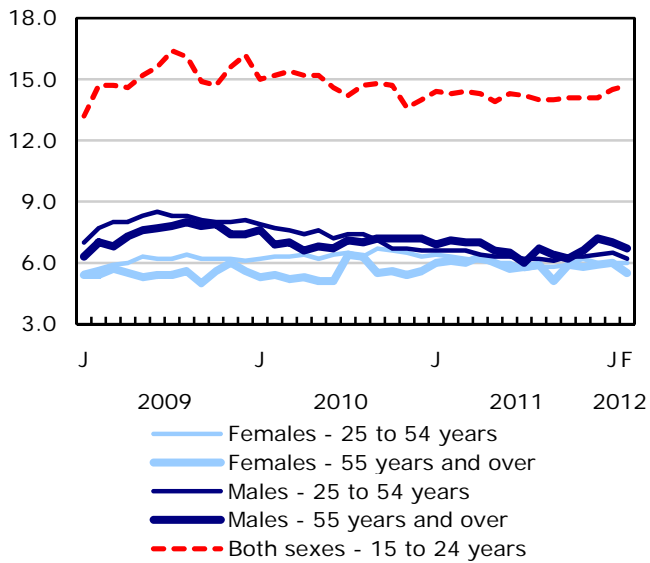
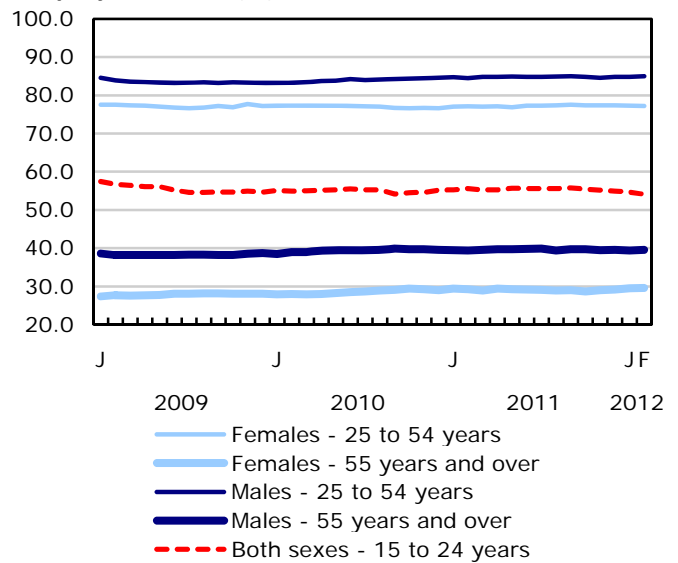


Chart 2
Employment and unemployment indicators, Canada, seasonally adjusted

Unemployment rate (%)



Employment rate (%)



Participation rate (%)

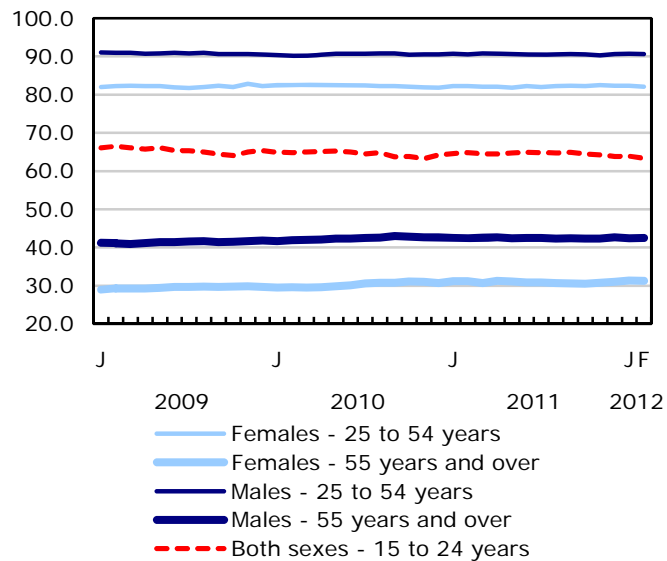


Chart 3
Index of employment by industry, Canada, seasonally adjusted, January 2009=100

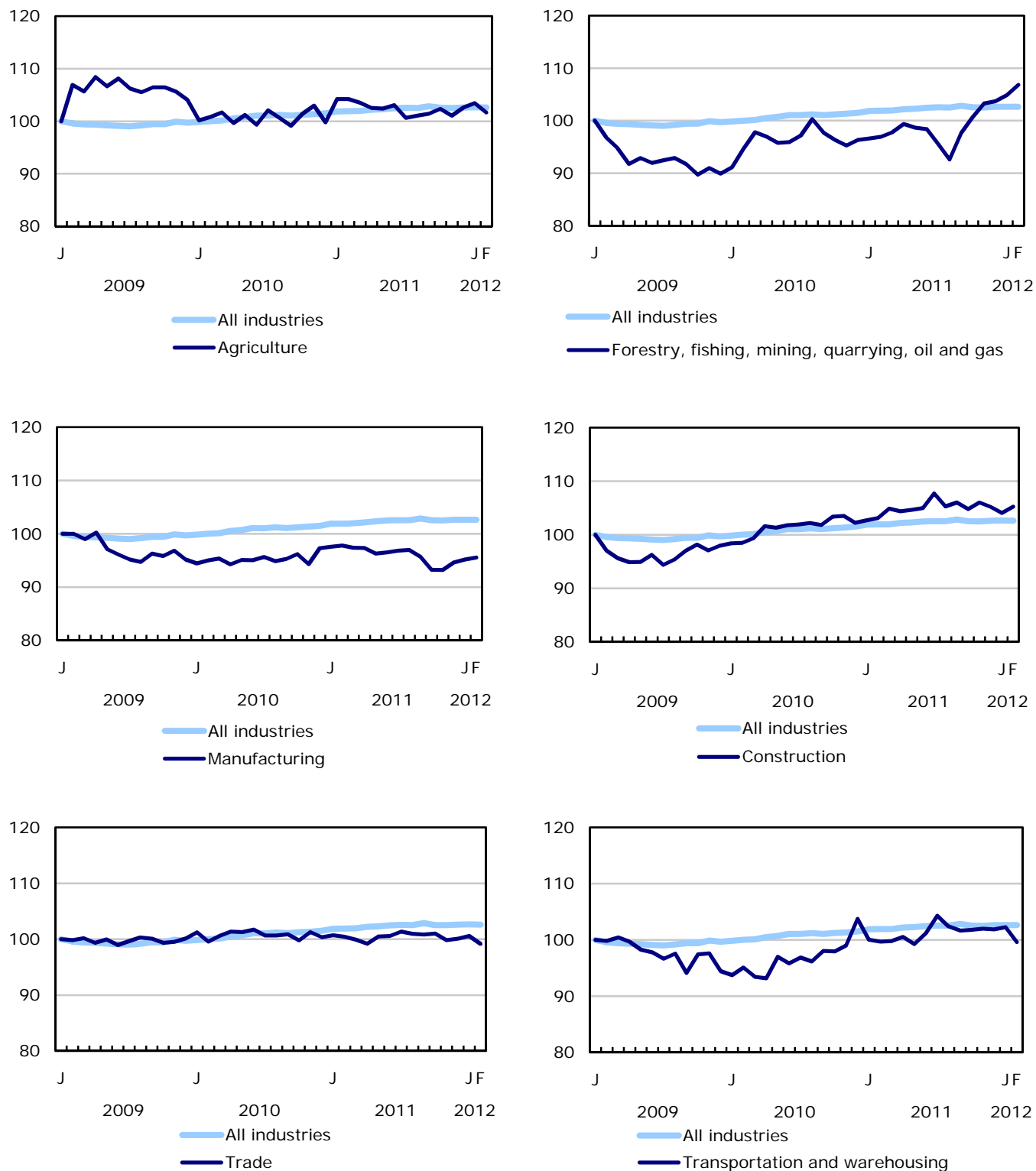


Chart 4
Index of employment by industry, Canada, seasonally adjusted, January 2009=100

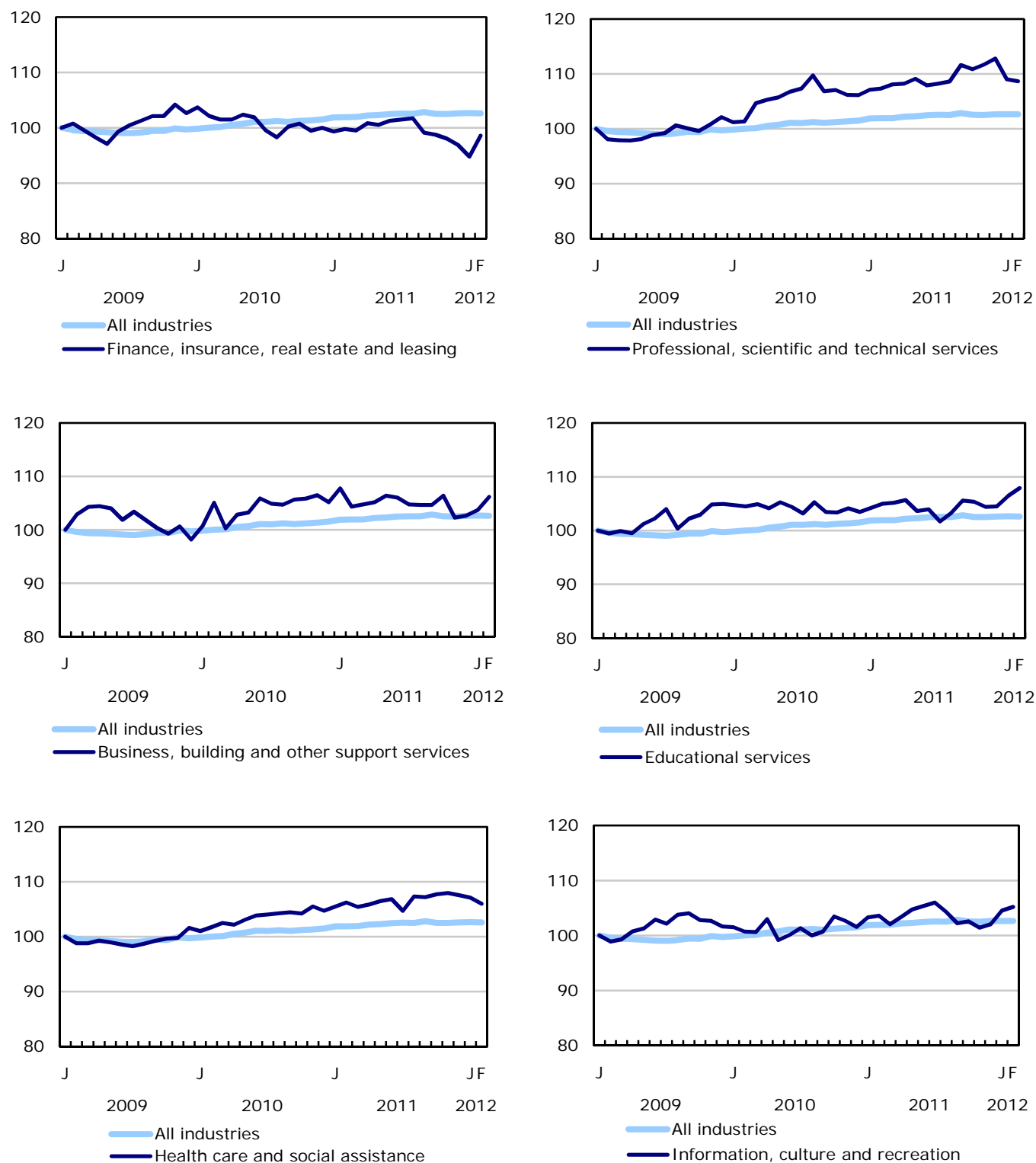


Chart 5
Index of employment by industry, Canada, seasonally adjusted, January 2009=100

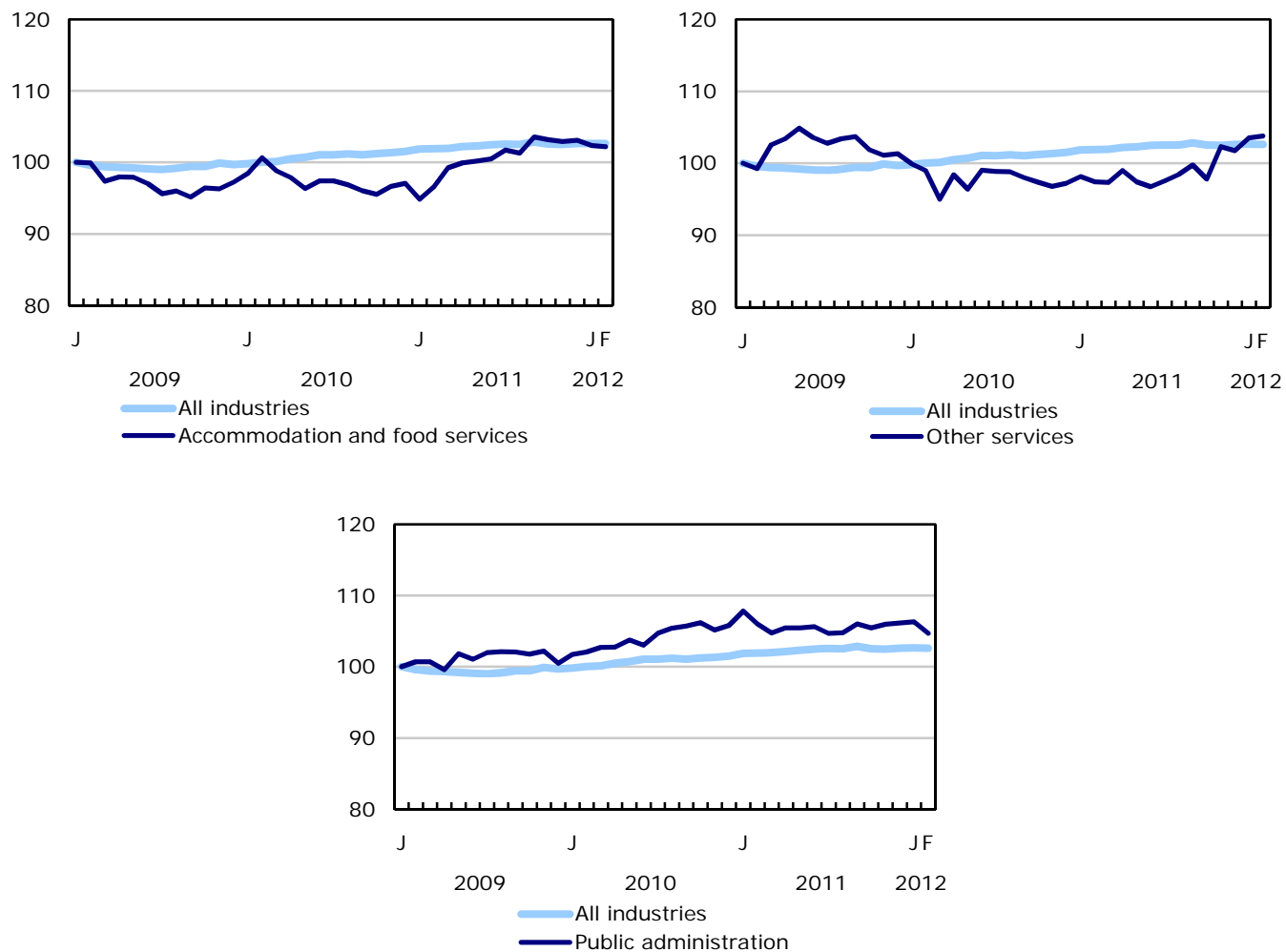


Chart 6
Index of employment by province, seasonally adjusted, January 2009=100

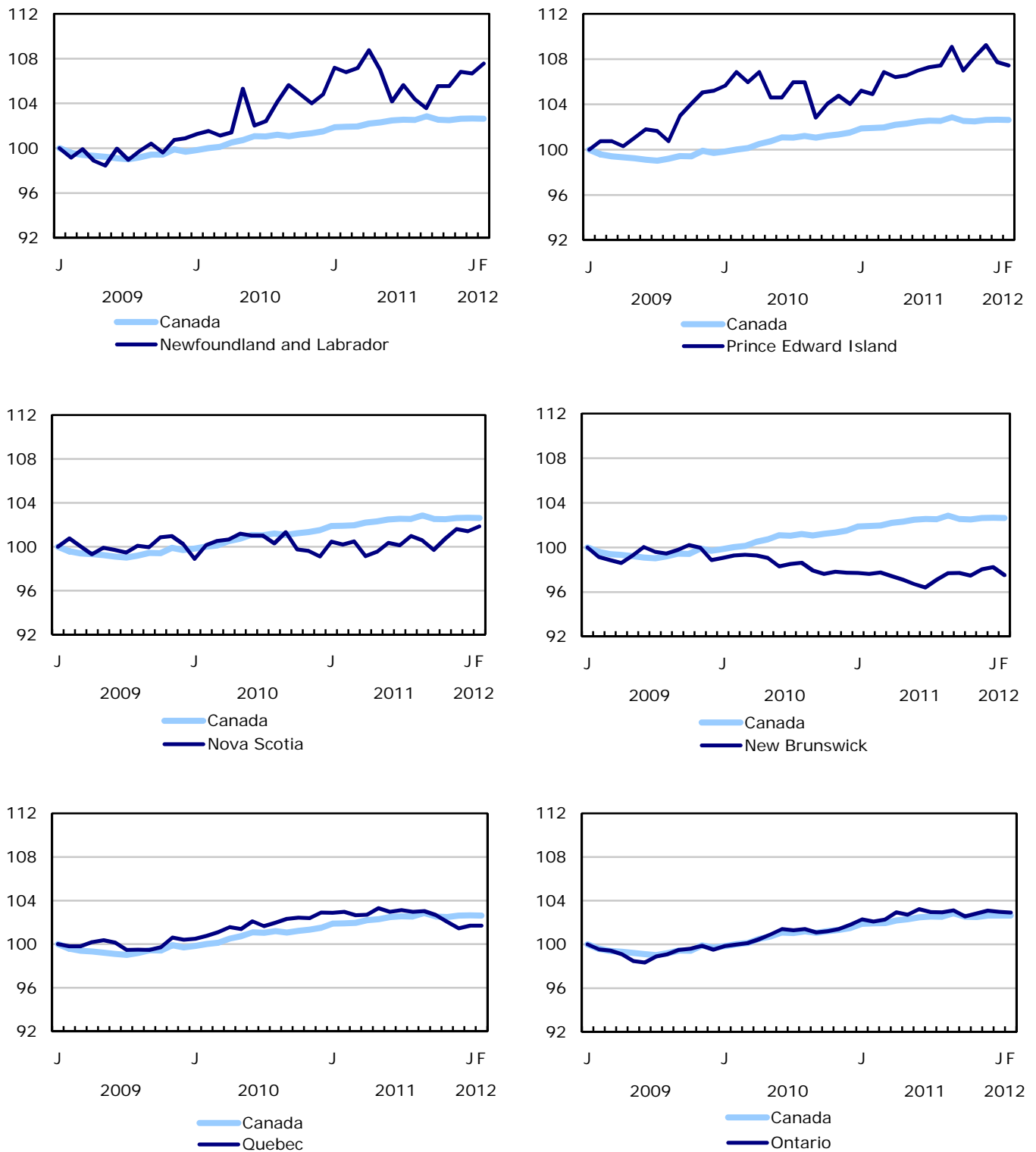
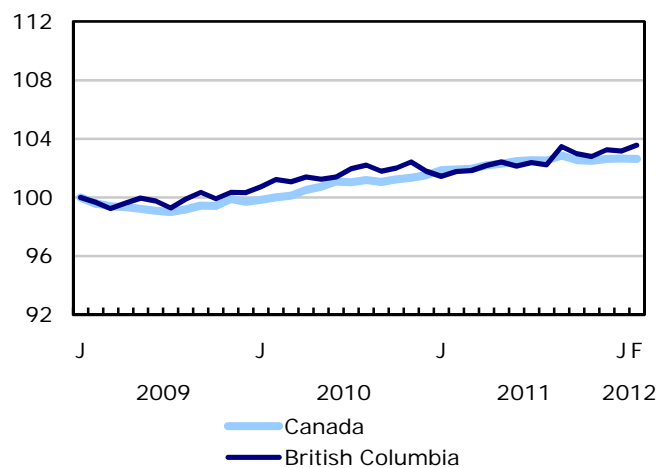
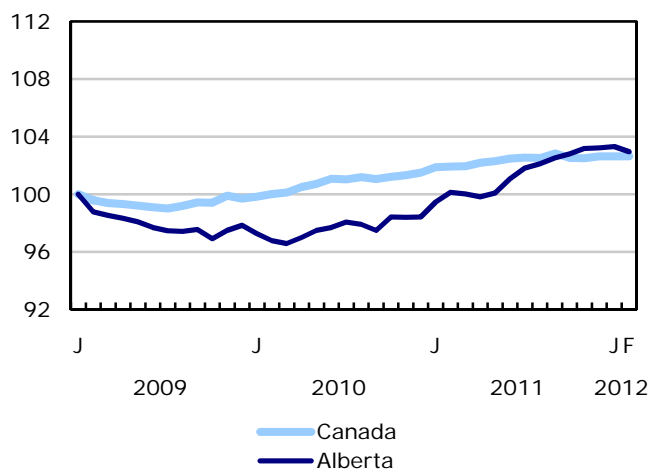
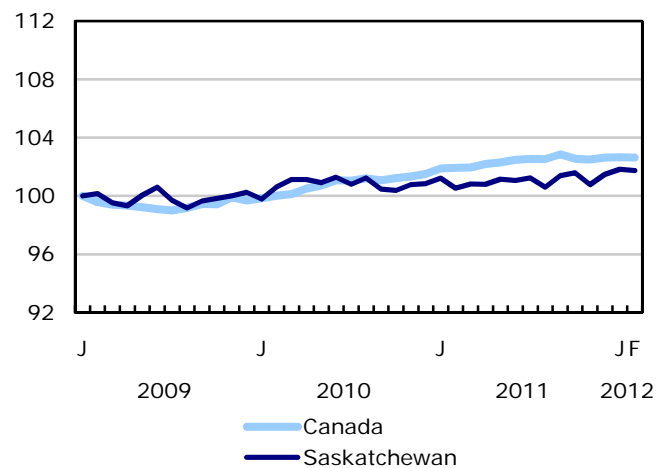
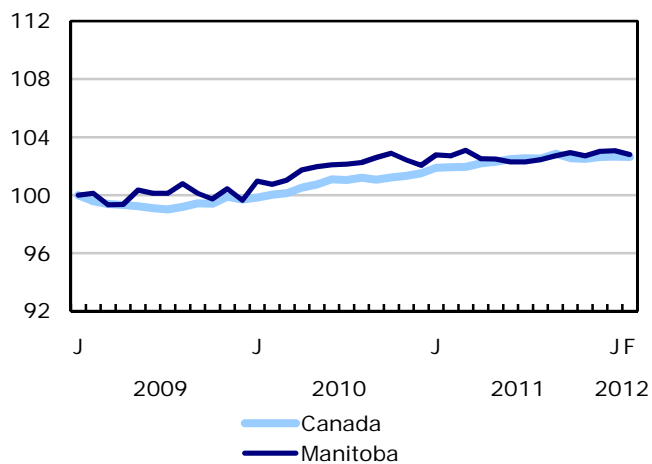


Chart 7
Index of employment by province, seasonally adjusted, January 2009=100



Related products

Selected publications from Statistics Canada

71-222-X	The Canadian Labour Market at a Glance
71-526-X	Methodology of the Canadian Labour Force Survey
71-543-G	Guide to the Labour Force Survey
71-544-X	Labour Force Survey Products and Services
71-587-X	Aboriginal Peoples Living Off-reserve in Western Canada: Estimates from the Labour Force Survey
71-588-X	The Aboriginal Labour Force Analysis Series
71-606-X	The Immigrant Labour Force Analysis Series
71F0004X	Labour Force Historical Review
71F0031X	Improvements to the Labour Force Survey (LFS)
71M0001X	Labour Force Survey Microdata File
75-001-X	Perspectives on Labour and Income

Selected CANSIM tables from Statistics Canada

282-0001	Labour force survey estimates (LFS), by sex and detailed age group, unadjusted for seasonality, monthly
282-0002	Labour force survey estimates (LFS), by sex and detailed age group, annual
282-0003	Labour force survey estimates (LFS), by educational attainment, sex and age group, unadjusted for seasonality, monthly
282-0004	Labour force survey estimates (LFS), by educational attainment, sex and age group, annual
282-0005	Labour force survey estimates (LFS), by full- and part-time students during school months, sex and age group, unadjusted for seasonality, monthly
282-0006	Labour force survey estimates (LFS), by students during summer months, sex and age group, unadjusted for seasonality, monthly
282-0007	Labour force survey estimates (LFS), by North American Industry Classification System (NAICS), sex and age group, unadjusted for seasonality, monthly

282-0008	Labour force survey estimates (LFS), by North American Industry Classification System (NAICS), sex and age group, annual
282-0009	Labour force survey estimates (LFS), by National Occupational Classification for Statistics (NOC-S) and sex, unadjusted for seasonality, monthly
282-0010	Labour force survey estimates (LFS), by National Occupational Classification for Statistics (NOC-S) and sex, annual
282-0011	Labour force survey estimates (LFS), employment by class of worker, North American Industry Classification System (NAICS) and sex, unadjusted for seasonality, monthly
282-0012	Labour force survey estimates (LFS), employment by class of worker, North American Industry Classification System (NAICS) and sex, annual
282-0013	Labour force survey estimates (LFS), part-time employment by reason for part-time work, sex and age group, unadjusted for seasonality, monthly
282-0014	Labour force survey estimates (LFS), part-time employment by reason for part-time work, sex and age group, annual
282-0015	Labour force survey estimates (LFS), by usual hours worked, main or all jobs, sex and age group, unadjusted for seasonality, monthly
282-0016	Labour force survey estimates (LFS), by usual hours worked, main or all jobs, sex and age group, annual
282-0017	Labour force survey estimates (LFS), by actual hours worked, main or all jobs, sex and age group, unadjusted for seasonality, monthly
282-0018	Labour force survey estimates (LFS), by actual hours worked, main or all jobs, sex and age group, annual
282-0019	Labour force survey estimates (LFS), by usual hours worked, class of worker, North American Industry Classification System (NAICS) and sex, unadjusted for seasonality, monthly
282-0020	Labour force survey estimates (LFS), by usual hours worked, class of worker, North American Industry Classification System (NAICS) and sex, annual
282-0021	Labour force survey estimates (LFS), by actual hours worked, class of worker, North American Industry Classification System (NAICS) and sex, unadjusted for seasonality, monthly
282-0022	Labour force survey estimates (LFS), by actual hours worked, class of worker, North American Industry Classification System (NAICS) and sex, annual
282-0023	Labour force survey estimates (LFS), by usual hours worked, class of worker, National Occupational Classification for Statistics (NOC-S) and sex, unadjusted for seasonality, monthly
282-0024	Labour force survey estimates (LFS), by usual hours worked, class of worker, National Occupational Classification for Statistics (NOC-S) and sex, annual
282-0025	Labour force survey estimates (LFS), by actual hours worked, class of worker, National Occupational Classification for Statistics (NOC-S) and sex, unadjusted for seasonality, monthly
282-0026	Labour force survey estimates (LFS), by actual hours worked, class of worker, National Occupational Classification for Statistics (NOC-S) and sex, annual

282-0027	Labour force survey estimates (LFS), by total and average usual and actual hours worked, main or all jobs, type of work, sex and age group, unadjusted for seasonality, monthly
282-0028	Labour force survey estimates (LFS), by total and average usual and actual hours worked, main or all jobs, type of work, sex and age group, annual
282-0029	Labour force survey estimates (LFS), average days lost for personal reasons per full-time employee by North American Industry Classification System (NAICS), sex and age group, annual
282-0030	Labour force survey estimates (LFS), average days lost for personal reasons per full-time employee by National Occupational Classification for Statistics (NOC-S), sex and age group, annual
282-0031	Labour force survey estimates (LFS), multiple jobholders by North American Industry Classification System (NAICS), sex and age group, annual
282-0032	Labour force survey estimates (LFS), multiple jobholders by North American Industry Classification System (NAICS), sex and age group, unadjusted for seasonality, monthly
282-0033	Labour force survey estimates (LFS), multiple jobholders by National Occupational Classification for Statistics (NOC-S), sex and age group, unadjusted for seasonality, monthly
282-0034	Labour force survey estimates (LFS), multiple jobholders by National Occupational Classification for Statistics (NOC-S), sex and age group, annual
282-0035	Labour force survey estimates (LFS), multiple jobholders by usual hours worked at main and all jobs, unadjusted for seasonality, monthly
282-0036	Labour force survey estimates (LFS), multiple jobholders by usual hours worked at main and all jobs, annual
282-0037	Labour force survey estimates (LFS), job tenure by type of work, sex and age group, unadjusted for seasonality, monthly
282-0038	Labour force survey estimates (LFS), job tenure by type of work, sex and age group, annual
282-0039	Labour force survey estimates (LFS), job tenure by National Occupational Classification for Statistics (NOC-S) and sex, unadjusted for seasonality, monthly
282-0040	Labour force survey estimates (LFS), job tenure by National Occupational Classification for Statistics (NOC-S) and sex, annual
282-0041	Labour force survey estimates (LFS), job tenure by North American Industry Classification System (NAICS) and sex, unadjusted for seasonality, monthly
282-0042	Labour force survey estimates (LFS), job tenure by North American Industry Classification System (NAICS) and sex, annual
282-0047	Labour force survey estimates (LFS), duration of unemployment by sex and age group, unadjusted for seasonality, monthly
282-0048	Labour force survey estimates (LFS), duration of unemployment by sex and age group, annual
282-0049	Labour force survey estimates (LFS), unemployment by type of work sought and search method, sex and age group, unadjusted for seasonality, monthly

282-0050	Labour force survey estimates (LFS), unemployment by type of work sought and search method, sex and age group, annual
282-0051	Labour force survey estimates (LFS), retirement age by class of worker and sex, annual
282-0052	Labour force survey estimates (LFS), by census metropolitan area based on 2001 census boundaries, sex and age group, 3-month moving average, unadjusted for seasonality, monthly *Terminated*
282-0053	Labour force survey estimates (LFS), by census metropolitan area based on 2001 census boundaries, sex and age group, annual *Terminated*
282-0054	Labour force survey estimates (LFS), by provinces and economic regions, 3-month moving average, unadjusted for seasonality, monthly
282-0055	Labour force survey estimates (LFS), by provinces, territories and economic regions, annual
282-0056	Labour force survey estimates (LFS), employment by census metropolitan area based on 2001 census boundaries and North American Industry Classification System (NAICS), 3-month moving average, unadjusted for seasonality, monthly *Terminated*
282-0057	Labour force survey estimates (LFS), employment by census metropolitan area based on 2001 census boundaries and North American Industry Classification System (NAICS), annual *Terminated*
282-0058	Labour force survey estimates (LFS), employment by census metropolitan area based on 2001 census boundaries and National Occupational Classification for Statistics (NOC-S), 3-month moving average, unadjusted for seasonality, monthly *Terminated*
282-0059	Labour force survey estimates (LFS), employment by census metropolitan area based on 2001 census boundaries and National Occupational Classification for Statistics (NOC-S), annual *Terminated*
282-0060	Labour force survey estimates (LFS), employment by economic region and North American Industry Classification System (NAICS), 3-month moving average, unadjusted for seasonality, monthly
282-0061	Labour force survey estimates (LFS), employment by economic region and North American Industry Classification System (NAICS), annual
282-0062	Labour force survey estimates (LFS), employment by economic region and National Occupational Classification for Statistics (NOC-S), 3-month moving average, unadjusted for seasonality, monthly
282-0063	Labour force survey estimates (LFS), employment by economic region and National Occupational Classification for Statistics (NOC-S), annual
282-0069	Labour force survey estimates (LFS), wages of employees by type of work, National Occupational Classification for Statistics (NOC-S), sex and age group, unadjusted for seasonality, monthly (current dollars)
282-0070	Labour force survey estimates (LFS), wages of employees by type of work, National Occupational Classification for Statistics (NOC-S), sex and age group, annual (current dollars)

282-0071	Labour force survey estimates (LFS), wages of employees by type of work, North American Industry Classification System (NAICS), sex and age group, unadjusted for seasonality, monthly (current dollars)
282-0072	Labour force survey estimates (LFS), wages of employees by type of work, North American Industry Classification System (NAICS), sex and age group, annual (current dollars)
282-0073	Labour force survey estimates (LFS), wages of employees by job permanence, union coverage, sex and age group, unadjusted for seasonality, monthly (current dollars)
282-0074	Labour force survey estimates (LFS), wages of employees by job permanence, union coverage, sex and age group, annual (current dollars)
282-0075	Labour force survey estimates (LFS), employees by establishment size, North American Industry Classification System (NAICS), sex and age group, unadjusted for seasonality, monthly
282-0076	Labour force survey estimates (LFS), employees by establishment size, North American Industry Classification System (NAICS), sex and age group, annual
282-0077	Labour force survey estimates (LFS), employees by union coverage, North American Industry Classification System (NAICS), sex and age group, unadjusted for seasonality, monthly
282-0078	Labour force survey estimates (LFS), employees by union coverage, North American Industry Classification System (NAICS), sex and age group, annual
282-0079	Labour force survey estimates (LFS), employees by job permanency, North American Industry Classification System (NAICS), sex and age group, unadjusted for seasonality, monthly
282-0080	Labour force survey estimates (LFS), employees by job permanency, North American Industry Classification System (NAICS), sex and age group, annual
282-0081	Labour force survey estimates (LFS), employees working overtime (weekly) by National Occupational Classification for Statistics (NOC-S), sex and age group, unadjusted for seasonality, monthly
282-0082	Labour force survey estimates (LFS), employees working overtime (weekly) by National Occupational Classification for Statistics (NOC-S), sex and age group, annual
282-0083	Labour force survey estimates (LFS), employees working overtime (weekly) by North American Industry Classification System (NAICS), sex and age group, unadjusted for seasonality, monthly
282-0084	Labour force survey estimates (LFS), employees working overtime (weekly) by North American Industry Classification System (NAICS), sex and age group, annual
282-0085	Labour force survey estimates (LFS), supplementary unemployment rates by sex and age group, unadjusted for seasonality, monthly
282-0086	Labour force survey estimates (LFS), supplementary unemployment rates by sex and age group, annual
282-0087	Labour force survey estimates (LFS), by sex and age group, seasonally adjusted and unadjusted, monthly
282-0088	Labour force survey estimates (LFS), employment by North American Industry Classification System (NAICS), seasonally adjusted and unadjusted, monthly

282-0089	Labour force survey estimates (LFS), employment by class of worker and sex, seasonally adjusted and unadjusted, monthly
282-0090	Labour force survey estimates (LFS), by census metropolitan area based on 2001 census boundaries, 3-month moving average, seasonally adjusted and unadjusted, monthly *Terminated*
282-0091	Labour force survey estimates (LFS), by Montréal, Toronto and Vancouver census metropolitan areas based on 2001 census boundaries, seasonally adjusted and unadjusted, monthly *Terminated*
282-0092	Labour force survey estimates (LFS), actual hours worked by North American Industry Classification System (NAICS), seasonally adjusted, monthly
282-0093	Labour force survey estimates (LFS), employment by National Occupational Classification for Statistics (NOC-S), seasonally adjusted, monthly
282-0094	Labour force survey estimates (LFS), by North American Industry Classification System (NAICS), Canada, seasonally adjusted, monthly
282-0095	Labour force survey estimates (LFS), by full- and part-time students during school months, sex and age group, annual
282-0100	Labour force survey estimates (LFS), by territories, sex and age group, 3-month moving average, seasonally adjusted and unadjusted, monthly
282-0101	Labour force survey estimates (LFS), by immigrant status, age group, Canada, regions, provinces and Montreal, Toronto, Vancouver census metropolitan areas, 3-month moving average, unadjusted for seasonality, monthly
282-0102	Labour force survey estimates (LFS), by immigrant status, age group, Canada, regions, provinces and Montreal, Toronto, Vancouver census metropolitan areas, annual
282-0103	Labour force survey estimates (LFS), by immigrant status, sex and detailed age group, Canada, 3-month moving average, unadjusted for seasonality, monthly
282-0104	Labour force survey estimates (LFS), by immigrant status, sex and detailed age group, Canada, annual
282-0105	Labour force survey estimates (LFS), by immigrant status, educational attainment, sex and age group, Canada, 3-month moving average, unadjusted for seasonality, monthly
282-0106	Labour force survey estimates (LFS), by immigrant status, educational attainment, sex and age group, Canada, annual
282-0107	Labour force survey estimates (LFS), by immigrant status, country of birth, sex and age group, Canada, regions and provinces, 3-month moving average, unadjusted for seasonality, monthly
282-0108	Labour force survey estimates (LFS), by immigrant status, country of birth, sex and age group, Canada, regions and provinces, annual
282-0109	Labour force survey estimates (LFS), by census metropolitan area based on 2006 census boundaries, sex and age group, 3-month moving average, unadjusted for seasonality, monthly

282-0110	Labour force survey estimates (LFS), by census metropolitan area based on 2006 census boundaries, sex and age group, annual
282-0111	Labour force survey estimates (LFS), employment by census metropolitan area based on 2006 census boundaries and North American Industry Classification System (NAICS), 3-month moving average, unadjusted for seasonality, monthly
282-0112	Labour force survey estimates (LFS), employment by census metropolitan area based on 2006 census boundaries and North American Industry Classification System (NAICS), annual
282-0113	Labour force survey estimates (LFS), employment by census metropolitan area based on 2006 census boundaries and National Occupational Classification for Statistics (NOC-S), 3-month moving average, unadjusted for seasonality, monthly
282-0114	Labour force survey estimates (LFS), employment by census metropolitan area based on 2006 census boundaries and National Occupational Classification for Statistics (NOC-S), annual
282-0115	Labour force survey estimates (LFS), by selected census agglomerations based on 2006 census boundaries, annual
282-0116	Labour force survey estimates (LFS), by census metropolitan area based on 2006 census boundaries, 3-month moving average, seasonally adjusted and unadjusted, monthly
282-0117	Labour force survey estimates (LFS), by Montréal, Toronto and Vancouver census metropolitan areas based on 2006 census boundaries, seasonally adjusted and unadjusted, monthly
282-0118	Labour force survey estimates (LFS), by urban and rural areas based on 2006 census boundaries, sex and age group, unadjusted for seasonality, monthly
282-0119	Labour force survey estimates (LFS), by urban and rural areas based on 2006 census boundaries, sex and age group, annual
282-0120	Labour force survey estimates (LFS), employment by urban and rural areas based on 2006 census boundaries, class of worker and North American Industry Classification System (NAICS), unadjusted for seasonality, monthly
282-0121	Labour force survey estimates (LFS), employment by urban and rural areas based on 2006 census boundaries, class of worker and North American Industry Classification System (NAICS), annual

Selected surveys from Statistics Canada

3701	Labour Force Survey
------	---------------------

Selected summary tables from Statistics Canada

- *Labour force characteristics*
- *Employment by industry*
- *Days lost per worker due to illness or disability, by sex, by province*
- *Economic indicators, by province and territory (monthly and quarterly)*
- *Labour force and participation rates by sex and age group*
- *Labour force, employed and unemployed, numbers and rates, by province*
- *Employment by industry and sex*
- *Full-time and part-time employment by sex and age group*
- *Labour force characteristics by age and sex*
- *Distribution of employed people, by industry, by province*
- *Labour force characteristics, population 15 years and older, by census metropolitan area*
- *Labour force characteristics, population 15 years and older, by economic region, by province*
- *Days lost per worker by cause, by provinces*
- *Days lost per worker by industry and sex*
- *People employed, by educational attainment*
- *Reasons for part-time work by sex and age group*
- *Self-employment, historical summary*
- *Employment by age, sex, type of work, class of worker and province (monthly)*
- *Employment by major industry groups, seasonally adjusted, by province (monthly)*
- *Actual hours worked per week by industry, seasonally adjusted (monthly)*
- *Average hourly wages of employees by selected characteristics and profession, unadjusted data, by province (monthly)*
- *Labour force characteristics, seasonally adjusted, by province (monthly)*
- *Labour force characteristics, unadjusted, by province (monthly)*
- *Labour force characteristics, seasonally adjusted, by census metropolitan area (3 month moving average)*
- *Labour force characteristics, unadjusted, by census metropolitan area (3 month moving average)*
- *Labour force characteristics, unadjusted, by economic region (3 month moving average)*

- *Labour force characteristics by immigrant status of population aged 25 to 54, by province*
- *Labour force characteristics by immigrant status of population aged 25 to 54, by educational attainment*
- *Labour force characteristics by immigrant status, by detailed age group*
- *Labour force characteristics by immigrant status of population aged 25 to 54, by country of birth*

Statistical tables

Table 1
Labour force characteristics by age and sex, Canada, seasonally adjusted

	January 2012	February 2012	S.E. ¹	Change from			Percent change from		
				last month	last December	twelve months ago	last month	last December	twelve months ago
in thousands (except rates)									
15 years and over, both sexes									
Population	28,156.4	28,180.9	...	24.5	50.1	314.4	0.1	0.2	1.1
Labour force	18,778.2	18,740.3	29.1	-37.9	-14.2	69.7	-0.2	-0.1	0.4
Employment	17,357.0	17,354.2	28.6	-2.8	-0.5	120.5	0.0	0.0	0.7
Employment full-time	14,048.9	14,058.0	37.7	9.1	5.5	203.8	0.1	0.0	1.5
Employment part-time	3,308.1	3,296.1	34.7	-12.0	-6.1	-83.4	-0.4	-0.2	-2.5
Unemployment	1,421.2	1,386.2	25.0	-35.0	-13.6	-50.7	-2.5	-1.0	-3.5
Participation rate	66.7	66.5	0.1	-0.2	-0.2	-0.5
Unemployment rate	7.6	7.4	0.1	-0.2	-0.1	-0.3
Employment rate	61.6	61.6	0.1	0.0	-0.1	-0.2
Part-time rate	19.1	19.0	0.2	-0.1	0.0	-0.6
15 to 24 years, both sexes									
Population	4,457.0	4,456.2	...	-0.8	-1.1	-2.6	0.0	0.0	-0.1
Labour force	2,847.8	2,822.8	17.0	-25.0	-22.8	-67.2	-0.9	-0.8	-2.3
Employment	2,435.9	2,409.1	15.6	-26.8	-35.8	-68.7	-1.1	-1.5	-2.8
Employment full-time	1,270.0	1,268.8	18.6	-1.2	-34.2	-20.1	-0.1	-2.6	-1.6
Employment part-time	1,165.9	1,140.3	19.4	-25.6	-1.6	-48.6	-2.2	-0.1	-4.1
Unemployment	411.9	413.7	14.6	1.8	13.1	1.5	0.4	3.3	0.4
Participation rate	63.9	63.3	0.4	-0.6	-0.5	-1.5
Unemployment rate	14.5	14.7	0.5	0.2	0.6	0.4
Employment rate	54.7	54.1	0.3	-0.6	-0.8	-1.5
Part-time rate	47.9	47.3	0.7	-0.5	0.6	-0.6
25 years and over, men									
Population	11,596.5	11,609.3	...	12.8	25.6	158.2	0.1	0.2	1.4
Labour force	8,431.8	8,429.3	15.3	-2.5	0.0	79.3	0.0	0.0	0.9
Employment	7,873.7	7,899.5	16.1	25.8	24.0	111.3	0.3	0.3	1.4
Employment full-time	7,261.9	7,281.3	21.1	19.4	9.2	122.5	0.3	0.1	1.7
Employment part-time	611.9	618.2	17.1	6.3	14.8	-11.2	1.0	2.5	-1.8
Unemployment	558.1	529.8	14.3	-28.3	-24.0	-31.9	-5.1	-4.3	-5.7
Participation rate	72.7	72.6	0.1	-0.1	-0.2	-0.3
Unemployment rate	6.6	6.3	0.2	-0.3	-0.3	-0.4
Employment rate	67.9	68.0	0.1	0.1	0.0	0.0
Part-time rate	7.8	7.8	0.2	0.1	0.2	-0.3
25 years and over, women									
Population	12,102.9	12,115.4	...	12.5	25.6	158.9	0.1	0.2	1.3
Labour force	7,498.6	7,488.2	16.6	-10.4	8.6	57.5	-0.1	0.1	0.8
Employment	7,047.3	7,045.6	16.3	-1.7	11.3	77.9	0.0	0.2	1.1
Employment full-time	5,517.0	5,508.0	24.4	-9.0	30.6	101.4	-0.2	0.6	1.9
Employment part-time	1,530.3	1,537.6	22.7	7.3	-19.3	-23.5	0.5	-1.2	-1.5
Unemployment	451.3	442.6	13.4	-8.7	-2.8	-20.3	-1.9	-0.6	-4.4
Participation rate	62.0	61.8	0.1	-0.2	-0.1	-0.3
Unemployment rate	6.0	5.9	0.2	-0.1	-0.1	-0.3
Employment rate	58.2	58.2	0.1	0.0	0.0	-0.1
Part-time rate	21.7	21.8	0.3	0.1	-0.3	-0.6
25 to 54 years, both sexes									
Population	14,545.7	14,545.0	...	-0.7	-2.2	29.5	0.0	0.0	0.2
Labour force	12,582.4	12,558.5	22.1	-23.9	-16.6	22.9	-0.2	-0.1	0.2
Employment	11,792.2	11,792.6	23.1	0.4	-4.1	66.8	0.0	0.0	0.6
Unemployment	790.2	765.8	18.4	-24.4	-12.5	-44.0	-3.1	-1.6	-5.4
Participation rate	86.5	86.3	0.2	-0.2	-0.1	-0.1
Unemployment rate	6.3	6.1	0.1	-0.2	-0.1	-0.4
Employment rate	81.1	81.1	0.2	0.0	0.0	0.3
25 to 54 years, men									
Population	7,276.2	7,276.2	...	0.0	-0.9	15.8	0.0	0.0	0.2
Labour force	6,600.5	6,588.9	14.3	-11.6	-1.3	17.9	-0.2	0.0	0.3
Employment	6,170.5	6,182.6	15.6	12.1	13.4	47.2	0.2	0.2	0.8
Unemployment	430.0	406.3	13.0	-23.7	-14.7	-29.3	-5.5	-3.5	-6.7
Participation rate	90.7	90.6	0.2	-0.1	0.0	0.1
Unemployment rate	6.5	6.2	0.2	-0.3	-0.2	-0.4
Employment rate	84.8	85.0	0.2	0.2	0.2	0.5

See notes at the end of the table.

Table 1 – continued

Labour force characteristics by age and sex, Canada, seasonally adjusted

	January 2012	February 2012	S.E. ¹	Change from			Percent change from		
				last month	last December	twelve months ago	last month	last December	twelve months ago
in thousands (except rates)									
25 to 54 years, women									
Population	7,269.4	7,268.9	...	-0.5	-1.2	13.8	0.0	0.0	0.2
Labour force	5,982.0	5,969.6	16.0	-12.4	-15.3	5.0	-0.2	-0.3	0.1
Employment	5,621.7	5,610.0	16.1	-11.7	-17.5	19.6	-0.2	-0.3	0.4
Unemployment	360.2	359.5	12.5	-0.7	2.2	-14.7	-0.2	0.6	-3.9
Participation rate	82.3	82.1	0.2	-0.2	-0.2	-0.1
Unemployment rate	6.0	6.0	0.2	0.0	0.0	-0.3
Employment rate	77.3	77.2	0.2	-0.1	-0.2	0.1
55 years and over, both sexes									
Population	9,153.7	9,179.6	...	25.9	53.4	287.4	0.3	0.6	3.2
Labour force	3,348.0	3,359.1	17.4	11.1	25.2	114.1	0.3	0.8	3.5
Employment	3,128.9	3,152.5	17.2	23.6	39.5	122.4	0.8	1.3	4.0
Unemployment	219.1	206.7	9.6	-12.4	-14.1	-8.2	-5.7	-6.4	-3.8
Participation rate	36.6	36.6	0.2	0.0	0.1	0.1
Unemployment rate	6.5	6.2	0.3	-0.3	-0.4	-0.4
Employment rate	34.2	34.3	0.2	0.1	0.2	0.2
55 years and over, men									
Population	4,320.2	4,333.2	...	13.0	26.6	142.4	0.3	0.6	3.4
Labour force	1,831.3	1,840.4	11.5	9.1	1.3	61.5	0.5	0.1	3.5
Employment	1,703.3	1,716.9	11.4	13.6	10.6	64.1	0.8	0.6	3.9
Unemployment	128.1	123.5	7.0	-4.6	-9.3	-2.6	-3.6	-7.0	-2.1
Participation rate	42.4	42.5	0.3	0.1	-0.2	0.1
Unemployment rate	7.0	6.7	0.4	-0.3	-0.5	-0.4
Employment rate	39.4	39.6	0.3	0.2	0.0	0.2
55 years and over, women									
Population	4,833.4	4,846.5	...	13.1	26.8	145.0	0.3	0.6	3.1
Labour force	1,516.6	1,518.7	11.9	2.1	23.9	52.6	0.1	1.6	3.6
Employment	1,425.6	1,435.6	11.8	10.0	28.9	58.3	0.7	2.1	4.2
Unemployment	91.0	83.1	6.2	-7.9	-4.9	-5.7	-8.7	-5.6	-6.4
Participation rate	31.4	31.3	0.3	-0.1	0.3	0.1
Unemployment rate	6.0	5.5	0.4	-0.5	-0.4	-0.6
Employment rate	29.5	29.6	0.2	0.1	0.4	0.3

1. Average standard error of change in two consecutive months (see "Sampling Errors" in Data Quality for further explanations).

Note(s): Related CANSIM table 282-0087.

Table 2
Employment by class of worker and industry, Canada, seasonally adjusted

	January 2012	February 2012	S.E. ¹	Change from			Percent change from		
				last month	last December	twelve months ago	last month	last December	twelve months ago
	in thousands								
Class of worker									
Employees	14,719.0	14,703.9	34.6	-15.1	24.1	138.5	-0.1	0.2	1.0
Self-employed ²	2,637.9	2,650.2	24.7	12.3	-24.7	-18.2	0.5	-0.9	-0.7
Public/private sector employees									
Public sector employees	3,574.9	3,561.5	24.0	-13.4	6.2	-18.8	-0.4	0.2	-0.5
Private sector employees	11,144.2	11,142.5	36.2	-1.7	18.0	157.4	0.0	0.2	1.4
Industry	17,357.0	17,354.2	28.6	-2.8	-0.5	120.5	0.0	0.0	0.7
Goods-producing sector	3,803.2	3,821.0	24.8	17.8	27.1	2.2	0.5	0.7	0.1
Agriculture	308.8	303.5	6.8	-5.3	-2.8	-7.7	-1.7	-0.9	-2.5
Forestry, fishing, mining, quarrying, oil and gas extraction ³	359.2	366.0	7.0	6.8	10.7	33.8	1.9	3.0	10.2
Utilities	140.2	135.8	4.9	-4.4	2.0	-8.7	-3.1	1.5	-6.0
Construction	1,251.2	1,265.2	16.1	14.0	0.3	25.9	1.1	0.0	2.1
Manufacturing	1,743.7	1,750.5	18.6	6.8	16.9	-41.1	0.4	1.0	-2.3
Services-producing sector	13,553.8	13,533.1	32.9	-20.7	-27.7	118.2	-0.2	-0.2	0.9
Trade	2,674.1	2,636.7	22.6	-37.4	-25.4	-34.1	-1.4	-1.0	-1.3
Transportation and warehousing	852.7	830.8	13.4	-21.9	-18.7	-0.8	-2.6	-2.2	-0.1
Finance, insurance, real estate and leasing	1,029.1	1,070.3	15.1	41.2	18.0	-13.2	4.0	1.7	-1.2
Professional, scientific and technical services	1,307.5	1,303.2	17.3	-4.3	-49.1	16.1	-0.3	-3.6	1.3
Business, building and other support services	667.8	683.6	13.5	15.8	22.6	11.6	2.4	3.4	1.7
Educational services	1,243.1	1,259.9	15.3	16.8	39.6	33.7	1.4	3.2	2.7
Health care and social assistance	2,102.3	2,080.6	18.1	-21.7	-31.2	-4.9	-1.0	-1.5	-0.2
Information, culture and recreation	791.4	796.5	14.2	5.1	23.9	11.9	0.6	3.1	1.5
Accommodation and food services	1,112.3	1,110.7	15.9	-1.6	-9.6	60.8	-0.1	-0.9	5.8
Other services	796.4	798.4	12.5	2.0	15.7	49.2	0.3	2.0	6.6
Public administration	977.1	962.4	12.3	-14.7	-13.5	-12.2	-1.5	-1.4	-1.3

1. Average standard error of change in two consecutive months (see "Sampling Errors" in Data Quality for further explanations).

2. Includes both incorporated and unincorporated working owners, self-employed persons who do not have a business and persons working in a family business without pay.

3. Also referred to as Natural resources.

Note(s): Related CANSIM Tables 282-0088, 282-0089.

Table 3
Labour force characteristics by province, seasonally adjusted

	January 2012	February 2012	S.E. ¹	Change from			Percent change from		
				last month	last December	twelve months ago	last month	last December	twelve months ago
in thousands (except rates)									
Newfoundland and Labrador									
Population	428.5	428.6	...	0.1	0.0	-0.6	0.0	0.0	-0.1
Labour force	262.5	262.7	2.0	0.2	2.2	3.2	0.1	0.8	1.2
Employment	226.9	228.8	2.1	1.9	1.6	1.7	0.8	0.7	0.7
Employment full-time	197.2	198.1	2.4	0.9	2.7	2.9	0.5	1.4	1.5
Employment part-time	29.7	30.7	1.9	1.0	-1.1	-1.2	3.4	-3.5	-3.8
Unemployment	35.5	33.9	2.0	-1.6	0.7	1.5	-4.5	2.1	4.6
Participation rate	61.3	61.3	0.5	0.0	0.5	0.8
Unemployment rate	13.5	12.9	0.7	-0.6	0.2	0.4
Employment rate	53.0	53.4	0.5	0.4	0.4	0.5
Prince Edward Island									
Population	120.0	120.1	...	0.1	0.3	1.6	0.1	0.3	1.4
Labour force	82.5	80.9	0.6	-1.6	-1.9	1.2	-1.9	-2.3	1.5
Employment	72.4	72.2	0.7	-0.2	-1.2	1.7	-0.3	-1.6	2.4
Employment full-time	60.3	60.1	0.8	-0.2	-1.4	0.8	-0.3	-2.3	1.3
Employment part-time	12.1	12.1	0.7	0.0	0.2	0.9	0.0	1.7	8.0
Unemployment	10.1	8.7	0.6	-1.4	-0.6	-0.5	-13.9	-6.5	-5.4
Participation rate	68.8	67.4	0.5	-1.4	-1.7	0.1
Unemployment rate	12.2	10.8	0.7	-1.4	-0.4	-0.7
Employment rate	60.3	60.1	0.6	-0.2	-1.2	0.6
Nova Scotia									
Population	779.6	779.8	...	0.2	0.2	0.7	0.0	0.0	0.1
Labour force	499.3	500.4	2.7	1.1	3.1	1.4	0.2	0.6	0.3
Employment	457.5	459.5	2.8	2.0	1.1	7.5	0.4	0.2	1.7
Employment full-time	370.1	367.0	3.5	-3.1	-2.5	-2.7	-0.8	-0.7	-0.7
Employment part-time	87.4	92.5	3.1	5.1	3.6	10.2	5.8	4.0	12.4
Unemployment	41.8	40.9	2.5	-0.9	2.0	-6.0	-2.2	5.1	-12.8
Participation rate	64.0	64.2	0.3	0.2	0.4	0.2
Unemployment rate	8.4	8.2	0.5	-0.2	0.4	-1.2
Employment rate	58.7	58.9	0.4	0.2	0.1	0.9
New Brunswick									
Population	620.4	620.5	...	0.1	0.3	1.8	0.0	0.0	0.3
Labour force	392.6	392.3	2.3	-0.3	1.2	1.0	-0.1	0.3	0.3
Employment	355.2	352.6	2.4	-2.6	-1.9	-0.4	-0.7	-0.5	-0.1
Employment full-time	297.7	296.6	2.8	-1.1	-1.3	1.3	-0.4	-0.4	0.4
Employment part-time	57.5	55.9	2.3	-1.6	-0.7	-1.7	-2.8	-1.2	-3.0
Unemployment	37.4	39.7	2.1	2.3	3.1	1.3	6.1	8.5	3.4
Participation rate	63.3	63.2	0.4	-0.1	0.1	0.0
Unemployment rate	9.5	10.1	0.5	0.6	0.7	0.3
Employment rate	57.3	56.8	0.4	-0.5	-0.4	-0.3
Quebec									
Population	6,610.1	6,614.2	...	4.1	9.0	63.7	0.1	0.1	1.0
Labour force	4,273.8	4,274.1	15.0	0.3	-2.7	-16.9	0.0	-0.1	-0.4
Employment	3,915.5	3,915.7	15.1	0.2	9.7	-48.9	0.0	0.2	-1.2
Employment full-time	3,164.8	3,180.3	19.7	15.5	15.0	8.5	0.5	0.5	0.3
Employment part-time	750.8	735.3	18.2	-15.5	-5.4	-57.4	-2.1	-0.7	-7.2
Unemployment	358.3	358.4	13.3	0.1	-12.4	32.0	0.0	-3.3	9.8
Participation rate	64.7	64.6	0.2	-0.1	-0.1	-0.9
Unemployment rate	8.4	8.4	0.3	0.0	-0.3	0.8
Employment rate	59.2	59.2	0.2	0.0	0.1	-1.3
Ontario									
Population	11,003.7	11,014.9	...	11.2	23.4	141.0	0.1	0.2	1.3
Labour force	7,339.4	7,298.9	20.2	-40.5	-19.2	32.3	-0.6	-0.3	0.4
Employment	6,746.0	6,742.1	19.2	-3.9	-11.4	53.6	-0.1	-0.2	0.8
Employment full-time	5,441.7	5,436.3	25.4	-5.4	-19.9	39.8	-0.1	-0.4	0.7
Employment part-time	1,304.3	1,305.8	23.2	1.5	8.5	13.9	0.1	0.7	1.1
Unemployment	593.4	556.8	17.2	-36.6	-7.8	-21.3	-6.2	-1.4	-3.7
Participation rate	66.7	66.3	0.2	-0.4	-0.3	-0.5
Unemployment rate	8.1	7.6	0.2	-0.5	-0.1	-0.4
Employment rate	61.3	61.2	0.2	-0.1	-0.2	-0.3

See notes at the end of the table.

Table 3 – continued

Labour force characteristics by province, seasonally adjusted

	January 2012	February 2012	S.E. ¹	Change from			Percent change from		
				last month	last December	twelve months ago	last month	last December	twelve months ago
in thousands (except rates)									
Manitoba									
Population	958.8	959.6	...	0.8	1.6	10.5	0.1	0.2	1.1
Labour force	662.7	662.6	2.7	-0.1	0.1	3.0	0.0	0.0	0.5
Employment	626.8	625.3	2.6	-1.5	-1.2	0.6	-0.2	-0.2	0.1
Employment full-time	504.4	502.3	3.7	-2.1	-5.8	1.5	-0.4	-1.1	0.3
Employment part-time	122.3	123.0	3.5	0.7	4.5	-0.8	0.6	3.8	-0.6
Unemployment	35.9	37.4	2.2	1.5	1.4	2.4	4.2	3.9	6.9
Participation rate	69.1	69.0	0.3	-0.1	-0.2	-0.5
Unemployment rate	5.4	5.6	0.3	0.2	0.2	0.3
Employment rate	65.4	65.2	0.3	-0.2	-0.2	-0.6
Saskatchewan									
Population	805.0	805.8	...	0.8	1.5	9.1	0.1	0.2	1.1
Labour force	557.3	557.1	2.5	-0.2	-0.1	3.2	0.0	0.0	0.6
Employment	529.8	529.4	2.5	-0.4	1.4	6.3	-0.1	0.3	1.2
Employment full-time	435.1	436.2	3.3	1.1	0.9	4.3	0.3	0.2	1.0
Employment part-time	94.7	93.2	3.0	-1.5	0.6	2.0	-1.6	0.6	2.2
Unemployment	27.6	27.7	1.9	0.1	-1.5	-3.1	0.4	-5.1	-10.1
Participation rate	69.2	69.1	0.3	-0.1	-0.2	-0.4
Unemployment rate	5.0	5.0	0.3	0.0	-0.2	-0.6
Employment rate	65.8	65.7	0.3	-0.1	0.1	0.0
Alberta									
Population	3,032.9	3,037.1	...	4.2	8.3	49.9	0.1	0.3	1.7
Labour force	2,246.0	2,239.0	8.7	-7.0	-3.8	44.4	-0.3	-0.2	2.0
Employment	2,135.1	2,127.9	9.0	-7.2	-5.3	58.4	-0.3	-0.2	2.8
Employment full-time	1,799.0	1,780.8	11.9	-18.2	3.7	89.2	-1.0	0.2	5.3
Employment part-time	336.1	347.1	10.6	11.0	-8.9	-30.8	3.3	-2.5	-8.2
Unemployment	110.9	111.1	7.0	0.2	1.4	-14.1	0.2	1.3	-11.3
Participation rate	74.1	73.7	0.3	-0.4	-0.3	0.2
Unemployment rate	4.9	5.0	0.3	0.1	0.1	-0.7
Employment rate	70.4	70.1	0.3	-0.3	-0.3	0.8
British Columbia									
Population	3,797.5	3,800.4	...	2.9	5.6	36.6	0.1	0.1	1.0
Labour force	2,462.1	2,472.4	10.5	10.3	6.9	-3.1	0.4	0.3	-0.1
Employment	2,291.7	2,300.8	10.3	9.1	6.9	39.9	0.4	0.3	1.8
Employment full-time	1,778.7	1,800.3	14.1	21.6	14.2	58.4	1.2	0.8	3.4
Employment part-time	513.1	500.5	13.5	-12.6	-7.3	-18.4	-2.5	-1.4	-3.5
Unemployment	170.4	171.5	8.7	1.1	-0.1	-43.1	0.6	-0.1	-20.1
Participation rate	64.8	65.1	0.3	0.3	0.1	-0.7
Unemployment rate	6.9	6.9	0.3	0.0	-0.1	-1.8
Employment rate	60.3	60.5	0.3	0.2	0.1	0.4

1. Average standard error of change in two consecutive months (see "Sampling Errors" in Data Quality for further explanations).

Note(s): Related CANSIM Table 282-0087.

Table 4-1
Selected labour force characteristics (seasonally adjusted) — Newfoundland and Labrador

	January 2012	February 2012	S.E. ¹	Change from			Percent change from		
				last month	last December	twelve months ago	last month	last December	twelve months ago
in thousands (except rates)									
Both sexes, 15 years and over									
Population	428.5	428.6	...	0.1	0.0	-0.6	0.0	0.0	-0.1
Labour force	262.5	262.7	2.0	0.2	2.2	3.2	0.1	0.8	1.2
Employment	226.9	228.8	2.1	1.9	1.6	1.7	0.8	0.7	0.7
Employment full-time	197.2	198.1	2.4	0.9	2.7	2.9	0.5	1.4	1.5
Unemployment	35.5	33.9	2.0	-1.6	0.7	1.5	-4.5	2.1	4.6
Participation rate	61.3	61.3	0.5	0.0	0.5	0.8
Unemployment rate	13.5	12.9	0.7	-0.6	0.2	0.4
Employment rate	53.0	53.4	0.5	0.4	0.4	0.5
Part-time rate	13.1	13.4	0.8	0.3	-0.6	-0.6
Both sexes, 15 to 24 years									
Population	60.2	60.2	...	0.0	-0.1	-1.3	0.0	-0.2	-2.1
Labour force	35.2	35.6	1.0	0.4	-0.2	0.4	1.1	-0.6	1.1
Employment	28.1	29.3	1.0	1.2	0.0	1.0	4.3	0.0	3.5
Unemployment	7.1	6.3	1.0	-0.8	-0.2	-0.6	-11.3	-3.1	-8.7
Participation rate	58.5	59.1	1.7	0.6	-0.3	1.9
Unemployment rate	20.2	17.7	2.6	-2.5	-0.5	-1.9
Employment rate	46.7	48.7	1.7	2.0	0.1	2.7
Part-time rate	40.6	40.6	3.7	0.0	-4.1	1.4
Men, 25 years and over									
Population	177.8	177.9	...	0.1	0.1	0.3	0.1	0.1	0.2
Labour force	119.3	118.4	1.2	-0.9	0.8	1.4	-0.8	0.7	1.2
Employment	102.5	101.8	1.3	-0.7	-0.1	-0.2	-0.7	-0.1	-0.2
Unemployment	16.8	16.7	1.3	-0.1	1.0	1.7	-0.6	6.4	11.3
Participation rate	67.1	66.6	0.7	-0.5	0.5	0.7
Unemployment rate	14.1	14.1	1.1	0.0	0.7	1.3
Employment rate	57.6	57.2	0.7	-0.4	-0.1	-0.2
Part-time rate	5.2	5.1	0.9	-0.1	-0.8	0.0
Women, 25 years and over									
Population	190.5	190.5	...	0.0	0.0	0.4	0.0	0.0	0.2
Labour force	108.0	108.6	1.1	0.6	1.5	1.3	0.6	1.4	1.2
Employment	96.4	97.7	1.1	1.3	1.6	0.9	1.3	1.7	0.9
Unemployment	11.6	10.9	1.0	-0.7	-0.1	0.4	-6.0	-0.9	3.8
Participation rate	56.7	57.0	0.6	0.3	0.8	0.6
Unemployment rate	10.7	10.0	0.9	-0.7	-0.3	0.2
Employment rate	50.6	51.3	0.6	0.7	0.9	0.4
Part-time rate	13.5	13.9	1.2	0.4	0.7	-2.2
Industry	226.9	228.8	2.1	1.9	1.6	1.7	0.8	0.7	0.7
Goods-producing sector	49.7	49.6	1.6	-0.1	-1.4	1.1	-0.2	-2.7	2.3
Agriculture	1.5	1.2	0.3	-0.3	0.0	-0.7	-20.0	0.0	-36.8
Forestry, fishing, mining, quarrying, oil and gas extraction ²	14.5	14.3	0.9	-0.2	-0.7	-0.8	-1.4	-4.7	-5.3
Utilities	2.6	2.9	0.3	0.3	0.4	0.7	11.5	16.0	31.8
Construction	20.2	19.7	1.1	-0.5	-0.6	1.7	-2.5	-3.0	9.4
Manufacturing	10.9	11.5	0.9	0.6	-0.5	0.2	5.5	-4.2	1.8
Services-producing sector	177.3	179.2	2.0	1.9	2.9	0.6	1.1	1.6	0.3
Trade	36.0	36.3	1.3	0.3	-1.1	-4.1	0.8	-2.9	-10.1
Transportation and warehousing	11.4	9.6	0.7	-1.8	-0.5	-1.7	-15.8	-5.0	-15.0
Finance, insurance, real estate and leasing	8.9	8.6	0.5	-0.3	-0.6	2.4	-3.4	-6.5	38.7
Professional, scientific and technical services	10.1	10.5	0.6	0.4	1.3	2.1	4.0	14.1	25.0
Business, building and other support services	5.8	6.8	0.6	1.0	0.8	1.1	17.2	13.3	19.3
Educational services	17.7	17.2	0.9	-0.5	-0.4	-0.9	-2.8	-2.3	-5.0
Health care and social assistance	34.9	34.7	1.1	-0.2	0.4	-1.5	-0.6	1.2	-4.1
Information, culture and recreation	7.6	8.4	0.7	0.8	1.2	0.3	10.5	16.7	3.7
Accommodation and food services	13.5	15.5	0.9	2.0	2.3	3.2	14.8	17.4	26.0
Other services	11.8	11.5	0.8	-0.3	-0.8	-0.2	-2.5	-6.5	-1.7
Public administration	19.6	20.0	0.9	0.4	0.3	-0.1	2.0	1.5	-0.5

1. Average standard error of change in two consecutive months (see "Sampling Errors" in Data Quality for further explanations).

2. Also referred to as Natural resources.

Note(s): Related CANSIM Tables 282-0087, 282-0088.

Table 4-2
Selected labour force characteristics (seasonally adjusted) — Prince Edward Island

	January 2012	February 2012	S.E. ¹	Change from			Percent change from		
				last month	last December	twelve months ago	last month	last December	twelve months ago
in thousands (except rates)									
Both sexes, 15 years and over									
Population	120.0	120.1	...	0.1	0.3	1.6	0.1	0.3	1.4
Labour force	82.5	80.9	0.6	-1.6	-1.9	1.2	-1.9	-2.3	1.5
Employment	72.4	72.2	0.7	-0.2	-1.2	1.7	-0.3	-1.6	2.4
Employment full-time	60.3	60.1	0.8	-0.2	-1.4	0.8	-0.3	-2.3	1.3
Unemployment	10.1	8.7	0.6	-1.4	-0.6	-0.5	-13.9	-6.5	-5.4
Participation rate	68.8	67.4	0.5	-1.4	-1.7	0.1
Unemployment rate	12.2	10.8	0.7	-1.4	-0.4	-0.7
Employment rate	60.3	60.1	0.6	-0.2	-1.2	0.6
Part-time rate	16.7	16.8	1.0	0.0	0.5	0.9
Both sexes, 15 to 24 years									
Population	20.0	20.0	...	0.0	0.1	0.3	0.0	0.5	1.5
Labour force	14.1	13.4	0.4	-0.7	-0.8	-0.6	-5.0	-5.6	-4.3
Employment	11.5	11.1	0.4	-0.4	-1.2	-0.8	-3.5	-9.8	-6.7
Unemployment	2.6	2.3	0.3	-0.3	0.4	0.2	-11.5	21.1	9.5
Participation rate	70.5	67.0	1.9	-3.5	-4.4	-4.1
Unemployment rate	18.4	17.2	2.4	-1.2	3.8	2.2
Employment rate	57.5	55.5	2.0	-2.0	-6.3	-4.9
Part-time rate	40.0	41.4	3.3	1.4	1.6	2.8
Men, 25 years and over									
Population	48.3	48.3	...	0.0	0.1	0.6	0.0	0.2	1.3
Labour force	35.0	34.2	0.4	-0.8	-0.9	-0.4	-2.3	-2.6	-1.2
Employment	30.9	30.9	0.4	0.0	0.1	0.7	0.0	0.3	2.3
Unemployment	4.0	3.3	0.4	-0.7	-1.1	-1.1	-17.5	-25.0	-25.0
Participation rate	72.5	70.8	0.7	-1.7	-2.0	-1.7
Unemployment rate	11.4	9.6	1.1	-1.8	-2.9	-3.1
Employment rate	64.0	64.0	0.8	0.0	0.1	0.7
Part-time rate	7.8	7.4	1.0	-0.3	0.6	-1.8
Women, 25 years and over									
Population	51.7	51.8	...	0.1	0.1	0.7	0.2	0.2	1.4
Labour force	33.5	33.3	0.3	-0.2	-0.2	2.1	-0.6	-0.6	6.7
Employment	30.0	30.3	0.4	0.3	-0.1	1.8	1.0	-0.3	6.3
Unemployment	3.5	3.1	0.3	-0.4	0.0	0.4	-11.4	0.0	14.8
Participation rate	64.8	64.3	0.6	-0.5	-0.5	3.2
Unemployment rate	10.4	9.3	1.0	-1.1	0.0	0.6
Employment rate	58.0	58.5	0.7	0.5	-0.3	2.7
Part-time rate	17.3	17.2	1.4	-0.2	0.7	4.2
Industry									
	72.4	72.2	0.7	-0.2	-1.2	1.7	-0.3	-1.6	2.4
Goods-producing sector									
	18.0	17.7	0.6	-0.3	-0.8	0.7	-1.7	-4.3	4.1
Agriculture	4.0	3.7	0.3	-0.3	-0.3	0.1	-7.5	-7.5	2.8
Forestry, fishing, mining, quarrying, oil and gas extraction ²	3.4	3.3	0.3	-0.1	-0.2	0.6	-2.9	-5.7	22.2
Utilities	0.3	0.3	0.1	0.0	-0.1	-0.1	0.0	-25.0	-25.0
Construction	5.0	5.1	0.3	0.1	-0.2	0.1	2.0	-3.8	2.0
Manufacturing	5.2	5.4	0.3	0.2	0.1	0.1	3.8	1.9	1.9
Services-producing sector									
	54.4	54.5	0.7	0.1	-0.5	1.0	0.2	-0.9	1.9
Trade	9.7	10.3	0.4	0.6	1.0	0.4	6.2	10.8	4.0
Transportation and warehousing	2.5	2.3	0.2	-0.2	-0.1	0.3	-8.0	-4.2	15.0
Finance, insurance, real estate and leasing	2.7	2.7	0.2	0.0	0.0	0.2	0.0	0.0	8.0
Professional, scientific and technical services	2.8	3.1	0.2	0.3	0.1	0.4	10.7	3.3	14.8
Business, building and other support services	2.2	2.5	0.2	0.3	0.1	-0.1	13.6	4.2	-3.8
Educational services	5.3	5.5	0.3	0.2	-0.1	-1.0	3.8	-1.8	-15.4
Health care and social assistance	9.9	9.8	0.3	-0.1	-0.3	1.1	-1.0	-3.0	12.6
Information, culture and recreation	2.7	2.5	0.3	-0.2	-0.3	-0.3	-7.4	-10.7	-10.7
Accommodation and food services	5.5	5.4	0.4	-0.1	-0.4	0.4	-1.8	-6.9	8.0
Other services	3.0	2.8	0.2	-0.2	0.1	-0.1	-6.7	3.7	-3.4
Public administration	8.0	7.6	0.3	-0.4	-0.6	-0.3	-5.0	-7.3	-3.8

1. Average standard error of change in two consecutive months (see "Sampling Errors" in Data Quality for further explanations).

2. Also referred to as Natural resources.

Note(s): Related CANSIM Tables 282-0087, 282-0088.

Table 4-3

Selected labour force characteristics (seasonally adjusted) — Nova Scotia

	January 2012	February 2012	S.E. ¹	Change from			Percent change from		
				last month	last December	twelve months ago	last month	last December	twelve months ago
in thousands (except rates)									
Both sexes, 15 years and over									
Population	779.6	779.8	...	0.2	0.2	0.7	0.0	0.0	0.1
Labour force	499.3	500.4	2.7	1.1	3.1	1.4	0.2	0.6	0.3
Employment	457.5	459.5	2.8	2.0	1.1	7.5	0.4	0.2	1.7
Employment full-time	370.1	367.0	3.5	-3.1	-2.5	-2.7	-0.8	-0.7	-0.7
Unemployment	41.8	40.9	2.5	-0.9	2.0	-6.0	-2.2	5.1	-12.8
Participation rate	64.0	64.2	0.3	0.2	0.4	0.2
Unemployment rate	8.4	8.2	0.5	-0.2	0.4	-1.2
Employment rate	58.7	58.9	0.4	0.2	0.1	0.9
Part-time rate	19.1	20.1	0.7	1.0	0.7	1.9
Both sexes, 15 to 24 years									
Population	119.0	118.8	...	-0.2	-0.4	-1.7	-0.2	-0.3	-1.4
Labour force	77.5	76.2	1.6	-1.3	0.9	-4.7	-1.7	1.2	-5.8
Employment	64.2	63.7	1.5	-0.5	-0.9	-4.0	-0.8	-1.4	-5.9
Unemployment	13.3	12.6	1.5	-0.7	1.9	-0.6	-5.3	17.8	-4.5
Participation rate	65.1	64.1	1.4	-1.0	0.9	-3.0
Unemployment rate	17.2	16.5	1.8	-0.7	2.3	0.2
Employment rate	53.9	53.6	1.3	-0.3	-0.6	-2.6
Part-time rate	49.4	52.4	2.6	3.1	2.4	10.5
Men, 25 years and over									
Population	312.8	313.0	...	0.2	0.4	1.1	0.1	0.1	0.4
Labour force	213.8	214.9	1.4	1.1	0.5	1.1	0.5	0.2	0.5
Employment	197.1	199.6	1.6	2.5	1.7	4.2	1.3	0.9	2.1
Unemployment	16.7	15.3	1.5	-1.4	-1.2	-3.0	-8.4	-7.3	-16.4
Participation rate	68.4	68.7	0.5	0.3	0.1	0.2
Unemployment rate	7.8	7.1	0.7	-0.7	-0.6	-1.5
Employment rate	63.0	63.8	0.5	0.8	0.5	1.2
Part-time rate	8.0	9.0	0.7	1.1	1.9	0.9
Women, 25 years and over									
Population	347.9	348.0	...	0.1	0.2	1.3	0.0	0.1	0.4
Labour force	208.0	209.2	1.5	1.2	1.6	4.9	0.6	0.8	2.4
Employment	196.2	196.2	1.6	0.0	0.3	7.3	0.0	0.2	3.9
Unemployment	11.8	13.1	1.4	1.3	1.4	-2.3	11.0	12.0	-14.9
Participation rate	59.8	60.1	0.4	0.3	0.4	1.2
Unemployment rate	5.7	6.3	0.6	0.6	0.7	-1.2
Employment rate	56.4	56.4	0.4	0.0	0.1	1.9
Part-time rate	20.4	20.9	1.0	0.5	-0.8	0.8
Industry									
	457.5	459.5	2.8	2.0	1.1	7.5	0.4	0.2	1.7
Goods-producing sector									
	86.5	88.7	2.1	2.2	4.1	2.5	2.5	4.8	2.9
Agriculture	6.4	5.7	0.7	-0.7	0.8	-0.3	-10.9	16.3	-5.0
Forestry, fishing, mining, quarrying, oil and gas extraction ²	10.8	11.9	0.9	1.1	0.3	0.0	10.2	2.6	0.0
Utilities	4.4	4.4	0.4	0.0	1.1	0.3	0.0	33.3	7.3
Construction	31.7	31.8	1.4	0.1	0.2	0.7	0.3	0.6	2.3
Manufacturing	33.2	34.9	1.3	1.7	1.7	1.8	5.1	5.1	5.4
Services-producing sector									
	371.0	370.8	2.8	-0.2	-3.0	5.0	-0.1	-0.8	1.4
Trade	75.8	72.9	1.9	-2.9	-3.7	-5.5	-3.8	-4.8	-7.0
Transportation and warehousing	21.3	21.9	1.1	0.6	-0.4	3.4	2.8	-1.8	18.4
Finance, insurance, real estate and leasing	22.6	24.0	1.1	1.4	0.7	1.2	6.2	3.0	5.3
Professional, scientific and technical services	24.3	23.4	1.0	-0.9	-0.8	0.1	-3.7	-3.3	0.4
Business, building and other support services	19.7	18.1	1.2	-1.6	-1.7	-4.4	-8.1	-8.6	-19.6
Educational services	37.8	41.6	1.5	3.8	3.0	8.0	10.1	7.8	23.8
Health care and social assistance	67.8	70.2	1.7	2.4	1.7	3.5	3.5	2.5	5.2
Information, culture and recreation	21.5	19.3	1.1	-2.2	-1.3	-1.0	-10.2	-6.3	-4.9
Accommodation and food services	27.7	27.6	1.4	-0.1	-0.4	-2.6	-0.4	-1.4	-8.6
Other services	21.1	21.8	1.1	0.7	0.9	3.7	3.3	4.3	20.4
Public administration	31.3	30.1	1.2	-1.2	-0.9	-1.3	-3.8	-2.9	-4.1

1. Average standard error of change in two consecutive months (see "Sampling Errors" in Data Quality for further explanations).

2. Also referred to as Natural resources.

Note(s): Related CANSIM Tables 282-0087, 282-0088.

Table 4-4
Selected labour force characteristics (seasonally adjusted) — New Brunswick

	January 2012	February 2012	S.E. ¹	Change from			Percent change from		
				last month	last December	twelve months ago	last month	last December	twelve months ago
in thousands (except rates)									
Both sexes, 15 years and over									
Population	620.4	620.5	...	0.1	0.3	1.8	0.0	0.0	0.3
Labour force	392.6	392.3	2.3	-0.3	1.2	1.0	-0.1	0.3	0.3
Employment	355.2	352.6	2.4	-2.6	-1.9	-0.4	-0.7	-0.5	-0.1
Employment full-time	297.7	296.6	2.8	-1.1	-1.3	1.3	-0.4	-0.4	0.4
Unemployment	37.4	39.7	2.1	2.3	3.1	1.3	6.1	8.5	3.4
Participation rate	63.3	63.2	0.4	-0.1	0.1	0.0
Unemployment rate	9.5	10.1	0.5	0.6	0.7	0.3
Employment rate	57.3	56.8	0.4	-0.5	-0.4	-0.3
Part-time rate	16.2	15.9	0.6	-0.3	-0.1	-0.5
Both sexes, 15 to 24 years									
Population	90.8	90.8	...	0.0	-0.1	-0.8	0.0	-0.1	-0.9
Labour force	59.4	59.1	1.3	-0.3	-0.5	0.8	-0.5	-0.8	1.4
Employment	49.1	49.5	1.2	0.4	1.1	1.1	0.8	2.3	2.3
Unemployment	10.3	9.6	1.2	-0.7	-1.6	-0.3	-6.8	-14.3	-3.0
Participation rate	65.4	65.1	1.5	-0.3	-0.5	1.5
Unemployment rate	17.3	16.2	1.8	-1.1	-2.6	-0.8
Employment rate	54.1	54.5	1.3	0.4	1.3	1.7
Part-time rate	40.9	40.8	2.6	-0.1	-2.6	1.3
Men, 25 years and over									
Population	254.1	254.2	...	0.1	0.2	1.4	0.0	0.1	0.6
Labour force	171.7	172.3	1.3	0.6	1.9	0.6	0.3	1.1	0.3
Employment	155.8	153.6	1.4	-2.2	-1.5	-0.8	-1.4	-1.0	-0.5
Unemployment	15.9	18.8	1.3	2.9	3.5	1.5	18.2	22.9	8.7
Participation rate	67.6	67.8	0.5	0.2	0.7	-0.1
Unemployment rate	9.3	10.9	0.7	1.6	1.9	0.8
Employment rate	61.3	60.4	0.6	-0.9	-0.7	-0.7
Part-time rate	5.7	5.5	0.7	-0.2	-0.2	-1.5
Women, 25 years and over									
Population	275.5	275.5	...	0.0	0.1	1.2	0.0	0.0	0.4
Labour force	161.4	160.8	1.2	-0.6	-0.3	-0.6	-0.4	-0.2	-0.4
Employment	150.3	149.4	1.3	-0.9	-1.6	-0.8	-0.6	-1.1	-0.5
Unemployment	11.2	11.4	1.1	0.2	1.4	0.2	1.8	14.0	1.8
Participation rate	58.6	58.4	0.4	-0.2	-0.1	-0.4
Unemployment rate	6.9	7.1	0.7	0.2	0.9	0.2
Employment rate	54.6	54.2	0.5	-0.4	-0.6	-0.6
Part-time rate	19.0	18.2	1.0	-0.8	0.5	-0.2
Industry	355.2	352.6	2.4	-2.6	-1.9	-0.4	-0.7	-0.5	-0.1
Goods-producing sector	78.8	76.7	1.9	-2.1	-0.2	-6.4	-2.7	-0.3	-7.7
Agriculture	4.2	3.7	0.5	-0.5	-0.1	-2.3	-11.9	-2.6	-38.3
Forestry, fishing, mining, quarrying, oil and gas extraction ²	11.0	10.8	0.8	-0.2	0.7	-0.3	-1.8	6.9	-2.7
Utilities	4.4	4.7	0.4	0.3	0.1	0.1	6.8	2.2	2.2
Construction	28.9	27.6	1.2	-1.3	-0.5	-1.6	-4.5	-1.8	-5.5
Manufacturing	30.3	29.9	1.3	-0.4	-0.5	-2.2	-1.3	-1.6	-6.9
Services-producing sector	276.4	275.9	2.4	-0.5	-1.7	6.0	-0.2	-0.6	2.2
Trade	56.2	54.2	1.5	-2.0	-2.4	4.2	-3.6	-4.2	8.4
Transportation and warehousing	16.5	16.8	0.8	0.3	1.0	-1.2	1.8	6.3	-6.7
Finance, insurance, real estate and leasing	15.5	15.1	0.8	-0.4	-1.3	-2.8	-2.6	-7.9	-15.6
Professional, scientific and technical services	15.9	15.3	0.8	-0.6	-0.3	-1.4	-3.8	-1.9	-8.4
Business, building and other support services	17.3	17.3	1.0	0.0	1.2	1.2	0.0	7.5	7.5
Educational services	25.9	27.1	1.1	1.2	0.7	2.5	4.6	2.7	10.2
Health care and social assistance	51.4	51.3	1.3	-0.1	-0.3	0.6	-0.2	-0.6	1.2
Information, culture and recreation	13.1	11.8	0.8	-1.3	-1.0	-0.3	-9.9	-7.8	-2.5
Accommodation and food services	22.3	23.3	1.1	1.0	-0.5	3.6	4.5	-2.1	18.3
Other services	15.7	17.1	0.8	1.4	2.2	0.8	8.9	14.8	4.9
Public administration	26.7	26.5	1.0	-0.2	-1.1	-1.3	-0.7	-4.0	-4.7

1. Average standard error of change in two consecutive months (see "Sampling Errors" in Data Quality for further explanations).

2. Also referred to as Natural resources.

Note(s): Related CANSIM Tables 282-0087, 282-0088.

Table 4-5
Selected labour force characteristics (seasonally adjusted) — Quebec

	January 2012	February 2012	S.E. ¹	Change from			Percent change from		
				last month	last December	twelve months ago	last month	last December	twelve months ago
in thousands (except rates)									
Both sexes, 15 years and over									
Population	6,610.1	6,614.2	...	4.1	9.0	63.7	0.1	0.1	1.0
Labour force	4,273.8	4,274.1	15.0	0.3	-2.7	-16.9	0.0	-0.1	-0.4
Employment	3,915.5	3,915.7	15.1	0.2	9.7	-48.9	0.0	0.2	-1.2
Employment full-time	3,164.8	3,180.3	19.7	15.5	15.0	8.5	0.5	0.5	0.3
Unemployment	358.3	358.4	13.3	0.1	-12.4	32.0	0.0	-3.3	9.8
Participation rate	64.7	64.6	0.2	-0.1	-0.1	-0.9
Unemployment rate	8.4	8.4	0.3	0.0	-0.3	0.8
Employment rate	59.2	59.2	0.2	0.0	0.1	-1.3
Part-time rate	19.2	18.8	0.4	-0.4	-0.2	-1.2
Both sexes, 15 to 24 years									
Population	982.6	982.7	...	0.1	0.5	2.6	0.0	0.1	0.3
Labour force	639.9	645.2	8.4	5.3	8.2	-18.4	0.8	1.3	-2.8
Employment	547.0	546.8	8.3	-0.2	0.8	-32.2	0.0	0.1	-5.6
Unemployment	92.9	98.4	7.5	5.5	7.3	13.9	5.9	8.0	16.4
Participation rate	65.1	65.7	0.9	0.6	0.8	-2.0
Unemployment rate	14.5	15.3	1.1	0.8	1.0	2.6
Employment rate	55.7	55.6	0.8	-0.1	0.0	-3.5
Part-time rate	52.9	51.7	1.6	-1.2	0.4	0.5
Men, 25 years and over									
Population	2,767.0	2,769.1	...	2.1	4.5	32.1	0.1	0.2	1.2
Labour force	1,924.0	1,918.4	8.2	-5.6	-17.4	0.5	-0.3	-0.9	0.0
Employment	1,767.6	1,768.6	8.6	1.0	5.8	-14.3	0.1	0.3	-0.8
Unemployment	156.4	149.8	7.8	-6.6	-23.1	14.8	-4.2	-13.4	11.0
Participation rate	69.5	69.3	0.3	-0.2	-0.7	-0.8
Unemployment rate	8.1	7.8	0.4	-0.3	-1.1	0.8
Employment rate	63.9	63.9	0.3	0.0	0.1	-1.2
Part-time rate	8.3	7.7	0.5	-0.6	0.1	-1.7
Women, 25 years and over									
Population	2,860.5	2,862.4	...	1.9	4.0	29.1	0.1	0.1	1.0
Labour force	1,709.9	1,710.5	8.4	0.6	6.5	1.0	0.0	0.4	0.1
Employment	1,600.9	1,600.3	8.5	-0.6	3.1	-2.3	0.0	0.2	-0.1
Unemployment	108.9	110.3	7.2	1.4	3.5	3.4	1.3	3.3	3.2
Participation rate	59.8	59.8	0.3	0.0	0.2	-0.5
Unemployment rate	6.4	6.4	0.4	0.0	0.1	0.1
Employment rate	56.0	55.9	0.3	-0.1	0.0	-0.7
Part-time rate	19.7	19.8	0.7	0.1	-0.7	-0.8
Industry	3,915.5	3,915.7	15.1	0.2	9.7	-48.9	0.0	0.2	-1.2
Goods-producing sector	821.1	826.1	12.3	5.0	2.9	-28.7	0.6	0.4	-3.4
Agriculture	51.9	57.2	3.1	5.3	1.6	0.2	10.2	2.9	0.4
Forestry, fishing, mining, quarrying, oil and gas extraction ²	37.4	37.1	2.5	-0.3	-0.5	7.0	-0.8	-1.3	23.3
Utilities	28.1	24.6	2.3	-3.5	-3.5	-7.6	-12.5	-12.5	-23.6
Construction	221.1	230.1	7.5	9.0	2.7	-8.3	4.1	1.2	-3.5
Manufacturing	482.6	477.2	9.8	-5.4	2.7	-19.9	-1.1	0.6	-4.0
Services-producing sector	3,094.4	3,089.6	16.7	-4.8	6.8	-20.2	-0.2	0.2	-0.6
Trade	641.1	616.0	12.2	-25.1	-19.1	-18.6	-3.9	-3.0	-2.9
Transportation and warehousing	185.9	178.0	6.3	-7.9	-1.2	-1.7	-4.2	-0.7	-0.9
Finance, insurance, real estate and leasing	212.2	217.2	7.0	5.0	-3.1	-10.1	2.4	-1.4	-4.4
Professional, scientific and technical services	296.2	296.0	8.6	-0.2	-4.6	-7.4	-0.1	-1.5	-2.4
Business, building and other support services	142.6	154.5	6.7	11.9	15.7	8.8	8.3	11.3	6.0
Educational services	285.9	284.8	7.8	-1.1	4.4	10.9	-0.4	1.6	4.0
Health care and social assistance	489.9	486.6	9.4	-3.3	-5.3	-40.7	-0.7	-1.1	-7.7
Information, culture and recreation	168.5	180.7	7.0	12.2	25.3	11.8	7.2	16.3	7.0
Accommodation and food services	257.9	259.9	8.4	2.0	1.2	20.8	0.8	0.5	8.7
Other services	180.3	181.9	6.2	1.6	-2.8	14.4	0.9	-1.5	8.6
Public administration	234.0	234.0	6.2	0.0	-3.7	-8.2	0.0	-1.6	-3.4

1. Average standard error of change in two consecutive months (see "Sampling Errors" in Data Quality for further explanations).

2. Also referred to as Natural resources.

Note(s): Related CANSIM Tables 282-0087, 282-0088.

Table 4-6
Selected labour force characteristics (seasonally adjusted) — Ontario

	January 2012	February 2012	S.E. ¹	Change from			Percent change from		
				last month	last December	twelve months ago	last month	last December	twelve months ago
in thousands (except rates)									
Both sexes, 15 years and over									
Population	11,003.7	11,014.9	...	11.2	23.4	141.0	0.1	0.2	1.3
Labour force	7,339.4	7,298.9	20.2	-40.5	-19.2	32.3	-0.6	-0.3	0.4
Employment	6,746.0	6,742.1	19.2	-3.9	-11.4	53.6	-0.1	-0.2	0.8
Employment full-time	5,441.7	5,436.3	25.4	-5.4	-19.9	39.8	-0.1	-0.4	0.7
Unemployment	593.4	556.8	17.2	-36.6	-7.8	-21.3	-6.2	-1.4	-3.7
Participation rate	66.7	66.3	0.2	-0.4	-0.3	-0.5
Unemployment rate	8.1	7.6	0.2	-0.5	-0.1	-0.4
Employment rate	61.3	61.2	0.2	-0.1	-0.2	-0.3
Part-time rate	19.3	19.4	0.3	0.0	0.2	0.1
Both sexes, 15 to 24 years									
Population	1,786.6	1,786.8	...	0.2	0.6	5.5	0.0	0.0	0.3
Labour force	1,079.8	1,075.6	12.1	-4.2	0.5	-29.2	-0.4	0.0	-2.6
Employment	900.6	893.1	10.5	-7.5	-14.4	-35.1	-0.8	-1.6	-3.8
Unemployment	179.3	182.5	10.3	3.2	14.8	5.9	1.8	8.8	3.3
Participation rate	60.4	60.2	0.7	-0.2	0.0	-1.8
Unemployment rate	16.6	17.0	0.9	0.4	1.4	1.0
Employment rate	50.4	50.0	0.6	-0.4	-0.8	-2.1
Part-time rate	51.0	50.3	1.3	-0.7	1.1	-1.2
Men, 25 years and over									
Population	4,470.1	4,475.6	...	5.5	11.2	66.3	0.1	0.3	1.5
Labour force	3,278.4	3,266.5	10.4	-11.9	2.5	42.1	-0.4	0.1	1.3
Employment	3,063.2	3,072.2	10.8	9.0	7.4	59.9	0.3	0.2	2.0
Unemployment	215.2	194.3	9.7	-20.9	-4.9	-17.8	-9.7	-2.5	-8.4
Participation rate	73.3	73.0	0.2	-0.3	-0.1	-0.1
Unemployment rate	6.6	5.9	0.3	-0.7	-0.2	-0.7
Employment rate	68.5	68.6	0.2	0.1	0.0	0.3
Part-time rate	8.0	8.1	0.4	0.1	0.4	0.5
Women, 25 years and over									
Population	4,747.0	4,752.4	...	5.4	11.5	69.2	0.1	0.2	1.5
Labour force	2,981.2	2,956.8	11.5	-24.4	-22.2	19.4	-0.8	-0.7	0.7
Employment	2,782.3	2,776.8	11.0	-5.5	-4.5	28.8	-0.2	-0.2	1.0
Unemployment	198.9	180.0	9.3	-18.9	-17.8	-9.4	-9.5	-9.0	-5.0
Participation rate	62.8	62.2	0.2	-0.6	-0.6	-0.5
Unemployment rate	6.7	6.1	0.3	-0.6	-0.5	-0.3
Employment rate	58.6	58.4	0.2	-0.2	-0.3	-0.3
Part-time rate	21.6	21.9	0.5	0.3	-0.2	0.6
Industry	6,746.0	6,742.1	19.2	-3.9	-11.4	53.6	-0.1	-0.2	0.8
Goods-producing sector	1,422.2	1,427.2	16.8	5.0	12.3	-2.5	0.4	0.9	-0.2
Agriculture	108.1	94.6	4.1	-13.5	1.4	-0.7	-12.5	1.5	-0.7
Forestry, fishing, mining, quarrying, oil and gas extraction ²	39.2	39.5	2.4	0.3	2.8	-3.0	0.8	7.6	-7.1
Utilities	54.6	54.2	3.3	-0.4	-1.8	3.7	-0.7	-3.2	7.3
Construction	439.7	449.0	10.5	9.3	4.7	19.3	2.1	1.1	4.5
Manufacturing	780.5	789.9	13.4	9.4	5.2	-21.9	1.2	0.7	-2.7
Services-producing sector	5,323.8	5,315.0	22.5	-8.8	-23.7	56.2	-0.2	-0.4	1.1
Trade	986.8	978.6	14.8	-8.2	-1.1	-33.0	-0.8	-0.1	-3.3
Transportation and warehousing	311.5	305.4	9.6	-6.1	-9.3	-19.8	-2.0	-3.0	-6.1
Finance, insurance, real estate and leasing	480.0	505.4	11.4	25.4	22.4	3.2	5.3	4.6	0.6
Professional, scientific and technical services	567.4	564.9	12.3	-2.5	-21.4	17.8	-0.4	-3.7	3.3
Business, building and other support services	288.4	291.7	9.7	3.3	-0.5	19.6	1.1	-0.2	7.2
Educational services	495.2	494.9	10.5	-0.3	15.0	19.9	-0.1	3.1	4.2
Health care and social assistance	757.7	762.7	12.3	5.0	-8.7	13.7	0.7	-1.1	1.8
Information, culture and recreation	344.0	343.1	10.5	-0.9	-0.2	-7.0	-0.3	-0.1	-2.0
Accommodation and food services	407.7	389.3	10.3	-18.4	-17.7	19.3	-4.5	-4.3	5.2
Other services	288.4	285.6	8.3	-2.8	4.0	10.5	-1.0	1.4	3.8
Public administration	396.7	393.3	8.7	-3.4	-6.3	11.9	-0.9	-1.6	3.1

1. Average standard error of change in two consecutive months (see "Sampling Errors" in Data Quality for further explanations).

2. Also referred to as Natural resources.

Note(s): Related CANSIM Tables 282-0087, 282-0088.

Table 4-7
Selected labour force characteristics (seasonally adjusted) — Manitoba

	January 2012	February 2012	S.E. ¹	Change from			Percent change from		
				last month	last December	twelve months ago	last month	last December	twelve months ago
in thousands (except rates)									
Both sexes, 15 years and over									
Population	958.8	959.6	...	0.8	1.6	10.5	0.1	0.2	1.1
Labour force	662.7	662.6	2.7	-0.1	0.1	3.0	0.0	0.0	0.5
Employment	626.8	625.3	2.6	-1.5	-1.2	0.6	-0.2	-0.2	0.1
Employment full-time	504.4	502.3	3.7	-2.1	-5.8	1.5	-0.4	-1.1	0.3
Unemployment	35.9	37.4	2.2	1.5	1.4	2.4	4.2	3.9	6.9
Participation rate	69.1	69.0	0.3	-0.1	-0.2	-0.5
Unemployment rate	5.4	5.6	0.3	0.2	0.2	0.3
Employment rate	65.4	65.2	0.3	-0.2	-0.2	-0.6
Part-time rate	19.5	19.7	0.5	0.2	0.8	-0.1
Both sexes, 15 to 24 years									
Population	165.0	165.0	...	0.0	0.1	0.3	0.0	0.1	0.2
Labour force	114.0	113.3	1.7	-0.7	-0.1	-0.6	-0.6	-0.1	-0.5
Employment	101.4	100.2	1.5	-1.2	-0.6	-0.1	-1.2	-0.6	-0.1
Unemployment	12.6	13.1	1.4	0.5	0.5	-0.5	4.0	4.0	-3.7
Participation rate	69.1	68.7	1.0	-0.4	-0.1	-0.5
Unemployment rate	11.1	11.6	1.2	0.5	0.5	-0.3
Employment rate	61.5	60.7	0.9	-0.8	-0.4	-0.2
Part-time rate	42.4	42.7	1.8	0.3	1.6	0.6
Men, 25 years and over									
Population	389.1	389.5	...	0.4	0.8	5.2	0.1	0.2	1.4
Labour force	296.6	295.2	1.4	-1.4	-0.5	2.4	-0.5	-0.2	0.8
Employment	284.2	283.0	1.5	-1.2	-1.2	1.7	-0.4	-0.4	0.6
Unemployment	12.4	12.2	1.1	-0.2	0.6	0.7	-1.6	5.2	6.1
Participation rate	76.2	75.8	0.4	-0.4	-0.3	-0.4
Unemployment rate	4.2	4.1	0.4	-0.1	0.2	0.2
Employment rate	73.0	72.7	0.4	-0.3	-0.4	-0.5
Part-time rate	7.5	8.0	0.6	0.5	0.9	0.0
Women, 25 years and over									
Population	404.8	405.2	...	0.4	0.8	5.1	0.1	0.2	1.3
Labour force	252.1	254.1	1.5	2.0	0.8	1.2	0.8	0.3	0.5
Employment	241.2	242.0	1.5	0.8	0.4	-1.1	0.3	0.2	-0.5
Unemployment	10.9	12.1	1.1	1.2	0.4	2.2	11.0	3.4	22.2
Participation rate	62.3	62.7	0.4	0.4	0.1	-0.5
Unemployment rate	4.3	4.8	0.4	0.5	0.2	0.9
Employment rate	59.6	59.7	0.4	0.1	0.0	-1.1
Part-time rate	24.0	23.8	0.9	-0.3	0.2	-0.6
Industry	626.8	625.3	2.6	-1.5	-1.2	0.6	-0.2	-0.2	0.1
Goods-producing sector	141.9	139.8	2.4	-2.1	-0.7	-13.4	-1.5	-0.5	-8.7
Agriculture	21.0	21.2	1.0	0.2	0.0	-3.0	1.0	0.0	-12.4
Forestry, fishing, mining, quarrying, oil and gas extraction ²	6.5	6.8	0.6	0.3	0.3	0.5	4.6	4.6	7.9
Utilities	7.9	6.9	0.6	-1.0	-1.3	-1.8	-12.7	-15.9	-20.7
Construction	45.1	41.5	1.5	-3.6	-1.5	0.9	-8.0	-3.5	2.2
Manufacturing	61.4	63.4	1.7	2.0	1.9	-10.0	3.3	3.1	-13.6
Services-producing sector	484.8	485.5	3.1	0.7	-0.5	14.1	0.1	-0.1	3.0
Trade	94.1	94.1	2.1	0.0	0.4	0.2	0.0	0.4	0.2
Transportation and warehousing	37.3	37.4	1.3	0.1	1.2	4.0	0.3	3.3	12.0
Finance, insurance, real estate and leasing	34.5	35.5	1.3	1.0	-1.2	0.9	2.9	-3.3	2.6
Professional, scientific and technical services	26.4	27.1	1.2	0.7	1.1	0.6	2.7	4.2	2.3
Business, building and other support services	17.3	17.9	1.1	0.6	-0.4	0.2	3.5	-2.2	1.1
Educational services	47.3	48.5	1.4	1.2	1.7	-0.4	2.5	3.6	-0.8
Health care and social assistance	95.5	94.4	1.9	-1.1	-1.3	-1.1	-1.2	-1.4	-1.2
Information, culture and recreation	22.2	21.9	1.2	-0.3	-1.5	-1.0	-1.4	-6.4	-4.4
Accommodation and food services	43.4	41.6	1.6	-1.8	-2.7	3.6	-4.1	-6.1	9.5
Other services	27.8	28.5	1.2	0.7	2.4	3.1	2.5	9.2	12.2
Public administration	39.0	38.5	1.2	-0.5	-0.3	3.9	-1.3	-0.8	11.3

1. Average standard error of change in two consecutive months (see "Sampling Errors" in Data Quality for further explanations).

2. Also referred to as Natural resources.

Note(s): Related CANSIM Tables 282-0087, 282-0088.

Table 4-8
Selected labour force characteristics (seasonally adjusted) — Saskatchewan

	January 2012	February 2012	S.E. ¹	Change from			Percent change from		
				last month	last December	twelve months ago	last month	last December	twelve months ago
in thousands (except rates)									
Both sexes, 15 years and over									
Population	805.0	805.8	...	0.8	1.5	9.1	0.1	0.2	1.1
Labour force	557.3	557.1	2.5	-0.2	-0.1	3.2	0.0	0.0	0.6
Employment	529.8	529.4	2.5	-0.4	1.4	6.3	-0.1	0.3	1.2
Employment full-time	435.1	436.2	3.3	1.1	0.9	4.3	0.3	0.2	1.0
Unemployment	27.6	27.7	1.9	0.1	-1.5	-3.1	0.4	-5.1	-10.1
Participation rate	69.2	69.1	0.3	-0.1	-0.2	-0.4
Unemployment rate	5.0	5.0	0.3	0.0	-0.2	-0.6
Employment rate	65.8	65.7	0.3	-0.1	0.1	0.0
Part-time rate	17.9	17.6	0.5	-0.3	0.1	0.2
Both sexes, 15 to 24 years									
Population	136.4	136.4	...	0.0	-0.1	-1.0	0.0	-0.1	-0.7
Labour force	96.3	95.9	1.5	-0.4	0.0	2.6	-0.4	0.0	2.8
Employment	87.5	87.7	1.5	0.2	1.9	5.9	0.2	2.2	7.2
Unemployment	8.7	8.2	1.2	-0.5	-2.0	-3.2	-5.7	-19.6	-28.1
Participation rate	70.6	70.3	1.1	-0.3	0.0	2.4
Unemployment rate	9.0	8.6	1.2	-0.4	-2.0	-3.6
Employment rate	64.1	64.3	1.1	0.2	1.4	4.8
Part-time rate	34.2	36.1	1.9	2.0	0.8	0.0
Men, 25 years and over									
Population	329.0	329.5	...	0.5	0.9	5.6	0.2	0.3	1.7
Labour force	248.4	249.3	1.2	0.9	0.3	1.1	0.4	0.1	0.4
Employment	239.4	239.5	1.3	0.1	-1.2	2.4	0.0	-0.5	1.0
Unemployment	9.0	9.7	1.1	0.7	1.5	-1.4	7.8	18.3	-12.6
Participation rate	75.5	75.7	0.4	0.2	-0.1	-0.9
Unemployment rate	3.6	3.9	0.4	0.3	0.6	-0.6
Employment rate	72.8	72.7	0.4	-0.1	-0.6	-0.5
Part-time rate	7.3	7.3	0.6	0.1	0.4	1.2
Women, 25 years and over									
Population	339.5	339.8	...	0.3	0.6	4.5	0.1	0.2	1.3
Labour force	212.6	211.9	1.4	-0.7	-0.4	-0.5	-0.3	-0.2	-0.2
Employment	202.8	202.2	1.4	-0.6	0.7	-2.0	-0.3	0.3	-1.0
Unemployment	9.8	9.8	1.0	0.0	-1.0	1.6	0.0	-9.3	19.5
Participation rate	62.6	62.4	0.4	-0.2	-0.2	-0.9
Unemployment rate	4.6	4.6	0.5	0.0	-0.5	0.7
Employment rate	59.7	59.5	0.4	-0.2	0.1	-1.4
Part-time rate	23.4	21.7	1.0	-1.8	-0.9	-1.3
Industry	529.8	529.4	2.5	-0.4	1.4	6.3	-0.1	0.3	1.2
Goods-producing sector	132.0	134.3	2.3	2.3	-0.6	-6.2	1.7	-0.4	-4.4
Agriculture	36.1	35.5	1.5	-0.6	-2.6	-4.3	-1.7	-6.8	-10.8
Forestry, fishing, mining, quarrying, oil and gas extraction ²	22.4	23.7	1.1	1.3	0.6	-0.5	5.8	2.6	-2.1
Utilities	5.6	5.2	0.4	-0.4	-0.1	-0.9	-7.1	-1.9	-14.8
Construction	40.0	40.8	1.4	0.8	-1.6	-0.5	2.0	-3.8	-1.2
Manufacturing	27.9	29.1	1.1	1.2	3.1	0.1	4.3	11.9	0.3
Services-producing sector	397.8	395.1	2.8	-2.7	2.0	12.5	-0.7	0.5	3.3
Trade	83.9	78.8	1.8	-5.1	-5.4	-2.7	-6.1	-6.4	-3.3
Transportation and warehousing	27.1	25.5	1.1	-1.6	-0.3	0.3	-5.9	-1.2	1.2
Finance, insurance, real estate and leasing	30.0	29.7	1.1	-0.3	-1.2	-1.7	-1.0	-3.9	-5.4
Professional, scientific and technical services	25.1	26.2	1.0	1.1	0.0	4.0	4.4	0.0	18.0
Business, building and other support services	12.4	12.2	0.9	-0.2	-0.1	0.9	-1.6	-0.8	8.0
Educational services	39.7	42.2	1.3	2.5	3.3	2.9	6.3	8.5	7.4
Health care and social assistance	69.6	70.1	1.5	0.5	-0.4	5.0	0.7	-0.6	7.7
Information, culture and recreation	18.2	19.2	1.0	1.0	1.8	-1.0	5.5	10.3	-5.0
Accommodation and food services	34.7	34.4	1.4	-0.3	1.4	4.4	-0.9	4.2	14.7
Other services	26.0	26.1	1.1	0.1	-0.1	0.3	0.4	-0.4	1.2
Public administration	31.1	30.8	1.1	-0.3	3.2	0.2	-1.0	11.6	0.7

1. Average standard error of change in two consecutive months (see "Sampling Errors" in Data Quality for further explanations).

2. Also referred to as Natural resources.

Note(s): Related CANSIM Tables 282-0087, 282-0088.

Table 4-9
Selected labour force characteristics (seasonally adjusted) — Alberta

	January 2012	February 2012	S.E. ¹	Change from			Percent change from		
				last month	last December	twelve months ago	last month	last December	twelve months ago
in thousands (except rates)									
Both sexes, 15 years and over									
Population	3,032.9	3,037.1	...	4.2	8.3	49.9	0.1	0.3	1.7
Labour force	2,246.0	2,239.0	8.7	-7.0	-3.8	44.4	-0.3	-0.2	2.0
Employment	2,135.1	2,127.9	9.0	-7.2	-5.3	58.4	-0.3	-0.2	2.8
Employment full-time	1,799.0	1,780.8	11.9	-18.2	3.7	89.2	-1.0	0.2	5.3
Unemployment	110.9	111.1	7.0	0.2	1.4	-14.1	0.2	1.3	-11.3
Participation rate	74.1	73.7	0.3	-0.4	-0.3	0.2
Unemployment rate	4.9	5.0	0.3	0.1	0.1	-0.7
Employment rate	70.4	70.1	0.3	-0.3	-0.3	0.8
Part-time rate	15.7	16.3	0.5	0.6	-0.4	-1.9
Both sexes, 15 to 24 years									
Population	506.1	505.3	...	-0.8	-1.4	-4.6	-0.2	-0.3	-0.9
Labour force	363.3	348.9	5.0	-14.4	-15.3	-1.2	-4.0	-4.2	-0.3
Employment	328.2	319.6	4.9	-8.6	-7.5	8.8	-2.6	-2.3	2.8
Unemployment	35.1	29.2	4.2	-5.9	-8.0	-10.1	-16.8	-21.5	-25.7
Participation rate	71.8	69.0	1.0	-2.8	-2.9	0.3
Unemployment rate	9.7	8.4	1.1	-1.3	-1.8	-2.8
Employment rate	64.8	63.2	1.0	-1.6	-1.4	2.2
Part-time rate	34.1	33.6	1.7	-0.5	-1.3	-5.3
Men, 25 years and over									
Population	1,283.9	1,286.2	...	2.3	4.4	26.8	0.2	0.3	2.1
Labour force	1,042.3	1,046.9	4.4	4.6	4.0	27.8	0.4	0.4	2.7
Employment	998.9	1,003.8	4.9	4.9	0.2	34.6	0.5	0.0	3.6
Unemployment	43.4	43.1	4.1	-0.3	3.8	-6.8	-0.7	9.7	-13.6
Participation rate	81.2	81.4	0.3	0.2	0.0	0.5
Unemployment rate	4.2	4.1	0.4	-0.1	0.3	-0.8
Employment rate	77.8	78.0	0.4	0.2	-0.3	1.0
Part-time rate	4.9	5.3	0.5	0.3	-0.7	-0.8
Women, 25 years and over									
Population	1,242.9	1,245.6	...	2.7	5.3	27.7	0.2	0.4	2.3
Labour force	840.4	843.2	5.2	2.8	7.5	17.8	0.3	0.9	2.2
Employment	808.1	804.4	5.2	-3.7	1.9	14.8	-0.5	0.2	1.9
Unemployment	32.4	38.8	3.7	6.4	5.6	2.9	19.8	16.9	8.1
Participation rate	67.6	67.7	0.4	0.1	0.3	-0.1
Unemployment rate	3.9	4.6	0.4	0.7	0.6	0.3
Employment rate	65.0	64.6	0.4	-0.4	-0.1	-0.2
Part-time rate	21.7	23.2	0.9	1.5	0.5	-1.9
Industry	2,135.1	2,127.9	9.0	-7.2	-5.3	58.4	-0.3	-0.2	2.8
Goods-producing sector	592.4	604.7	8.9	12.3	13.3	31.1	2.1	2.2	5.4
Agriculture	56.9	57.1	3.2	0.2	1.6	5.4	0.4	2.9	10.4
Forestry, fishing, mining, quarrying, oil and gas extraction ²	171.8	176.1	5.0	4.3	9.5	25.2	2.5	5.7	16.7
Utilities	19.1	16.9	1.8	-2.2	2.3	-2.2	-11.5	15.8	-11.5
Construction	214.0	223.7	6.4	9.7	5.5	15.0	4.5	2.5	7.2
Manufacturing	130.5	130.9	5.4	0.4	-5.5	-12.3	0.3	-4.0	-8.6
Services-producing sector	1,542.7	1,523.1	10.8	-19.6	-18.7	27.2	-1.3	-1.2	1.8
Trade	336.0	332.4	7.8	-3.6	-3.0	19.3	-1.1	-0.9	6.2
Transportation and warehousing	108.2	111.8	4.3	3.6	2.7	11.3	3.3	2.5	11.2
Finance, insurance, real estate and leasing	94.2	93.7	4.1	-0.5	-6.4	1.8	-0.5	-6.4	2.0
Professional, scientific and technical services	158.6	150.4	5.2	-8.2	-13.8	-11.0	-5.2	-8.4	-6.8
Business, building and other support services	71.8	71.1	3.9	-0.7	-1.5	-3.2	-1.0	-2.1	-4.3
Educational services	123.6	121.1	4.8	-2.5	-5.8	-9.1	-2.0	-4.6	-7.0
Health care and social assistance	241.9	234.7	5.8	-7.2	1.5	6.1	-3.0	0.6	2.7
Information, culture and recreation	81.1	74.1	3.9	-7.0	-4.4	0.0	-8.6	-5.6	0.0
Accommodation and food services	128.3	138.7	5.2	10.4	13.0	10.8	8.1	10.3	8.4
Other services	108.9	106.2	4.6	-2.7	-3.9	-0.9	-2.5	-3.5	-0.8
Public administration	90.1	88.7	3.8	-1.4	2.8	1.8	-1.6	3.3	2.1

1. Average standard error of change in two consecutive months (see "Sampling Errors" in Data Quality for further explanations).

2. Also referred to as Natural resources.

Note(s): Related CANSIM Tables 282-0087, 282-0088.

Table 4-10
Selected labour force characteristics (seasonally adjusted) — British Columbia

	January 2012	February 2012	S.E. ¹	Change from			Percent change from		
				last month	last December	twelve months ago	last month	last December	twelve months ago
in thousands (except rates)									
Both sexes, 15 years and over									
Population	3,797.5	3,800.4	...	2.9	5.6	36.6	0.1	0.1	1.0
Labour force	2,462.1	2,472.4	10.5	10.3	6.9	-3.1	0.4	0.3	-0.1
Employment	2,291.7	2,300.8	10.3	9.1	6.9	39.9	0.4	0.3	1.8
Employment full-time	1,778.7	1,800.3	14.1	21.6	14.2	58.4	1.2	0.8	3.4
Unemployment	170.4	171.5	8.7	1.1	-0.1	-43.1	0.6	-0.1	-20.1
Participation rate	64.8	65.1	0.3	0.3	0.1	-0.7
Unemployment rate	6.9	6.9	0.3	0.0	-0.1	-1.8
Employment rate	60.3	60.5	0.3	0.2	0.1	0.4
Part-time rate	22.4	21.8	0.6	-0.6	-0.4	-1.2
Both sexes, 15 to 24 years									
Population	590.4	590.3	...	-0.1	-0.2	-1.9	0.0	0.0	-0.3
Labour force	368.3	359.4	6.0	-8.9	-15.6	-16.8	-2.4	-4.2	-4.5
Employment	318.4	308.0	5.4	-10.4	-15.4	-13.4	-3.3	-4.8	-4.2
Unemployment	49.9	51.5	5.0	1.6	-0.1	-3.3	3.2	-0.2	-6.0
Participation rate	62.4	60.9	1.0	-1.5	-2.6	-2.6
Unemployment rate	13.5	14.3	1.2	0.8	0.5	-0.3
Employment rate	53.9	52.2	0.9	-1.7	-2.6	-2.1
Part-time rate	51.8	50.7	2.0	-1.0	1.7	1.5
Men, 25 years and over									
Population	1,564.4	1,566.0	...	1.6	3.0	18.9	0.1	0.2	1.2
Labour force	1,102.3	1,113.3	5.6	11.0	8.9	2.8	1.0	0.8	0.3
Employment	1,034.2	1,046.5	5.9	12.3	12.8	23.0	1.2	1.2	2.2
Unemployment	68.1	66.7	4.9	-1.4	-4.0	-20.3	-2.1	-5.7	-23.3
Participation rate	70.5	71.1	0.4	0.6	0.4	-0.7
Unemployment rate	6.2	6.0	0.4	-0.2	-0.4	-1.8
Employment rate	66.1	66.8	0.4	0.7	0.7	0.6
Part-time rate	9.7	10.1	0.7	0.4	0.0	0.0
Women, 25 years and over									
Population	1,642.6	1,644.2	...	1.6	3.0	19.7	0.1	0.2	1.2
Labour force	991.5	999.7	6.1	8.2	13.6	10.9	0.8	1.4	1.1
Employment	939.1	946.3	5.9	7.2	9.5	30.4	0.8	1.0	3.3
Unemployment	52.3	53.3	4.8	1.0	4.1	-19.5	1.9	8.3	-26.8
Participation rate	60.4	60.8	0.4	0.4	0.7	-0.1
Unemployment rate	5.3	5.3	0.5	0.0	0.3	-2.1
Employment rate	57.2	57.6	0.4	0.4	0.5	1.2
Part-time rate	26.4	25.2	0.9	-1.2	-0.9	-2.9
Industry	2,291.7	2,300.8	10.3	9.1	6.9	39.9	0.4	0.3	1.8
Goods-producing sector	461.4	458.4	8.7	-3.0	1.8	15.7	-0.7	0.4	3.5
Agriculture	24.4	23.6	2.3	-0.8	-3.1	-3.6	-3.3	-11.6	-13.2
Forestry, fishing, mining, quarrying, oil and gas extraction ²	40.9	42.3	2.7	1.4	-1.2	4.0	3.4	-2.8	10.4
Utilities	13.7	14.4	1.6	0.7	3.9	-0.7	5.1	37.1	-4.6
Construction	203.7	196.1	6.4	-7.6	-11.0	-1.5	-3.7	-5.3	-0.8
Manufacturing	178.7	182.0	5.7	3.3	13.2	17.5	1.8	7.8	10.6
Services-producing sector	1,830.4	1,842.4	11.9	12.0	5.1	24.2	0.7	0.3	1.3
Trade	350.2	362.3	8.1	12.1	4.4	4.1	3.5	1.2	1.1
Transportation and warehousing	133.2	125.7	5.0	-7.5	-1.8	3.7	-5.6	-1.4	3.0
Finance, insurance, real estate and leasing	140.8	142.7	5.3	1.9	9.9	-3.0	1.3	7.5	-2.1
Professional, scientific and technical services	168.4	176.4	6.3	8.0	-17.6	3.8	4.8	-9.1	2.2
Business, building and other support services	95.8	87.0	4.8	-8.8	4.7	-6.3	-9.2	5.7	-6.8
Educational services	168.4	177.5	5.6	9.1	15.2	5.8	5.4	9.4	3.4
Health care and social assistance	274.9	268.3	6.4	-6.6	-10.5	8.6	-2.4	-3.8	3.3
Information, culture and recreation	113.7	116.4	4.7	2.7	2.7	11.0	2.4	2.4	10.4
Accommodation and food services	169.7	169.6	6.3	-0.1	-9.1	-2.5	-0.1	-5.1	-1.5
Other services	117.1	120.3	4.6	3.2	16.0	17.8	2.7	15.3	17.4
Public administration	98.3	96.1	4.1	-2.2	-9.0	-18.8	-2.2	-8.6	-16.4

1. Average standard error of change in two consecutive months (see "Sampling Errors" in Data Quality for further explanations).

2. Also referred to as Natural resources.

Note(s): Related CANSIM Tables 282-0087, 282-0088.

Table 5-1

Labour force characteristics by census metropolitan area (seasonally adjusted) — 3 month moving average

	January 2012	February 2012	S.E. ¹	Change from			Percent change from		
				last month	last December	twelve months ago	last month	last December	twelve months ago
in thousands (except rates)									
St. John's, Newfoundland and Labrador									
Population	161.7	161.9	...	0.2	0.4	1.4	0.1	0.2	0.9
Labour force	115.5	116.2	0.7	0.7	1.1	5.2	0.6	1.0	4.7
Employment	106.6	107.4	0.7	0.8	0.9	3.7	0.8	0.8	3.6
Unemployment	9.0	8.8	0.4	-0.2	0.2	1.5	-2.2	2.3	20.5
Participation rate	71.4	71.8	0.5	0.4	0.5	2.6
Unemployment rate	7.8	7.6	0.4	-0.2	0.1	1.0
Employment rate	65.9	66.3	0.5	0.4	0.4	1.7
Halifax, Nova Scotia									
Population	341.2	341.5	...	0.3	0.7	4.3	0.1	0.2	1.3
Labour force	238.6	239.8	1.1	1.2	2.3	2.3	0.5	1.0	1.0
Employment	225.5	226.1	1.1	0.6	1.5	4.6	0.3	0.7	2.1
Unemployment	13.0	13.8	0.6	0.8	0.9	-2.2	6.2	7.0	-13.8
Participation rate	69.9	70.2	0.3	0.3	0.5	-0.2
Unemployment rate	5.4	5.8	0.3	0.4	0.4	-0.9
Employment rate	66.1	66.2	0.3	0.1	0.3	0.5
Moncton, New Brunswick									
Population	115.9	116.1	...	0.2	0.4	1.8	0.2	0.3	1.6
Labour force	80.0	80.1	0.7	0.1	0.4	3.8	0.1	0.5	5.0
Employment	74.3	74.8	0.7	0.5	1.1	4.8	0.7	1.5	6.9
Unemployment	5.7	5.3	0.4	-0.4	-0.7	-1.0	-7.0	-11.7	-15.9
Participation rate	69.0	69.0	0.6	0.0	0.1	2.2
Unemployment rate	7.1	6.6	0.5	-0.5	-0.9	-1.7
Employment rate	64.1	64.4	0.6	0.3	0.7	3.2
Saint John, New Brunswick									
Population	106.5	106.5	...	0.0	0.1	0.6	0.0	0.1	0.6
Labour force	66.8	67.0	0.8	0.2	-0.2	-1.6	0.3	-0.3	-2.3
Employment	61.7	61.9	0.8	0.2	-0.3	-2.2	0.3	-0.5	-3.4
Unemployment	5.1	5.2	0.3	0.1	0.1	0.7	2.0	2.0	15.6
Participation rate	62.7	62.9	0.7	0.2	-0.3	-1.9
Unemployment rate	7.6	7.8	0.5	0.2	0.2	1.2
Employment rate	57.9	58.1	0.7	0.2	-0.4	-2.4
Saguenay, Quebec									
Population	126.7	126.7	...	0.0	0.0	0.2	0.0	0.0	0.2
Labour force	73.8	74.8	0.9	1.0	2.2	-0.8	1.4	3.0	-1.1
Employment	69.7	70.2	0.9	0.5	1.9	0.7	0.7	2.8	1.0
Unemployment	4.1	4.7	0.3	0.6	0.5	-1.4	14.6	11.9	-23.0
Participation rate	58.2	59.0	0.7	0.8	1.7	-0.8
Unemployment rate	5.6	6.3	0.5	0.7	0.5	-1.8
Employment rate	55.0	55.4	0.7	0.4	1.5	0.5
Québec, Quebec									
Population	639.8	640.3	...	0.5	0.9	7.2	0.1	0.1	1.1
Labour force	445.2	446.8	3.4	1.6	-2.4	8.1	0.4	-0.5	1.8
Employment	422.9	424.1	3.5	1.2	-4.0	8.8	0.3	-0.9	2.1
Unemployment	22.3	22.7	1.6	0.4	1.6	-0.7	1.8	7.6	-3.0
Participation rate	69.6	69.8	0.5	0.2	-0.5	0.5
Unemployment rate	5.0	5.1	0.4	0.1	0.4	-0.2
Employment rate	66.1	66.2	0.6	0.1	-0.8	0.6
Sherbrooke, Quebec									
Population	165.9	166.0	...	0.1	0.3	1.9	0.1	0.2	1.2
Labour force	107.7	109.1	1.0	1.4	2.6	3.0	1.3	2.4	2.8
Employment	100.4	101.4	1.0	1.0	2.0	2.8	1.0	2.0	2.8
Unemployment	7.3	7.6	0.5	0.3	0.5	0.1	4.1	7.0	1.3
Participation rate	64.9	65.7	0.6	0.8	1.4	1.0
Unemployment rate	6.8	7.0	0.5	0.2	0.3	-0.1
Employment rate	60.5	61.1	0.6	0.6	1.1	1.0

See notes at the end of the table.

Table 5-1 – continued

Labour force characteristics by census metropolitan area (seasonally adjusted) — 3 month moving average

	January 2012	February 2012	S.E. ¹	Change from			Percent change from		
				last month	last December	twelve months ago	last month	last December	twelve months ago
in thousands (except rates)									
Trois-Rivières, Quebec									
Population	125.2	125.3	...	0.1	0.2	1.1	0.1	0.2	0.9
Labour force	78.8	78.6	0.8	-0.2	-0.3	3.4	-0.3	-0.4	4.5
Employment	72.2	72.2	0.8	0.0	0.4	3.1	0.0	0.6	4.5
Unemployment	6.7	6.4	0.4	-0.3	-0.8	0.2	-4.5	-11.1	3.2
Participation rate	62.9	62.7	0.7	-0.2	-0.4	2.2
Unemployment rate	8.5	8.1	0.5	-0.4	-1.0	-0.1
Employment rate	57.7	57.6	0.7	-0.1	0.2	2.0
Montréal, Quebec									
Population	3,237.8	3,240.1	...	2.3	4.7	35.3	0.1	0.1	1.1
Labour force	2,100.3	2,110.4	7.7	10.1	11.1	-20.4	0.5	0.5	-1.0
Employment	1,911.9	1,916.1	7.8	4.2	2.0	-44.5	0.2	0.1	-2.3
Unemployment	188.4	194.4	4.8	6.0	9.1	24.3	3.2	4.9	14.3
Participation rate	64.9	65.1	0.2	0.2	0.2	-1.4
Unemployment rate	9.0	9.2	0.2	0.2	0.4	1.2
Employment rate	59.0	59.1	0.2	0.1	-0.1	-2.1
Ottawa-Gatineau, Ontario/Quebec									
Population	1,042.6	1,044.1	...	1.5	3.0	18.2	0.1	0.3	1.8
Labour force	750.4	754.8	3.8	4.4	11.5	21.9	0.6	1.5	3.0
Employment	705.9	709.6	3.9	3.7	13.0	24.2	0.5	1.9	3.5
Unemployment	44.5	45.1	1.8	0.6	-1.6	-2.4	1.3	-3.4	-5.1
Participation rate	72.0	72.3	0.4	0.3	0.9	0.9
Unemployment rate	5.9	6.0	0.2	0.1	-0.3	-0.5
Employment rate	67.7	68.0	0.4	0.3	1.1	1.2
Ottawa-Gatineau, Quebec part, Ontario/Quebec									
Population	260.4	260.7	...	0.3	0.6	4.7	0.1	0.2	1.8
Labour force	187.6	186.2	1.3	-1.4	-1.9	5.0	-0.7	-1.0	2.8
Employment	175.2	175.0	1.3	-0.2	0.2	5.4	-0.1	0.1	3.2
Unemployment	12.4	11.3	0.7	-1.1	-2.0	-0.3	-8.9	-15.0	-2.6
Participation rate	72.0	71.4	0.5	-0.6	-0.9	0.6
Unemployment rate	6.6	6.1	0.4	-0.5	-1.0	-0.3
Employment rate	67.3	67.1	0.5	-0.2	-0.1	0.8
Ottawa-Gatineau, Ontario part, Ontario/Quebec									
Population	782.2	783.4	...	1.2	2.4	13.5	0.2	0.3	1.8
Labour force	562.8	568.5	3.6	5.7	13.3	16.8	1.0	2.4	3.0
Employment	530.7	534.7	3.6	4.0	12.9	18.9	0.8	2.5	3.7
Unemployment	32.1	33.9	1.6	1.8	0.5	-2.0	5.6	1.5	-5.6
Participation rate	72.0	72.6	0.5	0.6	1.5	0.9
Unemployment rate	5.7	6.0	0.3	0.3	0.0	-0.5
Employment rate	67.8	68.3	0.5	0.5	1.5	1.3
Kingston, Ontario									
Population	133.0	133.1	...	0.1	0.3	1.7	0.1	0.2	1.3
Labour force	87.4	88.9	0.8	1.5	3.4	5.8	1.7	4.0	7.0
Employment	81.5	82.7	0.8	1.2	2.6	4.9	1.5	3.2	6.3
Unemployment	5.8	6.3	0.3	0.5	0.9	1.0	8.6	16.7	18.9
Participation rate	65.7	66.8	0.6	1.1	2.4	3.6
Unemployment rate	6.6	7.1	0.4	0.5	0.8	0.7
Employment rate	61.3	62.1	0.6	0.8	1.8	2.9
Peterborough, Ontario									
Population	102.6	102.7	...	0.1	0.1	0.4	0.1	0.1	0.4
Labour force	69.1	69.6	1.1	0.5	2.9	6.7	0.7	4.3	10.7
Employment	64.1	64.4	1.1	0.3	2.7	7.3	0.5	4.4	12.8
Unemployment	5.0	5.2	0.5	0.2	0.3	-0.6	4.0	6.1	-10.3
Participation rate	67.3	67.8	1.1	0.5	2.8	6.3
Unemployment rate	7.2	7.5	0.8	0.3	0.2	-1.7
Employment rate	62.5	62.7	1.1	0.2	2.6	6.9

See notes at the end of the table.

Table 5-1 – continued

Labour force characteristics by census metropolitan area (seasonally adjusted) — 3 month moving average

	January 2012	February 2012	S.E. ¹	Change from			Percent change from		
				last month	last December	twelve months ago	last month	last December	twelve months ago
in thousands (except rates)									
Oshawa, Ontario									
Population	306.7	307.2	...	0.5	0.9	5.7	0.2	0.3	1.9
Labour force	214.1	217.2	1.5	3.1	4.3	10.2	1.4	2.0	4.9
Employment	198.3	201.1	1.6	2.8	3.8	12.4	1.4	1.9	6.6
Unemployment	15.8	16.1	0.9	0.3	0.6	-2.2	1.9	3.9	-12.0
Participation rate	69.8	70.7	0.5	0.9	1.2	2.0
Unemployment rate	7.4	7.4	0.4	0.0	0.1	-1.4
Employment rate	64.7	65.5	0.5	0.8	1.1	2.9
Toronto, Ontario									
Population	4,828.7	4,836.9	...	8.2	16.5	93.4	0.2	0.3	2.0
Labour force	3,222.1	3,217.4	10.3	-4.7	-4.8	-28.4	-0.1	-0.1	-0.9
Employment	2,944.2	2,939.5	10.5	-4.7	-6.6	-36.8	-0.2	-0.2	-1.2
Unemployment	277.9	277.9	6.6	0.0	1.8	8.4	0.0	0.7	3.1
Participation rate	66.7	66.5	0.2	-0.2	-0.3	-1.9
Unemployment rate	8.6	8.6	0.2	0.0	0.0	0.3
Employment rate	61.0	60.8	0.2	-0.2	-0.3	-1.9
Hamilton, Ontario									
Population	621.3	621.9	...	0.6	1.1	6.5	0.1	0.2	1.1
Labour force	419.3	420.9	3.3	1.6	3.6	19.2	0.4	0.9	4.8
Employment	393.9	396.2	3.3	2.3	5.4	20.2	0.6	1.4	5.4
Unemployment	25.3	24.7	1.5	-0.6	-1.8	-1.0	-2.4	-6.8	-3.9
Participation rate	67.5	67.7	0.5	0.2	0.5	2.4
Unemployment rate	6.0	5.9	0.4	-0.1	-0.5	-0.5
Employment rate	63.4	63.7	0.5	0.3	0.7	2.6
St. Catharines-Niagara, Ontario									
Population	339.2	339.2	...	0.0	0.1	0.9	0.0	0.0	0.3
Labour force	211.0	213.3	1.7	2.3	1.9	-1.8	1.1	0.9	-0.8
Employment	195.6	197.1	1.7	1.5	1.3	2.3	0.8	0.7	1.2
Unemployment	15.4	16.2	0.9	0.8	0.5	-4.1	5.2	3.2	-20.2
Participation rate	62.2	62.9	0.5	0.7	0.6	-0.7
Unemployment rate	7.3	7.6	0.4	0.3	0.2	-1.8
Employment rate	57.7	58.1	0.5	0.4	0.4	0.5
Kitchener-Cambridge-Waterloo, Ontario									
Population	410.9	411.3	...	0.4	0.9	5.6	0.1	0.2	1.4
Labour force	297.0	301.3	1.9	4.3	9.1	9.1	1.4	3.1	3.1
Employment	276.4	281.2	2.1	4.8	8.4	8.4	1.7	3.1	3.1
Unemployment	20.6	20.2	1.1	-0.4	0.8	0.7	-1.9	4.1	3.6
Participation rate	72.3	73.3	0.5	1.0	2.1	1.3
Unemployment rate	6.9	6.7	0.4	-0.2	0.1	0.0
Employment rate	67.3	68.4	0.5	1.1	1.9	1.2
Brantford, Ontario									
Population	108.2	108.3	...	0.1	0.1	0.8	0.1	0.1	0.7
Labour force	70.8	71.6	0.8	0.8	0.4	-3.3	1.1	0.6	-4.4
Employment	65.0	65.6	0.8	0.6	-0.3	-2.4	0.9	-0.5	-3.5
Unemployment	5.7	5.9	0.4	0.2	0.6	-1.0	3.5	11.3	-14.5
Participation rate	65.4	66.1	0.7	0.7	0.3	-3.6
Unemployment rate	8.1	8.2	0.6	0.1	0.8	-1.0
Employment rate	60.1	60.6	0.8	0.5	-0.3	-2.7
Guelph, Ontario									
Population	114.1	114.3	...	0.2	0.3	1.6	0.2	0.3	1.4
Labour force	86.8	86.5	0.7	-0.3	-0.2	8.5	-0.3	-0.2	10.9
Employment	82.0	81.7	0.7	-0.3	-0.5	8.8	-0.4	-0.6	12.1
Unemployment	4.8	4.8	0.4	0.0	0.3	-0.4	0.0	6.7	-7.7
Participation rate	76.1	75.7	0.6	-0.4	-0.4	6.5
Unemployment rate	5.5	5.5	0.5	0.0	0.3	-1.2
Employment rate	71.9	71.5	0.6	-0.4	-0.6	6.8

See notes at the end of the table.

Table 5-1 – continued

Labour force characteristics by census metropolitan area (seasonally adjusted) — 3 month moving average

	January 2012	February 2012	S.E. ¹	Change from			Percent change from		
				last month	last December	twelve months ago	last month	last December	twelve months ago
in thousands (except rates)									
London, Ontario									
Population	414.1	414.4	...	0.3	0.6	4.1	0.1	0.1	1.0
Labour force	265.8	265.1	2.1	-0.7	-1.2	0.3	-0.3	-0.5	0.1
Employment	241.8	241.7	2.1	-0.1	0.9	-0.5	0.0	0.4	-0.2
Unemployment	24.0	23.4	1.1	-0.6	-2.1	0.8	-2.5	-8.2	3.5
Participation rate	64.2	64.0	0.5	-0.2	-0.4	-0.5
Unemployment rate	9.0	8.8	0.4	-0.2	-0.8	0.3
Employment rate	58.4	58.3	0.5	-0.1	0.1	-0.7
Windsor, Ontario									
Population	267.1	267.1	...	0.0	0.0	-0.7	0.0	0.0	-0.3
Labour force	164.7	165.2	1.5	0.5	-0.2	-0.3	0.3	-0.1	-0.2
Employment	146.8	147.4	1.5	0.6	-0.5	-2.3	0.4	-0.3	-1.5
Unemployment	17.9	17.7	0.8	-0.2	0.3	1.9	-1.1	1.7	12.0
Participation rate	61.7	61.8	0.6	0.1	-0.1	0.0
Unemployment rate	10.9	10.7	0.5	-0.2	0.2	1.2
Employment rate	55.0	55.2	0.6	0.2	-0.2	-0.7
Barrie, Ontario									
Population	162.2	162.4	...	0.2	0.4	2.3	0.1	0.2	1.4
Labour force	115.0	113.4	1.4	-1.6	-3.1	1.6	-1.4	-2.7	1.4
Employment	104.2	103.5	1.4	-0.7	-1.1	1.0	-0.7	-1.1	1.0
Unemployment	10.9	9.9	0.8	-1.0	-2.1	0.7	-9.2	-17.5	7.6
Participation rate	70.9	69.8	0.9	-1.1	-2.1	0.0
Unemployment rate	9.5	8.7	0.7	-0.8	-1.6	0.5
Employment rate	64.2	63.7	0.9	-0.5	-0.9	-0.3
Greater Sudbury, Ontario									
Population	139.5	139.4	...	-0.1	-0.1	0.3	-0.1	-0.1	0.2
Labour force	88.0	88.4	0.7	0.4	0.0	-1.2	0.5	0.0	-1.3
Employment	82.4	82.6	0.7	0.2	-0.8	-0.4	0.2	-1.0	-0.5
Unemployment	5.6	5.8	0.4	0.2	0.8	-0.9	3.6	16.0	-13.4
Participation rate	63.1	63.4	0.5	0.3	0.0	-1.0
Unemployment rate	6.4	6.6	0.4	0.2	0.9	-0.9
Employment rate	59.1	59.3	0.5	0.2	-0.5	-0.4
Thunder Bay, Ontario									
Population	102.5	102.5	...	0.0	0.1	0.0	0.0	0.1	0.0
Labour force	67.8	67.3	0.7	-0.5	0.2	3.3	-0.7	0.3	5.2
Employment	63.6	63.5	0.7	-0.1	1.1	3.7	-0.2	1.8	6.2
Unemployment	4.2	3.8	0.3	-0.4	-0.9	-0.4	-9.5	-19.1	-9.5
Participation rate	66.1	65.7	0.6	-0.4	0.2	3.3
Unemployment rate	6.2	5.6	0.5	-0.6	-1.4	-1.0
Employment rate	62.0	62.0	0.7	0.0	1.1	3.7
Winnipeg, Manitoba									
Population	628.0	628.7	...	0.7	1.3	8.9	0.1	0.2	1.4
Labour force	439.4	441.1	1.3	1.7	3.8	8.2	0.4	0.9	1.9
Employment	413.9	415.5	1.3	1.6	3.0	6.8	0.4	0.7	1.7
Unemployment	25.4	25.6	0.8	0.2	0.8	1.4	0.8	3.2	5.8
Participation rate	70.0	70.2	0.2	0.2	0.5	0.4
Unemployment rate	5.8	5.8	0.2	0.0	0.1	0.2
Employment rate	65.9	66.1	0.2	0.2	0.4	0.2
Regina, Saskatchewan									
Population	178.1	178.3	...	0.2	0.5	2.9	0.1	0.3	1.7
Labour force	130.9	130.9	0.7	0.0	0.7	5.1	0.0	0.5	4.1
Employment	125.2	125.2	0.8	0.0	0.1	5.7	0.0	0.1	4.8
Unemployment	5.7	5.7	0.4	0.0	0.5	-0.6	0.0	9.6	-9.5
Participation rate	73.5	73.4	0.4	-0.1	0.2	1.7
Unemployment rate	4.4	4.4	0.3	0.0	0.4	-0.6
Employment rate	70.3	70.2	0.4	-0.1	-0.2	2.1

See notes at the end of the table.

Table 5-1 – continued

Labour force characteristics by census metropolitan area (seasonally adjusted) — 3 month moving average

	January 2012	February 2012	S.E. ¹	Change from			Percent change from		
				last month	last December	twelve months ago	last month	last December	twelve months ago
in thousands (except rates)									
Saskatoon, Saskatchewan									
Population	222.9	223.3	...	0.4	0.9	5.3	0.2	0.4	2.4
Labour force	156.4	157.5	1.0	1.1	3.1	4.1	0.7	2.0	2.7
Employment	147.1	148.0	1.0	0.9	2.1	3.4	0.6	1.4	2.4
Unemployment	9.3	9.5	0.5	0.2	1.1	0.7	2.2	13.1	8.0
Participation rate	70.2	70.5	0.5	0.3	1.1	0.1
Unemployment rate	5.9	6.0	0.3	0.1	0.6	0.3
Employment rate	66.0	66.3	0.5	0.3	0.7	0.0
Calgary, Alberta									
Population	1,042.8	1,044.3	...	1.5	3.0	20.3	0.1	0.3	2.0
Labour force	780.7	782.8	3.5	2.1	7.0	23.4	0.3	0.9	3.1
Employment	738.7	741.8	3.8	3.1	8.4	30.1	0.4	1.1	4.2
Unemployment	41.9	41.0	2.2	-0.9	-1.4	-6.7	-2.1	-3.3	-14.0
Participation rate	74.9	75.0	0.3	0.1	0.5	0.8
Unemployment rate	5.4	5.2	0.3	-0.2	-0.3	-1.1
Employment rate	70.8	71.0	0.4	0.2	0.6	1.5
Edmonton, Alberta									
Population	973.3	975.1	...	1.8	3.3	18.3	0.2	0.3	1.9
Labour force	714.0	710.9	3.6	-3.1	-6.0	12.1	-0.4	-0.8	1.7
Employment	678.0	673.5	3.7	-4.5	-8.0	15.8	-0.7	-1.2	2.4
Unemployment	36.0	37.4	1.7	1.4	2.0	-3.8	3.9	5.6	-9.2
Participation rate	73.4	72.9	0.4	-0.5	-0.9	-0.1
Unemployment rate	5.0	5.3	0.2	0.3	0.4	-0.6
Employment rate	69.7	69.1	0.4	-0.6	-1.0	0.4
Kelowna, British Columbia									
Population	150.0	150.0	...	0.0	0.0	1.3	0.0	0.0	0.9
Labour force	101.9	102.6	1.4	0.7	0.7	1.2	0.7	0.7	1.2
Employment	93.2	94.2	1.5	1.0	0.5	0.8	1.1	0.5	0.9
Unemployment	8.7	8.4	0.8	-0.3	0.2	0.4	-3.4	2.4	5.0
Participation rate	67.9	68.4	0.9	0.5	0.5	0.2
Unemployment rate	8.5	8.2	0.8	-0.3	0.2	0.3
Employment rate	62.1	62.8	1.0	0.7	0.3	0.0
Abbotsford-Mission, British Columbia									
Population	145.0	145.1	...	0.1	0.2	1.7	0.1	0.1	1.2
Labour force	96.9	97.9	0.7	1.0	1.9	4.0	1.0	2.0	4.3
Employment	87.1	87.6	0.7	0.5	0.2	3.0	0.6	0.2	3.5
Unemployment	9.8	10.3	0.5	0.5	1.6	1.0	5.1	18.4	10.8
Participation rate	66.8	67.5	0.5	0.7	1.2	2.0
Unemployment rate	10.1	10.5	0.5	0.4	1.4	0.6
Employment rate	60.1	60.4	0.5	0.3	0.1	1.4
Vancouver, British Columbia									
Population	2,039.9	2,042.5	...	2.6	5.0	30.6	0.1	0.2	1.5
Labour force	1,351.0	1,350.8	4.9	-0.2	-5.9	15.8	0.0	-0.4	1.2
Employment	1,256.9	1,259.9	5.1	3.0	-3.2	32.8	0.2	-0.3	2.7
Unemployment	94.1	90.8	3.0	-3.3	-2.8	-17.1	-3.5	-3.0	-15.8
Participation rate	66.2	66.1	0.2	-0.1	-0.5	-0.3
Unemployment rate	7.0	6.7	0.2	-0.3	-0.2	-1.4
Employment rate	61.6	61.7	0.2	0.1	-0.3	0.7
Victoria, British Columbia									
Population	301.4	301.5	...	0.1	0.2	1.8	0.0	0.1	0.6
Labour force	193.2	198.7	1.4	5.5	8.3	4.6	2.8	4.4	2.4
Employment	182.0	188.1	1.4	6.1	8.9	6.2	3.4	5.0	3.4
Unemployment	11.1	10.6	0.6	-0.5	-0.6	-1.6	-4.5	-5.4	-13.1
Participation rate	64.1	65.9	0.5	1.8	2.7	1.1
Unemployment rate	5.7	5.3	0.3	-0.4	-0.6	-1.0
Employment rate	60.4	62.4	0.5	2.0	2.9	1.7

1. Average standard error of change in two consecutive months (see "Sampling Errors" in Data Quality for further explanations).

Note(s): Estimates from this table are based on 2006 census population counts. Related CANSIM Table 282-0116.

Table 5-2
Labour force characteristics by census metropolitan area (seasonally adjusted) — Monthly

	January 2012	February 2012	S.E. ¹	Change from			Percent change from		
				last month	last December	twelve months ago	last month	last December	twelve months ago
in thousands (except rates)									
Montréal, Quebec									
Population	3,239.9	3,242.5	...	2.6	4.7	34.2	0.1	0.1	1.1
Labour force	2,115.8	2,118.1	15.7	2.3	20.7	-20.5	0.1	1.0	-1.0
Employment	1,924.3	1,916.4	15.9	-7.9	8.9	-50.6	-0.4	0.5	-2.6
Unemployment	191.5	201.7	11.4	10.2	11.8	30.1	5.3	6.2	17.5
Participation rate	65.3	65.3	0.5	0.0	0.5	-1.4
Unemployment rate	9.1	9.5	0.5	0.4	0.4	1.5
Employment rate	59.4	59.1	0.5	-0.3	0.2	-2.2
Toronto, Ontario									
Population	4,837.4	4,845.1	...	7.7	16.8	94.5	0.2	0.3	2.0
Labour force	3,232.1	3,206.2	21.9	-25.9	-7.7	-18.9	-0.8	-0.2	-0.6
Employment	2,937.6	2,936.7	21.4	-0.9	-7.5	-26.2	0.0	-0.3	-0.9
Unemployment	294.5	269.5	15.3	-25.0	-0.2	7.3	-8.5	-0.1	2.8
Participation rate	66.8	66.2	0.5	-0.6	-0.4	-1.7
Unemployment rate	9.1	8.4	0.5	-0.7	0.0	0.3
Employment rate	60.7	60.6	0.4	-0.1	-0.4	-1.8
Vancouver, British Columbia									
Population	2,042.4	2,045.5	...	3.1	5.8	30.4	0.2	0.3	1.5
Labour force	1,345.9	1,356.0	10.6	10.1	5.6	8.7	0.8	0.4	0.6
Employment	1,255.3	1,267.3	10.5	12.0	10.1	41.4	1.0	0.8	3.4
Unemployment	90.6	88.7	7.2	-1.9	-4.4	-32.7	-2.1	-4.7	-26.9
Participation rate	65.9	66.3	0.5	0.4	0.1	-0.6
Unemployment rate	6.7	6.5	0.5	-0.2	-0.4	-2.5
Employment rate	61.5	62.0	0.5	0.5	0.4	1.2

1. Average standard error of change in two consecutive months (see "Sampling Errors" in Data Quality for further explanations).

Note(s): Estimates from this table are based on 2006 census population counts. Related CANSIM Table 282-0117.

Table 6-1

Labour force characteristics by province and economic region, ¹ unadjusted for seasonality, 3 month moving average ending in February 2011 and February 2012

	Population	Labour force			Participation rate	Unemployment rate	Employment rate
		Labour force	Employment	Unemployment			
	in thousands						
Canada ²							
2011	27,840.7	18,388.1	16,968.4	1,419.7	66.0	7.7	60.9
2012	28,156.0	18,500.6	17,110.8	1,389.8	65.7	7.5	60.8
Newfoundland and Labrador							
2011	429.1	249.3	214.7	34.7	58.1	13.9	50.0
2012	428.6	253.3	217.1	36.2	59.1	14.3	50.7
Avalon Peninsula [1010]							
2011	220.1	139.5	126.8	12.7	63.4	9.1	57.6
2012	221.4	144.4	129.9	14.5	65.2	10.0	58.7
South Coast-Burin Peninsula [1020]							
2011	30.8	17.8	13.9	3.9	57.8	21.9	45.1
2012	30.3	16.1	12.6	3.6	53.1	22.4	41.6
West Coast-Northern Peninsula-Labrador [1030]							
2011	87.2	48.7	39.6	9.1	55.8	18.7	45.4
2012	86.5	48.1	39.5	8.6	55.6	17.9	45.7
Notre Dame-Central Bonavista Bay [1040]							
2011	91.0	43.3	34.4	8.9	47.6	20.6	37.8
2012	90.4	44.7	35.1	9.6	49.4	21.5	38.8
Prince Edward Island							
2011	118.2	76.7	66.0	10.7	64.9	14.0	55.8
2012	120.0	78.9	68.1	10.7	65.8	13.6	56.8
Nova Scotia							
2011	778.9	490.9	441.1	49.8	63.0	10.1	56.6
2012	779.7	490.7	449.2	41.5	62.9	8.5	57.6
Cape Breton [1210]							
2011	112.8	61.2	50.6	10.6	54.3	17.3	44.9
2012	111.4	61.3	52.7	8.6	55.0	14.0	47.3
North Shore [1220]							
2011	130.1	77.1	67.5	9.6	59.3	12.5	51.9
2012	129.6	78.5	69.3	9.2	60.6	11.7	53.5
Annapolis Valley [1230]							
2011	100.0	60.9	53.6	7.2	60.9	11.8	53.6
2012	99.6	56.6	51.7	4.9	56.8	8.7	51.9
Southern [1240]							
2011	98.8	56.6	49.8	6.7	57.3	11.8	50.4
2012	97.7	56.5	51.3	5.2	57.8	9.2	52.5
Halifax [1250]							
2011	337.2	235.1	219.5	15.6	69.7	6.6	65.1
2012	341.5	237.8	224.2	13.6	69.6	5.7	65.7
New Brunswick							
2011	618.5	379.8	341.8	37.9	61.4	10.0	55.3
2012	620.3	381.7	342.8	38.8	61.5	10.2	55.3
Campbellton-Miramichi [1310]							
2011	130.0	68.6	56.8	11.8	52.8	17.2	43.7
2012	128.4	68.0	56.9	11.1	53.0	16.3	44.3
Moncton-Richibucto [1320]							
2011	170.9	109.6	98.5	11.1	64.1	10.1	57.6
2012	172.8	113.0	103.8	9.2	65.4	8.1	60.1
Saint John-St. Stephen [1330]							
2011	143.9	91.7	85.3	6.3	63.7	6.9	59.3
2012	144.6	90.8	82.7	8.0	62.8	8.8	57.2

See notes at the end of the table.

Table 6-1 – continued

Labour force characteristics by province and economic region, ¹ unadjusted for seasonality, 3 month moving average ending in February 2011 and February 2012

	Population	Labour force			Participation rate	Unemployment rate	Employment rate
		Labour force	Employment	Unemployment			
		in thousands					
Fredericton-Oromocto [1340]							
2011	108.4	72.4	67.3	5.1	66.8	7.0	62.1
2012	109.9	71.0	64.9	6.1	64.6	8.6	59.1
Edmundston-Woodstock [1350]							
2011	65.2	37.5	34.0	3.5	57.5	9.3	52.1
2012	64.6	38.9	34.6	4.3	60.2	11.1	53.6
Quebec							
2011	6,545.0	4,224.1	3,884.5	339.7	64.5	8.0	59.4
2012	6,609.8	4,209.6	3,833.1	376.5	63.7	8.9	58.0
Gaspésie-Îles-de-la-Madeleine [2410]							
2011	78.6	42.6	35.9	6.7	54.2	15.7	45.7
2012	78.6	38.7	33.7	5.0	49.2	12.9	42.9
Bas-Saint-Laurent [2415]							
2011	166.9	96.9	85.7	11.2	58.1	11.6	51.3
2012	166.7	96.6	87.9	8.6	57.9	8.9	52.7
Capitale-Nationale [2420]							
2011	585.3	388.4	363.1	25.4	66.4	6.5	62.0
2012	591.8	398.4	373.6	24.8	67.3	6.2	63.1
Chaudière-Appalaches [2425]							
2011	332.7	221.3	210.5	10.8	66.5	4.9	63.3
2012	334.5	225.1	210.4	14.6	67.3	6.5	62.9
Estrie [2430]							
2011	257.3	166.2	154.3	12.0	64.6	7.2	60.0
2012	259.5	157.1	144.3	12.9	60.5	8.2	55.6
Centre-du-Québec [2433]							
2011	189.8	112.7	105.9	6.8	59.4	6.0	55.8
2012	191.4	108.8	98.0	10.8	56.8	9.9	51.2
Montréal [2435]							
2011	1,181.9	781.6	723.9	57.7	66.1	7.4	61.2
2012	1,197.5	769.4	704.7	64.7	64.3	8.4	58.8
Montréal [2440]							
2011	1,618.1	1,019.9	922.9	97.0	63.0	9.5	57.0
2012	1,626.4	1,026.9	910.4	116.5	63.1	11.3	56.0
Laval [2445]							
2011	330.2	218.8	202.9	15.9	66.3	7.3	61.4
2012	336.3	221.1	200.5	20.5	65.7	9.3	59.6
Lanaudière [2450]							
2011	387.5	248.2	229.8	18.3	64.1	7.4	59.3
2012	395.0	270.6	243.8	26.8	68.5	9.9	61.7
Laurentides [2455]							
2011	458.8	312.1	285.4	26.7	68.0	8.6	62.2
2012	467.5	305.4	283.7	21.7	65.3	7.1	60.7
Outaouais [2460]							
2011	303.6	202.9	188.3	14.6	66.8	7.2	62.0
2012	308.7	210.4	196.1	14.3	68.2	6.8	63.5
Abitibi-Témiscamingue [2465]							
2011	117.4	76.4	70.6	5.8	65.1	7.6	60.1
2012	117.8	72.1	66.6	5.5	61.2	7.6	56.5
Mauricie [2470]							
2011	221.0	138.2	127.0	11.2	62.5	8.1	57.5
2012	222.0	129.3	117.2	12.1	58.2	9.4	52.8

See notes at the end of the table.

Table 6-1 – continued

Labour force characteristics by province and economic region, ¹ unadjusted for seasonality, 3 month moving average ending in February 2011 and February 2012

	Population	Labour force			Participation rate	Unemployment rate	Employment rate
		Labour force	Employment	Unemployment			
	in thousands						
Saguenay-Lac-Saint-Jean [2475]							
2011	225.3	137.9	123.9	14.0	61.2	10.2	55.0
2012	225.4	126.0	114.4	11.6	55.9	9.2	50.8
Côte-Nord and Nord-du-Québec [2480, 2490]							
2011	90.7	60.0	54.4	5.6	66.2	9.3	60.0
2012	90.7	53.7	47.6	6.1	59.2	11.4	52.5
Ontario							
2011	10,864.1	7,174.4	6,616.7	557.6	66.0	7.8	60.9
2012	11,003.3	7,217.3	6,675.7	541.7	65.6	7.5	60.7
Ottawa [3510]							
2011	1,042.1	712.6	665.1	47.5	68.4	6.7	63.8
2012	1,056.0	734.9	688.1	46.8	69.6	6.4	65.2
Kingston-Pembroke [3515]							
2011	369.3	224.5	209.2	15.3	60.8	6.8	56.6
2012	371.5	231.3	216.5	14.8	62.3	6.4	58.3
Muskoka-Kawartha [3520]							
2011	318.1	185.2	164.0	21.1	58.2	11.4	51.6
2012	319.4	193.0	177.3	15.7	60.4	8.1	55.5
Toronto [3530]							
2011	4,999.1	3,373.3	3,114.1	259.1	67.5	7.7	62.3
2012	5,096.2	3,348.0	3,078.8	269.1	65.7	8.0	60.4
Kitchener-Waterloo-Barrie [3540]							
2011	1,030.0	721.8	666.1	55.7	70.1	7.7	64.7
2012	1,044.7	731.2	682.8	48.4	70.0	6.6	65.4
Hamilton-Niagara Peninsula [3550]							
2011	1,164.9	746.2	685.6	60.6	64.1	8.1	58.9
2012	1,174.2	763.8	709.6	54.2	65.0	7.1	60.4
London [3560]							
2011	538.3	347.1	319.6	27.5	64.5	7.9	59.4
2012	542.7	347.4	319.6	27.9	64.0	8.0	58.9
Windsor-Sarnia [3570]							
2011	520.5	323.8	293.1	30.7	62.2	9.5	56.3
2012	518.9	322.2	289.3	32.9	62.1	10.2	55.8
Stratford-Bruce Peninsula [3580]							
2011	245.8	160.4	148.7	11.7	65.3	7.3	60.5
2012	245.7	162.7	156.0	6.8	66.2	4.2	63.5
Northeast [3590]							
2011	462.1	277.4	258.1	19.3	60.0	7.0	55.9
2012	460.8	272.0	253.6	18.5	59.0	6.8	55.0
Northwest [3595]							
2011	173.9	102.1	93.1	9.0	58.7	8.8	53.5
2012	173.1	110.8	104.1	6.7	64.0	6.0	60.1
Manitoba							
2011	948.1	649.7	615.7	34.1	68.5	5.2	64.9
2012	958.8	654.2	618.2	35.9	68.2	5.5	64.5
Southeast [4610]							
2011	81.9	56.5	53.6	2.9	69.0	5.1	65.4
2012	83.5	57.9	54.8	3.1	69.3	5.4	65.6
South Central [4620]							
2011	46.8	31.6	30.1	1.5	67.5	4.7	64.3
2012	47.9	30.4	29.5	0.9	63.5	3.0	61.6

See notes at the end of the table.

Table 6-1 – continued

Labour force characteristics by province and economic region, ¹ unadjusted for seasonality, 3 month moving average ending in February 2011 and February 2012

	Population	Labour force			Participation rate	Unemployment rate	Employment rate
		Labour force	Employment	Unemployment			
		in thousands					
Southwest [4630]							
2011	83.6	55.7	53.8	1.9	66.6	3.4	64.4
2012	83.8	56.9	54.1	2.8	67.9	4.9	64.6
North Central [4640]							
2011	36.3	23.8	22.8	1.1	65.6	4.6	62.8
2012	36.7	23.2	22.1	1.1	63.2	4.7	60.2
Winnipeg [4650]							
2011	566.9	390.5	368.3	22.2	68.9	5.7	65.0
2012	574.6	396.6	373.1	23.6	69.0	6.0	64.9
Interlake [4660]							
2011	72.3	49.1	46.7	2.4	67.9	4.9	64.6
2012	72.8	50.7	48.4	2.4	69.6	4.7	66.5
Parklands and North [4670, 4680]							
2011	60.3	42.5	40.3	2.1	70.5	4.9	66.8
2012	59.4	38.5	36.3	2.2	64.8	5.7	61.1
Saskatchewan							
2011	796.0	548.2	517.8	30.4	68.9	5.5	65.1
2012	805.0	549.8	521.9	27.8	68.3	5.1	64.8
Regina-Moose Mountain [4710]							
2011	236.2	166.2	159.0	7.3	70.4	4.4	67.3
2012	239.5	172.2	165.9	6.3	71.9	3.7	69.3
Swift Current-Moose Jaw [4720]							
2011	81.2	53.2	50.5	2.6	65.5	4.9	62.2
2012	81.1	49.6	47.4	2.2	61.2	4.4	58.4
Saskatoon-Biggar [4730]							
2011	262.4	181.4	172.0	9.4	69.1	5.2	65.5
2012	267.8	184.1	174.5	9.7	68.7	5.3	65.2
Yorkton-Melville [4740]							
2011	63.1	40.9	38.3	2.6	64.8	6.4	60.7
2012	62.8	42.1	40.1	2.0	67.0	4.8	63.9
Prince Albert and Northern [4750, 4760]							
2011	153.2	106.5	98.0	8.5	69.5	8.0	64.0
2012	153.9	101.7	94.0	7.7	66.1	7.6	61.1
Alberta							
2011	2,983.4	2,160.6	2,037.7	122.9	72.4	5.7	68.3
2012	3,032.9	2,222.2	2,115.3	106.9	73.3	4.8	69.7
Lethbridge-Medicine Hat [4810]							
2011	218.1	140.7	134.3	6.3	64.5	4.5	61.6
2012	220.3	152.1	144.7	7.4	69.0	4.9	65.7
Camrose-Drumheller [4820]							
2011	155.7	111.6	106.0	5.5	71.7	4.9	68.1
2012	156.4	111.3	107.3	4.0	71.2	3.6	68.6
Calgary [4830]							
2011	1,100.5	803.7	754.6	49.0	73.0	6.1	68.6
2012	1,122.5	835.2	794.4	40.8	74.4	4.9	70.8
Banff-Jasper-Rocky Mountain House [4840]							
2011	71.7	56.1	53.2	2.9	78.2	5.2	74.2
2012	71.9	54.7	52.6	2.1	76.1	3.8	73.2

See notes at the end of the table.

Table 6-1 – continued

Labour force characteristics by province and economic region, ¹ unadjusted for seasonality, 3 month moving average ending in February 2011 and February 2012

	Population	Labour force			Participation rate	Unemployment rate	Employment rate
		Labour force	Employment	Unemployment			
	in thousands						
Red Deer [4850]							
2011	153.2	112.4	106.4	6.0	73.4	5.3	69.5
2012	155.5	116.4	110.4	6.0	74.9	5.2	71.0
Edmonton [4860]							
2011	992.5	718.6	677.5	41.0	72.4	5.7	68.3
2012	1,011.0	732.2	696.1	36.1	72.4	4.9	68.9
Athabasca-Grande Prairie-Peace River [4870]							
2011	190.1	137.3	128.9	8.4	72.2	6.1	67.8
2012	191.1	136.4	129.9	6.6	71.4	4.8	68.0
Wood Buffalo-Cold Lake [4880]							
2011	101.5	80.4	76.8	3.6	79.2	4.5	75.7
2012	104.3	83.9	79.9	4.0	80.4	4.8	76.6
British Columbia							
2011	3,759.5	2,434.4	2,232.3	202.0	64.8	8.3	59.4
2012	3,797.6	2,443.0	2,269.4	173.6	64.3	7.1	59.8
Vancouver Island and Coast [5910]							
2011	653.5	404.6	371.7	32.9	61.9	8.1	56.9
2012	657.4	392.5	366.1	26.4	59.7	6.7	55.7
Lower Mainland-Southwest [5920]							
2011	2,296.3	1,502.8	1,380.1	122.7	65.4	8.2	60.1
2012	2,330.7	1,518.8	1,413.9	104.8	65.2	6.9	60.7
Thompson-Okanagan [5930]							
2011	436.6	279.1	253.2	25.9	63.9	9.3	58.0
2012	437.2	275.0	251.3	23.7	62.9	8.6	57.5
Kootenay [5940]							
2011	127.1	76.5	70.0	6.4	60.2	8.4	55.1
2012	127.2	80.5	75.9	4.6	63.3	5.7	59.7
Cariboo [5950]							
2011	127.6	86.4	80.0	6.5	67.7	7.5	62.7
2012	127.1	88.7	81.8	6.9	69.8	7.8	64.4
North Coast and Nechako [5960, 5970]							
2011	66.9	45.3	41.3	4.0	67.7	8.8	61.7
2012	66.4	46.8	41.2	5.7	70.5	12.2	62.0
Northeast [5980]							
2011	51.5	39.7	36.1	3.6	77.1	9.1	70.1
2012	51.5	40.7	39.3	1.5	79.0	3.7	76.3

1. For geographic descriptions of economic regions, refer to the Guide to the Labour Force Survey (catalogue number 71-543-GIE).

2. Estimates for Canada are a sum of the provincial totals and exclude estimates from Yukon, Northwest Territories and Nunavut.

Note(s): Related CANSIM table 282-0054.

Table 6-2
Labour force characteristics by territories, unadjusted for seasonality, 3 month moving average ending in February 2011 and February 2012

	Population	Labour force			Participation rate	Unemployment rate	Employment rate
		Labour force	Employment	Unemployment			
		in thousands			percent		
Yukon ¹							
2011	26.1	19.1	18.2	0.9	73.2	4.7	69.7
2012	26.8	20.2	18.7	1.4	75.4	6.9	69.8
Northwest Territories ²							
2011	32.2	23.8	22.0	1.8	73.9	7.6	68.3
2012	32.1	24.2	22.1	2.1	75.4	8.7	68.8
Nunavut ³							
2011	21.3	14.5	11.9	2.6	68.3	17.7	56.2
2012	20.9	13.5	11.4	2.0	64.4	15.1	54.7

1. Since 1992, the Labour force survey (LFS) has been conducted in the Yukon, using an alternative methodology that accommodates some of the operational difficulties inherent to remote locales. These estimates are not included in the national totals. In 1995, the LFS in the Yukon underwent a sample redesign. One result of the redesign was that the covered population increased from 85% to 92%, which is reflected by the sharp increase in the three month moving averages estimates of January, February and March of 1995 for all the level estimates. Users are therefore warned to be cautious when comparing estimates before January 1995 to estimates for January 1995 and forward.
2. Since 2001, the Labour force survey (LFS) has been administered in the Northwest Territories, using an alternative methodology that accommodates some of the operational difficulties inherent to remote locales. These estimates are not included in national totals.
3. Since 2004, the Labour force survey (LFS) has been administered in Nunavut, using an alternative methodology that accommodates some of the operational difficulties inherent to remote locales. These estimates are 3-month moving averages and are not included in national totals. From January 2004 to December 2007, estimates represent about 70% of all Nunavut residents aged 15 and over. Starting in January 2008, coverage was extended to 92%, so that by March 2008, the 3-month moving average is completely based on the extended coverage. Because of the large difference in coverage, users are recommended not to compare estimates prior to January 2008 with data afterwards. The January and February 2008 3-month moving average estimates are based on a mix of both coverages, since the extended coverage was introduced in January 2008. Estimates from January 2004 to December 2007 are based on the 10 largest communities in Nunavut: Iqaluit, Rankin Inlet, Cambridge Bay, Kugluktuk, Baker Lake, Arviat, Pond Inlet, Cape Dorset, Pangnirtung, Igloolik. Estimates from March 2008 to present cover the above communities as well as: Taloyoak, Gjoa Haven, Kugaaruk, Coral Harbour, Repulse Bay, Qikiqtarjuaq, Arctic Bay, Hall Beach, Clyde River.

Note(s): Related CANSIM table 282-0100.

Table 7
Average usual hours and wages of employees by selected characteristics, Canada, unadjusted for seasonality

	Employees				Full-time			Part-time		
	Number	Average weekly hours	Average weekly wages	Average hourly wages	Number	Average weekly hours	Average weekly wages	Number	Average weekly hours	Average weekly wages
	thousands		current dollars		thousands		current dollars	thousands		current dollars
February 2012										
15 years and over	14,451.8	34.9	855.69	23.53	11,621.6	39.3	994.05	2,830.2	16.8	287.54
15 to 24 years	2,180.4	25.8	386.16	13.80	1,011.6	38.9	633.63	1,168.8	14.5	171.96
25 years and over	12,271.3	36.5	939.13	25.26	10,610.0	39.3	1,028.42	1,661.3	18.5	368.86
Men	7,190.6	37.5	978.95	25.34	6,295.3	40.5	1,081.54	895.3	16.1	257.60
Women	7,261.2	32.4	733.64	21.73	5,326.3	37.9	890.65	1,934.9	17.2	301.40
Union coverage										
Union coverage	4,570.0	35.4	966.01	26.86	3,855.2	38.5	1,067.48	714.8	18.6	418.74
No union coverage	9,881.8	34.7	804.68	21.99	7,766.4	39.7	957.60	2,115.4	16.2	243.21
Job permanency										
Permanent	12,691.7	36.0	896.36	24.11	10,706.2	39.3	1,005.58	1,985.5	18.0	307.43
Temporary	1,760.0	27.1	562.45	19.34	915.4	39.2	859.24	844.6	14.1	240.79
Occupation										
Management	964.2	39.7	1,478.86	37.46	934.7	40.3	1,509.32	29.6	18.0	516.69
Business, finance and administrative	2,808.1	35.1	797.46	22.14	2,368.7	38.3	887.27	439.4	18.0	313.24
Natural and applied sciences	1,085.2	38.6	1,268.39	32.85	1,044.1	39.4	1,295.05	41.1	20.1	591.08
Health	1,003.6	33.9	921.15	26.93	775.8	37.8	1,035.08	227.8	20.4	533.10
Social science, education, government service and religion	1,469.5	33.6	1,030.71	30.30	1,178.9	37.8	1,174.13	290.6	16.5	448.86
Art, culture, recreation and sport	362.3	29.9	758.59	23.46	244.9	38.3	1,010.96	117.4	12.3	232.29
Sales and service	3,761.8	29.8	502.76	15.66	2,289.9	38.6	696.53	1,471.9	16.1	201.29
Trades, transport and equipment operators	2,031.7	39.9	939.93	23.26	1,884.2	41.6	990.20	147.5	17.8	297.80
Occupations unique to primary industry	215.2	43.4	1,030.97	22.87	187.8	47.5	1,145.56	27.4	15.3	245.49
Occupations unique to processing, manufacturing and utilities	750.3	38.9	783.65	19.95	712.8	40.0	810.16	37.6	18.3	280.36
February 2011										
15 years and over	14,310.9	34.6	832.58	23.06	11,387.5	39.2	973.61	2,923.4	16.8	283.21
15 to 24 years	2,247.4	25.5	373.48	13.50	1,025.9	38.6	618.10	1,221.5	14.5	168.04
25 years and over	12,063.6	36.3	918.11	24.84	10,361.7	39.3	1,008.81	1,701.9	18.5	365.88
Men	7,102.8	37.2	952.93	24.81	6,160.0	40.4	1,060.58	942.7	16.3	249.56
Women	7,208.2	32.1	713.98	21.33	5,227.5	37.8	871.13	1,980.7	17.1	299.23
Union coverage										
Union coverage	4,551.9	35.3	948.38	26.49	3,823.6	38.4	1,048.57	728.3	18.7	422.35
No union coverage	9,759.0	34.3	778.57	21.45	7,563.9	39.6	935.72	2,195.1	16.2	237.05
Job permanency										
Permanent	12,571.0	35.6	871.09	23.62	10,490.4	39.2	984.46	2,080.6	17.7	299.49
Temporary	1,740.0	27.3	554.32	18.98	897.2	39.2	846.76	842.8	14.7	243.02
Occupation										
Management	989.5	39.8	1,419.48	35.65	961.8	40.4	1,447.68	27.8	17.9	442.77
Business, finance and administrative	2,806.4	35.1	778.94	21.71	2,388.7	38.1	861.27	417.7	17.9	308.12
Natural and applied sciences	1,086.6	38.4	1,229.94	31.94	1,047.5	39.2	1,259.34	39.1	17.3	442.23
Health	988.1	33.2	903.42	27.03	735.1	37.8	1,037.27	253.1	19.9	514.65
Social science, education, government service and religion	1,464.0	33.2	991.10	29.32	1,127.5	38.1	1,153.76	336.5	16.8	446.13
Art, culture, recreation and sport	333.7	29.3	722.96	23.19	218.8	37.9	970.01	114.9	12.9	252.65
Sales and service	3,668.8	29.2	490.31	15.49	2,155.4	38.3	694.43	1,513.4	16.3	199.59
Trades, transport and equipment operators	2,011.9	39.6	910.52	22.69	1,864.3	41.4	960.13	147.6	17.8	283.85
Occupations unique to primary industry	213.4	40.7	908.97	21.13	180.1	45.5	1,039.72	33.3	14.8	201.92
Occupations unique to processing, manufacturing and utilities	748.5	38.8	772.59	19.65	708.4	40.0	802.77	40.1	16.4	238.98

Note(s): Related CANSIM Tables 282-0023, 282-0069, 282-0073.

Table 8
Regional unemployment rates used by the Employment Insurance Program, ¹ seasonally adjusted, 3 month moving average

Region	Effective from March 11, 2012 to April 7, 2012
	percent
Newfoundland and Labrador	
01. St. John's	7.1
02. Newfoundland and Labrador	18.2
Prince Edward Island	
03. Prince Edward Island	11.5
Nova Scotia	
04. Eastern Nova Scotia	14.1
05. Western Nova Scotia	9.5
06. Halifax	5.7
New Brunswick	
07. Fredericton-Moncton-Saint John	7.3
08. Madawaska-Charlotte	11.2
09. Restigouche-Albert	14.5
Quebec	
10. Gaspésie-Îles-de-la-Madeleine	12.9
11. Québec	5.2
12. Trois-Rivières	8.0
13. South Central Quebec	4.6
14. Sherbrooke	7.1
15. Montérégie	9.1
16. Montréal	9.3
17. Central Quebec	9.6
18. Northwestern Quebec	10.1
19. Bas-Saint-Laurent-Côte-Nord	9.9
20. Gatineau	6.0
21. Saguenay	6.2
Ontario	
22. Ottawa	6.0
23. Eastern Ontario	8.6
24. Kingston	6.9
25. Central Ontario	7.6
26. Oshawa	7.5
27. Toronto	8.6
28. Hamilton	5.9
29. St. Catharines	7.7
30. London	8.8
31. Niagara	10.2
32. Windsor	11.1
33. Kitchener	6.7
34. Huron	9.7
35. South Central Ontario	5.4
36. Sudbury	6.5
37. Thunder Bay	5.7
38. Northern Ontario	11.4
Manitoba	
39. Winnipeg	5.8
40. Southern Manitoba	5.9
41. Northern Manitoba	28.7
Saskatchewan	
42. Regina	4.3
43. Saskatoon	5.9
44. Southern Saskatchewan	6.1
45. Northern Saskatchewan	18.5
Alberta	
46. Calgary	5.1
47. Edmonton	5.6
48. Northern Alberta	8.8
49. Southern Alberta	5.8

See notes at the end of the table.

Table 8 – continued

Regional unemployment rates used by the Employment Insurance Program, ¹ seasonally adjusted, 3 month moving average

Region	Effective from March 11, 2012 to April 7, 2012
	percent
British Columbia	
50. Southern Interior British Columbia	8.2
51. Abbotsford	10.8
52. Vancouver	6.8
53. Victoria	6.0
54. Southern Coastal British Columbia	8.1
55. Northern British Columbia	12.0
Territories	
56. Yukon ²	25.0
57. Northwest Territories ²	25.0
58. Nunavut ²	25.0

1. The boundaries of these regions are determined by Human Resources and Social Development Canada (HRSDC). For geographic descriptions and maps of employment insurance regions, see the HRSDC website: <http://srv129.services.gc.ca/eiregions/en/geocont.aspx>.

2. This rate is provided by Human Resources and Skills Development Canada.

Note(s): All geographic regions are based on the 1996 Census boundaries.

Data quality

About the Labour Force Survey

The statistics contained in this report are based on information obtained through a sample survey of 56,000 representative households across the country. The Labour Force Survey, started in November 1945, was taken at quarterly intervals until November 1952. It has been carried out monthly since then. The information generated by the survey has expanded considerably over the years with a major redesign of the survey content in 1976 and again in 1997, and provides a rich and detailed picture of the Canadian labour market.

The sample used in the Labour Force Survey has been designed to represent all persons in the population 15 years of age and over residing in the provinces of Canada, with the exception of the following: persons living on Indian reserves, full-time members of the armed forces and people living in institutions (for example, inmates of penal institutions and patients in hospitals or nursing homes who have resided in the institution for more than six months). Monthly estimates of employment, unemployment and persons not in the labour force refer to the specific week covered by the survey each month, normally the week containing the 15th day.

Definitions and explanations

The **labour force** is composed of those members of the civilian non-institutional population 15 years of age and over who, during the reference week, were employed or unemployed.

Employed persons are those who, during the reference week:

- (a) did any work at all
- (b) had a job but were not at work

A person is considered to be **full-time** if his/her usual hours at the main job are 30 or more hours per week. When the number of hours worked at the main job is usually less than 30 hours per week then he/she is considered to be **part-time**.

Unemployed persons are those who, during the reference week:

- (a) were without work, had actively looked for work in the past four weeks (ending with reference week), and were available for work;
- (b) had not actively looked for work in the past four weeks but were on temporary layoff and were available for work;
- (c) had not actively looked for work in the past four weeks but had a new job to start in four weeks or less from the reference week, and were available for work.

Persons in the civilian non-institutional population 15 years of age and over who, during the reference week, were neither employed nor unemployed are classified as **not in the labour force**.

The **unemployment rate** represents the number of unemployed persons expressed as a percentage of the labour force. The unemployment rate for a particular group (age, sex, etc.) is the number unemployed in that group expressed as a percentage of the labour force for that group.

The **participation rate** represents the labour force expressed as a percentage of the population 15 years of age and over. The participation rate for a particular group (age, sex, etc.) is the labour force in that group expressed as a percentage of the population for that group.

The **employment rate (formerly the employment/population ratio)** represents the number of persons employed expressed as a percentage of the population 15 years of age and over. The employment rate for a particular group (age, sex, etc.) is the number employed in that group expressed as a percentage of the population for that group.

The **part-time rate** represents the number of persons employed part-time expressed as a percentage of the employed. The part-time rate for a particular group (age, sex, etc.) is the number employed part-time in that group expressed as a percentage of the employed for that group.

All geographic regions are based on the 2006 Census boundaries.

Seasonal adjustment

Fluctuations in economic time series are caused by seasonal, cyclical and irregular movements. A seasonally adjusted series is one from which seasonal movements have been eliminated. Seasonal movements are defined as those which are caused by regular annual events such as climate, holidays, vacation periods and cycles related to crops, production and retail sales associated with Christmas and Easter. The seasonally adjusted series contains irregular as well as longer-term cyclical fluctuations.

The seasonally adjusted series are revised each year to take into account current data and to generate new forecast factors for the next twelve months. The data are therefore subject to slight revisions in future issues of this publication.

Sampling variability of estimates

Estimates in this publication are based on the Labour Force Survey, a monthly survey of approximately 56,000 households across Canada. Because the entire population is not surveyed, the estimates are subject to sampling error. While the published estimate is the best available indicator of the real value, changes in the level of any estimates between two months can be the result of a true change or sampling variability. The sampling error can be estimated by calculating the standard error for the published estimate or statistic. These standard errors have been included in the publication tables, in order to assist users in interpreting the data.

Interpretation based on standard error

Two thirds of the time (68%), a change greater than the sampling error indicates a real change. The larger the change compared to the standard error, the better the chance that we are observing a real change, as opposed to a change due to sampling variability. At the 95% level, in order to ensure that change is real, the change in the estimate must be greater than twice the sampling error.

Movements in estimates that are smaller than the sampling error are less likely to reflect a real change and more likely to be due to sampling variability. While the above is true for monthly movements, one can have more confidence in a series of consecutive movements in the same direction, even though some of the monthly movements may be smaller than the sampling error.

Interpretation based on confidence intervals

Confidence intervals provide another way of looking at the variability inherent in estimates of sample surveys. To illustrate how to calculate the confidence interval, let us say that one month the published estimate for total employment rose by 16,000 to reach 16,500,000. The associated standard error for the movement estimate is 27,200. The standard error used to interpret the movement estimate indicates that:

- There are approximately two chances in three (68%) that the real value of the movement between the two months falls within the range -11,200 to +43,200 (16,000 + or – one standard error).
- There are approximately nine chances in ten (90%) that the real value of the movement between the two months falls within the range -27,520 to +59,520 (16,000 + or – 1.6 times the standard error).
- There are approximately nineteen chances in twenty (95%) that the real value of the movement between the two months falls within the range -38,400 to +70,400 (16,000 + or – two standard errors).

For more detailed explanations on sampling variability of estimates, and in particular for information on how to assess the variability of level estimates, consult the Data quality section of the *Guide to the Labour Force Survey*, (71-543-G) on page 27.

Documentation

For more detailed information about the Labour Force Survey, see the following documents:

- Overview of the Labour Force Survey
- Guide to the Labour Force Survey (71-543-G)
- Data quality statement
- Methodology of the Canadian Labour Force Survey (71-526-X)
- LFS *geographical maps*