

Catalogue no. 71-001-X

Labour Force Information

Friday, November 2, 2012

October 7 to 13, 2012



Statistics
Canada

Statistique
Canada

Canada

How to obtain more information

For information about this product or the wide range of services and data available from Statistics Canada, visit our website at www.statcan.gc.ca, e-mail us at infostats@statcan.gc.ca, or telephone us, Monday to Friday from 8:30 a.m. to 4:30 p.m., at the following numbers:

Statistics Canada's National Contact Centre

Toll-free telephone (Canada and the United States):

Inquiries line	1-800-263-1136
National telecommunications device for the hearing impaired	1-800-363-7629
Fax line	1-877-287-4369

Local or international calls:

Inquiries line	1-613-951-8116
Fax line	1-613-951-0581

Depository Services Program

Inquiries line	1-800-635-7943
Fax line	1-800-565-7757

To access this product

This product, Catalogue no. 71-001-X, is available free in electronic format. To obtain a single issue, visit our website at www.statcan.gc.ca and browse by "Key resource" > "Publications."

Standards of service to the public

Statistics Canada is committed to serving its clients in a prompt, reliable and courteous manner. To this end, Statistics Canada has developed *standards of service* that its employees observe. To obtain a copy of these service standards, please contact Statistics Canada toll-free at 1-800-263-1136. The service standards are also published on www.statcan.gc.ca under "About us" > "The agency" > "Providing services to Canadians."

Statistics Canada
Labour Statistics Division
Labour Force Survey Program

Labour Force Information

Friday, November 2, 2012

October 7 to 13, 2012

Published by authority of the Minister responsible for Statistics Canada

© Minister of Industry, 2012

All rights reserved. Use of this publication is governed by the *Statistics Canada Open License Agreement*.

<http://www.statcan.gc.ca/reference/copyright-droit-auteur-eng.htm>

November 2012

Catalogue no. 71-001-X

ISSN 1492-5478

Frequency: Monthly

Ottawa

Cette publication est également disponible en français.

Note of appreciation

Canada owes the success of its statistical system to a long-standing partnership between Statistics Canada, the citizens of Canada, its businesses, governments and other institutions. Accurate and timely statistical information could not be produced without their continued cooperation and goodwill.

User information

Symbols

The following standard symbols are used in Statistics Canada publications:

- . not available for any reference period
- .. not available for a specific reference period
- ... not applicable
- 0 true zero or a value rounded to zero
- 0^s value rounded to 0 (zero) where there is a meaningful distinction between true zero and the value that was rounded
- p preliminary
- r revised
- x suppressed to meet the confidentiality requirements of the *Statistics Act*
- E use with caution
- F too unreliable to be published
- * significantly different from reference category ($p < 0.05$)

Special requests (\$)

Custom tabulations can be arranged on an ad hoc or regular basis. This service enables you to specify tables and time series to meet your own requirements. The cost varies according to the request. For more information, contact us toll-free at 1-866-873-8788 or e-mail us at labour@statcan.gc.ca.

Schedule of LFS releases

Reference period - Week ending	Release date
November 12, 2011	December 2, 2011
December 10, 2011	January 6, 2012
January 14, 2012	February 3, 2012
February 18, 2012	March 9, 2012
March 17, 2012	April 5, 2012
April 21, 2012	May 11, 2012
May 19, 2012	June 8, 2012
June 16, 2012	July 6, 2012
July 21, 2012	August 10, 2012
August 18, 2012	September 7, 2012
September 15, 2012	October 5, 2012
October 13, 2012	November 2, 2012
November 10, 2012	December 7, 2012
December 8, 2012	January 4, 2013

Latest LFS release in *The Daily* (free)

Table of contents

Highlights	5
Analysis — October 2012	6
Charts	
1. Employment and unemployment indicators, Canada, seasonally adjusted	8
2. Employment and unemployment indicators, Canada, seasonally adjusted	9
3. Index of employment by industry, Canada, seasonally adjusted, January 2009=100	10
4. Index of employment by industry, Canada, seasonally adjusted, January 2009=100	11
5. Index of employment by industry, Canada, seasonally adjusted, January 2009=100	12
6. Index of employment by province, seasonally adjusted, January 2009=100	13
7. Index of employment by province, seasonally adjusted, January 2009=100	14
Related products	15
Statistical tables	
1 Labour force characteristics by age and sex, Canada, seasonally adjusted	25
2 Employment by class of worker and industry, Canada, seasonally adjusted	27
3 Labour force characteristics by province, seasonally adjusted	28
4 Selected labour force characteristics (seasonally adjusted)	30
4-1 Newfoundland and Labrador	30
4-2 Prince Edward Island	31
4-3 Nova Scotia	32
4-4 New Brunswick	33
4-5 Quebec	34
4-6 Ontario	35
4-7 Manitoba	36
4-8 Saskatchewan	37
4-9 Alberta	38
4-10 British Columbia	39
5 Labour force characteristics by census metropolitan area (seasonally adjusted)	40
5-1 3 month moving average	40
5-2 Monthly	45

Table of contents – continued

6	Labour force characteristics	46
6-1	by province and economic region, unadjusted for seasonality, 3 month moving average ending in October 2011 and October 2012	46
6-2	by territories, unadjusted for seasonality, 3 month moving average ending in October 2011 and October 2012	51
7	Average usual hours and wages of employees by selected characteristics, Canada, unadjusted for seasonality	52
8	Regional unemployment rates used by the Employment Insurance Program, seasonally adjusted, 3 month moving average	53
 Data quality, concepts and methodology		
	Data quality	55

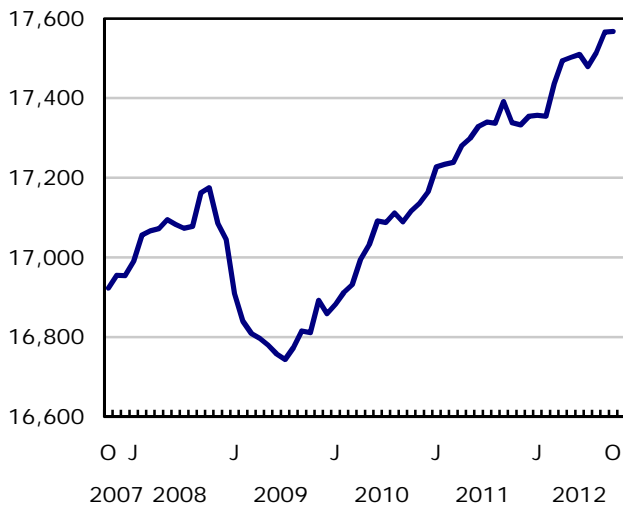
Highlights

Following two consecutive months of increases, employment in October was unchanged and the unemployment rate remained at 7.4%.

Chart 1
Employment and unemployment rates, Canada, seasonally adjusted

Employment

thousands



Unemployment rate

percent



Analysis — October 2012

Following two consecutive months of increases, employment in October was unchanged and the unemployment rate remained at 7.4%.

Compared with 12 months earlier, employment increased 1.3% or 229,000, all in full-time work. The total number of hours worked also rose 1.3% over the same period.

In October, employment grew in Quebec as well as Newfoundland and Labrador, while it fell in British Columbia and Manitoba. There was little change in the other provinces.

The number of public sector employees increased by 37,000, offset by a decline in private sector employment, which includes both private sector employees and the self-employed. Total gains over the previous 12 months were among both private sector employees (+157,000 or +1.4%) and public sector employees (+74,000 or +2.1%).

Employment in agriculture experienced a decline in October, while there was little change in the other industries.

The number of workers among the major demographic groups was virtually unchanged in October.

Provincial Summary

Employment in Quebec increased by 20,000 in October, all in part-time work, pushing the unemployment rate down 0.3 percentage points to 7.7%. Compared with 12 months earlier, employment in the province was 1.7% higher.

In October, employment in Newfoundland and Labrador rose by 3,800, and the unemployment rate was 11.9%. Employment in the province increased 3.6% from 12 months earlier, the highest growth rate among the provinces.

The number of workers in British Columbia declined 11,000 in October. Nevertheless, the unemployment rate fell 0.3 percentage points to 6.7%, as fewer people participated in the labour force. Year-over-year employment growth for the province was 1.3%.

Following two consecutive months of increases, employment in Manitoba fell by 7,300 in October, and the unemployment rate rose 0.6 percentage points to 5.6%. Despite this increase, Manitoba continued to have one of the lowest unemployment rates among the provinces. Compared with 12 months earlier, there was little change in overall employment.

In October, employment in Ontario was little changed, as a decrease in part-time work was mostly offset by an increase in full time. The unemployment rate rose 0.4 percentage points to 8.3%, as more people searched for work. Compared with 12 months earlier, employment growth in the province was 1.0%.

While employment in New Brunswick was little changed in October, the unemployment rate increased 0.6 percentage points to 11.6%, with more people searching for work. Compared with 12 months earlier, the unemployment rate in the province was up 2.2 percentage points.

Employment losses in agriculture

Following an increase in September, employment in agriculture fell by 16,000 in October. Employment in this industry was little changed compared with 12 months earlier.

The number of workers in manufacturing was little changed for the fifth consecutive month. Compared with 12 months earlier, the number of factory workers increased 5.2%, with most of the gains earlier in the year.

Little employment change among the major demographic groups

In October, employment among men aged 55 and over was little changed. However, with more men in this age group searching for work, the unemployment rate increased 1.0 percentage points to 7.3%. Compared with 12 months earlier, employment among this group was up 87,000 (+5.1%), driven in part by population aging.

Employment among women aged 55 and over was little changed in October. Compared with 12 months earlier, their employment increased by 102,000 (+7.4%), also partly due to population aging.

Employment among those aged 25 to 54 was unchanged in October, and the year-over-year gains were 92,000 (+0.8%).

Employment among youths remained little changed for the second consecutive month and was down by 52,000 (-2.1%) compared with 12 months earlier. Their unemployment rate was 14.7% in October.

Note to readers

The Labour Force Survey (LFS) estimates are based on a sample and are therefore subject to sampling variability. Estimates for smaller geographic areas or industries will have more variability. For an explanation of sampling variability of estimates and how to use standard errors to assess this variability, consult the "Data quality" section of the publication Labour Force Information (71-001-X, free).

The employment rate is the number of employed persons as a percentage of the population 15 years of age and over. The rate for a particular group (for example, youth aged 15 to 24) is the number employed in that group as a percentage of the population for that group.

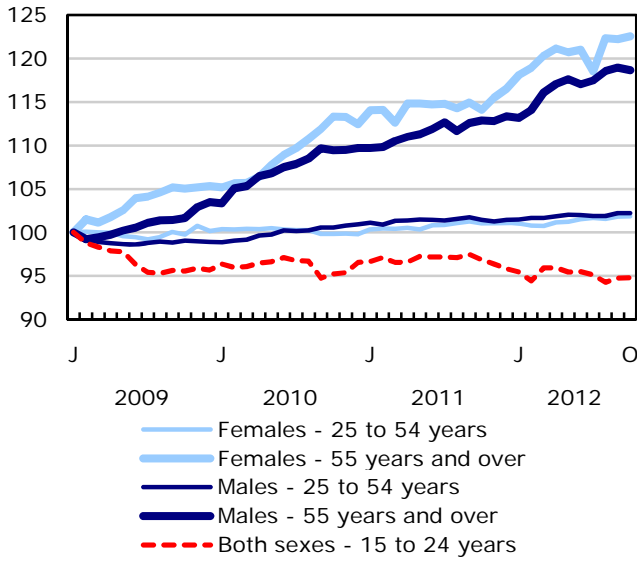
The unemployment rate is the number unemployed as a percentage of the labour force (employed and unemployed).

The participation rate is the number of employed and unemployed as a percentage of the population. For more detailed information, see the Guide to the Labour Force Survey (71-543-G, free).

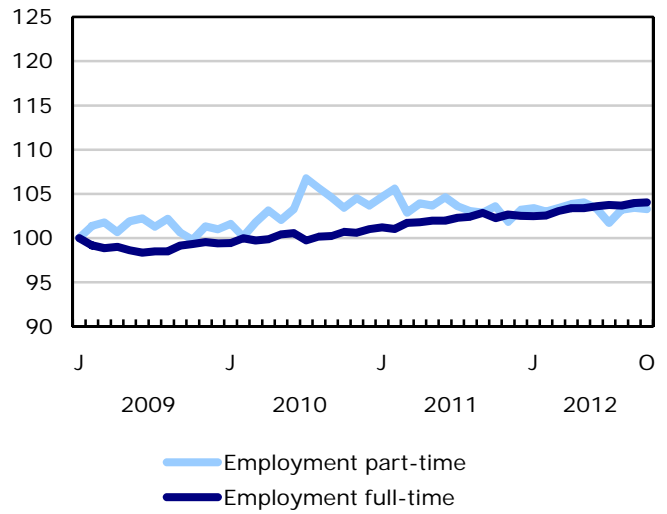
Unless otherwise stated, this release presents seasonally adjusted data, which facilitates comparisons by removing the effects of seasonal variations. For more information on seasonal adjustment, see *Seasonal adjustment and identifying economic trends*.

Chart 1
Employment and unemployment indicators, Canada, seasonally adjusted

Employment index, January 2009=100



Employment index, January 2009=100



Employment index, January 2009=100

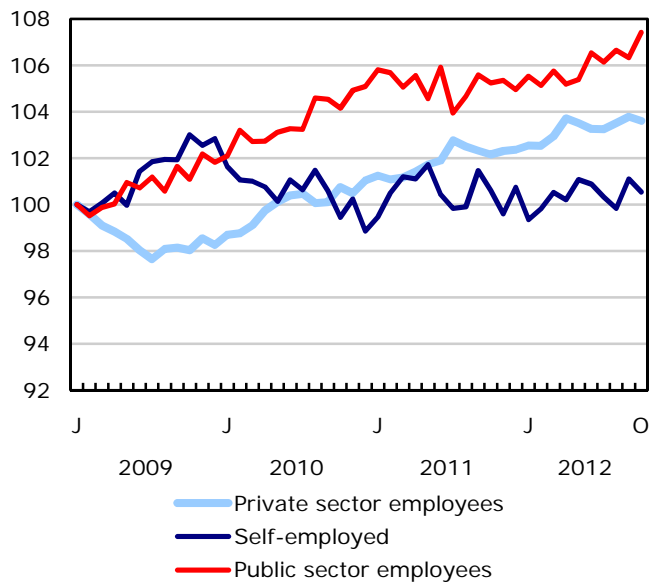
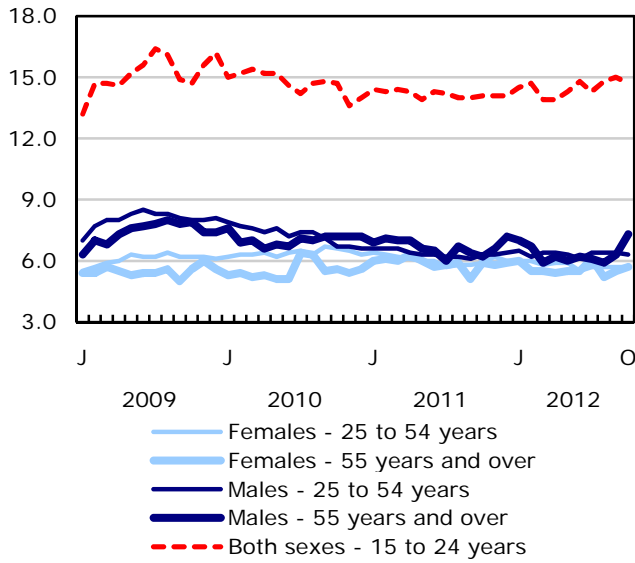
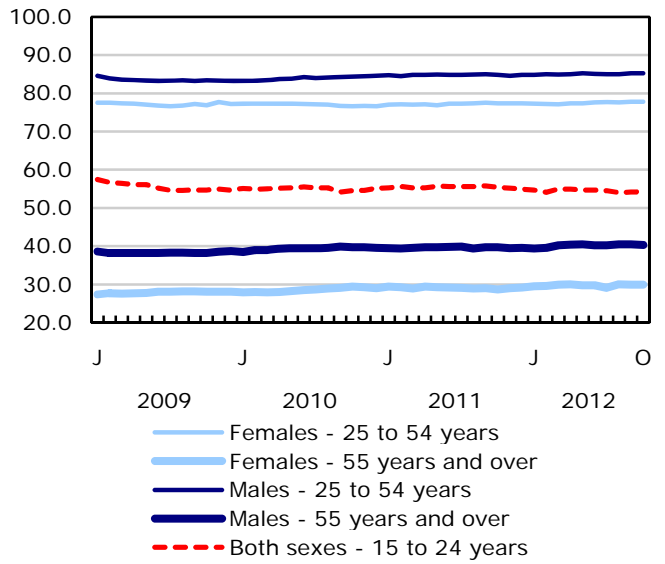


Chart 2
Employment and unemployment indicators, Canada, seasonally adjusted

Unemployment rate (%)



Employment rate (%)



Participation rate (%)

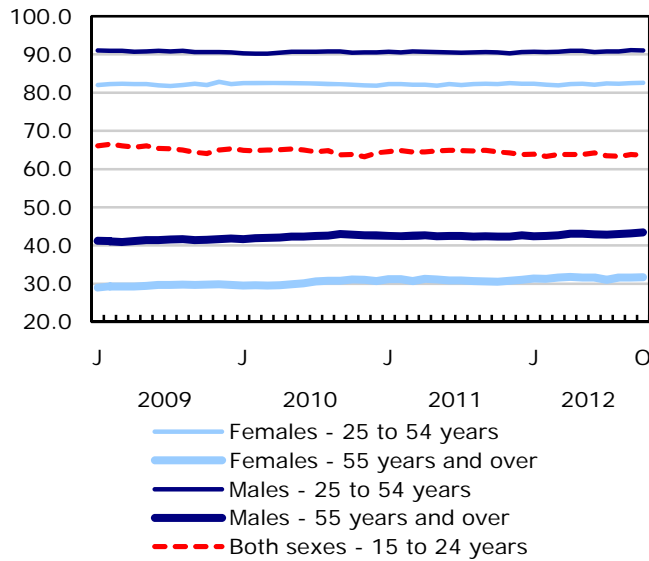


Chart 3
Index of employment by industry, Canada, seasonally adjusted, January 2009=100

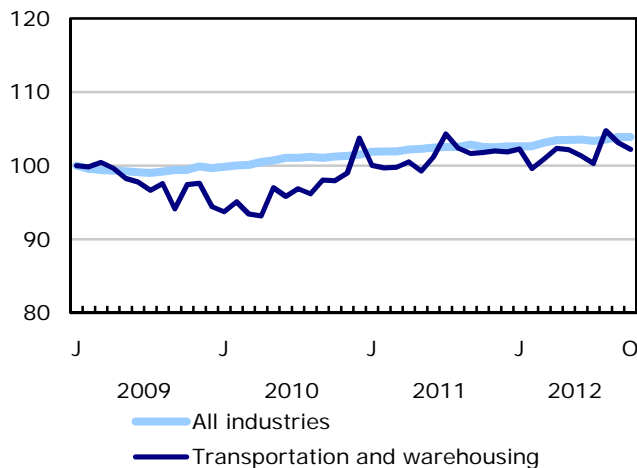
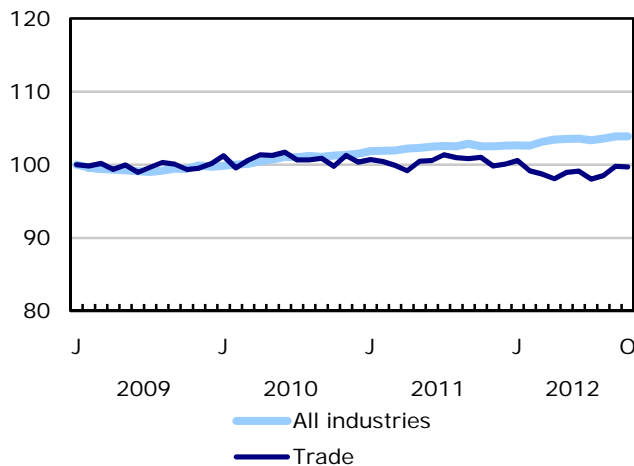
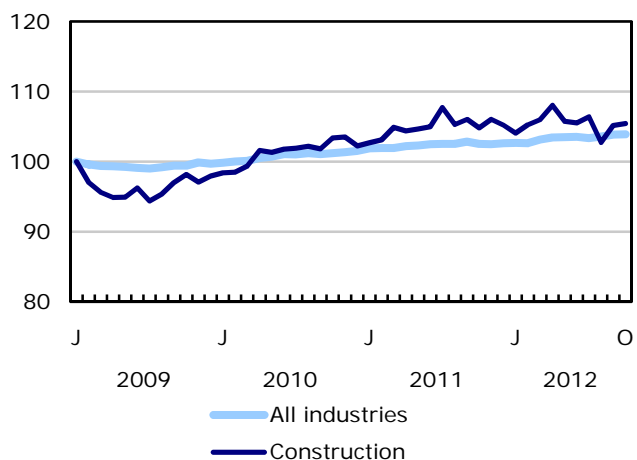
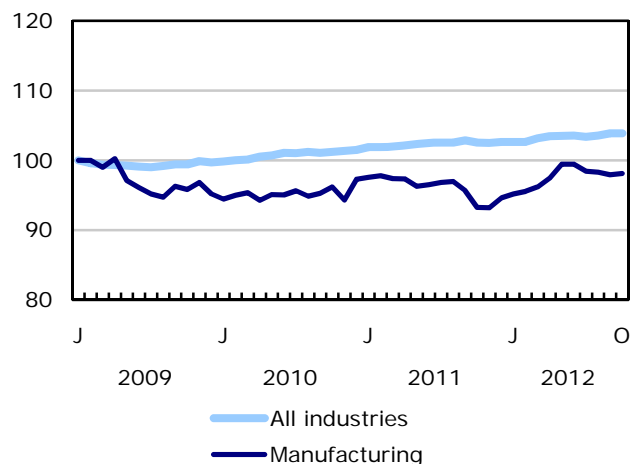
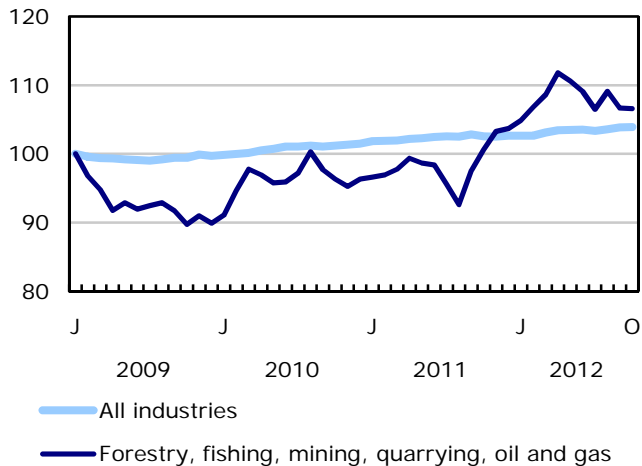
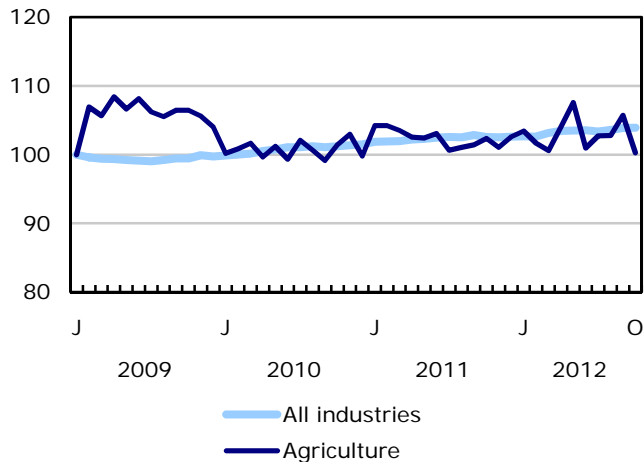


Chart 4
Index of employment by industry, Canada, seasonally adjusted, January 2009=100

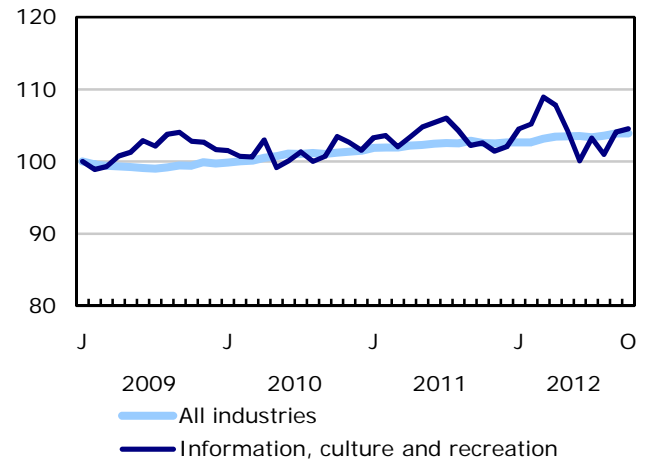
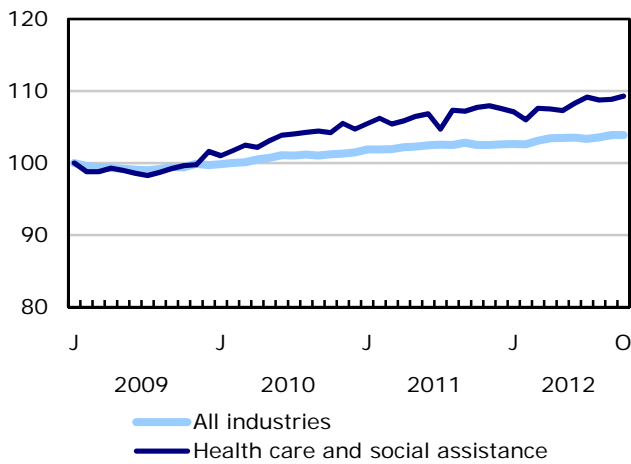
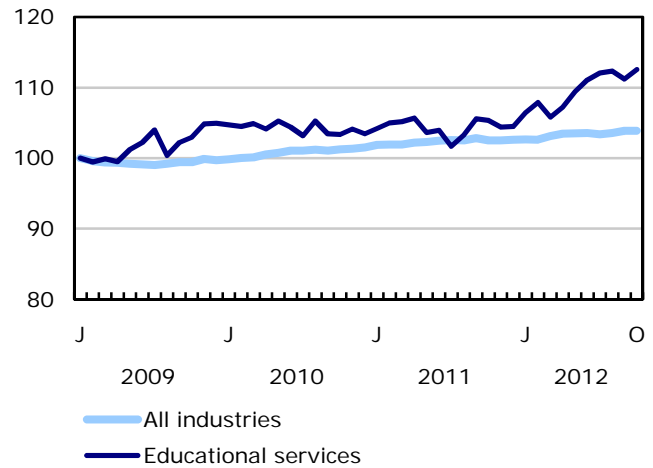
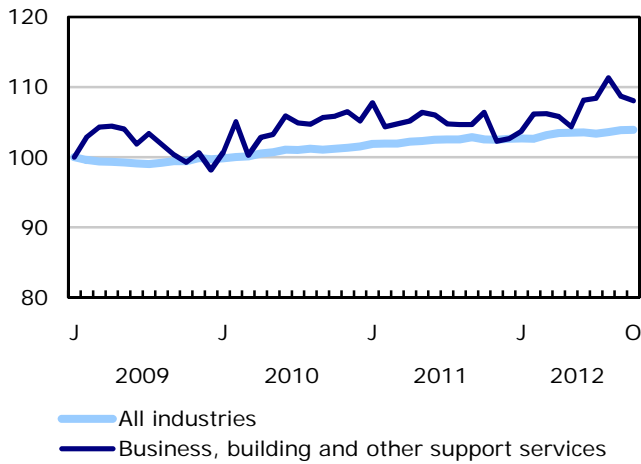
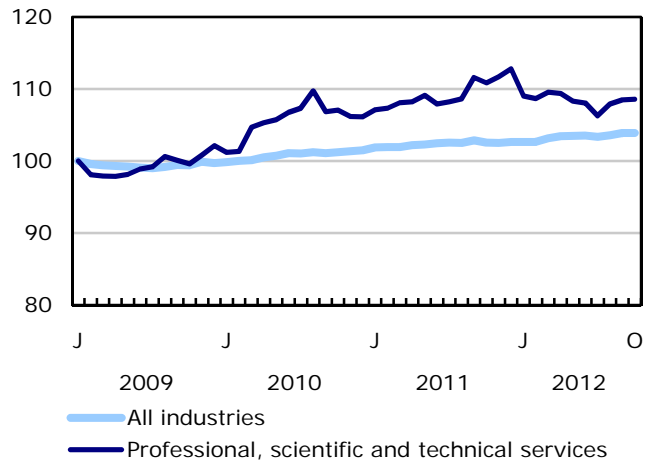
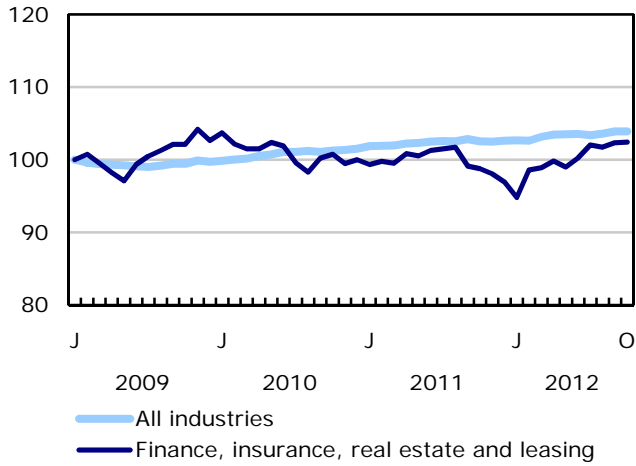


Chart 5
Index of employment by industry, Canada, seasonally adjusted, January 2009=100

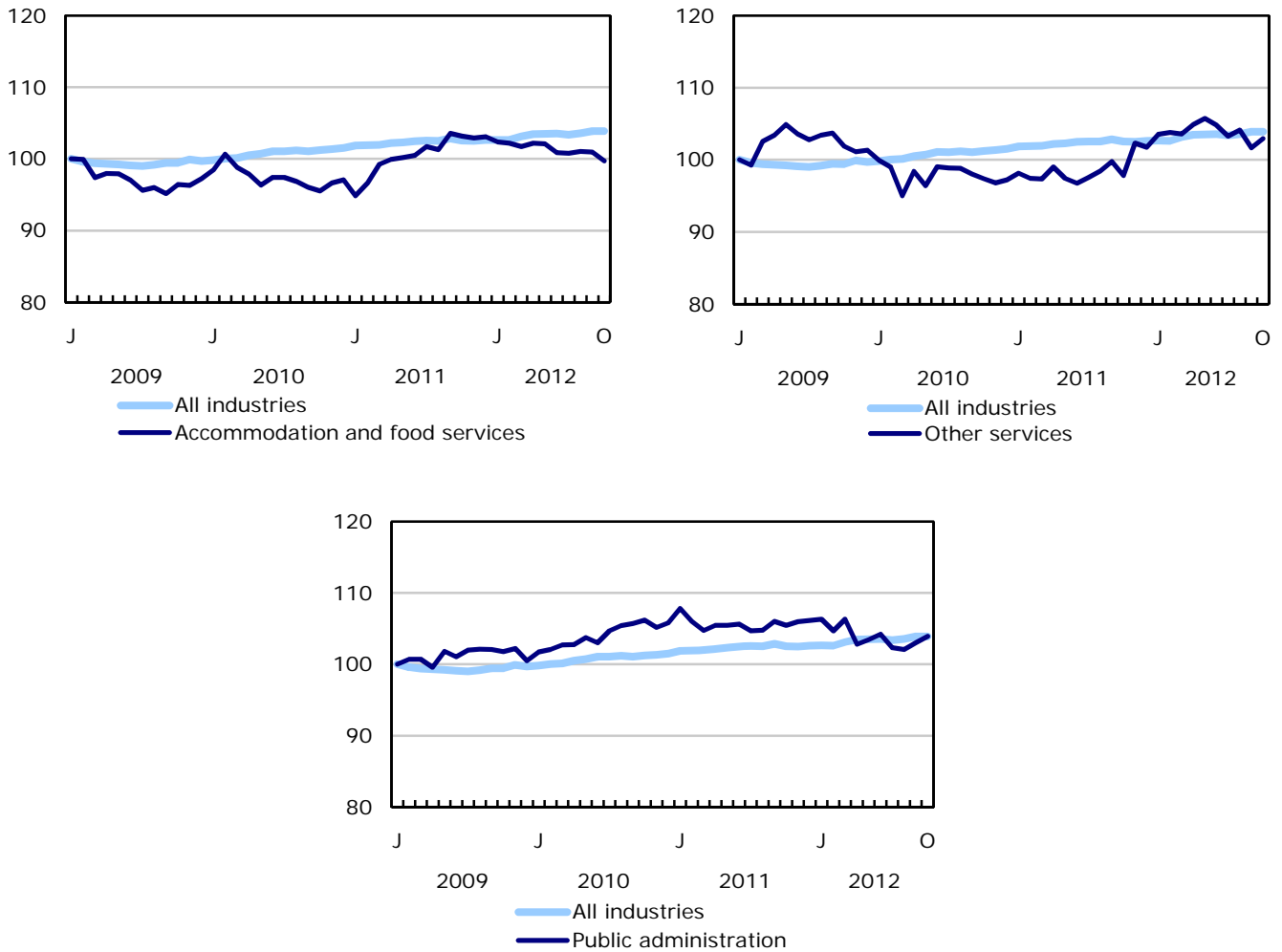


Chart 6
Index of employment by province, seasonally adjusted, January 2009=100

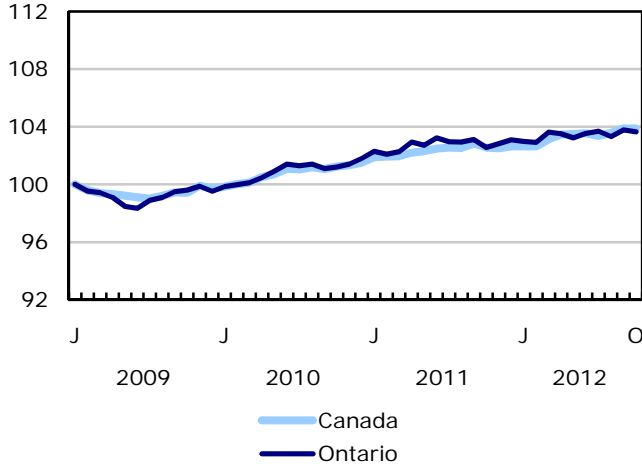
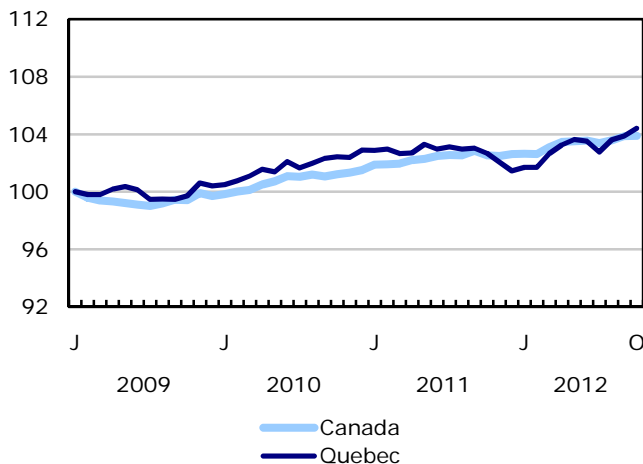
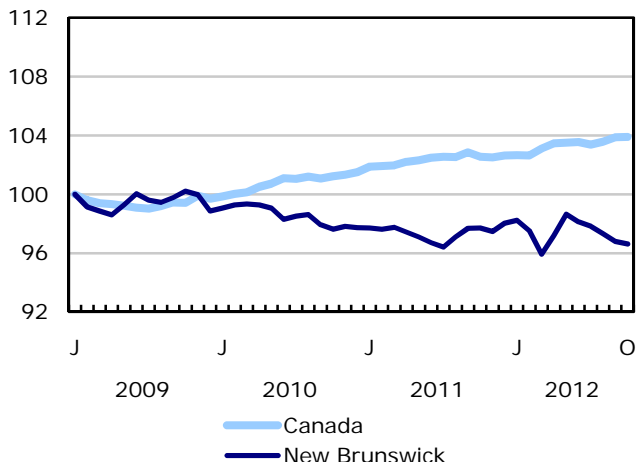
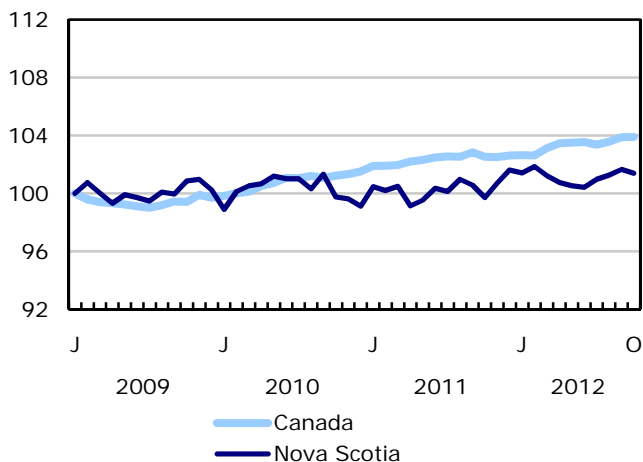
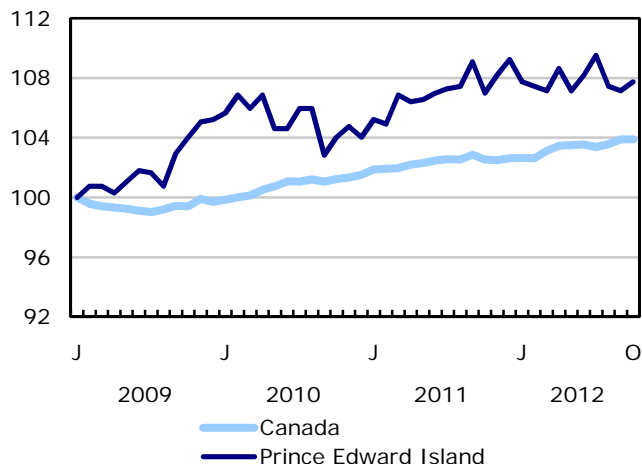
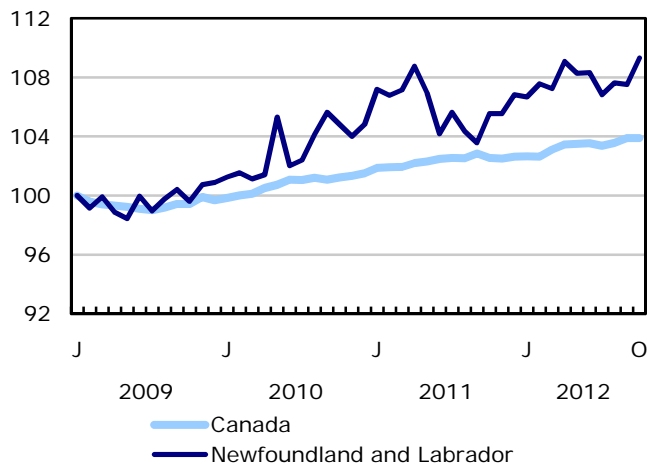
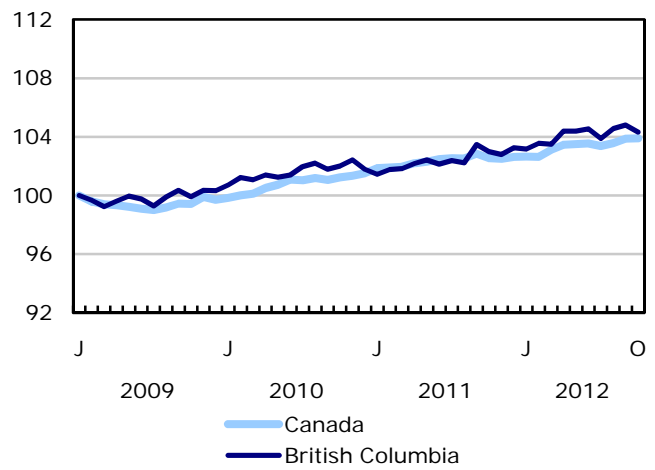
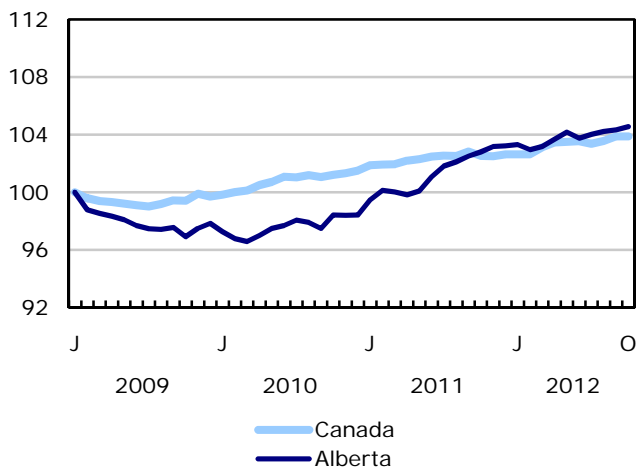
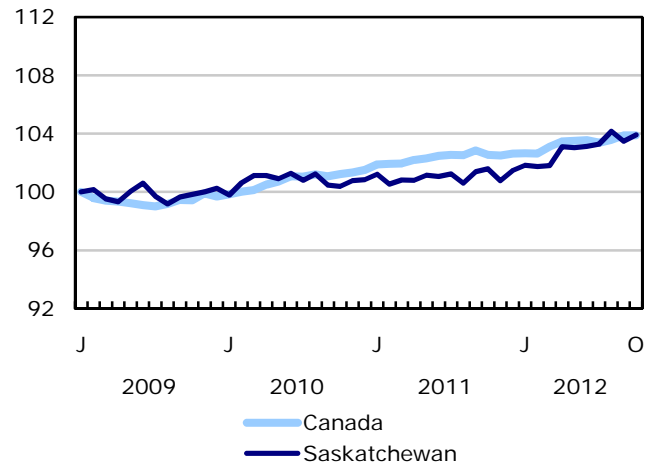
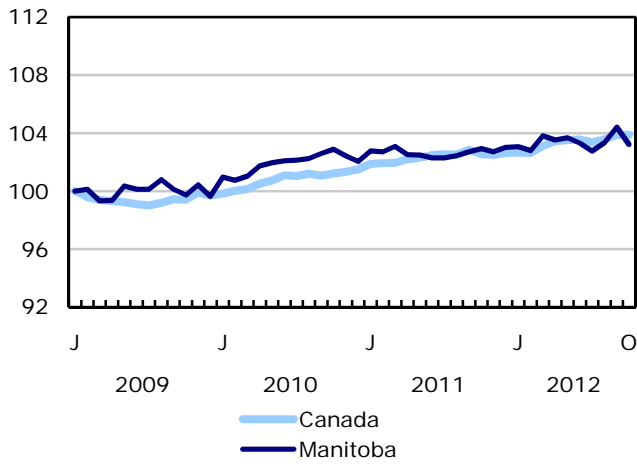


Chart 7
Index of employment by province, seasonally adjusted, January 2009=100



Related products

Selected publications from Statistics Canada

71-222-X	The Canadian Labour Market at a Glance
71-526-X	Methodology of the Canadian Labour Force Survey
71-543-G	Guide to the Labour Force Survey
71-544-X	Labour Force Survey Products and Services
71-587-X	Aboriginal Peoples Living Off-reserve in Western Canada: Estimates from the Labour Force Survey
71-588-X	The Aboriginal Labour Force Analysis Series
71-606-X	The Immigrant Labour Force Analysis Series
71F0031X	Improvements to the Labour Force Survey (LFS)
71M0001X	Labour Force Survey Microdata File

Selected CANSIM tables from Statistics Canada

282-0001	Labour force survey estimates (LFS), by sex and detailed age group, unadjusted for seasonality, monthly
282-0002	Labour force survey estimates (LFS), by sex and detailed age group, annual
282-0003	Labour force survey estimates (LFS), by educational attainment, sex and age group, unadjusted for seasonality, monthly
282-0004	Labour force survey estimates (LFS), by educational attainment, sex and age group, annual
282-0005	Labour force survey estimates (LFS), by full- and part-time students during school months, sex and age group, unadjusted for seasonality, monthly
282-0006	Labour force survey estimates (LFS), by students during summer months, sex and age group, unadjusted for seasonality, monthly
282-0007	Labour force survey estimates (LFS), by North American Industry Classification System (NAICS), sex and age group, unadjusted for seasonality, monthly
282-0008	Labour force survey estimates (LFS), by North American Industry Classification System (NAICS), sex and age group, annual

282-0009	Labour force survey estimates (LFS), by National Occupational Classification for Statistics (NOC-S) and sex, unadjusted for seasonality, monthly
282-0010	Labour force survey estimates (LFS), by National Occupational Classification for Statistics (NOC-S) and sex, annual
282-0011	Labour force survey estimates (LFS), employment by class of worker, North American Industry Classification System (NAICS) and sex, unadjusted for seasonality, monthly
282-0012	Labour force survey estimates (LFS), employment by class of worker, North American Industry Classification System (NAICS) and sex, annual
282-0013	Labour force survey estimates (LFS), part-time employment by reason for part-time work, sex and age group, unadjusted for seasonality, monthly
282-0014	Labour force survey estimates (LFS), part-time employment by reason for part-time work, sex and age group, annual
282-0015	Labour force survey estimates (LFS), by usual hours worked, main or all jobs, sex and age group, unadjusted for seasonality, monthly
282-0016	Labour force survey estimates (LFS), by usual hours worked, main or all jobs, sex and age group, annual
282-0017	Labour force survey estimates (LFS), by actual hours worked, main or all jobs, sex and age group, unadjusted for seasonality, monthly
282-0018	Labour force survey estimates (LFS), by actual hours worked, main or all jobs, sex and age group, annual
282-0019	Labour force survey estimates (LFS), by usual hours worked, class of worker, North American Industry Classification System (NAICS) and sex, unadjusted for seasonality, monthly
282-0020	Labour force survey estimates (LFS), by usual hours worked, class of worker, North American Industry Classification System (NAICS) and sex, annual
282-0021	Labour force survey estimates (LFS), by actual hours worked, class of worker, North American Industry Classification System (NAICS) and sex, unadjusted for seasonality, monthly
282-0022	Labour force survey estimates (LFS), by actual hours worked, class of worker, North American Industry Classification System (NAICS) and sex, annual
282-0023	Labour force survey estimates (LFS), by usual hours worked, class of worker, National Occupational Classification for Statistics (NOC-S) and sex, unadjusted for seasonality, monthly
282-0024	Labour force survey estimates (LFS), by usual hours worked, class of worker, National Occupational Classification for Statistics (NOC-S) and sex, annual
282-0025	Labour force survey estimates (LFS), by actual hours worked, class of worker, National Occupational Classification for Statistics (NOC-S) and sex, unadjusted for seasonality, monthly
282-0026	Labour force survey estimates (LFS), by actual hours worked, class of worker, National Occupational Classification for Statistics (NOC-S) and sex, annual
282-0027	Labour force survey estimates (LFS), by total and average usual and actual hours worked, main or all jobs, type of work, sex and age group, unadjusted for seasonality, monthly

282-0028	Labour force survey estimates (LFS), by total and average usual and actual hours worked, main or all jobs, type of work, sex and age group, annual
282-0029	Labour force survey estimates (LFS), average days lost for personal reasons per full-time employee by North American Industry Classification System (NAICS), sex and age group, annual
282-0030	Labour force survey estimates (LFS), average days lost for personal reasons per full-time employee by National Occupational Classification for Statistics (NOC-S), sex and age group, annual
282-0031	Labour force survey estimates (LFS), multiple jobholders by North American Industry Classification System (NAICS), sex and age group, annual
282-0032	Labour force survey estimates (LFS), multiple jobholders by North American Industry Classification System (NAICS), sex and age group, unadjusted for seasonality, monthly
282-0033	Labour force survey estimates (LFS), multiple jobholders by National Occupational Classification for Statistics (NOC-S), sex and age group, unadjusted for seasonality, monthly
282-0034	Labour force survey estimates (LFS), multiple jobholders by National Occupational Classification for Statistics (NOC-S), sex and age group, annual
282-0035	Labour force survey estimates (LFS), multiple jobholders by usual hours worked at main and all jobs, unadjusted for seasonality, monthly
282-0036	Labour force survey estimates (LFS), multiple jobholders by usual hours worked at main and all jobs, annual
282-0037	Labour force survey estimates (LFS), job tenure by type of work, sex and age group, unadjusted for seasonality, monthly
282-0038	Labour force survey estimates (LFS), job tenure by type of work, sex and age group, annual
282-0039	Labour force survey estimates (LFS), job tenure by National Occupational Classification for Statistics (NOC-S) and sex, unadjusted for seasonality, monthly
282-0040	Labour force survey estimates (LFS), job tenure by National Occupational Classification for Statistics (NOC-S) and sex, annual
282-0041	Labour force survey estimates (LFS), job tenure by North American Industry Classification System (NAICS) and sex, unadjusted for seasonality, monthly
282-0042	Labour force survey estimates (LFS), job tenure by North American Industry Classification System (NAICS) and sex, annual
282-0047	Labour force survey estimates (LFS), duration of unemployment by sex and age group, unadjusted for seasonality, monthly
282-0048	Labour force survey estimates (LFS), duration of unemployment by sex and age group, annual
282-0049	Labour force survey estimates (LFS), unemployment by type of work sought and search method, sex and age group, unadjusted for seasonality, monthly
282-0050	Labour force survey estimates (LFS), unemployment by type of work sought and search method, sex and age group, annual

282-0051	Labour force survey estimates (LFS), retirement age by class of worker and sex, annual
282-0054	Labour force survey estimates (LFS), by provinces and economic regions, 3-month moving average, unadjusted for seasonality, monthly
282-0055	Labour force survey estimates (LFS), by provinces, territories and economic regions, annual
282-0060	Labour force survey estimates (LFS), employment by economic region and North American Industry Classification System (NAICS), 3-month moving average, unadjusted for seasonality, monthly
282-0061	Labour force survey estimates (LFS), employment by economic region and North American Industry Classification System (NAICS), annual
282-0062	Labour force survey estimates (LFS), employment by economic region and National Occupational Classification for Statistics (NOC-S), 3-month moving average, unadjusted for seasonality, monthly
282-0063	Labour force survey estimates (LFS), employment by economic region and National Occupational Classification for Statistics (NOC-S), annual
282-0069	Labour force survey estimates (LFS), wages of employees by type of work, National Occupational Classification for Statistics (NOC-S), sex and age group, unadjusted for seasonality, monthly (current dollars)
282-0070	Labour force survey estimates (LFS), wages of employees by type of work, National Occupational Classification for Statistics (NOC-S), sex and age group, annual (current dollars)
282-0071	Labour force survey estimates (LFS), wages of employees by type of work, North American Industry Classification System (NAICS), sex and age group, unadjusted for seasonality, monthly (current dollars)
282-0072	Labour force survey estimates (LFS), wages of employees by type of work, North American Industry Classification System (NAICS), sex and age group, annual (current dollars)
282-0073	Labour force survey estimates (LFS), wages of employees by job permanence, union coverage, sex and age group, unadjusted for seasonality, monthly (current dollars)
282-0074	Labour force survey estimates (LFS), wages of employees by job permanence, union coverage, sex and age group, annual (current dollars)
282-0075	Labour force survey estimates (LFS), employees by establishment size, North American Industry Classification System (NAICS), sex and age group, unadjusted for seasonality, monthly
282-0076	Labour force survey estimates (LFS), employees by establishment size, North American Industry Classification System (NAICS), sex and age group, annual
282-0077	Labour force survey estimates (LFS), employees by union coverage, North American Industry Classification System (NAICS), sex and age group, unadjusted for seasonality, monthly
282-0078	Labour force survey estimates (LFS), employees by union coverage, North American Industry Classification System (NAICS), sex and age group, annual
282-0079	Labour force survey estimates (LFS), employees by job permanency, North American Industry Classification System (NAICS), sex and age group, unadjusted for seasonality, monthly

282-0080	Labour force survey estimates (LFS), employees by job permanency, North American Industry Classification System (NAICS), sex and age group, annual
282-0081	Labour force survey estimates (LFS), employees working overtime (weekly) by National Occupational Classification for Statistics (NOC-S), sex and age group, unadjusted for seasonality, monthly
282-0082	Labour force survey estimates (LFS), employees working overtime (weekly) by National Occupational Classification for Statistics (NOC-S), sex and age group, annual
282-0083	Labour force survey estimates (LFS), employees working overtime (weekly) by North American Industry Classification System (NAICS), sex and age group, unadjusted for seasonality, monthly
282-0084	Labour force survey estimates (LFS), employees working overtime (weekly) by North American Industry Classification System (NAICS), sex and age group, annual
282-0085	Labour force survey estimates (LFS), supplementary unemployment rates by sex and age group, unadjusted for seasonality, monthly
282-0086	Labour force survey estimates (LFS), supplementary unemployment rates by sex and age group, annual
282-0087	Labour force survey estimates (LFS), by sex and age group, seasonally adjusted and unadjusted, monthly
282-0088	Labour force survey estimates (LFS), employment by North American Industry Classification System (NAICS), seasonally adjusted and unadjusted, monthly
282-0089	Labour force survey estimates (LFS), employment by class of worker and sex, seasonally adjusted and unadjusted, monthly
282-0092	Labour force survey estimates (LFS), actual hours worked at main job by North American Industry Classification System (NAICS), seasonally adjusted, monthly
282-0093	Labour force survey estimates (LFS), employment by National Occupational Classification for Statistics (NOC-S), seasonally adjusted, monthly
282-0094	Labour force survey estimates (LFS), by North American Industry Classification System (NAICS), Canada, seasonally adjusted, monthly
282-0095	Labour force survey estimates (LFS), by full- and part-time students during school months, sex and age group, annual
282-0100	Labour force survey estimates (LFS), by territories, sex and age group, 3-month moving average, seasonally adjusted and unadjusted, monthly
282-0101	Labour force survey estimates (LFS), by immigrant status, age group, Canada, regions, provinces and Montreal, Toronto, Vancouver census metropolitan areas, 3-month moving average, unadjusted for seasonality, monthly
282-0102	Labour force survey estimates (LFS), by immigrant status, age group, Canada, regions, provinces and Montreal, Toronto, Vancouver census metropolitan areas, annual
282-0103	Labour force survey estimates (LFS), by immigrant status, sex and detailed age group, Canada, 3-month moving average, unadjusted for seasonality, monthly

282-0104	Labour force survey estimates (LFS), by immigrant status, sex and detailed age group, Canada, annual
282-0105	Labour force survey estimates (LFS), by immigrant status, educational attainment, sex and age group, Canada, 3-month moving average, unadjusted for seasonality, monthly
282-0106	Labour force survey estimates (LFS), by immigrant status, educational attainment, sex and age group, Canada, annual
282-0107	Labour force survey estimates (LFS), by immigrant status, country of birth, sex and age group, Canada, regions and provinces, 3-month moving average, unadjusted for seasonality, monthly
282-0108	Labour force survey estimates (LFS), by immigrant status, country of birth, sex and age group, Canada, regions and provinces, annual
282-0109	Labour force survey estimates (LFS), by census metropolitan area based on 2006 census boundaries, sex and age group, 3-month moving average, unadjusted for seasonality, monthly
282-0110	Labour force survey estimates (LFS), by census metropolitan area based on 2006 census boundaries, sex and age group, annual
282-0111	Labour force survey estimates (LFS), employment by census metropolitan area based on 2006 census boundaries and North American Industry Classification System (NAICS), 3-month moving average, unadjusted for seasonality, monthly
282-0112	Labour force survey estimates (LFS), employment by census metropolitan area based on 2006 census boundaries and North American Industry Classification System (NAICS), annual
282-0113	Labour force survey estimates (LFS), employment by census metropolitan area based on 2006 census boundaries and National Occupational Classification for Statistics (NOC-S), 3-month moving average, unadjusted for seasonality, monthly
282-0114	Labour force survey estimates (LFS), employment by census metropolitan area based on 2006 census boundaries and National Occupational Classification for Statistics (NOC-S), annual
282-0115	Labour force survey estimates (LFS), by selected census agglomerations based on 2006 census boundaries, annual
282-0116	Labour force survey estimates (LFS), by census metropolitan area based on 2006 census boundaries, 3-month moving average, seasonally adjusted and unadjusted, monthly
282-0117	Labour force survey estimates (LFS), by Montréal, Toronto and Vancouver census metropolitan areas based on 2006 census boundaries, seasonally adjusted and unadjusted, monthly
282-0118	Labour force survey estimates (LFS), by urban and rural areas based on 2006 census boundaries, sex and age group, unadjusted for seasonality, monthly
282-0119	Labour force survey estimates (LFS), by urban and rural areas based on 2006 census boundaries, sex and age group, annual
282-0120	Labour force survey estimates (LFS), employment by urban and rural areas based on 2006 census boundaries, class of worker and North American Industry Classification System (NAICS), unadjusted for seasonality, monthly

282-0121	Labour force survey estimates (LFS), employment by urban and rural areas based on 2006 census boundaries, class of worker and North American Industry Classification System (NAICS), annual
282-0200	Labour force survey estimates (LFS), weekly wage distributions of employees by type of work, North American Industry Classification System (NAICS) and by sex, unadjusted for seasonality, monthly
282-0201	Labour force survey estimates (LFS), weekly wage distributions of employees by type of work, North American Industry Classification System (NAICS) and by sex, annual
282-0202	Labour force survey estimates (LFS), weekly wage distributions of employees by type of work, National Occupational Classification for Statistics (NOC-S) and by sex, unadjusted for seasonality, monthly
282-0203	Labour force survey estimates (LFS), weekly wage distributions of employees by type of work, National Occupational Classification for Statistics (NOC-S) and by sex, annual
282-0204	Labour force survey estimates (LFS), hourly wage distributions of employees by type of work, North American Industry Classification System (NAICS) and by sex, unadjusted for seasonality, monthly
282-0205	Labour force survey estimates (LFS), hourly wage distributions of employees by type of work, North American Industry Classification System (NAICS) and by sex, annual
282-0206	Labour force survey estimates (LFS), hourly wage distribution of employees by type of work, National Occupational Classification for Statistics (NOC-S) and by sex, unadjusted for seasonality, monthly
282-0207	Labour force survey estimates (LFS), hourly wage distribution of employees by type of work, National Occupational Classification for Statistics (NOC-S) and by sex, annual
282-0208	Labour force survey estimates (LFS), by educational degree, sex and age group, unadjusted for seasonality, monthly
282-0209	Labour force survey estimates (LFS), by educational degree, sex and age group, annual
282-0210	Labour force survey estimates (LFS), by family type and family age composition, unadjusted for seasonality, monthly
282-0211	Labour force survey estimates (LFS), by family type and family age composition, annual
282-0212	Labour force survey estimates (LFS), hours lost by employees by reason absent full and part week and sex, unadjusted for seasonality, monthly
282-0213	Labour force survey estimates (LFS), hours lost by employees by reason absent full and part week and sex, annual
282-0214	Labour force survey estimates (LFS), activity prior to unemployment by sex and age group, unadjusted for seasonality, monthly
282-0215	Labour force survey estimates (LFS), activity prior to unemployment by sex and age group, annual

282-0216	Labour force survey estimates (LFS), reason for leaving job during previous year by sex and age group, unadjusted for seasonality, monthly
282-0217	Labour force survey estimates (LFS), reason for leaving job during previous year by sex and age group, annual
282-0218	Labour force survey estimates (LFS), reason for not looking for work, by sex and age group, unadjusted for seasonality, monthly
282-0219	Labour force survey estimates (LFS), reason for not looking for work, by sex and age group, annual

Selected surveys from Statistics Canada

3701	Labour Force Survey
------	---------------------

Selected summary tables from Statistics Canada

- *Labour force characteristics*
- *Employment by industry*
- *Days lost per worker due to illness or disability, by sex, by province*
- *Economic indicators, by province and territory (monthly and quarterly)*
- *Labour force and participation rates by sex and age group*
- *Labour force, employed and unemployed, numbers and rates, by province*
- *Employment by industry and sex*
- *Full-time and part-time employment by sex and age group*
- *Labour force characteristics by age and sex*
- *Distribution of employed people, by industry, by province*
- *Labour force characteristics, population 15 years and older, by census metropolitan area*
- *Labour force characteristics, population 15 years and older, by economic region, by province*
- *Days lost per worker by cause, by provinces*
- *Days lost per worker by industry and sex*
- *People employed, by educational attainment*
- *Reasons for part-time work by sex and age group*

- *Self-employment, historical summary*
- *Employment by age, sex, type of work, class of worker and province (monthly)*
- *Employment by major industry groups, seasonally adjusted, by province (monthly)*
- *Actual hours worked per week by industry, seasonally adjusted (monthly)*
- *Average hourly wages of employees by selected characteristics and profession, unadjusted data, by province (monthly)*
- *Labour force characteristics, seasonally adjusted, by province (monthly)*
- *Labour force characteristics, unadjusted, by province (monthly)*
- *Labour force characteristics, seasonally adjusted, by census metropolitan area (3 month moving average)*
- *Labour force characteristics, unadjusted, by census metropolitan area (3 month moving average)*
- *Labour force characteristics, unadjusted, by economic region (3 month moving average)*
- *Labour force characteristics by immigrant status of population aged 25 to 54, by province*
- *Labour force characteristics by immigrant status of population aged 25 to 54, by educational attainment*
- *Labour force characteristics by immigrant status, by detailed age group*
- *Labour force characteristics by immigrant status of population aged 25 to 54, by country of birth*

Statistical tables

Table 1
Labour force characteristics by age and sex, Canada, seasonally adjusted

	September 2012	October 2012	S.E. ¹	Change from			Percent change from		
				last	last	twelve	last	last	twelve
				month	December	months ago	month	December	months ago
in thousands (except rates)									
15 years and over, both sexes									
Population	28,388.3	28,414.8	...	26.5	284.0	332.5	0.1	1.0	1.2
Labour force	18,959.5	18,977.5	29.0	18.0	223.0	262.1	0.1	1.2	1.4
Employment	17,565.7	17,567.5	28.6	1.8	212.8	229.0	0.0	1.2	1.3
Employment full-time	14,255.5	14,262.8	37.8	7.3	210.3	240.4	0.1	1.5	1.7
Employment part-time	3,310.2	3,304.7	35.0	-5.5	2.5	-11.3	-0.2	0.1	-0.3
Unemployment	1,393.8	1,410.0	25.1	16.2	10.2	33.0	1.2	0.7	2.4
Participation rate	66.8	66.8	0.1	0.0	0.1	0.2
Unemployment rate	7.4	7.4	0.1	0.0	-0.1	0.0
Employment rate	61.9	61.8	0.1	-0.1	0.1	0.1
Part-time rate	18.8	18.8	0.2	0.0	-0.2	-0.3
15 to 24 years, both sexes									
Population	4,457.6	4,457.1	...	-0.5	-0.2	-0.3	0.0	0.0	0.0
Labour force	2,843.0	2,834.5	17.2	-8.5	-11.1	-42.6	-0.3	-0.4	-1.5
Employment	2,417.7	2,418.9	15.9	1.2	-26.0	-52.2	0.0	-1.1	-2.1
Employment full-time	1,270.9	1,256.0	18.6	-14.9	-47.0	-41.4	-1.2	-3.6	-3.2
Employment part-time	1,146.8	1,162.9	19.4	16.1	21.0	-10.7	1.4	1.8	-0.9
Unemployment	425.3	415.7	15.0	-9.6	15.1	9.6	-2.3	3.8	2.4
Participation rate	63.8	63.6	0.4	-0.2	-0.2	-0.9
Unemployment rate	15.0	14.7	0.5	-0.3	0.6	0.6
Employment rate	54.2	54.3	0.4	0.1	-0.6	-1.1
Part-time rate	47.4	48.1	0.7	0.6	1.4	0.6
25 years and over, men									
Population	11,712.6	11,726.3	...	13.7	142.6	166.7	0.1	1.2	1.4
Labour force	8,548.5	8,562.5	15.1	14.0	133.2	165.4	0.2	1.6	2.0
Employment	8,005.8	8,001.4	16.2	-4.4	125.9	134.1	-0.1	1.6	1.7
Employment full-time	7,398.6	7,399.5	21.2	0.9	127.4	161.1	0.0	1.8	2.2
Employment part-time	607.2	601.9	17.1	-5.3	-1.5	-27.0	-0.9	-0.2	-4.3
Unemployment	542.7	561.1	14.4	18.4	7.3	31.3	3.4	1.3	5.9
Participation rate	73.0	73.0	0.1	0.0	0.2	0.4
Unemployment rate	6.3	6.6	0.2	0.3	0.0	0.3
Employment rate	68.4	68.2	0.1	-0.2	0.2	0.1
Part-time rate	7.6	7.5	0.2	-0.1	-0.1	-0.5
25 years and over, women									
Population	12,218.1	12,231.4	...	13.3	141.6	166.0	0.1	1.2	1.4
Labour force	7,568.0	7,580.4	16.4	12.4	100.8	139.2	0.2	1.3	1.9
Employment	7,142.2	7,147.2	16.2	5.0	112.9	147.1	0.1	1.6	2.1
Employment full-time	5,586.0	5,607.3	24.6	21.3	129.9	120.7	0.4	2.4	2.2
Employment part-time	1,556.1	1,539.9	23.0	-16.2	-17.0	26.4	-1.0	-1.1	1.7
Unemployment	425.8	433.2	13.4	7.4	-12.2	-7.9	1.7	-2.7	-1.8
Participation rate	61.9	62.0	0.1	0.1	0.1	0.3
Unemployment rate	5.6	5.7	0.2	0.1	-0.3	-0.2
Employment rate	58.5	58.4	0.1	-0.1	0.2	0.4
Part-time rate	21.8	21.5	0.3	-0.2	-0.6	-0.1
25 to 54 years, both sexes									
Population	14,572.2	14,573.8	...	1.6	26.6	29.6	0.0	0.2	0.2
Labour force	12,644.7	12,648.1	21.9	3.4	73.0	83.9	0.0	0.6	0.7
Employment	11,882.2	11,883.4	23.1	1.2	86.7	92.0	0.0	0.7	0.8
Unemployment	762.5	764.7	18.4	2.2	-13.6	-8.1	0.3	-1.7	-1.0
Participation rate	86.8	86.8	0.2	0.0	0.4	0.4
Unemployment rate	6.0	6.0	0.1	0.0	-0.2	-0.2
Employment rate	81.5	81.5	0.2	0.0	0.4	0.4
25 to 54 years, men									
Population	7,290.7	7,291.6	...	0.9	14.5	16.1	0.0	0.2	0.2
Labour force	6,638.3	6,635.8	14.2	-2.5	45.6	49.9	0.0	0.7	0.8
Employment	6,215.3	6,215.6	15.7	0.3	46.4	47.0	0.0	0.8	0.8
Unemployment	423.0	420.2	13.3	-2.8	-0.8	2.8	-0.7	-0.2	0.7
Participation rate	91.1	91.0	0.2	-0.1	0.4	0.5
Unemployment rate	6.4	6.3	0.2	-0.1	-0.1	0.0
Employment rate	85.2	85.2	0.2	0.0	0.4	0.4

See notes at the end of the table.

Table 1 – continued

Labour force characteristics by age and sex, Canada, seasonally adjusted

	September 2012	October 2012	S.E. ¹	Change from			Percent change from		
				last month	last December	twelve months ago	last month	last December	twelve months ago
in thousands (except rates)									
25 to 54 years, women									
Population	7,281.5	7,282.2	...	0.7	12.1	13.5	0.0	0.2	0.2
Labour force	6,006.4	6,012.3	15.9	5.9	27.4	34.1	0.1	0.5	0.6
Employment	5,666.9	5,667.7	16.1	0.8	40.2	44.9	0.0	0.7	0.8
Unemployment	339.5	344.5	12.3	5.0	-12.8	-10.9	1.5	-3.6	-3.1
Participation rate	82.5	82.6	0.2	0.1	0.3	0.4
Unemployment rate	5.7	5.7	0.2	0.0	-0.3	-0.2
Employment rate	77.8	77.8	0.2	0.0	0.4	0.4
55 years and over, both sexes									
Population	9,358.5	9,383.8	...	25.3	257.6	303.1	0.3	2.8	3.3
Labour force	3,471.8	3,494.9	17.2	23.1	161.0	220.7	0.7	4.8	6.7
Employment	3,265.8	3,265.2	17.0	-0.6	152.2	189.2	0.0	4.9	6.2
Unemployment	206.0	229.7	9.5	23.7	8.9	31.6	11.5	4.0	16.0
Participation rate	37.1	37.2	0.2	0.1	0.7	1.1
Unemployment rate	5.9	6.6	0.3	0.7	0.0	0.5
Employment rate	34.9	34.8	0.2	-0.1	0.7	0.9
55 years and over, men									
Population	4,421.9	4,434.6	...	12.7	128.0	150.6	0.3	3.0	3.5
Labour force	1,910.2	1,926.8	11.3	16.6	87.7	115.7	0.9	4.8	6.4
Employment	1,790.5	1,785.8	11.3	-4.7	79.5	87.1	-0.3	4.7	5.1
Unemployment	119.7	141.0	6.9	21.3	8.2	28.6	17.8	6.2	25.4
Participation rate	43.2	43.4	0.3	0.2	0.7	1.1
Unemployment rate	6.3	7.3	0.4	1.0	0.1	1.1
Employment rate	40.5	40.3	0.3	-0.2	0.7	0.6
55 years and over, women									
Population	4,936.6	4,949.1	...	12.5	129.4	152.4	0.3	2.7	3.2
Labour force	1,561.6	1,568.2	11.8	6.6	73.4	105.2	0.4	4.9	7.2
Employment	1,475.3	1,479.5	11.7	4.2	72.8	102.2	0.3	5.2	7.4
Unemployment	86.3	88.7	6.4	2.4	0.7	3.0	2.8	0.8	3.5
Participation rate	31.6	31.7	0.2	0.1	0.7	1.2
Unemployment rate	5.5	5.7	0.4	0.2	-0.2	-0.2
Employment rate	29.9	29.9	0.2	0.0	0.7	1.2

1. Average standard error of change in two consecutive months (see "Sampling Errors" in Data Quality for further explanations).

Note(s): Related CANSIM table 282-0087.

Table 2
Employment by class of worker and industry, Canada, seasonally adjusted

	September 2012	October 2012	S.E. ¹	Change from			Percent change from		
				last month	last December	twelve months ago	last month	last December	twelve months ago
in thousands									
Class of worker									
Employees	14,881.3	14,897.9	35.2	16.6	218.1	230.9	0.1	1.5	1.6
Self-employed ²	2,684.4	2,669.5	25.1	-14.9	-5.4	-1.9	-0.6	-0.2	-0.1
Public/private sector employees									
Public sector employees	3,602.1	3,639.0	24.5	36.9	83.7	74.1	1.0	2.4	2.1
Private sector employees	11,279.2	11,258.9	37.2	-20.3	134.4	156.8	-0.2	1.2	1.4
Industry	17,565.7	17,567.5	28.6	1.8	212.8	229.0	0.0	1.2	1.3
Goods-producing sector	3,890.7	3,871.4	25.5	-19.3	77.5	119.3	-0.5	2.0	3.2
Agriculture	315.6	299.4	7.0	-16.2	-6.9	-6.2	-5.1	-2.3	-2.0
Forestry, fishing, mining, quarrying, oil and gas extraction ³	365.5	365.2	7.0	-0.3	9.9	20.4	-0.1	2.8	5.9
Utilities	151.1	141.8	4.9	-9.3	8.0	8.8	-6.2	6.0	6.6
Construction	1,264.0	1,267.5	16.8	3.5	2.6	7.6	0.3	0.2	0.6
Manufacturing	1,794.4	1,797.5	19.2	3.1	63.9	88.8	0.2	3.7	5.2
Services-producing sector	13,675.0	13,696.0	33.3	21.0	135.2	109.6	0.2	1.0	0.8
Trade	2,653.6	2,651.5	23.2	-2.1	-10.6	-34.7	-0.1	-0.4	-1.3
Transportation and warehousing	860.0	852.3	13.7	-7.7	2.8	3.5	-0.9	0.3	0.4
Finance, insurance, real estate and leasing	1,111.1	1,112.3	15.6	1.2	60.0	39.8	0.1	5.7	3.7
Professional, scientific and technical services	1,300.9	1,301.9	17.8	1.0	-50.4	-27.1	0.1	-3.7	-2.0
Business, building and other support services	700.0	695.8	13.9	-4.2	34.8	10.7	-0.6	5.3	1.6
Educational services	1,298.4	1,314.6	16.5	16.2	94.3	84.4	1.2	7.7	6.9
Health care and social assistance	2,136.8	2,145.4	19.0	8.6	33.6	30.4	0.4	1.6	1.4
Information, culture and recreation	788.2	791.6	14.4	3.4	19.0	14.9	0.4	2.5	1.9
Accommodation and food services	1,097.3	1,083.5	16.6	-13.8	-36.8	-37.9	-1.3	-3.3	-3.4
Other services	781.8	791.9	13.2	10.1	9.2	39.7	1.3	1.2	5.3
Public administration	946.9	955.4	12.5	8.5	-20.5	-13.9	0.9	-2.1	-1.4

1. Average standard error of change in two consecutive months (see "Sampling Errors" in Data Quality for further explanations).

2. Includes both incorporated and unincorporated working owners, self-employed persons who do not have a business and persons working in a family business without pay.

3. Also referred to as Natural resources.

Note(s): Related CANSIM Tables 282-0088, 282-0089.

Table 3
Labour force characteristics by province, seasonally adjusted

	September 2012	October 2012	S.E. ¹	Change from			Percent change from		
				last month	last December	twelve months ago	last month	last December	twelve months ago
in thousands (except rates)									
Newfoundland and Labrador									
Population	427.2	427.5	...	0.3	-1.1	-1.0	0.1	-0.3	-0.2
Labour force	261.0	264.0	2.1	3.0	3.5	6.1	1.1	1.3	2.4
Employment	228.7	232.5	2.1	3.8	5.3	8.0	1.7	2.3	3.6
Employment full-time	198.8	199.1	2.4	0.3	3.7	9.3	0.2	1.9	4.9
Employment part-time	30.0	33.4	1.9	3.4	1.6	-1.3	11.3	5.0	-3.7
Unemployment	32.2	31.5	2.0	-0.7	-1.7	-1.9	-2.2	-5.1	-5.7
Participation rate	61.1	61.8	0.5	0.7	1.0	1.6
Unemployment rate	12.3	11.9	0.7	-0.4	-0.8	-1.1
Employment rate	53.5	54.4	0.5	0.9	1.4	2.0
Prince Edward Island									
Population	120.8	120.7	...	-0.1	0.9	1.1	-0.1	0.8	0.9
Labour force	81.1	81.9	0.6	0.8	-0.9	0.9	1.0	-1.1	1.1
Employment	72.0	72.4	0.7	0.4	-1.0	0.5	0.6	-1.4	0.7
Employment full-time	60.2	60.5	0.8	0.3	-1.0	-0.4	0.5	-1.6	-0.7
Employment part-time	11.8	11.8	0.7	0.0	-0.1	0.8	0.0	-0.8	7.3
Unemployment	9.1	9.6	0.7	0.5	0.3	0.5	5.5	3.2	5.5
Participation rate	67.1	67.9	0.5	0.8	-1.2	0.2
Unemployment rate	11.2	11.7	0.8	0.5	0.5	0.5
Employment rate	59.6	60.0	0.6	0.4	-1.3	-0.1
Nova Scotia									
Population	780.4	780.5	...	0.1	0.9	1.2	0.0	0.1	0.2
Labour force	502.0	503.6	2.7	1.6	6.3	11.8	0.3	1.3	2.4
Employment	458.6	457.4	2.8	-1.2	-1.0	7.6	-0.3	-0.2	1.7
Employment full-time	366.8	365.5	3.5	-1.3	-4.0	-1.4	-0.4	-1.1	-0.4
Employment part-time	91.8	92.0	3.1	0.2	3.1	9.0	0.2	3.5	10.8
Unemployment	43.4	46.2	2.4	2.8	7.3	4.2	6.5	18.8	10.0
Participation rate	64.3	64.5	0.3	0.2	0.7	1.4
Unemployment rate	8.6	9.2	0.5	0.6	1.4	0.7
Employment rate	58.8	58.6	0.4	-0.2	-0.2	0.9
New Brunswick									
Population	620.6	620.3	...	-0.3	0.1	0.3	0.0	0.0	0.0
Labour force	393.4	395.2	2.3	1.8	4.1	5.1	0.5	1.0	1.3
Employment	350.0	349.4	2.4	-0.6	-5.1	-3.9	-0.2	-1.4	-1.1
Employment full-time	295.6	293.5	2.8	-2.1	-4.4	-3.5	-0.7	-1.5	-1.2
Employment part-time	54.4	56.0	2.4	1.6	-0.6	-0.2	2.9	-1.1	-0.4
Unemployment	43.4	45.8	2.1	2.4	9.2	9.0	5.5	25.1	24.5
Participation rate	63.4	63.7	0.4	0.3	0.6	0.8
Unemployment rate	11.0	11.6	0.5	0.6	2.2	2.2
Employment rate	56.4	56.3	0.4	-0.1	-0.9	-0.7
Quebec									
Population	6,650.9	6,655.5	...	4.6	50.3	60.7	0.1	0.8	0.9
Labour force	4,345.4	4,354.1	15.1	8.7	77.3	70.2	0.2	1.8	1.6
Employment	3,999.9	4,020.0	15.3	20.1	114.0	67.3	0.5	2.9	1.7
Employment full-time	3,233.7	3,230.4	19.5	-3.3	65.1	23.0	-0.1	2.1	0.7
Employment part-time	766.2	789.5	18.2	23.3	48.8	44.1	3.0	6.6	5.9
Unemployment	345.5	334.2	13.6	-11.3	-36.6	3.1	-3.3	-9.9	0.9
Participation rate	65.3	65.4	0.2	0.1	0.7	0.4
Unemployment rate	8.0	7.7	0.3	-0.3	-1.0	0.0
Employment rate	60.1	60.4	0.2	0.3	1.3	0.5
Ontario									
Population	11,100.1	11,109.5	...	9.4	118.0	141.5	0.1	1.1	1.3
Labour force	7,384.3	7,399.8	19.9	15.5	81.7	87.2	0.2	1.1	1.2
Employment	6,798.8	6,788.9	19.0	-9.9	35.4	69.6	-0.1	0.5	1.0
Employment full-time	5,500.7	5,530.6	25.5	29.9	74.4	110.3	0.5	1.4	2.0
Employment part-time	1,298.1	1,258.3	23.2	-39.8	-39.0	-40.7	-3.1	-3.0	-3.1
Unemployment	585.6	610.9	17.4	25.3	46.3	17.6	4.3	8.2	3.0
Participation rate	66.5	66.6	0.2	0.1	0.0	-0.1
Unemployment rate	7.9	8.3	0.2	0.4	0.6	0.2
Employment rate	61.2	61.1	0.2	-0.1	-0.3	-0.2

See notes at the end of the table.

Table 3 – continued

Labour force characteristics by province, seasonally adjusted

	September 2012	October 2012	S.E. ¹	Change from			Percent change from		
				last month	last December	twelve months ago	last month	last December	twelve months ago
in thousands (except rates)									
Manitoba									
Population	964.8	965.4	...	0.6	7.4	8.7	0.1	0.8	0.9
Labour force	668.6	664.7	2.7	-3.9	2.2	4.3	-0.6	0.3	0.7
Employment	635.0	627.7	2.7	-7.3	1.2	1.7	-1.1	0.2	0.3
Employment full-time	513.7	511.3	3.7	-2.4	3.2	13.6	-0.5	0.6	2.7
Employment part-time	121.3	116.5	3.6	-4.8	-2.0	-11.9	-4.0	-1.7	-9.3
Unemployment	33.6	37.0	2.2	3.4	1.0	2.6	10.1	2.8	7.6
Participation rate	69.3	68.9	0.3	-0.4	-0.3	-0.1
Unemployment rate	5.0	5.6	0.3	0.6	0.2	0.4
Employment rate	65.8	65.0	0.3	-0.8	-0.4	-0.4
Saskatchewan									
Population	813.9	815.1	...	1.2	10.8	12.2	0.1	1.3	1.5
Labour force	564.8	567.3	2.5	2.5	10.1	15.9	0.4	1.8	2.9
Employment	538.4	540.7	2.5	2.3	12.7	12.2	0.4	2.4	2.3
Employment full-time	448.6	449.5	3.4	0.9	14.2	13.8	0.2	3.3	3.2
Employment part-time	89.8	91.2	3.0	1.4	-1.4	-1.6	1.6	-1.5	-1.7
Unemployment	26.4	26.6	1.9	0.2	-2.6	3.7	0.8	-8.9	16.2
Participation rate	69.4	69.6	0.3	0.2	0.3	0.9
Unemployment rate	4.7	4.7	0.3	0.0	-0.5	0.5
Employment rate	66.2	66.3	0.3	0.1	0.7	0.5
Alberta									
Population	3,087.4	3,095.6	...	8.2	66.8	73.5	0.3	2.2	2.4
Labour force	2,255.6	2,261.9	8.6	6.3	19.1	24.0	0.3	0.9	1.1
Employment	2,156.0	2,161.0	9.1	5.0	27.8	36.5	0.2	1.3	1.7
Employment full-time	1,808.6	1,809.8	11.8	1.2	32.7	43.4	0.1	1.8	2.5
Employment part-time	347.4	351.2	10.7	3.8	-4.8	-6.9	1.1	-1.3	-1.9
Unemployment	99.6	101.0	6.8	1.4	-8.7	-12.3	1.4	-7.9	-10.9
Participation rate	73.1	73.1	0.3	0.0	-0.9	-1.0
Unemployment rate	4.4	4.5	0.3	0.1	-0.4	-0.6
Employment rate	69.8	69.8	0.3	0.0	-0.6	-0.5
British Columbia									
Population	3,822.3	3,824.7	...	2.4	29.9	34.4	0.1	0.8	0.9
Labour force	2,503.4	2,484.8	10.5	-18.6	19.3	36.3	-0.7	0.8	1.5
Employment	2,328.3	2,317.4	10.4	-10.9	23.5	29.5	-0.5	1.0	1.3
Employment full-time	1,828.9	1,812.7	14.4	-16.2	26.6	32.4	-0.9	1.5	1.8
Employment part-time	499.4	504.8	14.0	5.4	-3.0	-2.8	1.1	-0.6	-0.6
Unemployment	175.1	167.4	8.6	-7.7	-4.2	6.8	-4.4	-2.4	4.2
Participation rate	65.5	65.0	0.3	-0.5	0.0	0.4
Unemployment rate	7.0	6.7	0.3	-0.3	-0.3	0.1
Employment rate	60.9	60.6	0.3	-0.3	0.2	0.2

1. Average standard error of change in two consecutive months (see "Sampling Errors" in Data Quality for further explanations).

Note(s): Related CANSIM Table 282-0087.

Table 4-1
Selected labour force characteristics (seasonally adjusted) — Newfoundland and Labrador

	September 2012	October 2012	S.E. ¹	Change from			Percent change from		
				last month	last December	twelve months ago	last month	last December	twelve months ago
in thousands (except rates)									
Both sexes, 15 years and over									
Population	427.2	427.5	...	0.3	-1.1	-1.0	0.1	-0.3	-0.2
Labour force	261.0	264.0	2.1	3.0	3.5	6.1	1.1	1.3	2.4
Employment	228.7	232.5	2.1	3.8	5.3	8.0	1.7	2.3	3.6
Employment full-time	198.8	199.1	2.4	0.3	3.7	9.3	0.2	1.9	4.9
Unemployment	32.2	31.5	2.0	-0.7	-1.7	-1.9	-2.2	-5.1	-5.7
Participation rate	61.1	61.8	0.5	0.7	1.0	1.6
Unemployment rate	12.3	11.9	0.7	-0.4	-0.8	-1.1
Employment rate	53.5	54.4	0.5	0.9	1.4	2.0
Part-time rate	13.1	14.4	0.8	1.2	0.4	-1.1
Both sexes, 15 to 24 years									
Population	59.1	59.1	...	0.0	-1.2	-1.4	0.0	-2.0	-2.3
Labour force	36.2	38.6	1.1	2.4	2.8	3.0	6.6	7.8	8.4
Employment	29.5	31.5	1.0	2.0	2.2	3.2	6.8	7.5	11.3
Unemployment	6.7	7.2	1.1	0.5	0.7	-0.1	7.5	10.8	-1.4
Participation rate	61.3	65.3	1.8	4.0	5.9	6.5
Unemployment rate	18.5	18.7	2.7	0.2	0.5	-1.8
Employment rate	49.9	53.3	1.7	3.4	4.7	6.5
Part-time rate	34.2	39.0	3.7	4.8	-5.7	-3.0
Men, 25 years and over									
Population	177.9	178.0	...	0.1	0.2	0.4	0.1	0.1	0.2
Labour force	117.4	116.6	1.2	-0.8	-1.0	-0.2	-0.7	-0.9	-0.2
Employment	103.0	103.3	1.3	0.3	1.4	3.4	0.3	1.4	3.4
Unemployment	14.4	13.4	1.3	-1.0	-2.3	-3.5	-6.9	-14.6	-20.7
Participation rate	66.0	65.5	0.7	-0.5	-0.6	-0.3
Unemployment rate	12.3	11.5	1.0	-0.8	-1.9	-3.0
Employment rate	57.9	58.0	0.7	0.1	0.7	1.7
Part-time rate	4.6	5.3	0.8	0.8	-0.6	-1.2
Women, 25 years and over									
Population	190.2	190.4	...	0.2	-0.1	0.0	0.1	-0.1	0.0
Labour force	107.4	108.8	1.1	1.4	1.7	3.3	1.3	1.6	3.1
Employment	96.2	97.8	1.0	1.6	1.7	1.4	1.7	1.8	1.5
Unemployment	11.2	11.0	1.0	-0.2	0.0	1.8	-1.8	0.0	19.6
Participation rate	56.5	57.1	0.6	0.6	0.9	1.7
Unemployment rate	10.4	10.1	0.9	-0.3	-0.2	1.4
Employment rate	50.6	51.4	0.5	0.8	1.0	0.8
Part-time rate	15.8	16.0	1.2	0.2	2.7	-0.9
Industry									
	228.7	232.5	2.1	3.8	5.3	8.0	1.7	2.3	3.6
Goods-producing sector									
Agriculture	48.8	47.1	1.7	-1.7	-3.9	-1.1	-3.5	-7.6	-2.3
Forestry, fishing, mining, quarrying, oil and gas extraction ²	1.7	1.3	0.3	-0.4	0.1	-0.8	-23.5	8.3	-38.1
Utilities	14.7	14.0	0.9	-0.7	-1.0	-0.3	-4.8	-6.7	-2.1
Construction	3.0	3.3	0.3	0.3	0.8	1.1	10.0	32.0	50.0
Manufacturing	19.1	18.4	1.1	-0.7	-1.9	-1.1	-3.7	-9.4	-5.6
	10.3	10.1	0.9	-0.2	-1.9	-0.1	-1.9	-15.8	-1.0
Services-producing sector									
	179.9	185.5	2.0	5.6	9.2	9.2	3.1	5.2	5.2
Trade	33.5	33.2	1.3	-0.3	-4.2	-2.8	-0.9	-11.2	-7.8
Transportation and warehousing	11.4	12.7	0.7	1.3	2.6	2.6	11.4	25.7	25.7
Finance, insurance, real estate and leasing	9.4	8.8	0.5	-0.6	-0.4	0.2	-6.4	-4.3	2.3
Professional, scientific and technical services	9.6	9.1	0.7	-0.5	-0.1	-1.1	-5.2	-1.1	-10.8
Business, building and other support services	7.6	7.5	0.6	-0.1	1.5	1.6	-1.3	25.0	27.1
Educational services	18.3	19.6	0.9	1.3	2.0	1.4	7.1	11.4	7.7
Health care and social assistance	37.9	39.1	1.1	1.2	4.8	5.0	3.2	14.0	14.7
Information, culture and recreation	6.6	7.7	0.7	1.1	0.5	-0.3	16.7	6.9	-3.8
Accommodation and food services	13.0	14.2	0.9	1.2	1.0	1.1	9.2	7.6	8.4
Other services	15.4	15.2	0.8	-0.2	2.9	3.4	-1.3	23.6	28.8
Public administration	17.2	18.3	0.9	1.1	-1.4	-2.1	6.4	-7.1	-10.3

1. Average standard error of change in two consecutive months (see "Sampling Errors" in Data Quality for further explanations).

2. Also referred to as Natural resources.

Note(s): Related CANSIM Tables 282-0087, 282-0088.

Table 4-2
Selected labour force characteristics (seasonally adjusted) — Prince Edward Island

	September 2012	October 2012	S.E. ¹	Change from			Percent change from		
				last month	last December	twelve months ago	last month	last December	twelve months ago
in thousands (except rates)									
Both sexes, 15 years and over									
Population	120.8	120.7	...	-0.1	0.9	1.1	-0.1	0.8	0.9
Labour force	81.1	81.9	0.6	0.8	-0.9	0.9	1.0	-1.1	1.1
Employment	72.0	72.4	0.7	0.4	-1.0	0.5	0.6	-1.4	0.7
Employment full-time	60.2	60.5	0.8	0.3	-1.0	-0.4	0.5	-1.6	-0.7
Unemployment	9.1	9.6	0.7	0.5	0.3	0.5	5.5	3.2	5.5
Participation rate	67.1	67.9	0.5	0.8	-1.2	0.2
Unemployment rate	11.2	11.7	0.8	0.5	0.5	0.5
Employment rate	59.6	60.0	0.6	0.4	-1.3	-0.1
Part-time rate	16.4	16.3	1.0	-0.1	0.1	1.0
Both sexes, 15 to 24 years									
Population	20.0	20.0	...	0.0	0.1	0.1	0.0	0.5	0.5
Labour force	12.4	12.6	0.4	0.2	-1.6	-0.9	1.6	-11.3	-6.7
Employment	10.0	10.0	0.4	0.0	-2.3	-1.7	0.0	-18.7	-14.5
Unemployment	2.5	2.6	0.4	0.1	0.7	0.8	4.0	36.8	44.4
Participation rate	62.0	63.0	2.0	1.0	-8.4	-4.8
Unemployment rate	20.2	20.6	2.5	0.4	7.2	7.3
Employment rate	50.0	50.0	2.0	0.0	-11.8	-8.8
Part-time rate	41.0	39.0	3.6	-2.0	-0.8	0.5
Men, 25 years and over									
Population	48.6	48.5	...	-0.1	0.3	0.3	-0.2	0.6	0.6
Labour force	34.8	35.2	0.3	0.4	0.1	1.0	1.1	0.3	2.9
Employment	31.4	31.5	0.4	0.1	0.7	1.9	0.3	2.3	6.4
Unemployment	3.4	3.7	0.4	0.3	-0.7	-1.0	8.8	-15.9	-21.3
Participation rate	71.6	72.6	0.7	1.0	-0.2	1.6
Unemployment rate	9.8	10.5	1.1	0.7	-2.0	-3.2
Employment rate	64.6	64.9	0.8	0.3	1.0	3.5
Part-time rate	7.0	7.0	1.0	0.0	0.2	1.2
Women, 25 years and over									
Population	52.2	52.2	...	0.0	0.5	0.6	0.0	1.0	1.2
Labour force	33.9	34.1	0.3	0.2	0.6	0.9	0.6	1.8	2.7
Employment	30.6	30.9	0.4	0.3	0.5	0.3	1.0	1.6	1.0
Unemployment	3.2	3.2	0.3	0.0	0.1	0.6	0.0	3.2	23.1
Participation rate	64.9	65.3	0.6	0.4	0.5	1.0
Unemployment rate	9.4	9.4	1.0	0.0	0.1	1.6
Employment rate	58.6	59.2	0.7	0.6	0.4	-0.1
Part-time rate	18.0	18.4	1.4	0.5	2.0	2.8
Industry									
Industry	72.0	72.4	0.7	0.4	-1.0	0.5	0.6	-1.4	0.7
Goods-producing sector									
Goods-producing sector	17.8	17.2	0.6	-0.6	-1.3	0.4	-3.4	-7.0	2.4
Agriculture	4.4	3.9	0.3	-0.5	-0.1	0.4	-11.4	-2.5	11.4
Forestry, fishing, mining, quarrying, oil and gas extraction ²	3.3	3.1	0.3	-0.2	-0.4	0.1	-6.1	-11.4	3.3
Utilities	0.4	0.4	0.1	0.0	0.0	0.1	0.0	0.0	33.3
Construction	5.1	4.9	0.4	-0.2	-0.4	0.1	-3.9	-7.5	2.1
Manufacturing	4.5	4.9	0.4	0.4	-0.4	-0.4	8.9	-7.5	-7.5
Services-producing sector									
Services-producing sector	54.2	55.2	0.7	1.0	0.2	0.1	1.8	0.4	0.2
Trade	9.7	9.7	0.5	0.0	0.4	-0.3	0.0	4.3	-3.0
Transportation and warehousing	2.4	2.4	0.2	0.0	0.0	0.1	0.0	0.0	4.3
Finance, insurance, real estate and leasing	2.4	2.4	0.2	0.0	-0.3	-0.3	0.0	-11.1	-11.1
Professional, scientific and technical services	3.8	3.5	0.2	-0.3	0.5	0.8	-7.9	16.7	29.6
Business, building and other support services	2.5	2.5	0.2	0.0	0.1	0.2	0.0	4.2	8.7
Educational services	6.1	6.1	0.3	0.0	0.5	-0.1	0.0	8.9	-1.6
Health care and social assistance	9.8	9.4	0.4	-0.4	-0.7	-0.2	-4.1	-6.9	-2.1
Information, culture and recreation	2.4	2.6	0.3	0.2	-0.2	-0.2	8.3	-7.1	-7.1
Accommodation and food services	4.7	5.3	0.4	0.6	-0.5	-0.2	12.8	-8.6	-3.6
Other services	3.0	3.3	0.3	0.3	0.6	0.4	10.0	22.2	13.8
Public administration	7.4	7.8	0.3	0.4	-0.4	-0.2	5.4	-4.9	-2.5

1. Average standard error of change in two consecutive months (see "Sampling Errors" in Data Quality for further explanations).

2. Also referred to as Natural resources.

Note(s): Related CANSIM Tables 282-0087, 282-0088.

Table 4-3
Selected labour force characteristics (seasonally adjusted) — Nova Scotia

	September 2012	October 2012	S.E. ¹	Change from			Percent change from		
				last month	last December	twelve months ago	last month	last December	twelve months ago
in thousands (except rates)									
Both sexes, 15 years and over									
Population	780.4	780.5	...	0.1	0.9	1.2	0.0	0.1	0.2
Labour force	502.0	503.6	2.7	1.6	6.3	11.8	0.3	1.3	2.4
Employment	458.6	457.4	2.8	-1.2	-1.0	7.6	-0.3	-0.2	1.7
Employment full-time	366.8	365.5	3.5	-1.3	-4.0	-1.4	-0.4	-1.1	-0.4
Unemployment	43.4	46.2	2.4	2.8	7.3	4.2	6.5	18.8	10.0
Participation rate	64.3	64.5	0.3	0.2	0.7	1.4
Unemployment rate	8.6	9.2	0.5	0.6	1.4	0.7
Employment rate	58.8	58.6	0.4	-0.2	-0.2	0.9
Part-time rate	20.0	20.1	0.7	0.1	0.7	1.7
Both sexes, 15 to 24 years									
Population	117.5	117.3	...	-0.2	-1.9	-2.2	-0.2	-1.6	-1.8
Labour force	78.0	77.6	1.6	-0.4	2.3	3.6	-0.5	3.1	4.9
Employment	63.5	63.4	1.5	-0.1	-1.2	1.3	-0.2	-1.9	2.1
Unemployment	14.4	14.2	1.5	-0.2	3.5	2.3	-1.4	32.7	19.3
Participation rate	66.4	66.2	1.4	-0.2	3.0	4.3
Unemployment rate	18.5	18.3	1.8	-0.2	4.1	2.2
Employment rate	54.0	54.0	1.3	0.0	-0.2	2.0
Part-time rate	51.3	51.4	2.5	0.1	1.4	3.8
Men, 25 years and over									
Population	314.2	314.3	...	0.1	1.7	2.0	0.0	0.5	0.6
Labour force	212.8	215.4	1.4	2.6	1.0	3.3	1.2	0.5	1.6
Employment	196.6	197.0	1.6	0.4	-0.9	2.2	0.2	-0.5	1.1
Unemployment	16.3	18.4	1.5	2.1	1.9	1.1	12.9	11.5	6.4
Participation rate	67.7	68.5	0.5	0.8	-0.1	0.6
Unemployment rate	7.7	8.5	0.7	0.8	0.8	0.3
Employment rate	62.6	62.7	0.5	0.1	-0.6	0.3
Part-time rate	8.6	9.0	0.7	0.4	2.0	2.1
Women, 25 years and over									
Population	348.7	348.8	...	0.1	1.0	1.2	0.0	0.3	0.3
Labour force	211.2	210.7	1.4	-0.5	3.1	5.0	-0.2	1.5	2.4
Employment	198.5	197.0	1.5	-1.5	1.1	4.1	-0.8	0.6	2.1
Unemployment	12.7	13.6	1.2	0.9	1.9	0.8	7.1	16.2	6.2
Participation rate	60.6	60.4	0.4	-0.2	0.7	1.2
Unemployment rate	6.0	6.5	0.6	0.5	0.9	0.3
Employment rate	56.9	56.5	0.4	-0.4	0.2	1.0
Part-time rate	21.3	21.1	1.0	-0.2	-0.7	0.4
Industry									
Industry	458.6	457.4	2.8	-1.2	-1.0	7.6	-0.3	-0.2	1.7
Goods-producing sector									
Goods-producing sector	85.0	84.9	2.1	-0.1	0.3	3.2	-0.1	0.4	3.9
Agriculture	6.1	5.9	0.6	-0.2	1.0	2.0	-3.3	20.4	51.3
Forestry, fishing, mining, quarrying, oil and gas extraction ²	11.7	11.8	1.0	0.1	0.2	1.7	0.9	1.7	16.8
Utilities	4.3	4.6	0.4	0.3	1.3	0.2	7.0	39.4	4.5
Construction	31.9	30.7	1.4	-1.2	-0.9	-0.4	-3.8	-2.8	-1.3
Manufacturing	31.1	31.9	1.3	0.8	-1.3	-0.3	2.6	-3.9	-0.9
Services-producing sector									
Services-producing sector	373.6	372.5	2.8	-1.1	-1.3	4.4	-0.3	-0.3	1.2
Trade	73.3	69.7	1.9	-3.6	-6.9	-7.5	-4.9	-9.0	-9.7
Transportation and warehousing	19.9	20.4	1.1	0.5	-1.9	-2.5	2.5	-8.5	-10.9
Finance, insurance, real estate and leasing	24.3	24.1	1.1	-0.2	0.8	0.8	-0.8	3.4	3.4
Professional, scientific and technical services	24.8	27.2	1.1	2.4	3.0	2.8	9.7	12.4	11.5
Business, building and other support services	20.4	20.7	1.2	0.3	0.9	0.9	1.5	4.5	4.5
Educational services	37.4	38.0	1.5	0.6	-0.6	0.8	1.6	-1.6	2.2
Health care and social assistance	69.3	68.5	1.7	-0.8	0.0	1.4	-1.2	0.0	2.1
Information, culture and recreation	18.6	19.4	1.2	0.8	-1.2	-1.6	4.3	-5.8	-7.6
Accommodation and food services	35.0	34.2	1.4	-0.8	6.2	9.5	-2.3	22.1	38.5
Other services	19.9	19.6	1.1	-0.3	-1.3	-0.2	-1.5	-6.2	-1.0
Public administration	30.8	30.7	1.1	-0.1	-0.3	0.0	-0.3	-1.0	0.0

1. Average standard error of change in two consecutive months (see "Sampling Errors" in Data Quality for further explanations).

2. Also referred to as Natural resources.

Note(s): Related CANSIM Tables 282-0087, 282-0088.

Table 4-4
Selected labour force characteristics (seasonally adjusted) — New Brunswick

	September 2012	October 2012	S.E. ¹	Change from			Percent change from		
				last month	last December	twelve months ago	last month	last December	twelve months ago
in thousands (except rates)									
Both sexes, 15 years and over									
Population	620.6	620.3	...	-0.3	0.1	0.3	0.0	0.0	0.0
Labour force	393.4	395.2	2.3	1.8	4.1	5.1	0.5	1.0	1.3
Employment	350.0	349.4	2.4	-0.6	-5.1	-3.9	-0.2	-1.4	-1.1
Employment full-time	295.6	293.5	2.8	-2.1	-4.4	-3.5	-0.7	-1.5	-1.2
Unemployment	43.4	45.8	2.1	2.4	9.2	9.0	5.5	25.1	24.5
Participation rate	63.4	63.7	0.4	0.3	0.6	0.8
Unemployment rate	11.0	11.6	0.5	0.6	2.2	2.2
Employment rate	56.4	56.3	0.4	-0.1	-0.9	-0.7
Part-time rate	15.5	16.0	0.6	0.5	0.1	0.1
Both sexes, 15 to 24 years									
Population	90.0	89.8	...	-0.2	-1.1	-1.3	-0.2	-1.2	-1.4
Labour force	56.0	55.9	1.4	-0.1	-3.7	-2.9	-0.2	-6.2	-4.9
Employment	46.2	45.0	1.3	-1.2	-3.4	-3.1	-2.6	-7.0	-6.4
Unemployment	9.8	10.9	1.2	1.1	-0.3	0.2	11.2	-2.7	1.9
Participation rate	62.2	62.2	1.5	0.0	-3.4	-2.3
Unemployment rate	17.5	19.5	1.9	2.0	0.7	1.3
Employment rate	51.3	50.1	1.4	-1.2	-3.1	-2.7
Part-time rate	40.0	40.4	2.6	0.4	-2.9	-2.8
Men, 25 years and over									
Population	254.6	254.5	...	-0.1	0.5	0.8	0.0	0.2	0.3
Labour force	173.8	174.6	1.3	0.8	4.2	5.5	0.5	2.5	3.3
Employment	152.8	153.0	1.4	0.2	-2.1	-1.1	0.1	-1.4	-0.7
Unemployment	21.1	21.6	1.3	0.5	6.3	6.7	2.4	41.2	45.0
Participation rate	68.3	68.6	0.5	0.3	1.5	1.9
Unemployment rate	12.1	12.4	0.7	0.3	3.4	3.6
Employment rate	60.0	60.1	0.5	0.1	-1.0	-0.6
Part-time rate	6.2	5.5	0.7	-0.7	-0.2	-0.1
Women, 25 years and over									
Population	276.0	276.0	...	0.0	0.6	0.8	0.0	0.2	0.3
Labour force	163.5	164.7	1.2	1.2	3.6	2.5	0.7	2.2	1.5
Employment	151.0	151.4	1.2	0.4	0.4	0.3	0.3	0.3	0.2
Unemployment	12.6	13.3	1.1	0.7	3.3	2.1	5.6	33.0	18.8
Participation rate	59.2	59.7	0.4	0.5	1.2	0.8
Unemployment rate	7.7	8.1	0.7	0.4	1.9	1.2
Employment rate	54.7	54.9	0.4	0.2	0.1	0.0
Part-time rate	17.4	19.4	1.0	1.9	1.7	1.7
Industry									
Population	350.0	349.4	2.4	-0.6	-5.1	-3.9	-0.2	-1.4	-1.1
Goods-producing sector									
Agriculture	76.0	73.7	1.9	-2.3	-3.2	-3.6	-3.0	-4.2	-4.7
Forestry, fishing, mining, quarrying, oil and gas extraction ²	4.9	4.6	0.5	-0.3	0.8	-0.1	-6.1	21.1	-2.1
Utilities	11.1	11.8	0.8	0.7	1.7	2.6	6.3	16.8	28.3
Utilities	4.6	4.2	0.5	-0.4	-0.4	-0.2	-8.7	-8.7	-4.5
Construction	23.4	24.7	1.2	1.3	-3.4	-3.2	5.6	-12.1	-11.5
Manufacturing	32.1	28.4	1.2	-3.7	-2.0	-2.8	-11.5	-6.6	-9.0
Services-producing sector									
Trade	273.9	275.7	2.4	1.8	-1.9	-0.2	0.7	-0.7	-0.1
Trade	53.3	54.5	1.6	1.2	-2.1	-1.9	2.3	-3.7	-3.4
Transportation and warehousing	17.7	17.4	0.8	-0.3	1.6	0.2	-1.7	10.1	1.2
Finance, insurance, real estate and leasing	18.1	17.0	0.8	-1.1	0.6	0.5	-6.1	3.7	3.0
Professional, scientific and technical services	15.5	15.9	0.9	0.4	0.3	0.7	2.6	1.9	4.6
Business, building and other support services	16.4	16.9	1.0	0.5	0.8	-1.0	3.0	5.0	-5.6
Educational services	25.6	25.6	1.1	0.0	-0.8	-0.2	0.0	-3.0	-0.8
Health care and social assistance	54.3	55.3	1.3	1.0	3.7	4.2	1.8	7.2	8.2
Information, culture and recreation	13.0	12.7	0.9	-0.3	-0.1	0.0	-2.3	-0.8	0.0
Accommodation and food services	22.5	22.3	1.1	-0.2	-1.5	-0.8	-0.9	-6.3	-3.5
Other services	15.6	15.4	0.8	-0.2	0.5	0.7	-1.3	3.4	4.8
Public administration	21.9	22.7	1.0	0.8	-4.9	-2.6	3.7	-17.8	-10.3

1. Average standard error of change in two consecutive months (see "Sampling Errors" in Data Quality for further explanations).

2. Also referred to as Natural resources.

Note(s): Related CANSIM Tables 282-0087, 282-0088.

Table 4-5
Selected labour force characteristics (seasonally adjusted) — Quebec

	September 2012	October 2012	S.E. ¹	Change from			Percent change from		
				last month	last December	twelve months ago	last month	last December	twelve months ago
in thousands (except rates)									
Both sexes, 15 years and over									
Population	6,650.9	6,655.5	...	4.6	50.3	60.7	0.1	0.8	0.9
Labour force	4,345.4	4,354.1	15.1	8.7	77.3	70.2	0.2	1.8	1.6
Employment	3,999.9	4,020.0	15.3	20.1	114.0	67.3	0.5	2.9	1.7
Employment full-time	3,233.7	3,230.4	19.5	-3.3	65.1	23.0	-0.1	2.1	0.7
Unemployment	345.5	334.2	13.6	-11.3	-36.6	3.1	-3.3	-9.9	0.9
Participation rate	65.3	65.4	0.2	0.1	0.7	0.4
Unemployment rate	8.0	7.7	0.3	-0.3	-1.0	0.0
Employment rate	60.1	60.4	0.2	0.3	1.3	0.5
Part-time rate	19.2	19.6	0.4	0.5	0.7	0.8
Both sexes, 15 to 24 years									
Population	982.9	982.7	...	-0.2	0.5	1.4	0.0	0.1	0.1
Labour force	659.9	652.8	8.7	-7.1	15.8	11.5	-1.1	2.5	1.8
Employment	565.9	567.8	8.5	1.9	21.8	14.4	0.3	4.0	2.6
Unemployment	94.0	85.0	7.8	-9.0	-6.1	-2.8	-9.6	-6.7	-3.2
Participation rate	67.1	66.4	0.9	-0.7	1.5	1.0
Unemployment rate	14.2	13.0	1.1	-1.2	-1.3	-0.7
Employment rate	57.6	57.8	0.9	0.2	2.2	1.4
Part-time rate	50.9	51.6	1.6	0.7	0.3	-0.6
Men, 25 years and over									
Population	2,788.4	2,790.9	...	2.5	26.3	31.3	0.1	1.0	1.1
Labour force	1,960.8	1,973.4	8.3	12.6	37.6	33.9	0.6	1.9	1.7
Employment	1,819.2	1,828.9	8.8	9.7	66.1	30.6	0.5	3.7	1.7
Unemployment	141.6	144.5	8.0	2.9	-28.4	3.3	2.0	-16.4	2.3
Participation rate	70.3	70.7	0.3	0.4	0.7	0.4
Unemployment rate	7.2	7.3	0.4	0.1	-1.6	0.0
Employment rate	65.2	65.5	0.3	0.3	1.7	0.3
Part-time rate	8.0	8.6	0.5	0.6	1.0	0.7
Women, 25 years and over									
Population	2,879.6	2,882.0	...	2.4	23.6	28.0	0.1	0.8	1.0
Labour force	1,724.8	1,727.9	8.5	3.1	23.9	24.8	0.2	1.4	1.5
Employment	1,614.9	1,623.2	8.4	8.3	26.0	22.2	0.5	1.6	1.4
Unemployment	109.9	104.7	7.2	-5.2	-2.1	2.6	-4.7	-2.0	2.5
Participation rate	59.9	60.0	0.3	0.1	0.4	0.3
Unemployment rate	6.4	6.1	0.4	-0.3	-0.2	0.1
Employment rate	56.1	56.3	0.3	0.2	0.4	0.2
Part-time rate	20.6	20.9	0.7	0.3	0.4	1.3
Industry	3,999.9	4,020.0	15.3	20.1	114.0	67.3	0.5	2.9	1.7
Goods-producing sector									
Agriculture	869.4	880.1	12.6	10.7	56.9	41.1	1.2	6.9	4.9
Forestry, fishing, mining, quarrying, oil and gas extraction ²	58.3	58.3	3.0	0.0	2.7	-3.1	0.0	4.9	-5.0
Utilities	34.7	32.0	2.6	-2.7	-5.6	-5.6	-7.8	-14.9	-14.9
Construction	25.1	24.9	2.3	-0.2	-3.2	-5.4	-0.8	-11.4	-17.8
Manufacturing	247.5	255.1	7.9	7.6	27.7	16.4	3.1	12.2	6.9
	503.9	509.8	10.0	5.9	35.3	38.8	1.2	7.4	8.2
Services-producing sector									
Trade	3,130.5	3,139.8	16.9	9.3	57.0	26.0	0.3	1.8	0.8
Transportation and warehousing	634.1	635.5	12.5	1.4	0.4	-13.9	0.2	0.1	-2.1
Finance, insurance, real estate and leasing	165.4	164.6	6.7	-0.8	-14.6	-16.0	-0.5	-8.1	-8.9
Professional, scientific and technical services	228.2	227.5	7.3	-0.7	7.2	5.6	-0.3	3.3	2.5
Business, building and other support services	297.4	295.6	8.7	-1.8	-5.0	-8.8	-0.6	-1.7	-2.9
Educational services	147.0	149.3	6.8	2.3	10.5	7.7	1.6	7.6	5.4
Health care and social assistance	299.5	305.7	8.8	6.2	25.3	21.3	2.1	9.0	7.5
Information, culture and recreation	539.5	543.9	9.5	4.4	52.0	41.2	0.8	10.6	8.2
Accommodation and food services	191.3	190.2	6.9	-1.1	34.8	29.4	-0.6	22.4	18.3
Other services	227.6	218.8	8.7	-8.8	-39.9	-37.7	-3.9	-15.4	-14.7
Public administration	174.8	177.1	6.7	2.3	-7.6	-0.7	1.3	-4.1	-0.4
	225.8	231.7	6.2	5.9	-6.0	-2.0	2.6	-2.5	-0.9

1. Average standard error of change in two consecutive months (see "Sampling Errors" in Data Quality for further explanations).

2. Also referred to as Natural resources.

Note(s): Related CANSIM Tables 282-0087, 282-0088.

Table 4-6
Selected labour force characteristics (seasonally adjusted) — Ontario

	September 2012	October 2012	S.E. ¹	Change from			Percent change from		
				last month	last December	twelve months ago	last month	last December	twelve months ago
in thousands (except rates)									
Both sexes, 15 years and over									
Population	11,100.1	11,109.5	...	9.4	118.0	141.5	0.1	1.1	1.3
Labour force	7,384.3	7,399.8	19.9	15.5	81.7	87.2	0.2	1.1	1.2
Employment	6,798.8	6,788.9	19.0	-9.9	35.4	69.6	-0.1	0.5	1.0
Employment full-time	5,500.7	5,530.6	25.5	29.9	74.4	110.3	0.5	1.4	2.0
Unemployment	585.6	610.9	17.4	25.3	46.3	17.6	4.3	8.2	3.0
Participation rate	66.5	66.6	0.2	0.1	0.0	-0.1
Unemployment rate	7.9	8.3	0.2	0.4	0.6	0.2
Employment rate	61.2	61.1	0.2	-0.1	-0.3	-0.2
Part-time rate	19.1	18.5	0.3	-0.6	-0.7	-0.8
Both sexes, 15 to 24 years									
Population	1,789.6	1,789.3	...	-0.3	3.1	4.3	0.0	0.2	0.2
Labour force	1,078.9	1,087.6	12.2	8.7	12.5	-24.3	0.8	1.2	-2.2
Employment	888.1	894.0	10.7	5.9	-13.5	-34.0	0.7	-1.5	-3.7
Unemployment	190.8	193.6	10.6	2.8	25.9	9.8	1.5	15.4	5.3
Participation rate	60.3	60.8	0.7	0.5	0.6	-1.5
Unemployment rate	17.7	17.8	0.9	0.1	2.2	1.3
Employment rate	49.6	50.0	0.6	0.4	-0.8	-2.0
Part-time rate	51.9	53.2	1.3	1.4	4.1	3.3
Men, 25 years and over									
Population	4,516.6	4,521.3	...	4.7	56.9	67.7	0.1	1.3	1.5
Labour force	3,310.9	3,313.7	10.1	2.8	49.7	63.0	0.1	1.5	1.9
Employment	3,086.2	3,077.3	10.8	-8.9	12.5	34.4	-0.3	0.4	1.1
Unemployment	224.7	236.4	9.8	11.7	37.2	28.6	5.2	18.7	13.8
Participation rate	73.3	73.3	0.2	0.0	0.2	0.3
Unemployment rate	6.8	7.1	0.3	0.3	1.0	0.7
Employment rate	68.3	68.1	0.2	-0.2	-0.5	-0.2
Part-time rate	7.9	7.1	0.4	-0.8	-0.6	-1.1
Women, 25 years and over									
Population	4,793.9	4,798.9	...	5.0	58.0	69.4	0.1	1.2	1.5
Labour force	2,994.6	2,998.6	11.3	4.0	19.6	48.6	0.1	0.7	1.6
Employment	2,824.4	2,817.6	11.0	-6.8	36.3	69.2	-0.2	1.3	2.5
Unemployment	170.1	180.9	9.4	10.8	-16.9	-20.8	6.3	-8.5	-10.3
Participation rate	62.5	62.5	0.2	0.0	-0.3	0.1
Unemployment rate	5.7	6.0	0.3	0.3	-0.6	-0.8
Employment rate	58.9	58.7	0.2	-0.2	0.0	0.6
Part-time rate	21.0	20.0	0.5	-1.1	-2.1	-1.4
Industry	6,798.8	6,788.9	19.0	-9.9	35.4	69.6	-0.1	0.5	1.0
Goods-producing sector	1,404.3	1,409.4	17.5	5.1	-5.5	3.5	0.4	-0.4	0.2
Agriculture	91.3	86.0	4.5	-5.3	-7.2	-5.8	-5.8	-7.7	-6.3
Forestry, fishing, mining, quarrying, oil and gas extraction ²	31.9	35.5	2.5	3.6	-1.2	-0.2	11.3	-3.3	-0.6
Utilities	55.1	51.9	3.4	-3.2	-4.1	-2.0	-5.8	-7.3	-3.7
Construction	423.8	428.0	11.1	4.2	-16.3	-17.5	1.0	-3.7	-3.9
Manufacturing	802.1	808.0	14.1	5.9	23.3	29.0	0.7	3.0	3.7
Services-producing sector	5,394.5	5,379.5	22.9	-15.0	40.8	66.1	-0.3	0.8	1.2
Trade	996.3	991.5	15.4	-4.8	11.8	13.3	-0.5	1.2	1.4
Transportation and warehousing	326.7	323.7	9.6	-3.0	9.0	9.9	-0.9	2.9	3.2
Finance, insurance, real estate and leasing	516.1	513.4	11.9	-2.7	30.4	22.1	-0.5	6.3	4.5
Professional, scientific and technical services	566.7	549.8	13.0	-16.9	-36.5	-17.0	-3.0	-6.2	-3.0
Business, building and other support services	302.1	292.5	10.2	-9.6	0.3	-4.0	-3.2	0.1	-1.3
Educational services	508.6	528.4	11.4	19.8	48.5	51.0	3.9	10.1	10.7
Health care and social assistance	766.0	770.6	13.4	4.6	-0.8	-9.7	0.6	-0.1	-1.2
Information, culture and recreation	333.6	330.9	10.5	-2.7	-12.4	-7.5	-0.8	-3.6	-2.2
Accommodation and food services	423.6	411.9	10.9	-11.7	4.9	0.3	-2.8	1.2	0.1
Other services	279.1	283.6	8.9	4.5	2.0	18.6	1.6	0.7	7.0
Public administration	375.6	383.3	9.1	7.7	-16.3	-10.9	2.1	-4.1	-2.8

1. Average standard error of change in two consecutive months (see "Sampling Errors" in Data Quality for further explanations).

2. Also referred to as Natural resources.

Note(s): Related CANSIM Tables 282-0087, 282-0088.

Table 4-7
Selected labour force characteristics (seasonally adjusted) — Manitoba

	September 2012	October 2012	S.E. ¹	Change from			Percent change from		
				last month	last December	twelve months ago	last month	last December	twelve months ago
in thousands (except rates)									
Both sexes, 15 years and over									
Population	964.8	965.4	...	0.6	7.4	8.7	0.1	0.8	0.9
Labour force	668.6	664.7	2.7	-3.9	2.2	4.3	-0.6	0.3	0.7
Employment	635.0	627.7	2.7	-7.3	1.2	1.7	-1.1	0.2	0.3
Employment full-time	513.7	511.3	3.7	-2.4	3.2	13.6	-0.5	0.6	2.7
Unemployment	33.6	37.0	2.2	3.4	1.0	2.6	10.1	2.8	7.6
Participation rate	69.3	68.9	0.3	-0.4	-0.3	-0.1
Unemployment rate	5.0	5.6	0.3	0.6	0.2	0.4
Employment rate	65.8	65.0	0.3	-0.8	-0.4	-0.4
Part-time rate	19.1	18.6	0.5	-0.5	-0.4	-2.0
Both sexes, 15 to 24 years									
Population	164.9	164.8	...	-0.1	-0.1	-0.1	-0.1	-0.1	-0.1
Labour force	114.5	112.7	1.6	-1.8	-0.7	-2.3	-1.6	-0.6	-2.0
Employment	103.5	100.1	1.5	-3.4	-0.7	-1.7	-3.3	-0.7	-1.7
Unemployment	11.0	12.6	1.4	1.6	0.0	-0.6	14.5	0.0	-4.5
Participation rate	69.4	68.4	1.0	-1.0	-0.4	-1.3
Unemployment rate	9.6	11.2	1.2	1.6	0.1	-0.3
Employment rate	62.8	60.7	0.9	-2.1	-0.4	-1.0
Part-time rate	44.1	39.5	1.8	-4.6	-1.6	-4.8
Men, 25 years and over									
Population	392.0	392.4	...	0.4	3.7	4.4	0.1	1.0	1.1
Labour force	299.0	298.1	1.3	-0.9	2.4	6.5	-0.3	0.8	2.2
Employment	287.1	285.3	1.5	-1.8	1.1	3.0	-0.6	0.4	1.1
Unemployment	11.9	12.8	1.1	0.9	1.2	3.6	7.6	10.3	39.1
Participation rate	76.3	76.0	0.3	-0.3	-0.1	0.8
Unemployment rate	4.0	4.3	0.4	0.3	0.4	1.1
Employment rate	73.2	72.7	0.4	-0.5	-0.4	-0.1
Part-time rate	7.1	7.3	0.6	0.2	0.2	-0.8
Women, 25 years and over									
Population	407.9	408.3	...	0.4	3.9	4.5	0.1	1.0	1.1
Labour force	255.1	253.9	1.5	-1.2	0.6	0.1	-0.5	0.2	0.0
Employment	244.4	242.3	1.6	-2.1	0.7	0.4	-0.9	0.3	0.2
Unemployment	10.7	11.6	1.2	0.9	-0.1	-0.3	8.4	-0.9	-2.5
Participation rate	62.5	62.2	0.4	-0.3	-0.4	-0.7
Unemployment rate	4.2	4.6	0.4	0.4	0.0	-0.1
Employment rate	59.9	59.3	0.4	-0.6	-0.4	-0.6
Part-time rate	22.6	23.2	0.9	0.5	-0.4	-1.9
Industry									
Population	635.0	627.7	2.7	-7.3	1.2	1.7	-1.1	0.2	0.3
Goods-producing sector									
Agriculture	143.4	142.7	2.4	-0.7	2.2	2.1	-0.5	1.6	1.5
Forestry, fishing, mining, quarrying, oil and gas extraction ²	20.9	21.0	1.0	0.1	-0.2	-1.1	0.5	-0.9	-5.0
Utilities	6.3	7.2	0.6	0.9	0.7	0.0	14.3	10.8	0.0
Construction	7.9	7.7	0.6	-0.2	-0.5	-0.6	-2.5	-6.1	-7.2
Manufacturing	45.6	44.1	1.5	-1.5	1.1	-0.3	-3.3	2.6	-0.7
Manufacturing	62.7	62.8	1.7	0.1	1.3	4.2	0.2	2.1	7.2
Services-producing sector									
Trade	491.6	485.1	3.2	-6.5	-0.9	-0.3	-1.3	-0.2	-0.1
Transportation and warehousing	94.4	93.6	2.1	-0.8	-0.1	-0.5	-0.8	-0.1	-0.5
Finance, insurance, real estate and leasing	37.8	37.3	1.3	-0.5	1.1	2.0	-1.3	3.0	5.7
Professional, scientific and technical services	34.5	34.9	1.3	0.4	-1.8	-2.0	1.2	-4.9	-5.4
Business, building and other support services	30.4	30.5	1.2	0.1	4.5	3.6	0.3	17.3	13.4
Educational services	21.0	18.7	1.2	-2.3	0.4	0.6	-11.0	2.2	3.3
Health care and social assistance	48.8	46.2	1.5	-2.6	-0.6	-0.7	-5.3	-1.3	-1.5
Information, culture and recreation	93.6	93.2	1.9	-0.4	-2.5	-4.0	-0.4	-2.6	-4.1
Accommodation and food services	26.3	25.9	1.2	-0.4	2.5	1.3	-1.5	10.7	5.3
Other services	39.3	39.2	1.6	-0.1	-5.1	-2.9	-0.3	-11.5	-6.9
Public administration	28.3	28.7	1.1	0.4	2.6	2.8	1.4	10.0	10.8
Public administration	37.2	36.7	1.3	-0.5	-2.1	-0.7	-1.3	-5.4	-1.9

1. Average standard error of change in two consecutive months (see "Sampling Errors" in Data Quality for further explanations).

2. Also referred to as Natural resources.

Note(s): Related CANSIM Tables 282-0087, 282-0088.

Table 4-8
Selected labour force characteristics (seasonally adjusted) — Saskatchewan

	September 2012	October 2012	S.E. ¹	Change from			Percent change from		
				last month	last December	twelve months ago	last month	last December	twelve months ago
Both sexes, 15 years and over									
Population	813.9	815.1	...	1.2	10.8	12.2	0.1	1.3	1.5
Labour force	564.8	567.3	2.5	2.5	10.1	15.9	0.4	1.8	2.9
Employment	538.4	540.7	2.5	2.3	12.7	12.2	0.4	2.4	2.3
Employment full-time	448.6	449.5	3.4	0.9	14.2	13.8	0.2	3.3	3.2
Unemployment	26.4	26.6	1.9	0.2	-2.6	3.7	0.8	-8.9	16.2
Participation rate	69.4	69.6	0.3	0.2	0.3	0.9
Unemployment rate	4.7	4.7	0.3	0.0	-0.5	0.5
Employment rate	66.2	66.3	0.3	0.1	0.7	0.5
Part-time rate	16.7	16.9	0.6	0.2	-0.7	-0.7
Both sexes, 15 to 24 years									
Population	136.6	136.6	...	0.0	0.1	0.1	0.0	0.1	0.1
Labour force	94.2	93.5	1.5	-0.7	-2.4	0.5	-0.7	-2.5	0.5
Employment	84.5	84.4	1.5	-0.1	-1.4	-1.2	-0.1	-1.6	-1.4
Unemployment	9.7	9.0	1.2	-0.7	-1.2	1.6	-7.2	-11.8	21.6
Participation rate	69.0	68.4	1.1	-0.6	-1.9	0.3
Unemployment rate	10.3	9.6	1.2	-0.7	-1.0	1.6
Employment rate	61.9	61.8	1.1	-0.1	-1.1	-0.9
Part-time rate	35.6	35.3	1.9	-0.3	0.0	-3.0
Men, 25 years and over									
Population	334.1	334.7	...	0.6	6.1	6.9	0.2	1.9	2.1
Labour force	255.5	257.1	1.2	1.6	8.1	10.0	0.6	3.3	4.0
Employment	246.5	247.4	1.3	0.9	6.7	7.3	0.4	2.8	3.0
Unemployment	9.0	9.7	1.0	0.7	1.5	2.8	7.8	18.3	40.6
Participation rate	76.5	76.8	0.4	0.3	1.0	1.4
Unemployment rate	3.5	3.8	0.4	0.3	0.5	1.0
Employment rate	73.8	73.9	0.4	0.1	0.6	0.7
Part-time rate	6.0	6.4	0.6	0.4	-0.6	0.0
Women, 25 years and over									
Population	343.3	343.8	...	0.5	4.6	5.2	0.1	1.4	1.5
Labour force	215.0	216.7	1.5	1.7	4.4	5.4	0.8	2.1	2.6
Employment	207.3	208.9	1.4	1.6	7.4	6.1	0.8	3.7	3.0
Unemployment	7.7	7.8	1.0	0.1	-3.0	-0.7	1.3	-27.8	-8.2
Participation rate	62.6	63.0	0.4	0.4	0.4	0.6
Unemployment rate	3.6	3.6	0.5	0.0	-1.5	-0.4
Employment rate	60.4	60.8	0.4	0.4	1.4	0.9
Part-time rate	21.6	21.8	1.0	0.2	-0.8	-0.2
Industry									
Industry	538.4	540.7	2.5	2.3	12.7	12.2	0.4	2.4	2.3
Goods-producing sector									
Goods-producing sector	145.0	145.8	2.4	0.8	10.9	11.3	0.6	8.1	8.4
Agriculture	40.6	41.1	1.5	0.5	3.0	2.8	1.2	7.9	7.3
Forestry, fishing, mining, quarrying, oil and gas extraction ²	25.9	26.0	1.1	0.1	2.9	1.0	0.4	12.6	4.0
Utilities	6.1	5.9	0.4	-0.2	0.6	0.8	-3.3	11.3	15.7
Construction	45.9	45.4	1.5	-0.5	3.0	5.7	-1.1	7.1	14.4
Manufacturing	26.5	27.5	1.1	1.0	1.5	1.2	3.8	5.8	4.6
Services-producing sector									
Services-producing sector	393.4	394.9	3.0	1.5	1.8	0.8	0.4	0.5	0.2
Trade	83.3	82.0	1.9	-1.3	-2.2	-4.3	-1.6	-2.6	-5.0
Transportation and warehousing	24.6	26.0	1.1	1.4	0.2	-0.5	5.7	0.8	-1.9
Finance, insurance, real estate and leasing	30.8	30.9	1.1	0.1	0.0	-0.2	0.3	0.0	-0.6
Professional, scientific and technical services	25.5	25.5	1.1	0.0	-0.7	-2.1	0.0	-2.7	-7.6
Business, building and other support services	13.2	14.4	0.9	1.2	2.1	2.4	9.1	17.1	20.0
Educational services	42.8	42.4	1.4	-0.4	3.5	4.9	-0.9	9.0	13.1
Health care and social assistance	69.0	69.6	1.6	0.6	-0.9	0.4	0.9	-1.3	0.6
Information, culture and recreation	19.2	17.7	1.0	-1.5	0.3	-0.3	-7.8	1.7	-1.7
Accommodation and food services	27.9	29.3	1.5	1.4	-3.7	-1.1	5.0	-11.2	-3.6
Other services	25.8	25.3	1.1	-0.5	-0.9	-0.4	-1.9	-3.4	-1.6
Public administration	31.4	31.8	1.1	0.4	4.2	2.2	1.3	15.2	7.4

1. Average standard error of change in two consecutive months (see "Sampling Errors" in Data Quality for further explanations).

2. Also referred to as Natural resources.

Note(s): Related CANSIM Tables 282-0087, 282-0088.

Table 4-9
Selected labour force characteristics (seasonally adjusted) — Alberta

	September 2012	October 2012	S.E. ¹	Change from			Percent change from		
				last month	last December	twelve months ago	last month	last December	twelve months ago
in thousands (except rates)									
Both sexes, 15 years and over									
Population	3,087.4	3,095.6	...	8.2	66.8	73.5	0.3	2.2	2.4
Labour force	2,255.6	2,261.9	8.6	6.3	19.1	24.0	0.3	0.9	1.1
Employment	2,156.0	2,161.0	9.1	5.0	27.8	36.5	0.2	1.3	1.7
Employment full-time	1,808.6	1,809.8	11.8	1.2	32.7	43.4	0.1	1.8	2.5
Unemployment	99.6	101.0	6.8	1.4	-8.7	-12.3	1.4	-7.9	-10.9
Participation rate	73.1	73.1	0.3	0.0	-0.9	-1.0
Unemployment rate	4.4	4.5	0.3	0.1	-0.4	-0.6
Employment rate	69.8	69.8	0.3	0.0	-0.6	-0.5
Part-time rate	16.1	16.3	0.5	0.1	-0.4	-0.6
Both sexes, 15 to 24 years									
Population	507.7	508.5	...	0.8	1.8	0.7	0.2	0.4	0.1
Labour force	337.8	338.2	5.1	0.4	-26.0	-22.3	0.1	-7.1	-6.2
Employment	304.0	306.4	5.1	2.4	-20.7	-19.4	0.8	-6.3	-6.0
Unemployment	33.8	31.8	4.1	-2.0	-5.4	-2.9	-5.9	-14.5	-8.4
Participation rate	66.5	66.5	1.0	0.0	-5.4	-4.5
Unemployment rate	10.0	9.4	1.1	-0.6	-0.8	-0.2
Employment rate	59.9	60.3	1.0	0.4	-4.3	-3.9
Part-time rate	34.8	35.3	1.7	0.5	0.4	-0.3
Men, 25 years and over									
Population	1,309.1	1,313.1	...	4.0	31.3	34.9	0.3	2.4	2.7
Labour force	1,067.0	1,070.7	4.4	3.7	27.8	30.6	0.3	2.7	2.9
Employment	1,033.9	1,033.5	4.9	-0.4	29.9	35.7	0.0	3.0	3.6
Unemployment	33.1	37.2	4.1	4.1	-2.1	-5.0	12.4	-5.3	-11.8
Participation rate	81.5	81.5	0.3	0.0	0.1	0.1
Unemployment rate	3.1	3.5	0.4	0.4	-0.3	-0.6
Employment rate	79.0	78.7	0.4	-0.3	0.4	0.6
Part-time rate	5.8	5.6	0.5	-0.2	-0.3	-0.3
Women, 25 years and over									
Population	1,270.6	1,274.1	...	3.5	33.8	38.0	0.3	2.7	3.1
Labour force	850.8	853.1	5.0	2.3	17.4	15.8	0.3	2.1	1.9
Employment	818.1	821.0	5.2	2.9	18.5	20.1	0.4	2.3	2.5
Unemployment	32.7	32.0	3.6	-0.7	-1.2	-4.4	-2.1	-3.6	-12.1
Participation rate	67.0	67.0	0.4	0.0	-0.4	-0.7
Unemployment rate	3.8	3.8	0.4	0.0	-0.2	-0.5
Employment rate	64.4	64.4	0.4	0.0	-0.3	-0.4
Part-time rate	22.2	22.5	0.9	0.3	-0.2	-0.3
Industry									
	2,156.0	2,161.0	9.1	5.0	27.8	36.5	0.2	1.3	1.7
Goods-producing sector									
Agriculture	633.7	629.3	8.9	-4.4	37.9	45.3	-0.7	6.4	7.8
Forestry, fishing, mining, quarrying, oil and gas extraction ²	58.4	53.5	3.1	-4.9	-2.0	-3.7	-8.4	-3.6	-6.5
Utilities	179.2	177.2	4.9	-2.0	10.6	16.6	-1.1	6.4	10.3
Construction	23.0	22.3	1.7	-0.7	7.7	9.2	-3.0	52.7	70.2
Manufacturing	233.1	228.0	6.4	-5.1	9.8	17.9	-2.2	4.5	8.5
	140.0	148.3	5.1	8.3	11.9	5.3	5.9	8.7	3.7
Services-producing sector									
Trade	1,522.3	1,531.7	10.7	9.4	-10.1	-8.9	0.6	-0.7	-0.6
Transportation and warehousing	313.7	319.5	7.8	5.8	-15.9	-14.9	1.8	-4.7	-4.5
Finance, insurance, real estate and leasing	123.9	112.2	4.5	-11.7	3.1	-1.0	-9.4	2.8	-0.9
Professional, scientific and technical services	110.3	109.1	3.9	-1.2	9.0	6.6	-1.1	9.0	6.4
Business, building and other support services	155.7	173.1	5.4	17.4	8.9	13.6	11.2	5.4	8.5
Educational services	70.2	69.4	3.8	-0.8	-3.2	-5.1	-1.1	-4.4	-6.8
Health care and social assistance	133.7	132.1	4.6	-1.6	5.2	4.8	-1.2	4.1	3.8
Information, culture and recreation	219.5	222.8	5.8	3.3	-10.4	-8.5	1.5	-4.5	-3.7
Accommodation and food services	66.7	69.3	4.1	2.6	-9.2	-11.2	3.9	-11.7	-13.9
Other services	131.8	130.0	5.5	-1.8	4.3	1.8	-1.4	3.4	1.4
Public administration	107.1	107.2	4.8	0.1	-2.9	3.0	0.1	-2.6	2.9
	89.8	86.9	3.6	-2.9	1.0	1.8	-3.2	1.2	2.1

1. Average standard error of change in two consecutive months (see "Sampling Errors" in Data Quality for further explanations).

2. Also referred to as Natural resources.

Note(s): Related CANSIM Tables 282-0087, 282-0088.

Table 4-10
Selected labour force characteristics (seasonally adjusted) — British Columbia

	September 2012	October 2012	S.E. ¹	Change from			Percent change from		
				last month	last December	twelve months ago	last month	last December	twelve months ago
in thousands (except rates)									
Both sexes, 15 years and over									
Population	3,822.3	3,824.7	...	2.4	29.9	34.4	0.1	0.8	0.9
Labour force	2,503.4	2,484.8	10.5	-18.6	19.3	36.3	-0.7	0.8	1.5
Employment	2,328.3	2,317.4	10.4	-10.9	23.5	29.5	-0.5	1.0	1.3
Employment full-time	1,828.9	1,812.7	14.4	-16.2	26.6	32.4	-0.9	1.5	1.8
Unemployment	175.1	167.4	8.6	-7.7	-4.2	6.8	-4.4	-2.4	4.2
Participation rate	65.5	65.0	0.3	-0.5	0.0	0.4
Unemployment rate	7.0	6.7	0.3	-0.3	-0.3	0.1
Employment rate	60.9	60.6	0.3	-0.3	0.2	0.2
Part-time rate	21.4	21.8	0.6	0.3	-0.4	-0.4
Both sexes, 15 to 24 years									
Population	589.4	589.0	...	-0.4	-1.5	-2.0	-0.1	-0.3	-0.3
Labour force	375.1	365.1	6.0	-10.0	-9.9	-8.4	-2.7	-2.6	-2.2
Employment	322.4	316.3	5.5	-6.1	-7.1	-9.9	-1.9	-2.2	-3.0
Unemployment	52.6	48.8	5.1	-3.8	-2.8	1.4	-7.2	-5.4	3.0
Participation rate	63.6	62.0	1.0	-1.6	-1.5	-1.2
Unemployment rate	14.0	13.4	1.3	-0.6	-0.4	0.7
Employment rate	54.7	53.7	0.9	-1.0	-1.1	-1.5
Part-time rate	46.9	47.2	2.0	0.3	-1.8	-2.1
Men, 25 years and over									
Population	1,577.2	1,578.6	...	1.4	15.6	18.0	0.1	1.0	1.2
Labour force	1,116.5	1,107.8	5.4	-8.7	3.4	11.8	-0.8	0.3	1.1
Employment	1,049.1	1,044.2	5.7	-4.9	10.5	16.8	-0.5	1.0	1.6
Unemployment	67.4	63.5	4.8	-3.9	-7.2	-5.0	-5.8	-10.2	-7.3
Participation rate	70.8	70.2	0.3	-0.6	-0.5	0.0
Unemployment rate	6.0	5.7	0.4	-0.3	-0.7	-0.6
Employment rate	66.5	66.1	0.4	-0.4	0.0	0.3
Part-time rate	8.5	9.2	0.6	0.7	-0.8	-1.4
Women, 25 years and over									
Population	1,655.7	1,657.0	...	1.3	15.8	18.3	0.1	1.0	1.1
Labour force	1,011.8	1,012.0	6.0	0.2	25.9	33.0	0.0	2.6	3.4
Employment	956.8	956.9	5.9	0.1	20.1	22.6	0.0	2.1	2.4
Unemployment	55.0	55.0	4.6	0.0	5.8	10.3	0.0	11.8	23.0
Participation rate	61.1	61.1	0.4	0.0	1.0	1.4
Unemployment rate	5.4	5.4	0.5	0.0	0.4	0.8
Employment rate	57.8	57.7	0.4	-0.1	0.6	0.7
Part-time rate	27.1	27.1	0.9	0.0	0.9	1.6
Industry	2,328.3	2,317.4	10.4	-10.9	23.5	29.5	-0.5	1.0	1.3
Goods-producing sector	465.6	453.6	8.9	-12.0	-3.0	12.5	-2.6	-0.7	2.8
Agriculture	29.5	27.9	2.3	-1.6	1.2	3.7	-5.4	4.5	15.3
Forestry, fishing, mining, quarrying, oil and gas extraction ²	48.1	44.8	2.7	-3.3	1.3	5.7	-6.9	3.0	14.6
Utilities	19.0	17.1	1.7	-1.9	6.6	6.4	-10.0	62.9	59.8
Construction	188.0	191.2	6.7	3.2	-15.9	-15.9	1.7	-7.7	-7.7
Manufacturing	181.0	172.7	5.9	-8.3	3.9	12.7	-4.6	2.3	7.9
Services-producing sector	1,862.7	1,863.8	12.1	1.1	26.5	17.1	0.1	1.4	0.9
Trade	361.6	356.0	8.3	-5.6	-1.9	-3.9	-1.5	-0.5	-1.1
Transportation and warehousing	135.6	134.3	5.0	-1.3	6.8	9.5	-1.0	5.3	7.6
Finance, insurance, real estate and leasing	132.2	142.5	5.3	10.3	9.7	4.8	7.8	7.3	3.5
Professional, scientific and technical services	174.6	169.6	6.2	-5.0	-24.4	-15.6	-2.9	-12.6	-8.4
Business, building and other support services	101.4	103.3	4.9	1.9	21.0	5.5	1.9	25.5	5.6
Educational services	177.7	173.4	5.7	-4.3	11.1	1.3	-2.4	6.8	0.8
Health care and social assistance	276.3	269.8	6.7	-6.5	-9.0	-0.6	-2.4	-3.2	-0.2
Information, culture and recreation	113.0	118.0	5.1	5.0	4.3	7.5	4.4	3.8	6.8
Accommodation and food services	174.6	175.2	6.2	0.6	-3.5	-4.8	0.3	-2.0	-2.7
Other services	106.4	114.4	4.8	8.0	10.1	13.1	7.5	9.7	12.9
Public administration	109.3	107.3	3.9	-2.0	2.2	0.3	-1.8	2.1	0.3

1. Average standard error of change in two consecutive months (see "Sampling Errors" in Data Quality for further explanations).

2. Also referred to as Natural resources.

Note(s): Related CANSIM Tables 282-0087, 282-0088.

Table 5-1
Labour force characteristics by census metropolitan area (seasonally adjusted) — 3 month moving average

	September 2012	October 2012	S.E. ¹	Change from			Percent change from		
				last month	last December	twelve months ago	last month	last December	twelve months ago
in thousands (except rates)									
St. John's, Newfoundland and Labrador									
Population	162.9	163.2	...	0.3	1.7	1.9	0.2	1.1	1.2
Labour force	117.3	117.8	0.7	0.5	2.7	4.8	0.4	2.3	4.2
Employment	109.0	109.5	0.8	0.5	3.0	4.6	0.5	2.8	4.4
Unemployment	8.3	8.3	0.4	0.0	-0.3	0.2	0.0	-3.5	2.5
Participation rate	72.0	72.2	0.5	0.2	0.9	2.1
Unemployment rate	7.1	7.0	0.4	-0.1	-0.5	-0.2
Employment rate	66.9	67.1	0.5	0.2	1.2	2.1
Halifax, Nova Scotia									
Population	344.0	344.3	...	0.3	3.5	4.2	0.1	1.0	1.2
Labour force	240.2	240.4	1.1	0.2	2.9	1.2	0.1	1.2	0.5
Employment	226.5	227.4	1.2	0.9	2.8	2.2	0.4	1.2	1.0
Unemployment	13.7	13.1	0.6	-0.6	0.2	-0.9	-4.4	1.6	-6.4
Participation rate	69.8	69.8	0.3	0.0	0.1	-0.5
Unemployment rate	5.7	5.4	0.3	-0.3	0.0	-0.5
Employment rate	65.8	66.0	0.3	0.2	0.1	-0.2
Moncton, New Brunswick									
Population	117.3	117.4	...	0.1	1.7	2.0	0.1	1.5	1.7
Labour force	79.6	79.4	0.7	-0.2	-0.3	1.7	-0.3	-0.4	2.2
Employment	73.8	73.8	0.8	0.0	0.1	1.4	0.0	0.1	1.9
Unemployment	5.7	5.6	0.4	-0.1	-0.4	0.3	-1.8	-6.7	5.7
Participation rate	67.9	67.6	0.6	-0.3	-1.3	0.3
Unemployment rate	7.2	7.1	0.5	-0.1	-0.4	0.3
Employment rate	62.9	62.9	0.7	0.0	-0.8	0.2
Saint John, New Brunswick									
Population	106.7	106.7	...	0.0	0.3	0.4	0.0	0.3	0.4
Labour force	72.6	71.3	0.8	-1.3	4.1	1.2	-1.8	6.1	1.7
Employment	66.0	64.9	0.7	-1.1	2.7	-0.9	-1.7	4.3	-1.4
Unemployment	6.6	6.4	0.4	-0.2	1.3	2.1	-3.0	25.5	48.8
Participation rate	68.0	66.8	0.7	-1.2	3.6	0.9
Unemployment rate	9.1	9.0	0.5	-0.1	1.4	2.9
Employment rate	61.9	60.8	0.7	-1.1	2.3	-1.1
Saguenay, Quebec									
Population	126.7	126.7	...	0.0	0.0	0.1	0.0	0.0	0.1
Labour force	79.0	78.1	0.9	-0.9	5.5	7.3	-1.1	7.6	10.3
Employment	73.3	71.8	0.9	-1.5	3.5	5.6	-2.0	5.1	8.5
Unemployment	5.7	6.4	0.4	0.7	2.2	1.8	12.3	52.4	39.1
Participation rate	62.4	61.6	0.7	-0.8	4.3	5.7
Unemployment rate	7.2	8.2	0.5	1.0	2.4	1.7
Employment rate	57.9	56.7	0.7	-1.2	2.8	4.4
Québec, Quebec									
Population	643.5	644.0	...	0.5	4.6	5.9	0.1	0.7	0.9
Labour force	439.1	439.8	3.4	0.7	-9.4	-12.3	0.2	-2.1	-2.7
Employment	415.3	416.2	3.6	0.9	-11.9	-15.0	0.2	-2.8	-3.5
Unemployment	23.9	23.6	1.5	-0.3	2.5	2.7	-1.3	11.8	12.9
Participation rate	68.2	68.3	0.5	0.1	-2.0	-2.6
Unemployment rate	5.4	5.4	0.3	0.0	0.7	0.8
Employment rate	64.5	64.6	0.6	0.1	-2.4	-3.0
Sherbrooke, Quebec									
Population	167.3	167.4	...	0.1	1.7	2.0	0.1	1.0	1.2
Labour force	105.7	106.4	1.2	0.7	-0.1	1.4	0.7	-0.1	1.3
Employment	96.6	97.5	1.2	0.9	-1.9	-0.3	0.9	-1.9	-0.3
Unemployment	9.0	8.9	0.5	-0.1	1.8	1.7	-1.1	25.4	23.6
Participation rate	63.2	63.6	0.7	0.4	-0.7	0.1
Unemployment rate	8.5	8.4	0.5	-0.1	1.7	1.5
Employment rate	57.7	58.2	0.7	0.5	-1.8	-0.9

See notes at the end of the table.

Table 5-1 – continued

Labour force characteristics by census metropolitan area (seasonally adjusted) — 3 month moving average

	September 2012	October 2012	S.E. ¹	Change from			Percent change from		
				last month	last December	twelve months ago	last month	last December	twelve months ago
in thousands (except rates)									
Trois-Rivières, Quebec									
Population	125.9	126.0	...	0.1	0.9	1.0	0.1	0.7	0.8
Labour force	72.9	71.8	0.8	-1.1	-7.1	-4.5	-1.5	-9.0	-5.9
Employment	67.3	66.0	0.8	-1.3	-5.8	-3.5	-1.9	-8.1	-5.0
Unemployment	5.7	5.7	0.4	0.0	-1.5	-1.1	0.0	-20.8	-16.2
Participation rate	57.9	57.0	0.6	-0.9	-6.1	-4.0
Unemployment rate	7.8	7.9	0.5	0.1	-1.2	-1.0
Employment rate	53.5	52.4	0.6	-1.1	-5.0	-3.2
Montréal, Quebec									
Population	3,261.4	3,264.1	...	2.7	28.7	33.7	0.1	0.9	1.0
Labour force	2,161.7	2,173.1	7.6	11.4	73.8	53.4	0.5	3.5	2.5
Employment	1,984.6	1,994.9	7.9	10.3	80.8	49.4	0.5	4.2	2.5
Unemployment	177.1	178.3	4.9	1.2	-7.0	4.1	0.7	-3.8	2.4
Participation rate	66.3	66.6	0.2	0.3	1.7	1.0
Unemployment rate	8.2	8.2	0.2	0.0	-0.6	0.0
Employment rate	60.9	61.1	0.2	0.2	1.9	0.9
Ottawa-Gatineau, Ontario/Quebec									
Population	1,054.0	1,055.1	...	1.1	14.0	17.1	0.1	1.3	1.6
Labour force	755.1	758.4	3.8	3.3	15.1	25.0	0.4	2.0	3.4
Employment	706.1	709.5	3.9	3.4	12.9	19.5	0.5	1.9	2.8
Unemployment	49.0	48.9	1.7	-0.1	2.2	5.6	-0.2	4.7	12.9
Participation rate	71.6	71.9	0.4	0.3	0.5	1.2
Unemployment rate	6.5	6.4	0.2	-0.1	0.1	0.5
Employment rate	67.0	67.2	0.4	0.2	0.3	0.7
Ottawa-Gatineau, Quebec part, Ontario/Quebec									
Population	262.8	263.0	...	0.2	2.9	3.6	0.1	1.1	1.4
Labour force	182.6	182.6	1.2	0.0	-5.5	-2.6	0.0	-2.9	-1.4
Employment	171.5	171.6	1.3	0.1	-3.2	-0.7	0.1	-1.8	-0.4
Unemployment	11.2	11.0	0.6	-0.2	-2.3	-1.8	-1.8	-17.3	-14.1
Participation rate	69.5	69.4	0.5	-0.1	-2.9	-2.0
Unemployment rate	6.1	6.0	0.3	-0.1	-1.1	-0.9
Employment rate	65.3	65.2	0.5	-0.1	-2.0	-1.2
Ottawa-Gatineau, Ontario part, Ontario/Quebec									
Population	791.2	792.1	...	0.9	11.1	13.5	0.1	1.4	1.7
Labour force	572.4	575.8	3.6	3.4	20.6	27.6	0.6	3.7	5.0
Employment	534.6	537.9	3.6	3.3	16.1	20.2	0.6	3.1	3.9
Unemployment	37.8	37.9	1.6	0.1	4.5	7.4	0.3	13.5	24.3
Participation rate	72.3	72.7	0.5	0.4	1.6	2.3
Unemployment rate	6.6	6.6	0.3	0.0	0.6	1.0
Employment rate	67.6	67.9	0.5	0.3	1.1	1.4
Kingston, Ontario									
Population	134.2	134.2	...	0.0	1.4	1.6	0.0	1.1	1.2
Labour force	84.6	84.4	0.8	-0.2	-1.1	-0.6	-0.2	-1.3	-0.7
Employment	79.1	78.7	0.8	-0.4	-1.4	-1.4	-0.5	-1.7	-1.7
Unemployment	5.5	5.7	0.3	0.2	0.3	0.8	3.6	5.6	16.3
Participation rate	63.0	62.9	0.6	-0.1	-1.5	-1.2
Unemployment rate	6.5	6.8	0.4	0.3	0.5	1.0
Employment rate	58.9	58.6	0.6	-0.3	-1.7	-1.8
Peterborough, Ontario									
Population	103.1	103.1	...	0.0	0.5	0.6	0.0	0.5	0.6
Labour force	60.4	57.3	1.0	-3.1	-9.4	-3.3	-5.1	-14.1	-5.4
Employment	56.6	53.8	1.0	-2.8	-7.9	-0.7	-4.9	-12.8	-1.3
Unemployment	3.8	3.5	0.5	-0.3	-1.4	-2.6	-7.9	-28.6	-42.6
Participation rate	58.6	55.6	1.0	-3.0	-9.4	-3.5
Unemployment rate	6.3	6.1	0.8	-0.2	-1.2	-4.0
Employment rate	54.9	52.2	1.0	-2.7	-7.9	-1.0

See notes at the end of the table.

Table 5-1 – continued

Labour force characteristics by census metropolitan area (seasonally adjusted) — 3 month moving average

	September 2012	October 2012	S.E. ¹	Change from			Percent change from		
				last month	last December	twelve months ago	last month	last December	twelve months ago
in thousands (except rates)									
Oshawa, Ontario									
Population	310.3	310.7	...	0.4	4.4	5.3	0.1	1.4	1.7
Labour force	206.6	207.2	1.5	0.6	-5.7	-5.7	0.3	-2.7	-2.7
Employment	188.1	188.4	1.5	0.3	-8.9	-9.4	0.2	-4.5	-4.8
Unemployment	18.6	18.9	0.9	0.3	3.4	3.8	1.6	21.9	25.2
Participation rate	66.6	66.7	0.5	0.1	-2.8	-3.0
Unemployment rate	9.0	9.1	0.4	0.1	1.8	2.0
Employment rate	60.6	60.6	0.5	0.0	-3.8	-4.2
Toronto, Ontario									
Population	4,896.7	4,903.8	...	7.1	83.4	99.2	0.1	1.7	2.1
Labour force	3,311.0	3,332.0	10.4	21.0	109.8	103.7	0.6	3.4	3.2
Employment	3,028.8	3,044.7	10.5	15.9	98.6	85.8	0.5	3.3	2.9
Unemployment	282.1	287.3	6.5	5.2	11.2	17.9	1.8	4.1	6.6
Participation rate	67.6	67.9	0.2	0.3	1.1	0.7
Unemployment rate	8.5	8.6	0.2	0.1	0.0	0.3
Employment rate	61.9	62.1	0.2	0.2	1.0	0.5
Hamilton, Ontario									
Population	625.9	626.3	...	0.4	5.5	6.5	0.1	0.9	1.0
Labour force	405.8	405.4	3.1	-0.4	-11.9	0.0	-0.1	-2.9	0.0
Employment	378.1	380.0	3.1	1.9	-10.8	1.6	0.5	-2.8	0.4
Unemployment	27.7	25.4	1.4	-2.3	-1.1	-1.6	-8.3	-4.2	-5.9
Participation rate	64.8	64.7	0.5	-0.1	-2.5	-0.7
Unemployment rate	6.8	6.3	0.3	-0.5	-0.1	-0.4
Employment rate	60.4	60.7	0.5	0.3	-2.3	-0.4
St. Catharines-Niagara, Ontario									
Population	340.0	340.0	...	0.0	0.9	1.1	0.0	0.3	0.3
Labour force	224.1	223.9	1.7	-0.2	12.5	8.8	-0.1	5.9	4.1
Employment	205.0	204.5	1.7	-0.5	8.7	6.6	-0.2	4.4	3.3
Unemployment	19.1	19.4	0.8	0.3	3.7	2.2	1.6	23.6	12.8
Participation rate	65.9	65.9	0.5	0.0	3.6	2.4
Unemployment rate	8.5	8.7	0.4	0.2	1.3	0.7
Employment rate	60.3	60.1	0.5	-0.2	2.4	1.7
Kitchener-Cambridge-Waterloo, Ontario									
Population	414.1	414.4	...	0.3	4.0	4.9	0.1	1.0	1.2
Labour force	292.8	291.2	2.0	-1.6	-1.0	-0.5	-0.5	-0.3	-0.2
Employment	274.2	273.6	2.1	-0.6	0.8	1.9	-0.2	0.3	0.7
Unemployment	18.6	17.6	1.1	-1.0	-1.8	-2.4	-5.4	-9.3	-12.0
Participation rate	70.7	70.3	0.5	-0.4	-0.9	-0.9
Unemployment rate	6.4	6.0	0.4	-0.4	-0.6	-0.9
Employment rate	66.2	66.0	0.5	-0.2	-0.5	-0.3
Brantford, Ontario									
Population	108.7	108.8	...	0.1	0.6	0.8	0.1	0.6	0.7
Labour force	75.0	74.3	0.7	-0.7	3.1	-0.5	-0.9	4.4	-0.7
Employment	68.8	67.7	0.8	-1.1	1.8	-0.5	-1.6	2.7	-0.7
Unemployment	6.3	6.5	0.4	0.2	1.2	-0.1	3.2	22.6	-1.5
Participation rate	69.0	68.3	0.7	-0.7	2.5	-1.0
Unemployment rate	8.4	8.7	0.5	0.3	1.3	-0.1
Employment rate	63.3	62.2	0.7	-1.1	1.3	-0.9
Guelph, Ontario									
Population	115.5	115.6	...	0.1	1.6	1.9	0.1	1.4	1.7
Labour force	84.1	84.3	0.8	0.2	-2.4	-0.3	0.2	-2.8	-0.4
Employment	79.7	79.4	0.8	-0.3	-2.8	-1.7	-0.4	-3.4	-2.1
Unemployment	4.4	4.9	0.4	0.5	0.4	1.4	11.4	8.9	40.0
Participation rate	72.8	72.9	0.7	0.1	-3.2	-1.5
Unemployment rate	5.2	5.8	0.4	0.6	0.6	1.7
Employment rate	69.0	68.7	0.7	-0.3	-3.4	-2.6

See notes at the end of the table.

Table 5-1 – continued

Labour force characteristics by census metropolitan area (seasonally adjusted) — 3 month moving average

	September 2012	October 2012	S.E. ¹	Change from			Percent change from		
				last month	last December	twelve months ago	last month	last December	twelve months ago
in thousands (except rates)									
London, Ontario									
Population	416.7	417.0	...	0.3	3.2	3.9	0.1	0.8	0.9
Labour force	275.5	274.1	2.0	-1.4	7.8	4.7	-0.5	2.9	1.7
Employment	252.1	250.3	2.0	-1.8	9.5	5.5	-0.7	3.9	2.2
Unemployment	23.4	23.8	1.0	0.4	-1.7	-0.9	1.7	-6.7	-3.6
Participation rate	66.1	65.7	0.5	-0.4	1.3	0.5
Unemployment rate	8.5	8.7	0.4	0.2	-0.9	-0.5
Employment rate	60.5	60.0	0.5	-0.5	1.8	0.7
Windsor, Ontario									
Population	268.0	268.1	...	0.1	1.0	0.9	0.0	0.4	0.3
Labour force	168.0	168.6	1.6	0.6	3.2	4.9	0.4	1.9	3.0
Employment	152.9	152.4	1.6	-0.5	4.5	5.9	-0.3	3.0	4.0
Unemployment	15.1	16.2	0.8	1.1	-1.2	-1.0	7.3	-6.9	-5.8
Participation rate	62.7	62.9	0.6	0.2	1.0	1.6
Unemployment rate	9.0	9.6	0.5	0.6	-0.9	-0.9
Employment rate	57.1	56.8	0.6	-0.3	1.4	2.0
Barrie, Ontario									
Population	163.5	163.6	...	0.1	1.6	1.9	0.1	1.0	1.2
Labour force	111.3	111.4	1.3	0.1	-5.1	-7.0	0.1	-4.4	-5.9
Employment	101.4	102.2	1.3	0.8	-2.4	-2.3	0.8	-2.3	-2.2
Unemployment	9.9	9.2	0.8	-0.7	-2.8	-4.7	-7.1	-23.3	-33.8
Participation rate	68.1	68.1	0.8	0.0	-3.8	-5.1
Unemployment rate	8.9	8.3	0.7	-0.6	-2.0	-3.4
Employment rate	62.0	62.5	0.8	0.5	-2.1	-2.1
Greater Sudbury, Ontario									
Population	138.9	138.8	...	-0.1	-0.7	-0.6	-0.1	-0.5	-0.4
Labour force	86.0	85.1	0.8	-0.9	-3.3	-4.8	-1.0	-3.7	-5.3
Employment	80.1	79.5	0.8	-0.6	-3.9	-5.3	-0.7	-4.7	-6.2
Unemployment	5.9	5.6	0.4	-0.3	0.6	0.4	-5.1	12.0	7.7
Participation rate	61.9	61.3	0.5	-0.6	-2.1	-3.2
Unemployment rate	6.9	6.6	0.4	-0.3	0.9	0.8
Employment rate	57.7	57.3	0.6	-0.4	-2.5	-3.5
Thunder Bay, Ontario									
Population	102.9	103.0	...	0.1	0.6	0.6	0.1	0.6	0.6
Labour force	63.6	64.2	0.6	0.6	-2.9	-0.4	0.9	-4.3	-0.6
Employment	59.6	60.3	0.6	0.7	-2.1	0.2	1.2	-3.4	0.3
Unemployment	4.0	3.9	0.3	-0.1	-0.8	-0.6	-2.5	-17.0	-13.3
Participation rate	61.8	62.3	0.6	0.5	-3.2	-0.8
Unemployment rate	6.3	6.1	0.4	-0.2	-0.9	-0.9
Employment rate	57.9	58.5	0.6	0.6	-2.4	-0.2
Winnipeg, Manitoba									
Population	633.7	634.3	...	0.6	6.9	8.1	0.1	1.1	1.3
Labour force	440.0	439.3	1.3	-0.7	2.0	6.4	-0.2	0.5	1.5
Employment	415.6	415.1	1.4	-0.5	2.6	7.3	-0.1	0.6	1.8
Unemployment	24.4	24.2	0.8	-0.2	-0.6	-0.9	-0.8	-2.4	-3.6
Participation rate	69.4	69.3	0.2	-0.1	-0.4	0.2
Unemployment rate	5.5	5.5	0.2	0.0	-0.2	-0.3
Employment rate	65.6	65.4	0.2	-0.2	-0.3	0.3
Regina, Saskatchewan									
Population	180.9	181.2	...	0.3	3.4	3.9	0.2	1.9	2.2
Labour force	131.5	131.9	0.7	0.4	1.7	1.6	0.3	1.3	1.2
Employment	126.3	126.7	0.8	0.4	1.6	1.3	0.3	1.3	1.0
Unemployment	5.2	5.2	0.3	0.0	0.0	0.3	0.0	0.0	6.1
Participation rate	72.7	72.8	0.4	0.1	-0.4	-0.7
Unemployment rate	4.0	3.9	0.3	-0.1	-0.1	0.1
Employment rate	69.8	69.9	0.4	0.1	-0.5	-0.8

See notes at the end of the table.

Table 5-1 – continued

Labour force characteristics by census metropolitan area (seasonally adjusted) — 3 month moving average

	September 2012	October 2012	S.E. ¹	Change from			Percent change from		
				last month	last December	twelve months ago	last month	last December	twelve months ago
in thousands (except rates)									
Saskatoon, Saskatchewan									
Population	227.8	228.4	...	0.6	6.0	6.9	0.3	2.7	3.1
Labour force	162.1	162.4	1.0	0.3	8.0	9.8	0.2	5.2	6.4
Employment	153.4	154.0	1.0	0.6	8.1	9.8	0.4	5.6	6.8
Unemployment	8.7	8.3	0.5	-0.4	-0.1	-0.1	-4.6	-1.2	-1.2
Participation rate	71.2	71.1	0.4	-0.1	1.7	2.2
Unemployment rate	5.4	5.1	0.3	-0.3	-0.3	-0.4
Employment rate	67.3	67.4	0.5	0.1	1.8	2.3
Calgary, Alberta									
Population	1,061.7	1,064.3	...	2.6	23.0	26.0	0.2	2.2	2.5
Labour force	781.8	786.1	3.4	4.3	10.3	14.2	0.6	1.3	1.8
Employment	744.7	749.3	3.7	4.6	15.9	20.5	0.6	2.2	2.8
Unemployment	37.1	36.8	2.0	-0.3	-5.6	-6.2	-0.8	-13.2	-14.4
Participation rate	73.6	73.9	0.3	0.3	-0.6	-0.4
Unemployment rate	4.7	4.7	0.3	0.0	-0.8	-0.9
Employment rate	70.1	70.4	0.4	0.3	0.0	0.2
Edmonton, Alberta									
Population	994.1	997.0	...	2.9	25.2	28.0	0.3	2.6	2.9
Labour force	738.2	740.7	3.4	2.5	23.8	20.2	0.3	3.3	2.8
Employment	705.2	709.1	3.5	3.9	27.6	27.0	0.6	4.0	4.0
Unemployment	33.0	31.6	1.7	-1.4	-3.8	-6.8	-4.2	-10.7	-17.7
Participation rate	74.3	74.3	0.4	0.0	0.5	-0.1
Unemployment rate	4.5	4.3	0.2	-0.2	-0.6	-1.0
Employment rate	70.9	71.1	0.4	0.2	1.0	0.7
Kelowna, British Columbia									
Population	150.2	150.2	...	0.0	0.2	0.2	0.0	0.1	0.1
Labour force	99.2	100.3	1.6	1.1	-1.6	-1.8	1.1	-1.6	-1.8
Employment	93.9	94.3	1.7	0.4	0.6	-0.2	0.4	0.6	-0.2
Unemployment	5.4	6.0	0.8	0.6	-2.2	-1.6	11.1	-26.8	-21.1
Participation rate	66.0	66.8	1.0	0.8	-1.1	-1.3
Unemployment rate	5.4	6.0	0.8	0.6	-2.0	-1.4
Employment rate	62.5	62.8	1.1	0.3	0.3	-0.2
Abbotsford-Mission, British Columbia									
Population	145.8	145.9	...	0.1	1.0	1.2	0.1	0.7	0.8
Labour force	99.7	100.4	0.7	0.7	4.4	4.3	0.7	4.6	4.5
Employment	92.5	92.7	0.8	0.2	5.3	4.3	0.2	6.1	4.9
Unemployment	7.3	7.7	0.5	0.4	-1.0	0.0	5.5	-11.5	0.0
Participation rate	68.4	68.8	0.5	0.4	2.5	2.4
Unemployment rate	7.3	7.7	0.5	0.4	-1.4	-0.3
Employment rate	63.4	63.5	0.5	0.1	3.2	2.4
Vancouver, British Columbia									
Population	2,065.0	2,067.6	...	2.6	30.1	34.4	0.1	1.5	1.7
Labour force	1,376.5	1,376.5	4.9	0.0	19.8	10.3	0.0	1.5	0.8
Employment	1,279.4	1,278.0	5.0	-1.4	14.9	5.7	-0.1	1.2	0.4
Unemployment	97.0	98.5	2.9	1.5	4.9	4.5	1.5	5.2	4.8
Participation rate	66.7	66.6	0.2	-0.1	0.0	-0.6
Unemployment rate	7.0	7.2	0.2	0.2	0.3	0.3
Employment rate	62.0	61.8	0.2	-0.2	-0.2	-0.8
Victoria, British Columbia									
Population	302.8	302.9	...	0.1	1.6	1.8	0.0	0.5	0.6
Labour force	194.7	195.4	1.5	0.7	5.0	3.6	0.4	2.6	1.9
Employment	183.1	184.5	1.5	1.4	5.3	4.4	0.8	3.0	2.4
Unemployment	11.6	10.9	0.6	-0.7	-0.3	-0.8	-6.0	-2.7	-6.8
Participation rate	64.3	64.5	0.5	0.2	1.3	0.8
Unemployment rate	6.0	5.6	0.3	-0.4	-0.3	-0.5
Employment rate	60.5	60.9	0.5	0.4	1.4	1.1

1. Average standard error of change in two consecutive months (see "Sampling Errors" in Data Quality for further explanations).

Note(s): Estimates from this table are based on 2006 census population counts. Related CANSIM Table 282-0116.

Table 5-2
Labour force characteristics by census metropolitan area (seasonally adjusted) — Monthly

	September 2012	October 2012	S.E. ¹	Change from			Percent change from		
				last month	last December	twelve months ago	last month	last December	twelve months ago
in thousands (except rates)									
Montréal, Quebec									
Population	3,264.2	3,267.0	...	2.8	29.2	34.1	0.1	0.9	1.1
Labour force	2,170.7	2,180.3	15.8	9.6	82.9	67.3	0.4	4.0	3.2
Employment	1,991.5	2,002.9	15.9	11.4	95.4	72.0	0.6	5.0	3.7
Unemployment	179.2	177.4	11.7	-1.8	-12.5	-4.7	-1.0	-6.6	-2.6
Participation rate	66.5	66.7	0.5	0.2	1.9	1.3
Unemployment rate	8.3	8.1	0.5	-0.2	-1.0	-0.5
Employment rate	61.0	61.3	0.5	0.3	2.4	1.6
Toronto, Ontario									
Population	4,903.8	4,910.8	...	7.0	82.5	98.2	0.1	1.7	2.0
Labour force	3,342.4	3,347.8	21.6	5.4	133.9	115.3	0.2	4.2	3.6
Employment	3,057.5	3,060.0	21.3	2.5	115.8	116.6	0.1	3.9	4.0
Unemployment	284.9	287.8	15.7	2.9	18.1	-1.3	1.0	6.7	-0.4
Participation rate	68.2	68.2	0.4	0.0	1.6	1.0
Unemployment rate	8.5	8.6	0.5	0.1	0.2	-0.3
Employment rate	62.3	62.3	0.4	0.0	1.3	1.1
Vancouver, British Columbia									
Population	2,067.5	2,070.2	...	2.7	30.5	34.8	0.1	1.5	1.7
Labour force	1,380.0	1,373.6	10.7	-6.4	23.2	10.6	-0.5	1.7	0.8
Employment	1,280.4	1,274.8	10.4	-5.6	17.6	0.9	-0.4	1.4	0.1
Unemployment	99.6	98.9	7.1	-0.7	5.8	9.8	-0.7	6.2	11.0
Participation rate	66.7	66.4	0.5	-0.3	0.2	-0.6
Unemployment rate	7.2	7.2	0.5	0.0	0.3	0.7
Employment rate	61.9	61.6	0.5	-0.3	0.0	-1.0

1. Average standard error of change in two consecutive months (see "Sampling Errors" in Data Quality for further explanations).

Note(s): Estimates from this table are based on 2006 census population counts. Related CANSIM Table 282-0117.

Table 6-1
Labour force characteristics by province and economic region, ¹ unadjusted for seasonality, 3 month moving average ending in October 2011 and October 2012

	Population	Labour force			Participation rate	Unemployment rate	Employment rate
		Labour force	Employment	Unemployment			
in thousands							
Canada ²							
2011	28,057.4	18,814.9	17,480.4	1,334.4	67.1	7.1	62.3
2012	28,388.6	19,029.3	17,680.5	1,348.9	67.0	7.1	62.3
Newfoundland and Labrador							
2011	428.5	260.9	228.9	32.0	60.9	12.3	53.4
2012	427.2	266.6	236.6	29.9	62.4	11.2	55.4
<i>Avalon Peninsula [1010]</i>							
2011	220.9	145.0	130.8	14.2	65.6	9.8	59.2
2012	221.9	150.8	138.0	12.8	68.0	8.5	62.2
<i>South Coast-Burin Peninsula [1020]</i>							
2011	30.4	16.6	13.2	3.4	54.6	20.5	43.4
2012	30.0	16.1	13.4	2.7	53.7	16.8	44.7
<i>West Coast-Northern Peninsula-Labrador [1030]</i>							
2011	86.7	50.9	44.1	6.8	58.7	13.4	50.9
2012	85.7	50.8	43.1	7.7	59.3	15.2	50.3
<i>Notre Dame-Central Bonavista Bay [1040]</i>							
2011	90.5	48.3	40.8	7.5	53.4	15.5	45.1
2012	89.6	48.8	42.2	6.6	54.5	13.5	47.1
Prince Edward Island							
2011	119.7	83.3	75.6	7.8	69.6	9.4	63.2
2012	120.7	83.6	75.5	8.0	69.3	9.6	62.6
Nova Scotia							
2011	779.2	498.7	458.4	40.3	64.0	8.1	58.8
2012	780.5	507.4	463.4	44.0	65.0	8.7	59.4
<i>Cape Breton [1210]</i>							
2011	111.8	63.6	53.8	9.8	56.9	15.4	48.1
2012	110.7	63.9	53.4	10.5	57.7	16.4	48.2
<i>North Shore [1220]</i>							
2011	129.7	77.0	70.0	7.0	59.4	9.1	54.0
2012	129.1	81.4	73.2	8.2	63.1	10.1	56.7
<i>Annapolis Valley [1230]</i>							
2011	99.6	60.0	55.3	4.7	60.2	7.8	55.5
2012	99.5	63.5	58.9	4.6	63.8	7.2	59.2
<i>Southern [1240]</i>							
2011	98.0	58.3	53.4	4.9	59.5	8.4	54.5
2012	97.0	57.8	50.1	7.8	59.6	13.5	51.6
<i>Halifax [1250]</i>							
2011	340.1	239.9	225.9	14.0	70.5	5.8	66.4
2012	344.3	240.7	227.8	12.9	69.9	5.4	66.2
New Brunswick							
2011	619.8	393.2	360.6	32.6	63.4	8.3	58.2
2012	620.5	396.9	357.4	39.5	64.0	10.0	57.6
<i>Campbellton-Miramichi [1310]</i>							
2011	128.9	73.9	64.6	9.3	57.3	12.6	50.1
2012	127.5	71.9	60.3	11.6	56.4	16.1	47.3
<i>Moncton-Richibucto [1320]</i>							
2011	172.3	113.5	105.1	8.4	65.9	7.4	61.0
2012	173.9	116.2	106.8	9.5	66.8	8.2	61.4
<i>Saint John-St. Stephen [1330]</i>							
2011	144.4	94.8	88.4	6.3	65.7	6.6	61.2
2012	144.6	95.7	86.8	8.9	66.2	9.3	60.0

See notes at the end of the table.

Table 6-1 – continued

Labour force characteristics by province and economic region, ¹ unadjusted for seasonality, 3 month moving average ending in October 2011 and October 2012

	Population	Labour force			Participation rate	Unemployment rate	Employment rate
		Labour force	Employment	Unemployment			
in thousands							
Fredericton-Oromocto [1340]							
2011	109.4	71.1	65.5	5.6	65.0	7.9	59.9
2012	110.4	71.7	66.1	5.6	64.9	7.8	59.9
Edmundston-Woodstock [1350]							
2011	64.9	39.9	37.0	3.0	61.5	7.5	57.0
2012	64.1	41.4	37.4	3.9	64.6	9.4	58.3
Quebec							
2011	6,590.2	4,310.5	4,003.0	307.5	65.4	7.1	60.7
2012	6,650.9	4,366.4	4,052.1	314.3	65.7	7.2	60.9
Gaspésie-Îles-de-la-Madeleine [2410]							
2011	78.6	42.9	38.0	4.9	54.6	11.4	48.3
2012	78.6	42.2	38.0	4.2	53.7	10.0	48.3
Bas-Saint-Laurent [2415]							
2011	166.7	97.4	90.6	6.8	58.4	7.0	54.3
2012	166.5	102.3	95.8	6.5	61.4	6.4	57.5
Capitale-Nationale [2420]							
2011	589.8	406.8	389.1	17.6	69.0	4.3	66.0
2012	595.4	401.2	379.8	21.4	67.4	5.3	63.8
Chaudière-Appalaches [2425]							
2011	333.8	238.8	230.1	8.7	71.5	3.6	68.9
2012	336.0	230.0	222.8	7.2	68.5	3.1	66.3
Estrie [2430]							
2011	258.8	166.8	156.8	9.9	64.5	5.9	60.6
2012	261.1	166.3	152.4	13.8	63.7	8.3	58.4
Centre-du-Québec [2433]							
2011	190.9	117.9	109.2	8.7	61.8	7.4	57.2
2012	192.4	120.9	112.5	8.4	62.8	6.9	58.5
Montérégie [2435]							
2011	1,192.5	793.3	740.4	52.8	66.5	6.7	62.1
2012	1,206.4	823.6	772.8	50.8	68.3	6.2	64.1
Montréal [2440]							
2011	1,624.8	1,039.1	937.5	101.6	64.0	9.8	57.7
2012	1,635.2	1,057.1	958.4	98.6	64.6	9.3	58.6
Laval [2445]							
2011	334.3	214.2	201.0	13.2	64.1	6.2	60.1
2012	340.2	234.8	215.8	18.9	69.0	8.0	63.4
Lanaudière [2450]							
2011	392.6	280.6	263.6	17.0	71.5	6.1	67.1
2012	398.8	253.4	236.0	17.5	63.5	6.9	59.2
Laurentides [2455]							
2011	464.8	313.4	289.3	24.0	67.4	7.7	62.2
2012	472.3	328.7	305.7	23.0	69.6	7.0	64.7
Outaouais [2460]							
2011	307.1	213.5	197.7	15.8	69.5	7.4	64.4
2012	311.6	210.1	197.1	13.0	67.4	6.2	63.3
Abitibi-Témiscamingue [2465]							
2011	117.7	78.8	73.2	5.6	66.9	7.1	62.2
2012	118.0	76.9	72.5	4.4	65.2	5.7	61.4
Mauricie [2470]							
2011	221.7	125.9	116.1	9.9	56.8	7.9	52.4
2012	222.3	122.5	110.9	11.6	55.1	9.5	49.9

See notes at the end of the table.

Table 6-1 – continued

Labour force characteristics by province and economic region, ¹ unadjusted for seasonality, 3 month moving average ending in October 2011 and October 2012

	Population	Labour force			Participation rate	Unemployment rate	Employment rate
		Labour force	Employment	Unemployment			
in thousands							
Saguenay-Lac-Saint-Jean [2475]							
2011	225.3	125.9	118.4	7.5	55.9	6.0	52.6
2012	225.4	139.6	128.3	11.4	61.9	8.2	56.9
Côte-Nord and Nord-du-Québec [2480, 2490]							
2011	90.6	55.3	52.1	3.2	61.0	5.8	57.5
2012	90.9	56.9	53.3	3.6	62.6	6.3	58.6
Ontario							
2011	10,955.9	7,335.6	6,773.1	562.5	67.0	7.7	61.8
2012	11,100.1	7,401.4	6,814.8	586.6	66.7	7.9	61.4
Ottawa [3510]							
2011	1,051.0	727.9	682.1	45.8	69.3	6.3	64.9
2012	1,065.5	740.1	690.9	49.2	69.5	6.6	64.8
Kingston-Pembroke [3515]							
2011	370.9	238.0	221.7	16.4	64.2	6.9	59.8
2012	372.5	225.9	207.1	18.8	60.6	8.3	55.6
Muskoka-Kawarthas [3520]							
2011	319.0	193.8	179.7	14.2	60.8	7.3	56.3
2012	320.4	181.0	168.3	12.7	56.5	7.0	52.5
Toronto [3530]							
2011	5,063.1	3,413.5	3,126.7	286.8	67.4	8.4	61.8
2012	5,163.3	3,525.2	3,212.8	312.4	68.3	8.9	62.2
Kitchener-Waterloo-Barrie [3540]							
2011	1,040.1	744.6	693.6	51.0	71.6	6.8	66.7
2012	1,053.9	728.4	681.8	46.7	69.1	6.4	64.7
Hamilton-Niagara Peninsula [3550]							
2011	1,170.9	769.3	715.4	53.9	65.7	7.0	61.1
2012	1,181.4	780.5	724.6	55.9	66.1	7.2	61.3
London [3560]							
2011	541.3	357.6	326.4	31.1	66.1	8.7	60.3
2012	545.9	360.3	330.5	29.8	66.0	8.3	60.5
Windsor-Sarnia [3570]							
2011	519.2	323.3	296.2	27.1	62.3	8.4	57.0
2012	519.0	326.6	301.2	25.4	62.9	7.8	58.0
Stratford-Bruce Peninsula [3580]							
2011	245.7	168.6	160.9	7.7	68.6	4.6	65.5
2012	245.8	155.5	147.8	7.7	63.3	5.0	60.1
Northeast [3590]							
2011	461.4	288.0	265.7	22.3	62.4	7.7	57.6
2012	459.2	270.8	249.4	21.4	59.0	7.9	54.3
Northwest [3595]							
2011	173.3	110.9	104.7	6.2	64.0	5.6	60.4
2012	173.1	107.2	100.6	6.6	61.9	6.2	58.1
Manitoba							
2011	956.0	665.3	628.5	36.8	69.6	5.5	65.7
2012	964.8	671.4	634.6	36.8	69.6	5.5	65.8
Southeast [4610]							
2011	83.1	57.6	55.5	2.1	69.3	3.6	66.8
2012	84.4	60.9	58.1	2.8	72.2	4.6	68.8
South Central [4620]							
2011	47.6	33.6	32.7	1.0	70.6	3.0	68.7
2012	48.3	32.7	31.6	1.1	67.7	3.4	65.4

See notes at the end of the table.

Table 6-1 – continued

Labour force characteristics by province and economic region, ¹ unadjusted for seasonality, 3 month moving average ending in October 2011 and October 2012

	Population	Labour force			Participation rate	Unemployment rate	Employment rate
		Labour force	Employment	Unemployment			
in thousands							
Southwest [4630]							
2011	83.8	59.9	57.2	2.7	71.5	4.5	68.3
2012	84.0	61.6	59.3	2.4	73.3	3.9	70.6
North Central [4640]							
2011	36.7	23.3	21.7	1.6	63.5	6.9	59.1
2012	36.8	24.3	23.1	1.1	66.0	4.5	62.8
Winnipeg [4650]							
2011	572.4	397.5	372.7	24.8	69.4	6.2	65.1
2012	579.3	403.5	380.0	23.5	69.7	5.8	65.6
Interlake [4660]							
2011	72.7	52.8	50.4	2.3	72.6	4.4	69.3
2012	73.2	49.3	46.9	2.4	67.3	4.9	64.1
Parklands and North [4670, 4680]							
2011	59.8	40.7	38.3	2.4	68.1	5.9	64.0
2012	58.9	39.2	35.7	3.5	66.6	8.9	60.6
Saskatchewan							
2011	802.1	553.6	529.5	24.1	69.0	4.4	66.0
2012	814.0	569.1	543.9	25.2	69.9	4.4	66.8
Regina-Moose Mountain [4710]							
2011	238.3	177.1	170.8	6.3	74.3	3.6	71.7
2012	242.8	179.0	172.6	6.4	73.7	3.6	71.1
Swift Current-Moose Jaw [4720]							
2011	81.1	51.5	49.6	1.9	63.5	3.7	61.2
2012	81.2	51.5	49.6	2.0	63.4	3.9	61.1
Saskatoon-Biggar [4730]							
2011	266.1	181.8	172.8	9.0	68.3	5.0	64.9
2012	272.7	192.7	184.1	8.6	70.7	4.5	67.5
Yorkton-Melville [4740]							
2011	62.9	42.3	40.7	1.6	67.2	3.8	64.7
2012	62.6	40.2	38.1	2.1	64.2	5.2	60.9
Prince Albert and Northern [4750, 4760]							
2011	153.7	100.7	95.5	5.3	65.5	5.3	62.1
2012	154.7	105.7	99.6	6.2	68.3	5.9	64.4
Alberta							
2011	3,018.2	2,245.1	2,123.1	122.0	74.4	5.4	70.3
2012	3,087.5	2,265.9	2,164.5	101.5	73.4	4.5	70.1
Lethbridge-Medicine Hat [4810]							
2011	219.7	152.6	144.6	8.0	69.5	5.2	65.8
2012	223.1	148.3	140.7	7.6	66.5	5.1	63.1
Camrose-Drumheller [4820]							
2011	156.3	111.6	106.5	5.1	71.4	4.6	68.1
2012	157.6	108.7	105.2	3.5	69.0	3.2	66.8
Calgary [4830]							
2011	1,116.0	838.7	791.6	47.1	75.2	5.6	70.9
2012	1,144.6	849.4	808.6	40.8	74.2	4.8	70.6
Banff-Jasper-Rocky Mountain House [4840]							
2011	71.9	53.5	52.0	1.6	74.4	3.0	72.3
2012	72.5	53.9	52.1	1.9	74.3	3.5	71.9

See notes at the end of the table.

Table 6-1 – continued

Labour force characteristics by province and economic region, ¹ unadjusted for seasonality, 3 month moving average ending in October 2011 and October 2012

	Population	Labour force			Participation rate	Unemployment rate	Employment rate
		Labour force	Employment	Unemployment			
in thousands							
Red Deer [4850]							
2011	154.8	116.4	110.3	6.1	75.2	5.2	71.3
2012	158.0	111.7	106.6	5.1	70.7	4.6	67.5
Edmonton [4860]							
2011	1,004.9	744.2	702.3	41.9	74.1	5.6	69.9
2012	1,032.9	766.6	734.5	32.1	74.2	4.2	71.1
Athabasca-Grande Prairie-Peace River [4870]							
2011	191.0	144.2	136.6	7.6	75.5	5.3	71.5
2012	192.5	142.3	136.0	6.3	73.9	4.4	70.6
Wood Buffalo-Cold Lake [4880]							
2011	103.6	83.9	79.2	4.7	81.0	5.6	76.4
2012	106.2	84.9	81.0	4.0	79.9	4.7	76.3
British Columbia							
2011	3,787.8	2,468.7	2,299.8	168.9	65.2	6.8	60.7
2012	3,822.4	2,500.7	2,337.6	163.1	65.4	6.5	61.2
Vancouver Island and Coast [5910]							
2011	656.6	382.3	356.1	26.2	58.2	6.9	54.2
2012	658.9	386.4	364.8	21.7	58.6	5.6	55.4
Lower Mainland-Southwest [5920]							
2011	2,320.5	1,559.1	1,454.3	104.9	67.2	6.7	62.7
2012	2,357.4	1,577.3	1,468.0	109.3	66.9	6.9	62.3
Thompson-Okanagan [5930]							
2011	438.1	271.4	251.9	19.5	61.9	7.2	57.5
2012	435.1	276.2	263.1	13.2	63.5	4.8	60.5
Kootenay [5940]							
2011	127.3	79.0	73.2	5.7	62.1	7.2	57.5
2012	126.7	81.0	74.8	6.2	63.9	7.7	59.0
Cariboo [5950]							
2011	127.3	90.7	83.7	7.1	71.2	7.8	65.8
2012	126.5	95.2	88.5	6.7	75.3	7.0	70.0
North Coast and Nechako [5960, 5970]							
2011	66.6	48.8	44.8	4.0	73.3	8.2	67.3
2012	65.8	42.9	38.6	4.4	65.2	10.3	58.7
Northeast [5980]							
2011	51.4	37.3	35.8	1.6	72.6	4.3	69.6
2012	51.9	41.6	39.9	1.6	80.2	3.8	76.9

1. For geographic descriptions of economic regions, refer to the Guide to the Labour Force Survey (catalogue number 71-543-GIE).

2. Estimates for Canada are a sum of the provincial totals and exclude estimates from Yukon, Northwest Territories and Nunavut.

Note(s): Related CANSIM table 282-0054.

Table 6-2
Labour force characteristics by territories, unadjusted for seasonality, 3 month moving average ending in
October 2011 and October 2012

	Population	Labour force			Participation rate	Unemployment rate	Employment rate
		Labour force	Employment	Unemployment			
		in thousands			percent		
Yukon ¹							
2011	26.7	20.2	19.2	1.0	75.7	5.0	71.9
2012	27.0	20.7	19.6	1.2	76.7	5.8	72.6
Northwest Territories ²							
2011	32.1	24.8	23.1	1.7	77.3	6.9	72.0
2012	32.1	25.0	23.1	1.9	77.9	7.6	72.0
Nunavut ³							
2011	21.0	13.7	11.7	2.1	65.6	15.0	55.7
2012	21.2	13.9	11.9	2.0	65.7	14.6	56.1

1. Since 1992, the Labour force survey (LFS) has been conducted in the Yukon, using an alternative methodology that accommodates some of the operational difficulties inherent to remote locales. These estimates are not included in the national totals. In 1995, the LFS in the Yukon underwent a sample redesign. One result of the redesign was that the covered population increased from 85% to 92%, which is reflected by the sharp increase in the three month moving averages estimates of January, February and March of 1995 for all the level estimates. Users are therefore warned to be cautious when comparing estimates before January 1995 to estimates for January 1995 and forward.
2. Since 2001, the Labour force survey (LFS) has been administered in the Northwest Territories, using an alternative methodology that accommodates some of the operational difficulties inherent to remote locales. These estimates are not included in national totals.
3. Since 2004, the Labour force survey (LFS) has been administered in Nunavut, using an alternative methodology that accommodates some of the operational difficulties inherent to remote locales. These estimates are 3-month moving averages and are not included in national totals. From January 2004 to December 2007, estimates represent about 70% of all Nunavut residents aged 15 and over. Starting in January 2008, coverage was extended to 92%, so that by March 2008, the 3-month moving average is completely based on the extended coverage. Because of the large difference in coverage, users are recommended not to compare estimates prior to January 2008 with data afterwards. The January and February 2008 3-month moving average estimates are based on a mix of both coverages, since the extended coverage was introduced in January 2008. Estimates from January 2004 to December 2007 are based on the 10 largest communities in Nunavut: Iqaluit, Rankin Inlet, Cambridge Bay, Kugluktuk, Baker Lake, Arviat, Pond Inlet, Cape Dorset, Pangnirtung, Igloolik. Estimates from March 2008 to present cover the above communities as well as: Taloyoak, Gjoa Haven, Kugaaruk, Coral Harbour, Repulse Bay, Qikiqtarjuaq, Arctic Bay, Hall Beach, Clyde River.

Note(s): Related CANSIM table 282-0100.

Table 7
Average usual hours and wages of employees by selected characteristics, Canada, unadjusted for seasonality

	Employees				Full-time			Part-time		
	Number	Average weekly hours	Average weekly wages	Average hourly wages	Number	Average weekly hours	Average weekly wages	Number	Average weekly hours	Average weekly wages
	thousands		current dollars		thousands		current dollars	thousands		current dollars
October 2012										
15 years and over	14,937.4	35.4	876.54	23.92	12,228.9	39.4	1,004.04	2,708.5	17.1	300.86
15 to 24 years	2,258.3	26.7	397.08	13.86	1,113.6	39.0	624.19	1,144.7	14.7	176.15
25 years and over	12,679.1	37.0	961.94	25.71	11,115.2	39.5	1,042.10	1,563.8	18.9	392.16
Men	7,538.8	37.9	998.81	25.67	6,686.1	40.7	1,093.45	852.7	16.0	256.69
Women	7,398.6	32.9	751.96	22.13	5,542.8	38.0	896.19	1,855.8	17.6	321.16
Union coverage										
Union coverage	4,821.4	35.8	987.12	27.23	4,133.1	38.7	1,079.79	688.3	18.3	430.67
No union coverage	10,116.0	35.2	823.84	22.34	8,095.8	39.8	965.37	2,020.2	16.7	256.64
Job permanency										
Permanent	12,957.9	36.3	919.73	24.63	11,078.5	39.4	1,021.03	1,879.4	18.2	322.59
Temporary	1,979.5	29.2	593.82	19.25	1,150.4	39.6	840.47	829.2	14.7	251.62
Occupation										
Management	1,032.0	39.9	1,480.65	37.26	1,008.6	40.4	1,503.61	23.4	17.5	491.08
Business, finance and administrative	2,814.2	35.3	817.08	22.67	2,421.7	38.2	896.32	392.5	17.8	328.18
Natural and applied sciences	1,130.0	38.5	1,278.75	33.19	1,087.2	39.3	1,308.76	42.8	18.3	516.07
Health	999.3	33.6	931.64	27.62	758.1	38.0	1,055.39	241.2	19.9	542.66
Social science, education, government service and religion	1,548.8	34.1	1,033.92	30.10	1,263.4	38.1	1,162.87	285.4	16.6	463.07
Art, culture, recreation and sport	341.2	29.9	758.71	23.53	227.5	38.3	1,006.10	113.7	12.9	263.45
Sales and service	3,738.6	30.5	528.35	16.13	2,353.1	38.6	713.23	1,385.5	16.8	214.34
Trades, transport and equipment operators	2,265.2	40.2	956.80	23.49	2,107.9	41.9	1,006.42	157.3	17.8	292.08
Occupations unique to primary industry	283.7	42.3	940.49	21.52	250.4	45.8	1,034.02	33.4	15.8	239.10
Occupations unique to processing, manufacturing and utilities	784.4	39.2	790.60	19.95	751.0	40.2	814.30	33.5	17.3	258.56
October 2011										
15 years and over	14,712.5	35.3	842.19	23.06	11,968.4	39.5	969.38	2,744.1	17.0	287.48
15 to 24 years	2,306.5	26.9	398.74	13.75	1,144.8	39.1	627.54	1,161.7	14.8	173.26
25 years and over	12,406.0	36.8	924.64	24.79	10,823.6	39.5	1,005.53	1,582.5	18.6	371.33
Men	7,439.4	37.9	958.07	24.64	6,578.0	40.7	1,050.01	861.5	16.4	256.04
Women	7,273.1	32.6	723.67	21.44	5,390.4	37.9	870.98	1,882.7	17.3	301.87
Union coverage										
Union coverage	4,562.2	35.8	968.10	26.71	3,891.2	38.7	1,061.59	671.1	18.8	425.99
No union coverage	10,150.3	35.1	785.60	21.42	8,077.2	39.8	924.95	2,073.1	16.4	242.65
Job permanency										
Permanent	12,719.9	36.2	882.68	23.71	10,787.2	39.4	986.02	1,932.7	18.0	305.89
Temporary	1,992.6	29.5	583.72	18.90	1,181.2	39.7	817.35	811.4	14.6	243.64
Occupation										
Management	963.7	39.8	1,380.49	34.92	930.1	40.6	1,412.65	33.6	17.6	489.52
Business, finance and administrative	2,771.3	35.2	779.80	21.75	2,359.3	38.2	859.95	412.0	17.8	320.84
Natural and applied sciences	1,108.2	38.5	1,246.14	32.32	1,064.5	39.3	1,276.03	43.7	17.5	518.66
Health	1,018.4	33.5	898.78	26.62	781.9	37.8	1,016.88	236.4	19.5	508.23
Social science, education, government service and religion	1,435.9	33.9	1,025.02	29.95	1,159.3	38.0	1,164.32	276.7	16.3	441.36
Art, culture, recreation and sport	360.7	30.6	765.60	23.16	250.9	38.6	1,007.80	109.8	12.2	211.99
Sales and service	3,720.7	30.2	506.77	15.64	2,297.7	38.6	691.91	1,423.0	16.8	207.84
Trades, transport and equipment operators	2,240.6	40.3	929.38	22.79	2,095.7	41.9	973.92	144.9	17.9	284.95
Occupations unique to primary industry	308.8	41.9	887.46	20.54	276.7	45.2	966.07	32.2	13.6	211.27
Occupations unique to processing, manufacturing and utilities	784.1	39.4	781.76	19.71	752.3	40.3	803.98	31.9	16.5	256.93

Note(s): Related CANSIM Tables 282-0023, 282-0069, 282-0073.

Table 8
Regional unemployment rates used by the Employment Insurance Program, ¹ seasonally adjusted, 3 month moving average

Region	Effective from November 4, 2012 to December 8, 2012
	percent
Newfoundland and Labrador	
01. St. John's	6.9
02. Newfoundland and Labrador	17.6
Prince Edward Island	
03. Prince Edward Island	11.5
Nova Scotia	
04. Eastern Nova Scotia	16.8
05. Western Nova Scotia	11.1
06. Halifax	5.5
New Brunswick	
07. Fredericton-Moncton-Saint John	7.7
08. Madawaska-Charlotte	13.1
09. Restigouche-Albert	17.0
Quebec	
10. Gaspésie-Îles-de-la-Madeleine	12.6
11. Québec	5.4
12. Trois-Rivières	8.0
13. South Central Quebec	4.0
14. Sherbrooke	7.8
15. Montérégie	6.4
16. Montréal	8.2
17. Central Quebec	8.6
18. Northwestern Quebec	9.2
19. Bas-Saint-Laurent-Côte-Nord	9.6
20. Gatineau	6.0
21. Saguenay	8.0
Ontario	
22. Ottawa	6.5
23. Eastern Ontario	8.1
24. Kingston	6.6
25. Central Ontario	8.8
26. Oshawa	9.2
27. Toronto	8.6
28. Hamilton	6.2
29. St. Catharines	8.7
30. London	8.7
31. Niagara	10.8
32. Windsor	9.6
33. Kitchener	6.1
34. Huron	7.4
35. South Central Ontario	6.1
36. Sudbury	6.2
37. Thunder Bay	6.2
38. Northern Ontario	12.3
Manitoba	
39. Winnipeg	5.6
40. Southern Manitoba	6.6
41. Northern Manitoba	31.1
Saskatchewan	
42. Regina	4.1
43. Saskatoon	5.1
44. Southern Saskatchewan	6.6
45. Northern Saskatchewan	17.3
Alberta	
46. Calgary	4.7
47. Edmonton	4.5
48. Northern Alberta	8.2
49. Southern Alberta	5.9

See notes at the end of the table.

Table 8 – continued

Regional unemployment rates used by the Employment Insurance Program, ¹ seasonally adjusted, 3 month moving average

Region	Effective from November 4, 2012 to December 8, 2012
	percent
British Columbia	
50. Southern Interior British Columbia	7.0
51. Abbotsford	7.7
52. Vancouver	7.1
53. Victoria	6.3
54. Southern Coastal British Columbia	7.8
55. Northern British Columbia	11.8
Territories	
56. Yukon ²	25.0
57. Northwest Territories ²	25.0
58. Nunavut ²	25.0

1. The boundaries of these regions are determined by Human Resources and Social Development Canada (HRSDC). For geographic descriptions and maps of employment insurance regions, see the HRSDC website: <http://srv129.services.gc.ca/eiregions/en/geocont.aspx>.

2. This rate is provided by Human Resources and Skills Development Canada.

Note(s): All geographic regions are based on the 1996 Census boundaries.

Data quality

About the Labour Force Survey

The statistics contained in this report are based on information obtained through a sample survey of 56,000 representative households across the country. The Labour Force Survey, started in November 1945, was taken at quarterly intervals until November 1952. It has been carried out monthly since then. The information generated by the survey has expanded considerably over the years with a major redesign of the survey content in 1976 and again in 1997, and provides a rich and detailed picture of the Canadian labour market.

The sample used in the Labour Force Survey has been designed to represent all persons in the population 15 years of age and over residing in the provinces of Canada, with the exception of the following: persons living on Indian reserves, full-time members of the armed forces and people living in institutions (for example, inmates of penal institutions and patients in hospitals or nursing homes who have resided in the institution for more than six months). Monthly estimates of employment, unemployment and persons not in the labour force refer to the specific week covered by the survey each month, normally the week containing the 15th day.

Definitions and explanations

The **labour force** is composed of those members of the civilian non-institutional population 15 years of age and over who, during the reference week, were employed or unemployed.

Employed persons are those who, during the reference week:

- (a) did any work at all
- (b) had a job but were not at work

A person is considered to be **full-time** if his/her usual hours at the main job are 30 or more hours per week. When the number of hours worked at the main job is usually less than 30 hours per week then he/she is considered to be **part-time**.

Unemployed persons are those who, during the reference week:

- (a) were without work, had actively looked for work in the past four weeks (ending with reference week), and were available for work;
- (b) had not actively looked for work in the past four weeks but were on temporary layoff and were available for work;
- (c) had not actively looked for work in the past four weeks but had a new job to start in four weeks or less from the reference week, and were available for work.

Persons in the civilian non-institutional population 15 years of age and over who, during the reference week, were neither employed nor unemployed are classified as **not in the labour force**.

The **unemployment rate** represents the number of unemployed persons expressed as a percentage of the labour force. The unemployment rate for a particular group (age, sex, etc.) is the number unemployed in that group expressed as a percentage of the labour force for that group.

The **participation rate** represents the labour force expressed as a percentage of the population 15 years of age and over. The participation rate for a particular group (age, sex, etc.) is the labour force in that group expressed as a percentage of the population for that group.

The **employment rate (formerly the employment/population ratio)** represents the number of persons employed expressed as a percentage of the population 15 years of age and over. The employment rate for a particular group (age, sex, etc.) is the number employed in that group expressed as a percentage of the population for that group.

The **part-time rate** represents the number of persons employed part-time expressed as a percentage of the employed. The part-time rate for a particular group (age, sex, etc.) is the number employed part-time in that group expressed as a percentage of the employed for that group.

All geographic regions are based on the 2006 Census boundaries.

Seasonal adjustment

Fluctuations in economic time series are caused by seasonal, cyclical and irregular movements. A seasonally adjusted series is one from which seasonal movements have been eliminated. Seasonal movements are defined as those which are caused by regular annual events such as climate, holidays, vacation periods and cycles related to crops, production and retail sales associated with Christmas and Easter. The seasonally adjusted series contains irregular as well as longer-term cyclical fluctuations.

The seasonally adjusted series are revised each year to take into account current data and to generate new forecast factors for the next twelve months. The data are therefore subject to slight revisions in future issues of this publication.

Sampling variability of estimates

Estimates in this publication are based on the Labour Force Survey, a monthly survey of approximately 56,000 households across Canada. Because the entire population is not surveyed, the estimates are subject to sampling error. While the published estimate is the best available indicator of the real value, changes in the level of any estimates between two months can be the result of a true change or sampling variability. The sampling error can be estimated by calculating the standard error for the published estimate or statistic. These standard errors have been included in the publication tables, in order to assist users in interpreting the data.

Interpretation based on standard error

Two thirds of the time (68%), a change greater than the sampling error indicates a real change. The larger the change compared to the standard error, the better the chance that we are observing a real change, as opposed to a change due to sampling variability. At the 95% level, in order to ensure that change is real, the change in the estimate must be greater than twice the sampling error.

Movements in estimates that are smaller than the sampling error are less likely to reflect a real change and more likely to be due to sampling variability. While the above is true for monthly movements, one can have more confidence in a series of consecutive movements in the same direction, even though some of the monthly movements may be smaller than the sampling error.

Interpretation based on confidence intervals

Confidence intervals provide another way of looking at the variability inherent in estimates of sample surveys. To illustrate how to calculate the confidence interval, let us say that one month the published estimate for total employment rose by 16,000 to reach 16,500,000. The associated standard error for the movement estimate is 27,200. The standard error used to interpret the movement estimate indicates that:

- There are approximately two chances in three (68%) that the real value of the movement between the two months falls within the range -11,200 to +43,200 (16,000 + or – one standard error).
- There are approximately nine chances in ten (90%) that the real value of the movement between the two months falls within the range -27,520 to +59,520 (16,000 + or – 1.6 times the standard error).
- There are approximately nineteen chances in twenty (95%) that the real value of the movement between the two months falls within the range -38,400 to +70,400 (16,000 + or – two standard errors).

For more detailed explanations on sampling variability of estimates, and in particular for information on how to assess the variability of level estimates, consult the Data quality section of the *Guide to the Labour Force Survey*, (71-543-G) on page 27.

Documentation

For more detailed information about the Labour Force Survey, see the following documents:

- Overview of the Labour Force Survey
- Guide to the Labour Force Survey (71-543-G)
- Data quality statement
- Methodology of the Canadian Labour Force Survey (71-526-X)
- LFS *geographical maps*