

C.4

Catalogue No. 92-374-XPE

# 1997 Geography Catalogue

Reference



STATISTIQUE CANADA

# GEO

STATISTICS CANADA

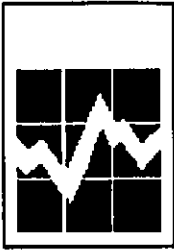


Statistique  
Canada

Statistics  
Canada

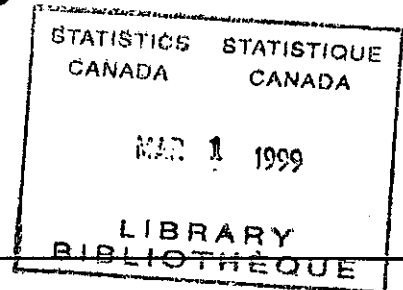
Canada 





Statistics Canada

# 1997 Geography Catalogue



Published by authority of the Minister  
responsible for Statistics Canada

©Minister of Industry, 1997

All rights reserved. No part of this product may be reproduced, stored in a retrieval system or transmitted in any form or by any means, electronic, mechanical, photocopying, recording or otherwise without prior written permission from Licence Services, Marketing Division, Statistics Canada, Ottawa, Ontario, Canada K1A 0T6.

November, 1997

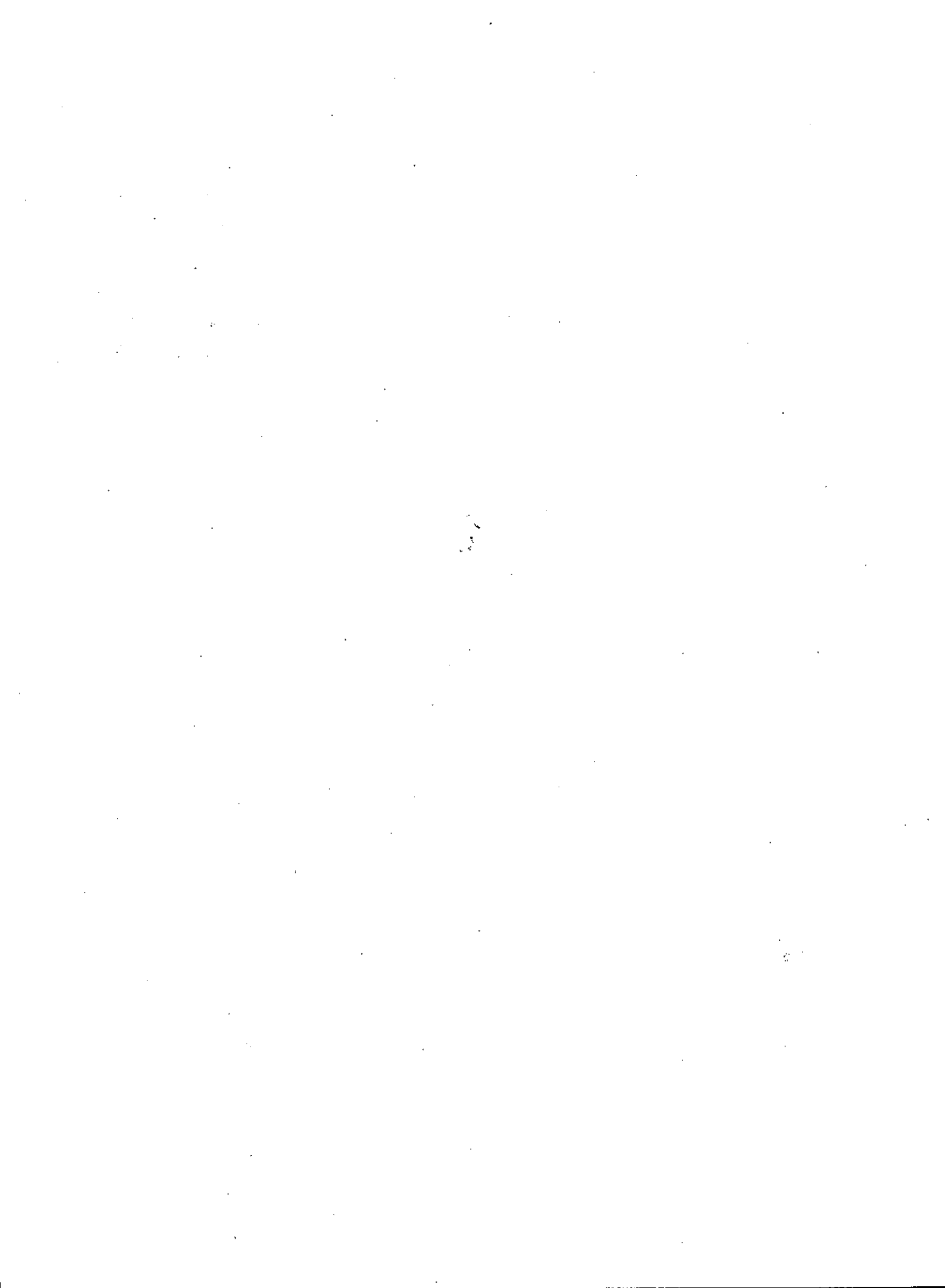
Catalogue No. 92-374-XPE

Ottawa

---

## Note of appreciation

*Canada owes the success of its statistical system to a long-standing co-operation involving Statistics Canada, the citizens of Canada, its businesses, governments and other institutions. Accurate and timely statistical information could not be produced without their continued co-operation and goodwill.*



---

## TABLE OF CONTENTS

	Page
<b><i>Geographic Reference Products</i></b> .....	2
Complete On-Line Guide To Geography (COGG) .....	2
Census Dictionary .....	2
1996 Reference Maps .....	3
Large Urban Enumeration Area (EA) Reference Maps .....	3
Small Urban Enumeration Area (EA) Reference Maps .....	5
Rural Enumeration Area (EA) Reference Maps .....	7
Enumeration Area (EA) Reference Maps Packages .....	8
Census Division and Census Subdivision Reference Maps .....	9
Census Metropolitan Area, Census Agglomeration and Census Tract Reference Maps .....	10
Federal Electoral District/Enumeration Area (FED/EA) Reference Maps (1987 Representation Order) .....	11
Interim List of Changes to Municipal Boundaries, Status and Names .....	13
Standard Geographical Classification .....	14
Standard Geographical Classification. Volume I. The Classification .....	14
Standard Geographical Classification. Volume II. Reference Maps .....	14
 <b><i>Geographic Data Products</i></b> .....	 15
GeoRef, 1996 Census .....	15
Postal Codes Counts, 1996 Census .....	15
 <b><i>Spatial Information Products</i></b> .....	 17
Digital Boundary Files (DBF)/ Digital Cartographic Files (DCF) .....	17
Provinces and Territories Digital Boundary File/Digital Cartographic File .....	18
Federal Electoral Districts (1987 Representation Order) Digital Boundary File/Digital Cartographic File .....	18
Federal Electoral Districts (1996 Representation Order) Digital Cartographic File .....	19
Census Divisions Digital Boundary File/Digital Cartographic File .....	19
Census Metropolitan Areas/Census Agglomerations Digital Boundary File/Digital Cartographic File .....	20
Urban Areas Digital Boundary File/Digital Cartographic File .....	20
Designated Places Digital Boundary File/Digital Cartographic File .....	20
Forward Sortation Areas Digital Cartographic File .....	21
Census Consolidated Subdivisions Digital Boundary File/ Digital Cartographic File .....	21
Census Subdivisions Digital Boundary File/Digital Cartographic File .....	24
Census Tracts Digital Boundary File/Digital Cartographic File .....	24
Enumeration Areas Digital Boundary File/Digital Cartographic File .....	24
Street Network Files (SNF) .....	26
Skeletal Street Network Files (SSNF) .....	27
Street Network and Feature Extension Files (SNFEF) .....	28
 <b><i>Attribute Information Products</i></b> .....	 31
Block-Face Data File (BFDF) .....	31
Postal Code Conversion File (PCCF) .....	33

---

Postal Code Conversion File (PCCF) - Update.....	33
Postal Codes by Federal Ridings (1996 Representation Order) File .....	35
Postal Codes by Federal Ridings (1996 Representation Order) File (PCFRF) - Update .....	36
<b><i>Geographic Services</i></b> .....	<b>37</b>
Geocoding Service .....	37
Geography Custom Service .....	37
Geography Custom Mapping .....	38
Geography Workshop .....	38
<b><i>Other STC Related Geographic Products and Services</i></b> .....	<b>39</b>
Agriculture Products and Services .....	39
Environment Services .....	41
<b><i>Glossary</i></b> .....	<b>42</b>
Appendix 1. Hierarchy of National, Metropolitan and Postal Code Geographic Units, 1996.....	47
Appendix 2: Number of 1996 Reference Maps By Province Or Territory .....	48
Appendix 3. Street Network File Coverage of Census Metropolitan Areas and Census Agglomerations by Census Subdivision Components, Showing CMA/CA Code and CSD Type (as of October 25, 1996).....	49
<b><i>List of Statistics Canada Regional Reference Centres</i></b> .....	<b>55</b>
<b><i>Limited Use Data Product Licence Agreement</i></b> .....	<b>56</b>
<b><i>Geography Products Feedback</i></b> .....	<b>57</b>

## Introduction

Statistics Canada (STC) maintains a spatially referenced geographic database in support of the Censuses of Population and Agriculture, the Standard Geographical Classification and other Statistics Canada programs. STC also develops geographical concepts, delineates geographic areas, produces maps and other published reference materials, produces files on diskette and CD-ROM, and offers a variety of services.

This catalogue provides information about the geographic products and services produced by Statistics Canada. It contains short descriptions of the products and services, along with the most current information on availability and prices.

Prices and other details quoted in the 1997 Geography Catalogue are accurate at the time of publication. Please contact the nearest Statistics Canada Regional Reference Centre for more up-to-date information. Prices are exclusive of any sales tax. Prices are quoted in Canadian and US dollars.

The 1997 Geography Catalogue is divided into five sections:

**The first section** describes most of the geographic reference tools available from Statistics Canada. These tools, including maps, publications and diskette products, provide definitions for geographical concepts and allow users to locate the appropriate geographic areas for their census data.

**The second section** — devoted to geography data products — includes GeoRef, a geographic reference tool that provides 1996 Census population and dwelling counts. Also included here is the Postal Code Counts.

**The third section** is a comprehensive collection of spatial information products offered by the Geography Division. Spatial information provides the shape and location of geographic features. The boundaries, street network and other features of standard geographic areas are available in digital form for computer mapping and Geographic Information System (GIS) applications.

**The fourth section** is a collection of attribute information products including the Block-face Data File, the Postal Code Conversion File, and the Postal Codes by Federal Ridings File.

**The fifth section** outlines Geography Division's custom services.

At the end of the 1997 Geography Catalogue, you will find a glossary of geographic terms used throughout the text.

## Geographic Reference Products

Geographic Reference Products provide users with the tools needed to understand geographic concepts and to locate the geographic areas appropriate to their census and other data needs.

*Reference maps* identify geographic areas and assist users in locating boundaries, allowing them to relate data to actual physical locations.

---

### Complete On-Line Guide To Geography (COGG)

This electronic product is an interactive hypertext document with the TOOLBOOK® authoring environment and runs as a WINDOWS® application. It provides a quick and easy access to a number of spatial concepts to census geography. It consists of three parts:

- Electronic Guide to Geography — Statistics Canada's census geography basics, products and services, case studies and learning activities;
- Illustrated Glossary — explanatory definitions and illustrations, national and metropolitan hierarchies;
- Reference Dictionary — definitions, rules, user issues, applicable censuses and footnotes.

This guide is particularly useful for users and educators and quickly illustrates specialized geography concepts and products.

- Catalogue Number:** 92F0077XDE  
**Price:** To be determined

---

### Census Dictionary

The 1996 Census Dictionary provides detailed information on the concepts, terms, variables and geographic elements of the 1996 Census. The geography definitions include a comprehensive definition of each term, the censuses for which the term was included, and any rule, special notes data quality issue or application relevant to the term. The Dictionary also includes an appendix called "A Guide to Census Geography and Applications" and a comprehensive subject index.

- Catalogue Number:** 92-351-XPE  
**Price:** \$25



---

## 1996 Reference Maps

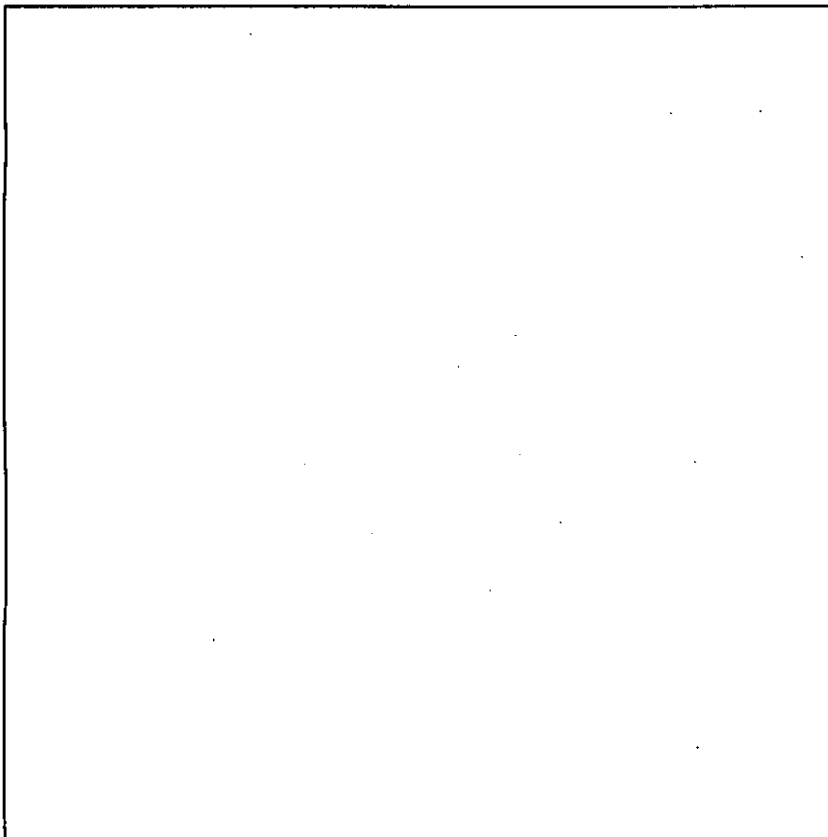
Over 7,500 reference maps are available for most standard geographic areas. These areas range from enumeration areas (the smallest geographic area for which census data are disseminated and published), census tracts (neighbourhoods), census subdivisions (municipalities), census divisions (counties), census agglomerations and census metropolitan areas (urban centres), and federal electoral districts (federal ridings). For the number of reference maps by province or territory see Appendix 2. Maps are obtainable individually or as sets. Enumeration area maps are printed on request and the remaining reference maps are available pre-printed in three colours.

The enumeration area reference maps cover three distinct types of areas: large urban centres, small urban centres and rural areas. All depict the enumeration area as their smallest reference unit. The maps also include roads, railroads, hydrography and other notable physical features.

---

### *Large Urban Enumeration Area (EA) Reference Maps*

These black and white EA reference maps (formerly known as Series 1: Large Urban Centres) cover all 25 census metropolitan areas (CMAs) and the 18 census agglomerations (CAs) that are in the Census Tract Program. Approximately 4,200 maps — generally one map per census tract — show enumeration area (EA) boundaries and codes on a background of detailed street networks and other visible features. Shown on the maps, also, are census tract, census subdivision, federal electoral district (1987 Representation Order) and CMA or CA boundaries. These maps are reproduced on demand. A reference guide is available.



The maps are completely redesigned for 1996. Generally, each census tract (CT) fits on a 11" x 17" (approximately 27cm x 43 cm) page size. Map scales vary according to the size of the census tract; thus the maps cannot be cut and pasted together. In cases where the map display is too congested to fit on one page, the CT may be split into two or four parts. Clients are not charged for the extra "split" maps. All maps were computer generated. Most were produced from Street Network File (SNF) information, but approximately 10% of the maps were generated from Natural Resources Canada's National Topographic Data Base (NTDB) files. The appearance of the maps from the NTDB source differ somewhat from those of the SNF.

- Catalogue Number:** 92F0090XPB  
**Coverage:** Census Metropolitan Area and those Census Agglomerations with Census Tracts

**Pricing: Individual maps**

\$60 for 1 to 6 maps (minimum cost)  
 \$10 per additional map up to 10 maps  
 \$5 per additional map over 10 maps

**Packaged maps by CMAs/CAs**

CMAs		CAs with Census Tracts	
Calgary	\$250	Abbotsford	\$150
Chicoutimi - Jonquière	\$150	Barrie	\$150
Edmonton	\$250	Belleville	\$150
Halifax	\$250	Brantford	\$150
Hamilton	\$250	Guelph	\$150
Kitchener	\$250	Kamloops	\$150
London	\$250	Kelowna	\$150
Montréal	\$750	Kingston	\$150
Oshawa	\$150	Lethbridge	\$150
Ottawa - Hull	\$500	Moncton	\$150
Québec	\$250	Nanaimo	\$150
Regina	\$150	North Bay	\$150
Saint John	\$150	Peterborough	\$150
Saskatoon	\$150	Prince George	\$150
Sherbrooke	\$150	Red Deer	\$130
St. Catharines - Niagara	\$250	Saint-Jean-sur-Richelieu	\$150
St. John's	\$150	Sarnia	\$150
Sudbury	\$150	Sault Ste. Marie	\$150
Thunder Bay	\$150		
Toronto	\$750		
Trois-Rivières	\$150		
Vancouver	\$500		
Victoria	\$250		
Windsor	\$250		
Winnipeg	\$250		

---

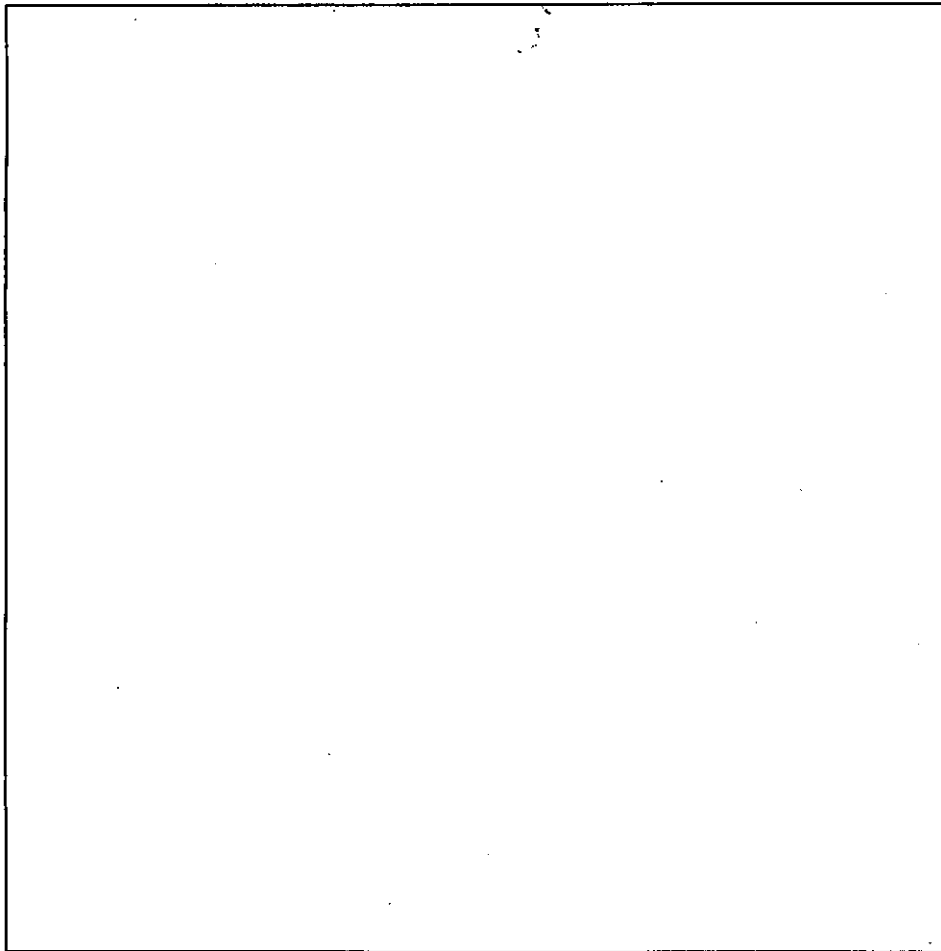
Fixed package price for provincial and territorial level when large urban, small urban and rural maps are purchased. See section "Enumeration Area (EA) Reference Maps Packages" for details.

---

### ***Small Urban Enumeration Area (EA) Reference Maps***

Approximately 870 reference maps (formerly known as Series 2: Small Urban Centres) cover smaller urban municipalities (census subdivisions) not in the Census Tract Program. The maps depict enumeration area (EA) boundaries and codes. Federal electoral districts (1987 Representation Order) are also shown on these maps. The size and scale of the maps vary, depending on the area covered. These maps are reproduced on demand. A reference guide is available.

A small number of maps in this series were computer generated. The content and symbology of these computer generated maps are similar to the Large Urban Enumeration Area Reference Maps.



- Catalogue Number:** 92F0088XPB  
**Coverage:** Provinces and territories

**Pricing: Individual maps**

\$60 for 1 to 6 maps (minimum cost)

\$10 per map for 7 or more maps

**Packaged maps for Small Urban EA Reference Maps by Province and Territory:**

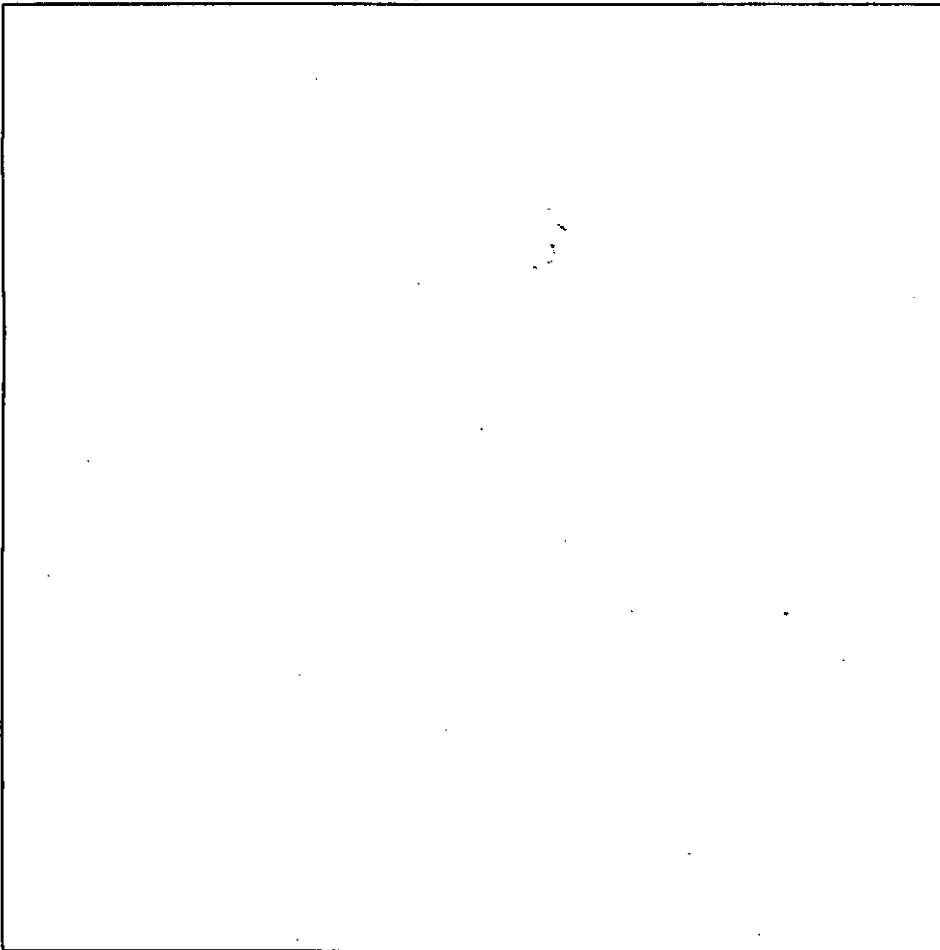
<b>Coverage</b>	
Newfoundland	\$ 440
Prince Edward Island	\$ 90
Nova Scotia	\$ 480
New Brunswick	\$ 520
Quebec	\$2,200
Ontario	\$2,270
Manitoba	\$ 270
Saskatchewan	\$ 460
Alberta	\$ 620
British Columbia	\$1,280
Yukon Territory	\$ 70
Northwest Territories	\$ 70

Fixed package price for provincial and territorial level when large urban, small urban and rural maps are purchased. See description of "Enumeration Area (EA) Reference Maps Packages" on page 9 for details.

---

### ***Rural Enumeration Area (EA) Reference Maps***

Approximately 2,400 maps (previously known as Series 3: Rural Areas) depict enumeration area boundaries and codes in rural areas of Canada. Boundaries for census subdivisions, census divisions, federal electoral districts (1987 Representation Order), census metropolitan areas and tracted census agglomerations are also shown on the maps. The maps are based on Natural Resources Canada's national topographic series, and are at a scale of 1:50,000 or 1:250,000 for the 10 provinces, 1:1,000,000 for Yukon Territory and 1:4,000,000 for the Northwest Territories. These maps are reproduced on demand. A reference guide is available.



**Catalogue Number:** 92F0091XPB

**Price: Individual maps**

\$60 for 1 to 6 maps (minimum cost)

\$10 per map for 7 or more maps

**Packaged maps for Rural Enumeration Area Reference Maps:**

Coverage	
CANADA	\$23,820
Newfoundland	\$ 1,450
Prince Edward Island	\$ 150
Nova Scotia	\$ 910
New Brunswick	\$ 930
Quebec	\$ 3,960
Ontario	\$ 2,870
Manitoba	\$ 2,270
Saskatchewan	\$ 4,120
Alberta	\$ 3,050
British Columbia	\$ 4,090
Yukon Territory	\$ 60
Northwest Territories	\$ 60

Fixed package price for provincial and territorial level when large urban, small urban and rural maps are purchased. See description of "Enumeration Area (EA) Reference Maps Packages" on page 9 for details.

**Enumeration Area (EA) Reference Maps Packages**

Complete sets of 1996 EA reference maps for all of Canada or a province or territory are obtainable at package prices. Each complete set includes maps of all large urban centres, small urban centres, and rural areas for the coverage selected. These maps are reproduced on demand. Reference guides are available.

For further details about the content of these maps, refer to 92F0088XPB, 92F0090XPB, and 92F0091XPB.

**Price: Enumeration Area Reference Maps Packages**

Coverage	
CANADA	\$33,500
Newfoundland	\$ 1,600
Prince Edward Island	\$ 190
Nova Scotia	\$ 1,300
New Brunswick	\$ 1,400
Quebec (1)	\$ 6,200
Ontario (2)	\$ 7,500
Manitoba	\$ 2,200
Saskatchewan	\$ 3,900
Alberta	\$ 3,600
British Columbia	\$ 5,500
Yukon Territory	\$ 60
Northwest Territories	\$ 60

(1) excludes Ontario part of Ottawa - Hull CMA

(2) excludes Quebec part of Ottawa - Hull CMA

## ***Census Division and Census Subdivision Reference Maps***

A total of 21 provincial maps is available for sale in a set for Canada or individually. These maps display the boundaries, names and codes for census divisions (areas such as counties and regional districts) and census subdivisions (such as cities, municipalities, towns, villages, settlements, other local municipal entities, townships and Indian reserves). The maps also show the boundaries for census metropolitan areas and census agglomerations. Each province is covered by one to four maps, with scales ranging from 1:375,000 to 1:6,000,000. The maps have the same general look as in 1991, although they were produced using computer-assisted technology from digital geographic databases. Except for the maps of the Northwest Territories and the Canada level maps, the reference information  including water bodies, major roads and railroads  comes from the Digital Chart of the World (DCW). A reference guide is obtainable.

All the maps are available in the publication, *Standard Geographical Classification. Volume II. Reference Maps (12-572-XPB)*, see pricing below. This publication also includes three maps of Canada at a scale of 1:10,000,000. One map shows census divisions, one shows economic regions, and one shows point locations of census metropolitan areas and census agglomerations. These maps are also available individually.

- Catalogue Number:** 92F0089XPB  
**Coverage:** Canada

**Price: Individual maps**  
 \$10 per map

**Price: Complete map sets (12-572-XPB)**  
 \$80

<b>Coverage</b>	
Newfoundland	\$ 10
Prince Edward Island	\$ 10
Nova Scotia	\$ 10
New Brunswick	\$ 10
Quebec (4 maps)	\$ 40
Ontario (2 maps)	\$ 20
Manitoba (2 maps)	\$ 20
Saskatchewan (2 maps)	\$ 20
Alberta (2 maps)	\$ 20
British Columbia (3 maps)	\$ 30
Yukon Territory	\$ 10
Northwest Territories	\$ 10

## ***Census Metropolitan Area, Census Agglomeration and Census Tract Reference Maps***

Reference maps of all census metropolitan areas (CMAs) and census agglomerations (CAs) with census tracts (CTs) are available in a set or individually. Fifty-five maps cover 25 CMAs and 29 maps cover 18 CAs. The maps show the boundaries and names of CTs and census subdivisions (CSDs) that make up the CMA/CA, including primary census metropolitan areas (PCMAs) and primary census agglomerations (PCAs). Also shown are the boundaries of the urban core, urban fringe and rural fringe. The maps include background information such as rivers, lakes, railroad tracks, provincial boundaries and other significant features. The map scales range from 1:25,000 to 1:2,000,000.

**Note that the equivalent maps produced for non-tracting CAs in 1991 are not obtainable for 1996.**

The *Census Tract Profile* series contains maps corresponding to each CMA and CA. The maps are available as a set in the publication 92-354-XPB (see pricing below). The publication also includes a Canada map (1:10,000,000 scale) showing point locations of CMAs and CAs. This map is also available individually.

**Catalogue Number:** 92F0092XPB

**Price: Individual maps**

\$10 per map

\$25 maximum per urban centre

**Price: Publication Price (92-354-XPB):**

\$90

<b>CMAs</b>			
Calgary	\$20	Saskatoon	\$20
Chicoutimi - Jonquière	\$20	Sherbrooke	\$20
Edmonton	\$20	St. Catharines - Niagara	\$25
Halifax	\$20	St. John's	\$20
Hamilton	\$20	Sudbury	\$20
Kitchener	\$20	Thunder Bay	\$20
London	\$30	Toronto	\$25
Montréal	\$20	Trois-Rivières	\$20
Oshawa	\$20	Vancouver	\$25
Ottawa - Hull	\$20	Victoria	\$20
Québec	\$20	Windsor	\$20
Regina	\$20	Winnipeg	\$20
Saint John	\$20		



<b>CAs with Census Tracts</b>			
Abbotsford	\$10	Moncton	\$20
Barrie	\$10	Nanaimo	\$20
Belleville	\$10	North Bay	\$20
Brantford	\$20	Peterborough	\$20
Guelph	\$10	Prince George	\$10
Kamloops	\$20	Red Deer	\$10
Kelowna	\$20	Saint-Jean-sur-Richelieu	\$10
Kingston	\$20	Sarnia	\$20
Lethbridge	\$10	Sault Ste. Marie	\$20

### ***Federal Electoral District/Enumeration Area (FED/EA) Reference Maps (1987 Representation Order)***

These reference maps show 1996 Census enumeration areas by federal electoral district. The FEDs are based on the 1987 Representation Order that was in effect on Census Day (May 14, 1996). The FED/EA maps are designed for the general reference of EA boundaries. For more specific identification, users should refer to the more detailed EA Reference Map series (92F0088XPB, 92F0090XPB, 92F0091XPB). The FED/EA maps are reproduced on demand. A reference guide is available.

The FED/EA maps in areas covered by the Street Network Files (SNF) were produced using an automated mapping system different from that used in areas not in SNF coverage. For non-SNF areas, the maps were produced from scanned Elections Canada maps, with an overlay of the Statistics Canada boundaries. The two types of maps have a different appearance, but both are in colour.

One map of all federal electoral districts in Canada based on the 1987 Representation Order is also obtainable as an index to these FED/EA maps. It was produced by Natural Resources Canada for the Office of the Chief Electoral Officer, Elections Canada.

Equivalent paper maps were not produced in 1991.

**Catalogue Number:** 92F0087XPB

**Price: Individual maps**

\$100 for 1 map (minimum cost)  
 \$60 per map for 2 to 9 maps  
 \$50 per map for 10 or more maps

---

**Federal Electoral District/Enumeration Area Reference Maps (1987 Representation Order),  
Provincial Sets**

<b>Coverage</b>	<b>Number of FEDs</b>	
Canada	295	\$11,700
Newfoundland	7	\$ 350
Prince Edward Island	4	\$ 200
Nova Scotia	11	\$ 450
New Brunswick	10	\$ 400
Quebec	75	\$ 3,000
Ontario	99	\$ 4,000
Manitoba	14	\$ 550
Saskatchewan	14	\$ 550
Alberta	26	\$ 1,050
British Columbia	32	\$ 1,300
Yukon Territory	1	maps not available
Northwest Territories	2	maps not available

## **Interim List of Changes to Municipal Boundaries, Status and Names**

This report provides a summary of changes to municipal boundaries, status and names in effect during the time period of January 2, 1996 to January 1, 1998. Subsequent releases will be annual.

The Geography Division of Statistics Canada processed the municipal changes that are based on information received through provincial/territorial gazettes, letters patent, and orders-in-council. These changes may or may not include all those that have occurred within the given time period.

The interim list is available in hard copy or on diskette.

- Catalogue Number:** 92F0009XPB  
**Price:** \$25

### **Tables included in the publication are:**

1. Changes to Census Subdivisions in Alphabetical Order, by Province. This table presents all types of changes received to date, with adjusted 1996 population and land area.
2. Changes to the Census Subdivisions Codes, Names and Types, in Numerical Order, by Province. This table presents only changes that impact on the Standard Geographical Classification (SGC) and therefore excludes annexations and boundary revisions. The changes are listed in SGC code order.

## Standard Geographical Classification

The Standard Geographical Classification (SGC) is a system of names and codes representing areas of Canada. It consists of a three-tiered hierarchy - province, county and municipality. The SGC is used to identify information for particular geographical areas and to tabulate statistics.

The 1996 SGC, which replaces the 1991 version as the official geographical classification of Statistics Canada, is organized into two volumes.

---

### *Standard Geographical Classification. Volume I. The Classification*

*Volume I, The Classification*, is designed as a reference and coding manual. *The Classification* volume contains tables of SGC units with their names and codes and an alphabetical index of place names. It also covers related areas based upon the SGC.

- Catalogue Number: 12-571-XPB      ISBN 0-660-59269-X  
Price: \$99

---

### *Standard Geographical Classification. Volume II. Reference Maps*

*Volume II, Reference Maps*, shows the boundaries, names and codes of SGC areas. For information on ordering individual map sheets, see *Census Division and Census Subdivision Reference Maps* (92F0090XPB).

- Catalogue Number: 12-572-XPB      ISBN 0-660-59270-3  
Price: \$80

## Geographic Data Products

### GeoRef, 1996 Census

GeoRef is a powerful data retrieval and tabular output tool with software and data on a CD-ROM. GeoRef allows users to explore the links between all standard levels of geography and to determine geographic codes, names, and population and dwelling counts. In addition to the standard census areas, GeoRef provides enumeration area (EA) correspondence data for 1996 Census EAs and 1991 Census EAs. It also includes an EA reference map listing that facilitates identification of appropriate EA reference maps.

GeoRef is completely redesigned for 1996 as a Windows-based product. For 1996, GeoRef includes information that was previously available (1991 Census) as separate products, namely, the EA Reference Lists (92-312, 92-313, 92-314, 92-315, 92-316, and 92-317), EA Correspondence File (92F0076) and Geographic Attribute File (92F0075). Therefore, these products are not available separately for 1996.

**Catalogue Number:** 92F0085XCB  
**Price:** \$60

**Minimum Computer Requirements:** 486 33MHz or higher processor running MS Windows® version 3.1 or higher, or Windows NT® or Win95®; 8 MB RAM; VGA or higher-resolution monitor.

**Recommended Requirements:** 486 66MHz or higher; 16 MB RAM.

### Postal Codes Counts, 1996 Census

This is a new product for 1996 that contains population and dwelling counts for all six character postal codes reported by respondents. The population and dwelling counts are provided by individual postal code, by forward sortation area (FSA - the first three character of the six-character postal code) and by province or territory. The data are provided with Windows-based software that enables users to perform simple data manipulations such as searching the data set for specific postal codes, importing groups of postal codes for which counts are required and exporting groupings of postal codes. Documentation and reference material are contained in electronic form on the CD-ROM.

**Catalogue Number:** 92F0086XCB  
**Price:** \$60

**Medium:** CD-ROM  
**Minimum  
Computer  
Requirements:** 486 33MHz or higher processor running MS Windows® version  
3.1 or higher, or Windows NT® or Win95®; 12 MB RAM; VGA  
or higher-resolution monitor.

## Spatial Information Products

Spatial information provides the shape and location of geographic features. The boundaries, street network and other features of standard geographic areas are available in digital form for computer mapping and Geographic Information System (GIS) applications. These products include: Digital Boundary Files (DBFs) and Digital Cartographic Files (DCFs); Street Network Files (SNFs); Skeletal Street Network File (SSNFs) and Street Network and Feature Extension Files (SNFEFs).

### Digital Boundary Files (DBF)/ Digital Cartographic Files (DCF)

The Digital Boundary Files and Digital Cartographic Files series comprise a library of geographic boundaries in digital form for most levels of geography (from enumeration area to province and territory). With the appropriate software, DBFs and DCFs provide the framework for computer analysis and mapping. These files can also be used to create new geographic areas by aggregating standard geographic areas, and for other data manipulations available with the user's software.

Digital Boundary Files portray the official boundaries used for 1996 Census collection and, therefore, often extend as straight lines into bodies of water. Consequently, Digital Boundary Files may not be suitable for mapping or display where realistic shoreline is required.

In Digital Cartographic Files, these boundaries were modified to follow the coastlines and shorelines on the perimeter of Canada's land mass, including major islands. The Digital Cartographic Files also include a separate map layer showing lakes and some rivers and estuaries. This "water" layer can be used for additional reference purposes when mapping or displaying the boundaries.

The Digital Boundary Files and Digital Cartographic Files are packaged by type of geographic boundary and coverage. For example boundaries include enumeration areas, census subdivisions, census consolidated subdivisions, census divisions, urban areas, designated places, federal electoral districts, provinces and territories. Coverages include Canada, province or territory, census metropolitan area or census agglomeration. Coordinates: Latitude/Longitude.

- Price:** Prices and catalogue numbers vary by type of geographic boundary. See details under description of specific products and in summary tables below. Custom orders for Digital Boundary and Digital Cartographic Files are available on request.
- Media:** IBM®-compatible high density diskettes 3.5, CD-ROM is obtainable for large files or orders
- Format:** ARC/INFO® Export, and MapInfo® for Windows

---

**Summary of Prices for Digital Boundary Files and Digital Cartographic Files**

Catalogue Number	DCF or DBF	Price
92F0029XDE	Provinces and Territories	\$ 60
92F0030XDE	Federal Electoral Districts (1987 Representation Order)	\$100
92F0031XDE	Federal Electoral Districts (1996 Representation Order)*	\$100
92F0032XDE	Census Divisions	\$100
92F0035XDE	Census Metropolitan Areas and Census Agglomerations	\$100
92F0037XDE	Urban Areas	\$100
92F0038XDE	Designated Places	\$100
92F0039XDE	Forward Sortation Areas*	\$400

\*DCF only

---

***Provinces and Territories Digital Boundary File/Digital Cartographic File***

The 1996 Provinces and Territories Digital Cartographic File (DCF) is available as a standard package for Canada. The Digital Boundary File is obtainable on request.

Special Content Note: The boundaries of the provinces and territories were generalized to meet the requirements of most desk-top mapping packages. Consequently, this product is not fully consistent with others in the series, except for the generalized Census Division and Federal Electoral Districts (1987 Representation Order) Digital Cartographic Files.

- Catalogue Number:** 92F0029XDE  
**Medium:** Diskette

**Price:** See table "Summary of Prices for Digital Boundary Files and Digital Cartographic Files" above for details.

---

***Federal Electoral Districts (1987 Representation Order) Digital Boundary File/Digital Cartographic File***

The Federal Electoral Districts (1987 Representation Order) Digital Cartographic File is available in two versions. The boundaries of the first version are consistent with all other levels of standard geography. A more generalized version is also obtainable for small scale mapping of the country as a whole. The Federal Electoral Districts (1987 Representation Order) Digital Cartographic Files are offered as standard packages for Canada. The Digital Boundary File is available on request.

Special Content Note: The Federal Electoral Districts (1987 Representation Order) Digital Boundary File/Digital Cartographic File was created by aggregating the component EA boundaries from the 1996 Census. They may differ slightly from the Digital Boundary File based on 1991 enumeration areas (92F0070XDB).



### ***Census Metropolitan Areas/Census Agglomerations Digital Boundary File/Digital Cartographic File***

The Census Metropolitan Areas/Census Agglomerations Digital Cartographic File is obtainable as a standard package for Canada. The Digital Boundary File is available upon request.

Special Content Note: These files include boundaries for primary census metropolitan areas and primary census agglomerations.

- Catalogue Number:** 92F0035XDE  
**Medium:** Diskette

Price: See table "Summary of Prices for Digital Boundary Files and Digital Cartographic Files" above for details.

---

### ***Urban Areas Digital Boundary File/Digital Cartographic File***

The Urban Areas Digital Cartographic File is obtainable as a standard package for Canada. The Digital Boundary File is available on request.

- Catalogue Number:** 92F0037XDE  
**Medium:** Diskette

Price: See table "Summary of Prices for Digital Boundary Files and Digital Cartographic Files" above for details.

---

### ***Designated Places Digital Boundary File/Digital Cartographic File***

The Designated Places Digital Cartographic File is obtainable as a standard package for Canada. The Digital Boundary File is available on request. **Designated Place is a new geographic concept in 1996.**

- Catalogue Number:** 92F0038XDE  
**Medium:** Diskette

Price: See table "Summary of Prices for Digital Boundary Files and Digital Cartographic Files" above for details.

- 
- Catalogue Number:** 92F0030XDE  
**Medium:** Diskette

**Price:** See table "Summary of Prices for Digital Boundary Files and Digital Cartographic Files" above for details.

---

***Federal Electoral Districts (1996 Representation Order) Digital Cartographic File***

The Federal Electoral District (1996 Representation Order) Digital Cartographic File depicts the boundaries of the 1996 Representation Order Federal Electoral Districts.

Special Content Note: Since the 1996 Representation Order Federal Electoral District is not a standard level of geography for the 1996 Census, the cartographic file was created with a different methodology. Therefore, this file is not consistent with other files in the series. Users should be aware that the FED boundaries used for the taking of the 1996 Census were based on the 1987 Representation Order. The 1996 Representation Order was proclaimed on January 8, 1996, and was in force on the first dissolution of Parliament that occurred at least one year after its proclamation.

- Catalogue Number:** 92F0031XDE  
**Medium:** Diskette

**Price:** See table "Summary of Prices for Digital Boundary Files and Digital Cartographic Files" above for details.

---

***Census Divisions Digital Boundary File/Digital Cartographic File***

The Census Division Digital Cartographic File is available in two versions. The boundaries of the first version are consistent with all other levels of standard geography. A more generalized version is also available for small scale mapping of the country as a whole. The 1996 Census Division Digital Cartographic Files are available as standard packages for Canada. The Digital Boundary File is available on request.

- Catalogue Number:** 92F0032XDE  
**Medium:** Diskette

**Price:** See table "Summary of Prices for Digital Boundary Files and Digital Cartographic Files" above for details.

---

### ***Forward Sortation Areas Digital Cartographic File***

The 1996 Census Forward Sortation Areas Digital Cartographic File is available as a standard package for Canada.

**Special Content Notes:** The 1996 Census Forward Sortation Areas (FSAs) Digital Cartographic File depicts FSA boundaries derived from postal codes captured from the 1996 Census questionnaires. Through analysis of the postal codes reported by census households, a single FSA was assigned to each enumeration area (most often the FSA reported by the largest number of census households). **FSA polygons were formed by grouping enumeration areas. Therefore, the Census based FSA boundaries are not equivalent to FSA boundaries in use by Canada Post, but are representations created from enumeration areas. This is a new product.**

- Catalogue Number:** 92F0039XDE  
**Medium:** Diskette

**Price:** See table "Summary of Prices for Digital Boundary Files and Digital Cartographic Files" above for details.

---

### ***Census Consolidated Subdivisions Digital Boundary File/ Digital Cartographic File***

The Census Consolidated Subdivisions (CCS) Digital Cartographic Files are available as standard packages for Canada and the provinces and territories. Digital Boundary Files are available on request.

**Price:** See summary table "Prices for Digital Boundary Files and Digital Cartographic Files for Canada and Province/Territory" below for details.

- Catalogue Number:** 92F0033XDE  
**Medium:** Diskette

---

**Price: Prices for Digital Boundary Files and Digital Cartographic Files for Canada and Province/Territory**

<b>Coverage: Census Consolidated Subdivisions</b>	<b>Price</b>
<b>CANADA</b>	<b>\$500</b>
Newfoundland	\$100
Prince Edward Island	\$100
Nova Scotia	\$100
New Brunswick	\$100
Quebec	\$100
Ontario	\$100
Manitoba	\$100
Saskatchewan	\$100
Alberta	\$100
British Columbia	\$100
Yukon Territory	\$100
Northwest Territories	\$100

**Summary of Prices for Digital Boundary Files/Digital Cartographic Files available for Canada, Province/Territory, and CMA/CA**

Coverage	Enumeration Areas	Census Subdivisions	Census Tracts
<b>CANADA</b>	\$9,800	\$1,200	\$900
Newfoundland	\$ 200	\$ 100	
St. John's	\$ 100	\$ 100	\$ 100
Prince Edward Island	\$ 100	\$ 100	
Nova Scotia	\$ 300	\$ 100	
Halifax	\$ 100	\$ 100	\$ 100
New Brunswick	\$ 300	\$ 100	\$ 150
Moncton	\$ 100	\$ 100	\$ 100
Saint John	\$ 100	\$ 100	\$ 100
Quebec	\$2,300	\$ 300	\$ 500
Chicoutimi - Jonquière	\$ 100	\$ 100	\$ 100
Montréal	\$1,150	\$ 100	\$ 150
Québec	\$ 250	\$ 100	\$ 100
Saint-Jean-sur-Richelieu	\$ 100	\$ 100	\$ 100
Sherbrooke	\$ 100	\$ 100	\$ 100
Trois-Rivières	\$ 100	\$ 100	\$ 100
Ontario	\$3,200	\$ 200	\$ 600
Barrie	\$ 100	\$ 100	\$ 100
Belleville	\$ 100	\$ 100	\$ 100
Brantford	\$ 100	\$ 100	\$ 100
Guelph	\$ 100	\$ 100	\$ 100
Hamilton	\$ 200	\$ 100	\$ 100
Kingston	\$ 100	\$ 100	\$ 100
Kitchener	\$ 100	\$ 100	\$ 100
London	\$ 150	\$ 100	\$ 100
North Bay	\$ 100	\$ 100	\$ 100
Oshawa	\$ 100	\$ 100	\$ 100
Ottawa - Hull	\$ 350	\$ 100	\$ 100
Peterborough	\$ 100	\$ 100	\$ 100
Sarnia	\$ 100	\$ 100	\$ 100
Sault Ste. Marie	\$ 100	\$ 100	\$ 100
St. Catharines - Niagara	\$ 100	\$ 100	\$ 100
Sudbury	\$ 100	\$ 100	\$ 100
Thunder Bay	\$ 100	\$ 100	\$ 100
Toronto	\$1,400	\$ 100	\$ 200
Windsor	\$ 100	\$ 100	\$ 100
Manitoba	\$ 400	\$ 100	\$ 100
Winnipeg	\$ 250	\$ 100	\$ 100
Saskatchewan	\$ 600	\$ 200	\$ 150
Regina	\$ 100	\$ 100	\$ 100
Saskatoon	\$ 100	\$ 100	\$ 100
Alberta	\$ 900	\$ 100	\$ 300
Calgary	\$ 250	\$ 100	\$ 100
Edmonton	\$ 300	\$ 100	\$ 100
Lethbridge	\$ 100	\$ 100	\$ 100
Red Deer	\$ 100	\$ 100	\$ 100
British Columbia	\$1,400	\$ 100	\$ 400
Abbotsford	\$ 100	\$ 100	\$ 100
Kamloops	\$ 100	\$ 100	\$ 100
Kelowna	\$ 100	\$ 100	\$ 100
Nanaimo	\$ 100	\$ 100	\$ 100
Prince George	\$ 100	\$ 100	\$ 100
Vancouver	\$ 650	\$ 100	\$ 100
Victoria	\$ 150	\$ 100	\$ 100
Yukon Territory	\$ 100	\$ 100	
Northwest Territories	\$ 100	\$ 100	

---

### ***Census Subdivisions Digital Boundary File/Digital Cartographic File***

The Census Subdivisions Digital Cartographic File is obtainable as standard packages for Canada, the provinces and territories, census metropolitan areas, and tracted census agglomerations (CMAs/CAs). Digital Boundary Files are available on request.

- Catalogue Number:** 92F0034XDE  
**Media:** Diskette. CD-ROM for large files or orders

**Price:** See summary table "Summary of Prices for Digital Boundary Files/Digital Cartographic Files available for Canada, Province/Territory, and CMA/CA" above for Census Tracts Digital Boundary File/Digital Cartographic File.

---

### ***Census Tracts Digital Boundary File/Digital Cartographic File***

The Census Tracts Digital Cartographic File is available as standard packages for Canada, the provinces, census metropolitan areas, and tracted census agglomerations (CMAs/CAs). Digital Boundary Files are available on request.

**Special Content Notes:** Users of the 1991 Census Tracts Digital Cartographic File will notice a major difference between the 1991 and the 1996 product. In 1991, all bodies of water were integrated with the boundaries on a single map layer. The 1996 boundaries follow the coastlines and shorelines on the perimeter of Canada's land mass, including major islands. Users can see the remaining shorelines (inland bodies of water) by overlaying the separate "water" layer. The 1996 Census tracts DCFs are consistent with all other levels of standard geography. This was not the case in 1991.

Users should also note that orders for all CMA/CA files for the province of Quebec exclude the Ontario part of the Ottawa - Hull. The reverse is true when ordering all CMA/CA files for Ontario (that is, the Quebec part is excluded). However, orders for the Ottawa - Hull CMA file include both the Ontario and Quebec parts.

- Catalogue Number:** 92F0036XDE  
**Media:** Diskette. CD-ROM for large files or orders

**Price:** See summary table, "Summary of Prices for Digital Boundary Files/Digital Cartographic Files available for Canada, Province/Territory, and CMA/CA" above for details.

---

### ***Enumeration Areas Digital Boundary File/Digital Cartographic File***

The Enumeration Areas Digital Cartographic File is a new product, and is available as a standard package for Canada, the provinces and territories, and large urban centres. Digital Boundary Files are available on request.

- Catalogue Number:** 92F0040XDE  
**Media:** Diskette, CD-ROM for large files or orders

**Price:** See summary table, "Summary of Prices for Digital Boundary Files/Digital Cartographic Files available for Canada, Province/Territory, and CMA/CA" above for details.

## Street Network Files (SNF)

The Street Network Files (SNFs) are digital files representing street networks for most large urban centres in Canada. The files also contain other visible physical and cultural features (such as hydrography, railroads, pipelines) and attribute information (for example, street and hydrographic names and address ranges for streets with assigned addresses). Streets and addresses are updated to reflect the information collected on Census Day - May 14, 1996. A reference guide is included.

A total of 344 municipalities is covered by SNFs — 328 in census metropolitan areas (CMAs) and census agglomerations (CAs) with census tracts, five in CAs without census tracts and 11 outside CMAs and CAs. This coverage represents 62% of Canada's population but less than 1% of the land area. Some CMAs and CAs are only partially covered by Street Network Files. Users will find a comprehensive listing of Census Subdivisions (CSDs) entirely or partially covered by Street Network Files in Appendix N of the 1996 Census Dictionary (92-351-XPE).

Prior to 1991, Street Network Files were called Area Master Files (AMFs). **Note that the AMF format is not offered for 1996.**

- Catalogue Number:** 92F0024XDE  
**Coverage:** All Census Subdivisions covered by Street Network Files  
**Price:** See table "Summary of Prices for SSNFs, SNFs and SNFEFs" for details. Street Network Files are packaged by CMAs and CAs.

**Media:** CD-ROM, IBM®-compatible high density diskette (3.5").

**Format:** MapInfo® for Windows® and ARC/INFO® Export.

**Coordinates:** Latitude/Longitude

**Minimum Computer Requirements:** 486 33MHz or higher processor running MS Windows® version 3.1 or higher, or Windows NT® or Win95®; 8 MB RAM; VGA or higher-resolution monitor

**Recommended Requirements:** 486 66MHz or higher; 16 MB RAM.



---

## Skeletal Street Network Files (SSNF)

The Skeletal Street Network Files (SSNFs) are "thinned-out" Street Network Files, consisting of cartographic reference features such as major streets (with street names but no address ranges) and some railway features used to define census tract boundaries.

The SSNFs have been produced solely to provide some cartographic reference features when producing thematic maps with the Digital Cartographic Files. Skeletal street network files (SSNFs) are available as standard packages for CMAs and CAs with census tracts.

- **Catalogue Number:** 92F0025XDE
- Coverage:** Census Subdivisions covered by Street Network Files
- Price:** See table "Summary of Prices for SSNFs, SNFs and SNFEFs" for pricing details.
  
- Medium:** IBM®-compatible high density diskettes (3.5").
  
- Format:** MapInfo® for Windows® and ARC/INFO® Export.
  
- Coordinates:** Latitude/Longitude

## Street Network and Feature Extension Files (SNFEF)

The Street Network and Feature Extension Files (SNFEFs) are digital files that extend the coverage of the Street Network Files (SNFs) to the defined limits of the census metropolitan area / census agglomeration (CMA/CA). The SNFEFs contain all the features of the SNFs plus a road and feature network from the National Topographic Data Base (NTDB) extending from the SNF coverage to the CMA/CA limit.

The extended features of the SNFEFs differ somewhat from the SNF portion of the files. These features are not as up-to-date as the SNF's (which have features reflecting the information collected on Census Day - May 14, 1996), nor do they have any address ranges — a major feature of the SNFs — or have block-faces. As well, x,y coordinates from the Postal Code Conversion File are only at the enumeration area level within these extensions.

SNFEFs cover a total of 29 centres: 26 CMAs and CAs that have partial SNF coverage, and 3 CAs with no SNF coverage. There are 16 CMAs/CAs that are completely covered as part of the SNF program. In Appendix M of the 1996 Census Dictionary (92-351-XPE), users may find a list of CMAs and CAs entirely or partially covered by Street Network Files.

The feature extensions in the SNFEF that are derived from the NTDB should only be used for thematic mapping. They should not be used for geocoding purposes.

Since standard boundary file products may not match the feature extensions in the SNFEF, adjusted boundary files are also available for clients wanting a complete CMA/CA package (see sections on Census Tracts DBF/DCF, Census Subdivisions DBF/DCF and Enumeration Areas DBF/DCF for specific information).

A Reference Guide that covers both the SNF and SNFEF is available.

- Catalogue Number:** See "Summary of Prices for SSNFs, SNFs and SNFEFs" for details
- Coverage:** All census tracted urban centres (excluding those fully covered by SNF)
- Price:** See table "Summary of Prices for SSNFs, SNFs and SNFEFs" for details. Street Network and Feature Extension Files are packaged by CMAs and CAs. Also offered are packaged prices nationally and provincially.
- Media:** CD-ROM, IBM®-compatible high density diskette (3.5").
- Format:** MapInfo® for Windows® and ARC/INFO® Export.
- Coordinates:** Latitude/Longitude

## Summary of Prices for SSNFs, SNFs and SNFEFs

Coverage	SSNF	SNF	SNFEF	SNFEF Catalogue Number
<b>CANADA</b>	\$2,900	\$20,000	\$22,000	92F0100XDE
Newfoundland	not available	\$ 200	\$ 300	
St. John's (CMA)*	\$ 100	\$ 200	\$ 300	92F0101XDE
Prince Edward Island	not available	not available	not available	
Nova Scotia	not available	\$ 350	\$ 450	
Halifax (CMA)*	\$ 100	\$ 350	\$ 450	92F0102XDE
New Brunswick	not available	\$ 700	\$ 900	92F0103XDE
Fredericton (CA)*	\$ 100	\$ 200	\$ 300	
Moncton (CA)*	\$ 100	\$ 350	\$ 450	92F0105XDE
Saint John (CMA)*	\$ 100	\$ 200	\$ 300	92F0106XDE
Quebec	not available	\$4,600	\$5,000	92F0107XDE
Chicoutimi - Jonquière (CMA)*	\$ 100	\$ 300	\$ 400	92F0108XDE
Montréal (CMA)*	\$ 200	\$3,300	\$3,400	92F0109XDE
Québec (CMA)*	\$ 100	\$1,050	\$1,150	92F0110XDE
Saint-Jean-sur-Richelieu (CA)	not available	not available	\$ 100	92F0111XDE
Sherbrooke (CMA)*	\$ 100	\$ 200	\$ 300	92F0112XDE
Trois-Rivières (CMA)*	\$ 100	\$ 300	\$ 400	92F0113XDE
Ontario	not available	\$8,700	\$9,400	92F0114XDE
Barrie (CA)	not available	not available	\$ 100	92F0115XDE
Belleville (CA)*	\$ 100	\$ 200	\$ 300	92F0116XDE
Brantford (CA)	\$ 100	\$ 250	full SNF coverage	
Guelph (CA)	\$ 100	\$ 200	full SNF coverage	
Hamilton (CMA)	\$ 100	\$1,000	full SNF coverage	
Kingston (CA)*	\$ 100	\$ 200	\$ 300	92F0117XDE
Kitchener (CMA)	\$ 100	\$ 600	full SNF coverage	
London (CMA)	\$ 100	\$ 750	full SNF coverage	
North Bay (CA)*	\$ 100	\$ 200	\$ 300	92F0118XDE
Oshawa (CMA)	\$ 100	\$ 500	full SNF coverage	
Ottawa - Hull (CMA)*	\$ 200	\$1,450	\$1,550	92F0119XDE
Peterborough (CA)*	\$ 100	\$ 200	\$ 300	92F0120XDE
Sarnia (CA)	\$ 100	\$ 250	full SNF coverage	
Sault Ste. Marie (CA)	\$ 100	\$ 200	full SNF coverage	
St. Catharines - Niagara (CMA)	\$ 100	\$1,250	full SNF coverage	
Stratford (CA)	\$ 100	\$ 200	full SNF coverage	
Sudbury (CMA)*	\$ 100	\$ 200	\$ 300	92F0121XDE
Thunder Bay (CMA)*	\$ 100	\$ 300	\$ 400	92F0122XDE
Toronto (CMA)*	\$ 200	\$2,900	\$3,000	92F0123XDE
Windsor (CMA)*	\$ 100	\$ 400	\$ 500	92F0124XDE
Woodstock (CA)	\$ 100	\$ 200	full SNF coverage	
Manitoba	not available	\$1,050	\$1,150	
Winnipeg (CMA)*	\$ 100	\$1,050	\$1,150	92F0125XDE
Saskatchewan	not available	\$ 750	\$ 900	92F0126XDE
Regina (CMA)*	\$ 100	\$ 400	\$ 500	92F0127XDE
Saskatoon (CMA)*	\$ 100	\$ 350	\$ 450	92F0128XDE
Alberta	not available	\$1,900	\$2,050	92F0129XDE
Calgary (CMA)*	\$ 100	\$1,050	\$1,150	92F0130XDE
Edmonton (CMA)*	\$ 100	\$ 900	\$ 1,000	92F0131XDE
Lethbridge (CA)	\$ 100	\$ 200	full SNF coverage	
Red Deer (CA)	\$ 100	\$ 200	full SNF coverage	
British Columbia	not available	\$2,900	\$3,200	92F0132XDE
Abbotsford (CA)*	\$ 100	\$ 200	\$ 300	92F0133XDE
Kamloops (CA)*	\$ 100	\$ 200	\$ 300	92F0134XDE
Kelowna (CA)*	\$ 100	\$ 200	\$ 300	92F0135XDE
Nanaimo (CA)	not available	not available	\$ 100	92F0136XDE
Prince George (CA)	\$ 100	\$ 200	full SNF coverage	
Vancouver (CMA)	\$ 200	\$2,200	full SNF coverage	
Victoria (CMA)	\$ 100	\$ 550	full SNF coverage	
Yukon Territory	not available	not available	not available	
Northwest Territories	not available	not available	not available	

\*Street Network Files do not cover the entire CMA or CA

<b>Minimum Computer Requirements:</b>	486 33MHz or higher processor running MS Windows® version 3.1 or higher, or Windows NT® or Win95®; 8 MB RAM; VGA or higher-resolution monitor
<b>Recommended Requirements:</b>	486 66MHz or higher; 16 MB RAM.

---

## Attribute Information Products

Attribute Information products are those that give descriptive information about features.

The attribute files include: Block-face Data File (BFDF); Postal Code Conversion File (PCCF); and Postal Codes by Federal Ridings File (PCFRF).

---

### Block-Face Data File (BFDF)

The Block-Face Data File (BFDF) contains 1996 Census population and dwelling counts for block-faces in urban centres covered by the Street Network Files (92F0024XDE). A block-face is generally one side of a city street between two consecutive intersections; it is also the smallest geographical unit available from Statistics Canada. The BFDF also links the block-face to all other levels of standard geography (enumeration areas and above) through geographic codes. The file includes street names with address ranges as well as x, y (latitude/longitude) coordinates for a point representing the approximate centre of each block-face. A reference guide is included.

Block-face data files are available for areas that have corresponding Street Network Files (92F0024XDE) such as areas within census metropolitan areas (CMAs) and census agglomerations (CAs). Block-face data files are packaged by CMAs and CAs. Custom orders are available on request.

- Catalogue Number:** 92F0026XDB  
**Coverage:** All Census Subdivisions covered by Street Network Files  
**Price:** See summary table "Prices for BFDF" for details.
- Medium :** IBM®-compatible high density diskette (3.5").

## Attribute Information Products

## Prices for BFDEs

Coverage	BDF
<b>CANADA</b>	<b>\$2,000</b>
Newfoundland	not available
St. John's (CMA)*	\$ 100
Prince Edward Island	not available
Nova Scotia	not available
Halifax (CMA)*	\$ 100
New Brunswick	not available
Fredericton (CA)*	\$ 100
Moncton (CA)*	\$ 100
Saint John (CMA)*	\$ 100
Quebec	not available
Chicoutimi - Jonquière (CMA)*	\$ 100
Montréal (CMA)*	\$ 300
Québec (CMA)*	\$ 200
Saint-Jean-sur-Richelieu (CA)	not available
Sherbrooke (CMA)*	\$ 100
Trois-Rivières (CMA)*	\$ 100
Ontario	not available
Barrie (CA)	not available
Belleville (CA)*	\$ 100
Brantford (CA)	\$ 100
Guelph (CA)	\$ 100
Hamilton (CMA)	\$ 200
Kingston (CA)*	\$ 100
Kitchener (CMA)	\$ 100
London (CMA)	\$ 200
North Bay (CA)*	\$ 100
Oshawa (CMA)	\$ 100
Ottawa - Hull (CMA)*	\$ 300
Peterborough (CA)*	\$ 100
Sarnia (CA)	\$ 100
Sault Ste. Marie (CA)	\$ 100
St. Catharines - Niagara (CMA)	\$ 300
Stratford (CA)	\$ 100
Sudbury (CMA)*	\$ 100
Thunder Bay (CMA)*	\$ 100
Toronto (CMA)*	\$ 300
Windsor (CMA)*	\$ 100
Woodstock (CA)	\$ 100
Manitoba	not available
Winnipeg (CMA)*	\$ 200
Saskatchewan	
Regina (CMA)*	\$ 100
Saskatoon (CMA)*	\$ 100
Alberta	not available
Calgary (CMA)*	\$ 200
Edmonton (CMA)*	\$ 200
Lethbridge (CA)	\$ 100
Red Deer (CA)	\$ 100
British Columbia	not available
Abbotsford (CA)*	\$ 100
Kamloops (CA)*	\$ 100
Kelowna (CA)*	\$ 100
Nanaimo (CA)	not available
Prince George (CA)	\$ 100
Vancouver (CMA)	\$ 300
Victoria (CMA)	\$ 100
Yukon Territory	not available
Northwest Territories	not available

\*Street Network Files do not cover the entire CMA or CA

---

## Postal Code Conversion File (PCCF)

The Postal Code Conversion File (PCCF) provides a link between six-character postal code and standard 1996 Census geographic areas (such as enumeration areas, municipalities, census tracts, and so on). It also provides the x,y (latitude/longitude) coordinates for a point representing the approximate location of the postal code to support mapping. A reference guide is included.

The PCCF is updated on a semi-annual basis. Updates released in July provide new postal codes as of January of the release year. Updates released in January provide new postal codes as of July of the previous year. Clients must purchase the Postal Code Conversion File at the initial cost; then subsequent updated files (92F0027UDB) may be purchased at the update or subscription rate.

- Catalogue Number:** 92F0027XDB  
**Price:** See table "Summary of Prices for PCCF, PCCF Updates and PCCF Subscription Rates" for details.

**Media:** CD-ROM, IBM®-compatible high density diskette (3.5").

**Price Notes:** Clients who purchase the PCCF at the initial cost may purchase the updates at a flat rate that, in most cases, is much lower than the initial purchase price. An additional 25% discount on updates is given to PCCF update subscribers. The subscription will require that they pay in advance for at least one updated file per year until the PCCF reflecting the geography of the 2001 Census is released.

The PCCF is available as standard packages for Canada, the provinces and territories, census metropolitan areas (CMAs) and some census agglomerations (CAs).

---

## Postal Code Conversion File (PCCF) - Update

- Catalogue Number:** 92F0027UDB  
**Release frequency:** Semi-annual  
**Price:** See table "Summary of Prices for PCCF, PCCF Updates and PCCF Subscription Rates" for details.

**Media :** CD-ROM, IBM®-compatible high density diskette (3.5").

Coverage	PCCF	PCCF Updates	PCCF Subscription Rates
Northwest Territories	\$ 200	\$ 100	\$ 75

### Postal Codes by Federal Ridings (1996 Representation Order) File

The Postal Codes by Federal Ridings (1996 Representation Order) File (PCFRF) provides a link between the six character postal codes and the federal electoral districts (1996 Representation Order). A federal electoral district (commonly referred to as a federal riding) is any place or territory entitled to return a Member of Parliament (MP) to sit in the House of Commons.

The PCFRF is intended as a tool for use with administrative files containing postal codes. By using the postal code as a link, data from administrative files may be organized and/or tabulated by federal riding. This PCFRF allows a link of more than 680,000 postal code records to the 301 federal electoral districts (1996 Representation Order).

Semi-annual updates (92F0028UDB) are available in January and July. Updates released in July provide new postal codes effective January of the release year. Updates released in January provide new postal codes in use in July of the previous year. A reference guide is included.

The PCFRF is available as standard packages for Canada and five regions. Custom orders are obtainable on request.

**Catalogue Number:** 92F0028XDB

<b>Price: (Initial Cost)</b>	<b>CANADA:</b>	\$2,900
	Atlantic provinces:	\$ 500
	Quebec:	\$1,000
	Ontario:	\$1,000
	Prairie provinces and Northwest Territories:	\$1,000
	B.C. and Yukon Territory:	\$1,000

**Medium:** Diskette

**Price Notes:** Clients must purchase the Postal Codes by Federal Ridings (1996 Representation Order) File at the initial cost. Subsequent update files may be purchased at the update rate (92F0028UDB).



## Summary of Prices for PCCF, PCCF Updates and PCCF Subscription Rates

Coverage	PCCF	PCCF Updates	PCCF Subscription Rates
Minimum	\$200	\$100	\$75
<b>CANADA</b>	<b>\$9,000</b>	<b>\$1,500</b>	<b>\$1,125</b>
Newfoundland	\$ 200	\$ 100	\$ 75
St. John's (CMA)	\$ 200		
Prince Edward Island	\$ 200	\$ 100	\$ 75
Nova Scotia	\$ 450	\$ 100	\$ 75
Halifax (CMA)	\$ 200		
New Brunswick	\$ 350	\$ 100	\$ 75
Fredericton (CA)	\$ 200		
Moncton (CA)	\$ 200		
Saint John (CMA)	\$ 200		
Quebec	\$2,500	\$ 400	\$ 300
Chicoutimi - Jonquière (CMA)	\$ 200		
Montréal (CMA)	\$1,300		
Québec (CMA)	\$ 500		
Saint-Jean-sur-Richelieu (CA)	\$ 200		
Sherbrooke (CMA)	\$ 200		
Trois-Rivières (CMA)	\$ 200		
Ontario	\$3,550	\$ 600	\$ 450
Barrie (CA)	\$ 200		
Belleville (CA)	\$ 200		
Brantford (CA)	\$ 200		
Guelph (CA)	\$ 200		
Hamilton (CMA)	\$ 400		
Kingston (CA)	\$ 200		
Kitchener (CMA)	\$ 250		
London (CMA)	\$ 250		
North Bay (CA)	\$ 200		
Oshawa (CMA)	\$ 200		
Ottawa - Hull (CMA)	\$ 600		
Peterborough (CA)	\$ 200		
Sarnia (CA)	\$ 200		
Sault Ste. Marie (CA)	\$ 200		
St. Catharines - Niagara (CMA)	\$ 300		
Stratford (CA)	\$ 200		
Sudbury (CMA)	\$ 200		
Thunder Bay (CMA)	\$ 200		
Toronto (CMA)	\$1,450		
Windsor (CMA)	\$ 200		
Woodstock (CA)	\$ 200		
Manitoba	\$ 500	\$ 100	\$ 75
Winnipeg (CMA)	\$ 400		
Saskatchewan	\$ 500	\$ 100	\$ 75
Regina (CMA)	\$ 200		
Saskatoon (CMA)	\$ 200		
Alberta	\$1,100	\$ 200	\$ 150
Calgary (CMA)	\$ 500		
Edmonton (CMA)	\$ 550		
Lethbridge (CA)	\$ 250		
Red Deer (CA)	\$ 200		
British Columbia	\$1,650	\$ 275	\$ 200
Abbotsford (CA)	\$ 200		
Kamloops (CA)	\$ 200		
Kelowna (CA)	\$ 200		
Nansimo (CA)	\$ 200		
Prince George (CA)	\$ 200		
Vancouver (CMA)	\$1,000		
Victoria (CMA)	\$ 250		
Yukon Territory	\$ 200	\$ 100	\$ 75

---

## Postal Codes by Federal Ridings (1996 Representation Order) File (PCFRF) - Update

- Catalogue Number:** 92F0028UDB  
**Coverage:** Canada  
**Frequency:** Semi-Annual

<b>Price:</b>	<i>Updates - See Price Notes</i>	
	CANADA:	\$500
	Atlantic Provinces:	\$200
	Quebec:	\$200
	Ontario:	\$200
	Prairie Provinces and Northwest Territories:	\$200
	B.C. and Yukon Territory:	\$200

**Medium:** Diskette

## **Geography Custom Mapping**

Thematic Maps and other custom maps may be produced.

**Catalogue Number:** 97C0007

**Price:** The minimum cost for this service is \$350. Estimates will be based on the nature and complexity of the request.

---

## **Geography Workshop**

The Geography Workshop is intended for users who are familiar with Statistics Canada's basic geographic definitions. The objective of this workshop is to provide further explanation of the concepts, products, and applications. It will help users with their research and will enable them to make more informed decisions.

The content also includes designing your own boundaries, such as sales districts or health care districts. Topics discussed include the Postal Code Conversion File, Street Network File, Digital Boundary Files, Digital Cartographic Files, Block-Face Data File, and much more. The content is updated as new information becomes available.

---

## Geographic Services

---

### Geocoding Service

The Geocoding Service allows users to define their own geographic areas of study (user-defined areas or aggregations of standard census geographic areas) for census data tabulations. This custom geography is produced from block-face level aggregation in centres with street network file coverage, and at the enumeration area level in smaller urban centres and rural areas. The user is thereby able to purchase census data for these custom areas.

Geocoding based on 1996 geography will be available in December, 1997.

**Catalogue Number:** 97C0005

**Price:** Geocoding is priced at a minimum base of \$350, plus an average of \$40 per polygon. The user may purchase the final boundary file for an additional \$200. Estimates will be provided based on the complexity of the request.

---

### Geography Custom Service

If standard geography products do not satisfy a user's need, Geography Custom Service is available to produce non-standard geographic products. Examples include alternative packaging of Digital Cartographic Files, special data retrievals, manipulations or merges using any of the geography computer files (postal codes, attribute files, boundary files, and street network files).

**Catalogue Number:** 97C0006

**Price:** The minimum cost for this service is \$100. Estimates will be based on the nature and complexity of the request.

## Other STC Related Geographic Products and Services

### Agriculture Products and Services

The Agriculture Division provides Digital Products and Special Services.

#### Agricultural Ecumene of Canada, 1991

This digital boundary file delineates areas of significant agricultural activity in Canada, as indicated by the 1991 Census of Agriculture. An agricultural ecumene is used for displaying agricultural data, and limits data presentation to recognized areas of agricultural significance. The 1991 agricultural ecumene was delineated to represent data at the census division level of geography. Ecumene pockets exist in all census divisions for which data are published by the Census of Agriculture. Where data have been suppressed for confidentiality reasons, ecumene pockets in these census divisions have been eliminated. Data collected from these census farms are reported in the ecumene pocket of a neighbouring census division. A list of these geographic amalgamations can be obtained by contacting User Services, Census of Agriculture.

**Release:** June 1994

These data are updated as new 1996 information becomes available.

#### Census Agricultural Region (CAR) Digital Boundary File

Digital boundary files are available for the census agricultural regions (CARs) for the 1991 and 1996 Censuses. These boundaries are used by the Census of Agriculture for disseminating agricultural statistics. Census agricultural regions are subprovincial geographic areas made up of groups of adjacent census divisions. In Saskatchewan, census agricultural regions are made up of groups of adjacent census consolidated subdivisions but these groups do not necessarily respect census division boundaries. Census agricultural regions have not been defined in Prince Edward Island and the Yukon and Northwest Territories. In the Prairie provinces, census agricultural regions are commonly referred to as crop districts.

<b>Coverage:</b>	All Canada except P.E.I. and the Yukon and Northwest Territories
<b>Price:</b>	\$500 for Canada \$100 for each province
<b>Media:</b>	IBM®-compatible 3.5" diskette, CD-ROM
<b>Format:</b>	ARC/INFO®Export; Coordinates: Latitude/Longitude

### **Spatial Analysis and Geomatics Applications (SAGA) Program**

SAGA provides a variety of products and services using the tools and methodologies of digital image analysis and geographic information systems. The SAGA program has evolved from a remote sensing research and development emphasis to a much broader program that includes operational agricultural and environmental applications and custom mapping, image analysis, and geomatic services.

SAGA offers remote sensing and geostatistical services on a fee-for-services basis. In addition to the custom mapping and image analysis capabilities, other applications could include:

- Estimation of crop and vegetation area, and crop yields by user-defined statistical units, such as risk areas, management districts
- Remote sensing/geographic information system integration and custom mapping
- Analysis and mapping of land-use classification and change monitoring
- Statistical sample frame construction for agriculture surveys
- Remote sensing consulting and training
- Spatial and statistical data integration

For further information on Agriculture Products and Services, please refer to *People, Products and Services* - Agriculture Division, 1997 (Catalogue Number 21F0003XPB).

## **Environment Services**

### **The Environmental Information System**

The Environmental Information System provides detailed spatial information on social and economic characteristics that influence environmental conditions. These characteristics are aggregated by spatial boundaries that are highly effective for the analysis of environmental issues: drainage basins and ecozones.

The problem-solving power of this system comes from its ability to overlay and aggregate a wide variety of Statistics Canada micro-data series into new tabulations, charts or maps. Information from the system can also be combined with external data sets or geographic boundaries provided by the client to suit specific needs. We offer a full line of services, ranging from table and map preparation to a complete statistical consulting service, including analysis and report preparation on specific environmental issues.

The core data in the EIS resides in the ARC/INFO®Geographic Information System. Analytical results can be provided for various formats:

- Spreadsheets
- ASCII files
- Micro computer databases
- Tables on paper
- ARCVIEW®products
- ARC/INFO®export files
- Maps on paper, image or postscript files

For more information on Environment Services, please contact:

National Accounts and Environment Division  
Statistics Canada  
21st Floor, R. H. Coats Building  
Tunney's Pasture, Ottawa  
K1A 0T6

Telephone: (613)-951-3640  
Fax Number: (613)-951-3618 or  
e-mail: [environ@statcan.ca](mailto:environ@statcan.ca)

## Glossary

The geographic terms are presented here in summary form only. Please refer to the 1996 Census Dictionary (Catalogue 92-351XPE) for the full definitions.

**Adjusted Counts.** The term "adjusted counts" refers to previous census population and dwelling counts which have been adjusted (i.e. re-compiled) to reflect current census boundaries when a boundary change occurred between the two censuses.

**Block-face.** A block-face is one side of a city street between two consecutive street intersections. Block-faces are also formed when streets intersect other visible physical features (such as railroads, power transmission lines, and rivers) and when streets intersect with *enumeration area* boundaries.

**Census Agglomeration (CA).** A census agglomeration (CA) is a large *urban area* (known as the *urban core*), together with adjacent urban and rural areas (known as *urban* and *rural fringes*) that have a high degree of social and economic integration with the urban core. A CA has an urban core population of at least 10,000, based on the previous census. However, if the population of the urban core of a CA declines below 10,000, the CA is retired. Once a CA attains an urban core population of at least 100,000, based on the previous census, it is eligible to become a CMA. CAs that have urban cores of at least 50,000, based on the previous census, are subdivided into *census tracts*. Census tracts are maintained for CAs, even if the population of the urban cores subsequently falls below 50,000. A CA may be consolidated with adjacent CAs if they are socially and economically integrated. This new grouping is called a *consolidated CA* and the component CAs are called *primary census agglomerations* (PCAs).

**Census Agricultural Region (CAR).** Census agricultural regions are subprovincial geographic areas made up of groups of adjacent *census divisions*. In Saskatchewan, census agricultural regions are made up of groups of adjacent *census consolidated subdivisions*, but these groups do not necessarily respect *census division* boundaries.

**Census Consolidated Subdivisions (CCS).** A census consolidated subdivision (CCS) is a grouping of *census subdivisions*. Generally, these smaller, more urban census subdivisions (towns, villages, etc.) are combined with the surrounding, larger, more rural census subdivision, in order to create a geographic level between the *census subdivision* and the *census division*.

**Census Division (CD).** Census division (CD) is the general term applied to areas established by provincial law which are intermediate geographic areas between the municipality (*census subdivision*) and the *province* level. Census divisions represent counties, regional districts, regional municipalities, and other types of provincially legislated areas.

In Newfoundland, Manitoba, Saskatchewan and Alberta, provincial law does not provide for these administrative geographic areas. Therefore, census divisions have been created by Statistics Canada in cooperation with these provinces for the dissemination of statistical data. In the Yukon Territory, the census division is equivalent to the entire territory.



---

**Census Metropolitan Area (CMA).** A census metropolitan area (CMA) is a very large *urban area* (known as the *urban core*), together with adjacent urban and rural areas (known as *urban and rural fringes*) that have a high degree of social and economic integration with the urban core. A CMA has an urban core population of at least 100,000, based on the previous census. Once an area becomes a CMA, it is retained as a CMA even if the population of its urban core declines below 100,000. All CMAs are subdivided into *census tracts*. A CMA may be consolidated with adjacent *census agglomerations* (CAs) if they are socially and economically integrated. This new grouping is known as a *consolidated CMA* and the component CMA and CA(s) are known as the *primary census metropolitan area* (PCMA) and *primary census agglomeration(s)* (PCA(s)). A CMA may not be consolidated with another CMA.

**Census Subdivision (CSD).** Census subdivision is the general term applying to municipalities (as determined by provincial legislation) or their equivalent (for example, Indian reserves, Indian settlements, and unorganized territories).

In Newfoundland, Nova Scotia and British Columbia, the term also describes geographic areas that have been created by Statistics Canada in cooperation with the provinces as equivalents for municipalities for the dissemination of statistical data.

**Census Tract (CT).** Census tracts (CTs) are small geographic units representing urban or rural neighbourhood-like communities created in *census metropolitan areas* and *census agglomerations* (with an *urban core* population of 50,000 or more at the previous census).

CTs are initially delineated by a committee of local specialists (for example, planners, health and social workers, educators) in conjunction with Statistics Canada. Once a census metropolitan area (CMA) or census agglomeration (CA) has been subdivided into census tracts, the census tracts are maintained even if the urban core population of the CMA or CA subsequently declines below 50,000.

**Consolidated Census Agglomeration (Consolidated CA).** A consolidated census agglomeration (consolidated CA) is a grouping of adjacent *census agglomerations* (CAs) that are socially and economically integrated. Adjacent CAs are consolidated into a single CA (consolidated CA) if the total commuting interchange between two CAs is equal to at least 35% of the employed labour force living in the smaller CA. Several CAs may be consolidated with a larger CA; each pair of CAs is evaluated for inclusion. For example, the consolidated Chatham CA is composed of the Chatham PCA and the Wallaceburg PCA.

**Consolidated Census Metropolitan Area (Consolidated CMA).** A consolidated census metropolitan area (consolidated CMA) is a grouping of one *census metropolitan area* (CMA) and adjacent *census agglomeration(s)* CA(s) that are socially and economically integrated. An adjacent CMA and CA can be consolidated into a single CMA (consolidated CMA) if the total commuting interchange between them is equal to at least 35% of the employed labour force living in the CA. Several CAs may be consolidated with a CMA; each CMA-CA combination is evaluated for inclusion. For example, the consolidated Toronto CMA is composed of the Toronto PCMA and the PCAs of Georgina, Milton, Halton Hills, Orangeville, and Bradford West Gwillimbury.

**Coordinate System.** A coordinate system is a mathematical method for specifying location. The coordinates can be spherical (latitude and longitude) or plane rectangular (such as Universal Transverse Mercator).

**Designated Place (DPL).** Designated place refers to areas created by provinces to provide services and to structure fiscal arrangements for submunicipal areas which are often within unorganized areas.

The concept of a designated place generally applies to small communities for which there may be some level of legislation, but the communities fall below the criteria established for municipal status, that is, they are "submunicipal" or unincorporated areas.

**Digital Boundary Files (DBFs).** Digital boundary files (DBFs) are computer files that depict the official boundaries of standard census geographic areas. The boundaries sometimes extend beyond shorelines into water.

**Digital Cartographic Files (DCFs).** Digital cartographic files (DCFs) are computer files that depict boundaries of standard census geographic areas which have been modified to follow shorelines and to include lakes.

**Economic Region (ER).** An economic region is a grouping of complete *census divisions* (with one exception in Ontario). Prince Edward Island and the two territories each consist of one economic region. Economic regions are used to analyse regional economic activity.

**Ecumene.** Ecumene is a term used by geographers to mean inhabited land. Generally, it refers to land where people have their permanent home, and to all work areas that are considered occupied and used for agricultural or any other economic purposes. Thus, there can be various types of ecumenes, each having their own unique characteristics (such as population ecumene, agricultural ecumene, industrial ecumene, etc.).

**Enumeration Area (EA).** An enumeration area (EA) is the geographic area canvassed by one census representative. It is the smallest standard geographic area for which census data are reported. All the territory of Canada is covered by EAs.

**Federal Electoral District (FED).** A federal electoral district refers to any place or territorial area entitled to elect a representative member to serve in the House of Commons (source; *Canada Elections Act*, 1990). There are 295 FEDs in Canada, according to the 1987 Representation Order and there are 301 FEDs in Canada, according to the 1996 Representation Order.

**Forward Sortation Area (FSA).** The first three characters of the postal code identify the forward sortation area (FSA). Individual FSAs are associated with a postal facility from which mail delivery originates.

**Geocoding.** This is the process of assigning geographic identifiers (codes) to map features and data records. The resulting geocodes permit data to be linked geographically. Statistics Canada's geocoding service links census households to small geographic units. This process makes it possible to produce census data tabulations for non-standard geographic areas such as provincial and municipal electoral districts, local planning areas, and school districts.

**Geographic Code.** A geographic code is a unique number used to identify and access standard geographic areas for the purposes of data storage, retrieval and display.

---

**Geographic Reference Date.** The geographic reference date is determined by Statistics Canada for the purpose of finalizing the geographic framework for which census data will be collected, tabulated and reported. For the 1996 Census, the geographic reference date is **January 1, 1996**.

**Land Area.** Land area refers to the area in square kilometres of the land-based portions of the census geographic areas.

**Map Projection.** A map projection is both the process and result of transforming positions on the spherical surface of the earth onto a plane (flat) surface.

**Place Name.** Place name is a general term for localities which have a "sense of place", such as cities, *urban areas*, neighbourhoods, post offices, communities and *unincorporated places*. Place names also include the names of uninhabited places, historical municipality names, alternative names and spellings of places.

**Population Density.** Population density refers to the number of persons per square kilometre.

**Postal Code.** The postal code is a six-character code defined and maintained by Canada Post Corporation for sorting and delivering mail.

**Primary Census Metropolitan Area (PCMA).** A *census metropolitan area* that is a component of a *consolidated census metropolitan area* is referred to as a primary census metropolitan area (PCMA).

**Primary Census Agglomeration (PCA).** A *census agglomeration* that is a component of a *consolidated census metropolitan area* or *consolidated census agglomeration* is referred to as the primary census agglomeration (PCA).

**Province/Territory.** Province and territory refer to the major political divisions of Canada. From a statistical point of view, they are a basic unit for which data are tabulated and cross-classified. The ten provinces combined with the two territories cover the complete country.

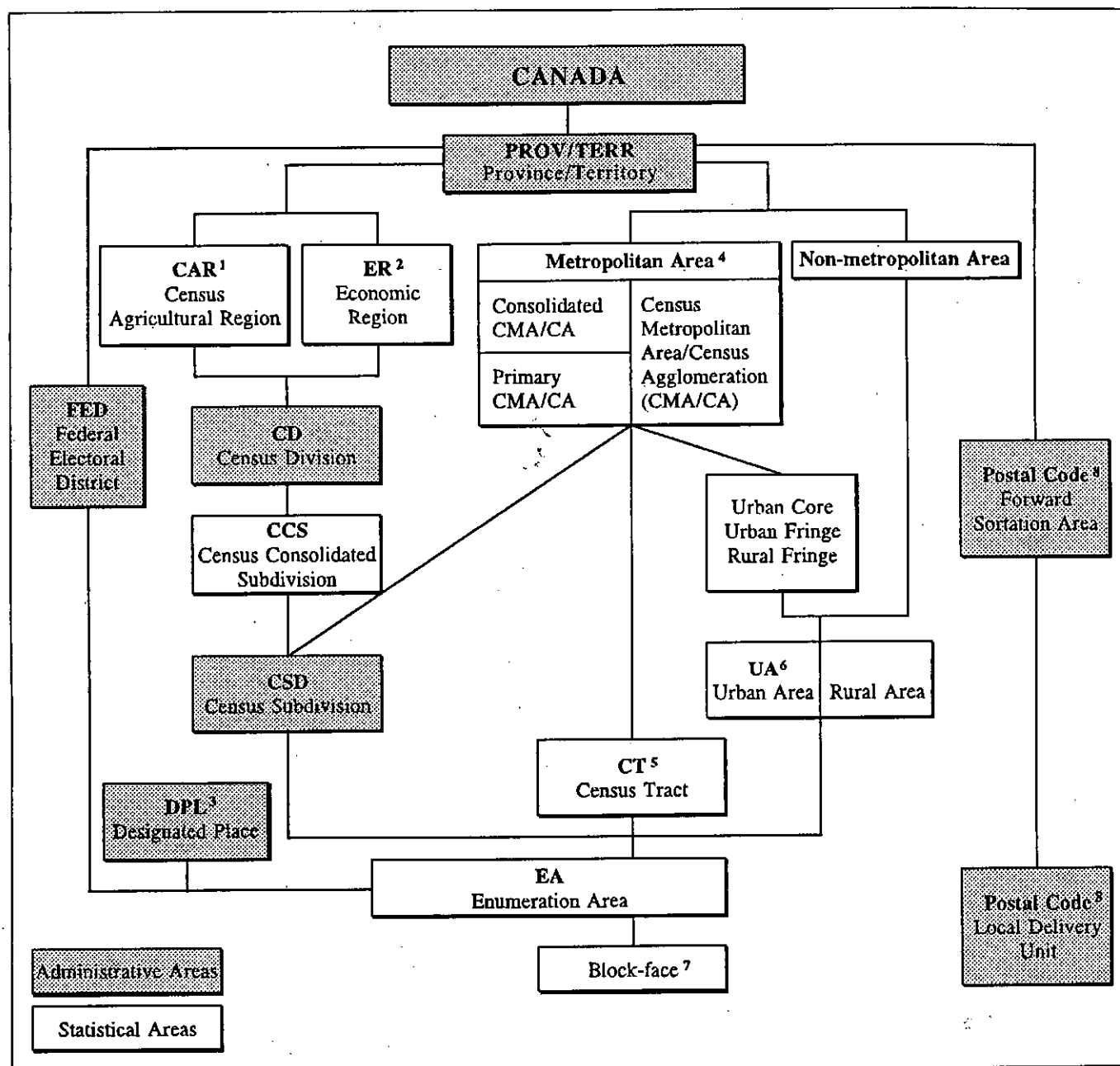
**Reference Map.** Census reference maps show the location of the geographic areas for which census data are tabulated and disseminated. The main information depicted includes the boundaries, names and codes of census geographic areas, and major physical and cultural features such as roads, railroads, coastlines, rivers and lakes.

**Representative Point.** A representative point is a single point that represents a linear feature (*block-face*) or an areal feature (*enumeration area*). The point's location generally indicates either dwelling concentrations or centrality.

**Rural Area.** Rural areas are sparsely populated lands lying outside **urban areas**.

**Standard Geographical Classification (SGC).** The Standard Geographical Classification (SGC) is Statistics Canada's official classification of geographic areas in Canada. The SGC provides unique numeric identification (codes) for three types of geographic areas. These are *provinces* and *territories*, census *divisions (CDs)*, and *census subdivisions (CSDs)*. The three geographic areas are hierarchically related.

### Appendix 1. Hierarchy of National, Metropolitan and Postal Code Geographic Units, 1996



<sup>1</sup> Census agricultural regions in Saskatchewan are made up of census consolidated subdivisions.

<sup>2</sup> Economic regions in Ontario are made up of municipalities (census subdivisions).

<sup>3</sup> Currently there are no designated places in Prince Edward Island, Quebec, Yukon Territory and Northwest Territories.

<sup>4</sup> Five CMAs/CAs cross provincial boundaries.

<sup>5</sup> All CMAs and only CAs with urban core population of 50,000 or more at the previous census have census tracts.

<sup>6</sup> Five UAs cross provincial boundaries.

<sup>7</sup> Only in areas covered by street network files (SNFs).

<sup>8</sup> The postal code is captured as provided by the respondent on all the questionnaires for 1996. Although shown and treated as part of the geography hierarchy, strictly speaking, it is not a geographic unit and, therefore, there is no exact relationship between postal codes and enumeration areas.

**Street Network Files (SNFs).** The street network files (SNFs) are digital files representing the street network for most large urban centres in Canada. The files also contain other visible physical and cultural features (such as hydrography, railroads, pipelines) and attribute information (for example, street and hydrographic names, and address ranges for streets with assigned addresses).

**Unincorporated Place (UP).** Statistics Canada defines an unincorporated place (UP) as a cluster of five or more dwellings (i.e. a settlement), locally known by a specific name, but lacking legal limits or local government. Unincorporated places are found only in *rural areas*.

**Urban Area (UA).** Urban areas have minimum population concentrations of 1,000 and a population density of at least 400 per square kilometre, based on the previous census population counts. All territory outside urban areas is considered rural. Taken together, urban and rural areas cover all of Canada.

**Urban Core, Urban Fringe and Rural Fringe.** The urban core, urban fringe and rural fringe distinguish between central and peripheral urban and rural areas within a *census metropolitan area (CMA)*, *primary census metropolitan area (PCMA)*, *census agglomeration (CA)* or *primary census agglomeration (PCA)*.

Urban core is a large *urban area* around which a CMA or a CA is delineated. The urban core must have a population (based on the previous census) of at least 100,000 in the case of a CMA, or between 10,000 and 99,999 in the case of a CA.

Urban fringe is the urban area within a CMA or CA that is not contiguous to the urban core.

Rural fringe is all territory within a CMA or CA not classified as urban core or urban fringe.

**Urban Population Size Group.** Urban population size group refers to the classification used in tabulations where urban areas are distributed according to the following size groups, based on the current census population:

Under 1,000		
1,000	-	2,499
2,500	-	4,999
5,000	-	9,999
10,000	-	24,999
25,000	-	49,999
50,000	-	99,999
100,000	-	249,999
250,000	-	499,999
500,000	-	999,999
1,000,00 and over		

**Usual Place of Residence.** In general, the usual place of residence is the dwelling in Canada where a person lives most of the time. It is the basis upon which individuals are assigned geographic location for collection, processing and dissemination.

## Appendix 2: Number of 1996 Reference Maps By Province Or Territory

Coverage	Enumeration Area				CD/ CSD	CMA/ CA/ CT	FED/ EA	ER CD
	Large Urban*	Small Urban (Automated)	Small Urban (Manual)	Rural				
Newfoundland	41	0	46	141	1	4	7	-
Prince Edward Island	0	0	10	16	1	0	4	-
Nova Scotia	75	0	51	92	1	2	11	-
New Brunswick	69	1	37	92	1	2	10	-
Quebec	1,108	0	246	384	4	13	75	-
Ontario	1,799	8	172	291	2	40	99	-
Manitoba	158	0	32	226	2	2	14	-
Saskatchewan	99	0	54	407	2	4	14	-
Alberta	386	0	69	308	2	6	26	-
British Columbia	488	1	114	368	3	13	32	-
Yukon Territory	0	0	7	1	1	0	1	-
Northwest Territories	0	0	7	1	1	0	2	-
CANADA					1	1	1	1
<b>TOTAL</b> (with duplicate counts) <sup>1</sup>	4,223	10	845	2327	22	87	296	1

<sup>1</sup> Map sheets that cross provincial limits are counted in both provinces.

\* Note these counts do not include counts of "split" maps.

### Appendix 3. Street Network File Coverage of Census Metropolitan Areas and Census Agglomerations by Census Subdivision Components, Showing CMA/CA Code and CSD Type (as of October 25, 1996)

CMA/CA/CSD Name	CMA/CA Code	CSD Type	SNF	CMA/CA/CSD Name	CMA/CA Code	CSD Type	SNF
<b>Abbotsford CA<sup>2</sup></b>	<b>932</b>		<b>Pt</b>	Morinville		T	N
Abbotsford		C	Y	Redwater		T	N
Fraser Valley, Subd. D		SRD	N	St. Albert		C	N
Matsqui Main 2		R	Y	Strathcona County		SM	N
Mission		DM	N	Sturgeon No. 90		MD	N
Upper Sumas 6		R	Y	<b>Leduc PCA</b>	<b>836</b>		
				Beaumont		T	N
<b>Belleville CA<sup>3</sup></b>	<b>522</b>		<b>Pt</b>	Calmar		T	N
Ameliasburgh		TP	N	Devon		T	N
Belleville		C	Y	Golden Days		SV	N
Frankford		VL	N	Itaska Beach		SV	N
Murray		TP	N	Leduc		C	N
Sidney		TP	N	Leduc County No. 25		CM	N
Thurlow		TP	N	New Sarepta		VL	N
Trenton		C	N	Sundance Beach		SV	N
				Thorsby		VL	N
<b>Brantford CA</b>	<b>543</b>		<b>Y</b>	Warburg		VL	N
Brantford		TP	Y	<b>Spruce Grove PCA</b>	<b>837</b>		
Brantford		C	Y	Betula Beach		SV	N
Paris		T	Y	Edmonton Beach		SV	N
				Entwistle		VL	N
<b>Calgary CMA</b>	<b>825</b>		<b>Pt</b>	Kapasiwin		SV	N
<b>Airdrie PCA</b>	<b>823</b>		<b>N</b>	Lakeview		SV	N
Airdrie		C	N	Parkland County		CM	N
<b>Calgary PCMA</b>	<b>825</b>		<b>Pt</b>	Point Alison		SV	N
Beiseker		VL	N	Seba Beach		SV	N
Calgary		C	Y	Spruce Grove		C	N
Chestermere		T	N	Stony Plain		T	N
Cochrane		T	N	Stony Plain 135		R	N
Crossfield		T	N	Wabamun		VL	N
Irricana		VL	N	Wabamun 133A		R	N
Rocky View No. 44		MD	N				
Sarcee 145		R	N	<b>Fredericton CA</b>	<b>320</b>		<b>Pt</b>
				Bright		PAR	N
<b>Chicoutimi - Jonquière CMA</b>	<b>408</b>		<b>Pt</b>	Devon 30		R	Y
<b>Chicoutimi - Jonquière PCMA</b>	<b>408</b>		<b>Pt</b>	Douglas		PAR	N
Chicoutimi		V	Y	Fredericton		C	Y
Jonquière		V	Y	Kingsclear		PAR	N
Lac-Kénogami		M	N	Kingsclear 6		R	N
Larouche		P	N	Lincoln		PAR	N
Laterrière		V	N	Maugerville		PAR	N
Saint-Fulgence		M	N	New Maryland		PAR	N
Saint-Honoré		M	N	New Maryland		VL	N
Shipsaw		M	N	Saint Mary's 24		R	Y
Tremblay		CT	N	Saint Marys		PAR	N
<b>La Bale PCA</b>	<b>413</b>		<b>Y</b>				
La Bale		V	Y	<b>Guelph CA</b>	<b>550</b>		<b>Y</b>
				Eramosa		TP	Y
<b>Edmonton CMA</b>	<b>835</b>		<b>Pt</b>	Guelph		TP	Y
<b>Edmonton PCMA</b>	<b>835</b>		<b>Pt</b>	Guelph		C	Y
Alexander 134		R	N				
Bon Accord		T	N	<b>Halifax CMA</b>	<b>205</b>		<b>Pt</b>
Bruderheim		T	N	Bedford		T	Y
Edmonton		C	Y	Cole Harbour 30		R	N
Fort Saskatchewan		C	N	Dartmouth		C	Y
Gibbons		T	N	Halifax		C	Y
Legal		VL	N	Halifax, Subd. A		SCM	N
				Halifax, Subd. B		SCM	N

## Appendices

CMA/CA/CSD Name	CMA/ CA Code	CSD Type	SNF	CMA/CA/CSD Name	CMA/ CA Code	CSD Type	SNF
Halifax, Subd. C		SCM	N	St. Thomas PCA	554		Y
Halifax, Subd. D		SCM	N	Port Stanley		VL	Y
Halifax, Subd. E		SCM	N	St. Thomas		C	Y
Shubenacadie 13		R	N	Yarmouth		TP	Y
<b>Hamilton CMA</b>	<b>537</b>		<b>Y</b>	<b>Moncton CA</b>	<b>305</b>		<b>Pt</b>
Ancaster		T	Y	Coverdale		PAR	Y
Burlington		C	Y	Dieppe		T	Y
Dundas		T	Y	Dorchester		PAR	Y
Flamborough		T	Y	Dorchester		VL	Y
Glanbrook		TP	Y	Elgin		PAR	N
Grimsby		T	Y	Fort Folly 1		R	Y
Hamilton		C	Y	Hillsborough		PAR	Y
Stoney Creek		C	Y	Hillsborough		VL	Y
				Memramcook		VL	Y
<b>Kamloops CA</b>	<b>925</b>		<b>Pt</b>	Moncton		PAR	Y
Kamloops		C	Y	Moncton		C	Y
Kamloops 1		R	Y	Riverview		T	Y
Logan Lake		DM	N	Salisbury		VL	Y
Neskainlith 1		R	N				
Sahhalkum 4		R	N	<b>Montréal CMA</b>	<b>462</b>		<b>Pt</b>
Thompson-Nicola, Subd. B		SRD	N	<b>Beloëil PCA</b>	<b>458</b>		<b>Y</b>
				Beloëil		V	Y
<b>Kelowna CA</b>	<b>915</b>		<b>Pt</b>	McMasterville		VL	Y
Central Okanagan, Subd. B		SRD	Y	Mont-Saint-Hilaire		V	Y
Peachland		DM	Y	Otterburn Park		V	Y
Tsinstikeptum 9		R	Y	<b>Châteauguay PCA</b>	<b>463</b>		<b>Pt</b>
Tsinstikeptum 10		R	Y	Beauharnois		V	Y
Central Okanagan, Subd. A		SRD	N	Châteauguay		V	Y
Duck Lake 7		R	Y	Léry		V	Y
Kelowna		C	Y	Maple Grove		V	Y
Lake Country		DM	N	Melocheville		VL	N
				Mercier		V	N
<b>Kingston CA</b>	<b>521</b>		<b>Pt</b>	<b>Montréal PCMA</b>	<b>462</b>		<b>Pt</b>
Amherst Island		TP	N	Anjou		V	Y
Bath		VL	N	Baie-d'Urfé		V	Y
Ernestown		TP	N	Beaconsfield		V	Y
Howe Island		TP	N	Blainville		V	Y
Kingston		TP	Y	Bois-des-Filion		V	Y
Kingston		C	Y	Boisbriand		V	Y
Loughborough		TP	N	Boucherville		V	Y
Pittsburgh		TP	N	Brossard		V	Y
Portland		TP	N	Candiac		V	Y
Storrington		TP	N	Carignan		V	Y
Wolfe Island		TP	N	Chambly		V	Y
				Charlemagne		V	Y
<b>Kitchener CMA</b>	<b>541</b>		<b>Y</b>	Côte-Saint-Luc		C	Y
Cambridge		C	Y	Delson		V	N
Kitchener		C	Y	Deux-Montagnes		V	Y
North Dumfries		TP	Y	Dollard-des-Ormeaux		V	Y
Waterloo		C	Y	Dorval		C	Y
Woolwich		TP	Y	Gore		CT	N
				Greenfield Park		V	Y
<b>Lethbridge CA</b>	<b>810</b>		<b>Y</b>	Hampstead		V	Y
Lethbridge		C	Y	Hudson		V	N
				Kahnawake 14		R	N
<b>London CMA</b>	<b>555</b>		<b>Y</b>	Kanesatake		R	N
London PCMA	<b>555</b>		<b>Y</b>	Kirkland		V	Y
Belmont		VL	Y	L'Assomption		V	N
Delaware		TP	Y	L'Île-Bizard		V	Y
Lobo		TP	Y	L'Île-Cadieux		V	Y
London		TP	Y	L'Île-Dorval		V	Y
London		C	Y	L'Île-Perrot		V	Y
North Dorchester		TP	Y	La Plaine		V	N
Southwold		TP	Y	La Prairie		V	Y
West Nissouri		TP	Y	Lachenaie		V	Y
				Lachine		V	Y



CMA/CA/CSD Name	CMA/ CA Code	CSD Type	SNF	CMA/CA/CSD Name	CMA/ CA Code	CSD Type	SNF
LaSalle		V	Y	Lafontaine		VL	N
Laval		V	Y	Saint-Antoine		V	N
Lavaltrie		VL	N	Saint-Jérôme		V	Y
Le Gardeur		V	Y	Varennes PCA	461		Y
Le Moyne		V	Y	Varennes		V	Y
Les Cèdres		M	N				
Longueuil		V	Y	North Bay CA	575		Pt
Lorraine		V	Y	Bonfield		TP	N
Mascouche		V	Y	East Ferris		TP	Y
Mirabel		V	Y	Nipissing 10		R	Y
Mont-Royal		V	Y	North Bay		C	Y
Montréal		V	Y	North Himsworth		TP	Y
Montréal-Est		V	Y				
Montréal-Nord		V	Y	Oshawa CMA	532		Y
Montréal-Ouest		V	Y	Clarington		T	Y
Notre-Dame-de-Bon-Secours		M	N	Oshawa		C	Y
Notre-Dame-de-l'Île-Perrot		P	N	Whitby		T	Y
Oka		M	N				
Oka		P	N	Ottawa - Hull CMA	505		Pt
Outremont		V	Y	Buckingham PCA	477		Y
Pierrefonds		V	Y	Buckingham		V	Y
Pincourt		V	Y	Masson-Angers		V	Y
Pointe-Calumet		VL	N	Kanata PCA	506		Y
Pointe-Claire		V	Y	Goulbourn		TP	Y
Pointe-des-Cascades		VL	N	Kanata		C	Y
Repentigny		V	Y	Ottawa - Hull PCMA	505		Pt
Richelieu		V	Y	Aylmer		V	Y
Rosemère		V	Y	Cambridge		TP	N
Roxboro		V	Y	Cantley		M	Y
Saint-Amable		M	Y	Casselman		VL	N
Saint-Antoine-de-Lavaltrie		P	N	Chelsea		M	Y
Saint-Basile-le-Grand		V	Y	Clarence		TP	Y
Saint-Bruno-de-Montarville		V	Y	Cumberland		TP	Y
Saint-Colomban		P	N	Gatineau		V	Y
Saint-Constant		V	N	Gloucester		C	Y
Saint-Eustache		V	Y	Hull		V	Y
Saint-Gérard-Majella		P	N	La Pêche		M	Y
Saint-Hubert		V	Y	Nepean		C	Y
Saint-Isidore		P	N	Osgoode		TP	Y
Saint-Joseph-du-Lac		P	N	Ottawa		C	Y
Saint-Lambert		V	Y	Pontiac		M	Y
Saint-Laurent		V	Y	Rideau		TP	Y
Saint-Lazare		P	N	Rockcliffe Park		VL	Y
Saint-Léonard		V	Y	Rockland		T	Y
Saint-Mathias-sur-Richelieu		M	N	Russell		TP	N
Saint-Mathieu		M	N	South Gower		TP	N
Saint-Mathieu-de-Beloeil		M	Y	Val-des-Monts		M	Y
Saint-Philippe		P	N	Vanier		C	Y
Saint-Pierre		V	Y	West Carleton		TP	Y
Saint-Placide		M	N				
Saint-Sulpice		P	N	Peterborough CA	529		Pt
Sainte-Anne-de-Bellevue		V	Y	Curve Lake First Nation 35		R	N
Sainte-Anne-des-Plaines		V	N	Douro		TP	N
Sainte-Catherine		V	N	Dummer		TP	N
Sainte-Geneviève		V	Y	Ennismore		TP	N
Sainte-Julie		V	Y	Hiawatha First Nation 36		R	N
Sainte-Marthe-sur-le-Lac		V	Y	Lakefield		VL	N
Sainte-Thérèse		V	Y	North Monaghan		TP	N
Senneville		VL	Y	Otonabee		TP	N
Terrasse-Vaudreuil		M	Y	Peterborough		C	Y
Terrebonne		V	N	Smith		TP	N
Vaudreuil-Dorion		V	Y				
Vaudreuil-sur-le-Lac		VL	Y	Prince George CA	970		Y
Verdun		V	Y	Prince George		C	Y
Westmount		V	Y				
Saint-Jérôme PCA	475		Pt	Québec CMA	421		Pt
Bellefeuille		P	N	Beauport		V	Y

CMA/CA/CSD Name	CMA/CA Code	CSD Type	SNF	CMA/CA/CSD Name	CMA/CA Code	CSD Type	SNF
Ascot		M	N	O'Connor		TP	N
Ascot Corner		M	N	Oliver		TP	N
Brompton		CT	N	Paipoonge		TP	N
Bromptonville		V	N	Shuniah		TP	N
Compton Station		M	N	Thunder Bay		C	Y
Deauville		VL	N				
Fleurimont		V	N	<b>Toronto CMA</b>	<b>535</b>		<b>Pt</b>
Hatley		CT	N	<b>Bradford West Gwillimbury PCA<sup>1</sup></b>	<b>552</b>		<b>N</b>
Lennoxville		V	N	Bradford West Gwillimbury		T	N
North Hatley		VL	N	<b>Georgina PCA<sup>1</sup></b>	<b>542</b>		<b>Y</b>
Rock Forest		V	N	Georgina		T	Y
Saint-Denis-de-Brompton		P	N	Georgina Island 33		R	Y
Saint-Élie-d'Orford		M	N	<b>Halton Hills PCA</b>	<b>549</b>		<b>Y</b>
Sherbrooke		V	Y	Halton Hills		T	Y
Stoke		M	N	<b>Milton PCA</b>	<b>548</b>		<b>Y</b>
Waterville		V	N	Milton		T	Y
				<b>Orangeville PCA</b>	<b>551</b>		<b>N</b>
<b>St. Catharines - Niagara CMA</b>	<b>539</b>		<b>Y</b>	Mono		TP	<b>N</b>
<b>Fort Erie PCA</b>	<b>540</b>		<b>Y</b>	Orangeville		T	<b>N</b>
Fort Erie		T	Y	<b>Toronto PCMA</b>	<b>535</b>		<b>Pt</b>
<b>St. Catharines - Niagara PCMA</b>	<b>539</b>		<b>Y</b>	Ajax		T	Y
Lincoln		T	Y	Aurora		T	Y
Niagara Falls		C	Y	Brampton		C	Y
Niagara-on-the-Lake		T	Y	Caledon		T	Y
Pelham		T	Y	East Gwillimbury		T	Y
Port Colborne		C	Y	East York		BOR	Y
St. Catharines		C	Y	Etobicoke		C	Y
Thorold		C	Y	King		TP	Y
Wainfleet		TP	Y	Markham		T	Y
Welland		C	Y	Mississauga		C	Y
				New Tecumseth		T	N
<b>St. John's CMA</b>	<b>001</b>		<b>Pt</b>	Newmarket		T	Y
<b>Conception Bay South PCA</b>	<b>002</b>		<b>N</b>	North York		C	Y
Conception Bay South		T	N	Oakville		T	Y
<b>St. John's PCMA</b>	<b>001</b>		<b>Pt</b>	Pickering		T	Y
Bauline		T	N	Richmond Hill		T	Y
Bay Bulls		T	N	Scarborough		C	Y
Flatrock		T	N	Toronto		C	Y
Logy Bay-Middle Cove-Outer Cove		T	N	Uxbridge		TP	Y
Mount Pearl		C	N	Vaughan		C	Y
Paradise		T	N	Whitchurch-Stouffville		T	Y
Petty Harbour-Maddox Cove		T	Y	York		C	Y
Portugal Cove-St. Philip's		T	N				
Pouch Cove		T	N	<b>Trois-Rivières CMA</b>	<b>442</b>		<b>Pt</b>
St. John's		C	Y	Bécancour		V	N
Torbay		T	N	Cap-de-la-Madeleine		V	Y
Witless Bay		T	N	Champlain		M	N
				Pointe-du-Lac		M	N
<b>Stratford CA</b>	<b>553</b>		<b>Y</b>	Saint-Louis-de-France		V	N
Stratford		C	Y	Saint-Maurice		P	N
				Sainte-Marthe-du-Cap		M	N
<b>Sudbury CMA</b>	<b>580</b>		<b>Pt</b>	Trois-Rivières		V	Y
<b>Sudbury PCMA</b>	<b>580</b>		<b>Pt</b>	Trois-Rivières-Ouest		V	Y
Nickel Centre		T	N	Wólínak 11		R	N
Onaping Falls		T	N				
Rayside-Balfour		T	N	<b>Vancouver CMA</b>	<b>933</b>		<b>Y</b>
Sudbury		C	Y	<b>Maple Ridge PCA</b>	<b>931</b>		<b>Y</b>
Walden		T	N	Katzie 1		R	Y
Whitefish Lake 6		R	N	Langley 5		R	Y
<b>Valley East PCA</b>	<b>579</b>		<b>N</b>	Maple Ridge		DM	Y
Valley East		T	N	Pitt Meadows		DM	Y
				Whonnock 1		R	Y
<b>Thunder Bay CMA</b>	<b>595</b>		<b>Pt</b>	<b>Vancouver PCMA</b>	<b>933</b>		<b>Y</b>
Connee		TP	N	Anmore		VL	Y
Fort William 52		R	N	Barnston Island 3		R	Y
Gillies		TP	N	Belcarra		VL	Y
Neebing		TP	N	Burnaby		C	Y

CMA/CA/CSD Name	CMA/ CA Code	CSD Type	SNF	CMA/CA/CSD Name	CMA/ CA Code	CSD Type	SNF
Bernières-Saint-Nicolas		V	Y				
Boischatel		M	N	Saint John CMA	310		Pt
Cap-Rouge		V	Y	East Riverside-Kinghurst		VL	N
Charlesbourg		V	Y	Fairvale		VL	N
Charny		V	Y	Gondola Point		VL	N
Château-Richer		V	N	Grand Bay		T	N
Fossambault-sur-le-Lac		V	N	Greenwich		PAR	N
Lac-Beauport		M	N	Hampton		PAR	N
Lac-Delage		V	N	Hampton		T	N
Lac-Saint-Charles		M	N	Kingston		PAR	N
Lac-Saint-Joseph		V	N	Lepreau		PAR	N
L'Ancienne-Lorette		V	Y	Musquash		PAR	N
L'Ange-Gardien		P	N	Petersville		PAR	N
Lévis		V	N	Quispamsis		T	N
Loretteville		V	Y	Renforth		VL	N
Notre-Dame-des-Anges		P	Y	Rothsay		PAR	N
Pintendre		M	N	Rothsay		T	N
Québec		V	Y	Saint John		C	Y
Saint-Augustin-de-Desmaures		M	N	Saint Martins		PAR	N
Saint-Émile		V	N	Simonds		PAR	N
Saint-Étienne-de-Beaumont		P	N	St. Martins		VL	N
Saint-Étienne-de-Lauzon		M	Y	Upham		PAR	N
Saint-François		P	N	Westfield		PAR	N
Saint-Gabriel-de-Valcartier		M	N	Westfield		VL	N
Saint-Jean		P	N				
Saint-Jean-Chrysostome		V	Y	Sarnia CA <sup>2</sup>	562		Y
Saint-Joseph-de-la-Pointe-de-Lévy		P	N	Moore		TP	Y
Saint-Lambert-de-Lauzon		P	Y	Point Edward		VL	Y
Saint-Laurent		P	N	Sarnia		C	Y
Saint-Pierre		P	N	Sarnia 45		R	Y
Saint-Rédempteur		V	Y				
Saint-Romuald		V	Y	Saskatoon CMA	725		Pt
Sainte-Brigitte-de-Laval		M	N	Allan		T	N
Sainte-Catherine-de-la-Jacques-Cartier		M	N	Asquith		T	N
Sainte-Famille		P	N	Blucher No. 343		RM	N
Sainte-Foy		V	Y	Bradwell		VL	N
Sainte-Hélène-de-Breakeyville		P	Y	Clavet		VL	N
Sainte-Pétronille		VL	N	Colonsay		T	N
Shannon		M	N	Colonsay No. 342		RM	N
Sillery		V	Y	Corman Park No. 344		RM	N
Stoneham-et-Tewkesbury		CU	N	Dalmeny		T	N
Val-Bélair		V	N	Delisle		T	N
Vanier		V	Y	Dundurn		T	N
Wendake		R	Y	Dundurn No. 314		RM	N
				Elstow		VL	N
Red Deer CA	830		Y	Langham		T	N
Red Deer		C	Y	Martensville		T	N
				Meacham		VL	N
Regina CMA	705		Pt	Osler		T	N
Balgonie		T	N	Saskatoon		C	Y
Belle Plaine		VL	N	Shields		RV	N
Buena Vista		VL	N	Thode		RV	N
Disley		VL	N	Vanscoy		VL	N
Edenwold		VL	N	Vanscoy No. 345		RM	N
Edenwold No. 158		RM	N	Warman		T	N
Grand Coulee		VL	Y	White Cap 94		R	N
Lumsden		T	Y				
Lumsden Beach		RV	N	Sault Ste. Marie CA	590		Y
Lumsden No. 189		RM	N	Garden River 14		R	Y
Pense		VL	N	Laird		TP	Y
Pense No. 160		RM	N	Macdonald, Meredith and Aberdeen Additional		TP	Y
Pilot Butte		T	N	Prince		TP	Y
Regina		C	Y	Rankin Location 15D		R	Y
Regina Beach		T	N	Sault Ste. Marie		C	Y
Sherwood No. 159		RM	Y				
White City		VL	N	Sherbrooke CMA	433		Pt

## Appendices

CMA/CA/CSD Name	CMA/ CA Code	CSD Type	SNF	CMA/CA/CSD Name	CMA/ CA Code	CSD Type	SNF
Burrard Inlet 3		R	Y	Windsor		C	Y
Capilano 5		R	Y				
Coquitlam		C	Y	<b>Winnipeg CMA</b>	<b>602</b>		<b>Pt</b>
Coquitlam 1		R	Y	Brokenhead 4		R	N
Coquitlam 2		R	Y	East St. Paul		RM	Y
Delta		DM	Y	Headingley		RM	Y
Greater Vancouver, Subd. A		SRD	Y	Ritchot		RM	Y
Katzie 2		R	Y	Rosser		RM	Y
Langley		DM	Y	Springfield		RM	Y
Langley		C	Y	St. Clements		RM	N
Lions Bay		VL	Y	St. François Xavier		RM	Y
Matsqui 4		R	Y	Taché		RM	Y
McMillan Island 6		R	Y	West St. Paul		RM	Y
Mission 1		R	Y	Winnipeg		C	Y
Musqueam 2		R	Y				
Musqueam 4		R	Y	<b>Woodstock CA</b>	<b>544</b>		<b>Y</b>
New Westminster		C	Y	Woodstock		C	Y
North Vancouver		DM	Y				
North Vancouver		C	Y				
Port Coquitlam		C	Y				
Port Moody		C	Y				
Richmond		C	Y	<b>Endnotes</b>			
Semiahmoo		R	Y	<sup>1</sup> New area for the 1996 Census.			
Seymour Creek 2		R	Y	<sup>2</sup> Name change for the 1996 Census.			
Surrey		C	Y	<sup>3</sup> New census tract area for the 1996 Census.			
Tsawwassen		R	Y				
University Endowment Area		SRD	Y				
Vancouver		C	Y	PCA		Primary Census Agglomeration	
West Vancouver		DM	Y	PCMA		Primary Census Metropolitan Area	
White Rock		C	Y				
<b>Victoria CMA</b>	<b>935</b>		<b>Y</b>				
Becher Bay 1		R	Y	<b>CSD Type:</b>			
Capital, Subd. B		SRD	Y	BOR		Borough	
Capital, Subd. C		SRD	Y	C		City - Cité	
Central Saanich		DM	Y	CM		County (municipality)	
Cole Bay 3		R	Y	CT		Canton (Municipalité de)	
Colwood		C	Y	CU		Canton unis (Municipalité de)	
East Saanich 2		R	Y	DM		District Municipality	
Esquimalt		DM	Y	M		Municipalité	
Esquimalt		R	Y	MD		Municipal District	
Highlands		DM	Y	P		Paroisse (Municipalité de)	
Langford		DM	Y	PAR		Parish	
Metchosin		DM	Y	R		Indian Reserve	
New Songhees 1A		R	Y	RM		Rural Municipality	
North Saanich		DM	Y	RV		Resort Village	
Oak Bay		DM	Y	SCM		Subdivision of County Municipality	
Saanich		DM	Y	SM		Specialized Municipality	
Sidney		T	Y	SRD		Subdivision of Regional District	
Sooke 1		R	Y	SV		Summer Village	
Sooke 2		R	Y	T		Town	
South Saanich 1		R	Y	TP		Township	
Union Bay 4		R	Y	V		Ville	
Victoria		C	Y	VL		Village	
View Royal		T	Y				
<b>Windsor CMA</b>	<b>559</b>		<b>Pt</b>				
Anderdon		TP	N				
Belle River		T	N				
Colchester North		TP	Y				
Essex		T	Y				
LaSalle		T	N				
Maidstone		TP	N				
Rochester		TP	N				
Sandwich South		TP	N				
St. Clair Beach		VL	N				
Tecumseh		T	N				

---

## List of Statistics Canada Regional Reference Centres

**Atlantic Region**

Serving Newfoundland and  
Labrador, Nova Scotia, Prince  
Edward Island and  
New Brunswick.

Statistics Canada  
Advisory Services  
North American Life Centre  
1770 Market Street  
Halifax, Nova Scotia B3J 3M3  
Toll-free number: 1 800-263-1136  
Local calls: (902) 426-5331  
Fax number: (902) 426-9538

**Quebec Region**

Statistics Canada  
Advisory Services  
200 René Lévesque Blvd W.  
Guy Favreau Complex  
4th floor, East Tower  
Montréal, Quebec H2Z 1X4  
Toll-free number: 1 800 263-1136  
Local calls: (514) 283-5725  
Fax number: (514) 283-9350  
E-mail: [http://stcmtl@login.net](mailto:http://stcmtl@login.net)

**National Capital Region**

Statistics Canada  
Statistical Reference Centre  
R.H. Coats Building Lobby  
Holland Avenue  
Ottawa, Ontario K1A 0T6  
Local calls: (613) 951-8116  
Fax number: (613) 951-0581  
E-mail: [http://infostats@statcan.ca](mailto:http://infostats@statcan.ca)  
*If you live outside the local calling  
area, please dial the toll-free  
number for your region.*

**Ontario Region**

Statistics Canada  
Advisory Services  
Arthur Meighen Building  
10th floor  
25 St. Clair Avenue East  
Toronto, Ontario M4T 1M4  
Toll-free number: 1 800 263-1136  
Local calls: (416) 973-6586  
Fax number: (416) 973-7475

**Prairie Region**

Serving Manitoba, Saskatchewan  
and Alberta and the Northwest  
Territories.

Statistics Canada  
Advisory Services  
VIA Rail Building, Suite 200  
123 Main Street  
Winnipeg, Manitoba R3C 4V9  
Toll-free number: 1 800 263-1136  
Local calls: (204) 983-4020  
Fax number: (204) 983-7543  
E-mail:  
[http://statswpg@solutions.net](mailto:http://statswpg@solutions.net)

Statistics Canada  
Advisory Services  
Park Plaza, Suite 440  
2365 Albert Street  
Regina, Saskatchewan S4P 4K1  
Toll-free number: 1 800 263-1136  
Local calls: (306) 780-5405  
Fax number: (306) 780-5403  
E-mail:  
[http://statcan@sympatico.ca](mailto:http://statcan@sympatico.ca)

**Statistics Canada**

Advisory Services  
Park Square, 9th floor  
10001 Bellamy Hill  
Edmonton, Alberta T5J 3B6  
Toll-free number: 1 800 263-1136  
Local calls: (403) 495-3027  
Fax number: (403) 495-5318

**Statistics Canada**

Advisory Services  
Discovery Place, Room 201  
3553-31 Street N.W.  
Calgary, Alberta T2L 2K7  
Toll-free number: 1 800 263-1136  
Local calls: (403) 292-6717  
Fax number: (403) 292-4958  
E-mail:  
[http://degagnej@cadvision.com](mailto:http://degagnej@cadvision.com)

**Pacific Region**

Serving British Columbia and the  
Yukon Territory.

Statistics Canada  
Advisory Services  
Library Square Office Tower  
600 - 300 West Georgia Street  
Vancouver, B.C. V6B 6C7  
Toll-free number: 1 800 263-1136  
Local calls: (604) 666-3691  
Fax number: (604) 666-4863

---

## Limited Use Data Product Licence Agreement

The Government of Canada (Statistics Canada) is the owner or a licensee of all intellectual property rights (including copyright) in this data product. In consideration of your payment of the requisite fee, you or your organization, as the case may be, (hereinafter referred to as the "licensee") are granted a non-exclusive, non-assignable and non-transferable licence to use this data product subject to the terms below.

This licence is not a sale of any or all of the rights of the owner(s). This data product may be used only by you or your organization, as the case may be. No part of the data product nor any right granted under this agreement shall be sold, rented, leased, lent, sub-licensed or transferred to any other person or organization. The licensee shall not use any part of the data product to develop or derive any other data product or data service for distribution or commercial sale, without a licence to do so. The licensee may not disassemble, decompile or in any way attempt to reverse engineer any software provided as part of the data product.

The licensee may not transfer this data product to or store the data product in any electronic network for use by more than one user unless it obtains prior written permission from Statistics Canada and pays any additional fees.

This data product is provided "as-is", and Statistics Canada makes no warranty, either express or implied, including but not limited to, warranties of merchantability and fitness for a particular purpose. In no event will Statistics Canada be liable for any indirect, special, consequential or other damages however caused.

This agreement will terminate automatically without notice if the licensee fails to comply with any term of this agreement. In the event of termination, the licensee must immediately return the data product to Statistics Canada or destroy it and certify this destruction in writing to Statistics Canada.

It is YOUR RESPONSIBILITY to ensure that your use of this data product complies with these terms and to seek prior written permission from Statistics Canada for any uses not permitted or not specified in this agreement.

**ANY USE WHATSOEVER OF THIS DATA PRODUCT SHALL CONSTITUTE YOUR ACCEPTANCE OF THE TERMS OF THIS AGREEMENT. For further information please contact:**

Licence Services  
Marketing Division  
Statistics Canada  
Ottawa, Ontario  
Canada, K1A 0T6

Tel: 613-951-8211  
Fax: 613-951-1134

Revised on December 11, 1996

## **Geography Products Feedback**

Please tell us what you think of our products. Send your written comments or suggestions to:

**Marketing Section  
Geography Division  
Statistics Canada  
3rd Floor, Jean Talon Building  
Tunney's Pasture  
Ottawa, Ontario  
K1A 0T6**

**or fax them to: (613)-951-0569**

To order, or for further information, contact your nearest Statistics Canada Regional Reference Centre.

Ca 205

STATISTICS CANADA LIBRARY  
BIBLIOTHEQUE STATISTIQUE CANADA



1010278107

C. 4





