

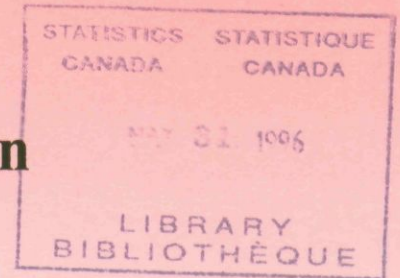
92N0084XPE

c.3

# 6 CENSUS OF CANADA

**IBFN-1**

## **Indian Band/First Nation Procedures Manual**



**Automated Coding**



Statistics  
Canada

Statistique  
Canada

**Canada**



**Table of Contents**

	Page
I. Introduction to the Indian Band/First Nation Variable .....	1
II. Standard Process Flow – Single Response .....	5
III. Misspelled Responses .....	11
IV. Abbreviated Responses .....	17
V. Identical or Similar Indian Band and Indian Nation Names .....	21
VI. Multiple Responses .....	31
VII. Write-in Responses of "Same/Même", "See Person 1/Voir Personne 1" or "Same as Person 1/Même que Personne 1" .....	37
VIII. Other Categories of Write-ins .....	41

**List of Appendices**

Appendix A – Related Questions which Provide Auxiliary Information .....	43
Appendix B – List of Reserve Names classified by PEDEA ID .....	47



## I. Introduction to the Indian Band/First Nation Variable

The Indian Band/First Nation (IB/FN) question identifies those persons who are members of an Indian Band or First Nation in order to determine this population's socio-economic characteristics and its geographic distribution. The respondent checks the "No" or the "Yes" answer circle listed on the questionnaire and is asked to specify his Indian Band/First Nation in the write-in space provided under the "Yes" circle.

The following is the 1996 Indian Band/First Nation question and the instructions provided in the 1996 Census Guide to aid respondents in answering this question.

<p><b>20.</b> Is this person a member of an Indian Band/First Nation?</p> <p>■</p>	<p>16 <input type="radio"/> No</p> <p>17 <input type="radio"/> Yes, member of an Indian Band/First Nation</p> <p style="padding-left: 20px;">Specify Indian Band/First Nation (for example, Musqueam)</p> <p>18 <input style="width: 150px; height: 20px;" type="text"/></p>
--	--

**Questions 18, 20 and 21 provide information about Aboriginal or First Nation peoples, which is used to administer legislation and employment programs under the *Indian Act* of Canada and the *Employment Equity Act*.**

The Indian Band/First Nation code set is outlined in the Edit and Imputation Dictionary. It contains a three digit numeric code and a description of every entry, and its structure forms the basis of the construction of the Indian Band/First Nation Reference File. The difference between the code set and the Reference File is that the first is the coding structure, it organizes the codes into a logical order; and the latter has an entry with a code for every conceivable variation of terms used to describe an entry in the code set.

The coding structure is divided into two parts with the first part providing codes for entries that are not Canadian Indian Bands (First Nations) or Indian Nations (tribes), and the second part providing codes for specific Canadian Indian Bands and Indian Nations. Codes 001 to 090 belong to non-Aboriginal groups, such as, English, French, Italian and Chinese or non specific Aboriginal groups, like North American Indian, Métis and Inuit while codes 100 to 990 belong to Indian Bands, such as, the Curve Lake First Nation Band and Indian Nations, like Ojibway.

In the coding structure, 608 Indian Bands and 16 registry groups (which are treated as Bands) are assigned into 49 Indian Nations. Indian Nations are arranged in alphabetical order in relation to each other with the Indian Bands arranged in alphabetical order within their assigned Nations. The assignment of an Indian Band into a Nation is based on the linguistic and cultural affiliations of the Indian Band so that a Band whose traditional language was Cree is assigned to the Cree Nation. All Bands consist of a single registry group, except for the Six Nations of the Grand River Band and the Stoney Band which have 13 and 3 registry groups respectively. Indian reserves, Indian settlements or other geographic areas associated with an Indian Band have the same code as their Band, and they are included in the Reference File as synonyms for their Band name.

Within the coding structure, an Indian Nation Group is comprised of one or more Indian Band codes and a code for the Indian Nation that is designated *Not Indicated Elsewhere* (n.i.e.). The n.i.e. designation is used to signify that it is a residual category where entries that cannot be assigned to an Indian Band are assigned, so that it will not be confused with its Indian Nation Group which is the sum of the Nation, n.i.e. code and the corresponding Band code(s).

A code is only to be assigned to an Indian Nation, n.i.e. code when a Band cannot be identified, because the Indian Band/First Nation variable has been designed to provide data at the Indian Band level. When a code is assigned to a Band, its Nation can be derived, because every Band has been assigned to an Indian Nation within the coding structure.

Indian Nation Groups vary in size from one Band Nation like the Bella Coola and Huron Nation Groups to the Cree Nation Group with 136 Bands (see Figure 1. Coding Structure: Indian Nation Groups on the following page). The first Indian Nation to appear in the coding structure, the Abenaki Nation Group, begins with Abenaki, n.i.e. at code 100. Since Bands are organized within nations, the next consecutive codes 101 and 102 are assigned to the Abenaki Nation's two Bands. The last Band within a Nation is followed with extra codes to allow for addition of new Bands and ensures that the next Nation can begin with a code that has a zero or a five as its third digit.

As seen in Figure 1 below, in the coding structure, the Algonquin Nation Group follows the Abenaki Nation Group. Notice that it begins with code 105 for Algonquin, n.i.e., the Algonquin Nation Group's 11 Bands follow in alphabetical order and have been assigned codes 106 to 116.

The following figure presents the first three Nations and their Bands from the coding structure:

Figure 1. Coding Structure: Indian Nation Groups

- 100 Abenaki, n.i.e.**
- 101 Abenakis de Wolinak Band
- 102 Odanak Band
- 103 Extra code
- 104 Extra code
- 105 Algonquin, n.i.e.**
- 106 Abitibiwinni Band
- 107 Algonquins of Barrier Lake Band
- 108 Eagle Village First Nation – Kipawa Band
- 109 Golden Lake Band
- 110 Kitcisakik Band
- 111 Kitigan Zibi Anishinabeg Band
- 112 Lac Simon Band
- 113 Long Point First Nations Band
- 114 Timiskaming Band
- 115 Wahgoshig Band
- 116 Wolf Lake Band
- 117 Extra code
- 118 Extra code
- 119 Extra code
- 120 Attikamek, n.i.e.**
- 121 Les Atikamekw de Manawan Band
- 122 Obedjiwan Band
- 123 Weymontachie Band
- 124 Extra code

(See reference material for a complete list of Nations and Bands.)

At the time of printing this manual (1996), Indian Band names are arranged in alphabetical order within their Indian Nations so that Bands are arranged in the same order alphabetically and numerically. Yet, as new Bands are created and Bands change their name, the order of Bands will not remain the same.

There are seven basic categories of write-in response you may encounter when manually coding the Indian Band/First Nation variable:

- (1) Single responses
- (2) Misspelled responses
- (3) Abbreviated responses
- (4) Identical or similar Indian Band and Indian Nation Names
- (5) Multiple responses
- (6) Write-in responses of "Same/Même", "See Person 1/Voir Personne 1" or "Same as Person 1/Même que Personne 1"
- (7) Other types of write-ins.

Coding of Indian Band/First Nation responses is done with the help of the Automated Coding by Text Recognition (ACTR) system, identification (ID) Number list, Band/Reserve lists, Indian Band/First Nation Reference File, maps and reports prepared during production.

The following warnings must be kept in mind during the coding process:

- **If you are in doubt about the codes returned by ACTR**, you can refer to auxiliary information for the person providing the write-in and for other members of the household.
- Phrases returned by ACTR do not necessarily indicate a possible match, because **many entries have the same words** such as "Band", "Indian", "Reserve", "Lake", "First Nation", "Bay", "River", etc.
- **When no phrase is returned by ACTR**, you may type in a valid code.
- **In the case where the ACTR list may be outdated**, you have the option to select a valid code from these phrases or type in a valid code based on further research of the response.
- **Before selecting a valid code for abbreviated responses or identical or similar names**, you should check the province (PROV), federal electoral district (FED) and enumeration area (EA) ID (PEDEA) at the bottom left hand side of the screen.
- **If you are in doubt about the correct code to assign**, REFER THE RESPONSE TO THE NEXT CODING LEVEL.



II. Standard Process Flow – Single Response

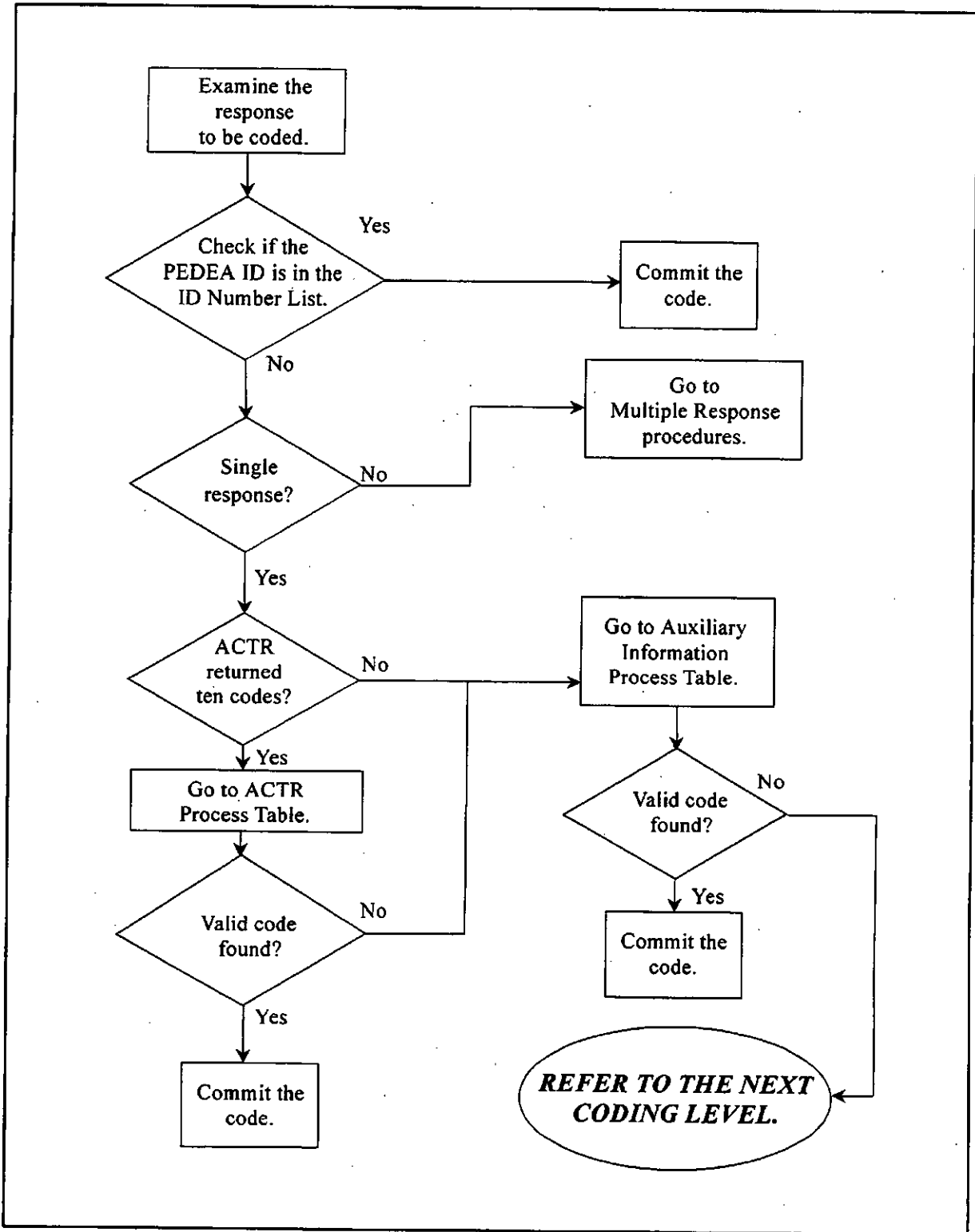
Shown below are some examples of how the response will appear on your screen.

1996 CENSUS OF POPULATION / AUTOMATED CODING		17/01/96
INTERACTIVE CODING - INDIAN BAND/FIRST NATION		13:02:27.5
MANUAL1		
Write-in to be coded		Type Code
YELLOW KNIFE "B"		-----
Phrases returned by ACTR		Codes (S)elect
INDIAN MONTAGNAIS USHAT ET MALIOTENAM B		XXX
OJIBWAYS OF THE PIC RIVER FIRST NATION B		XXX
YELLOWKNIFE "B"		XXX
ID:61XXXXXX	XXX 1 XX	

1996 CENSUS OF POPULATION / AUTOMATED CODING		17/01/96
INTERACTIVE CODING - INDIAN BAND/FIRST NATION		13:02:27.5
MANUAL1		
Write-in to be coded		Type Code
MILL BROOK		-----
Phrases returned by ACTR		Codes (S)elect
INDIAN BROOK 14		XXX
ID:12XXXXXX	XXX 1 XX	

The process diagram on the following page summarizes the standard process flow expected to occur under normal processing conditions.

STANDARD PROCESS FLOW



For any single response to be coded, follow these instructions.

SITUATION	CONDITIONS	ACTIONS
<p><b>Step 1</b> Examine the response to be coded.</p>		
<p><b>Step 2</b> Check the PROV, FED, EA ID (PEDEA) at the bottom left hand of the screen.</p>		
<p><b>Step 3</b> Consult the ID Number List.</p>	<p>(i) IF the ID number is found in the list, THEN</p> <p>(ii) IF the ID number is not listed, THEN</p>	<p>commit the code which corresponds to the ID number in the ID Number List.</p> <p>go to <b>Step 4</b>.</p>
<p><b>Step 4</b> Determine if the write-in is a single or a multiple response.</p>	<p>(i) IF it is a single response, THEN</p> <p>(ii) IF it is a multiple response, THEN</p>	<p>go to <b>Step 5</b>.</p> <p>go to the <b>Multiple Responses</b> procedures on page 31.</p>
<p><b>Step 5</b> Verify if ACTR returned ten codes at the bottom of the screen.</p>	<p>(i) IF the ten codes are returned by ACTR, THEN</p> <p>(ii) IF no ACTR code is returned, THEN</p> <p>(iii) IF the message "ACTR list may be outdated" appears, THEN</p>	<p>go to the ACTR Process Table on page 8.</p> <p>go to the Auxiliary Information Process Table on page 9.</p> <p>go to the Auxiliary Information Process Table on page 9.</p>

**ACTR Process Table**

SITUATION	CONDITIONS	ACTIONS
<p><b>Step 1</b> Compare the response to be coded with the codes returned by ACTR starting with the first to determine if it is a suitable match.</p>	<p><b>Step 1.1</b> IF a match is found, THEN</p>	<p>(a) select the valid code. (b) validate the code. (c) verify that the code description at the bottom of the screen matches the response.</p>
	<p><b>Step 1.2</b> (i) IF the code description matches the response, THEN  (ii) IF the code description does not match the response, THEN</p>	<p>commit the code.  (a) determine if the next code returned by ACTR can be selected. (b) REPEAT <b>Step 1</b> UNTIL list of ACTR codes is exhausted.</p>
	<p><b>Step 1.3</b> IF no match is found in the list ACTR has returned, THEN</p>	<p>go to the Auxiliary Information Process Table on page 9.</p>

**Auxiliary Information Process Table**

<b>SITUATION</b>	<b>CONDITIONS</b>	<b>ACTIONS</b>
<p><b>Step 1</b> Browse through the respondent's responses to the following cultural questions:</p> <ul style="list-style-type: none"> <li>- On/off reserve</li> <li>- Age (Date of Birth)</li> <li>- Sex</li> <li>- Mother Tongue</li> <li>- Home Language</li> <li>- Knowledge of Non-official Language</li> <li>- Place of Birth</li> <li>- Citizenship</li> <li>- Ethnic Origin</li> <li>- Aboriginal Self-reporting</li> <li>- Population Group</li> <li>- Indian Registration</li> <li>- Indian Band/First Nation</li> </ul>		
<p><b>Step 2</b> Study the relationship between results found in <b>Step 1</b> and the response to be coded.</p>	<p><b>Step 2.1</b> IF a response is found, THEN</p>	<ul style="list-style-type: none"> <li>(a) look up the response in the Indian Band/First Nation Reference File to find a code.</li> <li>(b) select the valid code.</li> <li>(c) validate the code.</li> </ul>
	<p><b>Step 2.2</b></p> <ul style="list-style-type: none"> <li>(i) IF the code description matches the response, THEN</li> <li>(ii) IF the code description selected does not match the response, THEN</li> </ul>	<p>commit the code.</p> <p>determine if another code can be found when repeating action for <b>Step 2.1</b> and <b>Step 2.2 (i)</b>.</p>

SITUATION	CONDITIONS	ACTIONS
	<b>Step 2.3</b> IF a code is still not found, THEN	(a) browse the responses provided by other members of the household for the same question. (b) REPEAT Step 2.
	<b>Step 2.4</b> IF a code is still not found, THEN	<b><i>REFER THE RESPONSE TO THE NEXT CODING LEVEL.</i></b>

### III. Misspelled Responses

Shown below are some examples of how the response will appear on your screen.

1996 CENSUS OF POPULATION / AUTOMATED CODING		17/01/96
INTERACTIVE CODING - INDIAN BAND/FIRST NATION		13:02:27.5
MANUAL1		
Write-in to be coded		Type Code
COVICHON LAKE BAND		-----
Phrases returned by ACTR		Codes (S)elect
ANGLING LAKE BAND		351
BARRIERE LAKE BAND		107
BEARSKIN LAKE BAND		236
ID:59013122	120 1 20	

1996 CENSUS OF POPULATION / AUTOMATED CODING		17/01/96
INTERACTIVE CODING - INDIAN BAND/FIRST NATION		13:02:27.5
MANUAL1		
Write-in to be coded		Type Code
MAKWA SAHGAIEHRAN BAND		-----
Phrases returned by ACTR		Codes (S)elect
MAKWA LAKE BAND		289
INDIAN BAND		062
BEARSPAW BAND		404
ID:47013470	120 1 20	

For misspelled responses (single or multiple write-ins), you should check the PEDEA ID code before consulting the Indian Band/First Nation Reference File to attempt to find a close match to the misspelled response and to ensure that the correct code is assigned.

The first example should read Cowichan Lake and the PEDEA corresponds to Cowichan Lake Reserve. Note how ACTR returned phrases with "Lake" and "Band" in alphabetical order and thus it did not provide Cowichan Lake.

The examples presented below depict common transcription and spelling errors. A transcription error is caused when a data entry clerk fails to enter the text as found on the questionnaire, while a spelling error is the result of a mistake by the respondent. The cases on the left appear to be transcription errors, because letters are inverted, missing, or they have been confused with other letters. Whereas, the cases on the right tend to show indications of phonetic spelling (i.e. Soto for Saulteau).

Figure 2. Typical Errors

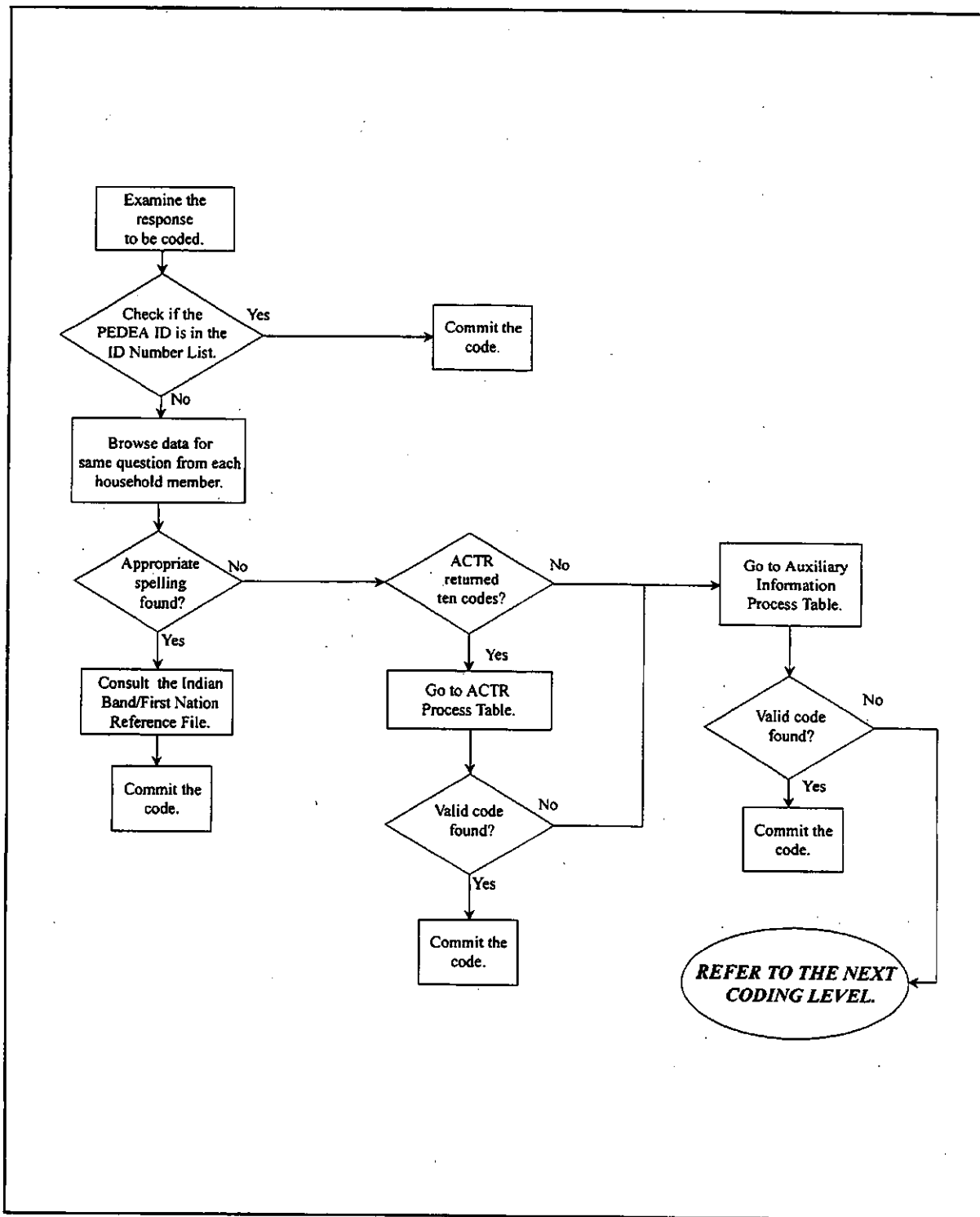
Typical Transcription Errors		Typical Spelling Errors	
Incorrect	Correct	Incorrect	Correct
Backfoot	Blackfoot	Chipawon	Chipewyan
Bjbway	Ojibway	Cognowagua	Caughnawaga
Fariford	Fairford	Cowhises	Cowessess
Hioquois	Iroquois	Erminskin	Ermineskin
Hyron	Huron	Objebway	Ojibway, Ojibwa
Iroqudis	Iroquois	Ochapawways	Ochapowace
Kakhewistahaw	Kahkewistahaw	Ochapowonce	Ochapowace
Pequis	Peguis	Ojibwe	Ojibway
Schoal Lake	Shoal Lake	Ojubwu	Ojibway
Uneida	Oneida	Soto	Saulteau(x)
Water hen	Waterhen	Sotto	Saulteau(x)

During this phase of manual resolution, common misspelled responses and transcription errors should be reported to the coding consultants so they can be incorporated into the reference file.

The process diagram on the following page summarizes the process flow expected to occur under misspelled responses processing conditions.



MISSPELLED RESPONSES



For any misspelled response to be coded, follow these instructions.

SITUATION	CONDITIONS	ACTIONS
<p><b>Step 1</b> Examine the response to be coded.</p>		
<p><b>Step 2</b> Check the PROV, FED, EA ID (PEDEA) at the bottom left hand of the screen.</p>		
<p><b>Step 3</b> Consult the ID Number List.</p>	<p>(i) IF the ID number is found in the list, THEN</p> <p>(ii) IF the ID number is not listed, THEN</p>	<p>(a) validate the code which corresponds to the ID number in the list.</p> <p>(b) commit the code.</p> <p>go to <b>Step 4</b>.</p>
<p><b>Step 4</b> Browse through the IB/FN response provided by other members of the household to see if they have a similar response which is correctly spelt.</p>	<p>(i) IF an appropriate spelling is found, THEN</p> <p>(ii) IF no appropriate spelling and code are found, THEN</p>	<p>(a) Consult the Indian Band/First Nation Reference File to determine the correct code to assign.</p> <p>(b) validate the code.</p> <p>(c) commit the code.</p> <p>go to <b>Step 5</b>.</p>

SITUATION	CONDITIONS	ACTIONS
<b>Step 5</b> Verify if ACTR returned ten codes at the bottom of the screen.	(i) IF the ten codes are returned by ACTR, THEN  (ii) IF no ACTR code is returned, THEN  (iii) IF the message "ACTR list may be outdated" appears, THEN	go to the ACTR Process Table on page 8.  go to the Auxiliary Information Process Table on page 9.  go to the Auxiliary Information Process Table on page 9.



IV. Abbreviated Responses

Shown below are some examples of how the response will appear on your screen.

MMANUAL1	1996 CENSUS OF POPULATION / AUTOMATED CODING	17/01/96
	INTERACTIVE CODING - INDIAN BAND/FIRST NATION	13:02:27.5
Write-in to be coded		Type Code
CHIP. OF KET. & STONEY PT.		-----
Phrases returned by ACTR	Codes	(S)elect
CHIP BAND	180	
ESKIMO POINT	064	
FORT CHIP	189	
ID:35039266	120 1 20	

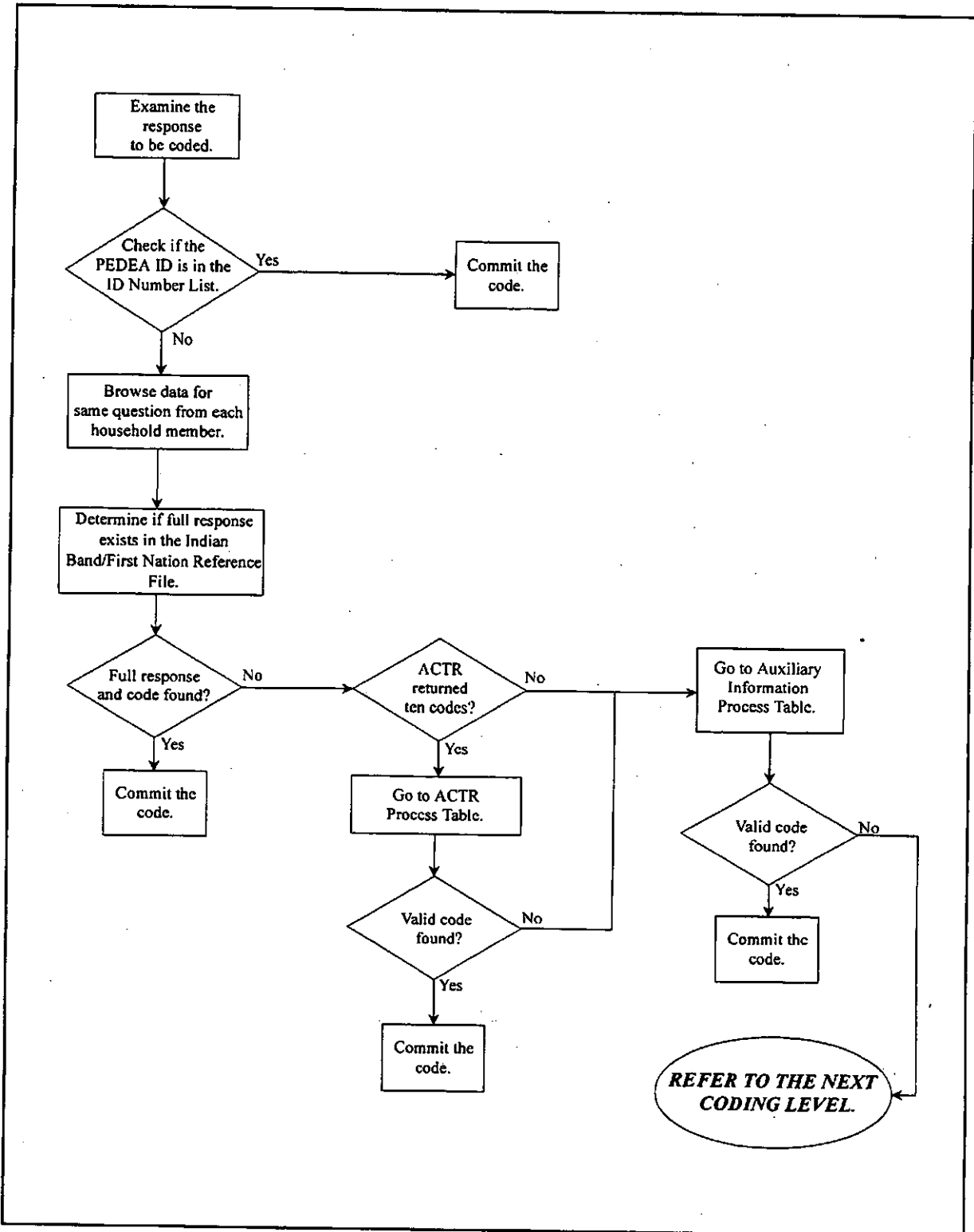
MMANUAL1	1996 CENSUS OF POPULATION / AUTOMATED CODING	17/01/96
	INTERACTIVE CODING - INDIAN BAND/FIRST NATION	13:02:27.5
Write-in to be coded		Type Code
CTK		-----
Phrases returned by ACTR	Codes	(S)elect
ID:47006024	120 1 20	

Often a respondent or a census representative (CR) will enter the full response for Person 1 (Carry the Kettle) and then abbreviate it for all other members of the household (CTK).

On Indian reserves and Indian settlements, it is the responsibility of the CR to write the responses on the questionnaires. Often CRs begin by entering the full Band name then as they encounter more households they start abbreviating the names. For example, a response of Norway House Band becomes Norway House I B, N House, N H Indian Band, Norway Hse, N H B, NH B, N H I B and finally N H. The same type of abbreviations occur for Nelson House Band and the only way to determine the correct code is to check the PEDEA ID.

The process diagram on the following page summarizes the process flow expected to occur under abbreviated responses processing conditions.

### ABBREVIATED RESPONSES



For any abbreviated response to be coded, follow these instructions.

SITUATION	CONDITIONS	ACTIONS
<p><b>Step 1</b> Examine the response to be coded.</p>		
<p><b>Step 2</b> Check the PROV, FED, EA ID (PEDEA) at the bottom left hand of the screen.</p>		
<p><b>Step 3</b> Consult the ID Number List.</p>	<p>(i) IF the ID number is found in the list, THEN</p> <p>(ii) IF the ID number is not listed, THEN</p>	<p>(a) validate the code which corresponds to the ID number in the list.</p> <p>(b) commit the code.</p> <p>go to <b>Step 4</b>.</p>
<p><b>Step 4</b> Browse through the Indian Band/First Nation response provided by other members of the household to determine if the write-in was given in its full form for other members.</p>	<p>(i) IF the write-in was given in its full form, THEN</p> <p>(ii) IF the write-in was not given in its full form, THEN</p>	<p>go to <b>Step 6</b>.</p> <p>go to <b>Step 5</b>.</p>
<p><b>Step 5</b> Expand the abbreviated write-in response to its full form by referring to the Indian Band/First Nation Reference File by conducting a match based on the first four or five letters.</p>	<p>(i) IF the full response and code are found, THEN</p> <p>(ii) IF the full response and code are not found, THEN</p>	<p>(a) validate the code.</p> <p>(b) commit the code.</p> <p>go to <b>Step 6</b>.</p>

SITUATION	CONDITIONS	ACTIONS
<b>Step 6</b> Verify if ACTR returned ten codes at the bottom of the screen.	(i) IF the ten codes are returned by ACTR, THEN  (ii) IF no ACTR code is returned, THEN  (iii) IF the message "ACTR list may be outdated" appears, THEN	go to the ACTR Process Table on page 8.  go to the Auxiliary Information Process Table on page 9.  go to the Auxiliary Information Process Table on page 9.



V. Identical or Similar Indian Band and Indian Nation Names

Shown below are some examples of how the response will appear on your screen.

MMANUAL1	1996 CENSUS OF POPULATION / AUTOMATED CODING INTERACTIVE CODING - INDIAN BAND/FIRST NATION	17/01/96 13:02:27.5
Write-in to be coded SAINT MARY'S		Type Code
Phrases returned by ACTR		Codes (S)elect
LAKE ST. MARTIN		774
MONTAGNAIS OF LAKE ST JOHN		665
SAINT MARY'S BC		568
ID:13XXXXXXXX 120 1 20		

MMANUAL1	1996 CENSUS OF POPULATION / AUTOMATED CODING INTERACTIVE CODING - INDIAN BAND/FIRST NATION	17/01/96 13:02:27.5
Write-in to be coded SARCEE		Type Code
Phrases returned by ACTR		Codes (S)elect
SARCEE NATION		870
SARCEE BAND		871
ID:48XXXXXXXX 120 1 20		

A. Identical Indian Band and Indian Nation Names

In a number of cases, Indian Bands have names with identical or similar spellings to another Indian Band and/or Indian Nation (Tribe). These Bands and Nations appear in the Indian Band/First Nation Reference File with their province in parenthesis because they do not provide enough information to assign a unique code unless they are followed by one of the following terms: "Band", "First Nation", "Nation" or "Tribe". For example, there is no entry of "Cree" in the Indian Band/First Nation Reference File, but there are entries of "Cree Band", "Cree First Nation", "Cree Nation" and "Cree Tribe".

**B. Bands with Identical Names**

In the Indian Band/First Nation Reference File, Bands with identical names, such as "Sturgeon Lake", appear with the province in parenthesis. For example, 341 Sturgeon Lake (AB), 342 Sturgeon Lake Band (SK), that are located in different provinces. These will not automatically be coded by ACTR unless the province is entered along with the entry, but they will give you a better indication of the correct code to assign to a Band.

**C. Similar Indian Band Names**

For example, a write-in of "Saugeen" could refer to the Saugeen Band (817) or it could be an abbreviated version of Saugeen Nation Band (979). If an entry of "Saugeen" is encountered, special attention should be given to determine which Band's code should be assigned. If an entry of "Saugeen" is always coded to 817, it might cause an over-reporting of the Saugeen Band and an under-reporting of the Saugeen Nation Band. An entry of Saugeen Nation will be coded automatically by ACTR because ACTR can determine which code to assign.

The following is a list of "Indian Bands with Identical Names to Other Indian Bands", "Indian Bands with Similar Names to Other Bands" and "Indian Bands with the Same Names as Indian Nations (Tribes)".

Figure 3. Indian Bands with Identical Names to Other Bands

Code	Band Name	Entry in Reference File
615	Saint Mary's (1)	Saint Mary's (NB)
568	St. Mary's (1)	St. Mary's (BC)
341	Sturgeon Lake	Sturgeon Lake (AB)
342	Sturgeon Lake	Sturgeon Lake (SK)
344	Sucker Creek	Sucker Creek (AB)
799	Sucker Creek	Sucker Creek (ON)
356	Waterhen Lake (2)	Waterhen (SK)
838	Waterhen (2)	Waterhen (MB)
362	Whitefish Lake	Whitefish Lake (AB)
842	Whitefish Lake	Whitefish Lake (ON)

- (1) Look under "St", "St." and "Saint".
- (2) Lake is found in documentation from Indian Affairs and Northern Development (INAC) for both Waterhen Bands.

Figure 4. Reserves Corresponding to More than One Band

Abitibi 70	Doncaster 17	Island Lake 22A
Agency 1	Hobbema	Pigeon Lake 138 A
Big Hole Tract 8	Island Lake 22	Shoal Lake 34 B2

Figure 5. Indian Bands with the Same Name as Indian Nations (Tribes)

Nation Code (3)	Nation Name	Band Code (4)	Band Name
135	Bella Coola	136	Bella Coola
140	Blackfoot	143	Blackfoot
215	Comox	216	Comox
465	Cowichan	472	Cowichan
230	Cree	293	Cree
520	Heiltsuk	521	Heiltsuk
595	Lillooet	601	Lillooet
720	Mississauga	785	Mississauga
680	Nootka	686	Nootka
855	Okanagan	857	Okanagan
870	Sarcee	871	Sarcee
720	Saulteau	818	Saulteau
720	Saulteaux	819	Saulteaux
875	Sechelt	876	Sechelt
885	Shuswap	897	Shuswap
530	Six Nations	537	Six Nations (of the Grand River)
930	Squamish	932	Squamish
950	Tahltan	952	Tahltan

(3) Nation entries often contain the terms: Nation, Tribe or Confederacy.

(4) Band entries often contain the terms: Band or First Nation.

Figure 6. Entries that Apply to More than One Indian Band

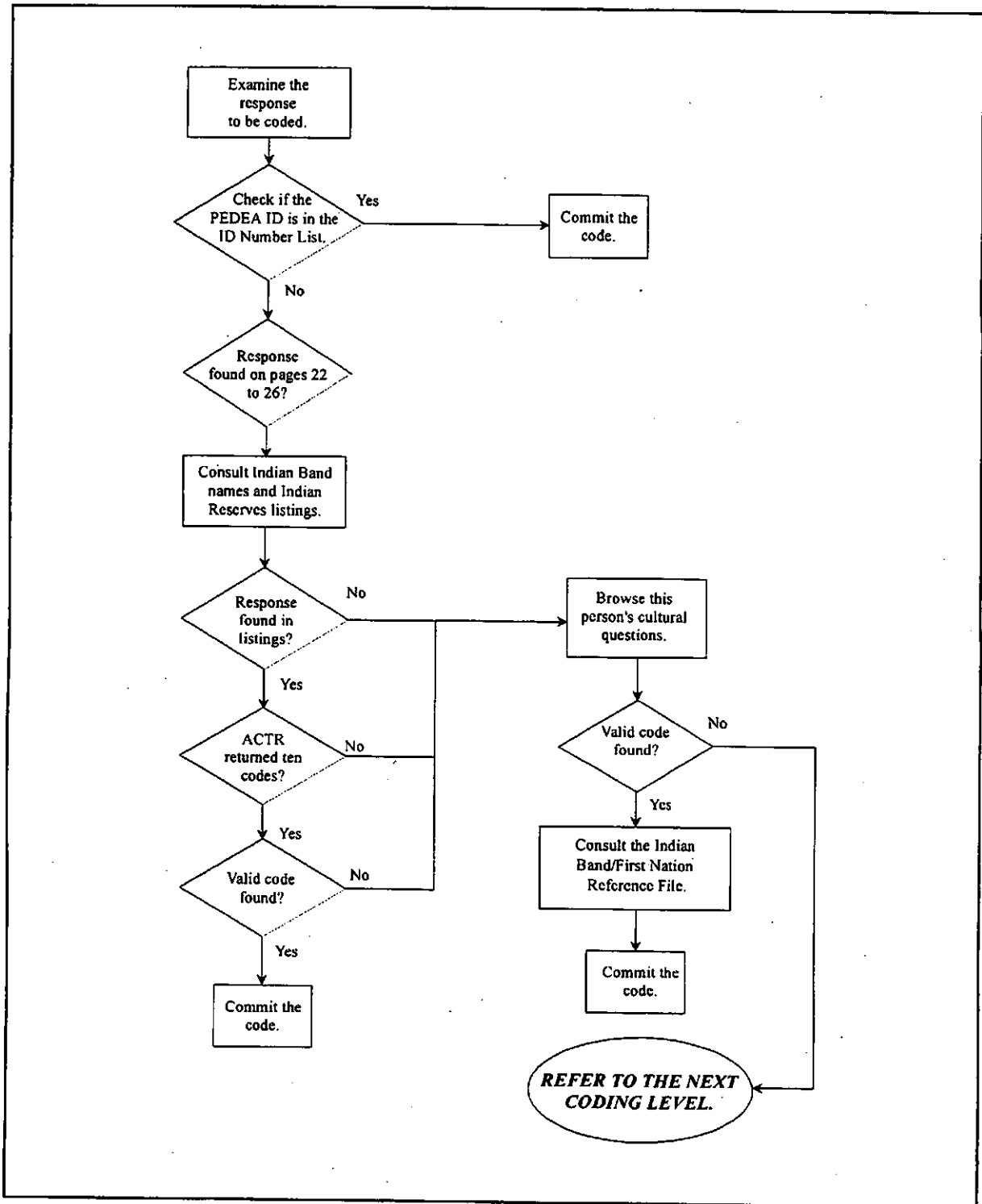
Aklavik	446 064	Aklavik Band Aklavik Inuit
Aroland	723 844	Aroland Aroland 83 (Whitesand Band)
Atikamekw, Attikamek	121 121 122 123	Les Atikamekw de Manawan Band Manowan Obedjiwan Weymontachie Band
Chapleau	244 732	Chapleau Cree Chapleau Ojibway
Chippewas of (Chippewa are the Ojibway of Southwestern Ontario)	720 733 734 735 736 737 738	Ojibway, n.i.e Chippewas of Georgina Island Band Chippewas of Kettle and Stoney Point Band Chippewas of Nawash Band Chippewas of Rama First Nation Band Chippewas of Sarnia Band Chippewas of the Thames First Nation Band
Cowichan	472 473	Cowichan Cowichan Lake Band
Inuvik	064 448	Inuit of Inuvik Inuvik Native Band Inuvik Dene
Long Lake	756 284 284 778	Long Lake 77 (Ginoogaming First Nation Band) Long Lake Cree Nation Band Kehewin Long Lake No 58 First Nation Band
Mississauga (Mississauga are the Ojibway of Central Ontario)	720 785 786 786 787	Ojibway, n.i.e Mississauga Band Mississauga's of Scugog Island First Nation Band Scugog Mississaugas of the Credit Band
Mohawks of	532 535 535 536 538	Mohawk, n.i.e Mohawks (Iroquois) of St Regis Mohawks of Akweswasne Band Mohawks of the Bay of Quinte Band Bay of Quinte Mohawks: Six Nations

Montagnais de/of	644 658 660 660 661 662 663 663 664 658 665 665	Montagnais-Naskapi, n.i.e Bande indienne Innu Takuaihan Uashat Mak Mani-Utenam Montagnais de les Escoumins Montagnais Essipit Band Montagnais de la Romaine Band Montagnais de Natashquan Band Montagnais de Pakua Shipi Band Montagnais de St Augustine Montagnais de Schefferville Band Montagnais de Ushat et Maliotenam Montagnais of Lake St John Montagnais du Lac St-Jean Band
Moose	299 299 301 301 408 408	Moose Cree First Nation Band Moose Factory Mosakahiken Cree Nation Band Moose Lake Whitecap Dakota/Sioux First Nation Band Moose Woods
Nh, N. House	306 313	Nelson House Band Norway House Band
Saint Mary's, St. Mary's	615 568	Saint Mary's Band (NB) St. Mary's Band (BC)
Saugeen, Sagkeeng	752 817 797	Sagkeeng First Nation (Fort Alexander Band) Saugeen Band Ojibway Nation of Saugeen Band Saugeen Nation Chippewa of Saugeen
Saulteau(x), Sotto (Saulteau(x), Sotto are the Ojibway of the Prairie provinces	720 818 819	Ojibway, n.i.e Saulteau Band (BC) Saulteaux Band (SK)
Shoal Lake	338 763 763 825	Shoal Lake of the Cree Nation Band Shoal Lake No. 39 Iskatewizaagegan No. 39 Independant First Nation Band Shoal Lake No. 40
Sucker Creek	799 799 344	Ojibways of Sucker Creek Band Sucker Creek Band (ON) Sucker Creek Band (AB)
Sturgeon, Sturgeon Lake	341 342	Sturgeon Lake (AB) Sturgeon Lake (SK)

Waterhen	838 356	Waterhen Band (MB) Waterhen Lake Band (SK)
Whitefish, Whitefish Lake	331 161 841 362 842 842 843	Whitefish Lake 128 (Saddle Lake Band) Whitefish Lake 6 BC (TI'Azt'En Nations Band) Whitefish Bay Band Whitefish Lake (AB) Whitefish Lake (ON) Whitefish Lake 6 ON (Whitefish Lake Band (ON)) Whitefish River Band

The process diagram on the following page summarizes the process flow expected to occur under "Identical or Similar Indian Band or Indian Nation Names" write-in processing conditions.

### IDENTICAL OR SIMILAR INDIAN BAND AND INDIAN NATION NAMES



For any identical or similar Indian Band and Indian Nation names response to be coded, follow these instructions.

SITUATION	CONDITIONS	ACTIONS
<p><b>Step 1</b> Examine the response to be coded.</p>		
<p><b>Step 2</b> Check the PROV, FED, EA ID (PEDEA) at the bottom left hand of the screen.</p>		
<p><b>Step 3</b> Consult the ID Number List.</p>	<p>(i) IF the ID number is found in the list, THEN</p> <p>(ii) IF the ID number is not listed, THEN</p>	<p>commit the code which corresponds to the ID number in the list.</p> <p>go to <b>Step 4</b>.</p>
<p><b>Step 4</b> Look up the response on pages 22 to 26.</p>	<p>(i) IF the response is not found in these pages, THEN</p> <p>(ii) IF the response is found in these pages, THEN</p>	<p>go to <b>Step 5</b>.</p> <p>go to action for <b>Step 6.2</b> and <b>6.2 (i)</b>.</p>
<p><b>Step 5</b> Look up the response in the Indian Band names listing and the Indian Reserves listing showing corresponding Indian Band to find a code.</p>	<p>(i) IF the response is not found in listings, THEN</p> <p>(ii) IF the response is found in listings, THEN</p>	<p>go to <b>Step 6</b>.</p> <p>go to action for <b>Step 6.2</b> and <b>6.2 (i)</b>.</p>



SITUATION	CONDITIONS	ACTIONS
<p><b>Step 6</b> Verify if there are any ACTR returned phrases at the top of the screen.</p>	<p><b>Step 6.1</b> IF phrases are OR are not returned by ACTR OR IF the message "ACTR list may be outdated" appears, THEN</p>	<p>browse through this person's response to the following questions to find more information:</p> <ul style="list-style-type: none"> <li>- On/off reserve</li> <li>- Age (Date of Birth)</li> <li>- Sex</li> <li>- Mother Tongue</li> <li>- Home Language</li> <li>- Knowledge of Non-official Language</li> <li>- Place of Birth</li> <li>- Citizenship</li> <li>- Ethnic Origin</li> <li>- Aboriginal Self-reporting</li> <li>- Population Group</li> <li>- Indian Registration</li> <li>- Indian Band/First Nation</li> </ul>
	<p><b>Step 6.2</b> IF more information is found, THEN</p> <p>(i) IF the code description matches the response, THEN</p> <p>(ii) IF the code description selected does not match the response, THEN</p>	<p>(a) you may select/type in a valid code based on your research.                      (b) validate the code.                      (c) verify that the code description at the bottom of the screen matches the response.</p> <p>commit the code.</p> <p><b>REFER THE RESPONSE TO THE NEXT CODING LEVEL.</b></p>



## VI. Multiple Responses

A multiple response occurs when two or more write-in responses with valid Indian Band codes appear in the same write-in space.

The Indian Band/First Nation coding structure requires that an entry be coded to the first Indian Band that can be identified in the write-in space.

If an Indian Band cannot be identified, then the PEDEA ID must be checked to try to identify an Indian Band. Then, if a Band cannot be identified, the first valid Indian Nation, n.i.e. code must be selected.

For instance, an entry of Big Cove indicates the Micmac Nation while an entry of Micmac could apply any of the 28 Micmac Bands, thus providing less information.

The following examples must be coded to the Big Cove Band:

- (1) Big Cove/Afton
- (2) Big Cove Micmac
- (3) Micmac Big Cove
- (4) English Big Cove
- (5) Big Cove English

The following examples should be coded to the Micmac Nation unless the PEDEA ID indicates an Indian Band:

- (1) English Micmac
- (2) Micmac English

In the first case, a response of Big Cove/Afton applies to two Indian Bands. Hence, the entry must be coded to the first valid Indian Band which is the Big Cove Band.

The second and third cases involve a Band name being used in conjunction with an Indian Nation name. This is similar to a response of Alberta Canada or Canada Alberta when asked: What is your province? The respondent has given the Nation name along with the province name. Thus word order of Band and Nation is irrelevant because the rule is to code to the first valid Indian Band code.

The fourth and fifth cases involve a non-Aboriginal and a valid Band name, thus the first valid Band rule still applies.

For the sixth and seventh cases, there is an Indian Nation and non-Aboriginal responses, if the PEDEA ID does identify an Indian Band, then the first valid Nation must be selected.

Shown below are some examples of how the response will appear on your screen. In these cases, assign the code for Curve Lake Band because the rule is always to code to the first valid Indian Band code. In the first case, there were two valid Indian Band write-ins and in the second case, there was a non-Aboriginal write-in and a valid Indian Band.

```

MMANUAL1          1996 CENSUS OF POPULATION / AUTOMATED CODING          17/01/96
                   INTERACTIVE CODING - INDIAN BAND/FIRST NATION        13:02:27.5

Write-in to be coded
CURVE LAKE AND SCUGOG ISLAND                                     Type Code
-----
Phrases returned by ACTR                                         Codes   (S)elect

ID:59XXXXXX 120 1 20
=====
    
```

```

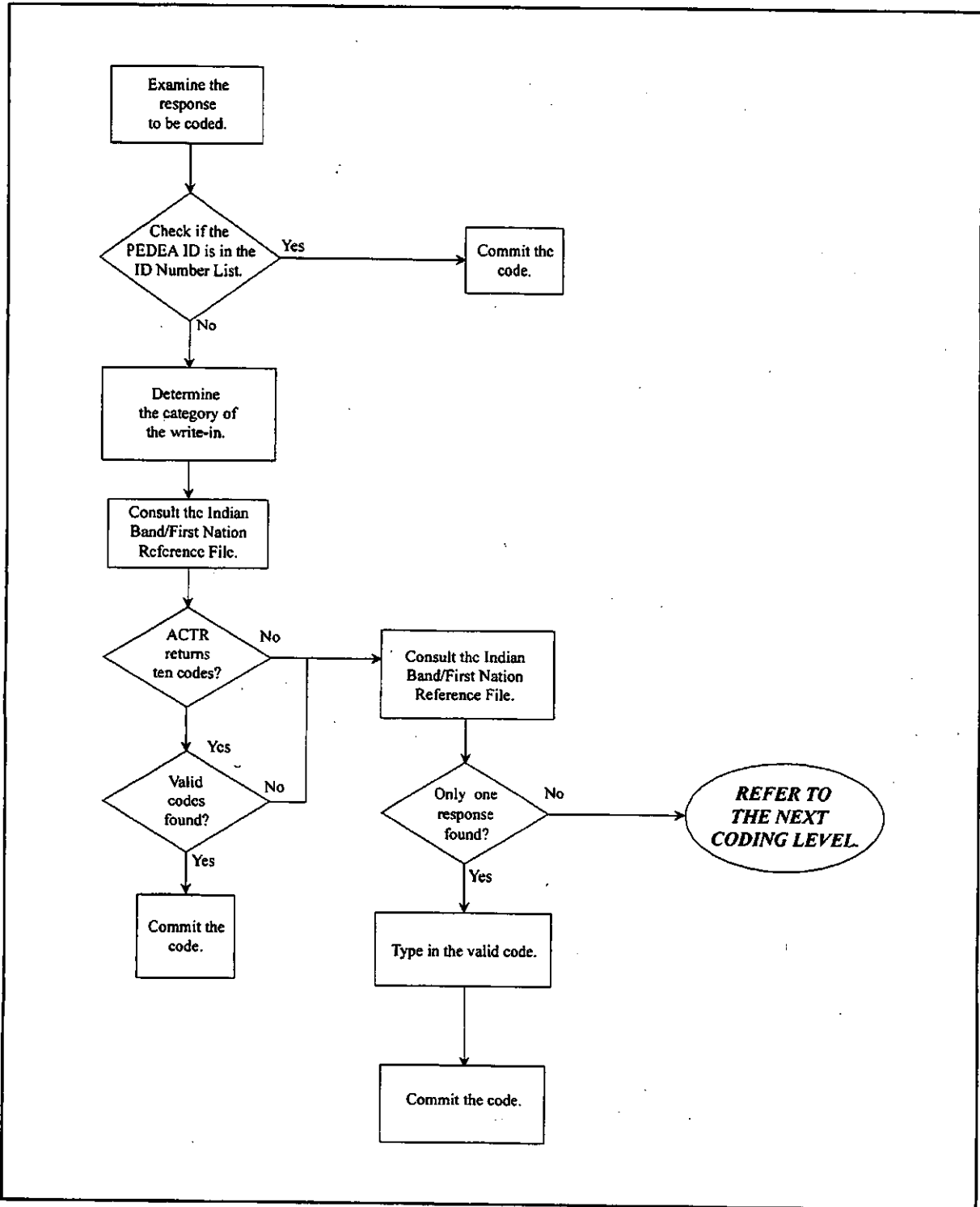
MMANUAL1          1996 CENSUS OF POPULATION / AUTOMATED CODING          17/01/96
                   INTERACTIVE CODING - INDIAN BAND/FIRST NATION        13:02:27.5

Write-in to be coded
ENGLISH CURVE LAKE                                             Type Code
-----
Phrases returned by ACTR                                         Codes   (S)elect
MOHAWK                                                         XXX
MOHAWK (SIX NATIONS)                                         XXX
ENGLISH                                                         XXX

ID:35XXXXXX 120 1 20
=====
    
```

The process diagram on the following page summarizes the process flow expected to occur under multiple response processing conditions.

### MULTIPLE RESPONSES



For any multiple responses to be coded, follow these instructions.

SITUATION	CONDITIONS	ACTIONS
<p><b>Step 1</b> Examine the response to be coded.</p>		
<p><b>Step 2</b> Check the PROV, FED, EA ID (PEDEA) at the bottom left hand of the screen.</p>		
<p><b>Step 3</b> Consult the ID Number List.</p>	<p>(i) IF the ID number is found in the list, THEN</p> <p>(ii) IF the ID number is not listed, THEN</p>	<p>commit the code which corresponds to the ID number in the list.</p> <p>go to <b>Step 4</b>.</p>
<p><b>Step 4</b> Determine the category in which the write-in response falls.</p>	<p>(i) IF the write-in falls in the "non-Aboriginal and Aboriginal responses" category (ex.: English and Cree), THEN</p> <p>(ii) IF the write-in falls in the "Aboriginal responses" (ex.: Cree and Sioux), THEN</p>	<p>go to <b>Step 5</b>.</p> <p>go to <b>Step 7</b>.</p>
<p><b>Step 5</b> Look up the Aboriginal write-in response in the Indian Band/First Nation Reference File <b>AND</b> ignore the non-Aboriginal write-in response.</p>	<p><b>Step 5.1</b> IF a valid code is found, THEN</p>	<p>verify if ACTR returned ten codes at the bottom of the screen.</p>

SITUATION	CONDITIONS	ACTIONS
	<b>Step 5.2</b> (i) IF the ten codes are returned by ACTR, THEN  (ii) IF no ACTR code is returned, THEN	go to <b>Step 6.</b>  go to <b>Step 6.4.</b>
<b>Step 6</b> Compare the response to be coded with the codes returned by ACTR starting with the first to determine if it is a suitable match.	<b>Step 6.1</b> IF a match is found, THEN	(a) select the valid code. (b) validate the code. (c) verify that the code description at the bottom of the screen matches the response.
	<b>Step 6.2</b> (i) IF the code description matches the response, THEN  (ii) IF the code description does not match, THEN	commit the code.  (a) determine if the next code returned by ACTR can be selected. (b) REPEAT Steps 6.1 and 6.2 (i).
	<b>Step 6.3</b> IF no match is found in the list ACTR has returned, THEN	go to action for <b>Step 6.4.</b>
	<b>Step 6.4</b> IF ACTR returned no code, or IF the message "ACTR list may be outdated" appears, THEN	(a) you have the option to select or type in a valid code from the Indian Band/First Nation Reference File. (b) REPEAT action for <b>Step 6.1.</b> (c) REPEAT <b>Step 6.2.</b>
	<b>Step 6.5</b> IF no other code can be found, THEN	<b>REFER THE RESPONSE TO THE NEXT CODING LEVEL.</b>

<b>SITUATION</b>	<b>CONDITIONS</b>	<b>ACTIONS</b>
<b>Step 7</b> Look up the first Aboriginal write-in response in the Indian Band/First Nation Reference File <b>AND</b> ignore the remainder of the write-in response.		REPEAT above <b>Steps 5.1 to 6.5.</b>



**VII. Write-in Responses of "Same/Même", "See Person 1/Voir Personne 1" or "Same as Person 1/Même que Personne 1"**

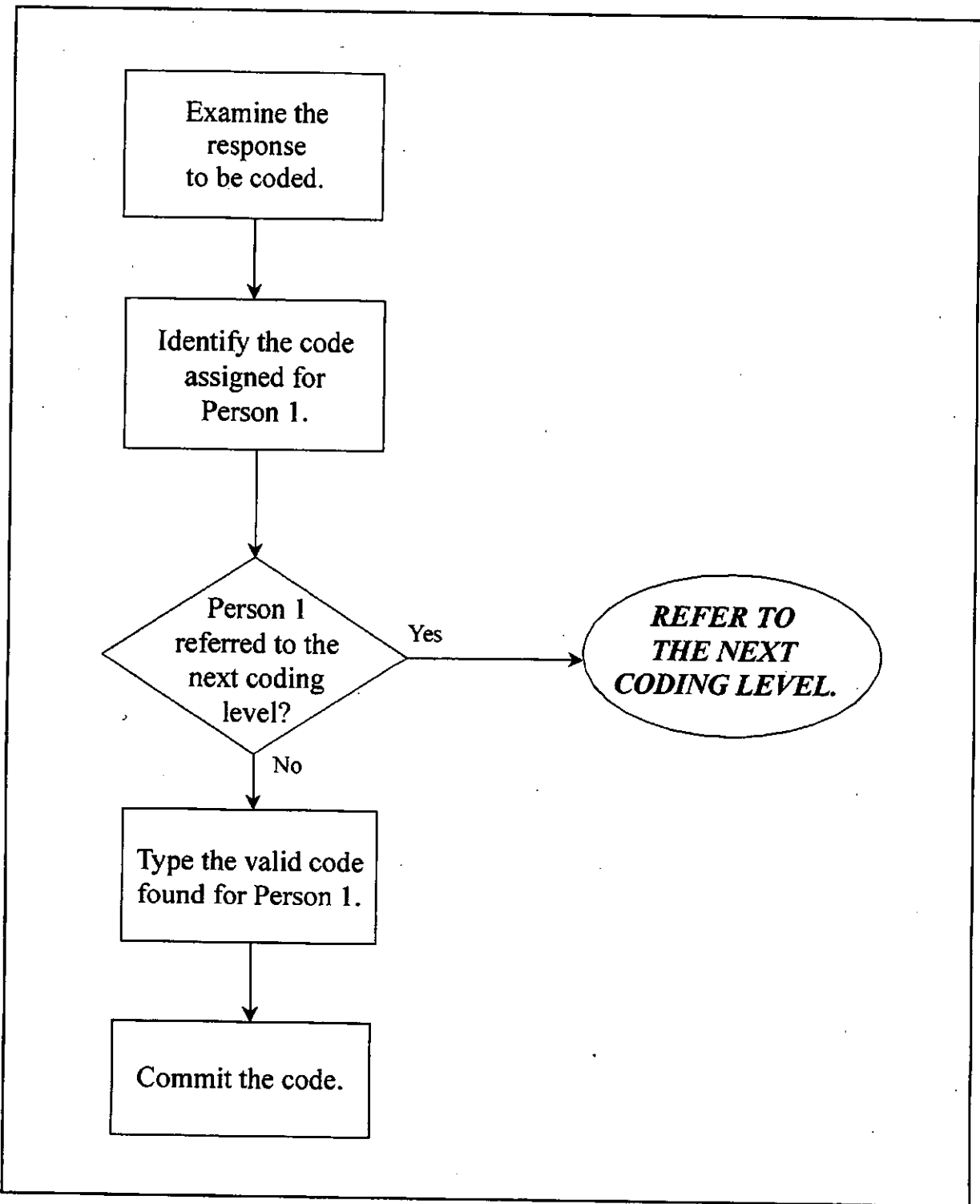
The write-in boxes of other respondents (Persons 2 to 6) in the household contain the write-ins "Same/Même", "See Person 1/Voir Personne 1" or "Same as Person 1/Même que Personne 1".

Shown below is an example of how the response will appear on your screen.

MMANUAL1	1996 CENSUS OF POPULATION / AUTOMATED CODING	17/01/96
	INTERACTIVE CODING - INDIAN BAND/FIRST NATION	13:02:27.5
Write-in to be coded		Type Code
SAME		-----
Phrases returned by ACTR		Codes (S)elect
ID:XXXXXXXX	XXX 2 XX	

The process diagram on the following page summarizes the process flow expected to occur under "Same/Même", "See Person 1/Voir Personne 1" or "Same as Person 1/Même que Personne 1" responses processing conditions.

WRITE-IN RESPONSES OF "SAME/MÊME", "SEE PERSON 1/VOIR PERSONNE 1"  
OR "SAME AS PERSON 1/MÊME QUE PERSONNE 1"



For any "Same/Même", "See Person 1/Voir Personne 1" or "Same as Person 1/Même que Personne 1" response, follow these instructions.

SITUATION	CONDITIONS	ACTIONS
<p><b>Step 1</b> Examine the response to be coded.</p>		
<p><b>Step 2</b> Identify the "batch" or manual code assigned for Person 1/Voir Personne 1.</p>	<p>(i) IF a code is found, THEN</p> <p>(ii) IF Person 1/Voir Personne 1 has been referred to the next coding level, THEN</p>	<p>(a) Type the same code for the respondent. (b) Commit the code.</p> <p><b><i>REFER THE RESPONSE TO THE NEXT CODING LEVEL.</i></b></p>



## VIII. Other Categories of Write-ins

Shown below is an example of how the response will appear on your screen.

```

MMANUAL1          1996 CENSUS OF POPULATION / AUTOMATED CODING          17/01/96
                   INTERACTIVE CODING - INDIAN BAND/FIRST NATION        13:02:27.5

Write-in to be coded
MOTHER MICMAC                                           Type Code
                                                         -----
Phrases returned by ACTR                               Codes   ($)elect

ID:XXXXXXXX XXX 1  XX
=====

```

The final category of write-in includes any situations which cannot be categorized into the previous six types of responses. For all such cases, these write-ins must be ***referred to the next coding level*** for resolution.



**Appendix A – Related Questions which Provide Auxiliary Information**

- Date of Birth

<p><b>3. DATE OF BIRTH</b>                  Enter <b>day, month and year.</b></p> <p><i>Example: If this person was born on the 23rd of February 1954, enter</i></p> <table style="margin-left: auto; margin-right: auto; border-collapse: collapse;"> <tr> <td style="text-align: center; padding: 0 5px;">Day</td> <td style="text-align: center; padding: 0 5px;">Month</td> <td style="text-align: center; padding: 0 5px;">Year</td> </tr> <tr> <td style="text-align: center;">23</td> <td style="text-align: center;">02</td> <td style="text-align: center;">1954</td> </tr> </table> <p><i>If exact date is not known, enter best estimate.</i></p>	Day	Month	Year	23	02	1954	<p>Date of birth</p> <table style="margin-left: auto; margin-right: auto; border-collapse: collapse;"> <tr> <td style="text-align: center; padding: 0 5px;">Day</td> <td style="text-align: center; padding: 0 5px;">Month</td> <td style="text-align: center; padding: 0 5px;">Year</td> </tr> <tr> <td style="text-align: center;">15</td> <td style="text-align: center;"> </td> <td style="text-align: center;">1  </td> </tr> </table>	Day	Month	Year	15		1
Day	Month	Year											
23	02	1954											
Day	Month	Year											
15		1											

- Sex

<p><b>4. SEX</b></p>	<p>16 <input type="radio"/> Male 17 <input type="radio"/> Female</p>
----------------------	--

- Knowledge of Non-official Language

<p><b>10. What language(s), other than English or French, can this person speak well enough to conduct a conversation?</b></p>	<p>14 <input type="radio"/> None                  OR                  Specify other language(s)</p> <p>15 <input style="width: 100%;" type="text"/></p> <p>16 <input style="width: 100%;" type="text"/></p> <p>17 <input style="width: 100%;" type="text"/></p>
--	---

- Home Language

<p><b>11. What language does this person speak most often at home?</b></p>	<p>18 <input type="radio"/> English                  19 <input type="radio"/> French                  Other – Specify</p> <p>20 <input style="width: 100%;" type="text"/></p>
--	---

- Mother Tongue

<p><b>12.</b> What is the language that this person first learned at home in childhood and still understands?</p> <p>■ <i>If this person no longer understands the first language learned, indicate the second language learned.</i></p>	<p>21 <input type="radio"/> English</p> <p>22 <input type="radio"/> French</p> <p>Other – Specify</p> <p>23 <input type="text"/></p>
--	--

- Place of Birth

<p><b>13.</b> Where was this person born?</p> <p>■ <i>Mark or specify one response only, according to present boundaries.</i></p>	<p><b>13.</b></p> <p><b>Born in Canada</b></p> <p>01 <input type="radio"/> Nfld.      07 <input type="radio"/> Man.</p> <p>02 <input type="radio"/> P.E.I.      08 <input type="radio"/> Sask.</p> <p>03 <input type="radio"/> N.S.      09 <input type="radio"/> Alta.</p> <p>04 <input type="radio"/> N.B.      10 <input type="radio"/> B.C.</p> <p>05 <input type="radio"/> Que.      11 <input type="radio"/> Yukon</p> <p>06 <input type="radio"/> Ont.      12 <input type="radio"/> N.W.T.</p> <p><b>Born outside Canada</b></p> <p>Country – Specify</p> <p>13 <input type="text"/></p>
---	--

- Citizenship

<p><b>14.</b> Of what country is this person a citizen?</p> <p>■ <i>Indicate more than one citizenship, if applicable.</i></p>	<p>14 <input type="radio"/> Canada, by birth</p> <p>15 <input type="radio"/> Canada, by naturalization</p> <p>Other country - Specify</p> <p>16 <input type="text"/></p>
--	--



- Ethnic Origin

- 17.** To which ethnic or cultural group(s) did this person's ancestors belong?

*For example, French, English, German, Scottish, Canadian, Italian, Irish, Chinese, Cree, Micmac, Métis, Inuit (Eskimo), Ukrainian, Dutch, East Indian, Polish, Portuguese, Jewish, Haitian, Jamaican, Vietnamese, Lebanese, Chilean, Somali, etc.*

*Specify as many groups as applicable*

21

22

23

24

- Aboriginal Self-reporting

- 18.** Is this person an Aboriginal person, that is, North American Indian, Métis or Inuit (Eskimo)?

*If "Yes", mark the circle(s) that best describe(s) this person now.*

**19.**

01  No

02  Yes, North American Indian

03  Yes, Métis

04  Yes, Inuit (Eskimo)

Go to Question 20

- Population Group

<p><b>19.</b> Is this person: ■ <i>Mark or specify more than one, if applicable.</i></p> <p><b>Note:</b> <i>This information is collected to support programs which promote equal opportunity for everyone to share in the social, cultural and economic life of Canada.</i></p>	<p>05 <input type="radio"/> White</p> <p>06 <input type="radio"/> Chinese</p> <p>07 <input type="radio"/> South Asian (e.g., East Indian, Pakistani, Punjabi, Sri Lankan)</p> <p>08 <input type="radio"/> Black (e.g., African, Haitian, Jamaican, Somali)</p> <p>09 <input type="radio"/> Arab/West Asian (e.g., Armenian, Egyptian, Iranian, Lebanese, Moroccan)</p> <p>10 <input type="radio"/> Filipino</p> <p>11 <input type="radio"/> South East Asian (e.g., Cambodian, Indonesian, Laotian, Vietnamese)</p> <p>12 <input type="radio"/> Latin American</p> <p>13 <input type="radio"/> Japanese</p> <p>14 <input type="radio"/> Korean</p> <p>Other – Specify</p> <p>15 <input type="text"/></p>
--	--

- Registered Indian

<p><b>21.</b> Is this person a Treaty Indian or a Registered Indian as defined by the <i>Indian Act</i> of Canada?</p>	<p>19 <input type="radio"/> No</p> <p>20 <input type="radio"/> Yes, Treaty Indian or Registered Indian</p>
--	--

**Appendix B – List of Reserve Names classified by PEDEA ID**

PEDEA ID	CSD Name	Code	Official Band Name
24006069	Akwesasne (partie)	535	MOHAWKS OF AKWESASNE BAND
24006070	Akwesasne (partie)	535	MOHAWKS OF AKWESASNE BAND
24006071	Akwesasne (partie)	535	MOHAWKS OF AKWESASNE BAND
35025018	Akwesasne (part)	535	MOHAWKS OF AKWESASNE BAND
35025019	Akwesasne (part)	535	MOHAWKS OF AKWESASNE BAND
35025020	Akwesasne (part)	535	MOHAWKS OF AKWESASNE BAND
35025021	Akwesasne (part)	535	MOHAWKS OF AKWESASNE BAND
61002207	Arctic Red River	447	GWICHA GWICH' IN BAND
35011327	Aroland	723	AROLAND BAND
xxxxxxx	AROLAND 83	844	WHITESAND BAND
47006024	Assiniboine 76	393	CARRY THE KETTLE BAND
47006026	Assiniboine 76	393	CARRY THE KETTLE BAND
59010264	Bummers Flat 6	568	St. MARY'S BAND (BC)
35007361	Cape Croker 27	735	CHIPPEWAS OF NAWASH BAND
35007374	Cape Croker 27	735	CHIPPEWAS OF NAWASH BAND
35007375	Cape Croker 27	735	CHIPPEWAS OF NAWASH BAND
35007376	Cape Croker 27	735	CHIPPEWAS OF NAWASH BAND
35007392	Cape Croker 27	735	CHIPPEWAS OF NAWASH BAND
59010262	Cassimayooks 5	568	St. MARY'S BAND (BC)
35086208	Chapleau 74A	732	CHAPLEAU OJIBWAY BAND
35039019	Chippewas of the Thames First Nation 42	738	CHIPPEWAS OF THE THAMES FIRST NATION BAND
35039018	Chippewas of the Thames First Nation 42	738	CHIPPEWAS OF THE THAMES FIRST NATION BAND
35039022	Chippewas of the Thames First Nation 42	738	CHIPPEWAS OF THE THAMES FIRST NATION BAND

PEDEA ID	CSD Name	Code	Official Band Name
59006366	Cowichan 1	472	COWICHAN BAND
59013023	Cowichan 1	472	COWICHAN BAND
59013019	Cowichan 1	472	COWICHAN BAND
59013021	Cowichan 1	472	COWICHAN BAND
59013024	Cowichan 1	472	COWICHAN BAND
59013025	Cowichan 1	472	COWICHAN BAND
59013022	Cowichan 1	472	COWICHAN BAND
59013020	Cowichan 9	472	COWICHAN BAND
59013122	Cowichan Lake	473	COWICHAN LAKE BAND
46006073	Fort Alexander 3	752	FORT ALEXANDER BAND
46006074	Fort Alexander 3	752	FORT ALEXANDER BAND
48001416	Fox Lake 162	283	LITTLE RED RIVER CREE NATION BAND
35097368	Georgina Island 33	733	CHIPPEWAS OF GEORGINA ISLAND BAND
35097369	Georgina Island 33	733	CHIPPEWAS OF GEORGINA ISLAND BAND
35097367	Georgina Island 33	733	CHIPPEWAS OF GEORGINA ISLAND BAND
35011263	Ginoogaming First Nation 77	756	GINOOGAMING FIRST NATION BAND
59010263	Isidore's Ranch 4	568	ST. MARY'S BAND (BC)
48020663	John d'Or Prairie 215	283	LITTLE RED RIVER CREE NATION BAND
48002019	Kehiwin 123	284	LONG LAKE CREE NATION BAND
35039266	Kettle Point 44	734	CHIPPEWAS OF KETTLE AND STONEY POINT BAND
59006364	Kil-pah-las 3	472	COWICHAN BAND
59010352	Kootenay 1	568	ST. MARY'S BAND (BC)
24042062	La Romaine 2	661	MONTAGNAIS DE LA ROMAINE BAND

PEDEA ID	CSD Name	Code	Official Band Name
35035214	Lake Of The Woods 37	794	NORTHWEST ANGLE No. 37 BAND
24017159	Les Escoumins	660	MONTAGNAIS ESSIPIT BAND
47004281	Little Red River 106C	279	LAC LA RONGE BAND
47004283	Little Red River 106D	279	LAC LA RONGE BAND
35011267	Long Lake 58	778	LONG LAKE No. 58 FIRST NATION BAND
24042115	Maliotenam 27A	658	INNU TAKUAIKAN UASHAT MAK MANI-UTENAM BAND
24058054	Mashteuiatsh	665	MONTAGNAIS DU LAC ST-JEAN BAND
24058053	Mashteuiatsh	665	MONTAGNAIS DU LAC ST-JEAN BAND
24042330	Matimekosh	664	MONTAGNAIS DE SCHEFFERVILLE BAND
24042331	Matimekosh	664	MONTAGNAIS DE SCHEFFERVILLE BAND
35001210	Mississagi River 8	785	MISSISSAUGA BAND
35001209	Mississagi River 8	785	MISSISSAUGA BAND
35001208	Mississagi River 8	785	MISSISSAUGA BAND
24042064	Natashquan 1	662	MONTAGNAIS DE NATASHQUAN BAND
46002131	Nelson House 170	306	NELSON HOUSE BAND
46002129	Nelson House 170A	306	NELSON HOUSE BAND
46002128	Nelson House 170B	306	NELSON HOUSE BAND
46002130	Nelson House 170C	306	NELSON HOUSE BAND
35027320	New Credit (Part) 40A	787	MISSISSAUGAS OF THE CREDIT BAND
35027314	New Credit (Part) 40A	787	MISSISSAUGAS OF THE CREDIT BAND
35035216	Northwest Angle 33B	793	NORTHWEST ANGLE No. 33 BAND
46002172	Norway House 17	313	NORWAY HOUSE BAND
46002171	Norway House 17	313	NORWAY HOUSE BAND
46002169	Norway House 17	313	NORWAY HOUSE BAND

<b>PEDEA ID</b>	<b>CSD Name</b>	<b>Code</b>	<b>Official Band Name</b>
46002173	Norway House 17	313	NORWAY HOUSE BAND
46002163	Norway House 17	313	NORWAY HOUSE BAND
46002164	Norway House 17	313	NORWAY HOUSE BAND
46002167	Norway House 17	313	NORWAY HOUSE BAND
46002170	Norway House 17	313	NORWAY HOUSE BAND
46002166	Norway House 17	313	NORWAY HOUSE BAND
46002168	Norway House 17	313	NORWAY HOUSE BAND
46002165	Norway House 17	313	NORWAY HOUSE BAND
24042057	Pakuashipi	663	MONTAGNAIS DE PAKUA SHIPI BAND
35080015	Rama 32	736	CHIPPEWAS OF RAMA FIRST NATION BAND
35080013	Rama 32	736	CHIPPEWAS OF RAMA FIRST NATION BAND
35080014	Rama 32	736	CHIPPEWAS OF RAMA FIRST NATION BAND
35080012	Rama 32	736	CHIPPEWAS OF RAMA FIRST NATION BAND
48002114	Saddle Lake 125	331	SADDLE LAKE BAND
48002115	Saddle Lake 125	331	SADDLE LAKE BAND
48002116	Saddle Lake 125	331	SADDLE LAKE BAND
48002117	Saddle Lake 125	331	SADDLE LAKE BAND
13003217	Saint Mary's 24	615	SAINT MARY'S BAND (NB)
35072016	Sarnia 45	737	CHIPPEWAS OF SARNIA BAND
35007223	Saugeen 29	817	SAUGEEN BAND
35007231	Saugeen 29	817	SAUGEEN BAND
35007230	Saugeen 29	817	SAUGEEN BAND
35007229	Saugeen 29	817	SAUGEEN BAND
35007220	Saugeen 29	817	SAUGEEN BAND

<b>PEDEA ID</b>	<b>CSD Name</b>	<b>Code</b>	<b>Official Band Name</b>
35007224	Saugeen 29	817	SAUGEEN BAND
35007221	Saugeen 29	817	SAUGEEN BAND
35007222	Saugeen 29	817	SAUGEEN BAND
47013219	Saulteaux 159	819	SAULTEAUX BAND (SK)
47013232	Saulteaux 159A	819	SAULTEAUX BAND (SK)
35035322	Savant Lake	797	OJIBWAY NATION OF SAUGEEN BAND
35016328	Scugog 34	786	MISSISSAUGA'S OF SCUGOG ISLAND FIRST NATION BAND
47002459	Shoal Lake 28A	338	SHOAL LAKE OF THE CREE NATION BAND
35035218	Shoal Lake 34B 2	825	SHOAL LAKE No. 40 BAND
35035220	Shoal Lake (Part) 39A	763	ISKATEWIZAAGEGAN No. 39 INDEPENDENT FIRST NATION BAND
35035219	Shoal Lake (Part) 40	825	SHOAL LAKE No. 40 BAND
46006020	Shoal Lake (Part) 40	825	SHOAL LAKE No. 40 BAND
46006021	Shoal Lake (Part) 40	825	SHOAL LAKE No. 40 BAND
35035217	Shoal Lake (Part) 40	825	SHOAL LAKE No. 40 BAND
46006022	Shoal Lake (Part) 40	825	SHOAL LAKE No. 40 BAND
35027316	Six Nations (Part) 40	537	SIX NATIONS OF THE GRAND RIVER BAND
35027321	Six Nations (Part) 40	537	SIX NATIONS OF THE GRAND RIVER BAND
35027328	Six Nations (Part) 40	537	SIX NATIONS OF THE GRAND RIVER BAND
35027325	Six Nations (Part) 40	537	SIX NATIONS OF THE GRAND RIVER BAND
35027323	Six Nations (Part) 40	537	SIX NATIONS OF THE GRAND RIVER BAND
35027324	Six Nations (Part) 40	537	SIX NATIONS OF THE GRAND RIVER BAND

<b>PEDEA ID</b>	<b>CSD Name</b>	<b>Code</b>	<b>Official Band Name</b>
35027326	Six Nations (Part) 40	537	SIX NATIONS OF THE GRAND RIVER BAND
35027311	Six Nations (Part) 40	537	SIX NATIONS OF THE GRAND RIVER BAND
35027312	Six Nations (Part) 40	537	SIX NATIONS OF THE GRAND RIVER BAND
35027322	Six Nations (Part) 40	537	SIX NATIONS OF THE GRAND RIVER BAND
35027319	Six Nations (Part) 40	537	SIX NATIONS OF THE GRAND RIVER BAND
35027337	Six Nations (Part) 40	537	SIX NATIONS OF THE GRAND RIVER BAND
35027336	Six Nations (Part) 40	537	SIX NATIONS OF THE GRAND RIVER BAND
35027331	Six Nations (Part) 40	537	SIX NATIONS OF THE GRAND RIVER BAND
35027333	Six Nations (Part) 40	537	SIX NATIONS OF THE GRAND RIVER BAND
35027334	Six Nations (Part) 40	537	SIX NATIONS OF THE GRAND RIVER BAND
35027335	Six Nations (Part) 40	537	SIX NATIONS OF THE GRAND RIVER BAND
35027340	Six Nations (Part) 40	537	SIX NATIONS OF THE GRAND RIVER BAND
35027329	Six Nations (Part) 40	537	SIX NATIONS OF THE GRAND RIVER BAND
35027315	Six Nations (Part) 40	537	SIX NATIONS OF THE GRAND RIVER BAND
35027338	Six Nations (Part) 40	537	SIX NATIONS OF THE GRAND RIVER BAND
35027327	Six Nations (Part) 40	537	SIX NATIONS OF THE GRAND RIVER BAND
35027342	Six Nations (Part) 40	537	SIX NATIONS OF THE GRAND RIVER BAND



<b>PEDEA ID</b>	<b>CSD Name</b>	<b>Code</b>	<b>Official Band Name</b>
35027343	Six Nations (Part) 40	537	SIX NATIONS OF THE GRAND RIVER BAND
35027332	Six Nations (Part) 40	537	SIX NATIONS OF THE GRAND RIVER BAND
35027339	Six Nations (Part) 40	537	SIX NATIONS OF THE GRAND RIVER BAND
35027330	Six Nations (Part) 40	537	SIX NATIONS OF THE GRAND RIVER BAND
35027341	Six Nations (Part) 40	537	SIX NATIONS OF THE GRAND RIVER BAND
47004182	Sturgeon Lake 101	342	STURGEON LAKE BAND (SK)
48020017	Sturgeon Lake 154	341	STURGEON LAKE BAND (AB)
47004373	Sturgeon Weir 184F	799	OJIBWAYS OF SUCKER CREEK BAND
35001016	Sucker Creek 23	799	OJIBWAYS OF SUCKER CREEK BAND
35001032	Sucker Creek 23	799	OJIBWAYS OF SUCKER CREEK BAND
47004419	Sucker River 156C	279	LAC LA RONGE BAND
46003420	Waterhen 45	838	WATERHEN BAND (MB)
47013378	Waterhen 130	356	WATERHEN LAKE BAND (SK)
47013376	Waterhen 130	356	WATERHEN LAKE BAND (SK)
47013377	Waterhen 130	356	WATERHEN LAKE BAND (SK)
47013379	Waterhen 130	356	WATERHEN LAKE BAND (SK)
47013380	Waterhen 130	356	WATERHEN LAKE BAND (SK)
48002159	White Fish Lake 128	331	SADDLE LAKE BAND
35035132	Whitefish Bay 32A	841	WHITEFISH BAY BAND
35035129	Whitefish Bay 32A	841	WHITEFISH BAY BAND
35035128	Whitefish Bay 33A	793	NORTHWEST ANGLE NO. 33 BAND
35035131	Whitefish Bay 34A	794	NORTHWEST ANGLE NO. 37 BAND
35052063	Whitefish Lake 6	842	WHITEFISH LAKE BAND (ON)

PEDEA ID	CSD Name	Code	Official Band Name
59021408	Whitefish Lake 6	842	WHITEFISH LAKE BAND (ON)
35001062	Whitefish River (Part) 4	843	WHITEFISH RIVER BAND
35001031	Whitefish River (Part) 4	843	WHITEFISH RIVER BAND
35001008	Whitefish River (Part) 4	843	WHITEFISH RIVER BAND

