

Canadian Motor Vehicle Traffic Collision Statistics

Collected in cooperation
with the Canadian Council of
Motor Transport Administrators

TC-1002273



Transport
Canada

Transports
Canada

Canada

Collisions and Casualties • 1986-2005

	COLLISIONS		VICTIMS		
	Fatal ¹	Personal Injury ²	Fatalities ³	Serious Injuries ⁴	Injuries ⁵ (Total)
1986	3,510	184,053	4,063	27,157	265,160
1987	3,729	193,237	4,283	28,000	280,605
1988	3,610	190,094	4,154	28,031	278,820
1989	3,651	192,595	4,238	27,422	284,937
1990	3,445	178,515	3,963	25,183	262,680
1991	3,228	170,693	3,690	26,035	249,217
1992	3,073	169,640	3,501	25,521	249,823
1993	3,121	168,106	3,615	23,902	247,593
1994	2,869	166,780	3,263	22,830	245,110
1995	2,854	164,190	3,351	21,494	241,935
1996	2,708	156,282	3,091	20,170	230,894
1997	2,646	150,118	3,063	19,027	221,499
1998	2,612	148,414	2,949	18,460	217,901
1999	2,636	151,110	2,985	17,582	222,579
2000	2,569	155,998 ^r	2,927	17,283	227,516
2001*	2,434	151,828 ^r	2,781	16,997	221,121
2002	2,593	157,074	2,931	17,830	227,983
2003	2,484	154,419 ^r	2,766	17,730	222,455
2004	2,430 ^r	149,007 ^r	2,725 ^r	17,533	212,523 ^r
2005	2,578	149,153	2,923	17,529	210,629

¹ "Fatal collisions" include all reportable motor vehicle crashes which resulted in at least one fatality, where death occurred within 30 days of collision, except in Quebec (8 days).

² "Personal Injury" collisions include all reportable motor vehicle crashes which resulted in at least one injury but not death within the timeframes set out in "Fatal collisions".

³ "Fatalities" include all those who died as a result of involvement in a reportable traffic collision within 30 days of its occurrence, except in Quebec (8 days).

⁴ "Serious Injuries" include persons admitted to hospital for treatment or observation. Serious injuries for British Columbia were estimated from 1986 to 2003 and for January, February and March 2004.

⁵ "Total Injuries" include minimal, minor, moderate, serious and unspecified severities.

* Data for Nunavut are not reported for 2001 except for fatalities.

^r Revised.

Fatalities and Injuries by Age Group

Age Group (yrs)	Fatalities	Serious Injuries	Injuries (Total)
0 - 4	24	310	2,649
5 - 14	79	921	11,000
15 - 19	328	2,286	25,321
20 - 24	391	2,424	27,793
25 - 34	458	2,937	37,478
35 - 44	394	2,706	35,282
45 - 54	416	2,441	29,706
55 - 64	318	1,412	17,824
65 +	481	1,696	16,225
Not stated	34	396	7,351
Total	2,923	17,529	210,629

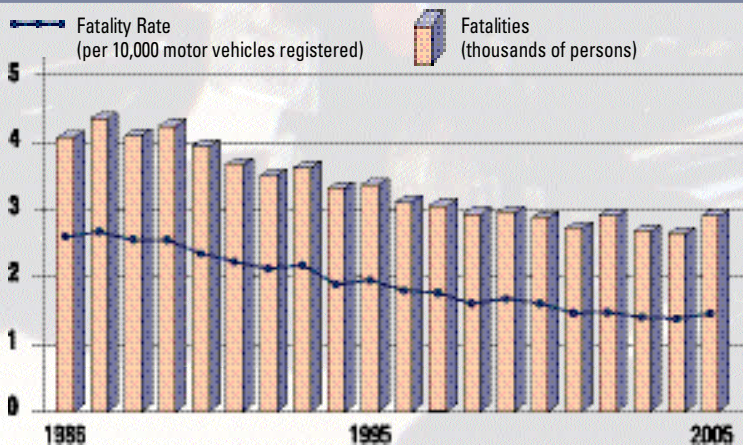
Fatalities by Road User Class • 2001-2005

Road User Class		2001	2002	2003	2004	2005
Drivers	#	1,443	1,515	1,427	1,387 ^r	1,557
	%	51.9	51.7	51.6	50.9	53.3
Passengers	#	654	712	649	636 ^r	683
	%	23.5	24.3	23.5	23.3	23.3
Pedestrians	#	334 ^r	368	379	367 ^r	344
	%	12.0	12.6	13.7	13.5	11.8
Bicyclists	#	60	63	44	56	52
	%	2.2	2.1	1.6	2.0	1.8
Motorcyclists*	#	157	172	177	198 ^r	234
	%	5.6	5.9	6.4	7.3	8.0
Not stated / Other	#	133 ^r	101	90	81 ^r	53
	%	4.8	3.4	3.2	3.0	1.8
Total	#	2,781	2,931	2,766	2,725	2,923
	%	100.0	100.0	100.0	100.0	100.0

* Includes moped riders ^r Revised



Fatalities • 1986-2005



Casualty Rates

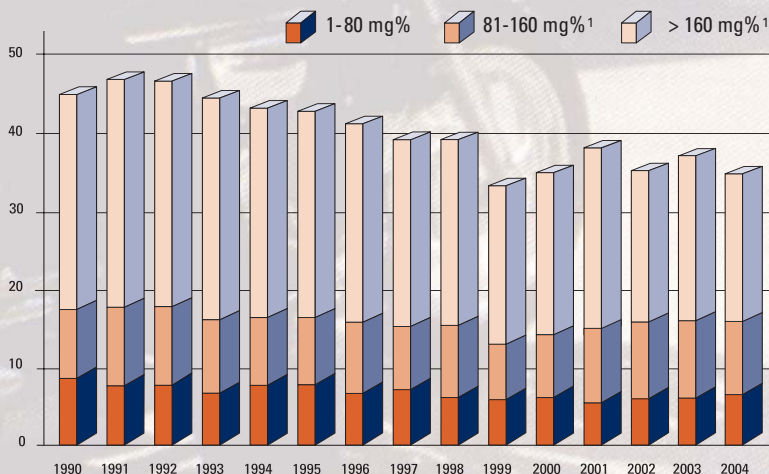
	PER 100,000 POPULATION		PER BILLION VEHICLE-KILOMETRES*		PER 100,000 LICENSED DRIVERS	
	Fatalities	Injuries	Fatalities	Injuries	Fatalities	Injuries
Canada	9.1	652.7	9.3	668.0	13.3	960.2
N.L.	8.3	456.0	9.8	537.1	12.7	693.6
P.E.I.	10.9	543.8	11.3	565.7	15.8	789.5
N.S.	7.7	523.8	7.1	487.7	11.0	750.8
N.B.	14.1	528.6	13.6	508.5	20.0	751.0
Que.	9.3	762.3	10.6	871.2	14.7	1,212.4
Ont.	6.3	570.1	6.3	571.5	9.0	816.0
Man.	9.6	737.0	10.3	788.4	16.2	1,246.6
Sask.	14.8	687.6	13.2	612.8	21.8	1,012.9
Alta.	14.3	752.4	10.6	555.1	19.1	1,003.4
B.C.	10.8	675.6	13.9	873.3	15.8	987.7
Y.T.	19.4	626.0	12.3	396.4	25.5	823.8
N.W.T.	4.7	432.7	5.4	505.7	6.3	584.1
Nvt.	6.7	240.1	n.a.	n.a.	n.a.	n.a.

* Statistics Canada, "Canadian Vehicle Survey", Catalogue No. 53-223-XIE.

Note: Data for Ontario and Saskatchewan are preliminary for 2005. There is no official abbreviation for Nunavut at this time. The abbreviation used here is provisional.

n.a.: Data is not available.

Percentage of Fatally Injured Drivers Tested and Found to Have Been Drinking (BAC* >0 mg%)



*BAC: Blood Alcohol Concentration.

mg%: Weight of alcohol in the bloodstream stated as milligrams in 100 millilitres of blood.

¹ Prior to 2001 BAC categories were reported as 81-150 mg% and >150 mg%.

Note: 2005 data were not available at the time of publication.

Source: Traffic Injury Research Foundation.

Percentage of Driver and Passenger Fatalities and Serious Injuries Where Victims Were Not Using Seat Belts • 2001-2005

	2001	2002	2003	2004	2005
Drivers					
Fatalities	39.6	38.5	38.8	40.2	34.9
Serious Injuries	16.5	14.2	15.5	16.3	14.3
Passengers					
Fatalities	41.9	35.9	39.4	39.6	35.4
Serious Injuries	23.6	20.4	20.9	23.4	19.9

Note: "Serious Injuries" include victims admitted to hospital for treatment or observation. "Serious Injuries" prior to 2004 do not include British Columbia. The percentage of "Serious Injuries" for British Columbia was estimated for January, February and March 2004.

Number of Collisions by Location

Location	Fatal	Personal Injury
Urban ¹	941	105,516
Rural ²	1,606	41,677
Not stated	31	1,960
Total	2,578	149,153

¹ Urban includes: a) metropolitan roads and streets and other urban areas, or b) a speed limit at the collision site of 60 km/h or less.

² Rural includes: a) primary or secondary highways, as well as local roads, or b) a speed limit at the collision site exceeding 60 km/h.

Note: In Alberta and Saskatchewan, "Urban" includes any area within the boundaries of a city, town, village or hamlet. "Rural" includes any area outside of what is defined as "Urban".



Percentage of Fatalities and Serious Injuries by Road User Class

Road User Class	Fatalities	Serious Injuries
Drivers	53.3	50.1
Passengers	23.3	26.0
Pedestrians	11.8	10.4
Bicyclists	1.8	3.4
Motorcyclists	8.0	8.1
Not stated/Other	1.8	2.0
Total	100.0	100.0

Percentage of Driver and Passenger Fatalities and Serious Injuries by Age Group

Age Group (yrs)	Fatalities		Serious Injuries	
	Drivers	Passengers	Drivers	Passengers
0 - 4	0.0	2.8	0.0	5.6
5 - 14	0.2	7.6	0.5	10.8
15 - 19	8.9	19.2	10.9	18.9
20 - 24	14.5	13.7	15.0	14.0
25 - 34	18.5	12.8	19.7	13.0
35 - 44	15.4	8.9	18.6	9.9
45 - 54	15.6	7.6	16.1	8.8
55 - 64	11.8	9.6	9.2	5.8
65 +	14.9	16.7	9.6	9.0
Not stated	0.2	1.1	0.4	4.2
Total	100.0	100.0	100.0	100.0



Source: Ontario Provincial Police

Number of Licensed Drivers by Gender and by Age

Age Group (yrs)	Males	Females	Total*
< 16	31,110	20,675	51,785
16 - 19	550,471	485,911	1,036,383
20 - 24	917,884	844,501	1,762,388
25 - 34	1,960,123	1,866,483	3,826,607
35 - 44	2,386,674	2,250,478	4,637,162
45 - 54	2,357,698	2,207,880	4,565,593
55 - 64	1,688,156	1,508,174	3,196,340
65 +	1,586,176	1,274,332	2,860,520
Total*	11,478,292	10,458,434	21,936,778

* Gender and/or age was not stated for 52 drivers.

Licensed Drivers and Motor Vehicle Registrations by Type of Vehicle • 1986-2005 (in thousands)

	Licensed Drivers ¹	Passenger Automobiles	Commercial Vehicles ²	Motorcycles ³
1986	16,226	11,586	3,285	465
1987	16,927	11,686	3,659	448
1988	17,155	12,086	3,850	400
1989	17,592	12,380	3,962	378
1990	17,718	12,622	4,000	359
1991	18,090	12,578	3,516	350
1992	18,465	12,781	3,461	339
1993	18,843	12,925	3,455	337
1994	19,243	13,131	3,510	330
1995	19,327	13,192	3,535	320
1996	19,964	13,251	3,620	312
1997	20,148	13,515	3,684	319
1998	20,744 ^e	13,887	3,767	334
1999	20,934	16,538	722	274
2000	20,593	16,832	739	311
2001	20,879	17,055	729	318
2002	21,163	17,543	724	350
2003	21,436	17,755	740	373
2004	21,673	17,920	752	409
2005	21,937	18,124	786	443

¹ Excludes temporary permits prior to 1999.

² Pre-1999, these registrations include trucks, buses and other commercial vehicles, such as vans. From 1999, these registrations include commercial vehicles (trucks and buses) greater than 4 500 kg.

³ Includes mopeds.

^e Estimated.



Source: Ontario Provincial Police

Source: 1985 to 1998: Statistics Canada, Catalogue No. 53-219, "Road Motor Vehicles - Registrations". From 1999, motor vehicle registration data are from Statistics Canada, CANSIM, Table 405-0004. From 1999, licensed driver data were provided by each jurisdiction.

The decline in police reporting in British Columbia in the years 1996 through 2004 has affected the British Columbia totals and, to a lesser extent, national totals reported in this publication.

To find out more about national road safety programs or initiatives, call Transport Canada toll free at 1-800-333-0371 or e-mail us at roadsafetywebmail@tc.gc.ca. You can also visit our website at www.tc.gc.ca/roadsafety or the Canadian Council of Motor Transport Administrators' website at www.ccmta.ca.