

Table 1
Railway Occurrence and Casualty

	December			January to December		
	2012	2011	2007-2011 Average	2012	2011	2007-2011 Average
Accidents	87	66	88	1,007	1,022	1,128
Main-Track Train Collisions	0	1	0	6	3	6
Main-Track Train Derailments - 1-2 cars	2	4	4	32	44	53
Main-Track Train Derailments - 3 or more cars	0	3	5	31	57	54
Crossings	20	15	20	189	170	195
Non-Main-Track Train Collisions	8	4	8	101	88	94
Non-Main-Track Train Derailments - 1-2 cars	41	21	32	389	369	413
Non-Main-Track Train Derailments - 3 or more cars	8	9	10	106	115	131
Collisions/Derailments Involving Track Units	1	1	1	24	33	35
Employee/Passenger	1	0	1	7	11	12
Trespassers	1	5	4	71	67	79
Fires/Explosions	2	0	1	17	23	22
Other	2	3	2	33	42	33
Incidents	12	16	15	203	204	202
Dangerous Goods Leaker	4	0	3	63	51	64
Main-track Switch in Abnormal Position	0	0	0	5	10	8
Movement Exceeds Limits of Authority	8	14	10	119	118	108
Runaway Rolling Stock	0	2	2	9	15	12
Others	0	0	1	7	10	10
Million Train-miles (a)				86.13	85.2	86.31
Accidents/Million Train-miles				11.69	12.00	13.07
Accidents Involving Dangerous Goods	7	3	11	117	118	147
Main-track Train Derailments	0	0	2	6	20	20
Crossings	0	0	0	4	1	4
Non-Main-Track Train Collisions	1	1	3	21	20	30
Non-Main-Track Train Derailments	6	2	7	85	71	85
All Others	0	0	0	1	6	7
Accidents with a DG Release	0	0	0	2	3	3
Accidents Involving Passenger Trains	3	5	6	47	68	72
Fatalities	5	6	5	82	71	76
Crossings	4	1	1	31	25	24
Trespassers	1	5	3	47	45	51
All Others	0	0	0	4	1	1
Serious Injuries	4	2	3	71	52	57
Crossings	2	1	2	32	22	26
Trespassers	0	1	0	20	21	21
All Others	2	0	1	19	9	11

Data extracted January 18, 2013.

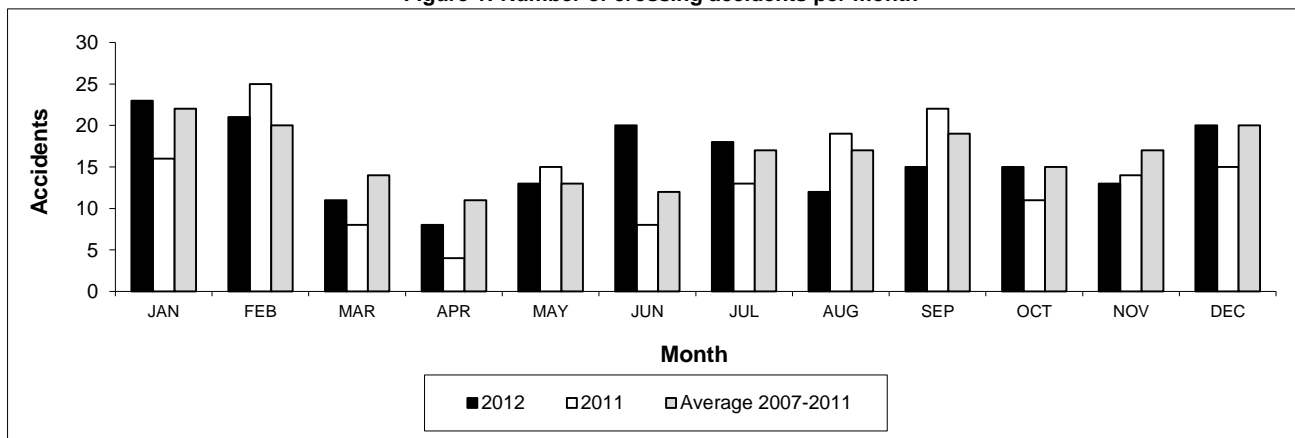
All 5-year averages have been rounded. The totals sometimes do not coincide to the sum of these averages.

a. Train-miles estimated. (Source: Transport Canada)

Table 2
Railway crossing and trespasser accidents by province

	Crossings with Type Recorded				All Crossings		Trespasser	
	2012 - Year To Date*				Year To Date*		Year To Date*	
	Public Automated	Public Passive	Private	Farm	2012	2011	2012	2011
Newfoundland								
Accidents	0	0	0	0	0	2	0	0
Fatalities	0	0	0	0	0	0	0	0
Serious Injuries	0	0	0	0	0	0	0	0
Nova Scotia								
Accidents	0	0	1	0	1	0	0	1
Fatalities	0	0	0	0	0	0	0	0
Serious Injuries	0	0	0	0	0	0	0	0
New Brunswick								
Accidents	2	0	0	1	3	6	1	2
Fatalities	1	0	0	0	1	2	1	1
Serious Injuries	0	0	0	0	0	0	0	1
Quebec								
Accidents	11	5	2	1	20	26	9	9
Fatalities	2	0	0	0	2	4	6	8
Serious Injuries	1	0	0	0	1	4	2	2
Ontario								
Accidents	23	11	4	1	39	39	31	32
Fatalities	9	3	0	0	12	9	20	26
Serious Injuries	1	6	1	0	8	7	11	6
Manitoba								
Accidents	12	12	1	0	25	7	3	1
Fatalities	1	1	0	0	2	2	3	1
Serious Injuries	2	5	0	0	7	1	0	0
Saskatchewan								
Accidents	11	18	2	1	32	23	6	2
Fatalities	0	7	0	1	8	1	4	1
Serious Injuries	4	1	1	0	6	2	0	1
Alberta								
Accidents	22	21	3	0	47	47	10	7
Fatalities	4	0	0	0	4	5	8	2
Serious Injuries	5	2	0	0	7	4	2	4
British Columbia								
Accidents	12	5	5	0	22	20	11	13
Fatalities	2	0	0	0	2	2	5	6
Serious Injuries	1	1	1	0	3	4	5	7
Northwest Territories								
Accidents	0	0	0	0	0	0	0	0
Fatalities	0	0	0	0	0	0	0	0
Serious Injuries	0	0	0	0	0	0	0	0
Canada								
Accidents	93	72	18	4	189	170	71	67
Fatalities	19	11	0	1	31	25	47	45
Serious Injuries	14	15	3	0	32	22	20	21

Figure 1: Number of crossing accidents per month



Data extracted January 18, 2013.

*Year to date is from January to December.

Table 3
Main-track train derailments by province

	January to December			Deraillments with DG Involvement January to December		
	2012	2011	2007-2011 Average	2012	2011	2007-2011 Average
Canada	63	101	107	6	20	20
Newfoundland	1	1	1	0	0	0
Nova Scotia	0	0	1	0	0	0
New Brunswick	0	0	2	0	0	1
Quebec	5	9	11	1	2	3
Ontario	7	24	28	1	5	6
Manitoba	8	11	9	1	0	1
Saskatchewan	4	11	13	1	0	2
Alberta	17	21	22	1	7	5
British Columbia	21	24	21	1	6	3
Northwest Territories	0	0	0	0	0	0

* There was 1 occurrence with dangerous goods release to date in 2012 and 1 in 2011.

Figure 1: Number of main-track train derailments per month

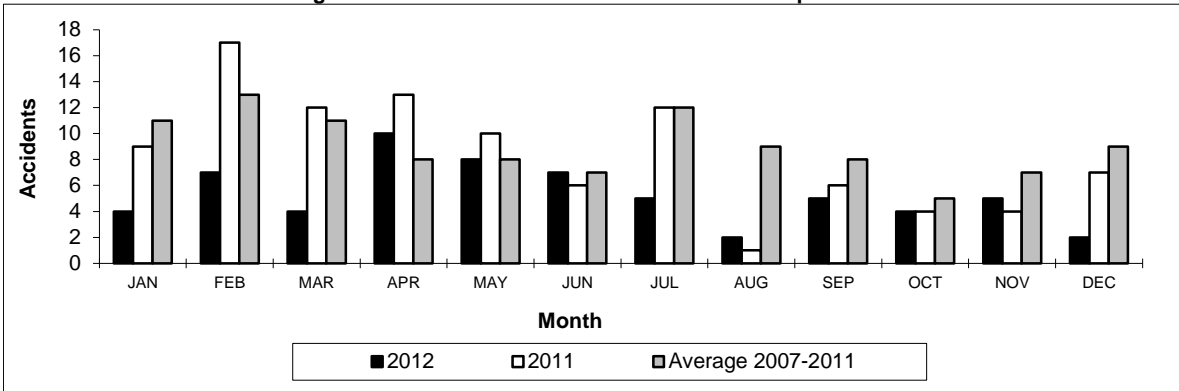
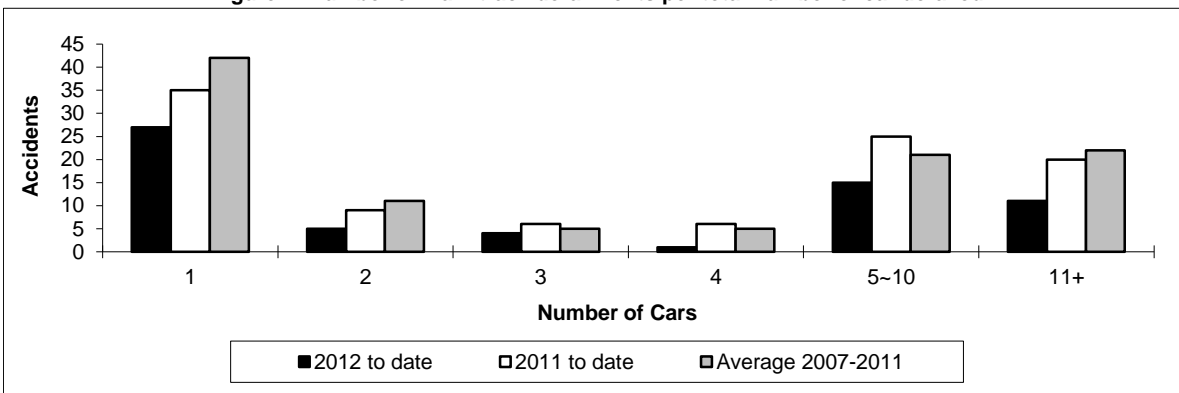


Figure 2: Number of main-track derailments per total number of car derailed



Data extracted January 18, 2013.

Table 4
Non main-track train collisions by province

	January to December			Collisions with DG Involvement January to December		
	2012	2011	2007-2011 Average	2012	2011	2007-2011 Average
	Canada	101	88	94	21	20
Newfoundland	0	0	0	0	0	0
Nova Scotia	0	0	0	0	0	0
New Brunswick	1	1	1	0	0	0
Quebec	8	12	9	4	3	2
Ontario	10	16	22	0	5	8
Manitoba	21	15	13	7	2	4
Saskatchewan	12	8	7	1	0	1
Alberta	34	16	24	5	4	10
British Columbia	15	20	17	4	6	4
Northwest Territories	0	0	0	0	0	0

* There were no occurrences with dangerous goods release to date in 2012 or in 2011.

Figure 1: Number of non main-track train collisions per month

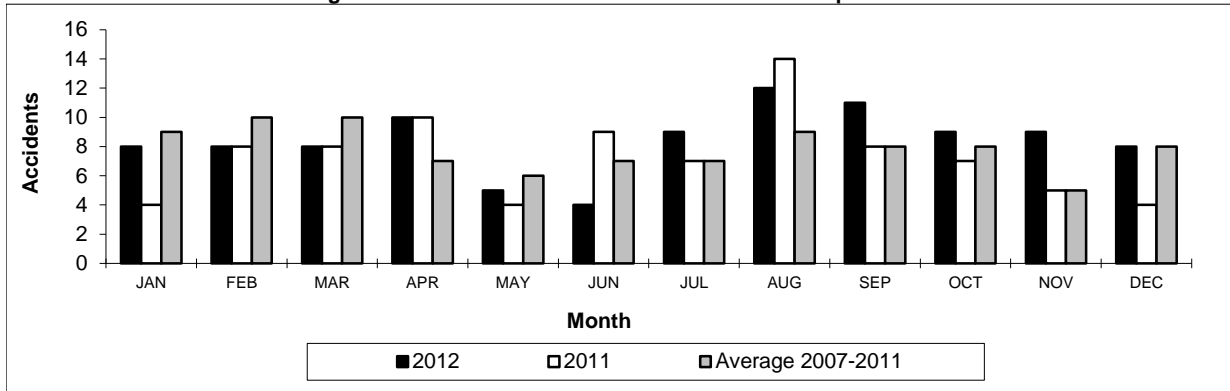
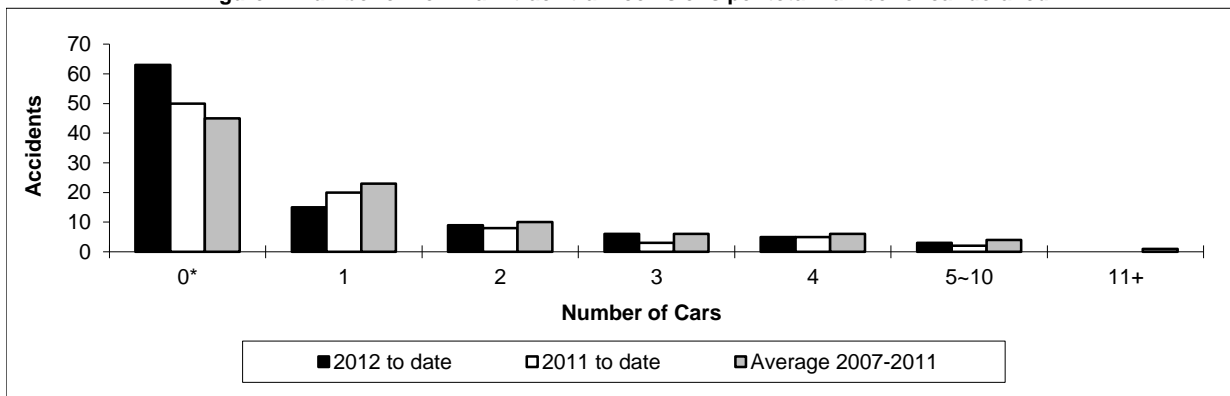


Figure 2: Number of non main-track train collisions per total number of car derailed



Data extracted January 18, 2013.

*Number of collisions with no derailments.

Table 5
Non main-track train derailments by province

	January to December			Deraillments with DG Involvement January to December		
	2012	2011	2007-2011 Average	2012	2011	2007-2011 Average
	Canada	496	484	544	85	71
Newfoundland	1	0	0	0	0	0
Nova Scotia	4	3	4	1	1	1
New Brunswick	6	13	11	1	1	2
Quebec	62	59	61	8	16	12
Ontario	90	106	125	11	14	19
Manitoba	59	53	61	8	5	9
Saskatchewan	67	75	60	7	3	4
Alberta	141	103	126	38	24	23
British Columbia	66	71	95	11	6	13
Northwest Territories	0	1	1	0	1	1

* There were no occurrences with dangerous goods release to date in 2012 and 1 in 2011.

Figure 1: Number of non main-track train derailments per month

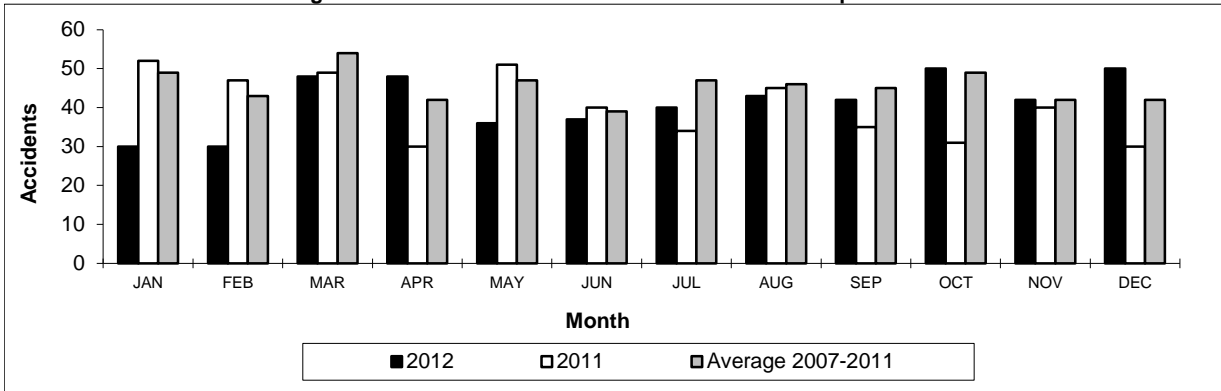
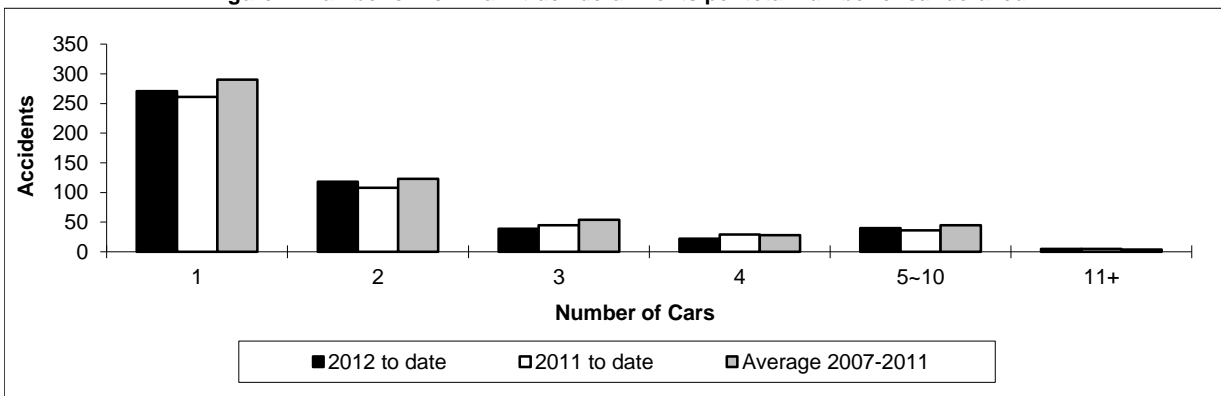


Figure 2: Number of non main-track derailments per total number of car derailed



Data extracted January 18, 2013.