

Table 1  
Railway Occurrence and Casualty

	February			January to February		
	2013	2012	2008-2012 Average	2013	2012	2008-2012 Average
<b>Accidents</b>	<b>91</b>	<b>78</b>	<b>92</b>	<b>189</b>	<b>157</b>	<b>188</b>
Main-Track Train Collisions	1	0	0	2	1	1
Main-Track Train Derailments - 1-2 cars	8	3	6	12	3	12
Main-Track Train Derailments - 3 or more cars	1	4	5	3	8	9
Crossings	21	21	20	42	44	42
Non-Main-Track Train Collisions	10	8	9	16	16	19
Non-Main-Track Train Derailments - 1-2 cars	30	25	32	70	47	67
Non-Main-Track Train Derailments - 3 or more cars	7	5	8	13	13	17
Collisions/Derailments Involving Track Units	3	1	2	8	3	4
Employee/Passenger	2	1	1	5	1	2
Trespassers	5	4	3	8	10	7
Fires/Explosions	1	3	1	3	6	2
Other	2	3	5	5	5	8
<b>Incidents</b>	<b>8</b>	<b>11</b>	<b>13</b>	<b>17</b>	<b>23</b>	<b>30</b>
Dangerous Goods Leaker	0	3	3	1	5	8
Main-track Switch in Abnormal Position	0	0	0	0	0	1
Movement Exceeds Limits of Authority	6	7	8	13	14	17
Runaway Rolling Stock	2	1	1	3	2	1
Others	0	0	1	0	2	2
<b>Million Train-miles (a)</b>				<b>13.89</b>	<b>14.4</b>	<b>13.78</b>
<b>Accidents/Million Train-miles</b>				<b>13.61</b>	<b>10.90</b>	<b>13.64</b>
<b>Accidents Involving Dangerous Goods</b>	<b>13</b>	<b>10</b>	<b>16</b>	<b>23</b>	<b>16</b>	<b>31</b>
Main-track Train Derailments	0	1	3	0	1	4
Crossings	0	0	0	2	1	1
Non-Main-Track Train Collisions	4	2	4	6	4	6
Non-Main-Track Train Derailments	9	7	9	15	10	17
All Others	0	0	0	0	0	2
<b>Accidents with a DG Release</b>	<b>0</b>	<b>0</b>	<b>0</b>	<b>0</b>	<b>1</b>	<b>1</b>
<b>Accidents Involving Passenger Trains</b>	<b>5</b>	<b>4</b>	<b>6</b>	<b>8</b>	<b>11</b>	<b>13</b>
<b>Fatalities</b>	<b>8</b>	<b>11</b>	<b>5</b>	<b>20</b>	<b>15</b>	<b>11</b>
Crossings	2	5	3	10	6	6
Trespassers	5	3	2	7	6	4
All Others	1	3	1	3	3	1
<b>Serious Injuries</b>	<b>1</b>	<b>13</b>	<b>8</b>	<b>4</b>	<b>22</b>	<b>12</b>
Crossings	1	2	3	2	8	5
Trespassers	0	1	1	1	3	2
All Others	0	10	4	1	11	5

Data extracted March 19, 2013.

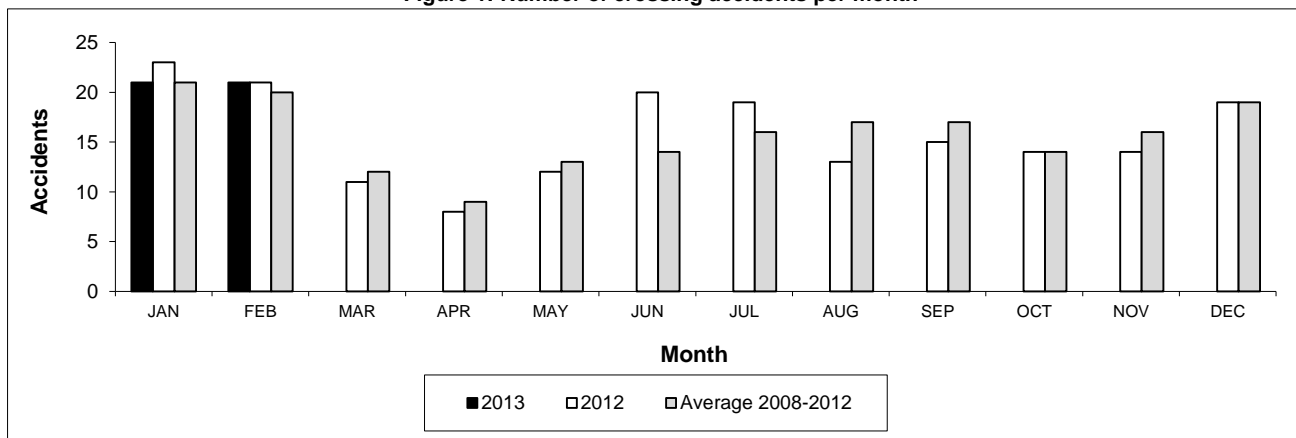
All 5-year averages have been rounded. The totals sometimes do not coincide to the sum of these averages.

a. Train-miles estimated. (Source: Transport Canada)

**Table 2**  
**Railway crossing and trespasser accidents by province**

	Crossings with Type Recorded				All Crossings		Trespasser		
	2013 - Year To Date*				Year To Date*		Year To Date*		
	Public Automated	Public Passive	Private	Farm	2013	2012	2013	2012	
<b>Newfoundland</b>									
Accidents	0	0	0	0	0	0	0	0	
Fatalities	0	0	0	0	0	0	0	0	
Serious Injuries	0	0	0	0	0	0	0	0	
<b>Nova Scotia</b>									
Accidents	0	0	0	0	0	1	0	0	
Fatalities	0	0	0	0	0	0	0	0	
Serious Injuries	0	0	0	0	0	0	0	0	
<b>New Brunswick</b>									
Accidents	0	0	0	0	0	2	0	0	
Fatalities	0	0	0	0	0	1	0	0	
Serious Injuries	0	0	0	0	0	0	0	0	
<b>Quebec</b>									
Accidents	2	0	0	0	2	3	1	1	
Fatalities	2	0	0	0	2	0	0	0	
Serious Injuries	0	0	0	0	0	0	1	0	
<b>Ontario</b>									
Accidents	6	0	0	1	8	9	5	3	
Fatalities	1	0	0	0	1	1	5	2	
Serious Injuries	0	0	0	1	1	1	0	1	
<b>Manitoba</b>									
Accidents	0	0	0	0	1	6	0	0	
Fatalities	0	0	0	0	0	1	0	0	
Serious Injuries	0	0	0	0	0	2	0	0	
<b>Saskatchewan</b>									
Accidents	4	6	0	0	12	7	0	0	
Fatalities	2	1	0	0	3	1	0	0	
Serious Injuries	1	0	0	0	1	1	0	0	
<b>Alberta</b>									
Accidents	4	5	0	0	13	6	0	3	
Fatalities	1	1	0	0	2	0	0	2	
Serious Injuries	0	0	0	0	0	4	0	1	
<b>British Columbia</b>									
Accidents	5	1	0	0	6	10	2	3	
Fatalities	2	0	0	0	2	2	2	2	
Serious Injuries	0	0	0	0	0	0	0	1	
<b>Northwest Territories</b>									
Accidents	0	0	0	0	0	0	0	0	
Fatalities	0	0	0	0	0	0	0	0	
Serious Injuries	0	0	0	0	0	0	0	0	
<b>Canada</b>									
Accidents	21	12	0	1	42	44	8	10	
Fatalities	8	2	0	0	10	6	7	6	
Serious Injuries	1	0	0	1	2	8	1	3	

**Figure 1: Number of crossing accidents per month**



Data extracted March 19, 2013.

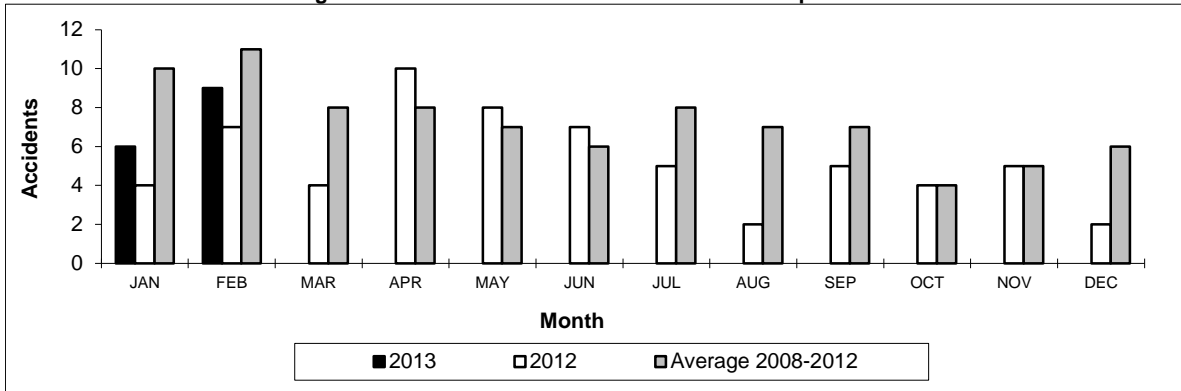
\*Year to date is from January to February.

**Table 3**  
Main-track train derailments by province

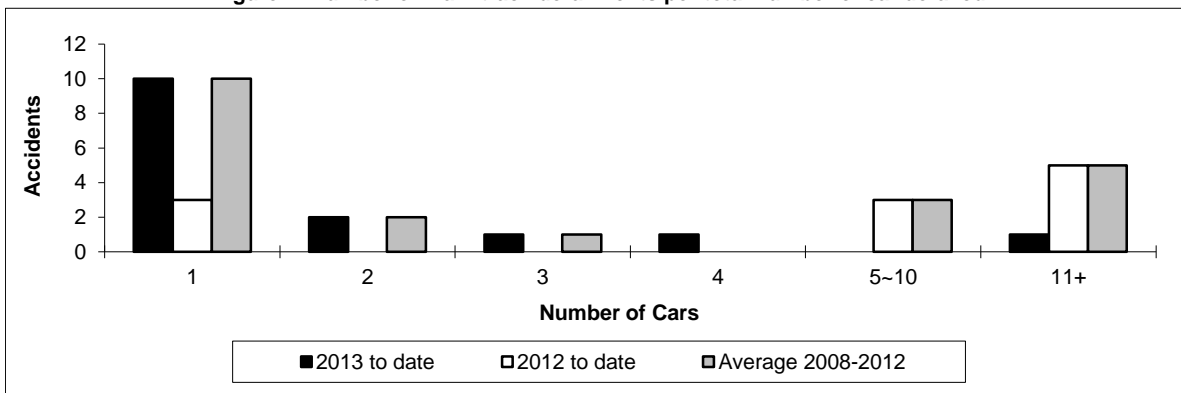
	January to February			Derailments with DG Involvement January to February		
	2013	2012	2008-2012 Average	2013	2012	2008-2012 Average
<b>Canada</b>	<b>15</b>	<b>11</b>	<b>21</b>	<b>0</b>	<b>1</b>	<b>4</b>
Newfoundland	1	0	1	0	0	0
Nova Scotia	1	0	0	0	0	0
New Brunswick	0	0	0	0	0	0
Quebec	1	0	2	0	0	0
Ontario	2	2	6	0	0	2
Manitoba	1	0	2	0	0	0
Saskatchewan	2	1	2	0	0	0
Alberta	4	5	5	0	1	1
British Columbia	3	3	4	0	0	0
Northwest Territories	0	0	0	0	0	0

\* There were no occurrences with dangerous goods release to date in 2013 or in 2012.

**Figure 1: Number of main-track train derailments per month**



**Figure 2: Number of main-track derailments per total number of car derailed**



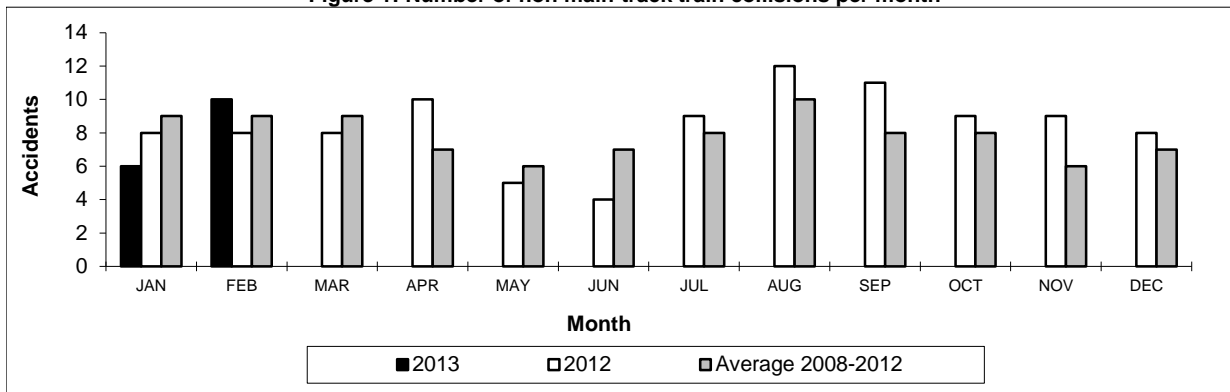
Data extracted March 19, 2013.

**Table 4**  
**Non main-track train collisions by province**

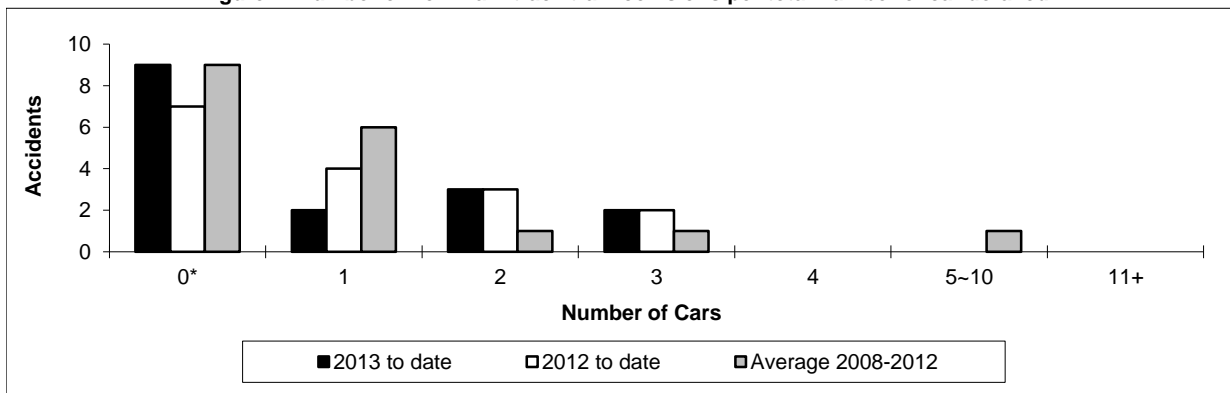
	January to February			Collisions with DG Involvement January to February		
	2013	2012	2008-2012 Average	2013	2012	2008-2012 Average
	<b>Canada</b>	<b>16</b>	<b>16</b>	<b>19</b>	<b>6</b>	<b>4</b>
Newfoundland	0	0	0	0	0	0
Nova Scotia	0	0	0	0	0	0
New Brunswick	0	0	0	0	0	0
Quebec	1	1	2	0	1	0
Ontario	5	1	5	1	0	2
Manitoba	5	5	3	2	2	1
Saskatchewan	2	0	1	1	0	0
Alberta	2	8	5	1	1	2
British Columbia	1	1	3	1	0	1
Northwest Territories	0	0	0	0	0	0

\* There were no occurrences with dangerous goods release to date in 2013 or in 2012.

**Figure 1: Number of non main-track train collisions per month**



**Figure 2: Number of non main-track train collisions per total number of car derailed**



Data extracted March 19, 2013.

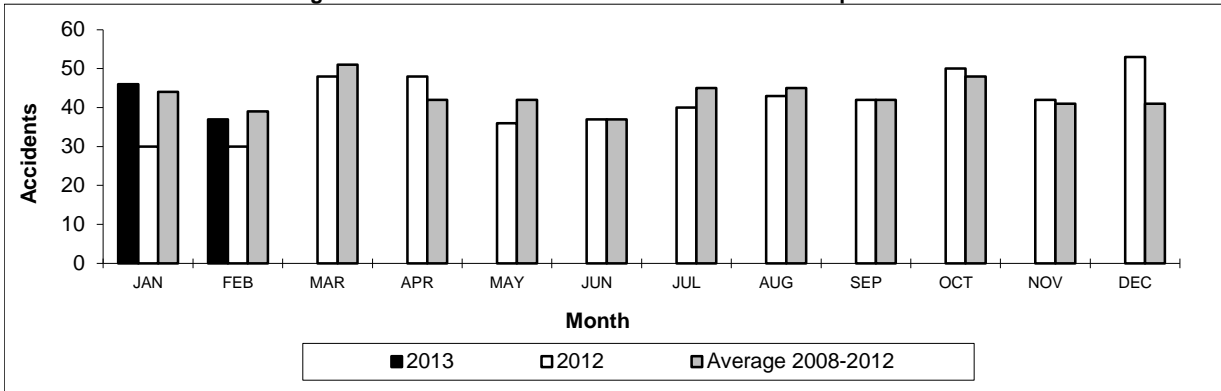
\*Number of collisions with no derailments.

**Table 5**  
**Non main-track train derailments by province**

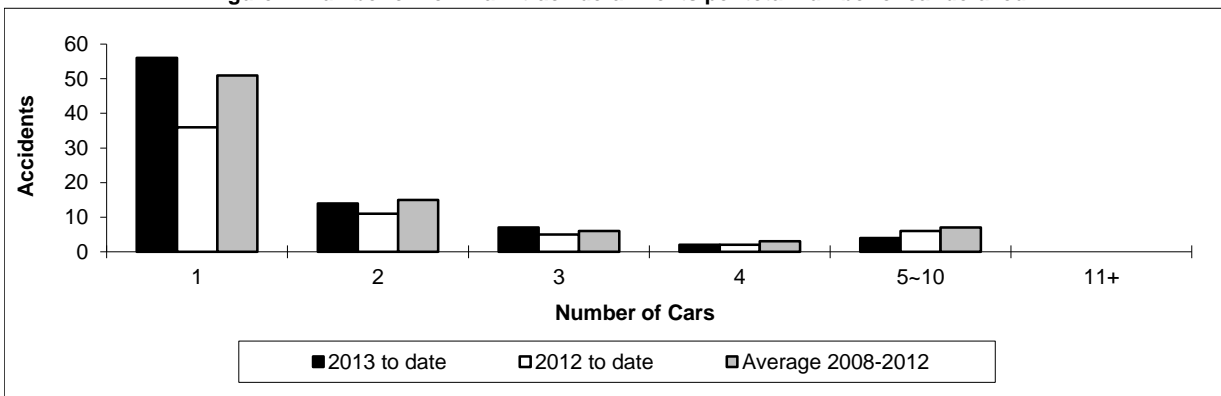
	January to February			Derailments with DG Involvement January to February		
	2013	2012	2008-2012 Average	2013	2012	2008-2012 Average
	<b>Canada</b>	<b>83</b>	<b>60</b>	<b>83</b>	<b>15</b>	<b>10</b>
Newfoundland	1	0	0	0	0	0
Nova Scotia	0	1	0	0	0	0
New Brunswick	2	0	1	1	0	0
Quebec	7	6	8	1	1	3
Ontario	16	15	17	3	2	4
Manitoba	5	7	10	0	2	2
Saskatchewan	17	7	9	2	1	1
Alberta	24	15	22	7	3	5
British Columbia	10	9	16	0	1	3
Northwest Territories	1	0	0	1	0	0

\* There were no occurrences with dangerous goods release to date in 2013 or in 2012.

**Figure 1: Number of non main-track train derailments per month**



**Figure 2: Number of non main-track derailments per total number of car derailed**



Data extracted March 19, 2013.