

Table 1
Railway Occurrence and Casualty

	March			January to March		
	2013	2012	2008-2012 Average	2013	2012	2008-2012 Average
Accidents	99	87	94	289	244	282
Main-Track Train Collisions	0	0	0	2	1	1
Main-Track Train Derailments - 1-2 cars	5	3	4	17	6	16
Main-Track Train Derailments - 3 or more cars	4	1	4	7	9	13
Crossings	20	11	12	63	55	54
Non-Main-Track Train Collisions	6	8	9	23	24	27
Non-Main-Track Train Derailments - 1-2 cars	42	34	40	112	81	107
Non-Main-Track Train Derailments - 3 or more cars	11	14	11	24	27	28
Collisions/Derailments Involving Track Units	1	1	2	9	4	6
Employee/Passenger	0	1	1	4	2	3
Trespassers	3	9	5	11	19	12
Fires/Explosions	2	0	1	5	6	3
Other	5	5	5	10	10	13
Incidents	21	17	15	38	44	45
Dangerous Goods Leaker	8	13	7	9	22	16
Main-track Switch in Abnormal Position	3	1	1	3	1	1
Movement Exceeds Limits of Authority	6	3	6	19	17	23
Runaway Rolling Stock	1	0	1	4	2	2
Others	3	0	0	3	2	3
Million Train-miles (a)				21.32	21.77	21.14
Accidents/Million Train-miles				13.56	11.21	13.34
Accidents Involving Dangerous Goods	16	18	15	41	34	46
Main-track Train Derailments	2	1	2	3	2	6
Crossings	1	0	0	3	1	1
Non-Main-Track Train Collisions	3	5	3	9	9	10
Non-Main-Track Train Derailments	10	12	10	26	22	27
All Others	0	0	0	0	0	2
Accidents with a DG Release	0	0	0	0	1	1
Accidents Involving Passenger Trains	4	1	5	13	12	18
Fatalities	5	5	6	25	20	17
Crossings	3	2	3	13	8	8
Trespassers	2	3	4	9	9	8
All Others	0	0	0	3	3	1
Serious Injuries	2	7	3	7	29	15
Crossings	1	1	1	4	9	7
Trespassers	1	5	1	2	8	3
All Others	0	1	1	1	12	6

Data extracted April 18, 2013.

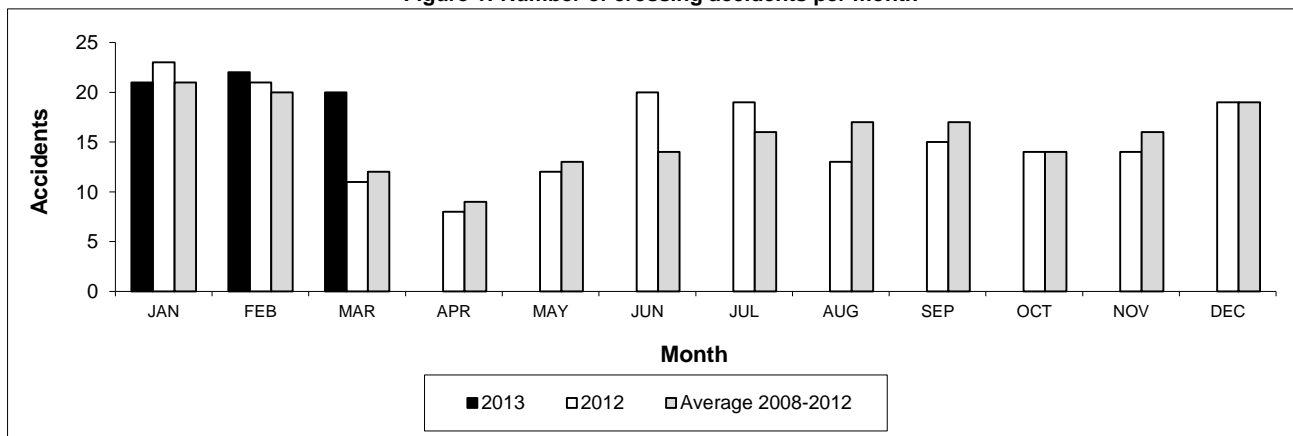
All 5-year averages have been rounded. The totals sometimes do not coincide to the sum of these averages.

a. Train-miles estimated. (Source: Transport Canada)

Table 2
Railway crossing and trespasser accidents by province

	Crossings with Type Recorded				All Crossings		Trespasser	
	2013 - Year To Date*				Year To Date*		Year To Date*	
	Public Automated	Public Passive	Private	Farm	2013	2012	2013	2012
Newfoundland								
Accidents	0	0	0	0	0	0	0	0
Fatalities	0	0	0	0	0	0	0	0
Serious Injuries	0	0	0	0	0	0	0	0
Nova Scotia								
Accidents	0	0	0	0	0	1	0	0
Fatalities	0	0	0	0	0	0	0	0
Serious Injuries	0	0	0	0	0	0	0	0
New Brunswick								
Accidents	0	0	0	0	0	2	0	0
Fatalities	0	0	0	0	0	1	0	0
Serious Injuries	0	0	0	0	0	0	0	0
Quebec								
Accidents	4	0	0	0	4	3	1	1
Fatalities	2	0	0	0	2	0	0	0
Serious Injuries	1	0	0	0	1	0	1	0
Ontario								
Accidents	10	0	0	1	13	13	8	9
Fatalities	3	0	0	0	3	2	7	3
Serious Injuries	0	0	0	1	1	2	1	6
Manitoba								
Accidents	1	2	0	0	4	8	0	0
Fatalities	0	0	0	0	0	1	0	0
Serious Injuries	1	0	0	0	1	2	0	0
Saskatchewan								
Accidents	8	8	0	0	17	7	0	2
Fatalities	3	1	0	0	4	1	0	1
Serious Injuries	1	0	0	0	1	1	0	0
Alberta								
Accidents	7	7	1	0	18	11	0	3
Fatalities	1	1	0	0	2	1	0	2
Serious Injuries	0	0	0	0	0	4	0	1
British Columbia								
Accidents	5	2	0	0	7	10	2	4
Fatalities	2	0	0	0	2	2	2	3
Serious Injuries	0	0	0	0	0	0	0	1
Northwest Territories								
Accidents	0	0	0	0	0	0	0	0
Fatalities	0	0	0	0	0	0	0	0
Serious Injuries	0	0	0	0	0	0	0	0
Canada								
Accidents	35	19	1	1	63	55	11	19
Fatalities	11	2	0	0	13	8	9	9
Serious Injuries	3	0	0	1	4	9	2	8

Figure 1: Number of crossing accidents per month



Data extracted April 18, 2013.

*Year to date is from January to March.

Table 3
Main-track train derailments by province

	January to March			Deraillments with DG Involvement January to March		
	2013	2012	2008-2012 Average	2013	2012	2008-2012 Average
Canada	24	15	29	3	2	6
Newfoundland	1	0	1	1	0	0
Nova Scotia	1	0	0	0	0	0
New Brunswick	0	0	0	0	0	0
Quebec	2	1	3	0	0	0
Ontario	4	2	9	1	0	3
Manitoba	1	0	2	0	0	0
Saskatchewan	4	2	3	0	1	0
Alberta	6	5	6	1	1	1
British Columbia	5	5	5	0	0	0
Northwest Territories	0	0	0	0	0	0

* There were no occurrences with dangerous goods release to date in 2013 or in 2012.

Figure 1: Number of main-track train derailments per month

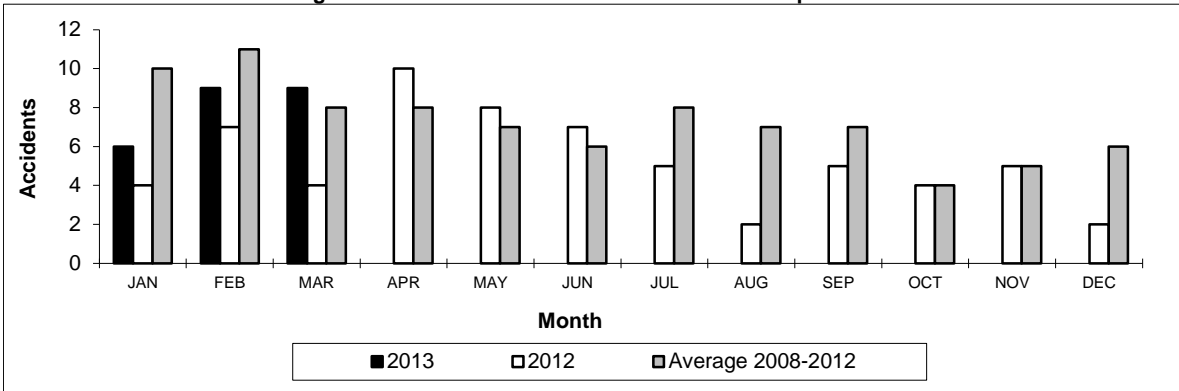
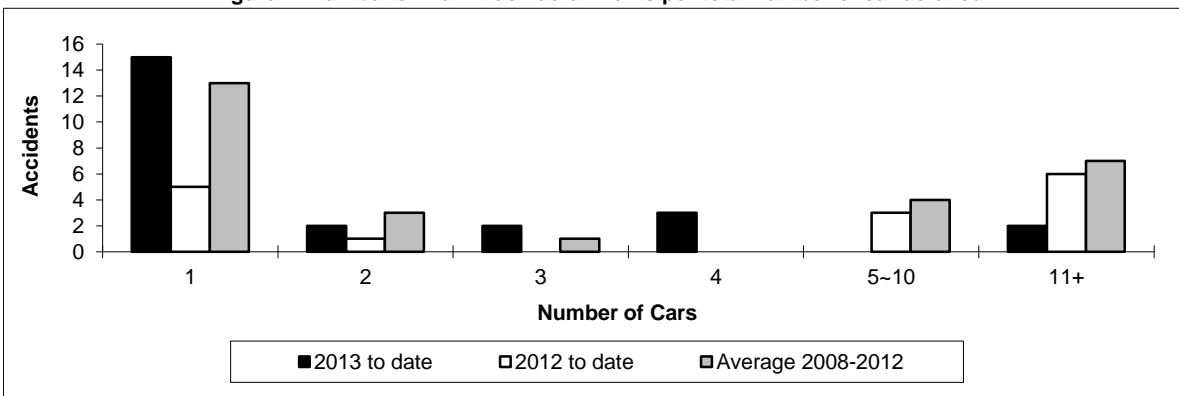


Figure 2: Number of main-track derailments per total number of car derailed



Data extracted April 18, 2013.

Table 4
Non main-track train collisions by province

	January to March			Collisions with DG Involvement January to March		
	2013	2012	2008-2012 Average	2013	2012	2008-2012 Average
	Canada	23	24	27	9	9
Newfoundland	0	0	0	0	0	0
Nova Scotia	0	0	0	0	0	0
New Brunswick	0	0	0	0	0	0
Quebec	2	1	3	1	1	1
Ontario	6	2	7	1	0	3
Manitoba	6	7	4	3	4	2
Saskatchewan	3	1	1	1	1	0
Alberta	5	10	7	2	1	2
British Columbia	1	3	6	1	2	2
Northwest Territories	0	0	0	0	0	0

* There were no occurrences with dangerous goods release to date in 2013 or in 2012.

Figure 1: Number of non main-track train collisions per month

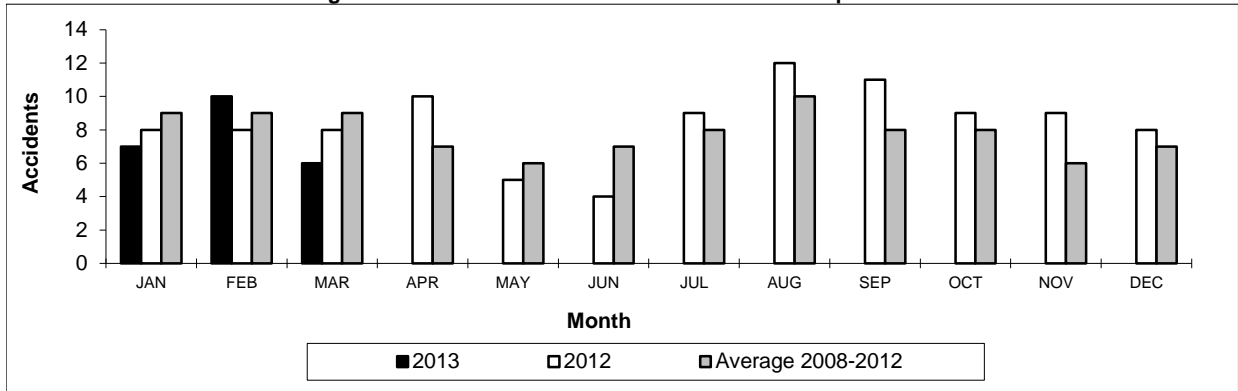
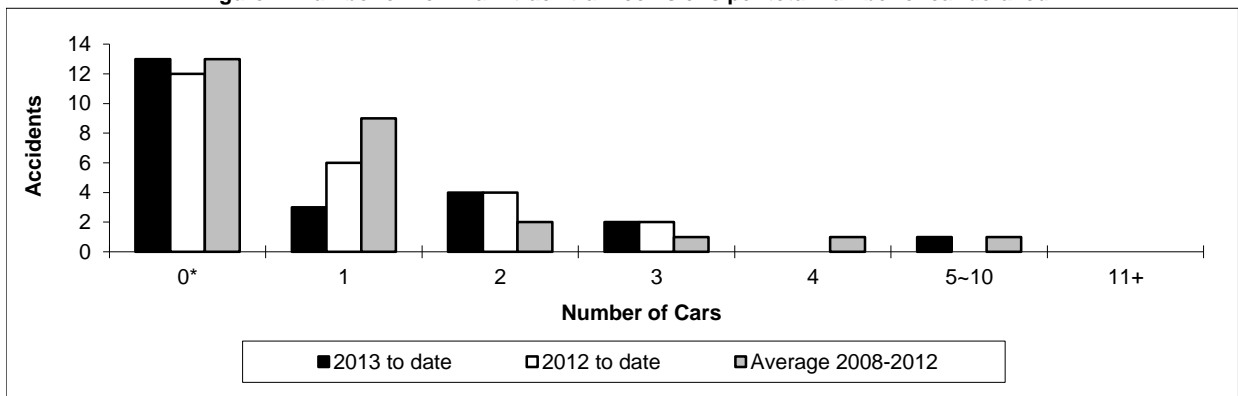


Figure 2: Number of non main-track train collisions per total number of car derailed



Data extracted April 18, 2013.

*Number of collisions with no derailments.

Table 5
Non main-track train derailments by province

	January to March			Derailments with DG Involvement January to March		
	2013	2012	2008-2012 Average	2013	2012	2008-2012 Average
	Canada	136	108	135	26	22
Newfoundland	1	0	0	0	0	0
Nova Scotia	2	1	1	0	0	0
New Brunswick	2	1	2	1	0	1
Quebec	12	6	14	1	1	4
Ontario	23	22	28	5	5	6
Manitoba	10	11	15	1	3	3
Saskatchewan	31	14	16	4	3	1
Alberta	33	35	35	11	9	8
British Columbia	21	18	24	2	1	4
Northwest Territories	1	0	0	1	0	0

* There were no occurrences with dangerous goods release to date in 2013 or in 2012.

Figure 1: Number of non main-track train derailments per month

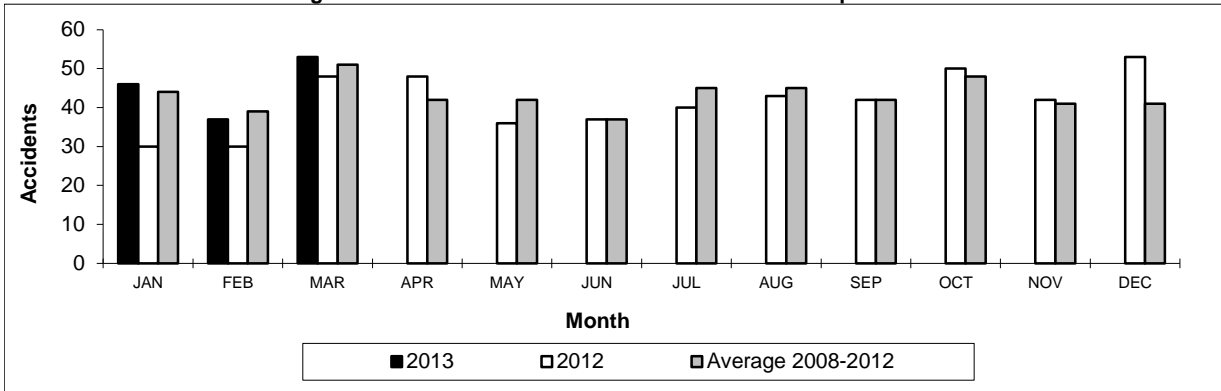
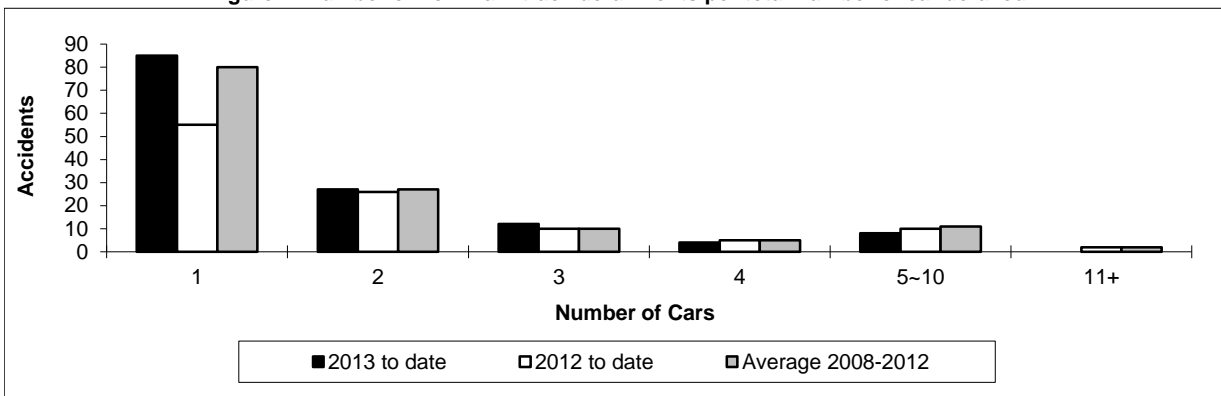


Figure 2: Number of non main-track derailments per total number of car derailed



Data extracted April 18, 2013.