

Table 1
Railway Occurrence and Casualty

	April			January to April		
	2013	2012	2008-2012 Average	2013	2012	2008-2012 Average
Accidents	86	89	81	376	333	363
Main-Track Train Collisions	0	2	1	2	3	2
Main-Track Train Derailments - 1-2 cars	4	6	4	21	12	21
Main-Track Train Derailments - 3 or more cars	5	4	4	12	13	16
Crossings	15	8	9	78	63	63
Non-Main-Track Train Collisions	7	10	7	30	34	34
Non-Main-Track Train Derailments - 1-2 cars	29	37	32	141	118	139
Non-Main-Track Train Derailments - 3 or more cars	8	11	10	32	38	38
Collisions/Derailments Involving Track Units	5	2	3	15	6	8
Employee/Passenger	0	0	0	4	2	3
Trespassers	3	5	6	14	24	18
Fires/Explosions	2	2	1	7	8	4
Other	8	2	3	18	12	16
Incidents	23	17	16	61	63	62
Dangerous Goods Leaker	10	6	8	20	30	24
Main-track Switch in Abnormal Position	2	0	0	5	1	1
Movement Exceeds Limits of Authority	8	9	8	26	26	31
Runaway Rolling Stock	2	1	0	6	3	2
Others	1	1	1	4	3	3
Million Train-miles (a)				N/A	N/A	N/A
Accidents/Million Train-miles				N/A	N/A	N/A
Accidents Involving Dangerous Goods	6	8	10	48	42	56
Main-track Train Derailments	1	1	1	4	3	7
Crossings	0	1	1	4	2	2
Non-Main-Track Train Collisions	2	0	2	11	9	12
Non-Main-Track Train Derailments	3	6	6	29	28	33
All Others	0	0	1	0	0	2
Accidents with a DG Release	0	0	0	0	1	1
Accidents Involving Passenger Trains	5	0	3	18	12	21
Fatalities	6	5	4	31	25	21
Crossings	4	0	0	17	8	9
Trespassers	2	5	3	11	14	11
All Others	0	0	0	3	3	1
Serious Injuries	2	0	3	9	29	18
Crossings	1	0	1	5	9	8
Trespassers	0	0	2	2	8	5
All Others	1	0	0	2	12	6

Data extracted May 22, 2013.

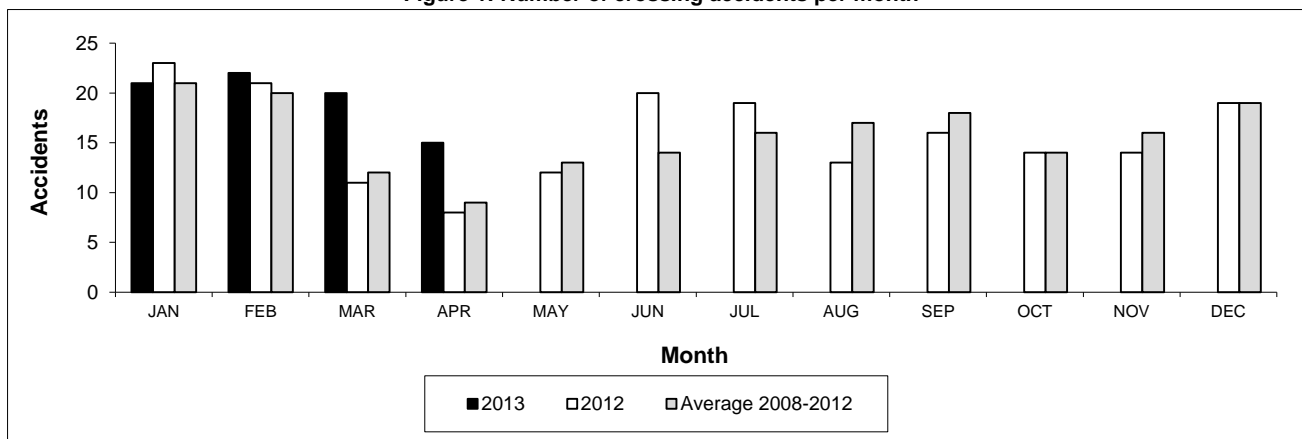
All 5-year averages have been rounded. The totals sometimes do not coincide to the sum of these averages.

a. Train-miles estimated. (Source: Transport Canada)

Table 2
Railway crossing and trespasser accidents by province

	Crossings with Type Recorded				All Crossings		Trespasser	
	2013 - Year To Date*				Year To Date*		Year To Date*	
	Public Automated	Public Passive	Private	Farm	2013	2012	2013	2012
Newfoundland								
Accidents	0	0	0	0	0	0	0	0
Fatalities	0	0	0	0	0	0	0	0
Serious Injuries	0	0	0	0	0	0	0	0
Nova Scotia								
Accidents	0	0	0	0	0	1	0	0
Fatalities	0	0	0	0	0	0	0	0
Serious Injuries	0	0	0	0	0	0	0	0
New Brunswick								
Accidents	1	0	0	0	1	2	0	0
Fatalities	1	0	0	0	1	1	0	0
Serious Injuries	0	0	0	0	0	0	0	0
Quebec								
Accidents	5	0	0	0	5	5	2	2
Fatalities	2	0	0	0	2	0	1	1
Serious Injuries	1	0	0	0	1	0	1	0
Ontario								
Accidents	13	0	0	1	16	13	9	10
Fatalities	4	0	0	0	4	2	8	4
Serious Injuries	0	0	0	1	1	2	1	6
Manitoba								
Accidents	1	4	0	0	6	8	0	0
Fatalities	0	0	0	0	0	1	0	0
Serious Injuries	1	0	0	0	1	2	0	0
Saskatchewan								
Accidents	9	9	0	0	19	9	0	2
Fatalities	3	1	0	0	4	1	0	1
Serious Injuries	1	0	0	0	1	1	0	0
Alberta								
Accidents	11	9	1	0	22	14	1	5
Fatalities	3	1	0	0	4	1	0	5
Serious Injuries	0	0	0	0	0	4	0	1
British Columbia								
Accidents	7	2	0	0	9	11	2	5
Fatalities	2	0	0	0	2	2	2	3
Serious Injuries	1	0	0	0	1	0	0	1
Northwest Territories								
Accidents	0	0	0	0	0	0	0	0
Fatalities	0	0	0	0	0	0	0	0
Serious Injuries	0	0	0	0	0	0	0	0
Canada								
Accidents	47	24	1	1	78	63	14	24
Fatalities	15	2	0	0	17	8	11	14
Serious Injuries	4	0	0	1	5	9	2	8

Figure 1: Number of crossing accidents per month



Data extracted May 22, 2013.

*Year to date is from January to April.

Table 3
Main-track train derailments by province

	January to April			Deraillments with DG Involvement January to April		
	2013	2012	2008-2012 Average	2013	2012	2008-2012 Average
Canada	33	25	37	4	3	7
Newfoundland	1	0	1	1	0	0
Nova Scotia	1	0	0	0	0	0
New Brunswick	0	0	0	0	0	0
Quebec	2	2	4	0	0	0
Ontario	6	4	11	2	1	4
Manitoba	2	0	3	0	0	0
Saskatchewan	6	2	4	0	1	0
Alberta	8	7	7	1	1	2
British Columbia	7	10	7	0	0	0
Northwest Territories	0	0	0	0	0	0

* There were no occurrences with dangerous goods release to date in 2013 or in 2012.

Figure 1: Number of main-track train derailments per month

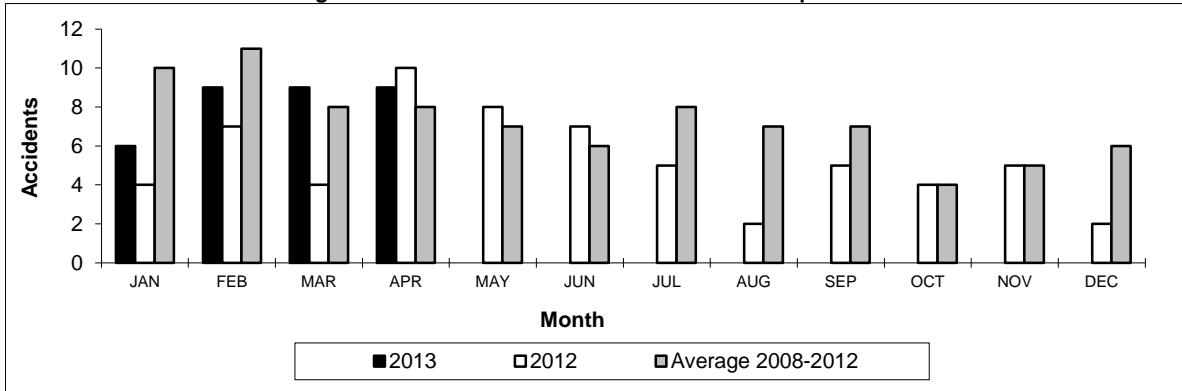
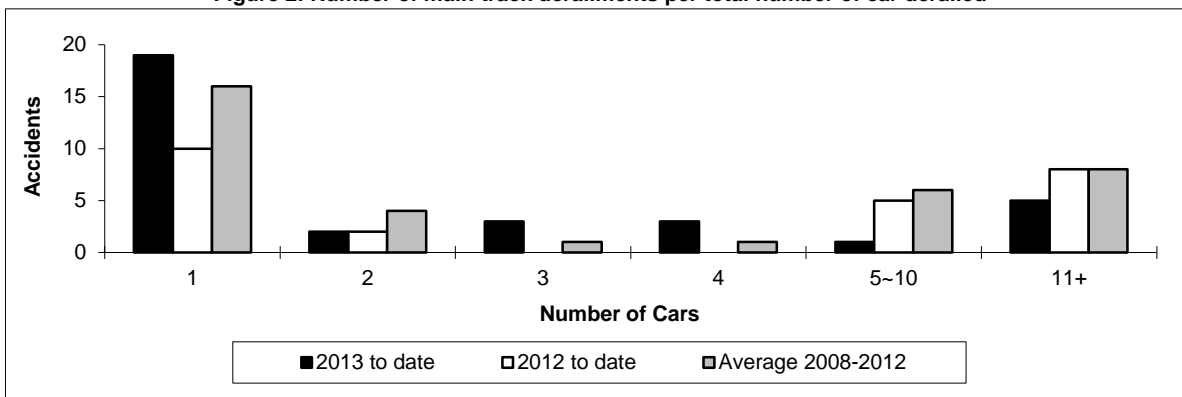


Figure 2: Number of main-track derailments per total number of car derailed



Data extracted May 22, 2013.

Table 4
Non main-track train collisions by province

	January to April			Collisions with DG Involvement January to April		
	2013	2012	2008-2012 Average	2013	2012	2008-2012 Average
	Canada	30	34	34	11	9
Newfoundland	0	0	0	0	0	0
Nova Scotia	0	0	0	0	0	0
New Brunswick	0	0	0	0	0	0
Quebec	3	1	4	1	1	1
Ontario	6	4	8	1	0	3
Manitoba	8	7	5	3	4	2
Saskatchewan	3	3	2	1	1	0
Alberta	9	14	8	4	1	3
British Columbia	1	5	7	1	2	2
Northwest Territories	0	0	0	0	0	0

* There were no occurrences with dangerous goods release to date in 2013 or in 2012.

Figure 1: Number of non main-track train collisions per month

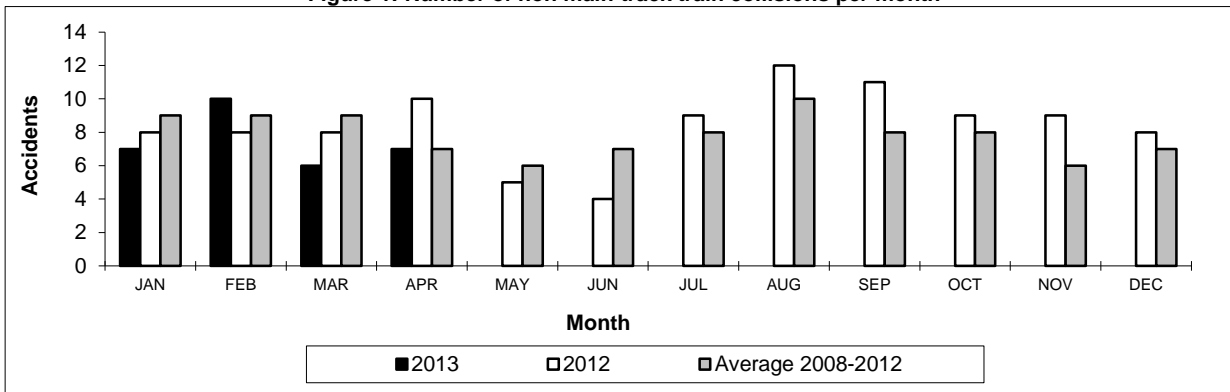
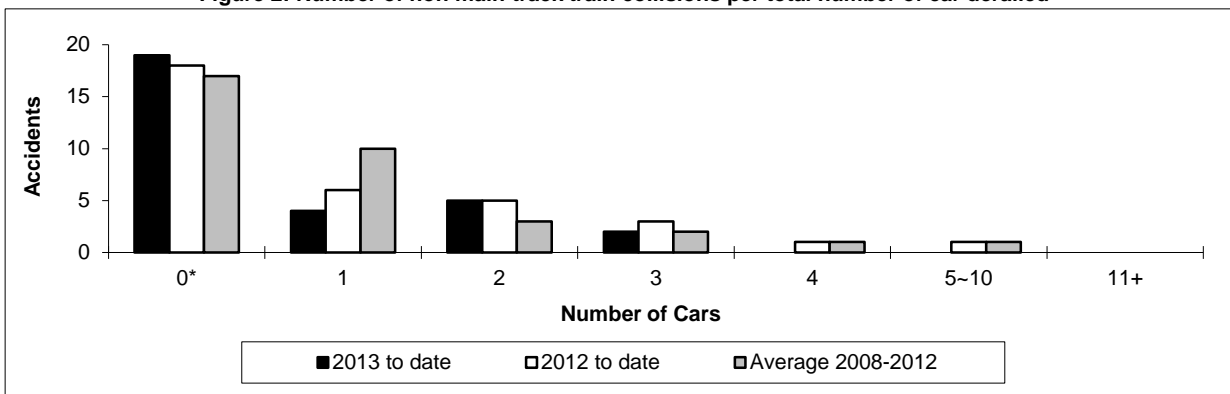


Figure 2: Number of non main-track train collisions per total number of car derailed



Data extracted May 22, 2013.

*Number of collisions with no derailments.

Table 5
Non main-track train derailments by province

	January to April			Derailments with DG Involvement January to April		
	2013	2012	2008-2012 Average	2013	2012	2008-2012 Average
	Canada	173	156	177	29	28
Newfoundland	1	0	0	0	0	0
Nova Scotia	2	1	1	0	0	0
New Brunswick	3	2	2	1	0	1
Quebec	15	11	19	1	2	5
Ontario	27	33	38	6	6	7
Manitoba	16	18	21	1	4	5
Saskatchewan	36	24	22	4	4	2
Alberta	47	45	43	13	11	10
British Columbia	25	22	30	2	1	5
Northwest Territories	1	0	0	1	0	0

* There were no occurrences with dangerous goods release to date in 2013 or in 2012.

Figure 1: Number of non main-track train derailments per month

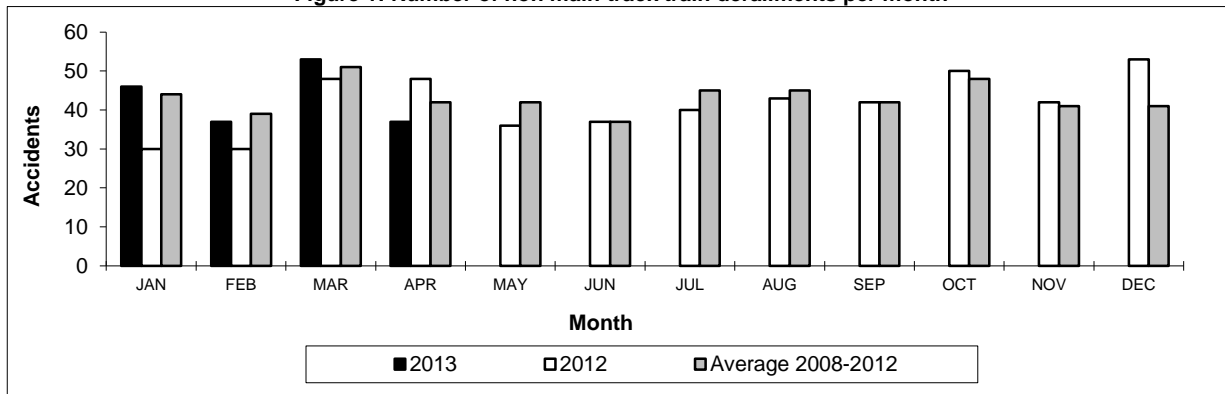
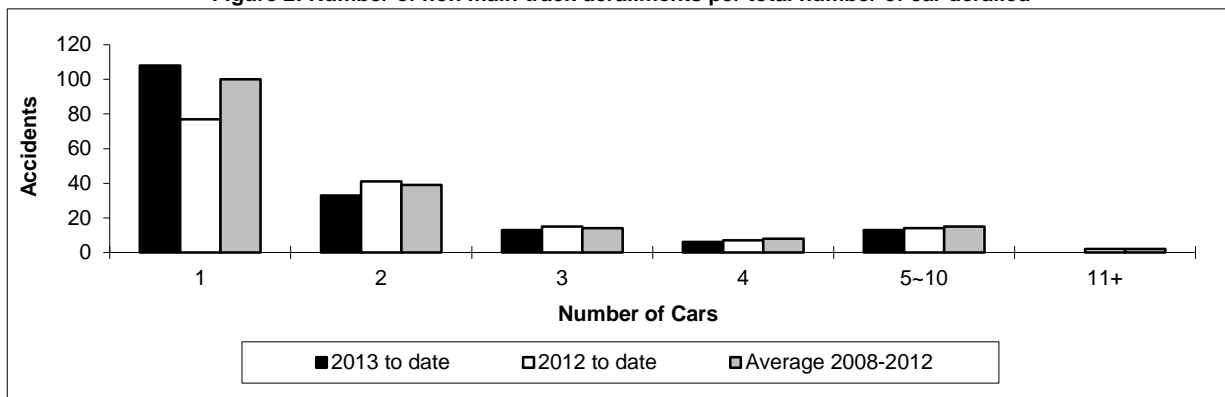


Figure 2: Number of non main-track derailments per total number of car derailed



Data extracted May 22, 2013.