

Table 1  
Railway Occurrence and Casualty

	May			January to May		
	2013	2012	2008-2012 Average	2013	2012	2008-2012 Average
<b>Accidents</b>	<b>62</b>	<b>74</b>	<b>85</b>	<b>439</b>	<b>407</b>	<b>448</b>
Main-Track Train Collisions	1	1	0	3	4	2
Main-Track Train Derailments - 1-2 cars	3	3	3	24	15	23
Main-Track Train Derailments - 3 or more cars	1	5	4	13	18	20
Crossings	12	12	13	90	75	76
Non-Main-Track Train Collisions	3	5	6	33	39	40
Non-Main-Track Train Derailments - 1-2 cars	25	24	31	165	142	170
Non-Main-Track Train Derailments - 3 or more cars	7	12	11	40	50	49
Collisions/Derailments Involving Track Units	0	0	3	15	6	11
Employee/Passenger	0	0	1	4	2	4
Trespassers	10	8	9	25	32	27
Fires/Explosions	0	1	2	7	9	6
Other	0	3	3	18	15	19
<b>Incidents</b>	<b>18</b>	<b>15</b>	<b>18</b>	<b>79</b>	<b>78</b>	<b>80</b>
Dangerous Goods Leaker	4	5	6	24	35	30
Main-track Switch in Abnormal Position	0	0	1	5	1	2
Movement Exceeds Limits of Authority	10	10	10	36	36	41
Runaway Rolling Stock	2	0	0	8	3	3
Others	2	0	0	6	3	4
<b>Million Train-miles (a)</b>				<b>35.72</b>	<b>35.75</b>	<b>34.88</b>
<b>Accidents/Million Train-miles</b>				<b>12.29</b>	<b>11.38</b>	<b>12.84</b>
<b>Accidents Involving Dangerous Goods</b>	<b>9</b>	<b>6</b>	<b>7</b>	<b>57</b>	<b>48</b>	<b>63</b>
Main-track Train Derailments	2	1	1	6	4	8
Crossings	0	0	0	4	2	2
Non-Main-Track Train Collisions	2	0	2	13	9	13
Non-Main-Track Train Derailments	5	4	4	34	32	37
All Others	0	1	0	0	1	3
<b>Accidents with a DG Release</b>	<b>1</b>	<b>0</b>	<b>0</b>	<b>1</b>	<b>1</b>	<b>1</b>
<b>Accidents Involving Passenger Trains</b>	<b>6</b>	<b>5</b>	<b>6</b>	<b>24</b>	<b>17</b>	<b>27</b>
<b>Fatalities</b>	<b>8</b>	<b>11</b>	<b>9</b>	<b>39</b>	<b>36</b>	<b>30</b>
Crossings	1	4	3	17	12	12
Trespassers	7	7	6	19	21	17
All Others	0	0	0	3	3	1
<b>Serious Injuries</b>	<b>3</b>	<b>2</b>	<b>5</b>	<b>12</b>	<b>31</b>	<b>24</b>
Crossings	1	2	2	6	11	10
Trespassers	2	0	3	4	8	8
All Others	0	0	1	2	12	6

Data extracted June 21, 2013.

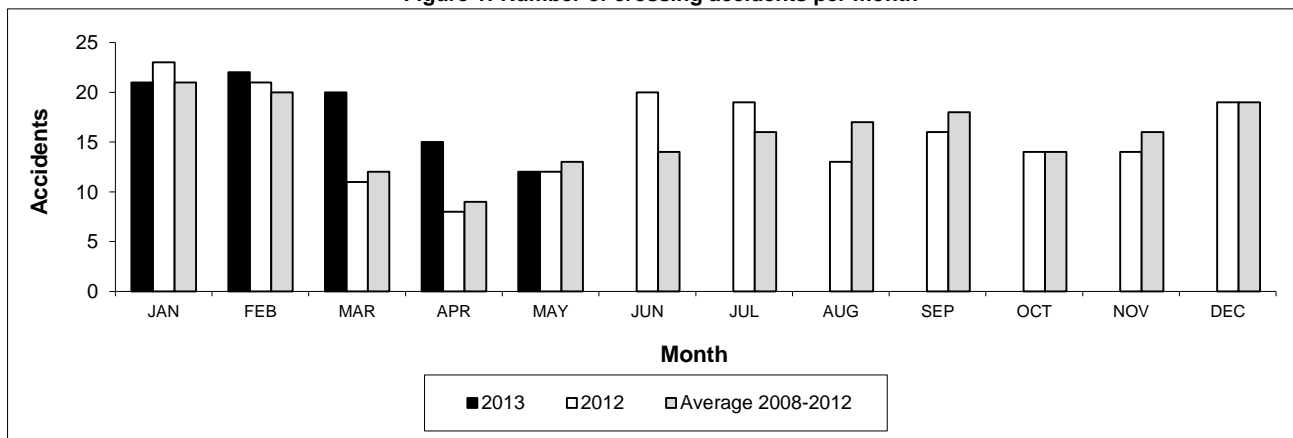
All 5-year averages have been rounded. The totals sometimes do not coincide to the sum of these averages.

a. Train-miles estimated. (Source: Transport Canada)

**Table 2**  
**Railway crossing and trespasser accidents by province**

	Crossings with Type Recorded				All Crossings		Trespasser		
	2013 - Year To Date*				Year To Date*		Year To Date*		
	Public Automated	Public Passive	Private	Farm	2013	2012	2013	2012	
<b>Newfoundland</b>									
Accidents	0	0	0	0	0	0	0	0	
Fatalities	0	0	0	0	0	0	0	0	
Serious Injuries	0	0	0	0	0	0	0	0	
<b>Nova Scotia</b>									
Accidents	0	0	0	0	0	1	0	0	
Fatalities	0	0	0	0	0	0	0	0	
Serious Injuries	0	0	0	0	0	0	0	0	
<b>New Brunswick</b>									
Accidents	1	0	0	0	1	2	0	0	
Fatalities	1	0	0	0	1	1	0	0	
Serious Injuries	0	0	0	0	0	0	0	0	
<b>Quebec</b>									
Accidents	5	0	1	0	7	7	3	2	
Fatalities	2	0	0	0	2	1	2	1	
Serious Injuries	1	0	0	0	1	0	1	0	
<b>Ontario</b>									
Accidents	17	1	0	1	21	18	15	15	
Fatalities	4	0	0	0	4	4	13	9	
Serious Injuries	0	0	0	1	1	2	2	6	
<b>Manitoba</b>									
Accidents	2	5	0	0	7	8	0	0	
Fatalities	0	0	0	0	0	1	0	0	
Serious Injuries	1	0	0	0	1	2	0	0	
<b>Saskatchewan</b>									
Accidents	9	9	0	0	18	11	1	2	
Fatalities	2	1	0	0	3	1	1	1	
Serious Injuries	1	0	0	0	1	2	0	0	
<b>Alberta</b>									
Accidents	13	11	2	0	27	17	3	8	
Fatalities	4	1	0	0	5	2	1	7	
Serious Injuries	0	1	0	0	1	5	1	1	
<b>British Columbia</b>									
Accidents	7	2	0	0	9	11	3	5	
Fatalities	2	0	0	0	2	2	2	3	
Serious Injuries	1	0	0	0	1	0	0	1	
<b>Northwest Territories</b>									
Accidents	0	0	0	0	0	0	0	0	
Fatalities	0	0	0	0	0	0	0	0	
Serious Injuries	0	0	0	0	0	0	0	0	
<b>Canada</b>									
Accidents	54	28	3	1	90	75	25	32	
Fatalities	15	2	0	0	17	12	19	21	
Serious Injuries	4	1	0	1	6	11	4	8	

**Figure 1: Number of crossing accidents per month**



Data extracted June 21, 2013.

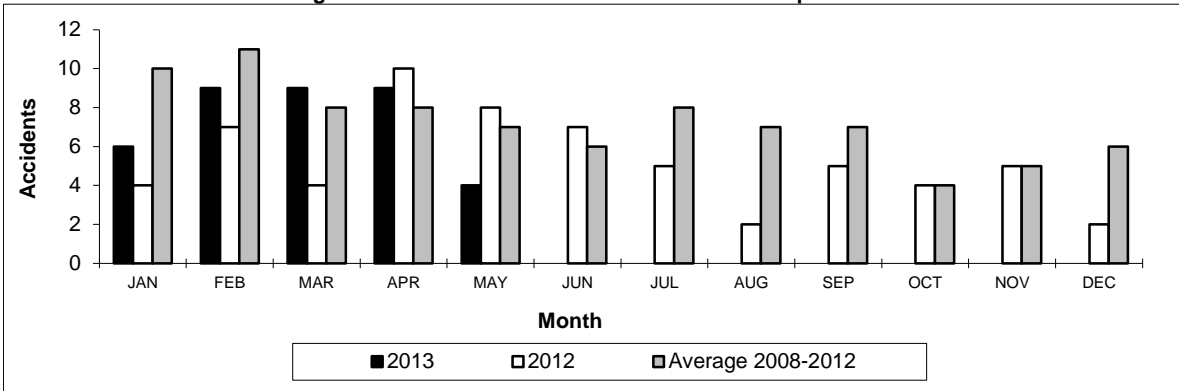
\*Year to date is from January to May.

**Table 3**  
Main-track train derailments by province

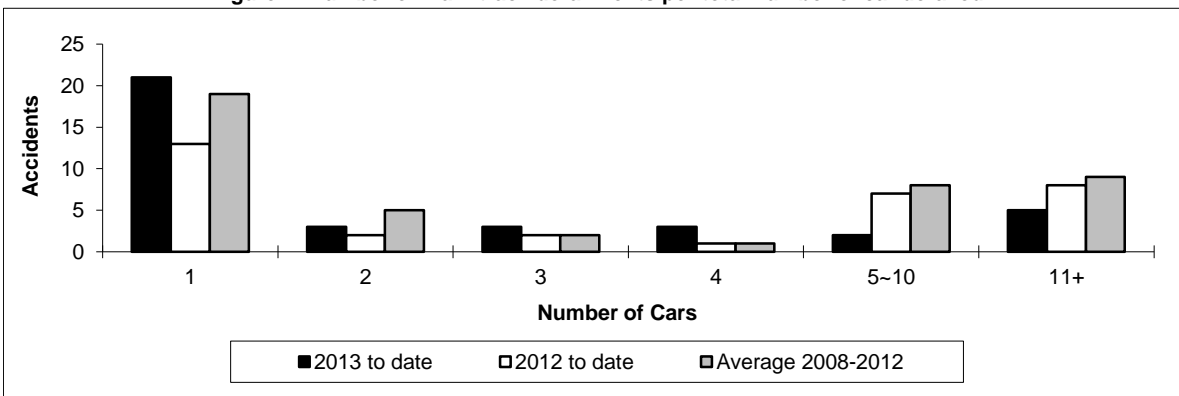
	January to May			Derailments with DG Involvement January to May		
	2013	2012	2008-2012 Average	2013	2012	2008-2012 Average
<b>Canada</b>	<b>37</b>	<b>33</b>	<b>44</b>	<b>6</b>	<b>4</b>	<b>8</b>
Newfoundland	1	0	1	1	0	0
Nova Scotia	1	0	0	0	0	0
New Brunswick	0	0	0	0	0	0
Quebec	2	3	4	0	1	1
Ontario	6	6	12	2	1	4
Manitoba	3	1	4	0	0	0
Saskatchewan	8	2	5	2	1	1
Alberta	8	9	8	1	1	2
British Columbia	8	12	9	0	0	1
Northwest Territories	0	0	0	0	0	0

\* There was 1 occurrence with dangerous goods release to date in 2013 and none in 2012.

**Figure 1: Number of main-track train derailments per month**



**Figure 2: Number of main-track derailments per total number of car derailed**



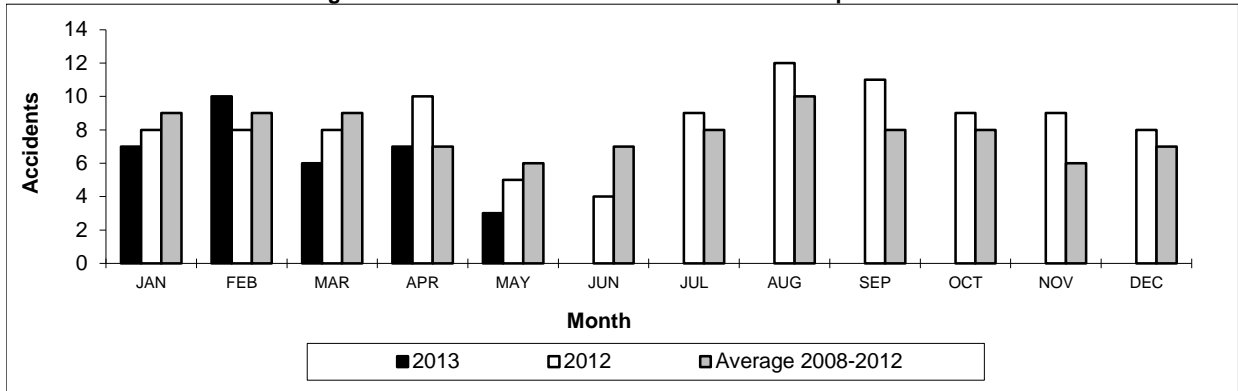
Data extracted June 21, 2013.

**Table 4**  
**Non main-track train collisions by province**

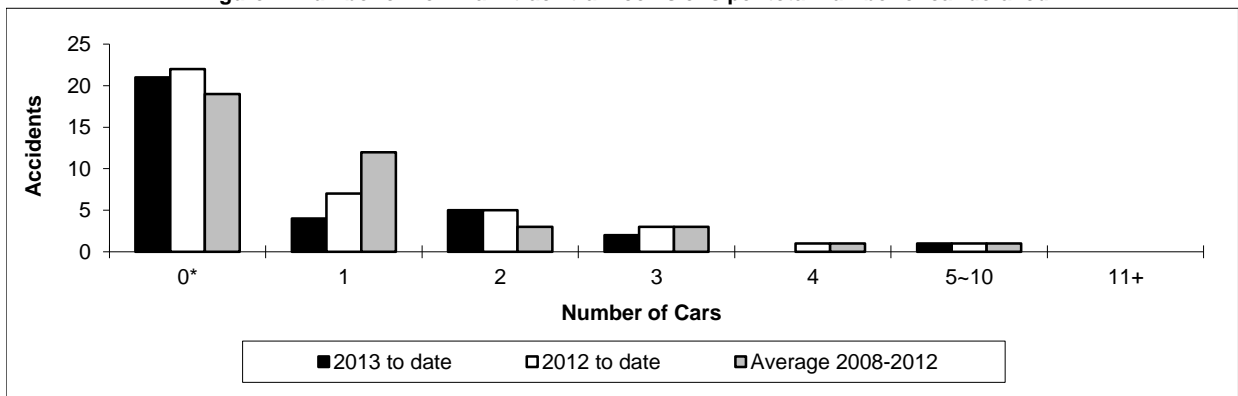
	January to May			Collisions with DG Involvement January to May		
	2013	2012	2008-2012 Average	2013	2012	2008-2012 Average
	<b>Canada</b>	<b>33</b>	<b>39</b>	<b>40</b>	<b>13</b>	<b>9</b>
Newfoundland	0	0	0	0	0	0
Nova Scotia	0	0	0	0	0	0
New Brunswick	0	0	0	0	0	0
Quebec	4	1	4	2	1	1
Ontario	7	4	9	2	0	4
Manitoba	8	8	6	3	4	2
Saskatchewan	3	3	2	1	1	0
Alberta	10	17	9	4	1	3
British Columbia	1	6	9	1	2	2
Northwest Territories	0	0	0	0	0	0

\* There were no occurrences with dangerous goods release to date in 2013 or in 2012.

**Figure 1: Number of non main-track train collisions per month**



**Figure 2: Number of non main-track train collisions per total number of car derailed**



Data extracted June 21, 2013.

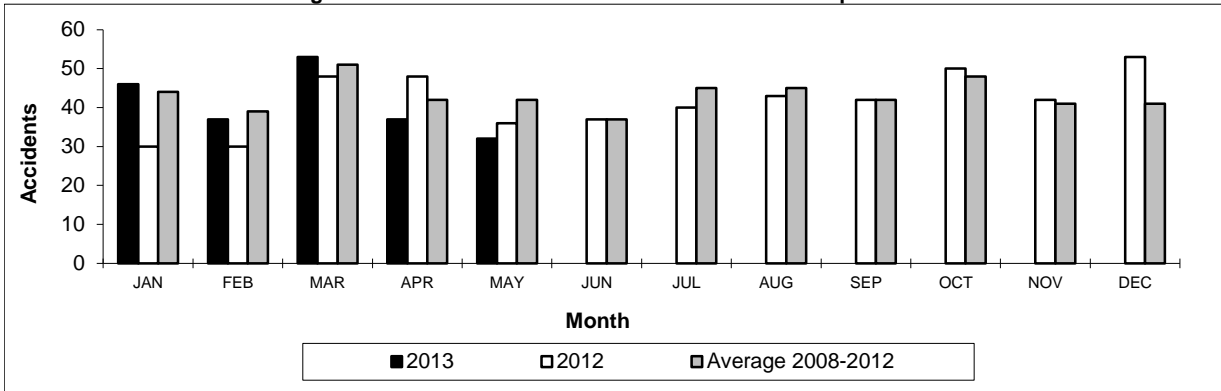
\*Number of collisions with no derailments.

**Table 5**  
**Non main-track train derailments by province**

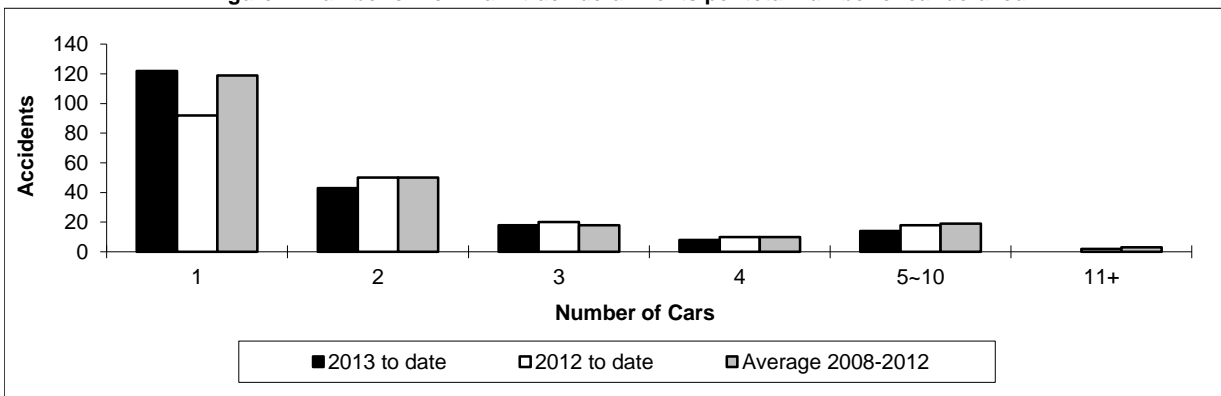
	January to May			Derailments with DG Involvement January to May		
	2013	2012	2008-2012 Average	2013	2012	2008-2012 Average
	<b>Canada</b>	<b>205</b>	<b>192</b>	<b>219</b>	<b>34</b>	<b>32</b>
Newfoundland	1	0	0	0	0	0
Nova Scotia	2	1	1	0	0	0
New Brunswick	3	3	4	1	0	1
Quebec	21	15	23	1	2	5
Ontario	31	40	48	8	7	8
Manitoba	22	23	25	2	5	5
Saskatchewan	40	31	29	4	4	2
Alberta	55	55	52	15	13	11
British Columbia	29	24	38	2	1	5
Northwest Territories	1	0	0	1	0	0

\* There were no occurrences with dangerous goods release to date in 2013 or in 2012.

**Figure 1: Number of non main-track train derailments per month**



**Figure 2: Number of non main-track derailments per total number of car derailed**



Data extracted June 21, 2013.