

Table 1  
Railway Occurrence and Casualty

	July			January to July		
	2013	2012	2008-2012 Average	2013	2012	2008-2012 Average
<b>Accidents</b>	<b>73</b>	<b>94</b>	<b>98</b>	<b>587</b>	<b>580</b>	<b>624</b>
Main-Track Train Collisions	0	1	1	3	6	3
Main-Track Train Derailments - 1-2 cars	9	2	4	35	19	30
Main-Track Train Derailments - 3 or more cars	2	3	5	21	26	29
Crossings	7	19	16	108	114	106
Non-Main-Track Train Collisions	11	9	8	50	52	54
Non-Main-Track Train Derailments - 1-2 cars	23	31	35	208	208	235
Non-Main-Track Train Derailments - 3 or more cars	7	9	10	59	61	66
Collisions/Derailments Involving Track Units	2	2	5	21	9	18
Employee/Passenger	1	2	2	6	4	6
Trespassers	8	10	8	41	49	43
Fires/Explosions	2	1	3	10	10	11
Other	1	5	2	23	22	23
<b>Incidents</b>	<b>25</b>	<b>30</b>	<b>21</b>	<b>119</b>	<b>130</b>	<b>123</b>
Dangerous Goods Leaker	15	12	7	44	54	43
Main-track Switch in Abnormal Position	0	0	1	6	3	3
Movement Exceeds Limits of Authority	9	17	11	54	65	66
Runaway Rolling Stock	1	1	2	9	5	6
Others	0	0	1	6	3	6
<b>Million Train-miles (a)</b>				<b>49.02</b>	<b>50.37</b>	<b>49.72</b>
<b>Accidents/Million Train-miles</b>				<b>11.97</b>	<b>11.51</b>	<b>12.55</b>
<b>Accidents Involving Dangerous Goods</b>	<b>10</b>	<b>11</b>	<b>11</b>	<b>74</b>	<b>70</b>	<b>83</b>
Main-track Train Derailments	1	0	1	7	4	11
Crossings	0	0	1	5	2	3
Non-Main-Track Train Collisions	4	2	2	20	12	16
Non-Main-Track Train Derailments	4	9	7	41	51	50
All Others	1	0	0	1	1	3
<b>Accidents with a DG Release</b>	<b>1</b>	<b>0</b>	<b>0</b>	<b>3</b>	<b>1</b>	<b>2</b>
<b>Accidents Involving Passenger Trains</b>	<b>6</b>	<b>6</b>	<b>7</b>	<b>33</b>	<b>28</b>	<b>39</b>
<b>Fatalities</b>	<b>9</b>	<b>10</b>	<b>8</b>	<b>55</b>	<b>55</b>	<b>44</b>
Crossings	1	4	3	20	22	16
Trespassers	8	6	5	32	30	26
All Others	0	0	0	3	3	1
<b>Serious Injuries</b>	<b>3</b>	<b>8</b>	<b>7</b>	<b>18</b>	<b>48</b>	<b>36</b>
Crossings	3	4	3	10	21	15
Trespassers	0	3	3	6	14	13
All Others	0	1	2	2	13	9

Data extracted August 23, 2013.

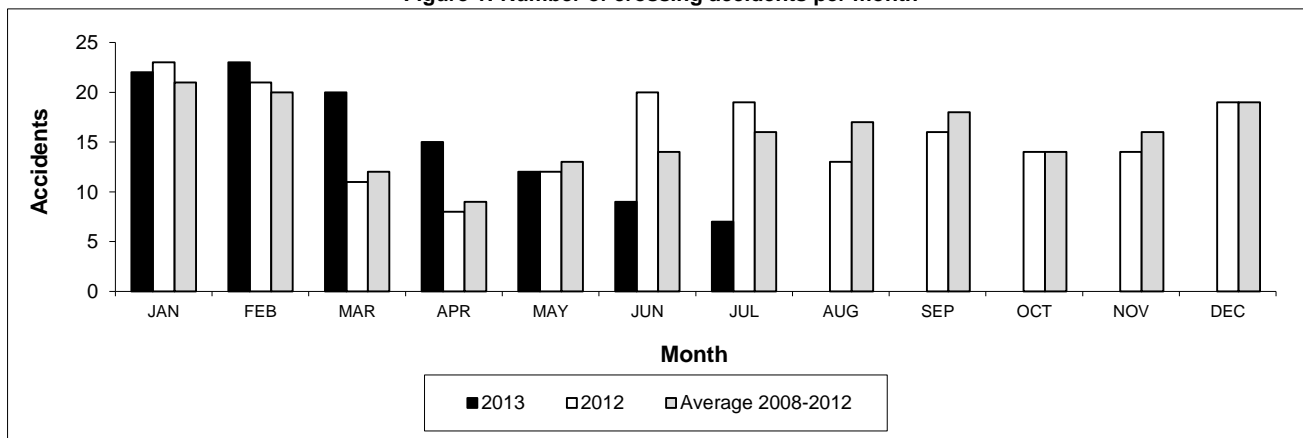
All 5-year averages have been rounded. The totals sometimes do not coincide to the sum of these averages.

a. Train-miles estimated. (Source: Transport Canada)

**Table 2**  
**Railway crossing and trespasser accidents by province**

	Crossings with Type Recorded				All Crossings		Trespasser	
	2013 - Year To Date*				Year To Date*		Year To Date*	
	Public Automated	Public Passive	Private	Farm	2013	2012	2013	2012
<b>Newfoundland</b>								
Accidents	0	0	0	0	0	0	0	0
Fatalities	0	0	0	0	0	0	0	0
Serious Injuries	0	0	0	0	0	0	0	0
<b>Nova Scotia</b>								
Accidents	0	0	0	0	0	1	0	0
Fatalities	0	0	0	0	0	0	0	0
Serious Injuries	0	0	0	0	0	0	0	0
<b>New Brunswick</b>								
Accidents	1	0	0	0	1	3	1	1
Fatalities	1	0	0	0	1	1	1	1
Serious Injuries	0	0	0	0	0	0	0	0
<b>Quebec</b>								
Accidents	6	0	2	0	10	12	5	7
Fatalities	2	0	0	0	2	1	3	3
Serious Injuries	1	0	0	0	1	1	2	2
<b>Ontario</b>								
Accidents	23	1	1	1	26	25	24	23
Fatalities	7	0	0	0	7	8	20	13
Serious Injuries	1	0	0	1	2	7	3	10
<b>Manitoba</b>								
Accidents	4	5	0	0	10	17	1	1
Fatalities	0	0	0	0	0	3	1	1
Serious Injuries	1	0	0	0	1	4	0	0
<b>Saskatchewan</b>								
Accidents	9	10	0	0	20	15	1	4
Fatalities	2	1	0	0	3	3	1	2
Serious Injuries	1	1	0	0	2	2	0	0
<b>Alberta</b>								
Accidents	13	12	2	0	29	26	4	8
Fatalities	4	1	0	0	5	4	2	7
Serious Injuries	0	1	0	0	2	6	1	1
<b>British Columbia</b>								
Accidents	7	4	0	0	12	15	5	5
Fatalities	2	0	0	0	2	2	4	3
Serious Injuries	0	1	0	0	2	1	0	1
<b>Northwest Territories</b>								
Accidents	0	0	0	0	0	0	0	0
Fatalities	0	0	0	0	0	0	0	0
Serious Injuries	0	0	0	0	0	0	0	0
<b>Canada</b>								
Accidents	63	32	5	1	108	114	41	49
Fatalities	18	2	0	0	20	22	32	30
Serious Injuries	4	3	0	1	10	21	6	14

**Figure 1: Number of crossing accidents per month**



Data extracted August 23, 2013.

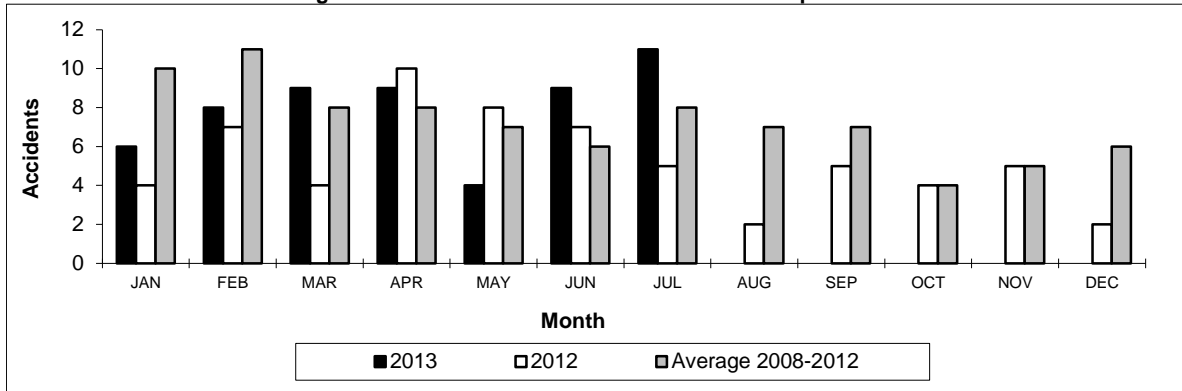
\*Year to date is from January to July.

**Table 3**  
Main-track train derailments by province

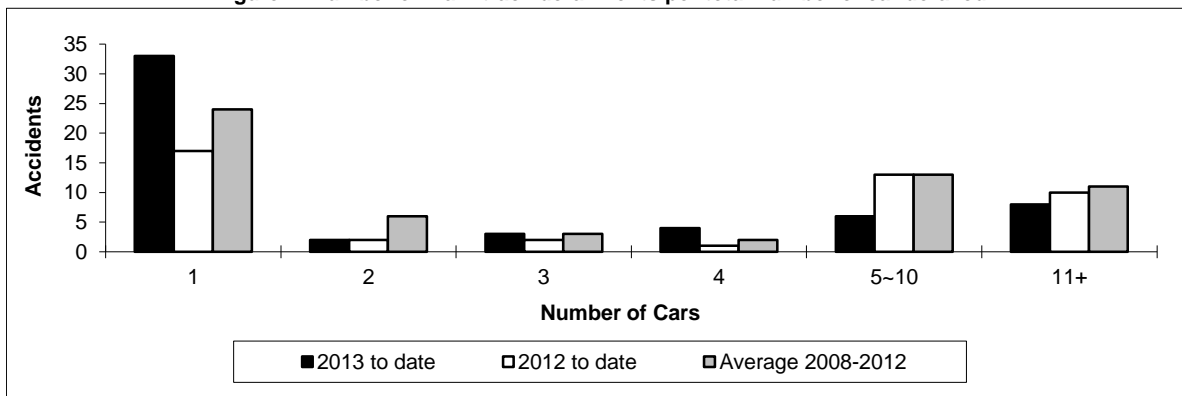
	January to July			Deraillments with DG Involvement January to July		
	2013	2012	2008-2012 Average	2013	2012	2008-2012 Average
<b>Canada</b>	<b>56</b>	<b>45</b>	<b>58</b>	<b>7</b>	<b>4</b>	<b>11</b>
Newfoundland	1	0	1	1	0	0
Nova Scotia	1	0	0	0	0	0
New Brunswick	1	0	0	0	0	0
Quebec	5	3	6	1	1	1
Ontario	12	6	15	2	1	4
Manitoba	4	4	6	0	0	0
Saskatchewan	8	3	6	2	1	1
Alberta	13	14	12	1	1	3
British Columbia	11	15	13	0	0	2
Northwest Territories	0	0	0	0	0	0

\* There were 2 occurrences with dangerous goods release to date in 2013 and none in 2012.

**Figure 1: Number of main-track train derailments per month**



**Figure 2: Number of main-track derailments per total number of car derailed**



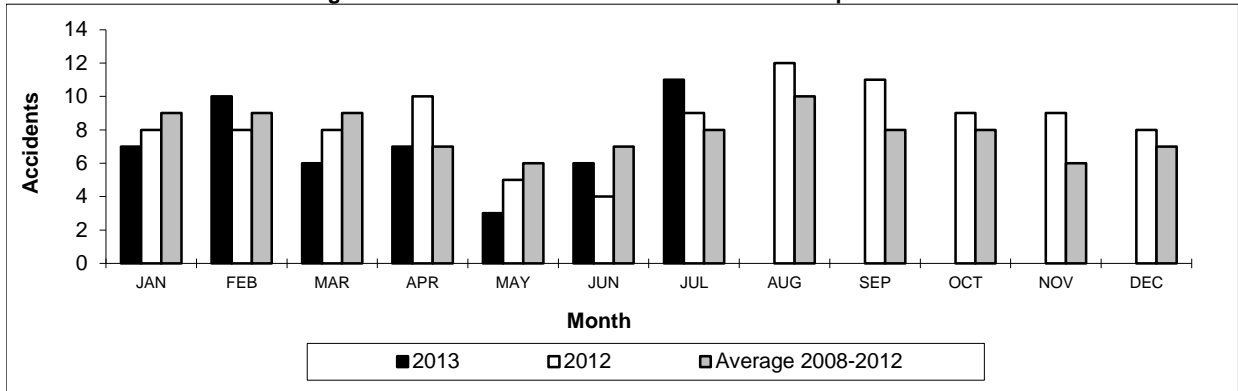
Data extracted August 23, 2013.

**Table 4**  
**Non main-track train collisions by province**

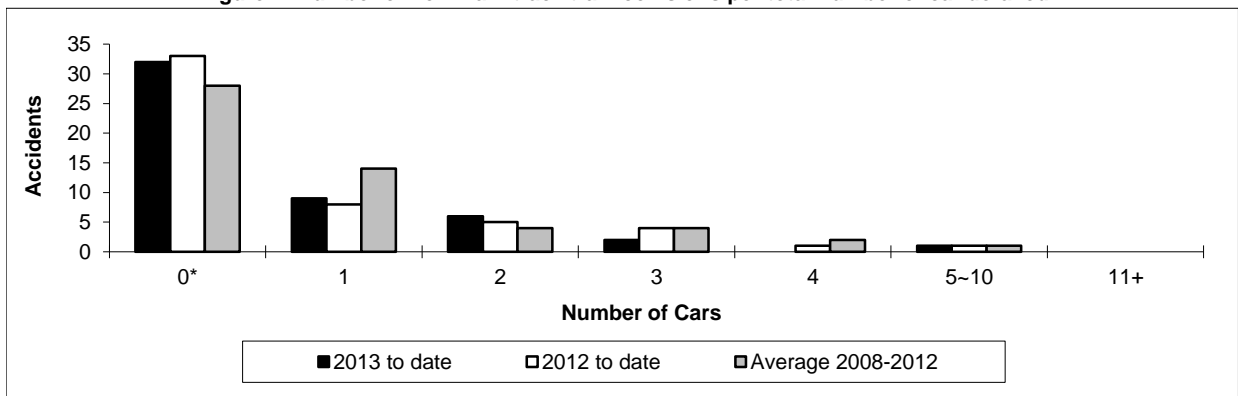
	January to July			Collisions with DG Involvement January to July		
	2013	2012	2008-2012 Average	2013	2012	2008-2012 Average
	<b>Canada</b>	<b>50</b>	<b>52</b>	<b>54</b>	<b>20</b>	<b>12</b>
Newfoundland	0	0	0	0	0	0
Nova Scotia	0	0	0	0	0	0
New Brunswick	1	0	1	0	0	0
Quebec	6	3	6	3	2	1
Ontario	9	5	11	3	0	5
Manitoba	10	11	8	4	4	2
Saskatchewan	5	6	4	2	1	0
Alberta	15	20	14	7	3	5
British Columbia	4	7	11	1	2	3
Northwest Territories	0	0	0	0	0	0

\* There was 1 occurrence with dangerous goods release to date in 2013 and none in 2012.

**Figure 1: Number of non main-track train collisions per month**



**Figure 2: Number of non main-track train collisions per total number of car derailed**



Data extracted August 23, 2013.

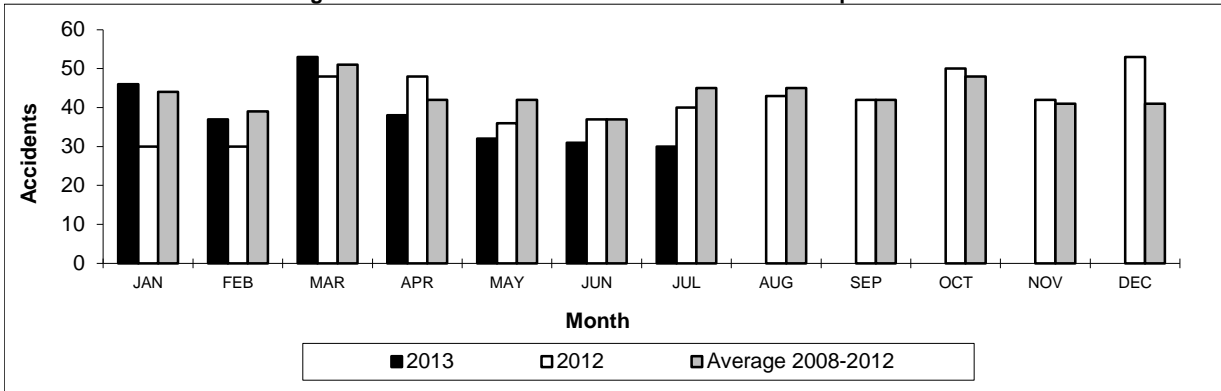
\*Number of collisions with no derailments.

**Table 5**  
**Non main-track train derailments by province**

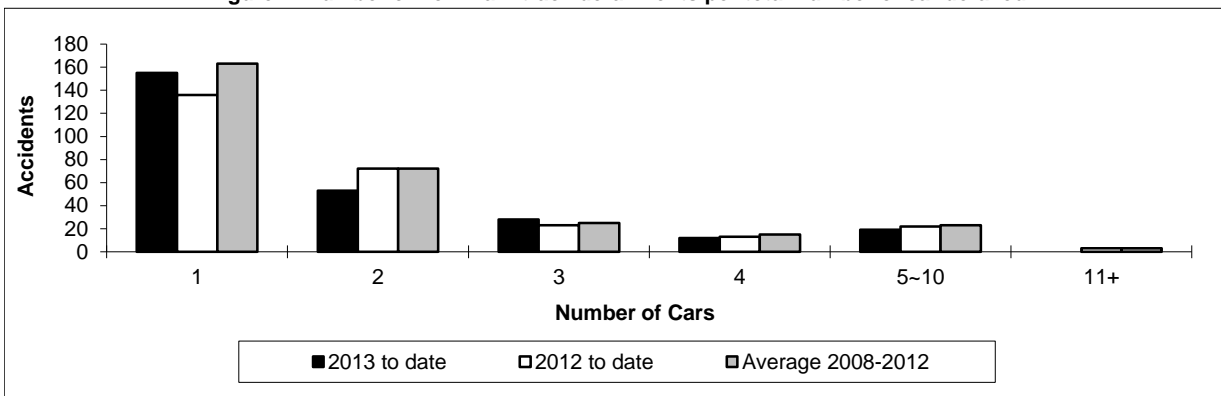
	January to July			Derailments with DG Involvement January to July		
	2013	2012	2008-2012 Average	2013	2012	2008-2012 Average
	<b>Canada</b>	<b>267</b>	<b>269</b>	<b>301</b>	<b>41</b>	<b>51</b>
Newfoundland	1	0	0	0	0	0
Nova Scotia	2	1	2	0	0	0
New Brunswick	3	3	6	1	0	1
Quebec	30	31	33	1	3	6
Ontario	40	53	65	9	10	11
Manitoba	27	35	37	4	6	6
Saskatchewan	49	35	35	6	5	2
Alberta	75	79	71	17	23	15
British Columbia	39	32	53	2	4	7
Northwest Territories	1	0	0	1	0	0

\* There were no occurrences with dangerous goods release to date in 2013 or in 2012.

**Figure 1: Number of non main-track train derailments per month**



**Figure 2: Number of non main-track derailments per total number of car derailed**



Data extracted August 23, 2013.