

Table 1
Railway Occurrence and Casualty

	August			January to August		
	2013	2012	2008-2012 Average	2013	2012	2008-2012 Average
Accidents	53	87	94	645	667	718
Main-Track Train Collisions	0	0	0	3	6	3
Main-Track Train Derailments - 1-2 cars	3	1	4	37	20	33
Main-Track Train Derailments - 3 or more cars	2	1	4	23	27	32
Crossings	11	13	17	118	127	123
Non-Main-Track Train Collisions	3	12	10	52	64	64
Non-Main-Track Train Derailments - 1-2 cars	18	31	33	229	239	268
Non-Main-Track Train Derailments - 3 or more cars	7	12	12	69	73	78
Collisions/Derailments Involving Track Units	2	5	5	24	14	23
Employee/Passenger	0	1	1	6	5	7
Trespassers	5	7	7	47	56	50
Fires/Explosions	0	2	2	10	12	13
Other	2	2	1	25	24	24
Incidents	18	38	21	135	168	145
Dangerous Goods Leaker	11	14	7	55	68	50
Main-track Switch in Abnormal Position	0	1	1	6	4	5
Movement Exceeds Limits of Authority	7	18	11	59	83	76
Runaway Rolling Stock	0	3	1	9	8	7
Others	0	2	1	6	5	7
Million Train-miles (a)				55.73	57.68	56.83
Accidents/Million Train-miles				11.57	11.56	12.63
Accidents Involving Dangerous Goods	8	11	12	83	81	94
Main-track Train Derailments	1	0	1	8	4	12
Crossings	0	0	0	5	2	3
Non-Main-Track Train Collisions	0	3	3	20	15	19
Non-Main-Track Train Derailments	7	8	7	49	59	57
All Others	0	0	0	1	1	4
Accidents with a DG Release	0	0	0	3	1	2
Accidents Involving Passenger Trains	4	4	5	37	32	45
Fatalities	4	9	8	101	64	52
Crossings	0	4	2	20	26	19
Trespassers	4	5	5	36	35	31
All Others	0	0	0	45	3	1
Serious Injuries	1	6	4	20	54	40
Crossings	0	1	2	9	22	16
Trespassers	1	2	1	9	16	14
All Others	0	3	1	2	16	9

Data extracted September 25, 2013.

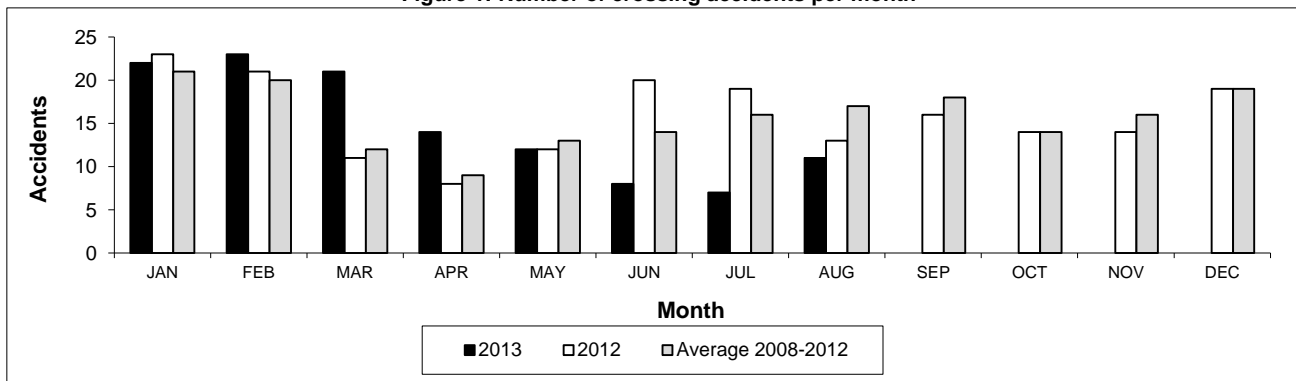
All 5-year averages have been rounded. The totals sometimes do not coincide to the sum of these averages.

a. Train-miles estimated. (Source: Transport Canada)

Table 2
Railway crossing and trespasser accidents by province

	Crossings with Type Recorded				All Crossings		Trespasser	
	2013 - Year To Date*				Year To Date*		Year To Date*	
	Public Automated	Public Passive	Private	Farm	2013	2012	2013	2012
Newfoundland								
Accidents	0	0	0	0	0	0	0	0
Fatalities	0	0	0	0	0	0	0	0
Serious Injuries	0	0	0	0	0	0	0	0
Nova Scotia								
Accidents	0	0	0	0	0	1	0	0
Fatalities	0	0	0	0	0	0	0	0
Serious Injuries	0	0	0	0	0	0	0	0
New Brunswick								
Accidents	1	0	1	0	2	3	1	1
Fatalities	1	0	0	0	1	1	1	1
Serious Injuries	0	0	0	0	0	0	0	0
Quebec								
Accidents	7	0	2	0	11	12	6	8
Fatalities	2	0	0	0	2	1	3	4
Serious Injuries	1	0	0	0	1	1	3	2
Ontario								
Accidents	23	1	1	1	26	28	26	25
Fatalities	7	0	0	0	7	8	22	15
Serious Injuries	1	0	0	1	2	7	3	10
Manitoba								
Accidents	6	6	1	0	13	17	2	1
Fatalities	0	0	0	0	0	3	2	1
Serious Injuries	1	0	0	0	1	4	0	0
Saskatchewan								
Accidents	9	10	0	1	21	18	1	5
Fatalities	2	1	0	0	3	7	1	3
Serious Injuries	1	1	0	0	2	3	0	0
Alberta								
Accidents	15	12	2	0	32	32	5	10
Fatalities	4	1	0	0	5	4	3	8
Serious Injuries	0	1	0	0	2	6	1	2
British Columbia								
Accidents	8	4	0	0	13	16	6	6
Fatalities	2	0	0	0	2	2	4	3
Serious Injuries	0	1	0	0	1	1	2	2
Northwest Territories								
Accidents	0	0	0	0	0	0	0	0
Fatalities	0	0	0	0	0	0	0	0
Serious Injuries	0	0	0	0	0	0	0	0
Canada								
Accidents	69	33	7	2	118	127	47	56
Fatalities	18	2	0	0	20	26	36	35
Serious Injuries	4	3	0	1	9	22	9	16

Figure 1: Number of crossing accidents per month



Data extracted September 25, 2013.
*Year to date is from January to August.

Table 3
Main-track train derailments by province

	January to August			Deraillments with DG Involvement January to August		
	2013	2012	2008-2012 Average	2013	2012	2008-2012 Average
Canada	60	47	66	8	4	12
Newfoundland	1	0	1	1	0	0
Nova Scotia	1	0	0	0	0	0
New Brunswick	1	0	0	0	0	0
Quebec	6	3	7	2	1	1
Ontario	13	6	17	2	1	4
Manitoba	3	5	7	0	0	0
Saskatchewan	8	3	7	2	1	1
Alberta	13	15	14	1	1	3
British Columbia	14	15	13	0	0	2
Northwest Territories	0	0	0	0	0	0

* There were 2 occurrences with dangerous goods release to date in 2013 and none in 2012.

Figure 1: Number of main-track train derailments per month

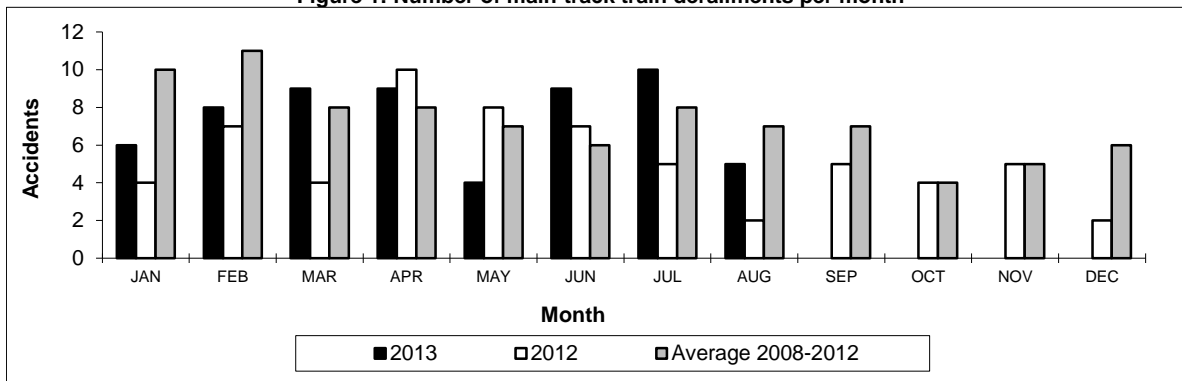
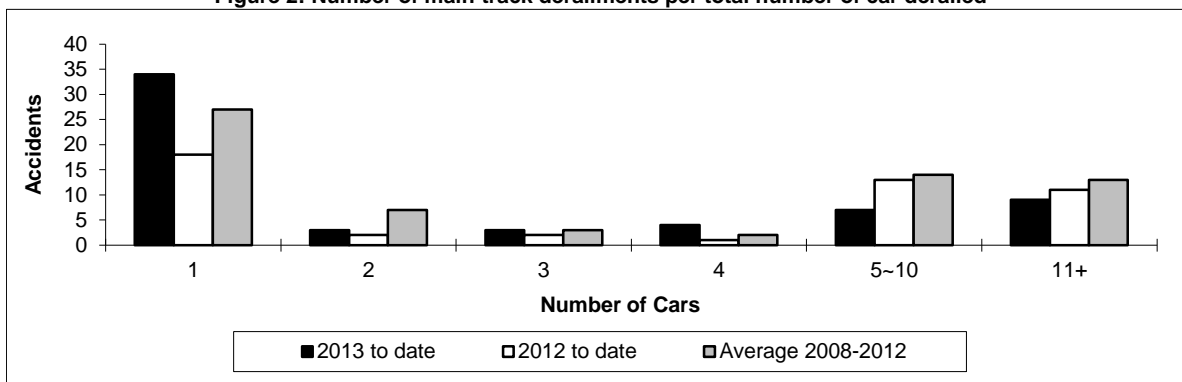


Figure 2: Number of main-track derailments per total number of car derailed



Data extracted September 25, 2013.

Table 4
Non main-track train collisions by province

	January to August			Collisions with DG Involvement January to August		
	2013	2012	2008-2012 Average	2013	2012	2008-2012 Average
Canada	52	64	64	20	15	19
Newfoundland	0	0	0	0	0	0
Nova Scotia	0	0	0	0	0	0
New Brunswick	2	1	1	0	0	0
Quebec	7	5	7	3	2	2
Ontario	9	6	14	3	0	5
Manitoba	10	13	9	4	5	2
Saskatchewan	4	8	4	1	1	1
Alberta	16	23	17	7	4	6
British Columbia	4	8	12	2	3	3
Northwest Territories	0	0	0	0	0	0

* There was 1 occurrence with dangerous goods release to date in 2013 and none in 2012.

Figure 1: Number of non main-track train collisions per month

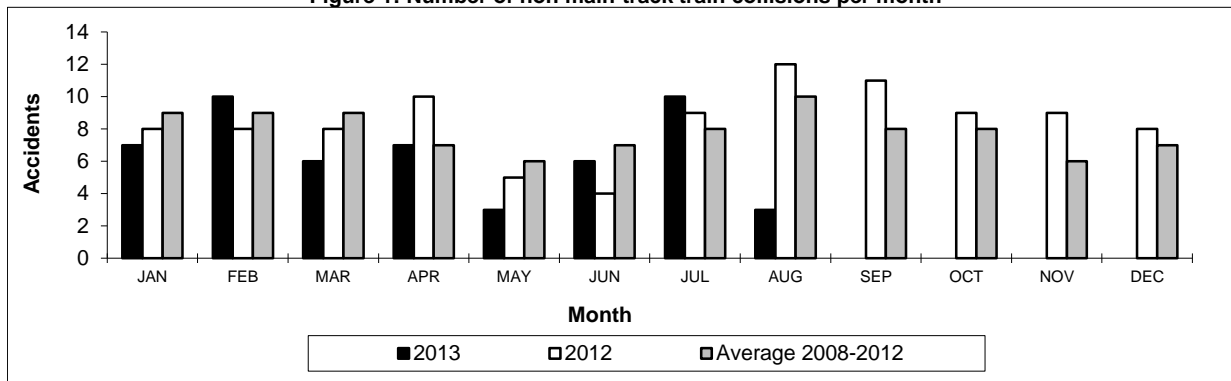
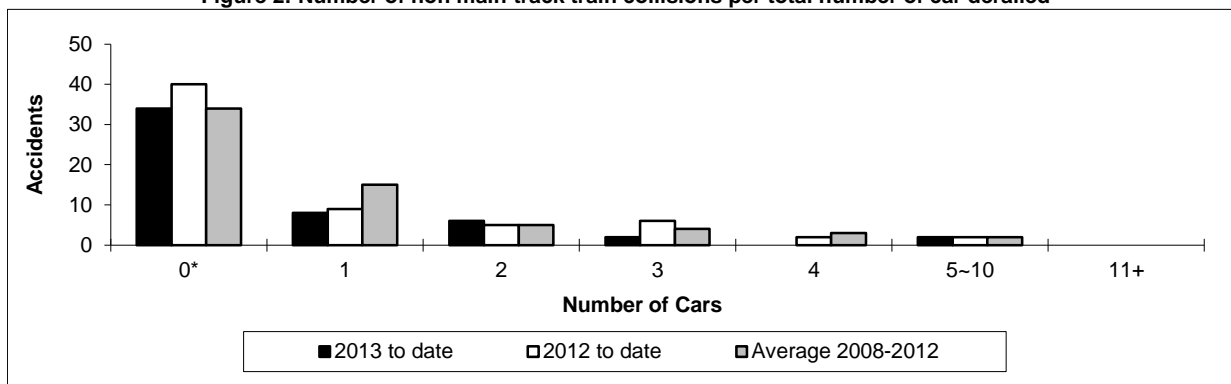


Figure 2: Number of non main-track train collisions per total number of car derailed



Data extracted September 25, 2013.

*Number of collisions with no derailments.

Table 5
Non main-track train derailments by province

	January to August			Derailments with DG Involvement January to August		
	2013	2012	2008-2012 Average	2013	2012	2008-2012 Average
	Canada	298	312	346	49	59
Newfoundland	1	0	0	0	0	0
Nova Scotia	2	1	2	0	0	1
New Brunswick	3	4	7	1	1	1
Quebec	35	38	38	2	3	7
Ontario	45	62	77	10	10	12
Manitoba	33	39	41	4	7	7
Saskatchewan	54	41	40	9	6	3
Alberta	80	89	81	18	26	17
British Columbia	44	38	60	4	6	8
Northwest Territories	1	0	0	1	0	0

* There were no occurrences with dangerous goods release to date in 2013 or in 2012.

Figure 1: Number of non main-track train derailments per month

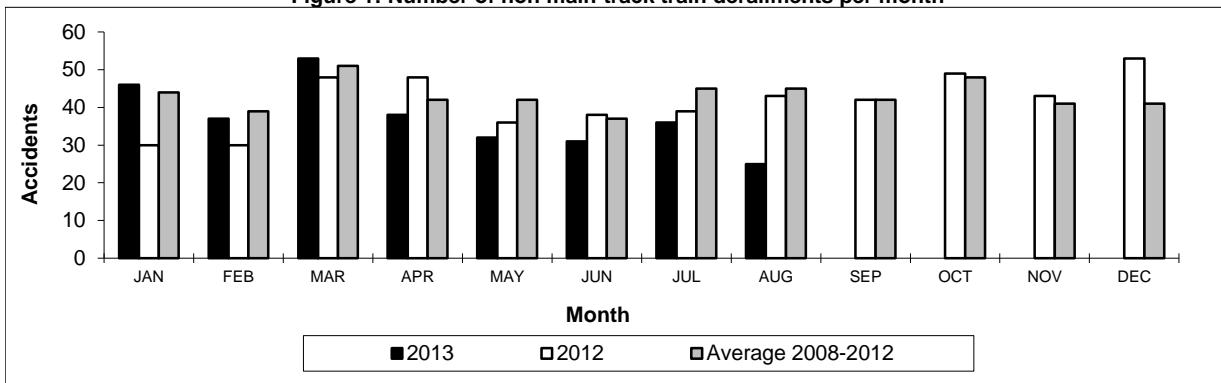
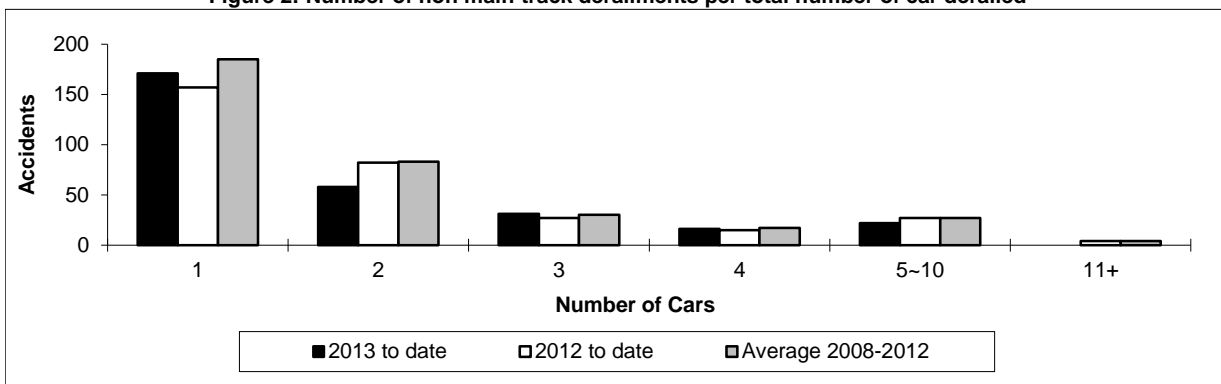


Figure 2: Number of non main-track derailments per total number of car derailed



Data extracted September 25, 2013.