

Table 1

Railway Occurrence and Casualty

	September			January to September		
	2013	2012	2008-2012 Average	2013	2012	2008-2012 Average
Accidents	45	86	91	703	753	809
Main-Track Train Collisions	0	0	0	3	6	3
Main-Track Train Derailments - 1-2 cars	3	2	4	40	22	37
Main-Track Train Derailments - 3 or more cars	3	3	3	26	30	35
Crossings	3	16	18	124	143	141
Non-Main-Track Train Collisions	5	11	8	58	75	72
Non-Main-Track Train Derailments - 1-2 cars	19	31	31	255	270	299
Non-Main-Track Train Derailments - 3 or more cars	5	11	11	75	84	89
Collisions/Derailments Involving Track Units	2	3	3	26	17	26
Employee/Passenger	0	0	0	6	5	7
Trespassers	1	7	8	49	63	57
Fires/Explosions	0	1	2	10	13	15
Other	4	1	3	29	25	27
Incidents	9	15	20	148	183	164
Dangerous Goods Leaker	4	5	8	60	73	59
Main-track Switch in Abnormal Position	0	0	1	6	4	5
Movement Exceeds Limits of Authority	4	9	9	66	92	85
Runaway Rolling Stock	1	0	1	10	8	8
Others	0	1	1	6	6	8
Million Train-miles (a)				62.51	64.82	63.82
Accidents/Million Train-miles				11.25	11.62	12.68
Accidents Involving Dangerous Goods	13	6	9	98	87	103
Main-track Train Derailments	3	1	1	11	5	13
Crossings	0	1	0	5	3	3
Non-Main-Track Train Collisions	3	1	3	23	16	22
Non-Main-Track Train Derailments	6	3	5	57	62	62
All Others	1	0	0	2	1	4
Accidents with a DG Release	0	0	0	3	1	2
Accidents Involving Passenger Trains	1	2	4	38	34	49
Fatalities	6	7	7	110	71	59
Crossings	6	0	1	28	26	20
Trespassers	0	7	6	37	42	37
All Others	0	0	0	45	3	1
Serious Injuries	11	4	6	33	58	46
Crossings	11	4	4	22	26	20
Trespassers	0	0	2	9	16	16
All Others	0	0	0	2	16	10

Data extracted October 28, 2013.

All 5-year averages have been rounded. The totals sometimes do not coincide to the sum of these averages.

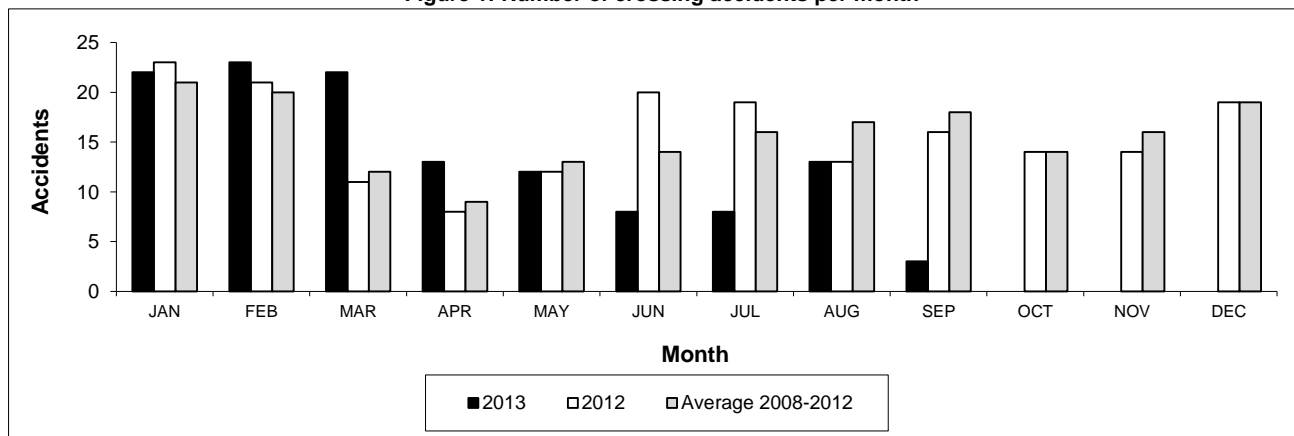
a. Train-miles estimated. (Source: Transport Canada)

Table 2

Railway crossing and trespasser accidents by province

	Crossings with Type Recorded 2013 - Year To Date*				All Crossings Year To Date*		Trespasser Year To Date*	
	Public Automated	Public Passive	Private	Farm	2013	2012	2013	2012
Newfoundland								
Accidents	0	0	0	0	0	0	0	0
Fatalities	0	0	0	0	0	0	0	0
Serious Injuries	0	0	0	0	0	0	0	0
Nova Scotia								
Accidents	0	0	0	0	0	1	0	0
Fatalities	0	0	0	0	0	0	0	0
Serious Injuries	0	0	0	0	0	0	0	0
New Brunswick								
Accidents	1	0	1	0	2	3	1	1
Fatalities	1	0	0	0	1	1	1	1
Serious Injuries	0	0	0	0	0	0	0	0
Quebec								
Accidents	7	0	2	0	11	12	6	8
Fatalities	2	0	0	0	2	1	3	4
Serious Injuries	1	0	0	0	1	1	3	2
Ontario								
Accidents	24	1	1	1	27	31	26	28
Fatalities	13	0	0	0	13	8	22	18
Serious Injuries	11	0	0	1	12	7	3	10
Manitoba								
Accidents	6	6	1	0	13	20	2	2
Fatalities	0	0	0	0	0	3	2	2
Serious Injuries	1	0	0	0	1	7	0	0
Saskatchewan								
Accidents	9	12	0	1	23	24	1	6
Fatalities	2	1	0	0	3	7	1	4
Serious Injuries	1	1	0	0	2	3	0	0
Alberta								
Accidents	16	14	1	0	34	36	6	10
Fatalities	4	1	0	0	5	4	4	8
Serious Injuries	0	2	0	0	5	7	1	2
British Columbia								
Accidents	8	4	0	0	14	16	7	8
Fatalities	2	0	0	0	4	2	4	5
Serious Injuries	0	1	0	0	1	1	2	2
Northwest Territories								
Accidents	0	0	0	0	0	0	0	0
Fatalities	0	0	0	0	0	0	0	0
Serious Injuries	0	0	0	0	0	0	0	0
Canada								
Accidents	71	37	6	2	124	143	49	63
Fatalities	24	2	0	0	28	26	37	42
Serious Injuries	14	4	0	1	22	26	9	16

Figure 1: Number of crossing accidents per month



Data extracted October 28, 2013.

*Year to date is from January to September.

Table 3
Main-track train derailments by province

	January to September			Derailments with DG Involvement January to September		
	2013	2012	2008-2012 Average	2013	2012	2008-2012 Average
Canada	66	52	72	11	5	13
Newfoundland	1	1	1	1	0	0
Nova Scotia	1	0	0	0	0	0
New Brunswick	1	0	0	0	0	0
Quebec	6	3	8	2	1	2
Ontario	13	6	18	3	1	4
Manitoba	3	7	8	0	1	0
Saskatchewan	11	3	7	3	1	1
Alberta	15	16	16	2	1	3
British Columbia	15	16	14	0	0	2
Northwest Territories	0	0	0	0	0	0

* There were 2 occurrences with dangerous goods release to date in 2013 and none in 2012.

Figure 1: Number of main-track train derailments per month

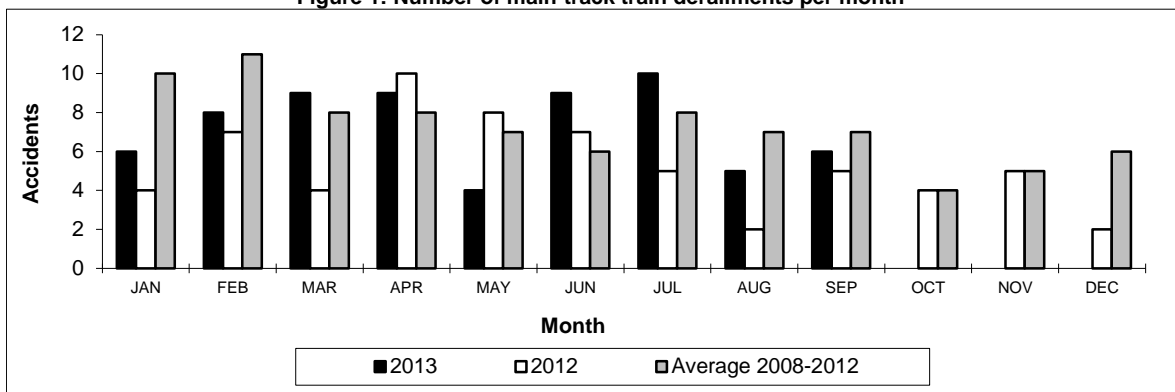
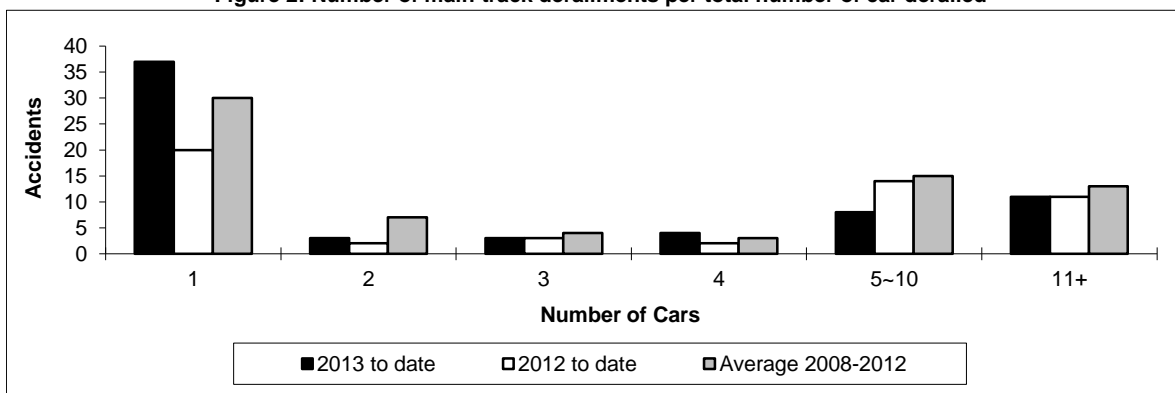


Figure 2: Number of main-track derailments per total number of car derailed



Data extracted October 28, 2013.

Table 4
Non main-track train collisions by province

	January to September			Collisions with DG Involvement January to September		
	2013	2012	2008-2012 Average	2013	2012	2008-2012 Average
Canada	58	75	72	23	16	22
Newfoundland	0	0	0	0	0	0
Nova Scotia	0	0	0	0	0	0
New Brunswick	2	1	1	0	0	0
Quebec	8	6	7	3	2	2
Ontario	11	8	15	4	0	6
Manitoba	10	15	11	4	5	3
Saskatchewan	4	10	5	1	1	1
Alberta	18	26	19	8	4	7
British Columbia	5	9	13	3	4	4
Northwest Territories	0	0	0	0	0	0

* There was 1 occurrence with dangerous goods release to date in 2013 and none in 2012.

Figure 1: Number of non main-track train collisions per month

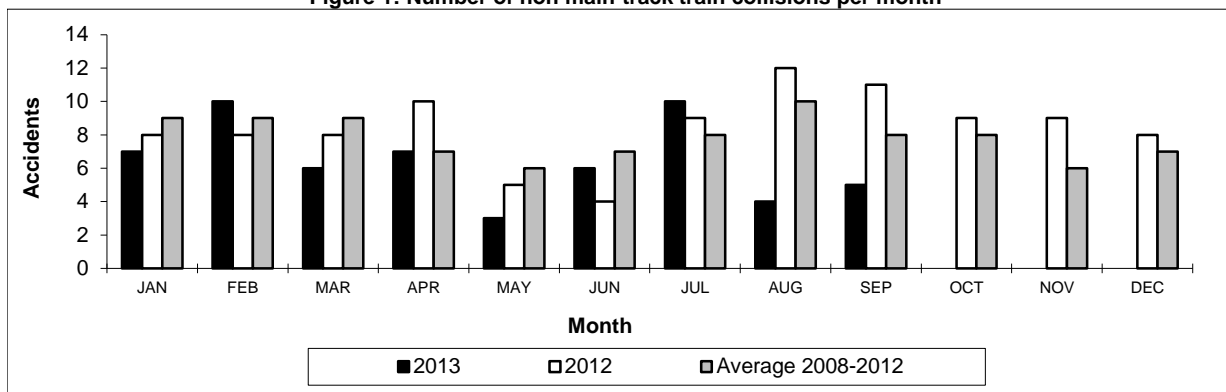
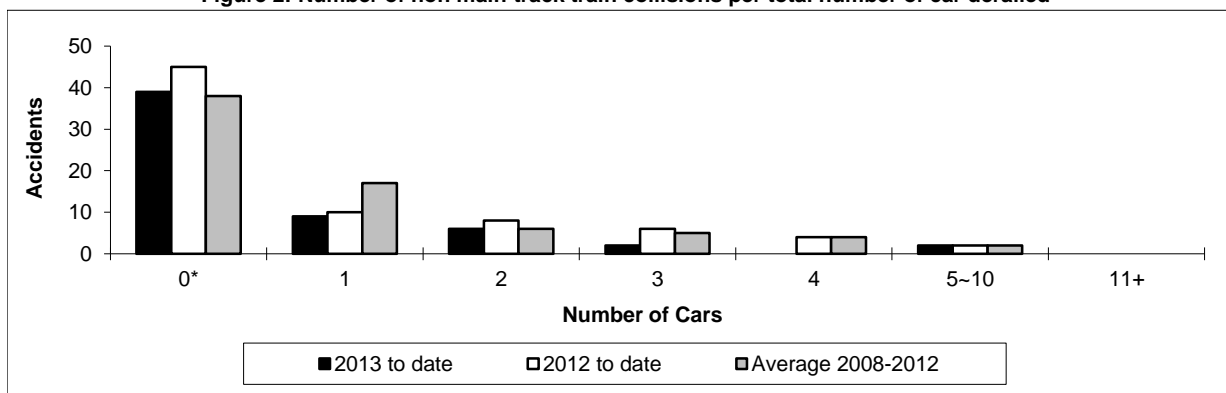


Figure 2: Number of non main-track train collisions per total number of car derailed



Data extracted October 28, 2013.

*Number of collisions with no derailments.

Table 5

Non main-track train derailments by province

	January to September			Derailments with DG Involvement January to September		
	2013	2012	2008-2012 Average	2013	2012	2008-2012 Average
Canada	330	354	388	57	62	62
Newfoundland	1	1	0	0	0	0
Nova Scotia	2	1	2	0	0	1
New Brunswick	3	5	8	1	1	2
Quebec	37	41	44	2	4	8
Ontario	53	73	86	14	11	13
Manitoba	35	45	46	4	7	7
Saskatchewan	61	43	44	9	6	3
Alberta	87	99	92	21	27	19
British Columbia	50	46	65	5	6	8
Northwest Territories	1	0	0	1	0	0

* There were no occurrences with dangerous goods release to date in 2013 or in 2012.

Figure 1: Number of non main-track train derailments per month

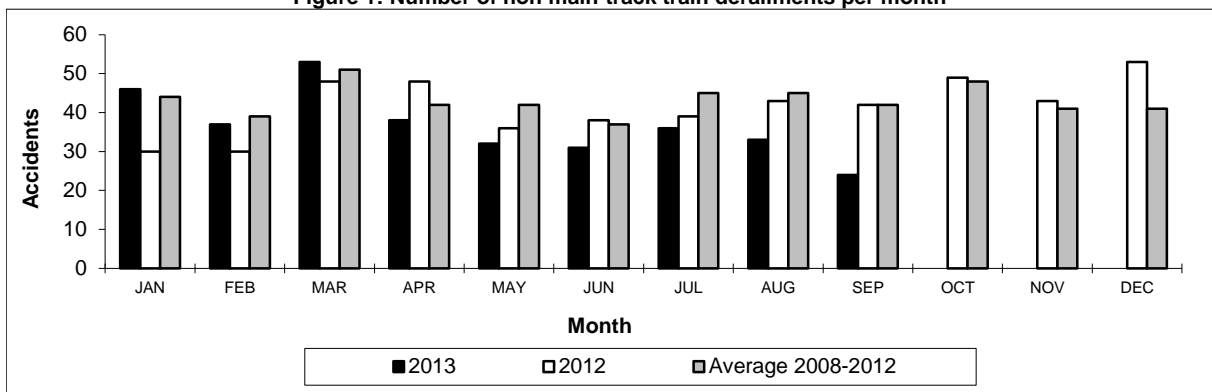
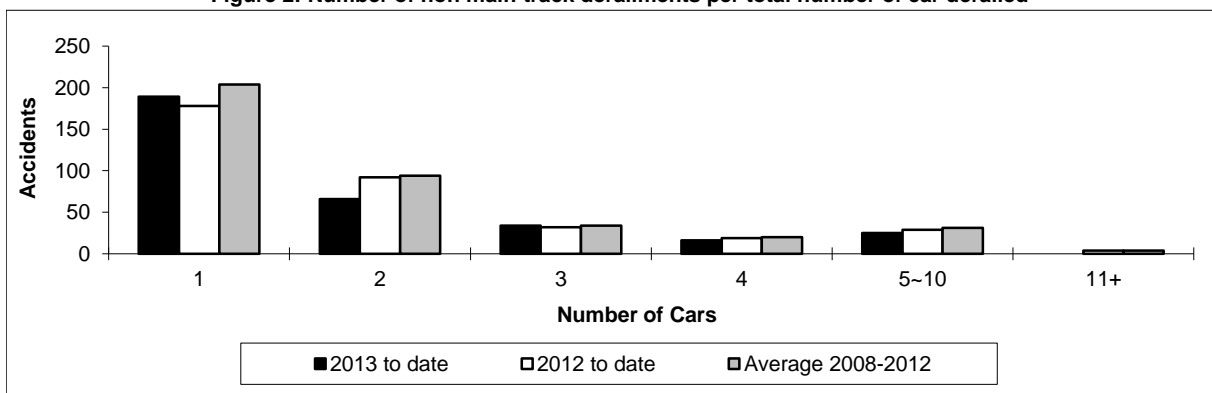


Figure 2: Number of non main-track derailments per total number of car derailed



Data extracted October 28, 2013.