

# Water Temperature at Selected Sites in the Fraser River Basin during the Summer and Fall of 1996

D. P. Barnes and L. C. Walthers

Department of Fisheries and Oceans  
Marine Environment and Habitat Science Division  
Cultus Lake Salmon Research Laboratory  
4222 Columbia Valley Highway  
Cultus Lake, B.C. V2R 5B6

1997

Canadian Data Report of  
Fisheries and Aquatic Sciences 1013



Fisheries and Oceans  
Canada

Pêches et Océans  
Canada

Canada

## **Canadian Data Report of Fisheries and Aquatic Sciences**

Data reports provide a medium for filing and archiving data compilations where little or no analysis is included. Such compilations commonly will have been prepared in support of other journal publications or reports. The subject matter of data reports reflects the broad interests and policies of the Department of Fisheries and Oceans, namely, fisheries and aquatic sciences.

Data reports are not intended for general distribution and the contents must not be referred to in other publications without prior written authorization from the issuing establishment. The correct citation appears above the abstract of each report. Data reports are abstracted in *Aquatic Sciences and Fisheries Abstracts* and indexed in the Department's annual index to scientific and technical publications.

Numbers 1-25 in this series were issued as Fisheries and Marine Service Data Records. Numbers 26-160 were issued as Department of Fisheries and the Environment, Fisheries and Marine Service Data Reports. The current series name was introduced with the publication of report number 161.

Data reports are produced regionally but are numbered nationally. Requests for individual reports will be filled by the issuing establishment listed on the front cover and title page. Out-of-stock reports will be supplied for a fee by commercial agents.

## **Rapport statistique canadien des sciences halieutiques et aquatiques**

Les rapports statistiques servent à classer et à archiver les compilations de données pour lesquelles il y a peu ou point d'analyse. Ces compilations auront d'ordinaire été préparées à l'appui d'autres publications ou rapports. Les sujets des rapports statistiques reflètent la vaste gamme des intérêts et des politiques du ministère des Pêches et des Océans, c'est-à-dire les sciences halieutiques et aquatiques.

Les rapports statistiques ne sont pas destinés à une vaste distribution et leur contenu ne doit pas être mentionné dans une publication sans autorisation écrite préalable de l'établissement auteur. Le titre exact paraît au-dessus du résumé de chaque rapport. Les rapports statistiques sont résumés dans la revue *Résumés des sciences aquatiques et halieutiques*, et ils sont classés dans l'index annuel des publications scientifiques et techniques du Ministère.

Les numéros 1 à 25 de cette série ont été publiés à titre de relevés statistiques, Services des pêches et de la mer. Les numéros 26 à 160 ont été publiés à titre de rapports statistiques du Service des pêches et de la mer, ministère des Pêches et de l'Environnement. Le nom actuel de la série a été établi lors de la parution du numéro 161.

Les rapports statistiques sont produits à l'échelon régional, mais numérotés à l'échelon national. Les demandes de rapports seront satisfaites par l'établissement auteur dont le nom figure sur la couverture et la page du titre. Les rapports épuisés seront fournis contre rétribution par des agents commerciaux.

Canadian Data Report of  
Fisheries and Aquatic Sciences 1013

1997

WATER TEMPERATURE AT SELECTED SITES IN THE  
FRASER RIVER BASIN DURING THE SUMMER AND FALL OF 1996

by

D.P. Barnes and L.C. Walthers<sup>1</sup>

Department of Fisheries and Oceans  
Cultus Lake Salmon Research Laboratory  
4222 Columbia Valley Highway  
Cultus Lake, British Columbia  
V2R 5B6

---

<sup>1</sup> StreamLine Research  
184 Black Powder Trail  
Nanaimo, British Columbia V9S 5G9

© Minister of Supply and Services Canada 1997  
Cat. No. Fs 97-13/1013E ISSN 0706-6465

Correct citation for this publication:

Barnes, D.P. and L.C. Walthers. 1997. Water temperature at selected sites in the Fraser River basin during the summer and fall of 1996. Can. Data Rep. Fish. Aquat. Sci. 1013: 65p.

## TABLE OF CONTENTS

ABSTRACT .....	iv
INTRODUCTION .....	iv
MATERIALS AND METHODS .....	1
RESULTS .....	2
ACKNOWLEDGEMENTS .....	2
REFERENCES .....	2
Table 1. Maximum, minimum, mean daily water temperatures and mean pyranometer readings at selected sites in the Fraser River basin during the summer of 1996. ....	3
Fraser River at Qualark (FR190) .....	4
Ainslie Creek (AC) .....	6
Siska Creek (SIS) .....	7
Fraser River at Lillooet (FR290) .....	8
Seton Creek (SC) .....	9
Bridge River (BR1) .....	11
Fraser River at Marguerite (FR550) .....	13
Fraser River at Quesnel (FR610) .....	14
Fraser River at Shelley (FR779) .....	15
Nechako River at Prince George (NR5) .....	17
Stuart River (SR26) .....	18
Stuart River (SR113) .....	19
Quesnel River at Quesnel (QR1) .....	21
Quesnel River at Likely (QR130) .....	23
Cariboo River (CAR5) .....	25
Chilcotin River at Alexis Creek (CR50) .....	27
Chilcotin River at Redstone (CR68) .....	29
Elkin Creek (EC10) .....	31
Thompson River at Goldpan (TR24) .....	33
Thompson River at Ashcroft (TR80) .....	35
Thompson River at Savona (TR113) .....	36
South Thompson River at Chase (STR60) .....	37
North Thompson River at Kamloops (NTR15) .....	39
Momich River (MR) .....	41
Upper Adams River (UAR5) .....	43
Upper Adams River (UAR38) .....	45
Figure 1. Map of the Fraser River watershed showing sample site locations. ....	47
Figure 2. Graphed mean daily water temperatures at selected sites in the Fraser River basin during the summer of 1996. ....	49
Appendix 1. Data logger site descriptions. ....	63



## ABSTRACT

Barnes, D.P. and L.C. Walthers. 1997. Water Temperature at Selected Sites in the Fraser River Basin during the Summer and Fall of 1996. Can. Data Rep. Fish. Aquat. Sci. 1013: 65 p.

Water temperature data loggers were installed and maintained in the Fraser River basin during the summer and fall of 1996. Hourly mean temperatures were recorded at 26 sites. Hourly mean solar radiation measuring sensors were recorded at four sites.

The daily maximum, minimum, and mean water temperatures are presented. The daily mean water temperature is graphed for each site.

## RÉSUMÉ

Barnes, D.P. and L.C. Walthers. 1997. Water Temperature at Selected Sites in the Fraser River Basin during the Summer and Fall of 1996. Can. Data Rep. Fish. Aquat. Sci. 1013: 65 p.

Des enregistreurs automatiques de données sur la température de l'eau ont été installés et surveillés dans le bassin du Fraser pendant l'été et l'automne 1996. Les températures moyennes horaires ont été enregistrées à 26 stations. Le rayonnement solaire moyen horaire a été mesuré par des capteurs à 4 stations.

Les températures quotidiennes de l'eau (maximum, minimum et moyenne) sont présentées dans le rapport. Un graphique représente la température moyenne quotidienne de l'eau à chaque station.

## INTRODUCTION

Water temperature plays a key role in the migratory patterns and habits of adult salmon and in the freshwater stages of the early life history of juvenile salmonids. As a result of the report prepared by Pearse and Larkin in 1992, the Science Branch of the Department of Fisheries and Oceans has been monitoring water temperatures throughout the Fraser River basin since 1993 (Lauzier et al. 1995). The data collected is used in a predictive mathematical model (Foreman et al. In press) used by managers to provide information for risk identification and strategies for harvesting salmon in the Fraser River.

A second component was added in 1996 by establishing a database of year round water temperature regimes in key interior coho (*Oncorhynchus kisutch*) and chinook (*O. tshawytscha*) spawning and rearing streams and in streams thought to provide cool water refuge sites for migrating juvenile salmon. This data will assist fisheries and habitat managers on habitat and water quality issues and provide baseline information for detecting long-term change. Averaged water temperatures ( $^{\circ}\text{C}$ ) were calculated hourly and recorded at 26 sites in the Fraser River watershed between mid June and mid October. At one site, FR190, temperatures were recorded until December 14. These data are summarized into daily maximum, minimum, and mean temperatures. At 4 sites sensors which measured solar radiation (pyranometers) were installed. This data is summarized as daily mean solar radiation expressed as watts/m<sup>2</sup>.

## MATERIALS AND METHODS

The criteria for locating data logger sites for Fraser River temperature predictions were based on data gathered from 1993 and 1994 (Lauzier et al. 1995) and in 1995 (Brown et al. In press). The addition of 4 for a total of 8 modem access real time data loggers made several sites from previous years dispensable.

As in previous years, Fraser River mainstem sites were identified by the initials FR followed by the approximate number of kilometers upstream of the mouth at Steveston. Tributary stations were identified by their initials and the approximate number of kilometers from their confluences with the Fraser. Where sites were repeated from previous years the site code remained the same. Site descriptions are in Appendix 1. Site locations are shown in Figure 1.

Eight sites in the watershed were equipped with dial-up real time data loggers supplied by Forest Technology Systems, Victoria, B.C. Each logger was configured with two previously calibrated 50m water temperature probes threaded through 2.0cm inside diameter flexible watertight conduit which was reinforced and weighted with 0.5cm chain. A riverboat was used to deploy the full length of the probes. Power for each unit (with the exception of FR190) was supplied by a 48 watt solar panel charging a deep cycle 12 volt battery. All sensitive electronic equipment was housed in a locked aluminum enclosure mounted on aluminum uprights embedded in the ground. The data loggers were programmed (using Weather Pro software by Remsoft) to record the mean temperature, (and, where applicable, the available solar radiation) every hour and were downloaded by telephone twice weekly. FR190 was left in to record temperatures over winter.

Seven sites in the watershed used Unidata Starlog data loggers using two temperature probes, checked for accuracy on site with a hand held calibrated thermometer. The thermistors were threaded through 1.25 cm flexible conduit and connected to camouflage-painted aluminum boxes. The boxes and conduit were concealed to prevent theft or vandalism. The loggers were programmed to

record the mean temperature every hour, with a scan rate of 5 seconds. The loggers were downloaded at the end of the season to a lap-top computer using Starlog software (Starlogger Version 2.024).

Fifteen Vemco Minilog data loggers were also used throughout the watershed. These small, microprocessor controlled loggers are relatively inexpensive and were deployed in areas where, in previous years, vandalism had been a problem. The loggers have a single external temperature sensor and, after verification of accuracy, were programmed to sample the temperature every hour. At seasons end the loggers were downloaded using Minilog software (Version 1.13). Unfortunately, four of the units were either stolen or, for various reasons, not available for downloading at the end of the season. Nine loggers were left in streams over winter.

Three different First Nation bands were contracted to visit 7 different data logger sites to ensure the loggers were functioning properly and to take water temperatures with a hand held calibrated thermometer. These temperature readings were later compared with the recorded logger readings and found to be within  $0.5^{\circ}$  C at all sites.

## RESULTS

The data are presented in Table 1 as daily maximum, minimum, and mean water temperatures for each site. Where applicable, mean pyranometer results are recorded. The mean daily water temperatures are graphed in Figure 2.

## ACKNOWLEDGEMENTS

The authors thank Sharon Williams of the Tsilhqot'in National Government, Raymond Douglas of the Siska Indian Band, and Gerald Michel of the Bridge River Band for their help in maintaining the data loggers and collecting water temperatures. We wish to thank Jeremy Hume, Tom J. Brown and Ray Lauzier for their helpful comments.

## REFERENCES

- Brown, T.J., L.C. Walthers, J.E. Simpson, and D. Barnes. 1995. Water Temperature at Selected Sites in the Fraser River Basin During the Summer of 1995. Can. Data Rep. Fish. Aquat. Sci. In press.
- Foreman, M.G.G., C.B. James, M.C. Quick, P. Hollmans and E. Wiebe. 1997. Flow and Temperature Models for the Fraser and Thompson Rivers. Atmosphere-Ocean. In press. (To appear in 1997).
- Lauzier, R., T.J. Brown, I. V. Williams, and L.C. Walthers. 1995. Water Temperatures at Selected Sites in the Fraser River Basin During the Summers of 1993 and 1994. Can. Data Rep. Fish. Aquat. Sci. No. 956: 86 p.
- Pearse, P.H., and P.A. Larkin. 1992. Managing salmon in the Fraser. Report to the Minister of Fisheries and Oceans on the Fraser River Salmon Investigation. Dept. Fisheries and Oceans, Vancouver: 36 p.



Table 1. Maximum, minimum, mean daily water temperatures and mean pyranometer readings at selected sites in the Fraser River basin during the summer of 1996.

## Fraser River at Qualark (FR190)

1996	Water Temperature (°C)				Water Temperature (°C)		
	Max	Min	Mean		Max	Min	Mean
15-Jun	12.1	11.7	11.9	01-Aug	18.4	17.8	18.1
16-Jun	11.8	11.6	11.7	02-Aug	18.1	17.5	17.8
17-Jun	12.1	11.7	11.8	03-Aug	17.6	16.9	17.2
18-Jun	12.4	12.1	12.2	04-Aug	17.0	16.2	16.5
19-Jun	12.3	11.8	12.0	05-Aug	16.5	15.9	16.2
20-Jun	12.2	11.9	12.0	06-Aug	15.9	15.5	15.7
21-Jun	12.3	12.1	12.2	07-Aug	16.2	15.6	15.9
22-Jun	12.5	12.2	12.3	08-Aug	16.7	16.3	16.5
23-Jun	12.8	12.5	12.6	09-Aug	16.9	16.7	16.8
24-Jun	13.4	12.8	13.0	10-Aug	17.0	16.8	16.9
25-Jun	13.7	13.4	13.6	11-Aug	17.1	16.9	17.0
26-Jun	13.7	13.4	13.5	12-Aug	17.4	16.8	17.1
27-Jun	13.9	13.5	13.7	13-Aug	17.6	16.8	17.2
28-Jun	13.9	13.6	13.7	14-Aug	18.0	17.5	17.8
29-Jun	14.0	13.5	13.7	15-Aug	18.2	18.0	18.1
30-Jun	13.8	13.7	13.8	16-Aug	18.1	17.4	17.9
01-Jul	14.1	13.9	14.0	17-Aug	17.4	17.2	17.3
02-Jul	14.3	14.1	14.2	18-Aug	17.2	16.8	17.0
03-Jul	14.3	13.9	14.1	19-Aug	16.9	16.3	16.5
04-Jul	14.0	13.4	13.8	20-Aug	16.7	16.3	16.5
05-Jul	13.8	13.7	13.8	21-Aug	16.7	16.4	16.6
06-Jul	14.2	13.9	14.0	22-Aug	16.4	16.2	16.3
07-Jul	14.2	13.9	14.0	23-Aug	16.6	16.2	16.4
08-Jul	14.5	14.2	14.3	24-Aug	17.0	16.4	16.7
09-Jul	14.7	14.0	14.4	25-Aug	16.9	16.7	16.8
10-Jul	14.4	14.0	14.2	26-Aug	17.0	16.6	16.8
11-Jul	14.7	14.2	14.4	27-Aug	17.5	16.9	17.2
12-Jul	15.2	14.7	14.9	28-Aug	17.7	17.4	17.6
13-Jul	15.7	15.3	15.5	29-Aug	17.8	17.4	17.6
14-Jul	15.6	15.3	15.5	30-Aug	17.8	17.6	17.7
15-Jul	16.1	15.6	15.8	31-Aug	17.9	17.6	17.7
16-Jul	16.3	15.7	15.9	01-Sep	17.6	17.1	17.4
17-Jul	15.8	15.4	15.6	02-Sep	17.1	16.9	17.0
18-Jul	15.4	15.0	15.1	03-Sep	17.1	16.6	16.9
19-Jul	15.5	15.1	15.3	04-Sep	16.5	16.1	16.4
20-Jul	15.4	15.0	15.2	05-Sep	16.0	15.2	15.6
21-Jul	15.3	15.1	15.2	06-Sep	15.2	14.7	15.0
22-Jul	15.5	15.2	15.3	07-Sep	14.7	14.4	14.5
23-Jul	15.6	15.4	15.5	08-Sep	14.9	14.5	14.7
24-Jul	15.5	15.0	15.2	09-Sep	15.1	14.9	15.0
25-Jul	15.8	15.3	15.6	10-Sep	15.3	14.9	15.1
26-Jul	16.2	15.6	15.8	11-Sep	15.2	15.0	15.1
27-Jul	17.0	16.3	16.5	12-Sep	15.2	15.0	15.1
28-Jul	17.6	17.1	17.3	13-Sep	15.1	14.9	15.1
29-Jul	18.3	17.6	17.8	14-Sep	15.1	14.9	15.0
30-Jul	18.5	18.3	18.4	15-Sep	14.9	14.6	14.8
31-Jul	18.6	18.1	18.4	16-Sep	14.8	14.4	14.5

## Fraser River at Qualark (FR190) Cont'd

1996	Water Temperature (°C)			Water Temperature (°C)			
	Max	Min	Mean	Max	Min	Mean	
17-Sep	14.5	14.3	14.4	01-Nov	4.4	4.0	4.1
18-Sep	14.4	13.9	14.2	02-Nov	4.3	4.0	4.1
19-Sep	13.9	13.8	13.8	03-Nov	4.4	4.2	4.3
20-Sep	13.7	13.5	13.6	04-Nov	4.6	4.3	4.4
21-Sep	13.5	13.3	13.4	05-Nov	4.8	4.6	4.7
22-Sep	13.3	13.0	13.1	06-Nov	4.9	4.8	4.8
23-Sep	12.9	12.5	12.6	07-Nov	4.9	4.6	4.8
24-Sep	12.4	12.1	12.3	08-Nov	4.7	4.5	4.6
25-Sep	12.1	11.9	12.0	09-Nov	5.0	4.7	4.9
26-Sep	12.2	12.1	12.1	10-Nov	4.9	4.5	4.6
27-Sep	12.3	12.1	12.2	11-Nov	4.7	4.5	4.6
28-Sep	12.6	12.3	12.5	12-Nov	5.1	4.8	4.9
29-Sep	13.0	12.6	12.8	13-Nov	5.1	4.7	5.0
30-Sep	13.1	12.7	13.0	14-Nov	4.7	4.5	4.5
01-Oct	12.7	12.3	12.6	15-Nov	4.4	4.1	4.3
02-Oct	12.2	11.3	11.7	16-Nov	3.1	2.5	2.8
03-Oct	11.3	10.9	11.0	17-Nov	2.4	1.4	1.9
04-Oct	11.1	10.9	11.0	18-Nov	1.3	0.6	0.9
05-Oct	11.1	10.9	11.0	19-Nov	0.8	0.4	0.6
06-Oct	11.0	10.9	10.9	20-Nov	0.8	0.4	0.6
07-Oct	11.2	11.0	11.1	21-Nov	0.8	0.3	0.5
08-Oct	11.2	11.1	11.1	22-Nov	0.8	0.5	0.6
09-Oct	11.1	10.9	11.0	23-Nov	1.1	0.6	0.8
10-Oct	11.4	10.9	11.0	24-Nov	1.6	1.2	1.5
11-Oct	11.5	11.3	11.4	25-Nov	1.6	1.1	1.3
12-Oct	11.5	11.2	11.3	26-Nov	1.3	0.9	1.0
13-Oct	11.2	10.8	11.0	27-Nov	1.2	0.8	1.0
14-Oct	10.8	10.3	10.6	28-Nov	1.0	0.7	0.9
15-Oct	10.2	9.9	10.0	29-Nov	1.0	0.5	0.7
16-Oct	9.9	9.6	9.7	30-Nov	1.7	1.1	1.5
17-Oct	9.6	8.7	9.1	01-Dec	1.6	1.5	1.6
18-Oct	8.7	8.1	8.3	02-Dec	1.7	1.5	1.6
19-Oct	8.2	7.9	8.0	03-Dec	1.7	1.1	1.4
20-Oct	7.9	7.7	7.8	04-Dec	1.9	1.2	1.5
21-Oct	7.8	7.6	7.6	05-Dec	2.0	1.8	1.9
22-Oct	7.6	7.4	7.5	06-Dec	2.1	1.7	1.9
23-Oct	7.5	7.1	7.3	07-Dec	1.7	1.5	1.6
24-Oct	7.2	6.8	7.0	08-Dec	1.8	1.7	1.8
25-Oct	7.1	7.0	7.1	09-Dec	1.8	1.6	1.7
26-Oct	7.1	6.7	6.9	10-Dec	1.9	1.6	1.7
27-Oct	6.7	6.6	6.6	11-Dec	1.8	1.6	1.6
28-Oct	6.9	6.6	6.7	12-Dec	1.6	1.5	1.6
29-Oct	6.7	6.1	6.4	13-Dec	1.9	1.7	1.8
30-Oct	6.1	5.4	5.7	14-Dec	2.0	1.9	1.9
31-Oct	5.3	4.5	4.9				

## Ainslie Creek (AC)

1996	Water Temperature (°C)			Water Temperature (°C)			
	Max	Min	Mean	Max	Min	Mean	
10-Jul	13.0	10.6	12.1	28-Aug	15.1	14.5	14.7
11-Jul	13.0	10.5	11.8	29-Aug	15.5	13.5	14.4
12-Jul	13.9	11.1	12.5	30-Aug	15.1	14.2	14.5
13-Jul	14.5	12.1	13.4	31-Aug	14.3	13.2	13.7
14-Jul	15.2	12.6	14.0	01-Sep	13.6	12.3	12.9
15-Jul	15.7	13.5	14.6	02-Sep	13.6	11.8	12.6
16-Jul	14.6	12.7	13.4	03-Sep	13.2	12.0	12.7
17-Jul	12.7	10.6	11.8	04-Sep	11.8	10.5	11.1
18-Jul	10.8	9.3	10.1	05-Sep	11.2	10.2	10.7
19-Jul	10.9	9.9	10.4	06-Sep	11.2	10.2	10.7
20-Jul	12.0	10.1	10.9	07-Sep	11.4	10.5	10.9
21-Jul	12.9	10.6	11.8	08-Sep	12.6	11.1	11.7
22-Jul	14.2	11.5	12.9	09-Sep	12.9	11.4	12.0
23-Jul	15.1	12.7	14.0	10-Sep	12.1	10.3	11.3
24-Jul	15.7	13.2	14.4	11-Sep	12.6	10.9	11.7
25-Jul	15.9	13.6	14.7	12-Sep	13.8	12.1	12.8
26-Jul	16.2	13.8	14.9	13-Sep	13.8	13.0	13.3
27-Jul	16.2	13.6	14.8	14-Sep	13.2	12.3	12.7
28-Jul	16.2	13.5	14.9	15-Sep	12.1	10.5	11.4
29-Jul	17.2	14.8	15.9	16-Sep	10.5	9.5	10.0
30-Jul	16.8	15.1	15.8	17-Sep	10.9	9.8	10.2
31-Jul	15.4	13.0	14.3	18-Sep	10.8	9.6	10.2
01-Aug	15.4	13.0	14.1	19-Sep	10.9	10.3	10.6
02-Aug	14.3	13.5	13.8	20-Sep	10.3	9.6	10.0
03-Aug	13.5	12.6	13.0	21-Sep	9.6	8.7	9.2
04-Aug	13.0	12.0	12.5	22-Sep	9.3	8.1	8.6
05-Aug	12.1	11.2	11.8	23-Sep	8.1	6.8	7.4
06-Aug	13.3	11.7	12.3	24-Sep	7.8	6.5	7.2
07-Aug	13.9	11.4	12.6	25-Sep	8.6	7.0	7.7
08-Aug	14.5	12.0	13.2	26-Sep	9.8	8.6	9.1
09-Aug	15.5	13.0	14.2	27-Sep	10.3	9.0	9.7
10-Aug	15.9	13.5	14.5	28-Sep	10.9	9.6	10.2
11-Aug	15.2	13.5	14.3	29-Sep	10.6	10.2	10.3
12-Aug	14.6	12.3	13.4	30-Sep			
13-Aug	14.9	12.4	13.6	01-Oct			
14-Aug	15.7	12.9	14.1	02-Oct	8.6	7.3	8.0
15-Aug	15.2	13.0	14.1	03-Oct	9.8	8.6	9.2
16-Aug	15.2	13.9	14.4	04-Oct	10.6	9.8	10.3
17-Aug	13.9	12.6	13.2	05-Oct	10.2	9.0	9.6
18-Aug	13.5	12.4	12.8	06-Oct	9.2	8.3	8.8
19-Aug	12.9	12.1	12.5	07-Oct	10.5	9.0	9.6
20-Aug	13.5	12.0	12.6	08-Oct	10.5	9.3	9.7
21-Aug	12.7	11.2	12.1	09-Oct	10.1	8.7	9.4
22-Aug	13.5	10.8	12.1	10-Oct	10.6	9.3	10.0
23-Aug	14.3	12.0	13.0	11-Oct	11.5	9.9	10.7
24-Aug	14.6	12.3	13.4	12-Oct	9.6	8.0	8.7
25-Aug	14.5	12.3	13.4	13-Oct	8.9	8.0	8.7
26-Aug	14.6	12.7	13.7	14-Oct	8.0	7.4	7.7
27-Aug	15.5	13.5	14.5	15-Oct	7.3	6.4	6.8

## Siska Creek (SIS)

1996	Water Temperature (°C)			Water Temperature (°C)			
	Max	Min	Mean	Max	Min	Mean	
10-Jul	12.9	11.1	12.1	27-Aug	15.1	13.5	14.3
11-Jul	13.2	10.5	11.7	28-Aug	14.9	14.3	14.6
12-Jul	14.0	10.9	12.4	29-Aug	15.1	13.8	14.4
13-Jul	14.6	11.8	13.1	30-Aug	14.8	13.8	14.4
14-Jul	15.4	12.4	13.8	31-Aug	13.8	13.0	13.4
15-Jul	15.9	13.3	14.5	01-Sep	13.3	12.3	12.8
16-Jul	14.0	12.6	13.2	02-Sep	13.0	11.8	12.5
17-Jul	12.6	10.3	11.6	03-Sep	11.7	10.5	10.9
18-Jul	11.1	9.3	10.2	04-Sep	11.1	10.1	10.6
19-Jul	11.1	9.6	10.3	05-Sep	11.2	10.5	10.8
20-Jul	12.4	9.9	11.1	06-Sep	11.5	10.6	11.1
21-Jul	13.3	10.3	11.8	07-Sep	12.4	11.2	11.8
22-Jul	14.6	11.4	12.9	08-Sep	12.0	11.2	11.7
23-Jul	15.2	12.4	13.8	09-Sep	11.8	10.6	11.3
24-Jul	15.7	13.0	14.3	10-Sep	12.4	10.9	11.6
25-Jul	15.7	13.5	14.7	11-Sep	13.5	12.1	12.7
26-Jul	15.9	13.6	14.8	12-Sep	13.3	12.7	13.1
27-Jul	16.0	13.5	14.8	13-Sep	12.7	12.0	12.4
28-Jul	16.2	13.5	14.9	14-Sep	12.0	10.1	11.2
29-Jul	16.8	14.6	15.8	15-Sep	10.5	9.3	10.0
30-Jul	16.2	15.1	15.6	16-Sep	10.1	9.5	9.8
31-Jul	15.2	13.3	14.4	17-Sep	10.5	9.3	10.0
01-Aug	15.1	13.5	14.3	18-Sep	10.5	10.2	10.3
02-Aug	14.2	13.3	13.8	19-Sep	10.1	9.3	9.7
03-Aug	13.8	12.7	13.2	20-Sep	9.3	8.9	9.1
04-Aug	13.2	12.1	12.6	21-Sep	8.9	8.1	8.6
05-Aug	12.3	11.4	12.0	22-Sep	8.1	7.0	7.5
06-Aug	13.5	11.8	12.5	23-Sep	7.7	7.0	7.4
07-Aug	14.0	12.0	13.0	24-Sep	8.6	7.1	7.8
08-Aug	14.6	12.4	13.6	25-Sep	9.8	8.6	9.1
09-Aug	14.6	13.6	14.2	26-Sep	10.5	9.2	9.8
10-Aug	14.6	14.0	14.3	27-Sep	10.9	9.9	10.4
11-Aug	14.6	14.2	14.4	28-Sep	11.4	10.5	10.9
12-Aug	14.3	13.3	13.8	29-Sep	10.8	10.1	10.4
13-Aug	14.0	13.5	13.8	30-Sep	9.9	8.4	8.9
14-Aug	14.3	13.9	14.0	01-Oct	8.7	7.7	8.2
15-Aug	14.3	14.0	14.2	02-Oct	10.5	8.7	9.7
16-Aug	14.3	14.0	14.2	03-Oct	10.6	9.9	10.4
17-Aug	14.0	13.5	13.7	04-Oct	9.8	9.2	9.5
18-Aug	13.5	13.2	13.3	05-Oct	9.5	8.4	9.0
19-Aug	13.3	13.0	13.1	06-Oct	10.1	9.2	9.6
20-Aug	13.0	12.6	12.8	07-Oct	9.9	9.3	9.7
21-Aug	12.9	12.0	12.5	08-Oct	9.6	8.7	9.3
22-Aug	13.3	11.7	12.5	09-Oct	10.6	9.3	10.0
23-Aug	14.0	12.7	13.4	10-Oct	10.5	9.5	10.2
24-Aug	14.2	13.0	13.7	11-Oct	9.3	8.3	8.8
25-Aug	14.0	13.0	13.7	12-Oct	9.0	7.7	8.5
26-Aug	14.5	12.9	13.6	13-Oct	7.7	7.1	7.5

Fraser River at Lillooet (FR290)

1996	Water Temperature (°C)		
	Max	Min	Mean
02-Jul	14.6	14.6	14.6
03-Jul	14.6	14.2	14.3
04-Jul	14.4	13.9	14.2
05-Jul	14.4	13.7	14.0
06-Jul	14.2	13.7	13.9
07-Jul	14.2	13.5	13.8
08-Jul	14.2	13.7	14.0
09-Jul	14.2	13.7	13.9
10-Jul	14.6	13.9	14.2
11-Jul	14.9	14.4	14.6
12-Jul	15.6	14.9	15.1
13-Jul	15.6	15.1	15.4
14-Jul	16.1	15.3	15.7
15-Jul	16.3	15.8	16.0
16-Jul	16.3	16.1	16.2
17-Jul	16.1	15.3	15.7
18-Jul	15.3	14.9	15.1
19-Jul	15.1	14.6	14.9
20-Jul	14.9	14.4	14.7
21-Jul	14.9	14.6	14.7
22-Jul	15.1	14.4	14.7
23-Jul	15.1	14.9	15.0
24-Jul	15.3	14.6	14.9
25-Jul	15.8	15.1	15.5
26-Jul	16.6	15.8	16.2
27-Jul	17.3	16.6	16.8
28-Jul	17.6	17.1	17.3
29-Jul	18.3	17.6	17.9
30-Jul	18.9	18.3	18.5
31-Jul	18.9	18.6	18.7
01-Aug	18.6	18.1	18.3
02-Aug	18.1	17.1	17.6
03-Aug	17.1	16.3	16.7
04-Aug	16.3	15.6	16.0
05-Aug	15.6	15.6	15.6
06-Aug	15.6	15.1	15.4
07-Aug	16.1	15.6	15.8
08-Aug	16.3	15.6	16.1
09-Aug	16.3	15.8	16.0



## Seton Creek (SC)

1996	Water Temperature (°C)			Water Temperature (°C)			
	Max	Min	Mean	Max	Min	Mean	
03-Jul	11.8	10.8	11.28	20-Aug	16.6	15.4	15.85
04-Jul	11.2	9.9	10.53	21-Aug	16.3	15.2	15.62
05-Jul	12.1	9.8	10.82	22-Aug	16.8	15.2	15.97
06-Jul	12.6	10.3	11.33	23-Aug	16.9	15.4	16.29
07-Jul	13.0	10.9	11.90	24-Aug	16.8	15.5	16.00
08-Jul	13.6	10.8	12.08	25-Aug	16.9	15.2	15.96
09-Jul	13.0	11.5	12.31	26-Aug	16.6	14.6	15.53
10-Jul	13.0	11.1	12.00	27-Aug	15.9	14.5	15.18
11-Jul	12.6	10.8	11.65	28-Aug	16.8	15.9	16.43
12-Jul	13.3	10.9	12.04	29-Aug	17.2	15.1	16.19
13-Jul	14.2	11.4	12.68	30-Aug	17.1	15.1	15.85
14-Jul	14.3	12.1	13.18	31-Aug	16.5	15.2	15.71
15-Jul	14.9	12.6	13.72	01-Sep	16.3	14.6	15.35
16-Jul	14.5	12.6	13.31	02-Sep	16.2	14.0	14.80
17-Jul	12.9	12.0	12.32	03-Sep	15.9	14.9	15.35
18-Jul	12.9	11.4	12.07	04-Sep	15.5	14.9	15.19
19-Jul	13.9	12.0	12.89	05-Sep	15.5	14.6	14.95
20-Jul	14.9	13.5	14.08	06-Sep	14.9	14.6	14.72
21-Jul	15.1	13.5	14.33	07-Sep	15.2	14.5	14.69
22-Jul	15.2	13.6	14.29	08-Sep	15.4	14.6	14.85
23-Jul	14.3	13.2	13.78	09-Sep	15.4	14.5	14.73
24-Jul	14.0	13.0	13.58	10-Sep	15.1	13.9	14.33
25-Jul	13.5	12.1	12.87	11-Sep	15.1	13.5	14.31
26-Jul	14.3	12.4	13.21	12-Sep	15.7	14.2	14.75
27-Jul	15.4	13.2	14.17	13-Sep	15.5	14.2	14.69
28-Jul	16.5	13.9	14.95	14-Sep	15.1	14.6	14.84
29-Jul	17.1	14.6	15.83	15-Sep	14.8	14.2	14.51
30-Jul	16.8	15.1	16.10	16-Sep	14.9	13.8	14.20
31-Jul	16.8	14.8	15.80	17-Sep	14.5	13.2	13.71
01-Aug	16.8	15.4	16.10	18-Sep	14.3	13.3	13.76
02-Aug	17.1	15.7	16.24	19-Sep	14.3	13.6	13.89
03-Aug	16.3	15.7	15.97	20-Sep	14.3	13.6	13.85
04-Aug	16.3	14.5	15.61	21-Sep	14.0	13.5	13.62
05-Aug	15.5	14.5	15.07	22-Sep	13.8	12.6	13.31
06-Aug	16.5	14.8	15.58	23-Sep	13.3	12.1	12.58
07-Aug	16.8	15.1	15.78	24-Sep	12.7	11.7	12.07
08-Aug	16.9	15.1	15.92	25-Sep	12.7	11.8	12.25
09-Aug	16.5	14.8	15.80	26-Sep	13.2	12.3	12.65
10-Aug	17.7	15.4	16.34	27-Sep	13.6	12.6	13.04
11-Aug	16.8	15.1	16.02	28-Sep	13.9	13.0	13.37
12-Aug	17.4	15.9	16.62	29-Sep	13.8	12.3	13.08
13-Aug	17.8	14.9	16.11	30-Sep	13.0	11.7	12.42
14-Aug	17.2	15.1	16.18	01-Oct	11.8	11.1	11.40
15-Aug	18.1	16.3	16.93	02-Oct	12.1	11.5	11.75
16-Aug	17.2	16.2	16.53	03-Oct	12.4	12.0	12.18
17-Aug	16.9	15.9	16.32	04-Oct	12.7	12.3	12.45
18-Aug	16.9	15.7	16.15	05-Oct	12.9	12.1	12.37
19-Aug	16.6	15.5	15.89	06-Oct	12.7	12.1	12.33

**Seton Creek (SC) Cont'd**

1996	Water Temperature (°C)		
	Max	Min	Mean
07-Oct	12.9	12.1	12.42
08-Oct	13.0	12.1	12.52
09-Oct	12.9	12.1	12.43
10-Oct	12.7	12.1	12.43
11-Oct	12.9	12.3	12.56
12-Oct	12.7	12.1	12.24
13-Oct	12.6	12.0	12.18
14-Oct	12.3	11.8	12.04
15-Oct	12.0	11.5	11.65
16-Oct	11.8	11.4	11.53
17-Oct	11.5	9.8	10.75
18-Oct	11.1	10.1	10.64
19-Oct	11.1	10.6	10.74
20-Oct	10.9	10.3	10.60
21-Oct	10.9	10.5	10.66
22-Oct	10.8	10.5	10.60
23-Oct	10.8	10.3	10.50
24-Oct	10.5	10.2	10.33
25-Oct	10.6	10.3	10.35

## Bridge River (BR1)

1996	Water Temperature (°C)			Water Temperature (°C)			
	Max	Min	Mean	Max	Min	Mean	
03-Jul	13.3	11.1	12.4	18-Aug	14.2	11.5	12.6
04-Jul	12.1	9.5	10.5	19-Aug	13.9	11.8	12.7
05-Jul	12.0	8.4	10.3	20-Aug	14.2	11.1	12.9
06-Jul	12.9	9.2	11.2	21-Aug	13.3	10.9	12.0
07-Jul	14.3	10.3	12.5	22-Aug	14.9	10.9	12.9
08-Jul	15.1	11.5	13.5	23-Aug	16.2	12.7	14.6
09-Jul	14.6	12.0	13.2	24-Aug	16.5	13.3	15.1
10-Jul	13.9	10.8	12.4	25-Aug	15.9	12.9	14.7
11-Jul	13.9	10.5	12.3	26-Aug	15.7	12.7	14.4
12-Jul	14.9	11.2	13.3	27-Aug	15.7	13.5	14.7
13-Jul	15.2	12.1	13.8	28-Aug	15.4	13.9	14.5
14-Jul	15.5	12.3	14.2	29-Aug	15.5	12.9	14.2
15-Jul	15.7	12.6	14.4	30-Aug	15.2	14.6	14.9
16-Jul	14.9	12.1	12.9	31-Aug	14.6	12.7	13.6
17-Jul	12.1	10.8	11.3	01-Sep	13.8	11.4	12.7
18-Jul	11.8	9.5	10.6	02-Sep	14.3	11.7	13.2
19-Jul	12.7	9.8	11.0	03-Sep	13.6	12.1	12.8
20-Jul	14.3	10.2	12.1	04-Sep	12.3	10.6	11.2
21-Jul	15.4	11.4	13.5	05-Sep	10.8	9.2	10.1
22-Jul	16.0	12.1	14.2	06-Sep	10.2	9.0	9.7
23-Jul	16.5	13.0	14.9	07-Sep	11.1	9.5	10.2
24-Jul	16.6	13.3	15.2	08-Sep	12.9	10.6	11.7
25-Jul	16.2	13.3	15.1	09-Sep	13.3	11.2	12.1
26-Jul	16.0	13.0	14.7	10-Sep	12.6	10.1	11.6
27-Jul	16.3	13.0	14.9	11-Sep	13.2	10.2	11.9
28-Jul	16.5	13.3	15.1	12-Sep	13.8	11.2	12.6
29-Jul	17.1	13.9	15.6	13-Sep	14.3	12.6	13.3
30-Jul	16.5	13.9	15.4	14-Sep	13.3	11.7	12.5
31-Jul	15.2	12.6	14.1	15-Sep	12.1	10.5	11.1
01-Aug	14.9	12.3	13.7	16-Sep	11.2	9.8	10.6
02-Aug	15.1	12.7	13.9	17-Sep	10.6	8.9	10.0
03-Aug	14.5	12.1	13.2	18-Sep	10.1	8.3	9.2
04-Aug	13.3	11.8	12.5	19-Sep	10.2	9.3	9.7
05-Aug	12.3	10.8	11.5	20-Sep	10.6	9.0	9.9
06-Aug	14.6	10.5	12.5	21-Sep	10.2	8.4	9.3
07-Aug	15.7	12.1	14.1	22-Sep	9.6	8.0	8.8
08-Aug	15.9	12.3	14.3	23-Sep	8.1	6.1	7.2
09-Aug	16.5	13.2	15.0	24-Sep	8.0	6.1	7.2
10-Aug	16.3	13.6	15.1	25-Sep	9.0	6.8	7.9
11-Aug	15.4	13.0	14.4	26-Sep	10.1	8.4	9.3
12-Aug	14.9	12.0	13.7	27-Sep	10.9	9.0	10.1
13-Aug	16.0	12.1	14.3	28-Sep	11.4	9.5	10.6
14-Aug	16.6	13.0	15.0	29-Sep	11.5	10.1	10.9
15-Aug	16.0	13.6	14.9	30-Sep	11.1	9.8	10.5
16-Aug	16.0	13.5	14.8	01-Oct	10.2	7.7	8.6
17-Aug	14.9	12.3	13.2	02-Oct	7.8	6.5	7.2

## Bridge River (BR1)Cont'd

1996	Water Temperature (°C)		
	Max	Min	Mean
03-Oct	9.8	7.4	8.4
04-Oct	10.5	9.6	10.1
05-Oct	10.2	9.0	9.6
06-Oct	9.5	8.0	8.8
07-Oct	9.5	8.1	9.0
08-Oct	9.5	8.1	8.8
09-Oct	9.2	7.8	8.7
10-Oct	9.8	8.0	8.8
11-Oct	10.2	8.9	9.6
12-Oct	8.7	7.3	7.8
13-Oct	8.7	7.4	8.0
14-Oct	8.4	7.4	7.9
15-Oct	7.4	5.5	6.3
16-Oct	5.5	4.3	4.8
17-Oct	4.6	3.7	4.0
18-Oct	5.5	3.8	4.5
19-Oct	5.5	4.6	4.9
20-Oct	4.9	3.4	4.1
21-Oct	5.3	4.3	4.6
22-Oct	5.8	4.9	5.3
23-Oct	5.2	4.6	4.9
24-Oct	5.2	4.4	4.8
25-Oct	5.3	4.7	4.9

## Fraser River at Marguerite (FR550)

1996	Water Temperature (°C)			Water Temperature (°C)			
	Max	Min	Mean	Max	Min	Mean	
03-Jul	13.7	13.7	13.7	17-Aug	16.3	15.6	15.8
04-Jul	13.5	13.0	13.3	18-Aug	16.1	15.3	15.6
05-Jul	13.3	12.8	13.0	19-Aug	15.8	15.1	15.5
06-Jul	13.0	12.2	12.7	20-Aug	15.1	14.6	14.9
07-Jul	13.0	12.4	12.7	21-Aug	14.6	14.2	14.5
08-Jul	13.0	12.2	12.6	22-Aug	15.1	13.9	14.4
09-Jul	13.7	12.8	13.2	23-Aug	15.3	14.2	14.7
10-Jul	14.2	13.3	13.7	24-Aug	16.1	14.4	15.2
11-Jul	14.4	13.7	14.1	25-Aug	15.3	14.9	15.0
12-Jul	14.6	13.9	14.3				
13-Jul	14.9	14.2	14.5				
14-Jul	15.3	14.4	14.9				
15-Jul	15.6	14.9	15.3				
16-Jul	15.3	14.9	15.1				
17-Jul	14.9	14.6	14.7				
18-Jul	14.6	14.2	14.3				
19-Jul	14.2	13.7	13.9				
20-Jul	13.9	13.3	13.6				
21-Jul	13.9	13.0	13.5				
22-Jul	13.9	13.3	13.6				
23-Jul	14.2	13.0	13.6				
24-Jul	14.9	13.9	14.3				
25-Jul	15.8	14.9	15.3				
26-Jul	16.3	15.6	16.0				
27-Jul	17.1	16.1	16.6				
28-Jul	17.6	16.8	17.2				
29-Jul	18.3	17.3	17.8				
30-Jul	18.6	17.8	18.2				
31-Jul	18.1	17.3	17.7				
01-Aug	17.3	16.3	16.8				
02-Aug	16.3	15.6	16.0				
03-Aug	15.6	15.1	15.3				
04-Aug	15.3	14.9	15.2				
05-Aug	14.9	14.4	14.6				
06-Aug	15.6	14.4	14.8				
07-Aug	15.3	14.4	14.9				
08-Aug	15.6	14.6	15.0				
09-Aug	16.1	14.9	15.5				
10-Aug	16.8	15.8	16.1				
11-Aug	17.1	16.1	16.4				
12-Aug	17.6	16.1	16.9				
13-Aug	17.8	16.6	17.2				
14-Aug	17.6	16.8	17.3				
15-Aug	17.3	16.6	16.8				
16-Aug	16.8	16.1	16.5				

## Fraser River at Quesnel (FR610)

1996	Water Temperature (°C)			Water Temperature (°C)			
	Max	Min	Mean	Max	Min	Mean	
28-Jun	13.7	13.6	13.5	14-Aug	17.6	16.3	16.9
29-Jun	13.5	12.8	13.1	15-Aug	16.8	16.3	16.6
30-Jun	13.5	12.8	13.1	16-Aug	16.6	15.8	16.2
01-Jul	13.7	12.8	13.3	17-Aug	15.8	15.1	15.5
02-Jul	13.5	12.8	13.1	18-Aug	15.8	14.9	15.4
03-Jul	13.3	12.8	13.0	19-Aug	15.3	14.6	14.9
04-Jul	13.5	12.6	13.0	20-Aug	14.6	13.9	14.2
05-Jul	13.0	12.6	12.7	21-Aug	14.2	13.5	13.6
06-Jul	12.8	11.9	12.4	22-Aug	13.9	13.0	13.5
07-Jul	12.4	11.7	12.0	23-Aug	14.4	13.0	13.7
08-Jul	12.8	11.7	12.2	24-Aug	15.1	13.5	14.3
09-Jul	13.7	12.6	13.1	25-Aug	16.1	14.4	15.1
10-Jul	14.4	13.5	13.9	26-Aug	16.6	15.1	15.9
11-Jul	14.6	13.7	14.2	27-Aug	16.8	15.6	16.3
12-Jul	14.6	13.7	14.2	28-Aug	16.8	15.8	16.4
13-Jul	15.1	13.9	14.5	29-Aug	17.3	16.1	16.6
14-Jul	15.8	14.6	15.2	30-Aug	16.8	16.1	16.3
15-Jul	15.8	15.1	15.6	31-Aug	16.1	15.6	15.9
16-Jul	15.6	15.1	15.4	01-Sep	15.6	14.9	15.1
17-Jul	15.6	14.9	15.1	02-Sep	14.9	13.7	14.2
18-Jul	14.9	14.2	14.5	03-Sep	13.7	13.0	13.2
19-Jul	14.2	13.5	13.9	04-Sep	13.3	12.4	12.8
20-Jul	13.7	12.8	13.3	05-Sep	12.4	11.7	12.0
21-Jul	13.5	12.6	13.0	06-Sep	11.9	11.5	11.8
22-Jul	13.3	12.4	12.8	07-Sep	11.5	11.5	11.5
23-Jul	13.9	12.6	13.2	08-Sep	12.6	11.1	11.8
24-Jul	14.9	13.5	14.1	09-Sep	12.6	11.5	12.1
25-Jul	16.1	14.6	15.2	10-Sep	12.2	11.3	11.8
26-Jul	16.8	15.6	16.1	11-Sep	12.2	11.1	11.7
27-Jul	17.8	16.1	16.9	12-Sep	12.4	11.7	12.0
28-Jul	17.8	16.8	17.4	13-Sep	12.8	11.9	12.4
29-Jul	18.6	17.1	17.8	14-Sep	13.3	12.2	12.7
30-Jul	18.3	17.6	18.0	15-Sep	12.6	12.2	12.4
31-Jul	17.6	16.8	17.1	16-Sep	12.6	11.7	12.1
01-Aug	16.8	16.1	16.3	17-Sep	11.9	11.3	11.7
02-Aug	15.8	15.3	15.6	18-Sep	11.5	11.1	11.4
03-Aug	15.3	15.1	15.1	19-Sep	11.7	10.9	11.3
04-Aug	15.1	14.6	14.8	20-Sep	8.2	8.2	8.2
05-Aug	14.9	14.2	14.5	21-Sep	8.2	7.7	8.0
06-Aug	15.6	14.2	14.9	22-Sep	8.2	7.7	8.0
07-Aug	15.6	14.4	15.0	23-Sep	8.8	8.2	8.5
08-Aug	15.6	14.4	15.1	24-Sep	8.8	8.4	8.7
09-Aug	16.3	14.9	15.5	25-Sep	9.0	8.6	8.8
10-Aug	16.6	15.3	15.9	26-Sep	9.2	8.6	8.9
11-Aug	17.1	15.8	16.4	27-Sep	8.6	8.0	8.2
12-Aug	17.3	16.1	16.6	28-Sep	8.2	7.7	8.0
13-Aug	17.6	16.1	16.8				



## Fraser River at Shelley (FR779)

1996	Water Temperature (°C)			Pyranometer
	Max	Min	Mean	Mean
15-Jun	11.1	10.4	10.7	234.0
16-Jun	11.1	10.2	10.6	315.3
17-Jun	10.7	10.0	10.2	83.6
18-Jun	9.9	9.3	9.5	135.9
19-Jun	9.9	9.2	9.5	219.0
20-Jun	10.3	9.6	9.9	179.3
21-Jun	10.8	9.8	10.3	286.5
22-Jun	11.2	10.3	10.7	236.0
23-Jun	11.7	10.6	11.1	293.3
24-Jun	11.9	10.9	11.3	254.5
25-Jun	12.2	11.4	11.7	276.5
26-Jun	12.1	11.3	11.7	221.4
27-Jun	11.8	11.0	11.4	284.3
28-Jun	11.4	10.9	11.1	212.4
29-Jun	11.2	10.6	10.9	241.4
30-Jun	11.4	10.5	10.9	243.3
01-Jul	11.3	10.5	10.8	281.5
02-Jul	11.0	10.4	10.7	194.0
03-Jul	11.1	10.5	10.7	151.3
04-Jul	11.1	10.6	10.8	230.8
05-Jul	10.9	10.3	10.5	152.0
06-Jul	10.2	9.4	9.8	340.5
07-Jul	10.0	9.0	9.5	330.2
08-Jul	11.3	9.6	10.4	259.6
09-Jul	12.3	11.2	11.6	226.3
10-Jul	12.5	11.8	12.1	292.4
11-Jul	12.3	11.3	11.8	303.1
12-Jul	12.6	11.4	11.9	324.8
13-Jul	13.3	11.9	12.5	327.5
14-Jul	14.0	12.8	13.3	331.9
15-Jul	13.8	13.3	13.5	229.0
16-Jul	13.4	12.9	13.2	249.3
17-Jul	13.2	12.2	12.6	75.9
18-Jul	12.2	11.7	11.9	249.8
19-Jul	11.8	11.4	11.5	188.7
20-Jul	11.4	10.9	11.1	60.0
21-Jul	10.9	10.2	10.5	239.0
22-Jul	11.3	10.2	10.7	297.1
23-Jul	12.2	10.6	11.3	310.1
24-Jul	13.4	11.8	12.4	279.5
25-Jul	14.3	12.9	13.5	307.4
26-Jul	15.3	13.8	14.4	304.2
27-Jul	15.8	14.5	15.1	302.4
28-Jul	16.0	14.9	15.4	273.7
29-Jul	16.1	15.2	15.6	285.3
30-Jul	15.6	15.0	15.4	264.7
31-Jul	15.0	14.5	14.7	227.2
01-Aug	14.4	13.6	13.8	156.3
02-Aug	13.6	13.1	13.4	196.8

## Fraser River at Shelley (FR779) Cont'd

	Water Temperature (°C)			Pyranometer
	Max	Min	Mean	Mean
03-Aug	13.5	12.9	13.2	88.3
04-Aug	13.0	12.6	12.8	107.9
05-Aug	12.8	12.3	12.5	135.3
06-Aug	13.2	12.1	12.6	292.5
07-Aug	13.1	12.1	12.6	193.7
08-Aug	13.5	12.3	12.8	222.3
09-Aug	14.5	12.6	13.5	237.9
10-Aug	15.2	13.9	14.5	207.1
11-Aug	15.5	14.4	15.0	208.0
12-Aug	15.6	14.6	15.1	239.0
13-Aug	15.7	14.6	15.1	256.9
14-Aug	15.4	14.5	15.0	200.9
15-Aug	15.3	14.5	14.8	188.7
16-Aug	14.7	14.0	14.3	133.8
17-Aug	14.2	13.6	13.8	141.6
18-Aug	13.8	12.9	13.3	181.1
19-Aug	13.3	12.3	12.8	106.3
20-Aug	12.3	11.7	12.0	151.8
21-Aug	11.9	11.2	11.4	98.8
22-Aug	11.5	11.0	11.3	78.5
23-Aug	12.8	11.4	12.0	236.7
24-Aug	13.8	12.2	12.9	243.3
25-Aug	14.5	13.0	13.7	249.5
26-Aug	15.4	13.8	14.5	239.5
27-Aug	15.3	14.4	14.9	135.8
28-Aug	15.1	14.5	14.8	107.0
29-Aug	15.6	14.4	14.9	151.6
30-Aug	15.3	14.6	14.9	60.0
31-Aug	14.5	13.7	14.0	151.2
01-Sep	13.6	12.1	12.6	109.7
02-Sep	12.2	11.6	11.9	229.9
03-Sep	11.9	11.3	11.6	162.3
04-Sep	11.4	10.8	11.0	99.5
05-Sep	11.0	10.4	10.6	127.9
06-Sep	10.7	10.1	10.5	105.4
07-Sep	10.6	10.4	10.5	57.0
08-Sep	10.9	10.3	10.5	143.5
09-Sep	10.7	9.9	10.3	175.2
10-Sep	10.7	9.7	10.1	181.8
11-Sep	11.0	10.0	10.4	190.9
12-Sep	10.8	10.6	10.6	5.8

## Nechako River at Prince George (NR5)

1996	Water Temperature (°C)			Water Temperature (°C)			
	Max	Min	Mean	Max	Min	Mean	
15-Jun	13.4	12.4	13.0	30-Jul	19.6	18.8	19.1
16-Jun	13.3	12.2	12.6	31-Jul	18.7	18.0	18.3
17-Jun	12.7	11.8	12.3	01-Aug	18.2	17.6	18.0
18-Jun	12.4	11.7	12.0	02-Aug	18.0	17.4	17.6
19-Jun	12.8	11.8	12.3	03-Aug	17.5	17.1	17.3
20-Jun	13.5	12.3	12.9	04-Aug	17.1	16.8	16.9
21-Jun	14.2	13.0	13.5	05-Aug	16.9	16.6	16.7
22-Jun	14.3	13.1	13.6	06-Aug	17.6	16.6	17.0
23-Jun	14.8	13.7	14.2	07-Aug	17.2	16.6	16.9
24-Jun	15.0	14.3	14.6	08-Aug	17.8	16.8	17.2
25-Jun	15.3	14.5	14.8	09-Aug	18.0	16.9	17.4
26-Jun	15.5	14.9	15.1	10-Aug	18.1	17.3	17.6
27-Jun	15.7	14.9	15.2	11-Aug	18.3	17.3	17.6
28-Jun	15.7	15.4	15.5	12-Aug	17.9	17.2	17.5
29-Jun	16.0	15.3	15.6	13-Aug	17.9	17.0	17.4
30-Jun	16.1	15.3	15.6	14-Aug	18.2	17.1	17.6
01-Jul	16.7	15.7	16.1	15-Aug	18.2	17.2	17.7
02-Jul	16.1	15.6	15.8	16-Aug	17.8	16.9	17.4
03-Jul	15.9	15.5	15.6	17-Aug	16.8	16.4	16.6
04-Jul	15.9	15.3	15.6	18-Aug	16.8	16.0	16.3
05-Jul	15.5	15.1	15.3	19-Aug	16.0	15.7	15.9
06-Jul	15.4	14.8	15.0	20-Aug	15.6	15.2	15.4
07-Jul	16.0	14.8	15.3	21-Aug	15.3	14.9	15.1
08-Jul	16.6	15.7	16.1	22-Aug	15.2	14.8	15.0
09-Jul	16.9	16.3	16.6	23-Aug	16.1	14.7	15.3
10-Jul	16.8	16.3	16.5	24-Aug	16.6	15.1	15.9
11-Jul	16.5	15.9	16.2	25-Aug	17.6	15.8	16.7
12-Jul	17.3	16.2	16.7	26-Aug	18.3	16.3	17.3
13-Jul	17.8	16.7	17.2	27-Aug	18.1	16.7	17.4
14-Jul	18.1	17.1	17.6	28-Aug	17.8	16.7	17.3
15-Jul	17.9	17.5	17.7	29-Aug	18.4	17.0	17.6
16-Jul	18.0	17.3	17.6	30-Aug	17.9	17.0	17.4
17-Jul	17.5	16.4	17.0	31-Aug	17.3	16.4	16.8
18-Jul	16.6	16.1	16.3	01-Sep	16.6	15.4	15.9
19-Jul	16.0	15.5	15.8	02-Sep	15.7	14.5	15.1
20-Jul	15.5	15.2	15.4	03-Sep	15.1	14.2	14.7
21-Jul	15.7	15.0	15.3	04-Sep	14.3	13.4	13.8
22-Jul	16.5	15.3	15.8	05-Sep	14.0	12.9	13.4
23-Jul	17.1	16.1	16.5	06-Sep	13.7	12.9	13.3
24-Jul	17.9	16.8	17.2	07-Sep	12.9	12.2	12.5
25-Jul	18.5	17.4	17.9	08-Sep	13.5	12.1	12.7
26-Jul	19.0	18.1	18.5	09-Sep	13.8	12.3	13.1
27-Jul	19.3	18.3	18.7	10-Sep	14.2	12.3	13.2
28-Jul	19.4	18.6	19.0	11-Sep	15.0	12.8	13.9
29-Jul	20.0	18.9	19.3	12-Sep	14.4	13.4	13.8

## Stuart River (SR26)

1996	Water Temperature (°C)			Water Temperature (°C)			
	Max	Min	Mean	Max	Min	Mean	
30-Jun	15.3	14.9	15.2	14-Aug	17.8	17.1	17.3
01-Jul	16.3	14.9	15.1	15-Aug	17.8	17.3	17.5
02-Jul	16.6	14.9	15.1	16-Aug	17.3	16.6	16.8
03-Jul	17.6	14.6	15.0	17-Aug	16.8	16.1	16.3
04-Jul	17.6	14.9	15.0	18-Aug	17.1	15.6	15.8
05-Jul	17.6	14.4	14.7	19-Aug	17.3	15.6	15.8
06-Jul	17.6	14.2	14.5	20-Aug	17.3	15.3	15.4
07-Jul	17.6	14.6	15.0	21-Aug	17.3	14.9	15.0
08-Jul	17.6	15.3	15.7	22-Aug	17.3	14.6	14.7
09-Jul	17.6	15.3	15.6	23-Aug	17.3	14.6	15.0
10-Jul	17.6	14.9	15.1	24-Aug	17.3	15.1	15.7
11-Jul	17.6	14.9	15.2	25-Aug	17.3	15.6	16.0
12-Jul	17.6	15.3	15.8	26-Aug	17.3	16.3	16.6
13-Jul	17.6	15.6	16.1	27-Aug	17.3	16.6	16.8
14-Jul	18.1	16.3	16.9	28-Aug	17.3	16.3	16.6
15-Jul	18.1	17.3	17.3	29-Aug	17.3	16.3	16.7
16-Jul	18.9	16.6	16.8	30-Aug	17.3	16.8	17.1
17-Jul	19.1	16.3	16.4	31-Aug	16.8	15.6	16.2
18-Jul	19.4	15.3	15.8	01-Sep	15.6	14.6	15.1
19-Jul	19.4	15.3	15.8	02-Sep	14.6	14.2	14.5
20-Jul	19.4	14.9	15.1	03-Sep	14.6	14.2	14.3
21-Jul	19.4	14.6	15.0	04-Sep	14.4	13.5	13.8
22-Jul	19.4	14.9	15.3	05-Sep	14.4	12.4	13.2
23-Jul	19.4	15.3	15.8	06-Sep	14.4	11.9	12.2
24-Jul	19.4	16.1	16.6	07-Sep	14.4	12.2	12.3
25-Jul	19.4	17.1	17.5	08-Sep	14.4	12.2	12.4
26-Jul	19.4	17.1	17.5	09-Sep	14.4	12.6	12.9
27-Jul	19.4	17.6	18.0	10-Sep	14.4	12.8	13.0
28-Jul	19.4	18.1	18.6	11-Sep	14.4	13.0	13.5
29-Jul	19.4	18.1	18.7	12-Sep	14.4	13.5	13.8
30-Jul	19.4	18.6	18.9	13-Sep	14.4	13.5	13.9
31-Jul	19.1	18.1	18.7	14-Sep	14.2	13.5	13.7
01-Aug	18.1	17.8	17.9				
02-Aug	17.8	17.6	17.7				
03-Aug	17.6	17.3	17.4				
04-Aug	17.8	16.8	17.0				
05-Aug	17.8	16.6	16.8				
06-Aug	17.8	16.6	16.7				
07-Aug	17.8	16.3	16.6				
08-Aug	17.8	16.1	16.3				
09-Aug	17.8	16.3	16.6				
10-Aug	17.8	16.8	17.0				
11-Aug	17.8	16.8	17.1				
12-Aug	17.8	16.6	16.8				
13-Aug	17.8	16.6	16.9				

## Stuart River (SR113)

1996	Water Temperature (°C)			Water Temperature (°C)			
	Max	Min	Mean	Max	Min	Mean	
29-Jun	14.9	14.3	14.8	16-Aug	16.6	15.8	16.3
30-Jun	14.9	13.9	14.4	17-Aug	16.1	15.6	15.8
01-Jul	15.1	14.2	14.7	18-Aug	16.1	15.1	15.6
02-Jul	15.3	14.2	14.7	19-Aug	15.8	15.1	15.5
03-Jul	15.1	14.4	14.7	20-Aug	15.6	14.9	15.2
04-Jul	15.1	14.2	14.6	21-Aug	15.1	14.6	14.8
05-Jul	14.6	13.9	14.3	22-Aug	15.1	14.4	14.8
06-Jul	14.6	13.5	14.1	23-Aug	15.8	14.6	15.2
07-Jul	15.6	13.7	14.6	24-Aug	16.6	14.9	15.6
08-Jul	15.6	13.9	14.7	25-Aug	16.8	15.1	16.0
09-Jul	15.1	14.2	14.7	26-Aug	17.3	15.3	16.4
10-Jul	15.3	14.2	14.8	27-Aug	16.8	15.3	16.1
11-Jul	15.6	14.2	14.9	28-Aug	16.8	16.1	16.4
12-Jul	16.1	14.2	15.1	29-Aug	17.8	15.8	16.8
13-Jul	17.3	15.1	16.1	30-Aug	17.3	16.1	16.6
14-Jul	17.6	15.8	16.8	31-Aug	15.8	15.3	15.6
15-Jul	17.1	15.6	16.2	01-Sep	15.3	14.6	15.0
16-Jul	16.8	15.6	16.2	02-Sep	15.8	13.9	14.8
17-Jul	16.3	15.6	15.8	03-Sep	14.6	13.9	14.3
18-Jul	15.8	15.3	15.6	04-Sep	13.9	12.2	12.9
19-Jul	15.6	14.9	15.4	05-Sep	13.0	11.9	12.4
20-Jul	14.9	14.4	14.6	06-Sep	13.0	11.9	12.6
21-Jul	15.1	14.2	14.5	07-Sep	13.0	12.2	12.6
22-Jul	15.6	14.2	15.0	08-Sep	13.7	12.6	13.0
23-Jul	17.6	14.6	15.8	09-Sep	13.7	12.4	13.1
24-Jul	18.1	15.6	16.7	10-Sep	14.4	12.4	13.3
25-Jul	17.8	15.3	16.4	11-Sep	14.9	12.6	13.6
26-Jul	18.6	15.8	17.2	12-Sep	14.4	13.0	13.8
27-Jul	19.4	16.6	17.8	13-Sep	14.2	13.3	13.7
28-Jul	19.4	16.6	18.0	14-Sep	14.6	13.5	13.8
29-Jul	19.7	17.3	18.5	15-Sep	13.9	13.0	13.4
30-Jul	19.7	18.3	19.0	16-Sep	14.4	12.6	13.5
31-Jul	18.3	17.3	17.8	17-Sep	14.2	12.4	13.3
01-Aug	18.1	17.3	17.7	18-Sep	13.9	12.8	13.2
02-Aug	17.8	17.1	17.6	19-Sep	13.7	12.4	12.9
03-Aug	17.8	16.8	17.2	20-Sep	13.0	12.2	12.5
04-Aug	16.8	16.3	16.7	21-Sep	12.4	11.5	11.9
05-Aug	16.8	15.6	16.2	22-Sep	12.6	10.7	11.5
06-Aug	16.6	15.6	16.2	23-Sep	12.8	10.5	11.5
07-Aug	16.1	15.3	15.8	24-Sep	12.4	10.7	11.3
08-Aug	16.6	15.6	16.1	25-Sep	11.1	10.7	10.9
09-Aug	16.8	15.8	16.4	26-Sep	11.9	10.7	11.2
10-Aug	17.3	15.8	16.7	27-Sep	11.9	11.1	11.6
11-Aug	17.3	16.3	16.8	28-Sep	13.7	11.5	12.3
12-Aug	17.1	16.1	16.5	29-Sep	12.6	10.9	11.7
13-Aug	17.6	16.1	16.9	30-Sep	11.9	10.5	11.0
14-Aug	17.6	16.6	17.1	01-Oct	11.5	9.4	10.3
15-Aug	17.6	16.3	16.9	02-Oct	10.5	9.6	10.0

## Stuart River (SR113) Cont'd

1996	Water Temperature (°C)		
	Max	Min	Mean
03-Oct	10.7	9.8	10.2
04-Oct	11.9	10.2	10.9
05-Oct	11.7	9.6	10.6
06-Oct	10.7	9.8	10.2
07-Oct	11.9	10.2	10.8
08-Oct	11.7	10.0	10.8
09-Oct	10.9	10.5	10.7
10-Oct	11.5	10.2	10.8
11-Oct	11.1	9.6	10.2
12-Oct	9.8	8.8	9.3
13-Oct	10.2	8.8	9.4
14-Oct	9.6	8.4	9.0
15-Oct	8.8	7.1	8.1
16-Oct	8.0	6.7	7.3
17-Oct	7.3	6.3	7.0
18-Oct	6.1	5.6	5.9



## Quesnel River at Quesnel (QR1)

1996	Water Temperature (°C)			Pyranometer Mean (W/m <sup>2</sup> )
	Max	Min	Mean	
15-Jun	9.9	9.9	9.9	202.5
16-Jun	9.9	9.8	9.8	311.1
17-Jun	9.9	9.8	9.8	138.3
18-Jun	9.8	9.6	9.7	98.3
19-Jun	9.6	9.4	9.5	237.1
20-Jun	9.4	9.3	9.3	214.5
21-Jun	9.3	9.2	9.2	281.6
22-Jun	9.2	9.1	9.2	306.2
23-Jun	9.2	9.2	9.2	278.7
24-Jun	9.3	9.2	9.2	241.3
25-Jun	9.3	9.2	9.2	219.5
26-Jun	9.3	9.2	9.2	213.2
27-Jun	9.6	9.3	9.5	218.2
28-Jun	10.0	9.7	9.9	205.5
29-Jun	10.1	10.0	10.0	237.8
30-Jun	10.7	10.1	10.4	182.8
01-Jul	11.1	10.8	10.9	282.0
02-Jul	11.1	11.0	11.1	163.3
03-Jul	11.2	11.0	11.1	196.5
04-Jul	11.6	11.2	11.4	235.7
05-Jul	11.7	11.3	11.5	162.4
06-Jul	11.3	10.9	11.1	352.4
07-Jul	11.1	10.9	11.0	336.5
08-Jul	11.3	11.1	11.2	276.1
09-Jul	11.4	11.2	11.3	206.0
10-Jul	11.4	11.1	11.3	280.8
11-Jul	11.1	11.0	11.0	328.0
12-Jul	11.1	11.0	11.1	336.1
13-Jul	11.2	11.1	11.2	327.9
14-Jul	11.2	10.9	11.1	332.8
15-Jul	10.9	10.9	10.9	251.4
16-Jul	11.0	10.9	10.9	127.2
17-Jul	10.9	10.8	10.8	75.9
18-Jul	10.8	10.6	10.7	232.6
19-Jul	11.8	10.8	11.2	209.9
20-Jul	12.1	11.8	12.0	53.3
21-Jul	11.9	11.8	11.8	283.2
22-Jul	12.0	11.8	11.9	292.4
23-Jul	12.1	12.0	12.1	315.2
24-Jul	12.2	12.1	12.2	313.8
25-Jul	12.5	12.2	12.4	312.5
26-Jul	12.6	12.4	12.5	303.8
27-Jul	12.8	12.4	12.7	277.7
28-Jul	13.3	12.8	13.1	265.3
29-Jul	15.4	13.4	14.0	264.7
30-Jul	15.7	15.4	15.6	253.1
31-Jul	16.0	15.6	15.8	282.3
01-Aug	15.5	14.4	14.9	158.0

## Quesnel River at Quesnel (QR1) Cont'd

1996	Water			Pyranometer
	Max	Min	Mean	Mean (W/m <sup>2</sup> )
02-Aug	15.7	14.5	15.1	56.5
03-Aug	14.9	13.8	14.3	98.7
04-Aug	14.8	13.3	14.0	103.1
05-Aug	13.3	12.8	13.0	147.6
06-Aug	12.8	11.7	12.3	290.6
07-Aug	12.4	10.5	11.5	250.5
08-Aug	13.5	11.3	12.2	247.1
09-Aug	15.6	13.0	14.0	268.3
10-Aug	16.1	14.8	15.4	165.1
11-Aug	16.3	15.5	16.0	171.6
12-Aug	17.3	15.4	16.3	244.0
13-Aug	17.1	15.9	16.5	262.8
14-Aug	16.7	15.5	16.1	230.0
15-Aug	16.3	15.2	15.8	133.3
16-Aug	16.0	15.1	15.5	156.4
17-Aug	15.6	14.4	14.9	120.5
18-Aug	15.5	14.0	14.7	207.3
19-Aug	15.3	14.6	15.0	100.3
20-Aug	15.9	14.6	15.2	165.2
21-Aug	15.7	15.0	15.4	114.1
22-Aug	16.7	15.3	15.9	181.5
23-Aug	17.2	16.0	16.6	246.5
24-Aug	17.3	16.1	16.7	238.8
25-Aug	17.5	16.4	17.0	223.0
26-Aug	17.4	16.4	17.0	207.3
27-Aug	17.1	16.2	16.7	182.1
28-Aug	17.1	16.4	16.7	99.2
29-Aug	18.0	16.8	17.3	172.9
30-Aug	17.6	16.4	16.8	51.3
31-Aug	17.2	16.2	16.6	151.3
01-Sep	17.0	16.4	16.6	84.5
02-Sep	16.8	15.7	16.3	218.1
03-Sep	16.2	15.1	15.5	45.9
04-Sep	15.9	15.0	15.5	168.2
05-Sep	15.7	15.0	15.3	119.9
06-Sep	15.4	14.8	15.1	90.8
07-Sep	15.2	14.6	14.9	70.8
08-Sep	15.5	14.7	15.1	155.5
09-Sep	15.6	14.7	15.2	170.7
10-Sep	15.6	14.4	15.1	158.9
11-Sep	15.8	14.5	15.3	159.2
12-Sep	15.7	15.3	15.6	3.2

**Quesnel River at Likely (QR130)**

1996	Water Temperature (°C)		
	Max	Min	Mean
28-Jun	10.9	10.6	10.8
29-Jun	11.5	10.6	11.1
30-Jun	12.6	11.5	12.0
01-Jul	12.7	12.3	12.6
02-Jul	12.6	11.8	12.4
03-Jul	12.0	11.4	11.7
04-Jul	11.7	10.6	11.4
05-Jul	10.5	9.9	10.1
06-Jul	11.7	10.3	11.0
07-Jul	11.7	10.3	10.9
08-Jul	12.1	9.8	10.8
09-Jul	11.1	8.4	9.8
10-Jul	9.5	8.4	8.9
11-Jul	9.3	8.6	9.0
12-Jul	9.5	8.6	9.1
13-Jul	8.4	6.5	7.5
14-Jul	8.9	6.4	7.6
15-Jul	9.0	7.7	8.7
16-Jul	8.1	7.3	7.7
17-Jul	8.3	7.5	7.8
18-Jul	11.5	8.3	9.8
19-Jul	12.1	11.5	12.0
20-Jul	13.0	12.1	12.6
21-Jul	13.3	12.7	13.0
22-Jul	13.3	12.9	13.2
23-Jul	13.0	11.2	12.0
24-Jul	13.3	12.3	12.8
25-Jul	13.5	11.1	12.4
26-Jul	11.7	11.4	11.5
27-Jul	13.8	11.7	12.5
28-Jul	15.5	13.8	14.4
29-Jul	17.1	15.5	16.1
30-Jul	18.9	17.1	18.2
31-Jul	17.5	13.3	14.6
01-Aug	15.1	14.5	14.8
02-Aug	14.6	11.5	12.7
03-Aug	13.9	12.0	13.3
04-Aug	11.7	10.2	10.9
05-Aug	10.8	8.1	9.5
06-Aug	8.0	7.1	7.4
07-Aug	8.3	7.4	7.9
08-Aug	12.1	8.1	10.0
09-Aug	14.3	12.1	13.2
10-Aug	15.2	14.2	14.7
11-Aug	15.4	14.6	15.0

**Quesnel River at Likely (QR130) Cont'd**

1996	Water Temperature (°C)		
	Max	Min	Mean
26-Sep	12.3	11.8	12.0
27-Sep	12.6	12.1	12.3
28-Sep	12.7	12.4	12.6
29-Sep	12.6	12.3	12.5
30-Sep	12.3	11.8	12.1
01-Oct	11.7	10.3	11.0
02-Oct	10.5	9.8	10.1
03-Oct	11.1	10.5	10.8
04-Oct	11.4	11.1	11.2
05-Oct	11.4	11.1	11.2
06-Oct	11.2	10.9	11.1
07-Oct	11.1	10.9	11.0
08-Oct	11.1	10.9	11.1
09-Oct	11.2	10.9	11.0
10-Oct	11.2	10.9	11.1
11-Oct	11.2	10.9	11.1
12-Oct	11.1	10.9	11.0
13-Oct	11.1	10.8	10.9
14-Oct	10.8	10.6	10.8
15-Oct	10.8	10.5	10.6
16-Oct	10.5	10.3	10.4
17-Oct	10.3	10.1	10.2
18-Oct	10.1	9.9	10.1
19-Oct	9.9	9.6	9.8
20-Oct	9.6	9.6	9.6

## Cariboo River (CAR5)

1996	Water Temperature (°C)			Water Temperature (°C)			
	Max	Min	Mean	Max	Min	Mean	
28-Jun	11.1	10.8	11.0	16-Aug	16.2	14.9	15.3
29-Jun	11.5	10.6	11.1	17-Aug	15.5	14.8	15.0
30-Jun	11.7	10.9	11.2	18-Aug	15.7	14.8	15.1
01-Jul	11.8	10.9	11.4	19-Aug	15.4	14.6	14.9
02-Jul	11.7	11.1	11.4	20-Aug	15.4	14.5	14.7
03-Jul	12.3	11.5	11.8	21-Aug	14.9	14.5	14.7
04-Jul	12.1	11.5	11.7	22-Aug	15.5	14.5	14.8
05-Jul	11.5	11.2	11.4	23-Aug	15.5	14.2	14.7
06-Jul	12.1	11.1	11.6	24-Aug	15.7	14.2	14.8
07-Jul	12.3	11.2	11.7	25-Aug	16.0	14.5	15.0
08-Jul	12.7	11.5	12.1	26-Aug	16.2	14.6	15.1
09-Jul	12.4	12.0	12.2	27-Aug	15.7	14.6	15.1
10-Jul	12.9	11.8	12.3	28-Aug	16.0	14.9	15.5
11-Jul	13.2	12.0	12.5	29-Aug	16.6	15.2	15.7
12-Jul	13.5	12.3	12.8	30-Aug	15.5	15.2	15.4
13-Jul	13.6	12.4	13.0	31-Aug	15.7	15.1	15.3
14-Jul	14.2	12.9	13.4	01-Sep	15.5	14.9	15.2
15-Jul	14.2	13.3	13.7	02-Sep	15.7	14.8	15.1
16-Jul	14.5	13.6	13.9	03-Sep	15.1	14.6	14.8
17-Jul	14.0	13.8	13.9	04-Sep	15.1	14.3	14.6
18-Jul	14.0	13.3	13.6	05-Sep	14.6	14.0	14.3
19-Jul	14.0	13.3	13.5	06-Sep	14.5	13.9	14.1
20-Jul	13.2	12.7	13.0	07-Sep	13.9	13.5	13.6
21-Jul	13.5	12.7	13.0	08-Sep	14.2	13.3	13.6
22-Jul	13.8	12.6	13.1	09-Sep	14.2	13.3	13.5
23-Jul	14.0	12.9	13.3	10-Sep	14.2	13.0	13.5
24-Jul	14.2	13.0	13.5	11-Sep	14.3	13.2	13.6
25-Jul	14.5	13.3	13.7	12-Sep	14.0	13.3	13.6
26-Jul	14.6	13.6	14.1	13-Sep	13.9	13.3	13.5
27-Jul	15.2	13.9	14.5	14-Sep	13.9	13.0	13.4
28-Jul	15.5	14.5	15.0	15-Sep	13.0	12.6	12.9
29-Jul	16.0	14.9	15.3	16-Sep	13.3	12.6	12.8
30-Jul	16.3	15.1	15.6	17-Sep	13.3	12.3	12.6
31-Jul	16.0	14.9	15.4	18-Sep	12.7	12.1	12.4
01-Aug	15.9	14.9	15.4	19-Sep	12.7	11.8	12.3
02-Aug	15.5	15.1	15.3	20-Sep	12.3	11.5	11.9
03-Aug	15.5	14.9	15.1	21-Sep	11.8	11.2	11.6
04-Aug	15.2	14.6	14.9	22-Sep	12.0	10.9	11.4
05-Aug	14.8	14.5	14.6	23-Sep	11.8	10.6	11.0
06-Aug	15.4	14.2	14.7	24-Sep	11.7	10.5	10.9
07-Aug	15.4	13.9	14.5	25-Sep	11.2	10.3	10.7
08-Aug	15.5	14.0	14.6	26-Sep	11.7	10.8	11.1
09-Aug	15.5	14.0	14.7	27-Sep	12.0	10.8	11.2
10-Aug	15.7	14.3	14.8	28-Sep	11.8	10.8	11.2
11-Aug	15.9	14.5	15.0	29-Sep	11.4	10.2	10.8
12-Aug	15.9	14.6	15.1	30-Sep	10.9	9.9	10.3
13-Aug	16.2	14.6	15.2	01-Oct	10.6	9.8	10.0
14-Aug	16.3	14.9	15.5	02-Oct	10.3	9.8	10.1
15-Aug	15.9	14.9	15.4	03-Oct	10.5	10.1	10.2

**Cariboo River (CAR5) Cont'd**

1996	Water Temperature (°C)		
	Max	Min	Mean
04-Oct	10.3	9.8	10.1
05-Oct	10.2	9.6	9.8
06-Oct	10.2	9.5	9.8
07-Oct	10.1	9.6	9.8
08-Oct	10.3	9.6	9.9
09-Oct	10.2	9.5	9.8
10-Oct	10.2	9.5	9.8
11-Oct	9.9	9.0	9.5
12-Oct	9.6	9.0	9.2
13-Oct	9.6	9.0	9.2
14-Oct	9.3	8.6	8.9
15-Oct	9.0	8.3	8.6
16-Oct	8.6	8.0	8.2
17-Oct	8.1	7.8	8.0
18-Oct	8.1	7.8	7.9
19-Oct	7.8	7.3	7.7
20-Oct	7.5	7.1	7.2



## Chilcotin River at Alexis Creek (CR50)

1996	Water Temperature (°C)			Pyranometer Mean (W/m <sup>2</sup> )
	Max	Min	Mean	
15-Jun	10.1	9.0	9.6	126.4
16-Jun	10.0	8.4	9.2	268.8
17-Jun	10.7	9.5	10.0	313.3
18-Jun	9.9	9.3	9.6	110.4
19-Jun	11.0	9.2	10.2	248.3
20-Jun	11.1	10.3	10.6	152.1
21-Jun	11.5	9.7	10.4	193.0
22-Jun	12.1	10.0	10.9	307.3
23-Jun	11.9	10.8	11.3	135.5
24-Jun	11.0	10.1	10.6	165.8
25-Jun	10.5	9.5	10.1	242.5
26-Jun	11.4	9.9	10.6	256.1
27-Jun	11.8	10.9	11.3	241.8
28-Jun	11.7	10.2	10.7	197.7
29-Jun	11.6	10.1	10.8	265.0
30-Jun	11.8	10.9	11.3	164.9
01-Jul	12.3	10.6	11.5	311.7
02-Jul	12.4	10.9	11.4	119.3
03-Jul	12.4	10.7	11.4	236.0
04-Jul	12.2	10.8	11.3	224.3
05-Jul	11.8	10.1	10.9	339.3
06-Jul	12.8	10.4	11.5	336.3
07-Jul	13.5	11.7	12.6	325.7
08-Jul	14.8	12.6	13.6	255.5
09-Jul	14.8	13.0	13.7	309.6
10-Jul	13.4	12.1	12.8	326.5
11-Jul	13.4	11.7	12.6	317.3
12-Jul	14.0	12.0	13.0	324.8
13-Jul	14.1	12.4	13.2	322.2
14-Jul	14.2	12.7	13.4	316.7
15-Jul	14.5	12.7	13.7	292.1
16-Jul	14.5	13.0	13.6	109.8
17-Jul	12.9	11.4	11.9	87.0
18-Jul	13.2	11.9	12.4	193.9
19-Jul	13.2	12.1	12.7	184.5
20-Jul	13.7	12.3	12.9	155.2
21-Jul	14.6	12.6	13.5	303.8
22-Jul	15.3	13.5	14.3	309.0
23-Jul	15.5	14.1	14.8	307.3
24-Jul	15.4	14.3	14.9	298.8
25-Jul	15.0	13.2	13.8	301.8
26-Jul	13.8	12.2	13.1	282.2
27-Jul	14.3	12.1	13.2	286.8
28-Jul	16.4	13.3	14.7	251.3
29-Jul	16.8	14.7	15.9	266.7
30-Jul	16.6	14.8	15.7	272.8

## Chilcotin River at Alexis Creek (CR50) Cont'd

1996	Water Temperature (°C)			Pyranometer Mean (W/m <sup>2</sup> )
	Max	Min	Mean	
31-Jul	15.9	13.9	14.9	290.8
01-Aug	15.8	13.8	14.5	115.4
02-Aug	14.6	13.9	14.2	77.6
03-Aug	14.4	13.4	13.9	133.6
04-Aug	14.4	13.6	14.0	107.6
05-Aug	14.0	12.8	13.3	146.3
06-Aug	15.0	12.9	13.9	274.8
07-Aug	15.1	13.4	14.3	270.4
08-Aug	15.5	14.0	14.7	222.5
09-Aug	15.6	13.6	14.7	250.8
10-Aug	15.7	14.3	15.1	218.0
11-Aug	15.6	14.4	14.8	118.2
12-Aug	15.0	13.2	14.2	258.8
13-Aug	15.5	13.8	14.7	255.3
14-Aug	15.5	14.2	14.9	207.0
15-Aug	15.6	14.4	14.8	97.2
16-Aug	14.8	13.6	14.3	157.5
17-Aug	14.7	13.2	13.7	141.0
18-Aug	13.6	12.5	13.1	195.7
19-Aug	13.9	13.0	13.4	180.7
20-Aug	13.5	12.2	13.0	201.1
21-Aug	13.2	11.9	12.5	128.8
22-Aug	15.0	12.8	13.8	197.5
23-Aug	15.0	13.7	14.6	233.5
24-Aug	14.9	13.6	14.5	228.5
25-Aug	15.2	13.9	14.7	234.3
26-Aug	15.7	14.1	14.9	216.2
27-Aug	16.3	15.0	15.6	174.4
28-Aug	16.3	14.6	15.2	74.7
29-Aug	15.8	14.4	15.0	173.3
30-Aug	16.0	14.4	15.0	75.3
31-Aug	14.3	13.0	13.6	116.4
01-Sep	13.8	12.7	13.2	173.1
02-Sep	13.6	12.5	13.1	216.2
03-Sep	13.7	12.6	13.1	72.3
04-Sep	13.2	11.8	12.5	76.9
05-Sep	12.6	11.8	12.1	111.9
06-Sep	12.3	11.2	11.7	64.1
07-Sep	12.2	11.3	11.7	88.6
08-Sep	12.6	11.4	12.0	169.8
09-Sep	13.2	12.1	12.7	168.3
10-Sep	12.8	11.4	12.3	197.3
11-Sep	13.0	12.1	12.7	180.2
12-Sep	13.1	12.6	12.9	0.3

## Chilcotin River at Redstone (CR68)

1996	Water Temperature (°C)			Water Temperature (°C)			
	Max	Min	Mean	Max	Min	Mean	
26-Jun	14.9	13.9	14.4	13-Aug	18.6	15.5	17.4
27-Jun	14.6	13.8	14.0	14-Aug	17.1	15.7	16.6
28-Jun	14.5	12.6	13.6	15-Aug	15.9	14.2	15.4
29-Jun	14.5	13.8	14.2	16-Aug	15.7	14.3	14.9
30-Jun	16.6	14.0	15.2	17-Aug	14.3	12.7	13.9
01-Jul	15.2	13.9	14.4	18-Aug	14.6	12.9	13.9
02-Jul	15.1	13.5	14.3	19-Aug	14.5	12.0	13.4
03-Jul	14.6	13.5	13.9	20-Aug	13.0	11.7	12.5
04-Jul	14.9	12.6	13.9	21-Aug	15.7	12.0	14.0
05-Jul	16.0	13.2	14.7	22-Aug	16.8	13.5	15.3
06-Jul	18.1	14.6	16.5	23-Aug	17.5	13.6	15.9
07-Jul	19.5	16.9	18.2	24-Aug	18.3	14.3	16.6
08-Jul	18.9	17.8	18.3	25-Aug	18.4	14.9	16.9
09-Jul	18.4	16.3	17.3	26-Aug	18.8	15.9	17.5
10-Jul	19.1	15.9	17.7	27-Aug	17.4	16.2	16.8
11-Jul	19.9	16.8	18.5	28-Aug	17.8	14.8	16.6
12-Jul	20.5	17.2	19.1	29-Aug	17.1	15.5	16.2
13-Jul	21.1	18.4	20.0	30-Aug	14.9	13.6	14.2
14-Jul	19.9	18.6	19.4	31-Aug	14.3	12.1	13.2
15-Jul	18.0	16.3	17.1	01-Sep	14.5	11.8	13.4
16-Jul	15.5	14.3	15.0	02-Sep	13.9	12.9	13.4
17-Jul	14.5	13.5	14.1	03-Sep	13.0	11.7	12.2
18-Jul	14.5	13.0	13.7	04-Sep	11.5	10.6	11.2
19-Jul	14.5	13.3	13.9	05-Sep	10.9	10.3	10.6
20-Jul	16.3	12.7	14.8	06-Sep	10.9	9.8	10.5
21-Jul	18.1	14.6	16.6	07-Sep	12.3	9.9	11.3
22-Jul	20.0	16.3	18.4	08-Sep	12.9	11.8	12.3
23-Jul	21.3	18.1	20.0	09-Sep	12.3	10.2	11.4
24-Jul	21.6	18.8	20.4	10-Sep	12.4	10.6	11.8
25-Jul	21.8	18.6	20.4	11-Sep	13.3	11.1	12.0
26-Jul	21.4	18.6	20.3	12-Sep	13.0	11.4	12.3
27-Jul	21.6	19.1	20.6	13-Sep	12.9	10.8	11.7
28-Jul	22.2	19.2	20.8	14-Sep	10.6	9.6	10.0
29-Jul	20.3	18.3	19.6	15-Sep	10.3	8.6	9.7
30-Jul	19.2	16.0	17.9	16-Sep	10.9	8.9	9.9
31-Jul	17.2	15.7	16.6	17-Sep	10.6	9.0	9.8
01-Aug	15.7	14.9	15.4	18-Sep	11.1	9.3	10.0
02-Aug	14.8	13.9	14.6	19-Sep	9.3	8.3	8.9
03-Aug	14.8	14.0	14.3	20-Sep	9.0	7.7	8.3
04-Aug	13.9	13.0	13.6	21-Sep	8.6	7.0	7.7
05-Aug	16.3	12.6	14.8	22-Sep	7.3	5.2	6.3
06-Aug	16.6	13.9	15.6	23-Sep	7.5	5.5	6.5
07-Aug	18.0	14.8	16.5	24-Sep	7.7	6.4	7.2
08-Aug	18.9	15.4	17.4	25-Sep	9.5	7.1	8.5
09-Aug	19.1	16.2	17.8	26-Sep	9.8	8.4	9.4
10-Aug	17.7	16.3	17.2	27-Sep	11.5	9.2	10.4
11-Aug	17.4	14.3	16.0	28-Sep	11.8	10.3	10.9
12-Aug	18.4	14.6	16.9	29-Sep	9.3	7.8	8.5

**Chilcotin River at Redstone (CR68) Cont'd**

1996	Water Temperature (°C)		
	Max	Min	Mean
30-Sep	7.3	6.1	6.8
01-Oct	7.3	6.2	6.8
02-Oct	7.7	6.1	6.9
03-Oct	8.7	7.5	7.9
04-Oct	8.1	7.0	7.5
05-Oct	8.1	6.8	7.6
06-Oct	8.3	7.0	7.8
07-Oct	8.9	7.4	8.1
08-Oct	9.0	7.7	8.3
09-Oct	8.6	7.4	8.0
10-Oct	7.8	6.5	7.1
11-Oct	5.9	5.2	5.5
12-Oct	5.5	4.6	5.1
13-Oct	5.0	4.0	4.5
14-Oct	3.7	2.6	3.2
15-Oct	2.2	1.3	1.8
16-Oct	1.1	0.7	0.8
17-Oct	1.7	0.4	1.1
18-Oct	1.3	0.0	0.7
19-Oct	0.5	0.0	0.2
20-Oct	1.1	0.5	0.8

## Elkin Creek (EC10)

1996	Water Temperature (°C)			Water Temperature (°C)			
	Max	Min	Mean	Max	Min	Mean	
04-Jul	14.6	13.6	14.6	21-Aug	15.5	12.7	14.3
05-Jul	16.3	12.4	14.1	22-Aug	18.4	14.0	16.1
06-Jul	17.5	13.2	15.1	23-Aug	18.6	14.2	16.7
07-Jul	17.5	12.7	15.1	24-Aug	19.2	14.0	16.9
08-Jul	18.6	13.9	16.2	25-Aug	19.9	15.1	17.8
09-Jul	17.1	14.0	15.7	26-Aug	19.5	16.2	18.1
10-Jul	17.8	13.2	15.2	27-Aug	20.2	16.8	18.7
11-Jul	19.2	13.5	16.2	28-Aug	19.5	16.5	17.5
12-Jul	20.0	15.1	17.3	29-Aug	19.7	15.7	17.7
13-Jul	21.1	14.2	17.3	30-Aug	19.2	15.9	17.0
14-Jul	21.3	16.0	18.5	31-Aug	16.8	14.2	15.7
15-Jul	21.1	16.6	18.8	01-Sep	17.4	13.3	15.5
16-Jul	19.5	15.4	17.1	02-Sep	16.8	12.9	15.1
17-Jul	16.8	15.9	16.3	03-Sep	16.0	13.5	14.7
18-Jul	18.3	14.9	16.4	04-Sep	14.9	12.4	13.5
19-Jul	16.9	15.2	16.0	05-Sep	15.5	12.7	14.0
20-Jul	18.1	14.6	16.2	06-Sep	14.5	12.1	13.2
21-Jul	20.3	14.9	17.4	07-Sep	14.8	12.3	13.5
22-Jul	20.3	14.0	17.1	08-Sep	15.2	12.3	13.9
23-Jul	20.8	14.3	17.4	09-Sep	16.2	13.2	14.7
24-Jul	21.1	15.1	17.8	10-Sep	16.3	12.3	14.7
25-Jul	21.3	15.7	18.3	11-Sep	16.0	12.0	14.1
26-Jul	21.0	16.5	18.5	12-Sep	16.0	12.9	14.7
27-Jul	22.7	16.9	19.7	13-Sep	16.0	13.6	14.4
28-Jul	21.8	16.8	19.5	14-Sep	14.5	11.7	13.3
29-Jul	22.2	19.2	20.5	15-Sep	13.5	11.2	12.4
30-Jul	21.8	18.1	19.9	16-Sep	14.5	11.1	12.9
31-Jul	21.8	16.8	19.2	17-Sep	14.6	11.5	13.4
01-Aug	18.9	16.6	17.8	18-Sep	14.0	11.7	12.9
02-Aug	17.5	16.8	17.2	19-Sep	13.8	11.8	13.0
03-Aug	18.4	16.0	17.2	20-Sep	13.3	10.9	11.7
04-Aug	17.4	15.5	16.3	21-Sep	11.8	10.1	11.0
05-Aug	16.9	14.8	15.7	22-Sep	12.1	8.7	10.6
06-Aug	19.7	14.5	16.8	23-Sep	11.8	8.9	10.8
07-Aug	20.2	14.9	17.5	24-Sep	11.7	9.3	10.8
08-Aug	19.1	16.3	17.8	25-Sep	11.7	10.1	10.9
09-Aug	20.2	15.5	17.8	26-Sep	13.8	10.8	12.2
10-Aug	19.7	15.9	18.0	27-Sep	13.2	11.5	12.6
11-Aug	18.4	16.3	17.2	28-Sep	14.5	11.8	13.2
12-Aug	19.5	14.2	16.8	29-Sep	13.6	12.0	13.0
13-Aug	20.5	15.7	18.1	30-Sep	11.8	9.0	10.3
14-Aug	19.5	15.9	18.0	01-Oct	9.9	7.7	9.1
15-Aug	18.4	16.2	16.9	02-Oct	10.3	9.2	9.8
16-Aug	17.8	14.5	16.1	03-Oct	11.1	9.6	10.2
17-Aug	16.5	14.0	15.4	04-Oct	10.8	10.1	10.3
18-Aug	16.5	14.0	15.3	05-Oct	10.3	9.2	9.7
19-Aug	17.5	14.0	15.6	06-Oct	10.5	9.2	10.0
20-Aug	16.6	13.2	15.1	07-Oct	11.5	9.0	10.3

## Elkin Creek (EC10) Cont'd

1996	Water Temperature (°C)		
	Max	Min	Mean
08-Oct	11.4	9.8	10.7
09-Oct	12.0	9.9	11.0
10-Oct	11.5	10.1	10.8
11-Oct	10.5	8.7	9.5
12-Oct	8.7	7.7	8.0
13-Oct	8.3	7.0	7.6
14-Oct	7.5	6.7	7.2
15-Oct	6.7	4.7	5.6
16-Oct	4.7	3.7	4.3
17-Oct	4.3	4.0	4.1
18-Oct	5.0	3.5	4.2
19-Oct	5.0	2.9	4.1
20-Oct	4.1	3.4	3.8
21-Oct	5.6	4.0	4.6
22-Oct	4.6	4.0	4.2

## Thompson River at Goldpan (TR24)

1996	Water Temperature (°C)			Water Temperature (°C)			
	Max	Min	Mean	Max	Min	Mean	
02-Jul	13.3	12.8	13.2	19-Aug	17.6	16.1	16.7
03-Jul	13.9	12.4	13.0	20-Aug	17.8	16.8	17.3
04-Jul	13.5	11.9	12.9	21-Aug	17.8	17.1	17.5
05-Jul	13.7	12.6	13.1	22-Aug	18.1	16.6	17.2
06-Jul	13.7	13.0	13.3	23-Aug	18.3	17.1	17.7
07-Jul	14.2	13.3	13.6	24-Aug	18.3	17.3	17.9
08-Jul	14.9	13.5	14.2	25-Aug	18.1	16.8	17.4
09-Jul	14.6	13.3	13.8	26-Aug	18.1	16.8	17.4
10-Jul	13.9	13.5	13.8	27-Aug	18.6	17.3	18.0
11-Jul	14.4	13.3	13.8	28-Aug	18.3	17.3	17.9
12-Jul	15.3	13.7	14.5	29-Aug	18.3	17.1	17.8
13-Jul	15.1	14.4	14.8	30-Aug	18.9	17.6	18.1
14-Jul	14.9	13.9	14.3	31-Aug	18.9	17.6	18.1
15-Jul	15.8	14.4	15.1	01-Sep	18.1	17.1	17.6
16-Jul	15.1	14.2	14.7	02-Sep	18.3	17.1	17.7
17-Jul	14.9	14.4	14.6	03-Sep	18.3	17.6	17.9
18-Jul	16.3	14.2	15.1	04-Sep	18.1	17.6	17.9
19-Jul	16.1	15.1	15.6	05-Sep	18.1	16.8	17.2
20-Jul	15.8	14.4	15.1	06-Sep	16.8	15.8	16.3
21-Jul	15.8	14.4	15.0	07-Sep	16.8	16.1	16.5
22-Jul	15.8	14.4	15.2	08-Sep	17.6	16.8	17.1
23-Jul	15.6	14.4	14.9	09-Sep	17.3	16.3	16.8
24-Jul	15.6	13.9	14.6	10-Sep	17.1	15.8	16.6
25-Jul	15.6	14.4	15.0	11-Sep	17.3	16.6	16.9
26-Jul	15.6	13.9	14.9	12-Sep	17.8	17.1	17.3
27-Jul	17.6	15.3	16.4	13-Sep	17.6	17.1	17.3
28-Jul	17.6	16.6	17.1	14-Sep	17.3	16.8	16.9
29-Jul	18.3	17.1	17.7	15-Sep	16.8	16.6	16.7
30-Jul	18.6	17.3	18.0	16-Sep	16.6	15.8	16.2
31-Jul	17.8	15.8	16.8	17-Sep	16.6	15.6	16.1
01-Aug	17.3	15.6	16.4	18-Sep	15.8	14.6	15.1
02-Aug	17.6	16.6	16.9	19-Sep	15.6	14.9	15.2
03-Aug	17.1	16.1	16.7	20-Sep	15.3	14.4	14.8
04-Aug	17.3	15.6	16.4	21-Sep	15.6	14.6	15.0
05-Aug	16.6	15.6	15.9	22-Sep	15.1	14.6	14.9
06-Aug	16.1	14.6	15.4	23-Sep	15.1	13.9	14.5
07-Aug	16.8	15.6	16.1	24-Sep	14.6	13.5	14.0
08-Aug	17.6	16.3	16.9	25-Sep	14.4	13.7	14.1
09-Aug	17.8	16.1	17.1	26-Sep	14.6	14.2	14.4
10-Aug	17.3	16.1	16.8	27-Sep	14.9	13.7	14.4
11-Aug	17.6	16.6	17.1	28-Sep	14.9	13.9	14.5
12-Aug	17.3	15.3	16.4	29-Sep	14.9	14.2	14.5
13-Aug	17.8	16.6	17.3	30-Sep	14.6	13.9	14.3
14-Aug	18.3	17.3	17.9	01-Oct	13.9	13.3	13.7
15-Aug	18.1	17.1	17.5	02-Oct	13.7	13.0	13.4
16-Aug	17.3	16.3	16.9	03-Oct	13.7	13.3	13.4
17-Aug	17.3	16.6	17.0	04-Oct	13.7	13.5	13.7
18-Aug	17.3	16.6	17.0	05-Oct	13.7	13.3	13.6

**Thompson River at Goldpan (TR24) Cont'd**

1996	Water Temperature (°C)		
	Max	Min	Mean
06-Oct	13.5	13.0	13.4
07-Oct	13.7	13.3	13.5
08-Oct	13.9	13.3	13.6
09-Oct	13.7	13.0	13.6
10-Oct	13.7	13.3	13.5
11-Oct	13.9	13.3	13.6
12-Oct	13.5	13.0	13.3
13-Oct	13.3	12.8	13.1
14-Oct	12.8	12.6	12.7
15-Oct	12.6	11.9	12.3



## Thompson River at Ashcroft (TR80)

1996	Water Temperature (°C)			Water Temperature (°C)			
	Max	Min	Mean	Max	Min	Mean	
15-Jun	10.1	9.5	9.7	30-Jul	17.9	16.3	17.6
16-Jun	10.1	9.3	9.7	31-Jul	16.4	15.4	16.0
17-Jun	11.2	10.0	10.4	01-Aug	16.9	15.5	16.4
18-Jun	11.2	10.2	10.7	02-Aug	17.0	16.2	16.7
19-Jun	11.3	10.2	10.7	03-Aug	16.7	15.5	16.2
20-Jun	11.3	10.8	11.0	04-Aug	16.9	15.7	16.4
21-Jun	10.9	10.5	10.7	05-Aug	16.0	14.8	15.4
22-Jun	11.5	10.9	11.2	06-Aug	15.6	14.5	15.1
23-Jun	11.9	11.1	11.5	07-Aug	16.5	15.5	16.0
24-Jun	13.6	11.5	12.6	08-Aug	17.1	16.1	16.6
25-Jun	12.8	12.2	12.5	09-Aug	16.8	16.0	16.4
26-Jun	12.9	12.2	12.5	10-Aug	17.1	16.1	16.5
27-Jun	12.7	12.4	12.5	11-Aug	17.5	15.8	16.7
28-Jun	12.7	12.2	12.5	12-Aug	17.3	15.2	16.1
29-Jun	12.8	11.8	12.2	13-Aug	17.6	16.5	17.0
30-Jun	12.9	12.3	12.5	14-Aug	17.8	17.3	17.6
01-Jul	13.0	12.1	12.5	15-Aug	17.3	16.5	16.9
02-Jul	12.8	12.2	12.5	16-Aug	17.5	15.8	16.6
03-Jul	13.5	11.9	12.5	17-Aug	17.2	16.3	16.8
04-Jul	13.1	11.8	12.5	18-Aug	17.0	16.2	16.5
05-Jul	13.2	12.3	12.8	19-Aug	17.5	16.3	16.9
06-Jul	13.1	12.8	13.0	20-Aug	17.9	16.6	17.2
07-Jul	13.9	12.9	13.3	21-Aug	17.7	16.9	17.2
08-Jul	14.4	13.4	13.8	22-Aug	17.8	16.7	17.1
09-Jul	13.8	12.8	13.2	23-Aug	18.2	16.8	17.4
10-Jul	13.9	13.0	13.2	24-Aug	17.8	16.8	17.3
11-Jul	14.0	13.0	13.5	25-Aug	17.5	16.6	17.0
12-Jul	14.9	13.5	14.2	26-Aug	17.9	16.9	17.3
13-Jul	14.6	13.8	14.1	27-Aug	18.1	17.5	17.8
14-Jul	14.5	13.5	13.9	28-Aug	18.0	17.3	17.5
15-Jul	14.9	14.3	14.6	29-Aug	18.1	16.6	17.3
16-Jul	14.8	14.0	14.4	30-Aug	19.3	17.5	18.4
17-Jul	14.6	14.3	14.4	31-Aug	18.5	17.2	17.8
18-Jul	16.0	14.3	15.3	01-Sep	17.8	16.9	17.3
19-Jul	15.8	15.0	15.4	02-Sep	18.3	17.3	17.7
20-Jul	15.0	14.3	14.6	03-Sep	18.4	17.7	18.0
21-Jul	15.1	14.1	14.6	04-Sep	18.3	17.5	17.9
22-Jul	15.4	14.3	14.8	05-Sep	17.6	16.3	16.9
23-Jul	14.6	13.7	14.0	06-Sep	16.7	15.9	16.2
24-Jul	15.2	13.6	14.3	07-Sep	17.3	16.4	16.8
25-Jul	15.0	13.8	14.2	08-Sep	17.4	16.5	16.9
26-Jul	15.4	14.0	14.7	09-Sep	17.2	16.3	16.6
27-Jul	17.3	15.2	16.3	10-Sep	16.9	15.8	16.3
28-Jul	17.4	16.5	16.7	11-Sep	17.2	16.3	16.7
29-Jul	17.6	16.9	17.3	12-Sep	17.2	16.9	17.1

## Thompson River at Savona (TR113)

1996	Water Temperature (°C)			Water Temperature (°C)			
	Max	Min	Mean	Max	Min	Mean	
09-Jul	14.9	14.2	14.6	23-Aug	17.8	16.8	17.3
10-Jul	13.9	12.4	13.1	24-Aug	17.3	16.8	16.9
11-Jul	14.2	12.8	13.4	25-Aug	17.3	16.6	16.9
12-Jul	15.3	13.7	14.5	26-Aug	17.8	16.8	17.3
13-Jul	15.3	13.5	13.9	27-Aug	17.8	17.3	17.5
14-Jul	15.1	13.3	14.2	28-Aug	17.6	16.6	17.2
15-Jul	15.8	13.9	14.6	29-Aug	17.8	16.6	17.2
16-Jul	14.9	13.9	14.4	30-Aug	18.9	17.3	18.2
17-Jul	15.1	14.4	14.7	31-Aug	18.1	17.1	17.6
18-Jul	15.8	14.9	15.6	01-Sep	17.6	16.8	17.1
19-Jul	15.8	14.9	15.6	02-Sep	18.1	17.6	17.7
20-Jul	15.6	14.6	15.0	03-Sep	18.6	17.8	18.1
21-Jul	15.6	14.9	15.2	04-Sep	17.8	17.3	17.8
22-Jul	15.8	15.1	15.4	05-Sep	17.1	16.3	16.6
23-Jul	15.6	13.3	14.0	06-Sep	16.6	15.8	16.4
24-Jul	16.3	13.9	15.1	07-Sep	17.1	16.6	16.8
25-Jul	14.6	13.5	13.8	08-Sep	16.8	16.3	16.6
26-Jul	16.1	14.2	14.8	09-Sep	16.6	16.1	16.3
27-Jul	17.3	16.3	16.7	10-Sep	16.8	15.8	16.3
28-Jul	18.1	16.3	17.3	11-Sep	17.1	16.1	16.6
29-Jul	18.3	17.6	18.0	12-Sep	17.1	16.6	16.7
30-Jul	18.1	16.1	17.5	13-Sep	17.3	16.6	16.9
31-Jul	16.8	15.6	16.1	14-Sep	17.3	16.6	16.9
01-Aug	17.1	16.3	16.8	15-Sep	16.8	16.3	16.6
02-Aug	17.3	16.3	17.0	16-Sep	16.6	15.8	16.3
03-Aug	16.8	15.6	16.1	17-Sep	15.8	15.1	15.3
04-Aug	16.8	16.1	16.6	18-Sep	15.3	14.6	15.0
05-Aug	15.8	14.6	15.1	19-Sep	15.3	14.4	15.0
06-Aug	15.8	14.6	15.2	20-Sep	15.6	14.4	14.9
07-Aug	16.8	15.6	16.0	21-Sep	15.6	14.9	15.1
08-Aug	17.1	16.3	16.6	22-Sep	15.1	14.6	14.8
09-Aug	16.8	16.1	16.5				
10-Aug	17.1	16.1	16.6				
11-Aug	17.6	15.3	16.5				
12-Aug	17.6	15.1	16.3				
13-Aug	18.1	16.6	17.2				
14-Aug	17.8	16.8	17.4				
15-Aug	17.1	16.1	16.6				
16-Aug	17.6	15.8	16.7				
17-Aug	17.1	16.3	16.7				
18-Aug	16.8	15.8	16.3				
19-Aug	17.6	16.6	17.1				
20-Aug	18.1	16.8	17.3				
21-Aug	17.3	16.8	16.9				
22-Aug	17.3	16.8	17.0				

## South Thompson River at Chase (STR60)

1996	Water Temperature (°C)			Water Temperature (°C)			
	Max	Min	Mean	Max	Min	Mean	
15-Jun	11.6	10.5	11.0	30-Jul	19.5	18.2	18.7
16-Jun	11.6	10.5	11.0	31-Jul	19.4	17.8	18.4
17-Jun	11.4	10.6	10.9	01-Aug	19.0	17.8	18.3
18-Jun	10.9	10.4	10.6	02-Aug	17.7	16.7	17.0
19-Jun	10.8	10.4	10.6	03-Aug	17.3	16.6	16.9
20-Jun	10.7	10.0	10.3	04-Aug	16.9	16.4	16.5
21-Jun	10.1	9.6	9.9	05-Aug	16.3	15.9	16.2
22-Jun	10.6	9.5	10.1	06-Aug	16.9	15.7	16.1
23-Jun	11.7	10.5	11.2	07-Aug	16.6	15.4	15.9
24-Jun	13.1	11.5	12.2	08-Aug	17.6	15.6	16.4
25-Jun	13.3	12.5	12.8	09-Aug	17.5	16.2	16.9
26-Jun	13.5	12.6	13.0	10-Aug	18.2	16.7	17.4
27-Jun	13.3	12.7	13.0	11-Aug	18.4	17.0	17.6
28-Jun	13.5	12.6	13.0	12-Aug	18.3	16.7	17.4
29-Jun	13.6	12.7	13.1	13-Aug	18.8	16.8	17.7
30-Jun	13.2	12.6	12.8	14-Aug	18.7	17.5	18.1
01-Jul	13.7	12.5	13.1	15-Aug	18.6	17.1	17.8
02-Jul	14.3	13.2	13.7	16-Aug	18.6	17.7	18.0
03-Jul	14.4	13.6	14.0	17-Aug	18.4	17.5	17.8
04-Jul	14.4	13.6	14.0	18-Aug	18.6	17.4	17.9
05-Jul	13.9	13.3	13.6	19-Aug	17.9	17.3	17.5
06-Jul	13.2	12.5	12.8	20-Aug	18.3	17.2	17.7
07-Jul	13.1	12.1	12.6	21-Aug	18.3	17.1	17.6
08-Jul	14.4	12.9	13.5	22-Aug	18.9	17.2	17.9
09-Jul	14.7	13.8	14.2	23-Aug	19.5	17.7	18.4
10-Jul	14.7	14.1	14.4	24-Aug	19.8	18.0	18.8
11-Jul	14.5	13.5	14.0	25-Aug	20.0	18.2	19.0
12-Jul	14.2	13.0	13.6	26-Aug	20.0	18.4	19.2
13-Jul	15.0	13.6	14.3	27-Aug	19.8	18.7	19.2
14-Jul	15.8	14.0	14.8	28-Aug	20.5	18.8	19.5
15-Jul	16.5	15.1	15.8	29-Aug	20.8	19.3	19.9
16-Jul	16.3	15.3	15.8	30-Aug	20.4	19.0	19.8
17-Jul	15.8	14.7	15.5	31-Aug	19.1	18.7	18.9
18-Jul	15.2	14.5	14.8	01-Sep	19.4	18.4	18.8
19-Jul	14.5	13.6	13.9	02-Sep	19.8	18.2	18.8
20-Jul	13.6	13.2	13.4	03-Sep	18.6	18.1	18.3
21-Jul	14.6	13.5	14.0	04-Sep	18.5	17.4	17.9
22-Jul	15.7	14.2	14.9	05-Sep	17.8	17.0	17.4
23-Jul	16.5	15.2	15.8	06-Sep	18.0	17.0	17.4
24-Jul	17.2	15.6	16.4	07-Sep	17.8	17.1	17.3
25-Jul	17.4	16.3	16.8	08-Sep	18.3	17.0	17.5
26-Jul	17.6	16.1	16.8	09-Sep	19.0	17.1	17.8
27-Jul	18.0	16.7	17.3	10-Sep	18.8	16.9	17.8
28-Jul	18.6	17.2	17.8	11-Sep	18.8	17.1	17.8
29-Jul	19.2	17.9	18.4	12-Sep	17.7	17.3	17.5



## North Thompson River at Kamloops (NTR15)

1996	Water Temperature (°C)			Pyranometer
	Max	Min	Mean	Mean (W/m <sup>2</sup> )
15-Jun	10.8	9.9	10.3	274.2
16-Jun	11.0	9.8	10.3	323.5
17-Jun	10.8	10.1	10.4	261.4
18-Jun	10.4	9.2	9.7	119.5
19-Jun	9.7	8.8	9.3	211.0
20-Jun	10.4	9.0	9.7	276.8
21-Jun	11.0	9.7	10.2	244.8
22-Jun	11.4	10.6	10.9	202.1
23-Jun	11.5	10.8	11.0	164.6
24-Jun	11.5	10.4	10.9	254.2
25-Jun	11.2	10.5	10.8	165.2
26-Jun	11.2	10.2	10.7	314.1
27-Jun	11.5	10.7	11.0	233.2
28-Jun	11.3	10.5	10.9	230.0
29-Jun	11.4	10.5	11.0	269.5
30-Jun	10.9	10.3	10.6	246.9
01-Jul	11.9	10.1	10.9	324.4
02-Jul	12.2	11.1	11.6	235.0
03-Jul	12.7	11.3	12.0	239.7
04-Jul	12.6	11.7	12.1	317.1
05-Jul	11.8	10.9	11.2	241.9
06-Jul	11.6	10.6	11.0	331.2
07-Jul	12.2	10.7	11.4	326.1
08-Jul	13.1	11.4	12.2	316.9
09-Jul	13.1	12.1	12.6	187.2
10-Jul	12.9	11.8	12.4	274.4
11-Jul	12.8	12.0	12.3	320.9
12-Jul	13.3	11.8	12.4	298.2
13-Jul	14.0	12.5	13.2	317.8
14-Jul	14.6	13.2	13.8	307.7
15-Jul	14.7	13.7	14.1	293.5
16-Jul	14.2	13.3	13.9	179.9
17-Jul	13.3	11.9	12.5	100.8
18-Jul	12.1	11.3	11.8	213.1
19-Jul	12.5	11.8	12.1	185.9
20-Jul	12.1	11.2	11.7	196.5
21-Jul	11.9	11.0	11.4	259.4
22-Jul	13.3	11.4	12.3	300.0
23-Jul	14.2	12.4	13.2	303.8
24-Jul	15.0	13.5	14.2	298.4
25-Jul	15.5	14.6	15.0	291.3
26-Jul	15.5	14.6	15.1	285.3
27-Jul	15.8	14.3	15.0	299.1
28-Jul	15.8	14.7	15.2	261.5
29-Jul	16.2	15.1	15.7	263.1
30-Jul	16.3	15.2	15.7	292.0
31-Jul	16.0	15.2	15.6	297.4
01-Aug	15.3	14.4	14.9	265.8

## North Thompson River at Kamloops (NTR15) Cont'd

1996	Water Temperature (°C)			Pyranometer
	Max	Min	Mean	Mean (W/m <sup>2</sup> )
02-Aug	14.7	13.6	14.0	124.1
03-Aug	13.6	13.0	13.3	171.4
04-Aug	13.3	12.8	13.1	91.2
05-Aug	12.8	12.4	12.6	117.8
06-Aug	13.3	12.4	12.8	223.6
07-Aug	14.2	12.7	13.4	277.1
08-Aug	14.7	13.5	14.1	272.8
09-Aug	15.4	14.3	14.8	245.2
10-Aug	16.0	14.9	15.4	258.4
11-Aug	15.8	15.0	15.4	261.8
12-Aug	15.9	14.9	15.4	273.1
13-Aug	16.0	14.9	15.5	271.0
14-Aug	16.0	15.2	15.6	269.4
15-Aug	16.0	15.3	15.7	208.0
16-Aug	15.8	15.1	15.5	173.0
17-Aug	15.3	14.9	15.1	190.5
18-Aug	14.9	14.6	14.7	182.2
19-Aug	14.6	14.1	14.3	132.3
20-Aug	14.3	13.8	14.0	246.4
21-Aug	13.8	13.3	13.6	173.2
22-Aug	14.1	13.2	13.7	247.7
23-Aug	15.0	13.6	14.2	250.4
24-Aug	15.8	14.4	15.0	241.2
25-Aug	16.3	15.1	15.7	235.0
26-Aug	16.4	15.4	15.9	211.0
27-Aug	16.2	15.4	15.8	174.2
28-Aug	16.0	15.4	15.7	151.5
29-Aug	16.5	15.3	15.8	204.2
30-Aug	16.3	15.8	16.1	122.6
31-Aug	16.0	14.9	15.4	116.0
01-Sep	14.9	14.3	14.5	150.2
02-Sep	14.4	13.6	14.0	228.5
03-Sep	14.0	13.3	13.5	45.2
04-Sep	13.5	12.9	13.2	204.1
05-Sep	13.5	12.9	13.2	147.2
06-Sep	13.3	12.8	13.1	102.0
07-Sep	13.2	12.8	13.0	125.9
08-Sep	13.5	12.7	13.0	180.1
09-Sep	13.7	13.0	13.3	206.7
10-Sep	13.6	12.9	13.3	206.0
11-Sep	13.9	13.0	13.4	190.1
12-Sep	13.8	13.5	13.6	4.9

## Momich River (MR)

1996	Water Temperature (°C)			Water Temperature (°C)			
	Max	Min	Mean	Max	Min	Mean	
01-Jul	9.6	9.0	9.3	15-Aug	12.7	12.1	12.4
02-Jul	9.8	8.0	8.9	16-Aug	12.7	12.1	12.4
03-Jul	9.8	8.3	9.0	17-Aug	12.6	11.8	12.1
04-Jul	9.3	8.3	8.9	18-Aug	12.6	11.5	11.8
05-Jul	9.2	8.0	8.5	19-Aug	11.7	11.1	11.2
06-Jul	10.1	7.8	8.9	20-Aug	11.5	10.8	11.0
07-Jul	10.1	8.4	9.3	21-Aug	11.1	10.5	10.8
08-Jul	10.6	9.0	9.8	22-Aug	11.5	10.3	10.8
09-Jul	10.6	9.3	9.9	24-Aug	12.0	10.8	11.1
10-Jul	9.6	8.3	9.0	25-Aug	12.1	11.1	11.4
11-Jul	10.3	8.4	9.5	26-Aug	11.8	10.9	11.3
12-Jul	10.9	9.3	10.2	27-Aug	11.8	10.9	11.4
13-Jul	11.4	9.8	10.6	28-Aug	12.1	11.4	11.7
14-Jul	11.5	9.8	10.7	29-Aug	12.7	11.7	12.0
15-Jul	12.0	10.3	11.1	30-Aug	13.2	11.5	12.0
16-Jul	11.7	10.5	10.8	31-Aug	12.6	11.5	11.9
17-Jul	10.8	10.1	10.4	01-Sep	12.4	12.0	12.3
18-Jul	10.6	9.8	10.2	02-Sep	12.6	11.4	11.9
19-Jul	10.1	9.5	9.8	03-Sep	12.0	11.2	11.6
20-Jul	9.9	9.3	9.6	04-Sep	11.5	11.1	11.3
21-Jul	10.8	9.3	9.9	05-Sep	11.4	11.1	11.2
22-Jul	11.4	9.8	10.5	06-Sep	11.1	10.9	11.1
23-Jul	12.1	10.6	11.3	07-Sep	11.1	10.8	11.0
24-Jul	12.6	11.1	11.8	08-Sep	11.1	10.5	10.8
25-Jul	12.7	11.5	12.1	09-Sep	11.4	10.8	11.1
26-Jul	13.0	11.7	12.3	10-Sep	11.4	10.8	11.1
27-Jul	13.3	12.0	12.6	11-Sep	11.5	10.8	11.2
28-Jul	13.5	12.3	12.8	12-Sep	11.7	11.2	11.4
29-Jul	14.2	12.7	13.3	13-Sep	11.7	11.1	11.4
30-Jul	14.0	12.6	13.1	14-Sep	11.5	11.1	11.3
31-Jul	13.5	12.7	13.1	15-Sep	11.2	10.3	10.6
01-Aug	13.5	12.3	12.8	16-Sep	10.3	9.9	10.1
02-Aug	13.2	12.0	12.4	17-Sep	9.9	9.3	9.7
03-Aug	12.1	11.7	12.0	18-Sep	9.9	9.5	9.7
04-Aug	11.8	10.9	11.4	19-Sep	9.9	9.8	9.8
05-Aug	11.1	10.5	10.8	20-Sep	9.8	9.3	9.5
06-Aug	11.7	10.3	10.9	21-Sep	9.3	9.0	9.1
07-Aug	12.0	10.6	11.2	22-Sep	9.0	8.7	8.9
08-Aug	12.3	11.1	11.6	23-Sep	8.9	8.4	8.7
09-Aug	12.7	11.5	12.1	24-Sep	8.7	8.3	8.6
10-Aug	12.9	12.1	12.3	25-Sep	8.9	8.3	8.6
11-Aug	13.0	11.7	12.3	26-Sep	9.3	8.7	9.0
12-Aug	12.3	11.5	12.0	27-Sep	9.3	8.9	9.1
13-Aug	12.7	11.7	12.2	28-Sep	9.8	9.0	9.4
14-Aug	12.9	12.1	12.4	29-Sep	9.9	9.6	9.8

## Momich River (MR) Cont'd

1996	Water Temperature (°C)		
	Max	Min	Mean
01-Oct	9.5	8.9	9.2
02-Oct	8.9	8.4	8.7
03-Oct	9.0	8.7	8.8
04-Oct	9.2	9.0	9.1
05-Oct	9.2	8.9	9.1
06-Oct	9.0	8.7	8.9
07-Oct	9.0	8.7	8.9
08-Oct	9.2	8.9	9.0
09-Oct	9.2	8.9	9.1
10-Oct	9.2	8.9	9.1
11-Oct	9.5	9.2	9.3
12-Oct	9.3	8.9	9.1
13-Oct	9.2	8.9	9.0
14-Oct	9.0	8.6	8.8
15-Oct	8.6	8.1	8.4
16-Oct	8.1	7.5	7.8
17-Oct	7.7	7.3	7.4
18-Oct	7.4	7.3	7.3
19-Oct	7.4	7.1	7.3
20-Oct	7.3	7.1	7.2
21-Oct	7.1	7.0	7.0
22-Oct	7.1	6.8	7.0
23-Oct	7.1	7.0	7.1
24-Oct	7.1	7.0	7.1



## Upper Adams River (UAR5)

1996	Water Temperature (°C)			Water Temperature (°C)			
	Max	Min	Mean	Max	Min	Mean	
01-Jul	10.6	10.2	10.4	18-Aug	12.7	11.5	12.1
02-Jul	10.6	9.9	10.1	19-Aug	12.6	11.7	11.9
03-Jul	10.2	9.6	9.9	20-Aug	12.0	10.9	11.5
04-Jul	9.9	9.2	9.6	21-Aug	12.4	11.1	11.9
05-Jul	9.9	9.2	9.4	22-Aug	13.6	11.7	12.7
06-Jul	10.2	8.4	9.3	23-Aug	14.6	11.8	13.3
07-Jul	10.3	9.5	9.9	24-Aug	14.9	12.6	13.8
08-Jul	11.5	10.2	10.8	25-Aug	14.9	12.4	13.7
09-Jul	11.5	10.6	11.1	26-Aug	14.8	12.7	13.9
10-Jul	10.5	9.5	9.9	27-Aug	14.9	13.0	14.0
11-Jul	10.5	9.2	9.8	28-Aug	14.9	13.3	14.2
12-Jul	11.2	10.3	10.7	29-Aug	15.5	14.2	14.8
13-Jul	11.5	10.6	11.1	30-Aug	14.6	13.3	14.0
14-Jul	11.5	10.8	11.3	31-Aug	13.3	12.3	12.7
15-Jul	11.8	11.1	11.5	01-Sep	12.1	11.1	11.6
16-Jul	12.1	9.9	11.0	02-Sep	12.3	10.6	11.5
17-Jul	10.5	10.1	10.3	03-Sep	12.0	10.8	11.1
18-Jul	10.6	10.1	10.5	04-Sep	12.3	10.3	11.3
19-Jul	10.1	9.5	9.7	05-Sep	11.5	10.6	11.1
20-Jul	9.5	9.0	9.3	06-Sep	11.4	10.5	10.9
21-Jul	10.9	9.0	9.8	07-Sep	10.8	10.2	10.6
22-Jul	12.0	9.9	10.8	08-Sep	11.1	9.9	10.4
23-Jul	12.9	11.2	12.0	09-Sep	11.7	10.3	11.0
24-Jul	13.0	12.0	12.4	10-Sep	12.0	10.8	11.4
25-Jul	12.7	12.1	12.4	11-Sep	12.9	11.1	12.0
26-Jul	12.7	11.7	12.1	12-Sep	12.6	11.5	12.1
27-Jul	13.0	12.1	12.5	13-Sep	12.6	11.7	12.2
28-Jul	13.2	12.4	12.8	14-Sep	12.6	11.1	11.8
29-Jul	13.5	12.7	13.1	15-Sep	10.9	9.9	10.4
30-Jul	13.6	12.3	12.9	16-Sep	10.5	9.8	10.1
31-Jul	12.9	11.7	12.3	17-Sep	10.3	9.3	9.8
01-Aug	12.1	11.5	11.8	18-Sep	10.1	9.5	9.8
02-Aug	12.3	10.8	11.6	19-Sep	10.2	9.3	9.6
03-Aug	11.4	10.8	11.0	20-Sep	9.5	8.6	8.9
04-Aug	11.4	10.3	10.9	21-Sep	8.7	8.1	8.4
05-Aug	10.9	10.1	10.4	22-Sep	8.9	8.0	8.3
06-Aug	11.7	9.8	10.6	23-Sep	8.9	7.5	8.2
07-Aug	12.7	10.8	11.9	24-Sep	8.6	7.3	7.9
08-Aug	13.5	11.7	12.7	25-Sep	8.6	7.3	8.0
09-Aug	14.0	12.3	13.3	26-Sep	9.2	8.3	8.7
10-Aug	13.9	12.6	13.2	27-Sep	9.9	8.4	9.2
11-Aug	13.9	12.4	13.1	28-Sep	11.1	9.8	10.4
12-Aug	13.8	12.3	13.0	29-Sep	10.9	10.2	10.5
13-Aug	14.0	12.3	13.3	30-Sep	10.3	9.5	9.9
14-Aug	14.3	13.0	13.6	01-Oct	9.5	7.7	8.4
15-Aug	14.5	12.9	13.7	02-Oct	7.8	7.0	7.4
16-Aug	14.5	12.9	13.5	03-Oct	8.3	7.3	7.7
17-Aug	13.2	11.8	12.5	04-Oct	8.7	8.3	8.5

## Upper Adams River (UAR5) Cont'd

1996	Water Temperature (°C)		
	Max	Min	Mean
05-Oct	9.2	8.6	8.9
06-Oct	9.3	8.9	9.0
07-Oct	9.2	8.1	8.7
08-Oct	9.8	8.7	9.2
09-Oct	9.8	9.2	9.4
10-Oct	9.6	9.2	9.3
11-Oct	9.6	9.0	9.3
12-Oct	9.3	9.0	9.2
13-Oct	9.0	8.4	8.8
14-Oct	8.7	8.0	8.3
15-Oct	7.8	7.1	7.4
16-Oct	7.1	6.4	6.7
17-Oct	6.2	5.5	5.8
18-Oct	5.8	5.2	5.4
19-Oct	6.1	5.2	5.6
20-Oct	5.8	5.0	5.4
21-Oct	5.3	4.4	4.8
22-Oct	4.9	4.6	4.7
23-Oct	5.3	4.6	5.0
24-Oct	5.0	4.9	4.9

## Upper Adams River (UAR38)

1996	Water Temperature (°C)			Water Temperature (°C)			
	Max	Min	Mean	Max	Min	Mean	
01-Jul	10.1	9.2	9.7	18-Aug	12.1	10.3	11.2
02-Jul	9.5	7.4	8.5	19-Aug	11.5	10.1	10.9
03-Jul	9.2	7.3	8.2	20-Aug	11.8	9.9	10.8
04-Jul	9.3	8.0	8.6	21-Aug	12.3	10.3	11.1
05-Jul	8.3	7.3	7.7	22-Aug	13.3	9.5	11.2
06-Jul	9.3	6.8	7.9	23-Aug	13.8	10.2	11.8
07-Jul	10.2	6.8	8.5	24-Aug	14.0	10.2	11.9
08-Jul	11.4	8.0	9.6	25-Aug	14.2	10.9	12.4
09-Jul	10.1	9.0	9.5	26-Aug	14.2	11.2	12.6
10-Jul	9.0	7.7	8.3	27-Aug	14.0	11.5	12.7
11-Jul	10.3	7.1	8.5	28-Aug	14.2	11.8	12.9
12-Jul	10.6	7.7	9.1	29-Aug	14.6	11.5	12.9
13-Jul	11.4	8.3	9.6	30-Aug	13.0	11.2	12.2
14-Jul	11.4	8.1	9.7	31-Aug	11.4	9.8	10.9
15-Jul	11.4	8.4	10.0	01-Sep	11.4	9.5	10.3
16-Jul	9.8	8.4	9.3	02-Sep	11.8	9.5	10.5
17-Jul	10.3	8.6	9.4	03-Sep	11.1	9.9	10.6
18-Jul	9.6	7.8	8.6	04-Sep	10.9	9.5	10.2
19-Jul	8.9	7.8	8.4	05-Sep	10.8	9.6	10.0
20-Jul	8.7	8.1	8.4	06-Sep	10.9	9.6	10.1
21-Jul	9.5	8.1	8.7	07-Sep	9.8	9.5	9.6
22-Jul	10.9	8.4	9.6	08-Sep	10.5	9.5	9.9
23-Jul	12.0	9.0	10.5	09-Sep	11.4	9.8	10.3
24-Jul	11.7	9.2	10.6	10-Sep	12.1	9.8	10.7
25-Jul	11.7	9.0	10.2	11-Sep	12.4	9.6	11.0
26-Jul	12.1	9.2	10.6	12-Sep	11.8	10.2	11.0
27-Jul	12.3	9.5	10.9	13-Sep	11.8	10.5	10.9
28-Jul	12.3	9.6	11.1	14-Sep	10.8	9.8	10.3
29-Jul	11.8	10.5	11.1	15-Sep	10.1	9.3	9.7
30-Jul	12.4	10.2	11.2	16-Sep	9.2	8.6	9.0
31-Jul	11.5	8.7	10.1	17-Sep	10.1	8.4	9.1
01-Aug	12.6	8.6	10.3	18-Sep	9.9	8.0	8.8
02-Aug	11.1	9.0	10.0	19-Sep	9.3	8.3	9.0
03-Aug	11.1	8.9	9.8	20-Sep	8.6	7.4	7.9
04-Aug	10.2	8.7	9.5	21-Sep	8.7	7.5	8.1
05-Aug	9.8	8.6	9.2	22-Sep	8.4	7.3	7.7
06-Aug	11.2	8.9	9.9	23-Sep	9.0	7.0	7.6
07-Aug	12.1	8.9	10.5	24-Sep	8.9	6.8	7.6
08-Aug	13.0	9.6	11.2	25-Sep	9.2	6.8	7.9
09-Aug	13.6	9.6	11.4	26-Sep	9.5	8.0	8.5
10-Aug	13.3	9.8	11.6	27-Sep	10.2	7.8	8.8
11-Aug	13.0	10.3	11.6	28-Sep	10.5	9.2	9.6
12-Aug	13.2	9.6	11.3	29-Sep	10.1	8.6	9.2
13-Aug	13.8	10.8	11.9	30-Sep	9.3	7.5	8.3
14-Aug	13.9	10.8	12.1	01-Oct	8.6	6.7	7.5
15-Aug	13.8	10.3	11.9	02-Oct	8.1	6.7	7.4
16-Aug	13.2	10.3	11.4	03-Oct	8.4	7.7	8.0
17-Aug	12.0	10.3	11.0	04-Oct	8.3	8.1	8.2

**Upper Adams River (UAR38) Cont'd**

<b>1996</b>	<b>Water Temperature (°C)</b>		
	<b>Max</b>	<b>Min</b>	<b>Mean</b>
05-Oct	8.7	8.3	8.5
06-Oct	8.6	7.7	8.0
07-Oct	9.3	8.0	8.4
08-Oct	9.8	8.3	8.8
09-Oct	9.6	8.1	8.6
10-Oct	9.0	8.1	8.5
11-Oct	9.3	8.4	8.8
12-Oct	8.4	7.7	8.1
13-Oct	8.6	7.8	8.2
14-Oct	8.0	7.1	7.5
15-Oct	7.3	6.5	6.8
16-Oct	7.0	5.8	6.3
17-Oct	6.1	5.3	5.7
18-Oct	5.9	5.3	5.6
19-Oct	6.4	5.5	5.8
20-Oct	6.4	4.9	5.5
21-Oct	5.5	3.8	4.6
22-Oct	5.5	4.4	5.0
23-Oct	5.6	4.6	5.3
24-Oct	4.4	3.7	4.0

Figure 1. Map of the Fraser River watershed showing sample site locations.

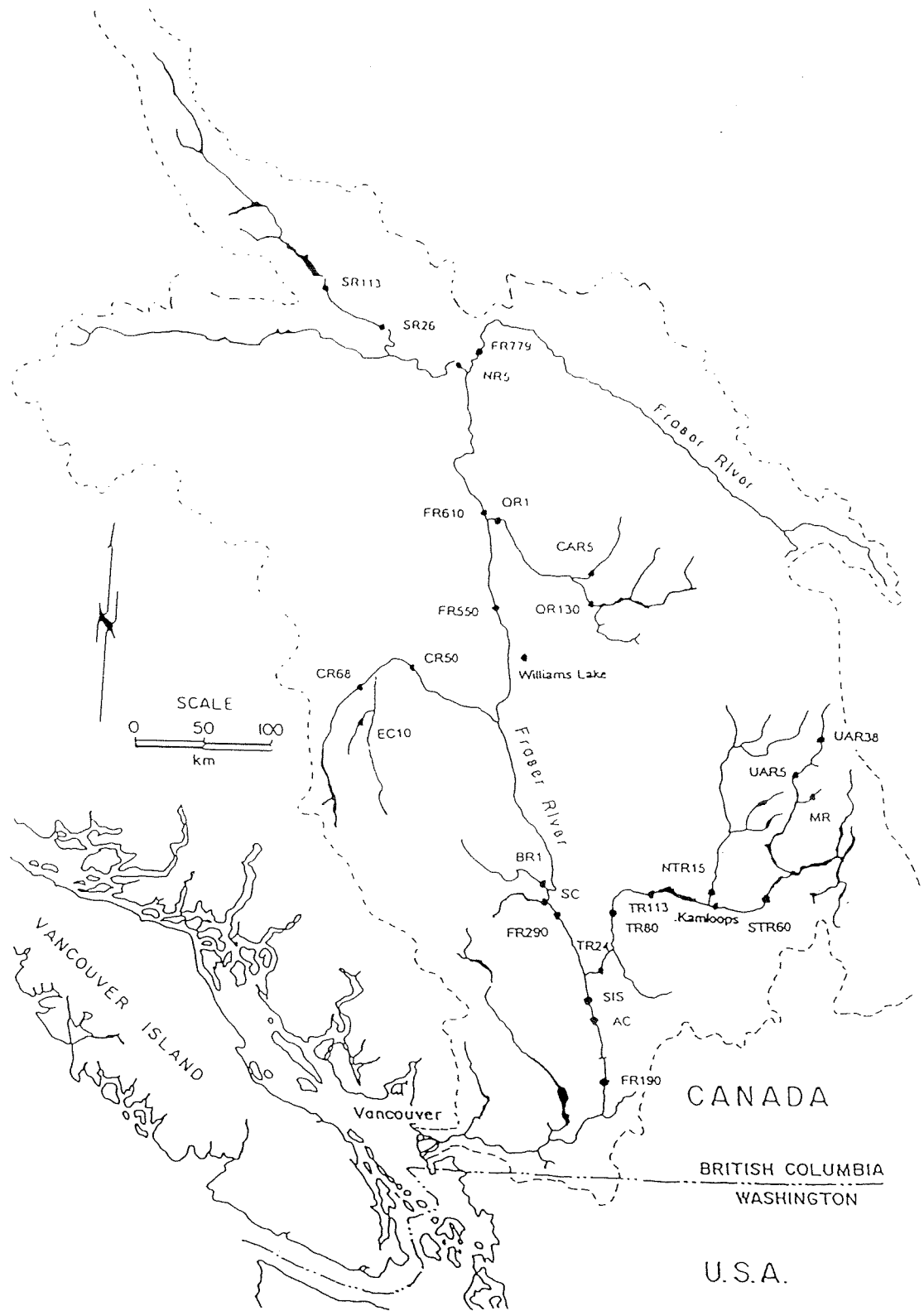
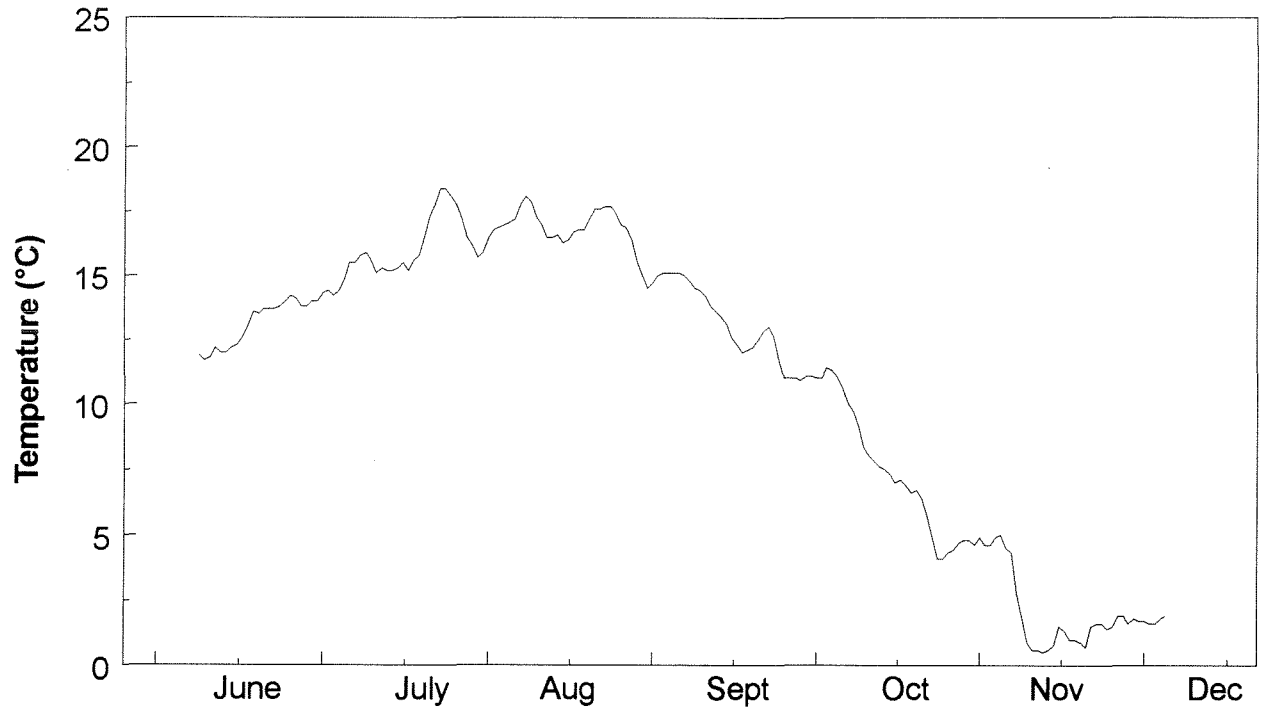
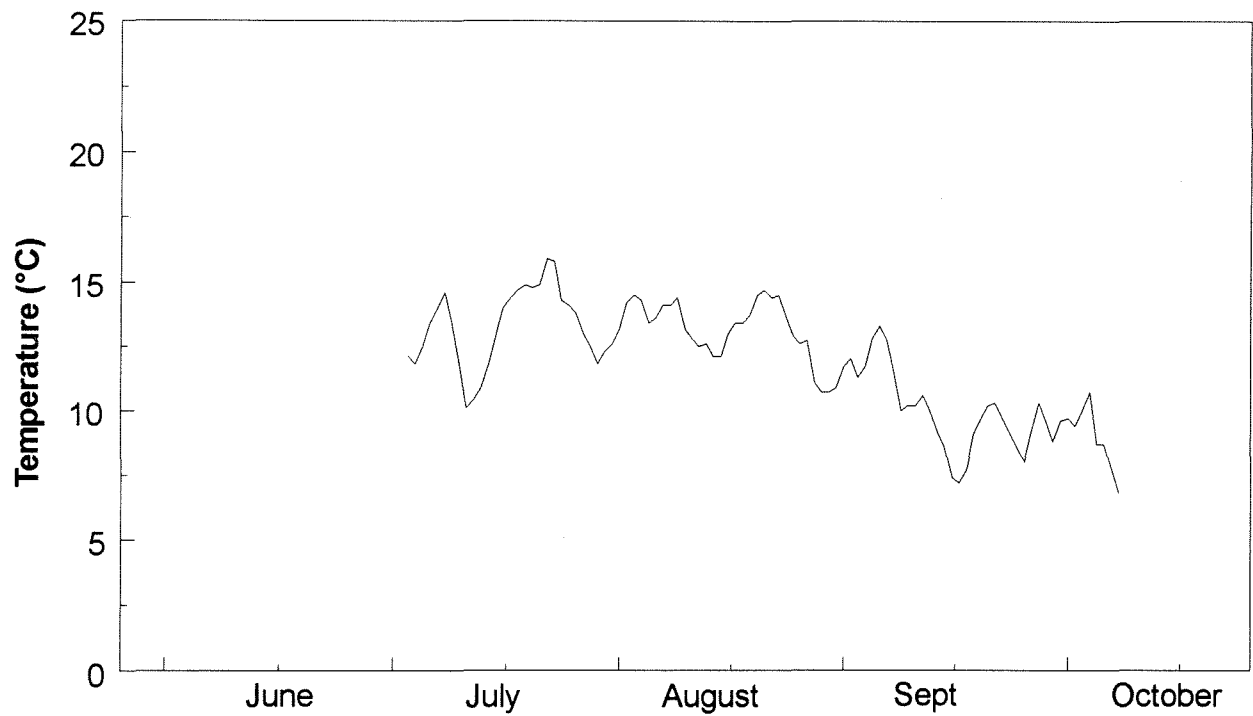


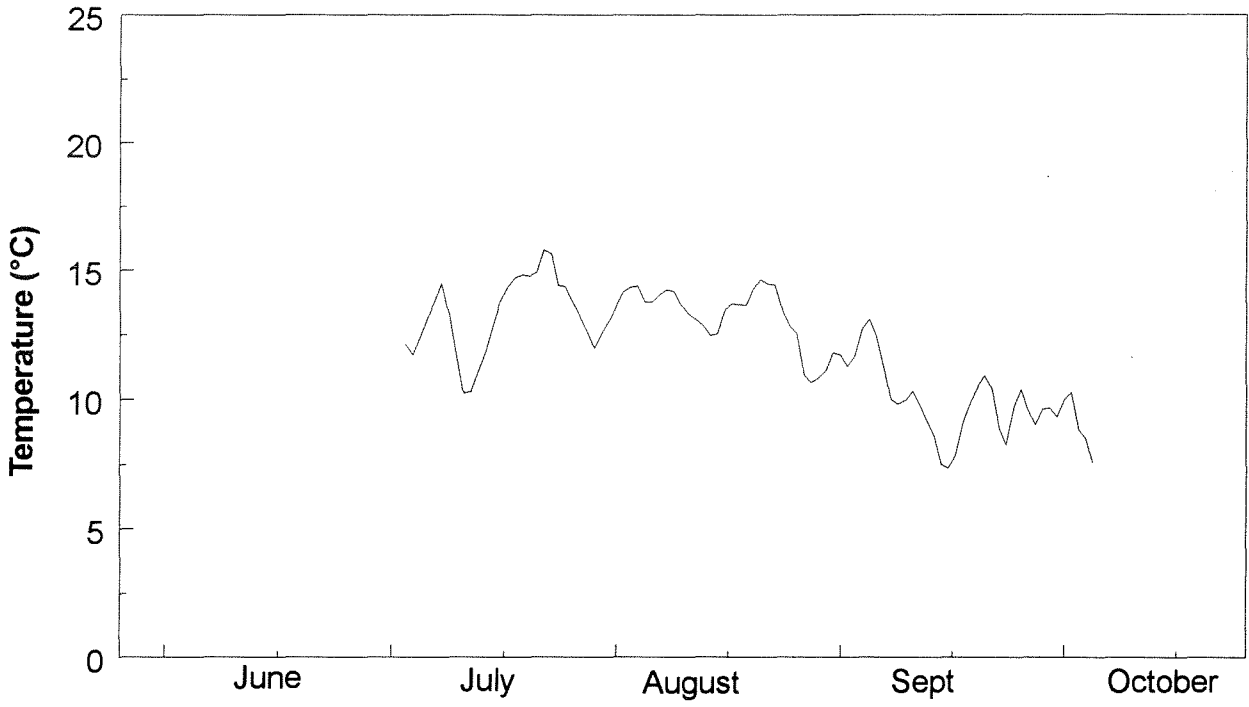


Figure 2. Graphed mean daily water temperatures at selected sites in the Fraser River basin during the summer of 1996.

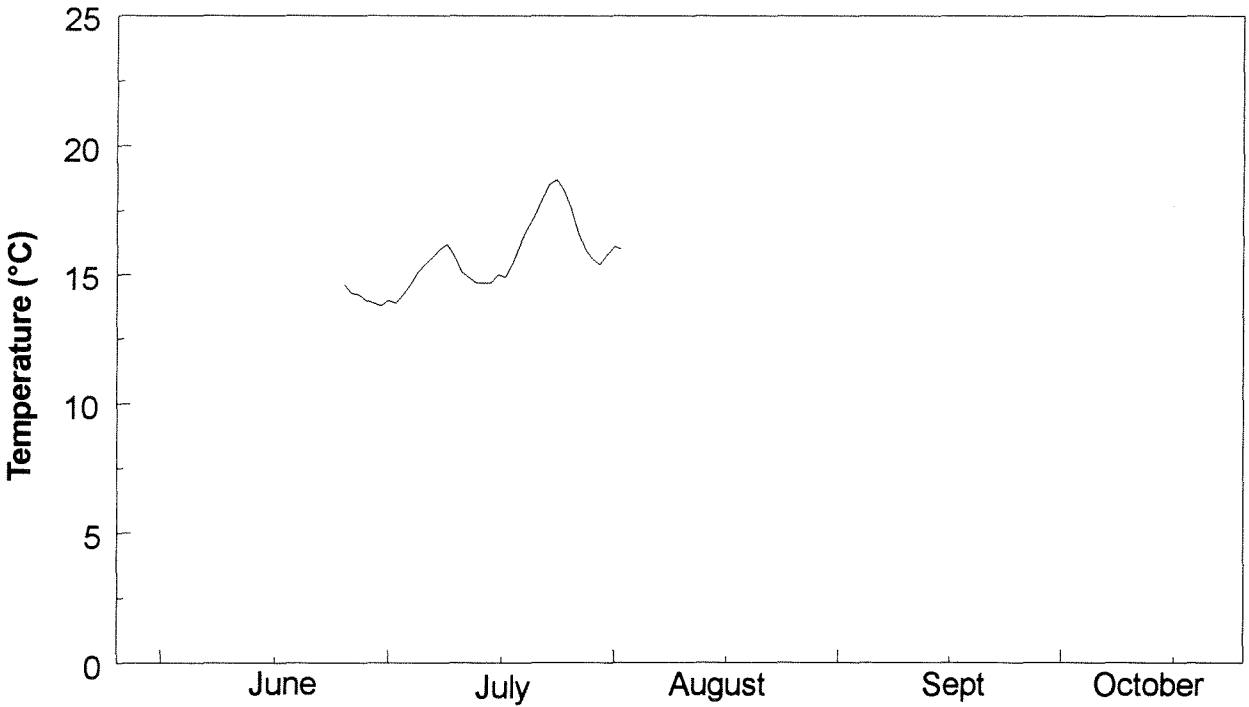
**Fraser River at Qualark (FR190)****Ainslie Creek (AC)**

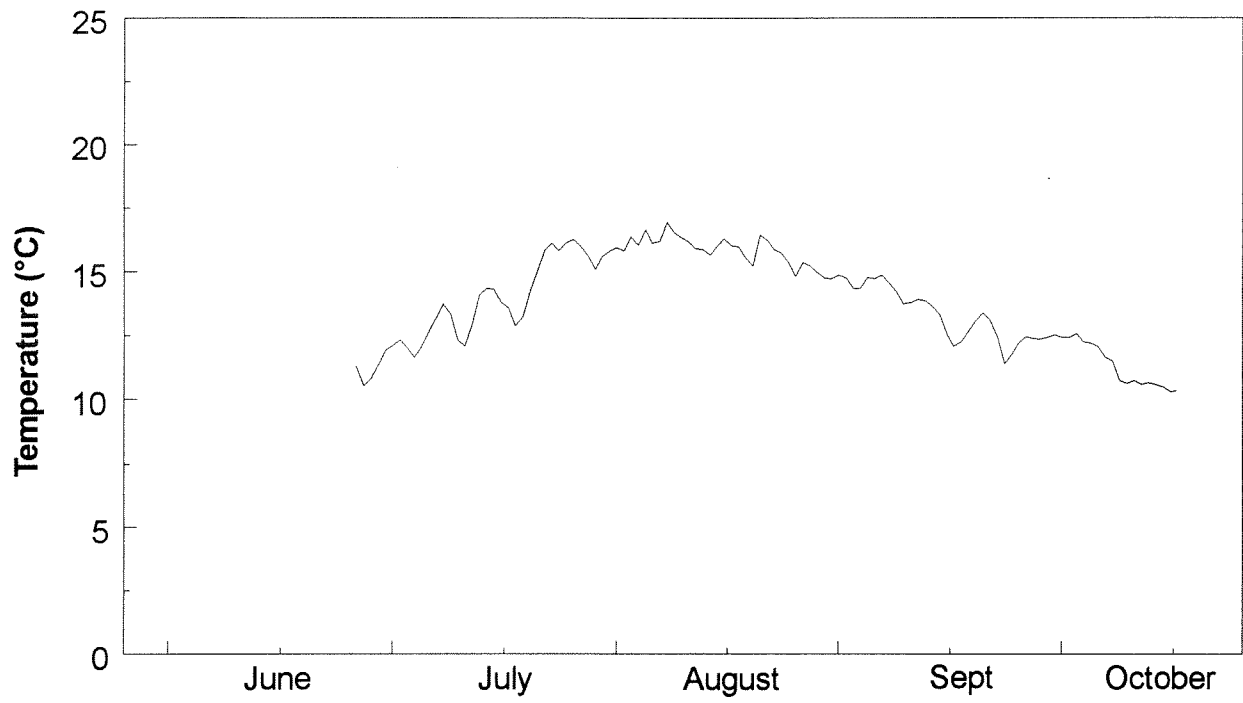
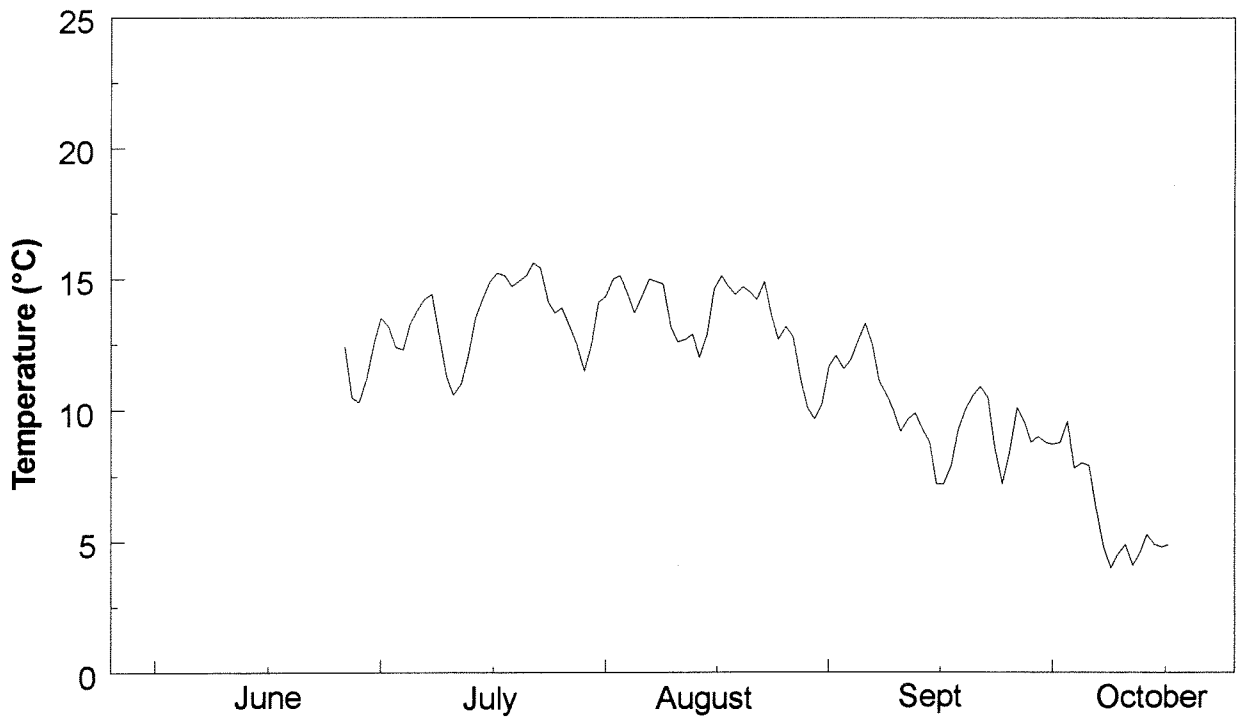


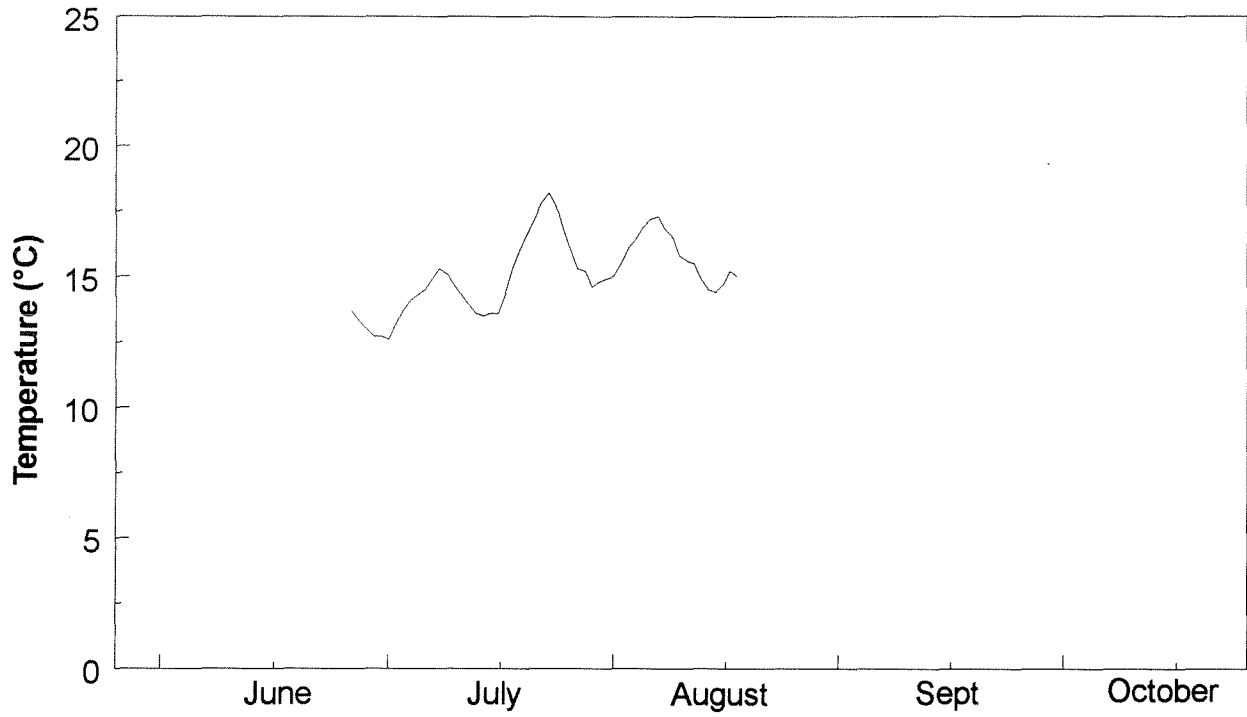
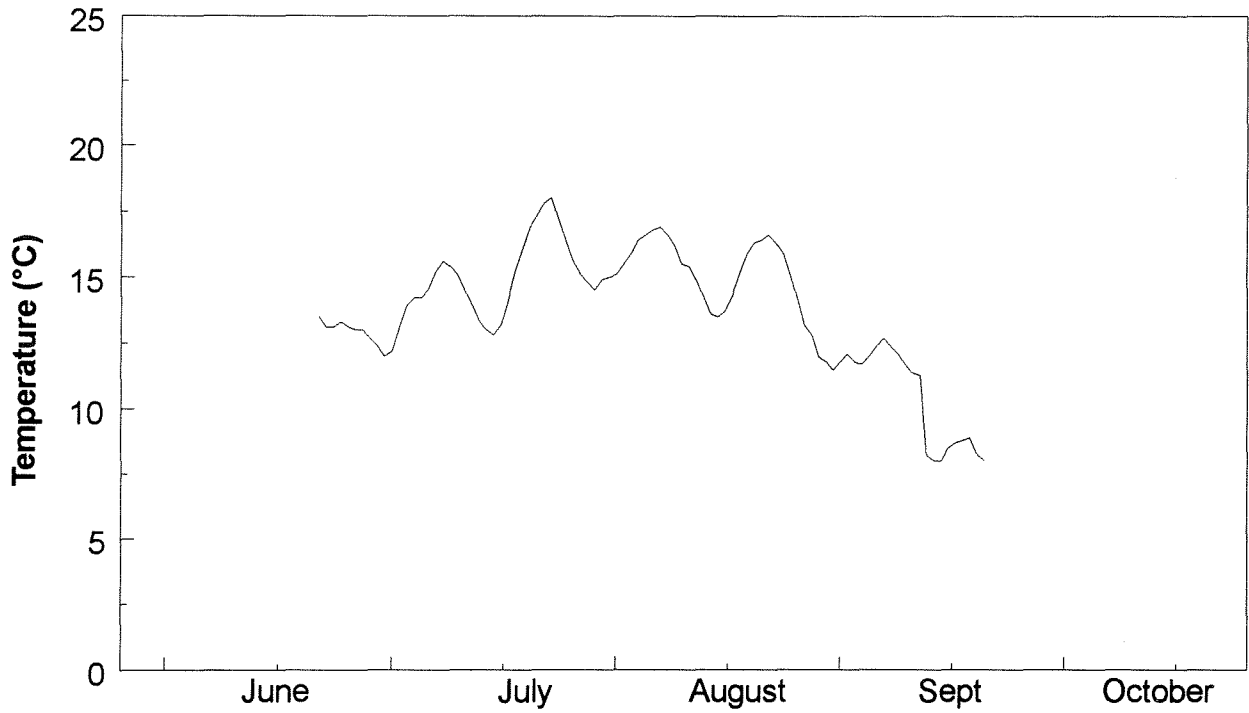
### Siska Creek (SIS)

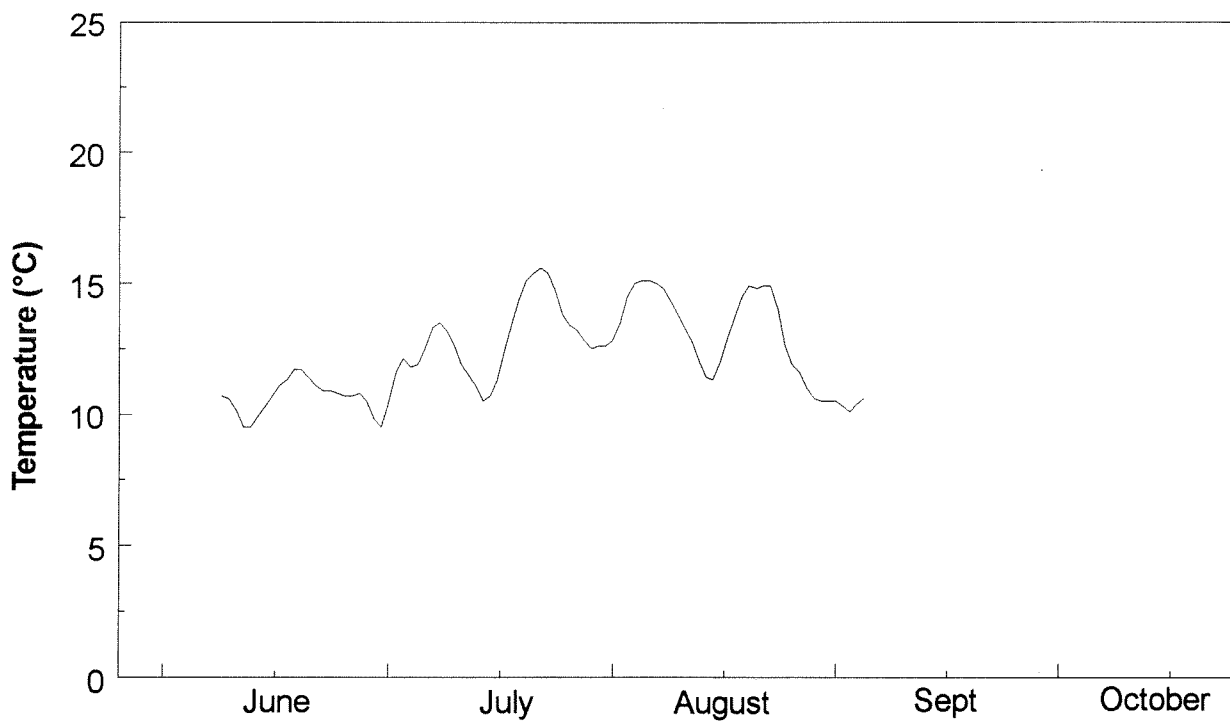
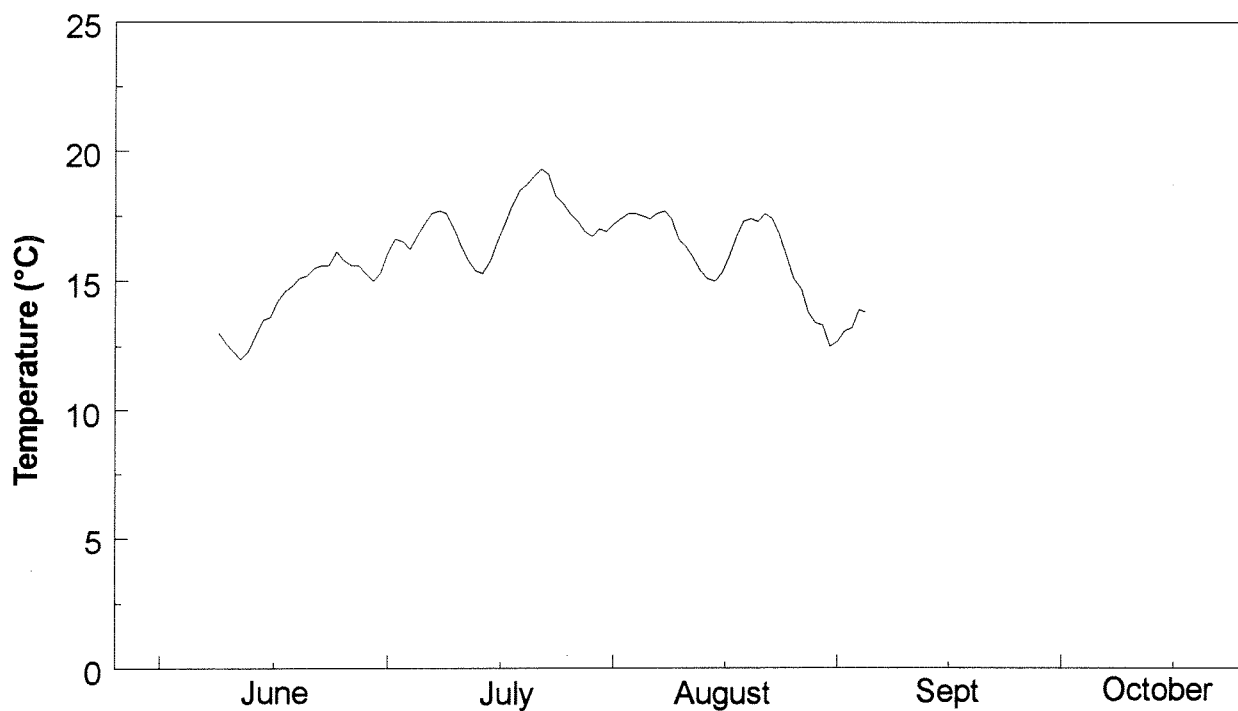


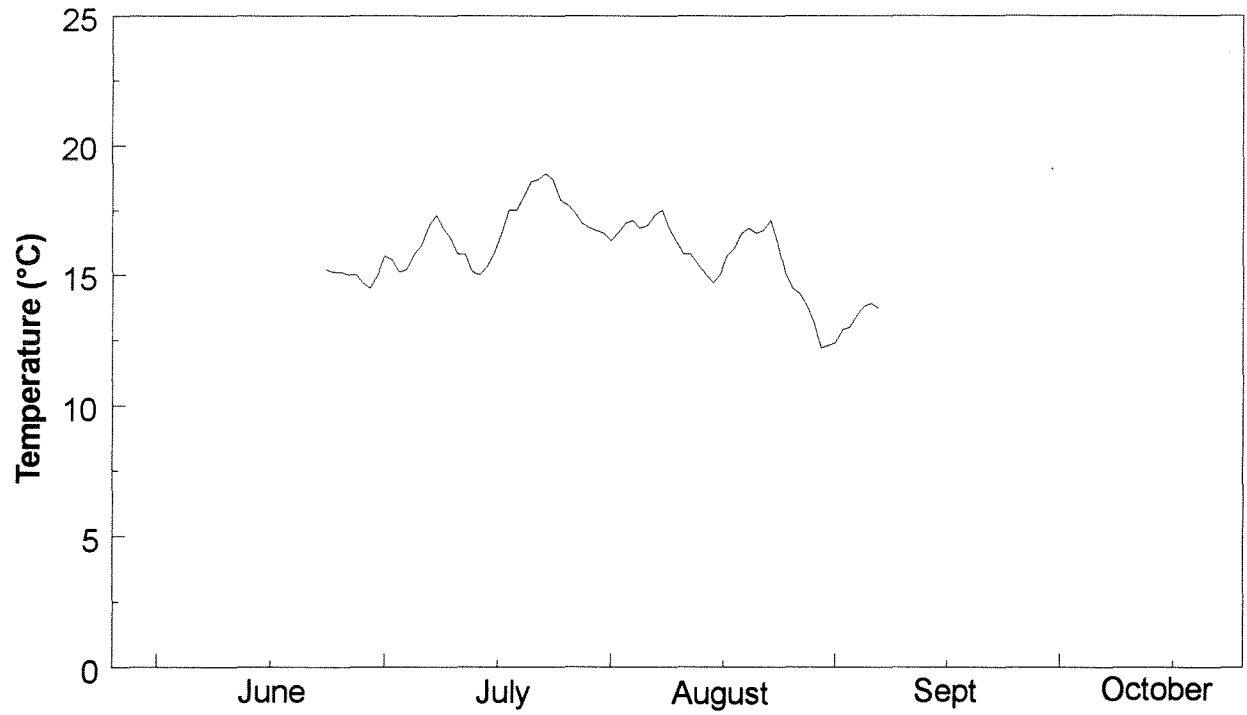
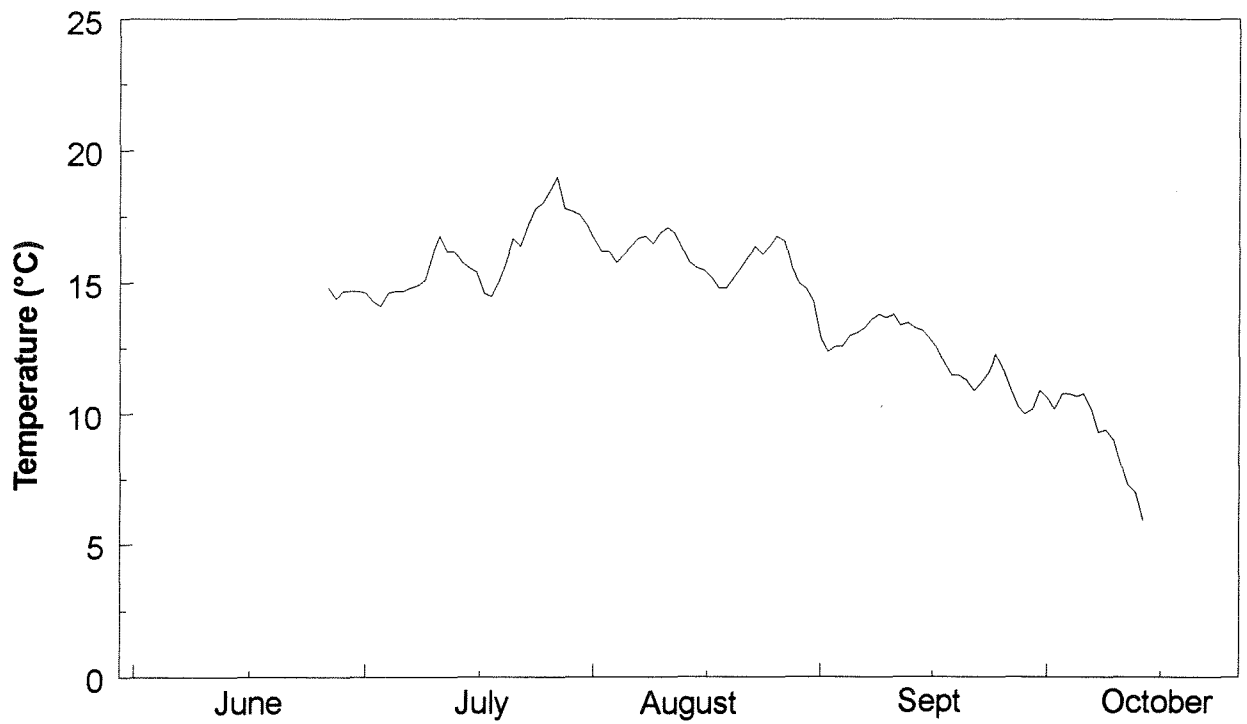
### Fraser River at Lillooet (FR290)

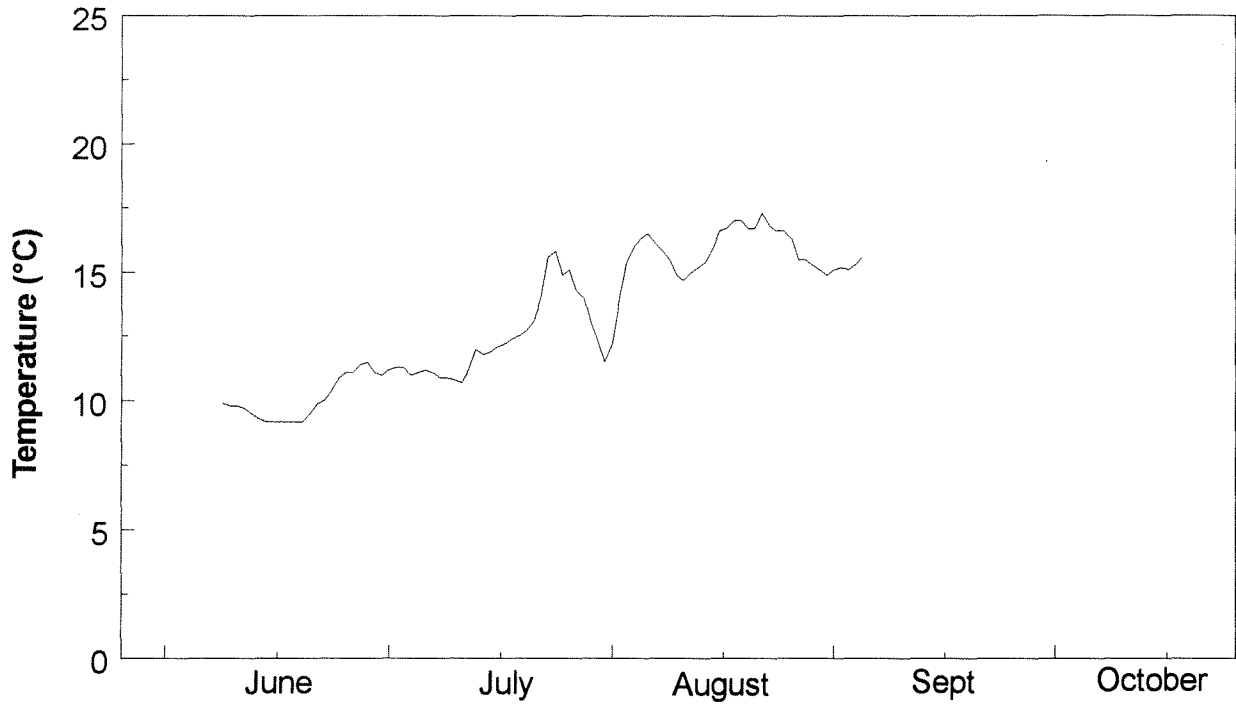
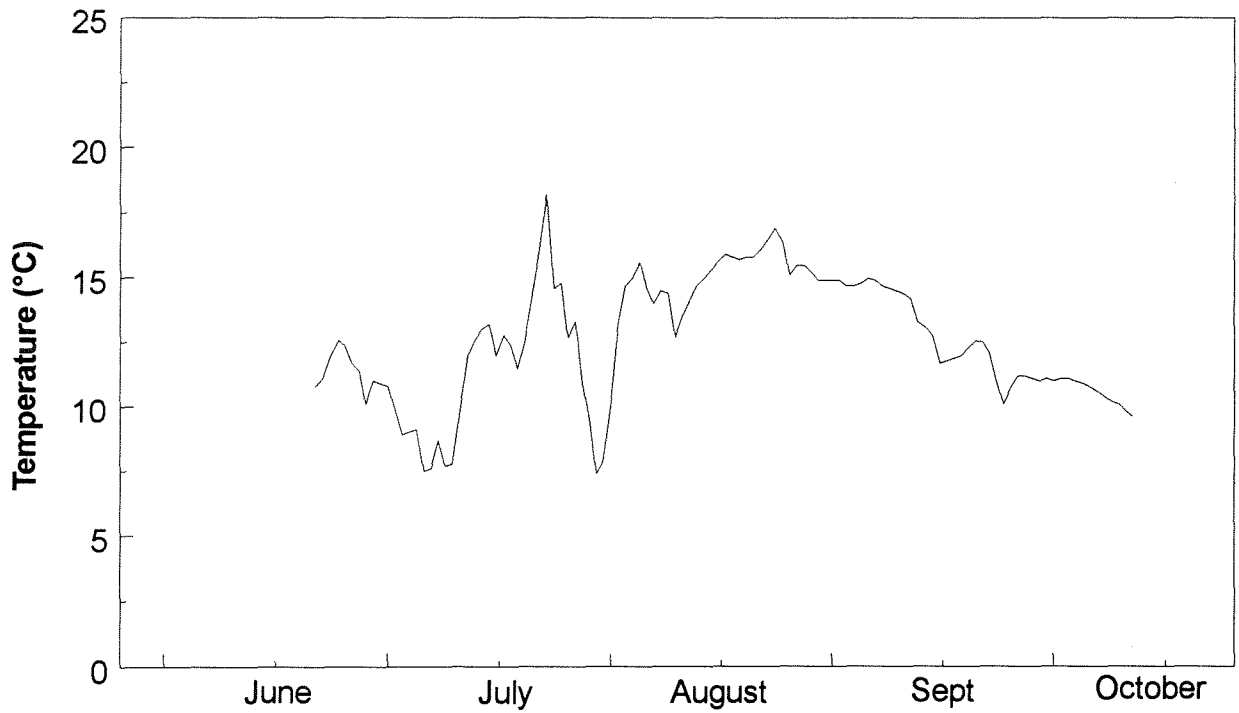


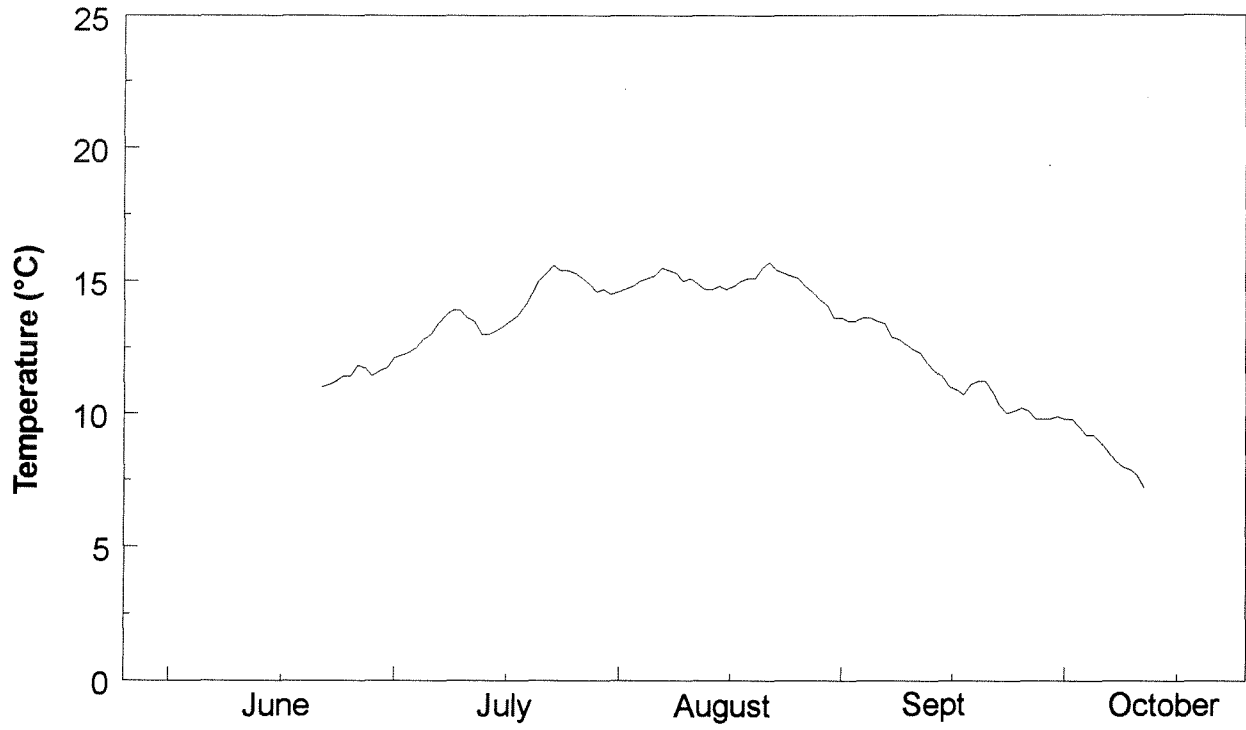
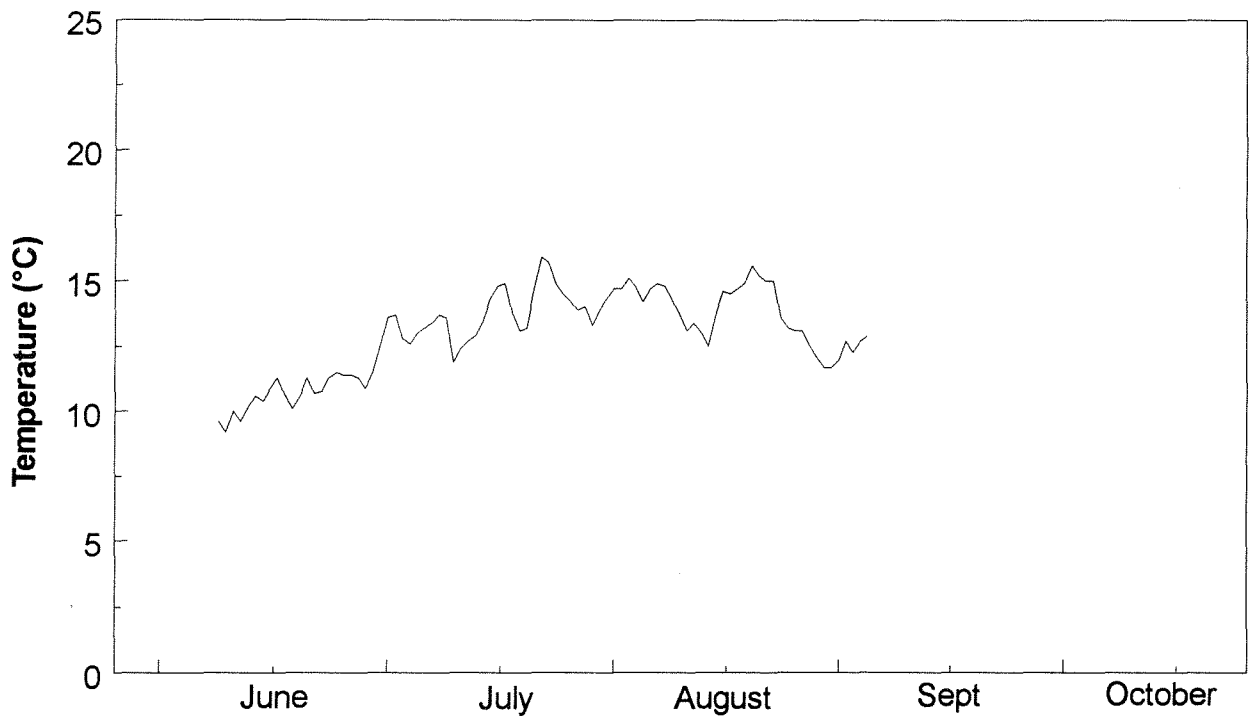
**Seton Creek (SC)****Bridge River (BR1)**

**Fraser River at Marguerite (FR550)****Fraser River at Quesnel (FR610)**

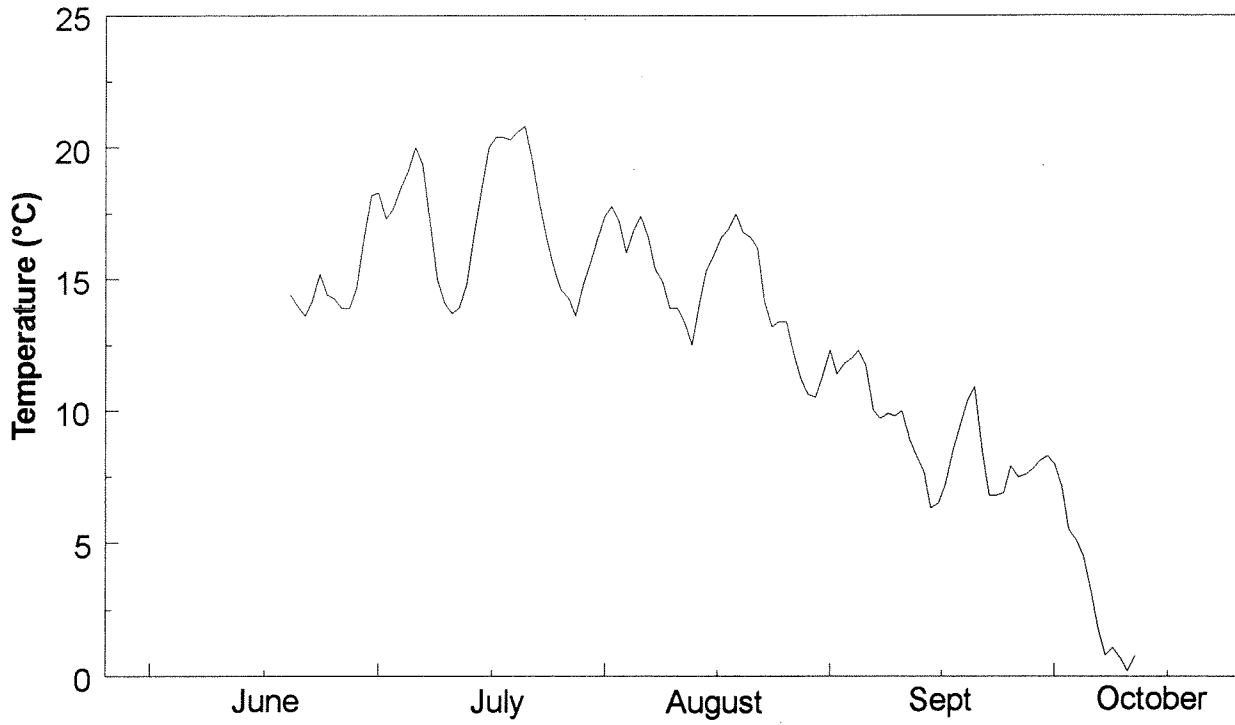
**Fraser River at Shelley (FR779)****Nechako River at Prince George (NR5)**

**Stuart River (SR26)****Upper Stuart River (SR113)**

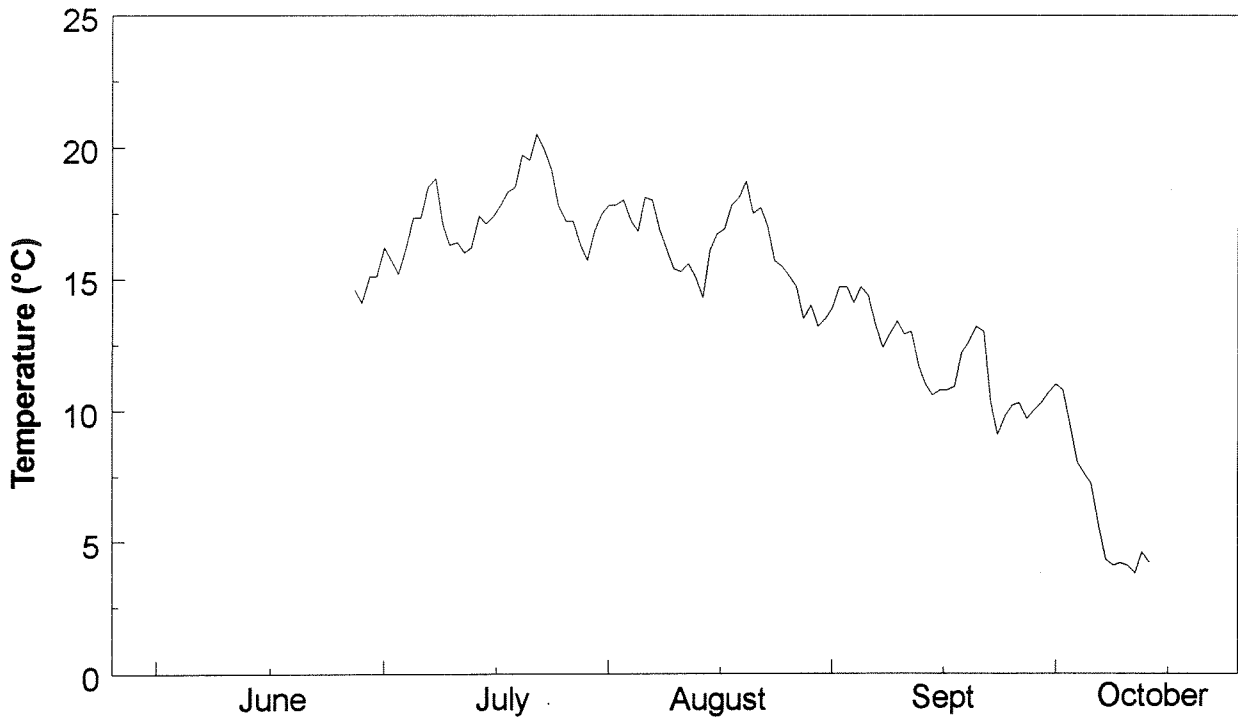
**Quesnel River at Quesnel (QR1)****Quesnel River at Likely (QR130)**

**Cariboo River (CAR5)****Chilcotin River at Alexis Creek (CR50)**

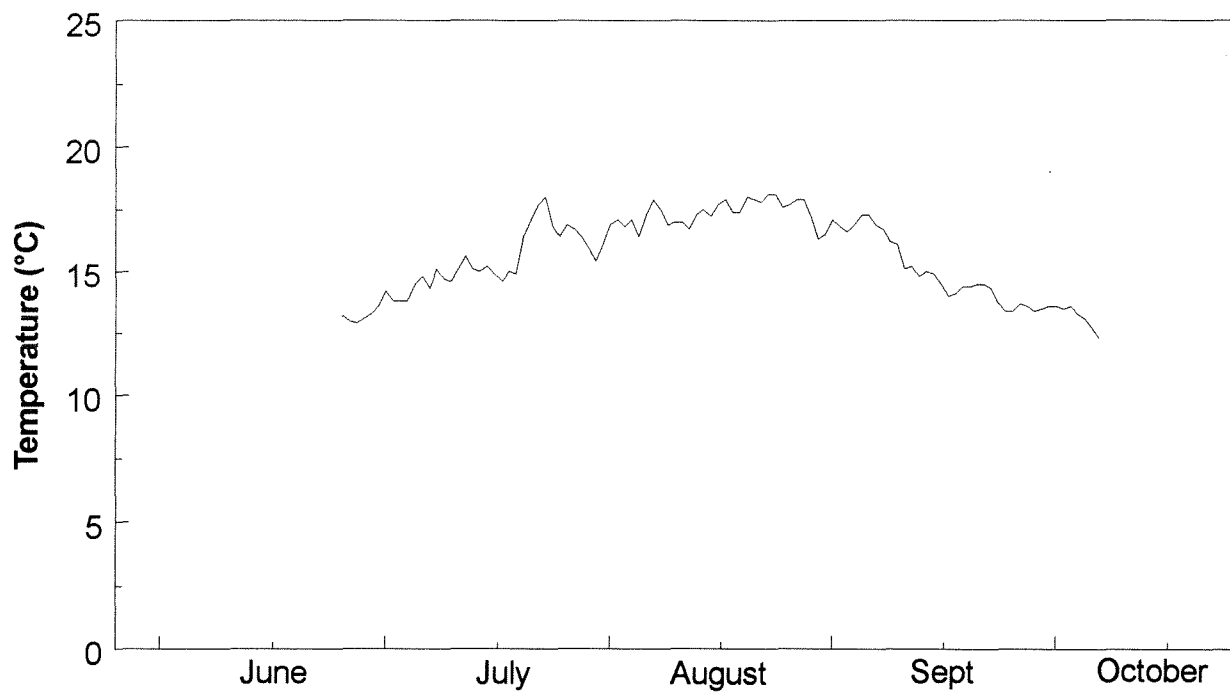
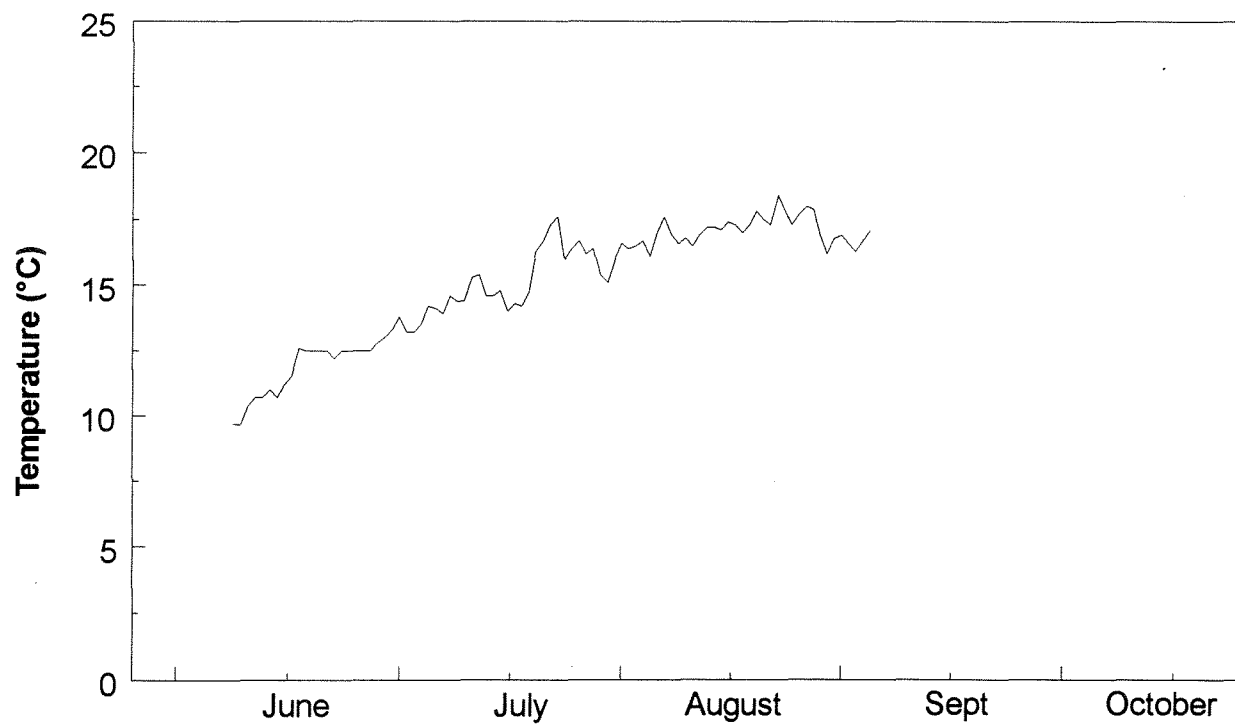
### Chilcotin River at Redstone (CR68)



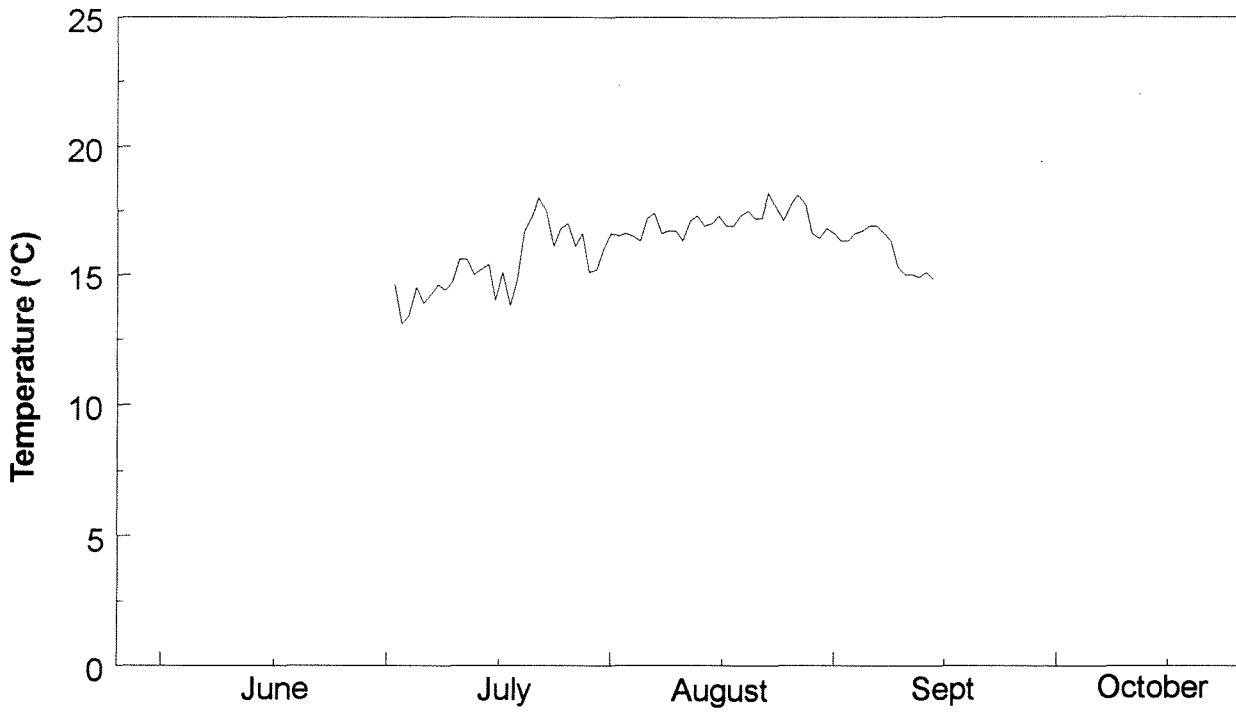
### Elkin Creek (EC10)



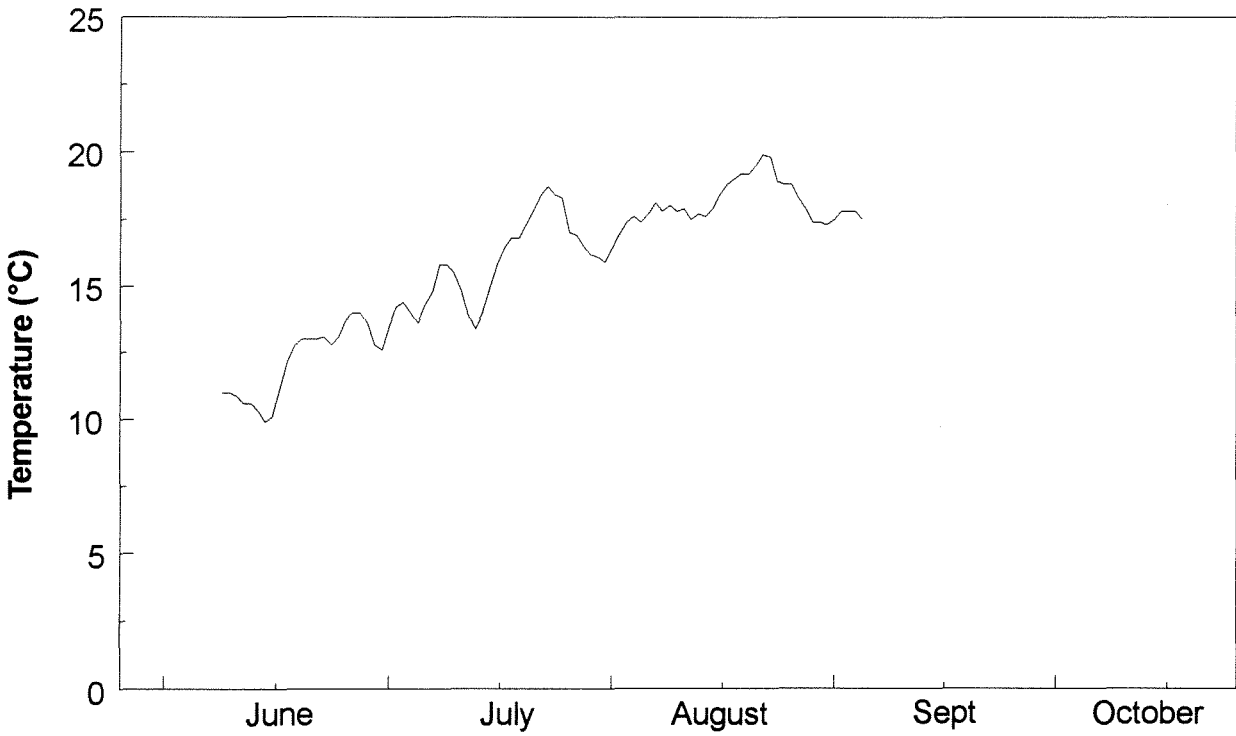


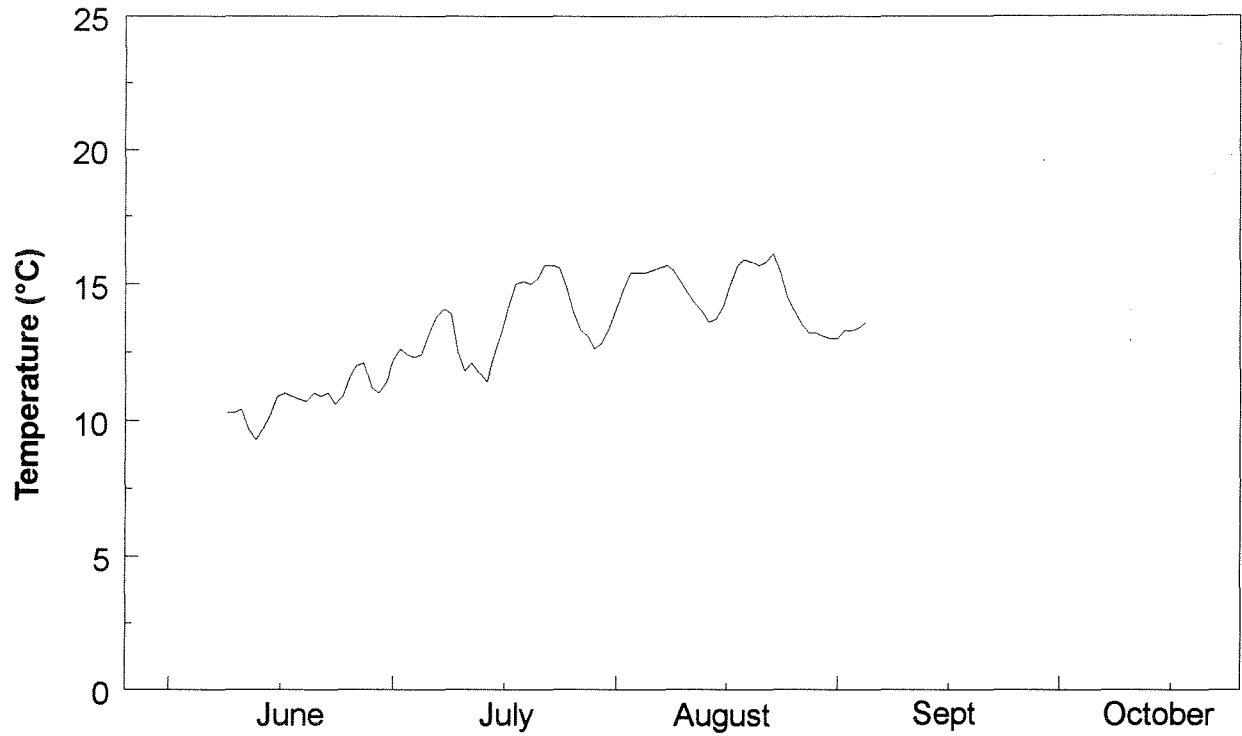
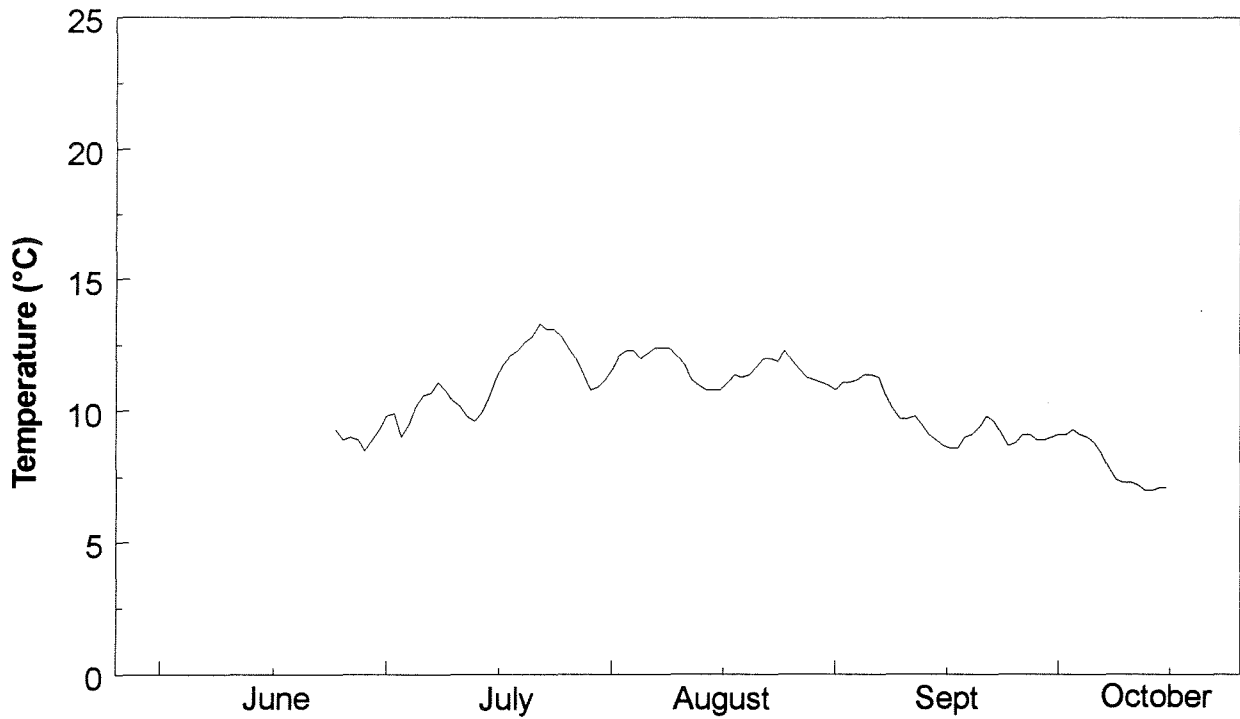
**Thompson River at Goldpan (TR24)****Thompson River at Ashcroft (TR80)**

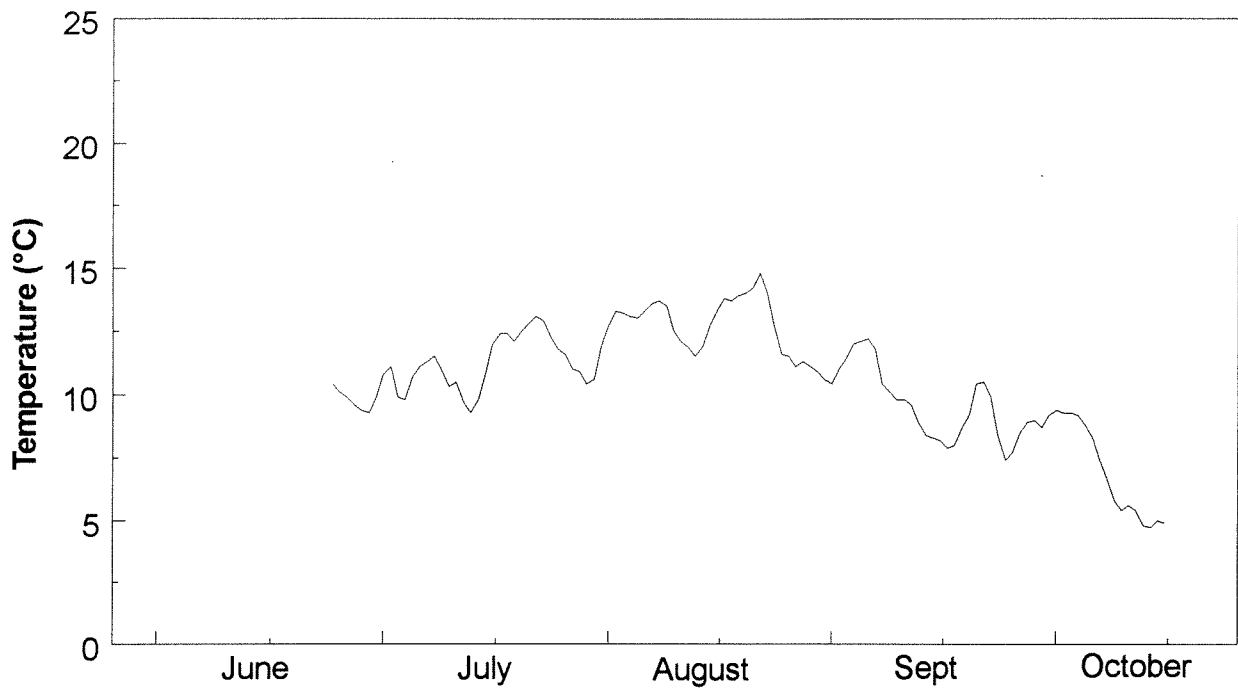
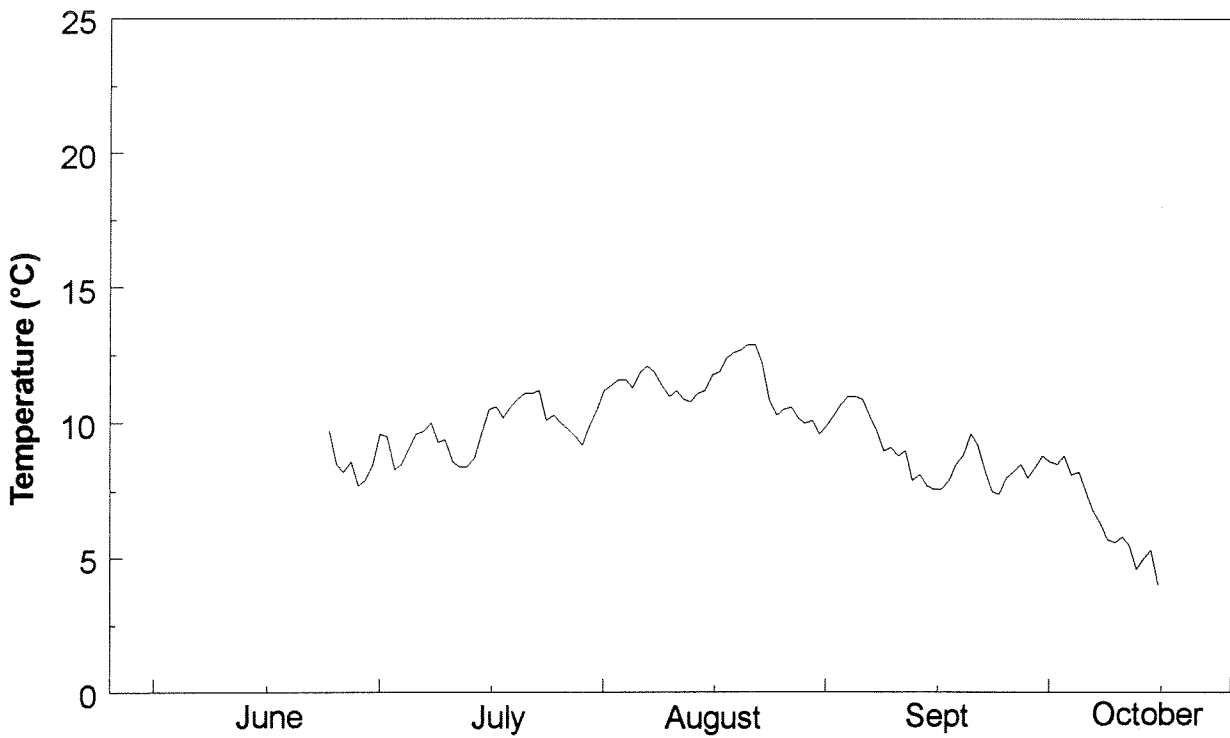
### Thompson River at Savona (TR113)



### South Thompson River at Chase (STR60)



**North Thompson River at Kamloops (NTR15)****Momich River**

**Upper Adams River (5km)****Upper Adams River (38km)**

## Appendix 1. Data logger site descriptions.

**Data logger sites for temperature model.**

**Fraser River at Qualark (FR190)** Modem access data logger situated on the right bank of the Fraser River at the Dept. of Fisheries and Oceans hydroacoustic enumeration site.

**Fraser River at Lillooet (FR290)** Unidata Starlog data logger situated on left bank of Fraser River at Munson Road app. 10 km downstream of Lillooet. This was the 1995 site of the above modem access data logger.

**Fraser River at Marguerite Ferry (FR550)** Unidata Starlog data logger situated on left bank of Fraser River app. 100m upstream of ferry site.

**Fraser River at Quesnel (FR610)** Unidata Starlog data logger situated on left bank of Fraser River app. 2km upstream of the Quesnel River confluence, adjacent to the George Baker Memorial Hospital.

**Quesnel River at Quesnel (QR1)** Modem access data logger situated on the right bank of the Quesnel River app. 1 km upstream of the confluence with the Fraser River. Pyranometer also at this site.

**Quesnel River at Likely (QR130)** Vemco Minilog data logger situated on right bank of Quesnel River near lake outlet on Quesnel River hatchery site.

**Fraser River at Shelley (FR779)** Modem access data logger situated on right bank of Fraser River at Northwood Pulp and Timber pulp mill. Pyranometer also at this site.

**Nechako River at Prince George (NR5)** Modem access data logger on right bank of Nechako River app. 5km from the confluence with the Fraser River.

**Stuart River (SR26)** Unidata Starlog data logger situated on the right bank of the Stuart River at the Stuart River Bison Farm, app. 26 km upstream of the confluence with the Nechako River.

**Stuart River (SR113)** Unidata Starlog data logger situated on the left bank of the Stuart River at the Stuart River campground, app. 5 km downstream of the mouth at Stuart Lake.

**Chilcotin River at Alexis Creek (CR50)** Modem access data logger situated on private ranch land on the left bank of the Chilcotin River app. 2 km downstream from Alexis Creek. Pyranometer also at this site.

**Thompson River at Goldpan (TR24)** Unidata Starlog data logger situated on left bank of Thompson River app. 0.5 km upstream of Gold Pan Provincial Park.

**Thompson River at Ashcroft (TR80)** Modem access data logger situated on private property on left bank of Thompson River.

**Thompson River at Savona (TR113)** Unidata Starlog data logger situated on the right bank of Thompson River directly under highway bridge.

**South Thompson River at Chase (STR60)** Modem access data logger situated on the left bank of the South Thompson River app. 10 km downstream of Chase.

**North Thompson River at Kamloops (NTR15)** Modem access data logger situated on the North Thompson River at the Rayleigh Correction Center, app. 15 km upstream of Kamloops. Pyranometer also at this site.

**Bridge River (BR1)** Vemco Minilog data logger situated on right bank of Bridge River app. 0.25 km from the confluence with the Fraser River. The Bridge River is app. 3 km north of Lillooet.

**DATA LOGGER SITES FOR INCUBATION, REARING AND REFUGE STREAMS**

**Siska Creek (SIS)** Vemco Minilog data logger situated in Siska Creek near its confluence with the Fraser River.

**Ainslie Creek (AC)** Vemco Minilog data logger situated in Ainslie Creek near its confluence with the Fraser River.

**Seton Creek (SC)** Vemco Minilog data logger situated in Seton Creek app. 2 km upstream from confluence with Fraser River.

**Cariboo River (CAR5)** Vemco Minilog data logger situated on left bank of Cariboo River, app. 1 km downstream of bridge and 5 km from confluence with Quesnel River.

**Chilcotin River at Redstone (CR68)** Vemco Minilog data logger situated on left bank of the Chilcotin River, app. 50m upstream of Hwy 20 bridge.

**Elkin Creek (EC10)** Vemco Minilog data logger situated on right bank of Elkin Creek downstream of Elkin Lake, app. 10 km from confluence with Taseko River.

**Upper Adams River (UAR5)** Vemco Minilog data logger situated on right bank of Upper Adams River under bridge app. 5 km above the mouth at Adams Lake.

**Upper Adams River (UAR38)** Vemco Minilog data logger situated on right bank of Upper Adams River at km 38 on the Tum Tum Lake road.

**Momich River (MR)** Vemco Minilog data logger situated on right bank under bridge over river just downstream from confluence with Cayenne Creek.