

226495

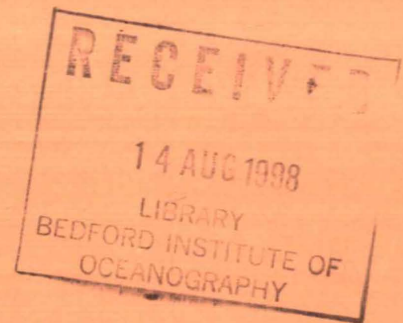
DUP

DOCUMENTS

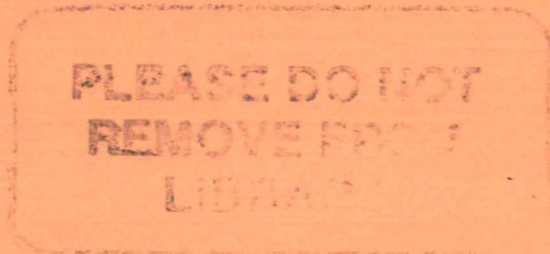
Water Temperature at Selected Sites in the Fraser Basin During the Summer of 1995

T.J. Brown, D.P. Barnes, and L.C. Walthers

Fisheries and Oceans Canada
Science Branch, Pacific Region
Pacific Biological Station
Nanaimo, B.C. V9R 5K6



1998



Canadian Data Report of Fisheries and Aquatic Sciences 1039



Fisheries and Oceans
Canada

Science

Pêches et Océans
Canada

Sciences

Canada

Canadian Data Report of Fisheries and Aquatic Sciences

Data reports provide a medium for filing and archiving data compilations where little or no analysis is included. Such compilations commonly will have been prepared in support of other journal publications or reports. The subject matter of data reports reflects the broad interests and policies of the Department of Fisheries and Oceans, namely, fisheries and aquatic sciences.

Data reports are not intended for general distribution and the contents must not be referred to in other publications without prior written authorization from the issuing establishment. The correct citation appears above the abstract of each report. Data reports are abstracted in *Aquatic Sciences and Fisheries Abstracts* and indexed in the Department's annual index to scientific and technical publications.

Numbers 1 - 25 in this series were issued as Fisheries and Marine Service Data Records. Numbers 26 - 160 were issued as Department of Fisheries and the Environment, Fisheries and Marine Service Data Reports. The current series name was introduced with the publication of report number 161.

Data reports are produced regionally but are numbered nationally. Requests for individual reports will be filled by the issuing establishment listed on the front cover and title page. Out-of-stock reports will be supplied for a fee by commercial agents.

Rapport statistique canadien des sciences halieutiques et aquatiques

Les rapports statistiques servent à classer et à archiver les compilations de données pour lesquelles il y a peu ou point d'analyse. Ces compilations auront d'ordinaire été préparées à l'appui d'autres publications ou rapports. Les sujets des rapports statistiques reflètent la vaste gamme des intérêts et des politiques du ministère des Pêches et des Océans, c'est-à-dire les sciences halieutiques et aquatiques.

Les rapports statistiques ne sont pas destinés à une vaste distribution et leur contenu ne doit pas être mentionné dans une publication sans autorisation écrite préalable de l'établissement auteur. Le titre exact paraît au-dessus du résumé de chaque rapport. Les rapports statistiques sont résumés dans la revue *Résumés des sciences aquatiques et halieutiques*, et ils sont classés dans l'index annuel des publications scientifiques et techniques du Ministère.

Les numéros 1 à 25 de cette série ont été publiés à titre de relevés statistiques, Services des pêches et de la mer. Les numéros 26 à 160 ont été publiés à titre de rapports statistiques du Service des pêches et de la mer, ministère des Pêches et de l'Environnement. Le nom actuel de la série a été établi lors de la parution du numéro 161.

Les rapports statistiques sont produits à l'échelon régional, mais numérotés à l'échelon national. Les demandes de rapports seront satisfaites par l'établissement auteur dont le nom figure sur la couverture et la page du titre. Les rapports épuisés seront fournis contre rétribution par des agents commerciaux.

Canadian Data Report of
Fisheries and Aquatic Sciences 1039

1998

WATER TEMPERATURE AT SELECTED SITES IN THE
FRASER RIVER BASIN DURING THE SUMMER OF 1995

by

T.J. Brown, D.P. Barnes¹, and L.C. Walthers²

Fisheries and Oceans Canada
Science Branch, Pacific Region
Pacific Biological Station
Nanaimo, British Columbia V9R 5K6

¹ Fisheries and Oceans Canada
Science Branch, Pacific Region
Cultus Lake Salmon Research Laboratory
4222 Columbia Valley Highway
Cultus Lake, British Columbia V2R 5B6

²Streamline Research
184 Black Powder Trail
Nanaimo, British Columbia V9S 5G9

© Minister of Public Works and Government Services Canada 1998
Cat. No. Fs 97-13/1039E ISSN 0706-6465

Correct citation for this publication:

Brown, T.J., D.P. Barnes, and L.C. Walther. 1998. Water temperature at selected sites in the Fraser basin during the summer of 1995. Can. Data Rep. Fish. Aquat. Sci. 1039: 49 p.

ABSTRACT

Brown, T.J., D.P. Barnes, and L.C. Walthers. 1998. Water temperature at selected sites in the Fraser basin during the summer of 1995. *Can. Data Rep. Fish. Aquat. Sci.* 1039: 49p.

Hourly mean temperatures were recorded at 28 sites in the Fraser basin. The recorded temperatures were adjusted using a calibration factor obtained for each site. The daily maximum, minimum, and average water temperatures for each site are presented.

RÉSUMÉ

Brown, T.J., D.P. Barnes, and L.C. Walthers. 1998. Water temperature at selected sites in the Fraser basin during the summer of 1995. *Can. Data Rep. Fish. Aquat. Sci.* 1039: 49p.

Cette étude a consisté à enregistrer les températures horaires moyennes observées à 28 endroits du bassin du Fraser. Les températures enregistrées ont été pondérées en fonction d'un facteur d'étalonnage établi pour chaque site observé. Le rapport fait également état des températures quotidiennes moyennes maximales et minimales enregistrées pour chaque site.

INTRODUCTION

Fish productivity in British Columbia is directly linked to water temperature. The growth, distribution, and energetics of all salmon are related to water temperature. Pearse and Larkin (1992) identified temperature-induced stress as a contributing factor to pre-spawning mortality. The Biological Sciences Branch, with Fraser River Action Plan funding, implemented a water temperature monitoring program within the Fraser watershed in 1993 (Lauzier et al. 1995). During 1995, the average water temperature was recorded hourly at 28 sites (Table 1) between May and October. The data is summarized into daily maximum, minimum and mean by station.

MATERIALS AND METHODS

Stations were selected to assess the effect of major tributaries. These tributaries included the Bridge, Thompson, North Thompson, South Thompson, Chilcotin, Quésnel, McGregor, Stuart and Nechako rivers. Stations were located upstream and downstream of the confluences as well as in these tributaries. There was no station upstream of the McGregor River. The Thompson River system had 13 stations while the Fraser mainstem had 12 sites from Hope to Shelley, the site above Prince George. There were 2 stations in small tributaries to examine their possible use by migrating adult salmon as cooler temperature refuge where they entered the mainstem.

Fraser River stations were identified by the initials FR followed by the approximate number of kilometres upstream from Steveston. The tributary stations were identified with initials and kilometres from their confluences. Station descriptions are shown in Table 1. Station locations are shown in Figure 1.

Unidata data loggers (Models 6004 and 6003) with two temperature probes (Model 6507A-Red) were used to collect the data. The temperature thermistors were checked for stability prior to installation. The 100-ft leads were threaded through 1/2-inch conduit and secured to an aluminum box to prevent vandalism. The data loggers were programmed to scan the temperature every 5 seconds and record the average temperature every hour. The thermistors were calibrated to 0.1°C using a standardized thermometer. Wherever possible, local First Nations bands were trained and contracted to visit the sites weekly to ensure the proper position of the probes and to adjust them to accommodate changing water levels. The data were downloaded to a portable lap-top computer at monthly intervals.

Four sites in the watershed were equipped with Forest Technology Systems (FTS) phone-up data loggers (FR290A, FR778, TR80, and STR60). FTS data loggers recorded hourly spot temperatures, while the Unidata loggers averaged 720 readings hourly. Dual temperature probes were calibrated before installation, and the data was accessed by telephone and downloaded biweekly.

RESULTS

The data are presented in Table 2 as daily maximum, minimum, and mean water temperatures. The examination of the lower Fraser stations show no significant difference from June to September 1 (Fig. 2). The warmest sites are generally lower in the river, while the coolest site measured in the Fraser was above Prince George (Fig. 3).

ACKNOWLEDGEMENTS

The assistance of Jennifer Simpson in data collection was essential for this project. The authors also wish to thank Rhodes GIS Consulting, the Tsilhqot'in National Government, Nicola Valley Tribal Council, Cayoose Creek Band, Bridge River Band and the Siska Indian Band for their assistance, and Ray Lauzier for his helpful comments.

REFERENCES

- Lauzier, R., T.J. Brown, I.V. Williams, and L.C. Walthers. 1995. Water temperature at selected sites in the Fraser River Basin during the summers of 1993 and 1994. *Can. Data Rep. Fish Aquat. Sci.* 956: 86 p.
- Pearse, P.H. and P.A. Larkin. 1992. Managing salmon in the Fraser. Report to the Minister of Fisheries and Oceans on the Fraser River Salmon Investigation. Dep. Fisheries and Oceans, Vancouver. 36 p.

Table 1.

SITE CODE	SITE DESCRIPTION	LONGITUDE	LATITUDE
AC	AINSLIE CREEK	121.503	49.939
BR1	BRIDGE RIVER	122.010	50.789
CR16	CHILCOTIN RIVER at FARWELL CANYON	122.778	51.832
FR149	FRASER RIVER at HOPE	121.503	49.377
FR200	FRASER RIVER at HELL'S GATE	121.437	49.757
FR245	FRASER RIVER at SISKA CREEK	121.581	50.414
FR290	FRASER RIVER at LILLOOET	121.914	50.653
FR290A	FRASER RIVER at LILLOOET (FTS)	121.914	50.653
FR337	FRASER RIVER at SALLUS CREEK	121.856	50.795
FR500	FRASER RIVER at CHILCOTIN BRIDGE	122.269	51.992
FR550	FRASER RIVER at MARGUERITE FERRY	122.455	52.522
FR610	FRASER RIVER at QUESNEL	122.544	53.026
FR687	FRASER RIVER at WHITE'S LANDING	122.660	53.389
FR778	FRASER RIVER above PRINCE GEORGE (FTS)	122.707	53.974
McG1	McGREGOR RIVER	122.019	54.189
NR8	NECHAKO RIVER	122.817	53.923
NTR3	NORTH THOMPSON RIVER at KAMPLOOPS	120.351	50.720
QR1	QUESNEL RIVER at QUESNEL	122.491	52.975
QR130	QUESNEL RIVER at LIKELY	121.641	52.607
SC	SETON CREEK	121.958	50.668
SR113	STUART RIVER - UPPER	124.282	54.413
SR43	STUART RIVER - LOWER	123.544	54.091
STR60	SOUTH THOMPSON RIVER at CHASE (FTS)	119.730	50.803
STR65	SOUTH THOMPSON RIVER at CHASE	119.717	50.824
TR24	THOMPSON RIVER at GOLDPAN	121.400	50.350
TR80	THOMPSON RIVER at ASHCROFT (FTS)	121.294	50.718
TR113	THOMPSON RIVER at SAVONA	120.871	50.752
TR163	THOMPSON RIVER at KAMLOOPS	120.415	50.678

Table 2. Daily maximum, minimum and mean water temperatures for the Fraser watershed for the summer of 1995.

AINSLIE CREEK
CODE: AC

DATE	MAX	MIN	MEAN	DATE	MAX	MIN	MEAN
5/29/95	8.9	6.8	7.8	7/18/95	16.6	14.0	15.3
5/30/95	8.9	5.5	6.7	7/19/95	16.9	14.2	15.5
5/31/95	8.5	5.6	6.7	7/20/95	17.6	14.9	16.2
6/1/95	8.7	5.8	6.9	7/21/95	16.4	15.6	16.0
6/2/95	8.9	6.2	7.1	7/22/95	16.4	14.9	15.5
6/3/95	9.1	6.2	7.2	7/23/95	15.6	14.2	15.0
6/4/95	7.5	6.6	7.1	7/24/95	15.2	14.5	14.8
6/5/95	7.1	6.4	6.6	7/25/95	14.7	14.0	14.3
6/6/95	6.4	5.6	6.0	7/26/95	14.5	13.5	14.0
6/7/95	8.3	6.0	6.9	7/27/95	14.0	12.9	13.4
6/8/95	10.1	6.6	8.0	7/28/95	13.5	11.6	12.7
6/9/95	9.9	6.6	8.1	7/29/95	13.1	12.0	12.4
6/10/95	8.3	7.1	7.8	7/30/95	13.8	11.4	12.4
6/11/95	8.7	6.8	7.7	7/31/95	14.2	11.8	13.0
6/12/95	8.3	6.2	7.2	8/1/95	14.7	13.1	14.0
6/13/95	8.5	7.0	7.7	8/2/95	15.2	13.8	14.4
6/14/95	8.5	6.4	7.6	8/3/95	15.9	14.0	14.8
6/15/95	9.5	7.5	8.4	8/4/95	16.9	14.5	15.5
6/16/95	10.3	7.9	9.0	8/5/95	16.1	14.9	15.4
6/17/95	9.3	7.9	8.6	8/6/95	14.7	12.4	13.5
6/18/95	8.7	7.5	7.9	8/7/95	12.4	11.4	11.9
6/19/95	9.5	7.5	8.5	8/8/95	12.4	11.6	11.9
6/20/95	8.9	7.9	8.2	8/9/95	12.9	10.5	11.8
6/21/95	10.3	7.7	8.7	8/10/95	13.3	12.0	12.7
6/22/95	9.7	8.5	9.1	8/11/95	13.1	12.4	12.7
6/23/95	11.4	8.5	9.7	8/12/95	12.4	11.8	12.0
6/24/95	10.9	9.1	10.1	8/13/95	12.4	10.9	11.6
6/25/95	12.0	8.9	10.3	8/14/95	12.0	11.1	11.6
6/26/95	11.6	9.5	10.6	8/15/95	11.6	10.5	11.1
6/27/95	11.6	8.7	10.2	8/16/95	10.7	9.1	10.1
6/28/95	12.7	9.5	11.1	8/17/95	10.5	9.1	9.9
6/29/95	12.9	10.5	11.8	8/18/95	10.7	9.7	10.2
6/30/95	13.5	11.4	12.4	8/19/95	11.4	10.1	10.7
7/1/95	14.2	11.8	13.0	8/20/95	11.8	9.5	10.7
7/2/95	14.0	12.0	12.8	8/21/95	12.7	10.5	11.7
7/3/95	11.8	11.1	11.4	8/22/95	13.1	11.4	12.3
7/4/95	12.0	10.7	11.3	8/23/95	12.7	11.1	11.9
7/5/95	12.2	10.5	11.4	8/24/95	12.0	10.9	11.5
7/6/95	12.2	10.3	11.4	8/25/95	11.6	9.7	10.8
7/7/95	13.3	11.6	12.5	8/26/95	12.2	10.5	11.3
7/8/95	14.0	12.0	13.0	8/27/95	11.8	9.7	11.0
7/9/95	13.5	12.4	12.9	8/28/95	12.7	10.9	11.6
7/10/95	13.1	11.8	12.5	8/29/95	12.9	11.8	12.2
7/11/95	12.7	10.7	11.7	8/30/95	12.4	10.5	11.6
7/12/95	12.9	10.5	11.8	8/31/95	12.2	10.3	11.4
7/13/95	12.9	11.1	12.2	9/1/95	12.2	10.3	11.4
7/14/95	12.9	11.1	12.2	9/2/95	12.9	10.9	11.9
7/15/95	14.2	11.8	13.0	9/3/95	12.9	11.1	12.1
7/16/95	15.2	12.7	13.9	9/4/95	14.2	12.2	13.1
7/17/95	15.9	13.1	14.5	9/5/95	13.8	12.7	13.3

AINSLIE CREEK
CODE: AC

DATE	MAX	MIN	MEAN	DATE	MAX	MIN	MEAN
9/6/95	13.5	12.0	12.8	9/24/95	10.7	9.3	10.1
9/7/95	13.8	11.8	12.8	9/25/95	10.9	9.7	10.4
9/8/95	13.5	12.0	12.9	9/26/95	12.2	10.9	11.4
9/9/95	14.0	12.4	13.2	9/27/95	11.4	10.5	11.0
9/10/95	14.5	12.7	13.5	9/28/95	12.0	11.1	11.4
9/11/95	14.2	12.7	13.5	9/29/95	11.1	10.1	10.7
9/12/95	13.8	12.2	13.1	9/30/95	11.1	10.3	10.9
9/13/95	13.8	12.2	13.0	10/1/95	10.1	8.9	9.4
9/14/95	13.5	12.0	12.8	10/2/95	10.1	9.3	9.7
9/15/95	13.8	12.2	13.0	10/3/95	9.9	9.1	9.5
9/16/95	13.3	11.8	12.6	10/4/95	9.1	8.5	8.7
9/17/95	13.3	11.4	12.4	10/5/95	8.7	7.7	8.3
9/18/95	14.0	12.9	13.4	10/6/95	9.1	8.1	8.6
9/19/95	13.5	12.4	13.0	10/7/95	9.3	8.5	8.9
9/20/95	12.2	9.9	11.0	10/8/95	9.3	8.9	9.1
9/21/95	10.7	8.7	9.7	10/9/95	9.1	8.3	8.8
9/22/95	9.9	8.3	9.4	10/10/95	8.9	7.5	8.5
9/23/95	10.3	8.7	9.6				

BRIDGE RIVER
CODE: BR1

DATE	MAX	MIN	MEAN	DATE	MAX	MIN	MEAN
23/05/95	13.0	10.7	12.3	12/07/95	15.3	11.5	13.6
24/05/95	13.5	9.8	11.7	13/07/95	14.6	12.4	13.5
25/05/95	13.5	9.8	11.9	14/07/95	14.8	11.5	13.0
26/05/95	12.8	9.4	11.5	15/07/95	16.3	12.4	14.3
27/05/95	13.5	10.0	11.9	16/07/95	17.3	13.5	15.5
28/05/95	13.2	10.2	12.1	17/07/95	17.8	13.7	15.9
29/05/95	13.0	10.2	11.8	18/07/95	18.0	14.6	16.5
30/05/95	13.5	10.2	11.9	19/07/95	17.8	13.9	16.1
31/05/95	12.6	10.0	11.3	20/07/95	17.3	14.6	16.3
01/06/95	13.0	9.4	11.2	21/07/95	17.3	15.1	16.3
02/06/95	12.8	10.7	11.7	22/07/95	17.8	14.1	16.2
03/06/95	13.5	10.0	11.8	23/07/95	17.5	15.3	16.6
04/06/95	13.2	11.1	11.7	24/07/95	17.0	14.1	15.7
05/06/95	11.3	9.6	10.1	25/07/95	16.0	14.1	14.7
06/06/95	9.4	8.6	9.0	26/07/95	16.3	13.2	14.4
07/06/95	11.1	8.4	9.7	27/07/95	15.5	12.8	14.4
08/06/95	13.9	9.6	11.6	28/07/95	14.8	12.1	13.8
09/06/95	14.6	11.1	13.0	29/07/95	14.1	11.9	12.7
10/06/95	13.7	11.5	12.1	30/07/95	14.6	11.1	12.7
11/06/95	13.7	10.4	12.0	31/07/95	16.0	12.6	14.1
12/06/95	12.8	9.8	10.7	01/08/95	15.5	13.5	14.8
13/06/95	11.7	9.2	10.4	02/08/95	16.0	13.2	14.7
14/06/95	12.4	8.8	10.8	03/08/95	17.5	13.5	15.5
15/06/95	13.0	10.2	11.6	04/08/95	18.2	14.5	16.6
16/06/95	13.2	10.4	11.9	05/08/95	17.7	15.7	16.4
17/06/95	13.2	11.1	12.4	06/08/95	15.5	13.2	14.1
18/06/95	12.8	10.4	11.5	07/08/95	13.6	11.7	12.7
19/06/95	13.0	10.9	12.1	08/08/95	14.3	11.4	12.8
20/06/95	13.2	10.9	12.1	09/08/95	15.5	11.7	13.6
21/06/95	14.4	10.9	12.7	10/08/95	14.1	12.5	13.3
22/06/95	14.8	11.3	13.2	11/08/95	13.2	12.1	12.7
23/06/95	14.4	11.5	13.0	12/08/95	13.0	12.1	12.6
24/06/95	14.4	11.7	13.1	13/08/95	13.9	10.4	12.2
25/06/95	14.4	11.1	13.1	14/08/95	13.6	12.5	13.0
26/06/95	13.9	11.7	13.0	15/08/95	13.6	12.1	13.0
27/06/95	14.4	10.4	12.7	16/08/95	13.4	11.2	12.4
28/06/95	15.5	11.5	13.7	17/08/95	12.5	11.0	11.9
29/06/95	16.3	12.4	14.5	18/08/95	12.1	10.8	11.6
30/06/95	16.5	12.4	14.6	19/08/95	13.9	10.6	12.1
01/07/95	15.8	13.0	14.6	20/08/95	13.9	10.8	12.6
02/07/95	15.3	13.5	14.4	21/08/95	13.6	11.4	12.7
03/07/95	14.4	12.8	13.7	22/08/95	14.5	11.9	13.3
04/07/95	14.8	12.1	13.3	23/08/95	14.5	11.9	13.2
05/07/95	14.6	11.5	13.1	24/08/95	13.6	11.0	12.5
06/07/95	15.1	11.5	13.5	25/08/95	13.9	10.8	12.5
07/07/95	15.1	12.8	14.2	26/08/95	14.1	11.4	12.9
08/07/95	15.8	12.8	14.3	27/08/95	13.9	11.4	12.8
09/07/95	15.8	12.6	13.6	28/08/95	14.1	12.1	13.1
10/07/95	14.4	11.9	13.0	29/08/95	14.1	12.7	13.5
11/07/95	14.8	11.1	13.1	30/08/95	14.3	11.4	13.0

BRIDGE RIVER
CODE: BR1

DATE	MAX	MIN	MEAN
31/08/95	13.9	11.0	12.8
01/09/95	14.1	11.0	12.9
02/09/95	14.3	11.4	13.1
03/09/95	14.3	11.4	13.1
04/09/95	14.3	11.9	13.3
05/09/95	14.3	13.0	13.8
06/09/95	15.3	13.2	14.2
07/09/95	14.8	12.3	13.8
08/09/95	14.8	12.3	13.8
09/09/95	15.0	12.3	13.9
10/09/95	15.0	12.5	13.9
11/09/95	14.8	12.5	13.9
12/09/95	14.8	12.5	13.8
13/09/95	14.8	12.5	13.8
14/09/95	14.5	12.5	13.8
15/09/95	14.8	12.5	13.9
16/09/95	13.9	11.9	13.1
17/09/95	13.2	10.8	12.4
18/09/95	13.9	12.5	13.3
19/09/95	13.6	12.3	13.0
20/09/95	12.5	9.8	11.2
21/09/95	10.6	8.4	9.8
22/09/95	10.2	8.2	9.5
23/09/95	10.8	8.6	9.8
24/09/95	11.4	9.2	10.5
25/09/95	10.8	9.4	10.4
26/09/95	11.4	9.8	10.5
27/09/95	11.2	9.8	10.6
28/09/95	12.3	10.6	11.3
29/09/95	11.4	9.8	10.8
30/09/95	10.8	9.4	10.2
01/10/95	9.2	8.2	8.7
02/10/95	9.8	7.8	8.8
03/10/95	9.8	9.2	9.5
04/10/95	9.2	7.6	8.5
05/10/95	9.0	7.6	8.3
06/10/95	9.0	7.8	8.5
07/10/95	8.8	7.4	8.3
08/10/95	9.6	8.4	8.9
09/10/95	9.2	8.6	8.9
10/10/95	9.8	9.0	9.3
11/10/95	9.2	8.0	8.6
12/10/95	8.6	7.8	8.2
13/10/95	8.4	7.4	8.0
14/10/95	8.6	8.0	8.3

CHILCOTIN RIVER AT FARWELL CANYON
CODE: CR16

DATE	MAX	MIN	MEAN	DATE	MAX	MIN	MEAN
6/14/95	11.8	10.1	10.9	8/4/95	17.2	15.9	16.6
6/15/95	-0-	-0-	-0-	8/5/95	16.2	15.5	15.8
6/16/95	-0-	-0-	-0-	8/6/95	15.7	14.5	15.1
6/17/95	-0-	-0-	-0-	8/7/95	14.7	13.8	14.2
6/18/95	-0-	-0-	-0-	8/8/95	14.3	13.1	13.7
6/19/95	-0-	-0-	-0-	8/9/95	15.2	13.4	14.3
6/20/95	-0-	-0-	-0-	8/10/95	15.5	13.6	14.5
6/21/95	-0-	-0-	-0-	8/11/95	15.0	13.8	14.6
6/22/95	-0-	-0-	-0-	8/12/95	15.0	14.0	14.5
6/23/95	15.0	12.5	14.0	8/13/95	15.5	13.6	14.6
6/24/95	15.0	12.5	13.7	8/14/95	15.5	13.8	14.8
6/25/95	14.8	12.9	14.0	8/15/95	15.0	13.8	14.5
6/26/95	15.0	12.7	13.8	8/16/95	14.7	12.9	13.9
6/27/95	15.0	12.7	14.0	8/17/95	14.3	12.5	13.6
6/28/95	15.5	12.7	14.1	8/18/95	14.0	12.9	13.6
6/29/95	16.0	13.1	14.5	8/19/95	14.3	12.0	13.2
6/30/95	16.7	13.8	15.3	8/20/95	13.8	12.5	13.1
7/1/95	16.7	15.7	16.1	8/21/95	-0-	-0-	-0-
7/2/95	-0-	-0-	-0-	8/22/95	-0-	-0-	-0-
7/3/95	-0-	-0-	-0-	8/23/95	-0-	-0-	-0-
7/4/95	-0-	-0-	-0-	8/24/95	14.3	14.0	14.2
7/5/95	-0-	-0-	-0-	8/25/95	14.3	12.0	13.4
7/6/95	-0-	-0-	-0-	8/26/95	15.0	12.7	14.1
7/7/95	-0-	-0-	-0-	8/27/95	15.0	13.1	14.1
7/8/95	-0-	-0-	-0-	8/28/95	14.3	12.9	13.8
7/9/95	-0-	-0-	-0-	8/29/95	14.7	13.1	14.1
7/10/95	-0-	-0-	-0-	8/30/95	15.0	13.1	14.2
7/11/95	-0-	-0-	-0-	8/31/95	14.5	12.5	13.9
7/12/95	-0-	-0-	-0-	9/1/95	15.0	12.7	14.0
7/13/95	-0-	-0-	-0-	9/2/95	15.2	13.1	14.4
7/14/95	-0-	-0-	-0-	9/3/95	15.7	13.4	14.7
7/15/95	-0-	-0-	-0-	9/4/95	15.5	13.6	14.6
7/16/95	-0-	-0-	-0-	9/5/95	14.7	13.8	14.3
7/17/95	-0-	-0-	-0-	9/6/95	15.9	14.0	14.8
7/18/95	-0-	-0-	-0-	9/7/95	15.5	13.8	14.8
7/19/95	-0-	-0-	-0-	9/8/95	15.7	13.4	14.7
7/20/95	-0-	-0-	-0-	9/9/95	15.5	13.6	14.8
7/21/95	-0-	-0-	-0-	9/10/95	15.9	13.6	15.0
7/22/95	-0-	-0-	-0-	9/11/95	15.5	13.6	14.8
7/23/95	-0-	-0-	-0-	9/12/95	15.2	13.6	14.5
7/24/95	-0-	-0-	-0-	9/13/95	15.0	13.1	14.2
7/25/95	-0-	-0-	-0-	9/14/95	15.0	13.1	14.3
7/26/95	-0-	-0-	-0-	9/15/95	15.0	13.1	14.2
7/27/95	-0-	-0-	-0-	9/16/95	14.5	12.3	13.6
7/28/95	-0-	-0-	-0-	9/17/95	13.6	11.6	12.8
7/29/95	-0-	-0-	-0-	9/18/95	13.4	12.0	12.8
7/30/95	-0-	-0-	-0-	9/19/95	13.1	11.6	12.6
7/31/95	-0-	-0-	-0-	9/20/95	12.7	10.4	11.4
8/1/95	-0-	-0-	-0-				
8/2/95	-0-	-0-	-0-				
8/3/95	17.9	17.4	17.7				

FRASER RIVER AT HOPE
CODE: FR149

DATE	MAX	MIN	MEAN	DATE	MAX	MIN	MEAN
5/16/95	11.7	11.3	11.5	7/5/95	17.3	16.8	17.1
5/17/95	11.7	11.5	11.6	7/6/95	17.3	17.0	17.1
5/18/95	11.5	11.1	11.4	7/7/95	17.3	17.0	17.1
5/19/95	11.1	10.7	10.9	7/8/95	17.5	17.0	17.3
5/20/95	10.9	10.5	10.6	7/9/95	17.8	17.3	17.6
5/21/95	10.7	10.5	10.6	7/10/95	17.8	17.0	17.4
5/22/95	10.7	10.5	10.7	7/11/95	17.5	17.0	17.3
5/23/95	11.9	10.7	11.4	7/12/95	17.5	17.0	17.3
5/24/95	12.2	11.7	12.0	7/13/95	17.8	17.3	17.5
5/25/95	12.4	12.2	12.2	7/14/95	18.0	17.3	17.7
5/26/95	12.6	11.9	12.3	7/15/95	18.0	17.0	17.5
5/27/95	13.5	12.4	12.9	7/16/95	18.0	17.3	17.7
5/28/95	13.9	13.3	13.7	7/17/95	18.3	17.5	17.9
5/29/95	13.9	13.7	13.8	7/18/95	18.6	17.8	18.2
5/30/95	13.9	13.5	13.8	7/19/95	18.8	17.8	18.4
5/31/95	14.2	13.7	13.9	7/20/95	19.1	18.0	18.5
6/1/95	13.9	13.7	13.9	7/21/95	19.1	18.6	18.8
6/2/95	13.9	13.7	13.8	7/22/95	18.8	18.6	18.6
6/3/95	13.7	13.5	13.6	7/23/95	19.4	18.6	19.1
6/4/95	13.7	13.5	13.6	7/24/95	19.4	19.1	19.3
6/5/95	13.5	13.3	13.4	7/25/95	19.4	19.1	19.2
6/6/95	13.5	12.8	13.2	7/26/95	19.1	18.3	18.6
6/7/95	12.8	11.9	12.5	7/27/95	18.8	18.0	18.4
6/8/95	13.0	11.9	12.6	7/28/95	18.6	17.8	18.2
6/9/95	13.3	12.8	13.1	7/29/95	18.3	17.5	17.8
6/10/95	13.3	12.8	13.1	7/30/95	17.3	16.8	17.1
6/11/95	13.7	13.3	13.5	7/31/95	16.8	16.5	16.7
6/12/95	13.7	13.5	13.7	8/1/95	17.0	16.5	16.9
6/13/95	13.9	13.7	13.8	8/2/95	17.5	17.0	17.2
6/14/95	13.9	13.5	13.7	8/3/95	17.5	17.0	17.1
6/15/95	14.2	13.5	13.9	8/4/95	18.0	17.0	17.6
6/16/95	14.6	14.2	14.3	8/5/95	18.0	17.5	17.7
6/17/95	14.4	13.9	14.2	8/6/95	17.5	16.8	17.1
6/18/95	14.4	13.9	14.2	8/7/95	16.8	16.3	16.5
6/19/95	14.2	13.9	14.0	8/8/95	16.8	16.3	16.5
6/20/95	14.6	14.2	14.4	8/9/95	17.0	16.3	16.7
6/21/95	14.6	14.4	14.5	8/10/95	16.8	16.3	16.6
6/22/95	15.3	14.6	15.2	8/11/95	17.0	16.5	16.7
6/23/95	16.0	15.3	15.9	8/12/95	16.8	16.5	16.7
6/24/95	15.8	15.6	15.8	8/13/95	16.8	16.3	16.5
6/25/95	15.8	15.6	15.7	8/14/95	16.8	16.3	16.5
6/26/95	16.0	15.6	15.8	8/15/95	16.8	16.5	16.6
6/27/95	15.6	15.1	15.5	8/16/95	17.0	16.5	16.7
6/28/95	15.8	15.1	15.5	8/17/95	16.8	16.3	16.4
6/29/95	16.3	15.3	15.9	8/18/95	16.3	15.8	16.0
6/30/95	16.8	16.0	16.5	8/19/95	15.8	15.6	15.6
7/1/95	17.3	16.5	16.9	8/20/95	16.3	15.3	15.8
7/2/95	17.0	16.8	17.0	8/21/95	16.8	15.8	16.3
7/3/95	17.0	16.8	16.9	8/22/95	16.8	16.0	16.4
7/4/95	17.0	16.8	16.9	8/23/95	16.5	16.0	16.2

FRASER RIVER AT HOPE
CODE: FR149

DATE	MAX	MIN	MEAN	DATE	MAX	MIN	MEAN
8/24/95	16.5	15.8	16.3	9/19/95	17.3	16.0	16.5
8/25/95	16.0	15.6	15.8	9/20/95	17.0	15.1	15.9
8/26/95	16.3	15.8	16.0	9/21/95	15.8	13.9	14.9
8/27/95	16.5	15.8	16.2	9/22/95	15.6	13.5	14.5
8/28/95	17.0	16.3	16.6	9/23/95	15.8	13.3	14.5
8/29/95	16.5	16.0	16.4	9/24/95	15.8	13.5	14.6
8/30/95	16.5	15.8	16.2	9/25/95	15.6	13.9	14.7
8/31/95	16.8	15.8	16.3	9/26/95	16.0	14.4	15.0
9/1/95	17.0	16.0	16.5	9/27/95	15.3	13.7	14.6
9/2/95	17.3	16.3	16.7	9/28/95	16.0	14.6	15.2
9/3/95	17.5	16.3	16.8	9/29/95	15.6	14.2	14.8
9/4/95	17.5	16.5	16.9	9/30/95	14.9	13.9	14.5
9/5/95	17.5	16.8	17.2	10/1/95	14.9	13.7	14.3
9/6/95	17.8	17.0	17.3	10/2/95	14.4	13.5	14.0
9/7/95	18.3	17.0	17.6	10/3/95	13.9	13.0	13.4
9/8/95	18.3	17.3	17.6	10/4/95	14.9	12.4	13.6
9/9/95	18.3	17.0	17.6	10/5/95	13.3	11.9	12.6
9/10/95	18.6	17.5	17.9	10/6/95	13.5	12.2	12.9
9/11/95	18.6	17.5	18.0	10/7/95	13.5	12.6	13.0
9/12/95	18.6	17.5	18.0	10/8/95	13.7	12.4	13.0
9/13/95	18.8	17.5	18.0	10/9/95	13.0	12.2	12.5
9/14/95	18.3	17.0	17.7	10/10/95	12.4	11.1	11.6
9/15/95	18.6	17.3	17.8	10/11/95	12.2	11.1	11.5
9/16/95	18.6	17.0	17.6	10/12/95	11.7	11.1	11.4
9/17/95	17.0	16.3	16.9	10/13/95	11.5	10.9	11.2
9/18/95	17.5	16.0	16.6	10/14/95	11.7	10.9	11.2

FRASER RIVER AT HELLS GATE
CODE: FR200

DATE	MAX	MIN	MEAN	DATE	MAX	MIN	MEAN
7/1/95	16.9	16.4	16.7	8/17/95	16.4	15.9	16.2
7/2/95	17.2	16.7	16.9	8/18/95	15.9	15.5	15.7
7/3/95	16.9	16.7	16.8	8/19/95	15.5	15.2	15.4
7/4/95	16.9	16.7	16.8	8/20/95	15.9	15.5	15.7
7/5/95	16.9	16.7	16.8	8/21/95	16.2	15.9	16.0
7/6/95	16.9	16.7	16.8	8/22/95	15.9	15.7	15.9
7/7/95	16.9	16.7	16.8	8/23/95	16.2	15.9	16.1
7/8/95	17.4	16.9	17.0	8/24/95	16.2	15.5	15.9
7/9/95	17.7	17.2	17.4	8/25/95	15.7	15.5	15.6
7/10/95	17.4	16.9	17.1	8/26/95	15.9	15.7	15.9
7/11/95	17.2	16.9	17.1	8/27/95	16.2	15.7	16.0
7/12/95	17.4	16.9	17.1	8/28/95	16.4	16.2	16.2
7/13/95	17.4	17.2	17.3	8/29/95	16.2	15.9	16.0
7/14/95	17.4	17.2	17.3	8/30/95	15.9	15.7	15.8
7/15/95	17.4	16.9	17.1	8/31/95	16.2	15.9	16.0
7/16/95	17.7	17.2	17.3	9/1/95	16.4	15.9	16.2
7/17/95	17.9	17.4	17.5	9/2/95	16.7	15.9	16.3
7/18/95	17.9	17.7	17.9	9/3/95	16.7	16.2	16.5
7/19/95	17.9	17.9	17.9	9/4/95	16.9	16.4	16.8
7/20/95	18.5	17.9	18.3	9/5/95	17.4	16.9	17.0
7/21/95	18.5	18.5	18.5	9/6/95	17.4	16.9	17.1
7/22/95	19.0	18.5	18.5	9/7/95	17.4	17.2	17.4
7/23/95	19.3	19.0	19.1	9/8/95	17.4	16.9	17.2
7/24/95	19.3	19.0	19.1	9/9/95	17.7	17.2	17.4
7/25/95	19.3	18.5	19.0	9/10/95	17.7	17.4	17.6
7/26/95	18.5	18.2	18.4	9/11/95	17.9	17.4	17.7
7/27/95	18.5	17.9	18.2	9/12/95	17.9	17.4	17.7
7/28/95	18.2	17.7	18.0	9/13/95	17.9	17.4	17.5
7/29/95	17.9	16.9	17.5	9/14/95	17.4	17.2	17.4
7/30/95	16.9	16.4	16.7	9/15/95	17.7	17.2	17.4
7/31/95	16.7	16.2	16.4	9/16/95	17.4	16.9	17.2
8/1/95	16.9	16.4	16.7	9/17/95	16.9	16.2	16.4
8/2/95	16.9	16.9	16.9	9/18/95	16.4	16.2	16.4
8/3/95	17.2	16.7	16.9	9/19/95	16.4	15.9	16.1
8/4/95	17.4	17.2	17.2	9/20/95	15.9	14.7	15.5
8/5/95	17.7	17.2	17.3	9/21/95	14.7	14.5	14.6
8/6/95	17.2	16.4	16.7	9/22/95	14.5	14.3	14.3
8/7/95	16.4	16.2	16.3	9/23/95	14.3	14.0	14.2
8/8/95	16.7	16.2	16.5	9/24/95	13.8	13.8	13.8
8/9/95	16.7	15.9	16.3	9/25/95	-0-	-0-	-0-
8/10/95	16.4	16.2	16.4	9/26/95	-0-	-0-	-0-
8/11/95	16.7	16.4	16.5	9/27/95	-0-	-0-	-0-
8/12/95	16.7	16.4	16.5	9/28/95	-0-	-0-	-0-
8/13/95	16.4	15.9	16.1	9/29/95	-0-	-0-	-0-
8/14/95	16.4	16.4	16.4	9/30/95	-0-	-0-	-0-
8/15/95	16.7	16.4	16.5	10/1/95	-0-	-0-	-0-
8/16/95	16.7	16.4	16.5				

FRASER RIVER AT SISKA CREEK
 CODE: FR245

DATE	MAX	MIN	MEAN	DATE	MAX	MIN	MEAN
6/9/95	12.9	12.3	12.7	7/29/95	17.9	16.9	17.4
6/10/95	13.6	12.9	13.1	7/30/95	16.9	16.4	16.6
6/11/95	13.8	13.1	13.5	7/31/95	16.7	15.9	16.3
6/12/95	13.8	13.4	13.6	8/1/95	16.9	16.4	16.7
6/13/95	13.8	13.4	13.7	8/2/95	16.9	16.7	16.8
6/14/95	13.8	13.1	13.5	8/3/95	17.4	16.7	17.0
6/15/95	14.7	13.6	14.1	8/4/95	17.7	16.9	17.4
6/16/95	14.3	13.8	14.0	8/5/95	17.7	17.2	17.4
6/17/95	-0-	-0-	-0-	8/6/95	-0-	-0-	-0-
6/18/95	-0-	-0-	-0-	8/7/95	-0-	-0-	-0-
6/19/95	-0-	-0-	-0-	8/8/95	-0-	-0-	-0-
6/20/95	14.7	14.3	14.5	8/9/95	-0-	-0-	-0-
6/21/95	15.5	14.3	14.7	8/10/95	-0-	-0-	-0-
6/22/95	16.2	15.0	15.5	8/11/95	-0-	-0-	-0-
6/23/95	15.9	15.5	15.8	8/12/95	-0-	-0-	-0-
6/24/95	15.9	15.5	15.6	8/13/95	-0-	-0-	-0-
6/25/95	15.9	15.2	15.5	8/14/95	-0-	-0-	-0-
6/26/95	15.9	15.5	15.6	8/15/95	-0-	-0-	-0-
6/27/95	15.5	14.5	15.1	8/16/95	-0-	-0-	-0-
6/28/95	15.9	15.0	15.4	8/17/95	-0-	-0-	-0-
6/29/95	16.4	15.5	16.0	8/18/95	-0-	-0-	-0-
6/30/95	16.9	16.2	16.5	8/19/95	-0-	-0-	-0-
7/1/95	17.4	16.4	16.9	8/20/95	-0-	-0-	-0-
7/2/95	17.4	16.7	17.1	8/21/95	16.2	15.9	16.0
7/3/95	17.2	16.7	17.0	8/22/95	16.2	15.7	15.9
7/4/95	17.4	16.7	17.0	8/23/95	16.2	15.9	16.1
7/5/95	17.2	16.7	17.0	8/24/95	16.2	15.5	15.8
7/6/95	17.2	16.7	16.9	8/25/95	15.9	15.5	15.7
7/7/95	17.2	16.7	16.9	8/26/95	15.9	15.7	15.8
7/8/95	17.9	16.9	17.3	8/27/95	16.2	15.9	16.0
7/9/95	17.9	17.2	17.5	8/28/95	16.4	16.2	16.2
7/10/95	17.7	16.9	17.3	8/29/95	16.2	15.7	16.0
7/11/95	17.4	16.9	17.2	8/30/95	16.2	15.5	15.7
7/12/95	17.7	16.9	17.3				
7/13/95	17.7	17.2	17.4				
7/14/95	17.7	17.2	17.4				
7/15/95	17.7	16.9	17.3				
7/16/95	18.5	16.7	17.4				
7/17/95	-0-	-0-	-0-				
7/18/95	-0-	-0-	-0-				
7/19/95	-0-	-0-	-0-				
7/20/95	-0-	-0-	-0-				
7/21/95	-0-	-0-	-0-				
7/22/95	-0-	-0-	-0-				
7/23/95	-0-	-0-	-0-				
7/24/95	19.5	19.0	19.3				
7/25/95	19.5	18.7	19.0				
7/26/95	18.7	18.2	18.6				
7/27/95	18.7	17.9	18.2				
7/28/95	18.2	17.9	18.0				

FRASER RIVER AT LILLOOET
CODE: FR290

DATE	MAX	MIN	MEAN	DATE	MAX	MIN	MEAN
5/13/95	12.4	11.7	12.1	7/2/95	18.3	17.6	17.9
5/14/95	12.4	11.9	12.1	7/3/95	18.1	17.6	17.8
5/15/95	12.1	11.7	11.9	7/4/95	17.8	17.6	17.7
5/16/95	12.4	11.7	12.0	7/5/95	17.6	16.8	17.0
5/17/95	12.4	11.7	12.3	7/6/95	17.0	16.5	16.8
5/18/95	11.7	10.9	11.3	7/7/95	17.0	16.5	16.9
5/19/95	10.9	10.2	10.5	7/8/95	17.8	16.8	17.2
5/20/95	10.4	10.2	10.4	7/9/95	17.8	17.6	17.7
5/21/95	10.7	10.2	10.5	7/10/95	18.1	17.3	17.7
5/22/95	11.3	10.4	10.8	7/11/95	17.8	17.3	17.5
5/23/95	12.1	11.3	11.7	7/12/95	17.8	17.0	17.5
5/24/95	12.8	11.9	12.4	7/13/95	17.8	17.3	17.5
5/25/95	13.2	12.6	12.9	7/14/95	17.6	17.0	17.3
5/26/95	13.7	13.0	13.4	7/15/95	17.6	16.8	17.2
5/27/95	14.2	13.7	13.9	7/16/95	17.3	16.8	17.2
5/28/95	14.6	13.9	14.3	7/17/95	17.8	17.0	17.4
5/29/95	15.1	14.2	14.7	7/18/95	17.8	17.0	17.5
5/30/95	15.3	14.6	14.9	7/19/95	18.1	17.3	17.7
5/31/95	15.3	14.9	15.1	7/20/95	18.3	17.8	18.1
6/1/95	14.9	14.2	14.4	7/21/95	18.9	18.1	18.4
6/2/95	14.2	13.7	13.9	7/22/95	19.7	18.6	19.2
6/3/95	13.7	13.5	13.6	7/23/95	19.7	19.4	19.6
6/4/95	13.9	13.5	13.7	7/24/95	19.4	18.9	19.2
6/5/95	13.7	13.2	13.5	7/25/95	19.1	18.3	18.5
6/6/95	13.2	12.6	12.9	7/26/95	18.3	17.8	18.2
6/7/95	13.0	12.6	12.9	7/27/95	18.3	17.6	17.9
6/8/95	13.0	12.8	13.0	7/28/95	17.8	17.3	17.5
6/9/95	13.0	12.4	12.7	7/29/95	17.3	16.1	16.6
6/10/95	13.5	13.0	13.2	7/30/95	16.1	15.8	15.9
6/11/95	13.9	13.5	13.7	7/31/95	15.8	15.6	15.7
6/12/95	14.4	13.9	14.2	8/1/95	16.1	15.8	15.9
6/13/95	14.4	13.9	14.2	8/2/95	16.1	15.6	15.9
6/14/95	14.4	13.9	14.2	8/3/95	16.3	15.8	16.1
6/15/95	14.6	14.2	14.3	8/4/95	16.8	16.3	16.5
6/16/95	14.6	14.2	14.4	8/5/95	16.8	16.3	16.5
6/17/95	14.9	14.4	14.5	8/6/95	16.3	15.8	16.0
6/18/95	14.9	14.6	14.7	8/7/95	15.8	15.6	15.7
6/19/95	15.3	14.6	15.1	8/8/95	15.8	15.6	15.7
6/20/95	15.3	14.9	15.2	8/9/95	15.8	15.3	15.5
6/21/95	16.3	15.1	15.6	8/10/95	15.8	15.6	15.7
6/22/95	16.8	16.3	16.5	8/11/95	16.3	15.6	15.8
6/23/95	16.5	16.1	16.3	8/12/95	16.3	15.8	16.0
6/24/95	16.1	15.6	15.8	8/13/95	16.1	15.3	15.7
6/25/95	16.1	15.6	15.8	8/14/95	16.3	15.8	16.1
6/26/95	15.8	15.6	15.7	8/15/95	16.5	16.1	16.2
6/27/95	15.8	15.1	15.5	8/16/95	16.3	15.6	15.9
6/28/95	15.6	15.1	15.4	8/17/95	15.8	15.3	15.6
6/29/95	16.3	15.3	15.7	8/18/95	15.6	15.1	15.2
6/30/95	16.8	16.1	16.4	8/19/95	15.1	14.6	14.9
7/1/95	17.8	16.3	17.1	8/20/95	15.3	14.6	15.0

FRASER RIVER AT LILLOOET
CODE: FR290

DATE	MAX	MIN	MEAN	DATE	MAX	MIN	MEAN
8/21/95	15.6	15.1	15.3	9/8/95	17.0	16.5	16.8
8/22/95	15.8	15.3	15.6	9/9/95	17.3	17.0	17.1
8/23/95	15.8	15.6	15.7	9/10/95	17.3	17.0	17.1
8/24/95	15.8	15.1	15.3	9/11/95	17.3	17.0	17.2
8/25/95	15.3	14.9	15.1	9/12/95	17.3	17.0	17.2
8/26/95	15.3	14.9	15.2	9/13/95	17.0	16.8	17.0
8/27/95	15.6	15.1	15.4	9/14/95	17.0	16.3	16.8
8/28/95	15.6	15.1	15.3	9/15/95	16.5	16.1	16.3
8/29/95	15.3	14.9	15.1	9/16/95	16.1	15.3	15.7
8/30/95	15.6	14.9	15.2	9/17/95	15.6	15.1	15.4
8/31/95	15.6	15.3	15.4	9/18/95	15.3	14.6	15.0
9/1/95	15.6	15.1	15.4	9/19/95	14.6	14.2	14.4
9/2/95	15.6	15.3	15.4	9/20/95	14.2	13.5	13.8
9/3/95	15.8	15.6	15.8	9/21/95	13.2	12.8	13.1
9/4/95	16.3	15.8	16.2	9/22/95	12.8	12.4	12.6
9/5/95	16.8	16.3	16.5	9/23/95	12.8	11.9	12.4
9/6/95	16.8	16.3	16.6	9/24/95	12.4	12.1	12.2
9/7/95	16.8	16.3	16.5				

FRASER RIVER AT LILLOOET - FTS
CODE: FR290A

DATE	MAX	MIN	MEAN	DATE	MAX	MIN	MEAN
7/9/95	17.7	17.4	17.6	8/21/95	15.4	14.9	15.2
7/10/95	17.9	17.3	17.6	8/22/95	15.8	15.1	15.4
7/11/95	17.6	17.1	17.4	8/23/95	15.8	15.4	15.6
7/12/95	17.7	17.0	17.4	8/24/95	15.5	14.9	15.2
7/13/95	17.6	17.2	17.5	8/25/95	15.2	14.7	15.0
7/14/95	17.4	17.0	17.2	8/26/95	15.4	14.8	15.1
7/15/95	17.5	16.7	17.1	8/27/95	15.6	15.0	15.3
7/16/95	17.3	16.8	17.1	8/28/95	15.5	15.0	15.2
7/17/95	17.8	16.8	17.3	8/29/95	15.2	14.7	15.0
7/18/95	17.9	17.0	17.5	8/30/95	15.5	14.8	15.1
7/19/95	18.1	17.2	17.7	8/31/95	15.5	15.1	15.3
7/20/95	18.4	17.7	18.1	9/1/95	15.5	15.1	15.3
7/21/95	18.8	17.9	18.3	9/2/95	15.6	15.1	15.3
7/22/95	19.8	18.7	19.2	9/3/95	15.9	15.6	15.7
7/23/95	19.7	19.3	19.5	9/4/95	16.3	15.9	16.1
7/24/95	19.3	18.9	19.1	9/5/95	16.6	16.3	16.4
7/25/95	19.0	18.1	18.5	9/6/95	16.7	16.4	16.6
7/26/95	18.2	17.9	18.0	9/7/95	16.7	16.2	16.4
7/27/95	18.0	17.6	17.8	9/8/95	17.1	16.5	16.7
7/28/95	17.7	17.1	17.4	9/9/95	17.2	16.9	17.1
7/29/95	17.0	15.9	16.4	9/10/95	17.2	17.0	17.1
7/30/95	15.9	15.6	15.7	9/11/95	17.3	17.1	17.2
7/31/95	15.7	15.3	15.5	9/12/95	17.2	17.0	17.1
8/1/95	15.9	15.6	15.8	9/13/95	17.0	16.8	16.9
8/2/95	16.0	15.5	15.8	9/14/95	16.9	16.4	16.7
8/3/95	16.3	15.8	16.1	9/15/95	16.5	15.9	16.2
8/4/95	16.7	16.1	16.4	9/16/95	15.9	15.4	15.7
8/5/95	16.6	16.1	16.4	9/17/95	15.4	15.2	15.3
8/6/95	16.1	15.7	15.9	9/18/95	15.2	14.5	14.9
8/7/95	15.7	15.4	15.6	9/19/95	14.5	14.1	14.4
8/8/95	15.6	15.4	15.5	9/20/95	14.0	13.3	13.7
8/9/95	15.7	15.2	15.4	9/21/95	13.3	12.7	13.0
8/10/95	15.8	15.4	15.6	9/22/95	12.7	12.2	12.4
8/11/95	16.2	15.5	15.8	9/23/95	12.4	12.0	12.2
8/12/95	16.1	15.6	15.8	9/24/95	12.7	12.2	12.4
8/13/95	16.0	15.3	15.7	9/25/95	13.0	12.6	12.8
8/14/95	16.2	15.7	15.9	9/26/95	13.3	13.0	13.1
8/15/95	16.4	15.9	16.1	9/27/95	13.2	13.1	13.2
8/16/95	16.1	15.6	15.7	9/28/95	13.3	13.0	13.1
8/17/95	15.7	15.2	15.4	9/29/95	13.3	12.9	13.1
8/18/95	15.3	14.9	15.0	9/30/95	13.4	12.9	13.2
8/19/95	14.9	14.4	14.7	10/1/95	12.9	12.3	12.5
8/20/95	15.3	14.5	14.9	10/2/95	12.3	12.1	12.2

FRASER RIVER AT SALLUS CREEK
CODE: FR337

DATE	MAX	MIN	MEAN	DATE	MAX	MIN	MEAN
5/13/95	12.6	11.9	12.3	7/2/95	18.8	18.0	18.4
5/14/95	12.6	12.4	12.4	7/3/95	18.6	18.3	18.4
5/15/95	12.4	11.9	12.1	7/4/95	18.3	17.8	18.0
5/16/95	12.6	11.9	12.2	7/5/95	17.5	17.0	17.3
5/17/95	12.6	11.7	12.3	7/6/95	17.3	16.8	17.0
5/18/95	11.7	10.9	11.3	7/7/95	17.3	17.0	17.1
5/19/95	11.1	10.3	10.6	7/8/95	18.3	17.0	17.6
5/20/95	10.7	10.3	10.5	7/9/95	18.0	17.8	17.9
5/21/95	10.9	10.5	10.7	7/10/95	18.3	17.8	18.0
5/22/95	11.5	10.7	11.1	7/11/95	18.0	17.5	17.8
5/23/95	12.1	11.5	11.7	7/12/95	18.0	17.3	17.7
5/24/95	13.2	12.1	12.6	7/13/95	18.0	17.5	17.8
5/25/95	13.9	12.8	13.3	7/14/95	17.8	17.3	17.4
5/26/95	14.4	13.5	13.9	7/15/95	17.8	17.0	17.3
5/27/95	14.6	13.9	14.2	7/16/95	17.8	17.0	17.4
5/28/95	15.1	14.1	14.5	7/17/95	18.3	17.3	17.7
5/29/95	15.3	14.6	14.9	7/18/95	18.6	17.5	18.0
5/30/95	15.6	14.8	15.1	7/19/95	18.6	17.5	18.1
5/31/95	15.3	14.8	15.1	7/20/95	18.8	18.0	18.4
6/1/95	14.8	14.1	14.4	7/21/95	19.4	18.3	18.8
6/2/95	14.1	13.7	13.9	7/22/95	20.2	19.1	19.6
6/3/95	13.7	13.2	13.6	7/23/95	19.9	19.6	19.8
6/4/95	13.9	13.5	13.8	7/24/95	19.6	19.1	19.4
6/5/95	13.9	13.2	13.6	7/25/95	19.1	18.3	18.7
6/6/95	13.2	12.8	13.0	7/26/95	18.6	18.3	18.4
6/7/95	13.2	12.8	13.1	7/27/95	18.3	17.8	18.0
6/8/95	13.2	12.8	13.0	7/28/95	18.0	17.3	17.6
6/9/95	13.2	12.6	12.9	7/29/95	17.0	16.0	16.5
6/10/95	13.5	13.2	13.3	7/30/95	16.0	15.8	15.9
6/11/95	14.1	13.7	13.9	7/31/95	-0-	-0-	-0-
6/12/95	14.6	14.1	14.3	8/1/95	-0-	-0-	-0-
6/13/95	14.4	14.1	14.3	8/2/95	16.0	15.8	16.0
6/14/95	14.6	14.1	14.4	8/3/95	16.5	16.0	16.2
6/15/95	14.8	14.4	14.5	8/4/95	17.0	16.3	16.5
6/16/95	15.1	14.4	14.6	8/5/95	16.5	16.0	16.4
6/17/95	15.3	14.4	14.8	8/6/95	16.0	15.8	15.9
6/18/95	14.6	14.4	14.5	8/7/95	15.8	15.8	15.8
6/19/95	-0-	-0-	-0-	8/8/95	15.8	15.6	15.6
6/20/95	-0-	-0-	-0-	8/9/95	16.0	15.3	15.6
6/21/95	16.8	16.0	16.4	8/10/95	16.0	15.6	15.8
6/22/95	17.3	16.5	16.8	8/11/95	16.3	15.6	16.0
6/23/95	16.8	16.3	16.5	8/12/95	16.3	15.8	16.0
6/24/95	16.3	15.8	15.9	8/13/95	16.5	15.6	15.9
6/25/95	16.3	15.8	16.0	8/14/95	16.5	16.0	16.2
6/26/95	16.0	15.8	15.9	8/15/95	16.8	16.0	16.4
6/27/95	16.0	15.6	15.8	8/16/95	16.3	15.8	15.9
6/28/95	15.8	15.3	15.6	8/17/95	15.8	15.3	15.6
6/29/95	16.5	15.6	16.1	8/18/95	15.3	14.8	15.2
6/30/95	17.3	16.3	16.7	8/19/95	15.3	14.6	14.9
7/1/95	18.0	16.8	17.5	8/20/95	16.0	14.6	15.1

FRASER RIVER AT SALLUS CREEK
CODE: FR337

DATE	MAX	MIN	MEAN	DATE	MAX	MIN	MEAN
8/21/95	-0-	-0-	-0-	8/24/95	15.6	15.1	15.2
8/22/95	-0-	-0-	-0-	8/25/95	15.3	14.8	15.0
8/23/95	16.0	15.6	15.8				

FRASER RIVER AT CHILCOTIN BRIDGE
 CODE: FR500

DATE	MAX	MIN	MEAN	DATE	MAX	MIN	MEAN
5/18/95	10.1	9.7	9.9	6/17/95	14.0	13.6	13.9
5/19/95	9.7	9.3	9.5	6/18/95	-0-	-0-	-0-
5/20/95	9.7	9.5	9.7	6/19/95	-0-	-0-	-0-
5/21/95	10.1	9.5	9.8	6/20/95	15.5	15.2	15.4
5/22/95	10.5	10.1	10.2	6/21/95	15.9	15.5	15.7
5/23/95	-0-	-0-	-0-	6/22/95	15.9	15.5	15.6
5/24/95	-0-	-0-	-0-	6/23/95	15.5	15.0	15.1
5/25/95	-0-	-0-	-0-	6/24/95	15.2	14.7	15.0
5/26/95	-0-	-0-	-0-	6/25/95	15.5	14.7	15.1
5/27/95	-0-	-0-	-0-	6/26/95	15.0	14.5	14.8
5/28/95	-0-	-0-	-0-	6/27/95	15.0	14.3	14.5
5/29/95	14.3	14.3	14.3	6/28/95	15.5	14.3	14.8
5/30/95	14.5	14.3	14.3	6/29/95	15.9	15.2	15.6
5/31/95	14.3	13.4	13.7	6/30/95	17.2	15.7	16.4
6/1/95	13.1	12.9	12.9	7/1/95	18.2	16.9	17.7
6/2/95	12.7	12.3	12.6	7/2/95	18.2	17.7	18.0
6/3/95	12.9	12.3	12.6				
6/4/95	12.9	12.7	12.8				
6/5/95	12.7	12.3	12.5				
6/6/95	12.3	12.0	12.2				
6/7/95	12.5	11.8	12.1				
6/8/95	11.8	11.2	11.5				
6/9/95	12.7	11.8	12.1				
6/10/95	12.9	12.5	12.7				
6/11/95	14.0	12.9	13.4				
6/12/95	14.0	13.4	13.7				
6/13/95	14.0	13.4	13.7				
6/14/95	14.0	13.4	13.6				
6/15/95	14.0	13.4	13.7				
6/16/95	14.3	13.6	13.9				

FRASER RIVER AT MARGUERITE FERRY
 CODE: FR550

DATE	MAX	MIN	MEAN	DATE	MAX	MIN	MEAN
5/20/95	10.1	9.5	9.8	7/9/95	17.6	17.4	17.5
5/21/95	10.7	9.3	10.0	7/10/95	17.6	17.1	17.3
5/22/95	11.3	10.3	10.8	7/11/95	17.4	16.9	17.1
5/23/95	12.0	11.1	11.5	7/12/95	17.6	16.9	17.1
5/24/95	12.9	11.6	12.2	7/13/95	17.1	16.4	16.6
5/25/95	13.3	12.2	12.7	7/14/95	16.9	16.1	16.4
5/26/95	13.5	12.4	13.0	7/15/95	16.9	15.6	16.3
5/27/95	14.0	12.9	13.4	7/16/95	16.9	16.1	16.6
5/28/95	14.4	13.5	14.0	7/17/95	17.1	16.1	16.6
5/29/95	14.4	14.0	14.2	7/18/95	17.6	16.4	17.0
5/30/95	14.4	14.0	14.2	7/19/95	18.1	16.9	17.5
5/31/95	14.0	13.1	13.4	7/20/95	19.2	17.6	18.4
6/1/95	13.1	12.4	12.8	7/21/95	20.0	18.7	19.2
6/2/95	12.9	12.2	12.5	7/22/95	19.7	18.9	19.3
6/3/95	13.3	12.2	12.7	7/23/95	19.2	18.7	19.0
6/4/95	13.1	12.6	12.8	7/24/95	18.7	18.1	18.5
6/5/95	12.9	12.2	12.4	7/25/95	18.1	17.6	17.9
6/6/95	12.6	12.2	12.4	7/26/95	17.9	17.4	17.5
6/7/95	12.4	11.6	11.9	7/27/95	17.4	16.6	16.9
6/8/95	12.0	10.9	11.5	7/28/95	16.4	15.6	16.0
6/9/95	12.9	11.8	12.2	7/29/95	15.9	14.9	15.3
6/10/95	13.3	12.6	12.9	7/30/95	15.2	14.4	14.8
6/11/95	14.4	13.3	13.7	7/31/95	14.9	14.7	14.8
6/12/95	14.0	13.5	13.7	8/1/95	15.4	14.7	14.9
6/13/95	14.0	13.5	13.7	8/2/95	15.2	14.7	15.0
6/14/95	14.2	13.1	13.7	8/3/95	15.6	14.7	15.2
6/15/95	14.2	13.3	13.8	8/4/95	15.6	15.2	15.4
6/16/95	14.4	13.5	14.0	8/5/95	15.4	14.9	15.2
6/17/95	14.7	13.8	14.3	8/6/95	15.4	14.7	15.1
6/18/95	15.2	14.2	14.7	8/7/95	15.4	14.9	15.1
6/19/95	14.9	14.7	14.8	8/8/95	14.9	14.7	14.8
6/20/95	15.6	14.7	15.2	8/9/95	15.4	14.7	15.0
6/21/95	16.1	15.4	15.7	8/10/95	15.9	14.9	15.3
6/22/95	15.6	14.9	15.3	8/11/95	15.6	15.2	15.4
6/23/95	15.2	14.7	14.9	8/12/95	15.6	15.4	15.5
6/24/95	15.2	14.7	14.9	8/13/95	15.9	15.4	15.6
6/25/95	15.2	14.7	14.9	8/14/95	16.1	15.4	15.7
6/26/95	14.9	14.4	14.7	8/15/95	15.6	14.9	15.2
6/27/95	14.7	14.0	14.4	8/16/95	15.2	14.7	14.9
6/28/95	15.4	14.4	14.9	8/17/95	14.7	14.2	14.5
6/29/95	16.1	15.2	15.6	8/18/95	14.4	14.0	14.3
6/30/95	17.1	16.1	16.5	8/19/95	14.9	14.2	14.4
7/1/95	18.1	17.1	17.5	8/20/95	14.9	14.4	14.6
7/2/95	-0-	-0-	-0-	8/21/95	15.6	14.9	15.1
7/3/95	-0-	-0-	-0-	8/22/95	15.4	14.9	15.1
7/4/95	-0-	-0-	-0-	8/23/95	14.9	14.4	14.8
7/5/95	16.1	16.1	16.1	8/24/95	14.9	14.2	14.4
7/6/95	16.6	15.6	16.1	8/25/95	15.2	14.0	14.5
7/7/95	17.4	16.4	16.8	8/26/95	15.2	14.2	14.6
7/8/95	17.6	16.9	17.3	8/27/95	14.7	14.2	14.4

FRASER RIVER AT MARGUERITE FERRY
 CODE: FR550

DATE	MAX	MIN	MEAN	DATE	MAX	MIN	MEAN
8/28/95	14.9	14.0	14.4	9/21/95	12.6	11.1	11.9
8/29/95	15.4	14.2	14.6	9/22/95	12.6	10.9	11.7
8/30/95	15.4	14.2	14.8	9/23/95	13.1	10.9	11.9
8/31/95	15.4	14.0	14.7	9/24/95	13.8	11.6	12.5
9/1/95	15.9	14.2	15.0	9/25/95	14.0	11.8	12.7
9/2/95	16.4	14.7	15.4	9/26/95	13.3	12.0	12.5
9/3/95	16.9	15.2	15.9	9/27/95	14.0	12.0	12.8
9/4/95	17.1	15.6	16.3	9/28/95	14.2	12.6	13.2
9/5/95	16.6	15.9	16.2	9/29/95	13.3	12.2	12.7
9/6/95	17.1	15.6	16.2	9/30/95	12.6	11.8	12.2
9/7/95	17.6	16.1	16.8	10/1/95	11.8	10.7	11.3
9/8/95	17.6	16.1	16.8	10/2/95	11.6	10.9	11.2
9/9/95	17.6	16.1	16.8	10/3/95	11.8	10.7	11.1
9/10/95	17.6	16.1	16.9	10/4/95	12.0	10.3	10.9
9/11/95	17.4	16.1	16.7	10/5/95	10.5	9.7	10.1
9/12/95	17.6	16.1	16.7	10/6/95	10.7	9.3	9.9
9/13/95	16.6	15.6	16.1	10/7/95	9.7	9.1	9.5
9/14/95	16.1	14.9	15.6	10/8/95	10.5	9.1	9.6
9/15/95	16.1	14.7	15.4	10/9/95	10.5	9.1	9.7
9/16/95	15.4	14.2	14.8	10/10/95	10.7	9.3	9.8
9/17/95	14.9	13.8	14.3	10/11/95	10.3	8.9	9.5
9/18/95	14.2	13.1	13.6	10/12/95	9.3	8.3	8.8
9/19/95	13.5	12.0	12.7	10/13/95	8.3	7.7	7.9
9/20/95	13.1	11.6	12.3				

FRASER RIVER AT QUESNEL
CODE: FR610

DATE	MAX	MIN	MEAN	DATE	MAX	MIN	MEAN
5/20/95	10.4	9.2	9.7	7/9/95	17.6	16.5	17.2
5/21/95	11.1	9.4	10.2	7/10/95	17.6	16.5	17.1
5/22/95	11.9	10.0	11.0	7/11/95	17.0	16.1	16.7
5/23/95	12.6	10.9	11.7	7/12/95	17.0	15.8	16.5
5/24/95	13.2	11.7	12.5	7/13/95	16.5	15.6	16.1
5/25/95	13.9	12.1	13.1	7/14/95	16.3	15.3	15.8
5/26/95	14.2	12.4	13.3	7/15/95	16.8	14.9	15.9
5/27/95	14.6	12.8	13.8	7/16/95	16.8	15.1	16.1
5/28/95	15.1	13.5	14.3	7/17/95	17.6	15.6	16.7
5/29/95	14.9	13.9	14.4	7/18/95	18.3	16.5	17.5
5/30/95	14.4	13.7	14.1	7/19/95	19.1	17.0	18.2
5/31/95	13.7	12.6	13.2	7/20/95	19.7	18.1	19.0
6/1/95	13.0	12.1	12.7	7/21/95	20.2	18.6	19.4
6/2/95	13.0	11.9	12.5	7/22/95	20.2	18.6	19.5
6/3/95	13.5	12.1	12.8	7/23/95	19.7	18.6	19.2
6/4/95	13.2	12.6	12.9	7/24/95	19.1	18.3	18.5
6/5/95	12.8	12.4	12.6	7/25/95	18.1	17.6	17.8
6/6/95	12.4	11.7	12.2	7/26/95	17.6	16.8	17.2
6/7/95	12.4	11.3	11.8	7/27/95	16.5	15.8	16.2
6/8/95	12.4	10.7	11.4	7/28/95	15.8	14.6	15.2
6/9/95	13.5	11.7	12.5	7/29/95	15.1	14.2	14.5
6/10/95	13.9	12.6	13.3	7/30/95	14.4	13.9	14.1
6/11/95	14.4	13.7	14.0	7/31/95	14.4	13.9	14.1
6/12/95	14.2	13.7	13.9	8/1/95	14.9	13.9	14.3
6/13/95	14.2	13.5	13.8	8/2/95	14.6	13.9	14.2
6/14/95	13.9	12.8	13.4	8/3/95	14.9	13.9	14.4
6/15/95	13.9	12.6	13.4	8/4/95	14.9	14.4	14.6
6/16/95	14.4	12.8	13.6	8/5/95	14.9	14.2	14.5
6/17/95	15.1	13.2	14.1	8/6/95	15.3	14.2	14.7
6/18/95	15.3	13.9	14.6	8/7/95	14.9	14.2	14.5
6/19/95	15.1	14.4	14.8	8/8/95	14.9	13.9	14.4
6/20/95	16.1	14.6	15.3	8/9/95	15.1	13.9	14.5
6/21/95	16.1	14.9	15.5	8/10/95	15.3	14.2	14.8
6/22/95	15.8	14.9	15.4	8/11/95	15.3	14.4	14.9
6/23/95	15.6	14.4	15.1	8/12/95	15.6	14.6	15.1
6/24/95	15.6	14.6	15.0	8/13/95	15.3	14.6	15.0
6/25/95	15.6	14.6	15.1	8/14/95	15.3	14.6	15.1
6/26/95	15.6	14.2	14.9	8/15/95	14.9	14.2	14.6
6/27/95	15.6	13.9	14.8	8/16/95	14.9	13.7	14.3
6/28/95	16.8	14.6	15.8	8/17/95	14.4	13.2	13.9
6/29/95	17.8	15.6	16.7	8/18/95	14.2	13.0	13.7
6/30/95	18.9	16.3	17.6	8/19/95	14.4	13.5	13.9
7/1/95	18.9	17.6	18.3	8/20/95	14.9	13.5	14.2
7/2/95	18.6	17.6	17.9	8/21/95	15.1	13.9	14.5
7/3/95	17.8	16.8	17.3	8/22/95	15.1	14.2	14.7
7/4/95	17.3	16.5	16.9	8/23/95	14.6	13.9	14.3
7/5/95	16.8	15.8	16.4	8/24/95	14.4	13.5	14.0
7/6/95	17.3	15.6	16.4	8/25/95	14.4	13.2	13.9
7/7/95	17.8	16.1	16.9	8/26/95	14.4	13.2	13.9
7/8/95	17.8	16.3	17.0	8/27/95	14.2	13.0	13.7

FRASER RIVER AT QUESNEL
CODE: FR610

DATE	MAX	MIN	MEAN	DATE	MAX	MIN	MEAN
8/28/95	14.2	13.2	13.7	9/21/95	12.1	10.7	11.3
8/29/95	14.4	13.5	14.0	9/22/95	11.9	10.7	11.2
8/30/95	14.4	13.5	14.0	9/23/95	12.1	10.7	11.3
8/31/95	14.4	13.2	13.9	9/24/95	12.6	10.9	11.7
9/1/95	15.1	13.7	14.4	9/25/95	12.8	11.1	11.9
9/2/95	15.3	14.2	14.8	9/26/95	12.6	11.3	11.9
9/3/95	16.1	14.9	15.4	9/27/95	12.8	11.7	12.2
9/4/95	16.5	15.6	16.0	9/28/95	12.8	11.9	12.3
9/5/95	16.3	15.6	15.8	9/29/95	12.1	11.5	11.8
9/6/95	17.0	15.6	16.2	9/30/95	12.1	11.3	11.6
9/7/95	16.8	15.8	16.3	10/1/95	11.3	10.7	10.9
9/8/95	16.8	15.8	16.2	10/2/95	10.7	10.2	10.6
9/9/95	17.0	16.1	16.4	10/3/95	10.7	10.0	10.3
9/10/95	17.0	16.1	16.5	10/4/95	10.4	9.4	9.9
9/11/95	17.0	16.1	16.4	10/5/95	9.4	9.0	9.2
9/12/95	16.5	15.8	16.1	10/6/95	9.6	8.6	9.0
9/13/95	16.1	14.9	15.5	10/7/95	8.8	8.2	8.5
9/14/95	15.3	14.6	15.1	10/8/95	8.2	8.2	8.2
9/15/95	15.3	14.4	14.8	10/9/95	8.8	8.8	8.8
9/16/95	14.6	13.7	14.2	10/10/95	9.4	8.4	8.8
9/17/95	14.4	13.2	13.8	10/11/95	9.0	8.2	8.6
9/18/95	13.7	12.6	13.0	10/12/95	8.4	7.3	7.7
9/19/95	12.8	11.7	12.3	10/13/95	7.3	7.1	7.2
9/20/95	12.4	11.1	11.8				

FRASER RIVER AT WHITE'S LANDING
CODE: FR687

DATE	MAX	MIN	MEAN	DATE	MAX	MIN	MEAN
5/21/95	11.1	9.5	10.2	7/8/95	17.1	16.3	16.7
5/22/95	11.8	10.3	10.9	7/9/95	16.8	16.3	16.6
5/23/95	12.4	11.1	11.7	7/10/95	16.8	16.3	16.7
5/24/95	13.1	11.8	12.3	7/11/95	16.3	16.1	16.3
5/25/95	13.3	12.2	12.8	7/12/95	16.1	15.6	15.8
5/26/95	13.7	12.4	13.0	7/13/95	15.6	15.1	15.4
5/27/95	14.2	12.8	13.5	7/14/95	15.6	14.9	15.2
5/28/95	14.4	13.5	14.0	7/15/95	15.9	15.1	15.5
5/29/95	14.4	13.7	14.1	7/16/95	16.1	15.1	15.6
5/30/95	14.0	12.8	13.4	7/17/95	16.8	15.9	16.4
5/31/95	12.8	12.2	12.6	7/18/95	17.9	16.6	17.1
6/1/95	12.4	11.8	12.1	7/19/95	18.6	17.3	17.9
6/2/95	12.6	12.0	12.3	7/20/95	19.2	18.4	18.7
6/3/95	13.1	12.0	12.5	7/21/95	19.4	18.6	18.9
6/4/95	12.6	12.4	12.6	7/22/95	19.4	18.6	19.0
6/5/95	12.4	12.0	12.2	7/23/95	18.9	18.6	18.8
6/6/95	12.4	11.5	11.9	7/24/95	18.6	17.6	18.1
6/7/95	11.5	10.7	11.1	7/25/95	17.6	17.1	17.4
6/8/95	12.0	10.7	11.3	7/26/95	17.1	16.1	16.5
6/9/95	13.1	11.8	12.4	7/27/95	15.9	14.7	15.2
6/10/95	13.7	12.8	13.3	7/28/95	14.9	14.2	14.6
6/11/95	14.0	13.5	13.8	7/29/95	14.4	13.7	14.1
6/12/95	14.0	13.3	13.6	7/30/95	14.0	13.5	13.8
6/13/95	13.7	13.1	13.3	7/31/95	14.2	13.3	13.8
6/14/95	13.7	12.4	13.0	8/1/95	14.4	13.5	13.9
6/15/95	13.5	12.4	13.0	8/2/95	14.0	13.5	13.8
6/16/95	13.7	12.8	13.3	8/3/95	14.7	13.7	14.1
6/17/95	14.2	13.7	13.9	8/4/95	14.4	14.2	14.3
6/18/95	14.9	14.0	14.4	8/5/95	14.7	13.7	14.2
6/19/95	14.9	14.7	14.7	8/6/95	14.9	14.0	14.4
6/20/95	15.4	14.7	14.9	8/7/95	14.7	14.0	14.2
6/21/95	15.4	14.4	14.9	8/8/95	14.7	13.7	14.1
6/22/95	15.1	14.4	14.7	8/9/95	14.7	13.7	14.3
6/23/95	14.9	14.7	14.7	8/10/95	14.9	14.2	14.5
6/24/95	15.1	14.4	14.6	8/11/95	15.4	14.7	14.8
6/25/95	15.1	14.4	14.7	8/12/95	15.1	14.7	14.8
6/26/95	14.9	13.7	14.4	8/13/95	15.1	14.7	14.9
6/27/95	15.4	13.7	14.6	8/14/95	14.9	14.4	14.7
6/28/95	16.1	14.9	15.5	8/15/95	14.4	13.7	14.1
6/29/95	16.8	16.1	16.4	8/16/95	14.2	13.5	13.8
6/30/95	17.9	16.6	17.3	8/17/95	13.5	13.3	13.4
7/1/95	18.4	17.6	17.9	8/18/95	14.0	13.3	13.6
7/2/95	17.6	16.8	17.4	8/19/95	14.0	13.5	13.7
7/3/95	16.8	16.6	16.7	8/20/95	14.7	13.5	14.0
7/4/95	16.3	15.9	16.1	8/21/95	14.7	14.0	14.3
7/5/95	16.1	15.6	15.8	8/22/95	14.7	14.2	14.5
7/6/95	16.6	15.6	16.0	8/23/95	14.2	13.7	13.9
7/7/95	16.6	16.1	16.3	8/24/95	14.2	13.7	13.9

FRASER RIVER ABOVE PRINCE GEORGE - FTS
 CODE: FR778

DATE	MAX	MIN	MEAN	DATE	MAX	MIN	MEAN
7/7/95	15.4	13.8	14.6	8/21/95	13.5	12.5	13.0
7/8/95	15.3	14.4	14.9	8/22/95	13.2	12.7	13.0
7/9/95	15.4	14.3	14.8	8/23/95	12.8	12.3	12.5
7/10/95	15.3	14.4	14.9	8/24/95	12.5	12.0	12.2
7/11/95	15.0	14.1	14.7	8/25/95	12.6	11.8	12.2
7/12/95	14.4	13.6	13.9	8/26/95	12.5	11.5	12.0
7/13/95	13.9	13.2	13.5	8/27/95	12.6	11.5	12.0
7/14/95	14.2	13.1	13.6	8/28/95	12.8	12.0	12.4
7/15/95	14.3	12.9	13.6	8/29/95	12.5	11.8	12.2
7/16/95	15.2	13.3	14.3	8/30/95	12.6	11.5	12.1
7/17/95	15.9	14.6	15.2	8/31/95	13.0	11.7	12.4
7/18/95	16.7	14.9	15.7	9/1/95	13.5	12.2	12.8
7/19/95	17.5	15.7	16.6	9/2/95	13.9	12.9	13.4
7/20/95	17.8	16.7	17.2	9/3/95	14.4	13.4	13.9
7/21/95	17.7	16.6	17.1	9/4/95	14.9	13.8	14.4
7/22/95	17.6	16.5	17.1	9/5/95	14.8	14.3	14.5
7/23/95	17.3	16.4	16.9	9/6/95	14.6	13.9	14.3
7/24/95	16.7	15.8	16.1	9/7/95	15.0	13.9	14.4
7/25/95	15.7	15.3	15.5	9/8/95	15.1	14.2	14.7
7/26/95	15.3	14.0	14.7	9/9/95	15.2	14.3	14.8
7/27/95	13.8	13.0	13.4	9/10/95	15.0	14.3	14.7
7/28/95	13.1	12.4	12.7	9/11/95	14.7	14.0	14.2
7/29/95	12.7	12.3	12.5	9/12/95	14.3	13.6	14.0
7/30/95	12.3	12.0	12.2	9/13/95	13.9	13.1	13.5
7/31/95	12.6	11.9	12.2	9/14/95	13.6	12.8	13.1
8/1/95	12.8	12.0	12.3	9/15/95	13.2	12.4	12.8
8/2/95	12.5	12.0	12.2	9/16/95	13.0	12.2	12.5
8/3/95	13.0	12.1	12.5	9/17/95	12.5	11.8	12.1
8/4/95	12.6	12.5	12.5	9/18/95	12.1	11.2	11.5
8/5/95	13.0	12.2	12.5	9/19/95	11.1	10.2	10.6
8/6/95	13.4	12.3	12.8	9/20/95	10.6	10.0	10.4
8/7/95	13.0	12.6	12.8	9/21/95	10.4	9.6	10.0
8/8/95	12.9	12.3	12.6	9/22/95	10.0	9.4	9.8
8/9/95	13.3	12.2	12.7	9/23/95	10.3	9.5	9.9
8/10/95	13.6	12.6	13.1	9/24/95	10.7	9.7	10.2
8/11/95	13.8	13.0	13.4	9/25/95	11.0	10.0	10.6
8/12/95	13.7	13.0	13.3	9/26/95	11.0	10.3	10.7
8/13/95	13.6	13.0	13.3	9/27/95	11.1	10.5	10.8
8/14/95	13.4	13.0	13.2	9/28/95	11.0	10.5	10.8
8/15/95	13.1	12.4	12.8	9/29/95	11.0	10.5	10.8
8/16/95	12.8	12.0	12.4	9/30/95	10.8	10.4	10.6
8/17/95	12.6	12.0	12.3	10/1/95	10.4	9.7	9.9
8/18/95	12.7	12.0	12.3	10/2/95	9.8	9.6	9.7
8/19/95	12.6	11.9	12.2				
8/20/95	13.0	11.8	12.4				

McGREGOR RIVER
CODE: McG1

DATE	MAX	MIN	MEAN	DATE	MAX	MIN	MEAN
6/16/95	11.6	9.9	10.7	8/4/95	10.5	10.1	10.4
6/17/95	12.0	10.3	11.1	8/5/95	11.4	10.3	10.7
6/18/95	12.0	10.5	11.3	8/6/95	11.2	9.9	10.6
6/19/95	11.6	10.1	11.1	8/7/95	10.7	9.9	10.5
6/20/95	10.1	9.5	9.7	8/8/95	11.6	9.7	10.6
6/21/95	11.0	8.9	9.8	8/9/95	12.2	10.3	11.3
6/22/95	12.0	10.1	11.0	8/10/95	12.7	11.2	11.9
6/23/95	12.2	11.4	11.7	8/11/95	12.9	11.6	12.1
6/24/95	11.8	10.5	11.2	8/12/95	12.0	11.4	11.7
6/25/95	10.5	9.7	10.0	8/13/95	12.0	10.7	11.4
6/26/95	11.2	9.1	10.2	8/14/95	12.2	11.2	11.5
6/27/95	12.7	10.3	11.4	8/15/95	11.2	9.9	10.4
6/28/95	14.0	11.6	12.7	8/16/95	10.7	9.3	10.1
6/29/95	14.9	12.5	13.6	8/17/95	11.0	9.9	10.4
6/30/95	15.2	13.3	14.2	8/18/95	11.0	9.9	10.3
7/1/95	14.7	13.8	14.2	8/19/95	11.0	9.7	10.2
7/2/95	13.6	12.0	13.2	8/20/95	11.8	9.9	10.8
7/3/95	12.0	11.2	11.6	8/21/95	12.2	11.2	11.6
7/4/95	12.7	11.2	11.8	8/22/95	11.6	11.0	11.3
7/5/95	12.7	11.6	12.0	8/23/95	11.4	10.3	10.7
7/6/95	13.1	11.2	12.0	8/24/95	10.7	9.9	10.2
7/7/95	14.0	12.0	13.0	8/25/95	11.2	9.7	10.2
7/8/95	14.5	13.1	13.7	8/26/95	10.7	9.1	9.9
7/9/95	13.6	12.2	12.8	8/27/95	11.2	9.3	10.2
7/10/95	14.0	12.5	13.0	8/28/95	11.0	9.9	10.4
7/11/95	12.2	11.2	11.8	8/29/95	11.4	9.9	10.6
7/12/95	11.4	10.7	11.0	8/30/95	11.4	9.7	10.6
7/13/95	11.8	10.1	11.0	8/31/95	11.4	9.9	10.7
7/14/95	12.2	10.7	11.4	9/1/95	12.5	10.3	11.3
7/15/95	12.9	10.7	11.9	9/2/95	12.5	11.6	12.0
7/16/95	13.6	12.0	12.9	9/3/95	13.1	11.6	12.1
7/17/95	14.2	12.7	13.4	9/4/95	13.1	11.6	12.5
7/18/95	14.7	12.2	13.4	9/5/95	13.1	12.2	12.6
7/19/95	15.2	12.9	14.0	9/6/95	13.1	11.4	12.2
7/20/95	15.9	14.5	15.0	9/7/95	13.1	11.4	12.3
7/21/95	15.2	13.6	14.4	9/8/95	13.3	11.6	12.5
7/22/95	14.9	13.3	14.1	9/9/95	13.6	11.8	12.6
7/23/95	14.9	13.8	14.4	9/10/95	13.1	11.8	12.5
7/24/95	14.2	12.9	13.6	9/11/95	12.2	11.4	11.8
7/25/95	12.9	11.8	12.5	9/12/95	12.7	10.7	11.7
7/26/95	11.6	10.7	11.0	9/13/95	11.8	10.3	11.1
7/27/95	10.7	9.9	10.4	9/14/95	10.5	10.1	10.3
7/28/95	11.0	9.9	10.5				
7/29/95	11.0	10.5	10.8				
7/30/95	10.7	10.1	10.4				
7/31/95	10.3	9.9	10.1				
8/1/95	11.0	9.9	10.3				
8/2/95	11.0	9.9	10.1				
8/3/95	11.0	9.9	10.3				

NECHAKO RIVER
 CODE: NR8

DATE	MAX	MIN	MEAN	DATE	MAX	MIN	MEAN
7/3/95	19.7	18.9	19.4	8/21/95	17.8	15.8	16.8
7/4/95	19.2	17.6	18.4	8/22/95	16.8	15.8	16.4
7/5/95	19.2	17.8	18.5	8/23/95	16.3	15.1	15.7
7/6/95	20.3	18.1	18.9	8/24/95	16.1	14.6	15.4
7/7/95	20.8	18.1	19.4	8/25/95	16.6	14.6	15.6
7/8/95	20.8	19.2	19.9	8/26/95	16.8	14.6	15.7
7/9/95	21.1	19.2	20.1	8/27/95	17.1	14.9	15.9
7/10/95	20.5	19.4	20.0	8/28/95	17.3	15.1	16.2
7/11/95	19.4	18.4	18.9	8/29/95	16.8	14.9	16.1
7/12/95	19.2	17.8	18.5	8/30/95	17.3	14.6	16.0
7/13/95	19.2	17.3	18.1	8/31/95	17.3	14.4	15.9
7/14/95	19.2	17.1	18.0	9/1/95	17.3	14.6	16.1
7/15/95	18.9	17.1	18.0	9/2/95	17.8	15.4	16.7
7/16/95	19.4	17.1	18.2	9/3/95	18.6	16.1	17.5
7/17/95	19.4	17.8	18.7	9/4/95	19.4	16.3	17.9
7/18/95	20.8	18.1	19.4	9/5/95	18.9	16.8	17.9
7/19/95	21.1	18.9	20.0	9/6/95	18.9	16.8	17.8
7/20/95	21.1	19.7	20.5	9/7/95	19.2	16.3	17.8
7/21/95	21.7	20.0	20.8	9/8/95	19.2	16.1	17.8
7/22/95	21.4	20.3	20.7	9/9/95	19.2	16.3	17.9
7/23/95	20.5	20.0	20.3	9/10/95	18.9	16.6	18.0
7/24/95	20.0	18.9	19.5	9/11/95	18.1	16.6	17.2
7/25/95	18.9	18.6	18.7	9/12/95	18.1	16.1	17.0
7/26/95	18.6	18.1	18.4	9/13/95	17.6	14.9	16.4
7/27/95	18.4	17.3	17.9	9/14/95	16.6	14.2	15.6
7/28/95	18.1	17.3	17.7	9/15/95	16.3	14.2	15.5
7/29/95	17.6	16.8	17.2	9/16/95	16.1	13.7	15.0
7/30/95	17.6	16.8	17.1	9/17/95	15.6	13.0	14.5
7/31/95	17.6	16.3	17.0	9/18/95	14.6	12.8	13.9
8/1/95	18.1	16.6	17.2	9/19/95	13.9	11.7	13.1
8/2/95	17.8	16.6	17.2	9/20/95	13.5	10.9	12.4
8/3/95	18.9	16.8	17.9	9/21/95	13.0	10.5	11.9
8/4/95	18.1	17.6	18.0	9/22/95	13.0	10.5	11.9
8/5/95	18.6	17.3	17.9	9/23/95	13.5	11.1	12.4
8/6/95	18.6	17.1	17.9	9/24/95	13.9	11.5	12.9
8/7/95	17.6	16.6	17.1	9/25/95	14.2	11.7	13.1
8/8/95	17.8	16.3	17.0	9/26/95	13.9	11.9	13.2
8/9/95	18.1	16.1	17.1	9/27/95	14.4	12.8	13.7
8/10/95	18.4	16.6	17.5	9/28/95	13.9	12.8	13.4
8/11/95	18.4	16.8	17.6	9/29/95	13.7	12.4	13.0
8/12/95	17.8	17.1	17.4	9/30/95	13.3	12.2	12.7
8/13/95	17.6	16.6	17.2	10/1/95	12.4	10.9	11.6
8/14/95	17.6	16.6	16.9	10/2/95	11.5	10.7	11.1
8/15/95	16.6	15.6	16.1	10/3/95	11.1	10.1	10.6
8/16/95	16.6	15.4	16.0	10/4/95	10.5	9.0	9.8
8/17/95	16.3	15.1	15.7	10/5/95	9.8	8.8	9.4
8/18/95	16.6	15.1	15.8	10/6/95	9.6	8.8	9.4
8/19/95	16.6	15.4	15.9	10/7/95	9.6	8.8	9.3
8/20/95	17.1	15.4	16.3	10/8/95	9.4	8.6	9.1

NORTH THOMPSON RIVER AT KAMLOOPS
CODE: NTR3

DATE	MAX	MIN	MEAN	DATE	MAX	MIN	MEAN
5/16/95	9.3	8.5	9.0	7/5/95	14.5	13.4	14.0
5/17/95	9.3	8.7	9.0	7/6/95	14.3	13.4	13.9
5/18/95	8.9	8.5	8.7	7/7/95	15.2	13.8	14.5
5/19/95	8.9	8.1	8.5	7/8/95	15.2	14.3	14.8
5/20/95	9.1	8.3	8.7	7/9/95	15.7	15.0	15.3
5/21/95	9.3	8.7	9.0	7/10/95	15.7	15.0	15.4
5/22/95	10.1	8.9	9.4	7/11/95	15.7	14.5	15.2
5/23/95	10.5	9.9	10.2	7/12/95	15.5	14.7	15.2
5/24/95	10.8	10.3	10.6	7/13/95	15.5	14.5	15.1
5/25/95	11.2	10.5	10.9	7/14/95	15.9	14.7	15.2
5/26/95	11.6	10.8	11.2	7/15/95	16.7	15.0	15.7
5/27/95	11.6	11.0	11.3	7/16/95	17.2	15.9	16.6
5/28/95	11.4	11.0	11.2	7/17/95	17.2	16.2	16.7
5/29/95	11.8	11.2	11.3	7/18/95	18.0	16.4	17.2
5/30/95	11.8	11.4	11.6	7/19/95	18.5	16.9	17.7
5/31/95	11.8	11.0	11.4	7/20/95	18.8	17.7	18.2
6/1/95	11.4	10.8	11.1	7/21/95	18.8	17.7	18.2
6/2/95	11.4	10.8	11.1	7/22/95	18.5	17.4	18.0
6/3/95	11.4	10.5	11.1	7/23/95	18.2	17.4	17.9
6/4/95	11.4	11.0	11.2	7/24/95	18.0	16.7	17.3
6/5/95	11.0	10.1	10.5	7/25/95	16.7	15.7	16.3
6/6/95	10.3	9.9	10.1	7/26/95	16.9	15.7	16.3
6/7/95	10.1	9.5	9.8	7/27/95	16.4	15.2	15.8
6/8/95	11.4	9.9	10.4	7/28/95	15.2	14.0	14.3
6/9/95	12.0	11.0	11.4	7/29/95	14.0	13.4	13.5
6/10/95	12.0	11.2	11.6	7/30/95	14.5	13.1	13.7
6/11/95	12.0	11.2	11.6	7/31/95	15.5	13.8	14.4
6/12/95	12.0	11.4	11.7	8/1/95	15.2	14.3	14.8
6/13/95	11.8	11.2	11.5	8/2/95	15.9	14.7	15.3
6/14/95	11.8	11.2	11.5	8/3/95	16.2	14.7	15.5
6/15/95	12.3	11.2	11.5	8/4/95	17.2	15.2	16.2
6/16/95	12.9	11.8	12.4	8/5/95	16.9	16.4	16.8
6/17/95	13.1	12.3	12.7	8/6/95	16.4	15.2	15.7
6/18/95	13.4	12.7	13.1	8/7/95	15.0	14.0	14.5
6/19/95	12.9	12.5	12.7	8/8/95	13.8	13.4	13.5
6/20/95	12.7	11.8	12.3	8/9/95	15.0	13.1	14.0
6/21/95	12.9	11.8	12.4	8/10/95	15.0	14.3	14.7
6/22/95	13.4	12.3	12.8	8/11/95	15.2	14.5	14.9
6/23/95	14.0	12.9	13.4	8/12/95	14.7	14.3	14.5
6/24/95	14.3	13.4	13.8	8/13/95	14.7	13.8	14.3
6/25/95	14.0	13.1	13.7	8/14/95	14.5	14.0	14.3
6/26/95	14.0	13.4	13.8	8/15/95	14.7	13.6	14.1
6/27/95	14.7	13.4	14.0	8/16/95	14.0	13.1	13.7
6/28/95	15.5	13.8	14.7	8/17/95	13.6	12.9	13.2
6/29/95	15.5	14.5	15.0	8/18/95	13.6	12.7	13.2
6/30/95	15.7	14.5	15.2	8/19/95	14.5	13.1	13.7
7/1/95	15.7	14.5	15.3	8/20/95	15.0	13.4	14.1
7/2/95	15.7	15.2	15.5	8/21/95	14.7	14.0	14.5
7/3/95	15.5	14.5	15.0	8/22/95	14.7	13.8	14.3
7/4/95	15.0	14.0	14.5	8/23/95	15.2	13.8	14.6

NORTH THOMPSON RIVER AT KAMLOOPS
 CODE: NTR3

DATE	MAX	MIN	MEAN	DATE	MAX	MIN	MEAN
8/24/95	15.5	14.3	14.9	9/15/95	15.9	15.0	15.6
8/25/95	15.2	14.0	14.6	9/16/95	15.7	14.7	15.3
8/26/95	15.0	14.3	14.7	9/17/95	15.5	14.7	15.2
8/27/95	15.5	14.0	14.8	9/18/95	15.2	14.5	14.9
8/28/95	15.9	14.5	15.3	9/19/95	14.7	14.0	14.5
8/29/95	15.9	15.0	15.5	9/20/95	14.5	13.6	14.2
8/30/95	16.2	15.0	15.6	9/21/95	13.8	12.7	13.4
8/31/95	16.2	15.0	15.7	9/22/95	13.1	12.3	12.8
9/1/95	16.2	14.7	15.6	9/23/95	13.1	12.0	12.6
9/2/95	16.2	14.7	15.6	9/24/95	13.6	12.3	12.9
9/3/95	16.4	15.2	15.9	9/25/95	13.6	12.5	13.0
9/4/95	16.2	15.5	15.9	9/26/95	13.1	12.7	12.9
9/5/95	16.2	15.5	15.6	9/27/95	13.1	12.3	12.8
9/6/95	15.9	14.7	15.4	9/28/95	13.8	12.9	13.3
9/7/95	16.2	15.2	15.8	9/29/95	14.0	13.1	13.6
9/8/95	15.9	14.7	15.5	9/30/95	13.4	12.3	13.0
9/9/95	16.4	15.2	15.8	10/1/95	12.3	11.6	12.0
9/10/95	16.7	15.5	16.2	10/2/95	11.8	11.2	11.6
9/11/95	16.7	15.5	16.2	10/3/95	11.4	10.8	11.0
9/12/95	16.4	15.5	16.1	10/4/95	11.2	10.1	10.6
9/13/95	16.4	15.5	16.1	10/5/95	10.5	10.1	10.4
9/14/95	16.2	15.0	15.7				

QUESNEL RIVER AT QUESNEL
CODE: QR1

DATE	MAX	MIN	MEAN	DATE	MAX	MIN	MEAN
5/20/95	8.2	7.4	7.8	7/9/95	17.5	16.0	16.7
5/21/95	9.0	7.2	8.1	7/10/95	17.3	15.8	16.6
5/22/95	9.2	7.4	8.4	7/11/95	17.5	16.3	16.9
5/23/95	9.4	7.8	8.8	7/12/95	17.5	16.5	16.9
5/24/95	10.2	8.4	9.4	7/13/95	16.5	15.5	15.9
5/25/95	10.2	8.6	9.5	7/14/95	16.3	15.1	15.6
5/26/95	10.0	8.6	9.5	7/15/95	16.5	14.8	15.5
5/27/95	10.8	8.8	9.8	7/16/95	16.3	13.7	14.8
5/28/95	11.7	10.0	10.8	7/17/95	15.3	12.8	13.8
5/29/95	11.7	10.6	11.2	7/18/95	13.9	12.8	13.4
5/30/95	11.7	10.6	11.2	7/19/95	14.6	12.5	13.4
5/31/95	11.2	9.8	10.4	7/20/95	17.5	14.3	15.7
6/1/95	10.8	9.4	10.2	7/21/95	17.5	16.3	17.1
6/2/95	10.6	9.4	10.1	7/22/95	16.8	14.3	15.5
6/3/95	11.0	9.4	10.3	7/23/95	17.0	16.0	16.4
6/4/95	10.8	9.4	9.9	7/24/95	17.0	16.0	16.4
6/5/95	11.5	9.4	10.3	7/25/95	16.0	15.5	15.8
6/6/95	11.5	10.4	10.9	7/26/95	17.0	16.0	16.4
6/7/95	10.2	9.2	9.5	7/27/95	17.3	16.0	16.7
6/8/95	10.6	8.8	9.8	7/28/95	17.3	15.8	16.6
6/9/95	10.8	8.8	9.9	7/29/95	16.8	15.8	16.2
6/10/95	11.2	9.4	10.3	7/30/95	16.3	15.5	15.8
6/11/95	11.7	11.2	11.5	7/31/95	16.3	15.3	15.7
6/12/95	11.9	10.6	11.3	8/1/95	16.5	15.5	16.0
6/13/95	12.8	11.5	12.1	8/2/95	16.5	15.3	15.8
6/14/95	13.7	11.7	12.5	8/3/95	17.0	15.5	16.2
6/15/95	13.7	12.1	13.0	8/4/95	17.0	16.0	16.5
6/16/95	13.7	12.3	13.2	8/5/95	16.8	16.0	16.5
6/17/95	14.1	12.5	13.4	8/6/95	16.0	15.1	15.6
6/18/95	14.6	12.5	13.6	8/7/95	15.5	15.1	15.4
6/19/95	14.6	13.2	13.7	8/8/95	15.8	14.8	15.3
6/20/95	14.6	13.2	13.8	8/9/95	15.5	14.3	15.1
6/21/95	14.1	13.0	13.6	8/10/95	16.3	15.1	15.8
6/22/95	13.7	11.7	12.4	8/11/95	16.3	15.5	16.0
6/23/95	13.4	12.3	12.9	8/12/95	16.3	15.5	15.8
6/24/95	13.9	13.0	13.4	8/13/95	16.3	15.3	15.8
6/25/95	13.7	11.9	12.7	8/14/95	16.0	15.1	15.5
6/26/95	12.8	10.4	11.5	8/15/95	15.8	14.6	15.2
6/27/95	11.7	9.6	10.7	8/16/95	15.8	14.3	15.2
6/28/95	11.7	10.0	11.1	8/17/95	15.5	14.3	15.0
6/29/95	12.8	10.2	11.5	8/18/95	15.3	14.1	14.7
6/30/95	16.0	12.5	14.0	8/19/95	15.3	14.3	14.9
7/1/95	16.3	15.3	15.9	8/20/95	15.8	14.6	15.2
7/2/95	16.5	15.8	16.1	8/21/95	15.8	14.8	15.5
7/3/95	15.5	13.7	14.2	8/22/95	15.8	14.8	15.3
7/4/95	13.7	12.8	13.2	8/23/95	15.3	14.6	14.8
7/5/95	13.2	11.9	12.6	8/24/95	15.1	14.3	14.7
7/6/95	14.3	12.1	13.0	8/25/95	15.5	14.1	14.8
7/7/95	16.5	14.6	15.4	8/26/95	15.3	14.3	14.9
7/8/95	17.5	15.5	16.4	8/27/95	15.3	14.3	14.9

QUESNEL RIVER AT QUESNEL
CODE: QR1

DATE	MAX	MIN	MEAN	DATE	MAX	MIN	MEAN
8/28/95	15.8	14.8	15.2	9/21/95	12.5	11.7	12.2
8/29/95	15.5	14.8	15.2	9/22/95	12.8	11.7	12.2
8/30/95	15.8	14.8	15.3	9/23/95	13.7	12.3	13.0
8/31/95	15.8	14.6	15.2	9/24/95	14.1	13.0	13.6
9/1/95	16.0	14.8	15.6	9/25/95	14.1	13.2	13.8
9/2/95	16.3	15.3	15.8	9/26/95	13.9	13.2	13.7
9/3/95	16.5	15.5	16.0	9/27/95	14.6	13.7	14.1
9/4/95	16.5	15.8	16.2	9/28/95	14.3	13.9	14.0
9/5/95	16.5	15.5	16.0	9/29/95	13.9	13.4	13.7
9/6/95	16.5	15.3	15.8	9/30/95	13.7	13.2	13.4
9/7/95	16.8	15.8	16.4	10/1/95	13.0	11.9	12.4
9/8/95	17.0	16.0	16.5	10/2/95	12.5	12.1	12.4
9/9/95	17.0	16.0	16.6	10/3/95	13.0	12.3	12.5
9/10/95	16.8	16.0	16.6	10/4/95	12.3	11.7	12.0
9/11/95	16.8	16.0	16.4	10/5/95	11.9	11.5	11.6
9/12/95	16.5	16.0	16.4	10/6/95	12.1	11.5	11.7
9/13/95	16.3	15.5	15.8	10/7/95	11.9	11.2	11.7
9/14/95	15.5	14.8	15.2	10/8/95	12.3	11.7	11.9
9/15/95	15.5	14.8	15.2	10/9/95	11.9	11.5	11.8
9/16/95	15.1	14.3	14.8	10/10/95	12.3	11.5	11.8
9/17/95	14.6	13.9	14.2	10/11/95	11.9	11.0	11.3
9/18/95	14.1	13.0	13.4	10/12/95	11.0	10.2	10.7
9/19/95	13.2	12.3	12.7	10/13/95	10.8	10.6	10.7
9/20/95	12.8	11.7	12.3				

QUESNEL RIVER AT LIKELY
CODE: QR130

DATE	MAX	MIN	MEAN	DATE	MAX	MIN	MEAN
5/18/95	4.4	3.8	4.2	7/7/95	14.4	13.3	13.6
5/19/95	4.0	3.5	3.7	7/8/95	15.1	14.4	14.8
5/20/95	3.8	3.5	3.6	7/9/95	14.9	14.6	14.8
5/21/95	4.0	3.3	3.7	7/10/95	16.8	15.1	16.1
5/22/95	4.0	3.3	3.7	7/11/95	16.5	16.0	16.5
5/23/95	5.3	3.8	4.6	7/12/95	15.8	14.2	14.8
5/24/95	5.3	4.5	5.0	7/13/95	14.2	13.0	13.5
5/25/95	4.7	4.4	4.5	7/14/95	13.7	11.5	12.9
5/26/95	4.5	4.2	4.4	7/15/95	13.7	10.7	12.5
5/27/95	7.3	4.5	5.8	7/16/95	11.1	8.1	10.2
5/28/95	8.9	6.9	7.7	7/17/95	8.9	7.5	8.3
5/29/95	8.9	7.5	8.0	7/18/95	8.7	7.7	8.1
5/30/95	7.5	6.0	6.7	7/19/95	13.0	7.7	10.3
5/31/95	5.8	5.3	5.4	7/20/95	15.1	13.5	14.6
6/1/95	5.1	4.5	4.8	7/21/95	14.2	10.5	12.0
6/2/95	5.1	4.7	5.0	7/22/95	14.2	10.7	12.8
6/3/95	4.9	4.5	4.7	7/23/95	14.9	14.4	14.7
6/4/95	7.1	4.4	4.8	7/24/95	14.6	13.3	14.1
6/5/95	8.9	7.3	8.4	7/25/95	15.3	13.3	14.4
6/6/95	8.1	4.9	6.0	7/26/95	16.0	15.3	15.7
6/7/95	4.7	4.2	4.4	7/27/95	15.8	15.6	15.7
6/8/95	4.4	4.0	4.2	7/28/95	16.0	15.6	15.8
6/9/95	5.8	4.2	5.1	7/29/95	15.8	15.1	15.6
6/10/95	9.5	5.8	7.8	7/30/95	14.9	13.7	14.3
6/11/95	9.1	8.1	8.3	7/31/95	15.1	14.2	14.5
6/12/95	9.9	7.9	8.9	8/1/95	15.6	15.1	15.3
6/13/95	10.3	9.7	10.0	8/2/95	15.3	14.9	15.0
6/14/95	11.1	10.3	10.8	8/3/95	16.3	14.9	15.6
6/15/95	11.1	10.7	10.8	8/4/95	16.8	16.0	16.4
6/16/95	11.5	10.7	11.1	8/5/95	16.3	14.6	15.6
6/17/95	11.5	11.1	11.3	8/6/95	15.1	13.9	14.6
6/18/95	12.6	11.5	12.2	8/7/95	15.3	14.9	15.2
6/19/95	11.9	11.7	11.9	8/8/95	14.9	13.7	14.6
6/20/95	11.9	10.7	11.4	8/9/95	15.1	13.5	14.4
6/21/95	10.7	8.5	9.6	8/10/95	15.6	14.9	15.3
6/22/95	10.1	7.9	9.1	8/11/95	16.3	15.8	16.1
6/23/95	11.7	10.1	11.1	8/12/95	16.0	15.8	16.0
6/24/95	11.5	9.3	10.1	8/13/95	15.8	14.6	15.0
6/25/95	9.3	6.5	8.4	8/14/95	15.6	14.4	15.0
6/26/95	6.5	5.6	5.9	8/15/95	15.6	15.3	15.5
6/27/95	6.2	5.6	5.9	8/16/95	15.1	14.6	14.9
6/28/95	7.3	5.1	5.6	8/17/95	14.9	14.4	14.6
6/29/95	10.5	6.9	8.5	8/18/95	14.6	14.4	14.5
6/30/95	13.9	10.7	12.7	8/19/95	14.9	14.6	14.7
7/1/95	15.3	13.7	14.6	8/20/95	15.1	14.6	14.8
7/2/95	15.1	11.1	13.1	8/21/95	15.1	14.9	14.9
7/3/95	10.9	9.3	9.9	8/22/95	15.1	14.9	15.0
7/4/95	9.7	7.7	8.3	8/23/95	14.9	14.6	14.8
7/5/95	9.1	8.3	8.9	8/24/95	14.6	14.2	14.3
7/6/95	13.3	8.1	10.9	8/25/95	-0-	-0-	-0-

QUESNEL RIVER AT LIKELY
CODE: QR130

DATE	MAX	MIN	MEAN	DATE	MAX	MIN	MEAN
8/26/95	-0-	-0-	-0-	9/11/95	15.8	15.6	15.6
8/27/95	-0-	-0-	-0-	9/12/95	15.6	14.6	15.2
8/28/95	15.1	14.9	14.9	9/13/95	14.6	13.9	14.3
8/29/95	15.1	14.6	14.9	9/14/95	13.9	13.7	13.9
8/30/95	14.9	14.6	14.8	9/15/95	14.4	13.7	14.0
8/31/95	15.1	14.6	14.9	9/16/95	13.7	12.6	13.2
9/1/95	15.3	14.9	15.0	9/17/95	12.6	12.4	12.6
9/2/95	15.3	14.9	15.1	9/18/95	12.6	11.5	12.3
9/3/95	15.6	15.1	15.3	9/19/95	11.5	10.9	11.3
9/4/95	15.8	15.3	15.6	9/20/95	11.5	11.1	11.3
9/5/95	15.6	15.1	15.2	9/21/95	11.1	10.9	10.9
9/6/95	15.3	15.1	15.2				
9/7/95	15.8	15.1	15.5				
9/8/95	15.8	15.6	15.7				
9/9/95	15.8	15.6	15.7				
9/10/95	15.8	15.3	15.6				

SETON CREEK
CODE: SE1

DATE	MAX	MIN	MEAN	DATE	MAX	MIN	MEAN
5/12/95	10.6	8.2	9.0	7/1/95	15.1	12.6	13.6
5/13/95	9.0	6.7	7.8	7/2/95	14.8	12.1	13.4
5/14/95	7.6	6.5	6.9	7/3/95	12.4	11.7	12.1
5/15/95	8.0	6.3	7.1	7/4/95	13.2	11.7	12.5
5/16/95	10.9	7.4	8.8	7/5/95	13.9	11.7	12.9
5/17/95	9.8	7.6	8.9	7/6/95	14.1	12.8	13.5
5/18/95	9.4	7.8	8.5	7/7/95	14.8	13.0	13.5
5/19/95	8.8	6.3	7.5	7/8/95	14.8	13.7	14.3
5/20/95	8.4	6.1	7.6	7/9/95	14.6	13.7	14.3
5/21/95	9.4	6.1	7.6	7/10/95	14.6	13.5	14.0
5/22/95	9.2	6.5	7.7	7/11/95	15.1	13.5	14.3
5/23/95	11.9	7.8	9.3	7/12/95	15.1	14.1	14.5
5/24/95	10.9	8.4	9.3	7/13/95	15.3	14.4	14.9
5/25/95	9.8	8.4	9.2	7/14/95	15.3	14.4	14.9
5/26/95	9.6	7.1	8.4	7/15/95	15.6	14.4	14.8
5/27/95	11.9	9.0	10.4	7/16/95	14.6	13.9	14.2
5/28/95	12.4	9.8	11.0	7/17/95	14.4	13.2	13.8
5/29/95	12.4	9.6	10.9	7/18/95	13.7	12.8	13.3
5/30/95	11.9	9.6	10.9	7/19/95	14.6	12.8	13.6
5/31/95	11.1	9.6	10.5	7/20/95	17.0	13.9	15.6
6/1/95	11.7	9.4	10.4	7/21/95	16.8	14.8	15.4
6/2/95	11.1	9.8	10.5	7/22/95	17.8	15.1	16.7
6/3/95	12.1	9.6	10.6	7/23/95	17.3	16.5	16.9
6/4/95	11.1	10.0	10.5	7/24/95	17.0	16.3	16.6
6/5/95	10.2	9.6	10.0	7/25/95	16.5	16.0	16.2
6/6/95	9.8	9.0	9.5	7/26/95	16.3	15.6	16.0
6/7/95	10.6	8.4	9.5	7/27/95	16.3	15.6	15.9
6/8/95	10.9	9.4	10.1	7/28/95	16.3	15.3	15.8
6/9/95	11.3	9.2	10.1	7/29/95	15.8	15.3	15.4
6/10/95	10.9	9.6	10.1	7/30/95	16.0	15.1	15.5
6/11/95	12.4	10.2	11.3	7/31/95	15.8	14.6	15.4
6/12/95	11.7	10.6	11.1	8/1/95	16.5	15.6	15.9
6/13/95	12.4	10.9	11.4	8/2/95	16.5	14.4	15.5
6/14/95	12.4	10.4	11.4	8/3/95	17.3	16.0	16.5
6/15/95	11.7	10.2	11.1	8/4/95	17.8	16.5	17.1
6/16/95	12.8	10.6	11.4	8/5/95	17.8	17.0	17.3
6/17/95	12.6	11.9	12.3	8/6/95	17.0	15.3	16.6
6/18/95	12.4	11.7	12.0	8/7/95	15.3	13.2	14.5
6/19/95	12.8	11.7	12.1	8/8/95	16.3	15.1	15.7
6/20/95	12.6	11.9	12.3	8/9/95	16.5	14.8	15.6
6/21/95	12.8	11.5	12.2	8/10/95	16.5	14.6	15.4
6/22/95	13.2	11.3	12.2	8/11/95	16.0	15.1	15.5
6/23/95	12.8	11.1	12.1	8/12/95	15.6	15.1	15.3
6/24/95	13.0	11.5	12.2	8/13/95	16.8	14.8	15.6
6/25/95	13.5	11.5	12.4	8/14/95	15.6	15.1	15.3
6/26/95	12.8	11.3	11.8	8/15/95	16.0	14.8	15.3
6/27/95	12.4	10.2	11.3	8/16/95	15.8	14.8	15.2
6/28/95	12.6	10.6	11.6	8/17/95	15.6	13.9	14.7
6/29/95	13.2	11.5	12.2	8/18/95	14.6	13.5	14.1
6/30/95	13.9	12.1	13.0	8/19/95	15.6	14.4	14.8

SETON CREEK
CODE: SE1

DATE	MAX	MIN	MEAN	DATE	MAX	MIN	MEAN
8/20/95	16.0	14.4	15.0	9/18/95	15.6	13.5	14.6
8/21/95	16.0	14.4	15.1	9/19/95	13.9	12.8	13.2
8/22/95	16.0	14.1	15.1	9/20/95	14.4	12.8	13.3
8/23/95	15.8	14.6	15.1	9/21/95	14.4	13.0	13.5
8/24/95	16.0	14.6	15.2	9/22/95	14.6	13.2	13.7
8/25/95	15.8	14.4	15.1	9/23/95	14.6	13.2	13.9
8/26/95	16.3	14.6	15.3	9/24/95	14.6	13.2	13.9
8/27/95	16.0	14.6	15.2	9/25/95	14.6	13.7	14.1
8/28/95	16.0	15.1	15.5	9/26/95	14.6	14.1	14.4
8/29/95	16.3	14.6	15.4	9/27/95	14.8	14.1	14.4
8/30/95	16.5	14.4	15.2	9/28/95	15.3	14.4	14.6
8/31/95	16.0	14.6	15.3	9/29/95	15.1	13.9	14.4
9/1/95	15.6	13.7	14.6	9/30/95	14.4	13.5	14.2
9/2/95	16.3	14.1	15.0	10/1/95	14.1	13.5	13.6
9/3/95	16.0	14.8	15.3	10/2/95	14.4	13.5	13.7
9/4/95	17.0	14.1	15.4	10/3/95	13.9	13.2	13.5
9/5/95	16.8	15.8	16.2	10/4/95	14.1	13.0	13.4
9/6/95	16.3	14.1	15.7	10/5/95	13.9	13.0	13.4
9/7/95	15.8	13.9	14.8	10/6/95	13.7	12.8	13.2
9/8/95	16.5	14.1	15.1	10/7/95	13.5	13.0	13.2
9/9/95	17.0	15.1	16.0	10/8/95	13.5	12.8	13.0
9/10/95	17.3	15.1	16.1	10/9/95	13.5	12.8	13.0
9/11/95	17.3	16.0	16.6	10/10/95	13.2	12.6	12.9
9/12/95	17.3	16.0	16.6	10/11/95	13.0	12.6	12.7
9/13/95	16.3	14.6	15.5	10/12/95	12.8	12.4	12.6
9/14/95	15.8	14.1	14.8	10/13/95	12.8	12.4	12.5
9/15/95	15.6	13.9	14.6	10/14/95	12.6	12.4	12.4
9/16/95	13.9	12.6	13.2				
9/17/95	14.4	12.8	13.5				

STUART RIVER - UPPER
CODE: SR113

DATE	MAX	MIN	MEAN	DATE	MAX	MIN	MEAN
7/4/95	18.1	17.9	18.1	8/22/95	16.1	15.4	15.8
7/5/95	18.6	17.3	17.9	8/23/95	16.6	14.9	15.5
7/6/95	19.7	17.6	18.5	8/24/95	16.1	14.9	15.5
7/7/95	20.3	18.4	19.3	8/25/95	16.6	14.7	15.6
7/8/95	20.0	18.4	18.9	8/26/95	16.3	14.9	15.6
7/9/95	19.4	17.9	18.7	8/27/95	16.6	14.4	15.5
7/10/95	18.1	16.8	17.4	8/28/95	16.6	15.1	15.8
7/11/95	17.1	16.1	16.6	8/29/95	16.6	14.7	15.6
7/12/95	17.3	15.4	16.2	8/30/95	16.8	14.4	15.6
7/13/95	16.6	15.6	16.1	8/31/95	16.8	14.7	15.7
7/14/95	16.8	15.6	16.1	9/1/95	16.8	14.7	15.8
7/15/95	17.6	15.4	16.4	9/2/95	16.8	15.4	16.2
7/16/95	17.6	16.1	16.9	9/3/95	18.1	15.9	16.8
7/17/95	17.9	16.6	17.2	9/4/95	18.4	16.1	17.1
7/18/95	19.7	17.1	18.3	9/5/95	17.9	16.6	17.2
7/19/95	20.3	17.6	18.9	9/6/95	18.1	15.6	16.7
7/20/95	20.6	19.2	20.0	9/7/95	18.4	15.9	17.1
7/21/95	21.4	18.9	20.2	9/8/95	18.6	16.3	17.5
7/22/95	21.1	19.7	20.5	9/9/95	18.6	16.6	17.6
7/23/95	20.6	19.2	19.7	9/10/95	17.6	16.8	17.3
7/24/95	19.2	18.4	18.6	9/11/95	16.8	16.1	16.4
7/25/95	18.9	17.9	18.3	9/12/95	17.3	15.6	16.3
7/26/95	18.9	17.9	18.3	9/13/95	17.1	14.9	16.0
7/27/95	18.1	17.1	17.6	9/14/95	17.1	14.9	15.9
7/28/95	17.6	16.3	17.0	9/15/95	17.1	15.1	15.9
7/29/95	17.9	16.3	17.1	9/16/95	16.8	14.4	15.6
7/30/95	17.3	16.3	16.8	9/17/95	16.1	14.2	15.1
7/31/95	17.3	15.9	16.6	9/18/95	14.7	13.3	13.9
8/1/95	17.9	16.1	16.9	9/19/95	15.1	12.6	13.8
8/2/95	17.1	16.3	16.7	9/20/95	14.9	12.4	13.6
8/3/95	17.9	16.1	17.0	9/21/95	14.7	12.2	13.4
8/4/95	18.1	16.6	17.3	9/22/95	14.9	12.4	13.5
8/5/95	18.1	16.3	17.1	9/23/95	15.4	12.8	14.0
8/6/95	17.9	15.9	16.8	9/24/95	15.4	13.1	14.2
8/7/95	17.1	16.3	16.6	9/25/95	15.4	13.1	14.2
8/8/95	17.3	16.1	16.7	9/26/95	15.1	13.5	14.4
8/9/95	17.3	16.3	16.9	9/27/95	15.1	14.0	14.4
8/10/95	17.1	16.3	16.7	9/28/95	14.9	13.3	14.0
8/11/95	17.1	16.3	16.7	9/29/95	14.2	12.8	13.5
8/12/95	17.3	16.3	16.9	9/30/95	13.3	12.0	12.8
8/13/95	17.3	16.6	16.8	10/1/95	12.2	10.9	11.7
8/14/95	16.6	16.3	16.4	10/2/95	12.4	11.5	11.8
8/15/95	16.3	15.4	15.9	10/3/95	11.3	10.7	11.0
8/16/95	16.3	15.4	15.9	10/4/95	11.5	10.3	10.8
8/17/95	16.1	15.6	15.9	10/5/95	10.9	10.5	10.6
8/18/95	16.1	15.4	15.8	10/6/95	11.5	10.5	10.9
8/19/95	16.3	15.4	15.8	10/7/95	10.9	10.3	10.6
8/20/95	17.1	15.1	16.1	10/8/95	10.9	10.1	10.5
8/21/95	16.8	15.6	16.2	10/9/95	10.7	9.9	10.2

STUART RIVER - LOWER
CODE: SR43

DATE	MAX	MIN	MEAN	DATE	MAX	MIN	MEAN
6/14/95	15.3	14.6	15.0	7/28/95	-0-	-0-	-0-
6/15/95	15.3	14.4	14.9	7/29/95	17.5	17.3	17.4
6/16/95	15.6	14.8	15.2	7/30/95	17.5	16.8	17.3
6/17/95	15.8	15.1	15.4	7/31/95	17.0	16.3	16.7
6/18/95	16.3	15.3	15.8	8/1/95	17.5	16.5	16.9
6/19/95	17.0	15.8	16.6	8/2/95	18.1	17.0	17.4
6/20/95	17.8	16.8	17.2	8/3/95	17.8	16.5	17.1
6/21/95	18.8	17.5	18.1	8/4/95	18.6	17.0	17.7
6/22/95	18.6	18.1	18.2	8/5/95	18.3	17.0	17.6
6/23/95	18.3	17.5	18.1	8/6/95	18.1	16.5	17.1
6/24/95	17.5	17.3	17.5	8/7/95	17.3	16.3	16.7
6/25/95	17.3	16.8	17.0	8/8/95	17.5	16.0	16.6
6/26/95	17.3	16.5	16.8	8/9/95	18.6	16.3	17.2
6/27/95	18.3	16.5	17.2	8/10/95	18.1	16.8	17.5
6/28/95	19.1	17.3	18.0	8/11/95	18.1	17.0	17.5
6/29/95	19.1	18.3	18.7	8/12/95	18.3	16.8	17.3
6/30/95	19.9	18.6	19.2	8/13/95	18.1	16.8	17.3
7/1/95	20.2	18.8	19.7	8/14/95	17.5	16.0	16.8
7/2/95	18.8	17.5	18.4	8/15/95	16.8	15.3	15.9
7/3/95	17.5	17.3	17.4	8/16/95	17.0	15.1	15.8
7/4/95	17.5	16.5	17.1	8/17/95	16.5	15.1	15.9
7/5/95	17.5	17.0	17.2	8/18/95	16.5	15.1	15.6
7/6/95	18.3	17.3	17.8	8/19/95	17.3	15.1	16.0
7/7/95	19.7	18.1	18.8	8/20/95	17.3	14.8	15.8
7/8/95	20.8	19.4	20.0	8/21/95	17.5	15.3	16.3
7/9/95	19.7	18.6	19.3	8/22/95	17.3	15.6	16.2
7/10/95	19.4	18.6	18.9	8/23/95	16.3	14.6	15.2
7/11/95	18.6	16.8	17.8	8/24/95	16.5	14.1	15.1
7/12/95	17.8	16.3	16.8	8/25/95	16.8	14.4	15.3
7/13/95	17.5	16.5	17.0	8/26/95	16.8	14.6	15.4
7/14/95	17.3	16.0	16.6	8/27/95	17.0	14.1	15.2
7/15/95	16.0	16.0	16.0	8/28/95	17.0	14.4	15.4
7/16/95	-0-	-0-	-0-	8/29/95	16.3	13.9	14.9
7/17/95	-0-	-0-	-0-	8/30/95	14.1	13.7	13.9
7/18/95	-0-	-0-	-0-				
7/19/95	-0-	-0-	-0-				
7/20/95	-0-	-0-	-0-				
7/21/95	-0-	-0-	-0-				
7/22/95	-0-	-0-	-0-				
7/23/95	-0-	-0-	-0-				
7/24/95	-0-	-0-	-0-				
7/25/95	-0-	-0-	-0-				
7/26/95	-0-	-0-	-0-				
7/27/95	-0-	-0-	-0-				

SOUTH THOMPSON RIVER AT CHASE - FTS
 CODE: STR60

DATE	MAX	MIN	MEAN	DATE	MAX	MIN	MEAN
7/6/95	15.8	15.3	15.6	8/20/95	18.9	17.2	17.9
7/7/95	16.5	15.3	15.9	8/21/95	19.0	17.2	18.0
7/8/95	17.6	16.2	16.8	8/22/95	19.2	17.4	18.2
7/9/95	17.7	16.8	17.2	8/23/95	18.6	16.9	17.7
7/10/95	18.4	17.0	17.5	8/24/95	17.8	16.6	17.1
7/11/95	18.1	17.0	17.4	8/25/95	18.2	16.6	17.3
7/12/95	18.1	16.8	17.5	8/26/95	18.3	16.7	17.4
7/13/95	18.5	17.0	17.7	8/27/95	18.2	16.7	17.4
7/14/95	18.2	17.0	17.6	8/28/95	18.8	17.0	17.6
7/15/95	18.2	17.0	17.5	8/29/95	17.6	16.6	17.1
7/16/95	18.6	16.9	17.7	8/30/95	18.7	16.8	17.6
7/17/95	18.4	17.0	17.8	8/31/95	18.9	17.0	17.8
7/18/95	18.9	17.2	18.0	9/1/95	19.0	17.2	18.0
7/19/95	19.0	17.2	18.2	9/2/95	19.3	17.3	18.2
7/20/95	19.7	18.3	18.8	9/3/95	19.2	17.4	18.3
7/21/95	19.6	18.3	19.0	9/4/95	19.2	17.7	18.3
7/22/95	20.3	18.9	19.7	9/5/95	18.1	17.6	17.8
7/23/95	19.8	19.0	19.3	9/6/95	19.3	17.6	18.2
7/24/95	20.1	19.1	19.6	9/7/95	19.2	17.5	18.1
7/25/95	19.8	19.3	19.5	9/8/95	19.3	17.4	18.3
7/26/95	20.2	18.7	19.4	9/9/95	20.0	18.0	18.8
7/27/95	20.1	18.5	19.1	9/10/95	19.9	18.0	18.8
7/28/95	20.2	18.7	19.3	9/11/95	19.8	18.1	18.8
7/29/95	18.6	17.2	17.5	9/12/95	20.0	18.2	18.9
7/30/95	19.5	17.2	18.3	9/13/95	19.8	18.1	18.8
7/31/95	19.3	18.2	18.6	9/14/95	20.0	18.1	18.9
8/1/95	19.1	18.2	18.6	9/15/95	19.8	18.3	18.9
8/2/95	19.2	18.0	18.5	9/16/95	19.6	18.0	18.6
8/3/95	20.3	18.2	19.1	9/17/95	19.6	17.6	18.4
8/4/95	20.8	19.0	19.7	9/18/95	18.8	17.8	18.2
8/5/95	19.2	18.1	18.7	9/19/95	19.1	17.5	18.1
8/6/95	18.8	18.0	18.3	9/20/95	18.7	17.2	17.8
8/7/95	19.2	18.1	18.5	9/21/95	18.3	16.5	17.3
8/8/95	18.5	17.8	18.1	9/22/95	17.8	16.2	16.9
8/9/95	19.6	17.7	18.5	9/23/95	18.0	16.0	16.8
8/10/95	19.1	18.0	18.6	9/24/95	18.2	16.2	17.0
8/11/95	18.5	17.9	18.2	9/25/95	17.7	16.0	16.7
8/12/95	17.9	17.5	17.7	9/26/95	17.1	16.0	16.5
8/13/95	19.0	17.2	18.0	9/27/95	17.0	16.0	16.5
8/14/95	18.3	17.5	17.9	9/28/95	17.8	16.3	16.9
8/15/95	18.5	17.3	17.7	9/29/95	17.7	16.1	16.7
8/16/95	18.4	17.2	17.7	9/30/95	16.9	15.2	16.2
8/17/95	17.9	17.1	17.4	10/1/95	16.6	15.0	15.6
8/18/95	17.9	17.0	17.4	10/2/95	15.5	15.4	15.5
8/19/95	18.6	17.0	17.6				

SOUTH THOMPSON RIVER AT CHASE
CODE: STR65

DATE	MAX	MIN	MEAN	DATE	MAX	MIN	MEAN
5/16/95	12.6	10.5	11.7	7/5/95	-0-	-0-	-0-
5/17/95	10.5	9.6	10.0	7/6/95	-0-	-0-	-0-
5/18/95	10.5	10.0	10.2	7/7/95	-0-	-0-	-0-
5/19/95	11.7	10.0	10.6	7/8/95	-0-	-0-	-0-
5/20/95	11.7	10.0	10.8	7/9/95	-0-	-0-	-0-
5/21/95	11.7	9.6	10.5	7/10/95	-0-	-0-	-0-
5/22/95	11.5	9.8	10.5	7/11/95	-0-	-0-	-0-
5/23/95	11.7	9.6	10.5	7/12/95	-0-	-0-	-0-
5/24/95	11.3	10.3	10.7	7/13/95	-0-	-0-	-0-
5/25/95	13.0	10.9	11.7	7/14/95	-0-	-0-	-0-
5/26/95	14.1	10.7	11.9	7/15/95	-0-	-0-	-0-
5/27/95	13.9	11.9	12.8	7/16/95	-0-	-0-	-0-
5/28/95	15.1	12.6	13.6	7/17/95	-0-	-0-	-0-
5/29/95	15.3	13.2	13.8	7/18/95	-0-	-0-	-0-
5/30/95	13.7	12.6	13.1	7/19/95	-0-	-0-	-0-
5/31/95	12.8	12.4	12.6	7/20/95	-0-	-0-	-0-
6/1/95	13.7	11.7	12.4	7/21/95	-0-	-0-	-0-
6/2/95	14.8	12.1	12.9	7/22/95	-0-	-0-	-0-
6/3/95	14.6	12.1	12.9	7/23/95	-0-	-0-	-0-
6/4/95	12.1	11.5	11.6	7/24/95	-0-	-0-	-0-
6/5/95	12.1	11.3	11.9	7/25/95	-0-	-0-	-0-
6/6/95	11.3	10.5	11.1	7/26/95	-0-	-0-	-0-
6/7/95	11.1	10.0	10.5	7/27/95	-0-	-0-	-0-
6/8/95	10.5	9.8	9.9	7/28/95	-0-	-0-	-0-
6/9/95	11.9	9.6	10.7	7/29/95	-0-	-0-	-0-
6/10/95	12.0	11.1	11.5	7/30/95	-0-	-0-	-0-
6/11/95	13.1	11.8	12.4	7/31/95	-0-	-0-	-0-
6/12/95	12.7	12.0	12.3	8/1/95	19.3	18.7	19.0
6/13/95	13.8	12.0	12.6	8/2/95	19.5	17.9	18.7
6/14/95	13.1	12.3	12.8	8/3/95	20.6	18.2	19.3
6/15/95	14.3	12.7	13.4	8/4/95	21.5	19.0	20.0
6/16/95	14.7	13.6	14.1	8/5/95	20.1	18.2	19.0
6/17/95	15.2	13.8	14.3	8/6/95	19.0	17.9	18.4
6/18/95	15.2	14.3	14.7	8/7/95	19.5	17.9	18.6
6/19/95	14.7	14.5	14.5	8/8/95	18.7	17.7	18.2
6/20/95	14.5	13.8	14.1	8/9/95	20.1	17.7	18.6
6/21/95	15.2	13.6	14.2	8/10/95	19.3	17.9	18.6
6/22/95	15.7	14.3	14.7	8/11/95	18.5	17.9	18.2
6/23/95	15.7	14.5	14.8	8/12/95	17.9	17.4	17.7
6/24/95	14.7	14.0	14.2	8/13/95	19.3	16.9	18.0
6/25/95	14.7	14.0	14.4	8/14/95	18.2	17.7	17.9
6/26/95	15.4	14.5	14.8	8/15/95	18.5	16.9	17.7
6/27/95	15.0	14.5	14.6	8/16/95	18.5	16.9	17.7
6/28/95	15.2	13.1	14.0	8/17/95	17.7	16.9	17.3
6/29/95	15.7	14.3	14.9	8/18/95	17.7	16.9	17.3
6/30/95	17.2	14.7	15.7	8/19/95	18.7	16.9	17.6
7/1/95	16.4	15.7	15.9	8/20/95	19.3	16.9	17.9
7/2/95	-0-	-0-	-0-	8/21/95	19.3	17.2	18.0
7/3/95	-0-	-0-	-0-	8/22/95	19.3	17.4	18.3
7/4/95	-0-	-0-	-0-	8/23/95	18.7	17.2	17.9

SOUTH THOMPSON RIVER AT CHASE
CODE: STR65

DATE	MAX	MIN	MEAN	DATE	MAX	MIN	MEAN
8/24/95	17.9	16.4	17.1	9/16/95	20.1	17.4	18.5
8/25/95	18.2	16.4	17.2	9/17/95	20.1	16.9	18.2
8/26/95	18.7	16.7	17.4	9/18/95	19.0	17.4	18.1
8/27/95	18.7	16.4	17.5	9/19/95	19.3	16.9	17.9
8/28/95	19.5	16.7	17.9	9/20/95	19.0	16.7	17.5
8/29/95	17.9	16.7	17.3	9/21/95	18.5	15.9	17.0
8/30/95	19.3	16.7	17.7	9/22/95	17.9	15.7	16.6
8/31/95	19.5	16.7	17.9	9/23/95	18.2	15.5	16.6
9/1/95	19.5	16.9	18.0	9/24/95	18.5	15.7	16.8
9/2/95	19.8	17.2	18.3	9/25/95	17.9	15.5	16.5
9/3/95	19.8	17.2	18.3	9/26/95	17.2	15.7	16.3
9/4/95	19.5	17.4	18.3	9/27/95	16.9	15.5	16.2
9/5/95	18.2	17.4	17.9	9/28/95	18.2	15.9	16.8
9/6/95	19.8	17.4	18.3	9/29/95	17.9	15.7	16.5
9/7/95	19.8	17.2	18.3	9/30/95	16.7	14.5	15.9
9/8/95	20.1	17.2	18.3	10/1/95	16.4	14.1	15.0
9/9/95	20.4	17.7	18.8	10/2/95	15.5	14.8	15.1
9/10/95	20.4	17.7	18.9	10/3/95	15.5	14.3	14.9
9/11/95	20.4	17.7	18.8	10/4/95	15.9	13.6	14.5
9/12/95	20.6	17.9	18.9	10/5/95	14.8	13.6	14.3
9/13/95	20.4	17.7	18.8	10/6/95	15.2	13.8	14.5
9/14/95	20.4	17.7	18.8	10/7/95	15.0	13.8	14.2
9/15/95	20.4	17.9	18.8				

THOMPSON RIVER AT GOLDPAN
CODE: TR24

DATE	MAX	MIN	MEAN	DATE	MAX	MIN	MEAN
5/10/95	10.3	10.1	10.3	6/29/95	16.7	15.5	16.1
5/11/95	10.5	9.3	9.9	6/30/95	17.0	16.0	16.5
5/12/95	10.3	9.5	10.1	7/1/95	17.0	16.2	16.6
5/13/95	10.5	9.5	10.0	7/2/95	16.7	15.3	15.9
5/14/95	10.7	9.7	10.3	7/3/95	16.2	15.3	15.6
5/15/95	11.3	10.3	10.8	7/4/95	16.5	15.3	15.8
5/16/95	10.9	9.9	10.4	7/5/95	17.2	16.0	16.5
5/17/95	10.5	9.3	10.0	7/6/95	17.2	16.2	16.7
5/18/95	10.3	9.1	9.6	7/7/95	17.5	16.0	16.7
5/19/95	10.1	9.1	9.6	7/8/95	18.0	16.7	17.4
5/20/95	10.5	10.1	10.2	7/9/95	17.7	16.2	16.9
5/21/95	10.3	9.5	9.8	7/10/95	17.2	15.8	16.5
5/22/95	11.8	8.7	10.3	7/11/95	17.0	15.8	16.3
5/23/95	11.8	10.9	11.4	7/12/95	17.5	16.0	16.7
5/24/95	11.5	10.9	11.2	7/13/95	17.5	16.2	16.9
5/25/95	11.1	9.7	10.4	7/14/95	17.2	16.0	16.7
5/26/95	12.4	10.5	11.3	7/15/95	17.5	16.2	16.9
5/27/95	13.7	12.2	12.8	7/16/95	18.0	16.0	17.0
5/28/95	13.5	12.6	13.1	7/17/95	18.5	16.7	17.6
5/29/95	13.1	12.0	12.6	7/18/95	18.8	17.0	17.8
5/30/95	13.1	11.8	12.5	7/19/95	18.8	16.7	18.0
5/31/95	12.8	12.0	12.4	7/20/95	19.0	17.7	18.5
6/1/95	13.1	11.8	12.3	7/21/95	18.8	18.5	18.8
6/2/95	13.3	12.4	12.8	7/22/95	18.8	17.5	18.3
6/3/95	13.5	12.4	12.9	7/23/95	18.8	17.7	18.3
6/4/95	13.5	12.6	13.0	7/24/95	19.9	18.3	19.0
6/5/95	13.3	12.8	13.2	7/25/95	19.6	18.5	19.0
6/6/95	12.8	11.1	12.1	7/26/95	19.9	18.3	19.2
6/7/95	12.0	9.5	10.4	7/27/95	19.6	17.2	18.4
6/8/95	12.8	11.5	12.1	7/28/95	19.0	18.8	18.8
6/9/95	13.0	11.9	12.3	7/29/95	19.0	18.0	18.3
6/10/95	13.7	12.8	13.2	7/30/95	18.0	16.7	17.2
6/11/95	13.7	13.0	13.2	7/31/95	18.5	16.7	17.6
6/12/95	13.2	12.3	12.8	8/1/95	18.8	17.5	18.2
6/13/95	13.0	12.1	12.5	8/2/95	18.8	18.0	18.4
6/14/95	12.8	11.9	12.3	8/3/95	19.3	17.7	18.5
6/15/95	13.9	12.5	13.1	8/4/95	19.3	18.3	18.8
6/16/95	13.7	12.8	13.3	8/5/95	19.0	17.5	18.0
6/17/95	13.7	12.3	13.0	8/6/95	17.7	17.0	17.4
6/18/95	13.7	12.5	13.0	8/7/95	18.3	17.2	17.8
6/19/95	13.4	12.5	13.0	8/8/95	18.8	17.7	18.1
6/20/95	13.7	12.8	13.2	8/9/95	18.0	16.2	17.3
6/21/95	14.6	12.8	13.6	8/10/95	17.9	16.9	17.3
6/22/95	15.0	13.7	14.4	8/11/95	17.9	17.1	17.5
6/23/95	15.0	14.3	14.7	8/12/95	17.6	16.4	16.9
6/24/95	15.3	14.3	14.8	8/13/95	17.4	16.1	16.7
6/25/95	15.5	14.1	14.8	8/14/95	17.6	16.9	17.1
6/26/95	15.0	14.3	14.8	8/15/95	17.6	16.9	17.2
6/27/95	14.6	13.2	14.0	7/6/95	16.0	15.8	15.9
6/28/95	16.0	14.1	15.0	7/7/95	17.0	15.6	16.3

THOMPSON RIVER AT ASHCROFT - FTS
 CODE: TR80

DATE	MAX	MIN	MEAN	DATE	MAX	MIN	MEAN
7/8/95	17.4	16.2	16.7	8/21/95	-0-	-0-	-0-
7/9/95	17.0	15.7	16.3	8/22/95	-0-	-0-	-0-
7/10/95	16.8	15.2	15.9	8/23/95	-0-	-0-	-0-
7/11/95	16.1	15.2	15.6	8/24/95	-0-	-0-	-0-
7/12/95	16.6	15.9	16.2	8/25/95	15.5	15.0	15.2
7/13/95	17.0	16.0	16.5	8/26/95	16.0	15.1	15.5
7/14/95	16.7	15.3	16.0	8/27/95	16.3	15.4	15.8
7/15/95	16.2	15.7	16.0	8/28/95	16.1	15.3	15.7
7/16/95	17.3	15.7	16.5	8/29/95	15.4	14.8	15.2
7/17/95	17.3	16.5	16.9	8/30/95	16.0	14.8	15.3
7/18/95	18.0	16.4	17.1	8/31/95	16.1	14.8	15.5
7/19/95	18.2	16.4	17.3	9/1/95	16.3	15.4	15.9
7/20/95	18.5	17.2	17.9	9/2/95	16.2	15.5	15.8
7/21/95	18.4	17.4	17.9	9/3/95	16.4	15.5	15.8
7/22/95	18.1	17.1	17.6	9/4/95	16.6	15.6	16.0
7/23/95	18.4	17.7	18.0	9/5/95	16.5	15.8	16.1
7/24/95	19.3	18.0	18.8	9/6/95	17.2	16.1	16.6
7/25/95	19.1	18.0	18.6	9/7/95	16.8	15.4	15.9
7/26/95	19.7	17.8	18.8	9/8/95	15.9	15.1	15.5
7/27/95	19.2	16.6	17.9	9/9/95	16.6	15.6	16.0
7/28/95	19.1	17.9	18.6	9/10/95	16.9	16.0	16.4
7/29/95	18.2	16.9	17.7	9/11/95	16.8	16.1	16.4
7/30/95	16.9	15.9	16.4	9/12/95	16.5	15.5	16.0
7/31/95	17.8	16.7	17.3	9/13/95	16.6	15.3	15.8
8/1/95	18.5	17.2	17.9	9/14/95	16.9	16.0	16.3
8/2/95	18.1	17.4	17.7	9/15/95	17.4	16.3	16.7
8/3/95	18.7	17.5	18.1	9/16/95	16.2	14.6	15.4
8/4/95	18.6	17.5	18.0	9/17/95	16.2	14.5	15.3
8/5/95	17.5	16.5	17.0	9/18/95	16.4	15.5	15.8
8/6/95	17.4	16.8	17.0	9/19/95	16.3	13.8	15.4
8/7/95	17.8	17.3	17.6	9/20/95	15.4	13.5	14.4
8/8/95	17.6	16.1	17.1	9/21/95	15.9	14.6	15.1
8/9/95	17.0	15.9	16.4	9/22/95	16.0	14.7	15.3
8/10/95	17.1	15.9	16.5	9/23/95	16.2	15.1	15.6
8/11/95	16.9	16.1	16.5	9/24/95	16.2	15.1	15.6
8/12/95	16.3	15.5	15.7	9/25/95	16.1	15.1	15.5
8/13/95	16.4	15.5	15.9	9/26/95	15.4	15.1	15.3
8/14/95	16.5	15.9	16.2	9/27/95	15.5	14.8	15.1
8/15/95	16.6	15.8	16.2	9/28/95	15.8	14.8	15.2
8/16/95	16.0	15.3	15.7	9/29/95	15.2	14.5	14.8
8/17/95	15.2	14.3	14.7	9/30/95	14.7	13.9	14.3
8/18/95	14.3	14.0	14.1	10/1/95	13.9	13.5	13.7
8/19/95	-0-	-0-	-0-	10/2/95	13.9	13.7	13.8
8/20/95	-0-	-0-	-0-				

THOMPSON RIVER AT SAVONA
 CODE: TR113

DATE	MAX	MIN	MEAN	DATE	MAX	MIN	MEAN
5/15/95	10.7	10.3	10.5	7/4/95	16.5	15.3	15.8
5/16/95	10.7	9.1	10.1	7/5/95	16.5	16.3	16.5
5/17/95	9.5	8.9	9.2	7/6/95	16.8	16.1	16.4
5/18/95	9.7	9.1	9.4	7/7/95	17.5	16.5	17.0
5/19/95	11.3	8.9	9.7	7/8/95	17.8	16.5	17.3
5/20/95	11.3	9.5	10.0	7/9/95	17.5	15.6	16.8
5/21/95	10.9	8.9	9.5	7/10/95	17.3	15.6	16.5
5/22/95	12.0	10.5	11.2	7/11/95	17.0	15.1	16.0
5/23/95	11.7	10.5	11.2	7/12/95	17.0	15.8	16.5
5/24/95	11.3	9.5	10.2	7/13/95	17.5	16.1	17.0
5/25/95	11.1	9.3	10.2	7/14/95	17.0	15.8	16.4
5/26/95	13.0	10.5	11.8	7/15/95	16.5	15.8	16.2
5/27/95	13.5	12.6	13.1	7/16/95	17.5	16.3	17.0
5/28/95	13.5	12.0	12.8	7/17/95	17.3	16.8	17.1
5/29/95	12.6	11.5	12.0	7/18/95	18.1	16.8	17.3
5/30/95	12.6	11.5	11.9	7/19/95	18.3	17.0	17.7
5/31/95	12.0	11.5	11.8	7/20/95	18.8	17.8	18.2
6/1/95	12.6	11.7	12.1	7/21/95	18.3	17.5	17.9
6/2/95	13.0	12.2	12.2	7/22/95	18.6	17.3	17.8
6/3/95	13.9	12.2	13.0	7/23/95	18.8	18.1	18.3
6/4/95	14.2	12.4	13.3	7/24/95	19.4	18.8	19.1
6/5/95	14.4	12.4	13.6	7/25/95	19.4	18.1	18.9
6/6/95	12.4	10.1	11.3	7/26/95	19.9	17.3	19.0
6/7/95	11.7	9.7	10.8	7/27/95	19.6	17.0	18.5
6/8/95	12.8	11.3	11.8	7/28/95	19.6	18.3	18.9
6/9/95	13.7	11.3	12.5	7/29/95	18.3	17.0	18.1
6/10/95	14.2	13.0	13.7	7/30/95	17.8	16.3	16.7
6/11/95	13.3	12.4	12.9	7/31/95	18.1	17.5	17.8
6/12/95	12.4	12.0	12.2	8/1/95	18.8	18.1	18.4
6/13/95	12.4	11.7	12.0	8/2/95	18.3	17.8	18.0
6/14/95	13.3	11.7	12.2	8/3/95	18.6	18.1	18.3
6/15/95	14.2	13.5	13.7	8/4/95	18.6	17.3	18.1
6/16/95	13.5	12.2	12.7	8/5/95	17.8	16.8	17.2
6/17/95	13.7	12.0	12.7	8/6/95	18.6	17.3	17.6
6/18/95	13.3	12.2	12.6	8/7/95	18.3	17.8	18.1
6/19/95	13.5	12.4	12.6	8/8/95	18.3	17.0	17.7
6/20/95	13.0	12.4	12.8	8/9/95	17.8	17.0	17.3
6/21/95	14.2	12.8	13.4	8/10/95	18.1	17.0	17.5
6/22/95	15.3	13.7	14.4	8/11/95	17.8	17.0	17.4
6/23/95	15.1	14.2	14.5	8/12/95	16.8	16.3	16.6
6/24/95	15.1	13.9	14.3	8/13/95	17.5	16.3	17.0
6/25/95	15.1	13.9	14.4	8/14/95	17.5	17.3	17.4
6/26/95	15.3	13.3	14.0	8/15/95	18.1	17.3	17.6
6/27/95	14.2	13.3	13.8	8/16/95	17.3	16.5	17.0
6/28/95	16.3	14.2	15.2	8/17/95	16.5	15.8	16.0
6/29/95	17.0	15.8	16.3	8/18/95	16.3	15.8	16.0
6/30/95	17.3	16.1	16.5	8/19/95	17.0	16.3	16.6
7/1/95	16.8	15.1	16.3	8/20/95	17.3	16.5	16.8
7/2/95	15.6	14.9	15.2	8/21/95	16.8	15.8	16.1
7/3/95	15.3	14.9	15.2	8/22/95	16.8	15.6	16.2

THOMPSON RIVER AT SAVONA
CODE: TR113

DATE	MAX	MIN	MEAN	DATE	MAX	MIN	MEAN
8/23/95	16.3	15.3	15.8	9/14/95	18.1	17.3	17.7
8/24/95	16.3	15.6	15.8	9/15/95	18.3	17.5	18.0
8/25/95	16.5	16.1	16.4	9/16/95	17.3	15.8	16.2
8/26/95	17.3	16.5	16.9	9/17/95	17.3	16.1	16.8
8/27/95	17.5	16.8	17.1	9/18/95	17.8	16.8	17.2
8/28/95	17.3	16.3	16.8	9/19/95	17.3	15.1	16.2
8/29/95	16.5	15.8	16.3	9/20/95	16.5	15.3	16.1
8/30/95	16.8	16.3	16.5	9/21/95	17.3	16.5	16.8
8/31/95	17.3	16.3	16.8	9/22/95	17.3	16.5	16.9
9/1/95	17.5	16.5	17.0	9/23/95	17.5	16.8	17.0
9/2/95	17.3	16.5	16.9	9/24/95	17.5	16.5	17.0
9/3/95	17.3	16.5	17.0	9/25/95	17.8	16.5	16.9
9/4/95	17.3	17.0	17.2	9/26/95	16.8	16.1	16.4
9/5/95	17.8	17.3	17.5	9/27/95	17.5	14.9	16.1
9/6/95	18.3	17.3	17.8	9/28/95	17.3	16.3	16.6
9/7/95	17.5	16.3	16.7	9/29/95	16.8	15.8	16.1
9/8/95	17.3	16.1	16.7	9/30/95	16.1	15.1	15.7
9/9/95	17.5	16.8	17.2	10/1/95	15.8	14.6	15.2
9/10/95	17.8	17.3	17.6	10/2/95	16.1	15.1	15.4
9/11/95	17.8	17.3	17.5	10/3/95	15.8	13.7	15.0
9/12/95	17.3	16.8	16.9	10/4/95	13.9	13.5	13.7
9/13/95	17.5	16.5	17.1				

THOMPSON RIVER AT KAMLOOPS
 CODE: TR163

DATE	MAX	MIN	MEAN	DATE	MAX	MIN	MEAN
5/16/95	11.4	10.8	11.3	7/5/95	15.9	15.0	15.4
5/17/95	11.6	11.0	11.3	7/6/95	15.9	15.2	15.7
5/18/95	11.2	10.2	10.4	7/7/95	16.7	15.7	16.2
5/19/95	10.8	9.8	10.3	7/8/95	17.4	16.4	16.9
5/20/95	11.2	10.4	10.7	7/9/95	17.9	17.2	17.5
5/21/95	11.2	10.4	10.8	7/10/95	18.2	17.4	17.9
5/22/95	11.6	10.8	11.2	7/11/95	18.5	17.7	18.0
5/23/95	11.8	11.0	11.4	7/12/95	18.2	17.4	17.9
5/24/95	12.1	11.0	11.5	7/13/95	18.5	17.9	18.1
5/25/95	12.1	11.2	11.8	7/14/95	18.7	17.7	18.2
5/26/95	12.9	11.6	12.2	7/15/95	19.0	17.7	18.3
5/27/95	13.2	11.8	12.5	7/16/95	19.0	18.2	18.6
5/28/95	13.6	12.9	13.3	7/17/95	19.3	18.2	18.8
5/29/95	14.3	13.4	13.8	7/18/95	19.3	18.2	18.9
5/30/95	14.3	13.8	14.2	7/19/95	19.5	18.5	19.0
5/31/95	14.3	13.4	13.8	7/20/95	19.5	18.7	19.2
6/1/95	13.8	13.2	13.5	7/21/95	19.8	19.0	19.5
6/2/95	13.6	12.9	13.2	7/22/95	20.1	19.0	19.7
6/3/95	13.4	12.7	13.1	7/23/95	20.1	19.5	19.9
6/4/95	13.4	12.5	13.0	7/24/95	19.8	19.3	19.5
6/5/95	12.3	11.6	11.8	7/25/95	19.5	19.0	19.2
6/6/95	11.8	11.0	11.4	7/26/95	19.5	18.7	19.1
6/7/95	11.8	10.8	11.4	7/27/95	19.0	18.2	18.7
6/8/95	11.8	11.4	11.6	7/28/95	18.2	17.4	17.6
6/9/95	11.4	11.2	11.3	7/29/95	17.2	16.7	17.0
6/10/95	11.8	11.0	11.5	7/30/95	17.2	16.4	16.8
6/11/95	12.7	11.6	12.2	7/31/95	18.2	16.9	17.6
6/12/95	13.2	12.7	12.9	8/1/95	18.2	17.4	17.9
6/13/95	12.9	12.5	12.8	8/2/95	18.7	17.7	18.2
6/14/95	13.4	12.7	13.1	8/3/95	19.0	17.7	18.4
6/15/95	13.8	12.7	13.1	8/4/95	19.8	18.2	19.0
6/16/95	14.5	13.6	14.1	8/5/95	19.5	19.0	19.4
6/17/95	15.0	14.3	14.6	8/6/95	19.0	17.7	18.2
6/18/95	15.2	14.3	14.8	8/7/95	17.4	16.9	17.1
6/19/95	15.5	14.8	15.1	8/8/95	17.2	16.7	16.8
6/20/95	15.2	14.5	14.8	8/9/95	17.7	16.4	17.1
6/21/95	15.0	14.3	14.7	8/10/95	17.9	17.4	17.6
6/22/95	15.2	14.5	14.9	8/11/95	17.9	17.4	17.7
6/23/95	15.7	15.0	15.3	8/12/95	17.7	16.9	17.2
6/24/95	15.7	15.5	15.6	8/13/95	17.4	16.4	17.0
6/25/95	15.5	15.0	15.2	8/14/95	17.4	16.9	17.2
6/26/95	15.2	15.0	15.1	8/15/95	17.4	16.7	16.9
6/27/95	15.7	15.0	15.4	8/16/95	16.9	16.4	16.6
6/28/95	15.7	15.2	15.6	8/17/95	16.9	15.9	16.4
6/29/95	15.7	14.8	15.1	8/18/95	16.7	15.9	16.2
6/30/95	16.2	15.5	15.9	8/19/95	17.2	16.2	16.6
7/1/95	16.9	15.9	16.5	8/20/95	17.4	16.7	17.0
7/2/95	16.9	16.7	16.8	8/21/95	17.7	16.9	17.4
7/3/95	17.4	16.4	16.9	8/22/95	17.9	16.9	17.4
7/4/95	16.9	15.5	16.4	8/23/95	17.9	16.9	17.5

THOMPSON RIVER AT KAMLOOPS
CODE: TR163

DATE	MAX	MIN	MEAN
8/24/95	17.7	16.9	17.4
8/25/95	17.4	16.4	17.0
8/26/95	17.4	16.7	17.1
8/27/95	17.7	16.7	17.2
8/28/95	17.9	17.2	17.6
8/29/95	17.9	17.2	17.6
8/30/95	17.7	16.9	17.4
8/31/95	18.2	16.9	17.7
9/1/95	18.2	17.2	17.8
9/2/95	18.5	17.4	17.9
9/3/95	18.5	17.7	18.1
9/4/95	18.5	17.7	18.1
9/5/95	18.2	17.4	17.8
9/6/95	17.7	16.9	17.4
9/7/95	18.2	17.4	17.8
9/8/95	18.2	17.2	17.9
9/9/95	18.5	17.4	18.1
9/10/95	18.7	17.9	18.4
9/11/95	18.7	17.9	18.4
9/12/95	18.5	17.7	18.3
9/13/95	18.5	17.7	18.2
9/14/95	18.2	17.4	18.0
9/15/95	17.9	17.4	17.8
9/16/95	17.9	17.2	17.6
9/17/95	17.7	16.9	17.4
9/18/95	17.4	16.7	17.0
9/19/95	16.9	16.4	16.6
9/20/95	16.7	15.9	16.4
9/21/95	16.2	15.5	15.9
9/22/95	15.7	15.0	15.4
9/23/95	15.7	14.5	15.2
9/24/95	15.9	14.8	15.3
9/25/95	15.7	15.0	15.4
9/26/95	15.5	14.8	15.1
9/27/95	15.2	14.5	14.8
9/28/95	15.9	14.8	15.3
9/29/95	16.2	15.2	15.5
9/30/95	15.5	14.3	15.0
10/1/95	14.5	13.8	14.1
10/2/95	13.8	13.4	13.6
10/3/95	13.6	12.5	13.1
10/4/95	13.6	12.1	12.7
10/5/95	12.7	12.3	12.6

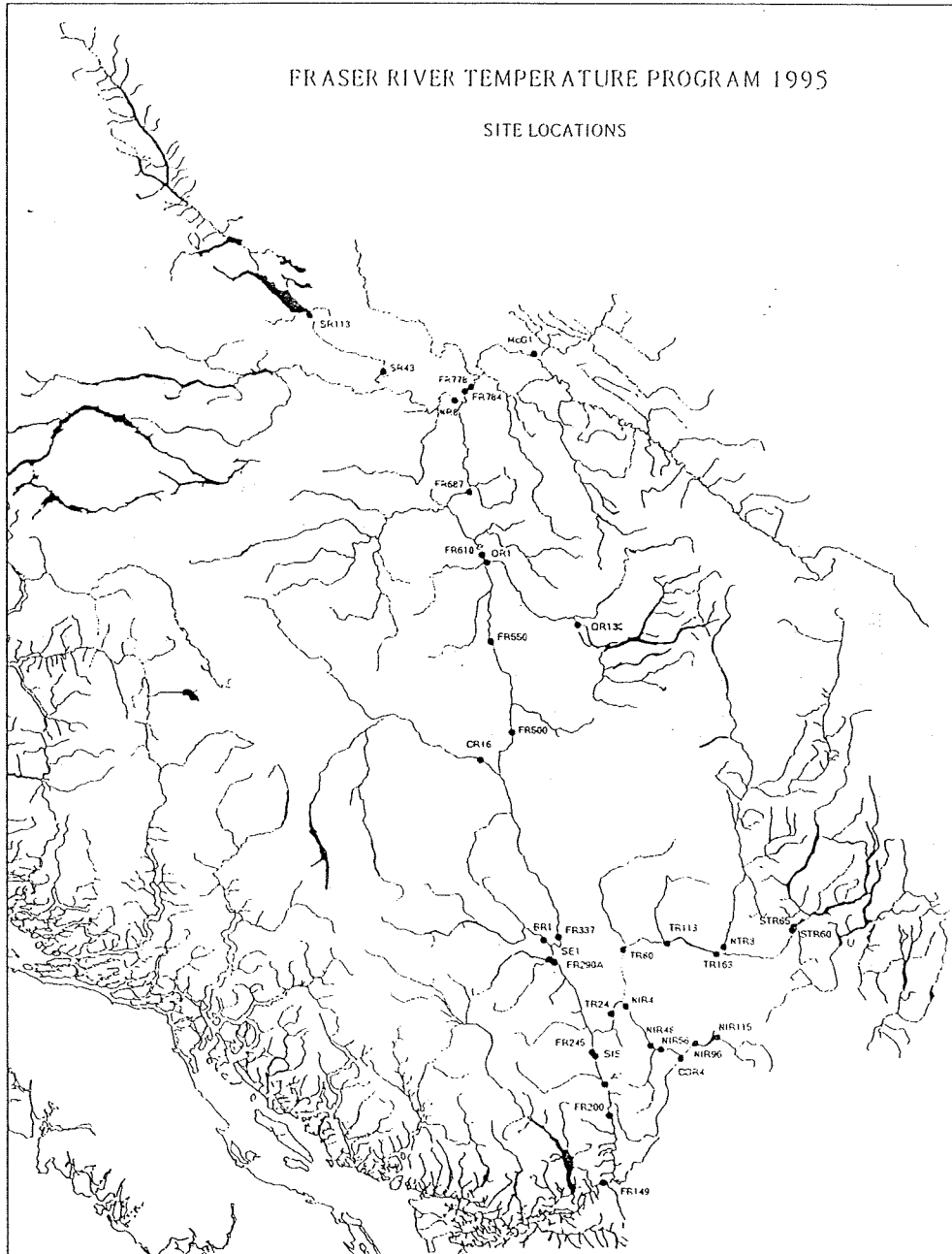


Fig. 1. Station locations.

FRASER RIVER - LOWER

1995 TEMPERATURE

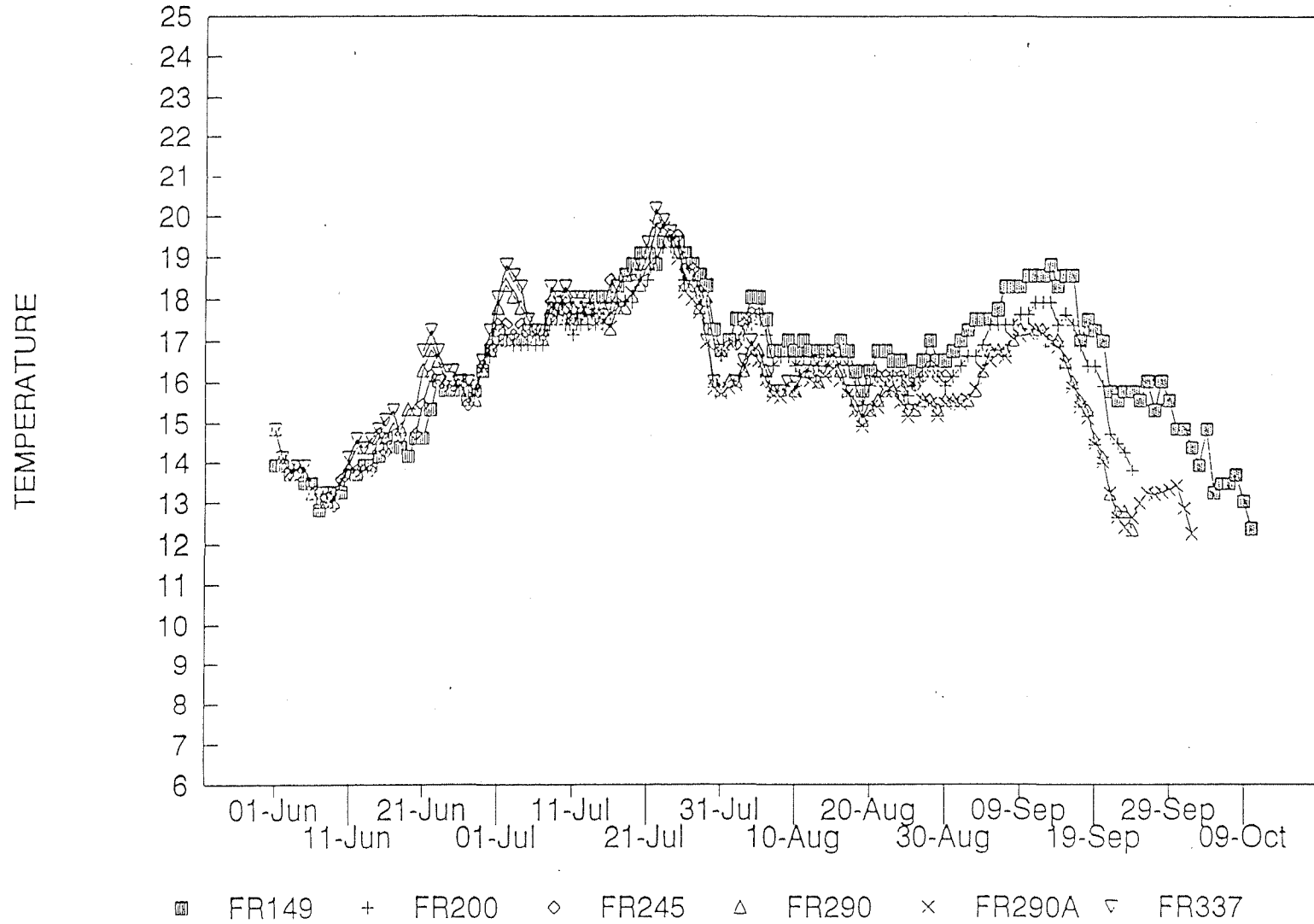


Figure 2. Lower Fraser River Temperatures

FRASER RIVER - UPPER

1995 TEMPERATURE

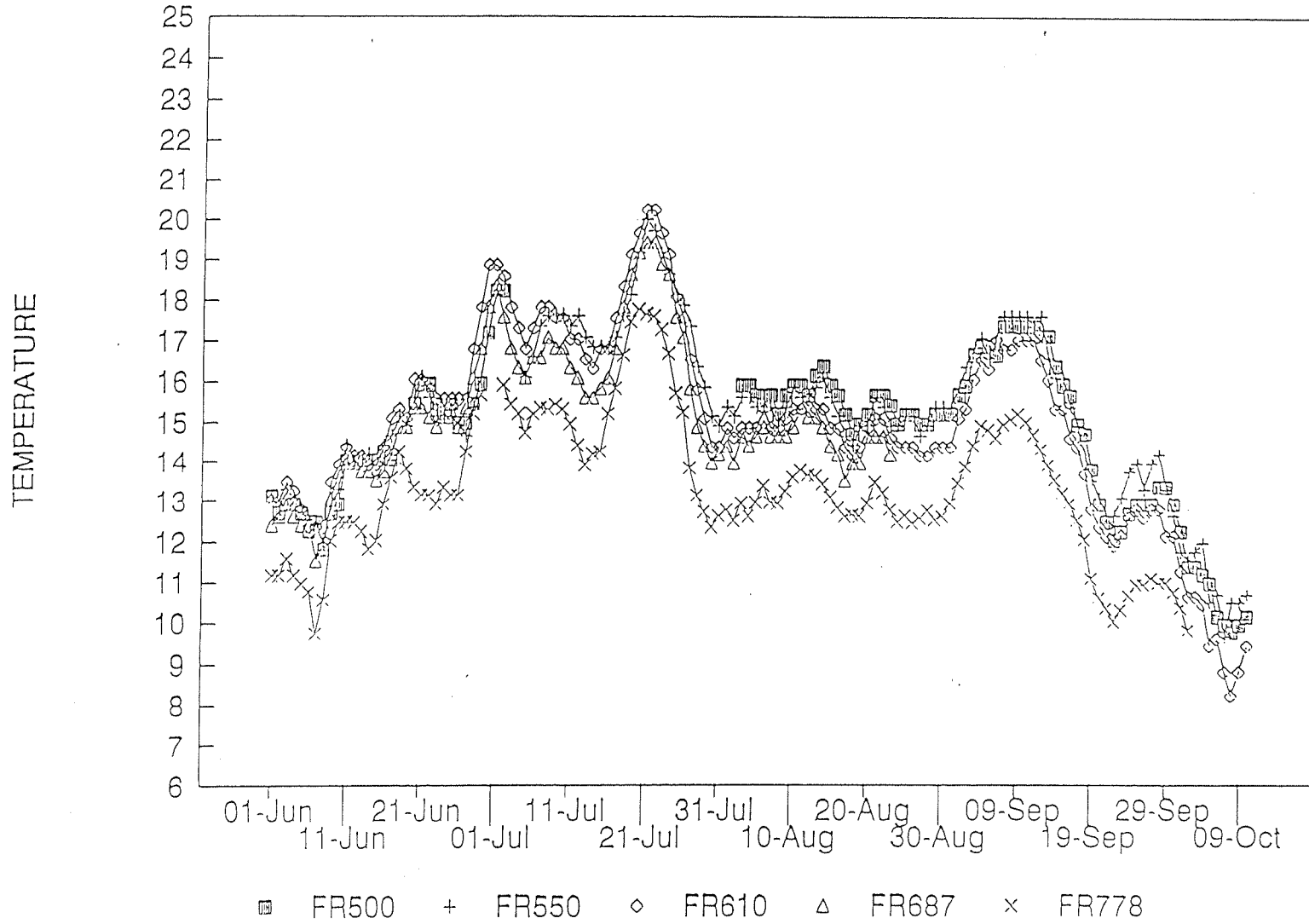


Figure 3. Upper Fraser River Temperatures