

Catalogue no. 71-001-X

Labour Force Information

Friday, January 4, 2012

December 2 to 8, 2012



Statistics
Canada

Statistique
Canada

Canada

How to obtain more information

For information about this product or the wide range of services and data available from Statistics Canada, visit our website, www.statcan.gc.ca.

You can also contact us by

e-mail at infostats@statcan.gc.ca

telephone, from Monday to Friday, 8:30 a.m. to 4:30 p.m., at the following toll-free numbers:

- | | |
|---------------------------------------------------------------|----------------|
| • Statistical Information Service | 1-800-263-1136 |
| • National telecommunications device for the hearing impaired | 1-800-363-7629 |
| • Fax line | 1-877-287-4369 |

Depository Services Program

- | | |
|------------------|----------------|
| • Inquiries line | 1-800-635-7943 |
| • Fax line | 1-800-565-7757 |

To access this product

This product, Catalogue no. 71-001-X, is available free in electronic format. To obtain a single issue, visit our website, www.statcan.gc.ca and browse by "Key resource" > "Publications."

Standards of service to the public

Statistics Canada is committed to serving its clients in a prompt, reliable and courteous manner. To this end, this agency has developed standards of service that its employees observe. To obtain a copy of these service standards, please contact Statistics Canada toll-free at 1-800-263-1136. The service standards are also published at www.statcan.gc.ca under "About us" > "The agency" > "Providing services to Canadians."

Statistics Canada
Labour Statistics Division
Labour Force Survey Program

Labour Force Information

Friday, January 4, 2012

December 2 to 8, 2012

Published by authority of the Minister responsible for Statistics Canada

© Minister of Industry, 2013

All rights reserved. Use of this publication is governed by the *Statistics Canada Open License Agreement*:

<http://www.statcan.gc.ca/reference/copyright-droit-auteur-eng.htm>

January 2013

Catalogue no. 71-001-X

ISSN 1492-5478

Frequency: Monthly

Ottawa

Cette publication est également disponible en français.

Note of appreciation

Canada owes the success of its statistical system to a long-standing partnership between Statistics Canada, the citizens of Canada, its businesses, governments and other institutions. Accurate and timely statistical information could not be produced without their continued cooperation and goodwill.

User information

Symbols

The following standard symbols are used in Statistics Canada publications:

- . not available for any reference period
- .. not available for a specific reference period
- ... not applicable
- 0 true zero or a value rounded to zero
- 0^s value rounded to 0 (zero) where there is a meaningful distinction between true zero and the value that was rounded
- p preliminary
- r revised
- x suppressed to meet the confidentiality requirements of the *Statistics Act*
- E use with caution
- F too unreliable to be published
- * significantly different from reference category ($p < 0.05$)

Special requests (\$)

Custom tabulations can be arranged on an ad hoc or regular basis. This service enables you to specify tables and time series to meet your own requirements. The cost varies according to the request. For more information, contact us toll-free at 1-866-873-8788 or e-mail us at labour@statcan.gc.ca.

Schedule of LFS releases

Reference period - Week ending	Release date
December 8, 2012	January 4, 2013
January 19, 2013	February 8, 2013
February 16, 2013	March 8, 2013
March 16, 2013	April 5, 2013
April 20, 2013	May 10, 2013
May 18, 2013	June 7, 2013
June 15, 2013	July 5, 2013
July 20, 2013	August 9, 2013
August 17, 2013	September 6, 2013
September 21, 2013	October 11, 2013
October 19, 2013	November 8, 2013
November 16, 2013	December 6, 2013
December 14, 2013	January 10, 2014

Latest LFS release in *The Daily* (free)

Table of contents

Highlights	5
Analysis — December 2012	6
Charts	
1. Employment and unemployment indicators, Canada, seasonally adjusted	9
2. Employment and unemployment indicators, Canada, seasonally adjusted	10
3. Index of employment by industry, Canada, seasonally adjusted, January 2009=100	11
4. Index of employment by industry, Canada, seasonally adjusted, January 2009=100	12
5. Index of employment by industry, Canada, seasonally adjusted, January 2009=100	13
6. Index of employment by province, seasonally adjusted, January 2009=100	14
7. Index of employment by province, seasonally adjusted, January 2009=100	15
Related products	16
Statistical tables	
1 Labour force characteristics by age and sex, Canada, seasonally adjusted	26
2 Employment by class of worker and industry, Canada, seasonally adjusted	28
3 Labour force characteristics by province, seasonally adjusted	29
4 Selected labour force characteristics (seasonally adjusted)	31
4-1 Newfoundland and Labrador	31
4-2 Prince Edward Island	32
4-3 Nova Scotia	33
4-4 New Brunswick	34
4-5 Quebec	35
4-6 Ontario	36
4-7 Manitoba	37
4-8 Saskatchewan	38
4-9 Alberta	39
4-10 British Columbia	40
5 Labour force characteristics by census metropolitan area (seasonally adjusted)	41
5-1 3 month moving average	41
5-2 Monthly	46

Table of contents – continued

6	Labour force characteristics	47
6-1	by province and economic region, unadjusted for seasonality, 3 month moving average ending in December 2011 and December 2012	47
6-2	by territories, unadjusted for seasonality, 3 month moving average ending in December 2011 and December 2012	52
7	Average usual hours and wages of employees by selected characteristics, Canada, unadjusted for seasonality	53
8	Regional unemployment rates used by the Employment Insurance Program, seasonally adjusted, 3 month moving average	54

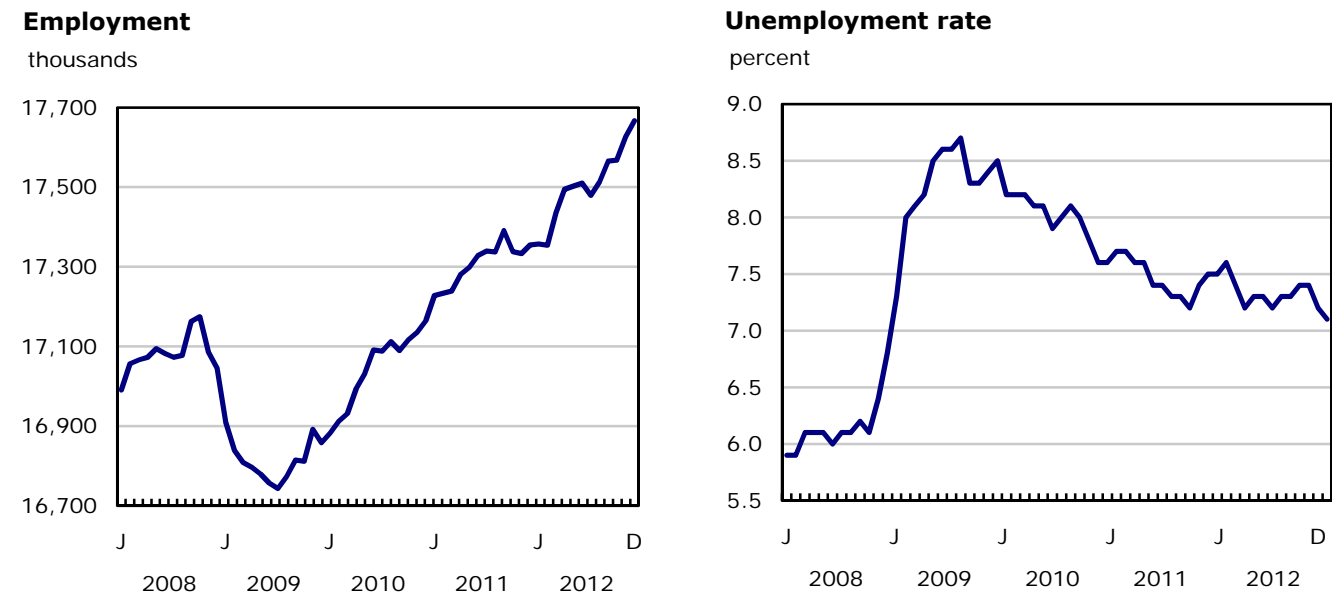
Data quality, concepts and methodology

Data quality	56
--------------	----

Highlights

Employment rose by 40,000 in December, the fourth increase in five months. December's increase was all in full-time work. The unemployment rate declined 0.1 percentage points to 7.1%, the lowest in four years.

Chart 1
Employment and unemployment rates, Canada, seasonally adjusted



Analysis — December 2012

Employment rose by 40,000 in December, the fourth increase in five months. December's increase was all in full-time work. The unemployment rate declined 0.1 percentage points to 7.1%, the lowest in four years.

Compared with 12 months earlier, employment increased 1.8% or 312,000, all in full-time work. Over the same period, the total number of hours worked rose 1.6%.

Provincially, employment increased in Ontario, Manitoba, Saskatchewan, Newfoundland and Labrador and Prince Edward Island in December. At the same time, there was a decline in Nova Scotia.

Employment rose among private sector employees in December, up 59,000, while there was little change in public sector employment and self-employment.

Year over year, employment gains among private sector employees totaled 242,000 (+2.2%), while public sector employment rose by 92,000 (+2.6%). Over the same period, the number of self-employed was little changed.

Among industries, employment increased in transportation and warehousing as well as construction, while there were fewer workers in professional, scientific and technical services; natural resources; and public administration.

In December, employment increased among core-aged men 25 to 54. Over the year, employment gains were shared among core-aged workers and those 55 and over, while employment among youths was unchanged.

Gains in several provinces

Employment in Ontario rose by 33,000 in December, following an increase of similar magnitude the previous month. The unemployment rate remained at 7.9%, as more people participated in the labour market. Compared with 12 months earlier, employment in the province was up 1.5%, mostly in full time, but below the national growth rate of 1.8%.

In Manitoba, employment was up by 5,200, the fourth increase in five months. The unemployment rate was 5.2% in December, little changed from the previous month, as more people entered the labour force. Compared with 12 months earlier, employment growth in the province was 1.9%.

In December, employment rose by 4,000 in Saskatchewan bringing total growth over the previous 12 months to 3.1%. The unemployment rate was little changed from the previous month at 4.6%, and remained among the lowest of all provinces.

Employment in Newfoundland and Labrador increased by 2,700 and the unemployment rate fell 1.0 percentage point to 11.5% in December. On a year-over-year basis, employment in this province has increased by 3.7%, the highest growth rate of all provinces. The employment rate, although the lowest of all provinces, has been steadily increasing, going from 49.4% in July 2009 to 55.1% in December 2012.

In Prince Edward Island, employment increased by 1,300 and the unemployment rate stood at 11.0% in December. Employment was little changed from 12 months earlier.

Employment in Nova Scotia fell by 5,000 in December, while the unemployment rate increased by 0.5 percentage points to 9.3%. With this employment decline, employment in the province was down 1.9% since December 2011.

In December, employment in New Brunswick was little changed and the unemployment rate was 10.8%. Compared with 12 months earlier, employment was down 1.9%.

In Alberta, employment was little changed for the month, while the unemployment rate increased by 0.3 percentage points as more people searched for work. Despite this increase, Alberta still has the lowest unemployment rate of all provinces, at 4.5%. Employment growth over the year was 1.5%, below the national growth rate.

Employment in Quebec was little changed in December and the unemployment rate declined 0.3 percentage points to 7.3% as fewer people searched for work. This province had an employment growth rate of 3.5% compared with 12 months earlier.

In British Columbia, employment was little changed in the month and the unemployment rate declined 0.3 percentage points to 6.5%. Compared with 12 months earlier, employment was little changed.

Gains in transportation and warehousing as well as construction

In December, there were more people working in transportation and warehousing, up 22,000, bringing employment in this industry to a level similar to that of December 2011.

Employment in construction rose by 18,000 in December. Despite this increase, employment in this industry was little changed from 12 months earlier.

Following an increase the previous month, employment declined by 42,000 in professional, scientific and technical services in December. This decline brought employment down 69,000 (-5.1%) on a year-over-year basis.

Employment in public administration declined by 13,000 in December, and is below its level of 12 months earlier by 23,000 (-2.3%).

Over the year, the highest employment growth rates were in educational services (+8.5%); finance, insurance, real estate and leasing (+6.4%); business, building and other support services (+5.5%); manufacturing (+3.1%); and health care and social assistance (+2.9%).

More men aged 25 to 54 employed in December

Employment in December rose by 41,000 among core-aged men (25 to 54), bringing their gains for the year to 97,000 (+1.6%). The unemployment rate for core-aged men in December was the lowest in four years, at 5.9%.

Employment among women aged 25 to 54 was little changed in December and up 60,000 (+1.1%) on a year-over-year basis.

Employment among youths aged 15 to 24 was unchanged in December, and similar to that of 12 months earlier. Their unemployment rate has hovered around 14% for the past two years and was 14.1% in December.

Among persons aged 55 and over, employment was little changed in December, and increased by 164,000 (+5.3%) on a year-over-year basis, driven in part by population aging.

Quarterly update for the territories

The Labour Force Survey also collects labour market information about the territories. This information is produced monthly in the form of three-month moving averages. The following data are not seasonally adjusted; therefore, comparisons should only be made on a year-over-year basis.

In the fourth quarter of 2012, employment levels in all three territories were similar to those in the fourth quarter of 2011. The unemployment rates were 6.1% in Yukon, 7.4% in Northwest Territories and 14.2% in Nunavut in the fourth quarter of 2012, little changed from the fourth quarter of 2011.

Note to Readers

Annual average estimates for 2012 are now available on CANSIM (tables 282-0001 to 282-0219).

The Labour Force Survey (LFS) estimates are based on a sample and are therefore subject to sampling variability. As a result, monthly estimates will show more variability than trends observed over longer time periods. Estimates for smaller geographic areas or industries also have more variability. For an explanation of sampling variability of estimates and how to use standard errors to assess this variability, consult the 'Estimates quality' section of the publication *Labour Force Information (71-001-X, free)*.

The employment rate is the number of employed persons as a percentage of the population 15 years of age and over. The rate for a particular group (for example, youth aged 15 to 24) is the number employed in that group as a percentage of the population for that group.

The unemployment rate is the number unemployed as a percentage of the labour force (employed and unemployed).

The participation rate is the number of employed and unemployed as a percentage of the population. For more detailed information, see the *Guide to the Labour Force Survey (71-543-G, free)*.

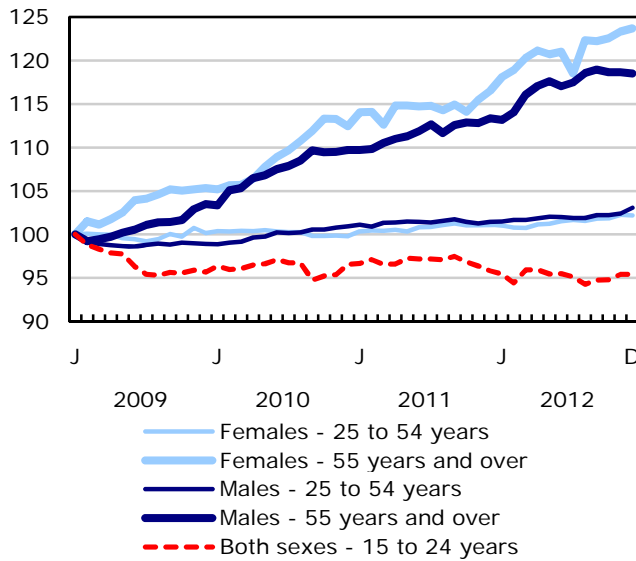
Unless otherwise stated, this release presents seasonally adjusted estimates, which facilitates comparisons by removing the effects of seasonal variations. For more information on seasonal adjustment, see *Seasonal adjustment and identifying economic trends*.

Revision

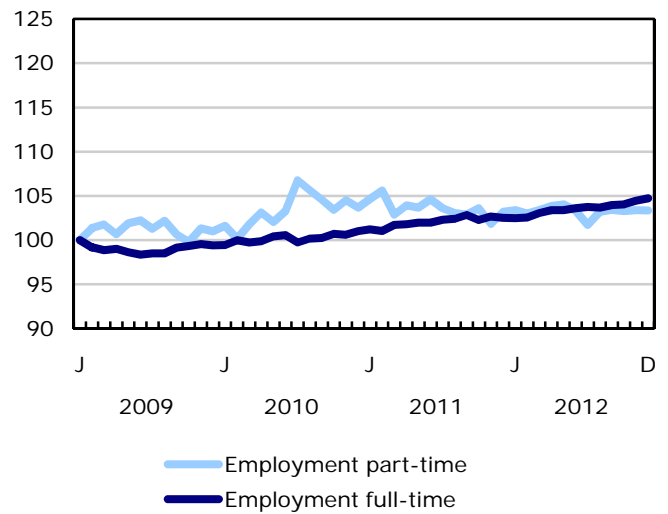
Seasonally adjusted estimates from the LFS will be revised using the latest seasonal factors, going back three years (January 2010 onwards). The revised estimates will be available on CANSIM (tables 282-0087 to 282-0094, 282-0100, 282-0116 and 282-0117) on February 1, 2013.

Chart 1
Employment and unemployment indicators, Canada, seasonally adjusted

Employment index, January 2009=100



Employment index, January 2009=100



Employment index, January 2009=100

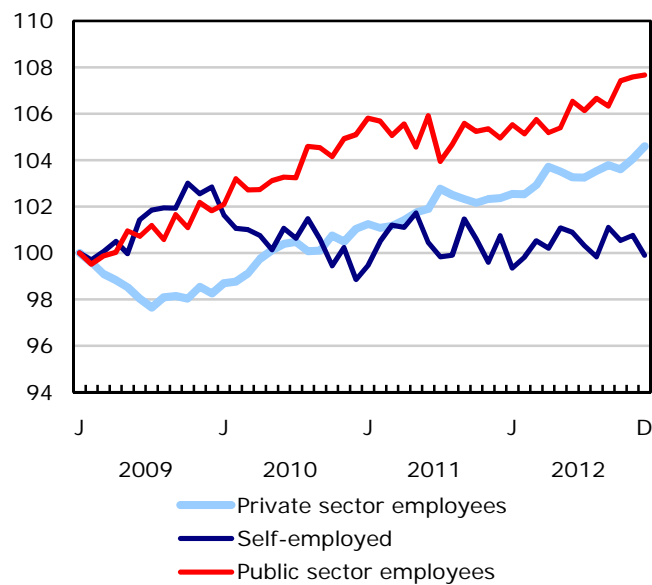
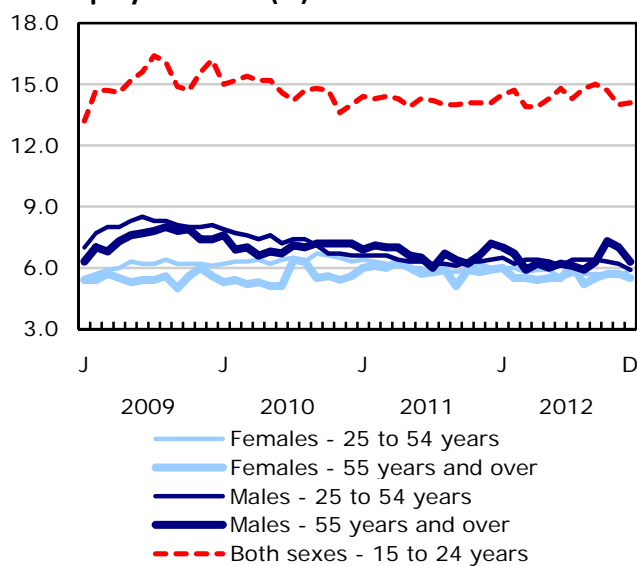
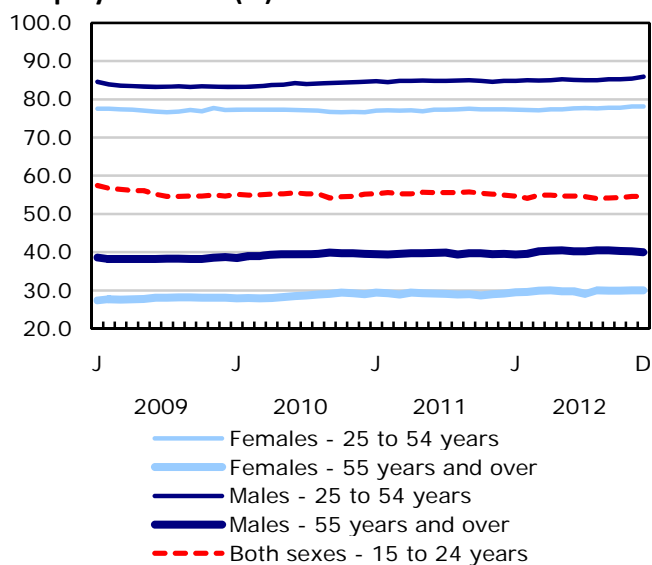


Chart 2
Employment and unemployment indicators, Canada, seasonally adjusted

Unemployment rate (%)



Employment rate (%)



Participation rate (%)

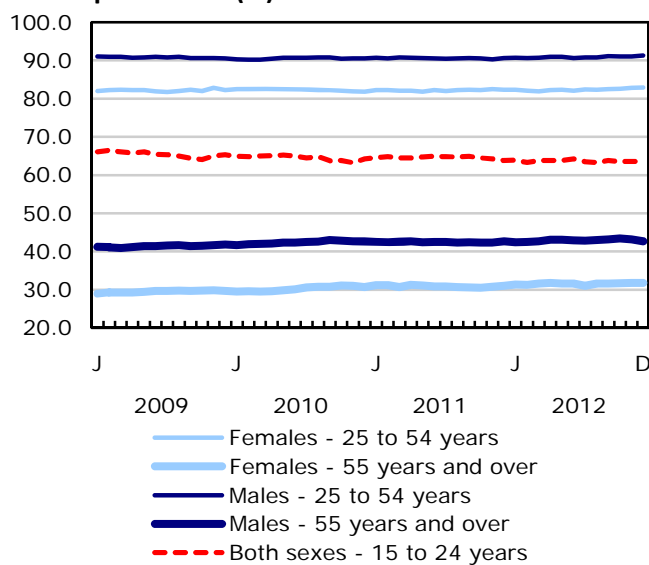


Chart 3
Index of employment by industry, Canada, seasonally adjusted, January 2009=100

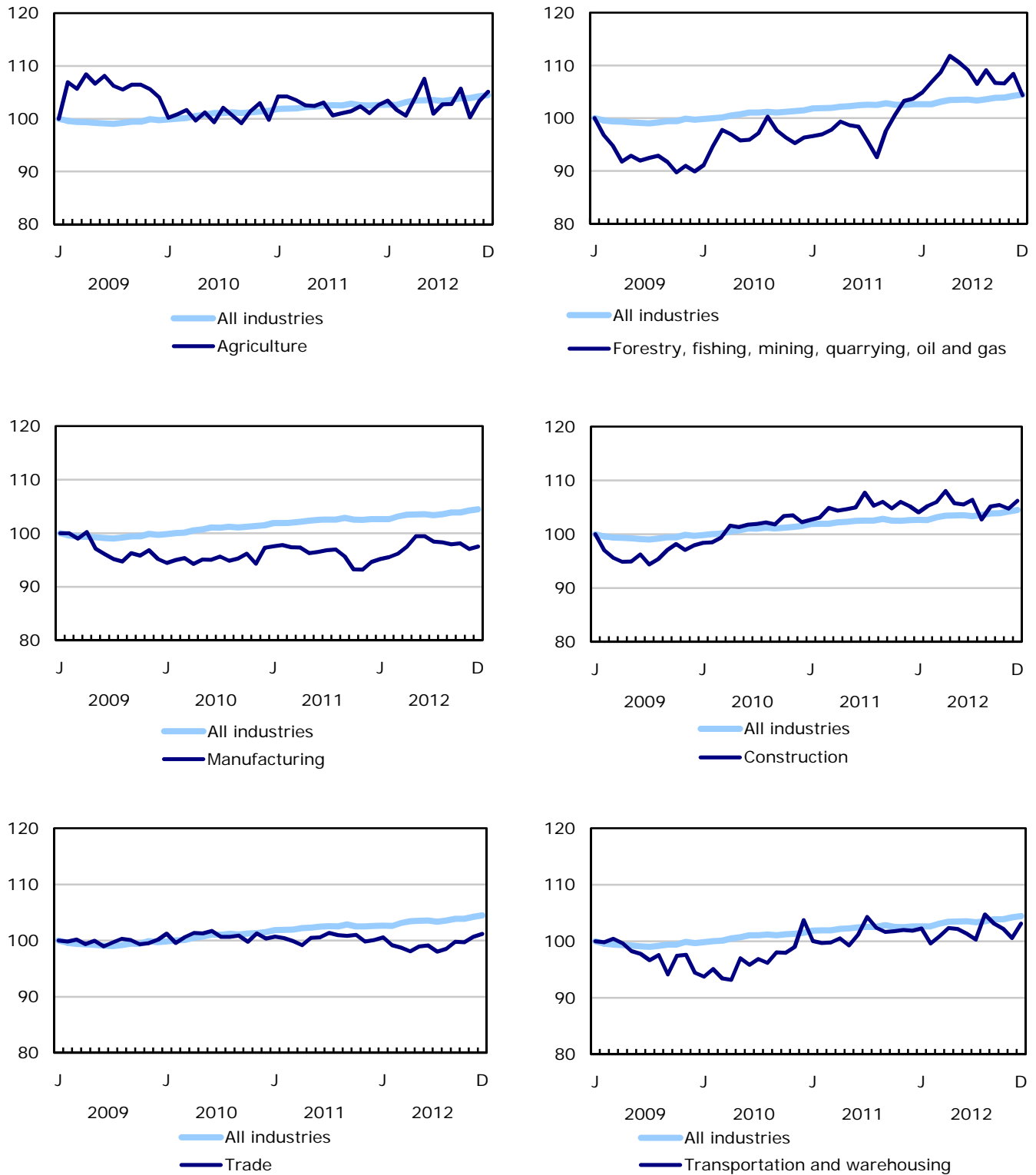


Chart 4
Index of employment by industry, Canada, seasonally adjusted, January 2009=100

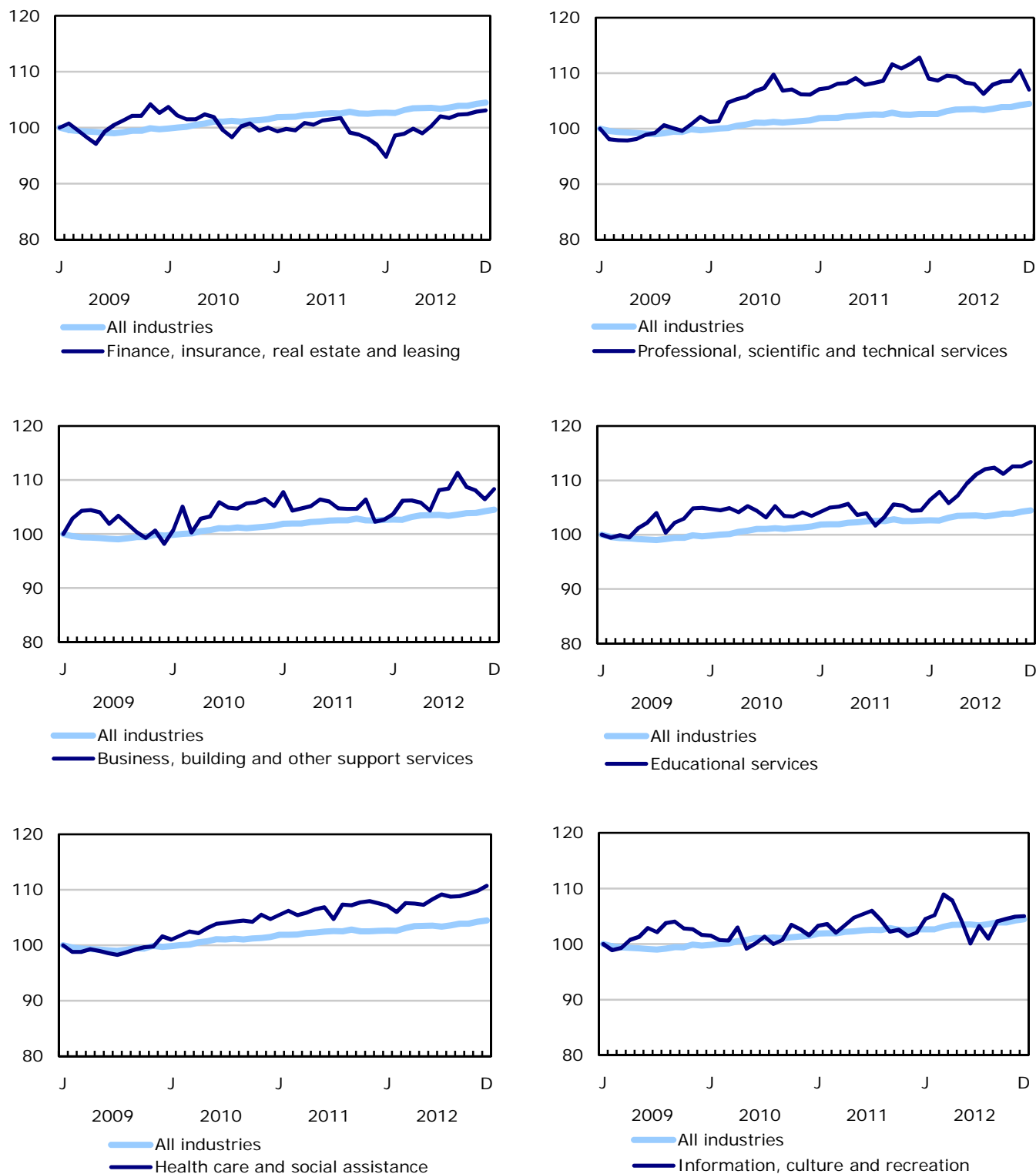


Chart 5
Index of employment by industry, Canada, seasonally adjusted, January 2009=100

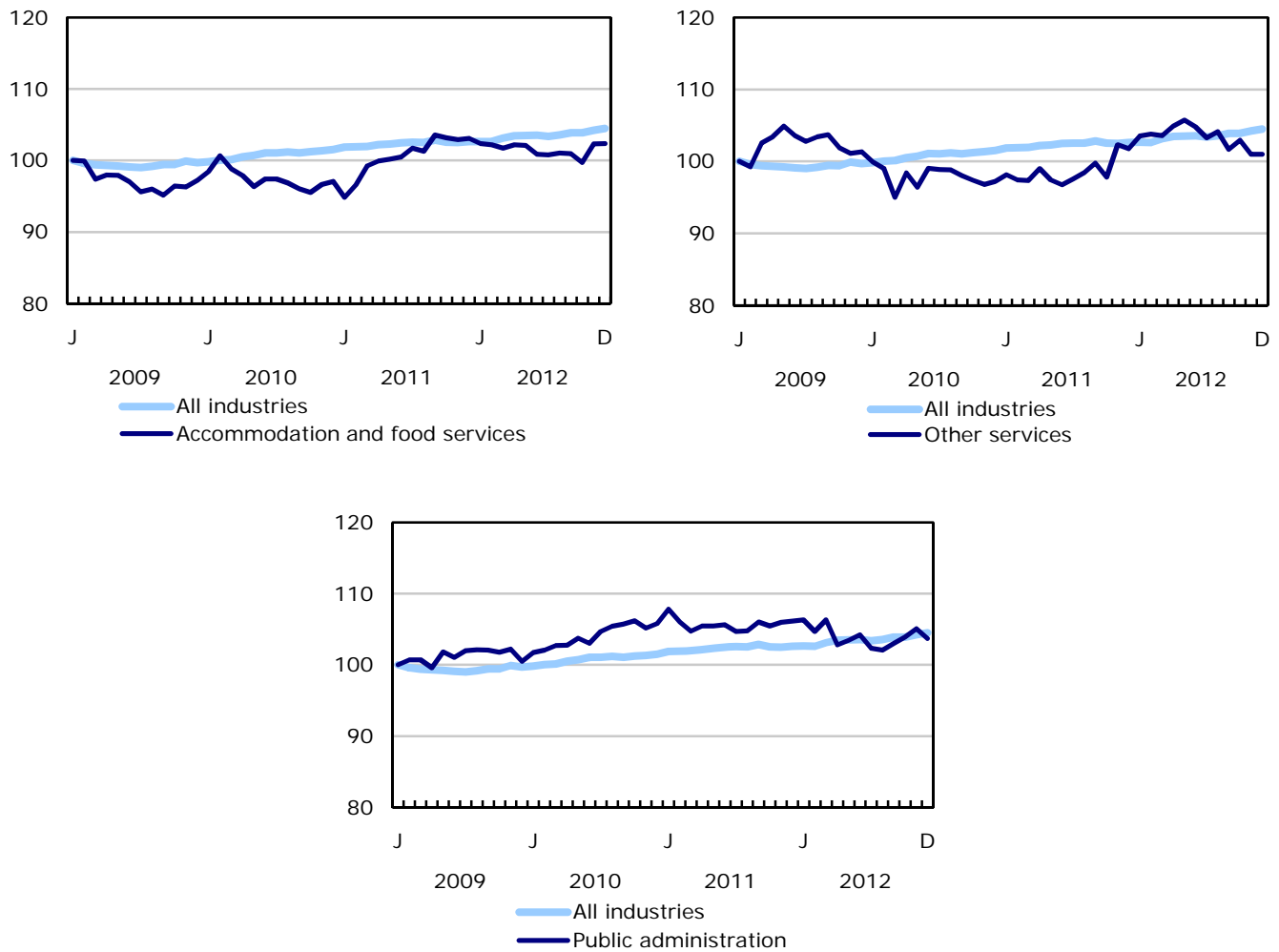


Chart 6
Index of employment by province, seasonally adjusted, January 2009=100

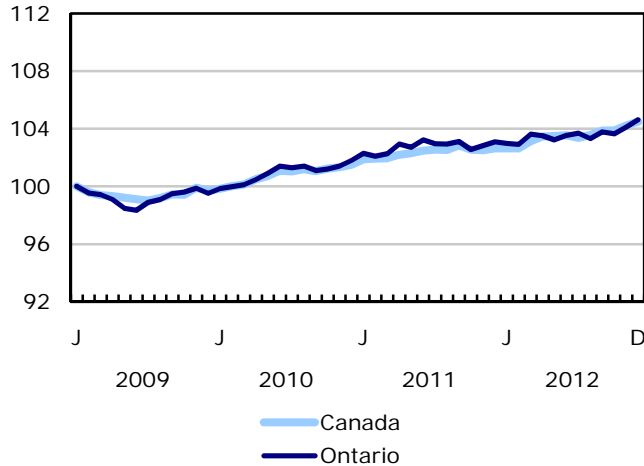
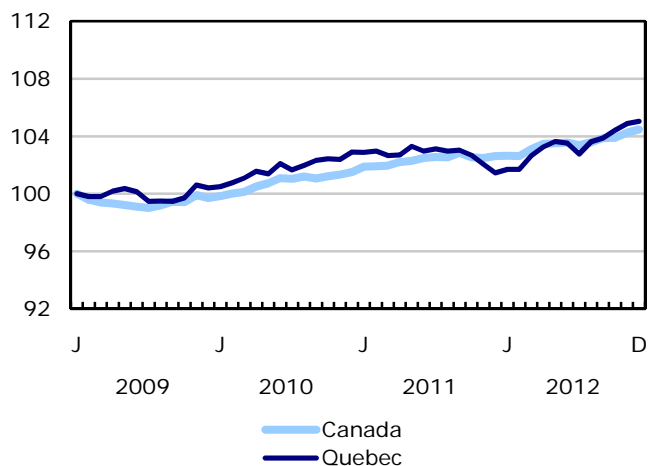
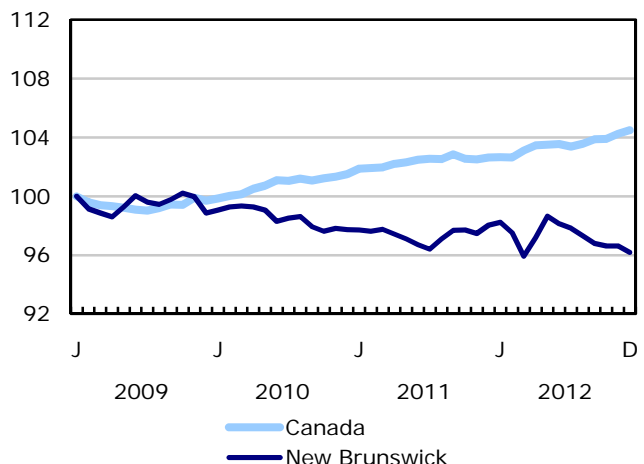
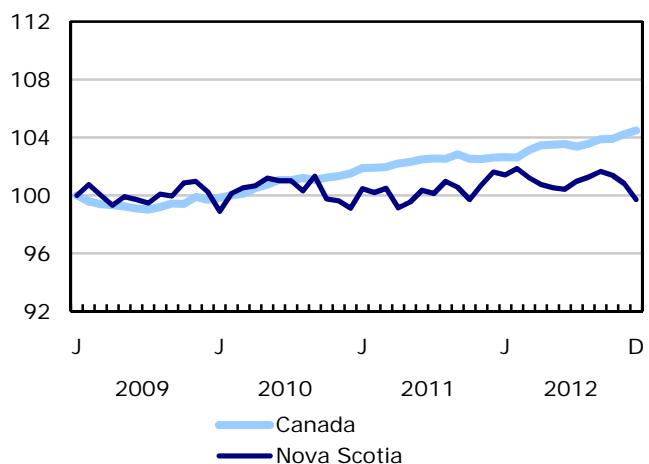
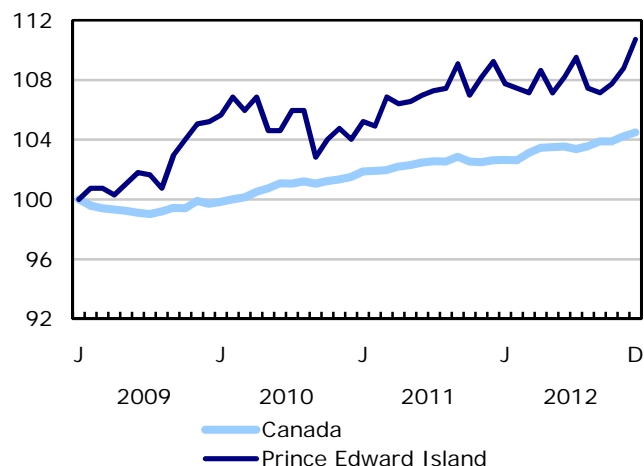
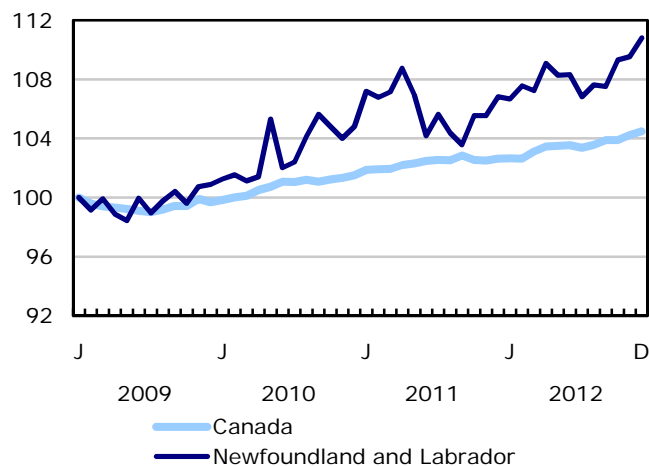
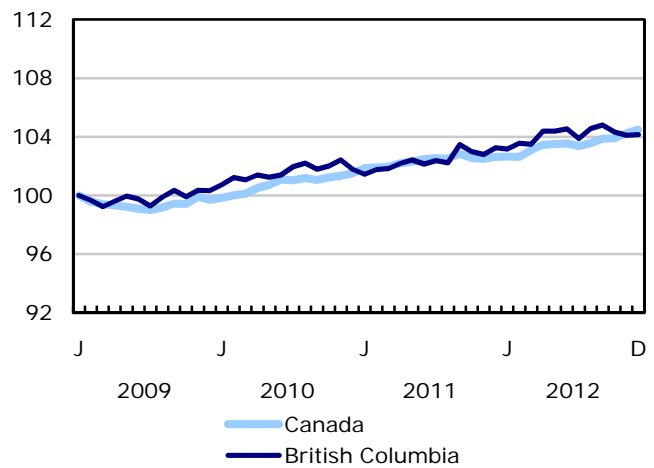
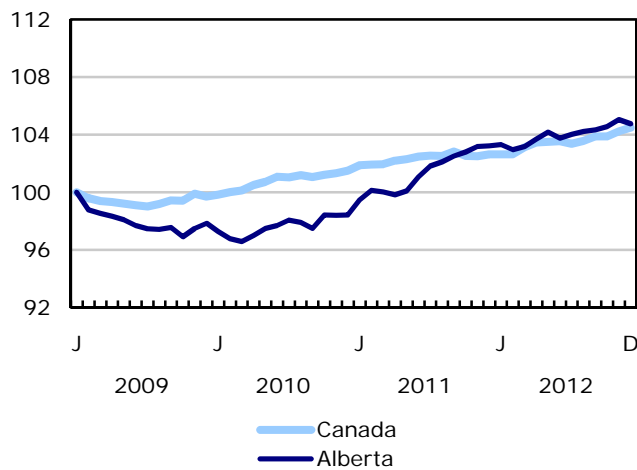
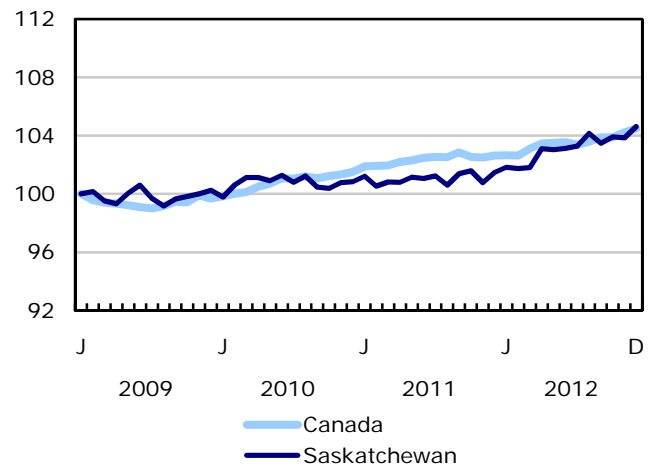
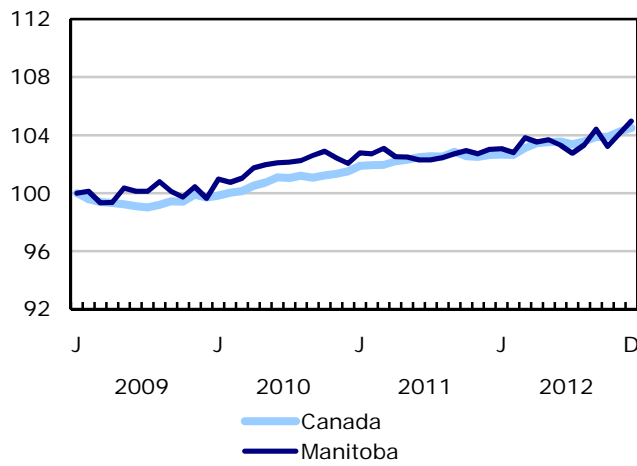


Chart 7
Index of employment by province, seasonally adjusted, January 2009=100



Related products

Selected publications from Statistics Canada

71-222-X	The Canadian Labour Market at a Glance
71-526-X	Methodology of the Canadian Labour Force Survey
71-543-G	Guide to the Labour Force Survey
71-544-X	Labour Force Survey Products and Services
71-587-X	Aboriginal Peoples Living Off-reserve in Western Canada: Estimates from the Labour Force Survey
71-588-X	The Aboriginal Labour Force Analysis Series
71-606-X	The Immigrant Labour Force Analysis Series
71F0031X	Improvements to the Labour Force Survey (LFS)
71M0001X	Labour Force Survey Microdata File

Selected CANSIM tables from Statistics Canada

282-0001	Labour force survey estimates (LFS), by sex and detailed age group, unadjusted for seasonality, monthly
282-0002	Labour force survey estimates (LFS), by sex and detailed age group, annual
282-0003	Labour force survey estimates (LFS), by educational attainment, sex and age group, unadjusted for seasonality, monthly
282-0004	Labour force survey estimates (LFS), by educational attainment, sex and age group, annual
282-0005	Labour force survey estimates (LFS), by full- and part-time students during school months, sex and age group, unadjusted for seasonality, monthly
282-0006	Labour force survey estimates (LFS), by students during summer months, sex and age group, unadjusted for seasonality, monthly
282-0007	Labour force survey estimates (LFS), by North American Industry Classification System (NAICS), sex and age group, unadjusted for seasonality, monthly
282-0008	Labour force survey estimates (LFS), by North American Industry Classification System (NAICS), sex and age group, annual

282-0009	Labour force survey estimates (LFS), by National Occupational Classification for Statistics (NOC-S) and sex, unadjusted for seasonality, monthly
282-0010	Labour force survey estimates (LFS), by National Occupational Classification for Statistics (NOC-S) and sex, annual
282-0011	Labour force survey estimates (LFS), employment by class of worker, North American Industry Classification System (NAICS) and sex, unadjusted for seasonality, monthly
282-0012	Labour force survey estimates (LFS), employment by class of worker, North American Industry Classification System (NAICS) and sex, annual
282-0013	Labour force survey estimates (LFS), part-time employment by reason for part-time work, sex and age group, unadjusted for seasonality, monthly
282-0014	Labour force survey estimates (LFS), part-time employment by reason for part-time work, sex and age group, annual
282-0015	Labour force survey estimates (LFS), by usual hours worked, main or all jobs, sex and age group, unadjusted for seasonality, monthly
282-0016	Labour force survey estimates (LFS), by usual hours worked, main or all jobs, sex and age group, annual
282-0017	Labour force survey estimates (LFS), by actual hours worked, main or all jobs, sex and age group, unadjusted for seasonality, monthly
282-0018	Labour force survey estimates (LFS), by actual hours worked, main or all jobs, sex and age group, annual
282-0019	Labour force survey estimates (LFS), by usual hours worked, class of worker, North American Industry Classification System (NAICS) and sex, unadjusted for seasonality, monthly
282-0020	Labour force survey estimates (LFS), by usual hours worked, class of worker, North American Industry Classification System (NAICS) and sex, annual
282-0021	Labour force survey estimates (LFS), by actual hours worked, class of worker, North American Industry Classification System (NAICS) and sex, unadjusted for seasonality, monthly
282-0022	Labour force survey estimates (LFS), by actual hours worked, class of worker, North American Industry Classification System (NAICS) and sex, annual
282-0023	Labour force survey estimates (LFS), by usual hours worked, class of worker, National Occupational Classification for Statistics (NOC-S) and sex, unadjusted for seasonality, monthly
282-0024	Labour force survey estimates (LFS), by usual hours worked, class of worker, National Occupational Classification for Statistics (NOC-S) and sex, annual
282-0025	Labour force survey estimates (LFS), by actual hours worked, class of worker, National Occupational Classification for Statistics (NOC-S) and sex, unadjusted for seasonality, monthly
282-0026	Labour force survey estimates (LFS), by actual hours worked, class of worker, National Occupational Classification for Statistics (NOC-S) and sex, annual
282-0027	Labour force survey estimates (LFS), by total and average usual and actual hours worked, main or all jobs, type of work, sex and age group, unadjusted for seasonality, monthly

282-0028	Labour force survey estimates (LFS), by total and average usual and actual hours worked, main or all jobs, type of work, sex and age group, annual
282-0029	Labour force survey estimates (LFS), average days lost for personal reasons per full-time employee by North American Industry Classification System (NAICS), sex and age group, annual
282-0030	Labour force survey estimates (LFS), average days lost for personal reasons per full-time employee by National Occupational Classification for Statistics (NOC-S), sex and age group, annual
282-0031	Labour force survey estimates (LFS), multiple jobholders by North American Industry Classification System (NAICS), sex and age group, annual
282-0032	Labour force survey estimates (LFS), multiple jobholders by North American Industry Classification System (NAICS), sex and age group, unadjusted for seasonality, monthly
282-0033	Labour force survey estimates (LFS), multiple jobholders by National Occupational Classification for Statistics (NOC-S), sex and age group, unadjusted for seasonality, monthly
282-0034	Labour force survey estimates (LFS), multiple jobholders by National Occupational Classification for Statistics (NOC-S), sex and age group, annual
282-0035	Labour force survey estimates (LFS), multiple jobholders by usual hours worked at main and all jobs, unadjusted for seasonality, monthly
282-0036	Labour force survey estimates (LFS), multiple jobholders by usual hours worked at main and all jobs, annual
282-0037	Labour force survey estimates (LFS), job tenure by type of work, sex and age group, unadjusted for seasonality, monthly
282-0038	Labour force survey estimates (LFS), job tenure by type of work, sex and age group, annual
282-0039	Labour force survey estimates (LFS), job tenure by National Occupational Classification for Statistics (NOC-S) and sex, unadjusted for seasonality, monthly
282-0040	Labour force survey estimates (LFS), job tenure by National Occupational Classification for Statistics (NOC-S) and sex, annual
282-0041	Labour force survey estimates (LFS), job tenure by North American Industry Classification System (NAICS) and sex, unadjusted for seasonality, monthly
282-0042	Labour force survey estimates (LFS), job tenure by North American Industry Classification System (NAICS) and sex, annual
282-0047	Labour force survey estimates (LFS), duration of unemployment by sex and age group, unadjusted for seasonality, monthly
282-0048	Labour force survey estimates (LFS), duration of unemployment by sex and age group, annual
282-0049	Labour force survey estimates (LFS), unemployment by type of work sought and search method, sex and age group, unadjusted for seasonality, monthly
282-0050	Labour force survey estimates (LFS), unemployment by type of work sought and search method, sex and age group, annual

282-0051	Labour force survey estimates (LFS), retirement age by class of worker and sex, annual
282-0054	Labour force survey estimates (LFS), by provinces and economic regions, 3-month moving average, unadjusted for seasonality, monthly
282-0055	Labour force survey estimates (LFS), by provinces, territories and economic regions, annual
282-0060	Labour force survey estimates (LFS), employment by economic region and North American Industry Classification System (NAICS), 3-month moving average, unadjusted for seasonality, monthly
282-0061	Labour force survey estimates (LFS), employment by economic region and North American Industry Classification System (NAICS), annual
282-0062	Labour force survey estimates (LFS), employment by economic region and National Occupational Classification for Statistics (NOC-S), 3-month moving average, unadjusted for seasonality, monthly
282-0063	Labour force survey estimates (LFS), employment by economic region and National Occupational Classification for Statistics (NOC-S), annual
282-0069	Labour force survey estimates (LFS), wages of employees by type of work, National Occupational Classification for Statistics (NOC-S), sex and age group, unadjusted for seasonality, monthly (current dollars)
282-0070	Labour force survey estimates (LFS), wages of employees by type of work, National Occupational Classification for Statistics (NOC-S), sex and age group, annual (current dollars)
282-0071	Labour force survey estimates (LFS), wages of employees by type of work, North American Industry Classification System (NAICS), sex and age group, unadjusted for seasonality, monthly (current dollars)
282-0072	Labour force survey estimates (LFS), wages of employees by type of work, North American Industry Classification System (NAICS), sex and age group, annual (current dollars)
282-0073	Labour force survey estimates (LFS), wages of employees by job permanence, union coverage, sex and age group, unadjusted for seasonality, monthly (current dollars)
282-0074	Labour force survey estimates (LFS), wages of employees by job permanence, union coverage, sex and age group, annual (current dollars)
282-0075	Labour force survey estimates (LFS), employees by establishment size, North American Industry Classification System (NAICS), sex and age group, unadjusted for seasonality, monthly
282-0076	Labour force survey estimates (LFS), employees by establishment size, North American Industry Classification System (NAICS), sex and age group, annual
282-0077	Labour force survey estimates (LFS), employees by union coverage, North American Industry Classification System (NAICS), sex and age group, unadjusted for seasonality, monthly
282-0078	Labour force survey estimates (LFS), employees by union coverage, North American Industry Classification System (NAICS), sex and age group, annual
282-0079	Labour force survey estimates (LFS), employees by job permanency, North American Industry Classification System (NAICS), sex and age group, unadjusted for seasonality, monthly

282-0080	Labour force survey estimates (LFS), employees by job permanency, North American Industry Classification System (NAICS), sex and age group, annual
282-0081	Labour force survey estimates (LFS), employees working overtime (weekly) by National Occupational Classification for Statistics (NOC-S), sex and age group, unadjusted for seasonality, monthly
282-0082	Labour force survey estimates (LFS), employees working overtime (weekly) by National Occupational Classification for Statistics (NOC-S), sex and age group, annual
282-0083	Labour force survey estimates (LFS), employees working overtime (weekly) by North American Industry Classification System (NAICS), sex and age group, unadjusted for seasonality, monthly
282-0084	Labour force survey estimates (LFS), employees working overtime (weekly) by North American Industry Classification System (NAICS), sex and age group, annual
282-0085	Labour force survey estimates (LFS), supplementary unemployment rates by sex and age group, unadjusted for seasonality, monthly
282-0086	Labour force survey estimates (LFS), supplementary unemployment rates by sex and age group, annual
282-0087	Labour force survey estimates (LFS), by sex and age group, seasonally adjusted and unadjusted, monthly
282-0088	Labour force survey estimates (LFS), employment by North American Industry Classification System (NAICS), seasonally adjusted and unadjusted, monthly
282-0089	Labour force survey estimates (LFS), employment by class of worker and sex, seasonally adjusted and unadjusted, monthly
282-0092	Labour force survey estimates (LFS), actual hours worked at main job by North American Industry Classification System (NAICS), seasonally adjusted, monthly
282-0093	Labour force survey estimates (LFS), employment by National Occupational Classification for Statistics (NOC-S), seasonally adjusted, monthly
282-0094	Labour force survey estimates (LFS), by North American Industry Classification System (NAICS), Canada, seasonally adjusted, monthly
282-0095	Labour force survey estimates (LFS), by full- and part-time students during school months, sex and age group, annual
282-0100	Labour force survey estimates (LFS), by territories, sex and age group, 3-month moving average, seasonally adjusted and unadjusted, monthly
282-0101	Labour force survey estimates (LFS), by immigrant status, age group, Canada, regions, provinces and Montreal, Toronto, Vancouver census metropolitan areas, 3-month moving average, unadjusted for seasonality, monthly
282-0102	Labour force survey estimates (LFS), by immigrant status, age group, Canada, regions, provinces and Montreal, Toronto, Vancouver census metropolitan areas, annual
282-0103	Labour force survey estimates (LFS), by immigrant status, sex and detailed age group, Canada, 3-month moving average, unadjusted for seasonality, monthly

282-0104	Labour force survey estimates (LFS), by immigrant status, sex and detailed age group, Canada, annual
282-0105	Labour force survey estimates (LFS), by immigrant status, educational attainment, sex and age group, Canada, 3-month moving average, unadjusted for seasonality, monthly
282-0106	Labour force survey estimates (LFS), by immigrant status, educational attainment, sex and age group, Canada, annual
282-0107	Labour force survey estimates (LFS), by immigrant status, country of birth, sex and age group, Canada, regions and provinces, 3-month moving average, unadjusted for seasonality, monthly
282-0108	Labour force survey estimates (LFS), by immigrant status, country of birth, sex and age group, Canada, regions and provinces, annual
282-0109	Labour force survey estimates (LFS), by census metropolitan area based on 2006 census boundaries, sex and age group, 3-month moving average, unadjusted for seasonality, monthly
282-0110	Labour force survey estimates (LFS), by census metropolitan area based on 2006 census boundaries, sex and age group, annual
282-0111	Labour force survey estimates (LFS), employment by census metropolitan area based on 2006 census boundaries and North American Industry Classification System (NAICS), 3-month moving average, unadjusted for seasonality, monthly
282-0112	Labour force survey estimates (LFS), employment by census metropolitan area based on 2006 census boundaries and North American Industry Classification System (NAICS), annual
282-0113	Labour force survey estimates (LFS), employment by census metropolitan area based on 2006 census boundaries and National Occupational Classification for Statistics (NOC-S), 3-month moving average, unadjusted for seasonality, monthly
282-0114	Labour force survey estimates (LFS), employment by census metropolitan area based on 2006 census boundaries and National Occupational Classification for Statistics (NOC-S), annual
282-0115	Labour force survey estimates (LFS), by selected census agglomerations based on 2006 census boundaries, annual
282-0116	Labour force survey estimates (LFS), by census metropolitan area based on 2006 census boundaries, 3-month moving average, seasonally adjusted and unadjusted, monthly
282-0117	Labour force survey estimates (LFS), by Montréal, Toronto and Vancouver census metropolitan areas based on 2006 census boundaries, seasonally adjusted and unadjusted, monthly
282-0118	Labour force survey estimates (LFS), by urban and rural areas based on 2006 census boundaries, sex and age group, unadjusted for seasonality, monthly
282-0119	Labour force survey estimates (LFS), by urban and rural areas based on 2006 census boundaries, sex and age group, annual
282-0120	Labour force survey estimates (LFS), employment by urban and rural areas based on 2006 census boundaries, class of worker and North American Industry Classification System (NAICS), unadjusted for seasonality, monthly

282-0121	Labour force survey estimates (LFS), employment by urban and rural areas based on 2006 census boundaries, class of worker and North American Industry Classification System (NAICS), annual
282-0200	Labour force survey estimates (LFS), weekly wage distributions of employees by type of work, North American Industry Classification System (NAICS) and by sex, unadjusted for seasonality, monthly
282-0201	Labour force survey estimates (LFS), weekly wage distributions of employees by type of work, North American Industry Classification System (NAICS) and by sex, annual
282-0202	Labour force survey estimates (LFS), weekly wage distributions of employees by type of work, National Occupational Classification for Statistics (NOC-S) and by sex, unadjusted for seasonality, monthly
282-0203	Labour force survey estimates (LFS), weekly wage distributions of employees by type of work, National Occupational Classification for Statistics (NOC-S) and by sex, annual
282-0204	Labour force survey estimates (LFS), hourly wage distributions of employees by type of work, North American Industry Classification System (NAICS) and by sex, unadjusted for seasonality, monthly
282-0205	Labour force survey estimates (LFS), hourly wage distributions of employees by type of work, North American Industry Classification System (NAICS) and by sex, annual
282-0206	Labour force survey estimates (LFS), hourly wage distribution of employees by type of work, National Occupational Classification for Statistics (NOC-S) and by sex, unadjusted for seasonality, monthly
282-0207	Labour force survey estimates (LFS), hourly wage distribution of employees by type of work, National Occupational Classification for Statistics (NOC-S) and by sex, annual
282-0208	Labour force survey estimates (LFS), by educational degree, sex and age group, unadjusted for seasonality, monthly
282-0209	Labour force survey estimates (LFS), by educational degree, sex and age group, annual
282-0210	Labour force survey estimates (LFS), by family type and family age composition, unadjusted for seasonality, monthly
282-0211	Labour force survey estimates (LFS), by family type and family age composition, annual
282-0212	Labour force survey estimates (LFS), hours lost by employees by reason absent full and part week and sex, unadjusted for seasonality, monthly
282-0213	Labour force survey estimates (LFS), hours lost by employees by reason absent full and part week and sex, annual
282-0214	Labour force survey estimates (LFS), activity prior to unemployment by sex and age group, unadjusted for seasonality, monthly
282-0215	Labour force survey estimates (LFS), activity prior to unemployment by sex and age group, annual

282-0216	Labour force survey estimates (LFS), reason for leaving job during previous year by sex and age group, unadjusted for seasonality, monthly
282-0217	Labour force survey estimates (LFS), reason for leaving job during previous year by sex and age group, annual
282-0218	Labour force survey estimates (LFS), reason for not looking for work, by sex and age group, unadjusted for seasonality, monthly
282-0219	Labour force survey estimates (LFS), reason for not looking for work, by sex and age group, annual

Selected surveys from Statistics Canada

3701	Labour Force Survey
------	---------------------

Selected summary tables from Statistics Canada

- *Labour force characteristics*
- *Employment by industry*
- *Days lost per worker due to illness or disability, by sex, by province*
- *Economic indicators, by province and territory (monthly and quarterly)*
- *Labour force and participation rates by sex and age group*
- *Labour force, employed and unemployed, numbers and rates, by province*
- *Employment by industry and sex*
- *Full-time and part-time employment by sex and age group*
- *Labour force characteristics by age and sex*
- *Distribution of employed people, by industry, by province*
- *Labour force characteristics, population 15 years and older, by census metropolitan area*
- *Labour force characteristics, population 15 years and older, by economic region, by province*
- *Days lost per worker by cause, by provinces*
- *Days lost per worker by industry and sex*
- *People employed, by educational attainment*
- *Reasons for part-time work by sex and age group*

- *Self-employment, historical summary*
- *Employment by age, sex, type of work, class of worker and province (monthly)*
- *Employment by major industry groups, seasonally adjusted, by province (monthly)*
- *Actual hours worked per week by industry, seasonally adjusted (monthly)*
- *Average hourly wages of employees by selected characteristics and profession, unadjusted data, by province (monthly)*
- *Labour force characteristics, seasonally adjusted, by province (monthly)*
- *Labour force characteristics, unadjusted, by province (monthly)*
- *Labour force characteristics, seasonally adjusted, by census metropolitan area (3 month moving average)*
- *Labour force characteristics, unadjusted, by census metropolitan area (3 month moving average)*
- *Labour force characteristics, unadjusted, by economic region (3 month moving average)*
- *Labour force characteristics by immigrant status of population aged 25 to 54, by province*
- *Labour force characteristics by immigrant status of population aged 25 to 54, by educational attainment*
- *Labour force characteristics by immigrant status, by detailed age group*
- *Labour force characteristics by immigrant status of population aged 25 to 54, by country of birth*

Statistical tables

Table 1
Labour force characteristics by age and sex, Canada, seasonally adjusted

	November 2012	December 2012	S.E. ¹	Change from			Percent change from		
				last month	last December	twelve months ago	last month	last December	twelve months ago
in thousands (except rates)									
15 years and over, both sexes									
Population	28,442.9	28,468.6	...	25.7	337.8	337.8	0.1	1.2	1.2
Labour force	18,996.5	19,023.8	29.0	27.3	269.3	269.3	0.1	1.4	1.4
Employment	17,626.8	17,666.6	28.6	39.8	311.9	311.9	0.2	1.8	1.8
Employment full-time	14,318.0	14,359.2	37.8	41.2	306.7	306.7	0.3	2.2	2.2
Employment part-time	3,308.8	3,307.4	35.0	-1.4	5.2	5.2	0.0	0.2	0.2
Unemployment	1,369.7	1,357.2	25.1	-12.5	-42.6	-42.6	-0.9	-3.0	-3.0
Participation rate	66.8	66.8	0.1	0.0	0.1	0.1
Unemployment rate	7.2	7.1	0.1	-0.1	-0.4	-0.4
Employment rate	62.0	62.1	0.1	0.1	0.4	0.4
Part-time rate	18.8	18.7	0.2	-0.1	-0.3	-0.3
15 to 24 years, both sexes									
Population	4,456.5	4,456.1	...	-0.4	-1.2	-1.2	0.0	0.0	0.0
Labour force	2,833.2	2,835.9	17.2	2.7	-9.7	-9.7	0.1	-0.3	-0.3
Employment	2,435.2	2,435.1	15.9	-0.1	-9.8	-9.8	0.0	-0.4	-0.4
Employment full-time	1,277.9	1,276.1	18.6	-1.8	-26.9	-26.9	-0.1	-2.1	-2.1
Employment part-time	1,157.3	1,159.0	19.4	1.7	17.1	17.1	0.1	1.5	1.5
Unemployment	397.9	400.8	15.0	2.9	0.2	0.2	0.7	0.0	0.0
Participation rate	63.6	63.6	0.4	0.0	-0.2	-0.2
Unemployment rate	14.0	14.1	0.5	0.1	0.0	0.0
Employment rate	54.6	54.6	0.4	0.0	-0.3	-0.3
Part-time rate	47.5	47.6	0.7	0.1	0.9	0.9
25 years and over, men									
Population	11,740.6	11,753.6	...	13.0	169.9	169.9	0.1	1.5	1.5
Labour force	8,555.6	8,565.6	15.1	10.0	136.3	136.3	0.1	1.6	1.6
Employment	8,011.9	8,050.4	16.2	38.5	174.9	174.9	0.5	2.2	2.2
Employment full-time	7,400.6	7,444.0	21.2	43.4	171.9	171.9	0.6	2.4	2.4
Employment part-time	611.3	606.4	17.1	-4.9	3.0	3.0	-0.8	0.5	0.5
Unemployment	543.7	515.3	14.4	-28.4	-38.5	-38.5	-5.2	-7.0	-7.0
Participation rate	72.9	72.9	0.1	0.0	0.1	0.1
Unemployment rate	6.4	6.0	0.2	-0.4	-0.6	-0.6
Employment rate	68.2	68.5	0.1	0.3	0.5	0.5
Part-time rate	7.6	7.5	0.2	-0.1	-0.1	-0.1
25 years and over, women									
Population	12,245.8	12,258.9	...	13.1	169.1	169.1	0.1	1.4	1.4
Labour force	7,607.7	7,622.3	16.4	14.6	142.7	142.7	0.2	1.9	1.9
Employment	7,179.7	7,181.1	16.2	1.4	146.8	146.8	0.0	2.1	2.1
Employment full-time	5,639.6	5,639.2	24.6	-0.4	161.8	161.8	0.0	3.0	3.0
Employment part-time	1,540.2	1,542.0	23.0	1.8	-14.9	-14.9	0.1	-1.0	-1.0
Unemployment	428.0	441.1	13.4	13.1	-4.3	-4.3	3.1	-1.0	-1.0
Participation rate	62.1	62.2	0.1	0.1	0.3	0.3
Unemployment rate	5.6	5.8	0.2	0.2	-0.2	-0.2
Employment rate	58.6	58.6	0.1	0.0	0.4	0.4
Part-time rate	21.5	21.5	0.3	0.0	-0.7	-0.7
25 to 54 years, both sexes									
Population	14,577.6	14,579.4	...	1.8	32.2	32.2	0.0	0.2	0.2
Labour force	12,664.9	12,703.4	21.9	38.5	128.3	128.3	0.3	1.0	1.0
Employment	11,916.6	11,954.4	23.1	37.8	157.7	157.7	0.3	1.3	1.3
Unemployment	748.3	749.0	18.4	0.7	-29.3	-29.3	0.1	-3.8	-3.8
Participation rate	86.9	87.1	0.2	0.2	0.7	0.7
Unemployment rate	5.9	5.9	0.1	0.0	-0.3	-0.3
Employment rate	81.7	82.0	0.2	0.3	0.9	0.9
25 to 54 years, men									
Population	7,293.5	7,294.4	...	0.9	17.3	17.3	0.0	0.2	0.2
Labour force	6,635.8	6,661.0	14.2	25.2	70.8	70.8	0.4	1.1	1.1
Employment	6,225.7	6,266.6	15.7	40.9	97.4	97.4	0.7	1.6	1.6
Unemployment	410.1	394.5	13.3	-15.6	-26.5	-26.5	-3.8	-6.3	-6.3
Participation rate	91.0	91.3	0.2	0.3	0.7	0.7
Unemployment rate	6.2	5.9	0.2	-0.3	-0.5	-0.5
Employment rate	85.4	85.9	0.2	0.5	1.1	1.1

See notes at the end of the table.

Table 1 – continued

Labour force characteristics by age and sex, Canada, seasonally adjusted

	November 2012	December 2012	S.E. ¹	Change from			Percent change from		
				last month	last December	twelve months ago	last month	last December	twelve months ago
in thousands (except rates)									
25 to 54 years, women									
Population	7,284.1	7,285.0	...	0.9	14.9	14.9	0.0	0.2	0.2
Labour force	6,029.1	6,042.3	15.9	13.2	57.4	57.4	0.2	1.0	1.0
Employment	5,690.9	5,687.8	16.1	-3.1	60.3	60.3	-0.1	1.1	1.1
Unemployment	338.2	354.5	12.3	16.3	-2.8	-2.8	4.8	-0.8	-0.8
Participation rate	82.8	82.9	0.2	0.1	0.6	0.6
Unemployment rate	5.6	5.9	0.2	0.3	-0.1	-0.1
Employment rate	78.1	78.1	0.2	0.0	0.7	0.7
55 years and over, both sexes									
Population	9,408.8	9,433.1	...	24.3	306.9	306.9	0.3	3.4	3.4
Labour force	3,498.5	3,484.5	17.2	-14.0	150.6	150.6	-0.4	4.5	4.5
Employment	3,275.0	3,277.1	17.0	2.1	164.1	164.1	0.1	5.3	5.3
Unemployment	223.5	207.4	9.5	-16.1	-13.4	-13.4	-7.2	-6.1	-6.1
Participation rate	37.2	36.9	0.2	-0.3	0.4	0.4
Unemployment rate	6.4	6.0	0.3	-0.4	-0.6	-0.6
Employment rate	34.8	34.7	0.2	-0.1	0.6	0.6
55 years and over, men									
Population	4,447.1	4,459.2	...	12.1	152.6	152.6	0.3	3.5	3.5
Labour force	1,919.8	1,904.6	11.3	-15.2	65.5	65.5	-0.8	3.6	3.6
Employment	1,786.2	1,783.8	11.3	-2.4	77.5	77.5	-0.1	4.5	4.5
Unemployment	133.6	120.8	6.9	-12.8	-12.0	-12.0	-9.6	-9.0	-9.0
Participation rate	43.2	42.7	0.3	-0.5	0.0	0.0
Unemployment rate	7.0	6.3	0.4	-0.7	-0.9	-0.9
Employment rate	40.2	40.0	0.3	-0.2	0.4	0.4
55 years and over, women									
Population	4,961.7	4,973.9	...	12.2	154.2	154.2	0.2	3.2	3.2
Labour force	1,578.7	1,579.9	11.8	1.2	85.1	85.1	0.1	5.7	5.7
Employment	1,488.8	1,493.3	11.7	4.5	86.6	86.6	0.3	6.2	6.2
Unemployment	89.9	86.6	6.4	-3.3	-1.4	-1.4	-3.7	-1.6	-1.6
Participation rate	31.8	31.8	0.2	0.0	0.8	0.8
Unemployment rate	5.7	5.5	0.4	-0.2	-0.4	-0.4
Employment rate	30.0	30.0	0.2	0.0	0.8	0.8

1. Average standard error of change in two consecutive months (see "Sampling Errors" in Data Quality for further explanations).

Note(s): Related CANSIM table 282-0087.

Table 2
Employment by class of worker and industry, Canada, seasonally adjusted

	November 2012	December 2012	S.E. ¹	Change from			Percent change from		
				last month	last December	twelve months ago	last month	last December	twelve months ago
in thousands									
Class of worker									
Employees	14,951.6	15,014.1	35.2	62.5	334.3	334.3	0.4	2.3	2.3
Self-employed ²	2,675.3	2,652.5	25.1	-22.8	-22.4	-22.4	-0.9	-0.8	-0.8
Public/private sector employees									
Public sector employees	3,644.4	3,647.6	24.5	3.2	92.3	92.3	0.1	2.6	2.6
Private sector employees	11,307.1	11,366.5	37.2	59.4	242.0	242.0	0.5	2.2	2.2
Industry	17,626.8	17,666.6	28.6	39.8	311.9	311.9	0.2	1.8	1.8
Goods-producing sector	3,865.2	3,880.4	25.5	15.2	86.5	86.5	0.4	2.3	2.3
Agriculture	308.4	313.8	7.0	5.4	7.5	7.5	1.8	2.4	2.4
Forestry, fishing, mining, quarrying, oil and gas extraction ³	371.4	357.5	7.0	-13.9	2.2	2.2	-3.7	0.6	0.6
Utilities	148.4	145.0	4.9	-3.4	11.2	11.2	-2.3	8.4	8.4
Construction	1,259.1	1,276.9	16.8	17.8	12.0	12.0	1.4	0.9	0.9
Manufacturing	1,777.9	1,787.2	19.2	9.3	53.6	53.6	0.5	3.1	3.1
Services-producing sector	13,761.7	13,786.2	33.3	24.5	225.4	225.4	0.2	1.7	1.7
Trade	2,676.8	2,690.7	23.2	13.9	28.6	28.6	0.5	1.1	1.1
Transportation and warehousing	838.7	860.2	13.7	21.5	10.7	10.7	2.6	1.3	1.3
Finance, insurance, real estate and leasing	1,117.0	1,119.5	15.6	2.5	67.2	67.2	0.2	6.4	6.4
Professional, scientific and technical services	1,324.7	1,283.2	17.8	-41.5	-69.1	-69.1	-3.1	-5.1	-5.1
Business, building and other support services	685.4	697.4	13.9	12.0	36.4	36.4	1.8	5.5	5.5
Educational services	1,314.2	1,323.8	16.5	9.6	103.5	103.5	0.7	8.5	8.5
Health care and social assistance	2,156.3	2,173.5	19.0	17.2	61.7	61.7	0.8	2.9	2.9
Information, culture and recreation	794.5	795.4	14.4	0.9	22.8	22.8	0.1	3.0	3.0
Accommodation and food services	1,111.8	1,112.5	16.6	0.7	-7.8	-7.8	0.1	-0.7	-0.7
Other services	776.6	776.7	13.2	0.1	-6.0	-6.0	0.0	-0.8	-0.8
Public administration	965.8	953.2	12.5	-12.6	-22.7	-22.7	-1.3	-2.3	-2.3

1. Average standard error of change in two consecutive months (see "Sampling Errors" in Data Quality for further explanations).

2. Includes both incorporated and unincorporated working owners, self-employed persons who do not have a business and persons working in a family business without pay.

3. Also referred to as Natural resources.

Note(s): Related CANSIM Tables 282-0088, 282-0089.

Table 3
Labour force characteristics by province, seasonally adjusted

	November 2012	December 2012	S.E. ¹	Change from			Percent change from		
				last month	last December	twelve months ago	last month	last December	twelve months ago
in thousands (except rates)									
Newfoundland and Labrador									
Population	427.8	428.1	...	0.3	-0.5	-0.5	0.1	-0.1	-0.1
Labour force	266.3	266.4	2.1	0.1	5.9	5.9	0.0	2.3	2.3
Employment	233.0	235.7	2.1	2.7	8.5	8.5	1.2	3.7	3.7
Employment full-time	201.9	200.7	2.4	-1.2	5.3	5.3	-0.6	2.7	2.7
Employment part-time	31.1	35.0	1.9	3.9	3.2	3.2	12.5	10.1	10.1
Unemployment	33.2	30.6	2.0	-2.6	-2.6	-2.6	-7.8	-7.8	-7.8
Participation rate	62.2	62.2	0.5	0.0	1.4	1.4
Unemployment rate	12.5	11.5	0.7	-1.0	-1.2	-1.2
Employment rate	54.5	55.1	0.5	0.6	2.1	2.1
Prince Edward Island									
Population	120.6	120.6	...	0.0	0.8	0.8	0.0	0.7	0.7
Labour force	82.5	83.6	0.6	1.1	0.8	0.8	1.3	1.0	1.0
Employment	73.1	74.4	0.7	1.3	1.0	1.0	1.8	1.4	1.4
Employment full-time	60.5	60.7	0.8	0.2	-0.8	-0.8	0.3	-1.3	-1.3
Employment part-time	12.6	13.7	0.7	1.1	1.8	1.8	8.7	15.1	15.1
Unemployment	9.4	9.2	0.7	-0.2	-0.1	-0.1	-2.1	-1.1	-1.1
Participation rate	68.4	69.3	0.5	0.9	0.2	0.2
Unemployment rate	11.4	11.0	0.8	-0.4	-0.2	-0.2
Employment rate	60.6	61.7	0.6	1.1	0.4	0.4
Nova Scotia									
Population	780.7	780.8	...	0.1	1.2	1.2	0.0	0.2	0.2
Labour force	498.4	495.8	2.7	-2.6	-1.5	-1.5	-0.5	-0.3	-0.3
Employment	454.8	449.8	2.8	-5.0	-8.6	-8.6	-1.1	-1.9	-1.9
Employment full-time	366.0	363.2	3.5	-2.8	-6.3	-6.3	-0.8	-1.7	-1.7
Employment part-time	88.8	86.5	3.1	-2.3	-2.4	-2.4	-2.6	-2.7	-2.7
Unemployment	43.7	46.1	2.4	2.4	7.2	7.2	5.5	18.5	18.5
Participation rate	63.8	63.5	0.3	-0.3	-0.3	-0.3
Unemployment rate	8.8	9.3	0.5	0.5	1.5	1.5
Employment rate	58.3	57.6	0.4	-0.7	-1.2	-1.2
New Brunswick									
Population	620.2	620.0	...	-0.2	-0.2	-0.2	0.0	0.0	0.0
Labour force	393.4	389.8	2.3	-3.6	-1.3	-1.3	-0.9	-0.3	-0.3
Employment	349.4	347.8	2.4	-1.6	-6.7	-6.7	-0.5	-1.9	-1.9
Employment full-time	294.1	293.5	2.8	-0.6	-4.4	-4.4	-0.2	-1.5	-1.5
Employment part-time	55.3	54.4	2.4	-0.9	-2.2	-2.2	-1.6	-3.9	-3.9
Unemployment	44.0	42.0	2.1	-2.0	5.4	5.4	-4.5	14.8	14.8
Participation rate	63.4	62.9	0.4	-0.5	-0.2	-0.2
Unemployment rate	11.2	10.8	0.5	-0.4	1.4	1.4
Employment rate	56.3	56.1	0.4	-0.2	-1.1	-1.1
Quebec									
Population	6,659.9	6,664.3	...	4.4	59.1	59.1	0.1	0.9	0.9
Labour force	4,372.1	4,363.4	15.1	-8.7	86.6	86.6	-0.2	2.0	2.0
Employment	4,038.2	4,044.0	15.3	5.8	138.0	138.0	0.1	3.5	3.5
Employment full-time	3,276.2	3,288.2	19.5	12.0	122.9	122.9	0.4	3.9	3.9
Employment part-time	762.0	755.9	18.2	-6.1	15.2	15.2	-0.8	2.1	2.1
Unemployment	333.9	319.4	13.6	-14.5	-51.4	-51.4	-4.3	-13.9	-13.9
Participation rate	65.6	65.5	0.2	-0.1	0.8	0.8
Unemployment rate	7.6	7.3	0.3	-0.3	-1.4	-1.4
Employment rate	60.6	60.7	0.2	0.1	1.6	1.6
Ontario									
Population	11,119.1	11,128.1	...	9.0	136.6	136.6	0.1	1.2	1.2
Labour force	7,403.0	7,439.2	19.9	36.2	121.1	121.1	0.5	1.7	1.7
Employment	6,820.9	6,853.8	19.0	32.9	100.3	100.3	0.5	1.5	1.5
Employment full-time	5,539.1	5,545.4	25.5	6.3	89.2	89.2	0.1	1.6	1.6
Employment part-time	1,281.8	1,308.3	23.2	26.5	11.0	11.0	2.1	0.8	0.8
Unemployment	582.1	585.4	17.4	3.3	20.8	20.8	0.6	3.7	3.7
Participation rate	66.6	66.9	0.2	0.3	0.3	0.3
Unemployment rate	7.9	7.9	0.2	0.0	0.2	0.2
Employment rate	61.3	61.6	0.2	0.3	0.2	0.2

See notes at the end of the table.

Table 3 – continued

Labour force characteristics by province, seasonally adjusted

	November 2012	December 2012	S.E. ¹	Change from			Percent change from		
				last month	last December	twelve months ago	last month	last December	twelve months ago
in thousands (except rates)									
Manitoba									
Population	966.3	967.3	...	1.0	9.3	9.3	0.1	1.0	1.0
Labour force	668.3	673.4	2.7	5.1	10.9	10.9	0.8	1.6	1.6
Employment	633.2	638.4	2.7	5.2	11.9	11.9	0.8	1.9	1.9
Employment full-time	512.8	515.9	3.7	3.1	7.8	7.8	0.6	1.5	1.5
Employment part-time	120.4	122.4	3.6	2.0	3.9	3.9	1.7	3.3	3.3
Unemployment	35.1	35.1	2.2	0.0	-0.9	-0.9	0.0	-2.5	-2.5
Participation rate	69.2	69.6	0.3	0.4	0.4	0.4
Unemployment rate	5.3	5.2	0.3	-0.1	-0.2	-0.2
Employment rate	65.5	66.0	0.3	0.5	0.6	0.6
Saskatchewan									
Population	816.5	817.6	...	1.1	13.3	13.3	0.1	1.7	1.7
Labour force	565.7	570.7	2.5	5.0	13.5	13.5	0.9	2.4	2.4
Employment	540.4	544.4	2.5	4.0	16.4	16.4	0.7	3.1	3.1
Employment full-time	445.0	447.2	3.4	2.2	11.9	11.9	0.5	2.7	2.7
Employment part-time	95.5	97.2	3.0	1.7	4.6	4.6	1.8	5.0	5.0
Unemployment	25.3	26.3	1.9	1.0	-2.9	-2.9	4.0	-9.9	-9.9
Participation rate	69.3	69.8	0.3	0.5	0.5	0.5
Unemployment rate	4.5	4.6	0.3	0.1	-0.6	-0.6
Employment rate	66.2	66.6	0.3	0.4	1.0	1.0
Alberta									
Population	3,104.0	3,111.5	...	7.5	82.7	82.7	0.2	2.7	2.7
Labour force	2,266.5	2,267.2	8.6	0.7	24.4	24.4	0.0	1.1	1.1
Employment	2,171.1	2,165.0	9.1	-6.1	31.8	31.8	-0.3	1.5	1.5
Employment full-time	1,809.9	1,827.5	11.8	17.6	50.4	50.4	1.0	2.8	2.8
Employment part-time	361.2	337.5	10.7	-23.7	-18.5	-18.5	-6.6	-5.2	-5.2
Unemployment	95.4	102.1	6.8	6.7	-7.6	-7.6	7.0	-6.9	-6.9
Participation rate	73.0	72.9	0.3	-0.1	-1.1	-1.1
Unemployment rate	4.2	4.5	0.3	0.3	-0.4	-0.4
Employment rate	69.9	69.6	0.3	-0.3	-0.8	-0.8
British Columbia									
Population	3,827.8	3,830.3	...	2.5	35.5	35.5	0.1	0.9	0.9
Labour force	2,480.2	2,474.3	10.5	-5.9	8.8	8.8	-0.2	0.4	0.4
Employment	2,312.7	2,313.3	10.4	0.6	19.4	19.4	0.0	0.8	0.8
Employment full-time	1,812.6	1,816.9	14.4	4.3	30.8	30.8	0.2	1.7	1.7
Employment part-time	500.1	496.4	14.0	-3.7	-11.4	-11.4	-0.7	-2.2	-2.2
Unemployment	167.5	161.0	8.6	-6.5	-10.6	-10.6	-3.9	-6.2	-6.2
Participation rate	64.8	64.6	0.3	-0.2	-0.4	-0.4
Unemployment rate	6.8	6.5	0.3	-0.3	-0.5	-0.5
Employment rate	60.4	60.4	0.3	0.0	0.0	0.0

1. Average standard error of change in two consecutive months (see "Sampling Errors" in Data Quality for further explanations).

Note(s): Related CANSIM Table 282-0087.

Table 4-1
Selected labour force characteristics (seasonally adjusted) — Newfoundland and Labrador

	November 2012	December 2012	S.E. ¹	Change from			Percent change from		
				last month	last December	twelve months ago	last month	last December	twelve months ago
in thousands (except rates)									
Both sexes, 15 years and over									
Population	427.8	428.1	...	0.3	-0.5	-0.5	0.1	-0.1	-0.1
Labour force	266.3	266.4	2.1	0.1	5.9	5.9	0.0	2.3	2.3
Employment	233.0	235.7	2.1	2.7	8.5	8.5	1.2	3.7	3.7
Employment full-time	201.9	200.7	2.4	-1.2	5.3	5.3	-0.6	2.7	2.7
Unemployment	33.2	30.6	2.0	-2.6	-2.6	-2.6	-7.8	-7.8	-7.8
Participation rate	62.2	62.2	0.5	0.0	1.4	1.4
Unemployment rate	12.5	11.5	0.7	-1.0	-1.2	-1.2
Employment rate	54.5	55.1	0.5	0.6	2.1	2.1
Part-time rate	13.3	14.8	0.8	1.5	0.9	0.9
Both sexes, 15 to 24 years									
Population	59.1	59.1	...	0.0	-1.2	-1.2	0.0	-2.0	-2.0
Labour force	37.6	37.8	1.1	0.2	2.0	2.0	0.5	5.6	5.6
Employment	31.0	31.6	1.0	0.6	2.3	2.3	1.9	7.8	7.8
Unemployment	6.6	6.2	1.1	-0.4	-0.3	-0.3	-6.1	-4.6	-4.6
Participation rate	63.6	64.0	1.8	0.4	4.6	4.6
Unemployment rate	17.6	16.4	2.7	-1.2	-1.8	-1.8
Employment rate	52.5	53.5	1.7	1.0	4.9	4.9
Part-time rate	38.7	38.0	3.7	-0.7	-6.7	-6.7
Men, 25 years and over									
Population	178.2	178.3	...	0.1	0.5	0.5	0.1	0.3	0.3
Labour force	119.1	119.1	1.2	0.0	1.5	1.5	0.0	1.3	1.3
Employment	103.8	106.0	1.3	2.2	4.1	4.1	2.1	4.0	4.0
Unemployment	15.3	13.1	1.3	-2.2	-2.6	-2.6	-14.4	-16.6	-16.6
Participation rate	66.8	66.8	0.7	0.0	0.7	0.7
Unemployment rate	12.8	11.0	1.0	-1.8	-2.4	-2.4
Employment rate	58.2	59.5	0.7	1.3	2.2	2.2
Part-time rate	3.5	4.2	0.8	0.7	-1.7	-1.7
Women, 25 years and over									
Population	190.6	190.8	...	0.2	0.3	0.3	0.1	0.2	0.2
Labour force	109.6	109.4	1.1	-0.2	2.3	2.3	-0.2	2.1	2.1
Employment	98.3	98.1	1.0	-0.2	2.0	2.0	-0.2	2.1	2.1
Unemployment	11.3	11.3	1.0	0.0	0.3	0.3	0.0	2.7	2.7
Participation rate	57.5	57.3	0.6	-0.2	1.1	1.1
Unemployment rate	10.3	10.3	0.9	0.0	0.0	0.0
Employment rate	51.6	51.4	0.5	-0.2	1.0	1.0
Part-time rate	15.9	19.0	1.2	3.1	5.7	5.7
Industry	233.0	235.7	2.1	2.7	8.5	8.5	1.2	3.7	3.7
Goods-producing sector	49.1	50.0	1.7	0.9	-1.0	-1.0	1.8	-2.0	-2.0
Agriculture	1.3	1.9	0.3	0.6	0.7	0.7	46.2	58.3	58.3
Forestry, fishing, mining, quarrying, oil and gas extraction ²	13.6	14.6	0.9	1.0	-0.4	-0.4	7.4	-2.7	-2.7
Utilities	3.4	3.3	0.3	-0.1	0.8	0.8	-2.9	32.0	32.0
Construction	20.8	20.0	1.1	-0.8	-0.3	-0.3	-3.8	-1.5	-1.5
Manufacturing	10.0	10.3	0.9	0.3	-1.7	-1.7	3.0	-14.2	-14.2
Services-producing sector	184.0	185.7	2.0	1.7	9.4	9.4	0.9	5.3	5.3
Trade	32.9	33.1	1.3	0.2	-4.3	-4.3	0.6	-11.5	-11.5
Transportation and warehousing	12.2	12.6	0.7	0.4	2.5	2.5	3.3	24.8	24.8
Finance, insurance, real estate and leasing	9.1	10.1	0.5	1.0	0.9	0.9	11.0	9.8	9.8
Professional, scientific and technical services	8.8	9.0	0.7	0.2	-0.2	-0.2	2.3	-2.2	-2.2
Business, building and other support services	7.3	6.9	0.6	-0.4	0.9	0.9	-5.5	15.0	15.0
Educational services	19.0	19.6	0.9	0.6	2.0	2.0	3.2	11.4	11.4
Health care and social assistance	38.5	37.7	1.1	-0.8	3.4	3.4	-2.1	9.9	9.9
Information, culture and recreation	7.0	7.4	0.7	0.4	0.2	0.2	5.7	2.8	2.8
Accommodation and food services	14.1	14.9	0.9	0.8	1.7	1.7	5.7	12.9	12.9
Other services	15.2	14.9	0.8	-0.3	2.6	2.6	-2.0	21.1	21.1
Public administration	20.0	19.4	0.9	-0.6	-0.3	-0.3	-3.0	-1.5	-1.5

1. Average standard error of change in two consecutive months (see "Sampling Errors" in Data Quality for further explanations).

2. Also referred to as Natural resources.

Note(s): Related CANSIM Tables 282-0087, 282-0088.

Table 4-2
Selected labour force characteristics (seasonally adjusted) — Prince Edward Island

	November 2012	December 2012	S.E. ¹	Change from			Percent change from		
				last month	last December	twelve months ago	last month	last December	twelve months ago
in thousands (except rates)									
Both sexes, 15 years and over									
Population	120.6	120.6	...	0.0	0.8	0.8	0.0	0.7	0.7
Labour force	82.5	83.6	0.6	1.1	0.8	0.8	1.3	1.0	1.0
Employment	73.1	74.4	0.7	1.3	1.0	1.0	1.8	1.4	1.4
Employment full-time	60.5	60.7	0.8	0.2	-0.8	-0.8	0.3	-1.3	-1.3
Unemployment	9.4	9.2	0.7	-0.2	-0.1	-0.1	-2.1	-1.1	-1.1
Participation rate	68.4	69.3	0.5	0.9	0.2	0.2
Unemployment rate	11.4	11.0	0.8	-0.4	-0.2	-0.2
Employment rate	60.6	61.7	0.6	1.1	0.4	0.4
Part-time rate	17.2	18.4	1.0	1.2	2.2	2.2
Both sexes, 15 to 24 years									
Population	20.0	19.9	...	-0.1	0.0	0.0	-0.5	0.0	0.0
Labour force	13.0	13.3	0.4	0.3	-0.9	-0.9	2.3	-6.3	-6.3
Employment	10.7	11.1	0.4	0.4	-1.2	-1.2	3.7	-9.8	-9.8
Unemployment	2.4	2.2	0.4	-0.2	0.3	0.3	-8.3	15.8	15.8
Participation rate	65.0	66.8	2.0	1.8	-4.6	-4.6
Unemployment rate	18.5	16.5	2.5	-2.0	3.1	3.1
Employment rate	53.5	55.8	2.0	2.3	-6.0	-6.0
Part-time rate	45.8	47.7	3.6	2.0	7.9	7.9
Men, 25 years and over									
Population	48.5	48.4	...	-0.1	0.2	0.2	-0.2	0.4	0.4
Labour force	35.6	36.1	0.3	0.5	1.0	1.0	1.4	2.8	2.8
Employment	31.4	31.8	0.4	0.4	1.0	1.0	1.3	3.2	3.2
Unemployment	4.2	4.2	0.4	0.0	-0.2	-0.2	0.0	-4.5	-4.5
Participation rate	73.4	74.6	0.7	1.2	1.8	1.8
Unemployment rate	11.8	11.6	1.1	-0.2	-0.9	-0.9
Employment rate	64.7	65.7	0.8	1.0	1.8	1.8
Part-time rate	7.6	8.2	1.0	0.5	1.4	1.4
Women, 25 years and over									
Population	52.2	52.2	...	0.0	0.5	0.5	0.0	1.0	1.0
Labour force	33.9	34.2	0.3	0.3	0.7	0.7	0.9	2.1	2.1
Employment	31.0	31.5	0.4	0.5	1.1	1.1	1.6	3.6	3.6
Unemployment	2.9	2.8	0.3	-0.1	-0.3	-0.3	-3.4	-9.7	-9.7
Participation rate	64.9	65.5	0.6	0.6	0.7	0.7
Unemployment rate	8.6	8.2	1.0	-0.4	-1.1	-1.1
Employment rate	59.4	60.3	0.7	0.9	1.5	1.5
Part-time rate	17.1	18.4	1.4	1.3	2.0	2.0
Industry									
	73.1	74.4	0.7	1.3	1.0	1.0	1.8	1.4	1.4
Goods-producing sector									
	17.3	17.4	0.6	0.1	-1.1	-1.1	0.6	-5.9	-5.9
Agriculture	4.2	4.4	0.3	0.2	0.4	0.4	4.8	10.0	10.0
Forestry, fishing, mining, quarrying, oil and gas extraction ²	3.0	2.4	0.3	-0.6	-1.1	-1.1	-20.0	-31.4	-31.4
Utilities	0.4	0.3	0.1	-0.1	-0.1	-0.1	-25.0	-25.0	-25.0
Construction	5.1	5.3	0.4	0.2	0.0	0.0	3.9	0.0	0.0
Manufacturing	4.6	5.0	0.4	0.4	-0.3	-0.3	8.7	-5.7	-5.7
Services-producing sector									
	55.8	57.0	0.7	1.2	2.0	2.0	2.2	3.6	3.6
Trade	10.2	10.5	0.5	0.3	1.2	1.2	2.9	12.9	12.9
Transportation and warehousing	2.3	2.3	0.2	0.0	-0.1	-0.1	0.0	-4.2	-4.2
Finance, insurance, real estate and leasing	2.4	2.4	0.2	0.0	-0.3	-0.3	0.0	-11.1	-11.1
Professional, scientific and technical services	3.4	3.2	0.2	-0.2	0.2	0.2	-5.9	6.7	6.7
Business, building and other support services	2.2	2.2	0.2	0.0	-0.2	-0.2	0.0	-8.3	-8.3
Educational services	6.3	6.9	0.3	0.6	1.3	1.3	9.5	23.2	23.2
Health care and social assistance	9.9	9.6	0.4	-0.3	-0.5	-0.5	-3.0	-5.0	-5.0
Information, culture and recreation	2.8	3.0	0.3	0.2	0.2	0.2	7.1	7.1	7.1
Accommodation and food services	5.3	5.9	0.4	0.6	0.1	0.1	11.3	1.7	1.7
Other services	3.4	3.2	0.3	-0.2	0.5	0.5	-5.9	18.5	18.5
Public administration	7.7	7.8	0.3	0.1	-0.4	-0.4	1.3	-4.9	-4.9

1. Average standard error of change in two consecutive months (see "Sampling Errors" in Data Quality for further explanations).

2. Also referred to as Natural resources.

Note(s): Related CANSIM Tables 282-0087, 282-0088.

Table 4-3
Selected labour force characteristics (seasonally adjusted) — Nova Scotia

	November 2012	December 2012	S.E. ¹	Change from			Percent change from		
				last month	last December	twelve months ago	last month	last December	twelve months ago
in thousands (except rates)									
Both sexes, 15 years and over									
Population	780.7	780.8	...	0.1	1.2	1.2	0.0	0.2	0.2
Labour force	498.4	495.8	2.7	-2.6	-1.5	-1.5	-0.5	-0.3	-0.3
Employment	454.8	449.8	2.8	-5.0	-8.6	-8.6	-1.1	-1.9	-1.9
Employment full-time	366.0	363.2	3.5	-2.8	-6.3	-6.3	-0.8	-1.7	-1.7
Unemployment	43.7	46.1	2.4	2.4	7.2	7.2	5.5	18.5	18.5
Participation rate	63.8	63.5	0.3	-0.3	-0.3	-0.3
Unemployment rate	8.8	9.3	0.5	0.5	1.5	1.5
Employment rate	58.3	57.6	0.4	-0.7	-1.2	-1.2
Part-time rate	19.5	19.2	0.7	-0.3	-0.2	-0.2
Both sexes, 15 to 24 years									
Population	117.2	117.2	...	0.0	-2.0	-2.0	0.0	-1.7	-1.7
Labour force	76.0	74.8	1.6	-1.2	-0.5	-0.5	-1.6	-0.7	-0.7
Employment	62.7	61.4	1.5	-1.3	-3.2	-3.2	-2.1	-5.0	-5.0
Unemployment	13.3	13.4	1.5	0.1	2.7	2.7	0.8	25.2	25.2
Participation rate	64.8	63.8	1.4	-1.0	0.6	0.6
Unemployment rate	17.5	17.9	1.8	0.4	3.7	3.7
Employment rate	53.5	52.4	1.3	-1.1	-1.8	-1.8
Part-time rate	48.3	49.3	2.5	1.0	-0.7	-0.7
Men, 25 years and over									
Population	314.4	314.5	...	0.1	1.9	1.9	0.0	0.6	0.6
Labour force	213.4	212.3	1.4	-1.1	-2.1	-2.1	-0.5	-1.0	-1.0
Employment	196.7	194.0	1.6	-2.7	-3.9	-3.9	-1.4	-2.0	-2.0
Unemployment	16.7	18.3	1.5	1.6	1.8	1.8	9.6	10.9	10.9
Participation rate	67.9	67.5	0.5	-0.4	-1.1	-1.1
Unemployment rate	7.8	8.6	0.7	0.8	0.9	0.9
Employment rate	62.6	61.7	0.5	-0.9	-1.6	-1.6
Part-time rate	8.3	8.2	0.7	-0.1	1.1	1.1
Women, 25 years and over									
Population	349.0	349.1	...	0.1	1.3	1.3	0.0	0.4	0.4
Labour force	209.1	208.8	1.4	-0.3	1.2	1.2	-0.1	0.6	0.6
Employment	195.4	194.4	1.5	-1.0	-1.5	-1.5	-0.5	-0.8	-0.8
Unemployment	13.7	14.4	1.2	0.7	2.7	2.7	5.1	23.1	23.1
Participation rate	59.9	59.8	0.4	-0.1	0.1	0.1
Unemployment rate	6.6	6.9	0.6	0.3	1.3	1.3
Employment rate	56.0	55.7	0.4	-0.3	-0.6	-0.6
Part-time rate	21.5	20.7	1.0	-0.8	-1.0	-1.0
Industry									
Industry	454.8	449.8	2.8	-5.0	-8.6	-8.6	-1.1	-1.9	-1.9
Goods-producing sector									
Goods-producing sector	83.2	81.2	2.1	-2.0	-3.4	-3.4	-2.4	-4.0	-4.0
Agriculture	6.7	6.1	0.6	-0.6	1.2	1.2	-9.0	24.5	24.5
Forestry, fishing, mining, quarrying, oil and gas extraction ²	11.6	10.7	1.0	-0.9	-0.9	-0.9	-7.8	-7.8	-7.8
Utilities	4.3	4.4	0.4	0.1	1.1	1.1	2.3	33.3	33.3
Construction	30.8	29.3	1.4	-1.5	-2.3	-2.3	-4.9	-7.3	-7.3
Manufacturing	29.9	30.7	1.3	0.8	-2.5	-2.5	2.7	-7.5	-7.5
Services-producing sector									
Services-producing sector	371.6	368.6	2.8	-3.0	-5.2	-5.2	-0.8	-1.4	-1.4
Trade	69.6	69.7	1.9	0.1	-6.9	-6.9	0.1	-9.0	-9.0
Transportation and warehousing	21.4	20.4	1.1	-1.0	-1.9	-1.9	-4.7	-8.5	-8.5
Finance, insurance, real estate and leasing	23.2	22.2	1.1	-1.0	-1.1	-1.1	-4.3	-4.7	-4.7
Professional, scientific and technical services	27.2	28.7	1.1	1.5	4.5	4.5	5.5	18.6	18.6
Business, building and other support services	21.0	21.4	1.2	0.4	1.6	1.6	1.9	8.1	8.1
Educational services	35.8	36.6	1.5	0.8	-2.0	-2.0	2.2	-5.2	-5.2
Health care and social assistance	68.9	67.7	1.7	-1.2	-0.8	-0.8	-1.7	-1.2	-1.2
Information, culture and recreation	19.6	18.6	1.2	-1.0	-2.0	-2.0	-5.1	-9.7	-9.7
Accommodation and food services	35.8	34.6	1.4	-1.2	6.6	6.6	-3.4	23.6	23.6
Other services	19.2	20.2	1.1	1.0	-0.7	-0.7	5.2	-3.3	-3.3
Public administration	29.8	28.5	1.1	-1.3	-2.5	-2.5	-4.4	-8.1	-8.1

1. Average standard error of change in two consecutive months (see "Sampling Errors" in Data Quality for further explanations).

2. Also referred to as Natural resources.

Note(s): Related CANSIM Tables 282-0087, 282-0088.

Table 4-4
Selected labour force characteristics (seasonally adjusted) — New Brunswick

	November 2012	December 2012	S.E. ¹	Change from			Percent change from		
				last month	last December	twelve months ago	last month	last December	twelve months ago
in thousands (except rates)									
Both sexes, 15 years and over									
Population	620.2	620.0	...	-0.2	-0.2	-0.2	0.0	0.0	0.0
Labour force	393.4	389.8	2.3	-3.6	-1.3	-1.3	-0.9	-0.3	-0.3
Employment	349.4	347.8	2.4	-1.6	-6.7	-6.7	-0.5	-1.9	-1.9
Employment full-time	294.1	293.5	2.8	-0.6	-4.4	-4.4	-0.2	-1.5	-1.5
Unemployment	44.0	42.0	2.1	-2.0	5.4	5.4	-4.5	14.8	14.8
Participation rate	63.4	62.9	0.4	-0.5	-0.2	-0.2
Unemployment rate	11.2	10.8	0.5	-0.4	1.4	1.4
Employment rate	56.3	56.1	0.4	-0.2	-1.1	-1.1
Part-time rate	15.8	15.6	0.6	-0.2	-0.3	-0.3
Both sexes, 15 to 24 years									
Population	89.7	89.5	...	-0.2	-1.4	-1.4	-0.2	-1.5	-1.5
Labour force	57.0	55.2	1.4	-1.8	-4.4	-4.4	-3.2	-7.4	-7.4
Employment	45.2	45.2	1.3	0.0	-3.2	-3.2	0.0	-6.6	-6.6
Unemployment	11.8	10.0	1.2	-1.8	-1.2	-1.2	-15.3	-10.7	-10.7
Participation rate	63.5	61.7	1.5	-1.8	-3.9	-3.9
Unemployment rate	20.7	18.1	1.9	-2.6	-0.7	-0.7
Employment rate	50.4	50.5	1.4	0.1	-2.7	-2.7
Part-time rate	38.9	36.5	2.6	-2.4	-6.9	-6.9
Men, 25 years and over									
Population	254.5	254.4	...	-0.1	0.4	0.4	0.0	0.2	0.2
Labour force	172.6	171.5	1.3	-1.1	1.1	1.1	-0.6	0.6	0.6
Employment	154.2	152.5	1.4	-1.7	-2.6	-2.6	-1.1	-1.7	-1.7
Unemployment	18.4	19.0	1.3	0.6	3.7	3.7	3.3	24.2	24.2
Participation rate	67.8	67.4	0.5	-0.4	0.3	0.3
Unemployment rate	10.7	11.1	0.7	0.4	2.1	2.1
Employment rate	60.6	59.9	0.5	-0.7	-1.2	-1.2
Part-time rate	7.2	6.6	0.7	-0.6	0.8	0.8
Women, 25 years and over									
Population	276.0	276.1	...	0.1	0.7	0.7	0.0	0.3	0.3
Labour force	163.9	163.0	1.2	-0.9	1.9	1.9	-0.5	1.2	1.2
Employment	150.0	150.1	1.2	0.1	-0.9	-0.9	0.1	-0.6	-0.6
Unemployment	13.9	13.0	1.1	-0.9	3.0	3.0	-6.5	30.0	30.0
Participation rate	59.4	59.0	0.4	-0.4	0.5	0.5
Unemployment rate	8.5	8.0	0.7	-0.5	1.8	1.8
Employment rate	54.3	54.4	0.4	0.1	-0.4	-0.4
Part-time rate	17.7	18.5	1.0	0.8	0.8	0.8
Industry									
Goods-producing sector	349.4	347.8	2.4	-1.6	-6.7	-6.7	-0.5	-1.9	-1.9
Agriculture	72.2	72.9	1.9	0.7	-4.0	-4.0	1.0	-5.2	-5.2
Forestry, fishing, mining, quarrying, oil and gas extraction ²	4.4	5.0	0.5	0.6	1.2	1.2	13.6	31.6	31.6
Utilities	13.2	12.8	0.8	-0.4	2.7	2.7	-3.0	26.7	26.7
Construction	4.3	3.8	0.5	-0.5	-0.8	-0.8	-11.6	-17.4	-17.4
Manufacturing	22.5	23.1	1.2	0.6	-5.0	-5.0	2.7	-17.8	-17.8
	27.8	28.3	1.2	0.5	-2.1	-2.1	1.8	-6.9	-6.9
Services-producing sector									
Trade	277.2	274.9	2.4	-2.3	-2.7	-2.7	-0.8	-1.0	-1.0
Transportation and warehousing	56.6	56.0	1.6	-0.6	-0.6	-0.6	-1.1	-1.1	-1.1
Finance, insurance, real estate and leasing	16.8	16.4	0.8	-0.4	0.6	0.6	-2.4	3.8	3.8
Professional, scientific and technical services	17.0	17.1	0.8	0.1	0.7	0.7	0.6	4.3	4.3
Business, building and other support services	15.8	14.6	0.9	-1.2	-1.0	-1.0	-7.6	-6.4	-6.4
Educational services	16.9	17.5	1.0	0.6	1.4	1.4	3.6	8.7	8.7
Health care and social assistance	26.8	26.8	1.1	0.0	0.4	0.4	0.0	1.5	1.5
Information, culture and recreation	55.7	54.9	1.3	-0.8	3.3	3.3	-1.4	6.4	6.4
Accommodation and food services	13.5	13.0	0.9	-0.5	0.2	0.2	-3.7	1.6	1.6
Other services	22.1	21.9	1.1	-0.2	-1.9	-1.9	-0.9	-8.0	-8.0
Public administration	13.8	14.9	0.8	1.1	0.0	0.0	8.0	0.0	0.0
	22.2	21.9	1.0	-0.3	-5.7	-5.7	-1.4	-20.7	-20.7

1. Average standard error of change in two consecutive months (see "Sampling Errors" in Data Quality for further explanations).

2. Also referred to as Natural resources.

Note(s): Related CANSIM Tables 282-0087, 282-0088.

Table 4-5
Selected labour force characteristics (seasonally adjusted) — Quebec

	November 2012	December 2012	S.E. ¹	Change from			Percent change from		
				last month	last December	twelve months ago	last month	last December	twelve months ago
in thousands (except rates)									
Both sexes, 15 years and over									
Population	6,659.9	6,664.3	...	4.4	59.1	59.1	0.1	0.9	0.9
Labour force	4,372.1	4,363.4	15.1	-8.7	86.6	86.6	-0.2	2.0	2.0
Employment	4,038.2	4,044.0	15.3	5.8	138.0	138.0	0.1	3.5	3.5
Employment full-time	3,276.2	3,288.2	19.5	12.0	122.9	122.9	0.4	3.9	3.9
Unemployment	333.9	319.4	13.6	-14.5	-51.4	-51.4	-4.3	-13.9	-13.9
Participation rate	65.6	65.5	0.2	-0.1	0.8	0.8
Unemployment rate	7.6	7.3	0.3	-0.3	-1.4	-1.4
Employment rate	60.6	60.7	0.2	0.1	1.6	1.6
Part-time rate	18.9	18.7	0.4	-0.2	-0.3	-0.3
Both sexes, 15 to 24 years									
Population	982.3	982.4	...	0.1	0.2	0.2	0.0	0.0	0.0
Labour force	666.1	656.6	8.7	-9.5	19.6	19.6	-1.4	3.1	3.1
Employment	581.2	574.8	8.5	-6.4	28.8	28.8	-1.1	5.3	5.3
Unemployment	85.0	81.8	7.8	-3.2	-9.3	-9.3	-3.8	-10.2	-10.2
Participation rate	67.8	66.8	0.9	-1.0	1.9	1.9
Unemployment rate	12.8	12.5	1.1	-0.3	-1.8	-1.8
Employment rate	59.2	58.5	0.9	-0.7	2.9	2.9
Part-time rate	51.0	50.1	1.6	-0.9	-1.1	-1.1
Men, 25 years and over									
Population	2,793.2	2,795.5	...	2.3	30.9	30.9	0.1	1.1	1.1
Labour force	1,970.2	1,977.8	8.3	7.6	42.0	42.0	0.4	2.2	2.2
Employment	1,822.7	1,838.2	8.8	15.5	75.4	75.4	0.9	4.3	4.3
Unemployment	147.4	139.6	8.0	-7.8	-33.3	-33.3	-5.3	-19.3	-19.3
Participation rate	70.5	70.7	0.3	0.2	0.7	0.7
Unemployment rate	7.5	7.1	0.4	-0.4	-1.8	-1.8
Employment rate	65.3	65.8	0.3	0.5	2.0	2.0
Part-time rate	7.3	7.2	0.5	-0.1	-0.4	-0.4
Women, 25 years and over									
Population	2,884.4	2,886.4	...	2.0	28.0	28.0	0.1	1.0	1.0
Labour force	1,735.9	1,729.0	8.5	-6.9	25.0	25.0	-0.4	1.5	1.5
Employment	1,634.3	1,631.0	8.4	-3.3	33.8	33.8	-0.2	2.1	2.1
Unemployment	101.5	98.0	7.2	-3.5	-8.8	-8.8	-3.4	-8.2	-8.2
Participation rate	60.2	59.9	0.3	-0.3	0.3	0.3
Unemployment rate	5.8	5.7	0.4	-0.1	-0.6	-0.6
Employment rate	56.7	56.5	0.3	-0.2	0.6	0.6
Part-time rate	20.4	20.6	0.7	0.2	0.1	0.1
Industry	4,038.2	4,044.0	15.3	5.8	138.0	138.0	0.1	3.5	3.5
Goods-producing sector	874.2	872.6	12.6	-1.6	49.4	49.4	-0.2	6.0	6.0
Agriculture	57.6	56.4	3.0	-1.2	0.8	0.8	-2.1	1.4	1.4
Forestry, fishing, mining, quarrying, oil and gas extraction ²	35.4	34.1	2.6	-1.3	-3.5	-3.5	-3.7	-9.3	-9.3
Utilities	26.9	25.3	2.3	-1.6	-2.8	-2.8	-5.9	-10.0	-10.0
Construction	252.3	250.2	7.9	-2.1	22.8	22.8	-0.8	10.0	10.0
Manufacturing	502.1	506.7	10.0	4.6	32.2	32.2	0.9	6.8	6.8
Services-producing sector	3,164.0	3,171.4	16.9	7.4	88.6	88.6	0.2	2.9	2.9
Trade	646.6	629.3	12.5	-17.3	-5.8	-5.8	-2.7	-0.9	-0.9
Transportation and warehousing	157.5	164.5	6.7	7.0	-14.7	-14.7	4.4	-8.2	-8.2
Finance, insurance, real estate and leasing	233.2	231.1	7.3	-2.1	10.8	10.8	-0.9	4.9	4.9
Professional, scientific and technical services	300.6	296.5	8.7	-4.1	-4.1	-4.1	-1.4	-1.4	-1.4
Business, building and other support services	137.8	152.7	6.8	14.9	13.9	13.9	10.8	10.0	10.0
Educational services	305.3	304.1	8.8	-1.2	23.7	23.7	-0.4	8.5	8.5
Health care and social assistance	558.5	571.0	9.5	12.5	79.1	79.1	2.2	16.1	16.1
Information, culture and recreation	185.3	186.6	6.9	1.3	31.2	31.2	0.7	20.1	20.1
Accommodation and food services	218.3	229.5	8.7	11.2	-29.2	-29.2	5.1	-11.3	-11.3
Other services	176.1	179.5	6.7	3.4	-5.2	-5.2	1.9	-2.8	-2.8
Public administration	244.8	226.6	6.2	-18.2	-11.1	-11.1	-7.4	-4.7	-4.7

1. Average standard error of change in two consecutive months (see "Sampling Errors" in Data Quality for further explanations).

2. Also referred to as Natural resources.

Note(s): Related CANSIM Tables 282-0087, 282-0088.

Table 4-6
Selected labour force characteristics (seasonally adjusted) — Ontario

	November 2012	December 2012	S.E. ¹	Change from			Percent change from		
				last month	last December	twelve months ago	last month	last December	twelve months ago
in thousands (except rates)									
Both sexes, 15 years and over									
Population	11,119.1	11,128.1	...	9.0	136.6	136.6	0.1	1.2	1.2
Labour force	7,403.0	7,439.2	19.9	36.2	121.1	121.1	0.5	1.7	1.7
Employment	6,820.9	6,853.8	19.0	32.9	100.3	100.3	0.5	1.5	1.5
Employment full-time	5,539.1	5,545.4	25.5	6.3	89.2	89.2	0.1	1.6	1.6
Unemployment	582.1	585.4	17.4	3.3	20.8	20.8	0.6	3.7	3.7
Participation rate	66.6	66.9	0.2	0.3	0.3	0.3
Unemployment rate	7.9	7.9	0.2	0.0	0.2	0.2
Employment rate	61.3	61.6	0.2	0.3	0.2	0.2
Part-time rate	18.8	19.1	0.3	0.3	-0.1	-0.1
Both sexes, 15 to 24 years									
Population	1,789.0	1,788.6	...	-0.4	2.4	2.4	0.0	0.1	0.1
Labour force	1,075.5	1,097.4	12.2	21.9	22.3	22.3	2.0	2.1	2.1
Employment	894.2	910.0	10.7	15.8	2.5	2.5	1.8	0.3	0.3
Unemployment	181.3	187.4	10.6	6.1	19.7	19.7	3.4	11.7	11.7
Participation rate	60.1	61.4	0.7	1.3	1.2	1.2
Unemployment rate	16.9	17.1	0.9	0.2	1.5	1.5
Employment rate	50.0	50.9	0.6	0.9	0.1	0.1
Part-time rate	52.7	54.4	1.3	1.7	5.2	5.2
Men, 25 years and over									
Population	4,526.1	4,530.6	...	4.5	66.2	66.2	0.1	1.5	1.5
Labour force	3,310.3	3,315.3	10.1	5.0	51.3	51.3	0.2	1.6	1.6
Employment	3,088.8	3,107.0	10.8	18.2	42.2	42.2	0.6	1.4	1.4
Unemployment	221.5	208.3	9.8	-13.2	9.1	9.1	-6.0	4.6	4.6
Participation rate	73.1	73.2	0.2	0.1	0.1	0.1
Unemployment rate	6.7	6.3	0.3	-0.4	0.2	0.2
Employment rate	68.2	68.6	0.2	0.4	0.0	0.0
Part-time rate	7.8	7.9	0.4	0.1	0.1	0.1
Women, 25 years and over									
Population	4,804.0	4,808.9	...	4.9	68.0	68.0	0.1	1.4	1.4
Labour force	3,017.2	3,026.5	11.3	9.3	47.5	47.5	0.3	1.6	1.6
Employment	2,837.9	2,836.8	11.0	-1.1	55.5	55.5	0.0	2.0	2.0
Unemployment	179.3	189.7	9.4	10.4	-8.1	-8.1	5.8	-4.1	-4.1
Participation rate	62.8	62.9	0.2	0.1	0.1	0.1
Unemployment rate	5.9	6.3	0.3	0.4	-0.3	-0.3
Employment rate	59.1	59.0	0.2	-0.1	0.3	0.3
Part-time rate	20.1	20.0	0.5	0.0	-2.0	-2.0
Industry	6,820.9	6,853.8	19.0	32.9	100.3	100.3	0.5	1.5	1.5
Goods-producing sector	1,407.2	1,408.3	17.5	1.1	-6.6	-6.6	0.1	-0.5	-0.5
Agriculture	87.6	85.9	4.5	-1.7	-7.3	-7.3	-1.9	-7.8	-7.8
Forestry, fishing, mining, quarrying, oil and gas extraction ²	34.3	34.5	2.5	0.2	-2.2	-2.2	0.6	-6.0	-6.0
Utilities	55.4	55.1	3.4	-0.3	-0.9	-0.9	-0.5	-1.6	-1.6
Construction	426.2	428.1	11.1	1.9	-16.2	-16.2	0.4	-3.6	-3.6
Manufacturing	803.7	804.8	14.1	1.1	20.1	20.1	0.1	2.6	2.6
Services-producing sector	5,413.8	5,445.5	22.9	31.7	106.8	106.8	0.6	2.0	2.0
Trade	1,011.0	1,035.0	15.4	24.0	55.3	55.3	2.4	5.6	5.6
Transportation and warehousing	319.5	329.2	9.6	9.7	14.5	14.5	3.0	4.6	4.6
Finance, insurance, real estate and leasing	509.2	526.3	11.9	17.1	43.3	43.3	3.4	9.0	9.0
Professional, scientific and technical services	567.4	537.6	13.0	-29.8	-48.7	-48.7	-5.3	-8.3	-8.3
Business, building and other support services	289.9	293.8	10.2	3.9	1.6	1.6	1.3	0.5	0.5
Educational services	522.1	527.0	11.4	4.9	47.1	47.1	0.9	9.8	9.8
Health care and social assistance	764.9	770.4	13.4	5.5	-1.0	-1.0	0.7	-0.1	-0.1
Information, culture and recreation	330.0	326.9	10.5	-3.1	-16.4	-16.4	-0.9	-4.8	-4.8
Accommodation and food services	435.1	428.4	10.9	-6.7	21.4	21.4	-1.5	5.3	5.3
Other services	281.7	286.7	8.9	5.0	5.1	5.1	1.8	1.8	1.8
Public administration	383.0	384.2	9.1	1.2	-15.4	-15.4	0.3	-3.9	-3.9

1. Average standard error of change in two consecutive months (see "Sampling Errors" in Data Quality for further explanations).

2. Also referred to as Natural resources.

Note(s): Related CANSIM Tables 282-0087, 282-0088.

Table 4-7
Selected labour force characteristics (seasonally adjusted) — Manitoba

	November 2012	December 2012	S.E. ¹	Change from			Percent change from		
				last month	last December	twelve months ago	last month	last December	twelve months ago
in thousands (except rates)									
Both sexes, 15 years and over									
Population	966.3	967.3	...	1.0	9.3	9.3	0.1	1.0	1.0
Labour force	668.3	673.4	2.7	5.1	10.9	10.9	0.8	1.6	1.6
Employment	633.2	638.4	2.7	5.2	11.9	11.9	0.8	1.9	1.9
Employment full-time	512.8	515.9	3.7	3.1	7.8	7.8	0.6	1.5	1.5
Unemployment	35.1	35.1	2.2	0.0	-0.9	-0.9	0.0	-2.5	-2.5
Participation rate	69.2	69.6	0.3	0.4	0.4	0.4
Unemployment rate	5.3	5.2	0.3	-0.1	-0.2	-0.2
Employment rate	65.5	66.0	0.3	0.5	0.6	0.6
Part-time rate	19.0	19.2	0.5	0.2	0.3	0.3
Both sexes, 15 to 24 years									
Population	164.8	164.8	...	0.0	-0.1	-0.1	0.0	-0.1	-0.1
Labour force	112.8	115.4	1.6	2.6	2.0	2.0	2.3	1.8	1.8
Employment	100.6	103.7	1.5	3.1	2.9	2.9	3.1	2.9	2.9
Unemployment	12.3	11.6	1.4	-0.7	-1.0	-1.0	-5.7	-7.9	-7.9
Participation rate	68.4	70.0	1.0	1.6	1.2	1.2
Unemployment rate	10.9	10.1	1.2	-0.8	-1.0	-1.0
Employment rate	61.0	62.9	0.9	1.9	1.8	1.8
Part-time rate	41.5	40.8	1.8	-0.7	-0.3	-0.3
Men, 25 years and over									
Population	392.8	393.3	...	0.5	4.6	4.6	0.1	1.2	1.2
Labour force	300.5	301.5	1.3	1.0	5.8	5.8	0.3	2.0	2.0
Employment	288.4	289.4	1.5	1.0	5.2	5.2	0.3	1.8	1.8
Unemployment	12.0	12.0	1.1	0.0	0.4	0.4	0.0	3.4	3.4
Participation rate	76.5	76.7	0.3	0.2	0.6	0.6
Unemployment rate	4.0	4.0	0.4	0.0	0.1	0.1
Employment rate	73.4	73.6	0.4	0.2	0.5	0.5
Part-time rate	7.7	8.1	0.6	0.4	0.9	0.9
Women, 25 years and over									
Population	408.7	409.2	...	0.5	4.8	4.8	0.1	1.2	1.2
Labour force	255.0	256.6	1.5	1.6	3.3	3.3	0.6	1.3	1.3
Employment	244.2	245.2	1.6	1.0	3.6	3.6	0.4	1.5	1.5
Unemployment	10.8	11.4	1.2	0.6	-0.3	-0.3	5.6	-2.6	-2.6
Participation rate	62.4	62.7	0.4	0.3	0.1	0.1
Unemployment rate	4.2	4.4	0.4	0.2	-0.2	-0.2
Employment rate	59.8	59.9	0.4	0.1	0.2	0.2
Part-time rate	23.1	23.2	0.9	0.1	-0.4	-0.4
Industry									
	633.2	638.4	2.7	5.2	11.9	11.9	0.8	1.9	1.9
Goods-producing sector									
	147.2	149.0	2.4	1.8	8.5	8.5	1.2	6.0	6.0
Agriculture	23.6	23.9	1.0	0.3	2.7	2.7	1.3	12.7	12.7
Forestry, fishing, mining, quarrying, oil and gas extraction ²	7.5	7.5	0.6	0.0	1.0	1.0	0.0	15.4	15.4
Utilities	8.6	8.0	0.6	-0.6	-0.2	-0.2	-7.0	-2.4	-2.4
Construction	45.2	48.7	1.5	3.5	5.7	5.7	7.7	13.3	13.3
Manufacturing	62.3	60.9	1.7	-1.4	-0.6	-0.6	-2.2	-1.0	-1.0
Services-producing sector									
	486.0	489.3	3.2	3.3	3.3	3.3	0.7	0.7	0.7
Trade	93.0	92.6	2.1	-0.4	-1.1	-1.1	-0.4	-1.2	-1.2
Transportation and warehousing	36.0	36.4	1.3	0.4	0.2	0.2	1.1	0.6	0.6
Finance, insurance, real estate and leasing	34.9	35.1	1.3	0.2	-1.6	-1.6	0.6	-4.4	-4.4
Professional, scientific and technical services	28.1	29.4	1.2	1.3	3.4	3.4	4.6	13.1	13.1
Business, building and other support services	22.1	20.5	1.2	-1.6	2.2	2.2	-7.2	12.0	12.0
Educational services	48.8	50.3	1.5	1.5	3.5	3.5	3.1	7.5	7.5
Health care and social assistance	93.1	94.3	1.9	1.2	-1.4	-1.4	1.3	-1.5	-1.5
Information, culture and recreation	26.4	25.6	1.2	-0.8	2.2	2.2	-3.0	9.4	9.4
Accommodation and food services	38.8	41.0	1.6	2.2	-3.3	-3.3	5.7	-7.4	-7.4
Other services	28.5	28.4	1.1	-0.1	2.3	2.3	-0.4	8.8	8.8
Public administration	36.2	35.9	1.3	-0.3	-2.9	-2.9	-0.8	-7.5	-7.5

1. Average standard error of change in two consecutive months (see "Sampling Errors" in Data Quality for further explanations).

2. Also referred to as Natural resources.

Note(s): Related CANSIM Tables 282-0087, 282-0088.

Table 4-8
Selected labour force characteristics (seasonally adjusted) — Saskatchewan

	November 2012	December 2012	S.E. ¹	Change from			Percent change from		
				last month	last December	twelve months ago	last month	last December	twelve months ago
in thousands (except rates)									
Both sexes, 15 years and over									
Population	816.5	817.6	...	1.1	13.3	13.3	0.1	1.7	1.7
Labour force	565.7	570.7	2.5	5.0	13.5	13.5	0.9	2.4	2.4
Employment	540.4	544.4	2.5	4.0	16.4	16.4	0.7	3.1	3.1
Employment full-time	445.0	447.2	3.4	2.2	11.9	11.9	0.5	2.7	2.7
Unemployment	25.3	26.3	1.9	1.0	-2.9	-2.9	4.0	-9.9	-9.9
Participation rate	69.3	69.8	0.3	0.5	0.5	0.5
Unemployment rate	4.5	4.6	0.3	0.1	-0.6	-0.6
Employment rate	66.2	66.6	0.3	0.4	1.0	1.0
Part-time rate	17.7	17.9	0.6	0.2	0.3	0.3
Both sexes, 15 to 24 years									
Population	136.7	136.7	...	0.0	0.2	0.2	0.0	0.1	0.1
Labour force	92.9	94.3	1.5	1.4	-1.6	-1.6	1.5	-1.7	-1.7
Employment	83.6	85.0	1.5	1.4	-0.8	-0.8	1.7	-0.9	-0.9
Unemployment	9.3	9.3	1.2	0.0	-0.9	-0.9	0.0	-8.8	-8.8
Participation rate	68.0	69.0	1.1	1.0	-1.3	-1.3
Unemployment rate	10.0	9.9	1.2	-0.1	-0.7	-0.7
Employment rate	61.2	62.2	1.1	1.0	-0.7	-0.7
Part-time rate	36.2	36.4	1.9	0.1	1.0	1.0
Men, 25 years and over									
Population	335.4	336.0	...	0.6	7.4	7.4	0.2	2.3	2.3
Labour force	256.4	257.6	1.2	1.2	8.6	8.6	0.5	3.5	3.5
Employment	248.3	249.1	1.3	0.8	8.4	8.4	0.3	3.5	3.5
Unemployment	8.1	8.5	1.0	0.4	0.3	0.3	4.9	3.7	3.7
Participation rate	76.4	76.7	0.4	0.3	0.9	0.9
Unemployment rate	3.2	3.3	0.4	0.1	0.0	0.0
Employment rate	74.0	74.1	0.4	0.1	0.8	0.8
Part-time rate	6.6	6.4	0.6	-0.1	-0.6	-0.6
Women, 25 years and over									
Population	344.4	344.9	...	0.5	5.7	5.7	0.1	1.7	1.7
Labour force	216.4	218.8	1.5	2.4	6.5	6.5	1.1	3.1	3.1
Employment	208.5	210.3	1.4	1.8	8.8	8.8	0.9	4.4	4.4
Unemployment	7.9	8.5	1.0	0.6	-2.3	-2.3	7.6	-21.3	-21.3
Participation rate	62.8	63.4	0.4	0.6	0.8	0.8
Unemployment rate	3.7	3.9	0.5	0.2	-1.2	-1.2
Employment rate	60.5	61.0	0.4	0.5	1.6	1.6
Part-time rate	23.5	23.9	1.0	0.5	1.3	1.3
Industry									
	540.4	544.4	2.5	4.0	16.4	16.4	0.7	3.1	3.1
Goods-producing sector									
Agriculture	40.4	42.0	1.5	1.6	3.9	3.9	4.0	10.2	10.2
Forestry, fishing, mining, quarrying, oil and gas extraction ²	26.6	26.0	1.1	-0.6	2.9	2.9	-2.3	12.6	12.6
Utilities	6.0	4.8	0.4	-1.2	-0.5	-0.5	-20.0	-9.4	-9.4
Construction	47.5	47.3	1.5	-0.2	4.9	4.9	-0.4	11.6	11.6
Manufacturing	27.0	30.1	1.1	3.1	4.1	4.1	11.5	15.8	15.8
Services-producing sector									
Trade	392.9	394.2	3.0	1.3	1.1	1.1	0.3	0.3	0.3
Transportation and warehousing	80.5	81.9	1.9	1.4	-2.3	-2.3	1.7	-2.7	-2.7
Finance, insurance, real estate and leasing	24.4	25.5	1.1	1.1	-0.3	-0.3	4.5	-1.2	-1.2
Professional, scientific and technical services	30.0	28.2	1.1	-1.8	-2.7	-2.7	-6.0	-8.7	-8.7
Business, building and other support services	24.8	24.9	1.1	0.1	-1.3	-1.3	0.4	-5.0	-5.0
Educational services	14.0	12.9	0.9	-1.1	0.6	0.6	-7.9	4.9	4.9
Health care and social assistance	44.6	43.6	1.4	-1.0	4.7	4.7	-2.2	12.1	12.1
Information, culture and recreation	69.0	72.2	1.6	3.2	1.7	1.7	4.6	2.4	2.4
Accommodation and food services	19.4	19.3	1.0	-0.1	1.9	1.9	-0.5	10.9	10.9
Other services	27.4	28.3	1.5	0.9	-4.7	-4.7	3.3	-14.2	-14.2
Public administration	26.5	24.5	1.1	-2.0	-1.7	-1.7	-7.5	-6.5	-6.5
	32.3	32.9	1.1	0.6	5.3	5.3	1.9	19.2	19.2

1. Average standard error of change in two consecutive months (see "Sampling Errors" in Data Quality for further explanations).

2. Also referred to as Natural resources.

Note(s): Related CANSIM Tables 282-0087, 282-0088.

Table 4-9
Selected labour force characteristics (seasonally adjusted) — Alberta

	November 2012	December 2012	S.E. ¹	Change from			Percent change from		
				last month	last December	twelve months ago	last month	last December	twelve months ago
in thousands (except rates)									
Both sexes, 15 years and over									
Population	3,104.0	3,111.5	...	7.5	82.7	82.7	0.2	2.7	2.7
Labour force	2,266.5	2,267.2	8.6	0.7	24.4	24.4	0.0	1.1	1.1
Employment	2,171.1	2,165.0	9.1	-6.1	31.8	31.8	-0.3	1.5	1.5
Employment full-time	1,809.9	1,827.5	11.8	17.6	50.4	50.4	1.0	2.8	2.8
Unemployment	95.4	102.1	6.8	6.7	-7.6	-7.6	7.0	-6.9	-6.9
Participation rate	73.0	72.9	0.3	-0.1	-1.1	-1.1
Unemployment rate	4.2	4.5	0.3	0.3	-0.4	-0.4
Employment rate	69.9	69.6	0.3	-0.3	-0.8	-0.8
Part-time rate	16.6	15.6	0.5	-1.0	-1.1	-1.1
Both sexes, 15 to 24 years									
Population	509.1	509.4	...	0.3	2.7	2.7	0.1	0.5	0.5
Labour force	336.5	332.1	5.1	-4.4	-32.1	-32.1	-1.3	-8.8	-8.8
Employment	308.3	302.7	5.1	-5.6	-24.4	-24.4	-1.8	-7.5	-7.5
Unemployment	28.2	29.5	4.1	1.3	-7.7	-7.7	4.6	-20.7	-20.7
Participation rate	66.1	65.2	1.0	-0.9	-6.7	-6.7
Unemployment rate	8.4	8.9	1.1	0.5	-1.3	-1.3
Employment rate	60.6	59.4	1.0	-1.2	-5.2	-5.2
Part-time rate	33.8	32.4	1.7	-1.4	-2.5	-2.5
Men, 25 years and over									
Population	1,317.1	1,320.8	...	3.7	39.0	39.0	0.3	3.0	3.0
Labour force	1,074.5	1,074.0	4.4	-0.5	31.1	31.1	0.0	3.0	3.0
Employment	1,038.0	1,036.9	4.9	-1.1	33.3	33.3	-0.1	3.3	3.3
Unemployment	36.6	37.1	4.1	0.5	-2.2	-2.2	1.4	-5.6	-5.6
Participation rate	81.6	81.3	0.3	-0.3	-0.1	-0.1
Unemployment rate	3.4	3.5	0.4	0.1	-0.3	-0.3
Employment rate	78.8	78.5	0.4	-0.3	0.2	0.2
Part-time rate	5.9	5.3	0.5	-0.6	-0.7	-0.7
Women, 25 years and over									
Population	1,277.8	1,281.2	...	3.4	40.9	40.9	0.3	3.3	3.3
Labour force	855.5	861.0	5.0	5.5	25.3	25.3	0.6	3.0	3.0
Employment	824.8	825.5	5.2	0.7	23.0	23.0	0.1	2.9	2.9
Unemployment	30.7	35.5	3.6	4.8	2.3	2.3	15.6	6.9	6.9
Participation rate	67.0	67.2	0.4	0.2	-0.2	-0.2
Unemployment rate	3.6	4.1	0.4	0.5	0.1	0.1
Employment rate	64.5	64.4	0.4	-0.1	-0.3	-0.3
Part-time rate	23.7	22.4	0.9	-1.3	-0.3	-0.3
Industry									
	2,171.1	2,165.0	9.1	-6.1	31.8	31.8	-0.3	1.5	1.5
Goods-producing sector									
Agriculture	614.5	620.0	8.9	5.5	28.6	28.6	0.9	4.8	4.8
Forestry, fishing, mining, quarrying, oil and gas extraction ²	53.6	61.8	3.1	8.2	6.3	6.3	15.3	11.4	11.4
Utilities	174.8	164.9	4.9	-9.9	-1.7	-1.7	-5.7	-1.0	-1.0
Construction	21.7	22.8	1.7	1.1	8.2	8.2	5.1	56.2	56.2
Manufacturing	216.9	220.5	6.4	3.6	2.3	2.3	1.7	1.1	1.1
	147.6	150.0	5.1	2.4	13.6	13.6	1.6	10.0	10.0
Services-producing sector									
Trade	1,556.6	1,545.0	10.7	-11.6	3.2	3.2	-0.7	0.2	0.2
Transportation and warehousing	322.4	325.3	7.8	2.9	-10.1	-10.1	0.9	-3.0	-3.0
Finance, insurance, real estate and leasing	118.3	126.4	4.5	8.1	17.3	17.3	6.8	15.9	15.9
Professional, scientific and technical services	111.8	108.5	3.9	-3.3	8.4	8.4	-3.0	8.4	8.4
Business, building and other support services	163.6	158.6	5.4	-5.0	-5.6	-5.6	-3.1	-3.4	-3.4
Educational services	74.4	72.2	3.8	-2.2	-0.4	-0.4	-3.0	-0.6	-0.6
Health care and social assistance	134.9	126.6	4.6	-8.3	-0.3	-0.3	-6.2	-0.2	-0.2
Information, culture and recreation	229.3	230.7	5.8	1.4	-2.5	-2.5	0.6	-1.1	-1.1
Accommodation and food services	69.8	72.0	4.1	2.2	-6.5	-6.5	3.2	-8.3	-8.3
Other services	137.4	132.2	5.5	-5.2	6.5	6.5	-3.8	5.2	5.2
Public administration	108.0	101.9	4.8	-6.1	-8.2	-8.2	-5.6	-7.4	-7.4
	86.8	90.7	3.6	3.9	4.8	4.8	4.5	5.6	5.6

1. Average standard error of change in two consecutive months (see "Sampling Errors" in Data Quality for further explanations).

2. Also referred to as Natural resources.

Note(s): Related CANSIM Tables 282-0087, 282-0088.

Table 4-10
Selected labour force characteristics (seasonally adjusted) — British Columbia

	November 2012	December 2012	S.E. ¹	Change from			Percent change from		
				last month	last December	twelve months ago	last month	last December	twelve months ago
in thousands (except rates)									
Both sexes, 15 years and over									
Population	3,827.8	3,830.3	...	2.5	35.5	35.5	0.1	0.9	0.9
Labour force	2,480.2	2,474.3	10.5	-5.9	8.8	8.8	-0.2	0.4	0.4
Employment	2,312.7	2,313.3	10.4	0.6	19.4	19.4	0.0	0.8	0.8
Employment full-time	1,812.6	1,816.9	14.4	4.3	30.8	30.8	0.2	1.7	1.7
Unemployment	167.5	161.0	8.6	-6.5	-10.6	-10.6	-3.9	-6.2	-6.2
Participation rate	64.8	64.6	0.3	-0.2	-0.4	-0.4
Unemployment rate	6.8	6.5	0.3	-0.3	-0.5	-0.5
Employment rate	60.4	60.4	0.3	0.0	0.0	0.0
Part-time rate	21.6	21.5	0.6	-0.2	-0.7	-0.7
Both sexes, 15 to 24 years									
Population	588.8	588.5	...	-0.3	-2.0	-2.0	-0.1	-0.3	-0.3
Labour force	365.7	358.9	6.0	-6.8	-16.1	-16.1	-1.9	-4.3	-4.3
Employment	318.0	309.6	5.5	-8.4	-13.8	-13.8	-2.6	-4.3	-4.3
Unemployment	47.8	49.3	5.1	1.5	-2.3	-2.3	3.1	-4.5	-4.5
Participation rate	62.1	61.0	1.0	-1.1	-2.5	-2.5
Unemployment rate	13.1	13.7	1.3	0.6	-0.1	-0.1
Employment rate	54.0	52.6	0.9	-1.4	-2.2	-2.2
Part-time rate	46.6	45.4	2.0	-1.2	-3.7	-3.7
Men, 25 years and over									
Population	1,580.3	1,581.7	...	1.4	18.7	18.7	0.1	1.2	1.2
Labour force	1,103.1	1,100.5	5.4	-2.6	-3.9	-3.9	-0.2	-0.4	-0.4
Employment	1,039.5	1,045.4	5.7	5.9	11.7	11.7	0.6	1.1	1.1
Unemployment	63.6	55.1	4.8	-8.5	-15.6	-15.6	-13.4	-22.1	-22.1
Participation rate	69.8	69.6	0.3	-0.2	-1.1	-1.1
Unemployment rate	5.8	5.0	0.4	-0.8	-1.4	-1.4
Employment rate	65.8	66.1	0.4	0.3	0.0	0.0
Part-time rate	10.1	9.8	0.6	-0.3	-0.3	-0.3
Women, 25 years and over									
Population	1,658.7	1,660.1	...	1.4	18.9	18.9	0.1	1.2	1.2
Labour force	1,011.3	1,015.0	6.0	3.7	28.9	28.9	0.4	2.9	2.9
Employment	955.2	958.3	5.9	3.1	21.5	21.5	0.3	2.3	2.3
Unemployment	56.1	56.6	4.6	0.5	7.4	7.4	0.9	15.0	15.0
Participation rate	61.0	61.1	0.4	0.1	1.0	1.0
Unemployment rate	5.5	5.6	0.5	0.1	0.6	0.6
Employment rate	57.6	57.7	0.4	0.1	0.6	0.6
Part-time rate	25.9	26.5	0.9	0.6	0.3	0.3
Industry									
	2,312.7	2,313.3	10.4	0.6	19.4	19.4	0.0	0.8	0.8
Goods-producing sector									
Agriculture	29.2	27.9	2.3	-1.3	1.2	1.2	-4.5	4.5	4.5
Forestry, fishing, mining, quarrying, oil and gas extraction ²	53.7	48.7	2.7	-5.0	5.2	5.2	-9.3	12.0	12.0
Utilities	18.2	16.6	1.7	-1.6	6.1	6.1	-8.8	58.1	58.1
Construction	191.5	206.3	6.7	14.8	-0.8	-0.8	7.7	-0.4	-0.4
Manufacturing	168.1	164.7	5.9	-3.4	-4.1	-4.1	-2.0	-2.4	-2.4
Services-producing sector									
Trade	1,852.0	1,849.3	12.1	-2.7	12.0	12.0	-0.1	0.7	0.7
Transportation and warehousing	355.1	362.0	8.3	6.9	4.1	4.1	1.9	1.1	1.1
Finance, insurance, real estate and leasing	129.4	119.0	5.0	-10.4	-8.5	-8.5	-8.0	-6.7	-6.7
Professional, scientific and technical services	142.4	135.6	5.3	-6.8	2.8	2.8	-4.8	2.1	2.1
Business, building and other support services	181.5	174.4	6.2	-7.1	-19.6	-19.6	-3.9	-10.1	-10.1
Educational services	97.3	94.6	4.9	-2.7	12.3	12.3	-2.8	14.9	14.9
Health care and social assistance	174.8	186.8	5.7	12.0	24.5	24.5	6.9	15.1	15.1
Information, culture and recreation	263.9	265.1	6.7	1.2	-13.7	-13.7	0.5	-4.9	-4.9
Accommodation and food services	119.9	121.5	5.1	1.6	7.8	7.8	1.3	6.9	6.9
Other services	174.4	176.0	6.2	1.6	-2.7	-2.7	0.9	-1.5	-1.5
Public administration	107.2	105.4	4.8	-1.8	1.1	1.1	-1.7	1.1	1.1
	106.1	108.8	3.9	2.7	3.7	3.7	2.5	3.5	3.5

1. Average standard error of change in two consecutive months (see "Sampling Errors" in Data Quality for further explanations).

2. Also referred to as Natural resources.

Note(s): Related CANSIM Tables 282-0087, 282-0088.

Table 5-1

Labour force characteristics by census metropolitan area (seasonally adjusted) — 3 month moving average

	November 2012	December 2012	S.E. ¹	Change from			Percent change from		
				last month	last December	twelve months ago	last month	last December	twelve months ago
in thousands (except rates)									
St. John's, Newfoundland and Labrador									
Population	163.5	163.8	...	0.3	2.3	2.3	0.2	1.4	1.4
Labour force	118.6	118.7	0.7	0.1	3.6	3.6	0.1	3.1	3.1
Employment	110.4	110.4	0.8	0.0	3.9	3.9	0.0	3.7	3.7
Unemployment	8.2	8.3	0.4	0.1	-0.3	-0.3	1.2	-3.5	-3.5
Participation rate	72.5	72.5	0.5	0.0	1.2	1.2
Unemployment rate	6.9	7.0	0.4	0.1	-0.5	-0.5
Employment rate	67.5	67.4	0.5	-0.1	1.5	1.5
Halifax, Nova Scotia									
Population	344.5	344.9	...	0.4	4.1	4.1	0.1	1.2	1.2
Labour force	239.8	240.3	1.1	0.5	2.8	2.8	0.2	1.2	1.2
Employment	226.2	225.2	1.2	-1.0	0.6	0.6	-0.4	0.3	0.3
Unemployment	13.6	15.1	0.6	1.5	2.2	2.2	11.0	17.1	17.1
Participation rate	69.6	69.7	0.3	0.1	0.0	0.0
Unemployment rate	5.7	6.3	0.3	0.6	0.9	0.9
Employment rate	65.7	65.3	0.3	-0.4	-0.6	-0.6
Moncton, New Brunswick									
Population	117.5	117.6	...	0.1	1.9	1.9	0.1	1.6	1.6
Labour force	79.4	79.4	0.7	0.0	-0.3	-0.3	0.0	-0.4	-0.4
Employment	73.8	74.2	0.8	0.4	0.5	0.5	0.5	0.7	0.7
Unemployment	5.6	5.2	0.4	-0.4	-0.8	-0.8	-7.1	-13.3	-13.3
Participation rate	67.6	67.5	0.6	-0.1	-1.4	-1.4
Unemployment rate	7.1	6.5	0.5	-0.6	-1.0	-1.0
Employment rate	62.8	63.1	0.7	0.3	-0.6	-0.6
Saint John, New Brunswick									
Population	106.7	106.7	...	0.0	0.3	0.3	0.0	0.3	0.3
Labour force	69.7	68.4	0.8	-1.3	1.2	1.2	-1.9	1.8	1.8
Employment	63.2	61.6	0.7	-1.6	-0.6	-0.6	-2.5	-1.0	-1.0
Unemployment	6.5	6.8	0.4	0.3	1.7	1.7	4.6	33.3	33.3
Participation rate	65.3	64.1	0.7	-1.2	0.9	0.9
Unemployment rate	9.3	9.9	0.5	0.6	2.3	2.3
Employment rate	59.2	57.7	0.7	-1.5	-0.8	-0.8
Saguenay, Quebec									
Population	126.7	126.7	...	0.0	0.0	0.0	0.0	0.0	0.0
Labour force	77.4	77.4	0.9	0.0	4.8	4.8	0.0	6.6	6.6
Employment	71.0	69.8	0.9	-1.2	1.5	1.5	-1.7	2.2	2.2
Unemployment	6.4	7.6	0.4	1.2	3.4	3.4	18.8	81.0	81.0
Participation rate	61.1	61.1	0.7	0.0	3.8	3.8
Unemployment rate	8.3	9.8	0.5	1.5	4.0	4.0
Employment rate	56.0	55.1	0.7	-0.9	1.2	1.2
Québec, Quebec									
Population	644.4	644.9	...	0.5	5.5	5.5	0.1	0.9	0.9
Labour force	442.3	440.6	3.4	-1.7	-8.6	-8.6	-0.4	-1.9	-1.9
Employment	419.9	419.0	3.6	-0.9	-9.1	-9.1	-0.2	-2.1	-2.1
Unemployment	22.4	21.5	1.5	-0.9	0.4	0.4	-4.0	1.9	1.9
Participation rate	68.6	68.3	0.5	-0.3	-2.0	-2.0
Unemployment rate	5.1	4.9	0.3	-0.2	0.2	0.2
Employment rate	65.2	65.0	0.6	-0.2	-2.0	-2.0
Sherbrooke, Quebec									
Population	167.6	167.8	...	0.2	2.1	2.1	0.1	1.3	1.3
Labour force	107.2	106.5	1.2	-0.7	0.0	0.0	-0.7	0.0	0.0
Employment	99.2	99.1	1.2	-0.1	-0.3	-0.3	-0.1	-0.3	-0.3
Unemployment	8.0	7.4	0.5	-0.6	0.3	0.3	-7.5	4.2	4.2
Participation rate	64.0	63.5	0.7	-0.5	-0.8	-0.8
Unemployment rate	7.5	6.9	0.5	-0.6	0.2	0.2
Employment rate	59.2	59.1	0.7	-0.1	-0.9	-0.9

See notes at the end of the table.

Table 5-1 – continued

Labour force characteristics by census metropolitan area (seasonally adjusted) — 3 month moving average

	November 2012	December 2012	S.E. ¹	Change from			Percent change from		
				last month	last December	twelve months ago	last month	last December	twelve months ago
in thousands (except rates)									
Trois-Rivières, Quebec									
Population	126.1	126.2	...	0.1	1.1	1.1	0.1	0.9	0.9
Labour force	70.8	70.0	0.8	-0.8	-8.9	-8.9	-1.1	-11.3	-11.3
Employment	65.2	64.4	0.8	-0.8	-7.4	-7.4	-1.2	-10.3	-10.3
Unemployment	5.6	5.6	0.4	0.0	-1.6	-1.6	0.0	-22.2	-22.2
Participation rate	56.1	55.5	0.6	-0.6	-7.6	-7.6
Unemployment rate	7.9	8.0	0.5	0.1	-1.1	-1.1
Employment rate	51.7	51.0	0.6	-0.7	-6.4	-6.4
Montréal, Quebec									
Population	3,266.9	3,269.6	...	2.7	34.2	34.2	0.1	1.1	1.1
Labour force	2,178.4	2,188.3	7.6	9.9	89.0	89.0	0.5	4.2	4.2
Employment	1,998.5	2,013.1	7.9	14.6	99.0	99.0	0.7	5.2	5.2
Unemployment	179.9	175.2	4.9	-4.7	-10.1	-10.1	-2.6	-5.5	-5.5
Participation rate	66.7	66.9	0.2	0.2	2.0	2.0
Unemployment rate	8.3	8.0	0.2	-0.3	-0.8	-0.8
Employment rate	61.2	61.6	0.2	0.4	2.4	2.4
Ottawa-Gatineau, Ontario/Quebec									
Population	1,056.4	1,057.5	...	1.1	16.4	16.4	0.1	1.6	1.6
Labour force	763.6	767.1	3.8	3.5	23.8	23.8	0.5	3.2	3.2
Employment	712.8	716.1	3.9	3.3	19.5	19.5	0.5	2.8	2.8
Unemployment	50.8	51.0	1.7	0.2	4.3	4.3	0.4	9.2	9.2
Participation rate	72.3	72.5	0.4	0.2	1.1	1.1
Unemployment rate	6.7	6.6	0.2	-0.1	0.3	0.3
Employment rate	67.5	67.7	0.4	0.2	0.8	0.8
Ottawa-Gatineau, Quebec part, Ontario/Quebec									
Population	263.3	263.5	...	0.2	3.4	3.4	0.1	1.3	1.3
Labour force	183.8	183.9	1.2	0.1	-4.2	-4.2	0.1	-2.2	-2.2
Employment	172.2	171.9	1.3	-0.3	-2.9	-2.9	-0.2	-1.7	-1.7
Unemployment	11.6	11.9	0.6	0.3	-1.4	-1.4	2.6	-10.5	-10.5
Participation rate	69.8	69.8	0.5	0.0	-2.5	-2.5
Unemployment rate	6.3	6.5	0.3	0.2	-0.6	-0.6
Employment rate	65.4	65.2	0.5	-0.2	-2.0	-2.0
Ottawa-Gatineau, Ontario part, Ontario/Quebec									
Population	793.1	794.0	...	0.9	13.0	13.0	0.1	1.7	1.7
Labour force	579.7	583.2	3.6	3.5	28.0	28.0	0.6	5.0	5.0
Employment	540.6	544.2	3.6	3.6	22.4	22.4	0.7	4.3	4.3
Unemployment	39.2	39.0	1.6	-0.2	5.6	5.6	-0.5	16.8	16.8
Participation rate	73.1	73.5	0.5	0.4	2.4	2.4
Unemployment rate	6.8	6.7	0.3	-0.1	0.7	0.7
Employment rate	68.2	68.5	0.5	0.3	1.7	1.7
Kingston, Ontario									
Population	134.2	134.3	...	0.1	1.5	1.5	0.1	1.1	1.1
Labour force	85.6	85.9	0.8	0.3	0.4	0.4	0.4	0.5	0.5
Employment	79.7	79.6	0.8	-0.1	-0.5	-0.5	-0.1	-0.6	-0.6
Unemployment	6.0	6.3	0.3	0.3	0.9	0.9	5.0	16.7	16.7
Participation rate	63.8	64.0	0.6	0.2	-0.4	-0.4
Unemployment rate	7.0	7.3	0.4	0.3	1.0	1.0
Employment rate	59.4	59.3	0.6	-0.1	-1.0	-1.0
Peterborough, Ontario									
Population	103.2	103.2	...	0.0	0.6	0.6	0.0	0.6	0.6
Labour force	57.0	56.4	1.0	-0.6	-10.3	-10.3	-1.1	-15.4	-15.4
Employment	53.0	51.6	1.0	-1.4	-10.1	-10.1	-2.6	-16.4	-16.4
Unemployment	4.0	4.8	0.5	0.8	-0.1	-0.1	20.0	-2.0	-2.0
Participation rate	55.2	54.7	1.0	-0.5	-10.3	-10.3
Unemployment rate	7.0	8.5	0.8	1.5	1.2	1.2
Employment rate	51.4	50.0	1.0	-1.4	-10.1	-10.1

See notes at the end of the table.

Table 5-1 – continued

Labour force characteristics by census metropolitan area (seasonally adjusted) — 3 month moving average

	November 2012	December 2012	S.E. ¹	Change from			Percent change from		
				last month	last December	twelve months ago	last month	last December	twelve months ago
in thousands (except rates)									
Oshawa, Ontario									
Population	311.0	311.4	...	0.4	5.1	5.1	0.1	1.7	1.7
Labour force	210.4	213.2	1.5	2.8	0.3	0.3	1.3	0.1	0.1
Employment	191.5	192.9	1.5	1.4	-4.4	-4.4	0.7	-2.2	-2.2
Unemployment	19.0	20.3	0.9	1.3	4.8	4.8	6.8	31.0	31.0
Participation rate	67.7	68.5	0.5	0.8	-1.0	-1.0
Unemployment rate	9.0	9.5	0.4	0.5	2.2	2.2
Employment rate	61.6	61.9	0.5	0.3	-2.5	-2.5
Toronto, Ontario									
Population	4,910.8	4,917.8	...	7.0	97.4	97.4	0.1	2.0	2.0
Labour force	3,347.9	3,352.6	10.4	4.7	130.4	130.4	0.1	4.0	4.0
Employment	3,065.7	3,073.1	10.5	7.4	127.0	127.0	0.2	4.3	4.3
Unemployment	282.2	279.5	6.5	-2.7	3.4	3.4	-1.0	1.2	1.2
Participation rate	68.2	68.2	0.2	0.0	1.4	1.4
Unemployment rate	8.4	8.3	0.2	-0.1	-0.3	-0.3
Employment rate	62.4	62.5	0.2	0.1	1.4	1.4
Hamilton, Ontario									
Population	626.7	627.1	...	0.4	6.3	6.3	0.1	1.0	1.0
Labour force	404.8	405.8	3.1	1.0	-11.5	-11.5	0.2	-2.8	-2.8
Employment	380.3	381.9	3.1	1.6	-8.9	-8.9	0.4	-2.3	-2.3
Unemployment	24.6	23.8	1.4	-0.8	-2.7	-2.7	-3.3	-10.2	-10.2
Participation rate	64.6	64.7	0.5	0.1	-2.5	-2.5
Unemployment rate	6.1	5.9	0.3	-0.2	-0.5	-0.5
Employment rate	60.7	60.9	0.5	0.2	-2.1	-2.1
St. Catharines-Niagara, Ontario									
Population	340.1	340.1	...	0.0	1.0	1.0	0.0	0.3	0.3
Labour force	220.8	218.3	1.7	-2.5	6.9	6.9	-1.1	3.3	3.3
Employment	202.6	201.3	1.7	-1.3	5.5	5.5	-0.6	2.8	2.8
Unemployment	18.2	17.0	0.8	-1.2	1.3	1.3	-6.6	8.3	8.3
Participation rate	64.9	64.2	0.5	-0.7	1.9	1.9
Unemployment rate	8.2	7.8	0.4	-0.4	0.4	0.4
Employment rate	59.6	59.2	0.5	-0.4	1.5	1.5
Kitchener-Cambridge-Waterloo, Ontario									
Population	414.7	415.0	...	0.3	4.6	4.6	0.1	1.1	1.1
Labour force	291.8	292.9	2.0	1.1	0.7	0.7	0.4	0.2	0.2
Employment	273.4	273.3	2.1	-0.1	0.5	0.5	0.0	0.2	0.2
Unemployment	18.3	19.7	1.1	1.4	0.3	0.3	7.7	1.5	1.5
Participation rate	70.4	70.6	0.5	0.2	-0.6	-0.6
Unemployment rate	6.3	6.7	0.4	0.4	0.1	0.1
Employment rate	65.9	65.9	0.5	0.0	-0.6	-0.6
Brantford, Ontario									
Population	108.8	108.9	...	0.1	0.7	0.7	0.1	0.6	0.6
Labour force	72.2	71.9	0.7	-0.3	0.7	0.7	-0.4	1.0	1.0
Employment	66.3	66.1	0.8	-0.2	0.2	0.2	-0.3	0.3	0.3
Unemployment	5.9	5.9	0.4	0.0	0.6	0.6	0.0	11.3	11.3
Participation rate	66.4	66.0	0.7	-0.4	0.2	0.2
Unemployment rate	8.2	8.2	0.5	0.0	0.8	0.8
Employment rate	60.9	60.7	0.7	-0.2	-0.2	-0.2
Guelph, Ontario									
Population	115.8	115.9	...	0.1	1.9	1.9	0.1	1.7	1.7
Labour force	82.9	82.3	0.8	-0.6	-4.4	-4.4	-0.7	-5.1	-5.1
Employment	77.6	77.1	0.8	-0.5	-5.1	-5.1	-0.6	-6.2	-6.2
Unemployment	5.3	5.2	0.4	-0.1	0.7	0.7	-1.9	15.6	15.6
Participation rate	71.6	71.0	0.7	-0.6	-5.1	-5.1
Unemployment rate	6.4	6.3	0.4	-0.1	1.1	1.1
Employment rate	67.0	66.5	0.7	-0.5	-5.6	-5.6

See notes at the end of the table.

Table 5-1 – continued

Labour force characteristics by census metropolitan area (seasonally adjusted) — 3 month moving average

	November 2012	December 2012	S.E. ¹	Change from			Percent change from		
				last month	last December	twelve months ago	last month	last December	twelve months ago
in thousands (except rates)									
London, Ontario									
Population	417.2	417.4	...	0.2	3.6	3.6	0.0	0.9	0.9
Labour force	272.2	269.7	2.0	-2.5	3.4	3.4	-0.9	1.3	1.3
Employment	249.0	246.6	2.0	-2.4	5.8	5.8	-1.0	2.4	2.4
Unemployment	23.1	23.1	1.0	0.0	-2.4	-2.4	0.0	-9.4	-9.4
Participation rate	65.2	64.6	0.5	-0.6	0.2	0.2
Unemployment rate	8.5	8.6	0.4	0.1	-1.0	-1.0
Employment rate	59.7	59.1	0.5	-0.6	0.9	0.9
Windsor, Ontario									
Population	268.2	268.3	...	0.1	1.2	1.2	0.0	0.4	0.4
Labour force	169.2	169.4	1.6	0.2	4.0	4.0	0.1	2.4	2.4
Employment	152.1	151.6	1.6	-0.5	3.7	3.7	-0.3	2.5	2.5
Unemployment	17.0	17.8	0.8	0.8	0.4	0.4	4.7	2.3	2.3
Participation rate	63.1	63.1	0.6	0.0	1.2	1.2
Unemployment rate	10.0	10.5	0.5	0.5	0.0	0.0
Employment rate	56.7	56.5	0.6	-0.2	1.1	1.1
Barrie, Ontario									
Population	163.8	163.9	...	0.1	1.9	1.9	0.1	1.2	1.2
Labour force	111.7	116.7	1.3	5.0	0.2	0.2	4.5	0.2	0.2
Employment	103.4	108.1	1.3	4.7	3.5	3.5	4.5	3.3	3.3
Unemployment	8.3	8.6	0.8	0.3	-3.4	-3.4	3.6	-28.3	-28.3
Participation rate	68.2	71.2	0.8	3.0	-0.7	-0.7
Unemployment rate	7.4	7.4	0.7	0.0	-2.9	-2.9
Employment rate	63.1	66.0	0.8	2.9	1.4	1.4
Greater Sudbury, Ontario									
Population	138.7	138.6	...	-0.1	-0.9	-0.9	-0.1	-0.6	-0.6
Labour force	86.0	87.7	0.8	1.7	-0.7	-0.7	2.0	-0.8	-0.8
Employment	80.3	81.7	0.8	1.4	-1.7	-1.7	1.7	-2.0	-2.0
Unemployment	5.6	6.0	0.4	0.4	1.0	1.0	7.1	20.0	20.0
Participation rate	62.0	63.3	0.5	1.3	-0.1	-0.1
Unemployment rate	6.5	6.8	0.4	0.3	1.1	1.1
Employment rate	57.9	58.9	0.6	1.0	-0.9	-0.9
Thunder Bay, Ontario									
Population	103.1	103.1	...	0.0	0.7	0.7	0.0	0.7	0.7
Labour force	64.2	63.6	0.6	-0.6	-3.5	-3.5	-0.9	-5.2	-5.2
Employment	60.6	60.4	0.6	-0.2	-2.0	-2.0	-0.3	-3.2	-3.2
Unemployment	3.6	3.2	0.3	-0.4	-1.5	-1.5	-11.1	-31.9	-31.9
Participation rate	62.3	61.7	0.6	-0.6	-3.8	-3.8
Unemployment rate	5.6	5.0	0.4	-0.6	-2.0	-2.0
Employment rate	58.8	58.6	0.6	-0.2	-2.3	-2.3
Winnipeg, Manitoba									
Population	634.9	635.7	...	0.8	8.3	8.3	0.1	1.3	1.3
Labour force	439.3	440.4	1.3	1.1	3.1	3.1	0.3	0.7	0.7
Employment	415.7	415.9	1.4	0.2	3.4	3.4	0.0	0.8	0.8
Unemployment	23.5	24.5	0.8	1.0	-0.3	-0.3	4.3	-1.2	-1.2
Participation rate	69.2	69.3	0.2	0.1	-0.4	-0.4
Unemployment rate	5.3	5.6	0.2	0.3	-0.1	-0.1
Employment rate	65.5	65.4	0.2	-0.1	-0.3	-0.3
Regina, Saskatchewan									
Population	181.6	181.9	...	0.3	4.1	4.1	0.2	2.3	2.3
Labour force	131.9	133.2	0.7	1.3	3.0	3.0	1.0	2.3	2.3
Employment	126.6	127.5	0.8	0.9	2.4	2.4	0.7	1.9	1.9
Unemployment	5.3	5.7	0.3	0.4	0.5	0.5	7.5	9.6	9.6
Participation rate	72.6	73.2	0.4	0.6	0.0	0.0
Unemployment rate	4.0	4.3	0.3	0.3	0.3	0.3
Employment rate	69.7	70.1	0.4	0.4	-0.3	-0.3

See notes at the end of the table.

Table 5-1 – continued

Labour force characteristics by census metropolitan area (seasonally adjusted) — 3 month moving average

	November 2012	December 2012	S.E. ¹	Change from			Percent change from		
				last month	last December	twelve months ago	last month	last December	twelve months ago
in thousands (except rates)									
Saskatoon, Saskatchewan									
Population	229.0	229.7	...	0.7	7.3	7.3	0.3	3.3	3.3
Labour force	162.4	163.4	1.0	1.0	9.0	9.0	0.6	5.8	5.8
Employment	153.5	154.4	1.0	0.9	8.5	8.5	0.6	5.8	5.8
Unemployment	8.9	9.0	0.5	0.1	0.6	0.6	1.1	7.1	7.1
Participation rate	70.9	71.1	0.4	0.2	1.7	1.7
Unemployment rate	5.5	5.5	0.3	0.0	0.1	0.1
Employment rate	67.0	67.2	0.5	0.2	1.6	1.6
Calgary, Alberta									
Population	1,067.3	1,070.3	...	3.0	29.0	29.0	0.3	2.8	2.8
Labour force	791.7	797.4	3.4	5.7	21.6	21.6	0.7	2.8	2.8
Employment	754.5	760.5	3.7	6.0	27.1	27.1	0.8	3.7	3.7
Unemployment	37.2	36.9	2.0	-0.3	-5.5	-5.5	-0.8	-13.0	-13.0
Participation rate	74.2	74.5	0.3	0.3	0.0	0.0
Unemployment rate	4.7	4.6	0.3	-0.1	-0.9	-0.9
Employment rate	70.7	71.1	0.4	0.4	0.7	0.7
Edmonton, Alberta									
Population	1,000.1	1,003.2	...	3.1	31.4	31.4	0.3	3.2	3.2
Labour force	739.1	738.1	3.4	-1.0	21.2	21.2	-0.1	3.0	3.0
Employment	708.7	706.2	3.5	-2.5	24.7	24.7	-0.4	3.6	3.6
Unemployment	30.4	31.8	1.7	1.4	-3.6	-3.6	4.6	-10.2	-10.2
Participation rate	73.9	73.6	0.4	-0.3	-0.2	-0.2
Unemployment rate	4.1	4.3	0.2	0.2	-0.6	-0.6
Employment rate	70.9	70.4	0.4	-0.5	0.3	0.3
Kelowna, British Columbia									
Population	150.2	150.2	...	0.0	0.2	0.2	0.0	0.1	0.1
Labour force	100.1	100.3	1.6	0.2	-1.6	-1.6	0.2	-1.6	-1.6
Employment	92.3	92.9	1.7	0.6	-0.8	-0.8	0.7	-0.9	-0.9
Unemployment	7.8	7.5	0.8	-0.3	-0.7	-0.7	-3.8	-8.5	-8.5
Participation rate	66.6	66.8	1.0	0.2	-1.1	-1.1
Unemployment rate	7.8	7.5	0.8	-0.3	-0.5	-0.5
Employment rate	61.5	61.9	1.1	0.4	-0.6	-0.6
Abbotsford-Mission, British Columbia									
Population	146.0	146.1	...	0.1	1.2	1.2	0.1	0.8	0.8
Labour force	100.7	99.7	0.7	-1.0	3.7	3.7	-1.0	3.9	3.9
Employment	93.2	92.1	0.8	-1.1	4.7	4.7	-1.2	5.4	5.4
Unemployment	7.5	7.7	0.5	0.2	-1.0	-1.0	2.7	-11.5	-11.5
Participation rate	69.0	68.2	0.5	-0.8	1.9	1.9
Unemployment rate	7.4	7.7	0.5	0.3	-1.4	-1.4
Employment rate	63.8	63.0	0.5	-0.8	2.7	2.7
Vancouver, British Columbia									
Population	2,070.3	2,073.1	...	2.8	35.6	35.6	0.1	1.7	1.7
Labour force	1,370.9	1,362.5	4.9	-8.4	5.8	5.8	-0.6	0.4	0.4
Employment	1,272.0	1,268.9	5.0	-3.1	5.8	5.8	-0.2	0.5	0.5
Unemployment	98.8	93.6	2.9	-5.2	0.0	0.0	-5.3	0.0	0.0
Participation rate	66.2	65.7	0.2	-0.5	-0.9	-0.9
Unemployment rate	7.2	6.9	0.2	-0.3	0.0	0.0
Employment rate	61.4	61.2	0.2	-0.2	-0.8	-0.8
Victoria, British Columbia									
Population	303.1	303.3	...	0.2	2.0	2.0	0.1	0.7	0.7
Labour force	195.8	197.4	1.5	1.6	7.0	7.0	0.8	3.7	3.7
Employment	185.2	186.7	1.5	1.5	7.5	7.5	0.8	4.2	4.2
Unemployment	10.6	10.7	0.6	0.1	-0.5	-0.5	0.9	-4.5	-4.5
Participation rate	64.6	65.1	0.5	0.5	1.9	1.9
Unemployment rate	5.4	5.4	0.3	0.0	-0.5	-0.5
Employment rate	61.1	61.6	0.5	0.5	2.1	2.1

1. Average standard error of change in two consecutive months (see "Sampling Errors" in Data Quality for further explanations).

Note(s): Estimates from this table are based on 2006 census population counts. Related CANSIM Table 282-0116.

Table 5-2
Labour force characteristics by census metropolitan area (seasonally adjusted) — Monthly

	November 2012	December 2012	S.E. ¹	Change from			Percent change from		
				last month	last December	twelve months ago	last month	last December	twelve months ago
in thousands (except rates)									
Montréal, Quebec									
Population	3,269.7	3,272.2	...	2.5	34.4	34.4	0.1	1.1	1.1
Labour force	2,184.1	2,200.4	15.8	16.3	103.0	103.0	0.7	4.9	4.9
Employment	2,001.1	2,035.3	15.9	34.2	127.8	127.8	1.7	6.7	6.7
Unemployment	183.0	165.1	11.7	-17.9	-24.8	-24.8	-9.8	-13.1	-13.1
Participation rate	66.8	67.2	0.5	0.4	2.4	2.4
Unemployment rate	8.4	7.5	0.5	-0.9	-1.6	-1.6
Employment rate	61.2	62.2	0.5	1.0	3.3	3.3
Toronto, Ontario									
Population	4,917.9	4,924.7	...	6.8	96.4	96.4	0.1	2.0	2.0
Labour force	3,353.6	3,356.5	21.6	2.9	142.6	142.6	0.1	4.4	4.4
Employment	3,079.6	3,079.7	21.3	0.1	135.5	135.5	0.0	4.6	4.6
Unemployment	273.9	276.8	15.7	2.9	7.1	7.1	1.1	2.6	2.6
Participation rate	68.2	68.2	0.4	0.0	1.6	1.6
Unemployment rate	8.2	8.2	0.5	0.0	-0.2	-0.2
Employment rate	62.6	62.5	0.4	-0.1	1.5	1.5
Vancouver, British Columbia									
Population	2,073.2	2,076.0	...	2.8	36.3	36.3	0.1	1.8	1.8
Labour force	1,359.0	1,354.9	10.7	-4.1	4.5	4.5	-0.3	0.3	0.3
Employment	1,261.0	1,270.9	10.4	9.9	13.7	13.7	0.8	1.1	1.1
Unemployment	98.0	84.0	7.1	-14.0	-9.1	-9.1	-14.3	-9.8	-9.8
Participation rate	65.6	65.3	0.5	-0.3	-0.9	-0.9
Unemployment rate	7.2	6.2	0.5	-1.0	-0.7	-0.7
Employment rate	60.8	61.2	0.5	0.4	-0.4	-0.4

1. Average standard error of change in two consecutive months (see "Sampling Errors" in Data Quality for further explanations).

Note(s): Estimates from this table are based on 2006 census population counts. Related CANSIM Table 282-0117.

Table 6-1

Labour force characteristics by province and economic region, ¹ unadjusted for seasonality, 3 month moving average ending in December 2011 and December 2012

	Population	Labour force			Participation rate	Unemployment rate	Employment rate
		Labour force	Employment	Unemployment			
	in thousands						
Canada ²							
2011	28,106.7	18,606.5	17,330.1	1,276.4	66.2	6.9	61.7
2012	28,442.1	18,855.2	17,602.4	1,252.9	66.3	6.6	61.9
Newfoundland and Labrador							
2011	428.6	255.4	223.2	32.2	59.6	12.6	52.1
2012	427.8	262.7	232.5	30.2	61.4	11.5	54.3
Avalon Peninsula [1010]							
2011	221.2	144.4	130.6	13.8	65.3	9.6	59.0
2012	222.5	149.8	138.0	11.8	67.3	7.9	62.0
South Coast-Burin Peninsula [1020]							
2011	30.4	16.4	12.9	3.6	53.9	22.0	42.4
2012	29.9	15.7	13.1	2.6	52.5	16.6	43.8
West Coast-Northern Peninsula-Labrador [1030]							
2011	86.6	48.9	41.8	7.0	56.5	14.3	48.3
2012	85.7	50.4	42.3	8.1	58.8	16.1	49.4
Notre Dame-Central Bonavista Bay [1040]							
2011	90.4	45.7	37.9	7.8	50.6	17.1	41.9
2012	89.7	46.8	39.1	7.7	52.2	16.5	43.6
Prince Edward Island							
2011	119.8	80.5	71.4	9.1	67.2	11.3	59.6
2012	120.6	81.8	72.5	9.3	67.8	11.4	60.1
Nova Scotia							
2011	779.5	492.9	454.4	38.5	63.2	7.8	58.3
2012	780.6	496.3	453.5	42.8	63.6	8.6	58.1
Cape Breton [1210]							
2011	111.6	62.8	52.8	10.0	56.3	15.9	47.3
2012	110.5	59.9	50.7	9.3	54.2	15.5	45.9
North Shore [1220]							
2011	129.6	77.0	69.3	7.7	59.4	10.0	53.5
2012	129.0	79.4	70.4	9.0	61.6	11.3	54.6
Annapolis Valley [1230]							
2011	99.6	58.2	54.2	4.0	58.4	6.9	54.4
2012	99.5	61.6	57.0	4.7	61.9	7.6	57.3
Southern [1240]							
2011	97.9	58.5	52.8	5.8	59.8	9.9	53.9
2012	96.8	57.0	50.0	7.0	58.9	12.3	51.7
Halifax [1250]							
2011	340.8	236.4	225.3	11.0	69.4	4.7	66.1
2012	344.9	238.4	225.4	12.9	69.1	5.4	65.4
New Brunswick							
2011	620.0	385.8	352.3	33.5	62.2	8.7	56.8
2012	620.2	386.7	347.0	39.7	62.4	10.3	55.9
Campbellton-Miramichi [1310]							
2011	128.7	68.6	59.3	9.3	53.3	13.6	46.1
2012	127.2	72.0	59.2	12.7	56.6	17.6	46.5
Moncton-Richibucto [1320]							
2011	172.5	113.9	105.5	8.4	66.0	7.4	61.2
2012	174.0	112.1	103.8	8.4	64.4	7.5	59.7
Saint John-St. Stephen [1330]							
2011	144.5	92.0	85.5	6.5	63.7	7.1	59.2
2012	144.6	91.7	82.5	9.3	63.4	10.1	57.1

See notes at the end of the table.

Table 6-1 – continued

Labour force characteristics by province and economic region, ¹ unadjusted for seasonality, 3 month moving average ending in December 2011 and December 2012

	Population	Labour force			Participation rate	Unemployment rate	Employment rate
		Labour force	Employment	Unemployment			
	in thousands						
Fredericton-Oromocto [1340]							
2011	109.7	71.8	66.2	5.6	65.5	7.8	60.3
2012	110.4	70.8	65.3	5.6	64.1	7.9	59.1
Edmundston-Woodstock [1350]							
2011	64.8	39.5	35.9	3.6	61.0	9.1	55.4
2012	64.0	40.0	36.3	3.7	62.5	9.3	56.7
Quebec							
2011	6,600.1	4,246.7	3,917.9	328.8	64.3	7.7	59.4
2012	6,659.9	4,330.5	4,022.1	308.4	65.0	7.1	60.4
Gaspésie-Îles-de-la-Madeleine [2410]							
2011	78.6	40.1	35.1	5.0	51.0	12.5	44.7
2012	78.6	40.5	34.4	6.1	51.5	15.1	43.8
Bas-Saint-Laurent [2415]							
2011	166.7	93.9	86.8	7.1	56.3	7.6	52.1
2012	166.4	99.1	92.8	6.3	59.6	6.4	55.8
Capitale-Nationale [2420]							
2011	591.0	401.2	381.3	19.9	67.9	5.0	64.5
2012	596.3	396.8	379.1	17.8	66.5	4.5	63.6
Chaudière-Appalaches [2425]							
2011	334.2	234.6	224.7	9.8	70.2	4.2	67.2
2012	336.3	230.6	221.7	8.9	68.6	3.9	65.9
Estrie [2430]							
2011	259.1	159.9	150.8	9.1	61.7	5.7	58.2
2012	261.4	167.4	156.6	10.8	64.0	6.5	59.9
Centre-du-Québec [2433]							
2011	191.1	115.4	106.7	8.7	60.4	7.5	55.8
2012	192.6	117.6	110.2	7.4	61.1	6.3	57.2
Montréal [2435]							
2011	1,194.8	775.6	720.8	54.8	64.9	7.1	60.3
2012	1,208.1	832.2	783.7	48.5	68.9	5.8	64.9
Montréal [2440]							
2011	1,625.7	1,021.8	914.1	107.7	62.9	10.5	56.2
2012	1,637.2	1,053.2	949.4	103.8	64.3	9.9	58.0
Laval [2445]							
2011	335.3	215.9	198.4	17.5	64.4	8.1	59.2
2012	341.0	228.8	211.9	16.9	67.1	7.4	62.1
Lanaudière [2450]							
2011	393.8	277.9	256.5	21.4	70.6	7.7	65.1
2012	399.7	252.7	234.9	17.8	63.2	7.0	58.8
Laurentides [2455]							
2011	466.2	308.2	284.5	23.7	66.1	7.7	61.0
2012	473.3	315.4	296.1	19.4	66.6	6.2	62.6
Outaouais [2460]							
2011	307.9	215.2	200.5	14.7	69.9	6.8	65.1
2012	312.2	209.8	196.1	13.7	67.2	6.5	62.8
Abitibi-Témiscamingue [2465]							
2011	117.8	76.7	71.2	5.5	65.1	7.2	60.4
2012	118.0	78.0	73.0	5.0	66.1	6.4	61.9
Mauricie [2470]							
2011	221.8	131.1	120.8	10.2	59.1	7.8	54.5
2012	222.3	116.7	105.5	11.2	52.5	9.6	47.5

See notes at the end of the table.

Table 6-1 – continued

Labour force characteristics by province and economic region, ¹ unadjusted for seasonality, 3 month moving average ending in December 2011 and December 2012

	Population	Labour force			Participation rate	Unemployment rate	Employment rate
		Labour force	Employment	Unemployment			
	in thousands						
Saguenay-Lac-Saint-Jean [2475]							
2011	225.4	124.8	116.4	8.4	55.4	6.7	51.6
2012	225.4	137.2	125.4	11.7	60.9	8.5	55.6
Côte-Nord and Nord-du-Québec [2480, 2490]							
2011	90.7	54.4	49.1	5.3	60.0	9.7	54.1
2012	90.9	54.7	51.5	3.3	60.2	6.0	56.7
Ontario							
2011	10,979.7	7,261.3	6,744.4	516.9	66.1	7.1	61.4
2012	11,118.9	7,353.7	6,826.8	526.9	66.1	7.2	61.4
Ottawa [3510]							
2011	1,053.5	726.3	683.5	42.8	68.9	5.9	64.9
2012	1,067.5	738.9	694.8	44.1	69.2	6.0	65.1
Kingston-Pembroke [3515]							
2011	371.2	233.7	219.5	14.1	63.0	6.0	59.1
2012	372.5	229.9	211.7	18.2	61.7	7.9	56.8
Muskoka-Kawartha [3520]							
2011	319.3	195.2	181.6	13.6	61.1	7.0	56.9
2012	320.6	173.3	160.8	12.5	54.1	7.2	50.2
Toronto [3530]							
2011	5,079.4	3,372.5	3,107.8	264.7	66.4	7.8	61.2
2012	5,177.2	3,509.7	3,237.6	272.0	67.8	7.7	62.5
Kitchener-Waterloo-Barrie [3540]							
2011	1,042.5	737.0	690.4	46.6	70.7	6.3	66.2
2012	1,055.7	737.1	693.7	43.4	69.8	5.9	65.7
Hamilton-Niagara Peninsula [3550]							
2011	1,172.6	767.8	718.1	49.7	65.5	6.5	61.2
2012	1,182.7	761.1	712.7	48.4	64.4	6.4	60.3
London [3560]							
2011	542.1	352.0	323.1	28.9	64.9	8.2	59.6
2012	546.4	350.6	325.2	25.5	64.2	7.3	59.5
Windsor-Sarnia [3570]							
2011	519.0	323.9	297.3	26.6	62.4	8.2	57.3
2012	518.8	325.0	297.3	27.7	62.6	8.5	57.3
Stratford-Bruce Peninsula [3580]							
2011	245.7	164.7	157.2	7.5	67.0	4.6	64.0
2012	245.8	151.5	144.5	7.0	61.6	4.6	58.8
Northeast [3590]							
2011	461.2	277.2	261.1	16.1	60.1	5.8	56.6
2012	458.7	270.0	247.5	22.5	58.9	8.3	54.0
Northwest [3595]							
2011	173.2	111.0	104.6	6.3	64.1	5.7	60.4
2012	173.0	106.6	101.1	5.5	61.6	5.2	58.4
Manitoba							
2011	957.4	657.0	625.1	31.9	68.6	4.9	65.3
2012	966.3	664.5	632.7	31.8	68.8	4.8	65.5
Southeast [4610]							
2011	83.3	56.8	54.4	2.4	68.2	4.2	65.3
2012	84.6	58.8	56.0	2.8	69.5	4.8	66.2
South Central [4620]							
2011	47.8	31.6	30.7	0.9	66.1	2.8	64.2
2012	48.4	31.7	30.9	0.8	65.5	2.5	63.8

See notes at the end of the table.

Table 6-1 – continued

Labour force characteristics by province and economic region, ¹ unadjusted for seasonality, 3 month moving average ending in December 2011 and December 2012

	Population	Labour force			Participation rate	Unemployment rate	Employment rate
		Labour force	Employment	Unemployment			
	in thousands						
Southwest [4630]							
2011	83.8	57.5	55.4	2.2	68.6	3.8	66.1
2012	84.0	60.7	59.0	1.6	72.3	2.6	70.2
North Central [4640]							
2011	36.7	23.3	22.3	1.0	63.5	4.3	60.8
2012	36.8	23.7	23.0	0.8	64.4	3.4	62.5
Winnipeg [4650]							
2011	573.4	397.2	375.9	21.4	69.3	5.4	65.6
2012	580.5	400.9	379.9	21.0	69.1	5.2	65.4
Interlake [4660]							
2011	72.7	51.2	48.9	2.4	70.4	4.7	67.3
2012	73.3	50.2	48.4	1.8	68.5	3.6	66.0
Parklands and North [4670, 4680]							
2011	59.7	39.3	37.6	1.7	65.8	4.3	63.0
2012	58.8	38.5	35.5	3.0	65.5	7.8	60.4
Saskatchewan							
2011	803.6	549.7	525.6	24.1	68.4	4.4	65.4
2012	816.4	563.7	540.5	23.2	69.0	4.1	66.2
Regina-Moose Mountain [4710]							
2011	238.9	174.5	169.0	5.4	73.0	3.1	70.7
2012	243.8	177.9	172.2	5.7	73.0	3.2	70.6
Swift Current-Moose Jaw [4720]							
2011	81.1	50.9	48.9	2.0	62.8	3.9	60.3
2012	81.2	51.7	50.4	1.3	63.7	2.5	62.1
Saskatoon-Biggar [4730]							
2011	266.9	182.0	173.8	8.2	68.2	4.5	65.1
2012	273.9	190.8	182.1	8.7	69.7	4.6	66.5
Yorkton-Melville [4740]							
2011	62.8	41.7	40.1	1.7	66.4	4.1	63.9
2012	62.6	40.6	39.3	1.3	64.9	3.2	62.8
Prince Albert and Northern [4750, 4760]							
2011	153.8	100.6	93.8	6.8	65.4	6.8	61.0
2012	154.9	102.7	96.5	6.2	66.3	6.0	62.3
Alberta							
2011	3,025.5	2,230.1	2,125.6	104.5	73.7	4.7	70.3
2012	3,103.7	2,253.7	2,161.9	91.8	72.6	4.1	69.7
Lethbridge-Medicine Hat [4810]							
2011	220.0	150.0	143.8	6.2	68.2	4.1	65.4
2012	224.0	147.2	141.1	6.1	65.7	4.1	63.0
Camrose-Drumheller [4820]							
2011	156.3	111.0	106.7	4.3	71.0	3.9	68.3
2012	158.1	104.7	101.6	3.1	66.2	3.0	64.3
Calgary [4830]							
2011	1,119.2	835.5	794.3	41.2	74.7	4.9	71.0
2012	1,151.1	851.8	815.5	36.3	74.0	4.3	70.8
Banff-Jasper-Rocky Mountain House [4840]							
2011	71.9	53.9	52.2	1.7	75.0	3.2	72.6
2012	72.7	53.7	51.1	2.6	73.9	4.8	70.3

See notes at the end of the table.

Table 6-1 – continued

Labour force characteristics by province and economic region, ¹ unadjusted for seasonality, 3 month moving average ending in December 2011 and December 2012

	Population	Labour force			Participation rate	Unemployment rate	Employment rate
		Labour force	Employment	Unemployment			
		in thousands					
Red Deer [4850]							
2011	155.2	117.9	111.8	6.2	76.0	5.3	72.0
2012	158.8	113.9	109.7	4.2	71.7	3.7	69.1
Edmonton [4860]							
2011	1,007.8	737.2	703.0	34.2	73.1	4.6	69.8
2012	1,039.1	759.1	727.9	31.2	73.1	4.1	70.1
Athabasca-Grande Prairie-Peace River [4870]							
2011	191.1	141.4	134.3	7.0	74.0	5.0	70.3
2012	193.0	137.6	132.3	5.3	71.3	3.9	68.5
Wood Buffalo-Cold Lake [4880]							
2011	104.0	83.2	79.5	3.6	80.0	4.3	76.4
2012	106.9	85.7	82.7	3.0	80.2	3.5	77.4
British Columbia							
2011	3,792.5	2,447.1	2,290.2	156.9	64.5	6.4	60.4
2012	3,827.6	2,461.6	2,312.9	148.7	64.3	6.0	60.4
Vancouver Island and Coast [5910]							
2011	657.0	381.8	357.7	24.2	58.1	6.3	54.4
2012	659.2	393.0	370.1	22.9	59.6	5.8	56.1
Lower Mainland-Southwest [5920]							
2011	2,325.3	1,536.3	1,439.3	97.0	66.1	6.3	61.9
2012	2,363.3	1,544.4	1,448.5	95.9	65.3	6.2	61.3
Thompson-Okanagan [5930]							
2011	437.8	273.3	255.2	18.1	62.4	6.6	58.3
2012	434.5	267.1	251.8	15.2	61.5	5.7	58.0
Kootenay [5940]							
2011	127.3	80.8	75.4	5.5	63.5	6.8	59.2
2012	126.6	83.2	77.3	5.8	65.7	7.0	61.1
Cariboo [5950]							
2011	127.2	88.2	81.8	6.4	69.3	7.3	64.3
2012	126.3	89.2	85.3	3.9	70.6	4.4	67.5
North Coast and Nechako [5960, 5970]							
2011	66.5	48.0	43.2	4.7	72.2	9.8	65.0
2012	65.7	42.7	39.2	3.5	65.0	8.2	59.7
Northeast [5980]							
2011	51.5	38.7	37.7	x	75.1	x	73.2
2012	52.0	42.0	40.6	x	80.8	x	78.1

1. For geographic descriptions of economic regions, refer to the Guide to the Labour Force Survey (catalogue number 71-543-GIE).

2. Estimates for Canada are a sum of the provincial totals and exclude estimates from Yukon, Northwest Territories and Nunavut.

Note(s): Related CANSIM table 282-0054.

Table 6-2
Labour force characteristics by territories, unadjusted for seasonality, 3 month moving average ending in
December 2011 and December 2012

	Population	Labour force			Participation rate	Unemployment rate	Employment rate
		Labour force	Employment	Unemployment			
		in thousands			percent		
Yukon ¹							
2011	26.7	20.4	19.4	1.0	76.4	4.9	72.7
2012	27.2	19.8	18.7	1.2	72.8	6.1	68.8
Northwest Territories ²							
2011	32.1	24.0	22.1	1.9	74.8	7.9	68.8
2012	32.1	24.4	22.6	1.8	76.0	7.4	70.4
Nunavut ³							
2011	20.9	13.4	11.4	2.0	64.3	14.9	54.8
2012	21.3	13.4	11.5	1.9	62.9	14.2	54.0

1. Since 1992, the Labour force survey (LFS) has been conducted in the Yukon, using an alternative methodology that accommodates some of the operational difficulties inherent to remote locales. These estimates are not included in the national totals. In 1995, the LFS in the Yukon underwent a sample redesign. One result of the redesign was that the covered population increased from 85% to 92%, which is reflected by the sharp increase in the three month moving averages estimates of January, February and March of 1995 for all the level estimates. Users are therefore warned to be cautious when comparing estimates before January 1995 to estimates for January 1995 and forward.
2. Since 2001, the Labour force survey (LFS) has been administered in the Northwest Territories, using an alternative methodology that accommodates some of the operational difficulties inherent to remote locales. These estimates are not included in national totals.
3. Since 2004, the Labour force survey (LFS) has been administered in Nunavut, using an alternative methodology that accommodates some of the operational difficulties inherent to remote locales. These estimates are 3-month moving averages and are not included in national totals. From January 2004 to December 2007, estimates represent about 70% of all Nunavut residents aged 15 and over. Starting in January 2008, coverage was extended to 92%, so that by March 2008, the 3-month moving average is completely based on the extended coverage. Because of the large difference in coverage, users are recommended not to compare estimates prior to January 2008 with data afterwards. The January and February 2008 3-month moving average estimates are based on a mix of both coverages, since the extended coverage was introduced in January 2008. Estimates from January 2004 to December 2007 are based on the 10 largest communities in Nunavut: Iqaluit, Rankin Inlet, Cambridge Bay, Kugluktuk, Baker Lake, Arviat, Pond Inlet, Cape Dorset, Pangnirtung, Igloolik. Estimates from March 2008 to present cover the above communities as well as: Taloyoak, Gjoa Haven, Kugaaruk, Coral Harbour, Repulse Bay, Qikiqtarjuaq, Arctic Bay, Hall Beach, Clyde River.

Note(s): Related CANSIM table 282-0100.

Table 7
Average usual hours and wages of employees by selected characteristics, Canada, unadjusted for seasonality

	Employees				Full-time			Part-time		
	Number	Average weekly hours	Average weekly wages	Average hourly wages	Number	Average weekly hours	Average weekly wages	Number	Average weekly hours	Average weekly wages
	thousands		current dollars		thousands		current dollars	thousands		current dollars
December 2012										
15 years and over	14,929.9	35.1	873.15	23.94	12,115.4	39.3	1,008.97	2,814.5	17.0	288.50
15 to 24 years	2,290.1	26.0	385.11	13.76	1,074.6	38.8	623.98	1,215.5	14.6	173.94
25 years and over	12,639.8	36.7	961.58	25.78	11,040.8	39.4	1,046.44	1,599.0	18.7	375.59
Men	7,457.3	37.7	999.20	25.80	6,578.6	40.5	1,098.93	878.7	16.2	252.60
Women	7,472.5	32.5	747.36	22.09	5,536.7	37.8	902.09	1,935.8	17.3	304.79
Union coverage										
Union coverage	4,752.6	35.6	990.27	27.35	4,060.0	38.6	1,087.29	692.6	18.5	421.49
No union coverage	10,177.2	34.8	818.46	22.34	8,055.4	39.7	969.50	2,121.9	16.4	245.09
Job permanency										
Permanent	12,987.9	36.1	917.31	24.64	11,037.4	39.3	1,024.37	1,950.5	18.1	311.48
Temporary	1,941.9	28.0	577.82	19.28	1,077.9	39.0	851.31	864.0	14.4	236.61
Occupation										
Management	1,054.7	39.8	1,475.92	37.22	1,032.3	40.3	1,498.08	22.5	17.4	458.34
Business, finance and administrative	2,791.3	35.2	813.57	22.63	2,394.6	38.1	896.01	396.7	17.6	315.93
Natural and applied sciences	1,161.0	38.4	1,277.24	33.21	1,123.4	39.0	1,302.10	37.6	18.7	534.93
Health	1,023.9	33.6	934.38	27.72	788.9	37.7	1,051.60	235.0	19.7	540.79
Social science, education, government service and religion	1,534.0	33.7	1,037.57	30.14	1,234.6	37.8	1,186.72	299.4	16.8	422.50
Art, culture, recreation and sport	357.5	28.3	696.00	22.52	222.8	38.3	990.62	134.7	11.7	208.90
Sales and service	3,802.0	30.1	516.95	16.01	2,321.7	38.6	709.77	1,480.4	16.7	214.54
Trades, transport and equipment operators	2,188.7	40.1	965.81	23.75	2,037.3	41.7	1,016.21	151.4	17.9	287.41
Occupations unique to primary industry	250.9	42.5	964.48	22.07	223.6	46.0	1,056.63	27.3	14.4	209.80
Occupations unique to processing, manufacturing and utilities	765.9	39.3	792.82	20.04	736.3	40.1	814.20	29.5	18.0	259.79
December 2011										
15 years and over	14,597.7	35.1	853.57	23.39	11,807.8	39.4	986.86	2,789.9	17.0	289.47
15 to 24 years	2,291.8	26.3	386.49	13.58	1,099.8	38.9	618.95	1,192.0	14.8	172.01
25 years and over	12,305.9	36.7	940.56	25.22	10,708.0	39.4	1,024.64	1,597.9	18.7	377.10
Men	7,302.2	37.7	975.94	25.17	6,446.0	40.6	1,071.21	856.2	16.2	258.64
Women	7,295.5	32.5	731.09	21.61	5,361.7	37.9	885.44	1,933.7	17.4	303.13
Union coverage										
Union coverage	4,560.1	35.7	976.53	26.98	3,887.0	38.6	1,070.81	673.1	18.9	432.09
No union coverage	10,037.6	34.8	797.71	21.76	7,920.8	39.7	945.66	2,116.8	16.4	244.12
Job permanency										
Permanent	12,748.3	36.1	894.30	24.03	10,779.6	39.4	1,000.87	1,968.7	18.1	310.74
Temporary	1,849.4	28.4	572.84	19.00	1,028.1	39.5	839.90	821.3	14.4	238.50
Occupation										
Management	979.7	39.7	1,436.63	36.37	946.6	40.4	1,468.30	33.2	18.2	532.60
Business, finance and administrative	2,778.8	34.9	788.30	22.05	2,332.2	38.2	880.64	446.7	17.5	306.23
Natural and applied sciences	1,105.1	38.6	1,280.95	33.10	1,066.8	39.4	1,307.24	38.3	18.2	547.97
Health	1,020.1	34.0	920.18	27.00	780.7	38.2	1,037.18	239.4	20.3	538.56
Social science, education, government service and religion	1,440.6	34.2	1,052.60	30.45	1,172.7	38.2	1,187.88	267.9	16.7	460.48
Art, culture, recreation and sport	364.8	30.8	783.45	23.68	256.1	38.8	1,022.42	108.7	12.2	220.54
Sales and service	3,737.1	30.0	497.55	15.44	2,289.0	38.4	681.09	1,448.1	16.7	207.45
Trades, transport and equipment operators	2,169.6	40.0	932.41	23.04	2,024.9	41.6	978.15	144.6	17.8	292.20
Occupations unique to primary industry	233.1	42.7	983.93	22.31	208.0	46.2	1,081.13	25.1	13.2	179.22
Occupations unique to processing, manufacturing and utilities	768.8	38.9	772.73	19.64	730.9	40.1	800.84	37.9	16.6	230.86

Note(s): Related CANSIM Tables 282-0023, 282-0069, 282-0073.

Table 8**Regional unemployment rates used by the Employment Insurance Program, ¹ seasonally adjusted, 3 month moving average**

Region	Effective from January 6, 2013 to February 9, 2013
	percent
Newfoundland and Labrador	
01. St. John's	6.7
02. Newfoundland and Labrador	17.3
Prince Edward Island	
03. Prince Edward Island	11.2
Nova Scotia	
04. Eastern Nova Scotia	16.2
05. Western Nova Scotia	10.9
06. Halifax	6.3
New Brunswick	
07. Fredericton-Moncton-Saint John	7.9
08. Madawaska-Charlotte	13.0
09. Restigouche-Albert	17.6
Quebec	
10. Gaspésie-Îles-de-la-Madeleine	16.0
11. Québec	4.8
12. Trois-Rivières	8.2
13. South Central Quebec	3.9
14. Sherbrooke	7.3
15. Montérégie	6.0
16. Montréal	8.0
17. Central Quebec	8.7
18. Northwestern Quebec	10.0
19. Bas-Saint-Laurent-Côte-Nord	8.3
20. Gatineau	6.6
21. Saguenay	9.3
Ontario	
22. Ottawa	6.4
23. Eastern Ontario	8.4
24. Kingston	7.3
25. Central Ontario	8.5
26. Oshawa	9.6
27. Toronto	8.4
28. Hamilton	6.0
29. St. Catharines	7.9
30. London	8.5
31. Niagara	10.1
32. Windsor	10.7
33. Kitchener	6.6
34. Huron	8.7
35. South Central Ontario	5.8
36. Sudbury	6.6
37. Thunder Bay	5.2
38. Northern Ontario	14.0
Manitoba	
39. Winnipeg	5.7
40. Southern Manitoba	6.1
41. Northern Manitoba	31.3
Saskatchewan	
42. Regina	4.6
43. Saskatoon	5.5
44. Southern Saskatchewan	6.0
45. Northern Saskatchewan	17.7
Alberta	
46. Calgary	4.7
47. Edmonton	4.7
48. Northern Alberta	8.0
49. Southern Alberta	5.6

See notes at the end of the table.

Table 8 – continued

Regional unemployment rates used by the Employment Insurance Program, ¹ seasonally adjusted, 3 month moving average

Region	Effective from January 6, 2013 to February 9, 2013
	percent
British Columbia	
50. Southern Interior British Columbia	7.6
51. Abbotsford	7.7
52. Vancouver	6.8
53. Victoria	6.1
54. Southern Coastal British Columbia	8.3
55. Northern British Columbia	10.2
Territories	
56. Yukon ²	25.0
57. Northwest Territories ²	25.0
58. Nunavut ²	25.0

1. The boundaries of these regions are determined by Human Resources and Social Development Canada (HRSDC). For geographic descriptions and maps of employment insurance regions, see the HRSDC website: <http://srv129.services.gc.ca/eiregions/en/geocont.aspx>.

2. This rate is provided by Human Resources and Skills Development Canada.

Note(s): All geographic regions are based on the 1996 Census boundaries.

Data quality

About the Labour Force Survey

The statistics contained in this report are based on information obtained through a sample survey of 56,000 representative households across the country. The Labour Force Survey, started in November 1945, was taken at quarterly intervals until November 1952. It has been carried out monthly since then. The information generated by the survey has expanded considerably over the years with a major redesign of the survey content in 1976 and again in 1997, and provides a rich and detailed picture of the Canadian labour market.

The sample used in the Labour Force Survey has been designed to represent all persons in the population 15 years of age and over residing in the provinces of Canada, with the exception of the following: persons living on Indian reserves, full-time members of the armed forces and people living in institutions (for example, inmates of penal institutions and patients in hospitals or nursing homes who have resided in the institution for more than six months). Monthly estimates of employment, unemployment and persons not in the labour force refer to the specific week covered by the survey each month, normally the week containing the 15th day.

Definitions and explanations

The **labour force** is composed of those members of the civilian non-institutional population 15 years of age and over who, during the reference week, were employed or unemployed.

Employed persons are those who, during the reference week:

- (a) did any work at all
- (b) had a job but were not at work

A person is considered to be **full-time** if his/her usual hours at the main job are 30 or more hours per week. When the number of hours worked at the main job is usually less than 30 hours per week then he/she is considered to be **part-time**.

Unemployed persons are those who, during the reference week:

- (a) were without work, had actively looked for work in the past four weeks (ending with reference week), and were available for work;
- (b) had not actively looked for work in the past four weeks but were on temporary layoff and were available for work;
- (c) had not actively looked for work in the past four weeks but had a new job to start in four weeks or less from the reference week, and were available for work.

Persons in the civilian non-institutional population 15 years of age and over who, during the reference week, were neither employed nor unemployed are classified as **not in the labour force**.

The **unemployment rate** represents the number of unemployed persons expressed as a percentage of the labour force. The unemployment rate for a particular group (age, sex, etc.) is the number unemployed in that group expressed as a percentage of the labour force for that group.

The **participation rate** represents the labour force expressed as a percentage of the population 15 years of age and over. The participation rate for a particular group (age, sex, etc.) is the labour force in that group expressed as a percentage of the population for that group.

The **employment rate (formerly the employment/population ratio)** represents the number of persons employed expressed as a percentage of the population 15 years of age and over. The employment rate for a particular group (age, sex, etc.) is the number employed in that group expressed as a percentage of the population for that group.

The **part-time rate** represents the number of persons employed part-time expressed as a percentage of the employed. The part-time rate for a particular group (age, sex, etc.) is the number employed part-time in that group expressed as a percentage of the employed for that group.

All geographic regions are based on the 2006 Census boundaries.

Seasonal adjustment

Fluctuations in economic time series are caused by seasonal, cyclical and irregular movements. A seasonally adjusted series is one from which seasonal movements have been eliminated. Seasonal movements are defined as those which are caused by regular annual events such as climate, holidays, vacation periods and cycles related to crops, production and retail sales associated with Christmas and Easter. The seasonally adjusted series contains irregular as well as longer-term cyclical fluctuations.

The seasonally adjusted series are revised each year to take into account current data and to generate new forecast factors for the next twelve months. The data are therefore subject to slight revisions in future issues of this publication.

Sampling variability of estimates

Estimates in this publication are based on the Labour Force Survey, a monthly survey of approximately 56,000 households across Canada. Because the entire population is not surveyed, the estimates are subject to sampling error. While the published estimate is the best available indicator of the real value, changes in the level of any estimates between two months can be the result of a true change or sampling variability. The sampling error can be estimated by calculating the standard error for the published estimate or statistic. These standard errors have been included in the publication tables, in order to assist users in interpreting the data.

Interpretation based on standard error

Two thirds of the time (68%), a change greater than the sampling error indicates a real change. The larger the change compared to the standard error, the better the chance that we are observing a real change, as opposed to a change due to sampling variability. At the 95% level, in order to ensure that change is real, the change in the estimate must be greater than twice the sampling error.

Movements in estimates that are smaller than the sampling error are less likely to reflect a real change and more likely to be due to sampling variability. While the above is true for monthly movements, one can have more confidence in a series of consecutive movements in the same direction, even though some of the monthly movements may be smaller than the sampling error.

Interpretation based on confidence intervals

Confidence intervals provide another way of looking at the variability inherent in estimates of sample surveys. To illustrate how to calculate the confidence interval, let us say that one month the published estimate for total employment rose by 16,000 to reach 16,500,000. The associated standard error for the movement estimate is 27,200. The standard error used to interpret the movement estimate indicates that:

- There are approximately two chances in three (68%) that the real value of the movement between the two months falls within the range -11,200 to +43,200 (16,000 + or – one standard error).
- There are approximately nine chances in ten (90%) that the real value of the movement between the two months falls within the range -27,520 to +59,520 (16,000 + or – 1.6 times the standard error).
- There are approximately nineteen chances in twenty (95%) that the real value of the movement between the two months falls within the range -38,400 to +70,400 (16,000 + or – two standard errors).

For more detailed explanations on sampling variability of estimates, and in particular for information on how to assess the variability of level estimates, consult the Data quality section of the *Guide to the Labour Force Survey*, (71-543-G) on page 27.

Documentation

For more detailed information about the Labour Force Survey, see the following documents:

- Overview of the Labour Force Survey
- Guide to the Labour Force Survey (71-543-G)
- Data quality statement
- Methodology of the Canadian Labour Force Survey (71-526-X)
- LFS *geographical maps*