

Catalogue no. 71-001-X

Labour Force Information

Friday, February 8, 2013

January 13 to 19, 2013



Statistics
Canada

Statistique
Canada

Canada

How to obtain more information

For information about this product or the wide range of services and data available from Statistics Canada, visit our website, www.statcan.gc.ca.

You can also contact us by

e-mail at infostats@statcan.gc.ca

telephone, from Monday to Friday, 8:30 a.m. to 4:30 p.m., at the following toll-free numbers:

- | | |
|---|----------------|
| • Statistical Information Service | 1-800-263-1136 |
| • National telecommunications device for the hearing impaired | 1-800-363-7629 |
| • Fax line | 1-877-287-4369 |

Depository Services Program

- | | |
|------------------|----------------|
| • Inquiries line | 1-800-635-7943 |
| • Fax line | 1-800-565-7757 |

To access this product

This product, Catalogue no. 71-001-X, is available free in electronic format. To obtain a single issue, visit our website, www.statcan.gc.ca and browse by "Key resource" > "Publications."

Standards of service to the public

Statistics Canada is committed to serving its clients in a prompt, reliable and courteous manner. To this end, this agency has developed standards of service that its employees observe. To obtain a copy of these service standards, please contact Statistics Canada toll-free at 1-800-263-1136. The service standards are also published at www.statcan.gc.ca under "About us" > "The agency" > "Providing services to Canadians."

Statistics Canada
Labour Statistics Division
Labour Force Survey Program

Labour Force Information

Friday, February 8, 2013

January 13 to 19, 2013

Published by authority of the Minister responsible for Statistics Canada

© Minister of Industry, 2013

All rights reserved. Use of this publication is governed by the Statistics Canada
Open License Agreement.

<http://www.statcan.gc.ca/reference/licence-eng.html>

February 2013

Catalogue no. 71-001-X

ISSN 1492-5478

Frequency: Monthly

Ottawa

Cette publication est également disponible en français.

Note of appreciation

Canada owes the success of its statistical system to a long-standing partnership between Statistics Canada, the citizens of Canada, its businesses, governments and other institutions. Accurate and timely statistical information could not be produced without their continued cooperation and goodwill.

User information

Symbols

The following standard symbols are used in Statistics Canada publications:

- . not available for any reference period
- .. not available for a specific reference period
- ... not applicable
- 0 true zero or a value rounded to zero
- 0^s value rounded to 0 (zero) where there is a meaningful distinction between true zero and the value that was rounded
- p preliminary
- r revised
- x suppressed to meet the confidentiality requirements of the *Statistics Act*
- E use with caution
- F too unreliable to be published
- * significantly different from reference category ($p < 0.05$)

Special requests (\$)

Custom tabulations can be arranged on an ad hoc or regular basis. This service enables you to specify tables and time series to meet your own requirements. The cost varies according to the request. For more information, contact us toll-free at 1-866-873-8788 or e-mail us at labour@statcan.gc.ca.

Schedule of LFS releases

Reference period - Week ending	Release date
December 8, 2012	January 4, 2013
January 19, 2013	February 8, 2013
February 16, 2013	March 8, 2013
March 16, 2013	April 5, 2013
April 20, 2013	May 10, 2013
May 18, 2013	June 7, 2013
June 15, 2013	July 5, 2013
July 20, 2013	August 9, 2013
August 17, 2013	September 6, 2013
September 21, 2013	October 11, 2013
October 19, 2013	November 8, 2013
November 16, 2013	December 6, 2013
December 14, 2013	January 10, 2014

Latest LFS release in *The Daily* (free)

Table of contents

Highlights	5
Analysis — Janvier 2013	6
Charts	
1. Employment and unemployment indicators, Canada, seasonally adjusted	8
2. Employment and unemployment indicators, Canada, seasonally adjusted	9
3. Index of employment by industry, Canada, seasonally adjusted, January 2010=100	10
4. Index of employment by industry, Canada, seasonally adjusted, January 2010=100	11
5. Index of employment by industry, Canada, seasonally adjusted, January 2010=100	12
6. Index of employment by province, seasonally adjusted, January 2010=100	13
7. Index of employment by province, seasonally adjusted, January 2010=100	14
Related products	15
Statistical tables	
1 Labour force characteristics by age and sex, Canada, seasonally adjusted	25
2 Employment by class of worker and industry, Canada, seasonally adjusted	27
3 Labour force characteristics by province, seasonally adjusted	28
4 Selected labour force characteristics (seasonally adjusted)	30
4-1 Newfoundland and Labrador	30
4-2 Prince Edward Island	31
4-3 Nova Scotia	32
4-4 New Brunswick	33
4-5 Quebec	34
4-6 Ontario	35
4-7 Manitoba	36
4-8 Saskatchewan	37
4-9 Alberta	38
4-10 British Columbia	39
5 Labour force characteristics by census metropolitan area (seasonally adjusted)	40
5-1 3 month moving average	40
5-2 Monthly	45

Table of contents – continued

6	Labour force characteristics	46
6-1	by province and economic region, unadjusted for seasonality, 3 month moving average ending in January 2012 and January 2013	46
6-2	by territories, unadjusted for seasonality, 3 month moving average ending in January 2012 and January 2013	51
7	Average usual hours and wages of employees by selected characteristics, Canada, unadjusted for seasonality	52
8	Regional unemployment rates used by the Employment Insurance Program, seasonally adjusted, 3 month moving average	53

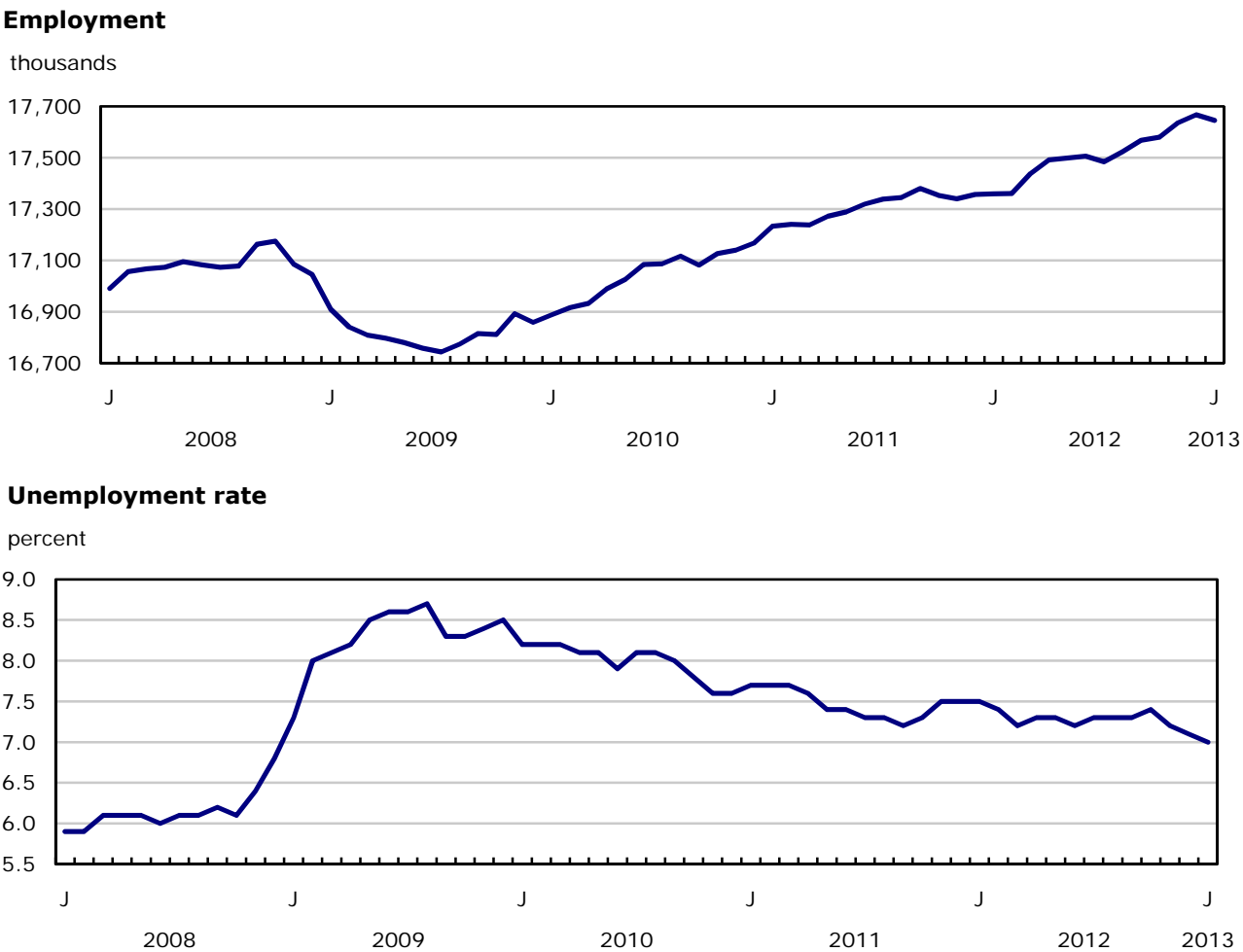
Data quality, concepts and methodology

Data quality	55
--------------	----

Highlights

Following two consecutive months of gains, employment decreased slightly in January (-22,000). A decline in the number of people looking for work pushed the unemployment rate down 0.1 percentage points to 7.0%.

Chart 1
Employment and unemployment rates, Canada, seasonally adjusted



Analysis — Janvier 2013

Following two consecutive months of gains, employment decreased slightly in January (-22,000). A decline in the number of people looking for work pushed the unemployment rate down 0.1 percentage points to 7.0%.

Compared with 12 months earlier, employment increased 1.6% or 286,000, all in full-time work. Over the same period, the total number of hours worked rose 1.7%.

In January, employment declined in Ontario and British Columbia. At the same time, there were increases in Alberta, Saskatchewan and New Brunswick.

Public sector employment fell in January, down 27,000, while self-employment was up slightly and the number of private sector employees was little changed. Compared with 12 months earlier, the number of private sector employees increased by 1.9% or 210,000, while the number of public sector employees and self-employed was little changed.

There were fewer workers in educational services and manufacturing in January, while employment rose in construction and public administration.

After gains in recent months, employment among men aged 25 to 54 declined in January. Employment rose among men aged 55 and over and edged up among youths.

Employment declines in Ontario and British Columbia

Following two months of increases, employment in Ontario declined by 31,000 in January, all in full-time work. With fewer people searching for work, the unemployment rate fell 0.2 percentage points to 7.7%. On a year-over-year basis, employment in the province was up 1.2%.

Employment in British Columbia fell by 16,000 in January, and the unemployment rate was 6.3%. With this month's decline, employment in the province returned to a level similar to that of 12 months earlier.

In Alberta, the number of workers increased by 9,700 in January. However, the unemployment rate remained at 4.5% as more people participated in the labour force. Compared with 12 months earlier, employment in the province was up 1.9%.

Employment in Saskatchewan increased for the second consecutive month, up 7,300 in January. With this gain, the unemployment rate declined 0.6 percentage points to 4.0%, the lowest among the provinces and lowest in Saskatchewan since November 2008. On a year-over-year basis, employment in the province rose by 4.1%, the highest growth in the country.

Employment rose by 2,700 in New Brunswick in January. At the same time, the number of people searching for work increased, pushing the unemployment rate up 0.5 percentage points to 11.3%. Compared with 12 months earlier, employment in the province declined by 1.4%.

Employment in Quebec remained little changed for the second consecutive month, and the unemployment rate was 7.1%. Over the 12 months to January, employment increased by 3.3%.

Industry Perspective

In January, employment in educational services declined by 31,000. Despite this month's loss, employment in the industry was up 3.7% from 12 months earlier.

In manufacturing, the number of workers was down 22,000, bringing employment in the industry back to a level similar to that of 12 months earlier.

The number of construction workers increased for the second consecutive month, up 17,000 in January. With this increase, year-over-year employment gains were 2.6% for the industry.

Employment in public administration rose 15,000, offsetting a decline in the previous month. Compared with 12 months earlier, employment in the industry was little changed.

Employment down among people aged 25 to 54

Following gains over the previous four months, employment in January declined by 58,000 among people aged 25 to 54 (core-age group), predominantly men. Compared to 12 months earlier, employment among people of core working-age rose 0.9%.

In January, employment increased by 22,000 among people aged 55 and over, mostly men. Year-over-year employment gains for people aged 55 and over were 5.2%, partly a result of population ageing.

Employment edged up among youths aged 15 to 24. The unemployment rate for this group fell 0.6 percentage points to 13.5%.

Note to Readers

Each year, the Labour Force Survey revises its estimates for the previous three years, using the latest seasonal factors. These revised estimates became available in CANSIM on February 1st, 2013 (282-0087 to 282-0089, 282-0092 to 282-0094, 282-0100, 282-0116 and 282-0117).

The Labour Force Survey (LFS) estimates are based on a sample and are therefore subject to sampling variability. As a result, monthly estimates will show more variability than trends observed over longer time periods. Estimates for smaller geographic areas or industries also have more variability. For an explanation of sampling variability of estimates and how to use standard errors to assess this variability, consult the 'Estimates quality' section of the publication *Labour Force Information (71-001-X, free)*.

The employment rate is the number of employed persons as a percentage of the population 15 years of age and over. The rate for a particular group (for example, youth aged 15 to 24) is the number employed in that group as a percentage of the population for that group.

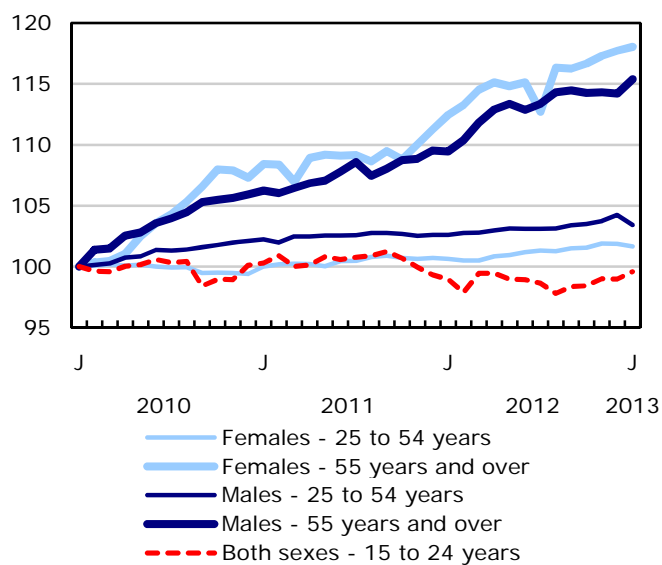
The unemployment rate is the number unemployed as a percentage of the labour force (employed and unemployed).

The participation rate is the number of employed and unemployed as a percentage of the population. For more detailed information, see the *Guide to the Labour Force Survey (71-543-G, free)*.

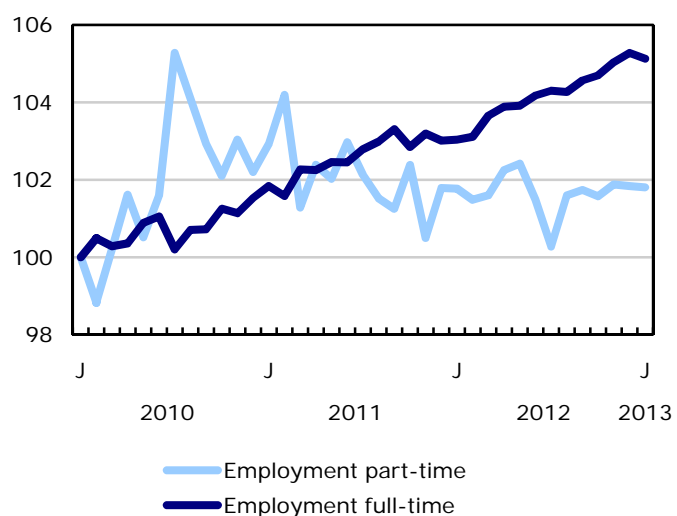
Unless otherwise stated, this release presents seasonally adjusted estimates, which facilitates comparisons by removing the effects of seasonal variations. For more information on seasonal adjustment, see *Seasonal adjustment and identifying economic trends*.

Chart 1
Employment and unemployment indicators, Canada, seasonally adjusted

Employment index, January 2010=100



Employment index, January 2010=100



Employment index, January 2010=100

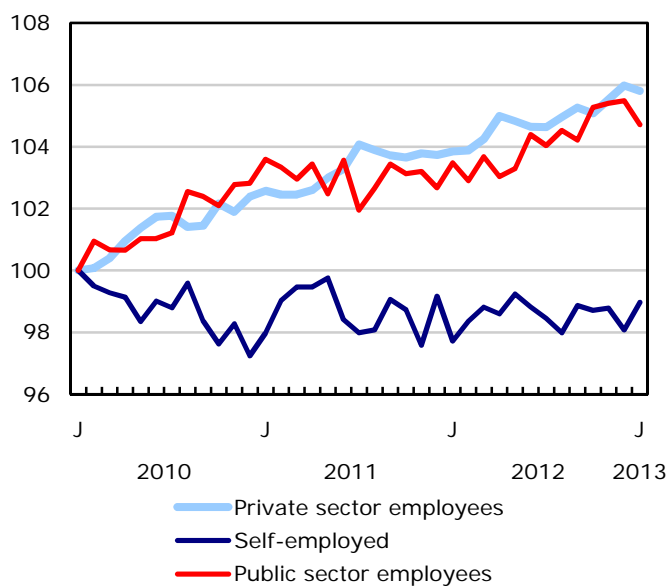
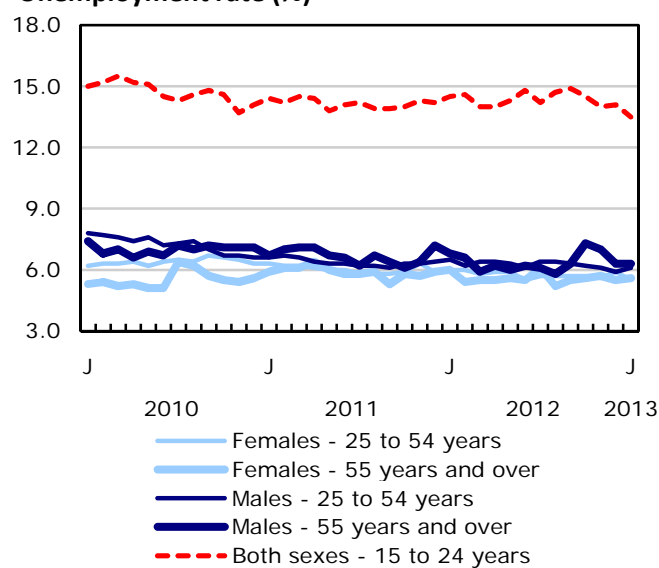
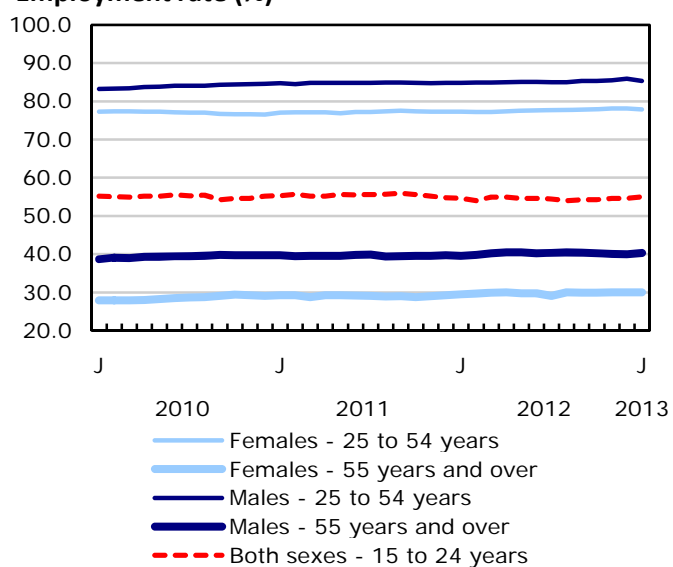


Chart 2
Employment and unemployment indicators, Canada, seasonally adjusted

Unemployment rate (%)



Employment rate (%)



Participation rate (%)

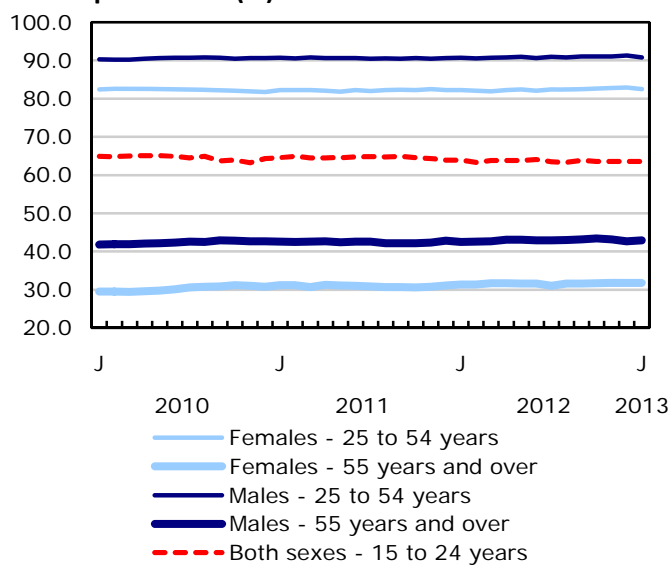


Chart 3
Index of employment by industry, Canada, seasonally adjusted, January 2010=100

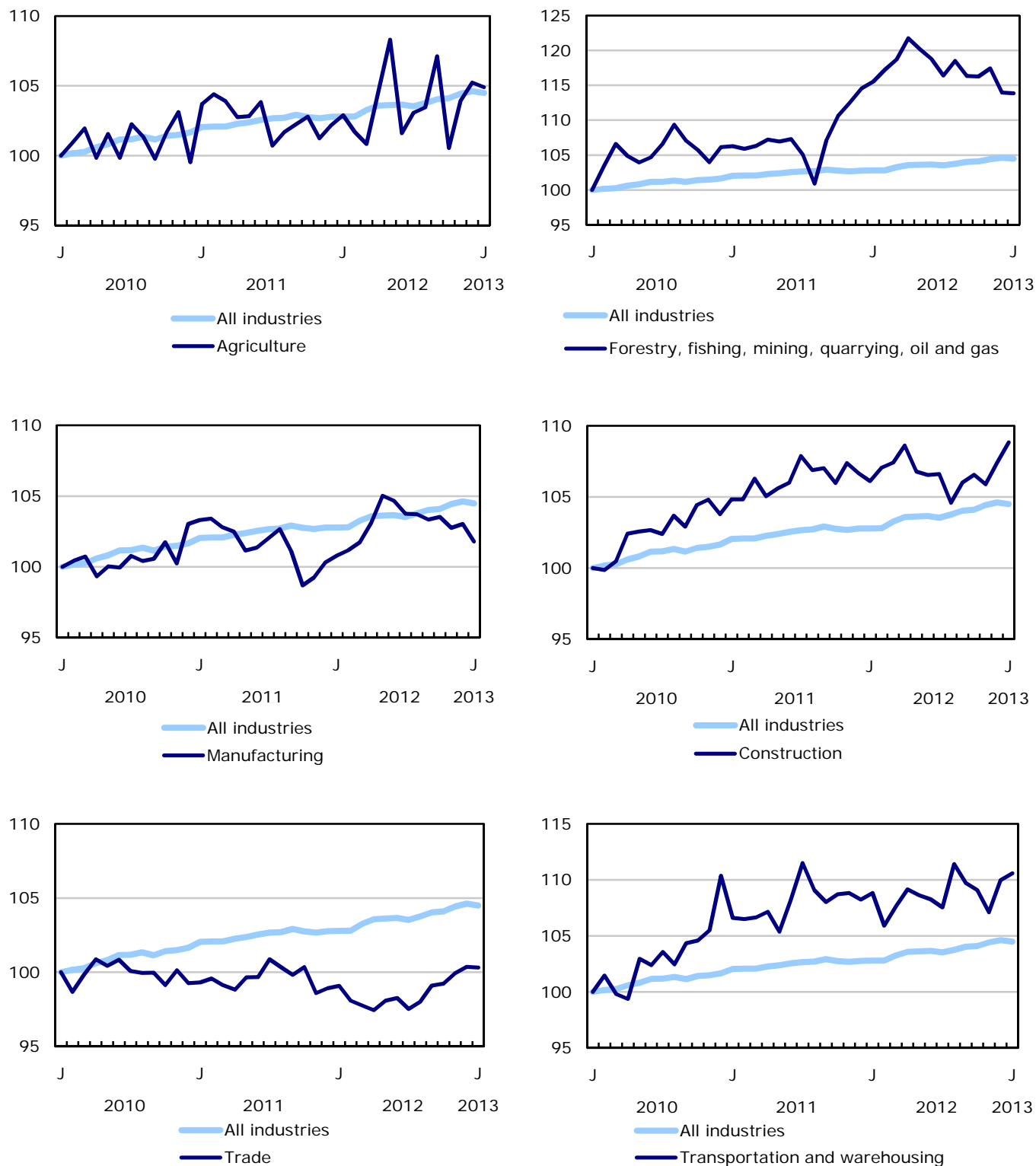


Chart 4
Index of employment by industry, Canada, seasonally adjusted, January 2010=100

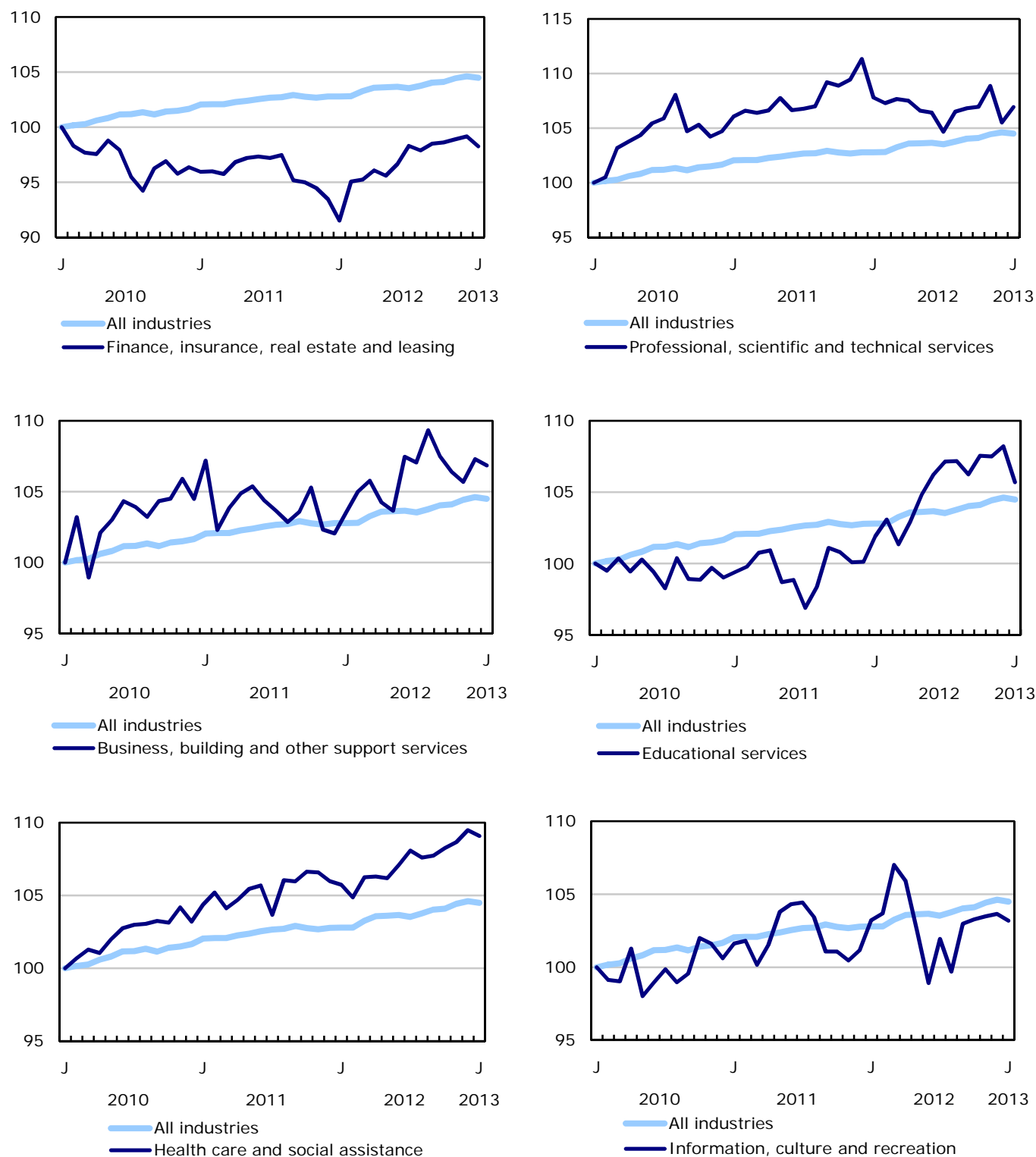


Chart 5
Index of employment by industry, Canada, seasonally adjusted, January 2010=100

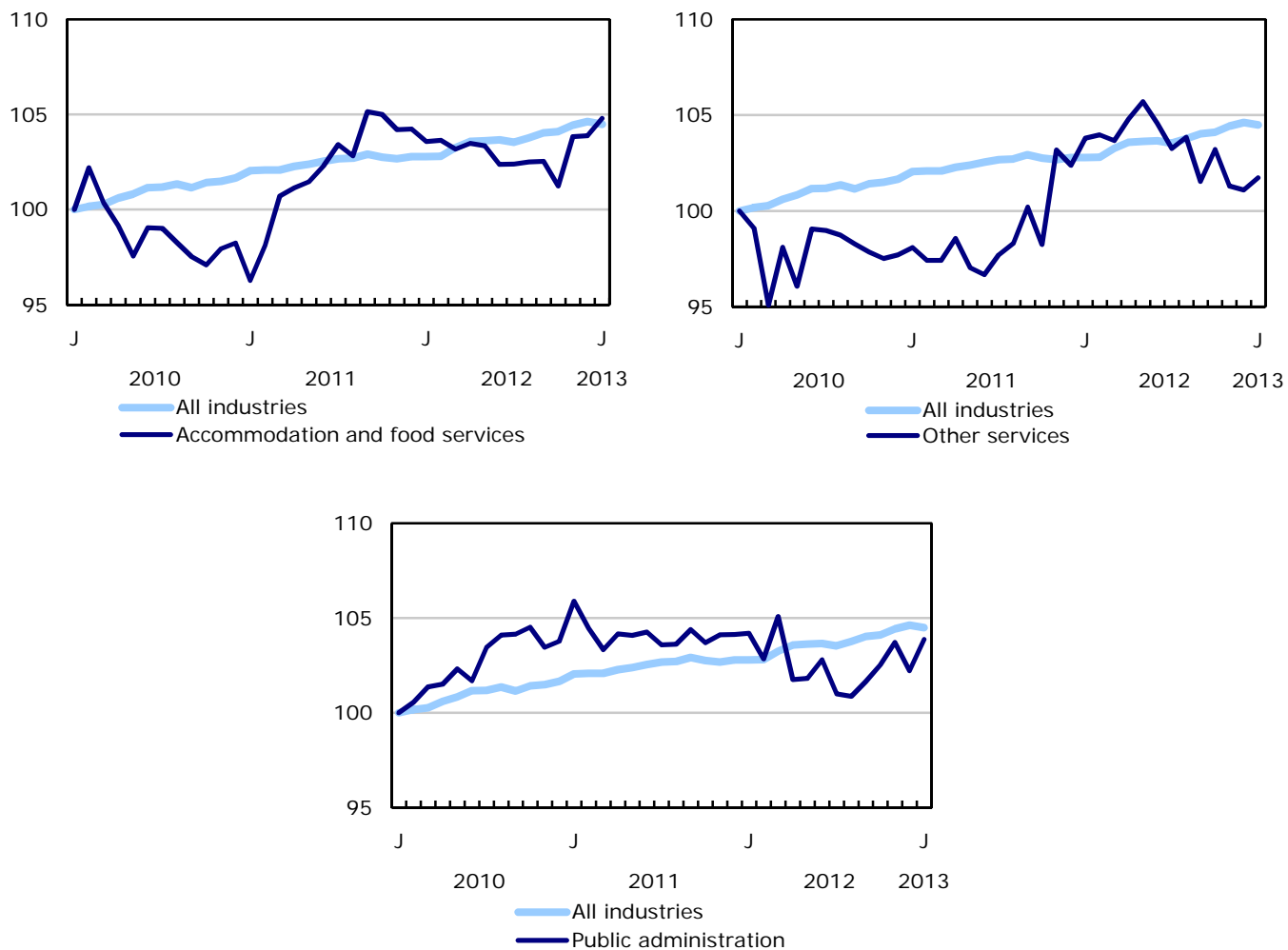


Chart 6
Index of employment by province, seasonally adjusted, January 2010=100

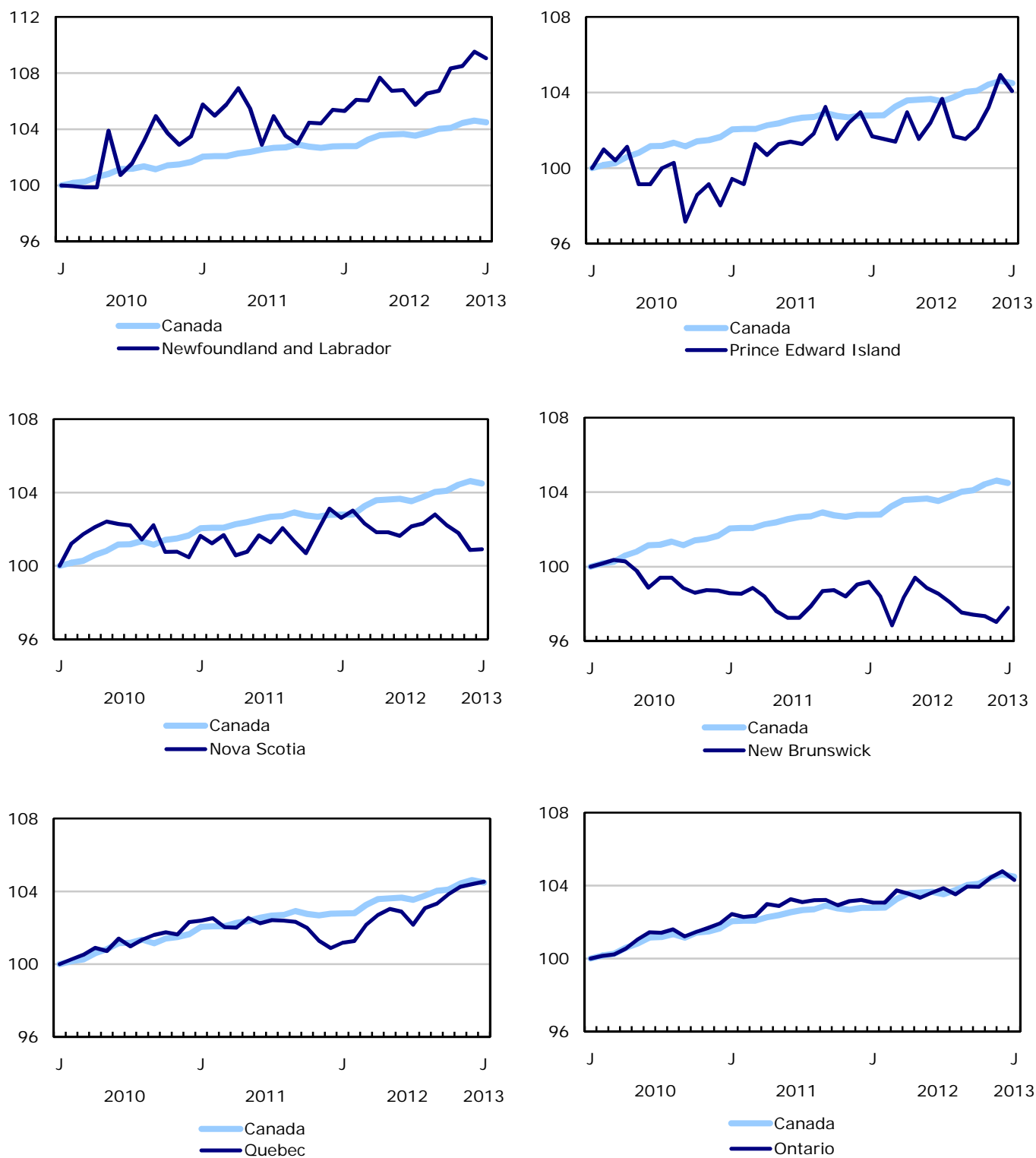
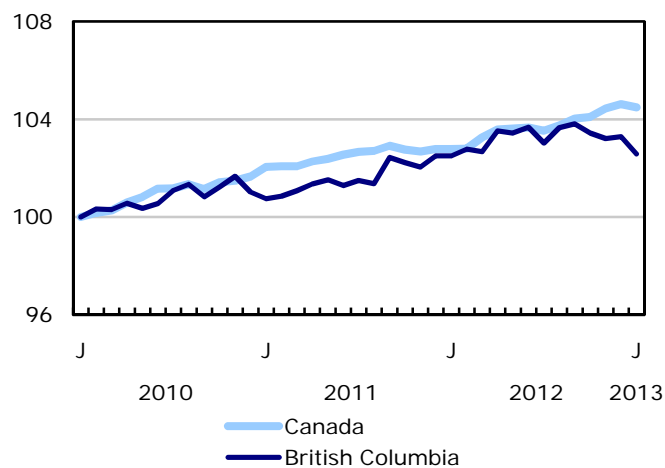
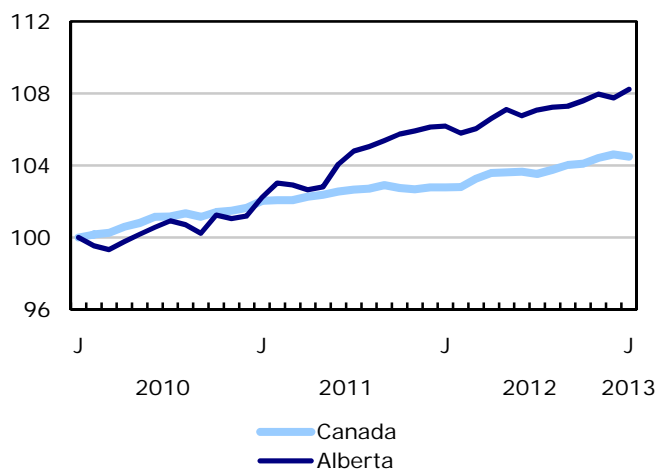
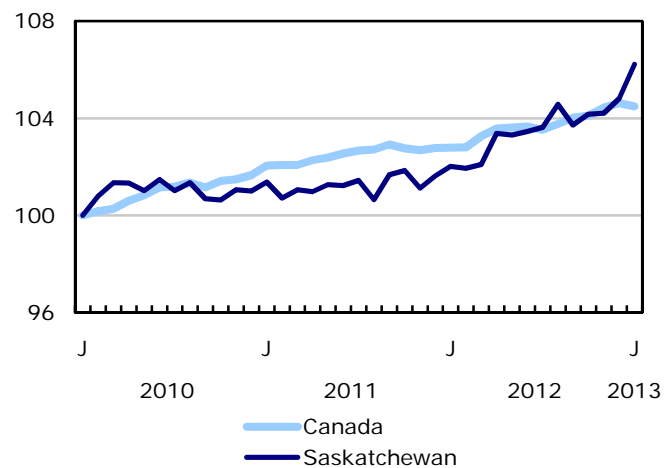
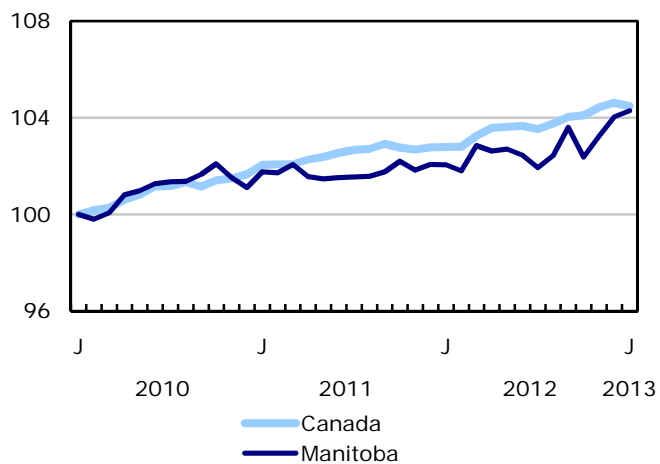


Chart 7

Index of employment by province, seasonally adjusted, January 2010=100



Related products

Selected publications from Statistics Canada

71-222-X	The Canadian Labour Market at a Glance
71-526-X	Methodology of the Canadian Labour Force Survey
71-543-G	Guide to the Labour Force Survey
71-544-X	Labour Force Survey Products and Services
71-587-X	Aboriginal Peoples Living Off-reserve in Western Canada: Estimates from the Labour Force Survey
71-588-X	The Aboriginal Labour Force Analysis Series
71-606-X	The Immigrant Labour Force Analysis Series
71F0031X	Improvements to the Labour Force Survey (LFS)
71M0001X	Labour Force Survey Microdata File

Selected CANSIM tables from Statistics Canada

282-0001	Labour force survey estimates (LFS), by sex and detailed age group, unadjusted for seasonality, monthly
282-0002	Labour force survey estimates (LFS), by sex and detailed age group, annual
282-0003	Labour force survey estimates (LFS), by educational attainment, sex and age group, unadjusted for seasonality, monthly
282-0004	Labour force survey estimates (LFS), by educational attainment, sex and age group, annual
282-0005	Labour force survey estimates (LFS), by full- and part-time students during school months, sex and age group, unadjusted for seasonality, monthly
282-0006	Labour force survey estimates (LFS), by students during summer months, sex and age group, unadjusted for seasonality, monthly
282-0007	Labour force survey estimates (LFS), by North American Industry Classification System (NAICS), sex and age group, unadjusted for seasonality, monthly
282-0008	Labour force survey estimates (LFS), by North American Industry Classification System (NAICS), sex and age group, annual

282-0009	Labour force survey estimates (LFS), by National Occupational Classification for Statistics (NOC-S) and sex, unadjusted for seasonality, monthly
282-0010	Labour force survey estimates (LFS), by National Occupational Classification for Statistics (NOC-S) and sex, annual
282-0011	Labour force survey estimates (LFS), employment by class of worker, North American Industry Classification System (NAICS) and sex, unadjusted for seasonality, monthly
282-0012	Labour force survey estimates (LFS), employment by class of worker, North American Industry Classification System (NAICS) and sex, annual
282-0013	Labour force survey estimates (LFS), part-time employment by reason for part-time work, sex and age group, unadjusted for seasonality, monthly
282-0014	Labour force survey estimates (LFS), part-time employment by reason for part-time work, sex and age group, annual
282-0015	Labour force survey estimates (LFS), by usual hours worked, main or all jobs, sex and age group, unadjusted for seasonality, monthly
282-0016	Labour force survey estimates (LFS), by usual hours worked, main or all jobs, sex and age group, annual
282-0017	Labour force survey estimates (LFS), by actual hours worked, main or all jobs, sex and age group, unadjusted for seasonality, monthly
282-0018	Labour force survey estimates (LFS), by actual hours worked, main or all jobs, sex and age group, annual
282-0019	Labour force survey estimates (LFS), by usual hours worked, class of worker, North American Industry Classification System (NAICS) and sex, unadjusted for seasonality, monthly
282-0020	Labour force survey estimates (LFS), by usual hours worked, class of worker, North American Industry Classification System (NAICS) and sex, annual
282-0021	Labour force survey estimates (LFS), by actual hours worked, class of worker, North American Industry Classification System (NAICS) and sex, unadjusted for seasonality, monthly
282-0022	Labour force survey estimates (LFS), by actual hours worked, class of worker, North American Industry Classification System (NAICS) and sex, annual
282-0023	Labour force survey estimates (LFS), by usual hours worked, class of worker, National Occupational Classification for Statistics (NOC-S) and sex, unadjusted for seasonality, monthly
282-0024	Labour force survey estimates (LFS), by usual hours worked, class of worker, National Occupational Classification for Statistics (NOC-S) and sex, annual
282-0025	Labour force survey estimates (LFS), by actual hours worked, class of worker, National Occupational Classification for Statistics (NOC-S) and sex, unadjusted for seasonality, monthly
282-0026	Labour force survey estimates (LFS), by actual hours worked, class of worker, National Occupational Classification for Statistics (NOC-S) and sex, annual
282-0027	Labour force survey estimates (LFS), by total and average usual and actual hours worked, main or all jobs, type of work, sex and age group, unadjusted for seasonality, monthly

282-0028	Labour force survey estimates (LFS), by total and average usual and actual hours worked, main or all jobs, type of work, sex and age group, annual
282-0029	Labour force survey estimates (LFS), average days lost for personal reasons per full-time employee by North American Industry Classification System (NAICS), sex and age group, annual
282-0030	Labour force survey estimates (LFS), average days lost for personal reasons per full-time employee by National Occupational Classification for Statistics (NOC-S), sex and age group, annual
282-0031	Labour force survey estimates (LFS), multiple jobholders by North American Industry Classification System (NAICS), sex and age group, annual
282-0032	Labour force survey estimates (LFS), multiple jobholders by North American Industry Classification System (NAICS), sex and age group, unadjusted for seasonality, monthly
282-0033	Labour force survey estimates (LFS), multiple jobholders by National Occupational Classification for Statistics (NOC-S), sex and age group, unadjusted for seasonality, monthly
282-0034	Labour force survey estimates (LFS), multiple jobholders by National Occupational Classification for Statistics (NOC-S), sex and age group, annual
282-0035	Labour force survey estimates (LFS), multiple jobholders by usual hours worked at main and all jobs, unadjusted for seasonality, monthly
282-0036	Labour force survey estimates (LFS), multiple jobholders by usual hours worked at main and all jobs, annual
282-0037	Labour force survey estimates (LFS), job tenure by type of work, sex and age group, unadjusted for seasonality, monthly
282-0038	Labour force survey estimates (LFS), job tenure by type of work, sex and age group, annual
282-0039	Labour force survey estimates (LFS), job tenure by National Occupational Classification for Statistics (NOC-S) and sex, unadjusted for seasonality, monthly
282-0040	Labour force survey estimates (LFS), job tenure by National Occupational Classification for Statistics (NOC-S) and sex, annual
282-0041	Labour force survey estimates (LFS), job tenure by North American Industry Classification System (NAICS) and sex, unadjusted for seasonality, monthly
282-0042	Labour force survey estimates (LFS), job tenure by North American Industry Classification System (NAICS) and sex, annual
282-0047	Labour force survey estimates (LFS), duration of unemployment by sex and age group, unadjusted for seasonality, monthly
282-0048	Labour force survey estimates (LFS), duration of unemployment by sex and age group, annual
282-0049	Labour force survey estimates (LFS), unemployment by type of work sought and search method, sex and age group, unadjusted for seasonality, monthly
282-0050	Labour force survey estimates (LFS), unemployment by type of work sought and search method, sex and age group, annual

282-0051	Labour force survey estimates (LFS), retirement age by class of worker and sex, annual
282-0054	Labour force survey estimates (LFS), by provinces and economic regions based on 2006 Census boundaries, 3-month moving average, unadjusted for seasonality, monthly
282-0055	Labour force survey estimates (LFS), by provinces, territories and economic regions based on 2006 Census boundaries, annual
282-0060	Labour force survey estimates (LFS), employment by economic region and North American Industry Classification System (NAICS), 3-month moving average, unadjusted for seasonality, monthly
282-0061	Labour force survey estimates (LFS), employment by economic region and North American Industry Classification System (NAICS), annual
282-0062	Labour force survey estimates (LFS), employment by economic region and National Occupational Classification for Statistics (NOC-S), 3-month moving average, unadjusted for seasonality, monthly
282-0063	Labour force survey estimates (LFS), employment by economic region and National Occupational Classification for Statistics (NOC-S), annual
282-0069	Labour force survey estimates (LFS), wages of employees by type of work, National Occupational Classification for Statistics (NOC-S), sex and age group, unadjusted for seasonality, monthly (current dollars)
282-0070	Labour force survey estimates (LFS), wages of employees by type of work, National Occupational Classification for Statistics (NOC-S), sex and age group, annual (current dollars)
282-0071	Labour force survey estimates (LFS), wages of employees by type of work, North American Industry Classification System (NAICS), sex and age group, unadjusted for seasonality, monthly (current dollars)
282-0072	Labour force survey estimates (LFS), wages of employees by type of work, North American Industry Classification System (NAICS), sex and age group, annual (current dollars)
282-0073	Labour force survey estimates (LFS), wages of employees by job permanence, union coverage, sex and age group, unadjusted for seasonality, monthly (current dollars)
282-0074	Labour force survey estimates (LFS), wages of employees by job permanence, union coverage, sex and age group, annual (current dollars)
282-0075	Labour force survey estimates (LFS), employees by establishment size, North American Industry Classification System (NAICS), sex and age group, unadjusted for seasonality, monthly
282-0076	Labour force survey estimates (LFS), employees by establishment size, North American Industry Classification System (NAICS), sex and age group, annual
282-0077	Labour force survey estimates (LFS), employees by union coverage, North American Industry Classification System (NAICS), sex and age group, unadjusted for seasonality, monthly
282-0078	Labour force survey estimates (LFS), employees by union coverage, North American Industry Classification System (NAICS), sex and age group, annual

282-0079	Labour force survey estimates (LFS), employees by job permanency, North American Industry Classification System (NAICS), sex and age group, unadjusted for seasonality, monthly
282-0080	Labour force survey estimates (LFS), employees by job permanency, North American Industry Classification System (NAICS), sex and age group, annual
282-0081	Labour force survey estimates (LFS), employees working overtime (weekly) by National Occupational Classification for Statistics (NOC-S), sex and age group, unadjusted for seasonality, monthly
282-0082	Labour force survey estimates (LFS), employees working overtime (weekly) by National Occupational Classification for Statistics (NOC-S), sex and age group, annual
282-0083	Labour force survey estimates (LFS), employees working overtime (weekly) by North American Industry Classification System (NAICS), sex and age group, unadjusted for seasonality, monthly
282-0084	Labour force survey estimates (LFS), employees working overtime (weekly) by North American Industry Classification System (NAICS), sex and age group, annual
282-0085	Labour force survey estimates (LFS), supplementary unemployment rates by sex and age group, unadjusted for seasonality, monthly
282-0086	Labour force survey estimates (LFS), supplementary unemployment rates by sex and age group, annual
282-0087	Labour force survey estimates (LFS), by sex and age group, seasonally adjusted and unadjusted, monthly
282-0088	Labour force survey estimates (LFS), employment by North American Industry Classification System (NAICS), seasonally adjusted and unadjusted, monthly
282-0089	Labour force survey estimates (LFS), employment by class of worker and sex, seasonally adjusted and unadjusted, monthly
282-0092	Labour force survey estimates (LFS), actual hours worked at main job by North American Industry Classification System (NAICS), seasonally adjusted, monthly
282-0093	Labour force survey estimates (LFS), employment by National Occupational Classification for Statistics (NOC-S), seasonally adjusted, monthly
282-0094	Labour force survey estimates (LFS), by North American Industry Classification System (NAICS), Canada, seasonally adjusted, monthly
282-0095	Labour force survey estimates (LFS), by full- and part-time students during school months, sex and age group, annual
282-0100	Labour force survey estimates (LFS), by territories, sex and age group, 3-month moving average, seasonally adjusted and unadjusted, monthly
282-0101	Labour force survey estimates (LFS), by immigrant status, age group, Canada, regions, provinces and Montreal, Toronto, Vancouver census metropolitan areas, 3-month moving average, unadjusted for seasonality, monthly
282-0102	Labour force survey estimates (LFS), by immigrant status, age group, Canada, regions, provinces and Montreal, Toronto, Vancouver census metropolitan areas, annual

282-0103	Labour force survey estimates (LFS), by immigrant status, sex and detailed age group, Canada, 3-month moving average, unadjusted for seasonality, monthly
282-0104	Labour force survey estimates (LFS), by immigrant status, sex and detailed age group, Canada, annual
282-0105	Labour force survey estimates (LFS), by immigrant status, educational attainment, sex and age group, Canada, 3-month moving average, unadjusted for seasonality, monthly
282-0106	Labour force survey estimates (LFS), by immigrant status, educational attainment, sex and age group, Canada, annual
282-0107	Labour force survey estimates (LFS), by immigrant status, country of birth, sex and age group, Canada, 3-month moving average, unadjusted for seasonality, monthly
282-0108	Labour force survey estimates (LFS), by immigrant status, country of birth, sex and age group, Canada, annual
282-0109	Labour force survey estimates (LFS), by census metropolitan area based on 2006 census boundaries, sex and age group, 3-month moving average, unadjusted for seasonality, monthly
282-0110	Labour force survey estimates (LFS), by census metropolitan area based on 2006 census boundaries, sex and age group, annual
282-0111	Labour force survey estimates (LFS), employment by census metropolitan area based on 2006 census boundaries and North American Industry Classification System (NAICS), 3-month moving average, unadjusted for seasonality, monthly
282-0112	Labour force survey estimates (LFS), employment by census metropolitan area based on 2006 census boundaries and North American Industry Classification System (NAICS), annual
282-0113	Labour force survey estimates (LFS), employment by census metropolitan area based on 2006 census boundaries and National Occupational Classification for Statistics (NOC-S), 3-month moving average, unadjusted for seasonality, monthly
282-0114	Labour force survey estimates (LFS), employment by census metropolitan area based on 2006 census boundaries and National Occupational Classification for Statistics (NOC-S), annual
282-0115	Labour force survey estimates (LFS), by selected census agglomerations based on 2006 census boundaries, annual
282-0116	Labour force survey estimates (LFS), by census metropolitan area based on 2006 census boundaries, 3-month moving average, seasonally adjusted and unadjusted, monthly
282-0117	Labour force survey estimates (LFS), by Montréal, Toronto and Vancouver census metropolitan areas based on 2006 census boundaries, seasonally adjusted and unadjusted, monthly
282-0118	Labour force survey estimates (LFS), by urban and rural areas based on 2006 census boundaries, sex and age group, unadjusted for seasonality, monthly
282-0119	Labour force survey estimates (LFS), by urban and rural areas based on 2006 census boundaries, sex and age group, annual

282-0120	Labour force survey estimates (LFS), employment by urban and rural areas based on 2006 census boundaries, class of worker and North American Industry Classification System (NAICS), unadjusted for seasonality, monthly
282-0121	Labour force survey estimates (LFS), employment by urban and rural areas based on 2006 census boundaries, class of worker and North American Industry Classification System (NAICS), annual
282-0200	Labour force survey estimates (LFS), weekly wage distributions of employees by type of work, North American Industry Classification System (NAICS) and by sex, unadjusted for seasonality, monthly
282-0201	Labour force survey estimates (LFS), weekly wage distributions of employees by type of work, North American Industry Classification System (NAICS) and by sex, annual
282-0202	Labour force survey estimates (LFS), weekly wage distributions of employees by type of work, National Occupational Classification for Statistics (NOC-S) and by sex, unadjusted for seasonality, monthly
282-0203	Labour force survey estimates (LFS), weekly wage distributions of employees by type of work, National Occupational Classification for Statistics (NOC-S) and by sex, annual
282-0204	Labour force survey estimates (LFS), hourly wage distributions of employees by type of work, North American Industry Classification System (NAICS) and by sex, unadjusted for seasonality, monthly
282-0205	Labour force survey estimates (LFS), hourly wage distributions of employees by type of work, North American Industry Classification System (NAICS) and by sex, annual
282-0206	Labour force survey estimates (LFS), hourly wage distribution of employees by type of work, National Occupational Classification for Statistics (NOC-S) and by sex, unadjusted for seasonality, monthly
282-0207	Labour force survey estimates (LFS), hourly wage distribution of employees by type of work, National Occupational Classification for Statistics (NOC-S) and by sex, annual
282-0208	Labour force survey estimates (LFS), by educational degree, sex and age group, unadjusted for seasonality, monthly
282-0209	Labour force survey estimates (LFS), by educational degree, sex and age group, annual
282-0210	Labour force survey estimates (LFS), by family type and family age composition, unadjusted for seasonality, monthly
282-0211	Labour force survey estimates (LFS), by family type and family age composition, annual
282-0212	Labour force survey estimates (LFS), hours lost by employees by reason absent full and part week and sex, unadjusted for seasonality, monthly
282-0213	Labour force survey estimates (LFS), hours lost by employees by reason absent full and part week and sex, annual
282-0214	Labour force survey estimates (LFS), activity prior to unemployment by sex and age group, unadjusted for seasonality, monthly

282-0215	Labour force survey estimates (LFS), activity prior to unemployment by sex and age group, annual
282-0216	Labour force survey estimates (LFS), reason for leaving job during previous year by sex and age group, unadjusted for seasonality, monthly
282-0217	Labour force survey estimates (LFS), reason for leaving job during previous year by sex and age group, annual
282-0218	Labour force survey estimates (LFS), reason for not looking for work, by sex and age group, unadjusted for seasonality, monthly
282-0219	Labour force survey estimates (LFS), reason for not looking for work, by sex and age group, annual

Selected surveys from Statistics Canada

3701	Labour Force Survey
------	---------------------

Selected summary tables from Statistics Canada

- *Labour force characteristics*
- *Employment by industry*
- *Days lost per worker due to illness or disability, by sex, by province*
- *Economic indicators, by province and territory (monthly and quarterly)*
- *Labour force and participation rates by sex and age group*
- *Labour force, employed and unemployed, numbers and rates, by province*
- *Employment by industry and sex*
- *Full-time and part-time employment by sex and age group*
- *Labour force characteristics by age and sex*
- *Distribution of employed people, by industry, by province*
- *Labour force characteristics, population 15 years and older, by census metropolitan area*
- *Labour force characteristics, population 15 years and older, by economic region, by province*
- *Days lost per worker by cause, by provinces*
- *Days lost per worker by industry and sex*

- *People employed, by educational attainment*
- *Reasons for part-time work by sex and age group*
- *Self-employment, historical summary*
- *Employment by age, sex, type of work, class of worker and province (monthly)*
- *Employment by major industry groups, seasonally adjusted, by province (monthly)*
- *Actual hours worked per week by industry, seasonally adjusted (monthly)*
- *Average hourly wages of employees by selected characteristics and profession, unadjusted data, by province (monthly)*
- *Labour force characteristics, seasonally adjusted, by province (monthly)*
- *Labour force characteristics, unadjusted, by province (monthly)*
- *Labour force characteristics, seasonally adjusted, by census metropolitan area (3 month moving average)*
- *Labour force characteristics, unadjusted, by census metropolitan area (3 month moving average)*
- *Labour force characteristics, unadjusted, by economic region (3 month moving average)*
- *Labour force characteristics by immigrant status of population aged 25 to 54, by province*
- *Labour force characteristics by immigrant status of population aged 25 to 54, by educational attainment*
- *Labour force characteristics by immigrant status, by detailed age group*
- *Labour force characteristics by immigrant status of population aged 25 to 54, by country of birth*

Statistical tables

Table 1
Labour force characteristics by age and sex, Canada, seasonally adjusted

	December 2012	January 2013	S.E. ¹	Change from			Percent change from		
				last month	last December	twelve months ago	last month	last December	twelve months ago
in thousands (except rates)									
15 years and over, both sexes									
Population	28,468.6	28,501.2	...	32.6	32.6	344.8	0.1	0.1	1.2
Labour force	19,026.0	18,968.5	29.1	-57.5	-57.5	193.5	-0.3	-0.3	1.0
Employment	17,667.6	17,645.7	28.7	-21.9	-21.9	286.4	-0.1	-0.1	1.6
Employment full-time	14,360.0	14,339.4	38.2	-20.6	-20.6	285.2	-0.1	-0.1	2.0
Employment part-time	3,307.6	3,306.2	35.1	-1.4	-1.4	1.1	0.0	0.0	0.0
Unemployment	1,358.4	1,322.8	25.2	-35.6	-35.6	-92.9	-2.6	-2.6	-6.6
Participation rate	66.8	66.6	0.1	-0.2	-0.2	-0.1
Unemployment rate	7.1	7.0	0.1	-0.1	-0.1	-0.5
Employment rate	62.1	61.9	0.1	-0.2	-0.2	0.2
Part-time rate	18.7	18.7	0.2	0.0	0.0	-0.3
15 to 24 years, both sexes									
Population	4,456.1	4,454.7	...	-1.4	-1.4	-2.3	0.0	0.0	-0.1
Labour force	2,836.0	2,831.5	17.2	-4.5	-4.5	-17.0	-0.2	-0.2	-0.6
Employment	2,435.1	2,449.4	15.9	14.3	14.3	14.9	0.6	0.6	0.6
Employment full-time	1,276.1	1,301.0	18.5	24.9	24.9	27.5	2.0	2.0	2.2
Employment part-time	1,159.0	1,148.3	19.4	-10.7	-10.7	-12.7	-0.9	-0.9	-1.1
Unemployment	400.8	382.1	15.1	-18.7	-18.7	-31.9	-4.7	-4.7	-7.7
Participation rate	63.6	63.6	0.4	0.0	0.0	-0.3
Unemployment rate	14.1	13.5	0.5	-0.6	-0.6	-1.0
Employment rate	54.6	55.0	0.4	0.4	0.4	0.4
Part-time rate	47.6	46.9	0.7	-0.7	-0.7	-0.8
25 years and over, men									
Population	11,753.6	11,770.7	...	17.1	17.1	174.2	0.1	0.1	1.5
Labour force	8,566.7	8,544.5	15.1	-22.2	-22.2	112.6	-0.3	-0.3	1.3
Employment	8,050.4	8,021.3	16.3	-29.1	-29.1	143.1	-0.4	-0.4	1.8
Employment full-time	7,444.0	7,418.2	21.6	-25.8	-25.8	152.5	-0.3	-0.3	2.1
Employment part-time	606.4	603.0	17.4	-3.4	-3.4	-9.5	-0.6	-0.6	-1.6
Unemployment	516.3	523.2	14.7	6.9	6.9	-30.5	1.3	1.3	-5.5
Participation rate	72.9	72.6	0.1	-0.3	-0.3	-0.1
Unemployment rate	6.0	6.1	0.2	0.1	0.1	-0.5
Employment rate	68.5	68.1	0.1	-0.4	-0.4	0.2
Part-time rate	7.5	7.5	0.2	0.0	0.0	-0.3
25 years and over, women									
Population	12,258.9	12,275.8	...	16.9	16.9	172.9	0.1	0.1	1.4
Labour force	7,623.3	7,592.5	16.5	-30.8	-30.8	97.9	-0.4	-0.4	1.3
Employment	7,182.1	7,175.0	16.4	-7.1	-7.1	128.4	-0.1	-0.1	1.8
Employment full-time	5,639.9	5,620.2	25.0	-19.7	-19.7	105.1	-0.3	-0.3	1.9
Employment part-time	1,542.2	1,554.9	23.6	12.7	12.7	23.4	0.8	0.8	1.5
Unemployment	441.2	417.5	13.4	-23.7	-23.7	-30.5	-5.4	-5.4	-6.8
Participation rate	62.2	61.8	0.1	-0.4	-0.4	-0.1
Unemployment rate	5.8	5.5	0.2	-0.3	-0.3	-0.5
Employment rate	58.6	58.4	0.1	-0.2	-0.2	0.2
Part-time rate	21.5	21.7	0.3	0.2	0.2	-0.1
25 to 54 years, both sexes									
Population	14,579.4	14,578.2	...	-1.2	-1.2	32.5	0.0	0.0	0.2
Labour force	12,704.5	12,628.1	21.7	-76.4	-76.4	54.9	-0.6	-0.6	0.4
Employment	11,954.4	11,896.2	23.3	-58.2	-58.2	108.2	-0.5	-0.5	0.9
Unemployment	750.1	731.9	18.4	-18.2	-18.2	-53.3	-2.4	-2.4	-6.8
Participation rate	87.1	86.6	0.1	-0.5	-0.5	0.2
Unemployment rate	5.9	5.8	0.1	-0.1	-0.1	-0.4
Employment rate	82.0	81.6	0.2	-0.4	-0.4	0.6
25 to 54 years, men									
Population	7,294.4	7,293.9	...	-0.5	-0.5	17.7	0.0	0.0	0.2
Labour force	6,662.1	6,622.0	13.9	-40.1	-40.1	24.9	-0.6	-0.6	0.4
Employment	6,266.6	6,219.1	15.7	-47.5	-47.5	50.6	-0.8	-0.8	0.8
Unemployment	395.5	402.9	13.5	7.4	7.4	-25.6	1.9	1.9	-6.0
Participation rate	91.3	90.8	0.2	-0.5	-0.5	0.1
Unemployment rate	5.9	6.1	0.2	0.2	0.2	-0.4
Employment rate	85.9	85.3	0.2	-0.6	-0.6	0.5

See notes at the end of the table.

Table 1 – continued

Labour force characteristics by age and sex, Canada, seasonally adjusted

	December 2012	January 2013	S.E. ¹	Change from			Percent change from		
				last month	last December	twelve months ago	last month	last December	twelve months ago
in thousands (except rates)									
25 to 54 years, women									
Population	7,285.0	7,284.4	...	-0.6	-0.6	15.0	0.0	0.0	0.2
Labour force	6,042.4	6,006.1	15.9	-36.3	-36.3	29.9	-0.6	-0.6	0.5
Employment	5,687.8	5,677.1	16.3	-10.7	-10.7	57.6	-0.2	-0.2	1.0
Unemployment	354.6	329.0	12.3	-25.6	-25.6	-27.7	-7.2	-7.2	-7.8
Participation rate	82.9	82.5	0.2	-0.4	-0.4	0.3
Unemployment rate	5.9	5.5	0.2	-0.4	-0.4	-0.5
Employment rate	78.1	77.9	0.2	-0.2	-0.2	0.6
55 years and over, both sexes									
Population	9,433.1	9,468.3	...	35.2	35.2	314.6	0.4	0.4	3.4
Labour force	3,485.5	3,508.9	17.3	23.4	23.4	155.6	0.7	0.7	4.6
Employment	3,278.1	3,300.1	17.3	22.0	22.0	163.3	0.7	0.7	5.2
Unemployment	207.4	208.8	9.4	1.4	1.4	-7.7	0.7	0.7	-3.6
Participation rate	36.9	37.1	0.2	0.2	0.2	0.5
Unemployment rate	6.0	6.0	0.3	0.0	0.0	-0.5
Employment rate	34.8	34.9	0.2	0.1	0.1	0.6
55 years and over, men									
Population	4,459.2	4,476.8	...	17.6	17.6	156.6	0.4	0.4	3.6
Labour force	1,904.6	1,922.5	11.3	17.9	17.9	87.6	0.9	0.9	4.8
Employment	1,783.8	1,802.2	11.4	18.4	18.4	92.5	1.0	1.0	5.4
Unemployment	120.8	120.3	6.9	-0.5	-0.5	-4.9	-0.4	-0.4	-3.9
Participation rate	42.7	42.9	0.3	0.2	0.2	0.4
Unemployment rate	6.3	6.3	0.4	0.0	0.0	-0.5
Employment rate	40.0	40.3	0.3	0.3	0.3	0.7
55 years and over, women									
Population	4,973.9	4,991.5	...	17.6	17.6	158.1	0.4	0.4	3.3
Labour force	1,580.9	1,586.5	11.9	5.6	5.6	68.1	0.4	0.4	4.5
Employment	1,494.3	1,498.0	11.8	3.7	3.7	70.9	0.2	0.2	5.0
Unemployment	86.6	88.5	6.4	1.9	1.9	-2.8	2.2	2.2	-3.1
Participation rate	31.8	31.8	0.2	0.0	0.0	0.4
Unemployment rate	5.5	5.6	0.4	0.1	0.1	-0.4
Employment rate	30.0	30.0	0.2	0.0	0.0	0.5

1. Average standard error of change in two consecutive months (see "Sampling Errors" in Data Quality for further explanations).

Note(s): Related CANSIM table 282-0087.

Table 2
Employment by class of worker and industry, Canada, seasonally adjusted

	December 2012	January 2013	S.E. ¹	Change from			Percent change from		
				last month	last December	twelve months ago	last month	last December	twelve months ago
	in thousands								
Class of worker									
Employees	15,016.0	14,970.2	35.7	-45.8	-45.8	252.6	-0.3	-0.3	1.7
Self-employed ²	2,651.6	2,675.5	25.5	23.9	23.9	33.8	0.9	0.9	1.3
Public/private sector employees									
Public sector employees	3,648.5	3,621.5	25.0	-27.0	-27.0	42.4	-0.7	-0.7	1.2
Private sector employees	11,367.5	11,348.7	37.9	-18.8	-18.8	210.2	-0.2	-0.2	1.9
Industry	17,667.6	17,645.7	28.7	-21.9	-21.9	286.4	-0.1	-0.1	1.6
Goods-producing sector	3,879.4	3,862.3	26.6	-17.1	-17.1	45.3	-0.4	-0.4	1.2
Agriculture	313.3	312.3	7.2	-1.0	-1.0	6.0	-0.3	-0.3	2.0
Forestry, fishing, mining, quarrying, oil and gas extraction ³	357.4	357.1	7.3	-0.3	-0.3	-5.2	-0.1	-0.1	-1.4
Utilities	145.0	133.7	4.9	-11.3	-11.3	-5.2	-7.8	-7.8	-3.7
Construction	1,276.5	1,293.6	17.1	17.1	17.1	32.4	1.3	1.3	2.6
Manufacturing	1,787.2	1,765.6	19.9	-21.6	-21.6	17.3	-1.2	-1.2	1.0
Services-producing sector	13,788.2	13,783.4	34.3	-4.8	-4.8	241.1	0.0	0.0	1.8
Trade	2,690.8	2,689.9	23.6	-0.9	-0.9	33.2	0.0	0.0	1.2
Transportation and warehousing	860.1	864.7	14.1	4.6	4.6	13.7	0.5	0.5	1.6
Finance, insurance, real estate and leasing	1,119.5	1,109.2	16.0	-10.3	-10.3	76.0	-0.9	-0.9	7.4
Professional, scientific and technical services	1,283.3	1,300.5	18.4	17.2	17.2	-10.4	1.3	1.3	-0.8
Business, building and other support services	698.9	696.0	14.3	-2.9	-2.9	21.5	-0.4	-0.4	3.2
Educational services	1,323.8	1,292.9	17.2	-30.9	-30.9	46.7	-2.3	-2.3	3.7
Health care and social assistance	2,173.9	2,165.9	19.3	-8.0	-8.0	66.4	-0.4	-0.4	3.2
Information, culture and recreation	795.4	791.8	14.5	-3.6	-3.6	-0.3	-0.5	-0.5	0.0
Accommodation and food services	1,112.5	1,122.2	16.8	9.7	9.7	13.0	0.9	0.9	1.2
Other services	776.6	781.5	13.8	4.9	4.9	-15.8	0.6	0.6	-2.0
Public administration	953.3	968.7	12.6	15.4	15.4	-3.0	1.6	1.6	-0.3

1. Average standard error of change in two consecutive months (see "Sampling Errors" in Data Quality for further explanations).

2. Includes both incorporated and unincorporated working owners, self-employed persons who do not have a business and persons working in a family business without pay.

3. Also referred to as Natural resources.

Note(s): Related CANSIM Tables 282-0088, 282-0089.

Table 3
Labour force characteristics by province, seasonally adjusted

	December 2012	January 2013	S.E. ¹	Change from			Percent change from		
				last month	last December	twelve months ago	last month	last December	twelve months ago
in thousands (except rates)									
Newfoundland and Labrador									
Population	428.1	428.6	...	0.5	0.5	0.1	0.1	0.1	0.0
Labour force	266.8	265.1	2.0	-1.7	-1.7	3.6	-0.6	-0.6	1.4
Employment	235.7	234.7	2.1	-1.0	-1.0	8.1	-0.4	-0.4	3.6
Employment full-time	200.5	202.1	2.4	1.6	1.6	5.2	0.8	0.8	2.6
Employment part-time	35.2	32.6	1.9	-2.6	-2.6	2.9	-7.4	-7.4	9.8
Unemployment	31.0	30.4	1.8	-0.6	-0.6	-4.5	-1.9	-1.9	-12.9
Participation rate	62.3	61.9	0.5	-0.4	-0.4	0.9
Unemployment rate	11.6	11.5	0.7	-0.1	-0.1	-1.8
Employment rate	55.1	54.8	0.5	-0.3	-0.3	1.9
Prince Edward Island									
Population	120.6	120.6	...	0.0	0.0	0.6	0.0	0.0	0.5
Labour force	83.8	83.8	0.6	0.0	0.0	1.5	0.0	0.0	1.8
Employment	74.5	73.9	0.7	-0.6	-0.6	1.7	-0.8	-0.8	2.4
Employment full-time	60.7	60.7	0.8	0.0	0.0	0.6	0.0	0.0	1.0
Employment part-time	13.8	13.2	0.8	-0.6	-0.6	1.0	-4.3	-4.3	8.2
Unemployment	9.2	9.9	0.7	0.7	0.7	-0.2	7.6	7.6	-2.0
Participation rate	69.5	69.5	0.5	0.0	0.0	0.9
Unemployment rate	11.0	11.8	0.8	0.8	0.8	-0.5
Employment rate	61.8	61.3	0.5	-0.5	-0.5	1.1
Nova Scotia									
Population	780.8	780.9	...	0.1	0.1	1.3	0.0	0.0	0.2
Labour force	495.9	498.4	2.6	2.5	2.5	-1.1	0.5	0.5	-0.2
Employment	449.8	449.9	2.8	0.1	0.1	-7.7	0.0	0.0	-1.7
Employment full-time	363.2	363.4	3.6	0.2	0.2	-5.6	0.1	0.1	-1.5
Employment part-time	86.6	86.5	3.2	-0.1	-0.1	-2.1	-0.1	-0.1	-2.4
Unemployment	46.1	48.5	2.4	2.4	2.4	6.6	5.2	5.2	15.8
Participation rate	63.5	63.8	0.3	0.3	0.3	-0.3
Unemployment rate	9.3	9.7	0.5	0.4	0.4	1.3
Employment rate	57.6	57.6	0.4	0.0	0.0	-1.1
New Brunswick									
Population	620.0	620.1	...	0.1	0.1	-0.3	0.0	0.0	0.0
Labour force	389.8	395.0	2.2	5.2	5.2	2.3	1.3	1.3	0.6
Employment	347.7	350.4	2.3	2.7	2.7	-5.0	0.8	0.8	-1.4
Employment full-time	293.4	292.8	2.8	-0.6	-0.6	-5.1	-0.2	-0.2	-1.7
Employment part-time	54.3	57.6	2.3	3.3	3.3	0.1	6.1	6.1	0.2
Unemployment	42.1	44.6	2.2	2.5	2.5	7.3	5.9	5.9	19.6
Participation rate	62.9	63.7	0.4	0.8	0.8	0.4
Unemployment rate	10.8	11.3	0.5	0.5	0.5	1.8
Employment rate	56.1	56.5	0.4	0.4	0.4	-0.8
Quebec									
Population	6,664.3	6,668.3	...	4.0	4.0	58.2	0.1	0.1	0.9
Labour force	4,364.5	4,360.9	15.0	-3.6	-3.6	86.4	-0.1	-0.1	2.0
Employment	4,044.2	4,049.7	15.3	5.5	5.5	129.9	0.1	0.1	3.3
Employment full-time	3,288.2	3,301.5	20.0	13.3	13.3	133.5	0.4	0.4	4.2
Employment part-time	756.1	748.2	18.1	-7.9	-7.9	-3.6	-1.0	-1.0	-0.5
Unemployment	320.3	311.2	13.5	-9.1	-9.1	-43.5	-2.8	-2.8	-12.3
Participation rate	65.5	65.4	0.2	-0.1	-0.1	0.7
Unemployment rate	7.3	7.1	0.3	-0.2	-0.2	-1.2
Employment rate	60.7	60.7	0.2	0.0	0.0	1.4
Ontario									
Population	11,128.1	11,140.0	...	11.9	11.9	136.3	0.1	0.1	1.2
Labour force	7,442.0	7,388.4	20.0	-53.6	-53.6	55.6	-0.7	-0.7	0.8
Employment	6,854.2	6,823.0	19.3	-31.2	-31.2	81.1	-0.5	-0.5	1.2
Employment full-time	5,547.2	5,504.2	25.6	-43.0	-43.0	56.5	-0.8	-0.8	1.0
Employment part-time	1,307.1	1,318.7	23.6	11.6	11.6	24.4	0.9	0.9	1.9
Unemployment	587.7	565.5	17.6	-22.2	-22.2	-25.4	-3.8	-3.8	-4.3
Participation rate	66.9	66.3	0.2	-0.6	-0.6	-0.3
Unemployment rate	7.9	7.7	0.2	-0.2	-0.2	-0.4
Employment rate	61.6	61.2	0.2	-0.4	-0.4	-0.1

See notes at the end of the table.

Table 3 – continued

Labour force characteristics by province, seasonally adjusted

	December 2012	January 2013	S.E. ¹	Change from			Percent change from		
				last month	last December	twelve months ago	last month	last December	twelve months ago
in thousands (except rates)									
Manitoba									
Population	967.3	968.3	...	1.0	1.0	9.5	0.1	0.1	1.0
Labour force	673.5	673.8	2.6	0.3	0.3	11.9	0.0	0.0	1.8
Employment	638.4	640.0	2.7	1.6	1.6	13.8	0.3	0.3	2.2
Employment full-time	515.9	515.2	3.6	-0.7	-0.7	11.3	-0.1	-0.1	2.2
Employment part-time	122.5	124.8	3.5	2.3	2.3	2.5	1.9	1.9	2.0
Unemployment	35.2	33.8	2.2	-1.4	-1.4	-1.8	-4.0	-4.0	-5.1
Participation rate	69.6	69.6	0.3	0.0	0.0	0.6
Unemployment rate	5.2	5.0	0.3	-0.2	-0.2	-0.4
Employment rate	66.0	66.1	0.3	0.1	0.1	0.8
Saskatchewan									
Population	817.6	818.8	...	1.2	1.2	13.8	0.1	0.1	1.7
Labour force	570.6	574.9	2.5	4.3	4.3	17.8	0.8	0.8	3.2
Employment	544.3	551.6	2.6	7.3	7.3	21.8	1.3	1.3	4.1
Employment full-time	447.1	452.9	3.3	5.8	5.8	18.5	1.3	1.3	4.3
Employment part-time	97.2	98.8	3.1	1.6	1.6	3.4	1.6	1.6	3.6
Unemployment	26.3	23.2	1.9	-3.1	-3.1	-4.1	-11.8	-11.8	-15.0
Participation rate	69.8	70.2	0.3	0.4	0.4	1.0
Unemployment rate	4.6	4.0	0.3	-0.6	-0.6	-0.9
Employment rate	66.6	67.4	0.3	0.8	0.8	1.6
Alberta									
Population	3,111.5	3,121.7	...	10.2	10.2	88.8	0.3	0.3	2.9
Labour force	2,267.6	2,276.3	8.7	8.7	8.7	31.0	0.4	0.4	1.4
Employment	2,165.3	2,175.0	8.9	9.7	9.7	41.1	0.4	0.4	1.9
Employment full-time	1,826.7	1,835.3	11.8	8.6	8.6	38.2	0.5	0.5	2.1
Employment part-time	338.5	339.6	10.9	1.1	1.1	2.7	0.3	0.3	0.8
Unemployment	102.3	101.4	6.8	-0.9	-0.9	-9.9	-0.9	-0.9	-8.9
Participation rate	72.9	72.9	0.3	0.0	0.0	-1.1
Unemployment rate	4.5	4.5	0.3	0.0	0.0	-0.5
Employment rate	69.6	69.7	0.3	0.1	0.1	-0.7
British Columbia									
Population	3,830.3	3,834.0	...	3.7	3.7	36.5	0.1	0.1	1.0
Labour force	2,471.6	2,451.9	10.7	-19.7	-19.7	-15.5	-0.8	-0.8	-0.6
Employment	2,313.5	2,297.6	10.3	-15.9	-15.9	1.8	-0.7	-0.7	0.1
Employment full-time	1,817.1	1,811.3	14.5	-5.8	-5.8	31.9	-0.3	-0.3	1.8
Employment part-time	496.4	486.3	13.6	-10.1	-10.1	-30.1	-2.0	-2.0	-5.8
Unemployment	158.1	154.4	8.6	-3.7	-3.7	-17.2	-2.3	-2.3	-10.0
Participation rate	64.5	64.0	0.3	-0.5	-0.5	-1.0
Unemployment rate	6.4	6.3	0.3	-0.1	-0.1	-0.7
Employment rate	60.4	59.9	0.3	-0.5	-0.5	-0.6

1. Average standard error of change in two consecutive months (see "Sampling Errors" in Data Quality for further explanations).

Note(s): Related CANSIM Table 282-0087.

Table 4-1
Selected labour force characteristics (seasonally adjusted) — Newfoundland and Labrador

	December 2012	January 2013	S.E. ¹	Change from			Percent change from		
				last month	last December	twelve months ago	last month	last December	twelve months ago
in thousands (except rates)									
Both sexes, 15 years and over									
Population	428.1	428.6	...	0.5	0.5	0.1	0.1	0.1	0.0
Labour force	266.8	265.1	2.0	-1.7	-1.7	3.6	-0.6	-0.6	1.4
Employment	235.7	234.7	2.1	-1.0	-1.0	8.1	-0.4	-0.4	3.6
Employment full-time	200.5	202.1	2.4	1.6	1.6	5.2	0.8	0.8	2.6
Unemployment	31.0	30.4	1.8	-0.6	-0.6	-4.5	-1.9	-1.9	-12.9
Participation rate	62.3	61.9	0.5	-0.4	-0.4	0.9
Unemployment rate	11.6	11.5	0.7	-0.1	-0.1	-1.8
Employment rate	55.1	54.8	0.5	-0.3	-0.3	1.9
Part-time rate	14.9	13.9	0.8	-1.0	-1.0	0.8
Both sexes, 15 to 24 years									
Population	59.1	59.0	...	-0.1	-0.1	-1.2	-0.2	-0.2	-2.0
Labour force	38.1	35.6	1.1	-2.5	-2.5	0.7	-6.6	-6.6	2.0
Employment	31.6	29.6	1.0	-2.0	-2.0	1.7	-6.3	-6.3	6.1
Unemployment	6.5	6.0	1.0	-0.5	-0.5	-1.0	-7.7	-7.7	-14.3
Participation rate	64.5	60.3	1.8	-4.2	-4.2	2.3
Unemployment rate	17.1	16.9	2.5	-0.2	-0.2	-3.2
Employment rate	53.5	50.2	1.7	-3.3	-3.3	3.9
Part-time rate	38.0	39.9	3.5	1.9	1.9	-1.7
Men, 25 years and over									
Population	178.3	178.6	...	0.3	0.3	0.8	0.2	0.2	0.4
Labour force	119.2	119.8	1.1	0.6	0.6	1.3	0.5	0.5	1.1
Employment	106.0	105.7	1.2	-0.3	-0.3	3.6	-0.3	-0.3	3.5
Unemployment	13.2	14.0	1.2	0.8	0.8	-2.4	6.1	6.1	-14.6
Participation rate	66.9	67.1	0.6	0.2	0.2	0.5
Unemployment rate	11.1	11.7	1.0	0.6	0.6	-2.1
Employment rate	59.5	59.2	0.7	-0.3	-0.3	1.8
Part-time rate	4.2	3.6	0.7	-0.6	-0.6	-1.5
Women, 25 years and over									
Population	190.8	191.0	...	0.2	0.2	0.5	0.1	0.1	0.3
Labour force	109.4	109.8	1.1	0.4	0.4	1.7	0.4	0.4	1.6
Employment	98.1	99.4	1.1	1.3	1.3	2.8	1.3	1.3	2.9
Unemployment	11.4	10.4	1.0	-1.0	-1.0	-1.1	-8.8	-8.8	-9.6
Participation rate	57.3	57.5	0.6	0.2	0.2	0.8
Unemployment rate	10.4	9.5	0.9	-0.9	-0.9	-1.1
Employment rate	51.4	52.0	0.6	0.6	0.6	1.3
Part-time rate	19.1	17.1	1.2	-2.0	-2.0	3.7
Industry	235.7	234.6	2.1	-1.1	-1.1	8.0	-0.5	-0.5	3.5
Goods-producing sector	50.0	49.8	1.6	-0.2	-0.2	0.3	-0.4	-0.4	0.6
Agriculture	1.9	1.0	0.3	-0.9	-0.9	-0.5	-47.4	-47.4	-33.3
Forestry, fishing, mining, quarrying, oil and gas extraction ²	14.6	15.1	0.9	0.5	0.5	0.8	3.4	3.4	5.6
Utilities	3.3	2.9	0.4	-0.4	-0.4	0.3	-12.1	-12.1	11.5
Construction	20.0	20.8	1.1	0.8	0.8	0.8	4.0	4.0	4.0
Manufacturing	10.2	10.0	0.9	-0.2	-0.2	-1.2	-2.0	-2.0	-10.7
Services-producing sector	185.7	184.9	2.0	-0.8	-0.8	7.8	-0.4	-0.4	4.4
Trade	33.2	35.8	1.3	2.6	2.6	-0.2	7.8	7.8	-0.6
Transportation and warehousing	12.6	12.5	0.8	-0.1	-0.1	1.3	-0.8	-0.8	11.6
Finance, insurance, real estate and leasing	10.1	9.0	0.6	-1.1	-1.1	0.1	-10.9	-10.9	1.1
Professional, scientific and technical services	9.0	8.7	0.8	-0.3	-0.3	-1.5	-3.3	-3.3	-14.7
Business, building and other support services	6.9	7.1	0.7	0.2	0.2	1.2	2.9	2.9	20.3
Educational services	19.7	18.4	1.0	-1.3	-1.3	0.7	-6.6	-6.6	4.0
Health care and social assistance	37.7	37.2	1.2	-0.5	-0.5	2.1	-1.3	-1.3	6.0
Information, culture and recreation	7.4	7.0	0.6	-0.4	-0.4	-0.5	-5.4	-5.4	-6.7
Accommodation and food services	14.9	14.7	0.9	-0.2	-0.2	1.3	-1.3	-1.3	9.7
Other services	14.9	14.9	0.9	0.0	0.0	3.1	0.0	0.0	26.3
Public administration	19.4	19.5	0.9	0.1	0.1	0.2	0.5	0.5	1.0

1. Average standard error of change in two consecutive months (see "Sampling Errors" in Data Quality for further explanations).

2. Also referred to as Natural resources.

Note(s): Related CANSIM Tables 282-0087, 282-0088.

Table 4-2
Selected labour force characteristics (seasonally adjusted) — Prince Edward Island

	December 2012	January 2013	S.E. ¹	Change from			Percent change from		
				last month	last December	twelve months ago	last month	last December	twelve months ago
in thousands (except rates)									
Both sexes, 15 years and over									
Population	120.6	120.6	...	0.0	0.0	0.6	0.0	0.0	0.5
Labour force	83.8	83.8	0.6	0.0	0.0	1.5	0.0	0.0	1.8
Employment	74.5	73.9	0.7	-0.6	-0.6	1.7	-0.8	-0.8	2.4
Employment full-time	60.7	60.7	0.8	0.0	0.0	0.6	0.0	0.0	1.0
Unemployment	9.2	9.9	0.7	0.7	0.7	-0.2	7.6	7.6	-2.0
Participation rate	69.5	69.5	0.5	0.0	0.0	0.9
Unemployment rate	11.0	11.8	0.8	0.8	0.8	-0.5
Employment rate	61.8	61.3	0.5	-0.5	-0.5	1.1
Part-time rate	18.5	17.9	1.0	-0.7	-0.7	1.0
Both sexes, 15 to 24 years									
Population	19.9	19.9	...	0.0	0.0	-0.1	0.0	0.0	-0.5
Labour force	13.4	13.5	0.4	0.1	0.1	-0.5	0.7	0.7	-3.6
Employment	11.2	11.1	0.4	-0.1	-0.1	-0.2	-0.9	-0.9	-1.8
Unemployment	2.2	2.4	0.4	0.2	0.2	-0.3	9.1	9.1	-11.1
Participation rate	67.3	67.8	2.0	0.5	0.5	-2.2
Unemployment rate	16.4	17.8	2.6	1.4	1.4	-1.5
Employment rate	56.3	55.8	1.8	-0.5	-0.5	-0.7
Part-time rate	47.3	46.8	3.9	-0.5	-0.5	6.1
Men, 25 years and over									
Population	48.4	48.4	...	0.0	0.0	0.1	0.0	0.0	0.2
Labour force	36.1	35.8	0.3	-0.3	-0.3	1.0	-0.8	-0.8	2.9
Employment	31.8	31.2	0.4	-0.6	-0.6	0.3	-1.9	-1.9	1.0
Unemployment	4.3	4.6	0.4	0.3	0.3	0.7	7.0	7.0	17.9
Participation rate	74.6	74.0	0.7	-0.6	-0.6	2.0
Unemployment rate	11.9	12.8	1.1	0.9	0.9	1.6
Employment rate	65.7	64.5	0.9	-1.2	-1.2	0.5
Part-time rate	8.2	7.1	1.1	-1.1	-1.1	-0.4
Women, 25 years and over									
Population	52.2	52.3	...	0.1	0.1	0.6	0.2	0.2	1.2
Labour force	34.2	34.5	0.3	0.3	0.3	0.9	0.9	0.9	2.7
Employment	31.5	31.6	0.4	0.1	0.1	1.6	0.3	0.3	5.3
Unemployment	2.8	2.9	0.3	0.1	0.1	-0.7	3.6	3.6	-19.4
Participation rate	65.5	66.0	0.6	0.5	0.5	1.0
Unemployment rate	8.2	8.4	0.9	0.2	0.2	-2.3
Employment rate	60.3	60.4	0.7	0.1	0.1	2.4
Part-time rate	18.4	18.0	1.4	-0.4	-0.4	0.7
Industry	74.5	73.9	0.7	-0.6	-0.6	1.7	-0.8	-0.8	2.4
Goods-producing sector	17.4	16.7	0.6	-0.7	-0.7	-1.2	-4.0	-4.0	-6.7
Agriculture	4.4	4.3	0.4	-0.1	-0.1	0.4	-2.3	-2.3	10.3
Forestry, fishing, mining, quarrying, oil and gas extraction ²	2.4	2.4	0.3	0.0	0.0	-1.1	0.0	0.0	-31.4
Utilities	0.3	0.3	0.1	0.0	0.0	0.0	0.0	0.0	0.0
Construction	5.3	5.0	0.3	-0.3	-0.3	0.0	-5.7	-5.7	0.0
Manufacturing	5.0	4.8	0.3	-0.2	-0.2	-0.5	-4.0	-4.0	-9.4
Services-producing sector	57.1	57.2	0.7	0.1	0.1	2.9	0.2	0.2	5.3
Trade	10.5	10.4	0.4	-0.1	-0.1	0.7	-1.0	-1.0	7.2
Transportation and warehousing	2.3	1.9	0.2	-0.4	-0.4	-0.6	-17.4	-17.4	-24.0
Finance, insurance, real estate and leasing	2.4	2.6	0.2	0.2	0.2	-0.1	8.3	8.3	-3.7
Professional, scientific and technical services	3.2	3.1	0.3	-0.1	-0.1	0.3	-3.1	-3.1	10.7
Business, building and other support services	2.2	2.4	0.3	0.2	0.2	0.2	9.1	9.1	9.1
Educational services	6.9	6.3	0.3	-0.6	-0.6	1.0	-8.7	-8.7	18.9
Health care and social assistance	9.6	10.3	0.4	0.7	0.7	0.4	7.3	7.3	4.0
Information, culture and recreation	3.0	3.1	0.3	0.1	0.1	0.5	3.3	3.3	19.2
Accommodation and food services	5.9	5.9	0.4	0.0	0.0	0.5	0.0	0.0	9.3
Other services	3.2	3.5	0.3	0.3	0.3	0.4	9.4	9.4	12.9
Public administration	7.8	7.8	0.4	0.0	0.0	-0.2	0.0	0.0	-2.5

1. Average standard error of change in two consecutive months (see "Sampling Errors" in Data Quality for further explanations).

2. Also referred to as Natural resources.

Note(s): Related CANSIM Tables 282-0087, 282-0088.

Table 4-3

Selected labour force characteristics (seasonally adjusted) — Nova Scotia

	December 2012	January 2013	S.E. ¹	Change from			Percent change from		
				last month	last December	twelve months ago	last month	last December	twelve months ago
in thousands (except rates)									
Both sexes, 15 years and over									
Population	780.8	780.9	...	0.1	0.1	1.3	0.0	0.0	0.2
Labour force	495.9	498.4	2.6	2.5	2.5	-1.1	0.5	0.5	-0.2
Employment	449.8	449.9	2.8	0.1	0.1	-7.7	0.0	0.0	-1.7
Employment full-time	363.2	363.4	3.6	0.2	0.2	-5.6	0.1	0.1	-1.5
Unemployment	46.1	48.5	2.4	2.4	2.4	6.6	5.2	5.2	15.8
Participation rate	63.5	63.8	0.3	0.3	0.3	-0.3
Unemployment rate	9.3	9.7	0.5	0.4	0.4	1.3
Employment rate	57.6	57.6	0.4	0.0	0.0	-1.1
Part-time rate	19.3	19.2	0.7	0.0	0.0	-0.1
Both sexes, 15 to 24 years									
Population	117.2	117.0	...	-0.2	-0.2	-2.0	-0.2	-0.2	-1.7
Labour force	74.7	75.4	1.6	0.7	0.7	-2.2	0.9	0.9	-2.8
Employment	61.4	60.5	1.5	-0.9	-0.9	-3.6	-1.5	-1.5	-5.6
Unemployment	13.3	14.9	1.5	1.6	1.6	1.4	12.0	12.0	10.4
Participation rate	63.7	64.4	1.4	0.7	0.7	-0.8
Unemployment rate	17.8	19.8	1.8	2.0	2.0	2.4
Employment rate	52.4	51.7	1.3	-0.7	-0.7	-2.2
Part-time rate	49.5	45.5	2.6	-4.1	-4.1	-4.9
Men, 25 years and over									
Population	314.5	314.7	...	0.2	0.2	1.9	0.1	0.1	0.6
Labour force	212.4	214.4	1.4	2.0	2.0	0.6	0.9	0.9	0.3
Employment	194.0	196.0	1.7	2.0	2.0	-1.3	1.0	1.0	-0.7
Unemployment	18.4	18.4	1.5	0.0	0.0	1.9	0.0	0.0	11.5
Participation rate	67.5	68.1	0.5	0.6	0.6	-0.3
Unemployment rate	8.7	8.6	0.7	-0.1	-0.1	0.9
Employment rate	61.7	62.3	0.5	0.6	0.6	-0.8
Part-time rate	8.2	8.5	0.8	0.3	0.3	0.6
Women, 25 years and over									
Population	349.1	349.2	...	0.1	0.1	1.3	0.0	0.0	0.4
Labour force	208.8	208.5	1.4	-0.3	-0.3	0.4	-0.1	-0.1	0.2
Employment	194.4	193.4	1.5	-1.0	-1.0	-2.8	-0.5	-0.5	-1.4
Unemployment	14.4	15.2	1.2	0.8	0.8	3.3	5.6	5.6	27.7
Participation rate	59.8	59.7	0.4	-0.1	-0.1	-0.1
Unemployment rate	6.9	7.3	0.6	0.4	0.4	1.6
Employment rate	55.7	55.4	0.4	-0.3	-0.3	-1.0
Part-time rate	20.7	21.9	1.0	1.1	1.1	1.2
Industry	449.8	449.9	2.8	0.1	0.1	-7.7	0.0	0.0	-1.7
Goods-producing sector	81.2	79.1	2.2	-2.1	-2.1	-7.7	-2.6	-2.6	-8.9
Agriculture	6.1	5.0	0.7	-1.1	-1.1	-1.3	-18.0	-18.0	-20.6
Forestry, fishing, mining, quarrying, oil and gas extraction ²	10.7	9.6	1.0	-1.1	-1.1	-1.4	-10.3	-10.3	-12.7
Utilities	4.4	4.1	0.4	-0.3	-0.3	-0.2	-6.8	-6.8	-4.7
Construction	29.3	31.2	1.5	1.9	1.9	-0.5	6.5	6.5	-1.6
Manufacturing	30.7	29.1	1.4	-1.6	-1.6	-4.4	-5.2	-5.2	-13.1
Services-producing sector	368.5	370.8	2.9	2.3	2.3	0.0	0.6	0.6	0.0
Trade	69.7	71.3	1.9	1.6	1.6	-3.6	2.3	2.3	-4.8
Transportation and warehousing	20.4	23.0	1.1	2.6	2.6	2.0	12.7	12.7	9.5
Finance, insurance, real estate and leasing	22.2	22.4	1.1	0.2	0.2	-0.4	0.9	0.9	-1.8
Professional, scientific and technical services	28.7	30.0	1.2	1.3	1.3	5.7	4.5	4.5	23.5
Business, building and other support services	21.4	23.0	1.3	1.6	1.6	3.5	7.5	7.5	17.9
Educational services	36.6	34.6	1.5	-2.0	-2.0	-3.7	-5.5	-5.5	-9.7
Health care and social assistance	67.7	68.8	1.7	1.1	1.1	0.6	1.6	1.6	0.9
Information, culture and recreation	18.6	18.6	1.2	0.0	0.0	-2.7	0.0	0.0	-12.7
Accommodation and food services	34.5	28.5	1.5	-6.0	-6.0	0.7	-17.4	-17.4	2.5
Other services	20.2	20.5	1.2	0.3	0.3	-0.8	1.5	1.5	-3.8
Public administration	28.5	30.2	1.2	1.7	1.7	-1.1	6.0	6.0	-3.5

1. Average standard error of change in two consecutive months (see "Sampling Errors" in Data Quality for further explanations).

2. Also referred to as Natural resources.

Note(s): Related CANSIM Tables 282-0087, 282-0088.

Table 4-4

Selected labour force characteristics (seasonally adjusted) — New Brunswick

	December 2012	January 2013	S.E. ¹	Change from			Percent change from		
				last month	last December	twelve months ago	last month	last December	twelve months ago
in thousands (except rates)									
Both sexes, 15 years and over									
Population	620.0	620.1	...	0.1	0.1	-0.3	0.0	0.0	0.0
Labour force	389.8	395.0	2.2	5.2	5.2	2.3	1.3	1.3	0.6
Employment	347.7	350.4	2.3	2.7	2.7	-5.0	0.8	0.8	-1.4
Employment full-time	293.4	292.8	2.8	-0.6	-0.6	-5.1	-0.2	-0.2	-1.7
Unemployment	42.1	44.6	2.2	2.5	2.5	7.3	5.9	5.9	19.6
Participation rate	62.9	63.7	0.4	0.8	0.8	0.4
Unemployment rate	10.8	11.3	0.5	0.5	0.5	1.8
Employment rate	56.1	56.5	0.4	0.4	0.4	-0.8
Part-time rate	15.6	16.4	0.6	0.8	0.8	0.3
Both sexes, 15 to 24 years									
Population	89.5	89.4	...	-0.1	-0.1	-1.4	-0.1	-0.1	-1.5
Labour force	55.2	55.7	1.3	0.5	0.5	-3.7	0.9	0.9	-6.2
Employment	45.2	45.6	1.2	0.4	0.4	-3.7	0.9	0.9	-7.5
Unemployment	10.0	10.1	1.2	0.1	0.1	0.0	1.0	1.0	0.0
Participation rate	61.7	62.3	1.5	0.6	0.6	-3.1
Unemployment rate	18.1	18.1	1.9	0.0	0.0	1.1
Employment rate	50.5	51.0	1.4	0.5	0.5	-3.3
Part-time rate	36.5	41.9	2.6	5.4	5.4	0.9
Men, 25 years and over									
Population	254.4	254.5	...	0.1	0.1	0.4	0.0	0.0	0.2
Labour force	171.6	174.8	1.3	3.2	3.2	2.8	1.9	1.9	1.6
Employment	152.5	152.0	1.4	-0.5	-0.5	-4.0	-0.3	-0.3	-2.6
Unemployment	19.1	22.8	1.4	3.7	3.7	6.7	19.4	19.4	41.6
Participation rate	67.5	68.7	0.5	1.2	1.2	1.0
Unemployment rate	11.1	13.0	0.8	1.9	1.9	3.6
Employment rate	59.9	59.7	0.6	-0.2	-0.2	-1.7
Part-time rate	6.6	7.0	0.7	0.5	0.5	1.5
Women, 25 years and over									
Population	276.1	276.1	...	0.0	0.0	0.6	0.0	0.0	0.2
Labour force	163.1	164.5	1.2	1.4	1.4	3.2	0.9	0.9	2.0
Employment	150.1	152.8	1.2	2.7	2.7	2.6	1.8	1.8	1.7
Unemployment	13.0	11.7	1.1	-1.3	-1.3	0.5	-10.0	-10.0	4.5
Participation rate	59.1	59.6	0.4	0.5	0.5	1.1
Unemployment rate	8.0	7.1	0.7	-0.9	-0.9	0.2
Employment rate	54.4	55.3	0.4	0.9	0.9	0.8
Part-time rate	18.5	18.2	1.0	-0.3	-0.3	-0.8
Industry	347.7	350.4	2.3	2.7	2.7	-5.0	0.8	0.8	-1.4
Goods-producing sector	72.9	74.6	1.9	1.7	1.7	-3.8	2.3	2.3	-4.8
Agriculture	4.9	5.1	0.5	0.2	0.2	1.0	4.1	4.1	24.4
Forestry, fishing, mining, quarrying, oil and gas extraction ²	12.8	12.1	0.9	-0.7	-0.7	1.1	-5.5	-5.5	10.0
Utilities	3.8	3.5	0.4	-0.3	-0.3	-0.9	-7.9	-7.9	-20.5
Construction	23.1	25.0	1.3	1.9	1.9	-3.6	8.2	8.2	-12.6
Manufacturing	28.3	28.9	1.3	0.6	0.6	-1.5	2.1	2.1	-4.9
Services-producing sector	274.9	275.8	2.4	0.9	0.9	-1.2	0.3	0.3	-0.4
Trade	56.0	57.0	1.6	1.0	1.0	1.4	1.8	1.8	2.5
Transportation and warehousing	16.5	17.9	0.9	1.4	1.4	1.3	8.5	8.5	7.8
Finance, insurance, real estate and leasing	17.0	16.7	0.8	-0.3	-0.3	1.1	-1.8	-1.8	7.1
Professional, scientific and technical services	14.6	13.9	0.9	-0.7	-0.7	-2.2	-4.8	-4.8	-13.7
Business, building and other support services	17.5	15.0	1.0	-2.5	-2.5	-2.1	-14.3	-14.3	-12.3
Educational services	26.8	28.0	1.2	1.2	1.2	1.8	4.5	4.5	6.9
Health care and social assistance	54.9	55.6	1.3	0.7	0.7	4.1	1.3	1.3	8.0
Information, culture and recreation	13.0	13.0	0.9	0.0	0.0	0.0	0.0	0.0	0.0
Accommodation and food services	21.9	21.7	1.2	-0.2	-0.2	-0.7	-0.9	-0.9	-3.1
Other services	14.9	14.7	0.9	-0.2	-0.2	-1.3	-1.3	-1.3	-8.1
Public administration	21.8	22.3	1.0	0.5	0.5	-4.4	2.3	2.3	-16.5

1. Average standard error of change in two consecutive months (see "Sampling Errors" in Data Quality for further explanations).

2. Also referred to as Natural resources.

Note(s): Related CANSIM Tables 282-0087, 282-0088.

Table 4-5
Selected labour force characteristics (seasonally adjusted) — Quebec

	December 2012	January 2013	S.E. ¹	Change from			Percent change from		
				last month	last December	twelve months ago	last month	last December	twelve months ago
in thousands (except rates)									
Both sexes, 15 years and over									
Population	6,664.3	6,668.3	...	4.0	4.0	58.2	0.1	0.1	0.9
Labour force	4,364.5	4,360.9	15.0	-3.6	-3.6	86.4	-0.1	-0.1	2.0
Employment	4,044.2	4,049.7	15.3	5.5	5.5	129.9	0.1	0.1	3.3
Employment full-time	3,288.2	3,301.5	20.0	13.3	13.3	133.5	0.4	0.4	4.2
Unemployment	320.3	311.2	13.5	-9.1	-9.1	-43.5	-2.8	-2.8	-12.3
Participation rate	65.5	65.4	0.2	-0.1	-0.1	0.7
Unemployment rate	7.3	7.1	0.3	-0.2	-0.2	-1.2
Employment rate	60.7	60.7	0.2	0.0	0.0	1.4
Part-time rate	18.7	18.5	0.4	-0.2	-0.2	-0.7
Both sexes, 15 to 24 years									
Population	982.4	981.9	...	-0.5	-0.5	-0.7	-0.1	-0.1	-0.1
Labour force	656.7	661.1	8.7	4.4	4.4	19.3	0.7	0.7	3.0
Employment	575.0	585.2	8.3	10.2	10.2	36.4	1.8	1.8	6.6
Unemployment	81.8	75.9	7.8	-5.9	-5.9	-17.2	-7.2	-7.2	-18.5
Participation rate	66.8	67.3	0.9	0.5	0.5	2.0
Unemployment rate	12.5	11.5	1.1	-1.0	-1.0	-3.0
Employment rate	58.5	59.6	0.8	1.1	1.1	3.7
Part-time rate	50.2	48.8	1.6	-1.4	-1.4	-4.1
Men, 25 years and over									
Population	2,795.5	2,797.9	...	2.4	2.4	30.9	0.1	0.1	1.1
Labour force	1,978.8	1,969.0	8.3	-9.8	-9.8	47.7	-0.5	-0.5	2.5
Employment	1,838.3	1,827.9	9.0	-10.4	-10.4	59.0	-0.6	-0.6	3.3
Unemployment	140.5	141.1	8.1	0.6	0.6	-11.3	0.4	0.4	-7.4
Participation rate	70.8	70.4	0.3	-0.4	-0.4	1.0
Unemployment rate	7.1	7.2	0.4	0.1	0.1	-0.7
Employment rate	65.8	65.3	0.3	-0.5	-0.5	1.4
Part-time rate	7.2	7.2	0.5	0.0	0.0	-1.1
Women, 25 years and over									
Population	2,886.4	2,888.5	...	2.1	2.1	28.0	0.1	0.1	1.0
Labour force	1,729.1	1,730.8	8.3	1.7	1.7	19.4	0.1	0.1	1.1
Employment	1,631.0	1,636.6	8.5	5.6	5.6	34.5	0.3	0.3	2.2
Unemployment	98.0	94.2	7.1	-3.8	-3.8	-15.1	-3.9	-3.9	-13.8
Participation rate	59.9	59.9	0.3	0.0	0.0	0.1
Unemployment rate	5.7	5.4	0.4	-0.3	-0.3	-1.0
Employment rate	56.5	56.7	0.3	0.2	0.2	0.7
Part-time rate	20.6	20.2	0.7	-0.4	-0.4	0.6
Industry	4,044.2	4,049.7	15.3	5.5	5.5	129.9	0.1	0.1	3.3
Goods-producing sector	872.9	865.6	13.6	-7.3	-7.3	43.6	-0.8	-0.8	5.3
Agriculture	56.4	56.2	3.2	-0.2	-0.2	4.2	-0.4	-0.4	8.1
Forestry, fishing, mining, quarrying, oil and gas extraction ²	34.1	35.4	2.5	1.3	1.3	-1.8	3.8	3.8	-4.8
Utilities	25.3	27.8	2.2	2.5	2.5	0.7	9.9	9.9	2.6
Construction	250.3	255.5	8.3	5.2	5.2	33.6	2.1	2.1	15.1
Manufacturing	506.8	490.7	10.7	-16.1	-16.1	6.9	-3.2	-3.2	1.4
Services-producing sector	3,171.3	3,184.1	17.8	12.8	12.8	86.4	0.4	0.4	2.8
Trade	629.8	641.8	12.7	12.0	12.0	-0.1	1.9	1.9	0.0
Transportation and warehousing	164.5	173.2	7.0	8.7	8.7	-12.2	5.3	5.3	-6.6
Finance, insurance, real estate and leasing	231.1	231.2	7.5	0.1	0.1	19.7	0.0	0.0	9.3
Professional, scientific and technical services	296.6	294.8	9.0	-1.8	-1.8	-0.9	-0.6	-0.6	-0.3
Business, building and other support services	153.1	147.6	7.2	-5.5	-5.5	4.2	-3.6	-3.6	2.9
Educational services	303.2	283.4	9.5	-19.8	-19.8	-2.4	-6.5	-6.5	-0.8
Health care and social assistance	571.2	572.8	10.0	1.6	1.6	82.0	0.3	0.3	16.7
Information, culture and recreation	186.7	193.3	7.4	6.6	6.6	21.6	3.5	3.5	12.6
Accommodation and food services	228.8	242.3	8.5	13.5	13.5	-15.8	5.9	5.9	-6.1
Other services	179.5	175.0	6.8	-4.5	-4.5	-4.5	-2.5	-2.5	-2.5
Public administration	226.7	228.7	6.3	2.0	2.0	-5.2	0.9	0.9	-2.2

1. Average standard error of change in two consecutive months (see "Sampling Errors" in Data Quality for further explanations).

2. Also referred to as Natural resources.

Note(s): Related CANSIM Tables 282-0087, 282-0088.

Table 4-6
Selected labour force characteristics (seasonally adjusted) — Ontario

	December 2012	January 2013	S.E. ¹	Change from			Percent change from		
				last month	last December	twelve months ago	last month	last December	twelve months ago
in thousands (except rates)									
Both sexes, 15 years and over									
Population	11,128.1	11,140.0	...	11.9	11.9	136.3	0.1	0.1	1.2
Labour force	7,442.0	7,388.4	20.0	-53.6	-53.6	55.6	-0.7	-0.7	0.8
Employment	6,854.2	6,823.0	19.3	-31.2	-31.2	81.1	-0.5	-0.5	1.2
Employment full-time	5,547.2	5,504.2	25.6	-43.0	-43.0	56.5	-0.8	-0.8	1.0
Unemployment	587.7	565.5	17.6	-22.2	-22.2	-25.4	-3.8	-3.8	-4.3
Participation rate	66.9	66.3	0.2	-0.6	-0.6	-0.3
Unemployment rate	7.9	7.7	0.2	-0.2	-0.2	-0.4
Employment rate	61.6	61.2	0.2	-0.4	-0.4	-0.1
Part-time rate	19.1	19.3	0.3	0.3	0.3	0.1
Both sexes, 15 to 24 years									
Population	1,788.6	1,788.1	...	-0.5	-0.5	1.5	0.0	0.0	0.1
Labour force	1,097.2	1,073.5	12.2	-23.7	-23.7	-7.2	-2.2	-2.2	-0.7
Employment	909.8	896.5	10.7	-13.3	-13.3	-1.2	-1.5	-1.5	-0.1
Unemployment	187.3	177.0	10.8	-10.3	-10.3	-6.0	-5.5	-5.5	-3.3
Participation rate	61.3	60.0	0.7	-1.3	-1.3	-0.5
Unemployment rate	17.1	16.5	0.9	-0.6	-0.6	-0.4
Employment rate	50.9	50.1	0.6	-0.8	-0.8	-0.1
Part-time rate	54.3	53.9	1.3	-0.5	-0.5	3.8
Men, 25 years and over									
Population	4,530.6	4,536.5	...	5.9	5.9	66.4	0.1	0.1	1.5
Labour force	3,317.7	3,298.4	10.1	-19.3	-19.3	21.0	-0.6	-0.6	0.6
Employment	3,107.0	3,086.7	10.8	-20.3	-20.3	23.9	-0.7	-0.7	0.8
Unemployment	210.7	211.7	10.0	1.0	1.0	-3.0	0.5	0.5	-1.4
Participation rate	73.2	72.7	0.2	-0.5	-0.5	-0.6
Unemployment rate	6.4	6.4	0.3	0.0	0.0	-0.2
Employment rate	68.6	68.0	0.2	-0.6	-0.6	-0.5
Part-time rate	7.9	7.8	0.4	-0.1	-0.1	-0.2
Women, 25 years and over									
Population	4,808.9	4,815.4	...	6.5	6.5	68.4	0.1	0.1	1.4
Labour force	3,027.1	3,016.5	11.3	-10.6	-10.6	41.8	-0.4	-0.4	1.4
Employment	2,837.4	2,839.7	11.1	2.3	2.3	58.2	0.1	0.1	2.1
Unemployment	189.7	176.8	9.3	-12.9	-12.9	-16.5	-6.8	-6.8	-8.5
Participation rate	62.9	62.6	0.2	-0.3	-0.3	-0.1
Unemployment rate	6.3	5.9	0.3	-0.4	-0.4	-0.6
Employment rate	59.0	59.0	0.2	0.0	0.0	0.4
Part-time rate	20.0	20.9	0.5	0.9	0.9	-0.6
Industry	6,854.2	6,823.0	19.3	-31.2	-31.2	81.1	-0.5	-0.5	1.2
Goods-producing sector	1,406.2	1,392.2	18.2	-14.0	-14.0	-36.4	-1.0	-1.0	-2.5
Agriculture	85.1	85.5	4.5	0.4	0.4	-22.5	0.5	0.5	-20.8
Forestry, fishing, mining, quarrying, oil and gas extraction ²	34.2	36.6	2.5	2.4	2.4	-2.6	7.0	7.0	-6.6
Utilities	55.4	48.5	3.2	-6.9	-6.9	-6.8	-12.5	-12.5	-12.3
Construction	429.4	423.2	11.2	-6.2	-6.2	-17.4	-1.4	-1.4	-3.9
Manufacturing	802.1	798.5	14.5	-3.6	-3.6	13.1	-0.4	-0.4	1.7
Services-producing sector	5,448.1	5,430.7	23.6	-17.4	-17.4	117.3	-0.3	-0.3	2.2
Trade	1,034.9	1,021.7	16.0	-13.2	-13.2	40.8	-1.3	-1.3	4.2
Transportation and warehousing	329.2	341.7	9.7	12.5	12.5	31.5	3.8	3.8	10.2
Finance, insurance, real estate and leasing	524.8	516.1	12.1	-8.7	-8.7	38.5	-1.7	-1.7	8.1
Professional, scientific and technical services	546.8	551.5	13.6	4.7	4.7	-23.0	0.9	0.9	-4.0
Business, building and other support services	293.7	290.5	10.3	-3.2	-3.2	1.8	-1.1	-1.1	0.6
Educational services	523.6	520.5	11.9	-3.1	-3.1	27.6	-0.6	-0.6	5.6
Health care and social assistance	769.5	768.4	13.3	-1.1	-1.1	10.7	-0.1	-0.1	1.4
Information, culture and recreation	326.7	316.9	10.3	-9.8	-9.8	-25.6	-3.0	-3.0	-7.5
Accommodation and food services	428.4	427.5	11.4	-0.9	-0.9	23.0	-0.2	-0.2	5.7
Other services	286.4	290.5	9.5	4.1	4.1	1.0	1.4	1.4	0.3
Public administration	384.1	385.5	9.1	1.4	1.4	-8.9	0.4	0.4	-2.3

1. Average standard error of change in two consecutive months (see "Sampling Errors" in Data Quality for further explanations).

2. Also referred to as Natural resources.

Note(s): Related CANSIM Tables 282-0087, 282-0088.

Table 4-7
Selected labour force characteristics (seasonally adjusted) — Manitoba

	December 2012	January 2013	S.E. ¹	Change from			Percent change from		
				last month	last December	twelve months ago	last month	last December	twelve months ago
in thousands (except rates)									
Both sexes, 15 years and over									
Population	967.3	968.3	...	1.0	1.0	9.5	0.1	0.1	1.0
Labour force	673.5	673.8	2.6	0.3	0.3	11.9	0.0	0.0	1.8
Employment	638.4	640.0	2.7	1.6	1.6	13.8	0.3	0.3	2.2
Employment full-time	515.9	515.2	3.6	-0.7	-0.7	11.3	-0.1	-0.1	2.2
Unemployment	35.2	33.8	2.2	-1.4	-1.4	-1.8	-4.0	-4.0	-5.1
Participation rate	69.6	69.6	0.3	0.0	0.0	0.6
Unemployment rate	5.2	5.0	0.3	-0.2	-0.2	-0.4
Employment rate	66.0	66.1	0.3	0.1	0.1	0.8
Part-time rate	19.2	19.5	0.5	0.3	0.3	0.0
Both sexes, 15 to 24 years									
Population	164.8	164.8	...	0.0	0.0	-0.2	0.0	0.0	-0.1
Labour force	115.4	116.5	1.6	1.1	1.1	2.8	1.0	1.0	2.5
Employment	103.7	105.0	1.5	1.3	1.3	3.8	1.3	1.3	3.8
Unemployment	11.6	11.6	1.4	0.0	0.0	-0.9	0.0	0.0	-7.2
Participation rate	70.0	70.7	0.9	0.7	0.7	1.8
Unemployment rate	10.1	10.0	1.2	-0.1	-0.1	-1.0
Employment rate	62.9	63.7	0.9	0.8	0.8	2.4
Part-time rate	40.8	42.4	1.8	1.6	1.6	-0.4
Men, 25 years and over									
Population	393.3	393.8	...	0.5	0.5	4.7	0.1	0.1	1.2
Labour force	301.6	300.8	1.3	-0.8	-0.8	4.6	-0.3	-0.3	1.6
Employment	289.4	289.2	1.4	-0.2	-0.2	5.3	-0.1	-0.1	1.9
Unemployment	12.1	11.6	1.2	-0.5	-0.5	-0.7	-4.1	-4.1	-5.7
Participation rate	76.7	76.4	0.3	-0.3	-0.3	0.3
Unemployment rate	4.0	3.9	0.4	-0.1	-0.1	-0.3
Employment rate	73.6	73.4	0.4	-0.2	-0.2	0.4
Part-time rate	8.1	7.3	0.6	-0.7	-0.7	-0.1
Women, 25 years and over									
Population	409.2	409.7	...	0.5	0.5	4.9	0.1	0.1	1.2
Labour force	256.6	256.5	1.5	-0.1	-0.1	4.5	0.0	0.0	1.8
Employment	245.2	245.8	1.6	0.6	0.6	4.7	0.2	0.2	1.9
Unemployment	11.4	10.6	1.1	-0.8	-0.8	-0.2	-7.0	-7.0	-1.9
Participation rate	62.7	62.6	0.4	-0.1	-0.1	0.3
Unemployment rate	4.4	4.1	0.4	-0.3	-0.3	-0.2
Employment rate	59.9	60.0	0.4	0.1	0.1	0.4
Part-time rate	23.2	24.0	0.9	0.9	0.9	0.0
Industry									
	638.3	640.0	2.7	1.7	1.7	13.8	0.3	0.3	2.2
Goods-producing sector									
	149.3	149.2	2.4	-0.1	-0.1	7.6	-0.1	-0.1	5.4
Agriculture	23.6	24.4	1.2	0.8	0.8	3.6	3.4	3.4	17.3
Forestry, fishing, mining, quarrying, oil and gas extraction ²	7.5	7.4	0.5	-0.1	-0.1	0.9	-1.3	-1.3	13.8
Utilities	8.0	7.6	0.5	-0.4	-0.4	-0.2	-5.0	-5.0	-2.6
Construction	48.7	48.6	1.5	-0.1	-0.1	4.4	-0.2	-0.2	10.0
Manufacturing	61.4	61.2	1.7	-0.2	-0.2	-1.2	-0.3	-0.3	-1.9
Services-producing sector									
	489.1	490.8	3.2	1.7	1.7	6.2	0.3	0.3	1.3
Trade	92.6	91.5	2.1	-1.1	-1.1	-2.6	-1.2	-1.2	-2.8
Transportation and warehousing	36.4	35.7	1.3	-0.7	-0.7	-1.5	-1.9	-1.9	-4.0
Finance, insurance, real estate and leasing	35.1	34.9	1.2	-0.2	-0.2	0.5	-0.6	-0.6	1.5
Professional, scientific and technical services	29.4	28.9	1.2	-0.5	-0.5	2.3	-1.7	-1.7	8.6
Business, building and other support services	20.5	20.2	1.2	-0.3	-0.3	2.4	-1.5	-1.5	13.5
Educational services	50.1	48.1	1.6	-2.0	-2.0	0.8	-4.0	-4.0	1.7
Health care and social assistance	94.2	94.2	1.8	0.0	0.0	-1.1	0.0	0.0	-1.2
Information, culture and recreation	25.6	27.0	1.2	1.4	1.4	4.9	5.5	5.5	22.2
Accommodation and food services	41.0	44.3	1.5	3.3	3.3	1.7	8.0	8.0	4.0
Other services	28.4	29.0	1.2	0.6	0.6	1.1	2.1	2.1	3.9
Public administration	35.9	36.9	1.3	1.0	1.0	-2.3	2.8	2.8	-5.9

1. Average standard error of change in two consecutive months (see "Sampling Errors" in Data Quality for further explanations).

2. Also referred to as Natural resources.

Note(s): Related CANSIM Tables 282-0087, 282-0088.

Table 4-8
Selected labour force characteristics (seasonally adjusted) — Saskatchewan

	December 2012	January 2013	S.E. ¹	Change from			Percent change from		
				last month	last December	twelve months ago	last month	last December	twelve months ago
in thousands (except rates)									
Both sexes, 15 years and over									
Population	817.6	818.8	...	1.2	1.2	13.8	0.1	0.1	1.7
Labour force	570.6	574.9	2.5	4.3	4.3	17.8	0.8	0.8	3.2
Employment	544.3	551.6	2.6	7.3	7.3	21.8	1.3	1.3	4.1
Employment full-time	447.1	452.9	3.3	5.8	5.8	18.5	1.3	1.3	4.3
Unemployment	26.3	23.2	1.9	-3.1	-3.1	-4.1	-11.8	-11.8	-15.0
Participation rate	69.8	70.2	0.3	0.4	0.4	1.0
Unemployment rate	4.6	4.0	0.3	-0.6	-0.6	-0.9
Employment rate	66.6	67.4	0.3	0.8	0.8	1.6
Part-time rate	17.9	17.9	0.6	0.1	0.1	-0.1
Both sexes, 15 to 24 years									
Population	136.7	136.6	...	-0.1	-0.1	0.2	-0.1	-0.1	0.1
Labour force	94.2	95.5	1.4	1.3	1.3	-0.3	1.4	1.4	-0.3
Employment	84.9	86.8	1.5	1.9	1.9	-0.5	2.2	2.2	-0.6
Unemployment	9.3	8.7	1.2	-0.6	-0.6	0.2	-6.5	-6.5	2.4
Participation rate	68.9	69.9	1.0	1.0	1.0	-0.3
Unemployment rate	9.9	9.1	1.2	-0.8	-0.8	0.2
Employment rate	62.1	63.5	1.1	1.4	1.4	-0.5
Part-time rate	36.4	35.4	1.8	-1.0	-1.0	0.9
Men, 25 years and over									
Population	336.0	336.6	...	0.6	0.6	7.6	0.2	0.2	2.3
Labour force	257.4	258.8	1.2	1.4	1.4	10.1	0.5	0.5	4.1
Employment	248.9	252.1	1.3	3.2	3.2	12.5	1.3	1.3	5.2
Unemployment	8.5	6.7	1.0	-1.8	-1.8	-2.4	-21.2	-21.2	-26.4
Participation rate	76.6	76.9	0.4	0.3	0.3	1.3
Unemployment rate	3.3	2.6	0.4	-0.7	-0.7	-1.1
Employment rate	74.1	74.9	0.4	0.8	0.8	2.1
Part-time rate	6.4	6.9	0.6	0.5	0.5	-0.3
Women, 25 years and over									
Population	344.9	345.5	...	0.6	0.6	6.0	0.2	0.2	1.8
Labour force	218.9	220.6	1.6	1.7	1.7	8.1	0.8	0.8	3.8
Employment	210.5	212.7	1.5	2.2	2.2	9.9	1.0	1.0	4.9
Unemployment	8.5	7.9	1.0	-0.6	-0.6	-1.8	-7.1	-7.1	-18.6
Participation rate	63.5	63.8	0.5	0.3	0.3	1.2
Unemployment rate	3.9	3.6	0.5	-0.3	-0.3	-1.0
Employment rate	61.0	61.6	0.4	0.6	0.6	1.9
Part-time rate	23.9	23.7	1.0	-0.2	-0.2	0.1
Industry									
Industry	544.3	551.6	2.6	7.3	7.3	21.8	1.3	1.3	4.1
Goods-producing sector									
Goods-producing sector	150.1	151.1	2.4	1.0	1.0	19.7	0.7	0.7	15.0
Agriculture	41.9	43.8	1.6	1.9	1.9	7.7	4.5	4.5	21.3
Forestry, fishing, mining, quarrying, oil and gas extraction ²	26.0	25.5	1.2	-0.5	-0.5	2.9	-1.9	-1.9	12.8
Utilities	4.8	5.4	0.4	0.6	0.6	-0.2	12.5	12.5	-3.6
Construction	47.3	48.0	1.6	0.7	0.7	8.2	1.5	1.5	20.6
Manufacturing	30.1	28.3	1.1	-1.8	-1.8	1.0	-6.0	-6.0	3.7
Services-producing sector									
Services-producing sector	394.2	400.5	3.0	6.3	6.3	2.1	1.6	1.6	0.5
Trade	81.9	83.8	1.9	1.9	1.9	0.4	2.3	2.3	0.5
Transportation and warehousing	25.5	25.7	1.1	0.2	0.2	-1.6	0.8	0.8	-5.9
Finance, insurance, real estate and leasing	28.2	29.2	1.0	1.0	1.0	-1.0	3.5	3.5	-3.3
Professional, scientific and technical services	24.9	26.3	1.2	1.4	1.4	1.1	5.6	5.6	4.4
Business, building and other support services	12.9	11.4	0.9	-1.5	-1.5	-1.1	-11.6	-11.6	-8.8
Educational services	43.6	44.1	1.4	0.5	0.5	3.6	1.1	1.1	8.9
Health care and social assistance	72.2	73.7	1.7	1.5	1.5	4.2	2.1	2.1	6.0
Information, culture and recreation	19.3	18.1	1.1	-1.2	-1.2	-0.5	-6.2	-6.2	-2.7
Accommodation and food services	28.3	28.9	1.5	0.6	0.6	-5.4	2.1	2.1	-15.7
Other services	24.5	26.6	1.2	2.1	2.1	0.4	8.6	8.6	1.5
Public administration	32.9	32.8	1.1	-0.1	-0.1	1.9	-0.3	-0.3	6.1

1. Average standard error of change in two consecutive months (see "Sampling Errors" in Data Quality for further explanations).

2. Also referred to as Natural resources.

Note(s): Related CANSIM Tables 282-0087, 282-0088.

Table 4-9
Selected labour force characteristics (seasonally adjusted) — Alberta

	December 2012	January 2013	S.E. ¹	Change from			Percent change from		
				last month	last December	twelve months ago	last month	last December	twelve months ago
in thousands (except rates)									
Both sexes, 15 years and over									
Population	3,111.5	3,121.7	...	10.2	10.2	88.8	0.3	0.3	2.9
Labour force	2,267.6	2,276.3	8.7	8.7	8.7	31.0	0.4	0.4	1.4
Employment	2,165.3	2,175.0	8.9	9.7	9.7	41.1	0.4	0.4	1.9
Employment full-time	1,826.7	1,835.3	11.8	8.6	8.6	38.2	0.5	0.5	2.1
Unemployment	102.3	101.4	6.8	-0.9	-0.9	-9.9	-0.9	-0.9	-8.9
Participation rate	72.9	72.9	0.3	0.0	0.0	-1.1
Unemployment rate	4.5	4.5	0.3	0.0	0.0	-0.5
Employment rate	69.6	69.7	0.3	0.1	0.1	-0.7
Part-time rate	15.6	15.6	0.5	0.0	0.0	-0.2
Both sexes, 15 to 24 years									
Population	509.4	509.7	...	0.3	0.3	3.6	0.1	0.1	0.7
Labour force	332.2	344.8	5.1	12.6	12.6	-17.2	3.8	3.8	-4.8
Employment	302.8	317.9	5.2	15.1	15.1	-10.0	5.0	5.0	-3.0
Unemployment	29.4	26.9	4.1	-2.5	-2.5	-7.2	-8.5	-8.5	-21.1
Participation rate	65.2	67.6	1.0	2.4	2.4	-3.9
Unemployment rate	8.9	7.8	1.1	-1.1	-1.1	-1.6
Employment rate	59.4	62.4	1.0	3.0	3.0	-2.4
Part-time rate	32.4	32.3	1.7	-0.2	-0.2	-2.1
Men, 25 years and over									
Population	1,320.8	1,326.0	...	5.2	5.2	42.1	0.4	0.4	3.3
Labour force	1,074.3	1,069.6	4.3	-4.7	-4.7	25.8	-0.4	-0.4	2.5
Employment	1,036.9	1,030.5	4.7	-6.4	-6.4	30.4	-0.6	-0.6	3.0
Unemployment	37.4	39.1	3.9	1.7	1.7	-4.6	4.5	4.5	-10.5
Participation rate	81.3	80.7	0.3	-0.6	-0.6	-0.6
Unemployment rate	3.5	3.7	0.4	0.2	0.2	-0.5
Employment rate	78.5	77.7	0.4	-0.8	-0.8	-0.2
Part-time rate	5.4	5.3	0.5	-0.1	-0.1	0.3
Women, 25 years and over									
Population	1,281.2	1,286.0	...	4.8	4.8	43.1	0.4	0.4	3.5
Labour force	861.1	862.0	5.2	0.9	0.9	22.5	0.1	0.1	2.7
Employment	825.5	826.6	5.2	1.1	1.1	20.7	0.1	0.1	2.6
Unemployment	35.5	35.3	3.8	-0.2	-0.2	1.7	-0.6	-0.6	5.1
Participation rate	67.2	67.0	0.4	-0.2	-0.2	-0.5
Unemployment rate	4.1	4.1	0.4	0.0	0.0	0.1
Employment rate	64.4	64.3	0.4	-0.1	-0.1	-0.5
Part-time rate	22.4	22.1	0.9	-0.3	-0.3	0.4
Industry	2,165.3	2,175.0	8.9	9.7	9.7	41.1	0.4	0.4	1.9
Goods-producing sector	621.9	624.1	9.2	2.2	2.2	28.5	0.4	0.4	4.8
Agriculture	61.6	62.8	3.1	1.2	1.2	6.2	1.9	1.9	11.0
Forestry, fishing, mining, quarrying, oil and gas extraction ²	165.0	165.3	5.2	0.3	0.3	-8.4	0.2	0.2	-4.8
Utilities	22.8	21.0	1.9	-1.8	-1.8	1.9	-7.9	-7.9	9.9
Construction	222.5	227.3	6.6	4.8	4.8	11.2	2.2	2.2	5.2
Manufacturing	150.0	147.7	5.2	-2.3	-2.3	17.6	-1.5	-1.5	13.5
Services-producing sector	1,543.4	1,550.8	10.9	7.4	7.4	12.5	0.5	0.5	0.8
Trade	325.3	318.5	7.7	-6.8	-6.8	-14.5	-2.1	-2.1	-4.4
Transportation and warehousing	126.0	114.2	4.9	-11.8	-11.8	5.7	-9.4	-9.4	5.3
Finance, insurance, real estate and leasing	108.4	115.2	4.1	6.8	6.8	19.8	6.3	6.3	20.8
Professional, scientific and technical services	158.6	157.7	5.4	-0.9	-0.9	0.1	-0.6	-0.6	0.1
Business, building and other support services	72.2	77.7	3.9	5.5	5.5	6.1	7.6	7.6	8.5
Educational services	125.6	130.4	4.7	4.8	4.8	7.9	3.8	3.8	6.4
Health care and social assistance	230.8	231.7	5.9	0.9	0.9	-10.9	0.4	0.4	-4.5
Information, culture and recreation	72.0	74.9	4.1	2.9	2.9	-5.4	4.0	4.0	-6.7
Accommodation and food services	132.1	130.3	5.6	-1.8	-1.8	1.7	-1.4	-1.4	1.3
Other services	101.8	105.9	4.7	4.1	4.1	-2.2	4.0	4.0	-2.0
Public administration	90.7	94.1	3.8	3.4	3.4	3.9	3.7	3.7	4.3

1. Average standard error of change in two consecutive months (see "Sampling Errors" in Data Quality for further explanations).

2. Also referred to as Natural resources.

Note(s): Related CANSIM Tables 282-0087, 282-0088.

Table 4-10
Selected labour force characteristics (seasonally adjusted) — British Columbia

	December 2012	January 2013	S.E. ¹	Change from			Percent change from		
				last month	last December	twelve months ago	last month	last December	twelve months ago
in thousands (except rates)									
Both sexes, 15 years and over									
Population	3,830.3	3,834.0	...	3.7	3.7	36.5	0.1	0.1	1.0
Labour force	2,471.6	2,451.9	10.7	-19.7	-19.7	-15.5	-0.8	-0.8	-0.6
Employment	2,313.5	2,297.6	10.3	-15.9	-15.9	1.8	-0.7	-0.7	0.1
Employment full-time	1,817.1	1,811.3	14.5	-5.8	-5.8	31.9	-0.3	-0.3	1.8
Unemployment	158.1	154.4	8.6	-3.7	-3.7	-17.2	-2.3	-2.3	-10.0
Participation rate	64.5	64.0	0.3	-0.5	-0.5	-1.0
Unemployment rate	6.4	6.3	0.3	-0.1	-0.1	-0.7
Employment rate	60.4	59.9	0.3	-0.5	-0.5	-0.6
Part-time rate	21.5	21.2	0.6	-0.3	-0.3	-1.3
Both sexes, 15 to 24 years									
Population	588.5	588.1	...	-0.4	-0.4	-2.3	-0.1	-0.1	-0.4
Labour force	358.8	359.8	6.0	1.0	1.0	-8.8	0.3	0.3	-2.4
Employment	309.5	311.2	5.6	1.7	1.7	-7.7	0.5	0.5	-2.4
Unemployment	49.3	48.6	5.0	-0.7	-0.7	-1.1	-1.4	-1.4	-2.2
Participation rate	61.0	61.2	1.0	0.2	0.2	-1.2
Unemployment rate	13.7	13.5	1.3	-0.2	-0.2	0.0
Employment rate	52.6	52.9	0.9	0.3	0.3	-1.1
Part-time rate	45.4	44.5	2.1	-0.9	-0.9	-7.7
Men, 25 years and over									
Population	1,581.7	1,583.8	...	2.1	2.1	19.4	0.1	0.1	1.2
Labour force	1,097.6	1,103.2	5.5	5.6	5.6	-2.2	0.5	0.5	-0.2
Employment	1,045.5	1,049.9	5.7	4.4	4.4	13.3	0.4	0.4	1.3
Unemployment	52.2	53.3	4.9	1.1	1.1	-15.5	2.1	2.1	-22.5
Participation rate	69.4	69.7	0.3	0.3	0.3	-1.0
Unemployment rate	4.8	4.8	0.4	0.0	0.0	-1.4
Employment rate	66.1	66.3	0.4	0.2	0.2	0.0
Part-time rate	9.8	9.9	0.6	0.1	0.1	0.1
Women, 25 years and over									
Population	1,660.1	1,662.1	...	2.0	2.0	19.5	0.1	0.1	1.2
Labour force	1,015.1	988.9	6.2	-26.2	-26.2	-4.5	-2.6	-2.6	-0.5
Employment	958.5	936.4	6.1	-22.1	-22.1	-3.9	-2.3	-2.3	-0.4
Unemployment	56.6	52.5	4.8	-4.1	-4.1	-0.5	-7.2	-7.2	-0.9
Participation rate	61.1	59.5	0.4	-1.6	-1.6	-1.0
Unemployment rate	5.6	5.3	0.5	-0.3	-0.3	0.0
Employment rate	57.7	56.3	0.4	-1.4	-1.4	-0.9
Part-time rate	26.5	26.1	1.0	-0.4	-0.4	-0.4
Industry	2,313.5	2,297.6	10.3	-15.9	-15.9	1.8	-0.7	-0.7	0.1
Goods-producing sector									
Agriculture	464.1	454.2	9.1	-9.9	-9.9	-6.7	-2.1	-2.1	-1.5
Forestry, fishing, mining, quarrying, oil and gas extraction ²	27.8	26.5	2.5	-1.3	-1.3	2.2	-4.7	-4.7	9.1
Utilities	48.7	46.4	3.0	-2.3	-2.3	5.1	-4.7	-4.7	12.3
Construction	16.3	14.3	1.8	-2.0	-2.0	1.1	-12.3	-12.3	8.3
Manufacturing	206.3	199.4	6.5	-6.9	-6.9	-1.8	-3.3	-3.3	-0.9
	164.9	167.5	6.0	2.6	2.6	-13.3	1.6	1.6	-7.4
Services-producing sector									
Trade	1,849.4	1,843.4	12.0	-6.0	-6.0	8.4	-0.3	-0.3	0.5
Transportation and warehousing	362.1	362.7	8.1	0.6	0.6	12.2	0.2	0.2	3.5
Finance, insurance, real estate and leasing	119.1	120.0	5.2	0.9	0.9	-14.4	0.8	0.8	-10.7
Professional, scientific and technical services	135.6	138.2	5.4	2.6	2.6	-2.6	1.9	1.9	-1.8
Business, building and other support services	174.4	179.8	5.9	5.4	5.4	11.4	3.1	3.1	6.8
Educational services	94.7	98.8	4.9	4.1	4.1	2.4	4.3	4.3	2.5
Health care and social assistance	186.4	177.3	5.9	-9.1	-9.1	8.0	-4.9	-4.9	4.7
Information, culture and recreation	265.2	252.0	6.8	-13.2	-13.2	-24.7	-5.0	-5.0	-8.9
Accommodation and food services	121.6	120.4	5.1	-1.2	-1.2	6.5	-1.0	-1.0	5.7
Other services	176.1	178.7	6.2	2.6	2.6	7.9	1.5	1.5	4.6
Public administration	105.4	103.2	4.9	-2.2	-2.2	-12.5	-2.1	-2.1	-10.8
	108.8	112.3	3.9	3.5	3.5	14.4	3.2	3.2	14.7

1. Average standard error of change in two consecutive months (see "Sampling Errors" in Data Quality for further explanations).

2. Also referred to as Natural resources.

Note(s): Related CANSIM Tables 282-0087, 282-0088.

Table 5-1

Labour force characteristics by census metropolitan area (seasonally adjusted) — 3 month moving average

	December 2012	January 2013	S.E. ¹	Change from			Percent change from		
				last month	last December	twelve months ago	last month	last December	twelve months ago
in thousands (except rates)									
St. John's, Newfoundland and Labrador									
Population	163.8	164.2	...	0.4	0.4	2.5	0.2	0.2	1.5
Labour force	118.9	118.0	0.8	-0.9	-0.9	2.3	-0.8	-0.8	2.0
Employment	110.5	109.6	0.8	-0.9	-0.9	3.0	-0.8	-0.8	2.8
Unemployment	8.3	8.4	0.4	0.1	0.1	-0.6	1.2	1.2	-6.7
Participation rate	72.6	71.9	0.5	-0.7	-0.7	0.3
Unemployment rate	7.0	7.1	0.3	0.1	0.1	-0.7
Employment rate	67.5	66.7	0.5	-0.8	-0.8	0.8
Halifax, Nova Scotia									
Population	344.9	345.2	...	0.3	0.3	4.0	0.1	0.1	1.2
Labour force	239.9	240.7	1.1	0.8	0.8	1.9	0.3	0.3	0.8
Employment	224.7	225.0	1.2	0.3	0.3	-0.6	0.1	0.1	-0.3
Unemployment	15.2	15.7	0.6	0.5	0.5	2.5	3.3	3.3	18.9
Participation rate	69.6	69.7	0.3	0.1	0.1	-0.3
Unemployment rate	6.3	6.5	0.3	0.2	0.2	1.0
Employment rate	65.1	65.2	0.3	0.1	0.1	-0.9
Moncton, New Brunswick									
Population	117.6	117.8	...	0.2	0.2	1.9	0.2	0.2	1.6
Labour force	79.4	79.1	0.7	-0.3	-0.3	-1.1	-0.4	-0.4	-1.4
Employment	74.2	73.8	0.7	-0.4	-0.4	-0.7	-0.5	-0.5	-0.9
Unemployment	5.2	5.3	0.4	0.1	0.1	-0.3	1.9	1.9	-5.4
Participation rate	67.5	67.1	0.6	-0.4	-0.4	-2.1
Unemployment rate	6.5	6.7	0.5	0.2	0.2	-0.3
Employment rate	63.1	62.6	0.6	-0.5	-0.5	-1.7
Saint John, New Brunswick									
Population	106.7	106.6	...	-0.1	-0.1	0.1	-0.1	-0.1	0.1
Labour force	68.4	68.5	0.7	0.1	0.1	1.1	0.1	0.1	1.6
Employment	61.6	61.7	0.7	0.1	0.1	-0.6	0.2	0.2	-1.0
Unemployment	6.8	6.8	0.4	0.0	0.0	1.7	0.0	0.0	33.3
Participation rate	64.1	64.3	0.7	0.2	0.2	1.0
Unemployment rate	9.9	9.9	0.6	0.0	0.0	2.3
Employment rate	57.7	57.9	0.7	0.2	0.2	-0.6
Saguenay, Quebec									
Population	126.7	126.7	...	0.0	0.0	0.0	0.0	0.0	0.0
Labour force	77.5	77.4	0.9	-0.1	-0.1	2.7	-0.1	-0.1	3.6
Employment	69.8	70.0	0.9	0.2	0.2	-0.5	0.3	0.3	-0.7
Unemployment	7.6	7.4	0.4	-0.2	-0.2	3.3	-2.6	-2.6	80.5
Participation rate	61.2	61.1	0.7	-0.1	-0.1	2.1
Unemployment rate	9.8	9.6	0.5	-0.2	-0.2	4.1
Employment rate	55.1	55.2	0.7	0.1	0.1	-0.4
Québec, Quebec									
Population	644.9	645.2	...	0.3	0.3	5.4	0.0	0.0	0.8
Labour force	439.6	442.2	3.3	2.6	2.6	-2.8	0.6	0.6	-0.6
Employment	418.7	421.7	3.5	3.0	3.0	-1.0	0.7	0.7	-0.2
Unemployment	21.0	20.5	1.5	-0.5	-0.5	-1.8	-2.4	-2.4	-8.1
Participation rate	68.2	68.5	0.5	0.3	0.3	-1.1
Unemployment rate	4.8	4.6	0.3	-0.2	-0.2	-0.4
Employment rate	64.9	65.4	0.5	0.5	0.5	-0.7
Sherbrooke, Quebec									
Population	167.8	167.9	...	0.1	0.1	2.0	0.1	0.1	1.2
Labour force	106.6	105.9	1.1	-0.7	-0.7	-1.5	-0.7	-0.7	-1.4
Employment	99.4	99.1	1.1	-0.3	-0.3	-0.8	-0.3	-0.3	-0.8
Unemployment	7.3	6.9	0.5	-0.4	-0.4	-0.7	-5.5	-5.5	-9.2
Participation rate	63.5	63.1	0.7	-0.4	-0.4	-1.6
Unemployment rate	6.8	6.5	0.5	-0.3	-0.3	-0.6
Employment rate	59.2	59.0	0.7	-0.2	-0.2	-1.2

See notes at the end of the table.

Table 5-1 – continued

Labour force characteristics by census metropolitan area (seasonally adjusted) — 3 month moving average

	December 2012	January 2013	S.E. ¹	Change from			Percent change from		
				last month	last December	twelve months ago	last month	last December	twelve months ago
in thousands (except rates)									
Trois-Rivières, Quebec									
Population	126.2	126.2	...	0.0	0.0	1.0	0.0	0.0	0.8
Labour force	69.8	69.5	0.7	-0.3	-0.3	-9.4	-0.4	-0.4	-11.9
Employment	64.1	64.2	0.7	0.1	0.1	-8.0	0.2	0.2	-11.1
Unemployment	5.7	5.3	0.4	-0.4	-0.4	-1.3	-7.0	-7.0	-19.7
Participation rate	55.3	55.1	0.6	-0.2	-0.2	-7.9
Unemployment rate	8.2	7.6	0.5	-0.6	-0.6	-0.8
Employment rate	50.8	50.9	0.6	0.1	0.1	-6.8
Montréal, Quebec									
Population	3,269.6	3,272.3	...	2.7	2.7	34.5	0.1	0.1	1.1
Labour force	2,191.0	2,198.2	7.7	7.2	7.2	91.7	0.3	0.3	4.4
Employment	2,017.0	2,025.7	8.0	8.7	8.7	109.3	0.4	0.4	5.7
Unemployment	174.0	172.5	4.9	-1.5	-1.5	-17.6	-0.9	-0.9	-9.3
Participation rate	67.0	67.2	0.2	0.2	0.2	2.1
Unemployment rate	7.9	7.8	0.2	-0.1	-0.1	-1.2
Employment rate	61.7	61.9	0.2	0.2	0.2	2.7
Ottawa-Gatineau, Ontario/Quebec									
Population	1,057.5	1,058.8	...	1.3	1.3	16.2	0.1	0.1	1.6
Labour force	767.2	765.6	3.8	-1.6	-1.6	14.1	-0.2	-0.2	1.9
Employment	716.5	716.7	3.8	0.2	0.2	9.4	0.0	0.0	1.3
Unemployment	50.6	49.0	1.9	-1.6	-1.6	4.8	-3.2	-3.2	10.9
Participation rate	72.5	72.3	0.4	-0.2	-0.2	0.2
Unemployment rate	6.6	6.4	0.2	-0.2	-0.2	0.5
Employment rate	67.8	67.7	0.4	-0.1	-0.1	-0.1
Ottawa-Gatineau, Quebec part, Ontario/Quebec									
Population	263.5	263.7	...	0.2	0.2	3.3	0.1	0.1	1.3
Labour force	183.7	183.8	1.3	0.1	0.1	-3.5	0.1	0.1	-1.9
Employment	171.6	171.3	1.3	-0.3	-0.3	-4.0	-0.2	-0.2	-2.3
Unemployment	12.1	12.5	0.6	0.4	0.4	0.6	3.3	3.3	5.0
Participation rate	69.7	69.7	0.5	0.0	0.0	-2.2
Unemployment rate	6.6	6.8	0.3	0.2	0.2	0.4
Employment rate	65.1	65.0	0.5	-0.1	-0.1	-2.3
Ottawa-Gatineau, Ontario part, Ontario/Quebec									
Population	794.0	795.1	...	1.1	1.1	12.9	0.1	0.1	1.6
Labour force	583.5	581.9	3.6	-1.6	-1.6	17.7	-0.3	-0.3	3.1
Employment	544.9	545.4	3.6	0.5	0.5	13.4	0.1	0.1	2.5
Unemployment	38.5	36.5	1.8	-2.0	-2.0	4.3	-5.2	-5.2	13.4
Participation rate	73.5	73.2	0.5	-0.3	-0.3	1.1
Unemployment rate	6.6	6.3	0.3	-0.3	-0.3	0.6
Employment rate	68.6	68.6	0.5	0.0	0.0	0.6
Kingston, Ontario									
Population	134.3	134.4	...	0.1	0.1	1.4	0.1	0.1	1.1
Labour force	86.0	86.6	0.8	0.6	0.6	-1.1	0.7	0.7	-1.3
Employment	79.7	80.5	0.8	0.8	0.8	-1.3	1.0	1.0	-1.6
Unemployment	6.3	6.1	0.3	-0.2	-0.2	0.1	-3.2	-3.2	1.7
Participation rate	64.0	64.4	0.6	0.4	0.4	-1.5
Unemployment rate	7.3	7.0	0.4	-0.3	-0.3	0.2
Employment rate	59.3	59.9	0.6	0.6	0.6	-1.6
Peterborough, Ontario									
Population	103.2	103.2	...	0.0	0.0	0.6	0.0	0.0	0.6
Labour force	56.4	56.3	1.0	-0.1	-0.1	-12.8	-0.2	-0.2	-18.5
Employment	51.6	50.8	1.0	-0.8	-0.8	-13.3	-1.6	-1.6	-20.7
Unemployment	4.8	5.5	0.5	0.7	0.7	0.5	14.6	14.6	10.0
Participation rate	54.7	54.6	1.0	-0.1	-0.1	-12.7
Unemployment rate	8.5	9.8	0.8	1.3	1.3	2.6
Employment rate	50.0	49.2	1.0	-0.8	-0.8	-13.3

See notes at the end of the table.

Table 5-1 – continued

Labour force characteristics by census metropolitan area (seasonally adjusted) — 3 month moving average

	December 2012	January 2013	S.E. ¹	Change from			Percent change from		
				last month	last December	twelve months ago	last month	last December	twelve months ago
in thousands (except rates)									
Oshawa, Ontario									
Population	311.4	311.8	...	0.4	0.4	5.1	0.1	0.1	1.7
Labour force	213.7	214.8	1.6	1.1	1.1	1.3	0.5	0.5	0.6
Employment	193.0	194.2	1.6	1.2	1.2	-3.4	0.6	0.6	-1.7
Unemployment	20.6	20.7	0.9	0.1	0.1	4.8	0.5	0.5	30.2
Participation rate	68.6	68.9	0.5	0.3	0.3	-0.7
Unemployment rate	9.6	9.6	0.4	0.0	0.0	2.2
Employment rate	62.0	62.3	0.5	0.3	0.3	-2.1
Toronto, Ontario									
Population	4,917.8	4,925.7	...	7.9	7.9	97.0	0.2	0.2	2.0
Labour force	3,352.3	3,352.1	10.6	-0.2	-0.2	129.3	0.0	0.0	4.0
Employment	3,074.6	3,075.9	10.7	1.3	1.3	134.7	0.0	0.0	4.6
Unemployment	277.8	276.2	6.5	-1.6	-1.6	-5.4	-0.6	-0.6	-1.9
Participation rate	68.2	68.1	0.2	-0.1	-0.1	1.4
Unemployment rate	8.3	8.2	0.2	-0.1	-0.1	-0.5
Employment rate	62.5	62.4	0.2	-0.1	-0.1	1.5
Hamilton, Ontario									
Population	627.1	627.6	...	0.5	0.5	6.3	0.1	0.1	1.0
Labour force	406.5	408.0	2.9	1.5	1.5	-10.3	0.4	0.4	-2.5
Employment	382.5	384.3	3.0	1.8	1.8	-8.1	0.5	0.5	-2.1
Unemployment	23.9	23.7	1.4	-0.2	-0.2	-2.2	-0.8	-0.8	-8.5
Participation rate	64.8	65.0	0.5	0.2	0.2	-2.3
Unemployment rate	5.9	5.8	0.3	-0.1	-0.1	-0.4
Employment rate	61.0	61.2	0.5	0.2	0.2	-2.0
St. Catharines-Niagara, Ontario									
Population	340.1	340.2	...	0.1	0.1	1.0	0.0	0.0	0.3
Labour force	218.2	216.9	1.7	-1.3	-1.3	4.3	-0.6	-0.6	2.0
Employment	201.1	201.6	1.8	0.5	0.5	4.9	0.2	0.2	2.5
Unemployment	17.1	15.3	0.8	-1.8	-1.8	-0.7	-10.5	-10.5	-4.4
Participation rate	64.2	63.8	0.5	-0.4	-0.4	1.1
Unemployment rate	7.8	7.1	0.4	-0.7	-0.7	-0.4
Employment rate	59.1	59.3	0.5	0.2	0.2	1.3
Kitchener-Cambridge-Waterloo, Ontario									
Population	415.0	415.3	...	0.3	0.3	4.4	0.1	0.1	1.1
Labour force	293.1	295.0	2.2	1.9	1.9	-4.0	0.6	0.6	-1.3
Employment	272.9	274.4	2.2	1.5	1.5	-3.3	0.5	0.5	-1.2
Unemployment	20.2	20.5	1.0	0.3	0.3	-0.9	1.5	1.5	-4.2
Participation rate	70.6	71.0	0.5	0.4	0.4	-1.8
Unemployment rate	6.9	6.9	0.3	0.0	0.0	-0.3
Employment rate	65.8	66.1	0.5	0.3	0.3	-1.5
Brantford, Ontario									
Population	108.9	108.9	...	0.0	0.0	0.7	0.0	0.0	0.6
Labour force	72.1	73.2	0.8	1.1	1.1	2.3	1.5	1.5	3.2
Employment	66.2	67.5	0.8	1.3	1.3	2.3	2.0	2.0	3.5
Unemployment	5.9	5.7	0.4	-0.2	-0.2	0.0	-3.4	-3.4	0.0
Participation rate	66.2	67.2	0.7	1.0	1.0	1.7
Unemployment rate	8.2	7.8	0.5	-0.4	-0.4	-0.2
Employment rate	60.8	62.0	0.7	1.2	1.2	1.7
Guelph, Ontario									
Population	115.9	116.1	...	0.2	0.2	2.0	0.2	0.2	1.8
Labour force	82.3	82.0	0.8	-0.3	-0.3	-4.9	-0.4	-0.4	-5.6
Employment	77.1	76.9	0.8	-0.2	-0.2	-5.2	-0.3	-0.3	-6.3
Unemployment	5.2	5.1	0.4	-0.1	-0.1	0.3	-1.9	-1.9	6.2
Participation rate	71.0	70.6	0.7	-0.4	-0.4	-5.6
Unemployment rate	6.3	6.2	0.4	-0.1	-0.1	0.7
Employment rate	66.5	66.2	0.7	-0.3	-0.3	-5.8

See notes at the end of the table.

Table 5-1 – continued

Labour force characteristics by census metropolitan area (seasonally adjusted) — 3 month moving average

	December 2012	January 2013	S.E. ¹	Change from			Percent change from		
				last month	last December	twelve months ago	last month	last December	twelve months ago
in thousands (except rates)									
London, Ontario									
Population	417.4	417.7	...	0.3	0.3	3.6	0.1	0.1	0.9
Labour force	268.8	270.0	2.0	1.2	1.2	3.5	0.4	0.4	1.3
Employment	246.1	247.2	2.1	1.1	1.1	4.5	0.4	0.4	1.9
Unemployment	22.6	22.9	1.0	0.3	0.3	-0.9	1.3	1.3	-3.8
Participation rate	64.4	64.6	0.5	0.2	0.2	0.2
Unemployment rate	8.4	8.5	0.4	0.1	0.1	-0.4
Employment rate	59.0	59.2	0.5	0.2	0.2	0.6
Windsor, Ontario									
Population	268.3	268.3	...	0.0	0.0	1.2	0.0	0.0	0.4
Labour force	169.0	166.0	1.6	-3.0	-3.0	0.9	-1.8	-1.8	0.5
Employment	151.4	149.9	1.6	-1.5	-1.5	2.5	-1.0	-1.0	1.7
Unemployment	17.6	16.1	0.7	-1.5	-1.5	-1.6	-8.5	-8.5	-9.0
Participation rate	63.0	61.9	0.6	-1.1	-1.1	0.1
Unemployment rate	10.4	9.7	0.4	-0.7	-0.7	-1.0
Employment rate	56.4	55.9	0.6	-0.5	-0.5	0.7
Barrie, Ontario									
Population	163.9	164.0	...	0.1	0.1	1.8	0.1	0.1	1.1
Labour force	116.7	120.0	1.4	3.3	3.3	5.1	2.8	2.8	4.4
Employment	108.1	111.2	1.4	3.1	3.1	7.2	2.9	2.9	6.9
Unemployment	8.6	8.7	0.7	0.1	0.1	-2.2	1.2	1.2	-20.2
Participation rate	71.2	73.2	0.9	2.0	2.0	2.4
Unemployment rate	7.4	7.3	0.6	-0.1	-0.1	-2.2
Employment rate	66.0	67.8	0.9	1.8	1.8	3.7
Greater Sudbury, Ontario									
Population	138.6	138.4	...	-0.2	-0.2	-1.1	-0.1	-0.1	-0.8
Labour force	88.1	89.1	0.8	1.0	1.0	1.0	1.1	1.1	1.1
Employment	82.1	82.6	0.8	0.5	0.5	0.2	0.6	0.6	0.2
Unemployment	6.0	6.6	0.3	0.6	0.6	0.9	10.0	10.0	15.8
Participation rate	63.6	64.4	0.6	0.8	0.8	1.2
Unemployment rate	6.8	7.4	0.4	0.6	0.6	0.9
Employment rate	59.2	59.7	0.6	0.5	0.5	0.6
Thunder Bay, Ontario									
Population	103.1	103.1	...	0.0	0.0	0.6	0.0	0.0	0.6
Labour force	63.4	63.4	0.6	0.0	0.0	-4.2	0.0	0.0	-6.2
Employment	60.3	60.2	0.7	-0.1	-0.1	-3.2	-0.2	-0.2	-5.0
Unemployment	3.1	3.2	0.3	0.1	0.1	-1.0	3.2	3.2	-23.8
Participation rate	61.5	61.5	0.6	0.0	0.0	-4.5
Unemployment rate	4.9	5.0	0.4	0.1	0.1	-1.2
Employment rate	58.5	58.4	0.6	-0.1	-0.1	-3.5
Winnipeg, Manitoba									
Population	635.7	636.5	...	0.8	0.8	8.5	0.1	0.1	1.4
Labour force	440.7	443.2	1.3	2.5	2.5	3.6	0.6	0.6	0.8
Employment	416.2	419.3	1.4	3.1	3.1	5.2	0.7	0.7	1.3
Unemployment	24.4	23.9	0.8	-0.5	-0.5	-1.6	-2.0	-2.0	-6.3
Participation rate	69.3	69.6	0.2	0.3	0.3	-0.4
Unemployment rate	5.5	5.4	0.2	-0.1	-0.1	-0.4
Employment rate	65.5	65.9	0.2	0.4	0.4	0.0
Regina, Saskatchewan									
Population	181.9	182.3	...	0.4	0.4	4.2	0.2	0.2	2.4
Labour force	133.5	134.3	0.8	0.8	0.8	3.7	0.6	0.6	2.8
Employment	127.8	128.8	0.8	1.0	1.0	3.8	0.8	0.8	3.0
Unemployment	5.7	5.5	0.3	-0.2	-0.2	-0.1	-3.5	-3.5	-1.8
Participation rate	73.4	73.7	0.4	0.3	0.3	0.4
Unemployment rate	4.3	4.1	0.3	-0.2	-0.2	-0.2
Employment rate	70.3	70.7	0.4	0.4	0.4	0.5

See notes at the end of the table.

Table 5-1 – continued

Labour force characteristics by census metropolitan area (seasonally adjusted) — 3 month moving average

	December 2012	January 2013	S.E. ¹	Change from			Percent change from		
				last month	last December	twelve months ago	last month	last December	twelve months ago
in thousands (except rates)									
Saskatoon, Saskatchewan									
Population	229.7	230.4	...	0.7	0.7	7.5	0.3	0.3	3.4
Labour force	163.7	165.1	0.9	1.4	1.4	8.3	0.9	0.9	5.3
Employment	154.6	156.5	1.0	1.9	1.9	9.0	1.2	1.2	6.1
Unemployment	9.0	8.7	0.5	-0.3	-0.3	-0.6	-3.3	-3.3	-6.5
Participation rate	71.3	71.7	0.4	0.4	0.4	1.4
Unemployment rate	5.5	5.3	0.3	-0.2	-0.2	-0.6
Employment rate	67.3	67.9	0.4	0.6	0.6	1.7
Calgary, Alberta									
Population	1,070.3	1,073.5	...	3.2	3.2	30.7	0.3	0.3	2.9
Labour force	798.0	801.7	3.5	3.7	3.7	20.6	0.5	0.5	2.6
Employment	761.0	762.7	3.7	1.7	1.7	23.3	0.2	0.2	3.2
Unemployment	37.0	39.0	1.8	2.0	2.0	-2.7	5.4	5.4	-6.5
Participation rate	74.6	74.7	0.3	0.1	0.1	-0.2
Unemployment rate	4.6	4.9	0.2	0.3	0.3	-0.4
Employment rate	71.1	71.0	0.3	-0.1	-0.1	0.1
Edmonton, Alberta									
Population	1,003.2	1,006.6	...	3.4	3.4	33.3	0.3	0.3	3.4
Labour force	738.5	737.2	3.3	-1.3	-1.3	23.0	-0.2	-0.2	3.2
Employment	705.3	705.3	3.5	0.0	0.0	26.6	0.0	0.0	3.9
Unemployment	33.1	31.9	1.7	-1.2	-1.2	-3.6	-3.6	-3.6	-10.1
Participation rate	73.6	73.2	0.3	-0.4	-0.4	-0.2
Unemployment rate	4.5	4.3	0.2	-0.2	-0.2	-0.7
Employment rate	70.3	70.1	0.4	-0.2	-0.2	0.4
Kelowna, British Columbia									
Population	150.2	150.2	...	0.0	0.0	0.2	0.0	0.0	0.1
Labour force	100.3	97.7	1.9	-2.6	-2.6	-4.4	-2.6	-2.6	-4.3
Employment	92.9	91.4	1.8	-1.5	-1.5	-1.8	-1.6	-1.6	-1.9
Unemployment	7.4	6.3	0.9	-1.1	-1.1	-2.5	-14.9	-14.9	-28.4
Participation rate	66.8	65.0	1.3	-1.8	-1.8	-3.1
Unemployment rate	7.4	6.4	0.9	-1.0	-1.0	-2.2
Employment rate	61.9	60.9	1.2	-1.0	-1.0	-1.2
Abbotsford-Mission, British Columbia									
Population	146.1	146.1	...	0.0	0.0	1.1	0.0	0.0	0.8
Labour force	99.6	99.9	0.8	0.3	0.3	2.8	0.3	0.3	2.9
Employment	92.0	92.6	0.9	0.6	0.6	5.1	0.7	0.7	5.8
Unemployment	7.6	7.3	0.4	-0.3	-0.3	-2.3	-3.9	-3.9	-24.0
Participation rate	68.2	68.4	0.6	0.2	0.2	1.4
Unemployment rate	7.6	7.3	0.4	-0.3	-0.3	-2.6
Employment rate	63.0	63.4	0.6	0.4	0.4	3.1
Vancouver, British Columbia									
Population	2,073.1	2,076.5	...	3.4	3.4	36.6	0.2	0.2	1.8
Labour force	1,362.6	1,356.9	5.1	-5.7	-5.7	1.2	-0.4	-0.4	0.1
Employment	1,271.3	1,268.5	5.1	-2.8	-2.8	6.4	-0.2	-0.2	0.5
Unemployment	91.4	88.4	2.9	-3.0	-3.0	-5.2	-3.3	-3.3	-5.6
Participation rate	65.7	65.3	0.2	-0.4	-0.4	-1.2
Unemployment rate	6.7	6.5	0.2	-0.2	-0.2	-0.4
Employment rate	61.3	61.1	0.2	-0.2	-0.2	-0.8
Victoria, British Columbia									
Population	303.3	303.4	...	0.1	0.1	2.0	0.0	0.0	0.7
Labour force	198.3	199.7	1.5	1.4	1.4	6.6	0.7	0.7	3.4
Employment	187.5	188.8	1.5	1.3	1.3	6.7	0.7	0.7	3.7
Unemployment	10.8	10.8	0.6	0.0	0.0	-0.2	0.0	0.0	-1.8
Participation rate	65.4	65.8	0.5	0.4	0.4	1.7
Unemployment rate	5.4	5.4	0.3	0.0	0.0	-0.3
Employment rate	61.8	62.2	0.5	0.4	0.4	1.8

1. Average standard error of change in two consecutive months (see "Sampling Errors" in Data Quality for further explanations).

Note(s): Estimates from this table are based on 2006 census population counts. Related CANSIM Table 282-0116.

Table 5-2
Labour force characteristics by census metropolitan area (seasonally adjusted) — Monthly

	December 2012	January 2013	S.E. ¹	Change from			Percent change from		
				last month	last December	twelve months ago	last month	last December	twelve months ago
in thousands (except rates)									
Montréal, Quebec									
Population	3,272.2	3,274.8	...	2.6	2.6	34.9	0.1	0.1	1.1
Labour force	2,200.4	2,204.6	15.8	4.2	4.2	86.0	0.2	0.2	4.1
Employment	2,035.3	2,033.0	15.9	-2.3	-2.3	106.9	-0.1	-0.1	5.6
Unemployment	165.1	171.7	11.8	6.6	6.6	-20.8	4.0	4.0	-10.8
Participation rate	67.2	67.3	0.5	0.1	0.1	1.9
Unemployment rate	7.5	7.8	0.5	0.3	0.3	-1.3
Employment rate	62.2	62.1	0.5	-0.1	-0.1	2.7
Toronto, Ontario									
Population	4,924.7	4,934.3	...	9.6	9.6	96.9	0.2	0.2	2.0
Labour force	3,356.5	3,346.0	21.6	-10.5	-10.5	111.8	-0.3	-0.3	3.5
Employment	3,079.7	3,068.1	21.3	-11.6	-11.6	128.6	-0.4	-0.4	4.4
Unemployment	276.8	277.9	15.8	1.1	1.1	-16.7	0.4	0.4	-5.7
Participation rate	68.2	67.8	0.4	-0.4	-0.4	0.9
Unemployment rate	8.2	8.3	0.5	0.1	0.1	-0.8
Employment rate	62.5	62.2	0.4	-0.3	-0.3	1.4
Vancouver, British Columbia									
Population	2,076.0	2,080.2	...	4.2	4.2	37.8	0.2	0.2	1.9
Labour force	1,356.8	1,354.9	11.0	-1.9	-1.9	4.3	-0.1	-0.1	0.3
Employment	1,272.8	1,266.5	10.7	-6.3	-6.3	6.6	-0.5	-0.5	0.5
Unemployment	84.0	88.3	7.1	4.3	4.3	-2.4	5.1	5.1	-2.6
Participation rate	65.4	65.1	0.5	-0.3	-0.3	-1.0
Unemployment rate	6.2	6.5	0.5	0.3	0.3	-0.2
Employment rate	61.3	60.9	0.5	-0.4	-0.4	-0.8

1. Average standard error of change in two consecutive months (see "Sampling Errors" in Data Quality for further explanations).

Note(s): Estimates from this table are based on 2006 census population counts. Related CANSIM Table 282-0117.

Table 6-1

Labour force characteristics by province and economic region, ¹ unadjusted for seasonality, 3 month moving average ending in January 2012 and January 2013

	Population	Labour force			Participation rate	Unemployment rate	Employment rate
		Labour force	Employment	Unemployment			
	in thousands						
Canada ²							
2012	28,131.4	18,543.7	17,194.9	1,348.8	65.9	7.3	61.1
2013	28,470.9	18,790.6	17,496.1	1,294.5	66.0	6.9	61.5
Newfoundland and Labrador							
2012	428.6	254.1	218.7	35.4	59.3	13.9	51.0
2013	428.2	260.4	227.8	32.7	60.8	12.6	53.2
Avalon Peninsula [1010]							
2012	221.3	143.9	129.5	14.4	65.0	10.0	58.5
2013	222.8	147.9	135.3	12.6	66.4	8.5	60.7
South Coast-Burin Peninsula [1020]							
2012	30.3	16.4	12.5	3.9	54.1	23.8	41.3
2013	29.9	15.9	13.0	2.9	53.2	18.2	43.5
West Coast-Northern Peninsula-Labrador [1030]							
2012	86.5	48.3	40.1	8.2	55.8	17.0	46.4
2013	85.8	50.5	41.8	8.8	58.9	17.4	48.7
Notre Dame-Central Bonavista Bay [1040]							
2012	90.4	45.4	36.6	8.8	50.2	19.4	40.5
2013	89.7	46.1	37.7	8.4	51.4	18.2	42.0
Prince Edward Island							
2012	119.9	80.0	69.3	10.7	66.7	13.4	57.8
2013	120.6	81.3	70.7	10.6	67.4	13.0	58.6
Nova Scotia							
2012	779.5	492.3	451.7	40.6	63.2	8.2	57.9
2013	780.8	492.0	445.8	46.2	63.0	9.4	57.1
Cape Breton [1210]							
2012	111.5	62.2	52.4	9.8	55.8	15.8	47.0
2013	110.4	58.8	49.2	9.6	53.3	16.3	44.6
North Shore [1220]							
2012	129.6	78.0	69.1	9.0	60.2	11.5	53.3
2013	128.9	78.1	68.5	9.5	60.6	12.2	53.1
Annapolis Valley [1230]							
2012	99.6	57.2	52.9	4.3	57.4	7.5	53.1
2013	99.5	60.3	54.4	5.9	60.6	9.8	54.7
Southern [1240]							
2012	97.8	57.9	52.3	5.6	59.2	9.7	53.5
2013	96.7	56.3	49.4	6.9	58.2	12.3	51.1
Halifax [1250]							
2012	341.2	236.8	224.9	11.9	69.4	5.0	65.9
2013	345.2	238.5	224.2	14.3	69.1	6.0	64.9
New Brunswick							
2012	620.2	382.9	346.6	36.3	61.7	9.5	55.9
2013	620.1	385.1	342.1	43.0	62.1	11.2	55.2
Campbellton-Miramichi [1310]							
2012	128.6	67.9	57.6	10.3	52.8	15.2	44.8
2013	127.1	72.3	59.2	13.1	56.9	18.1	46.6
Moncton-Richibucto [1320]							
2012	172.7	113.4	104.9	8.5	65.7	7.5	60.7
2013	174.1	111.8	102.6	9.2	64.2	8.2	58.9
Saint John-St. Stephen [1330]							
2012	144.5	91.1	83.6	7.5	63.0	8.2	57.9
2013	144.5	91.0	81.3	9.7	63.0	10.7	56.3

See notes at the end of the table.

Table 6-1 – continued

Labour force characteristics by province and economic region, ¹ unadjusted for seasonality, 3 month moving average ending in January 2012 and January 2013

	Population	Labour force			Participation rate	Unemployment rate	Employment rate
		Labour force	Employment	Unemployment			
	in thousands						
Fredericton-Oromocto [1340]							
2012	109.8	71.4	65.3	6.0	65.0	8.4	59.5
2013	110.5	70.7	64.3	6.4	64.0	9.1	58.2
Edmundston-Woodstock [1350]							
2012	64.7	39.1	35.1	4.0	60.4	10.2	54.3
2013	63.9	39.2	34.7	4.6	61.3	11.7	54.3
Quebec							
2012	6,605.2	4,218.1	3,860.3	357.8	63.9	8.5	58.4
2013	6,664.1	4,311.1	3,986.1	325.0	64.7	7.5	59.8
Gaspésie-Îles-de-la-Madeleine [2410]							
2012	78.6	38.8	34.0	4.7	49.4	12.1	43.3
2013	78.5	40.0	32.6	7.5	51.0	18.8	41.5
Bas-Saint-Laurent [2415]							
2012	166.7	93.9	85.7	8.2	56.3	8.7	51.4
2013	166.3	99.0	89.8	9.2	59.5	9.3	54.0
Capitale-Nationale [2420]							
2012	591.4	396.9	374.1	22.8	67.1	5.7	63.3
2013	596.6	396.8	377.4	19.4	66.5	4.9	63.3
Chaudière-Appalaches [2425]							
2012	334.4	229.1	216.1	13.0	68.5	5.7	64.6
2013	336.4	229.7	218.1	11.5	68.3	5.0	64.8
Estrie [2430]							
2012	259.3	158.4	147.1	11.3	61.1	7.1	56.7
2013	261.6	166.4	156.0	10.4	63.6	6.3	59.6
Centre-du-Québec [2433]							
2012	191.3	112.2	102.1	10.1	58.7	9.0	53.4
2013	192.7	114.2	106.8	7.5	59.3	6.6	55.4
Montréal [2435]							
2012	1,196.2	770.2	709.6	60.6	64.4	7.9	59.3
2013	1,209.2	825.7	776.9	48.8	68.3	5.9	64.2
Montréal [2440]							
2012	1,626.1	1,020.6	909.4	111.2	62.8	10.9	55.9
2013	1,638.2	1,057.7	949.8	107.9	64.6	10.2	58.0
Laval [2445]							
2012	335.8	218.4	199.0	19.5	65.0	8.9	59.3
2013	341.5	225.7	209.9	15.7	66.1	7.0	61.5
Lanaudière [2450]							
2012	394.4	274.6	249.6	24.9	69.6	9.1	63.3
2013	400.1	253.3	234.7	18.6	63.3	7.3	58.7
Laurentides [2455]							
2012	466.9	307.4	284.3	23.1	65.8	7.5	60.9
2013	473.8	311.1	291.0	20.1	65.7	6.5	61.4
Outaouais [2460]							
2012	308.3	213.2	199.0	14.3	69.2	6.7	64.5
2013	312.5	207.8	192.9	14.9	66.5	7.2	61.7
Abitibi-Témiscamingue [2465]							
2012	117.8	74.1	69.0	5.1	62.9	6.9	58.6
2013	118.0	78.0	72.5	5.4	66.1	6.9	61.4
Mauricie [2470]							
2012	221.9	131.0	118.9	12.1	59.0	9.2	53.6
2013	222.3	115.1	103.1	11.9	51.8	10.3	46.4

See notes at the end of the table.

Table 6-1 – continued

Labour force characteristics by province and economic region, ¹ unadjusted for seasonality, 3 month moving average ending in January 2012 and January 2013

	Population	Labour force			Participation rate	Unemployment rate	Employment rate
		Labour force	Employment	Unemployment			
	in thousands						
Saguenay-Lac-Saint-Jean [2475]							
2012	225.4	124.4	113.7	10.7	55.2	8.6	50.4
2013	225.4	137.4	124.7	12.8	61.0	9.3	55.3
Côte-Nord and Nord-du-Québec [2480, 2490]							
2012	90.7	54.8	48.7	6.2	60.4	11.3	53.7
2013	90.9	53.3	49.8	3.4	58.6	6.4	54.8
Ontario							
2012	10,991.6	7,242.6	6,708.6	534.0	65.9	7.4	61.0
2013	11,129.1	7,331.2	6,799.1	532.1	65.9	7.3	61.1
Ottawa [3510]							
2012	1,054.8	731.0	687.9	43.0	69.3	5.9	65.2
2013	1,068.5	737.3	694.5	42.8	69.0	5.8	65.0
Kingston-Pembroke [3515]							
2012	371.4	232.6	219.0	13.6	62.6	5.8	59.0
2013	372.5	228.6	212.7	15.9	61.4	7.0	57.1
Muskoka-Kawarthas [3520]							
2012	319.4	194.5	179.8	14.7	60.9	7.6	56.3
2013	320.6	172.8	158.8	14.0	53.9	8.1	49.5
Toronto [3530]							
2012	5,087.8	3,365.0	3,093.4	271.5	66.1	8.1	60.8
2013	5,185.0	3,498.1	3,223.6	274.5	67.5	7.8	62.2
Kitchener-Waterloo-Barrie [3540]							
2012	1,043.6	733.7	684.2	49.5	70.3	6.7	65.6
2013	1,056.6	738.0	693.3	44.7	69.8	6.1	65.6
Hamilton-Niagara Peninsula [3550]							
2012	1,173.4	764.4	712.3	52.1	65.1	6.8	60.7
2013	1,183.4	760.7	711.2	49.5	64.3	6.5	60.1
London [3560]							
2012	542.4	350.2	322.2	28.1	64.6	8.0	59.4
2013	546.7	349.8	325.1	24.7	64.0	7.1	59.5
Windsor-Sarnia [3570]							
2012	518.9	323.0	291.7	31.3	62.2	9.7	56.2
2013	518.7	318.7	289.8	29.0	61.4	9.1	55.9
Stratford-Bruce Peninsula [3580]							
2012	245.7	163.4	156.4	7.0	66.5	4.3	63.7
2013	245.7	150.0	142.8	7.2	61.1	4.8	58.1
Northeast [3590]							
2012	461.1	273.8	257.0	16.8	59.4	6.1	55.7
2013	458.3	270.3	246.4	23.9	59.0	8.8	53.8
Northwest [3595]							
2012	173.2	110.9	104.5	6.3	64.0	5.7	60.3
2013	173.0	106.8	101.0	5.8	61.7	5.4	58.4
Manitoba							
2012	958.1	654.2	620.4	33.7	68.3	5.2	64.8
2013	967.3	664.7	632.9	31.8	68.7	4.8	65.4
Southeast [4610]							
2012	83.4	57.1	54.3	2.8	68.5	4.9	65.1
2013	84.7	58.0	55.7	2.3	68.5	4.0	65.8
South Central [4620]							
2012	47.9	30.8	29.8	1.0	64.3	3.2	62.2
2013	48.5	31.7	30.8	0.9	65.4	2.8	63.5

See notes at the end of the table.

Table 6-1 – continued

Labour force characteristics by province and economic region, ¹ unadjusted for seasonality, 3 month moving average ending in January 2012 and January 2013

	Population	Labour force			Participation rate	Unemployment rate	Employment rate
		Labour force	Employment	Unemployment			
		in thousands					
Southwest [4630]							
2012	83.8	57.1	54.5	2.6	68.1	4.6	65.0
2013	84.1	60.0	58.1	1.9	71.3	3.2	69.1
North Central [4640]							
2012	36.7	23.1	22.2	0.8	62.9	3.5	60.5
2013	36.8	24.4	23.8	0.6	66.3	2.5	64.7
Winnipeg [4650]							
2012	574.0	396.5	374.2	22.3	69.1	5.6	65.2
2013	581.2	402.5	381.0	21.5	69.3	5.3	65.6
Interlake [4660]							
2012	72.8	50.5	48.2	2.3	69.4	4.6	66.2
2013	73.3	50.4	48.6	1.8	68.8	3.6	66.3
Parklands and North [4670, 4680]							
2012	59.5	39.1	37.2	1.9	65.7	4.9	62.5
2013	58.7	37.7	34.9	2.7	64.2	7.2	59.5
Saskatchewan							
2012	804.3	549.4	522.7	26.6	68.3	4.8	65.0
2013	817.7	565.0	541.7	23.3	69.1	4.1	66.2
Regina-Moose Mountain [4710]							
2012	239.2	172.9	167.0	5.9	72.3	3.4	69.8
2013	244.2	177.3	171.4	5.9	72.6	3.3	70.2
Swift Current-Moose Jaw [4720]							
2012	81.1	50.0	48.0	2.0	61.7	4.0	59.2
2013	81.2	52.3	51.1	1.1	64.4	2.1	62.9
Saskatoon-Biggar [4730]							
2012	267.4	183.3	173.9	9.4	68.5	5.1	65.0
2013	274.6	192.6	184.0	8.6	70.1	4.5	67.0
Yorkton-Melville [4740]							
2012	62.8	42.1	40.1	1.9	67.0	4.5	63.9
2013	62.6	41.1	39.5	1.5	65.7	3.6	63.1
Prince Albert and Northern [4750, 4760]							
2012	153.9	101.1	93.7	7.4	65.7	7.3	60.9
2013	155.0	101.7	95.6	6.1	65.6	6.0	61.7
Alberta							
2012	3,029.1	2,227.7	2,121.6	106.1	73.5	4.8	70.0
2013	3,112.4	2,254.1	2,159.1	94.9	72.4	4.2	69.4
Lethbridge-Medicine Hat [4810]							
2012	220.1	151.0	144.7	6.4	68.6	4.2	65.7
2013	224.5	147.1	141.2	5.9	65.5	4.0	62.9
Camrose-Drumheller [4820]							
2012	156.3	111.2	107.0	4.2	71.1	3.8	68.5
2013	158.3	105.2	102.2	3.0	66.5	2.9	64.6
Calgary [4830]							
2012	1,120.8	836.7	795.8	40.9	74.7	4.9	71.0
2013	1,154.6	853.2	813.8	39.4	73.9	4.6	70.5
Banff-Jasper-Rocky Mountain House [4840]							
2012	71.9	54.1	51.8	2.3	75.2	4.3	72.0
2013	72.9	52.8	50.2	2.6	72.4	4.9	68.9

See notes at the end of the table.

Table 6-1 – continued

Labour force characteristics by province and economic region, ¹ unadjusted for seasonality, 3 month moving average ending in January 2012 and January 2013

	Population	Labour force			Participation rate	Unemployment rate	Employment rate
		Labour force	Employment	Unemployment			
	in thousands						
Red Deer [4850]							
2012	155.3	118.1	111.0	7.1	76.0	6.0	71.5
2013	159.1	115.7	111.2	4.5	72.7	3.9	69.9
Edmonton [4860]							
2012	1,009.2	734.3	699.8	34.5	72.8	4.7	69.3
2013	1,042.5	758.4	727.3	31.2	72.7	4.1	69.8
Athabasca-Grande Prairie-Peace River [4870]							
2012	191.1	138.9	132.0	6.9	72.7	5.0	69.1
2013	193.3	135.7	130.3	5.5	70.2	4.1	67.4
Wood Buffalo-Cold Lake [4880]							
2012	104.1	83.3	79.6	3.7	80.0	4.4	76.5
2013	107.2	86.1	83.1	3.0	80.3	3.5	77.5
British Columbia							
2012	3,794.9	2,442.5	2,275.0	167.6	64.4	6.9	59.9
2013	3,830.7	2,445.7	2,290.8	155.0	63.8	6.3	59.8
Vancouver Island and Coast [5910]							
2012	657.2	386.8	361.3	25.5	58.9	6.6	55.0
2013	659.4	396.7	372.5	24.2	60.2	6.1	56.5
Lower Mainland-Southwest [5920]							
2012	2,327.8	1,526.0	1,423.1	102.9	65.6	6.7	61.1
2013	2,366.8	1,532.0	1,433.7	98.2	64.7	6.4	60.6
Thompson-Okanagan [5930]							
2012	437.5	273.2	252.3	20.9	62.4	7.7	57.7
2013	434.1	261.6	244.6	17.0	60.3	6.5	56.3
Kootenay [5940]							
2012	127.2	81.1	76.1	5.0	63.8	6.2	59.8
2013	126.5	84.4	77.9	6.6	66.7	7.8	61.6
Cariboo [5950]							
2012	127.2	88.2	81.6	6.6	69.3	7.5	64.2
2013	126.2	87.0	82.7	4.3	68.9	4.9	65.5
North Coast and Nechako [5960, 5970]							
2012	66.4	47.6	42.0	5.5	71.7	11.6	63.3
2013	65.6	42.9	39.7	3.2	65.4	7.5	60.5
Northeast [5980]							
2012	51.5	39.6	38.6	x	76.9	x	75.0
2013	52.0	41.1	39.7	x	79.0	x	76.3

1. For geographic descriptions of economic regions, refer to the Guide to the Labour Force Survey (catalogue number 71-543-GIE).

2. Estimates for Canada are a sum of the provincial totals and exclude estimates from Yukon, Northwest Territories and Nunavut.

Note(s): Related CANSIM table 282-0054.

Table 6-2

Labour force characteristics by territories, unadjusted for seasonality, 3 month moving average ending in January 2012 and January 2013

	Population	Labour force			Participation rate	Unemployment rate	Employment rate
		Labour force	Employment	Unemployment			
		in thousands			percent		
Yukon ¹							
2012	26.7	20.4	19.1	1.3	76.4	6.4	71.5
2013	27.2	19.5	18.2	1.3	71.7	6.7	66.9
Northwest Territories ²							
2012	32.1	23.9	22.0	1.9	74.5	7.9	68.5
2013	32.1	23.9	22.1	1.7	74.5	7.1	68.8
Nunavut ³							
2012	20.9	13.5	11.5	2.0	64.7	15.1	54.9
2013	21.4	13.4	11.6	1.8	62.8	13.4	54.4

1. Since 1992, the Labour force survey (LFS) has been conducted in the Yukon, using an alternative methodology that accommodates some of the operational difficulties inherent to remote locales. These estimates are not included in the national totals. In 1995, the LFS in the Yukon underwent a sample redesign. One result of the redesign was that the covered population increased from 85% to 92%, which is reflected by the sharp increase in the three month moving averages estimates of January, February and March of 1995 for all the level estimates. Users are therefore warned to be cautious when comparing estimates before January 1995 to estimates for January 1995 and forward.
2. Since 2001, the Labour force survey (LFS) has been administered in the Northwest Territories, using an alternative methodology that accommodates some of the operational difficulties inherent to remote locales. These estimates are not included in national totals.
3. Since 2004, the Labour force survey (LFS) has been administered in Nunavut, using an alternative methodology that accommodates some of the operational difficulties inherent to remote locales. These estimates are 3-month moving averages and are not included in national totals. From January 2004 to December 2007, estimates represent about 70% of all Nunavut residents aged 15 and over. Starting in January 2008, coverage was extended to 92%, so that by March 2008, the 3-month moving average is completely based on the extended coverage. Because of the large difference in coverage, users are recommended not to compare estimates prior to January 2008 with data afterwards. The January and February 2008 3-month moving average estimates are based on a mix of both coverages, since the extended coverage was introduced in January 2008. Estimates from January 2004 to December 2007 are based on the 10 largest communities in Nunavut: Iqaluit, Rankin Inlet, Cambridge Bay, Kugluktuk, Baker Lake, Arviat, Pond Inlet, Cape Dorset, Pangnirtung, Igloolik. Estimates from March 2008 to present cover the above communities as well as: Taloyoak, Gjoa Haven, Kugaaruk, Coral Harbour, Repulse Bay, Qikiqtarjuaq, Arctic Bay, Hall Beach, Clyde River.

Note(s): Related CANSIM table 282-0100.

Table 7
Average usual hours and wages of employees by selected characteristics, Canada, unadjusted for seasonality

	Employees				Full-time			Part-time		
	Number	Average weekly hours	Average weekly wages	Average hourly wages	Number	Average weekly hours	Average weekly wages	Number	Average weekly hours	Average weekly wages
	thousands		current dollars		thousands		current dollars	thousands		current dollars
January 2013										
15 years and over	14,665.3	35.0	874.98	24.03	11,826.4	39.3	1,013.33	2,838.9	17.1	298.62
15 to 24 years	2,216.8	25.8	387.85	13.87	1,032.5	38.7	632.22	1,184.4	14.5	174.82
25 years and over	12,448.5	36.6	961.73	25.84	10,793.9	39.3	1,049.79	1,654.5	18.8	387.24
Men	7,278.5	37.5	1,004.19	25.98	6,392.3	40.5	1,106.99	886.2	16.0	262.65
Women	7,386.8	32.5	747.66	22.10	5,434.1	37.9	903.16	1,952.7	17.5	314.94
Union coverage										
Union coverage	4,705.8	35.5	986.60	27.36	3,967.3	38.7	1,088.02	738.5	18.7	441.74
No union coverage	9,959.5	34.7	822.24	22.45	7,859.1	39.6	975.63	2,100.4	16.5	248.30
Job permanency										
Permanent	12,888.6	35.9	914.83	24.63	10,843.4	39.3	1,027.05	2,045.2	18.1	319.88
Temporary	1,776.7	28.0	585.89	19.64	983.0	39.0	862.05	793.7	14.3	243.85
Occupation										
Management	1,002.5	39.7	1,483.47	37.35	971.4	40.4	1,514.58	31.1	17.3	510.78
Business, finance and administrative	2,810.5	35.2	811.48	22.58	2,397.5	38.2	896.10	413.0	17.8	320.24
Natural and applied sciences	1,164.0	38.2	1,276.66	33.32	1,115.3	39.1	1,305.81	48.6	19.2	608.36
Health	1,007.5	33.5	925.87	27.40	758.7	37.9	1,051.21	248.8	20.2	543.62
Social science, education, government service and religion	1,521.4	33.9	1,054.24	30.66	1,228.0	38.0	1,196.68	293.4	16.7	458.06
Art, culture, recreation and sport	363.6	29.0	726.11	22.78	230.1	38.5	1,020.77	133.5	12.6	218.35
Sales and service	3,740.0	30.0	522.01	16.16	2,293.7	38.4	717.22	1,446.3	16.7	212.44
Trades, transport and equipment operators	2,105.5	39.9	966.18	23.81	1,937.9	41.8	1,023.79	167.6	17.9	299.83
Occupations unique to primary industry	223.9	41.4	984.56	22.99	194.4	45.5	1,097.62	29.4	14.8	237.83
Occupations unique to processing, manufacturing and utilities	726.5	39.2	784.97	19.89	699.3	40.1	805.85	27.2	15.7	248.19
January 2012										
15 years and over	14,381.5	34.9	855.15	23.56	11,556.6	39.3	994.09	2,824.9	16.9	286.77
15 to 24 years	2,175.1	25.8	380.43	13.66	991.8	39.0	628.47	1,183.3	14.7	172.54
25 years and over	12,206.4	36.5	939.74	25.32	10,564.8	39.3	1,028.41	1,641.6	18.5	369.11
Men	7,134.9	37.4	977.97	25.38	6,237.2	40.5	1,082.34	897.7	16.1	252.82
Women	7,246.6	32.4	734.23	21.77	5,319.4	37.9	890.61	1,927.2	17.3	302.58
Union coverage										
Union coverage	4,546.6	35.4	969.21	26.94	3,848.1	38.5	1,068.63	698.5	18.6	421.45
No union coverage	9,834.9	34.6	802.42	21.99	7,708.5	39.7	956.87	2,126.4	16.4	242.53
Job permanency										
Permanent	12,661.4	35.9	895.54	24.15	10,651.8	39.3	1,006.33	2,009.6	18.1	308.30
Temporary	1,720.1	27.3	557.87	19.23	904.8	39.2	849.96	815.3	14.1	233.69
Occupation										
Management	980.4	39.5	1,456.97	37.04	947.5	40.2	1,487.21	33.0	18.7	587.59
Business, finance and administrative	2,771.2	35.0	793.77	22.15	2,336.5	38.2	882.81	434.7	17.7	315.24
Natural and applied sciences	1,105.3	38.5	1,285.48	33.29	1,064.6	39.3	1,316.31	40.7	17.9	479.40
Health	1,022.2	33.4	906.76	27.00	772.3	37.7	1,027.56	249.9	20.2	533.52
Social science, education, government service and religion	1,434.3	33.7	1,034.31	30.26	1,152.0	37.9	1,182.47	282.3	16.3	429.64
Art, culture, recreation and sport	357.0	30.2	766.45	23.77	248.8	38.1	1,006.60	108.3	11.9	214.62
Sales and service	3,717.0	29.9	501.42	15.58	2,258.6	38.5	693.21	1,458.4	16.6	204.39
Trades, transport and equipment operators	2,043.2	39.7	933.54	23.20	1,893.8	41.4	984.44	149.4	17.7	288.48
Occupations unique to primary industry	227.8	43.2	1,009.51	22.69	201.5	47.1	1,116.29	26.3	13.6	191.20
Occupations unique to processing, manufacturing and utilities	722.9	38.8	780.22	19.88	681.0	40.2	813.45	42.0	16.4	240.91

Note(s): Related CANSIM Tables 282-0023, 282-0069, 282-0073.

Table 8**Regional unemployment rates used by the Employment Insurance Program, ¹ seasonally adjusted, 3 month moving average**

Region	Effective from February 10, 2013 to March 9, 2013
	percent
Newfoundland and Labrador	
01. St. John's	6.8
02. Newfoundland and Labrador	16.5
Prince Edward Island	
03. Prince Edward Island	11.2
Nova Scotia	
04. Eastern Nova Scotia	15.7
05. Western Nova Scotia	11.3
06. Halifax	6.5
New Brunswick	
07. Fredericton-Moncton-Saint John	8.1
08. Madawaska-Charlotte	13.8
09. Restigouche-Albert	16.9
Quebec	
10. Gaspésie-Îles-de-la-Madeleine	18.0
11. Québec	4.6
12. Trois-Rivières	7.7
13. South Central Quebec	4.1
14. Sherbrooke	7.2
15. Montérégie	6.0
16. Montréal	7.9
17. Central Quebec	7.9
18. Northwestern Quebec	9.8
19. Bas-Saint-Laurent-Côte-Nord	8.3
20. Gatineau	7.0
21. Saguenay	9.2
Ontario	
22. Ottawa	6.0
23. Eastern Ontario	8.1
24. Kingston	7.2
25. Central Ontario	7.9
26. Oshawa	9.6
27. Toronto	8.3
28. Hamilton	5.9
29. St. Catharines	7.2
30. London	8.6
31. Niagara	9.8
32. Windsor	9.9
33. Kitchener	6.6
34. Huron	8.5
35. South Central Ontario	5.4
36. Sudbury	7.2
37. Thunder Bay	5.3
38. Northern Ontario	14.1
Manitoba	
39. Winnipeg	5.5
40. Southern Manitoba	5.8
41. Northern Manitoba	30.9
Saskatchewan	
42. Regina	4.3
43. Saskatoon	5.3
44. Southern Saskatchewan	5.9
45. Northern Saskatchewan	17.3
Alberta	
46. Calgary	4.9
47. Edmonton	4.6
48. Northern Alberta	7.9
49. Southern Alberta	5.4

See notes at the end of the table.

Table 8 – continued

Regional unemployment rates used by the Employment Insurance Program, ¹ seasonally adjusted, 3 month moving average

Region	Effective from February 10, 2013 to March 9, 2013
	percent
British Columbia	
50. Southern Interior British Columbia	7.8
51. Abbotsford	7.5
52. Vancouver	6.6
53. Victoria	6.2
54. Southern Coastal British Columbia	8.2
55. Northern British Columbia	10.0
Territories	
56. Yukon ²	25.0
57. Northwest Territories ²	25.0
58. Nunavut ²	25.0

1. The boundaries of these regions are determined by Human Resources and Social Development Canada (HRSDC). For geographic descriptions and maps of employment insurance regions, see the HRSDC website: <http://srv129.services.gc.ca/eiregions/en/geocont.aspx>.

2. This rate is provided by Human Resources and Skills Development Canada.

Note(s): All geographic regions are based on the 1996 Census boundaries.

Data quality

About the Labour Force Survey

The statistics contained in this report are based on information obtained through a sample survey of 56,000 representative households across the country. The Labour Force Survey, started in November 1945, was taken at quarterly intervals until November 1952. It has been carried out monthly since then. The information generated by the survey has expanded considerably over the years with a major redesign of the survey content in 1976 and again in 1997, and provides a rich and detailed picture of the Canadian labour market.

The sample used in the Labour Force Survey has been designed to represent all persons in the population 15 years of age and over residing in the provinces of Canada, with the exception of the following: persons living on Indian reserves, full-time members of the armed forces and people living in institutions (for example, inmates of penal institutions and patients in hospitals or nursing homes who have resided in the institution for more than six months). Monthly estimates of employment, unemployment and persons not in the labour force refer to the specific week covered by the survey each month, normally the week containing the 15th day.

Definitions and explanations

The **labour force** is composed of those members of the civilian non-institutional population 15 years of age and over who, during the reference week, were employed or unemployed.

Employed persons are those who, during the reference week:

- (a) did any work at all
- (b) had a job but were not at work

A person is considered to be **full-time** if his/her usual hours at the main job are 30 or more hours per week. When the number of hours worked at the main job is usually less than 30 hours per week then he/she is considered to be **part-time**.

Unemployed persons are those who, during the reference week:

- (a) were without work, had actively looked for work in the past four weeks (ending with reference week), and were available for work;
- (b) had not actively looked for work in the past four weeks but were on temporary layoff and were available for work;
- (c) had not actively looked for work in the past four weeks but had a new job to start in four weeks or less from the reference week, and were available for work.

Persons in the civilian non-institutional population 15 years of age and over who, during the reference week, were neither employed nor unemployed are classified as **not in the labour force**.

The **unemployment rate** represents the number of unemployed persons expressed as a percentage of the labour force. The unemployment rate for a particular group (age, sex, etc.) is the number unemployed in that group expressed as a percentage of the labour force for that group.

The **participation rate** represents the labour force expressed as a percentage of the population 15 years of age and over. The participation rate for a particular group (age, sex, etc.) is the labour force in that group expressed as a percentage of the population for that group.

The **employment rate (formerly the employment/population ratio)** represents the number of persons employed expressed as a percentage of the population 15 years of age and over. The employment rate for a particular group (age, sex, etc.) is the number employed in that group expressed as a percentage of the population for that group.

The **part-time rate** represents the number of persons employed part-time expressed as a percentage of the employed. The part-time rate for a particular group (age, sex, etc.) is the number employed part-time in that group expressed as a percentage of the employed for that group.

All geographic regions are based on the 2006 Census boundaries.

Seasonal adjustment

Fluctuations in economic time series are caused by seasonal, cyclical and irregular movements. A seasonally adjusted series is one from which seasonal movements have been eliminated. Seasonal movements are defined as those which are caused by regular annual events such as climate, holidays, vacation periods and cycles related to crops, production and retail sales associated with Christmas and Easter. The seasonally adjusted series contains irregular as well as longer-term cyclical fluctuations.

The seasonally adjusted series are revised each year to take into account current data and to generate new forecast factors for the next twelve months. The data are therefore subject to slight revisions in future issues of this publication.

Sampling variability of estimates

Estimates in this publication are based on the Labour Force Survey, a monthly survey of approximately 56,000 households across Canada. Because the entire population is not surveyed, the estimates are subject to sampling error. While the published estimate is the best available indicator of the real value, changes in the level of any estimates between two months can be the result of a true change or sampling variability. The sampling error can be estimated by calculating the standard error for the published estimate or statistic. These standard errors have been included in the publication tables, in order to assist users in interpreting the data.

Interpretation based on standard error

Two thirds of the time (68%), a change greater than the sampling error indicates a real change. The larger the change compared to the standard error, the better the chance that we are observing a real change, as opposed to a change due to sampling variability. At the 95% level, in order to ensure that change is real, the change in the estimate must be greater than twice the sampling error.

Movements in estimates that are smaller than the sampling error are less likely to reflect a real change and more likely to be due to sampling variability. While the above is true for monthly movements, one can have more confidence in a series of consecutive movements in the same direction, even though some of the monthly movements may be smaller than the sampling error.

Interpretation based on confidence intervals

Confidence intervals provide another way of looking at the variability inherent in estimates of sample surveys. To illustrate how to calculate the confidence interval, let us say that one month the published estimate for total employment rose by 16,000 to reach 16,500,000. The associated standard error for the movement estimate is 27,200. The standard error used to interpret the movement estimate indicates that:

- There are approximately two chances in three (68%) that the real value of the movement between the two months falls within the range -11,200 to +43,200 (16,000 + or – one standard error).
- There are approximately nine chances in ten (90%) that the real value of the movement between the two months falls within the range -27,520 to +59,520 (16,000 + or – 1.6 times the standard error).
- There are approximately nineteen chances in twenty (95%) that the real value of the movement between the two months falls within the range -38,400 to +70,400 (16,000 + or – two standard errors).

For more detailed explanations on sampling variability of estimates, and in particular for information on how to assess the variability of level estimates, consult the Data quality section of the *Guide to the Labour Force Survey*, (71-543-G) on page 27.

Documentation

For more detailed information about the Labour Force Survey, see the following documents:

- Overview of the Labour Force Survey
- Guide to the Labour Force Survey (71-543-G)
- Data quality statement
- Methodology of the Canadian Labour Force Survey (71-526-X)
- LFS *geographical maps*