

Catalogue no. 71-001-X

Labour Force Information

Friday, April 5, 2013

March 10 to 16, 2013



Statistics
Canada

Statistique
Canada

Canada

How to obtain more information

For information about this product or the wide range of services and data available from Statistics Canada, visit our website, www.statcan.gc.ca.

You can also contact us by

e-mail at infostats@statcan.gc.ca

telephone, from Monday to Friday, 8:30 a.m. to 4:30 p.m., at the following toll-free numbers:

- | | |
|---|----------------|
| • Statistical Information Service | 1-800-263-1136 |
| • National telecommunications device for the hearing impaired | 1-800-363-7629 |
| • Fax line | 1-877-287-4369 |

Depository Services Program

- | | |
|------------------|----------------|
| • Inquiries line | 1-800-635-7943 |
| • Fax line | 1-800-565-7757 |

To access this product

This product, Catalogue no. 71-001-X, is available free in electronic format. To obtain a single issue, visit our website, www.statcan.gc.ca and browse by "Key resource" > "Publications."

Standards of service to the public

Statistics Canada is committed to serving its clients in a prompt, reliable and courteous manner. To this end, this agency has developed standards of service that its employees observe. To obtain a copy of these service standards, please contact Statistics Canada toll-free at 1-800-263-1136. The service standards are also published at www.statcan.gc.ca under "About us" > "The agency" > "Providing services to Canadians."

Statistics Canada
Labour Statistics Division
Labour Force Survey Program

Labour Force Information

Friday, April 5, 2013

March 10 to 16, 2013

Published by authority of the Minister responsible for Statistics Canada

© Minister of Industry, 2013

All rights reserved. Use of this publication is governed by the Statistics Canada
Open License Agreement.

<http://www.statcan.gc.ca/reference/licence-eng.html>

April 2013

Catalogue no. 71-001-X

ISSN 1492-5478

Frequency: Monthly

Ottawa

Cette publication est également disponible en français.

Note of appreciation

Canada owes the success of its statistical system to a long-standing partnership between Statistics Canada, the citizens of Canada, its businesses, governments and other institutions. Accurate and timely statistical information could not be produced without their continued cooperation and goodwill.

User information

Symbols

The following standard symbols are used in Statistics Canada publications:

- . not available for any reference period
- .. not available for a specific reference period
- ... not applicable
- 0 true zero or a value rounded to zero
- 0^s value rounded to 0 (zero) where there is a meaningful distinction between true zero and the value that was rounded
- p preliminary
- r revised
- x suppressed to meet the confidentiality requirements of the *Statistics Act*
- E use with caution
- F too unreliable to be published
- * significantly different from reference category ($p < 0.05$)

Special requests (\$)

Custom tabulations can be arranged on an ad hoc or regular basis. This service enables you to specify tables and time series to meet your own requirements. The cost varies according to the request. For more information, contact us toll-free at 1-866-873-8788 or e-mail us at labour@statcan.gc.ca.

Schedule of LFS releases

Reference period - Week ending	Release date
December 8, 2012	January 4, 2013
January 19, 2013	February 8, 2013
February 16, 2013	March 8, 2013
March 16, 2013	April 5, 2013
April 20, 2013	May 10, 2013
May 18, 2013	June 7, 2013
June 15, 2013	July 5, 2013
July 20, 2013	August 9, 2013
August 17, 2013	September 6, 2013
September 21, 2013	October 11, 2013
October 19, 2013	November 8, 2013
November 16, 2013	December 6, 2013
December 14, 2013	January 10, 2014

Latest LFS release in *The Daily* (free)

Table of contents

Highlights	5
Analysis — March 2013	6
Charts	
1. Employment and unemployment indicators, Canada, seasonally adjusted	9
2. Employment and unemployment indicators, Canada, seasonally adjusted	10
3. Index of employment by industry, Canada, seasonally adjusted, January 2010=100	11
4. Index of employment by industry, Canada, seasonally adjusted, January 2010=100	12
5. Index of employment by industry, Canada, seasonally adjusted, January 2010=100	13
6. Index of employment by province, seasonally adjusted, January 2010=100	14
7. Index of employment by province, seasonally adjusted, January 2010=100	15
Related products	16
Statistical tables	
1 Labour force characteristics by age and sex, Canada, seasonally adjusted	26
2 Employment by class of worker and industry, Canada, seasonally adjusted	28
3 Labour force characteristics by province, seasonally adjusted	29
4 Selected labour force characteristics (seasonally adjusted)	31
4-1 Newfoundland and Labrador	31
4-2 Prince Edward Island	32
4-3 Nova Scotia	33
4-4 New Brunswick	34
4-5 Quebec	35
4-6 Ontario	36
4-7 Manitoba	37
4-8 Saskatchewan	38
4-9 Alberta	39
4-10 British Columbia	40
5 Labour force characteristics by census metropolitan area (seasonally adjusted)	41
5-1 3 month moving average	41
5-2 Monthly	46

Table of contents – continued

6	Labour force characteristics	47
6-1	by province and economic region, unadjusted for seasonality, 3 month moving average ending in March 2012 and March 2013	47
6-2	by territories, unadjusted for seasonality, 3 month moving average ending in March 2012 and March 2013	52
7	Average usual hours and wages of employees by selected characteristics, Canada, unadjusted for seasonality	53
8	Regional unemployment rates used by the Employment Insurance Program, seasonally adjusted, 3 month moving average	54

Data quality, concepts and methodology

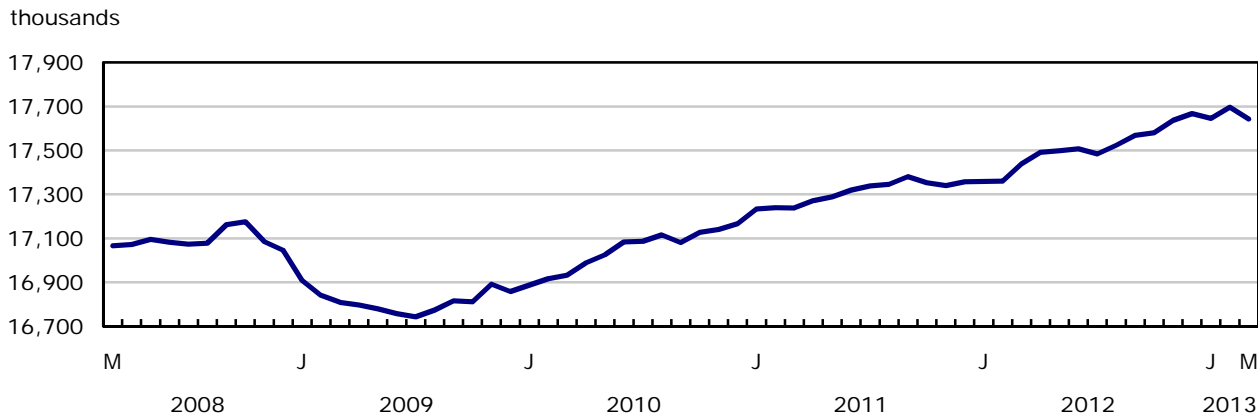
Data quality	56
--------------	----

Highlights

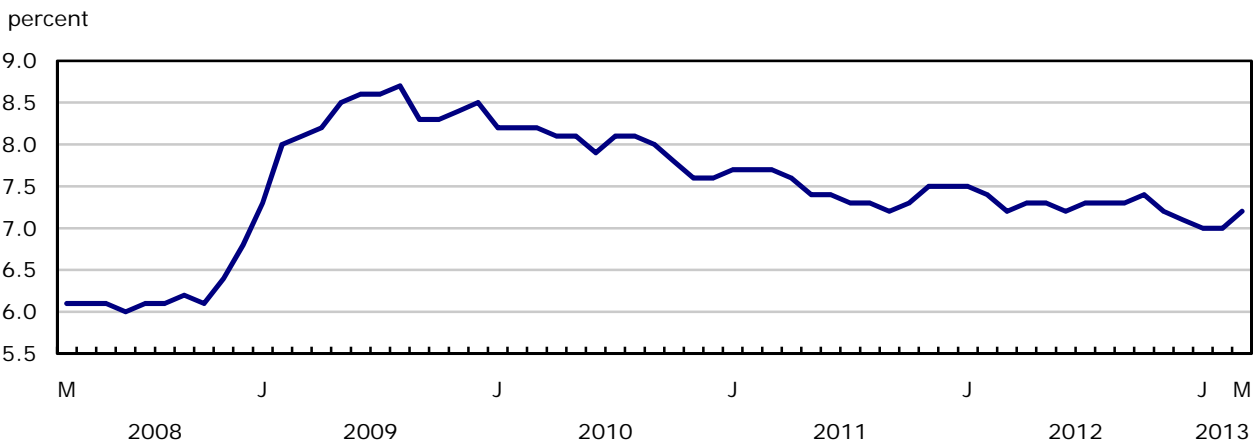
Following an increase the previous month, employment declined by 55,000 in March, all in full time. The unemployment rate rose 0.2 percentage points to 7.2%.

Chart 1
Employment and unemployment rates, Canada, seasonally adjusted

Employment



Unemployment rate



Analysis — March 2013

Following an increase the previous month, employment declined by 55,000 in March, all in full time. The unemployment rate rose 0.2 percentage points to 7.2%.

Despite the decline in March, employment was 1.2% or 203,000 above the level of 12 months earlier, with the increase mainly in full-time work. Over the same period, the total number of hours worked also rose by 1.2%.

Provincially, employment declined in Quebec, British Columbia and Alberta, and edged down in Ontario. The only province with an increase was Nova Scotia.

In March, there were fewer people employed in three industries: accommodation and food services, public administration and manufacturing. At the same time, there was little change in the other industries.

There were 85,000 fewer private-sector employees in March, while the number of self-employed rose by 39,000 and the number of public-sector employees was little changed. Compared with 12 months earlier, the number of private-sector employees increased by 1.0% or 111,000, while the number of self-employed was up 2.1% or 55,000 as a result of the gains in March. Public-sector employment was little changed over the 12-month period.

Employment decreased among people aged 25 to 54 in March, while there was little change among youths and persons aged 55 and over.

Provincial summary

Employment in Quebec declined by 17,000 in March, and the unemployment rate rose 0.3 percentage points to 7.7%. Despite this decrease, employment in the province was 1.6% above the level of 12 months earlier, compared with a national growth rate of 1.2%.

Employment in British Columbia was down 15,000, offsetting most of the increase in February. This pushed the unemployment rate up 0.7 percentage points to 7.0%. Compared with 12 months earlier, employment in the province was little changed.

In Alberta, there were 11,000 fewer people employed in March, the first notable decline in more than two years. The unemployment rate in the province rose 0.3 percentage points to 4.8%, still one of the lowest in the country. While there were fewer people working in March, Alberta experienced employment growth of 1.7% on a year-over-year basis.

In Ontario, employment edged down by 17,000 in March, following an increase of 35,000 the month before. The unemployment rate held steady at 7.7%, due to fewer people participating in the labour force. Year-over-year employment growth in the province was 0.8%.

Nova Scotia was the only province with an employment increase in March, up 2,900, following a similar increase the month before. The unemployment rate in the province was 9.5%. Despite the recent gains, employment was little changed compared with 12 months earlier.

While employment in Saskatchewan was little changed in March, the province experienced the strongest year-over-year growth (+4.6%) in the country. The unemployment rate was 3.9% in March, still the lowest among all provinces.

Industry employment

In March, there were notable employment declines in accommodation and food services, public administration and manufacturing.

Employment in accommodation and food services fell by 25,000, offsetting an increase the month before. This leaves employment in the industry similar to the level of 12 months earlier.

Public administration employment decreased by 24,000 in March, leaving employment in this industry down slightly from 12 months earlier.

The number of workers in manufacturing declined by 24,000 in March, following a similar decrease the previous month. Employment growth in the spring of 2012 was followed by losses since the summer, leaving employment in this industry down 2.8% from 12 months earlier.

Employment declines among people 25 to 54

Among people aged 25 to 54, employment declined by 47,000, equally divided between men and women. Compared with 12 months earlier, employment for this age group was up 0.6% or 68,000.

Employment among those aged 55 and over was little changed in March. On a year-over-year basis, employment among people in this age group rose by 4.2% or 135,000, partly a result of population ageing.

Among youths aged 15 to 24, employment was also little changed in March, while their unemployment rate increased 0.6 percentage points to 14.2%, as more youths searched for work. Employment among youths has been on a slight upward trend since August 2012.

Quarterly update for the territories

The Labour Force Survey also collects labour market information about the territories. This information is produced monthly in the form of three-month moving averages. The following data are not seasonally adjusted; therefore, comparisons should only be made on a year-over-year basis.

In the first quarter of 2013, employment and the unemployment rates in Yukon and the Northwest Territories were similar to those of the first quarter of 2012. The unemployment rate was 7.6% in Yukon and 8.0% in the Northwest Territories in the first quarter of 2013.

In Nunavut, employment increased by 700 in the first quarter of 2013, compared with the same quarter in 2012, and the unemployment rate fell from 15.3% to 11.4% over the same period.

Note to Readers

The Labour Force Survey (LFS) estimates are based on a sample and are therefore subject to sampling variability. As a result, monthly estimates will show more variability than trends observed over longer time periods. Estimates for smaller geographic areas or industries also have more variability. For an explanation of sampling variability of estimates and how to use standard errors to assess this variability, consult the 'Estimates quality' section of the publication Labour Force Information (71-001-X).

The employment rate is the number of employed persons as a percentage of the population 15 years of age and over. The rate for a particular group (for example, youth aged 15 to 24) is the number employed in that group as a percentage of the population for that group.

The unemployment rate is the number unemployed as a percentage of the labour force (employed and unemployed).

The participation rate is the number of employed and unemployed as a percentage of the population. For more detailed information, see the Guide to the Labour Force Survey (71-543-G).

Unless otherwise stated, this release presents seasonally adjusted estimates, which facilitates comparisons by removing the effects of seasonal variations. For more information on seasonal adjustment, see *Seasonal adjustment and identifying economic trends*.

Each year, the LFS revises its estimates for the previous three years, using the latest seasonal factors.

Employment and unemployment indicators, Canada, seasonally adjusted

The graph displays the workforce population in thousands from January 2010 to March 2013. The Y-axis represents the number of people in thousands, ranging from 95 to 120. The X-axis represents time in months, with labels for January (J) and March (M) for the years 2010, 2011, 2012, and 2013. The legend identifies five data series: Females - 25 to 54 years (light blue line), Females - 55 years and over (medium blue line), Males - 25 to 54 years (dark blue line), Males - 55 years and over (very dark blue line), and Both sexes - 15 to 24 years (red dashed line).

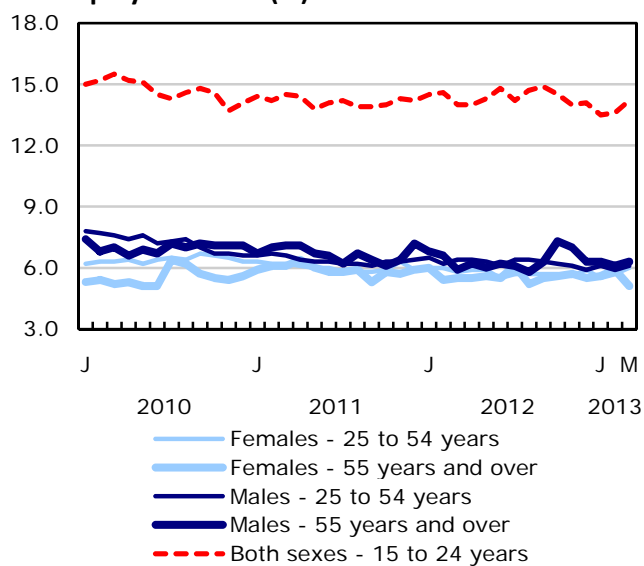
Month	Females - 25 to 54 years	Females - 55 years and over	Males - 25 to 54 years	Males - 55 years and over	Both sexes - 15 to 24 years
Jan 2010	100.0	100.0	100.0	100.0	100.0
Jul 2010	101.0	101.0	101.0	101.0	100.0
Jan 2011	102.0	102.0	102.0	102.0	100.0
Jul 2011	103.0	103.0	103.0	103.0	100.0
Jan 2012	104.0	104.0	104.0	104.0	99.0
Jul 2012	105.0	105.0	105.0	105.0	98.0
Jan 2013	106.0	106.0	106.0	106.0	99.0
Jul 2013	107.0	107.0	107.0	107.0	100.0
Mar 2013	108.0	108.0	108.0	108.0	99.0

The graph illustrates the distribution of employment types in the Netherlands from January 2010 to March 2013. The y-axis represents the percentage of employees, ranging from 96 to 108. The x-axis shows the time period in years and months. Three categories are tracked: Private sector employees (light blue line), Self-employed (dark blue line), and Public sector employees (red line). The private sector shows a steady increase, while the self-employed category shows more volatility, ending at its highest point in the period shown. The public sector remains relatively stable, fluctuating between 102% and 105%.

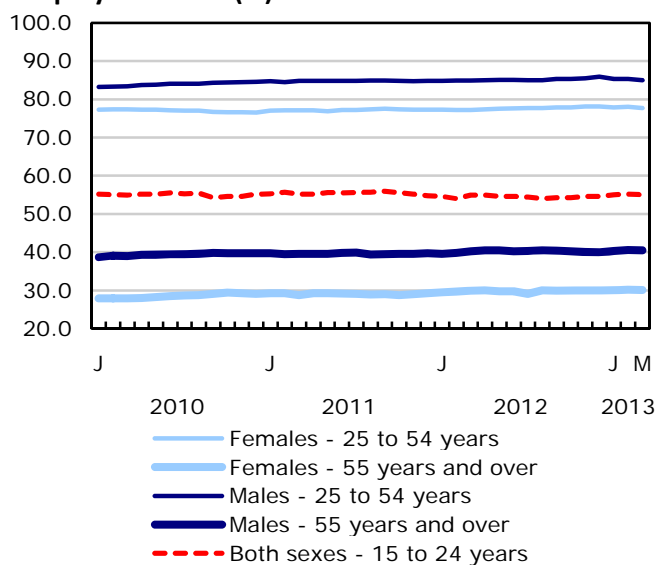
Month	Private sector employees (%)	Self-employed (%)	Public sector employees (%)
Jan 2010	100.0	100.0	100.0
Jul 2010	102.5	97.5	103.0
Jan 2011	102.5	99.5	103.5
Jul 2011	103.5	98.0	103.0
Jan 2012	105.0	98.5	103.5
Jul 2012	105.5	98.0	104.5
Jan 2013	106.0	99.5	105.0
Mar 2013	106.5	100.5	104.5

Chart 2
Employment and unemployment indicators, Canada, seasonally adjusted

Unemployment rate (%)



Employment rate (%)



Participation rate (%)

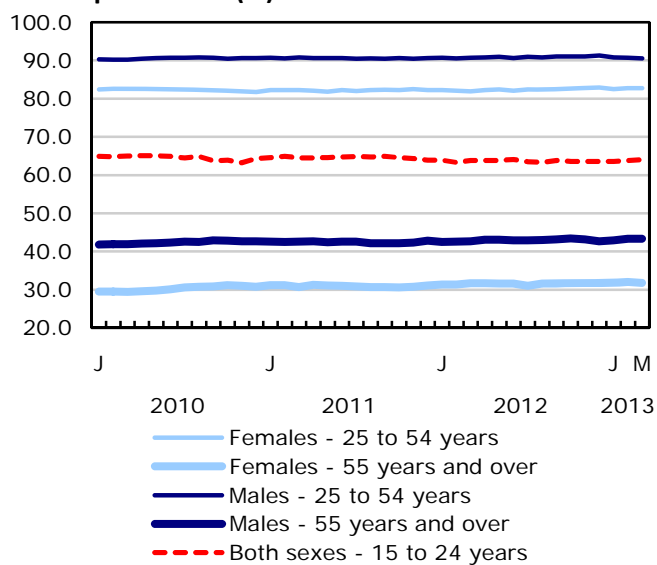


Chart 3
Index of employment by industry, Canada, seasonally adjusted, January 2010=100

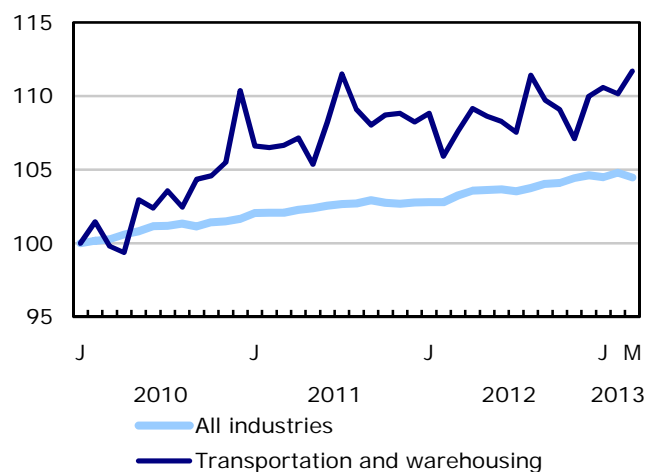
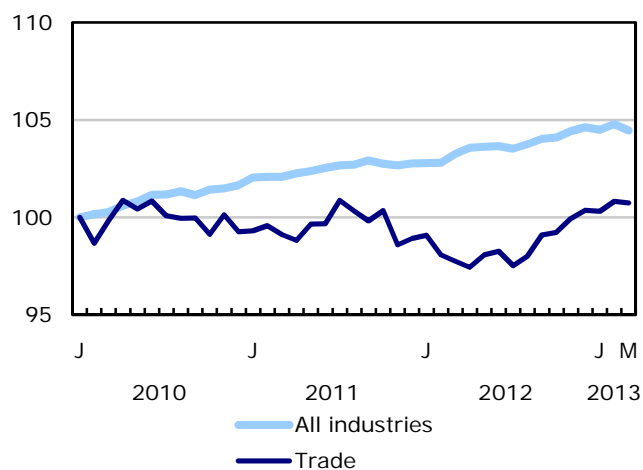
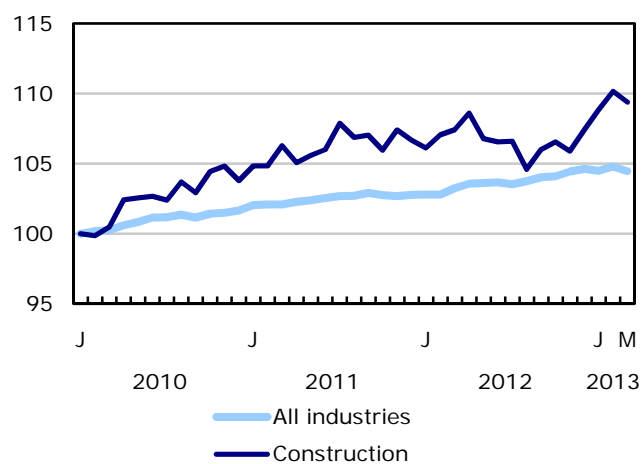
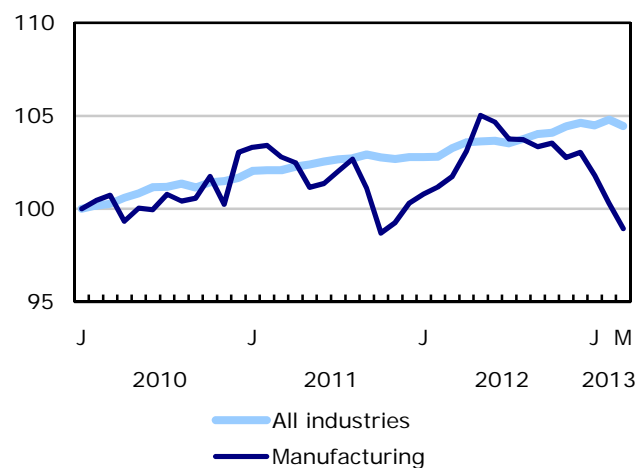
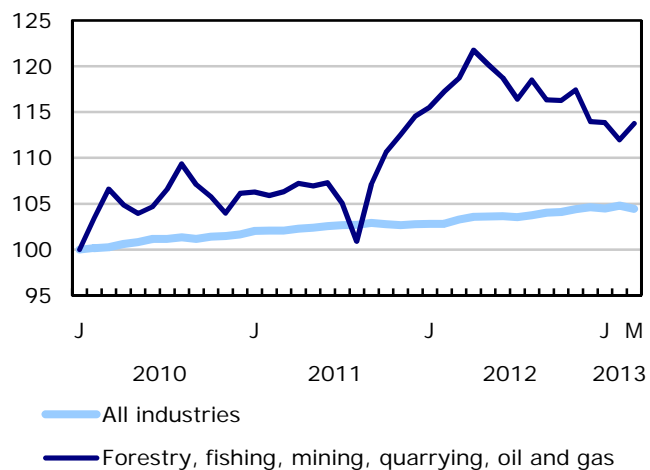
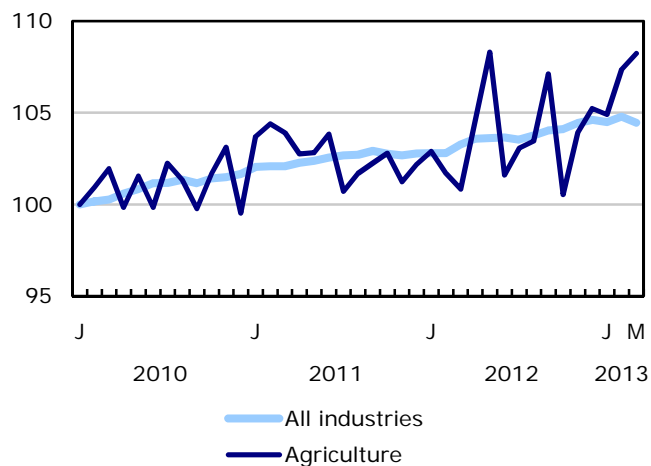


Chart 4
Index of employment by industry, Canada, seasonally adjusted, January 2010=100

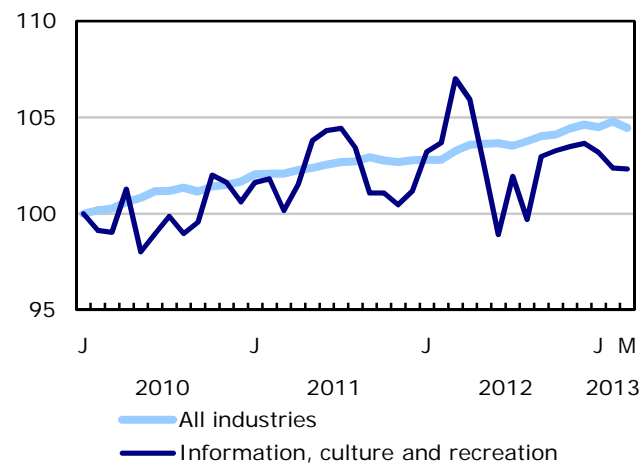
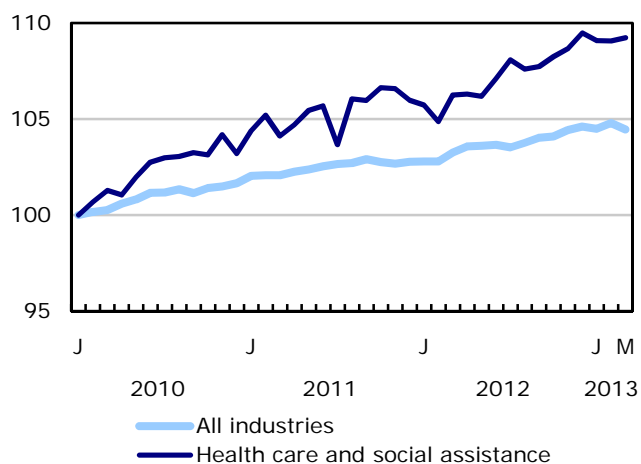
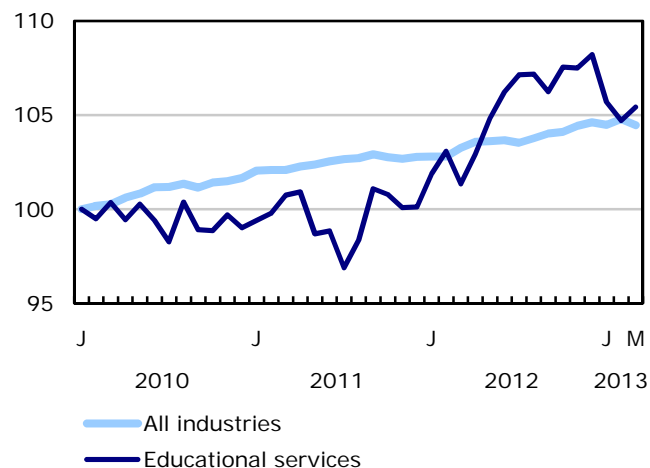
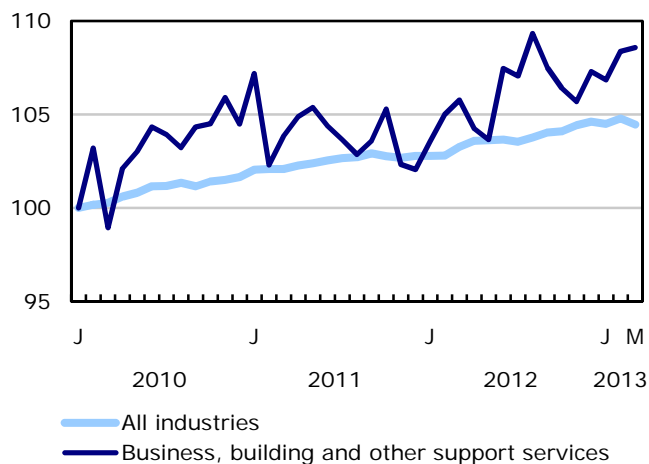
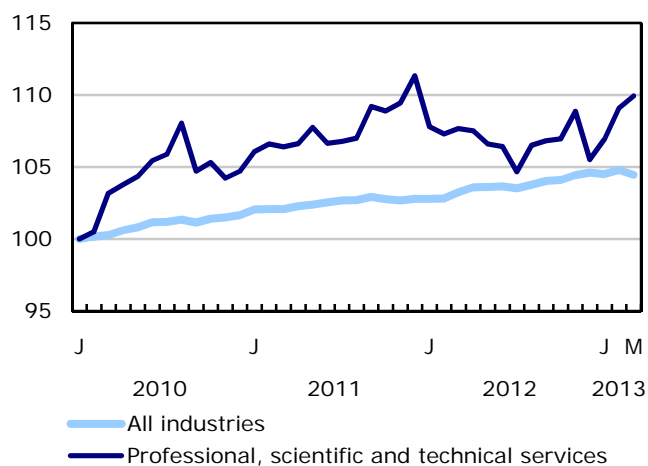
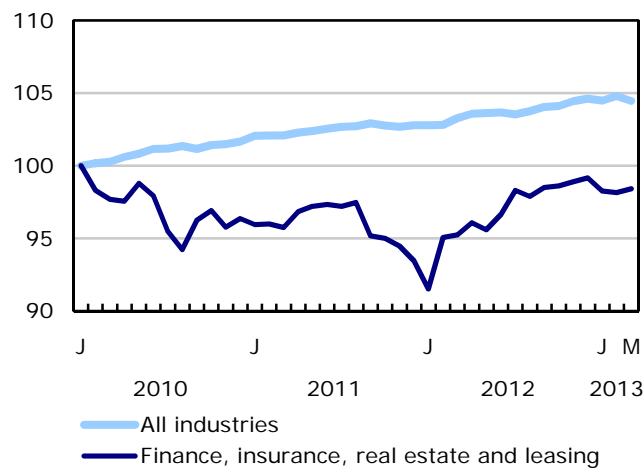


Chart 5
Index of employment by industry, Canada, seasonally adjusted, January 2010=100

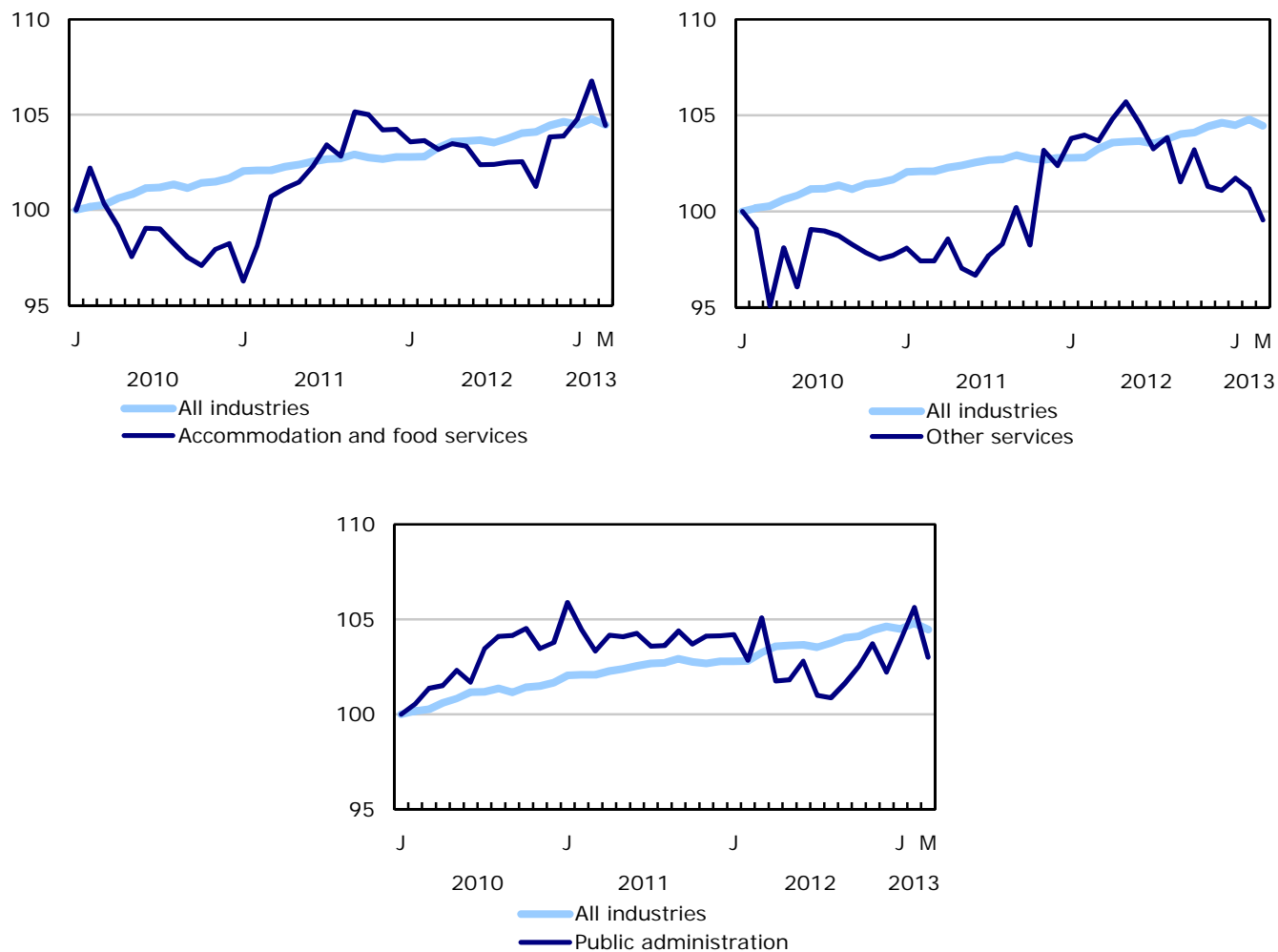


Chart 6
Index of employment by province, seasonally adjusted, January 2010=100

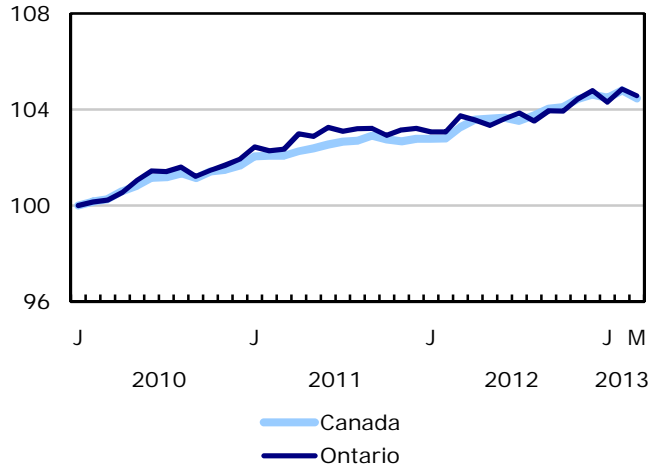
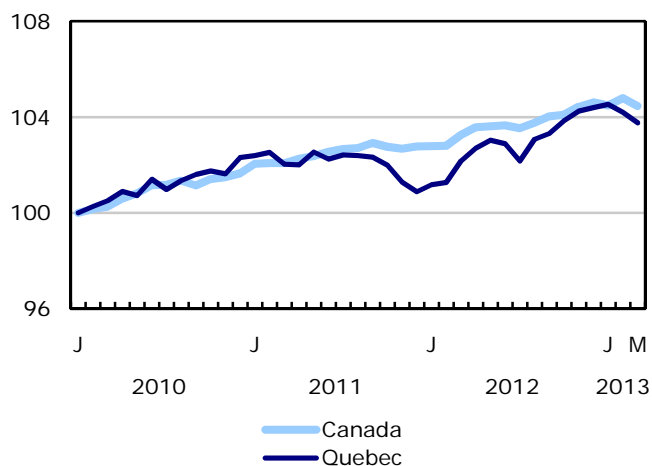
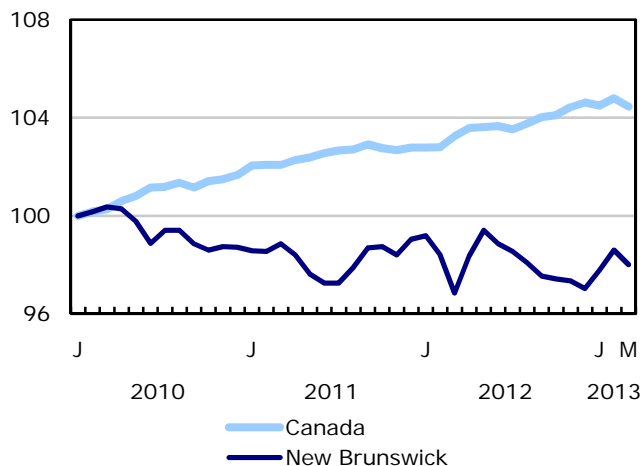
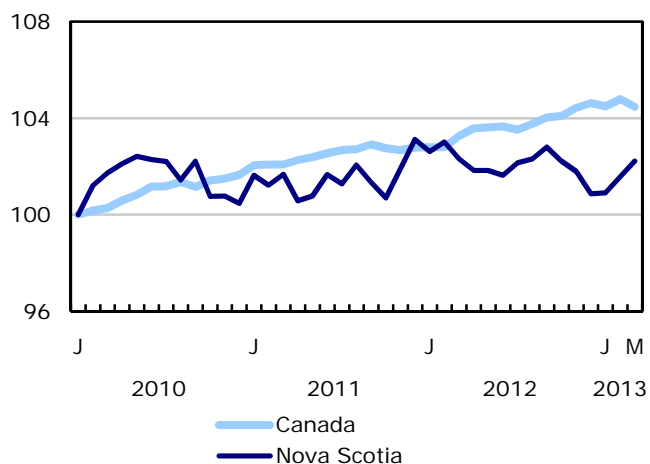
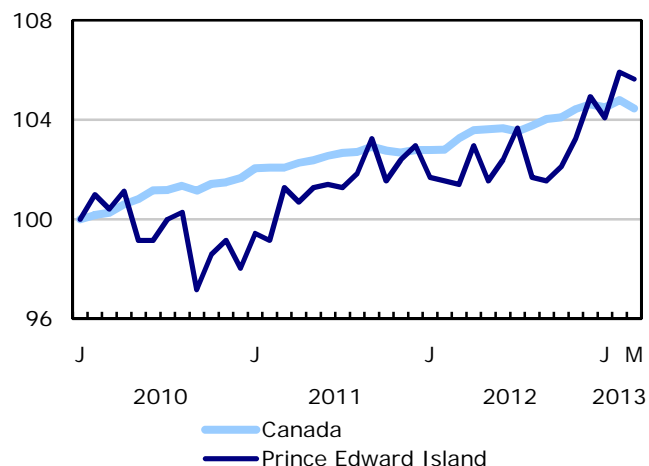
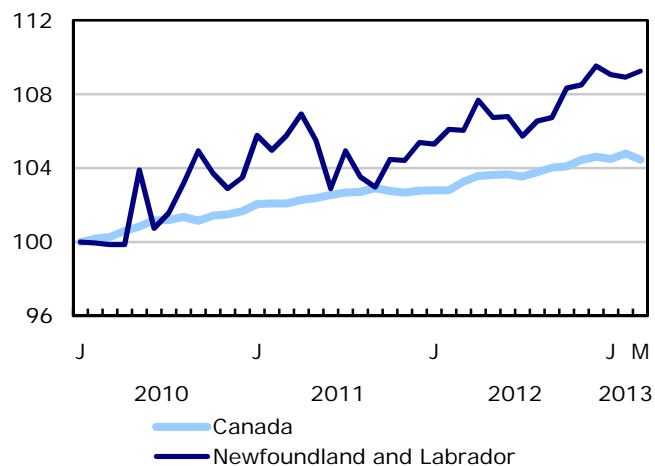
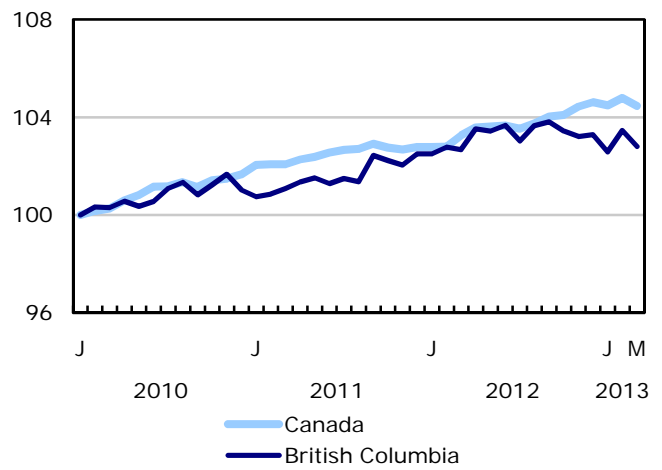
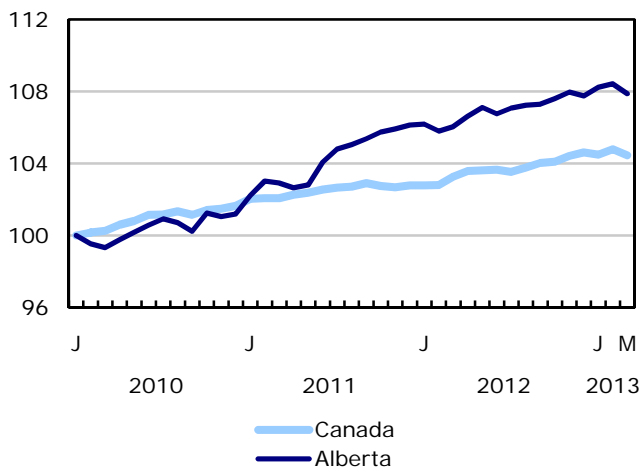
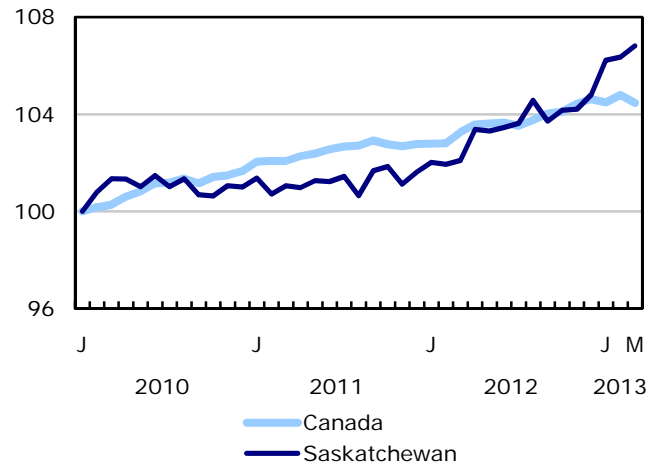
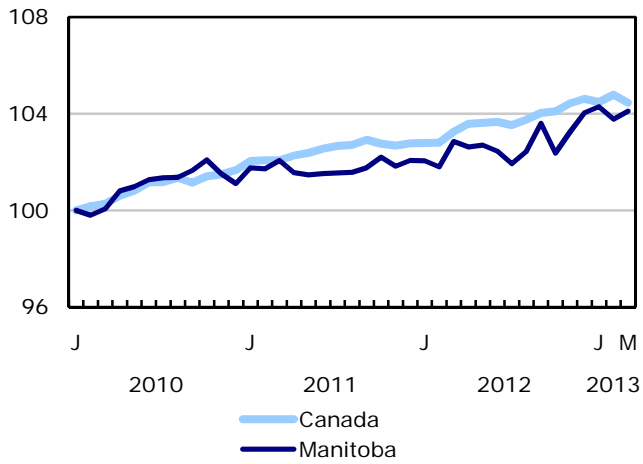


Chart 7
Index of employment by province, seasonally adjusted, January 2010=100



Related products

Selected publications from Statistics Canada

71-222-X	The Canadian Labour Market at a Glance
71-526-X	Methodology of the Canadian Labour Force Survey
71-543-G	Guide to the Labour Force Survey
71-544-X	Labour Force Survey Products and Services
71-587-X	Aboriginal Peoples Living Off-reserve in Western Canada: Estimates from the Labour Force Survey
71-588-X	The Aboriginal Labour Force Analysis Series
71-606-X	The Immigrant Labour Force Analysis Series
71F0031X	Improvements to the Labour Force Survey (LFS)
71M0001X	Labour Force Survey Microdata File

Selected CANSIM tables from Statistics Canada

282-0001	Labour force survey estimates (LFS), by sex and detailed age group, unadjusted for seasonality, monthly
282-0002	Labour force survey estimates (LFS), by sex and detailed age group, annual
282-0003	Labour force survey estimates (LFS), by educational attainment, sex and age group, unadjusted for seasonality, monthly
282-0004	Labour force survey estimates (LFS), by educational attainment, sex and age group, annual
282-0005	Labour force survey estimates (LFS), by full- and part-time students during school months, sex and age group, unadjusted for seasonality, monthly
282-0006	Labour force survey estimates (LFS), by students during summer months, sex and age group, unadjusted for seasonality, monthly
282-0007	Labour force survey estimates (LFS), by North American Industry Classification System (NAICS), sex and age group, unadjusted for seasonality, monthly
282-0008	Labour force survey estimates (LFS), by North American Industry Classification System (NAICS), sex and age group, annual

282-0009	Labour force survey estimates (LFS), by National Occupational Classification for Statistics (NOC-S) and sex, unadjusted for seasonality, monthly
282-0010	Labour force survey estimates (LFS), by National Occupational Classification for Statistics (NOC-S) and sex, annual
282-0011	Labour force survey estimates (LFS), employment by class of worker, North American Industry Classification System (NAICS) and sex, unadjusted for seasonality, monthly
282-0012	Labour force survey estimates (LFS), employment by class of worker, North American Industry Classification System (NAICS) and sex, annual
282-0013	Labour force survey estimates (LFS), part-time employment by reason for part-time work, sex and age group, unadjusted for seasonality, monthly
282-0014	Labour force survey estimates (LFS), part-time employment by reason for part-time work, sex and age group, annual
282-0015	Labour force survey estimates (LFS), by usual hours worked, main or all jobs, sex and age group, unadjusted for seasonality, monthly
282-0016	Labour force survey estimates (LFS), by usual hours worked, main or all jobs, sex and age group, annual
282-0017	Labour force survey estimates (LFS), by actual hours worked, main or all jobs, sex and age group, unadjusted for seasonality, monthly
282-0018	Labour force survey estimates (LFS), by actual hours worked, main or all jobs, sex and age group, annual
282-0019	Labour force survey estimates (LFS), by usual hours worked, class of worker, North American Industry Classification System (NAICS) and sex, unadjusted for seasonality, monthly
282-0020	Labour force survey estimates (LFS), by usual hours worked, class of worker, North American Industry Classification System (NAICS) and sex, annual
282-0021	Labour force survey estimates (LFS), by actual hours worked, class of worker, North American Industry Classification System (NAICS) and sex, unadjusted for seasonality, monthly
282-0022	Labour force survey estimates (LFS), by actual hours worked, class of worker, North American Industry Classification System (NAICS) and sex, annual
282-0023	Labour force survey estimates (LFS), by usual hours worked, class of worker, National Occupational Classification for Statistics (NOC-S) and sex, unadjusted for seasonality, monthly
282-0024	Labour force survey estimates (LFS), by usual hours worked, class of worker, National Occupational Classification for Statistics (NOC-S) and sex, annual
282-0025	Labour force survey estimates (LFS), by actual hours worked, class of worker, National Occupational Classification for Statistics (NOC-S) and sex, unadjusted for seasonality, monthly
282-0026	Labour force survey estimates (LFS), by actual hours worked, class of worker, National Occupational Classification for Statistics (NOC-S) and sex, annual
282-0027	Labour force survey estimates (LFS), by total and average usual and actual hours worked, main or all jobs, type of work, sex and age group, unadjusted for seasonality, monthly

282-0028	Labour force survey estimates (LFS), by total and average usual and actual hours worked, main or all jobs, type of work, sex and age group, annual
282-0029	Labour force survey estimates (LFS), average days lost for personal reasons per full-time employee by North American Industry Classification System (NAICS), sex and age group, annual
282-0030	Labour force survey estimates (LFS), average days lost for personal reasons per full-time employee by National Occupational Classification for Statistics (NOC-S), sex and age group, annual
282-0031	Labour force survey estimates (LFS), multiple jobholders by North American Industry Classification System (NAICS), sex and age group, annual
282-0032	Labour force survey estimates (LFS), multiple jobholders by North American Industry Classification System (NAICS), sex and age group, unadjusted for seasonality, monthly
282-0033	Labour force survey estimates (LFS), multiple jobholders by National Occupational Classification for Statistics (NOC-S), sex and age group, unadjusted for seasonality, monthly
282-0034	Labour force survey estimates (LFS), multiple jobholders by National Occupational Classification for Statistics (NOC-S), sex and age group, annual
282-0035	Labour force survey estimates (LFS), multiple jobholders by usual hours worked at main and all jobs, unadjusted for seasonality, monthly
282-0036	Labour force survey estimates (LFS), multiple jobholders by usual hours worked at main and all jobs, annual
282-0037	Labour force survey estimates (LFS), job tenure by type of work, sex and age group, unadjusted for seasonality, monthly
282-0038	Labour force survey estimates (LFS), job tenure by type of work, sex and age group, annual
282-0039	Labour force survey estimates (LFS), job tenure by National Occupational Classification for Statistics (NOC-S) and sex, unadjusted for seasonality, monthly
282-0040	Labour force survey estimates (LFS), job tenure by National Occupational Classification for Statistics (NOC-S) and sex, annual
282-0041	Labour force survey estimates (LFS), job tenure by North American Industry Classification System (NAICS) and sex, unadjusted for seasonality, monthly
282-0042	Labour force survey estimates (LFS), job tenure by North American Industry Classification System (NAICS) and sex, annual
282-0047	Labour force survey estimates (LFS), duration of unemployment by sex and age group, unadjusted for seasonality, monthly
282-0048	Labour force survey estimates (LFS), duration of unemployment by sex and age group, annual
282-0049	Labour force survey estimates (LFS), unemployment by type of work sought and search method, sex and age group, unadjusted for seasonality, monthly
282-0050	Labour force survey estimates (LFS), unemployment by type of work sought and search method, sex and age group, annual

282-0051	Labour force survey estimates (LFS), retirement age by class of worker and sex, annual
282-0054	Labour force survey estimates (LFS), by provinces and economic regions based on 2006 Census boundaries, 3-month moving average, unadjusted for seasonality, monthly
282-0055	Labour force survey estimates (LFS), by provinces, territories and economic regions based on 2006 Census boundaries, annual
282-0060	Labour force survey estimates (LFS), employment by economic region and North American Industry Classification System (NAICS), 3-month moving average, unadjusted for seasonality, monthly
282-0061	Labour force survey estimates (LFS), employment by economic region and North American Industry Classification System (NAICS), annual
282-0062	Labour force survey estimates (LFS), employment by economic region and National Occupational Classification for Statistics (NOC-S), 3-month moving average, unadjusted for seasonality, monthly
282-0063	Labour force survey estimates (LFS), employment by economic region and National Occupational Classification for Statistics (NOC-S), annual
282-0069	Labour force survey estimates (LFS), wages of employees by type of work, National Occupational Classification for Statistics (NOC-S), sex and age group, unadjusted for seasonality, monthly (current dollars)
282-0070	Labour force survey estimates (LFS), wages of employees by type of work, National Occupational Classification for Statistics (NOC-S), sex and age group, annual (current dollars)
282-0071	Labour force survey estimates (LFS), wages of employees by type of work, North American Industry Classification System (NAICS), sex and age group, unadjusted for seasonality, monthly (current dollars)
282-0072	Labour force survey estimates (LFS), wages of employees by type of work, North American Industry Classification System (NAICS), sex and age group, annual (current dollars)
282-0073	Labour force survey estimates (LFS), wages of employees by job permanence, union coverage, sex and age group, unadjusted for seasonality, monthly (current dollars)
282-0074	Labour force survey estimates (LFS), wages of employees by job permanence, union coverage, sex and age group, annual (current dollars)
282-0075	Labour force survey estimates (LFS), employees by establishment size, North American Industry Classification System (NAICS), sex and age group, unadjusted for seasonality, monthly
282-0076	Labour force survey estimates (LFS), employees by establishment size, North American Industry Classification System (NAICS), sex and age group, annual
282-0077	Labour force survey estimates (LFS), employees by union coverage, North American Industry Classification System (NAICS), sex and age group, unadjusted for seasonality, monthly
282-0078	Labour force survey estimates (LFS), employees by union coverage, North American Industry Classification System (NAICS), sex and age group, annual

282-0079	Labour force survey estimates (LFS), employees by job permanency, North American Industry Classification System (NAICS), sex and age group, unadjusted for seasonality, monthly
282-0080	Labour force survey estimates (LFS), employees by job permanency, North American Industry Classification System (NAICS), sex and age group, annual
282-0081	Labour force survey estimates (LFS), employees working overtime (weekly) by National Occupational Classification for Statistics (NOC-S), sex and age group, unadjusted for seasonality, monthly
282-0082	Labour force survey estimates (LFS), employees working overtime (weekly) by National Occupational Classification for Statistics (NOC-S), sex and age group, annual
282-0083	Labour force survey estimates (LFS), employees working overtime (weekly) by North American Industry Classification System (NAICS), sex and age group, unadjusted for seasonality, monthly
282-0084	Labour force survey estimates (LFS), employees working overtime (weekly) by North American Industry Classification System (NAICS), sex and age group, annual
282-0085	Labour force survey estimates (LFS), supplementary unemployment rates by sex and age group, unadjusted for seasonality, monthly
282-0086	Labour force survey estimates (LFS), supplementary unemployment rates by sex and age group, annual
282-0087	Labour force survey estimates (LFS), by sex and age group, seasonally adjusted and unadjusted, monthly
282-0088	Labour force survey estimates (LFS), employment by North American Industry Classification System (NAICS), seasonally adjusted and unadjusted, monthly
282-0089	Labour force survey estimates (LFS), employment by class of worker and sex, seasonally adjusted and unadjusted, monthly
282-0092	Labour force survey estimates (LFS), actual hours worked at main job by North American Industry Classification System (NAICS), seasonally adjusted, monthly
282-0093	Labour force survey estimates (LFS), employment by National Occupational Classification for Statistics (NOC-S), seasonally adjusted, monthly
282-0094	Labour force survey estimates (LFS), by North American Industry Classification System (NAICS), Canada, seasonally adjusted, monthly
282-0095	Labour force survey estimates (LFS), by full- and part-time students during school months, sex and age group, annual
282-0100	Labour force survey estimates (LFS), by territories, sex and age group, 3-month moving average, seasonally adjusted and unadjusted, monthly
282-0101	Labour force survey estimates (LFS), by immigrant status, age group, Canada, regions, provinces and Montreal, Toronto, Vancouver census metropolitan areas, 3-month moving average, unadjusted for seasonality, monthly
282-0102	Labour force survey estimates (LFS), by immigrant status, age group, Canada, regions, provinces and Montreal, Toronto, Vancouver census metropolitan areas, annual

282-0103	Labour force survey estimates (LFS), by immigrant status, sex and detailed age group, Canada, 3-month moving average, unadjusted for seasonality, monthly
282-0104	Labour force survey estimates (LFS), by immigrant status, sex and detailed age group, Canada, annual
282-0105	Labour force survey estimates (LFS), by immigrant status, educational attainment, sex and age group, Canada, 3-month moving average, unadjusted for seasonality, monthly
282-0106	Labour force survey estimates (LFS), by immigrant status, educational attainment, sex and age group, Canada, annual
282-0107	Labour force survey estimates (LFS), by immigrant status, country of birth, sex and age group, Canada, 3-month moving average, unadjusted for seasonality, monthly
282-0108	Labour force survey estimates (LFS), by immigrant status, country of birth, sex and age group, Canada, annual
282-0109	Labour force survey estimates (LFS), by census metropolitan area based on 2006 census boundaries, sex and age group, 3-month moving average, unadjusted for seasonality, monthly
282-0110	Labour force survey estimates (LFS), by census metropolitan area based on 2006 census boundaries, sex and age group, annual
282-0111	Labour force survey estimates (LFS), employment by census metropolitan area based on 2006 census boundaries and North American Industry Classification System (NAICS), 3-month moving average, unadjusted for seasonality, monthly
282-0112	Labour force survey estimates (LFS), employment by census metropolitan area based on 2006 census boundaries and North American Industry Classification System (NAICS), annual
282-0113	Labour force survey estimates (LFS), employment by census metropolitan area based on 2006 census boundaries and National Occupational Classification for Statistics (NOC-S), 3-month moving average, unadjusted for seasonality, monthly
282-0114	Labour force survey estimates (LFS), employment by census metropolitan area based on 2006 census boundaries and National Occupational Classification for Statistics (NOC-S), annual
282-0115	Labour force survey estimates (LFS), by selected census agglomerations based on 2006 census boundaries, annual
282-0116	Labour force survey estimates (LFS), by census metropolitan area based on 2006 census boundaries, 3-month moving average, seasonally adjusted and unadjusted, monthly
282-0117	Labour force survey estimates (LFS), by Montréal, Toronto and Vancouver census metropolitan areas based on 2006 census boundaries, seasonally adjusted and unadjusted, monthly
282-0118	Labour force survey estimates (LFS), by urban and rural areas based on 2006 census boundaries, sex and age group, unadjusted for seasonality, monthly
282-0119	Labour force survey estimates (LFS), by urban and rural areas based on 2006 census boundaries, sex and age group, annual

282-0120	Labour force survey estimates (LFS), employment by urban and rural areas based on 2006 census boundaries, class of worker and North American Industry Classification System (NAICS), unadjusted for seasonality, monthly
282-0121	Labour force survey estimates (LFS), employment by urban and rural areas based on 2006 census boundaries, class of worker and North American Industry Classification System (NAICS), annual
282-0200	Labour force survey estimates (LFS), weekly wage distributions of employees by type of work, North American Industry Classification System (NAICS) and by sex, unadjusted for seasonality, monthly
282-0201	Labour force survey estimates (LFS), weekly wage distributions of employees by type of work, North American Industry Classification System (NAICS) and by sex, annual
282-0202	Labour force survey estimates (LFS), weekly wage distributions of employees by type of work, National Occupational Classification for Statistics (NOC-S) and by sex, unadjusted for seasonality, monthly
282-0203	Labour force survey estimates (LFS), weekly wage distributions of employees by type of work, National Occupational Classification for Statistics (NOC-S) and by sex, annual
282-0204	Labour force survey estimates (LFS), hourly wage distributions of employees by type of work, North American Industry Classification System (NAICS) and by sex, unadjusted for seasonality, monthly
282-0205	Labour force survey estimates (LFS), hourly wage distributions of employees by type of work, North American Industry Classification System (NAICS) and by sex, annual
282-0206	Labour force survey estimates (LFS), hourly wage distribution of employees by type of work, National Occupational Classification for Statistics (NOC-S) and by sex, unadjusted for seasonality, monthly
282-0207	Labour force survey estimates (LFS), hourly wage distribution of employees by type of work, National Occupational Classification for Statistics (NOC-S) and by sex, annual
282-0208	Labour force survey estimates (LFS), by educational degree, sex and age group, unadjusted for seasonality, monthly
282-0209	Labour force survey estimates (LFS), by educational degree, sex and age group, annual
282-0210	Labour force survey estimates (LFS), by family type and family age composition, unadjusted for seasonality, monthly
282-0211	Labour force survey estimates (LFS), by family type and family age composition, annual
282-0212	Labour force survey estimates (LFS), hours lost by employees by reason absent full and part week and sex, unadjusted for seasonality, monthly
282-0213	Labour force survey estimates (LFS), hours lost by employees by reason absent full and part week and sex, annual
282-0214	Labour force survey estimates (LFS), activity prior to unemployment by sex and age group, unadjusted for seasonality, monthly

282-0215	Labour force survey estimates (LFS), activity prior to unemployment by sex and age group, annual
282-0216	Labour force survey estimates (LFS), reason for leaving job during previous year by sex and age group, unadjusted for seasonality, monthly
282-0217	Labour force survey estimates (LFS), reason for leaving job during previous year by sex and age group, annual
282-0218	Labour force survey estimates (LFS), reason for not looking for work, by sex and age group, unadjusted for seasonality, monthly
282-0219	Labour force survey estimates (LFS), reason for not looking for work, by sex and age group, annual

Selected surveys from Statistics Canada

3701	Labour Force Survey
------	---------------------

Selected summary tables from Statistics Canada

- *Labour force characteristics*
- *Employment by industry*
- *Days lost per worker due to illness or disability, by sex, by province*
- *Economic indicators, by province and territory (monthly and quarterly)*
- *Labour force and participation rates by sex and age group*
- *Labour force, employed and unemployed, numbers and rates, by province*
- *Employment by industry and sex*
- *Full-time and part-time employment by sex and age group*
- *Labour force characteristics by age and sex*
- *Distribution of employed people, by industry, by province*
- *Labour force characteristics, population 15 years and older, by census metropolitan area*
- *Labour force characteristics, population 15 years and older, by economic region, by province*
- *Days lost per worker by cause, by provinces*
- *Days lost per worker by industry and sex*

- *People employed, by educational attainment*
- *Reasons for part-time work by sex and age group*
- *Self-employment, historical summary*
- *Employment by age, sex, type of work, class of worker and province (monthly)*
- *Employment by major industry groups, seasonally adjusted, by province (monthly)*
- *Actual hours worked per week by industry, seasonally adjusted (monthly)*
- *Average hourly wages of employees by selected characteristics and profession, unadjusted data, by province (monthly)*
- *Labour force characteristics, seasonally adjusted, by province (monthly)*
- *Labour force characteristics, unadjusted, by province (monthly)*
- *Labour force characteristics, seasonally adjusted, by census metropolitan area (3 month moving average)*
- *Labour force characteristics, unadjusted, by census metropolitan area (3 month moving average)*
- *Labour force characteristics, unadjusted, by economic region (3 month moving average)*
- *Labour force characteristics by immigrant status of population aged 25 to 54, by province*
- *Labour force characteristics by immigrant status of population aged 25 to 54, by educational attainment*
- *Labour force characteristics by immigrant status, by detailed age group*
- *Labour force characteristics by immigrant status of population aged 25 to 54, by country of birth*

Statistical tables

Table 1
Labour force characteristics by age and sex, Canada, seasonally adjusted

	February 2013	March 2013	S.E. ¹	Change from			Percent change from		
				last month	last December	twelve months ago	last month	last December	twelve months ago
in thousands (except rates)									
15 years and over, both sexes									
Population	28,526.3	28,551.2	...	24.9	82.6	343.1	0.1	0.3	1.2
Labour force	19,028.9	19,016.6	29.1	-12.3	-9.4	219.2	-0.1	0.0	1.2
Employment	17,696.4	17,641.9	28.7	-54.5	-25.7	203.3	-0.3	-0.1	1.2
Employment full-time	14,373.0	14,319.0	38.2	-54.0	-41.0	180.0	-0.4	-0.3	1.3
Employment part-time	3,323.4	3,323.0	35.1	-0.4	15.4	23.4	0.0	0.5	0.7
Unemployment	1,332.6	1,374.7	25.2	42.1	16.3	15.9	3.2	1.2	1.2
Participation rate	66.7	66.6	0.1	-0.1	-0.2	0.0
Unemployment rate	7.0	7.2	0.1	0.2	0.1	0.0
Employment rate	62.0	61.8	0.1	-0.2	-0.3	0.0
Part-time rate	18.8	18.8	0.2	0.1	0.1	-0.1
15 to 24 years, both sexes									
Population	4,453.8	4,452.5	...	-1.3	-3.6	-4.2	0.0	-0.1	-0.1
Labour force	2,843.4	2,851.2	17.2	7.8	15.2	7.9	0.3	0.5	0.3
Employment	2,456.8	2,446.9	15.9	-9.9	11.8	0.5	-0.4	0.5	0.0
Employment full-time	1,283.3	1,285.7	18.5	2.4	9.6	-18.0	0.2	0.8	-1.4
Employment part-time	1,173.5	1,161.1	19.4	-12.4	2.1	18.4	-1.1	0.2	1.6
Unemployment	386.6	404.4	15.1	17.8	3.6	7.5	4.6	0.9	1.9
Participation rate	63.8	64.0	0.4	0.2	0.4	0.2
Unemployment rate	13.6	14.2	0.5	0.6	0.1	0.2
Employment rate	55.2	55.0	0.4	-0.2	0.4	0.1
Part-time rate	47.8	47.5	0.7	-0.3	-0.1	0.7
25 years and over, men									
Population	11,783.7	11,796.8	...	13.1	43.2	174.6	0.1	0.4	1.5
Labour force	8,556.8	8,549.5	15.1	-7.3	-17.2	89.1	-0.1	-0.2	1.1
Employment	8,047.2	8,024.7	16.3	-22.5	-25.7	98.1	-0.3	-0.3	1.2
Employment full-time	7,448.3	7,414.7	21.6	-33.6	-29.3	102.7	-0.5	-0.4	1.4
Employment part-time	598.9	609.9	17.4	11.0	3.5	-4.7	1.8	0.6	-0.8
Unemployment	509.6	524.8	14.7	15.2	8.5	-9.0	3.0	1.6	-1.7
Participation rate	72.6	72.5	0.1	-0.1	-0.4	-0.3
Unemployment rate	6.0	6.1	0.2	0.1	0.1	-0.2
Employment rate	68.3	68.0	0.1	-0.3	-0.5	-0.2
Part-time rate	7.4	7.6	0.2	0.2	0.1	-0.2
25 years and over, women									
Population	12,288.9	12,302.0	...	13.1	43.1	172.8	0.1	0.4	1.4
Labour force	7,628.7	7,615.9	16.5	-12.8	-7.4	122.2	-0.2	-0.1	1.6
Employment	7,192.3	7,170.4	16.4	-21.9	-11.7	104.8	-0.3	-0.2	1.5
Employment full-time	5,641.3	5,618.5	25.0	-22.8	-21.4	95.1	-0.4	-0.4	1.7
Employment part-time	1,551.0	1,551.9	23.6	0.9	9.7	9.7	0.1	0.6	0.6
Unemployment	436.3	445.5	13.4	9.2	4.3	17.4	2.1	1.0	4.1
Participation rate	62.1	61.9	0.1	-0.2	-0.3	0.1
Unemployment rate	5.7	5.8	0.2	0.1	0.0	0.1
Employment rate	58.5	58.3	0.1	-0.2	-0.3	0.0
Part-time rate	21.6	21.6	0.3	0.1	0.2	-0.2
25 to 54 years, both sexes									
Population	14,580.2	14,582.9	...	2.7	3.5	33.7	0.0	0.0	0.2
Labour force	12,640.3	12,625.5	21.7	-14.8	-79.0	65.6	-0.1	-0.6	0.5
Employment	11,907.3	11,859.9	23.3	-47.4	-94.5	67.5	-0.4	-0.8	0.6
Unemployment	732.9	765.7	18.4	32.8	15.6	-1.8	4.5	2.1	-0.2
Participation rate	86.7	86.6	0.1	-0.1	-0.5	0.3
Unemployment rate	5.8	6.1	0.1	0.3	0.2	0.0
Employment rate	81.7	81.3	0.2	-0.4	-0.7	0.2
25 to 54 years, men									
Population	7,294.9	7,296.3	...	1.4	1.9	18.3	0.0	0.0	0.3
Labour force	6,614.7	6,602.8	13.9	-11.9	-59.3	-1.6	-0.2	-0.9	0.0
Employment	6,224.0	6,200.9	15.7	-23.1	-65.7	20.6	-0.4	-1.0	0.3
Unemployment	390.7	401.9	13.5	11.2	6.4	-22.2	2.9	1.6	-5.2
Participation rate	90.7	90.5	0.2	-0.2	-0.8	-0.2
Unemployment rate	5.9	6.1	0.2	0.2	0.2	-0.3
Employment rate	85.3	85.0	0.2	-0.3	-0.9	0.1

See notes at the end of the table.

Table 1 – continued

Labour force characteristics by age and sex, Canada, seasonally adjusted

	February 2013	March 2013	S.E. ¹	Change from			Percent change from		
				last month	last December	twelve months ago	last month	last December	twelve months ago
in thousands (except rates)									
25 to 54 years, women									
Population	7,285.4	7,286.6	...	1.2	1.6	15.4	0.0	0.0	0.2
Labour force	6,025.6	6,022.7	15.9	-2.9	-19.7	67.2	0.0	-0.3	1.1
Employment	5,683.4	5,658.9	16.3	-24.5	-28.9	46.8	-0.4	-0.5	0.8
Unemployment	342.3	363.8	12.3	21.5	9.2	20.4	6.3	2.6	5.9
Participation rate	82.7	82.7	0.2	0.0	-0.2	0.8
Unemployment rate	5.7	6.0	0.2	0.3	0.1	0.2
Employment rate	78.0	77.7	0.2	-0.3	-0.4	0.5
55 years and over, both sexes									
Population	9,492.3	9,515.9	...	23.6	82.8	313.8	0.2	0.9	3.4
Labour force	3,545.2	3,539.8	17.3	-5.4	54.3	145.6	-0.2	1.6	4.3
Employment	3,332.2	3,335.2	17.3	3.0	57.1	135.4	0.1	1.7	4.2
Unemployment	213.0	204.6	9.4	-8.4	-2.8	10.2	-3.9	-1.4	5.2
Participation rate	37.3	37.2	0.2	-0.1	0.3	0.3
Unemployment rate	6.0	5.8	0.3	-0.2	-0.2	0.1
Employment rate	35.1	35.0	0.2	-0.1	0.2	0.2
55 years and over, men									
Population	4,488.8	4,500.5	...	11.7	41.3	156.3	0.3	0.9	3.6
Labour force	1,942.2	1,946.7	11.3	4.5	42.1	90.7	0.2	2.2	4.9
Employment	1,823.2	1,823.7	11.4	0.5	39.9	77.3	0.0	2.2	4.4
Unemployment	118.9	122.9	6.9	4.0	2.1	13.2	3.4	1.7	12.0
Participation rate	43.3	43.3	0.3	0.0	0.6	0.6
Unemployment rate	6.1	6.3	0.4	0.2	0.0	0.4
Employment rate	40.6	40.5	0.3	-0.1	0.5	0.3
55 years and over, women									
Population	5,003.6	5,015.4	...	11.8	41.5	157.4	0.2	0.8	3.2
Labour force	1,603.0	1,593.2	11.9	-9.8	12.3	55.0	-0.6	0.8	3.6
Employment	1,509.0	1,511.5	11.8	2.5	17.2	58.0	0.2	1.2	4.0
Unemployment	94.1	81.7	6.4	-12.4	-4.9	-3.0	-13.2	-5.7	-3.5
Participation rate	32.0	31.8	0.2	-0.2	0.0	0.1
Unemployment rate	5.9	5.1	0.4	-0.8	-0.4	-0.4
Employment rate	30.2	30.1	0.2	-0.1	0.1	0.2

1. Average standard error of change in two consecutive months (see "Sampling Errors" in Data Quality for further explanations).

Note(s): Related CANSIM table 282-0087.

Table 2
Employment by class of worker and industry, Canada, seasonally adjusted

	February 2013	March 2013	S.E. ¹	Change from			Percent change from		
				last month	last December	twelve months ago	last month	last December	twelve months ago
in thousands									
Class of worker									
Employees	15,008.8	14,915.7	35.7	-93.1	-100.3	148.2	-0.6	-0.7	1.0
Self-employed ²	2,687.5	2,726.2	25.5	38.7	74.6	55.1	1.4	2.8	2.1
Public/private sector employees									
Public sector employees	3,630.9	3,623.2	25.0	-7.7	-25.3	37.3	-0.2	-0.7	1.0
Private sector employees	11,377.9	11,292.5	37.9	-85.4	-75.0	110.9	-0.8	-0.7	1.0
Industry	17,696.4	17,641.9	28.7	-54.5	-25.7	203.3	-0.3	-0.1	1.2
Goods-producing sector	3,853.7	3,824.5	26.6	-29.2	-54.9	-26.2	-0.8	-1.4	-0.7
Agriculture	319.6	322.2	7.2	2.6	8.9	22.0	0.8	2.8	7.3
Forestry, fishing, mining, quarrying, oil and gas extraction ³	351.1	356.7	7.3	5.6	-0.7	-15.6	1.6	-0.2	-4.2
Utilities	133.6	129.6	4.9	-4.0	-15.4	-7.5	-3.0	-10.6	-5.5
Construction	1,309.4	1,300.1	17.1	-9.3	23.6	23.4	-0.7	1.8	1.8
Manufacturing	1,740.0	1,715.8	19.9	-24.2	-71.4	-48.6	-1.4	-4.0	-2.8
Services-producing sector	13,842.7	13,817.4	34.3	-25.3	29.2	229.5	-0.2	0.2	1.7
Trade	2,703.1	2,701.1	23.6	-2.0	10.3	80.1	-0.1	0.4	3.1
Transportation and warehousing	861.4	873.5	14.1	12.1	13.4	31.8	1.4	1.6	3.8
Finance, insurance, real estate and leasing	1,108.0	1,110.9	16.0	2.9	-8.6	35.7	0.3	-0.8	3.3
Professional, scientific and technical services	1,326.7	1,337.0	18.4	10.3	53.7	27.6	0.8	4.2	2.1
Business, building and other support services	706.0	707.3	14.3	1.3	8.4	18.3	0.2	1.2	2.7
Educational services	1,280.8	1,289.6	17.2	8.8	-34.2	50.0	0.7	-2.6	4.0
Health care and social assistance	2,165.6	2,169.0	19.3	3.4	-4.9	59.4	0.2	-0.2	2.8
Information, culture and recreation	785.6	785.2	14.5	-0.4	-10.2	-36.0	-0.1	-1.3	-4.4
Accommodation and food services	1,143.3	1,118.4	16.8	-24.9	5.9	13.5	-2.2	0.5	1.2
Other services	777.2	764.7	13.8	-12.5	-11.9	-31.6	-1.6	-1.5	-4.0
Public administration	985.0	960.7	12.6	-24.3	7.4	-19.3	-2.5	0.8	-2.0

1. Average standard error of change in two consecutive months (see "Sampling Errors" in Data Quality for further explanations).

2. Includes both incorporated and unincorporated working owners, self-employed persons who do not have a business and persons working in a family business without pay.

3. Also referred to as Natural resources.

Note(s): Related CANSIM Tables 282-0088, 282-0089.

Table 3
Labour force characteristics by province, seasonally adjusted

	February 2013	March 2013	S.E. ¹	Change from			Percent change from		
				last month	last December	twelve months ago	last month	last December	twelve months ago
in thousands (except rates)									
Newfoundland and Labrador									
Population	429.0	429.4	...	0.4	1.3	0.9	0.1	0.3	0.2
Labour force	265.4	268.0	2.0	2.6	1.2	5.9	1.0	0.4	2.3
Employment	234.4	235.1	2.1	0.7	-0.6	6.9	0.3	-0.3	3.0
Employment full-time	200.5	202.2	2.4	1.7	1.7	5.0	0.8	0.8	2.5
Employment part-time	33.9	32.9	1.9	-1.0	-2.3	1.9	-2.9	-6.5	6.1
Unemployment	31.0	32.9	1.8	1.9	1.9	-1.0	6.1	6.1	-2.9
Participation rate	61.9	62.4	0.5	0.5	0.1	1.2
Unemployment rate	11.7	12.3	0.7	0.6	0.7	-0.6
Employment rate	54.6	54.8	0.5	0.2	-0.3	1.5
Prince Edward Island									
Population	120.5	120.6	...	0.1	0.0	0.3	0.1	0.0	0.2
Labour force	85.1	85.4	0.6	0.3	1.6	4.2	0.4	1.9	5.2
Employment	75.2	75.0	0.7	-0.2	0.5	3.0	-0.3	0.7	4.2
Employment full-time	61.6	62.0	0.8	0.4	1.3	3.1	0.6	2.1	5.3
Employment part-time	13.6	13.0	0.8	-0.6	-0.8	-0.2	-4.4	-5.8	-1.5
Unemployment	9.9	10.3	0.7	0.4	1.1	1.1	4.0	12.0	12.0
Participation rate	70.6	70.8	0.5	0.2	1.3	3.3
Unemployment rate	11.6	12.1	0.8	0.5	1.1	0.8
Employment rate	62.4	62.2	0.5	-0.2	0.4	2.3
Nova Scotia									
Population	781.0	781.0	...	0.0	0.2	1.1	0.0	0.0	0.1
Labour force	499.5	503.4	2.6	3.9	7.5	4.9	0.8	1.5	1.0
Employment	452.9	455.8	2.8	2.9	6.0	-0.4	0.6	1.3	-0.1
Employment full-time	362.8	368.4	3.6	5.6	5.2	0.3	1.5	1.4	0.1
Employment part-time	90.0	87.4	3.2	-2.6	0.8	-0.7	-2.9	0.9	-0.8
Unemployment	46.7	47.6	2.4	0.9	1.5	5.3	1.9	3.3	12.5
Participation rate	64.0	64.5	0.3	0.5	1.0	0.6
Unemployment rate	9.3	9.5	0.5	0.2	0.2	1.0
Employment rate	58.0	58.4	0.4	0.4	0.8	-0.1
New Brunswick									
Population	619.9	619.8	...	-0.1	-0.2	-0.6	0.0	0.0	-0.1
Labour force	393.0	392.6	2.2	-0.4	2.8	5.9	-0.1	0.7	1.5
Employment	353.3	351.2	2.3	-2.1	3.5	4.2	-0.6	1.0	1.2
Employment full-time	297.6	294.9	2.8	-2.7	1.5	0.6	-0.9	0.5	0.2
Employment part-time	55.7	56.4	2.3	0.7	2.1	3.7	1.3	3.9	7.0
Unemployment	39.7	41.3	2.2	1.6	-0.8	1.5	4.0	-1.9	3.8
Participation rate	63.4	63.3	0.4	-0.1	0.4	1.0
Unemployment rate	10.1	10.5	0.5	0.4	-0.3	0.2
Employment rate	57.0	56.7	0.4	-0.3	0.6	0.8
Quebec									
Population	6,671.3	6,674.7	...	3.4	10.4	56.3	0.1	0.2	0.9
Labour force	4,356.9	4,354.2	15.0	-2.7	-10.3	59.8	-0.1	-0.2	1.4
Employment	4,036.6	4,019.8	15.3	-16.8	-24.4	61.6	-0.4	-0.6	1.6
Employment full-time	3,293.2	3,268.2	20.0	-25.0	-20.0	58.0	-0.8	-0.6	1.8
Employment part-time	743.3	751.6	18.1	8.3	-4.5	3.5	1.1	-0.6	0.5
Unemployment	320.3	334.4	13.5	14.1	14.1	-1.8	4.4	4.4	-0.5
Participation rate	65.3	65.2	0.2	-0.1	-0.3	0.3
Unemployment rate	7.4	7.7	0.3	0.3	0.4	-0.1
Employment rate	60.5	60.2	0.2	-0.3	-0.5	0.4
Ontario									
Population	11,150.2	11,159.5	...	9.3	31.4	132.4	0.1	0.3	1.2
Labour force	7,431.5	7,410.2	20.0	-21.3	-31.8	80.7	-0.3	-0.4	1.1
Employment	6,858.3	6,840.9	19.3	-17.4	-13.3	56.1	-0.3	-0.2	0.8
Employment full-time	5,516.6	5,508.3	25.6	-8.3	-38.9	21.5	-0.2	-0.7	0.4
Employment part-time	1,341.7	1,332.6	23.6	-9.1	25.5	34.6	-0.7	2.0	2.7
Unemployment	573.1	569.3	17.6	-3.8	-18.4	24.6	-0.7	-3.1	4.5
Participation rate	66.6	66.4	0.2	-0.2	-0.5	-0.1
Unemployment rate	7.7	7.7	0.2	0.0	-0.2	0.3
Employment rate	61.5	61.3	0.2	-0.2	-0.3	-0.2

See notes at the end of the table.

Table 3 – continued

Labour force characteristics by province, seasonally adjusted

	February 2013	March 2013	S.E. ¹	Change from			Percent change from		
				last month	last December	twelve months ago	last month	last December	twelve months ago
in thousands (except rates)									
Manitoba									
Population	969.1	969.8	...	0.7	2.5	9.2	0.1	0.3	1.0
Labour force	669.3	672.3	2.6	3.0	-1.2	6.0	0.4	-0.2	0.9
Employment	636.8	638.8	2.7	2.0	0.4	7.7	0.3	0.1	1.2
Employment full-time	512.0	511.1	3.6	-0.9	-4.8	1.7	-0.2	-0.9	0.3
Employment part-time	124.8	127.7	3.5	2.9	5.2	6.0	2.3	4.2	4.9
Unemployment	32.5	33.5	2.2	1.0	-1.7	-1.7	3.1	-4.8	-4.8
Participation rate	69.1	69.3	0.3	0.2	-0.3	-0.1
Unemployment rate	4.9	5.0	0.3	0.1	-0.2	-0.3
Employment rate	65.7	65.9	0.3	0.2	-0.1	0.2
Saskatchewan									
Population	819.7	820.6	...	0.9	3.0	14.0	0.1	0.4	1.7
Labour force	574.1	577.3	2.5	3.2	6.7	20.5	0.6	1.2	3.7
Employment	552.3	554.7	2.6	2.4	10.4	24.5	0.4	1.9	4.6
Employment full-time	456.8	458.1	3.3	1.3	11.0	19.4	0.3	2.5	4.4
Employment part-time	95.5	96.6	3.1	1.1	-0.6	5.1	1.2	-0.6	5.6
Unemployment	21.8	22.6	1.9	0.8	-3.7	-4.1	3.7	-14.1	-15.4
Participation rate	70.0	70.4	0.3	0.4	0.6	1.4
Unemployment rate	3.8	3.9	0.3	0.1	-0.7	-0.9
Employment rate	67.4	67.6	0.3	0.2	1.0	1.9
Alberta									
Population	3,128.4	3,135.3	...	6.9	23.8	92.9	0.2	0.8	3.1
Labour force	2,282.0	2,277.5	8.7	-4.5	9.9	28.7	-0.2	0.4	1.3
Employment	2,179.2	2,167.9	8.9	-11.3	2.6	36.8	-0.5	0.1	1.7
Employment full-time	1,847.0	1,843.4	11.8	-3.6	16.7	60.9	-0.2	0.9	3.4
Employment part-time	332.1	324.5	10.9	-7.6	-14.0	-24.2	-2.3	-4.1	-6.9
Unemployment	102.8	109.6	6.8	6.8	7.3	-8.1	6.6	7.1	-6.9
Participation rate	72.9	72.6	0.3	-0.3	-0.3	-1.3
Unemployment rate	4.5	4.8	0.3	0.3	0.3	-0.4
Employment rate	69.7	69.1	0.3	-0.6	-0.5	-0.9
British Columbia									
Population	3,837.2	3,840.5	...	3.3	10.2	36.6	0.1	0.3	1.0
Labour force	2,472.1	2,475.7	10.7	3.6	4.1	2.6	0.1	0.2	0.1
Employment	2,317.4	2,302.6	10.3	-14.8	-10.9	2.8	-0.6	-0.5	0.1
Employment full-time	1,824.8	1,802.4	14.5	-22.4	-14.7	9.3	-1.2	-0.8	0.5
Employment part-time	492.7	500.2	13.6	7.5	3.8	-6.4	1.5	0.8	-1.3
Unemployment	154.7	173.1	8.6	18.4	15.0	-0.2	11.9	9.5	-0.1
Participation rate	64.4	64.5	0.3	0.1	0.0	-0.5
Unemployment rate	6.3	7.0	0.3	0.7	0.6	0.0
Employment rate	60.4	60.0	0.3	-0.4	-0.4	-0.5

1. Average standard error of change in two consecutive months (see "Sampling Errors" in Data Quality for further explanations).

Note(s): Related CANSIM Table 282-0087.

Table 4-1
Selected labour force characteristics (seasonally adjusted) — Newfoundland and Labrador

	February 2013	March 2013	S.E. ¹	Change from			Percent change from		
				last month	last December	twelve months ago	last month	last December	twelve months ago
in thousands (except rates)									
Both sexes, 15 years and over									
Population	429.0	429.4	...	0.4	1.3	0.9	0.1	0.3	0.2
Labour force	265.4	268.0	2.0	2.6	1.2	5.9	1.0	0.4	2.3
Employment	234.4	235.1	2.1	0.7	-0.6	6.9	0.3	-0.3	3.0
Employment full-time	200.5	202.2	2.4	1.7	1.7	5.0	0.8	0.8	2.5
Unemployment	31.0	32.9	1.8	1.9	1.9	-1.0	6.1	6.1	-2.9
Participation rate	61.9	62.4	0.5	0.5	0.1	1.2
Unemployment rate	11.7	12.3	0.7	0.6	0.7	-0.6
Employment rate	54.6	54.8	0.5	0.2	-0.3	1.5
Part-time rate	14.5	14.0	0.8	-0.5	-0.9	0.4
Both sexes, 15 to 24 years									
Population	59.1	59.1	...	0.0	0.0	-1.1	0.0	0.0	-1.8
Labour force	35.4	35.7	1.1	0.3	-2.4	-0.8	0.8	-6.3	-2.2
Employment	30.0	30.1	1.0	0.1	-1.5	0.6	0.3	-4.7	2.0
Unemployment	5.4	5.6	1.0	0.2	-0.9	-1.4	3.7	-13.8	-20.0
Participation rate	59.9	60.4	1.8	0.5	-4.1	-0.2
Unemployment rate	15.3	15.7	2.5	0.4	-1.4	-3.5
Employment rate	50.8	50.9	1.7	0.1	-2.6	1.9
Part-time rate	42.0	40.9	3.5	-1.1	2.9	-0.8
Men, 25 years and over									
Population	178.7	178.9	...	0.2	0.6	1.0	0.1	0.3	0.6
Labour force	120.4	119.9	1.1	-0.5	0.7	2.4	-0.4	0.6	2.0
Employment	105.4	104.3	1.2	-1.1	-1.7	2.8	-1.0	-1.6	2.8
Unemployment	15.0	15.6	1.2	0.6	2.4	-0.4	4.0	18.2	-2.5
Participation rate	67.4	67.0	0.6	-0.4	0.1	1.0
Unemployment rate	12.5	13.0	1.0	0.5	1.9	-0.6
Employment rate	59.0	58.3	0.7	-0.7	-1.2	1.2
Part-time rate	4.0	4.3	0.7	0.3	0.2	0.0
Women, 25 years and over									
Population	191.2	191.4	...	0.2	0.6	0.9	0.1	0.3	0.5
Labour force	109.6	112.4	1.1	2.8	3.0	4.3	2.6	2.7	4.0
Employment	99.1	100.7	1.1	1.6	2.6	3.4	1.6	2.7	3.5
Unemployment	10.5	11.7	1.0	1.2	0.3	0.9	11.4	2.6	8.3
Participation rate	57.3	58.7	0.6	1.4	1.4	2.0
Unemployment rate	9.6	10.4	0.9	0.8	0.0	0.4
Employment rate	51.8	52.6	0.6	0.8	1.2	1.5
Part-time rate	17.3	16.0	1.2	-1.3	-3.1	1.3
Industry	234.4	235.1	2.1	0.7	-0.6	6.9	0.3	-0.3	3.0
Goods-producing sector	52.7	53.0	1.6	0.3	3.0	3.3	0.6	6.0	6.6
Agriculture	1.4	1.2	0.3	-0.2	-0.7	0.0	-14.3	-36.8	0.0
Forestry, fishing, mining, quarrying, oil and gas extraction ²	15.6	15.5	0.9	-0.1	0.9	1.3	-0.6	6.2	9.2
Utilities	2.9	2.8	0.4	-0.1	-0.5	0.0	-3.4	-15.2	0.0
Construction	22.1	21.1	1.1	-1.0	1.1	0.6	-4.5	5.5	2.9
Manufacturing	10.7	12.5	0.9	1.8	2.3	1.5	16.8	22.5	13.6
Services-producing sector	181.8	182.0	2.0	0.2	-3.7	3.6	0.1	-2.0	2.0
Trade	34.6	36.4	1.3	1.8	3.2	0.2	5.2	9.6	0.6
Transportation and warehousing	11.6	10.7	0.8	-0.9	-1.9	0.5	-7.8	-15.1	4.9
Finance, insurance, real estate and leasing	9.2	8.9	0.6	-0.3	-1.2	0.2	-3.3	-11.9	2.3
Professional, scientific and technical services	8.1	8.4	0.8	0.3	-0.6	-1.9	3.7	-6.7	-18.4
Business, building and other support services	7.1	6.7	0.7	-0.4	-0.2	0.3	-5.6	-2.9	4.7
Educational services	16.6	17.4	1.0	0.8	-2.3	-0.7	4.8	-11.7	-3.9
Health care and social assistance	37.1	37.9	1.2	0.8	0.2	2.7	2.2	0.5	7.7
Information, culture and recreation	7.4	6.4	0.6	-1.0	-1.0	-1.3	-13.5	-13.5	-16.9
Accommodation and food services	15.3	14.6	0.9	-0.7	-0.3	0.5	-4.6	-2.0	3.5
Other services	14.7	15.2	0.9	0.5	0.3	3.2	3.4	2.0	26.7
Public administration	19.9	19.3	0.9	-0.6	-0.1	-0.3	-3.0	-0.5	-1.5

1. Average standard error of change in two consecutive months (see "Sampling Errors" in Data Quality for further explanations).

2. Also referred to as Natural resources.

Note(s): Related CANSIM Tables 282-0087, 282-0088.

Table 4-2
Selected labour force characteristics (seasonally adjusted) — Prince Edward Island

	February 2013	March 2013	S.E. ¹	Change from			Percent change from		
				last month	last December	twelve months ago	last month	last December	twelve months ago
in thousands (except rates)									
Both sexes, 15 years and over									
Population	120.5	120.6	...	0.1	0.0	0.3	0.1	0.0	0.2
Labour force	85.1	85.4	0.6	0.3	1.6	4.2	0.4	1.9	5.2
Employment	75.2	75.0	0.7	-0.2	0.5	3.0	-0.3	0.7	4.2
Employment full-time	61.6	62.0	0.8	0.4	1.3	3.1	0.6	2.1	5.3
Unemployment	9.9	10.3	0.7	0.4	1.1	1.1	4.0	12.0	12.0
Participation rate	70.6	70.8	0.5	0.2	1.3	3.3
Unemployment rate	11.6	12.1	0.8	0.5	1.1	0.8
Employment rate	62.4	62.2	0.5	-0.2	0.4	2.3
Part-time rate	18.1	17.3	1.0	-0.8	-1.2	-1.0
Both sexes, 15 to 24 years									
Population	19.9	19.9	...	0.0	0.0	-0.1	0.0	0.0	-0.5
Labour force	13.9	14.3	0.4	0.4	0.9	0.7	2.9	6.7	5.1
Employment	11.4	11.5	0.4	0.1	0.3	0.3	0.9	2.7	2.7
Unemployment	2.5	2.8	0.4	0.3	0.6	0.4	12.0	27.3	16.7
Participation rate	69.8	71.9	2.0	2.1	4.6	3.9
Unemployment rate	18.0	19.6	2.6	1.6	3.2	2.0
Employment rate	57.3	57.8	1.8	0.5	1.5	1.8
Part-time rate	49.1	47.8	3.9	-1.3	0.5	-1.3
Men, 25 years and over									
Population	48.4	48.4	...	0.0	0.0	0.0	0.0	0.0	0.0
Labour force	36.7	36.7	0.3	0.0	0.6	2.0	0.0	1.7	5.8
Employment	32.5	32.4	0.4	-0.1	0.6	1.5	-0.3	1.9	4.9
Unemployment	4.2	4.3	0.4	0.1	0.0	0.5	2.4	0.0	13.2
Participation rate	75.8	75.8	0.7	0.0	1.2	4.1
Unemployment rate	11.4	11.7	1.1	0.3	-0.2	0.7
Employment rate	67.1	66.9	0.9	-0.2	1.2	3.1
Part-time rate	7.4	6.8	1.1	-0.6	-1.4	-1.3
Women, 25 years and over									
Population	52.3	52.3	...	0.0	0.1	0.4	0.0	0.2	0.8
Labour force	34.5	34.3	0.3	-0.2	0.1	1.4	-0.6	0.3	4.3
Employment	31.3	31.2	0.4	-0.1	-0.3	1.3	-0.3	-1.0	4.3
Unemployment	3.2	3.2	0.3	0.0	0.4	0.2	0.0	14.3	6.7
Participation rate	66.0	65.6	0.6	-0.4	0.1	2.2
Unemployment rate	9.3	9.3	0.9	0.0	1.1	0.2
Employment rate	59.8	59.7	0.7	-0.1	-0.6	2.1
Part-time rate	17.9	17.0	1.4	-0.9	-1.4	-0.4
Industry									
	75.2	75.0	0.7	-0.2	0.5	3.0	-0.3	0.7	4.2
Goods-producing sector									
	17.3	17.6	0.6	0.3	0.2	0.1	1.7	1.1	0.6
Agriculture	4.5	4.7	0.4	0.2	0.3	1.0	4.4	6.8	27.0
Forestry, fishing, mining, quarrying, oil and gas extraction ²	2.4	2.1	0.3	-0.3	-0.3	-1.4	-12.5	-12.5	-40.0
Utilities	0.3	0.3	0.1	0.0	0.0	0.0	0.0	0.0	0.0
Construction	5.1	5.3	0.3	0.2	0.0	0.3	3.9	0.0	6.0
Manufacturing	5.2	5.2	0.3	0.0	0.2	0.3	0.0	4.0	6.1
Services-producing sector									
	57.9	57.4	0.7	-0.5	0.3	2.9	-0.9	0.5	5.3
Trade	11.1	11.4	0.4	0.3	0.9	2.0	2.7	8.6	21.3
Transportation and warehousing	2.2	2.0	0.2	-0.2	-0.3	-0.6	-9.1	-13.0	-23.1
Finance, insurance, real estate and leasing	2.7	2.8	0.2	0.1	0.4	0.0	3.7	16.7	0.0
Professional, scientific and technical services	3.2	3.2	0.3	0.0	0.0	-0.1	0.0	0.0	-3.0
Business, building and other support services	2.1	2.1	0.3	0.0	-0.1	-0.4	0.0	-4.5	-16.0
Educational services	6.4	6.1	0.3	-0.3	-0.8	0.8	-4.7	-11.6	15.1
Health care and social assistance	10.0	9.8	0.4	-0.2	0.2	0.1	-2.0	2.1	1.0
Information, culture and recreation	3.0	2.3	0.3	-0.7	-0.7	-0.2	-23.3	-23.3	-8.0
Accommodation and food services	6.1	5.7	0.4	-0.4	-0.2	0.1	-6.6	-3.4	1.8
Other services	3.1	3.4	0.3	0.3	0.2	0.2	9.7	6.2	6.2
Public administration	8.0	8.6	0.4	0.6	0.8	0.9	7.5	10.3	11.7

1. Average standard error of change in two consecutive months (see "Sampling Errors" in Data Quality for further explanations).

2. Also referred to as Natural resources.

Note(s): Related CANSIM Tables 282-0087, 282-0088.

Table 4-3
Selected labour force characteristics (seasonally adjusted) — Nova Scotia

	February 2013	March 2013	S.E. ¹	Change from			Percent change from		
				last month	last December	twelve months ago	last month	last December	twelve months ago
in thousands (except rates)									
Both sexes, 15 years and over									
Population	781.0	781.0	...	0.0	0.2	1.1	0.0	0.0	0.1
Labour force	499.5	503.4	2.6	3.9	7.5	4.9	0.8	1.5	1.0
Employment	452.9	455.8	2.8	2.9	6.0	-0.4	0.6	1.3	-0.1
Employment full-time	362.8	368.4	3.6	5.6	5.2	0.3	1.5	1.4	0.1
Unemployment	46.7	47.6	2.4	0.9	1.5	5.3	1.9	3.3	12.5
Participation rate	64.0	64.5	0.3	0.5	1.0	0.6
Unemployment rate	9.3	9.5	0.5	0.2	0.2	1.0
Employment rate	58.0	58.4	0.4	0.4	0.8	-0.1
Part-time rate	19.9	19.2	0.7	-0.7	-0.1	-0.1
Both sexes, 15 to 24 years									
Population	116.9	116.9	...	0.0	-0.3	-1.8	0.0	-0.3	-1.5
Labour force	75.6	77.6	1.6	2.0	2.9	1.2	2.6	3.9	1.6
Employment	61.6	63.8	1.5	2.2	2.4	1.3	3.6	3.9	2.1
Unemployment	14.0	13.8	1.5	-0.2	0.5	-0.2	-1.4	3.8	-1.4
Participation rate	64.7	66.4	1.4	1.7	2.7	2.0
Unemployment rate	18.5	17.8	1.8	-0.7	0.0	-0.5
Employment rate	52.7	54.6	1.3	1.9	2.2	1.9
Part-time rate	48.7	49.8	2.6	1.1	0.3	-0.9
Men, 25 years and over									
Population	314.7	314.8	...	0.1	0.3	1.7	0.0	0.1	0.5
Labour force	215.3	216.4	1.4	1.1	4.0	2.6	0.5	1.9	1.2
Employment	196.9	197.7	1.7	0.8	3.7	-0.6	0.4	1.9	-0.3
Unemployment	18.4	18.6	1.5	0.2	0.2	3.0	1.1	1.1	19.2
Participation rate	68.4	68.7	0.5	0.3	1.2	0.4
Unemployment rate	8.5	8.6	0.7	0.1	-0.1	1.3
Employment rate	62.6	62.8	0.5	0.2	1.1	-0.5
Part-time rate	8.2	7.3	0.8	-0.9	-0.9	-0.7
Women, 25 years and over									
Population	349.3	349.4	...	0.1	0.3	1.3	0.0	0.1	0.4
Labour force	208.7	209.5	1.4	0.8	0.7	1.3	0.4	0.3	0.6
Employment	194.4	194.3	1.5	-0.1	-0.1	-1.2	-0.1	-0.1	-0.6
Unemployment	14.3	15.1	1.2	0.8	0.7	2.4	5.6	4.9	18.9
Participation rate	59.7	60.0	0.4	0.3	0.2	0.2
Unemployment rate	6.9	7.2	0.6	0.3	0.3	1.1
Employment rate	55.7	55.6	0.4	-0.1	-0.1	-0.6
Part-time rate	22.6	21.2	1.0	-1.4	0.4	0.4
Industry	452.8	455.8	2.8	3.0	6.0	-0.4	0.7	1.3	-0.1
Goods-producing sector	81.9	83.6	2.2	1.7	2.4	-3.3	2.1	3.0	-3.8
Agriculture	4.6	5.0	0.7	0.4	-1.1	-0.9	8.7	-18.0	-15.3
Forestry, fishing, mining, quarrying, oil and gas extraction ²	10.8	10.7	1.0	-0.1	0.0	-1.0	-0.9	0.0	-8.5
Utilities	4.2	4.4	0.4	0.2	0.0	0.1	4.8	0.0	2.3
Construction	32.1	32.9	1.5	0.8	3.6	2.1	2.5	12.3	6.8
Manufacturing	30.1	30.6	1.4	0.5	-0.1	-3.7	1.7	-0.3	-10.8
Services-producing sector	371.0	372.2	2.9	1.2	3.7	2.9	0.3	1.0	0.8
Trade	76.8	75.7	1.9	-1.1	6.0	5.1	-1.4	8.6	7.2
Transportation and warehousing	20.6	22.1	1.1	1.5	1.7	1.9	7.3	8.3	9.4
Finance, insurance, real estate and leasing	22.1	21.4	1.1	-0.7	-0.8	-2.4	-3.2	-3.6	-10.1
Professional, scientific and technical services	29.8	30.2	1.2	0.4	1.5	7.0	1.3	5.2	30.2
Business, building and other support services	21.9	22.0	1.3	0.1	0.6	2.8	0.5	2.8	14.6
Educational services	35.3	35.5	1.5	0.2	-1.1	-4.4	0.6	-3.0	-11.0
Health care and social assistance	71.1	69.9	1.7	-1.2	2.2	-1.6	-1.7	3.2	-2.2
Information, culture and recreation	18.1	19.6	1.2	1.5	1.0	0.8	8.3	5.4	4.3
Accommodation and food services	27.9	28.2	1.5	0.3	-6.3	-0.8	1.1	-18.3	-2.8
Other services	17.7	17.6	1.2	-0.1	-2.6	-5.1	-0.6	-12.9	-22.5
Public administration	29.6	30.0	1.2	0.4	1.5	-0.6	1.4	5.3	-2.0

1. Average standard error of change in two consecutive months (see "Sampling Errors" in Data Quality for further explanations).

2. Also referred to as Natural resources.

Note(s): Related CANSIM Tables 282-0087, 282-0088.

Table 4-4

Selected labour force characteristics (seasonally adjusted) — New Brunswick

	February 2013	March 2013	S.E. ¹	Change from			Percent change from		
				last month	last December	twelve months ago	last month	last December	twelve months ago
in thousands (except rates)									
Both sexes, 15 years and over									
Population	619.9	619.8	...	-0.1	-0.2	-0.6	0.0	0.0	-0.1
Labour force	393.0	392.6	2.2	-0.4	2.8	5.9	-0.1	0.7	1.5
Employment	353.3	351.2	2.3	-2.1	3.5	4.2	-0.6	1.0	1.2
Employment full-time	297.6	294.9	2.8	-2.7	1.5	0.6	-0.9	0.5	0.2
Unemployment	39.7	41.3	2.2	1.6	-0.8	1.5	4.0	-1.9	3.8
Participation rate	63.4	63.3	0.4	-0.1	0.4	1.0
Unemployment rate	10.1	10.5	0.5	0.4	-0.3	0.2
Employment rate	57.0	56.7	0.4	-0.3	0.6	0.8
Part-time rate	15.8	16.1	0.6	0.3	0.4	0.9
Both sexes, 15 to 24 years									
Population	89.2	89.1	...	-0.1	-0.4	-1.6	-0.1	-0.4	-1.8
Labour force	53.6	54.3	1.3	0.7	-0.9	-3.3	1.3	-1.6	-5.7
Employment	45.0	44.8	1.2	-0.2	-0.4	-2.7	-0.4	-0.9	-5.7
Unemployment	8.6	9.5	1.2	0.9	-0.5	-0.6	10.5	-5.0	-5.9
Participation rate	60.1	60.9	1.5	0.8	-0.8	-2.6
Unemployment rate	16.0	17.5	1.9	1.5	-0.6	0.0
Employment rate	50.4	50.3	1.4	-0.1	-0.2	-2.1
Part-time rate	40.9	41.7	2.6	0.9	5.2	3.4
Men, 25 years and over									
Population	254.5	254.5	...	0.0	0.1	0.4	0.0	0.0	0.2
Labour force	174.0	172.2	1.3	-1.8	0.6	2.4	-1.0	0.3	1.4
Employment	153.3	152.5	1.4	-0.8	0.0	-0.1	-0.5	0.0	-0.1
Unemployment	20.6	19.7	1.4	-0.9	0.6	2.5	-4.4	3.1	14.5
Participation rate	68.4	67.7	0.5	-0.7	0.2	0.9
Unemployment rate	11.8	11.4	0.8	-0.4	0.3	1.3
Employment rate	60.2	59.9	0.6	-0.3	0.0	-0.2
Part-time rate	6.5	6.3	0.7	-0.2	-0.3	0.5
Women, 25 years and over									
Population	276.2	276.2	...	0.0	0.1	0.6	0.0	0.0	0.2
Labour force	165.4	166.0	1.2	0.6	2.9	6.7	0.4	1.8	4.2
Employment	155.0	154.0	1.2	-1.0	3.9	7.1	-0.6	2.6	4.8
Unemployment	10.4	12.1	1.1	1.7	-0.9	-0.4	16.3	-6.9	-3.2
Participation rate	59.9	60.1	0.4	0.2	1.0	2.3
Unemployment rate	6.3	7.3	0.7	1.0	-0.7	-0.5
Employment rate	56.1	55.8	0.4	-0.3	1.4	2.5
Part-time rate	17.7	18.2	1.0	0.5	-0.3	0.8
Industry	353.3	351.2	2.3	-2.1	3.5	4.2	-0.6	1.0	1.2
Goods-producing sector	76.6	75.8	1.9	-0.8	2.9	2.3	-1.0	4.0	3.1
Agriculture	4.7	4.9	0.5	0.2	0.0	1.1	4.3	0.0	28.9
Forestry, fishing, mining, quarrying, oil and gas extraction ²	12.6	13.4	0.9	0.8	0.6	1.9	6.3	4.7	16.5
Utilities	3.6	4.1	0.4	0.5	0.3	0.0	13.9	7.9	0.0
Construction	25.9	25.0	1.3	-0.9	1.9	-0.3	-3.5	8.2	-1.2
Manufacturing	29.7	28.4	1.3	-1.3	0.1	-0.4	-4.4	0.4	-1.4
Services-producing sector	276.7	275.4	2.4	-1.3	0.5	1.9	-0.5	0.2	0.7
Trade	56.8	54.2	1.6	-2.6	-1.8	1.3	-4.6	-3.2	2.5
Transportation and warehousing	17.8	18.4	0.9	0.6	1.9	1.8	3.4	11.5	10.8
Finance, insurance, real estate and leasing	16.2	15.4	0.8	-0.8	-1.6	-0.6	-4.9	-9.4	-3.8
Professional, scientific and technical services	13.1	13.5	0.9	0.4	-1.1	-1.4	3.1	-7.5	-9.4
Business, building and other support services	15.4	14.7	1.0	-0.7	-2.8	-1.0	-4.5	-16.0	-6.4
Educational services	26.1	27.1	1.2	1.0	0.3	0.1	3.8	1.1	0.4
Health care and social assistance	55.1	55.8	1.3	0.7	0.9	3.4	1.3	1.6	6.5
Information, culture and recreation	15.1	14.1	0.9	-1.0	1.1	2.1	-6.6	8.5	17.5
Accommodation and food services	22.8	23.5	1.2	0.7	1.6	1.3	3.1	7.3	5.9
Other services	15.4	15.7	0.9	0.3	0.8	-1.0	1.9	5.4	-6.0
Public administration	23.1	23.1	1.0	0.0	1.3	-4.0	0.0	6.0	-14.8

1. Average standard error of change in two consecutive months (see "Sampling Errors" in Data Quality for further explanations).

2. Also referred to as Natural resources.

Note(s): Related CANSIM Tables 282-0087, 282-0088.

Table 4-5
Selected labour force characteristics (seasonally adjusted) — Quebec

	February 2013	March 2013	S.E. ¹	Change from			Percent change from		
				last month	last December	twelve months ago	last month	last December	twelve months ago
in thousands (except rates)									
Both sexes, 15 years and over									
Population	6,671.3	6,674.7	...	3.4	10.4	56.3	0.1	0.2	0.9
Labour force	4,356.9	4,354.2	15.0	-2.7	-10.3	59.8	-0.1	-0.2	1.4
Employment	4,036.6	4,019.8	15.3	-16.8	-24.4	61.6	-0.4	-0.6	1.6
Employment full-time	3,293.2	3,268.2	20.0	-25.0	-20.0	58.0	-0.8	-0.6	1.8
Unemployment	320.3	334.4	13.5	14.1	14.1	-1.8	4.4	4.4	-0.5
Participation rate	65.3	65.2	0.2	-0.1	-0.3	0.3
Unemployment rate	7.4	7.7	0.3	0.3	0.4	-0.1
Employment rate	60.5	60.2	0.2	-0.3	-0.5	0.4
Part-time rate	18.4	18.7	0.4	0.3	0.0	-0.2
Both sexes, 15 to 24 years									
Population	981.3	980.9	...	-0.4	-1.5	-1.9	0.0	-0.2	-0.2
Labour force	657.0	663.7	8.7	6.7	7.0	6.5	1.0	1.1	1.0
Employment	577.9	574.1	8.3	-3.8	-0.9	11.4	-0.7	-0.2	2.0
Unemployment	79.1	89.6	7.8	10.5	7.8	-4.9	13.3	9.5	-5.2
Participation rate	67.0	67.7	0.9	0.7	0.9	0.8
Unemployment rate	12.0	13.5	1.1	1.5	1.0	-0.9
Employment rate	58.9	58.5	0.8	-0.4	0.0	1.2
Part-time rate	50.7	50.4	1.6	-0.3	0.3	-0.2
Men, 25 years and over									
Population	2,799.7	2,801.8	...	2.1	6.3	30.5	0.1	0.2	1.1
Labour force	1,968.6	1,965.9	8.3	-2.7	-12.9	41.6	-0.1	-0.7	2.2
Employment	1,833.7	1,833.2	9.0	-0.5	-5.1	50.7	0.0	-0.3	2.8
Unemployment	134.8	132.7	8.1	-2.1	-7.8	-9.1	-1.6	-5.6	-6.4
Participation rate	70.3	70.2	0.3	-0.1	-0.6	0.8
Unemployment rate	6.8	6.8	0.4	0.0	-0.3	-0.6
Employment rate	65.5	65.4	0.3	-0.1	-0.4	1.1
Part-time rate	7.0	7.5	0.5	0.5	0.4	-0.5
Women, 25 years and over									
Population	2,890.3	2,892.0	...	1.7	5.6	27.7	0.1	0.2	1.0
Labour force	1,731.3	1,724.6	8.3	-6.7	-4.5	11.7	-0.4	-0.3	0.7
Employment	1,624.9	1,612.5	8.5	-12.4	-18.5	-0.5	-0.8	-1.1	0.0
Unemployment	106.4	112.1	7.1	5.7	14.1	12.2	5.4	14.4	12.2
Participation rate	59.9	59.6	0.3	-0.3	-0.3	-0.2
Unemployment rate	6.1	6.5	0.4	0.4	0.8	0.7
Employment rate	56.2	55.8	0.3	-0.4	-0.7	-0.5
Part-time rate	19.8	20.1	0.7	0.3	-0.5	0.3
Industry	4,036.6	4,019.8	15.3	-16.8	-24.4	61.6	-0.4	-0.6	1.6
Goods-producing sector									
Agriculture	55.0	57.4	3.2	2.4	1.0	4.5	4.4	1.8	8.5
Forestry, fishing, mining, quarrying, oil and gas extraction ²	33.7	34.2	2.5	0.5	0.1	-4.8	1.5	0.3	-12.3
Utilities	26.1	28.6	2.2	2.5	3.3	6.8	9.6	13.0	31.2
Construction	252.9	257.9	8.3	5.0	7.6	26.3	2.0	3.0	11.4
Manufacturing	487.4	467.9	10.7	-19.5	-38.9	-18.2	-4.0	-7.7	-3.7
Services-producing sector									
Trade	645.6	641.0	12.7	-4.6	11.2	14.3	-0.7	1.8	2.3
Transportation and warehousing	173.3	172.6	7.0	-0.7	8.1	-13.0	-0.4	4.9	-7.0
Finance, insurance, real estate and leasing	221.3	229.4	7.5	8.1	-1.7	16.4	3.7	-0.7	7.7
Professional, scientific and technical services	308.3	317.7	9.0	9.4	21.1	20.9	3.0	7.1	7.0
Business, building and other support services	153.7	138.4	7.2	-15.3	-14.7	-9.0	-10.0	-9.6	-6.1
Educational services	280.6	280.6	9.5	0.0	-22.6	-11.6	0.0	-7.5	-4.0
Health care and social assistance	560.6	556.6	10.0	-4.0	-14.6	40.7	-0.7	-2.6	7.9
Information, culture and recreation	185.1	194.9	7.4	9.8	8.2	10.2	5.3	4.4	5.5
Accommodation and food services	237.8	246.0	8.5	8.2	17.2	-7.3	3.4	7.5	-2.9
Other services	172.1	169.8	6.8	-2.3	-9.7	-6.0	-1.3	-5.4	-3.4
Public administration	243.0	226.8	6.3	-16.2	0.1	-8.5	-6.7	0.0	-3.6

1. Average standard error of change in two consecutive months (see "Sampling Errors" in Data Quality for further explanations).

2. Also referred to as Natural resources.

Note(s): Related CANSIM Tables 282-0087, 282-0088.

Table 4-6
Selected labour force characteristics (seasonally adjusted) — Ontario

	February 2013	March 2013	S.E. ¹	Change from			Percent change from		
				last month	last December	twelve months ago	last month	last December	twelve months ago
in thousands (except rates)									
Both sexes, 15 years and over									
Population	11,150.2	11,159.5	...	9.3	31.4	132.4	0.1	0.3	1.2
Labour force	7,431.5	7,410.2	20.0	-21.3	-31.8	80.7	-0.3	-0.4	1.1
Employment	6,858.3	6,840.9	19.3	-17.4	-13.3	56.1	-0.3	-0.2	0.8
Employment full-time	5,516.6	5,508.3	25.6	-8.3	-38.9	21.5	-0.2	-0.7	0.4
Unemployment	573.1	569.3	17.6	-3.8	-18.4	24.6	-0.7	-3.1	4.5
Participation rate	66.6	66.4	0.2	-0.2	-0.5	-0.1
Unemployment rate	7.7	7.7	0.2	0.0	-0.2	0.3
Employment rate	61.5	61.3	0.2	-0.2	-0.3	-0.2
Part-time rate	19.6	19.5	0.3	-0.1	0.4	0.3
Both sexes, 15 to 24 years									
Population	1,788.1	1,787.6	...	-0.5	-1.0	0.1	0.0	-0.1	0.0
Labour force	1,095.1	1,082.4	12.2	-12.7	-14.8	9.8	-1.2	-1.3	0.9
Employment	917.4	904.0	10.7	-13.4	-5.8	-4.3	-1.5	-0.6	-0.5
Unemployment	177.7	178.3	10.8	0.6	-9.0	14.1	0.3	-4.8	8.6
Participation rate	61.2	60.6	0.7	-0.6	-0.7	0.6
Unemployment rate	16.2	16.5	0.9	0.3	-0.6	1.2
Employment rate	51.3	50.6	0.6	-0.7	-0.3	-0.2
Part-time rate	54.5	53.3	1.3	-1.1	-1.0	3.1
Men, 25 years and over									
Population	4,541.4	4,546.0	...	4.6	15.4	64.8	0.1	0.3	1.4
Labour force	3,305.3	3,297.0	10.1	-8.3	-20.7	5.7	-0.3	-0.6	0.2
Employment	3,092.6	3,083.0	10.8	-9.6	-24.0	-1.2	-0.3	-0.8	0.0
Unemployment	212.6	214.0	10.0	1.4	3.3	6.9	0.7	1.6	3.3
Participation rate	72.8	72.5	0.2	-0.3	-0.7	-0.9
Unemployment rate	6.4	6.5	0.3	0.1	0.1	0.2
Employment rate	68.1	67.8	0.2	-0.3	-0.8	-1.0
Part-time rate	7.9	8.0	0.4	0.0	0.1	0.2
Women, 25 years and over									
Population	4,820.7	4,825.9	...	5.2	17.0	67.5	0.1	0.4	1.4
Labour force	3,031.1	3,030.9	11.3	-0.2	3.8	65.3	0.0	0.1	2.2
Employment	2,848.3	2,853.9	11.1	5.6	16.5	61.6	0.2	0.6	2.2
Unemployment	182.8	177.0	9.3	-5.8	-12.7	3.7	-3.2	-6.7	2.1
Participation rate	62.9	62.8	0.2	-0.1	-0.1	0.5
Unemployment rate	6.0	5.8	0.3	-0.2	-0.5	0.0
Employment rate	59.1	59.1	0.2	0.0	0.1	0.4
Part-time rate	20.9	21.2	0.5	0.3	1.2	-0.3
Industry									
	6,858.3	6,840.9	19.3	-17.4	-13.3	56.1	-0.3	-0.2	0.8
Goods-producing sector									
	1,393.1	1,389.9	18.2	-3.2	-16.3	-60.3	-0.2	-1.2	-4.2
Agriculture	89.0	85.9	4.5	-3.1	0.8	-11.5	-3.5	0.9	-11.8
Forestry, fishing, mining, quarrying, oil and gas extraction ²	34.7	35.6	2.5	0.9	1.4	-4.0	2.6	4.1	-10.1
Utilities	52.5	50.0	3.2	-2.5	-5.4	-9.0	-4.8	-9.7	-15.3
Construction	431.4	438.7	11.2	7.3	9.3	-10.4	1.7	2.2	-2.3
Manufacturing	785.5	779.8	14.5	-5.7	-22.3	-25.3	-0.7	-2.8	-3.1
Services-producing sector									
	5,465.2	5,451.0	23.6	-14.2	2.9	116.4	-0.3	0.1	2.2
Trade	1,015.6	1,009.7	16.0	-5.9	-25.2	27.5	-0.6	-2.4	2.8
Transportation and warehousing	339.3	345.1	9.7	5.8	15.9	37.8	1.7	4.8	12.3
Finance, insurance, real estate and leasing	510.5	513.6	12.1	3.1	-11.2	12.2	0.6	-2.1	2.4
Professional, scientific and technical services	564.6	553.1	13.6	-11.5	6.3	-21.5	-2.0	1.2	-3.7
Business, building and other support services	297.7	330.1	10.3	32.4	36.4	41.2	10.9	12.4	14.3
Educational services	514.9	521.8	11.9	6.9	-1.8	46.5	1.3	-0.3	9.8
Health care and social assistance	779.6	783.2	13.3	3.6	13.7	27.5	0.5	1.8	3.6
Information, culture and recreation	315.5	305.2	10.3	-10.3	-21.5	-50.0	-3.3	-6.6	-14.1
Accommodation and food services	439.8	440.2	11.4	0.4	11.8	34.9	0.1	2.8	8.6
Other services	290.7	275.0	9.5	-15.7	-11.4	-18.8	-5.4	-4.0	-6.4
Public administration	397.2	374.0	9.1	-23.2	-10.1	-21.0	-5.8	-2.6	-5.3

1. Average standard error of change in two consecutive months (see "Sampling Errors" in Data Quality for further explanations).

2. Also referred to as Natural resources.

Note(s): Related CANSIM Tables 282-0087, 282-0088.

Table 4-7
Selected labour force characteristics (seasonally adjusted) — Manitoba

	February 2013	March 2013	S.E. ¹	Change from			Percent change from		
				last month	last December	twelve months ago	last month	last December	twelve months ago
in thousands (except rates)									
Both sexes, 15 years and over									
Population	969.1	969.8	...	0.7	2.5	9.2	0.1	0.3	1.0
Labour force	669.3	672.3	2.6	3.0	-1.2	6.0	0.4	-0.2	0.9
Employment	636.8	638.8	2.7	2.0	0.4	7.7	0.3	0.1	1.2
Employment full-time	512.0	511.1	3.6	-0.9	-4.8	1.7	-0.2	-0.9	0.3
Unemployment	32.5	33.5	2.2	1.0	-1.7	-1.7	3.1	-4.8	-4.8
Participation rate	69.1	69.3	0.3	0.2	-0.3	-0.1
Unemployment rate	4.9	5.0	0.3	0.1	-0.2	-0.3
Employment rate	65.7	65.9	0.3	0.2	-0.1	0.2
Part-time rate	19.6	20.0	0.5	0.4	0.8	0.7
Both sexes, 15 to 24 years									
Population	164.8	164.8	...	0.0	0.0	-0.2	0.0	0.0	-0.1
Labour force	115.9	114.0	1.6	-1.9	-1.4	-0.3	-1.6	-1.2	-0.3
Employment	104.3	103.2	1.5	-1.1	-0.5	2.2	-1.1	-0.5	2.2
Unemployment	11.6	10.7	1.4	-0.9	-0.9	-2.6	-7.8	-7.8	-19.5
Participation rate	70.3	69.2	0.9	-1.1	-0.8	-0.1
Unemployment rate	10.0	9.4	1.2	-0.6	-0.7	-2.2
Employment rate	63.3	62.6	0.9	-0.7	-0.3	1.4
Part-time rate	44.5	44.9	1.8	0.4	4.1	2.8
Men, 25 years and over									
Population	394.2	394.5	...	0.3	1.2	4.6	0.1	0.3	1.2
Labour force	299.2	300.2	1.3	1.0	-1.4	1.9	0.3	-0.5	0.6
Employment	288.1	288.6	1.4	0.5	-0.8	1.4	0.2	-0.3	0.5
Unemployment	11.1	11.6	1.2	0.5	-0.5	0.5	4.5	-4.1	4.5
Participation rate	75.9	76.1	0.3	0.2	-0.6	-0.4
Unemployment rate	3.7	3.9	0.4	0.2	-0.1	0.2
Employment rate	73.1	73.2	0.4	0.1	-0.4	-0.5
Part-time rate	7.1	6.9	0.6	-0.2	-1.2	-0.4
Women, 25 years and over									
Population	410.1	410.5	...	0.4	1.3	4.8	0.1	0.3	1.2
Labour force	254.2	258.1	1.5	3.9	1.5	4.4	1.5	0.6	1.7
Employment	244.4	246.9	1.6	2.5	1.7	4.1	1.0	0.7	1.7
Unemployment	9.8	11.2	1.1	1.4	-0.2	0.4	14.3	-1.8	3.7
Participation rate	62.0	62.9	0.4	0.9	0.2	0.4
Unemployment rate	3.9	4.3	0.4	0.4	-0.1	0.0
Employment rate	59.6	60.1	0.4	0.5	0.2	0.3
Part-time rate	23.7	24.9	0.9	1.2	1.7	0.9
Industry	636.8	638.8	2.7	2.0	0.5	7.7	0.3	0.1	1.2
Goods-producing sector	155.6	154.3	2.4	-1.3	5.0	13.9	-0.8	3.3	9.9
Agriculture	24.8	25.8	1.2	1.0	2.2	6.7	4.0	9.3	35.1
Forestry, fishing, mining, quarrying, oil and gas extraction ²	7.5	7.0	0.5	-0.5	-0.5	0.0	-6.7	-6.7	0.0
Utilities	8.1	8.1	0.5	0.0	0.1	1.2	0.0	1.2	17.4
Construction	54.1	51.8	1.5	-2.3	3.1	8.1	-4.3	6.4	18.5
Manufacturing	61.1	61.6	1.7	0.5	0.2	-2.0	0.8	0.3	-3.1
Services-producing sector	481.2	484.5	3.2	3.3	-4.6	-6.2	0.7	-0.9	-1.3
Trade	89.0	91.0	2.1	2.0	-1.6	-3.9	2.2	-1.7	-4.1
Transportation and warehousing	36.0	33.9	1.3	-2.1	-2.5	-3.1	-5.8	-6.9	-8.4
Finance, insurance, real estate and leasing	33.7	34.3	1.2	0.6	-0.8	0.0	1.8	-2.3	0.0
Professional, scientific and technical services	27.4	28.2	1.2	0.8	-1.2	0.0	2.9	-4.1	0.0
Business, building and other support services	18.8	18.6	1.2	-0.2	-1.9	-1.2	-1.1	-9.3	-6.1
Educational services	49.2	48.1	1.6	-1.1	-2.0	0.4	-2.2	-4.0	0.8
Health care and social assistance	93.2	94.8	1.8	1.6	0.6	-1.3	1.7	0.6	-1.4
Information, culture and recreation	26.2	25.9	1.2	-0.3	0.3	2.9	-1.1	1.2	12.6
Accommodation and food services	43.0	40.8	1.5	-2.2	-0.2	0.4	-5.1	-0.5	1.0
Other services	27.8	30.9	1.2	3.1	2.5	2.0	11.2	8.8	6.9
Public administration	37.1	37.8	1.3	0.7	1.9	-2.6	1.9	5.3	-6.4

1. Average standard error of change in two consecutive months (see "Sampling Errors" in Data Quality for further explanations).

2. Also referred to as Natural resources.

Note(s): Related CANSIM Tables 282-0087, 282-0088.

Table 4-8
Selected labour force characteristics (seasonally adjusted) — Saskatchewan

	February 2013	March 2013	S.E. ¹	Change from			Percent change from		
				last month	last December	twelve months ago	last month	last December	twelve months ago
in thousands (except rates)									
Both sexes, 15 years and over									
Population	819.7	820.6	...	0.9	3.0	14.0	0.1	0.4	1.7
Labour force	574.1	577.3	2.5	3.2	6.7	20.5	0.6	1.2	3.7
Employment	552.3	554.7	2.6	2.4	10.4	24.5	0.4	1.9	4.6
Employment full-time	456.8	458.1	3.3	1.3	11.0	19.4	0.3	2.5	4.4
Unemployment	21.8	22.6	1.9	0.8	-3.7	-4.1	3.7	-14.1	-15.4
Participation rate	70.0	70.4	0.3	0.4	0.6	1.4
Unemployment rate	3.8	3.9	0.3	0.1	-0.7	-0.9
Employment rate	67.4	67.6	0.3	0.2	1.0	1.9
Part-time rate	17.3	17.4	0.6	0.1	-0.4	0.2
Both sexes, 15 to 24 years									
Population	136.6	136.6	...	0.0	-0.1	0.2	0.0	-0.1	0.1
Labour force	94.9	95.5	1.4	0.6	1.3	1.3	0.6	1.4	1.4
Employment	86.2	86.5	1.5	0.3	1.6	0.3	0.3	1.9	0.3
Unemployment	8.7	9.0	1.2	0.3	-0.3	1.1	3.4	-3.2	13.9
Participation rate	69.5	69.9	1.0	0.4	1.0	0.8
Unemployment rate	9.2	9.4	1.2	0.2	-0.5	1.0
Employment rate	63.1	63.3	1.1	0.2	1.2	0.1
Part-time rate	31.2	33.9	1.8	2.7	-2.5	-0.5
Men, 25 years and over									
Population	337.1	337.6	...	0.5	1.6	7.6	0.1	0.5	2.3
Labour force	258.0	260.0	1.2	2.0	2.6	9.8	0.8	1.0	3.9
Employment	252.2	253.3	1.3	1.1	4.4	12.8	0.4	1.8	5.3
Unemployment	5.9	6.6	1.0	0.7	-1.9	-3.1	11.9	-22.4	-32.0
Participation rate	76.5	77.0	0.4	0.5	0.4	1.2
Unemployment rate	2.3	2.5	0.4	0.2	-0.8	-1.4
Employment rate	74.8	75.0	0.4	0.2	0.9	2.1
Part-time rate	7.8	7.1	0.6	-0.6	0.7	-0.2
Women, 25 years and over									
Population	345.9	346.3	...	0.4	1.4	6.1	0.1	0.4	1.8
Labour force	221.2	221.9	1.6	0.7	3.0	9.4	0.3	1.4	4.4
Employment	214.0	214.9	1.5	0.9	4.4	11.4	0.4	2.1	5.6
Unemployment	7.2	7.0	1.0	-0.2	-1.5	-2.1	-2.8	-17.6	-23.1
Participation rate	63.9	64.1	0.5	0.2	0.6	1.6
Unemployment rate	3.3	3.2	0.5	-0.1	-0.7	-1.1
Employment rate	61.9	62.1	0.4	0.2	1.1	2.3
Part-time rate	22.9	22.9	1.0	0.0	-1.0	1.1
Industry									
Industry	552.3	554.7	2.6	2.4	10.4	24.5	0.4	1.9	4.6
Goods-producing sector									
Goods-producing sector	151.1	150.8	2.4	-0.3	0.7	13.8	-0.2	0.5	10.1
Agriculture	44.1	44.7	1.6	0.6	2.8	7.9	1.4	6.7	21.5
Forestry, fishing, mining, quarrying, oil and gas extraction ²	25.5	24.6	1.2	-0.9	-1.4	-1.1	-3.5	-5.4	-4.3
Utilities	5.2	5.1	0.4	-0.1	0.3	-0.3	-1.9	6.2	-5.6
Construction	48.5	49.2	1.6	0.7	1.9	7.2	1.4	4.0	17.1
Manufacturing	27.8	27.1	1.1	-0.7	-3.0	-0.1	-2.5	-10.0	-0.4
Services-producing sector									
Services-producing sector	401.2	403.9	3.0	2.7	9.7	10.8	0.7	2.5	2.7
Trade	85.2	85.9	1.9	0.7	4.0	6.3	0.8	4.9	7.9
Transportation and warehousing	25.4	26.1	1.1	0.7	0.6	0.2	2.8	2.4	0.8
Finance, insurance, real estate and leasing	28.8	28.1	1.0	-0.7	-0.1	-2.5	-2.4	-0.4	-8.2
Professional, scientific and technical services	25.8	26.8	1.2	1.0	1.9	1.4	3.9	7.6	5.5
Business, building and other support services	11.4	11.5	0.9	0.1	-1.4	-1.0	0.9	-10.9	-8.0
Educational services	44.9	44.5	1.4	-0.4	0.9	1.7	-0.9	2.1	4.0
Health care and social assistance	74.1	75.4	1.7	1.3	3.2	6.4	1.8	4.4	9.3
Information, culture and recreation	18.8	18.0	1.1	-0.8	-1.3	0.4	-4.3	-6.7	2.3
Accommodation and food services	30.3	30.3	1.5	0.0	2.0	-3.2	0.0	7.1	-9.6
Other services	27.5	27.3	1.2	-0.2	2.8	1.7	-0.7	11.4	6.6
Public administration	28.9	29.9	1.1	1.0	-3.0	-0.6	3.5	-9.1	-2.0

1. Average standard error of change in two consecutive months (see "Sampling Errors" in Data Quality for further explanations).

2. Also referred to as Natural resources.

Note(s): Related CANSIM Tables 282-0087, 282-0088.

Table 4-9
Selected labour force characteristics (seasonally adjusted) — Alberta

	February 2013	March 2013	S.E. ¹	Change from			Percent change from		
				last month	last December	twelve months ago	last month	last December	twelve months ago
in thousands (except rates)									
Both sexes, 15 years and over									
Population	3,128.4	3,135.3	...	6.9	23.8	92.9	0.2	0.8	3.1
Labour force	2,282.0	2,277.5	8.7	-4.5	9.9	28.7	-0.2	0.4	1.3
Employment	2,179.2	2,167.9	8.9	-11.3	2.6	36.8	-0.5	0.1	1.7
Employment full-time	1,847.0	1,843.4	11.8	-3.6	16.7	60.9	-0.2	0.9	3.4
Unemployment	102.8	109.6	6.8	6.8	7.3	-8.1	6.6	7.1	-6.9
Participation rate	72.9	72.6	0.3	-0.3	-0.3	-1.3
Unemployment rate	4.5	4.8	0.3	0.3	0.3	-0.4
Employment rate	69.7	69.1	0.3	-0.6	-0.5	-0.9
Part-time rate	15.2	15.0	0.5	-0.3	-0.7	-1.4
Both sexes, 15 to 24 years									
Population	509.8	509.8	...	0.0	0.4	4.7	0.0	0.1	0.9
Labour force	340.3	345.6	5.1	5.3	13.4	-12.1	1.6	4.0	-3.4
Employment	308.3	314.0	5.2	5.7	11.2	-11.5	1.8	3.7	-3.5
Unemployment	32.0	31.5	4.1	-0.5	2.1	-0.7	-1.6	7.1	-2.2
Participation rate	66.8	67.8	1.0	1.0	2.6	-3.0
Unemployment rate	9.4	9.1	1.1	-0.3	0.2	0.1
Employment rate	60.5	61.6	1.0	1.1	2.2	-2.8
Part-time rate	32.4	31.1	1.7	-1.3	-1.3	-3.4
Men, 25 years and over									
Population	1,329.4	1,333.0	...	3.6	12.2	44.2	0.3	0.9	3.4
Labour force	1,078.3	1,076.6	4.3	-1.7	2.3	27.0	-0.2	0.2	2.6
Employment	1,042.1	1,036.7	4.7	-5.4	-0.2	34.3	-0.5	0.0	3.4
Unemployment	36.2	39.9	3.9	3.7	2.5	-7.3	10.2	6.7	-15.5
Participation rate	81.1	80.8	0.3	-0.3	-0.5	-0.6
Unemployment rate	3.4	3.7	0.4	0.3	0.2	-0.8
Employment rate	78.4	77.8	0.4	-0.6	-0.7	0.0
Part-time rate	5.1	5.0	0.5	-0.1	-0.3	-0.3
Women, 25 years and over									
Population	1,289.2	1,292.5	...	3.3	11.3	43.9	0.3	0.9	3.5
Labour force	863.5	855.3	5.2	-8.2	-5.8	13.8	-0.9	-0.7	1.6
Employment	828.8	817.2	5.2	-11.6	-8.3	14.0	-1.4	-1.0	1.7
Unemployment	34.6	38.1	3.8	3.5	2.6	-0.2	10.1	7.3	-0.5
Participation rate	67.0	66.2	0.4	-0.8	-1.0	-1.2
Unemployment rate	4.0	4.5	0.4	0.5	0.4	-0.1
Employment rate	64.3	63.2	0.4	-1.1	-1.2	-1.1
Part-time rate	21.6	21.4	0.9	-0.2	-1.0	-1.4
Industry	2,179.2	2,167.9	8.9	-11.3	2.6	36.8	-0.5	0.1	1.7
Goods-producing sector									
Agriculture	615.5	610.0	9.2	-5.5	-11.9	0.1	-0.9	-1.9	0.0
Forestry, fishing, mining, quarrying, oil and gas extraction ²	60.8	63.5	3.1	2.7	1.9	9.9	4.4	3.1	18.5
Utilities	162.6	166.9	5.2	4.3	1.9	-10.3	2.6	1.2	-5.8
Construction	19.9	15.3	1.9	-4.6	-7.5	-5.3	-23.1	-32.9	-25.7
Manufacturing	228.2	223.6	6.6	-4.6	1.1	-4.1	-2.0	0.5	-1.8
	143.9	140.7	5.2	-3.2	-9.3	9.9	-2.2	-6.2	7.6
Services-producing sector									
Trade	1,563.7	1,557.9	10.9	-5.8	14.5	36.7	-0.4	0.9	2.4
Transportation and warehousing	323.8	321.5	7.7	-2.3	-3.8	-6.8	-0.7	-1.2	-2.1
Finance, insurance, real estate and leasing	118.4	122.6	4.9	4.2	-3.4	11.1	3.5	-2.7	10.0
Professional, scientific and technical services	121.3	115.1	4.1	-6.2	6.7	16.9	-5.1	6.2	17.2
Business, building and other support services	165.5	169.7	5.4	4.2	11.1	11.6	2.5	7.0	7.3
Educational services	74.4	71.3	3.9	-3.1	-0.9	-3.2	-4.2	-1.2	-4.3
Health care and social assistance	128.4	133.3	4.7	4.9	7.7	9.8	3.8	6.1	7.9
Information, culture and recreation	231.3	237.1	5.9	5.8	6.3	7.4	2.5	2.7	3.2
Accommodation and food services	75.4	75.2	4.1	-0.2	3.2	-0.2	-0.3	4.4	-0.3
Other services	130.7	119.1	5.6	-11.6	-13.0	-10.5	-8.9	-9.8	-8.1
Public administration	109.6	108.2	4.7	-1.4	6.4	4.0	-1.3	6.3	3.8
	84.8	84.8	3.8	0.0	-5.9	-3.4	0.0	-6.5	-3.9

1. Average standard error of change in two consecutive months (see "Sampling Errors" in Data Quality for further explanations).

2. Also referred to as Natural resources.

Note(s): Related CANSIM Tables 282-0087, 282-0088.

Table 4-10
Selected labour force characteristics (seasonally adjusted) — British Columbia

	February 2013	March 2013	S.E. ¹	Change from			Percent change from		
				last month	last December	twelve months ago	last month	last December	twelve months ago
in thousands (except rates)									
Both sexes, 15 years and over									
Population	3,837.2	3,840.5	...	3.3	10.2	36.6	0.1	0.3	1.0
Labour force	2,472.1	2,475.7	10.7	3.6	4.1	2.6	0.1	0.2	0.1
Employment	2,317.4	2,302.6	10.3	-14.8	-10.9	2.8	-0.6	-0.5	0.1
Employment full-time	1,824.8	1,802.4	14.5	-22.4	-14.7	9.3	-1.2	-0.8	0.5
Unemployment	154.7	173.1	8.6	18.4	15.0	-0.2	11.9	9.5	-0.1
Participation rate	64.4	64.5	0.3	0.1	0.0	-0.5
Unemployment rate	6.3	7.0	0.3	0.7	0.6	0.0
Employment rate	60.4	60.0	0.3	-0.4	-0.4	-0.5
Part-time rate	21.3	21.7	0.6	0.5	0.3	-0.3
Both sexes, 15 to 24 years									
Population	587.9	587.7	...	-0.2	-0.8	-2.6	0.0	-0.1	-0.4
Labour force	361.9	368.2	6.0	6.3	9.4	5.1	1.7	2.6	1.4
Employment	314.8	314.8	5.6	0.0	5.3	2.9	0.0	1.7	0.9
Unemployment	47.1	53.4	5.0	6.3	4.1	2.2	13.4	8.3	4.3
Participation rate	61.6	62.7	1.0	1.1	1.7	1.2
Unemployment rate	13.0	14.5	1.3	1.5	0.8	0.4
Employment rate	53.5	53.6	0.9	0.1	1.0	0.8
Part-time rate	44.8	46.9	2.1	2.1	1.5	-0.9
Men, 25 years and over									
Population	1,585.4	1,587.2	...	1.8	5.5	19.5	0.1	0.3	1.2
Labour force	1,101.0	1,104.6	5.5	3.6	7.0	-6.4	0.3	0.6	-0.6
Employment	1,050.5	1,043.0	5.7	-7.5	-2.5	-3.6	-0.7	-0.2	-0.3
Unemployment	50.6	61.6	4.9	11.0	9.4	-2.7	21.7	18.0	-4.2
Participation rate	69.4	69.6	0.3	0.2	0.2	-1.3
Unemployment rate	4.6	5.6	0.4	1.0	0.8	-0.2
Employment rate	66.3	65.7	0.4	-0.6	-0.4	-1.1
Part-time rate	9.4	10.1	0.6	0.7	0.3	-0.1
Women, 25 years and over									
Population	1,663.8	1,665.6	...	1.8	5.5	19.6	0.1	0.3	1.2
Labour force	1,009.2	1,002.9	6.2	-6.3	-12.2	3.9	-0.6	-1.2	0.4
Employment	952.2	944.9	6.1	-7.3	-13.6	3.7	-0.8	-1.4	0.4
Unemployment	57.0	58.0	4.8	1.0	1.4	0.2	1.8	2.5	0.3
Participation rate	60.7	60.2	0.4	-0.5	-0.9	-0.5
Unemployment rate	5.6	5.8	0.5	0.2	0.2	0.0
Employment rate	57.2	56.7	0.4	-0.5	-1.0	-0.5
Part-time rate	26.6	26.2	1.0	-0.4	-0.3	-0.5
Industry	2,317.4	2,302.6	10.3	-14.8	-10.9	2.8	-0.6	-0.5	0.1
Goods-producing sector	451.3	440.8	9.1	-10.5	-23.3	-12.7	-2.3	-5.0	-2.8
Agriculture	32.1	28.0	2.5	-4.1	0.2	3.9	-12.8	0.7	16.2
Forestry, fishing, mining, quarrying, oil and gas extraction ²	45.1	47.1	3.0	2.0	-1.6	4.9	4.4	-3.3	11.6
Utilities	12.1	12.4	1.8	0.3	-3.9	-1.7	2.5	-23.9	-12.1
Construction	201.6	189.3	6.5	-12.3	-17.0	-7.1	-6.1	-8.2	-3.6
Manufacturing	160.5	164.0	6.0	3.5	-0.9	-12.6	2.2	-0.5	-7.1
Services-producing sector	1,866.1	1,861.8	12.0	-4.3	12.4	15.5	-0.2	0.7	0.8
Trade	368.2	377.0	8.1	8.8	14.9	33.1	2.4	4.1	9.6
Transportation and warehousing	119.6	119.2	5.2	-0.4	0.1	-5.9	-0.3	0.1	-4.7
Finance, insurance, real estate and leasing	143.7	139.6	5.4	-4.1	4.0	-4.2	-2.9	2.9	-2.9
Professional, scientific and technical services	178.4	184.2	5.9	5.8	9.8	10.4	3.3	5.6	6.0
Business, building and other support services	97.7	97.1	4.9	-0.6	2.4	-4.0	-0.6	2.5	-4.0
Educational services	179.3	176.7	5.9	-2.6	-9.7	7.9	-1.5	-5.2	4.7
Health care and social assistance	254.0	251.2	6.8	-2.8	-14.0	-24.8	-1.1	-5.3	-9.0
Information, culture and recreation	121.5	118.6	5.1	-2.9	-3.0	0.4	-2.4	-2.5	0.3
Accommodation and food services	184.8	176.5	6.2	-8.3	0.4	-1.6	-4.5	0.2	-0.9
Other services	102.8	104.1	4.9	1.3	-1.3	-13.3	1.3	-1.2	-11.3
Public administration	116.1	117.6	3.9	1.5	8.8	17.5	1.3	8.1	17.5

1. Average standard error of change in two consecutive months (see "Sampling Errors" in Data Quality for further explanations).

2. Also referred to as Natural resources.

Note(s): Related CANSIM Tables 282-0087, 282-0088.

Table 5-1

Labour force characteristics by census metropolitan area (seasonally adjusted) — 3 month moving average

	February 2013	March 2013	S.E. ¹	Change from			Percent change from		
				last month	last December	twelve months ago	last month	last December	twelve months ago
in thousands (except rates)									
St. John's, Newfoundland and Labrador									
Population	164.6	165.0	...	0.4	1.2	2.9	0.2	0.7	1.8
Labour force	116.4	114.8	0.8	-1.6	-4.1	-1.6	-1.4	-3.4	-1.4
Employment	108.3	107.1	0.8	-1.2	-3.4	-0.2	-1.1	-3.1	-0.2
Unemployment	8.2	7.8	0.4	-0.4	-0.5	-1.3	-4.9	-6.0	-14.3
Participation rate	70.7	69.6	0.5	-1.1	-3.0	-2.2
Unemployment rate	7.0	6.8	0.3	-0.2	-0.2	-1.0
Employment rate	65.8	64.9	0.5	-0.9	-2.6	-1.3
Halifax, Nova Scotia									
Population	345.6	345.9	...	0.3	1.0	4.0	0.1	0.3	1.2
Labour force	241.0	241.4	1.1	0.4	1.5	1.2	0.2	0.6	0.5
Employment	225.5	226.2	1.2	0.7	1.5	0.4	0.3	0.7	0.2
Unemployment	15.5	15.2	0.6	-0.3	0.0	0.8	-1.9	0.0	5.6
Participation rate	69.7	69.8	0.3	0.1	0.2	-0.5
Unemployment rate	6.4	6.3	0.3	-0.1	0.0	0.3
Employment rate	65.2	65.4	0.3	0.2	0.3	-0.6
Moncton, New Brunswick									
Population	117.9	118.1	...	0.2	0.5	1.8	0.2	0.4	1.5
Labour force	79.2	78.9	0.7	-0.3	-0.5	-1.3	-0.4	-0.6	-1.6
Employment	74.2	73.7	0.7	-0.5	-0.5	-1.3	-0.7	-0.7	-1.7
Unemployment	5.0	5.2	0.4	0.2	0.0	0.0	4.0	0.0	0.0
Participation rate	67.2	66.8	0.6	-0.4	-0.7	-2.2
Unemployment rate	6.3	6.6	0.5	0.3	0.1	0.1
Employment rate	62.9	62.4	0.6	-0.5	-0.7	-2.1
Saint John, New Brunswick									
Population	106.7	106.7	...	0.0	0.0	0.1	0.0	0.0	0.1
Labour force	69.1	69.5	0.7	0.4	1.1	1.9	0.6	1.6	2.8
Employment	62.5	63.2	0.7	0.7	1.6	1.2	1.1	2.6	1.9
Unemployment	6.6	6.3	0.4	-0.3	-0.5	0.7	-4.5	-7.4	12.5
Participation rate	64.8	65.1	0.7	0.3	1.0	1.7
Unemployment rate	9.6	9.1	0.6	-0.5	-0.8	0.8
Employment rate	58.6	59.2	0.7	0.6	1.5	1.0
Saguenay, Quebec									
Population	126.7	126.6	...	-0.1	-0.1	-0.1	-0.1	-0.1	-0.1
Labour force	77.7	76.6	0.9	-1.1	-0.9	0.6	-1.4	-1.2	0.8
Employment	70.3	70.6	0.9	0.3	0.8	-0.8	0.4	1.1	-1.1
Unemployment	7.4	6.0	0.4	-1.4	-1.6	1.3	-18.9	-21.1	27.7
Participation rate	61.3	60.5	0.7	-0.8	-0.7	0.5
Unemployment rate	9.5	7.8	0.5	-1.7	-2.0	1.6
Employment rate	55.5	55.8	0.7	0.3	0.7	-0.6
Québec, Quebec									
Population	645.5	645.8	...	0.3	0.9	5.2	0.0	0.1	0.8
Labour force	443.8	447.9	3.3	4.1	8.3	-1.8	0.9	1.9	-0.4
Employment	423.2	428.1	3.5	4.9	9.4	0.8	1.2	2.2	0.2
Unemployment	20.6	19.7	1.5	-0.9	-1.3	-2.7	-4.4	-6.2	-12.1
Participation rate	68.8	69.4	0.5	0.6	1.2	-0.8
Unemployment rate	4.6	4.4	0.3	-0.2	-0.4	-0.6
Employment rate	65.6	66.3	0.5	0.7	1.4	-0.4
Sherbrooke, Quebec									
Population	168.1	168.2	...	0.1	0.4	2.0	0.1	0.2	1.2
Labour force	103.7	101.8	1.1	-1.9	-4.8	-6.4	-1.8	-4.5	-5.9
Employment	97.2	95.4	1.1	-1.8	-4.0	-5.0	-1.9	-4.0	-5.0
Unemployment	6.5	6.4	0.5	-0.1	-0.9	-1.4	-1.5	-12.3	-17.9
Participation rate	61.7	60.5	0.7	-1.2	-3.0	-4.6
Unemployment rate	6.3	6.3	0.5	0.0	-0.5	-0.9
Employment rate	57.8	56.7	0.7	-1.1	-2.5	-3.7

See notes at the end of the table.

Table 5-1 – continued

Labour force characteristics by census metropolitan area (seasonally adjusted) — 3 month moving average

	February 2013	March 2013	S.E. ¹	Change from			Percent change from		
				last month	last December	twelve months ago	last month	last December	twelve months ago
in thousands (except rates)									
Trois-Rivières, Quebec									
Population	126.3	126.3	...	0.0	0.1	0.9	0.0	0.1	0.7
Labour force	69.5	70.4	0.7	0.9	0.6	-7.4	1.3	0.9	-9.5
Employment	63.9	65.0	0.7	1.1	0.9	-7.0	1.7	1.4	-9.7
Unemployment	5.6	5.4	0.4	-0.2	-0.3	-0.4	-3.6	-5.3	-6.9
Participation rate	55.0	55.7	0.6	0.7	0.4	-6.3
Unemployment rate	8.1	7.7	0.5	-0.4	-0.5	0.2
Employment rate	50.6	51.5	0.6	0.9	0.7	-5.9
Montréal, Quebec									
Population	3,274.9	3,277.5	...	2.6	7.9	35.0	0.1	0.2	1.1
Labour force	2,197.5	2,189.4	7.7	-8.1	-1.6	64.4	-0.4	-0.1	3.0
Employment	2,030.9	2,017.7	8.0	-13.2	0.7	88.1	-0.6	0.0	4.6
Unemployment	166.6	171.6	4.9	5.0	-2.4	-23.8	3.0	-1.4	-12.2
Participation rate	67.1	66.8	0.2	-0.3	-0.2	1.3
Unemployment rate	7.6	7.8	0.2	0.2	-0.1	-1.4
Employment rate	62.0	61.6	0.2	-0.4	-0.1	2.1
Ottawa-Gatineau, Ontario/Quebec									
Population	1,060.1	1,061.2	...	1.1	3.7	15.6	0.1	0.3	1.5
Labour force	762.9	754.3	3.8	-8.6	-12.9	-3.7	-1.1	-1.7	-0.5
Employment	714.6	707.3	3.8	-7.3	-9.2	-5.0	-1.0	-1.3	-0.7
Unemployment	48.3	47.0	1.9	-1.3	-3.6	1.3	-2.7	-7.1	2.8
Participation rate	72.0	71.1	0.4	-0.9	-1.4	-1.4
Unemployment rate	6.3	6.2	0.2	-0.1	-0.4	0.2
Employment rate	67.4	66.7	0.4	-0.7	-1.1	-1.4
Ottawa-Gatineau, Quebec part, Ontario/Quebec									
Population	264.0	264.2	...	0.2	0.7	3.2	0.1	0.3	1.2
Labour force	183.8	184.2	1.3	0.4	0.5	-0.8	0.2	0.3	-0.4
Employment	171.1	171.8	1.3	0.7	0.2	-3.2	0.4	0.1	-1.8
Unemployment	12.7	12.4	0.6	-0.3	0.3	2.4	-2.4	2.5	24.0
Participation rate	69.6	69.7	0.5	0.1	0.0	-1.2
Unemployment rate	6.9	6.7	0.3	-0.2	0.1	1.3
Employment rate	64.8	65.0	0.5	0.2	-0.1	-2.0
Ottawa-Gatineau, Ontario part, Ontario/Quebec									
Population	796.1	797.0	...	0.9	3.0	12.4	0.1	0.4	1.6
Labour force	579.1	570.1	3.6	-9.0	-13.4	-2.9	-1.6	-2.3	-0.5
Employment	543.5	535.4	3.6	-8.1	-9.5	-1.9	-1.5	-1.7	-0.4
Unemployment	35.6	34.7	1.8	-0.9	-3.8	-1.0	-2.5	-9.9	-2.8
Participation rate	72.7	71.5	0.5	-1.2	-2.0	-1.5
Unemployment rate	6.1	6.1	0.3	0.0	-0.5	-0.1
Employment rate	68.3	67.2	0.5	-1.1	-1.4	-1.3
Kingston, Ontario									
Population	134.5	134.6	...	0.1	0.3	1.4	0.1	0.2	1.1
Labour force	86.5	87.0	0.8	0.5	1.0	-2.5	0.6	1.2	-2.8
Employment	80.7	81.4	0.8	0.7	1.7	-1.5	0.9	2.1	-1.8
Unemployment	5.8	5.5	0.3	-0.3	-0.8	-1.1	-5.2	-12.7	-16.7
Participation rate	64.3	64.6	0.6	0.3	0.6	-2.6
Unemployment rate	6.7	6.3	0.4	-0.4	-1.0	-1.1
Employment rate	60.0	60.5	0.6	0.5	1.2	-1.7
Peterborough, Ontario									
Population	103.3	103.3	...	0.0	0.1	0.6	0.0	0.1	0.6
Labour force	55.7	54.7	1.0	-1.0	-1.7	-16.0	-1.8	-3.0	-22.6
Employment	50.2	49.1	1.0	-1.1	-2.5	-14.9	-2.2	-4.8	-23.3
Unemployment	5.5	5.6	0.5	0.1	0.8	-1.2	1.8	16.7	-17.6
Participation rate	53.9	53.0	1.0	-0.9	-1.7	-15.8
Unemployment rate	9.9	10.2	0.8	0.3	1.7	0.6
Employment rate	48.6	47.5	1.0	-1.1	-2.5	-14.8

See notes at the end of the table.

Table 5-1 – continued

Labour force characteristics by census metropolitan area (seasonally adjusted) — 3 month moving average

	February 2013	March 2013	S.E. ¹	Change from			Percent change from		
				last month	last December	twelve months ago	last month	last December	twelve months ago
in thousands (except rates)									
Oshawa, Ontario									
Population	312.1	312.6	...	0.5	1.2	5.0	0.2	0.4	1.6
Labour force	215.0	215.3	1.6	0.3	1.6	-1.6	0.1	0.7	-0.7
Employment	194.8	196.8	1.6	2.0	3.8	-2.8	1.0	2.0	-1.4
Unemployment	20.2	18.5	0.9	-1.7	-2.1	1.2	-8.4	-10.2	6.9
Participation rate	68.9	68.9	0.5	0.0	0.3	-1.6
Unemployment rate	9.4	8.6	0.4	-0.8	-1.0	0.6
Employment rate	62.4	63.0	0.5	0.6	1.0	-1.9
Toronto, Ontario									
Population	4,933.4	4,941.1	...	7.7	23.3	95.8	0.2	0.5	2.0
Labour force	3,357.0	3,349.8	10.6	-7.2	-2.5	126.1	-0.2	-0.1	3.9
Employment	3,074.1	3,067.0	10.7	-7.1	-7.6	120.4	-0.2	-0.2	4.1
Unemployment	282.9	282.8	6.5	-0.1	5.0	5.7	0.0	1.8	2.1
Participation rate	68.0	67.8	0.2	-0.2	-0.4	1.3
Unemployment rate	8.4	8.4	0.2	0.0	0.1	-0.2
Employment rate	62.3	62.1	0.2	-0.2	-0.4	1.3
Hamilton, Ontario									
Population	628.0	628.5	...	0.5	1.4	6.1	0.1	0.2	1.0
Labour force	412.2	413.2	2.9	1.0	6.7	-4.0	0.2	1.6	-1.0
Employment	389.0	387.8	3.0	-1.2	5.3	-3.6	-0.3	1.4	-0.9
Unemployment	23.3	25.4	1.4	2.1	1.5	-0.4	9.0	6.3	-1.6
Participation rate	65.6	65.7	0.5	0.1	0.9	-1.3
Unemployment rate	5.7	6.1	0.3	0.4	0.2	-0.1
Employment rate	61.9	61.7	0.5	-0.2	0.7	-1.2
St. Catharines-Niagara, Ontario									
Population	340.2	340.2	...	0.0	0.1	0.9	0.0	0.0	0.3
Labour force	218.0	219.2	1.7	1.2	1.0	4.2	0.6	0.5	2.0
Employment	202.4	201.9	1.8	-0.5	0.8	3.2	-0.2	0.4	1.6
Unemployment	15.5	17.3	0.8	1.8	0.2	0.9	11.6	1.2	5.5
Participation rate	64.1	64.4	0.5	0.3	0.2	1.0
Unemployment rate	7.1	7.9	0.4	0.8	0.1	0.3
Employment rate	59.5	59.3	0.5	-0.2	0.2	0.7
Kitchener-Cambridge-Waterloo, Ontario									
Population	415.7	416.1	...	0.4	1.1	4.4	0.1	0.3	1.1
Labour force	297.9	298.6	2.2	0.7	5.5	-4.8	0.2	1.9	-1.6
Employment	275.6	277.1	2.2	1.5	4.2	-5.8	0.5	1.5	-2.1
Unemployment	22.3	21.5	1.0	-0.8	1.3	1.0	-3.6	6.4	4.9
Participation rate	71.7	71.8	0.5	0.1	1.2	-1.9
Unemployment rate	7.5	7.2	0.3	-0.3	0.3	0.4
Employment rate	66.3	66.6	0.5	0.3	0.8	-2.1
Brantford, Ontario									
Population	109.0	109.0	...	0.0	0.1	0.7	0.0	0.1	0.6
Labour force	74.0	74.4	0.8	0.4	2.3	2.4	0.5	3.2	3.3
Employment	68.3	68.7	0.8	0.4	2.5	3.1	0.6	3.8	4.7
Unemployment	5.7	5.7	0.4	0.0	-0.2	-0.6	0.0	-3.4	-9.5
Participation rate	67.9	68.3	0.7	0.4	2.1	1.8
Unemployment rate	7.7	7.7	0.5	0.0	-0.5	-1.1
Employment rate	62.7	63.0	0.7	0.3	2.2	2.4
Guelph, Ontario									
Population	116.2	116.4	...	0.2	0.5	2.0	0.2	0.4	1.7
Labour force	82.1	81.5	0.8	-0.6	-0.8	-4.3	-0.7	-1.0	-5.0
Employment	77.3	76.7	0.8	-0.6	-0.4	-4.5	-0.8	-0.5	-5.5
Unemployment	4.8	4.9	0.4	0.1	-0.3	0.3	2.1	-5.8	6.5
Participation rate	70.7	70.0	0.7	-0.7	-1.0	-5.0
Unemployment rate	5.8	6.0	0.4	0.2	-0.3	0.6
Employment rate	66.5	65.9	0.7	-0.6	-0.6	-5.1

See notes at the end of the table.

Table 5-1 – continued

Labour force characteristics by census metropolitan area (seasonally adjusted) — 3 month moving average

	February 2013	March 2013	S.E. ¹	Change from			Percent change from		
				last month	last December	twelve months ago	last month	last December	twelve months ago
in thousands (except rates)									
London, Ontario									
Population	417.9	418.2	...	0.3	0.8	3.5	0.1	0.2	0.8
Labour force	270.7	273.3	2.0	2.6	4.5	6.7	1.0	1.7	2.5
Employment	246.2	247.0	2.1	0.8	0.9	3.2	0.3	0.4	1.3
Unemployment	24.5	26.2	1.0	1.7	3.6	3.4	6.9	15.9	14.9
Participation rate	64.8	65.4	0.5	0.6	1.0	1.1
Unemployment rate	9.1	9.6	0.4	0.5	1.2	1.0
Employment rate	58.9	59.1	0.5	0.2	0.1	0.3
Windsor, Ontario									
Population	268.4	268.5	...	0.1	0.2	1.3	0.0	0.1	0.5
Labour force	165.6	165.7	1.6	0.1	-3.3	-1.6	0.1	-2.0	-1.0
Employment	150.4	150.9	1.6	0.5	-0.5	0.9	0.3	-0.3	0.6
Unemployment	15.2	14.9	0.7	-0.3	-2.7	-2.5	-2.0	-15.3	-14.4
Participation rate	61.7	61.7	0.6	0.0	-1.3	-0.9
Unemployment rate	9.2	9.0	0.4	-0.2	-1.4	-1.4
Employment rate	56.0	56.2	0.6	0.2	-0.2	0.1
Barrie, Ontario									
Population	164.1	164.3	...	0.2	0.4	1.7	0.1	0.2	1.0
Labour force	123.4	123.9	1.4	0.5	7.2	10.3	0.4	6.2	9.1
Employment	114.9	114.9	1.4	0.0	6.8	11.7	0.0	6.3	11.3
Unemployment	8.6	9.0	0.7	0.4	0.4	-1.4	4.7	4.7	-13.5
Participation rate	75.2	75.4	0.9	0.2	4.2	5.5
Unemployment rate	7.0	7.3	0.6	0.3	-0.1	-1.9
Employment rate	70.0	69.9	0.9	-0.1	3.9	6.4
Greater Sudbury, Ontario									
Population	138.3	138.3	...	0.0	-0.3	-1.1	0.0	-0.2	-0.8
Labour force	89.7	89.4	0.8	-0.3	1.3	0.8	-0.3	1.5	0.9
Employment	82.4	82.4	0.8	0.0	0.3	0.1	0.0	0.4	0.1
Unemployment	7.3	7.0	0.3	-0.3	1.0	0.7	-4.1	16.7	11.1
Participation rate	64.9	64.6	0.6	-0.3	1.0	1.0
Unemployment rate	8.1	7.8	0.4	-0.3	1.0	0.7
Employment rate	59.6	59.6	0.6	0.0	0.4	0.6
Thunder Bay, Ontario									
Population	103.1	103.1	...	0.0	0.0	0.6	0.0	0.0	0.6
Labour force	64.2	65.2	0.6	1.0	1.8	-1.1	1.6	2.8	-1.7
Employment	60.4	61.1	0.7	0.7	0.8	-1.8	1.2	1.3	-2.9
Unemployment	3.8	4.1	0.3	0.3	1.0	0.6	7.9	32.3	17.1
Participation rate	62.3	63.2	0.6	0.9	1.7	-1.5
Unemployment rate	5.9	6.3	0.4	0.4	1.4	1.0
Employment rate	58.6	59.3	0.6	0.7	0.8	-2.1
Winnipeg, Manitoba									
Population	637.4	638.2	...	0.8	2.5	8.7	0.1	0.4	1.4
Labour force	443.9	444.1	1.3	0.2	3.4	1.6	0.0	0.8	0.4
Employment	420.1	420.3	1.4	0.2	4.1	3.2	0.0	1.0	0.8
Unemployment	23.8	23.8	0.8	0.0	-0.6	-1.6	0.0	-2.5	-6.3
Participation rate	69.6	69.6	0.2	0.0	0.3	-0.7
Unemployment rate	5.4	5.4	0.2	0.0	-0.1	-0.3
Employment rate	65.9	65.9	0.2	0.0	0.4	-0.4
Regina, Saskatchewan									
Population	182.7	183.1	...	0.4	1.2	4.5	0.2	0.7	2.5
Labour force	136.2	136.6	0.8	0.4	3.1	6.2	0.3	2.3	4.8
Employment	131.0	131.8	0.8	0.8	4.0	6.5	0.6	3.1	5.2
Unemployment	5.1	4.8	0.3	-0.3	-0.9	-0.3	-5.9	-15.8	-5.9
Participation rate	74.5	74.6	0.4	0.1	1.2	1.6
Unemployment rate	3.7	3.5	0.3	-0.2	-0.8	-0.4
Employment rate	71.7	72.0	0.4	0.3	1.7	1.8

See notes at the end of the table.

Table 5-1 – continued

Labour force characteristics by census metropolitan area (seasonally adjusted) — 3 month moving average

	February 2013	March 2013	S.E. ¹	Change from			Percent change from		
				last month	last December	twelve months ago	last month	last December	twelve months ago
in thousands (except rates)									
Saskatoon, Saskatchewan									
Population	231.0	231.7	...	0.7	2.0	7.8	0.3	0.9	3.5
Labour force	165.0	165.8	0.9	0.8	2.1	7.6	0.5	1.3	4.8
Employment	157.3	159.1	1.0	1.8	4.5	10.2	1.1	2.9	6.9
Unemployment	7.7	6.7	0.5	-1.0	-2.3	-2.6	-13.0	-25.6	-28.0
Participation rate	71.4	71.6	0.4	0.2	0.3	0.9
Unemployment rate	4.7	4.0	0.3	-0.7	-1.5	-1.9
Employment rate	68.1	68.7	0.4	0.6	1.4	2.2
Calgary, Alberta									
Population	1,076.6	1,079.8	...	3.2	9.5	33.8	0.3	0.9	3.2
Labour force	805.5	801.8	3.5	-3.7	3.8	15.7	-0.5	0.5	2.0
Employment	765.0	760.8	3.7	-4.2	-0.2	14.4	-0.5	0.0	1.9
Unemployment	40.5	41.0	1.8	0.5	4.0	1.3	1.2	10.8	3.3
Participation rate	74.8	74.3	0.3	-0.5	-0.3	-0.9
Unemployment rate	5.0	5.1	0.2	0.1	0.5	0.0
Employment rate	71.1	70.5	0.3	-0.6	-0.6	-0.9
Edmonton, Alberta									
Population	1,009.7	1,012.7	...	3.0	9.5	35.6	0.3	0.9	3.6
Labour force	735.5	733.8	3.3	-1.7	-4.7	23.7	-0.2	-0.6	3.3
Employment	703.5	703.1	3.5	-0.4	-2.2	31.8	-0.1	-0.3	4.7
Unemployment	32.0	30.7	1.7	-1.3	-2.4	-8.1	-4.1	-7.3	-20.9
Participation rate	72.8	72.5	0.3	-0.3	-1.1	-0.2
Unemployment rate	4.4	4.2	0.2	-0.2	-0.3	-1.3
Employment rate	69.7	69.4	0.4	-0.3	-0.9	0.7
Kelowna, British Columbia									
Population	150.3	150.4	...	0.1	0.2	0.4	0.1	0.1	0.3
Labour force	96.8	94.9	1.9	-1.9	-5.4	-5.8	-2.0	-5.4	-5.8
Employment	90.4	88.7	1.8	-1.7	-4.2	-3.5	-1.9	-4.5	-3.8
Unemployment	6.4	6.2	0.9	-0.2	-1.2	-2.3	-3.1	-16.2	-27.1
Participation rate	64.4	63.1	1.3	-1.3	-3.7	-4.0
Unemployment rate	6.6	6.5	0.9	-0.1	-0.9	-1.9
Employment rate	60.1	59.0	1.2	-1.1	-2.9	-2.5
Abbotsford-Mission, British Columbia									
Population	146.3	146.4	...	0.1	0.3	1.2	0.1	0.2	0.8
Labour force	99.6	99.4	0.8	-0.2	-0.2	0.4	-0.2	-0.2	0.4
Employment	92.6	92.4	0.9	-0.2	0.4	3.5	-0.2	0.4	3.9
Unemployment	7.0	7.0	0.4	0.0	-0.6	-3.0	0.0	-7.9	-30.0
Participation rate	68.1	67.9	0.6	-0.2	-0.3	-0.3
Unemployment rate	7.0	7.0	0.4	0.0	-0.6	-3.1
Employment rate	63.3	63.1	0.6	-0.2	0.1	1.9
Vancouver, British Columbia									
Population	2,079.7	2,083.0	...	3.3	9.9	37.4	0.2	0.5	1.8
Labour force	1,357.8	1,366.9	5.1	9.1	4.3	10.8	0.7	0.3	0.8
Employment	1,271.3	1,273.8	5.1	2.5	2.5	7.5	0.2	0.2	0.6
Unemployment	86.6	93.1	2.9	6.5	1.7	3.3	7.5	1.9	3.7
Participation rate	65.3	65.6	0.2	0.3	-0.1	-0.7
Unemployment rate	6.4	6.8	0.2	0.4	0.1	0.2
Employment rate	61.1	61.2	0.2	0.1	-0.1	-0.7
Victoria, British Columbia									
Population	303.6	303.7	...	0.1	0.4	2.0	0.0	0.1	0.7
Labour force	199.4	195.8	1.5	-3.6	-2.5	-4.2	-1.8	-1.3	-2.1
Employment	188.6	185.0	1.5	-3.6	-2.5	-4.3	-1.9	-1.3	-2.3
Unemployment	10.7	10.8	0.6	0.1	0.0	0.1	0.9	0.0	0.9
Participation rate	65.7	64.5	0.5	-1.2	-0.9	-1.8
Unemployment rate	5.4	5.5	0.3	0.1	0.1	0.1
Employment rate	62.1	60.9	0.5	-1.2	-0.9	-1.8

1. Average standard error of change in two consecutive months (see "Sampling Errors" in Data Quality for further explanations).

Note(s): Estimates from this table are based on 2006 census population counts. Related CANSIM Table 282-0116.

Table 5-2
Labour force characteristics by census metropolitan area (seasonally adjusted) — Monthly

	February 2013	March 2013	S.E. ¹	Change from			Percent change from		
				last month	last December	twelve months ago	last month	last December	twelve months ago
in thousands (except rates)									
Montréal, Quebec									
Population	3,277.6	3,280.1	...	2.5	7.9	35.0	0.1	0.2	1.1
Labour force	2,187.5	2,176.0	15.8	-11.5	-24.4	40.2	-0.5	-1.1	1.9
Employment	2,024.4	1,995.9	15.9	-28.5	-39.4	53.0	-1.4	-1.9	2.7
Unemployment	163.1	180.1	11.8	17.0	15.0	-12.9	10.4	9.1	-6.7
Participation rate	66.7	66.3	0.5	-0.4	-0.9	0.5
Unemployment rate	7.5	8.3	0.5	0.8	0.8	-0.7
Employment rate	61.8	60.8	0.5	-1.0	-1.4	0.9
Toronto, Ontario									
Population	4,941.2	4,947.9	...	6.7	23.2	94.4	0.1	0.5	1.9
Labour force	3,368.7	3,334.8	21.6	-33.9	-21.7	109.3	-1.0	-0.6	3.4
Employment	3,074.7	3,058.4	21.3	-16.3	-21.3	98.8	-0.5	-0.7	3.3
Unemployment	294.0	276.4	15.8	-17.6	-0.4	10.5	-6.0	-0.1	3.9
Participation rate	68.2	67.4	0.4	-0.8	-0.8	0.9
Unemployment rate	8.7	8.3	0.5	-0.4	0.1	0.1
Employment rate	62.2	61.8	0.4	-0.4	-0.7	0.8
Vancouver, British Columbia									
Population	2,083.0	2,085.8	...	2.8	9.8	37.0	0.1	0.5	1.8
Labour force	1,361.8	1,384.1	11.0	22.3	27.3	24.8	1.6	2.0	1.8
Employment	1,274.4	1,280.4	10.7	6.0	7.6	10.4	0.5	0.6	0.8
Unemployment	87.4	103.7	7.1	16.3	19.7	14.5	18.6	23.5	16.3
Participation rate	65.4	66.4	0.5	1.0	1.0	0.1
Unemployment rate	6.4	7.5	0.5	1.1	1.3	0.9
Employment rate	61.2	61.4	0.5	0.2	0.1	-0.6

1. Average standard error of change in two consecutive months (see "Sampling Errors" in Data Quality for further explanations).

Note(s): Estimates from this table are based on 2006 census population counts. Related CANSIM Table 282-0117.

Table 6-1

Labour force characteristics by province and economic region, ¹ unadjusted for seasonality, 3 month moving average ending in March 2012 and March 2013

	Population	Labour force			Participation rate	Unemployment rate	Employment rate
		Labour force	Employment	Unemployment			
	in thousands						
Canada ²							
2012	28,181.8	18,512.0	17,069.7	1,442.3	65.7	7.8	60.6
2013	28,526.3	18,764.7	17,355.3	1,409.3	65.8	7.5	60.8
Newfoundland and Labrador							
2012	428.5	252.8	215.6	37.3	59.0	14.8	50.3
2013	429.0	257.8	222.8	35.0	60.1	13.6	51.9
Avalon Peninsula [1010]							
2012	221.6	144.4	129.0	15.4	65.2	10.7	58.2
2013	223.6	144.0	131.4	12.6	64.4	8.8	58.8
South Coast-Burin Peninsula [1020]							
2012	30.3	15.7	12.3	3.4	51.8	21.7	40.6
2013	29.9	16.0	12.5	3.5	53.5	21.9	41.8
West Coast-Northern Peninsula-Labrador [1030]							
2012	86.4	47.9	39.1	8.7	55.4	18.2	45.3
2013	85.8	51.2	41.9	9.3	59.7	18.2	48.8
Notre Dame-Central Bonavista Bay [1040]							
2012	90.3	44.9	35.1	9.8	49.7	21.8	38.9
2013	89.7	46.5	37.0	9.5	51.8	20.4	41.2
Prince Edward Island							
2012	120.1	78.0	67.3	10.8	64.9	13.8	56.0
2013	120.6	81.6	70.0	11.6	67.7	14.2	58.0
Nova Scotia							
2012	779.8	489.0	444.0	44.9	62.7	9.2	56.9
2013	781.0	491.2	440.0	51.2	62.9	10.4	56.3
Cape Breton [1210]							
2012	111.3	60.9	52.6	8.3	54.7	13.6	47.3
2013	110.2	59.2	48.3	11.0	53.7	18.6	43.8
North Shore [1220]							
2012	129.5	79.6	69.7	9.8	61.5	12.3	53.8
2013	128.8	77.5	67.5	10.0	60.2	12.9	52.4
Annapolis Valley [1230]							
2012	99.5	55.7	50.0	5.6	56.0	10.1	50.3
2013	99.5	59.8	52.9	6.9	60.1	11.5	53.2
Southern [1240]							
2012	97.6	55.0	48.7	6.4	56.4	11.6	49.9
2013	96.6	55.9	48.5	7.4	57.9	13.2	50.2
Halifax [1250]							
2012	341.9	237.8	223.0	14.9	69.6	6.3	65.2
2013	345.9	238.7	222.8	15.9	69.0	6.7	64.4
New Brunswick							
2012	620.4	379.8	337.6	42.2	61.2	11.1	54.4
2013	619.9	384.8	338.6	46.2	62.1	12.0	54.6
Campbellton-Miramichi [1310]							
2012	128.3	67.5	54.7	12.8	52.6	19.0	42.6
2013	126.7	72.6	57.8	14.7	57.3	20.2	45.6
Moncton-Richibucto [1320]							
2012	173.0	112.8	103.0	9.8	65.2	8.7	59.5
2013	174.3	112.0	101.7	10.4	64.3	9.3	58.3
Saint John-St. Stephen [1330]							
2012	144.6	90.5	81.6	8.9	62.6	9.8	56.4
2013	144.5	90.7	81.2	9.4	62.8	10.4	56.2

See notes at the end of the table.

Table 6-1 – continued

Labour force characteristics by province and economic region, ¹ unadjusted for seasonality, 3 month moving average ending in March 2012 and March 2013

	Population	Labour force			Participation rate	Unemployment rate	Employment rate
		Labour force	Employment	Unemployment			
	in thousands						
Fredericton-Oromocto [1340]							
2012	109.9	70.4	64.5	5.9	64.1	8.4	58.7
2013	110.7	70.8	64.1	6.7	64.0	9.5	57.9
Edmundston-Woodstock [1350]							
2012	64.6	38.6	33.8	4.8	59.8	12.4	52.3
2013	63.8	38.8	33.8	4.9	60.8	12.6	53.0
Quebec							
2012	6,614.2	4,215.8	3,833.7	382.1	63.7	9.1	58.0
2013	6,671.4	4,294.5	3,936.2	358.3	64.4	8.3	59.0
Gaspésie-Îles-de-la-Madeleine [2410]							
2012	78.6	39.2	33.8	5.5	49.9	14.0	43.0
2013	78.5	40.1	31.9	8.1	51.1	20.2	40.6
Bas-Saint-Laurent [2415]							
2012	166.6	99.3	89.9	9.3	59.6	9.4	54.0
2013	166.1	99.6	86.5	13.0	60.0	13.1	52.1
Capitale-Nationale [2420]							
2012	592.2	401.3	374.3	27.0	67.8	6.7	63.2
2013	597.2	399.1	376.5	22.6	66.8	5.7	63.0
Chaudière-Appalaches [2425]							
2012	334.7	220.2	206.6	13.5	65.8	6.1	61.7
2013	336.5	223.8	209.5	14.3	66.5	6.4	62.3
Estrie [2430]							
2012	259.7	153.6	139.9	13.7	59.1	8.9	53.9
2013	261.9	161.2	149.8	11.4	61.6	7.1	57.2
Centre-du-Québec [2433]							
2012	191.5	106.1	94.8	11.3	55.4	10.7	49.5
2013	192.9	115.7	107.9	7.8	60.0	6.7	55.9
Montréal [2435]							
2012	1,198.5	776.5	713.1	63.4	64.8	8.2	59.5
2013	1,210.8	807.2	754.7	52.4	66.7	6.5	62.3
Montréal [2440]							
2012	1,627.1	1,027.7	911.1	116.6	63.2	11.3	56.0
2013	1,640.2	1,056.7	944.2	112.5	64.4	10.6	57.6
Laval [2445]							
2012	336.8	226.0	205.7	20.4	67.1	9.0	61.1
2013	342.3	228.3	213.5	14.7	66.7	6.4	62.4
Lanaudière [2450]							
2012	395.5	268.3	241.0	27.3	67.8	10.2	60.9
2013	400.9	255.1	230.5	24.5	63.6	9.6	57.5
Laurentides [2455]							
2012	468.1	307.2	284.2	23.1	65.6	7.5	60.7
2013	474.8	320.7	298.5	22.3	67.5	7.0	62.9
Outaouais [2460]							
2012	309.1	208.4	194.2	14.1	67.4	6.8	62.8
2013	313.1	205.6	189.2	16.4	65.7	8.0	60.4
Abitibi-Témiscamingue [2465]							
2012	117.8	71.0	65.9	5.1	60.3	7.2	55.9
2013	118.0	78.2	71.7	6.5	66.3	8.3	60.8
Mauricie [2470]							
2012	222.0	130.5	117.1	13.4	58.8	10.3	52.7
2013	222.2	114.7	102.3	12.3	51.6	10.7	46.0

See notes at the end of the table.

Table 6-1 – continued

Labour force characteristics by province and economic region, ¹ unadjusted for seasonality, 3 month moving average ending in March 2012 and March 2013

	Population	Labour force			Participation rate	Unemployment rate	Employment rate
		Labour force	Employment	Unemployment			
	in thousands						
Saguenay-Lac-Saint-Jean [2475]							
2012	225.3	127.4	115.4	11.9	56.5	9.3	51.2
2013	225.2	136.0	120.9	15.2	60.4	11.2	53.7
Côte-Nord and Nord-du-Québec [2480, 2490]							
2012	90.7	53.0	46.7	6.3	58.4	11.9	51.5
2013	90.9	52.6	48.5	4.1	57.9	7.8	53.4
Ontario							
2012	11,015.2	7,224.4	6,656.4	568.0	65.6	7.9	60.4
2013	11,149.9	7,319.2	6,743.9	575.2	65.6	7.9	60.5
Ottawa [3510]							
2012	1,057.2	740.8	690.9	49.9	70.1	6.7	65.4
2013	1,070.5	732.0	686.0	46.0	68.4	6.3	64.1
Kingston-Pembroke [3515]							
2012	371.6	229.6	214.4	15.2	61.8	6.6	57.7
2013	372.5	228.8	213.8	15.0	61.4	6.6	57.4
Muskoka-Kawartha [3520]							
2012	319.5	192.6	176.0	16.7	60.3	8.7	55.1
2013	320.7	172.5	156.5	16.0	53.8	9.3	48.8
Toronto [3530]							
2012	5,104.6	3,355.9	3,073.8	282.2	65.7	8.4	60.2
2013	5,200.5	3,475.6	3,185.7	289.9	66.8	8.3	61.3
Kitchener-Waterloo-Barrie [3540]							
2012	1,045.9	731.6	680.8	50.8	69.9	6.9	65.1
2013	1,058.9	744.6	694.8	49.9	70.3	6.7	65.6
Hamilton-Niagara Peninsula [3550]							
2012	1,175.0	758.6	702.8	55.8	64.6	7.4	59.8
2013	1,184.8	764.8	707.1	57.7	64.6	7.5	59.7
London [3560]							
2012	543.1	346.2	318.0	28.2	63.7	8.1	58.6
2013	547.4	353.1	322.5	30.6	64.5	8.7	58.9
Windsor-Sarnia [3570]							
2012	518.9	324.1	289.4	34.8	62.5	10.7	55.8
2013	518.5	314.0	285.1	29.0	60.6	9.2	55.0
Stratford-Bruce Peninsula [3580]							
2012	245.7	163.8	156.3	7.5	66.7	4.6	63.6
2013	245.6	152.7	144.2	8.5	62.2	5.6	58.7
Northeast [3590]							
2012	460.6	271.8	251.8	19.9	59.0	7.3	54.7
2013	457.7	272.1	246.9	25.2	59.4	9.3	53.9
Northwest [3595]							
2012	173.1	109.5	102.3	7.2	63.3	6.6	59.1
2013	172.8	108.8	101.4	7.4	63.0	6.8	58.7
Manitoba							
2012	959.7	654.8	618.0	36.8	68.2	5.6	64.4
2013	969.1	663.8	630.0	33.8	68.5	5.1	65.0
Southeast [4610]							
2012	83.6	58.6	55.3	3.3	70.1	5.6	66.1
2013	84.9	58.5	56.3	2.2	68.9	3.8	66.3
South Central [4620]							
2012	48.0	30.2	29.5	0.8	62.9	2.6	61.5
2013	48.6	32.6	31.6	1.0	67.1	3.1	65.0

See notes at the end of the table.

Table 6-1 – continued

Labour force characteristics by province and economic region, ¹ unadjusted for seasonality, 3 month moving average ending in March 2012 and March 2013

	Population	Labour force			Participation rate	Unemployment rate	Employment rate
		Labour force	Employment	Unemployment			
	in thousands						
Southwest [4630]							
2012	83.8	56.5	53.8	2.7	67.4	4.8	64.2
2013	84.1	59.6	57.1	2.5	70.9	4.2	67.9
North Central [4640]							
2012	36.7	23.6	22.7	0.9	64.3	3.8	61.9
2013	36.8	25.6	25.0	0.6	69.6	2.3	67.9
Winnipeg [4650]							
2012	575.2	396.6	372.3	24.3	68.9	6.1	64.7
2013	582.6	401.8	378.5	23.3	69.0	5.8	65.0
Interlake [4660]							
2012	72.9	51.2	48.8	2.3	70.2	4.5	66.9
2013	73.4	49.4	47.5	1.9	67.3	3.8	64.7
Parklands and North [4670, 4680]							
2012	59.4	38.1	35.6	2.6	64.1	6.8	59.9
2013	58.5	36.3	34.0	2.3	62.1	6.3	58.1
Saskatchewan							
2012	805.8	550.0	521.4	28.6	68.3	5.2	64.7
2013	819.7	568.9	546.4	22.5	69.4	4.0	66.7
Regina-Moose Mountain [4710]							
2012	239.8	172.1	165.6	6.5	71.8	3.8	69.1
2013	245.0	178.2	171.9	6.3	72.7	3.5	70.2
Swift Current-Moose Jaw [4720]							
2012	81.0	49.1	46.8	2.3	60.6	4.7	57.8
2013	81.2	54.4	53.3	1.1	67.0	2.0	65.6
Saskatoon-Biggar [4730]							
2012	268.3	184.6	174.5	10.1	68.8	5.5	65.0
2013	275.9	193.8	186.8	7.0	70.2	3.6	67.7
Yorkton-Melville [4740]							
2012	62.7	41.5	39.4	2.1	66.2	5.1	62.8
2013	62.5	41.3	39.1	2.2	66.1	5.3	62.6
Prince Albert and Northern [4750, 4760]							
2012	153.9	102.6	95.1	7.6	66.7	7.4	61.8
2013	155.1	101.2	95.3	5.9	65.2	5.8	61.4
Alberta							
2012	3,037.5	2,221.9	2,108.7	113.2	73.1	5.1	69.4
2013	3,128.5	2,258.7	2,153.0	105.7	72.2	4.7	68.8
Lethbridge-Medicine Hat [4810]							
2012	220.5	153.5	146.4	7.0	69.6	4.6	66.4
2013	225.2	146.5	139.5	7.0	65.1	4.8	61.9
Camrose-Drumheller [4820]							
2012	156.4	112.6	108.7	3.9	72.0	3.5	69.5
2013	158.7	110.8	107.7	3.1	69.8	2.8	67.9
Calgary [4830]							
2012	1,124.4	838.1	795.4	42.6	74.5	5.1	70.7
2013	1,161.3	852.4	808.7	43.7	73.4	5.1	69.6
Banff-Jasper-Rocky Mountain House [4840]							
2012	71.9	55.0	52.9	2.1	76.5	3.8	73.6
2013	73.1	53.2	50.9	2.3	72.8	4.3	69.6

See notes at the end of the table.

Table 6-1 – continued

Labour force characteristics by province and economic region, ¹ unadjusted for seasonality, 3 month moving average ending in March 2012 and March 2013

	Population	Labour force			Participation rate	Unemployment rate	Employment rate
		Labour force	Employment	Unemployment			
		in thousands					
Red Deer [4850]							
2012	155.7	115.3	109.1	6.2	74.1	5.4	70.1
2013	159.9	119.4	112.3	7.1	74.7	5.9	70.2
Edmonton [4860]							
2012	1,013.0	729.9	688.8	41.1	72.1	5.6	68.0
2013	1,048.6	752.0	718.8	33.2	71.7	4.4	68.5
Athabasca-Grande Prairie-Peace River [4870]							
2012	191.1	133.8	127.3	6.5	70.0	4.9	66.6
2013	193.8	138.3	132.6	5.7	71.4	4.1	68.4
Wood Buffalo-Cold Lake [4880]							
2012	104.4	83.9	80.0	3.9	80.4	4.6	76.6
2013	107.9	86.2	82.6	3.5	79.9	4.1	76.6
British Columbia							
2012	3,800.6	2,445.4	2,267.0	178.5	64.3	7.3	59.6
2013	3,837.2	2,444.3	2,274.4	169.9	63.7	7.0	59.3
Vancouver Island and Coast [5910]							
2012	657.5	395.8	370.0	25.8	60.2	6.5	56.3
2013	659.7	395.1	367.9	27.2	59.9	6.9	55.8
Lower Mainland-Southwest [5920]							
2012	2,334.0	1,517.9	1,410.0	107.9	65.0	7.1	60.4
2013	2,373.8	1,535.7	1,427.1	108.6	64.7	7.1	60.1
Thompson-Okanagan [5930]							
2012	436.9	276.1	250.0	26.1	63.2	9.5	57.2
2013	433.8	261.1	242.6	18.6	60.2	7.1	55.9
Kootenay [5940]							
2012	127.1	80.1	74.9	5.2	63.0	6.5	58.9
2013	126.4	84.1	79.5	4.6	66.5	5.5	62.9
Cariboo [5950]							
2012	127.1	88.5	81.9	6.6	69.6	7.5	64.4
2013	126.1	84.1	78.5	5.6	66.7	6.7	62.3
North Coast and Nechako [5960, 5970]							
2012	66.3	45.9	40.5	5.4	69.2	11.8	61.1
2013	65.4	42.9	39.5	3.5	65.6	8.2	60.4
Northeast [5980]							
2012	51.6	41.1	39.7	1.5	79.7	3.6	76.9
2013	52.1	41.3	39.4	1.9	79.3	4.6	75.6

1. For geographic descriptions of economic regions, refer to the Guide to the Labour Force Survey (catalogue number 71-543-GIE).

2. Estimates for Canada are a sum of the provincial totals and exclude estimates from Yukon, Northwest Territories and Nunavut.

Note(s): Related CANSIM table 282-0054.

Table 6-2
Labour force characteristics by territories, unadjusted for seasonality, 3 month moving average ending in March 2012 and March 2013

	Population	Labour force			Participation rate	Unemployment rate	Employment rate
		Labour force	Employment	Unemployment			
		in thousands			percent		
Yukon ¹							
2012	26.8	20.1	18.3	1.8	75.0	9.0	68.3
2013	27.4	19.8	18.4	1.5	72.3	7.6	67.2
Northwest Territories ²							
2012	32.1	24.2	22.1	2.1	75.4	8.7	68.8
2013	32.1	23.7	21.8	1.9	73.8	8.0	67.9
Nunavut ³							
2012	20.9	13.6	11.5	2.1	64.8	15.3	54.9
2013	21.5	13.7	12.2	1.6	64.1	11.4	56.8

1. Since 1992, the Labour force survey (LFS) has been conducted in the Yukon, using an alternative methodology that accommodates some of the operational difficulties inherent to remote locales. These estimates are not included in the national totals. In 1995, the LFS in the Yukon underwent a sample redesign. One result of the redesign was that the covered population increased from 85% to 92%, which is reflected by the sharp increase in the three month moving averages estimates of January, February and March of 1995 for all the level estimates. Users are therefore warned to be cautious when comparing estimates before January 1995 to estimates for January 1995 and forward.
2. Since 2001, the Labour force survey (LFS) has been administered in the Northwest Territories, using an alternative methodology that accommodates some of the operational difficulties inherent to remote locales. These estimates are not included in national totals.
3. Since 2004, the Labour force survey (LFS) has been administered in Nunavut, using an alternative methodology that accommodates some of the operational difficulties inherent to remote locales. These estimates are 3-month moving averages and are not included in national totals. From January 2004 to December 2007, estimates represent about 70% of all Nunavut residents aged 15 and over. Starting in January 2008, coverage was extended to 92%, so that by March 2008, the 3-month moving average is completely based on the extended coverage. Because of the large difference in coverage, users are recommended not to compare estimates prior to January 2008 with data afterwards. The January and February 2008 3-month moving average estimates are based on a mix of both coverages, since the extended coverage was introduced in January 2008. Estimates from January 2004 to December 2007 are based on the 10 largest communities in Nunavut: Iqaluit, Rankin Inlet, Cambridge Bay, Kugluktuk, Baker Lake, Arviat, Pond Inlet, Cape Dorset, Pangnirtung, Igloolik. Estimates from March 2008 to present cover the above communities as well as: Taloyoak, Gjoa Haven, Kugaaruk, Coral Harbour, Repulse Bay, Qikiqtarjuaq, Arctic Bay, Hall Beach, Clyde River.

Note(s): Related CANSIM table 282-0100.

Table 7

Average usual hours and wages of employees by selected characteristics, Canada, unadjusted for seasonality

	Employees				Full-time			Part-time		
	Number	Average weekly hours	Average weekly wages	Average hourly wages	Number	Average weekly hours	Average weekly wages	Number	Average weekly hours	Average weekly wages
	thousands		current dollars		thousands		current dollars	thousands		current dollars
March 2013										
15 years and over	14,644.3	34.9	879.01	24.15	11,806.1	39.3	1,019.00	2,838.2	16.9	296.71
15 to 24 years	2,223.3	25.8	392.02	14.01	1,038.5	38.7	641.51	1,184.8	14.5	173.34
25 years and over	12,421.0	36.6	966.19	25.96	10,767.6	39.3	1,055.41	1,653.4	18.7	385.11
Men	7,285.4	37.4	1,007.50	26.12	6,364.0	40.5	1,113.98	921.4	16.0	272.05
Women	7,359.0	32.5	751.82	22.20	5,442.1	37.8	907.94	1,916.9	17.4	308.56
Union coverage										
Union coverage	4,668.8	35.5	988.72	27.45	3,946.9	38.6	1,090.89	721.9	18.5	430.17
No union coverage	9,975.6	34.7	827.67	22.61	7,859.2	39.6	982.90	2,116.3	16.4	251.18
Job permanency										
Permanent	12,819.7	35.9	917.63	24.74	10,783.3	39.3	1,031.50	2,036.4	17.9	314.66
Temporary	1,824.7	28.4	607.71	20.03	1,022.8	39.3	887.28	801.9	14.4	251.13
Occupation										
Management	981.3	39.7	1,512.54	37.97	952.7	40.4	1,540.54	28.7	18.3	581.80
Business, finance and administrative	2,876.7	35.2	815.62	22.68	2,461.5	38.2	900.32	415.1	17.5	313.37
Natural and applied sciences	1,163.3	38.3	1,281.76	33.39	1,112.8	39.2	1,312.54	50.5	18.8	603.87
Health	1,005.8	33.6	930.19	27.56	762.0	38.1	1,058.29	243.8	19.7	529.86
Social science, education, government service and religion	1,498.6	33.8	1,062.84	30.99	1,199.2	38.1	1,216.60	299.4	16.6	446.96
Art, culture, recreation and sport	350.0	29.1	756.06	23.59	226.0	38.3	1,044.32	124.0	12.4	230.72
Sales and service	3,755.2	30.0	521.82	16.17	2,297.7	38.4	717.60	1,457.6	16.6	213.20
Trades, transport and equipment operators	2,054.7	39.7	968.51	23.96	1,894.5	41.6	1,024.64	160.2	17.6	304.92
Occupations unique to primary industry	233.8	41.9	1,014.54	23.18	208.4	45.2	1,111.62	25.4	14.7	219.02
Occupations unique to processing, manufacturing and utilities	724.8	38.8	787.93	20.02	691.4	39.9	814.44	33.5	17.5	240.77
March 2012										
15 years and over	14,509.7	35.0	859.73	23.65	11,704.2	39.3	995.35	2,805.5	16.9	293.94
15 to 24 years	2,212.6	26.1	383.70	13.67	1,045.3	38.9	619.21	1,167.4	14.6	172.82
25 years and over	12,297.1	36.6	945.38	25.45	10,658.9	39.3	1,032.23	1,638.1	18.6	380.25
Men	7,230.6	37.6	984.90	25.47	6,364.9	40.5	1,083.31	865.7	16.1	261.38
Women	7,279.1	32.3	735.39	21.85	5,339.3	37.8	890.50	1,939.8	17.3	308.47
Union coverage										
Union coverage	4,617.7	35.4	969.30	26.96	3,909.1	38.5	1,066.02	708.6	18.9	435.74
No union coverage	9,892.0	34.7	808.58	22.10	7,795.1	39.7	959.91	2,096.9	16.3	246.02
Job permanency										
Permanent	12,728.4	36.0	900.53	24.23	10,757.9	39.3	1,008.10	1,970.5	18.0	313.22
Temporary	1,781.3	27.4	568.20	19.52	946.3	38.9	850.35	835.0	14.4	248.44
Occupation										
Management	957.9	39.7	1,485.94	37.57	931.3	40.3	1,512.26	26.6	18.9	564.32
Business, finance and administrative	2,799.1	34.9	794.48	22.20	2,366.7	38.1	884.49	432.3	17.3	301.68
Natural and applied sciences	1,085.1	38.5	1,281.60	33.26	1,047.1	39.1	1,306.65	38.1	19.5	592.79
Health	1,026.7	33.7	916.15	26.94	786.2	37.8	1,036.62	240.6	20.2	522.46
Social science, education, government service and religion	1,472.7	33.5	1,038.69	30.58	1,167.8	37.8	1,185.42	304.8	17.0	476.55
Art, culture, recreation and sport	363.3	29.9	765.78	23.97	242.7	38.4	1,014.80	120.6	13.0	264.60
Sales and service	3,734.2	30.1	509.38	15.73	2,298.9	38.6	699.51	1,435.2	16.4	204.82
Trades, transport and equipment operators	2,084.7	40.0	944.04	23.36	1,947.3	41.5	989.11	137.4	17.7	305.44
Occupations unique to primary industry	222.7	43.5	1,012.80	22.54	196.0	47.3	1,117.78	26.8	15.0	243.78
Occupations unique to processing, manufacturing and utilities	763.2	38.8	775.95	19.76	720.1	40.1	806.67	43.1	17.6	262.56

Note(s): Related CANSIM Tables 282-0023, 282-0069, 282-0073.

Table 8**Regional unemployment rates used by the Employment Insurance Program, ¹ seasonally adjusted, 3 month moving average**

Region	Effective from April 7, 2013 to May 11, 2013
	percent
Newfoundland and Labrador	
01. St. John's	6.4
02. Newfoundland and Labrador	16.0
Prince Edward Island	
03. Prince Edward Island	11.9
Nova Scotia	
04. Eastern Nova Scotia	15.9
05. Western Nova Scotia	11.3
06. Halifax	6.4
New Brunswick	
07. Fredericton-Moncton-Saint John	7.8
08. Madawaska-Charlotte	12.7
09. Restigouche-Albert	16.8
Quebec	
10. Gaspésie-Îles-de-la-Madeleine	17.6
11. Québec	4.5
12. Trois-Rivières	7.8
13. South Central Quebec	3.7
14. Sherbrooke	6.8
15. Montérégie	6.7
16. Montréal	7.9
17. Central Quebec	7.5
18. Northwestern Quebec	9.9
19. Bas-Saint-Laurent-Côte-Nord	10.8
20. Gatineau	6.9
21. Saguenay	8.0
Ontario	
22. Ottawa	5.9
23. Eastern Ontario	7.5
24. Kingston	6.7
25. Central Ontario	7.2
26. Oshawa	8.5
27. Toronto	8.5
28. Hamilton	6.2
29. St. Catharines	8.0
30. London	9.8
31. Niagara	10.1
32. Windsor	9.2
33. Kitchener	7.0
34. Huron	7.3
35. South Central Ontario	5.7
36. Sudbury	7.5
37. Thunder Bay	6.5
38. Northern Ontario	13.0
Manitoba	
39. Winnipeg	5.5
40. Southern Manitoba	5.2
41. Northern Manitoba	31.1
Saskatchewan	
42. Regina	3.8
43. Saskatoon	4.2
44. Southern Saskatchewan	5.9
45. Northern Saskatchewan	16.6
Alberta	
46. Calgary	5.3
47. Edmonton	4.4
48. Northern Alberta	8.1
49. Southern Alberta	5.7

See notes at the end of the table.

Table 8 – continued

Regional unemployment rates used by the Employment Insurance Program, ¹ seasonally adjusted, 3 month moving average

Region	Effective from April 7, 2013 to May 11, 2013
	percent
British Columbia	
50. Southern Interior British Columbia	7.4
51. Abbotsford	7.1
52. Vancouver	6.9
53. Victoria	6.4
54. Southern Coastal British Columbia	8.4
55. Northern British Columbia	11.1
Territories	
56. Yukon ²	25.0
57. Northwest Territories ²	25.0
58. Nunavut ²	25.0

1. The boundaries of these regions are determined by Human Resources and Social Development Canada (HRSDC). For geographic descriptions and maps of employment insurance regions, see the HRSDC website: <http://srv129.services.gc.ca/eiregions/en/geocont.aspx>.

2. This rate is provided by Human Resources and Skills Development Canada.

Note(s): All geographic regions are based on the 1996 Census boundaries.

Data quality

About the Labour Force Survey

The statistics contained in this report are based on information obtained through a sample survey of 56,000 representative households across the country. The Labour Force Survey, started in November 1945, was taken at quarterly intervals until November 1952. It has been carried out monthly since then. The information generated by the survey has expanded considerably over the years with a major redesign of the survey content in 1976 and again in 1997, and provides a rich and detailed picture of the Canadian labour market.

The sample used in the Labour Force Survey has been designed to represent all persons in the population 15 years of age and over residing in the provinces of Canada, with the exception of the following: persons living on Indian reserves, full-time members of the armed forces and people living in institutions (for example, inmates of penal institutions and patients in hospitals or nursing homes who have resided in the institution for more than six months). Monthly estimates of employment, unemployment and persons not in the labour force refer to the specific week covered by the survey each month, normally the week containing the 15th day.

Definitions and explanations

The **labour force** is composed of those members of the civilian non-institutional population 15 years of age and over who, during the reference week, were employed or unemployed.

Employed persons are those who, during the reference week:

- (a) did any work at all
- (b) had a job but were not at work

A person is considered to be **full-time** if his/her usual hours at the main job are 30 or more hours per week. When the number of hours worked at the main job is usually less than 30 hours per week then he/she is considered to be **part-time**.

Unemployed persons are those who, during the reference week:

- (a) were without work, had actively looked for work in the past four weeks (ending with reference week), and were available for work;
- (b) had not actively looked for work in the past four weeks but were on temporary layoff and were available for work;
- (c) had not actively looked for work in the past four weeks but had a new job to start in four weeks or less from the reference week, and were available for work.

Persons in the civilian non-institutional population 15 years of age and over who, during the reference week, were neither employed nor unemployed are classified as **not in the labour force**.

The **unemployment rate** represents the number of unemployed persons expressed as a percentage of the labour force. The unemployment rate for a particular group (age, sex, etc.) is the number unemployed in that group expressed as a percentage of the labour force for that group.

The **participation rate** represents the labour force expressed as a percentage of the population 15 years of age and over. The participation rate for a particular group (age, sex, etc.) is the labour force in that group expressed as a percentage of the population for that group.

The **employment rate (formerly the employment/population ratio)** represents the number of persons employed expressed as a percentage of the population 15 years of age and over. The employment rate for a particular group (age, sex, etc.) is the number employed in that group expressed as a percentage of the population for that group.

The **part-time rate** represents the number of persons employed part-time expressed as a percentage of the employed. The part-time rate for a particular group (age, sex, etc.) is the number employed part-time in that group expressed as a percentage of the employed for that group.

All geographic regions are based on the 2006 Census boundaries.

Seasonal adjustment

Fluctuations in economic time series are caused by seasonal, cyclical and irregular movements. A seasonally adjusted series is one from which seasonal movements have been eliminated. Seasonal movements are defined as those which are caused by regular annual events such as climate, holidays, vacation periods and cycles related to crops, production and retail sales associated with Christmas and Easter. The seasonally adjusted series contains irregular as well as longer-term cyclical fluctuations.

The seasonally adjusted series are revised each year to take into account current data and to generate new forecast factors for the next twelve months. The data are therefore subject to slight revisions in future issues of this publication.

Sampling variability of estimates

Estimates in this publication are based on the Labour Force Survey, a monthly survey of approximately 56,000 households across Canada. Because the entire population is not surveyed, the estimates are subject to sampling error. While the published estimate is the best available indicator of the real value, changes in the level of any estimates between two months can be the result of a true change or sampling variability. The sampling error can be estimated by calculating the standard error for the published estimate or statistic. These standard errors have been included in the publication tables, in order to assist users in interpreting the data.

Interpretation based on standard error

Two thirds of the time (68%), a change greater than the sampling error indicates a real change. The larger the change compared to the standard error, the better the chance that we are observing a real change, as opposed to a change due to sampling variability. At the 95% level, in order to ensure that change is real, the change in the estimate must be greater than twice the sampling error.

Movements in estimates that are smaller than the sampling error are less likely to reflect a real change and more likely to be due to sampling variability. While the above is true for monthly movements, one can have more confidence in a series of consecutive movements in the same direction, even though some of the monthly movements may be smaller than the sampling error.

Interpretation based on confidence intervals

Confidence intervals provide another way of looking at the variability inherent in estimates of sample surveys. To illustrate how to calculate the confidence interval, let us say that one month the published estimate for total employment rose by 16,000 to reach 16,500,000. The associated standard error for the movement estimate is 27,200. The standard error used to interpret the movement estimate indicates that:

- There are approximately two chances in three (68%) that the real value of the movement between the two months falls within the range -11,200 to +43,200 (16,000 + or – one standard error).
- There are approximately nine chances in ten (90%) that the real value of the movement between the two months falls within the range -27,520 to +59,520 (16,000 + or – 1.6 times the standard error).
- There are approximately nineteen chances in twenty (95%) that the real value of the movement between the two months falls within the range -38,400 to +70,400 (16,000 + or – two standard errors).

For more detailed explanations on sampling variability of estimates, and in particular for information on how to assess the variability of level estimates, consult the Data quality section of the *Guide to the Labour Force Survey*, (71-543-G) on page 27.

Documentation

For more detailed information about the Labour Force Survey, see the following documents:

- Overview of the Labour Force Survey
- Guide to the Labour Force Survey (71-543-G)
- Data quality statement
- Methodology of the Canadian Labour Force Survey (71-526-X)
- LFS *geographical maps*