

92N0060E
no. 7
c. 2



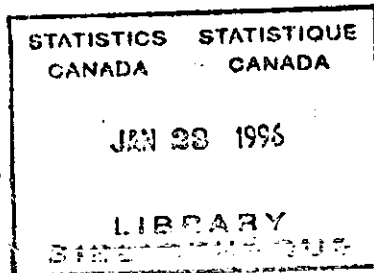
Statistics Canada / Statistique Canada

1996 CENSUS
RECENSEMENT DE 1996

**NATIONAL
CENSUS
TEST**



**TEST DU
RECENSEMENT
NATIONAL**



Report No. 7
Response Rate Sample Study

Canada

THE PRINCIPAL AUTHOR OF THIS REPORT IS ALAIN THÉBERGE

**THE AUTHOR ACKNOWLEDGES THE VALUABLE
CONTRIBUTIONS AND ASSISTANCE OF THE MEMBERS OF THE
NATIONAL CENSUS TEST
PROJECT TEAM**

**THE AUTHOR IS ALSO GRATEFUL TO YVES BÉLAND
FOR THE DEVELOPMENT OF THE PROGRAMS**

April 1989

RESPONSE RATE SAMPLE STUDY

CONTENTS

Highlights	1
1. The Study	4
1.1. Introduction	4
1.2. Methodology	5
2. Response Rates	8
2.1. Introduction	8
2.2. Calculation methods	8
2.2.1. Response	8
2.2.2. Over-response	9
2.3. Results	10
2.3.1. Response	10
2.3.2. Over-response	13
2.4. Comparison with previous surveys	14
2.4.1. Response	16
2.4.2. Over-response	27
2.5. Recommendations	29
3. Edits	33
3.1. Introduction	33
3.2. Calculation Methods	34
3.3. Comparison with previous surveys	37
3.4. Conclusion	40

Appendix 1 - Final status codes

Appendix 2 - Definition of target populations

Appendix 3 - Response rates and frequencies

Appendix 4 - Response rates with post-stratification

Appendix 5 - Over-response rates and frequencies

Appendix 6 - Over-response rates with post-stratification

Appendix 7 - Scenarios and example of program

Appendix 8 - Questionnaires from other surveys

Bibliography

Highlights

- o A mail return rate of 53.2% permitted us to capture 2076 questionnaires for the study.
- o The non-response rate for the coverage questions decreased substantially in comparison to previous surveys.
- o Overall, an improved response rate was noted with the new matrix format (one person per column) compared to the previous format (one question per column).
- o There is a high rate (9.1%) of invalid multiple responses to the question on place of residence due to persons who check "Here" and also write in their address which corresponds to "Here".
- o Some 90% of temporary and foreign residents kept answering the questionnaire after Question 4, in spite of instructions to the contrary.
- o The rate of response to the question on common law status is not as good as in Modular Test 1.
- o The response rate for the mother's birthplace is significantly lower than for the father's birthplace.

- o The response rates for the questions concerning the Band, First Nation or Tribe of native people were the lowest on the questionnaire. In fact, the non-response rates were higher than the response rates.

- o The response rate for the question on race is 97%.

- o Almost a third of persons less than 15 years of age answer the questionnaire past Question 18, despite instructions to the contrary.

- o Almost 60 per cent of persons gave their place of residence five years ago twice. This is a problem of over-response.

- o With the education questions, many persons simply put an 'x' in the box where they should have written a number.

- o The response rate for the new question on the number of years worked since going to school is about 88%.

- o The rate of (invalid) multiple responses to the question on hourly wages is about 8% and the rate of non-response is about 5%.

- o The practice of asking households to declare the amount of their property taxes even when these are included in the mortgage payments seems to have had a negative effect on the response rate for the question on the amount of property taxes.

- o With the exception of the over-response resulting from place of residence or age factors, the matrix format of the NCT seems to have had a minimal effect on over-response rates.

- o Using similar edit rules, the rejection rate for questionnaires in this study is significantly lower than for the questionnaires in the Edit Sample Study of the 1986 Census.

- o Using similar edit rules, the rejection rate for questionnaires in this study is the same as for the questionnaires of the 1984 Census Test which had only the questions on the 2A Census Form.

- o It would seem that the question on agriculture increases the rejection rate of 2A Census Forms by about 3%.

1. The Study

1.1 Introduction

The questionnaire which will be used in the next decennial census, to be held in June of 1991, will be significantly different from those used in the censuses of 1981 and 1986. This reflects the evolution of Canadian society and changing data requirements. The National Census Test (NCT) which took place in November of 1988 is part of the planning process for the 1991 census. The principal purpose of the test is to ensure the quality of responses to the questions which will be asked in 1991 and to measure the reaction of respondents to the questionnaire.

The subject of this report, the Response Rate Sample Study (RRSS), is one of the components of the NCT. The objectives of this study are:

- 1) to provide response rates before the edit and follow-up operation;
- 2) to estimate the percentage of questionnaires that will require a follow-up.

Similar studies were carried out during past censuses, for example, the Edit Sample Study (ESS) of the 1986 Census (M. Brodeur, January, 1988). Response rates have an important effect on the quality of data. They can also help to identify problems that

respondents might have with certain questions or with the whole of the questionnaire. Also, it is necessary to estimate the proportion of questionnaires requiring a follow-up in order to determine fair compensation for census representatives, who are paid on a piece-rate basis.

1.2 Methodology

The NCT sample included 39,889 dwellings selected according to the methodology used in the Labour Force Survey. The sample file was sorted according to PSU, group, cluster, rotation number and docket number. A systematic sub-sample of one dwelling in nine was selected for the RRSS. The 4,432 dwellings selected were specially identified on the control list and by the questionnaire's label. The completed questionnaires are mailed by respondents to the regional offices. Those specially identified for use in the RRSS were subsequently sent to Head Office. The interviewers did not do any follow-up for the dwellings designated for the study.

The specially marked questionnaires were used only in the study, thus reducing the sample size of the actual NCT by one-ninth. This simplified operations, avoided photocopying problems (the questionnaire is not a standard size) and transcription errors. One inconvenience is that the study sample is not weighted. Although experience has shown that weighting has little effect on response rates, there is reason to believe that it could have an appreciable

effect on the percentage of follow-ups brought about by a "yes" answer at step 5 (Does anyone in this household operate a farm, ranch or other agricultural holding?). The measures taken to overcome this inconvenience are discussed in Section 3.1.

Head Office received 2,602 questionnaires, which represents a return rate of $2,602 / 4,432 \times 100 = 58.7\%$. However, there were many cases of questionnaires returned directly by the interviewer when, for example, he/she noticed during drop-off that the dwelling was unoccupied. In such a case the interviewer was to write the code for the type of dwelling into the appropriate box on the questionnaire and code "v" in the box for the final status of the questionnaire (a list of codes and their meanings can be found in Appendix 1). With the exception of these two boxes, the questionnaire would be blank. If by mistake the interviewer did a follow-up or if he completed the questionnaire with the respondent during drop-off, such questionnaires could be identified by the code "x" designating their final status.

Clerks then batched the questionnaires, after eliminating the questionnaires whose final status box had not been left blank, as well as questionnaires that had been improperly cut. Indeed, certain questionnaires opened directly onto pages 4 and 5, because pages 2 and 3 were bound together in a way that necessarily kept respondents from writing on them. There were 520 questionnaires set

aside because they bore a final status code, and six which were improperly cut. The 2,076 remaining questionnaires were captured by Head Office without grooming. Thus, the return rate for questionnaires in which the interviewer did not intervene was $(2,602 - 520) / (4,432 - 520) \times 100 = 53.2\%$.

2. Response Rates

2.1. Introduction

As we will see further on, a detailed analysis of response rates allows us to identify certain problems that respondents might have with the questionnaire. Response rates also give us an objective measure of the initial quality of the data.

We will present the rates obtained in the RRSS both in terms of response and over-response, and then make a comparison with other studies.

2.2. Calculation Methods

2.2.1. Response

Each response from an individual or a household in the target population is classified into one of the following categories: simple response, non-response, multiple response (valid or invalid) and partial response. We prefer to use the term simple response rather than single response because, for example, of question 32 where the response should be a two-part answer. Precise definitions of these concepts as they apply to each question can be found in appendix 2.

Note that the target population in the case of question 5 (relationship to person 1) includes Person 1, even though their

answer is pre-printed. This tends to produce a lower non-response rate than if calculations were based solely on persons 2 to 6.

We chose the most "natural" way of determining target populations. This method is sometimes known as the direct method. For example, for question 5, which follows the question on place of residence, the target population is all the persons who checked off "Here" or "No usual home". On the other hand, using another method known as the complementary method, the target population would be all the persons who did not check off "Outside Canada" or "Elsewhere in Canada" and who did not write in an address. Therefore, unlike the direct method, the complementary method would include in the question 5 target population all the persons who did not answer the question on place of residence. Question 13 concerning year of immigration, which follows the question on the country (countries) of citizenship is somewhat problematic; because of the special nature of the instruction to "skip to", the complementary method is the natural method to be used in determining the target population. Those who do not respond to question 12 are thus included in the Question 13 target population, thereby increasing the non-response rate for this question.

2.2.2. Over-response

The over-response rate is also calculated, that is to say, the percentage of individuals or households that are not part of the

target population (for reasons other than age or place of residence) but who nonetheless answer a question that is not addressed to them. Over-response due to age or place of residence is studied separately, which allows us to identify the different causes of over-response.

2.3. Results

2.3.1. Response

The different types of response as well as the frequencies by type of response are presented in Appendix 3. Questions which concern the household are listed on a single page. As we will see in Section 3.2, a post-stratification of households was done according to province and type of primary sampling unit to account for urban/rural disparities. Response rates were recalculated under this post-stratification to determine whether there would be any significant deviation from rates established without post-stratification. These rates are listed in Appendix 4. Post-stratification makes little difference for most questions, but certain questions concerning the dwelling experience a significant drop in their non-response rate, whereas the multiple response rate increases for questions on mother tongue and ethnic origin. We also note an improvement in the response rate for each part of Question 43 (Income), although this improvement is slight. The following remarks apply equally to the rates obtained with or without post-stratification, but the rates given are those with post-stratification.

Among the questions which apply to the household, there is a 27.7% rate of multiple responses to Question 46 (person(s) responsible for the dwelling) and a rate of 37.0% at Step 9 (Name(s) of the household member(s) who completed this form). It was noted that in many cases only one person filled in the questionnaire but included his first name in one space and his last name in the other. This is counted as a multiple response by the computer. The three parts of Question 53 (payments for dwelling), as well as Questions 55d) and 55e) (value of the dwelling and a filter question for condominium fees) all experienced a fairly high non-response rate.

Among the questions directed to individuals, Question 4 (place of residence) had a high multiple-response rate (9.1%). Most of these multiple responses are the result of persons checking off the "Here" box but then writing the address they already gave in Step 1 into the space reserved for temporary residents.

The rate of non-response for Question 7 (common-law) is 18.5% which is among the highest.

Regarding questions such as 8, 9 and 10 (language) which have a low partial response rate, it must be remembered that these rates are low because the answer "Other", with or without a written answer, is relatively rare. The rate of partial response among those who check "Other" would be higher.

The low response rate to Question 13 (year of immigration) can hardly be compared to the response rate for other questions because of the manner in which the target population is defined.

The non-response rate for the mother's birthplace (7.1%) is far higher than for the question on the father's birthplace (2.3%).

There are more non-responses than responses for the "band" part of the questions concerning the ethnic origin of natives.

The rates of multiple response for Questions 21 (3.8%), 34 (2.6%) and 45 (7.5%) (mobility over 5 years, address at work and hourly wages, respectively) are among the highest. In the case of Questions 21 and 34, the reason for this is the same as that mentioned for Question 4.

The non-response rates are fairly high, between 10% and 15%, for Questions 24, 31, 36, 39 and 44, which deal with, respectively, grade (elementary and secondary), the year last worked, duties at work, number of years worked, and the filter question concerning hourly wage. An examination of the questionnaires shows that at Question 24 many persons simply put an "x" in the box in which they should have written their grade. Because only numerical answers can be captured for this space, such answers result in a non-response. The fact that the page on which Question 44 occurs looks as

forbidding as the page on income may perhaps explain the non-response rate for this question.

The non-response rates for the various parts of the income question are generally in the 30% to 40% range except for the "wages" part, where it is 19.9%.

2.3.2. Over-response

Rates of over-response with their corresponding frequencies are presented in Appendix 5. Rates of over-response calculated after post-stratification are listed in Appendix 6. Only Question 54 (rent) is significantly affected by post-stratification.

It can be seen that a serious over-response problem exists for Question 21 (mobility over 5 years) with a rate of 58.7%. The question is on a separate page from the filter question which precedes it, but this explains only part of the over-response. In fact, Question 29 has a reasonable over-response rate even though it is in a similar location.

Questions 31 (year when person last worked) and 55b) (property tax - inclusion) are two other questions experiencing high over-response with rates of 31.7% and 24.6% respectively.

The over-response rates for the "band" part of Questions 15 and 16 (ethnicity) indicate the percentage of persons who are not natives who write an answer in these spaces. These rates are low because few persons are required to actually write in their ethnic ancestry or cultural identity. However, among the 191 answers in these spaces, only 69 are from natives.

We also know that 384 of the 431 persons who marked neither "Here" nor "No usual home" in Question 4 went on to answer the following question -- an over-response rate of 89.1%. Many of these 431 persons were non-respondents to Question 4, but 68 of the 78 persons who marked a circle other than "Here" or "No usual home" answered Question 5. Among the 1,145 persons who checked off "Here" or "No usual home" and who are not 15 years of age or older, 375 answered Question 19, the first question in Step 7, which is reserved for those 15 years of age and older. The rate of over-response due to age is therefore 32.8%. This sort of over-response, involving entire sections of the questionnaire, has serious repercussions on the cost of coding and capture operations, since it represents capture of data that will be desirable during edit and imputation phase.

2.4. Comparison with previous surveys

We will compare the response rates obtained for the RRSS with those of six other surveys. It must be remembered that these surveys are

not all carried out under the same conditions. In general, the shorter the questionnaire, the better the response rate. Also, the lower the return rate, the more the returns tend to be from cooperative households, and therefore, the better the response rates. The following is a brief description of these surveys.

A survey similar to the NCT was carried out in 1978 in order to test the 1981 census questionnaire. The survey, known as the 1978 Census Test (CT) was a mailout/mailback survey. Out of 24,026 households contacted, 37.9% sent back their questionnaire, possibly after a postcard reminder was sent to them. No other follow-up took place, and a study of the response rates (A. van Baaren, February 1979) was undertaken using the questionnaires received.

In order to estimate the impact of the aboriginal question on response rates, a survey called the 1984 Census Test (D. Royce, October 1984) was undertaken. It was a mailout/mailback survey carried out in households participating in the Labour Force Survey. The black-and-white questionnaire contained the questions from Form 2A in 1986. Of the 1,734 questionnaires mailed out, 45% were returned. The answers to each question were manually verified, and invalid response rates were calculated.

The 1986 Edit Sample Study (ESS) (M. Brodeur, January 1988; M. Brodeur, D. Royce, 1988) dealt with a sample comprised of 2,676 2A

households and 2,657 2B households selected among the approximately 85% of households that returned their census questionnaire before follow-up. A similar study was also done in 1981 using questionnaires returned by mail, and non-response rates were calculated for certain questions only.

Modular Tests 1 and 2 (MT-1 and MT-2) took place in November 1987 and January 1988 respectively. These studies, carried out in Census Metropolitan Areas, tested new questions or new wordings of questions that were being considered for the 1991 census. The MT-2 sample was selected so as to include many "ethnic" households. Questionnaires were personally delivered and picked up. Thanks to the use of substitute households, personal contact with one of the members of the household was always certain. Some 85% of the households selected were willing to participate. Response rates were calculated for both MT-1 (R. Dibbs, January 1989) and MT-2 (Y. Béland and A. Théberge, March 1988).

2.4.1. Response

Table 2.1 gives the rates of invalid response for the various surveys. Invalid responses include non-response, invalid multiple response, partial response (except in the case of Question 32) and, in the case of certain surveys other than the NCT, written responses which should have been numerical, etc. The figures for the 1981 ESS represent non-responses only. Where appropriate, the

figures for the 1986 ESS are based on both the 2A and 2B samples. The figures for the NCT are based on the rates calculated with post-stratification.

Table 2.1

Comparison of invalid response rates

Question	#	NCT	1978 CT	1984 CT	1986 ESS	1981 ESS	MT-1	MT-2
Roster	S2	1.9					6.3	
Temporary residents	S3	4.1	22.0	13.2	21.4	17.8	24.3	
Persons left out	S4	8.0	13.3	15.3	25.6	27.0	17.3	
Agriculture	S5	2.3					11.6	
Name	Q1	0.7	1.5	0.9				
Date of birth	Q2	1.5	5.4	1.0	1.6	3.3	1.9	6.9
Sex	Q3	1.6	7.5	1.7	5.3	4.6	3.4	6.5
Place of residence	Q4	13.8						
Relationship to person 1	Q5	3.4	2.9	1.2	4.0	6.9	2.7	8.5
Marital status	Q6	4.7	7.2	3.1	5.1	6.6	4.6	9.5
Common law	Q7	18.5					14.2	
Languages spoken	Q8	1.9						3.5
Language at home	Q9	1.3	8.5		4.3			
First language	Q10	2.3	5.0	4.7	3.3	4.9		5.1
Place of birth	Q11	2.3	3.1		4.7			4.8
Citizenship	Q12	3.0	4.6		5.1			5.8
Year immigrated	Q13	22.0			25.0			
Place of birth (f.)	Q14	3.4						4.1
Place of birth (m.)	Q14	8.2						5.2
Ethnic origin	Q15	4.3	6.5		6.7	7.8		7.9
Bands (parents)	Q15	59.2						57.0

Table 2.1 (continued)

Comparison of invalid response rates

Question	#	NCT	1978 CT	1984 CT	1986 ESS	1981 ESS	MT-1	MT-2
Ethnic identity	Q16	4.0						8.4
Band (person)	Q16	72.1						57.9
Race	Q17	3.0						11.6
Religion	Q18	2.2	3.7					6.5
Mobility (1 year)	Q19	2.3						
Filter (mob. 5 yrs.)	Q20	3.3						
Mobility (5 years)	Q21	6.3	7.5		10.1			11.2
Fertility	Q22	4.3	5.5				8.1	
Date of 1st marr.	Q23a	5.7	11.0				7.2	
Number of marriages	Q23b	4.8					9.0	
Why marriage ended	Q23c	5.3					3.4	
Education (el.&sec.)	Q24	11.4	11.8		9.0			
Education (univers.)	Q25	3.9	7.2		14.2			
Education (other)	Q26	8.1	8.9		10.3			
School attendance	Q27	4.2	6.6					
Diplomas	Q28	5.5	5.3		9.1			
Field of study	Q29	11.2			32.6			
Filter (employment)	Q30	4.3						
Last worked	Q31	13.6	11.3		10.4		14.4	
Employer	Q32	3.6	7.5		9.0		5.4	
Type of business	Q33	6.3	11.0		10.7		7.5	

Table 2.1 (continued)

Comparison of invalid response rates

Question	#	NCT	1978 CT	1984 CT	1986 ESS	1981 ESS	MT-1	MT-2
Address at work	Q34	15.5	16.9		22.0			
Kind of work	Q35	5.6	5.9		6.6		5.9	
Duties at work	Q36	12.5	19.3		15.5		14.3	
Category of worker	Q37	6.0	4.9		7.6		5.8	
Status of enterprise	Q38	0.6	13.3		18.6		8.1	
Years worked	Q39	11.6					14.9	
Date started work	Q40	9.5					5.9	
Weeks worked	Q41	7.6	6.2		6.6		6.8	
Part/full time	Q42	0.6	4.9		3.4		1.8	
Income								
Salaries	Q43a	23.7	16.7		21.8	20.2		
Non-farm self-empl.	Q43b	42.0	39.2		41.6	39.5		
Farm self-empl.	Q43c	42.4	39.8		42.5	40.6		
OAS pension	Q43d	37.6	36.6		38.6	35.5	18.8	
CPP/QPP	Q43e	38.1	37.5		39.7		19.1	
UI	Q43f	39.3	36.9		40.2	36.5	20.1	
Oth. inc. from gov.	Q43g	40.7	38.6		40.7	37.6	20.6	
Dividends & interest	Q43h	36.4	33.1		35.9	32.4		
Pensions	Q43i	40.1	38.7		41.5			
Other income	Q43j	40.9	40.2		43.1			
Total	Q43k	31.6	20.4		27.9	25.6		

Table 2.1 (end)

Comparison of invalid response rates

Question	#	NCT	1978 CT	1984 CT	1986 ESS	1981 ESS	MT-1	MT-2
Filter (salary)	Q44	10.8						
Wage	Q45	15.4						
Pers. resp for dwell.	Q46	6.0	15.8	7.0	9.4	7.1		
Owned or rented	Q47	5.3	4.3	5.2	15.2	12.6		
Number of rooms	Q48	3.8	2.5		6.4			
Number of bedrooms	Q49	4.2	2.8					
Date of construc.	Q50	6.2	5.0		9.0			
Length of residence	Q51	3.1	2.3					
Repairs	Q52	5.9	5.8					
Payments (electr.)	Q53a	15.7	9.1		14.7	14.2		
Payments (fuels)	Q53b	20.5	15.1		29.4	24.4		
Payments (other)	Q53c	20.9	18.8		29.2	24.8		
Rent	Q54	6.0	4.6		7.2	4.6		
Mortgage	Q55a	9.1	8.3		6.7	6.3		
Property tx. includ.	Q55b	4.6	3.0		11.9	14.2		
Property taxes	Q55c	9.9	2.8		2.8	8.0		
Value of dwelling	Q55d	15.8	14.6		6.4	11.3		
Filter (condominium)	Q55e	10.2	17.6		12.0	13.3		
Condominium fees	Q55f	7.2						

It will be noted that the invalid response rates in the NCT for the coverage questions (Steps 2, 3, 4 and 5) are very much lower than those of other surveys. These questions seem to benefit from the fact that they are asked at the beginning. It is true that in the case of MT-1, the roster was also located at the beginning, but it was not numbered and could be missed by the respondent. Compared to their positions on former census forms, the questions on temporary residents and persons left out now enjoy better visibility. As well, the questions concerning persons responsible for the dwelling and whether the dwelling is rented or owned (Questions 46 and 47 respectively) which occupied the same column as the coverage questions on these forms, also have improved response rates.

The high rate of invalid response for Question 4 is due especially to multiple responses (9.1%). Most of these multiple responses were due to persons marking the "Here" box and then once again writing in the address they had already given in Step 1 into the space reserved for temporary residents.

The practice of asking the coverage questions at the beginning does not seem to affect the response rates for the questions on persons. It may also be noted that the basic demographic questions in the 1978 CT and in MT-2 have particularly high invalid response rates. These questions deal with the date of birth, sex, relationship to

person 1 (high rate for MT-2 only) and marital status. All of these questions were on page 3 of the MT-2 questionnaire. They are also on page 3 of the 1978 CT questionnaire, except for the question on the relationship to person 1, which, significantly, has a reasonable invalid response rate. Furthermore, questions on the language spoken at home and on first language, which are also found on page 3 of the 1978 TC questionnaire, also have high invalid response rates. One explanation of this phenomenon might be that page 3 of the questionnaire of these two surveys is sometimes left blank by the respondent. After completing page 2, the respondent goes on the page 3 as if it were an independent page, unaware of the matrix nature of this part of the questionnaire. Several factors contribute to this. The MT-2 questionnaire is 8.5" x 14" and contains spaces for only five persons. The horizontal bands are thus very large and it is difficult to visualize them extending over two pages, especially since the part of these horizontal bands found on page 2 contains only one question. The questionnaires for MT-2 and the 1978 CT are in colour, but their white margins create a break between the two pages. This contrast with the margins is even more pronounced in the case of the CT questionnaire, since it has darker colours. In the case of the CT, the vertical lines separating the questions are as noticeable as the horizontal lines separating persons, but the two lines that separate Question 2 on page 2 and Question 3 on page 3 are more noticeable because they are stylized. This helps accentuate the break between the two

pages. In the case of MT-1, the entire matrix was on a single page and it will be noted that the response rates for these questions were reasonable. On the 1981 and 1986 census questionnaires, the horizontal lines are more noticeable than the vertical lines, and once the flap is opened, the coloured part of the flap, page 2 and page 3 tend to form a visual whole. The presence of the flap also cuts down on the possibility of the respondent folding page 2 under the questionnaire after completing it in order to start on page 3, much as one reads a newspaper in a crowded bus. Nevertheless, there is surely some proportion of the non-response to the basic demographic questions in the census which is due to this phenomenon. Even though it uses the matrix format, the NCT does not experience this problem because the break between two facing pages is parallel to the axis of symmetry. The questionnaire for the 1984 CT is similar to Form 2A, except that it is black and white, eliminating the contrasting margins. The invalid response rates for this survey are low both for the question of relationship with person 1 (on page 2) and for the questions on page 3. These favourable rates can probably be explained by the fact that the survey contained only 12 questions on Form 2A of the census, and a relatively low return rate. Another factor is that the participating households were already familiar with another of our surveys: the Labour Force Survey.

The invalid response rate for the question on sex is particularly

high for the 1978 CT, probably because the column set aside for this question in the matrix was very narrow. This question is now one of the basic demographic questions which has seen the greatest improvement. It would seem that a narrow horizontal band is more visible than a narrow vertical band. Question 38, which occupies an even narrower space, has certainly not suffered.

The question on common law also has very little space, but it does not seem to be the reason it has a response rate inferior to MT-1. It has already been noted that in MT-1, many respondents did not understand the meaning of the term "common-law" ("union libre" in French), but in MT-1, these persons could more easily take a hint from the context. In fact, in this survey the questions of marital status and common law were parts a) and b) of a single question presented under the heading "Marital status". It is also possible that married people are more inclined to skip the common-law question because it does not apply, if the two questions are separately numbered and have separate headings.

The difference between the invalid response rates for the "mother" and "father" parts of Question 14 (birthplace of parents) is much greater than in MT-2. In the latter, both parts of the question were side by side instead of one beneath the other.

It may also be noted that there was a decrease of the invalid

response rates for Question 17 (race) compared to MT-2. It is, however, difficult to determine whether this is due to the new question or to the ethnic nature of the sample used in MT-2. One can also note a similar difference in the question on religion, even though the question is essentially the same in both surveys.

Among the employment questions, the quality of responses to Questions 31, 40 and 41 (respectively the year last worked, the date the person started working and the number of weeks worked) seems to have deteriorated. On the other hand, there was improvement as regards Questions 38 and 42 (status of the business and part/full time work). These questions used to make up part b) of the previous questions. As we will see in 2.4.2, this improvement was accompanied by an increase in the over-response rate.

The "wages and salaries" and the "total" components of the question on income have an invalid response rate that is significantly higher than those of the other surveys, while other components display only small differences. The cause of this is probably that the NCT took place in November, eleven months after the reference period. In the case of MT-1, the invalid response rates are relatively low, even though this survey also took place in November. However, MT-1 had fewer components in its income question, and in particular there were no questions on wages and

salaries and on total income.

For the questions on housing, the NCT had an invalid response rate about 1% higher than that of the 1978 CT, perhaps because these questions are now at the end of the NCT questionnaire. There are questions where the difference is greater, or is in the opposite direction. In the 1978 CT, the question on the person responsible for the dwelling was jammed between the definition of a dwelling and a space set aside for the census representative. Unlike other surveys, the NCT asks the amount of property tax even to those who declare that it is included in the mortgage payments. The fact that the word "condominium" is more popular than in 1978 probably explains the difference in response rates for question 55e). Regarding the three parts of question 53 (payments for electricity, fuel and other municipal services) it is possible that respondents are dismayed at the prospect of calculating these annual sums to the last cent. In fact, in surveys other than the NCT, "00" cents is already printed in the relevant space.

2.4.2. Over-response

We wished to find out whether the matrix format of the NCT questionnaire prevented the respondent from correctly following the instructions to "skip to". The over-response rates offer one method of measuring the extent of the problem. We will therefore compare the over-response rates for the NCT and MT-1, a survey which used a questionnaire similar in format to Form 2B of the

census. The rate of over-response by reason of age has not been calculated for MT-1. Over-response rates were calculated for the 1978 CT, but the method used is not comparable. However, the over-response rate by reason of age can be recalculated for comparison with that of the CT. The rates are 9.9% for the CT, compared to 31.2% for the NCT.

Table 2.2 compares the over-response rates for the NCT (after post-stratification) and for MT-1. The greatest differences can be explained by the fact that questions numbered separately in the NCT were sub-questions in MT-1. This is the case with question 38 (status of enterprise) and with Question 42 (part/full time work). In spite of this, we note that the over-response rates are generally significantly higher for the NCT.

Table 2.2
Comparison of over-response rates

Question	#	NCT	MT-1
Fertility	Q22	5.9	15.0
Date 1st marriage	Q23a	5.6	3.1
Number of marriages	Q23b	15.3	14.9
Why marriage ended	Q23c	2.2	1.7
Last worked	Q31	31.7	32.0
Employer	Q32	8.8	8.5
Type of business	Q33	7.2	4.3
Kind of work	Q35	8.8	8.1
Duties at work	Q36	6.4	5.7
Category of worker	Q37	8.4	7.9
Status of enterprise	Q38	9.3	2.9
Years worked	Q39	13.8	15.4
Date started work	Q40	18.1	8.8
Weeks worked	Q41	21.8	20.3
Part/full time	Q42	11.1	1.0

2.5. Recommendations

In order to reduce the number of multiple responses to Question 4 (place of residence) we should add "OR" before the "Elsewhere in Canada" answer category. The address box should not infringe on the area of the circles to be marked. This box is admittedly already short of space, but a new format would better illustrate the fact that the address space is reserved for the last answer category. The instructions "Continue with Question 5" and "End here for this person" could be removed and replaced by an instruction that would be a separate step. In addition to reducing the over-response rate, this would resolve the problem of whether to put the "End here for this person" instruction before or after the address. This new step, which would play a role similar to that of Step 7 concerning age, would have to attract the respondent's attention more. We could, for instance, place the instruction on a coloured background in the questions column.

It is recommended that the father and the mother's birthplace make up two separately numbered questions.

It is strongly recommended that the write-in box for band, first nation or tribe be dropped from Questions 15 and 16. These fields experienced both very low rates of response by native persons, plus a high rate of over-response on the part of non-natives. The low response rates are such that the production of reliable data on the

band, first nation or tribe of native persons is virtually impossible. Further, the over-response by non-natives strongly suggests that inclusion of this box would seriously put at risk the quality of the data for all of the "Other" categories. The finding is also consistent with the experience in Modular Test 2, but has been confirmed here with a probability sample.

If it is felt necessary to include these questions, the possibility of using the same spaces for all answers to be written in full, whether concerning the band or another ethnic or cultural group, should be considered. In such a case, coding procedures for the two questions would have to be harmonized.

Step 7 (instruction concerning age) should attract the respondent's attention more. In this regard, see the suggestion made for Question 4, above.

In order to diminish the burden on respondents, it is recommended to eliminate Question 20 by adding an answer category "Lived at the same address" to Question 21. Just as with Question 4, we should seek to reduce multiple responses by making sure the spaces for address and country do not infringe on the area of the circles to be marked.

The boxes reserved for a numerical answer in Questions 22

(fertility), 24, 25 and 26 (education) should be made longer, as they are in the example on the cover page of the questionnaire. The wordiness of the text next to these boxes in Questions 24, 25 and 26 could be considerably reduced in order to accentuate the fact that a number is to be written in.

It would be useful to have Question 29 (field of study) on the same page as Question 28 (diplomas), which serves as a filter.

Just as in the case of Questions 4 and 21, in order to cut down on multiple responses, the area reserved for address at work in Question 34 should not infringe on the area reserved for circles to be marked. We could also add "OR" before answer category "Worked at the address specified below".

In the case of Questions 39 (years worked) and 41 (weeks worked) the boxes for numerical answers should be lengthened as in the case of Questions 22, 24, 25 and 26.

In order to reduce the rate of multiple responses to Question 45 (hourly wage) it is recommended to reformulate the question so that there would be only one space for the amount and one choice of circles to mark for the period. Because of the simplification this would produce, we might also see a reduction of the non-response rate for this question and Question 44, which is on the same page.

Pre-printing "00" in the box reserved for cents could diminish non-response rates for Questions 43 (income) and 53 (payments for dwelling).

The fact of asking the amount of property taxes (Question 55c) of persons who have already declared that they are included in the mortgage payments causes an increase in the non-response rate, and it is recommended that this decision be reviewed.

3. Edits

3.1. Introduction

During a census, the census representative is the first person who carries out a quality control over questionnaires filled out by respondents. Among other things, he/she must ensure: that the questionnaire is properly identified, that all questionnaires for a household are in the same language, and that written answers are legible. But the most costly verification is the one regarding the validity of responses to each question, because this often involves follow-up action with the respondent. Because census representatives are paid on a piece-rate basis, we must estimate the percentage of questionnaires likely to require follow-up, in order to establish a fair wage. For accounting reasons, it is desirable to know what percentage of questionnaires require a follow-up only because of Step 5 (Does anyone in this household operate a ranch, farm or other agricultural holding?). In fact, the supplementary costs resulting from this step are attributed to the Census of Agriculture.

This report seeks to address these issues, although several factors prevent us from identifying more definite answers. These limiting factors include firstly the fact that we can study only the validity of responses. Therefore, we do not verify whether a questionnaire is properly identified, whether all questionnaires

from a given household are in the same language, if the answers are legible, etc. Legibility is a subjective concept, and, as regards the other forms of verification, comparisons between the census and the NCT would not be valid because procedures are different in the two surveys. Secondly, as noted in the preceding section, it is normal to expect different response rates for the RRSS than for other surveys, because, for instance, of the difference in the initial return rate. This has an important impact on the edit failure rate. Thirdly, in the NCT we collected information for no more than six persons per household, thus reducing the probability of a household of more than six persons failing edit. Finally, the content of the census has not yet been decided, and the sub-set of questions for which a valid response will be required has not yet been determined.

However, comparisons with other surveys are still possible, keeping in mind that they are imperfect, we present below the results of these comparisons.

3.2 Calculation methods

The NCT sampling rate varies from one province to another, and even within the same province the rate varies between urban and rural areas. Answers to Step 5 also vary by province and by urban or rural area. Given the importance of Step 5 for the study, it was decided to post-stratify the sample according to province and to

which type of PSU the household belonged. We distinguished two separate types of unit: the self-representative units (mainly urban) and the others (mainly rural). In order to permit maximum flexibility, separate edit rules were programmed for each question, sub-question or step, with the exception of Step 1 (address). We will now describe these rules. For the definitions of target population, of non-response, of multiple response or of partial response, see Appendix 2. Question 43 (income) is an exception in two senses: firstly, because it is considered to be a whole, in other words, because its parts are not separately edited; and secondly, for purposes of edit, we define a non-response to Question 43 as being a non-response or a partial response to each of the question's parts.

The first edit rule stipulates that the questionnaire fails edit for a given question if there is a non-response for one or more of the persons of the household in the target population. The second edit rule stipulates that the questionnaire fails edit for a given question if there is a multiple response for one or more of the persons in the household in the target population. The third edit rule stipulates that the questionnaire fails edit for a given question if there is a partial response for one or more of the persons in the household in the target population. The fourth rule covers the following special responses :

- Step 2: The questionnaire fails edit if the household includes

fewer than six persons and if the number included in Step 2 is positive but different from the number of persons in Question 1.

- Step 3: The questionnaire fails edit if the household includes fewer than six persons and the number of persons in Step 3 is different from the number of temporary residents identified in Question 4 (circle 6 marked).
- Step 4: The questionnaire fails edit if the household gave the simple response "Yes".
- Step 5: The questionnaire fails edit if the household gave the simple response "Yes".
- Question 2: The questionnaire fails edit if there is missing for one person the month or the year, or if the day of the month is missing and the month is November.
- Question 21: The questionnaire fails edit if for one person in the target population there is a multiple response without a written response.
- Question 34: The questionnaire fails edit if for one person in the target population there is a multiple response without an answer being written in.
- Question 43: The questionnaire fails edit if for one person in the target population there is a non-response or a partial response to 43k) (total) and non-response or partial response to one or more other parts.
- Question 46: The questionnaire fails edit if there is a non-

response and if there is more than one person in the household.

The edit rule known as the "rule of five" which was applied during previous censuses was not programmed for this study. The Edit Sample Study of 1986 showed that 1% of the 76% of 2B questionnaires rejected are rejected solely because of the rule of five.

3.3 Comparison with previous surveys

We will first of all compare the rejection rate for questionnaires with that of the 1984 Census Test (CT) which is described in Section 2.4. The rate of edit failures for this survey was 40.5% of which 33.2% was for a question other than the aboriginal question. The comparable rate for the RRSS is 33.3%. The rules that were used are summarized in Table 3.1. Note that Step 2 now replaces the question on the usual number of residents (Question 8b on Form 2A of 1986), while Step 3 is essentially identical to the former question on the number of temporary residents (Question 8d on Form 2A of 1986). However, there has been a change in the definition of a special response as regards Step 3; formerly there was a follow-up if a number higher than zero was written, now there is no follow-up unless the number fails to agree with the answer in Question 4.

Table 3.1

Rules used for comparison with the 1984 CT

Non-response	S3 S4 Q3 Q5 Q6 Q10 Q47
Multiple response	S3 S4 Q3 Q5 Q6 Q47
Partial response	S4 Q5
Special response	S2 S3 S4 Q2 Q46

Among the factors that must be considered when we compare the rejection rates of the two studies is the fact that, first, the questionnaire used in 1984 contained only a dozen questions. Second, the rate of return for the RRSS is 8% higher, and it is to be expected that the quality of the questionnaires in this supplementary 8% will be lower. Third, in 1984, the edits were carried out manually and it is possible that some questionnaires which should have failed edit were missed. Fourthly, the households selected for the 1984 CT were already familiar with the Labour Force Survey, and were thus well "trained". Finally, and this is an argument in the other direction, the questionnaire in the CT was less attractive to respondents.

The rejection rates of the two studies are similar in spite of a significant improvement in the response rate for the coverage questions. This seems to indicate that the improvement in the response rates could translate into a smaller number of questions

(per questionnaire) requiring a follow-up, rather than into a decrease in the proportion of rejected questionnaires.

We also established a comparison with the 1986 Edit Sample Study (CSS). There are several differences between Form 2B of 1986 and the NCT questionnaire which can have an impact on the follow-up rate. For example, among the questions not found in the NCT questionnaire are the questions on aboriginals, on disabilities and questions seeking to determine labour force status. A rejection rate was recalculated for the ESS with a sub-set of rules which would allow comparison with the NCT. These rules are given in Table 3.2. With this sub-set of rules, the rejection rate for questionnaires 2B of the ESS would have been 63.5%, whereas the NCT rate is 46.8%.

Table 3.2

Rules used for comparison with the 1986 ESS

Non-response	S4 Q2 Q3 Q5 Q6 Q10 Q21 Q28 Q31 Q32 Q35 Q43 Q47
Multiple response	S4 Q3 Q5 Q6 Q47
Partial response	S4 Q21
Special response	S4 Q2 Q21 Q46

Once again, it should be mentioned that there is a major difference in the return rates between the ESS and the NCT. Comparisons should thus be interpreted cautiously.

3.4. Conclusion

It can therefore be seen that it is difficult to predict what the follow-up rate will be in the 1991 Census. For example, we have seen that the rejection rate for the 1984 CT was 40.5%, while the 2A sample of the ESS allows us to estimate a rate of 53.7% for the 1986 Census. We can, however, make use of the data from the RRSS to compare different edit rule scenarios and thus to answer such questions as: Do the questions on employment have a major effect on the follow-up rate? The follow-up rates for certain scenarios are presented in Appendix 7. Scenario 1 represents a plausible set of rules for Form 2A in 1991; the follow-up rate would be 39.2%. Scenario 3 differs from Scenario 1 only by the exclusion of Step 5; without control rules for this step the follow-up rate diminishes by 3.0%. It is easy to explore other scenarios and a sample program is given in Appendix 7.

Appendix 1

Final Status Codes

- X: Questionnaire completed by all admissible members of the household.**
- E: Questionnaire completed by some (and not all) admissible members of the household.**
- N: Nobody home (after several attempts to make contact).**
- R: Household refused.**
- K: Impossible to interview because of death, illness, language problems or any other unusual circumstance connected to the household.**
- L: Impossible to interview because of bad weather.**
- T: Household temporarily absent.**
- V: Dwelling (or trailer site or seasonal home) vacant.**
- C: Dwelling under construction.**
- B: Dwelling occupied by persons not to be interviewed.**
- D: Dwelling demolished, transformed into business, moved, abandoned (inhabitable), listed by mistake.**

Appendix 2

THE ENGLISH TRANSLATION OF APPENDIX 2

"DEFINITION OF TARGET POPULATIONS"

WAS NOT AVAILABLE AT THE TIME REPORT # 7 WAS PRINTED.

THE ENGLISH VERSION OF THIS APPENDIX WILL BE

CIRCULATED AT A LATER DATE.

ETAPE 2

Population cible: Tous les ménages.

Non-réponse: Tout est blanc.

Réponse simple: Ce qui n'appartient pas à l'autre catégorie de réponse.

ETAPE 3

Population cible: Tous les ménages.

Non-réponse: Tout est blanc.

Réponse multiple: La case est cochée et un nombre de personnes (invalide) supérieur à zéro est indiqué.

Réponse simple: Ce qui n'appartient à aucune des autres catégories de réponse.

ETAPE 4

Population cible: Tous les ménages.

Non-réponse: Tout est blanc.

Réponse multiple: Les deux cases sont cochées; ou la première case (invalide) est cochée et il y a un ou des noms d'inscrits.

Réponse partielle: Ce n'est pas une réponse multiple; et la case OUI est cochée sans qu'un ou des noms soient indiqués.

Réponse simple: Ce qui n'appartient à aucune des autres catégories de réponse.

ETAPE 5

Population cible: Tous les ménages.

Non-réponse: Tout est blanc.

Réponse multiple (invalidé): Les deux cases sont cochées.

Réponse simple: Ce qui n'appartient à aucune des autres catégories de réponse.

ETAPE 6

Question 1

Population cible: Tous les individus.

Non-réponse: Tout est blanc.

Réponse simple: Ce qui n'appartient pas à l'autre catégorie de réponse.

Question 2

Population cible: Tous les individus.

Non-réponse: Tout est blanc.

Réponse partielle: Il manque soit le jour, soit le mois ou soit l'année; ou il manque deux de ces items.

Réponse simple: Ce qui n'appartient à aucune des autres catégories de réponse.

Question 3

Population cible: Tous les individus.

Non-réponse: Tout est blanc.

Réponse multiple (invalide): Les deux cases sont cochées.

Réponse simple: Ce qui n'appartient à aucune des autres catégories de réponse.

Question 4

Population cible: Tous les individus.

Non-réponse: Tout est blanc.

Réponse multiple: Au moins deux cases sont cochées; ou une des
(invalide) trois premières cases est cochée et une adresse
est inscrite.

Réponse partielle: Ce n'est pas une réponse multiple; et la
dernière case est cochée sans qu'il y ait une
adresse d'inscrite.

Réponse simple: Ce qui n'appartient à aucune des autres catégories
de réponse.

Question 5

Population cible: Tous les individus qui ont coché au moins une
des deux premières cases à la question 4.

Non-réponse: Tout est blanc.

Réponse multiple: Au moins deux cases sont cochées; ou une case
(invalide) est cochée et il y a un code non correspondant.

Réponse partielle: Ce n'est pas une réponse multiple; et la
case 11 ou la case 14 est cochée sans que le
code correspondant soit indiqué.

Réponse simple: Ce qui n'appartient à aucune des autres catégories
de réponse.

Question 6

Population cible: Tous les individus qui ont coché au moins une
des deux premières cases à la question 4.

Non-réponse: Tout est blanc.

Réponse multiple (invalide): Au moins deux cases sont cochées.

Réponse simple: Ce qui n'appartient à aucune des autres catégories
de réponse.

Question 7

Population cible: Tous les individus qui ont coché au moins 1 des 2 premières cases à la question 4.

Non-réponse: Tout est blanc.

Réponse multiple (invalidé): Les deux cases sont cochées.

Réponse simple: Ce qui n'appartient à aucune des autres catégories de réponse.

Question 8

Population cible: Tous les individus qui ont coché au moins 1 des 2 premières cases à la question 4.

Non-réponse: Tout est blanc.

Réponse multiple: Au moins deux cases sont cochées; ou une case (valide) est cochée et il y a un code non correspondant; ou deux codes sont indiqués.

Réponse partielle: Ce n'est pas une réponse multiple; et la dernière case est cochée sans que le code correspondant soit indiqué.

Réponse simple: Ce qui n'appartient à aucune des autres catégories de réponse.

Question 9

Population cible: Tous les individus qui ont coché au moins 1 des 2 premières cases à la question 4.

Non-réponse: Tout est blanc.

Réponse multiple: Au moins deux cases sont cochées; ou une case (valide) est cochée et il y a un code non correspondant.

Réponse partielle: Ce n'est pas une réponse multiple; et la dernière case est cochée sans que le code correspondant soit indiqué.

Réponse simple: Ce qui n'appartient à aucune des autres catégories de réponse.

Question 10

Population cible:Tous les individus qui ont coché au moins 1 des 2 premières cases à la question 4.

Non-réponse: Tout est blanc.

Réponse multiple: Au moins deux cases sont cochées; ou une case (valide) est cochée et il y a un code non correspondant.

Réponse partielle: Ce n'est pas une réponse multiple; et la dernière case est cochée sans que le code correspondant soit indiqué.

Réponse simple: Ce qui n'appartient à aucune des autres catégories de réponse.

Question 11

Population cible:Tous les individus qui ont coché au moins 1 des 2 premières cases à la question 4.

Non-réponse: Tout est blanc.

Réponse multiple: Au moins deux cases sont cochées; ou une case (invalidé) est cochée et il y a un code non correspondant.

Réponse partielle: Ce n'est pas une réponse multiple; et la dernière case est cochée sans que le code correspondant soit indiqué.

Réponse simple: Ce qui n'appartient à aucune des autres catégories de réponse.

Question 12

Population cible:Tous les individus qui ont coché au moins 1 des 2 premières cases à la question 4.

Non-réponse: Tout est blanc.

Réponse multiple: Au moins deux cases sont cochées.

Réponse simple: Ce qui n'appartient à aucune des autres catégories de réponse.

Question 13

Population cible: Tous les individus qui ont coché au moins 1 des 2 premières cases à la question 4 et qui n'ont pas coché la première case à la question 12.

Non-réponse: Tout est blanc.

Réponse multiple: Une année est indiquée et la case 'AVANT 1900' est cochée.
(invalide)

Réponse simple: Ce qui n'appartient à aucune des autres catégories de réponse.

Question 14 (Père et Mère)

Population cible: Tous les individus qui ont coché au moins 1 des 2 premières cases à la question 4.

Non-réponse: Tout est blanc.

Réponse multiple: Les deux cases sont cochées; ou la première case est cochée et un code est indiqué.
(invalide)

Réponse partielle: Ce n'est pas une réponse multiple; et la deuxième case est cochée sans que le code correspondant soit indiqué.

Réponse simple: Ce qui n'appartient à aucune des autres catégories de réponse.

Question 15 et 16 (excepté les 2 codes précisant la bande,
la première nation ou la tribu)

Population cible: Tous les individus qui ont coché au moins 1 des 2 premières cases à la question 4.

Non-réponse: Tout est blanc.

Réponse multiple: Au moins deux cases sont cochées; ou une case est cochée et il y a un code non correspondant; ou deux codes sont fournis pour le choix de réponse AUTRE(S) GROUPE(S) ETHNIQUE(S) OU CULTUREL(S).
(valide)

Réponse partielle: Ce n'est pas une réponse multiple; et la seizième case est cochée sans que le code correspondant soit indiqué.

Réponse simple: Ce qui n'appartient à aucune des autres catégories de réponse.

Question 15 et 16 (2 codes précisant bande, première nation ou tribu)

Population cible: Tous les individus qui ont coché au moins 1 des 2 premières cases à la question 4 et qui ont coché la treizième, quatorzième ou quinzième case à la question 15 (16).

Non-réponse / sans objet: Tout est blanc.

Réponse multiple (valide): Deux codes sont fournis.

Réponse simple: Ce qui n'appartient à aucune des autres catégories de réponse.

Question 17

Population cible: Tous les individus qui ont coché au moins 1 des 2 premières cases à la question 4.

Non-réponse: Tout est blanc.

Réponse multiple: Au moins deux cases sont cochées; ou une case (valide) est cochée et il y a un code non correspondant.

Réponse partielle: Ce n'est pas une réponse multiple; et la dernière case est cochée sans que le code correspondant soit indiqué.

Réponse simple: Ce qui n'appartient à aucune des autres catégories de réponse.

Question 18

Population cible: Tous les individus qui ont coché au moins 1 des 2 premières cases à la question 4.

Non-réponse: Tout est blanc.

Réponse multiple: Au moins deux cases sont cochées; ou une case (invalide) est cochée et il y a un code non correspondant.

Réponse partielle: Ce n'est pas une réponse multiple; et la dix-septième case est cochée sans que le code correspondant soit indiqué.

Réponse simple: Ce qui n'appartient à aucune des autres catégories de réponse.

ETAPE 7

Question 19

Population cible: Tous les individus qui ont coché au moins 1 des 2 premières cases à la question 4 qui sont âgés d'au moins 15 ans.

Non-réponse: Tout est blanc.

Réponse multiple: Au moins deux cases sont cochées; ou une case (invalide) est cochée et il y a un code non correspondant.

Réponse partielle: Ce n'est pas une réponse multiple; et une des deux dernières cases est cochée sans que le code correspondant soit indiqué.

Réponse simple: Ce qui n'appartient à aucune des autres catégories de réponse.

Question 20

Population cible: Tous les individus qui ont coché au moins 1 des 2 premières cases à la question 4 qui sont âgés d'au moins 15 ans.

Non-réponse: Tout est blanc.

Réponse multiple (invalide): Les deux cases sont cochées.

Réponse simple: Ce qui n'appartient à aucune des autres catégories de réponse.

Question 21

Population cible: Tous les individus qui ont coché au moins 1 des 2 premières cases à la question 4 qui sont âgés d'au moins 15 ans et qui ont répondu NON à la question 20.

Non-réponse: Tout est blanc.

Réponse multiple: Au moins deux cases sont cochées; ou une case est cochée et il y a un code non correspondant.
(invalide)

Réponse partielle: Ce n'est pas une réponse multiple; et une des deux dernières cases est cochée sans que le code correspondant soit indiqué.

Réponse simple: Ce qui n'appartient à aucune des autres catégories de réponse.

Question 22

Population cible: Tous les individus qui ont coché au moins 1 des 2 premières cases à la question 4 qui sont âgés d'au moins 15 ans et qui ont répondu FEMININ à la question sur le sexe.

Non-réponse: Tout est blanc.

Réponse multiple: La case est cochée et un nombre d'enfants supérieur à zéro est indiqué.
(invalide)

Réponse simple: Ce qui n'appartient à aucune des autres catégories de réponse.

Question 23a)

Population cible: Tous les individus qui ont coché au moins 1 des 2 premières cases à la question 4 qui sont âgés d'au moins 15 ans et qui ont coché une des quatre premières cases à la question 6.

Non-réponse: Tout est blanc.

Réponse partielle: Il manque le mois ou l'année mais pas les deux.

Réponse simple: Ce qui n'appartient à aucune des autres catégories de réponse.

Question 23b)

Population cible:Tous les individus qui ont coché au moins 1 des 2 premières cases à la question 4 qui sont âgés d'au moins 15 ans et qui ont coché une des quatre premières cases à la question 6.

Non-réponse: Tout est blanc.

Réponse multiple (invalidé): Les deux cases sont cochées.

Réponse simple: Ce qui n'appartient à aucune des autres catégories de réponse.

Question 23c)

Population cible:Tous les individus qui ont coché au moins 1 des 2 premières cases à la question 4 qui sont âgés d'au moins 15 ans et qui ont coché une des quatre premières cases à la question 6 ainsi que OUI, PLUS D'UNE FOIS à la question 23b).

Non-réponse: Tout est blanc.

Réponse multiple (invalidé): Les deux cases sont cochées.

Réponse simple: Ce qui n'appartient à aucune des autres catégories de réponse.

Question 24

Population cible:Tous les individus qui ont coché au moins 1 des 2 premières cases à la question 4 qui sont âgés d'au moins 15 ans.

Non-réponse: Tout est blanc.

Réponse multiple: Il y a un nombre supérieur à zéro d'inscrit et
(invalidé) la case est cochée.

Réponse simple: Ce qui n'appartient à aucune des autres catégories de réponse.

Question 25 et 26

Population cible: Tous les individus qui ont coché au moins 1 des 2 premières cases à la question 4 qui sont âgés d'au moins 15 ans.

Non-réponse: Tout est blanc.

Réponse multiple: Les deux cases sont cochées; ou une case est cochée et un nombre d'années supérieur à zéro est indiqué; ou les deux cases sont cochées et un nombre d'années supérieur à zéro est indiqué.
(invalidé)

Réponse simple: Ce qui n'appartient à aucune des autres catégories de réponse.

Question 27

Population cible: Tous les individus qui ont coché au moins 1 des 2 premières cases à la question 4 qui sont âgés d'au moins 15 ans.

Non-réponse: Tout est blanc.

Réponse multiple (invalidé): Au moins deux cases sont cochées.

Réponse simple: Ce qui n'appartient à aucune des autres catégories de réponse.

Question 28

Population cible: Tous les individus qui ont coché au moins 1 des 2 premières cases à la question 4 qui sont âgés d'au moins 15 ans.

Non-réponse: Tout est blanc.

Réponse multiple: Au moins deux cases sont cochées.

Réponse simple: Ce qui n'appartient à aucune des autres catégories de réponse.

Question 29

Population cible: Tous les individus qui ont coché au moins 1 des 2 premières cases à la question 4 qui sont âgés d'au moins 15 ans et qui ont coché une des neuf dernières cases à la question 28.

Non-réponse: Tout est blanc.

Réponse multiple (invalide): Un domaine d'études est indiqué et la case est cochée.

Réponse simple: Ce qui n'appartient à aucune des autres catégories de réponse.

Question 30

Population cible: Tous les individus qui ont coché au moins 1 des 2 premières cases à la question 4 qui sont âgés d'au moins 15 ans.

Non-réponse: Tout est blanc.

Réponse multiple (invalide): Les deux cases sont cochées.

Réponse simple: Ce qui n'appartient à aucune des autres catégories de réponse.

Question 31

Population cible: Tous les individus qui ont coché au moins 1 des 2 premières cases à la question 4 qui sont âgés d'au moins 15 ans et qui ont répondu NON à la question 30.

Non-réponse: Tout est blanc.

Réponse multiple (invalide): Au moins deux cases sont cochées.

Réponse simple: Ce qui n'appartient à aucune des autres catégories de réponse.

Question 32

Population cible: Tous les individus qui ont coché au moins 1 des 2 premières cases à la question 4 qui sont âgés d'au moins 15 ans, qui ont coché OUI à la question 30 ou EN 1988 ou EN 1987 à la question 31.

Non-réponse: Tout est blanc.

Réponse partielle: Il manque soit le nom de l'entreprise ou soit le nom du ministère (service, division, ...) mais pas les deux.

Réponse simple: Ce qui n'appartient à aucune des autres catégories de réponse.

Question 33

Population cible: Tous les individus qui ont coché au moins 1 des 2 premières cases à la question 4 qui sont âgés d'au moins 15 ans, qui ont coché OUI à la question 30 ou EN 1988 ou EN 1987 à la question 31.

Non-réponse: Tout est blanc.

Réponse simple: Ce qui n'appartient pas à l'autre catégorie de réponse.

Question 34

Population cible: Tous les individus qui ont coché au moins 1 des 2 premières cases à la question 4 qui sont âgés d'au moins 15 ans, qui ont coché OUI à la question 30 ou EN 1988 ou EN 1987 à la question 31.

Non-réponse: Tout est blanc.

Réponse multiple: Au moins deux cases sont cochées; ou une des deux premières cases est cochée et une adresse est inscrite.
(invalide)

Réponse partielle: Ce n'est pas une réponse multiple; et la dernière case est cochée sans que l'adresse n'y soit inscrite.

Réponse simple: Ce qui n'appartient à aucune des autres catégories de réponse.

Question 35 et 36

Population cible: Tous les individus qui ont coché au moins 1 des 2 premières cases à la question 4 qui sont âgés d'au moins 15 ans, qui ont coché OUI à la question 30 ou EN 1988 ou EN 1987 à la question 31.

Non-réponse: Tout est blanc.

Réponse simple: Ce qui n'appartient pas à l'autre catégorie de réponse.

Question 37

Population cible: Tous les individus qui ont coché au moins 1 des 2 premières cases à la question 4 qui sont âgés d'au moins 15 ans, qui ont coché OUI à la question 30 ou EN 1988 ou EN 1987 à la question 31.

Non-réponse: Tout est blanc.

Réponse multiple (invalidé): Au moins deux cases sont cochées.

Réponse simple: Ce qui n'appartient à aucune des autres catégories de réponse.

Question 38

Population cible: Tous les individus qui ont coché au moins 1 des 2 premières cases à la question 4 qui sont âgés d'au moins 15 ans, qui ont coché OUI à la question 30 ou EN 1988 ou EN 1987 à la question 31 et qui ont coché une des deux dernières cases à la question 37.

Non-réponse: Tout est blanc.

Réponse multiple (invalidé): Les deux cases sont cochées.

Réponse simple: Ce qui n'appartient à aucune des autres catégories de réponse.

Question 39

Population cible: Tous les individus qui ont coché au moins 1 des 2 premières cases à la question 4 qui sont âgés d'au moins 15 ans, qui ont coché OUI à la question 30 ou EN 1988 ou EN 1987 à la question 31.

Non-réponse: Tout est blanc.

Réponse multiple: La case est cochée et un nombre d'années est (invalidé) indiqué.

Réponse simple: Ce qui n'appartient à aucune des autres catégories de réponse.

Question 40

Population cible: Tous les individus qui ont coché au moins 1 des 2 premières cases à la question 4 qui sont âgés d'au moins 15 ans, qui ont coché OUI à la question 30 ou EN 1988 ou EN 1987 à la question 31 et qui ont fourni un nombre d'années à la question 39.

Non-réponse: Tout est blanc.

Réponse partielle: Il manque le mois ou l'année mais pas les deux.

Réponse simple: Ce qui n'appartient à aucune des autres catégories de réponse.

Question 41

Population cible: Tous les individus qui ont coché au moins 1 des 2 premières cases à la question 4 qui sont âgés d'au moins 15 ans, qui ont coché OUI à la question 30 ou EN 1988 ou EN 1987 à la question 31.

Non-réponse: Tout est blanc.

Réponse multiple: La case est cochée et un nombre de semaines (invalide) supérieur à zéro est indiqué.

Réponse simple: Ce qui n'appartient à aucune des autres catégories de réponse.

Question 42

Population cible: Tous les individus qui ont coché au moins 1 des 2 premières cases à la question 4 qui sont âgés d'au moins 15 ans, qui ont coché OUI à la question 30 ou EN 1988 ou EN 1987 à la question 31 et qui ont fourni un nombre de semaines à la question 41.

Non-réponse: Tout est blanc.

Réponse multiple (invalide): Les deux cases sont cochées.

Réponse simple: Ce qui n'appartient à aucune des autres catégories de réponse.

Question 43a), 43b), 43c), 43d), 43e), 43f), 43g), 43h),
43i), 43j) et 43k)

Population cible: Tous les individus qui ont coché au moins 1 des 2 premières cases à la question 4 qui sont âgés d'au moins 15 ans.

Non-réponse: Tout est blanc.

Réponse multiple: OUI et NON sont cochées OU NON est cochée et un (invalidé) montant est indiqué OU les cases NON et PERTE sont cochées.

Réponse partielle: Ce n'est pas une réponse multiple; et la case OUI ou la case PERTE est cochée et il n'y a pas de montant.

Réponse simple: Ce qui n'appartient à aucune des autres catégories de réponse.

Question 44

Population cible: Tous les individus qui ont coché au moins 1 des 2 premières cases à la question 4 qui sont âgés d'au moins 15 ans.

Non-réponse: Tout est blanc.

Réponse multiple (invalidé): Les deux cases sont cochées.

Réponse simple: Ce qui n'appartient à aucune des autres catégories de réponse.

Question 45

Population cible: Tous les individus qui ont coché au moins 1 des 2 premières cases à la question 4 qui sont âgés d'au moins 15 ans et qui ont coché OUI à la question 44.

Non-réponse: Tout est blanc.

Réponse multiple: Au moins deux cases sont cochées; ou une case est cochée et un montant non correspondant est indiqué; ou deux montants sont fournis; ou une case autre que la dernière est cochée et une période est indiquée.
(invalidé)

Réponse partielle: Ce n'est pas une réponse multiple; et une case est cochée sans que le montant correspondant soit indiqué; ou, dans le cas du dernier groupe de réponse, une période est indiquée mais il n'y a pas de montant ou un montant est indiqué mais il n'y a pas de période.

Réponse simple: Ce qui n'appartient à aucune des autres catégories de réponse.

ETAPE 8

Question 46

Population cible: Tous les ménages.

Non-réponse: Tout est blanc y compris la case 7.

Réponse multiple (valide): Au moins deux noms sont fournis.

Réponse simple: Ce qui n'appartient à aucune des autres catégories de réponse.

Question 47

Population cible: Tous les ménages.

Non-réponse: Tout est blanc.

Réponse multiple (invalide): Les deux cases sont cochées.

Réponse simple: Ce qui n'appartient à aucune des autres catégories de réponse.

Question 48 et 49

Population cible: Tous les ménages.

Non-réponse: Tout est blanc.

Réponse simple: Ce qui n'appartient pas à l'autre catégorie de réponse.

Question 50, 51 et 52

Population cible: Tous les ménages.

Non-réponse: Tout est blanc.

Réponse multiple (invalide): Au moins deux cases sont cochées.

Réponse simple: Ce qui n'appartient à aucune des autres catégories de réponse.

Question 53a), 53b) et 53c)

Population cible: Tous les ménages qui n'ont pas coché la case dans le NOTA situé au coin droit de la page 31.

Non-réponse: Tout est blanc.

Réponse multiple: Les deux cases sont cochées; ou une case est cochée et un montant non nul est indiqué; ou les deux cases sont cochées et un montant non nul est indiqué.
(invalide)

Réponse simple: Ce qui n'appartient à aucune des autres catégories de réponse.

Question 54

Population cible: Tous les ménages qui ont coché la deuxième case à la question 47 et qui n'ont pas coché la case dans le NOTA situé au coin droit de la page 31.

Non-réponse: Tout est blanc.

Réponse multiple (invalide): La case est cochée et un montant non nul est indiqué.

Réponse simple: Ce qui n'appartient à aucune des autres catégories de réponse.

Question 55a) et 55c)

Population cible: Tous les ménages qui ont coché la première case à la question 47 et qui n'ont pas coché la case dans le NOTA situé au coin droit de la page 31.

Non-réponse: Tout est blanc.

Réponse multiple (invalide): La case est cochée et un montant non nul est indiqué.

Réponse simple: Ce qui n'appartient à aucune des autres catégories de réponse.

Question 55b)

Population cible: Tous les ménages qui ont coché la première case à la question 47, qui n'ont pas coché la case dans le NOTA situé au coin droit de la page 31 et qui ont fourni un montant à la question 55a).

Non-réponse: Tout est blanc.

Réponse multiple (invalidé): Les deux cases sont cochées.

Réponse simple: Ce qui n'appartient à aucune des autres catégories de réponse.

Question 55d)

Population cible: Tous les ménages qui ont coché la première case à la question 47 et qui n'ont pas coché la case dans le NOTA situé au coin droit de la page 31.

Non-réponse: Tout est blanc.

Réponse simple: Un montant est indiqué.

Question 55e)

Population cible: Tous les ménages qui ont coché la première case à la question 47 et qui n'ont pas coché la case dans le NOTA situé au coin droit de la page 31.

Non-réponse: Tout est blanc.

Réponse multiple (invalidé): Les deux cases sont cochées.

Réponse simple: Ce qui n'appartient à aucune des autres catégories de réponse.

Question 55f)

Population cible: Tous les ménages qui ont coché la première case à la question 47, qui n'ont pas coché la case dans le NOTA situé au coin droit de la page 31 et qui ont coché la case OUI à la question 55e).

Non-réponse: Tout est blanc.

Réponse multiple (invalide): La case est cochée et un montant non nul est indiqué.

Réponse simple: Ce qui n'appartient à aucune des autres catégories de réponse.

ETAPE 9 (NP)

Population cible: Tous les ménages.

Non-réponse: Aucun nom d'inscrit.

Réponse multiple (valide): Deux noms sont inscrits.

Réponse simple: Ce qui n'appartient à aucune des autres catégories de réponse.

ETAPE 9 (TL et EF)

Population cible: Tous les ménages.

Non-réponse: Tout est blanc.

Réponse simple: Ce qui n'appartient pas à l'autre catégorie de réponse.

Appendix 3

RESPONSE RATES (ESS FOR NCT)

STEP 2

SIMPLE RESPONSE..... 98.1
NON-RESPONSE..... 1.9

STEP 3

SIMPLE RESPONSE..... 95.4
NON-RESPONSE..... 4.1
MULTIPLE RESP.(INVALID). 0.4

STEP 4

SIMPLE RESPONSE..... 91.6
NON-RESPONSE..... 7.8
MULTIPLE RESP.(INVALID). 0.1
PARTIAL RESPONSE..... 0.1

STEP 5

SIMPLE RESPONSE..... 97.6
NON-RESPONSE..... 2.2
MULTIPLE RESP.(INVALID). 0.1

STEP 8

QUESTION 46

SIMPLE RESPONSE..... 67.7
NON-RESPONSE..... 6.2
MULTIPLE RESP.(INVALID)... 26.1

QUESTION 47

SIMPLE RESPONSE..... 95.1
NON-RESPONSE..... 4.7
MULTIPLE RESP.(INVALID). 0.2

QUESTION 48

SIMPLE RESPONSE..... 96.1
NON-RESPONSE..... 3.9

QUESTION 49

SIMPLE RESPONSE..... 96.1
NON-RESPONSE..... 3.9

QUESTION	50	51	52	53A	53B	53C	54	55A	55B	55C
SIMPLE RESPONSE.....	94.2	96.6	94.3	83.3	79.0	78.1	92.2	89.7	96.0	88.2
NON-RESPONSE.....	5.7	3.4	4.6	14.0	19.7	20.6	6.2	10.1	4.0	11.4
MULTIPLE RESP.(INVALID).	0.1	0.0	1.1	2.7	1.3	1.3	1.6	0.1	0.0	0.4

QUESTION 55D

SIMPLE RESPONSE..... 82.8
NON-RESPONSE..... 17.2

QUESTION 55E

SIMPLE RESPONSE..... 88.2
NON-RESPONSE..... 11.8
MULTIPLE RESP.(INVALID). 0.0

QUESTION 55F

SIMPLE RESPONSE..... 93.3
NON-RESPONSE..... 6.7
MULTIPLE RESP.(INVALID). 0.0

STEP 9

SIMPLE RESPONSE..... 57.4
NON-RESPONSE..... 5.9
MULTIPLE RESP.(VALID)... 36.8

RESPONSE RATES (ESS FOR NCT)

STEP 6

<u>QUESTION 1</u>	<u>QUESTION 2</u>	<u>QUESTION 3</u>	<u>QUESTION 4</u>	
SIMPLE RESPONSE..... 99.2	SIMPLE RESPONSE..... 98.6	SIMPLE RESPONSE..... 98.5	SIMPLE RESPONSE..... 85.3	
NON-RESPONSE..... 0.8	NON-RESPONSE..... 0.9	NON-RESPONSE..... 1.4	NON-RESPONSE..... 4.6	
	PARTIAL RESPONSE..... 0.4	MULTIPLE RESP.(INVALID). 0.1	MULTIPLE RESP.(INVALID). 10.1	
			PARTIAL RESPONSE..... 0.1	
<u>QUESTION 5</u>	<u>QUESTION 6</u>	<u>QUESTION 7</u>	<u>QUESTION 8</u>	
SIMPLE RESPONSE..... 96.1	SIMPLE RESPONSE..... 95.6	SIMPLE RESPONSE..... 81.3	SIMPLE RESPONSE..... 81.1	
NON-RESPONSE..... 2.8	NON-RESPONSE..... 4.4	NON-RESPONSE..... 18.7	NON-RESPONSE..... 1.8	
MULTIPLE RESP.(INVALID). 1.1	MULTIPLE RESP.(INVALID). 0.1	MULTIPLE RESP.(INVALID). 0.0	MULTIPLE RESP.(VALID)... 17.1	
PARTIAL RESPONSE..... 0.1			PARTIAL RESPONSE..... 0.0	
<u>QUESTION 9</u>	<u>QUESTION 10</u>	<u>QUESTION 11</u>	<u>QUESTION 12</u>	
SIMPLE RESPONSE..... 97.1	SIMPLE RESPONSE..... 96.3	SIMPLE RESPONSE..... 97.4	SIMPLE RESPONSE..... 96.2	
NON-RESPONSE..... 1.2	NON-RESPONSE..... 2.4	NON-RESPONSE..... 2.2	NON-RESPONSE..... 2.7	
MULTIPLE RESP.(VALID)... 1.6	MULTIPLE RESP.(VALID)... 1.2	MULTIPLE RESP.(INVALID). 0.4	MULTIPLE RESP.(INVALID)... 1.1	
PARTIAL RESPONSE..... 0.0	PARTIAL RESPONSE..... 0.1	PARTIAL RESPONSE..... 0.0		
<u>QUESTION 13</u>	<u>QUESTION 14</u>	<u>QUESTION 15,16 (EXCEPT BAND)</u>	<u>Q15</u>	<u>Q16</u>
SIMPLE RESPONSE..... 74.8	SIMPLE RESPONSE..... 96.7	SIMPLE RESPONSE..... 55.0	72.0	
NON-RESPONSE..... 25.2	NON-RESPONSE..... 2.0	NON-RESPONSE..... 3.7	3.9	
MULTIPLE RESP.(INVALID). 0.0	MULTIPLE RESP.(INVALID). 0.5	MULTIPLE RESP.(INVALID). 41.3	23.3	
	PARTIAL RESPONSE..... 0.7	PARTIAL RESPONSE..... 0.0	0.0	
	FATHER MOTHER			
	92.0			
	6.8			
	0.6			
	0.6			
<u>QUESTION 15,16 (BAND)</u>	<u>Q15</u>	<u>Q16</u>	<u>QUESTION 17</u>	<u>QUESTION 18</u>
SIMPLE RESPONSE..... 34.9	34.1		SIMPLE RESPONSE..... 96.5	SIMPLE RESPONSE..... 97.8
NON-RESPONSE.(NOT APPLICABLE)... 55.4	65.9		NON-RESPONSE..... 3.1	NON-RESPONSE..... 1.6
MULTIPLE RESP.(INVALID). 9.6			MULTIPLE RESP.(VALID)... 0.4	MULTIPLE RESP.(INVALID). 0.5
			PARTIAL RESPONSE..... 0.0	PARTIAL RESPONSE..... 0.1

RESPONSE RATES (ESS FOR NCT)

STEP 7

<u>QUESTION 19</u>		<u>QUESTION 20</u>		<u>QUESTION 21</u>		<u>QUESTION 22</u>	
SIMPLE RESPONSE.....	97.9	SIMPLE RESPONSE.....	96.7	SIMPLE RESPONSE.....	93.5	SIMPLE RESPONSE.....	95.5
NON-RESPONSE.....	1.7	NON-RESPONSE.....	3.3	NON-RESPONSE.....	0.8	NON-RESPONSE.....	4.2
MULTIPLE RESP.(INVALID).	0.4	MULTIPLE RESP.(INVALID).	0.0	MULTIPLE RESP.(INVALID).	3.4	MULTIPLE RESP.(INVALID).	0.3
PARTIAL RESPONSE.....	0.0			PARTIAL RESPONSE.....	2.4		
<u>QUESTION 23A</u>		<u>QUESTION 23B</u>		<u>QUESTION 23C</u>		<u>QUESTION 24</u>	
SIMPLE RESPONSE.....	94.4	SIMPLE RESPONSE.....	95.4	SIMPLE RESPONSE.....	92.9	SIMPLE RESPONSE.....	90.0
NON-RESPONSE.....	3.7	NON-RESPONSE.....	4.6	NON-RESPONSE.....	7.1	NON-RESPONSE.....	10.0
PARTIAL RESPONSE.....	1.9	MULTIPLE RESP.(INVALID).	0.0	MULTIPLE RESP.(INVALID).	0.0	MULTIPLE RESP.(INVALID).	0.0
<u>QUESTION 25</u>		<u>QUESTION 26</u>		<u>QUESTION 27</u>		<u>QUESTION 28</u>	
SIMPLE RESPONSE.....	96.9	SIMPLE RESPONSE.....	92.7	SIMPLE RESPONSE.....	96.1	SIMPLE RESPONSE.....	73.3
NON-RESPONSE.....	3.0	NON-RESPONSE.....	6.5	NON-RESPONSE.....	3.7	NON-RESPONSE.....	5.6
MULTIPLE RESP.(INVALID).	0.2	MULTIPLE RESP.(INVALID).	0.7	MULTIPLE RESP.(INVALID).	0.2	MULTIPLE RESP.(INVALID)...	21.2
<u>QUESTION 29</u>		<u>QUESTION 30</u>		<u>QUESTION 31</u>		<u>QUESTION 32</u>	
SIMPLE RESPONSE.....	89.0	SIMPLE RESPONSE.....	95.6	SIMPLE RESPONSE.....	85.1	SIMPLE RESPONSE.....	43.7
NON-RESPONSE.....	9.8	NON-RESPONSE.....	4.3	NON-RESPONSE.....	13.7	NON-RESPONSE.....	4.2
MULTIPLE RESP.(INVALID).	1.2	MULTIPLE RESP.(INVALID).	0.1	MULTIPLE RESP.(INVALID).	1.2	PARTIAL RESPONSE.....	52.1
<u>QUESTION 33</u>		<u>QUESTION 34</u>		<u>QUESTION 35</u>		<u>QUESTION 36</u>	
SIMPLE RESPONSE.....	93.1	SIMPLE RESPONSE.....	84.3	SIMPLE RESPONSE.....	93.5	SIMPLE RESPONSE.....	86.1
NON-RESPONSE.....	6.9	NON-RESPONSE.....	9.8	NON-RESPONSE.....	6.5	NON-RESPONSE.....	13.9
		MULTIPLE RESP.(INVALID).	3.2				
		PARTIAL RESPONSE.....	2.7				

RESPONSE RATES (ESS FOR NCT)

STEP 7

<u>QUESTION 37</u>		<u>QUESTION 38</u>		<u>QUESTION 39</u>		<u>QUESTION 40</u>	
SIMPLE RESPONSE.....	93.8	SIMPLE RESPONSE.....	99.4	SIMPLE RESPONSE.....	87.5	SIMPLE RESPONSE.....	90.2
NON-RESPONSE.....	5.4	NON-RESPONSE.....	0.6	NON-RESPONSE.....	12.3	NON-RESPONSE.....	4.7
MULTIPLE RESP.(INVALID).	0.9	MULTIPLE RESP.(INVALID).	0.0	MULTIPLE RESP.(INVALID).	0.2	PARTIAL RESPONSE.....	5.1

<u>QUESTION 41</u>		<u>QUESTION 42</u>	
SIMPLE RESPONSE.....	91.9	SIMPLE RESPONSE.....	99.0
NON-RESPONSE.....	7.8	NON-RESPONSE.....	0.9
MULTIPLE RESP.(INVALID).	0.2	MULTIPLE RESP.(INVALID).	0.1

QUESTION	43A	43B	43C	43D	43E	43F	43G	43H	43I	43J	43K
SIMPLE RESPONSE.....	74.1	56.5	56.3	62.0	61.1	59.6	58.1	62.2	58.5	57.5	67.2
NON-RESPONSE.....	22.5	43.1	43.3	36.9	37.8	39.4	41.0	36.6	40.6	42.2	30.5
MULTIPLE RESP.(INVALID).	1.4	0.1	0.1	0.1	0.1	0.1	0.1	0.3	0.1	0.2	1.1
PARTIAL RESPONSE.....	2.0	0.3	0.2	1.0	1.0	0.9	0.8	0.9	0.8	0.1	1.1

<u>QUESTION 44</u>		<u>QUESTION 45</u>	
SIMPLE RESPONSE.....	87.6	SIMPLE RESPONSE.....	84.6
NON-RESPONSE.....	12.4	NON-RESPONSE.....	5.7
MULTIPLE RESP.(INVALID).	0.1	MULTIPLE RESP.(INVALID).	7.4
		PARTIAL RESPONSE.....	2.3

TYPES OF RESPONSE FREQUENCIES (ESS FOR NCT)

<u>STEP 2</u>		<u>STEP 3</u>		<u>STEP 4</u>		<u>STEP 5</u>	
SIMPLE RESPONSE.....	2015	SIMPLE RESPONSE.....	1960	SIMPLE RESPONSE.....	1882	SIMPLE RESPONSE.....	2005
NON-RESPONSE.....	39	NON-RESPONSE.....	85	NON-RESPONSE.....	161	NON-RESPONSE.....	46
		MULTIPLE RESP.(INVALID).	9	MULTIPLE RESP.(INVALID).	2	MULTIPLE RESP.(INVALID).	3
				PARTIAL RESPONSE.....	3		

STEP 8

<u>QUESTION 46</u>		<u>QUESTION 47</u>		<u>QUESTION 48</u>		<u>QUESTION 49</u>	
SIMPLE RESPONSE.....	1390	SIMPLE RESPONSE.....	1953	SIMPLE RESPONSE.....	1974	SIMPLE RESPONSE.....	1974
NON-RESPONSE.....	127	NON-RESPONSE.....	97	NON-RESPONSE.....	80	NON-RESPONSE.....	80
MULTIPLE RESP.(INVALID)...	537	MULTIPLE RESP.(INVALID).	4				

QUESTION	50	51	52	53A	53B	53C	54	55A	55B	55C
SIMPLE RESPONSE.....	1934	1985	1937	1675	1588	1571	449	1285	551	1263
NON-RESPONSE.....	117	69	94	281	397	414	30	145	23	163
MULTIPLE RESP.(INVALID).	3	0	23	55	26	26	0	2	0	6

<u>QUESTION 55D</u>		<u>QUESTION 55E</u>		<u>QUESTION 55F</u>		<u>STEP 9</u>	
SIMPLE RESPONSE.....	1186	SIMPLE RESPONSE.....	1263	SIMPLE RESPONSE.....	28	SIMPLE RESPONSE.....	1178
NON-RESPONSE.....	246	NON-RESPONSE.....	169	NON-RESPONSE.....	2	NON-RESPONSE.....	121
		MULTIPLE RESP.(INVALID).	0	MULTIPLE RESP.(INVALID).	0	MULTIPLE RESP.(INVALID)...	755

TYPES OF RESPONSE FREQUENCIES (ESS FOR NCT)

STEP 6

<u>QUESTION 1</u>	<u>QUESTION 2</u>	<u>QUESTION 3</u>	<u>QUESTION 4</u>		
SIMPLE RESPONSE..... 5533	SIMPLE RESPONSE..... 5503	SIMPLE RESPONSE..... 5498	SIMPLE RESPONSE..... 4759		
NON-RESPONSE..... 47	NON-RESPONSE..... 52	NON-RESPONSE..... 78	NON-RESPONSE..... 257		
	PARTIAL RESPONSE..... 25	MULTIPLE RESP.(INVALID). 4	MULTIPLE RESP.(INVALID). 561		
			PARTIAL RESPONSE..... 3		
<u>QUESTION 5</u>	<u>QUESTION 6</u>	<u>QUESTION 7</u>	<u>QUESTION 8</u>		
SIMPLE RESPONSE..... 4946	SIMPLE RESPONSE..... 4920	SIMPLE RESPONSE..... 4186	SIMPLE RESPONSE..... 4174		
NON-RESPONSE..... 142	NON-RESPONSE..... 225	NON-RESPONSE..... 963	NON-RESPONSE..... 93		
MULTIPLE RESP.(INVALID). 55	MULTIPLE RESP.(INVALID). 4	MULTIPLE RESP.(INVALID). 0	MULTIPLE RESP.(VALID)... 881		
PARTIAL RESPONSE..... 6			PARTIAL RESPONSE..... 1		
<u>QUESTION 9</u>	<u>QUESTION 10</u>	<u>QUESTION 11</u>	<u>QUESTION 12</u>		
SIMPLE RESPONSE..... 5000	SIMPLE RESPONSE..... 4957	SIMPLE RESPONSE..... 5015	SIMPLE RESPONSE..... 4955		
NON-RESPONSE..... 64	NON-RESPONSE..... 125	NON-RESPONSE..... 112	NON-RESPONSE..... 138		
MULTIPLE RESP.(VALID)... 84	MULTIPLE RESP.(VALID)... 61	MULTIPLE RESP.(INVALID). 22	MULTIPLE RESP.(VALID)... 56		
PARTIAL RESPONSE..... 1	PARTIAL RESPONSE..... 6	PARTIAL RESPONSE..... 0			
<u>QUESTION 13</u>	<u>QUESTION 14</u>	FATHER MOTHER	<u>QUESTION 15,16 (EXCEPT BAND)</u>	Q15	Q16
SIMPLE RESPONSE..... 462	SIMPLE RESPONSE..... 4981	4739	SIMPLE RESPONSE..... 2630	3747	
NON-RESPONSE..... 156	NON-RESPONSE..... 104	352	NON-RESPONSE..... 193	200	
MULTIPLE RESP.(INVALID). 0	MULTIPLE RESP.(INVALID). 27	29	MULTIPLE RESP.(VALID)... 2126	1201	
	PARTIAL RESPONSE..... 37	29	PARTIAL RESPONSE..... 0	1	
<u>QUESTION 15,16 (BAND)</u>	Q15	Q16	<u>QUESTION 17</u>	<u>QUESTION 18</u>	
SIMPLE RESPONSE..... 29	14		SIMPLE RESPONSE..... 4968	SIMPLE RESPONSE..... 5037	
NON-RESPONSE.(NOT APPLICABLE)... 46	27		NON-RESPONSE..... 161	NON-RESPONSE..... 80	
MULTIPLE RESP.(VALID)... 8			MULTIPLE RESP.(VALID)... 19	MULTIPLE RESP.(INVALID). 28	
			PARTIAL RESPONSE..... 1	PARTIAL RESPONSE..... 4	

TYPES OF RESPONSE FREQUENCIES (LESS FOR NCT)

STEP 7

<u>QUESTION 19</u>		<u>QUESTION 20</u>		<u>QUESTION 21</u>		<u>QUESTION 22</u>	
SIMPLE RESPONSE.....	3920	SIMPLE RESPONSE.....	3871	SIMPLE RESPONSE.....	1272	SIMPLE RESPONSE.....	1955
NON-RESPONSE.....	67	NON-RESPONSE.....	133	NON-RESPONSE.....	11	NON-RESPONSE.....	86
MULTIPLE RESP.(INVALID).	16	MULTIPLE RESP.(INVALID).	0	MULTIPLE RESP.(INVALID).	46	MULTIPLE RESP.(INVALID).	7
PARTIAL RESPONSE.....	1			PARTIAL RESPONSE.....	32		
<u>QUESTION 23A</u>		<u>QUESTION 23B</u>		<u>QUESTION 23C</u>		<u>QUESTION 24</u>	
SIMPLE RESPONSE.....	2830	SIMPLE RESPONSE.....	2860	SIMPLE RESPONSE.....	273	SIMPLE RESPONSE.....	3602
NON-RESPONSE.....	112	NON-RESPONSE.....	139	NON-RESPONSE.....	21	NON-RESPONSE.....	400
PARTIAL RESPONSE.....	57	MULTIPLE RESP.(INVALID).	0	MULTIPLE RESP.(INVALID).	0	MULTIPLE RESP.(INVALID).	2
<u>QUESTION 25</u>		<u>QUESTION 26</u>		<u>QUESTION 27</u>		<u>QUESTION 28</u>	
SIMPLE RESPONSE.....	3878	SIMPLE RESPONSE.....	3713	SIMPLE RESPONSE.....	3847	SIMPLE RESPONSE.....	2933
NON-RESPONSE.....	119	NON-RESPONSE.....	262	NON-RESPONSE.....	150	NON-RESPONSE.....	223
MULTIPLE RESP.(INVALID).	7	MULTIPLE RESP.(INVALID).	29	MULTIPLE RESP.(INVALID).	7	MULTIPLE RESP.(INVALID)...	848
<u>QUESTION 29</u>		<u>QUESTION 30</u>		<u>QUESTION 31</u>		<u>QUESTION 32</u>	
SIMPLE RESPONSE.....	1852	SIMPLE RESPONSE.....	3828	SIMPLE RESPONSE.....	1491	SIMPLE RESPONSE.....	1150
NON-RESPONSE.....	203	NON-RESPONSE.....	173	NON-RESPONSE.....	240	NON-RESPONSE.....	111
MULTIPLE RESP.(INVALID).	25	MULTIPLE RESP.(INVALID).	3	MULTIPLE RESP.(INVALID).	21	PARTIAL RESPONSE.....	1372
<u>QUESTION 33</u>		<u>QUESTION 34</u>		<u>QUESTION 35</u>		<u>QUESTION 36</u>	
SIMPLE RESPONSE.....	2451	SIMPLE RESPONSE.....	2220	SIMPLE RESPONSE.....	2463	SIMPLE RESPONSE.....	2268
NON-RESPONSE.....	182	NON-RESPONSE.....	258	NON-RESPONSE.....	170	NON-RESPONSE.....	365
		MULTIPLE RESP.(INVALID).	83				
		PARTIAL RESPONSE.....	72				

TYPES OF RESPONSE FREQUENCIES (ESS FOR NCT)

STEP 7

QUESTION 37

SIMPLE RESPONSE..... 2469
 NON-RESPONSE..... 141
 MULTIPLE RESP.(INVALID). 23

QUESTION 38

SIMPLE RESPONSE..... 329
 NON-RESPONSE..... 2
 MULTIPLE RESP.(INVALID). 0

QUESTION 39

SIMPLE RESPONSE..... 2303
 NON-RESPONSE..... 324
 MULTIPLE RESP.(INVALID). 6

QUESTION 40

SIMPLE RESPONSE..... 1914
 NON-RESPONSE..... 100
 PARTIAL RESPONSE..... 109

QUESTION 41

SIMPLE RESPONSE..... 2421
 NON-RESPONSE..... 206
 MULTIPLE RESP.(INVALID). 6

QUESTION 42

SIMPLE RESPONSE..... 2295
 NON-RESPONSE..... 21
 MULTIPLE RESP.(INVALID). 2

QUESTION	43A	43B	43C	43D	43E	43F	43G	43H	43I	43J	43K
SIMPLE RESPONSE.....	2967	2264	2256	2482	2447	2385	2325	2492	2341	2301	2692
NON-RESPONSE.....	901	1724	1733	1477	1512	1579	1641	1464	1627	1690	1223
MULTIPLE RESP.(INVALID).	56	5	6	4	5	5	5	13	5	9	46
PARTIAL RESPONSE.....	80	11	9	41	40	35	33	35	31	4	43

QUESTION 44

SIMPLE RESPONSE..... 3506
 NON-RESPONSE..... 495
 MULTIPLE RESP.(INVALID). 3

QUESTION 45

SIMPLE RESPONSE..... 1496
 NON-RESPONSE..... 101
 MULTIPLE RESP.(INVALID). 130
 PARTIAL RESPONSE..... 41

Appendix 4

RESPONSE RATES (ESS FOR NCT)

STEP 2

SIMPLE RESPONSE..... 98.1
NON-RESPONSE..... 1.9

STEP 3

SIMPLE RESPONSE..... 95.9
NON-RESPONSE..... 3.8
MULTIPLE RESP.(INVALID). 0.3

STEP 4

SIMPLE RESPONSE..... 92.0
NON-RESPONSE..... 7.6
MULTIPLE RESP.(INVALID). 0.1
PARTIAL RESPONSE..... 0.1

STEP 5

SIMPLE RESPONSE..... 97.7
NON-RESPONSE..... 2.2
MULTIPLE RESP.(INVALID). 0.1

STEP 8

QUESTION 46

SIMPLE RESPONSE..... 66.3
NON-RESPONSE..... 6.0
MULTIPLE RESP.(INVALID)... 27.7

QUESTION 47

SIMPLE RESPONSE..... 94.7
NON-RESPONSE..... 5.3
MULTIPLE RESP.(INVALID). 0.1

QUESTION 48

SIMPLE RESPONSE..... 96.2
NON-RESPONSE..... 3.8

QUESTION 49

SIMPLE RESPONSE..... 95.8
NON-RESPONSE..... 4.2

QUESTION	50	51	52	53A	53B	53C	54	55A	55B	55C
SIMPLE RESPONSE.....	93.8	96.9	94.1	84.3	79.5	79.1	94.0	90.9	95.4	90.1
NON-RESPONSE.....	6.1	3.1	4.6	13.0	19.1	19.9	4.4	8.8	4.6	9.7
MULTIPLE RESP.(INVALID).	0.1	0.0	1.2	2.7	1.4	1.1	1.6	0.2	0.0	0.2

QUESTION 55D

SIMPLE RESPONSE..... 84.2
NON-RESPONSE..... 15.8

QUESTION 55E

SIMPLE RESPONSE..... 89.8
NON-RESPONSE..... 10.2
MULTIPLE RESP.(INVALID). 0.0

QUESTION 55F

SIMPLE RESPONSE..... 92.0
NON-RESPONSE..... 7.2
MULTIPLE RESP.(INVALID). 0.0

STEP 9

SIMPLE RESPONSE..... 57.6
NON-RESPONSE..... 5.4
MULTIPLE RESP.(VALID)... 37.0

RESPONSE RATES (LESS FOR NCT)

STEP 6

<u>QUESTION 1</u>		<u>QUESTION 2</u>		<u>QUESTION 3</u>		<u>QUESTION 4</u>			
SIMPLE RESPONSE.....	99.3	SIMPLE RESPONSE.....	98.5	SIMPLE RESPONSE.....	98.4	SIMPLE RESPONSE.....	86.2		
NON-RESPONSE.....	0.7	NON-RESPONSE.....	1.2	NON-RESPONSE.....	1.5	NON-RESPONSE.....	4.6		
		PARTIAL RESPONSE.....	0.3	MULTIPLE RESP.(INVALID).	0.1	MULTIPLE RESP.(INVALID).	9.1		
						PARTIAL RESPONSE.....	0.0		
<u>QUESTION 5</u>		<u>QUESTION 6</u>		<u>QUESTION 7</u>		<u>QUESTION 8</u>			
SIMPLE RESPONSE.....	96.6	SIMPLE RESPONSE.....	95.3	SIMPLE RESPONSE.....	81.5	SIMPLE RESPONSE.....	78.0		
NON-RESPONSE.....	2.3	NON-RESPONSE.....	4.7	NON-RESPONSE.....	18.5	NON-RESPONSE.....	1.9		
MULTIPLE RESP.(INVALID).	0.9	MULTIPLE RESP.(INVALID):	0.0	MULTIPLE RESP.(INVALID).	0.0	MULTIPLE RESP.(VALID)...	20.1		
PARTIAL RESPONSE.....	0.1					PARTIAL RESPONSE.....	0.0		
<u>QUESTION 9</u>		<u>QUESTION 10</u>		<u>QUESTION 11</u>		<u>QUESTION 12</u>			
SIMPLE RESPONSE.....	96.8	SIMPLE RESPONSE.....	96.3	SIMPLE RESPONSE.....	97.7	SIMPLE RESPONSE.....	95.5		
NON-RESPONSE.....	1.3	NON-RESPONSE.....	2.2	NON-RESPONSE.....	1.8	NON-RESPONSE.....	3.0		
MULTIPLE RESP.(VALID)...	1.9	MULTIPLE RESP.(VALID)...	1.4	MULTIPLE RESP.(INVALID).	0.5	MULTIPLE RESP.(VALID)...	1.5		
PARTIAL RESPONSE.....	0.0	PARTIAL RESPONSE.....	0.1	PARTIAL RESPONSE.....	0.0				
<u>QUESTION 13</u>		<u>QUESTION 14</u>		<u>FATHER MOTHER</u>		<u>QUESTION 15,16 (EXCEPT BAND)</u>		<u>Q15</u>	<u>Q16</u>
SIMPLE RESPONSE.....	78.0	SIMPLE RESPONSE.....	96.6	91.8	SIMPLE RESPONSE.....	57.9	75.1		
NON-RESPONSE.....	22.0	NON-RESPONSE.....	2.3	7.1	NON-RESPONSE.....	4.3	4.0		
MULTIPLE RESP.(INVALID).	0.0	MULTIPLE RESP.(INVALID).	0.5	0.6	MULTIPLE RESP.(VALID).....	37.8	20.9		
		PARTIAL RESPONSE.....	0.5	0.5	PARTIAL RESPONSE.....	0.0	0.0		
<u>QUESTION 15,16 (BAND)</u>		<u>Q15</u>	<u>Q16</u>	<u>QUESTION 17</u>		<u>QUESTION 18</u>			
SIMPLE RESPONSE.....	33.7	27.9		SIMPLE RESPONSE.....	96.3	SIMPLE RESPONSE.....	97.8		
NON-RESPONSE.(NOT APPLICABLE)...	59.2	72.1		NON-RESPONSE.....	3.0	NON-RESPONSE.....	1.6		
MULTIPLE RESP.(VALID).....	7.1			MULTIPLE RESP.(VALID)...	0.6	MULTIPLE RESP.(INVALID).	0.5		
				PARTIAL RESPONSE.....	0.0	PARTIAL RESPONSE.....	0.1		

RESPONSE RATES (ESS FOR NCT)

STEP 7

<u>QUESTION 19</u>		<u>QUESTION 20</u>		<u>QUESTION 21</u>		<u>QUESTION 22</u>	
SIMPLE RESPONSE.....	97.7	SIMPLE RESPONSE.....	96.7	SIMPLE RESPONSE.....	93.7	SIMPLE RESPONSE.....	95.7
NON-RESPONSE.....	2.0	NON-RESPONSE.....	3.3	NON-RESPONSE.....	0.6	NON-RESPONSE.....	4.0
MULTIPLE RESP.(INVALID).	0.3	MULTIPLE RESP.(INVALID).	0.0	MULTIPLE RESP.(INVALID).	3.8	MULTIPLE RESP.(INVALID).	0.3
PARTIAL RESPONSE.....	0.0			PARTIAL RESPONSE.....	1.9		
<u>QUESTION 23A</u>		<u>QUESTION 23B</u>		<u>QUESTION 23C</u>		<u>QUESTION 24</u>	
SIMPLE RESPONSE.....	94.3	SIMPLE RESPONSE.....	95.2	SIMPLE RESPONSE.....	94.7	SIMPLE RESPONSE.....	88.6
NON-RESPONSE.....	3.6	NON-RESPONSE.....	4.8	NON-RESPONSE.....	5.3	NON-RESPONSE.....	11.4
PARTIAL RESPONSE.....	2.1	MULTIPLE RESP.(INVALID).	0.0	MULTIPLE RESP.(INVALID).	0.0	MULTIPLE RESP.(INVALID).	0.0
<u>QUESTION 25</u>		<u>QUESTION 26</u>		<u>QUESTION 27</u>		<u>QUESTION 28</u>	
SIMPLE RESPONSE.....	96.1	SIMPLE RESPONSE.....	91.9	SIMPLE RESPONSE.....	95.8	SIMPLE RESPONSE.....	71.5
NON-RESPONSE.....	3.7	NON-RESPONSE.....	7.4	NON-RESPONSE.....	4.0	NON-RESPONSE.....	5.5
MULTIPLE RESP.(INVALID).	0.1	MULTIPLE RESP.(INVALID).	0.8	MULTIPLE RESP.(INVALID).	0.2	MULTIPLE RESP.(INVALID)...	23.0
<u>QUESTION 29</u>		<u>QUESTION 30</u>		<u>QUESTION 31</u>		<u>QUESTION 32</u>	
SIMPLE RESPONSE.....	88.8	SIMPLE RESPONSE.....	95.7	SIMPLE RESPONSE.....	86.4	SIMPLE RESPONSE.....	44.2
NON-RESPONSE.....	10.0	NON-RESPONSE.....	4.3	NON-RESPONSE.....	12.2	NON-RESPONSE.....	3.6
MULTIPLE RESP.(INVALID).	1.1	MULTIPLE RESP.(INVALID).	0.0	MULTIPLE RESP.(INVALID).	1.4	PARTIAL RESPONSE.....	52.2
<u>QUESTION 33</u>		<u>QUESTION 34</u>		<u>QUESTION 35</u>		<u>QUESTION 36</u>	
SIMPLE RESPONSE.....	93.7	SIMPLE RESPONSE.....	84.5	SIMPLE RESPONSE.....	94.4	SIMPLE RESPONSE.....	87.5
NON-RESPONSE.....	6.3	NON-RESPONSE.....	9.8	NON-RESPONSE.....	5.6	NON-RESPONSE.....	12.5
		MULTIPLE RESP.(INVALID).	2.6				
		PARTIAL RESPONSE.....	3.1				

RESPONSE RATES (ESS FOR NCT)

STEP 7

<u>QUESTION 37</u>		<u>QUESTION 38</u>		<u>QUESTION 39</u>		<u>QUESTION 40</u>			
SIMPLE RESPONSE.....	94.0	SIMPLE RESPONSE.....	99.4	SIMPLE RESPONSE.....	88.4	SIMPLE RESPONSE.....	90.5		
NON-RESPONSE.....	5.2	NON-RESPONSE.....	0.6	NON-RESPONSE.....	11.4	NON-RESPONSE.....	4.6		
MULTIPLE RESP.(INVALID).	0.8	MULTIPLE RESP.(INVALID).	0.0	MULTIPLE RESP.(INVALID).	0.2	PARTIAL RESPONSE.....	4.9		
<u>QUESTION 41</u>		<u>QUESTION 42</u>		<u>QUESTION 43A</u>		<u>QUESTION 43B</u>			
SIMPLE RESPONSE.....	92.4	SIMPLE RESPONSE.....	99.4	SIMPLE RESPONSE.....	76.3	SIMPLE RESPONSE.....	58.0		
NON-RESPONSE.....	7.3	NON-RESPONSE.....	0.5	NON-RESPONSE.....	19.9	NON-RESPONSE.....	41.6		
MULTIPLE RESP.(INVALID).	0.3	MULTIPLE RESP.(INVALID).	0.0	MULTIPLE RESP.(INVALID).	1.6	MULTIPLE RESP.(INVALID).	0.1		
				PARTIAL RESPONSE.....	2.3	PARTIAL RESPONSE.....	0.2		
QUESTION	43C	43D	43E	43F	43G	43H	43I	43J	43K
SIMPLE RESPONSE.....	57.6	62.4	61.9	60.7	59.3	63.6	59.9	59.1	68.4
NON-RESPONSE.....	42.2	36.5	36.9	38.6	39.7	34.9	39.1	40.5	29.5
MULTIPLE RESP.(INVALID).	0.1	0.1	0.1	0.1	0.1	0.4	0.2	0.3	1.1
PARTIAL RESPONSE.....	0.1	1.0	1.1	0.6	0.9	1.1	0.9	0.1	1.1
<u>QUESTION 44</u>		<u>QUESTION 45</u>							
SIMPLE RESPONSE.....	89.2	SIMPLE RESPONSE.....	84.6						
NON-RESPONSE.....	10.7	NON-RESPONSE.....	5.4						
MULTIPLE RESP.(INVALID).	0.1	MULTIPLE RESP.(INVALID).	7.5						
		PARTIAL RESPONSE.....	2.6						

Appendix 5

OVER-RESPONSE RATES (ESS FOR NCT)

QUESTION 13

OVER-RESPONSE..... 1.3
NON-RESPONSE.(VALID).... 98.7

QUESTION 15,16 (BAND) Q15 Q16

OVER-RESPONSE..... 1.1 0.7
NON-RESPONSE.(VALID)..... 98.9 99.3

OVER-RESPONSE RATES (ESS FOR NCT)

STEP 7

QUESTION	19	20	21	22	23A	23B	23C	24	25	26
OVER-RESPONSE.....	-	-	59.5	6.3	5.6	16.9	2.6	-	-	-
NON-RESPONSE.(VALID)....	-	-	40.5	93.7	94.4	83.1	97.4	-	-	-

QUESTION	27	28	29	30	31	32	33	34	35	36
OVER-RESPONSE.....	-	-	12.7	-	33.2	9.3	9.2	9.0	8.5	6.3
NON-RESPONSE.(VALID)....	-	-	87.3	-	66.8	90.7	90.8	91.0	91.5	93.7

QUESTION	37	38	39	40	41	42
OVER-RESPONSE.....	9.6	10.0	12.9	17.8	22.1	11.4
NON-RESPONSE.(VALID)....	90.4	90.0	87.1	82.2	77.9	88.6

QUESTION	45
OVER-RESPONSE.....	7.7
NON-RESPONSE.(VALID)....	92.3

STEP 8

QUESTION	53A	53B	53C	54	55A	55B	55C	55D	55E	55F
OVER-RESPONSE.....	16.3	16.3	16.3	4.6	6.8	26.3	6.4	3.5	7.2	12.9
NON-RESPONSE.(VALID)....	83.7	83.7	83.7	95.4	93.2	73.7	93.6	96.5	92.8	87.1

OVER-RESPONSE FREQUENCIES (ESS FOR NCT)

STEP 6

QUESTION 13

OVER-RESPONSE..... 59
NON-RESPONSE.(VALID).... 4472

QUESTION 15,16 (BAND) Q15 Q16

OVER-RESPONSE..... 58 34
NON-RESPONSE.(VALID)..... 5008 5074

OVER-RESPONSE FREQUENCIES (ESS FOR NCT)

STEP 7

QUESTION	19	20	21	22	23A	23B	23C	24	25	26
OVER-RESPONSE.....	-	-	1572	124	56	170	97	-	-	-
NON-RESPONSE.(VALID)....	-	-	1071	1832	949	835	3613	-	-	-

QUESTION	27	28	29	30	31	32	33	34	35	36
OVER-RESPONSE.....	-	-	244	-	747	127	126	124	117	86
NON-RESPONSE.(VALID)....	-	-	1680	-	1505	1244	1245	1247	1254	1285

QUESTION	37	38	39	40	41	42
OVER-RESPONSE.....	132	366	177	334	303	192
NON-RESPONSE.(VALID)....	1239	3307	1194	1547	1068	1494

QUESTION	45
OVER-RESPONSE.....	173
NON-RESPONSE.(VALID)....	2063

STEP 8

QUESTION	53A	53B	53C	54	55A	55B	55C	55D	55E	55F
OVER-RESPONSE.....	7	7	7	72	42	389	40	22	45	262
NON-RESPONSE.(VALID)....	36	36	36	1495	580	1091	582	600	577	1762

Appendix 6

OVER-RESPONSE RATES (ESS FOR NCT)

QUESTION 13

OVER-RESPONSE..... 1.1
NON-RESPONSE.(VALID).... 98.9

QUESTION 15,16 (BAND) Q15 Q16

OVER-RESPONSE..... 1.2 0.7
NON-RESPONSE.(VALID)..... 98.8 99.3

OVER-RESPONSE RATES (ESS FOR NCT)

STEP 7

QUESTION	19	20	21	22	23A	23B	23C	24	25	26
OVER-RESPONSE.....	-	-	58.7	5.9	5.6	15.3	2.2	-	-	-
NON-RESPONSE.(VALID)....	-	-	41.3	94.1	94.4	84.7	97.8	-	-	-

QUESTION	27	28	29	30	31	32	33	34	35	36
OVER-RESPONSE.....	-	-	13.2	-	31.7	8.8	8.2	8.2	8.8	6.4
NON-RESPONSE.(VALID)....	-	-	86.8	-	68.3	91.2	91.8	91.8	91.2	93.6

QUESTION	37	38	39	40	41	42
OVER-RESPONSE.....	8.4	9.3	13.8	18.1	21.8	11.1
NON-RESPONSE.(VALID)....	91.6	90.7	86.2	81.9	78.2	88.9

QUESTION	45
OVER-RESPONSE.....	6.9
NON-RESPONSE.(VALID)....	93.1

STEP 8

QUESTION	53A	53B	53C	54	55A	55B	55C	55D	55E	55F
OVER-RESPONSE.....	14.9	14.9	15.3	5.9	5.9	24.6	5.3	2.9	5.7	11.7
NON-RESPONSE.(VALID)....	85.1	85.1	84.7	94.1	94.1	75.4	94.7	97.1	94.3	88.3

Appendix 7

Scenario 1 : rejection rate = 39.2%	
Non-response	S3 S4 S5 Q1 Q2 Q3 Q4 Q5 Q6 Q10 Q47
Multiple response	S3 S4 S5 Q3 Q5 Q6 Q47
Partial response	S4 Q4 Q5 Q10
Special response	S2 S3 S4 S5 Q2 Q46

Scénario 2 : rejection rate = 31.8%	
Non-response	S3 S4 S5 Q1 Q2 Q3 Q4 Q5 Q6 Q10 Q47
Multiple response	
Partial response	
Special response	

Scénario 3 : rejection rate = 36.2%	
Non-response	S3 S4 Q1 Q2 Q3 Q4 Q5 Q6 Q10 Q47
Multiple response	S3 S4 Q3 Q5 Q6 Q47
Partial response	S4 Q4 Q5 Q10
Special response	S2 S3 S4 Q2 Q46

Program for the calculation of rejection rates with scenarios 1 and 2.

```
< job card with TIME=(0,14) and CLASS=A >
//PROCLIB DD DSN=STC2.SAS.PROC,DISP=SHR
//ETAPE1 EXEC SAS
//IN1 DD DSN=CECO.PUBLIC.ESSNCT.MACRO(PGM),DISP=SHR
//IN2 DD DSN=CECO.PUBLIC.ESSNCT.DATA.CONTROL.SAS,DISP=SHR
//SYSIN DD *
%INCLUDE IN1;
%ANAL_REG(1,ST2 ST3 ST4 ST5 Q1 Q2 Q3 Q4 Q5 Q6 Q10 Q47)
%ANAL_REG(2,ST3 ST4 ST5 Q3 Q5 Q6 Q47)
%ANAL_REG(3,ST4 Q4 Q5 Q10)
%ANAL_REG(4,ST2 ST3 ST4 ST5 Q2 Q46)
%COMP_REG(R1-1,R2-2,R3-3,R4-4)
%ANAL_REG(1,ST2 ST3 ST4 ST5 Q1 Q2 Q3 Q4 Q5 Q6 Q10 Q47)
%COMP_REG(R1-1)
//
```

One can edit separately the "father" part and the "mother" part of Question 14, the variables used in the %ANAL_REG statement are Q14P and Q14M respectively. Use Q15 and Q16 for the "ethnic" portion of these questions, Q15C and Q16C for the "band" portion. For Questions 23, 53 et 55, also specify the question part; for example, Q23A, Q53C, Q55F, etc.

Appendix 8



1978 CENSUS TEST

Please complete your questionnaire as of Wednesday, March 15, 1978.
Refer to the enclosed Guide for further details.

Please complete address or exact location:

(Street and No. or Lot and concession) _____
 (City, town, village, municipality) _____
 (Province) _____ (Postal Code) _____

Form
2B

Prov.	
FED No.	
EA No.	
HHLD No.	
Quest. No.	
Doc. Type	1
No. of Persons	

1
2

Telephone number of this household _____

This household is made up of all persons who usually live here, even if they are temporarily away (such as on business or at school), and any persons staying or visiting here who have no other usual home.

Temporary or foreign residents, see the back cover and return the questionnaire in the enclosed envelope.

PLEASE INCLUDE ALSO ...

- persons who usually live here but are now in an institution (such as hospital, correctional institution), if they have been there for less than 6 months;
- unmarried persons with a home elsewhere but who stay in this household during the week while working.

... BUT DO NOT INCLUDE

- persons who are now in an institution and have been there for the past 6 months or longer;
- unmarried persons who live elsewhere during the week while working, even if they return here on week-ends;
- persons permanently away from home in the Armed Forces;
- foreign government representatives or members of the Armed Forces of another country and members of their families who are not citizens of Canada.

How many persons who have a usual home elsewhere in Canada are now staying or visiting here temporarily?

None, OR Number of persons

ORDER OF LISTING OF MEMBERS OF THIS HOUSEHOLD

To ensure that all persons in the same family group are listed together, enter the names of all members of this household on page 2 in the following order:

- Person 1: Choose one of the following as Person 1:
 - any person who lives alone
 - either the husband or the wife in any married couple living here
 - either partner in a common-law relationship
 - the parent, where one parent only lives with his or her never-married sons or daughters.
 If none of the above apply, choose any adult member of this household.
- Husband or wife (or common-law partner) of Person 1;
- Never-married children or stepchildren of Person 1;
- Other children of Person 1, and their families;
- Other relatives of Person 1 (whether related by blood, marriage, adoption or common-law), and their families;
- Persons not related to Person 1, and their families.

Si vous désirez remplir votre questionnaire en français, veuillez cocher cette case
et nous retourner le questionnaire immédiatement dans l'enveloppe-retour.

1. Print below the names of all persons who usually live here, in the order shown on the front cover of the questionnaire.
 For directions on how to choose Person 1 and on whom to include, also see the front cover.
 For directions on how to choose Person 1 and on whom to include, also see the front cover.
 If there are more than six persons in this household, see the Guide for instructions.

2. RELATIONSHIP TO PERSON 1

For each person in this household, check (✓) one box only to describe his or her relationship to Person 1. If you check the box marked "Other relative" or "Other non-relative", print in the relationship to Person 1. Some examples of the "Other" relationships are:
 grandmother
 uncle
 roommate's daughter
 employee's husband and so on.

Person 1

 Last name

 Given name and initial

1 Person 1

Person 2

 Last name

 Given name and initial

- 2 Husband or wife of Person 1
- 3 Common-law partner of Person 1
- 4 Son or daughter of Person 1
- 5 Father or mother of Person 1
- 6 Brother or sister of Person 1
- 7 Son-in-law or daughter-in-law of Person 1
- 8 Father-in-law or mother-in-law of Person 1

- 9 Brother-in-law or sister-in-law of Person 1
 - 10 Grandchild of Person 1
 - 11 Nephew or niece of Person 1
 - Other relative of Person 1 (print below)
- ⋮

- 12 Lodger
- 13 Lodger's husband or wife
- 14 Lodger's son or daughter
- 15 Roommate
- 16 Employee
- Other non-relative (print below)

Person 3

 Last name

 Given name and initial

- 4 Son or daughter of Person 1
- 5 Father or mother of Person 1
- 6 Brother or sister of Person 1
- 7 Son-in-law or daughter-in-law of Person 1
- 8 Father-in-law or mother-in-law of Person 1

- 9 Brother-in-law or sister-in-law of Person 1
 - 10 Grandchild of Person 1
 - 11 Nephew or niece of Person 1
 - Other relative of Person 1 (print below)
- ⋮

- 12 Lodger
- 13 Lodger's husband or wife
- 14 Lodger's son or daughter
- 15 Roommate
- 16 Employee
- Other non-relative (print below)

Person 4

 Last name

 Given name and initial

- 4 Son or daughter of Person 1
- 5 Father or mother of Person 1
- 6 Brother or sister of Person 1
- 7 Son-in-law or daughter-in-law of Person 1
- 8 Father-in-law or mother-in-law of Person 1

- 9 Brother-in-law or sister-in-law of Person 1
 - 10 Grandchild of Person 1
 - 11 Nephew or niece of Person 1
 - Other relative of Person 1 (print below)
- ⋮

- 12 Lodger
- 13 Lodger's husband or wife
- 14 Lodger's son or daughter
- 15 Roommate
- 16 Employee
- Other non-relative (print below)

Person 5

 Last name

 Given name and initial

- 4 Son or daughter of Person 1
- 5 Father or mother of Person 1
- 6 Brother or sister of Person 1
- 7 Son-in-law or daughter-in-law of Person 1
- 8 Father-in-law or mother-in-law of Person 1

- 9 Brother-in-law or sister-in-law of Person 1
 - 10 Grandchild of Person 1
 - 11 Nephew or niece of Person 1
 - Other relative of Person 1 (print below)
- ⋮

- 12 Lodger
- 13 Lodger's husband or wife
- 14 Lodger's son or daughter
- 15 Roommate
- 16 Employee
- Other non-relative (print below)

Person 6

 Last name

 Given name and initial

- 4 Son or daughter of Person 1
- 5 Father or mother of Person 1
- 6 Brother or sister of Person 1
- 7 Son-in-law or daughter-in-law of Person 1
- 8 Father-in-law or mother-in-law of Person 1

- 9 Brother-in-law or sister-in-law of Person 1
 - 10 Grandchild of Person 1
 - 11 Nephew or niece of Person 1
 - Other relative of Person 1 (print below)
- ⋮

- 12 Lodger
- 13 Lodger's husband or wife
- 14 Lodger's son or daughter
- 15 Roommate
- 16 Employee
- Other non-relative (print below)

<p>3. DATE OF BIRTH Print month and year. Example: If you were born in February 1945, you would enter 0:2 1:9:4:5 If exact month and year are not known, enter best estimate.</p>	<p>4. SEX Check (✓) one box only</p>	<p>5. MARITAL STATUS</p> <p>(a) What is your legal marital status? Check (✓) one box only</p> <p>(b) Also check (✓) one or both boxes, if applicable.</p>		<p>6. What is the language you first learned in childhood and still understand? Check (✓) one box only</p>	<p>7. What language do you yourself speak at home now? (If more than one language, which language do you speak most often?) Check (✓) one box only</p>	<p>OFFICE USE ONLY 96</p>
<p>Month: [] [] [] [] Year: [] [] [] []</p>	<p>1 <input type="checkbox"/> Male 2 <input type="checkbox"/> Female</p>	<p>1 <input type="checkbox"/> Now married 2 <input type="checkbox"/> Legally separated 3 <input type="checkbox"/> Divorced 4 <input type="checkbox"/> Widowed 5 <input type="checkbox"/> Never married (single)</p>	<p>6 <input type="checkbox"/> Separated, without legal separation 7 <input type="checkbox"/> Living with common-law partner</p>	<p>1 <input type="checkbox"/> English 2 <input type="checkbox"/> French 3 <input type="checkbox"/> German 4 <input type="checkbox"/> Italian 5 <input type="checkbox"/> Ukrainian [] [] [] [] Other (specify)</p>	<p>1 <input type="checkbox"/> English 2 <input type="checkbox"/> French 3 <input type="checkbox"/> German 4 <input type="checkbox"/> Italian 5 <input type="checkbox"/> Ukrainian [] [] [] [] Other (specify)</p>	<p>1 <input type="checkbox"/> A 2 <input type="checkbox"/> F</p>
<p>Month: [] [] [] [] Year: [] [] [] []</p>	<p>1 <input type="checkbox"/> Male 2 <input type="checkbox"/> Female</p>	<p>1 <input type="checkbox"/> Now married 2 <input type="checkbox"/> Legally separated 3 <input type="checkbox"/> Divorced 4 <input type="checkbox"/> Widowed 5 <input type="checkbox"/> Never married (single)</p>	<p>6 <input type="checkbox"/> Separated, without legal separation 7 <input type="checkbox"/> Living with common-law partner</p>	<p>1 <input type="checkbox"/> English 2 <input type="checkbox"/> French 3 <input type="checkbox"/> German 4 <input type="checkbox"/> Italian 5 <input type="checkbox"/> Ukrainian [] [] [] [] Other (specify)</p>	<p>1 <input type="checkbox"/> English 2 <input type="checkbox"/> French 3 <input type="checkbox"/> German 4 <input type="checkbox"/> Italian 5 <input type="checkbox"/> Ukrainian [] [] [] [] Other (specify)</p>	<p>1 <input type="checkbox"/> A 2 <input type="checkbox"/> F</p>
<p>Month: [] [] [] [] Year: [] [] [] []</p>	<p>1 <input type="checkbox"/> Male 2 <input type="checkbox"/> Female</p>	<p>1 <input type="checkbox"/> Now married 2 <input type="checkbox"/> Legally separated 3 <input type="checkbox"/> Divorced 4 <input type="checkbox"/> Widowed 5 <input type="checkbox"/> Never married (single)</p>	<p>6 <input type="checkbox"/> Separated, without legal separation 7 <input type="checkbox"/> Living with common-law partner</p>	<p>1 <input type="checkbox"/> English 2 <input type="checkbox"/> French 3 <input type="checkbox"/> German 4 <input type="checkbox"/> Italian 5 <input type="checkbox"/> Ukrainian [] [] [] [] Other (specify)</p>	<p>1 <input type="checkbox"/> English 2 <input type="checkbox"/> French 3 <input type="checkbox"/> German 4 <input type="checkbox"/> Italian 5 <input type="checkbox"/> Ukrainian [] [] [] [] Other (specify)</p>	<p>1 <input type="checkbox"/> A 2 <input type="checkbox"/> F</p>
<p>Month: [] [] [] [] Year: [] [] [] []</p>	<p>1 <input type="checkbox"/> Male 2 <input type="checkbox"/> Female</p>	<p>1 <input type="checkbox"/> Now married 2 <input type="checkbox"/> Legally separated 3 <input type="checkbox"/> Divorced 4 <input type="checkbox"/> Widowed 5 <input type="checkbox"/> Never married (single)</p>	<p>6 <input type="checkbox"/> Separated, without legal separation 7 <input type="checkbox"/> Living with common-law partner</p>	<p>1 <input type="checkbox"/> English 2 <input type="checkbox"/> French 3 <input type="checkbox"/> German 4 <input type="checkbox"/> Italian 5 <input type="checkbox"/> Ukrainian [] [] [] [] Other (specify)</p>	<p>1 <input type="checkbox"/> English 2 <input type="checkbox"/> French 3 <input type="checkbox"/> German 4 <input type="checkbox"/> Italian 5 <input type="checkbox"/> Ukrainian [] [] [] [] Other (specify)</p>	<p>1 <input type="checkbox"/> A 2 <input type="checkbox"/> F</p>
<p>Month: [] [] [] [] Year: [] [] [] []</p>	<p>1 <input type="checkbox"/> Male 2 <input type="checkbox"/> Female</p>	<p>1 <input type="checkbox"/> Now married 2 <input type="checkbox"/> Legally separated 3 <input type="checkbox"/> Divorced 4 <input type="checkbox"/> Widowed 5 <input type="checkbox"/> Never married (single)</p>	<p>6 <input type="checkbox"/> Separated, without legal separation 7 <input type="checkbox"/> Living with common-law partner</p>	<p>1 <input type="checkbox"/> English 2 <input type="checkbox"/> French 3 <input type="checkbox"/> German 4 <input type="checkbox"/> Italian 5 <input type="checkbox"/> Ukrainian [] [] [] [] Other (specify)</p>	<p>1 <input type="checkbox"/> English 2 <input type="checkbox"/> French 3 <input type="checkbox"/> German 4 <input type="checkbox"/> Italian 5 <input type="checkbox"/> Ukrainian [] [] [] [] Other (specify)</p>	<p>1 <input type="checkbox"/> A 2 <input type="checkbox"/> F</p>
<p>Month: [] [] [] [] Year: [] [] [] []</p>	<p>1 <input type="checkbox"/> Male 2 <input type="checkbox"/> Female</p>	<p>1 <input type="checkbox"/> Now married 2 <input type="checkbox"/> Legally separated 3 <input type="checkbox"/> Divorced 4 <input type="checkbox"/> Widowed 5 <input type="checkbox"/> Never married (single)</p>	<p>6 <input type="checkbox"/> Separated, without legal separation 7 <input type="checkbox"/> Living with common-law partner</p>	<p>1 <input type="checkbox"/> English 2 <input type="checkbox"/> French 3 <input type="checkbox"/> German 4 <input type="checkbox"/> Italian 5 <input type="checkbox"/> Ukrainian [] [] [] [] Other (specify)</p>	<p>1 <input type="checkbox"/> English 2 <input type="checkbox"/> French 3 <input type="checkbox"/> German 4 <input type="checkbox"/> Italian 5 <input type="checkbox"/> Ukrainian [] [] [] [] Other (specify)</p>	<p>1 <input type="checkbox"/> A 2 <input type="checkbox"/> F</p>

8. How many persons usually live in this household?

Number of persons

List 6 persons only on this form. Use the additional form provided to list other household members.

9. Did you leave anyone out of Question 1 because you were not sure whether he or she should be listed? For example, a student, a lodger who also has another home, a new baby still in hospital, or a former occupant of this household who has become a patient in a hospital or sanatorium within the past 6 months.

Yes No

If "Yes", print name(s) here and the reason this person was left out:

Name -----

Reason -----

If you require more space, please use the "Householder Comments" section on the back cover.

A dwelling is a separate set of living quarters with a private entrance from the outside or from a common hallway or stairway inside the building. This entrance must not be through someone else's living quarters.

10. The following questions about your dwelling should be answered by the person, or one of the persons, in the household who pays the rent or the mortgage, or the taxes, etc., for this dwelling.

Enter the name of that person here _____

CENSUS REPRESENTATIVE'S USE ONLY

Unoccupied Dwelling

96. A. Was this dwelling ever occupied?

1 Yes
2 No

B. Length of time unoccupied?

3 Under one year
4 One year or more

C. Is this dwelling (Check one box only)

Available?

5 For rent
6 For sale

Or unavailable?

7 Company maintained
8 Second home
9 Rented or sold
10 For demolition (or expropriated)
11 Other

97. Is this a seasonal dwelling?

1 Yes
2 No

OFFICE USE ONLY

98. 0 UD 4 Coll. 8 JIC-A
1 FP 5 FR
2 AV 6 TR 9 JIC-B
3 Trans. 7 Ref.

11. Do you enter your living quarters:

- 1 By a separate private entrance from outside?
- 2 By a separate private entrance off a common hallway or stairway?
- 3 Through someone else's living quarters?

12. Is this dwelling a:

Check one box only

1 Single house - a single dwelling not attached to any other building and surrounded on all sides by open space?



2 Semi-detached or double house - one of two dwellings attached side by side but not attached to any other building and surrounded on all other sides by open space?



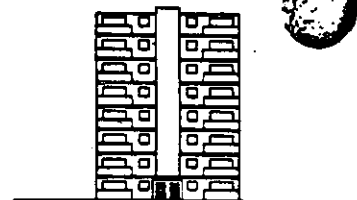
3 Duplex - one of two dwellings, one above the other, not attached to any other building and surrounded on all sides by open space?



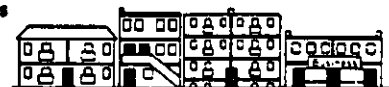
4 Row house - one of three or more dwellings joined side by side but not having any other dwellings either above or below?



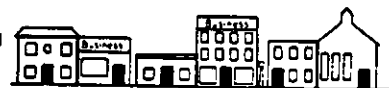
5 Apartment in a building that has six or more storeys - for example, a dwelling unit in a high-rise apartment building?



6 Apartment in a building that has less than six storeys - for example, a dwelling unit in a triplex, quadruplex or a dwelling unit in a non-residential building or in a house that has been converted?



7 House attached to a non-residential building - a dwelling unit attached to another building at ground level (such as a store, etc.) but separated from it by a common wall running from ground to roof?



8 Mobile home (designed and constructed to be transported on its own chassis and capable of being moved on short notice)?



9 Other movable dwelling (such as a tent, travel trailer, railroad car or houseboat)?



13. When was your dwelling or the building containing your dwelling originally built? (To the best of your knowledge, mark the period in which the building was completed, not the time of any later remodelling, additions or conversions.)

Check (✓) one box only

- 1 1920 or before
- 2 1921-1945
- 3 1946-1960
- 4 1961-1970
- 5 1971-1975
- 6 1976
- 7 1977 to present

14. How long have you lived in this dwelling?

Check (✓) one box only

- 1 Less than one year
- 2 One to two years
- 3 Three to five years
- 4 Six to ten years
- 5 More than ten years

15. How many rooms are there in your dwelling? (Include kitchen, bedrooms, finished rooms in attic or basement, etc. Do not count bathrooms, halls, vestibules and rooms used solely for business purposes.)

Number of rooms

16. How many bedrooms are there in your dwelling? (Include all rooms designed as bedrooms, even though the use may be occasional, as in the case of a "spare" bedroom. Do not include rooms designed as dining-rooms, living-rooms, etc., but which may be used as bedrooms at night.)

0 None, OR
 Number of bedrooms

17. How many bathrooms do you have within your dwelling?

Please consult the Guide for details

- 0 None, OR
- 1 Number of complete bathrooms
- 2 Number of half bathrooms

18. What is the main type of heating equipment for your dwelling?

Check (✓) one box only

- 1 Steam or hot water furnace
- 2 Hot air furnace
- 3 Installed electric heating system
- 4 Heating stove, cooking stove, space heater
- 5 Other (fireplace, etc.)

19. Is your dwelling in need of any repairs? (Do not include desirable remodelling or additions.)

- 1 No, only regular maintenance is needed (painting, furnace cleaning, etc.)
- 2 Yes, minor repairs are needed (loose bricks or shingles, defective steps, railing or siding, etc.)
- 3 Yes, major repairs are needed (defective plumbing or electrical wiring, structural repairs to walls, floors or ceilings, etc.)

20. Is this dwelling:

Check (✓) one box only

- 1 Owned or being bought by you or a member of this household?
- 2 Rented (even if no cash rent is paid to the landlord)?

NOTE: Answer Questions 21 to 23 only for the dwelling unit that you now occupy, even if you own or rent more than one dwelling.

21. For this dwelling, what are your average yearly payments for:

(a) Electricity?

- 1 None, OR
- 2 \$.00 per year

(b) Oil, gas, coal, wood or other fuels?

- 3 None, OR
- 4 \$.00 per year

(c) Water, sewage and garbage collection?

- 5 None, OR
- 6 \$.00 per year

(d) Condominium fees or lot rental?

- 7 None, OR
- 8 \$.00 per year

22. (For Renters Only) What is the regular monthly cash rent for this dwelling?

- 0 Rented without payment of cash rent, OR

\$.00 per month

Go to Question 24

23. (For Owners Only)

(a) What are your total regular monthly mortgage (or debt) payments for this dwelling?

- 1 None → Go to Question 23.(c)
OR
- 2 \$.00 per month

(b) Are your property taxes (municipal and school) included in the amount shown in Question 23.(a)?

- 3 Yes → Go to Question 23.(d)
- 4 No

(c) What are your estimated yearly property taxes (municipal and school) for this dwelling?

- 5 None, OR
- 6 \$.00 per year

(d) If you were to sell this dwelling now, for how much would you expect to sell it?

7 \$.00

(e) Is your dwelling part of a legally registered condominium development?

- 8 No
- 9 Yes

NAME OF PERSON

24. Where were you born? (Mark according to present boundaries.)
IN CANADA

Check (✓) one box only

- 1 Nfld.
- 2 P.E.I.
- 3 N.S.
- 4 N.B.
- 5 Que.
- 6 Ont.
- 7 Man.
- 8 Sask.
- 9 Alta.
- 10 B.C.
- 11 Yukon
- 12 N.W.T.

Go to Question 26

OUTSIDE CANADA

Check (✓) one box only

- 13 United Kingdom
- 14 Italy
- 15 U.S.A.
- 16 West Germany
- 17 East Germany
- 18 Poland
- 19 U.S.S.R.

Other (specify)

29. Which of Canada's two official languages, English and French, are you able to speak?

Check (✓) one box only

- 1 English only
- 2 French only
- 3 Both English and French
- 4 Neither English nor French

30. (a) Have you attended an educational institution at any time since last September? (See guide for further information.)

Check (✓) one box only

- 1 No → Go to Question 31
- 2 Yes, full-time
- 3 Yes, part-time, day or evening

Go to Question 30.(b)

(b) What kind of educational institution did you attend?

Check (✓) one box only

- 4 Elementary/Secondary
- 5 Post-secondary non-university
- 6 University

25. In what year did you first immigrate to Canada?

Print year below

If exact year is not known, please enter best estimate.

Year

31. What is the highest grade or year of secondary or elementary school you ever attended?

Check (✓) one box only, or enter highest grade or year

- 00 No schooling
- 01 Pre grade one

Highest grade or year of secondary or elementary school

26. Of what country are you a citizen?

Check (✓) as many boxes as apply

- 1 Canada by birth
- 2 Canada by naturalization
- 3 Same as country of birth
- 4 Other

32. Were you born before March 1, 1963?

1 No → End here for this person

2 Yes → Continue with Questions 33 to 46

27. To which ethnic or cultural group did you or your ancestors belong on first coming to this continent?

- 1 French
- 2 English
- 3 Irish
- 4 Scottish
- 5 German
- 6 Italian
- 7 Ukrainian
- 8 Dutch (Netherlands)
- 9 Polish
- 10 Jewish

Native Peoples

- 11 Inuit
- 12 Status or registered Indian
- 13 Non-status Indian
- 14 Métis

Other (specify)

33. (a) How many years of schooling since secondary (high) school have you ever completed at an institution other than a university (e.g., Community College, Institute of Technology, CEGEP, Diploma School of Nursing, etc.)?

0 None → Go to Question 34

1 Less than 1 year (of completed courses)

Number of completed years

Go to Question 33.(b)

(b) In which one of the following was this schooling taken?

If more than one answer is applicable check (✓) only the one of longest duration

- 3 Teachers' College
- 4 Diploma School of Nursing
- 5 Community College or Institute of Technology
- 6 CEGEP (general)
- 7 CEGEP (professional or other)
- 8 Private Trade School or Private Business College
- 9 Vocational Training Centre
- 10 Other

28. What is your religion?

Check (✓) one box only

- 1 Roman Catholic
- 2 United Church
- 3 Anglican
- 4 Presbyterian
- 5 Lutheran
- 6 Baptist
- 7 Greek Orthodox
- 8 Jewish

- 9 Ukrainian Catholic
- 10 Pentecostal
- 11 Jehovah's Witnesses
- 12 Mennonite
- 13 Salvation Army
- 14 No Religion

Other (specify)

34. How many years of education have you ever completed at university?

00 None

01 Less than 1 year (of completed courses)

Number of completed years

QUESTIONS FOR PERSON 1

What degrees, certificates or diplomas have you ever obtained?

Check (✓) as many boxes as apply

- None
- 1 Secondary (high) school graduation certificate
- 2 Trades certificate or diploma
- 3 Non-university certificate or diploma (e.g., obtained at Community College, CEGEP, Institute of Technology, etc.)
- 4 University certificate or diploma below bachelor level
- 5 Bachelor's degree(s) (e.g., B.A., B.Sc., B.A.Sc., LL.B.)
- 6 University certificate or diploma above bachelor level
- 7 Master's degree(s) (e.g., M.A., M.Sc., M.Ed.)
- 8 Degree in medicine, dentistry or veterinary medicine (e.g., M.D., D.D.S., D.M.D., D.V.M.)
- 9 Earned doctorate (e.g., Ph.D., D.Sc., D.Ed.)

36. For FEMALES 15 years of age or older: How many children were ever born to you? (Include all children who may have died since birth and those who are now living elsewhere, but do not include stillbirths - babies who showed no signs of life at birth.)

0 None OR
 Number of children

37. Where did you live 5 years ago, on March 1, 1973?

Check (✓) one box only

- 1 Same dwelling
 - 2 Different dwelling in same city, town, village, borough, or municipality
 - 3 Outside Canada
 - 4 Different city, town, village, borough, or municipality in Canada (specify below)
- } Go to Question 38

Important: If you lived in a suburban municipality within a large urban area, specify that municipality, not the main city (e.g., Montréal-Nord rather than Montréal; Scarborough rather than Toronto; West Vancouver rather than Vancouver).

 City, town, village, borough, or municipality

 County Province or Territory

5

38. For persons who are, or have ever been, married:
 (a) What were the month and year of your FIRST marriage?

Example: if you married in February 1945, you would enter

: : : :
 Month Year

If exact month or year are not known, please enter best estimate.

1 : : :
 Month Year

(b) What were the month and year of your MOST RECENT marriage?

- 2 Same as month and year of first marriage
- 3 Different from month and year of first marriage.
 Enter month and year of most recent marriage below.

If exact month or year are not known, please enter best estimate.

4 : : :
 Month Year

39. (a) Last week, how many hours did you work (not counting housework or other work around your home)?

Include: working for wages, salary, tips or commission, working in your own business, farm or professional practice, working without pay in a family farm or business.

0 None → Go to Question 39.(b)
 OR

1 Hours → Go to Question 41

(b) Last week, did you have a job from which you were on temporary lay-off?

- 2 No
- 3 Yes

(c) Last week, did you have a job or business from which you were absent because of illness, vacation, labour dispute at your place of work, training courses, etc.?

- 4 No
- 5 Yes

(d) Last week, did you have definite arrangements to start a new job within the next four weeks?

- 6 No
- 7 Yes

(e) Did you look for work during the past four weeks? For example, did you contact a Canada Manpower Centre, check with employers, place or answer newspaper ads, etc.?

Check (✓) one box only

- 8 No → Go to Question 40
- 9 Yes, looked for full-time work
- 10 Yes, looked for part-time work (less than 30 hours per week)

(f) Was there any reason why you could not start work last week? Check (✓) one box only

- 11 No, could have started work
- 12 Yes, already had a job
- 13 Yes, temporary illness or disability
- 14 Yes, personal or family responsibilities
- 15 Yes, going to school
- 16 Yes, other reasons

40. When did you last work, even for a few days (not counting housework or other work around your home)?

Check (✓) one box only

- 1 In 1978 } Answer Questions 41 to 46
- 2 In 1977 }
- 3 Before 1977 } Go to Question 46.
- 4 Never worked in lifetime }

41. Note: Questions 41 to 44 refer to your job or business last week. If none, answer for your job of longest duration since January 1, 1977. If you held more than one job last week, answer for the job at which you worked the most hours.

(a) For whom did you work?

 Name of firm, government agency, etc.

 Department, branch, division, section or plant

(b) What kind of business, industry or service was this?

 Give full description. For example, paper box manufacturing, road construction, retail shoe store, secondary school, dairy farm.

QUESTIONS FOR PERSON 1

42. At what address did you work?

Check (✓) one box only

- 1 Worked at home (Includes living and working on the same farm)
- 2 Worked outside Canada
- 3 Worked at address below (Please specify) →

 Number Street
 If street address is not known, give the building name, shopping centre or street intersection, etc.

 City, town, village, borough, township or other municipality
 Please be precise. For example, if you worked in a suburban municipality of a large metropolitan area, specify that municipality, not the largest city.

Province or Territory

4

43. (a) What kind of work were you doing?

For example, accounting clerk, sales representative, civil engineer, secondary teaching, garage foreman, metal machining.

(b) In this work, what were your most important activities or duties?

For example, verifying invoices, selling electrical tools, managing the research department, teaching mathematics, supervising auto mechanics, operating lathes.

44. (a) In this job were you mainly:

- 1 working for wages, salary, tips or commission? } Go to Question 45
- 2 working without pay for a relative in a family farm or business? }
- 3 self-employed without paid help?
- 4 self-employed with paid help?

(b) If self-employed, was your farm or business incorporated?

- 5 No
- 6 Yes

45. (a) In how many weeks did you work during 1977 (not counting housework or other work around your home)?

Include those weeks in which you:
 (i) worked full-time or part-time;
 (ii) were on vacation or sick leave with pay;
 (iii) were self-employed.

0 None → Go to Question 46
OR

1 Weeks

(b) During most of those weeks, did you work full-time or part-time?

- Check (✓) one box only
- 2 Full-time
 - 3 Part-time

46. During the year ending December 31, 1977, what was your total income from the sources listed below?

- Please be sure to enter an amount or check the "None" box against each item.
- If you suffered a loss from any of the items (b), (c), (j) or (m), please the amount and also check the "Loss" box.
- Please consult the Guide for details.

	AMOUNT		OR	NONE
	Dollars	Cents		
(a) Total Wages and Salaries including commissions, bonuses, tips, etc., before any deductions	01	<input type="text"/>		None 02 <input type="checkbox"/>
(b) Net Non-farm Self-employment Income (gross receipts minus expenses) from unincorporated business, professional practice, etc., on own account or in partnership	03	<input type="text"/>		None 04 <input type="checkbox"/>
		<input type="checkbox"/> Loss		
(c) Net Farm Self-employment Income (gross receipts minus expenses) from agricultural operations on own account or in partnership	05	<input type="text"/>		None 06 <input type="checkbox"/>
		<input type="checkbox"/> Loss		
(d) Family Allowances	07	<input type="text"/>		None 08 <input type="checkbox"/>
(e) Old Age Security Pension and Guaranteed Income Supplement from federal government only. (Provincial income supplements to be reported in (h)) ...	09	<input type="text"/>		None 10 <input type="checkbox"/>
(f) Canada or Quebec Pension Plan benefits	11	<input type="text"/>		None 12 <input type="checkbox"/>
(g) Unemployment Insurance Benefits	13	<input type="text"/>		None 14 <input type="checkbox"/>
(h) Other Income from Government Sources including Provincial Income Supplements and Social Assistance, e.g., veterans' pensions, workmen's compensation, etc.	15	<input type="text"/>		None 16 <input type="checkbox"/>
(i) Dividends and Interest on bonds, deposits and saving certificates	17	<input type="text"/>		None 18 <input type="checkbox"/>
(j) Other Investment Income, e.g., net rents from real estate, interest from mortgages, etc.	19	<input type="text"/>		None 20 <input type="checkbox"/>
		<input type="checkbox"/> Loss		
(k) Retirement Pension, Superannuation and Annuities	21	<input type="text"/>		None 22 <input type="checkbox"/>
(l) Other Money Income, e.g., alimony, scholarships, etc.	23	<input type="text"/>		None 24 <input type="checkbox"/>
(m) TOTAL INCOME from all of the above sources	25	<input type="text"/>		None 26 <input type="checkbox"/>
		<input type="checkbox"/> Loss		

END OF QUESTIONS FOR PERSON 1
PERSON 2 - CONTINUE



FOR INFORMATION ONLY
1986 Census of Canada

Please complete your questionnaire on
 Tuesday, June 3, 1986

Prov.	FED No.	EA No.	VN	2 B	1.
Hhd. No.	Form type 3	No. of persons	Quest. No. of		2.
				<input type="checkbox"/> TD 1 <input type="checkbox"/> M 3 <input type="checkbox"/> TR	
				<input type="checkbox"/> UD 2 <input type="checkbox"/> DC 4 <input type="checkbox"/> FR	

CONFIDENTIAL WHEN COMPLETED

Only persons sworn to secrecy under the Statistics Act will have access to your completed questionnaire. Information derived from this questionnaire will be treated in accordance with the confidentiality provisions of the Act. Persons who have been sworn to secrecy under the Act are subject to prosecution if they violate these provisions.

Legal requirement

The information sought in this questionnaire is collected under the authority of the Statistics Act. Everyone is required to provide this information.

Please complete address or exact location:

Street and No. or lot and concession

City, town, village, municipality, Indian reserve

Province or territory

Postal code

Telephone number:

To Temporary Residents

If all members of this household are Temporary Residents (that is, persons staying here temporarily who have a usual home elsewhere in Canada), enter the total number of temporary residents in this box..... and do not complete this questionnaire. Follow the return instructions indicated on the envelope which contained this questionnaire.

To Foreign Residents

If all members of this household are Foreign Residents (see below), mark here..... and do not complete this questionnaire. Follow the return instructions indicated on the envelope which contained this questionnaire.

Foreign Residents are persons in any one of the following categories:

- government representatives of another country attached to the legation, embassy or other diplomatic body of that country in Canada, and their families;
- members of the Armed Forces of another country, and their families;
- students from another country attending school in Canada, and their families;
- workers from another country in Canada on Employment Visas, and their families; and
- residents of another country visiting in Canada temporarily.

NOTE: The Guide includes reasons why questions are asked and should provide the answers to any problems that may arise. If not, do not hesitate to call our Telephone Assistance Service. The numbers to dial are listed on the back cover and long-distance calls are free of charge.

1. NAME

Using the instructions given on the left, print below the names of all persons usually living here as of Tuesday, June 3, 1986.

01 39 A

Person 1

Last name

Given name and initial

02 39 A

Person 2

Last name

Given name and initial

03 39 A

Person 3

Last name

Given name and initial

04 39 A

Person 4

Last name

Given name and initial

05 39 A

Person 5

Last name

Given name and initial

06 39 A

Person 6

Last name

Given name and initial

2. RELATIONSHIP TO PERSON 1

For each person in this household, mark one box only to describe his or her relationship to Person 1. If you mark the box "Other relative" or "Other non-relative", print in the relationship to Person 1.

Some examples of the "Other" relationships are:
 grandmother room-mate's daughter
 uncle employee's husband

common-law partner of son or daughter

(See Guide)

01 Person 1

- 02 Husband or wife of Person 1
- 03 Common-law partner of Person 1
- 04 Son or daughter of Person 1
- 05 Father or mother of Person 1
- 06 Brother or sister of Person 1
- 07 Son-in-law or daughter-in-law of Person 1
- 08 Father-in-law or mother-in-law of Person 1

- 09 Brother-in-law or sister-in-law of Person 1
- 10 Grandchild of Person 1
- 11 Nephew or niece of Person 1
- Other relative of Person 1 (print below)

- 12 Lodger
- 13 Lodger's husband or wife
- 14 Lodger's son or daughter
- 15 Room-mate
- 16 Employee
- Other non-relative (print below)

17

- 04 Son or daughter of Person 1
- 05 Father or mother of Person 1
- 06 Brother or sister of Person 1
- 07 Son-in-law or daughter-in-law of Person 1
- 08 Father-in-law or mother-in-law of Person 1

- 09 Brother-in-law or sister-in-law of Person 1
- 10 Grandchild of Person 1
- 11 Nephew or niece of Person 1
- Other relative of Person 1 (print below)

- 12 Lodger
- 13 Lodger's husband or wife
- 14 Lodger's son or daughter
- 15 Room-mate
- 16 Employee
- Other non-relative (print below)

17

- 04 Son or daughter of Person 1
- 05 Father or mother of Person 1
- 06 Brother or sister of Person 1
- 07 Son-in-law or daughter-in-law of Person 1
- 08 Father-in-law or mother-in-law of Person 1

- 09 Brother-in-law or sister-in-law of Person 1
- 10 Grandchild of Person 1
- 11 Nephew or niece of Person 1
- Other relative of Person 1 (print below)

- 12 Lodger
- 13 Lodger's husband or wife
- 14 Lodger's son or daughter
- 15 Room-mate
- 16 Employee
- Other non-relative (print below)

17

- 04 Son or daughter of Person 1
- 05 Father or mother of Person 1
- 06 Brother or sister of Person 1
- 07 Son-in-law or daughter-in-law of Person 1
- 08 Father-in-law or mother-in-law of Person 1

- 09 Brother-in-law or sister-in-law of Person 1
- 10 Grandchild of Person 1
- 11 Nephew or niece of Person 1
- Other relative of Person 1 (print below)

- 12 Lodger
- 13 Lodger's husband or wife
- 14 Lodger's son or daughter
- 15 Room-mate
- 16 Employee
- Other non-relative (print below)

17

- 04 Son or daughter of Person 1
- 05 Father or mother of Person 1
- 06 Brother or sister of Person 1
- 07 Son-in-law or daughter-in-law of Person 1
- 08 Father-in-law or mother-in-law of Person 1

- 09 Brother-in-law or sister-in-law of Person 1
- 10 Grandchild of Person 1
- 11 Nephew or niece of Person 1
- Other relative of Person 1 (print below)

- 12 Lodger
- 13 Lodger's husband or wife
- 14 Lodger's son or daughter
- 15 Room-mate
- 16 Employee
- Other non-relative (print below)

17

<p>3. DATE OF BIRTH Print day, month and year. Example: If you were born on the 10th of February, 1945, you would enter</p> <p style="text-align: center;"> <input type="text" value="10"/> <input type="text" value="02"/> <input type="text" value="1945"/> </p> <p>If exact date is not known, enter best estimate.</p>	<p>4. SEX</p>	<p>5. MARITAL STATUS What is your marital status? (See Guide)</p> <p style="text-align: center;">Mark one box only</p>	<p>6. What is the language you first learned in childhood and still understand? (See Guide)</p>	<p>7. Do you consider yourself an aboriginal person or a native Indian of North America, that is, Inuit, North American Indian or Métis? (See Guide)</p>
<p style="text-align: center;"><input type="text" value=""/> Day</p> <p>18 <input type="text" value=""/> <input type="text" value=""/> Month Year</p> <p>19 <input type="checkbox"/> D</p>	<p>20 <input type="checkbox"/> Male</p> <p>21 <input type="checkbox"/> Female</p>	<p>22 <input type="checkbox"/> Now married (excluding separated)</p> <p>23 <input type="checkbox"/> Separated</p> <p>24 <input type="checkbox"/> Divorced</p> <p>25 <input type="checkbox"/> Widowed</p> <p>26 <input type="checkbox"/> Never married (single)</p>	<p>27 <input type="checkbox"/> English</p> <p>28 <input type="checkbox"/> French</p> <p>29 <input type="checkbox"/> Italian</p> <p>30 <input type="checkbox"/> German</p> <p>31 <input type="checkbox"/> Ukrainian</p> <p>32 <input type="text" value=""/> <input type="text" value=""/> Other (specify)</p>	<p>33 <input type="checkbox"/> No, I do not consider myself Inuit, North American Indian or Métis</p> <p>34 <input type="checkbox"/> Yes, Inuit</p> <p>35 <input type="checkbox"/> Yes, status or registered Indian</p> <p>36 <input type="checkbox"/> Yes, non-status Indian</p> <p>37 <input type="checkbox"/> Yes, Métis</p> <p style="text-align: right;">38 <input type="checkbox"/></p>
<p style="text-align: center;"><input type="text" value=""/> Day</p> <p>18 <input type="text" value=""/> <input type="text" value=""/> Month Year</p> <p>19 <input type="checkbox"/> D</p>	<p>20 <input type="checkbox"/> Male</p> <p>21 <input type="checkbox"/> Female</p>	<p>22 <input type="checkbox"/> Now married (excluding separated)</p> <p>23 <input type="checkbox"/> Separated</p> <p>24 <input type="checkbox"/> Divorced</p> <p>25 <input type="checkbox"/> Widowed</p> <p>26 <input type="checkbox"/> Never married (single)</p>	<p>27 <input type="checkbox"/> English</p> <p>28 <input type="checkbox"/> French</p> <p>29 <input type="checkbox"/> Italian</p> <p>30 <input type="checkbox"/> German</p> <p>31 <input type="checkbox"/> Ukrainian</p> <p>32 <input type="text" value=""/> <input type="text" value=""/> Other (specify)</p>	<p>33 <input type="checkbox"/> No, I do not consider myself Inuit, North American Indian or Métis</p> <p>34 <input type="checkbox"/> Yes, Inuit</p> <p>35 <input type="checkbox"/> Yes, status or registered Indian</p> <p>36 <input type="checkbox"/> Yes, non-status Indian</p> <p>37 <input type="checkbox"/> Yes, Métis</p> <p style="text-align: right;">38 <input type="checkbox"/></p>
<p style="text-align: center;"><input type="text" value=""/> Day</p> <p>18 <input type="text" value=""/> <input type="text" value=""/> Month Year</p> <p>19 <input type="checkbox"/> D</p>	<p>20 <input type="checkbox"/> Male</p> <p>21 <input type="checkbox"/> Female</p>	<p>22 <input type="checkbox"/> Now married (excluding separated)</p> <p>23 <input type="checkbox"/> Separated</p> <p>24 <input type="checkbox"/> Divorced</p> <p>25 <input type="checkbox"/> Widowed</p> <p>26 <input type="checkbox"/> Never married (single)</p>	<p>27 <input type="checkbox"/> English</p> <p>28 <input type="checkbox"/> French</p> <p>29 <input type="checkbox"/> Italian</p> <p>30 <input type="checkbox"/> German</p> <p>31 <input type="checkbox"/> Ukrainian</p> <p>32 <input type="text" value=""/> <input type="text" value=""/> Other (specify)</p>	<p>33 <input type="checkbox"/> No, I do not consider myself Inuit, North American Indian or Métis</p> <p>34 <input type="checkbox"/> Yes, Inuit</p> <p>35 <input type="checkbox"/> Yes, status or registered Indian</p> <p>36 <input type="checkbox"/> Yes, non-status Indian</p> <p>37 <input type="checkbox"/> Yes, Métis</p> <p style="text-align: right;">38 <input type="checkbox"/></p>
<p style="text-align: center;"><input type="text" value=""/> Day</p> <p>18 <input type="text" value=""/> <input type="text" value=""/> Month Year</p> <p>19 <input type="checkbox"/> D</p>	<p>20 <input type="checkbox"/> Male</p> <p>21 <input type="checkbox"/> Female</p>	<p>22 <input type="checkbox"/> Now married (excluding separated)</p> <p>23 <input type="checkbox"/> Separated</p> <p>24 <input type="checkbox"/> Divorced</p> <p>25 <input type="checkbox"/> Widowed</p> <p>26 <input type="checkbox"/> Never married (single)</p>	<p>27 <input type="checkbox"/> English</p> <p>28 <input type="checkbox"/> French</p> <p>29 <input type="checkbox"/> Italian</p> <p>30 <input type="checkbox"/> German</p> <p>31 <input type="checkbox"/> Ukrainian</p> <p>32 <input type="text" value=""/> <input type="text" value=""/> Other (specify)</p>	<p>33 <input type="checkbox"/> No, I do not consider myself Inuit, North American Indian or Métis</p> <p>34 <input type="checkbox"/> Yes, Inuit</p> <p>35 <input type="checkbox"/> Yes, status or registered Indian</p> <p>36 <input type="checkbox"/> Yes, non-status Indian</p> <p>37 <input type="checkbox"/> Yes, Métis</p> <p style="text-align: right;">38 <input type="checkbox"/></p>
<p style="text-align: center;"><input type="text" value=""/> Day</p> <p>18 <input type="text" value=""/> <input type="text" value=""/> Month Year</p> <p>19 <input type="checkbox"/> D</p>	<p>20 <input type="checkbox"/> Male</p> <p>21 <input type="checkbox"/> Female</p>	<p>22 <input type="checkbox"/> Now married (excluding separated)</p> <p>23 <input type="checkbox"/> Separated</p> <p>24 <input type="checkbox"/> Divorced</p> <p>25 <input type="checkbox"/> Widowed</p> <p>26 <input type="checkbox"/> Never married (single)</p>	<p>27 <input type="checkbox"/> English</p> <p>28 <input type="checkbox"/> French</p> <p>29 <input type="checkbox"/> Italian</p> <p>30 <input type="checkbox"/> German</p> <p>31 <input type="checkbox"/> Ukrainian</p> <p>32 <input type="text" value=""/> <input type="text" value=""/> Other (specify)</p>	<p>33 <input type="checkbox"/> No, I do not consider myself Inuit, North American Indian or Métis</p> <p>34 <input type="checkbox"/> Yes, Inuit</p> <p>35 <input type="checkbox"/> Yes, status or registered Indian</p> <p>36 <input type="checkbox"/> Yes, non-status Indian</p> <p>37 <input type="checkbox"/> Yes, Métis</p> <p style="text-align: right;">38 <input type="checkbox"/></p>
<p style="text-align: center;"><input type="text" value=""/> Day</p> <p>18 <input type="text" value=""/> <input type="text" value=""/> Month Year</p> <p>19 <input type="checkbox"/> D</p>	<p>20 <input type="checkbox"/> Male</p> <p>21 <input type="checkbox"/> Female</p>	<p>22 <input type="checkbox"/> Now married (excluding separated)</p> <p>23 <input type="checkbox"/> Separated</p> <p>24 <input type="checkbox"/> Divorced</p> <p>25 <input type="checkbox"/> Widowed</p> <p>26 <input type="checkbox"/> Never married (single)</p>	<p>27 <input type="checkbox"/> English</p> <p>28 <input type="checkbox"/> French</p> <p>29 <input type="checkbox"/> Italian</p> <p>30 <input type="checkbox"/> German</p> <p>31 <input type="checkbox"/> Ukrainian</p> <p>32 <input type="text" value=""/> <input type="text" value=""/> Other (specify)</p>	<p>33 <input type="checkbox"/> No, I do not consider myself Inuit, North American Indian or Métis</p> <p>34 <input type="checkbox"/> Yes, Inuit</p> <p>35 <input type="checkbox"/> Yes, status or registered Indian</p> <p>36 <input type="checkbox"/> Yes, non-status Indian</p> <p>37 <input type="checkbox"/> Yes, Métis</p> <p style="text-align: right;">38 <input type="checkbox"/></p>

A dwelling is a separate set of living quarters with a private entrance from the outside or from a common hallway or stairway inside the building. This entrance should not be through someone else's living quarters.

8. (a) Print the name of the person (or one of the persons) who lives here and is responsible for paying the rent, or mortgage, or taxes, electricity, etc., for this dwelling.

01 [] [] Last name Given name and initial

This person shall answer Questions 8 (b) to 13.

NOTE: If no one living here makes any such payments, mark here [] and answer Questions 8 (b) to 13 yourself.

(b) How many persons usually live here (according to the WHOM TO INCLUDE item in the INSTRUCTIONS FOR QUESTION 1)?

02 [] Number of persons

(c) Did you leave anyone out of Question 1 because you were not sure whether he or she should be listed? For example, a student, a lodger who also has another home, a new baby still in hospital, live-in help, or a member of this household who has become a patient in a hospital or nursing home within the past six months.

[] Yes [] No

If "Yes", print the name of each person left out and the reason.

Name []

Reason [] []

Name []

Reason [] []

If you require more space, please use the Comments section on the last page of this questionnaire.

(d) How many persons who have a usual home elsewhere in Canada are staying or visiting here temporarily (as of Census Day, June 3)?

[] None OR

[] Number of persons

CONTINUE WITH QUESTION 10

OFFICE USE ONLY

05 [] Trans.

06 [] Coll.

07 [] IR

08 [] ER

09 [] Ref.

10 [] Miss.

11 [] JIC - A

12 [] JIC - B

9. Do you (or does any other member of this household): Mark one box only

03 [] own this dwelling (even if it is still being paid for)? 04 [] rent this dwelling (even if no cash rent is paid)?

10. To the best of your knowledge, when was this dwelling or the building containing this dwelling originally built? (Mark the period in which the building was completed, not the time of any later remodeling, additions or conversions.)

Mark one box only

08

- 01 1920 or before
- 02 1921 - 1945
- 03 1946 - 1960
- 04 1961 - 1970
- 05 1971 - 1975
- 06 1976 - 1980
- 07 1981 - 1985
- 08 1986

11. How many rooms are there in this dwelling? (Include kitchen, bedrooms, finished rooms in attic or basement, etc. Do not count bathrooms, halls, vestibules and rooms used solely for business purposes.)

09 Number of rooms

12. (a) What is the main type of heating equipment for this dwelling?

Mark one box only

- 10 Steam or hot water furnace or boiler
- 11 Forced hot air furnace with heat pump
- 12 Forced hot air furnace without heat pump and using one type of fuel/energy only (e.g., natural gas, oil, or electricity)
- 13 Forced hot air furnace without heat pump and using more than one type of fuel/energy for heating (e.g., oil and wood, or oil and electricity)
- 14 Installed electric heating system, e.g., built-in baseboard
- 15 Other electric heating system (plug-in)
- 16 Heating stove, cooking stove, space heater
- 17 Other, e.g., fireplace

(b) Which fuel or energy is used most for heating this dwelling?

Mark one box only

- 18 Piped gas, e.g., natural gas
- 19 Bottled gas, e.g., propane
- 20 Electricity only
- 21 Electricity as the main source where more than one fuel/energy is used, e.g., electricity and oil
- 22 Oil or kerosene
- 23 Wood
- 24 Coal or coke
- 25 Other fuel or energy

Answer Question 13 for only the dwelling that you now occupy, even if you own or rent more than one dwelling. If exact amount is not known, please enter your best estimate.

NOTE: If you are a farm operator living on the farm you operate, mark here

26 and go to the questions concerning Person 1 on page 6.

13. For this dwelling, what are the yearly payments (last 12 months) for:

(a) electricity?

27 None, or included in rent or other payments, OR

Dollars Cents
28 00 per year

(b) oil, gas, coal, wood or other fuels?

29 None, or included in rent or other payments, OR

Dollars Cents
30 00 per year

(c) water and other municipal services?

31 None, or included in rent, municipal taxes or other payments, OR

Dollars Cents
32 00 per year

RENTERS, answer part (d); OWNERS, go to part (e).

(d) What is the monthly cash rent you pay for this dwelling?

33 Rented without payment of cash rent OR

Dollars Cents
34 00 per month

Go to the questions concerning Person 1 on page 6

OWNERS, answer parts (e) through (i).

(e) What are your total regular monthly mortgage (or debt) payments for this dwelling?

35 None Go to part (g) OR

Dollars Cents
36 00 per month

(f) Are your property taxes (municipal and school) included in the amount shown in part (e)?

37 Yes Go to part (h)

38 No

(g) What are your estimated yearly property taxes (municipal and school) for this dwelling?

39 None OR

Dollars Cents
40 00 per year

(h) If you were to sell this dwelling now, for how much would you expect to sell it?

Dollars Cents
41 00

(i) Is this dwelling part of a registered condominium?

42 Yes

43 No

QUESTIONS FOR PERSON 1 -- CONTINUED

21. (c) How many years of schooling have you ever completed at an institution other than a university, secondary (high) or elementary school? Include years of schooling at community colleges, institutes of technology, CEGEPs (general and professional), private trade schools or private business colleges, diploma schools of nursing, etc. (See Guide)

10

- 01 None
02 Less than 1 year (of completed courses)
03 Enter number of completed years

22. What degrees, certificates or diplomas have you ever obtained? (See Guide)

Mark as many boxes as applicable

- 04 None
05 Secondary (high) school graduation certificate
06 Trades certificate or diploma
07 Other non-university certificate or diploma (obtained at community college, CEGEP, institute of technology, etc.)
08 University certificate or diploma below bachelor level
09 Bachelor's degree(s) (e.g., B.A., B.Sc., B.A.Sc., LL.B.)
10 University certificate or diploma above bachelor level
11 Master's degree(s) (e.g., M.A., M.Sc., M.Ed.)
12 Degree in medicine, dentistry, veterinary medicine or optometry (M.D., D.D.S., D.M.D., D.V.M., O.D.)
13 Earned doctorate (e.g., Ph.D., D.Sc., D.Ed.)

23. What was the major field of study of your highest degree, certificate or diploma (excluding secondary or high school graduation certificates)? (See Guide)

[Empty box for field of study]

(For example, accounting, civil engineering, history, legal secretary, welding.)

If you have no degree, certificate or diploma or have a secondary (high) school graduation certificate only, mark below.

14 Go to Question 24

[Empty box]

24. Where did you live 5 years ago, that is, on June 1, 1981?

Mark one box only

NOTE: If your place of residence 5 years ago was a municipality within a large urban area, be careful not to confuse suburban municipalities with the largest city. For example, distinguish between Montréal-Nord and Montréal, Scarborough and Toronto, West Vancouver and Vancouver.

- 16 This dwelling
17 Different dwelling in this city, town, village, township, municipality or Indian reserve
18 Outside Canada
19 Different city, town, village, township, other municipality or Indian reserve in Canada (specify below)

Go to Question 25

[Empty box for city/town/village]

City, town, village, township, other municipality or Indian reserve

[Empty box for city/town/village]

County Province or territory

20 [Bubble grid]

25. (a) Last week, how many hours did you work (not including housework, maintenance or repairs for your own home)? Include as work:

- working without pay in a family farm or business (e.g., assisting in seeding, doing accounts);
working in your own business, farm or professional practice, alone or in partnership;
working for wages, salary, tips or commission.

21 Number of hours (to the nearest hour) Go to Question 27

OR

22 None Continue with Questions 25 (b) to 32

(b) Last week, were you on temporary lay-off or absent from your job or business? Mark one box only

- 23 No
24 Yes, on temporary lay-off from a job to which I expect to return
25 Yes, on vacation, ill, on strike or locked out, or absent for other reasons

(c) Last week, did you have definite arrangements to start a new job within the next four weeks?

- 26 No
27 Yes

(d) Did you look for work during the past four weeks? For example, did you contact a Canada Employment Centre, check with employers, place or answer newspaper ads? Mark one box only

- 28 No Go to Question 26
29 Yes, looked for full-time work
30 Yes, looked for part-time work (less than 30 hours per week)

(e) Could you have started work last week had a job been available? Mark one box only

- 31 Yes, could have started work
32 No, already had a job
33 No, temporary illness or disability
34 No, personal or family responsibilities
35 No, going to school
36 No, other reasons

26. When did you last work, even for a few days (not including housework, maintenance or repairs for your own home)? Mark one box only

- 37 In 1986 Answer Questions 27 to 32
38 In 1985
39 Before 1985 Go to Question 32
40 Never worked in lifetime

27. NOTE: Questions 27 to 30 refer to your job or business last week. If you held no job last week, answer for your job of longest duration since January 1, 1985. If you held more than one job last week, answer for the job at which you worked the most hours.

(a) For whom did you work?

[Empty box for firm name]

Name of firm, government agency, etc.

[Empty box for department]

Department, branch, division, section or plant

(b) What kind of business, industry or service was this?

[Empty box for business description]

Give full description. For example, wheat farm, trapping, road maintenance, retail shoe store, secondary school, temporary help agency, municipal police.

41 [Bubble grid]

QUESTIONS FOR PERSON 1 — CONCLUDED

28. At what address did you work? If no usual place of work, see Guide.

Mark one box only

- (i) Worked at home (includes living and working on the same farm)
- (ii) Worked outside Canada
- (iii) Worked at the address below (please specify)

If street address is not known, give the building name, shopping centre or street intersection, etc.

Number Street

If you worked in a suburban municipality within a large urban area, specify that municipality, not the main city.

City, town, village, township, other municipality or Indian reserve

County Province or territory

29. (a) What kind of work were you doing?

For example, accounting clerk, door-to-door salesperson, civil engineer, secondary school teacher, chief electrician, food processing labourer, fishing guide. (If in the Armed Forces, give rank.)

(b) In this work, what were your most important activities or duties?

For example, verifying invoices, selling cosmetics, managing the research department, teaching mathematics, supervising construction electricians, cleaning vegetables, guiding fishing parties.

07

30. (a) In this job were you mainly:

- 08 working for wages, salary, tips or commission?
- 09 working without pay for your spouse or another relative in a family farm or business?
- 10 self-employed without paid help (alone or in partnership)?
- 11 self-employed with paid help (alone or in partnership)?

Go to Question 31

Continue with Question 30 (b)

(b) If self-employed, was your farm or business incorporated?

- 12 No
- 13 Yes

31. (a) In how many weeks did you work during 1985 (not including housework, maintenance or repairs for your own home)?

Include those weeks in which you:

- were on vacation or sick leave with pay;
- were self-employed or an unpaid worker in a family farm or business;
- worked full time or part time.

14 None ► Go to Question 32

OR

15 Number of weeks

(b) During most of those weeks, did you work full time or part time?

Mark one box only

- 16 Full time
- 17 Part time

18 In. OFFICE USE ONLY

32. During the year ending December 31, 1985, did you receive any income or suffer any loss from the sources listed below?

- If yes, please mark the "Yes" box and enter the amount; in case of a loss, also mark the "Loss" box.
- If no, please mark the "No" box and proceed to the next source.
- Do not include family allowances and child tax credits.
- Please consult the Guide for details.

AMOUNT

- | | | Dollars | Cents |
|---|-----------------------------------|----------------------|----------------------------------|
| (a) Total wages and salaries including commissions, bonuses, tips, etc., before any deductions | 19 <input type="checkbox"/> Yes ► | <input type="text"/> | <input type="text"/> |
| | 20 <input type="checkbox"/> No | | |
| (b) Net non-farm self-employment income (gross receipts minus expenses) from unincorporated business, professional practice, etc., on own account or in partnership | 21 <input type="checkbox"/> Yes ► | <input type="text"/> | <input type="text"/> |
| | 23 <input type="checkbox"/> No | | 22 <input type="checkbox"/> Loss |
| (c) Net farm self-employment income (gross receipts minus expenses) from agricultural operations on own account or in partnership | 24 <input type="checkbox"/> Yes ► | <input type="text"/> | <input type="text"/> |
| | 26 <input type="checkbox"/> No | | 25 <input type="checkbox"/> Loss |
| (d) Old age security pension and guaranteed income supplement from federal government only (provincial income supplements should be reported in (g)) | 27 <input type="checkbox"/> Yes ► | <input type="text"/> | <input type="text"/> |
| | 28 <input type="checkbox"/> No | | |
| (e) Benefits from Canada or Quebec Pension Plan | 29 <input type="checkbox"/> Yes ► | <input type="text"/> | <input type="text"/> |
| | 30 <input type="checkbox"/> No | | |
| (f) Benefits from Unemployment Insurance (total benefits before tax deductions) | 31 <input type="checkbox"/> Yes ► | <input type="text"/> | <input type="text"/> |
| | 32 <input type="checkbox"/> No | | |
| (g) Other income from government sources including provincial income supplements and grants and social assistance, e.g., veterans' pensions, workers' compensation, welfare payments (do not include family allowances and child tax credits) (See Guide) | 33 <input type="checkbox"/> Yes ► | <input type="text"/> | <input type="text"/> |
| | 34 <input type="checkbox"/> No | | |
| (h) Dividends and interest on bonds, deposits and savings certificates, and other investment income, e.g., net rents from real estate, interest from mortgages | 35 <input type="checkbox"/> Yes ► | <input type="text"/> | <input type="text"/> |
| | 37 <input type="checkbox"/> No | | 36 <input type="checkbox"/> Loss |
| (i) Retirement pensions, superannuation and annuities | 38 <input type="checkbox"/> Yes ► | <input type="text"/> | <input type="text"/> |
| | 39 <input type="checkbox"/> No | | |
| (j) Other money income, e.g., alimony, scholarships | 40 <input type="checkbox"/> Yes ► | <input type="text"/> | <input type="text"/> |
| | 41 <input type="checkbox"/> No | | |
| (k) Total income from all of the above sources | 42 <input type="checkbox"/> Yes ► | <input type="text"/> | <input type="text"/> |
| | 44 <input type="checkbox"/> No | | 43 <input type="checkbox"/> Loss |

END OF QUESTIONS FOR PERSON 1
PERSON 2 — CONTINUE



FOR INFORMATION ONLY
MT-1

CONFIDENTIAL WHEN COMPLETED

Census of Canada 1987 Questionnaire Test

--	--	--	--	--	--

POSTAL CODE

--	--	--	--	--	--	--	--	--	--

TELEPHONE NUMBER

OFFICE USE ONLY

DO	FU
1 <input type="checkbox"/> NC	7 <input type="checkbox"/> FC
2 <input type="checkbox"/> NF	8 <input type="checkbox"/> NC
3 <input type="checkbox"/> TR/FR	9 <input type="checkbox"/> REF
4 <input type="checkbox"/> UD	
5 <input type="checkbox"/> REF	
6 <input type="checkbox"/> SUB	
Quest. No. _____ of _____	Form Type _____ 1

Please complete your questionnaire as soon as possible and keep it in a safe place until our representative picks it up on

DAY DATE

REASON FOR TEST

Statistics Canada has commenced planning for the next major Census of Population to be taken in June of 1991. The purpose of this questionnaire is to test some possible questions for the 1991 Census to ensure that they can be easily understood and correctly answered.

All the data collected will be combined to provide anonymous statistical totals which will be used to assess whether the questions have been understood. It is important therefore to answer each question as completely and accurately as possible.

The data that you provide will be kept strictly confidential and will only be seen by Statistics Canada employees who have sworn an Oath of Secrecy.

There is a space on page 15 of this questionnaire for any comments you may have. We welcome them.

While participation in this survey is voluntary, we hope that you will assist us in planning for a successful 1991 Census.

The information you provide will be stored as part of Personal Information Bank STC/P-PU-007. It will be retained for a minimum of five years. The information provided by you is kept strictly confidential and only you can obtain a copy of your information. Should you wish to do so, please quote the above number and address your request to the Privacy Co-ordinator, Statistics Canada, Ottawa, Ontario K1A 0T6.

How to fill out your census form

Please mark or print all your answers clearly with a dark pencil or pen.

Begin on this page by listing all members of the household and then answer the questions on pages 2 through 5. Then, starting with page 6, fill in two pages for each person in your household, using the same order as you used in Question 1. For example, information for Person 2 will be entered on pages 6 and 7; information for Person 3 on pages 8 and 9, and so on.

Make sure that answers are provided for everyone here. If there are more than five persons in this household, enter the first five on this questionnaire and continue with the sixth person on a second questionnaire, starting in the row marked "Person 2".

LIST OF MEMBERS OF THIS HOUSEHOLD

This household is made up of all persons who usually live here, even if they are temporarily away (such as on business, at school, or on vacation) and any persons staying or visiting here who have no other usual home.

WHOM TO INCLUDE

persons who usually live here but are now in an institution (such as a hospital or correctional centre), if they have been there for less than six months;

unmarried sons or daughters who are postsecondary students, unless they are financially independent and living elsewhere;

unmarried persons who live here while working, even if they return to another home periodically.

DO NOT INCLUDE

persons who are now in an institution and have been there for the past six months or longer;

unmarried sons or daughters who live elsewhere during the week while working, even if they return here on weekends;

foreign government representatives or members of the Armed Forces of another country and members of their families who are not citizens of Canada.

Please list below the name of each person who was living here on Sunday, November 1, 1987, or who was visiting or staying here and had no other home.

Person 1 should be the household member (or one of the members) in whose name the home is owned or rented.

Person	Please print
1	-----
2	-----
3	-----
4	-----
5	-----
6	-----
7	-----
8	-----
9	-----
10	-----
11	-----
12	-----

Check (✓) this box if there are more than 12 persons in this household.

OFFICE USE ONLY

Number of persons in household

1. NAME Using the instructions given on page 1, print below the names of all persons usually living here as of Sunday, November 1, 1987.	2. How is this person related to PERSON 1? Mark (X) ONE box for each person Some examples of "Other" are: grandmother, uncle, niece, lodger, room-mate, employee, etc.	3. DATE OF BIRTH Print day, month and year	4. SEX	5. MARITAL STATUS (a) What is your current marital status? Mark one box only (b) Are you currently living with a common-law partner?
01 Person 1 <input type="text"/> Last name <input type="text"/> Given name and initial	1 <input checked="" type="checkbox"/> Person 1	Day <input type="text"/> <input type="text"/> Month <input type="text"/> <input type="text"/> Year <input type="text"/> <input type="text"/> <input type="text"/> <input type="text"/>	1 <input type="checkbox"/> Male 2 <input type="checkbox"/> Female	3 <input type="checkbox"/> Now married (excluding separated) 4 <input type="checkbox"/> Separated 5 <input type="checkbox"/> Divorced 6 <input type="checkbox"/> Widowed 7 <input type="checkbox"/> Never married (single) 8 <input type="checkbox"/> No 9 <input type="checkbox"/> Yes
02 Person 2 <input type="text"/> Last name <input type="text"/> Given name and initial	1 <input type="checkbox"/> Husband/wife 2 <input type="checkbox"/> Common-law partner 3 <input type="checkbox"/> Son/daughter 4 <input type="checkbox"/> Brother/sister 5 <input type="checkbox"/> Father/mother 6 <input type="checkbox"/> Other - Specify <input type="text"/>	Day <input type="text"/> <input type="text"/> Month <input type="text"/> <input type="text"/> Year <input type="text"/> <input type="text"/> <input type="text"/> <input type="text"/>	1 <input type="checkbox"/> Male 2 <input type="checkbox"/> Female	3 <input type="checkbox"/> Now married (excluding separated) 4 <input type="checkbox"/> Separated 5 <input type="checkbox"/> Divorced 6 <input type="checkbox"/> Widowed 7 <input type="checkbox"/> Never married (single) 8 <input type="checkbox"/> No 9 <input type="checkbox"/> Yes
03 Person 3 <input type="text"/> Last name <input type="text"/> Given name and initial	1 <input type="checkbox"/> Son/daughter 2 <input type="checkbox"/> Brother/sister 3 <input type="checkbox"/> Father/mother 4 <input type="checkbox"/> Other - Specify <input type="text"/>	Day <input type="text"/> <input type="text"/> Month <input type="text"/> <input type="text"/> Year <input type="text"/> <input type="text"/> <input type="text"/> <input type="text"/>	1 <input type="checkbox"/> Male 2 <input type="checkbox"/> Female	3 <input type="checkbox"/> Now married (excluding separated) 4 <input type="checkbox"/> Separated 5 <input type="checkbox"/> Divorced 6 <input type="checkbox"/> Widowed 7 <input type="checkbox"/> Never married (single) 8 <input type="checkbox"/> No 9 <input type="checkbox"/> Yes
04 Person 4 <input type="text"/> Last name <input type="text"/> Given name and initial	1 <input type="checkbox"/> Son/daughter 2 <input type="checkbox"/> Brother/sister 3 <input type="checkbox"/> Father/mother 4 <input type="checkbox"/> Other - Specify <input type="text"/>	Day <input type="text"/> <input type="text"/> Month <input type="text"/> <input type="text"/> Year <input type="text"/> <input type="text"/> <input type="text"/> <input type="text"/>	1 <input type="checkbox"/> Male 2 <input type="checkbox"/> Female	3 <input type="checkbox"/> Now married (excluding separated) 4 <input type="checkbox"/> Separated 5 <input type="checkbox"/> Divorced 6 <input type="checkbox"/> Widowed 7 <input type="checkbox"/> Never married (single) 8 <input type="checkbox"/> No 9 <input type="checkbox"/> Yes
05 Person 5 <input type="text"/> Last name <input type="text"/> Given name and initial	1 <input type="checkbox"/> Son/daughter 2 <input type="checkbox"/> Brother/sister 3 <input type="checkbox"/> Father/mother 4 <input type="checkbox"/> Other - Specify <input type="text"/>	Day <input type="text"/> <input type="text"/> Month <input type="text"/> <input type="text"/> Year <input type="text"/> <input type="text"/> <input type="text"/> <input type="text"/>	1 <input type="checkbox"/> Male 2 <input type="checkbox"/> Female	3 <input type="checkbox"/> Now married (excluding separated) 4 <input type="checkbox"/> Separated 5 <input type="checkbox"/> Divorced 6 <input type="checkbox"/> Widowed 7 <input type="checkbox"/> Never married (single) 8 <input type="checkbox"/> No 9 <input type="checkbox"/> Yes

6. (a) How many persons usually live here (according to the WHOM TO INCLUDE item in the INSTRUCTIONS ON PAGE 1)?

Number of persons

(b) Did you leave anyone out of Question 1 because you were not sure whether he or she should be listed? (For example, a student, a lodger who also has another home, a new baby still in hospital, live-in help, or a member of this household who has become a patient in a hospital or nursing home within the past six months.)

1 Yes

2 No

If "Yes", print the name of each person left out and the reason.

Name

Reason

Name

Reason

Name

Reason

(c) How many persons who have a usual home elsewhere in Canada are staying or visiting here temporarily (as of November 1, 1987)?

3 None

OR

Number of persons

7. Does anyone in this household operate a farm, ranch or other agricultural holding? (Other holdings include, for example: feedlots; greenhouses; mushroom houses; and nursery, sod, fur, beekeeping, berry and maple syrup operations.)

4 Yes

5 No

PLEASE CONTINUE WITH QUESTIONS FOR PERSON 1 ON PAGE 4.

NAME OF PERSON 1

Last name Given name and initial

If this person was born on or after November 1, 1972, mark here and do not answer Questions 8 to 22. **END HERE FOR THIS PERSON.**

If this person was born before November 1, 1972, mark here and continue with Questions 8 to 22.

8. For ALL WOMEN: How many children were ever born to you? (Count all children including those who may have died since birth or who may now be living elsewhere. Do not include stillbirths.)

1 None
 OR
 Number of children

9. (a) For ALL PERSONS who are now married or have ever been married: What was the date of your first marriage?

1 9 *If exact month and year are not known, please enter best estimate.*

Month Year

(b) Have you been married more than once?

2 No ➤ Go to Question 10
 3 Yes, more than once

(c) How did your first marriage end?

4 Death of spouse
 5 Divorce
 6 Other (Specify)

10. Last week, how many hours did you spend:

(a) doing unpaid volunteer work? (For example, work done for such organizations as health agencies, youth agencies, minor sports associations, religious associations.)

1 None
 OR
 Hours

(b) doing unpaid work in the operation of a family farm or a family business? (For example, harvesting or doing accounts.)

2 None
 OR
 Hours

(c) providing unpaid child care (including your own children as well as others but excluding co-operative arrangements)?

3 None
 OR
 Hours

(d) doing unpaid housework, yardwork, maintenance or repairs to your own home?

4 None
 OR
 Hours

11. (a) Last week, how many hours of paid work did you do?

include:

- working for wages, salary, tips or commission;
- working in your own business, farm or professional practice, alone or in partnership.

1 None
 OR
 Hours ➤ Go to Question 13

(b) Last week, were you permanently unable to work or permanently retired?

2 Yes ➤ Go to Question 12
 3 No

(c) Last week, were you on temporary lay-off or absent from your job or business?

Mark one box only

4 No
 5 Yes, on temporary lay-off from a job to which I expect to return
 6 Yes, on vacation, ill, on strike or locked out, or absent for other reasons

(d) Last week, did you have definite arrangements to start a new job within the next four weeks?

7 No
 8 Yes

(e) Did you look for work during the past four weeks? (For example, did you contact a Canada Employment Centre, check with employers, place or answer newspaper ads.)

Mark one box only

9 No ➤ Go to Question 12
 1 Yes, looked for full-time work
 2 Yes, looked for part-time work (less than 30 hours per week)

(f) Could you have started work last week had a job been available?

Mark one box only

3 Yes, could have started work
 4 No, already had a job
 5 No, temporary illness or disability
 6 No, personal or family responsibilities
 7 No, going to school
 8 No, other reasons

12. When did you last work, even for a few days?

Include:

- working for wages, salary, tips or commission;
- unpaid work in the operation of a family farm or a family business;
- working in your own business, farm or professional practice alone or in partnership.

Mark one box only

1 In 1987 ➤ Continue with Question 13
 2 In 1986
 3 Before 1986 ➤ Go to Question 19
 4 Never worked in lifetime

Note: Questions 13 to 16 refer to your job or business last week. If you held no job last week, answer for your job of longest duration since January 1, 1986. If you held more than one job last week, answer for the job at which you worked the most hours.

13. (a) For whom did you work? (name of firm, government agency, etc.)

(b) What kind of business, industry or service was this?

14. (a) What kind of work were you doing?

(b) In this work, what were your most important activities or duties?

QUESTIONS FOR PERSON 1

15. (a) In this job were you mainly:

- 1 working for wages, salary, tips or commission?
- 2 working without pay for your spouse or another relative in a family farm or business?
- 3 self-employed without paid help (alone or in partnership)?
- 4 self-employed with paid help (alone or in partnership)?

Go to Question 16

(b) If self-employed, was your farm or business incorporated?

- 5 Yes
- 6 No

16. When did you start to work for your current or most recent employer? (If self-employed, please refer to your current or most recent business.)

		1	9		
Month		Year			

17. Since you stopped going to school full time, in how many years have you worked? (Include part-time and part-year work.)

Years (round to the nearest year)

18. (a) In how many weeks did you work in 1986?

Include those weeks in which you:

- were on vacation or sick leave with pay;
- worked full time or part time;
- worked for wages, salary, tips or commission;
- were self-employed or an unpaid worker in a family farm or business.

1 None ▶ Go to Question 18(c)
OR

Number of weeks

(b) During most of those weeks, did you work full time or part time?

Mark one box only

- 2 Full time
- 3 Part time

(c) Of the weeks in which you did not work during 1986 (if any), in how many weeks did you look for work or were you on lay-off from a job?

- Only include those weeks for which you were available to work.

4 None
OR

Number of weeks

19. During the year ending December 31, 1986, did you receive an income from any of the following sources?

- If yes, please mark the "Yes" box and enter the amount.
- If no, please mark the "No" box and proceed to the next source.

AMOUNT

Dollars Cents

- (a) Family allowances 1 Yes ▶
2 No
- (b) Child tax credits received from federal government only 3 Yes ▶
4 No
- (c) Benefits from Unemployment Insurance (total benefits before tax deductions) 5 Yes ▶
6 No
- (d) Old Age Security pension and Guaranteed Income Supplement from federal government only (provincial income supplement should be reported in (f)) 7 Yes ▶
8 No
- (e) Benefits from Canada or Quebec Pension Plan 9 Yes ▶
1 No
- (f) Social assistance and provincial income supplements (Please specify, e.g., Social Aid benefits and Work Income Supplement, GAINS.) 2 Yes ▶
3 No
- (g) Other income from government sources (Please specify, e.g., veterans' pensions, workers' compensation, provincial tax credits and allowances.) 4 Yes ▶
5 No

20. Did you have any capital gains or losses in 1986? (Report only the taxable portion of capital gains or allowable capital losses.)
6 Yes ▶
7 No Loss

21. Did you have any income tax (federal and provincial) payable on 1986 income and capital gains?
1 Yes ▶
2 No

22. For persons who are currently working for a wage or salary: What is your normal hourly wage or salary before deductions for income tax, pension, unemployment and medical insurance, etc.?

If you cannot provide hourly wage rate, please give the precise gross wage or salary you usually receive and check the relevant period and also give the number of hours you normally work in a week.

Dollars Cents

- (a) Wage or salary
- (b) Period 3 Per hour
4 Per week
5 Every two weeks
6 Twice a month
7 Per month
8 Per year
9 Other (Specify)
- (c) Normal weekly hours Hours



Statistics Canada / Statistique Canada

Census of Canada

1988 Questionnaire Test MT-2

Confidential when completed

The information you provide will be stored as part of Personal Information Bank STC/P-PU-007. It will be retained for a minimum of five years. The information provided by you is kept strictly confidential and only you can obtain a copy of your information. Should you wish to do so, please quote the above number and address your request to the Privacy Co-ordinator, Statistics Canada, Ottawa, Ontario K1A 0T6.

FOR INFORMATION ONLY

Please complete your questionnaire as soon as possible and keep it in a safe place until our representative picks it up on

Please enter telephone number

-

Area Code

Day

Date

For office use only

DO	1	<input type="checkbox"/>	2	<input type="checkbox"/>	3	<input type="checkbox"/>	4	<input type="checkbox"/>	5	<input type="checkbox"/>	6	<input type="checkbox"/>	7	<input type="checkbox"/>
		NC		NF		TR/FR		UD		REF		CO		SUB

PU	8	<input type="checkbox"/>	9	<input type="checkbox"/>	1	<input type="checkbox"/>
		FC		NC		REF

Quest. No.

Form type

of

1X

REASON FOR TEST

Statistics Canada has begun planning for the next major Census of Population to be taken in June of 1991. The purpose of this questionnaire is to test some options for possible questions for the 1991 Census to ensure that they can be easily understood and correctly answered.

All the data collected will be combined to provide anonymous statistical totals which will be used to assess whether the questions have been understood. It is important therefore to answer each question as completely and accurately as possible.

The data that you provide will be kept strictly confidential and will only be seen by Statistics Canada employees who have sworn an Oath of Secrecy.

There are questions on the back cover of this questionnaire asking for your comments. We welcome them.

While participation in this survey is voluntary, we hope that you will assist us in planning for a successful 1991 Census.

HOW TO FILL OUT YOUR CENSUS FORM

- Please mark or print all your answers clearly with a dark pencil or pen.
- Answer questions 1 to 5 for all members of the household. Then, starting with page 4, fill in 4 pages for each person in your household, using the same order as you used in Question 1. For example, information for Person 1 will be entered on pages 4 to 7; information for Person 2 on pages 8 to 11, and so on.
- Please make sure that answers are provided for everyone here.
- Please answer the questions on the back cover.

INSTRUCTIONS FOR QUESTION 1

WHOM TO INCLUDE

- all persons who usually live here, even if they are temporarily away (such as on business, at school, or on vacation) and any persons staying or visiting here who have no other usual home;
- persons who usually live here, but are now in an institution (such as a hospital or correctional centre), if they have been there for less than six months;
- unmarried sons or daughters who are postsecondary students, unless they are financially independent and living elsewhere;
- unmarried persons who live here while working, even if they return to another home periodically.

DO NOT INCLUDE

- persons who are now in an institution and have been there for the past six months or longer;
- unmarried sons or daughters who live elsewhere during the week while working, even if they return here on weekends;
- foreign government representatives or members of the Armed Forces of another country and members of their families who are not citizens of Canada.

HOUSEHOLDS WITH MORE THAN FIVE PERSONS

If there are more than five persons in this household, enter the first five on this questionnaire and continue with the sixth person on a second questionnaire, starting in the row marked "Person 2".

PLEASE ENTER THE NUMBER OF PERSONS LIVING IN THIS HOUSEHOLD.

No. of persons

1. NAME

Using the instructions given on the left, print below the names of all persons usually living here as of Sunday, January 17, 1988.

Person 1 should be the household member (or one of the members) in whose name the home is owned or rented.

PERSON 1

Last name

Given name and initials

PERSON 2

Last name

Given name and initials

PERSON 3

Last name

Given name and initials

PERSON 4

Last name

Given name and initials

PERSON 5

Last name

Given name and initials

<p>2. RELATIONSHIP TO PERSON 1</p> <p>For each person in this household mark <input checked="" type="checkbox"/> one box only, to describe his or her relationship to Person 1.</p> <p>Examples of "Other relative" are: grandchild, grand-mother, father-in-law.</p> <p>Example of "Other non-relative" is: common-law partner of son or daughter.</p>	<p>3. DATE OF BIRTH</p> <p>Print day, month, year</p>	<p>4. SEX</p>	<p>5. MARITAL STATUS</p> <p>What is your marital status?</p> <p>Mark one box only</p>
<p><input checked="" type="checkbox"/> PERSON 1</p>	<p><input type="text"/> <input type="text"/> Day</p> <p><input type="text"/> <input type="text"/> Month</p> <p><input type="text"/> <input type="text"/> <input type="text"/> <input type="text"/> Year</p>	<p>1 <input type="checkbox"/> Male</p> <p>2 <input type="checkbox"/> Female</p>	<p>3 <input type="checkbox"/> Now married (excluding separated)</p> <p>4 <input type="checkbox"/> Separated</p> <p>5 <input type="checkbox"/> Divorced</p> <p>6 <input type="checkbox"/> Widowed</p> <p>7 <input type="checkbox"/> Never married (single)</p>
<p>8 <input type="checkbox"/> Husband or wife of Person 1</p> <p>9 <input type="checkbox"/> Common-law partner of Person 1</p> <p>1 <input type="checkbox"/> Son or daughter of Person 1</p> <p>2 <input type="checkbox"/> Stepson or step-daughter of Person 1</p> <p>3 <input type="checkbox"/> Father or mother of Person 1</p> <p>4 <input type="checkbox"/> Other relative of Person 1 (Print below)</p> <p>5 <input type="checkbox"/> Lodger</p> <p>6 <input type="checkbox"/> Room-mate</p> <p>7 <input type="checkbox"/> Other non-relative (Print below)</p> <p><input type="text"/></p>	<p><input type="text"/> <input type="text"/> Day</p> <p><input type="text"/> <input type="text"/> Month</p> <p><input type="text"/> <input type="text"/> <input type="text"/> <input type="text"/> Year</p>	<p>1 <input type="checkbox"/> Male</p> <p>2 <input type="checkbox"/> Female</p>	<p>3 <input type="checkbox"/> Now married (excluding separated)</p> <p>4 <input type="checkbox"/> Separated</p> <p>5 <input type="checkbox"/> Divorced</p> <p>6 <input type="checkbox"/> Widowed</p> <p>7 <input type="checkbox"/> Never married (single)</p>
<p>1 <input type="checkbox"/> Son or daughter of Person 1</p> <p>2 <input type="checkbox"/> Stepson or step-daughter of Person 1</p> <p>3 <input type="checkbox"/> Father or mother of Person 1</p> <p>4 <input type="checkbox"/> Other relative of Person 1 (Print below)</p> <p>5 <input type="checkbox"/> Lodger</p> <p>6 <input type="checkbox"/> Room-mate</p> <p>7 <input type="checkbox"/> Other non-relative (Print below)</p> <p><input type="text"/></p>	<p><input type="text"/> <input type="text"/> Day</p> <p><input type="text"/> <input type="text"/> Month</p> <p><input type="text"/> <input type="text"/> <input type="text"/> <input type="text"/> Year</p>	<p>1 <input type="checkbox"/> Male</p> <p>2 <input type="checkbox"/> Female</p>	<p>3 <input type="checkbox"/> Now married (excluding separated)</p> <p>4 <input type="checkbox"/> Separated</p> <p>5 <input type="checkbox"/> Divorced</p> <p>6 <input type="checkbox"/> Widowed</p> <p>7 <input type="checkbox"/> Never married (single)</p>
<p>1 <input type="checkbox"/> Son or daughter of Person 1</p> <p>2 <input type="checkbox"/> Stepson or step-daughter of Person 1</p> <p>3 <input type="checkbox"/> Father or mother of Person 1</p> <p>4 <input type="checkbox"/> Other relative of Person 1 (Print below)</p> <p>5 <input type="checkbox"/> Lodger</p> <p>6 <input type="checkbox"/> Room-mate</p> <p>7 <input type="checkbox"/> Other non-relative (Print below)</p> <p><input type="text"/></p>	<p><input type="text"/> <input type="text"/> Day</p> <p><input type="text"/> <input type="text"/> Month</p> <p><input type="text"/> <input type="text"/> <input type="text"/> <input type="text"/> Year</p>	<p>1 <input type="checkbox"/> Male</p> <p>2 <input type="checkbox"/> Female</p>	<p>3 <input type="checkbox"/> Now married (excluding separated)</p> <p>4 <input type="checkbox"/> Separated</p> <p>5 <input type="checkbox"/> Divorced</p> <p>6 <input type="checkbox"/> Widowed</p> <p>7 <input type="checkbox"/> Never married (single)</p>
<p>1 <input type="checkbox"/> Son or daughter of Person 1</p> <p>2 <input type="checkbox"/> Stepson or step-daughter of Person 1</p> <p>3 <input type="checkbox"/> Father or mother of Person 1</p> <p>4 <input type="checkbox"/> Other relative of Person 1 (Print below)</p> <p>5 <input type="checkbox"/> Lodger</p> <p>6 <input type="checkbox"/> Room-mate</p> <p>7 <input type="checkbox"/> Other non-relative (Print below)</p> <p><input type="text"/></p>	<p><input type="text"/> <input type="text"/> Day</p> <p><input type="text"/> <input type="text"/> Month</p> <p><input type="text"/> <input type="text"/> <input type="text"/> <input type="text"/> Year</p>	<p>1 <input type="checkbox"/> Male</p> <p>2 <input type="checkbox"/> Female</p>	<p>3 <input type="checkbox"/> Now married (excluding separated)</p> <p>4 <input type="checkbox"/> Separated</p> <p>5 <input type="checkbox"/> Divorced</p> <p>6 <input type="checkbox"/> Widowed</p> <p>7 <input type="checkbox"/> Never married (single)</p>

NAME OF PERSON 1

Last name

Given name and initials

6. What language or languages can you speak well enough to conduct a conversation?
(Mark or print all languages in which you can carry on a conversation. See Guidelines on back cover.)

- 1 English
- 2 French
- 3 Italian
- 4 German
- 5 Chinese

Other
(Print)

□ □ □

7. What is your main language, that is, the language in which you are most at ease?
(See Guidelines on back cover.)

- 6 English
- 7 French
- 8 Italian
- 9 German
- 1 Chinese

Other
(Print)

□ □ □

8. What is the language you first spoke at home in your childhood?
(If more than one, which language did you speak most often? See Guidelines on back cover.)

- 2 English
- 3 French
- 4 Italian
- 5 German
- 6 Chinese

Other
(Print)

□ □ □

9. Where were you born?
(Mark or print one only, according to present boundaries.)

- 7 Canada
- 8 United Kingdom
- 9 Italy
- 1 U.S.A.
- 2 West Germany
- 3 East Germany
- 4 Poland

Other
(Print)

□ □ □

10. Of what country are you a citizen?
(Mark more than one box, if applicable.)

- 5 Canada, by birth
- 6 Canada, by naturalization
- 7 Same as country of birth (other than Canada)
- 8 Other

QUESTIONS FOR PERSON 1 - CONTINUED

11. Where were your parents born?
(See Guidelines on back cover.)

- | | | | |
|---|--|---|--|
| Father | | Mother | |
| 1 <input type="checkbox"/> In Canada | | 3 <input type="checkbox"/> In Canada | |
| 2 <input type="checkbox"/> Outside Canada | | 4 <input type="checkbox"/> Outside Canada | |

12. What is your religion?
(Mark or print one only.)

- | | | |
|---|--|---|
| 5 <input type="checkbox"/> Roman Catholic | 2 <input type="checkbox"/> Pentecostal | 8 <input type="checkbox"/> Salvation Army |
| 6 <input type="checkbox"/> United Church | 3 <input type="checkbox"/> Greek Orthodox | 9 <input type="checkbox"/> Islam |
| 7 <input type="checkbox"/> Anglican | 4 <input type="checkbox"/> Jewish | 1 <input type="checkbox"/> Hindu |
| 8 <input type="checkbox"/> Presbyterian | 5 <input type="checkbox"/> Ukrainian Catholic | 2 <input type="checkbox"/> Sikh |
| 9 <input type="checkbox"/> Lutheran | 6 <input type="checkbox"/> Mennonite | 3 <input type="checkbox"/> No religion |
| 1 <input type="checkbox"/> Baptist | 7 <input type="checkbox"/> Jehovah's Witnesses | |
- Other (Print)

13. What are the ethnic or cultural origins of your parents and grandparents?
(Mark or print as many groups as apply.)

- | | |
|--|--|
| 4 <input type="checkbox"/> Canadian | Native/Aboriginal Peoples of North America |
| 5 <input type="checkbox"/> French | (a) 2 <input type="checkbox"/> North American Indian |
| 6 <input type="checkbox"/> English | 3 <input type="checkbox"/> Métis |
| 7 <input type="checkbox"/> German | 4 <input type="checkbox"/> Inuit (Eskimo) |
| 8 <input type="checkbox"/> Scottish | ▶ <i>Continue with (b)</i> |
| 9 <input type="checkbox"/> Irish | |
| 1 <input type="checkbox"/> Italian | (b) <i>Tribe, nation or band, if applicable. (Print, for example, Cree, Haida Nation, Inuvialuit.)</i> |
| 2 <input type="checkbox"/> Ukrainian | <input type="text"/> |
| 3 <input type="checkbox"/> Dutch (Netherlands) | <input type="text"/> |
| 4 <input type="checkbox"/> Chinese | |
| 5 <input type="checkbox"/> Jewish | |
| 6 <input type="checkbox"/> Polish | |
| 7 <input type="checkbox"/> Portuguese | |
| 8 <input type="checkbox"/> South Asian <i>(Print group, for example, Indian from India, Indian from Uganda, Pakistani, Punjabi, Tamil.)</i> | <input type="text"/> |
| 9 <input type="checkbox"/> Black <i>(Print group, for example, Haitian, African, West Indian Black, Canadian Black.)</i> | <input type="text"/> |
| 1 <input type="checkbox"/> Other ethnic or cultural group(s). <i>(Print group(s), for example, Japanese, Vietnamese, Mexican, Greek, Norwegian, Filipino.)</i> | <input type="text"/> |
| | <input type="text"/> |

QUESTIONS FOR PERSON 1 - CONTINUED

14. What is your ethnic or cultural identity?

(Mark or print as many groups as apply. See Guidelines on back cover.)

- 1 Canadian
- 2 French
- 3 English
- 4 German
- 6 Scottish
- 6 Irish
- 7 Italian
- 8 Ukrainian
- 9 Dutch (Netherlands)
- 1 Chinese
- 2 Jewish
- 3 Polish
- 4 Portuguese
- 5 South Asian *(Print group, for example, Indian from India, Indian from Uganda, Pakistani, Punjabi, Tamil.)*

Native/Aboriginal Peoples of North America

- (a) 8 North American Indian
- 9 Métis
- 1 Inuit (Eskimo)

Continue with (b) and (c)

(b) Tribe, nation or band, if applicable. *(Print, for example, Cree, Haida Nation, Inuvialuit.)*



(c) Are you?

- 2 Status, registered or treaty Indian
- 3 Non-status Indian
- 4 Neither



- 6 Black *(Print group, for example, Haitian, African, West Indian Black, Canadian Black.)*



- 7 Other ethnic or cultural group(s). *(Print group(s), for example, Japanese, Vietnamese, Mexican, Greek, Norwegian, Filipino.)*





15. Which of the following best describes your race or colour?

(Please mark or print as many as apply, regardless of your country of birth.)

- 1 Black
- 2 Korean
- 3 Filipino
- 4 Japanese
- 5 Chinese
- 6 Native/Aboriginal Peoples of North America *(North American Indian, Métis, Inuit/Eskimo)*
- 7 South Asian *(for example, Indian from India, Indian from Uganda, Pakistani, Punjabi, Tamil)*
- 8 South East Asian *(for example, Vietnamese, Thai, Laotian)*
- 9 West Asian or North African *(for example, Armenian, Syrian, Moroccan)*
- 1 White *(for example, British, French, European, Latin/South American of European background)*
- 2 Other racial group not mentioned above. *(Print group.)*



QUESTIONS FOR PERSON 1 - CONTINUED

If this person is under 15 years of age, that is, born on or after January 17, 1973,

mark and do not answer Questions 16 and 17 **END HERE FOR THIS PERSON**

If this person is 15 years of age or over, that is, born before January 17, 1973,

mark and continue with Question 16.

16. (a) When did you move to your present address?
(Mark one box only.)

3 Always lived here

4 Moved on or before January 17, 1983

END HERE FOR THIS PERSON

5 Moved after January 17, 1983 (Print date)

		1	9		
Month		Year			

If exact date is not known, enter best estimate.

(b) Where did you last live before moving to your present address?

If your last address was in a suburban municipality within a large urban area, distinguish between that municipality and the main city, where applicable. For example, distinguish between Montréal-Nord and Montréal, Scarborough and Toronto, West Vancouver and Vancouver.

(Mark one box only.)

6 Different address in this city, town, village, township, municipality or Indian reserve

7 Outside Canada (Print name of country according to present boundaries.)

	<table border="1"> <tr><td style="width: 10px; height: 10px;"></td><td style="width: 10px; height: 10px;"></td><td style="width: 10px; height: 10px;"></td><td style="width: 10px; height: 10px;"></td></tr> </table>				

8 Different city, town, village, township, other municipality or Indian reserve in Canada (Print below)

--

City, town, village, township, other municipality or Indian reserve

--	--

County

Province or territory

17. Where did you live 5 years ago, that is, on January 17, 1983?

If your address 5 years ago was in a suburban municipality within a large urban area, distinguish between that municipality and the main city, where applicable. For example, distinguish between Montréal-Nord and Montréal, Scarborough and Toronto, West Vancouver and Vancouver.

(Mark one box only.)

9 This address

1 Different address in this city, town, village, township, municipality or Indian reserve

2 Outside Canada (Print name of country according to present boundaries.)

	<table border="1"> <tr><td style="width: 10px; height: 10px;"></td><td style="width: 10px; height: 10px;"></td><td style="width: 10px; height: 10px;"></td><td style="width: 10px; height: 10px;"></td></tr> </table>				

3 Different city, town, village, township, other municipality or Indian reserve in Canada (Print below)

--

City, town, village, township, other municipality or Indian reserve

--	--

County

Province or territory

**END OF QUESTIONS FOR PERSON 1
PERSON 2 - CONTINUE**

18. Did you have difficulty answering any of the test questions?

1 No

2 Yes — Please explain

19. Do you have any overall comments about the test questionnaire, for example, on the wording, print size, how easy or difficult it was to complete?

3 No

4 Yes — Please explain

20. Print here the name of the household member who filled this form.

Name

Would you be willing to take part in a discussion group on this test questionnaire?
(Some respondents will be contacted about participating in a discussion group on the test questions. The groups will be held in the early evening. Our representative can provide further information at pick-up.)

5 Yes

6 No

GUIDELINES

- Question 6** — Report all languages in which you can conduct a conversation of some length on various topics. Do not report languages learned at school unless you can speak them.
- For a child who is not speaking yet, report the language or languages he/she is actually learning.
 - If you are mute, report the language or languages in which you understand people.
- Question 7** — Report more than one language, only if you are equally at ease with them.
- For a child who is not speaking yet, report the language he/she is actually learning. Report more than one language only if they are spoken equally often to the child.
- Question 8** — Report the language you yourself spoke at home before you were six years old. Report more than one language only if you spoke them equally often.
- For a child who has not yet learned a language, report the language spoken in his/her home. Report more than one language only if they are spoken equally often to the child.
 - If you are mute, report the language in which you understand people.
- Question 11** — For parents born in Newfoundland prior to 1949, mark Canada as place of birth.
- Question 14(c)** — Any person who is status Indian or non-status Indian should answer this question.

THANK YOU FOR YOUR CO-OPERATION.

200 07

Bibliography

van Baaren, A. Phase 3 Response Rate Study - Analysis of Results. CSMD, February, 1979

Béland, Y. et Théberge A. Taux de réponse pour l'Essai Modulaire 2. DMES, memorandum of March 24, 1988.


Brodeur, M. Edit Sample Study of the 1986 Census. SSMD, January, 1988.

Brodeur, M. et Royce, D. Assessing the 1986 Canadian Census Questionnaire. Proceedings of the American Statistical Association, 1988.

Dibbs, R. MT-1 Questionnaire Test Final Report. Statistics Canada, January, 1989.

PA 605

STATISTICS CANADA LIBRARY
BIBLIOTHEQUE STATISTIQUE CANADA



1010204482

C.2