

Table 1  
Railway Occurrence and Casualty

	November			January to November		
	2013	2012	2008-2012 Average	2013	2012	2008-2012 Average
<b>Accidents</b>	<b>80</b>	<b>84</b>	<b>83</b>	<b>883</b>	<b>936</b>	<b>987</b>
Main-Track Train Collisions	1	0	1	5	6	5
Main-Track Train Derailments - 1-2 cars	2	5	3	45	32	42
Main-Track Train Derailments - 3 or more cars	4	0	2	34	32	41
Crossings	19	14	16	166	171	171
Non-Main-Track Train Collisions	10	9	6	76	93	86
Non-Main-Track Train Derailments - 1-2 cars	25	40	31	320	357	370
Non-Main-Track Train Derailments - 3 or more cars	8	4	10	95	98	109
Collisions/Derailments Involving Track Units	0	3	3	29	23	32
Employee/Passenger	1	1	1	7	6	9
Trespassers	5	5	4	56	71	70
Fires/Explosions	0	0	2	10	15	20
Other	5	3	3	40	32	33
<b>Incidents</b>	<b>14</b>	<b>12</b>	<b>12</b>	<b>185</b>	<b>213</b>	<b>194</b>
Dangerous Goods Leaker	9	3	3	79	81	66
Main-track Switch in Abnormal Position	0	1	1	6	5	7
Movement Exceeds Limits of Authority	5	7	7	81	111	102
Runaway Rolling Stock	0	0	1	10	9	10
Others	0	1	0	9	7	9
<b>Million Train-miles (a)</b>				<b>76.79</b>	<b>79.21</b>	<b>78.2</b>
<b>Accidents/Million Train-miles</b>				<b>11.50</b>	<b>11.82</b>	<b>12.62</b>
<b>Accidents Involving Dangerous Goods</b>	<b>13</b>	<b>10</b>	<b>9</b>	<b>132</b>	<b>111</b>	<b>124</b>
Main-track Train Derailments	0	0	0	14	6	14
Crossings	0	0	0	5	4	4
Non-Main-Track Train Collisions	1	2	1	24	20	24
Non-Main-Track Train Derailments	11	8	7	84	80	77
All Others	1	0	1	5	1	6
<b>Accidents with a DG Release</b>	<b>0</b>	<b>0</b>	<b>0</b>	<b>4</b>	<b>2</b>	<b>3</b>
<b>Accidents Involving Passenger Trains</b>	<b>4</b>	<b>4</b>	<b>5</b>	<b>45</b>	<b>44</b>	<b>61</b>
<b>Fatalities</b>	<b>6</b>	<b>6</b>	<b>5</b>	<b>126</b>	<b>78</b>	<b>71</b>
Crossings	2	1	1	32	28	24
Trespassers	3	4	3	42	46	46
All Others	1	1	0	52	4	2
<b>Serious Injuries</b>	<b>3</b>	<b>7</b>	<b>5</b>	<b>38</b>	<b>68</b>	<b>57</b>
Crossings	2	4	3	26	30	26
Trespassers	1	2	1	10	21	19
All Others	0	1	1	2	17	12

Data extracted December 17, 2013.

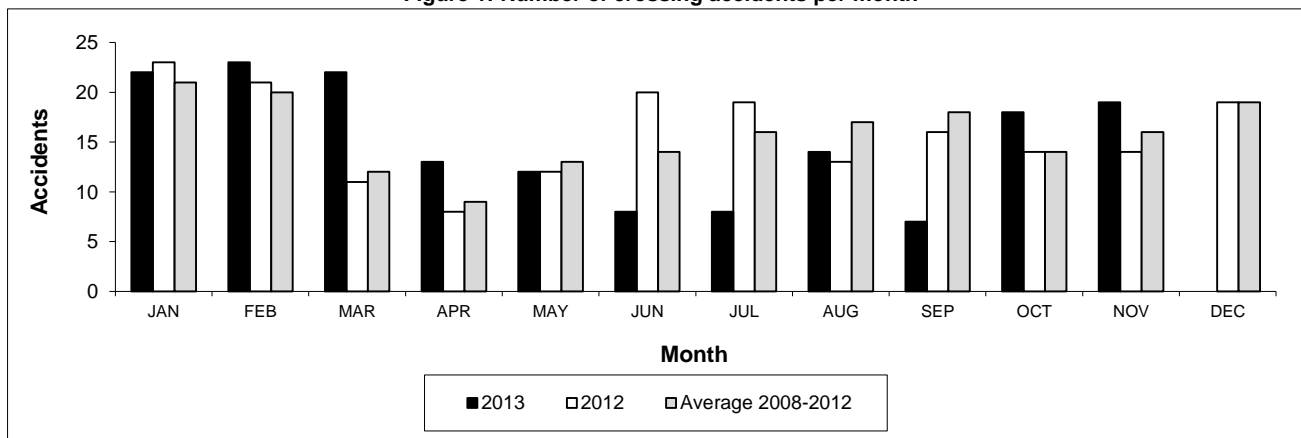
All 5-year averages have been rounded. The totals sometimes do not coincide to the sum of these averages.

a. Train-miles estimated. (Source: Transport Canada)

**Table 2**  
**Railway crossing and trespasser accidents by province**

	Crossings with Type Recorded				All Crossings		Trespasser	
	2013 - Year To Date*				Year To Date*		Year To Date*	
	Public Automated	Public Passive	Private	Farm	2013	2012	2013	2012
<b>Newfoundland</b>								
Accidents	0	0	0	0	0	0	0	0
Fatalities	0	0	0	0	0	0	0	0
Serious Injuries	0	0	0	0	0	0	0	0
<b>Nova Scotia</b>								
Accidents	0	0	0	0	0	1	0	0
Fatalities	0	0	0	0	0	0	0	0
Serious Injuries	0	0	0	0	0	0	0	0
<b>New Brunswick</b>								
Accidents	1	0	1	0	2	3	1	1
Fatalities	1	0	0	0	1	1	1	1
Serious Injuries	0	0	0	0	0	0	0	0
<b>Quebec</b>								
Accidents	9	0	3	0	14	17	7	9
Fatalities	2	0	0	0	2	1	4	6
Serious Injuries	1	0	0	0	1	1	3	2
<b>Ontario</b>								
Accidents	32	6	1	1	40	34	29	32
Fatalities	15	0	0	0	15	9	25	20
Serious Injuries	12	1	0	1	14	7	3	12
<b>Manitoba</b>								
Accidents	9	6	1	0	17	23	2	2
Fatalities	0	0	0	0	0	3	2	2
Serious Injuries	1	0	0	0	1	7	0	0
<b>Saskatchewan</b>								
Accidents	11	17	0	1	31	28	2	6
Fatalities	2	1	0	0	3	8	2	4
Serious Injuries	1	3	0	0	4	5	0	0
<b>Alberta</b>								
Accidents	22	14	1	0	43	45	7	10
Fatalities	6	1	0	0	7	4	4	8
Serious Injuries	1	2	0	0	5	7	1	2
<b>British Columbia</b>								
Accidents	10	7	1	0	18	20	8	11
Fatalities	3	1	0	0	4	2	4	5
Serious Injuries	0	1	0	0	1	3	3	5
<b>Northwest Territories</b>								
Accidents	0	1	0	0	1	0	0	0
Fatalities	0	0	0	0	0	0	0	0
Serious Injuries	0	0	0	0	0	0	0	0
<b>Canada</b>								
Accidents	94	51	8	2	166	171	56	71
Fatalities	29	3	0	0	32	28	42	46
Serious Injuries	16	7	0	1	26	30	10	21

**Figure 1: Number of crossing accidents per month**



Data extracted December 17, 2013.

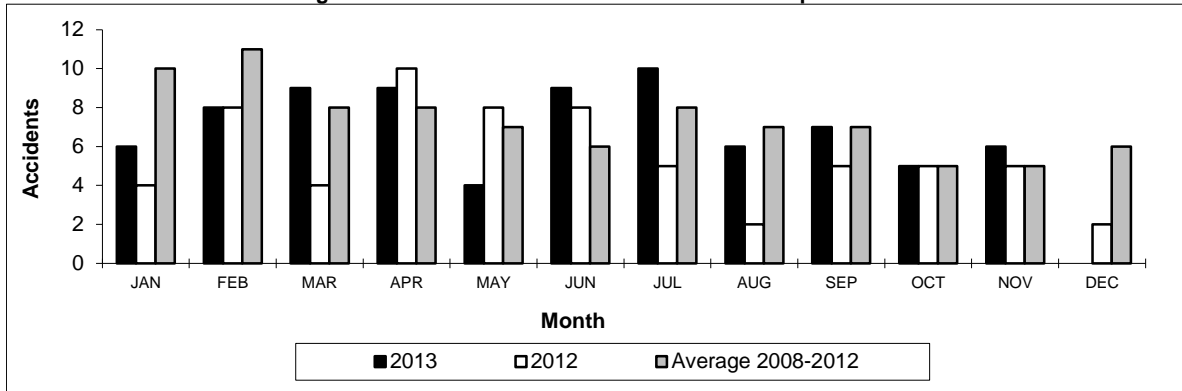
\*Year to date is from January to November.

**Table 3**  
Main-track train derailments by province

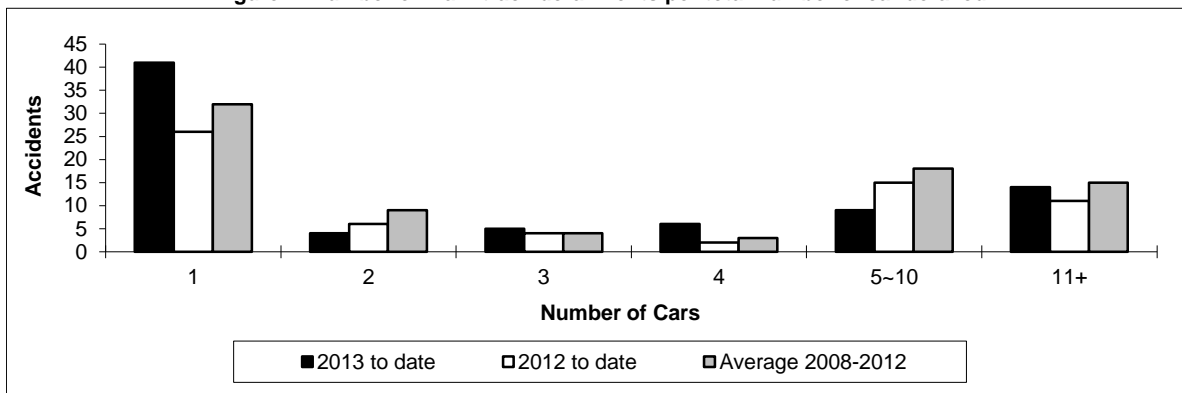
	January to November			Deraillments with DG Involvement January to November		
	2013	2012	2008-2012 Average	2013	2012	2008-2012 Average
<b>Canada</b>	<b>79</b>	<b>64</b>	<b>82</b>	<b>14</b>	<b>6</b>	<b>14</b>
Newfoundland	1	1	1	1	0	0
Nova Scotia	1	0	0	0	0	0
New Brunswick	1	0	0	0	0	0
Quebec	8	7	10	2	1	2
Ontario	15	6	20	3	1	5
Manitoba	3	8	8	0	1	1
Saskatchewan	12	4	9	4	1	1
Alberta	19	17	18	4	1	3
British Columbia	19	21	16	0	1	2
Northwest Territories	0	0	0	0	0	0

\* There were 3 occurrences with dangerous goods release to date in 2013 and 1 in 2012.

**Figure 1: Number of main-track train derailments per month**



**Figure 2: Number of main-track derailments per total number of car derailed**



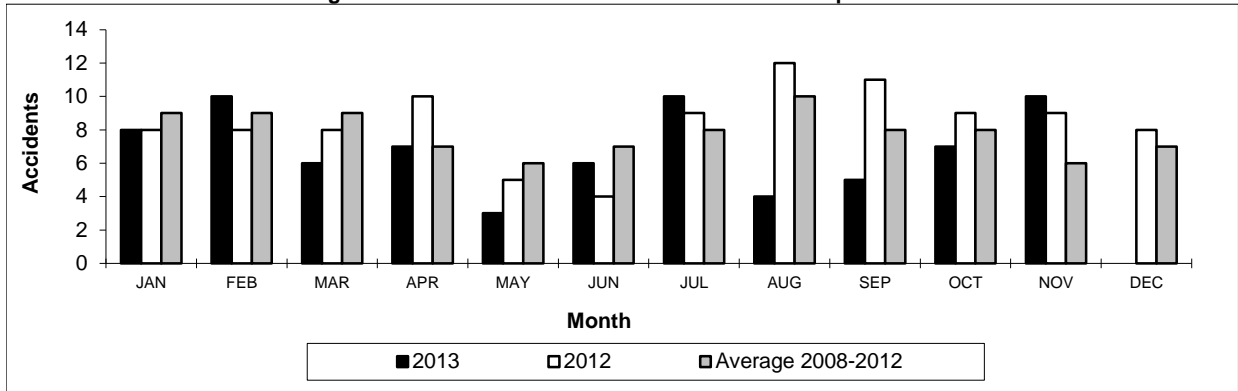
Data extracted December 17, 2013.

**Table 4**  
**Non main-track train collisions by province**

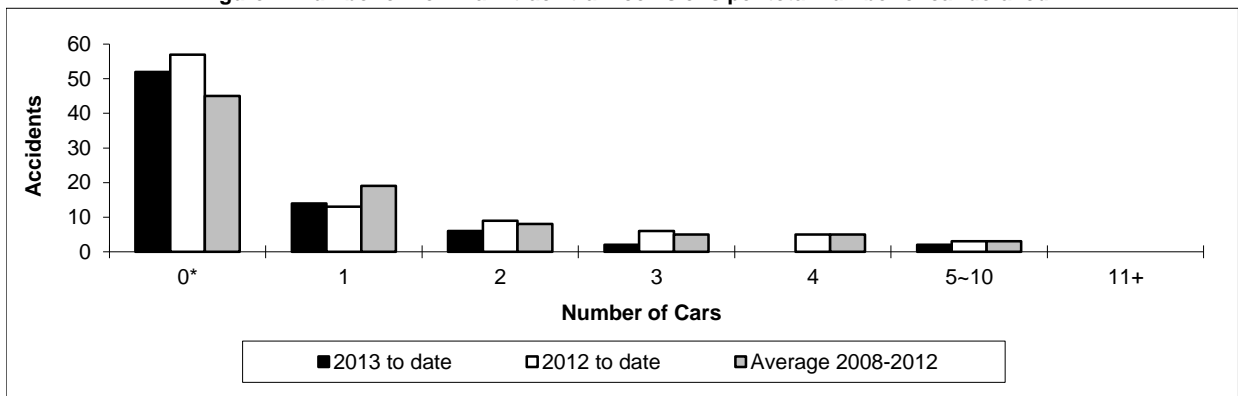
	January to November			Collisions with DG Involvement January to November		
	2013	2012	2008-2012 Average	2013	2012	2008-2012 Average
	<b>Canada</b>	<b>76</b>	<b>93</b>	<b>86</b>	<b>24</b>	<b>20</b>
Newfoundland	0	0	0	0	0	0
Nova Scotia	0	0	0	0	0	0
New Brunswick	2	1	1	0	0	0
Quebec	10	8	8	3	4	2
Ontario	13	10	17	4	0	6
Manitoba	12	19	13	5	6	3
Saskatchewan	8	10	7	1	1	1
Alberta	21	31	24	8	5	8
British Columbia	10	14	15	3	4	4
Northwest Territories	0	0	0	0	0	0

\* There was 1 occurrence with dangerous goods release to date in 2013 and none in 2012.

**Figure 1: Number of non main-track train collisions per month**



**Figure 2: Number of non main-track train collisions per total number of car derailed**



Data extracted December 17, 2013.

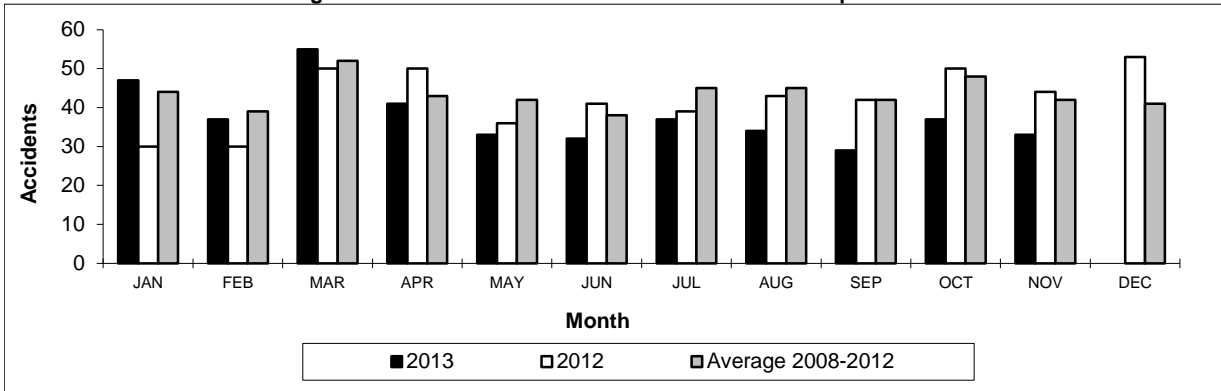
\*Number of collisions with no derailments.

**Table 5**  
**Non main-track train derailments by province**

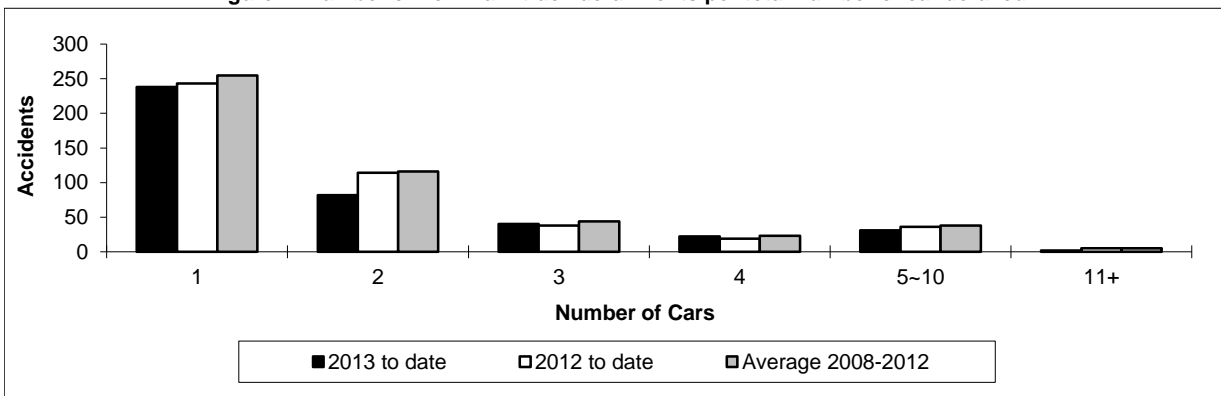
	January to November			Derailments with DG Involvement January to November		
	2013	2012	2008-2012 Average	2013	2012	2008-2012 Average
	<b>Canada</b>	<b>415</b>	<b>455</b>	<b>480</b>	<b>84</b>	<b>80</b>
Newfoundland	1	1	1	0	0	0
Nova Scotia	2	4	3	0	1	1
New Brunswick	4	6	9	2	1	2
Quebec	42	62	56	2	7	10
Ontario	80	85	104	20	11	15
Manitoba	42	54	58	5	8	9
Saskatchewan	68	55	55	10	7	4
Alberta	111	129	115	34	35	24
British Columbia	64	59	78	10	10	11
Northwest Territories	1	0	1	1	0	0

\* There were no occurrences with dangerous goods release to date in 2013 or in 2012.

**Figure 1: Number of non main-track train derailments per month**



**Figure 2: Number of non main-track derailments per total number of car derailed**



Data extracted December 17, 2013.