

Table 1  
Railway Occurrence and Casualty

	December			January to December		
	2013	2012	2008-2012 Average	2013	2012	2008-2012 Average
<b>Accidents</b>	<b>109</b>	<b>91</b>	<b>83</b>	<b>1,066</b>	<b>1,027</b>	<b>1,070</b>
Main-Track Train Collisions	0	0	0	4	6	5
Main-Track Train Derailments - 1-2 cars	6	2	3	50	34	45
Main-Track Train Derailments - 3 or more cars	1	0	3	33	32	44
Crossings	19	19	19	189	190	190
Non-Main-Track Train Collisions	10	8	7	92	101	94
Non-Main-Track Train Derailments - 1-2 cars	47	45	32	406	402	403
Non-Main-Track Train Derailments - 3 or more cars	11	8	8	113	106	118
Collisions/Derailments Involving Track Units	2	1	1	41	24	34
Employee/Passenger	1	1	1	8	7	10
Trespassers	1	3	4	57	74	73
Fires/Explosions	0	2	1	11	17	20
Other	10	2	2	61	34	35
<b>Incidents</b>	<b>15</b>	<b>18</b>	<b>15</b>	<b>216</b>	<b>231</b>	<b>209</b>
Dangerous Goods Leaker	3	8	4	93	89	70
Main-track Switch in Abnormal Position	0	0	0	7	5	7
Movement Exceeds Limits of Authority	11	9	10	95	120	111
Runaway Rolling Stock	0	1	2	10	10	12
Others	1	0	0	11	7	9
<b>Million Train-miles (a)</b>				<b>78.29</b>	<b>80.08</b>	<b>78.26</b>
<b>Accidents/Million Train-miles</b>				<b>13.62</b>	<b>12.82</b>	<b>13.67</b>
<b>Accidents Involving Dangerous Goods</b>	<b>14</b>	<b>8</b>	<b>9</b>	<b>145</b>	<b>119</b>	<b>133</b>
Main-track Train Derailments	0	0	1	12	6	15
Crossings	0	0	0	5	4	4
Non-Main-Track Train Collisions	1	1	2	26	21	26
Non-Main-Track Train Derailments	13	7	6	97	87	82
All Others	0	0	0	5	1	6
<b>Accidents with a DG Release</b>	<b>0</b>	<b>0</b>	<b>0</b>	<b>4</b>	<b>2</b>	<b>3</b>
<b>Accidents Involving Passenger Trains</b>	<b>2</b>	<b>5</b>	<b>5</b>	<b>48</b>	<b>49</b>	<b>65</b>
<b>Fatalities</b>	<b>1</b>	<b>5</b>	<b>5</b>	<b>127</b>	<b>83</b>	<b>76</b>
Crossings	0	2	1	32	30	25
Trespassers	1	3	3	43	49	50
All Others	0	0	0	52	4	2
<b>Serious Injuries</b>	<b>2</b>	<b>4</b>	<b>3</b>	<b>39</b>	<b>72</b>	<b>60</b>
Crossings	2	2	2	27	32	28
Trespassers	0	0	0	10	21	19
All Others	0	2	1	2	19	13

Data extracted January 22, 2014.

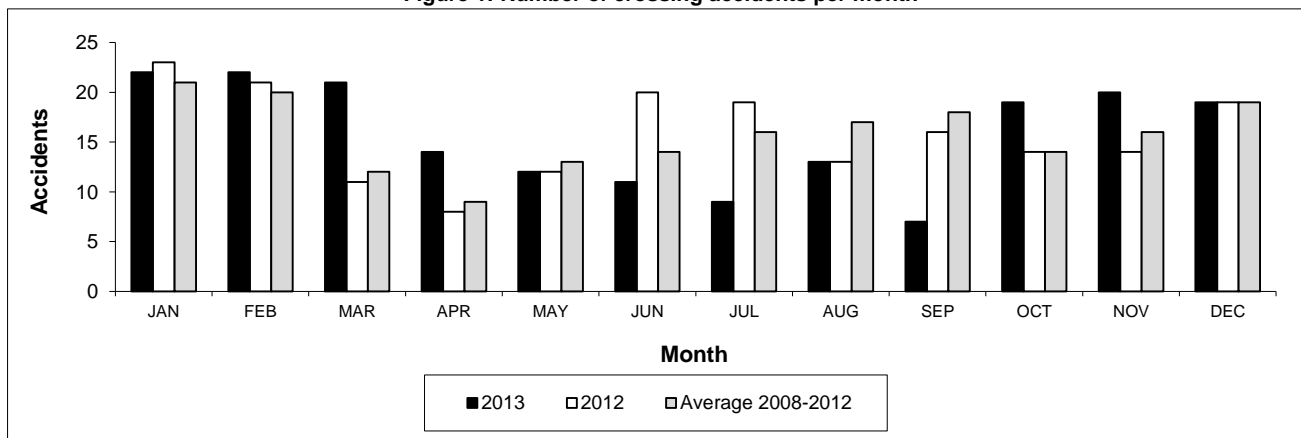
All 5-year averages have been rounded. The totals sometimes do not coincide to the sum of these averages.

a. Train-miles estimated. (Source: Transport Canada)

**Table 2**  
**Railway crossing and trespasser accidents by province**

	Crossings with Type Recorded				All Crossings		Trespasser	
	2013 - Year To Date*				Year To Date*		Year To Date*	
	Public Automated	Public Passive	Private	Farm	2013	2012	2013	2012
<b>Newfoundland</b>								
Accidents	0	0	0	0	0	0	0	0
Fatalities	0	0	0	0	0	0	0	0
Serious Injuries	0	0	0	0	0	0	0	0
<b>Nova Scotia</b>								
Accidents	0	0	0	0	0	1	0	0
Fatalities	0	0	0	0	0	0	0	0
Serious Injuries	0	0	0	0	0	0	0	0
<b>New Brunswick</b>								
Accidents	1	0	1	0	3	3	1	1
Fatalities	1	0	0	0	1	1	1	1
Serious Injuries	0	0	0	0	0	0	0	0
<b>Quebec</b>								
Accidents	9	1	3	0	18	18	7	11
Fatalities	2	0	0	0	2	1	4	8
Serious Injuries	1	0	0	0	1	1	3	2
<b>Ontario</b>								
Accidents	34	6	1	1	42	40	30	33
Fatalities	15	0	0	0	15	11	26	21
Serious Injuries	13	1	0	1	15	8	3	12
<b>Manitoba</b>								
Accidents	11	7	1	0	19	26	2	2
Fatalities	0	0	0	0	0	3	2	2
Serious Injuries	0	0	0	0	0	7	0	0
<b>Saskatchewan</b>								
Accidents	13	22	0	1	37	32	2	6
Fatalities	2	1	0	0	3	8	2	4
Serious Injuries	2	3	0	0	5	6	0	0
<b>Alberta</b>								
Accidents	26	19	2	0	50	48	7	10
Fatalities	6	1	0	0	7	4	4	8
Serious Injuries	3	2	0	0	5	7	1	2
<b>British Columbia</b>								
Accidents	10	8	0	0	19	22	8	11
Fatalities	3	1	0	0	4	2	4	5
Serious Injuries	0	1	0	0	1	3	3	5
<b>Northwest Territories</b>								
Accidents	0	1	0	0	1	0	0	0
Fatalities	0	0	0	0	0	0	0	0
Serious Injuries	0	0	0	0	0	0	0	0
<b>Canada</b>								
Accidents	104	64	8	2	189	190	57	74
Fatalities	29	3	0	0	32	30	43	49
Serious Injuries	19	7	0	1	27	32	10	21

**Figure 1: Number of crossing accidents per month**



Data extracted January 22, 2014.

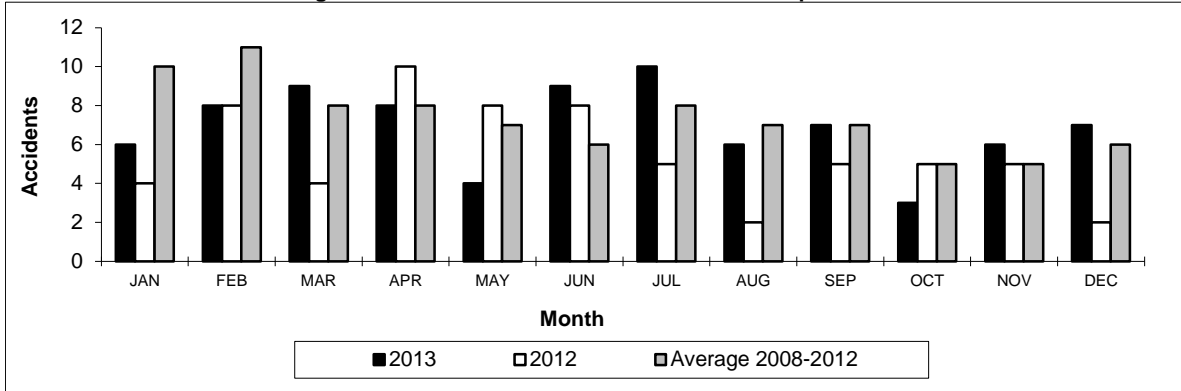
\*Year to date is from January to December.

**Table 3**  
Main-track train derailments by province

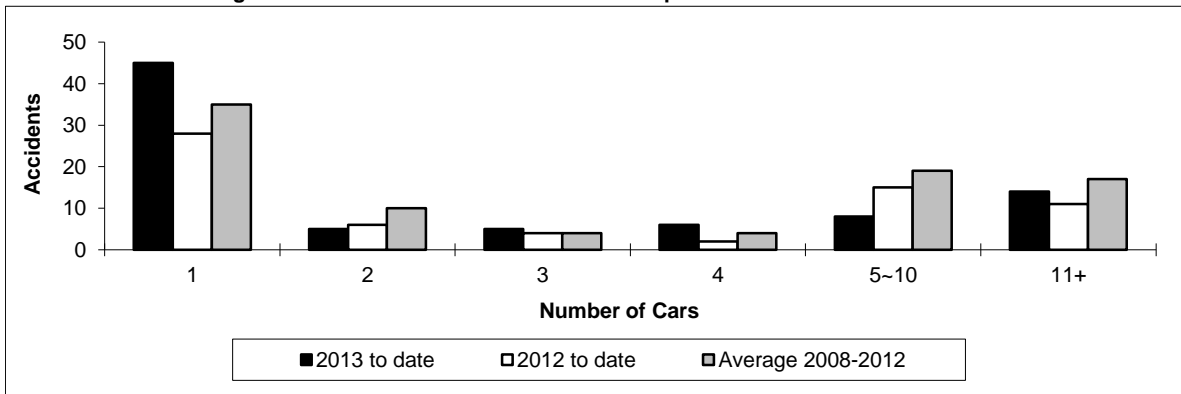
	January to December			Deraillments with DG Involvement January to December		
	2013	2012	2008-2012 Average	2013	2012	2008-2012 Average
<b>Canada</b>	<b>83</b>	<b>66</b>	<b>89</b>	<b>12</b>	<b>6</b>	<b>15</b>
Newfoundland	1	1	1	1	0	0
Nova Scotia	1	0	0	0	0	0
New Brunswick	1	0	0	0	0	0
Quebec	8	8	10	2	1	2
Ontario	18	7	21	3	1	5
Manitoba	3	8	8	0	1	1
Saskatchewan	13	4	10	4	1	1
Alberta	20	17	19	2	1	4
British Columbia	18	21	17	0	1	2
Northwest Territories	0	0	0	0	0	0

\* There were 2 occurrences with dangerous goods release to date in 2013 and 1 in 2012.

**Figure 1: Number of main-track train derailments per month**



**Figure 2: Number of main-track derailments per total number of car derailed**



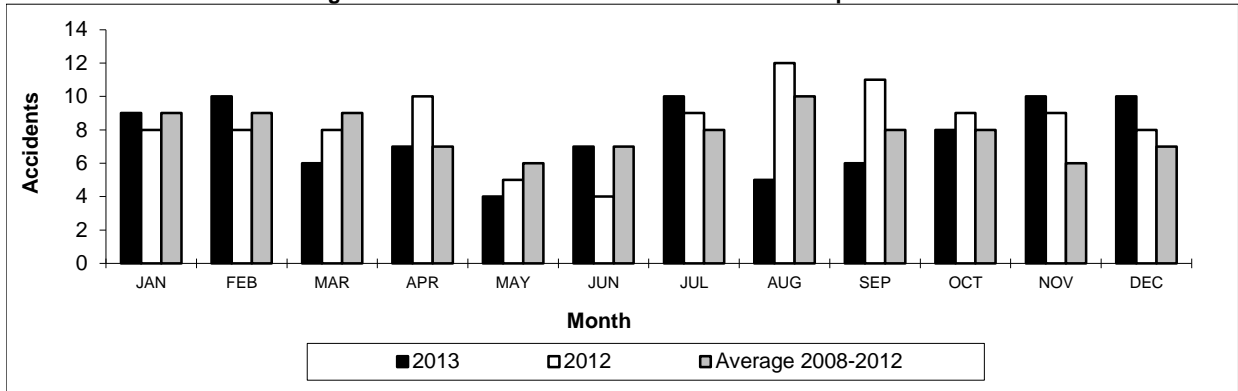
Data extracted January 22, 2014.

**Table 4**  
**Non main-track train collisions by province**

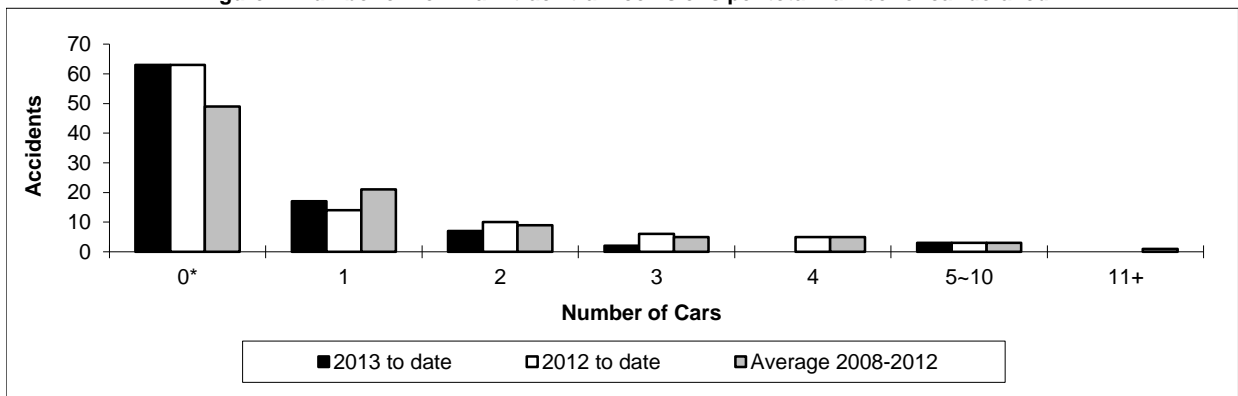
	January to December			Collisions with DG Involvement January to December		
	2013	2012	2008-2012 Average	2013	2012	2008-2012 Average
	<b>Canada</b>	<b>92</b>	<b>101</b>	<b>94</b>	<b>26</b>	<b>21</b>
Newfoundland	0	0	0	0	0	0
Nova Scotia	0	0	0	0	0	0
New Brunswick	2	1	1	0	0	0
Quebec	10	8	8	3	4	2
Ontario	16	10	18	5	0	6
Manitoba	13	21	15	5	7	4
Saskatchewan	10	12	8	1	1	1
Alberta	28	34	26	8	5	9
British Columbia	13	15	17	4	4	4
Northwest Territories	0	0	0	0	0	0

\* There was 1 occurrence with dangerous goods release to date in 2013 and none in 2012.

**Figure 1: Number of non main-track train collisions per month**



**Figure 2: Number of non main-track train collisions per total number of car derailed**



Data extracted January 22, 2014.

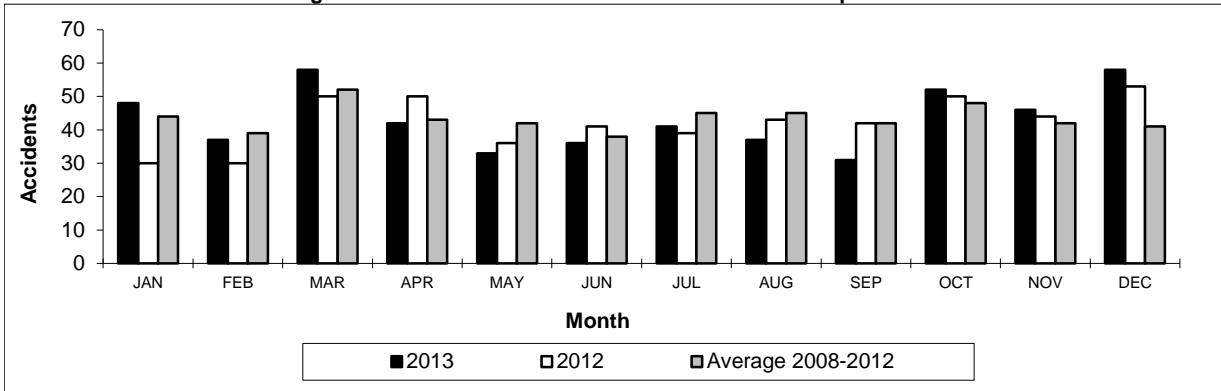
\*Number of collisions with no derailments.

**Table 5**  
**Non main-track train derailments by province**

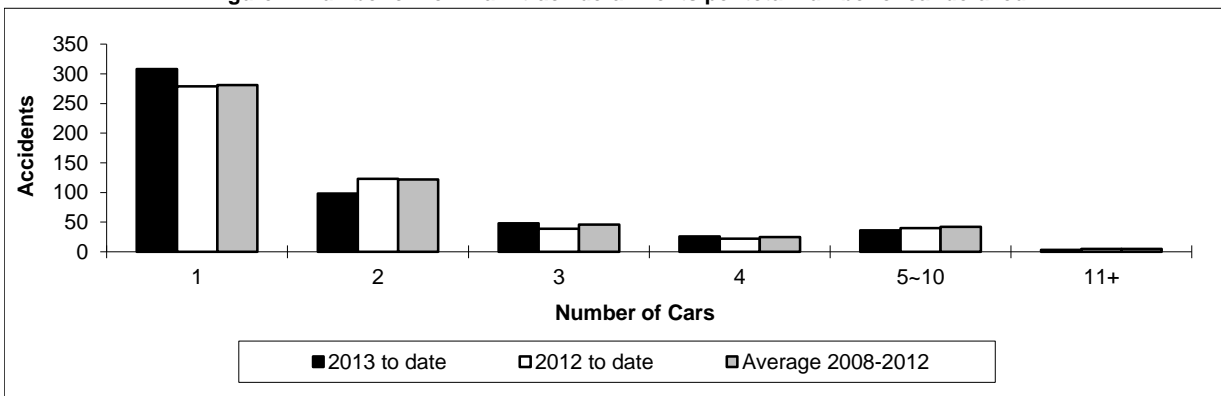
	January to December			Deraillments with DG Involvement January to December		
	2013	2012	2008-2012 Average	2013	2012	2008-2012 Average
	<b>Canada</b>	<b>519</b>	<b>508</b>	<b>521</b>	<b>97</b>	<b>87</b>
Newfoundland	1	1	1	0	0	0
Nova Scotia	2	4	4	0	1	1
New Brunswick	5	6	10	2	1	2
Quebec	52	72	63	4	9	12
Ontario	91	91	110	21	11	16
Manitoba	56	59	63	7	8	9
Saskatchewan	86	68	60	10	7	4
Alberta	139	141	125	39	39	27
British Columbia	86	66	84	13	11	11
Northwest Territories	1	0	1	1	0	0

\* There was 1 occurrence with dangerous goods release to date in 2013 and none in 2012.

**Figure 1: Number of non main-track train derailments per month**



**Figure 2: Number of non main-track derailments per total number of car derailed**



Data extracted January 22, 2014.