

Table 1
Railway Occurrence and Casualty

	January			Year to Date (January)		
	2014	2013	2009-2013 Average	2014	2013	2009-2013 Average
Accidents	94	102	97	94	102	97
Main-Track Train Collisions	0	2	1	0	2	1
Main-Track Train Derailments - 1-2 cars	7	4	5	7	4	5
Main-Track Train Derailments - 3 or more cars	7	2	3	7	2	3
Crossings	16	22	22	16	22	22
Non-Main-Track Train Collisions	8	9	9	8	9	9
Non-Main-Track Train Derailments - 1-2 cars	42	42	36	42	42	36
Non-Main-Track Train Derailments - 3 or more cars	5	6	9	5	6	9
Collisions/Derailments Involving Track Units	3	5	3	3	5	3
Employee/Passenger	0	2	1	0	2	1
Trespassers	5	3	4	5	3	4
Fires/Explosions	1	2	1	1	2	1
Other	0	3	3	0	3	3
Incidents	16	12	18	16	12	18
Dangerous Goods Leaker	5	3	7	5	3	7
Main-track Switch in Abnormal Position	1	0	1	1	0	1
Movement Exceeds Limits of Authority	8	8	9	8	8	9
Runaway Rolling Stock	1	1	1	1	1	1
Others	1	0	1	1	0	1
Million Train-miles (a)				6.3	7.1	6.95
Accidents/Million Train-miles				14.92	14.37	13.96
Accidents Involving Dangerous Goods	19	12	13	19	12	13
Main-track Train Derailments	2	1	1	2	1	1
Crossings	0	2	1	0	2	1
Non-Main-Track Train Collisions	5	2	2	5	2	2
Non-Main-Track Train Derailments	12	7	8	12	7	8
All Others	0	0	1	0	0	1
Accidents with a DG Release	1	0	0	1	0	0
Accidents Involving Passenger Trains	6	3	6	6	3	6
Fatalities	6	12	7	6	12	7
Crossings	2	8	3	2	8	3
Trespassers	4	2	2	4	2	2
All Others	0	2	1	0	2	1
Serious Injuries	4	3	4	4	3	4
Crossings	2	1	2	2	1	2
Trespassers	1	1	1	1	1	1
All Others	1	1	1	1	1	1

Data extracted February 18, 2014.

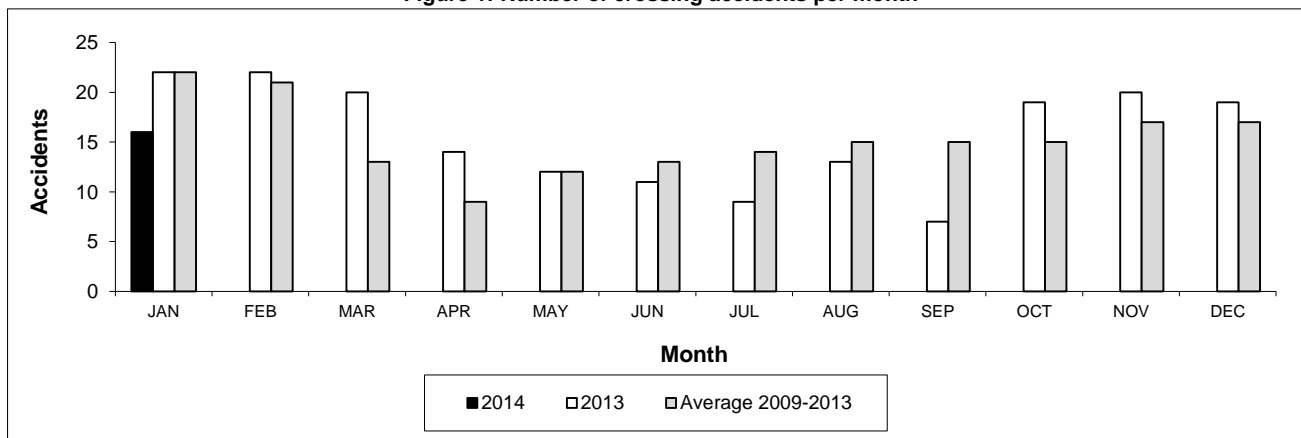
All 5-year averages have been rounded. The totals sometimes do not coincide to the sum of these averages.

a. Train-miles estimated. (Source: Transport Canada)

Table 2
Railway crossing and trespasser accidents by province

	Crossings with Type Recorded 2014 - Year To Date*				All Crossings Year To Date*		Trespasser Year To Date*	
	Public Automated	Public Passive	Private	Farm	2014	2013	2014	2013
Newfoundland								
Accidents	0	0	0	0	0	0	0	0
Fatalities	0	0	0	0	0	0	0	0
Serious Injuries	0	0	0	0	0	0	0	0
Nova Scotia								
Accidents	0	0	0	0	0	0	0	0
Fatalities	0	0	0	0	0	0	0	0
Serious Injuries	0	0	0	0	0	0	0	0
New Brunswick								
Accidents	0	0	0	0	2	0	0	0
Fatalities	0	0	0	0	0	0	0	0
Serious Injuries	0	0	0	0	0	0	0	0
Quebec								
Accidents	2	0	0	0	2	2	0	1
Fatalities	1	0	0	0	1	2	0	0
Serious Injuries	0	0	0	0	0	0	0	1
Ontario								
Accidents	3	1	1	0	5	2	2	2
Fatalities	0	0	0	0	0	0	2	2
Serious Injuries	0	0	0	0	0	0	0	0
Manitoba								
Accidents	0	1	0	0	1	0	0	0
Fatalities	0	0	0	0	0	0	0	0
Serious Injuries	0	0	0	0	0	0	0	0
Saskatchewan								
Accidents	1	1	0	0	2	7	0	0
Fatalities	1	0	0	0	1	3	0	0
Serious Injuries	1	1	0	0	2	1	0	0
Alberta								
Accidents	0	0	1	0	2	8	1	0
Fatalities	0	0	0	0	0	2	0	0
Serious Injuries	0	0	0	0	0	0	1	0
British Columbia								
Accidents	0	0	1	1	2	3	2	0
Fatalities	0	0	0	0	0	1	2	0
Serious Injuries	0	0	0	0	0	0	0	0
Northwest Territories								
Accidents	0	0	0	0	0	0	0	0
Fatalities	0	0	0	0	0	0	0	0
Serious Injuries	0	0	0	0	0	0	0	0
Canada								
Accidents	6	3	3	1	16	22	5	3
Fatalities	2	0	0	0	2	8	4	2
Serious Injuries	1	1	0	0	2	1	1	1

Figure 1: Number of crossing accidents per month



Data extracted February 18, 2014.

*Year to date includes January only for this month.

Table 3
Main-track train derailments by province

	Year to Date (January)			Derailments with DG Involvement Year to Date (January)		
	2014	2013	2009-2013 Average	2014	2013	2009-2013 Average
Canada	14	6	8	2	1	1
Newfoundland	0	1	1	0	1	0
Nova Scotia	0	1	0	0	0	0
New Brunswick	2	0	0	2	0	0
Quebec	3	0	0	0	0	0
Ontario	4	0	1	0	0	0
Manitoba	1	0	0	0	0	0
Saskatchewan	0	1	1	0	0	0
Alberta	1	0	2	0	0	0
British Columbia	3	3	2	0	0	0
Northwest Territories	0	0	0	0	0	0

* There was 1 occurrence with dangerous goods release to date in 2014 and none in 2013.

Figure 1: Number of main-track train derailments per month

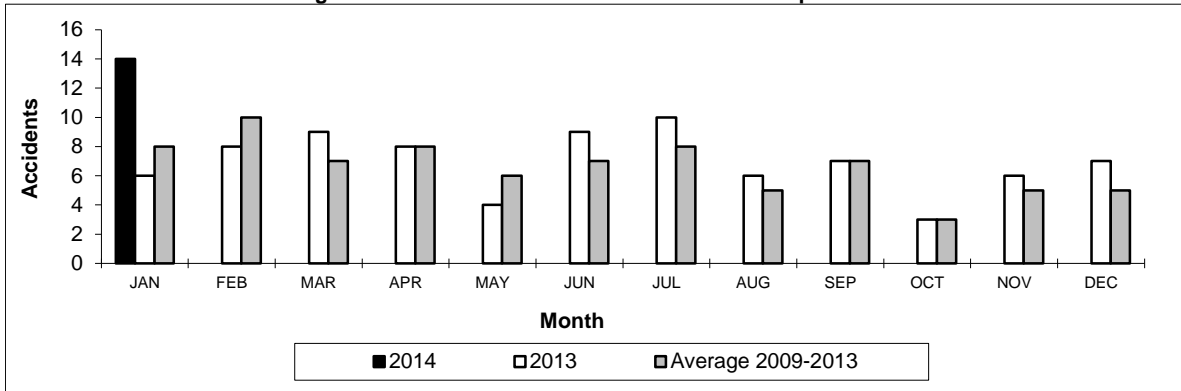
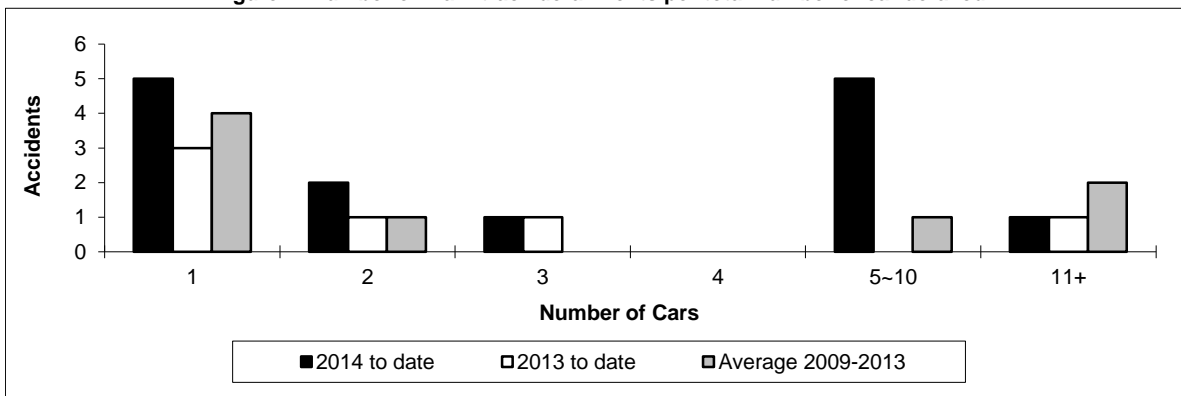


Figure 2: Number of main-track derailments per total number of car derailed



Data extracted February 18, 2014.

Table 4
Non main-track train collisions by province

	Year to Date (January)			Collisions with DG Involvement Year to Date (January)		
	2014	2013	2009-2013 Average	2014	2013	2009-2013 Average
	Canada	8	9	9	5	2
Newfoundland	0	0	0	0	0	0
Nova Scotia	0	0	0	0	0	0
New Brunswick	0	0	0	0	0	0
Quebec	0	1	1	0	0	0
Ontario	3	1	2	1	0	1
Manitoba	4	3	2	3	1	1
Saskatchewan	0	3	1	0	1	0
Alberta	1	1	2	1	0	0
British Columbia	0	0	1	0	0	0
Northwest Territories	0	0	0	0	0	0

* There were no occurrences with dangerous goods release to date in 2014 or in 2013.

Figure 1: Number of non main-track train collisions per month

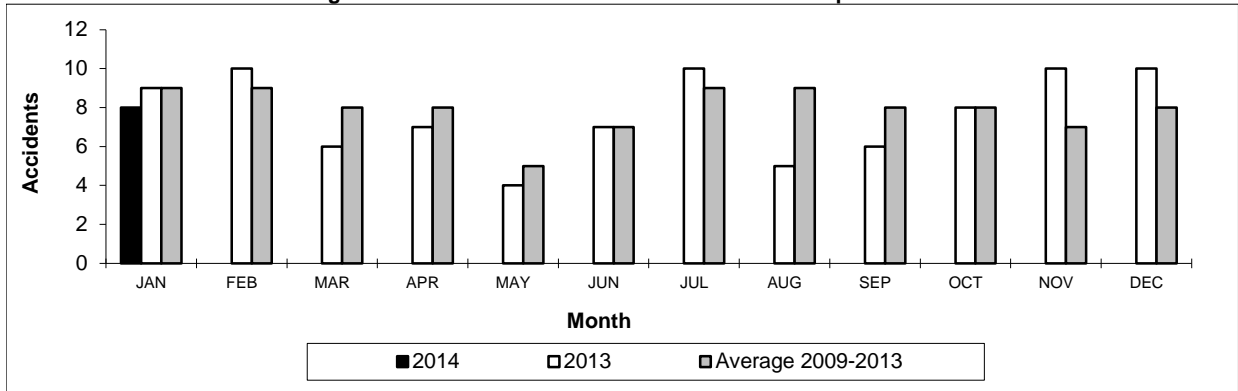
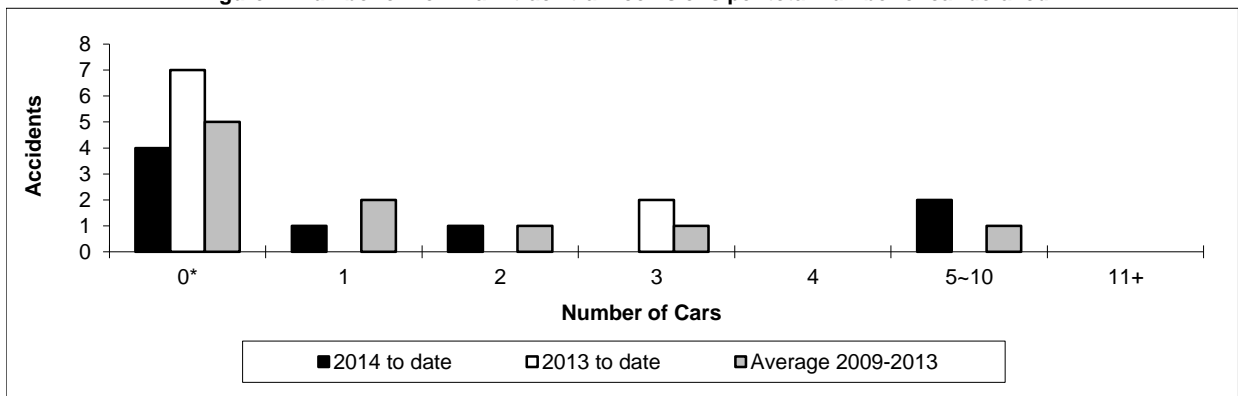


Figure 2: Number of non main-track train collisions per total number of car derailed



Data extracted February 18, 2014.

*Number of collisions with no derailments.

Table 5
Non main-track train derailments by province

	Year to Date (January)			Derailments with DG Involvement Year to Date (January)		
	2014	2013	2009-2013 Average	2014	2013	2009-2013 Average
	Canada	47	48	45	12	7
Newfoundland	0	0	0	0	0	0
Nova Scotia	0	0	0	0	0	0
New Brunswick	1	1	1	0	1	0
Quebec	1	4	4	1	1	1
Ontario	5	8	9	1	0	1
Manitoba	9	4	5	3	0	1
Saskatchewan	6	8	5	2	0	0
Alberta	18	14	13	4	4	3
British Columbia	6	8	8	0	0	1
Northwest Territories	1	1	0	1	1	0

* There were no occurrences with dangerous goods release to date in 2014 or in 2013.

Figure 1: Number of non main-track train derailments per month

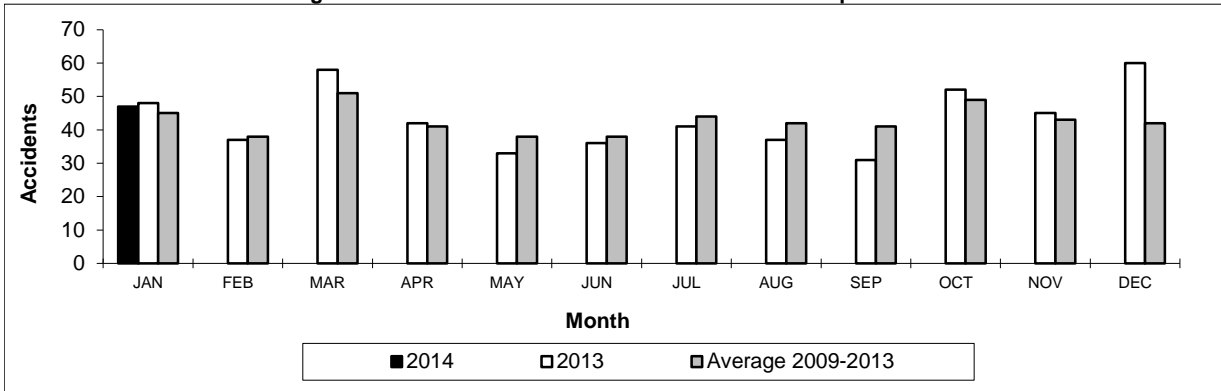
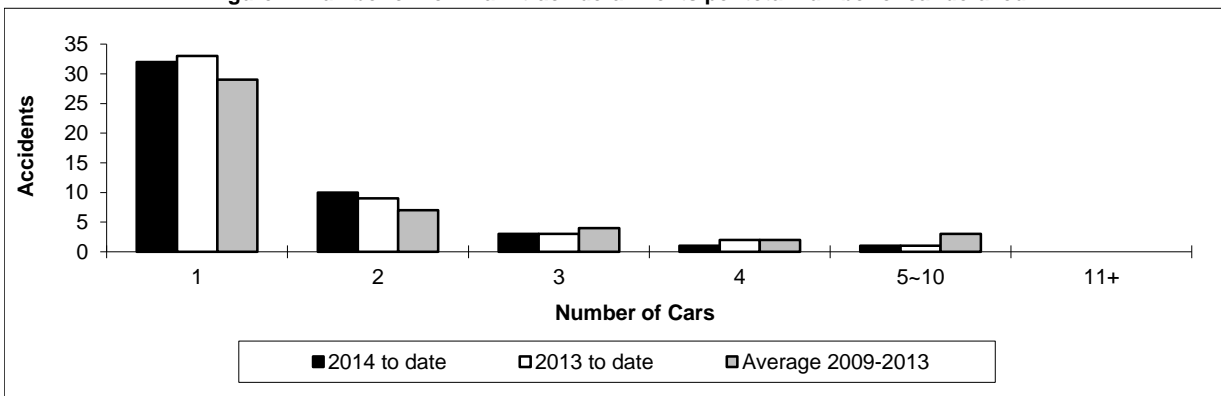


Figure 2: Number of non main-track derailments per total number of car derailed



Data extracted February 18, 2014.