

Table 1  
Railway Occurrence and Casualty

	October			January to October		
	2014	2013	2009-2013 Average	2014	2013	2009-2013 Average
<b>Accidents</b>	<b>89</b>	<b>92</b>	<b>93</b>	<b>987</b>	<b>877</b>	<b>893</b>
Main-Track Train Collisions	0	0	1	7	4	4
Main-Track Train Derailments - 1-2 cars*	1	1	1	39	44	36
Main-Track Train Derailments - 3-5 cars	1	1	0	11	11	10
Main-Track Train Derailments - 6 or more cars	3	1	1	33	16	24
Crossings	22	19	15	137	149	149
Non-Main-Track Train Collisions	8	8	8	85	73	79
Non-Main-Track Train Derailments - 1-2 cars*	27	42	41	419	341	346
Non-Main-Track Train Derailments - 3-5 cars	5	8	6	80	72	72
Non-Main-Track Train Derailments - 6 or more cars	2	2	2	30	21	22
Collisions/Derailments Involving Track Units	1	5	4	26	35	32
Employee/Passenger	2	0	1	9	6	8
Trespassers	6	2	6	52	52	63
Fires/Explosions	4	0	2	28	11	18
Other	6	3	3	30	42	31
<b>Incidents</b>	<b>16</b>	<b>23</b>	<b>17</b>	<b>173</b>	<b>192</b>	<b>189</b>
Dangerous Goods Leaker**	4	10	5	54	81	74
Main-track Switch in Abnormal Position	0	0	1	7	7	5
Movement Exceeds Limits of Authority	11	9	9	94	82	91
Runaway Rolling Stock	1	0	1	10	12	10
Others	0	4	1	8	10	8
<b>Million Train-miles (a)</b>				<b>72.88</b>	<b>69.91</b>	<b>69.76</b>
<b>Accidents/Million Train-miles</b>				<b>13.54</b>	<b>12.54</b>	<b>12.8</b>
<b>Accidents Involving Dangerous Goods</b>	<b>12</b>	<b>14</b>	<b>12</b>	<b>138</b>	<b>120</b>	<b>113</b>
Main-track Train Derailments	3	1	1	22	11	12
Crossings	1	0	0	4	5	4
Non-Main-Track Train Collisions	2	1	1	27	24	22
Non-Main-Track Train Derailments	6	12	9	80	76	71
All Others	0	0	0	5	4	4
<b>Accidents with a DG Release</b>	<b>1</b>	<b>1</b>	<b>1</b>	<b>3</b>	<b>7</b>	<b>3</b>
<b>Accidents Involving Passenger Trains</b>	<b>5</b>	<b>3</b>	<b>6</b>	<b>52</b>	<b>44</b>	<b>52</b>
<b>Accidents Involving Runaway Rolling Stock</b>	<b>2</b>	<b>0</b>	<b>2</b>	<b>13</b>	<b>24</b>	<b>21</b>
<b>Fatalities</b>	<b>3</b>	<b>4</b>	<b>7</b>	<b>52</b>	<b>120</b>	<b>78</b>
Crossings	1	2	2	18	29	24
Trespassers	2	2	4	32	40	43
All Others	0	0	0	2	51	11
<b>Serious Injuries</b>	<b>5</b>	<b>2</b>	<b>4</b>	<b>39</b>	<b>34</b>	<b>47</b>
Crossings	1	2	2	18	23	21
Trespassers	4	0	2	19	9	16
All Others	0	0	1	2	2	10

Data extracted November 17, 2014.

All 5-year averages have been rounded. The totals sometimes do not coincide to the sum of these averages.

a. Train-miles estimated. (Source: Transport Canada)

New TSB regulations came into effect on July 1, 2014, changing some reporting requirements.

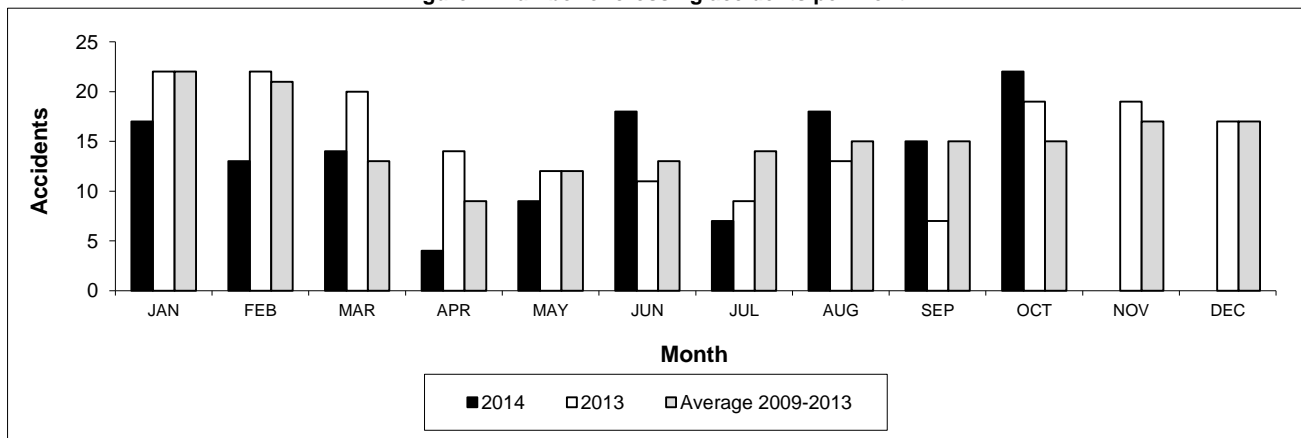
\* Under new reporting requirements all derailments are reportable.

\*\* Under new reporting requirements the minimum reporting threshold for incidents (200 litres) involving the release of low vapour pressure flammable liquids has been harmonized with Part 8 of the Transportation of Dangerous Goods Regulations.

**Table 2**  
**Railway crossing and trespasser accidents by province**

	Crossings with Type Recorded				All Crossings		Trespasser	
	2014 - Year To Date*				Year To Date*		Year To Date*	
	Public Automated	Public Passive	Private	Farm	2014	2013	2014	2013
<b>Newfoundland</b>								
Accidents	0	0	0	0	0	0	0	0
Fatalities	0	0	0	0	0	0	0	0
Serious Injuries	0	0	0	0	0	0	0	0
<b>Nova Scotia</b>								
Accidents	0	0	0	0	0	0	0	0
Fatalities	0	0	0	0	0	0	0	0
Serious Injuries	0	0	0	0	0	0	0	0
<b>New Brunswick</b>								
Accidents	2	0	0	0	4	2	0	1
Fatalities	0	0	0	0	0	1	0	1
Serious Injuries	0	0	0	0	0	0	0	0
<b>Quebec</b>								
Accidents	13	1	0	0	15	14	5	6
Fatalities	7	0	0	0	7	2	2	3
Serious Injuries	0	1	0	0	1	1	3	3
<b>Ontario</b>								
Accidents	24	8	5	1	38	31	23	28
Fatalities	5	0	0	0	5	12	17	24
Serious Injuries	2	0	0	0	2	12	6	3
<b>Manitoba</b>								
Accidents	5	5	1	0	11	16	2	2
Fatalities	1	0	0	0	1	0	1	2
Serious Injuries	2	0	0	0	2	0	1	0
<b>Saskatchewan</b>								
Accidents	8	14	1	0	23	30	2	2
Fatalities	2	0	0	0	2	3	1	2
Serious Injuries	3	4	0	0	7	4	0	0
<b>Alberta</b>								
Accidents	14	14	1	0	30	41	10	6
Fatalities	1	1	0	0	2	7	5	4
Serious Injuries	3	0	0	0	3	5	4	1
<b>British Columbia</b>								
Accidents	4	10	1	1	16	15	10	7
Fatalities	0	1	0	0	1	4	6	4
Serious Injuries	0	3	0	0	3	1	5	2
<b>Northwest Territories</b>								
Accidents	0	0	0	0	0	0	0	0
Fatalities	0	0	0	0	0	0	0	0
Serious Injuries	0	0	0	0	0	0	0	0
<b>Canada</b>								
Accidents	70	52	9	2	137	149	52	52
Fatalities	16	2	0	0	18	29	32	40
Serious Injuries	10	8	0	0	18	23	19	9

**Figure 1: Number of crossing accidents per month**



Data extracted November 17, 2014.

\*Year to date is from January to October.

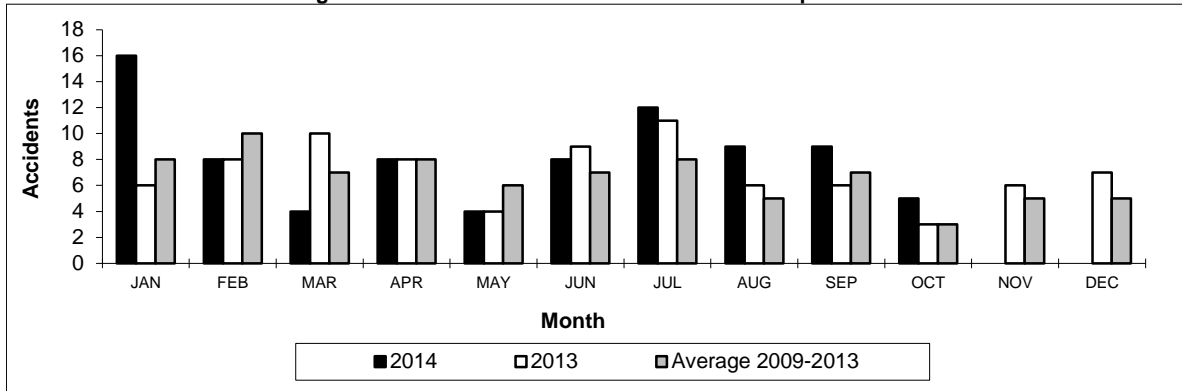
New TSB regulations came into effect on July 1, 2014, changing some reporting requirements.

**Table 3**  
Main-track train derailments by province\*

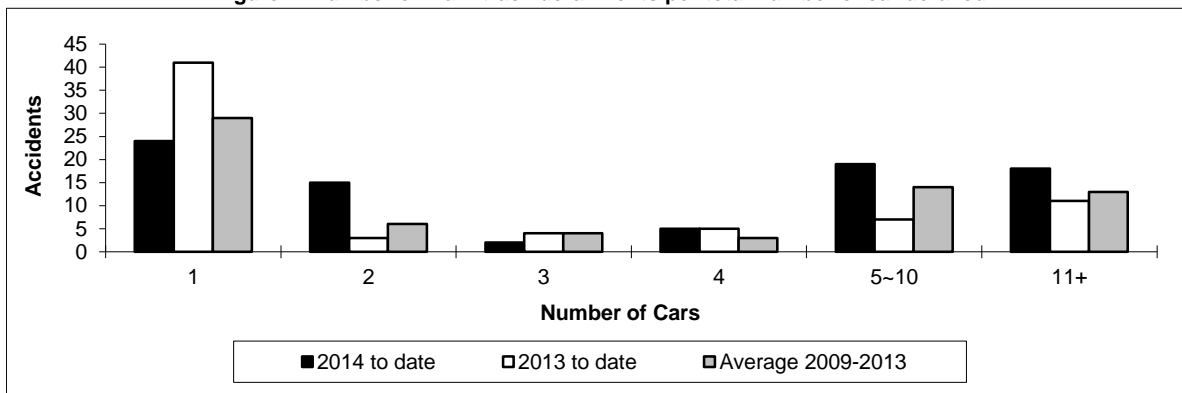
	January to October			Derailments with DG Involvement January to October		
	2014	2013	2009-2013 Average	2014	2013	2009-2013 Average
<b>Canada</b>	<b>83</b>	<b>71</b>	<b>69</b>	<b>22</b>	<b>11</b>	<b>12</b>
Newfoundland	0	1	1	0	1	0
Nova Scotia	0	1	0	0	0	0
New Brunswick	3	1	0	2	0	0
Quebec	9	8	8	1	2	2
Ontario	20	14	16	6	3	3
Manitoba	8	3	6	2	0	0
Saskatchewan	8	12	9	3	4	2
Alberta	21	15	15	7	1	3
British Columbia	14	16	15	1	0	2
Northwest Territories	0	0	0	0	0	0

\* There were 2 occurrences with dangerous goods release to date in 2014 and 3 in 2013.

**Figure 1: Number of main-track train derailments per month**



**Figure 2: Number of main-track derailments per total number of car derailed**



Data extracted November 17, 2014.

Figure 1: Number of main-track train derailments per month

New TSB regulations came into effect on July 1, 2014, changing some reporting requirements.

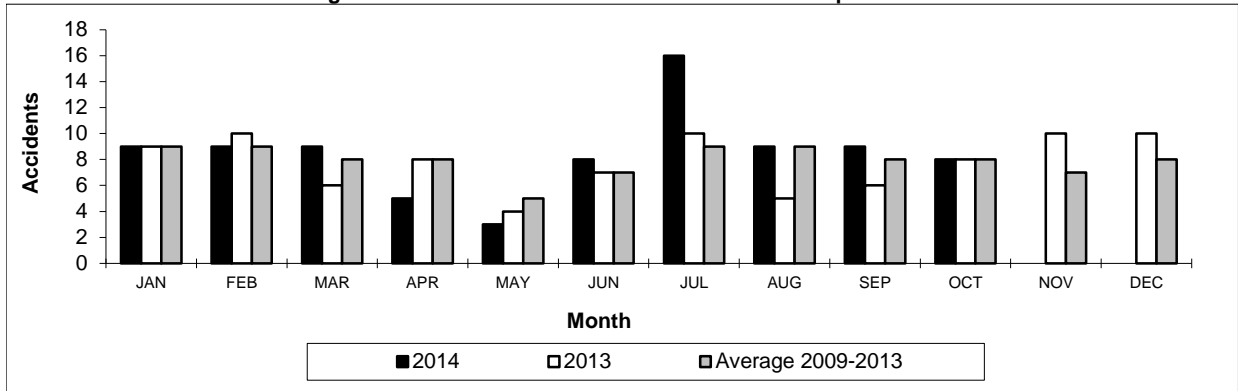
\* Under new reporting requirements all derailments are reportable.

**Table 4**  
**Non main-track train collisions by province**

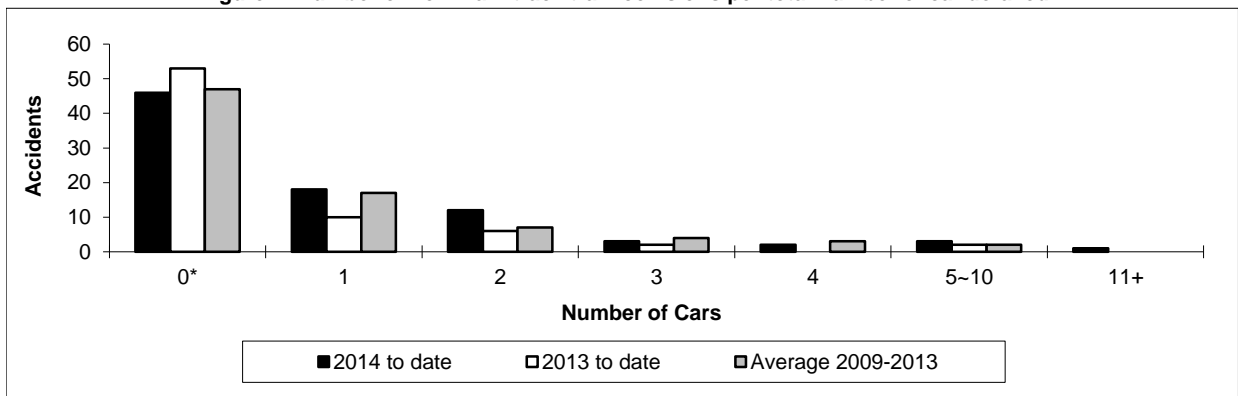
	January to October			Collisions with DG Involvement January to October		
	2014	2013	2009-2013 Average	2014	2013	2009-2013 Average
	<b>Canada</b>	<b>85</b>	<b>73</b>	<b>79</b>	<b>27</b>	<b>24</b>
Newfoundland	0	0	0	0	0	0
Nova Scotia	0	0	0	0	0	0
New Brunswick	4	2	1	1	0	0
Quebec	5	10	9	2	3	2
Ontario	20	12	14	7	4	5
Manitoba	13	11	13	5	5	3
Saskatchewan	17	8	6	3	1	1
Alberta	15	22	22	5	7	7
British Columbia	11	8	14	4	4	4
Northwest Territories	0	0	0	0	0	0

\* There were no occurrences with dangerous goods release to date in 2014 and 1 in 2013.

**Figure 1: Number of non main-track train collisions per month**



**Figure 2: Number of non main-track train collisions per total number of car derailed**



Data extracted November 17, 2014.

\* Number of collisions with no derailments.

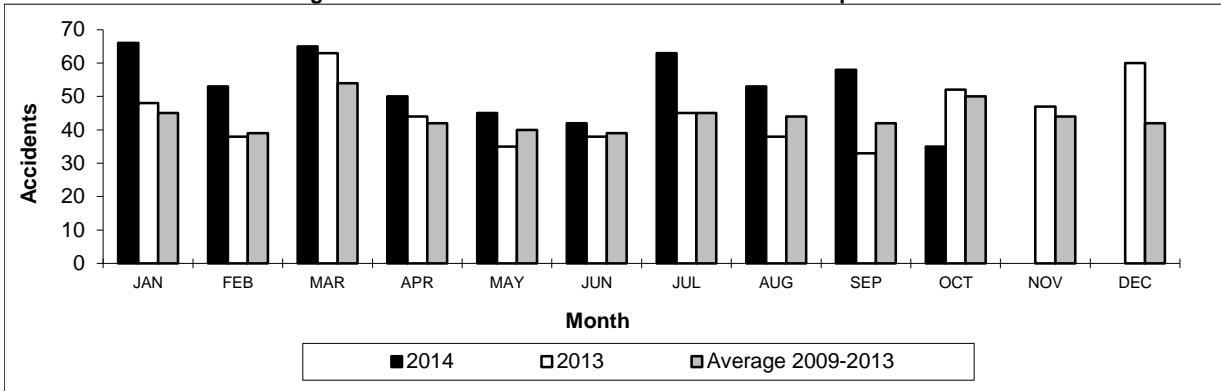
New TSB regulations came into effect on July 1, 2014, changing some reporting requirements.

**Table 5**  
**Non main-track train derailments by province\***

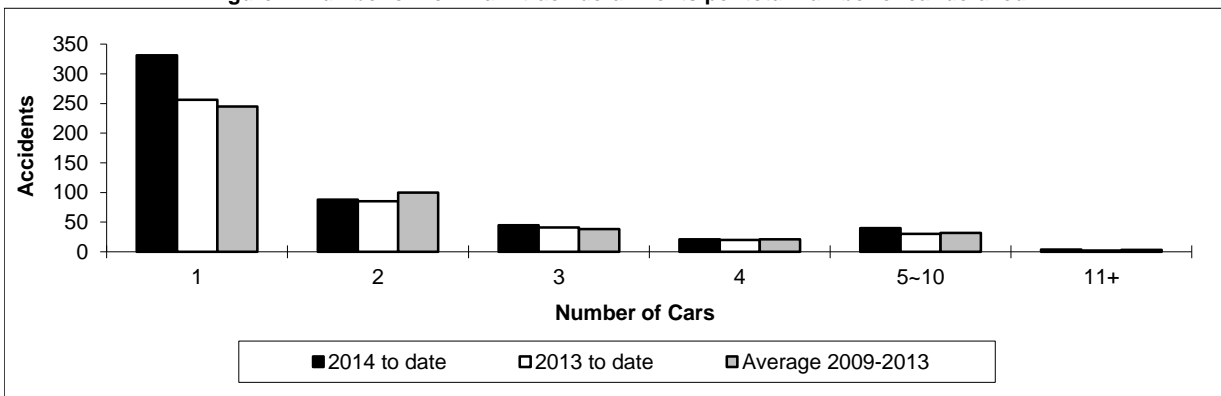
	January to October			Deraillments with DG Involvement January to October		
	2014	2013	2009-2013 Average	2014	2013	2009-2013 Average
	<b>Canada</b>	<b>530</b>	<b>434</b>	<b>439</b>	<b>80</b>	<b>76</b>
Newfoundland	0	1	1	0	0	0
Nova Scotia	3	2	3	0	0	1
New Brunswick	10	4	8	3	1	1
Quebec	44	43	49	5	3	7
Ontario	102	84	90	16	19	16
Manitoba	72	48	53	6	5	7
Saskatchewan	60	70	57	12	9	5
Alberta	145	115	113	25	31	25
British Columbia	92	66	66	11	7	8
Northwest Territories	2	1	1	2	1	1

\* There were no occurrences with dangerous goods release to date in 2014 and 1 in 2013.

**Figure 1: Number of non main-track train derailments per month**



**Figure 2: Number of non main-track derailments per total number of car derailed**



Data extracted November 17, 2014.

New TSB regulations came into effect on July 1, 2014, changing some reporting requirements.

\* Under new reporting requirements all derailments are reportable.