

Table 1
Railway Occurrence and Casualty

	February			January to February		
	2014	2013	2009-2013 Average	2014	2013	2009-2013 Average
Accidents	90	93	90	212	195	186
Main-Track Train Collisions	2	1	0	2	3	1
Main-Track Train Derailments - 1-2 cars	5	7	6	13	11	11
Main-Track Train Derailments - 3 or more cars	3	1	4	10	3	7
Crossings	14	22	21	32	44	43
Non-Main-Track Train Collisions	9	10	9	18	19	18
Non-Main-Track Train Derailments - 1-2 cars	42	30	32	103	72	68
Non-Main-Track Train Derailments - 3 or more cars	8	7	6	13	13	15
Collisions/Derailments Involving Track Units	1	4	2	7	9	5
Employee/Passenger	0	2	1	0	4	2
Trespassers	2	6	4	7	9	7
Fires/Explosions	2	1	1	4	3	2
Other	2	2	4	3	5	7
Incidents	25	9	11	41	21	29
Dangerous Goods Leaker	15	1	3	20	4	9
Main-track Switch in Abnormal Position	0	0	0	1	0	1
Movement Exceeds Limits of Authority	8	6	7	16	14	16
Runaway Rolling Stock	2	2	1	3	3	1
Others	0	0	1	1	0	2
Million Train-miles (a)				12.18	13.74	13.59
Accidents/Million Train-miles				17.41	14.19	13.69
Accidents Involving Dangerous Goods	14	14	15	35	26	28
Main-track Train Derailments	0	0	1	2	1	2
Crossings	0	1	0	0	3	1
Non-Main-Track Train Collisions	6	4	4	11	6	6
Non-Main-Track Train Derailments	8	9	9	22	16	17
All Others	0	0	0	0	0	1
Accidents with a DG Release	0	0	0	1	0	1
Accidents Involving Passenger Trains	2	6	6	8	9	12
Fatalities	5	8	6	11	20	13
Crossings	5	2	3	7	10	6
Trespassers	0	5	3	4	7	5
All Others	0	1	1	0	3	2
Serious Injuries	3	1	7	7	4	12
Crossings	1	1	3	3	2	5
Trespassers	2	0	1	3	1	2
All Others	0	0	4	1	1	5

Data extracted March 31, 2014.

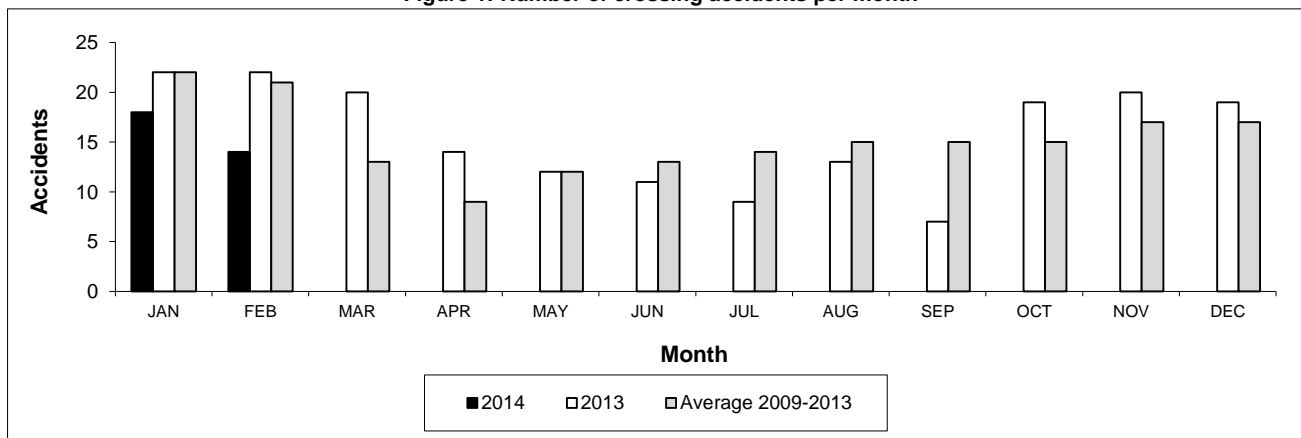
All 5-year averages have been rounded. The totals sometimes do not coincide to the sum of these averages.

a. Train-miles estimated. (Source: Transport Canada)

Table 2
Railway crossing and trespasser accidents by province

	Crossings with Type Recorded				All Crossings		Trespasser	
	2014 - Year To Date*				Year To Date*		Year To Date*	
	Public Automated	Public Passive	Private	Farm	2014	2013	2014	2013
Newfoundland								
Accidents	0	0	0	0	0	0	0	0
Fatalities	0	0	0	0	0	0	0	0
Serious Injuries	0	0	0	0	0	0	0	0
Nova Scotia								
Accidents	0	0	0	0	0	0	0	0
Fatalities	0	0	0	0	0	0	0	0
Serious Injuries	0	0	0	0	0	0	0	0
New Brunswick								
Accidents	0	0	0	0	2	0	0	0
Fatalities	0	0	0	0	0	0	0	0
Serious Injuries	0	0	0	0	0	0	0	0
Quebec								
Accidents	2	0	0	0	2	3	1	1
Fatalities	1	0	0	0	1	2	0	0
Serious Injuries	0	0	0	0	0	0	1	1
Ontario								
Accidents	6	2	1	0	9	8	2	6
Fatalities	1	0	0	0	1	1	2	5
Serious Injuries	0	0	0	0	0	1	0	0
Manitoba								
Accidents	0	2	0	0	2	2	0	0
Fatalities	0	0	0	0	0	0	0	0
Serious Injuries	0	0	0	0	0	0	0	0
Saskatchewan								
Accidents	3	1	0	0	4	12	0	0
Fatalities	2	0	0	0	2	3	0	0
Serious Injuries	1	1	0	0	2	1	0	0
Alberta								
Accidents	3	3	1	0	7	13	1	0
Fatalities	1	0	0	0	1	2	0	0
Serious Injuries	1	0	0	0	1	0	1	0
British Columbia								
Accidents	3	1	1	1	6	6	3	2
Fatalities	1	1	0	0	2	2	2	2
Serious Injuries	0	0	0	0	0	0	1	0
Northwest Territories								
Accidents	0	0	0	0	0	0	0	0
Fatalities	0	0	0	0	0	0	0	0
Serious Injuries	0	0	0	0	0	0	0	0
Canada								
Accidents	17	9	3	1	32	44	7	9
Fatalities	6	1	0	0	7	10	4	7
Serious Injuries	2	1	0	0	3	2	3	1

Figure 1: Number of crossing accidents per month



Data extracted March 31, 2014.

*Year to date is from January to February.

Table 3
Main-track train derailments by province

	January to February			Derailments with DG Involvement January to February		
	2014	2013	2009-2013 Average	2014	2013	2009-2013 Average
Canada	23	14	17	2	1	2
Newfoundland	0	1	1	0	1	0
Nova Scotia	0	1	0	0	0	0
New Brunswick	2	0	0	2	0	0
Quebec	5	1	2	0	0	0
Ontario	8	2	4	0	0	1
Manitoba	3	1	1	0	0	0
Saskatchewan	1	2	2	0	0	0
Alberta	0	3	4	0	0	1
British Columbia	4	3	4	0	0	0
Northwest Territories	0	0	0	0	0	0

* There was 1 occurrence with dangerous goods release to date in 2014 and none in 2013.

Figure 1: Number of main-track train derailments per month

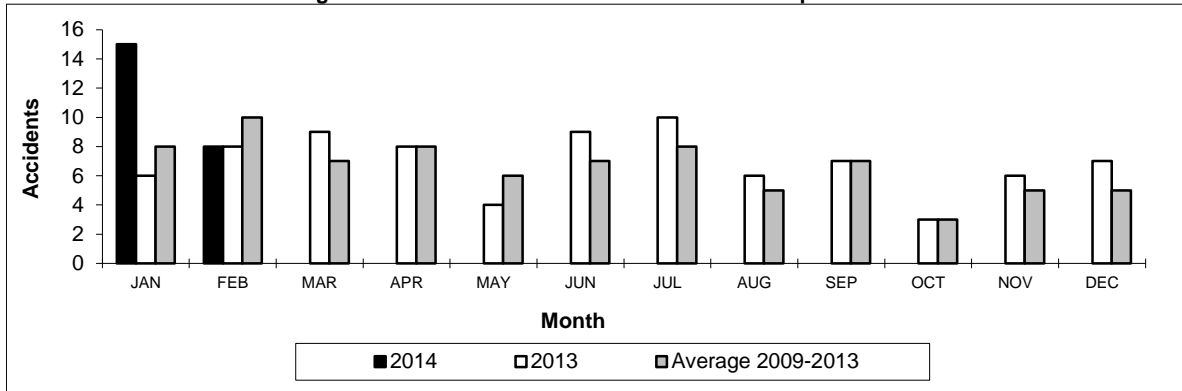
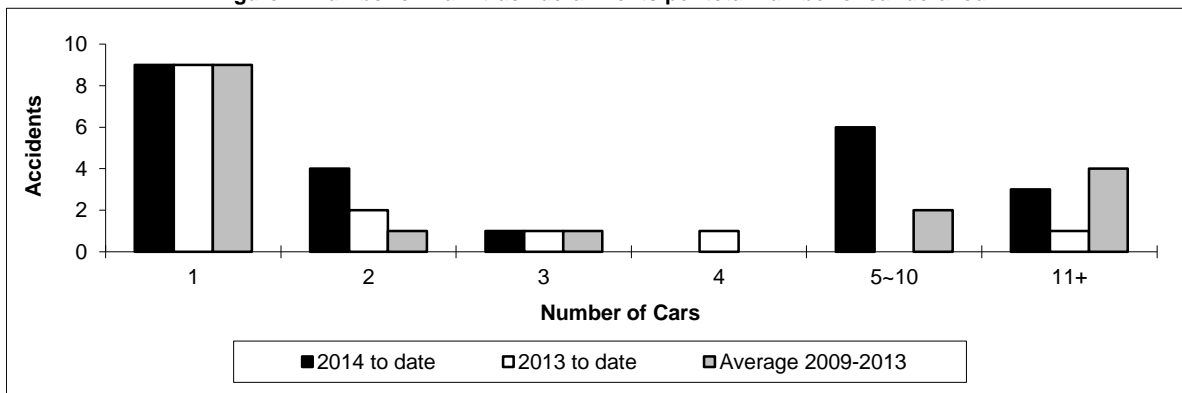


Figure 2: Number of main-track derailments per total number of car derailed



Data extracted March 31, 2014.

Table 4
Non main-track train collisions by province

	January to February			Collisions with DG Involvement January to February		
	2014	2013	2009-2013 Average	2014	2013	2009-2013 Average
	Canada	18	19	18	11	6
Newfoundland	0	0	0	0	0	0
Nova Scotia	0	0	0	0	0	0
New Brunswick	1	0	0	1	0	0
Quebec	0	2	2	0	0	0
Ontario	5	5	4	3	1	2
Manitoba	8	5	3	5	2	1
Saskatchewan	1	3	1	1	1	0
Alberta	3	3	4	1	1	1
British Columbia	0	1	3	0	1	1
Northwest Territories	0	0	0	0	0	0

* There were no occurrences with dangerous goods release to date in 2014 or in 2013.

Figure 1: Number of non main-track train collisions per month

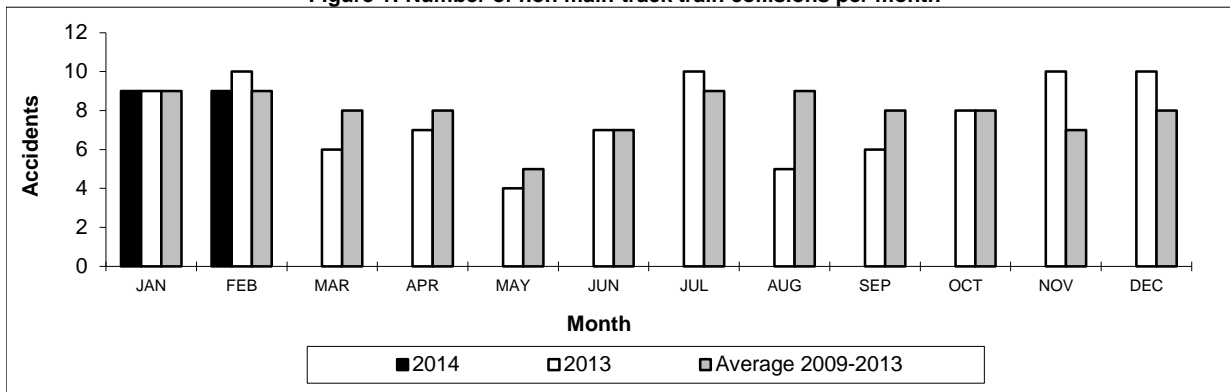
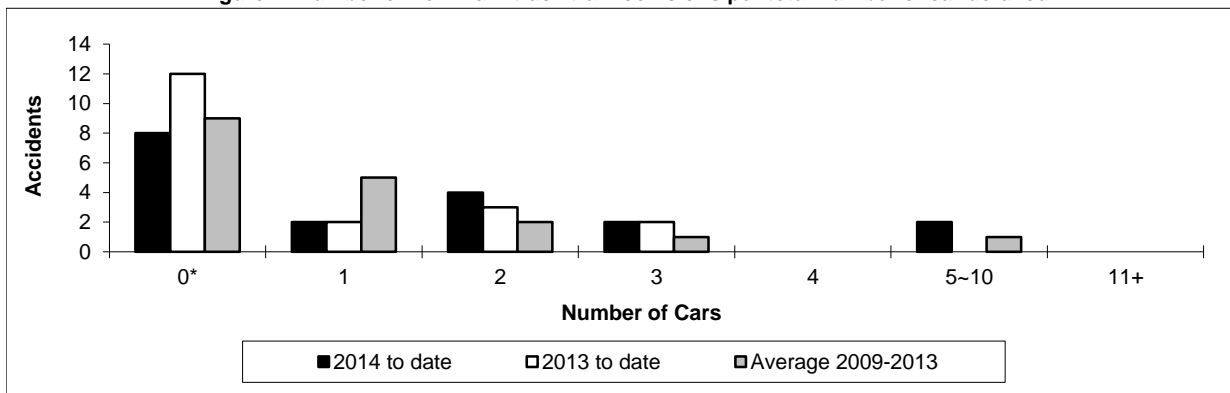


Figure 2: Number of non main-track train collisions per total number of car derailed



Data extracted March 31, 2014.

*Number of collisions with no derailments.

Table 5
Non main-track train derailments by province

	January to February			Deraillments with DG Involvement January to February		
	2014	2013	2009-2013 Average	2014	2013	2009-2013 Average
	Canada	116	85	83	22	16
Newfoundland	0	1	0	0	0	0
Nova Scotia	1	0	0	0	0	0
New Brunswick	1	2	1	0	1	0
Quebec	5	7	8	2	1	2
Ontario	20	17	16	5	3	4
Manitoba	21	6	10	4	0	2
Saskatchewan	11	17	10	3	2	1
Alberta	34	24	23	6	8	6
British Columbia	22	10	13	1	0	2
Northwest Territories	1	1	0	1	1	0

* There were no occurrences with dangerous goods release to date in 2014 or in 2013.

Figure 1: Number of non main-track train derailments per month

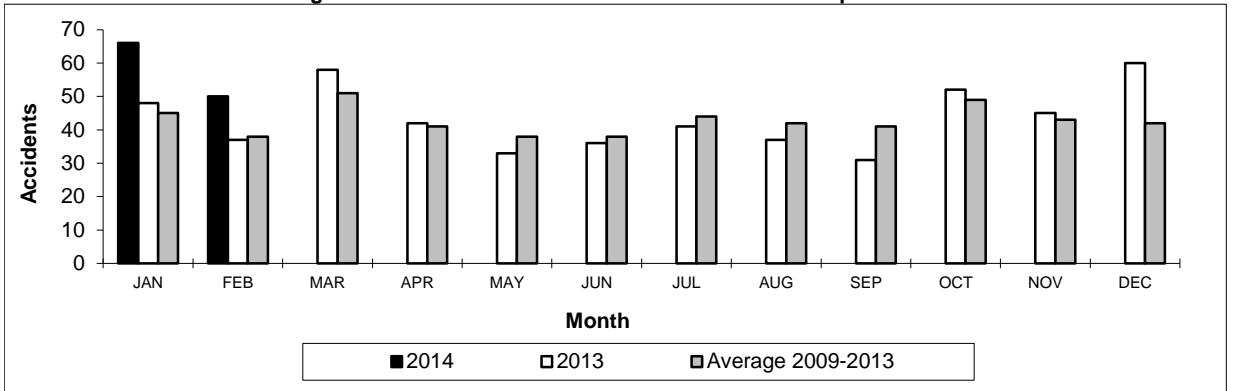
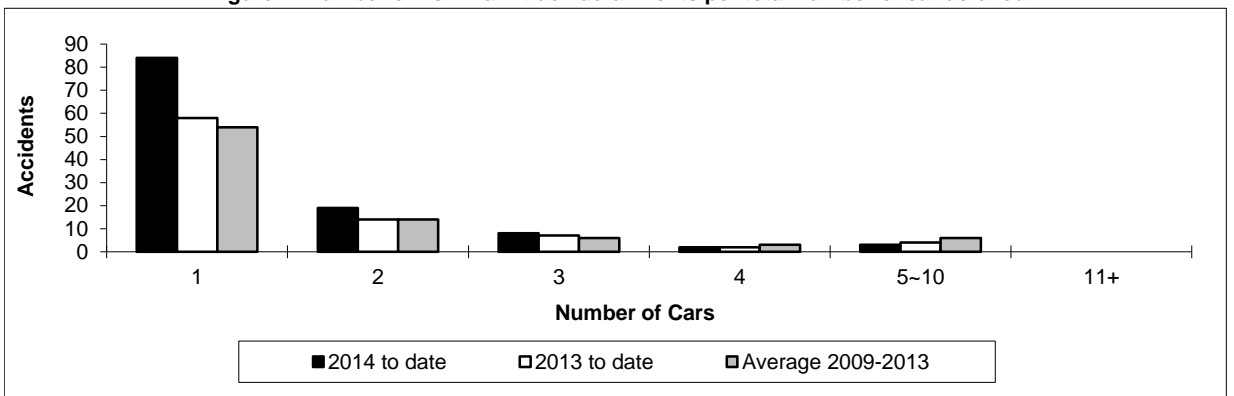


Figure 2: Number of non main-track derailments per total number of car derailed



Data extracted March 31, 2014.