

Table 1
Railway Occurrence and Casualty

	March			January to March		
	2014	2013	2009-2013 Average	2014	2013	2009-2013 Average
Accidents	93	108	94	305	303	280
Main-Track Train Collisions	1	0	0	3	3	1
Main-Track Train Derailments - 1-2 cars	4	5	4	17	16	15
Main-Track Train Derailments - 3 or more cars	0	4	3	10	7	10
Crossings	12	20	13	43	63	56
Non-Main-Track Train Collisions	9	6	8	27	25	26
Non-Main-Track Train Derailments - 1-2 cars	45	45	40	148	117	107
Non-Main-Track Train Derailments - 3 or more cars	10	13	12	23	26	27
Collisions/Derailments Involving Track Units	2	2	2	9	11	7
Employee/Passenger	1	0	1	1	4	2
Trespassers	2	5	6	9	14	14
Fires/Explosions	1	2	1	6	5	3
Other	5	6	4	8	12	11
Incidents	14	22	17	55	43	46
Dangerous Goods Leaker	4	10	8	24	14	18
Main-track Switch in Abnormal Position	0	3	1	1	3	2
Movement Exceeds Limits of Authority	7	5	6	23	19	21
Runaway Rolling Stock	1	1	1	4	4	2
Others	2	3	1	3	3	3
Million Train-miles (a)				21.01	21.04	20.79
Accidents/Million Train-miles				14.52	14.40	13.47
Accidents Involving Dangerous Goods	17	19	15	52	45	43
Main-track Train Derailments	1	1	1	3	2	4
Crossings	1	1	0	1	4	2
Non-Main-Track Train Collisions	3	3	3	14	9	9
Non-Main-Track Train Derailments	11	13	10	33	29	27
All Others	1	1	0	1	1	2
Accidents with a DG Release	0	0	0	1	0	1
Accidents Involving Passenger Trains	4	4	4	13	13	16
Fatalities	3	6	7	13	26	20
Crossings	1	2	2	7	12	9
Trespassers	1	4	4	5	11	9
All Others	1	0	0	1	3	2
Serious Injuries	5	2	4	12	6	15
Crossings	3	1	1	6	3	6
Trespassers	1	1	2	4	2	3
All Others	1	0	1	2	1	6

Data extracted April 15, 2014.

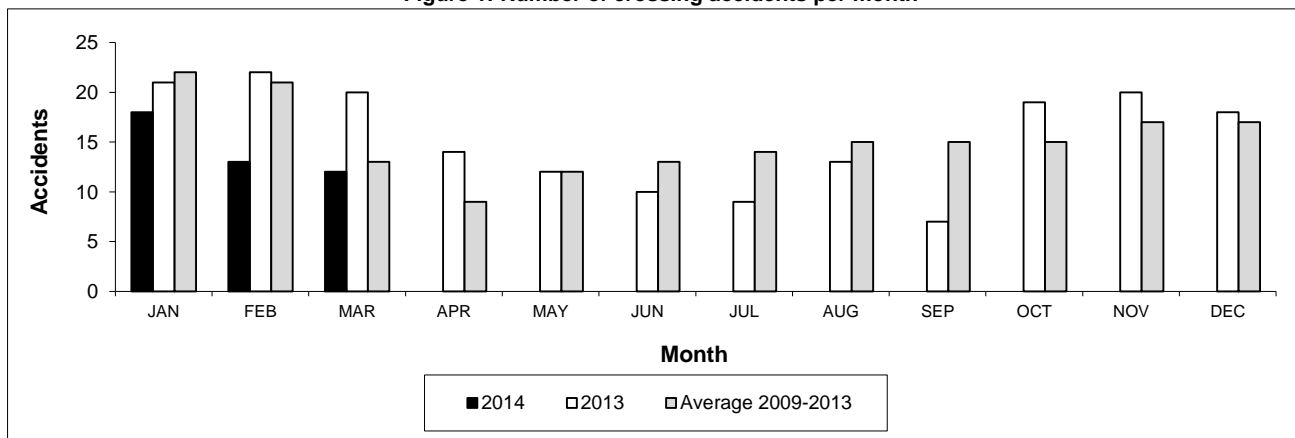
All 5-year averages have been rounded. The totals sometimes do not coincide to the sum of these averages.

a. Train-miles estimated. (Source: Transport Canada)

Table 2
Railway crossing and trespasser accidents by province

	Crossings with Type Recorded				All Crossings		Trespasser	
	2014 - Year To Date*				Year To Date*		Year To Date*	
	Public Automated	Public Passive	Private	Farm	2014	2013	2014	2013
Newfoundland								
Accidents	0	0	0	0	0	0	0	0
Fatalities	0	0	0	0	0	0	0	0
Serious Injuries	0	0	0	0	0	0	0	0
Nova Scotia								
Accidents	0	0	0	0	0	0	0	0
Fatalities	0	0	0	0	0	0	0	0
Serious Injuries	0	0	0	0	0	0	0	0
New Brunswick								
Accidents	0	0	0	0	2	0	0	0
Fatalities	0	0	0	0	0	0	0	0
Serious Injuries	0	0	0	0	0	0	0	0
Quebec								
Accidents	3	0	0	0	4	4	1	1
Fatalities	2	0	0	0	2	2	0	0
Serious Injuries	0	0	0	0	0	1	1	1
Ontario								
Accidents	7	2	2	0	11	12	3	10
Fatalities	1	0	0	0	1	2	3	8
Serious Injuries	1	0	0	0	1	1	0	1
Manitoba								
Accidents	1	2	0	0	3	5	0	0
Fatalities	0	0	0	0	0	0	0	0
Serious Injuries	0	0	0	0	0	0	0	0
Saskatchewan								
Accidents	5	2	0	0	7	16	0	1
Fatalities	2	0	0	0	2	3	0	1
Serious Injuries	2	1	0	0	3	1	0	0
Alberta								
Accidents	4	6	1	0	11	19	1	0
Fatalities	1	0	0	0	1	3	0	0
Serious Injuries	2	0	0	0	2	0	1	0
British Columbia								
Accidents	2	1	1	1	5	7	4	2
Fatalities	0	1	0	0	1	2	2	2
Serious Injuries	0	0	0	0	0	0	2	0
Northwest Territories								
Accidents	0	0	0	0	0	0	0	0
Fatalities	0	0	0	0	0	0	0	0
Serious Injuries	0	0	0	0	0	0	0	0
Canada								
Accidents	22	13	4	1	43	63	9	14
Fatalities	6	1	0	0	7	12	5	11
Serious Injuries	5	1	0	0	6	3	4	2

Figure 1: Number of crossing accidents per month



Data extracted April 15, 2014.

*Year to date is from January to March.

Table 3
Main-track train derailments by province

	January to March			Deraillments with DG Involvement January to March		
	2014	2013	2009-2013 Average	2014	2013	2009-2013 Average
Canada	27	23	25	3	2	4
Newfoundland	0	1	1	0	1	0
Nova Scotia	0	1	0	0	0	0
New Brunswick	2	0	0	2	0	0
Quebec	7	2	2	0	0	0
Ontario	9	4	6	1	1	2
Manitoba	3	1	1	0	0	0
Saskatchewan	1	4	3	0	0	0
Alberta	1	5	5	0	0	1
British Columbia	4	5	5	0	0	0
Northwest Territories	0	0	0	0	0	0

* There was 1 occurrence with dangerous goods release to date in 2014 and none in 2013.

Figure 1: Number of main-track train derailments per month

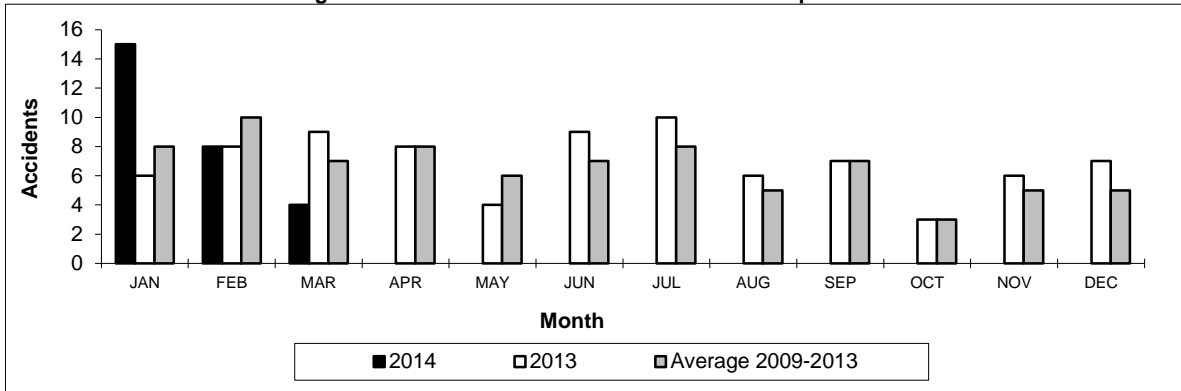
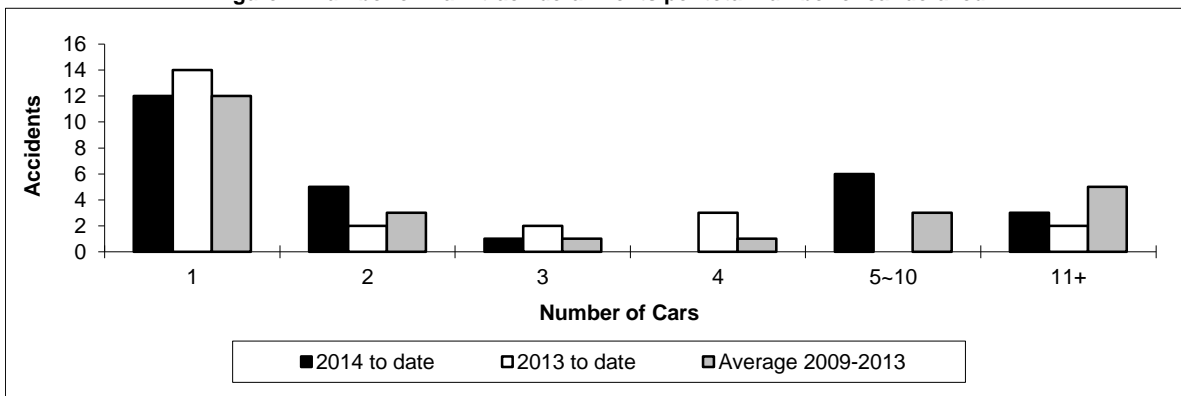


Figure 2: Number of main-track derailments per total number of car derailed



Data extracted April 15, 2014.

Table 4
Non main-track train collisions by province

	January to March			Collisions with DG Involvement January to March		
	2014	2013	2009-2013 Average	2014	2013	2009-2013 Average
	Canada	27	25	26	14	9
Newfoundland	0	0	0	0	0	0
Nova Scotia	0	0	0	0	0	0
New Brunswick	1	0	0	1	0	0
Quebec	1	3	3	0	1	1
Ontario	7	6	6	4	1	2
Manitoba	9	6	4	5	3	2
Saskatchewan	3	3	1	1	1	0
Alberta	4	6	6	2	2	2
British Columbia	2	1	5	1	1	2
Northwest Territories	0	0	0	0	0	0

* There were no occurrences with dangerous goods release to date in 2014 or in 2013.

Figure 1: Number of non main-track train collisions per month

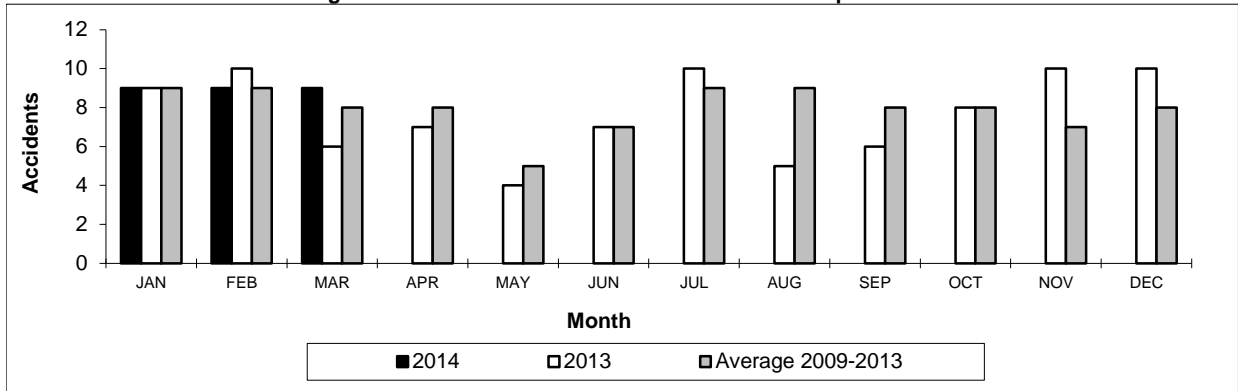
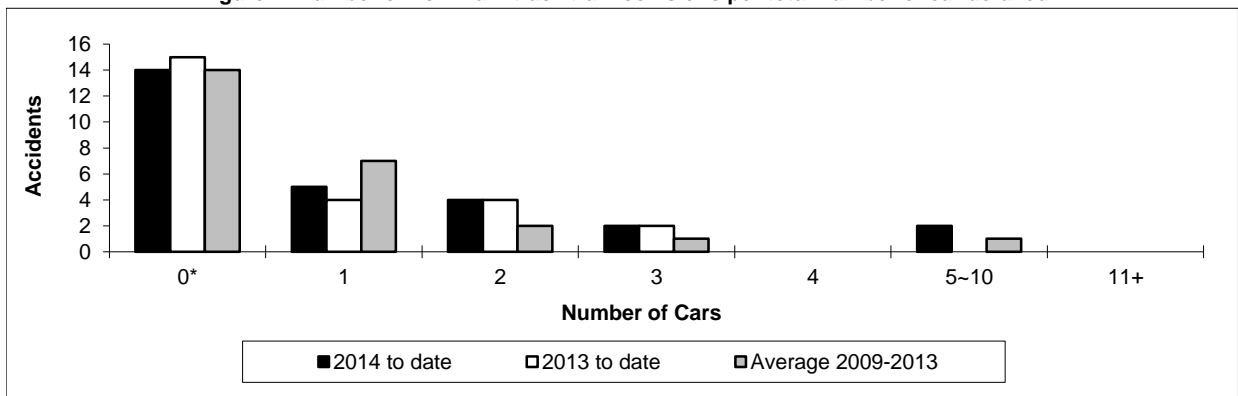


Figure 2: Number of non main-track train collisions per total number of car derailed



Data extracted April 15, 2014.

*Number of collisions with no derailments.

Table 5
Non main-track train derailments by province

	January to March			Derailments with DG Involvement January to March		
	2014	2013	2009-2013 Average	2014	2013	2009-2013 Average
Canada	171	143	134	33	29	27
Newfoundland	0	1	0	0	0	0
Nova Scotia	1	2	1	0	0	0
New Brunswick	2	2	2	1	1	1
Quebec	11	13	12	2	1	3
Ontario	26	26	27	5	7	6
Manitoba	34	11	15	4	1	3
Saskatchewan	16	32	19	4	4	2
Alberta	49	33	35	13	12	9
British Columbia	31	22	22	3	2	3
Northwest Territories	1	1	0	1	1	0

* There were no occurrences with dangerous goods release to date in 2014 or in 2013.

Figure 1: Number of non main-track train derailments per month

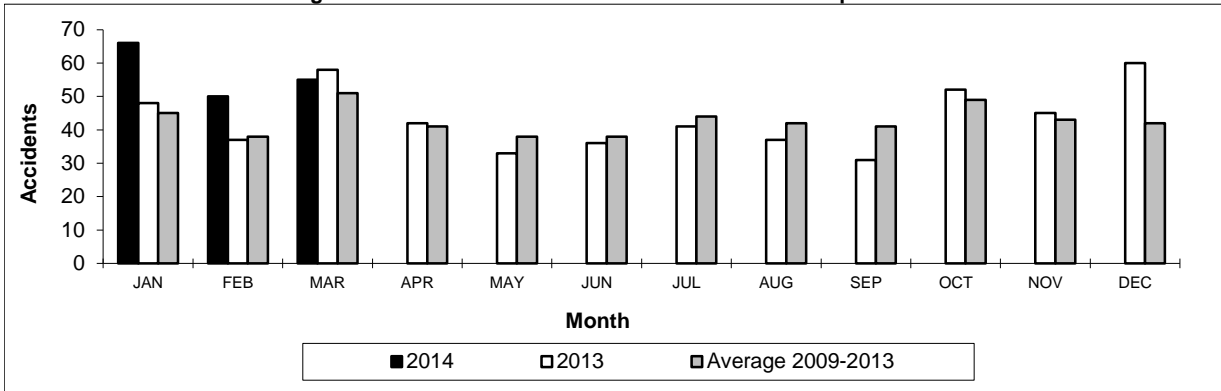
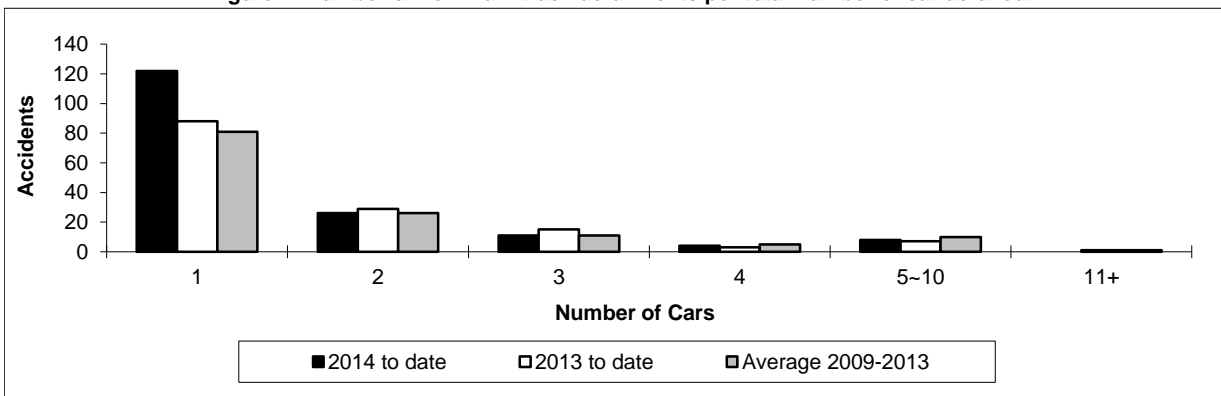


Figure 2: Number of non main-track derailments per total number of car derailed



Data extracted April 15, 2014.