

Table 1
Railway Occurrence and Casualty

	April			January to April		
	2014	2013	2009-2013 Average	2014	2013	2009-2013 Average
Accidents	67	88	80	389	392	360
Main-Track Train Collisions	1	0	1	4	3	2
Main-Track Train Derailments - 1-2 cars	5	4	4	23	20	19
Main-Track Train Derailments - 3 or more cars	2	4	4	12	11	14
Crossings	4	14	9	48	78	66
Non-Main-Track Train Collisions	4	7	8	31	32	33
Non-Main-Track Train Derailments - 1-2 cars	35	33	32	193	151	139
Non-Main-Track Train Derailments - 3 or more cars	10	9	9	34	35	36
Collisions/Derailments Involving Track Units	1	5	3	11	16	10
Employee/Passenger	1	0	0	2	4	3
Trespassers	1	3	5	11	17	19
Fires/Explosions	3	2	2	10	7	5
Other	0	7	4	9	18	15
Incidents	13	24	17	71	67	63
Dangerous Goods Leaker	6	11	9	31	25	26
Main-track Switch in Abnormal Position	0	2	0	2	5	2
Movement Exceeds Limits of Authority	4	8	7	27	27	29
Runaway Rolling Stock	2	2	1	6	6	3
Others	1	1	1	5	4	3
Million Train-miles (a)				28.41	28.59	27.89
Accidents/Million Train-miles				13.69	13.71	12.91
Accidents Involving Dangerous Goods	11	7	9	63	52	52
Main-track Train Derailments	1	1	1	4	3	5
Crossings	0	0	0	1	4	2
Non-Main-Track Train Collisions	0	2	2	14	11	11
Non-Main-Track Train Derailments	8	4	5	41	33	32
All Others	2	0	0	3	1	2
Accidents with a DG Release	1	0	0	2	0	1
Accidents Involving Passenger Trains	1	5	3	15	18	19
Fatalities	0	6	4	14	32	24
Crossings	0	3	1	8	15	9
Trespassers	0	3	3	5	14	13
All Others	0	0	0	1	3	2
Serious Injuries	3	2	2	16	8	17
Crossings	2	1	1	8	4	7
Trespassers	1	0	1	6	2	4
All Others	0	1	0	2	2	6

Data extracted May 16, 2014.

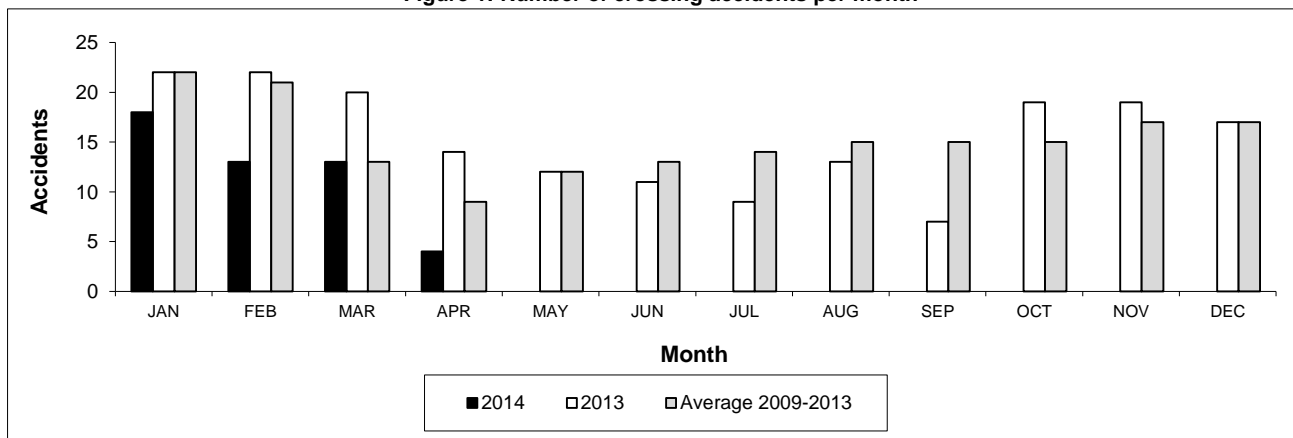
All 5-year averages have been rounded. The totals sometimes do not coincide to the sum of these averages.

a. Train-miles estimated. (Source: Transport Canada)

Table 2
Railway crossing and trespasser accidents by province

	Crossings with Type Recorded				All Crossings		Trespasser		
	2014 - Year To Date*				Year To Date*		Year To Date*		
	Public Automated	Public Passive	Private	Farm	2014	2013	2014	2013	
Newfoundland									
Accidents	0	0	0	0	0	0	0	0	
Fatalities	0	0	0	0	0	0	0	0	
Serious Injuries	0	0	0	0	0	0	0	0	
Nova Scotia									
Accidents	0	0	0	0	0	0	0	0	
Fatalities	0	0	0	0	0	0	0	0	
Serious Injuries	0	0	0	0	0	0	0	0	
New Brunswick									
Accidents	0	0	0	0	2	1	0	0	
Fatalities	0	0	0	0	0	1	0	0	
Serious Injuries	0	0	0	0	0	0	0	0	
Quebec									
Accidents	3	0	0	0	3	6	1	2	
Fatalities	2	0	0	0	2	2	0	1	
Serious Injuries	0	0	0	0	0	1	1	1	
Ontario									
Accidents	9	2	2	0	13	15	5	11	
Fatalities	1	0	0	0	1	3	3	9	
Serious Injuries	1	0	0	0	1	1	2	1	
Manitoba									
Accidents	2	2	0	0	4	7	0	0	
Fatalities	0	0	0	0	0	0	0	0	
Serious Injuries	1	0	0	0	1	0	0	0	
Saskatchewan									
Accidents	5	2	0	0	7	18	0	1	
Fatalities	2	0	0	0	2	3	0	1	
Serious Injuries	2	1	0	0	3	1	0	0	
Alberta									
Accidents	4	8	1	0	13	22	1	1	
Fatalities	1	1	0	0	2	4	0	1	
Serious Injuries	2	0	0	0	2	0	1	0	
British Columbia									
Accidents	2	2	1	0	6	9	4	2	
Fatalities	0	1	0	0	1	2	2	2	
Serious Injuries	0	1	0	0	1	1	2	0	
Northwest Territories									
Accidents	0	0	0	0	0	0	0	0	
Fatalities	0	0	0	0	0	0	0	0	
Serious Injuries	0	0	0	0	0	0	0	0	
Canada									
Accidents	25	16	4	0	48	78	11	17	
Fatalities	6	2	0	0	8	15	5	14	
Serious Injuries	6	2	0	0	8	4	6	2	

Figure 1: Number of crossing accidents per month



Data extracted May 16, 2014.

*Year to date is from January to April.

Table 3
Main-track train derailments by province

	January to April			Deraillments with DG Involvement January to April		
	2014	2013	2009-2013 Average	2014	2013	2009-2013 Average
Canada	35	31	33	4	3	5
Newfoundland	0	1	1	0	1	0
Nova Scotia	0	1	0	0	0	0
New Brunswick	2	0	0	2	0	0
Quebec	7	2	3	0	0	0
Ontario	11	6	8	2	2	2
Manitoba	5	2	3	0	0	0
Saskatchewan	3	6	4	0	0	0
Alberta	2	7	6	0	0	1
British Columbia	5	6	7	0	0	0
Northwest Territories	0	0	0	0	0	0

* There was 1 occurrence with dangerous goods release to date in 2014 and none in 2013.

Figure 1: Number of main-track train derailments per month

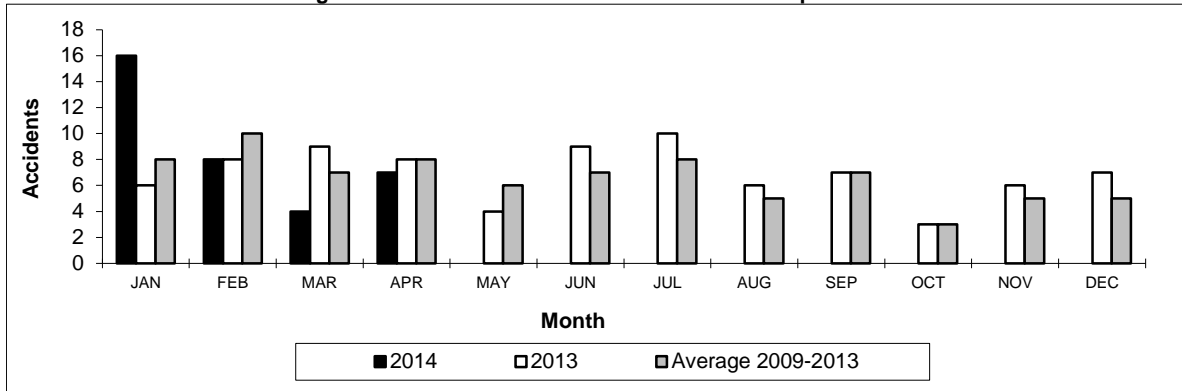
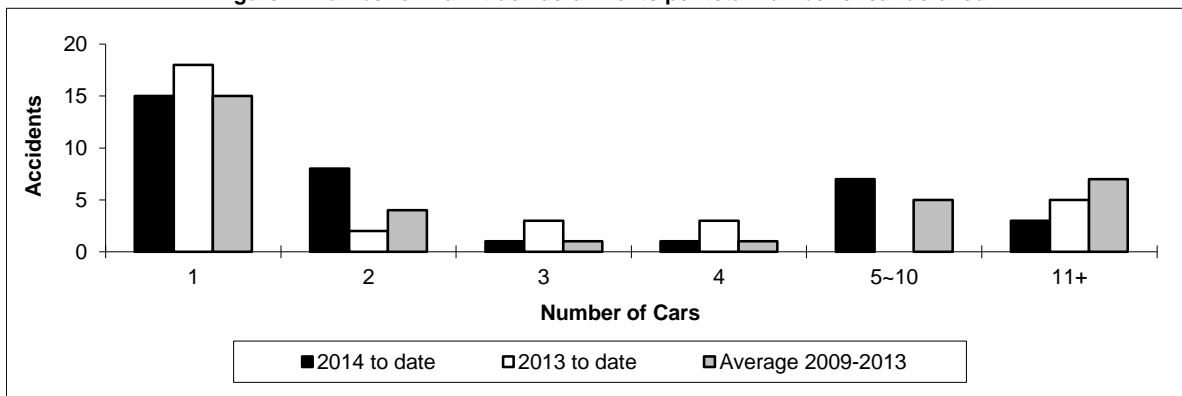


Figure 2: Number of main-track derailments per total number of car derailed



Data extracted May 16, 2014.

Table 4
Non main-track train collisions by province

	January to April			Collisions with DG Involvement January to April		
	2014	2013	2009-2013 Average	2014	2013	2009-2013 Average
	Canada	31	32	33	14	11
Newfoundland	0	0	0	0	0	0
Nova Scotia	0	0	0	0	0	0
New Brunswick	2	0	0	1	0	0
Quebec	1	4	4	0	1	1
Ontario	7	6	7	4	1	3
Manitoba	9	8	6	5	3	2
Saskatchewan	6	3	2	1	1	0
Alberta	4	10	8	2	4	3
British Columbia	2	1	7	1	1	2
Northwest Territories	0	0	0	0	0	0

* There were no occurrences with dangerous goods release to date in 2014 or in 2013.

Figure 1: Number of non main-track train collisions per month

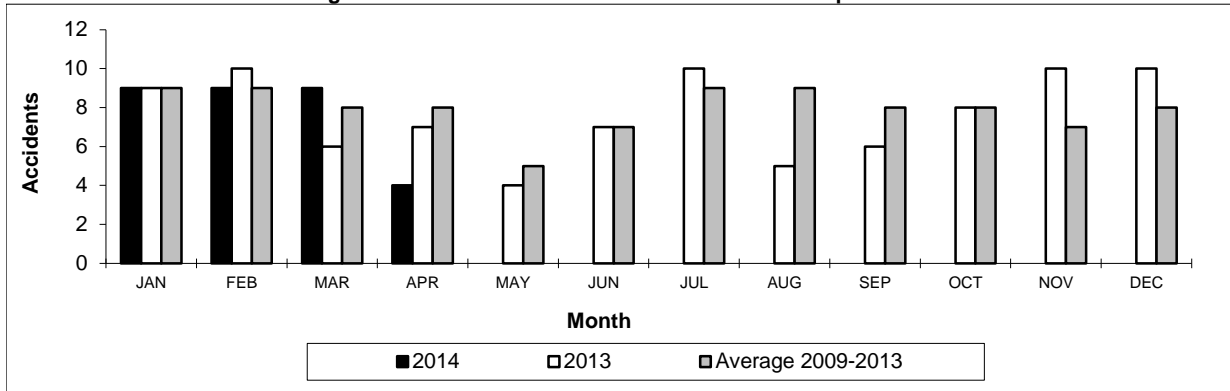
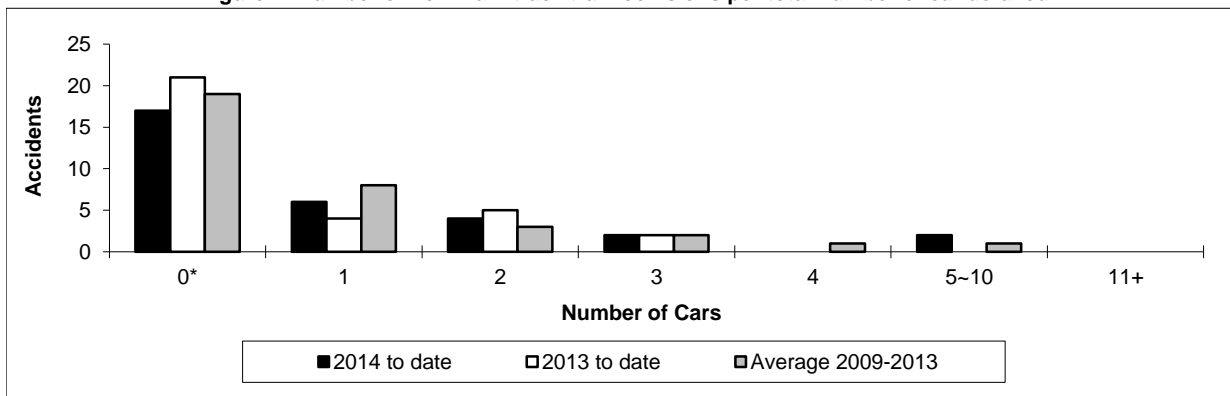


Figure 2: Number of non main-track train collisions per total number of car derailed



Data extracted May 16, 2014.

*Number of collisions with no derailments.

Table 5
Non main-track train derailments by province

	January to April			Derailments with DG Involvement January to April		
	2014	2013	2009-2013 Average	2014	2013	2009-2013 Average
	Canada	227	186	175	41	33
Newfoundland	0	1	0	0	0	0
Nova Scotia	2	2	1	0	0	0
New Brunswick	3	3	2	2	1	1
Quebec	17	17	18	2	1	4
Ontario	42	33	35	6	9	7
Manitoba	39	18	21	5	1	4
Saskatchewan	21	37	26	6	4	2
Alberta	62	47	45	14	14	10
British Columbia	40	27	28	5	2	3
Northwest Territories	1	1	0	1	1	0

* There were no occurrences with dangerous goods release to date in 2014 or in 2013.

Figure 1: Number of non main-track train derailments per month

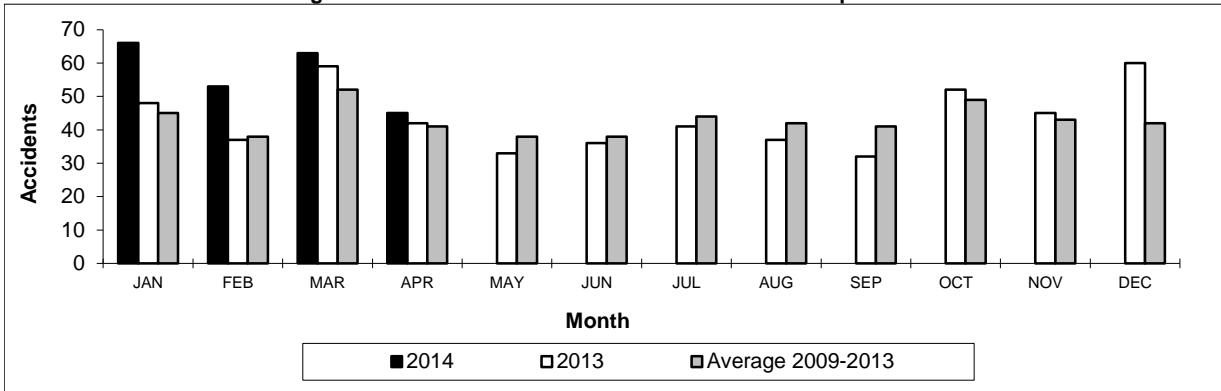
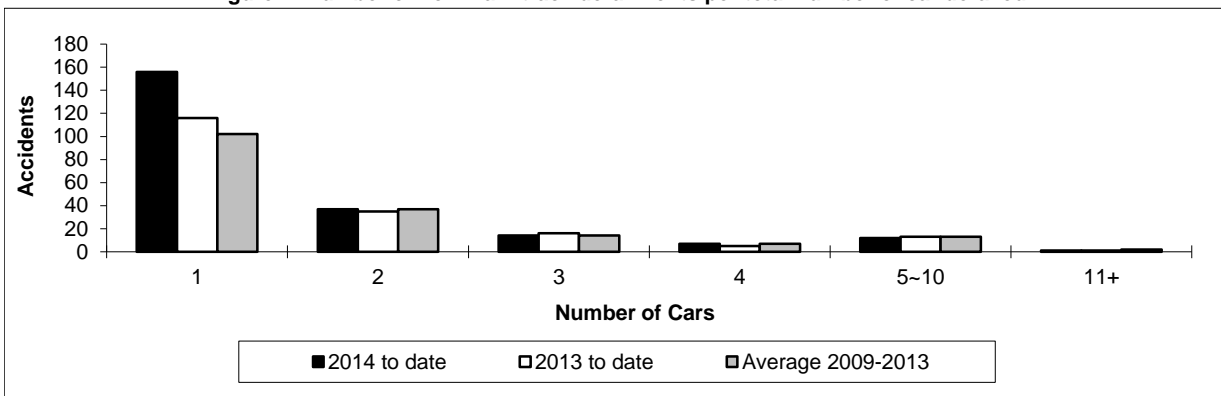


Figure 2: Number of non main-track derailments per total number of car derailed



Data extracted May 16, 2014.