

Table 1  
Railway Occurrence and Casualty

	May			January to May		
	2014	2013	2009-2013 Average	2014	2013	2009-2013 Average
<b>Accidents</b>	<b>64</b>	<b>66</b>	<b>79</b>	<b>459</b>	<b>458</b>	<b>439</b>
Main-Track Train Collisions	0	1	0	4	4	2
Main-Track Train Derailments - 1-2 cars	1	2	2	24	22	21
Main-Track Train Derailments - 3 or more cars	3	2	4	15	13	18
Crossings	9	12	12	57	90	78
Non-Main-Track Train Collisions	3	4	5	34	36	38
Non-Main-Track Train Derailments - 1-2 cars	25	26	30	224	177	169
Non-Main-Track Train Derailments - 3 or more cars	14	7	8	48	42	44
Collisions/Derailments Involving Track Units	2	0	2	13	16	12
Employee/Passenger	0	0	1	2	4	4
Trespassers	4	10	10	15	27	28
Fires/Explosions	3	0	2	13	7	7
Other	0	2	3	9	20	18
<b>Incidents</b>	<b>19</b>	<b>19</b>	<b>20</b>	<b>90</b>	<b>86</b>	<b>83</b>
Dangerous Goods Leaker	6	6	8	37	31	34
Main-track Switch in Abnormal Position	0	0	1	2	5	3
Movement Exceeds Limits of Authority	10	10	10	37	37	39
Runaway Rolling Stock	1	2	1	7	8	3
Others	2	1	1	7	5	4
<b>Million Train-miles (a)</b>				<b>36.05</b>	<b>35.9</b>	<b>34.91</b>
<b>Accidents/Million Train-miles</b>				<b>12.73</b>	<b>12.76</b>	<b>12.58</b>
<b>Accidents Involving Dangerous Goods</b>	<b>11</b>	<b>9</b>	<b>7</b>	<b>74</b>	<b>61</b>	<b>59</b>
Main-track Train Derailments	2	2	1	6	5	6
Crossings	0	0	0	1	4	2
Non-Main-Track Train Collisions	1	2	1	15	13	12
Non-Main-Track Train Derailments	8	5	4	49	38	36
All Others	0	0	0	3	1	2
<b>Accidents with a DG Release</b>	<b>0</b>	<b>2</b>	<b>1</b>	<b>2</b>	<b>2</b>	<b>1</b>
<b>Accidents Involving Passenger Trains</b>	<b>2</b>	<b>6</b>	<b>6</b>	<b>17</b>	<b>24</b>	<b>26</b>
<b>Fatalities</b>	<b>4</b>	<b>8</b>	<b>9</b>	<b>18</b>	<b>40</b>	<b>33</b>
Crossings	1	1	3	9	16	12
Trespassers	3	7	6	8	21	19
All Others	0	0	0	1	3	2
<b>Serious Injuries</b>	<b>4</b>	<b>4</b>	<b>4</b>	<b>20</b>	<b>12</b>	<b>22</b>
Crossings	3	1	1	11	5	8
Trespassers	1	3	3	7	5	7
All Others	0	0	1	2	2	7

Data extracted June 16, 2014.

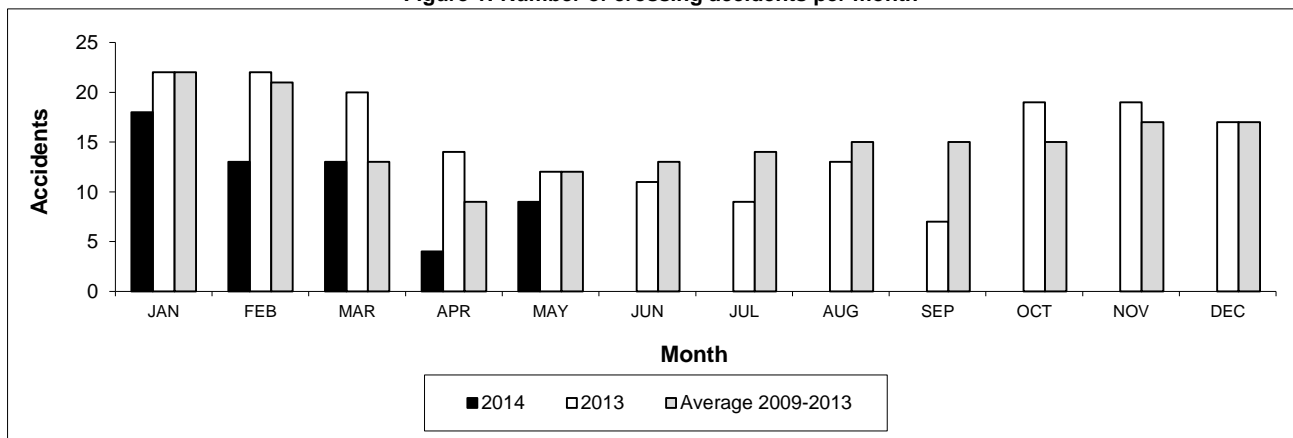
All 5-year averages have been rounded. The totals sometimes do not coincide to the sum of these averages.

a. Train-miles estimated. (Source: Transport Canada)

**Table 2**  
**Railway crossing and trespasser accidents by province**

	Crossings with Type Recorded				All Crossings		Trespasser	
	2014 - Year To Date*				Year To Date*		Year To Date*	
	Public Automated	Public Passive	Private	Farm	2014	2013	2014	2013
<b>Newfoundland</b>								
Accidents	0	0	0	0	0	0	0	0
Fatalities	0	0	0	0	0	0	0	0
Serious Injuries	0	0	0	0	0	0	0	0
<b>Nova Scotia</b>								
Accidents	0	0	0	0	0	0	0	0
Fatalities	0	0	0	0	0	0	0	0
Serious Injuries	0	0	0	0	0	0	0	0
<b>New Brunswick</b>								
Accidents	1	0	0	0	3	1	0	0
Fatalities	0	0	0	0	0	1	0	0
Serious Injuries	0	0	0	0	0	0	0	0
<b>Quebec</b>								
Accidents	3	0	0	0	3	8	1	3
Fatalities	2	0	0	0	2	2	0	2
Serious Injuries	0	0	0	0	0	1	1	1
<b>Ontario</b>								
Accidents	10	2	2	1	15	20	7	17
Fatalities	1	0	0	0	1	3	5	14
Serious Injuries	1	0	0	0	1	1	2	2
<b>Manitoba</b>								
Accidents	3	2	0	0	5	7	0	0
Fatalities	1	0	0	0	1	0	0	0
Serious Injuries	1	0	0	0	1	0	0	0
<b>Saskatchewan</b>								
Accidents	5	5	0	0	10	18	0	1
Fatalities	2	0	0	0	2	3	0	1
Serious Injuries	2	3	0	0	5	1	0	0
<b>Alberta</b>								
Accidents	4	8	1	0	13	27	3	3
Fatalities	1	1	0	0	2	5	1	2
Serious Injuries	2	0	0	0	2	1	2	1
<b>British Columbia</b>								
Accidents	3	3	1	1	8	9	4	3
Fatalities	0	1	0	0	1	2	2	2
Serious Injuries	1	1	0	0	2	1	2	1
<b>Northwest Territories</b>								
Accidents	0	0	0	0	0	0	0	0
Fatalities	0	0	0	0	0	0	0	0
Serious Injuries	0	0	0	0	0	0	0	0
<b>Canada</b>								
Accidents	29	20	4	2	57	90	15	27
Fatalities	7	2	0	0	9	16	8	21
Serious Injuries	7	4	0	0	11	5	7	5

**Figure 1: Number of crossing accidents per month**



Data extracted June 16, 2014.

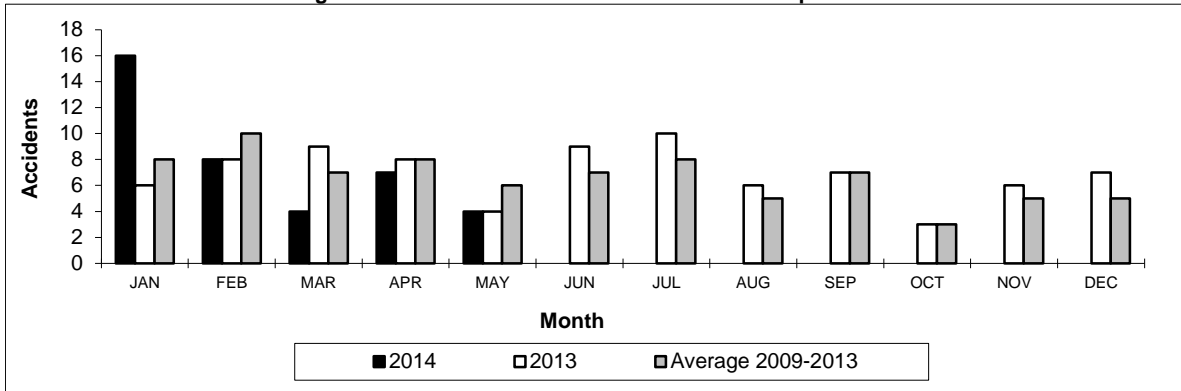
\*Year to date is from January to May.

**Table 3**  
Main-track train derailments by province

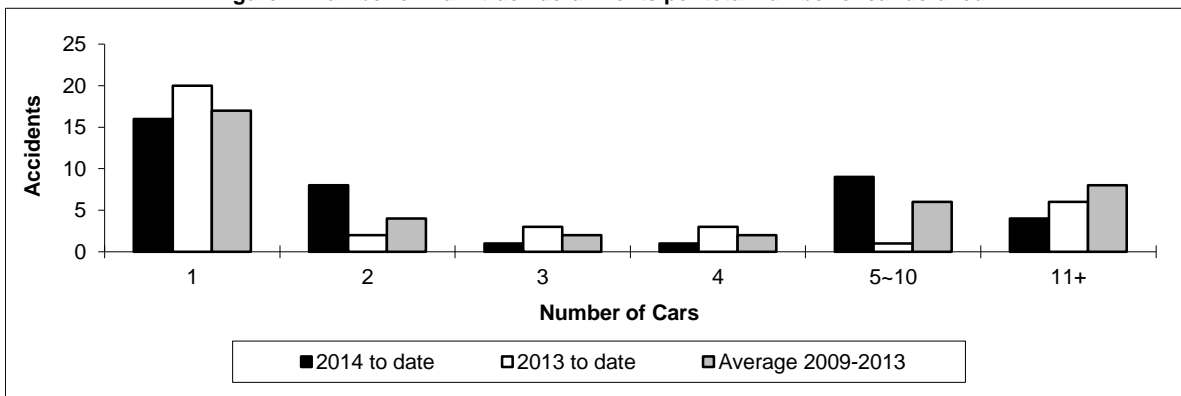
	January to May			Deraillments with DG Involvement January to May		
	2014	2013	2009-2013 Average	2014	2013	2009-2013 Average
<b>Canada</b>	<b>39</b>	<b>35</b>	<b>39</b>	<b>6</b>	<b>5</b>	<b>6</b>
Newfoundland	0	1	1	0	1	0
Nova Scotia	0	1	0	0	0	0
New Brunswick	2	0	0	2	0	0
Quebec	7	2	4	0	0	1
Ontario	13	6	9	3	2	2
Manitoba	5	3	3	0	0	0
Saskatchewan	3	8	5	0	2	1
Alberta	4	7	8	1	0	1
British Columbia	5	7	8	0	0	1
Northwest Territories	0	0	0	0	0	0

\* There was 1 occurrence with dangerous goods release to date in 2014 and 1 in 2013.

**Figure 1: Number of main-track train derailments per month**



**Figure 2: Number of main-track derailments per total number of car derailed**



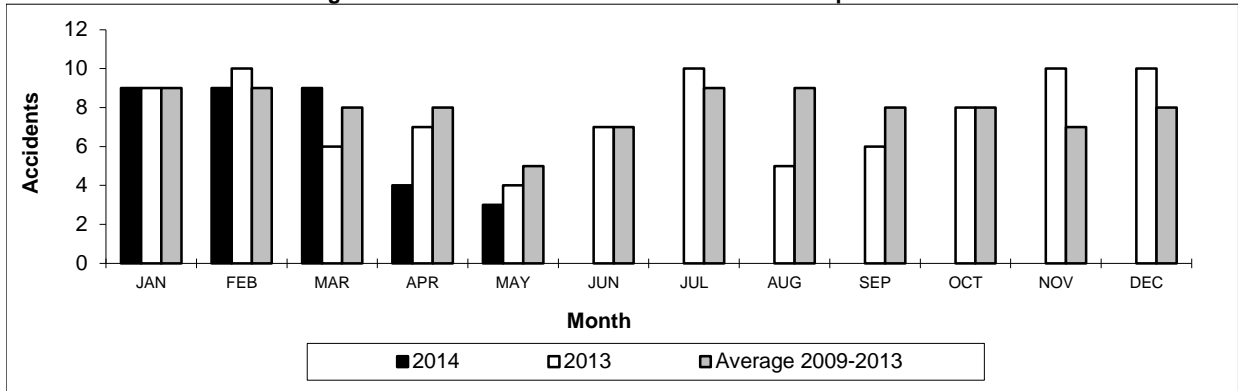
Data extracted June 16, 2014.

**Table 4**  
**Non main-track train collisions by province**

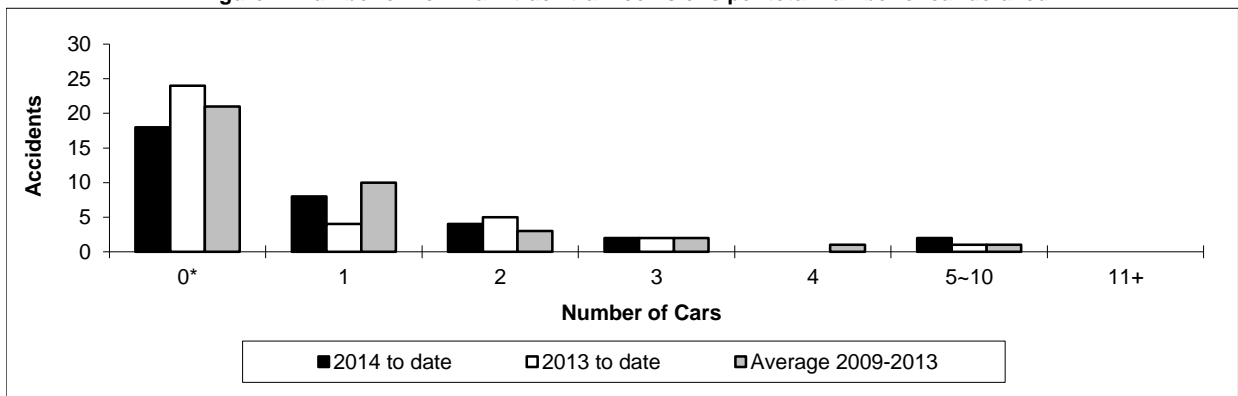
	January to May			Collisions with DG Involvement January to May		
	2014	2013	2009-2013 Average	2014	2013	2009-2013 Average
	<b>Canada</b>	<b>34</b>	<b>36</b>	<b>38</b>	<b>15</b>	<b>13</b>
Newfoundland	0	0	0	0	0	0
Nova Scotia	0	0	0	0	0	0
New Brunswick	2	0	0	1	0	0
Quebec	1	5	4	0	2	1
Ontario	8	7	8	4	2	3
Manitoba	9	8	6	5	3	2
Saskatchewan	7	3	2	1	1	0
Alberta	5	12	10	3	4	3
British Columbia	2	1	8	1	1	2
Northwest Territories	0	0	0	0	0	0

\* There were no occurrences with dangerous goods release to date in 2014 and 1 in 2013.

**Figure 1: Number of non main-track train collisions per month**



**Figure 2: Number of non main-track train collisions per total number of car derailed**



Data extracted June 16, 2014.

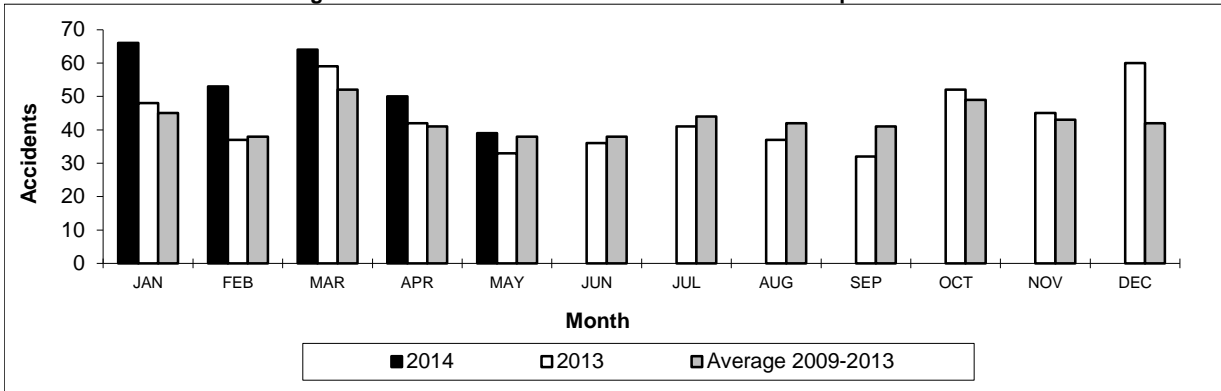
\*Number of collisions with no derailments.

**Table 5**  
**Non main-track train derailments by province**

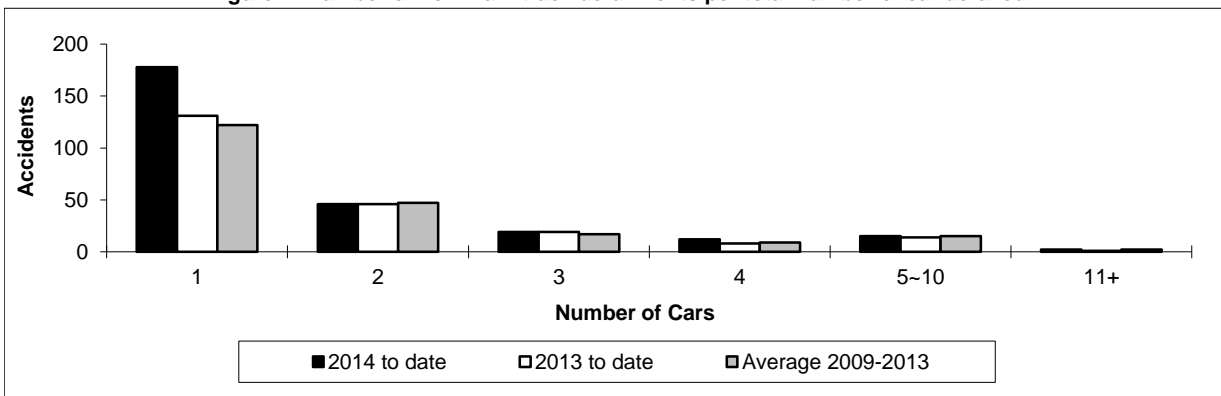
	January to May			Derailments with DG Involvement January to May		
	2014	2013	2009-2013 Average	2014	2013	2009-2013 Average
	<b>Canada</b>	<b>272</b>	<b>219</b>	<b>213</b>	<b>49</b>	<b>38</b>
Newfoundland	0	1	0	0	0	0
Nova Scotia	2	2	1	0	0	0
New Brunswick	5	3	4	2	1	1
Quebec	21	23	22	4	1	4
Ontario	52	38	43	9	11	8
Manitoba	43	24	25	5	2	5
Saskatchewan	27	41	31	7	4	3
Alberta	75	55	53	14	16	12
British Columbia	46	31	33	7	2	3
Northwest Territories	1	1	0	1	1	0

\* There were no occurrences with dangerous goods release to date in 2014 or in 2013.

**Figure 1: Number of non main-track train derailments per month**



**Figure 2: Number of non main-track derailments per total number of car derailed**



Data extracted June 16, 2014.