

Table 1  
Railway Occurrence and Casualty

	June			January to June		
	2014	2013	2009-2013 Average	2014	2013	2009-2013 Average
<b>Accidents</b>	<b>95</b>	<b>82</b>	<b>82</b>	<b>559</b>	<b>541</b>	<b>527</b>
Main-Track Train Collisions	1	0	1	5	4	3
Main-Track Train Derailments - 1-2 cars	2	4	3	26	26	24
Main-Track Train Derailments - 3-5 cars	2	2	1	6	9	6
Main-Track Train Derailments - 6 or more cars	3	3	3	15	9	16
Crossings	19	11	13	75	101	91
Non-Main-Track Train Collisions	8	7	7	42	43	45
Non-Main-Track Train Derailments - 1-2 cars	25	23	31	253	201	206
Non-Main-Track Train Derailments - 3-5 cars	8	10	6	44	42	39
Non-Main-Track Train Derailments - 6 or more cars	6	3	1	19	13	13
Collisions/Derailments Involving Track Units	4	4	3	17	20	15
Employee/Passenger	3	1	1	5	5	4
Trespassers	6	8	8	21	35	36
Fires/Explosions	5	1	3	18	8	9
Other	3	5	2	13	25	20
<b>Incidents</b>	<b>12</b>	<b>17</b>	<b>22</b>	<b>102</b>	<b>103</b>	<b>105</b>
Dangerous Goods Leaker	2	6	7	39	37	41
Main-track Switch in Abnormal Position	1	1	1	3	6	3
Movement Exceeds Limits of Authority	7	9	12	44	46	51
Runaway Rolling Stock	1	0	1	8	8	4
Others	1	1	1	8	6	5
<b>Million Train-miles (a)</b>				<b>43.38</b>	<b>42.48</b>	<b>41.78</b>
<b>Accidents/Million Train-miles</b>				<b>12.89</b>	<b>12.74</b>	<b>12.61</b>
<b>Accidents Involving Dangerous Goods</b>	<b>14</b>	<b>11</b>	<b>10</b>	<b>88</b>	<b>72</b>	<b>69</b>
Main-track Train Derailments	3	1	1	9	6	7
Crossings	0	1	0	1	5	3
Non-Main-Track Train Collisions	3	5	2	18	18	14
Non-Main-Track Train Derailments	8	4	6	57	42	42
All Others	0	0	0	3	1	2
<b>Accidents with a DG Release</b>	<b>0</b>	<b>0</b>	<b>0</b>	<b>2</b>	<b>2</b>	<b>1</b>
<b>Accidents Involving Passenger Trains</b>	<b>8</b>	<b>3</b>	<b>4</b>	<b>25</b>	<b>27</b>	<b>30</b>
<b>Accidents Involving Runaway Rolling Stock</b>	<b>0</b>	<b>4</b>	<b>2</b>	<b>7</b>	<b>21</b>	<b>14</b>
<b>Fatalities</b>	<b>12</b>	<b>8</b>	<b>7</b>	<b>30</b>	<b>48</b>	<b>40</b>
Crossings	5	2	2	14	18	15
Trespassers	6	5	5	14	26	23
All Others	1	1	0	2	4	2
<b>Serious Injuries</b>	<b>1</b>	<b>3</b>	<b>5</b>	<b>21</b>	<b>15</b>	<b>27</b>
Crossings	1	0	2	12	5	10
Trespassers	0	3	3	7	8	10
All Others	0	0	0	2	2	7

Data extracted July 24, 2014.

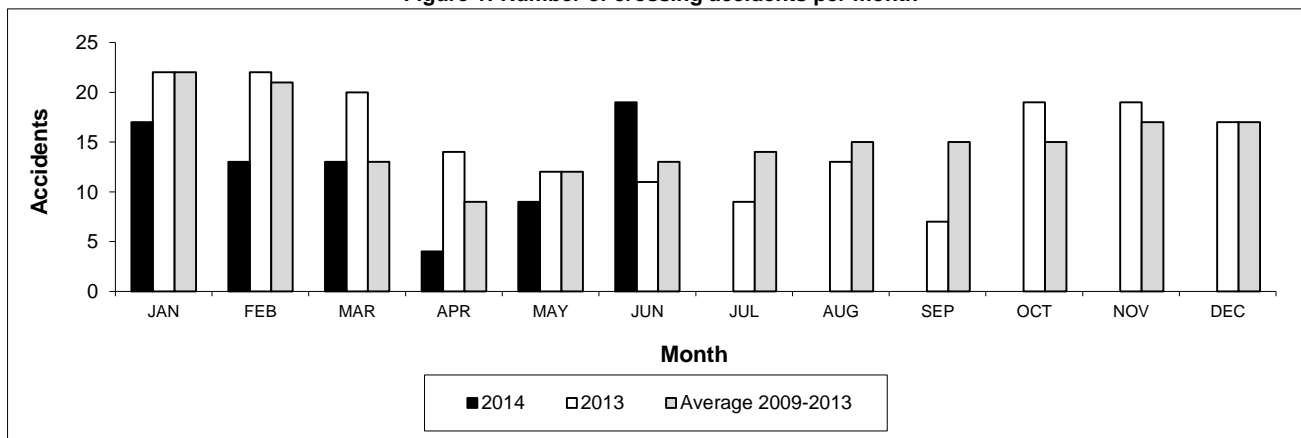
All 5-year averages have been rounded. The totals sometimes do not coincide to the sum of these averages.

a. Train-miles estimated. (Source: Transport Canada)

**Table 2**  
**Railway crossing and trespasser accidents by province**

	Crossings with Type Recorded				All Crossings		Trespasser	
	2014 - Year To Date*				Year To Date*		Year To Date*	
	Public Automated	Public Passive	Private	Farm	2014	2013	2014	2013
<b>Newfoundland</b>								
Accidents	0	0	0	0	0	0	0	0
Fatalities	0	0	0	0	0	0	0	0
Serious Injuries	0	0	0	0	0	0	0	0
<b>Nova Scotia</b>								
Accidents	0	0	0	0	0	0	0	0
Fatalities	0	0	0	0	0	0	0	0
Serious Injuries	0	0	0	0	0	0	0	0
<b>New Brunswick</b>								
Accidents	1	0	0	0	3	1	0	0
Fatalities	0	0	0	0	0	1	0	0
Serious Injuries	0	0	0	0	0	0	0	0
<b>Quebec</b>								
Accidents	6	0	0	0	7	10	2	4
Fatalities	6	0	0	0	6	2	1	2
Serious Injuries	0	0	0	0	0	1	1	2
<b>Ontario</b>								
Accidents	13	2	3	1	19	24	9	21
Fatalities	2	0	0	0	2	5	7	17
Serious Injuries	1	0	0	0	1	1	2	3
<b>Manitoba</b>								
Accidents	4	2	0	0	6	9	0	1
Fatalities	1	0	0	0	1	0	0	1
Serious Injuries	1	0	0	0	1	0	0	0
<b>Saskatchewan</b>								
Accidents	5	7	0	0	12	19	0	1
Fatalities	2	0	0	0	2	3	0	1
Serious Injuries	2	3	0	0	5	1	0	0
<b>Alberta</b>								
Accidents	8	10	1	0	19	28	6	3
Fatalities	1	1	0	0	2	5	4	2
Serious Injuries	3	0	0	0	3	1	2	1
<b>British Columbia</b>								
Accidents	4	3	1	1	9	10	4	5
Fatalities	0	1	0	0	1	2	2	3
Serious Injuries	1	1	0	0	2	1	2	2
<b>Northwest Territories</b>								
Accidents	0	0	0	0	0	0	0	0
Fatalities	0	0	0	0	0	0	0	0
Serious Injuries	0	0	0	0	0	0	0	0
<b>Canada</b>								
Accidents	41	24	5	2	75	101	21	35
Fatalities	12	2	0	0	14	18	14	26
Serious Injuries	8	4	0	0	12	5	7	8

**Figure 1: Number of crossing accidents per month**



Data extracted July 24, 2014.

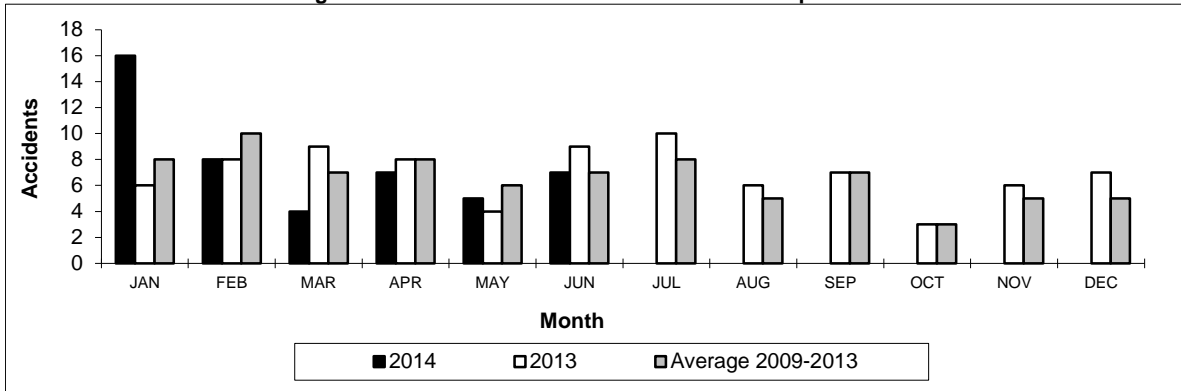
\*Year to date is from January to June.

**Table 3**  
Main-track train derailments by province

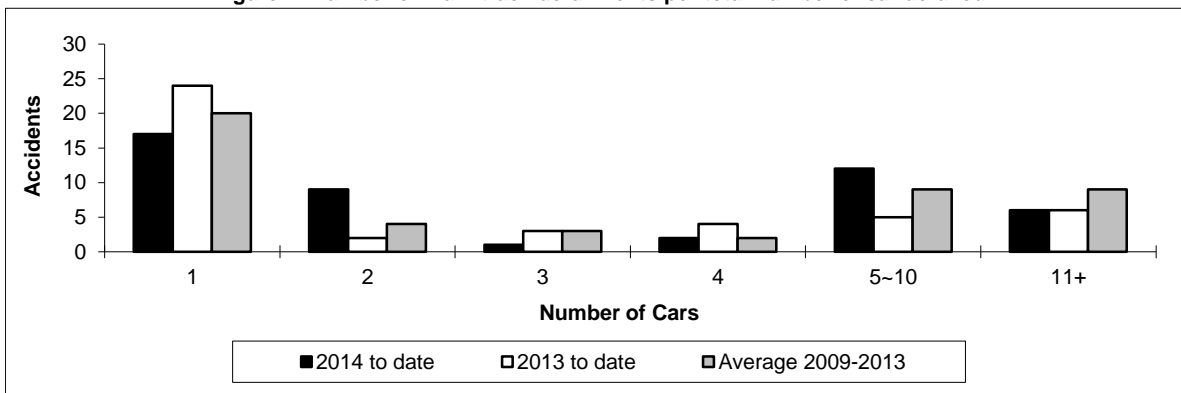
	January to June			Deraillments with DG Involvement January to June		
	2014	2013	2009-2013 Average	2014	2013	2009-2013 Average
<b>Canada</b>	<b>47</b>	<b>44</b>	<b>46</b>	<b>9</b>	<b>6</b>	<b>7</b>
Newfoundland	0	1	1	0	1	0
Nova Scotia	0	1	0	0	0	0
New Brunswick	2	0	0	2	0	0
Quebec	8	3	5	0	0	1
Ontario	13	10	11	3	2	3
Manitoba	5	3	4	0	0	0
Saskatchewan	4	8	6	0	2	1
Alberta	9	10	9	4	1	2
British Columbia	6	8	10	0	0	1
Northwest Territories	0	0	0	0	0	0

\* There was 1 occurrence with dangerous goods release to date in 2014 and 1 in 2013.

**Figure 1: Number of main-track train derailments per month**



**Figure 2: Number of main-track derailments per total number of car derailed**



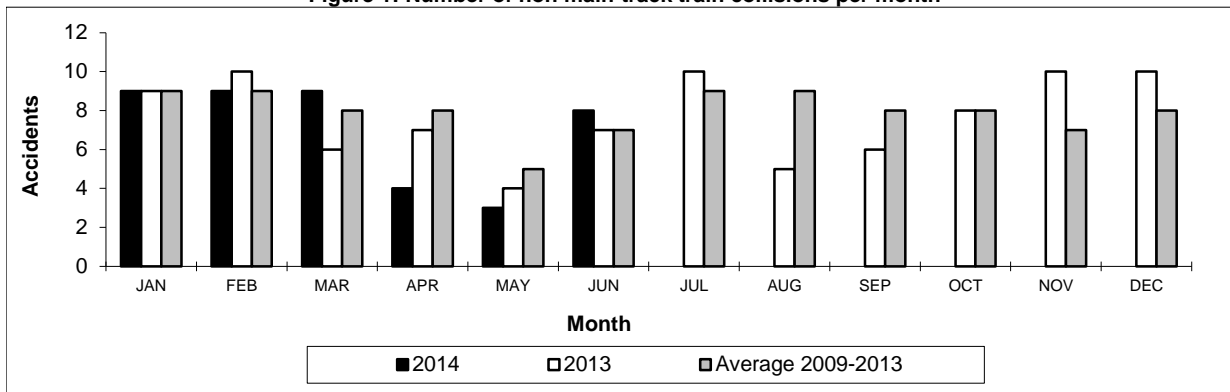
Data extracted July 24, 2014.

**Table 4**  
**Non main-track train collisions by province**

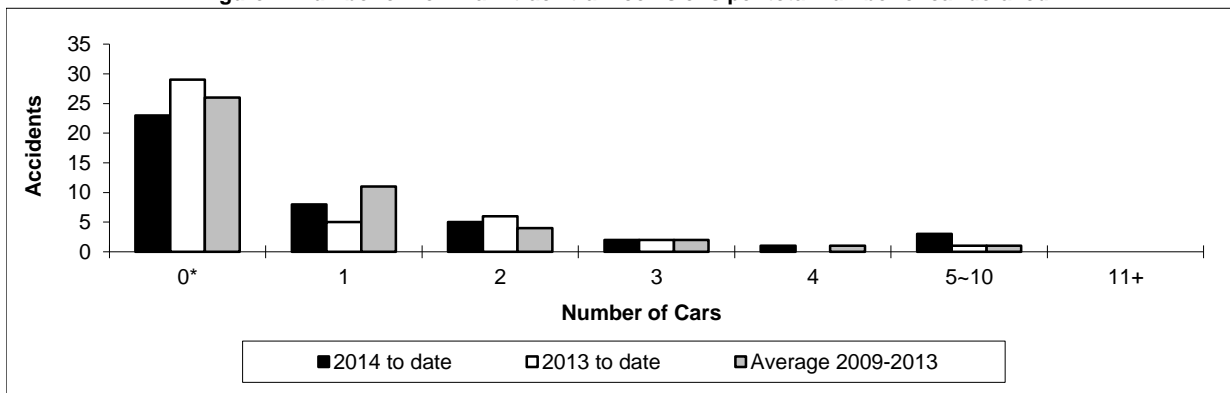
	January to June			Collisions with DG Involvement January to June		
	2014	2013	2009-2013 Average	2014	2013	2009-2013 Average
	<b>Canada</b>	<b>42</b>	<b>43</b>	<b>45</b>	<b>18</b>	<b>18</b>
Newfoundland	0	0	0	0	0	0
Nova Scotia	0	0	0	0	0	0
New Brunswick	3	0	0	1	0	0
Quebec	2	6	6	1	3	2
Ontario	9	7	9	4	2	4
Manitoba	9	9	7	5	3	2
Saskatchewan	8	4	3	2	1	0
Alberta	7	14	11	3	6	4
British Columbia	4	3	10	2	3	3
Northwest Territories	0	0	0	0	0	0

\* There were no occurrences with dangerous goods release to date in 2014 and 1 in 2013.

**Figure 1: Number of non main-track train collisions per month**



**Figure 2: Number of non main-track train collisions per total number of car derailed**



Data extracted July 24, 2014.

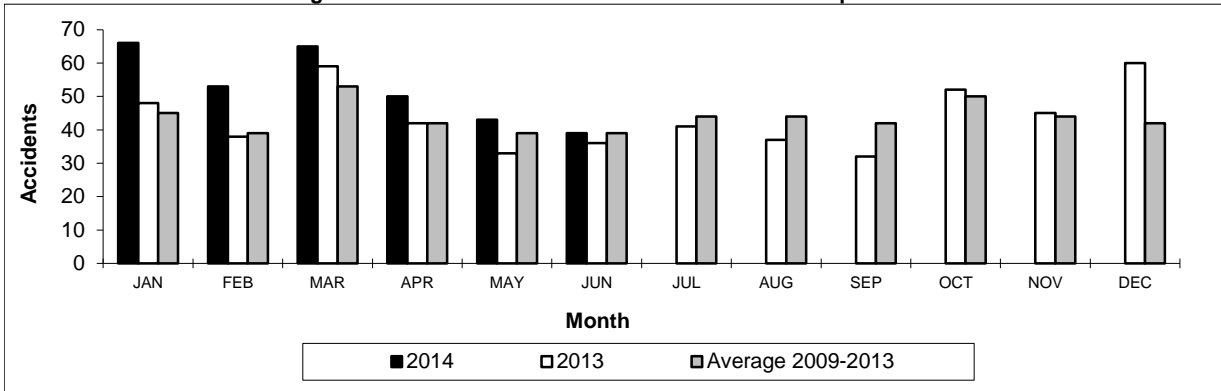
\*Number of collisions with no derailments.

**Table 5**  
**Non main-track train derailments by province**

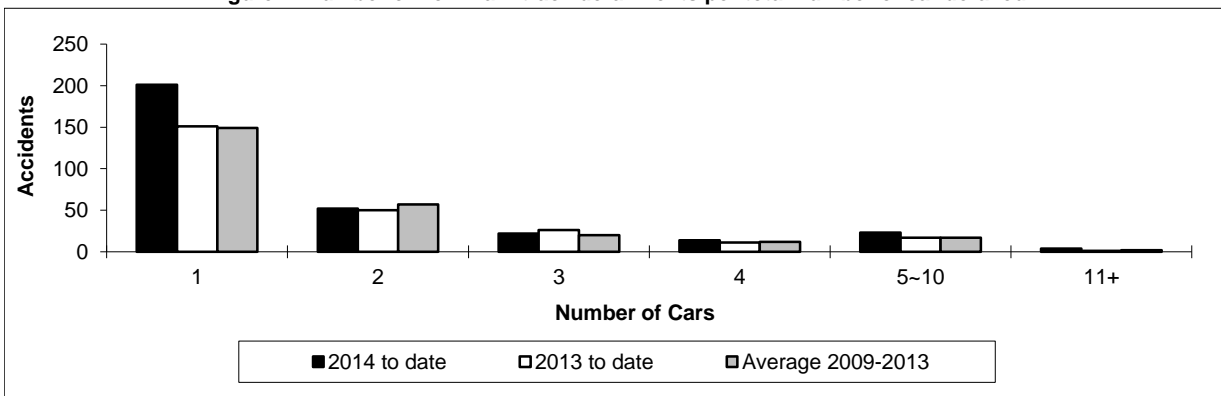
	January to June			Deraillments with DG Involvement January to June		
	2014	2013	2009-2013 Average	2014	2013	2009-2013 Average
<b>Canada</b>	<b>316</b>	<b>256</b>	<b>257</b>	<b>57</b>	<b>42</b>	<b>42</b>
Newfoundland	0	1	0	0	0	0
Nova Scotia	3	2	1	0	0	0
New Brunswick	7	3	4	3	1	1
Quebec	25	30	30	5	1	5
Ontario	63	44	50	12	11	10
Manitoba	46	28	30	6	4	5
Saskatchewan	33	45	35	7	5	3
Alberta	86	65	65	16	17	14
British Columbia	52	37	40	7	2	5
Northwest Territories	1	1	0	1	1	0

\* There were no occurrences with dangerous goods release to date in 2014 or in 2013.

**Figure 1: Number of non main-track train derailments per month**



**Figure 2: Number of non main-track derailments per total number of car derailed**



Data extracted July 24, 2014.