

**Seasonal Outlook
Gulf of St Lawrence, East Newfoundland Waters and
Labrador Coast
Winter 2013-2014**



**Issued by Canadian Ice Service of
Environment Canada
4 December 2013**

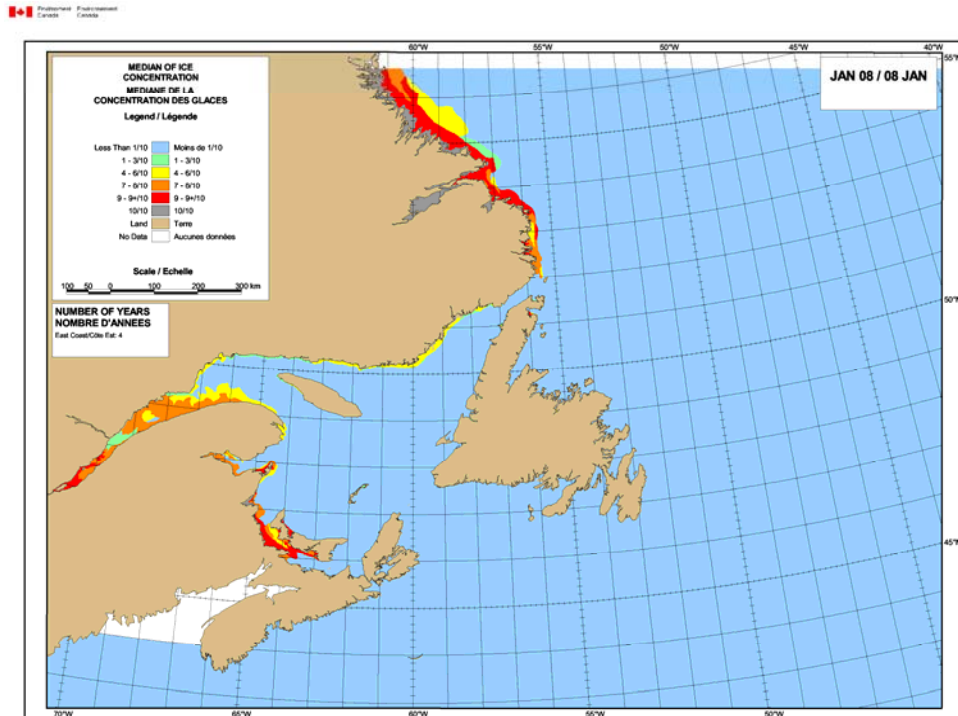


Figure 1: Expected ice conditions – 8 January 2014

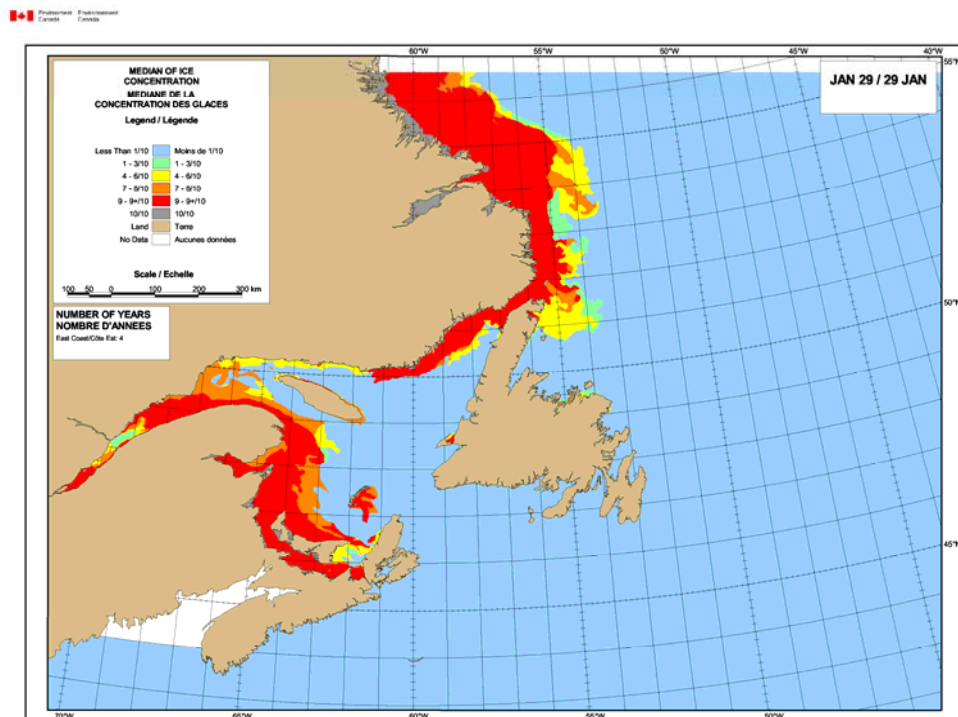


Figure 2: Expected ice conditions – 29 January 2014

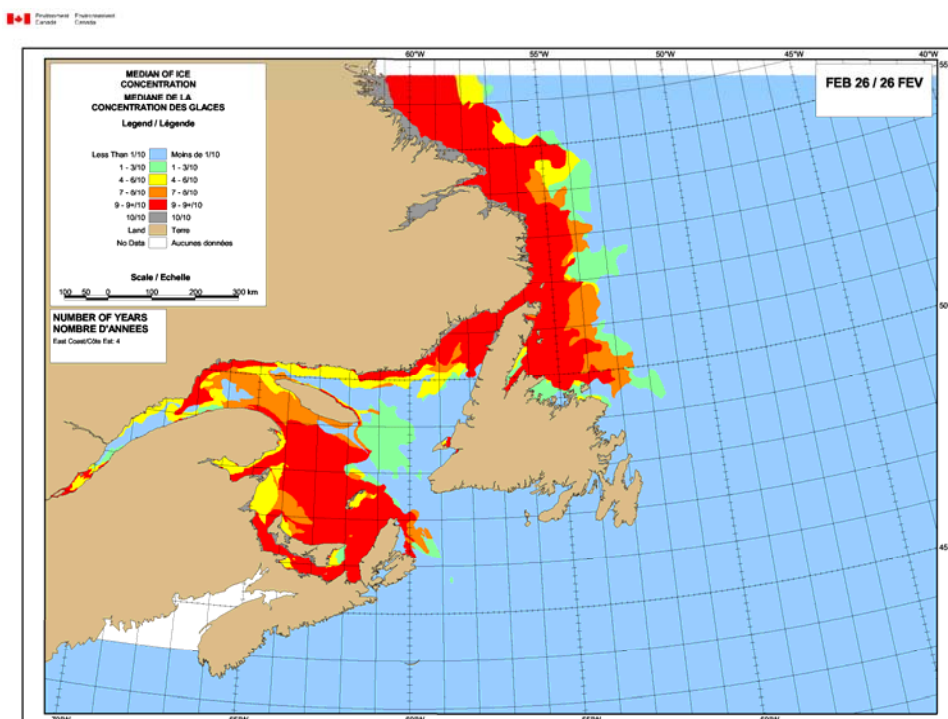


Figure 3: Expected ice conditions – 26 February 2014

Gulf of St-Lawrence

Winter temperature and ice forecasts

Average air temperatures are expected to be normal to above normal for December, January and February. Less ice than normal is expected.

The Estuary.

Outlook for December...New and grey ice near Sept-îles. Elsewhere a few strips and patches of new ice mostly in the second week and onward. Areas of close pack new and grey ice along the south shore west of the Saguenay at the end of the month. Narrow areas of new ice along the north shore.

Outlook for January... Close to very close pack new and grey ice over most of the estuary by mid-month with some grey-white ice along the south shore. At that time there should still be open water areas between Sept-îles and the western tip of Anticosti Island. At the end of the month, areas of close to very close pack new and grey ice between Sept-îles and Anticosti Island with the rest of the estuary covered with new and grey ice. Grey-white ice close to the south shore. The fast ice, including near Sept-îles, will thicken to the first-year ice stage.

Outlook for February...Close to very close pack grey and grey-white ice. Some first-year ice mostly along the south shore. Open water leads will become frequent at the end of the month in the western portion of the estuary.

Chaleur Bay southward to Northumberland Strait.

Outlook for December...Ice free to open water except new ice in shallower coastal waters after mid-month. At the end of the month, new and some grey ice along the shores.

Outlook for January...By about mid-month, consolidated grey-white ice in shallower waters. Open drift to close pack new and grey ice along the south shore of Chaleur Bay, within 20 nautical miles of the New Brunswick coast, and in Northumberland Strait west of Cape George. A few tenths of grey-white ice in the pack ice after mid-month. At the end of January, fast ice in shallower bays, including around Miscou Island and in Miramichi Bay, will thicken to the first-year ice stage. Areas of grey-white ice are expected in Chaleur Bay and grey-white ice with some first-year ice in Northumberland Strait. The ice edge will extend beyond 60 nautical miles offshore.

Outlook for February...Predominantly first-year ice in Northumberland Strait at mid-month, close to very close pack grey and grey-white ice with some first-year ice elsewhere.

West coast of Newfoundland.

Outlook for December...Ice free to open water except for some new ice along the shore north of Point Riche.

Outlook for January...Some new and grey ice in shallower coastal waters mostly after mid-month. At the end of the month, close to very close pack new and grey ice north of Flower's cove. Grey-white with some first-year ice within a few nautical miles of the Newfoundland coast.

Outlook for February...In the third week, the pack ice edge just north of Daniel's Harbour and about 40 nautical miles offshore west of Bonne Bay. Grey-white with some first-year ice in the ice pack. Otherwise open water except for consolidated grey-white and first-year ice in shallower coastal waters.

North Shore of Quebec.

Outlook for December...Isolated areas of new and grey ice in shallower coastal waters around mid-month.

Outlook for January...Narrow areas of new ice along the shore in the first week. In the second week open drift to close pack new and grey ice will extend to 10 to 20 nautical miles offshore. Consolidated grey ice in shallower coastal waters. By the end of January the ice edge will extend up to 40 nautical miles offshore and grey with some grey-white ice in the pack ice. Consolidated first-year ice in shallower coastal waters.

Outlook for February...By mid-month close to very close pack grey and grey-white with some first-year ice up to 60 nautical miles offshore.

Elsewhere.

Outlook for December...Ice free to open water except for narrow areas of new and grey ice in shallower coastal waters of the Îles de la Madeleine and the north shore of Prince Edward Island in the last week.

Outlook for January...New and grey ice north of Prince Edward Island, around Îles de la Madeleine, around Anticosti Island and west of Cape Breton Island after the third week. The pack ice edge will be about 30 nautical miles west of Îles de la Madeleine at the end of the month and some grey-white ice will be present in the pack.

Outlook for February...At the end of the first week, the pack ice will reach Îles de la Madeleine. Grey and grey-white ice will be present in the pack. New and grey ice from Cape North to Scatarie Island. After mid-month, grey-white with some first-year ice in the

pack. In the last week, the pack of grey-white with some first-year ice near Sydney and as far east as Scatarie Island.

East Newfoundland Waters and Labrador Coast.

Winter temperature and ice forecasts.

Average air temperatures are expected to be near to above normal for December, January and February. Below normal ice conditions are forecast in East Newfoundland Waters and along the South Labrador Coast.

Labrador Coast and Strait of Belle Isle.

Outlook for December... Areas of new and grey ice along the coast. In the third week, a narrow band of new with some grey ice along the coast from 30 nautical miles southeast of Cartwright to Groswater Bay. Farther north, new and grey ice will extend up to 30 miles offshore. At the end of the month, areas of close to very close pack grey-white ice along the shore north of Groswater Bay.

Outlook for January... By mid-month, the ice edge up to 40 nautical miles off the Labrador Coast except up to 80 nautical miles off the coast north of Groswater Bay. Mostly grey and grey-white ice in the pack except for areas of predominantly first-year ice north of Groswater Bay. Strips and patches of grey and grey-white ice will drift into the eastern entrance to the Strait of Belle Isle. At the end of the month, close to very close pack grey-white and first-year ice in the ice pack and most of the Strait of Belle Isle. The ice edge should extend to 80 to 120 nautical miles off the Labrador Coast.

Outlook for February... First-year ice in the ice pack. The ice edge 120 to 180 nautical miles off the coast.

Lake Melville.

Outlook for December... Some new ice mainly in the southern portion and open water elsewhere. Becoming close to very close pack new and grey ice in the second week. Consolidated grey ice along portions of the western and southern shores by mid-month. Very close pack grey-white ice in the last week with consolidated grey-white ice along the shores.

Outlook for January... Becoming consolidated with first-year ice in the first week.

Outlook for February... Consolidated with first-year ice.

Newfoundland.

Outlook for December... Generally ice free to open water except for some new ice present near St. Anthony.

Outlook for January... By mid-January, strips and patches of grey and grey-white ice east of Cape Bauld. Consolidated areas of grey ice south of Fogo Island and in Bay of Exploits. In the last week, strips and patches of grey and grey-white ice near the Grey Islands. At the end of the month, the ice edge of mostly grey-white ice with some first-year ice will be just south of the Grey Islands. Fast ice in Notre Dame Bay will thicken to the grey-white ice stage with some new ice near the shores. The ice edge is expected to be near 80 nautical miles off the Northern Peninsula.

Outlook for February... The fast ice in Notre Dame Bay will thicken to the first-year ice stage in the first week. The pack of grey-white and first-year ice should reach Notre Dame Bay at the end of the month. At that time, consolidated grey and grey-white ice in the

shallower waters of Bonavista Bay. The ice edge is forecast to be 80 nautical miles east of Cape Freels.