



Transport
Canada

Transports
Canada



Rail Safety

Oversight and Expertise



Rail Safety Bulletin

Bulletin: 2012-001

Second Train Event Warning Sign

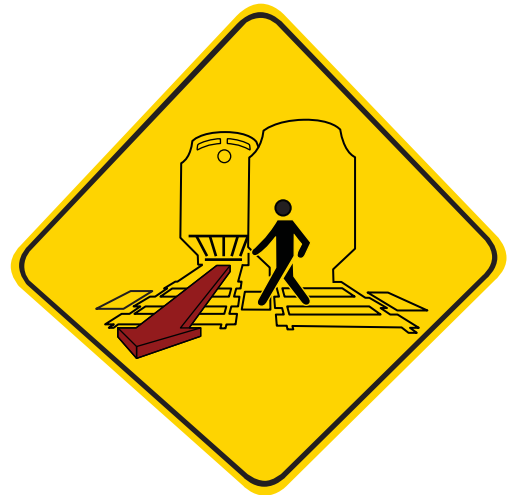
When two or more trains are moving across a railway-roadway pedestrian grade crossing in urban areas near a train station, track junction, and/or multiple track alignment (two or more tracks) and they have the potential to cross through the crossing almost simultaneously, Transport Canada, Rail Safety recommends the use of a Second Train Event Warning sign.

The Second Train Event Warning sign is to warn/alert pedestrians of the potential presence of a second train at the crossing, especially in urban areas or near train stations where pedestrian traffic is heavy.

The sign is a diamond shape warning sign (600 mm x 600 mm) with a warning tab "ATTENTION! 2 TRAINS" sign (600 mm x 300 mm) that provides added emphasis to the message.

These Second Train Event Warning signs should be mounted as close as possible to the minimum height (2.0 m) above the ground to the bottom of the sign as specified by the Manual of Uniform Traffic Control Devices for Canada. If they are mounted higher than the minimum height, pedestrians may not see or simply ignore the signs.

These warning signs should be placed with the nearest edge not less than 0.3 m and not more than 1.0 m from the curb face. The signs should be placed a maximum of 5.0 m from the nearest rail (closer to the crossing is better but the minimum railway clearance setbacks from the nearest rail must be respected).



**ATTENTION!
2 TRAINS**

**Sign 600 mm x 600mm
Tab 600mm x 300mm**

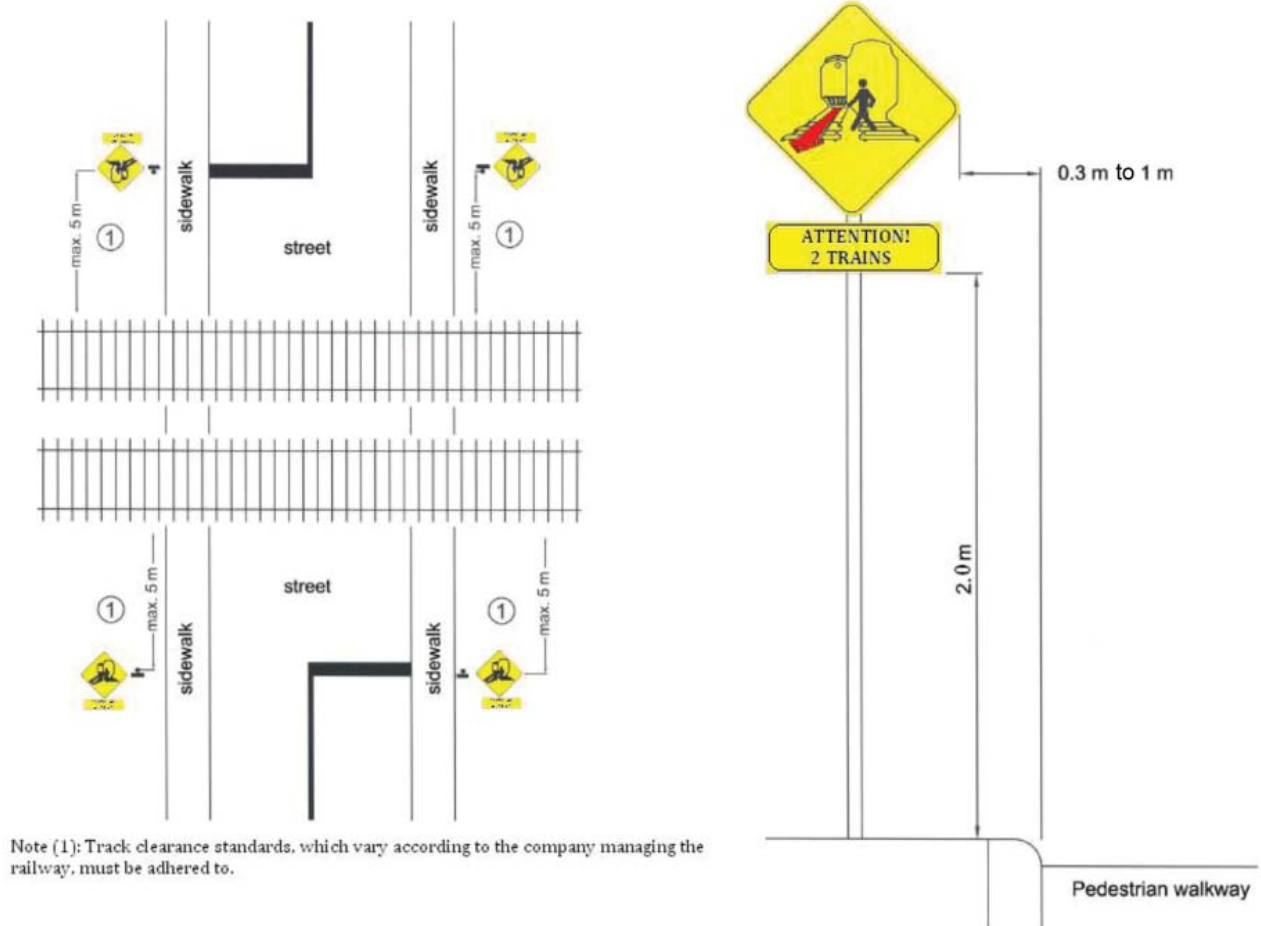
The installation and maintenance of the Second Train Event Warning sign should be done by the road authority and coordinated with the railway company to ensure the signs are placed and maintained in a consistent manner, and are highly visible to pedestrians. Sign installers/maintainers are required to have all buried facilities identified and located before the signs are installed on any public, railway or private land. This will prevent damage and save costs of unnecessary repairs.



Rail Safety

Oversight and Expertise

Figure 1 – Typical Installation of Second Train Event Warning Signs





Rail Safety

Oversight and Expertise

For additional information feel free to communicate with one of Transport Canada's Rail Safety offices.

OTTAWA HEAD OFFICE

Transport Canada - Rail Safety
427 Laurier Avenue West, Suite 1410
Ottawa, ON, K1A 0N5,
Tel.: 613 998-2985
Fax: 613 990-7767
E-mail: railsafety@tc.gc.ca
<http://www.tc.gc.ca>

ATLANTIC REGION

Transport Canada
95 Foundry Street, Suite 418
Moncton, NB, E1C 8K6
Tel.: 506 851-7040
Fax.: 506 851-7042

QUEBEC REGION

Transport Canada
800 René-Lévesque Blvd. West
6th Floor, Suite 638
Montreal, QC, H3B 1X9
Tel.: 514 283-5722
Fax.: 514 283-8234

ONTARIO REGION

Transport Canada
4900 Yonge Street, 3rd Floor
North York, ON, M2N 6A5
Tel.: 416 973-9820
Fax.: 416 973-9907

PRAIRIE AND NORTHERN REGION

Transport Canada
344 Edmonton Street
Winnipeg, MB, R3C 0P6
Tel.: 204-983-4214
Fax.: 204 983-8992

PACIFIC REGION

Transport Canada
225 - 625 Agnes Street
New Westminster, BC, V3M 5Y4
Tel.: 604 666-0011
Fax.: 604 666-7747