

1676

# Aphids infesting potatoes in Canada:

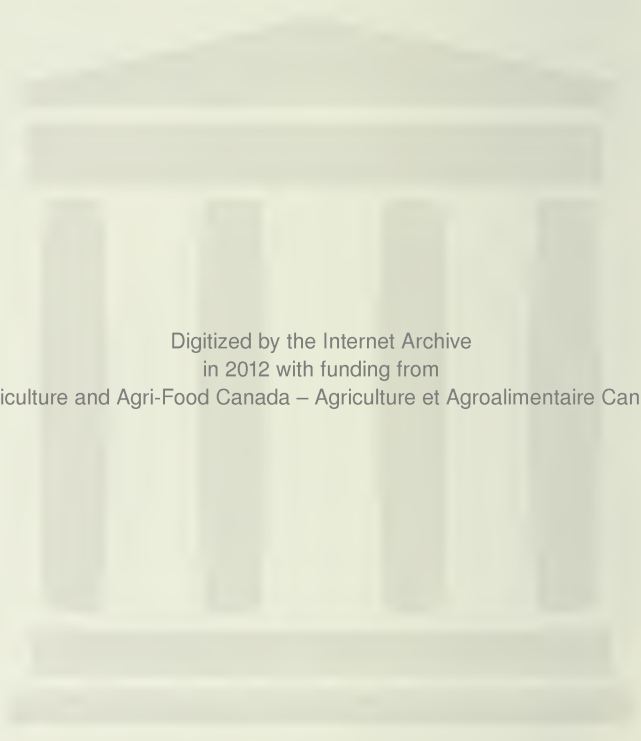
a field guide



S30.4  
C212  
P 1676  
1979  
(1987 print)  
c.3



Agriculture  
Canada



Digitized by the Internet Archive  
in 2012 with funding from  
Agriculture and Agri-Food Canada – Agriculture et Agroalimentaire Canada

# Aphids infesting potatoes in Canada: a field guide

M. E. MacGillivray  
Research Station, Fredericton, N.B.

**PUBLICATION 1676/E**, available from  
Communications Branch, Agriculture Canada,  
Ottawa K1A 0C7

©Minister of Supply and Services Canada 1979  
Cat. No. A53-1676/1979E ISBN: 0-662-10487-0  
Printed 1979 Reprinted 1987 2.5M-6:87

Également disponible en français sous le titre  
*Les pucerons nuisibles de la pomme de terre au  
Canada: guide d'identification.*



# CONTENTS

Features used to distinguish potato-infesting aphids	7
--	---

## GUIDE TO WINGLESS FORMS

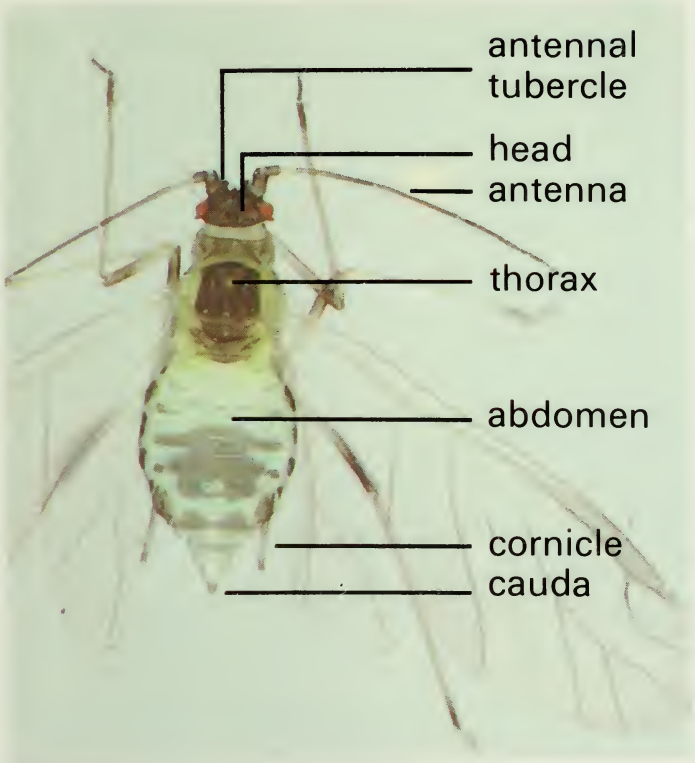
<i>Myzus persicae</i> (Sulzer)	8
<i>Aphis nasturtii</i> Kaltenbach	10
<i>Macrosiphum euphorbiae</i> (Thomas)	12
<i>Aulacorthum solani</i> (Kaltenbach)	14

## GUIDE TO WINGED FORMS

<i>Myzus persicae</i> (Sulzer)	16
<i>Aphis nasturtii</i> Kaltenbach	18
<i>Macrosiphum euphorbiae</i> (Thomas)	20
<i>Aulacorthum solani</i> (Kaltenbach)	22



Features used to distinguish potato-infesting aphids





# GREEN PEACH APHID (wingless)

## SHAPE

**Body** (1) egg-shaped, almost same width from thorax to bases of cornicles, then gently rounded to meet the cauda abruptly.

**Head** (2) with prominent inward-pointing antennal tubercles.

**Cornicles** (3) slightly swollen on apical half.

**Cauda** short.

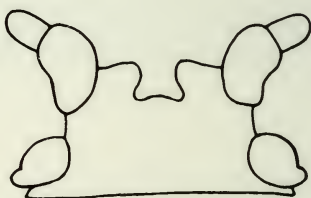
## COLOR

**Body** light green to almost translucent, sometimes deep pink or peach.

**Cornicles** same shade as body.



1



2



3

*Myzus persicae* (Sulzer)



# GREEN PEACH APHID (wingless)



*Myzus persicae* (Sulzer)

# BUCKTHORN APHID (wingless)

## SHAPE

**Body** (1) egg-shaped, flat.

**Head** (2) without prominent antennal tubercles; front of head slightly convex, almost flat.

**Antennae** always much shorter than body.

**Cornicles** (3) cylindrical, only slightly longer than cauda.

## SIZE

Smallest of potato-infesting aphids.

## COLOR

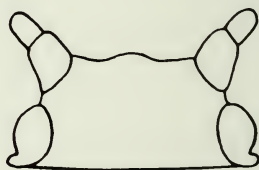
**Body** lemon yellow to green.

**Cornicles** pale yellow to light brown, with dusky tips.

**Cauda** same color as base of cornicles.



1



2



3

*Aphis nasturtii* Kaltenbach

**BUCKTHORN APHID**  
**(wingless)**



*Aphis nasturtii* Kaltenbach



# POTATO APHID (wingless)

## SHAPE

**Body** (1) elongate, wedge-shaped.

**Head** (2) with prominent outward-sloping antennal tubercles.

**Antennae** about as long as body.

**Cornicles** (3) cylindrical, longer than distance between their bases, with the end portions slightly curving.

## SIZE

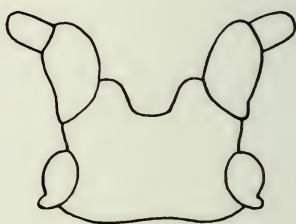
Largest of potato-infesting aphids.

## COLOR

**Body** some shade of yellow, green, or pink, with a darker dorsal ridge.



1



2



3

*Macrosiphum euphorbiae* (Thomas)

# POTATO APHID (wingless)



*Macrosiphum euphorbiae* (Thomas)

# FOXGLOVE APHID (wingless)

## SHAPE

**Body** (1) pear-shaped, globular, widest just ahead of cornicles.

**Head** (2) with prominent almost parallel straight-sided antennal tubercles.

**Cornicles** (3) slightly tapered, with prominent flanges on tips, and much longer than cauda.

## COLOR

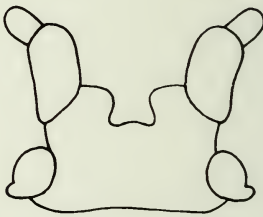
**Body** light yellow-green to dark green, shiny, sometimes brownish, usually with darker areas around bases of cornicles.

**Cornicles** with dark tips.

**Legs and antennae** with dark joints.



1



2



3

*Aulacorthum solani* (Kaltenbach)



**FOXGLOVE APHID**  
**(wingless)**



*Aulacorthum solani* (Kaltenbach)



# GREEN PEACH APHID (winged)

## COLOR

**Head** and **thorax** dark brown to black.

**Abdomen** green, pink, or dull reddish, with a conspicuous blackish almost solid central dorsal patch broken by a pale space or "window" just behind the cornicles.

**Cornicles** about same shade as abdomen; tips darker.

## SHAPE

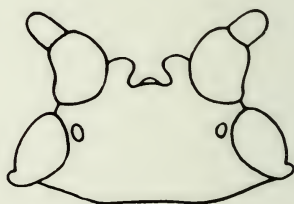
**Body outline** of immature winged form (1) modified by presence of wing pads.

**Head** (2) with prominent inward-pointing antennal tubercles.

**Cornicles** (3) slightly swollen.



1



2



3

*Myzus persicae* (Sulzer)

# GREEN PEACH APHID (winged)



*Myzus persicae* (Sulzer)

# BUCKTHORN APHID (winged)

## COLOR

**Head and thorax** dark brown to black.

**Abdomen** yellow to yellow-green, with a dark strip behind each cornicle.

**Cornicles and cauda** light to dark brown; tips of cornicles darker than bases.

## SHAPE

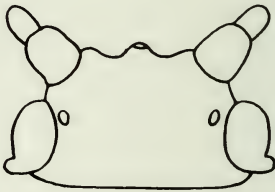
**Body outline** of immature winged form (1) modified by presence of wing pads.

**Head** (2) with inconspicuous outward-sloping antennal tubercles.

**Cornicles** (3) much shorter than body, slightly longer than cauda.



1



2



3

*Aphis nasturtii* Kaltenbach



**BUCKTHORN APHID**  
**(winged)**



*Aphis nasturtii* Kaltenbach

# POTATO APHID (winged)

## COLOR

**Head and thorax** light yellow-brown or green-brown to dark brown.

**Abdomen** green, or sometimes pink to magenta.

**Cornicles** usually same shade as body, with tips sometimes darker.

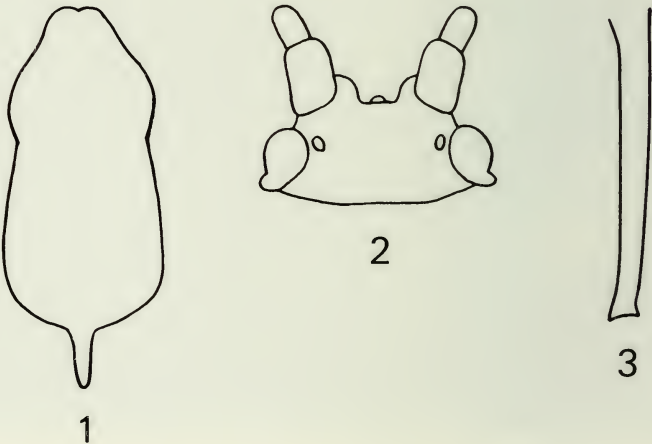
## SHAPE

**Body outline** of immature winged form (1) modified by presence of wing pads.

**Head** (2) with prominent outward-sloping antennal tubercles.

**Antennae** at least as long as body.

**Cornicles** (3) cylindrical, with insignificant flanges.



*Macrosiphum euphorbiae* (Thomas)

# POTATO APHID (winged)



*Macrosiphum euphorbiae* (Thomas)

# FOXGLOVE APHID (winged)

## COLOR

**Head** and **thorax** light yellow-brown or green-brown to dark brown.

**Fore wings** with distinctly darker anal and cubital veins.

**Abdomen** usually some shade of green to yellow-brown, with dark bars and spots.

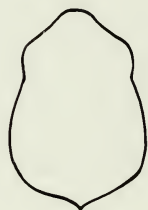
**Cornicles** with dark tips.

## SHAPE

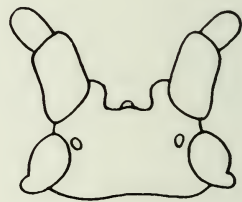
**Body outline** of immature winged form (1) modified by presence of wing pads.

**Head** (2) with prominent almost parallel straight-sided antennal tubercles.

**Cornicles** (3) straight, with prominent flanges on tips.



1



2



3

*Aulacorthum solani* (Kaltenbach)



## FOXGLOVE APHID (winged)



*Aulacorthum solani* (Kaltenbach)

CAL/BCA OTTAWA K1A 0C5



3 9073 00186741 7