



West Nile virus

National Surveillance Report

English Edition
July 28 to August 3, 2013
(Report Week 31)

Canada

Humans:

During the surveillance week 31, the Public Health Agency of Canada (Agency) has received one (1) human clinical cases of West Nile virus (WNV). As of week 31, the Agency has received two (2) clinical cases of WNV in Ontario. The two cases have not yet been classified clinically.

Mosquitoes:

To date (Week 31), a total of 5864 mosquito pools have been tested for WNV [Ontario (4215), Quebec (753), British Columbia (170), Saskatchewan (95), and Manitoba (631)]. Of them, forty WNV positive mosquito pools have been reported: twenty-two in Ontario [Central East; Durham (4), Peel (6), Toronto (1), Central West; Halton (2), Hamilton (2), Niagara (1), Eastern; Hastings and Prince Edward (1), Leeds-Grenville and Lanark (1), South West; Chatham-Kent (1), Middlesex-London (1), Perth (1), Wellington-Essex (1)]; five (5) in Quebec [(Montreal (3) and Laval (2))]; fourteen in Manitoba [(Prairie Mountain (2), Winnipeg (3), Southern (9))]; and three (3) in Saskatchewan [(Regina (1), Saskatoon (2))].

Dead Birds:

A total of 51 dead birds have been tested for WNV by the Canadian Cooperative Wildlife Health Centre (CCWHC) and the British Columbia Centre for Disease Control (BCCDC). Of them, twelve (12) positives were reported: three (3) in Ontario (Sault Ste. Marie and Sarnia regions); three (3) in Quebec (Montreal and Estrie regions), one (1) in Manitoba (Brandon (1), five (5) in Saskatchewan (Regina and Saskatoon).

Domestic Animals:

Three (3) animals positive for WNV have been reported by the Canadian Food Inspection Agency and the province of Quebec: one (1) heifer was reported in Quebec (Montérégie), one (1) horse in Saskatchewan (Aylesbury), one (1) horse in Manitoba (northwest of Winnipeg).

National WNV surveillance data and maps can be found on the PHAC website at: <http://www.phac-aspc.gc.ca/wnv-vwn/index.html>

United States

As of week 31, 99 human cases of WNV have been reported by the Centers for Disease Control and Prevention (CDC) in the U.S.A. Of them, 45 (45%) were diagnosed as neuroinvasive disease, and 54 (54%) non-neuroinvasive). Four fatal cases were reported. 26 cases of presumptive viremic blood donors were reported.

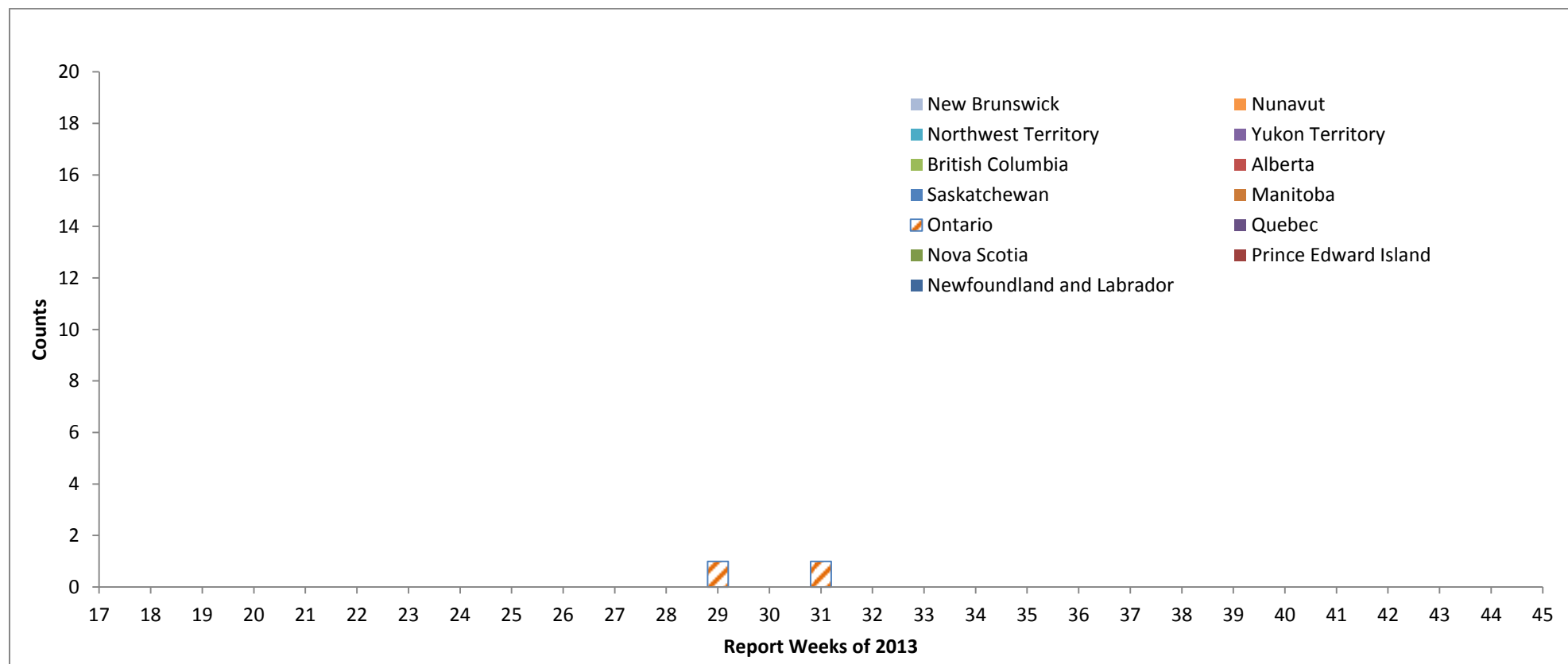
http://www.cdc.gov/ncidod/dvbid/westnile/surv&controlCaseCount12_detailed.html

Europe and Neighbouring countries

Since the start of the 2013 WNV season, eight (8) human cases of WNV has been reported in the European Union and the European Economic Area in the Attiki and Thessaloniki region of Greece. 34 human cases of WNV have been reported in neighbouring countries: the Former Yugoslav Republic of Macedonia one (1), Serbia seven (7), the Russian Federation fourteen (14), and Israel twelve.

http://ecdc.europa.eu/en/healthtopics/west_nile_fever/West-Nile-fever-maps/Pages/index.aspx

WNV clinical cases and asymptomatic infections, by Province / Territory and by report week, 2013 season



Link Figure 1 to the following table 1 below

Table 1

[illegible]

Table 2

West Nile virus human clinical cases and asymptomatic infections by Province / Territory for the current Report Week and year to date, 2013
Season

		July 28 to August 3, 2013 (Week 31)					
		West Nile virus Neurological syndrome	West Nile virus Non-Neurological syndrome	Unclassified / Unspecified	Total clinical cases ¹	# of travel related cases ²	West Nile virus asymptomatic infections ³
		# cases	# cases				
Provinces and territories	Newfoundland and Labrador	0	0	0	0	0	0
	Prince Edward Island	0	0	0	0	0	0
	Nova Scotia	0	0	0	0	0	0
	New Brunswick	0	0	0	0	0	0
	Quebec	0	0	0	0	0	0
	Ontario	0	0	1	1	0	0
	Manitoba	0	0	0	0	0	0
	Saskatchewan	0	0	0	0	0	0
	Alberta	0	0	0	0	0	0
	British Columbia	0	0	0	0	0	0
	Yukon Territory	0	0	0	0	0	0
	Northwest Territory	0	0	0	0	0	0
	Nunavut	0	0	0	0	0	0
Total		0	0	1	1	0	0
		Year to date: From January 1 to August 3 2013					
Provinces and territories	Newfoundland and Labrador	0	0	0	0	0	0
	Prince Edward Island	0	0	0	0	0	0
	Nova Scotia	0	0	0	0	0	0
	New Brunswick	0	0	0	0	0	0
	Quebec	0	0	0	0	0	0
	Ontario	0	0	2	2	0	0
	Manitoba	0	0	0	0	0	0
	Saskatchewan	0	0	0	0	0	0
	Alberta	0	0	0	0	0	0
	British Columbia	0	0	0	0	0	0
	Yukon Territory	0	0	0	0	0	0
	Northwest Territory	0	0	0	0	0	0
	Nunavut	0	0	0	0	0	0
Total		0	0	2	2	0	0

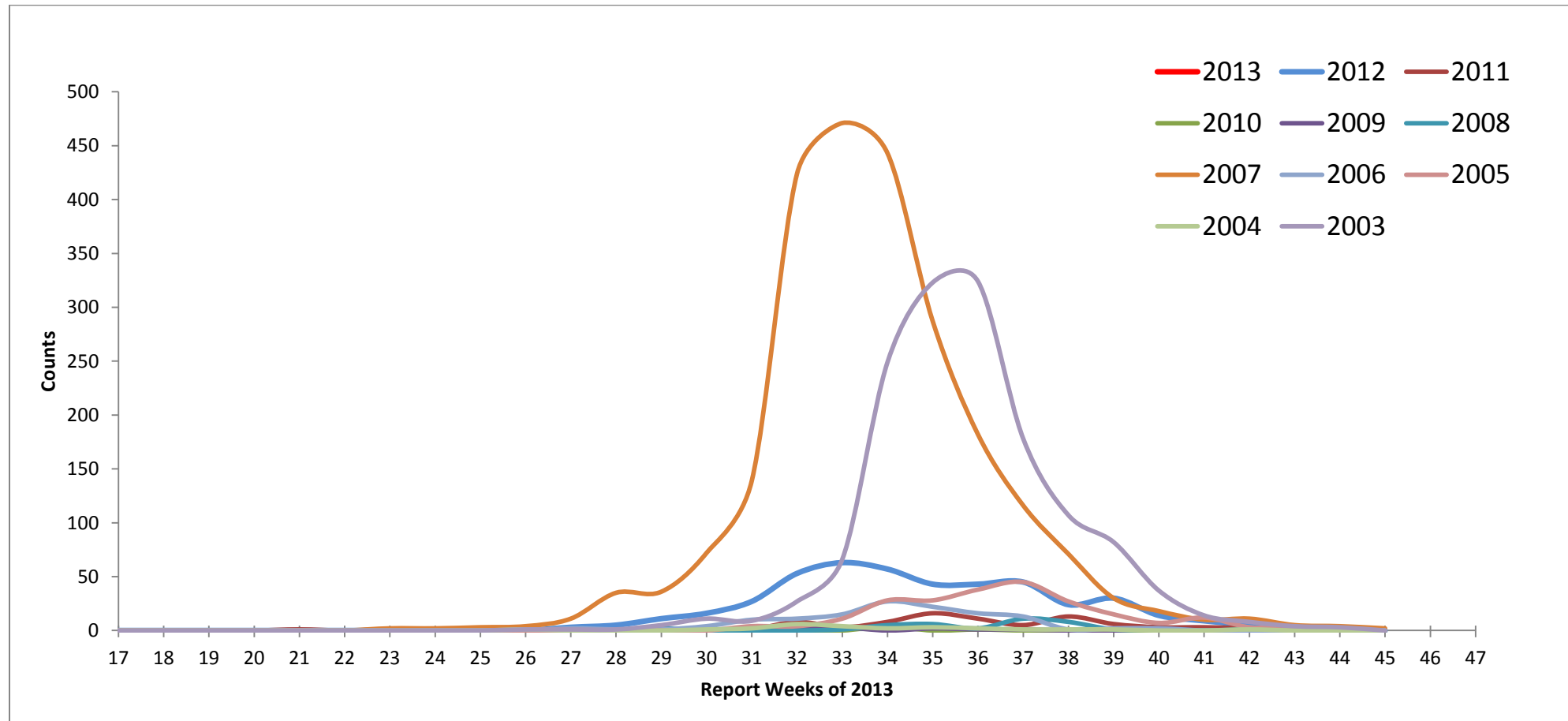
¹ Total clinical cases is the sum of both probable and confirmed: West Nile virus neurological and non-neurological syndromes, along with any unclassified or unspecified cases.

² Likely related to travel outside the province/territory. These cases are included in either the total clinical cases or West Nile virus asymptomatic infections.

³ Satisfies West Nile virus diagnostic test criteria in the absence of clinical criteria. This category could include asymptomatic blood donors whose blood is screened using a nucleic acid amplification test (NAT), by blood operators (i.e. Canadian Blood Services or Hema-Quebec) and is subsequently brought to the attention of public health officials. Blood operators in Canada perform a supplementary West Nile virus specific NAT following any positive donor screen test result.

Figure 2

WNV clinical cases and asymptomatic infections by report week, 2013 season compared to previous seasons



Link Figure 2 to the following table 3 below

Table 3

		Report Weeks of 2013																														
		17	18	19	20	21	22	23	24	25	26	27	28	29	30	31	32	33	34	35	36	37	38	39	40	41	42	43	44	45		
	2013	0	0	0	0	0	0	0	0	0	0	0	0	1	0	1																
	2012	0	0	0	0	0	0	0	0	0	0	3	5	11	16	27	53	63	57	43	43	45	24	30	14	9	5	1	0	0		
	2011	0	0	0	0	1	0	1	0	2	0	0	0	0	0	1	8	3	8	16	11	5	13	6	3	3	2	0	0	0		
	2010	0	0	0	0	0	0	0	0	0	0	0	0	0	0	0	0	0	4	0	1	0	0	0	0	0	0	0	0	0		
	2009	0	0	0	0	0	0	0	0	0	0	0	0	0	0	0	2	3	0	2	1	1	0	0	2	0	0	1	0	0		
	2008	0	0	0	0	0	0	0	0	0	0	0	0	2	0	0	0	1	5	6	2	11	8	1	1	0	1	0	0	0		
	2007	0	0	0	0	0	0	2	2	3	4	11	35	36	72	139	424	471	443	287	182	116	71	30	18	10	11	5	4	2		
	2006	0	0	0	0	0	0	0	0	0	0	2	1	1	4	10	11	15	27	22	16	13	1	2	2	0	0	0	0	0		
	2005	0	0	0	0	0	0	0	0	0	0	0	0	0	0	4	4	11	28	28	38	45	27	15	7	12	3	3	1	0		
	2004	0	0	0	0	0	0	0	0	0	1	0	0	0	1	2	6	4	2	3	2	1	1	1	0	0	1	0	0	0		
	2003	0	0	0	0	0	0	0	0	0	1	1	1	5	11	9	27	66	249	323	324	178	107	82	37	14	8	4	3	0		

Table 4

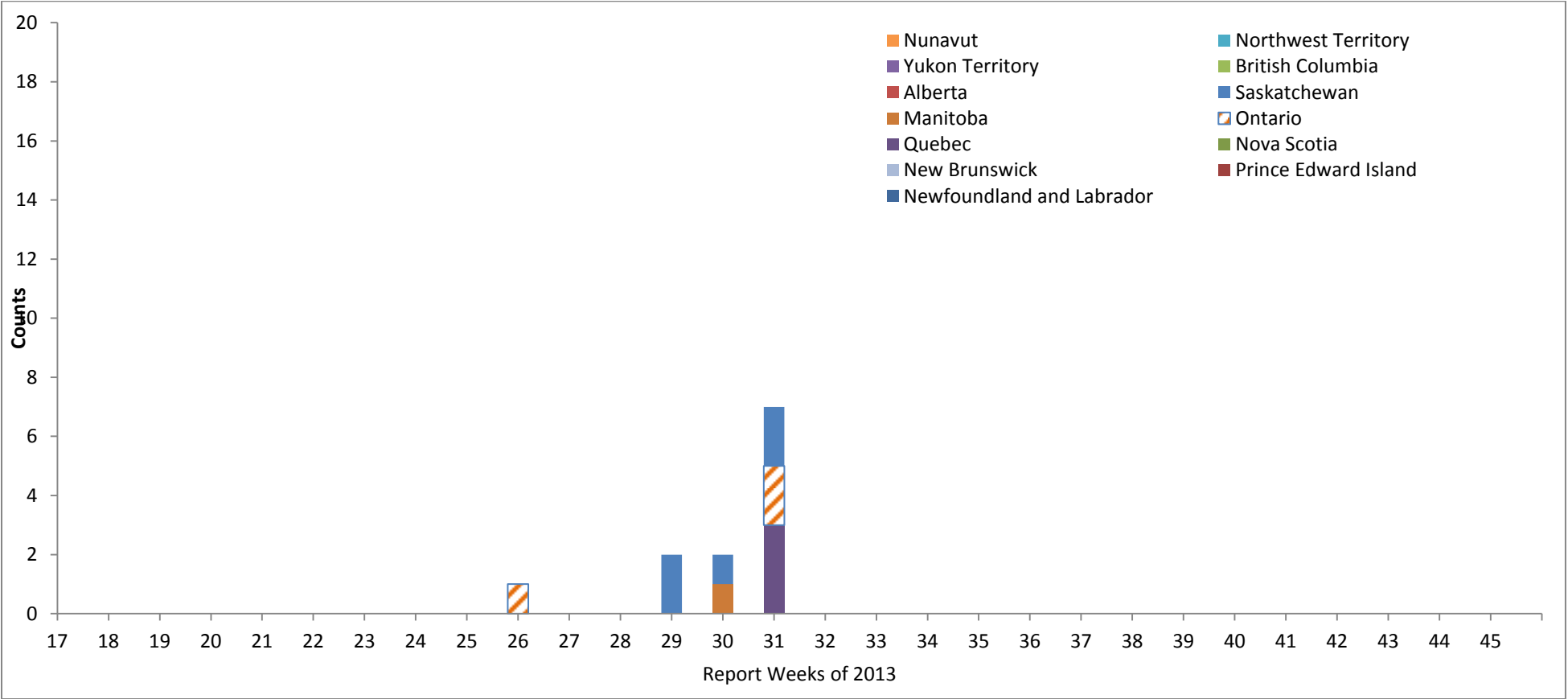
Reported cumulative number of West Nile virus positive mosquito pools by Province/Territory and by report week, 2013 season*

		Report Weeks of 2013																																
		17	18	19	20	21	22	23	24	25	26	27	28	29	30	31	32	33	34	35	36	37	38	39	40	41	42	43	44	45				
	Newfoundland	0	0	0	0	0	0	0	0	0	0	0	0	0	0																			
	Prince Edward Island	0	0	0	0	0	0	0	0	0	0	0	0	0	0																			
	New Brunswick	0	0	0	0	0	0	0	0	0	0	0	0	0	0																			
	Nova Scotia	0	0	0	0	0	0	0	0	0	0	0	0	0	0																			
	Quebec	0	0	0	0	0	0	0	0	0	0	0	2	3	5																			
	Ontario	0	0	0	0	0	0	0	0	0	2	2	4	12	22	41																		
	Manitoba	0	0	0	0	0	0	0	0	0	0	0	1	1	7	14																		
	Saskatchewan	0	0	0	0	0	0	0	0	0	0	0	1	1	3	3																		
	Alberta	0	0	0	0	0	0	0	0	0	0	0	0	0	0	0																		
	British Columbia	0	0	0	0	0	0	0	0	0	0	0	0	0	0	0																		
	Yukon Territory	0	0	0	0	0	0	0	0	0	0	0	0	0	0	0																		
	Northwest Territory	0	0	0	0	0	0	0	0	0	0	0	0	0	0	0																		
	Nunavut	0	0	0	0	0	0	0	0	0	0	0	0	0	0	0																		

* Detailed West Nile virus mosquito surveillance data can be accessed through Provincial/ Territorial websites

Figure 3

Reported number of dead birds testing positive for WNV by Province / Territory and by report week, 2013 season



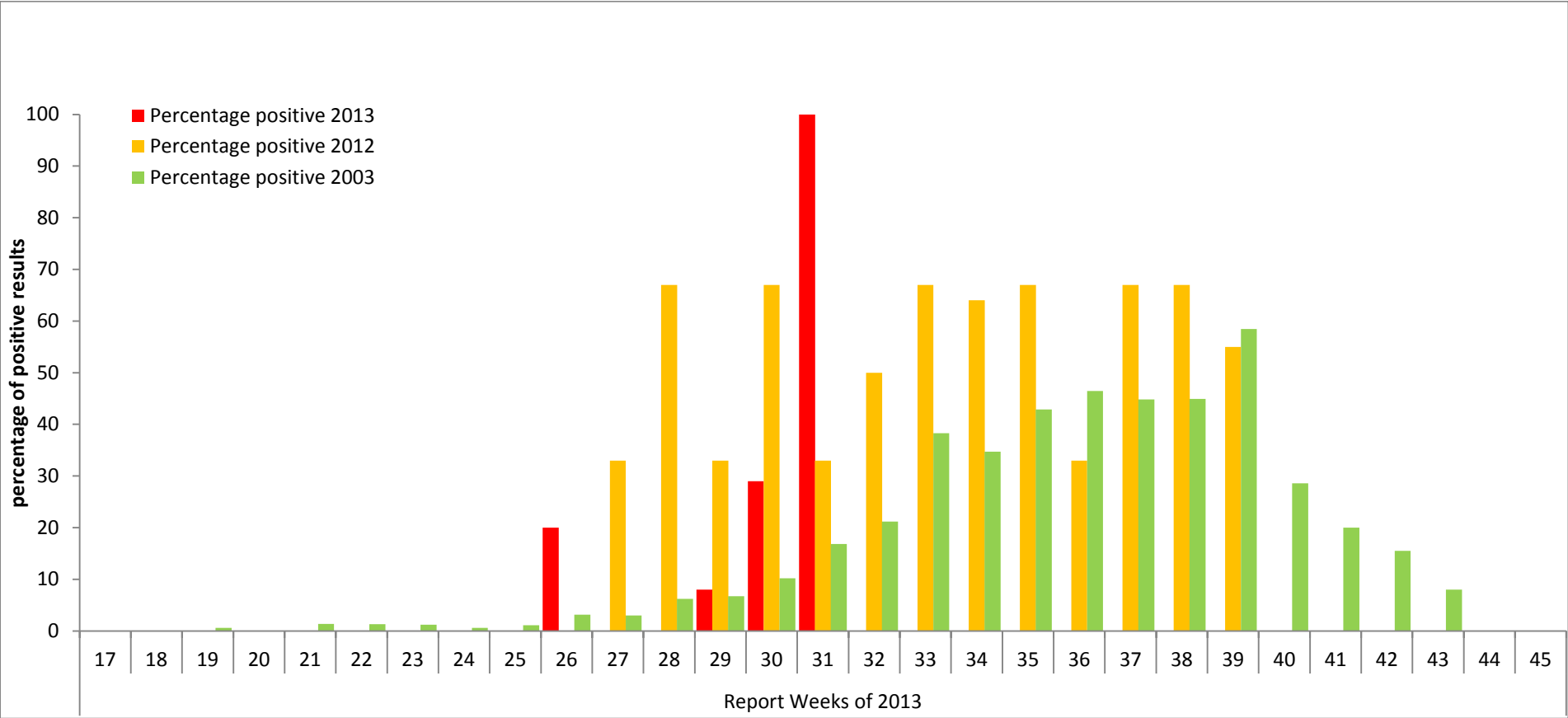
Link figure 3 to the following table 5 below

Table 5

[illegible]

Figure 4

Percentage of dead birds testing positive for WNV in the 2013 season by report week as compared to the 2003 and 2012 seasons



[Link figure 4 to the following table 6 below](#)

Table 6

		Report Weeks of 2013																												
		17	18	19	20	21	22	23	24	25	26	27	28	29	30	31	32	33	34	35	36	37	38	39	40	41	42	43	44	45
Numbers positive	2013	0	0	0	0	0	0	0	0	0	1	0	0	2	2	7														
Numbers tested	2013	0	0	0	0	0	0	0	0	0	5	0	3	25	7	7														
Percentage positive	2013	0	0	0	0	0	0	0	0	0	20	0	0	8	29	100														
Percentage positive	2012	0	0	0	0	0	0	0	0	0	33	67	33	67	33	50	67	64	67	33	67	67	55	0	0	0	0	0	0	0
Percentage positive	2003	0	0	1	0	1	1	1	1	1	3	3	6	7	10	17	21	38	35	43	46	45	45	58	29	20	15	8	0	0