

Table 1  
Railway Occurrence and Casualty

	March			January to March		
	2015	2014	2010-2014 Average	2015	2014	2010-2014 Average
<b>Accidents</b>	<b>115</b>	<b>110</b>	<b>98</b>	<b>347</b>	<b>328</b>	<b>288</b>
Main-track train collisions	0	1	0	2	3	2
Main-track train derailments - 1-2 cars*	5	4	5	13	18	15
Main-track train derailments - 3-5 cars	1	0	1	3	3	2
Main-track train derailments - 6 or more cars	4	0	2	11	7	8
Crossings	12	17	14	54	50	54
Non-main-track train collisions	18	9	7	33	27	24
Non-main-track train derailments - 1-2 cars*	48	55	45	162	160	121
Non-main-track train derailments - 3-5 cars	7	8	8	18	20	19
Non-main-track train derailments - 6 or more cars	2	2	4	5	4	7
Collisions/Derailments involving track units	3	3	2	10	10	7
Employee/Passenger	3	1	1	4	1	2
Trespassers	3	2	5	8	7	12
Fires/Explosions	0	2	1	6	8	5
Other	8	6	4	17	10	10
<b>Incidents</b>	<b>21</b>	<b>17</b>	<b>17</b>	<b>46</b>	<b>59</b>	<b>49</b>
Dangerous goods leaker**	7	5	8	9	26	19
Main-track switch in abnormal position	2	1	1	5	2	2
Movement exceeds limits of authority	10	7	5	28	23	22
Runaway rolling stock	0	1	1	1	4	3
Others	2	3	2	3	4	3
<b>Million train-miles (a)</b>				<b>20.04</b>	<b>19.58</b>	<b>20.71</b>
<b>Accidents/Million train-miles</b>				<b>17.32</b>	<b>16.75</b>	<b>13.91</b>
<b>Accidents involving dangerous goods</b>	<b>23</b>	<b>17</b>	<b>16</b>	<b>56</b>	<b>52</b>	<b>43</b>
Main-track train derailments	2	1	1	8	3	3
Crossings	0	1	1	1	1	2
Non-main-track train collisions	4	3	3	12	14	9
Non-main-track train derailments	17	11	11	35	33	28
All others	0	1	0	0	1	1
<b>Accidents with a DG release</b>	<b>1</b>	<b>0</b>	<b>0</b>	<b>3</b>	<b>1</b>	<b>1</b>
<b>Accidents involving passenger trains</b>	<b>3</b>	<b>5</b>	<b>4</b>	<b>18</b>	<b>12</b>	<b>15</b>
<b>Accidents involving runaway rolling stock</b>	<b>4</b>	<b>3</b>	<b>3</b>	<b>6</b>	<b>5</b>	<b>6</b>
<b>Fatalities</b>	<b>4</b>	<b>4</b>	<b>5</b>	<b>6</b>	<b>12</b>	<b>18</b>
Crossings	1	2	2	1	8	9
Trespassers	3	1	3	5	3	8
All others	0	1	0	0	1	2
<b>Serious Injuries</b>	<b>6</b>	<b>6</b>	<b>4</b>	<b>13</b>	<b>13</b>	<b>15</b>
Crossings	2	4	1	5	7	6
Trespassers	1	1	2	3	4	4
All others	3	1	1	5	2	6

Data extracted April 15, 2015.

All 5-year averages have been rounded. The totals sometimes do not coincide to the sum of these averages.

a. Train-miles estimated. (Source: Transport Canada)

New TSB regulations came into effect on July 1, 2014, changing some reporting requirements.

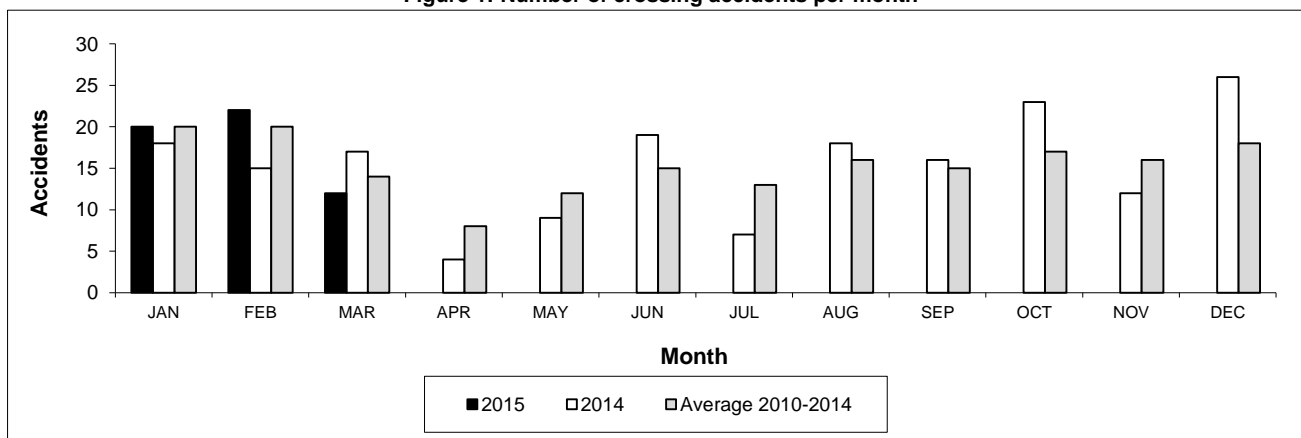
\* Under new reporting requirements all derailments are reportable.

\*\* Under new reporting requirements the minimum reporting threshold for incidents (200 litres) involving the release of low vapour pressure flammable liquids has been harmonized with Part 8 of the Transportation of Dangerous Goods Regulations.

**Table 2**  
**Railway crossing and trespasser accidents by province**

	Crossings with Type Recorded 2015 - Year To Date*				All Crossings Year To Date*		Trespasser Year To Date*	
	Public Automated	Public Passive	Private	Farm	2015	2014	2015	2014
<b>Newfoundland</b>								
Accidents	0	0	0	0	0	0	0	0
Fatalities	0	0	0	0	0	0	0	0
Serious injuries	0	0	0	0	0	0	0	0
<b>Nova Scotia</b>								
Accidents	0	2	0	0	2	0	0	0
Fatalities	0	0	0	0	0	0	0	0
Serious injuries	0	0	0	0	0	0	0	0
<b>New Brunswick</b>								
Accidents	2	0	1	1	4	2	0	0
Fatalities	0	0	0	0	0	0	0	0
Serious injuries	0	0	0	0	0	0	0	0
<b>Quebec</b>								
Accidents	8	0	3	0	11	5	0	1
Fatalities	0	0	0	0	0	2	0	0
Serious injuries	1	0	0	0	1	0	0	1
<b>Ontario</b>								
Accidents	3	1	4	0	8	12	3	2
Fatalities	0	0	0	0	0	1	2	1
Serious injuries	0	0	0	0	0	1	1	1
<b>Manitoba</b>								
Accidents	1	2	1	0	4	4	0	0
Fatalities	0	0	0	0	0	0	0	0
Serious injuries	0	0	0	0	0	0	0	0
<b>Saskatchewan</b>								
Accidents	1	3	0	0	4	8	2	0
Fatalities	0	0	0	0	0	2	1	0
Serious injuries	0	0	0	0	0	3	2	0
<b>Alberta</b>								
Accidents	5	6	0	1	12	14	0	1
Fatalities	0	0	0	0	0	2	0	0
Serious injuries	0	1	0	0	1	2	0	1
<b>British Columbia</b>								
Accidents	3	3	3	0	9	5	3	3
Fatalities	1	0	0	0	1	1	2	2
Serious injuries	3	0	0	0	3	1	0	1
<b>Northwest Territories</b>								
Accidents	0	0	0	0	0	0	0	0
Fatalities	0	0	0	0	0	0	0	0
Serious injuries	0	0	0	0	0	0	0	0
<b>Canada</b>								
Accidents	23	17	12	2	54	50	8	7
Fatalities	1	0	0	0	1	8	5	3
Serious injuries	4	1	0	0	5	7	3	4

**Figure 1: Number of crossing accidents per month**



Data extracted April 15, 2015.

\*Year to date is from January to March.

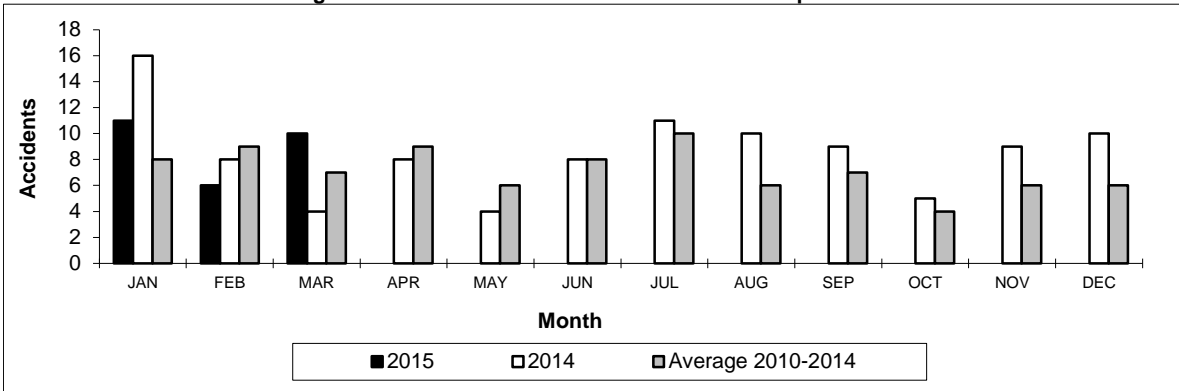
New TSB regulations came into effect on July 1, 2014, changing some reporting requirements.

**Table 3**  
Main-track train derailments by province\*

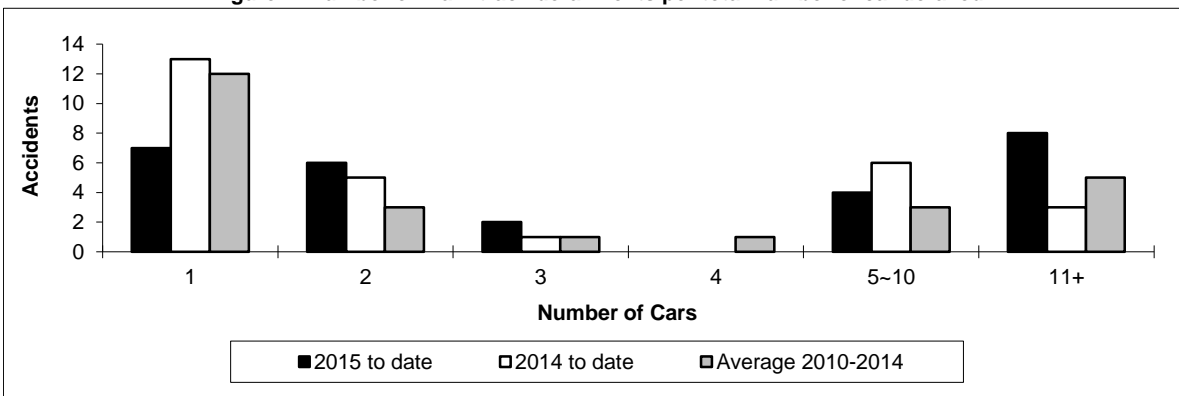
	January to March			Deraillments with DG Involvement January to March		
	2015	2014	2010-2014 Average	2015	2014	2010-2014 Average
<b>Canada</b>	<b>27</b>	<b>28</b>	<b>25</b>	<b>8</b>	<b>3</b>	<b>3</b>
Newfoundland	0	0	1	0	0	0
Nova Scotia	1	0	0	0	0	0
New Brunswick	0	2	0	0	2	0
Quebec	2	7	3	0	0	0
Ontario	10	9	6	5	1	1
Manitoba	3	3	2	1	0	0
Saskatchewan	1	2	3	0	0	0
Alberta	5	1	5	2	0	1
British Columbia	5	4	5	0	0	0
Northwest Territories	0	0	0	0	0	0

\* There were 3 occurrences with dangerous goods release to date in 2015 and 1 in 2014.

**Figure 1: Number of main-track train derailments per month**



**Figure 2: Number of main-track derailments per total number of car derailed**



Data extracted April 15, 2015.

Figure 1: Number of main-track train derailments per month

New TSB regulations came into effect on July 1, 2014, changing some reporting requirements.

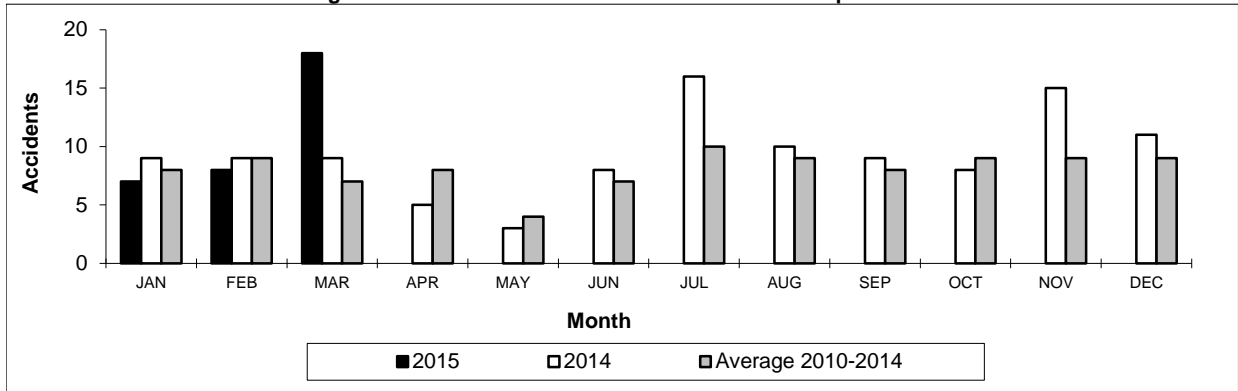
\* Under new reporting requirements all derailments are reportable.

**Table 4**  
**Non main-track train collisions by province**

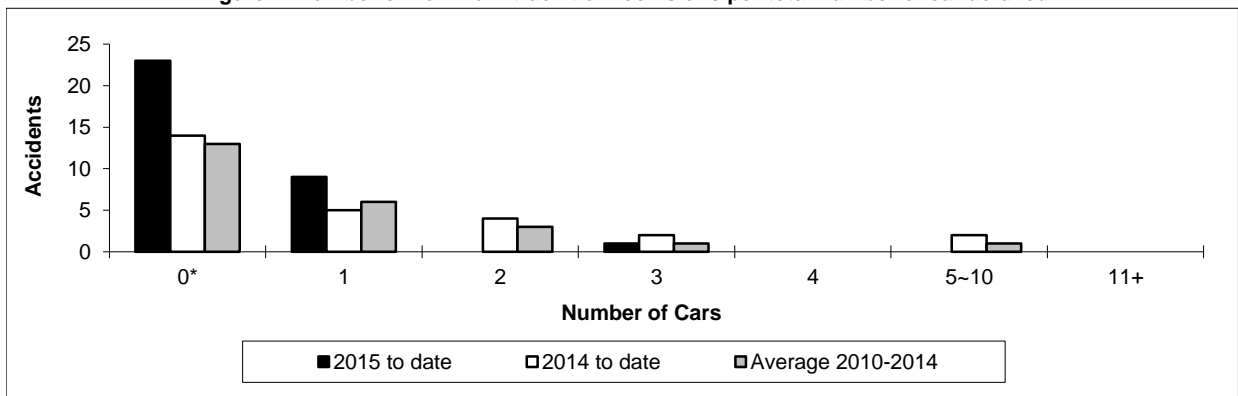
	January to March			Collisions with DG Involvement January to March		
	2015	2014	2010-2014 Average	2015	2014	2010-2014 Average
	<b>Canada</b>	<b>33</b>	<b>27</b>	<b>24</b>	<b>12</b>	<b>14</b>
Newfoundland	0	0	0	0	0	0
Nova Scotia	0	0	0	0	0	0
New Brunswick	0	1	0	0	1	0
Quebec	4	1	2	3	0	1
Ontario	1	7	5	0	4	2
Manitoba	9	9	5	3	5	3
Saskatchewan	4	3	1	2	1	1
Alberta	7	4	6	3	2	2
British Columbia	8	2	4	1	1	1
Northwest Territories	0	0	0	0	0	0

\* There were no occurrences with dangerous goods release to date in 2015 or in 2014.

**Figure 1: Number of non main-track train collisions per month**



**Figure 2: Number of non main-track train collisions per total number of car derailed**



Data extracted April 15, 2015.

\* Number of collisions with no derailments.

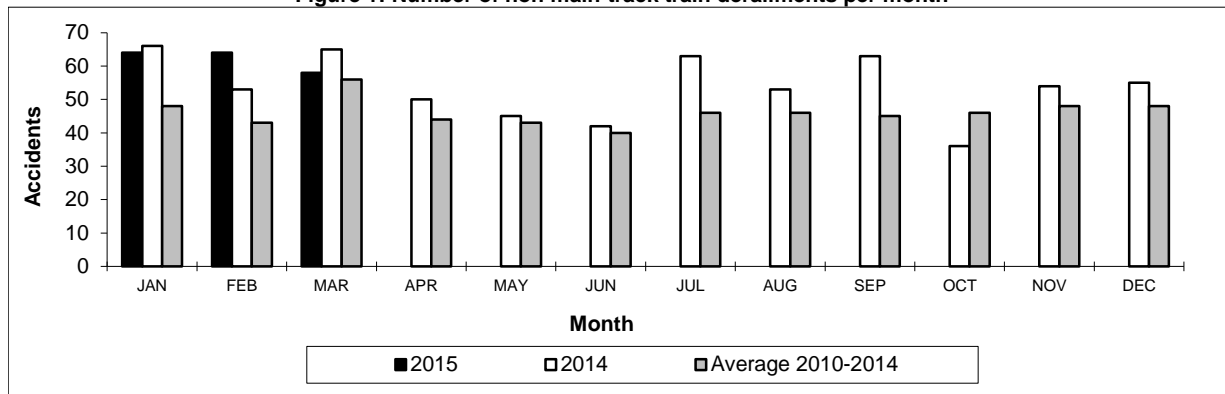
New TSB regulations came into effect on July 1, 2014, changing some reporting requirements.

**Table 5**  
**Non main-track train derailments by province\***

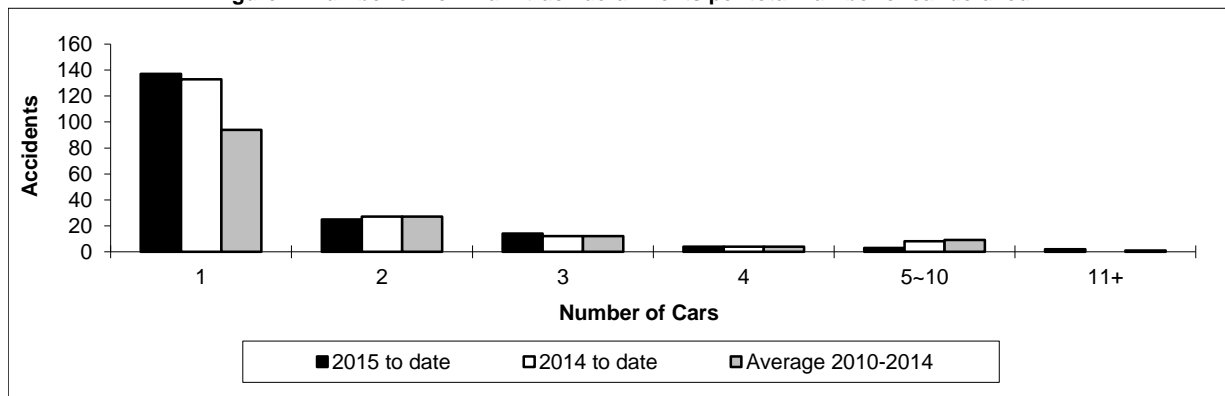
	January to March			Derailments with DG Involvement January to March		
	2015	2014	2010-2014 Average	2015	2014	2010-2014 Average
	<b>Canada</b>	<b>186</b>	<b>184</b>	<b>147</b>	<b>35</b>	<b>33</b>
Newfoundland	2	0	0	0	0	0
Nova Scotia	2	1	1	1	0	0
New Brunswick	6	2	2	3	1	1
Quebec	32	12	14	3	2	3
Ontario	36	31	27	6	5	6
Manitoba	29	35	19	5	4	3
Saskatchewan	15	17	20	3	4	3
Alberta	42	51	39	10	13	10
British Columbia	22	34	25	4	3	3
Northwest Territories	0	1	0	0	1	0

\* There were no occurrences with dangerous goods release to date in 2015 or in 2014.

**Figure 1: Number of non main-track train derailments per month**



**Figure 2: Number of non main-track derailments per total number of car derailed**



Data extracted April 15, 2015.

New TSB regulations came into effect on July 1, 2014, changing some reporting requirements.

\* Under new reporting requirements all derailments are reportable.