

Table 1  
Railway Occurrence and Casualty

	July			January to July		
	2015	2014	2010-2014 Average	2015	2014	2010-2014 Average
<b>Accidents</b>	<b>94</b>	<b>110</b>	<b>98</b>	<b>731</b>	<b>683</b>	<b>635</b>
Main-track train collisions	0	0	0	2	5	4
Main-track train derailments - 1-2 cars*	5	5	4	32	32	29
Main-track train derailments - 3-5 cars	0	2	2	5	8	8
Main-track train derailments - 6 or more cars	3	4	4	23	19	20
Crossings	12	7	13	91	90	101
Non-main-track train collisions	5	16	10	56	59	54
Non-main-track train derailments - 1-2 cars*	46	47	35	325	304	254
Non-main-track train derailments - 3-5 cars	5	14	10	56	59	51
Non-main-track train derailments - 6 or more cars	1	2	2	17	21	15
Collisions/Derailments involving track units	7	1	3	24	18	16
Employee/Passenger	2	1	2	11	5	6
Trespassers	3	3	8	33	21	40
Fires/Explosions	2	3	3	20	23	15
Other	3	5	3	36	19	21
<b>Incidents</b>	<b>22</b>	<b>15</b>	<b>23</b>	<b>114</b>	<b>120</b>	<b>129</b>
Dangerous goods leaker**	9	5	9	20	45	50
Main-track switch in abnormal position	2	0	0	7	4	4
Movement exceeds limits of authority	10	10	11	75	55	62
Runaway rolling stock	1	0	1	5	8	7
Others	0	0	0	7	8	6
<b>Million train-miles (a)</b>				<b>46.58</b>	<b>47.39</b>	<b>49.02</b>
<b>Accidents/Million train-miles</b>				<b>15.69</b>	<b>14.41</b>	<b>12.95</b>
<b>Accidents involving dangerous goods</b>	<b>8</b>	<b>19</b>	<b>12</b>	<b>104</b>	<b>108</b>	<b>84</b>
Main-track train derailments	2	7	3	11	16	10
Crossings	0	0	1	2	1	3
Non-main-track train collisions	3	6	2	22	24	17
Non-main-track train derailments	3	5	6	68	62	52
All others	0	1	0	1	5	3
<b>Accidents with a DG release</b>	<b>0</b>	<b>1</b>	<b>1</b>	<b>3</b>	<b>3</b>	<b>3</b>
<b>Accidents involving passenger trains</b>	<b>5</b>	<b>5</b>	<b>7</b>	<b>35</b>	<b>28</b>	<b>34</b>
<b>Accidents involving runaway rolling stock</b>	<b>2</b>	<b>0</b>	<b>1</b>	<b>12</b>	<b>7</b>	<b>14</b>
<b>Fatalities</b>	<b>5</b>	<b>2</b>	<b>17</b>	<b>24</b>	<b>30</b>	<b>55</b>
Crossings	2	0	2	4	14	18
Trespassers	3	2	5	19	14	26
All others	0	0	10	1	2	12
<b>Serious Injuries</b>	<b>1</b>	<b>1</b>	<b>5</b>	<b>28</b>	<b>26</b>	<b>32</b>
Crossings	0	1	2	7	18	13
Trespassers	0	0	2	11	6	11
All others	1	0	1	10	2	8

Data extracted August 17, 2015.

All 5-year averages have been rounded. The totals sometimes do not coincide to the sum of these averages.

a. Train-miles estimated. (Source: Transport Canada)

New TSB regulations came into effect on July 1, 2014, changing some reporting requirements.

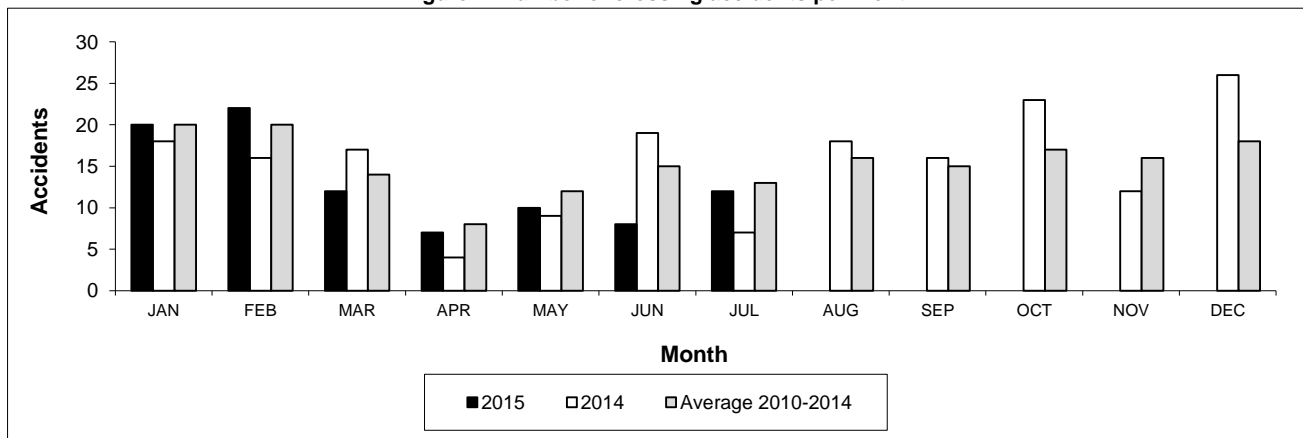
\* Under new reporting requirements all derailments are reportable.

\*\* Under new reporting requirements the minimum reporting threshold for incidents (200 litres) involving the release of low vapour pressure flammable liquids has been harmonized with Part 8 of the Transportation of Dangerous Goods Regulations.

**Table 2**  
**Railway crossing and trespasser accidents by province**

	Crossings with Type Recorded 2015 - Year To Date*				All Crossings Year To Date*		Trespasser Year To Date*	
	Public Automated	Public Passive	Private	Farm	2015	2014	2015	2014
<b>Newfoundland</b>								
Accidents	0	0	0	0	0	0	0	0
Fatalities	0	0	0	0	0	0	0	0
Serious injuries	0	0	0	0	0	0	0	0
<b>Nova Scotia</b>								
Accidents	0	2	0	0	2	0	0	0
Fatalities	0	0	0	0	0	0	0	0
Serious injuries	0	0	0	0	0	0	0	0
<b>New Brunswick</b>								
Accidents	2	0	1	2	5	3	0	0
Fatalities	0	0	0	0	0	0	0	0
Serious injuries	0	0	0	0	0	0	0	0
<b>Quebec</b>								
Accidents	11	1	7	1	20	10	2	2
Fatalities	0	0	0	0	0	6	2	1
Serious injuries	1	0	0	0	1	0	0	1
<b>Ontario</b>								
Accidents	10	1	4	0	15	22	15	8
Fatalities	1	0	0	0	1	2	9	5
Serious injuries	0	0	0	0	0	1	5	2
<b>Manitoba</b>								
Accidents	1	7	1	0	9	8	0	0
Fatalities	0	0	0	0	0	1	0	0
Serious injuries	0	0	0	0	0	5	0	0
<b>Saskatchewan</b>								
Accidents	6	6	0	0	12	15	3	0
Fatalities	0	0	0	0	0	2	1	0
Serious injuries	1	0	0	0	1	6	3	0
<b>Alberta</b>								
Accidents	7	10	0	1	18	20	2	6
Fatalities	1	1	0	0	2	2	2	4
Serious injuries	0	2	0	0	2	3	0	2
<b>British Columbia</b>								
Accidents	3	3	4	0	10	12	11	5
Fatalities	1	0	0	0	1	1	5	4
Serious injuries	3	0	0	0	3	3	3	1
<b>Northwest Territories</b>								
Accidents	0	0	0	0	0	0	0	0
Fatalities	0	0	0	0	0	0	0	0
Serious injuries	0	0	0	0	0	0	0	0
<b>Canada</b>								
Accidents	40	30	17	4	91	90	33	21
Fatalities	3	1	0	0	4	14	19	14
Serious injuries	5	2	0	0	7	18	11	6

**Figure 1: Number of crossing accidents per month**



Data extracted August 17, 2015.

\*Year to date is from January to July.

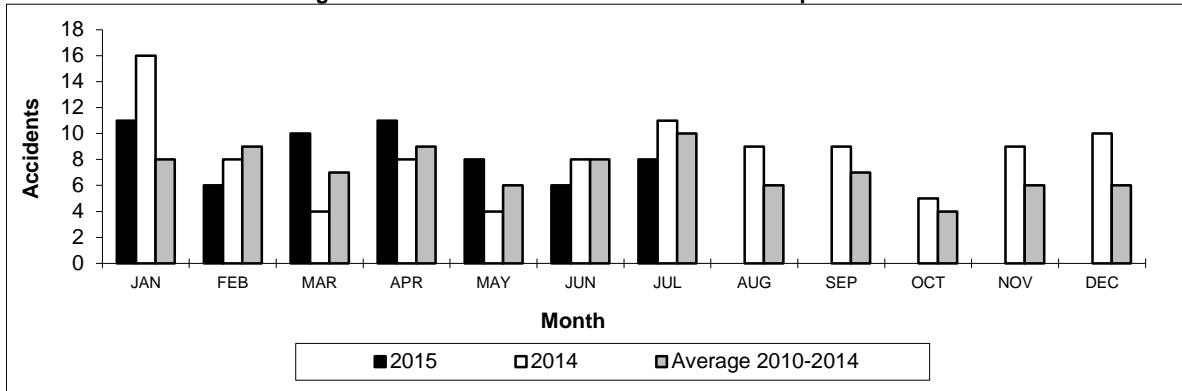
New TSB regulations came into effect on July 1, 2014, changing some reporting requirements.

**Table 3**  
Main-track train derailments by province\*

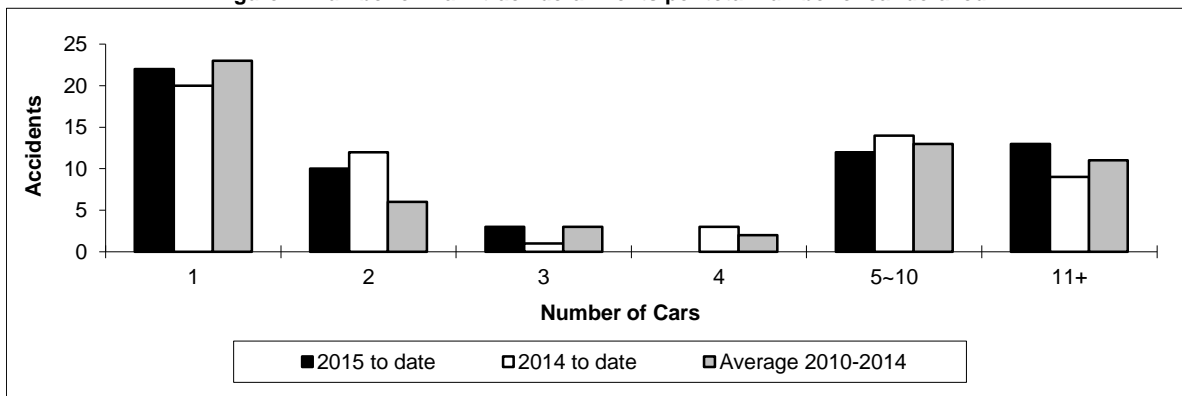
	January to July			Derailments with DG Involvement January to July		
	2015	2014	2010-2014 Average	2015	2014	2010-2014 Average
<b>Canada</b>	<b>60</b>	<b>59</b>	<b>58</b>	<b>11</b>	<b>16</b>	<b>10</b>
Newfoundland	0	0	1	0	0	0
Nova Scotia	2	0	0	0	0	0
New Brunswick	2	2	1	1	2	0
Quebec	6	9	6	0	1	1
Ontario	19	15	13	6	4	3
Manitoba	3	6	5	1	1	0
Saskatchewan	4	5	6	1	1	1
Alberta	10	12	13	2	6	3
British Columbia	14	10	13	0	1	2
Northwest Territories	0	0	0	0	0	0

\* There were 3 occurrences with dangerous goods release to date in 2015 and 2 in 2014.

**Figure 1: Number of main-track train derailments per month**



**Figure 2: Number of main-track derailments per total number of car derailed**



Data extracted August 17, 2015.

Figure 1: Number of main-track train derailments per month

New TSB regulations came into effect on July 1, 2014, changing some reporting requirements.

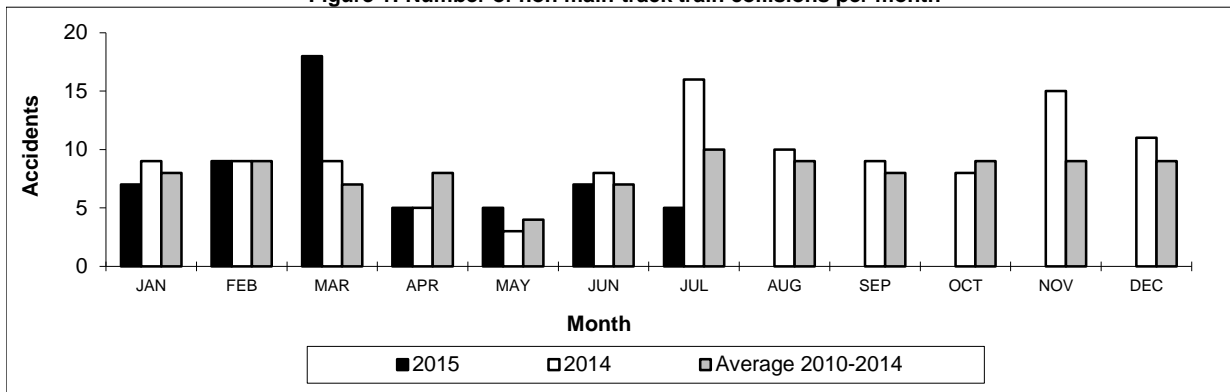
\* Under new reporting requirements all derailments are reportable.

**Table 4**  
**Non main-track train collisions by province**

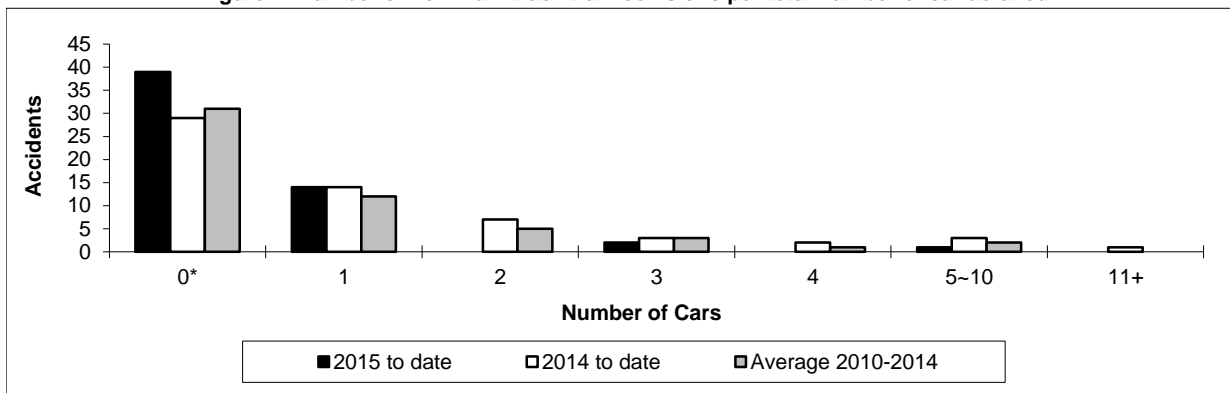
	January to July			Collisions with DG Involvement January to July		
	2015	2014	2010-2014 Average	2015	2014	2010-2014 Average
	<b>Canada</b>	<b>56</b>	<b>59</b>	<b>54</b>	<b>22</b>	<b>24</b>
Newfoundland	0	0	0	0	0	0
Nova Scotia	0	0	0	0	0	0
New Brunswick	0	3	1	0	1	0
Quebec	7	5	6	5	2	2
Ontario	11	12	8	4	6	4
Manitoba	10	9	9	4	5	3
Saskatchewan	7	13	6	3	3	1
Alberta	11	10	14	5	4	4
British Columbia	10	7	9	1	3	3
Northwest Territories	0	0	0	0	0	0

\* There were no occurrences with dangerous goods release to date in 2015 or in 2014.

**Figure 1: Number of non main-track train collisions per month**



**Figure 2: Number of non main-track train collisions per total number of car derailed**



Data extracted August 17, 2015.

\* Number of collisions with no derailments.

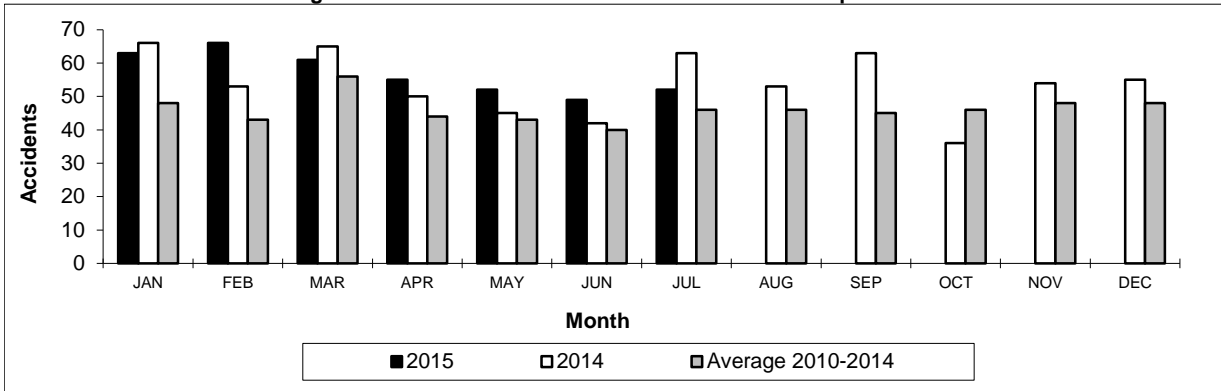
New TSB regulations came into effect on July 1, 2014, changing some reporting requirements.

**Table 5**  
**Non main-track train derailments by province\***

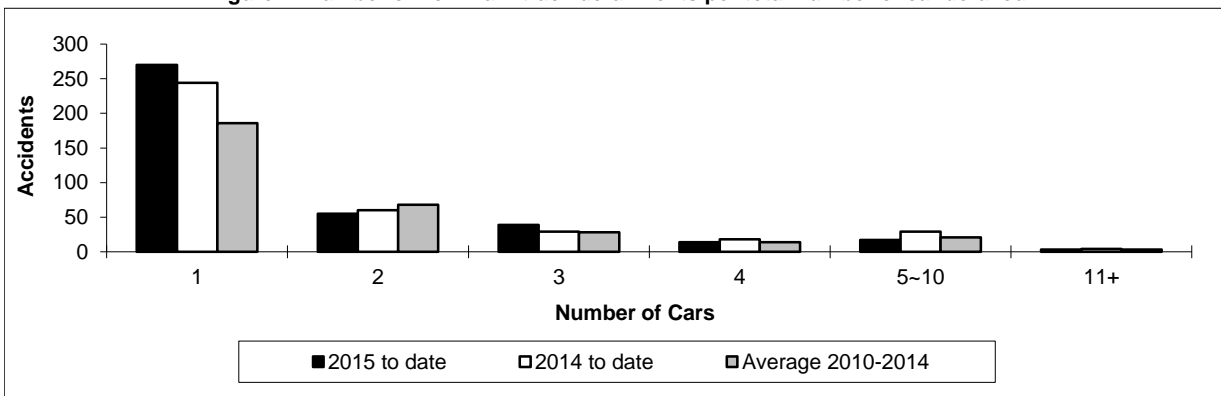
	January to July			Derailments with DG Involvement January to July		
	2015	2014	2010-2014 Average	2015	2014	2010-2014 Average
	<b>Canada</b>	<b>398</b>	<b>384</b>	<b>320</b>	<b>68</b>	<b>62</b>
Newfoundland	3	0	0	0	0	0
Nova Scotia	2	3	2	1	0	0
New Brunswick	8	8	6	4	3	2
Quebec	69	32	36	8	5	5
Ontario	80	71	62	13	12	11
Manitoba	51	54	38	10	6	5
Saskatchewan	37	44	43	5	11	5
Alberta	85	104	82	20	16	17
British Columbia	63	66	51	7	7	5
Northwest Territories	0	2	1	0	2	1

\* There were no occurrences with dangerous goods release to date in 2015 or in 2014.

**Figure 1: Number of non main-track train derailments per month**



**Figure 2: Number of non main-track derailments per total number of car derailed**



Data extracted August 17, 2015.

New TSB regulations came into effect on July 1, 2014, changing some reporting requirements.

\* Under new reporting requirements all derailments are reportable.