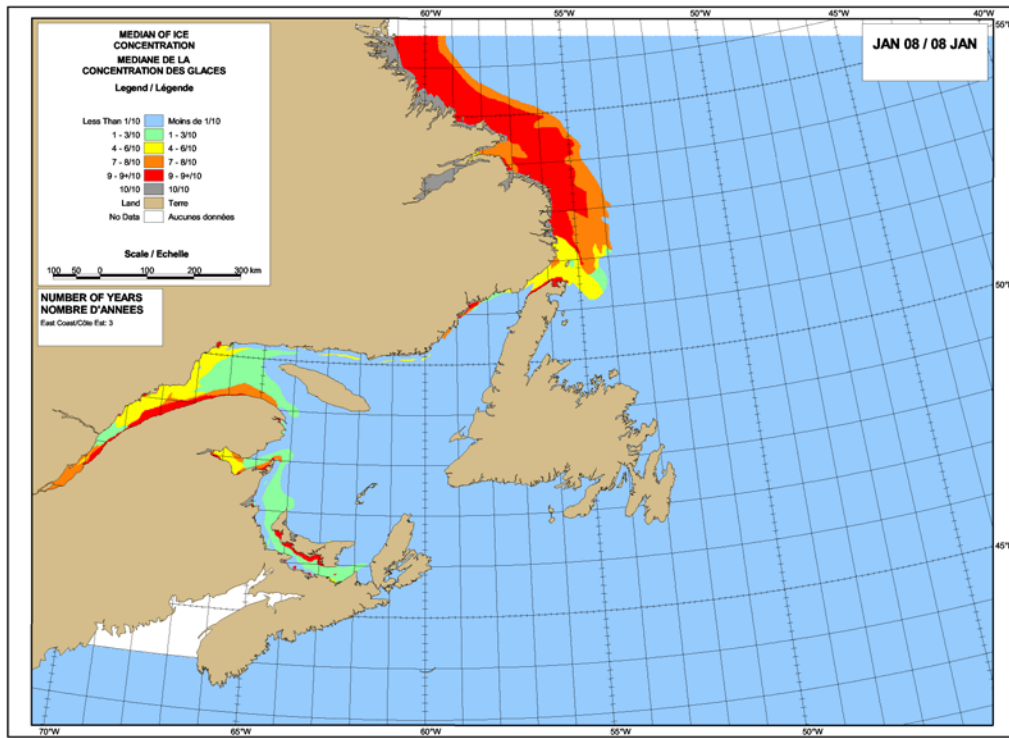


**Seasonal Outlook
Gulf of St Lawrence, East Newfoundland Waters and
Labrador Coast
Winter 2014-2015**



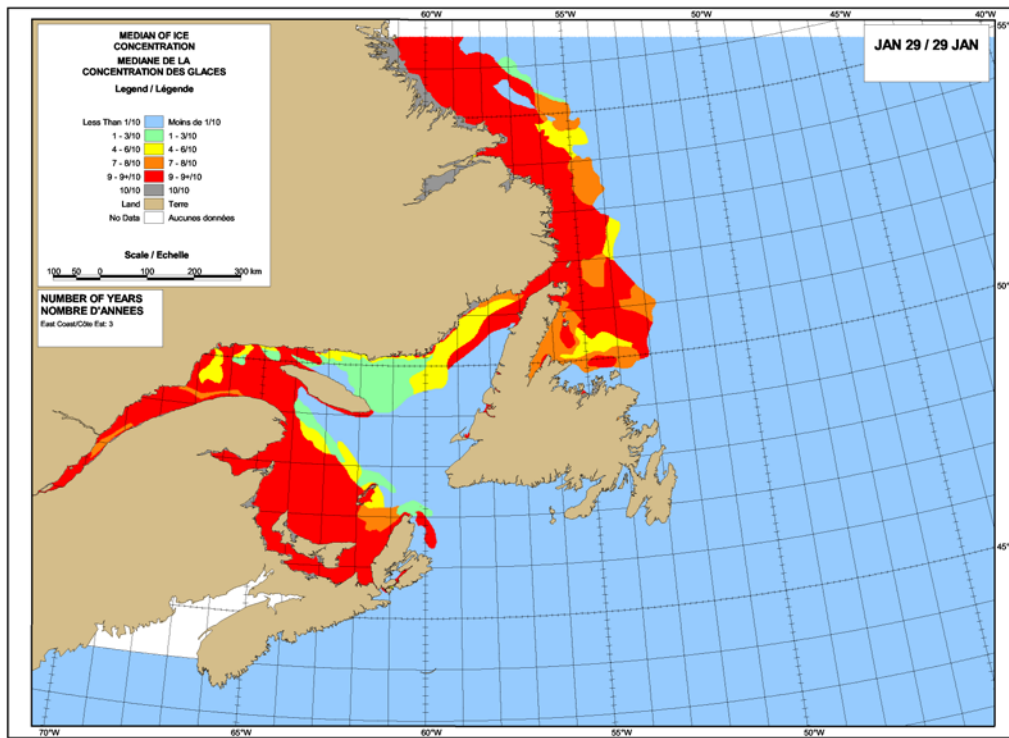
**Issued by Canadian Ice Service of
Environment Canada
3 December 2014**



Statistics based upon the years: 1979/80, 1993/94, 2003/04.
Statistiques basées sur les années: 1979/80, 1993/94, 2003/04.

Canada

Figure 1: Expected ice conditions – 8 January 2015



Statistics based upon the years: 1979/80, 1993/94, 2003/04.
Statistiques basées sur les années: 1979/80, 1993/94, 2003/04.

Canada

Figure 2: Expected ice conditions – 29 January 2015

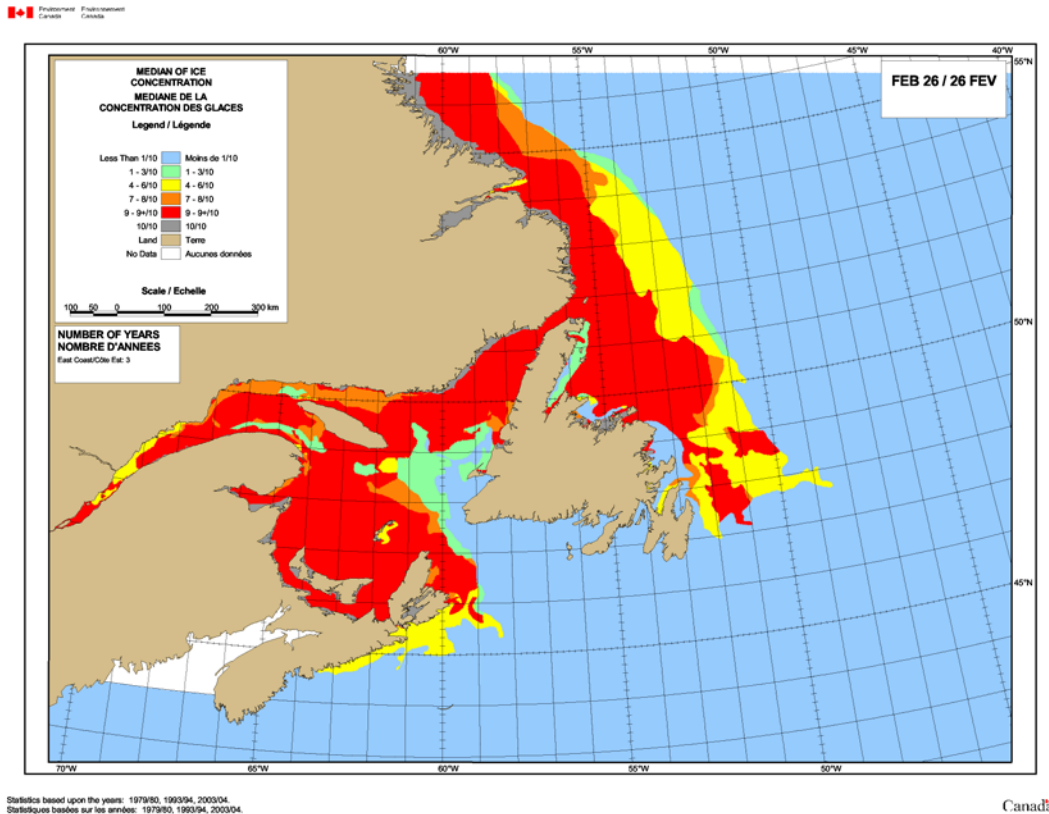


Figure 3: Expected ice conditions – 26 February 2015

Gulf of St-Lawrence

Winter temperature and ice forecasts

Average air temperatures are expected to be normal to above normal for December, January and February. Near normal to slightly below normal ice conditions are forecast.

The Estuary.

Outlook for December... A few strips and patches of new ice mostly after mid-month. New and grey ice near Sept-Îles by the third week of the month. Open drift to close pack new and grey ice along the south shore west of the Saguenay River by the end of the month. Narrow bands of new ice along the north shore.

Outlook for January... Open drift to close pack new and grey ice over most of the estuary in the second week with some very close pack grey-white ice along the south shore. Isolated areas of open water west of Anticosti Island. By the end of the month, close to very close pack new and grey ice between Sept-Îles and Anticosti Island. Elsewhere, very close pack new and grey ice. Ice thickening to grey-white ice along the south shore. Consolidated ice in sheltered bays will thicken to the first-year ice stage.

Outlook for February... Close to very close pack grey and grey-white ice. Isolated patches of first-year ice mainly along the south shore.

Chaleur Bay southward to Northumberland Strait.

Outlook for December...Ice free to open water except new ice in shallow coastal waters and sheltered bays after mid-month. By the end of the month, new ice with some grey ice along the shores.

Outlook for January...By mid-month, consolidated grey-white ice in sheltered bays.

Elsewhere, open drift to close pack new and grey ice with some grey-white ice in the pack ice extending up to 120 nautical miles offshore. Consolidated ice thickening to first-year ice by the end of the month. Ice beginning to thicken to grey-white in Chaleur Bay and first-year in Northumberland Strait near the end of the month.

Outlook for February...Predominantly first-year ice in Northumberland Strait and isolated bays by the third week, close to very close pack grey and grey-white ice with some first-year ice elsewhere.

West coast of Newfoundland.

Outlook for December...Ice free to open water except for some new ice forming in sheltered bays.

Outlook for January...Some new and grey ice continuing to form in sheltered bays after mid-month. By the end of the month, close to very close pack new and grey ice north of Port au Choix. Areas of grey-white with some first-year ice developing in isolated bays and inlets along the coast.

Outlook for February...In the third week, close to very close pack grey-white ice with some first-year ice north of Bonne Bay. Elsewhere, open water except for consolidated grey-white and first-year ice in sheltered bays and in isolated sections along the coast.

North Shore of Quebec.

Outlook for December...Isolated areas of new and grey ice in sheltered bays around mid-month, consolidating near the end of the month.

Outlook for January...Isolated bands of new ice along the shore in the first week.

Consolidated ice thickening to grey-white ice. In the second week, open drift new and grey ice will develop along the shore. By the end month, the ice edge will extend up to 40 nautical miles offshore and ice will thicken to grey ice with some grey-white ice.

Consolidated ice thickening to first-year ice.

Outlook for February...By mid-month close to very close pack grey and grey-white with some first-year ice within 60 nautical miles of the shore.

Elsewhere.

Outlook for December...Ice free to open water except for isolated areas of new and grey ice in shallow coastal waters near the Îles de la Madeleine and in sheltered bays along the north shore of Prince Edward Island in the last week.

Outlook for January...New and grey ice north of Prince Edward Island, near Îles de la Madeleine, around Anticosti Island and west of Cape Breton Island near the end of the month. The pack ice edge will be approaching Îles de la Madeleine at the end of the month and some grey-white ice will be present in the pack.

Outlook for February...In the first week, the pack ice approaching Îles de la Madeleine thickening to grey and grey-white ice. Open drift new and grey ice northeast of Cape Breton Island after mid-month. Ice thickening to grey-white with some first-year ice in the pack.

East Newfoundland Waters and Labrador Coast.

Winter temperature and ice forecasts.

Average air temperatures are expected to be near to above normal for December, January and February. Near to slightly below normal ice conditions are forecast in East Newfoundland Waters and along the South Labrador Coast.

Labrador Coast and Strait of Belle Isle.

Outlook for December... Areas of new and grey ice along the coast and in sheltered bays. In the third week, a narrow band of new ice with some grey ice will form up to 30 nautical miles offshore near Cartwright to Groswater Bay. By the end of the month, areas of close to very close pack grey-white ice up to 60 nautical miles offshore north of Groswater Bay.

Outlook for January... By the end of the first week, strips and patches of grey and grey-white ice will drift into the eastern entrance of the Strait of Belle Isle. By mid-month, close pack grey and grey-white ice except for areas of predominantly first-year ice north of Groswater Bay, within 60 nautical miles of the shore. At the end of the month, close to very close pack grey-white and first-year ice along the coast and over most of the Strait of Belle Isle. The ice edge should extend up to 120 nautical miles off the Labrador Coast.

Outlook for February... Very close pack first-year ice. Ice edge up to 150 nautical miles off the coast.

Lake Melville.

Outlook for December... Becoming close to very close pack new and grey ice in the first week. Consolidated grey ice along portions of the western and southern shores by mid-month. Very close pack grey-white ice in the last week with consolidated grey-white ice along the shores.

Outlook for January... Becoming consolidated with first-year ice in the first week.

Outlook for February... Consolidated with first-year ice.

Newfoundland.

Outlook for December... Ice free to open water except patches of new ice forming near St. Anthony.

Outlook for January... By mid-January, strips and patches of grey and grey-white ice near St. Anthony. Consolidated areas of grey ice south of Fogo Island and in Bay of Exploits. By the end of the month, close pack to very close pack grey-white ice with some first-year ice extending south of the Grey Islands. Elsewhere, new ice forming near the shores and in sheltered bays and inlets. The ice edge is expected to be approximately 60 nautical miles east of the Northern Peninsula.

Outlook for February... In the first week, consolidated ice in Notre Dame Bay and south of Fogo Island will thicken to the first-year ice stage. Close pack to very close pack grey-white and first-year ice approaching Notre Dame Bay by the end of the month. Consolidated grey and grey-white ice in the shallower waters of Bonavista Bay. Very open drift to open drift grey-white ice with some first-year ice offshore up to 120 nautical miles east of Cape Freels by mid-month.