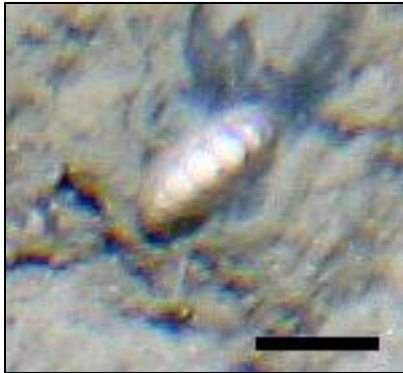


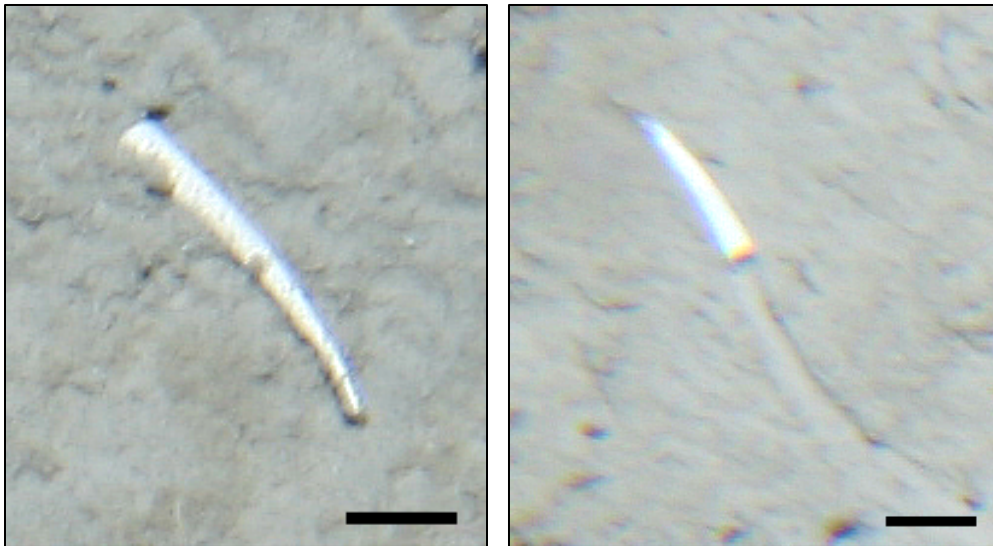
Polyplacophora



Description:

Small (~1 cm) chitons on rock or boulder. Valves white in colour; mantle appears brown in some specimens and white in others.

Scaphopoda



Description:

Long, tapering shells that are white to brownish and smooth. Several species are assumed to be present. Sediment trail or track sometimes visible at aperture end.

PHYLUM NEMERTEA

Phylum	Class	Order	Family	Taxa	ITIS TSN	Total abundance
Nemertea	N/A	N/A	N/A	Nemertea sp. 1	57411	7
				Nemertea sp. 2		1
				Nemertea sp. 3		2
				Nemertea sp. 4		10
				Nemertea sp. 5		2
				Nemertea		5

Nemertea sp. 1*Description:*

Long, slender ribbon worm. Colour red on one side; light pink on the other (orientation of body unclear).

Nemertea sp. 2*Description:*

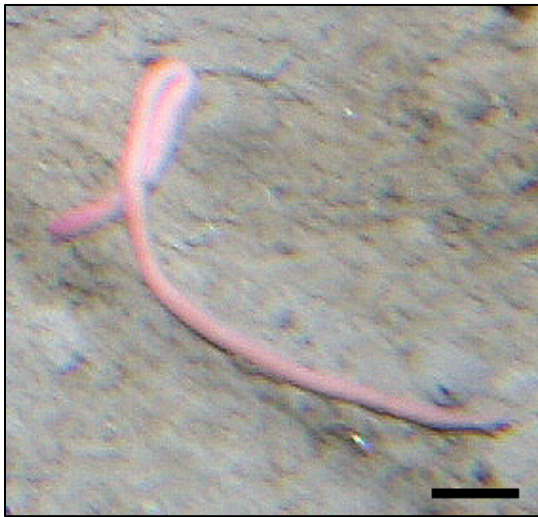
Pale-orange ribbon worm. Body thick. Length unknown.

Nemertea sp. 3*Description:*

Pink ribbon worm. Appears shorter and wider than other species. Ventral side may be lighter in colour than the dorsal side.

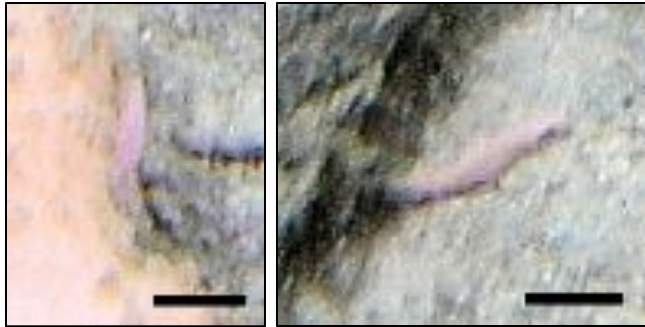
Nemertea sp. 4*Description:*

Long, slender ribbon worm. Dorsal side same colour as ventral.

Nemertea sp. 5*Description:*

Long, relatively thick ribbon worm. Body pink, but darker at one end. Dark-coloured end rounder and more blunt than tapered. Could be an acorn worm (Phylum Hemichordata).

Nemertea



Description:

Taxon includes possibly several species of nemertean. Most are only partially visible, making identification into one of the above groups difficult. All have short bodies and are pink in colour on the dorsal and ventral sides.

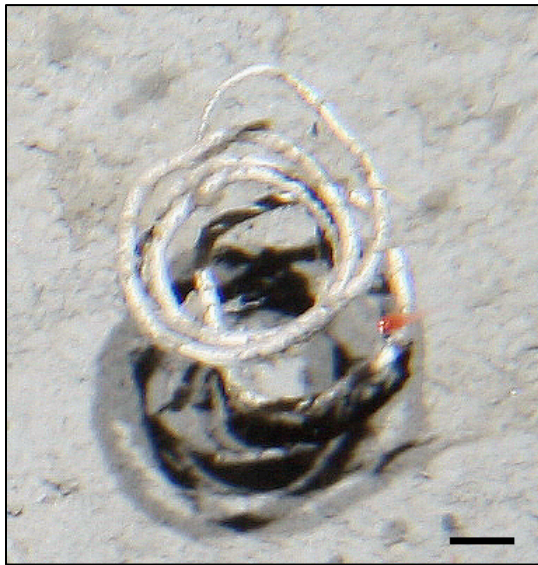
PHYLUM PLATYHELMINTHES

Phylum	Class	Order	Family	Taxa	ITIS TSN	Total abundance
Platyhelminthes	N/A	N/A	N/A	Platyhelminthes sp. 1	53963	1
	Rhadbitophora	Fecampiida	Fecampiidae	<i>Kronborgia</i> sp. 1	142279*	4

*Genus not recognized in ITIS. Number is WoRMS AphiaID.

Platyhelminthes sp. 1*Description:*

Pink, unsegmented flatworm. Surface smooth, except for a raised ridge that runs the length of the body.

***Kronborgia* sp. 1***Description:*

White, erect coil on soft substrate. Egg case of a member of the Family Fecampiidae.

PHYLUM PORIFERA

Phylum	Class	Order	Family	Taxa	ITIS TSN	Total abundance
Porifera	N/A	N/A	N/A	Porifera sp. 4	46861	482
				Porifera sp. 16		53
				Porifera sp. 20		4
				Porifera sp. 25		19
				Porifera sp. 26		248
				Porifera sp. 28		302
				Porifera sp. 30		9
				Porifera sp. 31		11
				Porifera sp. 33		3
				Porifera sp. 39		372
				Porifera sp. 40		8
				Porifera sp. 43		187
				Porifera sp. 47		12
				Porifera sp. 57		87
				Porifera sp. 69		1
				Porifera sp. 70		13
				Porifera sp. 72		178
				Porifera sp. 77		1
				Porifera sp. 78		248
				Porifera sp. 83		17
				Porifera sp. 88		9
				Porifera sp. 95		9

Porifera sp. 96	200
Porifera sp. 97	14
Porifera sp. 99	179
Porifera sp. 100	3
Porifera sp. 102	98
Porifera sp. 106	178
Porifera sp. 107	6
Porifera sp. 108	1
Porifera sp. 109	127
Porifera sp. 110	17
Porifera sp. 111	13
Porifera sp. 116	90
Porifera sp. 119	3
Porifera sp. 122	3
Porifera sp. 124	25
Porifera sp. 125	14
Porifera sp. 129	6
Porifera sp. 130	1
Porifera sp. 134	6
Porifera sp. 135	1
Porifera sp. 136	4
Porifera sp. 140	6
Porifera sp. 142	6
Porifera sp. 143	3
Porifera sp. 149	1
Porifera sp. 150	7

Porifera sp. 154	1
Porifera sp. 165	1
Porifera sp. 166	5
Porifera sp. 167	17
Porifera sp. 171	36
Porifera sp. 178	12
Porifera sp. 180	1
Porifera sp. 181	1
Porifera sp. 182	1
Porifera sp. 183	1
Porifera sp. 197	21
Porifera sp. 201	2
Porifera sp. 202	2
Porifera sp. 209	13
Porifera sp. 211	28
Porifera sp. 214	10
Porifera sp. 220	2
Porifera sp. 221	2
Porifera sp. 223	19
Porifera sp. 225	6
Porifera sp. 226	2
Porifera sp. 228	4
Porifera sp. 231	13
Porifera sp. 232	10
Porifera sp. 234	4
Porifera sp. 235	6

Porifera sp. 236	2
Porifera sp. 239	13
Porifera sp. 241	2
Porifera sp. 242	9
Porifera sp. 243	11
Porifera sp. 255	1
Porifera sp. 257	911
Porifera sp. 258	14
Porifera sp. 259	30
Porifera sp. 260	14
Porifera sp. 261	1
Porifera sp. 262	5
Porifera sp. 263	15
Porifera sp. 264	14
Porifera sp. 265	2
Porifera sp. 266	129
Porifera sp. 269	31
Porifera sp. 270	1
Porifera sp. 271	18
Porifera sp. 283	2
Porifera sp. 284	1
Porifera sp. 287	2
Porifera sp. 288	3
Porifera sp. 290	2
Porifera sp. 291	6
Porifera sp. 292	16

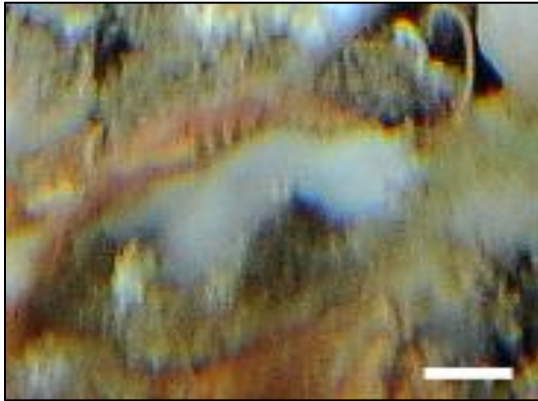
			Porifera sp. 293		10
			Porifera sp. 298		21
			Porifera sp. 299		2
			Porifera sp. 302		5
			Porifera sp. 304		2
			Porifera sp. 305		32
			Porifera sp. 307		30
			Porifera sp. 308		2
			Porifera sp. 312		9
Demospongiae	N/A	N/A	Demospongiae sp. 1	47528	24
			Demospongiae sp. 2		25
			Demospongiae sp. 3		17
			Demospongiae sp. 4		4
			Demospongiae sp. 5		45
			Demospongiae sp. 6		27
			Demospongiae sp. 7		261
			Demospongiae sp. 8		13
			Demospongiae sp. 9		1179
			Demospongiae sp. 10		3
			Demospongiae sp. 11		7
			Demospongiae sp. 12		4
			Demospongiae sp. 13		47
			Demospongiae sp. 14		89
			Demospongiae sp. 15		44
			Demospongiae sp. 16		242
			Demospongiae sp. 17		12

Demospongiae sp. 18	20
Demospongiae sp. 19	16
Demospongiae sp. 20	8
Demospongiae sp. 21	31
Demospongiae sp. 22	8
Demospongiae sp. 23	1
Demospongiae sp. 25	13
Demospongiae sp. 26	11
Demospongiae sp. 27	4
Demospongiae sp. 28	20
Demospongiae sp. 29	6
Demospongiae sp. 30	1
Demospongiae sp. 31	4
Demospongiae sp. 32	2
Demospongiae sp. 33	6
Demospongiae sp. 34	2
Demospongiae sp. 35	2
Demospongiae sp. 36	262
Demospongiae sp. 37	1
Demospongiae sp. 38	428
Demospongiae sp. 39	7
Demospongiae sp. 40	19
Demospongiae sp. 41	2
Demospongiae sp. 42	3
Demospongiae sp. 43	2
Demospongiae sp. 44	1

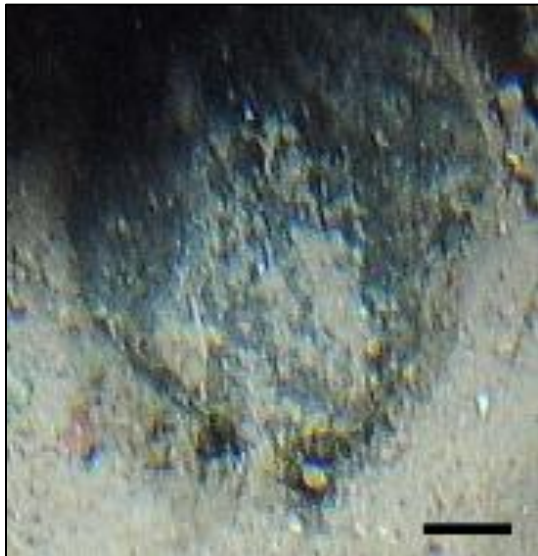
		Demospongiae sp. 45		1
		Demospongiae sp. 46		2
		Demospongiae sp. 47		2
		Demospongiae sp. 48		1
		Demospongiae sp. 49		4
		Demospongiae sp. 50		4
Astrophorida	Geodiidae	<i>Geodia barretti</i>	48612*	11
		<i>Geodia</i> sp. 1		4
		<i>Geodia</i> spp.		10
Hadromerida	Polymastiidae	Polymastiidae sp. 1	48505	3
		Polymastiidae sp. 2		6
		Polymastiidae sp. 4		42
		Polymastiidae sp. 5		1
		Polymastiidae sp. 6		6
		Polymastiidae sp. 7		4
		Polymastiidae sp. 10		4
		Polymastiidae		26
	Stylocordylidae/ Suberitidae	<i>Stylocordyla borealis</i> / <i>Rhizaxinella</i> sp.	204074/ 659300	355
Halichondrida	Axinellidae	Axinellidae	48329	58
Poecilosclerida	Cladorhizidae	<i>Asbestopluma</i> sp. 1	48263	21
		<i>Chondrocladia</i> sp. 1	48278	3
	Hymedesmiidae	Hymedesmiidae sp. 1	48301	1

			Hymedesmiidae sp. 2	7	
			Hymedesmiidae sp. 3	7	
			Hymedesmiidae sp. 4	1	
			Hymedesmiidae	55	
	Spirophorida	Tetillidae	<i>Craniella</i> spp.	48627	3
Hexactinellida	N/A	N/A	Hexactinellida sp. 1	659131	4
	Lyssacinosida	Rossellinae	<i>Asconema</i> sp. 1	659654	47

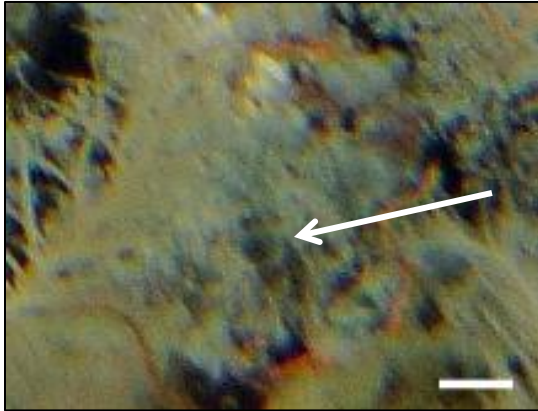
*Species not listed in ITIS. Number is for genus.

Porifera sp. 4*Description:*

Cushion sponges encrusting on rock.
Colour is white to grey.

Porifera sp. 16*Description:*

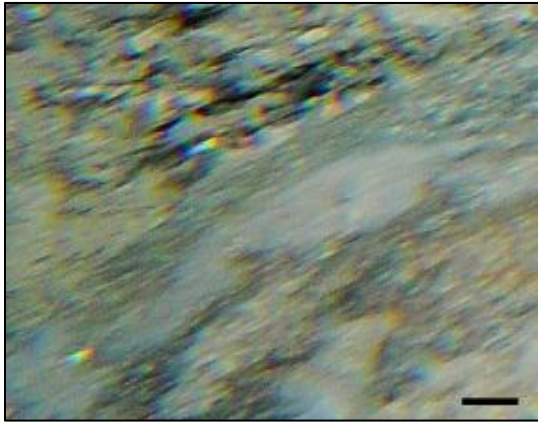
Translucent, very thin sheet
encrusting on rock. Can be partially
covered in sediment.

Porifera sp. 20*Description:*

Cushion morphology; greenish in colour. Encrusting on rock and/or other fauna. Appears to have oscules with raised edges as in Family Hymedesmiidae.

Porifera sp. 25*Description:*

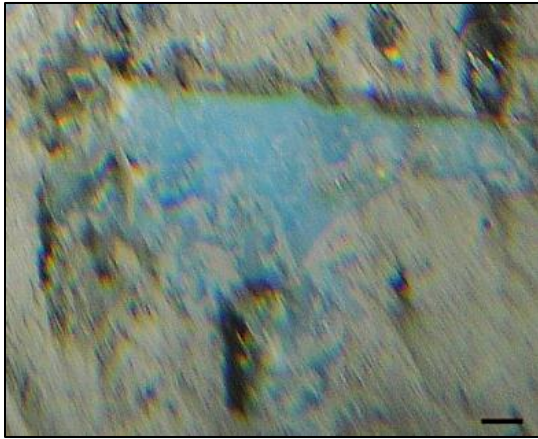
Thin sheet or cushion morphology; gelatinous-like. Brownish to white in colour. May not be a sponge; could possibly be an ascidian.

Porifera sp. 26*Description:*

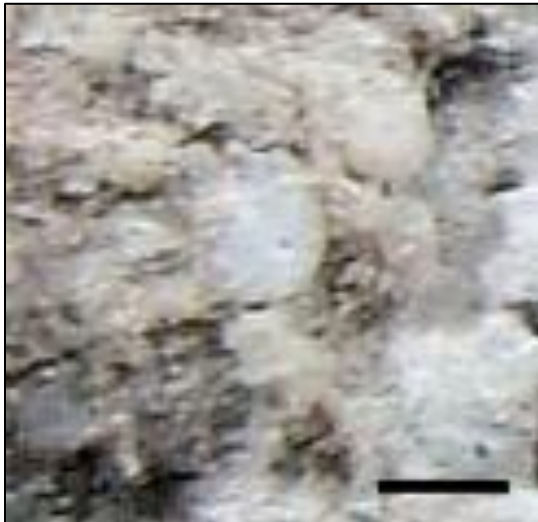
Thin sheet encrusting on rock. Surface smooth, sometimes covered in detritus. Not translucent; grey in colour.

Porifera sp. 28*Description:*

Irregularly shaped massive-globular sponge; yellowish in colour. Found on soft sediment. Can be partially covered in sediment. Possible visible oscules and ostia.

Porifera sp. 30*Description:*

Thin blue sheet encrusting on rock.
Form can appear cushion-like.

Porifera sp. 31*Description:*

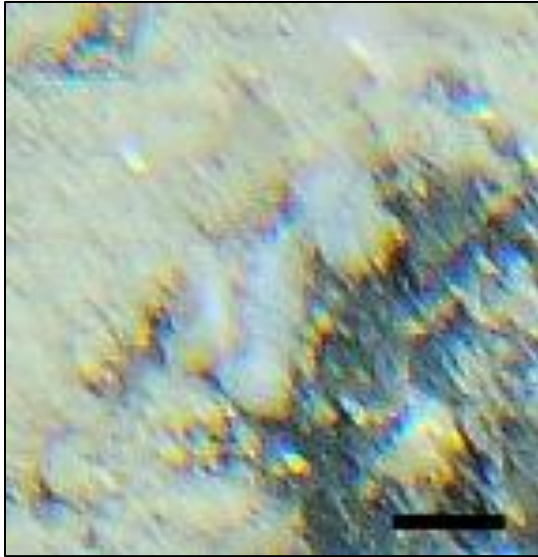
Hemispherical to cushion form.
Small. Single tiny opening visible.

Porifera sp. 33*Description:*

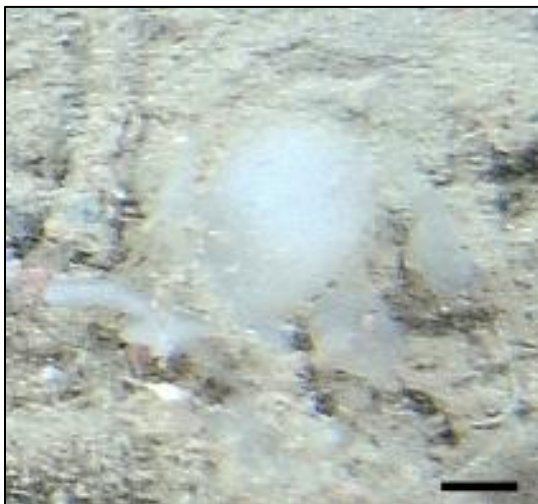
Thin sheet encrusting on rock.
Greenish in colour.

Porifera sp. 39*Description:*

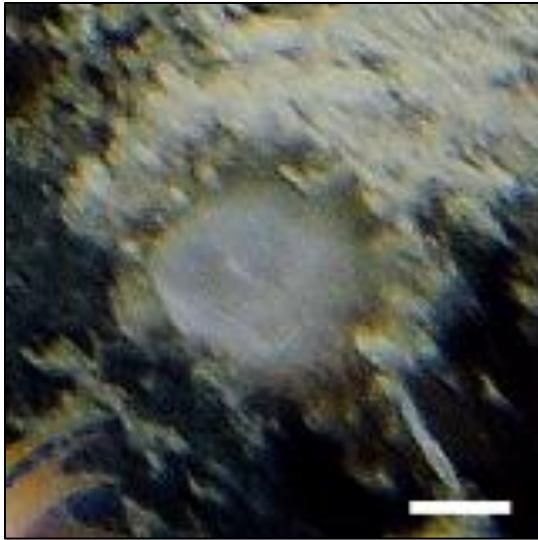
Cushion to globular morphology. On soft sediment. White to translucent in colour; edges appear darker than rest of tissue. Some openings are visible on surface.

Porifera sp. 40*Description:*

Cushion sponge growing on rocks. Edges of sponge irregular; finger-like growth pattern.

Porifera sp. 43*Description:*

Morphology irregular; globular with finger-like projections sometimes present. White to translucent in colour. On soft substrate.

Porifera sp. 47*Description:*

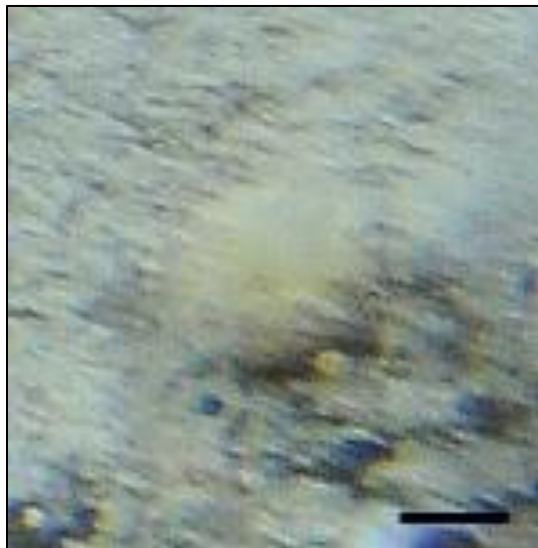
Cylindrical morphology with wide base and single large osculum at apical end. White to translucent in colour. Could be an ascidian.

Porifera sp. 57*Description:*

Thin sheet encrusting on rock. Thicker than Porifera sp. 16. Surface appears verrucose (warty). White to grey in colour. Similar to, or the same as Porifera sp. 231.

Porifera sp. 69*Description:*

Semi-translucent, cushion sponge encrusting on rock. Several osculae are visible over surface, and appear to have white, raised edges.

Porifera sp. 70*Description:*

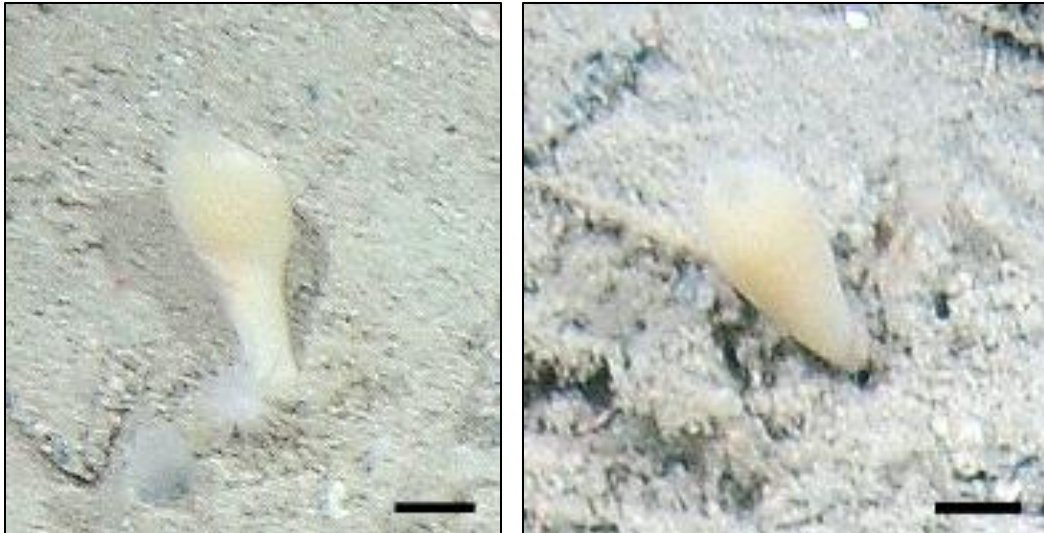
Globular, yellow sponge on soft sediment. Single osculum sometimes visible. Sides of sponge partially covered in sediment.

Porifera sp. 72*Description:*

Irregularly-shaped, globular sponge. Colour is grey, semi-translucent. Single large opening may be visible. Possibly not a sponge; could be an ascidian.

Porifera sp. 77*Description:*

Cushion sponge encrusting on rock. Thick consistency. Surface appears 'bumpy' as in Porifera sp. 57.

Porifera sp. 78*Description:*

Tubular, pedunculate sponge with single apical osculum visible. Pale yellow in colour.

Porifera sp. 83*Description:*

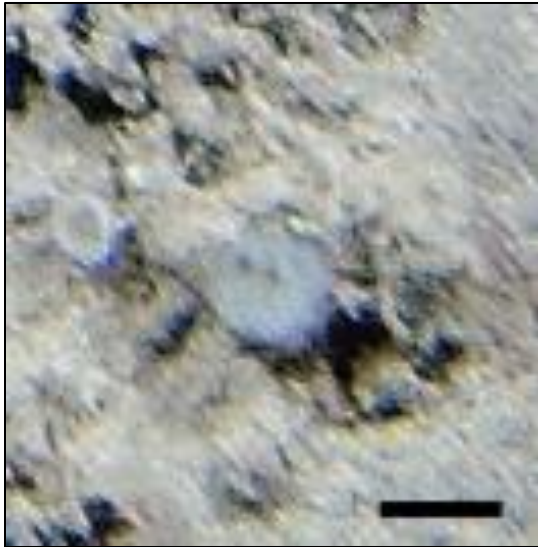
Tubular sponge that is the same width along its entire body. Single osculum visible at apical end. Could be a single papilla of a polymatiid sponge.

Porifera sp. 88*Description:*

Tubular in shape with non-tapering column. Appears to be lying flat on sediment. Pale yellow.

Porifera sp. 95*Description:*

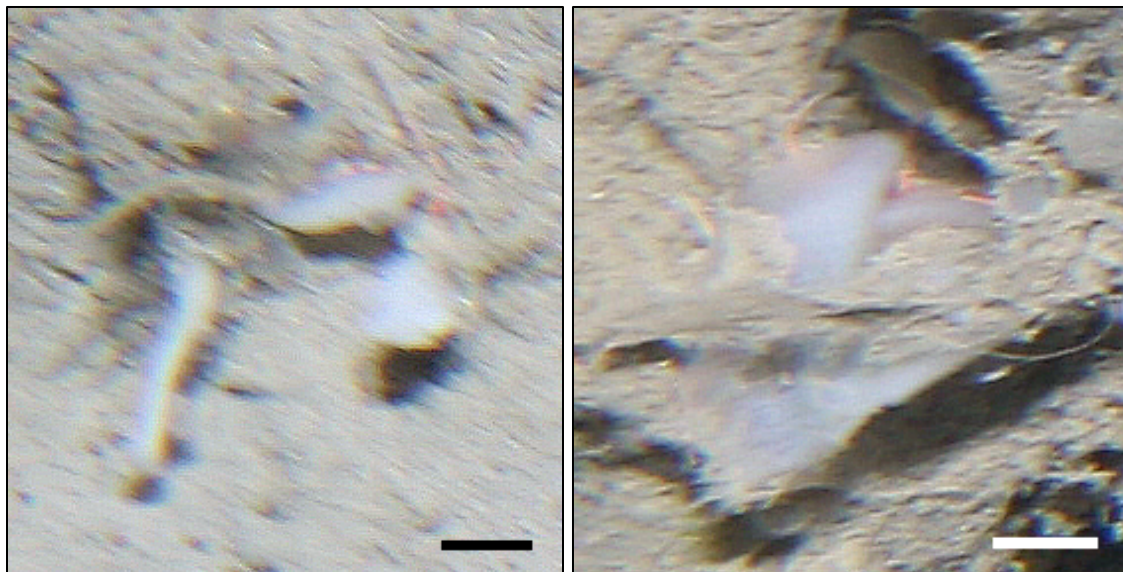
Large tubular sponge that appears 'deflated'. Large osculum at apical end.

Porifera sp. 96*Description:*

Small, cushion to globular sponge. Usually small and hemispherical but can sometimes have lobes. Single osculum usually visible. Substrate either rock or soft sediment.

Porifera sp. 97*Description:*

Large, erect sponge with branch-like morphology. Ends of 'branches' are bulbous. Large ostia visible throughout surface. Substrate either rock or soft sediment.

Porifera sp. 99*Description:*

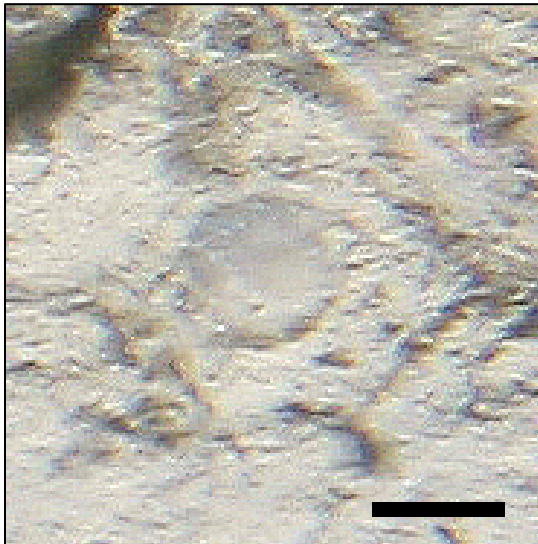
Morphology possibly lamellate; usually occurs as horizontal sheets but can have finger-like projections. White.

Porifera sp. 100*Description:*

Ovate sponge lying horizontally across soft sediment. White.

Porifera sp. 102*Description:*

Finger-like projections or 'tubes' spreading across soft sediment. White.

Porifera sp. 106*Description:*

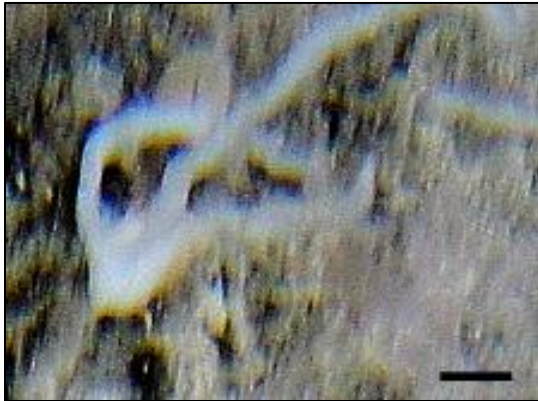
Cushion morphology; almost disc-like. Semi-translucent, grey. On soft substrate.

Porifera sp. 107*Description:*

Irregularly-shaped, erect sponge that appears to have a massive-fig morphology. Several oscula or ostia visible.

Porifera sp. 108*Description:*

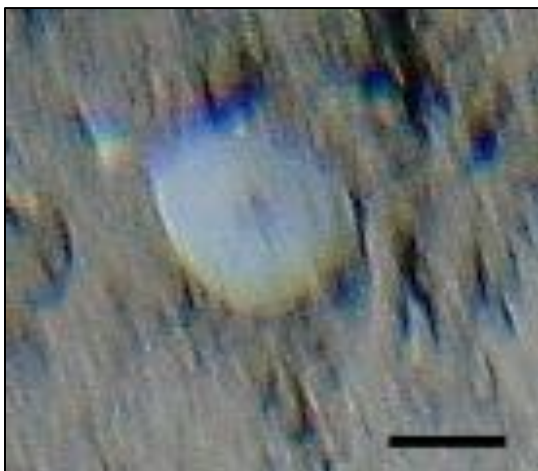
Cup-like sponge with thin stalk. Upper surface flattened and appears to have several osculae. Pale yellow.

Porifera sp. 109*Description:*

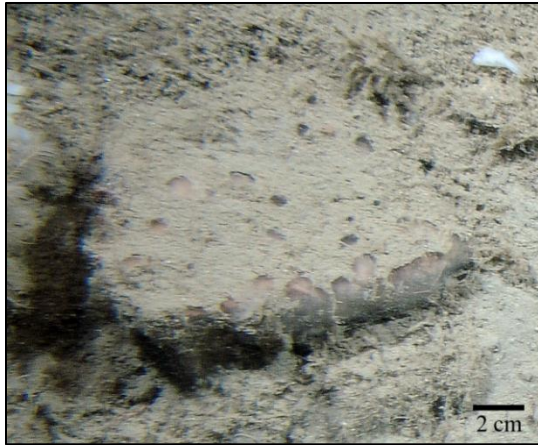
Branching or finger-like morphology. Branches are thin and spread out from basal stalk. On soft sediment. White.

Porifera sp. 110*Description:*

Ball-shaped/globular sponge attached to rock. Single osculum visible at apical end. Surface appears 'fuzzy'. Could be an ascidian.

Porifera sp. 111*Description:*

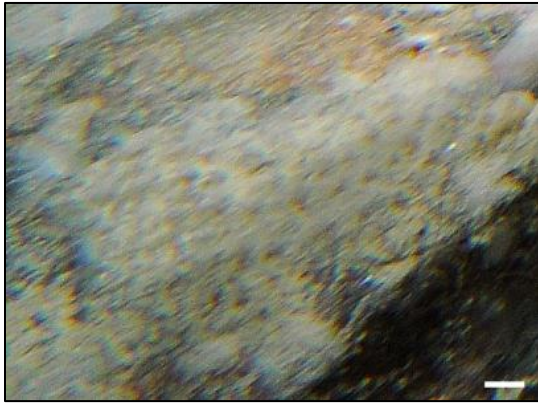
Globular but morphology could be massive-fig with a smaller attachment basal area. Single osculum visible on side of sponge. On soft substrate.

Porifera sp. 116*Description:*

Thin sheet encrusting on rock. Mostly covered in sediment but circular patches devoid of sediment are visible across surface. Tissue appears pinkish in colour.

Porifera sp. 119*Description:*

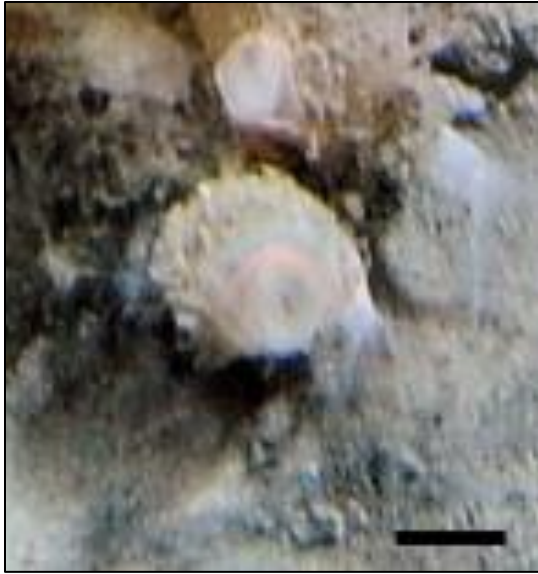
Tubular form; white in colour. Flat apical end, with a single tiny osculum visible at the apical end. Basal attachment area thin. Possibly attached to rock.

Porifera sp. 122*Description:*

Brownish, thin sheet encrusting on rock. Surface appears dappled, but is covered in sediment.

Porifera sp. 124*Description:*

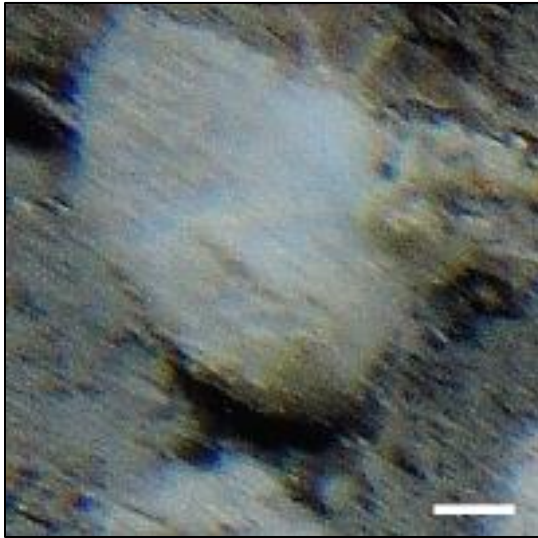
White, massive sponge. Several oscula and/or ostia visible. Could be same as Porifera sp. 39.

Porifera sp. 125*Description:*

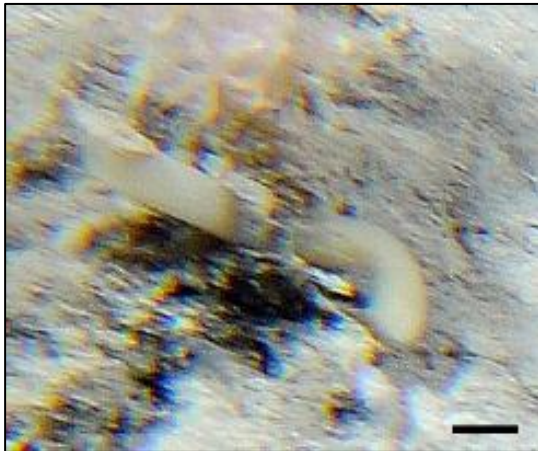
Globular to almost tubular in shape. Single small osculum visible at apical end. Basal attachment point covered in sediment. Ophiuroid wrapped around body.

Porifera sp. 129*Description:*

Large columns or tubes; yellow in colour. Large osculum visible at apical ends. Surface smooth with the exception of thick lobes. Single tubes possibly originate from the same base; cluster counted as one individual.

Porifera sp. 130*Description:*

Slightly flat sponge with narrow slit on surface that may be a closed osculum. White in colour.

Porifera sp. 134*Description:*

Long slender tubes that are slightly curved in shape. Yellow in colour. Clusters that possibly originates from the same base.

Porifera sp. 135*Description:*

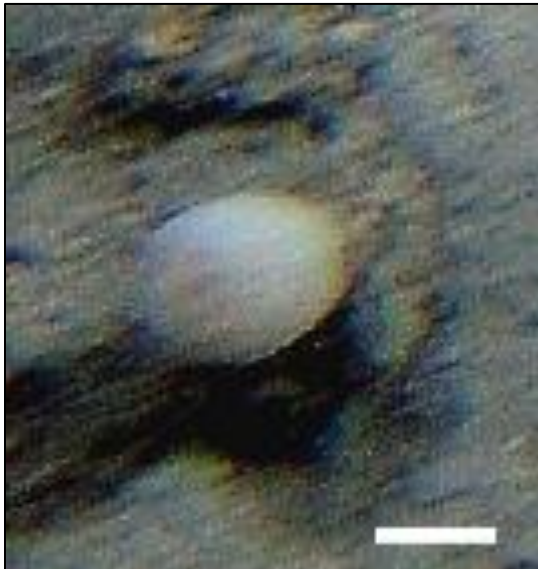
Large, globular sponge with two large, tubular projections. Tubes have single osculum at apical end and thin tissue strands visible within. White in colour. Colonized by ophiuroids and possibly sabellid worms. Substrate unknown.

Porifera sp. 136*Description:*

Cup-shaped morphology with narrow attachment point. Ophiuroids attached to surface. White in colour. Substrate unknown.

Porifera sp. 140*Description:*

Round-globular sponge. White in colour with ostia visible throughout surface. Ophiuroids sometimes attached to surface. Possibly Demospongiae sp. 7.

Porifera sp. 142*Description:*

Globular to almost tubular morphology. Single osculum visible at apical end. White in colour.

Porifera sp. 143*Description:*

Tubular, with large opening at apical end as wide as body column. Yellow to brown in colour. Ophiuroids attached to surface.

Porifera sp. 149*Description:*

Morphology appears irregular with globular base and finger-like projections extending from surface. White in colour.

Porifera sp. 150*Description:*

Thin sheet or cushion sponge encrusting on rock. White in colour; edges appear translucent. Surface smooth, with several small osculae visible.

Porifera sp. 154*Description:*

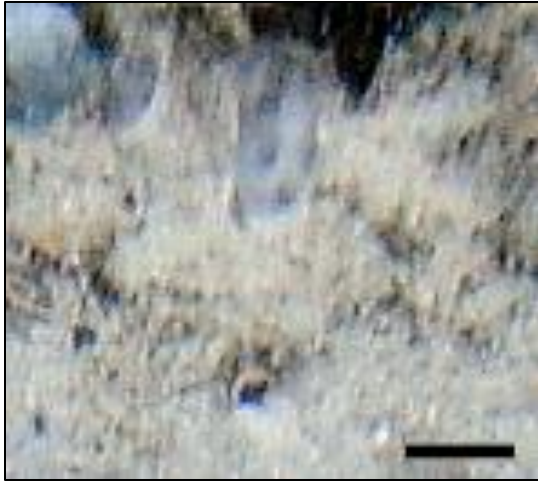
Erect, pen/feather-shaped. Appears to have small branches along main stem. Anchored in soft sediment. Could be *Asbestopluma*.

Porifera sp. 165*Description:*

Large, erect sponge with anastomosing thin branches. White in colour. Often colonized by ophiuroids. Could be the same as Porifera sp. 109.

Porifera sp. 166*Description:*

Small, tubular-shaped sponge. Osculum sometimes apparent at apical end. Attachment basal area less than greatest body width. Whitish in colour.

Porifera sp. 167*Description:*

Globular sponge that is partially covered in sediment. Semi-translucent tissue with oscula visible. Could be a hexactinellid glass sponge.

Porifera sp. 171*Description:*

Large, finger-like projections extending from a globular base. Oscula visible throughout surface of base. White in colour. Can be found attached to rock. Could be the same as Porifera sp. 109.

Porifera sp. 178*Description:*

Massive-lobose, or labellate sponge. Growth primarily lateral, with thick, finger-like projections extending from surface. Surface very porous. Could be an axinellid sponge.

Porifera sp. 180*Description:*

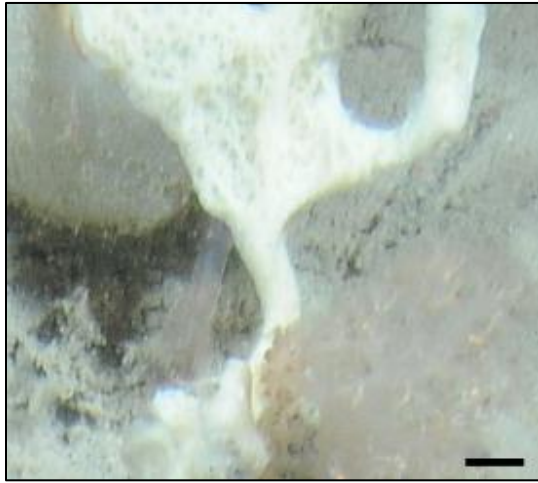
Irregular growth form with finger-like projections. Spreading mainly horizontally across sediment. White to yellow in colour.

Porifera sp. 181*Description:*

Small, lamellate sponge. Appears to be attached to a brachiopod. Ophiuroid attached to surface.

Porifera sp. 182*Description:*

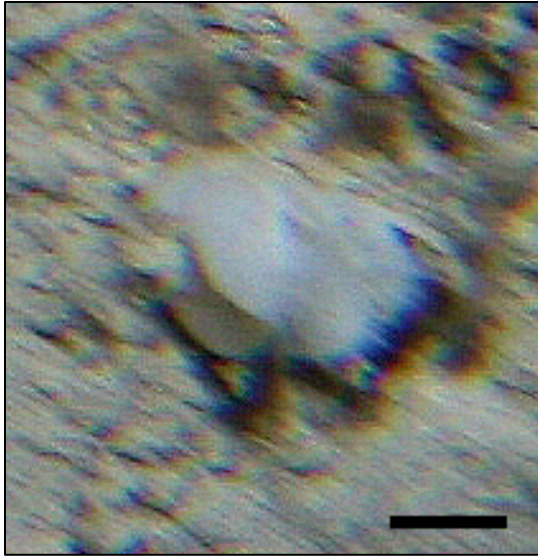
Cluster of tubes attached to thin stalk (pedunculate). Large oscules at apical ends of tubes. Ostia visible across surface. Subsequently identified as a demosponge.

Porifera sp. 183*Description:*

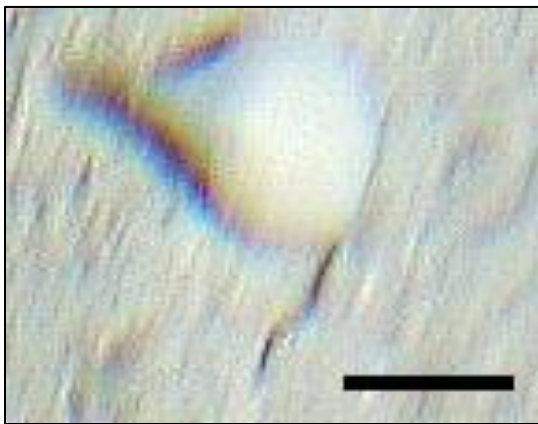
White, pedunculate sponge with only the basal attachment area visible. Colour is white; surface appears porous and vein-like. Possibly a lamellate sponge.

Porifera sp. 197*Description:*

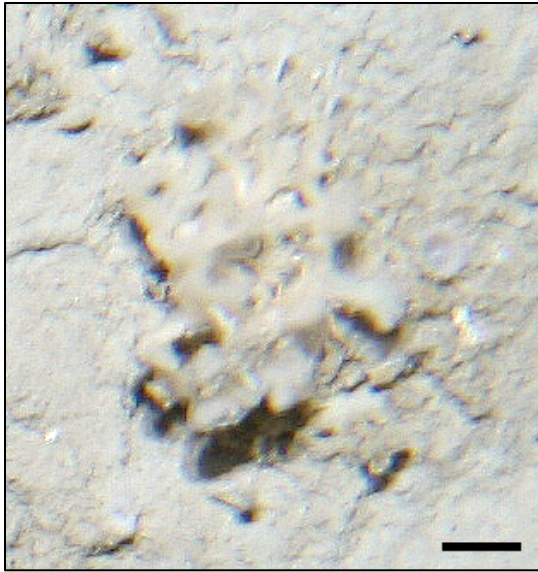
Globular sponge with a single large osculum visible. Semi-transparent, and usually partially covered in sediment. Could be an ascidian.

Porifera sp. 201*Description:*

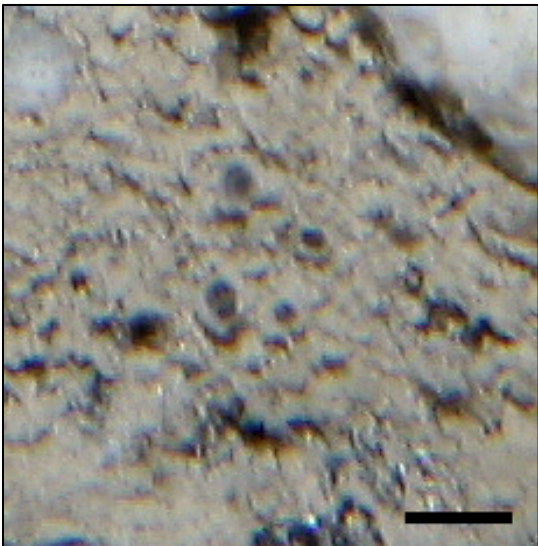
Globular morphology, with folding sheets. Grey in colour. On soft sediment.

Porifera sp. 202*Description:*

Globular to ovate sponge. White to yellow in colour. Triangular extension of surface that resembles a papilla. Large opening apparent in extension.

Porifera sp. 209*Description:*

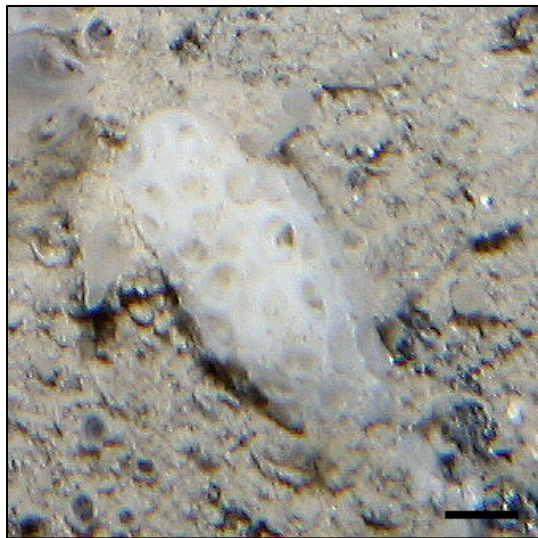
Branching-erect morphology. Growth more horizontal than vertical. Always found on soft sediment. Could be a juvenile *Lissodendoryx complicata*.

Porifera sp. 211*Description:*

Thin, sediment-covered sheet on soft substrate. Identified as a sponge from the presence of large osculae with raised edges over the surface.

Porifera sp. 214*Description:*

Massive-globose sponge that is partially covered in sediment. Several ostia or osculae visible throughout surface.

Porifera sp. 220*Description:*

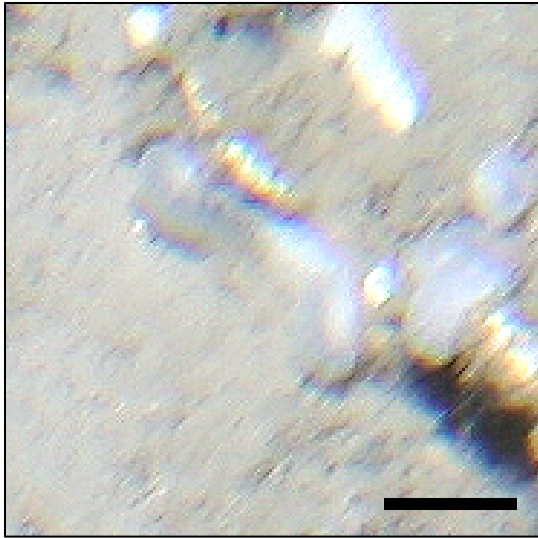
Massive-globose sponge with large circular osculae or pore sieves with raised edges covering surface. Could be a hymedesmiid sponge.

Porifera sp. 221*Description:*

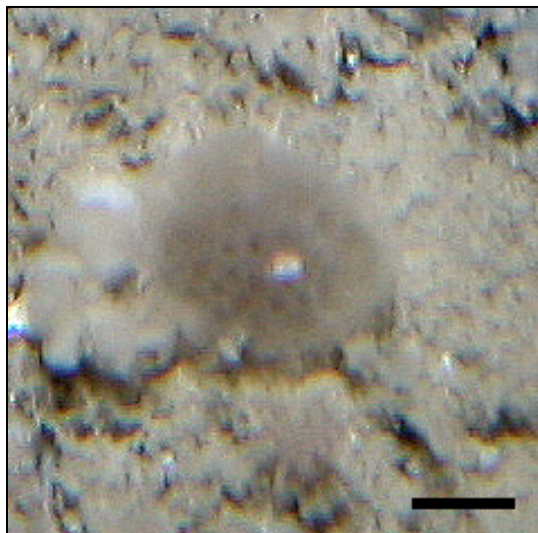
Cushion to globular form. Ostia or osculae visible throughout surface. On soft sediment.

Porifera sp. 223*Description:*

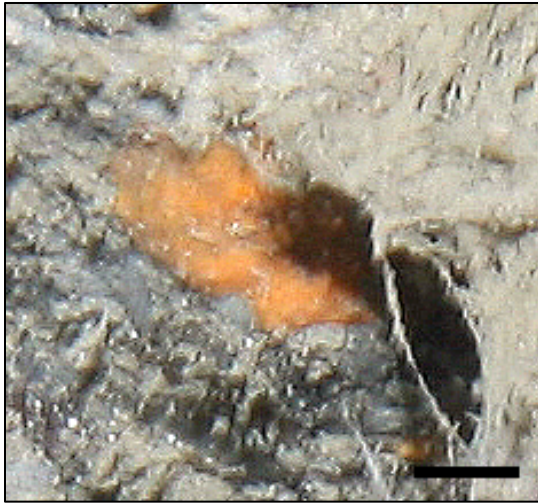
Thin sheet encrusting on rock. Colour white with pink and blue. Surface dotted with small ostia or osculae.

Porifera sp. 225*Description:*

Massive-globular or massive-lobose form. White to semi-transparent in colour. On soft sediment.

Porifera sp. 226*Description:*

Brownish, globular sponge on soft sediment. Edges appear 'fuzzy'. Surface covered in small ostia or osculae.

Porifera sp. 228*Description:*

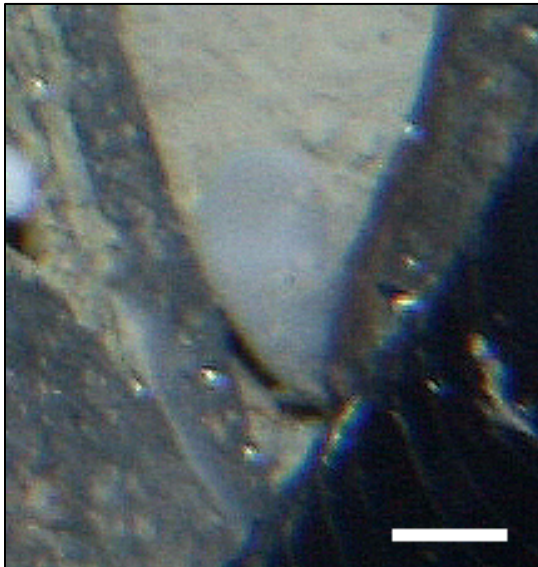
Thin sheet encrusting on rock. Surface texture mainly smooth, but somewhat conulated. Bright orange.

Porifera sp. 231*Description:*

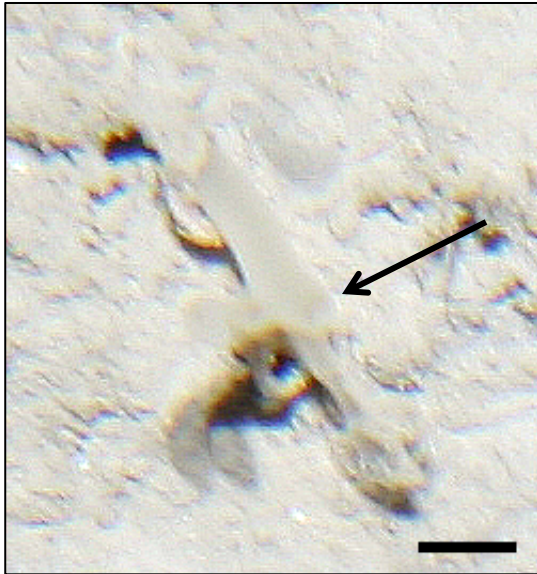
Thin sheet encrusting on rock. Sheets appear lobed. Surface verrucose (warty). White to bluish in colour. Could be the same as Porifera sp. 57.

Porifera sp. 232*Description:*

Globular sponge on soft sediment. Semi-translucent. Single osculum visible at apical end.

Porifera sp. 234*Description:*

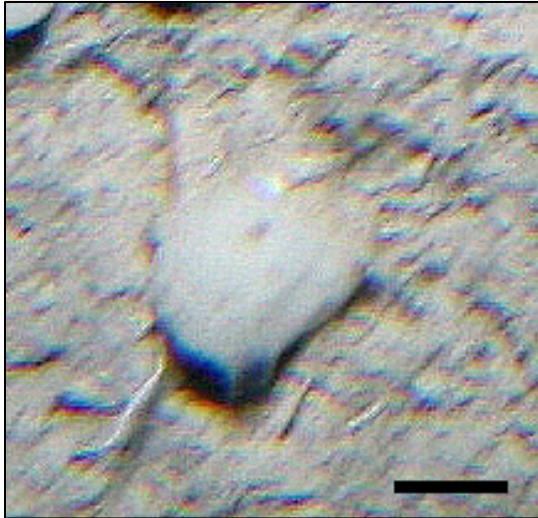
Tube-shaped, pedunculate sponge. Appears attached to hard substrate. Large osculum at apical end may be visible. White to grey in colour.

Porifera sp. 235*Description:*

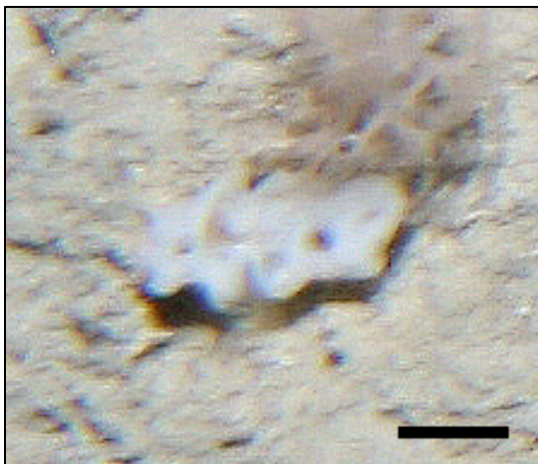
Tubular morphology, possibly with projections extending from apical end (arrow). Single large osculum visible at apical end. Yellowish in colour, semi-translucent. Surface smooth.

Porifera sp. 236*Description:*

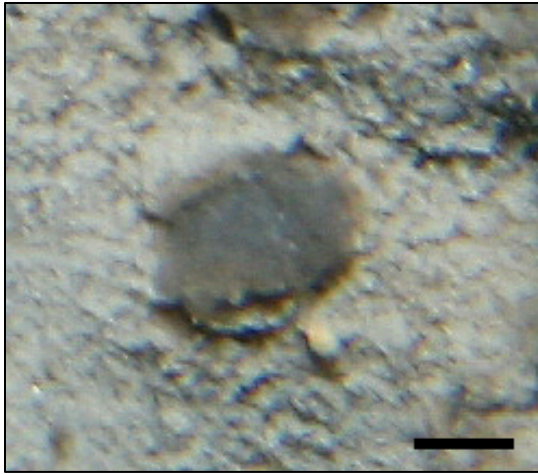
White, massive-globose sponge with surface covered in many small ostia or osculae.

Porifera sp. 239*Description:*

Irregularly-shaped, globular sponge. Large opening usually visible. On soft substrate.

Porifera sp. 241*Description:*

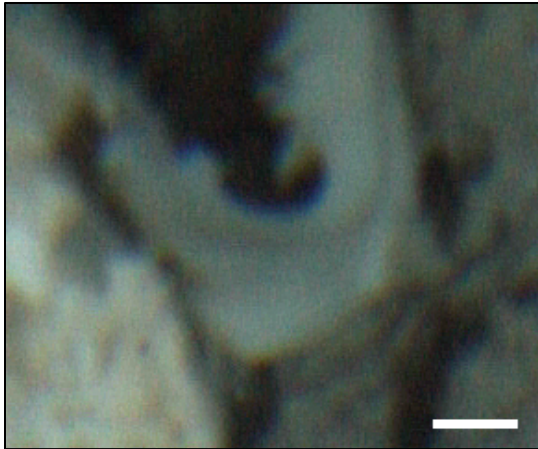
White, massive-lobate sponge with one or more visible oscula. On soft substrate.

Porifera sp. 242*Description:*

Globular sponge on soft sediment. Dark grey with brownish edges. Possibly not a sponge; possibly an artifact of the sediment.

Porifera sp. 243*Description:*

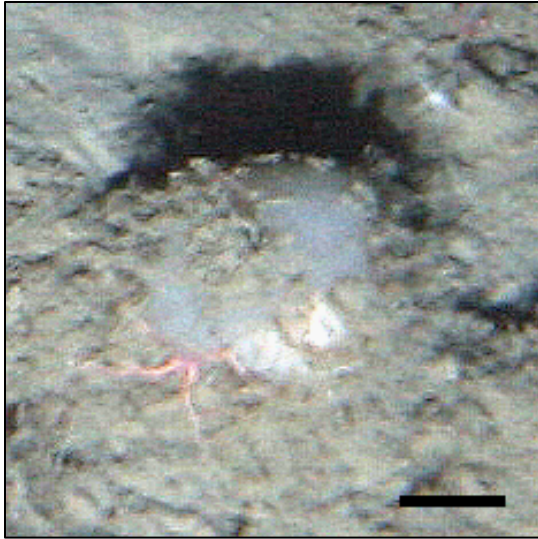
Cluster of tubes attached to a common basal area. Similar to Porifera sp. 209, but more tube-shaped, with oscula visible at apical ends of tubes.

Porifera sp. 255*Description:*

Lamellate morphology, with 'jagged' edges. Surface appears smooth, but assessment is inhibited by photo quality.

Porifera sp. 257*Description:*

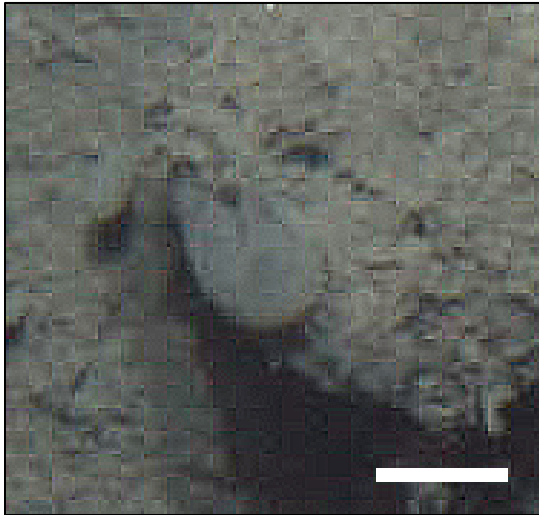
Erect, tubular sponge. Yellowish in colour. Width of body length equal throughout, with slightly thinner basal attachment area.

Porifera sp. 258*Description:*

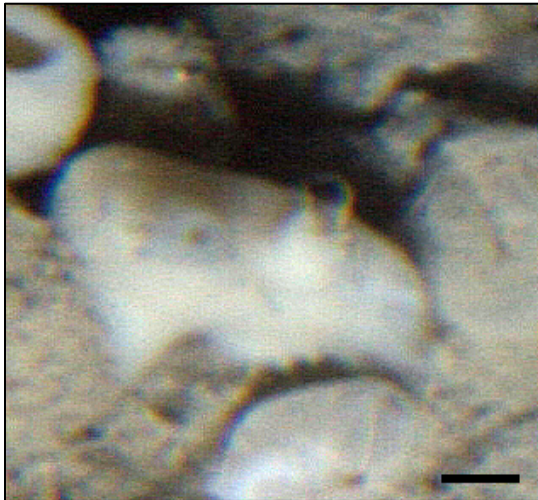
Cushion to massive-globular morphology. Partially covered in sediment. May be encrusting on another sponge.

Porifera sp. 259*Description:*

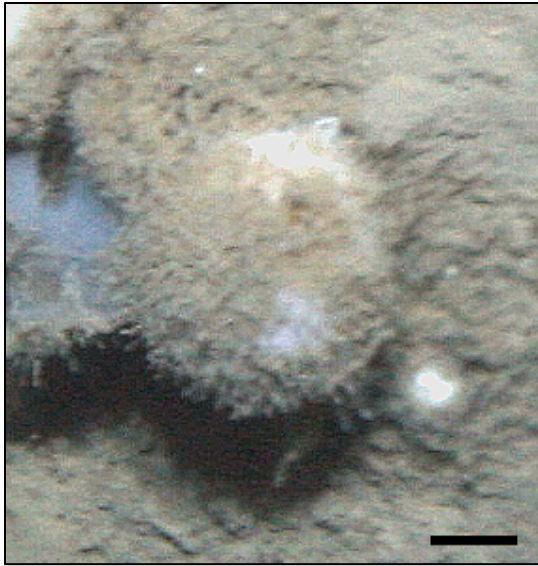
Large tubular sponge. Tubes often taper at apical end, where a large osculum is visible. Likely a demosponge.

Porifera sp. 260*Description:*

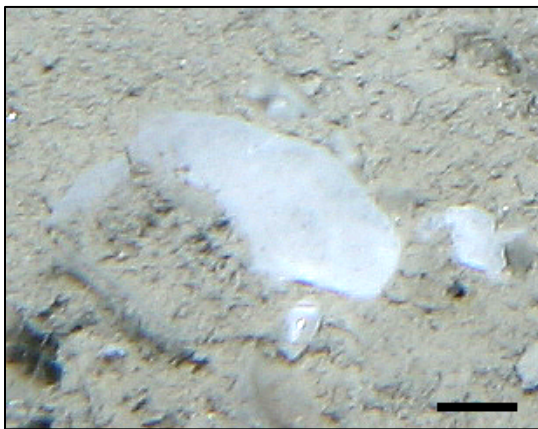
Globular sponge on soft sediment.
Single osculum visible.

Porifera sp. 261*Description:*

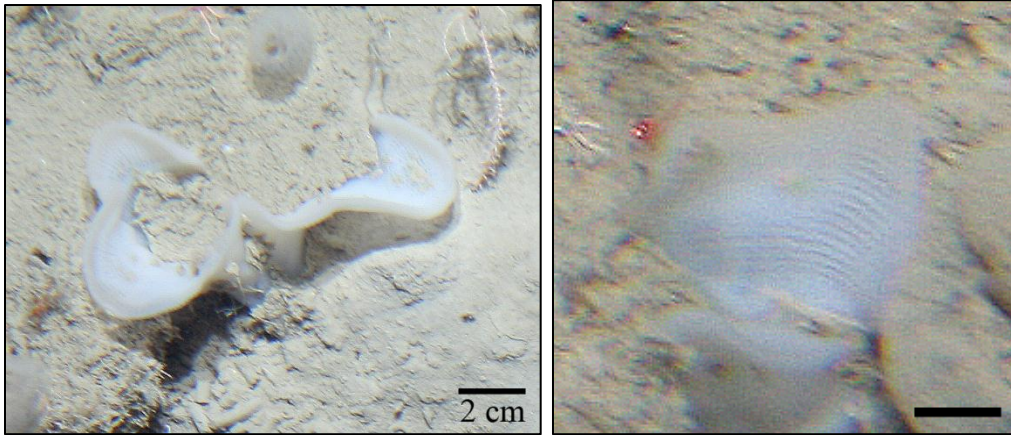
Massive-globular sponge with two
projections on the uppermost surface
that resemble papillae. Yellowish in
colour.

Porifera sp. 262*Description:*

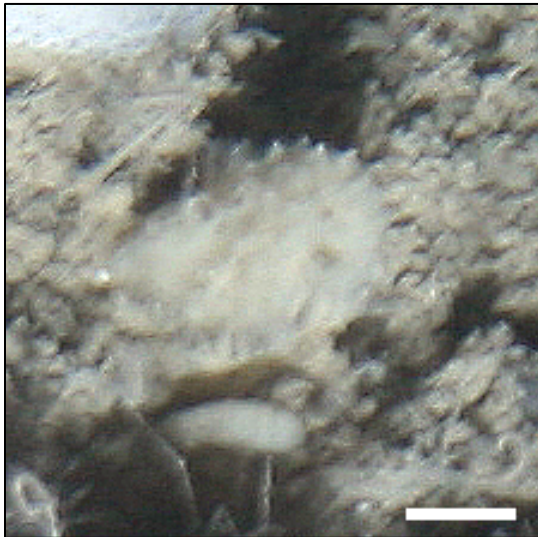
Round/globular in sponge that is partially covered in sediment. Surface covered in long thin projections that could be spicules. No apparent oscules. Could be a species of *Craniella*.

Porifera sp. 263*Description:*

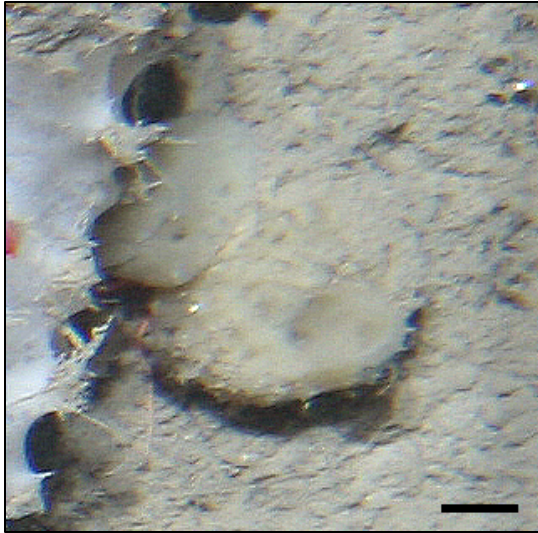
Massive-globular form. Growth more horizontal than vertical. No apparent oscules, although surface looks very 'porous'.

Porifera sp. 264*Description:*

Lamellate morphology. No apparent oscules. Appears similar to *Asconema* sp., but tissue has 'thatched' appearance. White in colour. Subsequently identified as *Chonelasma choanoides*.

Porifera sp. 265*Description:*

Massive-globular sponge. Two osculae visible with raised edges. Surface appears conulated. Pale yellow.

Porifera sp. 266*Description:*

Massive-globular sponge. Single large osculum usually visible, with several smaller pores throughout surface. Can be partially covered in sediment.

Porifera sp. 269*Description:*

Branching-repent form. Finger-like projections present. Surface covered in small ostia.

Porifera sp. 270*Description:*

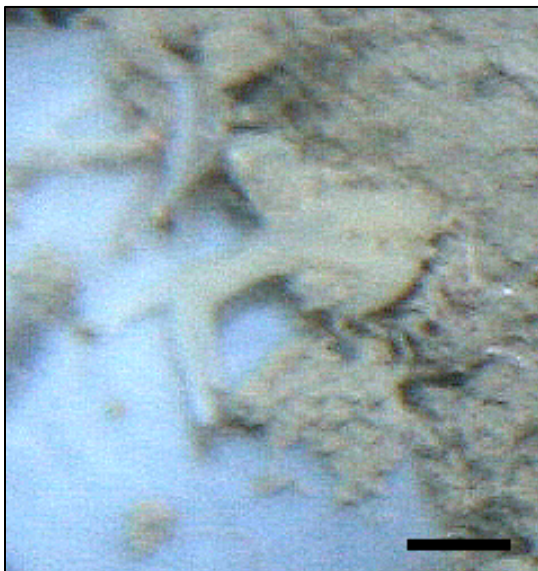
Tubular sponge with large ostia at apical ends. Tubes are curved and join at the base. Surface of sponge appears smooth. Yellow.

Porifera sp. 271*Description:*

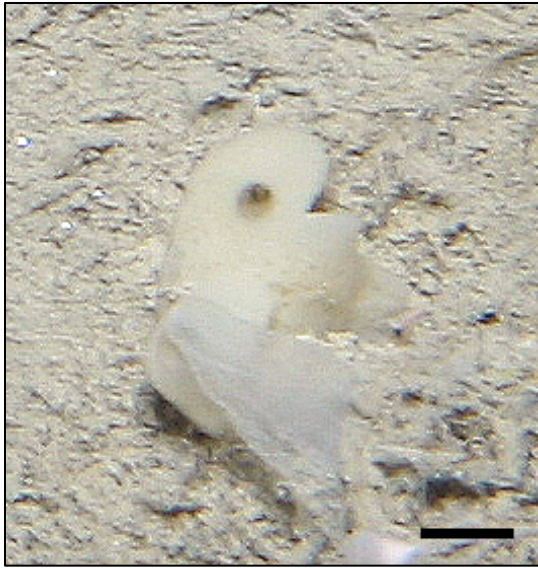
Large, tubular sponge. Tubes join at the base. Different from Porifera sp. 270 due to overall size and rough appearance of the surface.

Porifera sp. 283*Description:*

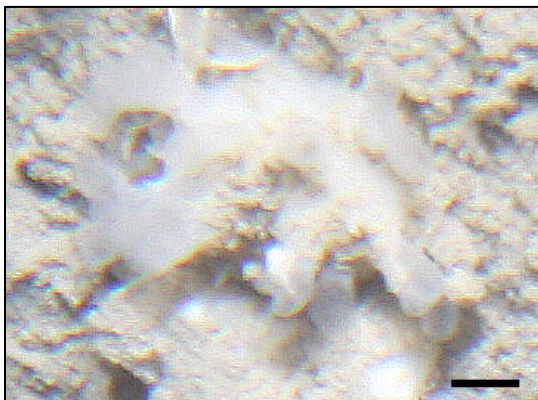
Lamellate sponge on soft sediment. White and semi-translucent, especially at edges. Tissue has 'banded' appearance.

Porifera sp. 284*Description:*

Branching-erect sponge with branch attached to globular base. Yellowish in colour.

Porifera sp. 287*Description:*

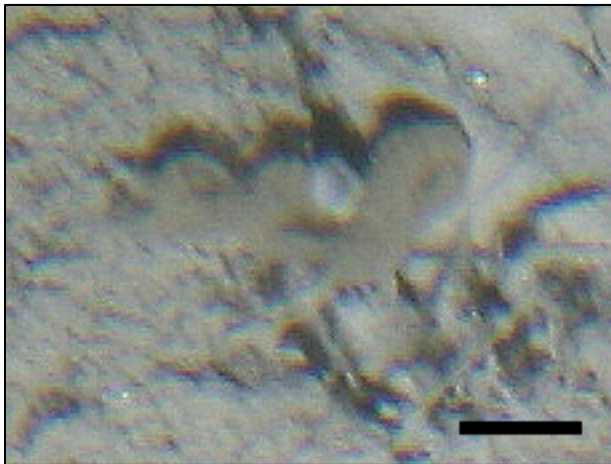
Irregular glob on soft sediment. Yellowish in colour. Tubular extensions of the surface may be present. Surface covered in small ostia. Single osculum visible.

Porifera sp. 288*Description:*

Globular sponge with semi-translucent, tube-like projections extending from the surface. Off-white in colour. On soft sediment.

Porifera sp. 290*Description:*

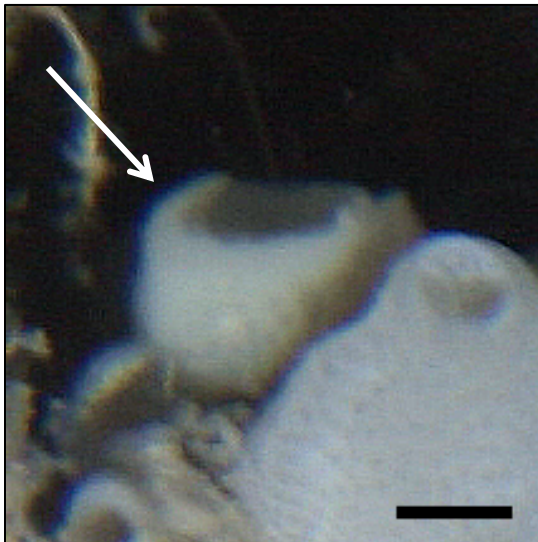
Tubular to ovate form. Yellowish in colour, Single osculum visible at apical end. Possibly the same species as Porifera sp. 287.

Porifera sp. 291*Description:*

Irregular, horizontally-spreading sponge. Surface 'porous'. Brownish in colour.

Porifera sp. 292*Description:*

Thin, sediment-covered sheet with large oscular 'chimneys' over surface. Counted as a single colony.

Porifera sp. 293*Description:*

Irregular, lamellate or tubular sponge (arrow). Off-white in colour.

Porifera sp. 298*Description:*

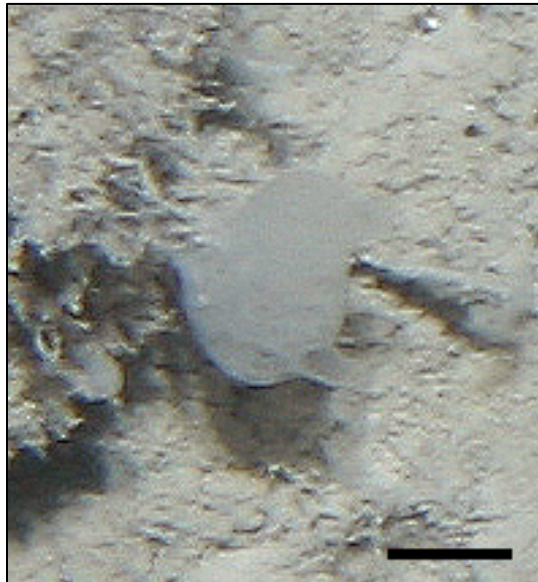
Massive-globular sponge. White to yellowish in colour. Surface covered in many small ostia. Could be Porifera sp. 269.

Porifera sp. 299*Description:*

Globular sponge with several tube-like extensions branching from base. Osculae visible at apical end of tubes. Surface covered in ostia. Yellowish in colour.

Porifera sp. 302*Description:*

Cushion form. Circular features visible on surface that may be osculae. Grey-greenish in colour.

Porifera sp. 304*Description:*

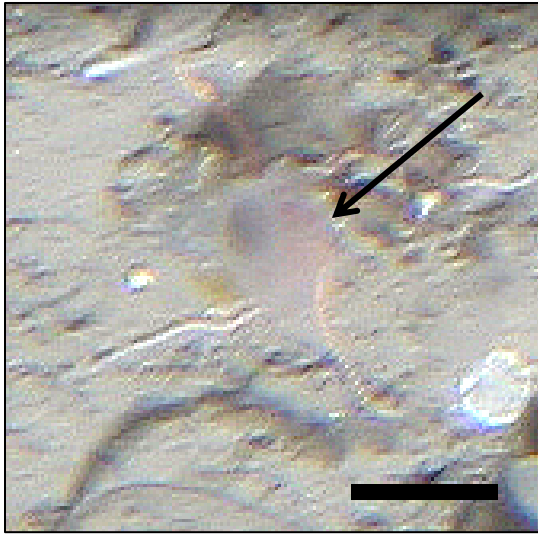
Globular sponge with small, hollow projections resembling extending from surface. Could be a polymastiid sponge.

Porifera sp. 305*Description:*

Irregularly-shaped, massive-lobate sponge. Yellow to brown in colour. Growth sometimes more vertical than horizontal.

Porifera sp. 307*Description:*

White, solid, massive-globular form. Surface conulated, with large spicules protruding from cones. No visible osculae. Edges usually covered in sediment.

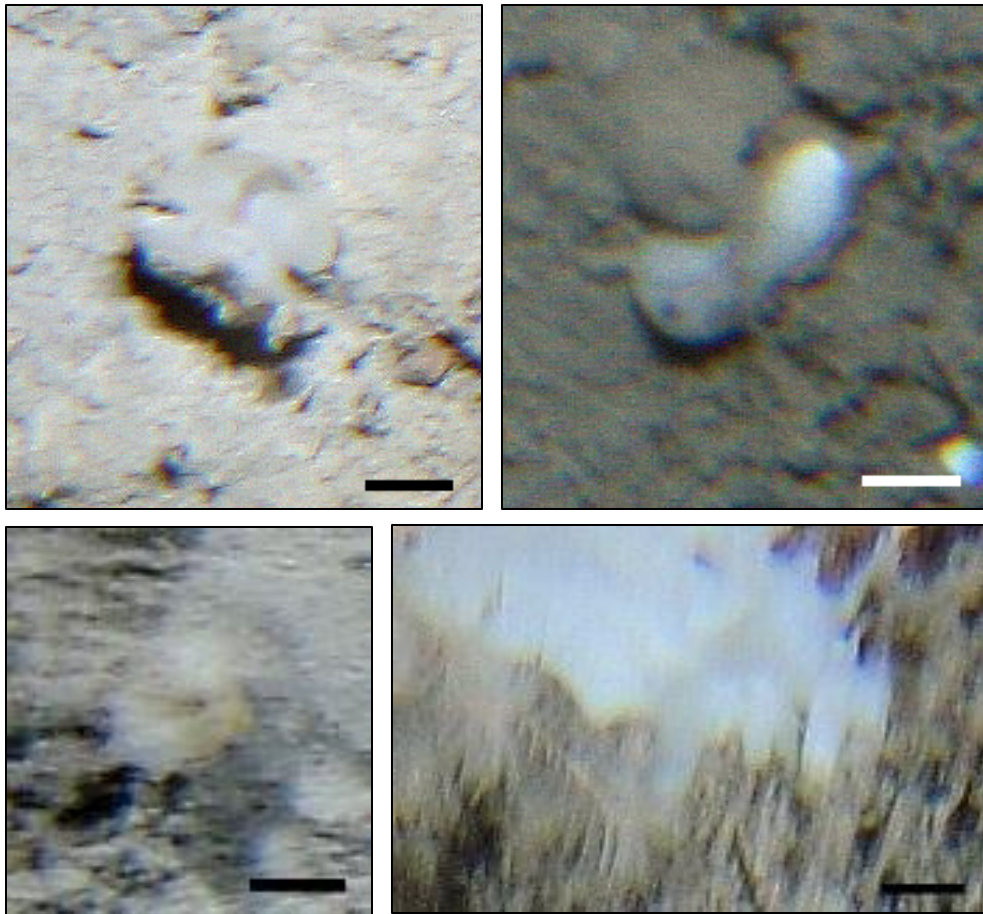
Porifera sp. 308*Description:*

Semi-translucent, tubular or cup-like sponge. Apical rim is flattened to form a 'shelf'. Grey, semi-translucent.

Porifera sp. 312*Description:*

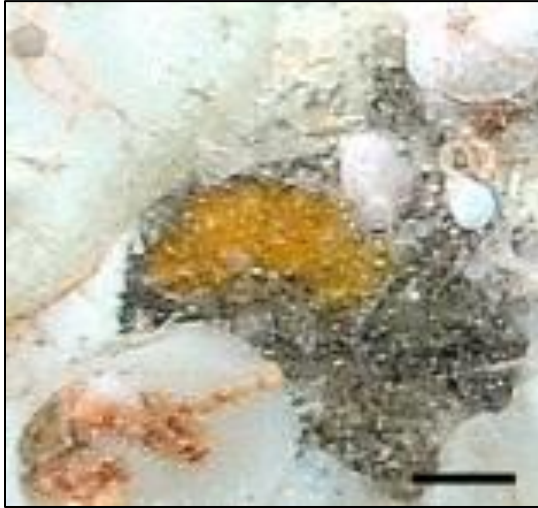
Stipitate or stalked sponge, with a tulip-like appearance. Pinkish centre.

Porifera

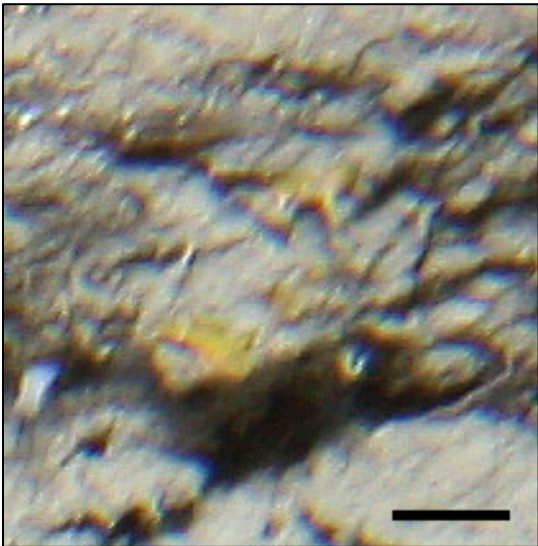


Description:

Miscellaneous sponges of several morphology types. Could not be placed into a known morphotype.

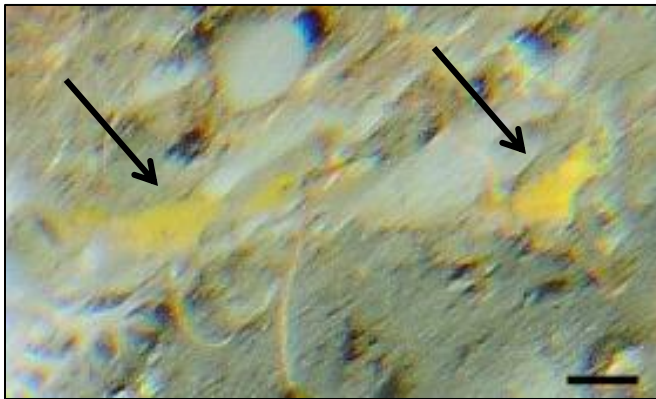
Demospongiae sp. 1*Description:*

Thin encrusting sponge; orange-yellow in colour. Surface appears rough; no visible oscules.

Demospongiae sp. 2*Description:*

Thin encrusting sponge; yellow in colour. Surface smooth; no visible oscules.

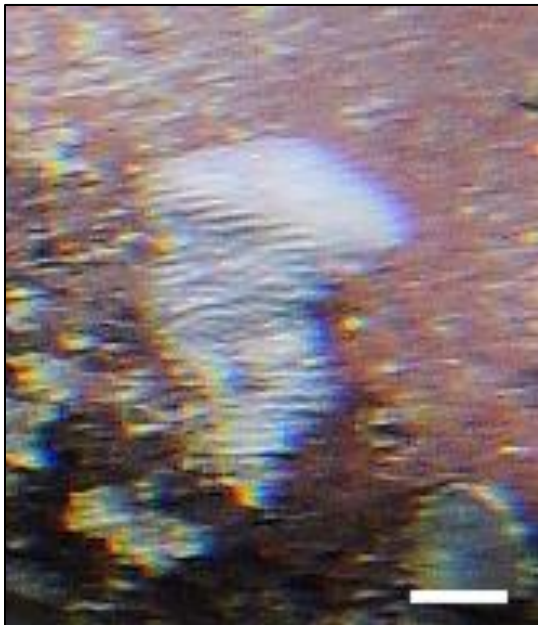
Demospongiae sp. 3



Description:

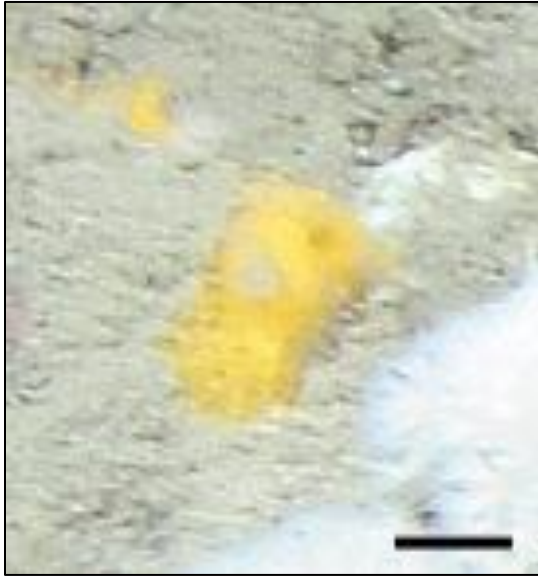
Cushion encrusting sponge. Yellow in colour. Surface smooth; oscules may be visible. Similar to Demospongiae sp. 2, but is brighter in colour and more robust.

Demospongiae sp. 4



Description:

Thin encrusting sponge, with verrucose (warty) surface. White to purplish in colour. Could be the same as Porifera sp. 57 and Porifera sp. 231.

Demospongiae sp. 5*Description:*

Cushion encrusting sponge. One large osculum often visible, with smaller ostia scattered across surface. Yellow in colour. Possibly the same as Demospongiae sp. 3.

Demospongiae sp. 6*Description:*

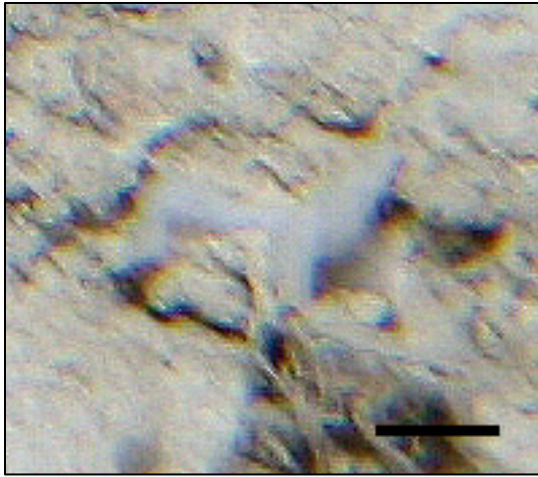
Thin or cushion sponge encrusting on rock. Surface appears smooth with no visible oscules. Bright white in colour.

Demospongiae sp. 7*Description:*

Globular/ball-shaped sponge. Brain-like pattern on side when large, and large osculum with multiple preoscles on the uppermost surface. Possibly a species of *Tentorium*.

Demospongiae sp. 8*Description:*

Globular sponge. Bright white in colour. Surface smooth. On soft sediment.

Demospongiae sp. 9*Description:*

Cushion sponge with irregular spreading pattern. Greyish in colour, sometimes semi-translucent. On soft sediment.

Demospongiae sp. 10*Description:*

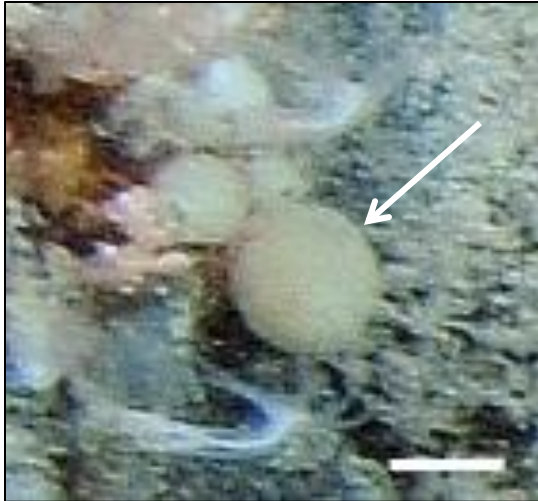
Erect, irregularly-shaped. Bright white in colour. Surface appears smooth. Single large 'hole' at base.

Demospongiae sp. 11*Description:*

Globular, with a single large osculum present. Surface covered in small ostia. Whitish in colour. Single depression (possible oscule) visible.

Demospongiae sp. 12*Description:*

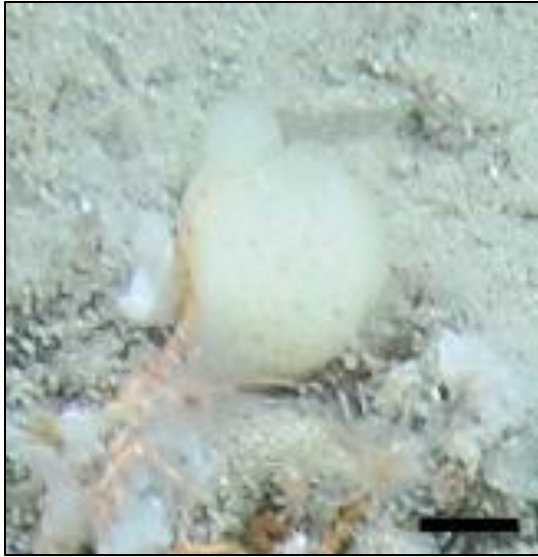
Cushion to almost globular sponge on soft sediment. Small oscula or ostia visible throughout surface.

Demospongiae sp. 13*Description:*

Globular/ball-shaped sponge with single large osculum sometimes visible on uppermost surface. Yellowish in colour.

Demospongiae sp. 14*Description:*

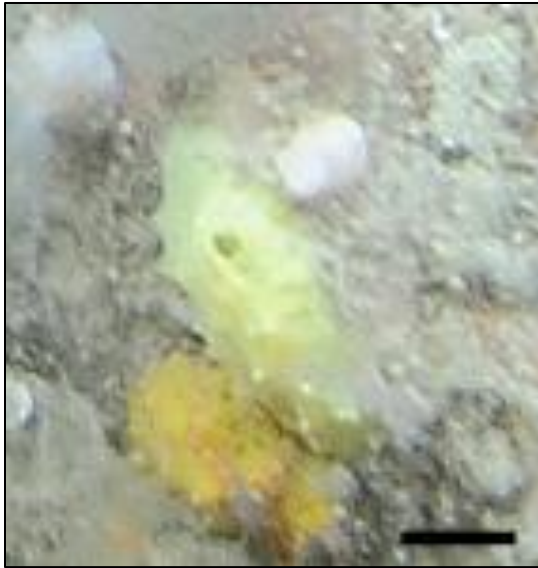
Small, globular sponge on rock. Light pink in colour. Appears to have lobes extending from base. Possibly *Psolus* spp. mistaken for a sponge.

Demospongiae sp. 15*Description:*

Globular sponge with ostia scattered throughout surface. Single osculum with raised edge visible on uppermost surface. Can be slightly tapered near the base.

Demospongiae sp. 16*Description:*

Encrusting cushion sponge on soft sediment. Darker depressions over surface, especially near edge of sponge. Grey in colour. Could be the same as Porifera sp. 167.

Demospongiae sp. 17*Description:*

Yellow, cushion sponge encrusting on rock. Surface highly convoluted. Single osculum normally visible.

Demospongiae sp. 18*Description:*

Massive-fig shape, with single osculum visible at uppermost end. Surface appears covered in small ostia. Pale yellow.