

Catalogue no. 71-001-X

Labour Force Information

Friday, February 6, 2015

January 11 to 17, 2015



Statistics
Canada

Statistique
Canada

Canada

How to obtain more information

For information about this product or the wide range of services and data available from Statistics Canada, visit our website, www.statcan.gc.ca.

You can also contact us by

e-mail at infostats@statcan.gc.ca

telephone, from Monday to Friday, 8:30 a.m. to 4:30 p.m., at the following toll-free numbers:

- | | |
|---|----------------|
| • Statistical Information Service | 1-800-263-1136 |
| • National telecommunications device for the hearing impaired | 1-800-363-7629 |
| • Fax line | 1-877-287-4369 |

Depository Services Program

- | | |
|------------------|----------------|
| • Inquiries line | 1-800-635-7943 |
| • Fax line | 1-800-565-7757 |

To access this product

This product, Catalogue no. 71-001-X, is available free in electronic format. To obtain a single issue, visit our website, www.statcan.gc.ca and browse by "Key resource" > "Publications."

Standards of service to the public

Statistics Canada is committed to serving its clients in a prompt, reliable and courteous manner. To this end, this agency has developed standards of service that its employees observe. To obtain a copy of these service standards, please contact Statistics Canada toll-free at 1-800-263-1136. The service standards are also published at www.statcan.gc.ca under "About us" > "The agency" > "Providing services to Canadians."

Statistics Canada
Labour Statistics Division
Labour Force Survey Program

Labour Force Information

Friday, February 6, 2015

January 11 to 17, 2015

Published by authority of the Minister responsible for Statistics Canada

© Minister of Industry, 2015

All rights reserved. Use of this publication is governed by the Statistics Canada
Open License Agreement.

<http://www.statcan.gc.ca/reference/licence-eng.html>

February 2015

Catalogue no. 71-001-X

ISSN 1492-5478

Frequency: Monthly

Ottawa

Cette publication est également disponible en français.

Note of appreciation

Canada owes the success of its statistical system to a long-standing partnership between Statistics Canada, the citizens of Canada, its businesses, governments and other institutions. Accurate and timely statistical information could not be produced without their continued cooperation and goodwill.

User information

Symbols

The following standard symbols are used in Statistics Canada publications:

- . not available for any reference period
- .. not available for a specific reference period
- ... not applicable
- 0 true zero or a value rounded to zero
- 0s value rounded to 0 (zero) where there is a meaningful distinction between true zero and the value that was rounded
- p preliminary
- r revised
- x suppressed to meet the confidentiality requirements of the *Statistics Act*
- E use with caution
- F too unreliable to be published
- * significantly different from reference category ($p < 0.05$)

Special requests (\$)

Custom tabulations can be arranged on an ad hoc or regular basis. This service enables you to specify tables and time series to meet your own requirements. The cost varies according to the request. For more information, contact us toll-free at 1-866-873-8788 or e-mail us at labour@statcan.gc.ca.

Schedule of LFS releases

Release date

January 9, 2015
February 6, 2015
March 13, 2015
April 10, 2015
May 8, 2015
June 5, 2015
July 10, 2015
August 7, 2015
September 4, 2015
October 9, 2015
November 6, 2015
December 4, 2015
January 8, 2016

Reference period

December 7 to 13, 2014
January 11 to 17, 2015
February 15 to 21, 2015
March 15 to 21, 2015
April 12 to 18, 2015
May 10 to 16, 2015
June 14 to 20, 2015
July 12 to 18, 2015
August 9 to 15, 2015
September 13 to 19, 2015
October 11 to 17, 2015
November 8 to 14, 2015
December 6 to 12, 2015

Table of contents

Highlights	5
Analysis — January 2015	6
Charts	
1. Employment indexes, Canada, seasonally adjusted	9
2. Employment, unemployment, and participation rates, Canada, seasonally adjusted	10
3. Employment indexes by industry, Canada, seasonally adjusted	11
4. Employment indexes by industry, Canada, seasonally adjusted	12
5. Employment indexes by industry, Canada, seasonally adjusted	13
6. Employment indexes by province, Canada, seasonally adjusted	14
7. Employment indexes by province, Canada, seasonally adjusted	15
Related products	16
Statistical tables	
1 Labour force characteristics by age and sex, Canada, seasonally adjusted	27
2 Employment by class of worker and industry, Canada, seasonally adjusted	29
3 Labour force characteristics by province, seasonally adjusted	30
4 Selected labour force characteristics (seasonally adjusted)	32
4-1 Newfoundland and Labrador	32
4-2 Prince Edward Island	33
4-3 Nova Scotia	34
4-4 New Brunswick	35
4-5 Quebec	36
4-6 Ontario	37
4-7 Manitoba	38
4-8 Saskatchewan	39
4-9 Alberta	40
4-10 British Columbia	41
5 Labour force characteristics by census metropolitan area (seasonally adjusted)	42
5-1 3 month moving average	42
5-2 Monthly	47

Table of contents – continued

6	Labour force characteristics	48
6-1	by province and economic region, unadjusted for seasonality, 3 month moving average ending in January 2014 and January 2015	48
6-2	by territories, unadjusted for seasonality, 3 month moving average ending in January 2014 and January 2015	53
7	Average usual hours and wages of employees by selected characteristics, Canada, unadjusted for seasonality	54
8	Regional unemployment rates used by the Employment Insurance program, seasonally adjusted, 3 month moving average	55

Data quality, concepts and methodology

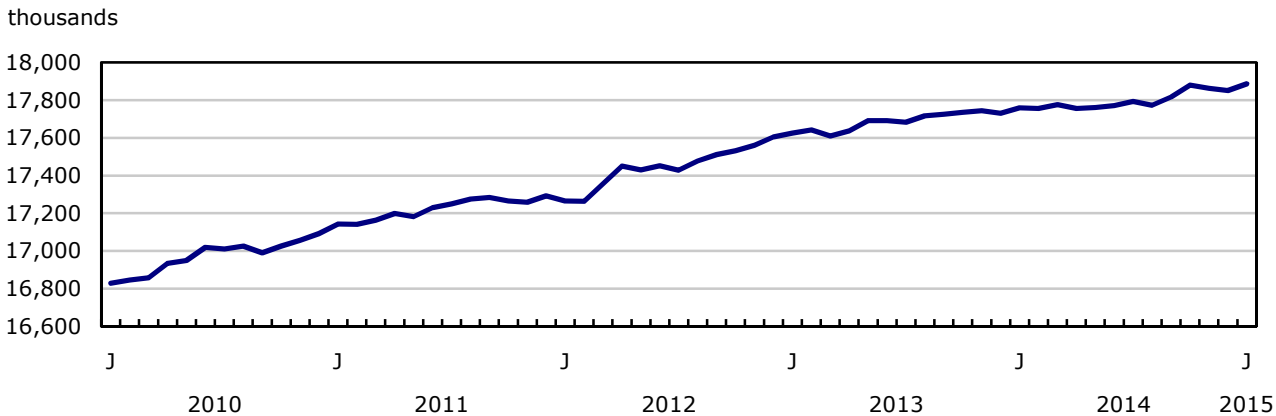
Data quality	57
--------------	----

Highlights

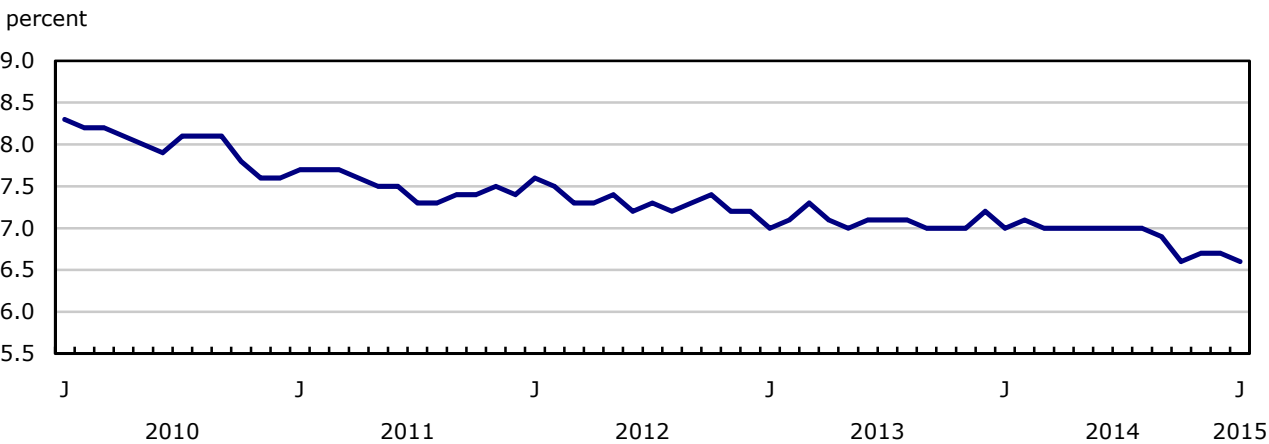
Employment increased by 35,000 in January, the result of more part-time work. The unemployment rate declined 0.1 percentage points to 6.6%.

Chart 1
Employment and unemployment rates, Canada, seasonally adjusted

Employment



Unemployment rate



Analysis — January 2015

Employment increased by 35,000 in January, the result of more part-time work. The unemployment rate declined 0.1 percentage points to 6.6%.

In the 12 months to January, employment increased by 128,000 (+0.7%) with most of the growth in the second half of the period.

In January, part-time employment increased by 47,000 and full time was little changed.

Compared with January 2014, full-time employment rose by 108,000 (+0.8%), while there was little change in part-time work. Over the same period, the total number of hours worked was up slightly (+0.3%).

In January, employment increased among women aged 55 and over, while there was little change in the other demographic groups.

Provincially, employment rose in Quebec, Alberta, New Brunswick and Prince Edward Island in January. At the same time, there was a decline in Saskatchewan.

There were more people working in professional, scientific and technical services in January, while employment declined in natural resources.

The number of self-employed workers increased in January and there was little change in the number of private and public sector employees.

More employed women aged 55 and older

There were 19,000 more women aged 55 and older working in January and their unemployment rate edged down to 4.8%. Employment for men in the same age group was little changed. However, their unemployment rate rose by 0.4 percentage points to 6.2% as more of them were searching for work.

While youth employment was unchanged in January, their unemployment rate fell 0.7 percentage points to 12.8% as fewer youths looked for work.

There was little employment change in January for men and women aged 25 to 54 and their unemployment rates remained at 5.6% and 5.3%, respectively.

In the 12 months to January, employment growth was driven by gains among men 25 and older (+79,000) and youths (+30,000).

Provincial summary

In Quebec, employment increased by 16,000 in January, the first notable gain since March 2014. In the 12 months to January 2015, overall employment in the province was virtually unchanged. The unemployment rate was 7.4% in January.

Employment in Alberta rose by 14,000 in January, bringing gains over the past 12 months to 67,000 or 3.0%, the fastest growth rate among the provinces. Year-over-year employment gains in Alberta were in health care and social assistance as well as in transportation and warehousing, while there was a decrease in retail and wholesale trade. Employment in natural resources was little changed on a year-over-year basis, but it was down 13,000 (-7.2%) from the most recent peak in September 2014. The unemployment rate in the province was 4.5% in January.

In January, employment increased by 3,400 in New Brunswick. The unemployment rate was unchanged at 10.0% as more people participated in the labour market. On a year-over-year basis, employment in the province was unchanged.

Employment in January was also up in Prince Edward Island (+1,000) and the unemployment rate declined 0.9 percentage points to 10.2%.

In Saskatchewan, employment decreased by 8,400 in January and the unemployment rate increased 0.8 percentage points to 4.5%. Despite fewer people working in January, employment was unchanged compared with 12 months earlier.

Employment in the remaining provinces was little changed between December and January.

Industry perspective

The number of people employed in professional, scientific and technical services rose by 22,000 in January, the first notable increase since July 2013.

Employment in natural resources fell by 8,800 in January and was little changed from 12 months earlier.

The number of self-employed increased by 41,000 in January. Compared with January 2014, employment for this group of workers rose by 59,000 or 2.2%.

For public and private sector employees, employment was little changed for both January and on a year-over-year basis.

Note to readers

A standard revision has been applied to Labour Force Survey (LFS) estimates, as announced in The Daily on January 28, 2015. Beginning with this release, historical comparisons of estimates produced by the LFS must be made with revised historical data. For more information, see the publication "*The 2015 Revisions of the Labour Force Survey (LFS)*" which is available as part of the *Improvements to the Labour Force Survey* series (71F0031X).

The LFS estimates for January 2015 are for the week of January 11 to 17.

The LFS estimates are based on a sample and are therefore subject to sampling variability. As a result, monthly estimates will show more variability than trends observed over longer time periods. For more information, see "*Interpreting Monthly Changes in Employment from the Labour Force Survey*." Estimates for smaller geographic areas or industries also have more variability. For an explanation of sampling variability of estimates and how to use standard errors to assess this variability, consult the "Data quality" section of the publication Labour Force Information (71-001-X).

This analysis focuses on differences between estimates that are statistically significant at the 68% confidence level.

The **employment rate** is the number of employed persons as a percentage of the population 15 years of age and over. The rate for a particular group (for example, youths aged 15 to 24) is the number employed in that group as a percentage of the population for that group.

The **unemployment rate** is the number unemployed as a percentage of the labour force (employed and unemployed).

The **participation rate** is the number of employed and unemployed as a percentage of the population. For more detailed information, see the Guide to the Labour Force Survey (71-543-G).

Seasonal adjustment

Unless otherwise stated, this release presents seasonally adjusted estimates, which facilitates comparisons by removing the effects of seasonal variations. For more information on seasonal adjustment, see *Seasonally adjusted data – Frequently asked questions*.

Sample redesign

Every 10 years, the LFS undergoes a sample redesign to reflect changes in population and labour market characteristics, as well as new definitions of geographical boundaries. The redesigned sample was introduced starting in January 2015 and will be fully implemented by June 2015.

Chart 1
Employment indexes, Canada, seasonally adjusted

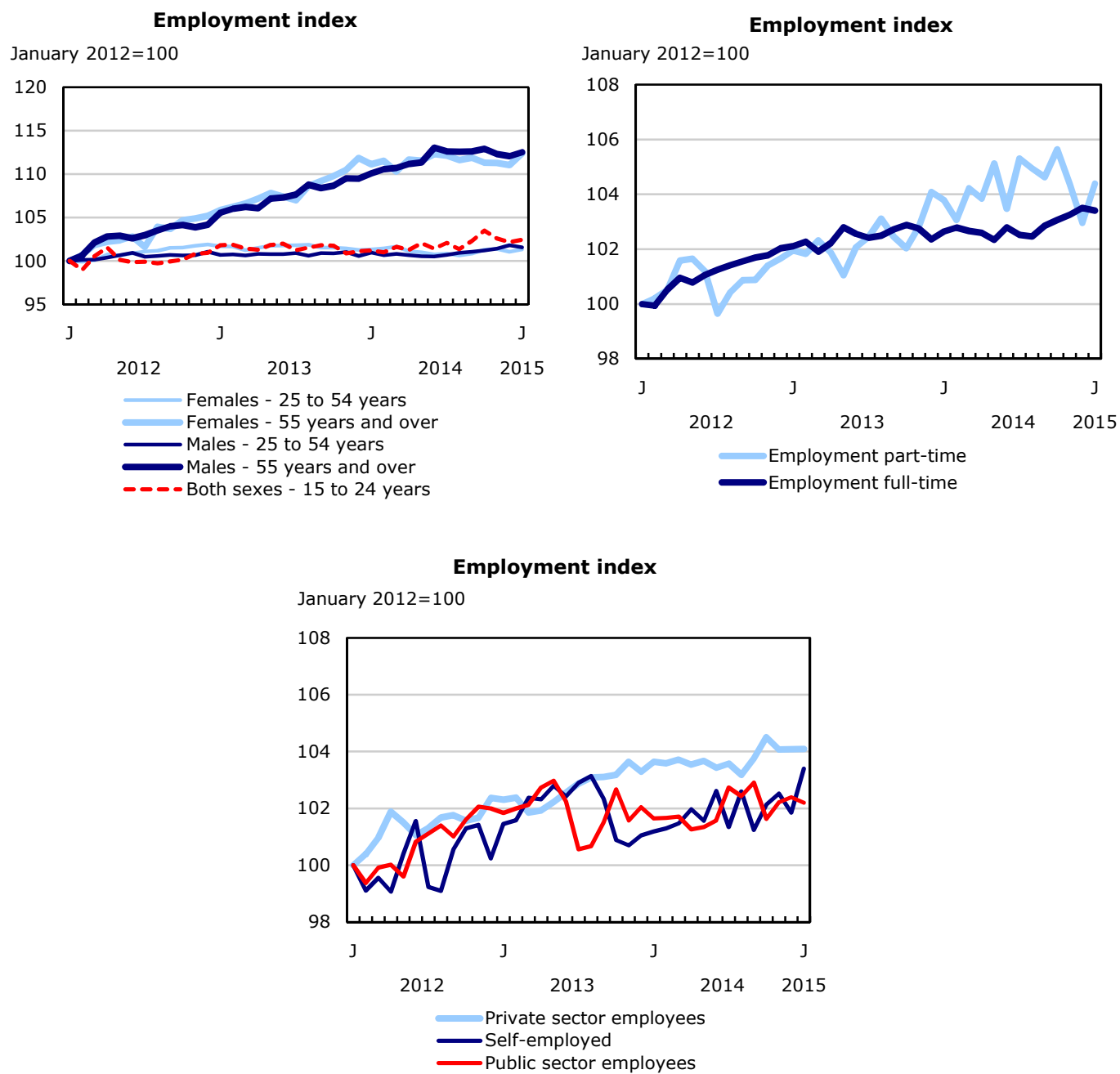


Chart 2
Employment, unemployment, and participation rates, Canada, seasonally adjusted

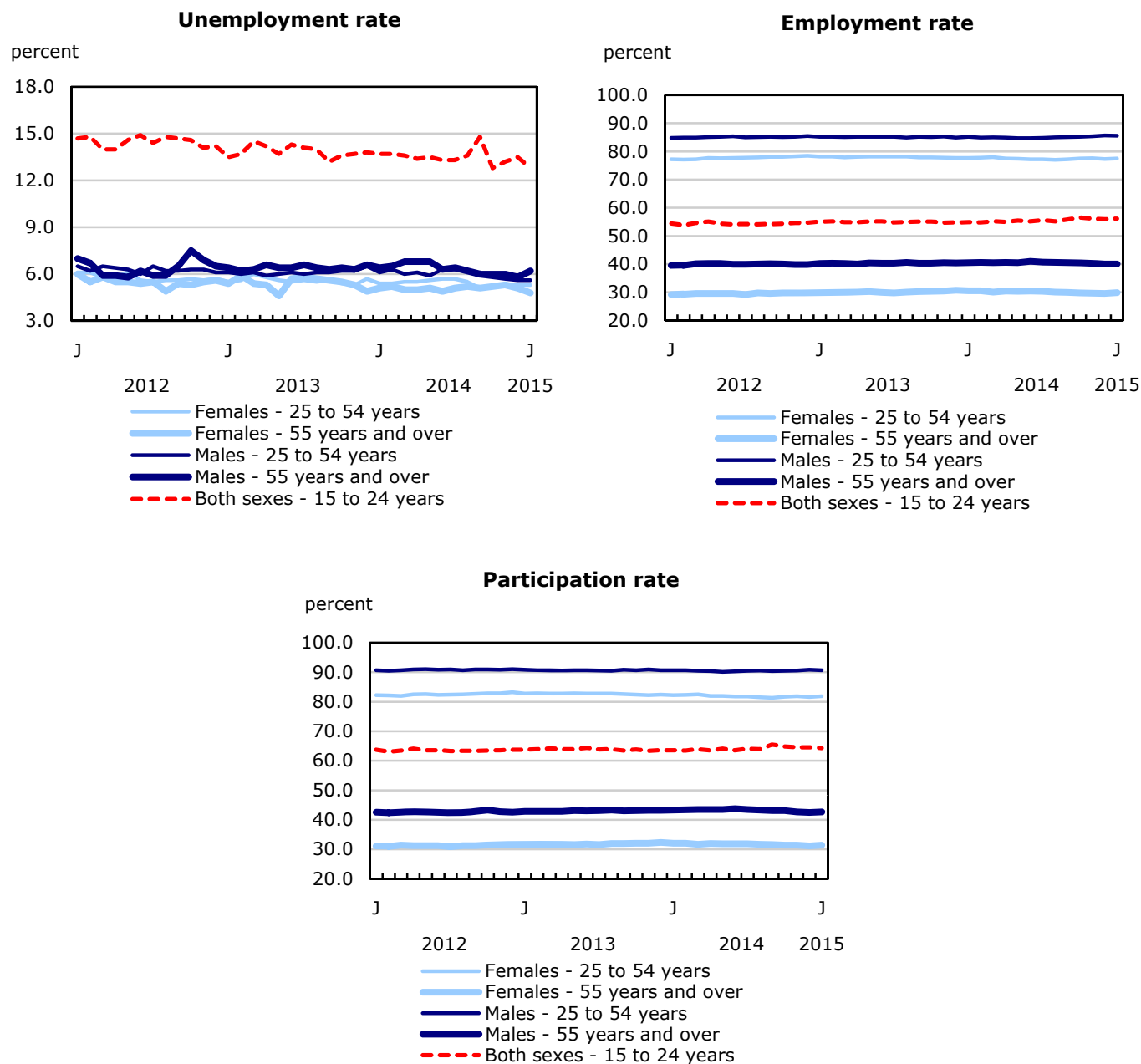


Chart 3
Employment indexes by industry, Canada, seasonally adjusted

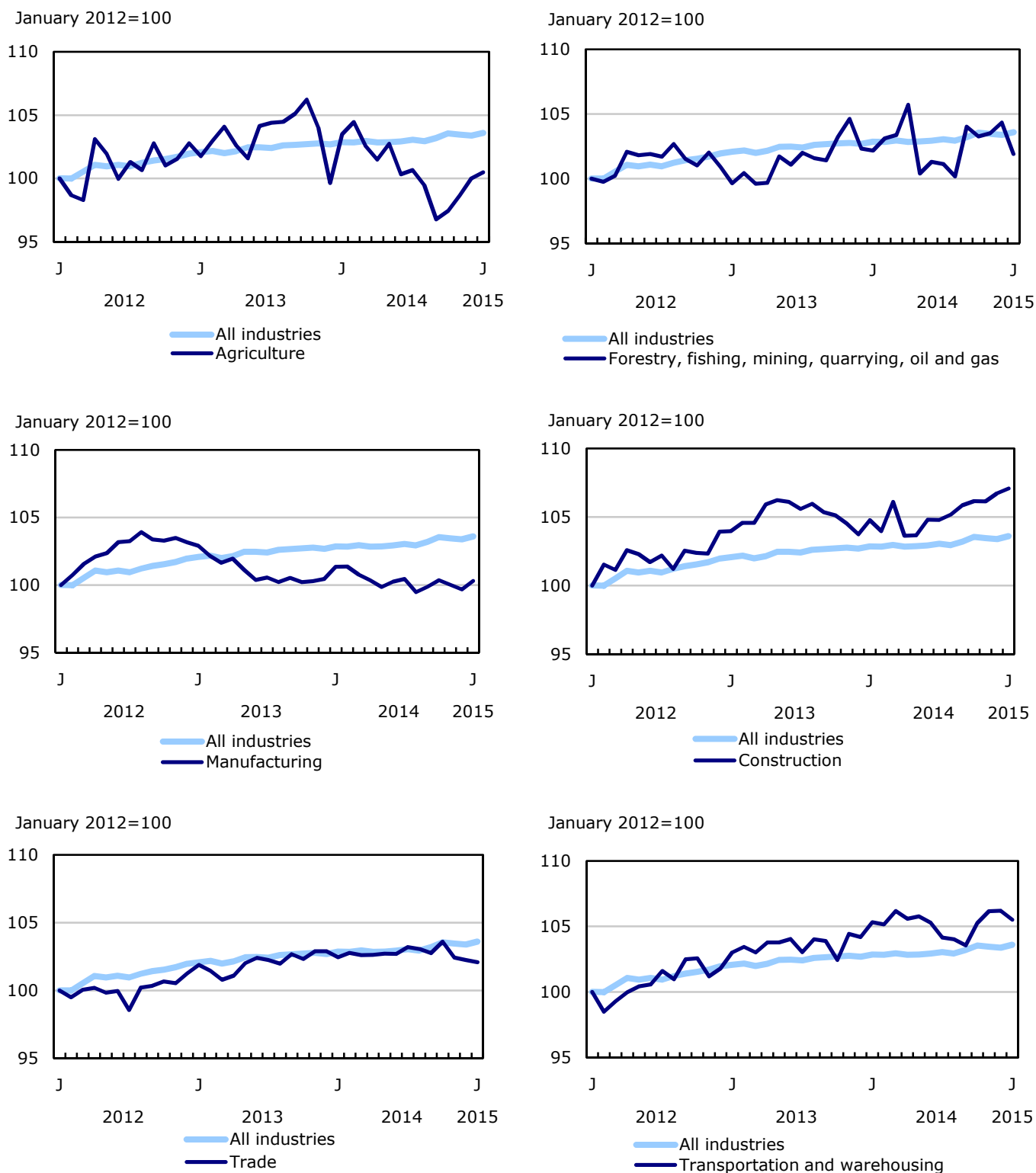


Chart 4
Employment indexes by industry, Canada, seasonally adjusted

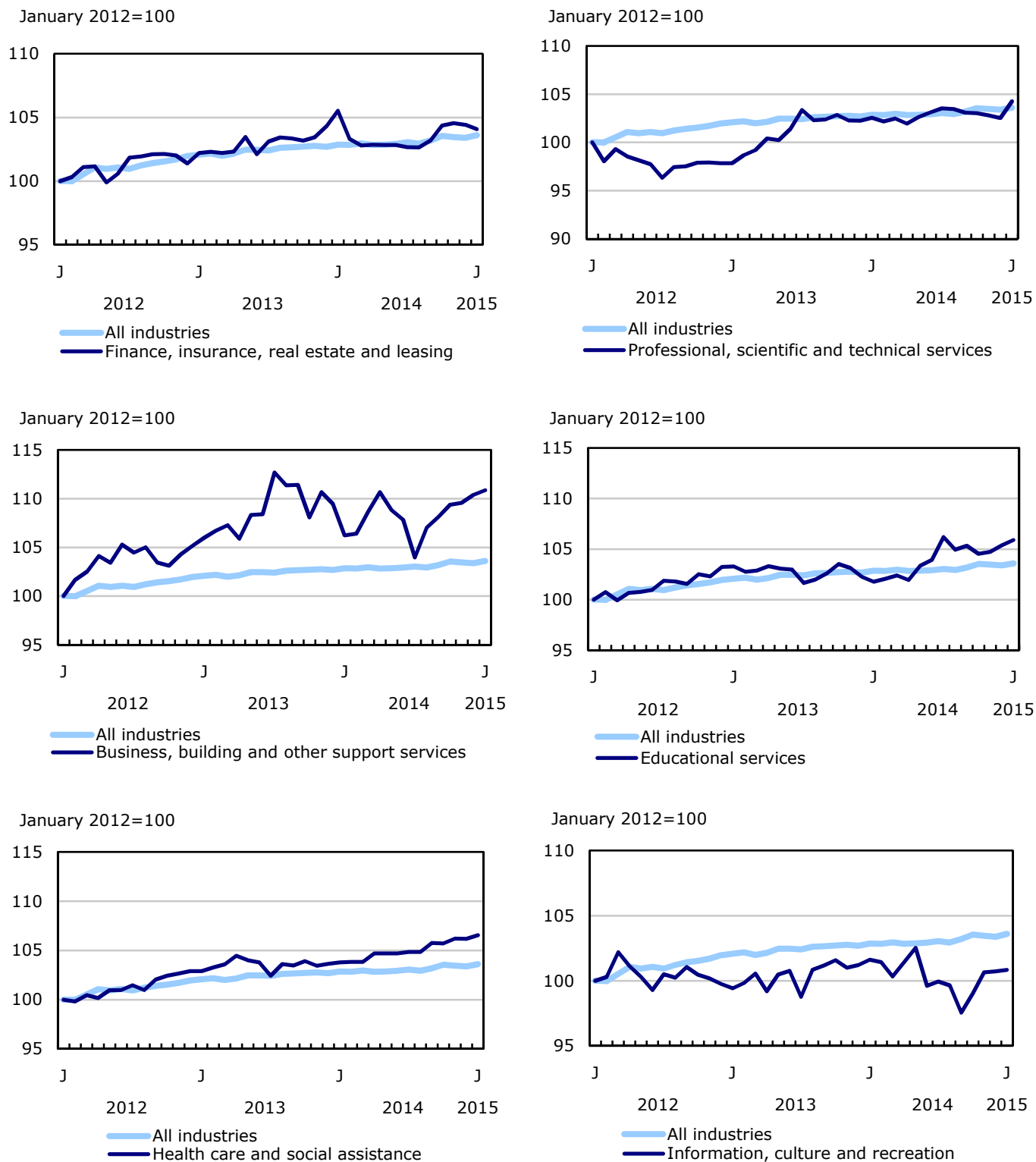


Chart 5
Employment indexes by industry, Canada, seasonally adjusted

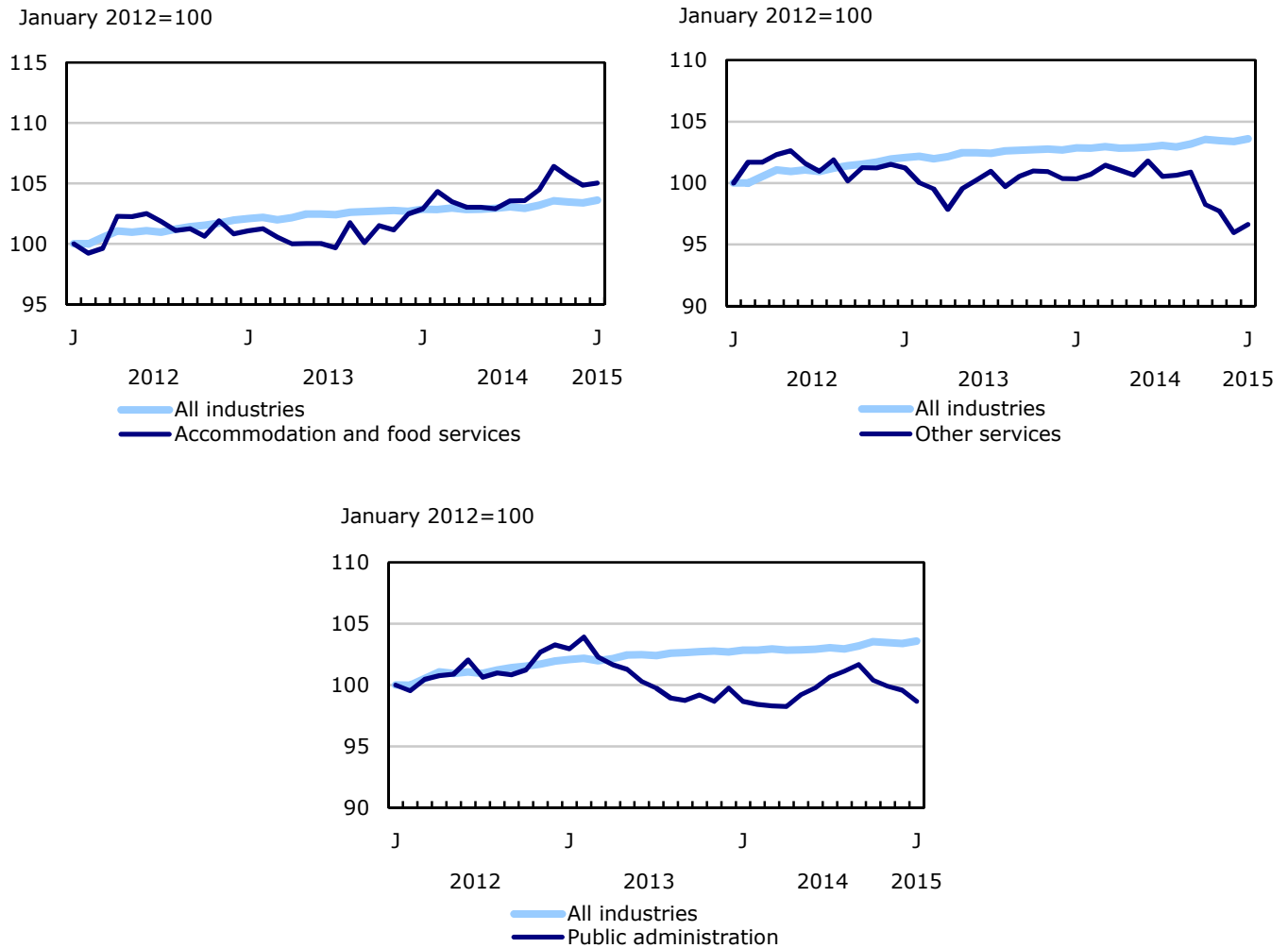


Chart 6
Employment indexes by province, Canada, seasonally adjusted

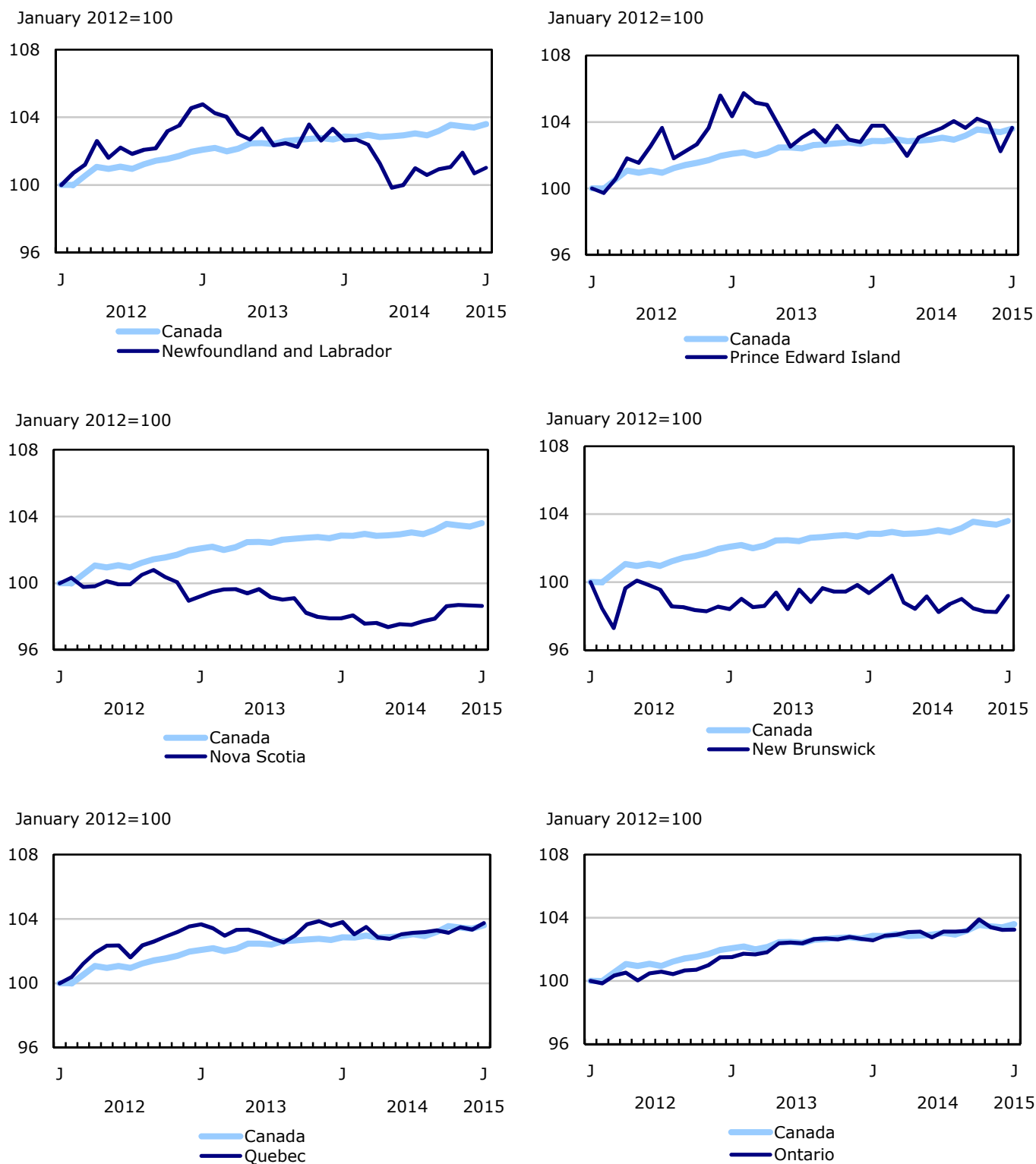
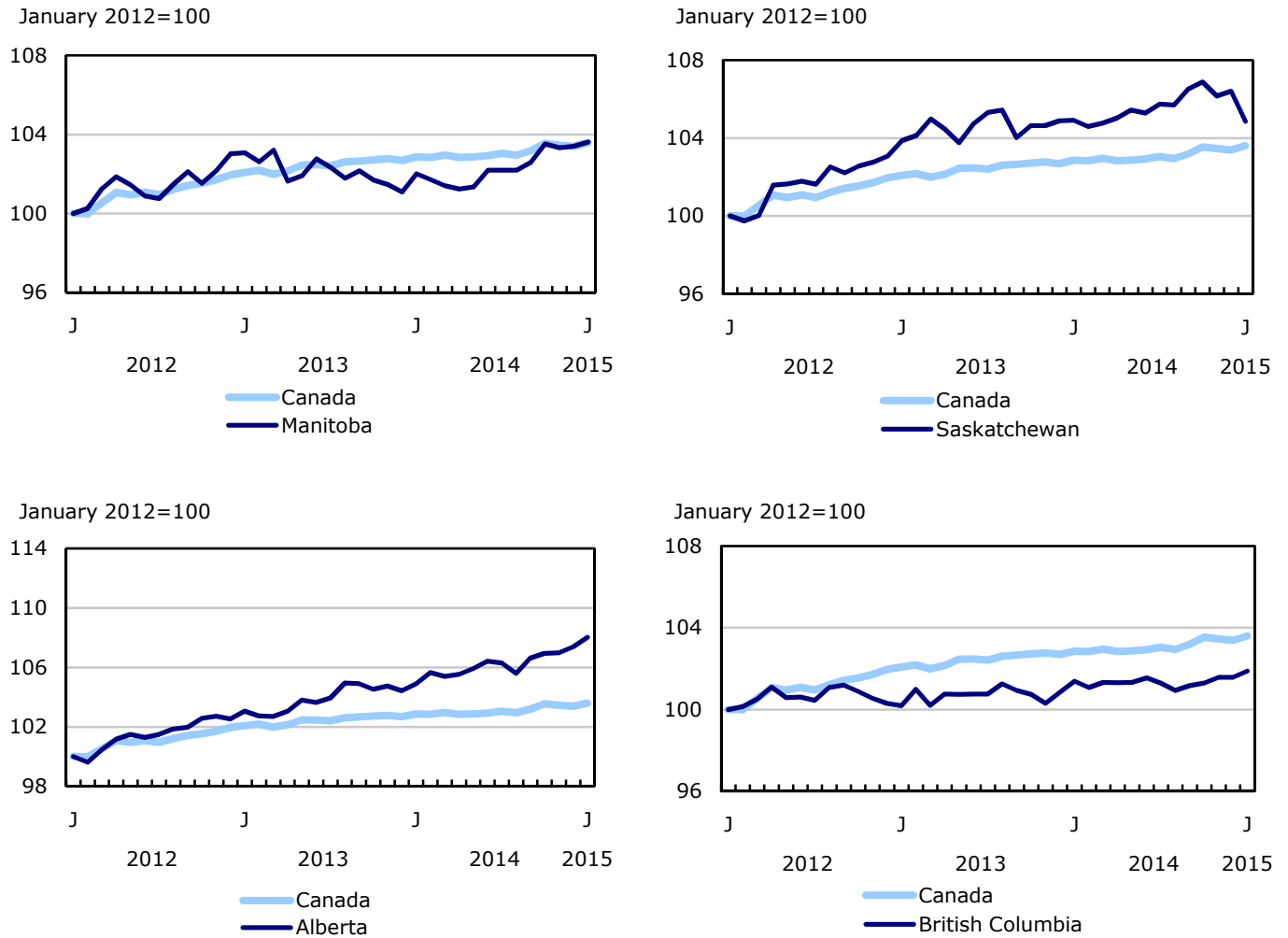


Chart 7
Employment indexes by province, Canada, seasonally adjusted



Related products

Selected publications from Statistics Canada

71-526-X	Methodology of the Canadian Labour Force Survey
71-543-G	Guide to the Labour Force Survey
71-587-X	Aboriginal Peoples Living Off-reserve in Western Canada: Estimates from the Labour Force Survey
71-588-X	The Aboriginal Labour Force Analysis Series
71-606-X	The Immigrant Labour Force Analysis Series
71F0031X	Improvements to the Labour Force Survey (LFS)
71M0001X	Labour Force Survey Microdata File

Selected CANSIM tables from Statistics Canada

279-0029	Work absence statistics of full-time employees, for Canada, provinces and census metropolitan area (CMA), and by sex, annual
279-0030	Work absence statistics of full-time employees, by sex and North American Industry Classification System (NAICS), Canada, annual
279-0031	Work absence statistics of full-time employees, by sex and National Occupational Classification for Statistics (NOC-S), Canada, annual
279-0032	Work absence statistics of full-time employees, by sex and age group, Canada, annual
279-0033	Work absence statistics of full-time employees, by sex and presence of children, Canada, annual
279-0034	Work absence statistics of full-time employees, by sex and job tenure, Canada, annual
279-0035	Work absence statistics of full-time employees, by sex and public and private sector, Canada, annual
279-0036	Work absence statistics of full-time employees, by sex and education, Canada, annual
279-0037	Work absence statistics of full-time employees, by sex and workplace size, Canada, annual
279-0038	Work absence statistics of full-time employees, by sex and job status, Canada, annual
279-0039	Work absence statistics of full-time employees, by sex and union coverage, Canada, annual

282-0001	Labour force survey estimates (LFS), by sex and detailed age group, unadjusted for seasonality, monthly
282-0002	Labour force survey estimates (LFS), by sex and detailed age group, annual
282-0003	Labour force survey estimates (LFS), by educational attainment, sex and age group, unadjusted for seasonality, monthly
282-0004	Labour force survey estimates (LFS), by educational attainment, sex and age group, annual
282-0005	Labour force survey estimates (LFS), by full- and part-time students during school months, sex and age group, unadjusted for seasonality, monthly
282-0006	Labour force survey estimates (LFS), by students during summer months, sex and age group, unadjusted for seasonality, monthly
282-0007	Labour force survey estimates (LFS), by North American Industry Classification System (NAICS), sex and age group, unadjusted for seasonality, monthly
282-0008	Labour force survey estimates (LFS), by North American Industry Classification System (NAICS), sex and age group, annual
282-0009	Labour force survey estimates (LFS), by National Occupational Classification for Statistics (NOC-S) and sex, unadjusted for seasonality, monthly
282-0010	Labour force survey estimates (LFS), by National Occupational Classification for Statistics (NOC-S) and sex, annual
282-0011	Labour force survey estimates (LFS), employment by class of worker, North American Industry Classification System (NAICS) and sex, unadjusted for seasonality, monthly
282-0012	Labour force survey estimates (LFS), employment by class of worker, North American Industry Classification System (NAICS) and sex, annual
282-0013	Labour force survey estimates (LFS), part-time employment by reason for part-time work, sex and age group, unadjusted for seasonality, monthly
282-0014	Labour force survey estimates (LFS), part-time employment by reason for part-time work, sex and age group, annual
282-0015	Labour force survey estimates (LFS), by usual hours worked, main or all jobs, sex and age group, unadjusted for seasonality, monthly
282-0016	Labour force survey estimates (LFS), by usual hours worked, main or all jobs, sex and age group, annual
282-0017	Labour force survey estimates (LFS), by actual hours worked, main or all jobs, sex and age group, unadjusted for seasonality, monthly
282-0018	Labour force survey estimates (LFS), by actual hours worked, main or all jobs, sex and age group, annual
282-0019	Labour force survey estimates (LFS), by usual hours worked, class of worker, North American Industry Classification System (NAICS) and sex, unadjusted for seasonality, monthly

282-0020	Labour force survey estimates (LFS), by usual hours worked, class of worker, North American Industry Classification System (NAICS) and sex, annual
282-0021	Labour force survey estimates (LFS), by actual hours worked, class of worker, North American Industry Classification System (NAICS) and sex, unadjusted for seasonality, monthly
282-0022	Labour force survey estimates (LFS), by actual hours worked, class of worker, North American Industry Classification System (NAICS) and sex, annual
282-0023	Labour force survey estimates (LFS), by usual hours worked, class of worker, National Occupational Classification for Statistics (NOC-S) and sex, unadjusted for seasonality, monthly
282-0024	Labour force survey estimates (LFS), by usual hours worked, class of worker, National Occupational Classification for Statistics (NOC-S) and sex, annual
282-0025	Labour force survey estimates (LFS), by actual hours worked, class of worker, National Occupational Classification for Statistics (NOC-S) and sex, unadjusted for seasonality, monthly
282-0026	Labour force survey estimates (LFS), by actual hours worked, class of worker, National Occupational Classification for Statistics (NOC-S) and sex, annual
282-0027	Labour force survey estimates (LFS), by total and average usual and actual hours worked, main or all jobs, type of work, sex and age group, unadjusted for seasonality, monthly
282-0028	Labour force survey estimates (LFS), by total and average usual and actual hours worked, main or all jobs, type of work, sex and age group, annual
282-0029	Labour force survey estimates (LFS), average days lost for personal reasons per full-time employee by North American Industry Classification System (NAICS), sex and age group, annual
282-0030	Labour force survey estimates (LFS), average days lost for personal reasons per full-time employee by National Occupational Classification for Statistics (NOC-S), sex and age group, annual
282-0031	Labour force survey estimates (LFS), multiple jobholders by North American Industry Classification System (NAICS), sex and age group, annual
282-0032	Labour force survey estimates (LFS), multiple jobholders by North American Industry Classification System (NAICS), sex and age group, unadjusted for seasonality, monthly
282-0033	Labour force survey estimates (LFS), multiple jobholders by National Occupational Classification for Statistics (NOC-S), sex and age group, unadjusted for seasonality, monthly
282-0034	Labour force survey estimates (LFS), multiple jobholders by National Occupational Classification for Statistics (NOC-S), sex and age group, annual
282-0035	Labour force survey estimates (LFS), multiple jobholders by usual hours worked at main and all jobs, unadjusted for seasonality, monthly
282-0036	Labour force survey estimates (LFS), multiple jobholders by usual hours worked at main and all jobs, annual
282-0037	Labour force survey estimates (LFS), job tenure by type of work, sex and age group, unadjusted for seasonality, monthly

282-0038	Labour force survey estimates (LFS), job tenure by type of work, sex and age group, annual
282-0039	Labour force survey estimates (LFS), job tenure by National Occupational Classification for Statistics (NOC-S) and sex, unadjusted for seasonality, monthly
282-0040	Labour force survey estimates (LFS), job tenure by National Occupational Classification for Statistics (NOC-S) and sex, annual
282-0041	Labour force survey estimates (LFS), job tenure by North American Industry Classification System (NAICS) and sex, unadjusted for seasonality, monthly
282-0042	Labour force survey estimates (LFS), job tenure by North American Industry Classification System (NAICS) and sex, annual
282-0047	Labour force survey estimates (LFS), duration of unemployment by sex and age group, unadjusted for seasonality, monthly
282-0048	Labour force survey estimates (LFS), duration of unemployment by sex and age group, annual
282-0049	Labour force survey estimates (LFS), unemployment by type of work sought and search method, sex and age group, unadjusted for seasonality, monthly
282-0050	Labour force survey estimates (LFS), unemployment by type of work sought and search method, sex and age group, annual
282-0051	Labour force survey estimates (LFS), retirement age by class of worker and sex, annual
282-0069	Labour force survey estimates (LFS), wages of employees by type of work, National Occupational Classification for Statistics (NOC-S), sex and age group, unadjusted for seasonality, monthly
282-0070	Labour force survey estimates (LFS), wages of employees by type of work, National Occupational Classification for Statistics (NOC-S), sex and age group, annual
282-0071	Labour force survey estimates (LFS), wages of employees by type of work, North American Industry Classification System (NAICS), sex and age group, unadjusted for seasonality, monthly
282-0072	Labour force survey estimates (LFS), wages of employees by type of work, North American Industry Classification System (NAICS), sex and age group, annual
282-0073	Labour force survey estimates (LFS), wages of employees by job permanence, union coverage, sex and age group, unadjusted for seasonality, monthly
282-0074	Labour force survey estimates (LFS), wages of employees by job permanence, union coverage, sex and age group, annual
282-0075	Labour force survey estimates (LFS), employees by establishment size, North American Industry Classification System (NAICS), sex and age group, unadjusted for seasonality, monthly
282-0076	Labour force survey estimates (LFS), employees by establishment size, North American Industry Classification System (NAICS), sex and age group, annual
282-0077	Labour force survey estimates (LFS), employees by union coverage, North American Industry Classification System (NAICS), sex and age group, unadjusted for seasonality, monthly

282-0078	Labour force survey estimates (LFS), employees by union coverage, North American Industry Classification System (NAICS), sex and age group, annual
282-0079	Labour force survey estimates (LFS), employees by job permanency, North American Industry Classification System (NAICS), sex and age group, unadjusted for seasonality, monthly
282-0080	Labour force survey estimates (LFS), employees by job permanency, North American Industry Classification System (NAICS), sex and age group, annual
282-0081	Labour force survey estimates (LFS), employees working overtime (weekly) by National Occupational Classification for Statistics (NOC-S), sex and age group, unadjusted for seasonality, monthly
282-0082	Labour force survey estimates (LFS), employees working overtime (weekly) by National Occupational Classification for Statistics (NOC-S), sex and age group, annual
282-0083	Labour force survey estimates (LFS), employees working overtime (weekly) by North American Industry Classification System (NAICS), sex and age group, unadjusted for seasonality, monthly
282-0084	Labour force survey estimates (LFS), employees working overtime (weekly) by North American Industry Classification System (NAICS), sex and age group, annual
282-0085	Labour force survey estimates (LFS), supplementary unemployment rates by sex and age group, unadjusted for seasonality, monthly
282-0086	Labour force survey estimates (LFS), supplementary unemployment rates by sex and age group, annual
282-0087	Labour force survey estimates (LFS), by sex and age group, seasonally adjusted and unadjusted, monthly
282-0088	Labour force survey estimates (LFS), employment by North American Industry Classification System (NAICS), seasonally adjusted and unadjusted, monthly
282-0089	Labour force survey estimates (LFS), employment by class of worker and sex, seasonally adjusted and unadjusted, monthly
282-0092	Labour force survey estimates (LFS), actual hours worked at main job by North American Industry Classification System (NAICS), seasonally adjusted, monthly
282-0093	Labour force survey estimates (LFS), employment by National Occupational Classification for Statistics (NOC-S), seasonally adjusted, monthly
282-0094	Labour force survey estimates (LFS), by North American Industry Classification System (NAICS), Canada, seasonally adjusted, monthly
282-0095	Labour force survey estimates (LFS), by full- and part-time students during school months, sex and age group, annual
282-0100	Labour force survey estimates (LFS), by territories, sex and age group, 3-month moving average, seasonally adjusted and unadjusted, monthly
282-0101	Labour force survey estimates (LFS), by immigrant status, age group, Canada, regions, provinces and Montreal, Toronto, Vancouver census metropolitan areas, 3-month moving average, unadjusted for seasonality, monthly

282-0102	Labour force survey estimates (LFS), by immigrant status, age group, Canada, regions, provinces and Montreal, Toronto, Vancouver census metropolitan areas, annual
282-0103	Labour force survey estimates (LFS), by immigrant status, sex and detailed age group, Canada, 3-month moving average, unadjusted for seasonality, monthly
282-0104	Labour force survey estimates (LFS), by immigrant status, sex and detailed age group, Canada, annual
282-0105	Labour force survey estimates (LFS), by immigrant status, educational attainment, sex and age group, Canada, 3-month moving average, unadjusted for seasonality, monthly
282-0106	Labour force survey estimates (LFS), by immigrant status, educational attainment, sex and age group, Canada, annual
282-0107	Labour force survey estimates (LFS), by immigrant status, country of birth, sex and age group, Canada, 3-month moving average, unadjusted for seasonality, monthly
282-0108	Labour force survey estimates (LFS), by immigrant status, country of birth, sex and age group, Canada, annual
282-0122	Labour force survey estimates (LFS), by provinces and economic regions based on 2011 census boundaries, 3-month moving average, unadjusted for seasonality, monthly
282-0123	Labour force survey estimates (LFS), by provinces, territories and economic regions based on 2011 census boundaries, annual
282-0124	Labour force survey estimates (LFS), employment by economic region based on 2011 census boundaries and North American Industry Classification System (NAICS), 3-month moving average, unadjusted for seasonality, monthly
282-0125	Labour force survey estimates (LFS), employment by economic region based on 2011 census boundaries and North American Industry Classification System (NAICS), annual
282-0126	Labour force survey estimates (LFS), employment by economic region based on 2011 census boundaries and National Occupational Classification for Statistics (NOC-S), 3-month moving average, unadjusted for seasonality, monthly
282-0127	Labour force survey estimates (LFS), employment by economic region based on 2011 census boundaries and National Occupational Classification for Statistics (NOC-S), annual
282-0128	Labour force survey estimates (LFS), by census metropolitan area based on 2011 census boundaries, sex and age group, 3-month moving average, unadjusted for seasonality, monthly
282-0129	Labour force survey estimates (LFS), by census metropolitan area based on 2011 census boundaries, sex and age group, annual
282-0130	Labour force survey estimates (LFS), employment by census metropolitan area based on 2011 census boundaries and North American Industry Classification System (NAICS), 3-month moving average, unadjusted for seasonality, monthly
282-0131	Labour force survey estimates (LFS), employment by census metropolitan area based on 2011 census boundaries and North American Industry Classification System (NAICS), annual

282-0132	Labour force survey estimates (LFS), employment by census metropolitan area based on 2011 census boundaries and National Occupational Classification for Statistics (NOC-S), 3-month moving average, unadjusted for seasonality, monthly
282-0133	Labour force survey estimates (LFS), employment by census metropolitan area based on 2011 census boundaries and National Occupational Classification for Statistics (NOC-S), annual
282-0134	Labour force survey estimates (LFS), by selected census agglomerations based on 2011 census boundaries, annual
282-0135	Labour force survey estimates (LFS), by census metropolitan area based on 2011 census boundaries, 3-month moving average, seasonally adjusted and unadjusted, monthly
282-0136	Labour force survey estimates (LFS), by Montréal, Toronto and Vancouver census metropolitan areas based on 2011 census boundaries, seasonally adjusted and unadjusted, monthly
282-0137	Labour force survey estimates (LFS), by population centres and rural areas based on 2011 census boundaries, sex and age group, unadjusted for seasonality, monthly
282-0138	Labour force survey estimates (LFS), by population centres and rural areas based on 2011 census boundaries, sex and age group, annual
282-0139	Labour force survey estimates (LFS), employment by population centres and rural areas based on 2011 census boundaries, class of worker and North American Industry Classification System (NAICS), unadjusted for seasonality, monthly
282-0140	Labour force survey estimates (LFS), employment by population centres and rural areas based on 2011 census boundaries, class of worker and North American Industry Classification System (NAICS), annual
282-0200	Labour force survey estimates (LFS), weekly wage distributions of employees by type of work, North American Industry Classification System (NAICS), and sex, unadjusted for seasonality, monthly
282-0201	Labour force survey estimates (LFS), weekly wage distributions of employees by type of work, North American Industry Classification System (NAICS), and sex, annual
282-0202	Labour force survey estimates (LFS), weekly wage distributions of employees by type of work, National Occupational Classification for Statistics (NOC-S), and sex, unadjusted for seasonality, monthly
282-0203	Labour force survey estimates (LFS), weekly wage distributions of employees by type of work, National Occupational Classification for Statistics (NOC-S), and sex, annual
282-0204	Labour force survey estimates (LFS), hourly wage distributions of employees by type of work, North American Industry Classification System (NAICS), and sex, unadjusted for seasonality, monthly
282-0205	Labour force survey estimates (LFS), hourly wage distributions of employees by type of work, North American Industry Classification System (NAICS), and sex, annual
282-0206	Labour force survey estimates (LFS), hourly wage distribution of employees by type of work, National Occupational Classification for Statistics (NOC-S), and sex, unadjusted for seasonality, monthly

282-0207	Labour force survey estimates (LFS), hourly wage distribution of employees by type of work, National Occupational Classification for Statistics (NOC-S), and sex, annual
282-0208	Labour force survey estimates (LFS), by educational degree, sex and age group, unadjusted for seasonality, monthly
282-0209	Labour force survey estimates (LFS), by educational degree, sex and age group, annual
282-0210	Labour force survey estimates (LFS), by family type and family age composition, unadjusted for seasonality, monthly
282-0211	Labour force survey estimates (LFS), by family type and family age composition, annual
282-0212	Labour force survey estimates (LFS), hours lost by employees by reason absent full and part week and sex, unadjusted for seasonality, monthly
282-0213	Labour force survey estimates (LFS), hours lost by employees by reason absent full and part week and sex, annual
282-0214	Labour force survey estimates (LFS), activity prior to unemployment by sex and age group, unadjusted for seasonality, monthly
282-0215	Labour force survey estimates (LFS), activity prior to unemployment, by sex and age group, annual
282-0216	Labour force survey estimates (LFS), reason for leaving job during previous year by sex and age group, unadjusted for seasonality, monthly
282-0217	Labour force survey estimates (LFS), reason for leaving job during previous year by sex and age group, annual
282-0218	Labour force survey estimates (LFS), reason for not looking for work, by sex and age group, unadjusted for seasonality, monthly
282-0219	Labour force survey estimates (LFS), reason for not looking for work, by sex and age group, annual
282-0220	Labour Force Survey estimates (LFS), employees by union status, sex and age group, Canada and provinces, annual
282-0221	Labour Force Survey estimates (LFS), employees by union status, sex, age group and education level, Canada, annual
282-0222	Labour Force Survey estimates (LFS), employees by union status and National Occupational Classification (NOC-S), Canada, annual
282-0223	Labour Force Survey estimates (LFS), employees by union status, North American Industry Classification System (NAICS) and sex, Canada, annual
282-0224	Labour Force Survey estimates (LFS), employees by union status, establishment size, job tenure, type of work and job permanency, Canada, annual
282-0225	Labour Force Survey estimates (LFS), average weekly earnings, average hourly wage rate and average usual weekly hours by union status and type of work, Canada and provinces, annual

Selected surveys from Statistics Canada

3701	Labour Force Survey
------	---------------------

Selected summary tables from Statistics Canada

- *Average hourly wages of employees by selected characteristics and occupation, unadjusted data, by province (monthly)*
- *Days lost per worker by industry and sex*
- *People employed, by educational attainment*
- *Reasons for part-time work by sex and age group*
- *Self-employment, historical summary*
- *Employment by age, sex, type of work, class of worker and province (monthly)*
- *Actual hours worked per week by industry, seasonally adjusted (monthly)*
- *Labour force characteristics, unadjusted, by territory (3 month moving average)*
- *Employment by industry and sex*
- *Full-time and part-time employment by sex and age group*
- *Labour force characteristics by age and sex*
- *Labour force characteristics, population 15 years and older, by economic region, by province*
- *Labour force characteristics by immigrant status of population aged 25 to 54, and by educational attainment*
- *Labour force characteristics by immigrant status, by detailed age group*
- *Labour force characteristics by immigrant status of population aged 25 to 54, by country of birth*
- *Days lost per worker due to illness or disability, by sex, by province*
- *Employment by industry*
- *Labour force characteristics, seasonally adjusted, by province (monthly)*
- *Labour force characteristics, unadjusted, by province (monthly)*
- *Labour force characteristics, unadjusted, by economic region (3 month moving average)*
- *Labour force, employment and unemployment, levels and rates, by province*
- *Economic indicators, by province and territory (monthly and quarterly)*

- *Days lost per worker by reason, by provinces*
- *Labour force characteristics, population 15 years and older, by census metropolitan area*
- *Labour force characteristics, seasonally adjusted, by census metropolitan area (3 month moving average)*
- *Labour force characteristics, unadjusted, by census metropolitan area (3 month moving average)*
- *Distribution of employed people, by industry, by province*
- *Employment by major industry group, seasonally adjusted, by province (monthly)*
- *Labour force characteristics*
- *Canada: Economic and financial data*
- *Labour force characteristics by sex and age group*
- *Labour force characteristics by immigrant status of population aged 25 to 54, by province*
- *Latest statistics (monthly)*

Statistical tables

Table 1
Labour force characteristics by age and sex, Canada, seasonally adjusted

	December 2014	January 2015	S.E.	Change from			Percent change from		
				last month	last December	twelve months ago	last month	last December	twelve months ago
in thousands (except rates)									
15 years and over, both sexes									
Population	29,116.6	29,139.2	...	22.6	22.6	305.7	0.1	0.1	1.1
Labour force	19,127.7	19,148.4	29.4	20.7	20.7	56.2	0.1	0.1	0.3
Employment	17,851.5	17,886.9	28.8	35.4	35.4	127.6	0.2	0.2	0.7
Employment full-time	14,466.0	14,454.2	39.6	-11.8	-11.8	107.8	-0.1	-0.1	0.8
Employment part-time	3,385.5	3,432.7	36.4	47.2	47.2	19.9	1.4	1.4	0.6
Unemployment	1,276.2	1,261.5	24.6	-14.7	-14.7	-71.4	-1.2	-1.2	-5.4
Participation rate	65.7	65.7	0.1	0.0	0.0	-0.5
Unemployment rate	6.7	6.6	0.1	-0.1	-0.1	-0.4
Employment rate	61.3	61.4	0.1	0.1	0.1	-0.2
Part-time rate	19.0	19.2	0.2	0.2	0.2	0.0
15 to 24 years, both sexes									
Population	4,455.0	4,451.4	...	-3.6	-3.6	-40.2	-0.1	-0.1	-0.9
Labour force	2,875.8	2,860.5	17.1	-15.3	-15.3	4.4	-0.5	-0.5	0.2
Employment	2,488.9	2,495.6	15.7	6.7	6.7	30.3	0.3	0.3	1.2
Employment full-time	1,289.5	1,286.5	19.0	-3.0	-3.0	26.2	-0.2	-0.2	2.1
Employment part-time	1,199.3	1,209.1	19.8	9.8	9.8	4.1	0.8	0.8	0.3
Unemployment	387.0	364.9	14.6	-22.1	-22.1	-26.0	-5.7	-5.7	-6.7
Participation rate	64.6	64.3	0.4	-0.3	-0.3	0.7
Unemployment rate	13.5	12.8	0.5	-0.7	-0.7	-0.9
Employment rate	55.9	56.1	0.4	0.2	0.2	1.2
Part-time rate	48.2	48.4	0.7	0.3	0.3	-0.4
25 years and over, men									
Population	12,061.6	12,074.8	...	13.2	13.2	169.0	0.1	0.1	1.4
Labour force	8,631.7	8,636.1	15.5	4.4	4.4	46.2	0.1	0.1	0.5
Employment	8,143.5	8,137.5	16.5	-6.0	-6.0	79.1	-0.1	-0.1	1.0
Employment full-time	7,502.2	7,455.4	22.3	-46.8	-46.8	35.4	-0.6	-0.6	0.5
Employment part-time	641.3	682.1	18.4	40.8	40.8	43.7	6.4	6.4	6.8
Unemployment	488.2	498.6	14.5	10.4	10.4	-32.9	2.1	2.1	-6.2
Participation rate	71.6	71.5	0.1	-0.1	-0.1	-0.6
Unemployment rate	5.7	5.8	0.2	0.1	0.1	-0.4
Employment rate	67.5	67.4	0.1	-0.1	-0.1	-0.3
Part-time rate	7.9	8.4	0.2	0.5	0.5	0.5
25 years and over, women									
Population	12,599.9	12,613.1	...	13.2	13.2	177.0	0.1	0.1	1.4
Labour force	7,620.2	7,651.7	16.7	31.5	31.5	5.5	0.4	0.4	0.1
Employment	7,219.2	7,253.7	16.3	34.5	34.5	18.1	0.5	0.5	0.3
Employment full-time	5,674.2	5,712.2	25.3	38.0	38.0	46.0	0.7	0.7	0.8
Employment part-time	1,544.9	1,541.5	24.0	-3.4	-3.4	-28.0	-0.2	-0.2	-1.8
Unemployment	401.0	398.0	13.4	-3.0	-3.0	-12.5	-0.7	-0.7	-3.0
Participation rate	60.5	60.7	0.1	0.2	0.2	-0.8
Unemployment rate	5.3	5.2	0.2	-0.1	-0.1	-0.2
Employment rate	57.3	57.5	0.1	0.2	0.2	-0.7
Part-time rate	21.4	21.3	0.3	-0.1	-0.1	-0.4
25 to 54 years, both sexes									
Population	14,569.4	14,567.7	...	-1.7	-1.7	31.8	0.0	0.0	0.2
Labour force	12,561.9	12,567.0	22.5	5.1	5.1	-1.9	0.0	0.0	0.0
Employment	11,876.3	11,877.6	23.9	1.3	1.3	37.0	0.0	0.0	0.3
Unemployment	685.6	689.3	18.1	3.7	3.7	-39.1	0.5	0.5	-5.4
Participation rate	86.2	86.3	0.2	0.1	0.1	-0.2
Unemployment rate	5.5	5.5	0.1	0.0	0.0	-0.3
Employment rate	81.5	81.5	0.2	0.0	0.0	0.0
25 to 54 years, men									
Population	7,256.4	7,255.5	...	-0.9	-0.9	12.1	0.0	0.0	0.2
Labour force	6,591.4	6,579.1	14.4	-12.3	-12.3	6.3	-0.2	-0.2	0.1
Employment	6,222.2	6,208.0	16.2	-14.2	-14.2	36.8	-0.2	-0.2	0.6
Unemployment	369.2	371.0	13.4	1.8	1.8	-30.6	0.5	0.5	-7.6
Participation rate	90.8	90.7	0.2	-0.1	-0.1	0.0
Unemployment rate	5.6	5.6	0.2	0.0	0.0	-0.5
Employment rate	85.7	85.6	0.2	-0.1	-0.1	0.4

See notes at the end of the table.

Table 1 – continued

Labour force characteristics by age and sex, Canada, seasonally adjusted

	December 2014	January 2015	S.E.	Change from			Percent change from		
				last month	last December	twelve months ago	last month	last December	twelve months ago
in thousands (except rates)									
25 to 54 years, women									
Population	7,313.0	7,312.3	...	-0.7	-0.7	19.8	0.0	0.0	0.3
Labour force	5,970.5	5,987.9	16.4	17.4	17.4	-8.2	0.3	0.3	-0.1
Employment	5,654.1	5,669.6	16.6	15.5	15.5	0.2	0.3	0.3	0.0
Unemployment	316.4	318.3	12.3	1.9	1.9	-8.4	0.6	0.6	-2.6
Participation rate	81.6	81.9	0.2	0.3	0.3	-0.3
Unemployment rate	5.3	5.3	0.2	0.0	0.0	-0.1
Employment rate	77.3	77.5	0.2	0.2	0.2	-0.2
55 years and over, both sexes									
Population	10,092.1	10,120.1	...	28.0	28.0	314.1	0.3	0.3	3.2
Labour force	3,690.0	3,720.9	18.1	30.9	30.9	53.8	0.8	0.8	1.5
Employment	3,486.4	3,513.6	18.1	27.2	27.2	60.2	0.8	0.8	1.7
Unemployment	203.6	207.2	9.6	3.6	3.6	-6.5	1.8	1.8	-3.0
Participation rate	36.6	36.8	0.2	0.2	0.2	-0.6
Unemployment rate	5.5	5.6	0.3	0.1	0.1	-0.2
Employment rate	34.5	34.7	0.2	0.2	0.2	-0.5
55 years and over, men									
Population	4,805.2	4,819.3	...	14.1	14.1	156.8	0.3	0.3	3.4
Labour force	2,040.3	2,057.1	12.0	16.8	16.8	40.0	0.8	0.8	2.0
Employment	1,921.3	1,929.5	12.1	8.2	8.2	42.3	0.4	0.4	2.2
Unemployment	119.0	127.6	7.1	8.6	8.6	-2.3	7.2	7.2	-1.8
Participation rate	42.5	42.7	0.3	0.2	0.2	-0.6
Unemployment rate	5.8	6.2	0.3	0.4	0.4	-0.2
Employment rate	40.0	40.0	0.3	0.0	0.0	-0.5
55 years and over, women									
Population	5,286.9	5,300.8	...	13.9	13.9	157.2	0.3	0.3	3.1
Labour force	1,649.7	1,663.8	12.4	14.1	14.1	13.8	0.9	0.9	0.8
Employment	1,565.1	1,584.1	12.3	19.0	19.0	17.8	1.2	1.2	1.1
Unemployment	84.6	79.7	6.2	-4.9	-4.9	-4.1	-5.8	-5.8	-4.9
Participation rate	31.2	31.4	0.2	0.2	0.2	-0.7
Unemployment rate	5.1	4.8	0.4	-0.3	-0.3	-0.3
Employment rate	29.6	29.9	0.2	0.3	0.3	-0.6

1. Average standard error of change in two consecutive months (see "Sampling Errors" in Data Quality for further explanations).

Note(s): Related CANSIM table 282-0087. The sum of individual categories may not always add to the total due to rounding.

Table 2
Employment by class of worker and industry, Canada, seasonally adjusted

	December 2014	January 2015	S.E. ¹	Change from			Percent change from		
				last month	last December	twelve months ago	last month	last December	twelve months ago
in thousands									
Class of worker									
Employees	15,126.3	15,120.6	35.5	-5.7	-5.7	68.8	0.0	0.0	0.5
Self-employed ²	2,725.2	2,766.3	26.0	41.1	41.1	58.8	1.5	1.5	2.2
Public/private sector employees									
Public sector employees	3,561.4	3,554.7	25.7	-6.7	-6.7	19.0	-0.2	-0.2	0.5
Private sector employees	11,564.9	11,566.0	38.3	1.1	1.1	50.0	0.0	0.0	0.4
Industry	17,851.5	17,886.9	28.8	35.4	35.4	127.6	0.2	0.2	0.7
Goods-producing sector	3,907.5	3,917.2	26.4	9.7	9.7	1.0	0.2	0.2	0.0
Agriculture	303.3	304.8	7.7	1.5	1.5	-9.1	0.5	0.5	-2.9
Forestry, fishing, mining, quarrying, oil and gas extraction ³	377.5	368.7	7.8	-8.8	-8.8	-0.9	-2.3	-2.3	-0.2
Utilities	138.3	139.8	5.1	1.5	1.5	-1.3	1.1	1.1	-0.9
Construction	1,388.5	1,393.2	17.9	4.7	4.7	30.1	0.3	0.3	2.2
Manufacturing	1,699.9	1,710.6	19.2	10.7	10.7	-17.9	0.6	0.6	-1.0
Services-producing sector	13,943.9	13,969.6	34.4	25.7	25.7	126.5	0.2	0.2	0.9
Trade	2,715.5	2,711.3	24.1	-4.2	-4.2	-9.7	-0.2	-0.2	-0.4
Transportation and warehousing	904.2	898.3	14.8	-5.9	-5.9	1.6	-0.7	-0.7	0.2
Finance, insurance, real estate and leasing	1,093.8	1,090.3	16.8	-3.5	-3.5	-15.2	-0.3	-0.3	-1.4
Professional, scientific and technical services	1,328.8	1,351.2	18.9	22.4	22.4	22.2	1.7	1.7	1.7
Business, building and other support services	751.2	754.3	14.0	3.1	3.1	31.4	0.4	0.4	4.3
Educational services	1,256.4	1,262.5	16.6	6.1	6.1	49.1	0.5	0.5	4.0
Health care and social assistance	2,245.2	2,253.0	19.8	7.8	7.8	58.1	0.3	0.3	2.6
Information, culture and recreation	760.1	761.0	14.9	0.9	0.9	-6.0	0.1	0.1	-0.8
Accommodation and food services	1,216.2	1,218.2	17.2	2.0	2.0	24.5	0.2	0.2	2.1
Other services	762.6	767.8	13.4	5.2	5.2	-29.5	0.7	0.7	-3.7
Public administration	910.1	901.8	13.0	-8.3	-8.3	0.0	-0.9	-0.9	0.0

1. Average standard error of change in two consecutive months (see "Sampling Errors" in Data Quality for further explanations).

2. Includes both incorporated and unincorporated working owners, self-employed persons who do not have a business and persons working in a family business without pay.

3. Also referred to as Natural resources.

Note(s): Related CANSIM Tables 282-0088, 282-0089. The sum of individual categories may not always add to the total due to rounding.

Table 3
Labour force characteristics by province, seasonally adjusted

	December 2014	January 2015	S.E.	Change from			Percent change from		
				last month	last December	twelve months ago	last month	last December	twelve months ago
in thousands (except rates)									
Newfoundland and Labrador									
Population	443.3	443.4	...	0.1	0.1	-1.6	0.0	0.0	-0.4
Labour force	268.7	268.5	1.9	-0.2	-0.2	-7.0	-0.1	-0.1	-2.5
Employment	237.1	237.9	2.0	0.8	0.8	-3.8	0.3	0.3	-1.6
Employment full-time	203.6	200.9	2.4	-2.7	-2.7	-4.2	-1.3	-1.3	-2.0
Employment part-time	33.5	37.0	1.9	3.5	3.5	0.5	10.4	10.4	1.4
Unemployment	31.6	30.6	1.8	-1.0	-1.0	-3.3	-3.2	-3.2	-9.7
Participation rate	60.6	60.6	0.4	0.0	0.0	-1.3
Unemployment rate	11.8	11.4	0.7	-0.4	-0.4	-0.9
Employment rate	53.5	53.7	0.5	0.2	0.2	-0.6
Prince Edward Island									
Population	120.7	120.8	...	0.1	0.1	0.4	0.1	0.1	0.3
Labour force	82.2	82.5	0.6	0.3	0.3	-0.8	0.4	0.4	-1.0
Employment	73.1	74.1	0.7	1.0	1.0	-0.1	1.4	1.4	-0.1
Employment full-time	62.0	62.4	0.9	0.4	0.4	0.8	0.6	0.6	1.3
Employment part-time	11.1	11.7	0.7	0.6	0.6	-0.9	5.4	5.4	-7.1
Unemployment	9.1	8.4	0.7	-0.7	-0.7	-0.7	-7.7	-7.7	-7.7
Participation rate	68.1	68.3	0.5	0.2	0.2	-0.9
Unemployment rate	11.1	10.2	0.8	-0.9	-0.9	-0.7
Employment rate	60.6	61.3	0.5	0.7	0.7	-0.3
Nova Scotia									
Population	784.1	784.1	...	0.0	0.0	1.7	0.0	0.0	0.2
Labour force	492.1	492.0	2.6	-0.1	-0.1	0.9	0.0	0.0	0.2
Employment	451.0	450.9	2.6	-0.1	-0.1	3.4	0.0	0.0	0.8
Employment full-time	369.0	369.2	3.5	0.2	0.2	7.6	0.1	0.1	2.1
Employment part-time	82.0	81.7	3.1	-0.3	-0.3	-4.1	-0.4	-0.4	-4.8
Unemployment	41.1	41.1	2.4	0.0	0.0	-2.6	0.0	0.0	-5.9
Participation rate	62.8	62.7	0.3	-0.1	-0.1	-0.1
Unemployment rate	8.4	8.4	0.5	0.0	0.0	-0.5
Employment rate	57.5	57.5	0.3	0.0	0.0	0.3
New Brunswick									
Population	621.7	622.0	...	0.3	0.3	-0.4	0.0	0.0	-0.1
Labour force	390.2	394.0	2.3	3.8	3.8	-1.0	1.0	1.0	-0.3
Employment	351.2	354.6	2.4	3.4	3.4	-0.6	1.0	1.0	-0.2
Employment full-time	295.5	298.9	3.0	3.4	3.4	-3.4	1.2	1.2	-1.1
Employment part-time	55.7	55.7	2.5	0.0	0.0	2.8	0.0	0.0	5.3
Unemployment	39.0	39.4	2.1	0.4	0.4	-0.4	1.0	1.0	-1.0
Participation rate	62.8	63.3	0.4	0.5	0.5	-0.2
Unemployment rate	10.0	10.0	0.5	0.0	0.0	-0.1
Employment rate	56.5	57.0	0.4	0.5	0.5	-0.1
Quebec									
Population	6,822.3	6,825.0	...	2.7	2.7	43.8	0.0	0.0	0.6
Labour force	4,389.5	4,400.7	15.0	11.2	11.2	-10.6	0.3	0.3	-0.2
Employment	4,061.1	4,077.1	14.8	16.0	16.0	-3.0	0.4	0.4	-0.1
Employment full-time	3,261.7	3,257.3	20.1	-4.4	-4.4	0.6	-0.1	-0.1	0.0
Employment part-time	799.4	819.8	18.5	20.4	20.4	-3.6	2.6	2.6	-0.4
Unemployment	328.4	323.6	13.1	-4.8	-4.8	-7.6	-1.5	-1.5	-2.3
Participation rate	64.3	64.5	0.2	0.2	0.2	-0.6
Unemployment rate	7.5	7.4	0.3	-0.1	-0.1	-0.1
Employment rate	59.5	59.7	0.2	0.2	0.2	-0.5
Ontario									
Population	11,320.4	11,329.1	...	8.7	8.7	112.8	0.1	0.1	1.0
Labour force	7,407.2	7,393.3	20.3	-13.9	-13.9	1.7	-0.2	-0.2	0.0
Employment	6,885.0	6,886.3	19.4	1.3	1.3	44.4	0.0	0.0	0.6
Employment full-time	5,540.1	5,516.9	26.9	-23.2	-23.2	-19.1	-0.4	-0.4	-0.3
Employment part-time	1,344.9	1,369.3	24.6	24.4	24.4	63.5	1.8	1.8	4.9
Unemployment	522.2	507.1	17.1	-15.1	-15.1	-42.6	-2.9	-2.9	-7.7
Participation rate	65.4	65.3	0.2	-0.1	-0.1	-0.6
Unemployment rate	7.0	6.9	0.2	-0.1	-0.1	-0.5
Employment rate	60.8	60.8	0.2	0.0	0.0	-0.2

See notes at the end of the table.

Table 3 – continued

Labour force characteristics by province, seasonally adjusted

	December 2014	January 2015	S.E.	Change from			Percent change from		
				last month	last December	twelve months ago	last month	last December	twelve months ago
in thousands (except rates)									
Manitoba									
Population	981.5	982.5	...	1.0	1.0	11.6	0.1	0.1	1.2
Labour force	670.0	675.3	2.7	5.3	5.3	13.1	0.8	0.8	2.0
Employment	633.8	635.0	2.7	1.2	1.2	9.8	0.2	0.2	1.6
Employment full-time	514.9	518.1	3.8	3.2	3.2	13.1	0.6	0.6	2.6
Employment part-time	118.9	116.9	3.5	-2.0	-2.0	-3.2	-1.7	-1.7	-2.7
Unemployment	36.2	40.3	2.1	4.1	4.1	3.2	11.3	11.3	8.6
Participation rate	68.3	68.7	0.3	0.4	0.4	0.5
Unemployment rate	5.4	6.0	0.3	0.6	0.6	0.4
Employment rate	64.6	64.6	0.3	0.0	0.0	0.2
Saskatchewan									
Population	857.0	857.8	...	0.8	0.8	11.1	0.1	0.1	1.3
Labour force	597.3	593.1	2.5	-4.2	-4.2	0.6	-0.7	-0.7	0.1
Employment	575.0	566.6	2.6	-8.4	-8.4	-0.4	-1.5	-1.5	-0.1
Employment full-time	479.7	468.2	3.5	-11.5	-11.5	-1.4	-2.4	-2.4	-0.3
Employment part-time	95.3	98.4	3.2	3.1	3.1	1.1	3.3	3.3	1.1
Unemployment	22.3	26.5	1.7	4.2	4.2	0.9	18.8	18.8	3.5
Participation rate	69.7	69.1	0.3	-0.6	-0.6	-0.9
Unemployment rate	3.7	4.5	0.3	0.8	0.8	0.2
Employment rate	67.1	66.1	0.3	-1.0	-1.0	-0.9
Alberta									
Population	3,317.2	3,323.0	...	5.8	5.8	84.3	0.2	0.2	2.6
Labour force	2,413.4	2,423.5	9.3	10.1	10.1	68.8	0.4	0.4	2.9
Employment	2,300.2	2,313.9	9.9	13.7	13.7	66.9	0.6	0.6	3.0
Employment full-time	1,924.3	1,934.4	13.1	10.1	10.1	51.6	0.5	0.5	2.7
Employment part-time	375.9	379.5	11.9	3.6	3.6	15.4	1.0	1.0	4.2
Unemployment	113.2	109.7	7.5	-3.5	-3.5	2.0	-3.1	-3.1	1.9
Participation rate	72.8	72.9	0.3	0.1	0.1	0.2
Unemployment rate	4.7	4.5	0.3	-0.2	-0.2	-0.1
Employment rate	69.3	69.6	0.3	0.3	0.3	0.2
British Columbia									
Population	3,848.4	3,851.6	...	3.2	3.2	42.1	0.1	0.1	1.1
Labour force	2,417.1	2,425.5	10.3	8.4	8.4	-9.4	0.3	0.3	-0.4
Employment	2,283.9	2,290.6	10.2	6.7	6.7	10.9	0.3	0.3	0.5
Employment full-time	1,815.1	1,827.9	14.5	12.8	12.8	62.4	0.7	0.7	3.5
Employment part-time	468.8	462.7	13.9	-6.1	-6.1	-51.4	-1.3	-1.3	-10.0
Unemployment	133.2	134.9	8.0	1.7	1.7	-20.3	1.3	1.3	-13.1
Participation rate	62.8	63.0	0.3	0.2	0.2	-0.9
Unemployment rate	5.5	5.6	0.3	0.1	0.1	-0.8
Employment rate	59.3	59.5	0.3	0.2	0.2	-0.3

1. Average standard error of change in two consecutive months (see "Sampling Errors" in Data Quality for further explanations).

Note(s): Related CANSIM Table 282-0087. The sum of individual categories may not always add to the total due to rounding.

Table 4-1
Selected labour force characteristics (seasonally adjusted) — Newfoundland and Labrador

	December 2014	January 2015	S.E.	Change from			Percent change from		
				last month	last December	twelve months ago	last month	last December	twelve months ago
in thousands (except rates)									
Both sexes, 15 years and over									
Population	443.3	443.4	...	0.1	0.1	-1.6	0.0	0.0	-0.4
Labour force	268.7	268.5	1.9	-0.2	-0.2	-7.0	-0.1	-0.1	-2.5
Employment	237.1	237.9	2.0	0.8	0.8	-3.8	0.3	0.3	-1.6
Employment full-time	203.6	200.9	2.4	-2.7	-2.7	-4.2	-1.3	-1.3	-2.0
Unemployment	31.6	30.6	1.8	-1.0	-1.0	-3.3	-3.2	-3.2	-9.7
Participation rate	60.6	60.6	0.4	0.0	0.0	-1.3
Unemployment rate	11.8	11.4	0.7	-0.4	-0.4	-0.9
Employment rate	53.5	53.7	0.5	0.2	0.2	-0.6
Part-time rate	14.1	15.6	0.8	1.4	1.4	0.5
Both sexes, 15 to 24 years									
Population	57.3	57.2	...	-0.1	-0.1	-2.3	-0.2	-0.2	-3.9
Labour force	35.8	36.1	1.0	0.3	0.3	0.6	0.8	0.8	1.7
Employment	30.1	31.3	0.9	1.2	1.2	2.7	4.0	4.0	9.4
Unemployment	5.7	4.8	0.9	-0.9	-0.9	-2.1	-15.8	-15.8	-30.4
Participation rate	62.5	63.1	1.7	0.6	0.6	3.4
Unemployment rate	15.9	13.3	2.4	-2.6	-2.6	-6.1
Employment rate	52.5	54.7	1.7	2.2	2.2	6.6
Part-time rate	40.9	46.3	3.4	5.5	5.5	4.0
Men, 25 years and over									
Population	188.1	188.2	...	0.1	0.1	0.2	0.1	0.1	0.1
Labour force	123.4	122.6	1.1	-0.8	-0.8	-3.7	-0.6	-0.6	-2.9
Employment	107.5	106.7	1.3	-0.8	-0.8	-4.2	-0.7	-0.7	-3.8
Unemployment	16.0	15.9	1.2	-0.1	-0.1	0.5	-0.6	-0.6	3.2
Participation rate	65.6	65.1	0.6	-0.5	-0.5	-2.1
Unemployment rate	13.0	13.0	1.0	0.0	0.0	0.8
Employment rate	57.2	56.7	0.7	-0.5	-0.5	-2.3
Part-time rate	4.5	5.7	0.9	1.3	1.3	0.8
Women, 25 years and over									
Population	197.9	198.0	...	0.1	0.1	0.5	0.1	0.1	0.3
Labour force	109.5	109.8	1.0	0.3	0.3	-4.0	0.3	0.3	-3.5
Employment	99.5	99.9	1.1	0.4	0.4	-2.3	0.4	0.4	-2.3
Unemployment	10.0	9.9	1.0	-0.1	-0.1	-1.6	-1.0	-1.0	-13.9
Participation rate	55.3	55.5	0.5	0.2	0.2	-2.1
Unemployment rate	9.1	9.0	0.9	-0.1	-0.1	-1.1
Employment rate	50.3	50.5	0.6	0.2	0.2	-1.2
Part-time rate	16.4	16.4	1.3	0.0	0.0	-2.3
Industry	237.1	237.9	2.0	0.8	0.8	-3.8	0.3	0.3	-1.6
Goods-producing sector	56.3	55.4	1.8	-0.9	-0.9	-1.0	-1.6	-1.6	-1.8
Agriculture	1.6	1.9	0.3	0.3	0.3	0.3	18.8	18.8	18.8
Forestry, fishing, mining, quarrying, oil and gas extraction ²	17.2	16.4	1.0	-0.8	-0.8	-2.4	-4.7	-4.7	-12.8
Utilities	3.0	2.4	0.4	-0.6	-0.6	-0.2	-20.0	-20.0	-7.7
Construction	23.6	22.6	1.2	-1.0	-1.0	1.3	-4.2	-4.2	6.1
Manufacturing	10.9	12.1	0.9	1.2	1.2	0.0	11.0	11.0	0.0
Services-producing sector	180.8	182.5	2.1	1.7	1.7	-2.8	0.9	0.9	-1.5
Trade	39.2	40.4	1.3	1.2	1.2	0.8	3.1	3.1	2.0
Transportation and warehousing	9.8	11.0	0.8	1.2	1.2	-0.9	12.2	12.2	-7.6
Finance, insurance, real estate and leasing	8.0	7.7	0.6	-0.3	-0.3	-0.7	-3.8	-3.8	-8.3
Professional, scientific and technical services	10.8	10.9	0.7	0.1	0.1	1.3	0.9	0.9	13.5
Business, building and other support services	6.9	7.1	0.6	0.2	0.2	1.1	2.9	2.9	18.3
Educational services	16.7	16.7	0.9	0.0	0.0	-1.7	0.0	0.0	-9.2
Health care and social assistance	37.5	37.7	1.2	0.2	0.2	0.2	0.5	0.5	0.5
Information, culture and recreation	7.4	7.0	0.7	-0.4	-0.4	-0.5	-5.4	-5.4	-6.7
Accommodation and food services	15.9	16.1	0.9	0.2	0.2	1.9	1.3	1.3	13.4
Other services	12.1	11.2	0.8	-0.9	-0.9	-2.0	-7.4	-7.4	-15.2
Public administration	16.5	16.7	0.9	0.2	0.2	-2.5	1.2	1.2	-13.0

1. Average standard error of change in two consecutive months (see "Sampling Errors" in Data Quality for further explanations).

2. Also referred to as Natural resources.

Note(s): Related CANSIM Tables 282-0087, 282-0088. The sum of individual categories may not always add to the total due to rounding.

Table 4-2
Selected labour force characteristics (seasonally adjusted) — Prince Edward Island

	December 2014	January 2015	S.E.	Change from			Percent change from		
				last month	last December	twelve months ago	last month	last December	twelve months ago
in thousands (except rates)									
Both sexes, 15 years and over									
Population	120.7	120.8	...	0.1	0.1	0.4	0.1	0.1	0.3
Labour force	82.2	82.5	0.6	0.3	0.3	-0.8	0.4	0.4	-1.0
Employment	73.1	74.1	0.7	1.0	1.0	-0.1	1.4	1.4	-0.1
Employment full-time	62.0	62.4	0.9	0.4	0.4	0.8	0.6	0.6	1.3
Unemployment	9.1	8.4	0.7	-0.7	-0.7	-0.7	-7.7	-7.7	-7.7
Participation rate	68.1	68.3	0.5	0.2	0.2	-0.9
Unemployment rate	11.1	10.2	0.8	-0.9	-0.9	-0.7
Employment rate	60.6	61.3	0.5	0.7	0.7	-0.3
Part-time rate	15.2	15.8	1.0	0.6	0.6	-1.2
Both sexes, 15 to 24 years									
Population	18.5	18.5	...	0.0	0.0	-0.4	0.0	0.0	-2.1
Labour force	12.4	12.3	0.4	-0.1	-0.1	-0.7	-0.8	-0.8	-5.4
Employment	10.2	10.3	0.4	0.1	0.1	-0.8	1.0	1.0	-7.2
Unemployment	2.3	2.0	0.4	-0.3	-0.3	0.0	-13.0	-13.0	0.0
Participation rate	67.0	66.5	1.9	-0.5	-0.5	-2.3
Unemployment rate	18.5	16.3	2.5	-2.2	-2.2	0.9
Employment rate	55.1	55.7	1.8	0.6	0.6	-3.0
Part-time rate	45.1	42.7	3.5	-2.4	-2.4	-4.1
Men, 25 years and over									
Population	49.0	49.0	...	0.0	0.0	0.3	0.0	0.0	0.6
Labour force	35.7	35.8	0.3	0.1	0.1	0.0	0.3	0.3	0.0
Employment	32.1	32.4	0.4	0.3	0.3	0.8	0.9	0.9	2.5
Unemployment	3.6	3.4	0.4	-0.2	-0.2	-0.7	-5.6	-5.6	-17.1
Participation rate	72.9	73.1	0.7	0.2	0.2	-0.4
Unemployment rate	10.1	9.5	1.0	-0.6	-0.6	-2.0
Employment rate	65.5	66.1	0.8	0.6	0.6	1.2
Part-time rate	5.0	5.9	1.0	0.9	0.9	-1.7
Women, 25 years and over									
Population	53.3	53.3	...	0.0	0.0	0.5	0.0	0.0	0.9
Labour force	34.1	34.4	0.3	0.3	0.3	-0.1	0.9	0.9	-0.3
Employment	30.8	31.3	0.4	0.5	0.5	-0.2	1.6	1.6	-0.6
Unemployment	3.2	3.1	0.4	-0.1	-0.1	0.1	-3.1	-3.1	3.3
Participation rate	64.0	64.5	0.6	0.5	0.5	-0.8
Unemployment rate	9.4	9.0	1.0	-0.4	-0.4	0.3
Employment rate	57.8	58.7	0.7	0.9	0.9	-1.0
Part-time rate	15.9	17.3	1.5	1.3	1.3	1.4
Industry									
Industry	73.1	74.1	0.7	1.0	1.0	-0.1	1.4	1.4	-0.1
Goods-producing sector									
Goods-producing sector	17.3	17.6	0.6	0.3	0.3	-0.5	1.7	1.7	-2.8
Agriculture	2.9	3.2	0.3	0.3	0.3	-0.6	10.3	10.3	-15.8
Forestry, fishing, mining, quarrying, oil and gas extraction ²	2.3	2.3	0.3	0.0	0.0	-0.7	0.0	0.0	-23.3
Utilities	0.3	0.3	0.1	0.0	0.0	-0.1	0.0	0.0	-25.0
Construction	5.6	5.5	0.4	-0.1	-0.1	-0.3	-1.8	-1.8	-5.2
Manufacturing	6.2	6.2	0.3	0.0	0.0	1.0	0.0	0.0	19.2
Services-producing sector									
Services-producing sector	55.8	56.5	0.7	0.7	0.7	0.4	1.3	1.3	0.7
Trade	11.0	10.9	0.4	-0.1	-0.1	-0.4	-0.9	-0.9	-3.5
Transportation and warehousing	3.1	2.8	0.2	-0.3	-0.3	0.3	-9.7	-9.7	12.0
Finance, insurance, real estate and leasing	2.2	2.3	0.2	0.1	0.1	-0.1	4.5	4.5	-4.2
Professional, scientific and technical services	2.9	3.0	0.3	0.1	0.1	0.1	3.4	3.4	3.4
Business, building and other support services	2.7	2.9	0.2	0.2	0.2	1.0	7.4	7.4	52.6
Educational services	5.3	5.3	0.3	0.0	0.0	-0.4	0.0	0.0	-7.0
Health care and social assistance	9.9	10.0	0.4	0.1	0.1	-0.8	1.0	1.0	-7.4
Information, culture and recreation	2.4	2.5	0.3	0.1	0.1	-0.4	4.2	4.2	-13.8
Accommodation and food services	5.6	5.6	0.4	0.0	0.0	0.4	0.0	0.0	7.7
Other services	3.6	3.6	0.3	0.0	0.0	0.4	0.0	0.0	12.5
Public administration	7.2	7.4	0.3	0.2	0.2	0.3	2.8	2.8	4.2

1. Average standard error of change in two consecutive months (see "Sampling Errors" in Data Quality for further explanations).

2. Also referred to as Natural resources.

Note(s): Related CANSIM Tables 282-0087, 282-0088. The sum of individual categories may not always add to the total due to rounding.

Table 4-3
Selected labour force characteristics (seasonally adjusted) — Nova Scotia

	December 2014	January 2015	S.E.	Change from			Percent change from		
				last month	last December	twelve months ago	last month	last December	twelve months ago
in thousands (except rates)									
Both sexes, 15 years and over									
Population	784.1	784.1	...	0.0	0.0	1.7	0.0	0.0	0.2
Labour force	492.1	492.0	2.6	-0.1	-0.1	0.9	0.0	0.0	0.2
Employment	451.0	450.9	2.6	-0.1	-0.1	3.4	0.0	0.0	0.8
Employment full-time	369.0	369.2	3.5	0.2	0.2	7.6	0.1	0.1	2.1
Unemployment	41.1	41.1	2.4	0.0	0.0	-2.6	0.0	0.0	-5.9
Participation rate	62.8	62.7	0.3	-0.1	-0.1	-0.1
Unemployment rate	8.4	8.4	0.5	0.0	0.0	-0.5
Employment rate	57.5	57.5	0.3	0.0	0.0	0.3
Part-time rate	18.2	18.1	0.7	-0.1	-0.1	-1.1
Both sexes, 15 to 24 years									
Population	112.8	112.6	...	-0.2	-0.2	-2.4	-0.2	-0.2	-2.1
Labour force	73.5	74.0	1.6	0.5	0.5	0.7	0.7	0.7	1.0
Employment	62.7	63.8	1.4	1.1	1.1	3.9	1.8	1.8	6.5
Unemployment	10.8	10.2	1.4	-0.6	-0.6	-3.2	-5.6	-5.6	-23.9
Participation rate	65.2	65.7	1.4	0.5	0.5	2.0
Unemployment rate	14.7	13.8	1.8	-0.9	-0.9	-4.5
Employment rate	55.6	56.7	1.3	1.1	1.1	4.6
Part-time rate	45.8	46.1	2.8	0.3	0.3	1.0
Men, 25 years and over									
Population	321.2	321.4	...	0.2	0.2	2.2	0.1	0.1	0.7
Labour force	213.6	213.1	1.4	-0.5	-0.5	-1.4	-0.2	-0.2	-0.7
Employment	197.0	196.0	1.6	-1.0	-1.0	0.8	-0.5	-0.5	0.4
Unemployment	16.6	17.1	1.4	0.5	0.5	-2.2	3.0	3.0	-11.4
Participation rate	66.5	66.3	0.4	-0.2	-0.2	-0.9
Unemployment rate	7.8	8.0	0.6	0.2	0.2	-1.0
Employment rate	61.3	61.0	0.5	-0.3	-0.3	-0.2
Part-time rate	8.1	8.9	0.8	0.8	0.8	0.0
Women, 25 years and over									
Population	350.0	350.1	...	0.1	0.1	1.9	0.0	0.0	0.5
Labour force	205.0	204.9	1.4	-0.1	-0.1	1.6	0.0	0.0	0.8
Employment	191.3	191.1	1.5	-0.2	-0.2	-1.2	-0.1	-0.1	-0.6
Unemployment	13.7	13.8	1.2	0.1	0.1	2.8	0.7	0.7	25.5
Participation rate	58.6	58.5	0.4	-0.1	-0.1	0.1
Unemployment rate	6.7	6.7	0.6	0.0	0.0	1.3
Employment rate	54.7	54.6	0.4	-0.1	-0.1	-0.6
Part-time rate	19.5	18.2	1.1	-1.3	-1.3	-3.3
Industry	451.0	450.9	2.6	-0.1	-0.1	3.4	0.0	0.0	0.8
Goods-producing sector	81.6	82.8	2.1	1.2	1.2	-4.3	1.5	1.5	-4.9
Agriculture	4.6	5.0	0.7	0.4	0.4	-0.3	8.7	8.7	-5.7
Forestry, fishing, mining, quarrying, oil and gas extraction ²	12.6	12.2	0.9	-0.4	-0.4	3.0	-3.2	-3.2	32.6
Utilities	4.0	3.6	0.4	-0.4	-0.4	-0.4	-10.0	-10.0	-10.0
Construction	31.6	33.7	1.5	2.1	2.1	-2.4	6.6	6.6	-6.6
Manufacturing	28.8	28.2	1.3	-0.6	-0.6	-4.2	-2.1	-2.1	-13.0
Services-producing sector	369.4	368.1	2.9	-1.3	-1.3	7.7	-0.4	-0.4	2.1
Trade	74.5	73.7	1.9	-0.8	-0.8	-1.6	-1.1	-1.1	-2.1
Transportation and warehousing	22.6	21.8	1.1	-0.8	-0.8	2.3	-3.5	-3.5	11.8
Finance, insurance, real estate and leasing	23.0	22.3	1.1	-0.7	-0.7	1.4	-3.0	-3.0	6.7
Professional, scientific and technical services	26.2	27.3	1.2	1.1	1.1	3.4	4.2	4.2	14.2
Business, building and other support services	18.7	20.0	1.2	1.3	1.3	-1.0	7.0	7.0	-4.8
Educational services	35.8	36.0	1.4	0.2	0.2	1.1	0.6	0.6	3.2
Health care and social assistance	70.5	70.9	1.7	0.4	0.4	1.9	0.6	0.6	2.8
Information, culture and recreation	20.0	19.0	1.2	-1.0	-1.0	0.0	-5.0	-5.0	0.0
Accommodation and food services	32.7	32.9	1.4	0.2	0.2	1.2	0.6	0.6	3.8
Other services	17.8	17.0	1.0	-0.8	-0.8	-2.0	-4.5	-4.5	-10.5
Public administration	27.5	27.1	1.2	-0.4	-0.4	1.0	-1.5	-1.5	3.8

1. Average standard error of change in two consecutive months (see "Sampling Errors" in Data Quality for further explanations).

2. Also referred to as Natural resources.

Note(s): Related CANSIM Tables 282-0087, 282-0088. The sum of individual categories may not always add to the total due to rounding.

Table 4-4
Selected labour force characteristics (seasonally adjusted) — New Brunswick

	December 2014	January 2015	S.E.	Change from			Percent change from		
				last month	last December	twelve months ago	last month	last December	twelve months ago
in thousands (except rates)									
Both sexes, 15 years and over									
Population	621.7	622.0	...	0.3	0.3	-0.4	0.0	0.0	-0.1
Labour force	390.2	394.0	2.3	3.8	3.8	-1.0	1.0	1.0	-0.3
Employment	351.2	354.6	2.4	3.4	3.4	-0.6	1.0	1.0	-0.2
Employment full-time	295.5	298.9	3.0	3.4	3.4	-3.4	1.2	1.2	-1.1
Unemployment	39.0	39.4	2.1	0.4	0.4	-0.4	1.0	1.0	-1.0
Participation rate	62.8	63.3	0.4	0.5	0.5	-0.2
Unemployment rate	10.0	10.0	0.5	0.0	0.0	-0.1
Employment rate	56.5	57.0	0.4	0.5	0.5	-0.1
Part-time rate	15.9	15.7	0.7	-0.2	-0.2	0.8
Both sexes, 15 to 24 years									
Population	85.4	85.3	...	-0.1	-0.1	-2.1	-0.1	-0.1	-2.4
Labour force	53.2	54.2	1.3	1.0	1.0	-1.7	1.9	1.9	-3.0
Employment	43.6	45.2	1.2	1.6	1.6	-1.9	3.7	3.7	-4.0
Unemployment	9.5	9.0	1.2	-0.5	-0.5	0.2	-5.3	-5.3	2.3
Participation rate	62.3	63.5	1.5	1.2	1.2	-0.5
Unemployment rate	17.9	16.6	1.9	-1.3	-1.3	0.9
Employment rate	51.1	53.0	1.4	1.9	1.9	-0.9
Part-time rate	43.6	37.6	3.0	-6.0	-6.0	-2.5
Men, 25 years and over									
Population	259.8	260.0	...	0.2	0.2	0.8	0.1	0.1	0.3
Labour force	175.8	177.2	1.3	1.4	1.4	-0.6	0.8	0.8	-0.3
Employment	157.1	157.3	1.4	0.2	0.2	-2.0	0.1	0.1	-1.3
Unemployment	18.7	19.8	1.3	1.1	1.1	1.3	5.9	5.9	7.0
Participation rate	67.7	68.2	0.5	0.5	0.5	-0.4
Unemployment rate	10.6	11.2	0.7	0.6	0.6	0.8
Employment rate	60.5	60.5	0.6	0.0	0.0	-1.0
Part-time rate	6.7	7.1	0.7	0.4	0.4	1.7
Women, 25 years and over									
Population	276.6	276.7	...	0.1	0.1	0.9	0.0	0.0	0.3
Labour force	161.2	162.6	1.2	1.4	1.4	1.3	0.9	0.9	0.8
Employment	150.5	152.1	1.3	1.6	1.6	3.3	1.1	1.1	2.2
Unemployment	10.7	10.5	1.1	-0.2	-0.2	-2.0	-1.9	-1.9	-16.0
Participation rate	58.3	58.8	0.4	0.5	0.5	0.3
Unemployment rate	6.6	6.5	0.7	-0.1	-0.1	-1.2
Employment rate	54.4	55.0	0.5	0.6	0.6	1.0
Part-time rate	17.3	18.1	1.0	0.7	0.7	1.1
Industry	351.2	354.6	2.4	3.4	3.4	-0.6	1.0	1.0	-0.2
Goods-producing sector	74.1	73.1	1.9	-1.0	-1.0	-4.3	-1.3	-1.3	-5.6
Agriculture	4.1	4.0	0.5	-0.1	-0.1	-0.2	-2.4	-2.4	-4.8
Forestry, fishing, mining, quarrying, oil and gas extraction ²	11.0	10.4	0.9	-0.6	-0.6	-1.3	-5.5	-5.5	-11.1
Utilities	3.5	3.6	0.3	0.1	0.1	-0.5	2.9	2.9	-12.2
Construction	26.5	25.6	1.3	-0.9	-0.9	-4.2	-3.4	-3.4	-14.1
Manufacturing	29.1	29.6	1.2	0.5	0.5	2.0	1.7	1.7	7.2
Services-producing sector	277.1	281.5	2.4	4.4	4.4	3.7	1.6	1.6	1.3
Trade	54.5	56.4	1.7	1.9	1.9	-2.4	3.5	3.5	-4.1
Transportation and warehousing	17.0	17.2	0.8	0.2	0.2	0.2	1.2	1.2	1.2
Finance, insurance, real estate and leasing	15.0	14.7	0.8	-0.3	-0.3	-0.6	-2.0	-2.0	-3.9
Professional, scientific and technical services	18.3	17.7	1.0	-0.6	-0.6	2.3	-3.3	-3.3	14.9
Business, building and other support services	20.3	19.9	1.2	-0.4	-0.4	1.2	-2.0	-2.0	6.4
Educational services	27.1	27.9	1.2	0.8	0.8	2.4	3.0	3.0	9.4
Health care and social assistance	50.5	51.7	1.4	1.2	1.2	-0.7	2.4	2.4	-1.3
Information, culture and recreation	11.6	11.7	0.8	0.1	0.1	0.3	0.9	0.9	2.6
Accommodation and food services	22.2	23.7	1.1	1.5	1.5	-1.3	6.8	6.8	-5.2
Other services	16.3	15.9	1.0	-0.4	-0.4	-0.4	-2.5	-2.5	-2.5
Public administration	24.4	24.7	1.1	0.3	0.3	2.8	1.2	1.2	12.8

1. Average standard error of change in two consecutive months (see "Sampling Errors" in Data Quality for further explanations).

2. Also referred to as Natural resources.

Note(s): Related CANSIM Tables 282-0087, 282-0088. The sum of individual categories may not always add to the total due to rounding.

Table 4-5
Selected labour force characteristics (seasonally adjusted) — Quebec

	December 2014	January 2015	S.E.	Change from			Percent change from		
				last month	last December	twelve months ago	last month	last December	twelve months ago
in thousands (except rates)									
Both sexes, 15 years and over									
Population	6,822.3	6,825.0	...	2.7	2.7	43.8	0.0	0.0	0.6
Labour force	4,389.5	4,400.7	15.0	11.2	11.2	-10.6	0.3	0.3	-0.2
Employment	4,061.1	4,077.1	14.8	16.0	16.0	-3.0	0.4	0.4	-0.1
Employment full-time	3,261.7	3,257.3	20.1	-4.4	-4.4	0.6	-0.1	-0.1	0.0
Unemployment	328.4	323.6	13.1	-4.8	-4.8	-7.6	-1.5	-1.5	-2.3
Participation rate	64.3	64.5	0.2	0.2	0.2	-0.6
Unemployment rate	7.5	7.4	0.3	-0.1	-0.1	-0.1
Employment rate	59.5	59.7	0.2	0.2	0.2	-0.5
Part-time rate	19.7	20.1	0.4	0.4	0.4	-0.1
Both sexes, 15 to 24 years									
Population	971.2	969.3	...	-1.9	-1.9	-18.5	-0.2	-0.2	-1.9
Labour force	654.8	649.2	8.4	-5.6	-5.6	-13.9	-0.9	-0.9	-2.1
Employment	563.4	566.9	7.9	3.5	3.5	-9.6	0.6	0.6	-1.7
Unemployment	91.5	82.3	7.4	-9.2	-9.2	-4.3	-10.1	-10.1	-5.0
Participation rate	67.4	67.0	0.9	-0.4	-0.4	-0.1
Unemployment rate	14.0	12.7	1.1	-1.3	-1.3	-0.4
Employment rate	58.0	58.5	0.8	0.5	0.5	0.1
Part-time rate	53.8	55.7	1.6	1.9	1.9	0.8
Men, 25 years and over									
Population	2,885.5	2,887.8	...	2.3	2.3	31.5	0.1	0.1	1.1
Labour force	1,982.6	1,990.1	8.4	7.5	7.5	-0.2	0.4	0.4	0.0
Employment	1,847.7	1,854.4	8.9	6.7	6.7	11.6	0.4	0.4	0.6
Unemployment	135.0	135.8	7.9	0.8	0.8	-11.8	0.6	0.6	-8.0
Participation rate	68.7	68.9	0.3	0.2	0.2	-0.8
Unemployment rate	6.8	6.8	0.4	0.0	0.0	-0.6
Employment rate	64.0	64.2	0.3	0.2	0.2	-0.3
Part-time rate	8.3	9.2	0.5	0.9	0.9	0.4
Women, 25 years and over									
Population	2,965.6	2,967.9	...	2.3	2.3	30.8	0.1	0.1	1.0
Labour force	1,752.1	1,761.4	8.1	9.3	9.3	3.5	0.5	0.5	0.2
Employment	1,650.1	1,655.8	8.2	5.7	5.7	-5.1	0.3	0.3	-0.3
Unemployment	102.0	105.5	6.9	3.5	3.5	8.5	3.4	3.4	8.8
Participation rate	59.1	59.3	0.3	0.2	0.2	-0.6
Unemployment rate	5.8	6.0	0.4	0.2	0.2	0.5
Employment rate	55.6	55.8	0.3	0.2	0.2	-0.7
Part-time rate	20.8	20.1	0.7	-0.7	-0.7	-0.6
Industry	4,061.1	4,077.1	14.8	16.0	16.0	-3.0	0.4	0.4	-0.1
Goods-producing sector	868.8	859.2	13.0	-9.6	-9.6	-11.9	-1.1	-1.1	-1.4
Agriculture	55.7	58.0	3.3	2.3	2.3	3.1	4.1	4.1	5.6
Forestry, fishing, mining, quarrying, oil and gas extraction ²	33.3	32.3	2.3	-1.0	-1.0	-1.0	-3.0	-3.0	-3.0
Utilities	30.0	29.1	2.5	-0.9	-0.9	0.0	-3.0	-3.0	0.0
Construction	271.0	260.4	8.1	-10.6	-10.6	2.8	-3.9	-3.9	1.1
Manufacturing	478.9	479.4	10.3	0.5	0.5	-16.7	0.1	0.1	-3.4
Services-producing sector	3,192.3	3,217.9	16.9	25.6	25.6	8.9	0.8	0.8	0.3
Trade	650.6	649.7	11.9	-0.9	-0.9	1.1	-0.1	-0.1	0.2
Transportation and warehousing	185.8	187.1	6.9	1.3	1.3	-1.1	0.7	0.7	-0.6
Finance, insurance, real estate and leasing	214.4	219.0	7.6	4.6	4.6	-5.2	2.1	2.1	-2.3
Professional, scientific and technical services	294.7	303.6	8.5	8.9	8.9	-6.2	3.0	3.0	-2.0
Business, building and other support services	161.8	161.9	6.2	0.1	0.1	13.5	0.1	0.1	9.1
Educational services	274.2	280.4	8.3	6.2	6.2	0.8	2.3	2.3	0.3
Health care and social assistance	564.4	562.2	10.5	-2.2	-2.2	-6.6	-0.4	-0.4	-1.2
Information, culture and recreation	172.5	182.1	7.6	9.6	9.6	2.8	5.6	5.6	1.6
Accommodation and food services	285.0	283.7	8.6	-1.3	-1.3	25.2	-0.5	-0.5	9.7
Other services	164.4	159.5	6.3	-4.9	-4.9	-34.6	-3.0	-3.0	-17.8
Public administration	224.5	228.6	6.6	4.1	4.1	19.1	1.8	1.8	9.1

1. Average standard error of change in two consecutive months (see "Sampling Errors" in Data Quality for further explanations).

2. Also referred to as Natural resources.

Note(s): Related CANSIM Tables 282-0087, 282-0088. The sum of individual categories may not always add to the total due to rounding.

Table 4-6
Selected labour force characteristics (seasonally adjusted) — Ontario

	December 2014	January 2015	S.E.	Change from			Percent change from		
				last month	last December	twelve months ago	last month	last December	twelve months ago
in thousands (except rates)									
Both sexes, 15 years and over									
Population	11,320.4	11,329.1	...	8.7	8.7	112.8	0.1	0.1	1.0
Labour force	7,407.2	7,393.3	20.3	-13.9	-13.9	1.7	-0.2	-0.2	0.0
Employment	6,885.0	6,886.3	19.4	1.3	1.3	44.4	0.0	0.0	0.6
Employment full-time	5,540.1	5,516.9	26.9	-23.2	-23.2	-19.1	-0.4	-0.4	-0.3
Unemployment	522.2	507.1	17.1	-15.1	-15.1	-42.6	-2.9	-2.9	-7.7
Participation rate	65.4	65.3	0.2	-0.1	-0.1	-0.6
Unemployment rate	7.0	6.9	0.2	-0.1	-0.1	-0.5
Employment rate	60.8	60.8	0.2	0.0	0.0	-0.2
Part-time rate	19.5	19.9	0.3	0.4	0.4	0.8
Both sexes, 15 to 24 years									
Population	1,802.9	1,802.0	...	-0.9	-0.9	-12.9	0.0	0.0	-0.7
Labour force	1,124.6	1,121.5	12.1	-3.1	-3.1	16.9	-0.3	-0.3	1.5
Employment	945.9	950.4	10.8	4.5	4.5	22.6	0.5	0.5	2.4
Unemployment	178.7	171.1	10.6	-7.6	-7.6	-5.7	-4.3	-4.3	-3.2
Participation rate	62.4	62.2	0.7	-0.2	-0.2	1.3
Unemployment rate	15.9	15.3	0.9	-0.6	-0.6	-0.7
Employment rate	52.5	52.7	0.6	0.2	0.2	1.6
Part-time rate	52.8	52.1	1.3	-0.7	-0.7	1.1
Men, 25 years and over									
Population	4,590.5	4,595.1	...	4.6	4.6	58.3	0.1	0.1	1.3
Labour force	3,309.7	3,289.0	10.4	-20.7	-20.7	17.2	-0.6	-0.6	0.5
Employment	3,124.2	3,104.6	10.8	-19.6	-19.6	36.7	-0.6	-0.6	1.2
Unemployment	185.5	184.4	9.8	-1.1	-1.1	-19.5	-0.6	-0.6	-9.6
Participation rate	72.1	71.6	0.2	-0.5	-0.5	-0.5
Unemployment rate	5.6	5.6	0.3	0.0	0.0	-0.6
Employment rate	68.1	67.6	0.2	-0.5	-0.5	0.0
Part-time rate	8.3	8.5	0.4	0.3	0.3	0.5
Women, 25 years and over									
Population	4,927.0	4,932.0	...	5.0	5.0	67.4	0.1	0.1	1.4
Labour force	2,972.9	2,982.8	11.6	9.9	9.9	-32.4	0.3	0.3	-1.1
Employment	2,814.9	2,831.3	11.0	16.4	16.4	-14.9	0.6	0.6	-0.5
Unemployment	158.0	151.6	9.5	-6.4	-6.4	-17.4	-4.1	-4.1	-10.3
Participation rate	60.3	60.5	0.2	0.2	0.2	-1.5
Unemployment rate	5.3	5.1	0.3	-0.2	-0.2	-0.5
Employment rate	57.1	57.4	0.2	0.3	0.3	-1.1
Part-time rate	20.8	21.5	0.6	0.7	0.7	1.0
Industry									
	6,885.0	6,886.3	19.4	1.3	1.3	44.4	0.0	0.0	0.6
Goods-producing sector									
	1,386.0	1,383.2	17.5	-2.8	-2.8	-6.8	-0.2	-0.2	-0.5
Agriculture	82.0	81.3	3.9	-0.7	-0.7	-1.9	-0.9	-0.9	-2.3
Forestry, fishing, mining, quarrying, oil and gas extraction ²	39.4	33.0	2.6	-6.4	-6.4	-2.2	-16.2	-16.2	-6.2
Utilities	50.9	51.6	3.2	0.7	0.7	-1.5	1.4	1.4	-2.8
Construction	468.4	476.0	11.6	7.6	7.6	20.0	1.6	1.6	4.4
Manufacturing	745.3	741.4	13.6	-3.9	-3.9	-21.2	-0.5	-0.5	-2.8
Services-producing sector									
	5,499.0	5,503.0	23.4	4.0	4.0	51.1	0.1	0.1	0.9
Trade	1,042.6	1,038.9	17.0	-3.7	-3.7	22.2	-0.4	-0.4	2.2
Transportation and warehousing	316.0	312.3	9.9	-3.7	-3.7	-31.0	-1.2	-1.2	-9.0
Finance, insurance, real estate and leasing	522.4	523.4	12.9	1.0	1.0	-0.4	0.2	0.2	-0.1
Professional, scientific and technical services	553.7	570.4	13.9	16.7	16.7	20.3	3.0	3.0	3.7
Business, building and other support services	342.8	347.0	10.3	4.2	4.2	15.6	1.2	1.2	4.7
Educational services	506.7	513.3	11.5	6.6	6.6	41.5	1.3	1.3	8.8
Health care and social assistance	810.1	813.9	13.2	3.8	3.8	27.7	0.5	0.5	3.5
Information, culture and recreation	328.3	316.9	10.6	-11.4	-11.4	-8.8	-3.5	-3.5	-2.7
Accommodation and food services	442.1	441.3	11.4	-0.8	-0.8	-6.1	-0.2	-0.2	-1.4
Other services	270.1	271.6	9.2	1.5	1.5	-15.9	0.6	0.6	-5.5
Public administration	364.2	354.2	8.8	-10.0	-10.0	-13.7	-2.7	-2.7	-3.7

1. Average standard error of change in two consecutive months (see "Sampling Errors" in Data Quality for further explanations).

2. Also referred to as Natural resources.

Note(s): Related CANSIM Tables 282-0087, 282-0088. The sum of individual categories may not always add to the total due to rounding.

Table 4-7
Selected labour force characteristics (seasonally adjusted) — Manitoba

	December 2014	January 2015	S.E.	Change from			Percent change from		
				last month	last December	twelve months ago	last month	last December	twelve months ago
in thousands (except rates)									
Both sexes, 15 years and over									
Population	981.5	982.5	...	1.0	1.0	11.6	0.1	0.1	1.2
Labour force	670.0	675.3	2.7	5.3	5.3	13.1	0.8	0.8	2.0
Employment	633.8	635.0	2.7	1.2	1.2	9.8	0.2	0.2	1.6
Employment full-time	514.9	518.1	3.8	3.2	3.2	13.1	0.6	0.6	2.6
Unemployment	36.2	40.3	2.1	4.1	4.1	3.2	11.3	11.3	8.6
Participation rate	68.3	68.7	0.3	0.4	0.4	0.5
Unemployment rate	5.4	6.0	0.3	0.6	0.6	0.4
Employment rate	64.6	64.6	0.3	0.0	0.0	0.2
Part-time rate	18.8	18.4	0.5	-0.4	-0.4	-0.8
Both sexes, 15 to 24 years									
Population	163.3	163.3	...	0.0	0.0	-0.4	0.0	0.0	-0.2
Labour force	111.2	112.7	1.6	1.5	1.5	2.2	1.3	1.3	2.0
Employment	99.3	99.5	1.6	0.2	0.2	0.5	0.2	0.2	0.5
Unemployment	11.9	13.2	1.4	1.3	1.3	1.7	10.9	10.9	14.8
Participation rate	68.1	69.0	1.0	0.9	0.9	1.5
Unemployment rate	10.7	11.7	1.2	1.0	1.0	1.3
Employment rate	60.8	60.9	1.0	0.1	0.1	0.4
Part-time rate	42.0	42.0	1.8	0.0	0.0	-0.6
Men, 25 years and over									
Population	400.9	401.5	...	0.6	0.6	6.4	0.1	0.1	1.6
Labour force	300.2	299.1	1.4	-1.1	-1.1	5.5	-0.4	-0.4	1.9
Employment	286.7	285.3	1.5	-1.4	-1.4	4.4	-0.5	-0.5	1.6
Unemployment	13.5	13.8	1.2	0.3	0.3	1.1	2.2	2.2	8.7
Participation rate	74.9	74.5	0.4	-0.4	-0.4	0.2
Unemployment rate	4.5	4.6	0.4	0.1	0.1	0.3
Employment rate	71.5	71.1	0.4	-0.4	-0.4	0.0
Part-time rate	8.1	7.5	0.6	-0.6	-0.6	0.3
Women, 25 years and over									
Population	417.3	417.7	...	0.4	0.4	5.6	0.1	0.1	1.4
Labour force	258.7	263.4	1.5	4.7	4.7	5.2	1.8	1.8	2.0
Employment	247.9	250.2	1.5	2.3	2.3	4.9	0.9	0.9	2.0
Unemployment	10.8	13.2	1.1	2.4	2.4	0.3	22.2	22.2	2.3
Participation rate	62.0	63.1	0.4	1.1	1.1	0.4
Unemployment rate	4.2	5.0	0.4	0.8	0.8	0.0
Employment rate	59.4	59.9	0.4	0.5	0.5	0.4
Part-time rate	21.7	21.5	0.9	-0.3	-0.3	-2.0
Industry									
	633.8	635.0	2.7	1.2	1.2	9.8	0.2	0.2	1.6
Goods-producing sector									
Agriculture	149.2	149.0	2.4	-0.2	-0.2	4.3	-0.1	-0.1	3.0
Forestry, fishing, mining, quarrying, oil and gas extraction ²	22.5	23.4	1.1	0.9	0.9	-1.3	4.0	4.0	-5.3
Utilities	6.6	6.5	0.6	-0.1	-0.1	-0.3	-1.5	-1.5	-4.4
Construction	7.4	7.7	0.6	0.3	0.3	-0.4	4.1	4.1	-4.9
Manufacturing	47.6	45.7	1.6	-1.9	-1.9	4.4	-4.0	-4.0	10.7
	65.1	65.6	1.6	0.5	0.5	1.9	0.8	0.8	3.0
Services-producing sector									
Trade	484.6	486.0	3.1	1.4	1.4	5.5	0.3	0.3	1.1
Transportation and warehousing	94.8	95.0	2.1	0.2	0.2	1.3	0.2	0.2	1.4
Finance, insurance, real estate and leasing	38.2	38.1	1.4	-0.1	-0.1	-0.6	-0.3	-0.3	-1.6
Professional, scientific and technical services	34.1	34.2	1.2	0.1	0.1	0.4	0.3	0.3	1.2
Business, building and other support services	22.7	22.8	1.1	0.1	0.1	-3.6	0.4	0.4	-13.6
Educational services	16.7	16.6	1.1	-0.1	-0.1	-2.8	-0.6	-0.6	-14.4
Health care and social assistance	50.1	51.6	1.6	1.5	1.5	2.5	3.0	3.0	5.1
Information, culture and recreation	100.5	101.9	1.9	1.4	1.4	4.7	1.4	1.4	4.8
Accommodation and food services	21.0	22.4	1.2	1.4	1.4	0.5	6.7	6.7	2.3
Other services	41.5	40.1	1.5	-1.4	-1.4	1.3	-3.4	-3.4	3.4
Public administration	29.7	29.2	1.2	-0.5	-0.5	1.9	-1.7	-1.7	7.0
	35.2	34.2	1.2	-1.0	-1.0	-0.1	-2.8	-2.8	-0.3

1. Average standard error of change in two consecutive months (see "Sampling Errors" in Data Quality for further explanations).

2. Also referred to as Natural resources.

Note(s): Related CANSIM Tables 282-0087, 282-0088. The sum of individual categories may not always add to the total due to rounding.

Table 4-8
Selected labour force characteristics (seasonally adjusted) — Saskatchewan

	December 2014	January 2015	S.E.	Change from			Percent change from		
				last month	last December	twelve months ago	last month	last December	twelve months ago
in thousands (except rates)									
Both sexes, 15 years and over									
Population	857.0	857.8	...	0.8	0.8	11.1	0.1	0.1	1.3
Labour force	597.3	593.1	2.5	-4.2	-4.2	0.6	-0.7	-0.7	0.1
Employment	575.0	566.6	2.6	-8.4	-8.4	-0.4	-1.5	-1.5	-0.1
Employment full-time	479.7	468.2	3.5	-11.5	-11.5	-1.4	-2.4	-2.4	-0.3
Unemployment	22.3	26.5	1.7	4.2	4.2	0.9	18.8	18.8	3.5
Participation rate	69.7	69.1	0.3	-0.6	-0.6	-0.9
Unemployment rate	3.7	4.5	0.3	0.8	0.8	0.2
Employment rate	67.1	66.1	0.3	-1.0	-1.0	-0.9
Part-time rate	16.6	17.4	0.6	0.8	0.8	0.2
Both sexes, 15 to 24 years									
Population	138.0	137.8	...	-0.2	-0.2	-1.5	-0.1	-0.1	-1.1
Labour force	92.4	91.2	1.4	-1.2	-1.2	-1.5	-1.3	-1.3	-1.6
Employment	85.8	83.2	1.4	-2.6	-2.6	-2.5	-3.0	-3.0	-2.9
Unemployment	6.7	8.0	1.0	1.3	1.3	0.9	19.4	19.4	12.7
Participation rate	67.0	66.2	1.1	-0.8	-0.8	-0.3
Unemployment rate	7.3	8.8	1.1	1.5	1.5	1.1
Employment rate	62.2	60.4	1.0	-1.8	-1.8	-1.1
Part-time rate	36.9	36.2	1.9	-0.8	-0.8	-3.3
Men, 25 years and over									
Population	359.6	360.1	...	0.5	0.5	6.7	0.1	0.1	1.9
Labour force	276.1	272.6	1.3	-3.5	-3.5	-3.6	-1.3	-1.3	-1.3
Employment	267.2	262.5	1.4	-4.7	-4.7	-3.4	-1.8	-1.8	-1.3
Unemployment	8.9	10.2	1.0	1.3	1.3	-0.2	14.6	14.6	-1.9
Participation rate	76.8	75.7	0.4	-1.1	-1.1	-2.5
Unemployment rate	3.2	3.7	0.4	0.5	0.5	-0.1
Employment rate	74.3	72.9	0.4	-1.4	-1.4	-2.3
Part-time rate	6.6	7.4	0.6	0.7	0.7	1.4
Women, 25 years and over									
Population	359.3	359.8	...	0.5	0.5	5.8	0.1	0.1	1.6
Labour force	228.8	229.3	1.5	0.5	0.5	5.7	0.2	0.2	2.5
Employment	222.1	220.9	1.5	-1.2	-1.2	5.4	-0.5	-0.5	2.5
Unemployment	6.7	8.3	0.9	1.6	1.6	0.2	23.9	23.9	2.5
Participation rate	63.7	63.7	0.4	0.0	0.0	0.5
Unemployment rate	2.9	3.6	0.4	0.7	0.7	0.0
Employment rate	61.8	61.4	0.4	-0.4	-0.4	0.5
Part-time rate	20.7	22.2	1.0	1.5	1.5	0.1
Industry									
Industry	575.0	566.6	2.6	-8.4	-8.4	-0.4	-1.5	-1.5	-0.1
Goods-producing sector									
Goods-producing sector	163.7	158.7	2.6	-5.0	-5.0	-2.6	-3.1	-3.1	-1.6
Agriculture	43.8	41.7	1.6	-2.1	-2.1	-4.8	-4.8	-4.8	-10.3
Forestry, fishing, mining, quarrying, oil and gas extraction ²	28.7	27.7	1.2	-1.0	-1.0	1.1	-3.5	-3.5	4.1
Utilities	6.4	6.4	0.5	0.0	0.0	0.5	0.0	0.0	8.5
Construction	57.2	56.3	1.8	-0.9	-0.9	2.3	-1.6	-1.6	4.3
Manufacturing	27.5	26.5	1.2	-1.0	-1.0	-1.8	-3.6	-3.6	-6.4
Services-producing sector									
Services-producing sector	411.3	407.9	3.2	-3.4	-3.4	2.2	-0.8	-0.8	0.5
Trade	83.4	81.5	2.1	-1.9	-1.9	-3.5	-2.3	-2.3	-4.1
Transportation and warehousing	28.6	28.0	1.2	-0.6	-0.6	-2.0	-2.1	-2.1	-6.7
Finance, insurance, real estate and leasing	31.6	30.9	1.3	-0.7	-0.7	2.5	-2.2	-2.2	8.8
Professional, scientific and technical services	26.2	24.9	1.3	-1.3	-1.3	-0.8	-5.0	-5.0	-3.1
Business, building and other support services	14.0	14.6	0.9	0.6	0.6	2.0	4.3	4.3	15.9
Educational services	44.7	44.8	1.5	0.1	0.1	3.0	0.2	0.2	7.2
Health care and social assistance	73.6	74.1	1.7	0.5	0.5	0.4	0.7	0.7	0.5
Information, culture and recreation	16.9	16.5	1.1	-0.4	-0.4	-0.6	-2.4	-2.4	-3.5
Accommodation and food services	37.2	36.4	1.5	-0.8	-0.8	1.0	-2.2	-2.2	2.8
Other services	24.2	24.9	1.2	0.7	0.7	-0.3	2.9	2.9	-1.2
Public administration	30.9	31.2	1.2	0.3	0.3	0.4	1.0	1.0	1.3

1. Average standard error of change in two consecutive months (see "Sampling Errors" in Data Quality for further explanations).

2. Also referred to as Natural resources.

Note(s): Related CANSIM Tables 282-0087, 282-0088. The sum of individual categories may not always add to the total due to rounding.

Table 4-9
Selected labour force characteristics (seasonally adjusted) — Alberta

	December 2014	January 2015	S.E.	Change from			Percent change from		
				last month	last December	twelve months ago	last month	last December	twelve months ago
in thousands (except rates)									
Both sexes, 15 years and over									
Population	3,317.2	3,323.0	...	5.8	5.8	84.3	0.2	0.2	2.6
Labour force	2,413.4	2,423.5	9.3	10.1	10.1	68.8	0.4	0.4	2.9
Employment	2,300.2	2,313.9	9.9	13.7	13.7	66.9	0.6	0.6	3.0
Employment full-time	1,924.3	1,934.4	13.1	10.1	10.1	51.6	0.5	0.5	2.7
Unemployment	113.2	109.7	7.5	-3.5	-3.5	2.0	-3.1	-3.1	1.9
Participation rate	72.8	72.9	0.3	0.1	0.1	0.2
Unemployment rate	4.7	4.5	0.3	-0.2	-0.2	-0.1
Employment rate	69.3	69.6	0.3	0.3	0.3	0.2
Part-time rate	16.3	16.4	0.5	0.1	0.1	0.2
Both sexes, 15 to 24 years									
Population	525.2	524.6	...	-0.6	-0.6	0.9	-0.1	-0.1	0.2
Labour force	361.4	355.3	5.2	-6.1	-6.1	5.2	-1.7	-1.7	1.5
Employment	330.1	328.6	5.2	-1.5	-1.5	12.7	-0.5	-0.5	4.0
Unemployment	31.2	26.7	4.3	-4.5	-4.5	-7.5	-14.4	-14.4	-21.9
Participation rate	68.8	67.7	1.0	-1.1	-1.1	0.8
Unemployment rate	8.6	7.5	1.2	-1.1	-1.1	-2.3
Employment rate	62.9	62.6	1.0	-0.3	-0.3	2.3
Part-time rate	33.0	35.0	1.8	2.0	2.0	-3.5
Men, 25 years and over									
Population	1,412.1	1,415.4	...	3.3	3.3	43.3	0.2	0.2	3.2
Labour force	1,131.5	1,143.5	4.9	12.0	12.0	30.9	1.1	1.1	2.8
Employment	1,090.4	1,098.3	5.7	7.9	7.9	26.2	0.7	0.7	2.4
Unemployment	41.1	45.2	4.5	4.1	4.1	4.7	10.0	10.0	11.6
Participation rate	80.1	80.8	0.3	0.7	0.7	-0.3
Unemployment rate	3.6	4.0	0.4	0.4	0.4	0.4
Employment rate	77.2	77.6	0.4	0.4	0.4	-0.5
Part-time rate	6.0	6.2	0.5	0.2	0.2	0.9
Women, 25 years and over									
Population	1,379.9	1,383.0	...	3.1	3.1	40.0	0.2	0.2	3.0
Labour force	920.5	924.8	5.8	4.3	4.3	32.9	0.5	0.5	3.7
Employment	879.6	887.0	5.8	7.4	7.4	28.0	0.8	0.8	3.3
Unemployment	40.9	37.8	4.0	-3.1	-3.1	4.9	-7.6	-7.6	14.9
Participation rate	66.7	66.9	0.4	0.2	0.2	0.5
Unemployment rate	4.4	4.1	0.4	-0.3	-0.3	0.4
Employment rate	63.7	64.1	0.4	0.4	0.4	0.1
Part-time rate	22.9	22.1	0.9	-0.8	-0.8	0.5
Industry	2,300.2	2,313.9	9.9	13.7	13.7	66.9	0.6	0.6	3.0
Goods-producing sector									
Agriculture	663.2	666.5	10.6	3.3	3.3	18.0	0.5	0.5	2.8
Forestry, fishing, mining, quarrying, oil and gas extraction ²	63.0	63.8	4.6	0.8	0.8	1.7	1.3	1.3	2.7
Utilities	172.9	171.9	5.8	-1.0	-1.0	-5.2	-0.6	-0.6	-2.9
Construction	18.1	19.3	2.2	1.2	1.2	-0.8	6.6	6.6	-4.0
Manufacturing	263.5	261.9	7.9	-1.6	-1.6	12.0	-0.6	-0.6	4.8
	145.6	149.6	5.5	4.0	4.0	10.2	2.7	2.7	7.3
Services-producing sector									
Trade	1,637.0	1,647.4	12.5	10.4	10.4	49.0	0.6	0.6	3.1
Transportation and warehousing	312.0	311.6	7.8	-0.4	-0.4	-20.0	-0.1	-0.1	-6.0
Finance, insurance, real estate and leasing	142.2	146.8	5.8	4.6	4.6	26.0	3.2	3.2	21.5
Professional, scientific and technical services	104.0	101.4	4.4	-2.6	-2.6	-2.3	-2.5	-2.5	-2.2
Business, building and other support services	182.4	178.7	6.2	-3.7	-3.7	-4.0	-2.0	-2.0	-2.2
Educational services	80.1	81.8	4.6	1.7	1.7	4.1	2.1	2.1	5.3
Health care and social assistance	132.2	126.6	5.2	-5.6	-5.6	6.0	-4.2	-4.2	5.0
Information, culture and recreation	252.8	255.4	6.7	2.6	2.6	25.2	1.0	1.0	10.9
Accommodation and food services	72.1	74.0	4.0	1.9	1.9	2.0	2.6	2.6	2.8
Other services	154.8	156.9	6.1	2.1	2.1	6.6	1.4	1.4	4.4
Public administration	120.8	127.5	5.2	6.7	6.7	7.6	5.5	5.5	6.3
	83.4	86.8	4.2	3.4	3.4	-2.2	4.1	4.1	-2.5

1. Average standard error of change in two consecutive months (see "Sampling Errors" in Data Quality for further explanations).

2. Also referred to as Natural resources.

Note(s): Related CANSIM Tables 282-0087, 282-0088. The sum of individual categories may not always add to the total due to rounding.

Table 4-10
Selected labour force characteristics (seasonally adjusted) — British Columbia

	December 2014	January 2015	S.E.	Change from			Percent change from		
				last month	last December	twelve months ago	last month	last December	twelve months ago
in thousands (except rates)									
Both sexes, 15 years and over									
Population	3,848.4	3,851.6	...	3.2	3.2	42.1	0.1	0.1	1.1
Labour force	2,417.1	2,425.5	10.3	8.4	8.4	-9.4	0.3	0.3	-0.4
Employment	2,283.9	2,290.6	10.2	6.7	6.7	10.9	0.3	0.3	0.5
Employment full-time	1,815.1	1,827.9	14.5	12.8	12.8	62.4	0.7	0.7	3.5
Unemployment	133.2	134.9	8.0	1.7	1.7	-20.3	1.3	1.3	-13.1
Participation rate	62.8	63.0	0.3	0.2	0.2	-0.9
Unemployment rate	5.5	5.6	0.3	0.1	0.1	-0.8
Employment rate	59.3	59.5	0.3	0.2	0.2	-0.3
Part-time rate	20.5	20.2	0.6	-0.3	-0.3	-2.4
Both sexes, 15 to 24 years									
Population	580.5	580.9	...	0.4	0.4	-0.6	0.1	0.1	-0.1
Labour force	356.5	354.1	5.9	-2.4	-2.4	-3.3	-0.7	-0.7	-0.9
Employment	317.8	316.4	5.6	-1.4	-1.4	2.6	-0.4	-0.4	0.8
Unemployment	38.8	37.7	4.6	-1.1	-1.1	-5.9	-2.8	-2.8	-13.5
Participation rate	61.4	61.0	1.0	-0.4	-0.4	-0.5
Unemployment rate	10.9	10.6	1.2	-0.3	-0.3	-1.6
Employment rate	54.7	54.5	0.9	-0.2	-0.2	0.5
Part-time rate	47.0	46.0	2.0	-1.0	-1.0	-3.1
Men, 25 years and over									
Population	1,595.0	1,596.3	...	1.3	1.3	19.3	0.1	0.1	1.2
Labour force	1,083.2	1,093.1	5.4	9.9	9.9	2.1	0.9	0.9	0.2
Employment	1,033.6	1,040.1	5.7	6.5	6.5	8.2	0.6	0.6	0.8
Unemployment	49.5	53.0	4.8	3.5	3.5	-6.1	7.1	7.1	-10.3
Participation rate	67.9	68.5	0.3	0.6	0.6	-0.7
Unemployment rate	4.6	4.8	0.4	0.2	0.2	-0.6
Employment rate	64.8	65.2	0.3	0.4	0.4	-0.2
Part-time rate	8.8	9.7	0.6	0.9	0.9	-0.2
Women, 25 years and over									
Population	1,672.9	1,674.4	...	1.5	1.5	23.4	0.1	0.1	1.4
Labour force	977.4	978.3	6.0	0.9	0.9	-8.1	0.1	0.1	-0.8
Employment	932.4	934.0	5.8	1.6	1.6	0.1	0.2	0.2	0.0
Unemployment	44.9	44.2	4.4	-0.7	-0.7	-8.3	-1.6	-1.6	-15.8
Participation rate	58.4	58.4	0.4	0.0	0.0	-1.3
Unemployment rate	4.6	4.5	0.4	-0.1	-0.1	-0.8
Employment rate	55.7	55.8	0.3	0.1	0.1	-0.8
Part-time rate	24.5	23.2	0.9	-1.3	-1.3	-4.5
Industry	2,283.9	2,290.6	10.2	6.7	6.7	10.9	0.3	0.3	0.5
Goods-producing sector	449.0	465.4	9.3	16.4	16.4	11.9	3.7	3.7	2.6
Agriculture	22.8	21.6	2.7	-1.2	-1.2	-4.5	-5.3	-5.3	-17.2
Forestry, fishing, mining, quarrying, oil and gas extraction ²	51.5	54.6	3.3	3.1	3.1	6.5	6.0	6.0	13.5
Utilities	14.7	16.4	1.8	1.7	1.7	2.4	11.6	11.6	17.1
Construction	196.3	202.0	6.6	5.7	5.7	-6.2	2.9	2.9	-3.0
Manufacturing	163.6	170.7	6.2	7.1	7.1	13.8	4.3	4.3	8.8
Services-producing sector	1,834.9	1,825.2	12.3	-9.7	-9.7	-1.0	-0.5	-0.5	-0.1
Trade	354.0	349.6	8.4	-4.4	-4.4	-5.1	-1.2	-1.2	-1.4
Transportation and warehousing	140.4	134.8	5.6	-5.6	-5.6	7.6	-4.0	-4.0	6.0
Finance, insurance, real estate and leasing	137.2	133.4	5.6	-3.8	-3.8	-11.5	-2.8	-2.8	-7.9
Professional, scientific and technical services	186.5	188.9	6.8	2.4	2.4	10.6	1.3	1.3	5.9
Business, building and other support services	86.4	85.1	5.0	-1.3	-1.3	-5.6	-1.5	-1.5	-6.2
Educational services	164.3	162.1	6.1	-2.2	-2.2	-7.1	-1.3	-1.3	-4.2
Health care and social assistance	271.3	275.6	6.9	4.3	4.3	3.4	1.6	1.6	1.2
Information, culture and recreation	110.6	110.3	5.5	-0.3	-0.3	1.5	-0.3	-0.3	1.4
Accommodation and food services	179.8	181.8	6.6	2.0	2.0	-5.1	1.1	1.1	-2.7
Other services	108.2	110.3	4.8	2.1	2.1	14.7	1.9	1.9	15.4
Public administration	96.3	93.3	4.9	-3.0	-3.0	-4.3	-3.1	-3.1	-4.4

1. Average standard error of change in two consecutive months (see "Sampling Errors" in Data Quality for further explanations).

2. Also referred to as Natural resources.

Note(s): Related CANSIM Tables 282-0087, 282-0088. The sum of individual categories may not always add to the total due to rounding.

Table 5-1

Labour force characteristics by census metropolitan area (seasonally adjusted) — 3 month moving average

	December 2014	January 2015	S.E. ¹	Change from			Percent change from		
				last month	last December	twelve months ago	last month	last December	twelve months ago
in thousands (except rates)									
St. John's, Newfoundland and Labrador									
Population	177.4	177.6	...	0.2	0.2	1.4	0.1	0.1	0.8
Labour force	124.4	125.6	0.8	1.2	1.2	3.5	1.0	1.0	2.9
Employment	117.5	118.5	0.8	1.0	1.0	3.7	0.9	0.9	3.2
Unemployment	7.0	7.1	0.4	0.1	0.1	-0.2	1.4	1.4	-2.7
Participation rate	70.1	70.7	0.5	0.6	0.6	1.4
Unemployment rate	5.6	5.7	0.4	0.1	0.1	-0.3
Employment rate	66.2	66.7	0.5	0.5	0.5	1.5
Halifax, Nova Scotia									
Population	345.7	346.0	...	0.3	0.3	4.2	0.1	0.1	1.2
Labour force	242.9	243.0	1.2	0.1	0.1	5.4	0.0	0.0	2.3
Employment	227.8	228.2	1.2	0.4	0.4	6.0	0.2	0.2	2.7
Unemployment	15.0	14.8	0.7	-0.2	-0.2	-0.7	-1.3	-1.3	-4.5
Participation rate	70.3	70.2	0.3	-0.1	-0.1	0.7
Unemployment rate	6.2	6.1	0.3	-0.1	-0.1	-0.4
Employment rate	65.9	66.0	0.4	0.1	0.1	1.0
Moncton, New Brunswick									
Population	122.7	122.9	...	0.2	0.2	1.8	0.2	0.2	1.5
Labour force	80.3	81.4	0.8	1.1	1.1	-0.7	1.4	1.4	-0.9
Employment	74.7	76.2	0.8	1.5	1.5	0.4	2.0	2.0	0.5
Unemployment	5.5	5.2	0.4	-0.3	-0.3	-1.1	-5.5	-5.5	-17.5
Participation rate	65.4	66.2	0.7	0.8	0.8	-1.6
Unemployment rate	6.8	6.4	0.5	-0.4	-0.4	-1.3
Employment rate	60.9	62.0	0.7	1.1	1.1	-0.6
Saint John, New Brunswick									
Population	105.6	105.6	...	0.0	0.0	-0.4	0.0	0.0	-0.4
Labour force	70.5	70.3	0.6	-0.2	-0.2	-1.3	-0.3	-0.3	-1.8
Employment	64.8	64.0	0.7	-0.8	-0.8	-2.7	-1.2	-1.2	-4.0
Unemployment	5.7	6.3	0.4	0.6	0.6	1.5	10.5	10.5	31.2
Participation rate	66.8	66.6	0.6	-0.2	-0.2	-0.9
Unemployment rate	8.1	9.0	0.5	0.9	0.9	2.3
Employment rate	61.4	60.6	0.6	-0.8	-0.8	-2.3
Saguenay, Quebec									
Population	135.3	135.2	...	-0.1	-0.1	-0.2	-0.1	-0.1	-0.1
Labour force	87.7	86.8	0.8	-0.9	-0.9	4.4	-1.0	-1.0	5.3
Employment	79.1	79.1	0.8	0.0	0.0	3.4	0.0	0.0	4.5
Unemployment	8.6	7.7	0.4	-0.9	-0.9	1.0	-10.5	-10.5	14.9
Participation rate	64.8	64.2	0.6	-0.6	-0.6	3.3
Unemployment rate	9.8	8.9	0.5	-0.9	-0.9	0.8
Employment rate	58.5	58.5	0.7	0.0	0.0	2.6
Québec, Quebec									
Population	667.3	667.5	...	0.2	0.2	4.1	0.0	0.0	0.6
Labour force	450.0	450.6	3.5	0.6	0.6	-10.0	0.1	0.1	-2.2
Employment	425.6	425.6	3.5	0.0	0.0	-14.5	0.0	0.0	-3.3
Unemployment	24.4	25.1	1.6	0.7	0.7	4.6	2.9	2.9	22.4
Participation rate	67.4	67.5	0.5	0.1	0.1	-1.9
Unemployment rate	5.4	5.6	0.3	0.2	0.2	1.1
Employment rate	63.8	63.8	0.5	0.0	0.0	-2.5
Sherbrooke, Quebec									
Population	178.2	178.3	...	0.1	0.1	1.8	0.1	0.1	1.0
Labour force	110.2	110.4	1.1	0.2	0.2	4.9	0.2	0.2	4.6
Employment	102.1	101.8	1.2	-0.3	-0.3	3.7	-0.3	-0.3	3.8
Unemployment	8.2	8.5	0.5	0.3	0.3	1.2	3.7	3.7	16.4
Participation rate	61.8	61.9	0.6	0.1	0.1	2.1
Unemployment rate	7.4	7.7	0.5	0.3	0.3	0.8
Employment rate	57.3	57.1	0.7	-0.2	-0.2	1.5

See notes at the end of the table.

Table 5-1 – continued

Labour force characteristics by census metropolitan area (seasonally adjusted) — 3 month moving average

	December 2014	January 2015	S.E. ¹	Change from			Percent change from		
				last month	last December	twelve months ago	last month	last December	twelve months ago
in thousands (except rates)									
Trois-Rivières, Quebec									
Population	132.6	132.6	...	0.0	0.0	0.2	0.0	0.0	0.2
Labour force	76.0	76.4	0.9	0.4	0.4	0.3	0.5	0.5	0.4
Employment	71.1	71.4	0.9	0.3	0.3	1.6	0.4	0.4	2.3
Unemployment	5.0	4.9	0.4	-0.1	-0.1	-1.4	-2.0	-2.0	-22.2
Participation rate	57.3	57.6	0.7	0.3	0.3	0.1
Unemployment rate	6.6	6.4	0.5	-0.2	-0.2	-1.9
Employment rate	53.6	53.8	0.7	0.2	0.2	1.1
Montréal, Quebec									
Population	3,335.5	3,337.4	...	1.9	1.9	27.9	0.1	0.1	0.8
Labour force	2,204.8	2,200.4	7.5	-4.4	-4.4	-2.4	-0.2	-0.2	-0.1
Employment	2,026.6	2,028.4	7.7	1.8	1.8	1.0	0.1	0.1	0.0
Unemployment	178.2	172.0	4.8	-6.2	-6.2	-3.4	-3.5	-3.5	-1.9
Participation rate	66.1	65.9	0.2	-0.2	-0.2	-0.7
Unemployment rate	8.1	7.8	0.2	-0.3	-0.3	-0.2
Employment rate	60.8	60.8	0.2	0.0	0.0	-0.5
Ottawa-Gatineau, Ontario/Quebec									
Population	1,090.3	1,091.3	...	1.0	1.0	13.4	0.1	0.1	1.2
Labour force	759.8	759.1	4.0	-0.7	-0.7	5.4	-0.1	-0.1	0.7
Employment	712.5	706.9	4.0	-5.6	-5.6	3.2	-0.8	-0.8	0.5
Unemployment	47.3	52.2	1.9	4.9	4.9	2.2	10.4	10.4	4.4
Participation rate	69.7	69.6	0.4	-0.1	-0.1	-0.3
Unemployment rate	6.2	6.9	0.2	0.7	0.7	0.3
Employment rate	65.3	64.8	0.4	-0.5	-0.5	-0.5
Ottawa-Gatineau, Quebec part, Ontario/Quebec									
Population	271.5	271.7	...	0.2	0.2	2.6	0.1	0.1	1.0
Labour force	185.0	186.7	1.3	1.7	1.7	-0.7	0.9	0.9	-0.4
Employment	171.8	172.5	1.3	0.7	0.7	-2.3	0.4	0.4	-1.3
Unemployment	13.2	14.2	0.7	1.0	1.0	1.6	7.6	7.6	12.7
Participation rate	68.1	68.7	0.5	0.6	0.6	-0.9
Unemployment rate	7.1	7.6	0.4	0.5	0.5	0.9
Employment rate	63.3	63.5	0.5	0.2	0.2	-1.5
Ottawa-Gatineau, Ontario part, Ontario/Quebec									
Population	818.8	819.6	...	0.8	0.8	10.9	0.1	0.1	1.3
Labour force	574.8	572.4	3.7	-2.4	-2.4	6.1	-0.4	-0.4	1.1
Employment	540.7	534.4	3.8	-6.3	-6.3	5.5	-1.2	-1.2	1.0
Unemployment	34.1	37.9	1.8	3.8	3.8	0.5	11.1	11.1	1.3
Participation rate	70.2	69.8	0.5	-0.4	-0.4	-0.2
Unemployment rate	5.9	6.6	0.3	0.7	0.7	0.0
Employment rate	66.0	65.2	0.5	-0.8	-0.8	-0.2
Kingston, Ontario									
Population	137.6	137.7	...	0.1	0.1	1.2	0.1	0.1	0.9
Labour force	85.2	85.5	0.8	0.3	0.3	-2.9	0.4	0.4	-3.3
Employment	79.4	79.9	0.8	0.5	0.5	-2.6	0.6	0.6	-3.2
Unemployment	5.7	5.6	0.4	-0.1	-0.1	-0.3	-1.8	-1.8	-5.1
Participation rate	61.9	62.1	0.6	0.2	0.2	-2.7
Unemployment rate	6.7	6.5	0.4	-0.2	-0.2	-0.2
Employment rate	57.7	58.0	0.6	0.3	0.3	-2.4
Peterborough, Ontario									
Population	104.2	104.2	...	0.0	0.0	0.4	0.0	0.0	0.4
Labour force	68.1	67.6	1.0	-0.5	-0.5	6.1	-0.7	-0.7	9.9
Employment	63.4	62.9	1.1	-0.5	-0.5	7.0	-0.8	-0.8	12.5
Unemployment	4.7	4.7	0.6	0.0	0.0	-0.9	0.0	0.0	-16.1
Participation rate	65.4	64.9	1.0	-0.5	-0.5	5.7
Unemployment rate	6.9	7.0	0.9	0.1	0.1	-2.1
Employment rate	60.8	60.4	1.1	-0.4	-0.4	6.5

See notes at the end of the table.

Table 5-1 – continued

Labour force characteristics by census metropolitan area (seasonally adjusted) — 3 month moving average

	December 2014	January 2015	S.E. ¹	Change from			Percent change from		
				last month	last December	twelve months ago	last month	last December	twelve months ago
in thousands (except rates)									
Oshawa, Ontario									
Population	318.3	318.7	...	0.4	0.4	5.7	0.1	0.1	1.8
Labour force	222.3	222.4	1.6	0.1	0.1	13.7	0.0	0.0	6.6
Employment	207.0	207.3	1.6	0.3	0.3	14.8	0.1	0.1	7.7
Unemployment	15.3	15.2	0.8	-0.1	-0.1	-1.0	-0.7	-0.7	-6.2
Participation rate	69.8	69.8	0.5	0.0	0.0	3.1
Unemployment rate	6.9	6.8	0.4	-0.1	-0.1	-1.0
Employment rate	65.0	65.0	0.5	0.0	0.0	3.5
Toronto, Ontario									
Population	5,053.2	5,059.6	...	6.4	6.4	80.5	0.1	0.1	1.6
Labour force	3,338.6	3,330.4	10.5	-8.2	-8.2	-51.0	-0.2	-0.2	-1.5
Employment	3,072.6	3,070.5	10.6	-2.1	-2.1	-30.3	-0.1	-0.1	-1.0
Unemployment	266.0	259.9	6.5	-6.1	-6.1	-20.7	-2.3	-2.3	-7.4
Participation rate	66.1	65.8	0.2	-0.3	-0.3	-2.1
Unemployment rate	8.0	7.8	0.2	-0.2	-0.2	-0.5
Employment rate	60.8	60.7	0.2	-0.1	-0.1	-1.6
Hamilton, Ontario									
Population	638.7	639.1	...	0.4	0.4	6.4	0.1	0.1	1.0
Labour force	402.1	401.7	3.3	-0.4	-0.4	2.6	-0.1	-0.1	0.7
Employment	380.4	378.6	3.4	-1.8	-1.8	3.9	-0.5	-0.5	1.0
Unemployment	21.7	23.0	1.4	1.3	1.3	-1.4	6.0	6.0	-5.7
Participation rate	63.0	62.9	0.5	-0.1	-0.1	-0.2
Unemployment rate	5.4	5.7	0.3	0.3	0.3	-0.4
Employment rate	59.6	59.2	0.5	-0.4	-0.4	0.0
St. Catharines-Niagara, Ontario									
Population	342.6	342.7	...	0.1	0.1	1.0	0.0	0.0	0.3
Labour force	211.7	211.3	1.7	-0.4	-0.4	-1.1	-0.2	-0.2	-0.5
Employment	196.9	196.7	1.7	-0.2	-0.2	3.0	-0.1	-0.1	1.5
Unemployment	14.8	14.6	0.8	-0.2	-0.2	-4.1	-1.4	-1.4	-21.9
Participation rate	61.8	61.7	0.5	-0.1	-0.1	-0.5
Unemployment rate	7.0	6.9	0.4	-0.1	-0.1	-1.9
Employment rate	57.5	57.4	0.5	-0.1	-0.1	0.7
Kitchener-Cambridge-Waterloo, Ontario									
Population	419.2	419.6	...	0.4	0.4	4.7	0.1	0.1	1.1
Labour force	307.7	308.5	2.2	0.8	0.8	3.4	0.3	0.3	1.1
Employment	290.0	290.8	2.2	0.8	0.8	5.8	0.3	0.3	2.0
Unemployment	17.8	17.7	1.0	-0.1	-0.1	-2.4	-0.6	-0.6	-11.9
Participation rate	73.4	73.5	0.5	0.1	0.1	0.0
Unemployment rate	5.8	5.7	0.3	-0.1	-0.1	-0.9
Employment rate	69.2	69.3	0.5	0.1	0.1	0.6
Brantford, Ontario									
Population	111.3	111.4	...	0.1	0.1	0.7	0.1	0.1	0.6
Labour force	74.2	75.2	0.8	1.0	1.0	3.2	1.3	1.3	4.4
Employment	69.6	70.7	0.8	1.1	1.1	3.0	1.6	1.6	4.4
Unemployment	4.6	4.5	0.4	-0.1	-0.1	0.3	-2.2	-2.2	7.1
Participation rate	66.7	67.5	0.7	0.8	0.8	2.5
Unemployment rate	6.2	6.0	0.5	-0.2	-0.2	0.2
Employment rate	62.5	63.5	0.7	1.0	1.0	2.3
Guelph, Ontario									
Population	127.8	128.0	...	0.2	0.2	2.2	0.2	0.2	1.7
Labour force	89.9	90.6	0.9	0.7	0.7	6.6	0.8	0.8	7.9
Employment	85.3	86.0	0.9	0.7	0.7	7.7	0.8	0.8	9.8
Unemployment	4.6	4.6	0.4	0.0	0.0	-1.1	0.0	0.0	-19.3
Participation rate	70.3	70.8	0.8	0.5	0.5	4.0
Unemployment rate	5.1	5.1	0.5	0.0	0.0	-1.7
Employment rate	66.7	67.2	0.8	0.5	0.5	5.0

See notes at the end of the table.

Table 5-1 – continued

Labour force characteristics by census metropolitan area (seasonally adjusted) — 3 month moving average

	December 2014	January 2015	S.E. ¹	Change from			Percent change from		
				last month	last December	twelve months ago	last month	last December	twelve months ago
in thousands (except rates)									
London, Ontario									
Population	420.0	420.3	...	0.3	0.3	4.1	0.1	0.1	1.0
Labour force	265.7	268.2	2.1	2.5	2.5	10.5	0.9	0.9	4.1
Employment	246.2	248.8	2.0	2.6	2.6	12.2	1.1	1.1	5.2
Unemployment	19.5	19.4	1.0	-0.1	-0.1	-1.7	-0.5	-0.5	-8.1
Participation rate	63.3	63.8	0.5	0.5	0.5	1.9
Unemployment rate	7.3	7.2	0.4	-0.1	-0.1	-1.0
Employment rate	58.6	59.2	0.5	0.6	0.6	2.4
Windsor, Ontario									
Population	278.6	278.7	...	0.1	0.1	2.3	0.0	0.0	0.8
Labour force	175.2	175.3	1.5	0.1	0.1	6.6	0.1	0.1	3.9
Employment	158.1	158.9	1.5	0.8	0.8	1.8	0.5	0.5	1.1
Unemployment	17.0	16.4	0.8	-0.6	-0.6	4.8	-3.5	-3.5	41.4
Participation rate	62.9	62.9	0.6	0.0	0.0	1.9
Unemployment rate	9.7	9.4	0.5	-0.3	-0.3	2.5
Employment rate	56.7	57.0	0.6	0.3	0.3	0.2
Barrie, Ontario									
Population	165.6	165.7	...	0.1	0.1	2.6	0.1	0.1	1.6
Labour force	121.4	121.6	1.1	0.2	0.2	7.2	0.2	0.2	6.3
Employment	115.1	114.9	1.2	-0.2	-0.2	7.1	-0.2	-0.2	6.6
Unemployment	6.2	6.7	0.6	0.5	0.5	0.1	8.1	8.1	1.5
Participation rate	73.3	73.4	0.7	0.1	0.1	3.3
Unemployment rate	5.1	5.5	0.5	0.4	0.4	-0.3
Employment rate	69.5	69.3	0.7	-0.2	-0.2	3.2
Greater Sudbury, Ontario									
Population	139.8	139.8	...	0.0	0.0	0.3	0.0	0.0	0.2
Labour force	89.8	89.6	0.8	-0.2	-0.2	0.2	-0.2	-0.2	0.2
Employment	84.3	84.4	0.8	0.1	0.1	1.1	0.1	0.1	1.3
Unemployment	5.4	5.3	0.3	-0.1	-0.1	-0.8	-1.9	-1.9	-13.1
Participation rate	64.2	64.1	0.6	-0.1	-0.1	0.0
Unemployment rate	6.0	5.9	0.4	-0.1	-0.1	-0.9
Employment rate	60.3	60.4	0.6	0.1	0.1	0.7
Thunder Bay, Ontario									
Population	104.7	104.7	...	0.0	0.0	-0.1	0.0	0.0	-0.1
Labour force	64.0	63.7	0.6	-0.3	-0.3	-2.4	-0.5	-0.5	-3.6
Employment	60.5	60.3	0.6	-0.2	-0.2	-2.1	-0.3	-0.3	-3.4
Unemployment	3.6	3.4	0.3	-0.2	-0.2	-0.3	-5.6	-5.6	-8.1
Participation rate	61.1	60.8	0.6	-0.3	-0.3	-2.3
Unemployment rate	5.6	5.3	0.4	-0.3	-0.3	-0.3
Employment rate	57.8	57.6	0.6	-0.2	-0.2	-1.9
Winnipeg, Manitoba									
Population	647.1	647.9	...	0.8	0.8	10.5	0.1	0.1	1.6
Labour force	440.4	443.0	1.3	2.6	2.6	7.6	0.6	0.6	1.7
Employment	415.1	416.1	1.4	1.0	1.0	6.3	0.2	0.2	1.5
Unemployment	25.3	26.9	0.8	1.6	1.6	1.2	6.3	6.3	4.7
Participation rate	68.1	68.4	0.2	0.3	0.3	0.1
Unemployment rate	5.7	6.1	0.2	0.4	0.4	0.2
Employment rate	64.1	64.2	0.2	0.1	0.1	-0.1
Regina, Saskatchewan									
Population	195.9	196.2	...	0.3	0.3	4.8	0.2	0.2	2.5
Labour force	143.0	143.5	0.8	0.5	0.5	0.8	0.3	0.3	0.6
Employment	137.9	137.6	0.8	-0.3	-0.3	1.2	-0.2	-0.2	0.9
Unemployment	5.1	5.9	0.3	0.8	0.8	-0.4	15.7	15.7	-6.3
Participation rate	73.0	73.1	0.4	0.1	0.1	-1.5
Unemployment rate	3.6	4.1	0.2	0.5	0.5	-0.3
Employment rate	70.4	70.1	0.4	-0.3	-0.3	-1.2

See notes at the end of the table.

Table 5-1 – continued

Labour force characteristics by census metropolitan area (seasonally adjusted) — 3 month moving average

	December 2014	January 2015	S.E. ¹	Change from			Percent change from		
				last month	last December	twelve months ago	last month	last December	twelve months ago
in thousands (except rates)									
Saskatoon, Saskatchewan									
Population	248.3	248.9	...	0.6	0.6	8.0	0.2	0.2	3.3
Labour force	178.7	178.7	1.0	0.0	0.0	4.9	0.0	0.0	2.8
Employment	171.7	170.8	1.0	-0.9	-0.9	4.4	-0.5	-0.5	2.6
Unemployment	7.0	7.9	0.4	0.9	0.9	0.4	12.9	12.9	5.3
Participation rate	72.0	71.8	0.4	-0.2	-0.2	-0.3
Unemployment rate	3.9	4.4	0.2	0.5	0.5	0.1
Employment rate	69.2	68.6	0.4	-0.6	-0.6	-0.5
Calgary, Alberta									
Population	1,160.7	1,163.4	...	2.7	2.7	38.9	0.2	0.2	3.5
Labour force	850.4	855.9	3.9	5.5	5.5	24.2	0.6	0.6	2.9
Employment	809.9	815.8	4.1	5.9	5.9	22.9	0.7	0.7	2.9
Unemployment	40.5	40.1	2.1	-0.4	-0.4	1.3	-1.0	-1.0	3.4
Participation rate	73.3	73.6	0.3	0.3	0.3	-0.4
Unemployment rate	4.8	4.7	0.2	-0.1	-0.1	0.0
Employment rate	69.8	70.1	0.4	0.3	0.3	-0.4
Edmonton, Alberta									
Population	1,086.0	1,088.0	...	2.0	2.0	30.3	0.2	0.2	2.9
Labour force	785.6	786.8	3.9	1.2	1.2	8.1	0.2	0.2	1.0
Employment	747.8	749.3	4.0	1.5	1.5	12.9	0.2	0.2	1.8
Unemployment	37.8	37.5	2.2	-0.3	-0.3	-4.8	-0.8	-0.8	-11.3
Participation rate	72.3	72.3	0.4	0.0	0.0	-1.3
Unemployment rate	4.8	4.8	0.3	0.0	0.0	-0.6
Employment rate	68.9	68.9	0.4	0.0	0.0	-0.7
Kelowna, British Columbia									
Population	151.0	151.1	...	0.1	0.1	1.1	0.1	0.1	0.7
Labour force	94.5	96.0	1.7	1.5	1.5	1.9	1.6	1.6	2.0
Employment	91.0	93.3	1.7	2.3	2.3	5.8	2.5	2.5	6.6
Unemployment	3.5	2.7	0.7	-0.8	-0.8	-3.9	-22.9	-22.9	-59.1
Participation rate	62.6	63.5	1.1	0.9	0.9	0.8
Unemployment rate	3.7	2.8	0.7	-0.9	-0.9	-4.2
Employment rate	60.3	61.7	1.1	1.4	1.4	3.4
Abbotsford-Mission, British Columbia									
Population	143.9	144.0	...	0.1	0.1	1.1	0.1	0.1	0.8
Labour force	92.3	92.1	0.8	-0.2	-0.2	-4.7	-0.2	-0.2	-4.9
Employment	86.4	86.4	0.8	0.0	0.0	-2.5	0.0	0.0	-2.8
Unemployment	5.9	5.7	0.5	-0.2	-0.2	-2.2	-3.4	-3.4	-27.8
Participation rate	64.1	64.0	0.6	-0.1	-0.1	-3.7
Unemployment rate	6.4	6.2	0.4	-0.2	-0.2	-2.0
Employment rate	60.0	60.0	0.6	0.0	0.0	-2.2
Vancouver, British Columbia									
Population	2,106.5	2,109.4	...	2.9	2.9	33.9	0.1	0.1	1.6
Labour force	1,364.6	1,364.0	5.1	-0.6	-0.6	14.5	0.0	0.0	1.1
Employment	1,283.2	1,284.3	5.2	1.1	1.1	18.2	0.1	0.1	1.4
Unemployment	81.5	79.7	2.8	-1.8	-1.8	-3.8	-2.2	-2.2	-4.6
Participation rate	64.8	64.7	0.2	-0.1	-0.1	-0.3
Unemployment rate	6.0	5.8	0.2	-0.2	-0.2	-0.4
Employment rate	60.9	60.9	0.2	0.0	0.0	-0.1
Victoria, British Columbia									
Population	301.4	301.6	...	0.2	0.2	2.5	0.1	0.1	0.8
Labour force	182.0	180.7	1.6	-1.3	-1.3	-7.9	-0.7	-0.7	-4.2
Employment	172.9	172.4	1.6	-0.5	-0.5	-6.9	-0.3	-0.3	-3.8
Unemployment	9.1	8.3	0.6	-0.8	-0.8	-1.0	-8.8	-8.8	-10.8
Participation rate	60.4	59.9	0.5	-0.5	-0.5	-3.2
Unemployment rate	5.0	4.6	0.3	-0.4	-0.4	-0.3
Employment rate	57.4	57.2	0.5	-0.2	-0.2	-2.7

1. Average standard error of change in two consecutive months (see "Sampling Errors" in Data Quality for further explanations).

Note(s): Estimates in this table are based on 2011 census boundaries. Related CANSIM Table 282-0135. The sum of individual categories may not always add to the total due to rounding.

Table 5-2
Labour force characteristics by census metropolitan area (seasonally adjusted) — Monthly

	December 2014	January 2015	S.E. ¹	Change from			Percent change from		
				last month	last December	twelve months ago	last month	last December	twelve months ago
in thousands (except rates)									
Montréal, Quebec									
Population	3,337.4	3,339.3	...	1.9	1.9	27.8	0.1	0.1	0.8
Labour force	2,199.7	2,195.3	15.5	-4.4	-4.4	4.7	-0.2	-0.2	0.2
Employment	2,030.2	2,030.2	15.3	0.0	0.0	5.3	0.0	0.0	0.3
Unemployment	169.5	165.1	11.3	-4.4	-4.4	-0.6	-2.6	-2.6	-0.4
Participation rate	65.9	65.7	0.5	-0.2	-0.2	-0.5
Unemployment rate	7.7	7.5	0.5	-0.2	-0.2	-0.1
Employment rate	60.8	60.8	0.5	0.0	0.0	-0.3
Toronto, Ontario									
Population	5,059.4	5,066.5	...	7.1	7.1	80.0	0.1	0.1	1.6
Labour force	3,323.9	3,321.9	22.1	-2.0	-2.0	-37.3	-0.1	-0.1	-1.1
Employment	3,057.3	3,078.7	21.5	21.4	21.4	-11.2	0.7	0.7	-0.4
Unemployment	266.6	243.2	15.4	-23.4	-23.4	-26.1	-8.8	-8.8	-9.7
Participation rate	65.7	65.6	0.4	-0.1	-0.1	-1.8
Unemployment rate	8.0	7.3	0.4	-0.7	-0.7	-0.7
Employment rate	60.4	60.8	0.4	0.4	0.4	-1.2
Vancouver, British Columbia									
Population	2,109.5	2,112.6	...	3.1	3.1	34.3	0.1	0.1	1.7
Labour force	1,361.8	1,366.0	10.8	4.2	4.2	12.8	0.3	0.3	0.9
Employment	1,283.7	1,284.6	10.7	0.9	0.9	9.4	0.1	0.1	0.7
Unemployment	78.0	81.4	6.7	3.4	3.4	3.3	4.4	4.4	4.2
Participation rate	64.6	64.7	0.5	0.1	0.1	-0.4
Unemployment rate	5.7	6.0	0.5	0.3	0.3	0.2
Employment rate	60.9	60.8	0.5	-0.1	-0.1	-0.6

1. Average standard error of change in two consecutive months (see "Sampling Errors" in Data Quality for further explanations).

Note(s): Estimates in this table are based on 2011 census boundaries. Related CANSIM Table 282-0136. The sum of individual categories may not always add to the total due to rounding.

Table 6-1

Labour force characteristics by province and economic region, ¹ unadjusted for seasonality, 3 month moving average ending in January 2014 and January 2015

	Population	Labour force			Participation rate	Unemployment rate	Employment rate
		Labour force	Employment	Unemployment			
		in thousands					
Canada							
2014	28,808.9	18,903.6	17,605.6	1,298.0	65.6	6.9	61.1
2015	29,116.1	18,950.0	17,725.7	1,224.4	65.1	6.5	60.9
Newfoundland and Labrador							
2014	445.0	269.2	235.1	34.0	60.5	12.6	52.8
2015	443.3	263.4	232.0	31.4	59.4	11.9	52.3
Avalon Peninsula [1010]							
2014	231.8	151.4	138.0	13.5	65.3	8.9	59.5
2015	232.2	152.7	140.7	12.1	65.8	7.9	60.6
South Coast-Burin Peninsula and Notre Dame-Central Bonavista Bay [1020, 1040]							
2014	124.9	68.0	55.0	12.9	54.4	19.0	44.0
2015	123.5	61.9	49.9	12.0	50.1	19.4	40.4
West Coast-Northern Peninsula-Labrador [1030]							
2014	88.3	49.8	42.1	7.6	56.4	15.3	47.7
2015	87.5	48.7	41.4	7.3	55.7	15.0	47.3
Prince Edward Island							
2014	120.2	81.6	70.6	11.0	67.9	13.5	58.7
2015	120.7	80.8	70.7	10.1	66.9	12.5	58.6
Nova Scotia							
2014	782.4	484.0	440.3	43.7	61.9	9.0	56.3
2015	784.0	485.7	443.9	41.8	62.0	8.6	56.6
Cape Breton [1210]							
2014	109.0	57.7	49.3	8.4	52.9	14.6	45.2
2015	107.6	58.7	49.8	8.9	54.6	15.2	46.3
North Coast [1220]							
2014	129.9	74.6	67.0	7.6	57.4	10.2	51.6
2015	129.2	71.2	62.9	8.3	55.1	11.7	48.7
Annapolis Valley [1230]							
2014	102.5	61.2	55.5	5.7	59.7	9.3	54.1
2015	102.5	57.3	53.0	4.2	55.9	7.3	51.7
Southern [1240]							
2014	99.3	54.0	47.5	6.5	54.4	12.0	47.8
2015	98.7	56.6	50.9	5.7	57.3	10.1	51.6
Halifax [1250]							
2014	341.8	236.5	221.0	15.5	69.2	6.6	64.7
2015	346.0	241.9	227.2	14.7	69.9	6.1	65.7
New Brunswick							
2014	622.4	388.3	348.8	39.5	62.4	10.2	56.0
2015	621.8	384.9	345.3	39.7	61.9	10.3	55.5
Campbellton-Miramichi [1310]							
2014	130.9	72.8	58.7	14.2	55.6	19.5	44.8
2015	129.6	70.5	57.4	13.0	54.4	18.4	44.3
Moncton-Richibucto [1320]							
2014	174.6	113.6	103.8	9.8	65.1	8.6	59.5
2015	176.1	113.2	104.4	8.8	64.3	7.8	59.3
Saint John-St. Stephen [1330]							
2014	143.1	93.0	86.0	7.0	65.0	7.5	60.1
2015	142.5	90.2	82.7	7.5	63.3	8.3	58.0
Fredericton-Oromocto [1340]							
2014	109.0	70.7	66.3	4.3	64.9	6.1	60.8
2015	109.4	71.1	65.3	5.8	65.0	8.2	59.7

See notes at the end of the table.

Table 6-1 – continued

Labour force characteristics by province and economic region, ¹ unadjusted for seasonality, 3 month moving average ending in January 2014 and January 2015

	Population	Labour force			Participation rate	Unemployment rate	Employment rate
		Labour force	Employment	Unemployment			
	in thousands						
Edmundston-Woodstock [1350]							
2014	64.8	38.3	34.1	4.2	59.1	11.0	52.6
2015	64.3	40.0	35.5	4.5	62.2	11.3	55.2
Quebec							
2014	6,778.0	4,366.0	4,037.5	328.5	64.4	7.5	59.6
2015	6,822.2	4,353.6	4,027.8	325.7	63.8	7.5	59.0
Gaspésie-Îles-de-la-Madeleine [2410]							
2014	79.1	41.2	33.6	7.6	52.1	18.4	42.5
2015	78.6	40.6	32.9	7.7	51.7	19.0	41.9
Bas-Saint-Laurent [2415]							
2014	170.5	95.3	83.7	11.6	55.9	12.2	49.1
2015	170.4	90.4	82.8	7.6	53.1	8.4	48.6
Capitale-Nationale [2420]							
2014	610.6	414.6	396.0	18.6	67.9	4.5	64.9
2015	614.6	400.6	378.1	22.5	65.2	5.6	61.5
Chaudière-Appalaches [2425]							
2014	347.9	233.3	223.3	10.0	67.1	4.3	64.2
2015	349.1	233.5	221.6	11.9	66.9	5.1	63.5
Estrie [2430]							
2014	266.9	164.5	153.2	11.3	61.6	6.9	57.4
2015	268.5	170.7	159.9	10.8	63.6	6.3	59.6
Centre-du-Québec [2433]							
2014	198.7	112.1	103.7	8.4	56.4	7.5	52.2
2015	200.0	117.2	105.2	12.0	58.6	10.2	52.6
Montréal [2435]							
2014	1,235.3	806.5	750.8	55.7	65.3	6.9	60.8
2015	1,246.6	821.1	775.0	46.1	65.9	5.6	62.2
Montréal [2440]							
2014	1,647.1	1,049.4	955.0	94.4	63.7	9.0	58.0
2015	1,656.4	1,047.3	949.7	97.6	63.2	9.3	57.3
Laval [2445]							
2014	346.0	245.4	231.4	14.0	70.9	5.7	66.9
2015	350.0	240.9	225.8	15.1	68.8	6.3	64.5
Lanaudière [2450]							
2014	405.6	271.7	249.8	21.9	67.0	8.1	61.6
2015	409.7	272.0	252.4	19.7	66.4	7.2	61.6
Laurentides [2455]							
2014	484.3	321.0	294.6	26.4	66.3	8.2	60.8
2015	490.0	314.8	289.4	25.4	64.2	8.1	59.1
Outaouais [2460]							
2014	315.2	211.7	197.3	14.4	67.2	6.8	62.6
2015	317.4	208.3	191.2	17.0	65.6	8.2	60.2
Abitibi-Témiscamingue [2465]							
2014	120.0	81.8	76.4	5.4	68.2	6.6	63.7
2015	120.4	77.6	71.2	6.4	64.5	8.2	59.1
Mauricie [2470]							
2014	226.0	126.0	114.5	11.5	55.8	9.1	50.7
2015	225.9	125.2	117.5	7.7	55.4	6.2	52.0
Saguenay-Lac-Saint-Jean [2475]							
2014	232.6	134.8	122.0	12.8	58.0	9.5	52.5
2015	232.3	139.0	126.5	12.6	59.8	9.1	54.5

See notes at the end of the table.

Table 6-1 – continued

Labour force characteristics by province and economic region, ¹ unadjusted for seasonality, 3 month moving average ending in January 2014 and January 2015

	Population	Labour force			Participation rate	Unemployment rate	Employment rate
		Labour force	Employment	Unemployment			
		in thousands					
Côte-Nord and Nord-du-Québec [2480, 2490]							
2014	92.1	56.6	52.2	4.4	61.5	7.8	56.7
2015	92.0	54.3	48.7	5.6	59.0	10.3	52.9
Ontario							
2014	11,206.6	7,327.4	6,806.1	521.4	65.4	7.1	60.7
2015	11,320.2	7,328.1	6,845.1	482.9	64.7	6.6	60.5
Ottawa [3510]							
2014	1,082.8	735.5	690.2	45.2	67.9	6.1	63.7
2015	1,091.9	738.9	691.9	47.0	67.7	6.4	63.4
Kingston-Pembroke [3515]							
2014	376.1	223.2	204.7	18.5	59.3	8.3	54.4
2015	376.7	223.7	206.9	16.9	59.4	7.6	54.9
Muskoka-Kawartha [3520]							
2014	323.3	178.9	168.3	10.5	55.3	5.9	52.1
2015	325.2	200.7	187.3	13.4	61.7	6.7	57.6
Toronto [3530]							
2014	5,231.6	3,514.3	3,241.4	272.8	67.2	7.8	62.0
2015	5,311.7	3,471.3	3,223.6	247.7	65.4	7.1	60.7
Kitchener-Waterloo-Barrie [3540]							
2014	1,057.2	731.6	689.4	42.2	69.2	5.8	65.2
2015	1,070.1	743.1	705.7	37.5	69.4	5.0	65.9
Hamilton-Niagara Peninsula [3550]							
2014	1,184.9	741.6	691.9	49.7	62.6	6.7	58.4
2015	1,193.1	742.1	699.0	43.2	62.2	5.8	58.6
London [3560]							
2014	546.8	342.8	319.8	23.1	62.7	6.7	58.5
2015	551.5	342.7	322.4	20.3	62.1	5.9	58.5
Windsor-Sarnia [3570]							
2014	524.4	322.0	299.6	22.4	61.4	7.0	57.1
2015	524.3	325.0	299.7	25.3	62.0	7.8	57.2
Stratford-Bruce Peninsula [3580]							
2014	246.4	158.6	148.7	9.9	64.4	6.2	60.3
2015	245.7	161.0	152.7	8.2	65.5	5.1	62.1
Northeast [3590]							
2014	459.9	271.8	251.9	20.0	59.1	7.4	54.8
2015	457.9	274.0	257.1	16.9	59.8	6.2	56.1
Northwest [3595]							
2014	173.3	107.3	100.2	7.1	61.9	6.6	57.8
2015	172.1	105.4	98.8	6.5	61.2	6.2	57.4
Manitoba							
2014	969.9	654.2	618.8	35.4	67.5	5.4	63.8
2015	981.5	665.5	630.8	34.7	67.8	5.2	64.3
Southeast [4610]							
2014	86.3	59.9	56.7	3.2	69.4	5.3	65.7
2015	88.1	60.5	57.3	3.2	68.7	5.3	65.0
South Central and North Central [4620, 4640]							
2014	83.0	54.8	52.3	2.6	66.0	4.7	63.0
2015	83.9	59.2	57.4	1.8	70.6	3.0	68.4
Southwest [4630]							
2014	87.3	60.4	58.0	2.4	69.2	4.0	66.4
2015	87.8	59.5	57.5	2.0	67.8	3.4	65.5

See notes at the end of the table.

Table 6-1 – continued

Labour force characteristics by province and economic region, ¹ unadjusted for seasonality, 3 month moving average ending in January 2014 and January 2015

	Population	Labour force			Participation rate	Unemployment rate	Employment rate
		Labour force	Employment	Unemployment			
		in thousands					
Winnipeg [4650]							
2014	581.7	392.8	370.7	22.1	67.5	5.6	63.7
2015	590.5	400.7	377.1	23.5	67.9	5.9	63.9
Interlake [4660]							
2014	73.7	49.4	46.5	3.0	67.0	6.1	63.1
2015	74.5	48.6	46.4	2.1	65.2	4.3	62.3
Parklands and Northern [4670, 4680]							
2014	58.0	36.9	34.6	2.2	63.6	6.0	59.7
2015	56.8	37.0	35.1	2.0	65.1	5.4	61.8
Saskatchewan							
2014	845.7	586.0	562.3	23.7	69.3	4.0	66.5
2015	857.0	589.5	566.8	22.6	68.8	3.8	66.1
Regina-Moose Mountain [4710]							
2014	255.5	184.0	177.7	6.4	72.0	3.5	69.5
2015	260.8	187.6	181.2	6.4	71.9	3.4	69.5
Swift Current-Moose Jaw [4720]							
2014	82.9	54.2	52.5	1.7	65.4	3.1	63.3
2015	82.7	54.2	53.0	1.2	65.5	2.2	64.1
Saskatoon-Biggar [4730]							
2014	284.6	203.2	194.8	8.4	71.4	4.1	68.4
2015	292.0	205.6	196.9	8.7	70.4	4.2	67.4
Yorkton-Melville [4740]							
2014	63.7	41.0	39.2	1.8	64.4	4.4	61.5
2015	62.9	40.1	38.7	1.4	63.8	3.5	61.5
Prince Albert and Northern [4750, 4760]							
2014	158.9	103.4	98.1	5.4	65.1	5.2	61.7
2015	158.5	101.9	97.1	4.8	64.3	4.7	61.3
Alberta							
2014	3,232.3	2,337.8	2,232.9	104.8	72.3	4.5	69.1
2015	3,317.4	2,395.9	2,291.6	104.3	72.2	4.4	69.1
Lethbridge-Medicine Hat [4810]							
2014	227.3	139.7	133.9	5.9	61.5	4.2	58.9
2015	229.6	149.9	144.3	5.6	65.3	3.7	62.8
Camrose-Drumheller [4820]							
2014	160.5	109.0	103.4	5.6	67.9	5.1	64.4
2015	161.7	110.9	106.3	4.6	68.6	4.1	65.7
Calgary [4830]							
2014	1,208.1	886.0	846.2	39.7	73.3	4.5	70.0
2015	1,248.6	910.8	871.1	39.7	72.9	4.4	69.8
Banff-Jasper-Rocky Mountain House and Athabasca-Grande Prairie-Peace River [4840, 4870]							
2014	272.6	201.0	193.7	7.3	73.7	3.6	71.1
2015	276.2	206.8	199.2	7.6	74.9	3.7	72.1
Red Deer [4850]							
2014	164.0	119.4	116.4	3.1	72.8	2.6	71.0
2015	168.4	126.9	120.7	6.2	75.4	4.9	71.7
Edmonton [4860]							
2014	1,087.8	795.6	755.7	39.9	73.1	5.0	69.5
2015	1,116.8	801.0	765.3	35.7	71.7	4.5	68.5
Wood Buffalo-Cold Lake [4880]							
2014	111.9	87.1	83.6	3.4	77.8	3.9	74.7
2015	116.1	89.6	84.8	4.8	77.2	5.4	73.0

See notes at the end of the table.

Table 6-1 – continued

Labour force characteristics by province and economic region, ¹ unadjusted for seasonality, 3 month moving average ending in January 2014 and January 2015

	Population	Labour force			Participation rate	Unemployment rate	Employment rate
		Labour force	Employment	Unemployment			
	in thousands						
British Columbia							
2014	3,806.5	2,409.2	2,253.2	156.0	63.3	6.5	59.2
2015	3,848.1	2,402.8	2,271.6	131.1	62.4	5.5	59.0
Vancouver Island and Coast [5910]							
2014	647.7	378.5	354.7	23.8	58.4	6.3	54.8
2015	652.0	372.0	352.6	19.5	57.1	5.2	54.1
Lower Mainland-Southwest [5920]							
2014	2,359.2	1,511.9	1,419.4	92.6	64.1	6.1	60.2
2015	2,395.6	1,522.7	1,437.3	85.4	63.6	5.6	60.0
Thompson-Okanagan [5930]							
2014	429.1	269.6	247.0	22.5	62.8	8.3	57.6
2015	429.7	260.3	245.5	14.8	60.6	5.7	57.1
Kootenay [5940]							
2014	122.8	76.1	69.9	6.2	62.0	8.1	56.9
2015	121.9	73.4	69.6	3.8	60.2	5.2	57.1
Cariboo [5950]							
2014	126.7	88.4	83.2	5.2	69.8	5.9	65.7
2015	127.1	88.3	83.9	4.4	69.5	5.0	66.0
North Coast and Nechako [5960, 5970]							
2014	66.8	40.8	38.1	2.7	61.1	6.6	57.0
2015	66.4	44.5	42.3	2.1	67.0	4.7	63.7
Northeast [5980]							
2014	54.3	43.8	40.9	2.9	80.7	6.6	75.3
2015	55.4	41.6	40.5	x	75.1	x	73.1

1. For geographic descriptions of economic regions, refer to the Guide to the Labour Force Survey (catalogue number 71-543-GIE).

Note(s): Estimates in this table are based on 2011 census boundaries. Related CANSIM table 282-0122.

Table 6-2
Labour force characteristics by territories, unadjusted for seasonality, 3 month moving average ending in
January 2014 and January 2015

	Population	Labour force			Participation rate	Unemployment rate	Employment rate
		Labour force	Employment	Unemployment			
		in thousands			percent		
Yukon ¹							
2014	27.6	20.7	19.4	1.3	75.0	6.3	70.3
2015	27.9	20.6	19.3	1.3	73.8	6.3	69.2
Northwest Territories ²							
2014	32.6	24.4	22.5	1.9	74.8	7.8	69.0
2015	32.3	23.4	21.6	1.8	72.4	7.7	66.9
Nunavut ³							
2014	22.8	14.5	12.5	2.0	63.4	13.8	54.6
2015	23.4	14.1	12.3	1.8	60.2	12.5	52.7

1. Since 1992, the Labour force survey (LFS) has been conducted in the Yukon, using an alternative methodology that accommodates some of the operational difficulties inherent to remote locales. These estimates are not included in the national totals. In 1995, the LFS in the Yukon underwent a sample redesign. One result of the redesign was that the covered population increased from 85% to 92%, which is reflected by the sharp increase in the three month moving averages estimates of January, February and March of 1995 for all the level estimates. Users are therefore warned to be cautious when comparing estimates before January 1995 to estimates for January 1995 and forward.
2. Since 2001, the Labour force survey (LFS) has been administered in the Northwest Territories, using an alternative methodology that accommodates some of the operational difficulties inherent to remote locales. These estimates are not included in national totals.
3. Since 2004, the Labour force survey (LFS) has been administered in Nunavut, using an alternative methodology that accommodates some of the operational difficulties inherent to remote locales. These estimates are 3-month moving averages and are not included in national totals. From January 2004 to December 2007, estimates represent about 70% of all Nunavut residents aged 15 and over. Starting in January 2008, coverage was extended to 92%, so that by March 2008, the 3-month moving average is completely based on the extended coverage. Because of the large difference in coverage, users are recommended not to compare estimates prior to January 2008 with data afterwards. The January and February 2008 3-month moving average estimates are based on a mix of both coverages, since the extended coverage was introduced in January 2008. Estimates from January 2004 to December 2007 are based on the 10 largest communities in Nunavut: Iqaluit, Rankin Inlet, Cambridge Bay, Kugluktuk, Baker Lake, Arviat, Pond Inlet, Cape Dorset, Pangnirtung, Igloolik. Estimates from March 2008 to present cover the above communities as well as: Taloyoak, Gjoa Haven, Kugaaruk, Coral Harbour, Repulse Bay, Qikiqtarjuaq, Arctic Bay, Hall Beach, Clyde River.

Note(s): Related CANSIM table 282-0100.

Table 7
Average usual hours and wages of employees by selected characteristics, Canada, unadjusted for seasonality

	Employees				Full-time			Part-time		
	Number	Average weekly hours	Average weekly wages	Average hourly wages	Number	Average weekly hours	Average weekly wages	Number	Average weekly hours	Average weekly wages
	thousands		current dollars		thousands		current dollars	thousands		current dollars
January 2015										
15 years and over	14,806.0	34.9	907.43	24.96	11,938.9	39.2	1,052.78	2,867.1	16.9	302.17
15 to 24 years	2,241.0	25.3	402.46	14.68	1,005.0	38.6	671.53	1,236.0	14.5	183.67
25 years and over	12,565.1	36.6	997.49	26.79	10,933.9	39.2	1,087.83	1,631.1	18.7	391.97
Men	7,408.2	37.3	1,033.26	26.81	6,458.7	40.4	1,145.25	949.5	16.3	271.48
Women	7,397.9	32.4	781.43	23.10	5,480.3	37.7	943.81	1,917.6	17.2	317.37
Union coverage										
Union coverage	4,524.2	35.5	1,022.10	28.33	3,854.6	38.4	1,120.49	669.6	18.9	455.71
No union coverage	10,281.8	34.6	856.98	23.47	8,084.3	39.6	1,020.50	2,197.5	16.3	255.39
Job permanency										
Permanent	12,999.5	35.9	950.22	25.63	10,967.2	39.2	1,066.27	2,032.3	17.9	323.95
Temporary	1,806.5	27.7	599.55	20.11	971.7	38.9	900.55	834.8	14.5	249.15
Occupation										
Management	867.7	39.7	1,592.44	40.04	841.4	40.4	1,626.42	26.4	18.1	507.72
Business, finance and administrative	2,871.1	35.3	872.10	24.16	2,457.4	38.3	964.18	413.7	17.1	325.18
Natural and applied sciences	1,155.5	38.5	1,329.79	34.51	1,122.0	39.1	1,351.74	33.5	18.8	595.15
Health	1,006.3	33.5	974.30	28.69	771.5	37.7	1,108.10	234.9	19.7	534.84
Social science, education, government service and religion	1,523.9	33.8	1,074.48	31.25	1,231.5	37.7	1,213.56	292.4	17.3	488.65
Art, culture, recreation and sport	366.8	29.4	833.56	26.09	238.2	38.7	1,152.48	128.6	11.9	242.93
Sales and service	3,907.4	29.9	536.22	16.70	2,394.9	38.3	736.73	1,512.5	16.5	218.74
Trades, transport and equipment operators	2,128.9	39.7	1,003.69	24.91	1,965.1	41.5	1,060.79	163.8	18.3	318.80
Occupations unique to primary industry	241.7	41.6	1,006.76	23.27	214.4	45.1	1,107.45	27.2	14.6	214.27
Occupations unique to processing, manufacturing and utilities	736.7	39.0	833.83	21.12	702.6	40.0	860.23	34.1	18.5	289.06
January 2014										
15 years and over	14,743.5	34.9	890.39	24.48	11,843.8	39.3	1,034.56	2,899.6	17.2	301.52
15 to 24 years	2,215.9	25.2	381.08	13.96	981.6	38.6	638.39	1,234.3	14.5	176.44
25 years and over	12,527.6	36.6	980.48	26.34	10,862.3	39.3	1,070.36	1,665.3	19.1	394.22
Men	7,345.9	37.4	1,015.74	26.35	6,413.6	40.4	1,124.18	932.3	16.4	269.72
Women	7,397.6	32.5	765.92	22.63	5,430.3	37.9	928.71	1,967.3	17.5	316.59
Union coverage										
Union coverage	4,559.9	35.6	1,015.76	28.17	3,868.3	38.5	1,115.54	691.6	19.3	457.67
No union coverage	10,183.5	34.6	834.26	22.82	7,975.5	39.6	995.29	2,208.0	16.5	252.60
Job permanency										
Permanent	13,029.0	35.9	930.93	25.10	10,949.0	39.3	1,046.64	2,080.0	18.1	321.81
Temporary	1,714.5	27.4	582.38	19.73	894.8	39.1	886.82	819.6	14.7	250.01
Occupation										
Management	967.4	39.5	1,511.19	38.41	945.9	39.9	1,531.69	21.5	20.6	609.22
Business, finance and administrative	2,852.9	35.4	837.13	23.18	2,430.4	38.3	924.20	422.5	18.3	336.28
Natural and applied sciences	1,126.4	38.4	1,306.07	33.96	1,084.9	39.2	1,336.29	41.5	17.6	515.93
Health	1,039.8	33.7	966.39	28.34	792.2	38.0	1,103.76	247.7	19.7	527.02
Social science, education, government service and religion	1,447.6	33.8	1,074.09	31.30	1,162.0	37.8	1,218.51	285.6	17.4	486.56
Art, culture, recreation and sport	358.3	28.4	741.46	23.66	220.9	38.4	1,057.36	137.3	12.4	233.30
Sales and service	3,885.7	29.8	527.38	16.40	2,352.6	38.5	729.40	1,533.1	16.6	217.38
Trades, transport and equipment operators	2,110.8	39.9	988.09	24.45	1,962.9	41.5	1,039.33	147.8	18.2	307.62
Occupations unique to primary industry	241.8	42.2	1,067.69	24.26	213.4	45.8	1,173.90	28.4	15.7	268.99
Occupations unique to processing, manufacturing and utilities	712.7	39.0	824.52	20.89	678.5	40.1	851.62	34.2	18.4	286.52

Note(s): Related CANSIM Tables 282-0023, 282-0069, 282-0073.

Table 8

Regional unemployment rates used by the Employment Insurance program ¹, seasonally adjusted, 3 month moving average

Region	Effective from February 8, 2015 to March 14, 2015
	percent
Newfoundland and Labrador	
01. St. John's	5.5
02. Newfoundland and Labrador ²	16.3
Prince Edward Island ³	
65. Charlottetown	8.4
66. Prince Edward Island ⁴	12.7
Nova Scotia	
04. Eastern Nova Scotia	15.4
05. Western Nova Scotia	9.8
06. Halifax	5.9
New Brunswick	
07. Fredericton—Moncton—Saint John	7.1
08. Madawaska—Charlotte	11.1
09. Restigouche—Albert	16.1
Quebec	
10. Gaspésie—Îles-de-la-Madeleine	17.8
11. Québec	5.8
12. Trois-Rivières	6.7
13. South Central Quebec	6.4
14. Sherbrooke	7.3
15. Montérégie	6.7
16. Montréal	7.9
17. Central Quebec	7.4
18. North Western Quebec	10.9
19. Bas-Saint-Laurent—Côte-Nord	9.9
20. Hull	7.5
21. Chicoutimi—Jonquière	8.8
Ontario	
22. Ottawa	6.6
23. Eastern Ontario	8.1
24. Kingston	6.6
25. Central Ontario	6.8
26. Oshawa	6.7
27. Toronto	7.8
28. Hamilton	5.7
29. St. Catharines	6.9
30. London	7.4
31. Niagara	8.5
32. Windsor	9.6
33. Kitchener	5.9
34. Huron	7.0
35. South Central Ontario	5.3
36. Sudbury	5.6
37. Thunder Bay	5.2
38. Northern Ontario	11.8
Manitoba	
39. Winnipeg	6.2
40. Southern Manitoba	5.3
41. Northern Manitoba	32.0
Saskatchewan	
42. Regina	3.8
43. Saskatoon	4.4
44. Southern Saskatchewan	5.5
45. Northern Saskatchewan	16.2
Alberta	
46. Calgary	4.8
47. Edmonton	4.8
48. Northern Alberta	8.6
49. Southern Alberta	5.4

See notes at the end of the table.

Table 8 – continued

Regional unemployment rates used by the Employment Insurance program 1, seasonally adjusted, 3 month moving average

Region	Effective from February 8, 2015 to March 14, 2015
	percent
British Columbia	
50. Southern Interior British Columbia	6.7
51. Abbotsford	6.2
52. Vancouver	5.9
53. Victoria	5.5
54. Southern Coastal British Columbia	7.1
55. Northern British Columbia	8.8
Territories 3, 5	
59. Whitehorse	5.4
60. Yukon 6	9.0
61. Yellowknife	4.0
62. Northwest Territories 7	13.9
63. Iqaluit	4.2
64. Nunavut 8	17.3

1. The boundaries of these regions are determined by Employment and Social Development Canada (ESDC). For geographic descriptions and maps of employment insurance regions, see the ESDC website: <http://srv129.services.gc.ca/eiregions/en/geocont.aspx>.
 2. This region excludes St. John's.
 3. Prince Edward Island as well as the territories are each comprised of two regions effective October 12, 2014.
 4. This region excludes Charlottetown.
 5. The monthly regional unemployment rates for EI purposes in the territories are subject to the greater of a seasonally adjusted 3 month moving average or 12 month moving average.
 6. This region excludes Whitehorse.
 7. This region excludes Yellowknife.
 8. This region excludes Iqaluit.
- Note(s):** All regions are based on the 1996 Census boundaries, with the exception of those in Prince Edward Island and in the territories, which respect the 2011 Census boundaries.

Data quality

Definitions and explanations

The **labour force** is composed of those members of the civilian non-institutional population 15 years of age and over who, during the reference week, were employed or unemployed.

Employed persons are those who, during the reference week:

- (a) did any work at all
- (b) had a job but were not at work

A person is considered to be **full-time** if his/her usual hours at the main job are 30 or more hours per week. When the number of hours worked at the main job is usually less than 30 hours per week then he/she is considered to be **part-time**.

Unemployed persons are those who, during the reference week:

- (a) were without work, had actively looked for work in the past four weeks (ending with reference week), and were available for work;
- (b) had not actively looked for work in the past four weeks but were on temporary layoff and were available for work;
- (c) had not actively looked for work in the past four weeks but had a new job to start in four weeks or less from the reference week, and were available for work.

Persons in the civilian non-institutional population 15 years of age and over who, during the reference week, were neither employed nor unemployed are classified as **not in the labour force**.

The **unemployment rate** represents the number of unemployed persons expressed as a percentage of the labour force (employed and unemployed). The unemployment rate for a particular group (age, sex, etc.) is the number unemployed in that group expressed as a percentage of the labour force for that group.

The **participation rate** represents the labour force expressed as a percentage of the population 15 years of age and over. The participation rate for a particular group (age, sex, etc.) is the labour force in that group expressed as a percentage of the population for that group.

The **employment rate** represents the number of persons employed expressed as a percentage of the population 15 years of age and over. The employment rate for a particular group (age, sex, etc.) is the number employed in that group expressed as a percentage of the population for that group.

The **part-time rate** represents the number of persons employed part-time expressed as a percentage of the employed. The part-time rate for a particular group (age, sex, etc.) is the number employed part-time in that group expressed as a percentage of the employed for that group.

All geographic regions are based on the 2011 Census boundaries.

Seasonal adjustment

Fluctuations in economic time series are caused by seasonal, cyclical and irregular movements. A seasonally adjusted series is one from which seasonal movements have been eliminated. Seasonal movements are defined as those which are caused by regular annual events such as climate, holidays, vacation periods and cycles related to crops, production and retail sales associated with Christmas and Easter. The seasonally adjusted series contains irregular as well as longer-term cyclical fluctuations.

The seasonally adjusted series are revised each year to take into account current data and to generate new forecast factors for the next twelve months. The data are therefore subject to slight revisions in future issues of this publication.

For more information on seasonal adjustment, see *Seasonally adjusted data – Frequently asked questions*.

Sampling variability of estimates

Estimates in this publication are based on the Labour Force Survey, a monthly survey of approximately 56,000 households across Canada. Because the entire population is not surveyed, the estimates are subject to sampling error. While the published estimate is the best available indicator of the real value, changes in the level of any estimates between two months can be the result of a true change or sampling variability. The sampling error can be estimated by calculating the standard error for the published estimate or statistic. These standard errors have been included in the publication tables, in order to assist users in interpreting the data. They are based on 12-month averages and are updated twice a year, in February and August.

Interpretation based on standard error

Approximately two thirds of the time (68%), a change greater than the sampling error indicates a real change. The larger the change compared to the standard error, the better the chance that we are observing a real change, as opposed to a change due to sampling variability. At the 95% confidence level, the change in the estimate must be greater than twice the sampling error in order to ensure that change is real.

Movements in estimates that are smaller than the sampling error are less likely to reflect a real change and more likely to be due to sampling variability. While the above is true for monthly movements, one can have more confidence in a series of consecutive movements in the same direction, even though some of the monthly movements may be smaller than the sampling error.

Interpretation based on confidence intervals

Confidence intervals provide another way of looking at the variability inherent in estimates of sample surveys. To illustrate how to calculate the confidence interval, let us say that one month the published estimate for total employment rose by 16,000 to reach 17,800,000. The associated standard error for the movement estimate is 28,800. The standard error used to interpret the movement estimate indicates that:

- There are approximately two chances in three (68%) that the real value of the movement between the two months falls within the range -12,800 to +44,800 (16,000 + or – one standard error).
- There are approximately nine chances in ten (90%) that the real value of the movement between the two months falls within the range -30,100 to +62,100 (16,000 + or – 1.6 times the standard error).
- There are approximately nineteen chances in twenty (95%) that the real value of the movement between the two months falls within the range -41,600 to +73,600 (16,000 + or – two standard errors).

For more detailed explanations on sampling variability of estimates, and in particular for information on how to assess the variability of level estimates, consult the Data quality section of the *Guide to the Labour Force Survey*, (71-543-G).

Documentation

For more detailed information about the Labour Force Survey, see the following documents:

- Overview of the Labour Force Survey 3701
- Guide to the Labour Force Survey (71-543-G)
- Methodology of the Canadian Labour Force Survey (71-526-X)
- LFS *geographical maps*