

Catalogue no. 71-001-X

Labour Force Information

Friday, June 5, 2015

May 10 to 16, 2015



Statistics
Canada

Statistique
Canada

Canada

How to obtain more information

For information about this product or the wide range of services and data available from Statistics Canada, visit our website, www.statcan.gc.ca.

You can also contact us by

e-mail at infostats@statcan.gc.ca

telephone, from Monday to Friday, 8:30 a.m. to 4:30 p.m., at the following toll-free numbers:

- | | |
|---|----------------|
| • Statistical Information Service | 1-800-263-1136 |
| • National telecommunications device for the hearing impaired | 1-800-363-7629 |
| • Fax line | 1-877-287-4369 |

Depository Services Program

- | | |
|------------------|----------------|
| • Inquiries line | 1-800-635-7943 |
| • Fax line | 1-800-565-7757 |

To access this product

This product, Catalogue no. 71-001-X, is available free in electronic format. To obtain a single issue, visit our website, www.statcan.gc.ca and browse by "Key resource" > "Publications."

Standards of service to the public

Statistics Canada is committed to serving its clients in a prompt, reliable and courteous manner. To this end, this agency has developed standards of service that its employees observe. To obtain a copy of these service standards, please contact Statistics Canada toll-free at 1-800-263-1136. The service standards are also published at www.statcan.gc.ca under "About us" > "The agency" > "Providing services to Canadians."

Statistics Canada
Labour Statistics Division
Labour Force Survey Program

Labour Force Information

Friday, June 5, 2015

May 10 to 16, 2015

Published by authority of the Minister responsible for Statistics Canada

© Minister of Industry, 2015

All rights reserved. Use of this publication is governed by the Statistics Canada
Open License Agreement.

<http://www.statcan.gc.ca/reference/licence-eng.html>

June 2015

Catalogue no. 71-001-X

ISSN 1492-5478

Frequency: Monthly

Ottawa

Cette publication est également disponible en français.

Note of appreciation

Canada owes the success of its statistical system to a long-standing partnership between Statistics Canada, the citizens of Canada, its businesses, governments and other institutions. Accurate and timely statistical information could not be produced without their continued cooperation and goodwill.

User information

Symbols

The following standard symbols are used in Statistics Canada publications:

- . not available for any reference period
- .. not available for a specific reference period
- ... not applicable
- 0 true zero or a value rounded to zero
- 0s value rounded to 0 (zero) where there is a meaningful distinction between true zero and the value that was rounded
- p preliminary
- r revised
- x suppressed to meet the confidentiality requirements of the *Statistics Act*
- E use with caution
- F too unreliable to be published
- * significantly different from reference category ($p < 0.05$)

Special requests (\$)

Custom tabulations can be arranged on an ad hoc or regular basis. This service enables you to specify tables and time series to meet your own requirements. The cost varies according to the request. For more information, contact us toll-free at 1-866-873-8788 or e-mail us at labour@statcan.gc.ca.

Schedule of LFS releases

Release date

January 9, 2015
February 6, 2015
March 13, 2015
April 10, 2015
May 8, 2015
June 5, 2015
July 10, 2015
August 7, 2015
September 4, 2015
October 9, 2015
November 6, 2015
December 4, 2015
January 8, 2016

Reference period

December 7 to 13, 2014
January 11 to 17, 2015
February 15 to 21, 2015
March 15 to 21, 2015
April 12 to 18, 2015
May 10 to 16, 2015
June 14 to 20, 2015
July 12 to 18, 2015
August 9 to 15, 2015
September 13 to 19, 2015
October 11 to 17, 2015
November 8 to 14, 2015
December 6 to 12, 2015

Table of contents

Highlights	5
Analysis — May 2015	6
Charts	
1. Employment indexes, Canada, seasonally adjusted	9
2. Employment, unemployment, and participation rates, Canada, seasonally adjusted	10
3. Employment indexes by industry, Canada, seasonally adjusted	11
4. Employment indexes by industry, Canada, seasonally adjusted	12
5. Employment indexes by industry, Canada, seasonally adjusted	13
6. Employment indexes by province, Canada, seasonally adjusted	14
7. Employment indexes by province, Canada, seasonally adjusted	15
Related products	16
Statistical tables	
1 Labour force characteristics by age and sex, Canada, seasonally adjusted	27
2 Employment by class of worker and industry, Canada, seasonally adjusted	29
3 Labour force characteristics by province, seasonally adjusted	30
4 Selected labour force characteristics (seasonally adjusted)	32
4-1 Newfoundland and Labrador	32
4-2 Prince Edward Island	33
4-3 Nova Scotia	34
4-4 New Brunswick	35
4-5 Quebec	36
4-6 Ontario	37
4-7 Manitoba	38
4-8 Saskatchewan	39
4-9 Alberta	40
4-10 British Columbia	41
5 Labour force characteristics by census metropolitan area (seasonally adjusted)	42
5-1 3 month moving average	42
5-2 Monthly	47

Table of contents – continued

6	Labour force characteristics	48
6-1	by province and economic region, unadjusted for seasonality, 3 month moving average ending in May 2014 and May 2015	48
6-2	by territories, unadjusted for seasonality, 3 month moving average ending in May 2014 and May 2015	53
7	Average usual hours and wages of employees by selected characteristics, Canada, unadjusted for seasonality	54
8	Regional unemployment rates used by the Employment Insurance program, seasonally adjusted, 3 month moving average	55
9	Students and other persons aged 15 to 24 (unadjusted)	57
9-1	by detailed age groups	57
9-2	by province	58

Data quality, concepts and methodology

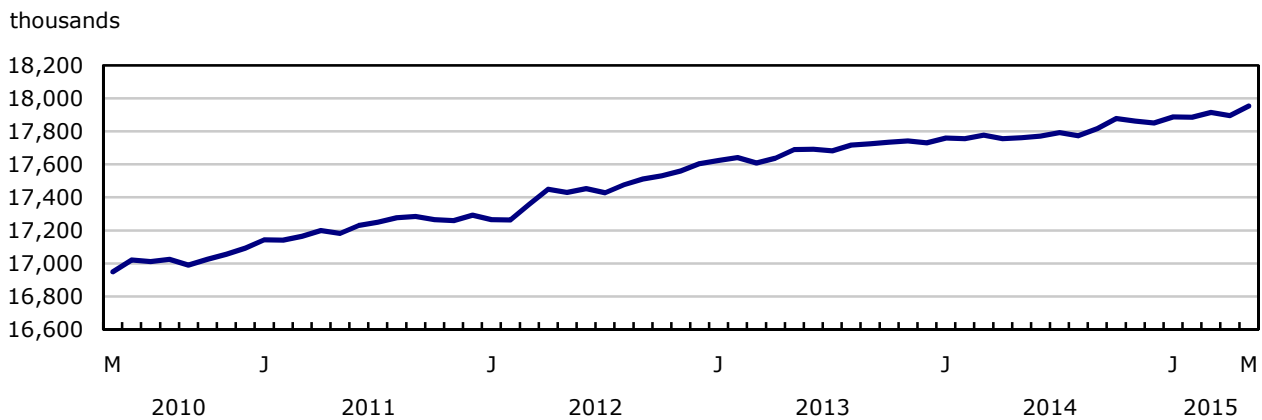
Data quality	60
--------------	----

Highlights

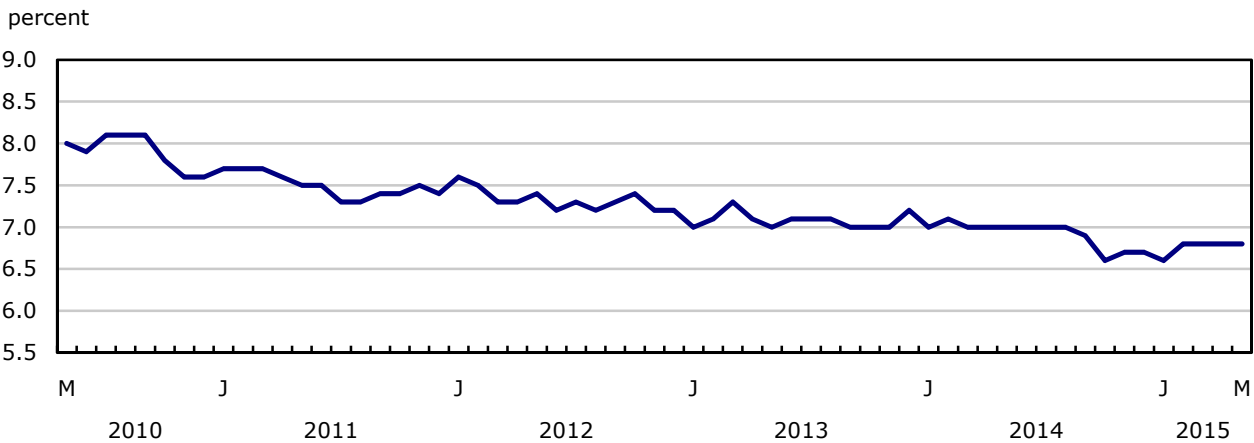
Employment increased by 59,000 in May, driven by gains in the number of private sector employees. The number of people participating in the labour market also rose in May, leaving the unemployment rate unchanged at 6.8% for the fourth consecutive month.

Chart 1
Employment and unemployment rates, Canada, seasonally adjusted

Employment



Unemployment rate



Analysis — May 2015

Employment increased by 59,000 in May, driven by gains in the number of private sector employees. The number of people participating in the labour market also rose in May, leaving the unemployment rate unchanged at 6.8% for the fourth consecutive month.

Since the beginning of 2015, employment gains have averaged 20,500 per month.

In the 12 months to May, employment increased by 192,000 (+1.1%), the result of more full-time work. Over the same period, the total number of hours worked grew by 1.2%.

Employment gains in May were highest among men aged 25 to 54, followed by men aged 55 and older. There was little change among the other demographic groups.

Provincially, employment increased in Ontario, British Columbia and Nova Scotia, while it declined in Newfoundland and Labrador, Manitoba and New Brunswick.

In May, there were more people working in manufacturing as well as in health care and social assistance. Additionally, employment rose in retail and wholesale trade; business, building and other support services; as well as in finance, insurance, real estate and leasing. In contrast, there were fewer workers in public administration and agriculture.

The number of private sector employees increased in May, while there was little change in self-employment. At the same time, public sector employment edged down.

Employment up for men aged 25 and older

For men aged 25 to 54, employment increased by 20,000 and their unemployment rate was unchanged at 6.0%, as their participation in the labour market also increased. In the 12 months to May, employment rose by 48,000 (+0.8%) for this group.

In comparison, employment in May was little changed for women aged 25 to 54 and the unemployment rate held steady at 5.2%. On a year-over-year basis, employment gains for this group totalled 46,000 (+0.8%).

For men aged 55 and older, employment rose by 14,000. However, their unemployment rate increased 0.5 percentage points to 6.4% as more of them searched for work. Compared with 12 months earlier, employment for this group increased by 68,000 (+3.6%), mostly a result of population aging.

For women aged 55 and older, employment was little changed in May and compared with 12 months earlier. Their unemployment rate fell 0.6 percentage points to 4.9% in May, as fewer women aged 55 and older searched for work.

Employment among youths aged 15 to 24 was also little changed both in May and on a year-over-year basis. Their unemployment rate was 13.2% in May.

Employment gains in Ontario and British Columbia

In Ontario, employment rose by 44,000 in May, pushing the unemployment rate down 0.3 percentage points to 6.5%. This employment increase accounted for most of the 53,000 (+0.8%) year-over-year gains for the province.

In May, employment increased by 31,000 in British Columbia, mostly in part-time work. This follows a similar-sized decrease in April, which was mainly in full-time employment. The unemployment rate was virtually unchanged at 6.1% in May, as more people participated in the labour market. In the 12 months to May, employment in the province was little changed.

In Nova Scotia, employment rose by 3,700 in May and the unemployment rate was 8.8%. Prior to this increase, employment in the province had been trending downward since January.

Employment in Newfoundland and Labrador fell by 4,300 in May, and the unemployment rate increased 1.2 percentage points to 13.8%. Employment in the province has been on a downward trend since November.

In Manitoba, 3,200 fewer people worked in May and the unemployment rate was 5.7%. Despite this employment decline, Manitoba had the highest rate of growth among all provinces in the 12 months to May, up 2.3% or 14,000.

There were 2,800 fewer people employed in New Brunswick in May and the unemployment rate was 9.6%. On a year-over-year basis, employment in the province was unchanged.

In May, employment was little changed in Alberta. The unemployment rate increased 0.3 percentage points to 5.8%, the highest rate since January 2011. On a year-over-year basis, employment gains totalled 38,000 (+1.7%). However, there has been little employment growth for the province since the start of 2015.

Employment in Quebec was virtually unchanged in May and the unemployment rate was 7.6%. However, compared with May 2014, employment in the province increased by 70,000 (+1.7%), with most of the growth in the first four months of 2015.

Industry perspective

Manufacturing employment increased for a second consecutive month, up 22,000 in May. These recent increases brought employment in the industry to a level similar to that of May 2014.

The number of workers in health care and social assistance rose by 21,000 in May. Compared with 12 months earlier, employment in the industry increased by 75,000 (+3.4%), one of the strongest growth rates among all industries.

There were 17,000 more people employed in retail and wholesale trade in May. On a year-over-year basis, however, employment in the industry was little changed as gains in wholesale trade were offset by declines in retail.

In business, building and other support services, employment rose for the second consecutive month, up 13,000 in May. These recent increases contributed to the year-over-year gain of 29,000 (+3.9%).

Employment in finance, insurance, real estate and leasing increased by 13,000 in May, bringing employment up 34,000 (+3.2%) over the past 12 months.

In public administration, employment declined by 12,000 in May, continuing the downward trend that began last fall. Compared with May 2014, employment in this industry was down 25,000 (-2.7%).

Employment also decreased in agriculture (-6,600), contributing to the year-over-year decline of 19,000 (-6.1%).

The number of private sector employees increased by 57,000 in May, while there was little change in self-employment. At the same time, public sector employment edged down.

In the 12 months to May, the number of private sector employees rose by 118,000 (+1.0%) and public sector employment increased by 42,000 (+1.2%). Over the same period, self-employment was little changed.

Summer employment for students

From May to August, the Labour Force Survey collects labour market data about youths aged 15 to 24 who were attending school full time in March and who intend to return to school full time in the fall. The May survey results provide the first indicators of the summer job market, especially for students aged 20 to 24, as many students aged 15 to 19 are still in school. The data for June, July and August will provide further insight into the summer job market. The published data are not seasonally adjusted, and therefore comparisons can only be made from one year to another.

The employment rate among returning students aged 20 to 24, that is, the number of employed as a percentage of their population, was 59.0% in May, little changed from a year earlier. The unemployment rate for this group of students was 15.1% in May, up 1.5 percentage points from May 2014.

Note to readers

The Labour Force Survey (LFS) estimates for May are for the week of May 10 to 16.

The LFS estimates are based on a sample and are therefore subject to sampling variability. As a result, monthly estimates will show more variability than trends observed over longer time periods. For more information, see "*Interpreting Monthly Changes in Employment from the Labour Force Survey*." Estimates for smaller geographic areas or industries also have more variability. For an explanation of sampling variability of estimates and how to use standard errors to assess this variability, consult the "Data quality" section of the publication *Labour Force Information* (71-001-X).

This analysis focuses on differences between estimates that are statistically significant at the 68% confidence level.

The **employment rate** is the number of employed persons as a percentage of the population 15 years of age and over. The rate for a particular group (for example, youths aged 15 to 24) is the number employed in that group as a percentage of the population for that group.

The **unemployment rate** is the number unemployed as a percentage of the labour force (employed and unemployed).

The **participation rate** is the number of employed and unemployed as a percentage of the population. For more detailed information, see the *Guide to the Labour Force Survey* (71-543-G).

Seasonal adjustment

Unless otherwise stated, this release presents seasonally adjusted estimates, which facilitates comparisons by removing the effects of seasonal variations. For more information on seasonal adjustment, see *Seasonally adjusted data – Frequently asked questions*.

Sample redesign

Every 10 years, the LFS undergoes a sample redesign to reflect changes in population and labour market characteristics, as well as new definitions of geographical boundaries. The redesigned sample was introduced starting in January 2015 and will be fully implemented by June 2015.

Chart 1
Employment indexes, Canada, seasonally adjusted

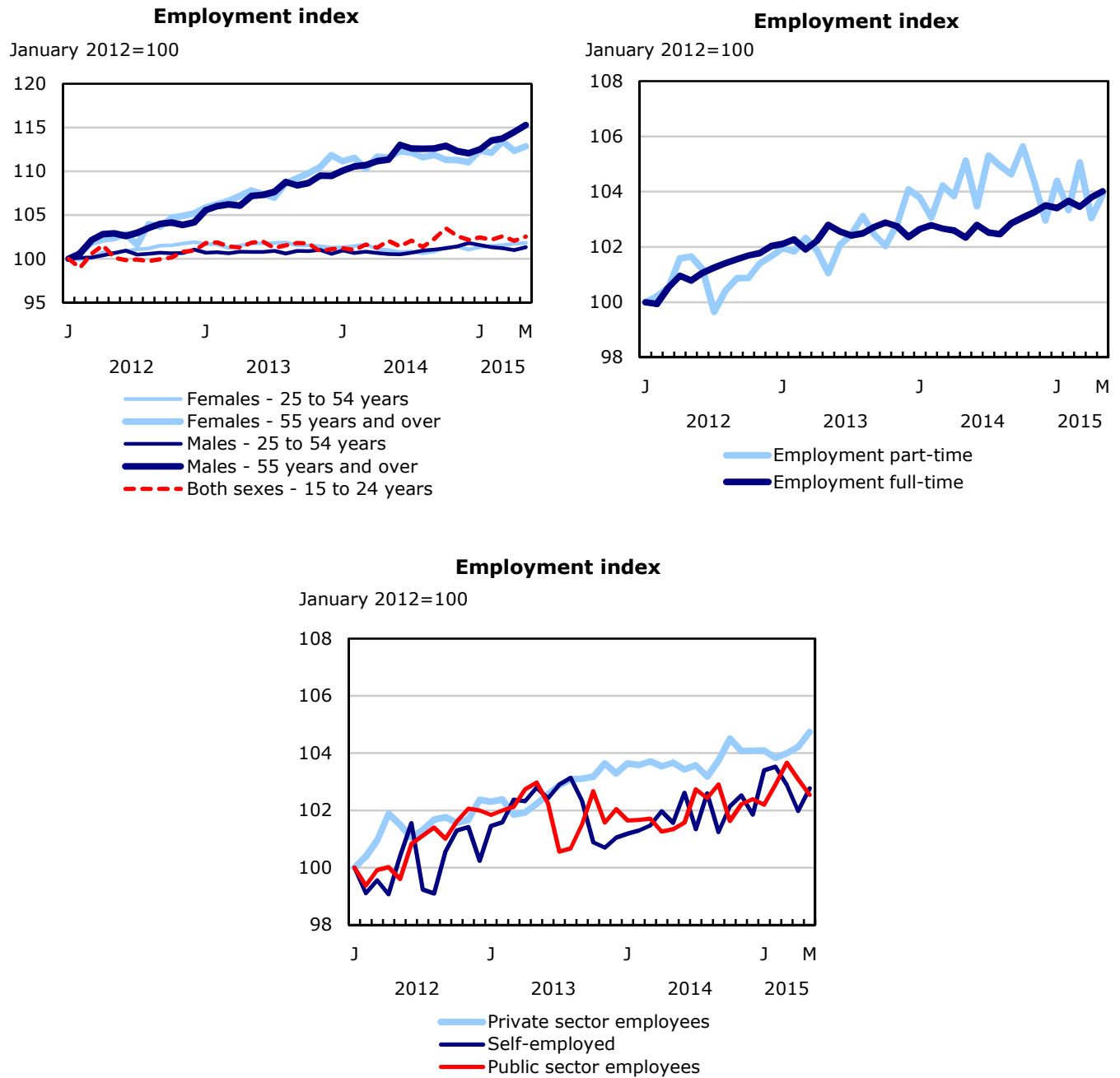


Chart 2
Employment, unemployment, and participation rates, Canada, seasonally adjusted

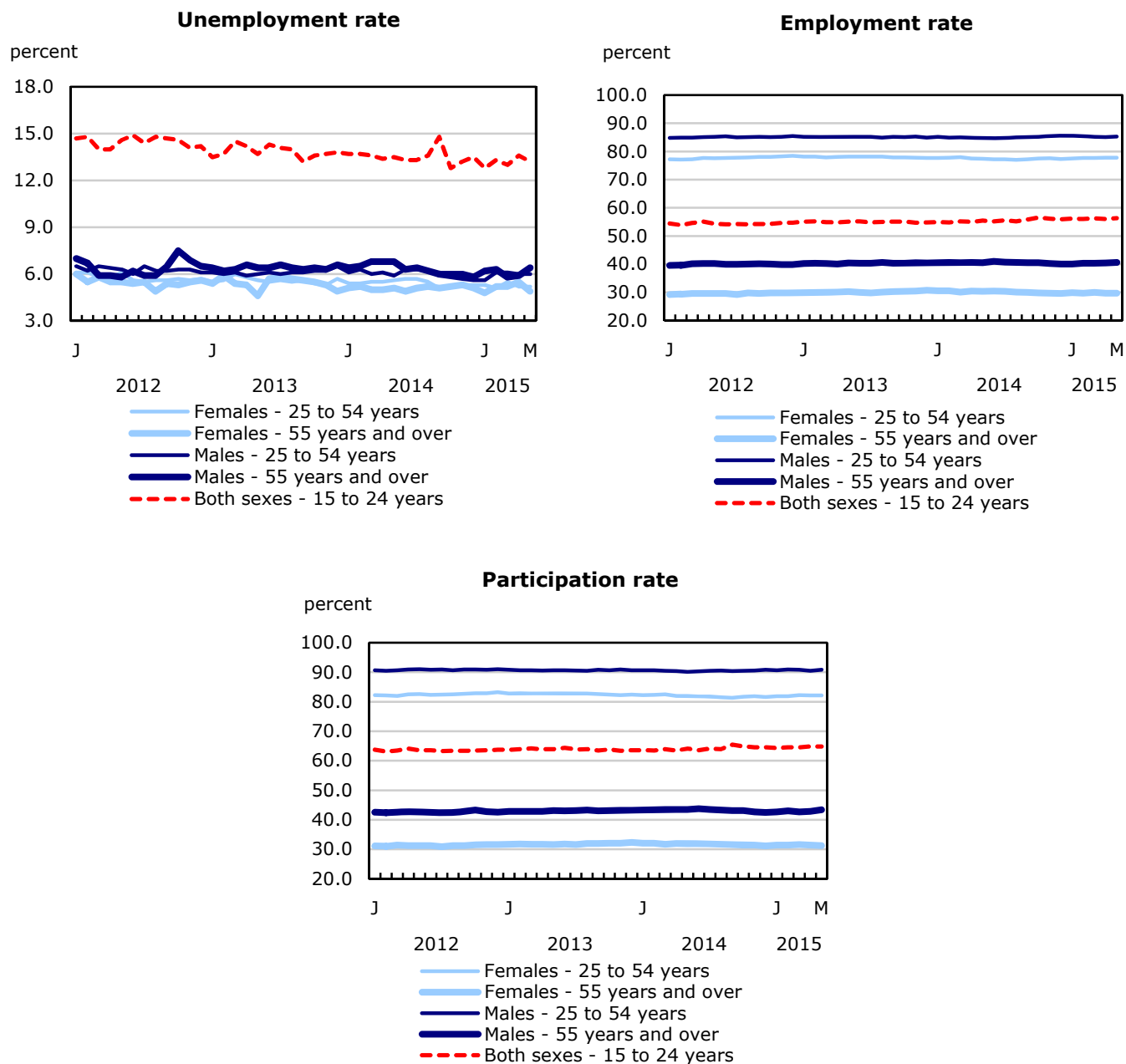


Chart 3
Employment indexes by industry, Canada, seasonally adjusted

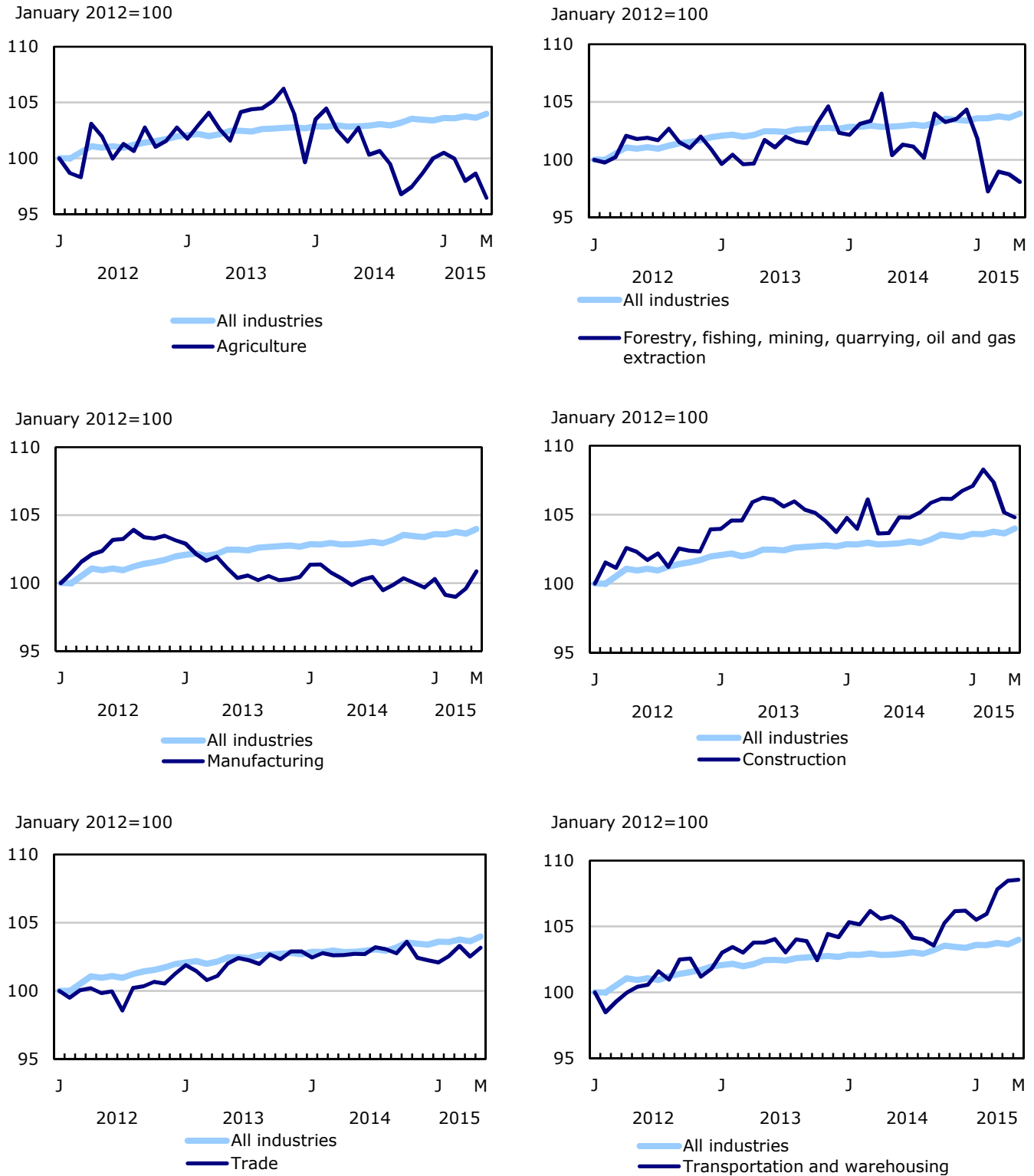


Chart 4
Employment indexes by industry, Canada, seasonally adjusted

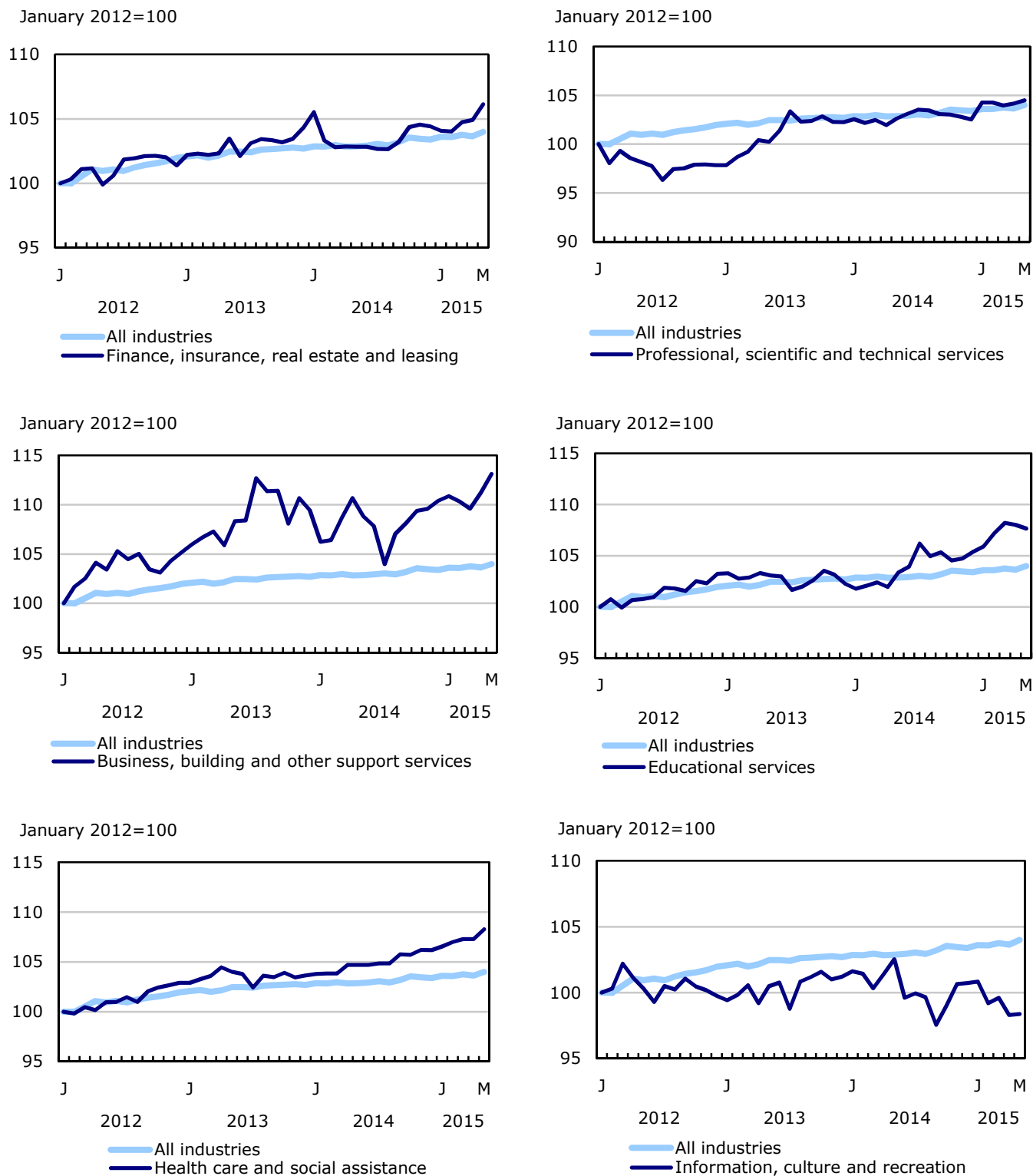


Chart 5
Employment indexes by industry, Canada, seasonally adjusted

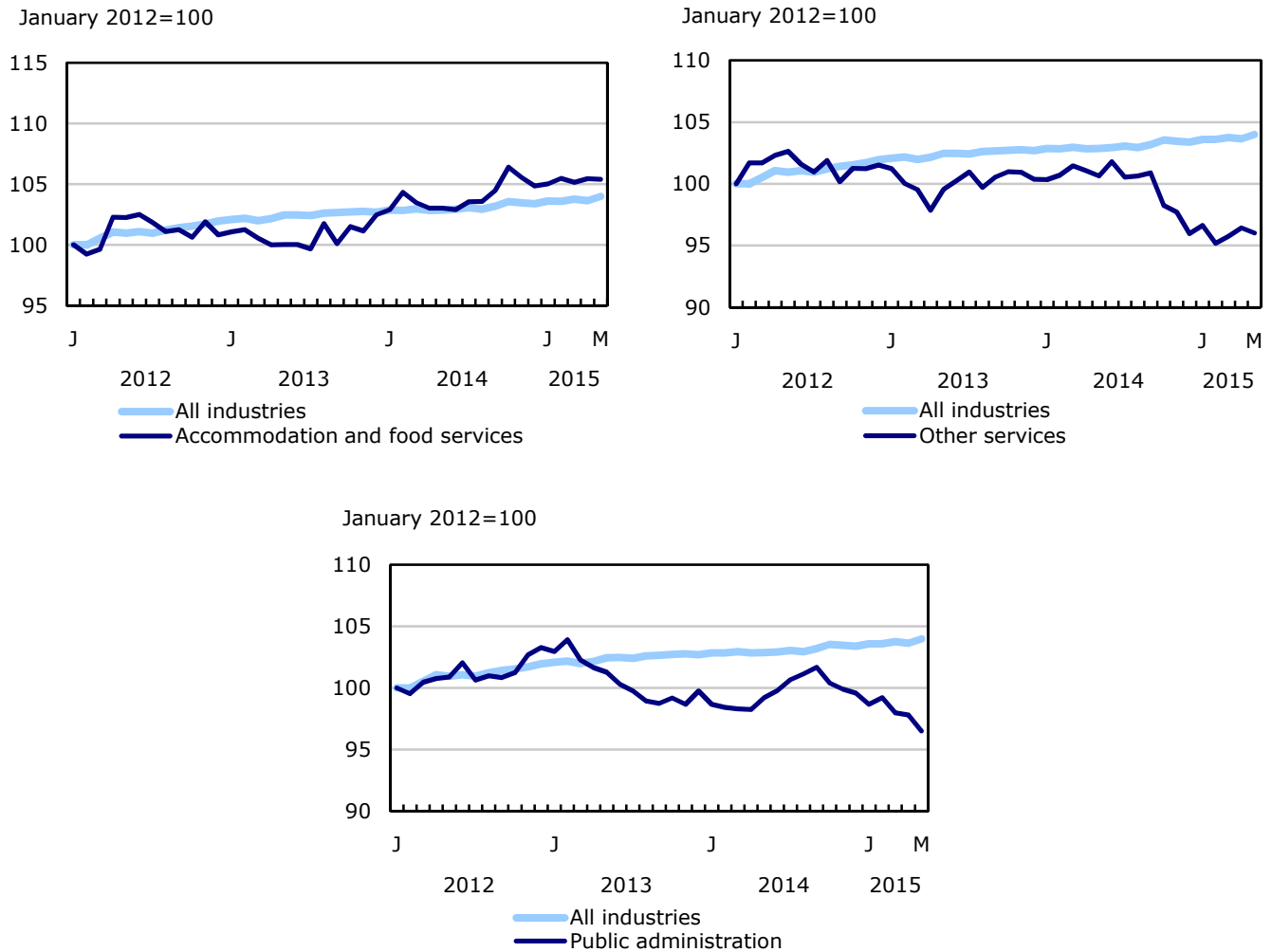


Chart 6
Employment indexes by province, Canada, seasonally adjusted

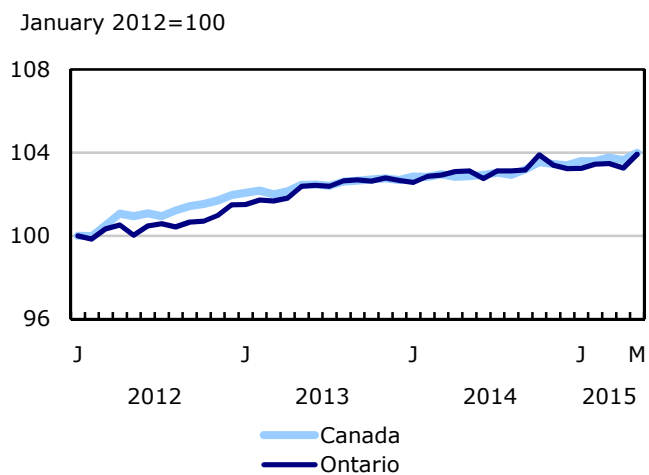
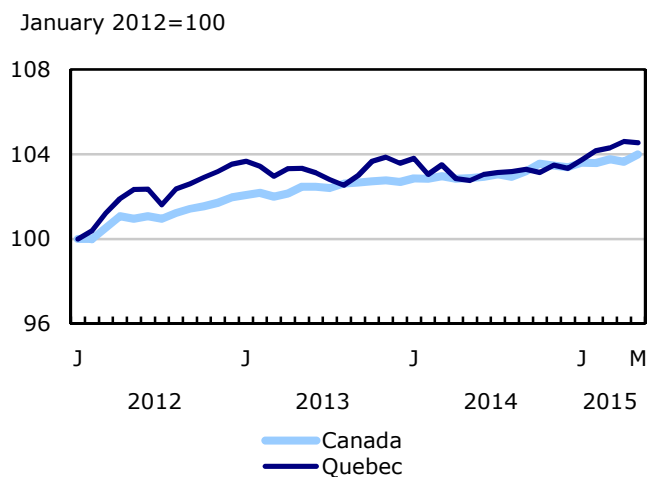
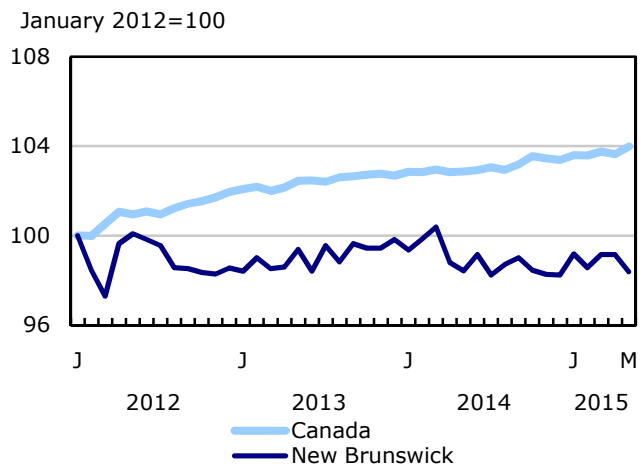
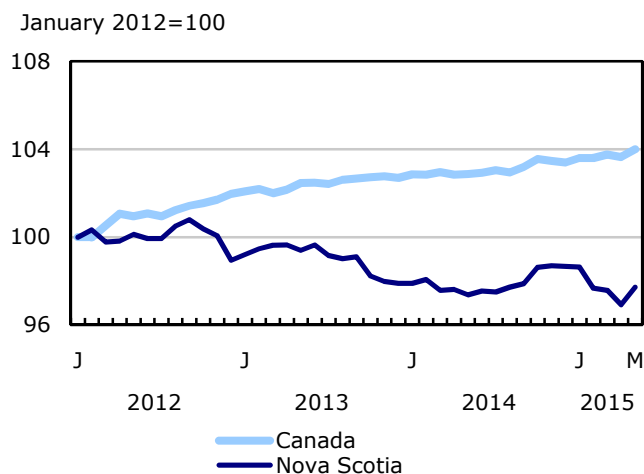
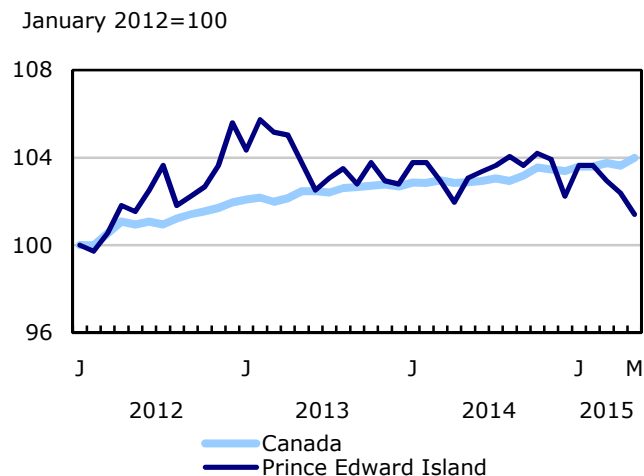
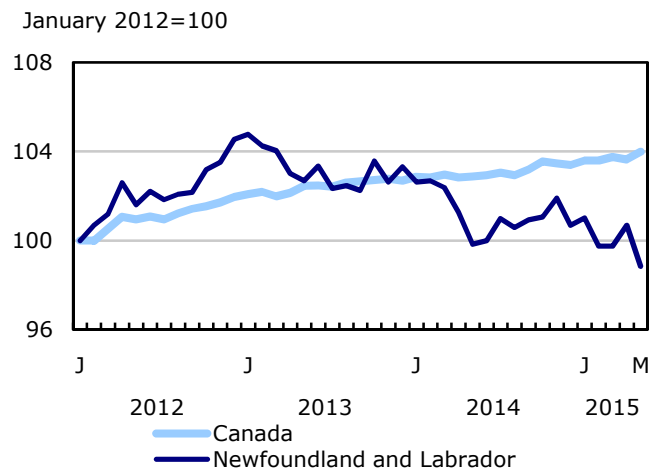
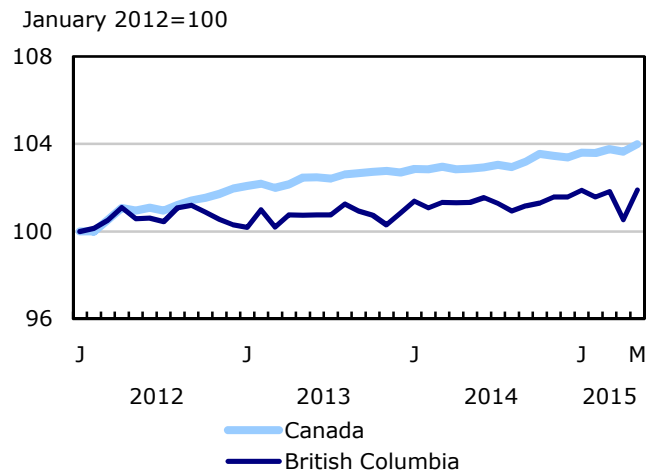
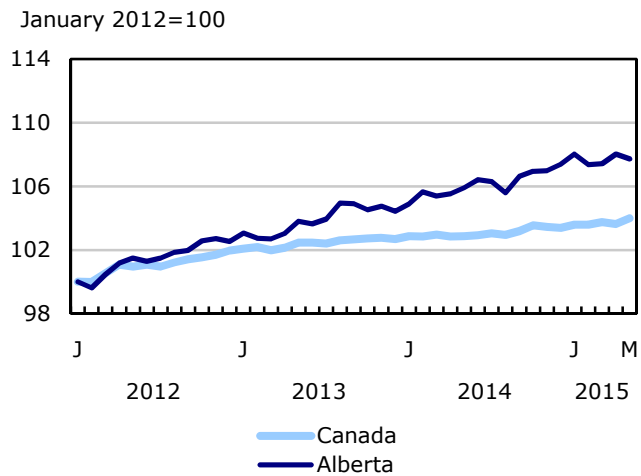
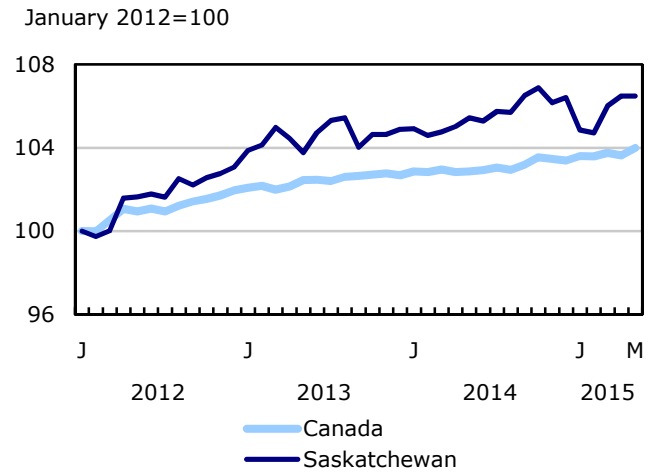
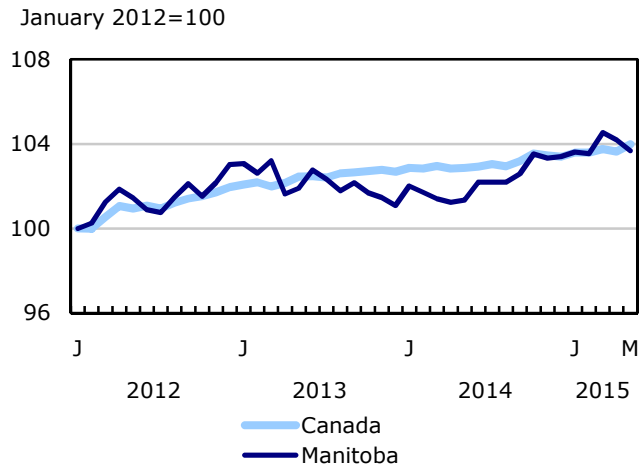


Chart 7
Employment indexes by province, Canada, seasonally adjusted



Related products

Selected publications from Statistics Canada

71-526-X	Methodology of the Canadian Labour Force Survey
71-543-G	Guide to the Labour Force Survey
71-587-X	Aboriginal Peoples Living Off-reserve in Western Canada: Estimates from the Labour Force Survey
71-588-X	The Aboriginal Labour Force Analysis Series
71-606-X	The Immigrant Labour Force Analysis Series
71F0031X	Improvements to the Labour Force Survey (LFS)
71M0001X	Labour Force Survey Microdata File

Selected CANSIM tables from Statistics Canada

279-0029	Work absence statistics of full-time employees, for Canada, provinces and census metropolitan area (CMA), and by sex, annual
279-0030	Work absence statistics of full-time employees, by sex and North American Industry Classification System (NAICS), Canada, annual
279-0031	Work absence statistics of full-time employees, by sex and National Occupational Classification for Statistics (NOC-S), Canada, annual
279-0032	Work absence statistics of full-time employees, by sex and age group, Canada, annual
279-0033	Work absence statistics of full-time employees, by sex and presence of children, Canada, annual
279-0034	Work absence statistics of full-time employees, by sex and job tenure, Canada, annual
279-0035	Work absence statistics of full-time employees, by sex and public and private sector, Canada, annual
279-0036	Work absence statistics of full-time employees, by sex and education, Canada, annual
279-0037	Work absence statistics of full-time employees, by sex and workplace size, Canada, annual
279-0038	Work absence statistics of full-time employees, by sex and job status, Canada, annual
279-0039	Work absence statistics of full-time employees, by sex and union coverage, Canada, annual

282-0001	Labour force survey estimates (LFS), by sex and detailed age group, unadjusted for seasonality, monthly
282-0002	Labour force survey estimates (LFS), by sex and detailed age group, annual
282-0003	Labour force survey estimates (LFS), by educational attainment, sex and age group, unadjusted for seasonality, monthly
282-0004	Labour force survey estimates (LFS), by educational attainment, sex and age group, annual
282-0005	Labour force survey estimates (LFS), by full- and part-time students during school months, sex and age group, unadjusted for seasonality, monthly
282-0006	Labour force survey estimates (LFS), by students during summer months, sex and age group, unadjusted for seasonality, monthly
282-0007	Labour force survey estimates (LFS), by North American Industry Classification System (NAICS), sex and age group, unadjusted for seasonality, monthly
282-0008	Labour force survey estimates (LFS), by North American Industry Classification System (NAICS), sex and age group, annual
282-0009	Labour force survey estimates (LFS), by National Occupational Classification for Statistics (NOC-S) and sex, unadjusted for seasonality, monthly
282-0010	Labour force survey estimates (LFS), by National Occupational Classification for Statistics (NOC-S) and sex, annual
282-0011	Labour force survey estimates (LFS), employment by class of worker, North American Industry Classification System (NAICS) and sex, unadjusted for seasonality, monthly
282-0012	Labour force survey estimates (LFS), employment by class of worker, North American Industry Classification System (NAICS) and sex, annual
282-0013	Labour force survey estimates (LFS), part-time employment by reason for part-time work, sex and age group, unadjusted for seasonality, monthly
282-0014	Labour force survey estimates (LFS), part-time employment by reason for part-time work, sex and age group, annual
282-0015	Labour force survey estimates (LFS), by usual hours worked, main or all jobs, sex and age group, unadjusted for seasonality, monthly
282-0016	Labour force survey estimates (LFS), by usual hours worked, main or all jobs, sex and age group, annual
282-0017	Labour force survey estimates (LFS), by actual hours worked, main or all jobs, sex and age group, unadjusted for seasonality, monthly
282-0018	Labour force survey estimates (LFS), by actual hours worked, main or all jobs, sex and age group, annual
282-0019	Labour force survey estimates (LFS), by usual hours worked, class of worker, North American Industry Classification System (NAICS) and sex, unadjusted for seasonality, monthly

282-0020	Labour force survey estimates (LFS), by usual hours worked, class of worker, North American Industry Classification System (NAICS) and sex, annual
282-0021	Labour force survey estimates (LFS), by actual hours worked, class of worker, North American Industry Classification System (NAICS) and sex, unadjusted for seasonality, monthly
282-0022	Labour force survey estimates (LFS), by actual hours worked, class of worker, North American Industry Classification System (NAICS) and sex, annual
282-0023	Labour force survey estimates (LFS), by usual hours worked, class of worker, National Occupational Classification for Statistics (NOC-S) and sex, unadjusted for seasonality, monthly
282-0024	Labour force survey estimates (LFS), by usual hours worked, class of worker, National Occupational Classification for Statistics (NOC-S) and sex, annual
282-0025	Labour force survey estimates (LFS), by actual hours worked, class of worker, National Occupational Classification for Statistics (NOC-S) and sex, unadjusted for seasonality, monthly
282-0026	Labour force survey estimates (LFS), by actual hours worked, class of worker, National Occupational Classification for Statistics (NOC-S) and sex, annual
282-0027	Labour force survey estimates (LFS), by total and average usual and actual hours worked, main or all jobs, type of work, sex and age group, unadjusted for seasonality, monthly
282-0028	Labour force survey estimates (LFS), by total and average usual and actual hours worked, main or all jobs, type of work, sex and age group, annual
282-0029	Labour force survey estimates (LFS), average days lost for personal reasons per full-time employee by North American Industry Classification System (NAICS), sex and age group, annual
282-0030	Labour force survey estimates (LFS), average days lost for personal reasons per full-time employee by National Occupational Classification for Statistics (NOC-S), sex and age group, annual
282-0031	Labour force survey estimates (LFS), multiple jobholders by North American Industry Classification System (NAICS), sex and age group, annual
282-0032	Labour force survey estimates (LFS), multiple jobholders by North American Industry Classification System (NAICS), sex and age group, unadjusted for seasonality, monthly
282-0033	Labour force survey estimates (LFS), multiple jobholders by National Occupational Classification for Statistics (NOC-S), sex and age group, unadjusted for seasonality, monthly
282-0034	Labour force survey estimates (LFS), multiple jobholders by National Occupational Classification for Statistics (NOC-S), sex and age group, annual
282-0035	Labour force survey estimates (LFS), multiple jobholders by usual hours worked at main and all jobs, unadjusted for seasonality, monthly
282-0036	Labour force survey estimates (LFS), multiple jobholders by usual hours worked at main and all jobs, annual
282-0037	Labour force survey estimates (LFS), job tenure by type of work, sex and age group, unadjusted for seasonality, monthly

282-0038	Labour force survey estimates (LFS), job tenure by type of work, sex and age group, annual
282-0039	Labour force survey estimates (LFS), job tenure by National Occupational Classification for Statistics (NOC-S) and sex, unadjusted for seasonality, monthly
282-0040	Labour force survey estimates (LFS), job tenure by National Occupational Classification for Statistics (NOC-S) and sex, annual
282-0041	Labour force survey estimates (LFS), job tenure by North American Industry Classification System (NAICS) and sex, unadjusted for seasonality, monthly
282-0042	Labour force survey estimates (LFS), job tenure by North American Industry Classification System (NAICS) and sex, annual
282-0047	Labour force survey estimates (LFS), duration of unemployment by sex and age group, unadjusted for seasonality, monthly
282-0048	Labour force survey estimates (LFS), duration of unemployment by sex and age group, annual
282-0049	Labour force survey estimates (LFS), unemployment by type of work sought and search method, sex and age group, unadjusted for seasonality, monthly
282-0050	Labour force survey estimates (LFS), unemployment by type of work sought and search method, sex and age group, annual
282-0051	Labour force survey estimates (LFS), retirement age by class of worker and sex, annual
282-0069	Labour force survey estimates (LFS), wages of employees by type of work, National Occupational Classification for Statistics (NOC-S), sex and age group, unadjusted for seasonality, monthly
282-0070	Labour force survey estimates (LFS), wages of employees by type of work, National Occupational Classification for Statistics (NOC-S), sex and age group, annual
282-0071	Labour force survey estimates (LFS), wages of employees by type of work, North American Industry Classification System (NAICS), sex and age group, unadjusted for seasonality, monthly
282-0072	Labour force survey estimates (LFS), wages of employees by type of work, North American Industry Classification System (NAICS), sex and age group, annual
282-0073	Labour force survey estimates (LFS), wages of employees by job permanence, union coverage, sex and age group, unadjusted for seasonality, monthly
282-0074	Labour force survey estimates (LFS), wages of employees by job permanence, union coverage, sex and age group, annual
282-0075	Labour force survey estimates (LFS), employees by establishment size, North American Industry Classification System (NAICS), sex and age group, unadjusted for seasonality, monthly
282-0076	Labour force survey estimates (LFS), employees by establishment size, North American Industry Classification System (NAICS), sex and age group, annual
282-0077	Labour force survey estimates (LFS), employees by union coverage, North American Industry Classification System (NAICS), sex and age group, unadjusted for seasonality, monthly

282-0078	Labour force survey estimates (LFS), employees by union coverage, North American Industry Classification System (NAICS), sex and age group, annual
282-0079	Labour force survey estimates (LFS), employees by job permanency, North American Industry Classification System (NAICS), sex and age group, unadjusted for seasonality, monthly
282-0080	Labour force survey estimates (LFS), employees by job permanency, North American Industry Classification System (NAICS), sex and age group, annual
282-0081	Labour force survey estimates (LFS), employees working overtime (weekly) by National Occupational Classification for Statistics (NOC-S), sex and age group, unadjusted for seasonality, monthly
282-0082	Labour force survey estimates (LFS), employees working overtime (weekly) by National Occupational Classification for Statistics (NOC-S), sex and age group, annual
282-0083	Labour force survey estimates (LFS), employees working overtime (weekly) by North American Industry Classification System (NAICS), sex and age group, unadjusted for seasonality, monthly
282-0084	Labour force survey estimates (LFS), employees working overtime (weekly) by North American Industry Classification System (NAICS), sex and age group, annual
282-0085	Labour force survey estimates (LFS), supplementary unemployment rates by sex and age group, unadjusted for seasonality, monthly
282-0086	Labour force survey estimates (LFS), supplementary unemployment rates by sex and age group, annual
282-0087	Labour force survey estimates (LFS), by sex and age group, seasonally adjusted and unadjusted, monthly
282-0088	Labour force survey estimates (LFS), employment by North American Industry Classification System (NAICS), seasonally adjusted and unadjusted, monthly
282-0089	Labour force survey estimates (LFS), employment by class of worker and sex, seasonally adjusted and unadjusted, monthly
282-0092	Labour force survey estimates (LFS), actual hours worked at main job by North American Industry Classification System (NAICS), seasonally adjusted, monthly
282-0093	Labour force survey estimates (LFS), employment by National Occupational Classification for Statistics (NOC-S), seasonally adjusted, monthly
282-0094	Labour force survey estimates (LFS), by North American Industry Classification System (NAICS), Canada, seasonally adjusted, monthly
282-0095	Labour force survey estimates (LFS), by full- and part-time students during school months, sex and age group, annual
282-0100	Labour force survey estimates (LFS), by territories, sex and age group, 3-month moving average, seasonally adjusted and unadjusted, monthly
282-0101	Labour force survey estimates (LFS), by immigrant status, age group, Canada, regions, provinces and Montreal, Toronto, Vancouver census metropolitan areas, 3-month moving average, unadjusted for seasonality, monthly

282-0102	Labour force survey estimates (LFS), by immigrant status, age group, Canada, regions, provinces and Montreal, Toronto, Vancouver census metropolitan areas, annual
282-0103	Labour force survey estimates (LFS), by immigrant status, sex and detailed age group, Canada, 3-month moving average, unadjusted for seasonality, monthly
282-0104	Labour force survey estimates (LFS), by immigrant status, sex and detailed age group, Canada, annual
282-0105	Labour force survey estimates (LFS), by immigrant status, educational attainment, sex and age group, Canada, 3-month moving average, unadjusted for seasonality, monthly
282-0106	Labour force survey estimates (LFS), by immigrant status, educational attainment, sex and age group, Canada, annual
282-0107	Labour force survey estimates (LFS), by immigrant status, country of birth, sex and age group, Canada, 3-month moving average, unadjusted for seasonality, monthly
282-0108	Labour force survey estimates (LFS), by immigrant status, country of birth, sex and age group, Canada, annual
282-0122	Labour force survey estimates (LFS), by provinces and economic regions based on 2011 census boundaries, 3-month moving average, unadjusted for seasonality, monthly
282-0123	Labour force survey estimates (LFS), by provinces, territories and economic regions based on 2011 census boundaries, annual
282-0124	Labour force survey estimates (LFS), employment by economic region based on 2011 census boundaries and North American Industry Classification System (NAICS), 3-month moving average, unadjusted for seasonality, monthly
282-0125	Labour force survey estimates (LFS), employment by economic region based on 2011 census boundaries and North American Industry Classification System (NAICS), annual
282-0126	Labour force survey estimates (LFS), employment by economic region based on 2011 census boundaries and National Occupational Classification for Statistics (NOC-S), 3-month moving average, unadjusted for seasonality, monthly
282-0127	Labour force survey estimates (LFS), employment by economic region based on 2011 census boundaries and National Occupational Classification for Statistics (NOC-S), annual
282-0128	Labour force survey estimates (LFS), by census metropolitan area based on 2011 census boundaries, sex and age group, 3-month moving average, unadjusted for seasonality, monthly
282-0129	Labour force survey estimates (LFS), by census metropolitan area based on 2011 census boundaries, sex and age group, annual
282-0130	Labour force survey estimates (LFS), employment by census metropolitan area based on 2011 census boundaries and North American Industry Classification System (NAICS), 3-month moving average, unadjusted for seasonality, monthly
282-0131	Labour force survey estimates (LFS), employment by census metropolitan area based on 2011 census boundaries and North American Industry Classification System (NAICS), annual

282-0132	Labour force survey estimates (LFS), employment by census metropolitan area based on 2011 census boundaries and National Occupational Classification for Statistics (NOC-S), 3-month moving average, unadjusted for seasonality, monthly
282-0133	Labour force survey estimates (LFS), employment by census metropolitan area based on 2011 census boundaries and National Occupational Classification for Statistics (NOC-S), annual
282-0134	Labour force survey estimates (LFS), by selected census agglomerations based on 2011 census boundaries, annual
282-0135	Labour force survey estimates (LFS), by census metropolitan area based on 2011 census boundaries, 3-month moving average, seasonally adjusted and unadjusted, monthly
282-0136	Labour force survey estimates (LFS), by Montréal, Toronto and Vancouver census metropolitan areas based on 2011 census boundaries, seasonally adjusted and unadjusted, monthly
282-0137	Labour force survey estimates (LFS), by population centres and rural areas based on 2011 census boundaries, sex and age group, unadjusted for seasonality, monthly
282-0138	Labour force survey estimates (LFS), by population centres and rural areas based on 2011 census boundaries, sex and age group, annual
282-0139	Labour force survey estimates (LFS), employment by population centres and rural areas based on 2011 census boundaries, class of worker and North American Industry Classification System (NAICS), unadjusted for seasonality, monthly
282-0140	Labour force survey estimates (LFS), employment by population centres and rural areas based on 2011 census boundaries, class of worker and North American Industry Classification System (NAICS), annual
282-0200	Labour force survey estimates (LFS), weekly wage distributions of employees by type of work, North American Industry Classification System (NAICS), and sex, unadjusted for seasonality, monthly
282-0201	Labour force survey estimates (LFS), weekly wage distributions of employees by type of work, North American Industry Classification System (NAICS), and sex, annual
282-0202	Labour force survey estimates (LFS), weekly wage distributions of employees by type of work, National Occupational Classification for Statistics (NOC-S), and sex, unadjusted for seasonality, monthly
282-0203	Labour force survey estimates (LFS), weekly wage distributions of employees by type of work, National Occupational Classification for Statistics (NOC-S), and sex, annual
282-0204	Labour force survey estimates (LFS), hourly wage distributions of employees by type of work, North American Industry Classification System (NAICS), and sex, unadjusted for seasonality, monthly
282-0205	Labour force survey estimates (LFS), hourly wage distributions of employees by type of work, North American Industry Classification System (NAICS), and sex, annual
282-0206	Labour force survey estimates (LFS), hourly wage distribution of employees by type of work, National Occupational Classification for Statistics (NOC-S), and sex, unadjusted for seasonality, monthly

282-0207	Labour force survey estimates (LFS), hourly wage distribution of employees by type of work, National Occupational Classification for Statistics (NOC-S), and sex, annual
282-0208	Labour force survey estimates (LFS), by educational degree, sex and age group, unadjusted for seasonality, monthly
282-0209	Labour force survey estimates (LFS), by educational degree, sex and age group, annual
282-0210	Labour force survey estimates (LFS), by family type and family age composition, unadjusted for seasonality, monthly
282-0211	Labour force survey estimates (LFS), by family type and family age composition, annual
282-0212	Labour force survey estimates (LFS), hours lost by employees by reason absent full and part week and sex, unadjusted for seasonality, monthly
282-0213	Labour force survey estimates (LFS), hours lost by employees by reason absent full and part week and sex, annual
282-0214	Labour force survey estimates (LFS), activity prior to unemployment by sex and age group, unadjusted for seasonality, monthly
282-0215	Labour force survey estimates (LFS), activity prior to unemployment, by sex and age group, annual
282-0216	Labour force survey estimates (LFS), reason for leaving job during previous year by sex and age group, unadjusted for seasonality, monthly
282-0217	Labour force survey estimates (LFS), reason for leaving job during previous year by sex and age group, annual
282-0218	Labour force survey estimates (LFS), reason for not looking for work, by sex and age group, unadjusted for seasonality, monthly
282-0219	Labour force survey estimates (LFS), reason for not looking for work, by sex and age group, annual
282-0220	Labour Force Survey estimates (LFS), employees by union status, sex and age group, Canada and provinces, annual
282-0221	Labour Force Survey estimates (LFS), employees by union status, sex, age group and education level, Canada, annual
282-0222	Labour Force Survey estimates (LFS), employees by union status and National Occupational Classification (NOC-S), Canada, annual
282-0223	Labour Force Survey estimates (LFS), employees by union status, North American Industry Classification System (NAICS) and sex, Canada, annual
282-0224	Labour Force Survey estimates (LFS), employees by union status, establishment size, job tenure, type of work and job permanency, Canada, annual
282-0225	Labour Force Survey estimates (LFS), average weekly earnings, average hourly wage rate and average usual weekly hours by union status and type of work, Canada and provinces, annual

Selected surveys from Statistics Canada

3701	Labour Force Survey
------	---------------------

Selected summary tables from Statistics Canada

- *Average hourly wages of employees by selected characteristics and occupation, unadjusted data, by province (monthly)*
- *Days lost per worker by industry and sex*
- *People employed, by educational attainment*
- *Reasons for part-time work by sex and age group*
- *Self-employment, historical summary*
- *Employment by age, sex, type of work, class of worker and province (monthly)*
- *Actual hours worked per week by industry, seasonally adjusted (monthly)*
- *Labour force characteristics, unadjusted, by territory (3 month moving average)*
- *Employment by industry and sex*
- *Full-time and part-time employment by sex and age group*
- *Labour force characteristics by age and sex*
- *Labour force characteristics, population 15 years and older, by economic region, by province*
- *Labour force characteristics by immigrant status of population aged 25 to 54, and by educational attainment*
- *Labour force characteristics by immigrant status, by detailed age group*
- *Labour force characteristics by immigrant status of population aged 25 to 54, by country of birth*
- *Days lost per worker due to illness or disability, by sex, by province*
- *Employment by industry*
- *Labour force characteristics, seasonally adjusted, by province (monthly)*
- *Labour force characteristics, unadjusted, by province (monthly)*
- *Labour force characteristics, unadjusted, by economic region (3 month moving average)*
- *Labour force, employment and unemployment, levels and rates, by province*
- *Economic indicators, by province and territory (monthly and quarterly)*

- *Days lost per worker by reason, by provinces*
- *Labour force characteristics, population 15 years and older, by census metropolitan area*
- *Labour force characteristics, seasonally adjusted, by census metropolitan area (3 month moving average)*
- *Labour force characteristics, unadjusted, by census metropolitan area (3 month moving average)*
- *Distribution of employed people, by industry, by province*
- *Employment by major industry group, seasonally adjusted, by province (monthly)*
- *Labour force characteristics*
- *Canada: Economic and financial data*
- *Labour force characteristics by sex and age group*
- *Labour force characteristics by immigrant status of population aged 25 to 54, by province*
- *Latest statistics (monthly)*

Statistical tables

Table 1
Labour force characteristics by age and sex, Canada, seasonally adjusted

	April 2015	May 2015	S.E. ¹	Change from			Percent change from		
				last month	last December	twelve months ago	last month	last December	twelve months ago
in thousands (except rates)									
15 years and over, both sexes									
Population	29,208.2	29,232.1	...	23.9	115.5	292.1	0.1	0.4	1.0
Labour force	19,205.1	19,261.3	29.0	56.2	133.6	167.7	0.3	0.7	0.9
Employment	17,894.9	17,953.8	28.7	58.9	102.3	192.3	0.3	0.6	1.1
Employment full-time	14,506.9	14,537.8	39.2	30.9	71.8	233.0	0.2	0.5	1.6
Employment part-time	3,388.1	3,416.0	36.1	27.9	30.5	-40.7	0.8	0.9	-1.2
Unemployment	1,310.2	1,307.6	24.6	-2.6	31.4	-24.4	-0.2	2.5	-1.8
Participation rate	65.8	65.9	0.1	0.1	0.2	-0.1
Unemployment rate	6.8	6.8	0.1	0.0	0.1	-0.2
Employment rate	61.3	61.4	0.1	0.1	0.1	0.0
Part-time rate	18.9	19.0	0.2	0.1	0.1	-0.4
15 to 24 years, both sexes									
Population	4,441.0	4,438.0	...	-3.0	-17.0	-42.7	-0.1	-0.4	-1.0
Labour force	2,875.8	2,877.2	16.9	1.4	1.4	4.1	0.0	0.0	0.1
Employment	2,485.8	2,497.7	15.6	11.9	8.8	11.5	0.5	0.4	0.5
Employment full-time	1,299.0	1,294.1	18.8	-4.9	4.6	26.4	-0.4	0.4	2.1
Employment part-time	1,186.8	1,203.5	19.8	16.7	4.2	-15.0	1.4	0.4	-1.2
Unemployment	390.0	379.5	14.5	-10.5	-7.5	-7.3	-2.7	-1.9	-1.9
Participation rate	64.8	64.8	0.4	0.0	0.2	0.7
Unemployment rate	13.6	13.2	0.5	-0.4	-0.3	-0.3
Employment rate	56.0	56.3	0.3	0.3	0.4	0.8
Part-time rate	47.7	48.2	0.7	0.4	0.0	-0.8
25 years and over, men									
Population	12,113.6	12,127.2	...	13.6	65.6	163.5	0.1	0.5	1.4
Labour force	8,650.9	8,701.0	15.3	50.1	69.3	122.4	0.6	0.8	1.4
Employment	8,135.8	8,169.5	16.5	33.7	26.0	116.1	0.4	0.3	1.4
Employment full-time	7,502.9	7,540.9	21.9	38.0	38.7	136.4	0.5	0.5	1.8
Employment part-time	632.9	628.6	17.9	-4.3	-12.7	-20.3	-0.7	-2.0	-3.1
Unemployment	515.2	531.5	14.3	16.3	43.3	6.4	3.2	8.9	1.2
Participation rate	71.4	71.7	0.1	0.3	0.1	0.0
Unemployment rate	6.0	6.1	0.2	0.1	0.4	0.0
Employment rate	67.2	67.4	0.1	0.2	-0.1	0.1
Part-time rate	7.8	7.7	0.2	-0.1	-0.2	-0.4
25 years and over, women									
Population	12,653.5	12,666.9	...	13.4	67.0	171.4	0.1	0.5	1.4
Labour force	7,678.4	7,683.1	16.5	4.7	62.9	41.2	0.1	0.8	0.5
Employment	7,273.4	7,286.6	16.0	13.2	67.4	64.7	0.2	0.9	0.9
Employment full-time	5,705.0	5,702.7	24.9	-2.3	28.5	70.2	0.0	0.5	1.2
Employment part-time	1,568.4	1,583.9	23.7	15.5	39.0	-5.5	1.0	2.5	-0.3
Unemployment	405.0	396.5	13.2	-8.5	-4.5	-23.5	-2.1	-1.1	-5.6
Participation rate	60.7	60.7	0.1	0.0	0.2	-0.5
Unemployment rate	5.3	5.2	0.2	-0.1	-0.1	-0.3
Employment rate	57.5	57.5	0.1	0.0	0.2	-0.3
Part-time rate	21.6	21.7	0.3	0.2	0.3	-0.3
25 to 54 years, both sexes									
Population	14,574.0	14,577.1	...	3.1	7.7	23.1	0.0	0.1	0.2
Labour force	12,569.1	12,598.6	22.1	29.5	36.7	81.6	0.2	0.3	0.7
Employment	11,863.2	11,888.8	23.5	25.6	12.5	94.6	0.2	0.1	0.8
Unemployment	706.0	709.8	17.9	3.8	24.2	-13.0	0.5	3.5	-1.8
Participation rate	86.2	86.4	0.2	0.2	0.2	0.4
Unemployment rate	5.6	5.6	0.1	0.0	0.1	-0.2
Employment rate	81.4	81.6	0.2	0.2	0.1	0.6
25 to 54 years, men									
Population	7,257.7	7,259.5	...	1.8	3.1	7.8	0.0	0.0	0.1
Labour force	6,565.5	6,588.2	14.3	22.7	-3.2	57.3	0.3	0.0	0.9
Employment	6,173.0	6,192.6	15.9	19.6	-29.6	48.2	0.3	-0.5	0.8
Unemployment	392.5	395.7	13.1	3.2	26.5	9.2	0.8	7.2	2.4
Participation rate	90.5	90.8	0.2	0.3	0.0	0.7
Unemployment rate	6.0	6.0	0.2	0.0	0.4	0.1
Employment rate	85.1	85.3	0.2	0.2	-0.4	0.6

See notes at the end of the table.

Table 1 – continued

Labour force characteristics by age and sex, Canada, seasonally adjusted

	April 2015	May 2015	S.E. ¹	Change from			Percent change from		
				last month	last December	twelve months ago	last month	last December	twelve months ago
in thousands (except rates)									
25 to 54 years, women									
Population	7,316.3	7,317.6	...	1.3	4.6	15.3	0.0	0.1	0.2
Labour force	6,003.6	6,010.4	16.0	6.8	39.9	24.3	0.1	0.7	0.4
Employment	5,690.2	5,696.2	16.3	6.0	42.1	46.4	0.1	0.7	0.8
Unemployment	313.5	314.1	12.2	0.6	-2.3	-22.2	0.2	-0.7	-6.6
Participation rate	82.1	82.1	0.2	0.0	0.5	0.1
Unemployment rate	5.2	5.2	0.2	0.0	-0.1	-0.4
Employment rate	77.8	77.8	0.2	0.0	0.5	0.4
55 years and over, both sexes									
Population	10,193.2	10,217.0	...	23.8	124.9	311.8	0.2	1.2	3.1
Labour force	3,760.2	3,785.5	17.9	25.3	95.5	82.0	0.7	2.6	2.2
Employment	3,546.0	3,567.2	18.0	21.2	80.8	86.0	0.6	2.3	2.5
Unemployment	214.2	218.2	9.4	4.0	14.6	-4.2	1.9	7.2	-1.9
Participation rate	36.9	37.1	0.2	0.2	0.5	-0.3
Unemployment rate	5.7	5.8	0.2	0.1	0.3	-0.2
Employment rate	34.8	34.9	0.2	0.1	0.4	-0.2
55 years and over, men									
Population	4,855.9	4,867.7	...	11.8	62.5	155.7	0.2	1.3	3.3
Labour force	2,085.4	2,112.7	11.8	27.3	72.4	65.0	1.3	3.5	3.2
Employment	1,962.8	1,976.9	12.1	14.1	55.6	67.8	0.7	2.9	3.6
Unemployment	122.7	135.9	7.0	13.2	16.9	-2.7	10.8	14.2	-1.9
Participation rate	42.9	43.4	0.3	0.5	0.9	-0.1
Unemployment rate	5.9	6.4	0.3	0.5	0.6	-0.4
Employment rate	40.4	40.6	0.3	0.2	0.6	0.1
55 years and over, women									
Population	5,337.3	5,349.3	...	12.0	62.4	156.0	0.2	1.2	3.0
Labour force	1,674.8	1,672.7	12.2	-2.1	23.0	16.9	-0.1	1.4	1.0
Employment	1,583.3	1,590.4	12.2	7.1	25.3	18.3	0.4	1.6	1.2
Unemployment	91.5	82.4	6.2	-9.1	-2.2	-1.3	-9.9	-2.6	-1.6
Participation rate	31.4	31.3	0.2	-0.1	0.1	-0.6
Unemployment rate	5.5	4.9	0.4	-0.6	-0.2	-0.2
Employment rate	29.7	29.7	0.2	0.0	0.1	-0.6

1. Average standard error of change in two consecutive months (see "Sampling Errors" in Data Quality for further explanations).

Note(s): Related CANSIM table 282-0087. The sum of individual categories may not always add to the total due to rounding.

Table 2
Employment by class of worker and industry, Canada, seasonally adjusted

	April 2015	May 2015	S.E. ¹	Change from			Percent change from		
				last month	last December	twelve months ago	last month	last December	twelve months ago
	in thousands								
Class of worker									
Employees	15,166.1	15,203.8	34.8	37.7	77.5	159.7	0.2	0.5	1.1
Self-employed ²	2,728.8	2,749.9	24.8	21.1	24.7	32.5	0.8	0.9	1.2
Public/private sector employees									
Public sector employees	3,585.6	3,566.5	19.6	-19.1	5.1	41.6	-0.5	0.1	1.2
Private sector employees	11,580.5	11,637.3	34.8	56.8	72.4	118.0	0.5	0.6	1.0
Industry	17,894.9	17,953.8	28.7	58.9	102.3	192.3	0.3	0.6	1.1
Goods-producing sector	3,861.1	3,871.3	16.2	10.2	-36.2	8.0	0.3	-0.9	0.2
Agriculture	299.1	292.5	5.7	-6.6	-10.8	-19.1	-2.2	-3.6	-6.1
Forestry, fishing, mining, quarrying, oil and gas extraction ³	357.2	354.8	5.5	-2.4	-22.7	-8.4	-0.7	-6.0	-2.3
Utilities	137.9	140.3	2.4	2.4	2.0	3.2	1.7	1.4	2.3
Construction	1,368.2	1,363.5	10.9	-4.7	-25.0	14.9	-0.3	-1.8	1.1
Manufacturing	1,698.7	1,720.2	10.3	21.5	20.3	17.3	1.3	1.2	1.0
Services-producing sector	14,033.9	14,082.5	27.2	48.6	138.6	184.3	0.3	1.0	1.3
Trade	2,723.0	2,739.8	14.2	16.8	24.3	11.7	0.6	0.9	0.4
Transportation and warehousing	923.4	924.2	7.7	0.8	20.0	23.7	0.1	2.2	2.6
Finance, insurance, real estate and leasing	1,099.1	1,111.8	8.1	12.7	18.0	34.4	1.2	1.6	3.2
Professional, scientific and technical services	1,349.8	1,353.9	10.5	4.1	25.1	24.0	0.3	1.9	1.8
Business, building and other support services	756.7	769.6	9.6	12.9	18.4	29.2	1.7	2.4	3.9
Educational services	1,287.7	1,283.5	10.3	-4.2	27.1	51.3	-0.3	2.2	4.2
Health care and social assistance	2,268.9	2,289.6	10.5	20.7	44.4	75.3	0.9	2.0	3.4
Information, culture and recreation	741.9	742.5	9.5	0.6	-17.6	-31.4	0.1	-2.3	-4.1
Accommodation and food services	1,223.3	1,222.8	11.2	-0.5	6.6	27.8	0.0	0.5	2.3
Other services	766.2	762.8	8.1	-3.4	0.2	-36.7	-0.4	0.0	-4.6
Public administration	893.9	881.9	6.9	-12.0	-28.2	-24.9	-1.3	-3.1	-2.7

1. Average standard error of change in two consecutive months (see "Sampling Errors" in Data Quality for further explanations).

2. Includes both incorporated and unincorporated working owners, self-employed persons who do not have a business and persons working in a family business without pay.

3. Also referred to as Natural resources.

Note(s): Related CANSIM Tables 282-0088, 282-0089. The sum of individual categories may not always add to the total due to rounding.

Table 3
Labour force characteristics by province, seasonally adjusted

	April 2015	May 2015	S.E.	Change from			Percent change from		
				last month	last December	twelve months ago	last month	last December	twelve months ago
in thousands (except rates)									
Newfoundland and Labrador									
Population	443.1	443.0	...	-0.1	-0.3	-0.8	0.0	-0.1	-0.2
Labour force	271.3	270.0	1.9	-1.3	1.3	0.9	-0.5	0.5	0.3
Employment	237.1	232.8	2.1	-4.3	-4.3	-2.3	-1.8	-1.8	-1.0
Employment full-time	203.9	199.8	2.5	-4.1	-3.8	2.4	-2.0	-1.9	1.2
Employment part-time	33.2	33.0	2.0	-0.2	-0.5	-4.7	-0.6	-1.5	-12.5
Unemployment	34.2	37.2	1.9	3.0	5.6	3.3	8.8	17.7	9.7
Participation rate	61.2	60.9	0.4	-0.3	0.3	0.3
Unemployment rate	12.6	13.8	0.7	1.2	2.0	1.2
Employment rate	53.5	52.6	0.5	-0.9	-0.9	-0.4
Prince Edward Island									
Population	120.8	120.8	...	0.0	0.1	0.1	0.0	0.1	0.1
Labour force	81.8	81.5	0.6	-0.3	-0.7	-2.6	-0.4	-0.9	-3.1
Employment	73.2	72.5	0.7	-0.7	-0.6	-1.2	-1.0	-0.8	-1.6
Employment full-time	60.4	59.7	0.9	-0.7	-2.3	-1.9	-1.2	-3.7	-3.1
Employment part-time	12.8	12.8	0.7	0.0	1.7	0.7	0.0	15.3	5.8
Unemployment	8.6	9.0	0.6	0.4	-0.1	-1.3	4.7	-1.1	-12.6
Participation rate	67.7	67.5	0.5	-0.2	-0.6	-2.2
Unemployment rate	10.5	11.0	0.7	0.5	-0.1	-1.2
Employment rate	60.6	60.0	0.5	-0.6	-0.6	-1.1
Nova Scotia									
Population	784.4	784.7	...	0.3	0.6	2.2	0.0	0.1	0.3
Labour force	487.8	489.7	2.6	1.9	-2.4	-0.1	0.4	-0.5	0.0
Employment	443.0	446.7	2.6	3.7	-4.3	1.6	0.8	-1.0	0.4
Employment full-time	361.1	363.7	3.5	2.6	-5.3	7.3	0.7	-1.4	2.0
Employment part-time	81.9	83.0	3.1	1.1	1.0	-5.7	1.3	1.2	-6.4
Unemployment	44.8	43.0	2.4	-1.8	1.9	-1.7	-4.0	4.6	-3.8
Participation rate	62.2	62.4	0.3	0.2	-0.4	-0.2
Unemployment rate	9.2	8.8	0.5	-0.4	0.4	-0.3
Employment rate	56.5	56.9	0.3	0.4	-0.6	0.0
New Brunswick									
Population	622.3	622.0	...	-0.3	0.3	0.4	0.0	0.0	0.1
Labour force	393.6	389.0	2.3	-4.6	-1.2	-3.1	-1.2	-0.3	-0.8
Employment	354.5	351.7	2.4	-2.8	0.5	-0.2	-0.8	0.1	-0.1
Employment full-time	301.0	295.7	3.0	-5.3	0.2	-0.6	-1.8	0.1	-0.2
Employment part-time	53.5	56.0	2.5	2.5	0.3	0.3	4.7	0.5	0.5
Unemployment	39.1	37.3	2.1	-1.8	-1.7	-2.9	-4.6	-4.4	-7.2
Participation rate	63.2	62.5	0.4	-0.7	-0.3	-0.6
Unemployment rate	9.9	9.6	0.5	-0.3	-0.4	-0.7
Employment rate	57.0	56.5	0.4	-0.5	0.0	-0.1
Quebec									
Population	6,833.8	6,837.1	...	3.3	14.8	42.2	0.0	0.2	0.6
Labour force	4,441.4	4,448.6	14.7	7.2	59.1	63.9	0.2	1.3	1.5
Employment	4,110.9	4,108.8	14.5	-2.1	47.7	70.2	-0.1	1.2	1.7
Employment full-time	3,309.5	3,293.7	19.9	-15.8	32.0	69.7	-0.5	1.0	2.2
Employment part-time	801.4	815.1	18.3	13.7	15.7	0.5	1.7	2.0	0.1
Unemployment	330.5	339.8	13.0	9.3	11.4	-6.3	2.8	3.5	-1.8
Participation rate	65.0	65.1	0.2	0.1	0.8	0.6
Unemployment rate	7.4	7.6	0.3	0.2	0.1	-0.3
Employment rate	60.2	60.1	0.2	-0.1	0.6	0.7
Ontario									
Population	11,356.6	11,364.9	...	8.3	44.5	112.1	0.1	0.4	1.0
Labour force	7,391.4	7,415.3	20.0	23.9	8.1	1.5	0.3	0.1	0.0
Employment	6,887.8	6,931.7	19.2	43.9	46.7	53.0	0.6	0.7	0.8
Employment full-time	5,581.7	5,612.8	26.6	31.1	72.7	78.7	0.6	1.3	1.4
Employment part-time	1,306.2	1,318.9	24.3	12.7	-26.0	-25.6	1.0	-1.9	-1.9
Unemployment	503.5	483.6	16.9	-19.9	-38.6	-51.6	-4.0	-7.4	-9.6
Participation rate	65.1	65.2	0.2	0.1	-0.2	-0.7
Unemployment rate	6.8	6.5	0.2	-0.3	-0.5	-0.7
Employment rate	60.7	61.0	0.2	0.3	0.2	-0.1

See notes at the end of the table.

Table 3 – continued

Labour force characteristics by province, seasonally adjusted

	April 2015	May 2015	S.E.	Change from			Percent change from		
				last month	last December	twelve months ago	last month	last December	twelve months ago
in thousands (except rates)									
Manitoba									
Population	985.0	985.6	...	0.6	4.1	10.7	0.1	0.4	1.1
Labour force	675.6	674.0	2.6	-1.6	4.0	16.7	-0.2	0.6	2.5
Employment	638.6	635.4	2.6	-3.2	1.6	14.2	-0.5	0.3	2.3
Employment full-time	520.2	514.2	3.7	-6.0	-0.7	16.1	-1.2	-0.1	3.2
Employment part-time	118.4	121.2	3.5	2.8	2.3	-1.8	2.4	1.9	-1.5
Unemployment	37.0	38.6	2.1	1.6	2.4	2.5	4.3	6.6	6.9
Participation rate	68.6	68.4	0.3	-0.2	0.1	1.0
Unemployment rate	5.5	5.7	0.3	0.2	0.3	0.2
Employment rate	64.8	64.5	0.3	-0.3	-0.1	0.8
Saskatchewan									
Population	859.7	860.2	...	0.5	3.2	9.3	0.1	0.4	1.1
Labour force	601.3	605.3	2.6	4.0	8.0	11.9	0.7	1.3	2.0
Employment	575.4	575.4	2.6	0.0	0.4	5.6	0.0	0.1	1.0
Employment full-time	479.3	478.7	3.5	-0.6	-1.0	6.0	-0.1	-0.2	1.3
Employment part-time	96.0	96.8	3.3	0.8	1.5	-0.3	0.8	1.6	-0.3
Unemployment	26.0	29.9	1.8	3.9	7.6	6.3	15.0	34.1	26.7
Participation rate	69.9	70.4	0.3	0.5	0.7	0.7
Unemployment rate	4.3	4.9	0.3	0.6	1.2	0.9
Employment rate	66.9	66.9	0.3	0.0	-0.2	-0.1
Alberta									
Population	3,338.5	3,345.4	...	6.9	28.2	71.8	0.2	0.9	2.2
Labour force	2,448.3	2,448.5	9.5	0.2	35.1	67.9	0.0	1.5	2.9
Employment	2,313.9	2,307.5	10.1	-6.4	7.3	38.4	-0.3	0.3	1.7
Employment full-time	1,901.5	1,921.7	13.3	20.2	-2.6	32.5	1.1	-0.1	1.7
Employment part-time	412.4	385.8	12.0	-26.6	9.9	5.9	-6.5	2.6	1.6
Unemployment	134.4	141.1	7.6	6.7	27.9	29.5	5.0	24.6	26.4
Participation rate	73.3	73.2	0.3	-0.1	0.4	0.5
Unemployment rate	5.5	5.8	0.3	0.3	1.1	1.1
Employment rate	69.3	69.0	0.3	-0.3	-0.3	-0.3
British Columbia									
Population	3,863.9	3,868.4	...	4.5	20.0	44.0	0.1	0.5	1.2
Labour force	2,412.5	2,439.4	10.1	26.9	22.3	10.7	1.1	0.9	0.4
Employment	2,260.6	2,291.2	9.9	30.6	7.3	12.9	1.4	0.3	0.6
Employment full-time	1,788.2	1,797.8	14.1	9.6	-17.3	22.9	0.5	-1.0	1.3
Employment part-time	472.3	493.4	13.4	21.1	24.6	-10.0	4.5	5.2	-2.0
Unemployment	152.0	148.2	7.9	-3.8	15.0	-2.2	-2.5	11.3	-1.5
Participation rate	62.4	63.1	0.3	0.7	0.3	-0.4
Unemployment rate	6.3	6.1	0.3	-0.2	0.6	-0.1
Employment rate	58.5	59.2	0.3	0.7	-0.1	-0.4

1. Average standard error of change in two consecutive months (see "Sampling Errors" in Data Quality for further explanations).

Note(s): Related CANSIM Table 282-0087. The sum of individual categories may not always add to the total due to rounding.

Table 4-1
Selected labour force characteristics (seasonally adjusted) — Newfoundland and Labrador

	April 2015	May 2015	S.E.	Change from			Percent change from		
				last month	last December	twelve months ago	last month	last December	twelve months ago
in thousands (except rates)									
Both sexes, 15 years and over									
Population	443.1	443.0	...	-0.1	-0.3	-0.8	0.0	-0.1	-0.2
Labour force	271.3	270.0	1.9	-1.3	1.3	0.9	-0.5	0.5	0.3
Employment	237.1	232.8	2.1	-4.3	-4.3	-2.3	-1.8	-1.8	-1.0
Employment full-time	203.9	199.8	2.5	-4.1	-3.8	2.4	-2.0	-1.9	1.2
Unemployment	34.2	37.2	1.9	3.0	5.6	3.3	8.8	17.7	9.7
Participation rate	61.2	60.9	0.4	-0.3	0.3	0.3
Unemployment rate	12.6	13.8	0.7	1.2	2.0	1.2
Employment rate	53.5	52.6	0.5	-0.9	-0.9	-0.4
Part-time rate	14.0	14.2	0.8	0.2	0.0	-1.9
Both sexes, 15 to 24 years									
Population	56.7	56.5	...	-0.2	-0.8	-2.0	-0.4	-1.4	-3.4
Labour force	37.2	37.1	1.0	-0.1	1.3	3.3	-0.3	3.6	9.8
Employment	30.5	30.9	0.9	0.4	0.8	3.5	1.3	2.7	12.8
Unemployment	6.7	6.2	0.9	-0.5	0.5	-0.2	-7.5	8.8	-3.1
Participation rate	65.6	65.7	1.7	0.1	3.2	7.9
Unemployment rate	18.0	16.7	2.4	-1.3	0.8	-2.2
Employment rate	53.8	54.7	1.6	0.9	2.2	7.9
Part-time rate	41.3	41.4	3.5	0.1	0.6	-3.1
Men, 25 years and over									
Population	188.3	188.3	...	0.0	0.2	0.5	0.0	0.1	0.3
Labour force	123.1	121.7	1.1	-1.4	-1.7	-2.9	-1.1	-1.4	-2.3
Employment	106.5	101.6	1.4	-4.9	-5.9	-6.2	-4.6	-5.5	-5.8
Unemployment	16.6	20.1	1.3	3.5	4.1	3.3	21.1	25.6	19.6
Participation rate	65.4	64.6	0.6	-0.8	-1.0	-1.7
Unemployment rate	13.5	16.5	1.0	3.0	3.5	3.0
Employment rate	56.6	54.0	0.7	-2.6	-3.2	-3.4
Part-time rate	4.7	4.9	0.8	0.2	0.5	-1.3
Women, 25 years and over									
Population	198.0	198.1	...	0.1	0.2	0.7	0.1	0.1	0.4
Labour force	111.0	111.1	1.1	0.1	1.6	0.4	0.1	1.5	0.4
Employment	100.0	100.3	1.1	0.3	0.8	0.4	0.3	0.8	0.4
Unemployment	11.0	10.9	1.0	-0.1	0.9	0.1	-0.9	9.0	0.9
Participation rate	56.1	56.1	0.5	0.0	0.8	0.0
Unemployment rate	9.9	9.8	0.8	-0.1	0.7	0.0
Employment rate	50.5	50.6	0.6	0.1	0.3	0.0
Part-time rate	15.7	15.2	1.3	-0.5	-1.2	-3.7
Industry	237.1	232.8	2.1	-4.3	-4.3	-2.3	-1.8	-1.8	-1.0
Goods-producing sector	53.9	51.5	1.4	-2.4	-4.8	-0.8	-4.5	-8.5	-1.5
Agriculture	1.7	1.9	0.3	0.2	0.3	0.8	11.8	18.8	72.7
Forestry, fishing, mining, quarrying, oil and gas extraction ²	16.6	15.9	0.8	-0.7	-1.3	-0.3	-4.2	-7.6	-1.9
Utilities	2.7	2.9	0.2	0.2	-0.1	0.4	7.4	-3.3	16.0
Construction	22.5	20.1	1.0	-2.4	-3.5	-2.7	-10.7	-14.8	-11.8
Manufacturing	10.6	10.6	0.7	0.0	-0.3	0.8	0.0	-2.8	8.2
Services-producing sector	183.1	181.3	1.8	-1.8	0.5	-1.5	-1.0	0.3	-0.8
Trade	40.8	40.6	0.9	-0.2	1.4	0.5	-0.5	3.6	1.2
Transportation and warehousing	10.7	10.8	0.6	0.1	1.0	-1.2	0.9	10.2	-10.0
Finance, insurance, real estate and leasing	8.2	7.9	0.4	-0.3	-0.1	-0.8	-3.7	-1.2	-9.2
Professional, scientific and technical services	11.6	11.6	0.5	0.0	0.8	1.2	0.0	7.4	11.5
Business, building and other support services	7.0	6.8	0.4	-0.2	-0.1	0.5	-2.9	-1.4	7.9
Educational services	16.2	15.7	0.6	-0.5	-1.0	-2.0	-3.1	-6.0	-11.3
Health care and social assistance	36.8	36.8	0.8	0.0	-0.7	0.1	0.0	-1.9	0.3
Information, culture and recreation	6.7	7.3	0.6	0.6	-0.1	-0.7	9.0	-1.4	-8.8
Accommodation and food services	16.1	16.0	0.7	-0.1	0.1	2.2	-0.6	0.6	15.9
Other services	12.6	12.5	0.6	-0.1	0.4	1.4	-0.8	3.3	12.6
Public administration	16.3	15.4	0.6	-0.9	-1.1	-2.6	-5.5	-6.7	-14.4

1. Average standard error of change in two consecutive months (see "Sampling Errors" in Data Quality for further explanations).

2. Also referred to as Natural resources.

Note(s): Related CANSIM Tables 282-0087, 282-0088. The sum of individual categories may not always add to the total due to rounding.

Table 4-2
Selected labour force characteristics (seasonally adjusted) — Prince Edward Island

	April 2015	May 2015	S.E.	Change from			Percent change from		
				last month	last December	twelve months ago	last month	last December	twelve months ago
in thousands (except rates)									
Both sexes, 15 years and over									
Population	120.8	120.8	...	0.0	0.1	0.1	0.0	0.1	0.1
Labour force	81.8	81.5	0.6	-0.3	-0.7	-2.6	-0.4	-0.9	-3.1
Employment	73.2	72.5	0.7	-0.7	-0.6	-1.2	-1.0	-0.8	-1.6
Employment full-time	60.4	59.7	0.9	-0.7	-2.3	-1.9	-1.2	-3.7	-3.1
Unemployment	8.6	9.0	0.6	0.4	-0.1	-1.3	4.7	-1.1	-12.6
Participation rate	67.7	67.5	0.5	-0.2	-0.6	-2.2
Unemployment rate	10.5	11.0	0.7	0.5	-0.1	-1.2
Employment rate	60.6	60.0	0.5	-0.6	-0.6	-1.1
Part-time rate	17.5	17.7	1.0	0.2	2.5	1.2
Both sexes, 15 to 24 years									
Population	18.4	18.3	...	-0.1	-0.2	-0.5	-0.5	-1.1	-2.7
Labour force	12.3	12.0	0.3	-0.3	-0.4	-1.6	-2.4	-3.2	-11.8
Employment	10.2	9.8	0.3	-0.4	-0.4	-1.0	-3.9	-3.9	-9.3
Unemployment	2.1	2.2	0.3	0.1	-0.1	-0.7	4.8	-4.3	-24.1
Participation rate	66.8	65.6	1.9	-1.2	-1.4	-6.7
Unemployment rate	17.1	18.3	2.5	1.2	-0.2	-3.0
Employment rate	55.4	53.6	1.9	-1.8	-1.5	-3.8
Part-time rate	48.0	49.0	3.6	0.9	3.9	3.6
Men, 25 years and over									
Population	49.1	49.1	...	0.0	0.1	0.2	0.0	0.2	0.4
Labour force	35.7	35.6	0.3	-0.1	-0.1	-0.6	-0.3	-0.3	-1.7
Employment	31.8	31.6	0.4	-0.2	-0.5	-0.4	-0.6	-1.6	-1.2
Unemployment	3.9	3.9	0.4	0.0	0.3	-0.4	0.0	8.3	-9.3
Participation rate	72.7	72.5	0.7	-0.2	-0.4	-1.5
Unemployment rate	10.9	11.0	1.0	0.1	0.9	-0.9
Employment rate	64.8	64.4	0.8	-0.4	-1.1	-1.0
Part-time rate	7.5	7.6	1.0	0.0	2.6	2.0
Women, 25 years and over									
Population	53.4	53.4	...	0.0	0.1	0.3	0.0	0.2	0.6
Labour force	33.8	33.9	0.3	0.1	-0.2	-0.3	0.3	-0.6	-0.9
Employment	31.2	31.2	0.4	0.0	0.4	0.2	0.0	1.3	0.6
Unemployment	2.7	2.8	0.4	0.1	-0.4	-0.4	3.7	-12.5	-12.5
Participation rate	63.3	63.5	0.6	0.2	-0.5	-0.9
Unemployment rate	8.0	8.3	1.0	0.3	-1.1	-1.1
Employment rate	58.4	58.4	0.7	0.0	0.6	0.0
Part-time rate	17.6	17.9	1.5	0.3	2.0	0.5
Industry									
Goods-producing sector	73.2	72.6	0.7	-0.6	-0.5	-1.1	-0.8	-0.7	-1.5
Agriculture	17.3	17.8	0.5	0.5	0.5	0.2	2.9	2.9	1.1
Forestry, fishing, mining, quarrying, oil and gas extraction ²	3.0	3.7	0.3	0.7	0.8	0.3	23.3	27.6	8.8
Utilities	2.7	2.6	0.3	-0.1	0.3	0.2	-3.7	13.0	8.3
Construction	0.4	0.3	0.1	-0.1	0.0	-0.1	-25.0	0.0	-25.0
Manufacturing	5.1	5.2	0.3	0.1	-0.4	-0.7	2.0	-7.1	-11.9
	6.0	6.0	0.2	0.0	-0.2	0.6	0.0	-3.2	11.1
Services-producing sector									
Trade	55.9	54.8	0.6	-1.1	-1.0	-1.3	-2.0	-1.8	-2.3
Transportation and warehousing	11.2	10.6	0.3	-0.6	-0.4	-0.5	-5.4	-3.6	-4.5
Finance, insurance, real estate and leasing	3.0	2.8	0.2	-0.2	-0.3	-0.1	-6.7	-9.7	-3.4
Professional, scientific and technical services	2.5	2.7	0.1	0.2	0.5	0.4	8.0	22.7	17.4
Business, building and other support services	3.0	2.9	0.1	-0.1	0.0	0.1	-3.3	0.0	3.6
Educational services	2.4	2.1	0.2	-0.3	-0.6	-0.3	-12.5	-22.2	-12.5
Health care and social assistance	5.3	5.3	0.2	0.0	0.0	-0.4	0.0	0.0	-7.0
Information, culture and recreation	9.5	9.6	0.2	0.1	-0.3	-1.3	1.1	-3.0	-11.9
Accommodation and food services	2.5	2.3	0.2	-0.2	-0.1	-0.5	-8.0	-4.2	-17.9
Other services	5.0	5.5	0.3	0.5	-0.1	0.2	10.0	-1.8	3.8
Public administration	4.0	3.3	0.2	-0.7	-0.3	0.1	-17.5	-8.3	3.1
	7.5	7.6	0.2	0.1	0.4	0.9	1.3	5.6	13.4

1. Average standard error of change in two consecutive months (see "Sampling Errors" in Data Quality for further explanations).

2. Also referred to as Natural resources.

Note(s): Related CANSIM Tables 282-0087, 282-0088. The sum of individual categories may not always add to the total due to rounding.

Table 4-3

Selected labour force characteristics (seasonally adjusted) — Nova Scotia

	April 2015	May 2015	S.E.	Change from			Percent change from		
				last month	last December	twelve months ago	last month	last December	twelve months ago
in thousands (except rates)									
Both sexes, 15 years and over									
Population	784.4	784.7	...	0.3	0.6	2.2	0.0	0.1	0.3
Labour force	487.8	489.7	2.6	1.9	-2.4	-0.1	0.4	-0.5	0.0
Employment	443.0	446.7	2.6	3.7	-4.3	1.6	0.8	-1.0	0.4
Employment full-time	361.1	363.7	3.5	2.6	-5.3	7.3	0.7	-1.4	2.0
Unemployment	44.8	43.0	2.4	-1.8	1.9	-1.7	-4.0	4.6	-3.8
Participation rate	62.2	62.4	0.3	0.2	-0.4	-0.2
Unemployment rate	9.2	8.8	0.5	-0.4	0.4	-0.3
Employment rate	56.5	56.9	0.3	0.4	-0.6	0.0
Part-time rate	18.5	18.6	0.7	0.1	0.4	-1.3
Both sexes, 15 to 24 years									
Population	112.0	111.8	...	-0.2	-1.0	-2.4	-0.2	-0.9	-2.1
Labour force	73.9	74.6	1.6	0.7	1.1	0.6	0.9	1.5	0.8
Employment	62.1	62.6	1.4	0.5	-0.1	1.2	0.8	-0.2	2.0
Unemployment	11.8	12.0	1.5	0.2	1.2	-0.6	1.7	11.1	-4.8
Participation rate	66.0	66.7	1.4	0.7	1.5	1.9
Unemployment rate	16.0	16.1	1.9	0.1	1.4	-0.9
Employment rate	55.4	56.0	1.3	0.6	0.4	2.2
Part-time rate	43.6	43.1	2.8	-0.5	-2.6	-3.4
Men, 25 years and over									
Population	321.9	322.1	...	0.2	0.9	2.4	0.1	0.3	0.8
Labour force	210.9	211.6	1.4	0.7	-2.0	-2.8	0.3	-0.9	-1.3
Employment	191.0	192.8	1.6	1.8	-4.2	-0.9	0.9	-2.1	-0.5
Unemployment	19.9	18.8	1.5	-1.1	2.2	-1.9	-5.5	13.3	-9.2
Participation rate	65.5	65.7	0.4	0.2	-0.8	-1.4
Unemployment rate	9.4	8.9	0.7	-0.5	1.1	-0.8
Employment rate	59.3	59.9	0.5	0.6	-1.4	-0.7
Part-time rate	9.0	8.8	0.8	-0.2	0.6	-1.0
Women, 25 years and over									
Population	350.5	350.7	...	0.2	0.7	2.1	0.1	0.2	0.6
Labour force	203.1	203.5	1.4	0.4	-1.5	2.1	0.2	-0.7	1.0
Employment	190.0	191.3	1.4	1.3	0.0	1.3	0.7	0.0	0.7
Unemployment	13.1	12.2	1.2	-0.9	-1.5	0.8	-6.9	-10.9	7.0
Participation rate	57.9	58.0	0.4	0.1	-0.6	0.2
Unemployment rate	6.5	6.0	0.6	-0.5	-0.7	0.3
Employment rate	54.2	54.5	0.4	0.3	-0.2	0.0
Part-time rate	19.8	20.4	1.1	0.6	0.9	-1.3
Industry	443.0	446.7	2.6	3.7	-4.3	1.6	0.8	-1.0	0.4
Goods-producing sector	79.5	81.9	1.7	2.4	0.3	-0.4	3.0	0.4	-0.5
Agriculture	5.3	4.5	0.6	-0.8	-0.1	-1.2	-15.1	-2.2	-21.1
Forestry, fishing, mining, quarrying, oil and gas extraction ²	10.7	12.7	0.9	2.0	0.1	2.9	18.7	0.8	29.6
Utilities	4.0	3.7	0.2	-0.3	-0.3	0.3	-7.5	-7.5	8.8
Construction	31.7	33.3	1.1	1.6	1.7	-0.4	5.0	5.4	-1.2
Manufacturing	27.9	27.7	0.9	-0.2	-1.1	-2.0	-0.7	-3.8	-6.7
Services-producing sector	363.6	364.7	2.4	1.1	-4.7	1.9	0.3	-1.3	0.5
Trade	72.4	72.0	1.3	-0.4	-2.5	-0.9	-0.6	-3.4	-1.2
Transportation and warehousing	19.8	19.1	0.8	-0.7	-3.5	-1.9	-3.5	-15.5	-9.0
Finance, insurance, real estate and leasing	22.6	22.9	0.7	0.3	-0.1	-0.8	1.3	-0.4	-3.4
Professional, scientific and technical services	26.6	29.2	0.8	2.6	3.0	4.1	9.8	11.5	16.3
Business, building and other support services	22.4	19.5	0.9	-2.9	0.8	-0.5	-12.9	4.3	-2.5
Educational services	35.8	37.7	1.1	1.9	1.9	0.0	5.3	5.3	0.0
Health care and social assistance	70.8	71.9	1.0	1.1	1.4	5.3	1.6	2.0	8.0
Information, culture and recreation	18.6	17.5	0.8	-1.1	-2.5	-0.6	-5.9	-12.5	-3.3
Accommodation and food services	32.0	32.5	1.1	0.5	-0.2	-0.9	1.6	-0.6	-2.7
Other services	16.0	16.2	0.7	0.2	-1.6	-2.3	1.2	-9.0	-12.4
Public administration	26.6	26.2	0.7	-0.4	-1.3	0.4	-1.5	-4.7	1.6

1. Average standard error of change in two consecutive months (see "Sampling Errors" in Data Quality for further explanations).

2. Also referred to as Natural resources.

Note(s): Related CANSIM Tables 282-0087, 282-0088. The sum of individual categories may not always add to the total due to rounding.

Table 4-4
Selected labour force characteristics (seasonally adjusted) — New Brunswick

	April 2015	May 2015	S.E.	Change from			Percent change from		
				last month	last December	twelve months ago	last month	last December	twelve months ago
in thousands (except rates)									
Both sexes, 15 years and over									
Population	622.3	622.0	...	-0.3	0.3	0.4	0.0	0.0	0.1
Labour force	393.6	389.0	2.3	-4.6	-1.2	-3.1	-1.2	-0.3	-0.8
Employment	354.5	351.7	2.4	-2.8	0.5	-0.2	-0.8	0.1	-0.1
Employment full-time	301.0	295.7	3.0	-5.3	0.2	-0.6	-1.8	0.1	-0.2
Unemployment	39.1	37.3	2.1	-1.8	-1.7	-2.9	-4.6	-4.4	-7.2
Participation rate	63.2	62.5	0.4	-0.7	-0.3	-0.6
Unemployment rate	9.9	9.6	0.5	-0.3	-0.4	-0.7
Employment rate	57.0	56.5	0.4	-0.5	0.0	-0.1
Part-time rate	15.1	15.9	0.7	0.8	0.1	0.1
Both sexes, 15 to 24 years									
Population	85.1	84.9	...	-0.2	-0.5	-1.7	-0.2	-0.6	-2.0
Labour force	56.0	54.7	1.3	-1.3	1.5	-1.1	-2.3	2.8	-2.0
Employment	46.4	45.6	1.2	-0.8	2.0	1.1	-1.7	4.6	2.5
Unemployment	9.5	9.1	1.1	-0.4	-0.4	-2.2	-4.2	-4.2	-19.5
Participation rate	65.8	64.4	1.5	-1.4	2.1	0.0
Unemployment rate	17.0	16.6	1.9	-0.4	-1.3	-3.7
Employment rate	54.5	53.7	1.4	-0.8	2.6	2.3
Part-time rate	40.5	38.8	2.9	-1.7	-4.8	-1.2
Men, 25 years and over									
Population	260.2	260.2	...	0.0	0.4	1.0	0.0	0.2	0.4
Labour force	176.2	173.7	1.3	-2.5	-2.1	-0.9	-1.4	-1.2	-0.5
Employment	157.9	155.3	1.5	-2.6	-1.8	-1.9	-1.6	-1.1	-1.2
Unemployment	18.4	18.3	1.4	-0.1	-0.4	0.9	-0.5	-2.1	5.2
Participation rate	67.7	66.8	0.5	-0.9	-0.9	-0.6
Unemployment rate	10.4	10.5	0.8	0.1	-0.1	0.5
Employment rate	60.7	59.7	0.6	-1.0	-0.8	-0.9
Part-time rate	6.5	7.7	0.7	1.3	1.0	1.9
Women, 25 years and over									
Population	277.0	277.0	...	0.0	0.4	1.1	0.0	0.1	0.4
Labour force	161.4	160.7	1.2	-0.7	-0.5	-1.0	-0.4	-0.3	-0.6
Employment	150.2	150.8	1.3	0.6	0.3	0.6	0.4	0.2	0.4
Unemployment	11.2	9.9	1.1	-1.3	-0.8	-1.6	-11.6	-7.5	-13.9
Participation rate	58.3	58.0	0.4	-0.3	-0.3	-0.6
Unemployment rate	6.9	6.2	0.7	-0.7	-0.4	-0.9
Employment rate	54.2	54.4	0.5	0.2	0.0	0.0
Part-time rate	16.3	17.4	1.1	1.1	0.1	-1.6
Industry	354.5	351.7	2.4	-2.8	0.5	-0.2	-0.8	0.1	-0.1
Goods-producing sector	72.7	72.4	1.6	-0.3	-1.7	-2.8	-0.4	-2.3	-3.7
Agriculture	3.8	4.1	0.5	0.3	0.0	0.9	7.9	0.0	28.1
Forestry, fishing, mining, quarrying, oil and gas extraction ²	9.8	9.5	0.7	-0.3	-1.5	-2.5	-3.1	-13.6	-20.8
Utilities	3.5	3.5	0.2	0.0	0.0	-0.7	0.0	0.0	-16.7
Construction	24.5	24.0	1.1	-0.5	-2.5	-5.2	-2.0	-9.4	-17.8
Manufacturing	31.1	31.2	0.8	0.1	2.1	4.6	0.3	7.2	17.3
Services-producing sector	281.8	279.3	2.1	-2.5	2.2	2.5	-0.9	0.8	0.9
Trade	56.2	56.0	1.0	-0.2	1.5	-2.2	-0.4	2.8	-3.8
Transportation and warehousing	19.1	18.2	0.6	-0.9	1.2	1.5	-4.7	7.1	9.0
Finance, insurance, real estate and leasing	14.6	14.0	0.5	-0.6	-1.0	-1.2	-4.1	-6.7	-7.9
Professional, scientific and technical services	17.2	16.2	0.6	-1.0	-2.1	-1.6	-5.8	-11.5	-9.0
Business, building and other support services	20.0	19.9	0.8	-0.1	-0.4	1.5	-0.5	-2.0	8.2
Educational services	28.1	28.4	0.7	0.3	1.3	3.8	1.1	4.8	15.4
Health care and social assistance	51.1	50.8	0.9	-0.3	0.3	-1.0	-0.6	0.6	-1.9
Information, culture and recreation	11.4	10.8	0.7	-0.6	-0.8	0.4	-5.3	-6.9	3.8
Accommodation and food services	24.6	26.7	0.9	2.1	4.5	2.5	8.5	20.3	10.3
Other services	15.3	14.9	0.6	-0.4	-1.4	-2.6	-2.6	-8.6	-14.9
Public administration	24.1	23.3	0.7	-0.8	-1.1	1.3	-3.3	-4.5	5.9

1. Average standard error of change in two consecutive months (see "Sampling Errors" in Data Quality for further explanations).

2. Also referred to as Natural resources.

Note(s): Related CANSIM Tables 282-0087, 282-0088. The sum of individual categories may not always add to the total due to rounding.

Table 4-5
Selected labour force characteristics (seasonally adjusted) — Quebec

	April 2015	May 2015	S.E.	Change from			Percent change from		
				last month	last December	twelve months ago	last month	last December	twelve months ago
in thousands (except rates)									
Both sexes, 15 years and over									
Population	6,833.8	6,837.1	...	3.3	14.8	42.2	0.0	0.2	0.6
Labour force	4,441.4	4,448.6	14.7	7.2	59.1	63.9	0.2	1.3	1.5
Employment	4,110.9	4,108.8	14.5	-2.1	47.7	70.2	-0.1	1.2	1.7
Employment full-time	3,309.5	3,293.7	19.9	-15.8	32.0	69.7	-0.5	1.0	2.2
Unemployment	330.5	339.8	13.0	9.3	11.4	-6.3	2.8	3.5	-1.8
Participation rate	65.0	65.1	0.2	0.1	0.8	0.6
Unemployment rate	7.4	7.6	0.3	0.2	0.1	-0.3
Employment rate	60.2	60.1	0.2	-0.1	0.6	0.7
Part-time rate	19.5	19.8	0.4	0.3	0.2	-0.3
Both sexes, 15 to 24 years									
Population	963.6	962.0	...	-1.6	-9.2	-20.4	-0.2	-0.9	-2.1
Labour force	663.3	656.9	8.3	-6.4	2.1	-0.4	-1.0	0.3	-0.1
Employment	573.2	574.2	7.8	1.0	10.8	8.2	0.2	1.9	1.4
Unemployment	90.2	82.7	7.2	-7.5	-8.8	-8.6	-8.3	-9.6	-9.4
Participation rate	68.8	68.3	0.8	-0.5	0.9	1.4
Unemployment rate	13.6	12.6	1.0	-1.0	-1.4	-1.3
Employment rate	59.5	59.7	0.8	0.2	1.7	2.1
Part-time rate	52.8	52.8	1.6	-0.1	-1.1	-2.2
Men, 25 years and over									
Population	2,895.2	2,897.7	...	2.5	12.2	31.7	0.1	0.4	1.1
Labour force	2,002.8	2,014.4	8.3	11.6	31.8	49.3	0.6	1.6	2.5
Employment	1,860.8	1,864.9	8.9	4.1	17.2	53.0	0.2	0.9	2.9
Unemployment	142.0	149.5	8.1	7.5	14.5	-3.7	5.3	10.7	-2.4
Participation rate	69.2	69.5	0.3	0.3	0.8	0.9
Unemployment rate	7.1	7.4	0.4	0.3	0.6	-0.4
Employment rate	64.3	64.4	0.3	0.1	0.4	1.2
Part-time rate	7.9	8.7	0.5	0.9	0.5	-0.2
Women, 25 years and over									
Population	2,975.0	2,977.3	...	2.3	11.7	30.9	0.1	0.4	1.0
Labour force	1,775.3	1,777.3	8.0	2.0	25.2	15.0	0.1	1.4	0.9
Employment	1,677.0	1,669.7	7.9	-7.3	19.6	9.0	-0.4	1.2	0.5
Unemployment	98.4	107.6	6.7	9.2	5.6	6.0	9.3	5.5	5.9
Participation rate	59.7	59.7	0.3	0.0	0.6	-0.1
Unemployment rate	5.5	6.1	0.4	0.6	0.3	0.3
Employment rate	56.4	56.1	0.3	-0.3	0.5	-0.3
Part-time rate	21.0	20.9	0.7	-0.1	0.1	0.3
Industry	4,110.9	4,108.8	14.5	-2.1	47.7	70.2	-0.1	1.2	1.7
Goods-producing sector									
Agriculture	841.5	842.9	8.2	1.4	-25.9	-14.6	0.2	-3.0	-1.7
Forestry, fishing, mining, quarrying, oil and gas extraction ²	53.1	50.9	2.6	-2.2	-4.8	-12.4	-4.1	-8.6	-19.6
Utilities	31.6	32.7	2.1	1.1	-0.6	1.5	3.5	-1.8	4.8
Construction	26.2	28.6	1.2	2.4	-1.4	-0.4	9.2	-4.7	-1.4
Manufacturing	241.0	238.8	5.2	-2.2	-32.2	-5.5	-0.9	-11.9	-2.3
	489.7	491.9	5.7	2.2	13.0	2.2	0.4	2.7	0.4
Services-producing sector									
Trade	3,269.4	3,265.9	13.7	-3.5	73.6	84.8	-0.1	2.3	2.7
Transportation and warehousing	660.5	660.5	7.2	0.0	9.9	23.5	0.0	1.5	3.7
Finance, insurance, real estate and leasing	196.7	197.2	3.8	0.5	11.4	12.2	0.3	6.1	6.6
Professional, scientific and technical services	227.0	221.0	3.6	-6.0	6.6	2.0	-2.6	3.1	0.9
Business, building and other support services	307.8	312.0	5.4	4.2	17.3	13.4	1.4	5.9	4.5
Educational services	165.5	176.8	4.5	11.3	15.0	24.7	6.8	9.3	16.2
Health care and social assistance	288.8	282.8	5.2	-6.0	8.6	7.2	-2.1	3.1	2.6
Information, culture and recreation	584.8	583.5	5.7	-1.3	19.1	12.7	-0.2	3.4	2.2
Accommodation and food services	169.0	165.4	5.0	-3.6	-7.1	-23.7	-2.1	-4.1	-12.5
Other services	280.8	283.1	5.7	2.3	-1.9	25.6	0.8	-0.7	9.9
Public administration	165.8	160.7	4.1	-5.1	-3.7	-17.5	-3.1	-2.3	-9.8
	222.8	222.9	3.5	0.1	-1.6	4.8	0.0	-0.7	2.2

1. Average standard error of change in two consecutive months (see "Sampling Errors" in Data Quality for further explanations).

2. Also referred to as Natural resources.

Note(s): Related CANSIM Tables 282-0087, 282-0088. The sum of individual categories may not always add to the total due to rounding.

Table 4-6
Selected labour force characteristics (seasonally adjusted) — Ontario

	April 2015	May 2015	S.E. ¹	Change from			Percent change from		
				last month	last December	twelve months ago	last month	last December	twelve months ago
in thousands (except rates)									
Both sexes, 15 years and over									
Population	11,356.6	11,364.9	...	8.3	44.5	112.1	0.1	0.4	1.0
Labour force	7,391.4	7,415.3	20.0	23.9	8.1	1.5	0.3	0.1	0.0
Employment	6,887.8	6,931.7	19.2	43.9	46.7	53.0	0.6	0.7	0.8
Employment full-time	5,581.7	5,612.8	26.6	31.1	72.7	78.7	0.6	1.3	1.4
Unemployment	503.5	483.6	16.9	-19.9	-38.6	-51.6	-4.0	-7.4	-9.6
Participation rate	65.1	65.2	0.2	0.1	-0.2	-0.7
Unemployment rate	6.8	6.5	0.2	-0.3	-0.5	-0.7
Employment rate	60.7	61.0	0.2	0.3	0.2	-0.1
Part-time rate	19.0	19.0	0.3	0.1	-0.5	-0.5
Both sexes, 15 to 24 years									
Population	1,799.6	1,798.5	...	-1.1	-4.4	-12.4	-0.1	-0.2	-0.7
Labour force	1,112.7	1,110.7	12.2	-2.0	-13.9	-16.9	-0.2	-1.2	-1.5
Employment	943.1	948.4	10.7	5.3	2.5	-4.8	0.6	0.3	-0.5
Unemployment	169.5	162.2	10.6	-7.3	-16.5	-12.2	-4.3	-9.2	-7.0
Participation rate	61.8	61.8	0.7	0.0	-0.6	-0.5
Unemployment rate	15.2	14.6	0.9	-0.6	-1.3	-0.9
Employment rate	52.4	52.7	0.6	0.3	0.2	0.1
Part-time rate	50.9	51.9	1.3	1.0	-1.0	0.4
Men, 25 years and over									
Population	4,609.0	4,613.5	...	4.5	23.0	57.8	0.1	0.5	1.3
Labour force	3,284.8	3,310.3	9.9	25.5	0.6	26.3	0.8	0.0	0.8
Employment	3,111.4	3,134.9	10.5	23.5	10.7	41.0	0.8	0.3	1.3
Unemployment	173.4	175.4	9.4	2.0	-10.1	-14.7	1.2	-5.4	-7.7
Participation rate	71.3	71.8	0.2	0.5	-0.3	-0.3
Unemployment rate	5.3	5.3	0.3	0.0	-0.3	-0.5
Employment rate	67.5	68.0	0.2	0.5	-0.1	0.1
Part-time rate	7.8	7.3	0.4	-0.5	-0.9	-1.0
Women, 25 years and over									
Population	4,948.0	4,952.8	...	4.8	25.8	66.6	0.1	0.5	1.4
Labour force	2,993.9	2,994.3	11.4	0.4	21.4	-8.0	0.0	0.7	-0.3
Employment	2,833.3	2,848.3	10.8	15.0	33.4	16.8	0.5	1.2	0.6
Unemployment	160.6	146.0	9.4	-14.6	-12.0	-24.7	-9.1	-7.6	-14.5
Participation rate	60.5	60.5	0.2	0.0	0.2	-0.9
Unemployment rate	5.4	4.9	0.3	-0.5	-0.4	-0.8
Employment rate	57.3	57.5	0.2	0.2	0.4	-0.4
Part-time rate	20.6	21.0	0.6	0.4	0.1	-0.1
Industry	6,887.8	6,931.7	19.2	43.9	46.7	53.0	0.6	0.7	0.8
Goods-producing sector	1,382.3	1,400.1	10.0	17.8	14.1	26.3	1.3	1.0	1.9
Agriculture	74.5	76.8	2.8	2.3	-5.2	-5.6	3.1	-6.3	-6.8
Forestry, fishing, mining, quarrying, oil and gas extraction ²	41.3	46.6	1.6	5.3	7.2	16.4	12.8	18.3	54.3
Utilities	51.3	51.1	1.4	-0.2	0.2	-0.3	-0.4	0.4	-0.6
Construction	481.0	475.5	6.6	-5.5	7.1	11.8	-1.1	1.5	2.5
Manufacturing	734.3	750.0	7.2	15.7	4.7	3.9	2.1	0.6	0.5
Services-producing sector	5,505.5	5,531.6	18.4	26.1	32.6	26.8	0.5	0.6	0.5
Trade	1,045.6	1,061.0	9.5	15.4	18.4	10.5	1.5	1.8	1.0
Transportation and warehousing	318.5	319.9	4.9	1.4	3.9	-15.9	0.4	1.2	-4.7
Finance, insurance, real estate and leasing	524.6	545.8	6.0	21.2	23.4	42.7	4.0	4.5	8.5
Professional, scientific and technical services	574.1	571.9	7.3	-2.2	18.2	13.6	-0.4	3.3	2.4
Business, building and other support services	334.4	337.7	7.0	3.3	-5.1	1.8	1.0	-1.5	0.5
Educational services	522.2	521.1	7.0	-1.1	14.4	25.9	-0.2	2.8	5.2
Health care and social assistance	800.5	808.7	6.6	8.2	-1.4	14.5	1.0	-0.2	1.8
Information, culture and recreation	312.1	311.3	6.4	-0.8	-17.0	-8.1	-0.3	-5.2	-2.5
Accommodation and food services	458.3	440.8	7.2	-17.5	-1.3	-13.1	-3.8	-0.3	-2.9
Other services	270.7	271.0	5.2	0.3	0.9	-22.5	0.1	0.3	-7.7
Public administration	344.4	342.4	4.8	-2.0	-21.8	-22.7	-0.6	-6.0	-6.2

1. Average standard error of change in two consecutive months (see "Sampling Errors" in Data Quality for further explanations).

2. Also referred to as Natural resources.

Note(s): Related CANSIM Tables 282-0087, 282-0088. The sum of individual categories may not always add to the total due to rounding.

Table 4-7
Selected labour force characteristics (seasonally adjusted) — Manitoba

	April 2015	May 2015	S.E.	Change from			Percent change from		
				last month	last December	twelve months ago	last month	last December	twelve months ago
in thousands (except rates)									
Both sexes, 15 years and over									
Population	985.0	985.6	...	0.6	4.1	10.7	0.1	0.4	1.1
Labour force	675.6	674.0	2.6	-1.6	4.0	16.7	-0.2	0.6	2.5
Employment	638.6	635.4	2.6	-3.2	1.6	14.2	-0.5	0.3	2.3
Employment full-time	520.2	514.2	3.7	-6.0	-0.7	16.1	-1.2	-0.1	3.2
Unemployment	37.0	38.6	2.1	1.6	2.4	2.5	4.3	6.6	6.9
Participation rate	68.6	68.4	0.3	-0.2	0.1	1.0
Unemployment rate	5.5	5.7	0.3	0.2	0.3	0.2
Employment rate	64.8	64.5	0.3	-0.3	-0.1	0.8
Part-time rate	18.5	19.1	0.5	0.5	0.3	-0.7
Both sexes, 15 to 24 years									
Population	163.1	163.0	...	-0.1	-0.3	-0.6	-0.1	-0.2	-0.4
Labour force	109.7	108.6	1.6	-1.1	-2.6	-1.1	-1.0	-2.3	-1.0
Employment	96.8	96.0	1.5	-0.8	-3.3	-3.1	-0.8	-3.3	-3.1
Unemployment	12.9	12.5	1.3	-0.4	0.6	1.9	-3.1	5.0	17.9
Participation rate	67.3	66.6	1.0	-0.7	-1.5	-0.5
Unemployment rate	11.8	11.5	1.1	-0.3	0.8	1.8
Employment rate	59.4	58.9	0.9	-0.5	-1.9	-1.7
Part-time rate	41.2	42.5	1.9	1.3	0.5	-2.7
Men, 25 years and over									
Population	402.8	403.2	...	0.4	2.3	5.9	0.1	0.6	1.5
Labour force	301.4	300.7	1.4	-0.7	0.5	7.6	-0.2	0.2	2.6
Employment	288.9	287.1	1.5	-1.8	0.4	6.6	-0.6	0.1	2.4
Unemployment	12.5	13.6	1.2	1.1	0.1	0.9	8.8	0.7	7.1
Participation rate	74.8	74.6	0.4	-0.2	-0.3	0.8
Unemployment rate	4.1	4.5	0.4	0.4	0.0	0.2
Employment rate	71.7	71.2	0.4	-0.5	-0.3	0.6
Part-time rate	8.7	8.6	0.6	-0.1	0.5	1.3
Women, 25 years and over									
Population	419.0	419.4	...	0.4	2.1	5.3	0.1	0.5	1.3
Labour force	264.5	264.8	1.5	0.3	6.1	10.4	0.1	2.4	4.1
Employment	252.9	252.3	1.4	-0.6	4.4	10.6	-0.2	1.8	4.4
Unemployment	11.6	12.5	1.1	0.9	1.7	-0.3	7.8	15.7	-2.3
Participation rate	63.1	63.1	0.4	0.0	1.1	1.7
Unemployment rate	4.4	4.7	0.4	0.3	0.5	-0.3
Employment rate	60.4	60.2	0.3	-0.2	0.8	1.8
Part-time rate	21.2	22.1	0.9	1.0	0.4	-1.8
Industry									
Goods-producing sector	146.6	145.2	1.6	-1.4	-4.0	-1.2	-1.0	-2.7	-0.8
Agriculture	23.0	21.7	0.9	-1.3	-0.8	-3.1	-5.7	-3.6	-12.5
Forestry, fishing, mining, quarrying, oil and gas extraction ²	6.2	4.9	0.4	-1.3	-1.7	-1.4	-21.0	-25.8	-22.2
Utilities	7.8	8.0	0.3	0.2	0.6	-0.4	2.6	8.1	-4.8
Construction	45.3	45.4	1.1	0.1	-2.2	2.0	0.2	-4.6	4.6
Manufacturing	64.3	65.2	0.9	0.9	0.1	1.8	1.4	0.2	2.8
Services-producing sector									
Trade	492.1	490.2	2.5	-1.9	5.6	15.4	-0.4	1.2	3.2
Transportation and warehousing	94.4	91.7	1.4	-2.7	-3.1	-0.3	-2.9	-3.3	-0.3
Finance, insurance, real estate and leasing	39.5	40.4	0.8	0.9	2.2	2.9	2.3	5.8	7.7
Professional, scientific and technical services	34.5	33.1	0.7	-1.4	-1.0	-0.8	-4.1	-2.9	-2.4
Business, building and other support services	24.9	25.8	0.7	0.9	3.1	1.4	3.6	13.7	5.7
Educational services	19.3	19.5	0.8	0.2	2.8	3.7	1.0	16.8	23.4
Health care and social assistance	51.5	52.5	1.1	1.0	2.4	4.0	1.9	4.8	8.2
Information, culture and recreation	102.1	100.4	1.2	-1.7	-0.1	1.6	-1.7	-0.1	1.6
Accommodation and food services	22.0	22.1	0.8	0.1	1.1	0.3	0.5	5.2	1.4
Other services	40.1	40.5	1.0	0.4	-1.0	0.4	1.0	-2.4	1.0
Public administration	29.3	29.1	0.8	-0.2	-0.6	0.5	-0.7	-2.0	1.7
	34.5	35.0	0.7	0.5	-0.2	1.4	1.4	-0.6	4.2

1. Average standard error of change in two consecutive months (see "Sampling Errors" in Data Quality for further explanations).

2. Also referred to as Natural resources.

Note(s): Related CANSIM Tables 282-0087, 282-0088. The sum of individual categories may not always add to the total due to rounding.

Table 4-8
Selected labour force characteristics (seasonally adjusted) — Saskatchewan

	April 2015	May 2015	S.E. ¹	Change from			Percent change from		
				last month	last December	twelve months ago	last month	last December	twelve months ago
in thousands (except rates)									
Both sexes, 15 years and over									
Population	859.7	860.2	...	0.5	3.2	9.3	0.1	0.4	1.1
Labour force	601.3	605.3	2.6	4.0	8.0	11.9	0.7	1.3	2.0
Employment	575.4	575.4	2.6	0.0	0.4	5.6	0.0	0.1	1.0
Employment full-time	479.3	478.7	3.5	-0.6	-1.0	6.0	-0.1	-0.2	1.3
Unemployment	26.0	29.9	1.8	3.9	7.6	6.3	15.0	34.1	26.7
Participation rate	69.9	70.4	0.3	0.5	0.7	0.7
Unemployment rate	4.3	4.9	0.3	0.6	1.2	0.9
Employment rate	66.9	66.9	0.3	0.0	-0.2	-0.1
Part-time rate	16.7	16.8	0.6	0.1	0.2	-0.2
Both sexes, 15 to 24 years									
Population	137.2	137.0	...	-0.2	-1.0	-1.9	-0.1	-0.7	-1.4
Labour force	93.8	94.3	1.4	0.5	1.9	0.3	0.5	2.1	0.3
Employment	85.1	85.2	1.4	0.1	-0.6	-1.0	0.1	-0.7	-1.2
Unemployment	8.7	9.1	1.1	0.4	2.4	1.3	4.6	35.8	16.7
Participation rate	68.4	68.8	1.0	0.4	1.8	1.1
Unemployment rate	9.3	9.7	1.1	0.4	2.4	1.4
Employment rate	62.0	62.2	1.0	0.2	0.0	0.1
Part-time rate	38.0	38.0	1.8	0.1	1.1	1.8
Men, 25 years and over									
Population	361.6	362.0	...	0.4	2.4	6.1	0.1	0.7	1.7
Labour force	276.4	278.3	1.3	1.9	2.2	3.5	0.7	0.8	1.3
Employment	267.0	266.2	1.4	-0.8	-1.0	0.1	-0.3	-0.4	0.0
Unemployment	9.4	12.1	1.1	2.7	3.2	3.4	28.7	36.0	39.1
Participation rate	76.4	76.9	0.4	0.5	0.1	-0.3
Unemployment rate	3.4	4.3	0.4	0.9	1.1	1.1
Employment rate	73.8	73.5	0.4	-0.3	-0.8	-1.3
Part-time rate	6.2	6.0	0.6	-0.1	-0.6	-0.1
Women, 25 years and over									
Population	361.0	361.3	...	0.3	2.0	5.2	0.1	0.6	1.5
Labour force	231.1	232.8	1.5	1.7	4.0	8.2	0.7	1.7	3.7
Employment	223.3	224.0	1.5	0.7	1.9	6.5	0.3	0.9	3.0
Unemployment	7.9	8.7	1.0	0.8	2.0	1.6	10.1	29.9	22.5
Participation rate	64.0	64.4	0.4	0.4	0.7	1.3
Unemployment rate	3.4	3.7	0.4	0.3	0.8	0.5
Employment rate	61.9	62.0	0.4	0.1	0.2	0.9
Part-time rate	21.1	21.6	1.0	0.4	0.9	-1.2
Industry									
Industry	575.4	575.4	2.6	0.0	0.4	5.6	0.0	0.1	1.0
Goods-producing sector									
Goods-producing sector	159.2	157.1	1.8	-2.1	-6.6	-8.1	-1.3	-4.0	-4.9
Agriculture	42.7	41.4	1.2	-1.3	-2.4	-1.9	-3.0	-5.5	-4.4
Forestry, fishing, mining, quarrying, oil and gas extraction ²	27.3	27.0	0.8	-0.3	-1.7	-0.8	-1.1	-5.9	-2.9
Utilities	6.7	6.7	0.3	0.0	0.3	0.8	0.0	4.7	13.6
Construction	56.6	56.5	1.2	-0.1	-0.7	-1.2	-0.2	-1.2	-2.1
Manufacturing	25.8	25.5	0.7	-0.3	-2.0	-5.1	-1.2	-7.3	-16.7
Services-producing sector									
Services-producing sector	416.2	418.3	2.5	2.1	7.0	13.7	0.5	1.7	3.4
Trade	82.1	81.5	1.4	-0.6	-1.9	-2.0	-0.7	-2.3	-2.4
Transportation and warehousing	30.4	30.6	0.8	0.2	2.0	1.2	0.7	7.0	4.1
Finance, insurance, real estate and leasing	30.9	31.1	0.7	0.2	-0.5	2.3	0.6	-1.6	8.0
Professional, scientific and technical services	24.9	23.6	0.8	-1.3	-2.6	-3.0	-5.2	-9.9	-11.3
Business, building and other support services	15.5	15.1	0.7	-0.4	1.1	1.5	-2.6	7.9	11.0
Educational services	45.8	46.2	1.0	0.4	1.5	2.4	0.9	3.4	5.5
Health care and social assistance	77.0	78.6	1.1	1.6	5.0	4.7	2.1	6.8	6.4
Information, culture and recreation	17.5	18.2	0.7	0.7	1.3	1.9	4.0	7.7	11.7
Accommodation and food services	35.4	37.7	1.1	2.3	0.5	2.7	6.5	1.3	7.7
Other services	25.1	26.5	0.8	1.4	2.3	2.8	5.6	9.5	11.8
Public administration	31.4	29.4	0.7	-2.0	-1.5	-0.6	-6.4	-4.9	-2.0

1. Average standard error of change in two consecutive months (see "Sampling Errors" in Data Quality for further explanations).

2. Also referred to as Natural resources.

Note(s): Related CANSIM Tables 282-0087, 282-0088. The sum of individual categories may not always add to the total due to rounding.

Table 4-9
Selected labour force characteristics (seasonally adjusted) — Alberta

	April 2015	May 2015	S.E.	Change from			Percent change from		
				last month	last December	twelve months ago	last month	last December	twelve months ago
in thousands (except rates)									
Both sexes, 15 years and over									
Population	3,338.5	3,345.4	...	6.9	28.2	71.8	0.2	0.9	2.2
Labour force	2,448.3	2,448.5	9.5	0.2	35.1	67.9	0.0	1.5	2.9
Employment	2,313.9	2,307.5	10.1	-6.4	7.3	38.4	-0.3	0.3	1.7
Employment full-time	1,901.5	1,921.7	13.3	20.2	-2.6	32.5	1.1	-0.1	1.7
Unemployment	134.4	141.1	7.6	6.7	27.9	29.5	5.0	24.6	26.4
Participation rate	73.3	73.2	0.3	-0.1	0.4	0.5
Unemployment rate	5.5	5.8	0.3	0.3	1.1	1.1
Employment rate	69.3	69.0	0.3	-0.3	-0.3	-0.3
Part-time rate	17.8	16.7	0.5	-1.1	0.4	0.0
Both sexes, 15 to 24 years									
Population	523.1	523.4	...	0.3	-1.8	-2.2	0.1	-0.3	-0.4
Labour force	364.1	369.5	5.1	5.4	8.1	24.0	1.5	2.2	6.9
Employment	326.4	328.8	5.3	2.4	-1.3	12.6	0.7	-0.4	4.0
Unemployment	37.8	40.7	4.3	2.9	9.5	11.4	7.7	30.4	38.9
Participation rate	69.6	70.6	1.0	1.0	1.8	4.9
Unemployment rate	10.4	11.0	1.2	0.6	2.4	2.5
Employment rate	62.4	62.8	1.0	0.4	-0.1	2.6
Part-time rate	38.5	35.8	1.8	-2.7	2.8	-2.5
Men, 25 years and over									
Population	1,424.1	1,427.6	...	3.5	15.5	38.2	0.2	1.1	2.7
Labour force	1,152.3	1,152.7	4.9	0.4	21.2	31.0	0.0	1.9	2.8
Employment	1,098.1	1,094.8	5.7	-3.3	4.4	15.4	-0.3	0.4	1.4
Unemployment	54.3	58.0	4.5	3.7	16.9	15.7	6.8	41.1	37.1
Participation rate	80.9	80.7	0.4	-0.2	0.6	0.0
Unemployment rate	4.7	5.0	0.4	0.3	1.4	1.2
Employment rate	77.1	76.7	0.4	-0.4	-0.5	-1.0
Part-time rate	6.5	5.5	0.5	-1.0	-0.5	0.3
Women, 25 years and over									
Population	1,391.3	1,394.4	...	3.1	14.5	35.9	0.2	1.1	2.6
Labour force	931.8	926.3	5.7	-5.5	5.8	12.8	-0.6	0.6	1.4
Employment	889.4	883.9	5.7	-5.5	4.3	10.3	-0.6	0.5	1.2
Unemployment	42.4	42.4	4.0	0.0	1.5	2.5	0.0	3.7	6.3
Participation rate	67.0	66.4	0.4	-0.6	-0.3	-0.8
Unemployment rate	4.6	4.6	0.4	0.0	0.2	0.2
Employment rate	63.9	63.4	0.4	-0.5	-0.3	-0.9
Part-time rate	24.2	23.5	0.9	-0.7	0.6	0.3
Industry	2,313.9	2,307.5	10.1	-6.4	7.3	38.4	-0.3	0.3	1.7
Goods-producing sector	649.2	647.8	6.9	-1.4	-15.4	5.6	-0.2	-2.3	0.9
Agriculture	66.0	65.8	3.0	-0.2	2.8	6.2	-0.3	4.4	10.4
Forestry, fishing, mining, quarrying, oil and gas extraction ²	164.3	160.5	3.8	-3.8	-12.4	-17.3	-2.3	-7.2	-9.7
Utilities	22.3	20.9	0.9	-1.4	2.8	2.8	-6.3	15.5	15.5
Construction	257.4	261.5	4.9	4.1	-2.0	13.0	1.6	-0.8	5.2
Manufacturing	139.2	139.1	3.0	-0.1	-6.5	0.9	-0.1	-4.5	0.7
Services-producing sector	1,664.7	1,659.7	9.3	-5.0	22.7	32.9	-0.3	1.4	2.0
Trade	313.9	316.2	4.9	2.3	4.2	-7.0	0.7	1.3	-2.2
Transportation and warehousing	149.1	142.3	3.3	-6.8	0.1	14.9	-4.6	0.1	11.7
Finance, insurance, real estate and leasing	101.8	105.6	2.6	3.8	1.6	-2.9	3.7	1.5	-2.7
Professional, scientific and technical services	174.6	168.6	3.6	-6.0	-13.8	-18.4	-3.4	-7.6	-9.8
Business, building and other support services	82.6	79.4	3.2	-3.2	-0.7	-0.9	-3.9	-0.9	-1.1
Educational services	135.6	137.3	3.2	1.7	5.1	19.0	1.3	3.9	16.1
Health care and social assistance	263.0	265.2	3.7	2.2	12.4	27.0	0.8	4.9	11.3
Information, culture and recreation	72.1	73.9	2.8	1.8	1.8	-4.5	2.5	2.5	-5.7
Accommodation and food services	152.8	157.1	3.9	4.3	2.3	6.9	2.8	1.5	4.6
Other services	123.0	122.6	3.4	-0.4	1.8	-1.2	-0.3	1.5	-1.0
Public administration	96.0	91.4	2.1	-4.6	8.0	-0.1	-4.8	9.6	-0.1

1. Average standard error of change in two consecutive months (see "Sampling Errors" in Data Quality for further explanations).

2. Also referred to as Natural resources.

Note(s): Related CANSIM Tables 282-0087, 282-0088. The sum of individual categories may not always add to the total due to rounding.

Table 4-10
Selected labour force characteristics (seasonally adjusted) — British Columbia

	April 2015	May 2015	S.E.	Change from			Percent change from		
				last month	last December	twelve months ago	last month	last December	twelve months ago
in thousands (except rates)									
Both sexes, 15 years and over									
Population	3,863.9	3,868.4	...	4.5	20.0	44.0	0.1	0.5	1.2
Labour force	2,412.5	2,439.4	10.1	26.9	22.3	10.7	1.1	0.9	0.4
Employment	2,260.6	2,291.2	9.9	30.6	7.3	12.9	1.4	0.3	0.6
Employment full-time	1,788.2	1,797.8	14.1	9.6	-17.3	22.9	0.5	-1.0	1.3
Unemployment	152.0	148.2	7.9	-3.8	15.0	-2.2	-2.5	11.3	-1.5
Participation rate	62.4	63.1	0.3	0.7	0.3	-0.4
Unemployment rate	6.3	6.1	0.3	-0.2	0.6	-0.1
Employment rate	58.5	59.2	0.3	0.7	-0.1	-0.4
Part-time rate	20.9	21.5	0.6	0.6	1.0	-0.6
Both sexes, 15 to 24 years									
Population	582.1	582.5	...	0.4	2.0	1.1	0.1	0.3	0.2
Labour force	352.8	358.8	5.7	6.0	2.3	-2.9	1.7	0.6	-0.8
Employment	311.9	316.1	5.3	4.2	-1.7	-5.3	1.3	-0.5	-1.6
Unemployment	40.9	42.7	4.6	1.8	3.9	2.4	4.4	10.1	6.0
Participation rate	60.6	61.6	1.0	1.0	0.2	-0.6
Unemployment rate	11.6	11.9	1.2	0.3	1.0	0.8
Employment rate	53.6	54.3	0.9	0.7	-0.4	-1.0
Part-time rate	45.7	49.1	2.0	3.4	2.2	0.6
Men, 25 years and over									
Population	1,601.5	1,603.4	...	1.9	8.4	19.5	0.1	0.5	1.2
Labour force	1,087.4	1,102.2	5.5	14.8	19.0	12.1	1.4	1.8	1.1
Employment	1,022.6	1,040.3	5.6	17.7	6.7	9.3	1.7	0.6	0.9
Unemployment	64.8	61.8	4.6	-3.0	12.3	2.7	-4.6	24.8	4.6
Participation rate	67.9	68.7	0.3	0.8	0.8	-0.1
Unemployment rate	6.0	5.6	0.4	-0.4	1.0	0.2
Employment rate	63.9	64.9	0.4	1.0	0.1	-0.2
Part-time rate	9.3	9.5	0.6	0.2	0.7	-0.3
Women, 25 years and over									
Population	1,680.3	1,682.5	...	2.2	9.6	23.4	0.1	0.6	1.4
Labour force	972.3	978.4	5.9	6.1	1.0	1.5	0.6	0.1	0.2
Employment	926.1	934.8	5.7	8.7	2.4	8.9	0.9	0.3	1.0
Unemployment	46.3	43.7	4.3	-2.6	-1.2	-7.3	-5.6	-2.7	-14.3
Participation rate	57.9	58.2	0.4	0.3	-0.2	-0.7
Unemployment rate	4.8	4.5	0.4	-0.3	-0.1	-0.7
Employment rate	55.1	55.6	0.3	0.5	-0.1	-0.2
Part-time rate	25.3	25.6	0.9	0.3	1.1	-1.0
Industry	2,260.6	2,291.2	9.9	30.6	7.3	12.9	1.4	0.3	0.6
Goods-producing sector									
Agriculture	458.1	456.9	5.6	-1.2	7.9	0.9	-0.3	1.8	0.2
Forestry, fishing, mining, quarrying, oil and gas extraction ²	24.2	22.4	2.2	-1.8	-0.4	-3.0	-7.4	-1.8	-11.8
Utilities	47.6	44.5	2.4	-3.1	-7.0	-8.2	-6.5	-13.6	-15.6
Construction	13.0	14.1	0.9	1.1	-0.6	0.2	8.5	-4.1	1.4
Manufacturing	203.2	202.9	3.9	-0.3	6.6	2.2	-0.1	3.4	1.1
	170.3	172.9	3.2	2.6	9.3	9.6	1.5	5.7	5.9
Services-producing sector									
Trade	1,802.4	1,834.3	9.4	31.9	-0.6	12.0	1.8	0.0	0.7
Transportation and warehousing	346.7	347.4	4.8	0.7	-6.6	-10.3	0.2	-1.9	-2.9
Finance, insurance, real estate and leasing	138.2	142.1	2.8	3.9	1.7	9.9	2.8	1.2	7.5
Professional, scientific and technical services	133.3	131.2	2.9	-2.1	-6.0	-2.4	-1.6	-4.4	-1.8
Business, building and other support services	184.3	189.1	3.6	4.8	2.6	11.8	2.6	1.4	6.7
Educational services	85.9	90.7	3.1	4.8	4.3	-2.3	5.6	5.0	-2.5
Health care and social assistance	160.1	157.4	3.5	-2.7	-6.9	-10.6	-1.7	-4.2	-6.3
Information, culture and recreation	270.6	284.0	3.8	13.4	12.7	12.2	5.0	4.7	4.5
Accommodation and food services	107.5	112.0	3.4	4.5	1.4	4.8	4.2	1.3	4.5
Other services	176.7	183.5	4.6	6.8	3.7	-0.2	3.8	2.1	-0.1
Public administration	105.2	104.1	2.9	-1.1	-4.1	4.4	-1.0	-3.8	4.4
	94.0	92.7	2.2	-1.3	-3.6	-5.3	-1.4	-3.7	-5.4

1. Average standard error of change in two consecutive months (see "Sampling Errors" in Data Quality for further explanations).

2. Also referred to as Natural resources.

Note(s): Related CANSIM Tables 282-0087, 282-0088. The sum of individual categories may not always add to the total due to rounding.

Table 5-1

Labour force characteristics by census metropolitan area (seasonally adjusted) — 3 month moving average

	April 2015	May 2015	S.E. ¹	Change from			Percent change from		
				last month	last December	twelve months ago	last month	last December	twelve months ago
in thousands (except rates)									
St. John's, Newfoundland and Labrador									
Population	178.1	178.3	...	0.2	0.9	1.8	0.1	0.5	1.0
Labour force	125.6	125.9	0.8	0.3	1.5	1.9	0.2	1.2	1.5
Employment	117.5	117.8	0.9	0.3	0.3	1.5	0.3	0.3	1.3
Unemployment	8.1	8.1	0.5	0.0	1.1	0.4	0.0	15.7	5.2
Participation rate	70.5	70.6	0.5	0.1	0.5	0.3
Unemployment rate	6.4	6.4	0.4	0.0	0.8	0.2
Employment rate	66.0	66.1	0.5	0.1	-0.1	0.2
Halifax, Nova Scotia									
Population	347.1	347.5	...	0.4	1.8	4.6	0.1	0.5	1.3
Labour force	238.5	237.7	1.2	-0.8	-5.2	2.6	-0.3	-2.1	1.1
Employment	222.4	221.1	1.2	-1.3	-6.7	-0.5	-0.6	-2.9	-0.2
Unemployment	16.2	16.7	0.7	0.5	1.7	3.1	3.1	11.3	22.8
Participation rate	68.7	68.4	0.4	-0.3	-1.9	-0.2
Unemployment rate	6.8	7.0	0.3	0.2	0.8	1.2
Employment rate	64.1	63.6	0.4	-0.5	-2.3	-1.0
Moncton, New Brunswick									
Population	123.3	123.5	...	0.2	0.8	1.9	0.2	0.7	1.6
Labour force	82.8	82.9	0.8	0.1	2.6	-0.5	0.1	3.2	-0.6
Employment	76.8	76.5	0.8	-0.3	1.8	-1.9	-0.4	2.4	-2.4
Unemployment	6.0	6.4	0.4	0.4	0.9	1.4	6.7	16.4	28.0
Participation rate	67.2	67.1	0.7	-0.1	1.7	-1.5
Unemployment rate	7.2	7.7	0.5	0.5	0.9	1.7
Employment rate	62.3	61.9	0.6	-0.4	1.0	-2.6
Saint John, New Brunswick									
Population	105.6	105.6	...	0.0	0.0	-0.2	0.0	0.0	-0.2
Labour force	69.2	68.8	0.6	-0.4	-1.7	-0.7	-0.6	-2.4	-1.0
Employment	63.6	63.7	0.7	0.1	-1.1	-0.1	0.2	-1.7	-0.2
Unemployment	5.6	5.1	0.4	-0.5	-0.6	-0.6	-8.9	-10.5	-10.5
Participation rate	65.5	65.2	0.6	-0.3	-1.6	-0.5
Unemployment rate	8.1	7.4	0.6	-0.7	-0.7	-0.8
Employment rate	60.2	60.3	0.6	0.1	-1.1	0.0
Saguenay, Quebec									
Population	135.1	135.1	...	0.0	-0.2	-0.2	0.0	-0.1	-0.1
Labour force	84.4	83.2	0.9	-1.2	-4.5	0.9	-1.4	-5.1	1.1
Employment	77.7	76.8	0.9	-0.9	-2.3	2.6	-1.2	-2.9	3.5
Unemployment	6.7	6.5	0.4	-0.2	-2.1	-1.6	-3.0	-24.4	-19.8
Participation rate	62.5	61.6	0.7	-0.9	-3.2	0.8
Unemployment rate	7.9	7.8	0.5	-0.1	-2.0	-2.0
Employment rate	57.5	56.8	0.7	-0.7	-1.7	2.0
Québec, Quebec									
Population	668.5	668.9	...	0.4	1.6	4.4	0.1	0.2	0.7
Labour force	460.4	465.4	3.6	5.0	15.4	6.5	1.1	3.4	1.4
Employment	437.3	446.1	3.6	8.8	20.5	12.1	2.0	4.8	2.8
Unemployment	23.1	19.3	1.6	-3.8	-5.1	-5.6	-16.5	-20.9	-22.5
Participation rate	68.9	69.6	0.5	0.7	2.2	0.5
Unemployment rate	5.0	4.1	0.3	-0.9	-1.3	-1.3
Employment rate	65.4	66.7	0.5	1.3	2.9	1.4
Sherbrooke, Quebec									
Population	178.8	178.9	...	0.1	0.7	1.9	0.1	0.4	1.1
Labour force	110.7	111.5	1.1	0.8	1.3	1.9	0.7	1.2	1.7
Employment	103.1	104.1	1.2	1.0	2.0	3.4	1.0	2.0	3.4
Unemployment	7.6	7.4	0.5	-0.2	-0.8	-1.5	-2.6	-9.8	-16.9
Participation rate	61.9	62.3	0.6	0.4	0.5	0.4
Unemployment rate	6.9	6.6	0.4	-0.3	-0.8	-1.5
Employment rate	57.7	58.2	0.7	0.5	0.9	1.3

See notes at the end of the table.

Table 5-1 – continued

Labour force characteristics by census metropolitan area (seasonally adjusted) — 3 month moving average

	April 2015	May 2015	S.E. ¹	Change from			Percent change from		
				last month	last December	twelve months ago	last month	last December	twelve months ago
in thousands (except rates)									
Trois-Rivières, Quebec									
Population	132.6	132.6	...	0.0	0.0	0.2	0.0	0.0	0.2
Labour force	77.1	77.6	0.9	0.5	1.6	1.5	0.6	2.1	2.0
Employment	72.4	73.1	0.9	0.7	2.0	3.4	1.0	2.8	4.9
Unemployment	4.7	4.5	0.4	-0.2	-0.5	-1.9	-4.3	-10.0	-29.7
Participation rate	58.1	58.5	0.7	0.4	1.2	1.0
Unemployment rate	6.1	5.8	0.5	-0.3	-0.8	-2.6
Employment rate	54.6	55.1	0.7	0.5	1.5	2.5
Montréal, Quebec									
Population	3,344.4	3,346.9	...	2.5	11.4	29.0	0.1	0.3	0.9
Labour force	2,216.9	2,225.6	7.4	8.7	20.8	36.8	0.4	0.9	1.7
Employment	2,045.3	2,040.6	7.5	-4.7	14.0	29.3	-0.2	0.7	1.5
Unemployment	171.6	185.0	4.7	13.4	6.8	7.5	7.8	3.8	4.2
Participation rate	66.3	66.5	0.2	0.2	0.4	0.5
Unemployment rate	7.7	8.3	0.2	0.6	0.2	0.2
Employment rate	61.2	61.0	0.2	-0.2	0.2	0.4
Ottawa-Gatineau, Ontario/Quebec									
Population	1,094.2	1,095.1	...	0.9	4.8	12.8	0.1	0.4	1.2
Labour force	763.1	759.9	3.9	-3.2	0.1	0.9	-0.4	0.0	0.1
Employment	710.4	709.5	4.0	-0.9	-3.0	2.3	-0.1	-0.4	0.3
Unemployment	52.7	50.4	1.9	-2.3	3.1	-1.3	-4.4	6.6	-2.5
Participation rate	69.7	69.4	0.4	-0.3	-0.3	-0.7
Unemployment rate	6.9	6.6	0.3	-0.3	0.4	-0.2
Employment rate	64.9	64.8	0.4	-0.1	-0.5	-0.5
Ottawa-Gatineau, Quebec part, Ontario/Quebec									
Population	272.1	272.2	...	0.1	0.7	2.3	0.0	0.3	0.9
Labour force	189.3	190.5	1.3	1.2	5.5	3.5	0.6	3.0	1.9
Employment	174.7	175.8	1.4	1.1	4.0	1.5	0.6	2.3	0.9
Unemployment	14.6	14.8	0.7	0.2	1.6	2.1	1.4	12.1	16.5
Participation rate	69.6	70.0	0.5	0.4	1.9	0.7
Unemployment rate	7.7	7.8	0.4	0.1	0.7	1.0
Employment rate	64.2	64.6	0.5	0.4	1.3	0.0
Ottawa-Gatineau, Ontario part, Ontario/Quebec									
Population	822.2	823.0	...	0.8	4.2	10.6	0.1	0.5	1.3
Labour force	573.8	569.3	3.6	-4.5	-5.5	-2.7	-0.8	-1.0	-0.5
Employment	535.7	533.7	3.8	-2.0	-7.0	0.7	-0.4	-1.3	0.1
Unemployment	38.1	35.6	1.8	-2.5	1.5	-3.4	-6.6	4.4	-8.7
Participation rate	69.8	69.2	0.4	-0.6	-1.0	-1.2
Unemployment rate	6.6	6.3	0.3	-0.3	0.4	-0.5
Employment rate	65.2	64.8	0.5	-0.4	-1.2	-0.8
Kingston, Ontario									
Population	138.0	138.0	...	0.0	0.4	1.1	0.0	0.3	0.8
Labour force	86.6	87.6	0.8	1.0	2.4	-1.2	1.2	2.8	-1.4
Employment	80.4	81.6	0.8	1.2	2.2	-1.1	1.5	2.8	-1.3
Unemployment	6.2	6.0	0.4	-0.2	0.3	-0.1	-3.2	5.3	-1.6
Participation rate	62.8	63.5	0.6	0.7	1.6	-1.4
Unemployment rate	7.2	6.8	0.4	-0.4	0.1	-0.1
Employment rate	58.3	59.1	0.6	0.8	1.4	-1.3
Peterborough, Ontario									
Population	104.2	104.3	...	0.1	0.1	0.4	0.1	0.1	0.4
Labour force	65.5	66.1	1.0	0.6	-2.0	2.3	0.9	-2.9	3.6
Employment	60.2	61.2	1.1	1.0	-2.2	3.3	1.7	-3.5	5.7
Unemployment	5.3	4.9	0.6	-0.4	0.2	-1.0	-7.5	4.3	-16.9
Participation rate	62.9	63.4	1.0	0.5	-2.0	2.0
Unemployment rate	8.1	7.4	0.9	-0.7	0.5	-1.8
Employment rate	57.8	58.7	1.0	0.9	-2.1	3.0

See notes at the end of the table.

Table 5-1 – continued

Labour force characteristics by census metropolitan area (seasonally adjusted) — 3 month moving average

	April 2015	May 2015	S.E. ¹	Change from			Percent change from		
				last month	last December	twelve months ago	last month	last December	twelve months ago
in thousands (except rates)									
Oshawa, Ontario									
Population	320.0	320.4	...	0.4	2.1	5.5	0.1	0.7	1.7
Labour force	217.4	215.0	1.6	-2.4	-7.3	0.5	-1.1	-3.3	0.2
Employment	200.3	198.0	1.5	-2.3	-9.0	-0.6	-1.1	-4.3	-0.3
Unemployment	17.1	17.0	0.8	-0.1	1.7	1.1	-0.6	11.1	6.9
Participation rate	67.9	67.1	0.5	-0.8	-2.7	-1.0
Unemployment rate	7.9	7.9	0.4	0.0	1.0	0.5
Employment rate	62.6	61.8	0.5	-0.8	-3.2	-1.3
Toronto, Ontario									
Population	5,080.1	5,086.5	...	6.4	33.3	80.9	0.1	0.7	1.6
Labour force	3,358.4	3,381.1	10.6	22.7	42.5	2.3	0.7	1.3	0.1
Employment	3,114.5	3,141.2	10.7	26.7	68.6	23.9	0.9	2.2	0.8
Unemployment	243.9	240.0	6.5	-3.9	-26.0	-21.5	-1.6	-9.8	-8.2
Participation rate	66.1	66.5	0.2	0.4	0.4	-1.0
Unemployment rate	7.3	7.1	0.2	-0.2	-0.9	-0.6
Employment rate	61.3	61.8	0.2	0.5	1.0	-0.5
Hamilton, Ontario									
Population	640.6	641.1	...	0.5	2.4	6.3	0.1	0.4	1.0
Labour force	400.7	405.2	3.2	4.5	3.1	-1.8	1.1	0.8	-0.4
Employment	379.8	384.7	3.3	4.9	4.3	3.4	1.3	1.1	0.9
Unemployment	20.9	20.5	1.4	-0.4	-1.2	-5.2	-1.9	-5.5	-20.2
Participation rate	62.6	63.2	0.5	0.6	0.2	-0.9
Unemployment rate	5.2	5.1	0.3	-0.1	-0.3	-1.2
Employment rate	59.3	60.0	0.5	0.7	0.4	-0.1
St. Catharines-Niagara, Ontario									
Population	342.8	342.9	...	0.1	0.3	0.9	0.0	0.1	0.3
Labour force	214.7	213.3	1.7	-1.4	1.6	0.1	-0.7	0.8	0.0
Employment	200.8	200.1	1.7	-0.7	3.2	3.5	-0.3	1.6	1.8
Unemployment	13.8	13.2	0.8	-0.6	-1.6	-3.3	-4.3	-10.8	-20.0
Participation rate	62.6	62.2	0.5	-0.4	0.4	-0.1
Unemployment rate	6.4	6.2	0.4	-0.2	-0.8	-1.5
Employment rate	58.6	58.4	0.5	-0.2	0.9	0.9
Kitchener-Cambridge-Waterloo, Ontario									
Population	420.5	420.7	...	0.2	1.5	4.3	0.0	0.4	1.0
Labour force	299.6	295.5	2.1	-4.1	-12.2	-2.9	-1.4	-4.0	-1.0
Employment	281.7	278.5	2.2	-3.2	-11.5	0.5	-1.1	-4.0	0.2
Unemployment	17.9	17.1	1.0	-0.8	-0.7	-3.4	-4.5	-3.9	-16.6
Participation rate	71.2	70.2	0.5	-1.0	-3.2	-1.5
Unemployment rate	6.0	5.8	0.3	-0.2	0.0	-1.1
Employment rate	67.0	66.2	0.5	-0.8	-3.0	-0.6
Brantford, Ontario									
Population	111.5	111.6	...	0.1	0.3	0.7	0.1	0.3	0.6
Labour force	77.3	74.8	0.8	-2.5	0.6	0.2	-3.2	0.8	0.3
Employment	73.3	70.5	0.8	-2.8	0.9	1.2	-3.8	1.3	1.7
Unemployment	4.0	4.3	0.4	0.3	-0.3	-1.0	7.5	-6.5	-18.9
Participation rate	69.3	67.0	0.7	-2.3	0.3	-0.3
Unemployment rate	5.2	5.7	0.5	0.5	-0.5	-1.4
Employment rate	65.7	63.2	0.7	-2.5	0.7	0.7
Guelph, Ontario									
Population	128.3	128.4	...	0.1	0.6	1.9	0.1	0.5	1.5
Labour force	94.2	93.9	1.0	-0.3	4.0	10.5	-0.3	4.4	12.6
Employment	90.3	90.4	1.0	0.1	5.1	12.9	0.1	6.0	16.6
Unemployment	3.9	3.5	0.4	-0.4	-1.1	-2.4	-10.3	-23.9	-40.7
Participation rate	73.4	73.1	0.8	-0.3	2.8	7.2
Unemployment rate	4.1	3.7	0.5	-0.4	-1.4	-3.4
Employment rate	70.4	70.4	0.8	0.0	3.7	9.1

See notes at the end of the table.

Table 5-1 – continued

Labour force characteristics by census metropolitan area (seasonally adjusted) — 3 month moving average

	April 2015	May 2015	S.E. ¹	Change from			Percent change from		
				last month	last December	twelve months ago	last month	last December	twelve months ago
in thousands (except rates)									
London, Ontario									
Population	421.1	421.4	...	0.3	1.4	3.9	0.1	0.3	0.9
Labour force	262.1	260.5	2.1	-1.6	-5.2	-1.7	-0.6	-2.0	-0.6
Employment	245.1	244.7	2.1	-0.4	-1.5	2.6	-0.2	-0.6	1.1
Unemployment	17.0	15.8	1.0	-1.2	-3.7	-4.3	-7.1	-19.0	-21.4
Participation rate	62.2	61.8	0.5	-0.4	-1.5	-1.0
Unemployment rate	6.5	6.1	0.4	-0.4	-1.2	-1.6
Employment rate	58.2	58.1	0.5	-0.1	-0.5	0.1
Windsor, Ontario									
Population	279.1	279.3	...	0.2	0.7	2.2	0.1	0.3	0.8
Labour force	180.4	181.1	1.6	0.7	5.9	13.1	0.4	3.4	7.8
Employment	159.8	161.1	1.6	1.3	3.0	8.3	0.8	1.9	5.4
Unemployment	20.7	20.0	0.8	-0.7	3.0	4.7	-3.4	17.6	30.7
Participation rate	64.6	64.8	0.6	0.2	1.9	4.2
Unemployment rate	11.5	11.0	0.5	-0.5	1.3	1.9
Employment rate	57.3	57.7	0.6	0.4	1.0	2.6
Barrie, Ontario									
Population	166.4	166.6	...	0.2	1.0	2.7	0.1	0.6	1.6
Labour force	119.8	120.5	1.1	0.7	-0.9	2.7	0.6	-0.7	2.3
Employment	110.5	110.6	1.2	0.1	-4.5	0.5	0.1	-3.9	0.5
Unemployment	9.3	9.9	0.6	0.6	3.7	2.3	6.5	59.7	30.3
Participation rate	72.0	72.3	0.7	0.3	-1.0	0.4
Unemployment rate	7.8	8.2	0.5	0.4	3.1	1.7
Employment rate	66.4	66.4	0.7	0.0	-3.1	-0.8
Greater Sudbury, Ontario									
Population	139.8	139.8	...	0.0	0.0	0.3	0.0	0.0	0.2
Labour force	90.4	90.5	0.8	0.1	0.7	2.8	0.1	0.8	3.2
Employment	84.3	84.2	0.8	-0.1	-0.1	2.6	-0.1	-0.1	3.2
Unemployment	6.0	6.3	0.4	0.3	0.9	0.3	5.0	16.7	5.0
Participation rate	64.7	64.7	0.6	0.0	0.5	1.8
Unemployment rate	6.6	7.0	0.4	0.4	1.0	0.2
Employment rate	60.3	60.2	0.6	-0.1	-0.1	1.7
Thunder Bay, Ontario									
Population	104.6	104.6	...	0.0	-0.1	-0.1	0.0	-0.1	-0.1
Labour force	63.9	64.2	0.7	0.3	0.2	-0.6	0.5	0.3	-0.9
Employment	60.9	61.2	0.7	0.3	0.7	0.0	0.5	1.2	0.0
Unemployment	3.0	3.0	0.3	0.0	-0.6	-0.6	0.0	-16.7	-16.7
Participation rate	61.1	61.4	0.6	0.3	0.3	-0.5
Unemployment rate	4.7	4.7	0.4	0.0	-0.9	-0.9
Employment rate	58.2	58.5	0.6	0.3	0.7	0.0
Winnipeg, Manitoba									
Population	650.4	651.1	...	0.7	4.0	10.2	0.1	0.6	1.6
Labour force	448.9	452.2	1.3	3.3	11.8	19.0	0.7	2.7	4.4
Employment	421.7	424.5	1.3	2.8	9.4	16.9	0.7	2.3	4.1
Unemployment	27.2	27.8	0.8	0.6	2.5	2.2	2.2	9.9	8.6
Participation rate	69.0	69.5	0.2	0.5	1.4	1.9
Unemployment rate	6.1	6.1	0.2	0.0	0.4	0.2
Employment rate	64.8	65.2	0.2	0.4	1.1	1.6
Regina, Saskatchewan									
Population	197.2	197.5	...	0.3	1.6	4.4	0.2	0.8	2.3
Labour force	144.9	144.5	0.8	-0.4	1.5	3.5	-0.3	1.0	2.5
Employment	138.1	138.1	0.8	0.0	0.2	2.2	0.0	0.1	1.6
Unemployment	6.8	6.4	0.4	-0.4	1.3	1.3	-5.9	25.5	25.5
Participation rate	73.5	73.2	0.4	-0.3	0.2	0.2
Unemployment rate	4.7	4.4	0.3	-0.3	0.8	0.8
Employment rate	70.0	69.9	0.4	-0.1	-0.5	-0.5

See notes at the end of the table.

Table 5-1 – continued

Labour force characteristics by census metropolitan area (seasonally adjusted) — 3 month moving average

	April 2015	May 2015	S.E. ¹	Change from			Percent change from		
				last month	last December	twelve months ago	last month	last December	twelve months ago
in thousands (except rates)									
Saskatoon, Saskatchewan									
Population	250.6	251.1	...	0.5	2.8	7.4	0.2	1.1	3.0
Labour force	178.5	177.7	1.0	-0.8	-1.0	3.2	-0.4	-0.6	1.8
Employment	169.4	168.5	1.0	-0.9	-3.2	1.6	-0.5	-1.9	1.0
Unemployment	9.1	9.3	0.4	0.2	2.3	1.7	2.2	32.9	22.4
Participation rate	71.2	70.8	0.4	-0.4	-1.2	-0.8
Unemployment rate	5.1	5.2	0.3	0.1	1.3	0.8
Employment rate	67.6	67.1	0.4	-0.5	-2.1	-1.4
Calgary, Alberta									
Population	1,171.2	1,173.9	...	2.7	13.2	35.2	0.2	1.1	3.1
Labour force	872.5	876.4	3.9	3.9	26.0	39.4	0.4	3.1	4.7
Employment	826.2	828.1	4.0	1.9	18.2	37.1	0.2	2.2	4.7
Unemployment	46.4	48.3	2.1	1.9	7.8	2.3	4.1	19.3	5.0
Participation rate	74.5	74.7	0.3	0.2	1.4	1.2
Unemployment rate	5.3	5.5	0.2	0.2	0.7	0.0
Employment rate	70.5	70.5	0.3	0.0	0.7	1.0
Edmonton, Alberta									
Population	1,094.2	1,096.5	...	2.3	10.5	27.5	0.2	1.0	2.6
Labour force	800.7	801.7	3.9	1.0	16.1	13.6	0.1	2.0	1.7
Employment	754.3	751.4	3.9	-2.9	3.6	6.0	-0.4	0.5	0.8
Unemployment	46.3	50.3	2.2	4.0	12.5	7.7	8.6	33.1	18.1
Participation rate	73.2	73.1	0.4	-0.1	0.8	-0.6
Unemployment rate	5.8	6.3	0.3	0.5	1.5	0.9
Employment rate	68.9	68.5	0.4	-0.4	-0.4	-1.2
Kelowna, British Columbia									
Population	151.6	151.8	...	0.2	0.8	1.4	0.1	0.5	0.9
Labour force	96.1	96.6	1.6	0.5	2.1	4.1	0.5	2.2	4.4
Employment	92.2	92.8	1.6	0.6	1.8	4.6	0.7	2.0	5.2
Unemployment	3.9	3.8	0.6	-0.1	0.3	-0.4	-2.6	8.6	-9.5
Participation rate	63.4	63.6	1.0	0.2	1.0	2.1
Unemployment rate	4.1	3.9	0.7	-0.2	0.2	-0.6
Employment rate	60.8	61.1	1.0	0.3	0.8	2.5
Abbotsford-Mission, British Columbia									
Population	144.4	144.6	...	0.2	0.7	1.4	0.1	0.5	1.0
Labour force	97.3	98.5	0.8	1.2	6.2	2.0	1.2	6.7	2.1
Employment	91.6	92.9	0.8	1.3	6.5	3.5	1.4	7.5	3.9
Unemployment	5.8	5.6	0.4	-0.2	-0.3	-1.5	-3.4	-5.1	-21.1
Participation rate	67.4	68.1	0.6	0.7	4.0	0.7
Unemployment rate	6.0	5.7	0.5	-0.3	-0.7	-1.7
Employment rate	63.4	64.2	0.6	0.8	4.2	1.8
Vancouver, British Columbia									
Population	2,118.8	2,122.0	...	3.2	15.5	34.9	0.2	0.7	1.7
Labour force	1,353.5	1,355.9	5.0	2.4	-8.7	5.6	0.2	-0.6	0.4
Employment	1,271.4	1,272.5	5.1	1.1	-10.7	-0.6	0.1	-0.8	0.0
Unemployment	82.1	83.5	2.7	1.4	2.0	6.3	1.7	2.5	8.2
Participation rate	63.9	63.9	0.2	0.0	-0.9	-0.8
Unemployment rate	6.1	6.2	0.2	0.1	0.2	0.5
Employment rate	60.0	60.0	0.2	0.0	-0.9	-1.0
Victoria, British Columbia									
Population	302.3	302.6	...	0.3	1.2	2.6	0.1	0.4	0.9
Labour force	185.0	185.5	1.6	0.5	3.5	-0.7	0.3	1.9	-0.4
Employment	173.8	174.4	1.6	0.6	1.5	-1.5	0.3	0.9	-0.9
Unemployment	11.2	11.1	0.6	-0.1	2.0	0.8	-0.9	22.0	7.8
Participation rate	61.2	61.3	0.5	0.1	0.9	-0.8
Unemployment rate	6.1	6.0	0.3	-0.1	1.0	0.5
Employment rate	57.5	57.6	0.5	0.1	0.2	-1.0

1. Average standard error of change in two consecutive months (see "Sampling Errors" in Data Quality for further explanations).

Note(s): Estimates in this table are based on 2011 census boundaries. Related CANSIM Table 282-0135. The sum of individual categories may not always add to the total due to rounding.

Table 5-2
Labour force characteristics by census metropolitan area (seasonally adjusted) — Monthly

	April 2015	May 2015	S.E. ¹	Change from			Percent change from		
				last month	last December	twelve months ago	last month	last December	twelve months ago
in thousands (except rates)									
Montréal, Quebec									
Population	3,347.0	3,349.5	...	2.5	12.1	29.1	0.1	0.4	0.9
Labour force	2,218.5	2,237.4	15.3	18.9	37.7	56.7	0.9	1.7	2.6
Employment	2,038.2	2,037.5	15.0	-0.7	7.3	37.1	0.0	0.4	1.9
Unemployment	180.2	199.9	11.3	19.7	30.4	19.6	10.9	17.9	10.9
Participation rate	66.3	66.8	0.5	0.5	0.9	1.1
Unemployment rate	8.1	8.9	0.5	0.8	1.2	0.6
Employment rate	60.9	60.8	0.5	-0.1	0.0	0.6
Toronto, Ontario									
Population	5,086.6	5,092.8	...	6.2	33.4	80.6	0.1	0.7	1.6
Labour force	3,369.7	3,418.9	22.0	49.2	95.0	50.4	1.5	2.9	1.5
Employment	3,128.8	3,181.9	21.6	53.1	124.6	81.1	1.7	4.1	2.6
Unemployment	240.8	237.0	15.2	-3.8	-29.6	-30.7	-1.6	-11.1	-11.5
Participation rate	66.2	67.1	0.4	0.9	1.4	-0.1
Unemployment rate	7.1	6.9	0.4	-0.2	-1.1	-1.0
Employment rate	61.5	62.5	0.4	1.0	2.1	0.6
Vancouver, British Columbia									
Population	2,122.0	2,125.2	...	3.2	15.7	35.2	0.2	0.7	1.7
Labour force	1,340.9	1,369.2	10.6	28.3	7.4	12.9	2.1	0.5	1.0
Employment	1,257.8	1,282.0	10.4	24.2	-1.7	6.2	1.9	-0.1	0.5
Unemployment	83.1	87.1	6.7	4.0	9.1	6.5	4.8	11.7	8.1
Participation rate	63.2	64.4	0.5	1.2	-0.2	-0.5
Unemployment rate	6.2	6.4	0.5	0.2	0.7	0.5
Employment rate	59.3	60.3	0.5	1.0	-0.6	-0.7

1. Average standard error of change in two consecutive months (see "Sampling Errors" in Data Quality for further explanations).

Note(s): Estimates in this table are based on 2011 census boundaries. Related CANSIM Table 282-0136. The sum of individual categories may not always add to the total due to rounding.

Table 6-1

Labour force characteristics by province and economic region, ¹ unadjusted for seasonality, 3 month moving average ending in May 2014 and May 2015

	Population	Labour force			Participation rate	Unemployment rate	Employment rate
		Labour force	Employment	Unemployment			
		in thousands					
Canada							
2014	28,910.7	19,056.2	17,664.4	1,391.8	65.9	7.3	61.1
2015	29,207.9	19,174.6	17,794.1	1,380.4	65.6	7.2	60.9
Newfoundland and Labrador							
2014	444.0	269.3	234.3	35.0	60.7	13.0	52.8
2015	443.1	270.4	230.6	39.8	61.0	14.7	52.0
Avalon Peninsula [1010]							
2014	231.7	152.6	139.1	13.5	65.9	8.8	60.0
2015	232.6	153.9	139.6	14.3	66.2	9.3	60.0
South Coast-Burin Peninsula and Notre Dame-Central Bonavista Bay [1020, 1040]							
2014	124.3	65.9	52.0	14.0	53.0	21.2	41.8
2015	123.1	66.9	52.3	14.5	54.3	21.7	42.5
West Coast-Northern Peninsula-Labrador [1030]							
2014	87.9	50.8	43.2	7.6	57.8	15.0	49.1
2015	87.4	49.7	38.7	11.0	56.9	22.1	44.3
Prince Edward Island							
2014	120.6	82.7	71.8	10.9	68.6	13.2	59.5
2015	120.8	81.0	70.9	10.1	67.1	12.5	58.7
Nova Scotia							
2014	782.3	488.1	440.4	47.7	62.4	9.8	56.3
2015	784.5	486.7	439.7	47.0	62.0	9.7	56.0
Cape Breton [1210]							
2014	108.4	58.7	48.3	10.3	54.2	17.5	44.6
2015	107.2	61.4	51.4	10.0	57.3	16.3	47.9
North Shore [1220]							
2014	129.6	77.3	68.1	9.2	59.6	11.9	52.5
2015	128.9	75.7	67.8	7.9	58.7	10.4	52.6
Annapolis Valley [1230]							
2014	102.4	61.6	54.7	6.9	60.2	11.2	53.4
2015	102.5	58.2	52.1	6.2	56.8	10.7	50.8
Southern [1240]							
2014	99.0	57.0	49.7	7.3	57.6	12.8	50.2
2015	98.4	56.2	49.8	6.4	57.1	11.4	50.6
Halifax [1250]							
2014	342.9	233.6	219.6	14.0	68.1	6.0	64.0
2015	347.5	235.3	218.6	16.7	67.7	7.1	62.9
New Brunswick							
2014	621.8	393.8	349.3	44.5	63.3	11.3	56.2
2015	622.2	390.5	347.1	43.4	62.8	11.1	55.8
Campbellton-Miramichi [1310]							
2014	130.4	73.7	58.6	15.1	56.5	20.5	44.9
2015	129.3	71.2	58.7	12.5	55.1	17.6	45.4
Moncton-Richibucto [1320]							
2014	175.0	117.7	108.6	9.1	67.3	7.7	62.1
2015	176.5	116.8	104.8	12.0	66.2	10.3	59.4
Saint John-St. Stephen [1330]							
2014	142.8	93.0	84.5	8.5	65.1	9.1	59.2
2015	142.3	89.7	81.4	8.2	63.0	9.1	57.2
Fredericton-Oromocto [1340]							
2014	109.0	69.0	61.5	7.5	63.3	10.9	56.4
2015	109.8	72.6	66.1	6.5	66.1	9.0	60.2

See notes at the end of the table.

Table 6-1 – continued

Labour force characteristics by province and economic region, ¹ unadjusted for seasonality, 3 month moving average ending in May 2014 and May 2015

	Population	Labour force			Participation rate	Unemployment rate	Employment rate
		Labour force	Employment	Unemployment			
	in thousands						
Edmundston-Woodstock [1350]							
2014	64.6	40.5	36.2	4.3	62.7	10.6	56.0
2015	64.2	40.3	36.1	4.2	62.8	10.4	56.2
Quebec							
2014	6,790.5	4,382.5	4,018.4	364.1	64.5	8.3	59.2
2015	6,833.7	4,424.0	4,070.4	353.6	64.7	8.0	59.6
Gaspésie-Îles-de-la-Madeleine [2410]							
2014	78.9	45.4	36.7	8.7	57.5	19.2	46.5
2015	78.3	41.2	34.0	7.2	52.6	17.5	43.4
Bas-Saint-Laurent [2415]							
2014	170.5	95.3	86.5	8.7	55.9	9.1	50.7
2015	170.1	91.0	80.8	10.2	53.5	11.2	47.5
Capitale-Nationale [2420]							
2014	611.7	414.3	388.0	26.3	67.7	6.3	63.4
2015	615.8	423.7	402.6	21.1	68.8	5.0	65.4
Chaudière-Appalaches [2425]							
2014	348.2	235.0	221.7	13.3	67.5	5.7	63.7
2015	349.1	235.2	223.9	11.3	67.4	4.8	64.1
Estrie [2430]							
2014	267.4	166.6	151.8	14.8	62.3	8.9	56.8
2015	268.9	163.5	152.1	11.3	60.8	6.9	56.6
Centre-du-Québec [2433]							
2014	199.1	121.7	112.0	9.6	61.1	7.9	56.3
2015	200.2	127.2	117.6	9.6	63.5	7.5	58.7
Montréal [2435]							
2014	1,238.5	838.5	773.7	64.9	67.7	7.7	62.5
2015	1,248.9	819.2	768.1	51.1	65.6	6.2	61.5
Montréal [2440]							
2014	1,649.9	1,044.8	949.0	95.7	63.3	9.2	57.5
2015	1,661.0	1,073.7	959.6	114.1	64.6	10.6	57.8
Laval [2445]							
2014	347.2	244.0	223.0	21.0	70.3	8.6	64.2
2015	351.0	230.9	215.8	15.0	65.8	6.5	61.5
Lanaudière [2450]							
2014	406.9	258.5	236.2	22.3	63.5	8.6	58.0
2015	410.7	275.4	249.4	26.0	67.1	9.4	60.7
Laurentides [2455]							
2014	486.0	312.0	289.5	22.5	64.2	7.2	59.6
2015	491.6	330.8	304.6	26.2	67.3	7.9	62.0
Outaouais [2460]							
2014	315.9	206.7	192.5	14.2	65.4	6.9	60.9
2015	317.9	212.1	194.7	17.4	66.7	8.2	61.2
Abitibi-Témiscamingue [2465]							
2014	120.1	80.1	73.2	7.0	66.7	8.7	60.9
2015	120.5	77.8	71.2	6.5	64.6	8.4	59.1
Mauricie [2470]							
2014	225.9	128.9	116.7	12.2	57.1	9.5	51.7
2015	225.7	126.3	117.1	9.2	56.0	7.3	51.9
Saguenay-Lac-Saint-Jean [2475]							
2014	232.4	139.7	122.6	17.1	60.1	12.2	52.8
2015	232.1	142.8	130.9	11.9	61.5	8.3	56.4

See notes at the end of the table.

Table 6-1 – continued

Labour force characteristics by province and economic region, ¹ unadjusted for seasonality, 3 month moving average ending in May 2014 and May 2015

	Population	Labour force			Participation rate	Unemployment rate	Employment rate
		Labour force	Employment	Unemployment			
		in thousands					
Côte-Nord and Nord-du-Québec [2480, 2490]							
2014	92.0	51.0	45.4	5.6	55.4	11.0	49.3
2015	91.9	53.3	47.8	5.5	58.0	10.3	52.0
Ontario							
2014	11,243.1	7,401.5	6,842.6	558.9	65.8	7.6	60.9
2015	11,356.3	7,387.5	6,870.9	516.5	65.1	7.0	60.5
Ottawa [3510]							
2014	1,085.8	746.8	695.2	51.6	68.8	6.9	64.0
2015	1,094.8	733.5	686.3	47.2	67.0	6.4	62.7
Kingston-Pembroke [3515]							
2014	376.2	228.3	204.3	23.9	60.7	10.5	54.3
2015	376.7	221.6	203.4	18.3	58.8	8.3	54.0
Muskoka-Kawarths [3520]							
2014	323.8	194.3	179.2	15.1	60.0	7.8	55.3
2015	325.6	194.8	174.7	20.1	59.8	10.3	53.7
Toronto [3530]							
2014	5,257.8	3,531.2	3,254.7	276.5	67.2	7.8	61.9
2015	5,338.5	3,526.7	3,272.6	254.1	66.1	7.2	61.3
Kitchener-Waterloo-Barrie [3540]							
2014	1,061.3	738.0	690.0	48.0	69.5	6.5	65.0
2015	1,074.0	751.6	704.9	46.7	70.0	6.2	65.6
Hamilton-Niagara Peninsula [3550]							
2014	1,187.5	757.0	702.9	54.2	63.7	7.2	59.2
2015	1,195.8	754.2	710.7	43.5	63.1	5.8	59.4
London [3560]							
2014	548.2	350.8	324.4	26.4	64.0	7.5	59.2
2015	552.6	339.5	320.2	19.3	61.4	5.7	57.9
Windsor-Sarnia [3570]							
2014	524.3	322.3	294.7	27.6	61.5	8.6	56.2
2015	524.1	332.3	301.4	30.9	63.4	9.3	57.5
Stratford-Bruce Peninsula [3580]							
2014	246.2	156.6	148.9	7.8	63.6	5.0	60.5
2015	245.6	163.2	154.6	8.6	66.4	5.3	62.9
Northeast [3590]							
2014	459.1	271.7	250.6	21.1	59.2	7.8	54.6
2015	457.1	267.5	246.4	21.1	58.5	7.9	53.9
Northwest [3595]							
2014	172.9	104.4	97.6	6.8	60.4	6.5	56.4
2015	171.6	102.5	95.8	6.7	59.7	6.5	55.8
Manitoba							
2014	973.7	655.1	618.3	36.8	67.3	5.6	63.5
2015	984.9	672.8	635.0	37.8	68.3	5.6	64.5
Southeast [4610]							
2014	86.9	59.5	56.9	2.6	68.5	4.4	65.5
2015	88.7	58.5	54.9	3.6	66.0	6.2	61.9
South Central and North Central [4620, 4640]							
2014	83.3	55.1	52.7	2.4	66.1	4.4	63.3
2015	84.2	57.0	54.9	2.1	67.7	3.7	65.2
Southwest [4630]							
2014	87.4	59.5	56.4	3.1	68.1	5.2	64.5
2015	87.9	58.5	56.7	1.7	66.6	2.9	64.5

See notes at the end of the table.

Table 6-1 – continued

Labour force characteristics by province and economic region, ¹ unadjusted for seasonality, 3 month moving average ending in May 2014 and May 2015

	Population	Labour force			Participation rate	Unemployment rate	Employment rate
		Labour force	Employment	Unemployment			
	in thousands						
Winnipeg [4650]							
2014	584.6	393.2	369.3	23.8	67.3	6.1	63.2
2015	593.1	413.8	388.3	25.6	69.8	6.2	65.5
Interlake [4660]							
2014	73.9	51.1	48.4	2.7	69.1	5.3	65.5
2015	74.7	47.1	44.6	2.4	63.1	5.1	59.7
Parklands and Northern [4670, 4680]							
2014	57.6	36.8	34.6	2.2	63.9	6.0	60.1
2015	56.3	38.0	35.7	2.4	67.5	6.3	63.4
Saskatchewan							
2014	849.8	591.1	566.0	25.1	69.6	4.2	66.6
2015	859.6	602.3	572.2	30.1	70.1	5.0	66.6
Regina-Moose Mountain [4710]							
2014	257.4	186.4	180.3	6.1	72.4	3.3	70.0
2015	262.2	189.2	180.9	8.3	72.2	4.4	69.0
Swift Current-Moose Jaw [4720]							
2014	82.9	54.4	52.2	2.3	65.6	4.2	63.0
2015	82.5	58.3	55.4	2.9	70.7	5.0	67.2
Saskatoon-Biggar [4730]							
2014	287.2	203.7	194.9	8.8	70.9	4.3	67.9
2015	294.0	206.9	196.3	10.6	70.4	5.1	66.8
Yorkton-Melville [4740]							
2014	63.5	41.9	39.6	2.3	66.0	5.5	62.4
2015	62.6	39.5	38.3	1.2	63.1	3.0	61.2
Prince Albert and Northern [4750, 4760]							
2014	158.8	104.6	99.1	5.6	65.9	5.4	62.4
2015	158.2	108.4	101.3	7.1	68.5	6.5	64.0
Alberta							
2014	3,264.2	2,371.8	2,250.7	121.1	72.7	5.1	69.0
2015	3,338.8	2,440.2	2,290.2	150.0	73.1	6.1	68.6
Lethbridge-Medicine Hat [4810]							
2014	228.3	141.6	134.5	7.2	62.0	5.1	58.9
2015	229.8	153.3	146.8	6.6	66.7	4.3	63.9
Camrose-Drumheller [4820]							
2014	161.0	107.2	103.5	3.8	66.6	3.5	64.3
2015	161.7	107.7	102.6	5.1	66.6	4.7	63.5
Calgary [4830]							
2014	1,222.9	897.0	846.2	50.8	73.4	5.7	69.2
2015	1,259.4	939.0	884.5	54.6	74.6	5.8	70.2
Banff-Jasper-Rocky Mountain House and Athabasca-Grande Prairie-Peace River [4840, 4870]							
2014	274.1	205.3	198.0	7.3	74.9	3.6	72.2
2015	276.6	203.8	191.2	12.6	73.7	6.2	69.1
Red Deer [4850]							
2014	165.6	125.4	121.1	4.3	75.7	3.4	73.1
2015	169.4	126.1	118.3	7.8	74.4	6.2	69.8
Edmonton [4860]							
2014	1,098.7	805.1	761.1	44.0	73.3	5.5	69.3
2015	1,125.0	817.1	761.8	55.4	72.6	6.8	67.7
Wood Buffalo-Cold Lake [4880]							
2014	113.4	90.1	86.3	3.8	79.5	4.2	76.1
2015	116.9	93.0	85.0	8.0	79.6	8.6	72.7

See notes at the end of the table.

Table 6-1 – continued

Labour force characteristics by province and economic region, ¹ unadjusted for seasonality, 3 month moving average ending in May 2014 and May 2015

	Population	Labour force			Participation rate	Unemployment rate	Employment rate
		Labour force	Employment	Unemployment			
	in thousands						
British Columbia							
2014	3,820.7	2,420.3	2,272.6	147.7	63.3	6.1	59.5
2015	3,863.9	2,419.2	2,267.1	152.0	62.6	6.3	58.7
Vancouver Island and Coast [5910]							
2014	649.1	373.0	349.3	23.7	57.5	6.4	53.8
2015	653.4	376.0	352.7	23.4	57.5	6.2	54.0
Lower Mainland-Southwest [5920]							
2014	2,371.7	1,539.1	1,450.1	89.0	64.9	5.8	61.1
2015	2,409.2	1,534.5	1,438.7	95.7	63.7	6.2	59.7
Thompson-Okanagan [5930]							
2014	429.3	263.9	247.4	16.5	61.5	6.3	57.6
2015	430.4	263.4	247.8	15.6	61.2	5.9	57.6
Kootenay [5940]							
2014	122.5	71.5	66.3	5.2	58.4	7.3	54.1
2015	121.8	73.2	67.9	5.3	60.1	7.2	55.7
Cariboo [5950]							
2014	126.8	89.8	83.3	6.5	70.8	7.2	65.7
2015	127.1	84.2	77.7	6.5	66.2	7.7	61.1
North Coast and Nechako [5960, 5970]							
2014	66.7	42.5	38.8	3.7	63.7	8.7	58.2
2015	66.4	45.2	42.2	3.0	68.1	6.6	63.6
Northeast [5980]							
2014	54.7	40.6	37.5	3.1	74.2	7.6	68.6
2015	55.6	42.6	40.1	2.5	76.6	5.9	72.1

1. For geographic descriptions of economic regions, refer to the Guide to the Labour Force Survey (catalogue number 71-543-GIE).

Note(s): Estimates in this table are based on 2011 census boundaries. Related CANSIM table 282-0122.

Table 6-2
Labour force characteristics by territories, unadjusted for seasonality, 3 month moving average ending in
May 2014 and May 2015

	Population	Labour force			Participation rate	Unemployment rate	Employment rate
		Labour force	Employment	Unemployment			
		in thousands			percent		
Yukon ¹							
2014	27.6	20.6	19.5	1.0	74.6	4.9	70.7
2015	28.0	20.9	19.2	1.7	74.6	8.1	68.6
Northwest Territories ²							
2014	32.3	24.3	22.1	2.2	75.2	9.1	68.4
2015	32.0	23.5	21.6	1.9	73.4	8.1	67.5
Nunavut ³							
2014	23.2	14.0	12.3	1.7	60.3	12.0	53.0
2015	23.5	14.6	12.4	2.2	61.8	14.9	52.6

1. Since 1992, the Labour force survey (LFS) has been conducted in the Yukon, using an alternative methodology that accommodates some of the operational difficulties inherent to remote locales. These estimates are not included in the national totals. In 1995, the LFS in the Yukon underwent a sample redesign. One result of the redesign was that the covered population increased from 85% to 92%, which is reflected by the sharp increase in the three month moving averages estimates of January, February and March of 1995 for all the level estimates. Users are therefore warned to be cautious when comparing estimates before January 1995 to estimates for January 1995 and forward.
2. Since 2001, the Labour force survey (LFS) has been administered in the Northwest Territories, using an alternative methodology that accommodates some of the operational difficulties inherent to remote locales. These estimates are not included in national totals.
3. Since 2004, the Labour force survey (LFS) has been administered in Nunavut, using an alternative methodology that accommodates some of the operational difficulties inherent to remote locales. These estimates are 3-month moving averages and are not included in national totals. From January 2004 to December 2007, estimates represent about 70% of all Nunavut residents aged 15 and over. Starting in January 2008, coverage was extended to 92%, so that by March 2008, the 3-month moving average is completely based on the extended coverage. Because of the large difference in coverage, users are recommended not to compare estimates prior to January 2008 with data afterwards. The January and February 2008 3-month moving average estimates are based on a mix of both coverages, since the extended coverage was introduced in January 2008. Estimates from January 2004 to December 2007 are based on the 10 largest communities in Nunavut: Iqaluit, Rankin Inlet, Cambridge Bay, Kugluktuk, Baker Lake, Arviat, Pond Inlet, Cape Dorset, Pangnirtung, Igloolik. Estimates from March 2008 to present cover the above communities as well as: Taloyoak, Gjoa Haven, Kugaaruk, Coral Harbour, Repulse Bay, Qikiqtarjuaq, Arctic Bay, Hall Beach, Clyde River.

Note(s): Related CANSIM table 282-0100.

Table 7

Average usual hours and wages of employees by selected characteristics, Canada, unadjusted for seasonality

	Employees				Full-time			Part-time		
	Number	Average weekly hours	Average weekly wages	Average hourly wages	Number	Average weekly hours	Average weekly wages	Number	Average weekly hours	Average weekly wages
	thousands		current dollars		thousands		current dollars	thousands		current dollars
May 2015										
15 years and over	15,349.8	35.3	917.88	25.07	12,541.1	39.2	1,053.49	2,808.7	17.6	312.37
15 to 24 years	2,476.7	27.9	436.46	14.67	1,311.8	38.7	647.70	1,164.9	15.7	198.59
25 years and over	12,873.1	36.7	1,010.50	27.07	11,229.3	39.3	1,100.89	1,643.7	18.9	393.00
Men	7,776.0	37.7	1,042.82	26.86	6,884.5	40.4	1,142.14	891.5	16.9	275.89
Women	7,573.8	32.8	789.60	23.23	5,656.6	37.8	945.60	1,917.1	17.9	329.33
Union coverage										
Union coverage	4,687.8	35.9	1,043.23	28.67	4,030.3	38.6	1,139.45	657.5	19.2	453.43
No union coverage	10,662.0	35.0	862.77	23.49	8,510.8	39.5	1,012.79	2,151.2	17.1	269.25
Job permanency										
Permanent	13,255.7	36.1	963.44	25.89	11,259.0	39.2	1,075.56	1,996.6	18.4	331.22
Temporary	2,094.1	30.1	629.48	19.88	1,282.0	39.3	859.70	812.1	15.5	266.02
Occupation										
Management	911.8	39.6	1,605.01	40.55	882.8	40.3	1,640.00	29.0	18.1	541.31
Business, finance and administrative	2,800.5	35.4	871.97	24.12	2,411.3	38.2	956.63	389.2	18.2	347.46
Natural and applied sciences	1,215.8	38.8	1,354.98	34.96	1,185.1	39.3	1,375.12	30.6	19.0	576.21
Health	1,090.7	33.6	973.95	28.79	845.8	37.7	1,102.81	245.0	19.7	529.04
Social science, education, government service and religion	1,551.5	34.2	1,091.25	31.44	1,278.0	37.7	1,218.81	273.5	17.8	495.11
Art, culture, recreation and sport	374.6	30.9	835.28	25.49	257.1	38.8	1,083.28	117.5	13.7	292.64
Sales and service	4,006.5	30.5	554.82	16.98	2,507.7	38.4	749.50	1,498.8	17.2	229.10
Trades, transport and equipment operators	2,269.1	39.8	1,003.35	24.81	2,112.3	41.4	1,053.94	156.8	18.6	322.06
Occupations unique to primary industry	330.1	41.8	923.71	21.53	294.9	45.0	1,010.52	35.2	14.5	196.06
Occupations unique to processing, manufacturing and utilities	799.2	39.4	830.48	20.80	766.2	40.3	855.11	33.0	18.8	259.17
May 2014										
15 years and over	15,194.0	35.3	889.56	24.31	12,377.9	39.3	1,021.86	2,816.1	17.6	308.06
15 to 24 years	2,481.2	27.6	419.59	14.16	1,297.8	38.6	630.25	1,183.4	15.5	188.58
25 years and over	12,712.8	36.7	981.29	26.29	11,080.1	39.4	1,067.72	1,632.7	19.1	394.67
Men	7,644.4	37.7	1,014.59	26.17	6,760.2	40.5	1,110.67	884.2	16.9	280.01
Women	7,549.6	32.8	762.96	22.43	5,617.7	37.9	914.98	1,931.9	17.9	320.90
Union coverage										
Union coverage	4,665.2	35.7	1,017.98	28.06	3,960.0	38.7	1,118.41	705.2	19.1	454.04
No union coverage	10,528.8	35.1	832.66	22.65	8,417.9	39.6	976.43	2,110.9	17.1	259.29
Job permanency										
Permanent	13,066.5	36.1	935.46	25.16	11,083.2	39.2	1,044.58	1,983.3	18.4	325.63
Temporary	2,127.5	30.2	607.65	19.10	1,294.7	39.6	827.28	832.8	15.7	266.22
Occupation										
Management	917.2	39.5	1,567.70	39.73	895.5	40.1	1,594.29	21.8	18.3	473.25
Business, finance and administrative	2,765.6	35.4	842.74	23.31	2,385.2	38.2	924.77	380.4	17.9	328.42
Natural and applied sciences	1,208.1	38.7	1,333.69	34.41	1,173.8	39.3	1,355.50	34.2	18.6	585.87
Health	1,084.0	33.5	943.10	28.07	825.9	37.7	1,060.23	258.1	20.2	568.31
Social science, education, government service and religion	1,463.5	33.9	1,044.68	30.45	1,177.8	37.9	1,181.41	285.6	17.6	480.87
Art, culture, recreation and sport	356.3	29.9	770.02	23.89	235.3	38.3	1,040.68	121.0	13.4	243.77
Sales and service	4,026.2	30.6	527.25	16.16	2,522.7	38.4	708.16	1,503.5	17.3	223.70
Trades, transport and equipment operators	2,244.1	40.2	994.31	24.42	2,094.0	41.7	1,042.06	150.1	18.7	328.35
Occupations unique to primary industry	352.7	41.2	914.95	21.49	316.3	44.3	997.03	36.4	14.6	200.80
Occupations unique to processing, manufacturing and utilities	776.3	39.4	816.32	20.53	751.4	40.1	835.72	24.9	16.8	231.56

Note(s): Related CANSIM Tables 282-0023, 282-0069, 282-0073.

Table 8**Regional unemployment rates used by the Employment Insurance program ¹, seasonally adjusted, 3 month moving average**

Region	Effective from June 7, 2015 to July 11, 2015
	percent
Newfoundland and Labrador	
01. St. John's	6.3
02. Newfoundland and Labrador ²	18.8
Prince Edward Island ³	
65. Charlottetown	8.1
66. Prince Edward Island ⁴	13.2
Nova Scotia	
04. Eastern Nova Scotia	14.9
05. Western Nova Scotia	9.9
06. Halifax	6.7
New Brunswick	
07. Fredericton—Moncton—Saint John	7.4
08. Madawaska—Charlotte	9.5
09. Restigouche—Albert	15.5
Quebec	
10. Gaspésie—Îles-de-la-Madeleine	17.2
11. Québec	4.1
12. Trois-Rivières	5.8
13. South Central Quebec	4.1
14. Sherbrooke	6.5
15. Montérégie	7.4
16. Montréal	8.5
17. Central Quebec	7.8
18. North Western Quebec	9.4
19. Bas-Saint-Laurent—Côte-Nord	9.6
20. Hull	7.9
21. Chicoutimi—Jonquière	7.6
Ontario	
22. Ottawa	6.2
23. Eastern Ontario	8.7
24. Kingston	6.8
25. Central Ontario	8.3
26. Oshawa	7.8
27. Toronto	7.0
28. Hamilton	4.9
29. St. Catharines	6.2
30. London	5.9
31. Niagara	7.9
32. Windsor	11.4
33. Kitchener	5.8
34. Huron	6.5
35. South Central Ontario	4.2
36. Sudbury	6.9
37. Thunder Bay	4.6
38. Northern Ontario	12.4
Manitoba	
39. Winnipeg	6.1
40. Southern Manitoba	5.9
41. Northern Manitoba	30.3
Saskatchewan	
42. Regina	4.3
43. Saskatoon	5.2
44. Southern Saskatchewan	5.6
45. Northern Saskatchewan	17.5
Alberta	
46. Calgary	5.8
47. Edmonton	6.3
48. Northern Alberta	10.7
49. Southern Alberta	5.8

See notes at the end of the table.

Table 8 – continued

Regional unemployment rates used by the Employment Insurance program 1, seasonally adjusted, 3 month moving average

Region	Effective from June 7, 2015 to July 11, 2015
	percent
British Columbia	
50. Southern Interior British Columbia	6.9
51. Abbotsford	5.7
52. Vancouver	6.2
53. Victoria	6.8
54. Southern Coastal British Columbia	7.4
55. Northern British Columbia	9.8
Territories 3, 5	
59. Whitehorse	7.3
60. Yukon 6	12.1
61. Yellowknife	3.2
62. Northwest Territories 7	14.0
63. Iqaluit	4.9
64. Nunavut 8	20.2

1. The boundaries of these regions are determined by Employment and Social Development Canada (ESDC). For geographic descriptions and maps of employment insurance regions, see the ESDC website: <http://srv129.services.gc.ca/eiregions/en/geocont.aspx>.

2. This region excludes St. John's.

3. Prince Edward Island as well as the territories are each comprised of two regions effective October 12, 2014.

4. This region excludes Charlottetown.

5. The monthly regional unemployment rates for EI purposes in the territories are subject to the greater of a seasonally adjusted 3 month moving average or 12 month moving average.

6. This region excludes Whitehorse.

7. This region excludes Yellowknife.

8. This region excludes Iqaluit.

Note(s): All regions are based on the 1996 Census boundaries, with the exception of those in Prince Edward Island and in the territories, which respect the 2011 Census boundaries.

Table 9-1
Students and other persons aged 15 to 24 (unadjusted) by detailed age groups

	May 2013	May 2014	May 2015	S.E. ¹	Change from		Percent change from	
					last year	two years ago	last year	two years ago
in thousands								
Students 15 to 24 years ²								
Population	2,404.0	2,388.0	2,338.2	29.9	-49.8	-65.8	-2.1	-2.7
Labour force	1,292.3	1,289.4	1,264.6	32.0	-24.8	-27.7	-1.9	-2.1
Employment	1,029.2	1,045.2	1,005.8	30.5	-39.4	-23.4	-3.8	-2.3
Full-time employment	264.6	249.1	243.0	20.5	-6.1	-21.6	-2.4	-8.2
Part-time employment	764.6	796.1	762.8	25.1	-33.3	-1.8	-4.2	-0.2
Unemployment	263.1	244.2	258.8	15.2	14.6	-4.3	6.0	-1.6
Participation rate	53.8	54.0	54.1	1.0	0.1	0.3
Unemployment rate	20.4	18.9	20.5	1.0	1.6	0.1
Employment rate	42.8	43.8	43.0	1.0	-0.8	0.2
Part-time rate	74.3	76.2	75.8	1.4	-0.3	1.5
Students 15 to 16 years ²								
Population	762.5	747.0	736.1	4.7	-10.9	-26.4	-1.5	-3.5
Labour force	221.2	235.7	234.3	12.1	-1.4	13.1	-0.6	5.9
Employment	155.5	161.0	156.5	10.5	-4.5	1.0	-2.8	0.6
Full-time employment	3.5	4.1	4.4	3.9	0.3	0.9	7.3	25.7
Part-time employment	152.0	156.9	152.1	9.9	-4.8	0.1	-3.1	0.1
Unemployment	65.7	74.7	77.8	7.7	3.1	12.1	4.1	18.4
Participation rate	29.0	31.6	31.8	1.6	0.2	2.8
Unemployment rate	29.7	31.7	33.2	2.6	1.5	3.5
Employment rate	20.4	21.6	21.3	1.4	-0.3	0.9
Part-time rate	97.7	97.5	97.2	1.8	-0.3	-0.6
Students 17 to 19 years ²								
Population	911.3	895.2	868.4	15.5	-26.8	-42.9	-3.0	-4.7
Labour force	552.1	532.9	520.9	17.1	-12.0	-31.2	-2.3	-5.7
Employment	437.2	434.1	416.6	16.9	-17.5	-20.6	-4.0	-4.7
Full-time employment	80.5	70.2	62.0	11.2	-8.2	-18.5	-11.7	-23.0
Part-time employment	356.7	363.8	354.6	15.3	-9.2	-2.1	-2.5	-0.6
Unemployment	114.9	98.9	104.3	10.0	5.4	-10.6	5.5	-9.2
Participation rate	60.6	59.5	60.0	1.6	0.5	-0.6
Unemployment rate	20.8	18.6	20.0	1.6	1.4	-0.8
Employment rate	48.0	48.5	48.0	1.6	-0.5	0.0
Part-time rate	81.6	83.8	85.1	2.0	1.3	3.5
Students 20 to 24 years ²								
Population	730.1	745.8	733.7	24.9	-12.1	3.6	-1.6	0.5
Labour force	519.0	520.8	509.4	22.7	-11.4	-9.6	-2.2	-1.8
Employment	436.6	450.2	432.7	21.5	-17.5	-3.9	-3.9	-0.9
Full-time employment	180.6	174.8	176.6	16.1	1.8	-4.0	1.0	-2.2
Part-time employment	255.9	275.4	256.0	16.3	-19.4	0.1	-7.0	0.0
Unemployment	82.5	70.7	76.7	8.3	6.0	-5.8	8.5	-7.0
Participation rate	71.1	69.8	69.4	1.8	-0.4	-1.7
Unemployment rate	15.9	13.6	15.1	1.4	1.5	-0.8
Employment rate	59.8	60.4	59.0	1.9	-1.4	-0.8
Part-time rate	58.6	61.2	59.2	2.4	-2.0	0.6
Other persons aged 15 to 24³								
Population	2,095.5	2,092.8	2,099.8	29.9	7.0	4.3	0.3	0.2
Labour force	1,729.2	1,726.0	1,752.5	29.6	26.5	23.3	1.5	1.3
Employment	1,525.9	1,508.5	1,555.1	29.7	46.6	29.2	3.1	1.9
Full-time employment	1,137.9	1,083.3	1,118.1	27.3	34.8	-19.8	3.2	-1.7
Part-time employment	388.0	425.1	437.0	19.1	11.9	49.0	2.8	12.6
Unemployment	203.3	217.5	197.5	14.6	-20.0	-5.8	-9.2	-2.9
Participation rate	82.5	82.5	83.5	0.8	1.0	0.9
Unemployment rate	11.8	12.6	11.3	0.8	-1.3	-0.5
Employment rate	72.8	72.1	74.1	1.0	2.0	1.2
Part-time rate	25.4	28.2	28.1	1.1	-0.1	2.7

1. Average standard error of change over the year (see "Sampling Errors" in Data Quality for further explanations).

2. Students are persons aged 15 to 24 who attended school full-time in March and who are planning to return to school in the fall.

3. Other persons are all other youths aged 15 to 24 who are not included in the student population.

Note(s): Related CANSIM Table 282-0006.

Table 9-2
Students and other persons aged 15 to 24 (unadjusted) by province

	Population	Labour force				Unemployment	Participation rate	Unemployment rate	Employment rate
		Labour force	Employment	Full-time employment	Part-time employment				
in thousands									
Students ¹									
Newfoundland and Labrador									
May 2014	30.0	13.0	9.3	1.4	8.0	3.6	43.3	27.7	31.0
May 2015	27.4	14.4	10.6	2.6	8.1	3.7	52.6	25.7	38.7
Prince Edward Island									
May 2014	9.4	6.3	4.7	1.4	3.3	1.6	67.0	25.4	50.0
May 2015	9.9	5.7	4.5	1.1	3.4	1.2	57.6	21.1	45.5
Nova Scotia									
May 2014	54.5	29.0	22.5	6.5	16.0	6.5	53.2	22.4	41.3
May 2015	57.6	32.6	25.6	8.6	17.0	7.0	56.6	21.5	44.4
New Brunswick									
May 2014	40.9	22.0	14.8	4.1	10.6	7.3	53.8	33.2	36.2
May 2015	38.4	20.0	14.8	3.7	11.1	5.2	52.1	26.0	38.5
Quebec									
May 2014	556.9	316.4	270.4	42.0	228.4	46.0	56.8	14.5	48.6
May 2015	542.6	316.3	260.3	35.5	224.8	55.9	58.3	17.7	48.0
Ontario									
May 2014	1,028.1	562.3	428.3	106.3	322.0	134.0	54.7	23.8	41.7
May 2015	1,001.2	523.9	405.0	115.8	289.2	118.8	52.3	22.7	40.5
Manitoba									
May 2014	77.1	41.3	35.6	10.2	25.4	5.8	53.6	14.0	46.2
May 2015	76.2	41.1	33.8	11.2	22.6	7.3	53.9	17.8	44.4
Saskatchewan									
May 2014	64.5	34.7	30.3	9.8	20.5	4.4	53.8	12.7	47.0
May 2015	63.7	37.6	32.0	9.1	23.0	5.6	59.0	14.9	50.2
Alberta									
May 2014	249.8	134.6	119.0	40.6	78.4	15.6	53.9	11.6	47.6
May 2015	218.4	125.9	97.0	27.2	69.7	28.9	57.6	23.0	44.4
British Columbia									
May 2014	276.7	129.9	110.3	26.7	83.5	19.6	46.9	15.1	39.9
May 2015	302.7	147.3	122.1	28.1	93.9	25.2	48.7	17.1	40.3
Other persons aged 15-24 ²									
Newfoundland and Labrador									
May 2014	28.5	21.0	17.2	12.6	4.6	3.8	73.7	18.1	60.4
May 2015	29.1	23.1	19.2	14.2	5.0	3.9	79.4	16.9	66.0
Prince Edward Island									
May 2014	9.3	8.3	6.7	4.9	1.8	1.6	89.2	19.3	72.0
May 2015	8.4	7.1	5.7	x	1.6	1.5	84.5	21.1	67.9
Nova Scotia									
May 2014	59.7	48.2	40.2	27.3	12.9	7.9	80.7	16.4	67.3
May 2015	54.2	45.2	38.1	28.3	9.8	7.1	83.4	15.7	70.3
New Brunswick									
May 2014	45.7	37.6	31.5	24.0	7.6	6.1	82.3	16.2	68.9
May 2015	46.5	38.7	32.3	25.9	6.4	6.4	83.2	16.5	69.5
Quebec									
May 2014	425.4	359.1	303.9	211.7	92.1	55.2	84.4	15.4	71.4
May 2015	419.5	356.6	319.7	236.1	83.7	36.9	85.0	10.3	76.2
Ontario									
May 2014	782.7	645.4	559.8	397.1	162.7	85.6	82.5	13.3	71.5
May 2015	797.3	664.5	581.4	387.0	194.3	83.2	83.3	12.5	72.9
Manitoba									
May 2014	86.5	71.7	65.4	47.4	18.1	6.3	82.9	8.8	75.6
May 2015	86.8	70.5	63.3	46.7	16.6	7.2	81.2	10.2	72.9
Saskatchewan									
May 2014	74.4	64.2	59.5	48.4	11.1	4.7	86.3	7.3	80.0
May 2015	73.2	62.2	56.1	47.0	9.2	6.1	85.0	9.8	76.6
Alberta									
May 2014	275.7	226.2	206.3	166.9	39.4	19.9	82.0	8.8	74.8
May 2015	305.0	260.8	239.5	194.7	44.8	21.4	85.5	8.2	78.5

See notes at the end of the table.

Table 9-2 – continued

Students and other persons aged 15 to 24 (unadjusted) by province

	Population	Labour force				Unemployment	Participation rate	Unemployment rate	Employment rate
		Labour force	Employment	Full-time employment	Part-time employment				
in thousands									
British Columbia									
May 2014	304.7	244.4	218.1	143.2	74.8	26.3	80.2	10.8	71.6
May 2015	279.9	223.9	200.1	134.4	65.6	23.8	80.0	10.6	71.5

1. Students are persons aged 15 to 24 who attended school full-time in March and who are planning to return to school in the fall.

2. Other persons are all other youths aged 15 to 24 who are not included in the student population.

Note(s): Related CANSIM Table 282-0006.

Data quality

Definitions and explanations

The **labour force** is composed of those members of the civilian non-institutional population 15 years of age and over who, during the reference week, were employed or unemployed.

Employed persons are those who, during the reference week:

- (a) did any work at all
- (b) had a job but were not at work

A person is considered to be **full-time** if his/her usual hours at the main job are 30 or more hours per week. When the number of hours worked at the main job is usually less than 30 hours per week then he/she is considered to be **part-time**.

Unemployed persons are those who, during the reference week:

- (a) were without work, had actively looked for work in the past four weeks (ending with reference week), and were available for work;
- (b) had not actively looked for work in the past four weeks but were on temporary layoff and were available for work;
- (c) had not actively looked for work in the past four weeks but had a new job to start in four weeks or less from the reference week, and were available for work.

Persons in the civilian non-institutional population 15 years of age and over who, during the reference week, were neither employed nor unemployed are classified as **not in the labour force**.

The **unemployment rate** represents the number of unemployed persons expressed as a percentage of the labour force (employed and unemployed). The unemployment rate for a particular group (age, sex, etc.) is the number unemployed in that group expressed as a percentage of the labour force for that group.

The **participation rate** represents the labour force expressed as a percentage of the population 15 years of age and over. The participation rate for a particular group (age, sex, etc.) is the labour force in that group expressed as a percentage of the population for that group.

The **employment rate** represents the number of persons employed expressed as a percentage of the population 15 years of age and over. The employment rate for a particular group (age, sex, etc.) is the number employed in that group expressed as a percentage of the population for that group.

The **part-time rate** represents the number of persons employed part-time expressed as a percentage of the employed. The part-time rate for a particular group (age, sex, etc.) is the number employed part-time in that group expressed as a percentage of the employed for that group.

All geographic regions are based on the 2011 Census boundaries.

Seasonal adjustment

Fluctuations in economic time series are caused by seasonal, cyclical and irregular movements. A seasonally adjusted series is one from which seasonal movements have been eliminated. Seasonal movements are defined as those which are caused by regular annual events such as climate, holidays, vacation periods and cycles related to crops, production and retail sales associated with Christmas and Easter. The seasonally adjusted series contains irregular as well as longer-term cyclical fluctuations.

The seasonally adjusted series are revised each year to take into account current data and to generate new forecast factors for the next twelve months. The data are therefore subject to slight revisions in future issues of this publication.

For more information on seasonal adjustment, see *Seasonally adjusted data – Frequently asked questions*.

Sampling variability of estimates

Estimates in this publication are based on the Labour Force Survey, a monthly survey of approximately 56,000 households across Canada. Because the entire population is not surveyed, the estimates are subject to sampling error. While the published estimate is the best available indicator of the real value, changes in the level of any estimates between two months can be the result of a true change or sampling variability. The sampling error can be estimated by calculating the standard error for the published estimate or statistic. These standard errors have been included in the publication tables, in order to assist users in interpreting the data. They are based on 12-month averages and are updated twice a year, in February and August.

Interpretation based on standard error

Approximately two thirds of the time (68%), a change greater than the sampling error indicates a real change. The larger the change compared to the standard error, the better the chance that we are observing a real change, as opposed to a change due to sampling variability. At the 95% confidence level, the change in the estimate must be greater than twice the sampling error in order to ensure that change is real.

Movements in estimates that are smaller than the sampling error are less likely to reflect a real change and more likely to be due to sampling variability. While the above is true for monthly movements, one can have more confidence in a series of consecutive movements in the same direction, even though some of the monthly movements may be smaller than the sampling error.

Interpretation based on confidence intervals

Confidence intervals provide another way of looking at the variability inherent in estimates of sample surveys. To illustrate how to calculate the confidence interval, let us say that one month the published estimate for total employment rose by 16,000 to reach 17,800,000. The associated standard error for the movement estimate is 28,800. The standard error used to interpret the movement estimate indicates that:

- There are approximately two chances in three (68%) that the real value of the movement between the two months falls within the range -12,800 to +44,800 (16,000 + or – one standard error).
- There are approximately nine chances in ten (90%) that the real value of the movement between the two months falls within the range -30,100 to +62,100 (16,000 + or – 1.6 times the standard error).
- There are approximately nineteen chances in twenty (95%) that the real value of the movement between the two months falls within the range -41,600 to +73,600 (16,000 + or – two standard errors).

For more detailed explanations on sampling variability of estimates, and in particular for information on how to assess the variability of level estimates, consult the Data quality section of the *Guide to the Labour Force Survey*, (71-543-G).

Documentation

For more detailed information about the Labour Force Survey, see the following documents:

- Overview of the Labour Force Survey 3701
- Guide to the Labour Force Survey (71-543-G)
- Methodology of the Canadian Labour Force Survey (71-526-X)
- LFS *geographical maps*