

Catalogue no. 71-001-X

Labour Force Information

Friday, August 7, 2015

July 12 to 18, 2015



Statistics
Canada

Statistique
Canada

Canada

How to obtain more information

For information about this product or the wide range of services and data available from Statistics Canada, visit our website, www.statcan.gc.ca.

You can also contact us by

e-mail at infostats@statcan.gc.ca

telephone, from Monday to Friday, 8:30 a.m. to 4:30 p.m., at the following toll-free numbers:

- | | |
|---|----------------|
| • Statistical Information Service | 1-800-263-1136 |
| • National telecommunications device for the hearing impaired | 1-800-363-7629 |
| • Fax line | 1-877-287-4369 |

Depository Services Program

- | | |
|------------------|----------------|
| • Inquiries line | 1-800-635-7943 |
| • Fax line | 1-800-565-7757 |

To access this product

This product, Catalogue no. 71-001-X, is available free in electronic format. To obtain a single issue, visit our website, www.statcan.gc.ca and browse by "Key resource" > "Publications."

Standards of service to the public

Statistics Canada is committed to serving its clients in a prompt, reliable and courteous manner. To this end, this agency has developed standards of service that its employees observe. To obtain a copy of these service standards, please contact Statistics Canada toll-free at 1-800-263-1136. The service standards are also published at www.statcan.gc.ca under "About us" > "The agency" > "Providing services to Canadians."

Statistics Canada
Labour Statistics Division
Labour Force Survey Program

Labour Force Information

Friday, August 7, 2015

July 12 to 18, 2015

Published by authority of the Minister responsible for Statistics Canada

© Minister of Industry, 2015

All rights reserved. Use of this publication is governed by the Statistics Canada
Open License Agreement.

<http://www.statcan.gc.ca/reference/licence-eng.html>

August 2015

Catalogue no. 71-001-X

ISSN 1492-5478

Frequency: Monthly

Ottawa

Cette publication est également disponible en français.

Note of appreciation

Canada owes the success of its statistical system to a long-standing partnership between Statistics Canada, the citizens of Canada, its businesses, governments and other institutions. Accurate and timely statistical information could not be produced without their continued cooperation and goodwill.

User information

Symbols

The following standard symbols are used in Statistics Canada publications:

- . not available for any reference period
- .. not available for a specific reference period
- ... not applicable
- 0 true zero or a value rounded to zero
- 0s value rounded to 0 (zero) where there is a meaningful distinction between true zero and the value that was rounded
- p preliminary
- r revised
- x suppressed to meet the confidentiality requirements of the *Statistics Act*
- E use with caution
- F too unreliable to be published
- * significantly different from reference category ($p < 0.05$)

Special requests (\$)

Custom tabulations can be arranged on an ad hoc or regular basis. This service enables you to specify tables and time series to meet your own requirements. The cost varies according to the request. For more information, contact us toll-free at 1-866-873-8788 or e-mail us at labour@statcan.gc.ca.

Schedule of LFS releases

Release date

January 9, 2015
February 6, 2015
March 13, 2015
April 10, 2015
May 8, 2015
June 5, 2015
July 10, 2015
August 7, 2015
September 4, 2015
October 9, 2015
November 6, 2015
December 4, 2015
January 8, 2016

Reference period

December 7 to 13, 2014
January 11 to 17, 2015
February 15 to 21, 2015
March 15 to 21, 2015
April 12 to 18 2015
May 10 to 16, 2015
June 14 to 20, 2015
July 12 to 18, 2015
August 9 to 15, 2015
September 13 to 19, 2015
October 11 to 17, 2015
November 8 to 14, 2015
December 6 to 12, 2015

Table of contents

Highlights	5
Analysis — July 2015	6
Charts	
1. Employment indexes, Canada, seasonally adjusted	9
2. Employment, unemployment, and participation rates, Canada, seasonally adjusted	10
3. Employment indexes by industry, Canada, seasonally adjusted	11
4. Employment indexes by industry, Canada, seasonally adjusted	12
5. Employment indexes by industry, Canada, seasonally adjusted	13
6. Employment indexes by province, Canada, seasonally adjusted	14
7. Employment indexes by province, Canada, seasonally adjusted	15
Related products	16
Statistical tables	
1 Labour force characteristics by age and sex, Canada, seasonally adjusted	27
2 Employment by class of worker and industry, Canada, seasonally adjusted	29
3 Labour force characteristics by province, seasonally adjusted	30
4 Selected labour force characteristics (seasonally adjusted)	32
4-1 Newfoundland and Labrador	32
4-2 Prince Edward Island	33
4-3 Nova Scotia	34
4-4 New Brunswick	35
4-5 Quebec	36
4-6 Ontario	37
4-7 Manitoba	38
4-8 Saskatchewan	39
4-9 Alberta	40
4-10 British Columbia	41
5 Labour force characteristics by census metropolitan area (seasonally adjusted)	42
5-1 3 month moving average	42
5-2 Monthly	47

Table of contents – continued

6	Labour force characteristics	48
6-1	by province and economic region, unadjusted for seasonality, 3 month moving average ending in July 2014 and July 2015	48
6-2	by territories, unadjusted for seasonality, 3 month moving average ending in July 2014 and July 2015	53
7	Average usual hours and wages of employees by selected characteristics, Canada, unadjusted for seasonality	54
8	Regional unemployment rates used by the Employment Insurance program, seasonally adjusted, 3 month moving average	55
9	Students and other persons aged 15 to 24 (unadjusted)	57
9-1	by detailed age groups	57
9-2	by province	58

Data quality, concepts and methodology

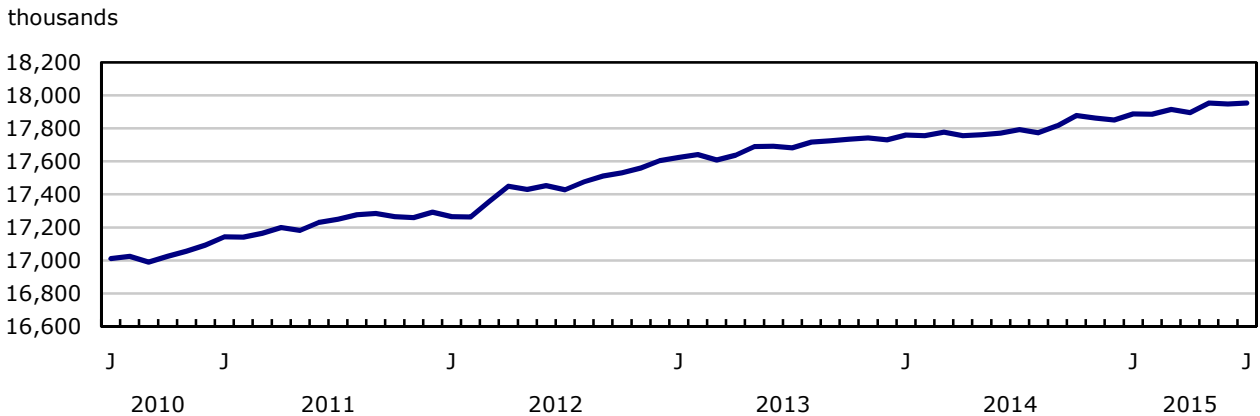
Data quality	60
--------------	----

Highlights

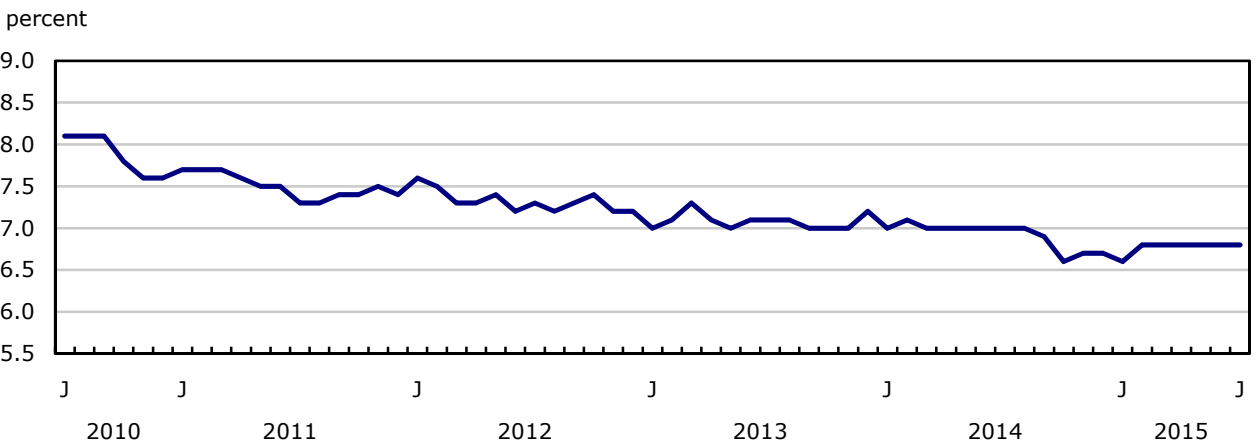
Employment was little changed in July (+6,600 or 0.0%) and the unemployment rate remained at 6.8% for the sixth consecutive month.

Chart 1
Employment and unemployment rates, Canada, seasonally adjusted

Employment



Unemployment rate



Analysis — July 2015

Employment was little changed in July (+6,600 or 0.0%) and the unemployment rate remained at 6.8% for the sixth consecutive month.

Compared with 12 months earlier, employment increased by 161,000 or 0.9%, the result of more full-time work. Over the same period, the total number of hours worked rose 1.2%.

In July, employment increased among men aged 25 to 54, while there was little change among the other demographic groups.

Provincially, employment rose in Quebec and Nova Scotia. At the same time, there were declines in Saskatchewan, Manitoba, and Prince Edward Island.

Employment was up in professional, scientific and technical services as well as public administration. There were fewer people working in finance, insurance, real estate and leasing.

The number of self-employed workers rose in July, while there was little change among public sector and private sector employees.

More men aged 25 to 54 employed

For men aged 25 to 54, employment rose by 19,000 in July. Compared with 12 months earlier, employment among this group was up 66,000 (+1.1%) and their unemployment rate fell by 0.3 percentage points to 6.0%. At the same time, their participation rate increased 0.5 percentage points to 91.0%.

Among women aged 25 to 54, employment was virtually unchanged in July. However, on a year-over-year basis, employment for this group of women increased by 54,000 or 1.0%, and their unemployment rate fell by 0.5 percentage points to 5.2%. In July, their participation rate was 82.0%, little changed from 12 months earlier.

Employment among youths aged 15 to 24 was little changed, and their unemployment rate was also little changed at 13.2% in July. The participation rate for youths was 63.9%. On a year-over-year basis, there was virtually no change in either employment, or the unemployment rate for this age group.

There was virtually no change in the employment level for men aged 55 and older in July. Compared with 12 months earlier, however, there were 69,000 (+3.6%) more men employed in this age group. Their unemployment rate was 6.4% and their participation rate was 43.6%, both little changed for the month and compared with July 2014.

For women aged 55 and older, employment was virtually unchanged both in July and compared with 12 months earlier. In the 12 months to July, their unemployment rate was little changed at 5.4%, and their participation rate declined 0.9 percentage points to 31.0%.

Provincial summary

Employment in Quebec increased by 22,000 in July, lowering the unemployment rate by 0.3 percentage points to 7.7%. Compared with 12 months earlier, employment in the province was up 44,000 or 1.1%.

In Nova Scotia, employment rose by 3,100. The unemployment rate was little changed at 8.1% due to a rise in the number of people participating in the labour market. On a year-over-year basis, employment in the province was virtually unchanged.

Employment in Saskatchewan declined by 7,400 in July, and the unemployment rate increased 0.5 percentage points to 5.2%. With this decline, employment in the province was virtually unchanged compared with 12 months earlier.

In Manitoba, there were 3,800 fewer people working in July, and the unemployment rate increased 0.3 percentage points to 5.6%. Compared with July 2014, employment in the province was up 6,000 or 1.0%.

Employment in Prince Edward Island fell by 800 in July. On a year-over-year basis, there were 1,900 fewer people working in the province and the unemployment rate increased 2.3 percentage points to 11.6%.

Employment in Ontario was unchanged in July. Compared with 12 months earlier, employment in the province was up 67,000 (+1.0%) and the unemployment rate fell 1.1 percentage points to 6.4%, the lowest rate since September 2008.

Despite little change in the level of employment in Alberta, the unemployment rate increased 0.3 percentage points to 6.0% in July, as more people searched for work. Since January, the unemployment rate in the province has increased 1.5 percentage points.

Industry perspective

In July, there were 19,000 more people employed in professional, scientific and technical services. Employment in this industry was up by 38,000 (+2.8%) compared with 12 months earlier.

Employment in public administration rose by 9,000. However, on a year-over-year basis, employment in this industry was down 20,000 (-2.1%).

Employment fell by 10,000 in finance, insurance, real estate and leasing in July. Despite this decline, employment in the industry was up 31,000 (+2.9%) compared with 12 months earlier.

The number of self-employed workers increased by 41,000 in July, contributing to a year-over-year increase of 57,000 or 2.1%.

The number of employees in both the public sector and private sector was little changed in July. On a year-over-year basis, employment rose by 75,000 or 0.7% in the private sector, while it was little changed in the public sector.

Summer employment for students

From May to August, the Labour Force Survey collects labour market data about youths aged 15 to 24 who attended school full time in March, and who intended to return full time in the fall. The published data are not seasonally adjusted; therefore, comparisons can only be made on a year-over-year basis.

Employment among students aged 20 to 24 edged down 21,000 compared with 12 months earlier. Their unemployment rate was 8.2%, unchanged from July 2014, but down 1.5 percentage points from July 2013.

Among 17 to 19 year old students, there was little change in employment compared with July 2014. Their unemployment rate was virtually unchanged at 16.9%.

Over the same period, there was little change in employment among students aged 15 and 16. Their unemployment rate rose 2.8 percentage points to 30.2% compared with July 2014, as more of them searched for work. This rate is similar to the rate observed two years earlier.

Note to readers

The Labour Force Survey (LFS) estimates for July are for the week of July 12 to 18.

The LFS estimates are based on a sample and are therefore subject to sampling variability. As a result, monthly estimates will show more variability than trends observed over longer time periods. For more information, see "*Interpreting Monthly Changes in Employment from the Labour Force Survey*." Estimates for smaller geographic areas or industries also have more variability. For an explanation of sampling variability of estimates and how to use standard errors to assess this variability, consult the "Data quality" section of the publication *Labour Force Information* (71-001-X).

This analysis focuses on differences between estimates that are statistically significant at the 68% confidence level.

The **employment rate** is the number of employed persons as a percentage of the population 15 years of age and over. The rate for a particular group (for example, youths aged 15 to 24) is the number employed in that group as a percentage of the population for that group.

The **unemployment rate** is the number unemployed as a percentage of the labour force (employed and unemployed).

The **participation rate** is the number of employed and unemployed as a percentage of the population.

For more detailed information, see the *Guide to the Labour Force Survey* (71-543-G).

Seasonal adjustment

Unless otherwise stated, this release presents seasonally adjusted estimates, which facilitates comparisons by removing the effects of seasonal variations. For more information on seasonal adjustment, see *Seasonally adjusted data – Frequently asked questions*.

Sample redesign

Every 10 years, the LFS undergoes a sample redesign to reflect changes in population and labour market characteristics, as well as new definitions of geographical boundaries. The redesigned sample was introduced starting in January 2015 and was fully implemented in June 2015.

Next release

The next release of the LFS will be on September 4.

Chart 1
Employment indexes, Canada, seasonally adjusted

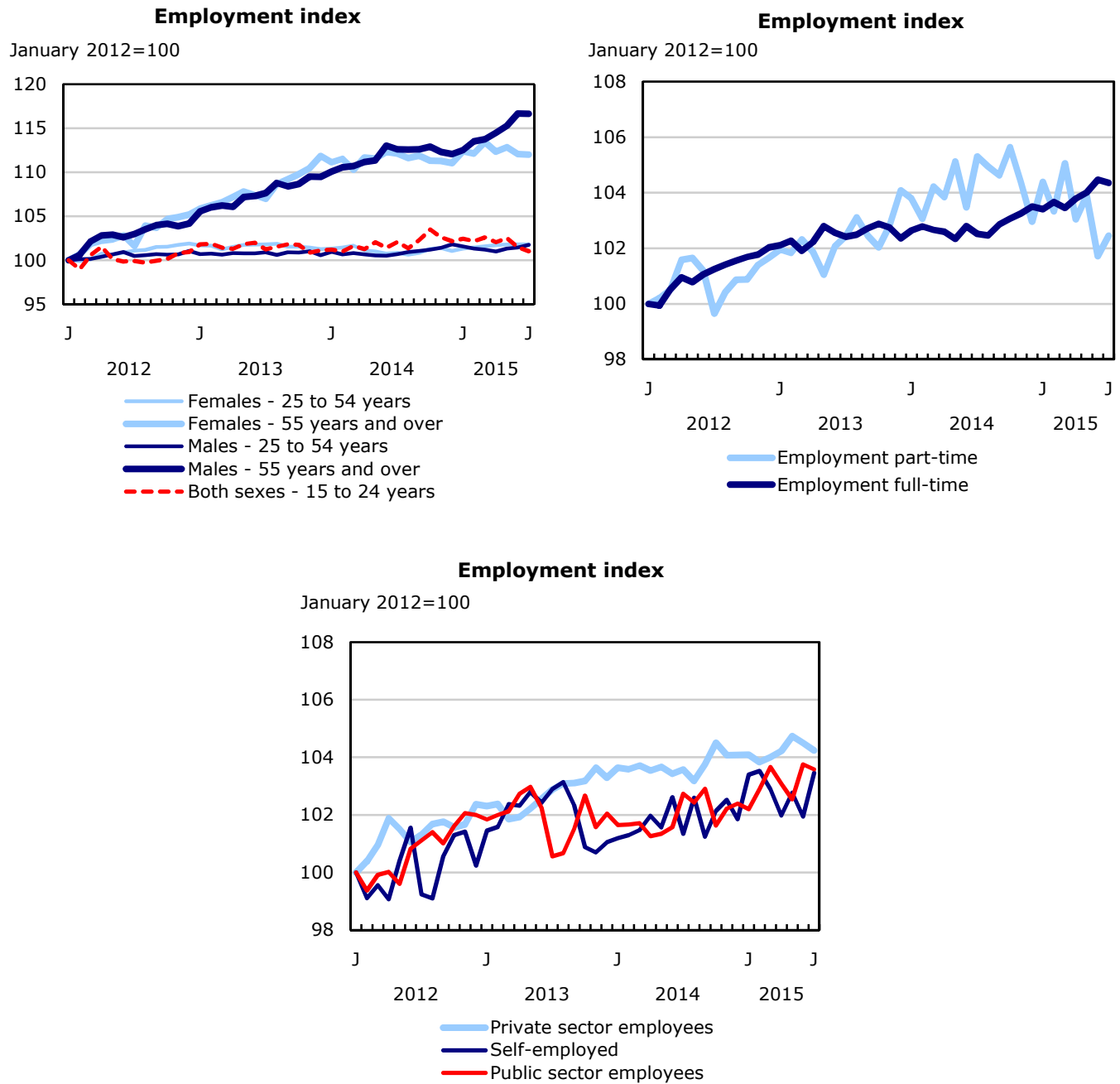


Chart 2
Employment, unemployment, and participation rates, Canada, seasonally adjusted

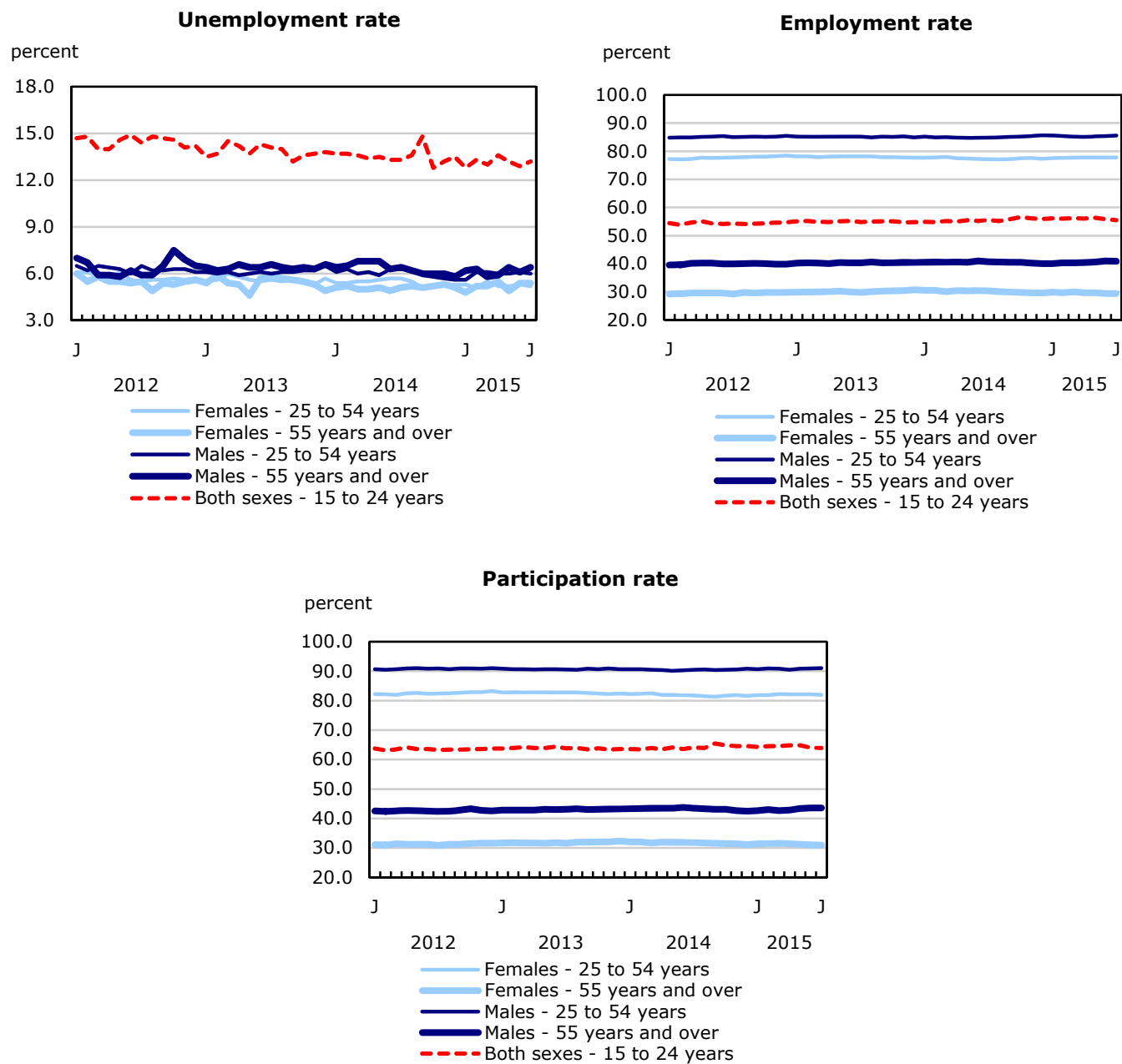


Chart 3
Employment indexes by industry, Canada, seasonally adjusted

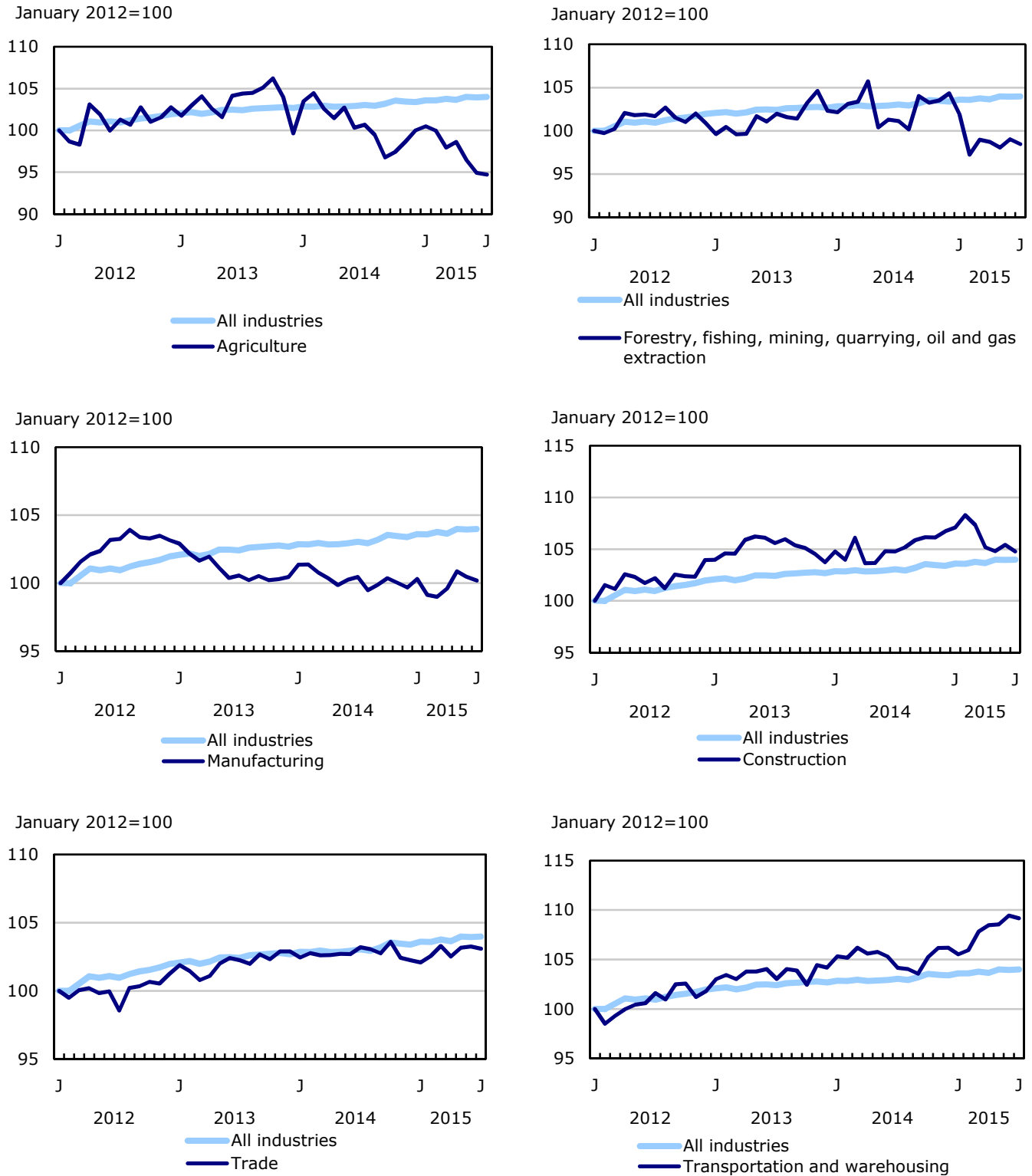


Chart 4
Employment indexes by industry, Canada, seasonally adjusted

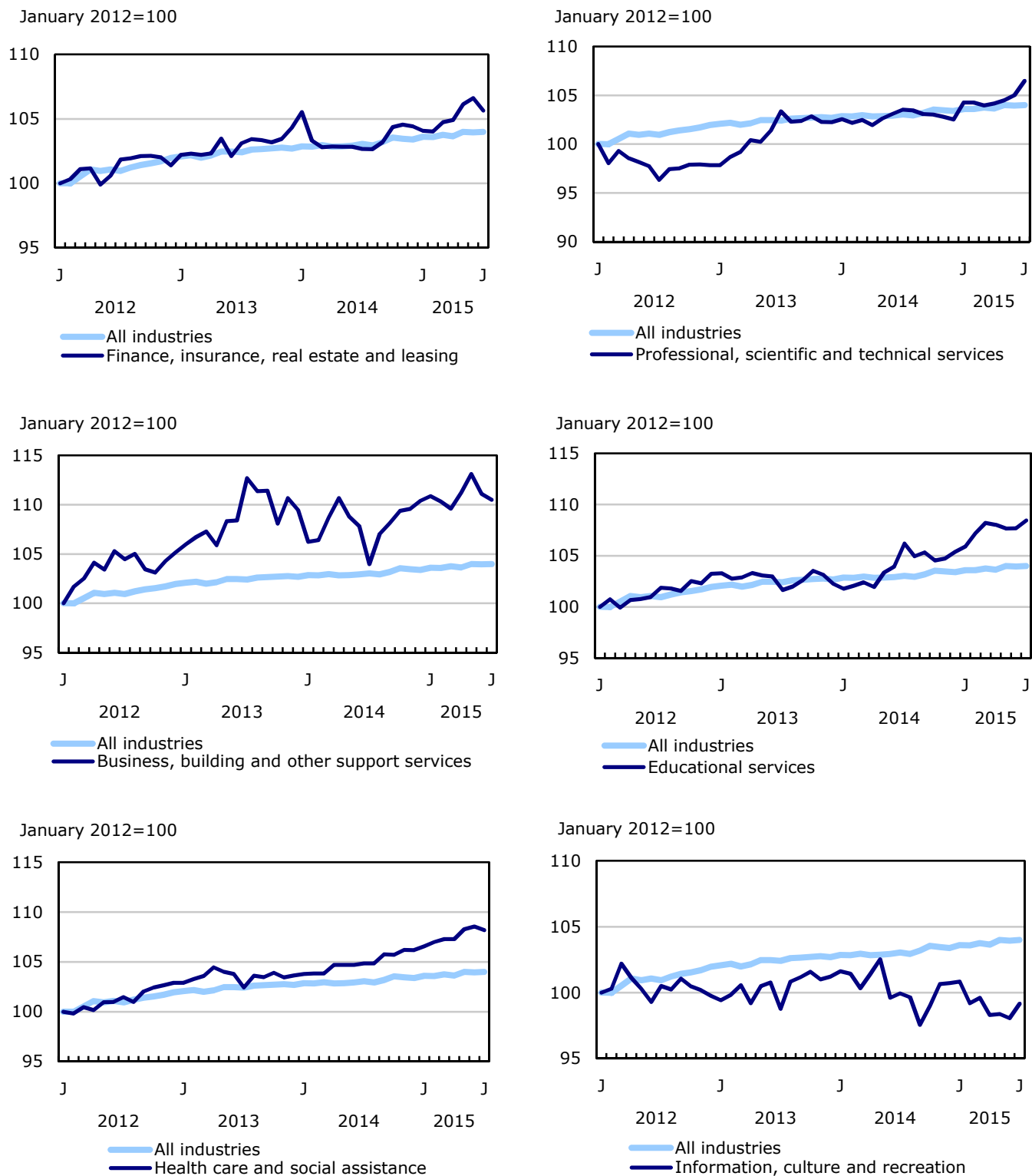


Chart 5
Employment indexes by industry, Canada, seasonally adjusted

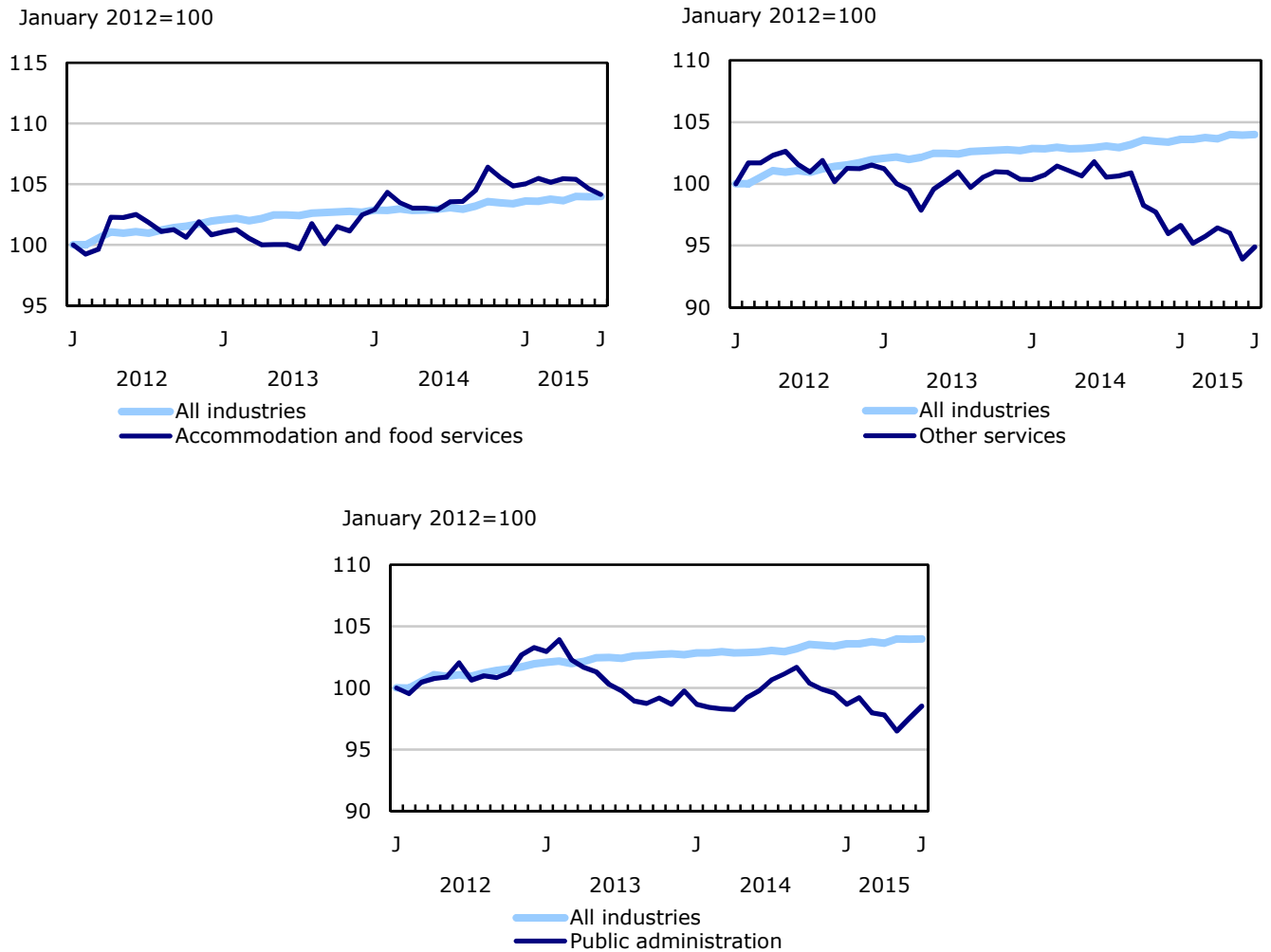


Chart 6
Employment indexes by province, Canada, seasonally adjusted

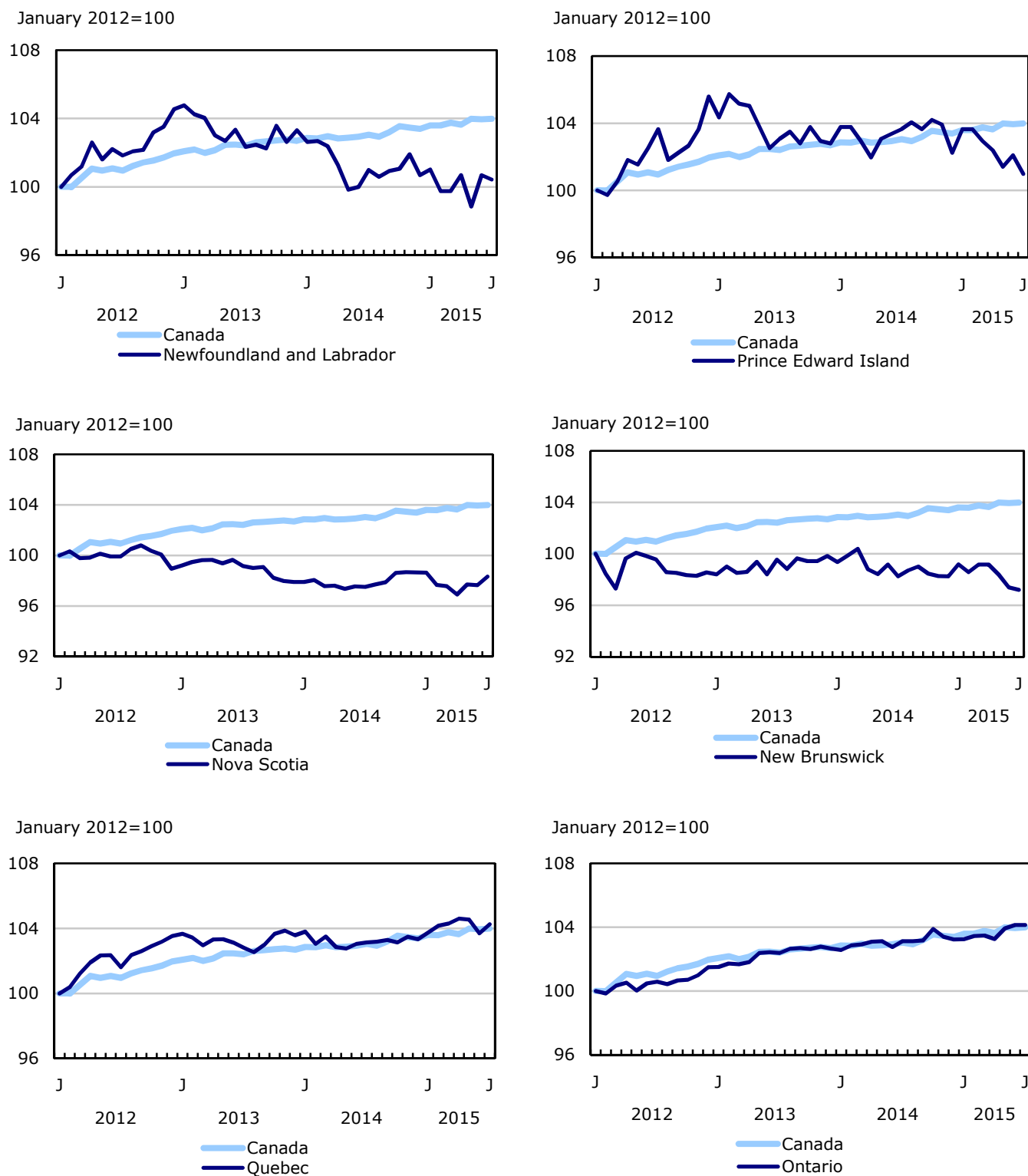
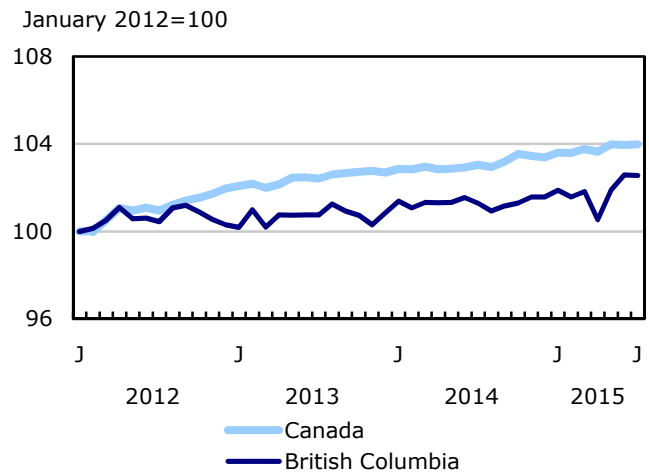
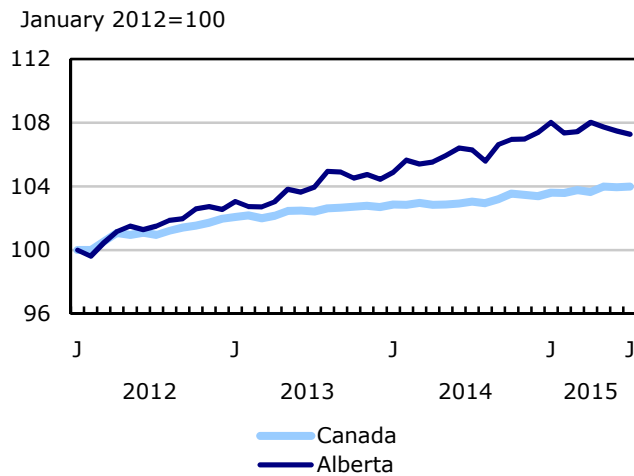
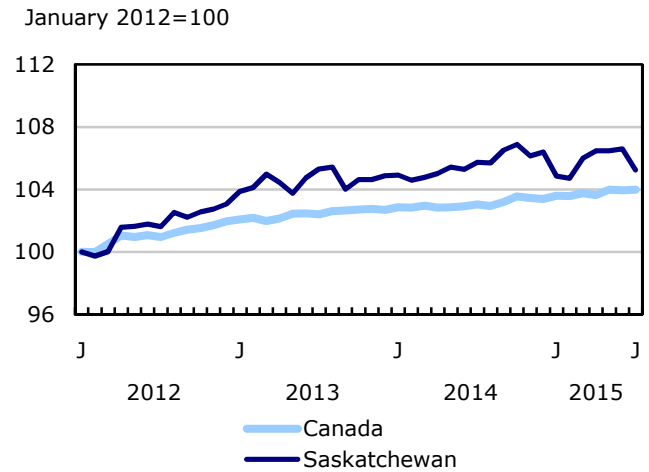
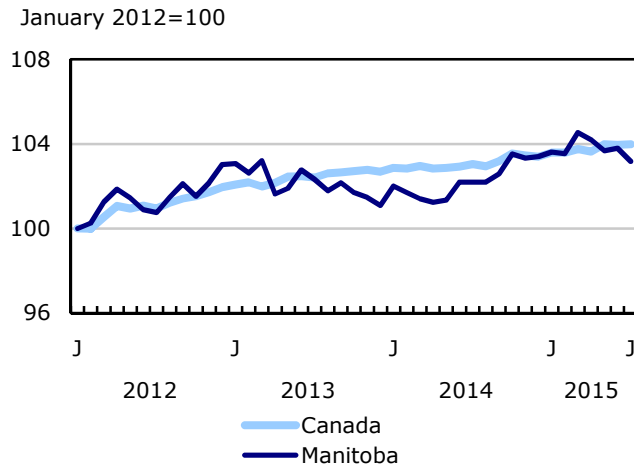


Chart 7
Employment indexes by province, Canada, seasonally adjusted



Related products

Selected publications from Statistics Canada

71-526-X	Methodology of the Canadian Labour Force Survey
71-543-G	Guide to the Labour Force Survey
71-587-X	Aboriginal Peoples Living Off-reserve in Western Canada: Estimates from the Labour Force Survey
71-588-X	The Aboriginal Labour Force Analysis Series
71-606-X	The Immigrant Labour Force Analysis Series
71F0031X	Improvements to the Labour Force Survey (LFS)
71M0001X	Labour Force Survey Microdata File

Selected CANSIM tables from Statistics Canada

279-0029	Work absence statistics of full-time employees, for Canada, provinces and census metropolitan area (CMA), and by sex, annual
279-0030	Work absence statistics of full-time employees, by sex and North American Industry Classification System (NAICS), Canada, annual
279-0031	Work absence statistics of full-time employees, by sex and National Occupational Classification for Statistics (NOC-S), Canada, annual
279-0032	Work absence statistics of full-time employees, by sex and age group, Canada, annual
279-0033	Work absence statistics of full-time employees, by sex and presence of children, Canada, annual
279-0034	Work absence statistics of full-time employees, by sex and job tenure, Canada, annual
279-0035	Work absence statistics of full-time employees, by sex and public and private sector, Canada, annual
279-0036	Work absence statistics of full-time employees, by sex and education, Canada, annual
279-0037	Work absence statistics of full-time employees, by sex and workplace size, Canada, annual
279-0038	Work absence statistics of full-time employees, by sex and job status, Canada, annual
279-0039	Work absence statistics of full-time employees, by sex and union coverage, Canada, annual

282-0001	Labour force survey estimates (LFS), by sex and detailed age group, unadjusted for seasonality, monthly
282-0002	Labour force survey estimates (LFS), by sex and detailed age group, annual
282-0003	Labour force survey estimates (LFS), by educational attainment, sex and age group, unadjusted for seasonality, monthly
282-0004	Labour force survey estimates (LFS), by educational attainment, sex and age group, annual
282-0005	Labour force survey estimates (LFS), by full- and part-time students during school months, sex and age group, unadjusted for seasonality, monthly
282-0006	Labour force survey estimates (LFS), by students during summer months, sex and age group, unadjusted for seasonality, monthly
282-0007	Labour force survey estimates (LFS), by North American Industry Classification System (NAICS), sex and age group, unadjusted for seasonality, monthly
282-0008	Labour force survey estimates (LFS), by North American Industry Classification System (NAICS), sex and age group, annual
282-0009	Labour force survey estimates (LFS), by National Occupational Classification for Statistics (NOC-S) and sex, unadjusted for seasonality, monthly
282-0010	Labour force survey estimates (LFS), by National Occupational Classification for Statistics (NOC-S) and sex, annual
282-0011	Labour force survey estimates (LFS), employment by class of worker, North American Industry Classification System (NAICS) and sex, unadjusted for seasonality, monthly
282-0012	Labour force survey estimates (LFS), employment by class of worker, North American Industry Classification System (NAICS) and sex, annual
282-0013	Labour force survey estimates (LFS), part-time employment by reason for part-time work, sex and age group, unadjusted for seasonality, monthly
282-0014	Labour force survey estimates (LFS), part-time employment by reason for part-time work, sex and age group, annual
282-0015	Labour force survey estimates (LFS), by usual hours worked, main or all jobs, sex and age group, unadjusted for seasonality, monthly
282-0016	Labour force survey estimates (LFS), by usual hours worked, main or all jobs, sex and age group, annual
282-0017	Labour force survey estimates (LFS), by actual hours worked, main or all jobs, sex and age group, unadjusted for seasonality, monthly
282-0018	Labour force survey estimates (LFS), by actual hours worked, main or all jobs, sex and age group, annual
282-0019	Labour force survey estimates (LFS), by usual hours worked, class of worker, North American Industry Classification System (NAICS) and sex, unadjusted for seasonality, monthly

282-0020	Labour force survey estimates (LFS), by usual hours worked, class of worker, North American Industry Classification System (NAICS) and sex, annual
282-0021	Labour force survey estimates (LFS), by actual hours worked, class of worker, North American Industry Classification System (NAICS) and sex, unadjusted for seasonality, monthly
282-0022	Labour force survey estimates (LFS), by actual hours worked, class of worker, North American Industry Classification System (NAICS) and sex, annual
282-0023	Labour force survey estimates (LFS), by usual hours worked, class of worker, National Occupational Classification for Statistics (NOC-S) and sex, unadjusted for seasonality, monthly
282-0024	Labour force survey estimates (LFS), by usual hours worked, class of worker, National Occupational Classification for Statistics (NOC-S) and sex, annual
282-0025	Labour force survey estimates (LFS), by actual hours worked, class of worker, National Occupational Classification for Statistics (NOC-S) and sex, unadjusted for seasonality, monthly
282-0026	Labour force survey estimates (LFS), by actual hours worked, class of worker, National Occupational Classification for Statistics (NOC-S) and sex, annual
282-0027	Labour force survey estimates (LFS), by total and average usual and actual hours worked, main or all jobs, type of work, sex and age group, unadjusted for seasonality, monthly
282-0028	Labour force survey estimates (LFS), by total and average usual and actual hours worked, main or all jobs, type of work, sex and age group, annual
282-0031	Labour force survey estimates (LFS), multiple jobholders by North American Industry Classification System (NAICS), sex and age group, annual
282-0032	Labour force survey estimates (LFS), multiple jobholders by North American Industry Classification System (NAICS), sex and age group, unadjusted for seasonality, monthly
282-0033	Labour force survey estimates (LFS), multiple jobholders by National Occupational Classification for Statistics (NOC-S), sex and age group, unadjusted for seasonality, monthly
282-0034	Labour force survey estimates (LFS), multiple jobholders by National Occupational Classification for Statistics (NOC-S), sex and age group, annual
282-0035	Labour force survey estimates (LFS), multiple jobholders by usual hours worked at main and all jobs, unadjusted for seasonality, monthly
282-0036	Labour force survey estimates (LFS), multiple jobholders by usual hours worked at main and all jobs, annual
282-0037	Labour force survey estimates (LFS), job tenure by type of work, sex and age group, unadjusted for seasonality, monthly
282-0038	Labour force survey estimates (LFS), job tenure by type of work, sex and age group, annual
282-0039	Labour force survey estimates (LFS), job tenure by National Occupational Classification for Statistics (NOC-S) and sex, unadjusted for seasonality, monthly
282-0040	Labour force survey estimates (LFS), job tenure by National Occupational Classification for Statistics (NOC-S) and sex, annual

282-0041	Labour force survey estimates (LFS), job tenure by North American Industry Classification System (NAICS) and sex, unadjusted for seasonality, monthly
282-0042	Labour force survey estimates (LFS), job tenure by North American Industry Classification System (NAICS) and sex, annual
282-0047	Labour force survey estimates (LFS), duration of unemployment by sex and age group, unadjusted for seasonality, monthly
282-0048	Labour force survey estimates (LFS), duration of unemployment by sex and age group, annual
282-0049	Labour force survey estimates (LFS), unemployment by type of work sought and search method, sex and age group, unadjusted for seasonality, monthly
282-0050	Labour force survey estimates (LFS), unemployment by type of work sought and search method, sex and age group, annual
282-0051	Labour force survey estimates (LFS), retirement age by class of worker and sex, annual
282-0069	Labour force survey estimates (LFS), wages of employees by type of work, National Occupational Classification for Statistics (NOC-S), sex and age group, unadjusted for seasonality, monthly
282-0070	Labour force survey estimates (LFS), wages of employees by type of work, National Occupational Classification for Statistics (NOC-S), sex and age group, annual
282-0071	Labour force survey estimates (LFS), wages of employees by type of work, North American Industry Classification System (NAICS), sex and age group, unadjusted for seasonality, monthly
282-0072	Labour force survey estimates (LFS), wages of employees by type of work, North American Industry Classification System (NAICS), sex and age group, annual
282-0073	Labour force survey estimates (LFS), wages of employees by job permanence, union coverage, sex and age group, unadjusted for seasonality, monthly
282-0074	Labour force survey estimates (LFS), wages of employees by job permanence, union coverage, sex and age group, annual
282-0075	Labour force survey estimates (LFS), employees by establishment size, North American Industry Classification System (NAICS), sex and age group, unadjusted for seasonality, monthly
282-0076	Labour force survey estimates (LFS), employees by establishment size, North American Industry Classification System (NAICS), sex and age group, annual
282-0077	Labour force survey estimates (LFS), employees by union coverage, North American Industry Classification System (NAICS), sex and age group, unadjusted for seasonality, monthly
282-0078	Labour force survey estimates (LFS), employees by union coverage, North American Industry Classification System (NAICS), sex and age group, annual
282-0079	Labour force survey estimates (LFS), employees by job permanency, North American Industry Classification System (NAICS), sex and age group, unadjusted for seasonality, monthly
282-0080	Labour force survey estimates (LFS), employees by job permanency, North American Industry Classification System (NAICS), sex and age group, annual

282-0081	Labour force survey estimates (LFS), employees working overtime (weekly) by National Occupational Classification for Statistics (NOC-S), sex and age group, unadjusted for seasonality, monthly
282-0082	Labour force survey estimates (LFS), employees working overtime (weekly) by National Occupational Classification for Statistics (NOC-S), sex and age group, annual
282-0083	Labour force survey estimates (LFS), employees working overtime (weekly) by North American Industry Classification System (NAICS), sex and age group, unadjusted for seasonality, monthly
282-0084	Labour force survey estimates (LFS), employees working overtime (weekly) by North American Industry Classification System (NAICS), sex and age group, annual
282-0085	Labour force survey estimates (LFS), supplementary unemployment rates by sex and age group, unadjusted for seasonality, monthly
282-0086	Labour force survey estimates (LFS), supplementary unemployment rates by sex and age group, annual
282-0087	Labour force survey estimates (LFS), by sex and age group, seasonally adjusted and unadjusted, monthly
282-0088	Labour force survey estimates (LFS), employment by North American Industry Classification System (NAICS), seasonally adjusted and unadjusted, monthly
282-0089	Labour force survey estimates (LFS), employment by class of worker and sex, seasonally adjusted and unadjusted, monthly
282-0092	Labour force survey estimates (LFS), actual hours worked at main job by North American Industry Classification System (NAICS), seasonally adjusted, monthly
282-0093	Labour force survey estimates (LFS), employment by National Occupational Classification for Statistics (NOC-S), seasonally adjusted, monthly
282-0094	Labour force survey estimates (LFS), by North American Industry Classification System (NAICS), Canada, seasonally adjusted, monthly
282-0095	Labour force survey estimates (LFS), by full- and part-time students during school months, sex and age group, annual
282-0100	Labour force survey estimates (LFS), by territories, sex and age group, 3-month moving average, seasonally adjusted and unadjusted, monthly
282-0101	Labour force survey estimates (LFS), by immigrant status, age group, Canada, regions, provinces and Montreal, Toronto, Vancouver census metropolitan areas, 3-month moving average, unadjusted for seasonality, monthly
282-0102	Labour force survey estimates (LFS), by immigrant status, age group, Canada, regions, provinces and Montreal, Toronto, Vancouver census metropolitan areas, annual
282-0103	Labour force survey estimates (LFS), by immigrant status, sex and detailed age group, Canada, 3-month moving average, unadjusted for seasonality, monthly
282-0104	Labour force survey estimates (LFS), by immigrant status, sex and detailed age group, Canada, annual

282-0105	Labour force survey estimates (LFS), by immigrant status, educational attainment, sex and age group, Canada, 3-month moving average, unadjusted for seasonality, monthly
282-0106	Labour force survey estimates (LFS), by immigrant status, educational attainment, sex and age group, Canada, annual
282-0107	Labour force survey estimates (LFS), by immigrant status, country of birth, sex and age group, Canada, 3-month moving average, unadjusted for seasonality, monthly
282-0108	Labour force survey estimates (LFS), by immigrant status, country of birth, sex and age group, Canada, annual
282-0122	Labour force survey estimates (LFS), by provinces and economic regions based on 2011 census boundaries, 3-month moving average, unadjusted for seasonality, monthly
282-0123	Labour force survey estimates (LFS), by provinces, territories and economic regions based on 2011 census boundaries, annual
282-0124	Labour force survey estimates (LFS), employment by economic region based on 2011 census boundaries and North American Industry Classification System (NAICS), 3-month moving average, unadjusted for seasonality, monthly
282-0125	Labour force survey estimates (LFS), employment by economic region based on 2011 census boundaries and North American Industry Classification System (NAICS), annual
282-0126	Labour force survey estimates (LFS), employment by economic region based on 2011 census boundaries and National Occupational Classification for Statistics (NOC-S), 3-month moving average, unadjusted for seasonality, monthly
282-0127	Labour force survey estimates (LFS), employment by economic region based on 2011 census boundaries and National Occupational Classification for Statistics (NOC-S), annual
282-0128	Labour force survey estimates (LFS), by census metropolitan area based on 2011 census boundaries, sex and age group, 3-month moving average, unadjusted for seasonality, monthly
282-0129	Labour force survey estimates (LFS), by census metropolitan area based on 2011 census boundaries, sex and age group, annual
282-0130	Labour force survey estimates (LFS), employment by census metropolitan area based on 2011 census boundaries and North American Industry Classification System (NAICS), 3-month moving average, unadjusted for seasonality, monthly
282-0131	Labour force survey estimates (LFS), employment by census metropolitan area based on 2011 census boundaries and North American Industry Classification System (NAICS), annual
282-0132	Labour force survey estimates (LFS), employment by census metropolitan area based on 2011 census boundaries and National Occupational Classification for Statistics (NOC-S), 3-month moving average, unadjusted for seasonality, monthly
282-0133	Labour force survey estimates (LFS), employment by census metropolitan area based on 2011 census boundaries and National Occupational Classification for Statistics (NOC-S), annual

282-0134	Labour force survey estimates (LFS), by selected census agglomerations based on 2011 census boundaries, annual
282-0135	Labour force survey estimates (LFS), by census metropolitan area based on 2011 census boundaries, 3-month moving average, seasonally adjusted and unadjusted, monthly
282-0136	Labour force survey estimates (LFS), by Montréal, Toronto and Vancouver census metropolitan areas based on 2011 census boundaries, seasonally adjusted and unadjusted, monthly
282-0137	Labour force survey estimates (LFS), by population centres and rural areas based on 2011 census boundaries, sex and age group, unadjusted for seasonality, monthly
282-0138	Labour force survey estimates (LFS), by population centres and rural areas based on 2011 census boundaries, sex and age group, annual
282-0139	Labour force survey estimates (LFS), employment by population centres and rural areas based on 2011 census boundaries, class of worker and North American Industry Classification System (NAICS), unadjusted for seasonality, monthly
282-0140	Labour force survey estimates (LFS), employment by population centres and rural areas based on 2011 census boundaries, class of worker and North American Industry Classification System (NAICS), annual
282-0200	Labour force survey estimates (LFS), weekly wage distributions of employees by type of work, North American Industry Classification System (NAICS), and sex, unadjusted for seasonality, monthly
282-0201	Labour force survey estimates (LFS), weekly wage distributions of employees by type of work, North American Industry Classification System (NAICS), and sex, annual
282-0202	Labour force survey estimates (LFS), weekly wage distributions of employees by type of work, National Occupational Classification for Statistics (NOC-S), and sex, unadjusted for seasonality, monthly
282-0203	Labour force survey estimates (LFS), weekly wage distributions of employees by type of work, National Occupational Classification for Statistics (NOC-S), and sex, annual
282-0204	Labour force survey estimates (LFS), hourly wage distributions of employees by type of work, North American Industry Classification System (NAICS), and sex, unadjusted for seasonality, monthly
282-0205	Labour force survey estimates (LFS), hourly wage distributions of employees by type of work, North American Industry Classification System (NAICS), and sex, annual
282-0206	Labour force survey estimates (LFS), hourly wage distribution of employees by type of work, National Occupational Classification for Statistics (NOC-S), and sex, unadjusted for seasonality, monthly
282-0207	Labour force survey estimates (LFS), hourly wage distribution of employees by type of work, National Occupational Classification for Statistics (NOC-S), and sex, annual
282-0208	Labour force survey estimates (LFS), by educational degree, sex and age group, unadjusted for seasonality, monthly
282-0209	Labour force survey estimates (LFS), by educational degree, sex and age group, annual

282-0210	Labour force survey estimates (LFS), by family type and family age composition, unadjusted for seasonality, monthly
282-0211	Labour force survey estimates (LFS), by family type and family age composition, annual
282-0212	Labour force survey estimates (LFS), hours lost by employees by reason absent full and part week and sex, unadjusted for seasonality, monthly
282-0213	Labour force survey estimates (LFS), hours lost by employees by reason absent full and part week and sex, annual
282-0214	Labour force survey estimates (LFS), activity prior to unemployment by sex and age group, unadjusted for seasonality, monthly
282-0215	Labour force survey estimates (LFS), activity prior to unemployment, by sex and age group, annual
282-0216	Labour force survey estimates (LFS), reason for leaving job during previous year by sex and age group, unadjusted for seasonality, monthly
282-0217	Labour force survey estimates (LFS), reason for leaving job during previous year by sex and age group, annual
282-0218	Labour force survey estimates (LFS), reason for not looking for work, by sex and age group, unadjusted for seasonality, monthly
282-0219	Labour force survey estimates (LFS), reason for not looking for work, by sex and age group, annual
282-0220	Labour Force Survey estimates (LFS), employees by union status, sex and age group, Canada and provinces, annual
282-0221	Labour Force Survey estimates (LFS), employees by union status, sex, age group and education level, Canada, annual
282-0222	Labour Force Survey estimates (LFS), employees by union status and National Occupational Classification (NOC-S), Canada, annual
282-0223	Labour Force Survey estimates (LFS), employees by union status, North American Industry Classification System (NAICS) and sex, Canada, annual
282-0224	Labour Force Survey estimates (LFS), employees by union status, establishment size, job tenure, type of work and job permanency, Canada, annual
282-0225	Labour Force Survey estimates (LFS), average weekly earnings, average hourly wage rate and average usual weekly hours by union status and type of work, Canada and provinces, annual

Selected surveys from Statistics Canada

3701	Labour Force Survey
------	---------------------

Selected summary tables from Statistics Canada

- *Average hourly wages of employees by selected characteristics and occupation, unadjusted data, by province (monthly)*
- *Days lost per worker by industry and sex*
- *People employed, by educational attainment*
- *Reasons for part-time work by sex and age group*
- *Self-employment, historical summary*
- *Employment by age, sex, type of work, class of worker and province (monthly)*
- *Actual hours worked per week by industry, seasonally adjusted (monthly)*
- *Labour force characteristics, unadjusted, by territory (3 month moving average)*
- *Employment by industry and sex*
- *Full-time and part-time employment by sex and age group*
- *Labour force characteristics by age and sex*
- *Labour force characteristics, population 15 years and older, by economic region, by province*
- *Labour force characteristics by immigrant status of population aged 25 to 54, and by educational attainment*
- *Labour force characteristics by immigrant status, by detailed age group*
- *Labour force characteristics by immigrant status of population aged 25 to 54, by country of birth*
- *Days lost per worker due to illness or disability, by sex, by province*
- *Employment by industry*
- *Labour force characteristics, seasonally adjusted, by province (monthly)*
- *Labour force characteristics, unadjusted, by province (monthly)*
- *Labour force characteristics, unadjusted, by economic region (3 month moving average)*
- *Labour force, employment and unemployment, levels and rates, by province*
- *Economic indicators, by province and territory (monthly and quarterly)*
- *Days lost per worker by reason, by provinces*
- *Labour force characteristics, population 15 years and older, by census metropolitan area*
- *Labour force characteristics, seasonally adjusted, by census metropolitan area (3 month moving average)*
- *Labour force characteristics, unadjusted, by census metropolitan area (3 month moving average)*

- *Distribution of employed people, by industry, by province*
- *Employment by major industry group, seasonally adjusted, by province (monthly)*
- *Labour force characteristics*
- *Canada: Economic and financial data*
- *Labour force characteristics by sex and age group*
- *Labour force characteristics by immigrant status of population aged 25 to 54, by province*
- *Latest statistics (monthly)*

Statistical tables

Table 1
Labour force characteristics by age and sex, Canada, seasonally adjusted

	June 2015	July 2015	S.E. ¹	Change from			Percent change from		
				last month	last December	twelve months ago	last month	last December	twelve months ago
in thousands (except rates)									
15 years and over, both sexes									
Population	29,266.5	29,296.1	...	29.6	179.5	291.8	0.1	0.6	1.0
Labour force	19,251.3	19,260.0	29.2	8.7	132.3	118.6	0.0	0.7	0.6
Employment	17,947.4	17,954.0	29.1	6.6	102.5	161.4	0.0	0.6	0.9
Employment full-time	14,602.6	14,585.3	41.8	-17.3	119.3	255.4	-0.1	0.8	1.8
Employment part-time	3,344.8	3,368.7	38.4	23.9	-16.8	-94.0	0.7	-0.5	-2.7
Unemployment	1,303.9	1,306.0	24.9	2.1	29.8	-42.8	0.2	2.3	-3.2
Participation rate	65.8	65.7	0.1	-0.1	0.0	-0.3
Unemployment rate	6.8	6.8	0.1	0.0	0.1	-0.2
Employment rate	61.3	61.3	0.1	0.0	0.0	0.0
Part-time rate	18.6	18.8	0.2	0.1	-0.2	-0.7
15 to 24 years, both sexes									
Population	4,434.2	4,431.9	...	-2.3	-23.1	-42.9	-0.1	-0.5	-1.0
Labour force	2,837.9	2,834.2	17.1	-3.7	-41.6	-32.8	-0.1	-1.4	-1.1
Employment	2,472.2	2,461.0	16.0	-11.2	-27.9	-25.7	-0.5	-1.1	-1.0
Employment full-time	1,295.7	1,266.7	19.8	-29.0	-22.8	6.0	-2.2	-1.8	0.5
Employment part-time	1,176.5	1,194.3	20.9	17.8	-5.0	-31.8	1.5	-0.4	-2.6
Unemployment	365.8	373.2	14.8	7.4	-13.8	-7.1	2.0	-3.6	-1.9
Participation rate	64.0	63.9	0.4	-0.1	-0.7	-0.2
Unemployment rate	12.9	13.2	0.5	0.3	-0.3	-0.1
Employment rate	55.8	55.5	0.4	-0.3	-0.4	-0.1
Part-time rate	47.6	48.5	0.8	0.9	0.3	-0.8
25 years and over, men									
Population	12,146.2	12,162.5	...	16.3	100.9	164.3	0.1	0.8	1.4
Labour force	8,731.8	8,749.9	15.8	18.1	118.2	121.5	0.2	1.4	1.4
Employment	8,200.6	8,219.1	16.9	18.5	75.6	135.0	0.2	0.9	1.7
Employment full-time	7,572.7	7,603.0	23.1	30.3	100.8	157.8	0.4	1.3	2.1
Employment part-time	627.9	616.1	18.9	-11.8	-25.2	-22.8	-1.9	-3.9	-3.6
Unemployment	531.2	530.8	14.8	-0.4	42.6	-13.4	-0.1	8.7	-2.5
Participation rate	71.9	71.9	0.1	0.0	0.3	0.0
Unemployment rate	6.1	6.1	0.2	0.0	0.4	-0.2
Employment rate	67.5	67.6	0.1	0.1	0.1	0.2
Part-time rate	7.7	7.5	0.2	-0.2	-0.4	-0.4
25 years and over, women									
Population	12,686.1	12,701.7	...	15.6	101.8	170.5	0.1	0.8	1.4
Labour force	7,681.6	7,675.9	16.4	-5.7	55.7	29.9	-0.1	0.7	0.4
Employment	7,274.7	7,274.0	16.4	-0.7	54.8	52.3	0.0	0.8	0.7
Employment full-time	5,734.2	5,715.7	27.4	-18.5	41.5	91.7	-0.3	0.7	1.6
Employment part-time	1,540.5	1,558.3	25.9	17.8	13.4	-39.4	1.2	0.9	-2.5
Unemployment	406.9	401.9	13.1	-5.0	0.9	-22.4	-1.2	0.2	-5.3
Participation rate	60.6	60.4	0.1	-0.2	-0.1	-0.6
Unemployment rate	5.3	5.2	0.2	-0.1	-0.1	-0.3
Employment rate	57.3	57.3	0.1	0.0	0.0	-0.3
Part-time rate	21.2	21.4	0.3	0.2	0.0	-0.7
25 to 54 years, both sexes									
Population	14,583.8	14,590.2	...	6.4	20.8	23.5	0.0	0.1	0.2
Labour force	12,613.3	12,621.0	23.8	7.7	59.1	74.3	0.1	0.5	0.6
Employment	11,895.2	11,914.5	25.7	19.3	38.2	119.6	0.2	0.3	1.0
Unemployment	718.1	706.6	18.5	-11.5	21.0	-45.2	-1.6	3.1	-6.0
Participation rate	86.5	86.5	0.2	0.0	0.3	0.4
Unemployment rate	5.7	5.6	0.1	-0.1	0.1	-0.4
Employment rate	81.6	81.7	0.2	0.1	0.2	0.7
25 to 54 years, men									
Population	7,262.7	7,266.3	...	3.6	9.9	8.6	0.0	0.1	0.1
Labour force	6,601.6	6,613.2	15.5	11.6	21.8	47.1	0.2	0.3	0.7
Employment	6,199.7	6,219.0	17.3	19.3	-3.2	65.6	0.3	-0.1	1.1
Unemployment	401.8	394.2	13.6	-7.6	25.0	-18.5	-1.9	6.8	-4.5
Participation rate	90.9	91.0	0.2	0.1	0.2	0.5
Unemployment rate	6.1	6.0	0.2	-0.1	0.4	-0.3
Employment rate	85.4	85.6	0.2	0.2	-0.1	0.8

See notes at the end of the table.

Table 1 – continued

Labour force characteristics by age and sex, Canada, seasonally adjusted

	June 2015	July 2015	S.E. ¹	Change from			Percent change from		
				last month	last December	twelve months ago	last month	last December	twelve months ago
in thousands (except rates)									
25 to 54 years, women									
Population	7,321.1	7,324.0	...	2.9	11.0	15.0	0.0	0.2	0.2
Labour force	6,011.7	6,007.8	17.2	-3.9	37.3	27.2	-0.1	0.6	0.5
Employment	5,695.4	5,695.5	17.8	0.1	41.4	54.0	0.0	0.7	1.0
Unemployment	316.3	312.3	12.3	-4.0	-4.1	-26.7	-1.3	-1.3	-7.9
Participation rate	82.1	82.0	0.2	-0.1	0.4	0.2
Unemployment rate	5.3	5.2	0.2	-0.1	-0.1	-0.5
Employment rate	77.8	77.8	0.2	0.0	0.5	0.6
55 years and over, both sexes									
Population	10,248.5	10,274.0	...	25.5	181.9	311.3	0.2	1.8	3.1
Labour force	3,800.1	3,804.7	20.3	4.6	114.7	77.0	0.1	3.1	2.1
Employment	3,580.0	3,578.6	20.4	-1.4	92.2	67.7	0.0	2.6	1.9
Unemployment	220.1	226.1	10.1	6.0	22.5	9.3	2.7	11.1	4.3
Participation rate	37.1	37.0	0.2	-0.1	0.4	-0.4
Unemployment rate	5.8	5.9	0.3	0.1	0.4	0.1
Employment rate	34.9	34.8	0.2	-0.1	0.3	-0.4
55 years and over, men									
Population	4,883.5	4,896.2	...	12.7	91.0	155.7	0.3	1.9	3.3
Labour force	2,130.2	2,136.7	13.3	6.5	96.4	74.5	0.3	4.7	3.6
Employment	2,000.8	2,000.1	13.7	-0.7	78.8	69.3	0.0	4.1	3.6
Unemployment	129.4	136.6	7.6	7.2	17.6	5.1	5.6	14.8	3.9
Participation rate	43.6	43.6	0.3	0.0	1.1	0.1
Unemployment rate	6.1	6.4	0.4	0.3	0.6	0.0
Employment rate	41.0	40.9	0.3	-0.1	0.9	0.2
55 years and over, women									
Population	5,365.0	5,377.7	...	12.7	90.8	155.5	0.2	1.7	3.0
Labour force	1,669.9	1,668.0	13.8	-1.9	18.3	2.6	-0.1	1.1	0.2
Employment	1,579.2	1,578.5	13.7	-0.7	13.4	-1.7	0.0	0.9	-0.1
Unemployment	90.7	89.5	6.5	-1.2	4.9	4.2	-1.3	5.8	4.9
Participation rate	31.1	31.0	0.3	-0.1	-0.2	-0.9
Unemployment rate	5.4	5.4	0.4	0.0	0.3	0.3
Employment rate	29.4	29.4	0.3	0.0	-0.2	-0.9

1. Average standard error of change in two consecutive months (see "Sampling Errors" in Data Quality for further explanations).

Note(s): Related CANSIM table 282-0087. The sum of individual categories may not always add to the total due to rounding.

Table 2
Employment by class of worker and industry, Canada, seasonally adjusted

	June 2015	July 2015	S.E. ¹	Change from			Percent change from		
				last month	last December	twelve months ago	last month	last December	twelve months ago
in thousands									
Class of worker									
Employees	15,219.7	15,185.8	35.6	-33.9	59.5	104.7	-0.2	0.4	0.7
Self-employed ²	2,727.7	2,768.2	25.3	40.5	43.0	56.7	1.5	1.6	2.1
Public/private sector employees									
Public sector employees	3,608.7	3,602.9	20.7	-5.8	41.5	29.7	-0.2	1.2	0.8
Private sector employees	11,611.0	11,582.9	36.0	-28.1	18.0	75.0	-0.2	0.2	0.7
Industry	17,947.4	17,954.0	29.1	6.6	102.5	161.4	0.0	0.6	0.9
Goods-producing sector	3,869.4	3,857.2	16.7	-12.2	-50.3	-24.8	-0.3	-1.3	-0.6
Agriculture	287.9	287.3	5.8	-0.6	-16.0	-18.0	-0.2	-5.3	-5.9
Forestry, fishing, mining, quarrying, oil and gas extraction ³	358.3	356.3	5.5	-2.0	-21.2	-9.6	-0.6	-5.6	-2.6
Utilities	138.7	142.0	2.4	3.3	3.7	7.3	2.4	2.7	5.4
Construction	1,371.5	1,363.2	11.4	-8.3	-25.3	0.0	-0.6	-1.8	0.0
Manufacturing	1,713.0	1,708.4	10.7	-4.6	8.5	-4.6	-0.3	0.5	-0.3
Services-producing sector	14,078.0	14,096.8	27.5	18.8	152.9	186.3	0.1	1.1	1.3
Trade	2,742.4	2,738.0	14.3	-4.4	22.5	-3.0	-0.2	0.8	-0.1
Transportation and warehousing	931.7	929.5	8.2	-2.2	25.3	42.7	-0.2	2.8	4.8
Finance, insurance, real estate and leasing	1,116.8	1,106.6	8.6	-10.2	12.8	31.0	-0.9	1.2	2.9
Professional, scientific and technical services	1,360.8	1,379.7	10.6	18.9	50.9	37.9	1.4	3.8	2.8
Business, building and other support services	755.9	751.9	9.9	-4.0	0.7	44.4	-0.5	0.1	6.3
Educational services	1,283.6	1,293.0	10.4	9.4	36.6	27.0	0.7	2.9	2.1
Health care and social assistance	2,295.2	2,287.4	10.8	-7.8	42.2	69.9	-0.3	1.9	3.2
Information, culture and recreation	740.1	748.4	9.7	8.3	-11.7	-5.9	1.1	-1.5	-0.8
Accommodation and food services	1,214.1	1,208.0	11.6	-6.1	-8.2	6.7	-0.5	-0.7	0.6
Other services	746.0	753.9	8.3	7.9	-8.7	-44.8	1.1	-1.1	-5.6
Public administration	891.4	900.4	6.9	9.0	-9.7	-19.6	1.0	-1.1	-2.1

1. Average standard error of change in two consecutive months (see "Sampling Errors" in Data Quality for further explanations).

2. Includes both incorporated and unincorporated working owners, self-employed persons who do not have a business and persons working in a family business without pay.

3. Also referred to as Natural resources.

Note(s): Related CANSIM Tables 282-0088, 282-0089. The sum of individual categories may not always add to the total due to rounding.

Table 3
Labour force characteristics by province, seasonally adjusted

	June 2015	July 2015	S.E.	Change from			Percent change from		
				last month	last December	twelve months ago	last month	last December	twelve months ago
in thousands (except rates)									
Newfoundland and Labrador									
Population	442.8	442.5	...	-0.3	-0.8	-1.3	-0.1	-0.2	-0.3
Labour force	270.5	268.3	2.0	-2.2	-0.4	-1.7	-0.8	-0.1	-0.6
Employment	237.1	236.5	2.1	-0.6	-0.6	-1.3	-0.3	-0.3	-0.5
Employment full-time	204.4	205.5	2.7	1.1	1.9	5.9	0.5	0.9	3.0
Employment part-time	32.7	31.0	2.1	-1.7	-2.5	-7.2	-5.2	-7.5	-18.8
Unemployment	33.4	31.8	2.0	-1.6	0.2	-0.4	-4.8	0.6	-1.2
Participation rate	61.1	60.6	0.5	-0.5	0.0	-0.2
Unemployment rate	12.3	11.9	0.7	-0.4	0.1	0.0
Employment rate	53.5	53.4	0.5	-0.1	-0.1	-0.2
Prince Edward Island									
Population	120.9	120.9	...	0.0	0.2	0.2	0.0	0.2	0.2
Labour force	82.1	81.7	0.6	-0.4	-0.5	0.0	-0.5	-0.6	0.0
Employment	73.0	72.2	0.6	-0.8	-0.9	-1.9	-1.1	-1.2	-2.6
Employment full-time	59.9	59.7	0.9	-0.2	-2.3	-2.3	-0.3	-3.7	-3.7
Employment part-time	13.2	12.5	0.7	-0.7	1.4	0.3	-5.3	12.6	2.5
Unemployment	9.1	9.5	0.6	0.4	0.4	1.9	4.4	4.4	25.0
Participation rate	67.9	67.6	0.5	-0.3	-0.5	-0.1
Unemployment rate	11.1	11.6	0.7	0.5	0.5	2.3
Employment rate	60.4	59.7	0.5	-0.7	-0.9	-1.7
Nova Scotia									
Population	785.2	785.8	...	0.6	1.7	3.0	0.1	0.2	0.4
Labour force	485.0	489.3	2.6	4.3	-2.8	-3.3	0.9	-0.6	-0.7
Employment	446.4	449.5	2.7	3.1	-1.5	3.8	0.7	-0.3	0.9
Employment full-time	364.2	369.4	3.8	5.2	0.4	7.6	1.4	0.1	2.1
Employment part-time	82.2	80.1	3.3	-2.1	-1.9	-3.8	-2.6	-2.3	-4.5
Unemployment	38.7	39.8	2.4	1.1	-1.3	-7.1	2.8	-3.2	-15.1
Participation rate	61.8	62.3	0.3	0.5	-0.5	-0.6
Unemployment rate	8.0	8.1	0.5	0.1	-0.3	-1.4
Employment rate	56.9	57.2	0.3	0.3	-0.3	0.3
New Brunswick									
Population	621.9	621.9	...	0.0	0.2	0.5	0.0	0.0	0.1
Labour force	390.5	390.4	2.2	-0.1	0.2	0.4	0.0	0.1	0.1
Employment	348.2	347.5	2.3	-0.7	-3.7	-3.7	-0.2	-1.1	-1.1
Employment full-time	293.2	297.7	3.1	4.5	2.2	4.2	1.5	0.7	1.4
Employment part-time	55.0	49.8	2.7	-5.2	-5.9	-7.9	-9.5	-10.6	-13.7
Unemployment	42.2	42.9	2.1	0.7	3.9	4.0	1.7	10.0	10.3
Participation rate	62.8	62.8	0.4	0.0	0.0	0.0
Unemployment rate	10.8	11.0	0.5	0.2	1.0	1.0
Employment rate	56.0	55.9	0.4	-0.1	-0.6	-0.6
Quebec									
Population	6,841.5	6,845.1	...	3.6	22.8	39.0	0.1	0.3	0.6
Labour force	4,429.5	4,438.5	14.8	9.0	49.0	27.7	0.2	1.1	0.6
Employment	4,075.5	4,097.2	14.8	21.7	36.1	43.7	0.5	0.9	1.1
Employment full-time	3,294.1	3,297.4	21.4	3.3	35.7	57.1	0.1	1.1	1.8
Employment part-time	781.4	799.8	19.6	18.4	0.4	-13.3	2.4	0.1	-1.6
Unemployment	354.0	341.3	13.2	-12.7	12.9	-16.1	-3.6	3.9	-4.5
Participation rate	64.7	64.8	0.2	0.1	0.5	0.0
Unemployment rate	8.0	7.7	0.3	-0.3	0.2	-0.4
Employment rate	59.6	59.9	0.2	0.3	0.4	0.3
Ontario									
Population	11,378.1	11,390.4	...	12.3	70.0	113.4	0.1	0.6	1.0
Labour force	7,426.0	7,424.1	19.7	-1.9	16.9	-11.5	0.0	0.2	-0.2
Employment	6,945.7	6,945.7	19.6	0.0	60.7	67.4	0.0	0.9	1.0
Employment full-time	5,647.0	5,642.4	28.3	-4.6	102.3	131.0	-0.1	1.8	2.4
Employment part-time	1,298.7	1,303.4	25.6	4.7	-41.5	-63.5	0.4	-3.1	-4.6
Unemployment	480.3	478.4	16.9	-1.9	-43.8	-78.9	-0.4	-8.4	-14.2
Participation rate	65.3	65.2	0.2	-0.1	-0.2	-0.7
Unemployment rate	6.5	6.4	0.2	-0.1	-0.6	-1.1
Employment rate	61.0	61.0	0.2	0.0	0.2	0.0

See notes at the end of the table.

Table 3 – continued

Labour force characteristics by province, seasonally adjusted

	June 2015	July 2015	S.E. ¹	Change from			Percent change from		
				last month	last December	twelve months ago	last month	last December	twelve months ago
in thousands (except rates)									
Manitoba									
Population	986.4	987.6	...	1.2	6.1	10.1	0.1	0.6	1.0
Labour force	671.8	669.7	2.5	-2.1	-0.3	8.9	-0.3	0.0	1.3
Employment	636.1	632.3	2.5	-3.8	-1.5	6.0	-0.6	-0.2	1.0
Employment full-time	512.1	509.7	3.8	-2.4	-5.2	9.3	-0.5	-1.0	1.9
Employment part-time	124.1	122.6	3.6	-1.5	3.7	-3.3	-1.2	3.1	-2.6
Unemployment	35.7	37.4	2.1	1.7	1.2	2.9	4.8	3.3	8.4
Participation rate	68.1	67.8	0.3	-0.3	-0.5	0.2
Unemployment rate	5.3	5.6	0.3	0.3	0.2	0.4
Employment rate	64.5	64.0	0.3	-0.5	-0.6	-0.1
Saskatchewan									
Population	861.1	861.9	...	0.8	4.9	8.7	0.1	0.6	1.0
Labour force	604.7	599.6	2.6	-5.1	2.3	8.8	-0.8	0.4	1.5
Employment	576.1	568.7	2.7	-7.4	-6.3	-2.7	-1.3	-1.1	-0.5
Employment full-time	474.8	464.6	3.7	-10.2	-15.1	-10.3	-2.1	-3.1	-2.2
Employment part-time	101.4	104.2	3.4	2.8	8.9	7.7	2.8	9.3	8.0
Unemployment	28.6	30.9	2.0	2.3	8.6	11.5	8.0	38.6	59.3
Participation rate	70.2	69.6	0.3	-0.6	-0.1	0.4
Unemployment rate	4.7	5.2	0.3	0.5	1.5	1.9
Employment rate	66.9	66.0	0.3	-0.9	-1.1	-1.0
Alberta									
Population	3,354.0	3,360.4	...	6.4	43.2	71.1	0.2	1.3	2.2
Labour force	2,441.5	2,446.1	10.0	4.6	32.7	61.0	0.2	1.4	2.6
Employment	2,302.5	2,298.2	10.2	-4.3	-2.0	21.0	-0.2	-0.1	0.9
Employment full-time	1,918.9	1,920.5	14.2	1.6	-3.8	23.1	0.1	-0.2	1.2
Employment part-time	383.6	377.7	12.7	-5.9	1.8	-2.1	-1.5	0.5	-0.6
Unemployment	139.1	147.8	7.9	8.7	34.6	39.9	6.3	30.6	37.0
Participation rate	72.8	72.8	0.3	0.0	0.0	0.3
Unemployment rate	5.7	6.0	0.3	0.3	1.3	1.5
Employment rate	68.6	68.4	0.3	-0.2	-0.9	-0.8
British Columbia									
Population	3,874.4	3,879.5	...	5.1	31.1	47.0	0.1	0.8	1.2
Labour force	2,449.5	2,452.3	10.1	2.8	35.2	28.4	0.1	1.5	1.2
Employment	2,306.6	2,306.0	10.1	-0.6	22.1	28.9	0.0	1.0	1.3
Employment full-time	1,834.1	1,818.4	14.9	-15.7	3.3	29.9	-0.9	0.2	1.7
Employment part-time	472.5	487.7	14.4	15.2	18.9	-0.8	3.2	4.0	-0.2
Unemployment	142.9	146.2	8.2	3.3	13.0	-0.7	2.3	9.8	-0.5
Participation rate	63.2	63.2	0.3	0.0	0.4	0.0
Unemployment rate	5.8	6.0	0.3	0.2	0.5	-0.1
Employment rate	59.5	59.4	0.3	-0.1	0.1	0.0

1. Average standard error of change in two consecutive months (see "Sampling Errors" in Data Quality for further explanations).

Note(s): Related CANSIM Table 282-0087. The sum of individual categories may not always add to the total due to rounding.

Table 4-1
Selected labour force characteristics (seasonally adjusted) — Newfoundland and Labrador

	June 2015	July 2015	S.E.	Change from			Percent change from		
				last month	last December	twelve months ago	last month	last December	twelve months ago
in thousands (except rates)									
Both sexes, 15 years and over									
Population	442.8	442.5	...	-0.3	-0.8	-1.3	-0.1	-0.2	-0.3
Labour force	270.5	268.3	2.0	-2.2	-0.4	-1.7	-0.8	-0.1	-0.6
Employment	237.1	236.5	2.1	-0.6	-0.6	-1.3	-0.3	-0.3	-0.5
Employment full-time	204.4	205.5	2.7	1.1	1.9	5.9	0.5	0.9	3.0
Unemployment	33.4	31.8	2.0	-1.6	0.2	-0.4	-4.8	0.6	-1.2
Participation rate	61.1	60.6	0.5	-0.5	0.0	-0.2
Unemployment rate	12.3	11.9	0.7	-0.4	0.1	0.0
Employment rate	53.5	53.4	0.5	-0.1	-0.1	-0.2
Part-time rate	13.8	13.1	0.9	-0.7	-1.0	-3.0
Both sexes, 15 to 24 years									
Population	56.2	56.0	...	-0.2	-1.3	-2.2	-0.4	-2.3	-3.8
Labour force	36.2	35.4	1.0	-0.8	-0.4	0.9	-2.2	-1.1	2.6
Employment	29.8	29.7	0.9	-0.1	-0.4	0.5	-0.3	-1.3	1.7
Unemployment	6.4	5.7	0.9	-0.7	0.0	0.4	-10.9	0.0	7.5
Participation rate	64.4	63.2	1.8	-1.2	0.7	3.9
Unemployment rate	17.7	16.1	2.3	-1.6	0.2	0.7
Employment rate	53.0	53.0	1.6	0.0	0.5	2.8
Part-time rate	38.3	32.0	3.6	-6.3	-8.9	-9.1
Men, 25 years and over									
Population	188.4	188.4	...	0.0	0.3	0.4	0.0	0.2	0.2
Labour force	122.7	122.7	1.2	0.0	-0.7	-3.6	0.0	-0.6	-2.9
Employment	106.2	106.4	1.4	0.2	-1.1	-1.2	0.2	-1.0	-1.1
Unemployment	16.5	16.4	1.4	-0.1	0.4	-2.3	-0.6	2.5	-12.3
Participation rate	65.1	65.1	0.6	0.0	-0.5	-2.1
Unemployment rate	13.4	13.4	1.1	0.0	0.4	-1.4
Employment rate	56.4	56.5	0.7	0.1	-0.7	-0.7
Part-time rate	5.4	5.4	0.9	0.0	0.9	-1.7
Women, 25 years and over									
Population	198.2	198.1	...	-0.1	0.2	0.5	-0.1	0.1	0.3
Labour force	111.6	110.2	1.1	-1.4	0.7	0.9	-1.3	0.6	0.8
Employment	101.2	100.5	1.1	-0.7	1.0	-0.5	-0.7	1.0	-0.5
Unemployment	10.4	9.7	1.0	-0.7	-0.3	1.5	-6.7	-3.0	18.3
Participation rate	56.3	55.6	0.6	-0.7	0.3	0.3
Unemployment rate	9.3	8.8	0.9	-0.5	-0.3	1.3
Employment rate	51.1	50.7	0.6	-0.4	0.4	-0.4
Part-time rate	15.5	15.7	1.4	0.2	-0.7	-2.7
Industry									
Population	237.1	236.5	2.1	-0.6	-0.6	-1.3	-0.3	-0.3	-0.5
Goods-producing sector									
Agriculture	55.0	55.3	1.5	0.3	-1.0	2.3	0.5	-1.8	4.3
Forestry, fishing, mining, quarrying, oil and gas extraction ²	1.6	1.3	0.4	-0.3	-0.3	0.5	-18.8	-18.8	62.5
Utilities	16.3	16.6	0.8	0.3	-0.6	-1.0	1.8	-3.5	-5.7
Construction	2.7	2.9	0.3	0.2	-0.1	0.4	7.4	-3.3	16.0
Manufacturing	22.9	22.6	1.0	-0.3	-1.0	0.8	-1.3	-4.2	3.7
	11.4	11.9	0.7	0.5	1.0	1.7	4.4	9.2	16.7
Services-producing sector									
Trade	182.2	181.2	1.8	-1.0	0.4	-3.7	-0.5	0.2	-2.0
Transportation and warehousing	41.2	41.2	1.0	0.0	2.0	2.1	0.0	5.1	5.4
Finance, insurance, real estate and leasing	10.5	10.0	0.6	-0.5	0.2	-2.0	-4.8	2.0	-16.7
Professional, scientific and technical services	7.9	7.6	0.4	-0.3	-0.4	-1.1	-3.8	-5.0	-12.6
Business, building and other support services	12.1	11.3	0.5	-0.8	0.5	0.4	-6.6	4.6	3.7
Educational services	5.8	7.2	0.5	1.4	0.3	0.7	24.1	4.3	10.8
Health care and social assistance	15.6	14.4	0.6	-1.2	-2.3	-3.8	-7.7	-13.8	-20.9
Information, culture and recreation	36.2	38.0	0.8	1.8	0.5	0.3	5.0	1.3	0.8
Accommodation and food services	7.9	8.0	0.6	0.1	0.6	0.1	1.3	8.1	1.3
Other services	16.5	15.0	0.8	-1.5	-0.9	0.2	-9.1	-5.7	1.4
Public administration	13.0	12.7	0.6	-0.3	0.6	1.2	-2.3	5.0	10.4
	15.6	15.6	0.6	0.0	-0.9	-2.0	0.0	-5.5	-11.4

1. Average standard error of change in two consecutive months (see "Sampling Errors" in Data Quality for further explanations).

2. Also referred to as Natural resources.

Note(s): Related CANSIM Tables 282-0087, 282-0088. The sum of individual categories may not always add to the total due to rounding.

Table 4-2
Selected labour force characteristics (seasonally adjusted) — Prince Edward Island

	June 2015	July 2015	S.E. ¹	Change from			Percent change from		
				last month	last December	twelve months ago	last month	last December	twelve months ago
in thousands (except rates)									
Both sexes, 15 years and over									
Population	120.9	120.9	...	0.0	0.2	0.2	0.0	0.2	0.2
Labour force	82.1	81.7	0.6	-0.4	-0.5	0.0	-0.5	-0.6	0.0
Employment	73.0	72.2	0.6	-0.8	-0.9	-1.9	-1.1	-1.2	-2.6
Employment full-time	59.9	59.7	0.9	-0.2	-2.3	-2.3	-0.3	-3.7	-3.7
Unemployment	9.1	9.5	0.6	0.4	0.4	1.9	4.4	4.4	25.0
Participation rate	67.9	67.6	0.5	-0.3	-0.5	-0.1
Unemployment rate	11.1	11.6	0.7	0.5	0.5	2.3
Employment rate	60.4	59.7	0.5	-0.7	-0.9	-1.7
Part-time rate	18.1	17.3	1.0	-0.8	2.1	0.8
Both sexes, 15 to 24 years									
Population	18.3	18.2	...	-0.1	-0.3	-0.4	-0.5	-1.6	-2.2
Labour force	12.7	12.6	0.3	-0.1	0.2	-0.5	-0.8	1.6	-3.8
Employment	10.3	10.6	0.4	0.3	0.4	0.0	2.9	3.9	0.0
Unemployment	2.4	2.0	0.3	-0.4	-0.3	-0.5	-16.7	-13.0	-20.0
Participation rate	69.4	69.2	1.8	-0.2	2.2	-1.2
Unemployment rate	18.9	15.9	2.4	-3.0	-2.6	-3.2
Employment rate	56.3	58.2	1.9	1.9	3.1	1.2
Part-time rate	47.6	43.4	3.6	-4.2	-1.7	1.9
Men, 25 years and over									
Population	49.1	49.1	...	0.0	0.1	0.2	0.0	0.2	0.4
Labour force	35.3	35.1	0.3	-0.2	-0.6	0.0	-0.6	-1.7	0.0
Employment	31.6	31.3	0.4	-0.3	-0.8	-1.1	-0.9	-2.5	-3.4
Unemployment	3.7	3.8	0.4	0.1	0.2	1.0	2.7	5.6	35.7
Participation rate	71.9	71.5	0.7	-0.4	-1.4	-0.3
Unemployment rate	10.5	10.8	1.0	0.3	0.7	2.8
Employment rate	64.4	63.7	0.8	-0.7	-1.8	-2.6
Part-time rate	8.2	8.6	1.0	0.4	3.6	3.1
Women, 25 years and over									
Population	53.5	53.5	...	0.0	0.2	0.3	0.0	0.4	0.6
Labour force	34.2	34.0	0.3	-0.2	-0.1	0.5	-0.6	-0.3	1.5
Employment	31.2	30.3	0.4	-0.9	-0.5	-0.9	-2.9	-1.6	-2.9
Unemployment	3.0	3.7	0.3	0.7	0.5	1.3	23.3	15.6	54.2
Participation rate	63.9	63.6	0.6	-0.3	-0.4	0.6
Unemployment rate	8.8	10.9	1.0	2.1	1.5	3.7
Employment rate	58.3	56.6	0.7	-1.7	-1.2	-2.0
Part-time rate	18.3	17.2	1.6	-1.1	1.3	-2.1
Industry									
Goods-producing sector	73.0	72.2	0.6	-0.8	-0.9	-1.9	-1.1	-1.2	-2.6
Agriculture	17.5	17.3	0.4	-0.2	0.0	-1.0	-1.1	0.0	-5.5
Forestry, fishing, mining, quarrying, oil and gas extraction ²	3.7	3.5	0.3	-0.2	0.6	-0.3	-5.4	20.7	-7.9
Utilities	2.3	2.3	0.2	0.0	0.0	-0.4	0.0	0.0	-14.8
Construction	0.3	0.4	0.1	0.1	0.1	0.1	33.3	33.3	33.3
Manufacturing	5.2	5.2	0.3	0.0	-0.4	-0.6	0.0	-7.1	-10.3
Services-producing sector	5.9	6.0	0.2	0.1	-0.2	0.4	1.7	-3.2	7.1
Trade	55.5	54.9	0.6	-0.6	-0.9	-1.0	-1.1	-1.6	-1.8
Transportation and warehousing	10.7	10.6	0.3	-0.1	-0.4	-0.6	-0.9	-3.6	-5.4
Finance, insurance, real estate and leasing	2.7	2.2	0.2	-0.5	-0.9	-0.8	-18.5	-29.0	-26.7
Professional, scientific and technical services	2.6	2.5	0.1	-0.1	0.3	0.6	-3.8	13.6	31.6
Business, building and other support services	2.9	3.2	0.1	0.3	0.3	0.5	10.3	10.3	18.5
Educational services	2.2	2.5	0.2	0.3	-0.2	0.3	13.6	-7.4	13.6
Health care and social assistance	5.2	4.9	0.2	-0.3	-0.4	-0.8	-5.8	-7.5	-14.0
Information, culture and recreation	9.7	9.8	0.2	0.1	-0.1	-0.7	1.0	-1.0	-6.7
Accommodation and food services	2.8	2.4	0.2	-0.4	0.0	-0.3	-14.3	0.0	-11.1
Other services	5.8	6.1	0.3	0.3	0.5	0.4	5.2	8.9	7.0
Public administration	3.3	3.4	0.2	0.1	-0.2	0.1	3.0	-5.6	3.0
	7.6	7.5	0.2	-0.1	0.3	0.6	-1.3	4.2	8.7

1. Average standard error of change in two consecutive months (see "Sampling Errors" in Data Quality for further explanations).

2. Also referred to as Natural resources.

Note(s): Related CANSIM Tables 282-0087, 282-0088. The sum of individual categories may not always add to the total due to rounding.

Table 4-3

Selected labour force characteristics (seasonally adjusted) — Nova Scotia

	June 2015	July 2015	S.E.	Change from			Percent change from		
				last month	last December	twelve months ago	last month	last December	twelve months ago
in thousands (except rates)									
Both sexes, 15 years and over									
Population	785.2	785.8	...	0.6	1.7	3.0	0.1	0.2	0.4
Labour force	485.0	489.3	2.6	4.3	-2.8	-3.3	0.9	-0.6	-0.7
Employment	446.4	449.5	2.7	3.1	-1.5	3.8	0.7	-0.3	0.9
Employment full-time	364.2	369.4	3.8	5.2	0.4	7.6	1.4	0.1	2.1
Unemployment	38.7	39.8	2.4	1.1	-1.3	-7.1	2.8	-3.2	-15.1
Participation rate	61.8	62.3	0.3	0.5	-0.5	-0.6
Unemployment rate	8.0	8.1	0.5	0.1	-0.3	-1.4
Employment rate	56.9	57.2	0.3	0.3	-0.3	0.3
Part-time rate	18.4	17.8	0.7	-0.6	-0.4	-1.0
Both sexes, 15 to 24 years									
Population	111.6	111.5	...	-0.1	-1.3	-2.2	-0.1	-1.2	-1.9
Labour force	71.4	73.6	1.6	2.2	0.1	-2.2	3.1	0.1	-2.9
Employment	61.2	61.9	1.4	0.7	-0.8	2.5	1.1	-1.3	4.2
Unemployment	10.2	11.7	1.5	1.5	0.9	-4.7	14.7	8.3	-28.7
Participation rate	64.0	66.0	1.4	2.0	0.8	-0.7
Unemployment rate	14.3	15.9	1.8	1.6	1.2	-5.7
Employment rate	54.8	55.5	1.3	0.7	-0.1	3.3
Part-time rate	44.8	41.5	2.9	-3.3	-4.3	-3.6
Men, 25 years and over									
Population	322.5	322.8	...	0.3	1.6	2.7	0.1	0.5	0.8
Labour force	211.0	212.3	1.5	1.3	-1.3	-2.5	0.6	-0.6	-1.2
Employment	193.9	195.8	1.7	1.9	-1.2	-1.3	1.0	-0.6	-0.7
Unemployment	17.1	16.5	1.5	-0.6	-0.1	-1.1	-3.5	-0.6	-6.2
Participation rate	65.4	65.8	0.5	0.4	-0.7	-1.3
Unemployment rate	8.1	7.8	0.7	-0.3	0.0	-0.4
Employment rate	60.1	60.7	0.5	0.6	-0.6	-0.9
Part-time rate	8.4	8.1	0.8	-0.3	0.0	-0.6
Women, 25 years and over									
Population	351.1	351.5	...	0.4	1.5	2.5	0.1	0.4	0.7
Labour force	202.6	203.4	1.4	0.8	-1.6	1.4	0.4	-0.8	0.7
Employment	191.3	191.9	1.4	0.6	0.6	2.7	0.3	0.3	1.4
Unemployment	11.3	11.6	1.2	0.3	-2.1	-1.2	2.7	-15.3	-9.4
Participation rate	57.7	57.9	0.4	0.2	-0.7	0.0
Unemployment rate	5.6	5.7	0.6	0.1	-1.0	-0.6
Employment rate	54.5	54.6	0.4	0.1	-0.1	0.4
Part-time rate	20.1	20.1	1.2	-0.1	0.6	-1.1
Industry									
Industry	446.4	449.5	2.7	3.1	-1.5	3.8	0.7	-0.3	0.9
Goods-producing sector									
Goods-producing sector	85.2	84.9	1.7	-0.3	3.3	1.5	-0.4	4.0	1.8
Agriculture	5.1	5.4	0.6	0.3	0.8	-0.1	5.9	17.4	-1.8
Forestry, fishing, mining, quarrying, oil and gas extraction ²	12.6	12.0	1.0	-0.6	-0.6	1.1	-4.8	-4.8	10.1
Utilities	3.7	3.4	0.3	-0.3	-0.6	-0.1	-8.1	-15.0	-2.9
Construction	35.6	35.9	1.1	0.3	4.3	2.1	0.8	13.6	6.2
Manufacturing	28.1	28.2	0.9	0.1	-0.6	-1.5	0.4	-2.1	-5.1
Services-producing sector									
Services-producing sector	361.2	364.6	2.5	3.4	-4.8	2.3	0.9	-1.3	0.6
Trade	71.0	71.8	1.3	0.8	-2.7	-2.5	1.1	-3.6	-3.4
Transportation and warehousing	18.7	20.1	0.8	1.4	-2.5	0.3	7.5	-11.1	1.5
Finance, insurance, real estate and leasing	24.1	24.6	0.7	0.5	1.6	2.7	2.1	7.0	12.3
Professional, scientific and technical services	29.7	29.2	0.8	-0.5	3.0	2.6	-1.7	11.5	9.8
Business, building and other support services	19.9	20.2	0.8	0.3	1.5	1.4	1.5	8.0	7.4
Educational services	37.7	36.3	1.1	-1.4	0.5	1.0	-3.7	1.4	2.8
Health care and social assistance	70.0	72.0	1.0	2.0	1.5	2.7	2.9	2.1	3.9
Information, culture and recreation	16.8	17.1	0.8	0.3	-2.9	-2.2	1.8	-14.5	-11.4
Accommodation and food services	31.2	30.6	1.1	-0.6	-2.1	-0.7	-1.9	-6.4	-2.2
Other services	15.3	16.5	0.8	1.2	-1.3	-1.8	7.8	-7.3	-9.8
Public administration	26.8	26.1	0.7	-0.7	-1.4	-1.3	-2.6	-5.1	-4.7

1. Average standard error of change in two consecutive months (see "Sampling Errors" in Data Quality for further explanations).

2. Also referred to as Natural resources.

Note(s): Related CANSIM Tables 282-0087, 282-0088. The sum of individual categories may not always add to the total due to rounding.

Table 4-4
Selected labour force characteristics (seasonally adjusted) — New Brunswick

	June 2015	July 2015	S.E.	Change from			Percent change from		
				last month	last December	twelve months ago	last month	last December	twelve months ago
in thousands (except rates)									
Both sexes, 15 years and over									
Population	621.9	621.9	...	0.0	0.2	0.5	0.0	0.0	0.1
Labour force	390.5	390.4	2.2	-0.1	0.2	0.4	0.0	0.1	0.1
Employment	348.2	347.5	2.3	-0.7	-3.7	-3.7	-0.2	-1.1	-1.1
Employment full-time	293.2	297.7	3.1	4.5	2.2	4.2	1.5	0.7	1.4
Unemployment	42.2	42.9	2.1	0.7	3.9	4.0	1.7	10.0	10.3
Participation rate	62.8	62.8	0.4	0.0	0.0	0.0
Unemployment rate	10.8	11.0	0.5	0.2	1.0	1.0
Employment rate	56.0	55.9	0.4	-0.1	-0.6	-0.6
Part-time rate	15.8	14.3	0.8	-1.5	-1.5	-2.1
Both sexes, 15 to 24 years									
Population	84.7	84.5	...	-0.2	-0.9	-1.6	-0.2	-1.1	-1.9
Labour force	52.8	53.4	1.3	0.6	0.2	-1.2	1.1	0.4	-2.2
Employment	41.3	43.1	1.1	1.8	-0.5	-2.1	4.4	-1.1	-4.6
Unemployment	11.5	10.3	1.1	-1.2	0.8	1.0	-10.4	8.4	10.8
Participation rate	62.3	63.2	1.5	0.9	0.9	-0.2
Unemployment rate	21.8	19.3	1.9	-2.5	1.4	2.3
Employment rate	48.8	51.0	1.3	2.2	-0.1	-1.5
Part-time rate	42.1	39.4	3.0	-2.7	-4.1	-1.0
Men, 25 years and over									
Population	260.2	260.2	...	0.0	0.4	0.9	0.0	0.2	0.3
Labour force	173.7	175.0	1.3	1.3	-0.8	1.0	0.7	-0.5	0.6
Employment	154.5	154.2	1.5	-0.3	-2.9	-1.8	-0.2	-1.8	-1.2
Unemployment	19.2	20.8	1.5	1.6	2.1	2.8	8.3	11.2	15.6
Participation rate	66.8	67.3	0.5	0.5	-0.4	0.2
Unemployment rate	11.1	11.9	0.8	0.8	1.3	1.6
Employment rate	59.4	59.3	0.6	-0.1	-1.2	-0.9
Part-time rate	7.3	6.5	0.8	-0.8	-0.3	0.0
Women, 25 years and over									
Population	277.1	277.2	...	0.1	0.6	1.2	0.0	0.2	0.4
Labour force	163.9	162.0	1.2	-1.9	0.8	0.5	-1.2	0.5	0.3
Employment	152.5	150.2	1.3	-2.3	-0.3	0.2	-1.5	-0.2	0.1
Unemployment	11.5	11.8	1.1	0.3	1.1	0.3	2.6	10.3	2.6
Participation rate	59.1	58.4	0.4	-0.7	0.1	-0.1
Unemployment rate	7.0	7.3	0.7	0.3	0.7	0.2
Employment rate	55.0	54.2	0.5	-0.8	-0.2	-0.1
Part-time rate	17.2	15.2	1.2	-2.1	-2.2	-4.3
Industry									
	348.2	347.5	2.3	-0.7	-3.7	-3.7	-0.2	-1.1	-1.1
Goods-producing sector									
Agriculture	71.0	70.7	1.6	-0.3	-3.4	-2.9	-0.4	-4.6	-3.9
Forestry, fishing, mining, quarrying, oil and gas extraction ²	3.9	4.5	0.5	0.6	0.4	0.7	15.4	9.8	18.4
Utilities	10.7	9.8	0.8	-0.9	-1.2	-1.7	-8.4	-10.9	-14.8
Construction	3.3	3.5	0.2	0.2	0.0	-0.4	6.1	0.0	-10.3
Manufacturing	23.0	23.3	1.1	0.3	-3.2	-4.0	1.3	-12.1	-14.7
	30.0	29.6	0.8	-0.4	0.5	2.4	-1.3	1.7	8.8
Services-producing sector									
Trade	277.3	276.8	2.1	-0.5	-0.3	-0.8	-0.2	-0.1	-0.3
Transportation and warehousing	54.2	54.0	1.1	-0.2	-0.5	-3.1	-0.4	-0.9	-5.4
Finance, insurance, real estate and leasing	18.6	19.2	0.6	0.6	2.2	3.2	3.2	12.9	20.0
Professional, scientific and technical services	14.6	14.0	0.5	-0.6	-1.0	-0.7	-4.1	-6.7	-4.8
Business, building and other support services	16.5	17.0	0.6	0.5	-1.3	-1.2	3.0	-7.1	-6.6
Educational services	19.6	17.8	0.9	-1.8	-2.5	-0.7	-9.2	-12.3	-3.8
Health care and social assistance	28.7	28.2	0.8	-0.5	1.1	3.0	-1.7	4.1	11.9
Information, culture and recreation	51.2	52.3	0.9	1.1	1.8	0.9	2.1	3.6	1.8
Accommodation and food services	11.7	11.4	0.7	-0.3	-0.2	0.4	-2.6	-1.7	3.6
Other services	24.2	25.4	0.8	1.2	3.2	-0.4	5.0	14.4	-1.6
Public administration	15.2	14.7	0.6	-0.5	-1.6	-2.5	-3.3	-9.8	-14.5
	22.7	22.9	0.7	0.2	-1.5	0.3	0.9	-6.1	1.3

1. Average standard error of change in two consecutive months (see "Sampling Errors" in Data Quality for further explanations).

2. Also referred to as Natural resources.

Note(s): Related CANSIM Tables 282-0087, 282-0088. The sum of individual categories may not always add to the total due to rounding.

Table 4-5
Selected labour force characteristics (seasonally adjusted) — Quebec

	June 2015	July 2015	S.E.	Change from			Percent change from		
				last month	last December	twelve months ago	last month	last December	twelve months ago
in thousands (except rates)									
Both sexes, 15 years and over									
Population	6,841.5	6,845.1	...	3.6	22.8	39.0	0.1	0.3	0.6
Labour force	4,429.5	4,438.5	14.8	9.0	49.0	27.7	0.2	1.1	0.6
Employment	4,075.5	4,097.2	14.8	21.7	36.1	43.7	0.5	0.9	1.1
Employment full-time	3,294.1	3,297.4	21.4	3.3	35.7	57.1	0.1	1.1	1.8
Unemployment	354.0	341.3	13.2	-12.7	12.9	-16.1	-3.6	3.9	-4.5
Participation rate	64.7	64.8	0.2	0.1	0.5	0.0
Unemployment rate	8.0	7.7	0.3	-0.3	0.2	-0.4
Employment rate	59.6	59.9	0.2	0.3	0.4	0.3
Part-time rate	19.2	19.5	0.5	0.3	-0.2	-0.5
Both sexes, 15 to 24 years									
Population	959.9	958.2	...	-1.7	-13.0	-21.5	-0.2	-1.3	-2.2
Labour force	640.9	649.4	8.3	8.5	-5.4	-6.7	1.3	-0.8	-1.0
Employment	557.8	567.9	8.0	10.1	4.5	-10.3	1.8	0.8	-1.8
Unemployment	83.1	81.5	7.5	-1.6	-10.0	3.6	-1.9	-10.9	4.6
Participation rate	66.8	67.8	0.9	1.0	0.4	0.8
Unemployment rate	13.0	12.6	1.1	-0.4	-1.4	0.7
Employment rate	58.1	59.3	0.8	1.2	1.3	0.3
Part-time rate	52.9	54.9	1.7	2.1	1.1	1.8
Men, 25 years and over									
Population	2,901.1	2,903.8	...	2.7	18.3	30.7	0.1	0.6	1.1
Labour force	2,014.1	2,019.3	8.3	5.2	36.7	24.4	0.3	1.9	1.2
Employment	1,852.9	1,864.0	9.0	11.1	16.3	43.8	0.6	0.9	2.4
Unemployment	161.2	155.3	8.3	-5.9	20.3	-19.4	-3.7	15.0	-11.1
Participation rate	69.4	69.5	0.3	0.1	0.8	0.1
Unemployment rate	8.0	7.7	0.4	-0.3	0.9	-1.1
Employment rate	63.9	64.2	0.3	0.3	0.2	0.8
Part-time rate	7.9	7.9	0.6	0.1	-0.3	-0.6
Women, 25 years and over									
Population	2,980.6	2,983.1	...	2.5	17.5	29.8	0.1	0.6	1.0
Labour force	1,774.5	1,769.8	8.3	-4.7	17.7	9.9	-0.3	1.0	0.6
Employment	1,664.8	1,665.3	8.1	0.5	15.2	10.2	0.0	0.9	0.6
Unemployment	109.7	104.5	6.9	-5.2	2.5	-0.3	-4.7	2.5	-0.3
Participation rate	59.5	59.3	0.3	-0.2	0.2	-0.3
Unemployment rate	6.2	5.9	0.4	-0.3	0.1	-0.1
Employment rate	55.9	55.8	0.3	-0.1	0.2	-0.2
Part-time rate	20.5	20.4	0.8	-0.1	-0.4	-0.7
Industry	4,075.5	4,097.2	14.8	21.7	36.1	43.7	0.5	0.9	1.1
Goods-producing sector	838.1	827.9	8.5	-10.2	-40.9	-21.4	-1.2	-4.7	-2.5
Agriculture	49.8	49.9	2.6	0.1	-5.8	-4.1	0.2	-10.4	-7.6
Forestry, fishing, mining, quarrying, oil and gas extraction ²	32.2	32.4	2.0	0.2	-0.9	1.8	0.6	-2.7	5.9
Utilities	27.8	30.0	1.3	2.2	0.0	2.5	7.9	0.0	9.1
Construction	240.0	230.8	5.7	-9.2	-40.2	-20.0	-3.8	-14.8	-8.0
Manufacturing	488.3	484.7	5.9	-3.6	5.8	-1.7	-0.7	1.2	-0.3
Services-producing sector	3,237.4	3,269.3	13.9	31.9	77.0	65.2	1.0	2.4	2.0
Trade	660.1	668.7	7.2	8.6	18.1	19.7	1.3	2.8	3.0
Transportation and warehousing	197.9	202.0	3.9	4.1	16.2	22.4	2.1	8.7	12.5
Finance, insurance, real estate and leasing	217.0	214.9	3.9	-2.1	0.5	-5.0	-1.0	0.2	-2.3
Professional, scientific and technical services	317.5	318.2	5.2	0.7	23.5	19.2	0.2	8.0	6.4
Business, building and other support services	164.8	167.8	4.8	3.0	6.0	19.6	1.8	3.7	13.2
Educational services	285.5	282.8	5.1	-2.7	8.6	12.9	-0.9	3.1	4.8
Health care and social assistance	576.4	573.8	5.8	-2.6	9.4	8.1	-0.5	1.7	1.4
Information, culture and recreation	164.5	169.5	5.2	5.0	-3.0	-19.9	3.0	-1.7	-10.5
Accommodation and food services	272.6	273.0	5.7	0.4	-12.0	-4.9	0.1	-4.2	-1.8
Other services	157.1	158.8	4.2	1.7	-5.6	-26.3	1.1	-3.4	-14.2
Public administration	224.0	239.8	3.5	15.8	15.3	19.4	7.1	6.8	8.8

1. Average standard error of change in two consecutive months (see "Sampling Errors" in Data Quality for further explanations).

2. Also referred to as Natural resources.

Note(s): Related CANSIM Tables 282-0087, 282-0088. The sum of individual categories may not always add to the total due to rounding.

Table 4-6
Selected labour force characteristics (seasonally adjusted) — Ontario

	June 2015	July 2015	S.E.	Change from			Percent change from		
				last month	last December	twelve months ago	last month	last December	twelve months ago
in thousands (except rates)									
Both sexes, 15 years and over									
Population	11,378.1	11,390.4	...	12.3	70.0	113.4	0.1	0.6	1.0
Labour force	7,426.0	7,424.1	19.7	-1.9	16.9	-11.5	0.0	0.2	-0.2
Employment	6,945.7	6,945.7	19.6	0.0	60.7	67.4	0.0	0.9	1.0
Employment full-time	5,647.0	5,642.4	28.3	-4.6	102.3	131.0	-0.1	1.8	2.4
Unemployment	480.3	478.4	16.9	-1.9	-43.8	-78.9	-0.4	-8.4	-14.2
Participation rate	65.3	65.2	0.2	-0.1	-0.2	-0.7
Unemployment rate	6.5	6.4	0.2	-0.1	-0.6	-1.1
Employment rate	61.0	61.0	0.2	0.0	0.2	0.0
Part-time rate	18.7	18.8	0.4	0.1	-0.8	-1.1
Both sexes, 15 to 24 years									
Population	1,797.4	1,796.9	...	-0.5	-6.0	-12.4	0.0	-0.3	-0.7
Labour force	1,099.5	1,096.4	12.3	-3.1	-28.2	-24.4	-0.3	-2.5	-2.2
Employment	942.8	934.4	10.9	-8.4	-11.5	-7.1	-0.9	-1.2	-0.8
Unemployment	156.7	162.0	10.6	5.3	-16.7	-17.3	3.4	-9.3	-9.6
Participation rate	61.2	61.0	0.7	-0.2	-1.4	-0.9
Unemployment rate	14.3	14.8	0.9	0.5	-1.1	-1.2
Employment rate	52.5	52.0	0.6	-0.5	-0.5	0.0
Part-time rate	50.1	51.1	1.3	1.0	-1.8	-4.1
Men, 25 years and over									
Population	4,620.3	4,626.7	...	6.4	36.2	58.9	0.1	0.8	1.3
Labour force	3,334.8	3,339.9	10.4	5.1	30.2	42.0	0.2	0.9	1.3
Employment	3,164.6	3,170.9	11.1	6.3	46.7	71.9	0.2	1.5	2.3
Unemployment	170.2	169.0	9.6	-1.2	-16.5	-30.0	-0.7	-8.9	-15.1
Participation rate	72.2	72.2	0.2	0.0	0.1	0.0
Unemployment rate	5.1	5.1	0.3	0.0	-0.5	-0.9
Employment rate	68.5	68.5	0.2	0.0	0.4	0.7
Part-time rate	8.1	7.9	0.4	-0.2	-0.4	-0.3
Women, 25 years and over									
Population	4,960.4	4,966.8	...	6.4	39.8	66.8	0.1	0.8	1.4
Labour force	2,991.7	2,987.8	11.0	-3.9	14.9	-29.0	-0.1	0.5	-1.0
Employment	2,838.3	2,840.4	10.9	2.1	25.5	2.6	0.1	0.9	0.1
Unemployment	153.4	147.4	8.8	-6.0	-10.6	-31.6	-3.9	-6.7	-17.7
Participation rate	60.3	60.2	0.2	-0.1	-0.1	-1.4
Unemployment rate	5.1	4.9	0.3	-0.2	-0.4	-1.0
Employment rate	57.2	57.2	0.2	0.0	0.1	-0.7
Part-time rate	20.1	20.3	0.6	0.2	-0.5	-0.6
Industry	6,945.7	6,945.7	19.6	0.0	60.7	67.4	0.0	0.9	1.0
Goods-producing sector	1,409.8	1,412.2	10.4	2.4	26.2	33.3	0.2	1.9	2.4
Agriculture	76.7	73.6	2.8	-3.1	-8.4	-4.9	-4.0	-10.2	-6.2
Forestry, fishing, mining, quarrying, oil and gas extraction ²	46.6	47.1	1.9	0.5	7.7	17.3	1.1	19.5	58.1
Utilities	52.0	50.6	1.2	-1.4	-0.3	-1.0	-2.7	-0.6	-1.9
Construction	489.7	492.8	6.9	3.1	24.4	25.2	0.6	5.2	5.4
Manufacturing	744.8	748.1	7.4	3.3	2.8	-3.3	0.4	0.4	-0.4
Services-producing sector	5,535.9	5,533.5	18.7	-2.4	34.5	34.1	0.0	0.6	0.6
Trade	1,059.7	1,045.8	9.7	-13.9	3.2	-2.0	-1.3	0.3	-0.2
Transportation and warehousing	317.1	320.8	5.1	3.7	4.8	-8.3	1.2	1.5	-2.5
Finance, insurance, real estate and leasing	553.3	552.3	6.3	-1.0	29.9	47.2	-0.2	5.7	9.3
Professional, scientific and technical services	583.3	597.0	7.4	13.7	43.3	27.5	2.3	7.8	4.8
Business, building and other support services	333.3	326.6	7.2	-6.7	-16.2	2.6	-2.0	-4.7	0.8
Educational services	514.1	521.1	7.2	7.0	14.4	4.1	1.4	2.8	0.8
Health care and social assistance	813.6	805.5	7.0	-8.1	-4.6	0.2	-1.0	-0.6	0.0
Information, culture and recreation	306.4	310.3	6.6	3.9	-18.0	-0.1	1.3	-5.5	0.0
Accommodation and food services	443.8	442.4	7.5	-1.4	0.3	-1.8	-0.3	0.1	-0.4
Other services	267.9	273.1	5.2	5.2	3.0	-6.3	1.9	1.1	-2.3
Public administration	343.5	338.5	4.8	-5.0	-25.7	-29.1	-1.5	-7.1	-7.9

1. Average standard error of change in two consecutive months (see "Sampling Errors" in Data Quality for further explanations).

2. Also referred to as Natural resources.

Note(s): Related CANSIM Tables 282-0087, 282-0088. The sum of individual categories may not always add to the total due to rounding.

Table 4-7
Selected labour force characteristics (seasonally adjusted) — Manitoba

	June 2015	July 2015	S.E.	Change from			Percent change from		
				last month	last December	twelve months ago	last month	last December	twelve months ago
in thousands (except rates)									
Both sexes, 15 years and over									
Population	986.4	987.6	...	1.2	6.1	10.1	0.1	0.6	1.0
Labour force	671.8	669.7	2.5	-2.1	-0.3	8.9	-0.3	0.0	1.3
Employment	636.1	632.3	2.5	-3.8	-1.5	6.0	-0.6	-0.2	1.0
Employment full-time	512.1	509.7	3.8	-2.4	-5.2	9.3	-0.5	-1.0	1.9
Unemployment	35.7	37.4	2.1	1.7	1.2	2.9	4.8	3.3	8.4
Participation rate	68.1	67.8	0.3	-0.3	-0.5	0.2
Unemployment rate	5.3	5.6	0.3	0.3	0.2	0.4
Employment rate	64.5	64.0	0.3	-0.5	-0.6	-0.1
Part-time rate	19.5	19.4	0.6	-0.1	0.6	-0.7
Both sexes, 15 to 24 years									
Population	162.9	163.0	...	0.1	-0.3	-0.6	0.1	-0.2	-0.4
Labour force	106.9	107.2	1.6	0.3	-4.0	-3.2	0.3	-3.6	-2.9
Employment	94.9	95.4	1.5	0.5	-3.9	-3.6	0.5	-3.9	-3.6
Unemployment	12.0	11.7	1.4	-0.3	-0.2	0.4	-2.5	-1.7	3.5
Participation rate	65.6	65.8	1.0	0.2	-2.3	-1.7
Unemployment rate	11.2	10.9	1.2	-0.3	0.2	0.7
Employment rate	58.3	58.5	0.9	0.2	-2.3	-2.0
Part-time rate	42.7	45.5	1.8	2.8	3.5	1.7
Men, 25 years and over									
Population	403.7	404.3	...	0.6	3.4	5.6	0.1	0.8	1.4
Labour force	300.8	300.1	1.3	-0.7	-0.1	4.7	-0.2	0.0	1.6
Employment	288.6	287.7	1.4	-0.9	1.0	4.9	-0.3	0.3	1.7
Unemployment	12.2	12.5	1.2	0.3	-1.0	-0.1	2.5	-7.4	-0.8
Participation rate	74.5	74.2	0.3	-0.3	-0.7	0.1
Unemployment rate	4.1	4.2	0.4	0.1	-0.3	-0.1
Employment rate	71.5	71.2	0.3	-0.3	-0.3	0.3
Part-time rate	8.2	7.9	0.6	-0.3	-0.2	-0.9
Women, 25 years and over									
Population	419.8	420.3	...	0.5	3.0	5.0	0.1	0.7	1.2
Labour force	264.1	262.4	1.5	-1.7	3.7	7.5	-0.6	1.4	2.9
Employment	252.6	249.2	1.4	-3.4	1.3	4.7	-1.3	0.5	1.9
Unemployment	11.5	13.2	1.1	1.7	2.4	2.7	14.8	22.2	25.7
Participation rate	62.9	62.4	0.3	-0.5	0.4	1.0
Unemployment rate	4.4	5.0	0.4	0.6	0.8	0.9
Employment rate	60.2	59.3	0.3	-0.9	-0.1	0.4
Part-time rate	23.7	22.6	0.9	-1.1	0.9	-0.9
Industry									
Goods-producing sector	636.1	632.3	2.5	-3.8	-1.5	6.0	-0.6	-0.2	1.0
Agriculture	145.8	147.2	1.6	1.4	-2.0	0.0	1.0	-1.3	0.0
Forestry, fishing, mining, quarrying, oil and gas extraction ²	21.8	24.2	0.9	2.4	1.7	-0.7	11.0	7.6	-2.8
Utilities	5.0	5.0	0.4	0.0	-1.6	-2.4	0.0	-24.2	-32.4
Construction	8.4	7.7	0.3	-0.7	0.3	-0.9	-8.3	4.1	-10.5
Manufacturing	45.6	45.8	1.0	0.2	-1.8	2.5	0.4	-3.8	5.8
	65.1	64.4	0.9	-0.7	-0.7	1.4	-1.1	-1.1	2.2
Services-producing sector									
Trade	490.3	485.1	2.4	-5.2	0.5	6.0	-1.1	0.1	1.3
Transportation and warehousing	90.7	90.5	1.3	-0.2	-4.3	-2.6	-0.2	-4.5	-2.8
Finance, insurance, real estate and leasing	39.9	39.1	0.8	-0.8	0.9	3.1	-2.0	2.4	8.6
Professional, scientific and technical services	32.5	31.6	0.7	-0.9	-2.5	-2.2	-2.8	-7.3	-6.5
Business, building and other support services	26.7	26.6	0.7	-0.1	3.9	1.3	-0.4	17.2	5.1
Educational services	19.0	19.0	0.8	0.0	2.3	2.9	0.0	13.8	18.0
Health care and social assistance	52.4	51.1	1.0	-1.3	1.0	1.7	-2.5	2.0	3.4
Information, culture and recreation	101.5	100.6	1.1	-0.9	0.1	0.6	-0.9	0.1	0.6
Accommodation and food services	23.3	22.7	0.8	-0.6	1.7	0.4	-2.6	8.1	1.8
Other services	40.8	41.6	1.0	0.8	0.1	2.1	2.0	0.2	5.3
Public administration	30.0	30.0	0.7	0.0	0.3	1.8	0.0	1.0	6.4
	33.6	32.4	0.8	-1.2	-2.8	-3.0	-3.6	-8.0	-8.5

1. Average standard error of change in two consecutive months (see "Sampling Errors" in Data Quality for further explanations).

2. Also referred to as Natural resources.

Note(s): Related CANSIM Tables 282-0087, 282-0088. The sum of individual categories may not always add to the total due to rounding.

Table 4-8
Selected labour force characteristics (seasonally adjusted) — Saskatchewan

	June 2015	July 2015	S.E. ¹	Change from			Percent change from		
				last month	last December	twelve months ago	last month	last December	twelve months ago
in thousands (except rates)									
Both sexes, 15 years and over									
Population	861.1	861.9	...	0.8	4.9	8.7	0.1	0.6	1.0
Labour force	604.7	599.6	2.6	-5.1	2.3	8.8	-0.8	0.4	1.5
Employment	576.1	568.7	2.7	-7.4	-6.3	-2.7	-1.3	-1.1	-0.5
Employment full-time	474.8	464.6	3.7	-10.2	-15.1	-10.3	-2.1	-3.1	-2.2
Unemployment	28.6	30.9	2.0	2.3	8.6	11.5	8.0	38.6	59.3
Participation rate	70.2	69.6	0.3	-0.6	-0.1	0.4
Unemployment rate	4.7	5.2	0.3	0.5	1.5	1.9
Employment rate	66.9	66.0	0.3	-0.9	-1.1	-1.0
Part-time rate	17.6	18.3	0.6	0.7	1.7	1.4
Both sexes, 15 to 24 years									
Population	136.7	136.5	...	-0.2	-1.5	-2.3	-0.1	-1.1	-1.7
Labour force	93.2	92.4	1.5	-0.8	0.0	1.9	-0.9	0.0	2.1
Employment	83.7	83.6	1.5	-0.1	-2.2	-1.3	-0.1	-2.6	-1.5
Unemployment	9.4	8.8	1.2	-0.6	2.1	3.2	-6.4	31.3	57.1
Participation rate	68.2	67.7	1.1	-0.5	0.7	2.5
Unemployment rate	10.1	9.5	1.2	-0.6	2.2	3.3
Employment rate	61.2	61.2	1.1	0.0	-1.0	0.0
Part-time rate	39.2	39.7	2.0	0.5	2.8	2.7
Men, 25 years and over									
Population	362.6	363.2	...	0.6	3.6	6.0	0.2	1.0	1.7
Labour force	278.3	276.7	1.3	-1.6	0.6	1.8	-0.6	0.2	0.7
Employment	266.8	263.2	1.5	-3.6	-4.0	-4.1	-1.3	-1.5	-1.5
Unemployment	11.5	13.6	1.1	2.1	4.7	6.0	18.3	52.8	78.9
Participation rate	76.8	76.2	0.4	-0.6	-0.6	-0.8
Unemployment rate	4.1	4.9	0.4	0.8	1.7	2.1
Employment rate	73.6	72.5	0.4	-1.1	-1.8	-2.3
Part-time rate	6.7	6.8	0.6	0.1	0.2	0.7
Women, 25 years and over									
Population	361.8	362.2	...	0.4	2.9	5.0	0.1	0.8	1.4
Labour force	233.3	230.5	1.5	-2.8	1.7	5.1	-1.2	0.7	2.3
Employment	225.6	222.0	1.5	-3.6	-0.1	2.7	-1.6	0.0	1.2
Unemployment	7.7	8.5	1.0	0.8	1.8	2.4	10.4	26.9	39.3
Participation rate	64.5	63.6	0.4	-0.9	-0.1	0.5
Unemployment rate	3.3	3.7	0.4	0.4	0.8	1.0
Employment rate	62.4	61.3	0.4	-1.1	-0.5	-0.1
Part-time rate	22.5	23.9	1.0	1.4	3.3	1.7
Industry									
	576.1	568.7	2.7	-7.4	-6.3	-2.7	-1.3	-1.1	-0.5
Goods-producing sector									
Agriculture	155.4	152.2	1.9	-3.2	-11.5	-12.6	-2.1	-7.0	-7.6
Forestry, fishing, mining, quarrying, oil and gas extraction ²	39.6	40.5	1.2	0.9	-3.3	-4.5	2.3	-7.5	-10.0
Utilities	26.1	25.4	0.8	-0.7	-3.3	-2.3	-2.7	-11.5	-8.3
Construction	6.3	7.2	0.3	0.9	0.8	1.2	14.3	12.5	20.0
Manufacturing	57.5	52.7	1.2	-4.8	-4.5	-4.6	-8.3	-7.9	-8.0
	25.9	26.4	0.8	0.5	-1.1	-2.4	1.9	-4.0	-8.3
Services-producing sector									
Trade	420.7	416.5	2.5	-4.2	5.2	9.9	-1.0	1.3	2.4
Transportation and warehousing	85.3	84.8	1.4	-0.5	1.4	0.3	-0.6	1.7	0.4
Finance, insurance, real estate and leasing	31.1	30.1	0.8	-1.0	1.5	1.5	-3.2	5.2	5.2
Professional, scientific and technical services	30.0	30.5	0.7	0.5	-1.1	-0.2	1.7	-3.5	-0.7
Business, building and other support services	24.5	24.3	0.8	-0.2	-1.9	-0.9	-0.8	-7.3	-3.6
Educational services	14.4	14.4	0.7	0.0	0.4	2.4	0.0	2.9	20.0
Health care and social assistance	46.0	41.3	1.1	-4.7	-3.4	-4.9	-10.2	-7.6	-10.6
Information, culture and recreation	78.7	78.6	1.0	-0.1	5.0	6.0	-0.1	6.8	8.3
Accommodation and food services	18.2	18.4	0.7	0.2	1.5	2.4	1.1	8.9	15.0
Other services	38.2	38.6	1.1	0.4	1.4	1.9	1.0	3.8	5.2
Public administration	26.2	27.9	0.8	1.7	3.7	3.4	6.5	15.3	13.9
	28.2	27.6	0.7	-0.6	-3.3	-2.0	-2.1	-10.7	-6.8

1. Average standard error of change in two consecutive months (see "Sampling Errors" in Data Quality for further explanations).

2. Also referred to as Natural resources.

Note(s): Related CANSIM Tables 282-0087, 282-0088. The sum of individual categories may not always add to the total due to rounding.

Table 4-9
Selected labour force characteristics (seasonally adjusted) — Alberta

	June 2015	July 2015	S.E.	Change from			Percent change from		
				last month	last December	twelve months ago	last month	last December	twelve months ago
in thousands (except rates)									
Both sexes, 15 years and over									
Population	3,354.0	3,360.4	...	6.4	43.2	71.1	0.2	1.3	2.2
Labour force	2,441.5	2,446.1	10.0	4.6	32.7	61.0	0.2	1.4	2.6
Employment	2,302.5	2,298.2	10.2	-4.3	-2.0	21.0	-0.2	-0.1	0.9
Employment full-time	1,918.9	1,920.5	14.2	1.6	-3.8	23.1	0.1	-0.2	1.2
Unemployment	139.1	147.8	7.9	8.7	34.6	39.9	6.3	30.6	37.0
Participation rate	72.8	72.8	0.3	0.0	0.0	0.3
Unemployment rate	5.7	6.0	0.3	0.3	1.3	1.5
Employment rate	68.6	68.4	0.3	-0.2	-0.9	-0.8
Part-time rate	16.7	16.4	0.5	-0.2	0.1	-0.2
Both sexes, 15 to 24 years									
Population	523.5	523.6	...	0.1	-1.6	-2.2	0.0	-0.3	-0.4
Labour force	362.8	357.5	5.5	-5.3	-3.9	1.7	-1.5	-1.1	0.5
Employment	329.7	317.6	5.4	-12.1	-12.5	-2.2	-3.7	-3.8	-0.7
Unemployment	33.1	39.9	4.5	6.8	8.7	3.8	20.5	27.9	10.5
Participation rate	69.3	68.3	1.0	-1.0	-0.5	0.6
Unemployment rate	9.1	11.2	1.2	2.1	2.6	1.1
Employment rate	63.0	60.7	1.0	-2.3	-2.2	-0.1
Part-time rate	35.3	36.3	1.9	1.0	3.3	2.0
Men, 25 years and over									
Population	1,432.0	1,435.4	...	3.4	23.3	37.9	0.2	1.7	2.7
Labour force	1,150.8	1,161.4	5.2	10.6	29.9	33.9	0.9	2.6	3.0
Employment	1,089.7	1,097.3	5.8	7.6	6.9	5.5	0.7	0.6	0.5
Unemployment	61.1	64.0	4.7	2.9	22.9	28.2	4.7	55.7	78.8
Participation rate	80.4	80.9	0.4	0.5	0.8	0.2
Unemployment rate	5.3	5.5	0.4	0.2	1.9	2.3
Employment rate	76.1	76.4	0.4	0.3	-0.8	-1.7
Part-time rate	5.9	5.8	0.5	-0.1	-0.2	0.2
Women, 25 years and over									
Population	1,398.4	1,401.4	...	3.0	21.5	35.4	0.2	1.6	2.6
Labour force	928.0	927.2	5.8	-0.8	6.7	25.5	-0.1	0.7	2.8
Employment	883.1	883.3	6.0	0.2	3.7	17.7	0.0	0.4	2.0
Unemployment	44.9	43.9	4.1	-1.0	3.0	7.8	-2.2	7.3	21.6
Participation rate	66.4	66.2	0.4	-0.2	-0.5	0.2
Unemployment rate	4.8	4.7	0.4	-0.1	0.3	0.7
Employment rate	63.2	63.0	0.4	-0.2	-0.7	-0.4
Part-time rate	22.9	22.5	1.0	-0.4	-0.4	-1.6
Industry	2,302.5	2,298.2	10.2	-4.3	-2.0	21.0	-0.2	-0.1	0.9
Goods-producing sector									
Agriculture	638.5	642.5	6.9	4.0	-20.7	-23.8	0.6	-3.1	-3.6
Forestry, fishing, mining, quarrying, oil and gas extraction ²	61.6	62.4	3.2	0.8	-0.6	1.0	1.3	-1.0	1.6
Utilities	158.8	157.1	3.6	-1.7	-15.8	-24.2	-1.1	-9.1	-13.3
Construction	19.1	22.2	1.0	3.1	4.1	5.0	16.2	22.7	29.1
Manufacturing	259.9	259.5	4.8	-0.4	-4.0	0.9	-0.2	-1.5	0.3
	139.2	141.2	3.1	2.0	-4.4	-6.6	1.4	-3.0	-4.5
Services-producing sector									
Trade	1,664.0	1,655.8	9.3	-8.2	18.8	44.9	-0.5	1.1	2.8
Transportation and warehousing	318.4	317.5	4.8	-0.9	5.5	-7.7	-0.3	1.8	-2.4
Finance, insurance, real estate and leasing	143.6	139.9	3.3	-3.7	-2.3	14.5	-2.6	-1.6	11.6
Professional, scientific and technical services	107.5	105.3	2.6	-2.2	1.3	0.0	-2.0	1.2	0.0
Business, building and other support services	167.6	175.8	3.3	8.2	-6.6	-13.6	4.9	-3.6	-7.2
Educational services	81.3	79.7	3.1	-1.6	-0.4	5.7	-2.0	-0.5	7.7
Health care and social assistance	138.4	134.6	3.3	-3.8	2.4	9.3	-2.7	1.8	7.4
Information, culture and recreation	266.6	263.3	3.7	-3.3	10.5	23.6	-1.2	4.2	9.8
Accommodation and food services	72.4	76.2	2.8	3.8	4.1	4.9	5.2	5.7	6.9
Other services	157.7	154.4	4.1	-3.3	-0.4	12.9	-2.1	-0.3	9.1
Public administration	118.3	115.5	3.4	-2.8	-5.3	-8.3	-2.4	-4.4	-6.7
	92.1	93.7	2.1	1.6	10.3	3.7	1.7	12.4	4.1

1. Average standard error of change in two consecutive months (see "Sampling Errors" in Data Quality for further explanations).

2. Also referred to as Natural resources.

Note(s): Related CANSIM Tables 282-0087, 282-0088. The sum of individual categories may not always add to the total due to rounding.

Table 4-10
Selected labour force characteristics (seasonally adjusted) — British Columbia

	June 2015	July 2015	S.E. ¹	Change from			Percent change from		
				last month	last December	twelve months ago	last month	last December	twelve months ago
in thousands (except rates)									
Both sexes, 15 years and over									
Population	3,874.4	3,879.5	...	5.1	31.1	47.0	0.1	0.8	1.2
Labour force	2,449.5	2,452.3	10.1	2.8	35.2	28.4	0.1	1.5	1.2
Employment	2,306.6	2,306.0	10.1	-0.6	22.1	28.9	0.0	1.0	1.3
Employment full-time	1,834.1	1,818.4	14.9	-15.7	3.3	29.9	-0.9	0.2	1.7
Unemployment	142.9	146.2	8.2	3.3	13.0	-0.7	2.3	9.8	-0.5
Participation rate	63.2	63.2	0.3	0.0	0.4	0.0
Unemployment rate	5.8	6.0	0.3	0.2	0.5	-0.1
Employment rate	59.5	59.4	0.3	-0.1	0.1	0.0
Part-time rate	20.5	21.1	0.6	0.7	0.6	-0.3
Both sexes, 15 to 24 years									
Population	583.0	583.5	...	0.5	3.0	2.4	0.1	0.5	0.4
Labour force	361.6	356.4	5.9	-5.2	-0.1	1.0	-1.4	0.0	0.3
Employment	320.8	316.8	5.6	-4.0	-1.0	-2.1	-1.2	-0.3	-0.7
Unemployment	40.8	39.6	4.9	-1.2	0.8	3.1	-2.9	2.1	8.5
Participation rate	62.0	61.1	1.0	-0.9	-0.3	-0.1
Unemployment rate	11.3	11.1	1.3	-0.2	0.2	0.8
Employment rate	55.0	54.3	1.0	-0.7	-0.4	-0.6
Part-time rate	49.5	49.4	2.2	-0.1	2.4	1.3
Men, 25 years and over									
Population	1,606.2	1,608.5	...	2.3	13.5	20.8	0.1	0.8	1.3
Labour force	1,110.3	1,107.3	5.4	-3.0	24.1	19.8	-0.3	2.2	1.8
Employment	1,051.8	1,048.4	5.7	-3.4	14.8	18.4	-0.3	1.4	1.8
Unemployment	58.5	58.9	4.7	0.4	9.4	1.4	0.7	19.0	2.4
Participation rate	69.1	68.8	0.3	-0.3	0.9	0.3
Unemployment rate	5.3	5.3	0.4	0.0	0.7	0.0
Employment rate	65.5	65.2	0.4	-0.3	0.4	0.3
Part-time rate	8.1	7.6	0.7	-0.5	-1.2	-1.1
Women, 25 years and over									
Population	1,685.2	1,687.5	...	2.3	14.6	23.9	0.1	0.9	1.4
Labour force	977.7	988.5	5.9	10.8	11.1	7.5	1.1	1.1	0.8
Employment	934.0	940.8	5.9	6.8	8.4	12.7	0.7	0.9	1.4
Unemployment	43.7	47.7	4.5	4.0	2.8	-5.2	9.2	6.2	-9.8
Participation rate	58.0	58.6	0.4	0.6	0.2	-0.4
Unemployment rate	4.5	4.8	0.4	0.3	0.2	-0.6
Employment rate	55.4	55.8	0.4	0.4	0.1	0.0
Part-time rate	24.5	26.7	1.0	2.2	2.2	0.3
Industry									
	2,306.6	2,306.0	10.1	-0.6	22.1	28.9	0.0	1.0	1.3
Goods-producing sector									
Agriculture	449.6	446.0	5.9	-3.6	-3.0	-2.9	-0.8	-0.7	-0.6
Forestry, fishing, mining, quarrying, oil and gas extraction ²	23.6	23.3	2.4	-0.3	0.5	-5.0	-1.3	2.2	-17.7
Utilities	46.4	46.9	2.5	0.5	-4.6	1.0	1.1	-8.9	2.2
Construction	14.2	14.6	1.0	0.4	-0.1	0.7	2.8	-0.7	5.0
Manufacturing	194.9	196.4	4.1	1.5	0.1	-2.5	0.8	0.1	-1.3
	170.5	165.0	3.3	-5.5	1.4	3.1	-3.2	0.9	1.9
Services-producing sector									
Trade	1,857.0	1,860.0	9.7	3.0	25.1	31.8	0.2	1.4	1.7
Transportation and warehousing	351.2	353.2	5.1	2.0	-0.8	-9.0	0.6	-0.2	-2.5
Finance, insurance, real estate and leasing	153.1	142.7	3.3	-10.4	2.3	9.8	-6.8	1.6	7.4
Professional, scientific and technical services	130.8	124.0	3.1	-6.8	-13.2	-12.7	-5.2	-9.6	-9.3
Business, building and other support services	185.5	185.6	3.8	0.1	-0.9	3.0	0.1	-0.5	1.6
Educational services	92.5	95.6	3.2	3.1	9.2	8.4	3.4	10.6	9.6
Health care and social assistance	160.6	167.9	3.7	7.3	3.6	2.9	4.5	2.2	1.8
Information, culture and recreation	287.4	298.0	3.8	10.6	26.7	30.6	3.7	9.8	11.4
Accommodation and food services	115.3	116.2	3.6	0.9	5.6	10.6	0.8	5.1	10.0
Other services	183.3	180.9	4.9	-2.4	1.1	-4.6	-1.3	0.6	-2.5
Public administration	101.1	99.8	3.0	-1.3	-8.4	-3.1	-1.3	-7.8	-3.0
	96.3	96.3	2.2	0.0	0.0	-3.8	0.0	0.0	-3.8

1. Average standard error of change in two consecutive months (see "Sampling Errors" in Data Quality for further explanations).

2. Also referred to as Natural resources.

Note(s): Related CANSIM Tables 282-0087, 282-0088. The sum of individual categories may not always add to the total due to rounding.

Table 5-1

Labour force characteristics by census metropolitan area (seasonally adjusted) — 3 month moving average

	June 2015	July 2015	S.E. ¹	Change from			Percent change from		
				last month	last December	twelve months ago	last month	last December	twelve months ago
in thousands (except rates)									
St. John's, Newfoundland and Labrador									
Population	178.4	178.5	...	0.1	1.1	1.7	0.1	0.6	1.0
Labour force	125.1	123.9	0.9	-1.2	-0.5	1.1	-1.0	-0.4	0.9
Employment	117.0	116.1	1.0	-0.9	-1.4	1.4	-0.8	-1.2	1.2
Unemployment	8.1	7.8	0.5	-0.3	0.8	-0.3	-3.7	11.4	-3.7
Participation rate	70.1	69.4	0.5	-0.7	-0.7	-0.1
Unemployment rate	6.5	6.3	0.4	-0.2	0.7	-0.3
Employment rate	65.6	65.0	0.5	-0.6	-1.2	0.1
Halifax, Nova Scotia									
Population	347.9	348.4	...	0.5	2.7	4.7	0.1	0.8	1.4
Labour force	236.6	237.5	1.4	0.9	-5.4	2.5	0.4	-2.2	1.1
Employment	220.9	222.9	1.4	2.0	-4.9	2.4	0.9	-2.2	1.1
Unemployment	15.8	14.6	0.7	-1.2	-0.4	0.2	-7.6	-2.7	1.4
Participation rate	68.0	68.2	0.4	0.2	-2.1	-0.2
Unemployment rate	6.7	6.1	0.3	-0.6	-0.1	0.0
Employment rate	63.5	64.0	0.4	0.5	-1.9	-0.2
Moncton, New Brunswick									
Population	123.6	123.7	...	0.1	1.0	1.8	0.1	0.8	1.5
Labour force	83.1	83.8	0.9	0.7	3.5	3.3	0.8	4.4	4.1
Employment	76.6	77.1	0.9	0.5	2.4	1.5	0.7	3.2	2.0
Unemployment	6.6	6.7	0.4	0.1	1.2	1.8	1.5	21.8	36.7
Participation rate	67.2	67.7	0.7	0.5	2.3	1.7
Unemployment rate	7.9	8.0	0.5	0.1	1.2	1.9
Employment rate	62.0	62.3	0.7	0.3	1.4	0.3
Saint John, New Brunswick									
Population	105.5	105.5	...	0.0	-0.1	-0.2	0.0	-0.1	-0.2
Labour force	68.9	69.5	0.8	0.6	-1.0	-0.1	0.9	-1.4	-0.1
Employment	63.9	63.9	0.8	0.0	-0.9	-0.2	0.0	-1.4	-0.3
Unemployment	5.0	5.7	0.4	0.7	0.0	0.2	14.0	0.0	3.6
Participation rate	65.3	65.9	0.7	0.6	-0.9	0.1
Unemployment rate	7.3	8.2	0.6	0.9	0.1	0.3
Employment rate	60.6	60.6	0.8	0.0	-0.8	0.0
Saguenay, Quebec									
Population	135.1	135.1	...	0.0	-0.2	-0.2	0.0	-0.1	-0.1
Labour force	80.9	79.7	1.0	-1.2	-8.0	-4.5	-1.5	-9.1	-5.3
Employment	74.9	73.3	1.0	-1.6	-5.8	-2.6	-2.1	-7.3	-3.4
Unemployment	6.0	6.3	0.4	0.3	-2.3	-2.0	5.0	-26.7	-24.1
Participation rate	59.9	59.0	0.8	-0.9	-5.8	-3.2
Unemployment rate	7.4	7.9	0.5	0.5	-1.9	-2.0
Employment rate	55.4	54.3	0.7	-1.1	-4.2	-1.8
Québec, Quebec									
Population	669.3	669.7	...	0.4	2.4	4.3	0.1	0.4	0.6
Labour force	465.8	464.9	4.2	-0.9	14.9	0.5	-0.2	3.3	0.1
Employment	446.9	446.3	4.3	-0.6	20.7	9.6	-0.1	4.9	2.2
Unemployment	18.8	18.5	1.6	-0.3	-5.9	-9.2	-1.6	-24.2	-33.2
Participation rate	69.6	69.4	0.6	-0.2	2.0	-0.4
Unemployment rate	4.0	4.0	0.4	0.0	-1.4	-2.0
Employment rate	66.8	66.6	0.6	-0.2	2.8	1.0
Sherbrooke, Quebec									
Population	179.1	179.2	...	0.1	1.0	1.8	0.1	0.6	1.0
Labour force	114.8	115.6	1.2	0.8	5.4	4.6	0.7	4.9	4.1
Employment	106.9	107.5	1.2	0.6	5.4	4.3	0.6	5.3	4.2
Unemployment	7.9	8.1	0.5	0.2	-0.1	0.4	2.5	-1.2	5.2
Participation rate	64.1	64.5	0.7	0.4	2.7	1.9
Unemployment rate	6.9	7.0	0.4	0.1	-0.4	0.1
Employment rate	59.7	60.0	0.7	0.3	2.7	1.8

See notes at the end of the table.

Table 5-1 – continued

Labour force characteristics by census metropolitan area (seasonally adjusted) — 3 month moving average

	June 2015	July 2015	S.E. ¹	Change from			Percent change from		
				last month	last December	twelve months ago	last month	last December	twelve months ago
in thousands (except rates)									
Trois-Rivières, Quebec									
Population	132.7	132.7	...	0.0	0.1	0.2	0.0	0.1	0.2
Labour force	76.9	76.8	1.0	-0.1	0.8	-0.4	-0.1	1.1	-0.5
Employment	72.4	72.2	1.0	-0.2	1.1	0.8	-0.3	1.5	1.1
Unemployment	4.5	4.6	0.4	0.1	-0.4	-1.2	2.2	-8.0	-20.7
Participation rate	58.0	57.9	0.7	-0.1	0.6	-0.4
Unemployment rate	5.9	6.0	0.5	0.1	-0.6	-1.5
Employment rate	54.6	54.4	0.7	-0.2	0.8	0.5
Montréal, Quebec									
Population	3,349.7	3,352.5	...	2.8	17.0	28.7	0.1	0.5	0.9
Labour force	2,229.1	2,239.6	8.4	10.5	34.8	43.8	0.5	1.6	2.0
Employment	2,034.1	2,039.4	8.6	5.3	12.8	33.7	0.3	0.6	1.7
Unemployment	195.0	200.1	4.9	5.1	21.9	10.0	2.6	12.3	5.3
Participation rate	66.5	66.8	0.3	0.3	0.7	0.7
Unemployment rate	8.7	8.9	0.2	0.2	0.8	0.2
Employment rate	60.7	60.8	0.3	0.1	0.0	0.5
Ottawa-Gatineau, Ontario/Quebec									
Population	1,096.1	1,097.2	...	1.1	6.9	12.3	0.1	0.6	1.1
Labour force	759.3	758.9	4.6	-0.4	-0.9	2.2	-0.1	-0.1	0.3
Employment	709.7	710.1	4.8	0.4	-2.4	3.3	0.1	-0.3	0.5
Unemployment	49.6	48.8	2.1	-0.8	1.5	-1.1	-1.6	3.2	-2.2
Participation rate	69.3	69.2	0.4	-0.1	-0.5	-0.5
Unemployment rate	6.5	6.4	0.3	-0.1	0.2	-0.2
Employment rate	64.7	64.7	0.4	0.0	-0.6	-0.4
Ottawa-Gatineau, Quebec part, Ontario/Quebec									
Population	272.3	272.4	...	0.1	0.9	2.0	0.0	0.3	0.7
Labour force	192.0	194.1	1.6	2.1	9.1	8.0	1.1	4.9	4.3
Employment	177.3	180.0	1.6	2.7	8.2	7.1	1.5	4.8	4.1
Unemployment	14.7	14.1	0.8	-0.6	0.9	0.9	-4.1	6.8	6.8
Participation rate	70.5	71.3	0.6	0.8	3.2	2.5
Unemployment rate	7.7	7.3	0.4	-0.4	0.2	0.2
Employment rate	65.1	66.1	0.6	1.0	2.8	2.2
Ottawa-Gatineau, Ontario part, Ontario/Quebec									
Population	823.8	824.8	...	1.0	6.0	10.3	0.1	0.7	1.3
Labour force	567.3	564.8	4.3	-2.5	-10.0	-5.9	-0.4	-1.7	-1.0
Employment	532.5	530.1	4.5	-2.4	-10.6	-3.9	-0.5	-2.0	-0.7
Unemployment	34.8	34.7	1.9	-0.1	0.6	-2.0	-0.3	1.8	-5.4
Participation rate	68.9	68.5	0.5	-0.4	-1.7	-1.6
Unemployment rate	6.1	6.1	0.3	0.0	0.2	-0.3
Employment rate	64.6	64.3	0.6	-0.3	-1.7	-1.3
Kingston, Ontario									
Population	138.1	138.3	...	0.2	0.7	1.0	0.1	0.5	0.7
Labour force	88.4	88.9	0.9	0.5	3.7	0.8	0.6	4.3	0.9
Employment	82.4	83.1	0.9	0.7	3.7	0.6	0.8	4.7	0.7
Unemployment	6.0	5.8	0.4	-0.2	0.1	0.1	-3.3	1.8	1.8
Participation rate	64.0	64.3	0.7	0.3	2.4	0.1
Unemployment rate	6.8	6.5	0.4	-0.3	-0.2	0.0
Employment rate	59.7	60.1	0.6	0.4	2.4	0.0
Peterborough, Ontario									
Population	104.3	104.3	...	0.0	0.1	0.3	0.0	0.1	0.3
Labour force	68.0	69.2	1.2	1.2	1.1	2.5	1.8	1.6	3.7
Employment	63.2	64.5	1.2	1.3	1.1	3.0	2.1	1.7	4.9
Unemployment	4.8	4.6	0.6	-0.2	-0.1	-0.6	-4.2	-2.1	-11.5
Participation rate	65.2	66.3	1.1	1.1	0.9	2.2
Unemployment rate	7.1	6.6	0.9	-0.5	-0.3	-1.2
Employment rate	60.6	61.8	1.2	1.2	1.0	2.7

See notes at the end of the table.

Table 5-1 – continued

Labour force characteristics by census metropolitan area (seasonally adjusted) — 3 month moving average

	June 2015	July 2015	S.E. ¹	Change from			Percent change from		
				last month	last December	twelve months ago	last month	last December	twelve months ago
in thousands (except rates)									
Oshawa, Ontario									
Population	320.8	321.2	...	0.4	2.9	5.3	0.1	0.9	1.7
Labour force	210.8	204.9	1.8	-5.9	-17.4	-12.0	-2.8	-7.8	-5.5
Employment	195.0	189.7	1.9	-5.3	-17.3	-12.1	-2.7	-8.4	-6.0
Unemployment	15.8	15.2	0.9	-0.6	-0.1	0.1	-3.8	-0.7	0.7
Participation rate	65.7	63.8	0.6	-1.9	-6.0	-4.9
Unemployment rate	7.5	7.4	0.4	-0.1	0.5	0.4
Employment rate	60.8	59.1	0.6	-1.7	-5.9	-4.8
Toronto, Ontario									
Population	5,093.7	5,101.4	...	7.7	48.2	81.1	0.2	1.0	1.6
Labour force	3,402.4	3,425.3	11.5	22.9	86.7	73.4	0.7	2.6	2.2
Employment	3,167.6	3,198.5	11.6	30.9	125.9	121.6	1.0	4.1	4.0
Unemployment	234.8	226.8	6.5	-8.0	-39.2	-48.1	-3.4	-14.7	-17.5
Participation rate	66.8	67.1	0.2	0.3	1.0	0.3
Unemployment rate	6.9	6.6	0.2	-0.3	-1.4	-1.6
Employment rate	62.2	62.7	0.2	0.5	1.9	1.4
Hamilton, Ontario									
Population	641.6	642.2	...	0.6	3.5	6.2	0.1	0.5	1.0
Labour force	408.6	414.1	3.6	5.5	12.0	4.2	1.3	3.0	1.0
Employment	387.4	392.1	3.7	4.7	11.7	8.3	1.2	3.1	2.2
Unemployment	21.2	22.0	1.4	0.8	0.3	-4.1	3.8	1.4	-15.7
Participation rate	63.7	64.5	0.6	0.8	1.5	0.1
Unemployment rate	5.2	5.3	0.3	0.1	-0.1	-1.1
Employment rate	60.4	61.1	0.6	0.7	1.5	0.8
St. Catharines-Niagara, Ontario									
Population	343.0	343.1	...	0.1	0.5	0.9	0.0	0.1	0.3
Labour force	214.0	217.3	2.1	3.3	5.6	8.3	1.5	2.6	4.0
Employment	201.1	203.8	2.1	2.7	6.9	10.6	1.3	3.5	5.5
Unemployment	12.9	13.5	0.8	0.6	-1.3	-2.2	4.7	-8.8	-14.0
Participation rate	62.4	63.3	0.6	0.9	1.5	2.2
Unemployment rate	6.0	6.2	0.4	0.2	-0.8	-1.3
Employment rate	58.6	59.4	0.6	0.8	1.9	2.9
Kitchener-Cambridge-Waterloo, Ontario									
Population	421.1	421.4	...	0.3	2.2	4.1	0.1	0.5	1.0
Labour force	291.0	289.9	2.8	-1.1	-17.8	-9.2	-0.4	-5.8	-3.1
Employment	275.0	275.1	2.9	0.1	-14.9	-4.8	0.0	-5.1	-1.7
Unemployment	16.0	14.8	1.0	-1.2	-3.0	-4.4	-7.5	-16.9	-22.9
Participation rate	69.1	68.8	0.7	-0.3	-4.6	-2.9
Unemployment rate	5.5	5.1	0.3	-0.4	-0.7	-1.3
Employment rate	65.3	65.3	0.7	0.0	-3.9	-1.8
Brantford, Ontario									
Population	111.7	111.8	...	0.1	0.5	0.7	0.1	0.4	0.6
Labour force	72.6	72.5	0.9	-0.1	-1.7	-0.9	-0.1	-2.3	-1.2
Employment	68.1	67.4	0.9	-0.7	-2.2	-1.4	-1.0	-3.2	-2.0
Unemployment	4.4	5.1	0.4	0.7	0.5	0.5	15.9	10.9	10.9
Participation rate	65.0	64.8	0.8	-0.2	-1.9	-1.3
Unemployment rate	6.1	7.0	0.5	0.9	0.8	0.7
Employment rate	61.0	60.3	0.8	-0.7	-2.2	-1.6
Guelph, Ontario									
Population	128.5	128.7	...	0.2	0.9	1.8	0.2	0.7	1.4
Labour force	93.4	92.9	1.2	-0.5	3.0	6.3	-0.5	3.3	7.3
Employment	90.1	89.6	1.2	-0.5	4.3	9.2	-0.6	5.0	11.4
Unemployment	3.2	3.3	0.4	0.1	-1.3	-2.9	3.1	-28.3	-46.8
Participation rate	72.7	72.2	0.9	-0.5	1.9	4.0
Unemployment rate	3.4	3.6	0.5	0.2	-1.5	-3.6
Employment rate	70.1	69.6	0.9	-0.5	2.9	6.2

See notes at the end of the table.

Table 5-1 – continued

Labour force characteristics by census metropolitan area (seasonally adjusted) — 3 month moving average

	June 2015	July 2015	S.E. ¹	Change from			Percent change from		
				last month	last December	twelve months ago	last month	last December	twelve months ago
in thousands (except rates)									
London, Ontario									
Population	421.7	422.0	...	0.3	2.0	3.6	0.1	0.5	0.9
Labour force	265.0	268.8	2.4	3.8	3.1	4.6	1.4	1.2	1.7
Employment	249.4	251.9	2.4	2.5	5.7	7.0	1.0	2.3	2.9
Unemployment	15.6	16.8	1.1	1.2	-2.7	-2.4	7.7	-13.8	-12.5
Participation rate	62.8	63.7	0.6	0.9	0.4	0.6
Unemployment rate	5.9	6.3	0.4	0.4	-1.0	-1.0
Employment rate	59.1	59.7	0.6	0.6	1.1	1.2
Windsor, Ontario									
Population	279.4	279.6	...	0.2	1.0	2.0	0.1	0.4	0.7
Labour force	180.7	179.9	1.8	-0.8	4.7	10.7	-0.4	2.7	6.3
Employment	164.6	164.2	1.8	-0.4	6.1	10.3	-0.2	3.9	6.7
Unemployment	16.1	15.7	1.0	-0.4	-1.3	0.4	-2.5	-7.6	2.6
Participation rate	64.7	64.3	0.6	-0.4	1.4	3.3
Unemployment rate	8.9	8.7	0.6	-0.2	-1.0	-0.3
Employment rate	58.9	58.7	0.6	-0.2	2.0	3.3
Barrie, Ontario									
Population	166.8	167.0	...	0.2	1.4	2.6	0.1	0.8	1.6
Labour force	119.5	118.2	1.4	-1.3	-3.2	0.4	-1.1	-2.6	0.3
Employment	110.3	109.7	1.5	-0.6	-5.4	-0.1	-0.5	-4.7	-0.1
Unemployment	9.2	8.5	0.7	-0.7	2.3	0.6	-7.6	37.1	7.6
Participation rate	71.6	70.8	0.9	-0.8	-2.5	-0.9
Unemployment rate	7.7	7.2	0.6	-0.5	2.1	0.5
Employment rate	66.1	65.7	0.9	-0.4	-3.8	-1.1
Greater Sudbury, Ontario									
Population	139.8	139.9	...	0.1	0.1	0.3	0.1	0.1	0.2
Labour force	91.2	90.6	0.8	-0.6	0.8	2.4	-0.7	0.9	2.7
Employment	84.7	83.9	0.9	-0.8	-0.4	1.6	-0.9	-0.5	1.9
Unemployment	6.5	6.6	0.4	0.1	1.2	0.7	1.5	22.2	11.9
Participation rate	65.2	64.8	0.6	-0.4	0.6	1.6
Unemployment rate	7.1	7.3	0.4	0.2	1.3	0.6
Employment rate	60.6	60.0	0.6	-0.6	-0.3	1.0
Thunder Bay, Ontario									
Population	104.6	104.6	...	0.0	-0.1	-0.1	0.0	-0.1	-0.1
Labour force	63.1	62.3	0.7	-0.8	-1.7	-3.5	-1.3	-2.7	-5.3
Employment	59.9	59.4	0.7	-0.5	-1.1	-3.1	-0.8	-1.8	-5.0
Unemployment	3.2	3.0	0.3	-0.2	-0.6	-0.3	-6.2	-16.7	-9.1
Participation rate	60.3	59.6	0.7	-0.7	-1.5	-3.2
Unemployment rate	5.1	4.8	0.4	-0.3	-0.8	-0.2
Employment rate	57.3	56.8	0.7	-0.5	-1.0	-2.9
Winnipeg, Manitoba									
Population	651.8	652.6	...	0.8	5.5	9.5	0.1	0.8	1.5
Labour force	453.7	452.7	1.4	-1.0	12.3	18.3	-0.2	2.8	4.2
Employment	426.2	425.6	1.4	-0.6	10.5	16.2	-0.1	2.5	4.0
Unemployment	27.5	27.1	0.8	-0.4	1.8	2.1	-1.5	7.1	8.4
Participation rate	69.6	69.4	0.2	-0.2	1.3	1.9
Unemployment rate	6.1	6.0	0.2	-0.1	0.3	0.2
Employment rate	65.4	65.2	0.2	-0.2	1.1	1.5
Regina, Saskatchewan									
Population	197.9	198.2	...	0.3	2.3	4.2	0.2	1.2	2.2
Labour force	144.0	144.2	1.0	0.2	1.2	3.1	0.1	0.8	2.2
Employment	138.0	138.0	1.0	0.0	0.1	2.0	0.0	0.1	1.5
Unemployment	6.0	6.2	0.4	0.2	1.1	1.1	3.3	21.6	21.6
Participation rate	72.8	72.8	0.5	0.0	-0.2	0.1
Unemployment rate	4.2	4.3	0.3	0.1	0.7	0.7
Employment rate	69.7	69.6	0.5	-0.1	-0.8	-0.5

See notes at the end of the table.

Table 5-1 – continued

Labour force characteristics by census metropolitan area (seasonally adjusted) — 3 month moving average

	June 2015	July 2015	S.E. ¹	Change from			Percent change from		
				last month	last December	twelve months ago	last month	last December	twelve months ago
in thousands (except rates)									
Saskatoon, Saskatchewan									
Population	251.7	252.2	...	0.5	3.9	7.1	0.2	1.6	2.9
Labour force	177.8	177.2	1.2	-0.6	-1.5	1.9	-0.3	-0.8	1.1
Employment	168.1	166.8	1.3	-1.3	-4.9	-2.1	-0.8	-2.9	-1.2
Unemployment	9.7	10.3	0.5	0.6	3.3	3.9	6.2	47.1	60.9
Participation rate	70.6	70.3	0.5	-0.3	-1.7	-1.2
Unemployment rate	5.5	5.8	0.3	0.3	1.9	2.1
Employment rate	66.8	66.1	0.5	-0.7	-3.1	-2.8
Calgary, Alberta									
Population	1,177.0	1,180.3	...	3.3	19.6	33.9	0.3	1.7	3.0
Labour force	876.3	876.0	4.5	-0.3	25.6	37.3	0.0	3.0	4.4
Employment	824.9	818.4	4.5	-6.5	8.5	21.1	-0.8	1.0	2.6
Unemployment	51.4	57.6	2.2	6.2	17.1	16.2	12.1	42.2	39.1
Participation rate	74.5	74.2	0.4	-0.3	0.9	1.0
Unemployment rate	5.9	6.6	0.3	0.7	1.8	1.7
Employment rate	70.1	69.3	0.4	-0.8	-0.5	-0.2
Edmonton, Alberta									
Population	1,099.2	1,101.9	...	2.7	15.9	26.9	0.2	1.5	2.5
Labour force	800.0	798.3	4.5	-1.7	12.7	12.3	-0.2	1.6	1.6
Employment	753.0	753.0	4.6	0.0	5.2	9.5	0.0	0.7	1.3
Unemployment	46.9	45.3	2.2	-1.6	7.5	2.8	-3.4	19.8	6.6
Participation rate	72.8	72.4	0.4	-0.4	0.1	-0.7
Unemployment rate	5.9	5.7	0.3	-0.2	0.9	0.3
Employment rate	68.5	68.3	0.4	-0.2	-0.6	-0.9
Kelowna, British Columbia									
Population	152.0	152.3	...	0.3	1.3	1.7	0.2	0.9	1.1
Labour force	98.8	100.8	2.0	2.0	6.3	5.7	2.0	6.7	6.0
Employment	94.4	95.8	2.0	1.4	4.8	5.0	1.5	5.3	5.5
Unemployment	4.4	5.0	0.6	0.6	1.5	0.6	13.6	42.9	13.6
Participation rate	65.0	66.2	1.3	1.2	3.6	3.1
Unemployment rate	4.5	5.0	0.7	0.5	1.3	0.4
Employment rate	62.1	62.9	1.3	0.8	2.6	2.6
Abbotsford-Mission, British Columbia									
Population	144.8	145.0	...	0.2	1.1	1.5	0.1	0.8	1.0
Labour force	99.1	98.5	0.9	-0.6	6.2	4.9	-0.6	6.7	5.2
Employment	93.7	93.2	0.9	-0.5	6.8	7.1	-0.5	7.9	8.2
Unemployment	5.4	5.3	0.4	-0.1	-0.6	-2.2	-1.9	-10.2	-29.3
Participation rate	68.4	67.9	0.7	-0.5	3.8	2.7
Unemployment rate	5.4	5.4	0.4	0.0	-1.0	-2.6
Employment rate	64.7	64.3	0.6	-0.4	4.3	4.3
Vancouver, British Columbia									
Population	2,125.6	2,129.2	...	3.6	22.7	35.8	0.2	1.1	1.7
Labour force	1,358.7	1,364.2	5.6	5.5	-0.4	8.4	0.4	0.0	0.6
Employment	1,275.2	1,283.0	5.7	7.8	-0.2	5.3	0.6	0.0	0.4
Unemployment	83.5	81.2	2.9	-2.3	-0.3	3.1	-2.8	-0.4	4.0
Participation rate	63.9	64.1	0.3	0.2	-0.7	-0.7
Unemployment rate	6.1	6.0	0.2	-0.1	0.0	0.2
Employment rate	60.0	60.3	0.3	0.3	-0.6	-0.7
Victoria, British Columbia									
Population	302.9	303.3	...	0.4	1.9	2.9	0.1	0.6	1.0
Labour force	186.1	187.4	1.8	1.3	5.4	0.7	0.7	3.0	0.4
Employment	175.0	177.5	1.8	2.5	4.6	1.1	1.4	2.7	0.6
Unemployment	11.1	9.9	0.7	-1.2	0.8	-0.3	-10.8	8.8	-2.9
Participation rate	61.4	61.8	0.6	0.4	1.4	-0.4
Unemployment rate	6.0	5.3	0.4	-0.7	0.3	-0.2
Employment rate	57.8	58.5	0.6	0.7	1.1	-0.2

1. Average standard error of change in two consecutive months (see "Sampling Errors" in Data Quality for further explanations).

Note(s): Estimates in this table are based on 2011 census boundaries. Related CANSIM Table 282-0135. The sum of individual categories may not always add to the total due to rounding.

Table 5-2
Labour force characteristics by census metropolitan area (seasonally adjusted) — Monthly

	June 2015	July 2015	S.E. ¹	Change from			Percent change from		
				last month	last December	twelve months ago	last month	last December	twelve months ago
in thousands (except rates)									
Montréal, Quebec									
Population	3,352.7	3,355.4	...	2.7	18.0	28.7	0.1	0.5	0.9
Labour force	2,231.4	2,249.9	18.1	18.5	50.2	40.9	0.8	2.3	1.9
Employment	2,026.5	2,054.2	17.9	27.7	24.0	44.3	1.4	1.2	2.2
Unemployment	204.9	195.6	12.0	-9.3	26.1	-3.5	-4.5	15.4	-1.8
Participation rate	66.6	67.1	0.5	0.5	1.2	0.7
Unemployment rate	9.2	8.7	0.5	-0.5	1.0	-0.3
Employment rate	60.4	61.2	0.5	0.8	0.4	0.8
Toronto, Ontario									
Population	5,101.7	5,109.5	...	7.8	50.1	81.6	0.2	1.0	1.6
Labour force	3,418.6	3,438.5	24.5	19.9	114.6	92.8	0.6	3.4	2.8
Employment	3,192.0	3,221.5	24.7	29.5	164.2	158.6	0.9	5.4	5.2
Unemployment	226.6	217.0	15.4	-9.6	-49.6	-65.8	-4.2	-18.6	-23.3
Participation rate	67.0	67.3	0.5	0.3	1.6	0.8
Unemployment rate	6.6	6.3	0.4	-0.3	-1.7	-2.2
Employment rate	62.6	63.0	0.5	0.4	2.6	2.1
Vancouver, British Columbia									
Population	2,129.5	2,133.0	...	3.5	23.5	36.7	0.2	1.1	1.8
Labour force	1,365.9	1,357.6	12.1	-8.3	-4.2	5.0	-0.6	-0.3	0.4
Employment	1,285.6	1,281.4	12.1	-4.2	-2.3	4.1	-0.3	-0.2	0.3
Unemployment	80.3	76.2	7.3	-4.1	-1.8	0.9	-5.1	-2.3	1.2
Participation rate	64.1	63.6	0.6	-0.5	-1.0	-0.9
Unemployment rate	5.9	5.6	0.5	-0.3	-0.1	0.0
Employment rate	60.4	60.1	0.6	-0.3	-0.8	-0.8

1. Average standard error of change in two consecutive months (see "Sampling Errors" in Data Quality for further explanations).

Note(s): Estimates in this table are based on 2011 census boundaries. Related CANSIM Table 282-0136. The sum of individual categories may not always add to the total due to rounding.

Table 6-1

Labour force characteristics by province and economic region, ¹ unadjusted for seasonality, 3 month moving average ending in July 2014 and July 2015

	Population	Labour force			Participation rate	Unemployment rate	Employment rate
		Labour force	Employment	Unemployment			
		in thousands					
Canada							
2014	28,973.4	19,420.9	18,047.9	1,373.0	67.0	7.1	62.3
2015	29,264.9	19,564.9	18,221.8	1,343.1	66.9	6.9	62.3
Newfoundland and Labrador							
2014	443.8	277.8	246.8	31.1	62.6	11.2	55.6
2015	442.8	278.6	246.0	32.6	62.9	11.7	55.6
Avalon Peninsula [1010]							
2014	231.9	154.2	141.6	12.6	66.5	8.2	61.1
2015	232.7	154.4	141.6	12.8	66.4	8.3	60.9
South Coast-Burin Peninsula and Notre Dame-Central Bonavista Bay [1020, 1040]							
2014	124.1	69.9	58.3	11.5	56.3	16.5	47.0
2015	122.8	70.8	60.1	10.7	57.7	15.1	48.9
West Coast-Northern Peninsula-Labrador [1030]							
2014	87.8	53.8	46.9	6.9	61.3	12.8	53.4
2015	87.3	53.4	44.4	9.1	61.2	17.0	50.9
Prince Edward Island							
2014	120.7	85.7	78.5	7.2	71.0	8.4	65.0
2015	120.9	84.4	76.8	7.6	69.8	9.0	63.5
Nova Scotia							
2014	782.7	501.8	457.1	44.7	64.1	8.9	58.4
2015	785.2	498.4	459.2	39.2	63.5	7.9	58.5
Cape Breton [1210]							
2014	108.2	62.4	53.2	9.2	57.7	14.7	49.2
2015	107.0	61.6	53.0	8.6	57.6	14.0	49.5
North Shore [1220]							
2014	129.5	79.6	71.2	8.4	61.5	10.6	55.0
2015	128.9	79.7	73.8	6.0	61.8	7.5	57.3
Annapolis Valley [1230]							
2014	102.5	64.8	59.4	5.4	63.2	8.3	58.0
2015	102.6	60.2	55.8	4.4	58.7	7.3	54.4
Southern [1240]							
2014	98.9	57.0	50.4	6.6	57.6	11.6	51.0
2015	98.4	56.9	51.8	5.1	57.8	9.0	52.6
Halifax [1250]							
2014	343.7	238.0	222.9	15.1	69.2	6.3	64.9
2015	348.4	240.0	224.9	15.2	68.9	6.3	64.6
New Brunswick							
2014	621.5	402.5	364.3	38.2	64.8	9.5	58.6
2015	621.9	400.7	360.0	40.7	64.4	10.2	57.9
Campbellton-Miramichi [1310]							
2014	130.1	75.9	64.2	11.7	58.3	15.4	49.3
2015	129.1	74.5	64.1	10.4	57.7	14.0	49.7
Moncton-Richibucto [1320]							
2014	175.2	120.5	112.1	8.4	68.8	7.0	64.0
2015	176.7	119.9	108.8	11.1	67.9	9.3	61.6
Saint John-St. Stephen [1330]							
2014	142.7	95.5	87.4	8.1	66.9	8.5	61.2
2015	142.2	93.1	84.6	8.4	65.5	9.0	59.5
Fredericton-Oromocto [1340]							
2014	109.0	68.5	62.0	6.5	62.8	9.5	56.9
2015	109.9	72.4	65.3	7.1	65.9	9.8	59.4

See notes at the end of the table.

Table 6-1 – continued

Labour force characteristics by province and economic region, ¹ unadjusted for seasonality, 3 month moving average ending in July 2014 and July 2015

	Population	Labour force			Participation rate	Unemployment rate	Employment rate
		Labour force	Employment	Unemployment			
	in thousands						
Edmundston-Woodstock [1350]							
2014	64.5	42.2	38.7	3.5	65.4	8.3	60.0
2015	64.0	40.8	37.1	3.7	63.8	9.1	58.0
Quebec							
2014	6,800.8	4,471.1	4,130.0	341.1	65.7	7.6	60.7
2015	6,841.2	4,511.5	4,171.5	340.0	65.9	7.5	61.0
Gaspésie-Îles-de-la-Madeleine [2410]							
2014	78.8	47.8	42.2	5.6	60.7	11.7	53.6
2015	78.1	44.0	39.3	4.7	56.3	10.7	50.3
Bas-Saint-Laurent [2415]							
2014	170.5	96.6	89.2	7.4	56.7	7.7	52.3
2015	170.0	92.5	86.2	6.3	54.4	6.8	50.7
Capitale-Nationale [2420]							
2014	612.6	421.0	397.3	23.6	68.7	5.6	64.9
2015	616.5	425.6	408.7	16.9	69.0	4.0	66.3
Chaudière-Appalaches [2425]							
2014	348.5	239.3	224.6	14.7	68.7	6.1	64.4
2015	349.2	233.6	222.7	10.9	66.9	4.7	63.8
Estrie [2430]							
2014	267.8	168.1	156.5	11.7	62.8	7.0	58.4
2015	269.2	163.4	153.0	10.4	60.7	6.4	56.8
Centre-du-Québec [2433]							
2014	199.4	124.5	116.4	8.1	62.4	6.5	58.4
2015	200.4	132.5	124.4	8.2	66.1	6.2	62.1
Montréal [2435]							
2014	1,241.3	856.7	804.8	51.9	69.0	6.1	64.8
2015	1,250.6	828.8	780.9	47.8	66.3	5.8	62.4
Montréal [2440]							
2014	1,652.0	1,067.2	953.1	114.2	64.6	10.7	57.7
2015	1,663.9	1,114.8	989.4	125.4	67.0	11.2	59.5
Laval [2445]							
2014	348.1	245.1	226.8	18.3	70.4	7.5	65.2
2015	351.5	228.5	210.0	18.6	65.0	8.1	59.7
Lanaudière [2450]							
2014	407.7	265.3	247.1	18.2	65.1	6.9	60.6
2015	411.3	287.9	261.0	26.9	70.0	9.3	63.5
Laurentides [2455]							
2014	487.2	322.5	305.0	17.5	66.2	5.4	62.6
2015	492.4	342.7	323.5	19.2	69.6	5.6	65.7
Outaouais [2460]							
2014	316.3	207.5	192.3	15.2	65.6	7.3	60.8
2015	318.2	219.3	204.1	15.1	68.9	6.9	64.1
Abitibi-Témiscamingue [2465]							
2014	120.2	82.2	77.0	5.2	68.4	6.3	64.1
2015	120.5	76.6	71.3	5.3	63.6	6.9	59.2
Mauricie [2470]							
2014	226.0	127.5	116.7	10.9	56.4	8.5	51.6
2015	225.6	122.9	115.4	7.5	54.5	6.1	51.2
Saguenay-Lac-Saint-Jean [2475]							
2014	232.5	146.1	132.6	13.5	62.8	9.2	57.0
2015	232.0	141.8	130.1	11.7	61.1	8.3	56.1

See notes at the end of the table.

Table 6-1 – continued

Labour force characteristics by province and economic region, ¹ unadjusted for seasonality, 3 month moving average ending in July 2014 and July 2015

	Population	Labour force			Participation rate	Unemployment rate	Employment rate
		Labour force	Employment	Unemployment			
	in thousands						
Côte-Nord and Nord-du-Québec [2480, 2490]							
2014	92.1	53.7	48.6	5.1	58.3	9.5	52.8
2015	91.9	56.7	51.5	5.2	61.7	9.2	56.0
Ontario							
2014	11,265.2	7,545.6	6,957.8	587.7	67.0	7.8	61.8
2015	11,377.8	7,546.2	7,032.3	513.9	66.3	6.8	61.8
Ottawa [3510]							
2014	1,087.6	759.2	708.2	51.0	69.8	6.7	65.1
2015	1,096.5	745.9	695.4	50.5	68.0	6.8	63.4
Kingston-Pembroke [3515]							
2014	376.5	236.0	216.2	19.9	62.7	8.4	57.4
2015	376.9	222.0	205.7	16.3	58.9	7.3	54.6
Muskoka-Kawarthas [3520]							
2014	324.3	206.4	194.1	12.3	63.6	6.0	59.9
2015	326.0	178.8	166.0	12.9	54.8	7.2	50.9
Toronto [3530]							
2014	5,272.6	3,574.3	3,254.2	320.1	67.8	9.0	61.7
2015	5,353.3	3,634.1	3,366.2	267.8	67.9	7.4	62.9
Kitchener-Waterloo-Barrie [3540]							
2014	1,063.8	761.0	715.1	45.9	71.5	6.0	67.2
2015	1,076.0	755.3	716.6	38.7	70.2	5.1	66.6
Hamilton-Niagara Peninsula [3550]							
2014	1,189.1	768.4	716.2	52.2	64.6	6.8	60.2
2015	1,197.6	783.1	736.9	46.2	65.4	5.9	61.5
London [3560]							
2014	549.3	358.5	332.8	25.7	65.3	7.2	60.6
2015	553.2	358.6	339.6	18.9	64.8	5.3	61.4
Windsor-Sarnia [3570]							
2014	524.4	330.7	302.9	27.8	63.1	8.4	57.8
2015	524.2	330.5	304.1	26.4	63.0	8.0	58.0
Stratford-Bruce Peninsula [3580]							
2014	246.1	162.8	155.6	7.2	66.2	4.4	63.2
2015	245.6	158.1	149.6	8.5	64.4	5.4	60.9
Northeast [3590]							
2014	458.9	282.2	262.8	19.5	61.5	6.9	57.3
2015	456.9	274.8	253.6	21.1	60.1	7.7	55.5
Northwest [3595]							
2014	172.7	106.0	99.8	6.1	61.4	5.8	57.8
2015	171.5	105.1	98.5	6.5	61.3	6.2	57.4
Manitoba							
2014	976.2	666.8	631.4	35.4	68.3	5.3	64.7
2015	986.5	679.4	640.8	38.6	68.9	5.7	65.0
Southeast [4610]							
2014	87.2	59.2	56.9	2.3	67.9	3.9	65.3
2015	89.0	59.2	56.1	3.1	66.5	5.2	63.0
South Central and North Central [4620, 4640]							
2014	83.5	58.3	55.7	2.6	69.8	4.5	66.7
2015	84.4	57.5	54.9	2.6	68.1	4.5	65.0
Southwest [4630]							
2014	87.5	59.9	57.5	2.3	68.5	3.8	65.7
2015	87.9	60.2	58.2	2.0	68.5	3.3	66.2

See notes at the end of the table.

Table 6-1 – continued

Labour force characteristics by province and economic region, ¹ unadjusted for seasonality, 3 month moving average ending in July 2014 and July 2015

	Population	Labour force			Participation rate	Unemployment rate	Employment rate
		Labour force	Employment	Unemployment			
		in thousands					
Winnipeg [4650]							
2014	586.4	399.1	375.2	23.9	68.1	6.0	64.0
2015	594.3	416.1	390.1	26.0	70.0	6.2	65.6
Interlake [4660]							
2014	74.1	53.1	51.1	2.0	71.7	3.8	69.0
2015	74.8	48.6	46.2	2.4	65.0	4.9	61.8
Parklands and Northern [4670, 4680]							
2014	57.5	37.3	35.0	2.3	64.9	6.2	60.9
2015	56.1	37.9	35.3	2.6	67.6	6.9	62.9
Saskatchewan							
2014	852.0	600.7	579.0	21.7	70.5	3.6	68.0
2015	861.1	612.8	582.4	30.5	71.2	5.0	67.6
Regina-Moose Mountain [4710]							
2014	258.4	189.4	182.9	6.5	73.3	3.4	70.8
2015	262.9	194.1	185.7	8.4	73.8	4.3	70.6
Swift Current-Moose Jaw [4720]							
2014	82.8	54.7	53.3	1.5	66.1	2.7	64.4
2015	82.5	57.3	54.8	2.5	69.5	4.4	66.4
Saskatoon-Biggar [4730]							
2014	288.6	209.3	202.2	7.1	72.5	3.4	70.1
2015	295.0	211.1	199.8	11.3	71.6	5.4	67.7
Yorkton-Melville [4740]							
2014	63.4	40.8	39.6	1.3	64.4	3.2	62.5
2015	62.5	40.0	38.3	1.7	64.0	4.3	61.3
Prince Albert and Northern [4750, 4760]							
2014	158.9	106.5	101.1	5.4	67.0	5.1	63.6
2015	158.1	110.4	103.7	6.7	69.8	6.1	65.6
Alberta							
2014	3,281.6	2,419.0	2,304.2	114.7	73.7	4.7	70.2
2015	3,353.3	2,479.6	2,329.5	150.1	73.9	6.1	69.5
Lethbridge-Medicine Hat [4810]							
2014	228.9	147.0	140.5	6.4	64.2	4.4	61.4
2015	230.3	157.2	150.9	6.3	68.3	4.0	65.5
Camrose-Drumheller [4820]							
2014	161.4	113.5	109.9	3.7	70.3	3.3	68.1
2015	161.9	108.7	105.1	3.6	67.1	3.3	64.9
Calgary [4830]							
2014	1,231.0	914.5	869.5	45.0	74.3	4.9	70.6
2015	1,266.0	954.7	889.8	64.8	75.4	6.8	70.3
Banff-Jasper-Rocky Mountain House and Athabasca-Grande Prairie-Peace River [4840, 4870]							
2014	275.0	207.5	199.9	7.6	75.5	3.7	72.7
2015	277.2	207.8	197.8	10.0	75.0	4.8	71.4
Red Deer [4850]							
2014	166.5	127.3	123.7	3.6	76.5	2.8	74.3
2015	170.2	127.3	118.0	9.3	74.8	7.3	69.3
Edmonton [4860]							
2014	1,104.6	818.9	774.2	44.7	74.1	5.5	70.1
2015	1,130.3	830.3	781.7	48.6	73.5	5.9	69.2
Wood Buffalo-Cold Lake [4880]							
2014	114.3	90.3	86.6	3.8	79.0	4.2	75.8
2015	117.4	93.7	86.2	7.5	79.8	8.0	73.4

See notes at the end of the table.

Table 6-1 – continued

Labour force characteristics by province and economic region, ¹ unadjusted for seasonality, 3 month moving average ending in July 2014 and July 2015

	Population	Labour force			Participation rate	Unemployment rate	Employment rate
		Labour force	Employment	Unemployment			
	in thousands						
British Columbia							
2014	3,828.7	2,449.9	2,298.7	151.2	64.0	6.2	60.0
2015	3,874.1	2,473.2	2,323.3	149.9	63.8	6.1	60.0
Vancouver Island and Coast [5910]							
2014	649.9	375.0	349.4	25.7	57.7	6.9	53.8
2015	654.5	380.3	357.4	22.9	58.1	6.0	54.6
Lower Mainland-Southwest [5920]							
2014	2,378.4	1,557.5	1,463.6	93.9	65.5	6.0	61.5
2015	2,417.3	1,566.4	1,472.5	93.9	64.8	6.0	60.9
Thompson-Okanagan [5930]							
2014	429.5	269.6	254.8	14.8	62.8	5.5	59.3
2015	431.1	274.0	261.4	12.6	63.6	4.6	60.6
Kootenay [5940]							
2014	122.4	72.8	68.3	4.5	59.5	6.2	55.8
2015	121.9	77.8	70.6	7.1	63.8	9.1	57.9
Cariboo [5950]							
2014	126.9	93.1	87.1	6.1	73.4	6.6	68.6
2015	127.2	85.9	79.1	6.8	67.5	7.9	62.2
North Coast and Nechako [5960, 5970]							
2014	66.6	42.6	38.1	4.5	64.0	10.6	57.2
2015	66.4	46.6	42.8	3.8	70.2	8.2	64.5
Northeast [5980]							
2014	54.9	39.1	37.4	1.8	71.2	4.6	68.1
2015	55.8	42.3	39.6	2.7	75.8	6.4	71.0

1. For geographic descriptions of economic regions, refer to the Guide to the Labour Force Survey (catalogue number 71-543-GIE).

Note(s): Estimates in this table are based on 2011 census boundaries. Related CANSIM table 282-0122.

Table 6-2
Labour force characteristics by territories, unadjusted for seasonality, 3 month moving average ending in
July 2014 and July 2015

	Population	Labour force			Participation rate	Unemployment rate	Employment rate
		Labour force	Employment	Unemployment			
	in thousands				percent		
Yukon ¹							
2014	27.8	21.5	20.8	0.7	77.3	3.3	74.8
2015	28.2	21.1	19.6	1.5	74.8	7.1	69.5
Northwest Territories ²							
2014	32.3	24.9	22.7	2.2	77.1	8.8	70.3
2015	31.8	24.5	22.5	2.0	77.0	8.2	70.8
Nunavut ³							
2014	23.3	14.2	12.1	2.1	60.8	14.6	51.9
2015	23.8	15.0	12.2	2.8	63.2	18.6	51.5

1. Since 1992, the Labour force survey (LFS) has been conducted in the Yukon, using an alternative methodology that accommodates some of the operational difficulties inherent to remote locales. These estimates are not included in the national totals. In 1995, the LFS in the Yukon underwent a sample redesign. One result of the redesign was that the covered population increased from 85% to 92%, which is reflected by the sharp increase in the three month moving averages estimates of January, February and March of 1995 for all the level estimates. Users are therefore warned to be cautious when comparing estimates before January 1995 to estimates for January 1995 and forward.
2. Since 2001, the Labour force survey (LFS) has been administered in the Northwest Territories, using an alternative methodology that accommodates some of the operational difficulties inherent to remote locales. These estimates are not included in national totals.
3. Since 2004, the Labour force survey (LFS) has been administered in Nunavut, using an alternative methodology that accommodates some of the operational difficulties inherent to remote locales. These estimates are 3-month moving averages and are not included in national totals. From January 2004 to December 2007, estimates represent about 70% of all Nunavut residents aged 15 and over. Starting in January 2008, coverage was extended to 92%, so that by March 2008, the 3-month moving average is completely based on the extended coverage. Because of the large difference in coverage, users are recommended not to compare estimates prior to January 2008 with data afterwards. The January and February 2008 3-month moving average estimates are based on a mix of both coverages, since the extended coverage was introduced in January 2008. Estimates from January 2004 to December 2007 are based on the 10 largest communities in Nunavut: Iqaluit, Rankin Inlet, Cambridge Bay, Kugluktuk, Baker Lake, Arviat, Pond Inlet, Cape Dorset, Pangnirtung, Igloolik. Estimates from March 2008 to present cover the above communities as well as: Taloyoak, Gjoa Haven, Kugaaruk, Coral Harbour, Repulse Bay, Qikiqtarjuaq, Arctic Bay, Hall Beach, Clyde River.

Note(s): Related CANSIM table 282-0100.

Table 7
Average usual hours and wages of employees by selected characteristics, Canada, unadjusted for seasonality

	Employees				Full-time			Part-time		
	Number	Average weekly hours	Average weekly wages	Average hourly wages	Number	Average weekly hours	Average weekly wages	Number	Average weekly hours	Average weekly wages
	thousands		current dollars		thousands		current dollars	thousands		current dollars
July 2015										
15 years and over	15,462.6	36.1	928.95	25.01	13,032.8	39.3	1,040.86	2,429.8	18.6	328.71
15 to 24 years	2,722.4	30.8	463.82	14.45	1,710.9	38.4	605.42	1,011.5	17.8	224.33
25 years and over	12,740.2	37.2	1,028.34	27.26	11,322.0	39.5	1,106.65	1,418.3	19.1	403.16
Men	7,947.9	38.3	1,049.82	26.83	7,180.1	40.4	1,130.81	767.9	18.1	292.54
Women	7,514.7	33.7	801.11	23.08	5,852.8	38.0	930.51	1,661.9	18.8	345.43
Union coverage										
Union coverage	4,583.6	36.5	1,063.80	28.82	4,042.1	38.7	1,141.54	541.5	20.0	483.50
No union coverage	10,879.0	35.9	872.14	23.40	8,990.8	39.6	995.59	1,888.3	18.1	284.33
Job permanency										
Permanent	13,105.7	36.7	982.11	26.12	11,400.2	39.3	1,076.69	1,705.5	19.3	349.96
Temporary	2,356.9	32.6	633.33	18.83	1,632.6	39.6	790.66	724.3	16.8	278.67
Occupation										
Management	946.6	39.9	1,577.83	39.63	922.3	40.5	1,604.60	24.3	17.7	561.20
Business, finance and administrative	2,834.7	35.8	884.07	24.21	2,477.8	38.3	962.03	356.8	18.3	342.71
Natural and applied sciences	1,295.0	38.6	1,346.41	34.71	1,256.9	39.2	1,371.43	38.1	18.9	520.27
Health	1,126.3	34.0	985.13	28.90	878.3	37.8	1,101.63	248.0	20.7	572.56
Social science, education, government service and religion	1,428.2	35.2	1,100.73	31.09	1,231.4	37.9	1,194.06	196.7	18.6	516.54
Art, culture, recreation and sport	449.4	34.4	801.80	23.24	357.7	39.1	921.30	91.6	15.9	335.30
Sales and service	3,963.3	31.8	572.88	16.99	2,651.8	38.4	735.84	1,311.5	18.5	243.38
Trades, transport and equipment operators	2,276.3	40.5	1,023.30	25.01	2,167.5	41.6	1,058.68	108.8	18.2	318.74
Occupations unique to primary industry	358.5	42.1	922.65	21.41	326.3	44.6	988.90	32.2	16.8	251.85
Occupations unique to processing, manufacturing and utilities	784.4	39.6	826.50	20.70	762.7	40.2	841.29	21.7	19.0	306.39
July 2014										
15 years and over	15,359.4	36.0	896.95	24.18	12,867.3	39.3	1,008.15	2,492.1	18.6	322.80
15 to 24 years	2,770.4	30.8	459.28	14.20	1,738.9	38.6	604.41	1,031.5	17.7	214.59
25 years and over	12,589.0	37.1	993.27	26.37	11,128.4	39.5	1,071.24	1,460.7	19.3	399.21
Men	7,834.7	38.3	1,016.44	25.93	7,069.4	40.5	1,095.20	765.4	18.1	288.92
Women	7,524.7	33.5	772.54	22.35	5,797.9	37.9	902.01	1,726.8	18.8	337.81
Union coverage										
Union coverage	4,525.6	36.5	1,036.61	28.10	3,984.9	38.7	1,113.10	540.7	20.2	472.91
No union coverage	10,833.7	35.8	838.61	22.54	8,882.4	39.6	961.07	1,951.4	18.2	281.20
Job permanency										
Permanent	12,948.9	36.6	948.73	25.28	11,198.5	39.3	1,043.08	1,750.4	19.3	345.10
Temporary	2,410.4	32.6	618.80	18.26	1,668.7	39.5	773.77	741.7	17.0	270.16
Occupation										
Management	879.4	39.6	1,574.57	39.84	863.8	40.0	1,595.28	15.6	18.6	431.24
Business, finance and administrative	2,777.7	35.7	844.06	23.29	2,408.7	38.3	918.60	368.9	18.7	357.41
Natural and applied sciences	1,266.9	38.9	1,337.62	34.29	1,231.2	39.5	1,360.38	35.7	19.6	553.05
Health	1,103.4	33.7	946.70	28.00	848.9	37.6	1,060.11	254.5	20.5	568.36
Social science, education, government service and religion	1,333.2	35.1	1,097.29	31.05	1,147.0	37.8	1,191.03	186.2	18.3	519.80
Art, culture, recreation and sport	424.2	33.9	733.11	21.48	325.1	39.3	863.49	99.1	16.1	305.14
Sales and service	4,060.1	31.8	546.81	16.26	2,711.5	38.4	700.71	1,348.6	18.4	237.39
Trades, transport and equipment operators	2,322.3	40.7	994.97	24.17	2,208.1	41.8	1,029.53	114.2	19.2	326.96
Occupations unique to primary industry	388.0	41.7	885.41	20.55	358.0	43.8	938.05	30.0	17.6	257.05
Occupations unique to processing, manufacturing and utilities	804.2	39.1	820.76	20.69	764.9	40.2	850.81	39.3	17.6	235.47

Note(s): Related CANSIM Tables 282-0023, 282-0069, 282-0073.

Table 8**Regional unemployment rates used by the Employment Insurance program ¹, seasonally adjusted, 3 month moving average**

Region	Effective from August 9, 2015 to September 5, 2015
	percent
Newfoundland and Labrador	
01. St. John's	6.2
02. Newfoundland and Labrador ²	18.1
Prince Edward Island ³	
65. Charlottetown	9.3
66. Prince Edward Island ⁴	12.9
Nova Scotia	
04. Eastern Nova Scotia	15.1
05. Western Nova Scotia	8.8
06. Halifax	6.1
New Brunswick	
07. Fredericton—Moncton—Saint John	8.2
08. Madawaska—Charlotte	9.9
09. Restigouche—Albert	15.7
Quebec	
10. Gaspésie—Îles-de-la-Madeleine	15.2
11. Québec	4.1
12. Trois-Rivières	5.9
13. South Central Quebec	4.1
14. Sherbrooke	7.3
15. Montérégie	7.9
16. Montréal	9.1
17. Central Quebec	7.4
18. North Western Quebec	8.8
19. Bas-Saint-Laurent—Côte-Nord	10.4
20. Hull	7.2
21. Chicoutimi—Jonquière	7.9
Ontario	
22. Ottawa	6.1
23. Eastern Ontario	8.4
24. Kingston	6.5
25. Central Ontario	7.3
26. Oshawa	7.8
27. Toronto	6.6
28. Hamilton	5.3
29. St. Catharines	6.2
30. London	6.2
31. Niagara	8.4
32. Windsor	9.3
33. Kitchener	5.1
34. Huron	6.8
35. South Central Ontario	4.1
36. Sudbury	7.5
37. Thunder Bay	4.7
38. Northern Ontario	12.9
Manitoba	
39. Winnipeg	6.0
40. Southern Manitoba	6.4
41. Northern Manitoba	32.3
Saskatchewan	
42. Regina	4.1
43. Saskatoon	5.8
44. Southern Saskatchewan	6.4
45. Northern Saskatchewan	17.9
Alberta	
46. Calgary	6.9
47. Edmonton	5.8
48. Northern Alberta	11.3
49. Southern Alberta	5.9

See notes at the end of the table.

Table 8 – continued

Regional unemployment rates used by the Employment Insurance program 1, seasonally adjusted, 3 month moving average

Region	Effective from August 9, 2015 to September 5, 2015
	percent
British Columbia	
50. Southern Interior British Columbia	7.1
51. Abbotsford	5.6
52. Vancouver	6.0
53. Victoria	6.2
54. Southern Coastal British Columbia	7.5
55. Northern British Columbia	10.5
Territories 3, 5	
59. Whitehorse	7.3
60. Yukon 6	8.5
61. Yellowknife	4.1
62. Northwest Territories 7	13.6
63. Iqaluit	4.7
64. Nunavut 8	25.2

1. The boundaries of these regions are determined by Employment and Social Development Canada (ESDC). For geographic descriptions and maps of employment insurance regions, see the ESDC website: <http://srv129.services.gc.ca/eiregions/en/geocont.aspx>.
 2. This region excludes St. John's.
 3. Prince Edward Island as well as the territories are each comprised of two regions effective October 12, 2014.
 4. This region excludes Charlottetown.
 5. The monthly regional unemployment rates for EI purposes in the territories are subject to the greater of a seasonally adjusted 3 month moving average or 12 month moving average.
 6. This region excludes Whitehorse.
 7. This region excludes Yellowknife.
 8. This region excludes Iqaluit.
- Note(s):** All regions are based on the 1996 Census boundaries, with the exception of those in Prince Edward Island and in the territories, which respect the 2011 Census boundaries.

Table 9-1
Students and other persons aged 15 to 24 (unadjusted) by detailed age groups

	July 2013	July 2014	July 2015	S.E. ¹	Change from		Percent change from	
					last year	two years ago	last year	two years ago
in thousands								
Students 15 to 24 years ²								
Population	2,406.7	2,418.9	2,373.9	30.7	-45.0	-32.8	-1.9	-1.4
Labour force	1,529.8	1,541.4	1,518.4	32.1	-23.0	-11.4	-1.5	-0.7
Employment	1,265.4	1,300.2	1,271.2	30.7	-29.0	5.8	-2.2	0.5
Full-time employment	578.3	589.2	596.9	20.6	7.7	18.6	1.3	3.2
Part-time employment	687.1	711.0	674.3	25.2	-36.7	-12.8	-5.2	-1.9
Unemployment	264.4	241.2	247.2	15.5	6.0	-17.2	2.5	-6.5
Participation rate	63.6	63.7	64.0	1.0	0.3	0.4
Unemployment rate	17.3	15.6	16.3	1.0	0.7	-1.0
Employment rate	52.6	53.8	53.5	1.0	-0.3	0.9
Part-time rate	54.3	54.7	53.0	1.4	-1.6	-1.3
Students 15 to 16 years ²								
Population	756.7	734.5	726.1	5.1	-8.4	-30.6	-1.1	-4.0
Labour force	308.5	297.0	303.3	12.5	6.3	-5.2	2.1	-1.7
Employment	215.2	215.5	211.6	10.9	-3.9	-3.6	-1.8	-1.7
Full-time employment	49.7	53.7	59.6	4.1	5.9	9.9	11.0	19.9
Part-time employment	165.5	161.8	152.0	10.2	-9.8	-13.5	-6.1	-8.2
Unemployment	93.4	81.5	91.7	7.9	10.2	-1.7	12.5	-1.8
Participation rate	40.8	40.4	41.8	1.7	1.4	1.0
Unemployment rate	30.3	27.4	30.2	2.6	2.8	-0.1
Employment rate	28.4	29.3	29.1	1.5	-0.2	0.7
Part-time rate	76.9	75.1	71.8	1.9	-3.2	-5.1
Students 17 to 19 years ²								
Population	924.6	911.1	894.0	15.9	-17.1	-30.6	-1.9	-3.3
Labour force	659.6	647.2	639.1	17.6	-8.1	-20.5	-1.3	-3.1
Employment	542.9	535.6	531.1	17.2	-4.5	-11.8	-0.8	-2.2
Full-time employment	224.6	229.8	225.2	11.2	-4.6	0.6	-2.0	0.3
Part-time employment	318.3	305.8	306.0	15.5	0.2	-12.3	0.1	-3.9
Unemployment	116.7	111.6	108.0	10.4	-3.6	-8.7	-3.2	-7.5
Participation rate	71.3	71.0	71.5	1.6	0.5	0.2
Unemployment rate	17.7	17.2	16.9	1.7	-0.3	-0.8
Employment rate	58.7	58.8	59.4	1.7	0.6	0.7
Part-time rate	58.6	57.1	57.6	2.0	0.5	-1.0
Students 20 to 24 years ²								
Population	725.4	773.3	753.9	25.4	-19.4	28.5	-2.5	3.9
Labour force	561.6	597.1	576.0	22.7	-21.1	14.4	-3.5	2.6
Employment	507.3	549.1	528.5	21.6	-20.6	21.2	-3.8	4.2
Full-time employment	304.1	305.7	312.1	15.9	6.4	8.0	2.1	2.6
Part-time employment	203.2	243.4	216.4	16.3	-27.0	13.2	-11.1	6.5
Unemployment	54.4	48.1	47.5	8.5	-0.6	-6.9	-1.2	-12.7
Participation rate	77.4	77.2	76.4	1.8	-0.8	-1.0
Unemployment rate	9.7	8.1	8.2	1.4	0.1	-1.5
Employment rate	69.9	71.0	70.1	1.9	-0.9	0.2
Part-time rate	40.1	44.3	40.9	2.4	-3.4	0.9
Other persons aged 15 to 24³								
Population	2,093.5	2,055.9	2,058.0	30.7	2.1	-35.5	0.1	-1.7
Labour force	1,771.8	1,755.4	1,745.4	30.3	-10.0	-26.4	-0.6	-1.5
Employment	1,564.6	1,547.6	1,545.3	29.8	-2.3	-19.3	-0.1	-1.2
Full-time employment	1,219.4	1,188.9	1,176.5	27.8	-12.4	-42.9	-1.0	-3.5
Part-time employment	345.2	358.7	368.9	19.6	10.2	23.7	2.8	6.9
Unemployment	207.2	207.8	200.1	14.5	-7.7	-7.1	-3.7	-3.4
Participation rate	84.6	85.4	84.8	0.8	-0.6	0.2
Unemployment rate	11.7	11.8	11.5	0.8	-0.4	-0.2
Employment rate	74.7	75.3	75.1	1.0	-0.2	0.4
Part-time rate	22.1	23.2	23.9	1.1	0.7	1.8

1. Average standard error of change over the year (see "Sampling Errors" in Data Quality for further explanations).

2. Students are persons aged 15 to 24 who attended school full-time in March and who are planning to return to school in the fall.

3. Other persons are all other youths aged 15 to 24 who are not included in the student population.

Note(s): Related CANSIM Table 282-0006.

Table 9-2
Students and other persons aged 15 to 24 (unadjusted) by province

	Population		Labour force				Participation rate	Unemployment rate	Employment rate
		Labour force	Employment	Full-time employment	Part-time employment	Unemployment			
in thousands									
Students ¹									
Newfoundland and Labrador									
July 2014	31.7	21.6	18.5	10.9	7.6	3.2	68.1	14.8	58.4
July 2015	25.9	17.7	15.5	9.7	5.8	2.2	68.3	12.4	59.8
Prince Edward Island									
July 2014	9.5	8.2	7.1	4.5	2.6	1.1	86.3	13.4	74.7
July 2015	9.3	7.6	6.5	4.0	2.5	1.1	81.7	14.5	69.9
Nova Scotia									
July 2014	57.4	39.1	31.0	16.0	15.0	8.1	68.1	20.7	54.0
July 2015	56.3	39.4	33.2	17.1	16.1	6.1	70.0	15.5	59.0
New Brunswick									
July 2014	39.9	27.4	22.4	11.9	10.5	5.1	68.7	18.6	56.1
July 2015	39.3	27.1	21.7	11.8	9.9	5.4	69.0	19.9	55.2
Quebec									
July 2014	558.3	395.5	346.4	162.6	183.8	49.1	70.8	12.4	62.0
July 2015	545.2	396.3	333.9	157.8	176.1	62.4	72.7	15.7	61.2
Ontario									
July 2014	1,046.9	658.6	535.8	224.5	311.3	122.8	62.9	18.6	51.2
July 2015	1,040.0	636.8	517.6	241.9	275.7	119.3	61.2	18.7	49.8
Manitoba									
July 2014	78.3	49.1	42.3	19.0	23.2	6.8	62.7	13.8	54.0
July 2015	71.9	46.2	39.2	17.9	21.3	7.0	64.3	15.2	54.5
Saskatchewan									
July 2014	64.8	39.5	36.3	17.4	18.9	3.2	61.0	8.1	56.0
July 2015	65.7	41.8	38.2	19.1	19.1	3.6	63.6	8.6	58.1
Alberta									
July 2014	244.4	157.4	134.1	69.2	65.0	23.3	64.4	14.8	54.9
July 2015	219.9	143.8	121.0	59.3	61.7	22.9	65.4	15.9	55.0
British Columbia									
July 2014	287.7	144.9	126.4	53.2	73.2	18.5	50.4	12.8	43.9
July 2015	300.4	161.7	144.5	58.3	86.2	17.2	53.8	10.6	48.1
Other persons aged 15-24 ²									
Newfoundland and Labrador									
July 2014	26.5	21.6	18.2	15.3	2.8	3.4	81.5	15.7	68.7
July 2015	30.1	26.9	22.1	19.4	2.7	4.9	89.4	18.2	73.4
Prince Edward Island									
July 2014	9.1	8.1	6.8	6.0	0.9	1.2	89.0	14.8	74.7
July 2015	8.9	8.5	7.6	6.5	1.1	0.9	95.5	10.6	85.4
Nova Scotia									
July 2014	56.4	49.0	39.1	29.7	9.3	9.9	86.9	20.2	69.3
July 2015	55.1	46.5	39.6	33.4	6.2	6.9	84.4	14.8	71.9
New Brunswick									
July 2014	46.1	40.0	33.8	28.0	5.8	6.2	86.8	15.5	73.3
July 2015	45.2	39.6	32.3	27.2	5.1	7.3	87.6	18.4	71.5
Quebec									
July 2014	421.5	359.8	322.8	254.0	68.7	37.1	85.4	10.3	76.6
July 2015	412.9	354.4	324.0	238.3	85.8	30.4	85.8	8.6	78.5
Ontario									
July 2014	762.4	647.0	550.7	396.8	153.9	96.4	84.9	14.9	72.2
July 2015	757.0	637.4	555.9	413.2	142.7	81.4	84.2	12.8	73.4
Manitoba									
July 2014	85.3	74.3	67.7	54.0	13.8	6.7	87.1	9.0	79.4
July 2015	91.1	73.8	66.6	50.3	16.3	7.3	81.0	9.9	73.1
Saskatchewan									
July 2014	74.0	62.3	59.2	53.3	5.9	3.0	84.2	4.8	80.0
July 2015	70.8	62.1	56.3	47.5	8.8	5.8	87.7	9.3	79.5
Alberta									
July 2014	281.3	243.2	224.8	193.8	31.1	18.4	86.5	7.6	79.9
July 2015	303.7	260.4	235.9	195.1	40.8	24.5	85.7	9.4	77.7

See notes at the end of the table.

Table 9-2 – continued

Students and other persons aged 15 to 24 (unadjusted) by province

	Population	Labour force					Participation rate	Unemployment rate	Employment rate
		Labour force	Employment	Full-time employment	Part-time employment	Unemployment			
		in thousands							
British Columbia									
July 2014	293.3	250.0	224.3	158.0	66.4	25.6	85.2	10.2	76.5
July 2015	283.1	235.8	205.0	145.5	59.5	30.8	83.3	13.1	72.4

1. Students are persons aged 15 to 24 who attended school full-time in March and who are planning to return to school in the fall.

2. Other persons are all other youths aged 15 to 24 who are not included in the student population.

Note(s): Related CANSIM Table 282-0006.

Data quality

Definitions and explanations

The **labour force** is composed of those members of the civilian non-institutional population 15 years of age and over who, during the reference week, were employed or unemployed.

Employed persons are those who, during the reference week:

- (a) did any work at all
- (b) had a job but were not at work

A person is considered to be **full-time** if his/her usual hours at the main job are 30 or more hours per week. When the number of hours worked at the main job is usually less than 30 hours per week then he/she is considered to be **part-time**.

Unemployed persons are those who, during the reference week:

- (a) were without work, had actively looked for work in the past four weeks (ending with reference week), and were available for work;
- (b) had not actively looked for work in the past four weeks but were on temporary layoff and were available for work;
- (c) had not actively looked for work in the past four weeks but had a new job to start in four weeks or less from the reference week, and were available for work.

Persons in the civilian non-institutional population 15 years of age and over who, during the reference week, were neither employed nor unemployed are classified as **not in the labour force**.

The **unemployment rate** represents the number of unemployed persons expressed as a percentage of the labour force (employed and unemployed). The unemployment rate for a particular group (age, sex, etc.) is the number unemployed in that group expressed as a percentage of the labour force for that group.

The **participation rate** represents the labour force expressed as a percentage of the population 15 years of age and over. The participation rate for a particular group (age, sex, etc.) is the labour force in that group expressed as a percentage of the population for that group.

The **employment rate** represents the number of persons employed expressed as a percentage of the population 15 years of age and over. The employment rate for a particular group (age, sex, etc.) is the number employed in that group expressed as a percentage of the population for that group.

The **part-time rate** represents the number of persons employed part-time expressed as a percentage of the employed. The part-time rate for a particular group (age, sex, etc.) is the number employed part-time in that group expressed as a percentage of the employed for that group.

All geographic regions are based on the 2011 Census boundaries.

Seasonal adjustment

Fluctuations in economic time series are caused by seasonal, cyclical and irregular movements. A seasonally adjusted series is one from which seasonal movements have been eliminated. Seasonal movements are defined as those which are caused by regular annual events such as climate, holidays, vacation periods and cycles related to crops, production and retail sales associated with Christmas and Easter. The seasonally adjusted series contains irregular as well as longer-term cyclical fluctuations.

The seasonally adjusted series are revised each year to take into account current data and to generate new forecast factors for the next twelve months. The data are therefore subject to slight revisions in future issues of this publication.

For more information on seasonal adjustment, see *Seasonally adjusted data – Frequently asked questions*.

Sampling variability of estimates

Estimates in this publication are based on the Labour Force Survey, a monthly survey of approximately 56,000 households across Canada. Because the entire population is not surveyed, the estimates are subject to sampling error. While the published estimate is the best available indicator of the real value, changes in the level of any estimates between two months can be the result of a true change or sampling variability. The sampling error can be estimated by calculating the standard error for the published estimate or statistic. These standard errors have been included in the publication tables, in order to assist users in interpreting the data. They are based on 12-month averages and are updated twice a year, in February and August.

Interpretation based on standard error

Approximately two thirds of the time (68%), a change greater than the sampling error indicates a real change. The larger the change compared to the standard error, the better the chance that we are observing a real change, as opposed to a change due to sampling variability. At the 95% confidence level, the change in the estimate must be greater than twice the sampling error in order to ensure that change is real.

Movements in estimates that are smaller than the sampling error are less likely to reflect a real change and more likely to be due to sampling variability. While the above is true for monthly movements, one can have more confidence in a series of consecutive movements in the same direction, even though some of the monthly movements may be smaller than the sampling error.

Interpretation based on confidence intervals

Confidence intervals provide another way of looking at the variability inherent in estimates of sample surveys. To illustrate how to calculate the confidence interval, let us say that one month the published estimate for total employment rose by 16,000 to reach 17,800,000. The associated standard error for the movement estimate is 28,800. The standard error used to interpret the movement estimate indicates that:

- There are approximately two chances in three (68%) that the real value of the movement between the two months falls within the range -12,800 to +44,800 (16,000 + or – one standard error).
- There are approximately nine chances in ten (90%) that the real value of the movement between the two months falls within the range -30,100 to +62,100 (16,000 + or – 1.6 times the standard error).
- There are approximately nineteen chances in twenty (95%) that the real value of the movement between the two months falls within the range -41,600 to +73,600 (16,000 + or – two standard errors).

For more detailed explanations on sampling variability of estimates, and in particular for information on how to assess the variability of level estimates, consult the Data quality section of the *Guide to the Labour Force Survey*, (71-543-G).

Documentation

For more detailed information about the Labour Force Survey, see the following documents:

- Overview of the Labour Force Survey 3701
- Guide to the Labour Force Survey (71-543-G)
- Methodology of the Canadian Labour Force Survey (71-526-X)
- LFS *geographical maps*