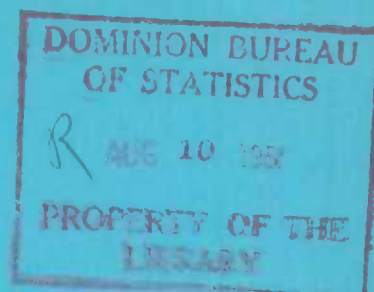


C-1

72 002



GOVERNMENT OF CANADA

DOES NOT CIRCULATE
NE PAS PRÊTER

THE EMPLOYMENT SITUATION

At the Beginning of

JUNE, 1950

TOGETHER WITH PAYROLLS



**DOMINION BUREAU OF STATISTICS
DEPARTMENT OF TRADE AND COMMERCE**

Vol. 28

No. 6

THE EMPLOYMENT SITUATION

At the Beginning of

JUNE, 1950

TOGETHER WITH PAYROLLS

For the Last Week in May

(As reported by employers having 15 or more employees)

Published by Authority of the Rt. Hon. C. D. Howe
Minister of Trade and Commerce

Prepared in the Employment Section
of the Labour and Prices Division,
Dominion Bureau of Statistics, Ottawa

CONTENTS.

	<u>Page</u>
Explanation of the Methods used in Preparing the Monthly Statistics of Employment and Payrolls, (end of report)	I-II
<u>TEXTUAL SUMMARY</u>	1
<u>SUMMARY TABLES</u>	
A. Industrial and geographical distribution of employees and weekly payrolls reported at June 1, 1950, with indexes, (June 1, 1941=100)	2
B. Index numbers of employment, payrolls and average weekly earnings, based on June 1, 1941 as 100, in certain broad groups of industries, with per capita weekly earnings, monthly from 1945	4
C. Geographical and industrial distribution of men and women employees reported by leading firms at June 1, 1950	6
D. Average Weekly Salaries and Wages of Persons Employed by Leading Establishments at June 1, 1941-50	7
<u>DETAILED TABLES</u>	
INDUSTRIAL DISTRIBUTION of employees and payrolls reported at June 1; per capita earnings; indexes of employment and payrolls (June 1, 1941=100) for:	
Table 1. The Dominion as a Whole	21
Table 2. The Five Economic Areas	22
Table 3. The Three Maritime and Three Prairie Provinces	23
Table 4. The Eight Cities with Populations exceeding 100,000	24
Table 5. The Fourteen Cities with Populations of 35,000 to 100,000	25
INDEX NUMBERS OF EMPLOYMENT (1926=100), with comparisons from earlier years for:	
Table 6. Canada, the Economic Areas and Provinces	26
Table 7. The Eight Largest Cities	27
Table 8. The Principal Industrial Groups	28
Table 9. Some 60 Industries or Industrial Groups in Canada as a Whole ..	29
Table 10. Leading Industries in the Economic Areas	30
Table 11. Leading Industries in the Eight Largest Cities	31
<u>SEX DISTRIBUTION</u>	
Table 12. Sex Distribution of Employees Reported at June 1, 1950	32
<u>CHARTS</u>	
EMPLOYMENT AND PAYROLLS IN LEADING INDUSTRIES, (June 1, 1941=100)	
1. In Eight Leading Industries, Annual Averages and Monthly	9
2. In Manufacturing, Mining and Construction	10
3. In Communications, Transportation and Services	11
4. In Logging and Trade	12
5. In Manufacturing, and in the Durable and Non-Durable Groups	13
6. In the Textile and in Hosiery and Knit Goods Industries	14
7. In the Garment and Personal Furnishings and Woollen Industries	15
8. In the Synthetic Silk and Cotton Industries	16
9. In the Leather Gloves and Fur Goods Industries	17
10. In the Clay and Stone Industries	18
PER CAPITA WEEKLY SALARIES AND WAGES	
11. In Eight Leading Industries and in Specified Industries or	19
12. Industrial Groups	20

THE JUNE EMPLOYMENT SITUATION,
TOGETHER WITH STATISTICS OF PAYROLLS
IN THE LAST WEEK IN MAY, 1950.

SUMMARY.

Important expansion in industrial activity as compared with May 1 was reported to the Dominion Bureau of Statistics by over 20,000 of the larger firms^{1/} in the 8 major industrial groups at the beginning of June, when their personnel showed an increase of 3.9 p.c. This advance was greater than at the same date in 1949 or any earlier spring since 1941; smaller than in most pre-war years, the latest percentage gain approximated the average at June 1 in the period, 1921-1949. Based on the 1926 average as 100, the index of employment rose from 188.7 at the first of May, to 196.0 at June 1. It was then the highest in the record for the time of year, slightly exceeding the previous maximum of 194.5 at June 1, 1949. During the war years, the peak index for the beginning of June was that of 181.2 in 1943.

The general rise in recorded employment at June 1 as compared with a month earlier was accompanied by an increase of 3.0 p.c. in the weekly salaries and wages^{2/} disbursed by the reporting establishments. The advances in several of the non-manufacturing industries were particularly marked. The situation in manufacturing was affected to some extent by the observance of the Victoria Day holiday, and by reduced working hours in certain establishments, but there was nevertheless a moderate gain in the reported payrolls. As compared with the same week in 1949, the general index number of payrolls showed an increase of 6.3 p.c. at June 1, 1950.

At \$44.61, the average weekly salaries and wages were 38 cents lower than at May 1. Also lower than at Apr. 1 and Mar. 1 of this year, the most recent figure of per capita earnings was otherwise the highest in the record, exceeding the June 1, 1949, average by 5.4 p.c. Since the monthly series was established 10 years ago, the average weekly earnings of men and women on the payrolls of leading industrial establishments have mounted by 76.7 p.c.

Conforming to the seasonal pattern, the increase in employment for men at June 1 was decidedly more pronounced than for women. The co-operating firms reported a gain of about 4.8 p.c. among their male employees, as compared with a rise of 0.5 p.c. among females. The general proportion of women was lower than at May 1, but was the same as at June 1, 1949.

On the whole, the trend of employment at the date under review was favourable in all provinces^{3/}, in 18 of the 22 cities for which data are published in this bulletin, and in each of the main industrial divisions. Moderate advances were recorded in manufacturing, in which the gain of 1.5 p.c. was slightly less-than-average in extent according to the experience of preceding years, although it was larger than that noted 12 months previously. Among the non-manufacturing classes,

1/See explanatory notes at the end of this bulletin.

2/For estimates of total expenditures in wages, salaries and supplementary labour income, see the bulletins "Monthly Estimates of Labour Income".

3/Data for Newfoundland are not yet available.

Table A.- Geographical and Industrial Distribution of the Employees and the Weekly Payrolls of the Reporting Establishments* at June 1, 1950, and Average Weekly Salaries and Wages of these Persons, Together with Index Numbers of Employment and Payrolls, with Comparisons at May 1, 1950 and June 1, 1949 and 1948.

(The latest figures are subject to revision).

Geographical and Industrial Unit	No. of Employees Reported at June 1, 1950	Weekly Salaries and Wages at June 1, 1950	Average Weekly Salaries and Wages at				Index Numbers Based on June 1, 1941 as 100 p.c.							
							Employment				Payrolls			
			June 1 1950	May 1 1950	June 1 1949	June 1 1948	June 1 1950	May 1 1950	June 1 1949	June 1 1948	June 1 1950	May 1 1950	June 1 1949	June 1 1948
(a) Provinces														
Maritime Provinces	136,859	5,237,450	38.27	39.86	37.14	35.73	114.2	104.6	110.9	113.2	199.3	188.8	188.0	185.3
Prince Edward Island	3,608	130,518	36.17	36.39	34.83	34.12	156.2	140.9	141.2	143.5	257.9	234.0	226.3	224.6
Nova Scotia	77,206	2,997,087	38.82	40.77	37.13	36.20	106.8	98.0	105.1	104.0	183.0	174.2	172.1	166.9
New Brunswick	56,043	2,109,827	37.65	38.37	37.30	35.32	124.3	115.2	119.1	126.8	224.4	211.9	213.5	215.2
Quebec	587,131	24,974,106	42.54	42.89	40.29	38.39	122.3	117.9	123.7	123.6	217.0	210.9	208.0	198.1
Ontario	881,882	40,983,318	46.37	46.58	43.67	40.97	128.3	124.6	125.5	124.0	219.9	214.5	202.2	187.4
Prairie Provinces	251,474	11,166,670	44.40	44.50	42.63	41.11	139.0	133.1	138.3	131.3	233.2	233.7	222.8	204.3
Manitoba	108,333	4,753,381	43.88	43.83	42.34	40.35	129.2	127.0	131.3	126.6	214.0	210.3	209.9	192.6
Saskatchewan	48,051	2,084,974	43.39	43.03	41.39	40.03	129.8	117.3	129.3	126.4	216.3	194.5	207.0	195.3
Alberta	95,090	4,327,916	45.51	46.01	43.33	42.66	158.7	151.2	153.4	141.3	269.8	259.9	249.7	226.2
British Columbia	197,811	9,416,383	47.80	48.16	45.57	42.48	150.6	144.8	161.7	149.7	251.9	245.3	243.1	223.4
CANADA	2,054,957	91,677,804	44.61	44.99	42.32	40.02	126.4	123.6	127.4	125.9	222.2	215.7	209.0	195.4
(b) Cities														
Montreal	302,772	13,006,218	42.96	43.46	40.91	38.32	133.7	133.0	134.0	128.9	223.9	226.4	213.9	192.7
Quebec City	32,657	1,214,411	37.19	37.03	34.50	34.65	117.1	113.4	121.7	120.7	211.0	203.3	203.5	198.3
Toronto	289,521	13,311,270	45.98	46.22	43.18	40.43	137.1	136.2	131.4	128.2	235.4	235.1	211.5	193.4
Ottawa	27,894	1,069,287	38.53	38.54	37.01	34.15	132.3	131.6	132.4	127.0	219.3	219.0	211.6	189.6
Hamilton	67,859	3,359,880	49.51	48.55	46.98	42.18	124.7	122.9	125.7	120.8	223.3	216.2	210.3	185.1
Windsor	42,583	2,315,287	54.24	54.00	47.44	46.93	130.2	113.9	121.3	115.6	190.2	165.5	154.5	146.5
Winnipeg	67,679	2,756,130	40.72	40.77	38.90	36.56	129.1	130.6	133.5	129.5	206.0	208.5	203.7	185.5
Vancouver	86,079	3,907,796	45.40	46.06	43.37	39.54	157.5	154.1	161.9	135.5	289.4	287.2	263.4	243.3
Halifax	22,320	821,035	36.78	36.85	35.49	32.68	122.7	121.4	122.0	118.2	197.5	195.9	183.9	170.4
St. John	12,772	461,117	36.10	37.02	34.98	32.06	115.4	117.4	121.7	123.2	194.0	202.3	198.6	184.6
Sherbrooke	10,506	390,448	37.38	36.96	34.08	32.97	117.4	115.7	117.0	115.0	211.9	206.5	192.0	182.3
Three Rivers	11,321	478,605	42.28	41.28	41.17	40.04	136.4	130.0	136.4	138.9	222.3	206.8	216.4	214.1
Brantford	16,008	661,955	44.11	45.90	43.25	-	-	-	-	-	-	-	-	-
Kitchener - Waterloo	20,988	885,685	42.19	42.17	39.33	36.05	136.3	135.0	133.9	132.3	253.3	251.2	232.4	222.5
London	28,211	1,222,578	43.34	43.14	40.44	37.72	154.3	156.8	151.3	143.7	264.0	265.0	239.3	213.0
Port William - Port Arthur	11,274	520,806	46.20	45.60	44.36	42.98	75.2	68.7	76.6	84.5	133.3	122.8	131.3	136.8
St. Catharines ^x	26,960	1,427,805	52.96	51.71	48.19	-	-	-	-	-	-	-	-	-
Regina	12,119	480,063	39.51	40.00	38.03	35.30	136.6	130.9	136.9	131.3	231.0	223.8	221.3	195.7
Saskatoon	8,232	319,889	38.86	38.47	36.87	34.70	155.3	149.3	151.3	152.8	275.6	262.3	254.4	241.1
Calgary	24,401	1,046,455	42.99	43.32	41.94	38.46	149.8	146.5	146.1	134.6	254.8	253.5	242.1	203.8
Edmonton	26,913	1,122,819	41.72	42.60	39.78	38.25	195.8	185.6	179.6	161.5	331.8	320.4	287.9	248.2
Victoria	13,510	589,481	43.63	43.19	41.30	38.06	150.4	142.9	164.5	148.4	269.3	243.9	252.4	225.6
(c) Industries														
Manufacturing	1,063,589	49,047,840	46.12	46.33	43.31	40.63	121.4	119.5	122.1	121.2	216.6	213.4	203.7	189.3
Durable Goods ^{1/}	492,582	24,187,557	49.06	49.46	46.00	43.03	115.7	113.1	117.7	118.4	202.1	199.1	192.6	180.8
Non-Durable Goods	536,444	23,104,803	43.07	43.18	40.49	38.12	124.3	123.7	124.1	122.7	227.9	226.9	213.4	198.3
Electric Light and Power	34,563	1,776,580	51.38	51.49	48.04	45.43	167.9	161.7	165.5	147.5	274.2	264.7	252.8	211.7
Logging	46,519	1,954,558	40.74	40.34	40.06	37.19	95.9	67.1	111.4	138.0	194.2	154.9	221.9	257.3
Mining	88,177	4,644,368	52.67	54.13	50.06	48.63	105.9	103.7	99.2	98.6	174.4	175.5	155.4	148.8
Communications	67,021	2,434,229	42.69	42.39	40.36	38.43	211.4	206.4	196.9	180.7	325.5	315.5	287.9	252.3
Transportation	182,367	9,505,757	52.12	52.23	50.83	49.63	141.2	138.0	143.1	143.3	224.6	220.0	222.1	217.3
Construction and Maintenance	244,361	10,413,933	42.66	43.19	40.15	38.14	132.3	112.9	126.0	119.9	244.4	211.5	218.0	198.7
Services ^{2/}	77,299	2,273,719	29.48	29.96	27.82	25.96	147.9	143.9	147.7	145.3	262.9	260.0	248.9	228.9
Trade	298,324	11,498,300	38.30	38.62	36.96	34.39	147.9	147.1	144.3	138.1	240.3	237.9	223.5	200.6
EIGHT LEADING INDUSTRIES	2,054,957	91,677,804	44.61	44.99	42.32	40.02	126.4	123.6	127.4	125.9	222.2	215.7	209.0	195.4
Finance	94,078	4,014,919	42.66	42.65	41.57	39.64	151.8	151.4	144.2	139.1	223.2	222.5	206.7	189.9
NINE LEADING INDUSTRIES	2,149,035	95,692,723	44.63	44.88	42.29	40.01	129.3	124.7	128.0	126.4	222.3	216.0	208.9	196.2

^{1/}This classification comprises the following:- iron and steel, non-ferrous metals, electrical apparatus, lumber, musical instruments and clay, glass and stone products. The non-durable group includes the remaining manufacturing industries, as listed in Tables 1 and 9, with the exception of electric light and power. ^{2/}Mainly hotels and restaurants and laundries and dry-cleaning plants. * See explanatory statement on pages I and II.

x Includes Welland, Thorold and Merriton.

there was extremely marked expansion in logging, due in the main to river-driving operations in the Eastern and Central provinces; improvement was also noted in British Columbia. Mining, communications, transportation, construction and maintenance, hotels and restaurants and trade also showed considerably heightened activity. The largest increases were those of 42.6 p.c. and 17.2 p.c. in logging and construction, respectively. The gain in the former was above-normal for the time of year, while that in construction was less-than-average.

Changes in the Major Industrial Divisions.- Although the improvement recorded in manufacturing at the beginning of June was slightly below the average for the time of year, the percentage gain was nevertheless the largest recorded in 24 months. Lower than at June 1, 1949, the latest index number was rather higher than at the same date in any other post-war year. The movement from May 1 was upward in many divisions of manufacturing; the exceptions were the leather, textile, tobacco and non-ferrous metal groups. The losses in the first two were mainly seasonal in character; that in tobacco was insignificant, while the decline in non-ferrous metals was largely due to industrial disputes in Ontario. Elsewhere, the trend in this industry was favourable.

There were considerable increases in employment in the food, lumber, pulp and paper, beverage, electrical apparatus and iron and steel divisions, with smaller advances in many other classes. The recovery in the iron and steel group resulted in large measure from a return to more normal conditions in **automotive** plants in Windsor, following the settlement of industrial disputes in parent establishments in the United States. The gain in the heavy manufactured goods group as a whole amounted to 2.3 p.c., and that in the non-durable goods industries to 0.7 p.c. The accompanying increases in the payrolls were 1.5 p.c. in the former category and 0.4 p.c. in the latter. The general rise in the reported expenditures in weekly salaries and wages in manufacturing as a whole was 1.1 p.c. The June 1 index number of payrolls was the highest in the record, although that of employment was somewhat lower than in several months in 1949 and 1948, as well as being lower than during the period of intensified wartime production.

Employment generally in the non-manufacturing classes showed expansion on a large scale at June 1. In logging, mining and communications, the advances were somewhat above-average for June 1 in the experience of preceding years since 1920. The gains in transportation, construction and maintenance, hotels and restaurants and trade were rather smaller than usual for the time of year. The increase in the working force in mining took place in the metallic ore and the miscellaneous non-metallic mineral groups, coal mining showing a seasonal decline in employment, accompanied by reduced working hours in some areas. The resultant losses in the payrolls in that industry sufficed to lower the total of weekly salaries and wages reported in mining as a whole. The index number of payrolls fell by 0.6 p.c. in the month, but was 12.2 p.c. above its level at June 1, 1949.

Provincial Changes in Non-Agricultural Employment.- The situation in each of the nine older provinces^{1/} showed considerable improvement at June 1, when the general advance from May 1 ranged from 1.6 p.c. in Manitoba, 3.0 p.c. in Ontario and 3.7 p.c. in Quebec, to over 10 p.c. in Prince Edward Island, Nova Scotia and Saskatchewan. On the whole, the gain in the Maritime Provinces, Ontario and British Columbia was above-average, while that in Quebec and the Prairie Area was not equal to the increase generally indicated at the time of year.

^{1/} Data for Newfoundland are not yet available.

Year and Month	Nine Leading Industries				Eight Leading Industries				Manufacturing			
	Index Numbers of			Average Weekly Salaries & Wages	Index Numbers of			Average Weekly Salaries & Wages	Index Numbers of			Average Weekly Salaries & Wages
	Employment	Aggregate Weekly Payrolls	Average Weekly Earnings		Employment	Aggregate Weekly Payrolls	Average Weekly Earnings		Employment	Aggregate Weekly Payrolls	Average Weekly Earnings	
June 1, 1941	100.0	100.0	100.0	\$ 25.49	100.0	100.0	100.0	\$ 25.25	100.0	100.0	100.0	\$ 25.57
Jan. 1, 1945	110.4	128.1	119.0	30.09	110.2	127.6	118.5	29.92	107.1	121.2	115.3	29.49
Feb. 1	109.3	135.7	125.8	32.06	109.5	135.5	126.5	31.97	108.8	135.4	126.8	32.43
Mar. 1	109.8	137.5	127.6	32.53	109.4	137.3	128.5	32.44	108.7	135.3	126.8	32.43
Apr. 1	111.1	139.5	127.7	32.56	110.5	139.1	128.5	32.48	110.1	138.7	128.4	32.82
May 1	111.3	138.0	126.2	32.16	110.9	137.5	126.9	32.05	110.8	137.1	126.1	32.24
June 1	111.8	137.0	124.8	31.81	111.3	136.5	125.5	31.68	109.9	134.3	124.5	31.83
July 1	114.1	142.2	126.9	32.35	113.7	141.9	127.7	32.25	111.4	138.5	126.5	32.37
Aug. 1	113.7	143.4	128.4	32.72	113.2	143.1	129.3	32.54	109.5	137.5	127.7	32.56
Sept. 1	115.4	145.9	128.7	32.81	114.9	145.5	129.6	32.72	111.4	140.1	127.9	32.71
Oct. 1	117.1	150.1	130.4	33.25	116.5	149.8	131.3	33.15	112.1	143.0	129.3	33.18
Nov. 1	120.0	154.6	131.1	33.42	119.5	154.4	132.0	33.33	114.8	147.5	130.9	33.45
Dec. 1	121.9	159.9	133.5	34.02	121.5	159.9	134.5	33.95	115.6	153.6	135.1	34.54
Jan. 1, 1947	119.0	150.2	128.6	32.77	119.5	149.9	129.3	32.64	113.5	141.5	126.7	32.40
Feb. 1	119.8	160.7	137.7	35.09	118.3	160.5	138.7	35.03	115.4	156.9	138.2	35.34
Mar. 1	119.6	163.2	139.9	35.66	118.1	163.0	141.0	35.51	115.9	159.5	140.0	35.81
Apr. 1	119.9	163.9	140.4	35.78	118.3	163.9	141.5	35.73	116.2	160.8	140.7	35.98
May 1	118.2	164.0	141.0	35.95	117.5	163.7	142.1	35.89	116.5	162.7	141.8	36.27
June 1	121.3	168.7	141.5	36.07	120.9	168.5	142.6	36.00	117.5	165.9	143.3	36.64
July 1	124.4	173.7	142.0	36.20	124.1	173.8	143.2	36.15	119.4	167.7	142.6	36.47
Aug. 1	126.4	178.3	143.5	36.57	126.1	178.5	144.7	36.53	120.5	171.5	144.6	36.97
Sept. 1	126.9	180.1	144.3	36.79	126.5	180.3	145.5	36.76	121.0	173.3	145.3	37.16
Oct. 1	128.0	184.5	146.6	37.38	127.6	184.9	148.1	37.39	121.2	177.5	148.9	38.04
Nov. 1	129.8	189.1	148.2	37.77	129.5	189.7	149.7	37.79	122.1	181.2	150.6	38.52
Dec. 1	130.9	193.2	150.0	38.24	130.7	193.9	151.6	38.28	122.1	184.5	153.5	39.25
Jan. 1, 1948	127.2	178.2	142.5	36.32	126.9	179.3	143.7	36.28	119.0	166.5	142.0	36.31
Feb. 1	124.5	185.4	151.4	38.59	124.0	185.7	153.0	38.53	119.5</			

Industrially, the provincial movements in most cases were favourable. Curtailment was noted in manufacturing in Manitoba, mainly in textile, printing and publishing and iron and steel plants, in all of which the losses were moderate. The trend in manufacturing in the other provinces was upward, notably in Ontario and British Columbia, where there were gains of 1.8 p.c. and 3.5 p.c., respectively, in the month. Important expansion was indicated in construction in all provinces. Seasonal losses took place in transportation in the Maritime Provinces, but elsewhere fairly substantial increases were recorded.

Changes in Industrial Employment in the Cities.- A higher level of industrial activity was shown in 18 of the 22 cities for which data are published in this bulletin. The exceptions were Saint John, Brantford, London and Winnipeg. In Saint John, seasonal slackness in transportation was the primary cause of the decline, although iron and steel plants were rather quieter. Construction, however, afforded more employment. The decrease in London resulted mainly from industrial disputes in the non-ferrous metal division of manufacturing; that in Brantford also took place largely in manufacturing. In Winnipeg, the severe floods affected the situation. The index of employment fell by 1.1 p.c. In some industries, the earnings rose as a result of overtime work, but in other cases short time was reported. In the other centres for which statistics are segregated there were increases in employment ranging from 0.5 p.c. in Ottawa and 0.7 p.c. in Toronto, to 9.4 p.c. in Fort William - Port Arthur, and 14.4 p.c. in Windsor. The marked improvement in Windsor resulted from the settlement of industrial disputes in the automotive industry in the United States, which had produced shortages of material in Canadian branch factories.

Construction in all cities except London showed expansion. In most centres the trends in the remaining non-manufacturing industries covered by the survey were also favourable. In manufacturing, improvement was reported in all but 9 of the 22 larger cities. The recovery in Windsor was particularly noteworthy. The changes in the other centres, whether increases or decreases, were moderate.

The reductions in employment already mentioned in four of the larger cities were accompanied by lowered disbursements in weekly salaries and wages. The trend in payrolls was also downward in Montreal, largely as a result of reduced working hours in several industries. In the remaining 17 centres for which figures are given in the present bulletin, the reported expenditures were higher. In several instances, however, the gains in the payrolls were relatively smaller than those in employment, so that the average per person declined; this falling-off was largely seasonal in character. The per capita figures rose at June 1 as compared with May 1 in 10 cities and fell in 12. In each of the 22 cities, the latest averages were higher than at June 1 in 1949.

Payrolls.- The index number of weekly payrolls continued to mount, showing its fifth consecutive advance. The increase over the May 1, 1950, figure was 3.0 p.c. As compared with June 1, 1949, (previously the maximum for the late spring), there was a gain of 6.3 p.c. The latest index of weekly salaries and wages was exceeded only by the figures reported in the final quarter of 1949. Provincially, the increases from May 1 in the payrolls distributed by the larger firms varied from 1.8 p.c. in Manitoba and 2.5 p.c. in Ontario to 5.9 p.c. in New Brunswick, 10.2 p.c. in Prince Edward Island, and 11.4 p.c. in Saskatchewan. Higher disbursements were also indicated in numerous cities and in all the major industrial groups except mining. The decline in mining took place mainly in the western coal fields, and to some extent was seasonal in nature.

Table C.- The Sex Distribution of the Workers in Recorded Employment in the Provinces, the Leading Cities, and the Nine Major Industrial Groups at June 1, 1950, with Comparisons as at May 1, 1950 and June 1, 1949.

Geographical and Industrial Unit	June 1, 1950 ^{3/}					May 1, 1950		June 1, 1949	
	Total	Men	Women	Men	Women	Men	Women	Men	Women
	No.	No.	No.	P.C.	P.C.	P.C.	P.C.	P.C.	P.C.
(a) Provinces									
Maritime Provinces	141,579	120,437	21,142	85.1	14.9	84.3	15.7	84.6	15.4
Prince Edward Island	3,932	3,023	909	76.9	23.1	75.8	24.2	74.0	26.0
Nova Scotia	79,782	68,638	11,144	86.0	14.0	85.0	15.0	86.0	14.0
New Brunswick	57,865	48,776	9,089	84.2	15.7	83.8	16.2	83.2	16.8
Quebec	612,650	462,808	149,842	75.5	24.5	74.5	25.4	75.8	24.2
Ontario	924,790	705,332	219,408	76.3	23.7	75.7	24.3	76.3	23.7
Prairie Provinces	265,251	211,396	53,855	79.7	20.3	78.9	21.1	79.4	20.6
Manitoba	114,268	83,615	25,653	77.6	22.4	76.4	23.6	77.0	23.0
Saskatchewan	51,312	40,951	10,361	79.6	20.2	78.9	21.1	79.9	20.1
Alberta	99,371	81,830	17,541	82.1	17.9	81.8	18.2	82.1	17.9
British Columbia	204,755	166,960	35,805	82.6	17.6	82.3	17.7	82.3	17.7
CANADA	2,149,035	1,668,983	480,052	77.7	22.3	76.9	23.1	77.7	22.3
(b) Cities									
Montreal	322,031	224,760	97,271	69.8	30.2	69.5	30.5	70.0	30.0
Quebec	34,163	24,192	9,974	70.8	29.2	70.3	29.7	70.7	29.3
Toronto	311,355	212,987	98,368	68.4	31.6	68.1	31.9	68.1	31.9
Ottawa	31,757	21,583	10,174	68.0	32.0	67.7	32.3	67.6	32.4
Hamilton	69,352	52,110	17,242	75.1	24.9	74.7	25.3	75.0	25.0
Windsor	43,461	36,578	6,883	84.2	15.8	82.3	17.7	83.3	16.7
Winnipeg	72,348	50,833	21,515	70.3	29.7	69.1	30.9	69.5	30.5
Vancouver	90,615	66,312	24,303	73.2	26.8	73.0	27.0	73.3	26.7
Halifax	22,320	15,797	6,523	70.8	29.2	70.5	29.5	71.5	28.5
Saint John	12,772	9,261	3,511	72.5	27.5	74.0	26.0	73.1	26.9
Sherbrooke	10,605	7,189	3,416	67.8	32.2	66.1	33.9	65.8	34.2
Three Rivers	11,321	8,618	2,703	76.1	23.9	75.2	24.8	77.2	22.8
Brantford	15,008	11,674	3,334	77.8	22.2	77.7	22.3	78.2	21.8
Kitchener - Waterloo	20,988	14,569	6,419	69.4	30.6	69.9	30.1	69.8	30.2
London	28,211	19,474	8,737	69.0	31.0	68.6	31.4	69.1	30.9
Fort William - Port Arthur	11,274	9,430	1,844	83.6	16.4	83.1	16.9	84.2	15.8
St. Catharines - Welland	26,960	22,141	4,819	82.1	17.9	82.3	17.7	82.8	17.2
Regina	12,119	8,070	4,049	66.6	33.4	66.2	33.8	66.1	33.9
Saskatoon	8,232	5,886	2,347	71.6	28.6	72.4	27.6	70.6	29.4
Calgary	24,401	18,514	5,887	75.9	24.1	76.0	24.0	76.5	23.5
Edmonton	25,913	20,113	5,800	74.7	25.3	74.1	25.9	73.2	26.8
Victoria	13,510	10,331	3,179	75.6	23.5	76.1	23.9	75.2	24.8
(c) Industries									
Manufacturing	1,063,589	826,362	237,227	77.7	22.3	77.3	22.7	77.6	22.4
Durable Goods ^{1/}	492,582	440,061	52,521	89.3	10.7	89.3	10.7	89.4	10.6
Non-Durable Goods	536,444	356,144	180,300	66.4	33.6	65.7	34.3	65.9	34.1
Electric Light and Power	34,563	30,157	4,406	87.3	12.7	87.0	13.0	87.8	12.2
Logging	45,519	44,694	825	98.2	1.8	97.7	2.3	98.3	1.7
Mining	88,177	86,233	1,944	97.8	2.2	97.8	2.2	97.6	2.4
Communications	57,021	26,431	30,590	46.4	53.6	46.6	53.5	47.5	52.5
Transportation	182,367	171,443	10,924	94.0	6.0	94.0	6.0	94.0	6.0
Construction and Maintenance	244,651	239,635	5,026	97.9	2.1	97.7	2.3	98.1	1.9
Services ^{2/}	77,299	38,588	38,711	49.9	50.1	50.1	49.9	48.6	51.4
Trade	296,324	186,320	110,004	62.9	37.1	62.8	37.2	61.5	38.4
EIGHT LEADING INDUSTRIES	2,054,957	1,619,706	435,251	78.8	21.2	78.1	21.9	78.8	21.2
Finance	94,078	49,277	44,801	52.4	47.6	52.5	47.5	52.9	47.1
TOTAL - ALL INDUSTRIES	2,149,035	1,668,983	480,052	77.7	22.3	76.9	23.1	77.7	22.3

^{1/} This classification comprises the following:- iron and steel, non-ferrous metals, electrical apparatus, lumber, musical instruments and clay, glass and stone products. The non-durable group includes the remaining manufacturing industries with the exception of electric light and power.

^{2/} Mainly hotels and restaurants and laundry and dry-cleaning establishments.

^{3/} The June 1 data are subject to revision.

Per Capita Earnings.- There was a reduction of 38 cents in the average weekly salaries and wages of persons on the paylists of the larger establishments in the 8 leading industries at June 1 as compared with May 1. The falling-off was partly seasonal in character, resulting to some extent from changes in the industrial distribution of employment. Curtailed working time in some industries was also a factor. The most recent figure was the highest for June 1, and in the period for which data are available, was exceeded only by the averages for the three months immediately preceding.

Industrially, the per capita figures at June 1 were higher than at May 1, 1950, in communications and trade; the seasonal losses in manufacturing, transportation, construction and in those branches of the service industries for which data are available, were moderate, resulting in the main from the employment of additional workers taken on at the lower rates of pay; in some cases, notably in manufacturing, a reduction in working hours was a factor. The declines in logging and mining were considerable; in both cases, the decreases were largely due to seasonal changes in the levels and the distribution of employment. Provincially, the trends in average earnings were mixed, moving upward in 2 cases and downward in 7. In the cities for which data are published, the per capita earnings rose in 10 centres, and fell in 12. The variations in these areas were associated with changes in the industrial distributions. In some industries and establishments, upward revisions of the wage rates were reported.

Monthly statistics of weekly salaries and wages have now been collected for June 1 in a period of 10 years. Table D recapitulates the average earnings at that date in the decade.

Table D.- Average Weekly Salaries and Wages of Persons Employed by Leading Establishments at June 1, 1941-50.

Year	Index Numbers (June 1, 1941=100)	
	Eight Leading Industries	Manufacturing
1941	25.25	25.57
1942	28.20	28.73
1943	30.93	31.62
1944	31.80	32.64
1945	32.10	32.88
1946	31.68	31.83
1947	36.00	36.64
1948	40.02	40.63
1949	42.32	43.31
1950	44.61	46.12

The growth in the general figures from year to year has been uninterrupted except in 1946, when the situation was seriously affected by industrial disputes, as well as by post-war changes in industrial distribution, and other factors consequent upon the termination of hostilities. During the first years of the decade, when wartime restrictions upon increases in basic wage rates were in effect, the upward movement mainly reflected changes in the distribution of employment, with a concentration in industries producing for the war, or furthering war-time needs, "upgrading", greater regularity of employment, and important amounts of overtime work at premium rates; the compulsory payment of cost-of-living allowances

to a majority of wage-earners and salaried employees from 1941 to 1944^{1/} was also a weighty factor. The cessation of fighting in the European and Pacific theatres of war was followed by the gradual removal of wartime restrictions; the cost-of-living^{2/} continued to rise, and there were important increases in the average earnings, more especially during 1947 and 1948. Since then, the general rate of growth from year to year has tended to lessen, although the gains are still considerable.

Since the end of 1944, monthly statistics on hours and earnings^{3/} have been available for the hourly-rated personnel of the firms contributing to the monthly surveys of employment and payrolls. In manufacturing, a comparison of the latest figures (those for May 1), with data for the same period in 1945 shows a decline of almost 3 hours in the average work week, with gains of about 32 cents in the average hourly earnings, and over \$10.00 in the average weekly wages.

Changes in Employment for Men and Women-- The firms furnishing data in the 8 leading industries at June 1 reported 212 women in each 1,000 workers on their payrolls. This proportion was lower than that of 219 recorded at May 1, 1950, but coincided with the ratio at June 1, 1949. At the same date in 1948, 1947 and 1946, the comparable figures were 209, 212 and 223 per 1,000, respectively. In the last 12 months, there has been a rise of about 0.4 p.c. in recorded employment for women, and a gain of approximately 0.9 p.c. among men. Taking the nine leading non-agricultural industries as a group, an increase of 1.0 p.c. was recorded for both men and women in the year.

Leading manufacturers reported a decrease of about 0.4 p.c. among women at June 1 as compared with May 1, with an increase of over 2.0 p.c. among their male employees. Changes in the industrial distribution of employment were mainly responsible for the disparity in the trends in the month. In the 12 months' comparison, employment showed a falling-off of 0.9 p.c. among women, and 0.5 p.c. among men. The ratio of women per 1,000 workers at the date under review was 223, as compared with 227 at May 1, 224 at June 1, 1949, 219 at June 1, 1948, 226 at June 1, 1947, and 236 at June 1, 1946.

Charts. Chart 1 on the next page depicts the general course of employment in the major non-agricultural industries from 1920 to 1950, with the movements of weekly payrolls from 1941, when the monthly record was established. Charts 2 to 10 show the trends of employment in the eight main industrial groups, and in various divisions of manufacturing from 1939, with the movements of payrolls during the period for which data are available. The last two charts deal with the fluctuations in average weekly salaries and wages in specified industrial groups from 1941.

ooooooooooooo0000000000oooooooooooo

- 1/ From February, 1944, the cost-of-living allowances were incorporated in the wage rates.
- 2/ The index number of the cost-of-living rose by 49.7 p.c. from June 1, 1941, to June 1, 1950.
- 3/ See the monthly bulletins on man-hours and average hourly earnings (Report 9-4040).

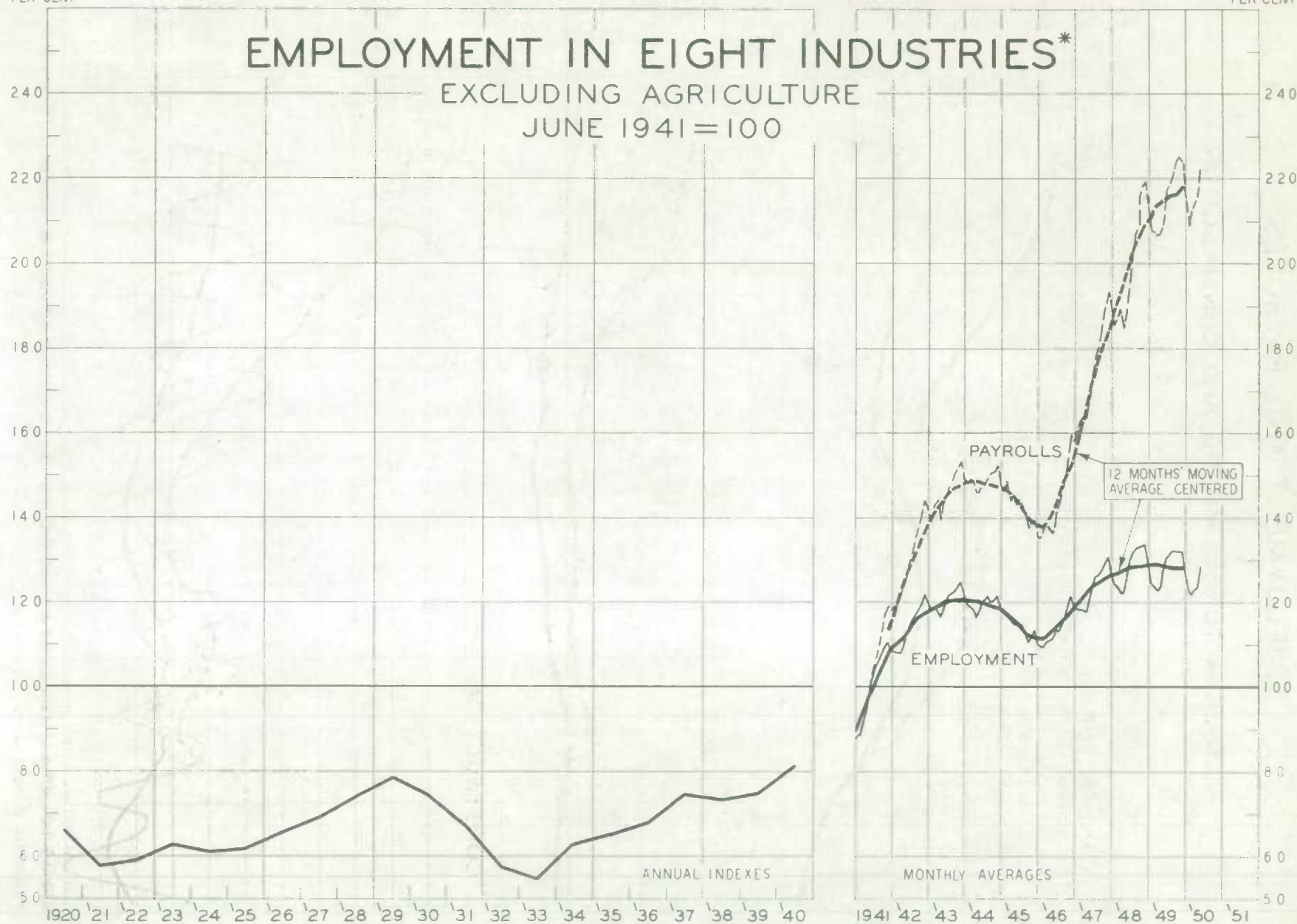
PER CENT

PER CENT

EMPLOYMENT IN EIGHT INDUSTRIES*

EXCLUDING AGRICULTURE

JUNE 1941=100

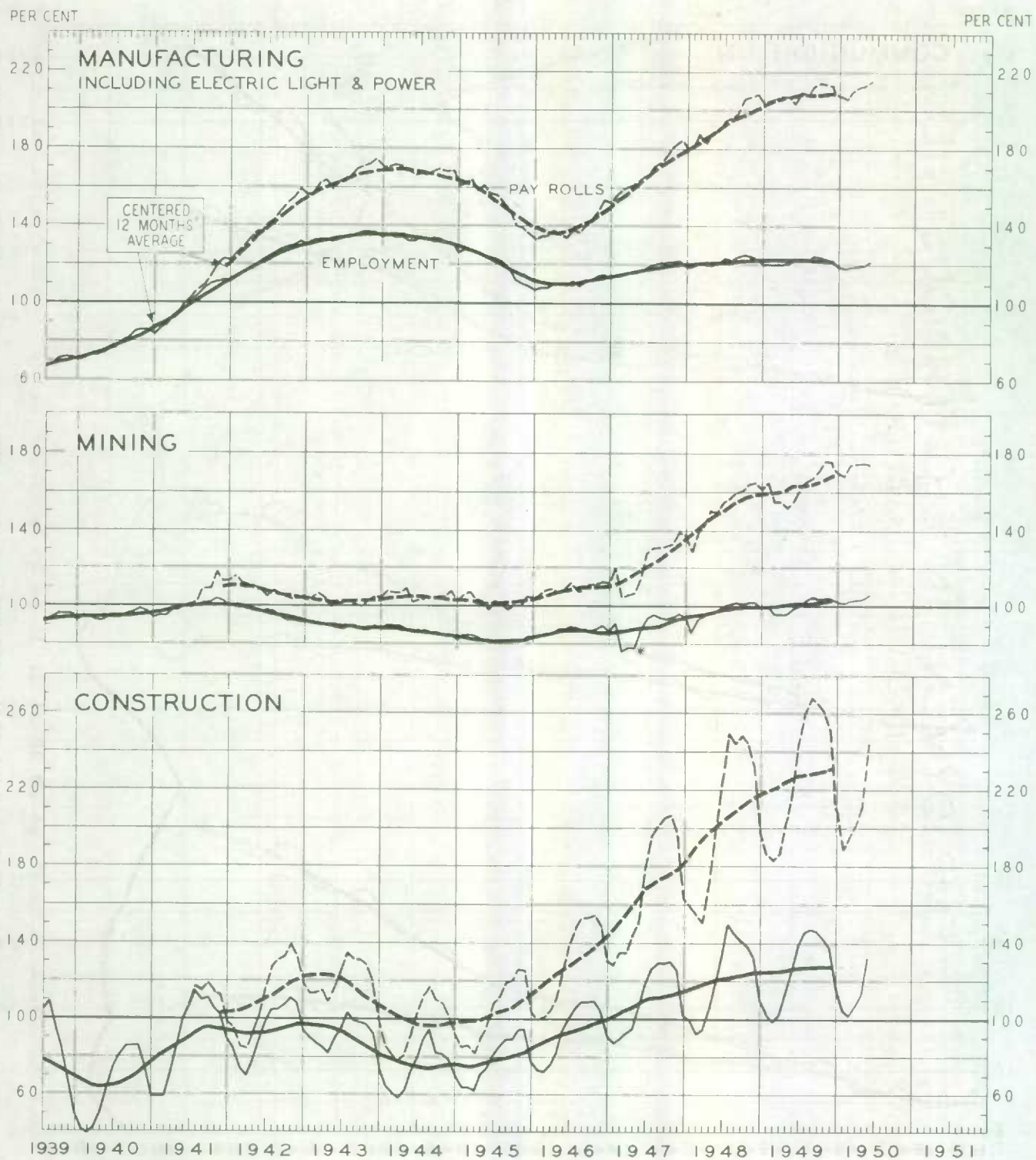


* NAMELY — MANUFACTURING, LOGGING, MINING, TRANSPORTATION, COMMUNICATION, CONSTRUCTION, TRADE AND CERTAIN SERVICES

EMPLOYMENT AND PAYROLLS

MANUFACTURING, MINING AND CONSTRUCTION

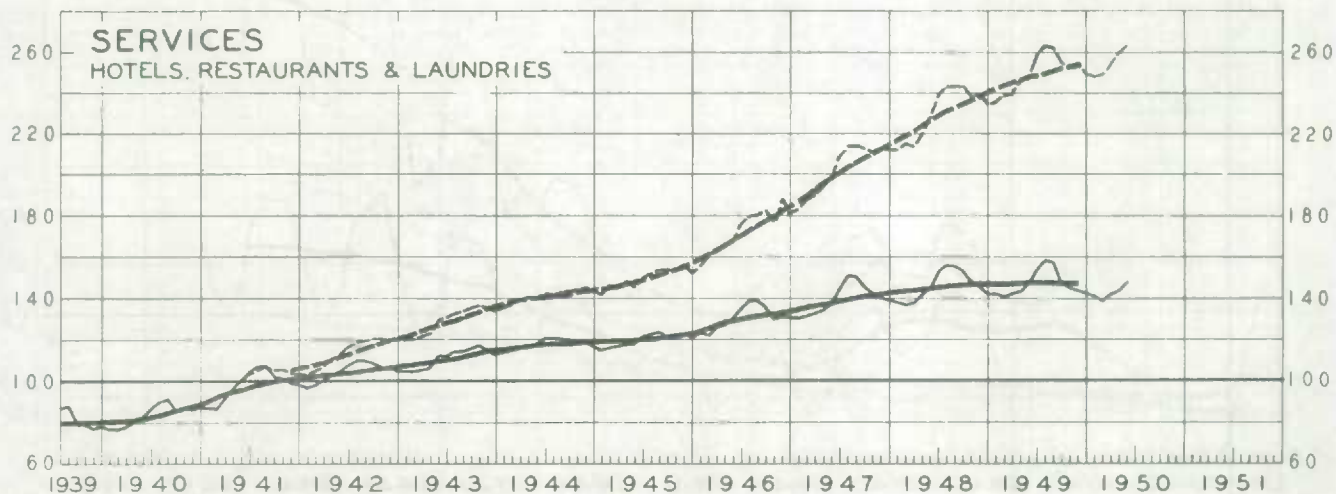
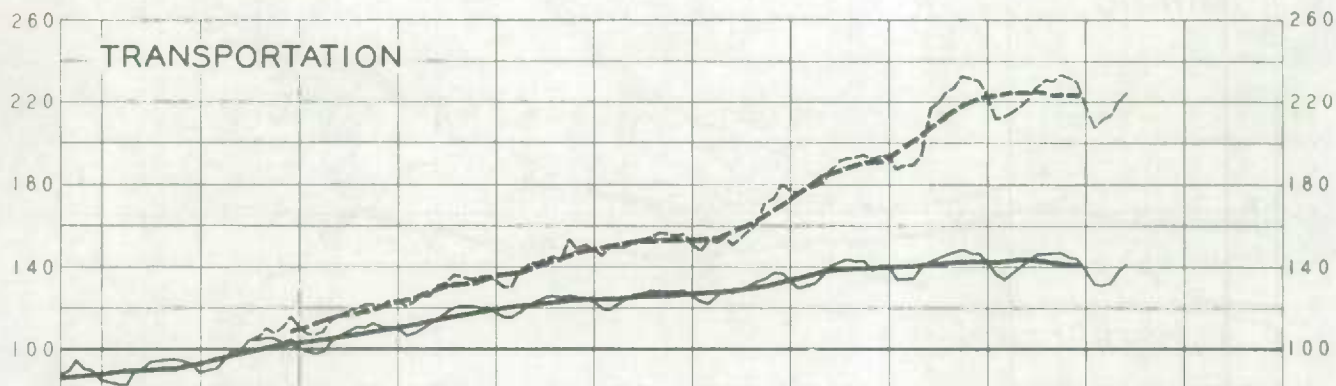
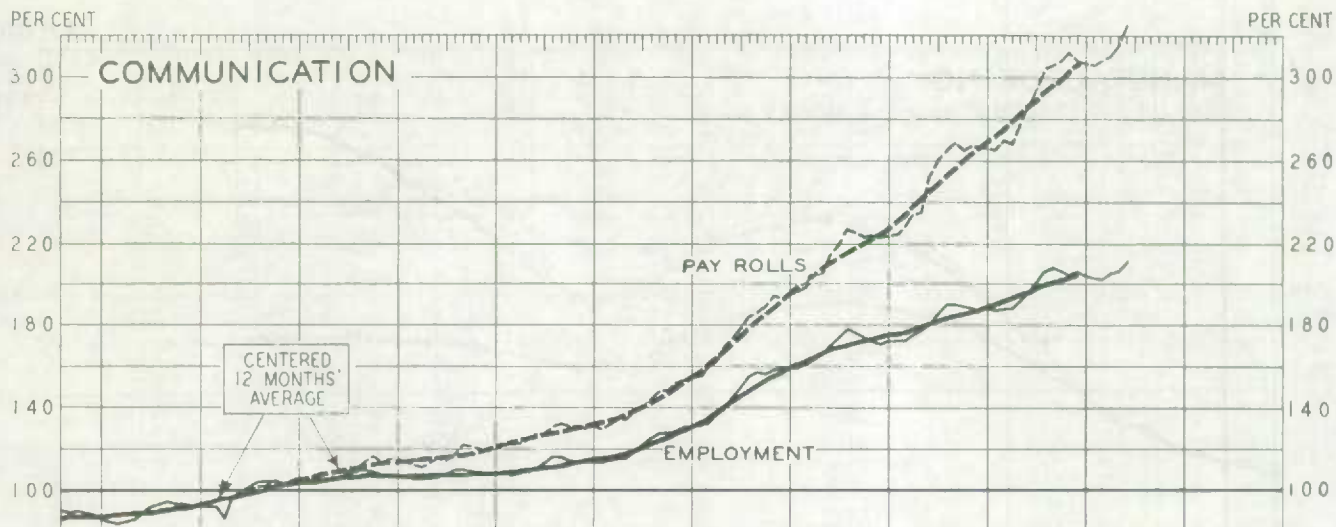
JUNE 1941 = 100



* INDUSTRIAL DISPUTE IN COAL MINING

EMPLOYMENT AND PAYROLLS COMMUNICATION, TRANSPORTATION AND SERVICES

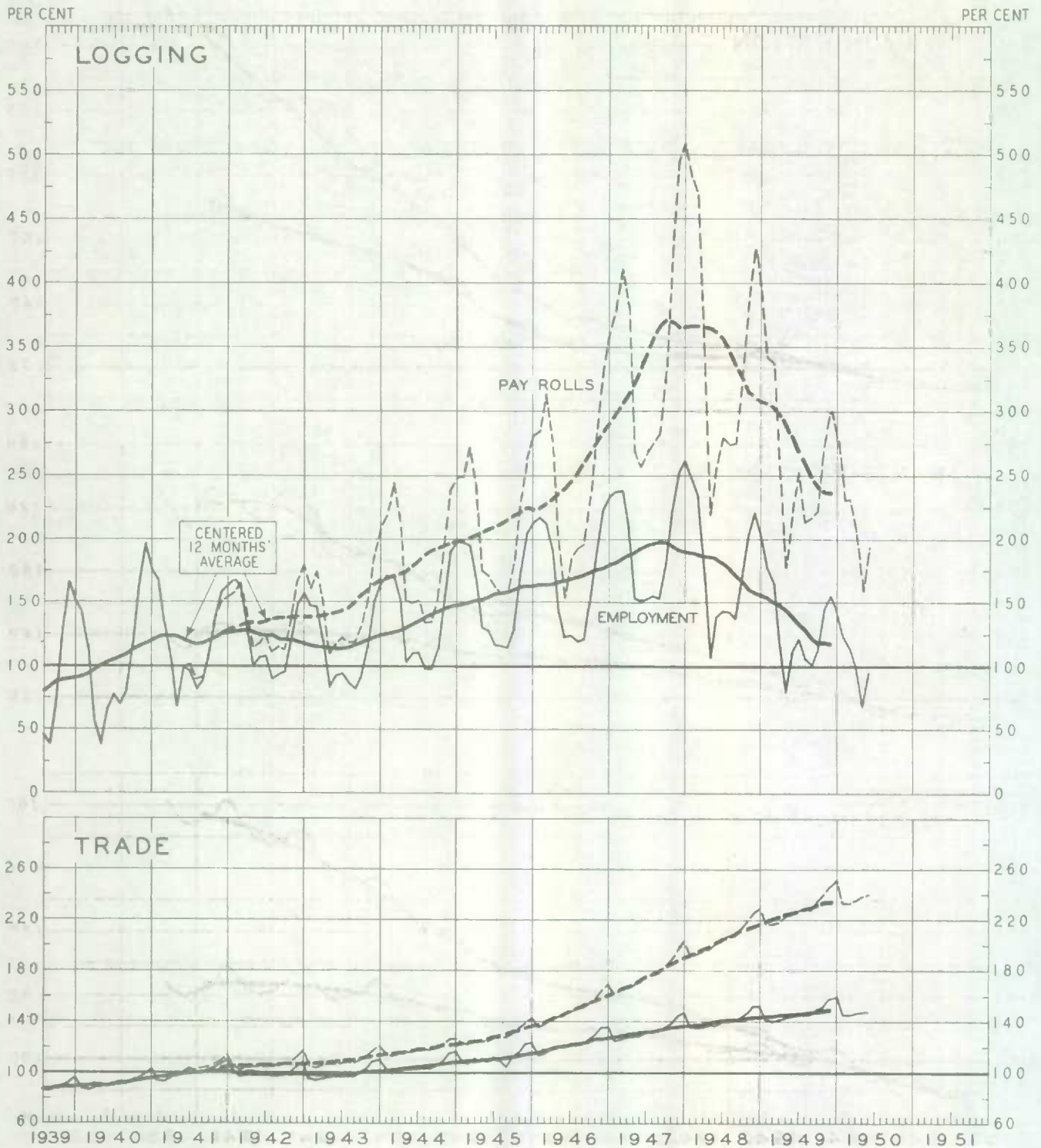
JUNE 1941 = 100



EMPLOYMENT AND PAYROLLS

LOGGING AND TRADE

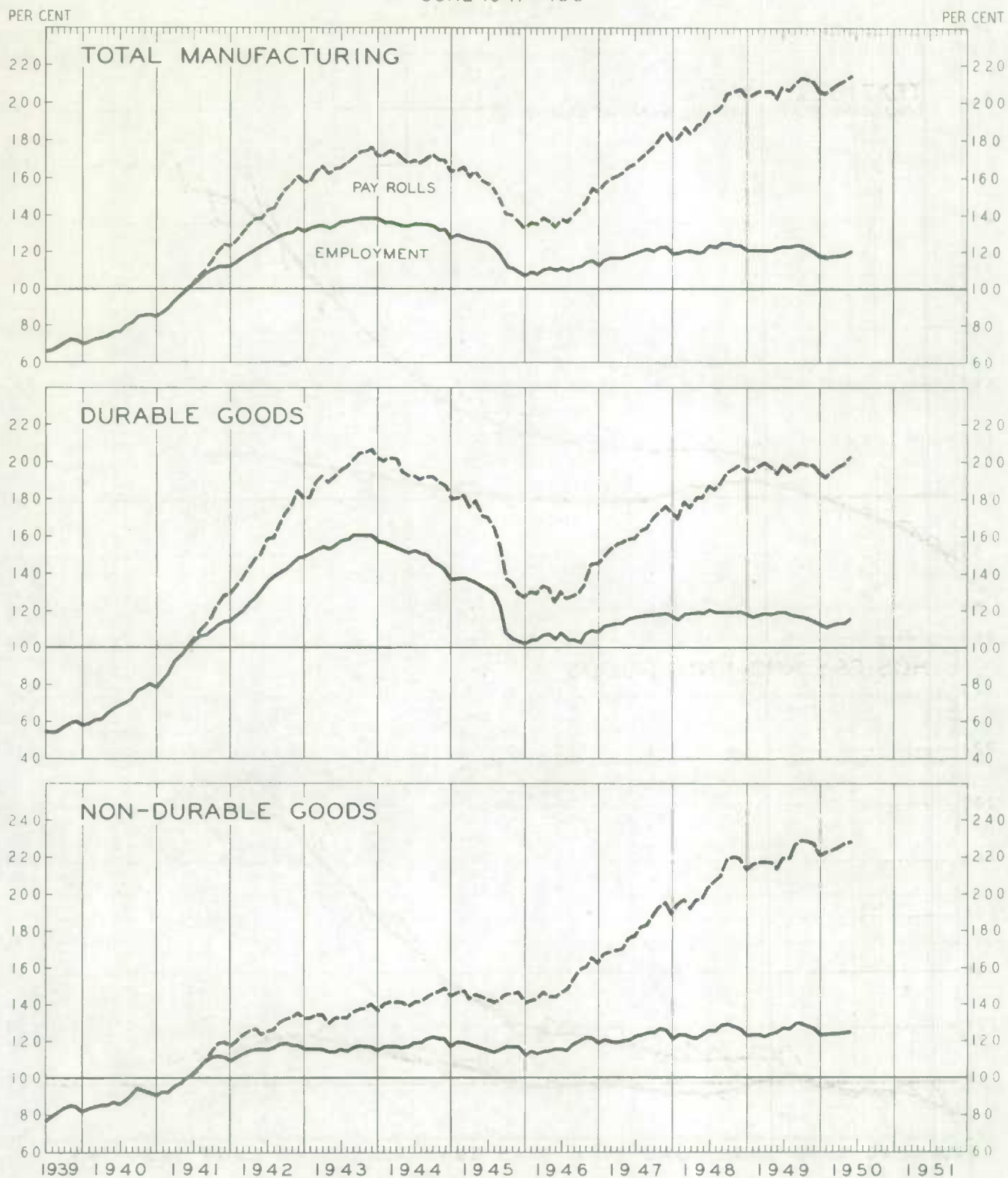
JUNE 1941 = 100



EMPLOYMENT AND PAYROLLS IN MANUFACTURING

AS REPORTED BY LEADING ESTABLISHMENTS

JUNE 1941 = 100

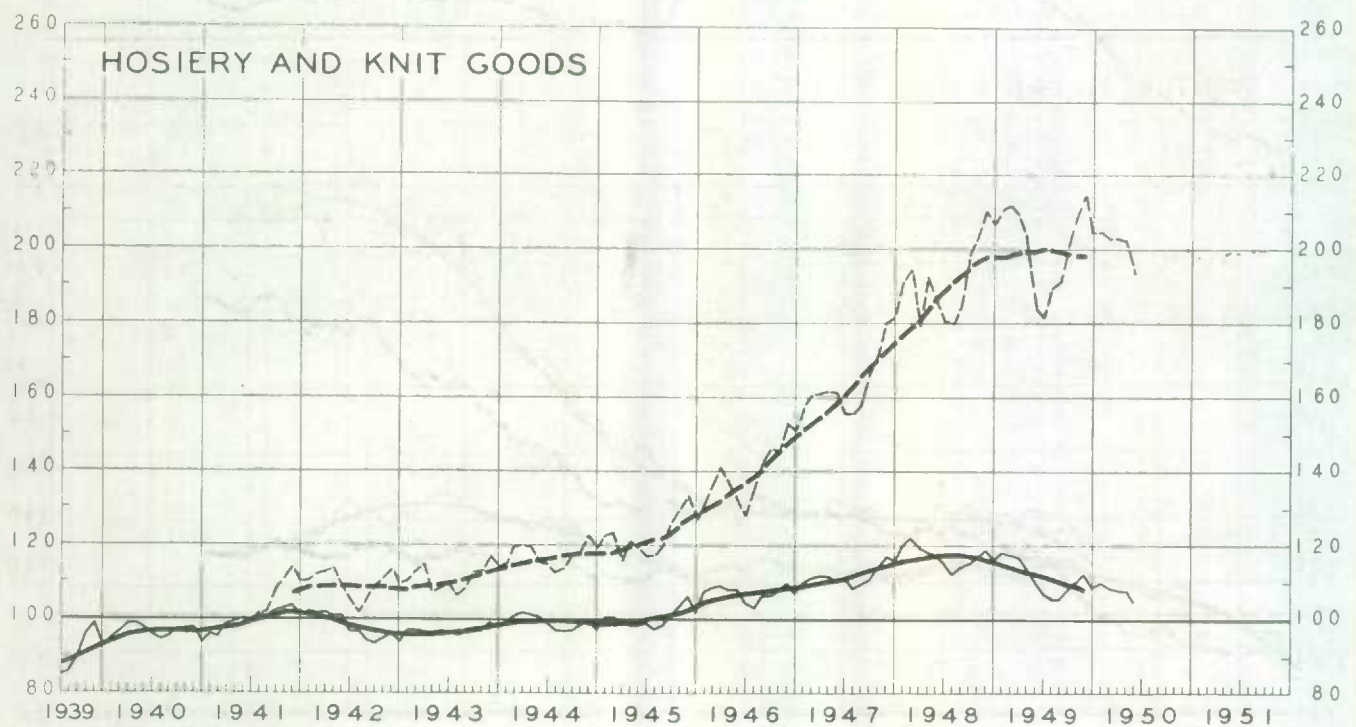
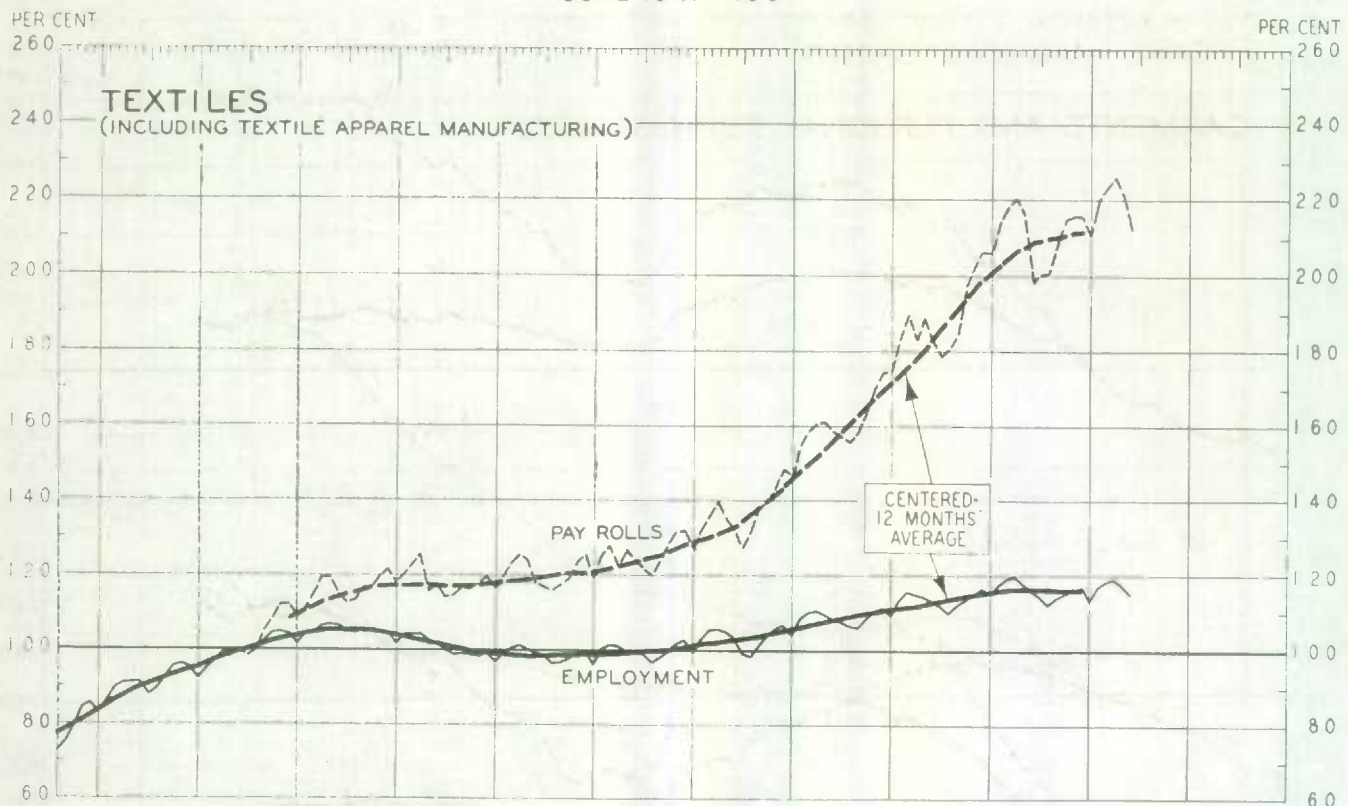


DURABLE GOODS INCLUDE IRON AND STEEL, NON-FERROUS METALS, ELECTRICAL APPARATUS, LUMBER AND CLAY, GLASS AND STONE PRODUCTS
 THE REMAINDER, NON-DURABLE GOODS INCLUDE TEXTILES, FOOD, BEVERAGES, TOBACCO, RUBBER, LEATHER, CHEMICALS AND FUELS

EMPLOYMENT AND PAYROLLS IN MANUFACTURING

TEXTILES

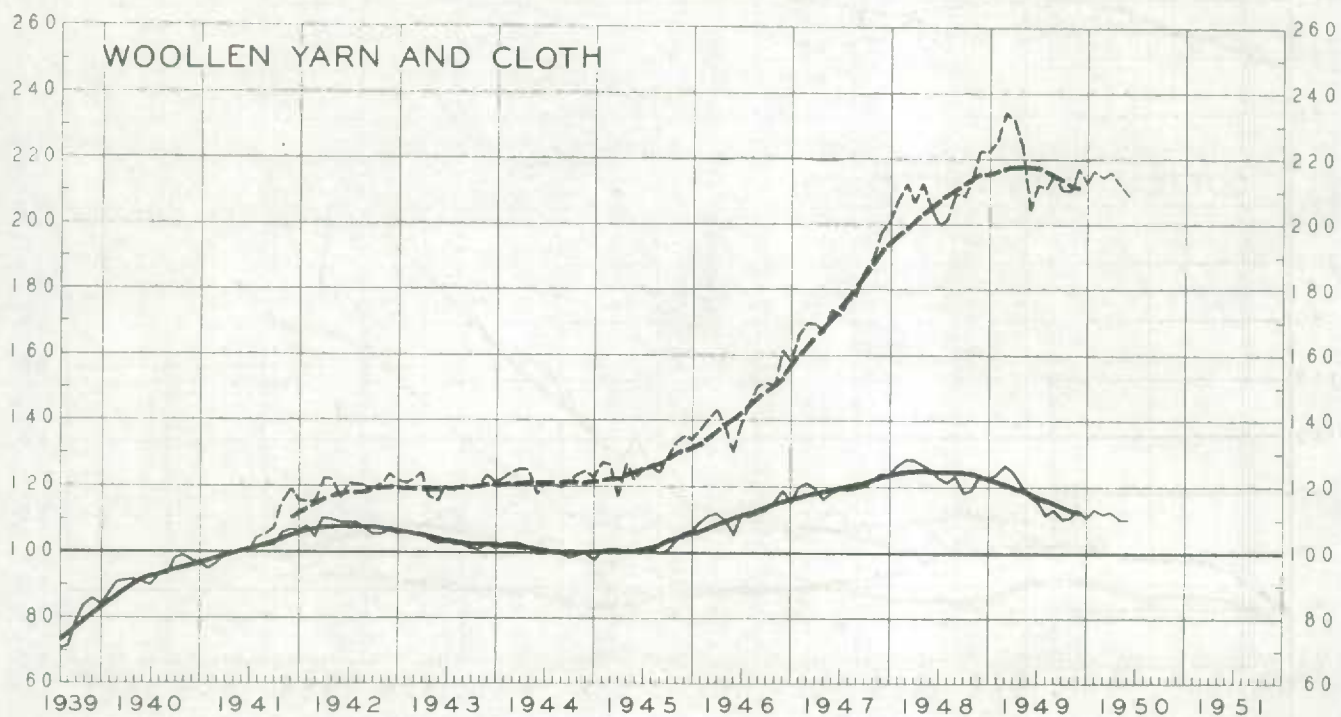
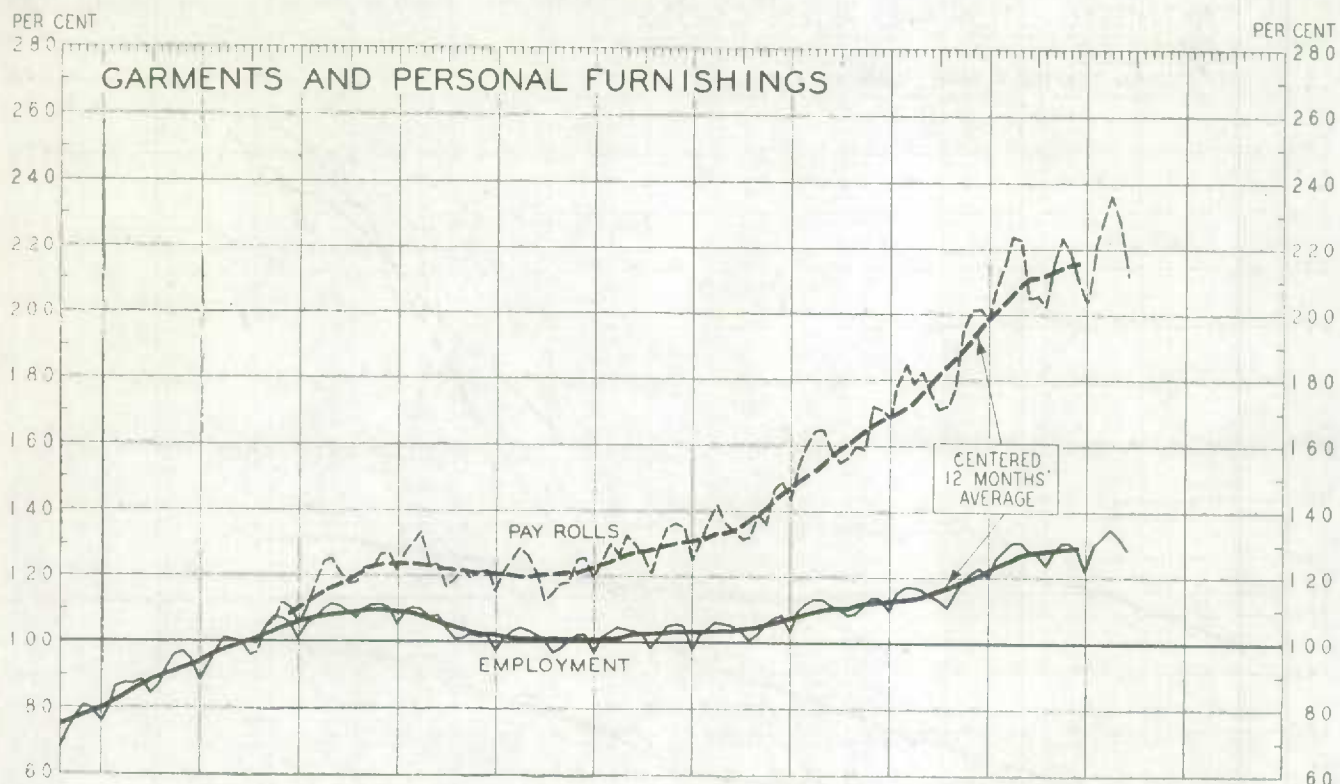
JUNE 1941 = 100



EMPLOYMENT AND PAYROLLS IN MANUFACTURING

TEXTILES

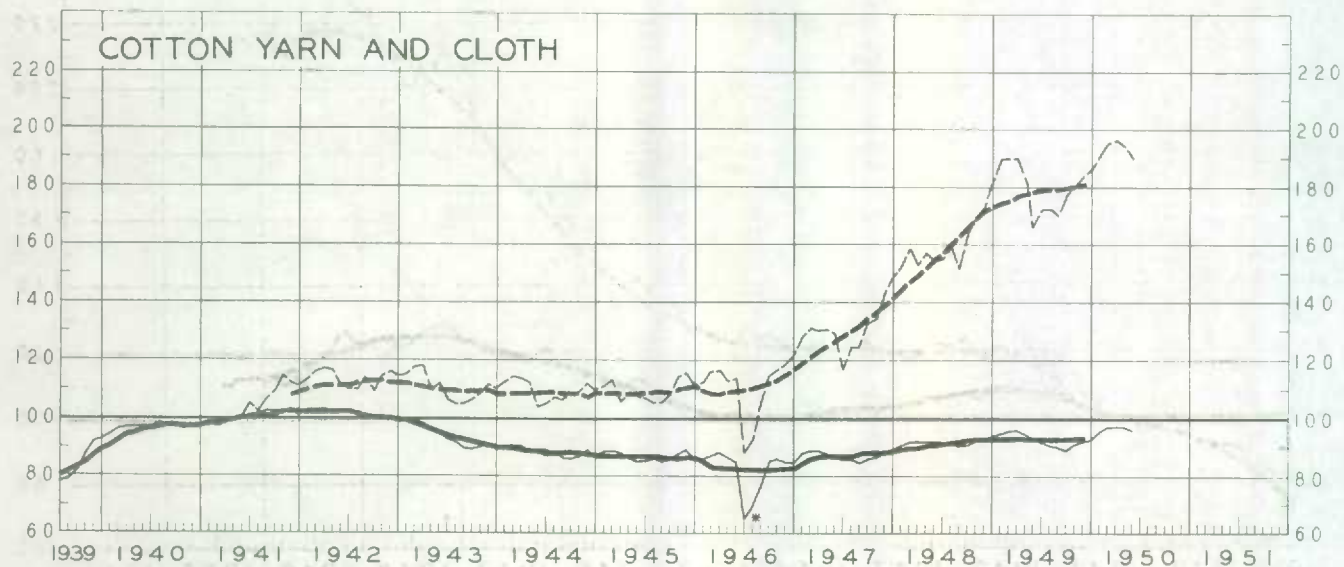
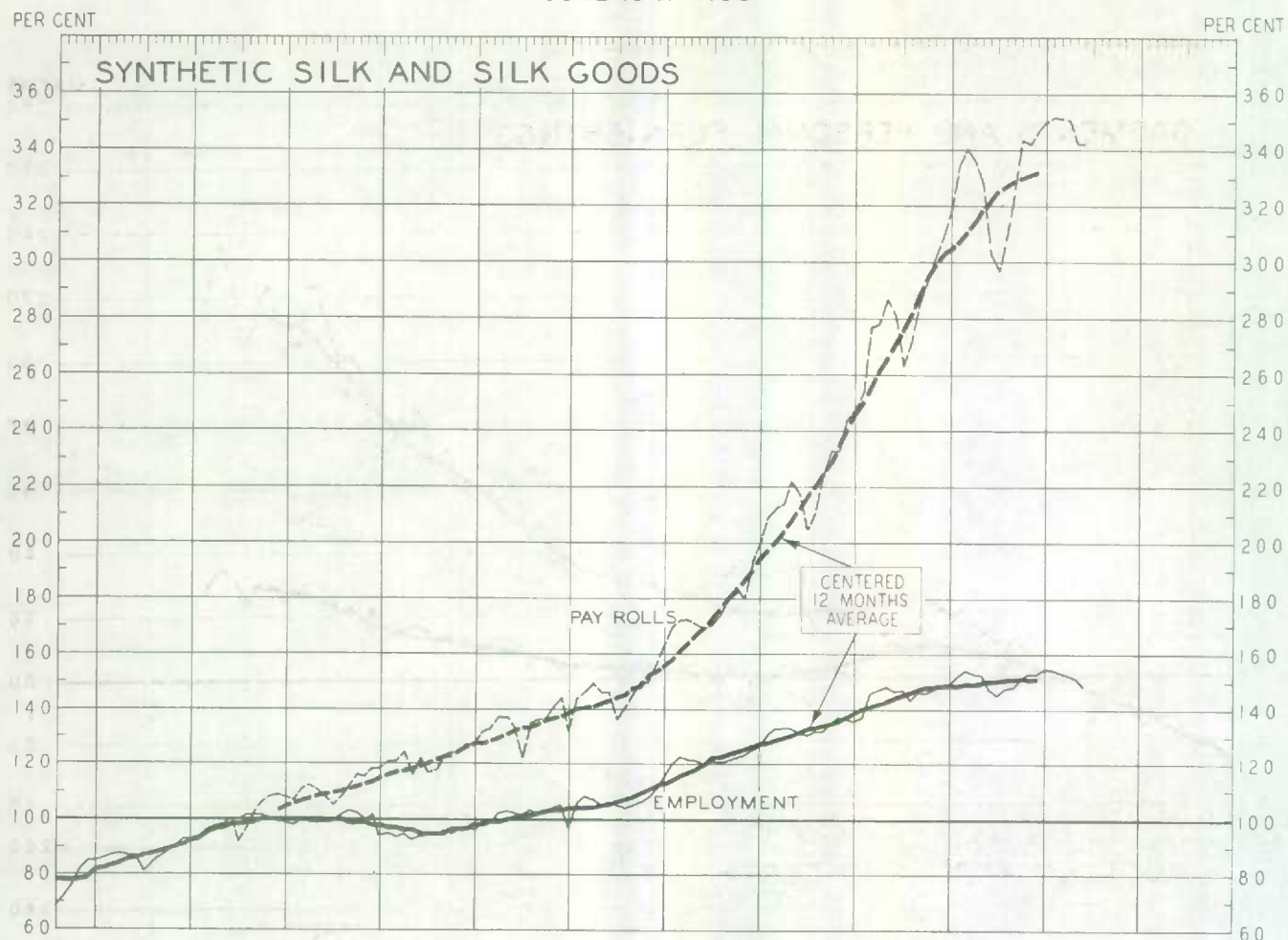
JUNE 1941 = 100



1939 1940 1941 1942 1943 1944 1945 1946 1947 1948 1949 1950 1951

EMPLOYMENT AND PAYROLLS IN MANUFACTURING TEXTILES

JUNE 1941 = 100

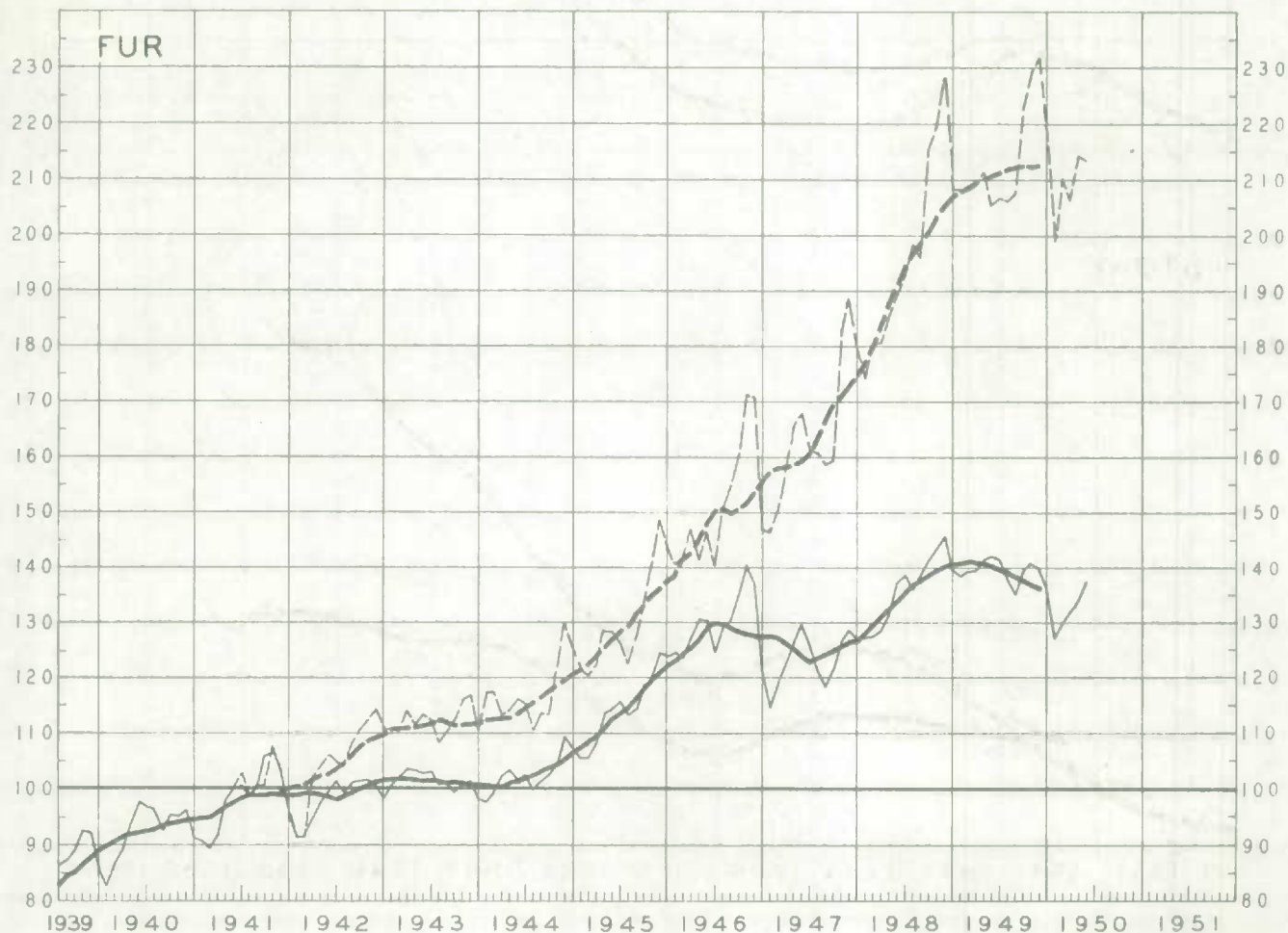
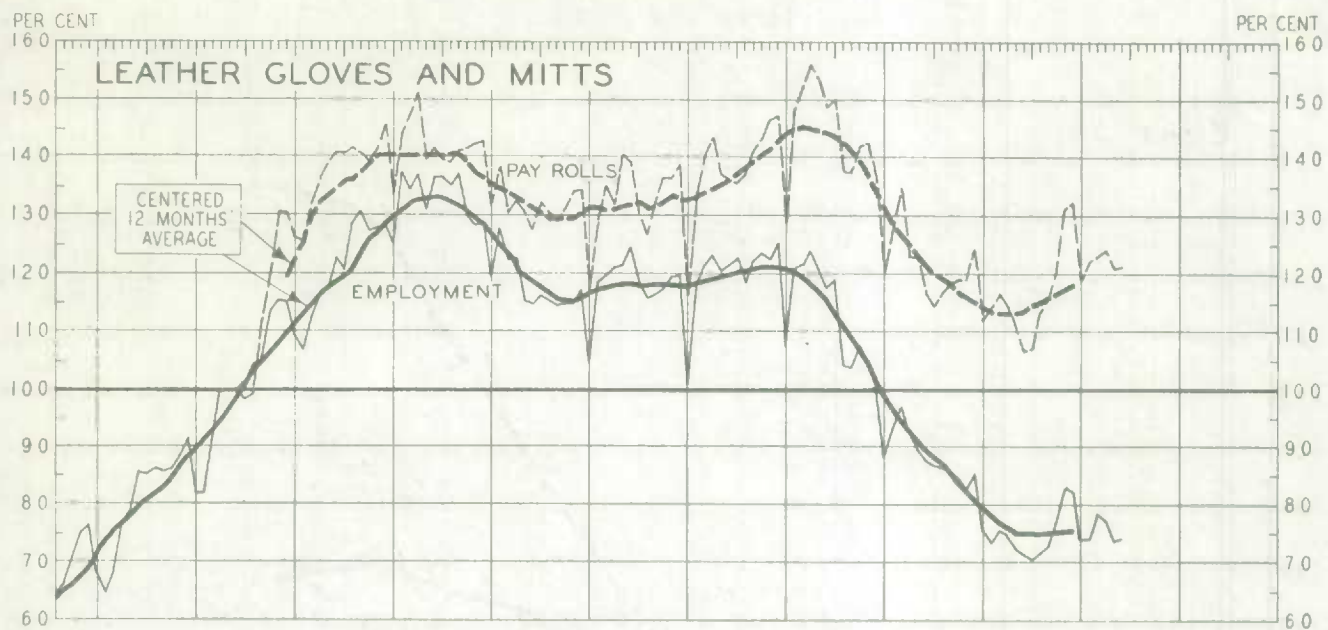


* STRIKE

EMPLOYMENT AND PAYROLLS IN MANUFACTURING

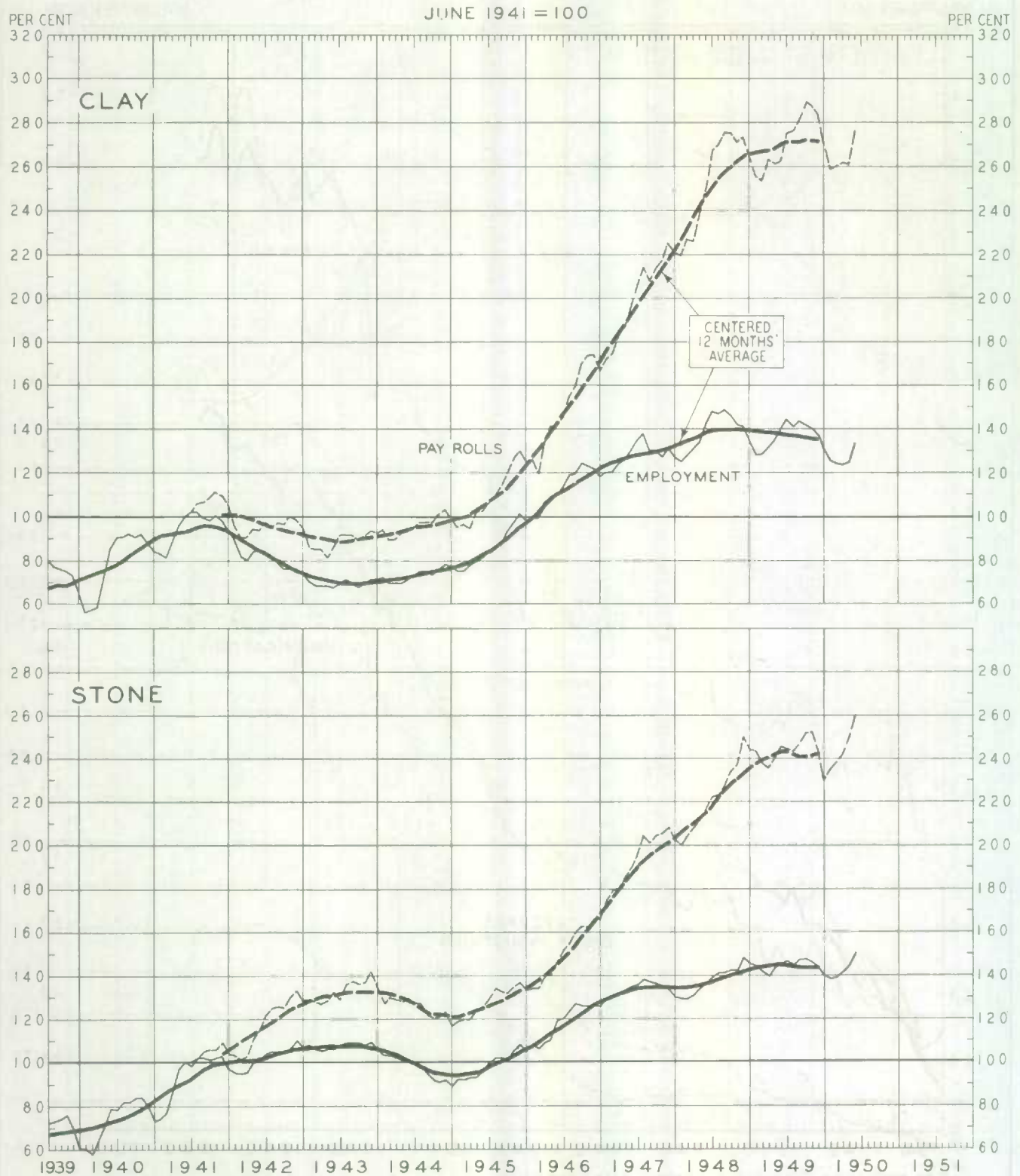
LEATHER AND FUR

JUNE 1941 = 100



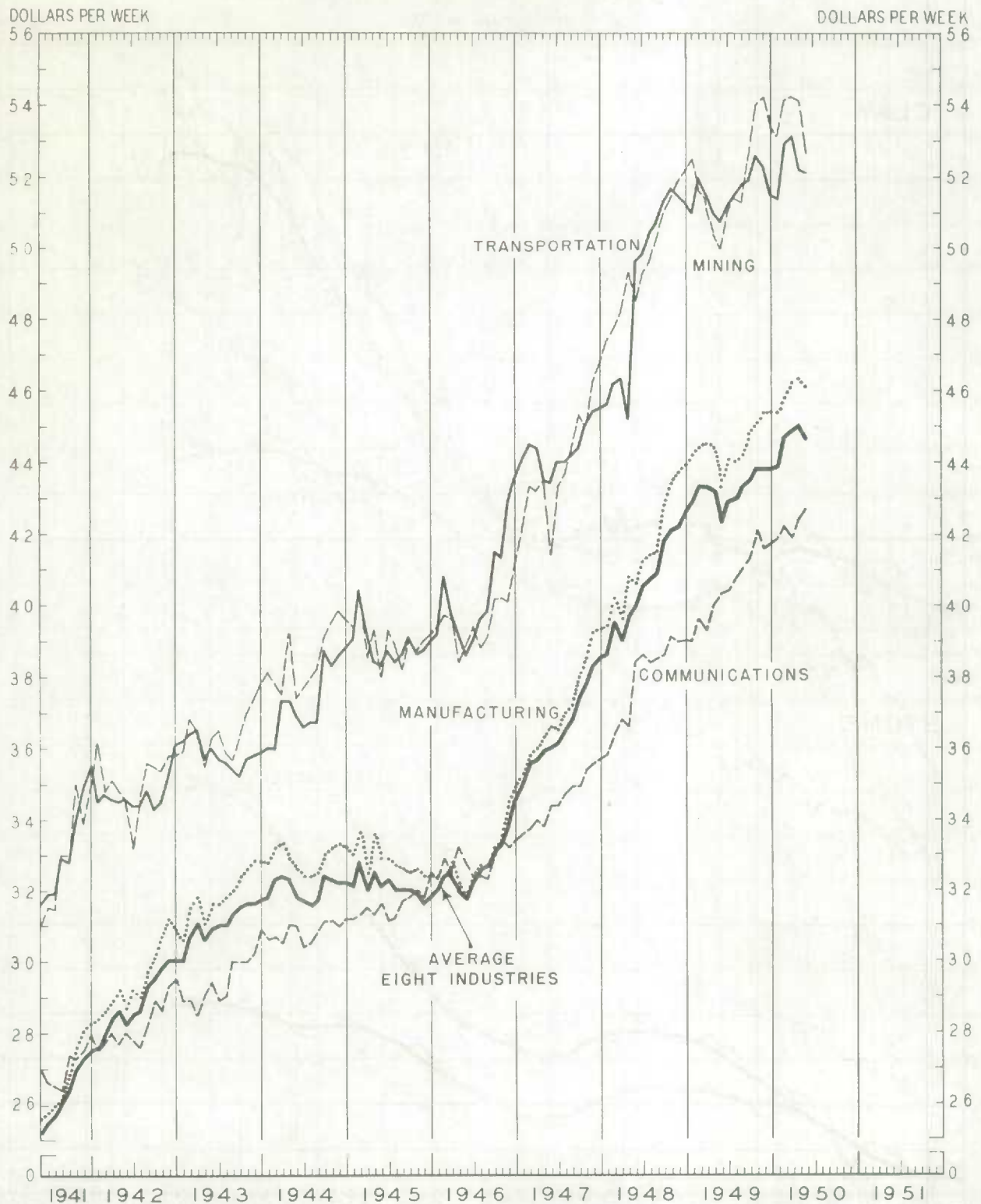
EMPLOYMENT AND PAYROLLS IN MANUFACTURING

CLAY AND STONE



PER CAPITA WEEKLY EARNINGS*

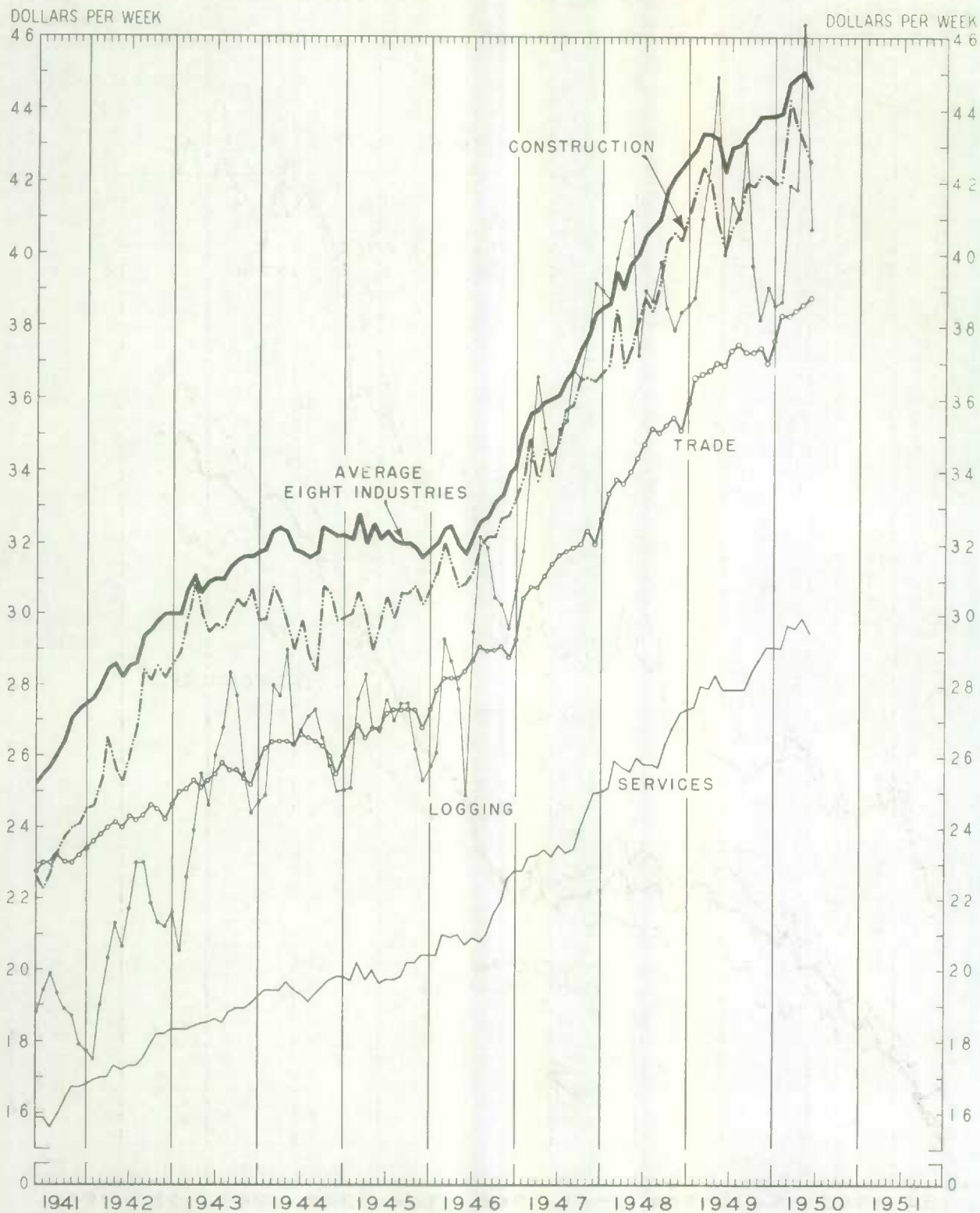
SPECIFIED INDUSTRIES



* OF EMPLOYEES REPORTED BY LEADING ESTABLISHMENTS.

PER CAPITA WEEKLY EARNINGS*

SPECIFIED INDUSTRIES



*OF EMPLOYEES REPORTED BY LEADING ESTABLISHMENTS.

Table 1.- Industrial Distribution of the Employees and Weekly Payrolls of the Reporting Establishments* at June 1, 1950, and Average Weekly Salaries and Wages of their Employees, Together with Index Numbers of Employment and Payrolls, with Comparisons from a month and a year earlier.

(The latest figures are subject to revision).

I n d u s t r i e s	No. of Employees Reported at June 1, 1950	Weekly Salaries and Wages at June 1, 1950	Average Weekly Salaries and Wages at			Index Numbers Based on June 1, 1941 as 100 p.c.					
						Employment			Payrolls		
			June 1 1950	May 1 1950	June 1 1949	June 1 1950	May 1 1950	June 1 1949	June 1 1950	May 1 1950	June 1 1949
		\$	\$	\$							
MANUFACTURING	1,063,589	49,047,840	46.12	46.33	43.31	121.4	119.5	122.1	215.6	213.4	203.7
Animal products - edible	37,949	1,708,207	46.01	45.87	43.03	136.3	128.1	134.7	242.9	228.9	228.0
Fur and products	4,257	177,052	41.59	42.82	38.74	137.4	133.9	142.0	213.6	214.2	205.6
Leather and products	28,286	904,229	31.97	32.65	31.38	99.1	104.7	109.1	168.3	161.8	180.8
Boots and shoes	17,743	535,895	30.20	31.19	30.26	97.6	105.1	112.1	166.0	164.7	190.9
Lumber and its products	84,638	3,344,426	39.51	40.72	38.16	125.4	118.6	122.6	227.8	222.2	216.0
Rough and dressed lumber	52,660	2,129,989	40.45	42.17	39.50	123.9	114.0	118.4	234.5	225.1	219.6
Furniture	19,273	749,951	38.91	39.26	36.94	159.2	158.2	149.9	225.7	223.3	203.8
Other lumber products	12,705	464,486	36.65	37.30	34.92	103.6	101.5	116.2	204.1	204.2	219.3
Plant products - edible	58,979	2,297,860	38.96	39.13	36.62	134.8	130.6	130.4	231.6	225.4	211.4
Pulp and paper products	115,543	6,053,887	52.40	52.05	49.55	142.1	139.2	140.8	251.0	244.3	235.2
Pulp and paper	49,087	2,918,987	59.47	58.37	56.16	129.1	123.6	131.7	245.2	228.4	234.3
Paper products	21,474	903,221	42.06	42.79	39.21	168.7	167.7	162.0	293.3	296.8	262.7
Printing and publishing	44,982	2,231,679	49.61	49.84	46.92	148.2	147.9	144.2	247.0	247.6	226.8
Rubber products	21,412	1,029,758	46.09	47.09	44.40	126.0	124.9	121.8	258.5	250.9	230.8
Textile products	161,772	5,706,246	35.28	36.03	32.74	115.2	117.7	115.9	212.2	221.4	198.2
Thread, yarn and cloth	60,117	2,351,113	39.11	39.30	35.58	111.7	113.2	111.4	231.3	235.6	209.7
Cotton yarn and cloth	23,684	902,741	38.12	38.50	34.21	96.1	97.2	93.6	189.8	194.1	165.9
Woolen yarn and cloth	14,245	528,400	37.09	37.75	34.37	99.5	100.2	105.4	207.4	212.5	202.6
Synthetic silk and silk goods	16,564	698,419	42.16	41.58	39.30	148.8	150.9	146.8	342.1	342.2	303.3
Hosiery and knit goods	23,081	750,761	32.53	33.15	29.33	108.5	111.4	113.6	193.4	202.5	183.8
Garments and personal furnishings	62,830	2,002,808	31.88	33.43	30.76	128.7	132.6	128.9	211.8	228.9	205.0
Other textile products	16,744	601,564	38.21	38.37	35.10	93.5	94.5	94.2	177.2	179.5	163.5
Tobacco	9,676	415,201	42.61	43.01	39.92	108.8	109.5	113.7	260.3	262.8	250.3
Beverages	20,678	1,034,298	50.02	49.13	46.57	177.6	170.8	175.9	300.0	283.4	276.4
Chemicals and allied products	44,145	2,186,310	49.53	49.37	47.43	100.4	99.7	98.3	132.5	131.7	171.4
Clay, glass and stone products	22,583	1,076,110	47.05	47.37	44.53	148.5	143.3	147.0	287.5	278.6	266.3
Electric light and power	34,563	1,775,980	51.38	51.49	48.04	167.3	161.7	165.5	274.2	264.7	252.8
Electrical apparatus	55,888	2,795,153	49.33	50.25	46.74	175.7	172.6	167.7	327.9	324.6	293.5
Iron and steel products	282,904	14,595,199	51.59	51.71	47.80	105.8	103.7	109.7	179.1	178.3	172.3
Crude, rolled and forged products	37,432	2,099,508	56.39	54.42	53.27	137.5	131.8	144.3	209.5	194.8	208.2
Machinery (other than vehicles)	27,521	1,355,477	49.25	49.37	45.30	108.9	109.5	116.1	195.7	197.2	184.4
Agricultural implements	16,778	892,278	53.13	51.58	48.42	185.5	189.6	203.0	365.5	362.1	363.7
Land vehicles and aircraft	115,259	5,113,147	53.04	53.56	48.97	101.3	96.9	102.5	165.4	159.9	154.3
Automobiles and parts	50,705	2,896,498	57.12	57.50	49.79	129.4	115.3	115.0	192.0	172.3	149.0
Steel shipbuilding and repairing	13,555	685,483	48.74	48.12	44.91	59.2	75.1	79.5	112.4	120.4	119.2
Heating appliances	8,053	359,115	44.59	44.71	41.75	144.9	145.0	146.1	243.9	244.3	230.7
Iron and steel fabrication (n.e.s.)	10,821	555,484	51.33	51.87	47.28	96.9	97.7	99.5	210.4	214.3	197.5
Foundry and machine shop products	7,852	386,870	49.27	51.95	44.12	81.6	83.1	93.5	196.1	210.5	195.3
Other iron and steel products	45,533	2,127,837	47.61	48.58	44.75	97.1	96.8	99.1	169.6	172.5	162.1
Non-ferrous metal products	45,583	2,327,134	51.05	51.08	48.45	111.5	112.2	117.2	210.7	212.0	210.3
Non-metallic mineral products	15,794	889,857	58.34	57.01	54.10	124.9	122.5	121.0	240.3	238.9	223.9
Miscellaneous	18,939	741,223	39.14	39.28	36.90	161.5	161.2	155.4	281.9	282.1	255.1
LOGGING	45,519	1,854,558	40.74	46.34	40.06	95.5	67.1	111.4	194.2	154.8	221.9
MINING	88,177	4,544,368	52.57	54.13	50.96	105.9	103.7	99.2	174.4	175.5	155.4
Coal	23,118	1,088,719	47.01	50.25	44.07	91.8	94.4	95.0	169.5	198.3	164.5
Metallic ores	45,726	2,575,928	58.33	57.25	54.67	95.9	93.5	92.2	149.9	147.7	138.9
Non-metallic minerals (except coal)	19,333	981,721	50.78	51.47	46.31	180.4	157.1	137.3	337.4	318.9	243.7
COMMUNICATIONS	57,021	2,434,229	42.59	42.39	40.36	211.4	206.4	196.9	325.5	315.5	287.9
Telegraphs	8,453	394,094	46.62	45.28	45.23	124.2	121.0	123.2	227.2	215.2	218.7
Telephones	45,038	1,878,016	41.70	41.59	39.44	231.2	225.5	216.4	345.2	335.9	305.1
TRANSPORTATION	182,367	9,505,757	52.12	52.23	50.83	141.2	138.0	143.1	224.3	220.0	222.1
Street railways, cartage and storage	63,459	2,998,178	47.25	47.55	45.34	158.2	154.9	155.9	256.5	253.0	242.3
Steam railways	89,912	5,235,224	58.23	57.81	56.70	131.3	129.9	132.4	211.0	207.4	207.2
Shipping and stevedoring	28,996	1,272,355	43.88	44.54	44.75	125.3	120.4	142.5	218.5	207.2	245.3
CONSTRUCTION AND MAINTENANCE	244,361	10,413,933	42.56	43.19	40.16	132.3	119.9	125.0	244.4	211.5	218.0
Building	120,891	5,543,516	45.93	47.14	42.85	173.1	157.8	180.2	278.0	259.9	240.0
Highway	85,753	3,158,158	37.04	36.54	35.74	116.5	89.0	106.1	224.0	168.5	202.2
Railway	38,717	1,712,261	44.23	43.15	41.49	89.5	78.1	92.3	199.7	170.0	193.1
SERVICES (as indicated below)	77,299	2,278,719	29.48	29.95	27.92	147.3	143.9	147.7	262.9	260.0	248.9
Hotels and restaurants	46,020	1,239,319	26.93	27.48	26.22	153.8	148.5	152.3	274.2	270.1	262.2
Personal (chiefly laundries)	19,954	592,362	29.69	30.15	28.39	130.6	128.9	131.3	217.5	218.2	208.4
TRADE	296,324	11,498,300	38.80	38.32	36.96	147.3	147.1	144.3	240.3	237.9	223.5
Retail	212,092	7,892,171	36.27	36.11	34.49	145.1	144.7	141.7	240.0	238.3	223.2
Wholesale	84,232	3,806,129	45.19	45.00	43.18	158.7	156.8	154.4	240.8	237.0	224.2
EIGHT LEADING INDUSTRIES	2,054,957	91,877,804	44.81	44.99	42.32	128.4	123.6	127.4	222.2	215.7	209.0
FINANCE	94,078	4,014,919	42.68	42.65	41.57	151.8	151.4	144.2	223.2	222.5	206.7
Banks and trust companies	53,240	2,025,525	38.06	38.09	37.08	161.1	160.7	154.9	235.0	234.3	220.5
Brokerage and stock market operations	3,894	215,571	55.39	54.05	50.44	161.5	157.7	152.4	259.3	247.1	223.4
Insurance	36,944	1,773,723	48.01	48.03	47.29	139.0	138.8	129.3	207.8	207.5	191.2
NINE LEADING INDUSTRIES	2,149,035	95,592,723	44.53	44.88	42.29	129.3	124.7	128.0	222.3	216.0	208.9

* See explanatory statement on pages I and II.

Table 2.- Distribution of the Employees and Weekly Payrolls of the Reporting Establishments* at June 1, 1950, in the Major Industries in the Five Economic Areas and Average Weekly Salaries and Wages of Their Employees, Together with Index Numbers of Employment and Payrolls with Comparisons from a month and a year earlier.

(The latest figures are subject to revision).

Areas and Industries	No. of Employees Reported at June 1, 1950	Weekly Salaries and Wages at June 1, 1950	Average Weekly Salaries and Wages at			Index Numbers Based on June 1, 1941 as 100 p.c.					
			June 1 May 1 June 1			Employment			Payrolls		
			1950	1950	1949	1950	1950	1949	1950	1950	1949
MARITIME PROVINCES											
Manufacturing	45,937	1,926,543	41.94	42.11	40.15	107.5	104.2	111.1	194.1	188.9	192.5
Lumber products	5,372	155,150	29.07	28.63	28.31	102.3	95.5	94.8	162.8	149.7	151.8
Pulp and paper products	6,524	324,787	49.78	49.42	48.76	124.1	117.5	115.7	234.7	220.5	214.2
Iron and steel	16,013	792,694	49.50	48.15	47.48	97.2	98.1	109.2	176.3	173.0	188.2
Logging	4,053	108,385	26.74	29.78	31.36	67.7	34.8	60.0	119.5	68.4	120.7
Mining	14,983	658,975	43.97	49.48	40.70	82.8	84.5	84.8	158.9	182.3	150.9
Transportation	13,431	643,050	47.88	47.84	47.72	132.3	144.8	134.9	217.7	238.3	221.6
Construction	32,299	1,360,766	32.84	32.49	31.23	131.4	93.9	113.3	224.9	159.1	184.7
Trade	18,550	606,798	32.71	32.58	31.36	139.8	137.0	135.3	220.0	214.8	205.0
- Eight Leading Industries	136,869	5,237,430	38.27	39.56	37.14	114.2	104.5	110.9	199.3	188.8	188.0
QUEBEC											
Manufacturing	338,481	14,591,803	43.08	43.24	40.71	116.4	115.6	118.7	209.7	209.1	202.1
Lumber products	18,247	649,092	35.57	36.26	33.89	109.2	100.2	106.1	232.9	217.7	217.0
Pulp and paper products	40,471	2,156,551	53.53	52.85	51.14	132.3	127.7	131.3	245.3	233.6	233.1
Textile products	92,268	3,202,014	34.70	35.18	31.98	126.2	127.2	122.8	231.3	238.4	209.3
Chemicals and allied products	18,000	869,832	48.32	48.42	48.44	86.1	85.4	85.9	161.2	150.3	144.6
Iron and steel	60,556	2,948,502	48.39	49.53	45.22	95.2	95.3	108.1	153.9	157.0	164.9
Logging	14,675	473,787	32.29	37.15	29.39	71.8	39.6	105.8	165.0	104.7	223.6
Mining	17,218	892,108	51.81	52.50	48.36	137.5	132.2	104.1	216.9	211.6	164.9
Communications	15,281	698,345	45.70	45.57	42.55	234.3	229.0	218.5	338.5	327.9	293.0
Transportation	48,549	2,485,590	51.20	51.36	50.45	139.3	136.6	145.7	223.8	219.7	230.2
Construction	84,969	2,658,880	40.93	41.43	38.74	120.9	102.8	119.5	225.4	193.5	210.8
Services	19,557	559,842	28.63	29.06	27.51	161.1	157.8	158.2	280.0	258.5	249.8
Trade	68,211	2,813,770	38.32	38.12	36.82	143.1	143.1	138.3	229.3	228.1	212.3
- Eight Leading Industries	587,131	24,974,105	42.54	42.39	40.29	122.3	117.9	123.7	217.0	210.9	208.0
ONTARIO											
Manufacturing	530,557	25,616,444	48.28	48.44	44.89	122.3	120.1	121.9	216.4	213.3	200.4
Lumber products	27,313	1,037,903	39.00	38.71	36.34	121.9	114.8	123.1	210.0	201.8	204.1
Plant products - edible	30,561	1,205,576	39.46	39.51	36.89	133.5	130.0	130.3	225.0	220.0	205.8
Pulp and paper products	53,466	2,788,389	62.15	51.98	48.67	153.6	151.6	150.6	264.3	260.0	241.0
Textile products	58,834	2,165,707	35.81	39.03	34.55	103.1	105.0	105.9	189.6	199.7	183.3
Chemicals and allied products	21,599	1,095,028	50.70	50.31	48.24	110.5	109.2	105.8	204.8	205.0	186.8
Electrical apparatus	39,937	1,986,136	49.88	50.47	46.87	181.5	177.6	169.4	327.8	324.6	286.8
Iron and steel	171,852	9,174,978	53.39	53.35	48.77	108.8	105.4	109.1	185.5	180.6	170.9
Non-ferrous metal products	26,891	1,367,527	51.24	51.18	48.25	112.9	114.3	114.8	223.8	228.4	214.6
Logging	10,792	384,928	35.70	40.67	41.36	105.5	73.6	111.9	209.6	166.4	257.3
Mining	26,776	1,468,503	54.84	56.06	52.70	86.2	83.9	83.2	134.2	133.5	124.5
Communications	22,561	967,971	42.72	42.50	40.46	220.9	218.2	208.2	338.7	332.9	304.1
Transportation	57,222	3,067,197	53.80	53.90	51.40	149.1	142.3	148.9	231.2	221.9	221.3
Construction	79,876	3,836,286	45.52	45.84	42.69	134.1	121.8	120.1	239.5	219.1	201.4
Services	32,974	985,124	29.88	30.52	27.76	139.7	135.6	138.1	268.9	266.6	244.0
Trade	120,934	4,756,863	39.37	38.97	37.47	146.9	145.9	140.0	240.0	235.9	218.2
- Eight Leading Industries	881,582	40,883,316	46.37	46.58	43.67	128.3	124.6	125.5	219.9	214.5	202.2
PRAIRIE PROVINCES											
Manufacturing	71,747	3,189,820	44.46	44.65	42.61	134.6	134.1	136.9	230.2	230.2	224.2
Animal products - edible	9,294	450,074	48.43	48.46	45.49	129.3	121.4	134.6	217.9	204.2	212.0
Lumber products	4,867	187,098	38.44	38.85	36.86	118.2	116.8	129.9	206.3	206.0	217.8
Plant products - edible	6,581	270,790	41.15	41.31	39.12	141.0	140.0	142.3	235.5	234.7	227.2
Textile products	5,474	187,430	30.69	31.30	28.17	130.0	143.0	135.0	223.4	251.5	213.8
Iron and steel	22,874	1,080,236	47.23	47.83	45.94	123.9	124.7	124.0	212.2	215.6	208.7
Mining	18,570	1,060,933	57.13	57.04	53.92	166.9	163.4	164.1	271.0	254.9	251.5
Communications	8,343	349,540	41.90	41.14	39.44	192.4	183.3	173.8	306.4	286.8	263.6
Transportation	41,897	2,200,778	52.53	52.25	51.66	132.6	126.9	133.3	204.4	197.9	202.4
Construction	42,635	1,843,376	43.24	43.42	40.30	127.2	102.8	123.1	246.8	200.2	224.3
Services	11,873	347,126	29.24	29.57	28.12	142.3	137.7	147.4	246.6	241.2	242.5
Trade	55,674	2,146,412	38.32	38.92	36.98	148.0	147.6	147.1	234.8	235.9	224.3
- Eight Leading Industries	251,474	11,166,570	44.40	44.50	42.63	139.0	133.1	138.3	233.2	223.7	222.6
BRITISH COLUMBIA											
Manufacturing	76,967	3,723,230	48.56	49.34	46.78	137.4	132.7	135.5	236.7	233.7	225.0
Animal products - edible	5,564	253,128	47.29	46.04	45.39	132.1	117.6	123.7	251.2	217.6	225.3
Lumber products	28,859	1,314,283	45.57	47.76	44.80	150.8	145.5	142.2	258.4	251.1	238.9
Plant products - edible	4,251	168,259	39.58	41.89	36.67	132.4	115.3	124.2	257.1	236.8	232.9
Pulp and paper products	8,994	493,567	54.69	55.01	52.07	142.1	140.6	150.1	234.4	232.4	236.0
Iron and steel	11,609	598,789	51.58	51.90	48.83	96.7	96.6	100.3	167.1	167.5	183.3
Non-ferrous metal products	4,321	236,571	54.75	55.07	52.90	134.3	132.5	134.6	208.2	206.7	201.5
Logging	15,174	858,973	56.51	58.84	55.86	159.2	159.0	162.5	228.4	206.5	231.5
Mining	10,530	583,949	53.05	53.42	52.07	106.4	102.6	101.4	160.7	155.9	150.9
Transportation	21,268	1,109,142	52.15	52.98	50.68	155.3	150.9	155.9	262.6	258.2	254.1
Construction	24,892	1,214,645	48.90	49.29	45.50	186.4	176.7	197.4	351.3	336.4	347.3
Services	9,451	306,723	32.46	32.66	30.92	160.3	158.0	172.0	280.8	278.5	288.6
Trade	33,155	1,374,457	41.43	41.23	38.73	163.9	162.8	170.9	290.5	287.1	281.2
- Eight Leading Industries	197,811	9,416,383	47.50	48.16	45.87	150.6	144.8	151.7	251.9	246.3	243.1

* See explanatory statement on pages I and II.

1/ See footnote 2 on page 2.

Table 3.- Distribution of the Employees and Weekly Payrolls of the Reporting Establishments at June 1, 1950 in the Major Industries in the Indicated Provinces and Average Salaries and Wages of their Employees, Together with Index Numbers of Employment and Payrolls with Comparisons from a month and a year earlier.

(The latest figures are subject to revision).

Provinces and Industries	No. of Employees Reported at June 1, 1950	Weekly Salaries and Wages at June 1, 1950	Average Weekly Salaries and Wages at			Index Numbers Based on June 1, 1941 as 100 p.c.					
						Employment			Payrolls		
			June 1 1950	May 1 1950	June 1 1949	June 1 1950	May 1 1950	June 1 1949	June 1 1950	May 1 1950	June 1 1949
PRINCE EDWARD ISLAND											
Manufacturing	952	35,113	36.88	36.13	33.71	170.8	152.3	170.7	312.8	273.2	265.5
Trade	720	18,913	26.27	26.50	24.53	128.8	126.7	130.5	188.8	190.7	179.6
- Eight Leading Industries	3,608	130,516	36.17	36.39	34.83	156.2	140.9	141.2	257.9	234.0	226.3
NOVA SCOTIA											
Manufacturing	24,425	1,044,838	42.73	42.81	41.06	101.1	99.0	107.8	179.7	176.0	184.2
Animal products - edible	2,686	98,724	36.01	41.96	34.08	122.9	112.6	119.1	232.1	247.7	212.8
Iron and steel	10,956	558,165	50.95	48.79	49.07	89.4	89.7	101.7	170.9	164.1	187.1
Mining	13,799	813,005	44.42	50.64	41.06	82.4	83.7	84.5	158.6	183.8	150.6
Coal	12,606	573,200	44.76	51.31	41.06	80.3	83.4	83.5	156.3	185.1	148.4
Transportation	6,917	306,750	44.35	44.62	44.56	125.6	126.3	122.7	203.1	205.4	199.5
Steam railway operation	3,795	192,516	51.96	53.07	50.77	110.3	113.2	106.9	195.8	205.3	183.7
Shipping and stevedoring	2,238	72,650	32.46	29.96	35.95	150.4	148.7	146.4	205.1	187.3	221.0
Construction	17,508	565,288	32.29	32.73	29.61	102.6	63.4	87.4	185.6	116.1	144.3
Building	4,557	160,951	35.32	35.88	33.37	88.0	77.2	76.4	144.0	128.4	118.2
Highway	11,664	351,130	30.10	30.38	26.60	113.5	49.8	93.7	218.3	96.6	159.2
Retail trade	6,857	207,768	30.30	29.26	28.83	140.2	138.9	135.0	227.5	217.6	204.7
Wholesale trade	3,143	125,880	40.05	40.41	38.62	157.1	155.2	163.0	210.0	209.2	198.1
- Eight Leading Industries	77,208	2,997,087	38.32	40.77	37.13	106.8	98.0	106.1	183.0	174.2	172.1
NEW BRUNSWICK											
Manufacturing	20,560	846,592	41.18	41.62	39.29	112.6	108.2	112.2	211.6	205.1	202.1
Lumber products	3,228	97,616	30.24	29.40	30.80	92.0	84.4	82.2	187.2	149.1	183.4
Pulp and paper products	4,381	230,889	52.68	52.09	52.29	129.4	122.2	117.5	245.4	229.2	221.3
Iron and steel	4,894	226,988	46.38	46.77	43.99	111.0	113.4	117.2	189.6	195.5	190.0
Logging	3,581	97,485	27.22	31.75	32.61	71.9	32.3	57.5	120.7	63.3	115.6
Transportation	5,902	303,447	51.41	50.31	50.74	131.2	158.9	140.1	229.8	272.4	242.9
Steam railway operation	4,000	231,117	57.78	55.98	56.12	134.2	164.2	135.9	223.4	263.9	219.0
Construction	13,879	463,107	33.37	32.13	33.04	169.6	141.8	161.6	300.3	241.6	255.9
Highway	8,739	261,523	29.23	27.70	29.71	207.4	175.7	163.6	428.6	336.1	335.6
Railway	2,304	96,979	42.09	43.45	41.42	86.9	65.8	79.5	203.8	159.3	133.5
Retail trade	5,164	156,097	30.23	30.45	29.46	136.2	129.4	131.2	240.6	230.2	225.0
- Eight Leading Industries	56,043	2,109,827	37.65	38.27	37.20	124.3	115.2	115.1	224.4	211.9	213.5
MANITOBA											
Manufacturing	39,432	1,719,705	43.61	43.80	41.63	127.3	129.5	131.3	215.0	219.8	211.5
Animal products - edible	3,167	162,339	51.26	50.94	47.84	121.9	115.5	125.2	203.6	192.0	194.3
Plant products - edible	3,031	123,286	40.28	40.40	37.83	139.6	142.4	140.8	229.2	232.9	215.5
Pulp and paper products	3,863	179,763	46.53	46.54	44.40	135.8	144.0	145.6	219.2	232.5	224.1
Textiles	4,443	134,152	30.19	30.83	28.16	127.9	143.7	136.2	215.1	247.6	213.7
Iron and steel	15,063	706,506	46.90	47.56	45.55	121.3	122.1	122.0	207.5	211.9	202.6
Transportation	19,145	998,335	52.15	52.04	52.14	134.3	130.1	134.5	207.2	200.2	207.3
Street railways	7,518	329,292	43.80	44.55	44.45	149.1	148.3	155.1	225.3	227.8	237.4
Steam railway operation	11,453	662,089	57.81	57.14	57.61	123.4	116.7	121.1	197.9	188.1	193.5
Construction	14,241	608,150	42.70	42.46	41.27	112.5	97.1	112.1	204.7	175.0	196.2
Building	5,959	271,636	45.58	45.88	43.53	115.1	106.6	114.3	179.2	167.2	169.1
Railway	5,047	223,606	44.30	41.83	41.56	90.7	76.8	87.2	204.7	163.7	184.6
Services	4,727	130,567	27.62	28.28	26.82	154.5	166.0	160.4	243.0	251.1	246.3
Retail trade	15,748	581,487	36.92	37.55	35.46	137.8	140.9	144.2	214.5	223.1	215.7
Wholesale trade	7,757	334,694	43.15	42.68	41.27	133.3	132.6	133.3	206.6	203.2	198.7
- Eight Leading Industries	106,333	4,753,681	43.68	43.83	42.34	129.2	127.0	131.3	214.0	210.3	209.9
SASKATCHEWAN											
Manufacturing	10,172	456,640	44.89	45.07	43.98	130.3	126.3	133.1	215.7	210.0	216.0
Animal products - edible	2,616	115,496	44.15	43.75	40.81	128.1	119.0	135.5	226.4	208.6	221.5
Street railways	4,213	171,413	40.69	39.53	38.27	95.9	92.4	102.4	154.9	145.0	168.0
Steam railway operation	4,845	307,930	63.56	62.03	61.86	128.9	127.5	126.9	184.9	181.6	180.0
Construction	11,220	485,790	43.30	42.39	39.81	119.5	79.5	118.9	248.5	161.8	228.5
Highway	4,258	189,848	44.59	42.73	40.02	136.4	61.3	127.9	303.0	130.6	255.9
Railway	4,194	183,048	43.65	44.61	41.49	93.2	73.3	90.9	187.1	151.1	173.4
Retail trade	7,598	274,768	36.16	36.11	34.24	137.1	135.8	139.7	235.2	232.8	229.2
Wholesale trade	4,945	207,547	41.99	41.80	40.31	139.7	136.3	135.6	233.0	226.2	217.9
- Eight Leading Industries	48,051	2,084,574	43.32	43.03	41.39	129.6	117.3	129.6	216.6	194.5	207.0
ALBERTA											
Manufacturing	22,143	1,312,475	45.77	46.06	43.79	151.6	147.1	150.0	270.8	264.1	258.0
Animal products - edible	3,511	172,239	49.06	49.68	46.85	134.1	126.0	139.0	226.6	214.2	224.4
Plant products - edible	2,328	98,359	42.25	42.12	40.19	133.5	130.7	139.5	234.2	228.6	233.6
Iron and steel	5,592	265,602	47.50	48.41	46.32	154.6	155.4	153.5	257.5	263.9	249.5
Mining	14,340	801,410	55.89	56.02	52.45	193.0	189.2	190.4	290.6	285.5	268.6
Coal	6,795	349,887	51.34	50.96	47.31	127.4	131.3	122.5	196.9	201.5	194.2
Transportation	13,694	723,099	52.60	52.63	51.60	140.3	142.0	145.9	227.8	221.3	222.2
Street railways	5,433	243,935	44.80	44.89	43.70	132.5	130.5	127.0	210.1	206.9	195.7
Steam railway operation	7,906	463,210	58.60	58.72	57.05	144.1	140.3	145.7	236.8	231.0	233.0
Construction	17,174	749,436	43.64	44.74	40.50	147.4	126.4	136.8	294.6	259.1	254.0
Highway	8,152	247,851	40.29	40.43	36.60	124.4	101.7	122.5	225.2	184.8	212.6
Railway	3,700	182,058	43.80	42.56	41.10	85.1	78.1	89.4	193.6	172.8	191.0
Services	4,806	150,494	31.32	31.74	30.31	136.6	125.2	141.7	240.5	223.3	232.4
Retail trade	13,172	476,489	36.17	37.03	34.88	162.5	159.7	154.3	273.6	275.4	251.5
Wholesale trade	6,354	271,327	42.70	42.87	40.88	170.1	168.5	160.6	268.1	266.7	241.8
- Eight Leading Industries	95,090	4,327,915	45.51	46.01	43.63	158.7	151.2	153.4	269.8	259.9	249.7

* See explanatory statement on pages I and II.

1/ See footnote 2 on page 2.

Table 4.- Distribution of the Employees and Weekly Payrolls of the Reporting Establishments* at June 1, 1950 in the Major Industries in the Larger Cities, and Average Weekly Salaries and Wages of their Employees, Together with Index Numbers of Employment and Payrolls with Comparisons from a month and a year earlier.

(The latest figures are subject to revision).

Cities and Industries	No. of Employees Reported at June 1, 1950	Weekly Salaries and Wages at June 1, 1950	Average Weekly Salaries and Wages at			Index Numbers Based on June 1, 1941 as 100 P.c.								
						Employment			Payrolls					
			June 1 1950	May 1 1950	June 1 1949	June 1 1950	May 1 1950	June 1 1949	June 1 1950	May 1 1950	June 1 1949	June 1 1950	May 1 1950	June 1 1949
MONTREAL														
Manufacturing	186,048	8,208,941	44.12	44.50	41.89	122.3	122.6	124.4	209.7	212.7	202.6			
Plant products - edible	11,556	453,120	39.21	39.44	37.45	130.5	130.1	121.7	241.5	241.6	214.2			
Pulp and paper products	13,985	709,581	50.72	50.95	47.75	154.4	152.2	150.3	279.9	276.9	256.5			
Textiles	43,532	1,513,013	34.76	35.89	32.68	128.1	130.5	125.5	223.1	234.7	205.4			
Tobacco	5,776	283,472	45.61	45.67	42.28	98.3	98.9	102.3	259.9	261.6	249.8			
Iron and steel	41,985	2,073,059	49.49	50.77	47.15	92.7	93.0	105.4	145.9	150.2	158.1			
Communications	8,243	424,524	51.50	51.47	48.02	250.3	247.1	226.2	344.6	335.9	296.3			
Transportation	17,900	817,301	45.82	48.48	46.27	138.1	136.3	145.7	228.6	239.3	243.5			
Construction	24,410	1,066,962	43.71	46.00	41.09	156.6	180.4	188.7	309.7	298.5	279.1			
Services ^{1/}	14,405	432,830	30.05	30.13	28.60	162.2	162.4	158.8	256.2	259.8	246.5			
Trade	51,334	2,021,287	39.38	38.79	37.28	145.2	145.3	141.8	225.7	224.0	208.4			
- Eight Leading Industries	302,772	13,006,213	42.56	43.46	40.91	133.7	133.0	134.0	223.8	225.4	213.9			
QUEBEC														
Manufacturing	17,620	658,101	37.82	37.67	35.60	92.6	93.0	99.4	173.2	172.4	174.7			
Iron and steel	1,180	57,090	40.38	47.65	44.54	45.0	49.2	92.5	76.1	80.2	143.6			
Transportation	2,068	85,378	41.17	40.76	39.09	191.0	179.3	178.0	261.0	243.1	238.3			
Construction	4,599	183,727	39.55	40.79	34.22	169.0	142.2	180.1	344.7	294.8	319.1			
Services ^{1/}	1,774	49,211	27.74	27.60	26.25	142.5	144.7	156.5	298.7	286.7	298.8			
Trade	5,782	191,367	33.10	32.91	31.08	157.3	154.1	152.3	331.0	239.2	220.6			
- Eight Leading Industries	32,657	1,214,411	37.15	37.03	34.50	117.1	113.4	121.7	211.0	203.3	203.6			
TORONTO														
Manufacturing	178,353	8,337,302	47.26	47.70	44.49	127.2	128.9	123.5	223.5	224.5	203.6			
Plant products - edible	13,230	528,741	39.57	39.62	37.26	123.5	124.6	116.1	206.5	206.6	183.6			
Pulp and paper products	23,364	1,190,296	50.95	51.13	47.56	149.2	149.8	145.2	255.4	257.2	230.5			
Textiles	21,728	823,665	37.91	39.55	36.24	107.9	109.8	107.3	193.8	205.5	185.1			
Chemicals and allied products	11,007	542,180	49.26	49.14	46.75	142.0	141.8	137.6	270.5	269.6	248.4			
Electrical apparatus	18,229	890,458	48.85	50.13	45.18	154.4	188.8	172.4	345.5	344.4	283.4			
Iron and steel	37,974	1,915,777	50.48	50.74	46.73	108.2	108.3	106.0	190.0	189.5	170.5			
Communications	8,873	344,063	50.06	49.80	46.08	224.0	222.3	213.0	323.0	319.2	289.8			
Transportation	13,921	687,467	40.38	49.79	46.50	175.6	170.3	163.3	278.3	271.8	255.9			
Construction	15,460	785,317	50.80	53.21	45.27	166.5	155.3	129.8	264.8	259.7	187.0			
Services ^{1/}	16,611	551,254	33.19	33.42	30.26	132.2	131.7	129.3	262.9	263.8	239.5			
Trade	60,236	2,600,943	43.18	42.52	40.88	150.5	150.3	144.5	244.3	241.4	223.3			
- Eight Leading Industries	289,521	13,311,270	45.98	46.22	43.18	137.1	135.2	131.4	235.4	235.1	211.5			
OTTAWA														
Manufacturing	9,336	399,827	42.83	42.56	40.90	94.1	98.3	101.5	165.4	171.6	170.6			
Pulp and paper products	3,545	166,871	47.07	46.16	45.16	125.9	124.3	119.2	206.5	200.5	188.4			
Iron and steel	1,012	43,790	45.27	43.35	41.00	30.5	46.3	60.6	60.0	90.7	111.6			
Construction	5,010	200,729	40.07	40.57	39.27	187.2	171.5	174.7	318.8	295.9	293.1			
Services ^{1/}	2,829	77,032	27.23	27.54	25.79	134.2	134.1	140.3	268.6	271.5	259.3			
Trade	7,752	257,815	33.28	33.55	31.82	154.5	151.2	151.5	233.9	231.0	220.1			
- Eight Leading Industries	27,894	1,069,287	38.33	38.54	37.01	132.3	131.5	132.4	219.3	219.0	211.6			
HAMILTON														
Manufacturing	51,691	2,713,232	52.49	51.22	47.93	118.7	117.5	122.4	218.3	210.7	206.8			
Textiles	6,251	218,911	35.02	36.29	32.44	92.7	95.8	101.6	160.3	171.8	164.0			
Electrical apparatus	7,815	423,334	54.17	54.08	51.27	146.4	143.2	139.2	301.8	294.6	274.2			
Iron and steel	23,771	1,397,786	58.80	55.93	53.59	108.1	106.6	113.1	200.0	187.7	191.1			
Construction	3,753	176,271	46.97	48.17	46.12	135.7	126.4	134.7	233.4	223.3	228.1			
Trade	7,629	287,453	37.68	36.95	36.55	140.7	140.3	125.6	235.9	230.6	205.5			
- Eight Leading Industries	67,859	3,359,880	49.51	48.55	45.98	124.7	122.9	125.7	223.8	218.2	210.3			
WINDSOR														
Manufacturing	34,037	1,935,994	56.80	57.23	49.00	124.8	126.0	116.3	178.2	152.2	143.5			
Iron and steel	28,389	1,653,221	58.23	58.55	49.57	120.7	99.9	111.0	171.1	142.4	134.0			
Construction	1,809	100,809	55.73	53.43	50.77	259.9	239.5	205.9	481.4	425.4	347.4			
Trade	3,750	145,311	38.75	38.29	36.72	150.1	158.7	155.5	218.1	216.8	203.2			
- Eight Leading Industries	42,683	2,316,287	54.24	54.00	47.44	130.2	113.9	121.3	190.2	155.6	154.6			
WINNIPEG														
Manufacturing	32,225	1,374,191	42.64	42.79	40.52	125.7	128.9	130.8	211.2	217.3	206.6			
Animal products - edible	2,919	152,408	52.21	51.69	48.68	118.0	113.0	122.6	199.9	188.6	191.1			
Plant products - edible	2,831	107,350	40.80	40.51	38.18	132.7	136.2	135.5	222.4	226.6	213.1			
Textiles	4,223	129,119	30.58	31.32	28.67	125.4	141.5	132.2	211.3	244.1	208.9			
Iron and steel	11,355	520,755	45.86	46.54	44.32	113.4	120.2	121.3	202.2	206.5	198.5			
Communications	1,594	73,521	46.12	41.47	38.58	221.4	208.5	186.2	309.7	262.2	227.6			
Transportation	4,525	195,346	43.28	43.79	43.03	154.2	152.0	153.2	220.3	219.7	217.9			
Construction	4,112	171,308	41.68	40.78	41.74	82.5	75.3	87.1	120.9	108.0	127.2			
Services ^{1/}	4,248	119,083	28.03	28.61	26.61	152.2	155.5	163.8	239.6	249.2	249.2			
Trade	20,875	817,624	39.17	39.45	37.45	137.4	139.9	142.6	214.4	219.8	213.5			
- Eight Leading Industries	67,679	2,756,130	40.72	40.77	38.90	129.1	130.5	133.5	206.0	208.5	203.7			
VANCOUVER														
Manufacturing	33,364	1,604,448	48.09	49.12	46.23	138.7	134.9	135.9	236.7	235.1	222.0			
Lumber products	9,821	456,038	46.43	48.54	45.90	155.6	153.1	146.3	250.8	258.1	233.0			
Iron and steel	7,485	384,812	51.41	52.46	48.95	89.6	88.4	92.9	154.8	155.8	151.6			
Communications	4,878	191,955	39.35	38.65	39.16	203.5	198.6	187.0	293.1	280.9	267.8			
Transportation	8,660	422,330	46.77	50.07	46.84	149.1	145.6	152.0	232.8	233.5	227.1			
Construction	9,208	473,062	51.38	54.09	49.07	270.2	254.3	326.6	461.1	466.8	533.7			
Services ^{1/}	6,413	215,183	33.55	33.92	31.91	164.2	161.9	174.5	282.7	281.7	289.7			
Trade	23,486	927,780	42.46	42.49	39.44	155.6	159.2	165.1	287.8	285.2	242.7			
- Eight Leading Industries	86,079	3,907,786	45.40	46.06	43.37	157.6	154.1	161.9	289.4	287.2	243.4			

* See explanatory statement on pages I and II. 1/ See footnote 2 on page 2.

Table 5.- Distribution of the Employees and Weekly Payrolls of the Reporting Establishments at June 1, 1950 in the Major Industries in Specified Cities and Average Weekly Salaries and Wages of their Employees, Together with Index Numbers of Employment and Payrolls with Comparisons from a month and a year earlier.

(The latest figures are subject to revision).

Cities and Industries	No. of Employees Reported at June 1, 1950	Weekly Salaries and Wages at June 1, 1950	Average Weekly Salaries and Wages at			Index Numbers Based on June 1, 1941 as 100 p.c.								
						Employment			Payrolls					
			June 1 1950	May 1 1950	June 1 1949	June 1 1950	May 1 1950	June 1 1949	June 1 1950	May 1 1950	June 1 1949			
		\$	\$	\$	\$									
HALIFAX	Manufacturing	7,024	289,413	41.20	42.35	39.84	97.2	101.5	102.5	176.0	189.0	179.4		
	Plant products - edible	1,283	35,482	27.66	27.23	25.11	96.2	96.1	86.4	159.5	156.8	129.9		
	Iron and steel	2,655	124,031	46.72	47.90	45.18	85.0	94.2	102.8	158.4	180.0	185.3		
	Transportation	2,068	66,156	31.99	30.05	35.27	170.8	174.7	162.0	217.0	208.3	226.3		
	Construction	3,109	118,069	37.58	39.11	35.97	125.8	106.3	122.6	189.5	147.6	156.7		
	Trade	6,118	211,796	34.62	33.23	32.43	149.2	140.3	144.4	227.8	218.8	206.3		
- Nine Leading Industries	22,320	821,035	36.78	36.85	35.49	122.7	121.4	122.0	197.5	195.9	186.9			
SAINT JOHN	Manufacturing	4,276	170,083	39.78	41.67	36.71	85.1	87.2	91.6	164.6	165.7	164.2		
	Iron and steel	609	27,122	44.64	48.66	37.56	47.2	56.2	63.3	76.2	99.1	86.2		
	Trade	3,192	103,905	32.55	33.25	31.71	111.1	110.8	110.7	183.1	185.6	176.7		
	- Nine Leading Industries	12,772	461,117	36.10	37.02	34.98	115.4	117.4	121.7	194.0	202.3	196.5		
SHERBROOKE	Manufacturing	7,534	287,915	38.22	37.58	34.22	105.9	107.0	108.3	194.1	192.7	177.2		
	Textiles	4,516	163,961	36.31	35.14	31.29	106.7	110.6	106.0	212.0	212.7	181.4		
	Iron and steel	1,587	71,634	45.26	45.53	41.38	79.6	78.2	87.2	137.9	136.4	138.2		
	- Nine Leading Industries	10,605	396,448	37.38	36.96	34.08	117.4	115.7	117.0	211.9	205.5	192.0		
THREE RIVERS	Manufacturing	8,141	377,847	46.41	45.01	46.55	128.1	124.6	131.1	216.3	204.3	217.9		
	Pulp and paper products	3,500	214,139	61.18	59.00	57.99	122.1	117.8	126.9	230.7	214.7	227.3		
	Textiles	2,475	76,639	30.97	29.91	30.88	106.3	105.0	99.6	139.9	181.1	177.5		
	- Nine Leading Industries	11,321	478,505	42.28	41.28	41.17	136.4	130.0	136.4	222.3	206.8	218.4		
BRIGHTON - FORD	Manufacturing	12,814	580,664	45.31	47.37	44.47	-	-	-	-	-	-		
	Textiles	1,945	75,455	38.77	40.89	36.67	-	-	-	-	-	-		
	Iron and steel	6,753	328,388	48.63	51.94	49.25	-	-	-	-	-	-		
	- Nine Leading Industries	15,008	681,955	44.11	45.90	43.25	-	-	-	-	-	-		
KITCHENER - WATERLOO	Manufacturing	16,131	685,763	42.51	42.68	39.26	130.8	130.2	131.4	244.0	243.7	225.3		
	Animal products - edible	1,426	59,450	43.70	48.62	45.69	132.3	129.3	130.2	262.9	256.6	242.8		
	Leather products	1,720	68,303	39.71	39.27	36.88	103.5	104.4	101.1	182.8	182.4	164.9		
	Lumber products	2,131	90,250	42.35	42.32	37.59	160.0	160.8	154.4	295.6	297.1	253.3		
	Rubber products	4,670	207,188	44.37	44.02	41.08	140.6	138.5	144.7	260.9	255.1	248.6		
	Textiles	1,771	55,707	31.46	35.33	30.36	102.5	103.0	104.0	186.1	210.0	182.2		
	- Nine Leading Industries	20,988	885,585	42.19	42.17	39.33	136.3	135.0	133.9	253.6	251.2	232.4		
LONDON	Manufacturing	16,147	734,995	45.52	45.24	41.69	141.7	144.5	140.8	260.4	263.7	236.4		
	Plant products - edible	2,217	88,164	39.77	37.16	35.83	143.2	153.0	144.4	265.7	255.3	232.4		
	Pulp and paper products	2,408	112,611	46.77	47.82	42.55	158.7	156.2	145.4	275.6	277.5	231.3		
	Iron and steel	4,243	206,916	49.24	49.09	45.81	151.3	147.0	142.2	268.6	260.4	235.7		
	Trade	4,736	177,644	37.51	36.76	35.81	174.2	175.2	166.3	243.3	239.8	225.7		
	- Nine Leading Industries	28,211	1,222,576	43.34	43.14	40.44	154.9	156.8	151.3	264.0	266.0	238.3		
ST. WILLIAM - ST. MARY	Manufacturing	5,158	270,547	52.45	52.30	48.82	57.3	55.6	59.5	112.0	108.5	108.3		
	Pulp and paper products	2,110	131,186	62.17	60.48	55.14	134.4	131.7	145.6	226.0	216.5	218.0		
	Iron and steel	1,847	86,731	46.56	47.58	45.75	27.2	25.3	24.4	52.2	49.3	45.6		
	Transportation	2,035	97,128	47.73	50.23	47.61	138.1	99.4	146.6	166.0	118.3	165.5		
	Trade	2,107	80,407	36.16	37.87	36.03	128.8	126.8	121.0	228.5	223.6	220.6		
	- Nine Leading Industries	11,274	520,808	46.20	46.60	44.36	75.2	68.7	78.6	133.3	122.6	131.3		
ST. CATHARINES	Manufacturing	21,875	1,225,895	55.13	53.73	49.34	-	-	-	-	-	-		
	Pulp and paper products	2,876	174,278	60.60	59.20	56.51	-	-	-	-	-	-		
	Textiles	2,165	80,219	37.05	39.11	31.94	-	-	-	-	-	-		
	Iron and steel	13,387	762,256	58.43	56.40	52.12	-	-	-	-	-	-		
	- Nine Leading Industries	26,960	1,427,805	52.96	51.71	48.19	-	-	-	-	-	-		
REgina	Manufacturing	2,435	108,335	44.70	45.18	45.05	106.2	102.4	103.1	167.1	162.9	162.7		
	Animal products - edible	553	23,568	42.30	44.34	41.37	140.9	132.4	139.3	212.8	207.3	204.2		
	Trade	5,442	209,744	38.54	38.76	36.51	150.4	146.2	153.4	254.3	253.2	247.7		
	- Nine Leading Industries	12,119	480,053	39.51	40.20	38.02	136.5	130.8	136.9	231.0	225.8	221.3		
SASKATOON	Manufacturing	2,301	98,991	43.02	42.86	41.07	189.3	180.8	183.5	319.1	303.3	292.2		
	Animal products - edible	716	33,315	48.53	43.37	13.20	197.2	183.7	181.3	373.1	326.2	319.3		
	Trade	3,120	114,891	36.82	36.44	34.54	139.7	139.7	135.9	233.3	231.0	212.2		
	- Nine Leading Industries	5,232	319,989	39.36	38.47	36.37	155.3	149.2	151.3	275.5	262.3	254.4		
CALGARY	Manufacturing	7,740	364,487	47.09	47.55	46.01	138.1	137.0	139.9	247.5	247.9	245.4		
	Plant products - edible	975	42,211	43.29	43.49	41.90	134.4	132.4	133.0	243.8	241.2	236.9		
	Iron and steel	2,549	125,341	47.32	48.22	46.36	141.1	144.8	151.1	226.3	237.0	237.8		
	Construction	2,557	105,574	42.85	45.46	42.22	121.5	116.7	117.1	272.3	269.9	240.8		
	Trade	8,198	322,995	39.40	40.07	37.75	164.5	162.1	164.5	254.8	255.2	231.3		
	- Nine Leading Industries	24,401	1,046,455	42.89	43.52	41.94	149.3	146.5	146.1	254.8	253.5	247.1		
EDMONTON	Manufacturing	7,959	364,793	45.33	45.38	43.10	153.7	147.1	145.9	276.2	265.2	245.3		
	Animal products - edible	2,162	107,349	49.66	49.49	46.92	138.4	128.5	139.3	227.1	210.6	217.1		
	Iron and steel	2,028	94,890	46.39	47.72	44.31	164.2	161.9	147.1	298.3	300.7	266.3		
	Construction	4,732	216,009	46.44	48.44	43.35	375.8	328.8	314.5	603.3	562.7	483.6		
	Trade	8,493	314,611	37.04	37.33	35.51	197.4	194.3	196.0	323.5	326.0	292.1		
	- Nine Leading Industries	26,913	1,122,819	41.72	42.50	39.76	195.3	185.6	179.5	331.9	320.4	287.9		
VICTORIA	Manufacturing	5,281	258,859	49.02	48.99	46.30	139.2	137.1	148.1	234.0	230.3	238.4		
	Lumber products	1,362	58,997	43.32	45.34	47.02	127.0	117.4	122.0	202.3	197.0	210.9		
	Iron and steel	1,754	90,713	51.72	48.07	47.93	132.0	139.0	146.0	221.9	221.3	227.5		
	Trade	3,518	134,549	38.27	38.24	36.33	152.3	149.8	162.9	262.7	256.0	267.3		
	- Nine Leading Industries	13,510	589,481	43.53	43.19	41.30	150.4	142.9	154.5	259.3	243.9	252.4		

* See explanatory statement on pages I and II.

x Includes Merrittton, Thorold and Welland.

TABLE 6.- INDEX NUMBERS OF EMPLOYMENT BY PROVINCES AND ECONOMIC AREAS,
(AVERAGE CALENDAR YEAR 1926=100).

(The latest figures are subject to revision).

	CANADA	Maritime Provinces	Prince Edward Island	Nova Scotia	New Brunswick	Quebec	Ontario	Prairie Provinces	Manitoba	Sask- atchewan	Alberta	British Columbia
June 1, 1934	96.5	98.4	-	-	-	90.9	104.4	89.5	-	-	-	89.1
June 1, 1935	97.8	101.6	-	-	-	93.8	101.5	92.2	-	-	-	96.5
June 1, 1936	102.0	103.4	-	-	-	99.8	104.7	97.7	-	-	-	102.2
June 1, 1937	114.3	122.0	82.0	124.4	121.4	113.5	118.9	99.3	97.4	103.9	99.4	112.2
June 1, 1938	111.9	110.9	82.0	122.5	98.5	120.4	112.5	97.0	93.7	100.2	100.1	105.1
June 1, 1939	113.1	108.4	94.4	120.3	94.4	121.0	113.5	101.0	95.5	105.1	106.4	106.5
June 1, 1940	120.9	117.0	90.7	129.8	104.2	123.0	126.3	107.4	102.9	113.0	110.8	112.0
June 1, 1941	152.9	152.4	107.1	167.9	134.9	157.3	161.9	128.3	124.7	127.4	134.5	134.9
June 1, 1942	171.7	166.1	107.0	185.2	145.9	182.8	178.5	137.4	133.0	132.0	147.9	161.9
June 1, 1943	181.2	175.3	108.3	195.5	153.7	197.8	182.9	138.5	136.2	132.1	146.4	187.5
June 1, 1944	180.5	178.2	133.5	197.4	156.4	194.3	182.1	145.2	141.5	138.3	155.3	183.5
June 1, 1945	175.3	181.0	121.8	191.9	170.7	184.3	178.9	141.9	137.6	136.5	151.3	175.5
June 1, 1946	169.9	172.9	132.2	180.4	165.7	174.8	178.4	153.3	144.3	149.4	169.5	139.3
Jan. 1, 1947	181.0	169.4	128.9	169.0	172.4	186.7	186.7	158.3	151.3	148.4	175.4	180.4
Feb. 1	180.7	168.0	124.7	172.3	165.2	186.2	187.5	154.6	148.3	142.9	171.7	180.8
Mar. 1	180.4	148.9	124.0	133.1	164.4	188.4	188.7	155.4	149.5	145.1	171.1	180.9
Apr. 1	180.7	153.3	127.4	138.2	174.4	185.8	189.9	155.3	149.1	145.5	171.1	183.3
May 1	179.5	151.7	128.0	141.3	165.7	182.2	189.4	155.7	149.9	147.2	171.5	186.2
June 1	184.5	165.3	139.3	165.2	168.2	196.0	191.9	161.9	152.4	157.7	179.1	192.4
July 1	189.5	179.4	150.9	186.3	172.2	191.2	195.7	167.3	155.7	162.5	137.9	196.9
Aug. 1	192.5	183.9	157.0	189.2	180.1	195.0	196.7	172.1	159.1	167.5	194.8	204.2
Sept. 1	193.2	184.7	159.2	191.7	177.3	196.1	196.4	172.1	158.5	168.0	195.4	207.5
Oct. 1	194.9	188.2	162.7	196.5	179.2	199.3	199.5	166.8	155.7	163.1	186.1	206.0
Nov. 1	197.8	193.3	160.4	201.4	184.9	203.7	202.2	170.1	160.7	168.0	185.9	203.1
Dec. 1	199.5	192.3	154.3	193.9	192.0	205.5	205.0	171.7	161.8	168.4	189.0	202.6
Jan. 1, 1948	193.7	181.9	152.2	178.4	188.2	196.8	202.7	166.2	156.3	159.0	186.0	194.0
Feb. 1	189.3	179.9	170.2	182.4	177.4	193.5	198.5	155.4	152.6	148.3	167.4	190.3
Mar. 1	189.9	171.0	171.2	169.0	173.4	193.4	199.3	158.4	150.6	147.7	177.2	186.1
Apr. 1	188.6	166.1	163.7	170.7	160.3	187.3	197.7	159.6	151.1	148.9	179.3	190.8
May 1	185.5	167.9	143.0	170.4	166.4	186.3	196.7	159.5	152.2	147.2	179.1	196.1
June 1	192.3	172.5	153.7	174.5	171.0	194.4	200.0	168.9	157.3	151.0	190.9	202.0
July 1	198.0	186.7	159.7	192.9	180.5	198.5	204.8	175.3	153.1	156.9	201.2	207.3
Aug. 1	200.9	190.0	161.4	196.8	183.0	206.3	203.3	179.5	155.9	169.7	206.7	212.3
Sept. 1	201.8	189.1	165.3	198.8	178.2	205.1	205.4	180.6	156.5	169.4	209.4	216.2
Oct. 1	203.3	192.9	164.6	205.7	178.0	205.8	208.3	180.8	167.3	171.1	207.5	214.8
Nov. 1	203.5	194.9	160.4	207.7	180.3	207.1	208.6	180.3	168.5	167.9	206.1	212.2
Dec. 1	204.3	197.8	156.2	209.9	184.3	207.5	210.4	180.9	169.3	167.0	207.6	206.1
Jan. 1, 1949	196.0	177.2	151.8	178.2	177.3	198.2	206.1	173.3	152.4	158.0	201.8	192.4
Feb. 1	190.5	168.2	139.9	172.4	164.7	193.0	202.8	155.7	157.3	145.2	194.4	181.5
Mar. 1	188.9	167.1	139.1	170.3	164.8	190.2	201.8	155.5	156.4	145.3	192.3	179.5
Apr. 1	187.5	167.4	163.0	173.1	160.5	184.8	200.2	156.0	155.4	146.8	194.5	188.8
May 1	189.1	153.3	139.8	170.7	155.2	186.4	200.1	170.5	159.9	153.0	198.0	196.9
June 1	194.5	169.0	151.2	176.4	160.7	194.5	202.4	177.4	153.7	155.1	205.3	204.7
July 1	199.5	187.4	152.8	202.0	176.5	198.0	205.4	181.8	168.0	167.3	212.2	209.1
Aug. 1	200.5	188.9	157.5	203.8	171.7	199.4	205.5	185.3	170.7	169.7	218.5	212.5
Sept. 1	202.1	190.4	165.3	205.7	172.1	199.6	208.3	183.5	171.7	169.9	220.0	215.1
Oct. 1	202.2	192.0	165.9	208.8	172.0	199.5	209.2	185.9	173.6	170.8	214.3	211.9
Nov. 1	202.0	189.5	165.0	206.1	167.5	202.0	208.5	185.2	173.1	171.8	212.3	208.7
Dec. 1	201.8	193.7	171.4	208.0	176.5	201.9	208.7	184.5	172.0	170.8	212.4	203.2
Jan. 1, 1950	194.0	172.9	157.7	173.7	172.9	191.4	205.1	178.3	155.5	150.5	207.7	193.2
Feb. 1	187.2	165.5	148.2	168.3	163.1	185.8	201.0	168.9	159.5	145.4	193.4	174.9
Mar. 1	186.5	162.3	141.5	165.3	159.8	183.8	200.3	167.7	157.3	144.8	198.3	181.5
Apr. 1	187.9	153.5	147.9	167.0	160.0	184.9	200.5	168.5	157.3	148.2	200.5	189.9
May 1	188.7	159.2	150.9	162.5	155.4	185.4	201.0	170.8	158.4	149.5	203.3	195.4
June 1	196.0	174.1	167.3	179.3	167.7	192.3	206.9	178.4	161.1	165.1	213.4	203.0

Relative Weight of Employment by Provinces and Economic Areas as at June 1, 1950.

100.0 6.7 .2 3.8 2.7 28.6 42.9 12.2 5.3 2.3 4.6 9.6

Notes:- The "Relative Weight", as given just above, shows the proportion of employees in the indicated area, to the total number of employees reported in Canada by the firms making returns at the date under review.

TABLE 7.- INDEX NUMBERS OF EMPLOYMENT BY PRINCIPAL CITIES,
(AVERAGE CALENDAR YEAR 1926=100).

(The latest figures are subject to revision).

	Montreal	Quebec	Toronto	Ottawa	Hamilton	Windsor	Winnipeg	Vancouver
June 1, 1934	86.3	97.9	93.9	102.4	86.7	107.1	81.9	86.3
June 1, 1935	87.2	95.8	97.9	103.6	93.5	123.5	87.0	96.6
June 1, 1936	93.7	96.8	101.1	108.2	97.6	123.2	90.9	103.8
June 1, 1937	105.2	101.6	108.7	111.8	114.2	153.1	96.5	110.6
June 1, 1938	107.3	103.6	106.7	106.3	106.6	146.0	92.6	106.4
June 1, 1939	108.7	124.2	109.2	109.8	104.6	136.4	92.4	109.8
June 1, 1940	113.5	125.6	119.9	117.8	122.3	160.0	99.4	118.6
June 1, 1941	141.1	163.9	153.3	150.6	161.9	229.8	122.2	141.9
June 1, 1942	166.6	220.0	179.7	157.7	185.9	279.2	132.8	197.7
June 1, 1943	186.8	276.3	193.3	164.7	184.2	304.5	136.6	240.2
June 1, 1944	188.9	268.1	197.5	165.2	178.7	288.0	144.3	243.5
June 1, 1945	175.6	229.1	186.4	159.1	176.7	270.0	139.4	228.1
June 1, 1946	169.0	164.4	176.8	170.8	173.0	266.7	145.7	179.6
Jan. 1, 1947	174.1	169.5	185.5	184.4	174.9	238.4	154.2	212.9
Feb. 1	173.9	164.9	185.1	177.6	177.7	243.6	151.0	213.6
Mar. 1	174.8	166.3	187.2	175.7	177.8	250.0	151.8	214.7
Apr. 1	175.0	167.9	188.3	178.2	181.2	252.6	151.9	216.0
May 1	176.8	170.6	188.5	177.5	182.5	263.7	152.2	217.3
June 1	178.9	178.9	189.0	180.4	185.3	272.5	153.2	222.4
July 1	179.7	186.8	192.6	183.8	188.4	273.7	155.9	224.9
Aug. 1	179.3	195.6	190.6	184.0	187.2	276.5	157.4	230.5
Sept. 1	179.9	199.6	191.0	183.8	185.1	276.2	157.4	229.5
Oct. 1	181.5	199.8	191.2	182.6	187.2	279.7	153.9	225.2
Nov. 1	182.0	198.8	196.5	182.9	189.7	278.7	162.2	220.4
Dec. 1	185.8	199.7	200.2	185.5	191.2	273.9	165.9	232.3
Jan. 1, 1948	180.3	190.2	198.9	185.4	189.3	267.4	159.3	226.5
Feb. 1	178.7	188.2	196.6	183.1	189.0	206.7	154.6	226.1
Mar. 1	179.1	191.4	196.3	181.2	188.9	268.1	152.6	225.6
Apr. 1	178.3	190.7	196.2	184.1	190.4	267.8	154.2	225.5
May 1	180.6	192.9	196.5	183.5	192.4	263.1	154.4	227.6
June 1	181.9	197.9	196.6	191.2	195.3	267.9	158.3	232.0
July 1	183.1	200.3	199.2	197.2	199.6	281.1	162.0	235.8
Aug. 1	182.6	202.1	196.6	197.0	197.6	284.0	162.5	236.8
Sept. 1	185.8	204.3	198.8	197.9	198.2	284.0	163.6	240.4
Oct. 1	188.5	203.8	200.2	196.4	198.4	292.0	164.9	238.6
Nov. 1	190.2	201.8	203.4	201.1	200.5	288.4	168.3	239.7
Dec. 1	192.6	200.7	206.4	202.9	202.8	288.9	171.4	236.5
Jan. 1, 1949	186.8	186.7	204.7	202.2	197.8	284.7	165.5	228.1
Feb. 1	184.6	181.1	202.0	196.0	197.2	274.6	158.8	219.4
Mar. 1	183.3	185.4	201.7	194.6	198.1	279.1	158.2	218.1
Apr. 1	183.2	185.4	200.3	193.5	199.5	281.9	156.9	223.2
May 1	186.4	191.4	201.4	194.9	201.6	286.2	161.7	226.5
June 1	189.1	199.5	201.4	199.4	203.5	278.2	163.1	229.6
July 1	190.2	201.7	204.6	201.9	199.5	298.2	166.8	230.4
Aug. 1	187.9	204.6	201.9	202.2	201.7	295.7	168.2	232.8
Sept. 1	190.2	204.3	204.1	202.5	202.7	297.1	168.8	233.3
Oct. 1	192.3	200.7	205.9	200.0	203.7	300.1	170.6	228.3
Nov. 1	193.1	200.4	208.3	198.7	204.9	294.1	172.1	228.8
Dec. 1	195.0	200.7	211.5	203.2	206.0	285.5	172.4	228.1
Jan. 1, 1950	187.6	185.6	209.1	204.7	200.6	288.4	168.2	220.3
Feb. 1	185.1	178.0	205.4	194.9	196.8	286.3	160.9	209.1
Mar. 1	184.6	178.8	205.0	189.5	196.1	289.0	158.5	212.6
Apr. 1	185.3	180.0	207.0	192.6	196.2	263.5	158.6	217.3
May 1	187.7	185.8	208.8	198.0	199.0	261.8	159.5	218.7
June 1	188.6	192.0	210.2	199.2	201.9	299.4	157.7	223.7

Relative Weight of Employment by Cities as at June 1, 1950.

14.7 1.6 14.1 1.4 3.3 2.1 3.3 4.2

Note:- The "Relative Weight", as given just above, shows the proportion of employees in the indicated city, to the total number of employees reported in Canada by the firms making returns at the date under review.

TABLE 8.- INDEX NUMBERS OF EMPLOYMENT BY INDUSTRIES
(AVERAGE CALENDAR YEAR 1926=100).

(The latest figures are subject to revision).

	All Industries	Manu- facturing	Logging	Mining	Commun- ications	Trans- portation	Con- struction	Services*	Trade
June 1, 1934	96.6	93.2	75.0	106.2	78.0	80.3	116.7	115.4	116.5
June 1, 1935	97.6	98.4	96.0	119.2	79.2	79.9	89.5	118.5	119.9
June 1, 1936	102.0	103.4	94.1	132.1	80.0	85.4	87.0	123.0	127.1
June 1, 1937	114.3	117.9	109.1	151.9	85.6	86.7	105.2	129.0	131.5
June 1, 1938	111.9	112.3	93.6	153.3	84.7	84.9	114.5	135.3	131.5
June 1, 1939	113.1	111.4	97.1	160.5	83.8	86.5	115.3	141.5	136.6
June 1, 1940	120.9	129.2	105.2	166.7	87.1	90.3	90.5	142.5	140.7
June 1, 1941	152.9	168.0	158.3	177.2	97.2	99.2	139.5	170.9	156.6
June 1, 1942	171.7	205.9	169.0	173.1	103.9	106.4	123.3	180.6	153.7
June 1, 1943	181.2	224.2	146.9	156.2	103.6	114.5	126.3	192.0	150.6
June 1, 1944	180.5	223.1	175.9	152.9	107.8	122.4	101.3	202.2	161.3
June 1, 1945	175.3	209.0	201.1	144.6	115.5	125.9	103.1	202.4	171.1
June 1, 1946	169.8	184.7	193.7	157.5	141.4	126.5	131.1	224.3	187.7
Jan. 1, 1947	181.0	190.6	370.5	154.0	154.9	132.0	125.1	223.7	212.3
Feb. 1	180.7	193.9	375.6	162.1	155.1	129.3	121.2	224.8	196.4
Mar. 1	180.4	194.5	377.9	135.9	156.6	129.9	123.6	226.4	197.4
Apr. 1	180.7	195.2	331.0	138.7	159.0	131.1	128.6	228.5	200.2
May 1	179.6	195.8	241.3	139.5	161.4	134.7	133.2	231.5	200.7
June 1	184.5	197.6	239.8	157.6	165.7	139.9	149.6	238.4	201.6
July 1	189.5	200.6	241.5	167.5	169.9	141.2	165.0	250.5	205.9
Aug. 1	192.6	202.6	246.0	170.2	173.5	142.7	176.2	260.2	206.0
Sept. 1	193.2	203.3	242.2	167.1	171.6	141.6	179.9	258.7	207.2
Oct. 1	194.6	203.6	286.1	165.2	169.4	141.7	180.4	251.0	211.7
Nov. 1	197.2	205.1	352.3	168.0	168.0	138.2	181.3	245.0	216.7
Dec. 1	199.6	205.1	405.2	171.0	166.4	140.0	170.5	241.8	228.3
Jan. 1, 1948	193.7	199.9	414.3	167.1	168.0	139.3	142.5	240.4	230.8
Feb. 1	189.3	200.7	393.8	153.4	168.0	132.5	137.6	239.2	212.7
Mar. 1	188.9	202.6	371.3	164.9	168.1	132.5	129.0	236.8	212.0
Apr. 1	186.6	202.0	273.3	168.8	170.5	132.5	130.8	237.9	215.3
May 1	186.5	201.6	168.6	172.3	172.0	138.3	147.0	245.0	214.4
June 1	192.3	203.6	218.4	174.8	175.6	141.5	166.6	250.2	216.6
July 1	198.0	207.2	226.6	178.7	181.3	142.8	185.5	264.1	220.0
Aug. 1	200.9	206.5	224.0	179.7	184.3	144.9	207.3	268.7	219.4
Sept. 1	201.3	209.5	220.3	181.5	186.5	145.5	201.5	268.4	220.5
Oct. 1	203.3	210.0	267.7	179.5	184.3	146.5	197.3	263.7	224.8
Nov. 1	203.6	208.3	321.6	181.5	182.7	144.5	192.7	253.9	230.5
Dec. 1	204.3	207.9	351.0	181.1	182.6	144.5	184.5	251.0	239.5
Jan. 1, 1949	196.0	202.7	326.2	176.5	182.3	140.7	153.8	245.5	238.9
Feb. 1	190.5	202.3	280.9	178.9	181.3	134.9	142.9	245.0	221.1
Mar. 1	188.3	203.0	262.1	170.5	183.3	132.9	138.7	242.2	220.0
Apr. 1	187.6	203.0	184.0	171.1	182.3	135.5	142.0	244.5	221.3
May 1	189.1	203.3	125.6	171.4	186.3	138.5	158.0	247.9	224.5
June 1	194.5	205.1	176.4	175.7	191.4	141.4	173.3	254.4	226.2
July 1	199.5	207.4	192.9	178.1	195.7	144.2	191.3	265.4	227.7
Aug. 1	200.5	206.4	166.7	183.4	201.1	145.7	203.5	272.3	227.5
Sept. 1	202.1	209.2	160.9	185.9	202.3	145.4	205.5	270.4	228.0
Oct. 1	202.2	208.5	178.7	184.1	200.6	145.8	202.6	253.0	234.5
Nov. 1	202.0	206.5	228.9	184.8	199.2	142.8	197.7	249.7	238.7
Dec. 1	201.3	204.5	246.3	184.4	199.9	142.2	191.0	248.5	248.8
Jan. 1, 1950	194.0	199.7	238.7	180.3	198.1	135.5	157.3	245.3	249.9
Feb. 1	187.2	198.9	191.5	181.1	196.9	130.3	143.3	243.5	227.9
Mar. 1	186.6	199.7	179.3	181.9	196.4	129.4	141.0	239.5	227.5
Apr. 1	187.9	200.4	158.3	183.0	199.5	130.4	149.3	243.7	228.7
May 1	188.7	200.8	106.2	183.7	200.6	136.3	156.9	247.8	230.7
June 1	196.0	203.9	151.4	187.6	205.5	139.5	163.9	254.6	231.9

Relative Weight of Employment by Industries as at June 1, 1950.

100.0 51.7 2.2 4.3 2.8 8.9 11.9 3.8 14.4

Note:- The "Relative Weight", as given just above, shows the proportion of employees in the indicated industry, to the total number of employees reported in Canada by the firms making returns at the date under review.

* Consisting almost entirely of hotels and restaurants and laundries and dry-cleaning establishments.

TABLE 9.- INDEX NUMBERS OF EMPLOYMENT BY INDUSTRIES (AVERAGE 1926=100).

(The latest figures are subject to revision).

Industries	^{1/} Relative Weight	June 1 1950	May 1 1950	June 1 1949	June 1 1948	June 1 1947	June 1 1946	June 1 1945
MANUFACTURING	51.7	203.9	200.8	205.1	203.6	197.6	164.7	209.0
Animal products - edible	1.8	235.7	218.0	232.9	235.8	229.4	225.4	218.6
Fur and products	0.2	169.8	165.6	175.5	169.5	160.6	161.2	141.0
Leather and products	1.4	135.7	143.5	149.5	144.9	156.9	155.0	140.1
Boots and shoes	0.9	127.9	137.7	146.8	136.8	144.2	142.6	128.2
Lumber and products	4.1	151.6	143.4	148.2	150.5	142.7	104.0	124.9
Rough and dressed lumber	2.6	143.3	131.9	137.0	137.1	123.5	75.1	104.7
Furniture	0.9	178.1	177.0	167.7	165.2	162.7	146.1	126.6
Other lumber products	0.6	153.8	160.7	172.5	191.9	199.1	171.7	199.7
Musical instruments	.04	41.9	41.3	39.9	39.9	41.8	37.7	28.2
Plant products - edible	2.9	180.4	174.7	174.5	167.9	172.3	159.1	155.6
Pulp and paper products	5.6	182.3	178.6	180.7	182.3	173.8	159.8	141.5
Pulp and paper	2.4	155.6	148.9	158.7	168.7	159.5	145.4	128.2
Paper products	1.0	202.2	200.5	271.0	257.2	264.1	236.2	213.5
Printing and publishing	2.2	185.6	185.2	180.6	174.7	162.6	153.1	134.8
Rubber products	1.0	169.6	168.1	164.0	180.2	197.5	186.2	181.1
Textile products	7.9	183.7	187.6	184.7	179.8	171.8	164.5	157.3
Thread, yarn and cloth	2.9	189.7	192.3	189.3	191.5	177.1	165.4	156.9
Cotton yarn and cloth	1.2	120.9	122.3	117.7	116.2	109.4	107.3	107.3
Woolen yarn and cloth	0.7	185.4	186.7	196.4	210.4	198.4	176.3	168.4
Synthetic silk and silk goods	0.8	871.3	883.9	859.6	858.0	770.7	702.9	621.3
Hosiery and knit goods	1.1	155.1	159.3	162.5	173.2	162.8	159.3	145.5
Garments and personal furnishings	3.1	200.3	206.3	200.5	178.8	174.0	163.6	160.9
Other textile products	0.8	155.4	156.8	156.4	157.6	167.7	173.0	170.5
Tobacco	0.5	116.4	117.2	121.7	116.4	119.3	114.3	124.2
Beverages	1.0	365.1	351.2	361.7	338.0	308.2	290.0	259.2
Chemicals and allied products	2.1	353.9	351.3	346.5	342.3	335.0	325.5	544.4
Clay, glass and stone products	1.1	198.0	191.0	196.0	192.3	188.5	167.2	138.2
Electric light and power	1.7	251.7	242.4	248.1	221.1	187.9	175.8	147.8
Electrical apparatus	2.7	374.4	367.6	367.4	353.7	345.3	291.4	287.5
Iron and steel products	13.8	210.1	206.4	218.3	218.5	213.9	208.9	286.3
Crude, rolled and forged products	1.8	290.4	278.4	304.8	308.9	287.7	257.3	242.4
Machinery (other than vehicles)	1.4	245.3	246.6	261.5	256.4	255.2	234.2	215.7
Agricultural implements	0.8	200.2	204.6	219.0	224.6	187.1	164.0	142.3
Land vehicles and aircraft	5.6	183.5	175.4	185.7	174.7	174.5	173.1	250.3
Automobiles and parts	2.5	331.8	295.6	294.9	285.7	294.4	263.8	278.0
Steel shipbuilding and repairing	0.7	276.9	300.5	318.4	460.6	494.5	527.4	1234.5
Heating appliances	0.4	229.6	229.7	231.4	223.9	191.7	191.1	192.3
Iron and steel fabrication (n.e.s.)	0.5	219.3	221.1	225.0	230.3	205.7	181.1	264.7
Foundry and machine shop products	0.4	189.6	193.1	217.3	225.7	223.4	213.5	229.0
Other iron and steel products	2.2	208.5	207.5	212.8	210.7	223.3	221.0	319.9
Non-ferrous metal products	2.2	374.2	326.0	340.7	348.7	325.1	291.3	375.3
Non-metallic mineral products	0.8	224.5	220.1	217.5	222.0	216.8	225.1	215.7
Miscellaneous	0.9	359.1	358.4	345.5	283.9	284.4	290.7	340.7
LOGGING	2.2	151.4	106.2	176.4	218.4	239.9	193.7	201.1
MINING	4.3	187.6	183.7	175.7	174.8	157.5	157.5	144.6
Coal	1.1	84.0	86.4	86.9	88.4	74.8	93.7	92.2
Metallic ores	2.2	356.5	348.0	343.1	325.8	305.5	280.3	247.5
Non-metallic minerals (except coal)	1.0	290.4	269.1	221.0	242.5	215.4	184.5	163.2
COMMUNICATIONS	2.8	205.5	200.6	191.4	175.3	165.7	141.4	115.5
Telegraphs	0.4	143.4	139.8	142.3	137.2	136.5	137.3	126.8
Telephones	2.2	213.2	208.0	199.5	184.1	172.3	141.3	112.1
TRANSPORTATION	8.9	139.5	136.3	141.4	141.5	139.3	126.8	125.9
Street railways, cartage and storage	3.1	231.8	227.1	228.4	222.7	225.5	207.7	190.7
Steam railways	4.4	112.8	111.6	113.7	114.3	113.0	106.9	107.9
Shipping and stevedoring	1.4	122.7	114.3	135.2	141.7	135.3	103.5	118.3
CONSTRUCTION AND MAINTENANCE	11.9	183.9	166.9	173.8	166.3	149.5	131.1	103.1
Building	5.9	244.3	222.6	228.0	208.0	186.2	142.9	90.7
Highway	4.1	210.3	160.4	196.7	197.1	179.1	167.0	131.8
Railway	1.9	89.9	78.4	92.7	92.5	83.0	85.7	89.6
SERVICES (as indicated below)	3.8	254.6	247.8	254.4	250.2	238.4	224.3	202.4
Hotels and restaurants	2.2	254.9	246.1	252.9	253.2	240.0	221.3	201.4
Personal (chiefly laundries)	1.0	239.7	236.6	241.1	244.5	235.3	230.3	204.5
TRADE	14.4	231.9	230.7	226.2	216.3	201.9	187.7	171.1
Retail	10.3	238.8	238.1	233.2	224.7	207.4	194.3	177.4
Wholesale	4.1	216.1	213.6	210.3	199.0	188.4	172.3	155.9
EIGHT LEADING INDUSTRIES	100.0	196.0	188.7	194.5	192.3	184.5	169.9	175.3
FINANCE	-	176.2	175.8	167.4	161.5	153.2	143.8	129.0
Banks and trust companies	-	179.3	178.9	172.4	164.5	154.3	144.3	133.0
Brokerage and stock market operations	-	199.2	194.4	187.9	197.2	207.4	248.9	178.3
Insurance	-	170.0	169.8	158.6	154.3	147.6	136.9	120.8
TOTAL - NINE LEADING INDUSTRIES	-	195.1	188.1	193.2	190.8	183.0	168.7	173.1

^{1/}The relative weight shows the proportion of employees reported in the indicated industry to the total number of employees reported in Canada by the firms making returns at the date under review.

TABLE 10.- INDEX NUMBERS OF EMPLOYMENT BY ECONOMIC AREAS AND INDUSTRIES (AVERAGE 1926=100).

(The latest figures are subject to revision).

Areas and Industries		1/ Relative Weight	June 1 1950	May 1 1950	June 1 1949	June 1 1948	June 1 1947	June 1 1946	June 1 1945
<u>Maritime</u> - Manufacturing		33.6	163.7	158.6	169.1	173.1	169.1	177.9	201.3
<u>Provinces</u>	Lumber products	3.9	114.6	107.0	106.2	116.7	115.4	107.1	124.0
	Pulp and paper products	4.8	232.2	219.8	216.4	235.5	225.5	215.0	199.5
	Textile products	2.6	92.1	100.9	117.8	123.7	124.5	110.5	113.7
	Iron and steel	11.7	178.0	179.6	198.1	193.5	192.6	235.9	311.0
	Other manufactures	10.7	185.5	170.7	181.1	183.6	176.0	172.5	163.7
	Logging	3.0	175.9	90.3	155.9	203.9	254.9	279.0	275.2
	Mining	10.9	98.5	100.5	100.8	102.7	76.1	107.3	103.3
	Communications	3.0	171.8	164.5	162.1	144.2	143.0	134.2	125.4
	Transportation	9.8	112.7	123.4	114.9	120.6	123.7	116.1	160.1
	Construction	23.8	332.2	237.5	286.5	296.0	288.6	281.1	236.2
	Services ^{2/}	2.6	310.8	296.2	289.8	282.6	276.5	279.5	290.2
Trade		13.6	235.8	231.2	228.8	218.7	212.2	205.1	199.3
<u>Maritimes</u> - All Industries		100.0	174.1	159.2	169.0	172.5	165.8	172.5	181.0
<u>Quebec</u> - Manufacturing		57.7	202.5	201.1	206.4	205.3	201.7	191.8	221.4
	Lumber products	3.1	157.2	144.2	152.7	159.0	153.5	164.2	143.3
	Pulp and paper products	6.9	164.6	158.8	163.7	168.7	163.2	151.6	138.5
	Textile products	15.7	224.9	228.4	220.5	209.7	200.4	191.1	184.3
	Iron and steel	10.3	183.1	183.3	207.9	213.3	218.6	214.7	316.5
	Other manufactures	21.7	223.1	221.6	224.6	221.3	217.6	201.1	240.5
	Logging	2.6	163.6	90.2	241.2	275.3	295.7	273.5	242.3
	Mining	2.9	405.2	389.5	306.9	354.0	324.1	294.1	272.1
	Communications	2.6	214.4	209.5	200.0	183.3	168.0	140.2	111.9
	Transportation	8.3	134.0	131.1	139.9	143.5	138.0	126.3	117.5
	Construction	11.1	146.4	124.2	144.7	138.0	117.6	100.8	84.8
	Services ^{2/}	3.3	239.2	234.4	234.9	227.6	209.6	201.3	188.8
Trade		11.6	236.2	236.2	229.1	226.1	209.9	196.3	180.4
<u>Quebec</u> - All Industries		100.0	192.3	185.4	194.6	194.4	186.9	174.8	184.3
<u>Ontario</u> - Manufacturing		60.2	209.8	206.1	209.1	206.2	199.1	187.1	201.3
	Lumber products	3.1	121.9	114.8	123.1	121.8	121.9	112.5	110.5
	Pulp and paper products	6.1	193.0	190.5	189.3	188.6	179.1	163.0	139.3
	Textile products	6.7	145.2	147.9	149.1	150.4	143.3	139.2	131.1
	Iron and steel	19.5	242.1	234.6	242.9	238.4	227.0	215.2	270.7
	Other manufactures	24.8	240.2	237.1	236.5	230.6	226.4	211.3	218.4
	Logging	1.2	117.0	81.6	124.0	197.7	236.0	253.9	206.1
	Mining	3.0	270.6	263.3	261.3	248.1	241.3	223.9	207.9
	Communications	2.6	198.5	196.2	187.2	173.8	168.1	137.7	104.8
	Transportation	6.5	141.2	134.8	141.0	139.2	135.4	121.5	118.5
	Construction	9.1	196.8	178.8	176.3	175.8	157.1	134.5	100.2
	Services ^{2/}	3.7	278.8	270.5	275.6	268.8	256.5	244.1	219.3
Trade		13.7	242.6	240.9	231.1	220.7	202.9	189.2	172.6
<u>Ontario</u> - All Industries		100.0	206.9	201.0	202.4	200.0	191.8	178.4	178.9
<u>Prairie</u> - Manufacturing		28.5	187.4	186.6	190.5	183.6	177.4	174.3	178.0
<u>Provinces</u>	Lumber products	1.9	166.7	164.7	183.2	169.9	173.1	164.3	141.6
	Pulp and paper products	2.4	151.2	156.5	155.4	145.8	136.5	124.8	111.8
	Textile products	2.2	255.9	281.5	265.8	238.5	224.1	224.1	229.4
	Iron and steel	9.1	137.0	138.0	137.3	134.0	126.3	120.3	130.1
	Other manufactures	12.9	259.3	250.1	261.6	251.0	245.7	248.4	256.5
	Logging	0.3	48.5	57.2	43.1	40.0	77.7	106.6	84.5
	Mining	7.4	203.0	198.7	199.6	186.1	169.3	154.4	136.9
	Communications	3.3	212.6	202.6	192.0	168.6	158.5	143.7	128.0
	Transportation	16.7	146.4	142.4	147.3	145.6	145.9	135.8	132.4
	Construction	17.0	166.4	134.5	161.0	146.1	130.3	120.2	89.7
	Services ^{2/}	4.7	231.6	224.1	239.9	237.9	232.5	222.2	182.8
Trade		22.1	195.1	194.6	193.9	184.2	177.3	164.4	148.0
<u>Prairies</u> - All Industries		100.0	178.4	170.8	177.4	168.9	161.9	153.3	141.8
<u>British Columbia</u> - Manufacturing		38.7	217.7	210.3	214.7	223.1	211.4	151.2	246.5
	Lumber products	14.6	202.7	195.5	191.1	196.0	170.5	26.4	129.2
	Pulp and paper products	4.5	211.2	208.9	223.1	223.7	199.4	179.4	160.9
	Textile products	0.9	262.2	272.3	251.4	248.4	236.8	221.3	204.9
	Iron and steel	5.9	237.7	237.2	246.5	298.2	328.0	330.5	818.1
	Other manufactures	12.8	227.7	214.1	225.1	222.5	213.8	207.5	184.8
	Logging	7.7	193.3	168.7	199.0	217.7	207.7	16.3	147.6
	Mining	5.4	125.2	120.6	119.4	117.3	107.5	99.7	84.6
	Communications	3.2	230.2	224.3	210.9	199.8	179.8	161.4	141.1
	Transportation	10.7	158.2	153.2	158.2	153.9	160.7	134.9	126.9
	Construction	12.6	195.5	185.4	207.1	179.0	170.4	131.0	100.3
	Services ^{2/}	4.8	229.2	225.9	246.0	254.4	248.6	207.6	186.8
Trade		16.8	260.2	258.5	271.3	251.5	229.1	207.0	181.7
<u>B. C.</u> - All Industries		100.0	203.0	195.4	204.7	202.0	192.4	139.3	175.5

1/ Proportion of employees in indicated industry in an area, to the total number of employees reported in that area by the firms making returns at the date under review.

2/ See footnote 2 on page 2.

TABLE 11.- INDEX NUMBERS OF EMPLOYMENT BY CITIES AND PRINCIPAL INDUSTRIES (AVERAGE 1926=100).

(The latest figures are subject to revision).

Cities and Industries		^{1/} Relative Weight	June 1 1950	May 1 1950	June 1 1949	June 1 1948	June 1 1947	June 1 1946	June 1 1945
<u>Montreal</u>	- Manufacturing	61.4	195.0	195.6	198.4	169.2	191.1	186.0	208.6
	Plant products - edible	3.8	188.5	187.3	175.2	170.8	161.9	149.2	145.7
	Pulp and paper (chiefly printing)	4.6	190.9	188.1	185.8	185.6	179.3	162.7	150.3
	Textiles	14.4	203.5	207.3	199.4	178.6	173.3	170.3	163.0
	Tobacco and beverages	4.0	186.4	182.3	182.5	176.6	174.2	162.3	169.9
	Iron and steel	13.8	170.5	171.2	194.0	181.4	195.4	205.8	300.0
	Other manufactures	20.8	213.5	213.9	212.7	210.4	212.1	197.4	197.5
	Communications	2.7	162.7	160.6	147.0	135.4	128.4	105.2	81.9
	Transportation	5.9	139.6	138.3	147.3	152.2	148.2	131.7	113.0
	Construction	8.1	132.1	121.2	126.8	115.6	108.6	82.2	57.5
	Trade	17.0	226.9	228.6	221.6	220.2	202.9	188.6	174.0
<u>Montreal</u>	- All Industries	100.0	188.6	187.7	189.1	181.9	178.9	169.0	175.6
<u>Quebec</u>	- Manufacturing	54.0	174.3	174.9	186.9	198.3	182.6	165.0	286.6
	Leather products	7.5	92.2	106.7	123.9	113.5	123.6	126.2	111.1
	Other manufactures	45.5	204.1	199.5	209.4	235.6	208.5	182.2	364.4
	Transportation	6.4	131.8	123.7	123.4	122.4	116.4	88.6	90.1
	Construction	14.1	268.3	224.7	234.6	232.6	160.0	166.6	151.1
<u>Quebec</u>	- All Industries	100.0	192.0	185.3	199.5	197.9	178.9	164.4	229.1
<u>Toronto</u>	- Manufacturing	60.9	206.9	206.3	201.0	196.1	190.7	181.5	207.6
	Plant products - edible	4.6	184.0	185.7	176.0	172.6	183.2	171.6	166.6
	Printing and publishing	8.1	223.1	223.9	217.1	211.2	199.8	188.9	166.0
	Textiles	7.5	129.5	131.7	128.6	125.6	122.9	122.6	116.6
	Iron and steel	13.1	254.0	252.0	246.6	236.6	217.1	206.3	334.0
	Other manufactures	27.6	223.3	221.2	216.8	211.6	209.2	197.4	216.1
	Communications	2.4	158.3	157.3	151.0	135.1	133.9	113.6	85.3
	Transportation	4.9	182.5	176.9	172.6	169.7	167.2	149.8	136.1
	Construction	5.3	225.6	211.2	175.9	198.6	191.7	148.8	110.1
	Trade	20.8	221.7	221.3	212.6	204.0	188.4	175.2	166.7
<u>Toronto</u>	- All Industries	100.0	210.2	208.8	201.4	196.6	189.0	176.6	186.4
<u>Ottawa</u>	- Manufacturing	33.5	141.1	147.3	152.2	157.0	148.4	145.5	150.6
	Lumber products	2.1	52.3	52.4	51.5	51.1	60.8	45.3	42.1
	Pulp and paper products	12.7	146.5	145.0	138.9	148.0	139.6	137.6	124.4
	Other manufactures	19.7	168.0	182.5	197.8	200.3	185.0	186.7	208.3
	Construction	19.0	302.2	276.3	281.8	256.8	215.6	178.0	118.2
	Trade	27.8	266.3	260.7	261.2	233.2	225.0	220.1	199.5
<u>Ottawa</u>	- All Industries	100.0	199.2	198.0	199.4	191.2	180.4	170.6	159.1
<u>Hamilton</u>	- Manufacturing	76.2	196.6	194.6	202.7	193.6	183.8	172.2	182.7
	Textiles	9.2	99.6	103.0	109.2	115.9	103.6	106.2	101.7
	Electrical apparatus	11.5	237.0	231.3	226.4	215.1	216.5	192.0	197.4
	Iron and steel	35.0	230.4	227.2	241.2	225.9	212.6	197.6	230.6
	Other manufactures	20.5	216.3	212.5	223.1	208.3	199.5	187.5	180.0
	Construction	6.5	206.7	193.2	206.0	194.6	176.7	171.6	105.6
	Trade	11.2	213.6	213.0	190.7	190.4	178.1	170.6	165.4
<u>Hamilton</u>	- All Industries	100.0	201.9	199.0	203.6	195.3	185.3	173.0	178.7
<u>Windsor</u>	- Manufacturing	79.7	322.3	274.1	300.6	292.1	298.6	295.0	302.6
	Iron and steel	66.5	340.7	282.0	313.4	305.6	313.9	308.2	319.6
	Other manufactures	13.2	255.3	244.4	254.2	244.5	247.3	250.5	245.3
	Construction	4.2	177.5	163.6	140.6	110.3	123.6	97.8	77.0
<u>Windsor</u>	- All Industries	100.0	299.4	261.3	278.6	267.8	272.5	266.7	270.0
<u>Winnipeg</u>	- Manufacturing	47.6	163.0	173.3	175.8	169.2	165.6	159.4	169.6
	Animal products - edible	4.3	229.5	213.7	237.3	221.4	230.3	246.4	255.8
	Printing and publishing	4.9	144.3	154.7	155.0	148.6	142.5	125.7	113.0
	Textiles	6.2	252.1	284.4	265.6	242.2	221.1	226.1	238.1
	Iron and steel	13.8	132.8	133.7	134.9	132.6	127.7	118.6	124.8
	Other manufactures	15.4	197.3	199.4	207.1	195.8	196.2	187.0	213.9
	Transportation	6.7	111.3	110.2	111.1	112.6	104.6	102.6	94.0
	Construction	6.1	127.7	115.5	134.7	124.3	104.3	96.6	46.1
	Trade	30.8	153.3	156.1	159.1	156.4	152.5	141.2	124.8
<u>Winnipeg</u>	- All Industries	100.0	157.7	159.5	163.1	158.3	153.2	145.7	139.4
<u>Vancouver</u>	- Manufacturing	38.7	257.2	250.1	251.5	267.3	254.5	198.8	371.1
	Lumber products	11.4	204.1	200.9	191.5	202.8	175.2	39.7	131.6
	Other manufactures	27.3	236.6	279.2	287.3	302.7	296.5	282.3	498.6
	Communications	5.7	221.2	215.9	203.3	195.4	172.6	153.6	131.7
	Transportation	10.1	124.3	121.9	127.2	145.3	166.6	128.6	121.0
	Construction	10.7	214.0	201.4	258.7	225.1	211.9	142.9	91.6
	Services ^{2/}	7.4	224.0	221.3	239.1	253.1	244.6	207.7	185.2
	Trade	27.3	258.0	255.1	264.5	251.4	226.3	207.8	183.7
<u>Vancouver</u>	- All Industries	100.0	223.7	213.7	229.6	232.0	222.4	179.8	228.1

^{1/} Proportion of employees in indicated industry within a city, to the total number of employees reported in that city by the firms making returns at the date under review.

^{2/} See footnote 2 on page 2.

Table 12.- Sex Distribution of the Persons in Recorded Employment at June 1, 1950 with Comparisons as at May 1, 1950 and June 1, 1949.

Industries	June 1, 1950						May 1, 1950		June 1, 1949	
	Total	Men	Women	Men	Women		Men	Women	Men	Women
	No.	No.	No.	P.C.	P.C.		P.C.	P.C.	P.C.	P.C.
MANUFACTURING	1,063,589	326,362	237,227	77.7	22.3		77.3	22.7	77.6	22.4
Animal products - edible	37,949	30,370	7,579	80.0	20.0		81.2	18.8	79.8	20.2
Fur and products	4,257	2,866	1,391	67.3	32.7		67.6	32.4	65.8	34.2
Leather and products	28,286	17,381	10,905	61.4	38.6		61.0	39.0	61.3	38.7
Boots and shoes	17,743	10,283	7,460	58.0	42.0		57.2	42.8	57.4	42.6
Lumber and products	84,638	78,009	6,629	92.2	7.8		91.8	8.2	92.0	8.0
Rough and dressed lumber	52,660	50,160	2,500	95.3	4.7		94.8	5.1	95.0	5.0
Furniture	19,273	17,099	2,174	88.7	11.3		88.8	11.2	89.2	10.8
Other lumber products	12,705	10,750	1,955	84.6	15.4		84.2	15.8	85.5	14.5
Plant products - edible	58,979	39,840	19,139	67.5	32.5		67.3	32.7	67.0	33.0
Pulp and paper products	115,543	93,063	22,480	80.5	19.5		80.3	19.7	80.6	19.4
Pulp and paper	49,087	46,558	2,529	94.8	5.2		94.8	5.2	94.8	5.2
Paper products	21,474	13,835	7,639	64.4	35.6		64.5	35.5	63.9	36.1
Printing and publishing	44,982	32,570	12,312	72.6	27.4		72.5	27.5	72.3	27.7
Rubber products	21,412	16,238	5,174	75.8	24.2		76.4	23.6	76.2	23.8
Textile products	161,772	75,051	86,721	46.4	53.6		46.0	54.0	45.6	54.4
Thread, yarn and cloth	60,117	39,056	21,061	65.0	35.0		64.8	35.2	63.8	36.2
Cotton yarn and cloth	23,664	14,871	8,813	62.8	37.2		62.3	37.7	61.8	38.2
Woolen yarn and cloth	14,245	8,424	5,821	59.1	40.9		58.9	41.1	58.2	41.8
Synthetic silk and silk goods	16,554	11,783	4,781	71.1	28.9		71.0	29.0	69.2	30.8
Hosiery and knit goods	23,081	8,301	14,780	36.0	64.0		35.7	64.3	35.6	64.4
Garments and personal furnishings	62,630	19,238	43,394	30.8	69.4		30.4	69.6	30.0	70.0
Other textile products	15,744	8,458	7,286	53.7	46.3		53.2	46.8	54.1	45.9
Tobacco	9,676	4,066	5,610	42.0	58.0		42.3	57.7	42.0	58.0
Beverages	20,678	18,319	2,359	88.6	11.4		88.3	11.7	88.0	12.0
Chemicals and allied products	44,145	33,772	10,373	76.5	23.5		76.4	23.6	76.2	23.8
Clay, glass and stone products	22,583	20,230	2,353	89.8	10.4		89.3	10.7	88.7	11.3
Electric light and power	34,563	30,157	4,406	87.3	12.7		87.0	13.0	87.8	12.2
Electrical apparatus	65,686	40,391	15,497	72.3	27.7		72.4	27.6	71.5	28.5
Iron and steel products	282,904	250,962	21,922	92.3	7.7		92.1	7.9	92.5	7.5
Crude, rolled and forged products	37,432	35,770	1,662	95.6	4.4		95.4	4.6	95.5	4.5
Machinery (other than vehicles)	27,521	24,201	3,320	87.9	12.1		88.1	11.9	88.4	11.6
Agricultural implements	16,778	15,861	917	94.6	5.4		94.6	5.4	94.5	5.5
Land vehicles and aircraft	115,259	108,350	6,909	94.0	6.0		93.8	6.2	94.4	5.6
Automobiles and parts	50,705	45,424	5,281	89.6	10.4		88.6	11.4	89.3	10.7
Steel shipbuilding and repairing	13,655	13,148	507	96.3	3.7		96.5	3.5	96.5	3.5
Heating appliances	8,053	7,550	503	93.8	6.2		93.6	6.4	93.7	6.3
Iron and steel fabrication (n.e.s.)	10,821	9,972	849	92.2	7.8		92.0	8.0	92.2	7.8
Foundry and machine shop products	7,852	7,482	370	95.3	4.7		95.3	4.7	95.5	4.5
Other iron and steel products	45,533	36,648	8,885	84.9	15.1		84.6	15.2	84.6	15.4
Non-ferrous metal products	45,583	39,592	5,991	86.9	13.1		86.7	13.3	86.6	13.4
Non-metallic mineral products	15,794	14,328	1,466	90.7	9.3		90.9	9.1	91.5	8.5
Miscellaneous	18,939	11,707	7,232	61.8	38.2		60.8	39.2	62.6	37.4
LOGGING	45,519	44,694	825	98.2	1.8		97.7	2.3	98.3	1.7
MINING	38,177	36,233	1,944	97.8	2.2		97.8	2.2	97.6	2.4
Coal	23,118	22,909	209	99.1	0.9		99.1	0.9	99.0	1.0
Metallic ores	45,726	44,872	854	98.1	1.9		98.1	1.9	98.0	2.0
Non-metallic minerals (except coal)	19,323	18,452	881	95.4	4.6		95.1	4.9	94.2	5.8
COMMUNICATIONS	57,021	23,431	30,590	46.4	53.6		46.5	53.5	47.5	52.5
Telegraphs	8,453	6,928	1,525	82.0	18.0		81.9	18.1	81.4	18.6
Telephones	45,038	16,503	28,535	37.7	62.3		37.9	62.1	39.9	60.1
TRANSPORTATION	182,367	171,443	10,924	94.0	6.0		94.0	6.0	94.0	6.0
Street railways, cartage and storage	63,459	59,046	4,411	93.0	7.0		93.0	7.0	93.2	6.8
Steam railway operation	89,912	84,677	5,235	94.2	5.8		94.1	5.9	94.1	5.9
Shipping and stavedoring	28,996	27,718	1,278	95.6	4.4		95.7	4.3	95.5	4.5
CONSTRUCTION AND MAINTENANCE	244,661	239,635	5,026	97.9	2.1		97.7	2.3	98.1	1.9
Building	120,691	117,255	3,436	97.2	2.8		97.0	3.0	97.3	2.7
Highway	85,253	83,798	1,455	98.3	1.7		98.0	2.0	98.3	1.7
Railway	38,717	38,572	145	99.6	0.4		99.6	0.4	99.7	0.3
SERVICES (as specified below)	77,299	38,568	38,731	49.9	50.1		50.1	49.9	48.6	51.4
Hotels and restaurants	46,020	23,725	22,295	51.6	48.4		51.5	48.5	50.7	49.3
Personal (chiefly laundries)	19,954	7,515	12,439	37.7	62.3		38.4	61.6	38.4	61.6
TRADE	296,324	186,320	110,004	62.9	37.1		62.8	37.2	61.6	38.4
Retail	212,092	121,047	91,045	57.1	42.9		57.0	43.0	56.6	43.4
Wholesale	84,232	65,273	18,959	77.5	22.5		77.6	22.5	76.9	23.1
EIGHT LEADING INDUSTRIES	2,054,967	1,619,706	435,251	78.8	21.2		78.1	21.9	78.6	21.2
FINANCE	94,078	49,277	44,801	52.4	47.6		52.5	47.5	52.9	47.1
Banks and trust companies	53,240	26,213	27,027	49.2	50.8		49.3	50.7	49.4	50.6
Brokerage and stock market operations	3,894	2,471	1,423	63.5	36.5		64.1	35.9	64.8	35.2
Insurance	36,944	20,593	16,351	55.7	44.3		55.8	44.2	56.5	43.5
ALL INDUSTRIES	2,149,036	1,668,983	480,053	77.7	22.3		76.9	23.1	77.7	22.3

EXPLANATION OF THE METHOD USED IN PREPARING THE MONTHLY STATISTICS OF EMPLOYMENT AND PAYROLLS.

The monthly surveys of employment and payrolls extend to all branches of the following industries: manufacturing, logging, mining, communications, transportation, construction and maintenance, trade and finance; the establishments for which data are given under the heading "services" are chiefly hotels and restaurants and laundries and dry-cleaning plants. For practical reasons of collection and tabulation, the surveys are in the main limited to firms usually employing 15 persons and over. Firms reducing their staffs below this minimum are not necessarily removed from the mailing list. Establishments are asked to furnish data for all classes of employees irrespective of their functions in the business, but to exclude statistics for the owners. Employers operating in two or more lines of business, or in different provinces or cities, are asked to furnish separate monthly returns for their establishments in the different industries and areas.

1.- COVERAGE - The virtual limitation of the monthly surveys to establishments having 15 employees or more results in a relatively even representation of employment in the various provinces and in the larger cities for which data are segregated, but also results in variations in the coverage of different industries, depending upon whether a given industry is ordinarily organized in large or small units of operation. Complete information respecting the distribution of the working population is available only at 10 year intervals, and some time after the Census date; comparisons of the data of the monthly surveys and those obtained elsewhere in the Bureau are complicated by the fact that the industrial classifications differ in several important respects. The distribution of the persons employed at June 1, 1941, by the co-operating firms in comparison with the distribution of the wage-earners and salaried employees enumerated in the Census of June 1, 1941, was discussed in the 1944 Annual Review of Employment and Payrolls. Since 1944, there has been considerable growth in the number of firms reporting to the monthly survey. It is estimated that the coverage in the industrial divisions now ranges from about 51 p.c. in the hotel-and-restaurant and laundry-and-dry-cleaning group, and 56 p.c. in trade, to some 85 p.c. in mining and 88 p.c. in manufacturing. The last two figures are based on the statistics of the Annual Census of Industry, relating to practically all establishments in the indicated industries. In manufacturing, certain adjustments in respect of industrial coverage are required to bring about comparability in the two series. The proportion of 88 p.c. results from the use of the adjusted figures. It is estimated that the firms co-operating in the monthly surveys in the nine major industrial groups employ approximately 82 p.c. of the total wage-earners and salaried employees in the same industries throughout Canada; of the total wage-earners and salaried employees in all industries, including workers in the industries excluded from the monthly surveys as well as in those represented, the coverage is estimated at about 61 p.c.

It should be noted that the statistics of persons employed, as published in various tables in the monthly bulletins, do not represent estimates of the total numbers engaged in the specified areas or industries, but show the distribution of the workers on the staffs of the co-operating firms at the indicated dates, together with the distribution of their weekly payrolls, and the per capita weekly earnings of such employees.

2.- THE QUESTIONNAIRE - From 1921 to 1941, the questionnaire used in collecting current data on employment called for a statement of the number of persons at work on the last working day of the month. With the introduction of the statistics of payrolls in the spring of 1941, it became necessary to ask for information showing the numbers of employees on the payrolls in the last pay periods in the month, to relate to the salaries and wages. The difference in the coverage of employment as a result of this change was considerable, especially in industries with high proportions of casual labour. In so far as was possible, adjustment in the records was made in 1941, to preserve the comparability of the data collected prior to the spring of 1941, and those thereafter collected. The inclusion of casual workers to a greater extent than was the case in the earlier surveys nevertheless constitutes an element of incomparability in the present statistics of employment and those tabulated prior to the institution of the complementary statistics of payrolls in April, 1941. The questionnaire now used asks employers to furnish data showing the gross earnings of their salaried employees and wage-earners in the last pay periods in the month, the employees and their earnings to be grouped according to the duration of their pay periods, whether these be monthly, semi-monthly, fortnightly, weekly, etc. The payrolls reported include amounts deducted for taxes, unemployment insurance contributions, etc. Cost-of-living allowances, incorporated in the basic wage-rates as from Feb. 15, 1944, are included, as was the case before their incorporation in the basic rates. Commissions and incentive and production bonuses and overtime payments are also included.

3.- THE PROCESSING - In the Bureau, the statistics of salaries and wages reported for any period exceeding a week are reduced, for tabulation purposes, to the proportions which would be earned in one week in the period, the numerator of the fraction ordinarily used for this purpose being

EXPLANATION OF THE METHOD USED IN PREPARING THE MONTHLY STATISTICS OF
EMPLOYMENT AND PAYROLLS. (Cont'd.)

six days, the standard working week; the denominators of the fractions are the numbers of working days in the different pay periods, excluding only the Sundays. Where operations are continuous, the numerator of the fraction is seven, the denominator being the total number of days in the pay period, including Sundays. In the case of employees paid at annual or monthly rates, so that their earnings are not affected by variations in the number of working days in the month, fixed proportions are used to reduce the earnings to a weekly basis, without regard to the length of the calendar month. The sums resulting from these various calculations are then aggregated to give the total amounts, which, on the average, would be paid for services rendered in one week by the persons on the payrolls of the co-operating establishments. The employees reported are not in all cases necessarily employed for a period of a week by one firm. Employers are urged to make a practice of furnishing data only for the last pay period in the month for their various classes of employees rather than to aggregate statistics for several pay periods, since the latter method tends to exaggerate the amount of duplication possible in the statistics of employment in cases where individuals may be employed by more than one co-operating establishment in a period of several weeks.

4.- THE TABULATION - The data tabulated monthly show the number of persons drawing pay from the establishments furnishing returns at the given date, and their weekly earnings, together with the numbers of employees and the payrolls of the same firms in the preceding month, and in the basic periods. The statistics of the first tabulation are preliminary, the re-tabulation of the statistics on the succeeding month's tabulation incorporating revisions in the returns originally tabulated, as well as reports received too late for inclusion in the preliminary tabulation.

5.- THE INDEX NUMBERS OF EMPLOYMENT - The index numbers represent the percentage relationship between the number of persons employed by the establishments currently furnishing data and the number which they had employed in the basic period. The number of workers employed in the basic period by the firms which then operated but have since gone out of business are continued in the basic average figures, while firms or branches opening for business since the basic period are tabulated with zero base figures. The basic averages of establishments which operated in the base period but have since been added to the mailing list are incorporated in the basic figures from the date when their co-operation was first obtained.

6.- THE INDEX NUMBERS OF PAYROLLS - Shortly after the institution of the statistics of payrolls, it became necessary to present the data in the form of index numbers. The earliest period which could be adopted as a base was selected for the purpose, namely, the week of June 1, 1941. The current disbursements are thus related to the sums expended in salaries and wages by the co-operating employers on or about June 1, 1941, as 100 p.c. To provide a measurement of the changes in employment and payrolls from the establishment of the latter series, the monthly indexes of employment are related to June 1, 1941, as 100, in the tables giving the two sets of data. For all purposes apart from comparison with the statistics of payrolls, however, the indexes compiled on the original 1926 base should be used.

7.- THE WEEKLY EARNINGS - The average weekly earnings represent the division of the aggregate weekly salaries and wages reported by the co-operating establishments, by the number of their employees in the same pay periods; the index numbers of average weekly earnings, given in the table on page 4, are based on the averages reported in the week of June 1, 1941, as 100.

8.- HOURLY EARNINGS - Statistics of average hourly and weekly earnings of wage-earners for whom the larger employers keep record of hours worked are contained in the monthly bulletins on man-hours and average hourly earnings, available from the end of 1944.

STATISTICS CANADA LIBRARY
BIBLIOTHEQUE STATISTIQUE CANADA



1010514980

