

72 002

C-1

DOMINION BUREAU
OF STATISTICS

R SEP 9 1950

PROPERTY OF THE
LIBRARY

GOVERNMENT OF CANADA

DOES NOT CIRCULATE
NE PAS PRÊTER

THE EMPLOYMENT SITUATION

At the Beginning of

JULY, 1950

TOGETHER WITH PAYROLLS

^A D.B.S.
PUBLICATION



**DOMINION BUREAU OF STATISTICS
DEPARTMENT OF TRADE AND COMMERCE**

Vol. 28

No. 7

THE EMPLOYMENT SITUATION

At the Beginning of

JULY, 1950

TOGETHER WITH PAYROLLS

For the Last Week in June

(As reported by employers having 15 or more employees)

Published by Authority of the Rt. Hon. C. D. Howe
Minister of Trade and Commerce

Prepared in the Employment Section
of the Labour and Prices Division,
Dominion Bureau of Statistics, Ottawa

CONTENTS.

	<u>Page</u>
Explanation of the Methods used in Preparing the Monthly Statistics of Employment and Payrolls, (end of report)	I-II
TEXTUAL SUMMARY	1
<u>SUMMARY TABLES</u>	
A. Industrial and geographical distribution of employees and weekly payrolls reported at July 1, 1950, with indexes, (June 1, 1941=100).....	2
B. Index numbers of employment, payrolls and average weekly earnings, based on June 1, 1941 as 100, in certain broad groups of industries, with per capita weekly earnings, monthly from 1945	4
C. Geographical and industrial distribution of men and women employees reported by leading firms at July 1, 1950	6
D. Employment, payrolls and average weekly earnings in Newfoundland	8
E. Proportions of women in specified industries and cities	5
<u>DETAILED TABLES</u>	
INDUSTRIAL DISTRIBUTION of employees and payrolls reported at July 1; per capita earnings; indexes of employment and payrolls (June 1, 1941=100) for:	
Table 1. The Dominion as a Whole	24
Table 2. The Five Economic Areas	25
Table 3. The Three Maritime and Three Prairie Provinces	26
Table 4. The Eight Cities with Populations exceeding 100,000	27
Table 5. The Fourteen Cities with Populations of 35,000 to 100,000	28
INDEX NUMBERS OF EMPLOYMENT (1926=100), with comparisons from earlier years for:	
Table 6. Canada, the Economic Areas and Provinces	29
Table 7. The Eight Largest Cities	30
Table 8. The Principal Industrial Groups	31
Table 9. Some 60 Industries or Industrial Groups in Canada as a Whole ..	32
Table 10. Leading Industries in the Economic Areas	33
Table 11. Leading Industries in the Eight Largest Cities	34
<u>SEX DISTRIBUTION</u>	
Table 12. Sex Distribution of Employees Reported at July 1, 1950	35
<u>CHARTS</u>	
EMPLOYMENT AND WEEKLY PAYROLLS IN LEADING INDUSTRIES, (June 1, 1941=100)	
1. In Nine Major Industries, 1941-50, with Average Earnings	10
3. Pulp & Paper Products (including Printing and Publishing)	12
4. Pulp & Paper Mills	13
5. Printing & Publishing, and Paper Products	14
6. Lumber & Products	15
7. Furniture, and Rough & Dressed Lumber	16
8. Electrical Apparatus, and Non-Ferrous Metals & Products	17
9. Iron & Steel Products	18
10. Iron & Steel Fabrication, and Heating Appliances	19
11. Automobiles & Parts	20
12. Aeroplanes & Parts	21
13. Shipbuilding & Repairing	22
14. Non-Metallic Minerals, Coal Products and Petroleum	23
EMPLOYMENT (1926=100)	
2. In Manufacturing, from 1930	11

THE JULY EMPLOYMENT SITUATION,
TOGETHER WITH STATISTICS OF PAYROLLS
IN THE LAST WEEK IN JUNE, 1950.

SUMMARY.

Employment in the principal non-agricultural industries^{1/} at the first of July showed a considerable seasonal increase, the general trend being favourable in all provinces, (including Newfoundland^{2/}), in 22 of the 23 cities for which data are segregated, and in most manufacturing and non-manufacturing divisions included in the monthly survey. On the whole, the expansion was about equal in extent to the average at July 1 in the experience of the period since 1920, although it was rather greater than in earlier years since 1942.

Computed from returns furnished by over 21,000 leading establishments, the index number of employment at July 1, on the 1926 base, was 201.92^{2/}, as compared with 196.4 a month earlier, and 199.5 at July 1, 1949, previously the peak figure in the record for that date. The increase of 2.8 p.c. in industrial employment was accompanied by a rise of 4.1 p.c. in the weekly payrolls disbursed by the co-operating firms. The index of payrolls was the highest in the record, exceeding the July 1, 1949, figure by 6.5 p.c.

Partly as a result of a return to more usual working hours following the Victoria Day holiday, the average weekly salaries and wages at July 1 showed an increase, rising by 57 cents from June 1 to a new maximum of \$45.16 at the date under review; this figure was 5.1 p.c. higher than that recorded 12 months earlier.

As at June 1, the improvement in employment for men at the beginning of July was on a substantially larger scale than for women; the reported workers of the latter sex increased by 1.2 p.c. in the month, while the number of men rose by 3.2 p.c. The variation in the percentages was seasonal, due to relatively greater expansion in the industries employing high proportions of men. At 208 per 1,000 reported workers of both sexes, the latest ratio of women was lower than at June 1, and was also below the July 1, 1949, proportion of 210 per 1,000.

Industrially, the trend of employment in the major groups was very generally upward. In manufacturing, the indicated increase of 1.6 p.c. was above-average in extent according to the experience of earlier years. The improvement in logging, largely reported in New Brunswick, Quebec and Ontario, was decidedly greater than usual; that in trade was just about equal to the average. In transportation, construction and services, the gains were rather below-normal for July 1, but were nevertheless substantial.

Payrolls.- The index number of weekly salaries and wages showed a further advance, the sixth in as many months, reaching a new high at July 1. The increase from June 1, 1950, was 4.1 p.c., while as compared with July 1, 1949, there was a rise of 6.5 p.c. The disbursements reported were larger than at June 1

1/ See explanatory notes on the last pages of this bulletin.

2/ Statistics for Newfoundland are not included in the index numbers of employment and payrolls: available information for that province appears on pages 7 & 8 of this bulletin.

Table A.- Geographical and Industrial Distribution of the Employees and the Weekly Payrolls of the Reporting Establishments ^{1/at July 1, 1950} and Average Weekly Salaries and Wages of these Persons, Together with Index Numbers of Employment and Payrolls, with Comparisons at June 1, 1950, July 1, 1949 and July 1, 1948.

(The latest figures are subject to revision).

Geographical and Industrial Unit	Employees and Weekly Salaries and Wages Reported at July 1, 1950		Average Weekly Salaries and Wages at				Index Numbers Based on June 1, 1941 as 100 p.c.							
			Employees Earnings				Employment				Payrolls			
	Employees	Earnings	July 1 1950	June 1 1950	July 1 1949	July 1 1948	July 1 1950	June 1 1950	July 1 1949	July 1 1948	July 1 1950	June 1 1950	July 1 1949	July 1 1948
(a) Provinces														
Maritime Provinces	144,252	5,614,125	38.92	38.19	37.47	36.72	120.4	114.6	123.0	122.5	213.6	199.5	210.2	205.7
Prince Edward Island	3,872	137,678	35.56	36.17	35.07	34.72	167.6	156.2	142.7	149.1	272.1	257.9	230.4	237.5
Nova Scotia	79,501	3,151,589	39.64	38.68	37.53	37.30	109.9	107.3	117.6	114.9	192.5	183.2	194.7	189.9
New Brunswick	60,879	2,324,860	38.19	37.64	37.51	36.02	135.1	124.6	130.9	133.8	247.3	224.8	236.0	231.6
Quebec	603,294	26,001,545	43.10	42.52	40.63	38.59	125.6	122.7	125.9	126.3	225.9	217.7	213.4	203.4
Ontario	904,254	42,441,738	46.94	46.36	44.54	41.66	131.8	126.4	128.0	127.0	228.3	220.1	210.3	195.0
Prairie Provinces	262,335	11,728,859	44.71	44.39	43.16	41.16	145.1	139.1	141.7	137.1	245.0	233.3	230.9	213.0
Manitoba	114,002	5,041,424	44.22	43.91	42.76	40.76	135.9	129.0	134.7	130.8	227.0	214.0	217.5	201.0
Saskatchewan	48,947	2,128,466	43.65	43.38	41.83	39.72	132.0	129.2	131.3	131.0	221.1	215.9	211.8	200.8
Alberta	99,386	4,558,969	45.87	45.42	44.34	42.45	165.8	159.3	157.8	149.6	284.2	270.4	261.0	237.2
British Columbia	202,419	9,795,983	48.40	47.59	46.76	43.01	154.0	151.0	155.0	154.0	262.1	252.7	254.4	232.6
CANADA	2,116,554	95,583,248	45.16	44.59	42.96	40.48	132.2	128.6	130.6	129.7	231.7	222.6	217.6	203.5
(b) Cities														
Montreal	306,236	13,416,628	43.81	42.92	41.23	38.52	135.2	134.2	134.8	129.8	230.9	224.7	216.8	195.1
Quebec City	33,589	1,238,166	36.86	37.20	34.78	33.32	120.5	117.3	123.1	122.2	215.1	211.4	207.5	192.9
Toronto	292,295	13,623,386	46.51	46.01	44.15	41.17	138.4	137.2	133.5	129.9	240.9	235.6	219.9	199.6
Ottawa	28,473	1,115,266	39.17	38.35	37.53	34.87	135.0	132.4	134.1	130.9	228.4	219.4	217.2	197.8
Hamilton	69,317	3,391,335	48.93	49.53	46.95	42.46	127.4	124.8	123.2	123.3	225.9	224.1	210.4	190.4
Windsor	43,552	2,490,381	57.18	54.27	52.33	47.72	132.9	130.4	130.0	122.5	204.6	190.6	182.8	157.0
Winnipeg	71,556	2,935,283	41.03	40.73	39.50	37.15	136.6	129.1	135.5	132.6	219.5	206.0	211.5	192.8
Vancouver	87,361	4,050,562	46.37	45.38	44.78	40.31	160.0	158.1	162.4	166.2	279.3	270.0	272.6	251.7
Halifax	23,034	838,494	36.40	36.74	35.28	33.88	125.6	122.7	126.7	121.9	201.7	197.3	195.0	182.0
Saint John	12,557	466,201	37.13	36.08	35.69	33.22	113.5	115.9	121.2	122.4	196.1	194.6	201.8	190.0
Sherbrooke	10,628	394,898	37.16	37.55	33.13	31.08	117.6	117.4	115.4	116.3	211.0	212.9	184.2	173.9
Three Rivers	11,748	499,037	42.49	42.28	42.21	41.05	141.6	136.4	139.9	146.1	231.8	222.3	227.7	231.1
Brantford	15,320	686,509	44.81	44.11	44.02	-	-	-	-	-	-	-	-	-
Kitchener - Waterloo	21,393	922,902	43.14	42.19	40.74	39.27	138.9	136.5	134.9	134.8	264.3	253.8	242.4	233.9
London	28,816	1,266,319	43.94	43.32	41.29	39.17	168.0	164.8	155.9	147.0	273.3	264.0	252.9	226.3
Fort William - Port Arthur	11,661	541,116	46.40	46.20	45.49	43.59	77.8	75.2	79.2	87.5	138.5	133.3	135.9	143.8
St. Catharines ^{2/}	27,874	1,468,806	53.41	52.96	49.06	-	-	-	-	-	-	-	-	-
Regina	12,209	493,321	40.41	39.61	39.02	36.83	137.5	135.5	134.5	131.0	237.4	231.0	223.0	198.1
Saskatoon	8,418	324,261	38.52	38.81	37.33	34.73	158.6	154.7	155.5	157.3	278.9	274.3	264.7	248.6
Calgary	25,142	1,090,041	43.36	42.93	42.30	39.09	154.1	150.1	147.5	139.5	264.9	255.5	246.9	214.8
Edmonton	27,891	1,182,793	42.41	41.57	40.63	38.56	202.9	197.4	182.5	168.7	349.5	334.1	299.1	262.3
Victoria	13,808	619,907	44.82	43.57	42.23	38.11	153.7	151.1	156.7	146.8	272.3	260.8	261.7	223.2
(c) Industries														
Manufacturing	1,083,121	50,619,034	46.73	46.11	44.09	41.17	123.6	121.5	123.5	123.3	222.5	215.9	209.6	195.7
Durable Goods ^{3/}	502,677	25,082,108	49.90	49.06	47.26	43.89	118.0	116.0	117.9	119.9	209.7	202.6	198.3	186.7
Non-Durable Goods	544,808	23,710,251	43.52	43.05	40.90	38.36	125.5	124.6	126.6	125.1	233.8	227.8	219.8	204.3
Electric Light and Power	35,636	1,828,675	51.26	51.38	48.50	45.82	173.1	167.9	171.2	154.3	282.1	274.2	264.0	223.4
Logging	58,613	2,441,217	41.55	40.45	41.65	38.98	123.2	97.4	121.9	143.1	255.6	196.3	252.3	279.8
Mining	90,407	4,888,175	54.07	52.64	51.37	49.33	108.6	106.0	100.5	100.8	183.5	174.5	161.5	155.7
Communications	58,468	2,483,128	42.47	42.68	40.48	38.58	216.8	211.4	201.3	186.5	332.0	325.4	295.0	261.5
Transportation	185,387	9,810,868	52.92	52.16	51.17	49.79	143.5	141.5	146.0	144.5	231.8	225.4	227.9	219.9
Construction and Maintenance	260,255	11,232,793	43.16	42.55	40.76	38.78	140.7	132.9	138.0	133.5	263.5	245.4	244.3	224.9
Services ^{4/}	80,423	3,353,940	29.27	29.48	27.91	25.81	153.8	147.7	154.1	153.4	271.6	262.7	259.5	239.7
Trade	299,880	11,754,095	39.20	38.75	37.36	34.76	149.7	148.1	145.2	140.3	245.8	240.4	227.4	204.8
EIGHT LEADING INDUSTRIES	2,116,554	95,583,248	45.16	44.59	42.96	40.48	132.2	128.6	130.6	129.7	231.7	222.6	217.6	203.5
Finance	94,771	4,057,370	42.81	42.70	41.84	39.67	152.9	151.8	145.2	139.7	225.5	223.2	208.4	190.9
NINE LEADING INDUSTRIES	2,211,325	99,640,618	45.06	44.51	42.90	40.45	133.0	129.6	131.2	130.1	231.4	222.6	217.2	203.0

^{1/} See explanatory statements on pages I and II. ^{2/} Includes Welland, Thorold and Merritton. ^{3/} This classification comprises the followings:- iron and steel, non-ferrous metals, electrical apparatus, lumber, musical instruments and clay, glass and stone products. The non-durable group includes the remaining manufacturing industries, as listed in Tables 1 and 9, with the exception of electric light and power. ^{4/} Consisting almost entirely of hotels and restaurants, and laundries and dry-cleaning plants.

in each of the provinces, in all but one of the cities for which statistics are segregated, and in most industrial groups. In the provinces, there were gains ranging from 2.8 p.c. in Saskatchewan and 3.7 p.c. in Quebec, Ontario and British Columbia, to 6.1 p.c. in Manitoba and 10 p.c. in New Brunswick.

Per Capita Earnings.- The general increase in the average weekly earnings of the salaried employees and wage-earners employed by leading industrial firms at July 1 rather exceeded the decline which had been indicated at June 1, partly as a result of the observance of the Victoria Day holiday. A new all-time maximum figure was reached at the date under review. Longer working hours in certain industries in which rates of pay are above-average contributed to the rise at the beginning of July, when the payment of higher wage rates in some establishments was also a factor. There were widely-distributed gains in the per capita earnings, geographically and industrially, in comparison with a month earlier, and with July 1 in preceding years.

Changes in the Major Industrial Divisions.- Employment in manufacturing generally at the first of July showed an unusually marked increase for the early summer; the gain of 1.7 p.c. from June 1 was the largest recorded in a month-to-month comparison in a period of two years. The latest index number, however, was only fractionally higher than at July 1 in 1949 or 1948. Lower than at that date in 1942, 1943 and 1944, it was otherwise the highest in the record for July 1.

The increases reported in manufacturing at the date under review as compared with June 1 were fairly evenly divided between the durable and the non-durable divisions, there being gains of 1.7 p.c. and 1.5 p.c., respectively, in these classes. Central electric power stations also afforded considerably more employment. Improvement was indicated in most main branches of manufacturing. The exceptions were the leather, textile, tobacco and miscellaneous groups. The reductions in the first 3 divisions were seasonal; that in textiles amounted to 1.9 p.c., while the losses in the other classes were small.

The trend was decidedly upward in the food and beverage group, where the gain of 6.7 p.c. was seasonal in character, as was the increase of 3.5 p.c. in lumber. There were advances in the electrical apparatus and iron and steel divisions amounting to 2.3 p.c. and 1.1 p.c., respectively. In some establishments, longer working hours were indicated, as well as larger staffs.

Higher expenditures in weekly payrolls were reported in many branches of manufacturing, in which the general gain was 3.1 p.c. In the heavy manufactured goods division, the salaries and wages were greater by 3.5 p.c. than at June 1; in the non-durable classes taken as a whole, the rise amounted to 2.6 p.c. Among the more important groups, only textiles and textile products showed lower disbursements. The latest general index number of payrolls in manufacturing has never been exceeded in the record of 10 years.

The movement in employment in the non-manufacturing classes was generally upward at the beginning of July. Construction showed a rise of 5.9 p.c. Although this was considerably below-average for the time of year, the latest index number was the highest on record for July 1. The gains in transportation were also slightly below-normal, and employment in that division was in rather smaller volume than at July 1 in 1949 and 1948. On the other hand, the expansion in logging was contra-seasonal; the index of employment in that industry was slightly higher than at the same date of last summer, although it was lower than at July 1

Year and Month	Nine Leading Industries				Eight Leading Industries				Manufacturing			
	Index Numbers of			Average Weekly Salaries & Wages	Index Numbers of			Average Weekly Salaries & Wages	Index Numbers of			Average Weekly Salaries & Wages
	Employment	Aggregate Weekly Payrolls	Average Weekly Earnings		Employment	Aggregate Weekly Payrolls	Average Weekly Earnings		Employment	Aggregate Weekly Payrolls	Average Weekly Earnings	
June 1, 1941	100.0	100.0	100.0	\$ 25.49	100.0	100.0	100.0	\$ 25.25	100.0	100.0	100.0	\$ 25.57
Jan. 1, 1946	110.4	128.1	118.0	30.09	110.2	127.6	118.5	29.92	107.1	121.2	115.3	29.48
Feb. 1	109.8	135.7	125.8	32.06	109.5	135.5	126.6	31.97	108.9	135.4	126.8	32.43
Mar. 1	109.8	137.6	127.6	32.53	109.4	137.3	128.5	32.44	108.7	135.3	126.8	32.44
Apr. 1	111.1	139.5	127.7	32.56	110.3	139.1	128.6	32.48	110.1	138.7	128.4	32.82
May 1	111.3	138.0	126.2	32.16	110.9	137.6	126.9	32.05	110.9	137.1	126.1	32.24
June 1	111.8	137.0	124.8	31.81	111.3	136.6	125.5	31.68	109.9	134.3	124.5	31.83
July 1	114.1	142.2	126.9	32.35	115.7	141.9	127.7	32.25	111.4	138.5	126.6	32.37
Aug. 1	113.7	143.4	128.4	32.72	113.2	143.1	129.3	32.64	109.6	137.5	127.7	32.66
Sept. 1	115.4	145.9	128.7	32.81	114.9	145.6	129.6	32.72	111.4	140.1	127.9	32.71
Oct. 1	117.1	150.1	130.4	33.25	116.6	149.9	131.3	33.15	112.1	143.0	129.3	33.18
Nov. 1	120.0	154.6	131.1	33.42	119.6	154.4	132.0	33.33	114.8	147.5	130.8	33.45
Dec. 1	121.9	159.9	133.6	34.02	121.6	159.9	134.5	33.95	115.6	153.6	135.1	34.54
Jan. 1, 1947	119.0	150.2	128.6	32.77	118.5	149.9	129.3	32.64	113.5	141.5	126.7	32.40
Feb. 1	118.8	160.7	137.7	35.09	118.3	160.5	138.7	35.03	115.4	156.8	138.2	35.34
Mar. 1	118.6	163.2	139.9	35.66	118.1	163.0	141.0	35.61	115.9	159.5	140.0	35.81
Apr. 1	118.9	163.9	140.4	35.78	118.3	163.9	141.5	35.73	116.2	160.8	140.7	35.98
May 1	118.2	164.0	141.0	35.95	117.6	163.7	142.1	35.89	116.5	162.7	141.8	36.27
June 1	121.3	168.7	141.5	36.07	120.9	168.5	142.6	36.00	117.6	165.9	143.3	36.64
July 1	124.4	173.7	142.0	36.20	124.1	173.8	143.2	36.15	119.4	167.7	142.6	36.47
Aug. 1	126.4	178.3	143.5	36.57	126.1	178.6	144.7	36.53	120.5	171.5	144.6	36.97
Sept. 1	126.9	180.1	144.3	36.79	126.5	180.3	145.6	36.76	121.0	173.5	145.3	37.16
Oct. 1	128.0	184.5	146.6	37.38	127.6	184.9	148.1	37.59	121.2	177.5	148.8	38.04
Nov. 1	129.8	189.1	148.2	37.77	129.5	189.7	149.7	37.79	122.1	181.2	150.6	38.52
Dec. 1	130.9	193.2	150.0	38.24	130.7	193.9	151.6	38.28	122.1	184.6	153.5	39.25
Jan. 1, 1948	127.2	178.2	142.5	36.32	126.9	178.3	143.7	36.28	119.0	166.6	142.0	36.31
Feb. 1	124.5	185.4	151.4	38.59	124.0	185.7	153.0	38.53	119.5</			

in 1948 and 1947. The increases in mining, trade and communications were larger than usual for the time of year, and the index numbers of employment reached new high levels for the early summer.

Changes in Employment for Men and Women.- The firms furnishing data in the 9 leading industries at July 1 reported an increase of 1.1 p.c. from June 1 in the number of their female employees, with a rise of 3.1 p.c. among their male workers; the latter made up 780 per 1,000 of both sexes at July 1, as compared with 777 per 1,000 a month earlier, and 779, 783, 779 and 769 per 1,000 at the first of July in 1949, 1948, 1947 and 1946, respectively. In the last 12 months, recorded employment for men has mounted by 1.5 p.c., and that for women, by 0.8 p.c. Variations in the levels of employment in industries employing larger or smaller numbers of women are mainly responsible for the disparities in the rates of growth in the year.

In the comparison with a month earlier, there was a gain of 0.9 p.c. in employment for women in manufacturing, with an increase of 1.8 p.c. in the number of men on the reported staffs. In the 12 months' comparison, (in which the general index showed almost no change), there was an advance of 0.2 p.c. among men, but a loss of 0.6 p.c. among women. The proportion of women per 1,000 employees reported in factory work was 221 at the beginning of July, as compared with 223 at June 1, 1950, and 223, 218, 225 and 233 at July 1 in 1949, 1948, 1947 and 1946, respectively.

Reference to Table C and Table 12 shows relatively low proportions of female employees in many industrial groups, their numbers generally forming a fifth or more of the indicated totals in Canada only in manufacturing, communications, services, trade and finance, industries which are largely found in the cities. Table E gives the proportions of women reported in selected centres at July 1, 1950, in these industries.

Table E.- Proportions of Women per 1,000 Workers of Both Sexes Reported by Leading Establishments in Specified Industries at July 1, 1950.

City	Manufac- turing	Communi- cations	Services ^{1/}	Trade		Finance	Nine Major Industries ^{2/}
				Retail	Wholesale		
Montreal	303	586	438	416	234	461	297
Quebec	334	585	488	380	174	399	291
Toronto	282	586	479	449	257	512	315
Ottawa	206	646	501	437	128	610	324
Hamilton	219	589	558	453	209	429	243
Windsor	119	577	533	409	162	440	158
Winnipeg	221	335	567	478	266	515	293
Edmonton	197	411	640	438	203	507	247
Calgary	138	428	617	369	194	514	239
Vancouver	180	667	510	429	242	498	265
CANADA	221	534	500	426	225	477	220

1/ Mainly hotels and restaurants and laundries and dry-cleaning plants.

2/ Enumerated in Tables A and C, etc.

Table C.- The Sex Distribution of the Workers in Recorded Employment in the Provinces, the Leading Cities, and the Nine Major Industrial Groups at July 1, 1950, with Comparisons as at June 1, 1950 and July 1, 1949.

Geographical and Industrial Unit	July 1, 1950 ^{3/}					June 1, 1950		July 1, 1949	
	Total	Men	Women	Men	Women	Men	Women	Men	Women
	No.	No.	No.	P.C.	P.C.	P.C.	P.C.	P.C.	P.C.
(a) Provinces									
Maritime Provinces	148,975	127,289	21,686	85.4	14.6	85.1	14.9	85.1	14.9
Prince Edward Island	4,196	3,267	929	77.9	22.1	76.9	23.1	73.9	26.1
Nova Scotia	82,079	70,653	11,226	86.3	13.7	86.0	14.0	86.1	13.9
New Brunswick	62,700	53,169	9,531	84.8	15.2	84.3	15.7	84.3	15.7
Quebec	628,977	479,967	149,010	76.3	23.7	75.5	24.5	76.2	23.8
Ontario	947,752	724,498	223,254	76.4	23.6	76.3	23.7	76.4	23.6
Prairie Provinces	276,200	220,786	55,412	79.9	20.1	79.7	20.3	79.5	20.5
Manitoba	119,954	93,595	26,359	78.0	22.0	77.6	22.4	77.3	22.7
Saskatchewan	52,218	41,939	10,279	80.3	19.7	79.8	20.2	80.2	19.8
Alberta	104,028	85,254	18,774	82.0	18.0	82.1	17.9	81.9	18.1
British Columbia	209,421	172,362	37,059	82.3	17.7	82.5	17.5	82.3	17.7
CANADA	2,211,325	1,724,904	486,421	78.0	22.0	77.7	22.3	77.9	22.1
(b) Cities									
Montreal	325,836	229,077	96,559	70.3	29.7	69.8	30.2	70.4	29.6
Quebec	35,112	24,887	10,225	70.9	29.1	70.8	29.2	70.7	29.3
Toronto	314,450	215,359	99,091	68.5	31.5	68.4	31.6	68.3	31.7
Ottawa	32,355	21,871	10,484	67.6	32.4	68.0	32.0	67.8	32.2
Hamilton	70,810	53,604	17,206	75.7	24.3	75.1	24.9	74.7	25.3
Windsor	44,329	37,343	6,986	84.2	15.8	84.2	15.8	84.2	15.8
Winnipeg	76,243	53,925	22,318	70.7	29.3	70.3	29.7	69.8	30.2
Vancouver	91,938	67,566	24,372	73.5	26.5	73.2	26.8	73.6	26.4
Halifax	23,034	16,424	6,610	71.3	28.7	70.8	29.2	72.0	28.0
Saint John	12,557	8,998	3,559	71.7	28.3	72.5	27.5	73.0	27.0
Sherbrooke	10,628	7,337	3,291	69.0	31.0	67.8	32.2	65.9	34.1
Three Rivers	11,748	9,049	2,697	77.0	23.0	76.1	23.9	77.5	22.5
Brantford	15,320	11,651	3,669	76.1	23.9	77.8	22.2	77.1	22.9
Kitchener - Waterloo	21,393	14,807	6,586	69.2	30.8	69.4	30.6	69.9	30.1
London	28,816	19,913	8,903	69.1	30.9	69.0	31.0	69.1	30.9
Fort William - Port Arthur	11,661	9,855	1,806	84.6	15.5	83.6	16.4	85.2	14.8
St. Catharines - Welland	27,874	22,931	4,943	82.3	17.7	82.1	17.9	82.6	17.4
Regina	12,209	8,264	3,945	67.7	32.3	66.6	33.4	66.5	33.5
Saskatoon	8,418	6,108	2,310	72.6	27.4	71.5	28.5	71.1	28.9
Calgary	25,142	19,123	6,019	76.1	23.9	75.9	24.1	76.2	23.8
Edmonton	27,891	20,990	6,901	75.3	24.7	74.7	25.3	73.5	26.5
Victoria	13,808	10,550	3,258	76.4	23.6	76.5	23.5	75.1	24.9
(c) Industries									
Manufacturing	1,083,121	843,478	239,643	77.9	22.1	77.7	22.3	77.7	22.3
Durable Goods ^{1/}	502,677	449,389	53,288	89.4	10.6	89.3	10.7	89.6	10.4
Non-Durable Goods	544,808	362,928	181,880	66.6	33.4	66.4	33.6	66.1	33.9
Electric Light and Power	35,636	31,161	4,475	87.4	12.6	87.3	12.7	87.9	12.1
Logging	58,513	57,704	909	98.4	1.6	98.2	1.8	98.4	1.6
Mining	90,407	88,221	2,186	97.6	2.4	97.8	2.2	97.6	2.4
Communications	58,468	27,219	31,249	46.6	53.4	46.4	53.6	47.7	52.3
Transportation	185,387	174,070	11,317	93.9	6.1	94.0	6.0	93.9	6.1
Construction and Maintenance	260,255	255,037	5,218	98.0	2.0	97.9	2.1	98.1	1.9
Services ^{2/}	90,423	40,222	40,201	50.0	50.0	49.9	50.1	48.6	51.5
Trade	299,880	189,384	110,496	63.2	36.8	62.9	37.1	61.8	38.2
EIGHT LEADING INDUSTRIES	2,118,554	1,675,335	443,219	79.2	20.8	78.8	21.2	79.0	21.0
Finance	94,771	49,569	45,202	52.3	47.7	52.4	47.6	52.9	47.1
TOTAL - ALL INDUSTRIES	2,211,325	1,724,904	486,421	78.0	22.0	77.7	22.3	77.9	22.1

^{1/} This classification comprises the following:- iron and steel, non-ferrous metals, electrical apparatus, lumber, musical instruments and clay, glass and stone products. The non-durable group includes the remaining manufacturing industries with the exception of electric light and power.

^{2/} Mainly hotels and restaurants and laundry and dry-cleaning establishments.

^{3/} The July 1 data are subject to revision.

The comparatively low ratios of female employees in manufacturing in Hamilton and Windsor result from a concentration of employment in the heavy manufacturing classes in those cities; at July 1, the reported workers in the durable goods division in Hamilton made up 68.9 p.c. of the total in the payrolls of leading manufacturing plants, (exclusive of central electric stations), while the proportion in Windsor was 85.8 p.c. The general figure in Canada was 48 p.c. In Edmonton and Calgary, manufacturing is also largely concentrated in industries which normally employ few women. In the non-manufacturing classes listed in Table E, the cities showed considerable variation in the proportions of female employees, but in each of these industries except wholesale trade, the indicated ratios were comparatively high.

Provincial Changes in Non-Agricultural Employment.- Industrial employment in all provinces was in a substantially greater volume at July 1 than at June 1. The increases varied from 2.0 p.c. in British Columbia, 2.1 p.c. in Saskatchewan and 2.4 p.c. in both Quebec and Ontario, to 5.3 p.c. in Manitoba, 7.3 p.c. in Prince Edward Island and 8.4 p.c. in New Brunswick. The expansion in Quebec, Ontario and the Prairie Provinces was above-normal, while the improvement in the Maritime Area and British Columbia was somewhat smaller than usual for the time of year.

The upward movement generally indicated in employment was accompanied by higher disbursements in weekly payrolls. The general provincial figures of average weekly salaries and wages exceeded those at June 1; they were also higher than at July 1 in 1949 and earlier years for which data are available.

In all areas, the trends of employment in most major industrial divisions were favourable; the noteworthy exception was transportation in the Maritime Provinces, which showed a seasonal recession. Manufacturing, except in Prince Edward Island, was generally more active; the gain of 2.4 p.c. in Ontario was especially marked. Food, lumber, electrical apparatus and iron and steel plants reported considerable additions to their working forces in that province, together, in some instances, with longer working hours.

Large increases were noted in construction in all provinces except New Brunswick, where the general situation was unchanged. In logging, the important advances in employment taking place in New Brunswick, Quebec and Ontario were largely due to river drives. The moderate improvement in mining was widely distributed, there being rather small gains in most provinces. General though not particularly large increases were also reported in communications, trade, finance and in services, mainly hotels and restaurants and laundries and dry-cleaning plants.

Changes in Employment in Newfoundland.- For the first time, statistics furnished by leading industrial firms in Newfoundland appear in the monthly bulletin on employment and payrolls; data obtained in preceding months were summarized in a recently-issued press letter entitled "Trends of Employment, Earnings and Hours in the Principal Non-Agricultural Industries in Newfoundland" (Report 9-7020).

As was stated in that bulletin, it is estimated from comparison with the Newfoundland Census of 1945, and the labour force survey of Mar. 4, 1950, that the monthly surveys cover the following proportions of the total paid workers in the specified industries:- logging, 66 p.c.; mining, 100 p.c.;

Table D.- Statistics of Employment Reported by Leading Employers^{1/} in Specified Industries in Newfoundland at July 1, 1950, with Average Weekly Salaries and Wages at May 1, June 1 and July 1.

(The latest data are subject to revision).

<u>Industries</u>	Employees Reported at July 1, 1950	Proportion of Women at July 1, 1950	Average Weekly Salaries and Wages at		
			July 1	June 1	May 1
	no.	p.c.	1950	1950	1950
			\$	\$	\$
<u>A.- Statistics for Newfoundland.</u>					
Forestry (Logging)	5,811	0.7	38.69	40.86	42.04
Mining	2,830	1.9	44.76	46.82	50.08
Manufacturing (all branches)	10,452	14.5	45.72	43.09	43.95
Food and beverages	3,288	24.5	28.64	28.12	27.31
Fish processing	2,267	19.2	26.61	25.67	23.98
Pulp and paper mills	4,697	5.3	61.54	56.93	61.48
Iron and steel products ^{2/}	928	1.0	48.69	48.06	46.60
Construction	1,106	3.2	38.97	36.14	35.74
Transportation & communications	5,405	5.4	40.61	40.23	44.72
Public utilities	424	7.1	32.04	31.11	31.31
Trade	5,490	26.5	30.57	30.52	29.56
Finance	364	44.2	32.98	32.90	32.91
Services ^{3/}	550	61.6	20.48	20.60	20.88

B.- Statistics for St. John's

Manufacturing (all branches)	3,915	25.1	36.14	36.17	35.63
Food and beverages	1,765	30.6	32.64	33.39	32.45
Iron and steel products	912	1.0	48.43	47.63	46.29
Construction	480	2.7	34.12	35.64	37.88
Public utilities	424	7.1	32.04	31.11	31.31
Trade	3,588	26.4	33.44	33.99	31.51
Finance	216	53.7	35.14	35.00	35.03
Services ^{3/}	451	58.3	21.28	20.96	21.31

C.- Percentage Changes in Employment and Weekly Payrolls Reported at July 1 as Compared with June 1, 1950.

Industries	Newfoundland		St. John's	
	Employment	Payrolls	Employment	Payrolls
Forestry (Logging)	69.5	60.5
Mining	1.4	- 3.1
Manufacturing (all branches)	6.9	13.4	9.1	9.0
Food and beverages	4.7	6.6	14.8	12.2
Fish processing	3.8	7.6
Pulp and paper mills	9.2	18.0
Iron and steel products ^{2/}	-4.2	- 3.0	- 4.5	- 2.7
Construction	2.2	10.2	39.5	33.6
Transportation & communications	7.0	8.0
Public utilities	0.2	3.2	0.2	3.2
Trade	-2.1	- 1.9	- 1.9	- 3.5
Finance	..	0.3	..	0.4
Services ^{3/}	-0.4	- 1.0	..	1.5

1/ Firms usually employing 15 persons and over. 2/ Including transportation equipment. 3/ Mainly hotels, restaurants, laundries and dry-cleaning plants.

manufacturing, 90 p.c.; construction, 52 p.c.; transportation, 78 p.c.; trade, 58 p.c., and finance, 100 p.c. It is not possible at present to measure the extent of coverage in those branches of the service industries for which data are available, mainly hotels and restaurants and laundries and dry-cleaning plants. For the time being, statistics for Newfoundland cannot be incorporated in the index numbers of employment and payrolls prepared for other parts of Canada, owing to the lack of base-period data.

Table D shows the industrial distribution of the employees reported by the larger firms in Newfoundland and in St. John's at the first of July, giving also recent figures of average weekly salaries and wages of members of their staffs, and the percentage changes in the employment and payrolls reported in the principal industrial groups at July 1 as compared with a month earlier. As in the remaining parts of Canada, the trends of employment in Newfoundland were generally favourable at the date under review; the exception was trade, in which the moderate loss was largely attributed to seasonal factors. The declines in the payrolls reported in mining and in the iron and steel division of manufacturing were chiefly due to reduced working hours in certain establishments.

The reduction in the average weekly salaries and wages in logging resulted in the main from the employment of large numbers of additional men taken on at the lower rates of pay, and in some cases working during only part of the pay period. In manufacturing, the higher per capita figure was due partly to the settlement of industrial disputes which had affected the situation in some establishments at June 1, partly to increased wage rates reported in certain plants, and partly to changes in the industrial distribution of persons employed in leading manufacturing plants.

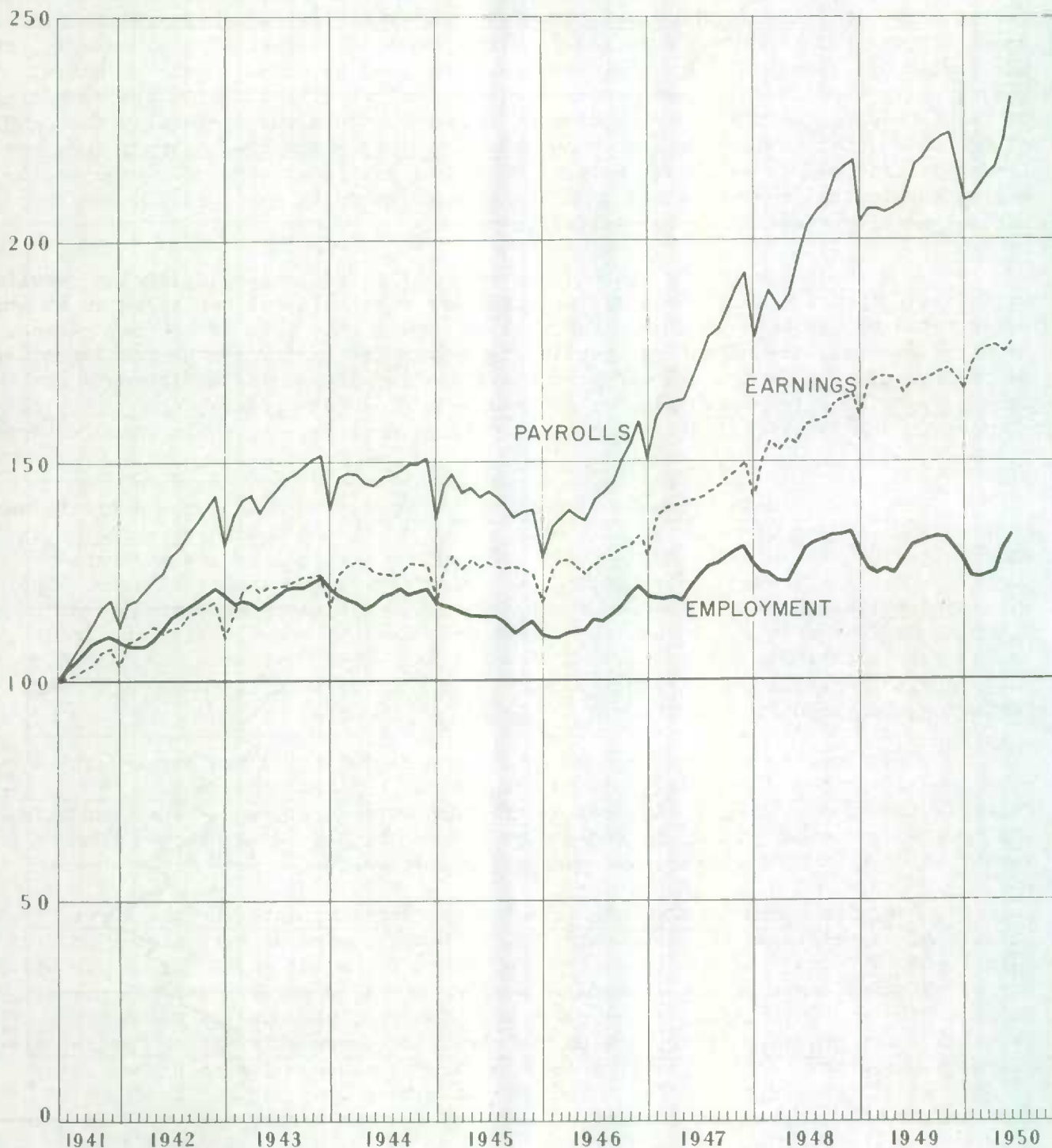
Changes in Industrial Employment in the Cities.-- Heightened activity was reported by leading firms in 22 of the 23 cities for which data are published in this bulletin. The exception was Saint John, where seasonal losses in transportation again affected the situation, and manufacturing was also slacker. The increases in the other centres for which information is compiled varied from 0.2 p.c. in Sherbrooke, 0.7 p.c. in Montreal and Regina, and 0.9 p.c. in Toronto, to 3.4 p.c. in the St. Catharines and Fort William - Port Arthur areas, and 5.8 p.c. in Winnipeg. In the last-named, there was considerable improvement in manufacturing, construction and trade.

There was widespread improvement in manufacturing in the larger cities with the exception of Montreal, Sherbrooke, Saint John and Saskatoon. Construction in practically all centres afforded more employment. The trends in the remaining non-manufacturing industries covered by the survey showed some variation, but in most cities were moderately favourable.

The disbursement in weekly salaries and wages reported by the larger industrial establishments in the principal industrial centres were higher at July 1 than at June 1 except in Sherbrooke, where there was a falling-off in the payrolls, mainly as a result of reduced working hours in certain textile plants. In that city and in Halifax, Quebec City and Hamilton, the average weekly salaries and wages were lower, but in the remaining centres for which figures are given in the present report, the per capita figures at July 1 were higher than at June 1. In the 22 cities for which data have been prepared for a period of some length, the averages at the date under review were higher than at July 1 in 1949 and earlier years.

oooooooooooo0000000000oooooooooooo

THE COURSE OF EMPLOYMENT AGGREGATE WEEKLY PAYROLLS
AND
AVERAGE WEEKLY EARNINGS AS REPORTED BY LEADING EMPLOYERS
IN
NINE MAJOR INDUSTRIAL GROUPS*
JUNE 1 1941=100



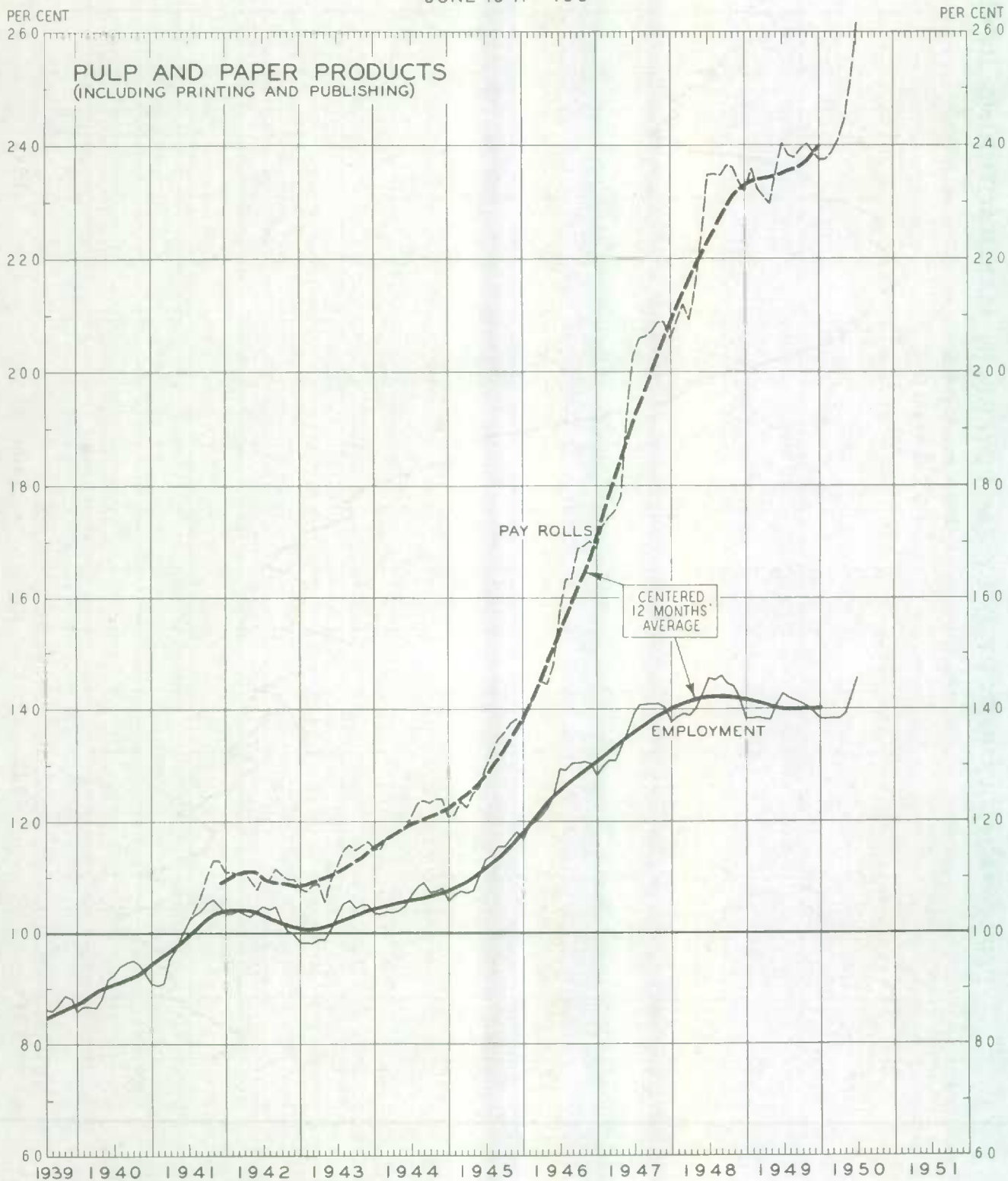
* LISTED ON PAGE 2, SECTION C.



EMPLOYMENT AND PAYROLLS IN MANUFACTURING

MAJOR GROUPS—NON-DURABLE GOODS

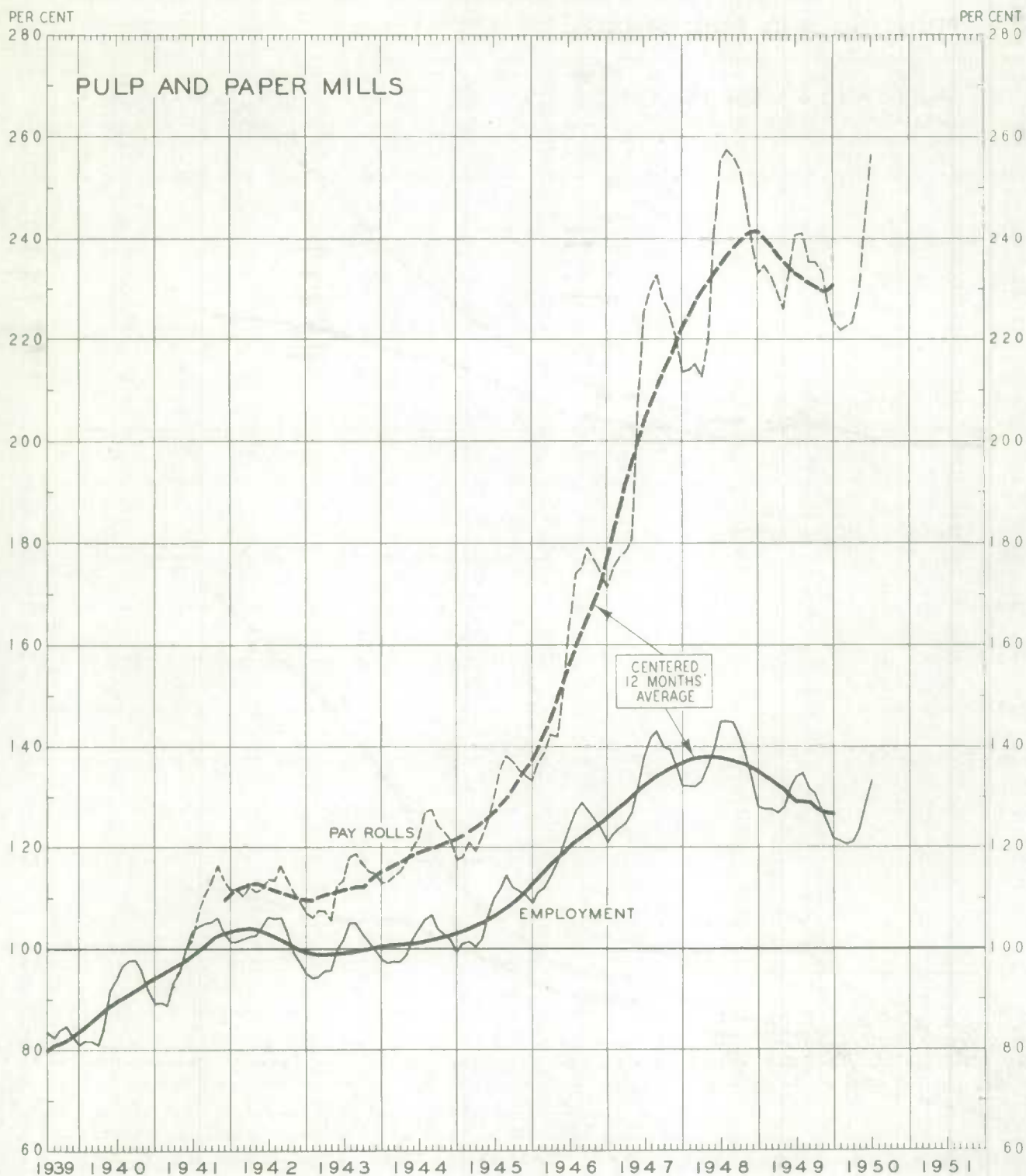
JUNE 1941 = 100



EMPLOYMENT AND PAYROLLS IN MANUFACTURING

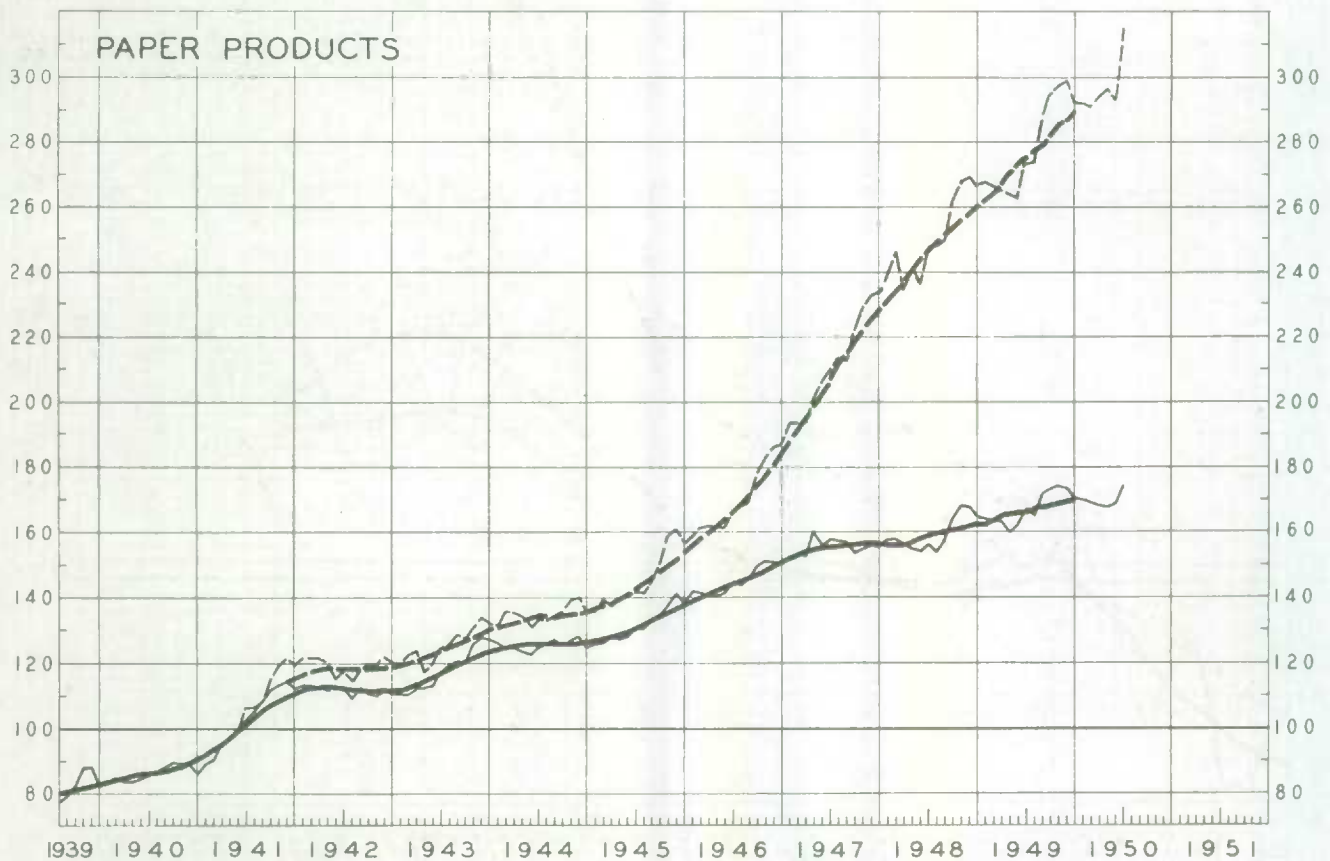
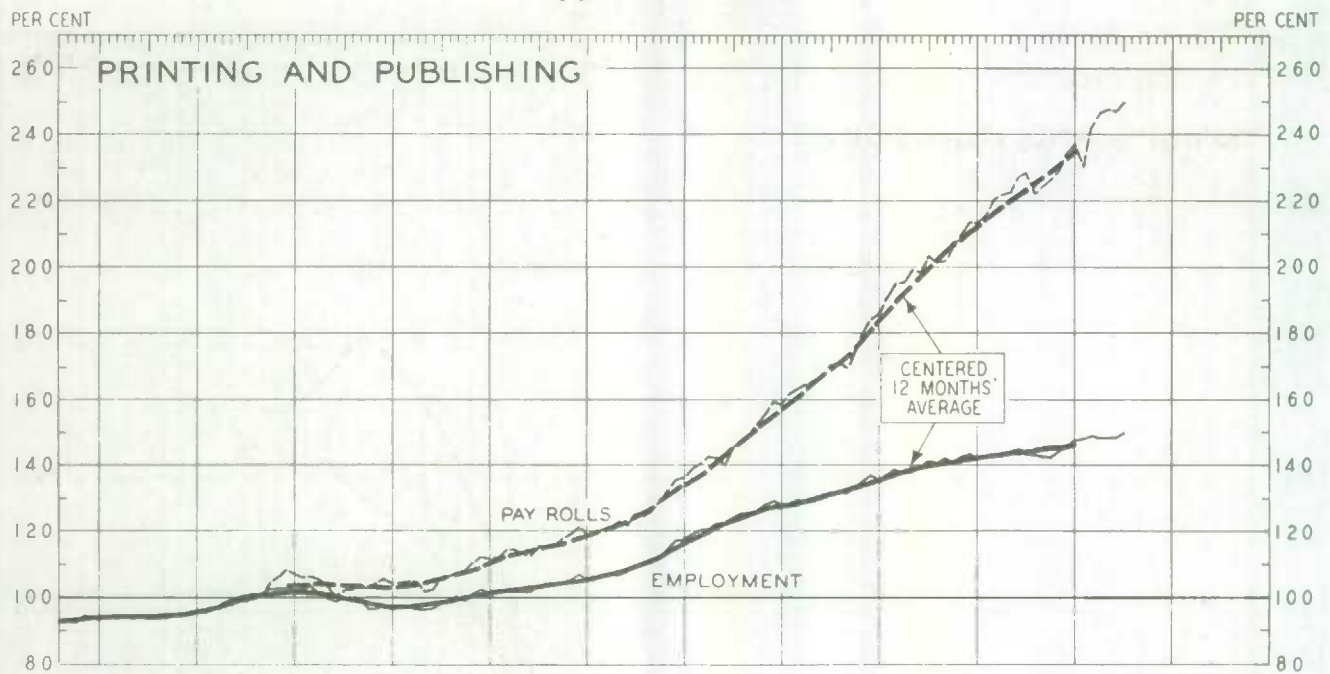
PULP AND PAPER

JUNE 1941 = 100



EMPLOYMENT AND PAYROLLS IN MANUFACTURING PAPER

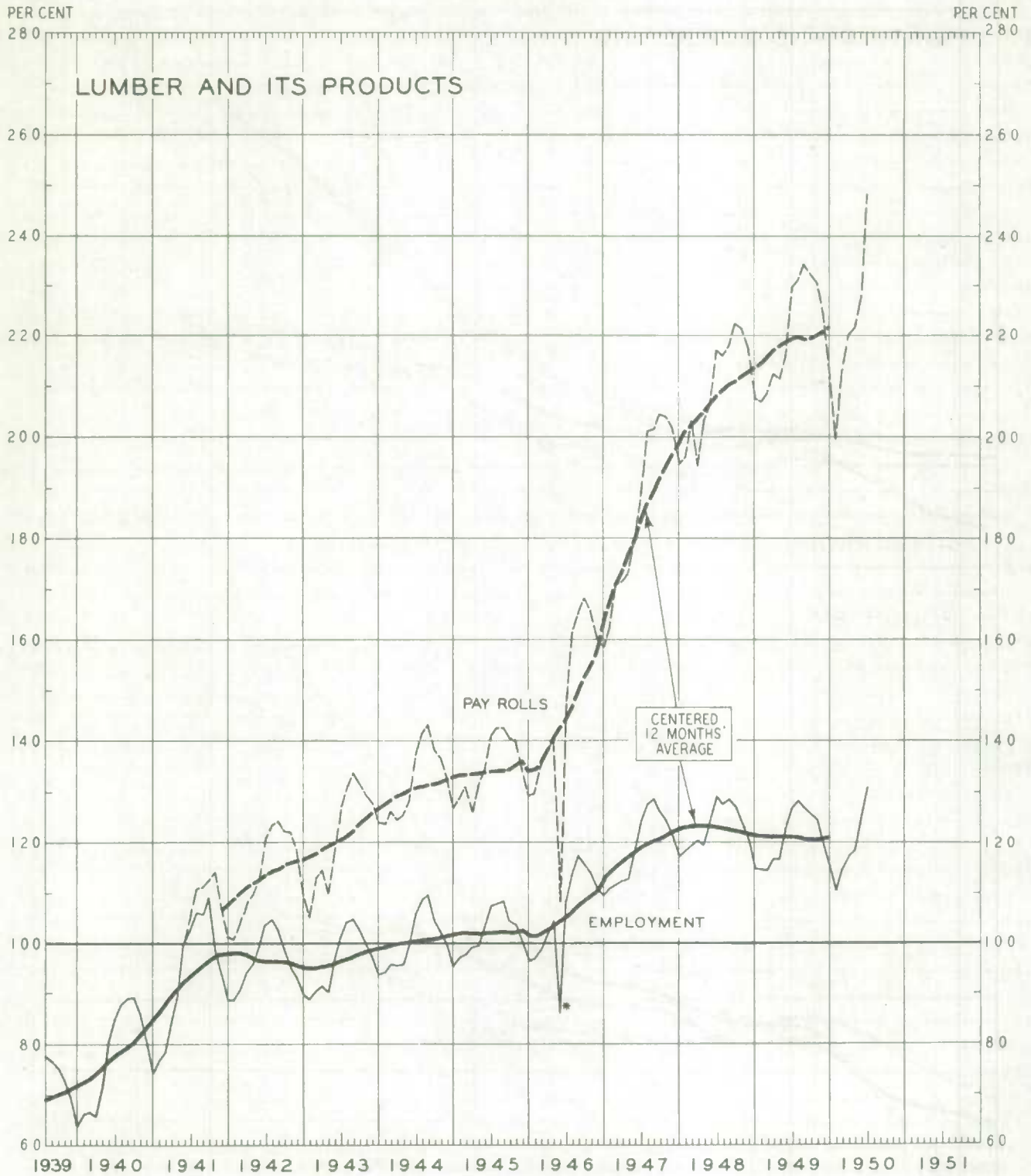
JUNE 1941 = 100



EMPLOYMENT AND PAYROLLS IN MANUFACTURING

MAJOR GROUPS—DURABLE GOODS

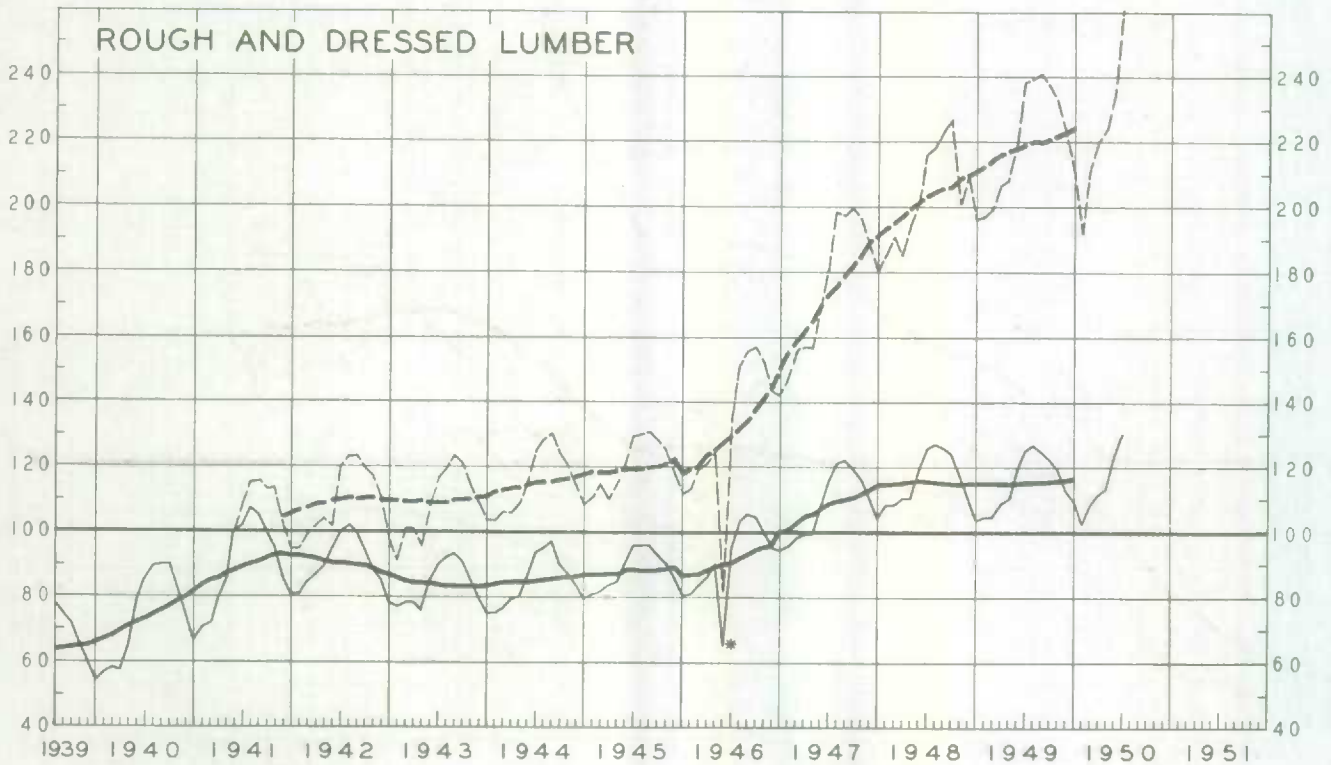
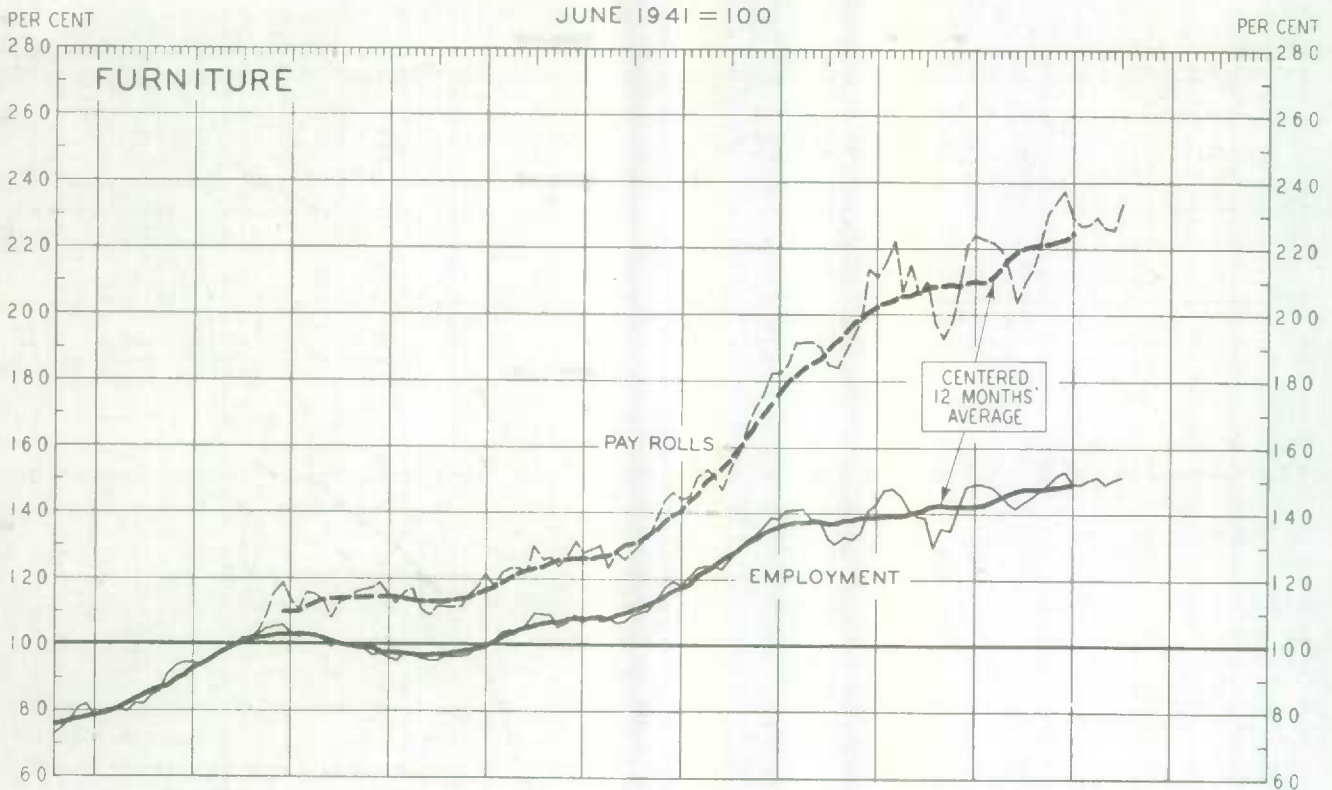
JUNE 1941 = 100



* STRIKES

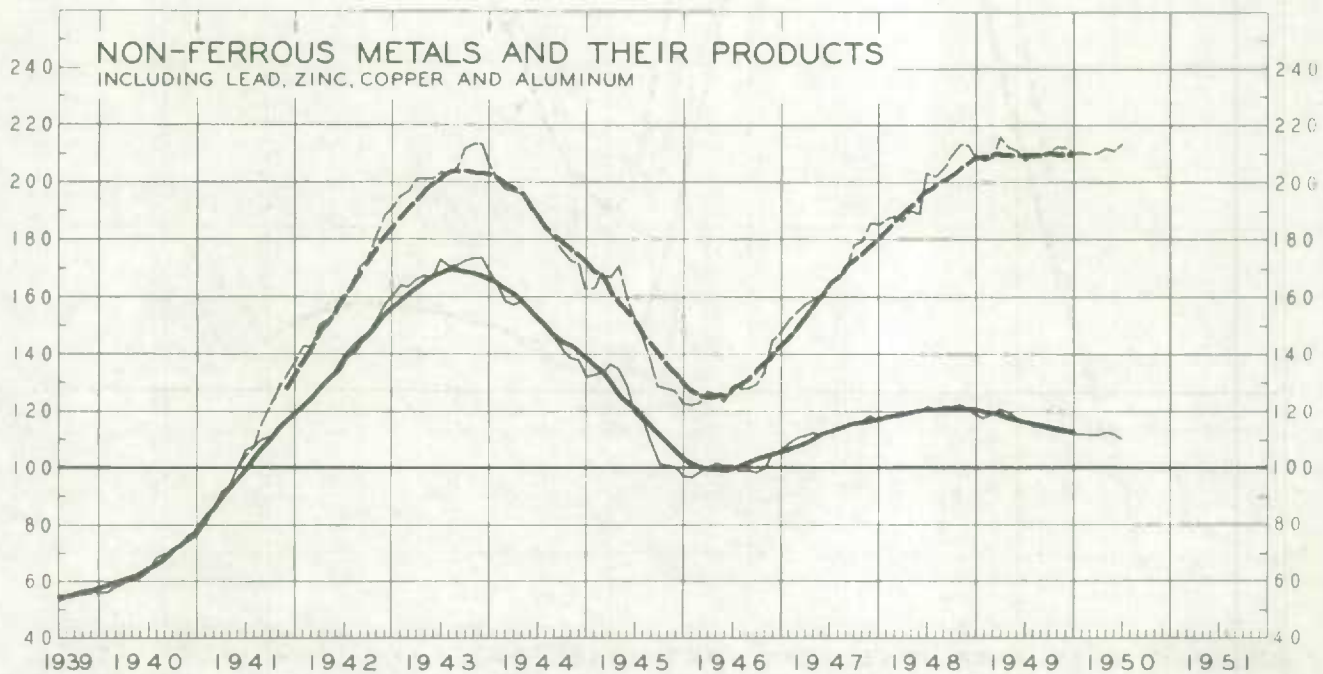
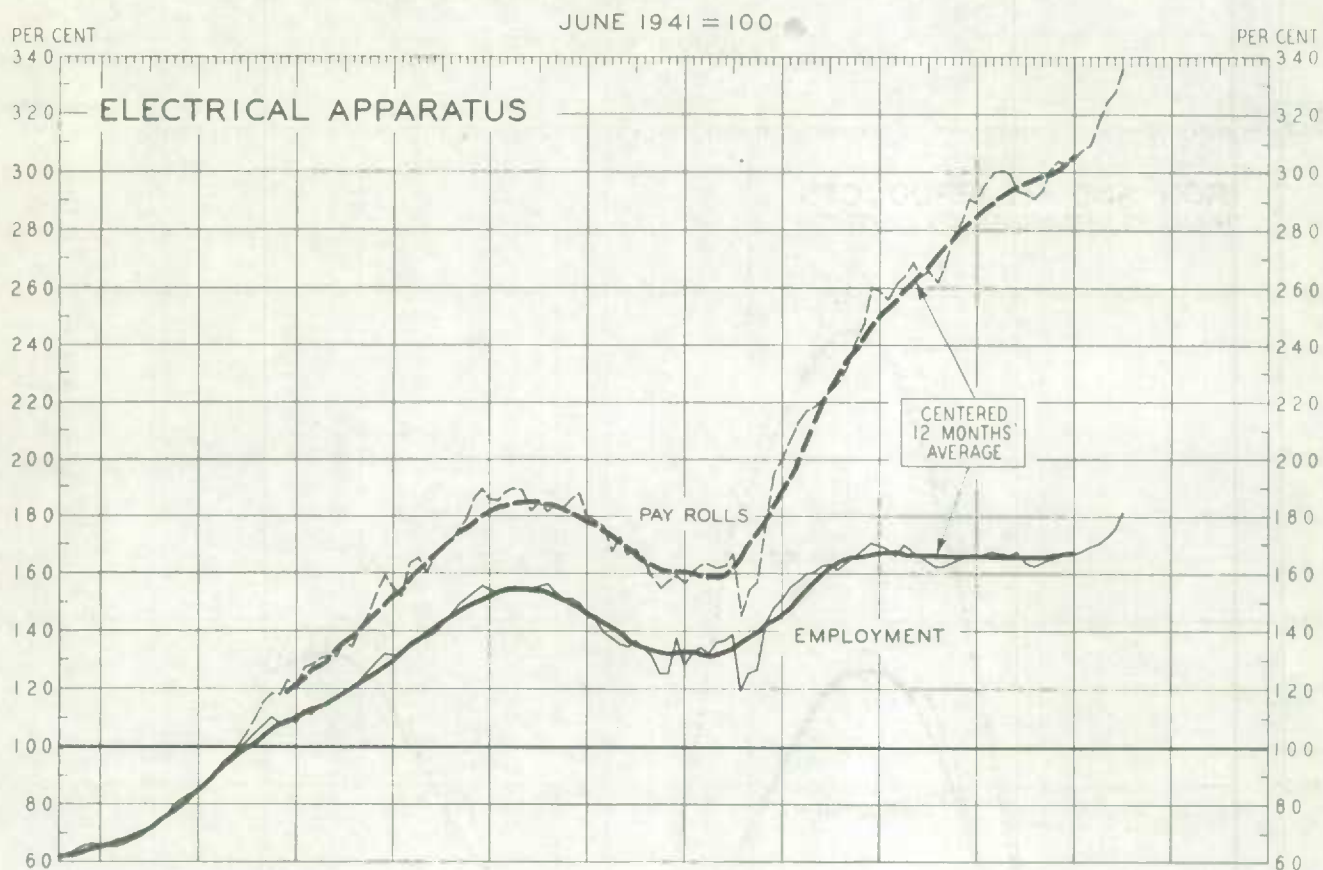
EMPLOYMENT AND PAYROLLS IN MANUFACTURING

MAJOR GROUPS—DURABLE GOODS



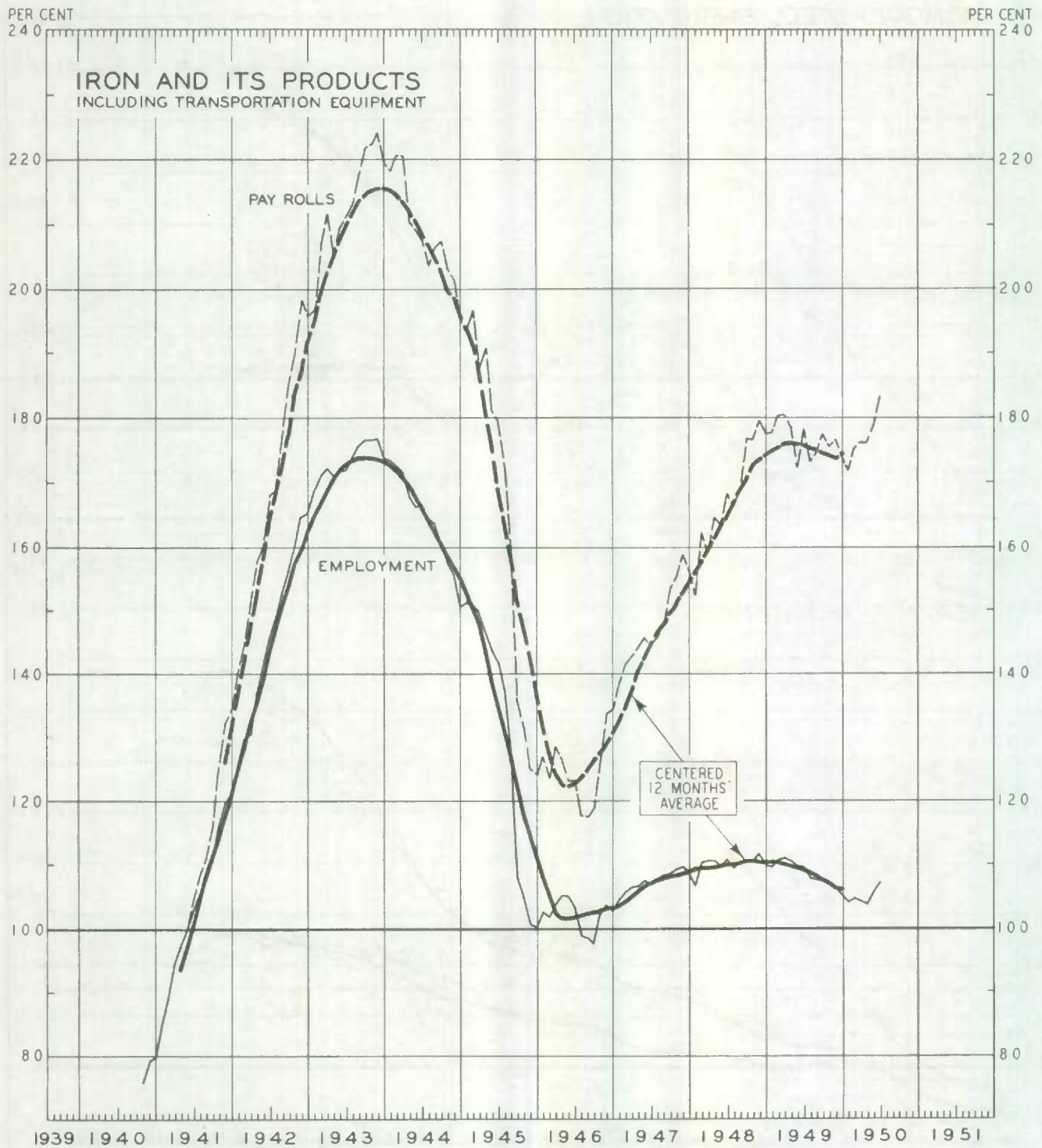
EMPLOYMENT AND PAYROLLS IN MANUFACTURING

MAJOR GROUPS—DURABLE GOODS



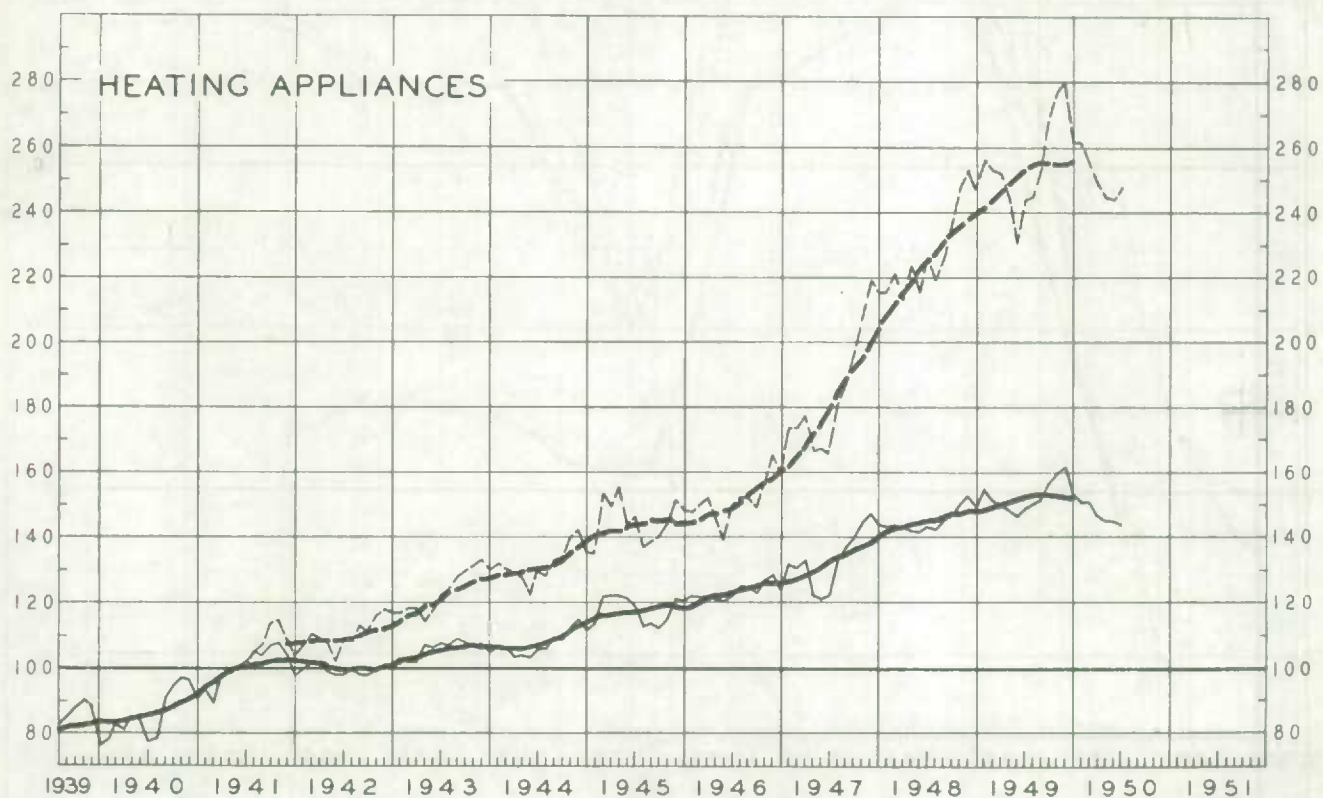
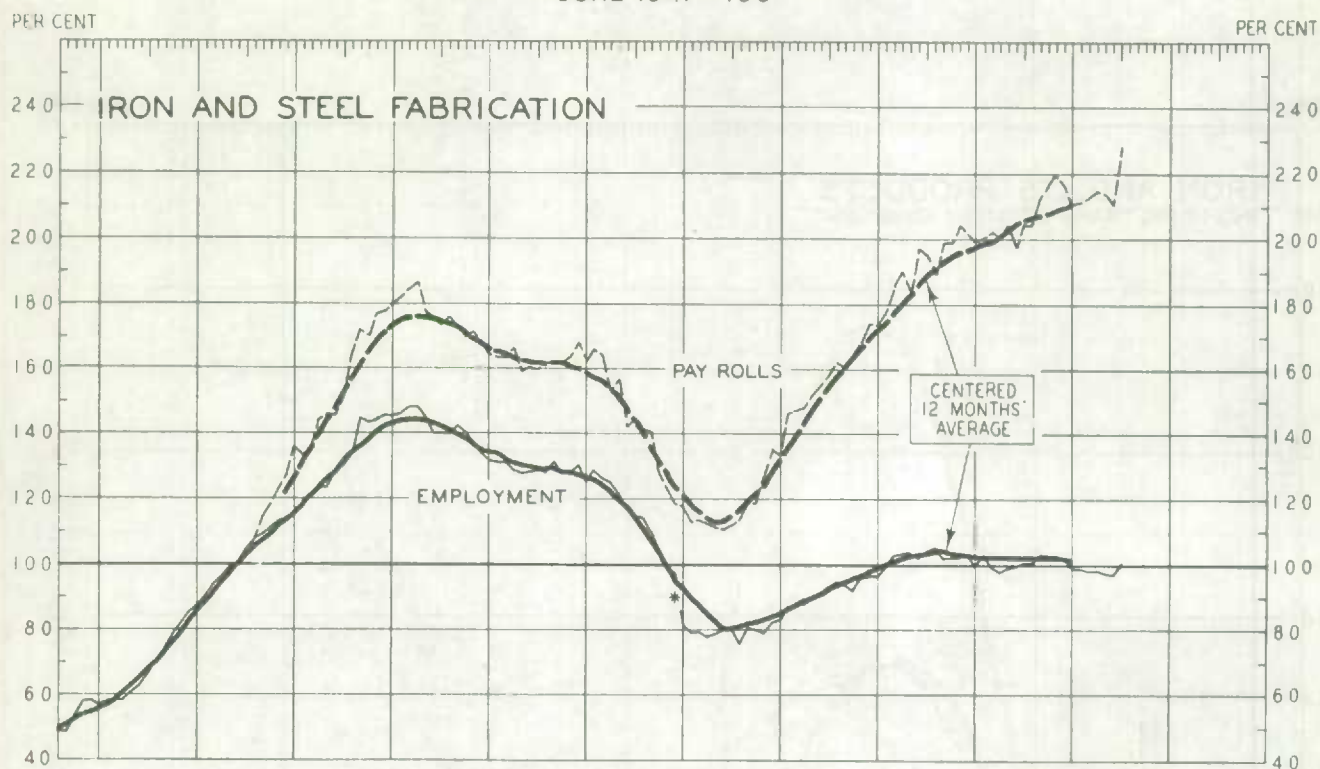
EMPLOYMENT AND PAYROLLS IN MANUFACTURING MAJOR GROUPS—DURABLE GOODS

JUNE 1941 = 100



EMPLOYMENT AND PAYROLLS IN MANUFACTURING IRON AND STEEL

JUNE 1941 = 100

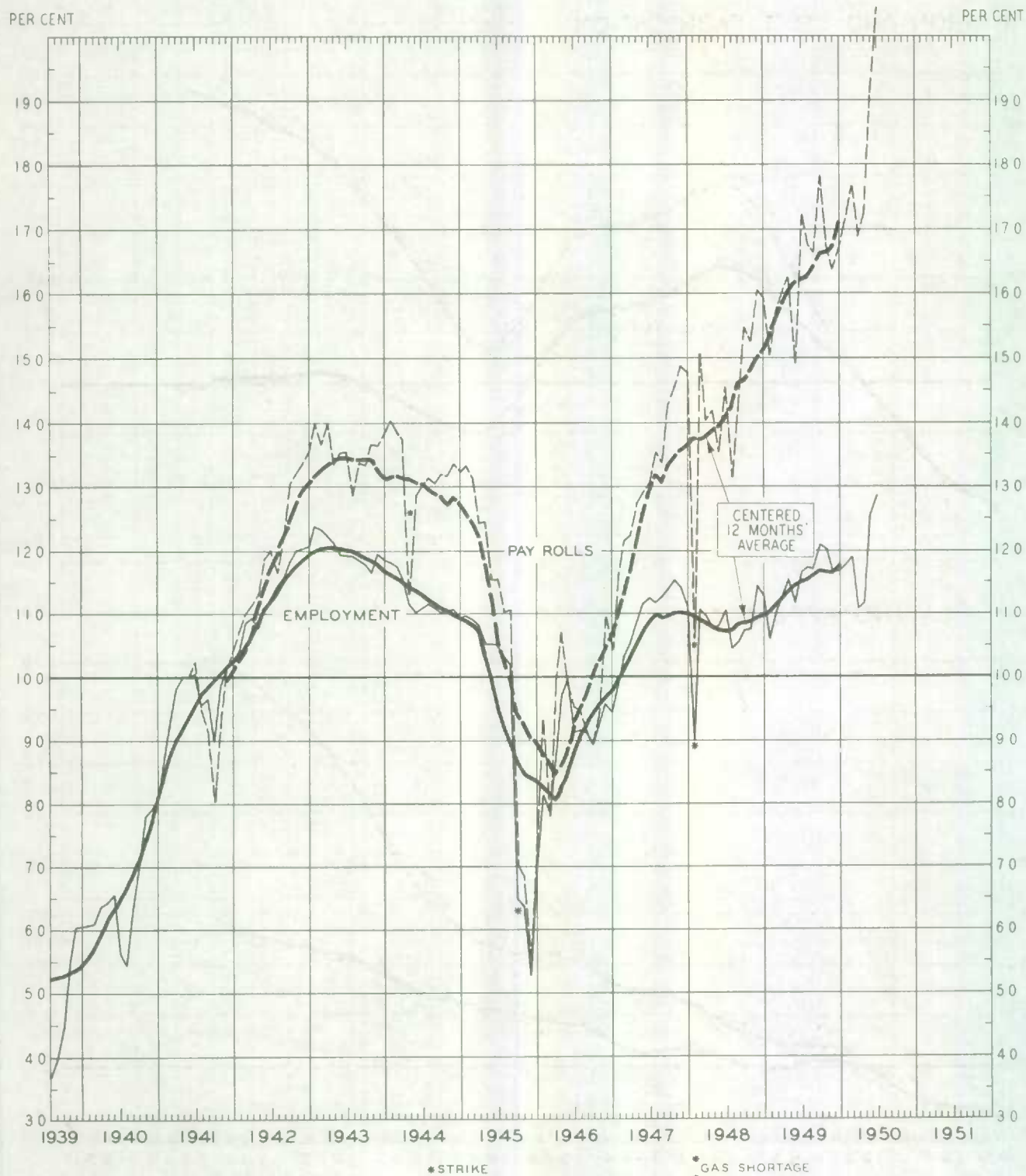


*RECLASSIFICATION FOR CERTAIN FIRMS

EMPLOYMENT AND PAYROLLS IN MANUFACTURING

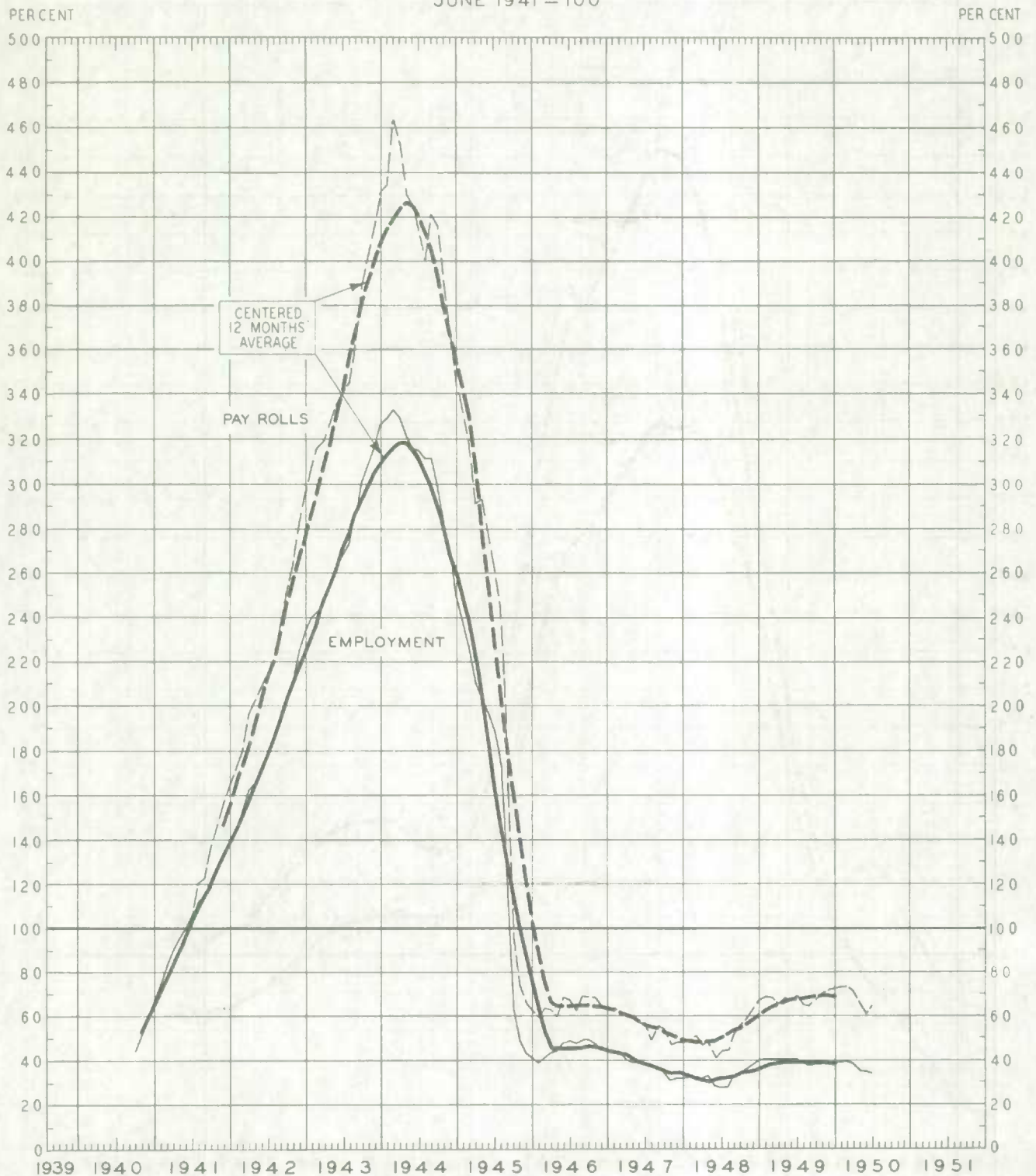
AUTOMOBILES AND PARTS

JUNE 1941 = 100



EMPLOYMENT AND PAYROLLS IN MANUFACTURING AIRPLANES

JUNE 1941 = 100

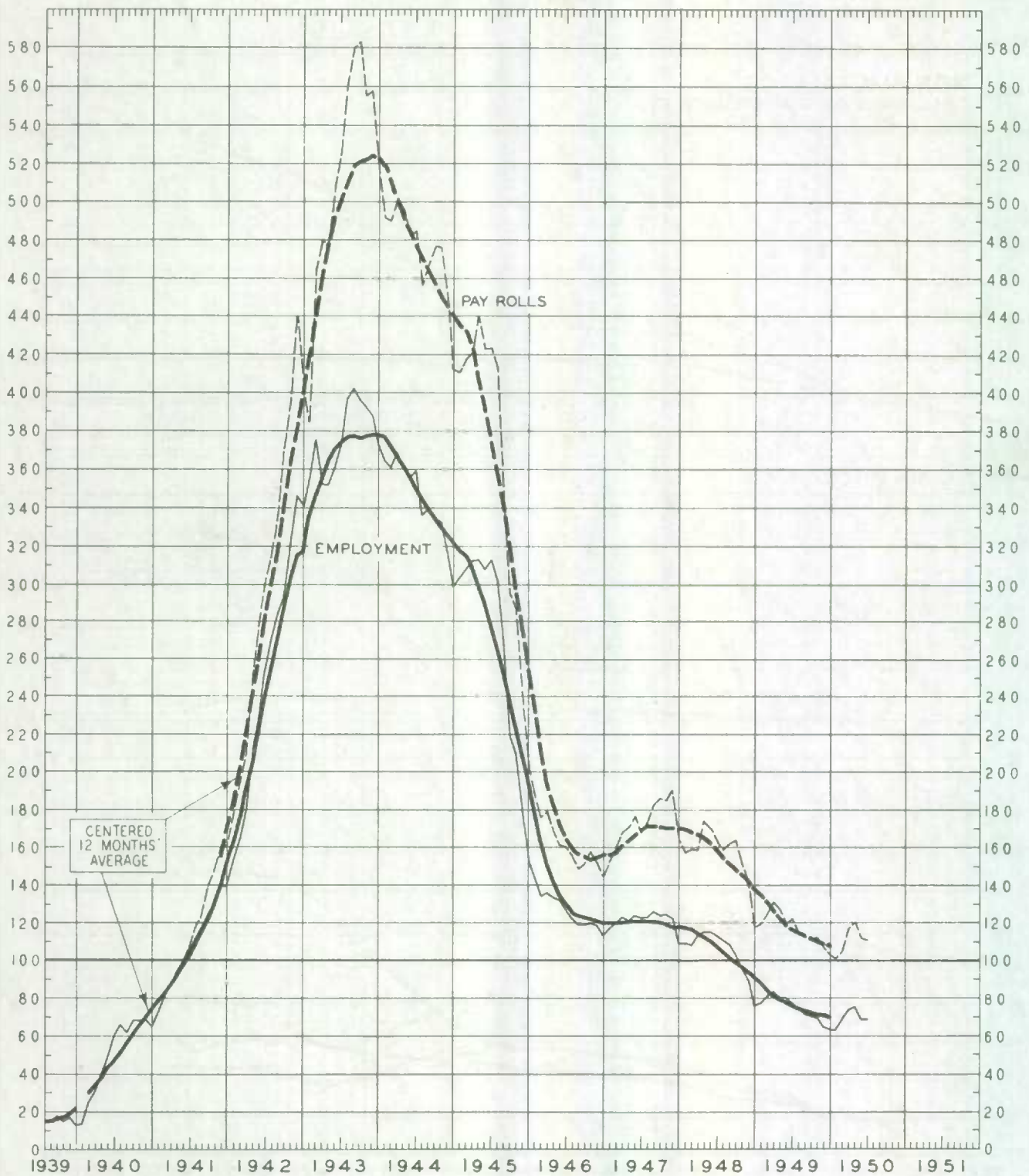


EMPLOYMENT AND PAYROLLS IN MANUFACTURING SHIPBUILDING

JUNE 1941 = 100

PER CENT

PER CENT



EMPLOYMENT AND PAYROLLS IN MANUFACTURING NON-METALLIC MINERALS

JUNE 1941 = 100

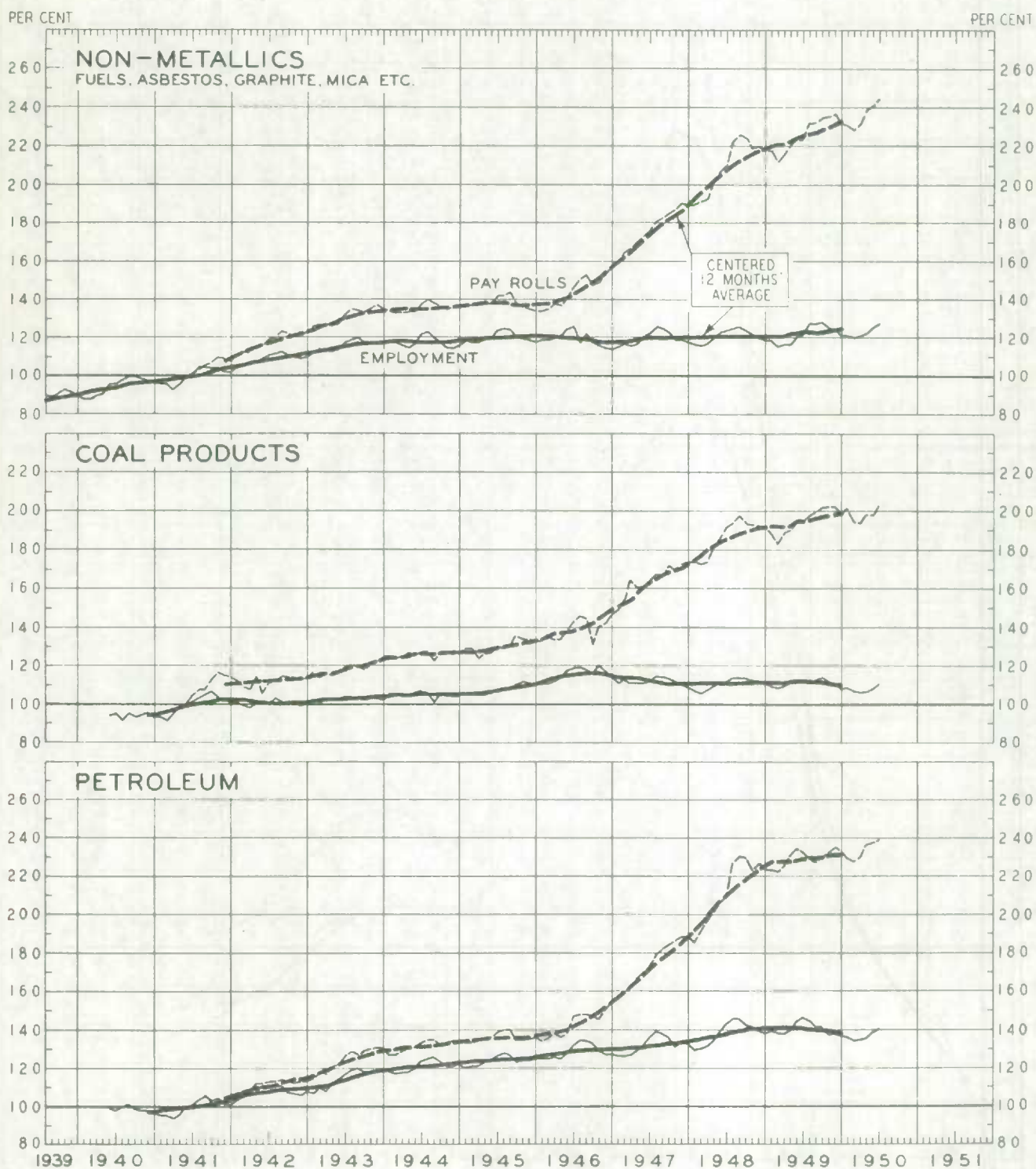


Table 1.- Industrial Distribution of the Employees and Weekly Payrolls of the Reporting Establishments* at July 1, 1950, and Average Weekly Salaries and Wages of their Employees, Together with Index Numbers of Employment and Payrolls, with Comparisons from a month and a year earlier.

(The latest figures are subject to revision).

Industries	No. of Employees Reported at July 1, 1950	Weekly Salaries and Wages at July 1, 1950 \$	Average Weekly Salaries and Wages at			Index Numbers Based on June 1, 1941 as 100 p.c.					
						Employment			Payrolls		
			July 1 1950	June 1 1950	July 1 1949	July 1 1950	June 1 1950	July 1 1949	July 1 1950	June 1 1950	July 1 1949
MANUFACTURING	1,083,121	50,619,034	46.73	46.11	44.09	123.6	121.5	123.5	222.5	215.9	209.8
Animal products - edible	39,998	1,783,073	44.58	45.02	42.33	143.7	137.0	143.4	253.5	244.1	238.9
Fur and products	4,300	185,505	43.09	41.60	39.12	138.8	138.1	141.6	223.5	214.7	206.9
Leather and products	28,095	922,249	32.83	31.97	31.76	98.4	99.1	109.6	171.7	168.3	183.7
Boots and shoes	17,732	555,189	31.31	30.20	30.22	97.6	97.6	112.8	172.0	166.0	192.0
Lumber and its products	88,325	3,647,548	41.29	39.51	39.21	130.9	128.3	128.9	248.4	229.6	229.9
Rough and dressed lumber	55,719	2,371,801	42.57	40.45	40.72	130.9	124.5	124.4	260.7	235.9	238.1
Furniture	19,395	776,545	40.04	38.91	37.67	160.1	159.2	151.8	233.7	226.7	210.1
Other lumber products	13,211	499,002	37.77	36.54	35.63	107.9	106.9	117.1	220.3	209.2	225.5
Plant products - edible	63,552	2,455,659	38.58	38.98	36.28	145.4	134.7	146.3	247.6	231.5	235.0
Pulp and paper products	118,288	6,305,194	53.30	52.41	50.00	145.4	142.1	142.7	281.5	261.1	240.4
Pulp and paper	50,615	3,079,142	60.83	59.47	56.77	133.1	129.1	133.9	256.5	243.2	240.8
Paper products	22,192	969,779	43.70	42.11	39.76	174.4	168.7	166.6	314.9	293.7	273.4
Printing and publishing	45,481	2,256,273	49.61	49.63	47.03	150.0	148.3	146.0	249.8	247.2	228.6
Rubber products	21,677	1,046,092	48.26	47.61	44.65	127.8	126.0	122.6	262.7	255.9	233.3
Textile products	158,656	5,842,045	36.56	35.27	33.51	113.0	115.2	114.4	209.8	212.1	200.2
Thread, yarn and cloth	60,118	2,844,718	39.00	39.11	36.84	111.7	111.7	109.2	230.7	231.3	214.1
Cotton yarn and cloth	24,035	923,021	38.40	38.12	36.13	97.5	96.1	92.1	194.1	189.8	172.4
Woolen yarn and cloth	14,102	530,610	37.83	37.09	36.44	98.6	99.5	103.6	208.2	207.4	211.4
Synthetic silk and silk goods	16,407	670,792	40.88	42.16	38.06	147.4	148.8	144.8	328.5	342.1	297.3
Hosiery and knit goods	21,736	708,611	32.60	32.56	29.70	102.2	108.7	110.7	182.6	194.0	181.2
Garments and personal furnishings	61,107	1,960,118	32.40	31.84	31.11	125.1	128.5	127.7	209.5	211.2	206.4
Other textile products	15,695	608,598	38.78	38.26	36.27	93.8	93.6	93.9	179.3	177.3	168.4
Tobacco	9,570	434,137	45.36	43.01	41.32	107.6	108.0	113.9	272.2	259.1	262.2
Beverages	21,981	1,087,082	49.46	50.03	47.68	188.8	177.7	185.9	315.3	300.3	299.0
Chemicals and allied products	44,592	2,220,665	49.80	49.82	47.43	101.4	100.4	99.0	185.4	182.4	172.8
Clay, glass and stone products	23,223	1,128,905	48.53	47.65	44.69	152.7	148.5	149.4	301.0	287.6	271.4
Electric light and power	35,636	1,826,676	51.28	51.38	48.50	173.1	167.9	171.2	282.1	274.2	264.0
Electrical apparatus	58,916	2,971,404	50.44	50.00	47.68	181.8	177.7	185.6	335.8	326.4	292.1
Iron and steel products	286,859	15,012,880	52.34	51.59	49.57	107.0	105.9	109.4	184.2	179.6	178.2
Crude, rolled and forged products	38,238	2,101,521	54.96	56.09	52.18	140.5	137.5	143.0	209.7	209.5	202.5
Machinery (other than vehicles)	28,577	1,415,263	49.52	49.19	46.49	113.0	110.8	115.2	193.8	188.9	187.0
Agricultural implements	15,944	810,104	50.61	53.18	49.54	176.4	185.5	198.9	331.8	355.5	364.5
Land vehicles and aircraft	118,165	6,356,196	54.72	53.07	51.81	102.2	101.4	103.0	172.0	165.6	164.3
Automobiles and parts	51,982	3,084,173	59.33	57.12	55.03	132.6	129.4	120.2	204.4	192.0	172.2
Steel shipbuilding and repairing	13,652	655,533	47.98	48.74	47.52	69.2	69.2	76.8	110.7	112.4	121.7
Heating appliances	6,009	365,197	45.60	44.89	43.41	144.2	144.9	148.4	248.0	243.9	243.8
Iron and steel fabrication (n.e.s.)	11,237	602,136	53.60	51.46	48.89	100.7	97.6	100.4	228.1	212.4	205.3
Foundry and machine shop products	7,935	403,493	50.86	49.27	46.04	82.5	81.6	91.2	204.5	196.1	200.5
Other iron and steel products	47,092	2,303,437	48.91	47.69	46.32	100.4	97.4	99.3	180.2	170.2	168.0
Non-ferrous metal products	44,337	2,281,920	51.47	50.94	48.41	110.6	109.6	115.8	213.4	209.2	207.9
Non-metallic mineral products	16,142	908,376	56.27	56.22	53.38	127.4	124.7	122.6	244.9	239.4	223.7
Miscellaneous	18,875	762,025	40.37	39.14	38.26	160.5	161.6	155.1	288.5	281.6	264.6
LOGGING	58,813	2,441,217	41.65	40.45	41.65	123.2	97.4	121.9	255.6	198.3	252.3
MINING	90,407	4,888,175	54.07	52.64	51.37	108.6	106.0	100.5	183.5	174.5	161.6
Coal	23,375	1,202,816	51.46	47.01	48.27	92.9	91.8	95.4	187.7	169.6	180.9
Metallic ores	46,664	2,636,171	56.61	56.20	54.86	97.6	95.8	91.6	152.3	148.6	138.5
Non-metallic minerals (except coal)	20,468	1,049,188	51.26	50.98	48.50	190.9	181.4	149.4	359.5	339.6	256.5
COMMUNICATIONS	58,468	2,463,128	42.47	42.66	40.46	218.8	211.4	201.3	332.0	325.4	295.0
Telegraphs	8,656	397,347	45.90	46.62	45.67	127.1	124.2	126.9	229.1	227.2	227.6
Telephones	46,210	1,920,829	41.57	41.70	39.47	237.2	231.2	220.7	353.1	345.2	311.9
TRANSPORTATION	185,387	9,610,866	52.92	52.16	51.17	143.5	141.5	146.0	231.6	225.4	227.9
Street railways, cartage and storage	64,318	3,083,925	47.95	47.20	45.84	180.3	168.6	157.3	263.9	256.9	247.2
Steam railway operation	90,948	5,322,638	58.52	58.23	56.45	132.8	131.3	135.2	214.5	211.0	210.7
Shipping and stevedoring	30,121	1,404,305	46.62	44.30	46.42	134.4	130.9	147.4	241.3	223.3	263.5
CONSTRUCTION AND MAINTENANCE	260,255	11,232,793	43.16	42.65	40.76	140.7	132.9	138.0	265.6	245.4	244.2
Building	129,774	6,067,177	46.75	45.88	43.27	186.2	174.3	175.5	304.2	279.6	265.5
Highway	89,341	3,374,062	37.77	37.05	36.65	122.2	117.0	123.5	239.3	224.7	234.5
Railway	41,140	1,791,554	43.55	44.23	42.29	95.1	89.5	98.6	206.9	199.7	210.4
SERVICES (as indicated below)	80,422	2,353,240	29.27	29.48	27.91	153.6	147.7	154.1	271.6	262.7	259.5
Hotels and restaurants	48,875	1,303,247	26.66	26.93	25.96	163.4	163.8	161.6	288.5	274.2	277.5
Personal (chiefly laundries)	20,199	598,054	29.61	29.69	28.83	132.1	130.6	135.1	219.7	217.8	214.6
TRADE	299,880	11,754,095	39.20	38.75	37.36	149.7	148.1	145.2	245.8	240.4	227.4
Retail	214,546	7,858,607	36.63	38.21	35.07	146.8	145.6	141.7	245.3	240.4	227.0
Wholesale	85,334	3,895,488	45.65	45.18	43.08	160.7	158.1	157.6	246.8	240.2	226.2
EIGHT LEADING INDUSTRIES	2,116,554	95,583,248	45.18	44.59	42.96	132.2	128.6	130.6	231.7	222.6	217.6
FINANCE	94,771	4,057,370	42.81	42.70	41.64	152.9	151.6	145.2	225.5	223.2	206.4
Banks and trust companies	53,387	2,038,404	38.18	38.06	37.10	161.6	161.1	155.3	236.5	235.0	221.2
Brokerage and stock market operation	4,099	230,564	56.25	55.59	46.23	170.1	161.6	162.2	277.2	269.3	212.2
Insurance	37,285	1,788,402	47.97	48.08	47.59	140.2	139.0	131.7	209.2	207.8	195.3
NINE LEADING INDUSTRIES	2,211,325	99,640,618	45.06	44.51	42.90	133.0	129.6	131.2	231.4	222.6	217.2

* See explanatory statement on Pages I and II.

Table 2.- Distribution of the Employees and Weekly Payrolls of the Reporting Establishments* at July 1, 1950, in the Major Industries in the Five Economic Areas and Average Weekly Salaries and Wages of Their Employees, Together with Index Numbers of Employment and Payrolls with Comparisons from a month and a year earlier.

(The latest figures are subject to revision).

Areas and Industries	No. of Employees Reported at July 1, 1950	Weekly Salaries and Wages at July 1, 1950	Average Weekly Salaries and Wages at			Index Numbers Based on June 1, 1941 as 100 p.e.								
			July 1 1950	June 1 1950	July 1 1949	Employment			Payrolls					
						July 1 1950	June 1 1950	July 1 1949	July 1 1950	June 1 1950	July 1 1949			
MARITIME PROVINCES														
Manufacturing	47,112	1,957,965	41.56	41.91	39.78	110.2	107.9	112.7	197.0	194.4	193.4			
Lumber products	5,690	170,722	30.00	29.23	29.26	107.9	104.3	106.4	175.6	165.4	168.2			
Pulp and paper products	6,489	329,409	50.78	49.78	49.42	123.4	124.1	116.2	238.0	234.7	218.1			
Iron and steel	16,198	782,223	48.29	49.50	46.48	98.4	97.2	106.4	174.0	176.3	184.5			
Logging	8,692	281,228	32.35	26.08	34.77	145.2	73.7	120.9	310.4	127.0	269.5			
Mining	15,316	769,086	50.21	43.97	44.98	84.7	82.6	86.0	185.4	158.9	188.8			
Transportation	13,024	639,877	49.13	47.72	47.98	128.3	131.6	132.6	216.6	216.2	219.1			
Construction	53,221	1,113,047	33.50	32.81	32.57	135.1	131.4	161.8	256.0	224.7	258.2			
Trade	18,768	607,536	32.37	32.70	31.73	141.8	139.9	137.7	221.3	220.4	210.6			
- Eight Leading Industries	144,252	5,614,125	38.92	38.19	37.47	120.4	114.6	123.0	213.6	199.5	210.2			
QUEBEC														
Manufacturing	540,758	14,903,223	43.74	43.06	41.17	117.1	116.6	119.1	214.2	210.1	206.1			
Lumber products	19,065	687,119	36.06	36.56	34.18	114.1	110.2	112.3	245.5	234.7	231.7			
Pulp and paper products	41,532	2,264,611	55.01	53.53	51.60	135.8	132.3	133.7	258.6	245.3	239.0			
Textile products	90,049	3,133,949	34.80	34.69	32.02	122.2	125.1	121.4	226.6	231.3	207.2			
Chemicals and allied products	18,236	895,787	49.12	48.31	46.69	87.2	86.1	85.2	155.7	161.1	144.8			
Iron and steel	61,144	3,046,736	49.83	48.86	47.44	96.2	96.0	107.0	169.0	155.1	168.7			
Logging	20,014	712,192	35.58	32.29	33.95	97.9	71.8	107.2	246.0	165.0	259.0			
Mining	17,791	931,212	52.34	51.81	48.33	142.1	137.6	113.8	226.4	216.9	167.5			
Communications	15,553	702,222	45.15	45.70	42.39	238.5	234.3	222.2	338.5	336.6	296.7			
Transportation	49,905	2,604,061	52.18	51.41	50.49	143.4	140.8	148.4	234.4	226.7	234.7			
Construction	69,882	2,885,599	42.01	40.97	38.36	130.1	121.7	129.5	244.6	227.1	226.2			
Services ^{1/}	20,368	575,271	26.24	26.63	27.46	167.7	161.1	164.6	267.2	260.0	259.5			
Trade	69,023	2,687,775	38.94	38.06	36.47	144.8	144.5	139.1	235.7	230.0	212.0			
- Eight Leading Industries	603,294	26,001,545	43.10	42.52	40.63	125.6	122.7	125.9	225.9	217.7	213.4			
ONTARIO														
Manufacturing	541,996	26,487,044	48.87	48.28	45.95	124.9	122.4	123.4	228.7	216.6	207.7			
Lumber products	28,525	1,131,444	39.86	37.94	37.48	127.4	122.3	125.3	229.5	210.8	214.1			
Plant products - edible	33,661	1,318,601	38.94	39.45	35.20	148.0	133.5	153.4	246.1	225.1	237.8			
Pulp and paper products	54,643	2,890,687	52.90	52.18	49.14	166.9	163.6	162.7	274.0	264.5	247.2			
Textile products	57,860	2,182,406	37.37	36.81	36.22	101.3	103.1	104.3	189.6	189.8	189.4			
Chemicals and allied products	21,932	1,105,604	50.41	50.70	47.99	112.2	110.5	106.0	206.7	204.8	189.5			
Electrical apparatus	42,465	2,182,406	50.97	50.05	47.55	188.1	184.0	166.4	337.5	324.2	288.9			
Iron and steel	174,788	9,461,108	54.13	53.40	50.98	110.6	108.9	106.9	192.3	186.9	178.3			
Non-ferrous metal products	25,164	1,298,228	51.69	51.10	48.05	110.4	109.7	113.6	225.5	222.0	211.2			
Logging	13,571	530,003	39.05	35.41	40.97	132.9	107.9	119.0	268.5	212.3	270.9			
Mining	27,172	1,491,993	54.91	54.76	53.31	67.5	66.5	61.4	156.4	154.2	123.1			
Communications	23,261	988,446	42.49	42.72	40.32	226.7	220.9	212.9	348.6	338.7	309.9			
Transportation	58,144	3,161,263	54.37	53.60	52.23	131.5	149.1	162.1	238.5	231.2	229.7			
Construction	85,129	3,921,795	46.07	45.47	43.83	142.9	134.6	131.1	259.4	240.3	225.7			
Services ^{1/}	33,715	1,011,568	30.00	29.87	28.07	142.9	139.5	141.1	275.0	268.3	251.7			
Trade	121,284	4,849,634	39.99	39.38	37.99	147.5	145.7	141.5	244.9	239.8	225.6			
- Eight Leading Industries	904,254	42,441,736	46.94	46.36	44.54	131.6	128.4	128.0	228.3	220.1	210.3			
PRAIRIE PROVINCES														
Manufacturing	73,916	3,309,914	44.78	44.42	43.17	136.6	134.2	139.9	236.9	229.4	232.1			
Animal products - edible	9,861	469,796	47.64	48.43	44.90	137.5	129.8	139.3	227.4	217.9	216.5			
Lumber products	5,256	204,247	32.87	32.37	37.09	127.7	119.3	133.1	226.2	207.7	224.4			
Plant products - edible	6,630	272,346	41.06	41.31	39.50	141.9	139.8	153.8	236.4	234.4	246.9			
Textile products	5,547	171,618	30.92	30.59	29.95	131.7	130.0	137.2	228.9	223.4	231.0			
Iron and steel	23,045	1,113,220	48.31	47.23	47.50	124.7	123.6	123.9	218.7	212.2	213.5			
Mining	19,060	1,111,186	58.30	57.02	55.67	171.4	168.5	164.6	283.2	272.4	260.6			
Communications	8,675	358,757	41.36	41.90	40.56	200.0	192.4	180.4	314.5	306.4	281.1			
Transportation	42,789	2,263,918	52.91	52.48	51.41	135.3	132.7	135.5	210.3	204.6	204.7			
Construction	47,003	2,064,767	43.93	43.22	42.10	140.3	128.1	129.4	276.4	248.4	244.5			
Services ^{1/}	12,977	371,392	28.62	29.24	27.60	155.6	142.3	162.8	263.8	246.5	253.4			
Trade	57,054	2,219,330	39.90	38.62	37.35	152.0	147.6	147.6	242.7	234.0	227.3			
- Eight Leading Industries	262,335	11,726,859	44.71	44.39	43.16	145.1	139.1	141.7	245.0	233.3	230.9			
BRITISH COLUMBIA														
Manufacturing	79,337	3,960,888	49.92	48.59	47.93	142.1	138.0	139.2	251.8	238.0	236.8			
Animal products - edible	6,026	288,573	47.89	47.37	44.71	143.2	135.4	140.8	275.5	257.8	252.5			
Lumber products	29,800	1,453,819	48.79	45.61	46.72	165.9	152.2	145.5	285.8	280.9	258.8			
Plant products - edible	5,250	193,006	36.79	39.58	37.82	163.5	132.4	156.8	294.9	257.1	263.2			
Pulp and paper products	9,112	502,429	55.14	54.90	52.14	144.3	142.2	160.5	239.1	234.6	236.9			
Iron and steel	11,684	609,591	52.17	51.58	48.90	97.4	96.7	101.8	170.1	167.1	169.2			
Non-ferrous metal products	4,419	248,567	56.85	54.98	54.10	136.9	134.3	134.9	217.9	209.9	206.7			
Logging	15,475	888,199	57.40	56.27	55.98	162.4	161.8	169.1	236.2	230.7	239.4			
Mining	11,066	584,698	52.83	53.15	52.83	110.7	106.4	103.2	166.6	159.5	155.8			
Transportation	21,525	1,141,757	53.04	52.15	51.48	157.7	155.9	162.9	270.3	262.6	270.2			
Construction	25,020	1,247,585	48.68	48.73	47.33	187.3	186.9	200.6	360.9	351.8	366.6			
Services ^{1/}	9,580	311,138	32.48	32.45	30.99	162.5	160.3	174.4	284.8	280.8	293.2			
Trade	33,771	1,389,620	41.15	41.48	39.90	166.8	164.2	170.7	293.7	291.3	269.6			
- Eight Leading Industries	202,419	9,796,983	48.40	47.59	46.76	154.0	151.0	155.0	262.1	252.7	254.4			

* See explanatory statement on pages I and II. 1/ See footnote 2 on page 2.

Table 3.- Distribution of the Employees and Weekly Payrolls of the Reporting Establishments* at July 1, 1950 in the Major Industries in the Indicated Provinces and Average Salaries and Wages of their Employees, Together with Index Numbers of Employment and Payrolls with Comparisons from a month and a year earlier.

(The latest figures are subject to revision).

Provinces and Industries	No. of Employees Reported at July 1, 1950	Weekly Salaries and Wages at July 1, 1950	Average Weekly Salaries and Wages at			Index Numbers Based on June 1, 1941 as 100 p.c.					
			July 1 1950	June 1 1950	July 1 1949	Employment			Payrolls		
						July 1 1950	June 1 1950	July 1 1949	July 1 1950	June 1 1950	July 1 1949
PRINCE EDWARD ISLAND											
Manufacturing	902	31,920	35.39	36.88	34.81	161.8	170.6	160.2	284.3	312.8	269.6
Trade	753	19,534	25.94	26.27	24.59	134.5	129.8	129.8	195.0	186.8	178.7
- Eight Leading Industries	3,872	137,876	35.56	36.17	35.07	167.8	166.2	142.7	272.1	257.9	230.4
NOVA SCOTIA											
Manufacturing	25,233	1,060,718	41.64	42.75	39.59	104.3	101.3	109.2	180.3	179.8	180.0
Animal products - edible	2,987	106,701	35.72	36.01	31.99	138.7	122.9	135.1	256.0	232.1	226.6
Iron and steel	11,276	545,338	48.36	50.95	46.33	92.0	89.4	101.7	167.0	170.9	176.6
Mining	14,108	721,063	51.12	44.42	46.93	84.3	82.4	85.4	186.6	158.6	170.1
Coal	13,058	674,264	51.64	44.78	46.17	82.4	80.8	84.3	185.9	156.3	168.4
Transportation	6,711	300,340	44.75	44.02	45.83	121.8	124.7	120.6	198.8	200.2	201.4
Steam railway operation	3,656	194,642	53.24	51.96	53.13	108.8	110.3	105.7	198.0	195.8	191.9
Snipping and stevedoring	1,991	61,294	30.79	31.57	35.29	133.8	139.1	138.6	173.0	184.4	202.5
Construction	18,205	598,895	32.90	32.23	31.93	103.8	102.8	135.8	196.6	185.2	242.6
Building	4,984	183,410	36.80	35.32	32.80	96.2	89.0	102.3	164.1	144.0	154.5
Highway	11,728	355,391	30.30	30.01	30.76	114.1	113.5	158.7	220.9	217.6	313.7
Retail trade	6,909	197,587	28.60	30.24	28.61	143.1	141.3	138.7	219.5	229.1	211.9
Wholesale trade	3,212	128,680	40.12	40.07	39.44	180.5	166.6	164.0	215.0	209.4	203.6
- Eight Leading Industries	79,501	3,151,589	39.64	38.68	37.63	109.9	107.3	117.6	192.5	183.2	194.7
NEW BRUNSWICK											
Manufacturing	20,977	675,329	41.73	41.14	40.18	114.8	113.1	114.6	218.8	212.4	211.1
Lumber products	3,266	101,955	31.22	30.33	30.83	93.1	93.8	92.4	174.6	170.0	172.7
Pulp and paper products	4,343	235,121	54.14	52.88	53.19	128.2	129.4	118.3	250.2	245.4	226.6
Iron and steel	4,762	229,285	48.15	46.38	46.94	107.9	111.0	118.3	191.5	189.6	204.7
Logging	7,911	257,827	32.69	27.22	36.69	158.9	71.9	128.4	319.3	120.7	280.8
Transportation	5,661	304,617	53.81	51.41	49.90	125.8	131.2	137.9	230.7	229.8	235.1
Steam railway operation	3,928	230,364	58.65	57.78	56.86	132.2	134.6	134.6	222.7	223.4	216.8
Construction	13,871	474,663	34.22	33.37	33.60	169.5	169.6	165.0	307.6	300.3	293.2
Highway	8,226	258,661	31.44	29.95	30.39	195.2	207.4	171.9	423.9	428.6	350.8
Railway	2,557	102,526	40.10	42.09	40.73	98.4	86.9	96.3	215.5	203.8	218.7
Retail trade	5,203	161,861	31.11	30.23	30.02	137.2	136.2	132.2	249.4	240.5	230.9
- Eight Leading Industries	60,879	2,324,860	38.19	37.64	37.51	135.1	124.6	130.9	247.3	224.8	236.0
MANITOBA											
Manufacturing	40,704	1,798,370	44.18	43.65	42.51	131.3	127.2	134.1	224.8	215.0	220.6
Animal products - edible	3,402	170,634	50.16	51.28	47.00	130.9	121.9	133.8	214.3	203.9	208.5
Plant products - edible	3,046	123,591	40.57	41.04	38.40	140.3	136.8	169.3	230.4	227.2	247.6
Pulp and paper products	4,249	196,924	46.35	46.63	44.02	149.4	135.8	145.8	240.1	219.2	222.3
Textiles	4,560	137,496	30.15	30.19	29.74	131.3	127.9	141.0	220.5	215.1	233.6
Iron and steel	15,066	729,039	46.58	46.90	47.30	121.4	121.3	122.1	214.2	207.5	210.6
Transportation	19,579	1,030,198	52.62	52.15	51.58	137.4	134.3	137.1	213.8	207.2	209.1
Street railways	7,670	341,795	44.58	43.80	44.58	162.2	149.1	166.0	233.9	225.3	239.9
Steam railway operation	11,736	678,943	57.85	57.81	56.44	126.5	128.4	124.4	202.9	197.9	194.7
Construction	16,738	737,567	44.07	42.90	42.06	132.7	112.3	119.7	248.2	204.6	213.9
Building	7,442	363,497	46.64	46.10	43.94	143.8	113.8	122.4	239.9	179.1	183.5
Railway	5,276	227,765	43.17	44.30	42.79	94.8	90.7	90.0	206.6	204.7	196.0
Services	4,841	134,690	27.82	27.62	27.16	158.3	154.5	161.7	260.7	243.0	263.0
Retail trade	16,627	616,674	37.09	36.92	35.91	145.5	137.8	146.4	227.5	214.5	221.7
Wholesale trade	8,001	342,924	42.88	43.15	41.05	137.5	133.8	136.4	211.5	206.5	202.2
- Eight Leading Industries	114,002	5,041,424	44.22	43.91	42.76	135.9	129.0	134.7	227.0	214.0	217.5
SASKATCHEWAN											
Manufacturing	10,328	481,463	44.68	44.79	43.34	132.1	130.0	136.1	217.7	214.7	217.8
Animal products - edible	2,737	117,094	42.78	44.15	40.16	134.0	128.1	139.7	229.5	226.4	224.7
Street railways	4,292	176,302	41.06	40.69	39.16	97.7	95.9	102.0	169.3	154.9	168.5
Steam railway operation	4,867	313,545	64.42	63.66	61.42	127.5	126.9	128.5	188.3	184.9	181.1
Construction	11,760	501,339	42.63	43.20	40.98	125.2	120.1	125.6	256.5	249.2	247.3
Highway	4,216	186,362	43.97	44.59	42.13	136.0	136.4	134.7	295.9	303.0	283.0
Railway	4,396	187,328	42.59	43.65	42.49	97.8	93.2	94.2	191.5	187.1	184.2
Retail trade	7,703	276,609	35.91	36.16	35.30	139.0	137.1	132.0	236.8	235.2	223.4
Wholesale trade	4,812	209,869	43.62	42.31	40.22	136.0	134.8	139.2	236.5	226.3	223.1
- Eight Leading Industries	48,947	2,128,466	43.65	43.38	41.83	132.0	129.2	131.3	221.1	216.9	211.8
ALBERTA											
Manufacturing	22,684	1,050,091	45.89	45.62	44.34	156.9	150.6	153.3	281.3	268.4	265.0
Animal products - edible	3,722	182,038	48.92	49.06	46.59	142.2	134.1	140.0	239.8	226.8	224.9
Plant products - edible	2,410	100,791	41.82	42.25	40.28	138.2	133.5	142.9	240.0	234.2	239.8
Iron and steel	5,739	276,537	48.19	47.50	47.99	158.6	154.6	152.5	268.1	257.5	256.8
Mining	14,720	847,341	57.56	55.60	54.75	198.1	195.6	190.9	306.3	293.1	281.8
Coal	6,803	361,413	53.13	51.34	52.11	127.5	127.4	134.9	204.0	196.9	211.7
Transportation	14,061	743,873	52.94	52.65	51.57	160.1	147.1	149.0	234.3	228.4	226.6
Street railways	5,476	245,258	44.79	44.90	43.22	138.5	132.6	129.9	211.2	210.1	158.1
Steam railway operation	8,042	473,159	58.84	58.60	57.75	146.5	144.1	145.7	241.8	236.8	236.0
Construction	18,606	825,861	44.63	43.48	42.96	158.8	150.1	141.3	324.6	298.8	278.1
Highway	6,997	295,416	42.22	40.05	41.80	141.4	127.6	128.6	268.4	229.8	241.6
Railway	3,841	166,847	43.44	43.80	42.13	88.4	85.1	91.8	199.3	193.6	200.7
Services	5,791	169,508	29.27	31.32	26.23	164.6	136.6	177.2	270.9	240.5	271.4
Retail trade	13,457	499,296	37.10	36.17	35.20	166.1	162.5	155.2	286.9	273.8	255.0
Wholesale trade	6,454	273,998	42.45	42.53	41.26	172.7	170.1	169.6	270.8	267.1	242.6
- Eight Leading Industries	99,386	4,558,969	45.87	45.42	44.34	165.8	159.8	157.8	264.2	270.4	261.0

* See explanatory statement on pages I and II.

1/ See footnote 4 on page 2.

Table 4.- Distribution of the Employees and Weekly Payrolls of the Reporting Establishments* at July 1, 1950 in the Major Industries in the Larger Cities, and Average Weekly Salaries and Wages of their Employees, Together with Index Numbers of Employment and Payrolls with Comparisons from a month and a year earlier.

(The latest figures are subject to revision).

Cities and Industries	No. of Employees Reported at July 1, 1950	Weekly Salaries and Wages at July 1, 1950	Average Weekly Salaries and Wages at			Index Numbers Based on June 1, 1941 as 100 p.c.					
			July 1 1950	June 1 1950	July 1 1949	Employment			Payrolls		
						July 1 1950	June 1 1950	July 1 1949	July 1 1950	June 1 1950	July 1 1949
MONTREAL											
Manufacturing	185,332	8,319,942	44.89	44.10	42.47	121.8	122.3	125.2	212.6	209.6	204.7
Plant products - edible	11,787	467,272	39.64	39.22	37.48	133.5	130.8	126.8	249.8	242.1	223.9
Pulp and paper products	14,102	728,493	51.68	50.75	47.75	155.7	154.4	151.3	287.4	279.9	288.3
Textiles	42,465	1,490,400	35.10	34.67	32.60	125.0	128.1	123.2	219.6	222.4	201.3
Tobacco	5,698	277,591	48.72	45.73	44.02	97.0	97.6	101.5	273.8	258.7	289.2
Iron and steel	41,484	2,121,041	51.13	49.47	48.90	91.8	92.7	105.4	149.3	145.9	163.9
Communications	8,387	427,406	51.08	51.50	47.93	254.2	250.3	230.0	346.9	344.5	297.1
Transportation	19,074	929,187	48.71	46.61	47.25	147.8	141.6	148.1	259.2	237.7	253.2
Construction	26,798	1,198,148	44.54	43.74	40.08	215.8	198.8	203.9	346.6	318.0	293.8
Services ^{1/}	14,415	435,870	30.24	30.05	29.02	162.3	162.2	159.1	280.0	258.2	250.5
Trade	51,759	2,074,888	40.09	39.00	37.08	146.4	147.2	141.7	231.8	226.6	207.0
- Eight Leading Industries	306,236	13,416,628	43.81	42.92	41.23	135.2	134.2	134.8	230.9	224.7	216.8
QUEBEC											
Manufacturing	18,025	688,362	38.19	37.92	35.50	94.9	92.8	98.7	178.5	173.2	173.1
Iron and steel	1,184	55,961	48.49	48.38	46.66	45.0	45.0	77.9	74.6	76.1	123.0
Transportation	2,080	83,833	40.30	41.17	40.66	190.4	191.0	180.3	255.3	261.6	280.0
Construction	4,904	184,799	37.86	40.00	36.06	181.1	171.8	190.4	346.8	343.2	349.3
Services ^{1/}	1,915	62,194	27.28	27.74	26.95	161.8	149.9	187.9	316.8	298.7	329.2
Trade	5,858	193,171	32.98	33.10	31.25	159.4	157.3	155.2	246.9	244.6	226.4
- Eight Leading Industries	33,589	1,238,166	36.86	37.20	34.78	120.5	117.3	123.1	215.1	211.4	207.5
TORONTO											
Manufacturing	177,958	8,522,192	47.89	47.31	45.41	128.3	127.3	124.4	228.3	223.6	209.3
Plant products - edible	13,304	539,995	40.59	39.97	38.22	124.2	123.5	122.8	210.9	206.5	194.4
Pulp and paper products	23,742	1,209,833	50.96	50.97	48.03	151.6	149.3	147.3	259.8	255.7	236.1
Textiles	21,305	811,450	38.09	37.91	37.12	106.8	107.9	108.3	190.9	193.8	187.3
Chemicals and allied products	11,184	549,154	49.10	49.26	46.78	144.2	142.0	142.5	274.0	270.5	287.0
Electrical apparatus	20,423	1,030,616	50.46	49.23	46.89	203.7	194.4	167.8	351.7	334.6	286.2
Iron and steel	38,233	1,953,040	51.08	50.57	48.48	109.9	109.3	108.2	193.6	190.5	177.3
Communications	7,082	351,624	46.65	50.06	46.22	230.7	224.0	216.8	330.1	323.0	290.9
Transportation	14,152	715,901	50.59	49.38	48.20	178.6	175.6	168.6	289.8	278.3	269.0
Construction	16,186	845,911	52.26	50.74	49.79	174.3	169.7	164.5	285.2	268.0	241.4
Services ^{1/}	18,613	658,199	33.60	33.18	30.79	132.2	131.7	129.8	266.3	262.0	244.3
Trade	60,223	2,623,839	43.57	43.19	41.23	150.6	149.9	146.7	247.7	244.4	228.6
- Eight Leading Industries	292,295	13,823,385	46.51	46.01	44.15	138.4	137.2	133.5	240.9	235.6	219.9
OTTAWA											
Manufacturing	9,573	420,572	43.93	42.85	41.78	96.5	94.5	101.6	173.5	165.8	174.4
Pulp and paper products	3,553	172,792	48.63	47.07	45.97	126.1	125.9	119.4	213.8	208.5	191.8
Iron and steel	1,046	45,920	43.90	43.27	41.82	31.9	30.9	54.3	63.0	60.0	102.1
Construction	5,230	215,478	41.20	40.07	39.37	195.4	187.2	184.1	342.2	318.8	308.3
Services ^{1/}	2,891	78,928	27.30	27.23	26.26	137.1	134.2	138.3	275.2	268.5	260.2
Trade	7,760	263,935	34.01	33.88	32.26	154.6	154.5	152.6	239.5	233.9	226.1
- Eight Leading Industries	26,473	1,115,268	39.17	38.35	37.53	135.0	132.4	134.1	228.4	219.4	217.2
HAMILTON											
Manufacturing	62,981	2,716,126	51.27	52.49	49.01	121.7	118.7	118.8	218.5	218.3	205.2
Textiles	6,080	214,934	35.35	35.02	34.93	90.0	92.7	97.2	167.4	160.3	169.1
Electrical apparatus	8,087	442,759	54.75	54.17	51.18	151.5	146.4	139.0	315.6	301.8	271.9
Iron and steel	24,416	1,359,022	55.66	58.80	54.65	111.0	108.1	106.6	194.5	200.0	183.9
Construction	4,026	201,283	50.00	48.92	46.32	145.0	136.8	137.1	266.5	258.9	232.1
Trade	7,584	292,747	38.60	37.91	37.42	139.9	141.1	127.3	240.2	238.0	213.1
- Eight Leading Industries	69,517	3,391,335	48.93	49.53	46.95	127.4	124.8	123.2	225.9	224.1	210.4
WINDSOR											
Manufacturing	34,787	2,100,484	60.38	56.91	54.81	127.6	125.1	126.3	193.4	178.7	174.2
Iron and steel	29,179	1,811,465	62.08	58.27	56.95	124.1	121.0	120.2	187.6	171.6	166.7
Construction	1,799	101,206	56.26	55.73	51.85	258.4	259.8	202.6	483.3	481.4	349.2
Trade	3,790	151,971	40.10	38.75	37.28	169.8	168.1	169.0	228.1	218.1	211.0
- Eight Leading Industries	43,552	2,490,381	57.18	54.27	52.33	132.9	130.4	130.0	204.6	190.8	182.8
WINNIPEG											
Manufacturing	53,293	1,438,308	43.20	42.69	41.43	129.9	125.7	153.9	221.0	211.2	218.1
Animal products - edible	3,091	158,788	51.38	52.21	47.66	126.6	118.6	131.3	208.2	199.9	200.4
Plant products - edible	2,645	107,709	40.72	41.23	38.40	133.4	129.6	158.8	223.1	219.5	260.6
Textiles	4,313	132,217	30.66	30.58	30.25	128.1	125.4	137.6	216.4	211.3	229.3
Iron and steel	11,565	538,694	47.22	45.86	45.42	119.6	119.4	120.3	208.4	202.2	208.1
Communications	1,573	67,832	43.12	46.12	40.37	218.5	221.4	193.6	285.7	309.7	247.7
Transportation	4,713	207,033	43.93	43.28	43.29	180.7	164.2	166.0	232.9	220.3	222.9
Construction	5,560	235,833	42.42	41.40	41.50	111.8	82.7	91.7	166.4	120.3	133.7
Services ^{1/}	4,347	122,986	28.29	28.03	27.07	165.7	162.2	163.2	247.5	239.6	252.6
Trade	21,969	859,815	39.14	39.17	37.68	144.6	137.4	145.4	225.5	214.4	219.0
- Eight Leading Industries	71,556	2,935,283	41.03	40.73	39.50	136.6	129.1	136.5	219.5	206.0	211.5
VANCOUVER											
Manufacturing	33,927	1,692,620	49.89	48.10	47.50	141.1	139.6	136.8	249.7	238.3	229.7
Lumber products	10,125	508,897	50.08	48.41	47.89	160.4	158.9	148.4	278.6	266.1	246.8
Iron and steel	7,663	397,278	52.53	51.41	49.75	90.6	89.6	95.6	159.8	154.8	158.3
Communications	4,970	201,224	40.49	39.22	39.42	207.4	203.5	191.2	307.3	292.2	275.8
Transportation	8,711	433,525	49.77	46.77	47.49	150.1	149.1	158.2	239.0	232.8	239.6
Construction	9,314	495,441	53.30	51.20	51.39	273.4	270.1	330.9	483.6	459.1	564.9
Services ^{1/}	6,449	216,680	33.40	33.55	32.12	165.1	164.2	175.1	284.7	282.7	292.6
Trade	23,905	1,006,765	42.12	42.48	41.19	162.5	159.6	161.0	290.4	287.6	281.6
- Eight Leading Industries	87,361	4,060,562	46.37	45.38	44.78	160.0	158.1	162.4	279.3	270.0	272.6

* See explanatory statement on pages I and II. 1/ See footnote 4 on page 2.

Table 5.- Distribution of the Employees and Weekly Payrolls of the Reporting Establishments* at July 1, 1950 in the Major Industries in Specified Cities and Average Weekly Salaries and Wages of their Employees, Together with Index Numbers of Employment and Payrolls with Comparisons from a month and a year earlier.

(The latest figures are subject to revision).

Cities and Industries	No. of Employees Reported at July 1, 1950	Weekly Salaries and Wages at July 1, 1950	Average Weekly Salaries and Wages at			Index Numbers Based on June 1, 1941 as 100 p.c.					
						Employment			Payrolls		
			July 1 1950	June 1 1950	July 1 1949	July 1 1950	June 1 1950	July 1 1949	July 1 1950	June 1 1950	July 1 1949
HALIFAX											
Manufacturing	7,238	297,141	41.05	41.20	39.37	100.1	97.2	104.7	180.7	176.0	180.3
Plant products - edible	1,284	35,319	27.51	27.66	24.79	96.4	96.3	86.2	158.7	159.5	128.0
Iron and steel	2,818	125,154	44.41	46.72	44.39	90.2	86.0	103.9	159.8	158.4	183.9
Transportation	2,016	64,547	32.02	31.99	34.08	166.6	170.9	144.6	211.8	217.0	195.6
Construction	3,420	133,927	39.16	37.64	34.57	138.3	126.8	156.3	192.3	168.0	192.0
Trade	6,227	201,934	32.43	34.62	32.77	151.9	149.2	147.5	217.2	227.8	212.9
- Nine Leading Industries	23,034	838,494	36.40	36.74	36.26	126.6	122.7	126.7	201.7	197.3	195.0
SAINT JOHN											
Manufacturing	4,106	167,285	40.74	39.68	39.28	81.8	86.1	91.1	161.9	155.8	164.1
Iron and steel	495	23,195	46.86	44.54	45.18	38.4	47.2	87.0	65.1	78.2	109.8
Trade	3,233	107,541	33.26	32.55	32.15	112.6	111.1	111.6	189.8	183.1	180.6
- Nine Leading Industries	12,557	466,201	37.13	36.08	36.69	113.5	115.9	121.2	196.1	194.6	201.8
SHERBROOKE											
Manufacturing	7,309	279,788	38.28	38.51	34.33	102.8	104.9	108.5	188.6	193.8	174.8
Textiles	4,265	151,412	35.50	36.77	31.89	100.8	105.1	103.5	195.8	211.5	178.4
Iron and steel	1,626	74,518	45.83	45.26	39.96	81.5	79.6	86.0	143.0	137.9	131.6
- Nine Leading Industries	10,628	394,898	37.16	37.55	33.13	117.6	117.4	115.4	211.0	212.9	184.2
THREE RIVERS											
Manufacturing	8,289	388,914	46.92	46.41	45.92	130.5	128.1	134.2	222.8	216.3	224.1
Pulp and paper products	3,893	225,783	61.14	61.18	58.12	128.8	122.1	136.9	243.3	230.7	245.7
Textiles	2,466	77,130	31.03	30.97	32.99	106.8	106.3	100.6	191.1	189.9	191.3
- Nine Leading Industries	11,746	499,037	42.49	42.28	42.21	141.6	136.4	139.9	231.8	222.3	227.7
BRANTFORD											
Manufacturing	13,109	604,106	46.08	45.31	45.36	-	-	-	-	-	-
Textiles	1,934	74,044	38.29	38.77	39.84	-	-	-	-	-	-
Iron and steel	6,804	333,939	50.57	48.63	49.80	-	-	-	-	-	-
- Nine Leading Industries	15,320	686,609	44.81	44.11	44.02	-	-	-	-	-	-
KITCHENER											
Manufacturing	16,447	715,330	43.49	42.61	40.86	133.4	130.8	132.3	254.6	244.0	237.1
Animal products - edible	1,495	69,533	46.51	46.70	45.63	138.7	132.3	134.1	263.2	262.9	249.3
Leather products	1,634	64,894	39.71	39.71	38.61	98.3	103.5	102.7	173.7	182.8	176.4
Lumber products	2,187	98,978	44.75	42.35	40.19	162.6	160.0	153.7	317.7	295.6	269.7
Rubber products	4,911	222,188	45.24	44.37	41.51	147.9	140.6	146.0	279.8	260.9	255.4
Textiles	1,780	59,766	33.57	31.46	33.08	103.0	102.6	104.2	199.6	186.1	202.6
- Nine Leading Industries	21,393	922,902	43.14	42.19	40.74	136.9	136.3	134.9	264.3	253.6	242.4
LONDON											
Manufacturing	16,551	765,034	46.22	45.52	42.61	145.3	141.7	145.2	271.0	260.4	249.0
Plant products - edible	2,444	96,640	39.54	39.77	36.38	157.8	143.2	159.8	280.2	255.7	261.2
Pulp and paper products	2,428	113,238	46.64	46.77	41.77	160.0	158.7	155.8	277.2	275.6	241.8
Iron and steel	4,338	218,676	50.41	49.24	47.25	154.6	151.3	142.3	281.2	268.6	243.3
Trade	4,758	180,727	38.00	37.44	36.43	173.2	173.4	166.2	248.8	243.3	229.3
- Nine Leading Industries	28,816	1,266,319	43.94	43.32	41.29	158.0	154.8	155.9	273.3	263.0	252.9
ST. CATHARINES											
Manufacturing	5,421	285,495	52.86	52.45	50.14	80.2	57.3	59.7	118.2	112.0	111.6
Pulp and paper products	2,185	134,520	61.54	62.17	57.59	139.2	134.4	146.2	232.7	226.9	228.8
Iron and steel	1,996	94,388	47.29	46.96	46.86	29.4	27.2	23.8	66.8	52.2	45.7
Transportation	2,043	96,197	47.09	47.73	49.46	138.6	138.1	147.6	154.6	156.0	173.1
Trade	2,152	82,378	38.28	38.18	36.81	131.5	126.8	131.6	234.1	228.6	226.3
- Nine Leading Industries	11,661	541,116	46.40	46.20	45.49	77.8	75.2	79.2	138.5	133.3	135.9
ST. CATHARINES											
Manufacturing	22,453	1,247,600	55.56	55.13	50.66	-	-	-	-	-	-
Pulp and paper products	2,922	185,769	63.58	60.60	56.90	-	-	-	-	-	-
Textiles	2,120	84,179	39.71	37.05	38.10	-	-	-	-	-	-
Iron and steel	13,765	798,770	58.03	58.43	52.26	-	-	-	-	-	-
- Nine Leading Industries	27,874	1,488,806	53.41	52.96	49.08	-	-	-	-	-	-
REGINA											
Manufacturing	2,603	111,919	44.71	44.70	43.43	109.2	106.2	107.9	171.8	167.1	164.1
Animal products - edible	577	24,240	42.02	42.80	41.49	146.9	140.8	143.1	219.0	212.8	209.6
Trade	6,361	211,047	39.37	38.64	38.78	148.2	150.4	142.8	255.9	254.3	244.5
- Nine Leading Industries	12,209	493,321	40.41	39.61	39.02	137.5	136.5	134.5	237.4	231.0	223.0
SASKATCHEWAN											
Manufacturing	2,282	98,327	43.09	42.88	41.20	186.5	186.8	187.0	314.8	313.9	299.4
Animal products - edible	737	32,920	44.67	46.53	41.43	203.0	197.2	191.7	368.6	373.1	321.9
Trade	3,286	119,147	36.28	36.82	34.62	147.1	139.7	138.8	241.9	233.3	218.6
- Nine Leading Industries	8,418	324,261	38.52	38.81	37.33	158.6	154.7	155.5	278.9	274.3	264.7
CALGARY											
Manufacturing	7,921	378,430	47.78	47.09	46.71	141.3	138.1	141.1	256.9	247.5	251.7
Plant products - edible	978	42,444	43.40	43.29	42.65	134.8	134.4	136.6	245.2	243.8	247.7
Iron and steel	2,690	127,772	47.50	47.32	46.45	143.4	141.1	149.8	251.1	226.8	245.9
Construction	2,752	119,385	43.38	42.85	43.20	134.6	128.9	115.8	297.2	281.0	254.6
Trade	8,388	334,467	39.87	39.40	38.29	168.4	164.6	155.1	263.8	264.8	236.3
- Nine Leading Industries	25,142	1,090,041	43.36	42.93	42.30	154.1	150.1	147.5	264.9	255.5	246.9
EDMONTON											
Manufacturing	8,211	379,244	46.19	45.85	43.94	158.5	153.7	148.5	287.2	276.2	254.8
Animal products - edible	2,240	109,276	48.78	49.65	46.15	143.3	138.4	143.2	331.5	227.4	218.8
Iron and steel	2,127	102,803	48.24	46.69	46.83	172.3	164.2	147.1	323.2	298.3	287.9
Construction	6,229	241,592	46.20	46.00	45.98	415.2	393.0	318.8	677.9	624.9	517.8
Trade	8,644	328,907	38.05	37.04	36.95	200.9	197.4	187.1	338.2	323.5	296.6
- Nine Leading Industries	27,891	1,182,793	42.41	41.87	40.63	202.9	197.4	182.5	349.5	334.1	299.1
VICTORIA											
Manufacturing	5,357	271,082	50.60	49.02	48.13	141.2	139.2	146.5	245.0	234.0	242.1
Lumber products	1,357	67,764	49.94	43.32	47.46	126.8	127.0	121.0	232.3	202.3	211.2
Iron and steel	1,730	88,730	51.29	51.72	49.95	130.2	132.0	143.5	217.0	221.9	233.0
Trade	3,608	140,376	38.91	38.50	37.82	156.8	156.8	163.4	274.0	269.3	279.2
- Nine Leading Industries	13,808	618,907	44.82	43.87	42.23	153.7	151.1	156.7	272.3	260.8	261.7

* See explanatory statement on pages I and II.

x Includes Merrittton, Thorold and Welland.

TABLE 6.- INDEX NUMBERS OF EMPLOYMENT BY PROVINCES AND ECONOMIC AREAS
(1925=100)

(The latest figures are subject to revision).

	CANADA	Maritime Provinces	Prince Edward Island	Nova Scotia	New Brunswick	Quebec	Ontario	Prairie Provinces	Manitoba	Sask- atchewan	Alberta	British Columbia
July 1, 1934	101.0	100.4	-	-	-	94.1	109.9	94.1	-	-	-	94.1
July 1, 1935	99.5	106.7	-	-	-	94.8	102.7	96.3	-	-	-	99.5
July 1, 1936	104.6	111.7	-	-	-	101.6	106.2	101.9	-	-	-	104.8
July 1, 1937	119.1	135.8	79.7	138.3	136.1	118.0	122.2	104.0	100.3	110.2	105.7	117.1
July 1, 1938	113.5	116.7	104.6	126.6	105.4	119.9	114.0	99.8	96.5	102.9	102.9	108.0
July 1, 1939	115.8	115.9	108.7	129.9	99.3	124.0	114.7	104.0	98.5	107.5	110.0	111.0
July 1, 1940	124.7	124.0	102.2	135.3	111.5	126.6	129.6	112.4	106.8	117.5	117.6	114.8
July 1, 1941	157.4	163.9	108.5	183.2	143.3	161.8	165.3	132.5	128.9	133.7	137.3	139.2
July 1, 1942	175.7	177.2	117.0	199.7	153.0	187.1	181.1	139.4	135.3	131.6	150.9	167.9
July 1, 1943	183.7	184.7	112.4	203.1	165.8	198.6	184.9	141.6	138.3	135.6	150.8	191.9
July 1, 1944	183.5	187.8	136.7	205.5	168.5	195.3	185.1	148.4	144.0	143.2	158.5	187.5
July 1, 1945	175.5	177.7	128.8	194.7	159.0	181.9	179.8	144.6	138.9	140.7	155.7	180.4
July 1, 1946	173.6	176.0	136.0	184.1	168.2	175.4	179.6	158.2	148.4	153.3	176.3	162.2
Jan. 1, 1947	181.0	169.4	128.9	169.0	172.4	186.7	186.7	158.3	151.3	148.4	175.4	180.4
Feb. 1	180.7	168.0	124.7	172.3	165.2	186.2	187.6	154.6	148.3	142.9	171.7	180.8
Mar. 1	180.4	148.9	124.0	138.1	164.4	188.4	188.7	155.4	149.5	145.1	171.1	180.9
Apr. 1	180.7	153.3	127.4	138.2	174.4	185.8	189.9	155.3	149.1	145.5	171.1	183.6
May 1	179.6	151.7	128.0	141.9	165.7	182.2	189.4	155.7	148.9	147.2	171.5	186.2
June 1	184.5	165.8	139.3	165.2	168.2	186.9	191.8	161.9	152.4	157.7	179.1	192.4
July 1	189.5	179.4	150.9	186.3	172.2	191.2	195.7	167.3	155.7	162.5	187.8	196.9
Aug. 1	192.6	183.9	157.0	188.2	180.1	195.0	196.7	172.1	159.1	167.5	194.8	204.2
Sept. 1	193.2	184.7	159.2	191.7	177.3	196.1	196.4	172.1	158.5	168.0	195.4	207.5
Oct. 1	194.8	188.2	162.7	196.5	179.2	199.3	199.6	166.8	155.7	163.1	186.1	206.0
Nov. 1	197.8	193.3	160.4	201.4	184.9	203.7	202.2	170.1	160.7	168.0	185.9	203.1
Dec. 1	199.6	192.3	164.3	193.9	192.0	205.6	205.0	171.7	161.8	168.4	189.0	202.6
Jan. 1, 1948	193.7	181.9	152.2	178.4	188.2	196.8	202.7	166.2	156.3	159.0	186.0	194.0
Feb. 1	189.3	179.9	170.2	182.4	177.4	193.6	198.6	156.4	152.6	148.3	167.4	190.3
Mar. 1	188.9	171.0	171.2	169.0	173.4	193.4	199.3	158.4	150.6	147.7	177.2	188.1
Apr. 1	185.6	166.1	163.7	170.7	160.3	187.3	197.7	159.6	151.1	148.8	179.8	190.8
May 1	186.5	167.9	143.0	170.4	166.4	186.3	196.7	159.6	152.2	147.2	179.1	196.1
June 1	192.3	172.5	153.7	174.6	171.0	194.4	200.0	168.9	157.8	161.0	190.9	202.0
July 1	198.0	186.7	159.7	192.9	180.5	198.6	204.8	175.9	163.1	166.9	201.2	207.8
Aug. 1	200.9	190.0	161.4	196.8	183.0	206.3	203.3	179.5	165.9	169.7	206.7	212.6
Sept. 1	201.8	189.1	165.3	198.8	178.2	205.1	205.4	180.6	166.6	169.4	209.4	216.2
Oct. 1	203.3	192.8	164.6	205.7	178.0	205.8	208.3	180.8	167.3	171.1	207.5	214.8
Nov. 1	203.6	194.9	160.4	207.7	180.8	207.1	208.6	180.3	168.6	167.9	206.1	212.2
Dec. 1	204.3	197.8	156.2	209.9	184.9	207.5	210.4	180.9	169.3	167.0	207.6	206.1
Jan. 1, 1949	196.0	177.2	151.8	178.2	177.6	198.2	206.1	173.9	162.4	158.0	201.8	192.4
Feb. 1	190.5	168.2	139.9	172.4	164.7	193.0	202.8	166.7	157.3	146.2	194.4	181.5
Mar. 1	188.9	167.1	139.1	170.3	164.8	190.2	201.8	165.6	156.4	145.9	192.3	179.6
Apr. 1	187.6	167.4	163.0	173.1	160.5	184.8	200.2	166.0	155.4	146.8	194.6	188.8
May 1	189.1	163.3	139.8	170.7	155.2	186.4	200.1	170.5	159.9	153.0	198.0	196.9
June 1	194.5	169.0	151.2	176.4	160.7	194.6	202.4	177.4	163.7	165.1	206.3	204.7
July 1	199.5	187.4	152.8	202.0	176.6	198.0	206.4	181.8	168.0	167.3	212.2	209.1
Aug. 1	200.5	188.9	157.6	203.8	171.7	199.4	205.5	185.6	170.7	169.7	218.6	212.6
Sept. 1	202.1	190.4	165.3	205.7	172.1	199.5	208.3	186.6	171.7	169.9	220.0	215.1
Oct. 1	202.2	192.0	165.9	208.8	172.0	199.5	209.2	185.9	173.6	170.8	214.3	211.9
Nov. 1	202.0	188.6	165.0	206.1	167.5	202.0	208.6	185.2	173.1	171.8	212.3	208.7
Dec. 1	201.8	193.7	171.4	208.0	176.6	201.9	208.7	184.5	172.0	170.8	212.4	203.2
Jan. 1, 1950	194.0	172.9	157.7	173.7	172.9	191.4	205.1	178.3	166.5	160.5	207.7	193.2
Feb. 1	187.2	165.5	148.2	168.3	163.1	185.8	201.0	168.9	159.5	145.4	198.4	174.9
Mar. 1	186.6	162.3	141.6	165.3	159.8	183.8	200.3	167.7	157.3	144.8	198.3	181.9
Apr. 1	187.9	163.5	147.9	167.0	160.0	184.8	200.5	168.6	157.3	146.2	200.5	189.8
May 1	188.7	159.2	150.9	162.5	155.4	185.4	201.0	170.8	158.4	149.5	203.3	195.4
June 1	196.4	174.8	167.3	180.1	168.1	193.0	207.1	178.5	160.9	164.8	214.3	203.7
July 1	201.9	183.5	179.5	184.6	182.2	197.6	212.2	186.1	169.5	168.2	223.0	207.7

Relative Weight of Employment by Provinces and Economic Areas as at July 1, 1950.

100.0 6.8 0.2 3.7 2.9 28.5 42.7 12.4 5.4 2.3 4.7 9.6

Note:- The "Relative Weight", as given just above, shows the proportion of employees in the indicated area, to the total number of all employees reported in Canada by the firms making returns at the date under review.

TABLE 7.- INDEX NUMBERS OF EMPLOYMENT BY PROVINCIAL CITIES,
(1926=100).

(The latest figures are subject to revision).

	Montreal	Quebec	Toronto	Ottawa	Hamilton	Windsor	Winnipeg	Vancouver
July 1, 1934	86.7	96.1	94.1	102.4	87.5	100.6	82.7	89.8
July 1, 1935	86.8	99.0	97.7	106.2	93.9	113.4	89.1	99.9
July 1, 1936	93.5	94.5	101.4	110.0	99.4	113.0	92.7	106.0
July 1, 1937	105.5	106.4	109.5	114.9	116.3	149.8	99.2	114.8
July 1, 1938	106.4	109.1	107.4	106.8	109.9	128.8	95.2	111.0
July 1, 1939	108.3	127.4	109.4	111.8	105.7	114.7	94.3	112.6
July 1, 1940	114.3	127.3	121.4	124.0	124.2	143.4	101.3	122.9
July 1, 1941	146.2	171.1	155.1	153.8	164.0	235.6	124.9	147.4
July 1, 1942	168.2	221.2	181.7	160.3	188.8	287.2	132.9	209.7
July 1, 1943	187.8	278.0	194.8	168.2	186.3	303.7	139.7	245.2
July 1, 1944	188.1	270.5	199.8	168.1	183.8	288.5	144.8	247.0
July 1, 1945	174.1	227.7	186.8	161.5	177.1	266.9	139.0	232.8
July 1, 1946	169.9	167.7	176.9	173.1	175.9	241.2	149.9	191.8
Jan. 1, 1947	174.1	169.5	185.5	184.4	174.9	238.4	154.2	212.9
Feb. 1	173.9	164.9	185.1	177.6	177.7	243.6	151.0	213.6
Mar. 1	174.8	166.3	187.2	175.7	177.8	250.0	151.8	214.7
Apr. 1	175.0	167.9	188.3	178.2	181.2	252.6	151.9	216.0
May 1	176.8	170.6	188.5	177.5	182.5	263.7	152.2	217.3
June 1	178.9	178.9	189.0	180.4	185.3	272.5	153.2	222.4
July 1	179.7	186.8	192.6	183.9	188.4	273.7	155.9	224.9
Aug. 1	179.3	195.6	190.8	184.0	187.2	276.5	157.4	230.5
Sept. 1	179.9	199.6	191.0	183.8	185.1	276.2	157.4	229.5
Oct. 1	181.5	199.8	191.2	182.6	187.8	279.7	153.9	225.2
Nov. 1	182.9	198.8	196.5	182.9	189.7	278.7	162.2	220.4
Dec. 1	185.8	199.7	200.2	185.5	191.8	273.9	165.9	232.3
Jan. 1, 1948	180.3	190.2	198.9	185.4	189.3	267.4	159.3	226.5
Feb. 1	178.7	188.2	196.6	183.1	189.0	206.7	154.6	226.1
Mar. 1	179.1	191.4	196.3	181.2	188.9	268.1	152.6	225.5
Apr. 1	178.3	190.7	196.2	184.1	190.4	267.8	154.2	225.5
May 1	180.6	192.9	196.5	183.5	192.4	263.1	154.4	227.5
June 1	181.9	197.9	196.6	191.2	195.3	267.9	158.3	232.0
July 1	183.1	200.3	199.2	197.2	199.6	281.7	162.0	235.8
Aug. 1	182.6	202.1	196.6	197.0	197.6	284.0	162.8	236.8
Sept. 1	185.9	204.3	198.8	197.9	198.2	284.0	163.6	240.4
Oct. 1	188.5	203.8	200.2	196.4	198.4	292.0	164.9	238.5
Nov. 1	190.2	201.9	203.4	201.1	200.5	288.4	168.3	239.7
Dec. 1	192.6	200.7	206.4	202.9	202.8	288.9	171.4	236.5
Jan. 1, 1949	186.8	186.7	204.7	202.2	197.8	284.7	165.5	228.1
Feb. 1	184.6	181.1	202.0	196.0	197.2	274.6	158.8	219.4
Mar. 1	183.3	185.4	201.7	194.6	198.1	279.1	158.2	218.1
Apr. 1	183.2	185.4	200.3	193.5	199.5	281.9	156.9	223.2
May 1	186.4	191.4	201.4	194.9	201.6	285.2	161.7	226.5
June 1	189.1	199.5	201.4	199.4	203.5	278.8	163.1	229.8
July 1	190.2	201.7	204.6	201.9	199.5	298.8	166.8	230.4
Aug. 1	187.9	204.6	201.9	202.2	201.7	295.7	168.8	232.8
Sept. 1	190.2	204.3	204.1	202.5	202.7	297.1	168.8	233.3
Oct. 1	192.3	200.7	205.9	200.0	203.7	300.1	170.6	228.3
Nov. 1	193.1	200.4	208.3	198.7	204.9	294.1	172.1	228.8
Dec. 1	195.0	200.7	211.5	203.2	206.0	285.5	172.4	228.1
Jan. 1, 1950	187.6	185.6	209.1	204.7	200.8	288.4	168.2	220.3
Feb. 1	185.1	178.0	205.4	194.9	196.8	286.3	160.9	209.1
Mar. 1	184.6	178.8	205.0	189.5	196.1	289.0	158.5	212.6
Apr. 1	185.3	180.0	207.0	192.6	196.2	263.5	158.5	217.3
May 1	187.7	185.8	208.8	198.0	199.0	261.8	159.5	218.7
June 1	189.4	192.3	210.3	199.4	202.1	299.9	157.7	224.3
July 1	190.7	197.5	212.2	203.3	206.3	305.5	166.8	227.1

Relative Weight of Employment by Cities as at July 1, 1950.

14.5 1.6 13.8 1.3 3.3 2.1 3.4 4.1

Note:- The "Relative Weight", as given just above, shows the proportion of employees in the indicated city, to the total number of all employees reported in Canada by the firms making returns at the date under review.

TABLE 8.- INDEX NUMBERS OF EMPLOYMENT BY INDUSTRIES,
(1926=100).

(The latest figures are subject to revision).

	All Industries	Manu- facturing	Logging	Mining	Commun- ications	Trans- portation	Con- struction	* Services	Trade
July 1, 1934	101.0	93.8	86.3	107.0	80.1	82.6	140.6	119.7	119.1
July 1, 1935	99.5	98.6	82.2	121.5	80.8	82.7	101.1	123.6	122.1
July 1, 1936	104.6	104.7	93.4	134.1	82.4	87.1	97.4	131.7	127.3
July 1, 1937	119.1	119.0	125.0	153.6	88.0	89.4	128.6	137.5	133.4
July 1, 1938	113.5	111.8	86.1	154.5	87.2	86.3	124.9	146.1	133.3
July 1, 1939	115.8	111.3	95.3	164.1	86.0	87.6	133.1	147.6	137.4
July 1, 1940	124.7	130.3	121.4	167.2	89.4	93.7	105.0	149.2	142.8
July 1, 1941	157.4	172.4	152.7	176.8	99.7	103.7	149.9	179.8	158.5
July 1, 1942	175.7	209.5	169.8	174.1	105.7	108.1	137.7	184.8	152.8
July 1, 1943	183.7	226.5	148.2	156.5	104.8	117.2	133.6	193.0	151.4
July 1, 1944	183.5	225.8	175.4	153.1	110.0	124.4	110.8	207.7	161.2
July 1, 1945	175.5	207.2	184.6	146.5	118.7	126.3	112.6	208.9	172.0
July 1, 1946	173.6	187.2	197.0	159.5	146.4	128.3	141.7	233.3	191.1
Jan. 1, 1947	181.0	190.6	370.5	154.0	154.9	132.0	125.1	223.7	212.3
Feb. 1	180.7	193.9	375.6	162.1	155.1	129.3	121.2	224.8	196.4
Mar. 1	180.4	194.5	377.9	135.9	156.6	129.9	123.8	226.4	197.4
Apr. 1	180.7	195.2	331.0	138.7	159.0	131.1	128.6	228.5	200.2
May 1	179.6	195.8	241.3	139.5	161.4	134.7	133.2	231.9	200.7
June 1	184.5	197.6	239.8	157.6	165.7	139.9	149.6	238.4	201.6
July 1	189.5	200.6	241.5	167.5	169.9	141.2	165.0	250.5	205.9
Aug. 1	192.6	202.5	246.0	170.2	173.5	142.7	176.2	260.2	206.0
Sept. 1	193.2	203.3	242.2	167.1	171.6	141.8	179.9	258.7	207.2
Oct. 1	194.8	203.6	286.1	165.2	169.4	141.7	180.4	251.0	211.7
Nov. 1	197.8	205.1	352.3	168.0	168.0	138.2	181.3	245.0	216.7
Dec. 1	199.6	205.1	405.2	171.0	166.4	140.0	170.5	241.8	228.3
Jan. 1, 1948	193.7	199.9	414.3	167.1	168.0	139.3	142.5	240.4	230.8
Feb. 1	189.3	200.7	393.8	153.4	168.0	132.8	137.6	239.2	212.7
Mar. 1	188.9	202.6	371.3	164.9	168.1	132.8	129.0	236.8	212.0
Apr. 1	186.6	202.0	273.3	168.8	170.5	132.5	130.8	237.9	215.3
May 1	186.5	201.8	168.6	172.3	172.0	138.3	147.0	245.0	214.4
June 1	192.3	203.6	218.4	174.8	175.6	141.6	166.6	250.2	216.6
July 1	198.0	207.2	226.6	178.7	181.3	142.8	185.5	264.1	220.0
Aug. 1	200.9	206.5	224.0	179.7	184.8	144.9	207.8	268.7	219.4
Sept. 1	201.8	209.5	220.3	181.5	185.5	145.5	201.5	268.4	220.5
Oct. 1	203.3	210.0	267.7	179.6	184.3	146.6	197.3	263.7	224.8
Nov. 1	203.6	208.3	321.6	181.5	182.7	144.6	192.7	253.9	230.5
Dec. 1	204.3	207.9	351.0	181.1	182.6	144.5	184.6	251.0	239.5
Jan. 1, 1949	196.0	202.7	326.2	176.5	182.8	140.7	153.6	245.6	238.9
Feb. 1	190.5	202.6	280.8	178.8	181.8	134.9	142.9	245.0	221.1
Mar. 1	188.9	203.0	262.1	170.5	183.3	132.9	138.7	242.2	220.0
Apr. 1	187.6	203.0	184.0	171.1	182.8	135.5	142.0	244.5	221.3
May 1	189.1	203.3	125.6	171.4	186.6	138.5	158.0	247.8	224.5
June 1	194.5	205.1	176.4	175.7	191.4	141.4	173.8	254.4	226.2
July 1	199.5	207.4	192.9	178.1	195.7	144.2	191.8	265.4	227.7
Aug. 1	200.5	206.4	166.7	183.4	201.1	145.7	203.5	272.3	227.6
Sept. 1	202.1	209.2	160.9	185.8	202.6	145.4	205.6	270.4	228.0
Oct. 1	202.2	208.6	178.7	184.1	200.6	145.6	202.6	253.0	234.5
Nov. 1	202.0	206.5	228.9	184.8	199.2	142.8	197.7	249.7	238.7
Dec. 1	201.8	204.5	246.3	184.4	199.8	142.2	191.0	248.5	248.8
Jan. 1, 1950	194.0	199.7	238.7	180.3	198.1	135.6	157.3	245.3	249.9
Feb. 1	187.2	198.9	191.5	181.1	196.9	130.8	143.8	243.6	227.9
Mar. 1	186.6	199.7	179.6	181.8	196.4	129.4	141.0	239.6	227.5
Apr. 1	187.9	200.4	158.8	183.0	199.5	130.4	149.3	243.7	228.7
May 1	188.7	200.8	106.2	183.7	200.6	136.3	156.9	247.8	230.7
June 1	196.4	204.2	154.2	187.9	205.5	139.8	184.8	254.4	232.2
July 1	201.9	207.6	195.0	192.4	210.7	141.8	195.6	264.9	234.7

Relative Weight of Employment by Industries as at July 1, 1950.

100.0 51.2 2.8 4.3 2.8 8.7 12.3 3.8 14.1

Notes:- The "Relative Weight", as given just above, shows the proportion of employees in the indicated industry, to the total number of all employees reported in Canada by the firms making returns at the date under review.

* Consisting almost entirely of hotels and restaurants and laundries and dry-cleaning establishments.

TABLE 9.- INDEX NUMBERS OF EMPLOYMENT BY INDUSTRIES
(1926=100)

(The latest figures are subject to revision).

Industries	1/Relative Weight	July 1 1950	June 1 1950	July 1 1949	July 1 1948	July 1 1947	July 1 1946	July 1 1945
MANUFACTURING	51.2	207.6	204.2	207.4	207.2	200.6	187.2	207.2
Animal products - edible	1.9	248.5	236.9	248.0	246.8	236.7	240.9	224.5
Fur and products	0.2	171.5	170.7	175.0	171.7	155.7	154.2	143.1
Leather and products	1.3	134.8	135.7	150.1	144.1	154.9	154.7	139.6
Boots and shoes	0.8	127.8	127.9	147.8	136.3	142.1	142.6	129.2
Lumber and products	4.2	158.2	152.7	153.4	156.2	150.1	131.2	129.8
Rough and dressed lumber	2.7	151.5	144.2	143.9	145.3	134.1	109.8	110.6
Furniture	0.9	179.2	178.1	169.9	165.0	158.0	149.7	128.8
Other lumber products	0.6	160.3	167.3	173.9	193.2	207.7	194.9	203.5
Musical instruments	.04	43.2	41.9	40.3	39.3	39.2	37.9	28.0
Plant products - edible	3.0	194.6	180.2	195.7	186.8	185.1	166.2	169.8
Pulp and paper products	5.6	186.6	182.3	183.1	187.0	178.6	163.5	145.2
Pulp and paper	2.4	180.4	155.6	161.3	174.5	166.4	149.7	132.8
Paper products	1.0	291.7	282.3	278.7	261.0	263.9	242.0	218.9
Printing and publishing	2.2	187.8	185.7	181.6	177.2	165.2	155.4	137.0
Rubber products	1.0	171.7	169.6	164.9	180.7	196.1	162.4	181.0
Textile products	7.5	180.1	183.6	182.3	178.2	171.2	158.2	157.4
Thread, yarn and cloth	2.8	189.7	189.7	185.6	191.0	176.7	152.8	157.8
Cotton yarn and cloth	1.1	122.7	120.9	115.8	115.9	108.6	82.0	107.4
Woollen yarn and cloth	0.7	183.6	185.4	193.3	206.4	200.4	187.3	170.6
Synthetic silk and silk goods	0.8	863.1	871.3	847.7	859.2	768.5	711.0	615.3
Hosiery and knit goods	1.0	146.1	155.4	158.3	170.6	163.6	154.3	146.6
Garments and personal furnishings	2.9	194.7	200.0	198.7	176.7	172.6	161.1	159.6
Other textile products	0.8	164.9	155.4	155.9	155.3	161.1	172.6	166.3
Tobacco	0.6	115.1	115.6	121.9	119.2	120.9	117.9	122.0
Beverages	1.0	388.1	365.3	382.2	355.0	323.0	299.9	265.7
Chemicals and allied products	2.1	357.5	353.8	348.9	343.6	336.1	324.4	472.5
Clay, glass and stone products	1.1	203.6	198.0	199.1	198.2	189.8	172.9	141.7
Electric light and power	1.7	259.5	251.7	256.6	231.3	196.9	184.1	154.2
Electrical apparatus	2.8	387.4	378.7	348.7	352.6	348.4	295.7	291.3
Iron and steel products	13.6	213.0	210.7	217.7	220.2	214.7	205.6	282.1
Crude, rolled and forged products	1.8	296.7	290.4	302.0	309.4	271.7	255.9	243.4
Machinery (other than vehicles)	1.4	254.4	249.6	259.5	259.4	256.9	233.7	216.4
Agricultural implements	0.8	190.3	200.2	214.6	222.7	193.6	165.3	144.7
Land vehicles and aircraft	5.6	185.0	183.6	186.5	177.0	174.5	167.3	244.1
Automobiles and parts	2.5	340.1	331.8	308.3	291.6	297.0	241.1	277.4
Steel shipbuilding and repairing	0.6	277.0	276.9	307.6	455.0	489.7	509.7	1252.8
Heating appliances	0.4	228.4	229.6	235.1	226.1	192.8	194.1	189.2
Iron and steel fabrication (n.e.s.)	0.5	227.7	220.8	227.1	236.0	210.0	182.1	259.6
Foundry and machine shop products	0.4	191.6	189.6	211.9	229.0	219.1	211.0	228.8
Other iron and steel products	2.2	215.6	209.3	213.3	212.8	222.9	222.7	307.2
Non-ferrous metal products	2.1	321.6	318.6	336.5	353.8	326.6	293.2	346.8
Non-metallic mineral products	0.8	229.0	224.1	220.3	223.2	222.2	226.6	223.5
Miscellaneous	0.8	355.6	358.8	344.5	288.8	280.7	293.4	339.2
LOGGING	2.6	195.0	154.2	192.9	226.6	241.5	197.0	184.6
MINING	4.3	192.4	187.9	178.1	178.7	167.5	159.5	146.5
Coal	1.1	85.0	84.0	87.3	88.9	86.6	93.9	91.6
Metallic ores	2.2	363.0	356.6	340.8	332.8	304.8	278.3	246.9
Non-metallic minerals (except coal)	1.0	307.4	292.1	240.6	254.6	237.0	201.0	179.8
COMMUNICATIONS	2.8	210.7	205.5	195.7	181.3	169.9	146.4	118.7
Telegraphs	0.4	146.8	143.4	146.6	144.4	140.7	139.5	130.8
Telephones	2.2	218.7	213.2	203.5	189.0	176.5	147.6	115.1
TRANSPORTATION	8.7	141.8	139.8	144.2	142.8	141.2	128.3	126.3
Street railways, cartage and storage	3.0	234.9	232.3	230.4	224.7	227.6	209.9	197.7
Steam railways	4.3	114.1	112.8	116.1	115.7	114.0	107.2	107.7
Shipping and stevedoring	1.4	127.5	124.2	139.9	142.3	136.8	108.0	117.8
CONSTRUCTION AND MAINTENANCE	12.3	195.6	184.8	191.8	185.5	165.0	141.7	112.6
Building	6.1	262.7	246.0	247.7	233.7	198.3	154.5	98.5
Highway	4.2	220.4	211.0	222.6	232.4	209.1	180.6	146.6
Railway	2.0	95.5	89.9	99.0	99.6	83.4	92.3	96.0
SERVICES (as indicated below)	3.8	264.9	254.4	265.4	264.1	250.5	233.3	208.9
Hotels and restaurants	2.3	270.7	254.9	267.8	270.8	266.6	234.5	210.3
Personal (chiefly laundries)	1.0	242.6	239.7	244.3	251.5	238.8	231.0	206.3
TRADE	14.1	234.7	232.2	227.7	220.0	205.9	191.1	172.0
Retail	10.1	241.7	239.6	233.3	227.7	211.6	197.5	177.8
Wholesale	4.0	218.9	215.3	214.7	203.0	192.9	175.9	157.8
EIGHT LEADING INDUSTRIES	100.0	201.9	196.4	199.5	198.0	189.5	173.6	175.5
FINANCE	-	177.5	176.2	168.6	162.2	153.6	144.2	129.6
Bank and trust companies	-	179.8	179.3	172.8	164.9	154.4	144.3	133.2
Brokerage and stock market operations	-	209.7	199.2	187.7	195.8	208.6	253.8	190.9
Insurance	-	171.5	170.0	161.1	165.6	148.3	137.6	121.3
NINE LEADING INDUSTRIES	-	200.7	195.5	198.0	196.3	187.7	172.2	173.3

1/ The relative weight shows the proportion of employees reported in the indicated industry to the total number of employees reported in Canada by the firms making returns at the date under review.

TABLE 10.- INDEX OF EMPLOYMENT BY ECONOMIC AREAS AND INDUSTRIES
(1926=100)

(The latest figures are subject to revision).

Areas and Industries		1/Relative Weight	July 1 1950	June 1 1950	July 1 1949	July 1 1948	July 1 1947	July 1 1946	July 1 1945
Maritime	- Manufacturing	32.7	167.7	164.2	171.6	174.9	173.0	179.3	198.7
Provinces	Lumber products	4.0	120.8	116.8	115.8	122.8	123.5	118.8	115.7
	Pulp and paper products	4.5	230.9	232.2	217.4	243.0	233.0	223.8	201.6
	Textile products	2.5	97.1	92.1	108.2	123.2	126.7	109.8	112.3
	Iron and steel	11.2	180.1	178.0	198.4	191.5	194.5	226.6	307.9
	Other manufactures	10.5	192.2	186.1	187.9	186.3	178.3	176.1	162.9
	Logging	6.0	377.3	191.4	314.1	269.3	256.5	255.6	196.7
	Mining	10.6	100.7	98.5	102.3	101.9	97.9	108.5	103.7
	Communications	3.0	179.0	171.8	164.7	149.7	148.2	139.4	128.9
	Transportation	9.0	109.3	112.3	113.0	121.1	111.1	110.4	144.1
	Construction	23.0	341.6	332.2	384.0	386.8	361.2	307.9	254.3
	Services 2/	2.7	341.1	310.8	323.7	322.7	312.4	302.0	292.8
	Trade	13.0	239.3	236.0	232.3	219.7	214.2	208.4	198.6
Maritimes	- All Industries	100.0	183.5	174.6	137.4	186.7	179.4	176.0	177.7
Quebec	- Manufacturing	56.5	203.7	202.8	207.1	207.1	203.1	191.0	215.7
	Lumber products	3.2	164.2	158.6	161.6	168.1	171.5	169.9	157.1
	Pulp and paper products	6.9	168.9	164.6	166.3	173.8	167.2	155.8	141.9
	Textile products	14.9	219.4	224.7	218.0	207.3	197.6	177.9	181.6
	Iron and steel	10.1	184.9	184.7	205.8	214.0	219.1	216.7	310.3
	Other manufactures	21.4	226.4	223.1	226.8	224.2	218.8	203.9	225.6
	Logging	3.3	223.1	183.5	244.4	289.0	316.1	250.3	211.6
	Mining	2.9	418.7	405.2	335.5	362.9	323.1	295.8	273.9
	Communications	2.6	218.2	214.4	203.3	189.8	171.6	144.8	113.6
	Transportation	8.3	137.7	135.2	142.5	143.0	140.9	128.4	118.3
	Construction	11.6	157.5	147.4	156.8	151.7	131.3	108.5	94.1
	Services 2/	3.4	249.1	238.2	244.4	244.0	215.9	207.4	196.7
	Trade	11.4	239.0	238.6	229.6	226.0	212.9	199.8	181.3
Quebec	- All Industries	100.0	197.6	193.0	198.0	198.6	191.2	175.4	181.9
Ontario	- Manufacturing	59.9	214.3	210.1	211.7	210.4	202.7	187.2	200.6
	Lumber products	3.2	127.4	122.3	125.3	127.0	125.8	118.5	114.7
	Pulp and paper products	6.0	197.2	193.1	192.0	192.0	185.2	168.1	144.2
	Textile products	6.4	142.8	145.2	147.0	150.1	144.4	138.7	133.7
	Iron and steel	19.3	246.1	242.4	242.4	241.8	228.7	210.9	265.8
	Other manufactures	25.0	247.9	240.4	243.8	237.7	231.5	212.0	217.0
	Logging	1.5	147.3	119.5	131.8	191.9	226.4	224.1	207.6
	Mining	3.0	274.6	271.0	255.4	256.4	243.3	226.3	208.4
	Communications	2.6	203.8	198.6	191.4	177.4	172.2	143.8	108.8
	Transportation	6.5	143.5	141.2	144.0	141.2	137.6	124.3	120.2
	Construction	9.4	209.8	197.6	192.4	186.5	165.8	143.7	108.2
	Services 2/	3.7	285.0	278.3	281.5	275.7	266.5	249.0	227.3
	Trade	13.4	243.5	242.2	233.6	226.7	207.9	192.6	173.3
Ontario	- All Industries	100.0	212.2	207.1	206.4	204.8	195.7	179.6	179.8
Prairie	- Manufacturing	28.2	193.0	186.8	194.7	189.7	181.0	177.0	177.7
Provinces	Lumber products	2.0	180.0	168.2	187.7	180.8	177.1	163.7	147.1
	Pulp and paper products	2.5	161.7	151.2	156.1	147.7	136.3	122.4	110.5
	Textile products	2.1	259.3	255.9	270.1	228.8	226.3	222.4	228.8
	Iron and steel	8.8	138.0	137.0	137.2	135.3	127.2	118.9	129.6
	Other manufactures	12.8	268.1	257.3	272.6	266.2	253.9	259.6	255.7
	Logging	0.3	50.1	48.5	39.1	42.4	71.7	85.8	64.8
	Mining	7.3	208.4	204.9	200.2	191.6	175.0	154.9	137.7
	Communications	3.3	221.0	212.6	199.3	178.5	164.1	146.1	131.3
	Transportation	16.3	149.5	146.6	149.8	148.4	149.2	137.5	135.3
	Construction	17.9	183.5	167.6	169.3	161.4	140.2	134.5	101.5
	Services 2/	4.9	253.2	231.6	265.3	263.3	256.9	243.9	186.0
	Trade	21.8	200.3	194.5	194.6	185.9	180.3	168.0	148.4
Prairie	- All Industries	100.0	186.1	178.5	181.8	175.9	167.3	158.2	144.6
British	- Manufacturing	39.2	225.3	218.8	220.6	228.8	216.4	186.9	253.0
Columbia	Lumber products	14.7	209.5	204.6	196.9	198.4	175.4	116.5	132.2
	Pulp and paper products	4.5	214.5	211.3	223.7	227.6	203.0	176.3	165.1
	Textile products	0.8	235.9	262.2	251.8	235.0	237.2	222.4	201.1
	Iron and steel	5.8	239.2	237.7	250.1	290.3	315.0	308.5	823.4
	Other manufactures	13.4	242.8	228.8	234.3	239.7	229.2	219.8	197.3
	Logging	7.6	197.1	196.4	205.3	223.1	201.9	105.6	147.0
	Mining	5.5	130.3	124.0	121.5	116.9	115.9	104.2	91.9
	Communications	3.3	232.6	230.2	215.2	206.2	183.2	166.6	144.5
	Transportation	10.6	160.1	158.2	165.3	154.8	165.1	136.3	131.1
	Construction	12.4	196.5	196.1	210.4	194.2	180.5	136.9	103.7
	Services 2/	4.7	232.4	229.2	249.4	259.8	256.1	214.1	191.5
	Trade	16.7	264.9	260.7	271.1	257.9	236.0	209.4	185.1
B.C.	- All Industries	100.0	207.7	203.7	209.1	207.8	196.9	162.2	180.4

1/ Proportion of employees in indicated industry in an area, to the total number of employees reported in that area by the firms making returns at the date under review.

2/ See footnote 4 on page 2.

TABLE 11.- INDEX NUMBERS OF EMPLOYMENT BY CITIES AND PRINCIPAL INDUSTRIES
(1926=100).

(The latest figures are subject to revision).

Cities and Industries		1/Relative Weight	July 1 1950	June 1 1950	July 1 1949	July 1 1948	July 1 1947	July 1 1946	July 1 1945
Montreal	- Manufacturing	60.5	194.3	195.0	197.7	189.7	190.0	183.7	204.4
	Plant products - edible	3.8	192.3	188.3	182.6	176.5	161.8	150.3	145.1
	Pulp and paper (chiefly printing)	4.6	192.5	190.9	187.0	189.2	178.6	166.9	152.4
	Textiles	13.9	198.6	203.3	195.8	176.5	169.3	154.2	158.2
	Tobacco and beverages	4.0	187.9	185.9	185.4	181.4	176.9	167.1	168.1
	Iron and steel	13.5	168.9	170.8	194.0	181.8	194.6	206.9	297.3
	Other manufactures	20.7	214.5	213.4	210.5	210.0	211.7	198.1	190.0
	Communications	2.7	165.2	162.7	149.5	137.5	129.2	107.4	82.6
	Transportation	6.2	149.4	143.2	149.7	152.0	152.1	142.9	120.8
	Construction	8.8	145.0	133.6	137.0	123.3	113.9	90.4	61.3
	Trade	18.9	228.8	230.1	221.4	218.6	205.3	192.4	174.1
Montreal	- All Industries	100.0	190.7	189.4	190.2	183.1	179.7	169.9	174.1
Quebec	- Manufacturing	53.7	178.6	174.6	185.7	201.9	189.1	168.8	281.2
	Leather products	7.9	99.9	92.2	177.2	110.8	121.2	124.6	113.2
	Other manufactures	45.8	208.6	203.9	206.5	241.6	219.1	188.4	355.8
	Transportation	6.2	131.4	131.8	124.4	118.0	125.3	89.1	88.9
	Construction	14.6	286.1	271.4	300.9	229.2	179.7	159.4	152.2
Quebec	- All Industries	100.0	197.5	192.3	201.7	200.3	186.8	167.7	227.7
Toronto	- Manufacturing	60.9	208.7	207.1	202.4	197.9	193.5	179.9	207.3
	Plant products - edible	4.6	185.0	184.0	182.9	182.0	190.3	172.4	171.0
	Printing and publishing	8.1	226.7	223.2	220.2	213.6	206.7	194.8	171.2
	Textiles	7.3	127.0	129.5	127.5	125.7	122.7	119.6	117.4
	Iron and steel	13.1	255.7	254.2	247.0	236.5	221.8	207.9	332.0
	Other manufactures	27.8	226.9	223.5	217.2	213.6	210.5	192.5	213.0
	Communications	2.4	163.6	158.8	153.7	139.3	135.3	118.5	88.0
	Transportation	4.8	185.6	182.5	175.2	171.2	169.9	154.1	138.9
	Construction	5.5	236.2	228.6	209.3	202.2	204.9	153.6	116.9
	Trade	20.6	221.9	220.8	216.1	208.3	192.5	177.8	157.6
Toronto	- All Industries	100.0	212.2	210.3	204.6	199.2	192.6	176.9	186.8
Ottawa	- Manufacturing	33.6	144.6	141.6	152.3	155.1	151.3	146.3	149.0
	Lumber products	2.0	52.1	52.8	51.7	52.6	60.9	45.4	43.1
	Pulp and paper products	12.5	146.8	146.5	139.0	149.0	138.9	138.3	127.4
	Other manufactures	19.1	175.2	169.0	198.0	196.6	192.7	187.8	202.6
	Construction	18.4	315.4	302.2	297.1	278.1	214.9	188.7	123.8
	Trade	27.3	266.6	266.3	263.4	250.3	235.7	224.8	205.6
Ottawa	- All Industries	100.0	203.3	199.4	201.9	197.2	183.9	173.1	161.5
Hamilton	- Manufacturing	76.4	201.5	196.6	196.8	196.9	186.8	174.6	182.3
	Textiles	8.8	96.8	99.6	104.5	115.8	103.9	107.8	103.4
	Electrical apparatus	11.6	245.3	237.0	225.0	215.6	215.5	193.2	199.0
	Iron and steel	36.2	236.6	230.4	227.6	231.9	213.7	200.8	228.8
	Other manufactures	20.8	225.1	216.6	225.8	212.2	211.5	189.9	179.3
	Construction	5.8	221.7	209.1	209.6	221.4	186.7	180.8	118.3
	Trade	10.9	212.4	214.2	193.2	196.5	187.6	172.0	165.1
Hamilton	- All Industries	100.0	206.3	202.1	199.5	199.6	188.4	175.9	177.1
Windsor	- Manufacturing	79.9	330.0	323.5	326.6	303.9	298.4	261.5	298.1
	Iron and steel	67.0	350.2	341.5	339.4	320.7	313.1	265.1	310.9
	Other manufactures	12.9	253.8	256.6	279.3	244.9	249.1	249.4	255.1
	Construction	4.1	176.5	177.6	138.4	116.2	123.9	100.1	84.8
Windsor	- All Industries	100.0	305.5	299.9	298.8	281.7	273.7	241.2	266.9
Winnipeg	- Manufacturing	46.5	174.6	168.9	179.9	172.9	167.2	162.2	166.9
	Animal products - edible	4.3	243.0	229.5	254.1	238.7	238.0	274.8	258.7
	Printing and publishing	5.2	160.6	144.8	155.6	146.3	138.3	122.4	110.5
	Textiles	6.0	257.5	252.1	276.5	229.9	224.8	223.8	237.5
	Iron and steel	15.9	133.0	132.8	133.8	135.0	128.5	118.8	123.5
	Other manufactures	15.1	205.5	196.8	216.7	204.3	197.2	191.2	206.8
	Transportation	6.6	116.5	111.8	113.1	114.7	106.6	104.1	95.2
	Construction	7.8	172.6	127.9	141.8	133.8	110.0	110.4	58.1
	Trade	30.7	161.4	153.3	162.3	159.1	155.9	145.9	123.9
Winnipeg	- All Industries	100.0	166.8	157.7	166.8	162.0	155.9	149.9	139.0
Vancouver	- Manufacturing	38.9	261.6	258.9	253.6	269.8	250.7	226.1	377.1
	Lumber products	11.6	210.4	208.5	194.7	202.0	177.6	134.6	135.4
	Other manufactures	27.2	291.8	288.6	288.5	307.2	289.7	274.2	506.7
	Communications	5.7	225.4	221.2	207.8	202.1	175.9	159.3	135.1
	Transportation	10.0	125.6	124.8	132.4	144.3	168.1	127.8	122.8
	Construction	10.7	218.5	213.9	262.1	236.0	220.3	152.5	100.7
	Services ^{2/}	7.4	226.2	224.9	239.9	257.3	252.8	211.6	188.2
	Trade	27.4	260.6	256.0	258.2	256.3	235.8	210.0	187.4
Vancouver	- All Industries	100.0	227.1	224.3	230.4	235.8	224.9	191.8	232.6

1/ Proportion of employees in indicated industry within a city, to the total number of employees reported in that city by the firms making returns at the date under review.

2/ See footnote 4 on page 2.

Table 12.- Sex Distribution of the Persons in Recorded Employment at July 1, 1950 with Comparisons as at June 1, 1950 and July 1, 1949.

Industries	July 1, 1950					June 1, 1950		July 1, 1949	
	Total	Men	Women	Men	Women	Men	Women	Men	Women
	No.	No.	No.	P.C.	P.C.	P.C.	P.C.	P.C.	P.C.
MANUFACTURING	1,083,121	843,478	239,643	77.9	22.1	77.7	22.3	77.7	22.3
Animal products - edible	39,998	31,910	8,088	79.8	20.2	80.0	20.0	79.2	20.8
Fur and products	4,300	2,862	1,438	66.6	33.4	67.3	32.7	66.1	33.9
Leather end products	28,095	17,156	10,940	61.1	38.9	61.4	38.6	61.4	38.6
Boots and shoes	17,732	10,215	7,517	57.6	42.4	58.0	42.0	57.4	42.6
Lumber and products	88,325	81,596	6,729	92.4	7.6	92.2	7.8	92.3	7.7
Rough and dressed lumber	55,719	53,174	2,545	95.4	4.6	95.3	4.7	95.2	4.8
Furniture	19,395	17,177	2,218	88.6	11.4	88.7	11.3	89.1	10.9
Other lumber products	13,211	11,245	1,966	85.1	14.9	84.6	15.4	85.8	14.2
Plant products - edible	63,652	41,896	21,756	65.8	34.2	67.5	32.5	67.1	32.9
Pulp and paper products	118,288	95,329	22,959	80.6	19.4	80.5	19.5	80.5	19.5
Pulp and paper	50,615	48,074	2,541	96.0	4.0	94.8	5.2	94.9	5.1
Paper products	22,192	14,362	7,830	64.7	35.3	64.4	35.6	63.7	36.3
Printing and publishing	46,481	32,893	12,688	72.3	27.7	72.6	27.4	71.9	28.1
Rubber products	21,677	16,433	5,244	76.8	23.2	75.8	24.2	75.6	24.4
Textile products	158,656	74,266	84,390	46.8	53.2	46.4	53.6	45.8	54.2
Thread, yarn and cloth	60,118	38,999	21,119	64.9	35.1	65.0	35.0	64.0	36.0
Cotton yarn and cloth	24,036	15,076	8,960	62.7	37.3	62.8	37.2	61.4	38.6
Woolen yarn and cloth	14,102	8,284	5,818	58.7	41.3	59.1	40.9	58.1	41.9
Synthetic silk and silk goods	16,407	11,712	4,695	71.4	28.6	71.1	28.9	70.1	29.9
Hosiery and knit goods	21,736	7,883	13,853	36.3	63.7	36.0	64.0	35.6	64.4
Garments and personal furnishings	61,107	18,922	42,185	31.0	69.0	30.6	69.4	30.4	69.6
Other textile products	15,695	8,462	7,233	53.9	46.1	53.7	46.3	54.0	46.0
Tobacco	9,570	3,985	5,585	41.6	58.4	42.0	58.0	42.1	57.9
Beverages	21,981	19,437	2,544	88.4	11.6	88.6	11.4	89.1	10.9
Chemicals and allied products	44,592	34,163	10,429	76.6	23.4	76.5	23.5	76.9	23.1
Clay, glass and stone products	23,223	20,845	2,378	89.8	10.2	89.6	10.4	89.0	11.0
Electric light and power	35,636	31,161	4,475	87.4	12.6	87.3	12.7	87.9	12.1
Electrical apparatus	58,916	42,943	15,972	72.9	27.1	72.3	27.7	71.7	28.3
Iron and steel products	286,659	264,493	22,166	92.2	7.8	92.3	7.7	92.4	7.6
Crude, rolled and forged products	38,238	36,629	1,709	95.5	4.5	95.6	4.4	95.5	4.5
Machinery (other than vehicles)	28,577	25,183	3,394	88.1	11.9	87.9	12.1	88.3	11.7
Agricultural implements	15,944	15,074	870	94.5	5.5	94.5	5.5	94.2	5.8
Land vehicles and aircraft	116,166	109,148	7,017	94.0	6.0	94.0	6.0	94.4	5.6
Automobiles and parts	51,982	46,595	5,387	89.6	10.4	89.6	10.4	89.7	10.3
Steel shipbuilding and repairing	13,662	13,175	487	96.4	3.6	96.3	3.7	96.6	3.4
Heating appliances	8,009	7,606	403	95.1	4.9	95.1	4.9	95.1	4.9
Iron and steel fabrication (n.e.a.)	11,237	10,406	832	92.6	7.4	92.2	7.8	92.2	7.8
Foundry and machine shop products	7,935	7,570	365	95.4	4.6	95.3	4.7	95.3	4.7
Other iron and steel products	47,092	39,903	7,189	84.7	15.3	84.9	15.1	84.5	15.5
Non-ferrous metal products	44,337	38,626	5,711	87.1	12.9	86.9	13.1	87.0	13.0
Non-metallic mineral products	16,142	14,701	1,441	91.1	8.9	90.7	9.3	91.5	8.5
Miscellaneous	18,875	11,677	7,198	61.9	38.1	61.8	38.2	61.7	38.3
LOGGING	58,613	57,704	909	98.4	1.6	98.2	1.8	98.4	1.6
MINING	90,407	88,221	2,186	97.6	2.4	97.8	2.2	97.6	2.4
Coal	23,375	23,157	218	99.1	0.9	99.1	0.9	99.0	1.0
Metallic ores	46,564	45,695	869	98.1	1.9	98.1	1.9	98.0	2.0
Non-metallic minerals (except coal)	20,468	19,369	1,099	94.6	5.4	95.4	4.6	94.4	5.6
COMMUNICATIONS	58,468	27,219	31,249	46.6	53.4	46.4	53.6	47.7	52.3
Telegraphs	8,656	7,090	1,566	81.9	18.1	82.0	18.0	81.6	18.4
Telephones	46,210	17,535	28,675	37.9	62.1	37.7	62.3	40.0	60.0
TRANSPORTATION	185,387	174,070	11,317	93.9	6.1	94.0	6.0	93.9	6.1
Street railways, cartage and storage	84,318	59,845	24,473	93.0	7.0	93.0	7.0	93.1	6.9
Steam railway operation	90,948	65,614	25,334	94.1	5.9	94.2	5.8	94.1	5.9
Shipping and stevedoring	30,121	28,611	1,510	95.0	5.0	95.6	4.4	94.6	5.4
CONSTRUCTION AND MAINTENANCE	260,255	255,037	5,218	98.0	2.0	97.9	2.1	98.1	1.9
Building	129,774	126,285	3,489	97.3	2.7	97.2	2.8	97.4	2.6
Highway	89,341	87,762	1,579	98.2	1.8	98.3	1.7	98.2	1.8
Railway	41,140	40,990	150	99.6	0.4	99.6	0.4	99.7	0.3
SERVICES (as specified below)	80,423	40,222	40,201	50.0	50.0	49.9	50.1	48.5	51.5
Hotels and restaurants	48,875	25,106	23,770	51.4	48.6	51.6	48.4	50.3	49.7
Personal (chiefly laundries)	20,199	7,666	12,533	37.9	62.1	37.7	62.3	38.5	61.5
TRADE	299,880	189,384	110,496	63.2	36.8	62.9	37.1	61.8	38.2
Retail	214,546	123,244	91,302	57.4	42.6	57.1	42.9	55.7	44.3
Wholesale	85,334	66,140	19,194	77.5	22.5	77.6	22.4	76.8	23.2
EIGHT LEADING INDUSTRIES	2,116,654	1,675,335	441,319	79.2	20.8	78.8	21.2	79.0	21.0
FINANCE	94,771	49,569	45,202	52.3	47.7	52.4	47.6	52.9	47.1
Banks and trust companies	53,387	26,251	27,136	49.2	50.8	49.2	50.8	49.5	50.5
Brokerage and stock market operations	4,099	2,608	1,491	65.6	34.4	63.5	36.5	64.9	35.1
Insurance	37,285	20,710	16,575	55.5	44.5	55.7	44.3	56.7	43.3
ALL INDUSTRIES	2,211,325	1,724,904	486,421	78.0	22.0	77.7	22.3	77.9	22.1

Date	Description	Debit	Credit	Balance	Remarks
1917	Jan 1				Balance forward
1917	Jan 2				
1917	Jan 3				
1917	Jan 4				
1917	Jan 5				
1917	Jan 6				
1917	Jan 7				
1917	Jan 8				
1917	Jan 9				
1917	Jan 10				
1917	Jan 11				
1917	Jan 12				
1917	Jan 13				
1917	Jan 14				
1917	Jan 15				
1917	Jan 16				
1917	Jan 17				
1917	Jan 18				
1917	Jan 19				
1917	Jan 20				
1917	Jan 21				
1917	Jan 22				
1917	Jan 23				
1917	Jan 24				
1917	Jan 25				
1917	Jan 26				
1917	Jan 27				
1917	Jan 28				
1917	Jan 29				
1917	Jan 30				
1917	Jan 31				
1917	Feb 1				
1917	Feb 2				
1917	Feb 3				
1917	Feb 4				
1917	Feb 5				
1917	Feb 6				
1917	Feb 7				
1917	Feb 8				
1917	Feb 9				
1917	Feb 10				
1917	Feb 11				
1917	Feb 12				
1917	Feb 13				
1917	Feb 14				
1917	Feb 15				
1917	Feb 16				
1917	Feb 17				
1917	Feb 18				
1917	Feb 19				
1917	Feb 20				
1917	Feb 21				
1917	Feb 22				
1917	Feb 23				
1917	Feb 24				
1917	Feb 25				
1917	Feb 26				
1917	Feb 27				
1917	Feb 28				
1917	Feb 29				
1917	Feb 30				
1917	Mar 1				
1917	Mar 2				
1917	Mar 3				
1917	Mar 4				
1917	Mar 5				
1917	Mar 6				
1917	Mar 7				
1917	Mar 8				
1917	Mar 9				
1917	Mar 10				
1917	Mar 11				
1917	Mar 12				
1917	Mar 13				
1917	Mar 14				
1917	Mar 15				
1917	Mar 16				
1917	Mar 17				
1917	Mar 18				
1917	Mar 19				
1917	Mar 20				
1917	Mar 21				
1917	Mar 22				
1917	Mar 23				
1917	Mar 24				
1917	Mar 25				
1917	Mar 26				
1917	Mar 27				
1917	Mar 28				
1917	Mar 29				
1917	Mar 30				
1917	Mar 31				
1917	Apr 1				
1917	Apr 2				
1917	Apr 3				
1917	Apr 4				
1917	Apr 5				
1917	Apr 6				
1917	Apr 7				
1917	Apr 8				
1917	Apr 9				
1917	Apr 10				
1917	Apr 11				
1917	Apr 12				
1917	Apr 13				
1917	Apr 14				
1917	Apr 15				
1917	Apr 16				
1917	Apr 17				
1917	Apr 18				
1917	Apr 19				
1917	Apr 20				
1917	Apr 21				
1917	Apr 22				
1917	Apr 23				
1917	Apr 24				
1917	Apr 25				
1917	Apr 26				
1917	Apr 27				
1917	Apr 28				
1917	Apr 29				
1917	Apr 30				
1917	May 1				
1917	May 2				
1917	May 3				
1917	May 4				
1917	May 5				
1917	May 6				
1917	May 7				
1917	May 8				
1917	May 9				
1917	May 10				
1917	May 11				
1917	May 12				
1917	May 13				
1917	May 14				
1917	May 15				
1917	May 16				
1917	May 17				
1917	May 18				
1917	May 19				
1917	May 20				
1917	May 21				
1917	May 22				
1917	May 23				
1917	May 24				
1917	May 25				
1917	May 26				
1917	May 27				
1917	May 28				
1917	May 29				
1917	May 30				
1917	May 31				
1917	Jun 1				
1917	Jun 2				
1917	Jun 3				
1917	Jun 4				
1917	Jun 5				
1917	Jun 6				
1917	Jun 7				
1917	Jun 8				
1917	Jun 9				
1917	Jun 10				
1917	Jun 11				
1917	Jun 12				
1917	Jun 13				
1917	Jun 14				
1917	Jun 15				
1917	Jun 16				
1917	Jun 17				
1917	Jun 18				
1917	Jun 19				
1917	Jun 20				
1917	Jun 21				
1917	Jun 22				
1917	Jun 23				
1917	Jun 24				
1917	Jun 25				
1917	Jun 26				
1917	Jun 27				
1917	Jun 28				
1917	Jun 29				
1917	Jun 30				
1917	Jul 1				
1917	Jul 2				
1917	Jul 3				
1917	Jul 4				
1917	Jul 5				
1917	Jul 6				
1917	Jul 7				
1917	Jul 8				
1917	Jul 9				
1917	Jul 10				
1917	Jul 11				
1917	Jul 12				
1917	Jul 13				
1917	Jul 14				
1917	Jul 15				
1917	Jul 16				
1917	Jul 17				
1917	Jul 18				
1917	Jul 19				
1917	Jul 20				
1917	Jul 21				
1917	Jul 22				
1917	Jul 23				
1917	Jul 24				
1917	Jul 25				
1917	Jul 26				
1917	Jul 27				
1917	Jul 28				
1917	Jul 29				
1917	Jul 30				
1917	Jul 31				
1917	Aug 1				
1917	Aug 2				
1917	Aug 3				
1917	Aug 4				
1917	Aug 5				
1917	Aug 6				
1917	Aug 7				
1917	Aug 8				
1917	Aug 9				
1917	Aug 10				
1917	Aug 11				
1917	Aug 12				
1917	Aug 13				
1917	Aug 14				
1917	Aug 15				
1917	Aug 16				
1917	Aug 17				
1917	Aug 18				
1917	Aug 19				
1917	Aug 20				
1917	Aug 21				
1917	Aug 22				
1917	Aug 23				
1917	Aug 24				
1917	Aug 25				
1917	Aug 26				
1917	Aug 27				
1917	Aug 28				
1917	Aug 29				
1917	Aug 30				
1917	Aug 31				
1917	Sep 1				
1917	Sep 2				
1917	Sep 3				
1917	Sep 4				
1917	Sep 5				
1917	Sep 6				
1917	Sep 7				
1917	Sep 8				
1917	Sep 9				
1917	Sep 10				
1917	Sep 11				
1917	Sep 12				
1917	Sep 13				
1917	Sep 14				
1917	Sep 15				
1917	Sep 16				
1917	Sep 17				
1917	Sep 18				
1917	Sep 19				
1917	Sep 20				
1917	Sep 21				
1917	Sep 22				
1917	Sep 23				
1917	Sep 24				
1917	Sep 25				
1917	Sep 26				
1917	Sep 27				
1917	Sep 28				
1917	Sep 29				
1917	Sep 30				
1917	Oct 1				
1917	Oct 2				
1917	Oct 3				
1917	Oct 4				
1917	Oct 5				
1917	Oct 6				
1917	Oct 7				
1917	Oct 8				
1917	Oct 9				
1917	Oct 10				
1917	Oct 11				
1917	Oct 12				
1917	Oct 13				
1917	Oct 14				
1917	Oct 15				
1917	Oct 16				
1917	Oct 17				
1917	Oct 18				
1917	Oct 19				
1917	Oct 20				
1917	Oct 21				
1917	Oct 22				
1917	Oct 23				
1917	Oct 24				
1917	Oct 25				
1917	Oct 26				
1917	Oct 27				
1917	Oct 28				
1917	Oct 29				
1917	Oct 30				
1917	Oct 31				

EXPLANATION OF THE METHOD USED IN PREPARING THE MONTHLY STATISTICS OF EMPLOYMENT AND PAYROLLS.

The monthly surveys of employment and payrolls extend to all branches of the following industries: manufacturing, logging, mining, communications, transportation, construction and maintenance, trade and finance; the establishments for which data are given under the heading "services" are chiefly hotels and restaurants and laundries and dry-cleaning plants. For practical reasons of collection and tabulation, the surveys are in the main limited to firms usually employing 15 persons and over. Firms reducing their staffs below this minimum are not necessarily removed from the mailing list. Establishments are asked to furnish data for all classes of employees irrespective of their functions in the business, but to exclude statistics for the owners. Employers operating in two or more lines of business, or in different provinces or cities, are asked to furnish separate monthly returns for their establishments in the different industries and areas.

1.- COVERAGE - The virtual limitation of the monthly surveys to establishments having 15 employees or more results in a relatively even representation of employment in the various provinces and in the larger cities for which data are segregated, but also results in variations in the coverage of different industries, depending upon whether a given industry is ordinarily organized in large or small units of operation. Complete information respecting the distribution of the working population is available only at 10 year intervals, and some time after the Census date; comparisons of the data of the monthly surveys and those obtained elsewhere in the Bureau are complicated by the fact that the industrial classifications differ in several important respects. The distribution of the persons employed at June 1, 1941, by the co-operating firms in comparison with the distribution of the wage-earners and salaried employees enumerated in the Census of June 1, 1941, was discussed in the 1944 Annual Review of Employment and Payrolls. Since 1944, there has been considerable growth in the number of firms reporting to the monthly survey. It is estimated that the coverage in the industrial divisions now ranges from about 51 p.c. in the hotel-and-restaurant and laundry-and-dry-cleaning group, and 56 p.c. in trade, to some 85 p.c. in mining and 88 p.c. in manufacturing. The last two figures are based on the statistics of the Annual Census of Industry, relating to practically all establishments in the indicated industries. In manufacturing, certain adjustments in respect of industrial coverage are required to bring about comparability in the two series. The proportion of 88 p.c. results from the use of the adjusted figures. It is estimated that the firms co-operating in the monthly surveys in the nine major industrial groups employ approximately 82 p.c. of the total wage-earners and salaried employees in the same industries throughout Canada; of the total wage-earners and salaried employees in all industries, including workers in the industries excluded from the monthly surveys as well as in those represented, the coverage is estimated at about 61 p.c.

It should be noted that the statistics of persons employed, as published in various tables in the monthly bulletins, do not represent estimates of the total numbers engaged in the specified areas or industries, but show the distribution of the workers on the staffs of the co-operating firms at the indicated dates, together with the distribution of their weekly payrolls, and the per capita weekly earnings of such employees.

2.- THE QUESTIONNAIRE - From 1921 to 1941, the questionnaire used in collecting current data on employment called for a statement of the number of persons at work on the last working day of the month. With the introduction of the statistics of payrolls in the spring of 1941, it became necessary to ask for information showing the numbers of employees on the payrolls in the last pay periods in the month, to relate to the salaries and wages. The difference in the coverage of employment as a result of this change was considerable, especially in industries with high proportions of casual labour. In so far as was possible, adjustment in the records was made in 1941, to preserve the comparability of the data collected prior to the spring of 1941, and those thereafter collected. The inclusion of casual workers to a greater extent than was the case in the earlier surveys nevertheless constitutes an element of incomparability in the present statistics of employment and those tabulated prior to the institution of the complementary statistics of payrolls in April, 1941. The questionnaire now used asks employers to furnish data showing the gross earnings of their salaried employees and wage-earners in the last pay periods in the month, the employees and their earnings to be grouped according to the duration of their pay periods, whether these be monthly, semi-monthly, fortnightly, weekly, etc. The payrolls reported include amounts deducted for taxes, unemployment insurance contributions, etc. Cost-of-living allowances, incorporated in the basic wage-rates as from Feb. 15, 1944, are included, as was the case before their incorporation in the basic rates. Commissions and incentive and production bonuses and overtime payments are also included.

3.- THE PROCESSING - In the Bureau, the statistics of salaries and wages reported for any period exceeding a week are reduced, for tabulation purposes, to the proportions which would be earned in one week in the period, the numerator of the fraction ordinarily used for this purpose being

EXPLANATION OF THE METHOD USED IN PREPARING THE MONTHLY STATISTICS OF
EMPLOYMENT AND PAYROLLS. (Cont'd.)

six days, the standard working week; the denominators of the fractions are the numbers of working days in the different pay periods, excluding only the Sundays. Where operations are continuous, the numerator of the fraction is seven, the denominator being the total number of days in the pay period, including Sundays. In the case of employees paid at annual or monthly rates, so that their earnings are not affected by variations in the number of working days in the month, fixed proportions are used to reduce the earnings to a weekly basis, without regard to the length of the calendar month. The sums resulting from these various calculations are then aggregated to give the total amounts, which, on the average, would be paid for services rendered in one week by the persons on the payrolls of the co-operating establishments. The employees reported are not in all cases necessarily employed for a period of a week by one firm. Employers are urged to make a practice of furnishing data only for the last pay period in the month for their various classes of employees rather than to aggregate statistics for several pay periods, since the latter method tends to exaggerate the amount of duplication possible in the statistics of employment in cases where individuals may be employed by more than one co-operating establishment in a period of several weeks.

4.- THE TABULATION - The data tabulated monthly show the number of persons drawing pay from the establishments furnishing returns at the given date, and their weekly earnings, together with the numbers of employees and the payrolls of the same firms in the preceding month, and in the basic periods. The statistics of the first tabulation are preliminary, the re-tabulation of the statistics on the succeeding month's tabulation incorporating revisions in the returns originally tabulated, as well as reports received too late for inclusion in the preliminary tabulation.

5.- THE INDEX NUMBERS OF EMPLOYMENT - The index numbers represent the percentage relationship between the number of persons employed by the establishments currently furnishing data and the number which they had employed in the basic period. The number of workers employed in the basic period by the firms which then operated but have since gone out of business are continued in the basic average figures, while firms or branches opening for business since the basic period are tabulated with zero base figures. The basic averages of establishments which operated in the base period but have since been added to the mailing list are incorporated in the basic figures from the date when their co-operation was first obtained.

6.- THE INDEX NUMBERS OF PAYROLLS - Shortly after the institution of the statistics of payrolls, it became necessary to present the data in the form of index numbers. The earliest period which could be adopted as a base was selected for the purpose, namely, the week of June 1, 1941. The current disbursements are thus related to the sums expended in salaries and wages by the co-operating employers on or about June 1, 1941, as 100 p.c. To provide a measurement of the changes in employment and payrolls from the establishment of the latter series, the monthly indexes of employment are related to June 1, 1941, as 100, in the tables giving the two sets of data. For all purposes apart from comparison with the statistics of payrolls, however, the indexes compiled on the original 1926 base should be used.

7.- THE WEEKLY EARNINGS - The average weekly earnings represent the division of the aggregate weekly salaries and wages reported by the co-operating establishments, by the number of their employees in the same pay periods; the index numbers of average weekly earnings, given in the table on page 4, are based on the averages reported in the week of June 1, 1941, as 100.

8.- HOURLY EARNINGS - Statistics of average hourly and weekly earnings of wage-earners for whom the larger employers keep record of hours worked are contained in the monthly bulletins on man-hours and average hourly earnings, available from the end of 1944.

STATISTICS CANADA LIBRARY
BIBLIOTHEQUE STATISTIQUE CANADA



1010514979

