

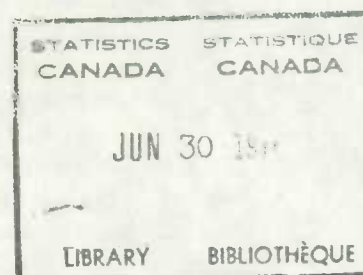
CATALOGUE No.

72-003 C-1

MONTHLY



MAN-HOURS AND HOURLY EARNINGS  
WITH AVERAGE WEEKLY WAGES  
OCTOBER 1962



*Published by Authority of*  
The Honourable George Hees, Minister of Trade and Commerce

DOMINION BUREAU OF STATISTICS

Labour Division

Employment Section

January 1963  
8003-502

Price: \$3.00 per year

Vol. 18—No. 10

## EMPLOYMENT AND EARNINGS REPORTS

Following are other publications of the Labour Division based upon establishment data in the field of industrial employment, earnings and hours:

**72-001 — Advance Statement on Employment and Weekly Earnings** — Monthly — Price \$1.00 per year

(index numbers of employment and averages of weekly wage and salary statistics for Canada (major industrial divisions) and the provinces (industrial composite figures))

**72-002 — Employment and Payrolls** — Monthly — Price \$3.00 per year

(industry and area index numbers of employment and payrolls and averages of weekly wage and salary statistics; comparisons with earlier periods; charts and explanatory material)

**72-005 — Estimates of Labour Income** — Monthly — Price \$2.00 per year

(monthly or quarterly estimates of wages, salaries and supplementary labour income, both unadjusted and seasonally adjusted, for specific industries and regions; with annual totals from 1951)

**72-006 — Hiring and Separation Rates in Certain Industries** — Semi-Annual — Price \$1.50 per year

(data for establishments having one or more employees covered by unemployment insurance and employing ten or more persons; also all units of chain or multiple firms, with at least one insured employee, regardless of number employed)

**72-201 — Review of Employment and Payrolls** — Annual — Price \$1.00

(industry and area index numbers of employment and payrolls and average weekly wages and salaries, monthly and annually, over a lengthy period; charts and explanatory material)

**72-202 — Review of Man-Hours and Hourly Earnings** — Annual — Price 75 cents

(industry and area averages of hours per week, hourly and weekly wages, monthly and annually, from 1945; charts and explanatory material)

**72-203 — Earnings and Hours of Work in Manufacturing** — Annual — Preliminary Report — Price 25 cents

(separate figures of earnings and hours for men and women and for wage-earners and salaried employees in one week in autumn for major manufacturing industries, Canada, and manufacturing in provinces and larger metropolitan areas)

**72-204 — Earnings and Hours of Work in Manufacturing** — Annual — Final Report — Price 75 cents

(separate figures of earnings and hours for men and women and for salaried employees and wage-earners in one week in autumn from 1946 with industrial and area detail; charts and explanatory material. Special data are obtained on a rotational basis in successive years:

- (1) a segregation of office and clerical workers from the salaried group
- (2) a distribution of wage-earners and salaried employees in a given range of weekly earnings and
- (3) a distribution of wage-earners in a given range of hours worked in the survey week)

Inquiries regarding these reports should be directed to the Labour Division, Dominion Bureau of Statistics, and subscriptions to the Publications Distribution Unit, Financial Control Section, Dominion Bureau of Statistics, or to the Queen's Printer, Ottawa, Canada.

## CONTENTS

Page

<u>COMMENTARY</u> .....	5
-------------------------	---

### OCTOBER 1962 STATISTICS

#### Hours and Earnings, by Industry:

1. Canada .....	8
2. Provinces .....	10
3. Urban Areas .....	13

### HISTORICAL STATISTICS Annual Averages 1945-61 (Monthly 1959-62)

4. Manufacturing, Canada .....	15
--------------------------------	----

### ROTATION TABLES

5b. Specified Non-Manufacturing Industries, Canada .....	16
6b. Specified Manufacturing Industries, Canada .....	19

(Historical statistics for manufacturing in provinces and urban areas  
last published in September issue)

### SPECIAL TABLES

7. Index Numbers of Average Hourly Earnings in Manufacturing .....	23
8. Index Numbers of Average Hourly Earnings in the Heavy Electrical Machinery and Equipment Industry .....	24
9. Weekly Wages in Manufacturing in 1949 Dollars and Current Dollars ..	24

### CHARTS

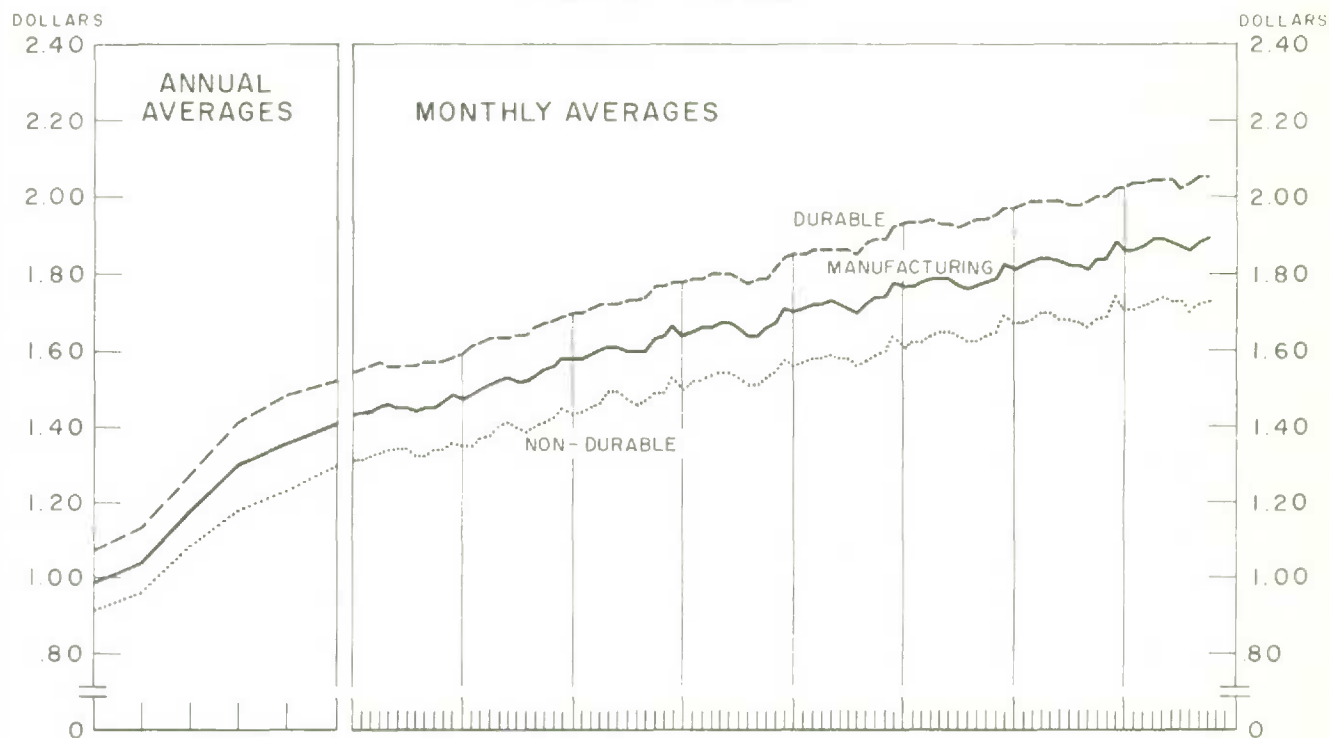
1. Average Hourly Earnings and Weekly Wages, Canada .....	4
2. Average Hourly Earnings, Specified Industries, Canada .....	6

### EXPLANATORY NOTES

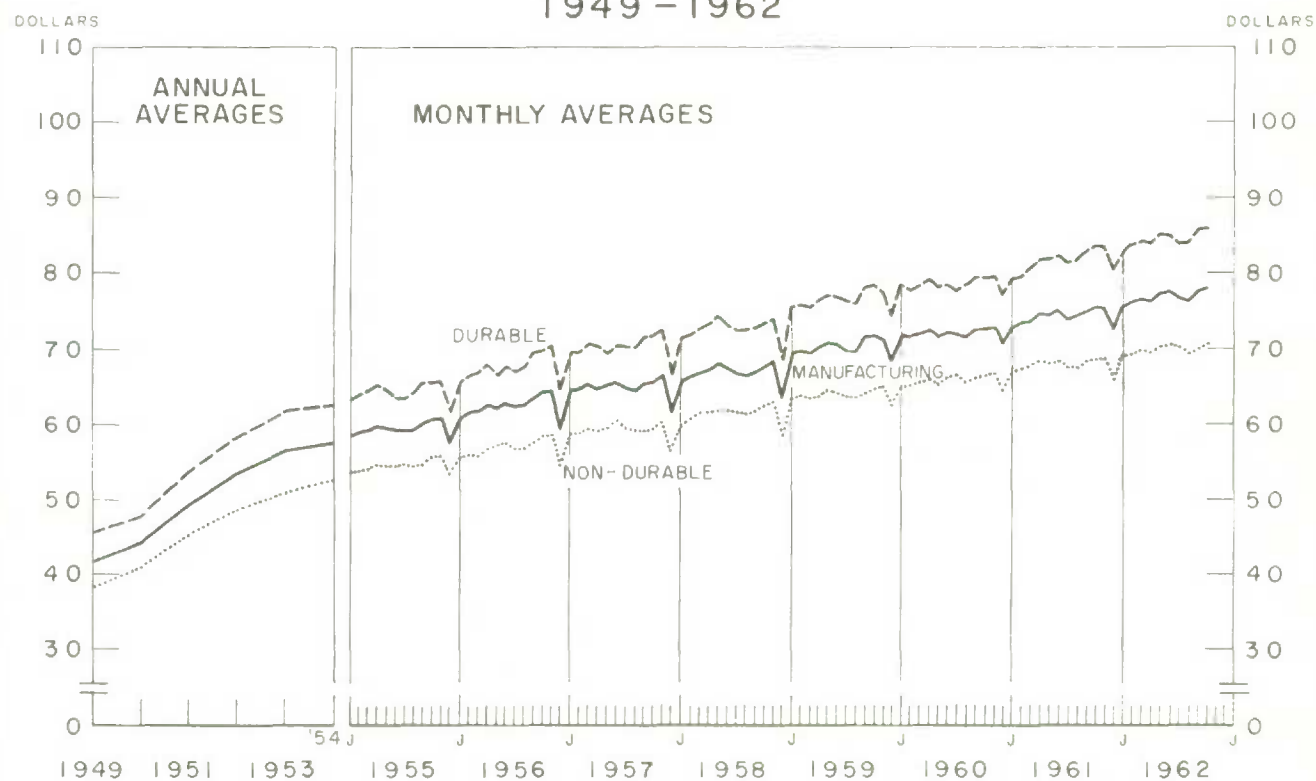
Notes on methods and scope of monthly surveys of hours and earnings ....	i
--	---

<u>FOOTNOTES</u> .....	111
------------------------	-----

# AVERAGE HOURLY EARNINGS IN MANUFACTURING 1949 - 1962



# AVERAGE WEEKLY WAGES IN MANUFACTURING 1949 - 1962





## MAN-HOURS AND HOURLY EARNINGS, OCTOBER, 1962

### Manufacturing

The average work week in manufacturing in October, at 41.3 hours, was 0.1 hours shorter than in September. Average hourly earnings rose by a cent to \$1.89 in October, and average weekly wages increased by 34 cents to \$77.95. Compared with October, 1961, the average work week was 0.1 hours longer, and average hourly and weekly earnings were 5 cents and \$2.26 higher.

In durable goods manufacturing in October, average hourly earnings were unchanged from September. Higher production in the motor vehicles industries provided an upward influence on average earnings but this was offset by a number of factors. While there was also increased activity in the non-metallic mineral products group after settlement of industrial disputes, this added activity had a lowering effect on average earnings in durables since the average earnings in this industry group are below the overall average for the division. Other downward effects included reduced activity in the higher-paid iron and steel group and lay-offs in non-ferrous metal smelting and refining. Compared with the previous October, averages of weekly hours, hourly earnings and weekly earnings, were up by 0.3 hours, 5 cents and \$2.57, respectively.

Average hourly earnings in non-durable goods manufacturing, were a cent higher than in September and 5 cents higher than in October, 1961. The work week was unchanged from September and from the previous October, while weekly wages rose by 48 cents and \$1.76 in comparison with these two months. Seasonal declines in production in clothing and food and beverages, where earnings are below that of non-durables generally, tended to raise average earnings in October in this division of manufacturing. This effect was partly offset by reduced operations at above-average earnings in the paper products group.

### Non-Manufacturing Industries

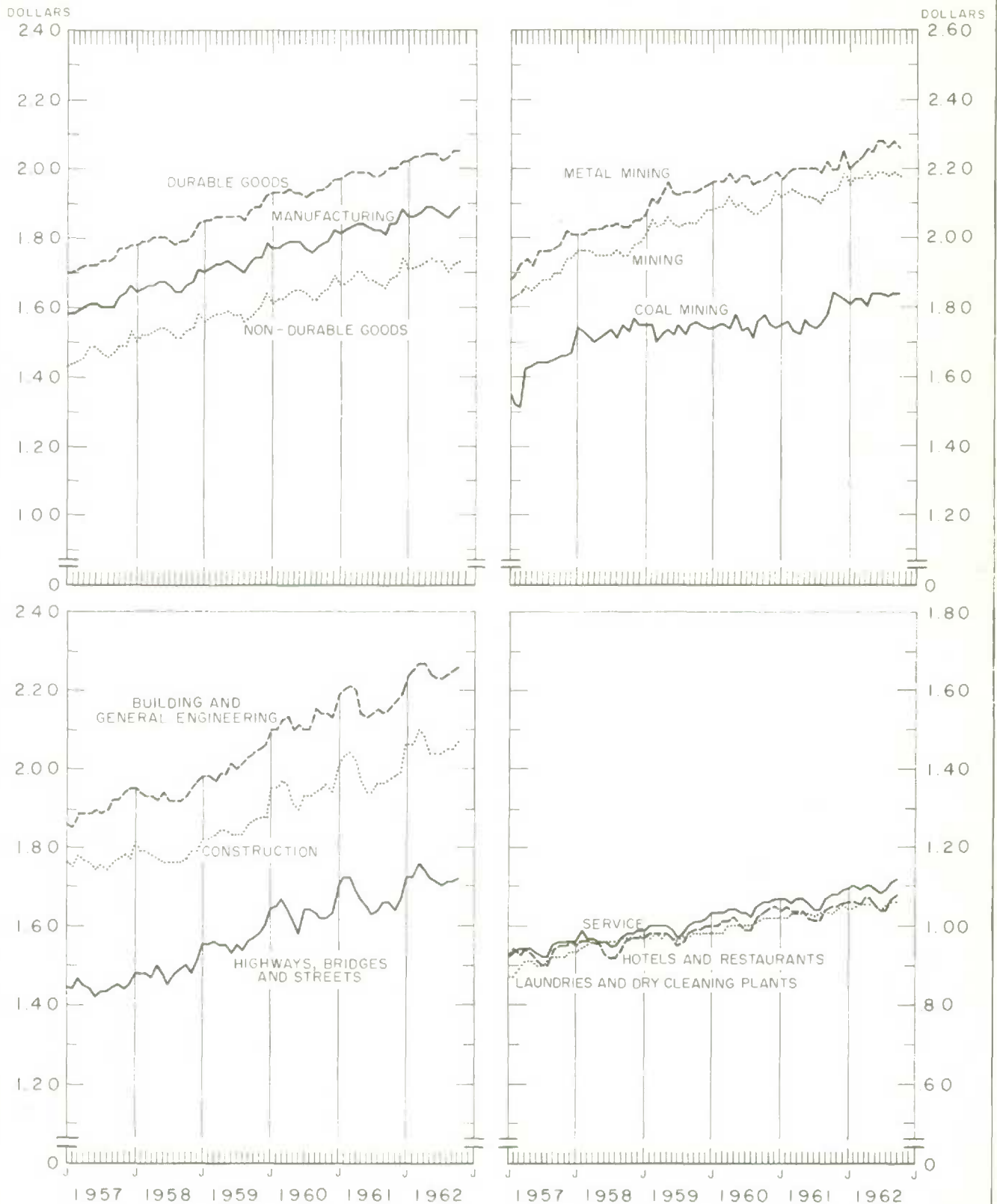
Lower average hourly earnings in metal mining partly reflected lay-offs of higher-paid workers and decreased bonuses. While there was no change in average hourly earnings in coal mining, the lengthened work week increased weekly earnings moderately. A decline in hours and earnings in the oil and natural gas group resulted in part from reduced overtime and short time in October. In non-metal mining, some short time contributed to lower hours and weekly earnings but hourly earnings were unchanged.

Average hourly earnings rose by 2 cents in construction as a whole in October, with average weekly hours and earnings decreasing by 0.8 hours and \$1.26. Seasonal declines in employment and hours were recorded in both major components of construction. Compared with October, 1961, the average work week was 0.1 hours shorter while average hourly and weekly wages rose by 10 cents and \$ 3.56.

---

NOTE: Statistics are based on returns received from employers usually employing 15 or more persons. These returns include data from the last pay period (s) of reporting establishments in each month. The latest figures throughout this publication are subject to revision.

# AVERAGE HOURLY EARNINGS IN SPECIFIED INDUSTRIES, CANADA



### Provinces

Average hourly earnings in manufacturing increased in October in all provinces except Nova Scotia and Manitoba where the level was unchanged from September. The average of weekly hours was higher in Nova Scotia, New Brunswick, Saskatchewan and Alberta with decreases in the remaining provinces. Average weekly wages were up in most provinces except Newfoundland, Quebec and Manitoba.

In the Maritime Provinces, the decline in activity in fish processing where many lower-paid seasonal workers are employed, contributed to higher average hourly earnings in manufacturing. Lower hours and employment in fruit and vegetable canning and preserving and wood products groups, had a similar effect in New Brunswick. In Nova Scotia, however, more lower-paid workers and a longer work week in the canning industry, along with reduced operations in the higher-paid paper products group, tended to lower average hourly earnings in the province. Reduced operations in paper products were also reported in Newfoundland.

Higher average hourly earnings in manufacturing in Quebec resulted mainly from lessened activity in the canning, clothing and wood products industries where earnings are below the overall average for manufacturing. This was counteracted in part by declines in employment and hours in higher-paid industry groups such as iron and steel and transportation equipment. Some overtime work at premium rates was reported in the paper products, chemicals and iron and steel groups.

Increased activity including overtime work in transportation equipment in Ontario contributed significantly to the increase in average earnings in manufacturing. Seasonal lay-offs of lower-paid workers in fruit and vegetable canning and preserving were also a factor in this upward trend in average earnings. However, lay-offs in non-ferrous metal smelting and refining, and to a lesser extent in pulp and paper mills and iron and steel products, partly offset these factors.

In Alberta, a rise in average earnings in manufacturing was partly a consequence of seasonally reduced operations in food and beverages and a shortened week in clothing where many casual workers and women are employed. A partly counteracting effect resulted from a reduction in the work week in transportation equipment and non-metallic mineral products groups. Higher average earnings in British Columbia were mainly a result of reduced operations in industry groups where average earnings are lower than the overall average for manufacturing, namely, fish processing, fruit and vegetable canning and preserving, and wood products.



TABLE 1. Average Hours and Average Earnings of Hourly-Rated Wage-Earners, Canada, by Industry

Industry	Average weekly hours			Average hourly earnings			Average weekly wages			Wage-earners reported
	Oct. 1962	Sept. 1962	Oct. 1961	Oct. 1962	Sept. 1962	Oct. 1961	Oct. 1962	Sept. 1962	Oct. 1961	October 1962
	number			dollars						number
<b>Mining</b>	42.2	41.6	42.7	2.18	2.19	2.13	92.09	91.34	90.90	74,029
Metal mining	42.2	41.1	43.0	2.26	2.28	2.20	95.23	93.82	94.56	48,811
Gold (a)	43.7	41.8	43.5	1.77	1.78	1.74	77.24	74.39	75.69	13,265
Other metal (b)	41.6	40.9	42.8	2.45	2.46	2.37	101.94	100.74	101.54	35,546
Copper-gold-silver	40.2	39.6	40.5	2.24	2.25	2.17	90.29	89.19	87.97	8,353
Iron	43.7	43.4	47.6	2.67	2.67	2.50	116.84	115.84	118.87	7,063
Uranium	40.3	38.5	41.4	2.71	2.71	2.79	109.27	104.16	115.37	3,726
Fuels	41.6	41.4	41.0	2.09	2.09	2.03	86.99	86.78	83.33	13,121
Coal	42.9	42.4	42.1	1.84	1.84	1.84	79.15	78.05	77.29	8,049
Oil and natural gas (c)	39.5	40.0	39.2	2.52	2.53	2.38	99.43	100.97	93.60	5,072
Non-metal (d)	43.2	43.8	43.7	1.96	1.96	1.94	84.92	85.99	84.83	12,097
Asbestos	41.2	41.2	42.5	2.22	2.23	2.22	91.58	92.02	94.39	5,844
<b>Manufacturing</b>	41.3	41.4	41.2	1.89	1.88	1.84	77.95	77.61	75.69	891,412
Durable goods	41.9	42.0	41.6	2.05	2.05	2.00	85.96	85.92	83.39	430,249
Non-durable goods	40.8	40.8	40.8	1.73	1.72	1.68	70.48	70.00	68.72	461,163
Food and beverages	40.2	40.1	40.2	1.61	1.57	1.59	64.82	62.80	64.16	111,218
Meat products	41.1	40.8	40.7	1.92	1.92	1.87	79.11	78.59	76.39	22,334
Canned and cured fish	32.4	33.3	29.2	1.12	1.12	1.09	36.30	37.32	31.95	11,167
Canned and preserved fruits and vegetables	39.3	40.1	39.5	1.23	1.18	1.25	48.19	47.32	49.37	14,482
Grain mill products	41.3	41.9	42.5	1.83	1.83	1.79	75.60	76.73	75.92	5,701
Bread and other bakery products	41.0	41.3	41.4	1.54	1.55	1.49	63.34	64.00	61.87	12,067
Biscuits and crackers	40.0	40.4	40.1	1.44	1.41	1.39	57.42	57.05	55.67	5,835
Distilled liquors	42.7	41.1	42.1	2.18	2.18	2.07	92.85	89.61	86.95	3,326
Malt liquors	38.9	39.8	39.0	2.38	2.37	2.35	92.59	94.24	91.65	5,654
Confectionery	41.1	41.6	42.0	1.32	1.33	1.28	54.20	55.17	53.70	8,678
Tobacco and tobacco products	39.9	39.8	40.3	2.00	2.00	1.90	80.05	79.76	76.65	6,518
Rubber products	43.3	42.6	42.2	1.96	1.94	1.91	85.14	82.83	80.78	16,282
Rubber footwear	44.3	42.3	42.0	1.45	1.42	1.40	64.20	60.02	58.67	4,754
Other rubber products (e)	42.9	42.7	42.3	2.18	2.17	2.12	93.77	92.61	89.57	11,528
Leather products	40.4	40.9	40.6	1.30	1.28	1.24	52.42	52.51	50.45	24,876
Boots and shoes (except rubber)	39.6	40.8	39.7	1.25	1.23	1.19	49.44	50.33	47.15	17,179
Other leather products (f)	42.3	41.2	42.5	1.40	1.39	1.35	59.06	57.40	57.61	7,697
Textile products (except clothing)	42.9	43.1	43.1	1.43	1.43	1.39	61.32	61.77	59.84	50,274
Cotton yarn and broad woven goods	41.2	41.6	42.0	1.46	1.47	1.42	60.30	60.91	59.47	15,494
Woollen goods	43.2	43.6	44.0	1.33	1.33	1.31	57.34	58.15	57.71	7,919
Synthetic textiles and silk	44.2	44.4	44.0	1.52	1.51	1.45	67.21	67.13	63.93	12,184
Filament yarn and staple fibres	42.4	42.8	42.0	1.87	1.88	1.80	79.17	80.28	75.81	5,362
Spun yarn and fabrics	45.6	45.6	45.6	1.27	1.25	1.19	57.81	57.04	54.07	6,822
Clothing (textile and fur)	39.2	39.5	39.3	1.22	1.23	1.19	48.01	48.70	46.67	80,388
Men's clothing	38.9	39.5	38.8	1.22	1.22	1.19	47.48	48.13	46.11	28,762
Women's clothing	37.3	37.6	37.8	1.30	1.33	1.25	48.38	49.95	47.28	20,671
Knit goods	42.6	42.2	42.5	1.15	1.14	1.11	48.88	48.27	47.26	14,625
*Wood products	41.7	42.5	41.8	1.67	1.67	1.62	69.66	71.01	67.50	76,063
Saw and planing mills	40.6	41.5	40.4	1.78	1.78	1.72	72.24	73.73	69.55	48,197
Plywood and veneer mills	40.2	40.4	40.5	1.77	1.79	1.72	71.02	72.18	69.83	10,125
Sash, door and planing mills	42.7	43.6	42.4	1.48	1.48	1.44	63.17	64.53	61.16	11,584
Sawmills	39.8	41.0	39.4	1.93	1.91	1.86	76.72	78.35	73.26	26,388
Furniture	44.2	44.9	44.5	1.52	1.53	1.49	67.24	68.62	66.35	20,548
Other wood products (g)	42.7	42.8	43.0	1.40	1.39	1.35	59.51	59.55	58.14	7,318
Paper products	41.7	41.6	41.8	2.26	2.26	2.18	94.19	93.89	91.11	76,042
Pulp and paper mills	41.8	41.5	41.7	2.44	2.45	2.36	102.13	101.51	98.46	55,353
Other paper products (h)	41.6	41.7	41.9	1.75	1.76	1.71	72.95	73.31	71.73	20,689
Paper boxes and bags	41.7	41.5	42.0	1.74	1.75	1.69	72.52	72.70	71.10	12,975
Printing, publishing and allied industries	38.9	39.3	39.1	2.32	2.32	2.24	90.13	91.13	87.61	33,419

For footnotes (a) to (o) see notes on last page.

\* Durable manufactured goods industries.

TABLE 1. Average Hours and Average Earnings of Hourly-Rated Wage-Earners, Canada, by Industry - Concluded

Industry	Average weekly hours			Average hourly earnings			Average weekly wages			Wage-earners reported
	Oct. 1962	Sept. 1962	Oct. 1961	Oct. 1962	Sept. 1962	Oct. 1961	Oct. 1962	Sept. 1962	Oct. 1961	October 1962
	number			dollars						number
<b>Manufacturing - Concluded:</b>										
*Iron and steel products .....	41.9	41.9	41.6	2.19	2.19	2.14	91.89	92.00	89.09	133,848
Agricultural implements .....	37.2	41.0	39.7	2.21	2.21	2.13	82.27	90.76	84.58	7,473
Boilers and plate work .....	42.7	43.7	41.3	2.10	2.09	2.03	89.49	91.41	84.09	5,435
Fabricated and structural steel.....	43.4	43.1	40.8	2.17	2.17	2.08	94.12	93.65	84.61	7,877
Hardware and tools .....	43.6	43.7	42.5	1.82	1.82	1.78	79.35	79.57	75.68	9,312
Heating and cooking appliances.....	42.0	42.3	41.9	1.87	1.85	1.82	78.51	78.48	76.17	6,591
Iron castings.....	42.3	42.3	42.9	2.07	2.08	2.02	87.73	88.09	86.57	14,681
Machinery (i).....	42.5	42.8	41.7	2.07	2.07	2.01	87.77	88.77	83.69	23,848
Household, office and store .....	41.9	41.4	41.7	2.11	2.12	2.05	88.36	87.63	85.41	5,601
Industrial (j).....	42.7	43.3	41.7	2.05	2.06	1.99	87.59	89.13	83.11	18,247
Primary iron and steel .....	41.2	39.7	41.2	2.64	2.63	2.57	108.79	104.44	105.77	31,118
Sheet metal products .....	42.2	42.6	41.5	2.08	2.12	2.06	87.51	90.44	85.48	13,982
Wire and wire products.....	42.4	42.1	42.5	2.14	2.15	2.10	90.60	90.48	89.46	6,962
*Transportation equipment .....	41.7	41.2	41.2	2.24	2.20	2.17	93.31	90.87	89.15	97,580
Aircraft and parts .....	41.1	40.9	42.1	2.16	2.15	2.14	88.81	88.12	90.01	16,509
Motor vehicles .....	44.1	41.5	44.4	2.49	2.44	2.41	109.92	101.29	106.80	24,356
Motor vehicle parts and accessories.....	42.3	41.8	40.8	2.16	2.13	2.09	91.44	88.77	85.39	16,930
Railroad and rolling stock equipment .....	39.1	40.6	39.3	2.11	2.10	2.08	82.42	85.14	81.90	18,656
Shipbuilding and repairing .....	41.0	41.2	38.1	2.21	2.18	2.06	90.40	89.93	78.34	18,990
*Non-ferrous metal products.....	41.3	41.0	41.0	2.16	2.17	2.15	89.43	88.97	87.92	37,674
Aluminum products .....	42.5	42.3	42.1	1.93	1.94	1.88	82.13	82.07	79.04	5,340
Brass and copper products .....	41.8	41.8	42.1	2.07	2.08	2.03	86.46	87.16	85.53	5,510
Smelting and refining .....	40.4	40.2	40.0	2.44	2.42	2.41	98.37	97.31	96.36	20,464
Other non-ferrous metal products (k).....	43.0	42.2	42.4	1.61	1.61	1.58	69.39	67.88	66.82	6,360
*Electrical apparatus and supplies .....	41.5	42.1	41.6	1.91	1.93	1.88	79.40	81.11	78.44	54,501
Heavy electrical machinery and equipment <sup>1</sup> .....	42.1	42.9	41.5	2.14	2.16	2.08	90.13	92.69	86.40	11,836
Telecommunication equipment.....	41.2	41.4	41.4	1.72	1.72	1.73	70.64	71.33	71.61	13,834
Batteries .....	43.5	44.1	44.4	1.90	1.92	1.88	82.62	84.79	83.60	1,465
Refrigerators, vacuum cleaners and appliances .....	40.2	41.0	39.4	1.95	1.96	1.90	78.57	80.20	74.87	6,769
Wire and cable .....	43.0	43.2	43.0	2.17	2.17	2.11	93.20	94.03	90.76	4,541
Miscellaneous electrical products .....	41.4	42.1	42.2	1.81	1.83	1.79	74.97	77.22	75.65	15,876
*Non-metallic mineral products (l).....	43.7	44.3	43.8	1.93	1.93	1.89	84.49	85.62	82.60	30,583
Clay products .....	43.0	43.8	43.4	1.72	1.73	1.70	74.09	75.85	73.57	4,243
Glass and glass products.....	41.1	41.9	41.8	1.95	1.94	1.91	80.16	81.22	79.83	7,164
Products of petroleum and coal .....	41.3	41.2	41.3	2.66	2.65	2.59	110.01	109.05	106.93	7,569
Petroleum refining and products.....	41.3	41.1	41.2	2.70	2.68	2.61	111.40	110.46	107.60	7,204
Chemical products.....	41.2	41.2	40.9	2.11	2.11	2.04	86.97	86.73	83.63	27,771
Medicinal and pharmaceutical preparations.....	40.2	39.9	40.3	1.65	1.63	1.57	66.39	65.05	63.39	3,731
Acids, alkalis and salts .....	41.7	42.2	40.3	2.44	2.45	2.37	101.63	103.45	95.28	5,501
Fertilizers .....	42.0	40.9	41.5	2.15	2.13	2.08	90.53	87.30	86.32	1,952
Paints and varnishes .....	40.4	41.0	40.2	1.94	1.94	1.88	78.55	79.48	75.34	2,519
Miscellaneous manufacturing industries .....	42.1	42.2	42.5	1.52	1.53	1.48	63.98	64.72	62.97	26,806
Professional and scientific equipment .....	40.7	40.9	41.5	1.87	1.87	1.83	76.21	76.62	75.95	6,364
<b>Construction .....</b>	<b>41.8</b>	<b>42.6</b>	<b>41.9</b>	<b>2.07</b>	<b>2.05</b>	<b>1.97</b>	<b>86.25</b>	<b>87.51</b>	<b>82.69</b>	<b>214,341</b>
Building and general engineering (m) .....	41.5	42.1	41.8	2.26	2.25	2.15	93.51	94.67	89.95	138,626
Building.....	40.6	41.1	40.8	2.27	2.26	2.15	92.10	92.63	87.74	116,525
General engineering .....	45.9	47.3	47.1	2.20	2.22	2.14	100.94	105.23	100.81	22,101
Highways, bridges and streets .....	42.3	43.7	42.0	1.72	1.71	1.66	72.95	74.59	69.56	75,715
<b>Electric and motor transportation (n).....</b>	<b>43.9</b>	<b>44.1</b>	<b>43.8</b>	<b>1.98</b>	<b>1.98</b>	<b>1.91</b>	<b>86.89</b>	<b>87.12</b>	<b>83.67</b>	<b>34,429</b>
<b>Service (o) .....</b>	<b>37.9</b>	<b>37.8</b>	<b>38.7</b>	<b>1.12</b>	<b>1.11</b>	<b>1.08</b>	<b>42.38</b>	<b>42.10</b>	<b>41.68</b>	<b>60,645</b>
Hotels and restaurants.....	37.6	37.2	38.6	1.08	1.07	1.05	40.54	39.83	40.44	39,035
Laundries and dry cleaning plants .....	40.3	40.5	40.0	1.06	1.06	1.03	42.80	43.00	41.35	13,536

For footnotes (a) to (o) see notes on last page, appear in Table 8.

\*Durable manufactured goods industries.

<sup>1</sup> Index numbers of average hourly earnings in this industry



TABLE 2. Average Hours and Earnings of Hourly-Rated Wage-Earners in Specified Industries, Provinces

Province and industry	Average weekly hours			Average hourly earnings			Average weekly wages			Wage-earners reported
	Oct. 1962	Sept. 1962	Oct. 1961	Oct. 1962	Sept. 1962	Oct. 1961	Oct. 1962	Sept. 1962	Oct. 1961	October 1962
	number			dollars						number
Newfoundland										
Mining .....	46.4	45.4	45.2	2.13	2.13	1.95	99.01	96.74	87.93	2,898
Manufacturing .....	38.1	38.4	38.1	1.69	1.68	1.71	64.17	64.44	65.27	7,998
Food and beverages .....	33.3	35.1	33.0	1.06	1.05	1.07	35.22	36.80	35.38	3,472
Canned and cured fish .....	30.3	32.5	29.3	0.93	0.93	0.95	28.15	30.07	27.95	2,762
Pulp and paper mills .....	40.4	39.6	40.3	2.62	2.62	2.57	105.77	103.80	103.69	2,236
Building and general engineering (m) .....	50.9	52.7	40.2	1.74	1.76	1.81	88.70	92.90	72.82	3,929
Nova Scotia										
Coal mining .....	44.8	44.0	43.5	1.80	1.79	1.80	80.45	78.72	78.37	5,875
Manufacturing .....	40.9	39.9	39.6	1.64	1.64	1.58	67.12	65.34	62.45	21,729
Food and beverages .....	40.8	38.7	37.9	1.06	1.06	1.02	43.32	41.03	38.65	5,660
Canned and cured fish .....	36.7	36.0	28.8	1.13	1.07	1.06	41.53	38.52	30.55	2,591
Wood products .....	43.2	43.5	43.1	1.02	1.02	1.00	43.86	44.19	43.35	1,348
Iron and steel products .....	41.3	39.4	40.2	2.32	2.28	2.21	95.75	90.01	88.82	4,042
Primary iron and steel .....	41.7	38.7	40.3	2.52	2.48	2.41	105.20	96.27	97.31	2,954
Transportation equipment .....	40.2	39.7	39.1	1.92	1.89	1.81	77.44	75.27	70.58	5,856
Shipbuilding and repairing .....	40.3	39.9	39.9	1.91	1.89	1.78	77.21	75.37	70.93	3,975
Building and general engineering (m) .....	39.4	39.6	40.8	1.69	1.68	1.79	66.70	66.76	72.96	4,484
Highways, bridges and street construction .....	42.5	42.1	41.3	1.42	1.42	1.41	60.41	59.65	58.04	3,460
New Brunswick										
Manufacturing .....	40.2	40.1	40.5	1.60	1.55	1.62	64.19	62.22	65.47	17,049
Food and beverages .....	37.8	36.9	38.0	1.17	1.13	1.20	44.04	41.58	45.80	5,478
Saw and planing mills .....	46.4	48.0	44.1	1.08	1.07	1.05	50.02	51.48	46.32	1,257
Pulp and paper mills .....	41.1	40.6	41.9	2.32	2.32	2.25	95.32	94.08	94.29	3,789
Transportation equipment .....	38.7	40.2	38.3	2.00	2.00	1.94	77.35	80.24	74.37	2,400
Building and general engineering (m) .....	41.9	41.4	42.1	1.62	1.61	1.55	67.85	66.60	65.47	3,069
Highways, bridges and street construction .....	43.7	45.0	43.3	1.30	1.29	1.27	56.63	58.17	54.84	2,228
Quebec										
Metal mining .....	42.6	41.5	44.9	2.19	2.20	2.06	93.38	91.35	92.36	12,433
Non-metal mining (d) .....	42.7	43.2	44.1	2.03	2.03	2.03	86.63	87.80	89.55	6,912
Manufacturing .....	42.3	42.5	42.2	1.70	1.69	1.65	71.83	71.98	69.62	286,315
Food and beverages .....	42.8	42.3	43.1	1.58	1.53	1.53	67.54	64.95	65.93	25,887
Tobacco .....	39.8	39.7	40.3	2.02	2.03	1.90	80.46	80.43	76.57	5,256
Rubber products .....	45.1	43.5	43.3	1.53	1.51	1.51	68.95	65.73	65.24	4,954
Leather products .....	39.7	40.8	39.9	1.22	1.22	1.16	48.52	49.78	46.46	12,545
Boots and shoes (except rubber) .....	39.3	40.8	39.3	1.23	1.22	1.16	48.28	49.95	45.70	9,679
Textile products (except clothing) .....	44.0	44.2	44.3	1.38	1.38	1.33	60.69	61.01	58.72	29,754
Cotton yarn and broad woven goods .....	41.6	41.9	42.4	1.51	1.51	1.44	62.57	63.35	61.22	10,753
Woollen goods .....	46.6	47.2	47.8	1.30	1.31	1.28	60.65	61.74	61.15	2,835
Synthetic textiles and silk <sup>1</sup> .....	45.3	45.3	45.0	1.34	1.32	1.24	60.60	59.74	55.82	8,179
Clothing (textile and fur) .....	39.0	39.3	39.0	1.22	1.23	1.17	47.58	48.35	45.74	48,513
Men's clothing .....	39.0	39.9	38.7	1.21	1.21	1.17	46.98	48.20	45.37	16,387
Women's clothing .....	36.8	36.9	37.2	1.30	1.33	1.25	47.99	49.21	46.38	14,412
Knit goods .....	43.5	42.8	43.1	1.15	1.14	1.10	49.81	48.74	47.22	7,077
Wood products .....	46.7	47.4	47.1	1.27	1.27	1.22	59.32	59.97	57.63	17,161
Saw and planing mills .....	47.3	48.3	47.7	1.20	1.19	1.15	56.71	57.60	55.12	7,665
Furniture .....	46.4	46.9	46.7	1.39	1.39	1.35	64.30	65.01	62.88	7,130
Paper products .....	43.0	42.8	42.9	2.20	2.19	2.12	94.73	93.71	90.99	28,762
Pulp and paper mills .....	43.4	43.2	43.0	2.37	2.35	2.28	102.91	101.65	98.10	22,353
Other paper products (h) .....	41.6	41.4	42.6	1.59	1.59	1.55	66.22	66.05	65.96	6,409
Printing, publishing and allied industries .....	39.4	40.0	40.0	2.23	2.24	2.18	88.00	89.39	87.08	9,292
Iron and steel products .....	44.1	44.3	43.4	1.94	1.94	1.88	85.57	85.94	81.49	26,126
Machinery (i) .....	44.6	45.0	43.0	1.86	1.87	1.79	82.75	84.07	77.01	5,837
Transportation equipment .....	41.9	42.2	41.1	2.12	2.11	2.09	88.71	89.02	85.78	22,549
Aircraft and parts .....	42.1	41.7	43.8	2.15	2.15	2.18	90.47	89.59	95.30	8,012
Railroad and rolling stock equipment .....	39.6	40.9	39.4	2.10	2.08	2.08	83.10	85.07	81.98	6,484
Shipbuilding and repairing .....	42.9	43.5	36.6	2.24	2.20	2.09	96.10	95.77	76.36	6,653

Footnotes (a) to (c) appear in explanatory notes at the end of this report.

<sup>1</sup> Includes synthetic filament yarn and staple fibre and spun yarn and fabric manufacturing.

TABLE 2. Average Hours and Earnings of Hourly-Rated Wage-Earners in Specified Industries, Provinces, - Continued

Province and industry	Average weekly hours			Average hourly earnings			Average weekly wages			Wage-earners reported
	Oct. 1962	Sept. 1962	Oct. 1961	Oct. 1962	Sept. 1962	Oct. 1961	Oct. 1962	Sept. 1962	Oct. 1961	October 1962
	number			dollars						number
Quebec - Concluded										
Manufacturing - Concluded:										
Non-ferrous metal products.....	42.0	42.0	41.9	2.20	2.20	2.14	92.32	92.49	89.45	11,693
Smelting and refining.....	41.0	41.0	41.0	2.50	2.50	2.40	102.36	102.29	98.38	7,338
Electrical apparatus and supplies.....	42.0	43.1	42.2	1.91	1.93	1.91	80.00	83.17	80.47	15,398
Chemical products.....	40.9	41.0	41.0	1.95	1.95	1.93	79.97	79.96	79.12	8,428
Building and general engineering (m).....	41.7	43.4	43.0	2.18	2.16	2.00	90.83	93.80	85.92	40,792
Building.....	40.6	41.8	41.0	2.18	2.17	2.03	88.35	90.63	83.34	33,366
General engineering.....	47.0	50.0	52.6	2.17	2.14	1.86	101.98	107.22	97.85	7,426
Highways, bridges and street construction.....	39.0	41.3	39.7	1.61	1.57	1.50	62.95	65.00	59.35	19,505
Electric and motor transportation (n).....	43.9	44.4	44.2	1.85	1.85	1.79	81.10	82.05	79.30	9,740
Service (o).....	41.0	41.1	41.7	1.03	1.04	0.99	42.17	42.67	41.44	12,318
Ontario										
Metal mining.....	41.5	40.4	41.4	2.21	2.26	2.24	91.56	91.10	92.82	24,116
Gold (a).....	43.3	41.4	42.8	1.75	1.76	1.74	75.90	72.95	74.27	9,307
Other metal (b).....	40.3	39.8	40.7	2.53	2.55	2.54	101.72	101.35	103.29	15,187
Manufacturing.....	41.5	41.6	41.4	1.99	1.97	1.93	82.45	81.92	80.03	428,018
Food and beverages.....	40.9	41.6	41.0	1.65	1.59	1.61	67.38	66.06	65.86	45,328
Meat products.....	42.5	42.8	41.8	1.86	1.87	1.82	79.00	80.01	76.08	8,484
Canned and preserved fruits and vegetables.....	38.1	41.7	38.6	1.32	1.23	1.32	50.09	51.22	51.13	8,662
Bread and other bakery products.....	40.3	41.0	40.5	1.52	1.53	1.45	61.26	62.62	58.63	4,958
Rubber products.....	42.6	42.2	41.8	2.17	2.15	2.10	92.33	90.78	87.66	10,990
Leather products.....	41.3	41.2	41.5	1.38	1.36	1.33	56.90	55.89	55.19	11,375
Boots and shoes (except rubber).....	40.1	40.8	40.3	1.27	1.25	1.22	51.05	50.88	49.16	6,998
Textile products (except clothing).....	41.4	41.8	41.4	1.53	1.54	1.51	63.52	64.24	62.66	18,475
Cotton yarn and broad woven goods.....	40.3	40.9	40.9	1.39	1.38	1.38	56.12	56.60	56.47	4,062
Woolen goods.....	41.3	41.7	41.9	1.35	1.36	1.34	55.81	56.52	56.06	4,780
Synthetic textiles and silk <sup>1</sup> .....	41.7	42.4	41.7	1.92	1.93	1.93	80.25	81.86	80.67	3,871
Clothing (textile and fur).....	40.0	40.2	40.0	1.27	1.28	1.25	50.93	51.35	50.01	22,462
Men's clothing.....	39.1	39.3	38.8	1.33	1.32	1.30	52.23	51.67	50.47	7,601
Knit goods.....	42.3	42.1	42.3	1.17	1.17	1.15	49.40	49.18	48.56	6,139
Wood products.....	43.5	44.2	43.3	1.52	1.52	1.49	66.19	67.29	64.55	22,591
Saw and planing mills.....	44.2	44.7	42.8	1.43	1.43	1.41	63.42	64.07	60.10	8,370
Furniture.....	43.6	44.5	44.1	1.60	1.61	1.58	69.79	71.62	69.65	10,675
Paper products.....	41.4	41.5	41.5	2.21	2.22	2.14	91.49	92.15	88.53	28,536
Pulp and paper mills.....	40.9	41.1	41.1	2.47	2.47	2.37	101.10	101.61	97.42	17,223
Other paper products (b).....	42.1	42.2	42.0	1.83	1.83	1.78	76.84	77.39	74.84	11,313
Printing, publishing and allied industries.....	38.7	38.9	38.7	2.39	2.39	2.29	92.51	93.14	88.84	18,427
Iron and steel products.....	41.6	41.6	41.3	2.27	2.28	2.23	94.57	94.91	91.93	89,857
Agricultural implements.....	36.5	40.7	39.4	2.32	2.32	2.21	84.60	94.59	86.87	6,455
Iron castings.....	41.9	41.7	41.1	2.14	2.16	2.09	89.81	89.98	86.10	8,552
Machinery (i).....	41.9	42.2	41.3	2.15	2.15	2.08	89.95	90.86	86.06	16,182
Primary iron and steel.....	40.9	39.5	41.3	2.71	2.71	2.65	111.08	107.08	109.37	23,967
Sheet metal products.....	42.6	43.0	41.9	2.07	2.13	2.07	88.45	91.74	86.58	8,201
Transportation equipment.....	42.6	41.3	42.1	2.34	2.30	2.27	99.51	94.90	95.56	51,644
Aircraft and parts.....	40.2	40.2	40.1	2.22	2.21	2.13	88.99	88.80	85.53	6,541
Motor vehicles.....	44.2	41.4	44.4	2.53	2.48	2.45	111.63	102.61	108.89	23,103
Motor vehicle parts and accessories.....	42.2	41.7	40.7	2.20	2.16	2.13	92.70	89.94	86.53	15,751
Railroad and rolling stock equipment.....	38.1	40.9	39.4	2.15	2.19	2.12	82.10	89.44	83.63	3,468
Non-ferrous metal products.....	40.8	40.6	40.8	2.06	2.08	2.07	84.28	84.34	84.63	19,338
Brass and copper products.....	41.4	41.5	41.7	2.16	2.17	2.13	89.52	90.17	88.89	3,175
Smelting and refining.....	38.8	39.1	39.2	2.34	2.32	2.34	90.83	90.89	91.97	7,481
Electrical apparatus and supplies.....	41.3	41.7	41.4	1.93	1.94	1.88	79.74	80.83	77.75	36,657
Non-metallic mineral products (l).....	43.5	43.7	43.7	1.99	2.00	1.96	86.75	87.32	85.48	15,021
Chemical products.....	41.2	41.4	40.9	2.17	2.17	2.10	89.50	89.86	85.89	16,312
Building and general engineering (n).....	40.5	40.8	41.4	2.42	2.42	2.29	98.11	98.58	94.77	49,761
Building.....	40.3	40.5	41.1	2.41	2.41	2.28	97.14	97.67	93.76	44,800
General engineering.....	43.1	43.2	43.5	2.48	2.47	2.39	106.90	106.90	103.92	4,961
Highways, bridges and street construction.....	44.4	45.0	45.6	1.75	1.73	1.68	77.88	77.96	76.32	23,506
Electric and motor transportation (n).....	45.2	45.1	44.6	2.01	2.01	1.94	90.92	90.53	86.45	16,291
Service (o).....	37.9	38.0	38.6	1.10	1.10	1.06	41.80	42.01	40.94	24,701
Hotels and restaurants.....	37.6	37.6	38.4	1.04	1.04	1.00	39.07	39.18	38.63	15,621

Footnotes (a) to (o) appear in explanatory notes at the end of this report.

<sup>1</sup> Mainly synthetic filament yarn and staple fibre manufacturing.

TABLE 2. Average Hours and Earnings of Hourly-Rated Wage-Earners in Specified Industries, Provinces - Concluded

Province and industry	Average weekly hours			Average hourly earnings			Average weekly wages			Wage-earners reported
	Oct. 1962	Sept. 1962	Oct. 1961	Oct. 1962	Sept. 1962	Oct. 1961	Oct. 1962	Sept. 1962	Oct. 1961	October 1962
	number			dollars						number
Manitoba										
Manufacturing .....	40.1	40.6	40.2	1.76	1.76	1.73	70.79	71.48	69.46	29,231
Food and beverages .....	39.6	38.6	39.6	1.85	1.83	1.82	73.15	70.61	72.26	5,925
Meat products .....	39.3	37.8	39.7	2.04	2.04	1.97	79.98	77.03	78.19	2,397
Clothing (textile and fur) .....	38.9	39.8	39.0	1.13	1.14	1.14	44.05	45.42	44.49	4,844
Iron and steel products .....	40.8	41.3	40.8	1.94	1.94	1.94	79.29	80.05	79.23	3,784
Transportation equipment .....	39.5	40.6	40.2	2.04	2.02	2.00	80.75	82.12	80.39	5,363
Building and general engineering (m) .....	44.1	46.0	43.0	2.14	2.14	1.96	94.55	98.54	84.14	7,907
Highways, bridges and street construction .....	43.9	48.6	43.2	1.63	1.63	1.58	71.43	78.95	68.29	3,789
Service (o) .....	35.6	35.8	36.6	1.11	1.11	1.07	39.59	39.79	39.24	5,029
Saskatchewan										
Mining .....	41.6	40.4	41.1	2.55	2.58	2.50	106.19	104.29	102.82	2,154
Manufacturing .....	38.9	38.6	39.0	1.98	1.97	1.95	77.10	76.24	76.07	6,759
Meat products .....	37.4	35.8	37.0	1.98	2.02	1.98	74.13	72.56	73.19	1,326
Building and general engineering (m) .....	42.6	42.9	42.2	1.95	1.95	1.85	83.07	83.66	78.15	5,564
Highways, bridges and street construction .....	46.8	46.3	42.8	1.79	1.74	1.68	83.65	80.71	71.70	4,608
Service (o) .....	38.6	38.7	38.4	1.12	1.11	1.10	43.09	42.88	42.00	1,912
Alberta (p)										
Coal mining .....	37.2	39.2	36.6	2.16	2.20	2.15	80.31	86.46	78.68	1,035
Oil and natural gas production (c) .....	39.2	39.5	38.9	2.53	2.52	2.39	99.08	99.55	93.17	4,221
Manufacturing .....	40.1	39.8	40.7	1.99	1.97	1.97	79.69	78.56	80.21	23,480
Food and beverages .....	39.1	37.5	40.6	1.95	1.90	1.92	76.12	71.29	77.95	6,528
Meat products .....	39.1	38.6	40.5	2.16	2.18	2.15	84.42	84.04	87.16	3,222
Transportation equipment .....	40.3	41.6	40.1	1.99	1.97	1.98	80.04	81.83	79.58	3,114
Non-metallic mineral products (e) .....	41.3	42.4	41.5	2.03	2.05	1.95	83.83	87.00	81.11	2,474
Building and general engineering (m) .....	41.8	42.1	42.9	2.26	2.26	2.41	94.41	94.99	103.63	12,985
Highways, bridges and street construction .....	42.9	45.0	40.3	1.87	1.86	1.86	80.31	83.62	74.82	7,078
Electric and motor transportation (n) .....	41.2	42.6	39.7	2.00	2.01	1.98	82.30	85.39	78.53	2,141
Service (o) .....	36.0	35.3	38.0	1.20	1.13	1.14	43.27	40.02	43.33	6,512
British Columbia (p)										
Forestry (logging) .....	38.2	38.7	38.3	2.87	2.87	2.80	109.57	111.17	107.10	7,360
Metal mining .....	42.6	40.5	42.7	2.46	2.48	2.44	104.86	100.29	104.22	4,255
Manufacturing .....	37.9	38.0	37.7	2.29	2.27	2.24	86.85	86.37	84.57	69,677
Food and beverages .....	35.0	34.8	34.4	1.94	1.86	1.99	67.97	64.88	68.53	9,153
Canned and cured fish .....	25.2	27.9	22.1	2.07	2.02	2.15	52.02	56.51	47.63	1,844
Canned and preserved fruits and vegetables .....	35.9	35.0	34.9	1.45	1.36	1.50	52.01	47.43	52.21	2,163
Wood products .....	37.1	38.2	37.2	2.21	2.22	2.14	82.10	84.55	79.49	28,644
Saw and planing mills .....	37.1	38.2	37.2	2.22	2.23	2.15	82.49	84.95	79.85	27,233
Pulp and paper mills .....	39.9	38.7	40.0	2.71	2.75	2.61	108.25	106.58	104.35	7,494
Iron and steel products .....	38.9	39.1	39.0	2.44	2.45	2.38	94.98	95.69	93.02	4,791
Steel shipbuilding and repairing .....	39.3	39.3	37.9	2.55	2.54	2.46	100.36	99.74	93.48	5,025
Non-ferrous metal products .....	40.9	39.5	39.4	2.53	2.53	2.57	103.74	100.03	101.47	4,276
Building and general engineering (m) .....	39.0	37.1	37.6	2.85	2.86	2.71	111.17	106.11	102.02	9,442
Highways, bridges and street construction .....	37.5	38.3	36.6	2.20	2.25	2.24	82.49	85.96	82.09	8,491
Electric and motor transportation (n) .....	40.2	39.5	40.8	2.40	2.41	2.31	96.32	95.29	94.41	3,169
Service (o) .....	34.9	35.1	34.8	1.37	1.37	1.33	47.73	47.91	46.23	7,735

Footnotes (a) to (p) appear in explanatory notes at the end of this report.



TABLE 3. Average Hours and Earnings of Hourly-Rated Wage-Earners in Specified Industries, Urban Areas

Urban area and industry	Average weekly hours			Average hourly earnings			Average weekly wages			Wage-earners reported
	Oct. 1962	Sept. 1962	Oct. 1961	Oct. 1962	Sept. 1962	Oct. 1961	Oct. 1962	Sept. 1962	Oct. 1961	October 1962
	number			dollars						number
Halifax - Manufacturing .....	40.7	40.2	39.9	1.83	1.81	1.74	74.41	72.48	69.31	6,928
Saint John - Manufacturing .....	41.2	41.3	41.2	1.73	1.71	1.71	71.45	70.53	70.21	4,190
Quebec - Manufacturing .....	41.5	41.2	40.9	1.68	1.65	1.58	69.73	68.10	64.63	15,750
Leather products .....	39.2	39.2	39.4	1.20	1.19	1.11	47.27	46.62	43.86	2,103
Clothing (textile and fur) .....	39.6	39.2	38.9	0.98	0.97	0.96	38.90	38.15	37.14	1,909
Transportation equipment .....	43.3	40.6	36.5	2.23	2.16	2.07	96.57	87.68	75.52	2,594
Building and general engineering (m) .....	39.8	42.7	42.1	1.94	1.92	1.89	77.24	82.19	79.53	5,472
Sherbrooke - Manufacturing .....	43.6	43.6	44.7	1.52	1.52	1.43	66.48	66.35	63.85	6,650
Three Rivers - Manufacturing .....	43.7	42.8	43.4	1.85	1.84	1.79	80.77	78.91	77.70	8,599
Drummondville - Manufacturing .....	43.8	43.9	43.4	1.46	1.46	1.35	64.00	64.15	58.77	4,696
Shawinigan - Manufacturing .....	41.4	41.8	40.9	1.98	1.94	1.98	82.21	81.29	81.01	4,549
Granby - Manufacturing .....	43.6	44.0	42.9	1.51	1.51	1.42	65.74	66.33	60.95	4,473
St. Hyacinthe - Manufacturing .....	42.3	42.3	42.9	1.35	1.33	1.29	57.15	56.24	55.38	3,569
Sorel - Manufacturing .....	42.1	42.0	41.4	1.95	1.96	1.89	82.13	82.39	78.11	3,158
St. Jean - Manufacturing .....	43.9	43.3	44.5	1.58	1.53	1.52	69.51	66.20	67.38	3,201
Montreal - Manufacturing .....	41.5	41.8	41.4	1.75	1.75	1.71	72.50	73.32	70.54	154,710
Food and beverages .....	42.2	41.9	41.8	1.75	1.72	1.69	73.93	72.23	70.84	16,478
Tobacco and tobacco products .....	39.8	39.7	40.3	2.03	2.03	1.91	80.89	80.59	76.86	4,014
Leather products .....	39.9	40.7	39.7	1.28	1.28	1.22	51.02	51.95	48.51	6,665
Textile products (except clothing) .....	43.4	43.5	43.8	1.33	1.35	1.30	57.88	58.67	57.11	7,248
Clothing (textile and fur) .....	38.9	38.9	38.7	1.31	1.32	1.26	50.76	51.58	48.94	33,361
Printing, publishing and allied industries .....	38.8	39.1	39.4	2.38	2.38	2.31	92.33	93.22	91.16	7,355
Iron and steel products .....	43.6	43.8	42.5	2.04	2.04	1.98	88.98	89.28	84.08	17,381
Transportation equipment .....	41.4	42.1	41.2	2.14	2.13	2.13	88.43	89.84	87.62	17,327
Electrical apparatus and supplies .....	41.7	43.0	42.2	1.99	2.01	1.98	82.96	86.51	83.44	12,234
Building and general engineering (m) .....	39.4	40.2	38.6	2.31	2.31	2.16	91.12	92.60	83.53	20,918
Electric and motor transportation (n) .....	43.1	43.7	43.3	1.91	1.91	1.86	82.13	83.27	80.73	7,695
Service (o) .....	40.7	40.8	41.5	1.04	1.05	1.00	42.44	42.96	41.44	9,741
Valleyfield (Salaberry-de-) - Manufacturing .....	42.6	42.1	43.0	1.61	1.62	1.55	68.44	68.03	66.51	2,835
Cornwall - Manufacturing .....	41.0	41.8	41.0	2.08	2.06	2.00	85.15	86.35	82.02	3,678
Ottawa-Hull - Manufacturing .....	41.0	40.6	41.1	2.02	2.02	1.95	82.99	82.08	80.00	10,868
Pulp and paper mills .....	40.7	39.0	40.4	2.42	2.42	2.29	98.44	94.20	92.36	3,658
Building and general engineering (m) .....	42.2	41.9	42.3	2.05	2.06	1.95	86.36	86.40	82.43	4,591
Kingston - Manufacturing .....	40.8	41.5	41.3	2.07	2.09	2.05	84.51	86.94	84.89	4,255
Peterborough - Manufacturing .....	41.7	41.8	41.1	2.33	2.32	2.26	97.02	97.11	92.86	5,291
Oshawa - Manufacturing .....	42.4	40.3	43.2	2.41	2.37	2.36	102.05	95.36	102.11	15,360
Toronto - Manufacturing .....	41.5	41.6	41.3	1.90	1.90	1.84	78.64	79.14	75.89	138,656
Food and beverages .....	40.8	41.4	40.8	1.78	1.78	1.73	72.52	73.77	70.53	16,514
Rubber products .....	43.1	42.5	41.2	2.32	2.29	2.23	100.12	97.46	91.98	3,350
Clothing (textile and fur) .....	40.1	40.1	39.8	1.33	1.33	1.30	53.32	53.52	51.92	12,550
Paper products .....	41.8	42.2	41.7	1.88	1.86	1.81	78.35	78.58	75.53	7,453
Printing, publishing and allied industries .....	38.3	38.4	38.3	2.55	2.55	2.44	97.60	98.02	93.26	11,734
Iron and steel products .....	42.9	42.8	41.6	2.15	2.15	2.08	92.18	92.11	86.51	23,230
Transportation equipment .....	39.7	40.3	40.2	2.13	2.13	2.07	84.42	85.75	83.21	9,132
Non-ferrous metal products .....	43.0	42.2	43.0	1.85	1.85	1.80	79.38	78.07	77.30	6,040
Electrical apparatus and supplies .....	41.5	41.6	42.0	1.91	1.93	1.87	79.43	80.34	78.39	14,969
Chemical products .....	40.5	40.7	40.7	1.92	1.93	1.86	77.87	78.60	75.55	6,103
Building and general engineering (m) .....	39.4	39.9	40.4	2.62	2.61	2.43	103.32	104.35	97.90	16,866
Electric and motor transportation (n) .....	44.8	44.4	44.6	2.10	2.10	2.01	94.10	93.21	89.70	8,768
Service (o) .....	38.7	39.0	39.8	1.17	1.17	1.12	45.32	45.65	44.53	12,930
Hamilton - Manufacturing .....	40.6	40.7	41.6	2.29	2.27	2.24	92.97	92.34	93.04	41,274
Clothing (textile and fur) .....	38.5	40.0	35.6	1.22	1.23	1.20	47.01	49.21	42.63	1,157
Iron and steel products .....	40.1	39.8	41.5	2.59	2.57	2.53	103.88	102.25	105.08	23,122
Electrical apparatus and supplies .....	41.1	42.2	40.9	2.28	2.32	2.16	93.57	97.80	88.40	4,097
Building and general engineering (m) .....	40.7	41.4	44.5	2.42	2.44	2.42	98.40	101.07	107.61	3,553

Footnotes (a) to (o) appear in explanatory notes at the end of this report.

TABLE 3. Average Hours and Earnings of Hourly-Rated Wage-Earners in Specified Industries, Urban Areas - Concluded

Urban area and industry	Average weekly hours			Average hourly earnings			Average weekly wages			Wage-earners reported
	Oct. 1962	Sept. 1962	Oct. 1961	Oct. 1962	Sept. 1962	Oct. 1961	Oct. 1962	Sept. 1962	Oct. 1961	October 1962
	number			dollars						number
<b>St. Catharines - Manufacturing</b> .....	40.9	41.1	40.7	2.34	2.30	2.25	95.55	94.38	91.48	21,496
Pulp and paper mills .....	40.2	40.8	40.9	2.45	2.45	2.35	98.49	99.91	96.34	2,857
Iron and steel products .....	42.1	42.0	40.9	2.48	2.48	2.39	104.26	104.37	97.65	6,395
Transportation equipment .....	43.3	41.7	40.1	2.56	2.52	2.39	110.97	105.03	95.94	5,556
<b>Niagara Falls - Manufacturing</b> .....	41.1	40.9	40.4	2.07	2.01	1.99	85.16	82.32	80.44	3,981
<b>Brantford - Manufacturing</b> .....	40.7	40.1	40.2	1.84	1.82	1.77	74.93	72.92	71.17	7,390
Textile products (except clothing) .....	39.0	38.4	40.8	1.68	1.63	1.62	65.47	62.67	66.23	1,039
Iron and steel products .....	40.8	40.3	39.8	2.23	2.20	2.12	91.03	88.84	84.42	2,535
<b>Guelph - Manufacturing</b> .....	41.6	42.2	40.8	1.81	1.80	1.75	75.30	76.20	71.36	5,540
<b>Galt - Manufacturing</b> .....	40.3	41.0	40.4	1.69	1.68	1.63	67.96	68.96	66.05	7,370
<b>Kitchener - Manufacturing</b> .....	42.6	42.4	42.5	1.73	1.73	1.68	73.56	73.21	71.56	16,092
Food and beverages .....	40.6	40.3	40.7	1.93	1.89	1.83	78.47	75.98	74.62	3,093
Rubber products .....	42.3	42.3	41.9	2.00	1.99	1.94	84.32	84.46	81.07	3,287
Wood products .....	43.9	44.0	44.2	1.65	1.64	1.60	72.45	72.15	70.73	1,677
<b>Woodstock - Manufacturing</b> .....	41.4	41.8	41.3	1.83	1.82	1.77	75.88	76.26	73.31	3,133
<b>London - Manufacturing</b> .....	40.4	41.2	40.6	1.87	1.87	1.81	75.67	77.26	73.58	13,336
Food and beverages .....	40.7	40.7	39.8	1.83	1.82	1.77	74.34	74.32	70.39	2,362
Iron and steel products .....	41.0	41.9	41.6	2.00	2.02	1.96	81.96	84.77	81.50	2,161
<b>Sarnia - Manufacturing</b> .....	40.5	40.3	40.3	2.65	2.62	2.55	107.41	105.52	102.71	5,148
<b>Windsor - Manufacturing</b> .....	42.4	40.1	40.8	2.32	2.28	2.24	98.37	91.39	91.26	15,347
Iron and steel products .....	42.2	40.8	38.5	2.25	2.24	2.18	94.87	91.29	84.14	2,565
Transportation equipment .....	42.7	40.0	41.5	2.44	2.42	2.35	104.23	96.85	97.58	9,572
Building and general engineering (m) .....	38.6	38.7	37.2	2.46	2.43	2.19	94.82	93.97	81.53	1,038
<b>Ft. William-Pt. Arthur - Manufacturing</b> .....	41.1	41.3	40.1	2.28	2.31	2.26	93.47	95.37	90.62	4,274
<b>Winnipeg - Manufacturing</b> .....	39.9	40.5	40.2	1.75	1.75	1.73	70.03	70.70	69.44	25,258
Food and beverages .....	40.0	39.0	39.7	1.92	1.92	1.90	76.82	74.76	75.49	5,265
Meat products .....	40.3	39.2	40.1	2.15	2.13	2.10	86.64	83.51	83.97	2,135
Clothing (textile and fur) .....	38.7	39.5	39.1	1.17	1.18	1.16	45.28	46.61	45.56	4,449
Transportation equipment .....	39.5	40.6	40.2	2.04	2.02	2.00	80.75	82.12	80.39	5,363
Building and general engineering (m) .....	41.9	43.1	41.5	2.18	2.14	2.05	91.63	92.21	85.20	4,521
Service (o) .....	35.3	35.5	36.4	1.12	1.12	1.08	39.65	39.92	39.36	4,722
<b>Edmonton - Manufacturing</b> .....	39.8	40.0	41.0	2.00	2.01	1.99	79.59	80.38	81.46	9,884
Food and beverages .....	38.6	38.5	40.4	2.09	2.11	2.05	80.78	81.09	82.89	2,641
Building and general engineering (m) .....	41.0	40.3	40.0	2.31	2.30	2.28	94.60	92.74	91.27	5,111
<b>Calgary - Manufacturing</b> .....	40.2	40.5	40.7	2.06	2.05	2.04	82.74	83.19	82.90	7,231
<b>Vancouver - Manufacturing</b> .....	37.4	37.8	37.8	2.23	2.23	2.18	83.69	84.35	82.57	33,206
Food and beverages .....	35.7	35.3	36.1	2.07	2.04	2.10	73.81	72.26	75.81	5,867
Wood products .....	37.2	38.2	37.9	2.25	2.26	2.16	83.62	86.33	81.91	12,606
Iron and steel products .....	38.8	38.9	39.0	2.47	2.48	2.41	95.96	96.46	94.03	4,294
Transportation equipment .....	38.7	38.7	38.4	2.51	2.47	2.46	97.10	95.55	94.31	2,429
Building and general engineering (m) .....	38.2	35.9	36.9	2.93	2.95	2.81	111.94	106.18	103.72	5,027
Electric and motor transportation (n) .....	40.5	38.6	40.7	2.40	2.41	2.34	97.25	92.83	95.11	2,022
Service (o) .....	34.6	34.8	35.0	1.37	1.38	1.34	47.38	47.82	46.69	4,934
<b>Victoria - Manufacturing</b> .....	38.2	39.0	37.6	2.42	2.41	2.32	92.71	93.99	87.52	5,708

Footnotes (a) to (o) appear in explanatory notes at the end of this report.



Table 4 - Average Hours and Earnings of Hourly-Rated Wage-Earners, Manufacturing, Canada

Year and Month	All Manufactures			Durable Goods			Non-Durable Goods		
	Average Weekly Hours	Average Hourly Earnings	Average Weekly Wages	Average Weekly Hours	Average Hourly Earnings	Average Weekly Wages	Average Weekly Hours	Average Hourly Earnings	Average Weekly Wages
	No.	\$	\$	No.	\$	\$	No.	\$	\$
1945 - Average	44.1	0.69	30.47	44.5	0.76	34.04	43.7	0.61	26.57
1946 - Average	42.7	0.71	30.15	42.8	0.77	33.00	41.8	0.64	26.92
1947 - Average	42.5	0.81	34.47	42.8	0.88	37.71	42.3	0.74	31.39
1948 - Average	42.3	0.92	38.96	42.5	0.99	42.24	42.1	0.85	35.70
1949 - Average	42.2	0.99	41.74	42.4	1.07	45.28	42.0	0.91	38.18
1950 - Average	42.3	1.04	44.03	42.4	1.13	47.74	42.3	0.96	40.57
1951 - Average	41.7	1.18	49.29	41.9	1.27	53.38	41.5	1.08	45.03
1952 - Average	41.5	1.30	53.83	41.6	1.41	58.49	41.3	1.18	48.65
1953 - Average	41.3	1.36	56.25	41.7	1.48	61.55	40.9	1.23	50.51
1954 - Average	40.7	1.41	57.43	40.9	1.52	62.13	40.4	1.30	52.36
1955 - Average	41.0	1.45	59.45	41.2	1.56	64.35	40.8	1.33	54.30
1956 - Average	41.0	1.52	62.40	41.1	1.64	67.45	40.7	1.39	56.74
1957 - Average	40.4	1.61	64.96	40.5	1.73	70.15	40.2	1.47	59.17
1958 - Average	40.2	1.66	66.77	40.3	1.80	72.42	40.1	1.53	61.31
1959 - Average	40.7	1.72	70.16	41.0	1.87	76.66	40.4	1.58	63.90
1960 - Average	40.4	1.78	71.96	40.7	1.94	78.70	40.1	1.64	65.67
1961 - Average	40.6	1.83	74.27	40.9	1.99	81.36	40.3	1.68	67.87
1959 - January	40.6	1.70	69.28	40.7	1.85	75.48	40.6	1.56	63.28
February	40.9	1.71	69.81	41.0	1.85	75.83	40.8	1.57	63.96
*March	40.3	1.72	69.40	40.5	1.86	75.65	40.1	1.58	63.25
April	40.7	1.72	70.01	41.0	1.86	76.38	40.3	1.58	63.63
May	41.1	1.73	70.90	41.4	1.86	77.12	40.7	1.59	64.63
June	41.0	1.72	70.63	41.4	1.86	77.09	40.6	1.58	64.19
July	40.8	1.71	69.90	41.2	1.86	76.57	40.4	1.58	63.69
August	41.0	1.70	69.56	41.1	1.85	76.28	40.8	1.56	63.65
September	41.2	1.72	71.13	41.7	1.88	78.38	40.8	1.57	64.27
October	41.3	1.74	71.68	41.7	1.89	78.76	40.9	1.59	64.86
November	40.9	1.74	71.08	41.2	1.89	77.62	40.7	1.60	64.95
*December	38.5	1.78	68.48	39.0	1.92	74.72	38.1	1.64	62.39
1960 - January	40.7	1.77	71.89	41.0	1.93	78.93	40.3	1.61	64.99
February	40.4	1.77	71.49	40.5	1.93	78.05	40.3	1.62	65.08
March	40.5	1.78	71.94	40.8	1.93	78.60	40.3	1.62	65.38
April	40.5	1.79	72.37	40.9	1.94	79.21	40.1	1.64	65.60
May	40.1	1.79	71.69	40.5	1.93	78.18	39.7	1.65	65.29
June	40.4	1.79	72.19	40.7	1.93	78.48	40.1	1.65	66.13
July	40.6	1.77	72.01	40.7	1.92	77.95	40.5	1.64	66.64
August	40.5	1.76	71.46	40.8	1.93	78.54	40.3	1.62	65.30
September	40.9	1.77	72.37	41.1	1.94	79.63	40.6	1.62	66.05
October	40.7	1.78	72.66	41.0	1.94	79.57	40.5	1.64	66.54
November	40.6	1.79	72.82	40.9	1.95	79.79	40.4	1.65	66.64
*December	38.7	1.82	70.60	39.3	1.97	77.47	38.1	1.69	64.39
1961 - January	40.1	1.81	72.76	40.2	1.97	79.20	40.1	1.67	66.98
February	40.4	1.82	73.40	40.4	1.98	79.86	40.5	1.67	67.57
March	40.3	1.83	73.64	40.4	1.99	80.16	40.2	1.68	67.70
April	40.6	1.84	74.56	40.8	1.99	81.21	40.4	1.70	68.43
May	40.5	1.84	74.44	40.8	1.99	81.36	40.1	1.70	68.04
June	41.0	1.83	75.02	41.3	1.99	82.04	40.8	1.68	68.58
July	40.6	1.82	73.95	40.9	1.98	81.01	40.4	1.68	67.73
August	40.9	1.82	74.26	41.2	1.98	81.76	40.6	1.67	67.65
September	41.3	1.81	75.00	41.7	1.99	82.82	41.0	1.66	68.22
October	41.2	1.84	75.69	41.6	2.00	83.39	40.8	1.68	68.72
November	41.1	1.84	75.64	41.6	2.00	83.29	40.7	1.69	68.73
*December	38.8	1.88	72.85	39.6	2.02	80.21	38.0	1.74	66.04
1962 - January	40.6	1.86	75.46	40.8	2.02	82.40	40.4	1.71	69.05
February	40.8	1.86	75.99	41.1	2.03	83.30	40.4	1.71	69.21
March	41.0	1.87	76.68	41.4	2.03	83.92	40.7	1.72	69.86
*April	40.6	1.89	76.50	41.1	2.04	83.86	40.1	1.73	69.44
May	41.0	1.89	77.51	41.7	2.04	85.12	40.5	1.74	70.20
June	41.1	1.88	77.52	41.7	2.04	84.91	40.6	1.73	70.48
July	41.0	1.87	76.72	41.4	2.02	83.85	40.5	1.73	70.18
August	41.0	1.86	76.17	41.4	2.03	83.87	40.7	1.70	69.28
September	41.4	1.88	77.61	42.0	2.05	85.92	40.8	1.72	70.00
October	41.3	1.89	77.95	41.9	2.05	85.96	40.8	1.73	70.48
November									
December									

\* The averages at these dates were affected by loss of working time at the year-end holidays in the case of December, and by the Easter holidays in the case of March, 1959 and April, 1962. Monthly statistics are based on data for the last pay periods of reporting establishments in each month.

Table 5b.- Average Hours and Earnings of Hourly-Rated Wage-Earners, Specified Industries, Canada

Year and Month	Mining			Metal Mining			Coal Mining			Oil and Natural Gas		
	Average Weekly Hours	Average Hourly Earnings	Average Weekly Wages	Average Weekly Hours	Average Hourly Earnings	Average Weekly Wages	Average Weekly Hours	Average Hourly Earnings	Average Weekly Wages	Average Weekly Hours	Average Hourly Earnings	Average Weekly Wages
	No.	\$	\$	No.	\$	\$	No.	\$	\$	No.	\$	\$
1945 - Average	43.9	0.85	38.40	45.7	0.85	38.85	40.8	0.94	38.23	..	..	..
1946 - Average	42.7	0.88	37.53	44.9	0.88	39.60	39.2	0.97	37.98	..	..	..
1947 - Average	42.3	0.99	41.83	44.4	1.00	44.49	37.2	1.11	41.37	..	..	..
1948 - Average	42.8	1.12	48.02	44.9	1.11	49.93	38.3	1.25	47.80	..	..	..
1949 - Average	42.7	1.18	50.22	45.4	1.16	52.75	37.7	1.28	48.37	..	..	..
1950 - Average	43.0	1.22	52.46	45.1	1.22	54.93	38.1	1.30	49.49	..	..	..
1951 - Average	43.1	1.35	58.06	44.1	1.36	60.02	39.3	1.37	54.04	43.8	1.49	65.39
1952 - Average	42.7	1.48	63.20	44.4	1.49	66.11	38.6	1.50	57.78	44.1	1.62	71.22
1953 - Average	42.6	1.54	65.69	44.4	1.57	69.75	37.9	1.50	56.93	44.1	1.66	73.16
1954 - Average	42.6	1.58	67.14	44.1	1.62	71.27	38.5	1.48	57.02	43.1	1.70	73.31
1955 - Average	43.2	1.61	69.68	44.1	1.66	73.07	39.7	1.48	58.88	44.4	1.74	77.34
1956 - Average	43.8	1.73	73.92	43.0	1.80	77.27	40.8	1.50	61.04	44.4	1.92	85.11
1957 - Average	42.3	1.88	79.35	42.9	1.95	83.70	39.3	1.62	63.51	43.5	2.07	90.13
1958 - Average	41.5	1.96	81.30	41.8	2.03	84.77	39.0	1.73	67.43	41.8	2.13	89.20
1959 - Average	41.5	2.04	84.80	41.7	2.13	88.73	38.6	1.74	67.00	41.9	2.21	92.74
1960 - Average	41.7	2.09	87.26	41.9	2.17	90.89	39.7	1.75	69.36	41.8	2.31	96.57
1961 - Average	41.8	2.13	89.08	42.2	2.20	92.83	39.7	1.77	70.36	40.8	2.34	95.66
1959 - January	41.7	2.01	83.84	41.9	2.07	87.01	39.0	1.75	68.31	43.9	2.18	95.45
February	42.6	2.05	87.28	42.7	2.11	90.22	39.7	1.75	69.53	45.2	2.20	99.65
*March	41.7	2.05	85.61	42.3	2.11	89.47	35.4	1.70	60.06	43.1	2.20	94.91
April	41.4	2.04	84.70	42.0	2.13	89.44	38.9	1.72	66.84	39.7	2.22	88.13
May	40.5	2.06	83.41	40.4	2.16	87.11	39.3	1.73	68.05	40.5	2.21	89.29
June	41.1	2.04	83.95	41.9	2.13	89.28	35.1	1.72	60.54	41.3	2.19	90.40
July	41.6	2.03	84.41	41.5	2.12	87.95	40.3	1.75	70.66	41.8	2.18	91.28
August	40.8	2.04	83.15	40.8	2.13	87.01	38.2	1.72	65.65	40.6	2.23	90.49
September	41.9	2.04	85.45	41.9	2.13	89.16	40.9	1.75	71.39	41.3	2.24	92.65
October	42.1	2.04	86.17	42.0	2.13	89.36	41.6	1.76	73.17	41.2	2.23	91.80
November	42.6	2.06	87.57	42.6	2.14	90.98	42.0	1.75	73.49	42.3	2.23	94.40
*December	39.5	2.08	82.05	40.8	2.15	87.72	32.3	1.74	56.37	42.1	2.24	94.41
1960 - January	41.3	2.08	85.86	41.0	2.16	88.35	41.5	1.74	72.48	45.5	2.25	102.47
February	42.1	2.09	87.90	42.0	2.16	90.75	39.9	1.75	69.81	46.4	2.25	104.54
March	42.2	2.09	88.02	42.3	2.16	91.30	40.9	1.75	71.65	43.1	2.28	98.27
April	41.2	2.12	87.37	41.4	2.19	90.78	38.1	1.74	66.36	39.5	2.33	91.92
May	41.9	2.09	87.41	42.0	2.16	91.00	40.7	1.78	72.34	39.9	2.32	92.56
June	42.0	2.10	88.06	42.5	2.18	92.55	40.3	1.73	69.88	40.5	2.36	95.46
July	41.3	2.08	86.05	41.0	2.18	89.12	40.9	1.74	71.09	41.7	2.33	97.18
August	41.5	2.07	85.90	41.7	2.15	89.76	40.2	1.71	68.78	40.6	2.29	93.16
September	42.1	2.07	87.35	42.3	2.16	91.32	41.4	1.76	72.84	39.5	2.31	91.45
October	41.9	2.09	87.53	41.6	2.17	90.23	41.3	1.78	73.47	42.0	2.34	98.11
November	41.9	2.10	88.14	42.5	2.18	92.67	38.0	1.75	66.55	40.9	2.34	95.53
*December	41.0	2.14	87.52	42.4	2.19	92.90	32.8	1.74	57.13	42.3	2.32	98.25
1961 - January	42.1	2.12	88.97	42.5	2.17	92.33	39.3	1.75	68.91	42.6	2.26	96.58
February	42.1	2.13	89.46	42.5	2.19	93.08	40.2	1.76	70.87	43.3	2.27	98.23
March	41.6	2.14	89.18	42.6	2.20	93.76	34.3	1.73	59.28	42.3	2.29	96.65
April	41.4	2.13	88.04	41.5	2.20	91.35	40.6	1.72	69.91	38.7	2.37	91.49
May	42.1	2.12	89.08	42.4	2.20	93.17	41.0	1.77	72.79	39.3	2.35	92.26
June	42.2	2.12	89.39	42.5	2.20	93.47	41.2	1.75	71.98	41.6	2.32	96.68
July	41.4	2.11	87.55	41.3	2.20	90.66	41.5	1.74	72.40	40.1	2.36	94.67
August	42.1	2.10	88.66	42.2	2.19	92.34	41.1	1.75	71.90	40.6	2.33	94.61
September	41.9	2.13	89.44	42.1	2.22	93.28	38.9	1.78	69.22	40.6	2.37	96.09
October	42.7	2.13	90.90	43.0	2.20	94.56	42.1	1.84	77.29	39.2	2.38	93.60
November	42.6	2.14	90.97	42.9	2.20	94.41	41.4	1.83	75.78	40.3	2.38	96.08
*December	39.9	2.19	87.32	40.7	2.25	91.58	35.2	1.82	64.00	41.1	2.46	100.97
1962 - January	42.8	2.15	92.19	43.0	2.20	94.53	41.8	1.80	75.33	43.7	2.40	105.12
February	41.9	2.17	90.82	42.1	2.22	93.50	38.8	1.82	70.58	44.6	2.40	106.94
March	42.0	2.17	91.28	41.9	2.23	93.39	40.8	1.82	74.42	43.3	2.39	103.21
*April	41.5	2.19	90.83	41.8	2.26	94.63	40.4	1.80	72.81	39.1	2.52	98.49
May	42.2	2.17	91.72	42.4	2.25	95.46	41.5	1.84	76.25	39.1	2.51	98.26
June	42.0	2.19	92.04	41.9	2.28	95.46	42.5	1.84	78.28	40.9	2.51	102.70
July	41.8	2.19	91.57	41.7	2.28	95.04	42.7	1.84	78.76	39.2	2.51	98.43
August	41.8	2.18	91.27	42.1	2.26	95.13	39.8	1.83	73.05	39.3	2.52	98.89
September	41.6	2.19	91.34	41.1	2.28	93.82	42.4	1.84	78.05	40.0	2.53	100.37
October	42.2	2.18	92.09	42.2	2.26	95.23	42.9	1.84	79.15	39.5	2.52	99.43
November												
December												

\* See footnote on Page 15.



Table 5b.- Average Hours and Earnings of Hourly-Rated Wage-Earners, Specified Industries, Canada. (Continued)

Year and Month	Non-Metal Mining			Construction			Building and General Engineering			Highway, Bridges and Street Construction		
	Average Weekly Hours	Average Hourly Earnings	Average Weekly Wages	Average Weekly Hours	Average Hourly Earnings	Average Weekly Wages	Average Weekly Hours	Average Hourly Earnings	Average Weekly Wages	Average Weekly Hours	Average Hourly Earnings	Average Weekly Wages
	No.	\$	\$	No.	\$	\$	No.	\$	\$	No.	\$	\$
1945 - Average	..	..	..	38.9	0.74	28.59	40.2	0.81	32.60	36.7	0.63	23.19
1946 - Average	..	..	..	38.4	0.77	29.53	38.7	0.84	32.39	37.9	0.66	24.98
1947 - Average	..	..	..	39.3	0.85	33.25	39.3	0.92	36.12	39.1	0.72	28.00
1948 - Average	..	..	..	39.2	0.94	36.89	40.0	1.02	40.68	37.5	0.80	30.04
1949 - Average	..	..	..	39.7	1.01	40.18	40.0	1.08	43.28	39.0	0.86	33.50
1950 - Average	..	..	..	39.9	1.06	42.13	39.5	1.14	45.07	40.8	0.88	35.99
1951 - Average	46.0	1.18	54.14	40.3	1.19	47.86	39.4	1.29	50.67	42.2	0.96	40.55
1952 - Average	42.6	1.36	57.81	41.5	1.32	54.99	41.0	1.44	59.04	41.5	1.06	43.87
1953 - Average	42.8	1.43	61.29	41.7	1.44	60.26	40.7	1.58	64.31	41.3	1.13	46.83
1954 - Average	42.9	1.47	63.15	40.3	1.48	59.85	39.9	1.61	64.08	41.1	1.21	49.73
1955 - Average	43.3	1.53	66.16	39.9	1.52	60.49	39.5	1.63	64.46	41.0	1.26	51.87
1956 - Average	43.1	1.60	68.79	41.1	1.65	67.77	41.0	1.77	72.73	41.3	1.35	55.67
1957 - Average	42.5	1.68	71.57	41.2	1.76	72.55	41.3	1.90	78.47	40.8	1.44	58.83
1958 - Average	42.3	1.74	73.73	40.7	1.78	72.36	40.5	1.94	78.37	41.0	1.48	60.80
1959 - Average	42.2	1.82	76.87	40.2	1.84	74.20	39.6	2.01	79.59	41.3	1.56	64.28
1960 - Average	42.2	1.89	79.62	40.4	1.94	78.41	40.1	2.12	84.85	41.0	1.63	66.89
1961 - Average	42.3	1.95	82.60	40.3	1.98	79.93	39.9	2.17	86.39	40.9	1.67	68.37
1959 - January	42.0	1.81	76.25	39.8	1.82	72.75	39.1	1.98	77.34	41.2	1.55	63.91
February	42.0	1.84	77.05	40.4	1.82	73.81	40.0	1.98	79.12	41.3	1.55	63.93
*March	42.3	1.84	78.00	37.7	1.83	69.01	37.4	1.97	73.75	38.4	1.56	60.09
April	41.9	1.81	75.76	39.6	1.84	72.84	40.1	1.99	79.66	38.5	1.55	59.81
May	42.1	1.81	76.11	41.3	1.84	75.82	41.3	1.99	82.31	41.4	1.55	64.12
June	42.1	1.79	75.50	40.8	1.83	74.64	39.8	2.01	79.84	42.6	1.53	65.39
July	43.1	1.79	77.06	42.2	1.83	77.18	41.4	2.00	82.69	43.7	1.55	67.60
August	43.0	1.79	77.16	42.0	1.83	76.97	41.1	2.01	82.75	43.4	1.54	67.01
September	43.2	1.79	77.47	42.5	1.86	78.82	41.9	2.03	85.00	43.4	1.56	67.75
October	43.9	1.83	80.46	41.5	1.87	77.81	41.0	2.04	83.62	42.4	1.57	66.80
November	43.4	1.86	80.74	40.5	1.88	76.34	40.4	2.05	82.58	40.8	1.58	64.29
*December	38.0	1.86	70.85	34.2	1.88	64.40	32.2	2.06	66.38	37.9	1.60	60.64
1960 - January	39.8	1.87	74.39	40.2	1.95	78.29	40.1	2.10	84.15	40.4	1.64	66.43
February	41.6	1.89	78.57	40.0	1.95	77.83	39.7	2.10	83.40	40.5	1.65	66.86
March	42.4	1.90	80.45	39.8	1.97	78.28	40.0	2.12	84.75	39.4	1.67	65.82
April	42.9	1.88	80.60	39.2	1.96	76.91	39.6	2.13	84.34	38.6	1.64	63.16
May	42.9	1.85	79.55	39.1	1.91	74.84	38.4	2.10	80.79	40.2	1.61	64.80
June	41.8	1.87	78.32	40.1	1.90	76.13	39.2	2.11	82.62	41.6	1.58	65.87
July	42.8	1.86	79.87	42.7	1.93	82.21	41.7	2.10	87.64	44.5	1.64	72.88
August	42.4	1.86	79.02	42.9	1.93	82.65	42.3	2.10	89.03	43.8	1.64	71.72
September	43.5	1.87	81.29	43.1	1.94	83.56	42.7	2.12	90.69	43.7	1.63	71.17
October	43.5	1.90	82.86	41.8	1.95	81.51	41.6	2.14	88.97	42.2	1.62	68.28
November	43.3	1.93	83.68	40.8	1.96	79.70	41.2	2.14	88.10	40.0	1.62	64.83
*December	39.4	1.95	76.83	35.4	1.93	68.47	34.1	2.13	72.69	37.6	1.63	61.37
1961 - January	41.4	1.97	81.68	39.2	2.01	78.94	38.8	2.19	84.93	39.8	1.70	67.86
February	40.7	1.98	80.45	40.1	2.03	81.26	39.8	2.20	87.61	40.6	1.72	69.76
March	41.6	1.99	82.65	38.6	2.04	78.73	38.6	2.21	85.30	38.6	1.72	66.53
April	42.6	1.97	84.10	39.3	2.02	79.58	39.4	2.20	86.81	39.1	1.69	66.18
May	42.8	1.95	83.32	39.7	1.97	78.08	39.3	2.14	84.11	40.4	1.67	67.54
June	41.9	1.92	80.63	41.9	1.94	81.47	41.1	2.13	87.31	43.3	1.65	71.43
July	42.8	1.91	81.84	42.4	1.94	82.47	41.9	2.14	89.49	43.3	1.63	70.41
August	43.1	1.91	82.31	42.6	1.96	83.46	42.1	2.15	90.55	43.4	1.64	71.20
September	44.0	1.93	85.10	42.5	1.96	83.41	42.2	2.14	90.48	43.0	1.66	71.28
October	43.7	1.94	84.83	41.9	1.97	82.69	41.8	2.15	89.95	42.0	1.66	69.56
November	43.6	1.96	85.52	40.6	1.98	80.49	40.7	2.17	88.30	40.2	1.64	66.06
*December	39.8	1.98	78.74	34.5	1.99	68.63	32.9	2.19	71.89	37.6	1.67	62.63
1962 - January	42.1	2.01	84.51	39.3	2.06	80.88	39.1	2.23	87.35	39.5	1.72	68.14
February	41.5	2.01	83.47	40.4	2.06	83.23	39.2	2.25	88.45	42.6	1.72	73.30
March	42.3	2.00	84.89	40.4	2.10	84.83	40.5	2.27	91.95	40.0	1.76	70.53
*April	42.0	1.98	83.21	38.5	2.08	80.43	38.5	2.27	87.17	38.6	1.74	67.20
May	43.1	1.96	84.41	40.6	2.04	82.93	39.8	2.24	88.94	42.0	1.72	72.34
June	42.5	1.95	83.01	42.0	2.04	85.66	40.9	2.23	91.44	44.0	1.71	75.46
July	42.8	1.94	82.91	42.0	2.04	85.56	41.2	2.23	92.00	43.4	1.70	73.96
August	43.1	1.94	83.52	42.6	2.05	87.19	42.0	2.24	94.04	43.8	1.71	74.73
September	43.8	1.96	85.99	42.6	2.05	87.51	42.1	2.25	94.67	43.7	1.71	74.59
October	43.2	1.96	84.92	41.8	2.07	86.25	41.5	2.26	93.51	42.3	1.72	72.95
November												
December												

\* See footnote on page 15.

Table 5b.- Average Hours and Earnings of Hourly-Rated Wage-Earners, Specified Industries, Canada. (Concluded)

Year and Month	Electric and Motor Transportation			Service			Hotels and Restaurants			Laundries and Dry Cleaning Plants		
	Average Weekly Hours	Average Hourly Earnings	Average Weekly Wages	Average Weekly Hours	Average Hourly Earnings	Average Weekly Wages	Average Weekly Hours	Average Hourly Earnings	Average Weekly Wages	Average Weekly Hours	Average Hourly Earnings	Average Weekly Wages
	No.	\$	\$	No.	\$	\$	No.	\$	\$	No.	\$	\$
1945 - Average	..	..	..	43.8	0.43	18.92	45.1	0.41	18.63	41.2	0.47	19.41
1946 - Average	..	..	..	43.1	0.47	20.08	44.3	0.45	20.07	41.0	0.49	19.97
1947 - Average	..	..	..	42.5	0.53	22.70	43.4	0.52	22.79	40.8	0.55	22.52
1948 - Average	..	..	..	42.3	0.59	24.87	43.2	0.58	25.10	41.0	0.59	24.31
1949 - Average	..	..	..	42.2	0.64	26.92	43.0	0.63	27.00	40.8	0.63	25.70
1950 - Average	..	..	..	42.5	0.66	28.09	43.5	0.65	28.14	41.0	0.65	26.73
1951 - Average	45.1	1.18	53.04	42.5	0.70	29.62	43.5	0.69	30.10	40.7	0.68	27.55
1952 - Average	45.3	1.29	58.53	42.6	0.74	31.52	43.6	0.73	31.87	41.1	0.72	29.63
1953 - Average	45.0	1.35	60.89	41.9	0.79	32.93	42.6	0.78	33.36	41.3	0.75	31.14
1954 - Average	45.1	1.40	63.37	40.9	0.83	34.03	41.4	0.83	34.28	40.6	0.79	32.24
1955 - Average	44.8	1.45	64.96	40.4	0.86	34.62	40.7	0.86	34.88	40.5	0.82	33.17
1956 - Average	44.3	1.52	67.20	40.2	0.89	35.94	40.4	0.89	36.04	40.7	0.85	34.72
1957 - Average	44.3	1.59	70.61	39.8	0.94	37.37	40.0	0.93	37.24	39.9	0.90	36.07
1958 - Average	44.1	1.68	74.13	39.5	0.97	38.28	39.6	0.95	37.58	39.6	0.96	37.94
1959 - Average	44.2	1.75	77.60	39.4	1.00	39.29	39.4	0.98	38.52	40.1	0.97	38.98
1960 - Average	43.5	1.83	79.84	39.1	1.04	40.58	39.1	1.01	39.63	39.8	1.00	39.83
1961 - Average	43.3	1.90	82.23	38.7	1.07	41.27	38.7	1.04	40.09	39.7	1.03	40.96
1959 - January	44.6	1.72	76.81	39.0	0.99	38.53	39.2	0.97	38.07	38.8	0.98	37.85
February	44.5	1.73	76.89	39.5	1.00	39.31	39.8	0.98	39.13	39.1	0.97	38.09
*March	44.2	1.73	76.43	39.3	1.00	39.13	39.0	0.98	38.24	40.9	0.96	39.42
April	43.6	1.74	75.74	39.6	1.00	39.58	39.3	0.98	38.62	41.4	0.97	40.12
May	44.6	1.75	77.91	39.7	1.00	39.67	39.3	0.98	38.47	41.5	0.98	40.52
June	44.7	1.76	78.48	39.4	0.99	38.98	39.3	0.97	38.05	40.2	0.97	38.98
July	44.4	1.76	78.25	39.6	0.97	38.61	39.9	0.95	37.79	39.6	0.96	38.19
August	44.2	1.76	77.95	39.5	0.98	38.71	39.6	0.96	37.78	39.8	0.97	38.55
September	44.7	1.76	78.82	39.6	1.00	39.51	39.5	0.98	38.53	40.8	0.97	39.66
October	44.6	1.77	78.89	39.5	1.01	39.86	39.4	0.99	39.07	40.5	0.98	39.55
November	44.3	1.77	78.49	39.4	1.01	39.92	39.4	0.99	39.17	40.2	0.98	39.32
*December	42.5	1.80	76.52	38.7	1.02	39.65	39.2	1.00	39.29	38.4	0.98	37.54
1960 - January	43.8	1.81	79.24	38.9	1.03	39.88	38.9	1.00	39.01	39.6	0.98	38.69
February	43.6	1.81	79.16	39.1	1.03	40.37	39.2	1.01	39.73	39.5	0.97	38.53
March	43.4	1.82	78.79	38.9	1.03	39.90	38.8	1.01	39.02	39.9	0.98	39.16
April	43.6	1.82	79.28	39.6	1.04	40.99	39.2	1.01	39.65	41.6	1.00	41.51
May	43.4	1.83	79.24	39.3	1.04	40.89	39.2	1.02	39.88	40.4	1.00	40.50
June	43.8	1.82	79.78	39.5	1.03	40.49	39.5	1.00	39.35	40.3	1.00	40.36
July	44.0	1.84	80.67	39.0	1.03	39.98	39.2	0.99	38.93	39.4	1.00	39.23
August	43.7	1.83	80.13	39.2	1.02	40.09	39.6	0.99	39.16	39.3	1.00	39.29
September	43.6	1.85	80.60	39.0	1.05	40.91	39.2	1.02	39.90	39.7	1.01	40.29
October	43.4	1.85	80.43	38.9	1.06	41.19	38.7	1.03	40.09	40.1	1.02	40.73
November	43.2	1.86	80.13	39.0	1.06	41.34	39.0	1.04	40.41	39.8	1.02	40.41
*December	42.8	1.88	80.60	38.3	1.07	40.96	38.6	1.05	40.42	38.3	1.02	39.09
1961 - January	42.7	1.88	80.39	38.6	1.07	41.08	38.7	1.04	40.32	38.9	1.02	39.59
February	42.8	1.89	80.83	39.0	1.07	41.70	39.3	1.05	41.16	39.0	1.02	39.85
March	43.0	1.89	81.33	38.9	1.06	41.41	38.7	1.04	40.12	40.6	1.03	41.77
April	43.0	1.89	81.08	39.0	1.07	41.66	38.5	1.04	40.19	41.0	1.03	42.17
May	43.4	1.90	82.31	38.8	1.07	41.53	38.8	1.04	40.27	40.1	1.03	41.44
June	43.8	1.90	83.12	39.0	1.06	41.14	39.0	1.02	39.93	40.0	1.03	41.07
July	43.3	1.89	81.96	38.9	1.04	40.58	39.1	1.01	39.31	39.7	1.02	40.74
August	44.3	1.90	84.20	38.9	1.04	40.67	39.2	1.01	39.38	39.4	1.03	40.82
September	43.6	1.90	82.63	38.6	1.07	41.36	38.4	1.04	39.82	40.3	1.04	41.83
October	43.8	1.91	83.67	38.7	1.08	41.68	38.6	1.05	40.44	40.0	1.03	41.35
November	43.3	1.91	82.68	38.4	1.08	41.44	38.0	1.05	39.90	40.1	1.04	41.57
*December	42.4	1.94	82.50	37.5	1.09	40.96	37.9	1.06	40.22	37.6	1.05	39.34
1962 - January	42.8	1.94	83.12	38.1	1.09	41.48	38.3	1.06	40.37	39.0	1.04	40.65
February	43.6	1.94	84.75	38.3	1.10	42.01	38.5	1.06	40.98	39.3	1.04	41.03
March	43.7	1.95	84.97	38.4	1.09	41.79	38.3	1.05	40.33	40.2	1.05	42.06
*April	43.4	1.97	85.55	38.2	1.10	42.11	38.0	1.07	40.63	40.3	1.05	42.30
May	43.2	1.98	85.62	38.4	1.10	42.41	38.2	1.07	40.81	40.5	1.05	42.57
June	43.5	1.98	86.34	38.6	1.09	42.04	38.2	1.05	40.07	40.5	1.05	42.47
July	43.4	1.97	85.32	38.6	1.08	41.69	38.4	1.04	39.89	40.2	1.04	41.90
August	44.4	1.97	87.59	38.4	1.09	41.89	38.2	1.04	39.82	40.2	1.05	42.32
September	44.1	1.98	87.12	37.8	1.11	42.10	37.2	1.07	39.83	40.5	1.06	43.00
October	43.9	1.98	86.89	37.9	1.12	42.38	37.6	1.08	40.54	40.3	1.06	42.80
November												
December												

\* See footnote on page 15.



Table 6b.- Average Hours and Earnings of Hourly-Rated Wage-Earners, Specified Manufacturing Industries, Canada.

Year and Month	Food and Beverages			Tobacco and Tobacco Products			Rubber Products			Leather Products		
	Average Weekly Hours	Average Hourly Earnings	Average Weekly Wages	Average Weekly Hours	Average Hourly Earnings	Average Weekly Wages	Average Weekly Hours	Average Hourly Earnings	Average Weekly Wages	Average Weekly Hours	Average Hourly Earnings	Average Weekly Wages
	No.	\$	\$	No.	\$	\$	No.	\$	\$	No.	\$	\$
1945 - Average	43.5	0.59	25.67	41.9	0.52	21.70	43.7	0.72	31.42	42.9	0.52	22.45
1946 - Average	42.4	0.62	26.50	40.4	0.54	21.94	41.8	0.73	30.51	41.8	0.56	23.49
1947 - Average	42.0	0.71	29.65	40.6	0.62	25.21	42.7	0.88	37.79	40.5	0.64	26.02
1948 - Average	42.3	0.80	33.80	41.3	0.78	32.21	41.6	1.00	41.50	39.3	0.71	28.02
1949 - Average	42.4	0.86	36.46	42.6	0.86	36.76	40.9	1.05	42.78	40.2	0.75	30.23
1950 - Average	42.6	0.90	38.25	41.4	0.95	39.45	41.3	1.11	45.88	39.4	0.79	31.09
1951 - Average	42.0	1.00	42.21	40.6	1.11	45.03	40.9	1.26	51.64	38.6	0.86	33.23
1952 - Average	41.9	1.10	46.19	40.2	1.24	49.85	41.0	1.35	55.25	40.3	0.92	37.20
1953 - Average	41.3	1.16	47.87	40.2	1.30	52.34	40.8	1.43	58.43	39.9	0.97	38.54
1954 - Average	41.1	1.21	49.65	39.8	1.35	53.81	40.7	1.46	59.30	38.8	1.00	38.61
1955 - Average	41.0	1.25	51.33	40.6	1.39	56.31	41.6	1.49	61.98	39.9	1.02	40.58
1956 - Average	40.8	1.31	53.33	40.6	1.42	57.73	41.2	1.57	64.64	40.1	1.05	42.15
1957 - Average	40.5	1.39	56.17	39.8	1.53	60.77	40.2	1.66	66.69	39.5	1.11	43.81
1958 - Average	40.6	1.45	58.99	39.9	1.58	62.88	40.0	1.71	68.48	39.7	1.14	45.38
1959 - Average	40.8	1.53	62.43	39.2	1.67	65.61	41.3	1.79	74.01	39.7	1.17	46.56
1960 - Average	40.5	1.57	63.50	40.0	1.74	69.58	40.4	1.83	73.87	39.1	1.21	47.20
1961 - Average	40.4	1.61	64.95	39.6	1.83	72.58	41.3	1.87	77.23	40.4	1.24	49.98
1959 - January	40.3	1.53	61.73	39.7	1.51	59.79	41.8	1.75	73.08	41.9	1.15	48.42
February	40.5	1.55	62.80	39.6	1.52	60.21	42.1	1.77	74.64	42.0	1.15	48.40
*March	40.7	1.56	63.54	37.2	1.56	58.09	41.3	1.78	73.62	39.6	1.16	46.14
April	40.9	1.56	63.83	39.6	1.62	64.03	41.3	1.79	73.94	39.6	1.17	46.13
May	41.3	1.55	63.93	40.6	1.72	69.92	41.9	1.79	74.95	39.8	1.17	46.74
June	41.6	1.51	62.88	40.5	1.75	70.95	42.1	1.81	76.21	39.5	1.18	46.42
July	41.4	1.49	61.71	40.8	1.74	71.90	40.6	1.80	72.95	39.4	1.16	45.91
August	41.6	1.46	60.68	39.4	1.74	68.54	41.2	1.78	73.59	40.1	1.17	46.84
September	40.3	1.50	60.32	39.9	1.74	69.43	42.3	1.80	76.35	40.1	1.18	47.21
October	40.7	1.53	62.33	40.4	1.74	70.54	42.2	1.82	76.53	39.5	1.19	47.07
November	40.8	1.54	62.67	37.3	1.74	64.84	41.6	1.82	75.78	39.6	1.19	47.34
*December	39.1	1.60	62.73	36.0	1.64	59.13	36.6	1.82	66.45	35.1	1.20	42.15
1960 - January	40.1	1.58	63.48	39.6	1.59	62.80	41.2	1.84	75.75	40.3	1.20	48.29
February	40.3	1.59	64.12	40.5	1.59	64.28	40.9	1.82	74.66	40.5	1.19	48.34
March	40.2	1.60	64.08	38.7	1.70	65.82	40.5	1.83	74.00	39.7	1.20	47.61
April	40.4	1.60	64.47	40.0	1.80	72.06	40.6	1.82	74.11	37.4	1.20	45.01
May	40.9	1.59	65.03	40.2	1.82	72.97	40.1	1.83	73.29	35.4	1.22	43.10
June	41.3	1.57	64.77	40.7	1.82	74.09	40.4	1.82	73.42	38.2	1.22	46.40
July	41.9	1.54	64.60	41.6	1.84	76.41	40.0	1.85	74.10	39.4	1.20	47.38
August	40.2	1.50	60.29	41.1	1.84	75.38	41.1	1.81	74.45	40.6	1.20	48.96
September	41.0	1.50	61.35	41.9	1.85	77.37	41.5	1.82	75.27	40.3	1.20	48.51
October	40.4	1.56	63.11	40.0	1.81	72.28	41.1	1.82	74.65	39.5	1.21	47.99
November	40.4	1.57	63.59	39.9	1.61	64.11	40.8	1.81	73.87	40.4	1.22	49.36
*December	38.7	1.63	63.18	35.4	1.62	57.43	37.2	1.85	68.85	36.9	1.23	45.40
1961 - January	39.5	1.63	64.52	40.6	1.56	63.15	40.8	1.83	74.48	41.3	1.22	50.61
February	40.2	1.63	65.40	39.5	1.66	65.64	40.6	1.84	74.73	42.0	1.22	51.29
March	40.6	1.65	67.12	38.4	1.78	68.48	40.5	1.85	74.96	40.1	1.23	49.28
April	40.6	1.65	67.10	39.9	1.90	75.67	41.1	1.86	76.34	39.7	1.24	49.10
May	40.9	1.64	66.99	40.4	1.90	76.95	40.6	1.87	75.72	39.4	1.24	49.01
June	42.2	1.59	66.98	39.7	1.94	76.92	41.4	1.89	78.37	40.2	1.24	49.91
July	41.1	1.57	64.50	39.6	1.95	77.29	40.9	1.87	76.39	40.2	1.23	49.38
August	39.7	1.55	61.70	40.7	1.95	79.37	42.4	1.87	79.36	41.7	1.24	51.58
September	40.8	1.53	62.52	40.0	1.90	76.19	42.8	1.89	80.94	41.5	1.24	51.49
October	40.2	1.59	64.16	40.3	1.90	76.65	42.2	1.91	80.78	40.6	1.24	50.45
November	40.1	1.60	64.13	39.4	1.81	71.37	42.3	1.91	80.58	41.6	1.25	52.02
*December	38.4	1.67	64.30	36.6	1.73	63.31	39.5	1.88	74.11	36.3	1.26	45.64
1962 - January	39.9	1.66	66.19	40.7	1.62	66.10	41.7	1.91	79.84	41.9	1.26	52.74
February	39.8	1.67	66.39	40.3	1.67	67.15	41.7	1.93	80.30	41.7	1.26	52.57
March	40.4	1.67	67.33	39.9	1.69	67.38	41.9	1.91	80.22	41.2	1.26	51.87
*April	40.3	1.67	67.31	38.2	1.80	68.77	41.0	1.91	78.16	39.1	1.28	49.88
May	41.4	1.64	68.02	39.0	1.84	71.65	41.6	1.94	80.47	38.9	1.27	49.55
June	41.2	1.63	66.94	39.8	2.01	80.11	42.4	1.95	82.55	39.9	1.28	50.90
July	40.7	1.62	65.94	40.1	2.02	81.09	41.3	1.94	80.16	40.4	1.27	51.15
August	40.8	1.55	63.25	40.2	2.01	80.77	41.6	1.91	79.42	40.9	1.27	52.00
September	40.1	1.57	62.80	39.8	2.00	79.76	42.6	1.94	82.83	40.9	1.28	52.51
October	40.2	1.61	64.82	39.9	2.00	80.05	43.3	1.96	85.14	40.4	1.30	52.42
November												
December												

\* See footnote on page 15.



Table 6b.- Average Hours and Earnings of Hourly-Rated Wage-Earners, Specified Manufacturing Industries, Canada. (Continued)

Year and Month	Textile Products (except clothing)			Clothing (textile and fur)			Wood Products			Paper Products		
	Average Weekly Hours	Average Hourly Earnings	Average Weekly Wages	Average Weekly Hours	Average Hourly Earnings	Average Weekly Wages	Average Weekly Hours	Average Hourly Earnings	Average Weekly Wages	Average Weekly Hours	Average Hourly Earnings	Average Weekly Wages
	No.	\$	\$	No.	\$	\$	No.	\$	\$	No.	\$	\$
1945 - Average	45.5	0.50	22.61	39.7	0.53	21.04	43.6	0.61	26.42	47.7	0.68	32.29
1946 - Average	43.9	0.54	23.57	38.7	0.56	21.75	42.9	0.65	27.80	47.6	0.74	35.27
1947 - Average	43.2	0.62	26.78	38.5	0.63	24.29	42.2	0.75	31.48	47.6	0.88	41.79
1948 - Average	42.7	0.74	31.51	37.8	0.71	26.72	41.1	0.84	34.61	47.1	1.01	47.34
1949 - Average	42.7	0.83	35.44	38.2	0.76	29.18	41.3	0.93	38.41	46.4	1.06	49.32
1950 - Average	43.3	0.86	37.24	38.3	0.79	30.37	41.5	0.96	39.67	46.9	1.11	51.97
1951 - Average	41.2	0.97	40.13	37.1	0.87	32.20	41.4	1.07	44.38	46.6	1.31	60.86
1952 - Average	41.2	1.04	42.93	38.2	0.92	34.99	41.8	1.15	48.15	44.8	1.43	63.84
1953 - Average	41.1	1.08	44.26	38.1	0.96	36.50	42.0	1.21	50.86	43.5	1.52	66.12
1954 - Average	41.3	1.10	45.55	36.9	0.99	36.38	41.3	1.26	51.91	42.6	1.61	68.42
1955 - Average	42.4	1.12	47.49	37.8	0.98	37.12	41.7	1.29	53.83	42.4	1.67	70.85
1956 - Average	42.2	1.15	48.66	38.3	1.01	38.76	41.2	1.34	55.13	42.3	1.78	75.12
1957 - Average	41.5	1.21	50.34	37.4	1.05	39.31	40.6	1.40	56.96	41.5	1.87	77.69
1958 - Average	41.3	1.25	51.67	37.6	1.08	40.68	40.8	1.46	59.61	40.8	1.94	79.03
1959 - Average	42.1	1.29	54.34	38.1	1.11	42.33	41.5	1.49	61.61	41.2	2.00	82.51
1960 - Average	41.7	1.34	55.84	37.7	1.14	43.09	40.8	1.58	64.29	41.2	2.08	85.73
1961 - Average	42.0	1.38	57.79	38.2	1.18	45.13	41.1	1.61	66.24	41.2	2.17	89.37
1959 - January	42.5	1.28	54.46	39.2	1.10	43.27	41.3	1.48	61.18	40.8	1.98	80.73
February	42.3	1.28	54.27	39.7	1.11	43.96	41.5	1.49	61.68	41.3	1.99	82.37
*March	41.7	1.29	53.70	38.1	1.11	42.34	40.4	1.50	60.78	40.6	1.98	80.45
April	42.0	1.29	54.04	38.1	1.10	42.00	41.3	1.50	61.93	40.7	1.99	81.00
May	41.9	1.28	53.94	38.1	1.10	42.02	42.2	1.50	63.14	41.7	2.00	83.53
June	42.0	1.29	54.27	37.1	1.11	41.03	41.2	1.49	61.23	41.8	2.00	83.43
July	41.2	1.29	53.12	37.3	1.11	41.34	42.6	1.35	57.66	41.6	2.00	83.15
August	42.3	1.29	54.45	38.7	1.11	43.16	43.0	1.37	58.84	41.5	2.00	83.12
September	42.7	1.30	55.48	39.6	1.12	44.44	42.1	1.53	64.35	41.4	2.00	83.00
October	43.1	1.30	56.05	39.0	1.11	43.49	42.6	1.53	65.39	41.7	2.01	83.64
November	43.1	1.30	55.93	38.3	1.12	42.80	41.6	1.54	64.10	41.8	2.02	84.53
*December	40.0	1.31	52.32	33.8	1.13	38.13	38.0	1.55	59.06	40.0	2.03	81.18
1960 - January	42.7	1.31	56.17	38.7	1.13	43.98	41.7	1.56	65.12	40.8	2.04	83.19
February	42.0	1.33	55.75	38.6	1.14	43.98	41.2	1.56	64.37	41.1	2.04	84.02
March	42.2	1.33	56.09	38.6	1.14	44.04	40.9	1.57	64.08	40.9	2.04	83.49
April	41.8	1.33	55.84	38.0	1.14	43.16	40.9	1.58	64.63	41.3	2.03	88.93
May	41.3	1.34	55.30	36.4	1.14	41.28	40.1	1.57	63.00	40.9	2.05	83.94
June	41.3	1.34	55.30	36.4	1.14	41.34	40.6	1.57	63.75	41.6	2.08	86.35
July	41.3	1.33	55.09	37.5	1.15	42.98	40.7	1.57	63.80	41.7	2.10	87.51
August	41.7	1.34	56.06	38.8	1.15	44.56	41.2	1.57	64.71	41.3	2.08	85.91
September	42.1	1.34	56.63	38.2	1.15	43.86	41.8	1.58	65.99	41.8	2.10	87.93
October	42.2	1.34	56.65	38.8	1.15	44.84	41.5	1.59	66.05	41.6	2.11	87.69
November	42.3	1.35	57.07	38.0	1.15	43.58	41.1	1.59	65.33	41.6	2.13	88.73
*December	40.0	1.35	54.01	33.8	1.16	39.24	37.8	1.60	60.55	39.9	2.15	85.86
1961 - January	41.9	1.36	57.08	38.5	1.18	45.25	40.3	1.59	63.95	41.0	2.15	88.13
February	41.9	1.37	57.22	39.1	1.18	46.08	40.8	1.60	65.34	41.2	2.15	88.82
March	41.9	1.37	57.44	38.4	1.18	45.37	40.7	1.62	65.88	40.7	2.15	87.53
April	41.9	1.37	57.45	38.2	1.18	45.03	41.3	1.63	67.21	41.6	2.17	90.28
May	41.6	1.37	57.07	37.4	1.17	43.75	40.8	1.61	65.71	40.9	2.15	88.10
June	42.1	1.37	57.78	38.0	1.17	44.62	41.6	1.60	66.65	41.4	2.15	88.94
July	41.3	1.37	56.59	37.9	1.18	44.89	41.4	1.60	66.27	41.3	2.16	89.20
August	42.6	1.38	58.58	39.3	1.19	46.75	41.5	1.60	66.38	41.5	2.16	89.70
September	43.0	1.38	59.39	39.6	1.19	47.19	42.3	1.62	68.53	41.5	2.17	90.10
October	43.1	1.39	59.84	39.3	1.19	46.67	41.8	1.62	67.50	41.8	2.18	91.11
November	43.0	1.39	59.82	38.6	1.19	45.80	41.9	1.62	68.03	41.6	2.19	91.27
*December	39.5	1.40	55.21	33.8	1.19	40.14	38.9	1.63	63.45	39.7	2.25	89.29
1962 - January	42.8	1.40	60.05	38.7	1.20	46.62	40.7	1.62	66.07	40.8	2.21	90.34
February	42.3	1.40	59.34	39.0	1.21	47.31	41.3	1.63	67.22	40.9	2.21	90.36
March	42.6	1.41	59.96	39.5	1.22	48.16	41.4	1.64	67.92	41.1	2.21	90.72
*April	41.6	1.41	58.79	37.9	1.22	46.30	40.6	1.64	66.60	41.0	2.20	90.30
May	42.2	1.42	60.03	37.7	1.22	45.88	41.4	1.63	67.61	41.2	2.22	91.47
June	42.3	1.42	60.05	37.8	1.22	46.12	41.9	1.64	68.70	41.9	2.23	93.43
July	41.7	1.41	58.89	38.2	1.22	46.65	41.4	1.64	67.79	41.8	2.24	93.68
August	42.6	1.42	60.52	39.1	1.23	47.88	41.5	1.64	68.01	41.4	2.24	92.56
September	43.1	1.43	61.77	39.5	1.23	48.70	42.5	1.67	71.01	41.6	2.26	93.89
October	42.9	1.43	61.32	39.2	1.22	48.01	41.7	1.67	69.66	41.7	2.26	94.19
November												
December												

\* See footnote on page 15.

Table 6b.- Average Hours and Earnings of Hourly-Rated Wage-Earners, Specified Manufacturing Industries, Canada. (Continued)

Year and Month	Printing, Publishing and Allied Industries			Iron and Steel Products			Transportation Equipment			Non-Ferrous Metal Products		
	Average Weekly Hours	Average Hourly Earnings	Average Weekly Wages	Average Weekly Hours	Average Hourly Earnings	Average Weekly Wages	Average Weekly Hours	Average Hourly Earnings	Average Weekly Wages	Average Weekly Hours	Average Hourly Earnings	Average Weekly Wages
	No.	\$	\$	No.	\$	\$	No.	\$	\$	No.	\$	\$
1945 - Average	41.5	0.76	31.50	45.7	0.75	34.32	44.4	0.87	38.58	44.4	0.74	32.81
1946 - Average	41.1	0.79	32.55	43.3	0.76	32.95	41.7	0.88	36.65	43.2	0.77	33.09
1947 - Average	40.8	0.89	36.35	43.6	0.89	38.72	42.1	0.98	41.22	43.2	0.88	37.93
1948 - Average	40.5	1.03	41.63	43.2	1.01	43.59	41.9	1.08	45.29	43.1	1.00	43.06
1949 - Average	40.6	1.14	46.12	42.8	1.09	46.57	42.2	1.16	48.95	43.3	1.07	46.42
1950 - Average	40.6	1.23	49.74	42.5	1.16	49.39	42.5	1.21	51.38	43.3	1.12	48.71
1951 - Average	40.1	1.33	53.49	42.0	1.32	55.31	41.7	1.35	56.42	42.4	1.30	54.95
1952 - Average	39.6	1.49	58.81	41.8	1.46	60.90	41.2	1.48	60.85	41.4	1.47	60.94
1953 - Average	39.9	1.59	63.28	41.5	1.53	63.70	41.5	1.57	65.24	41.4	1.53	63.22
1954 - Average	40.1	1.66	66.45	40.8	1.58	64.30	40.5	1.62	65.57	41.0	1.60	65.52
1955 - Average	40.1	1.73	69.21	41.4	1.64	67.77	40.2	1.67	67.01	41.3	1.66	68.60
1956 - Average	40.1	1.81	72.46	41.6	1.73	72.13	40.3	1.74	70.20	41.0	1.73	70.93
1957 - Average	39.8	1.89	75.30	40.9	1.84	75.17	39.7	1.83	72.53	40.7	1.84	75.01
1958 - Average	39.3	1.98	77.93	40.3	1.91	77.05	39.8	1.90	75.54	39.7	1.94	76.94
1959 - Average	39.6	2.08	82.18	41.0	2.01	82.40	40.5	1.99	80.54	40.5	1.99	80.72
1960 - Average	39.1	2.16	84.38	40.6	2.07	84.03	40.5	2.04	82.78	40.7	2.08	84.63
1961 - Average	38.9	2.22	86.38	40.8	2.13	87.05	40.5	2.12	86.06	40.6	2.15	87.13
1959 - January	39.0	2.02	78.83	40.6	1.97	80.07	40.3	1.98	79.95	40.0	1.98	79.07
February	39.4	2.04	80.40	40.9	1.98	80.94	40.8	1.96	80.18	40.3	1.97	79.33
*March	39.6	2.07	81.90	40.5	1.99	80.74	40.5	1.96	79.42	40.2	2.04	81.88
April	39.5	2.07	81.88	41.0	1.99	81.62	40.9	1.97	80.68	40.4	1.98	80.20
May	39.9	2.09	83.39	41.3	2.00	82.44	41.2	1.99	81.87	40.3	1.97	79.55
June	39.7	2.09	82.85	41.7	2.01	83.69	40.8	1.99	81.30	40.5	1.97	79.84
July	39.7	2.08	82.46	41.4	2.01	83.23	40.2	1.99	79.89	40.5	1.98	80.31
August	39.5	2.08	82.17	40.9	2.02	82.70	40.0	1.99	79.55	40.4	1.98	79.78
September	40.3	2.10	84.45	41.7	2.03	84.53	41.0	2.01	82.51	40.8	1.98	80.68
October	40.1	2.10	83.91	41.8	2.04	85.28	40.6	2.02	82.01	41.0	1.99	83.46
November	39.6	2.10	83.35	41.2	2.04	83.99	40.2	1.99	80.01	41.2	2.00	82.26
*December	38.5	2.10	80.63	39.0	2.04	79.61	39.1	2.02	79.11	40.2	2.10	84.25
1960 - January	38.9	2.13	82.93	40.8	2.05	83.92	40.5	2.05	83.04	40.8	2.05	83.43
February	39.0	2.14	83.56	40.7	2.06	83.78	39.7	2.03	80.68	40.7	2.05	83.32
March	39.6	2.17	85.88	40.7	2.06	83.95	40.7	2.04	82.84	40.5	2.05	82.92
April	39.3	2.17	85.28	40.7	2.07	84.08	41.4	2.05	84.90	40.7	2.05	83.55
May	39.2	2.17	84.87	40.3	2.06	83.15	40.9	2.04	83.68	40.0	2.05	82.13
June	39.2	2.16	84.71	40.8	2.06	84.01	40.5	2.03	82.30	40.7	2.11	85.92
July	39.2	2.16	84.45	40.9	2.06	84.37	40.0	2.01	80.27	40.7	2.10	85.19
August	38.9	2.16	84.22	40.6	2.09	84.62	40.3	2.03	81.76	40.5	2.09	84.65
September	39.3	2.18	85.56	40.8	2.09	85.18	40.7	2.06	83.78	40.8	2.08	85.01
October	39.2	2.16	84.65	40.7	2.09	85.02	40.5	2.05	82.96	40.9	2.09	85.70
November	39.1	2.17	84.71	40.6	2.09	84.78	40.6	2.07	84.14	40.9	2.09	85.21
*December	37.8	2.16	81.71	39.0	2.09	81.54	39.9	2.08	83.04	41.3	2.15	88.59
1961 - January	38.4	2.19	84.01	40.1	2.11	84.62	39.7	2.09	83.01	40.5	2.11	85.37
February	38.7	2.20	85.05	40.2	2.12	85.27	40.2	2.09	84.01	40.6	2.11	85.73
March	39.0	2.21	86.22	40.4	2.12	85.73	40.0	2.10	83.83	40.5	2.12	86.06
April	38.7	2.21	85.76	40.6	2.13	86.70	40.6	2.11	85.47	40.5	2.14	86.55
May	38.7	2.22	85.98	40.9	2.15	87.93	40.3	2.11	85.06	40.6	2.15	87.30
June	39.2	2.22	86.92	41.1	2.14	87.90	40.8	2.13	87.00	40.6	2.16	87.56
July	39.0	2.22	86.33	40.9	2.15	87.95	39.9	2.11	84.22	40.5	2.15	86.92
August	39.2	2.22	87.25	41.3	2.15	88.72	40.1	2.12	85.17	41.0	2.14	87.64
September	39.5	2.25	89.07	41.6	2.14	89.02	40.7	2.12	86.48	41.0	2.14	87.65
October	39.1	2.24	87.61	41.6	2.14	89.09	41.2	2.17	89.15	41.0	2.15	87.92
November	39.3	2.25	88.36	41.1	2.13	87.79	41.5	2.17	90.05	41.0	2.14	87.66
*December	37.6	2.23	84.01	39.2	2.14	83.86	41.2	2.17	89.29	39.7	2.24	89.10
1962 - January	38.7	2.27	87.63	40.8	2.16	88.07	40.5	2.17	87.68	40.6	2.14	87.14
February	38.9	2.28	88.69	40.9	2.16	88.46	41.4	2.19	90.75	40.5	2.14	86.61
March	39.3	2.30	90.40	41.3	2.17	89.63	41.5	2.19	90.77	40.6	2.14	87.16
*April	39.0	2.31	90.07	41.2	2.17	89.41	41.3	2.21	92.44	40.4	2.16	87.22
May	39.4	2.32	91.44	41.7	2.20	91.62	42.1	2.21	93.21	40.7	2.16	88.01
June	38.9	2.31	89.85	41.8	2.18	91.18	41.4	2.20	91.19	40.5	2.22	89.74
July	38.9	2.30	89.54	41.8	2.19	91.33	40.6	2.17	88.34	40.5	2.18	89.06
August	38.7	2.32	89.66	41.5	2.19	90.84	40.7	2.18	88.84	40.4	2.17	87.82
September	39.3	2.32	91.13	41.9	2.19	92.00	41.2	2.20	90.87	41.0	2.17	88.97
October	38.9	2.32	90.13	41.9	2.19	91.89	41.7	2.24	93.31	41.3	2.16	89.43
November												
December												

\* See footnote on page 15.



Table 6b.- Average Hours and Earnings of Hourly-Rated Wage-Earners, Specified Manufacturing Industries, Canada. (Concluded)

Year and Month	Electrical Apparatus and Supplies			Non-Metallic Mineral Products			Products of Petroleum and Coal			Chemical Products		
	Average Weekly Hours	Average Hourly Earnings	Average Weekly Wages	Average Weekly Hours	Average Hourly Earnings	Average Weekly Wages	Average Weekly Hours	Average Hourly Earnings	Average Weekly Wages	Average Weekly Hours	Average Hourly Earnings	Average Weekly Wages
	No.	\$	\$	No.	\$	\$	No.	\$	\$	No.	\$	\$
1945 - Average	43.1	0.70	30.21	46.0	0.66	30.18	43.4	0.84	36.37	45.0	0.68	30.78
1946 - Average	41.6	0.72	30.08	44.3	0.68	30.12	40.5	0.88	35.48	43.3	0.70	30.31
1947 - Average	41.0	0.86	35.18	44.6	0.78	34.70	41.4	0.98	40.74	43.0	0.81	34.79
1948 - Average	40.6	1.00	40.72	44.6	0.89	39.78	41.6	1.15	47.67	43.4	0.93	40.15
1949 - Average	41.1	1.09	44.96	44.9	0.96	43.19	41.3	1.23	50.63	43.5	0.99	43.02
1950 - Average	41.1	1.15	47.39	45.2	1.02	46.10	41.5	1.30	54.07	43.3	1.05	45.25
1951 - Average	41.0	1.29	52.93	44.5	1.17	52.20	41.1	1.53	62.92	42.8	1.20	51.36
1952 - Average	41.1	1.40	57.54	44.0	1.28	56.54	41.6	1.73	71.80	41.9	1.33	55.52
1953 - Average	41.1	1.44	59.02	43.6	1.36	59.08	41.5	1.81	75.32	41.8	1.38	57.85
1954 - Average	40.2	1.50	60.30	43.2	1.42	61.30	41.6	1.89	78.54	41.5	1.45	60.22
1955 - Average	40.7	1.51	61.38	43.4	1.46	63.49	41.2	1.96	80.83	41.3	1.51	62.49
1956 - Average	40.8	1.59	64.83	43.2	1.53	66.18	40.6	2.08	84.33	41.1	1.60	65.60
1957 - Average	40.3	1.66	67.10	42.7	1.61	68.70	41.4	2.23	92.20	40.9	1.72	70.39
1958 - Average	40.0	1.72	69.00	43.0	1.68	72.20	41.0	2.30	94.34	40.7	1.82	73.99
1959 - Average	40.5	1.78	71.99	43.0	1.74	74.72	41.4	2.44	100.98	40.8	1.88	76.58
1960 - Average	40.3	1.84	74.13	42.2	1.80	75.86	41.1	2.52	103.46	40.6	1.97	80.20
1961 - Average	40.7	1.88	76.66	42.4	1.87	79.18	41.2	2.58	106.23	40.8	2.04	83.23
1959 - January	40.4	1.76	70.86	42.8	1.74	74.61	41.2	2.40	98.58	40.7	1.86	75.82
February	40.3	1.76	70.65	43.0	1.74	74.89	41.1	2.40	98.39	40.7	1.87	76.08
*March	40.0	1.76	70.42	42.6	1.74	74.27	41.6	2.46	102.53	40.8	1.86	75.67
April	40.4	1.78	71.83	42.7	1.73	73.78	41.2	2.43	100.12	40.8	1.84	74.97
May	40.6	1.78	72.45	43.7	1.73	75.44	42.7	2.46	105.28	40.9	1.84	75.20
June	41.1	1.79	73.53	43.6	1.73	75.34	41.3	2.44	100.63	40.9	1.85	75.53
July	40.6	1.78	72.54	43.4	1.73	74.99	40.9	2.43	99.39	40.7	1.88	76.56
August	40.5	1.77	71.80	43.5	1.73	75.14	40.7	2.42	98.28	40.5	1.89	76.73
September	41.4	1.78	73.68	44.4	1.74	77.17	40.8	2.43	99.21	41.1	1.90	78.62
October	41.1	1.78	73.06	44.2	1.74	77.03	41.1	2.45	100.68	41.1	1.90	78.25
November	41.0	1.79	73.36	43.2	1.73	74.86	42.1	2.47	103.78	40.8	1.90	77.77
*December	39.0	1.79	69.76	38.9	1.78	69.07	41.7	2.52	104.94	40.4	1.94	78.39
1960 - January	40.9	1.82	74.26	42.3	1.78	75.20	40.8	2.42	98.63	40.8	1.93	78.52
February	40.3	1.82	73.49	41.6	1.79	74.51	40.6	2.43	98.58	40.4	1.94	78.41
March	40.4	1.84	74.27	41.9	1.78	74.48	40.9	2.49	101.82	40.7	1.94	78.97
April	40.2	1.84	73.78	41.8	1.78	74.45	41.1	2.54	104.10	40.9	1.95	79.65
May	40.1	1.84	73.87	42.8	1.78	76.24	41.4	2.55	105.53	40.7	1.96	79.66
June	40.6	1.84	74.52	42.1	1.78	74.75	41.5	2.57	106.44	41.1	1.98	81.12
July	40.1	1.84	73.97	42.5	1.79	76.13	41.1	2.51	103.28	40.8	1.99	81.36
August	40.5	1.84	74.57	42.8	1.79	76.62	39.9	2.52	100.54	40.2	1.98	79.58
September	40.7	1.85	75.02	42.9	1.81	77.81	40.8	2.55	103.89	40.6	1.99	80.96
October	40.7	1.84	74.64	42.8	1.82	78.07	41.5	2.55	105.93	40.4	2.00	80.84
November	40.7	1.85	75.24	42.8	1.82	78.17	40.9	2.55	104.12	40.4	2.01	81.25
*December	38.9	1.85	71.98	40.1	1.84	73.89	42.2	2.57	108.62	40.4	2.03	82.12
1961 - January	40.4	1.87	75.45	40.7	1.86	75.81	40.9	2.53	103.59	40.5	2.02	81.69
February	40.1	1.87	75.01	40.7	1.87	75.90	41.1	2.54	104.39	40.6	2.02	81.76
March	40.1	1.87	75.08	41.3	1.87	77.20	41.0	2.55	104.71	40.8	2.03	82.77
April	40.7	1.87	76.24	41.9	1.85	77.75	40.9	2.54	103.99	40.7	2.02	82.22
May	40.5	1.89	76.32	43.4	1.86	80.78	41.6	2.58	107.13	41.4	2.04	84.46
June	41.0	1.88	77.18	43.7	1.86	81.38	41.5	2.57	106.69	41.2	2.03	83.64
July	40.8	1.89	77.04	42.9	1.86	79.67	41.3	2.57	105.96	40.8	2.03	82.92
August	41.1	1.88	77.35	43.5	1.87	81.48	41.1	2.56	105.27	40.6	2.04	82.92
September	42.0	1.89	79.53	43.7	1.87	81.72	40.4	2.56	103.32	41.2	2.04	84.32
October	41.6	1.88	78.44	43.8	1.89	82.60	41.3	2.59	106.93	40.9	2.04	83.63
November	41.8	1.89	79.20	43.1	1.87	80.81	41.4	2.64	109.28	40.9	2.06	84.12
*December	38.7	1.89	73.09	39.6	1.90	75.05	42.3	2.68	113.45	40.2	2.10	84.34
1962 - January	41.4	1.91	79.12	41.6	1.92	79.72	40.7	2.67	108.44	40.7	2.07	84.50
February	41.0	1.91	78.31	41.9	1.92	80.42	40.7	2.65	107.79	40.7	2.08	84.75
March	41.1	1.91	78.54	42.6	1.90	80.96	40.5	2.64	106.84	40.8	2.08	84.84
*April	40.2	1.90	76.59	42.2	1.92	80.98	41.8	2.67	111.68	41.2	2.09	86.30
May	40.7	1.90	77.43	43.6	1.91	83.30	42.0	2.68	112.29	41.3	2.10	86.68
June	41.1	1.91	78.36	43.8	1.92	84.09	41.4	2.65	109.52	41.2	2.11	86.88
July	41.0	1.91	78.09	43.6	1.92	83.65	42.0	2.63	110.56	41.1	2.12	87.03
August	41.0	1.91	78.21	43.9	1.92	84.44	41.7	2.65	110.56	40.8	2.08	84.87
September	42.1	1.93	81.11	44.3	1.93	85.62	41.2	2.65	109.05	41.2	2.11	86.72
October	41.5	1.91	79.40	43.7	1.93	84.49	41.3	2.66	110.01	41.2	2.11	86.97
November												
December												

\* See footnote on page 15.

Table 7. Index Numbers of Average Hourly Earnings in Manufacturing, Canada, 1947-1962.

(1949=100)

Last week in	1947	1948	1949	1950	1951	1952	1953	1954	1955	1956	1957	1958	1959	1960	1961	1962
<u>(a) Manufacturing</u>																
January	77.2	87.6	98.3	102.0	111.6	128.5	135.7	142.0	144.3	148.9	159.2	166.1	172.4	178.9	183.3	187.9
February	78.0	89.0	98.7	102.5	112.6	129.2	135.9	142.2	145.1	150.2	159.4	167.1	172.6	178.9	183.6	188.6
March	78.5	90.0	99.3	102.8	114.1	130.4	136.4	142.6	145.9	152.2	160.5	167.6	174.0	179.6	184.7	189.1
April	79.2	90.4	99.7	103.6	115.4	130.8	137.0	143.4	147.0	152.8	161.8	168.2	174.1	180.6	185.8	190.6
May	80.8	92.4	100.2	104.6	117.2	131.1	137.4	143.8	147.1	153.6	162.5	169.1	174.6	180.7	185.9	190.9
June	81.7	93.3	100.2	105.1	119.7	130.0	137.7	143.2	146.6	154.4	162.8	168.4	174.3	180.6	184.9	190.5
July	82.2	93.7	99.9	105.4	120.4	130.3	137.5	142.5	146.7	154.1	162.2	167.7	173.2	179.3	184.1	189.4
August	83.1	94.4	99.5	105.6	121.9	130.9	137.2	141.0	145.4	153.8	161.3	165.8	171.8	178.3	183.8	187.8
September	84.3	95.6	100.4	106.5	123.3	131.3	138.1	141.2	146.4	155.0	162.3	166.2	174.4	179.1	183.5	189.7
October	85.6	96.6	100.6	107.6	124.9	132.5	138.9	142.1	147.0	156.4	164.7	167.3	175.6	180.4	185.7	190.8
November	86.6	97.1	101.1	109.0	125.9	133.6	139.9	142.8	147.7	157.2	165.3	169.2	175.7	181.2	186.0	
December	87.6	98.3	102.2	110.2	128.5	135.5	142.0	144.4	149.1	159.8	167.6	172.9	179.6	184.5	189.9	
Average	82.1	93.2	100.0	105.4	119.6	131.2	137.8	142.6	146.5	154.0	162.5	168.0	174.4	180.2	185.1	
<u>(b) Durable goods</u>																
January	78.2	87.3	98.3	102.5	111.4	128.7	136.4	141.8	144.0	148.9	159.6	166.8	173.6	180.3	184.6	189.0
February	78.8	89.0	98.6	102.8	112.3	129.6	137.0	141.9	145.1	150.4	159.5	167.4	173.2	180.3	185.2	189.7
March	79.4	89.5	99.0	103.0	113.9	130.7	137.4	142.0	145.9	151.9	160.3	168.0	174.6	180.6	185.9	189.9
April	80.0	90.1	99.4	103.6	115.1	130.6	137.4	142.6	146.7	152.5	161.0	168.3	174.4	181.3	186.4	191.0
May	80.7	92.1	99.7	104.3	115.9	130.7	137.4	142.4	146.3	152.2	160.8	168.8	174.4	180.5	186.5	191.3
June	81.3	92.9	99.9	104.7	118.9	129.5	137.6	141.9	145.8	153.0	161.4	168.1	174.5	180.4	186.2	190.8
July	82.1	93.4	99.7	105.3	120.0	130.5	137.7	141.9	145.7	153.2	161.8	167.9	173.8	179.4	185.6	189.5
August	83.1	94.5	99.8	105.7	121.7	132.2	137.9	141.3	146.0	153.9	162.1	166.9	173.7	180.3	185.9	189.9
September	84.8	96.1	100.9	107.0	123.7	132.8	139.0	141.9	146.7	155.6	163.0	167.6	176.0	181.5	186.0	191.6
October	86.0	96.8	101.1	107.9	124.8	133.5	139.3	141.9	147.0	156.6	165.4	167.6	177.0	181.9	187.5	192.1
November	86.9	97.5	101.8	109.0	126.0	134.5	140.0	142.8	147.4	157.5	166.0	169.5	176.6	182.8	187.5	
December	87.0	98.1	102.3	109.6	127.7	135.3	140.5	143.3	147.6	158.5	166.8	172.4	179.6	184.5	189.4	
Average	82.4	93.1	100.0	105.4	119.3	131.6	138.1	142.1	146.2	153.7	162.3	168.3	175.1	181.1	186.4	
<u>(c) Non-durable goods</u>																
January	76.3	88.1	98.2	101.9	111.3	127.3	132.9	140.7	144.3	148.4	157.6	165.3	171.6	177.3	183.7	187.9
February	76.9	88.9	98.6	102.4	112.5	127.6	132.8	141.0	144.3	148.7	158.0	166.8	172.4	177.7	183.7	188.3
March	77.6	90.3	99.3	103.0	113.8	128.6	133.4	141.9	145.0	150.8	159.4	167.3	173.5	178.7	185.1	189.0
April	78.3	90.6	99.8	103.7	115.1	129.6	134.6	142.9	146.2	151.3	161.2	168.0	173.6	179.9	186.6	190.6
May	80.7	92.8	100.7	105.1	117.9	130.2	135.4	144.6	147.2	153.6	163.5	169.0	174.6	181.1	186.5	190.9
June	82.2	93.7	100.4	105.3	120.0	129.7	135.9	143.9	147.0	154.7	163.6	169.0	174.0	181.3	185.0	190.8
July	82.3	94.2	100.2	105.4	120.4	129.3	135.8	142.9	147.2	154.0	162.0	168.1	173.5	180.9	184.5	190.6
August	83.3	94.4	99.4	105.5	121.7	128.5	135.3	141.2	144.8	153.2	160.5	166.1	171.6	178.2	183.5	187.1
September	83.8	95.3	100.1	105.9	122.3	128.7	136.1	140.9	145.8	153.6	161.5	166.1	173.2	178.8	182.9	188.7
October	85.4	96.4	100.6	107.3	124.3	130.2	137.3	142.6	146.9	155.0	163.5	168.3	174.6	180.6	185.3	190.1
November	86.1	96.5	100.7	108.9	124.9	131.2	138.7	143.0	147.6	155.7	163.7	169.7	175.7	181.5	185.8	
December	88.0	98.2	102.2	110.6	128.5	134.0	142.0	145.5	150.2	160.0	167.9	174.0	180.0	185.9	191.2	
Average	81.7	93.3	100.0	105.4	119.4	129.6	135.8	142.6	146.4	153.2	161.9	168.1	174.0	180.2	185.3	

Table 8.- Index Numbers of Average Hourly Earnings in the Heavy Electrical Machinery and Equipment Industry. (1949=100)

Month	1953	1954	1955	1956	1957	1958	1959	1960	1961	1962
January	136.0	142.1	141.8	144.4	158.2	165.0	167.8	173.3	177.3	182.8
February	136.4	141.8	141.8	146.1	157.7	165.1	167.3	175.0	177.5	182.1
March	136.3	142.9	142.0	146.8	158.0	164.9	170.1	175.3	178.1	183.0
April	134.9	143.0	144.1	148.7	157.5	165.6	170.6	177.0	179.6	182.9
May	135.1	144.3	143.5	150.4	159.4	165.1	171.9	176.4	179.0	184.2
June	136.9	144.9	143.7	151.2	160.7	165.9	172.0	177.9	179.6	185.2
July	135.8	144.3	141.2	152.1	162.3	167.8	173.5	178.8	179.2	184.4
August	136.1	143.4	141.6	151.2	160.1	164.5	170.5	177.7	178.9	184.6
September	137.1	143.4	142.0	153.5	161.5	166.1	171.9	178.1	179.9	186.4
October	138.6	143.1	144.1	155.5	162.6	165.6	171.6	176.4	179.7	184.7
November	138.7	143.2	145.2	154.2	162.9	165.7	171.6	176.9	182.4	
December	139.5	142.2	145.5	156.1	163.8	168.2	172.1	176.4	181.2	

Table 9.- Average Weekly Wages in Manufacturing in Current Dollars and Adjusted for Changes in the Consumer Price Index.

Year and Month	Weekly Wages in Current Dollars	Index Numbers of Weekly Wages in Current Dollars (1949=100)	Weekly Wages in 1949 Dollars	Index Numbers of Weekly Wages in 1949 Dollars
1945 - Average	\$ 30.47	73.0	\$ 40.63	97.3
1946 - Average	30.15	72.2	38.70	92.7
1947 - Average	34.47	82.6	40.08	96.0
1948 - Average	38.96	93.3	39.96	95.7
1949 - Average	41.74	100.0	41.74	100.0
1950 - Average	44.03	105.5	42.54	101.9
1951 - Average	49.29	118.1	43.01	103.0
1952 - Average	53.83	129.0	46.33	111.0
1953 - Average	56.25	134.8	48.70	116.7
1954 - Average	57.43	137.6	49.42	118.4
1955 - Average	59.45	142.4	51.07	122.4
1956 - Average	62.40	149.5	52.70	126.3
1957 - Average	64.96	155.6	53.20	127.4
1958 - Average	66.77	160.0	53.30	127.7
1959 - Average	70.16	168.1	55.42	132.8
1960 - Average	71.96	172.4	56.14	134.5
1961 - Average	74.27	177.9	57.47	137.7
1961 - January	72.76	174.3	56.45	135.2
February	73.40	175.9	56.86	136.2
March	73.64	176.4	57.04	136.7
April	74.56	178.6	57.80	138.5
May	74.44	178.3	57.71	138.3
June	75.02	179.7	58.16	139.3
July	73.95	177.2	57.28	137.2
August	74.26	177.9	57.52	137.8
September	75.00	179.7	58.05	139.1
October	75.69	181.3	58.36	139.8
November	75.64	181.2	58.27	139.6
December	72.85	174.5	56.17	134.6
1962 - January	75.46	180.8	58.14	139.3
February	75.99	182.1	58.59	140.4
March	76.68	183.7	58.85	141.0
April	76.50	183.3	58.80	140.9
May	77.51	185.7	59.39	142.3
June	77.52	185.7	59.18	141.8
July	76.72	183.8	58.39	139.9
August	76.17	182.5	58.15	139.3
September	77.61	185.9	59.02	141.4
October	77.95	186.8	59.10	141.6
November				
December				

Note:- The current weekly wages relate to the last pay periods in the month, while the Consumer Price Index relates to the beginning of the month. The current average of weekly wages for any month is therefore adjusted in the above table by the Consumer Price Index for the following month, as more representative of the period in which the wages are spent. A statement of uses and limitations of the adjusted figures appears on page ii.

For Consumer Price Index statistics, construction methods and component details, see monthly report "Prices and Price Indexes".



## NOTES

**General.**—The monthly statistics of average hours, average hourly earnings and average weekly wages, like those of employment, payrolls and average weekly wages and salaries, are based on data from establishments usually employing 15 persons and over. The latest monthly figures are subject to revision.

**Coverage.**—Firms are asked to furnish information for the male and female wage-earners for whom they keep records of hours worked, so that the statistics relate, in the main, to hourly-rated wage-earners, or production workers, employed full time and part time. Casual workers are also included, provided that they work at least one day in the reported pay period. Data for salaried personnel are purposely excluded. In many cases, information is not available for certain classes of wage-earners, whose earnings, like those of most salaried employees, are not directly dependent on the number of hours worked; examples of wage-earners frequently excluded are route-drivers, piece-workers in many but not all establishments, truck men, etc. Numerous employers do not keep records of man-hours for any classes of employees. The number of workers for whom information is given in the present report is therefore smaller than the total number of workers (wage-earners and salaried employees) for whom statistics of employment, payrolls, average earnings, sex distribution, etc., are given in the monthly reports on employment and payrolls. These also include figures for certain industries not represented in the present report because relatively few of the wage-earners therein are paid on an hourly basis with the result that man-hour records are lacking. Such industries include public utility operation, trade, finance, insurance and real estate and some branches of transportation, storage and communication and service.

In manufacturing, the data relate to over 70 p.c. of all employees on the staffs of the firms co-operating in the monthly surveys of employment and payrolls; in 1956 the wage-earners for whom information on man-hours was obtained formed some 83 p.c. of the total number of hourly-rated and other wage-earners reported by practically all manufacturing establishments to the Annual Census of Manufactures. In mining and construction, data on man-hours and hourly earnings are provided for approximately 75 p.c. and 69 p.c. of the total employees of firms co-operating in the monthly surveys of employment and payrolls in those industries, respectively; in 1956, the monthly statistics were based on approximately 93 p.c. of the total number of wage-earners reported in the annual survey of the Mineral Statistics Section of the Industry and Merchandising Division.

**Man-hours.**—The man-hours statistics include hours worked by full-time and part-time wage-earners, including overtime hours actually worked; premium or penalty hours credited for purpose of computing overtime payment are not included. Hours

credited to wage-earners absent on leave with pay in the reported pay periods are included in the statistics as though the hours had been worked. The averages are obtained by dividing the aggregate hours reported for the week by the number of full-time and part-time wage-earners working such hours.

**Wages.**—The questionnaire calls for a statement of gross wages earned by the full-time and part-time wage-earners whose hours are reported, before deductions are made for taxes, unemployment insurance contributions, etc. Payments for overtime work, incentive or production and cost-of-living bonuses paid at regular intervals, and amounts credited to wage-earners on leave with pay in the reported pay periods are included. The value of board and lodging, which in some cases is part of the remuneration of workers, is not included. Bonuses paid at infrequent intervals and employers' contributions to welfare funds such as workmen's compensation, unemployment insurance, pension and medical plans and certain other employee benefits are also excluded.

So far as is possible the revised figures of average hourly and weekly earnings incorporate retroactive pay for one month as well as corrections in the material originally tabulated and data received too late for inclusion in the first tabulation; for the most part, such adjustments are not carried back for more than one month.

**Pay Periods.**—Statistics of man-hours and wages reported for periods exceeding one week in duration are reduced by the appropriate proportions to obtain the number of hours and the wages for one week in the stated pay period. Such data are combined with weekly figures furnished by employers whose records are maintained on a weekly basis, so that, in all cases, the tabulated statistics represent the situation in one week in each month.

**Variations in Trends** of average earnings result from many factors, such as changes in wage rates, in amounts of overtime work, short-time work, shift differentials, incentive or production bonuses and in the area, occupational and sex distributions of the reported working forces. Differences in industrial distributions, with related occupational and sex distributions, are the principal factors contributing to differences in the levels of earnings in particular areas.

**Urban Area Statistics.**—Statistics given in the present report for communities listed as "metropolitan areas" and "other major urban areas" in Tables 8 and 9 of the 1956 Census Volume 1 (Population) and in the same tables in Bulletin 1-6, cover the census areas, except those for St. Catharines, which also include establishments in Port Colborne and Welland. Statistics given for urban areas not listed in the above mentioned tables cover establishments in the incorporated cities and towns named but also include Iberville with St. Jean, Nitro with Valleyfield, and Preston with Galt.

### Measuring the Purchasing Power of Earnings.—

Changing consumer price levels affect the amounts of goods and services which a dollar will buy, and average earnings, of course, will be affected in the same way. An earnings measurement which takes the change of consumer prices into account, can be calculated by reducing actual earnings averages by the percentage amounts consumer price levels rise, or increasing them by the amount price levels fall. The adjusted averages may be used to indicate the comparative quantities of goods and services which could be purchased by average earnings if consumer price levels and consumption patterns had remained constant. The following illustration shows how this kind of an adjustment can be made.

Suppose that a series of weekly average wages rises from \$50.00 in week A to \$60.00 in week B, and that in the same interval a consumer price index advances from 100.0 to 110.0. Because of the 10 per cent rise in consumer prices, \$1.00 will not buy as much in week B as it would in week A. Likewise, a 20 per cent rise from \$50.00 to \$60.00 will overstate the increase which has occurred in the purchasing power of average weekly wages. This overstatement can be removed by reducing the figure of \$60.00 by the amount of the consumer price increase. The adjusted average is \$54.55 ( $60.00/110.0 \times 100.0$ ), which may be referred to as a weekly wage average for week B expressed in the dollars of period A, or it may be said to indicate the level of real weekly wages relative to week A.

The foregoing calculation can be carried a step further to express in index number form the relationship between the week A average of \$50.00 and the week B figure of \$54.55. Taking the week A average of \$50.00 as equal to 100.0, the week B index becomes 109.0 ( $54.55/50.00 \times 100.0$ ). Such an index may be called an index of weekly real wages. It indicates that average wages for week B will buy 9 per cent more goods and services than those received in week A, in spite of a 10 per cent rise in consumer prices. This 9 per cent increase in real wages compares with the rise of 20 per cent in money wages ( $60.00/50.00 \times 100.0$ ).

It should be noted that while the estimates of average real wages may reflect the experiences of

broad groups of workers fairly well, their applicability to individual wage-earners depends upon a number of considerations. For example, individual earnings will differ significantly from the group average, depending upon occupation, industry, geographical location, or sex of the wage-earner. Moreover, individual spending habits differ widely, but the consumer price index which is used to adjust the earnings data refers only to the average consumption pattern of a particular income group. Group-spending patterns change over periods of time. To the extent that this occurs, the earnings data adjusted by the consumer price index (which has a "fixed" consumption pattern), will gradually be rendered less valid. Finally, some part of income may be saved, and it should be borne in mind that it is not appropriate to reduce savings to a constant dollar basis by using a price index which reflects consumption patterns.

It should also be kept in mind that measures of change in real earnings calculated from averages of gross earnings may differ from changes in the purchasing power of "take-home" pay, due to such factors as changes in personal income tax, pay deductions for such things as social insurance and pension plans. Thus index numbers of real wages should not be interpreted as measuring fluctuations in the levels of consumption of wage-earners or wage-earners' families; they are intended to show only the trend in purchasing power of wages over the items covered by the price index, and in addition to the factors already mentioned, do not take into account other family income (including family allowances) or changes in the savings position of families.

In Table 9, 1949 figures are used as reference levels for indexes of both actual and real wages, since this is the year selected by the Dominion Bureau of Statistics for general post-war index number comparisons. However, the adjustment made in the foregoing illustration can be applied to any reference level, and it should not be inferred that the 1949 reference period has any special validity for earnings comparisons. Percentage change between any two periods will be the same regardless of the reference period selected.





1010512606

# FOOTNOTES

The following footnotes explain the content of various industrial classes listed in the detailed tables in this bulletin. In some industries, the group breakdown is less extensive than in the Standard

Industrial Classification; in these cases, figures for certain categories not shown are contained in the group totals.

- (a) Alluvial gold and auriferous quartz mining.
- (b) Copper-gold-silver; nickel-copper; silver-cobalt; silver-lead-zinc and miscellaneous metal mining.
- (c) Oil and natural gas; oil shale and bituminous sand; contract drilling and prospecting for oil.
- (d) Non-metal mining and quarrying; clay and sand pits.
- (e) Tires, tubes and other rubber products.
- (f) Leather gloves and mittens; leather tanneries and miscellaneous leather products.
- (g) Miscellaneous wood products.
- (h) Paper boxes and bags; roofing papers; miscellaneous paper products.
- (i) Household, office and store machinery; machine tools; machinery, n.e.s.
- (j) Machine tools; machinery, n.e.s.
- (k) Jewellery and silverware; white metal alloys; miscellaneous non-ferrous metal products.
- (l) Abrasives; asbestos; hydraulic cement; clay; glass; lime and gypsum; stone; concrete and miscellaneous non-metallic mineral products.
- (m) Building includes buildings and structures, special trade contractors. General engineering includes other construction, other than highways, bridges and streets.
- (n) Interurban bus and coach and urban and suburban transportation systems; taxi-cab and truck transportation; services incidental to transportation; other transportation.
- (o) Hotels and restaurants; laundries; dyeing, cleaning and pressing plants, and recreational services.
- (p) The Northwest Territories, with the exception of Baffin Island, are included in Alberta. Baffin Island is included in Quebec. The Yukon Territory is included in British Columbia.
- (...) Figures not available.



