

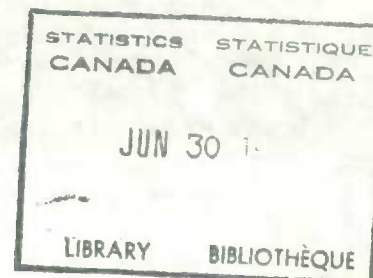
CATALOGUE No.

72-003 C-2

MONTHLY



MAN-HOURS AND HOURLY EARNINGS
WITH AVERAGE WEEKLY WAGES
APRIL 1962



Published by Authority of
The Honourable George Hees, Minister of Trade and Commerce

DOMINION BUREAU OF STATISTICS

Labour Division
Employment Section

8003-502-42

Price: \$3.00 per year

Vol. 18—No. 4

EMPLOYMENT AND EARNINGS REPORTS

Following are other publications of the Labour Division based upon establishment data in the field of industrial employment, earnings and hours:

72-001 - Advance Statement on Employment and Weekly Earnings - Monthly - Price \$1.00 per year

(index numbers of employment and averages of weekly wage and salary statistics for Canada (major industrial divisions) and the provinces (industrial composite figures))

72-002 - Employment and Payrolls - Monthly - Price \$3.00 per year

(industry and area index numbers of employment and payrolls and averages of weekly wage and salary statistics; comparisons with earlier periods; charts and explanatory material)

72-005 - Estimates of Labour Income - Monthly - Price \$2.00 per year

(monthly or quarterly estimates of wages, salaries and supplementary labour income, both unadjusted and seasonally adjusted, for specific industries and regions; with annual totals from 1951)

72-006 - Hiring and Separation Rates in Certain Industries - Semi-Annual - Price \$1.50 per year

(data for establishments having one or more employees covered by unemployment insurance and employing ten or more persons; also all units of chain or multiple firms, with at least one insured employee, regardless of number employed)

72-201 - Review of Employment and Payrolls - Annual - Price \$1.00

(industry and area index numbers of employment and payrolls and average weekly wages and salaries, monthly and annually, over a lengthy period; charts and explanatory material)

72-202 - Review of Man-Hours and Hourly Earnings - Annual - Price 75 cents

(industry and area averages of hours per week, hourly and weekly wages, monthly and annually, from 1945; charts and explanatory material)

72-203 - Earnings and Hours of Work in Manufacturing - Annual - Preliminary Report - Price 25 cents

(separate figures of earnings and hours for men and women and for wage-earners and salaried employees in one week in autumn for major manufacturing industries, Canada, and manufacturing in provinces and larger metropolitan areas)

72-204 - Earnings and Hours of Work in Manufacturing - Annual - Final Report - Price 75 cents

(separate figures of earnings and hours for men and women and for salaried employees and wage-earners in one week in autumn from 1946 with industrial and area detail; charts and explanatory material. Special data are obtained on a rotational basis in successive years:

- (1) a segregation of office and clerical workers from the salaried group
- (2) a distribution of wage-earners and salaried employees in a given range of weekly earnings and
- (3) a distribution of wage-earners in a given range of hours worked in the survey week)

Inquiries regarding these reports should be directed to the Labour Division, Dominion Bureau of Statistics, and subscriptions to the Information Services Division of the Dominion Bureau of Statistics or to the Queen's Printer, Ottawa.

CONTENTS

Page

| | |
|------------------|---|
| COMMENTARY | 5 |
|------------------|---|

APRIL 1962 STATISTICS

Hours and Earnings, by Industry:

| | |
|----------------------|----|
| 1. Canada | 8 |
| 2. Provinces | 10 |
| 3. Urban Areas | 13 |

HISTORICAL STATISTICS Annual Averages 1945-61 (Monthly 1959-62)

| | |
|--------------------------------|----|
| 4. Manufacturing, Canada | 15 |
|--------------------------------|----|

ROTATION TABLES

| | |
|--|----|
| 5b. Specified Non-Manufacturing Industries, Canada | 16 |
| 6b. Specified Manufacturing Industries, Canada | 19 |

(Historical statistics for manufacturing in provinces and urban areas last published in March issue)

SPECIAL TABLES

| | |
|---|----|
| 7. Index Numbers of Average Hourly Earnings in Manufacturing | 23 |
| 8. Index Numbers of Average Hourly Earnings in the Heavy Electrical Machinery and Equipment Industry | 24 |
| 9. Weekly Wages in Manufacturing in 1949 Dollars and Current Dollars | 24 |

CHARTS

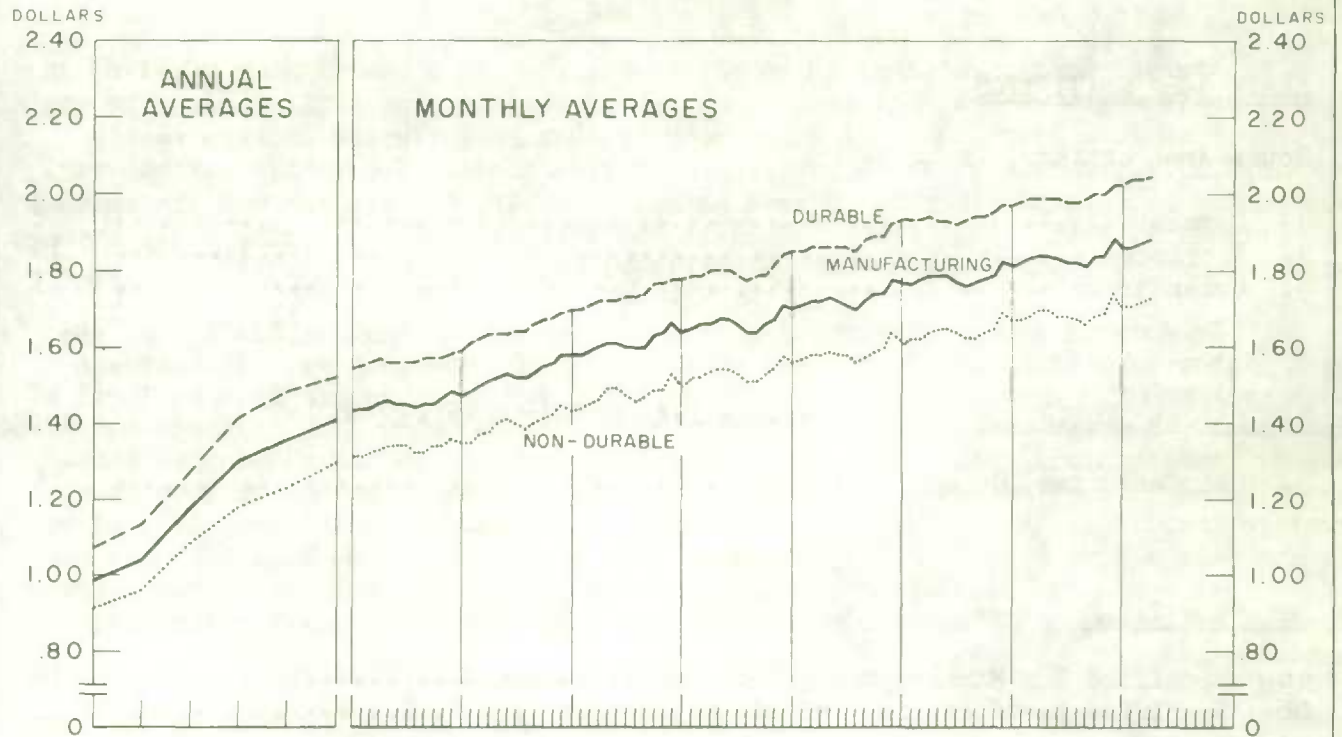
| | |
|--|---|
| 1. Average Hourly Earnings and Weekly Wages, Canada | 4 |
| 2. Average Hourly Earnings, Specified Industries, Canada | 6 |

EXPLANATORY NOTES

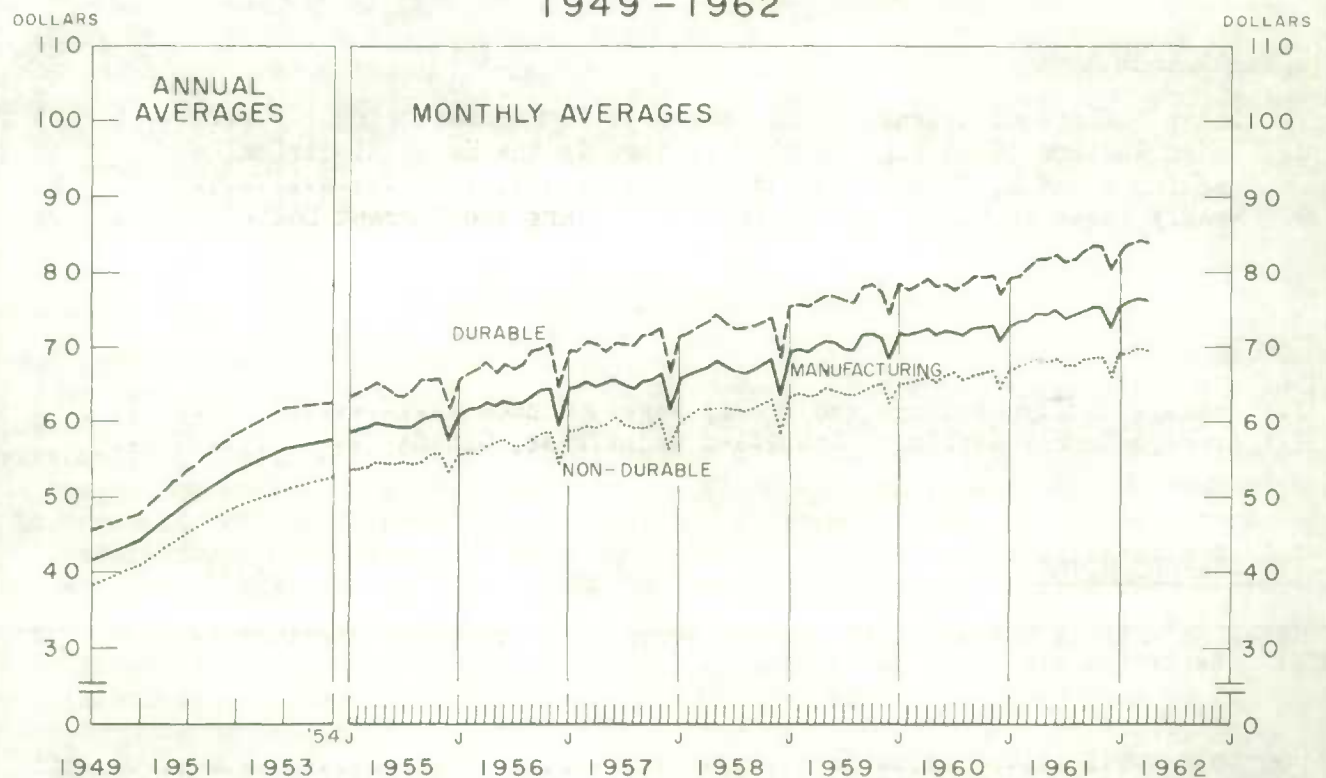
| | |
|---|---|
| Notes on methods and scope of monthly surveys of hours and earnings | 1 |
|---|---|

| | |
|------------------------|-----|
| <u>FOOTNOTES</u> | 111 |
|------------------------|-----|

AVERAGE HOURLY EARNINGS IN MANUFACTURING 1949 - 1962



AVERAGE WEEKLY WAGES IN MANUFACTURING 1949 - 1962



MAN-HOURS AND HOURLY EARNINGS, APRIL 1962

Manufacturing

Average hourly earnings in manufacturing rose to a new maximum of \$1.88 in April, an increase of one cent over March and of 4 cents over April 1961. The average work week, at 40.6 hours, was 0.4 hours shorter than in March and average weekly earnings 17 cents lower. The observance of Easter Monday, frequently without pay, was partly responsible for the reduced hours. However, the average was the same as in April 1961, when Easter did not fall in the last week of the month, while average weekly wages were \$1.95 higher than a year earlier.

In durable goods manufacturing, average hourly earnings at \$2.04 were one cent higher than in March and 5 cents above the April 1961 average. The average work week was 0.3 hours shorter than in March but 0.3 hours longer than in April of last year. Average weekly wages at \$83.89 were 3 cents lower than in March but \$2.62 higher than in April 1961. Settlement of labour disputes in the automotive industry contributed to the increase in the number of wage-earners reported and to higher average hourly earnings. Wage-rate increases in non-ferrous metal smelting and refining were also a factor. Short time and less overtime work in wood products and electrical apparatus manufacturing accounted for much of the decline in the general average of hours, while layoffs and a shorter work week in aircraft plants also contributed.

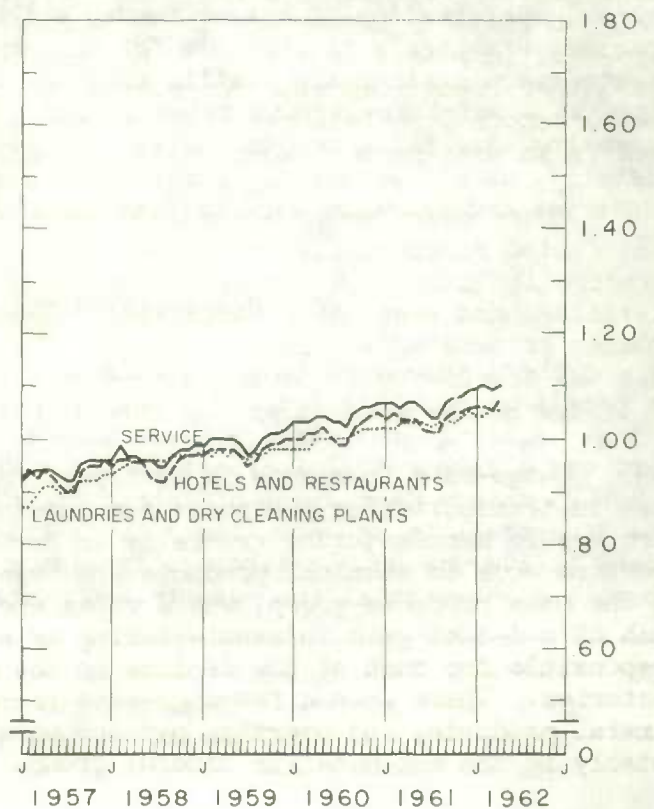
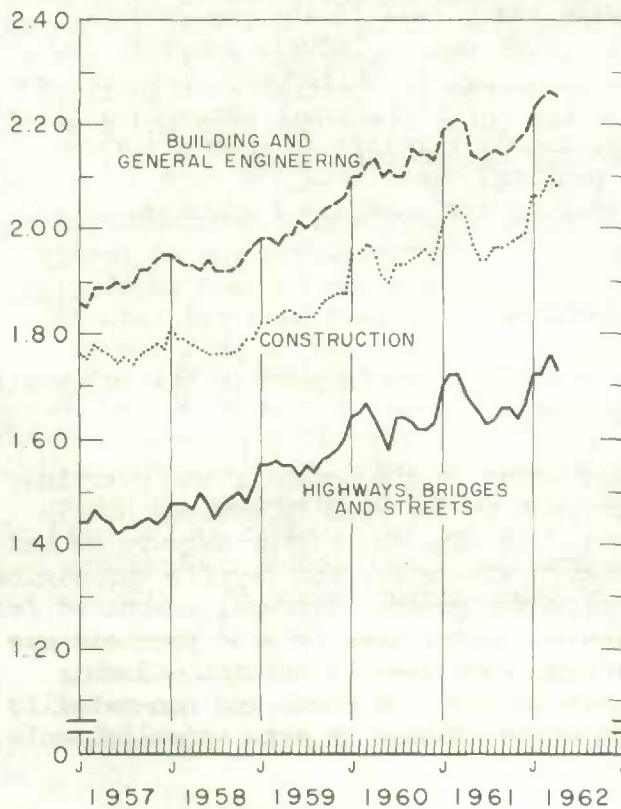
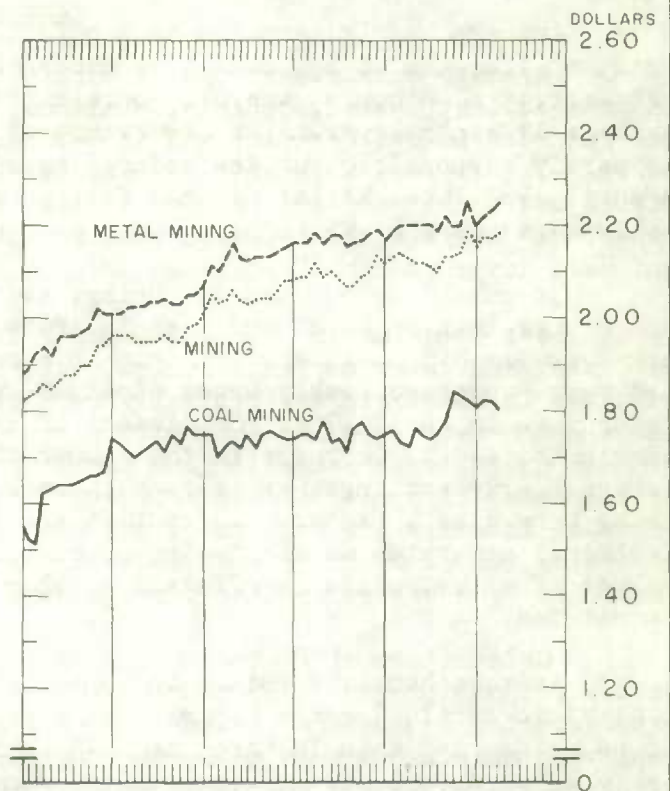
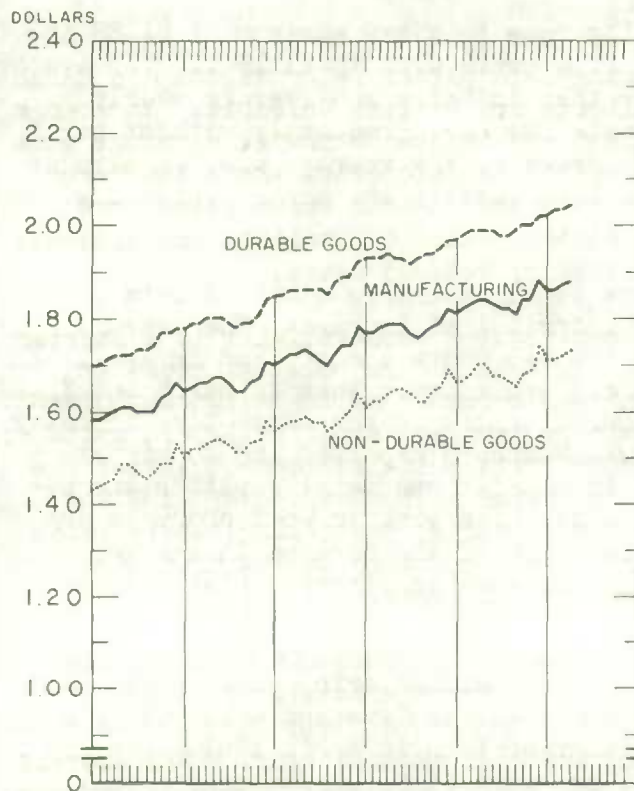
Average hourly earnings in non-durable goods manufacturing rose by one cent to \$1.73 in April, 3 cents higher than a year earlier. The average work week was 0.6 hours shorter than in March and 0.3 hours shorter than in April 1961. Average weekly wages dropped by 42 cents in the month, but were \$1.01 higher than a year earlier. Celebration of Easter Monday which frequently fell in the pay periods reported, was partly responsible for the shorter work week. Industries principally affected were leather and textile products and clothing, in which many women are employed at lower-than-average rates of pay. The lay-off of seasonal workers in tobacco processing also had a buoyant effect on average hourly earnings in manufacturing generally, as did wage-rate increases in meat packing, distilling and some other industries and overtime work in petroleum refineries and chemical factories.

Non-Manufacturing Industries

Short time work in oil fields in Alberta, due to spring road conditions, was partly responsible for a 0.5 hour reduction in the length of the work week in mining. Although the average hours worked in coal mining were shorter than in March, there was a substantial increase in the number of wage-earners reported, particularly in Nova Scotia. Settlement of labour disputes in metal mines in Quebec and wage-rate increases in the same industry in British Columbia resulted in an increase of a cent in average hourly earnings in mining generally. Construction contractors reported a substantial increase in the number of wage-earners reported. With the

NOTE: Statistics are based on returns received from employers usually employing 15 or more persons. These returns include data for the last pay period(s) of reporting establishments in each month. The latest figures throughout this publication are subject to revision.

AVERAGE HOURLY EARNINGS IN SPECIFIED INDUSTRIES, CANADA



employment of larger numbers of casual employees, the averages of hourly earnings and hours worked were slightly lower.

Provinces

Average hourly earnings in manufacturing were higher in April than in March in Nova Scotia, Quebec, Ontario, Manitoba, Alberta and British Columbia. No change was recorded in Saskatchewan and in Newfoundland and in New Brunswick earnings were lower. The average work week was shorter except in Saskatchewan, where the March figure was unchanged, and in Nova Scotia, Manitoba and Alberta where gains were reported. Average weekly wages rose in Nova Scotia, Ontario, Manitoba and Alberta, but were lower in other provinces, partly because of reduced hours.

Less overtime in pulp and paper mills contributed substantially to a shorter work week and lower earnings in Newfoundland. In Nova Scotia, average hours and earnings in manufacturing generally were higher as a result of increased employment and a longer work week in shipbuilding and primary iron and steel mills, in spite of greater activity in seasonal fish processing work which usually tends to lower the more general figures. Less overtime in transportation equipment, combined with seasonal increases in employment and average hours in fish processing, where rates are below the general average, lowered average hourly earnings in New Brunswick factories by 3 cents, and the average work week by 0.8 hours.

Celebration of Easter Monday, which is frequently an unpaid holiday, was partly responsible for a shorter work week and lower average weekly earnings in manufacturing in Quebec. As the industries most affected by the holidays were those employing many women, such as leather products, textiles and clothing, where average earnings are generally below the average, the short time reported tended to produce a slight increase in average hourly earnings in manufacturing generally. Scattered wage-rate increases in meat packing, non-ferrous metal smelting and refining and some other industries also contributed to higher averages. Partially offsetting these factors were less overtime in pulp and paper mills and short time and some layoffs in transportation equipment and electrical apparatus.

More overtime work and settlement of strikes in automobile manufacturing contributed substantially to a one-cent increase in the general average of hourly earnings in Ontario factories. Higher wage rates were reported in meat packing, distilling and some other industries. The layoff of lower-paid seasonal help in tobacco processing was also a factor. The shorter work week was in part due to seasonal inactivity in tobacco processing and clothing, and in part to the celebration of Easter Monday without pay in some establishments.

Wage-rate increases in meat packing and other food processing and overtime work in transportation equipment accounted for much of the rise in average hourly earnings in manufacturing generally in Manitoba. In Alberta, higher wage-rates and overtime work in chemical products and some other industries, and layoffs and strikes in the wood products group, where rates are below the general average, accounted for much of a 4-cent gain in manufacturing as a whole. Short time in wood products was responsible for much of the decline in the average work week in British Columbia factories. There were a few wage-rate increases in iron and steel and non-metallic mineral products, and overtime pay for work on Easter Monday in some establishments, notably in the non-metallic mineral group.

TABLE 1. Average Hours and Average Earnings of Hourly-Rated Wage-Earners, Canada, by Industry

| Industry | Average weekly hours | | | Average hourly earnings | | | Average weekly wages | | | Wage-earners reported |
|--|----------------------|-----------|-----------|-------------------------|-----------|-----------|----------------------|-----------|-----------|-----------------------|
| | Apr. 1962 | Mar. 1962 | Apr. 1961 | Apr. 1962 | Mar. 1962 | Apr. 1961 | Apr. 1962 | Mar. 1962 | Apr. 1961 | April 1962 |
| | number | | | dollars | | | | | | number |
| Mining | 41.5 | 42.0 | 41.4 | 2.18 | 2.17 | 2.13 | 90.40 | 91.28 | 88.04 | 73,032 |
| Metal mining | 41.8 | 41.9 | 41.5 | 2.25 | 2.23 | 2.20 | 94.23 | 93.39 | 91.35 | 49,920 |
| Gold (a) | 42.4 | 43.0 | 41.5 | 1.78 | 1.76 | 1.71 | 75.70 | 75.84 | 71.00 | 13,231 |
| Other metal (b) | 41.6 | 41.5 | 41.6 | 2.43 | 2.40 | 2.39 | 100.92 | 99.79 | 99.17 | 36,689 |
| Copper-gold-silver | 40.8 | 41.3 | 40.4 | 2.24 | 2.21 | 2.19 | 91.60 | 91.42 | 88.50 | 8,313 |
| Iron | 44.0 | 43.5 | 45.2 | 2.51 | 2.52 | 2.36 | 110.39 | 109.76 | 106.42 | 5,962 |
| Uranium | 40.5 | 40.5 | 38.7 | 2.80 | 2.81 | 2.78 | 113.31 | 113.82 | 107.62 | 3,753 |
| Fuels | 39.7 | 42.0 | 39.9 | 2.04 | 2.11 | 1.96 | 81.15 | 88.54 | 77.97 | 12,277 |
| Coal | 40.4 | 40.8 | 40.6 | 1.80 | 1.82 | 1.72 | 72.81 | 74.42 | 69.91 | 7,810 |
| Oil and natural gas (c) | 38.5 | 43.3 | 38.7 | 2.48 | 2.39 | 2.37 | 95.72 | 103.21 | 91.49 | 4,467 |
| Non-metal (d) | 42.0 | 42.3 | 42.6 | 1.98 | 2.00 | 1.97 | 83.21 | 84.89 | 84.10 | 10,835 |
| Asbestos | 41.9 | 42.1 | 42.7 | 2.20 | 2.22 | 2.21 | 92.19 | 93.44 | 94.38 | 5,768 |
| Manufacturing | 40.6 | 41.0 | 40.6 | 1.88 | 1.87 | 1.84 | 76.51 | 76.68 | 74.56 | 840,766 |
| Durable goods | 41.1 | 41.4 | 40.8 | 2.04 | 2.03 | 1.99 | 83.89 | 83.92 | 81.26 | 411,119 |
| Non-durable goods | 40.1 | 40.7 | 40.4 | 1.73 | 1.72 | 1.70 | 69.44 | 69.86 | 68.43 | 429,647 |
| Food and beverages | 40.3 | 40.4 | 40.6 | 1.67 | 1.67 | 1.65 | 67.30 | 67.33 | 67.10 | 93,346 |
| Meat products | 39.6 | 40.2 | 40.2 | 1.94 | 1.93 | 1.91 | 76.94 | 77.44 | 76.64 | 21,041 |
| Canned and cured fish | 38.9 | 38.4 | 37.1 | 1.21 | 1.20 | 1.24 | 47.02 | 46.00 | 45.84 | 7,375 |
| Canned and preserved fruits and vegetables | 38.6 | 38.6 | 39.5 | 1.49 | 1.47 | 1.48 | 57.69 | 56.85 | 58.55 | 7,309 |
| Grain mill products | 42.0 | 41.6 | 42.2 | 1.80 | 1.80 | 1.74 | 75.76 | 75.14 | 73.55 | 5,404 |
| Bread and other bakery products | 41.5 | 41.2 | 41.8 | 1.51 | 1.50 | 1.46 | 62.64 | 61.68 | 61.29 | 11,766 |
| Biscuits and crackers | 39.6 | 40.5 | 38.1 | 1.41 | 1.41 | 1.38 | 55.84 | 57.08 | 52.64 | 5,301 |
| Distilled liquors | 38.8 | 39.8 | 40.3 | 2.17 | 2.15 | 2.09 | 84.19 | 85.33 | 84.22 | 2,759 |
| Malt liquors | 39.6 | 39.3 | 39.4 | 2.35 | 2.36 | 2.33 | 93.02 | 92.86 | 91.58 | 5,749 |
| Confectionery | 40.2 | 40.4 | 39.4 | 1.32 | 1.31 | 1.34 | 53.11 | 52.88 | 52.81 | 6,264 |
| Tobacco and tobacco products | 38.2 | 39.9 | 39.9 | 1.80 | 1.69 | 1.90 | 68.77 | 67.38 | 75.67 | 8,392 |
| Rubber products | 41.0 | 41.9 | 41.1 | 1.91 | 1.91 | 1.86 | 78.16 | 80.22 | 76.34 | 14,795 |
| Rubber footwear | 42.3 | 42.1 | 41.7 | 1.43 | 1.41 | 1.38 | 60.23 | 59.45 | 57.69 | 4,012 |
| Other rubber products (e) | 40.5 | 41.8 | 40.9 | 2.09 | 2.10 | 2.04 | 84.84 | 87.86 | 83.25 | 10,783 |
| Leather products | 39.0 | 41.2 | 39.7 | 1.27 | 1.26 | 1.24 | 49.69 | 51.87 | 49.10 | 24,567 |
| Boots and shoes (except rubber) | 38.5 | 41.1 | 39.2 | 1.23 | 1.21 | 1.18 | 47.34 | 49.88 | 46.41 | 17,216 |
| Other leather products (f) | 40.1 | 41.2 | 40.8 | 1.37 | 1.37 | 1.35 | 55.20 | 56.55 | 55.05 | 7,351 |
| Textile products (except clothing) | 41.7 | 42.6 | 41.9 | 1.41 | 1.41 | 1.37 | 58.76 | 59.96 | 57.45 | 46,060 |
| Cotton yarn and broad woven goods | 40.1 | 41.3 | 40.4 | 1.45 | 1.45 | 1.40 | 57.98 | 59.95 | 56.43 | 15,446 |
| Woollen goods | 42.7 | 43.4 | 43.1 | 1.31 | 1.31 | 1.28 | 55.93 | 56.98 | 55.24 | 7,381 |
| Synthetic textiles and silk | 42.9 | 43.8 | 43.1 | 1.49 | 1.48 | 1.44 | 63.82 | 64.80 | 62.25 | 9,511 |
| Filament yarn and staple fibres | 41.7 | 41.6 | 41.2 | 2.01 | 2.01 | 1.78 | 83.72 | 83.49 | 73.42 | 3,250 |
| Spun yarn and fabrics | 43.6 | 44.9 | 44.8 | 1.23 | 1.24 | 1.17 | 53.49 | 55.63 | 52.37 | 6,261 |
| Clothing (textile and fur) | 38.0 | 39.5 | 38.2 | 1.22 | 1.22 | 1.18 | 46.45 | 48.16 | 45.03 | 77,020 |
| Men's clothing | 37.8 | 39.4 | 37.6 | 1.21 | 1.21 | 1.18 | 45.69 | 47.60 | 44.29 | 26,995 |
| Women's clothing | 37.0 | 38.1 | 37.4 | 1.31 | 1.30 | 1.26 | 48.64 | 49.51 | 46.97 | 20,332 |
| Knit goods | 40.1 | 41.0 | 40.6 | 1.14 | 1.14 | 1.10 | 45.70 | 46.69 | 44.49 | 13,817 |
| *Wood products | 40.7 | 41.4 | 41.3 | 1.64 | 1.64 | 1.63 | 66.63 | 67.92 | 67.21 | 69,886 |
| Saw and planing mills | 39.6 | 40.9 | 41.0 | 1.76 | 1.75 | 1.75 | 69.68 | 71.62 | 71.74 | 43,626 |
| Plywood and veneer mills | 39.9 | 40.6 | 41.2 | 1.75 | 1.73 | 1.70 | 69.84 | 70.09 | 69.95 | 9,693 |
| Sash, door and planing mills | 41.0 | 42.0 | 41.7 | 1.46 | 1.46 | 1.46 | 60.01 | 61.36 | 60.85 | 10,410 |
| Sawmills | 38.9 | 40.5 | 40.7 | 1.90 | 1.90 | 1.90 | 73.89 | 76.80 | 77.18 | 23,523 |
| Furniture | 42.1 | 42.1 | 41.7 | 1.50 | 1.50 | 1.46 | 63.09 | 62.94 | 60.91 | 19,093 |
| Other wood products (g) | 42.8 | 42.8 | 42.0 | 1.34 | 1.36 | 1.35 | 57.49 | 58.26 | 56.76 | 7,167 |
| Paper products | 41.0 | 41.1 | 41.6 | 2.20 | 2.21 | 2.17 | 90.24 | 90.72 | 90.28 | 71,675 |
| Pulp and paper mills | 41.0 | 41.0 | 41.8 | 2.37 | 2.39 | 2.34 | 97.22 | 97.89 | 98.05 | 51,904 |
| Other paper products (h) | 41.1 | 41.2 | 41.0 | 1.75 | 1.75 | 1.69 | 71.91 | 72.00 | 69.37 | 19,771 |
| Paper boxes and bags | 41.0 | 40.8 | 40.8 | 1.74 | 1.73 | 1.67 | 71.39 | 70.82 | 68.03 | 12,078 |
| Printing, publishing and allied industries | 39.1 | 39.3 | 38.7 | 2.31 | 2.30 | 2.21 | 90.13 | 90.40 | 85.76 | 33,029 |

For footnotes (a) to (o) see notes on last page.
 * Durable manufactured goods industries.

TABLE 1. Average Hours and Average Earnings of Hourly-Rated Wage-Earners, Canada, by Industry - Concluded

| Industry | Average weekly hours | | | Average hourly earnings | | | Average weekly wages | | | Wage-earners reported |
|---|----------------------|-----------|-----------|-------------------------|-----------|-----------|----------------------|-----------|-----------|-----------------------|
| | Apr. 1962 | Mar. 1962 | Apr. 1961 | Apr. 1962 | Mar. 1962 | Apr. 1961 | Apr. 1962 | Mar. 1962 | Apr. 1961 | April 1962 |
| | number | | | dollars | | | | | | number |
| Manufacturing - Concluded: | | | | | | | | | | |
| *Iron and steel products | 41.2 | 41.3 | 40.6 | 2.17 | 2.17 | 2.13 | 89.42 | 89.63 | 86.70 | 125,494 |
| Agricultural implements | 40.7 | 41.1 | 40.3 | 2.22 | 2.24 | 2.19 | 90.28 | 91.93 | 88.20 | 7,854 |
| Boilers and plate work | 41.7 | 42.1 | 41.3 | 2.08 | 2.07 | 2.00 | 86.81 | 87.37 | 82.90 | 4,547 |
| Fabricated and structural steel | 40.7 | 40.5 | 40.3 | 2.13 | 2.13 | 2.08 | 86.53 | 86.49 | 84.06 | 7,066 |
| Hardware and tools | 42.2 | 42.5 | 42.3 | 1.81 | 1.81 | 1.78 | 76.43 | 76.87 | 75.45 | 8,738 |
| Heating and cooking appliances | 40.5 | 40.9 | 39.3 | 1.84 | 1.84 | 1.80 | 74.36 | 75.27 | 70.63 | 5,919 |
| Iron castings | 42.0 | 42.6 | 40.9 | 2.06 | 2.06 | 2.00 | 86.35 | 87.57 | 81.92 | 14,293 |
| Machinery (i) | 41.5 | 41.9 | 41.1 | 2.04 | 2.04 | 1.99 | 84.82 | 85.25 | 81.70 | 21,708 |
| Household, office and store | 40.5 | 41.4 | 40.3 | 2.08 | 2.06 | 1.99 | 83.97 | 85.34 | 80.13 | 5,226 |
| Industrial (j) | 41.9 | 42.0 | 41.4 | 2.03 | 2.03 | 1.99 | 85.09 | 85.22 | 82.29 | 16,482 |
| Primary iron and steel | 40.3 | 40.1 | 39.9 | 2.58 | 2.58 | 2.53 | 104.04 | 103.32 | 100.88 | 29,847 |
| Sheet metal products | 41.3 | 41.4 | 40.7 | 2.12 | 2.11 | 2.10 | 87.55 | 87.56 | 85.64 | 12,516 |
| Wire and wire products | 41.5 | 41.5 | 41.6 | 2.11 | 2.11 | 2.08 | 87.76 | 87.54 | 86.34 | 6,805 |
| *Transportation equipment | 41.8 | 41.5 | 40.6 | 2.21 | 2.19 | 2.11 | 92.46 | 90.77 | 85.47 | 97,826 |
| Aircraft and parts | 40.4 | 41.4 | 42.1 | 2.12 | 2.14 | 2.10 | 85.74 | 88.53 | 88.42 | 18,591 |
| Motor vehicles | 44.9 | 43.8 | 39.6 | 2.48 | 2.44 | 2.30 | 111.46 | 106.78 | 91.24 | 23,838 |
| Motor vehicle parts and accessories | 42.8 | 42.0 | 40.6 | 2.20 | 2.17 | 2.11 | 94.07 | 91.01 | 85.52 | 15,606 |
| Railroad and rolling stock equipment | 40.0 | 39.4 | 39.8 | 2.10 | 2.09 | 1.97 | 84.13 | 82.22 | 78.37 | 18,746 |
| Shipbuilding and repairing | 39.7 | 40.3 | 40.7 | 2.12 | 2.13 | 2.05 | 84.01 | 85.74 | 83.32 | 18,951 |
| *Non-ferrous metal products | 40.4 | 40.6 | 40.5 | 2.16 | 2.14 | 2.14 | 87.21 | 87.16 | 86.55 | 38,277 |
| Aluminum products | 41.6 | 41.9 | 42.0 | 1.89 | 1.91 | 1.92 | 78.76 | 80.10 | 80.77 | 5,009 |
| Brass and copper products | 41.4 | 42.0 | 40.4 | 2.06 | 2.05 | 1.99 | 85.29 | 86.34 | 80.56 | 5,654 |
| Smelting and refining | 39.9 | 39.9 | 40.0 | 2.41 | 2.38 | 2.36 | 96.07 | 94.96 | 94.39 | 21,641 |
| Other non-ferrous metal products (k) | 40.0 | 41.1 | 41.1 | 1.60 | 1.60 | 1.58 | 64.03 | 65.61 | 65.11 | 5,973 |
| *Electrical apparatus and supplies | 40.2 | 41.1 | 40.7 | 1.90 | 1.91 | 1.87 | 76.62 | 78.54 | 76.24 | 50,745 |
| Heavy electrical machinery and equipment ¹ | 40.9 | 40.9 | 40.7 | 2.12 | 2.12 | 2.08 | 86.79 | 86.81 | 84.83 | 10,887 |
| Telecommunication equipment | 39.8 | 41.1 | 40.6 | 1.75 | 1.75 | 1.76 | 69.55 | 72.14 | 71.29 | 12,598 |
| Batteries | 40.7 | 40.8 | 42.6 | 1.83 | 1.84 | 1.78 | 74.28 | 74.95 | 75.83 | 1,347 |
| Refrigerators, vacuum cleaners and appliances | 39.3 | 40.0 | 40.6 | 1.93 | 1.94 | 1.90 | 75.92 | 77.52 | 77.03 | 6,019 |
| Wire and cable | 41.1 | 41.9 | 41.3 | 2.12 | 2.11 | 2.03 | 86.96 | 88.50 | 84.01 | 4,527 |
| Miscellaneous electrical products | 40.2 | 41.5 | 40.2 | 1.81 | 1.83 | 1.76 | 72.53 | 75.76 | 70.73 | 15,264 |
| *Non-metallic mineral products (l) | 42.3 | 42.6 | 41.9 | 1.92 | 1.90 | 1.85 | 81.00 | 80.96 | 77.75 | 28,891 |
| Clay products | 42.3 | 41.9 | 42.2 | 1.74 | 1.73 | 1.69 | 73.58 | 72.52 | 71.17 | 3,777 |
| Glass and glass products | 40.6 | 41.4 | 40.6 | 1.91 | 1.88 | 1.85 | 77.32 | 77.98 | 75.25 | 7,974 |
| Products of petroleum and coal | 41.8 | 40.5 | 40.9 | 2.67 | 2.64 | 2.54 | 111.68 | 106.84 | 103.99 | 7,676 |
| Petroleum refining and products | 41.7 | 40.5 | 40.8 | 2.71 | 2.67 | 2.56 | 112.92 | 107.98 | 104.71 | 7,339 |
| Chemical products | 41.2 | 40.8 | 40.7 | 2.09 | 2.08 | 2.02 | 86.25 | 84.84 | 82.22 | 28,811 |
| Medicinal and pharmaceutical preparations | 39.6 | 39.9 | 40.0 | 1.60 | 1.61 | 1.56 | 63.56 | 64.35 | 62.25 | 3,069 |
| Acids, alkalis and salts | 40.9 | 40.7 | 40.5 | 2.39 | 2.39 | 2.33 | 97.99 | 97.19 | 94.20 | 6,330 |
| Fertilizers | 43.4 | 41.0 | 42.8 | 2.14 | 2.10 | 2.02 | 92.97 | 85.88 | 86.64 | 2,427 |
| Paints and varnishes | 41.6 | 41.0 | 40.8 | 1.94 | 1.92 | 1.87 | 80.90 | 78.49 | 76.27 | 2,690 |
| Miscellaneous manufacturing industries | 40.8 | 41.8 | 41.7 | 1.54 | 1.54 | 1.51 | 62.91 | 64.28 | 62.82 | 24,276 |
| Professional and scientific equipment | 40.4 | 40.8 | 41.0 | 1.85 | 1.85 | 1.82 | 74.93 | 75.69 | 74.87 | 6,402 |
| Construction | | | | | | | | | | |
| Building and general engineering (m) | 38.5 | 40.4 | 39.3 | 2.08 | 2.10 | 2.02 | 80.10 | 84.83 | 79.58 | 162,514 |
| Building | 38.5 | 40.5 | 39.4 | 2.26 | 2.27 | 2.20 | 87.07 | 91.95 | 86.81 | 106,709 |
| General engineering | 38.0 | 39.9 | 38.6 | 2.27 | 2.28 | 2.20 | 86.28 | 90.89 | 85.17 | 91,103 |
| Highways, bridges and streets | 41.5 | 44.5 | 44.0 | 2.21 | 2.21 | 2.18 | 91.70 | 98.32 | 96.09 | 15,606 |
| Electric and motor transportation (n) | 38.5 | 40.0 | 39.1 | 1.73 | 1.76 | 1.69 | 66.75 | 70.53 | 66.18 | 55,805 |
| Electric and motor transportation (n) | | | | | | | | | | |
| | 43.4 | 43.7 | 43.0 | 1.97 | 1.95 | 1.89 | 85.43 | 84.97 | 81.08 | 32,473 |
| Service (o) | | | | | | | | | | |
| | 38.2 | 38.4 | 39.0 | 1.10 | 1.09 | 1.07 | 42.02 | 41.79 | 41.66 | 58,582 |
| Hotels and restaurants | 38.0 | 38.3 | 38.5 | 1.07 | 1.05 | 1.04 | 40.44 | 40.33 | 40.19 | 37,517 |
| Laundries and dry cleaning plants | 40.3 | 40.2 | 41.0 | 1.05 | 1.05 | 1.03 | 42.30 | 42.06 | 42.17 | 13,625 |

For footnotes (a) to (o) see notes on last page.
appear in Table 8.

*Durable manufactured goods industries.

¹ Index numbers of average hourly earnings in this industry

TABLE 2. Average Hours and Earnings of Hourly-Rated Wage-Earners in Specified Industries, Provinces

| Province and industry | Average weekly hours | | | Average hourly earnings | | | Average weekly wages | | | Wage-earners reported |
|--|----------------------|-----------|-----------|-------------------------|-----------|-----------|----------------------|-----------|-----------|-----------------------|
| | Apr. 1962 | Mar. 1962 | Apr. 1961 | Apr. 1962 | Mar. 1962 | Apr. 1961 | Apr. 1962 | Mar. 1962 | Apr. 1961 | April 1962 |
| | number | | | dollars | | | | | | number |
| Newfoundland | | | | | | | | | | |
| Mining | 42.9 | 43.9 | 44.3 | 1.82 | 1.87 | 1.96 | 78.32 | 82.02 | 87.02 | 1,959 |
| Manufacturing | 42.1 | 42.3 | 41.0 | 1.70 | 1.74 | 1.78 | 71.48 | 73.50 | 73.19 | 7,389 |
| Food and beverages | 43.1 | 42.7 | 40.2 | 1.05 | 1.05 | 1.02 | 45.31 | 44.69 | 41.08 | 2,928 |
| Canned and cured fish | 42.7 | 42.0 | 38.7 | 0.95 | 0.95 | 0.88 | 40.56 | 39.79 | 34.21 | 2,235 |
| Pulp and paper mills | 40.9 | 43.4 | 43.2 | 2.62 | 2.62 | 2.64 | 107.01 | 113.68 | 114.25 | 2,432 |
| Building and general engineering (m) | 48.2 | 51.2 | 42.5 | 2.02 | 2.07 | 1.92 | 97.46 | 106.14 | 81.58 | 2,890 |
| Nova Scotia | | | | | | | | | | |
| Coal mining | 42.1 | 42.4 | 41.9 | 1.76 | 1.78 | 1.67 | 74.20 | 75.50 | 69.97 | 5,678 |
| Manufacturing | 41.2 | 40.6 | 40.7 | 1.65 | 1.64 | 1.61 | 67.94 | 66.59 | 65.43 | 19,207 |
| Food and beverages | 43.4 | 42.7 | 42.2 | 1.17 | 1.16 | 1.14 | 50.78 | 49.72 | 47.92 | 4,558 |
| Canned and cured fish | 44.9 | 43.8 | 41.7 | 1.19 | 1.21 | 1.18 | 53.41 | 53.02 | 49.32 | 2,365 |
| Wood products | 41.3 | 42.0 | 44.1 | 1.01 | 1.00 | 1.00 | 41.76 | 41.76 | 44.18 | 1,202 |
| Iron and steel products | 39.9 | 39.9 | 39.4 | 2.23 | 2.21 | 2.21 | 88.81 | 88.31 | 87.16 | 3,551 |
| Primary iron and steel | 40.3 | 39.7 | 38.8 | 2.43 | 2.42 | 2.36 | 98.07 | 95.89 | 91.79 | 2,492 |
| Transportation equipment | 40.2 | 39.9 | 39.9 | 1.87 | 1.87 | 1.76 | 75.23 | 74.60 | 70.35 | 5,644 |
| Shipbuilding and repairing | 40.5 | 40.3 | 40.1 | 1.87 | 1.88 | 1.75 | 75.89 | 75.70 | 70.04 | 4,397 |
| Building and general engineering (m) | 36.8 | 39.2 | 40.0 | 1.70 | 1.77 | 1.74 | 62.46 | 69.27 | 69.62 | 3,358 |
| Highways, bridges and street construction | 30.7 | 36.8 | 32.3 | 1.40 | 1.44 | 1.42 | 42.96 | 53.07 | 45.82 | 2,939 |
| New Brunswick | | | | | | | | | | |
| Manufacturing | 40.8 | 41.6 | 42.3 | 1.66 | 1.69 | 1.63 | 67.87 | 70.24 | 68.97 | 14,010 |
| Food and beverages | 40.4 | 39.5 | 42.6 | 1.32 | 1.34 | 1.26 | 53.35 | 52.92 | 53.53 | 3,132 |
| Saw and planing mills | 43.4 | 44.3 | 44.5 | 1.05 | 1.05 | 1.03 | 45.42 | 46.70 | 45.66 | 1,256 |
| Pulp and paper mills | 41.8 | 41.7 | 42.8 | 2.26 | 2.26 | 2.26 | 94.28 | 94.00 | 97.00 | 3,373 |
| Transportation equipment | 37.8 | 42.2 | 39.3 | 1.98 | 2.03 | 1.98 | 74.87 | 85.59 | 77.94 | 2,542 |
| Building and general engineering (m) | 37.5 | 39.4 | 37.3 | 1.67 | 1.65 | 1.66 | 62.54 | 64.88 | 61.75 | 2,022 |
| Highways, bridges and street construction | 38.3 | 44.7 | 38.6 | 1.31 | 1.30 | 1.20 | 50.21 | 57.98 | 46.24 | 1,695 |
| Quebec | | | | | | | | | | |
| Metal mining | 42.8 | 43.8 | 42.7 | 2.11 | 2.06 | 2.00 | 90.47 | 90.11 | 85.49 | 12,169 |
| Non-metal mining (d) | 42.5 | 42.8 | 43.0 | 2.04 | 2.06 | 2.07 | 86.65 | 88.06 | 88.94 | 6,501 |
| Manufacturing | 41.2 | 42.0 | 41.5 | 1.69 | 1.68 | 1.64 | 69.62 | 70.58 | 68.12 | 276,272 |
| Food and beverages | 41.7 | 42.2 | 42.5 | 1.58 | 1.58 | 1.58 | 65.85 | 66.74 | 67.06 | 23,437 |
| Tobacco | 39.5 | 39.8 | 40.0 | 1.95 | 1.91 | 1.90 | 76.85 | 76.15 | 75.94 | 5,248 |
| Rubber products | 43.7 | 43.1 | 43.0 | 1.52 | 1.51 | 1.49 | 66.51 | 65.15 | 63.88 | 4,455 |
| Leather products | 38.2 | 41.1 | 38.9 | 1.21 | 1.19 | 1.17 | 46.22 | 48.85 | 45.43 | 12,342 |
| Boots and shoes (except rubber) | 37.8 | 40.9 | 38.4 | 1.22 | 1.19 | 1.17 | 46.06 | 48.73 | 44.76 | 9,627 |
| Textile products (except clothing) | 42.5 | 43.7 | 42.9 | 1.35 | 1.35 | 1.31 | 57.20 | 59.01 | 56.04 | 26,595 |
| Cotton yarn and broad woven goods | 40.2 | 41.6 | 40.4 | 1.48 | 1.49 | 1.43 | 59.63 | 62.00 | 57.53 | 10,840 |
| Woollen goods | 45.7 | 47.0 | 47.2 | 1.28 | 1.28 | 1.24 | 58.53 | 60.02 | 58.57 | 2,647 |
| Synthetic textiles and silk ¹ | 43.9 | 45.3 | 44.3 | 1.21 | 1.23 | 1.23 | 53.32 | 55.52 | 54.61 | 5,612 |
| Clothing (textile and fur) | 37.8 | 39.5 | 38.0 | 1.22 | 1.22 | 1.16 | 45.96 | 48.01 | 44.19 | 47,129 |
| Men's clothing | 37.5 | 39.3 | 37.0 | 1.20 | 1.20 | 1.16 | 45.03 | 47.13 | 42.95 | 15,340 |
| Women's clothing | 36.7 | 37.8 | 37.3 | 1.32 | 1.30 | 1.24 | 48.42 | 49.22 | 46.33 | 14,407 |
| Knit goods | 40.2 | 41.8 | 41.2 | 1.13 | 1.13 | 1.08 | 45.55 | 47.40 | 44.36 | 6,832 |
| Wood products | 45.7 | 46.2 | 45.9 | 1.25 | 1.25 | 1.21 | 57.03 | 57.57 | 55.60 | 16,114 |
| Saw and planing mills | 46.4 | 47.9 | 47.8 | 1.18 | 1.18 | 1.13 | 54.51 | 56.51 | 54.22 | 7,074 |
| Furniture | 44.7 | 44.3 | 44.4 | 1.38 | 1.37 | 1.34 | 61.64 | 60.86 | 59.31 | 6,794 |
| Paper products | 41.7 | 42.1 | 42.8 | 2.13 | 2.15 | 2.11 | 88.84 | 90.74 | 90.31 | 27,057 |
| Pulp and paper mills | 41.9 | 42.3 | 43.4 | 2.29 | 2.32 | 2.26 | 96.05 | 98.09 | 98.00 | 20,776 |
| Other paper products (h) | 41.1 | 41.7 | 40.8 | 1.58 | 1.59 | 1.53 | 65.00 | 66.38 | 62.29 | 6,281 |
| Printing, publishing and allied industries | 39.8 | 40.2 | 39.4 | 2.23 | 2.21 | 2.11 | 88.78 | 89.03 | 83.31 | 9,261 |
| Iron and steel products | 43.2 | 43.2 | 42.3 | 1.93 | 1.92 | 1.88 | 83.16 | 82.70 | 79.29 | 24,631 |
| Machinery (i) | 42.8 | 42.9 | 42.6 | 1.83 | 1.83 | 1.77 | 78.35 | 78.29 | 75.36 | 5,193 |
| Transportation equipment | 41.0 | 41.6 | 42.3 | 2.07 | 2.09 | 2.01 | 84.77 | 86.76 | 85.11 | 24,323 |
| Aircraft and parts | 41.1 | 42.6 | 43.9 | 2.12 | 2.15 | 2.12 | 86.94 | 91.83 | 92.79 | 10,147 |
| Railroad and rolling stock equipment | 39.8 | 39.6 | 39.4 | 2.10 | 2.09 | 1.97 | 83.85 | 82.86 | 77.51 | 6,994 |
| Shipbuilding and repairing | 40.6 | 40.9 | 42.5 | 2.10 | 2.10 | 1.99 | 85.26 | 85.91 | 84.40 | 5,795 |

Footnotes (a) to (o) appear in explanatory notes at the end of this report.

¹ Includes synthetic filament yarn and staple fibre and spun yarn and fabric manufacturing.

TABLE 2. Average Hours and Earnings of Hourly-Rated Wage-Earners in Specified Industries, Provinces, - Continued

| Province and industry | Average weekly hours | | | Average hourly earnings | | | Average weekly wages | | | Wage-earners reported |
|---|----------------------|-----------|-----------|-------------------------|-----------|-----------|----------------------|-----------|-----------|-----------------------|
| | Apr. 1962 | Mar. 1962 | Apr. 1961 | Apr. 1962 | Mar. 1962 | Apr. 1961 | Apr. 1962 | Mar. 1962 | Apr. 1961 | April 1962 |
| | number | | | dollars | | | | | | number |
| Quebec - Concluded | | | | | | | | | | |
| Manufacturing - Concluded: | | | | | | | | | | |
| Non-ferrous metal products..... | 41.5 | 41.5 | 41.3 | 2.19 | 2.14 | 2.12 | 90.85 | 88.95 | 87.57 | 12,044 |
| Smelting and refining..... | 41.2 | 40.6 | 40.9 | 2.44 | 2.40 | 2.34 | 100.67 | 97.60 | 95.86 | 7,883 |
| Electrical apparatus and supplies..... | 40.8 | 42.6 | 41.3 | 1.90 | 1.91 | 1.82 | 77.64 | 81.36 | 75.24 | 15,169 |
| Chemical products..... | 41.3 | 40.7 | 40.6 | 2.00 | 1.97 | 1.91 | 82.45 | 80.17 | 77.36 | 9,645 |
| Building and general engineering (m)..... | 39.7 | 42.8 | 41.4 | 2.14 | 2.14 | 2.01 | 85.21 | 91.50 | 83.08 | 31,365 |
| Building..... | 38.9 | 41.7 | 40.1 | 2.16 | 2.15 | 2.03 | 83.91 | 89.68 | 81.27 | 25,819 |
| General engineering..... | 43.9 | 48.1 | 47.8 | 2.08 | 2.09 | 1.92 | 91.27 | 100.40 | 92.08 | 5,546 |
| Highways, bridges and street construction..... | 38.5 | 41.4 | 39.5 | 1.58 | 1.65 | 1.55 | 60.94 | 68.39 | 61.31 | 13,706 |
| Electric and motor transportation (n)..... | 43.6 | 44.6 | 43.4 | 1.86 | 1.83 | 1.76 | 80.97 | 81.73 | 76.30 | 8,591 |
| Service (o)..... | 40.3 | 40.8 | 42.4 | 1.02 | 1.01 | 0.99 | 41.07 | 41.27 | 42.14 | 12,296 |
| Ontario | | | | | | | | | | |
| Metal mining..... | 40.9 | 41.0 | 40.4 | 2.27 | 2.26 | 2.25 | 92.72 | 92.61 | 91.01 | 25,875 |
| Gold (a)..... | 42.5 | 42.7 | 41.2 | 1.77 | 1.76 | 1.70 | 75.26 | 75.10 | 69.95 | 9,291 |
| Other metal (b)..... | 39.9 | 40.1 | 40.0 | 2.57 | 2.56 | 2.57 | 102.50 | 102.45 | 102.90 | 16,584 |
| Manufacturing..... | 40.7 | 41.0 | 40.3 | 1.98 | 1.97 | 1.94 | 80.76 | 80.57 | 78.05 | 404,461 |
| Food and beverages..... | 40.2 | 40.5 | 40.6 | 1.71 | 1.70 | 1.67 | 68.74 | 68.69 | 67.96 | 38,599 |
| Meat products..... | 40.6 | 41.2 | 40.5 | 1.88 | 1.86 | 1.85 | 76.46 | 76.89 | 74.99 | 8,041 |
| Canned and preserved fruits and vegetables..... | 39.2 | 38.4 | 39.7 | 1.61 | 1.61 | 1.58 | 63.35 | 62.03 | 62.85 | 4,783 |
| Bread and other bakery products..... | 40.6 | 40.5 | 40.9 | 1.48 | 1.47 | 1.42 | 59.88 | 59.62 | 58.21 | 4,969 |
| Rubber products..... | 39.8 | 41.4 | 40.3 | 2.09 | 2.10 | 2.03 | 83.25 | 86.85 | 81.81 | 10,034 |
| Leather products..... | 39.9 | 41.4 | 40.6 | 1.35 | 1.34 | 1.32 | 53.85 | 55.67 | 53.40 | 11,254 |
| Boots and shoes (except rubber)..... | 39.5 | 41.6 | 40.4 | 1.25 | 1.24 | 1.20 | 49.24 | 51.64 | 48.60 | 7,075 |
| Textile products (except clothing)..... | 40.7 | 41.0 | 40.6 | 1.53 | 1.52 | 1.49 | 62.11 | 62.47 | 60.63 | 17,461 |
| Cotton yarn and broad woven goods..... | 39.5 | 40.2 | 40.3 | 1.39 | 1.39 | 1.36 | 55.11 | 56.10 | 55.01 | 3,908 |
| Woollen goods..... | 41.1 | 41.4 | 40.6 | 1.34 | 1.34 | 1.32 | 54.96 | 55.61 | 53.52 | 4,424 |
| Synthetic textiles and silk ¹ | 41.5 | 41.6 | 40.6 | 1.89 | 1.89 | 1.90 | 78.68 | 78.39 | 76.98 | 3,759 |
| Clothing (textile and fur)..... | 38.3 | 39.6 | 38.5 | 1.27 | 1.27 | 1.24 | 48.56 | 50.16 | 47.86 | 21,333 |
| Men's clothing..... | 37.5 | 39.5 | 38.1 | 1.31 | 1.31 | 1.26 | 49.09 | 51.79 | 48.20 | 7,329 |
| Knit goods..... | 40.3 | 40.7 | 40.1 | 1.16 | 1.16 | 1.14 | 46.73 | 47.06 | 45.79 | 5,762 |
| Wood products..... | 41.5 | 41.9 | 41.4 | 1.49 | 1.50 | 1.47 | 61.77 | 62.71 | 60.84 | 20,938 |
| Saw and planing mills..... | 41.9 | 42.8 | 42.8 | 1.42 | 1.42 | 1.39 | 59.46 | 60.97 | 59.77 | 7,470 |
| Furniture..... | 41.1 | 41.3 | 40.5 | 1.57 | 1.57 | 1.54 | 64.38 | 64.68 | 62.23 | 9,803 |
| Paper products..... | 41.1 | 40.9 | 40.8 | 2.16 | 2.16 | 2.10 | 88.97 | 88.42 | 85.62 | 26,844 |
| Pulp and paper mills..... | 40.9 | 40.6 | 40.4 | 2.39 | 2.39 | 2.32 | 97.49 | 96.97 | 93.96 | 16,251 |
| Other paper products (h)..... | 41.5 | 41.4 | 41.3 | 1.83 | 1.82 | 1.76 | 75.89 | 75.32 | 72.55 | 10,593 |
| Printing, publishing and allied industries..... | 38.7 | 38.9 | 38.4 | 2.37 | 2.37 | 2.28 | 91.74 | 92.18 | 87.47 | 18,157 |
| Iron and steel products..... | 40.9 | 41.0 | 40.3 | 2.26 | 2.25 | 2.23 | 92.16 | 92.45 | 89.65 | 84,475 |
| Agricultural implements..... | 40.5 | 40.8 | 40.0 | 2.32 | 2.33 | 2.26 | 93.98 | 95.30 | 90.37 | 6,826 |
| Iron castings..... | 41.4 | 41.7 | 39.9 | 2.12 | 2.13 | 2.09 | 87.85 | 88.68 | 83.43 | 8,206 |
| Machinery (i)..... | 41.3 | 41.6 | 40.7 | 2.12 | 2.11 | 2.07 | 87.44 | 87.81 | 84.25 | 14,802 |
| Primary iron and steel..... | 40.0 | 39.9 | 40.0 | 2.65 | 2.65 | 2.61 | 105.97 | 105.51 | 104.41 | 23,174 |
| Sheet metal products..... | 41.8 | 41.9 | 41.3 | 2.12 | 2.11 | 2.08 | 88.64 | 88.28 | 86.12 | 7,167 |
| Transportation equipment..... | 43.2 | 42.3 | 40.1 | 2.34 | 2.29 | 2.20 | 100.98 | 96.84 | 88.17 | 49,760 |
| Aircraft and parts..... | 39.7 | 40.0 | 40.2 | 2.17 | 2.16 | 2.12 | 86.24 | 86.69 | 85.22 | 6,309 |
| Motor vehicles..... | 45.0 | 43.9 | 39.4 | 2.52 | 2.48 | 2.34 | 113.43 | 108.73 | 92.36 | 22,538 |
| Motor vehicle parts and accessories..... | 42.9 | 42.0 | 40.5 | 2.23 | 2.20 | 2.14 | 95.91 | 92.34 | 86.59 | 14,481 |
| Railroad and rolling stock equipment..... | 40.2 | 39.3 | 40.2 | 2.17 | 2.14 | 2.02 | 87.37 | 84.02 | 81.16 | 3,475 |
| Non-ferrous metal products..... | 39.9 | 40.4 | 40.2 | 2.08 | 2.08 | 2.08 | 82.78 | 84.08 | 83.87 | 20,502 |
| Brass and copper products..... | 41.0 | 41.5 | 39.9 | 2.14 | 2.16 | 2.08 | 87.97 | 89.62 | 83.20 | 3,320 |
| Smelting and refining..... | 38.8 | 39.3 | 39.6 | 2.33 | 2.32 | 2.32 | 90.40 | 90.98 | 91.93 | 8,959 |
| Electrical apparatus and supplies..... | 39.9 | 40.4 | 40.3 | 1.91 | 1.92 | 1.90 | 76.30 | 77.46 | 76.74 | 33,617 |
| Non-metallic mineral products (l)..... | 42.2 | 42.2 | 41.6 | 1.97 | 1.96 | 1.91 | 83.18 | 82.62 | 79.29 | 14,454 |
| Chemical products..... | 40.9 | 41.0 | 40.7 | 2.13 | 2.13 | 2.08 | 87.13 | 87.38 | 84.38 | 15,882 |
| Building and general engineering (n)..... | 38.3 | 40.0 | 39.1 | 2.42 | 2.43 | 2.37 | 92.51 | 97.08 | 92.58 | 40,568 |
| Building..... | 38.1 | 39.8 | 38.6 | 2.41 | 2.42 | 2.34 | 91.57 | 96.16 | 90.29 | 36,533 |
| General engineering..... | 40.2 | 42.1 | 42.6 | 2.51 | 2.51 | 2.57 | 101.01 | 105.61 | 109.25 | 4,035 |
| Highways, bridges and street construction..... | 41.1 | 40.5 | 40.8 | 1.74 | 1.75 | 1.68 | 71.45 | 70.86 | 68.62 | 18,200 |
| Electric and motor transportation (n)..... | 44.6 | 44.3 | 43.9 | 1.97 | 1.96 | 1.90 | 87.92 | 86.90 | 83.49 | 16,075 |
| Service (o)..... | 38.3 | 38.6 | 38.7 | 1.08 | 1.07 | 1.05 | 41.36 | 41.19 | 40.53 | 23,200 |
| Hotels and restaurants..... | 38.2 | 38.5 | 38.5 | 1.02 | 1.01 | 1.00 | 38.91 | 38.78 | 38.39 | 14,629 |

Footnotes (a) to (o) appear in explanatory notes at the end of this report.

¹ Mainly synthetic filament yarn and staple fibre manufacturing.

TABLE 2. Average Hours and Earnings of Hourly-Rated Wage-Earners in Specified Industries, Provinces - Concluded

| Province and industry | Average weekly hours | | | Average hourly earnings | | | Average weekly wages | | | Wage-earners reported April 1962 |
|--|----------------------|-----------|-----------|-------------------------|-----------|-----------|----------------------|-----------|-----------|-------------------------------------|
| | Apr. 1962 | Mar. 1962 | Apr. 1961 | Apr. 1962 | Mar. 1962 | Apr. 1961 | Apr. 1962 | Mar. 1962 | Apr. 1961 | |
| | number | | | dollars | | | | | | number |
| Manitoba | | | | | | | | | | |
| Manufacturing | 39.9 | 39.7 | 39.8 | 1.76 | 1.75 | 1.72 | 70.30 | 69.30 | 68.41 | 26,916 |
| Food and beverages | 39.1 | 38.3 | 39.0 | 1.93 | 1.91 | 1.86 | 75.34 | 73.14 | 72.67 | 5,126 |
| Meat products | 36.9 | 37.4 | 38.7 | 2.15 | 2.12 | 2.04 | 79.16 | 79.30 | 79.00 | 2,163 |
| Clothing (textile and fur) | 39.0 | 39.9 | 38.3 | 1.12 | 1.14 | 1.13 | 43.90 | 45.53 | 43.41 | 4,562 |
| Iron and steel products | 40.7 | 41.2 | 40.4 | 1.93 | 1.93 | 1.92 | 78.71 | 79.43 | 77.39 | 3,572 |
| Transportation equipment | 40.2 | 39.5 | 40.2 | 2.02 | 2.01 | 1.92 | 81.13 | 79.22 | 77.08 | 5,536 |
| Building and general engineering (m) | 38.0 | 40.2 | 38.8 | 2.06 | 2.05 | 2.11 | 78.33 | 82.51 | 81.68 | 5,072 |
| Highways, bridges and street construction | 38.1 | 39.1 | 39.2 | 1.58 | 1.62 | 1.55 | 60.31 | 63.18 | 60.91 | 2,537 |
| Service (o) | 36.9 | 36.6 | 37.5 | 1.10 | 1.08 | 1.07 | 40.66 | 39.51 | 40.30 | 4,928 |
| Saskatchewan | | | | | | | | | | |
| Mining | 41.0 | 41.5 | 40.4 | 2.62 | 2.52 | 2.53 | 107.37 | 104.55 | 102.15 | 1,992 |
| Manufacturing | 39.0 | 39.0 | 39.4 | 2.01 | 2.01 | 1.99 | 78.37 | 78.62 | 78.22 | 6,100 |
| Meat products | 38.5 | 38.6 | 41.3 | 2.09 | 2.14 | 2.19 | 80.63 | 82.57 | 90.52 | 1,073 |
| Building and general engineering (m) | 38.7 | 39.2 | 40.0 | 1.94 | 1.96 | 1.87 | 75.04 | 76.63 | 74.72 | 3,477 |
| Highways, bridges and street construction | 36.6 | 39.3 | 37.2 | 1.73 | 1.79 | 1.69 | 63.44 | 70.39 | 62.96 | 2,682 |
| Service (o) | 39.1 | 38.5 | 39.3 | 1.10 | 1.10 | 1.08 | 43.13 | 42.30 | 42.60 | 2,031 |
| Alberta (p) | | | | | | | | | | |
| Coal mining | 27.4 | 34.7 | 31.8 | 2.17 | 2.11 | 2.11 | 59.46 | 73.27 | 67.12 | 829 |
| Oil and natural gas production (c) | 38.2 | 43.7 | 38.4 | 2.50 | 2.39 | 2.38 | 95.42 | 104.44 | 91.58 | 3,624 |
| Manufacturing | 40.1 | 39.3 | 39.8 | 2.01 | 1.97 | 1.95 | 80.56 | 77.31 | 77.63 | 21,122 |
| Food and beverages | 39.5 | 38.8 | 39.0 | 2.02 | 2.02 | 1.99 | 79.64 | 78.54 | 77.63 | 5,623 |
| Meat products | 39.6 | 39.0 | 38.8 | 2.18 | 2.17 | 2.14 | 86.20 | 84.70 | 83.24 | 3,135 |
| Transportation equipment | 40.7 | 40.0 | 40.9 | 1.97 | 1.97 | 1.89 | 80.24 | 78.96 | 77.37 | 3,151 |
| Non-metallic mineral products (e) | 40.8 | 40.9 | 40.2 | 1.97 | 1.95 | 1.89 | 80.22 | 79.74 | 75.89 | 2,137 |
| Building and general engineering (m) | 35.7 | 37.6 | 37.4 | 2.22 | 2.28 | 2.22 | 79.44 | 85.58 | 83.10 | 9,272 |
| Highways, bridges and street construction | 37.8 | 40.6 | 40.2 | 1.85 | 1.86 | 1.78 | 69.90 | 75.43 | 71.49 | 5,099 |
| Electric and motor transportation (n) | 39.9 | 39.9 | 40.0 | 2.04 | 2.00 | 1.96 | 81.48 | 79.89 | 78.36 | 1,841 |
| Service (o) | 37.2 | 37.3 | 38.3 | 1.17 | 1.17 | 1.10 | 43.56 | 43.56 | 42.20 | 6,539 |
| British Columbia (p) | | | | | | | | | | |
| Forestry (logging) | 38.9 | 37.5 | 40.2 | 2.83 | 2.78 | 2.78 | 110.40 | 104.32 | 111.58 | 6,839 |
| Metal mining | 40.5 | 38.0 | 39.6 | 2.59 | 2.57 | 2.40 | 104.96 | 97.55 | 95.17 | 4,046 |
| Manufacturing | 37.5 | 38.1 | 38.4 | 2.28 | 2.27 | 2.24 | 85.65 | 86.58 | 86.02 | 64,658 |
| Food and beverages | 35.2 | 35.3 | 35.2 | 2.07 | 2.07 | 2.04 | 72.87 | 72.99 | 71.68 | 7,075 |
| Canned and cured fish | 28.5 | 27.5 | 28.6 | 2.06 | 2.03 | 2.01 | 58.74 | 55.93 | 57.61 | 1,587 |
| Canned and preserved fruits and vegetables | 31.2 | 31.9 | 33.7 | 1.70 | 1.74 | 1.60 | 52.95 | 55.62 | 53.97 | 692 |
| Wood products | 36.9 | 38.2 | 38.6 | 2.17 | 2.15 | 2.14 | 79.91 | 82.22 | 82.38 | 26,139 |
| Saw and planing mills | 36.9 | 38.2 | 38.7 | 2.18 | 2.16 | 2.15 | 80.23 | 82.67 | 83.03 | 24,879 |
| Pulp and paper mills | 38.1 | 38.9 | 39.7 | 2.63 | 2.63 | 2.61 | 100.32 | 102.28 | 103.60 | 7,222 |
| Iron and steel products | 38.5 | 38.7 | 38.4 | 2.41 | 2.40 | 2.37 | 92.76 | 92.73 | 90.87 | 4,646 |
| Steel shipbuilding and repairing | 38.1 | 38.6 | 38.4 | 2.52 | 2.53 | 2.43 | 96.12 | 97.79 | 93.31 | 5,076 |
| Non-ferrous metal products | 39.4 | 39.4 | 39.4 | 2.51 | 2.52 | 2.48 | 99.09 | 98.99 | 97.69 | 4,069 |
| Building and general engineering (m) | 35.6 | 36.1 | 36.5 | 2.81 | 2.78 | 2.72 | 99.93 | 100.53 | 99.29 | 8,407 |
| Highways, bridges and street construction | 36.9 | 37.0 | 36.2 | 2.17 | 2.16 | 2.15 | 80.00 | 79.97 | 77.89 | 8,228 |
| Electric and motor transportation (n) | 39.7 | 40.2 | 39.9 | 2.39 | 2.36 | 2.30 | 95.02 | 94.66 | 91.75 | 3,119 |
| Service (o) | 34.8 | 34.8 | 35.3 | 1.35 | 1.33 | 1.33 | 46.89 | 46.44 | 46.89 | 7,653 |

Footnotes (a) to (p) appear in explanatory notes at the end of this report.

TABLE 3. Average Hours and Earnings of Hourly-Rated Wage-Earners in Specified Industries, Urban Areas

| Urban area and industry | Average weekly hours | | | Average hourly earnings | | | Average weekly wages | | | Wage-earners reported |
|---|----------------------|-----------|-----------|-------------------------|-----------|-----------|----------------------|-----------|-----------|-----------------------|
| | Apr. 1962 | Mar. 1962 | Apr. 1961 | Apr. 1962 | Mar. 1962 | Apr. 1961 | Apr. 1962 | Mar. 1962 | Apr. 1961 | April 1962 |
| | number | | | dollars | | | | | | number |
| Halifax - Manufacturing | 40.9 | 40.8 | 40.3 | 1.84 | 1.81 | 1.69 | 75.54 | 73.99 | 68.27 | 7,066 |
| Saint John - Manufacturing | 40.8 | 43.0 | 43.6 | 1.75 | 1.79 | 1.62 | 71.37 | 76.76 | 70.41 | 4,429 |
| Quebec - Manufacturing | 40.4 | 40.6 | 41.2 | 1.63 | 1.61 | 1.56 | 66.02 | 65.32 | 64.41 | 15,016 |
| Leather products | 38.2 | 39.5 | 37.7 | 1.18 | 1.16 | 1.12 | 45.05 | 46.01 | 42.14 | 2,159 |
| Clothing (textile and fur) | 38.3 | 39.5 | 38.7 | 0.98 | 0.98 | 0.96 | 37.51 | 38.92 | 37.39 | 1,724 |
| Transportation equipment | 40.6 | 40.0 | 42.9 | 2.07 | 2.05 | 1.92 | 84.05 | 82.23 | 82.38 | 2,274 |
| Building and general engineering (m) | 38.4 | 42.1 | 40.7 | 1.91 | 1.93 | 1.84 | 73.39 | 81.37 | 75.06 | 3,494 |
| Sherbrooke - Manufacturing | 43.3 | 43.0 | 43.3 | 1.48 | 1.47 | 1.41 | 63.86 | 63.27 | 61.21 | 6,064 |
| Three Rivers - Manufacturing | 41.8 | 43.0 | 41.2 | 1.78 | 1.79 | 1.83 | 74.39 | 76.87 | 75.56 | 8,207 |
| Drummondville - Manufacturing | 42.6 | 43.8 | 42.8 | 1.38 | 1.37 | 1.36 | 58.81 | 60.07 | 58.28 | 2,464 |
| Showinigan - Manufacturing | 39.8 | 41.6 | 40.9 | 2.04 | 2.01 | 1.99 | 81.05 | 83.61 | 81.55 | 5,963 |
| Granby - Manufacturing | 42.8 | 43.5 | 42.8 | 1.47 | 1.46 | 1.42 | 62.98 | 63.40 | 60.84 | 4,185 |
| St. Hyacinthe - Manufacturing | 41.2 | 41.2 | 42.6 | 1.30 | 1.30 | 1.25 | 53.61 | 53.37 | 53.26 | 3,762 |
| Sorel - Manufacturing | 42.7 | 41.6 | 41.6 | 2.07 | 1.98 | 1.84 | 88.28 | 82.17 | 76.72 | 3,379 |
| St. Jean - Manufacturing | 42.4 | 43.4 | 44.0 | 1.56 | 1.54 | 1.52 | 66.35 | 66.96 | 66.70 | 3,466 |
| Montreal - Manufacturing | 40.4 | 41.4 | 40.6 | 1.74 | 1.74 | 1.69 | 70.58 | 71.90 | 68.51 | 152,794 |
| Food and beverages | 41.4 | 41.8 | 41.5 | 1.71 | 1.72 | 1.70 | 70.89 | 71.92 | 70.63 | 16,011 |
| Tobacco and tobacco products | 39.4 | 39.5 | 39.7 | 1.96 | 1.94 | 1.90 | 77.34 | 76.57 | 75.44 | 3,954 |
| Leather products | 38.0 | 40.5 | 39.6 | 1.26 | 1.24 | 1.22 | 47.93 | 50.18 | 48.31 | 6,546 |
| Textile products (except clothing) | 42.0 | 43.0 | 42.4 | 1.33 | 1.34 | 1.30 | 55.98 | 57.35 | 54.96 | 7,039 |
| Clothing (textile and fur) | 37.4 | 39.3 | 37.7 | 1.31 | 1.31 | 1.25 | 49.04 | 51.37 | 47.24 | 32,401 |
| Printing, publishing and allied industries | 39.0 | 39.5 | 38.7 | 2.38 | 2.36 | 2.25 | 92.83 | 93.00 | 87.00 | 7,409 |
| Iron and steel products | 42.6 | 42.6 | 41.6 | 2.03 | 2.02 | 1.99 | 86.37 | 86.12 | 82.91 | 16,469 |
| Transportation equipment | 40.6 | 41.5 | 42.1 | 2.10 | 2.12 | 2.05 | 85.20 | 87.71 | 86.42 | 19,479 |
| Electrical apparatus and supplies | 40.5 | 42.6 | 40.7 | 1.98 | 2.00 | 1.91 | 80.31 | 85.03 | 77.61 | 12,101 |
| Building and general engineering (m) | 37.8 | 40.3 | 39.0 | 2.27 | 2.25 | 2.11 | 85.68 | 90.76 | 82.15 | 16,155 |
| Electric and motor transportation (n) | 42.9 | 44.1 | 42.6 | 1.93 | 1.89 | 1.83 | 82.63 | 83.55 | 78.04 | 6,709 |
| Service (o) | 39.9 | 40.2 | 42.0 | 1.03 | 1.03 | 1.00 | 41.11 | 41.28 | 42.17 | 9,911 |
| Valleyfield (Salaberry-de-) - Manufacturing | 41.0 | 43.5 | 41.8 | 1.59 | 1.57 | 1.53 | 65.43 | 68.16 | 63.79 | 2,677 |
| Cornwall - Manufacturing | 40.7 | 41.4 | 40.5 | 2.02 | 2.02 | 1.97 | 82.40 | 83.70 | 79.68 | 3,645 |
| Ottawa-Hull - Manufacturing | 39.9 | 40.6 | 40.6 | 1.96 | 1.96 | 1.95 | 78.34 | 79.61 | 79.08 | 10,263 |
| Pulp and paper mills | 38.9 | 39.6 | 40.4 | 2.32 | 2.33 | 2.33 | 90.35 | 92.09 | 94.04 | 3,345 |
| Building and general engineering (m) | 38.3 | 41.0 | 39.0 | 2.01 | 2.03 | 1.93 | 77.03 | 83.00 | 75.26 | 3,522 |
| Kingston - Manufacturing | 40.7 | 41.0 | 40.8 | 2.02 | 2.02 | 2.05 | 82.35 | 82.80 | 83.51 | 4,014 |
| Peterborough - Manufacturing | 41.2 | 41.0 | 40.0 | 2.30 | 2.29 | 2.18 | 94.74 | 93.63 | 87.30 | 5,276 |
| Oshawa - Manufacturing | 45.1 | 41.8 | 40.0 | 2.47 | 2.38 | 2.29 | 111.38 | 99.52 | 91.61 | 14,807 |
| Toronto - Manufacturing | 40.2 | 40.6 | 40.2 | 1.89 | 1.89 | 1.85 | 76.03 | 76.68 | 74.47 | 130,014 |
| Food and beverages | 40.4 | 40.3 | 40.1 | 1.78 | 1.76 | 1.74 | 72.06 | 71.04 | 69.71 | 15,459 |
| Rubber products | 40.7 | 40.8 | 40.3 | 2.20 | 2.20 | 2.15 | 89.45 | 89.85 | 86.86 | 2,971 |
| Clothing (textile and fur) | 38.0 | 39.5 | 38.4 | 1.33 | 1.32 | 1.30 | 50.38 | 52.27 | 50.11 | 11,929 |
| Paper products | 41.1 | 41.3 | 41.1 | 1.87 | 1.86 | 1.78 | 76.64 | 76.68 | 73.39 | 6,983 |
| Printing, publishing and allied industries | 38.2 | 38.4 | 38.0 | 2.55 | 2.55 | 2.43 | 97.30 | 97.99 | 92.40 | 11,578 |
| Iron and steel products | 41.5 | 41.8 | 40.8 | 2.13 | 2.14 | 2.09 | 88.45 | 89.36 | 85.40 | 21,789 |
| Transportation equipment | 40.0 | 40.2 | 40.2 | 2.09 | 2.09 | 2.06 | 83.79 | 84.21 | 82.74 | 8,985 |
| Non-ferrous metal products | 40.9 | 41.6 | 41.1 | 1.83 | 1.84 | 1.80 | 74.82 | 76.51 | 74.03 | 5,630 |
| Electrical apparatus and supplies | 40.1 | 40.4 | 40.4 | 1.91 | 1.91 | 1.91 | 76.43 | 77.26 | 77.12 | 13,578 |
| Chemical products | 40.2 | 40.3 | 40.0 | 1.89 | 1.90 | 1.86 | 75.88 | 76.65 | 74.56 | 5,824 |
| Building and general engineering (m) | 37.4 | 39.1 | 38.4 | 2.56 | 2.59 | 2.53 | 95.73 | 101.16 | 97.17 | 13,977 |
| Electric and motor transportation (n) | 44.9 | 43.9 | 43.5 | 2.05 | 2.04 | 1.97 | 92.32 | 89.77 | 85.76 | 8,577 |
| Service (o) | 39.3 | 39.4 | 38.9 | 1.14 | 1.12 | 1.10 | 44.64 | 44.24 | 43.00 | 12,307 |
| Hamilton - Manufacturing | 40.1 | 40.5 | 40.4 | 2.26 | 2.25 | 2.23 | 90.59 | 91.40 | 89.90 | 39,587 |
| Clothing (textile and fur) | 36.5 | 39.6 | 36.6 | 1.25 | 1.26 | 1.17 | 45.51 | 49.78 | 42.67 | 1,033 |
| Iron and steel products | 39.8 | 39.8 | 40.0 | 2.53 | 2.53 | 2.52 | 100.84 | 100.61 | 100.74 | 21,598 |
| Electrical apparatus and supplies | 41.4 | 41.1 | 41.1 | 2.29 | 2.27 | 2.20 | 94.51 | 93.41 | 90.20 | 3,864 |
| Building and general engineering (m) | 40.1 | 40.9 | 38.4 | 2.54 | 2.53 | 2.44 | 101.96 | 103.47 | 93.89 | 3,534 |

Footnotes (a) to (o) appear in explanatory notes at the end of this report.

TABLE 3. Average Hours and Earnings of Hourly-Rated Wage-Earners in Specified Industries, Urban Areas - Concluded

| Urban area and industry | Average weekly hours | | | Average hourly earnings | | | Average weekly wages | | | Wage-earners reported April 1962 |
|---|----------------------|-----------|-----------|-------------------------|-----------|-----------|----------------------|-----------|-----------|-------------------------------------|
| | Apr. 1962 | Mar. 1962 | Apr. 1961 | Apr. 1962 | Mar. 1962 | Apr. 1961 | Apr. 1962 | Mar. 1962 | Apr. 1961 | |
| | number | | | dollars | | | | | | number |
| St. Catharines - Manufacturing | 41.8 | 41.3 | 40.2 | 2.32 | 2.31 | 2.24 | 97.07 | 95.18 | 89.92 | 20,779 |
| Pulp and paper mills | 41.2 | 41.1 | 40.3 | 2.37 | 2.36 | 2.32 | 97.54 | 97.14 | 93.48 | 2,880 |
| Iron and steel products | 41.6 | 41.2 | 40.3 | 2.42 | 2.43 | 2.37 | 100.46 | 100.03 | 95.27 | 6,407 |
| Transportation equipment | 43.9 | 42.1 | 40.0 | 2.55 | 2.49 | 2.39 | 112.21 | 104.95 | 95.58 | 5,322 |
| Niagara Falls - Manufacturing | 39.9 | 40.3 | 40.6 | 2.12 | 2.11 | 2.07 | 84.44 | 84.97 | 83.85 | 3,581 |
| Brantford - Manufacturing | 40.0 | 40.2 | 39.8 | 1.82 | 1.82 | 1.85 | 72.76 | 73.14 | 73.51 | 6,617 |
| Textile products (except clothing) | 40.0 | 39.4 | 40.1 | 1.66 | 1.64 | 1.60 | 66.34 | 64.68 | 64.27 | 961 |
| Iron and steel products | 40.5 | 40.7 | 40.1 | 2.20 | 2.19 | 2.20 | 89.09 | 88.97 | 88.34 | 2,141 |
| Guelph - Manufacturing | 40.3 | 40.5 | 39.1 | 1.75 | 1.74 | 1.71 | 70.39 | 70.57 | 66.74 | 4,943 |
| Galt - Manufacturing | 40.5 | 41.2 | 40.0 | 1.65 | 1.66 | 1.64 | 66.75 | 68.26 | 65.54 | 7,127 |
| Kitchener - Manufacturing | 40.9 | 41.4 | 40.8 | 1.70 | 1.70 | 1.68 | 69.62 | 70.37 | 68.80 | 14,645 |
| Food and beverages | 41.2 | 41.0 | 40.8 | 1.91 | 1.90 | 1.89 | 78.80 | 77.99 | 76.94 | 2,734 |
| Rubber products | 40.2 | 41.3 | 40.4 | 1.93 | 1.93 | 1.88 | 77.59 | 79.80 | 75.89 | 3,033 |
| Wood products | 40.8 | 40.8 | 40.6 | 1.59 | 1.57 | 1.55 | 64.65 | 64.20 | 62.95 | 1,739 |
| Woodstock - Manufacturing | 40.8 | 40.5 | 39.8 | 1.79 | 1.82 | 1.74 | 72.96 | 73.91 | 69.16 | 2,880 |
| London - Manufacturing | 39.3 | 40.2 | 39.6 | 1.84 | 1.84 | 1.78 | 72.18 | 73.99 | 70.58 | 12,877 |
| Food and beverages | 39.1 | 38.6 | 39.2 | 1.86 | 1.84 | 1.77 | 72.76 | 70.94 | 69.48 | 2,669 |
| Iron and steel products | 40.3 | 40.5 | 39.9 | 2.00 | 2.00 | 1.95 | 80.82 | 81.13 | 77.83 | 1,994 |
| Sarnia - Manufacturing | 40.4 | 39.9 | 40.2 | 2.60 | 2.60 | 2.51 | 104.86 | 103.66 | 101.02 | 5,247 |
| Windsor - Manufacturing | 41.3 | 41.7 | 39.7 | 2.29 | 2.24 | 2.22 | 94.71 | 93.49 | 88.24 | 15,006 |
| Iron and steel products | 41.7 | 40.7 | 41.1 | 2.22 | 2.21 | 2.21 | 92.81 | 90.21 | 90.81 | 2,522 |
| Transportation equipment | 41.4 | 42.0 | 39.0 | 2.41 | 2.39 | 2.32 | 99.97 | 100.61 | 90.56 | 9,641 |
| Building and general engineering (m) | 35.7 | 35.2 | 36.4 | 2.47 | 2.50 | 2.45 | 88.23 | 88.12 | 89.18 | 832 |
| Ft. William-Pt. Arthur - Manufacturing | 40.8 | 40.2 | 40.5 | 2.24 | 2.23 | 2.18 | 91.38 | 89.87 | 88.46 | 3,554 |
| Winnipeg - Manufacturing | 40.0 | 39.9 | 39.9 | 1.76 | 1.74 | 1.71 | 70.34 | 69.52 | 68.11 | 23,833 |
| Food and beverages | 39.8 | 39.2 | 39.5 | 1.98 | 1.97 | 1.92 | 78.94 | 77.03 | 75.85 | 4,599 |
| Meat products | 38.5 | 39.3 | 39.6 | 2.19 | 2.16 | 2.12 | 84.24 | 85.11 | 83.84 | 2,003 |
| Clothing (textile and fur) | 38.9 | 39.7 | 38.5 | 1.16 | 1.18 | 1.16 | 45.32 | 46.87 | 44.49 | 4,176 |
| Transportation equipment | 40.2 | 39.5 | 40.2 | 2.02 | 2.01 | 1.92 | 81.13 | 79.22 | 77.08 | 5,536 |
| Building and general engineering (m) | 35.7 | 37.9 | 38.0 | 2.13 | 2.11 | 2.05 | 76.21 | 79.98 | 77.87 | 3,495 |
| Service (o) | 36.7 | 36.2 | 37.3 | 1.11 | 1.09 | 1.08 | 40.82 | 39.54 | 40.39 | 4,612 |
| Edmonton - Manufacturing | 40.2 | 39.9 | 40.0 | 2.01 | 1.98 | 1.92 | 80.75 | 79.04 | 76.90 | 9,293 |
| Food and beverages | 39.9 | 39.6 | 39.4 | 2.08 | 2.08 | 2.02 | 83.02 | 82.35 | 79.62 | 2,690 |
| Building and general engineering (m) | 35.4 | 36.9 | 37.9 | 2.32 | 2.37 | 2.31 | 82.20 | 87.52 | 87.49 | 3,763 |
| Calgary - Manufacturing | 39.9 | 39.4 | 39.7 | 2.06 | 2.05 | 2.01 | 82.32 | 80.91 | 79.65 | 6,786 |
| Vancouver - Manufacturing | 37.5 | 38.0 | 38.1 | 2.21 | 2.21 | 2.17 | 83.10 | 83.86 | 82.81 | 31,582 |
| Food and beverages | 36.9 | 37.0 | 36.7 | 2.11 | 2.12 | 2.09 | 77.99 | 78.34 | 76.61 | 4,987 |
| Wood products | 37.1 | 38.2 | 38.4 | 2.18 | 2.17 | 2.15 | 80.99 | 82.90 | 82.67 | 12,124 |
| Iron and steel products | 38.7 | 39.0 | 38.4 | 2.44 | 2.42 | 2.39 | 94.26 | 94.43 | 91.89 | 4,158 |
| Transportation equipment | 38.4 | 38.7 | 38.5 | 2.46 | 2.49 | 2.38 | 94.60 | 96.57 | 91.78 | 2,695 |
| Building and general engineering (m) | 35.1 | 35.9 | 35.5 | 2.89 | 2.88 | 2.80 | 101.69 | 103.53 | 99.51 | 5,131 |
| Electric and motor transportation (n) | 39.2 | 39.7 | 39.9 | 2.41 | 2.38 | 2.31 | 94.40 | 94.70 | 92.28 | 2,214 |
| Service (o) | 35.0 | 34.4 | 35.3 | 1.34 | 1.34 | 1.34 | 46.99 | 46.23 | 47.44 | 4,900 |
| Victoria - Manufacturing | 38.1 | 38.4 | 38.8 | 2.39 | 2.39 | 2.32 | 91.07 | 91.65 | 89.85 | 5,512 |

Footnotes (a) to (o) appear in explanatory notes at the end of this report.

Table 4.- Average Hours and Earnings of Hourly-Rated Wage-Earners, Manufacturing, Canada

| Year and Month | All Manufactures | | | Durable Goods | | | Non-Durable Goods | | |
|----------------|----------------------|-------------------------|----------------------|----------------------|-------------------------|----------------------|----------------------|-------------------------|----------------------|
| | Average Weekly Hours | Average Hourly Earnings | Average Weekly Wages | Average Weekly Hours | Average Hourly Earnings | Average Weekly Wages | Average Weekly Hours | Average Hourly Earnings | Average Weekly Wages |
| | No. | \$ | \$ | No. | \$ | \$ | No. | \$ | \$ |
| 1945 - Average | 44.1 | 0.69 | 30.47 | 44.5 | 0.76 | 34.04 | 43.7 | 0.61 | 26.57 |
| 1946 - Average | 42.7 | 0.71 | 30.15 | 42.8 | 0.77 | 33.00 | 41.8 | 0.64 | 26.92 |
| 1947 - Average | 42.5 | 0.81 | 34.47 | 42.8 | 0.88 | 37.71 | 42.3 | 0.74 | 31.39 |
| 1948 - Average | 42.3 | 0.92 | 38.96 | 42.5 | 0.99 | 42.24 | 42.1 | 0.85 | 35.70 |
| 1949 - Average | 42.2 | 0.99 | 41.74 | 42.4 | 1.07 | 45.28 | 42.0 | 0.91 | 38.18 |
| 1950 - Average | 42.3 | 1.04 | 44.03 | 42.4 | 1.13 | 47.74 | 42.3 | 0.96 | 40.57 |
| 1951 - Average | 41.7 | 1.18 | 49.29 | 41.9 | 1.27 | 53.38 | 41.5 | 1.08 | 45.03 |
| 1952 - Average | 41.5 | 1.30 | 53.83 | 41.6 | 1.41 | 58.49 | 41.3 | 1.18 | 48.65 |
| 1953 - Average | 41.3 | 1.36 | 56.25 | 41.7 | 1.48 | 61.55 | 40.9 | 1.23 | 50.51 |
| 1954 - Average | 40.7 | 1.41 | 57.43 | 40.9 | 1.52 | 62.13 | 40.4 | 1.30 | 52.36 |
| 1955 - Average | 41.0 | 1.45 | 59.45 | 41.2 | 1.56 | 64.35 | 40.8 | 1.33 | 54.30 |
| 1956 - Average | 41.0 | 1.52 | 62.40 | 41.1 | 1.64 | 67.45 | 40.7 | 1.39 | 56.74 |
| 1957 - Average | 40.4 | 1.61 | 64.96 | 40.5 | 1.73 | 70.15 | 40.2 | 1.47 | 59.17 |
| 1958 - Average | 40.2 | 1.66 | 66.77 | 40.3 | 1.80 | 72.42 | 40.1 | 1.53 | 61.31 |
| 1959 - Average | 40.7 | 1.72 | 70.16 | 41.0 | 1.87 | 76.66 | 40.4 | 1.58 | 63.90 |
| 1960 - Average | 40.4 | 1.78 | 71.96 | 40.7 | 1.94 | 78.70 | 40.1 | 1.64 | 65.67 |
| 1961 - Average | 40.6 | 1.83 | 74.27 | 40.9 | 1.99 | 81.36 | 40.3 | 1.68 | 67.87 |
| 1959 - January | 40.6 | 1.70 | 69.28 | 40.7 | 1.85 | 75.48 | 40.6 | 1.56 | 63.28 |
| February | 40.9 | 1.71 | 69.81 | 41.0 | 1.85 | 75.83 | 40.8 | 1.57 | 63.96 |
| *March | 40.3 | 1.72 | 69.40 | 40.5 | 1.86 | 75.65 | 40.1 | 1.58 | 63.25 |
| April | 40.7 | 1.72 | 70.01 | 41.0 | 1.86 | 76.38 | 40.3 | 1.58 | 63.63 |
| May | 41.1 | 1.73 | 70.90 | 41.4 | 1.86 | 77.12 | 40.7 | 1.59 | 64.63 |
| June | 41.0 | 1.72 | 70.63 | 41.4 | 1.86 | 77.09 | 40.6 | 1.58 | 64.19 |
| July | 40.8 | 1.71 | 69.90 | 41.2 | 1.86 | 76.57 | 40.4 | 1.58 | 63.69 |
| August | 41.0 | 1.70 | 69.56 | 41.1 | 1.85 | 76.28 | 40.8 | 1.56 | 63.65 |
| September | 41.2 | 1.72 | 71.13 | 41.7 | 1.88 | 78.38 | 40.8 | 1.57 | 64.27 |
| October | 41.3 | 1.74 | 71.68 | 41.7 | 1.89 | 78.76 | 40.9 | 1.59 | 64.86 |
| November | 40.9 | 1.74 | 71.08 | 41.2 | 1.89 | 77.62 | 40.7 | 1.60 | 64.95 |
| *December | 38.5 | 1.78 | 68.48 | 39.0 | 1.92 | 74.72 | 38.1 | 1.64 | 62.39 |
| 1960 - January | 40.7 | 1.77 | 71.89 | 41.0 | 1.93 | 78.93 | 40.3 | 1.61 | 64.99 |
| February | 40.4 | 1.77 | 71.49 | 40.5 | 1.93 | 78.05 | 40.3 | 1.62 | 65.08 |
| March | 40.5 | 1.78 | 71.94 | 40.8 | 1.93 | 78.60 | 40.3 | 1.62 | 65.38 |
| April | 40.5 | 1.79 | 72.37 | 40.9 | 1.94 | 79.21 | 40.1 | 1.64 | 65.60 |
| May | 40.1 | 1.79 | 71.69 | 40.5 | 1.93 | 78.18 | 39.7 | 1.65 | 65.29 |
| June | 40.4 | 1.79 | 72.19 | 40.7 | 1.93 | 78.48 | 40.1 | 1.65 | 66.13 |
| July | 40.6 | 1.77 | 72.01 | 40.7 | 1.92 | 77.95 | 40.5 | 1.64 | 66.64 |
| August | 40.5 | 1.76 | 71.46 | 40.8 | 1.93 | 78.54 | 40.3 | 1.62 | 65.30 |
| September | 40.9 | 1.77 | 72.37 | 41.1 | 1.94 | 79.63 | 40.6 | 1.62 | 66.05 |
| October | 40.7 | 1.78 | 72.66 | 41.0 | 1.94 | 79.57 | 40.5 | 1.64 | 66.54 |
| November | 40.6 | 1.79 | 72.82 | 40.9 | 1.95 | 79.79 | 40.4 | 1.65 | 66.64 |
| *December | 38.7 | 1.82 | 70.60 | 39.3 | 1.97 | 77.47 | 38.1 | 1.69 | 64.39 |
| 1961 - January | 40.1 | 1.81 | 72.76 | 40.2 | 1.97 | 79.20 | 40.1 | 1.67 | 66.98 |
| February | 40.4 | 1.82 | 73.40 | 40.4 | 1.98 | 79.86 | 40.5 | 1.67 | 67.57 |
| March | 40.3 | 1.83 | 73.64 | 40.4 | 1.99 | 80.16 | 40.2 | 1.68 | 67.70 |
| April | 40.6 | 1.84 | 74.56 | 40.8 | 1.99 | 81.21 | 40.4 | 1.70 | 68.43 |
| May | 40.5 | 1.84 | 74.44 | 40.8 | 1.99 | 81.36 | 40.1 | 1.70 | 68.04 |
| June | 41.0 | 1.83 | 75.02 | 41.3 | 1.99 | 82.04 | 40.8 | 1.68 | 68.58 |
| July | 40.6 | 1.82 | 73.95 | 40.9 | 1.98 | 81.01 | 40.4 | 1.68 | 67.73 |
| August | 40.9 | 1.82 | 74.26 | 41.2 | 1.98 | 81.76 | 40.6 | 1.67 | 67.65 |
| September | 41.3 | 1.81 | 75.00 | 41.7 | 1.99 | 82.82 | 41.0 | 1.66 | 68.22 |
| October | 41.2 | 1.84 | 75.69 | 41.6 | 2.00 | 83.39 | 40.8 | 1.68 | 68.72 |
| November | 41.1 | 1.84 | 75.64 | 41.6 | 2.00 | 83.29 | 40.7 | 1.69 | 68.73 |
| *December | 38.8 | 1.88 | 72.85 | 39.6 | 2.02 | 80.21 | 38.0 | 1.74 | 66.04 |
| 1962 - January | 40.6 | 1.86 | 75.46 | 40.8 | 2.02 | 82.40 | 40.4 | 1.71 | 69.05 |
| February | 40.8 | 1.86 | 75.99 | 41.1 | 2.03 | 83.30 | 40.4 | 1.71 | 69.21 |
| March | 41.0 | 1.87 | 76.68 | 41.4 | 2.03 | 83.92 | 40.7 | 1.72 | 69.86 |
| *April | 40.6 | 1.88 | 76.51 | 41.1 | 2.04 | 83.89 | 40.1 | 1.73 | 69.44 |
| May | | | | | | | | | |
| June | | | | | | | | | |
| July | | | | | | | | | |
| August | | | | | | | | | |
| September | | | | | | | | | |
| October | | | | | | | | | |
| November | | | | | | | | | |
| December | | | | | | | | | |

* The averages at these dates were affected by loss of working time at the year-end holidays in the case of December, and by the Easter holidays in the case of March, 1959 and April, 1962. Monthly statistics are based on data for the last pay periods of reporting establishments in each month.

Table 5b.- Average Hours and Earnings of Hourly-Rated Wage-Earners, Specified Industries, Canada

| Year and Month | Mining | | | Metal Mining | | | Coal Mining | | | Oil and Natural Gas | | |
|----------------|----------------------|-------------------------|----------------------|----------------------|-------------------------|----------------------|----------------------|-------------------------|----------------------|----------------------|-------------------------|----------------------|
| | Average Weekly Hours | Average Hourly Earnings | Average Weekly Wages | Average Weekly Hours | Average Hourly Earnings | Average Weekly Wages | Average Weekly Hours | Average Hourly Earnings | Average Weekly Wages | Average Weekly Hours | Average Hourly Earnings | Average Weekly Wages |
| | No. | \$ | \$ | No. | \$ | \$ | No. | \$ | \$ | No. | \$ | \$ |
| 1945 - Average | 43.9 | 0.85 | 38.40 | 45.7 | 0.85 | 38.85 | 40.8 | 0.94 | 38.23 | .. | .. | .. |
| 1946 - Average | 42.7 | 0.88 | 37.53 | 44.9 | 0.88 | 39.60 | 39.2 | 0.97 | 37.98 | .. | .. | .. |
| 1947 - Average | 42.3 | 0.99 | 41.83 | 44.4 | 1.00 | 44.49 | 37.2 | 1.11 | 41.37 | .. | .. | .. |
| 1948 - Average | 42.8 | 1.12 | 48.02 | 44.9 | 1.11 | 49.93 | 38.3 | 1.25 | 47.80 | .. | .. | .. |
| 1949 - Average | 42.7 | 1.18 | 50.22 | 45.4 | 1.16 | 52.75 | 37.7 | 1.28 | 48.37 | .. | .. | .. |
| 1950 - Average | 43.0 | 1.22 | 52.46 | 45.1 | 1.22 | 54.93 | 38.1 | 1.30 | 49.49 | .. | .. | .. |
| 1951 - Average | 43.1 | 1.35 | 58.06 | 44.1 | 1.36 | 60.02 | 39.3 | 1.37 | 54.04 | 43.8 | 1.49 | 65.39 |
| 1952 - Average | 42.7 | 1.48 | 63.20 | 44.4 | 1.49 | 66.11 | 38.6 | 1.50 | 57.78 | 44.1 | 1.62 | 71.22 |
| 1953 - Average | 42.6 | 1.54 | 65.69 | 44.4 | 1.57 | 69.75 | 37.9 | 1.50 | 56.93 | 44.1 | 1.66 | 73.16 |
| 1954 - Average | 42.6 | 1.58 | 67.14 | 44.1 | 1.62 | 71.27 | 38.5 | 1.48 | 57.02 | 43.1 | 1.70 | 73.31 |
| 1955 - Average | 43.2 | 1.61 | 69.68 | 44.1 | 1.66 | 73.07 | 39.7 | 1.48 | 58.88 | 44.4 | 1.74 | 77.34 |
| 1956 - Average | 42.8 | 1.73 | 73.92 | 43.0 | 1.80 | 77.27 | 40.8 | 1.50 | 61.04 | 44.4 | 1.92 | 85.11 |
| 1957 - Average | 42.3 | 1.88 | 79.35 | 42.9 | 1.95 | 83.70 | 39.3 | 1.62 | 63.51 | 43.5 | 2.07 | 90.13 |
| 1958 - Average | 41.5 | 1.96 | 81.30 | 41.8 | 2.03 | 84.77 | 39.0 | 1.73 | 67.43 | 41.8 | 2.13 | 89.20 |
| 1959 - Average | 41.5 | 2.04 | 84.80 | 41.7 | 2.13 | 88.73 | 38.6 | 1.74 | 67.00 | 41.9 | 2.21 | 92.74 |
| 1960 - Average | 41.7 | 2.09 | 87.26 | 41.9 | 2.17 | 90.89 | 39.7 | 1.75 | 69.36 | 41.8 | 2.31 | 96.57 |
| 1961 - Average | 41.8 | 2.13 | 89.08 | 42.2 | 2.20 | 92.83 | 39.7 | 1.77 | 70.36 | 40.8 | 2.34 | 95.66 |
| 1959 - January | 41.7 | 2.01 | 83.84 | 41.9 | 2.07 | 87.01 | 39.0 | 1.75 | 68.31 | 43.9 | 2.18 | 95.45 |
| February | 42.6 | 2.05 | 87.28 | 42.7 | 2.11 | 90.22 | 39.7 | 1.75 | 69.53 | 45.2 | 2.20 | 99.65 |
| *March | 41.7 | 2.05 | 85.61 | 42.3 | 2.11 | 89.47 | 35.4 | 1.70 | 60.06 | 43.1 | 2.20 | 94.91 |
| April | 41.4 | 2.04 | 84.70 | 42.0 | 2.13 | 89.44 | 38.9 | 1.72 | 66.84 | 39.7 | 2.22 | 88.13 |
| May | 40.5 | 2.06 | 83.41 | 40.4 | 2.16 | 87.11 | 39.3 | 1.73 | 68.05 | 40.5 | 2.21 | 89.29 |
| June | 41.1 | 2.04 | 83.95 | 41.9 | 2.13 | 89.28 | 35.1 | 1.72 | 60.54 | 41.3 | 2.19 | 90.40 |
| July | 41.6 | 2.03 | 84.41 | 41.5 | 2.12 | 87.95 | 40.3 | 1.75 | 70.66 | 41.8 | 2.18 | 91.28 |
| August | 40.8 | 2.04 | 83.15 | 40.8 | 2.13 | 87.01 | 38.2 | 1.72 | 65.65 | 40.6 | 2.23 | 90.49 |
| September | 41.9 | 2.04 | 85.45 | 41.9 | 2.13 | 89.16 | 40.9 | 1.75 | 71.39 | 41.3 | 2.24 | 92.65 |
| October | 42.1 | 2.04 | 86.17 | 42.0 | 2.13 | 89.36 | 41.6 | 1.76 | 73.17 | 41.2 | 2.23 | 91.80 |
| November | 42.6 | 2.06 | 87.57 | 42.6 | 2.14 | 90.98 | 42.0 | 1.75 | 73.49 | 42.3 | 2.23 | 94.40 |
| *December | 39.5 | 2.08 | 82.05 | 40.8 | 2.15 | 87.72 | 32.3 | 1.74 | 56.37 | 42.1 | 2.24 | 94.41 |
| 1960 - January | 41.3 | 2.08 | 85.86 | 41.0 | 2.16 | 88.35 | 41.5 | 1.74 | 72.48 | 45.5 | 2.25 | 102.47 |
| February | 42.1 | 2.09 | 87.90 | 42.0 | 2.16 | 90.75 | 39.9 | 1.75 | 69.81 | 46.4 | 2.25 | 104.54 |
| March | 42.2 | 2.09 | 88.02 | 42.3 | 2.16 | 91.30 | 40.9 | 1.75 | 71.65 | 43.1 | 2.28 | 98.27 |
| April | 41.2 | 2.12 | 87.37 | 41.4 | 2.19 | 90.78 | 38.1 | 1.74 | 66.36 | 39.5 | 2.33 | 91.92 |
| May | 41.9 | 2.09 | 87.41 | 42.0 | 2.16 | 91.00 | 40.7 | 1.78 | 72.34 | 39.9 | 2.32 | 92.56 |
| June | 42.0 | 2.10 | 88.06 | 42.5 | 2.18 | 92.55 | 40.3 | 1.73 | 69.88 | 40.5 | 2.36 | 95.46 |
| July | 41.3 | 2.08 | 86.05 | 41.0 | 2.18 | 89.12 | 40.9 | 1.74 | 71.09 | 41.7 | 2.33 | 97.18 |
| August | 41.5 | 2.07 | 85.90 | 41.7 | 2.15 | 89.76 | 40.2 | 1.71 | 68.78 | 40.6 | 2.29 | 93.16 |
| September | 42.1 | 2.07 | 87.35 | 42.3 | 2.16 | 91.32 | 41.4 | 1.76 | 72.84 | 39.5 | 2.31 | 91.45 |
| October | 41.9 | 2.09 | 87.53 | 41.6 | 2.17 | 90.23 | 41.3 | 1.78 | 73.47 | 42.0 | 2.34 | 98.11 |
| November | 41.9 | 2.10 | 88.14 | 42.5 | 2.18 | 92.67 | 38.0 | 1.75 | 66.55 | 40.9 | 2.34 | 95.53 |
| *December | 41.0 | 2.14 | 87.52 | 42.4 | 2.19 | 92.90 | 32.8 | 1.74 | 57.13 | 42.3 | 2.32 | 98.25 |
| 1961 - January | 42.1 | 2.12 | 88.97 | 42.5 | 2.17 | 92.33 | 39.3 | 1.75 | 68.91 | 42.6 | 2.26 | 96.58 |
| February | 42.1 | 2.13 | 89.46 | 42.5 | 2.19 | 93.08 | 40.2 | 1.76 | 70.87 | 43.3 | 2.27 | 98.23 |
| March | 41.6 | 2.14 | 89.18 | 42.6 | 2.20 | 93.76 | 34.3 | 1.73 | 59.28 | 42.3 | 2.29 | 96.65 |
| April | 41.4 | 2.13 | 88.04 | 41.5 | 2.20 | 91.35 | 40.6 | 1.72 | 69.91 | 38.7 | 2.37 | 91.49 |
| May | 42.1 | 2.12 | 89.08 | 42.4 | 2.20 | 93.17 | 41.0 | 1.77 | 72.79 | 39.3 | 2.35 | 92.26 |
| June | 42.2 | 2.12 | 89.39 | 42.5 | 2.20 | 93.47 | 41.2 | 1.75 | 71.98 | 41.6 | 2.32 | 96.68 |
| July | 41.4 | 2.11 | 87.55 | 41.3 | 2.20 | 90.66 | 41.5 | 1.74 | 72.40 | 40.1 | 2.36 | 94.67 |
| August | 42.1 | 2.10 | 88.66 | 42.2 | 2.19 | 92.34 | 41.1 | 1.75 | 71.90 | 40.6 | 2.33 | 94.61 |
| September | 41.9 | 2.13 | 89.44 | 42.1 | 2.22 | 93.28 | 38.9 | 1.78 | 69.22 | 40.6 | 2.37 | 96.09 |
| October | 42.7 | 2.13 | 90.90 | 43.0 | 2.20 | 94.56 | 42.1 | 1.84 | 77.29 | 39.2 | 2.38 | 93.60 |
| November | 42.6 | 2.14 | 90.97 | 42.9 | 2.20 | 94.41 | 41.4 | 1.83 | 75.78 | 40.3 | 2.38 | 96.08 |
| *December | 39.9 | 2.19 | 87.32 | 40.7 | 2.25 | 91.58 | 35.2 | 1.82 | 64.00 | 41.1 | 2.46 | 100.97 |
| 1962 - January | 42.8 | 2.15 | 92.19 | 43.0 | 2.20 | 94.53 | 41.8 | 1.80 | 75.33 | 43.7 | 2.40 | 105.12 |
| February | 41.9 | 2.17 | 90.82 | 42.1 | 2.22 | 93.50 | 38.8 | 1.82 | 70.58 | 44.6 | 2.40 | 106.94 |
| March | 42.0 | 2.17 | 91.28 | 41.9 | 2.23 | 93.39 | 40.8 | 1.82 | 74.42 | 43.3 | 2.39 | 103.21 |
| *April | 41.5 | 2.18 | 90.40 | 41.8 | 2.25 | 94.23 | 40.4 | 1.80 | 72.81 | 38.5 | 2.48 | 95.72 |
| May | | | | | | | | | | | | |
| June | | | | | | | | | | | | |
| July | | | | | | | | | | | | |
| August | | | | | | | | | | | | |
| September | | | | | | | | | | | | |
| October | | | | | | | | | | | | |
| November | | | | | | | | | | | | |
| December | | | | | | | | | | | | |

* See footnote on Page 15.

Table 5b.- Average Hours and Earnings of Hourly-Rated Wage-Earners, Specified Industries, Canada. (Continued)

| Year and Month | Non-Metal Mining | | | Construction | | | Building and General Engineering | | | Highway, Bridges and Street Construction | | |
|----------------|----------------------|-------------------------|----------------------|----------------------|-------------------------|----------------------|----------------------------------|-------------------------|----------------------|--|-------------------------|----------------------|
| | Average Weekly Hours | Average Hourly Earnings | Average Weekly Wages | Average Weekly Hours | Average Hourly Earnings | Average Weekly Wages | Average Weekly Hours | Average Hourly Earnings | Average Weekly Wages | Average Weekly Hours | Average Hourly Earnings | Average Weekly Wages |
| | No. | \$ | \$ | No. | \$ | \$ | No. | \$ | \$ | No. | \$ | \$ |
| 1945 - Average | .. | .. | .. | 38.9 | 0.74 | 28.59 | 40.2 | 0.81 | 32.60 | 36.7 | 0.63 | 23.19 |
| 1946 - Average | .. | .. | .. | 38.4 | 0.77 | 29.53 | 38.7 | 0.84 | 32.39 | 37.9 | 0.66 | 24.98 |
| 1947 - Average | .. | .. | .. | 39.3 | 0.85 | 33.25 | 39.3 | 0.92 | 36.12 | 39.1 | 0.72 | 28.00 |
| 1948 - Average | .. | .. | .. | 39.2 | 0.94 | 36.89 | 40.0 | 1.02 | 40.68 | 37.5 | 0.80 | 30.04 |
| 1949 - Average | .. | .. | .. | 39.7 | 1.01 | 40.18 | 40.0 | 1.08 | 43.28 | 39.0 | 0.86 | 33.50 |
| 1950 - Average | .. | .. | .. | 39.9 | 1.06 | 42.13 | 39.5 | 1.14 | 45.07 | 40.8 | 0.88 | 35.99 |
| 1951 - Average | 46.0 | 1.18 | 54.14 | 40.3 | 1.19 | 47.86 | 39.4 | 1.29 | 50.67 | 42.2 | 0.96 | 40.55 |
| 1952 - Average | 42.6 | 1.36 | 57.81 | 41.5 | 1.32 | 54.99 | 41.0 | 1.44 | 59.04 | 41.5 | 1.06 | 43.87 |
| 1953 - Average | 42.8 | 1.43 | 61.29 | 41.7 | 1.44 | 60.26 | 40.7 | 1.58 | 64.31 | 41.3 | 1.13 | 46.83 |
| 1954 - Average | 42.9 | 1.47 | 63.15 | 40.3 | 1.48 | 59.85 | 39.9 | 1.61 | 64.08 | 41.1 | 1.21 | 49.73 |
| 1955 - Average | 43.3 | 1.53 | 66.16 | 39.9 | 1.52 | 60.49 | 39.5 | 1.63 | 64.46 | 41.0 | 1.26 | 51.87 |
| 1956 - Average | 43.1 | 1.60 | 68.79 | 41.1 | 1.65 | 67.77 | 41.0 | 1.77 | 72.73 | 41.3 | 1.35 | 55.67 |
| 1957 - Average | 42.5 | 1.68 | 71.57 | 41.2 | 1.76 | 72.55 | 41.3 | 1.90 | 78.47 | 40.8 | 1.44 | 58.83 |
| 1958 - Average | 42.3 | 1.74 | 73.73 | 40.7 | 1.78 | 72.36 | 40.5 | 1.94 | 78.37 | 41.0 | 1.48 | 60.80 |
| 1959 - Average | 42.2 | 1.82 | 76.87 | 40.2 | 1.84 | 74.20 | 39.6 | 2.01 | 79.59 | 41.3 | 1.56 | 64.28 |
| 1960 - Average | 42.2 | 1.89 | 79.62 | 40.4 | 1.94 | 78.41 | 40.1 | 2.12 | 84.85 | 41.0 | 1.63 | 66.89 |
| 1961 - Average | 42.3 | 1.95 | 82.60 | 40.3 | 1.98 | 79.93 | 39.9 | 2.17 | 86.39 | 40.9 | 1.67 | 68.37 |
| 1959 - January | 42.0 | 1.81 | 76.25 | 39.8 | 1.82 | 72.75 | 39.1 | 1.98 | 77.34 | 41.2 | 1.55 | 63.91 |
| February | 42.0 | 1.84 | 77.05 | 40.4 | 1.82 | 73.81 | 40.0 | 1.98 | 79.12 | 41.3 | 1.55 | 63.93 |
| *March | 42.3 | 1.84 | 78.00 | 37.7 | 1.83 | 69.01 | 37.4 | 1.97 | 73.75 | 38.4 | 1.56 | 60.09 |
| April | 41.9 | 1.81 | 75.76 | 39.6 | 1.84 | 72.84 | 40.1 | 1.99 | 79.66 | 38.5 | 1.55 | 59.81 |
| May | 42.1 | 1.81 | 76.11 | 41.3 | 1.84 | 75.82 | 41.3 | 1.99 | 82.31 | 41.4 | 1.55 | 64.12 |
| June | 42.1 | 1.79 | 75.50 | 40.8 | 1.83 | 74.64 | 39.8 | 2.01 | 79.84 | 42.6 | 1.53 | 65.39 |
| July | 43.1 | 1.79 | 77.06 | 42.2 | 1.83 | 77.18 | 41.4 | 2.00 | 82.69 | 43.7 | 1.55 | 67.60 |
| August | 43.0 | 1.79 | 77.16 | 42.0 | 1.83 | 76.97 | 41.1 | 2.01 | 82.75 | 43.4 | 1.54 | 67.01 |
| September | 43.2 | 1.79 | 77.47 | 42.5 | 1.86 | 78.82 | 41.9 | 2.03 | 85.00 | 43.4 | 1.56 | 67.75 |
| October | 43.9 | 1.83 | 80.46 | 41.5 | 1.87 | 77.81 | 41.0 | 2.04 | 83.62 | 42.4 | 1.57 | 66.80 |
| November | 43.4 | 1.86 | 80.74 | 40.5 | 1.88 | 76.34 | 40.4 | 2.05 | 82.58 | 40.8 | 1.58 | 64.29 |
| *December | 38.0 | 1.86 | 70.85 | 34.2 | 1.88 | 64.40 | 32.2 | 2.06 | 66.38 | 37.9 | 1.60 | 60.64 |
| 1960 - January | 39.8 | 1.87 | 74.39 | 40.2 | 1.95 | 78.29 | 40.1 | 2.10 | 84.15 | 40.4 | 1.64 | 66.43 |
| February | 41.6 | 1.89 | 78.57 | 40.0 | 1.95 | 77.83 | 39.7 | 2.10 | 83.40 | 40.5 | 1.65 | 66.86 |
| March | 42.4 | 1.90 | 80.45 | 39.8 | 1.97 | 78.28 | 40.0 | 2.12 | 84.75 | 39.4 | 1.67 | 65.82 |
| April | 42.9 | 1.88 | 80.60 | 39.2 | 1.96 | 76.91 | 39.6 | 2.13 | 84.34 | 38.6 | 1.64 | 63.16 |
| May | 42.9 | 1.85 | 79.55 | 39.1 | 1.91 | 74.84 | 38.4 | 2.10 | 80.79 | 40.2 | 1.61 | 64.80 |
| June | 41.8 | 1.87 | 78.32 | 40.1 | 1.90 | 76.13 | 39.2 | 2.11 | 82.62 | 41.6 | 1.58 | 65.87 |
| July | 42.8 | 1.86 | 79.87 | 42.7 | 1.93 | 82.21 | 41.7 | 2.10 | 87.64 | 44.5 | 1.64 | 72.88 |
| August | 42.4 | 1.86 | 79.02 | 42.9 | 1.93 | 82.65 | 42.3 | 2.10 | 89.03 | 43.8 | 1.64 | 71.72 |
| September | 43.5 | 1.87 | 81.29 | 43.1 | 1.94 | 83.56 | 42.7 | 2.12 | 90.69 | 43.7 | 1.63 | 71.17 |
| October | 43.5 | 1.90 | 82.86 | 41.8 | 1.95 | 81.51 | 41.6 | 2.14 | 88.97 | 42.2 | 1.62 | 68.28 |
| November | 43.3 | 1.93 | 83.68 | 40.8 | 1.96 | 79.70 | 41.2 | 2.14 | 88.10 | 40.0 | 1.62 | 64.83 |
| *December | 39.4 | 1.95 | 76.83 | 35.4 | 1.93 | 68.47 | 34.1 | 2.13 | 72.69 | 37.6 | 1.63 | 61.37 |
| 1961 - January | 41.4 | 1.97 | 81.68 | 39.2 | 2.01 | 78.94 | 38.8 | 2.19 | 84.93 | 39.8 | 1.70 | 67.86 |
| February | 40.7 | 1.98 | 80.45 | 40.1 | 2.03 | 81.26 | 39.8 | 2.20 | 87.61 | 40.6 | 1.72 | 69.76 |
| March | 41.6 | 1.99 | 82.65 | 38.6 | 2.04 | 78.73 | 38.6 | 2.21 | 85.30 | 38.6 | 1.72 | 66.53 |
| April | 42.6 | 1.97 | 84.10 | 39.3 | 2.02 | 79.58 | 39.4 | 2.20 | 86.81 | 39.1 | 1.69 | 66.18 |
| May | 42.8 | 1.95 | 83.32 | 39.7 | 1.97 | 78.08 | 39.3 | 2.14 | 84.11 | 40.4 | 1.67 | 67.54 |
| June | 41.9 | 1.92 | 80.63 | 41.9 | 1.94 | 81.47 | 41.1 | 2.13 | 87.31 | 43.3 | 1.65 | 71.43 |
| July | 42.8 | 1.91 | 81.84 | 42.4 | 1.94 | 82.47 | 41.9 | 2.14 | 89.49 | 43.3 | 1.63 | 70.41 |
| August | 43.1 | 1.91 | 82.31 | 42.6 | 1.96 | 83.46 | 42.1 | 2.15 | 90.55 | 43.4 | 1.64 | 71.20 |
| September | 44.0 | 1.93 | 85.10 | 42.5 | 1.96 | 83.41 | 42.2 | 2.14 | 90.48 | 43.0 | 1.66 | 71.28 |
| October | 43.7 | 1.94 | 84.83 | 41.9 | 1.97 | 82.69 | 41.8 | 2.15 | 89.95 | 42.0 | 1.66 | 69.56 |
| November | 43.6 | 1.96 | 85.52 | 40.6 | 1.98 | 80.49 | 40.7 | 2.17 | 88.90 | 40.2 | 1.64 | 66.06 |
| *December | 39.8 | 1.98 | 78.74 | 34.5 | 1.99 | 68.63 | 32.9 | 2.19 | 71.89 | 37.6 | 1.67 | 62.63 |
| 1962 - January | 42.1 | 2.01 | 84.51 | 39.3 | 2.06 | 80.88 | 39.1 | 2.23 | 87.35 | 39.5 | 1.72 | 68.14 |
| February | 41.5 | 2.01 | 83.47 | 40.4 | 2.06 | 83.23 | 39.2 | 2.25 | 88.45 | 42.6 | 1.72 | 73.30 |
| March | 42.3 | 2.00 | 84.89 | 40.4 | 2.10 | 84.83 | 40.5 | 2.27 | 91.95 | 40.0 | 1.76 | 70.53 |
| *April | 42.0 | 1.98 | 83.21 | 38.5 | 2.08 | 80.10 | 38.5 | 2.26 | 87.07 | 38.5 | 1.73 | 66.75 |
| May | | | | | | | | | | | | |
| June | | | | | | | | | | | | |
| July | | | | | | | | | | | | |
| August | | | | | | | | | | | | |
| September | | | | | | | | | | | | |
| October | | | | | | | | | | | | |
| November | | | | | | | | | | | | |
| December | | | | | | | | | | | | |

* See footnote on page 15.

Table 5b.- Average Hours and Earnings of Hourly-Rated Wage-Earners, Specified Industries, Canada. (Concluded)

| Year and Month | Electric and Motor Transportation | | | Service | | | Hotels and Restaurants | | | Laundries and Dry Cleaning Plants | | |
|----------------|-----------------------------------|-------------------------|----------------------|----------------------|-------------------------|----------------------|------------------------|-------------------------|----------------------|-----------------------------------|-------------------------|----------------------|
| | Average Weekly Hours | Average Hourly Earnings | Average Weekly Wages | Average Weekly Hours | Average Hourly Earnings | Average Weekly Wages | Average Weekly Hours | Average Hourly Earnings | Average Weekly Wages | Average Weekly Hours | Average Hourly Earnings | Average Weekly Wages |
| | No. | \$ | \$ | No. | \$ | \$ | No. | \$ | \$ | No. | \$ | \$ |
| 1945 - Average | .. | .. | .. | 43.8 | 0.43 | 18.92 | 45.1 | 0.41 | 18.63 | 41.2 | 0.47 | 19.41 |
| 1946 - Average | .. | .. | .. | 43.1 | 0.47 | 20.08 | 44.3 | 0.45 | 20.07 | 41.0 | 0.49 | 19.97 |
| 1947 - Average | .. | .. | .. | 42.5 | 0.53 | 22.70 | 43.4 | 0.52 | 22.79 | 40.8 | 0.55 | 22.52 |
| 1948 - Average | .. | .. | .. | 42.3 | 0.59 | 24.87 | 43.2 | 0.58 | 25.10 | 41.0 | 0.59 | 24.31 |
| 1949 - Average | .. | .. | .. | 42.2 | 0.64 | 26.92 | 43.0 | 0.63 | 27.00 | 40.8 | 0.63 | 25.70 |
| 1950 - Average | .. | .. | .. | 42.5 | 0.66 | 28.09 | 43.5 | 0.65 | 28.14 | 41.0 | 0.65 | 26.73 |
| 1951 - Average | 45.1 | 1.18 | 53.04 | 42.5 | 0.70 | 29.62 | 43.5 | 0.69 | 30.10 | 40.7 | 0.68 | 27.55 |
| 1952 - Average | 45.3 | 1.29 | 58.53 | 42.6 | 0.74 | 31.52 | 43.6 | 0.73 | 31.87 | 41.1 | 0.72 | 29.63 |
| 1953 - Average | 45.0 | 1.35 | 60.89 | 41.9 | 0.79 | 32.93 | 42.6 | 0.78 | 33.36 | 41.3 | 0.75 | 31.14 |
| 1954 - Average | 45.1 | 1.40 | 63.37 | 40.9 | 0.83 | 34.03 | 41.4 | 0.83 | 34.28 | 40.6 | 0.79 | 32.24 |
| 1955 - Average | 44.8 | 1.45 | 64.96 | 40.4 | 0.86 | 34.62 | 40.7 | 0.86 | 34.88 | 40.5 | 0.82 | 33.17 |
| 1956 - Average | 44.3 | 1.52 | 67.20 | 40.2 | 0.89 | 35.94 | 40.4 | 0.89 | 36.04 | 40.7 | 0.85 | 34.72 |
| 1957 - Average | 44.3 | 1.59 | 70.61 | 39.8 | 0.94 | 37.37 | 40.0 | 0.93 | 37.24 | 39.9 | 0.90 | 36.07 |
| 1958 - Average | 44.1 | 1.68 | 74.13 | 39.5 | 0.97 | 38.28 | 39.6 | 0.95 | 37.58 | 39.6 | 0.96 | 37.94 |
| 1959 - Average | 44.2 | 1.75 | 77.60 | 39.4 | 1.00 | 39.29 | 39.4 | 0.98 | 38.52 | 40.1 | 0.97 | 38.98 |
| 1960 - Average | 43.5 | 1.83 | 79.84 | 39.1 | 1.04 | 40.58 | 39.1 | 1.01 | 39.63 | 39.8 | 1.00 | 39.83 |
| 1961 - Average | 43.3 | 1.90 | 82.23 | 38.7 | 1.07 | 41.27 | 38.7 | 1.04 | 40.09 | 39.7 | 1.03 | 40.96 |
| | | | | | | | | | | | | |
| 1959 - January | 44.6 | 1.72 | 76.81 | 39.0 | 0.99 | 38.53 | 39.2 | 0.97 | 38.07 | 38.8 | 0.98 | 37.85 |
| February | 44.5 | 1.73 | 76.89 | 39.5 | 1.00 | 39.31 | 39.8 | 0.98 | 39.13 | 39.1 | 0.97 | 38.09 |
| *March | 44.2 | 1.73 | 76.43 | 39.3 | 1.00 | 39.13 | 39.0 | 0.98 | 38.24 | 40.9 | 0.96 | 39.42 |
| April | 43.6 | 1.74 | 75.74 | 39.6 | 1.00 | 39.58 | 39.3 | 0.98 | 38.62 | 41.4 | 0.97 | 40.12 |
| May | 44.6 | 1.75 | 77.91 | 39.7 | 1.00 | 39.67 | 39.3 | 0.98 | 38.47 | 41.5 | 0.98 | 40.52 |
| June | 44.7 | 1.76 | 78.48 | 39.4 | 0.99 | 38.98 | 39.3 | 0.97 | 38.05 | 40.2 | 0.97 | 38.98 |
| July | 44.4 | 1.76 | 78.25 | 39.6 | 0.97 | 38.61 | 39.9 | 0.95 | 37.79 | 39.6 | 0.96 | 38.19 |
| August | 44.2 | 1.76 | 77.95 | 39.5 | 0.98 | 38.71 | 39.6 | 0.96 | 37.78 | 39.8 | 0.97 | 38.55 |
| September | 44.7 | 1.76 | 78.82 | 39.6 | 1.00 | 39.51 | 39.5 | 0.98 | 38.53 | 40.8 | 0.97 | 39.66 |
| October | 44.6 | 1.77 | 78.89 | 39.5 | 1.01 | 39.86 | 39.4 | 0.99 | 39.07 | 40.5 | 0.98 | 39.55 |
| November | 44.3 | 1.77 | 78.49 | 39.4 | 1.01 | 39.92 | 39.4 | 0.99 | 39.17 | 40.2 | 0.98 | 39.32 |
| *December | 42.5 | 1.80 | 76.52 | 38.7 | 1.02 | 39.65 | 39.2 | 1.00 | 39.29 | 38.4 | 0.98 | 37.54 |
| | | | | | | | | | | | | |
| 1960 - January | 43.8 | 1.81 | 79.24 | 38.9 | 1.03 | 39.88 | 38.9 | 1.00 | 39.01 | 39.6 | 0.98 | 38.69 |
| February | 43.6 | 1.81 | 79.16 | 39.1 | 1.03 | 40.37 | 39.2 | 1.01 | 39.73 | 39.5 | 0.97 | 38.53 |
| March | 43.4 | 1.82 | 78.79 | 38.9 | 1.03 | 39.90 | 38.8 | 1.01 | 39.02 | 39.9 | 0.98 | 39.16 |
| April | 43.6 | 1.82 | 79.28 | 39.6 | 1.04 | 40.99 | 39.2 | 1.01 | 39.65 | 41.6 | 1.00 | 41.51 |
| May | 43.4 | 1.83 | 79.24 | 39.3 | 1.04 | 40.89 | 39.2 | 1.02 | 39.88 | 40.4 | 1.00 | 40.50 |
| June | 43.8 | 1.82 | 79.78 | 39.5 | 1.03 | 40.49 | 39.5 | 1.00 | 39.35 | 40.3 | 1.00 | 40.36 |
| July | 44.0 | 1.84 | 80.67 | 39.0 | 1.03 | 39.98 | 39.2 | 0.99 | 38.93 | 39.4 | 1.00 | 39.23 |
| August | 43.7 | 1.83 | 80.13 | 39.2 | 1.02 | 40.09 | 39.6 | 0.99 | 39.16 | 39.3 | 1.00 | 39.29 |
| September | 43.6 | 1.85 | 80.60 | 39.0 | 1.05 | 40.91 | 39.2 | 1.02 | 39.90 | 39.7 | 1.01 | 40.29 |
| October | 43.4 | 1.85 | 80.43 | 38.9 | 1.06 | 41.19 | 38.7 | 1.03 | 40.09 | 40.1 | 1.02 | 40.73 |
| November | 43.2 | 1.86 | 80.13 | 39.0 | 1.06 | 41.34 | 39.0 | 1.04 | 40.41 | 39.8 | 1.02 | 40.41 |
| *December | 42.8 | 1.88 | 80.60 | 38.3 | 1.07 | 40.96 | 38.6 | 1.05 | 40.42 | 38.3 | 1.02 | 39.09 |
| | | | | | | | | | | | | |
| 1961 - January | 42.7 | 1.88 | 80.39 | 38.6 | 1.07 | 41.08 | 38.7 | 1.04 | 40.32 | 38.9 | 1.02 | 39.59 |
| February | 42.8 | 1.89 | 80.83 | 39.0 | 1.07 | 41.70 | 39.3 | 1.05 | 41.16 | 39.0 | 1.02 | 39.85 |
| March | 43.0 | 1.89 | 81.33 | 38.9 | 1.06 | 41.41 | 38.7 | 1.04 | 40.12 | 40.6 | 1.03 | 41.77 |
| April | 43.0 | 1.89 | 81.08 | 39.0 | 1.07 | 41.66 | 38.5 | 1.04 | 40.19 | 41.0 | 1.03 | 42.17 |
| May | 43.4 | 1.90 | 82.31 | 38.8 | 1.07 | 41.53 | 38.8 | 1.04 | 40.27 | 40.1 | 1.03 | 41.44 |
| June | 43.8 | 1.90 | 83.12 | 39.0 | 1.06 | 41.14 | 39.0 | 1.02 | 39.93 | 40.0 | 1.03 | 41.07 |
| July | 43.3 | 1.89 | 81.96 | 38.9 | 1.04 | 40.58 | 39.1 | 1.01 | 39.31 | 39.7 | 1.02 | 40.74 |
| August | 44.3 | 1.90 | 84.20 | 38.9 | 1.04 | 40.67 | 39.2 | 1.01 | 39.38 | 39.4 | 1.03 | 40.82 |
| September | 43.6 | 1.90 | 82.63 | 38.6 | 1.07 | 41.36 | 38.4 | 1.04 | 39.82 | 40.3 | 1.04 | 41.83 |
| October | 43.8 | 1.91 | 83.67 | 38.7 | 1.08 | 41.68 | 38.6 | 1.05 | 40.44 | 40.0 | 1.03 | 41.35 |
| November | 43.3 | 1.91 | 82.68 | 38.4 | 1.08 | 41.44 | 38.0 | 1.05 | 39.90 | 40.1 | 1.04 | 41.57 |
| *December | 42.4 | 1.94 | 82.50 | 37.5 | 1.09 | 40.96 | 37.9 | 1.06 | 40.22 | 37.6 | 1.05 | 39.34 |
| | | | | | | | | | | | | |
| 1962 - January | 42.8 | 1.94 | 83.12 | 38.1 | 1.09 | 41.48 | 38.3 | 1.06 | 40.37 | 39.0 | 1.04 | 40.65 |
| February | 43.6 | 1.94 | 84.75 | 38.3 | 1.10 | 42.01 | 38.5 | 1.06 | 40.98 | 39.3 | 1.04 | 41.03 |
| March | 43.7 | 1.95 | 84.97 | 38.4 | 1.09 | 41.79 | 38.3 | 1.05 | 40.33 | 40.2 | 1.05 | 42.06 |
| *April | 43.4 | 1.97 | 85.43 | 38.2 | 1.10 | 42.02 | 38.0 | 1.07 | 40.44 | 40.3 | 1.05 | 42.30 |
| May | | | | | | | | | | | | |
| June | | | | | | | | | | | | |
| July | | | | | | | | | | | | |
| August | | | | | | | | | | | | |
| September | | | | | | | | | | | | |
| October | | | | | | | | | | | | |
| November | | | | | | | | | | | | |
| December | | | | | | | | | | | | |

* See footnote on page 15.

Table 6b.- Average Hours and Earnings of Hourly-Rated Wage-Earners, Specified Manufacturing Industries, Canada.

| Year and Month | Food and Beverages | | | Tobacco and Tobacco Products | | | Rubber Products | | | Leather Products | | |
|----------------|----------------------|-------------------------|----------------------|------------------------------|-------------------------|----------------------|----------------------|-------------------------|----------------------|----------------------|-------------------------|----------------------|
| | Average Weekly Hours | Average Hourly Earnings | Average Weekly Wages | Average Weekly Hours | Average Hourly Earnings | Average Weekly Wages | Average Weekly Hours | Average Hourly Earnings | Average Weekly Wages | Average Weekly Hours | Average Hourly Earnings | Average Weekly Wages |
| | No. | \$ | \$ | No. | \$ | \$ | No. | \$ | \$ | No. | \$ | \$ |
| 1945 - Average | 43.5 | 0.59 | 25.67 | 41.9 | 0.52 | 21.70 | 43.7 | 0.72 | 31.42 | 42.9 | 0.52 | 22.45 |
| 1946 - Average | 42.4 | 0.62 | 26.50 | 40.4 | 0.54 | 21.94 | 41.8 | 0.73 | 30.51 | 41.8 | 0.56 | 23.49 |
| 1947 - Average | 42.0 | 0.71 | 29.65 | 40.6 | 0.62 | 25.21 | 42.7 | 0.88 | 37.79 | 40.5 | 0.64 | 26.02 |
| 1948 - Average | 42.3 | 0.80 | 33.80 | 41.3 | 0.78 | 32.21 | 41.6 | 1.00 | 41.50 | 39.3 | 0.71 | 28.02 |
| 1949 - Average | 42.4 | 0.86 | 36.46 | 42.6 | 0.86 | 36.76 | 40.9 | 1.05 | 42.78 | 40.2 | 0.75 | 30.23 |
| 1950 - Average | 42.6 | 0.90 | 38.25 | 41.4 | 0.95 | 39.45 | 41.3 | 1.11 | 45.88 | 39.4 | 0.79 | 31.09 |
| 1951 - Average | 42.0 | 1.00 | 42.21 | 40.6 | 1.11 | 45.03 | 40.9 | 1.26 | 51.64 | 38.6 | 0.86 | 33.23 |
| 1952 - Average | 41.9 | 1.10 | 46.19 | 40.2 | 1.24 | 49.85 | 41.0 | 1.35 | 55.25 | 40.3 | 0.92 | 37.20 |
| 1953 - Average | 41.3 | 1.16 | 47.87 | 40.2 | 1.30 | 52.34 | 40.8 | 1.43 | 58.43 | 39.9 | 0.97 | 38.54 |
| 1954 - Average | 41.1 | 1.21 | 49.65 | 39.8 | 1.35 | 53.81 | 40.7 | 1.46 | 59.30 | 38.8 | 1.00 | 38.61 |
| 1955 - Average | 41.0 | 1.25 | 51.33 | 40.6 | 1.39 | 56.31 | 41.6 | 1.49 | 61.98 | 39.9 | 1.02 | 40.58 |
| 1956 - Average | 40.8 | 1.31 | 53.33 | 40.6 | 1.42 | 57.73 | 41.2 | 1.57 | 64.64 | 40.1 | 1.05 | 42.15 |
| 1957 - Average | 40.5 | 1.39 | 56.17 | 39.8 | 1.53 | 60.77 | 40.2 | 1.66 | 66.69 | 39.5 | 1.11 | 43.81 |
| 1958 - Average | 40.6 | 1.45 | 58.99 | 39.9 | 1.58 | 62.88 | 40.0 | 1.71 | 68.48 | 39.7 | 1.14 | 45.38 |
| 1959 - Average | 40.8 | 1.53 | 62.43 | 39.2 | 1.67 | 65.61 | 41.3 | 1.79 | 74.01 | 39.7 | 1.17 | 46.56 |
| 1960 - Average | 40.5 | 1.57 | 63.50 | 40.0 | 1.74 | 69.58 | 40.4 | 1.83 | 73.87 | 39.1 | 1.21 | 47.20 |
| 1961 - Average | 40.4 | 1.61 | 64.95 | 39.6 | 1.83 | 72.58 | 41.3 | 1.87 | 77.23 | 40.4 | 1.24 | 49.98 |
| 1959 - January | 40.3 | 1.53 | 61.73 | 39.7 | 1.51 | 59.79 | 41.8 | 1.75 | 73.08 | 41.9 | 1.15 | 48.42 |
| February | 40.5 | 1.55 | 62.80 | 39.6 | 1.52 | 60.21 | 42.1 | 1.77 | 74.64 | 42.0 | 1.15 | 48.40 |
| *March | 40.7 | 1.56 | 63.54 | 37.2 | 1.56 | 58.09 | 41.3 | 1.78 | 73.62 | 39.6 | 1.16 | 46.14 |
| April | 40.9 | 1.56 | 63.83 | 39.6 | 1.62 | 64.03 | 41.3 | 1.79 | 73.94 | 39.6 | 1.17 | 46.13 |
| May | 41.3 | 1.55 | 63.93 | 40.6 | 1.72 | 69.92 | 41.9 | 1.79 | 74.95 | 39.8 | 1.17 | 46.74 |
| June | 41.6 | 1.51 | 62.88 | 40.5 | 1.75 | 70.95 | 42.1 | 1.81 | 76.21 | 39.5 | 1.18 | 46.42 |
| July | 41.4 | 1.49 | 61.71 | 40.8 | 1.74 | 71.90 | 40.6 | 1.80 | 72.95 | 39.4 | 1.16 | 45.91 |
| August | 41.6 | 1.46 | 60.68 | 39.4 | 1.74 | 68.54 | 41.2 | 1.78 | 73.59 | 40.1 | 1.17 | 46.84 |
| September | 40.3 | 1.50 | 60.32 | 39.9 | 1.74 | 69.43 | 42.3 | 1.80 | 76.35 | 40.1 | 1.18 | 47.21 |
| October | 40.7 | 1.53 | 62.33 | 40.4 | 1.74 | 70.54 | 42.2 | 1.82 | 76.53 | 39.5 | 1.19 | 47.07 |
| November | 40.8 | 1.54 | 62.67 | 37.3 | 1.74 | 64.84 | 41.6 | 1.82 | 75.78 | 39.6 | 1.19 | 47.34 |
| *December | 39.1 | 1.60 | 62.73 | 36.0 | 1.64 | 59.13 | 36.6 | 1.82 | 66.45 | 35.1 | 1.20 | 42.15 |
| 1960 - January | 40.1 | 1.58 | 63.48 | 39.6 | 1.59 | 62.80 | 41.2 | 1.84 | 75.75 | 40.3 | 1.20 | 48.29 |
| February | 40.3 | 1.59 | 64.12 | 40.5 | 1.59 | 64.28 | 40.9 | 1.82 | 74.66 | 40.5 | 1.19 | 48.34 |
| March | 40.2 | 1.60 | 64.08 | 38.7 | 1.70 | 65.82 | 40.5 | 1.83 | 74.00 | 39.7 | 1.20 | 47.61 |
| April | 40.4 | 1.60 | 64.47 | 40.0 | 1.80 | 72.06 | 40.6 | 1.82 | 74.11 | 37.4 | 1.20 | 45.01 |
| May | 40.9 | 1.59 | 65.03 | 40.2 | 1.82 | 72.97 | 40.1 | 1.83 | 73.29 | 35.4 | 1.22 | 43.10 |
| June | 41.3 | 1.57 | 64.77 | 40.7 | 1.82 | 74.09 | 40.4 | 1.82 | 73.42 | 38.2 | 1.22 | 46.40 |
| July | 41.9 | 1.54 | 64.60 | 41.6 | 1.84 | 76.41 | 40.0 | 1.85 | 74.10 | 39.4 | 1.20 | 47.38 |
| August | 40.2 | 1.50 | 60.29 | 41.1 | 1.84 | 75.38 | 41.1 | 1.81 | 74.45 | 40.6 | 1.20 | 48.96 |
| September | 41.0 | 1.50 | 61.35 | 41.9 | 1.85 | 77.37 | 41.5 | 1.82 | 75.27 | 40.3 | 1.20 | 48.51 |
| October | 40.4 | 1.56 | 63.11 | 40.0 | 1.81 | 72.28 | 41.1 | 1.82 | 74.65 | 39.5 | 1.21 | 47.99 |
| November | 40.4 | 1.57 | 63.59 | 39.9 | 1.61 | 64.11 | 40.8 | 1.81 | 73.87 | 40.4 | 1.22 | 49.36 |
| *December | 38.7 | 1.63 | 63.18 | 35.4 | 1.62 | 57.43 | 37.2 | 1.85 | 68.85 | 36.9 | 1.23 | 45.40 |
| 1961 - January | 39.5 | 1.63 | 64.52 | 40.6 | 1.56 | 63.15 | 40.8 | 1.83 | 74.48 | 41.3 | 1.22 | 50.61 |
| February | 40.2 | 1.63 | 65.40 | 39.5 | 1.66 | 65.64 | 40.6 | 1.84 | 74.73 | 42.0 | 1.22 | 51.29 |
| March | 40.6 | 1.65 | 67.12 | 38.4 | 1.78 | 68.48 | 40.5 | 1.85 | 74.96 | 40.1 | 1.23 | 49.28 |
| April | 40.6 | 1.65 | 67.10 | 39.9 | 1.90 | 75.67 | 41.1 | 1.86 | 76.34 | 39.7 | 1.24 | 49.10 |
| May | 40.9 | 1.64 | 66.99 | 40.4 | 1.90 | 76.95 | 40.6 | 1.87 | 75.72 | 39.4 | 1.24 | 49.01 |
| June | 42.2 | 1.59 | 66.98 | 39.7 | 1.94 | 76.92 | 41.4 | 1.89 | 78.37 | 40.2 | 1.24 | 49.91 |
| July | 41.1 | 1.57 | 64.50 | 39.6 | 1.95 | 77.29 | 40.9 | 1.87 | 76.39 | 40.2 | 1.23 | 49.38 |
| August | 39.7 | 1.55 | 61.70 | 40.7 | 1.95 | 79.37 | 42.4 | 1.87 | 79.36 | 41.7 | 1.24 | 51.58 |
| September | 40.8 | 1.53 | 62.52 | 40.0 | 1.90 | 76.19 | 42.8 | 1.89 | 80.94 | 41.5 | 1.24 | 51.49 |
| October | 40.2 | 1.59 | 64.16 | 40.3 | 1.90 | 76.65 | 42.2 | 1.91 | 80.78 | 40.6 | 1.24 | 50.45 |
| November | 40.1 | 1.60 | 64.13 | 39.4 | 1.81 | 71.37 | 42.3 | 1.91 | 80.58 | 41.6 | 1.25 | 52.02 |
| *December | 38.4 | 1.67 | 64.30 | 36.6 | 1.73 | 63.31 | 39.5 | 1.88 | 74.11 | 36.3 | 1.26 | 45.64 |
| 1962 - January | 39.9 | 1.66 | 66.19 | 40.7 | 1.62 | 66.10 | 41.7 | 1.91 | 79.84 | 41.9 | 1.26 | 52.74 |
| February | 39.8 | 1.67 | 66.39 | 40.3 | 1.67 | 67.15 | 41.7 | 1.93 | 80.30 | 41.7 | 1.26 | 52.57 |
| March | 40.4 | 1.67 | 67.33 | 39.9 | 1.69 | 67.38 | 41.9 | 1.91 | 80.22 | 41.2 | 1.26 | 51.87 |
| *April | 40.3 | 1.67 | 67.30 | 38.2 | 1.80 | 68.77 | 41.0 | 1.91 | 78.16 | 39.0 | 1.27 | 49.69 |
| May | | | | | | | | | | | | |
| June | | | | | | | | | | | | |
| July | | | | | | | | | | | | |
| August | | | | | | | | | | | | |
| September | | | | | | | | | | | | |
| October | | | | | | | | | | | | |
| November | | | | | | | | | | | | |
| December | | | | | | | | | | | | |

* See footnote on page 15.

Table 6b.- Average Hours and Earnings of Hourly-Rated Wage-Earners, Specified Manufacturing Industries, Canada. (Continued)

| Year and Month | Textile Products (except clothing) | | | Clothing (textile and fur) | | | Wood Products | | | Paper Products | | |
|----------------|---------------------------------------|-------------------------------|----------------------------|-------------------------------|-------------------------------|----------------------------|----------------------------|-------------------------------|----------------------------|----------------------------|-------------------------------|----------------------------|
| | Average Weekly Hours | Average Hourly Earnings | Average Weekly Wages | Average Weekly Hours | Average Hourly Earnings | Average Weekly Wages | Average Weekly Hours | Average Hourly Earnings | Average Weekly Wages | Average Weekly Hours | Average Hourly Earnings | Average Weekly Wages |
| | No. | \$ | \$ | No. | \$ | \$ | No. | \$ | \$ | No. | \$ | \$ |
| 1945 - Average | 45.5 | 0.50 | 22.61 | 39.7 | 0.53 | 21.04 | 43.6 | 0.61 | 26.42 | 47.7 | 0.68 | 32.29 |
| 1946 - Average | 43.9 | 0.54 | 23.57 | 38.7 | 0.56 | 21.75 | 42.9 | 0.65 | 27.80 | 47.6 | 0.74 | 35.27 |
| 1947 - Average | 43.2 | 0.62 | 26.78 | 38.5 | 0.63 | 24.29 | 42.2 | 0.75 | 31.48 | 47.6 | 0.88 | 41.79 |
| 1948 - Average | 42.7 | 0.74 | 31.51 | 37.8 | 0.71 | 26.72 | 41.1 | 0.84 | 34.61 | 47.1 | 1.01 | 47.34 |
| 1949 - Average | 42.7 | 0.83 | 35.44 | 38.2 | 0.76 | 29.18 | 41.3 | 0.93 | 38.41 | 46.4 | 1.06 | 49.32 |
| 1950 - Average | 43.3 | 0.86 | 37.24 | 38.3 | 0.79 | 30.37 | 41.5 | 0.96 | 39.67 | 46.9 | 1.11 | 51.97 |
| 1951 - Average | 41.2 | 0.97 | 40.13 | 37.1 | 0.87 | 32.20 | 41.4 | 1.07 | 44.38 | 46.6 | 1.31 | 60.86 |
| 1952 - Average | 41.2 | 1.04 | 42.93 | 38.2 | 0.92 | 34.99 | 41.8 | 1.15 | 48.15 | 44.8 | 1.43 | 63.84 |
| 1953 - Average | 41.1 | 1.08 | 44.26 | 38.1 | 0.96 | 36.50 | 42.0 | 1.21 | 50.86 | 43.5 | 1.52 | 66.12 |
| 1954 - Average | 41.3 | 1.10 | 45.55 | 36.9 | 0.99 | 36.38 | 41.3 | 1.26 | 51.91 | 42.6 | 1.61 | 68.42 |
| 1955 - Average | 42.4 | 1.12 | 47.49 | 37.8 | 0.98 | 37.12 | 41.7 | 1.29 | 53.83 | 42.4 | 1.67 | 70.85 |
| 1956 - Average | 42.2 | 1.15 | 48.66 | 38.3 | 1.01 | 38.76 | 41.2 | 1.34 | 55.13 | 42.3 | 1.78 | 75.12 |
| 1957 - Average | 41.5 | 1.21 | 50.34 | 37.4 | 1.05 | 39.31 | 40.6 | 1.40 | 56.96 | 41.5 | 1.87 | 77.69 |
| 1958 - Average | 41.3 | 1.25 | 51.67 | 37.6 | 1.08 | 40.68 | 40.8 | 1.46 | 59.61 | 40.8 | 1.94 | 79.03 |
| 1959 - Average | 42.1 | 1.29 | 54.34 | 38.1 | 1.11 | 42.33 | 41.5 | 1.49 | 61.61 | 41.2 | 2.00 | 82.51 |
| 1960 - Average | 41.7 | 1.34 | 55.84 | 37.7 | 1.14 | 43.09 | 40.8 | 1.58 | 64.29 | 41.2 | 2.08 | 85.73 |
| 1961 - Average | 42.0 | 1.38 | 57.79 | 38.2 | 1.18 | 45.13 | 41.1 | 1.61 | 66.24 | 41.2 | 2.17 | 89.37 |
| 1959 - January | 42.5 | 1.28 | 54.46 | 39.2 | 1.10 | 43.27 | 41.3 | 1.48 | 61.18 | 40.8 | 1.98 | 80.73 |
| February | 42.3 | 1.28 | 54.27 | 39.7 | 1.11 | 43.96 | 41.5 | 1.49 | 61.68 | 41.3 | 1.99 | 82.37 |
| *March | 41.7 | 1.29 | 53.70 | 38.1 | 1.11 | 42.34 | 40.4 | 1.50 | 60.78 | 40.6 | 1.98 | 80.45 |
| April | 42.0 | 1.29 | 54.04 | 38.1 | 1.10 | 42.00 | 41.3 | 1.50 | 61.93 | 40.7 | 1.99 | 81.00 |
| May | 41.9 | 1.28 | 53.94 | 38.1 | 1.10 | 42.02 | 42.2 | 1.50 | 63.14 | 41.7 | 2.00 | 83.53 |
| June | 42.0 | 1.29 | 54.27 | 37.1 | 1.11 | 41.03 | 41.2 | 1.49 | 61.23 | 41.8 | 2.00 | 83.43 |
| July | 41.2 | 1.29 | 53.12 | 37.3 | 1.11 | 41.34 | 42.6 | 1.35 | 57.66 | 41.6 | 2.00 | 83.15 |
| August | 42.3 | 1.29 | 54.45 | 38.7 | 1.11 | 43.16 | 43.0 | 1.37 | 58.84 | 41.5 | 2.00 | 83.12 |
| September | 42.7 | 1.30 | 55.48 | 39.6 | 1.12 | 44.44 | 42.1 | 1.53 | 64.35 | 41.4 | 2.00 | 83.00 |
| October | 43.1 | 1.30 | 56.05 | 39.0 | 1.11 | 43.49 | 42.6 | 1.53 | 65.39 | 41.7 | 2.01 | 83.64 |
| November | 43.1 | 1.30 | 55.93 | 38.3 | 1.12 | 42.80 | 41.6 | 1.54 | 64.10 | 41.8 | 2.02 | 84.53 |
| *December | 40.0 | 1.31 | 52.32 | 33.8 | 1.13 | 38.13 | 38.0 | 1.55 | 59.06 | 40.0 | 2.03 | 81.18 |
| 1960 - January | 42.7 | 1.31 | 56.17 | 38.7 | 1.13 | 43.98 | 41.7 | 1.56 | 65.12 | 40.8 | 2.04 | 83.19 |
| February | 42.0 | 1.33 | 55.75 | 38.6 | 1.14 | 43.98 | 41.2 | 1.56 | 64.37 | 41.1 | 2.04 | 84.02 |
| March | 42.2 | 1.33 | 56.09 | 38.6 | 1.14 | 44.04 | 40.9 | 1.57 | 64.08 | 40.9 | 2.04 | 83.49 |
| April | 41.8 | 1.33 | 55.84 | 38.0 | 1.14 | 43.16 | 40.9 | 1.58 | 64.63 | 41.3 | 2.03 | 88.93 |
| May | 41.3 | 1.34 | 55.30 | 36.4 | 1.14 | 41.28 | 40.1 | 1.57 | 63.00 | 40.9 | 2.05 | 83.94 |
| June | 41.3 | 1.34 | 55.30 | 36.4 | 1.14 | 41.34 | 40.6 | 1.57 | 63.75 | 41.6 | 2.08 | 86.35 |
| July | 41.3 | 1.33 | 55.09 | 37.5 | 1.15 | 42.98 | 40.7 | 1.57 | 63.80 | 41.7 | 2.10 | 87.51 |
| August | 41.7 | 1.34 | 56.06 | 38.8 | 1.15 | 44.56 | 41.2 | 1.57 | 64.71 | 41.3 | 2.08 | 85.91 |
| September | 42.1 | 1.34 | 56.63 | 38.2 | 1.15 | 43.86 | 41.8 | 1.58 | 65.99 | 41.8 | 2.10 | 87.93 |
| October | 42.2 | 1.34 | 56.65 | 38.8 | 1.15 | 44.84 | 41.5 | 1.59 | 66.05 | 41.6 | 2.11 | 87.69 |
| November | 42.3 | 1.35 | 57.07 | 38.0 | 1.15 | 43.58 | 41.1 | 1.59 | 65.33 | 41.6 | 2.13 | 88.73 |
| *December | 40.0 | 1.35 | 54.01 | 33.8 | 1.16 | 39.24 | 37.8 | 1.60 | 60.55 | 39.9 | 2.15 | 85.86 |
| 1961 - January | 41.9 | 1.36 | 57.08 | 38.5 | 1.18 | 45.25 | 40.3 | 1.59 | 63.95 | 41.0 | 2.15 | 88.13 |
| February | 41.9 | 1.37 | 57.22 | 39.1 | 1.18 | 46.08 | 40.8 | 1.60 | 65.34 | 41.2 | 2.15 | 88.82 |
| March | 41.9 | 1.37 | 57.44 | 38.4 | 1.18 | 45.37 | 40.7 | 1.62 | 65.88 | 40.7 | 2.15 | 87.53 |
| April | 41.9 | 1.37 | 57.45 | 38.2 | 1.18 | 45.03 | 41.3 | 1.63 | 67.21 | 41.6 | 2.17 | 90.28 |
| May | 41.6 | 1.37 | 57.07 | 37.4 | 1.17 | 43.75 | 40.8 | 1.61 | 65.71 | 40.9 | 2.15 | 88.10 |
| June | 42.1 | 1.37 | 57.78 | 38.0 | 1.17 | 44.62 | 41.6 | 1.60 | 66.65 | 41.4 | 2.15 | 88.94 |
| July | 41.3 | 1.37 | 56.59 | 37.9 | 1.18 | 44.89 | 41.4 | 1.60 | 66.27 | 41.3 | 2.16 | 89.20 |
| August | 42.6 | 1.38 | 58.58 | 39.3 | 1.19 | 46.75 | 41.5 | 1.60 | 66.38 | 41.5 | 2.16 | 89.70 |
| September | 43.0 | 1.38 | 59.39 | 39.6 | 1.19 | 47.19 | 42.3 | 1.62 | 68.53 | 41.5 | 2.17 | 90.10 |
| October | 43.1 | 1.39 | 59.84 | 39.3 | 1.19 | 46.67 | 41.8 | 1.62 | 67.50 | 41.8 | 2.18 | 91.11 |
| November | 43.0 | 1.39 | 59.82 | 38.6 | 1.19 | 45.80 | 41.9 | 1.62 | 68.03 | 41.6 | 2.19 | 91.27 |
| *December | 39.5 | 1.40 | 55.21 | 33.8 | 1.19 | 40.14 | 38.9 | 1.63 | 63.45 | 39.7 | 2.25 | 89.29 |
| 1962 - January | 42.8 | 1.40 | 60.05 | 38.7 | 1.20 | 46.62 | 40.7 | 1.62 | 66.07 | 40.8 | 2.21 | 90.34 |
| February | 42.3 | 1.40 | 59.34 | 39.0 | 1.21 | 47.31 | 41.3 | 1.63 | 67.22 | 40.9 | 2.21 | 90.36 |
| March | 42.6 | 1.41 | 59.96 | 39.5 | 1.22 | 48.16 | 41.4 | 1.64 | 67.92 | 41.1 | 2.21 | 90.72 |
| *April | 41.7 | 1.41 | 58.76 | 38.0 | 1.22 | 46.45 | 40.7 | 1.64 | 66.63 | 41.0 | 2.20 | 90.24 |
| May | | | | | | | | | | | | |
| June | | | | | | | | | | | | |
| July | | | | | | | | | | | | |
| August | | | | | | | | | | | | |
| September | | | | | | | | | | | | |
| October | | | | | | | | | | | | |
| November | | | | | | | | | | | | |
| December | | | | | | | | | | | | |

* See footnote on page 15.

Table 6b.- Average Hours and Earnings of Hourly-Rated Wage-Earners, Specified Manufacturing Industries, Canada. (Continued)

| Year and Month | Printing, Publishing and Allied Industries | | | Iron and Steel Products | | | Transportation Equipment | | | Non-Ferrous Metal Products | | |
|----------------|---|-------------------------------|----------------------------|----------------------------|-------------------------------|----------------------------|----------------------------|-------------------------------|----------------------------|-------------------------------|-------------------------------|----------------------------|
| | Average Weekly Hours | Average Hourly Earnings | Average Weekly Wages | Average Weekly Hours | Average Hourly Earnings | Average Weekly Wages | Average Weekly Hours | Average Hourly Earnings | Average Weekly Wages | Average Weekly Hours | Average Hourly Earnings | Average Weekly Wages |
| | No. | \$ | \$ | No. | \$ | \$ | No. | \$ | \$ | No. | \$ | \$ |
| 1945 - Average | 41.5 | 0.76 | 31.50 | 45.7 | 0.75 | 34.32 | 44.4 | 0.87 | 38.58 | 44.4 | 0.74 | 32.81 |
| 1946 - Average | 41.1 | 0.79 | 32.55 | 43.3 | 0.76 | 32.95 | 41.7 | 0.88 | 36.65 | 43.2 | 0.77 | 33.09 |
| 1947 - Average | 40.8 | 0.89 | 36.35 | 43.6 | 0.89 | 38.72 | 42.1 | 0.98 | 41.22 | 43.2 | 0.88 | 37.93 |
| 1948 - Average | 40.5 | 1.03 | 41.63 | 43.2 | 1.01 | 43.59 | 41.9 | 1.08 | 45.29 | 43.1 | 1.00 | 43.06 |
| 1949 - Average | 40.6 | 1.14 | 46.12 | 42.8 | 1.09 | 46.57 | 42.2 | 1.16 | 48.95 | 43.3 | 1.07 | 46.42 |
| 1950 - Average | 40.6 | 1.23 | 49.74 | 42.5 | 1.16 | 49.39 | 42.5 | 1.21 | 51.38 | 43.3 | 1.12 | 48.71 |
| 1951 - Average | 40.1 | 1.33 | 53.49 | 42.0 | 1.32 | 55.31 | 41.7 | 1.35 | 56.42 | 42.4 | 1.30 | 54.95 |
| 1952 - Average | 39.6 | 1.49 | 58.81 | 41.8 | 1.46 | 60.90 | 41.2 | 1.48 | 60.85 | 41.4 | 1.47 | 60.94 |
| 1953 - Average | 39.9 | 1.59 | 63.28 | 41.5 | 1.53 | 63.70 | 41.5 | 1.57 | 65.24 | 41.4 | 1.53 | 63.22 |
| 1954 - Average | 40.1 | 1.66 | 66.45 | 40.8 | 1.58 | 64.30 | 40.5 | 1.62 | 65.57 | 41.0 | 1.60 | 65.52 |
| 1955 - Average | 40.1 | 1.73 | 69.21 | 41.4 | 1.64 | 67.77 | 40.2 | 1.67 | 67.01 | 41.3 | 1.66 | 68.60 |
| 1956 - Average | 40.1 | 1.81 | 72.46 | 41.6 | 1.73 | 72.13 | 40.3 | 1.74 | 70.20 | 41.0 | 1.73 | 70.93 |
| 1957 - Average | 39.8 | 1.89 | 75.30 | 40.9 | 1.84 | 75.17 | 39.7 | 1.83 | 72.53 | 40.7 | 1.84 | 75.01 |
| 1958 - Average | 39.3 | 1.98 | 77.93 | 40.3 | 1.91 | 77.05 | 39.8 | 1.90 | 75.54 | 39.7 | 1.94 | 76.94 |
| 1959 - Average | 39.6 | 2.08 | 82.18 | 41.0 | 2.01 | 82.40 | 40.5 | 1.99 | 80.54 | 40.5 | 1.99 | 80.72 |
| 1960 - Average | 39.1 | 2.16 | 84.38 | 40.6 | 2.07 | 84.03 | 40.5 | 2.04 | 82.78 | 40.7 | 2.08 | 84.63 |
| 1961 - Average | 38.9 | 2.22 | 86.38 | 40.8 | 2.13 | 87.05 | 40.5 | 2.12 | 86.06 | 40.6 | 2.15 | 87.13 |
| 1959 - January | 39.0 | 2.02 | 78.83 | 40.6 | 1.97 | 80.07 | 40.3 | 1.98 | 79.95 | 40.0 | 1.98 | 79.07 |
| February | 39.4 | 2.04 | 80.40 | 40.9 | 1.98 | 80.94 | 40.8 | 1.96 | 80.18 | 40.3 | 1.97 | 79.33 |
| *March | 39.6 | 2.07 | 81.90 | 40.5 | 1.99 | 80.74 | 40.5 | 1.96 | 79.42 | 40.2 | 2.04 | 81.88 |
| April | 39.5 | 2.07 | 81.88 | 41.0 | 1.99 | 81.62 | 40.9 | 1.97 | 80.68 | 40.4 | 1.98 | 80.20 |
| May | 39.9 | 2.09 | 83.39 | 41.3 | 2.00 | 82.44 | 41.2 | 1.99 | 81.87 | 40.3 | 1.97 | 79.55 |
| June | 39.7 | 2.09 | 82.85 | 41.7 | 2.01 | 83.69 | 40.8 | 1.99 | 81.30 | 40.5 | 1.97 | 79.84 |
| July | 39.7 | 2.08 | 82.46 | 41.4 | 2.01 | 83.23 | 40.2 | 1.99 | 79.89 | 40.5 | 1.98 | 80.31 |
| August | 39.5 | 2.08 | 82.17 | 40.9 | 2.02 | 82.70 | 40.0 | 1.99 | 79.55 | 40.4 | 1.98 | 79.78 |
| September | 40.3 | 2.10 | 84.45 | 41.7 | 2.03 | 84.53 | 41.0 | 2.01 | 82.51 | 40.8 | 1.98 | 80.68 |
| October | 40.1 | 2.10 | 83.91 | 41.8 | 2.04 | 85.28 | 40.6 | 2.02 | 82.01 | 41.0 | 1.99 | 83.46 |
| November | 39.6 | 2.10 | 83.35 | 41.2 | 2.04 | 83.99 | 40.2 | 1.99 | 80.01 | 41.2 | 2.00 | 82.26 |
| *December | 38.5 | 2.10 | 80.63 | 39.0 | 2.04 | 79.61 | 39.1 | 2.02 | 79.11 | 40.2 | 2.10 | 84.25 |
| 1960 - January | 38.9 | 2.13 | 82.93 | 40.8 | 2.05 | 83.92 | 40.5 | 2.05 | 83.04 | 40.8 | 2.05 | 83.43 |
| February | 39.0 | 2.14 | 83.56 | 40.7 | 2.06 | 83.78 | 39.7 | 2.03 | 80.68 | 40.7 | 2.05 | 83.32 |
| March | 39.6 | 2.17 | 85.88 | 40.7 | 2.06 | 83.95 | 40.7 | 2.04 | 82.84 | 40.5 | 2.05 | 82.92 |
| April | 39.3 | 2.17 | 85.28 | 40.7 | 2.07 | 84.08 | 41.4 | 2.05 | 84.90 | 40.7 | 2.05 | 83.55 |
| May | 39.2 | 2.17 | 84.87 | 40.3 | 2.06 | 83.15 | 40.9 | 2.04 | 83.68 | 40.0 | 2.05 | 82.13 |
| June | 39.2 | 2.16 | 84.71 | 40.8 | 2.06 | 84.01 | 40.5 | 2.03 | 82.30 | 40.7 | 2.11 | 85.92 |
| July | 39.2 | 2.16 | 84.45 | 40.9 | 2.06 | 84.37 | 40.0 | 2.01 | 80.27 | 40.7 | 2.10 | 85.19 |
| August | 38.9 | 2.16 | 84.22 | 40.6 | 2.09 | 84.62 | 40.3 | 2.03 | 81.76 | 40.5 | 2.09 | 84.65 |
| September | 39.3 | 2.18 | 85.56 | 40.8 | 2.09 | 85.18 | 40.7 | 2.06 | 83.78 | 40.8 | 2.08 | 85.01 |
| October | 39.2 | 2.16 | 84.65 | 40.7 | 2.09 | 85.02 | 40.5 | 2.05 | 82.96 | 40.9 | 2.09 | 85.70 |
| November | 39.1 | 2.17 | 84.71 | 40.6 | 2.09 | 84.78 | 40.6 | 2.07 | 84.14 | 40.9 | 2.09 | 85.21 |
| *December | 37.8 | 2.16 | 81.71 | 39.0 | 2.09 | 81.54 | 39.9 | 2.08 | 83.04 | 41.3 | 2.15 | 88.59 |
| 1961 - January | 38.4 | 2.19 | 84.01 | 40.1 | 2.11 | 84.62 | 39.7 | 2.09 | 83.01 | 40.5 | 2.11 | 85.37 |
| February | 38.7 | 2.20 | 85.05 | 40.2 | 2.12 | 85.27 | 40.2 | 2.09 | 84.01 | 40.6 | 2.11 | 85.73 |
| March | 39.0 | 2.21 | 86.22 | 40.4 | 2.12 | 85.73 | 40.0 | 2.10 | 83.83 | 40.5 | 2.12 | 86.06 |
| April | 38.7 | 2.21 | 85.76 | 40.6 | 2.13 | 86.70 | 40.6 | 2.11 | 85.47 | 40.5 | 2.14 | 86.55 |
| May | 38.7 | 2.22 | 85.98 | 40.9 | 2.15 | 87.93 | 40.3 | 2.11 | 85.06 | 40.6 | 2.15 | 87.30 |
| June | 39.2 | 2.22 | 86.92 | 41.1 | 2.14 | 87.90 | 40.8 | 2.13 | 87.00 | 40.6 | 2.16 | 87.56 |
| July | 39.0 | 2.22 | 86.33 | 40.9 | 2.15 | 87.95 | 39.9 | 2.11 | 84.22 | 40.5 | 2.15 | 86.92 |
| August | 39.2 | 2.22 | 87.25 | 41.3 | 2.15 | 88.72 | 40.1 | 2.12 | 85.17 | 41.0 | 2.14 | 87.64 |
| September | 39.5 | 2.25 | 89.07 | 41.6 | 2.14 | 89.02 | 40.7 | 2.12 | 86.48 | 41.0 | 2.14 | 87.65 |
| October | 39.1 | 2.24 | 87.61 | 41.6 | 2.14 | 89.09 | 41.2 | 2.17 | 89.15 | 41.0 | 2.15 | 87.92 |
| November | 39.3 | 2.25 | 88.36 | 41.1 | 2.13 | 87.79 | 41.5 | 2.17 | 90.05 | 41.0 | 2.14 | 87.66 |
| *December | 37.6 | 2.23 | 84.01 | 39.2 | 2.14 | 83.86 | 41.2 | 2.17 | 89.29 | 39.7 | 2.24 | 89.10 |
| 1962 - January | 38.7 | 2.27 | 87.63 | 40.8 | 2.16 | 88.07 | 40.5 | 2.17 | 87.68 | 40.6 | 2.14 | 87.14 |
| February | 38.9 | 2.28 | 88.69 | 40.9 | 2.16 | 88.46 | 41.4 | 2.19 | 90.75 | 40.5 | 2.14 | 86.61 |
| March | 39.3 | 2.30 | 90.40 | 41.3 | 2.17 | 89.63 | 41.5 | 2.19 | 90.77 | 40.6 | 2.14 | 87.16 |
| *April | 39.1 | 2.31 | 90.13 | 41.2 | 2.17 | 89.42 | 41.8 | 2.21 | 92.46 | 40.4 | 2.16 | 87.21 |
| May | | | | | | | | | | | | |
| June | | | | | | | | | | | | |
| July | | | | | | | | | | | | |
| August | | | | | | | | | | | | |
| September | | | | | | | | | | | | |
| October | | | | | | | | | | | | |
| November | | | | | | | | | | | | |
| December | | | | | | | | | | | | |

* See footnote on page 15.

Table 6b.- Average Hours and Earnings of Hourly-Rated Wage-Earners, Specified Manufacturing Industries, Canada. (Concluded)

| Year and Month | Electrical Apparatus and Supplies | | | Non-Metallic Mineral Products | | | Products of Petroleum and Coal | | | Chemical Products | | |
|----------------|-----------------------------------|-------------------------|----------------------|-------------------------------|-------------------------|----------------------|--------------------------------|-------------------------|----------------------|----------------------|-------------------------|----------------------|
| | Average Weekly Hours | Average Hourly Earnings | Average Weekly Wages | Average Weekly Hours | Average Hourly Earnings | Average Weekly Wages | Average Weekly Hours | Average Hourly Earnings | Average Weekly Wages | Average Weekly Hours | Average Hourly Earnings | Average Weekly Wages |
| | No. | \$ | \$ | No. | \$ | \$ | No. | \$ | \$ | No. | \$ | \$ |
| 1945 - Average | 43.1 | 0.70 | 30.21 | 46.0 | 0.66 | 30.18 | 43.4 | 0.84 | 36.37 | 45.0 | 0.68 | 30.78 |
| 1946 - Average | 41.6 | 0.72 | 30.08 | 44.3 | 0.68 | 30.12 | 40.5 | 0.88 | 35.48 | 43.3 | 0.70 | 30.31 |
| 1947 - Average | 41.0 | 0.86 | 35.18 | 44.6 | 0.78 | 34.70 | 41.4 | 0.98 | 40.74 | 43.0 | 0.81 | 34.79 |
| 1948 - Average | 40.6 | 1.00 | 40.72 | 44.6 | 0.89 | 39.78 | 41.6 | 1.15 | 47.67 | 43.4 | 0.93 | 40.15 |
| 1949 - Average | 41.1 | 1.09 | 44.96 | 44.9 | 0.96 | 43.19 | 41.3 | 1.23 | 50.63 | 43.5 | 0.99 | 43.02 |
| 1950 - Average | 41.1 | 1.15 | 47.39 | 45.2 | 1.02 | 46.10 | 41.5 | 1.30 | 54.07 | 43.3 | 1.05 | 45.25 |
| 1951 - Average | 41.0 | 1.29 | 52.93 | 44.5 | 1.17 | 52.20 | 41.1 | 1.53 | 62.92 | 42.8 | 1.20 | 51.36 |
| 1952 - Average | 41.1 | 1.40 | 57.54 | 44.0 | 1.28 | 56.54 | 41.6 | 1.73 | 71.80 | 41.9 | 1.33 | 55.52 |
| 1953 - Average | 41.1 | 1.44 | 59.02 | 43.6 | 1.36 | 59.08 | 41.5 | 1.81 | 75.32 | 41.8 | 1.38 | 57.85 |
| 1954 - Average | 40.2 | 1.50 | 60.30 | 43.2 | 1.42 | 61.30 | 41.6 | 1.89 | 78.54 | 41.5 | 1.45 | 60.22 |
| 1955 - Average | 40.7 | 1.51 | 61.38 | 43.4 | 1.46 | 63.49 | 41.2 | 1.96 | 80.83 | 41.3 | 1.51 | 62.49 |
| 1956 - Average | 40.8 | 1.59 | 64.83 | 43.2 | 1.53 | 66.18 | 40.6 | 2.08 | 84.33 | 41.1 | 1.60 | 65.60 |
| 1957 - Average | 40.3 | 1.66 | 67.10 | 42.7 | 1.61 | 68.70 | 41.4 | 2.23 | 92.20 | 40.9 | 1.72 | 70.39 |
| 1958 - Average | 40.0 | 1.72 | 69.00 | 43.0 | 1.68 | 72.20 | 41.0 | 2.30 | 94.34 | 40.7 | 1.82 | 73.99 |
| 1959 - Average | 40.5 | 1.78 | 71.99 | 43.0 | 1.74 | 74.72 | 41.4 | 2.44 | 100.98 | 40.8 | 1.88 | 76.58 |
| 1960 - Average | 40.3 | 1.84 | 74.13 | 42.2 | 1.80 | 75.86 | 41.1 | 2.52 | 103.46 | 40.6 | 1.97 | 80.20 |
| 1961 - Average | 40.7 | 1.88 | 76.66 | 42.4 | 1.87 | 79.18 | 41.2 | 2.58 | 106.23 | 40.8 | 2.04 | 83.23 |
| 1959 - January | 40.4 | 1.76 | 70.86 | 42.8 | 1.74 | 74.61 | 41.2 | 2.40 | 98.58 | 40.7 | 1.86 | 75.82 |
| February | 40.3 | 1.76 | 70.65 | 43.0 | 1.74 | 74.89 | 41.1 | 2.40 | 98.39 | 40.7 | 1.87 | 76.08 |
| *March | 40.0 | 1.76 | 70.42 | 42.6 | 1.74 | 74.27 | 41.6 | 2.46 | 102.53 | 40.8 | 1.86 | 75.67 |
| April | 40.4 | 1.78 | 71.83 | 42.7 | 1.73 | 73.78 | 41.2 | 2.43 | 100.12 | 40.8 | 1.84 | 74.97 |
| May | 40.6 | 1.78 | 72.45 | 43.7 | 1.73 | 75.44 | 42.7 | 2.46 | 105.28 | 40.9 | 1.84 | 75.20 |
| June | 41.1 | 1.79 | 73.53 | 43.6 | 1.73 | 75.34 | 41.3 | 2.44 | 100.63 | 40.9 | 1.85 | 75.53 |
| July | 40.6 | 1.78 | 72.54 | 43.4 | 1.73 | 74.99 | 40.9 | 2.43 | 99.39 | 40.7 | 1.88 | 76.56 |
| August | 40.5 | 1.77 | 71.80 | 43.5 | 1.73 | 75.14 | 40.7 | 2.42 | 98.28 | 40.5 | 1.89 | 76.73 |
| September | 41.4 | 1.78 | 73.68 | 44.4 | 1.74 | 77.17 | 40.8 | 2.43 | 99.21 | 41.1 | 1.90 | 78.02 |
| October | 41.1 | 1.78 | 73.06 | 44.2 | 1.74 | 77.03 | 41.1 | 2.45 | 100.68 | 41.1 | 1.90 | 78.23 |
| November | 41.0 | 1.79 | 73.36 | 43.2 | 1.73 | 74.86 | 42.1 | 2.47 | 103.78 | 40.8 | 1.90 | 77.77 |
| *December | 39.0 | 1.79 | 69.76 | 38.9 | 1.78 | 69.07 | 41.7 | 2.52 | 104.94 | 40.4 | 1.94 | 78.39 |
| 1960 - January | 40.9 | 1.82 | 74.26 | 42.3 | 1.78 | 75.20 | 40.8 | 2.42 | 98.63 | 40.8 | 1.93 | 78.52 |
| February | 40.3 | 1.82 | 73.49 | 41.6 | 1.79 | 74.51 | 40.6 | 2.43 | 98.58 | 40.4 | 1.94 | 78.41 |
| March | 40.4 | 1.84 | 74.27 | 41.9 | 1.78 | 74.48 | 40.9 | 2.49 | 101.82 | 40.7 | 1.94 | 78.97 |
| April | 40.2 | 1.84 | 73.78 | 41.8 | 1.78 | 74.45 | 41.1 | 2.54 | 104.10 | 40.9 | 1.95 | 79.65 |
| May | 40.1 | 1.84 | 73.87 | 42.8 | 1.78 | 76.24 | 41.4 | 2.55 | 105.53 | 40.7 | 1.96 | 79.66 |
| June | 40.6 | 1.84 | 74.52 | 42.1 | 1.78 | 74.75 | 41.5 | 2.57 | 106.44 | 41.1 | 1.98 | 81.12 |
| July | 40.1 | 1.84 | 73.97 | 42.5 | 1.79 | 76.13 | 41.1 | 2.51 | 103.28 | 40.8 | 1.99 | 81.36 |
| August | 40.5 | 1.84 | 74.57 | 42.8 | 1.79 | 76.62 | 39.9 | 2.52 | 100.54 | 40.2 | 1.98 | 79.58 |
| September | 40.7 | 1.85 | 75.02 | 42.9 | 1.81 | 77.81 | 40.8 | 2.55 | 103.89 | 40.6 | 1.99 | 80.96 |
| October | 40.7 | 1.84 | 74.64 | 42.8 | 1.82 | 78.07 | 41.5 | 2.55 | 105.93 | 40.4 | 2.00 | 80.84 |
| November | 40.7 | 1.85 | 75.24 | 42.8 | 1.82 | 78.17 | 40.9 | 2.55 | 104.12 | 40.4 | 2.01 | 81.25 |
| *December | 38.9 | 1.85 | 71.98 | 40.1 | 1.84 | 73.89 | 42.2 | 2.57 | 108.62 | 40.4 | 2.03 | 82.12 |
| 1961 - January | 40.4 | 1.87 | 75.45 | 40.7 | 1.86 | 75.81 | 40.9 | 2.53 | 103.59 | 40.5 | 2.02 | 81.69 |
| February | 40.1 | 1.87 | 75.01 | 40.7 | 1.87 | 75.90 | 41.1 | 2.54 | 104.39 | 40.6 | 2.02 | 81.76 |
| March | 40.1 | 1.87 | 75.08 | 41.3 | 1.87 | 77.20 | 41.0 | 2.55 | 104.71 | 40.8 | 2.03 | 82.77 |
| April | 40.7 | 1.87 | 76.24 | 41.9 | 1.85 | 77.75 | 40.9 | 2.54 | 103.99 | 40.7 | 2.02 | 82.22 |
| May | 40.5 | 1.89 | 76.32 | 43.4 | 1.86 | 80.78 | 41.6 | 2.58 | 107.13 | 41.4 | 2.04 | 84.46 |
| June | 41.0 | 1.88 | 77.18 | 43.7 | 1.86 | 81.38 | 41.5 | 2.57 | 106.69 | 41.2 | 2.03 | 83.64 |
| July | 40.8 | 1.89 | 77.04 | 42.9 | 1.86 | 79.67 | 41.3 | 2.57 | 105.96 | 40.8 | 2.03 | 82.92 |
| August | 41.1 | 1.88 | 77.35 | 43.5 | 1.87 | 81.48 | 41.1 | 2.56 | 105.27 | 40.6 | 2.04 | 82.92 |
| September | 42.0 | 1.89 | 79.53 | 43.7 | 1.87 | 81.72 | 40.4 | 2.56 | 103.32 | 41.2 | 2.04 | 84.32 |
| October | 41.6 | 1.88 | 78.44 | 43.8 | 1.89 | 82.60 | 41.3 | 2.59 | 106.93 | 40.9 | 2.04 | 83.63 |
| November | 41.8 | 1.89 | 79.20 | 43.1 | 1.87 | 80.81 | 41.4 | 2.64 | 109.28 | 40.9 | 2.06 | 84.12 |
| *December | 38.7 | 1.89 | 73.09 | 39.6 | 1.90 | 75.05 | 42.3 | 2.68 | 113.45 | 40.2 | 2.10 | 84.34 |
| 1962 - January | 41.4 | 1.91 | 79.12 | 41.6 | 1.92 | 79.72 | 40.7 | 2.67 | 108.44 | 40.7 | 2.07 | 84.50 |
| February | 41.0 | 1.91 | 78.31 | 41.9 | 1.92 | 80.42 | 40.7 | 2.65 | 107.79 | 40.7 | 2.08 | 84.75 |
| March | 41.1 | 1.91 | 78.54 | 42.6 | 1.90 | 80.96 | 40.5 | 2.64 | 106.84 | 40.8 | 2.08 | 84.84 |
| *April | 40.2 | 1.90 | 76.62 | 42.3 | 1.92 | 81.00 | 41.8 | 2.67 | 111.68 | 41.2 | 2.09 | 86.25 |
| May | | | | | | | | | | | | |
| June | | | | | | | | | | | | |
| July | | | | | | | | | | | | |
| August | | | | | | | | | | | | |
| September | | | | | | | | | | | | |
| October | | | | | | | | | | | | |
| November | | | | | | | | | | | | |
| December | | | | | | | | | | | | |

* See footnote on page 15.

Table 7. Index Numbers of Average Hourly Earnings in Manufacturing, Canada, 1947-1962.

(1949=100)

| Last week in | 1947 | 1948 | 1949 | 1950 | 1951 | 1952 | 1953 | 1954 | 1955 | 1956 | 1957 | 1958 | 1959 | 1960 | 1961 | 1962 |
|------------------------------|------|------|-------|-------|-------|-------|-------|-------|-------|-------|-------|-------|-------|-------|-------|-------|
| <u>(a) Manufacturing</u> | | | | | | | | | | | | | | | | |
| January | 77.2 | 87.6 | 98.3 | 102.0 | 111.6 | 128.5 | 135.7 | 142.0 | 144.3 | 148.9 | 159.2 | 166.1 | 172.4 | 178.9 | 183.3 | 187.9 |
| February | 78.0 | 89.0 | 98.7 | 102.5 | 112.6 | 129.2 | 135.9 | 142.2 | 145.1 | 150.2 | 159.4 | 167.1 | 172.6 | 178.9 | 183.6 | 188.6 |
| March | 78.5 | 90.0 | 99.3 | 102.8 | 114.1 | 130.4 | 136.4 | 142.6 | 145.9 | 152.2 | 160.5 | 167.6 | 174.0 | 179.6 | 184.7 | 189.1 |
| April | 79.2 | 90.4 | 99.7 | 103.6 | 115.4 | 130.8 | 137.0 | 143.4 | 147.0 | 152.8 | 161.8 | 168.2 | 174.1 | 180.6 | 185.8 | 190.6 |
| May | 80.8 | 92.4 | 100.2 | 104.6 | 117.2 | 131.1 | 137.4 | 143.8 | 147.1 | 153.6 | 162.5 | 169.1 | 174.6 | 180.7 | 185.9 | |
| June | 81.7 | 93.3 | 100.2 | 105.1 | 119.7 | 130.0 | 137.7 | 143.2 | 146.6 | 154.4 | 162.8 | 168.4 | 174.3 | 180.6 | 184.9 | |
| July | 82.2 | 93.7 | 99.9 | 105.4 | 120.4 | 130.3 | 137.5 | 142.5 | 146.7 | 154.1 | 162.2 | 167.7 | 173.2 | 179.3 | 184.1 | |
| August | 83.1 | 94.4 | 99.5 | 105.6 | 121.9 | 130.9 | 137.2 | 141.0 | 145.4 | 153.8 | 161.3 | 165.8 | 171.8 | 178.3 | 183.8 | |
| September | 84.3 | 95.6 | 100.4 | 106.5 | 123.3 | 131.3 | 138.1 | 141.2 | 146.4 | 155.0 | 162.3 | 166.2 | 174.4 | 179.1 | 183.5 | |
| October | 85.6 | 96.6 | 100.6 | 107.6 | 124.9 | 132.5 | 138.9 | 142.1 | 147.0 | 156.4 | 164.7 | 167.3 | 175.6 | 180.4 | 185.7 | |
| November | 86.6 | 97.1 | 101.1 | 109.0 | 125.9 | 133.6 | 139.9 | 142.8 | 147.7 | 157.2 | 165.3 | 169.2 | 175.7 | 181.2 | 186.0 | |
| December | 87.6 | 98.3 | 102.2 | 110.2 | 128.5 | 135.5 | 142.0 | 144.4 | 149.1 | 159.8 | 167.6 | 172.9 | 179.6 | 184.5 | 189.9 | |
| Average | 82.1 | 93.2 | 100.0 | 105.4 | 119.6 | 131.2 | 137.8 | 142.6 | 146.5 | 154.0 | 162.5 | 168.0 | 174.4 | 180.2 | 185.1 | |
| <u>(b) Durable goods</u> | | | | | | | | | | | | | | | | |
| January | 78.2 | 87.3 | 98.3 | 102.5 | 111.4 | 128.7 | 136.4 | 141.8 | 144.0 | 148.9 | 159.6 | 166.8 | 173.6 | 180.3 | 184.6 | 189.0 |
| February | 78.8 | 89.0 | 98.6 | 102.8 | 112.3 | 129.6 | 137.0 | 141.9 | 145.1 | 150.4 | 159.5 | 167.4 | 173.2 | 180.3 | 185.2 | 189.7 |
| March | 79.4 | 89.5 | 99.0 | 103.0 | 113.9 | 130.7 | 137.4 | 142.0 | 145.9 | 151.9 | 160.3 | 168.0 | 174.6 | 180.6 | 185.9 | 189.9 |
| April | 80.0 | 90.1 | 99.4 | 103.6 | 115.1 | 130.6 | 137.4 | 142.6 | 146.7 | 152.5 | 161.0 | 168.3 | 174.4 | 181.3 | 186.4 | 191.1 |
| May | 80.7 | 92.1 | 99.7 | 104.3 | 115.9 | 130.7 | 137.4 | 142.4 | 146.3 | 152.2 | 160.8 | 168.8 | 174.4 | 180.5 | 186.5 | |
| June | 81.3 | 92.9 | 99.9 | 104.7 | 118.9 | 129.5 | 137.6 | 141.9 | 145.8 | 153.0 | 161.4 | 168.1 | 174.5 | 180.4 | 186.2 | |
| July | 82.1 | 93.4 | 99.7 | 105.3 | 120.0 | 130.5 | 137.7 | 141.9 | 145.7 | 153.2 | 161.8 | 167.9 | 173.8 | 179.4 | 185.6 | |
| August | 83.1 | 94.5 | 99.8 | 105.7 | 121.7 | 132.2 | 137.9 | 141.3 | 146.0 | 153.9 | 162.1 | 166.9 | 173.7 | 180.3 | 185.9 | |
| September | 84.8 | 96.1 | 100.9 | 107.0 | 123.7 | 132.8 | 139.0 | 141.9 | 146.7 | 155.6 | 163.0 | 167.6 | 176.0 | 181.5 | 186.0 | |
| October | 86.0 | 96.8 | 101.1 | 107.9 | 124.8 | 133.5 | 139.3 | 141.9 | 147.0 | 156.6 | 165.4 | 167.6 | 177.0 | 181.9 | 187.5 | |
| November | 86.9 | 97.5 | 101.8 | 109.0 | 126.0 | 134.5 | 140.0 | 142.8 | 147.4 | 157.5 | 166.0 | 169.5 | 176.6 | 182.8 | 187.5 | |
| December | 87.0 | 98.1 | 102.3 | 109.6 | 127.7 | 135.3 | 140.5 | 143.3 | 147.6 | 158.5 | 166.8 | 172.4 | 179.6 | 184.5 | 189.4 | |
| Average | 82.4 | 93.1 | 100.0 | 105.4 | 119.3 | 131.6 | 138.1 | 142.1 | 146.2 | 153.7 | 162.3 | 168.3 | 175.1 | 181.1 | 186.4 | |
| <u>(c) Non-durable goods</u> | | | | | | | | | | | | | | | | |
| January | 76.3 | 88.1 | 98.2 | 101.9 | 111.3 | 127.3 | 132.9 | 140.7 | 144.3 | 148.4 | 157.6 | 165.3 | 171.6 | 177.3 | 183.7 | 187.9 |
| February | 76.9 | 88.9 | 98.6 | 102.4 | 112.5 | 127.6 | 132.8 | 141.0 | 144.3 | 148.7 | 158.0 | 166.8 | 172.4 | 177.7 | 183.7 | 188.3 |
| March | 77.6 | 90.3 | 99.3 | 103.0 | 113.8 | 128.6 | 133.4 | 141.9 | 145.0 | 150.8 | 159.4 | 167.3 | 173.5 | 178.7 | 185.1 | 189.0 |
| April | 78.3 | 90.6 | 99.8 | 103.7 | 115.1 | 129.6 | 134.6 | 142.9 | 146.2 | 151.3 | 161.2 | 168.0 | 173.6 | 179.9 | 186.6 | 190.5 |
| May | 80.7 | 92.8 | 100.7 | 105.1 | 117.9 | 130.2 | 135.4 | 144.6 | 147.2 | 153.6 | 163.5 | 169.0 | 174.6 | 181.1 | 186.5 | |
| June | 82.2 | 93.7 | 100.4 | 105.3 | 120.0 | 129.7 | 135.9 | 143.9 | 147.0 | 154.7 | 163.6 | 169.0 | 174.0 | 181.3 | 185.0 | |
| July | 82.3 | 94.2 | 100.2 | 105.4 | 120.4 | 129.3 | 135.8 | 142.9 | 147.2 | 154.0 | 162.0 | 168.1 | 173.5 | 180.9 | 184.5 | |
| August | 83.3 | 94.4 | 99.4 | 105.5 | 121.7 | 128.5 | 135.3 | 141.2 | 144.8 | 153.2 | 160.5 | 166.1 | 171.6 | 178.2 | 183.5 | |
| September | 83.8 | 95.3 | 100.1 | 105.9 | 122.3 | 128.7 | 136.1 | 140.9 | 145.8 | 153.6 | 161.5 | 166.1 | 173.2 | 178.8 | 182.9 | |
| October | 85.4 | 96.4 | 100.6 | 107.3 | 124.3 | 130.2 | 137.3 | 142.6 | 146.9 | 155.0 | 163.5 | 168.3 | 174.6 | 180.6 | 185.3 | |
| November | 86.1 | 96.5 | 100.7 | 108.9 | 124.9 | 131.2 | 138.7 | 143.0 | 147.6 | 155.7 | 163.7 | 169.7 | 175.7 | 181.5 | 185.8 | |
| December | 88.0 | 98.2 | 102.2 | 110.6 | 128.5 | 134.0 | 142.0 | 145.5 | 150.2 | 160.0 | 167.9 | 174.0 | 180.0 | 185.9 | 191.2 | |
| Average | 81.7 | 93.3 | 100.0 | 105.4 | 119.4 | 129.6 | 135.8 | 142.6 | 146.4 | 153.2 | 161.9 | 168.1 | 174.0 | 180.2 | 185.3 | |

Table 8.- Index Numbers of Average Hourly Earnings in the Heavy Electrical Machinery and Equipment Industry. (1949=100)

| Month | 1953 | 1954 | 1955 | 1956 | 1957 | 1958 | 1959 | 1960 | 1961 | 1962 |
|-----------|-------|-------|-------|-------|-------|-------|-------|-------|-------|-------|
| January | 136.0 | 142.1 | 141.8 | 144.4 | 158.2 | 165.0 | 167.8 | 173.3 | 177.3 | 182.8 |
| February | 136.4 | 141.8 | 141.8 | 146.1 | 157.7 | 165.1 | 167.3 | 175.0 | 177.5 | 182.1 |
| March | 136.3 | 142.9 | 142.0 | 146.8 | 158.0 | 164.9 | 170.1 | 175.3 | 178.1 | 183.0 |
| April | 134.9 | 143.0 | 144.1 | 148.7 | 157.5 | 165.6 | 170.6 | 177.0 | 179.6 | 183.3 |
| May | 135.1 | 144.3 | 143.5 | 150.4 | 159.4 | 165.1 | 171.9 | 176.4 | 179.0 | |
| June | 136.9 | 144.9 | 143.7 | 151.2 | 160.7 | 165.9 | 172.0 | 177.9 | 179.6 | |
| July | 135.8 | 144.3 | 141.2 | 152.1 | 162.3 | 167.8 | 173.5 | 178.8 | 179.2 | |
| August | 136.1 | 143.4 | 141.6 | 151.2 | 160.1 | 164.5 | 170.5 | 177.7 | 178.9 | |
| September | 137.1 | 143.4 | 142.0 | 153.5 | 161.5 | 166.1 | 171.9 | 178.1 | 179.9 | |
| October | 138.6 | 143.1 | 144.1 | 155.5 | 162.6 | 165.6 | 171.6 | 176.4 | 179.7 | |
| November | 138.7 | 143.2 | 145.2 | 154.2 | 162.9 | 165.7 | 171.6 | 176.9 | 182.4 | |
| December | 139.5 | 142.2 | 145.5 | 156.1 | 163.8 | 168.2 | 172.1 | 176.4 | 181.2 | |

Table 9.- Average Weekly Wages in Manufacturing in Current Dollars and Adjusted for Changes in the Consumer Price Index.

| Year and Month | Weekly Wages in Current Dollars | Index Numbers of Weekly Wages in Current Dollars (1949=100) | Weekly Wages in 1949 Dollars | Index Numbers of Weekly Wages in 1949 Dollars |
|----------------|---------------------------------------|--|------------------------------------|---|
| 1945 - Average | \$ 30.47 | 73.0 | \$ 40.63 | 97.3 |
| 1946 - Average | 30.15 | 72.2 | 38.70 | 92.7 |
| 1947 - Average | 34.47 | 82.6 | 40.08 | 96.0 |
| 1948 - Average | 38.96 | 93.3 | 39.96 | 95.7 |
| 1949 - Average | 41.74 | 100.0 | 41.74 | 100.0 |
| 1950 - Average | 44.03 | 105.5 | 42.54 | 101.9 |
| 1951 - Average | 49.29 | 118.1 | 43.01 | 103.0 |
| 1952 - Average | 53.83 | 129.0 | 46.33 | 111.0 |
| 1953 - Average | 56.25 | 134.8 | 48.70 | 116.7 |
| 1954 - Average | 57.43 | 137.6 | 49.42 | 118.4 |
| 1955 - Average | 59.45 | 142.4 | 51.07 | 122.4 |
| 1956 - Average | 62.40 | 149.5 | 52.70 | 126.3 |
| 1957 - Average | 64.96 | 155.6 | 53.20 | 127.4 |
| 1958 - Average | 66.77 | 160.0 | 53.30 | 127.7 |
| 1959 - Average | 70.16 | 168.1 | 55.42 | 132.8 |
| 1960 - Average | 71.96 | 172.4 | 56.14 | 134.5 |
| 1961 - Average | 74.27 | 177.9 | 57.47 | 137.7 |
| 1961 - January | 72.76 | 174.3 | 56.45 | 135.2 |
| February | 73.40 | 175.9 | 56.86 | 136.2 |
| March | 73.64 | 176.4 | 57.04 | 136.7 |
| April | 74.56 | 178.6 | 57.80 | 138.5 |
| May | 74.44 | 178.3 | 57.71 | 138.3 |
| June | 75.02 | 179.7 | 58.16 | 139.3 |
| July | 73.95 | 177.2 | 57.28 | 137.2 |
| August | 74.26 | 177.9 | 57.52 | 137.8 |
| September | 75.00 | 179.7 | 58.05 | 139.1 |
| October | 75.69 | 181.3 | 58.36 | 139.8 |
| November | 75.64 | 181.2 | 58.27 | 139.6 |
| December | 72.85 | 174.5 | 56.17 | 134.6 |
| 1962 - January | 75.46 | 180.8 | 58.14 | 139.3 |
| February | 75.99 | 182.1 | 58.59 | 140.4 |
| March | 76.68 | 183.7 | 58.85 | 141.0 |
| April | 76.51 | 183.3 | 58.81 | 140.9 |
| May | | | | |
| June | | | | |
| July | | | | |
| August | | | | |
| September | | | | |
| October | | | | |
| November | | | | |
| December | | | | |

Note:- The current weekly wages relate to the last pay periods in the month, while the Consumer Price Index relates to the beginning of the month. The current average of weekly wages for any month is therefore adjusted in the above table by the Consumer Price Index for the following month, as more representative of the period in which the wages are spent. A statement of uses and limitations of the adjusted figures appears on page 11.

For Consumer Price Index statistics, construction methods and component details, see monthly report "Prices and Price Indexes".

NOTES

General.—The monthly statistics of average hours, average hourly earnings and average weekly wages, like those of employment, payrolls and average weekly wages and salaries, are based on data from establishments usually employing 15 persons and over. The latest monthly figures are subject to revision.

Coverage.—Firms are asked to furnish information for the male and female wage-earners for whom they keep records of hours worked, so that the statistics relate, in the main, to hourly-rated wage-earners, or production workers, employed full time and part time. Casual workers are also included, provided that they work at least one day in the reported pay period. Data for salaried personnel are purposely excluded. In many cases, information is not available for certain classes of wage-earners, whose earnings, like those of most salaried employees, are not directly dependent on the number of hours worked; examples of wage-earners frequently excluded are route-drivers, piece-workers in many but not all establishments, truck men, etc. Numerous employers do not keep records of man-hours for any classes of employees. The number of workers for whom information is given in the present report is therefore smaller than the total number of workers (wage-earners and salaried employees) for whom statistics of employment, payrolls, average earnings, sex distribution, etc., are given in the monthly reports on employment and payrolls. These also include figures for certain industries not represented in the present report because relatively few of the wage-earners therein are paid on an hourly basis with the result that man-hour records are lacking. Such industries include public utility operation, trade, finance, insurance and real estate and some branches of transportation, storage and communication and service.

In manufacturing, the data relate to over 70 p.c. of all employees on the staffs of the firms co-operating in the monthly surveys of employment and payrolls: in 1956 the wage-earners for whom information on man-hours was obtained formed some 83 p.c. of the total number of hourly-rated and other wage-earners reported by practically all manufacturing establishments to the Annual Census of Manufactures. In mining and construction, data on man-hours and hourly earnings are provided for approximately 75 p.c. and 69 p.c. of the total employees of firms co-operating in the monthly surveys of employment and payrolls in those industries, respectively; in 1956, the monthly statistics were based on approximately 93 p.c. of the total number of wage-earners reported in the annual survey of the Mineral Statistics Section of the Industry and Merchandising Division.

Man-hours.—The man-hours statistics include hours worked by full-time and part-time wage-earners, including overtime hours actually worked; premium or penalty hours credited for purpose of computing overtime payment are not included. Hours

credited to wage-earners absent on leave with pay in the reported pay periods are included in the statistics as though the hours had been worked. The averages are obtained by dividing the aggregate hours reported for the week by the number of full-time and part-time wage-earners working such hours.

Wages.—The questionnaire calls for a statement of gross wages earned by the full-time and part-time wage-earners whose hours are reported, before deductions are made for taxes, unemployment insurance contributions, etc. Payments for overtime work, incentive or production and cost-of-living bonuses paid at regular intervals, and amounts credited to wage-earners on leave with pay in the reported pay periods are included. The value of board and lodging, which in some cases is part of the remuneration of workers, is not included. Bonuses paid at infrequent intervals and employers' contributions to welfare funds such as workmen's compensation, unemployment insurance, pension and medical plans and certain other employee benefits are also excluded.

So far as is possible the revised figures of average hourly and weekly earnings incorporate retroactive pay for one month as well as corrections in the material originally tabulated and data received too late for inclusion in the first tabulation; for the most part, such adjustments are not carried back for more than one month.

Pay Periods.—Statistics of man-hours and wages reported for periods exceeding one week in duration are reduced by the appropriate proportions to obtain the number of hours and the wages for one week in the stated pay period. Such data are combined with weekly figures furnished by employers whose records are maintained on a weekly basis, so that, in all cases, the tabulated statistics represent the situation in one week in each month.

Variations in Trends of average earnings result from many factors, such as changes in wage rates, in amounts of overtime work, short-time work, shift differentials, incentive or production bonuses and in the area, occupational and sex distributions of the reported working forces. Differences in industrial distributions, with related occupational and sex distributions, are the principal factors contributing to differences in the levels of earnings in particular areas.

Urban Area Statistics.—Statistics given in the present report for communities listed as "metropolitan areas" and "other major urban areas" in Tables 8 and 9 of the 1956 Census Volume 1 (Population) and in the same tables in Bulletin 1-6, cover the census areas, except those for St. Catharines, which also include establishments in Port Colborne and Welland. Statistics given for urban areas not listed in the above mentioned tables cover establishments in the incorporated cities and towns named but also include Iberville with St. Jean, Nitro with Valleyfield, and Preston with Galt.

Measuring the Purchasing Power of Earnings.—

Changing consumer price levels affect the amounts of goods and services which a dollar will buy, and average earnings, of course, will be affected in the same way. An earnings measurement which takes the change of consumer prices into account, can be calculated by reducing actual earnings averages by the percentage amounts consumer price levels rise, or increasing them by the amount price levels fall. The adjusted averages may be used to indicate the comparative quantities of goods and services which could be purchased by average earnings if consumer price levels and consumption patterns had remained constant. The following illustration shows how this kind of an adjustment can be made.

Suppose that a series of weekly average wages rises from \$50.00 in week A to \$60.00 in week B, and that in the same interval a consumer price index advances from 100.0 to 110.0. Because of the 10 per cent rise in consumer prices, \$1.00 will not buy as much in week B as it would in week A. Likewise, a 20 per cent rise from \$50.00 to \$60.00 will overstate the increase which has occurred in the purchasing power of average weekly wages. This overstatement can be removed by reducing the figure of \$60.00 by the amount of the consumer price increase. The adjusted average is \$54.55 ($60.00/110.0 \times 100.0$), which may be referred to as a weekly wage average for week B expressed in the dollars of period A, or it may be said to indicate the level of real weekly wages relative to week A.

The foregoing calculation can be carried a step further to express in index number form the relationship between the week A average of \$50.00 and the week B figure of \$54.55. Taking the week A average of \$50.00 as equal to 100.0, the week B index becomes 109.0 ($54.55/50.00 \times 100.0$). Such an index may be called an index of weekly real wages. It indicates that average wages for week B will buy 9 per cent more goods and services than those received in week A, in spite of a 10 per cent rise in consumer prices. This 9 per cent increase in real wages compares with the rise of 20 per cent in money wages ($60.00/50.00 \times 100.0$).

It should be noted that while the estimates of average real wages may reflect the experiences of

broad groups of workers fairly well, their applicability to individual wage-earners depends upon a number of considerations. For example, individual earnings will differ significantly from the group average, depending upon occupation, industry, geographical location, or sex of the wage-earner. Moreover, individual spending habits differ widely, but the consumer price index which is used to adjust the earnings data refers only to the average consumption pattern of a particular income group. Group-spending patterns change over periods of time. To the extent that this occurs, the earnings data adjusted by the consumer price index (which has a "fixed" consumption pattern), will gradually be rendered less valid. Finally, some part of income may be saved, and it should be borne in mind that it is not appropriate to reduce savings to a constant dollar basis by using a price index which reflects consumption patterns.

It should also be kept in mind that measures of change in real earnings calculated from averages of gross earnings may differ from changes in the purchasing power of "take-home" pay, due to such factors as changes in personal income tax, pay deductions for such things as social insurance and pension plans. Thus index numbers of real wages should not be interpreted as measuring fluctuations in the levels of consumption of wage-earners or wage-earners' families; they are intended to show only the trend in purchasing power of wages over the items covered by the price index, and in addition to the factors already mentioned, do not take into account other family income (including family allowances) or changes in the savings position of families.

In Table 9, 1949 figures are used as reference levels for indexes of both actual and real wages, since this is the year selected by the Dominion Bureau of Statistics for general post-war index number comparisons. However, the adjustment made in the foregoing illustration can be applied to any reference level, and it should not be inferred that the 1949 reference period has any special validity for earnings comparisons. Percentage change between any two periods will be the same regardless of the reference period selected.



1010512618

FOOTNOTES

The following footnotes explain the content of various industrial classes listed in the detailed tables in this bulletin. In some industries, the group breakdown is less extensive than in the Standard

Industrial Classification; in these cases, figures for certain categories not shown are contained in the group totals.

- (a) Alluvial gold and auriferous quartz mining.
- (b) Copper-gold-silver; nickel-copper; silver-cobalt; silver-lead-zinc and miscellaneous metal mining.
- (c) Oil and natural gas; oil shale and bituminous sand; contract drilling and prospecting for oil.
- (d) Non-metal mining and quarrying; clay and sand pits.
- (e) Tires, tubes and other rubber products.
- (f) Leather gloves and mittens; leather tanneries and miscellaneous leather products.
- (g) Miscellaneous wood products.
- (h) Paper boxes and bags; roofing papers; miscellaneous paper products.
- (i) Household, office and store machinery; machine tools; machinery, n.e.s.
- (j) Machine tools; machinery, n.e.s.
- (k) Jewellery and silverware; white metal alloys; miscellaneous non-ferrous metal products.
- (l) Abrasives; asbestos; hydraulic cement; clay; glass; lime and gypsum; stone; concrete and miscellaneous non-metallic mineral products.
- (m) Building includes buildings and structures, special trade contractors. General engineering includes other construction, other than highways, bridges and streets.
- (n) Interurban bus and coach and urban and suburban transportation systems; taxi-cab and truck transportation; services incidental to transportation; other transportation.
- (o) Hotels and restaurants; laundries; dyeing, cleaning and pressing plants, and recreational services.
- (p) The Northwest Territories, with the exception of Baffin Island, are included in Alberta. Baffin Island is included in Quebec. The Yukon Territory is included in British Columbia.
- (..) Figures not available.

