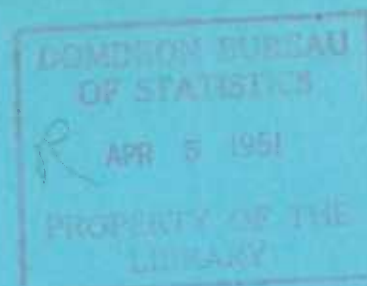


C.1

72-405



GOVERNMENT OF CANADA

DOES NOT CIRCULATE
NE PAS PRÊTER

MAN-HOURS AND HOURLY EARNINGS

REPORTED AT

THE FIRST OF JANUARY, 1951



DOMINION BUREAU OF STATISTICS
Department of Trade and Commerce

Vol. 7

No. 1

Published by Authority of the Rt. Hon. C. D. Howe
Minister of Trade and Commerce

Prepared in
Employment Section of the Labour and Prices Division,
Dominion Bureau of Statistics, Ottawa

CONTENTS

Page

Explanatory notes, facing	1
---------------------------------	---

TEXTUAL SUMMARIES

Manufacturing	1
Non-Manufacturing	1
Provincial Statistics for Leading Industries	3
Statistics for the Larger Cities	6
Statistics for Newfoundland	6

TABLES

A. Changes in the Average Earnings of Persons Employed by Leading Establishments at Jan. 1, 1951, as compared with the same date in preceding years ...	2
B. Average Hours Worked and Average Hourly and Weekly Earnings of Hourly-Rated Wage-Earners in Specified Industries in Newfoundland	7
1. Industrial Distribution of Wage-Earners in Canada for Whom Statistics are Available at latest date, showing their average hours and average earnings, with comparative averages a month and a year earlier	8

Average Hours and Average Hourly Earnings at Jan. 1, 1951, with Comparisons at Earlier Dates.

2. In Manufacturing in Canada	9
3. In Specified Non-Manufacturing Industries	10
4. In Manufacturing as a Whole in Eight Provinces	14
5. In Manufacturing as a Whole in Leading Cities	16
6. By Industries, Within Provinces	18
7. By Industries, Within Cities	21

Average Weekly Wages of Hourly-Rated Wage-Earners at Jan. 1, 1951, with Comparisons at Earlier Dates.

8. In Manufacturing in Canada, with Comparative Figures of Earnings for Salaried Employees and Wage-Earners	22
9. In Manufacturing by Provinces	23
10. In Manufacturing by Cities	24

CHARTS

Average Hourly Earnings in Specified Non-Agricultural Industries	4-5
--	-----

EXPLANATORY NOTES.

General.-- The monthly statistics of average hours, average hourly earnings and average weekly wages, like those of employment, payrolls and average weekly wages and salaries, are based on data from establishments usually employing 15 persons and over.

Coverage.-- Firms are asked to furnish information for the male and female wage-earners for whom they keep records of hours worked, so that the statistics relate, in the main, to hourly-rated wage-earners, or production workers, employed full time and part-time. Casual workers are also included. Data for salaried personnel are purposely excluded. In many cases, information is not available for certain classes of wage-earners, whose earnings, like those of most salaried employees, are not directly dependent on the number of hours worked; examples of wage-earners frequently excluded are route drivers, piece-workers in many but not all establishments, truck men, etc. Numerous employers do not keep record of man-hours for any classes of employees. The number of workers for whom information is given in the present report is therefore smaller than the total number of workers (wage-earners and salaried employees) for whom statistics of employment, payrolls, average earnings, sex distribution, etc., are given in the monthly bulletins on employment and payrolls (Report 9-4010).

In manufacturing, largely represented in the statistics of this report, the data relate to over 75 p.c. of all employees on the staffs of the firms co-operating in the monthly surveys of employment and payrolls; in 1948, the wage-earners for whom information on man-hours was obtained formed over 80 p.c. of the total number of wage-earners reported by practically all manufacturing establishments to the Annual Census of Manufactures, including hourly-rated and other wage-earners. In mining and construction, data on man-hours and hourly earnings are provided for approximately 84 p.c. and 71 p.c. of the total employees of firms co-operating in the monthly surveys of employment and payrolls in those industries, respectively; in 1948, the monthly statistics were based on approximately 89 p.c. and 54 p.c. of the total number of wage-earners reported to the Census of Mining and Census of Construction, respectively.

Man-Hours.-- The statistics of man-hours include hours worked by full time and part-time wage-earners, including overtime hours actually worked; premium or penalty hours credited for purposes of computing overtime payment are not included. Hours credited to wage-earners absent on leave with pay in the reported pay periods are included in the statistics as though the hours had been worked. The averages are obtained by dividing the aggregate hours reported for the week by the number of full time and part-time wage-earners working such hours.

Wages.-- The questionnaire calls for a statement of gross wages earned by the full time and part-time wage-earners whose hours are reported, before deductions are made for taxes, unemployment insurance contributions, etc. Payments for overtime work, incentive or production, and cost-of-living bonuses paid at regular intervals, and amounts credited to wage-earners on leave with pay in the reported pay periods are included. The value of board and lodging which in some cases is part of the remuneration of workers is not included. Retroactive pay not earned during the reported pay period, and bonuses paid at infrequent intervals are also excluded.

Pay Periods.-- Statistics of man-hours and wages reported for periods exceeding one week in duration are reduced by the appropriate proportions to calculate the number of hours and the wages in one week in the stated pay period. Such data are combined with weekly figures furnished by employers whose records are maintained on a weekly basis, so that, in all cases, the tabulated statistics represent the situation in one week in each month.

MAN-HOURS, HOURLY EARNINGS AND WEEKLY WAGES REPORTED BY LEADING EMPLOYERS
AT JAN. 1, 1951.

1. Manufacturing

There was a decline of 8.3 p.c. in the aggregate hours worked by wage-earners in leading manufacturing establishments at Jan. 1 as compared with Dec. 1. This reduction resulted partly from the observance of the year-end holidays, and partly from seasonal inactivity in certain industries. The average hours worked were 2.9 hours lower than in the week of Dec. 1. The number of factory workers for whom man-hours were reported at the date under review was 1.8 p.c. below the figure for Dec. 1. The decline in wage-earners took place in the non-durable section of manufacturing, the heavy goods industries reporting a slight increase in the number of hourly-rated wage-earners. The aggregate wages distributed by the manufacturing firms furnishing data decreased by 7.4 p.c. in the period under review, but the average hourly earnings rose by 1.1 cents, to reach 108.9 cents, the highest figure on record. The increase was largely due to seasonal changes in the industrial distribution of the hours, although upward adjustments in wage rates, increased cost-of-living bonuses, and overtime at premium rates were reported by some firms. It should be noted that increasingly large proportions of establishments are paying their staffs for specified statutory holidays.

Durable Goods Industries.— The number of hourly-rated wage-earners employed by firms manufacturing durable goods rose by 0.02 p.c. in the period under review. Except for a slight increase in the number of wage-earners in the electrical apparatus industry, the advance was confined to the iron and steel group, and in particular, to the primary iron and steel and motor vehicle sections. The aggregate hours reported in the heavy manufactured goods division in the week of Jan. 1 were 6.1 p.c. below the total for the week of Dec. 1; the average hours worked declined by 2.7 hours. The aggregate wages disbursed by the establishments furnishing data decreased by 5.8 p.c. at Jan. 1 as compared with Dec. 1, but there was a rise of 0.3 cents in the average hourly earnings of their hourly-rated wage-earners.

Non-Durable Goods Industries.— The aggregate hours reported by the co-operating factories in the light manufactured goods division in the week of Jan. 1 were 10.6 p.c. lower than one month earlier. Declines in working time were noted in all industries in this category; the losses were particularly marked in the textile and edible plant products industries, where the aggregate hours in the holiday week fell by 11.4 p.c. and 20.3 p.c., respectively, as compared with the week of Dec. 1. Seasonal inactivity in certain industries also contributed to the lower figure at the date under review. The average hours worked in the non-durable goods industries taken as a unit were 3.1 hours lower than in the same week a month earlier. The average hourly earnings reported rose by 1.6 cents at Jan. 1, to reach a new maximum. Increases were indicated in most of the main branches of the group, the exceptions being edible animal products, fur products and tobacco.

2. Non-Manufacturing Industries

Mining.— The number of hourly-rated wage-earners reported by the larger

NOTE:—THE MOST RECENT STATISTICS THROUGHOUT THIS BULLETIN ARE SUBJECT TO REVISION.

Table A.- Changes in the Average Earnings of Persons Employed by Leading Establishments at Jan. 1, 1951, as compared with the same date in preceding years.

(Decrease indicated by the minus sign)

(1) Changes in Average Hourly Earnings and Weekly Wages of Hourly-Rated Wage-Earners

	Hourly-Rated Wage-Earners Reported at Jan. 1, 1951	Change in Average Hourly Earnings at Jan. 1, 1951 over			Change in Average Weekly Wages at Jan. 1, 1951 over		
		Jan. 1 1950	Jan. 1 1949	Jan. 1 1948	Jan. 1 1950	Jan. 1 1949	Jan. 1 1948
(a) Industries	no.	p.c.	p.c.	p.c.	p.c.	p.c.	p.c.
Manufacturing	794,607	7.7	12.0	25.8	8.5	10.9	32.0
Mining	74,866	5.9	8.8	22.4	6.9	15.0	35.7
Local Transportation	32,351	6.1	12.0	20.6	7.1	12.2	23.1
Building Construction	95,484	9.1	12.4	23.0	6.9	7.0	23.3
Services	31,968	4.8	9.7	21.5	6.0	11.0	23.6

(b) In Manufacturing, by Provinces

Nova Scotia	19,237	1.6	11.1	22.7	0.8	4.0	17.8
New Brunswick	14,682	6.6	9.9	23.4	8.2	11.4	30.8
Quebec	252,687	7.1	10.6	24.3	7.9	8.8	31.2
Ontario	405,555	8.2	12.9	27.0	8.5	11.7	34.4
Manitoba	27,364	5.5	9.8	23.1	7.1	10.7	26.5
Saskatchewan	4,860	6.7	12.4	24.7	9.0	16.0	34.6
Alberta	14,782	6.9	9.8	27.3	8.2	11.4	29.6
British Columbia	54,986	8.2	11.2	24.1	13.2	14.1	28.0

(c) In Manufacturing, by Cities

Montreal	131,241	5.5	9.8	23.7	5.7	6.3	31.7
Toronto	121,031	8.5	13.0	25.4	7.2	11.5	31.2
Hamilton	44,098	7.4	16.5	33.2	6.3	11.9	32.5
Windsor	28,571	8.3	11.6	21.9	13.5	13.0	60.8
Winnipeg	24,195	5.2	9.6	22.7	6.8	10.4	26.2
Vancouver	22,974	9.3	12.7	25.1	14.3	12.0	29.2

(2) Changes in Weekly Earnings of Salaried Employees and Wage-Earners and in Weekly Wages of Hourly-Rated Wage-Earners

Changes at Jan. 1, 1951, as compared with:-

CANADA	Jan. 1, 1950 in		Jan. 1, 1949 in		Jan. 1, 1948 in	
	Salaries and Wages	Weekly Wages	Salaries and Wages	Weekly Wages	Salaries and Wages	Weekly Wages
	p.c.	p.c.	p.c.	p.c.	p.c.	p.c.
All Manufacturing	7.5	8.5	10.8	10.9	29.1	32.0
Durable Manufactured Goods	6.9	7.0	10.2	9.7	30.1	31.8
Non-Durable Manufactured Goods	7.9	9.4	11.5	12.1	28.0	32.0

coal-mining companies decreased by 0.9 p.c.; this reduction was accompanied by declines of 13.8 p.c. in their aggregate hours and 13.5 p.c. in their total wages. The length of the average working week in coal mining at Jan. 1 was 5.3 hours shorter than in the week of Dec. 1, while the average hourly earnings were half a cent higher. **Changes** in the geographical distribution of the hours worked contributed to the slight advance.

The loss in working time in metallic mining in the week of Jan. 1 as compared with that of Dec. 1 was not so great as in coal mining; the average hours worked were 2.4 hours shorter than at Dec. 1, while the aggregate hours reported in the industry decreased by 4.9 p.c. The total wages fell by 3.5 p.c., but the average hourly earnings increased by 3.3 cents. Several firms in the industry stated an upward adjustment had been made in their wage rates.

The number of wage-earners reported by non-metallic mining companies at Jan. 1 was 5.7 p.c. less than the number they had employed at Dec. 1. Their aggregate hours were 11.7 p.c. lower than in the week of Dec. 1, while the average per wage-earner was 2.9 hours shorter. The average hourly earnings were at a new high level at Jan. 1, 3.2 cents above the Dec. 1 figure. Numerous mining companies indicated the payment of double time for work on the holidays.

Construction.— There was a further seasonal decline in activity in building and highway construction in the period under review. The number of wage-earners employed by the co-operating building contractors declined by 11.6 p.c., while the loss in highway construction amounted to 15.3 p.c. The aggregate hours reported in building construction during the holiday week were 25.3 p.c. lower than in the week of Dec. 1. In the same comparison, the average hours worked fell by 6.2 hours; on the other hand, the average hourly earnings rose by 1.3 cents in the month.

In highway construction, the percentage changes in aggregate hours and wages were not so great as in building construction. The loss in average working time as compared with the preceding period was only 1.4 hours, while the average hourly earnings in highway construction increased only slightly in the period under review.

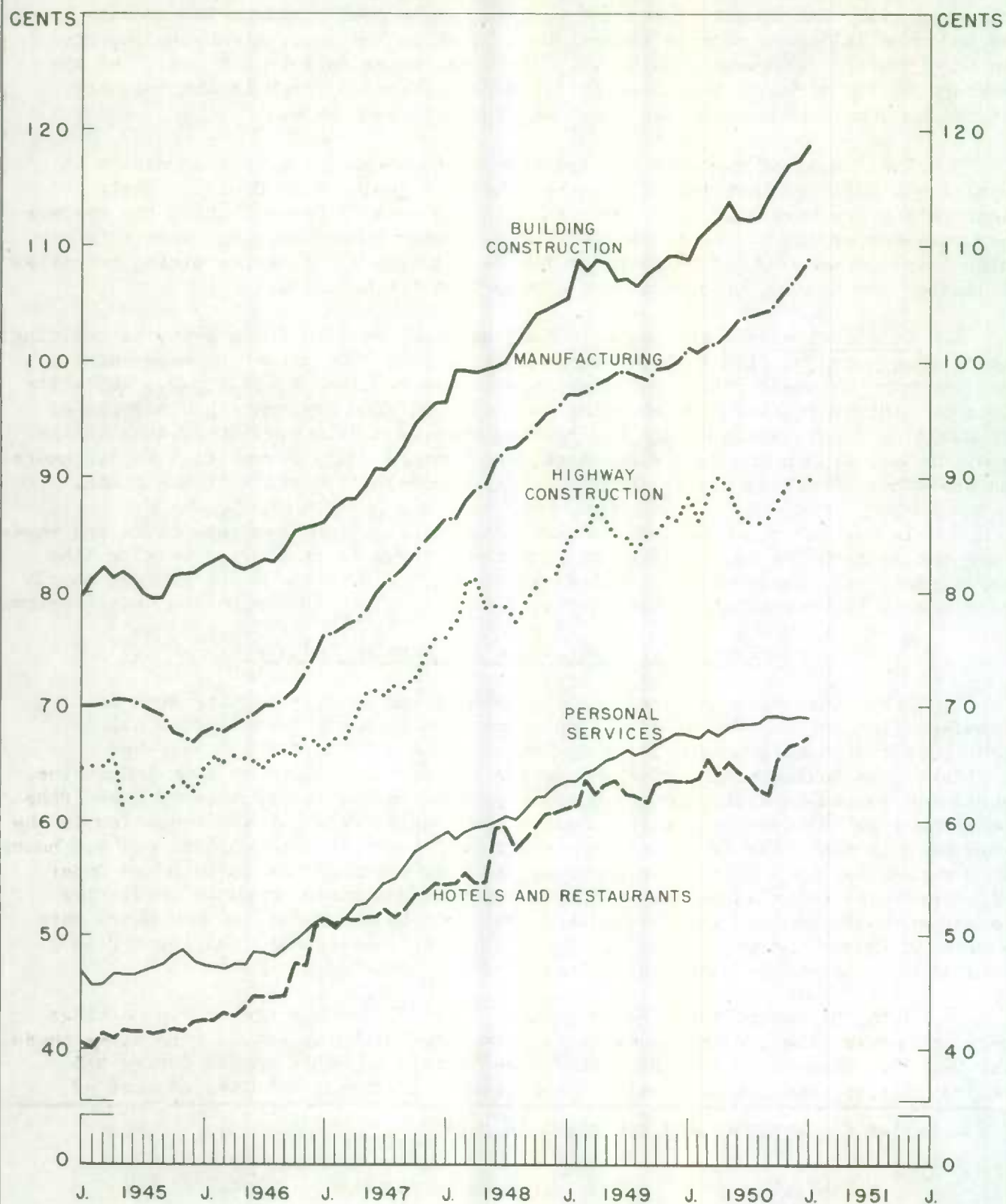
3. Provincial Statistics for Leading Industries

Table 4 shows a decline in the length of the average working week in manufacturing in the week of Jan. 1 as compared with a month earlier in all provinces except Saskatchewan, largely due to time lost during the year-end holidays. In Saskatchewan, overtime during the holiday period in some industries, particularly non-metallic mineral products, accounted for an advance of two-fifths of an hour in the average working time in the week of Jan. 1. The reduction in the work week in the other provinces ranged from 4.7 hours in Newfoundland and 4.6 hours in Nova Scotia, to 1.4 hours in Alberta. Shorter working time in pulp and paper mills and seasonal slackness in the edible plant and animal products industries caused much of the loss in Newfoundland, while in Nova Scotia, reduced hours were worked in lumber and textile mills, in addition to the seasonal falling-off in activity in the edible plant and animal products industries.

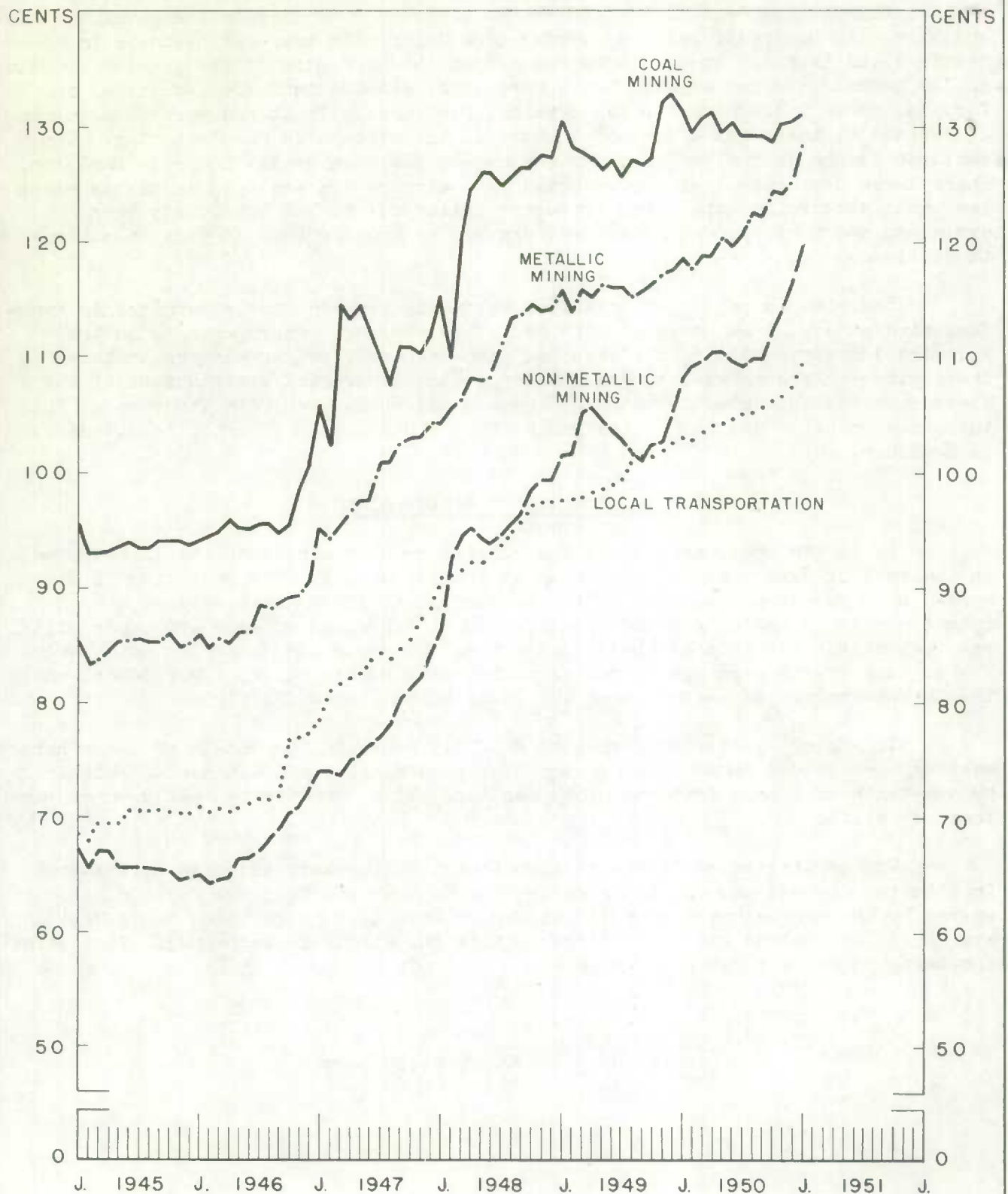
With the exception of Newfoundland, in which the average hourly earnings were unchanged, the provincial averages in manufacturing at Jan. 1 were above those for Dec. 1. Changes in the industrial distribution of hours worked during the holiday period, and seasonal variations in some industries, with the payment of

¹/Statistics for Newfoundland are given on page 7.

AVERAGE HOURLY EARNINGS IN SPECIFIED NON-AGRICULTURAL INDUSTRIES



AVERAGE HOURLY EARNINGS IN SPECIFIED NON-AGRICULTURAL INDUSTRIES



higher wage rates in numerous instances, were responsible for much of the advance, in which premium overtime work in some establishments was also a factor. The most substantial rise in the period under review was that of 4.5 cents in the average hourly earnings in manufacturing in Nova Scotia.

4. Statistics for the Larger Cities

The average hours in manufacturing in the week of Jan. 1 were shorter than in the week of Dec. 1, in each of the cities for which data are given in this bulletin. In Montreal, reduced working time during the year-end holidays in textiles and iron and steel plants was responsible for much of the general decline of 3.5 hours. Shorter working hours were also reported in these industries in Toronto, where there were further seasonal declines in fruit and vegetable canning; on the whole, there was a drop of 3 hours in the average in manufacturing. The smallest change in the period under review was the loss of 1.9 hours in Hamilton, where large proportions of the reported wage-earners are employed in plants which pay their workers for specified statutory holidays; as has previously been explained, hours of paid absences are regarded as hours worked in these monthly tabulations.

There was a reduction of 4.2 cents in the average hourly earnings in manufacturing at Jan. 1 as compared with Dec. 1 in Windsor, where changes in the industrial distribution of the reported wage-earners were largely responsible for the decline. Wage increases, and changes in the industrial distribution of the hours reported accounted for much of the advance of 2.1 cents in Vancouver. The increases in other leading cities ranged from 0.6 cents in Toronto, to 1.6 cents in Hamilton.

5. Statistics for Newfoundland

As in the other provinces, the working week in manufacturing in Newfoundland in the week of Jan. 1 was shorter than in that of Dec. 1. The reduction in time worked by wage-earners engaged in the production of foods and beverages, (particularly in the canned and cured fish division), and in pulp and paper mills, was responsible for much of the decline of 4.7 hours in manufacturing as a whole. The average hourly earnings in manufacturing were unchanged, at 103.8 cents, while the latest average of weekly wages was \$4.88 below the Dec. 1 figure.

In mining, there was a reduction of 3.2 hours in the length of the working week in the holiday period. The average hourly earnings, at 109.0 cents, declined by one-tenth of a cent from one month earlier, while the average weekly wages were lower by \$3.53.

The working hours in the construction industry were affected by seasonal inactivity, as well as by conditions during the holiday period; the average hours worked by the wage-earners reported at Jan. 1 were 12.7 hours below their Dec. 1 average. The average hourly earnings in this industry were unchanged. Statistics for Newfoundland are given in Table B.

oooooooooooo0000000000oooooooooooo

Table B.- Average Hours Worked and Average Hourly and Weekly Earnings of Hourly-Rated Wage-Earners in Specified Industries in Newfoundland.

Week of	Mining	Manufacturing (All Branches)	Food and Beverages	Canned and Cured Fish	Pulp and Paper Mills	Con- struction
<u>Average Hours Worked</u>						
	no.	no.	no.	no.	no.	no.
Apr. 1, 1950	47.6	45.2	42.7	38.6	48.1	46.5
May 1	43.1	44.1	38.1	31.9	48.9	42.6
June 1	46.9	44.6	41.5	36.6	46.4	43.9
July 1	43.5	44.5	42.8	37.7	45.7	44.0
Aug. 1	47.1	45.0	42.0	37.1	47.2	49.7
Sept. 1 ^{1/}	42.9	43.6	41.4	36.8	46.0	48.0
Oct. 1	43.2	46.1	43.4	39.2	47.8	46.0
Nov. 1	44.1	46.0	46.3	43.9	47.1	47.4
Dec. 1	43.1	45.5	43.8	40.8	47.4	47.9
*Jan. 1, 1951	39.9	40.8	35.8	30.5	42.9	35.2
<u>Average Hourly Earnings</u>						
	¢	¢	¢	¢	¢	¢
Apr. 1, 1950	92.2	100.0	62.2	61.5	127.0	84.4
May 1	92.2	100.4	63.1	63.6	125.2	83.3
June 1	91.6	98.9	62.3	65.1	120.3	81.3
July 1	94.5	106.1	61.6	64.5	132.5	80.6
Aug. 1	95.3	100.9	62.7	65.4	124.8	80.5
Sept. 1 ^{1/}	100.8	101.8	62.4	64.2	126.1	82.6
Oct. 1	112.2	100.6	62.8	64.6	127.2	83.6
Nov. 1	109.1	100.6	60.1	59.3	130.8	84.2
Dec. 1	109.1	103.8	61.1	60.7	137.3	84.9
*Jan. 1, 1951	109.0	103.8	60.1	58.5	134.5	84.9
<u>Average Weekly Wages</u>						
	\$	\$	\$	\$	\$	\$
Apr. 1, 1950	43.89	45.20	26.56	23.74	61.09	39.25
May 1	39.74	44.28	24.04	20.29	61.22	35.49
June 1	42.96	44.11	25.85	23.83	55.82	35.69
July 1	41.11	47.21	26.36	24.32	60.55	35.46
Aug. 1	44.89	45.41	26.33	24.26	58.91	40.01
Sept. 1 ^{1/}	43.24	44.38	25.83	23.63	58.01	39.65
Oct. 1	48.47	46.38	27.26	25.32	60.80	38.46
Nov. 1	48.11	46.28	27.83	26.03	61.61	39.91
Dec. 1	47.02	47.23	26.76	24.77	65.08	40.67
*Jan. 1, 1951	43.49	42.35	21.52	17.84	57.70	29.88

1/Railway dispute.

*See footnote on page 9.

Table 1.- Average Hours and Average Hourly and Weekly Earnings of Wage-Earners for Whom Data are Available at Jan. 1, 1961, with Comparative Figures for Dec. 1, 1960 and Jan. 1, 1960.

Industries	Average Hours per Week Reported at			Average Hourly Earnings Reported at			Average Weekly Wages			Wage-Earners Working Hours Shown in Col. 1
	Jan. 1 1961	Dec. 1 1960	Jan. 1 1960	Jan. 1 1961	Dec. 1 1960	Jan. 1 1960	Jan. 1 1961	Dec. 1 1960	Jan. 1 1960	
	no.	no.	no.	¢	¢	¢	\$	\$	\$	
MANUFACTURING	40.2	43.1	39.9	108.9	107.8	101.1	43.78	46.46	40.34	794,607
Durable manufactured goods	40.4	43.1	40.3	116.7	116.4	109.3	47.15	50.17	44.06	407,348
Non-durable manufactured goods	40.0	43.1	39.6	100.6	99.0	92.9	40.24	42.67	36.79	386,959
Animal products - edible	38.6	41.8	39.7	107.6	107.8	100.7	41.63	45.06	39.98	21,247
Dairy products	46.0	46.5	44.2	82.3	81.3	76.3	37.04	36.99	33.72	3,021
Meat products	38.9	41.8	40.4	116.2	117.7	109.6	45.98	49.20	44.28	14,872
Leather products	37.0	40.6	36.8	82.1	81.3	77.0	30.38	33.01	28.34	20,923
Leather boots and shoes	36.1	39.2	35.8	78.9	78.2	74.2	28.48	30.65	26.66	13,890
Wood products	38.5	42.3	37.6	99.9	99.7	92.8	38.46	42.17	34.89	68,061
Saw and planing mills	37.4	41.2	36.4	107.0	106.2	99.3	40.02	43.76	36.16	41,242
Containers	41.0	45.3	37.8	83.9	84.8	76.2	34.40	38.41	28.80	4,317
Furniture	39.7	44.2	39.8	92.1	92.3	86.8	36.56	40.80	34.55	17,208
Plant products - edible	40.7	43.6	38.8	88.8	83.6	80.2	34.92	36.45	31.12	40,816
Flour and other milled products	43.5	45.9	39.8	103.4	102.2	96.6	44.98	46.91	38.45	4,770
Fruit and vegetable preserving	36.2	41.4	36.3	79.3	74.7	77.3	28.71	30.93	27.29	6,166
Bread and bakery products	44.0	44.7	42.5	86.3	85.3	80.4	37.97	38.13	34.17	8,539
Chocolates and cocoa products	36.0	42.7	36.7	73.6	71.2	68.9	26.46	30.40	24.60	7,073
Pulp and paper products	43.4	45.6	42.3	119.9	119.3	109.2	52.04	54.40	46.19	84,560
Pulp and paper mills	47.4	49.5	45.4	125.7	125.4	113.5	59.68	62.07	51.63	41,414
Paper products	39.9	43.5	39.6	93.1	93.0	86.5	37.16	40.46	34.25	16,795
Printing and publishing	39.4	40.9	39.2	126.1	125.7	116.8	49.68	51.41	45.79	26,351
Rubber products	38.5	42.7	40.8	115.4	111.9	103.7	44.43	47.78	42.31	18,188
Textiles - all branches	37.7	41.9	37.4	86.1	85.5	80.6	32.46	35.82	30.14	127,880
Thread, yarn and cloth	40.7	44.5	41.1	92.0	91.8	84.3	37.44	40.85	34.66	55,981
Cotton yarn and cloth	39.8	43.5	42.7	95.7	95.8	84.9	38.09	41.67	36.26	25,312
Woolen yarn and cloth	40.1	43.8	40.1	85.7	86.2	81.0	34.37	37.76	32.48	12,778
Synthetic silk and silk goods	43.4	47.0	39.6	91.6	90.8	86.2	39.75	42.68	33.74	14,868
Hosiery and knit goods	37.0	42.2	36.4	79.7	79.4	74.9	29.49	33.51	27.26	19,968
Garments and personal furnishings	34.1	38.5	32.6	79.1	78.5	77.1	26.97	30.22	25.13	39,516
Tobacco	37.6	41.6	39.8	98.4	100.0	87.8	37.00	41.60	34.94	8,322
Beverages	44.4	43.2	43.2	108.0	106.7	101.6	47.95	46.09	43.89	12,712
Distilled and malt liquor	44.2	42.9	42.3	113.4	111.6	107.6	50.12	47.88	45.51	10,052
Chemicals and allied products	42.3	43.5	42.7	110.0	107.5	100.7	46.53	46.76	43.00	26,076
Drugs and medicines	38.7	41.8	40.8	90.4	90.2	83.2	34.98	37.70	33.96	3,682
Non-metallic mineral products ^{1/}	43.2	45.8	..	108.0	106.9	..	46.66	48.96	..	20,120
Glass products	43.9	47.3	44.1	104.9	104.7	96.8	46.06	49.52	42.25	5,724
Lime, gypsum and cement products	43.0	46.4	43.1	107.4	106.5	99.2	46.18	48.95	42.76	4,722
Electrical apparatus	38.1	41.9	39.8	117.4	117.6	110.7	44.73	49.27	44.06	45,107
Heavy electrical apparatus ^{2/}	40.3	41.6	42.4	133.1	134.2	123.1	53.64	55.83	52.19	10,531
Iron and steel products	41.0	43.2	40.6	121.5	122.1	114.3	49.82	52.76	46.41	237,931
Crude, rolled and forged products	41.1	42.6	40.6	124.7	129.0	121.3	51.25	54.96	49.26	35,441
Primary iron and steel	40.9	41.8	40.7	126.4	131.7	123.8	51.70	55.06	50.39	29,408
Machinery (other than vehicles)	41.4	44.5	40.9	113.6	113.7	105.5	47.03	50.60	43.15	22,737
Agricultural implements	37.7	40.0	38.9	130.8	131.5	121.9	49.31	52.60	47.42	12,136
Land vehicles and aircraft	42.3	43.4	41.7	126.3	126.4	118.1	53.42	54.86	49.25	93,258
Railway rolling stock	43.8	44.3	43.8	117.3	115.6	113.8	51.38	51.21	49.84	38,095
Automobiles and parts	40.8	42.0	39.4	135.9	137.5	125.1	55.46	57.76	49.29	45,569
Aeroplanes and parts	43.3	46.1	41.9	120.2	121.2	109.7	52.05	55.87	45.96	8,942
Steel shipbuilding and repairing	39.0	41.8	38.9	116.2	114.3	110.9	44.93	47.78	43.14	10,752
Iron and steel fabrication n.e.e.	39.7	43.0	39.3	116.4	117.2	108.6	46.21	50.40	42.68	8,273
Hardware, tools and cutlery	41.6	43.7	41.3	106.1	106.6	98.9	44.14	46.15	40.86	10,102
Foundry and machine shop products	41.1	44.3	38.8	122.6	122.7	112.2	50.39	54.36	43.53	6,988
Sheet metal work	38.2	42.9	37.4	111.3	111.2	102.1	42.52	47.70	38.19	13,543
Non-ferrous metal products	41.7	43.8	42.6	119.0	115.1	109.6	49.62	50.41	46.69	56,429
Smelting and refining	43.8	43.8	45.4	131.3	124.1	119.4	57.51	54.36	54.21	16,890
Aluminum and its products	41.5	44.0	41.3	108.7	107.6	100.8	45.11	47.34	41.63	4,918
Brass and copper manufacturing	40.7	43.4	40.1	110.4	111.4	106.1	44.93	48.35	42.55	7,996
Products of petroleum & coal	41.7	41.1	..	137.9	135.9	..	57.50	55.85	..	8,312
Petroleum and its products	41.5	40.7	41.5	142.1	139.4	131.8	68.97	66.74	64.70	6,349
Miscellaneous manufactured products ^{3/}	38.7	43.3	38.8	93.2	93.1	86.8	36.07	40.31	33.68	17,924
MINING	40.6	43.9	40.2	127.4	124.8	120.3	51.72	54.79	48.36	74,866
Coal	34.9	40.2	35.1	131.0	130.5	131.3	45.72	52.46	46.09	20,337
Metallic ores	42.8	45.2	42.7	128.5	125.2	118.8	55.00	56.59	50.73	40,745
Non-metallic minerals (except coal)	42.6	45.5	41.2	119.8	116.6	108.1	51.03	53.05	44.54	13,784
LOCAL TRANSPORTATION	44.6	45.4	44.2	109.5	107.7	103.2	48.84	48.90	45.61	32,551
BUILDING CONSTRUCTION	33.9	40.1	34.6	118.8	117.5	108.9	40.27	47.12	37.68	95,484
HIGHWAY CONSTRUCTION	38.4	39.8	37.8	89.9	89.8	88.4	34.52	36.74	33.42	38,104
SERVICES (as indicated below)	41.9	42.7	41.4	67.8	67.6	64.7	28.41	28.87	26.79	31,968
Hotels and restaurants	43.4	43.5	43.3	87.2	66.8	63.4	29.16	29.06	27.45	21,503
Personal (Chiefly laundries)	38.8	41.0	37.6	69.2	69.2	67.7	26.85	28.37	25.46	10,465

* Durable manufactured goods industries.

1/ Abrasive, asbestos, hydraulic cement, clay, glass, lime and gypsum, stone, concrete and miscellaneous non-metallic products.

2/ Based upon June 1, 1941, as 100 p.c., the index numbers of average hourly earnings of wage-earners employed by eight establishments manufacturing heavy electrical apparatus are as follows: Nov. 1, 1950, 254.5; Dec. 1, 1960, 254.6; Jan. 1, 1961, 252.6; at Jan. 1, 1960 the index was 233.9.

3/ Including musical instruments. 4/ Chiefly street and electric railways.

Table 2.- Average Hours Worked and Average Hourly Earnings of Hourly-Rated Wage-Earners in Manufacturing as a Whole and in the Manufacture of Durable Goods and of Non-Durable Goods.

Week of	All Average Hours Worked			All Average Hourly Earnings		
	Manu-	Non-Durable		Manu-	Non-Durable	
	factures	Durable Goods	Goods	factures	Durable Goods	Goods
	no.	no.	no.	¢	¢	¢
*Jan. 1, 1945	39.6	39.7	39.5	70.0	77.1	60.9
*Jan. 1, 1946	38.1	37.5	38.7	67.9	74.7	61.7
*Jan. 1, 1947	38.1	38.0	38.1	76.3	83.3	69.4
*Jan. 1, 1948	38.3	38.5	38.1	86.6	92.9	80.0
*Jan. 1, 1949	40.6	41.0	40.2	97.2	104.8	89.3
Feb. 1	42.9	43.2	42.7	97.2	105.0	89.3
Mar. 1	43.0	43.2	42.7	97.6	105.3	89.6
Apr. 1	42.9	43.2	42.6	98.2	105.7	90.3
May 1	42.5	42.7	42.3	98.6	106.2	90.7
June 1	40.8	41.1	40.5	99.1	106.5	91.5
July 1	41.8	42.4	41.2	99.1	106.7	91.3
Aug. 1	41.9	42.1	41.7	98.8	106.5	91.1
Sept. 1	42.4	42.5	42.2	98.4	106.6	90.4
Oct. 1	42.7	43.0	42.5	99.3	107.8	91.0
Nov. 1	42.8	42.8	42.9	99.5	108.0	91.4
Dec. 1	42.9	43.0	42.9	100.0	108.7	91.5
*Jan. 1, 1950	39.9	40.3	39.6	101.1	109.3	92.9
Feb. 1	42.3	42.2	42.4	100.9	109.5	92.6
Mar. 1	42.5	42.6	42.5	101.4	109.8	93.1
Apr. 1	42.8	43.0	42.6	101.7	110.0	93.6
May 1	42.6	42.9	42.4	102.5	110.6	94.3
June 1	42.0	42.2	41.7	103.5	111.4	95.5
July 1	42.5	42.9	42.2	103.9	111.8	95.7
Aug. 1	42.5	42.7	42.2	104.2	112.5	95.8
Sept. 1 ^{1/}	41.9	41.5	42.4	104.4	112.9	95.9
Oct. 1	42.9	43.0	42.8	105.3	114.3	96.3
Nov. 1	43.0	43.1	43.0	106.4	115.2	97.5
Dec. 1	43.1	43.1	43.1	107.8	116.4	99.0
*Jan. 1, 1951	40.2	40.4	40.0	108.9	116.7	100.6

*The averages at these dates were affected by loss of working time at the year-end holidays.

^{1/}Railway dispute.

Table 3.- Average Hours Worked and Average Hourly Earnings of Hourly-Rated Wage-Earners in Specified Non-Manufacturing Industries.

<u>Week of</u>	<u>Mining All Branches</u>	<u>Coal Mining</u>	<u>Metallic Mining</u>	<u>Non-Metallic Mining</u>	<u>Local Transportation</u>
(a) <u>Average Hours Worked Per Week</u>					
*Jan. 1, 1945	39.0	32.3	42.6	43.3	47.2
*Jan. 1, 1946	40.5	38.9	41.1	43.1	45.1
*Jan. 1, 1947	34.9	26.8	39.3	39.8	44.8
*Jan. 1, 1948	36.6	30.5	39.0	41.6	43.7
*Jan. 1, 1949	38.4	31.2	41.8	41.0	44.5
Feb. 1	44.0	40.3	45.9	44.9	45.4
Mar. 1	42.5	37.4	45.5	42.5	45.7
Apr. 1	42.3	36.6	45.5	42.6	45.5
May 1	41.4	34.7	44.6	42.9	45.4
June 1	41.2	33.5	45.4	40.9	44.7
July 1	42.6	37.8	45.5	41.8	45.4
Aug. 1	42.9	39.0	45.1	43.0	45.6
Sept. 1	42.9	38.4	45.1	43.6	46.1
Oct. 1	43.8	39.4	45.8	44.9	45.6
Nov. 1	44.5	40.3	46.5	45.4	46.0
Dec. 1	44.4	40.3	46.4	45.7	46.0
*Jan. 1, 1950	40.2	35.1	42.7	41.2	44.2
Feb. 1	43.0	37.4	46.0	44.0	45.3
Mar. 1	43.8	39.0	46.2	44.5	45.6
Apr. 1	43.7	39.2	46.1	43.8	45.5
May 1	43.5	38.3	46.1	44.1	45.3
June 1	42.3	35.1	45.2	43.8	44.5
July 1	43.2	39.3	44.7	44.4	45.7
Aug. 1	43.7	39.8	45.2	44.7	45.3
Sept. 1 ^{1/}	41.7	35.4	43.8	43.9	45.3
Oct. 1	43.1	39.1	44.5	44.8	45.4
Nov. 1	43.9	39.6	45.3	45.8	45.2
Dec. 1	43.9	40.2	45.2	45.5	45.4
*Jan. 1, 1951	40.6	34.9	42.8	42.6	44.6

*See footnote on page 9. 1/ Railway dispute.

Table 3.- Average Hours Worked and Average Hourly Earnings of Hourly-Rated Wage-Earners in Specified Non-Manufacturing Industries. (Continued)

<u>Week of</u>	<u>Mining All Branches</u>	<u>Coal Mining</u>	<u>Metallic Mining</u>	<u>Non-Metallic Mining</u>	<u>Local Transportation</u>
(b) <u>Average Hourly Earnings (in cents)</u>					
Jan. 1, 1945	85.3	95.7	85.1	67.2	68.5
Jan. 1, 1946	86.1	94.0	86.0	65.0	71.0
Jan. 1, 1947	94.4	106.0	95.3	74.0	78.8
Jan. 1, 1948	104.1	115.3	104.3	86.4	90.8
Jan. 1, 1949	117.1	130.6	115.9	101.6	97.8
Feb. 1	116.0	128.2	113.7	101.8	97.9
Mar. 1	118.1	127.6	115.9	105.3	98.1
Apr. 1	117.5	127.3	115.1	105.8	98.4
May 1	117.2	126.4	116.2	104.4	98.7
June 1	117.0	127.3	116.0	103.7	99.1
July 1	116.6	125.8	116.0	103.0	99.5
Aug. 1	115.9	127.4	115.3	101.6	101.6
Sept. 1	115.8	126.9	115.9	101.0	101.3
Oct. 1	116.8	127.7	116.4	102.5	101.4
Nov. 1	118.6	132.1	117.2	102.8	101.9
Dec. 1	119.6	132.8	117.6	105.1	102.8
Jan. 1, 1950	120.3	131.3	118.8	108.1	103.2
Feb. 1	119.4	129.7	117.5	109.4	102.8
Mar. 1	120.7	130.8	119.0	109.7	103.7
Apr. 1	120.7	131.3	118.9	110.4	104.3
May 1	120.9	129.6	120.3	110.4	104.3
June 1	120.1	130.5	119.7	109.7	104.6
July 1	120.4	129.3	120.5	109.3	105.2
Aug. 1	121.5	129.3	122.5	109.8	105.2
Sept. 1 ^{1/}	121.1	129.3	122.2	109.8	105.9
Oct. 1	123.1	128.9	124.6	112.2	106.4
Nov. 1	123.7	130.3	124.4	114.0	106.9
Dec. 1	124.8	130.5	125.2	116.6	107.7
Jan. 1, 1951	127.4	131.0	128.5	119.8	109.5

^{1/} Railway dispute.

Table 3.- Average Hours Worked and Average Hourly Earnings of Hourly-Rated Wage-Earners in Specified Non-Manufacturing Industries. (Continued)

<u>Week of</u>	<u>Building Construction</u>	<u>Highway Construction</u>	<u>Services as Specified</u>	<u>Hotels Restaurants</u>	<u>Personal Services</u>
(a) <u>Average Hours Worked Per Week</u>					
*Jan. 1, 1945	35.1	35.2	41.5	44.0	36.6
*Jan. 1, 1946	32.5	35.2	41.6	44.3	36.5
*Jan. 1, 1947	32.8	37.7	40.9	43.0	37.2
*Jan. 1, 1948	33.8	35.6	41.2	43.1	37.6
*Jan. 1, 1949	35.6	35.9	41.4	42.8	38.5
Feb. 1	39.6	40.6	42.2	42.9	40.8
Mar. 1	40.8	40.3	42.4	43.4	40.6
Apr. 1	40.5	39.1	42.6	43.4	41.2
May 1	40.4	35.2	42.3	43.0	41.1
June 1	38.6	38.1	41.8	42.7	40.1
July 1	39.1	39.9	42.3	43.1	40.7
Aug. 1	41.1	40.3	42.2	43.2	40.1
Sept. 1	41.1	39.4	42.5	43.4	40.5
Oct. 1	41.5	38.6	42.0	42.5	40.9
Nov. 1	41.2	38.9	41.9	42.4	40.8
Dec. 1	41.1	38.8	42.7	43.6	41.0
*Jan. 1, 1950	34.6	37.8	41.4	43.3	37.6
Feb. 1	38.6	40.6	42.1	42.9	40.4
Mar. 1	40.0	45.2	42.8	44.0	40.5
Apr. 1	40.2	40.8	43.0	43.8	41.4
May 1	40.1	38.6	42.9	43.6	41.6
June 1	39.4	38.6	42.8	43.8	40.9
July 1	40.5	40.5	42.7	43.9	40.5
Aug. 1	40.2	41.9	42.5	43.8	40.0
Sept. 1 ^{1/}	40.2	41.9	41.8	42.6	40.1
Oct. 1	40.6	41.9	42.5	43.4	40.9
Nov. 1	40.4	41.4	42.5	43.4	40.8
Dec. 1	40.1	39.8	42.7	43.5	41.0
*Jan. 1, 1951	33.9	38.4	41.9	43.4	38.8

*See footnote on page 9. 1/Railway dispute.

Table 3.- Average Hours Worked and Average Hourly Earnings of Hourly-Rated Wage-Earners in Specified Non-Manufacturing Industries. (Concluded)

<u>Week of</u>	<u>Building Construction</u>	<u>Highway Construction</u>	<u>Services as Specified</u>	<u>Hotels Restaurants</u>	<u>Personal Services</u>
(b) <u>Average Hourly Earnings (in cents)</u>					
Jan. 1, 1945	79.6	64.6	42.3	40.5	46.6
Jan. 1, 1946	82.3	64.6	43.8	42.3	47.4
Jan. 1, 1947	86.3	66.3	51.3	51.3	51.4
Jan. 1, 1948	96.6	76.0	55.8	54.4	59.1
Jan. 1, 1949	105.7	84.4	61.8	61.1	63.5
Feb. 1	108.9	85.5	62.1	61.4	63.5
Mar. 1	108.0	85.7	63.8	63.7	64.1
Apr. 1	108.9	87.6	63.0	62.3	64.7
May 1	108.5	86.2	63.9	63.1	65.4
June 1	107.0	85.1	64.2	63.5	65.8
July 1	107.2	84.9	63.8	62.5	66.4
Aug. 1	106.7	83.7	63.3	62.1	65.9
Sept. 1	107.8	85.1	63.0	61.6	66.2
Oct. 1	108.2	85.4	64.3	63.1	66.9
Nov. 1	109.0	86.8	64.9	63.8	67.3
Dec. 1	109.1	86.5	64.8	63.5	67.7
Jan. 1, 1950	108.9	88.4	64.7	63.4	67.7
Feb. 1	110.7	86.7	65.0	63.8	67.4
Mar. 1	111.7	88.7	66.3	65.4	68.1
Apr. 1	112.4	90.0	65.2	64.0	67.5
May 1	113.9	89.0	66.1	65.1	68.2
June 1	112.4	87.1	65.7	64.3	68.4
July 1	112.2	86.3	65.3	63.9	68.5
Aug. 1	112.5	86.1	64.7	62.9	68.7
Sept. 1 ^{1/}	114.1	86.7	64.5	62.2	69.3
Oct. 1	115.8	88.3	66.6	65.3	69.3
Nov. 1	117.1	89.7	67.6	66.5	69.9
Dec. 1	117.5	89.8	67.6	66.8	69.2
Jan. 1, 1951	118.8	89.9	67.8	67.2	69.2

^{1/} Railway dispute.

Table 4.- Average Hours Worked and Average Hourly Earnings of Hourly-Rated Wage-Earners Reported in Manufacturing as a Whole, by Provinces.

<u>Week of</u>	<u>N.S.</u>	<u>N.B.</u>	<u>Que.</u>	<u>Ont.</u>	<u>Man.</u>	<u>Sask.</u>	<u>Alta.</u>	<u>B.C.</u>
(a) <u>Average Hours Worked</u>								
*Jan. 1, 1945	40.3	40.1	41.4	38.7	39.6	37.8	40.2	37.1
*Jan. 1, 1946	38.5	41.1	39.5	37.2	39.1	40.2	39.8	36.1
*Jan. 1, 1947	37.8	40.5	39.5	38.1	38.4	40.6	39.8	34.6
*Jan. 1, 1948	40.0	39.9	39.4	37.7	39.5	39.1	40.0	34.9
*Jan. 1, 1949	41.0	41.7	42.3	40.3	40.3	40.9	40.1	35.1
Feb. 1	44.3	45.6	44.5	42.4	42.4	42.7	42.0	38.2
Mar. 1	44.0	45.4	44.5	42.6	42.8	42.7	42.4	37.4
Apr. 1	43.9	45.0	44.4	42.3	42.9	42.8	42.9	38.6
May 1	44.1	44.3	44.1	42.0	41.7	43.0	41.6	37.9
June 1	43.3	43.1	41.8	40.3	41.2	43.3	41.4	37.4
July 1	43.2	44.4	42.1	41.8	42.7	42.7	42.4	38.4
Aug. 1	42.8	44.8	43.1	41.4	42.5	42.5	41.6	37.8
Sept. 1	42.9	44.6	43.8	41.8	43.0	42.6	42.9	38.2
Oct. 1	43.5	45.4	44.4	42.2	42.8	42.6	42.2	38.1
Nov. 1	44.2	44.8	44.4	42.3	42.9	42.0	42.9	38.4
Dec. 1	43.0	45.5	44.5	42.4	43.2	42.3	42.7	38.6
*Jan. 1, 1950	38.7	41.7	41.3	39.8	40.0	41.3	40.2	34.4
Feb. 1	43.1	43.3	43.9	42.1	41.2	42.7	41.2	36.3
Mar. 1	43.2	45.4	44.1	41.9	43.1	43.3	42.7	38.2
Apr. 1	44.0	45.3	44.4	42.2	43.0	43.4	43.0	38.5
May 1	44.0	44.5	43.9	42.2	42.5	43.6	42.5	38.8
June 1	43.2	44.0	43.3	41.6	41.8	43.2	42.2	37.5
July 1	43.6	45.3	43.8	42.2	42.9	42.9	42.3	38.1
Aug. 1	43.7	45.6	44.0	42.1	42.3	41.8	41.7	38.0
Sept. 1 ^{1/}	42.9	43.6	43.8	41.5	39.2	40.8	39.4	38.1
Oct. 1	43.7	46.1	44.9	42.2	42.1	42.8	40.7	39.1
Nov. 1	44.1	44.8	45.0	42.4	42.4	43.1	42.3	38.7
Dec. 1	43.0	45.4	45.0	42.4	43.0	41.8	42.1	38.8
*Jan. 1, 1951	38.4	42.3	41.6	39.9	40.6	42.2	40.7	36.0

*See footnote on page 9. 1/Railway dispute.

Table 4.- Average Hours Worked and Average Hourly Earnings of Hourly-Rated Wage-Earners Reported in Manufacturing as a Whole, by Provinces. (Concluded)

<u>Week of</u>	<u>N.S.</u>	<u>N.B.</u>	<u>Que.</u>	<u>Ont.</u>	<u>Man.</u>	<u>Sask.</u>	<u>Alta.</u>	<u>B.C.</u>
(b) <u>Average Hourly Earnings (in cents)</u>								
Jan. 1, 1945	71.2	62.6	64.6	72.1	68.9	69.0	73.5	83.9
Jan. 1, 1946	68.5	64.1	61.9	69.8	69.5	69.1	71.6	81.6
Jan. 1, 1947	71.2	70.8	69.2	79.8	77.1	76.8	76.0	91.4
Jan. 1, 1948	78.4	79.5	78.6	90.5	84.3	88.7	85.6	105.4
Jan. 1, 1949	86.6	89.3	88.3	101.8	94.5	98.4	99.3	117.6
Feb. 1	87.2	88.5	88.2	102.0	94.6	98.7	99.4	118.0
Mar. 1	86.9	88.6	88.4	102.5	94.7	99.4	100.0	118.5
Apr. 1	87.7	89.6	89.2	103.0	95.5	99.0	99.2	118.8
May 1	87.9	89.9	89.3	103.5	95.9	100.4	100.1	119.0
June 1	92.6	88.1	90.1	103.7	96.5	100.9	100.6	118.5
July 1	88.1	88.3	90.7	103.3	95.6	100.4	100.3	118.5
Aug. 1	90.0	87.1	89.7	103.6	96.0	101.6	99.2	118.3
Sept. 1	90.7	88.1	89.5	103.0	95.8	101.1	99.1	116.9
Oct. 1	90.8	88.6	90.1	104.1	96.6	102.4	100.8	118.1
Nov. 1	89.9	89.1	90.4	104.2	96.9	102.4	101.4	119.4
Dec. 1	89.9	89.6	90.6	104.9	97.4	103.2	101.7	119.5
Jan. 1, 1950	94.7	92.0	91.2	106.2	98.4	103.7	102.0	120.9
Feb. 1	91.1	91.3	90.9	106.4	97.4	103.7	101.9	121.9
Mar. 1	91.6	90.2	91.1	107.0	97.8	104.2	102.8	121.7
Apr. 1	92.0	90.8	91.5	107.4	98.6	103.7	102.5	121.2
May 1	92.3	90.9	91.9	108.2	98.6	104.1	103.8	122.2
June 1	95.0	89.8	92.7	109.5	99.8	104.3	104.1	122.3
July 1	91.3	89.4	93.3	109.5	98.8	104.8	103.6	125.2
Aug. 1	91.1	90.1	93.3	110.3	99.5	103.4	102.2	124.8
Sept. 1	91.0	90.7	93.3	110.5	98.8	104.2	103.0	125.5
Oct. 1	90.7	92.7	94.4	111.1	102.1	106.9	105.6	126.8
Nov. 1	90.1	94.1	95.2	112.7	102.1	107.5	107.2	127.6
Dec. 1	91.7	97.1	96.4	114.2	102.9	108.7	108.1	128.7
Jan. 1, 1951	96.2	98.1	97.7	114.9	103.8	110.6	109.0	130.8

1/Railway dispute.

Table 5.- Average Hours Worked and Average Hourly Earnings of Hourly-Rated Wage-Earners Reported in Manufacturing as a Whole in Indicated Cities.

<u>Week of</u>	<u>Montreal</u>	<u>Toronto</u>	<u>Hamilton</u>	<u>Windsor</u>	<u>Winnipeg</u>	<u>Vancouver</u>
(a) <u>Average Hours Worked</u>						
*Jan. 1, 1945	38.9	37.3	38.2	36.6	39.2	35.4
*Jan. 1, 1946	36.8	36.3	37.0	31.0	38.7	34.8
*Jan. 1, 1947	37.0	36.7	38.2	35.7	37.5	32.8
*Jan. 1, 1948	37.4	36.9	39.4	29.8	39.0	33.6
*Jan. 1, 1949	41.1	39.1	40.8	38.8	39.8	34.9
Feb. 1	42.7	41.1	42.9	39.7	42.0	37.7
Mar. 1	42.7	41.4	43.1	40.6	42.4	36.1
Apr. 1	43.0	41.2	42.9	40.3	42.4	38.0
May 1	42.6	41.2	43.0	40.2	41.3	37.4
June 1	40.4	39.2	40.6	35.8	40.7	36.7
July 1	40.8	40.6	41.7	41.6	42.2	37.8
Aug. 1	41.3	40.2	40.7	39.7	42.2	37.5
Sept. 1	42.3	40.6	41.4	39.8	42.7	37.6
Oct. 1	42.9	41.1	42.0	40.7	42.5	37.8
Nov. 1	43.1	41.5	41.2	40.4	42.6	37.8
Dec. 1	43.2	41.6	42.5	38.7	42.9	37.8
*Jan. 1, 1950	39.7	39.1	39.6	37.5	39.5	33.2
Feb. 1	42.1	41.1	41.2	40.5	40.6	36.5
Mar. 1	42.5	40.7	40.8	40.8	42.7	37.5
Apr. 1	43.0	41.2	40.8	42.0	42.6	37.7
May 1	42.5	41.2	41.1	41.7	42.0	38.1
June 1	41.6	40.3	41.7	41.0	41.3	36.7
July 1	42.3	41.1	40.5	43.3	42.4	37.8
Aug. 1	41.9	40.9	40.4	43.5	41.8	37.6
Sept. 1 ^{1/}	41.5	40.8	39.7	42.2	38.6	37.3
Oct. 1	43.1	41.4	40.7	40.5	41.7	38.6
Nov. 1	43.5	41.6	40.9	39.8	42.0	37.8
Dec. 1	43.3	41.6	41.1	42.0	42.6	37.6
*Jan. 1, 1951	39.8	38.6	39.2	39.3	40.1	34.7

*See footnote on page 9. 1/Railway dispute.

Table 5.- Average Hours Worked and Average Hourly Earnings of Hourly-Rated Wage-Earners Reported in Manufacturing as a Whole in Indicated Cities. (Concluded)

<u>Week of</u>	<u>Montreal</u>	<u>Toronto</u>	<u>Hamilton</u>	<u>Windsor</u>	<u>Winnipeg</u>	<u>Vancouver</u>
(b) <u>Average Hourly Earnings (in cents)</u>						
Jan. 1, 1945	71.3	71.7	73.5	93.7	68.9	85.8
Jan. 1, 1946	67.4	71.4	73.4	90.3	69.6	81.9
Jan. 1, 1947	74.2	79.0	83.1	104.6	76.8	91.4
Jan. 1, 1948	82.6	90.2	94.9	113.1	83.7	102.9
Jan. 1, 1949	93.1	100.1	106.5	123.6	93.7	114.2
Feb. 1	93.1	101.3	109.2	125.4	93.7	115.2
Mar. 1	93.5	101.7	109.7	125.3	93.9	115.4
Apr. 1	94.1	102.3	109.1	124.9	94.7	116.2
May 1	94.0	102.5	111.2	125.0	95.0	116.6
June 1	94.8	102.7	112.5	124.3	95.4	116.9
July 1	95.7	102.2	111.8	125.1	94.5	117.0
Aug. 1	94.6	102.0	112.5	125.5	94.8	116.8
Sept. 1	94.3	102.1	112.4	125.1	95.1	115.8
Oct. 1	95.1	102.7	113.2	125.7	95.8	117.5
Nov. 1	95.4	102.7	113.1	126.3	96.0	117.3
Dec. 1	95.8	103.4	114.7	127.4	96.7	117.7
Jan. 1, 1950	96.9	104.2	117.7	127.3	97.6	117.7
Feb. 1	96.2	105.2	117.7	126.9	96.6	118.1
Mar. 1	96.2	105.6	118.4	127.5	97.0	119.4
Apr. 1	96.8	105.3	119.2	128.2	97.8	119.6
May 1	97.0	107.1	119.6	128.9	97.9	120.6
June 1	97.5	107.5	122.0	131.4	99.2	120.6
July 1	98.0	107.6	121.5	132.7	97.8	123.7
Aug. 1	98.1	108.1	122.1	134.0	98.6	124.9
Sept. 1 ^{1/}	97.9	108.4	122.7	133.5	97.8	125.0
Oct. 1	99.5	109.8	123.5	133.4	101.1	126.1
Nov. 1	99.9	111.4	123.5	138.0	101.2	125.6
Dec. 1	100.8	112.5	124.8	142.1	101.8	126.6
Jan. 1, 1951	102.2	113.1	126.4	137.9	102.7	128.7

1/Railway dispute.

Table 6.- Average Hours and Average Hourly Earnings of Wage-earners in Nova Scotia, New Brunswick and Quebec for Whom Data are Available at Jan. 1, 1951, with Comparative Figures at Dec. 1, 1950 and Jan. 1, 1950.

Provinces and Industries	Average Hours Per Week Reported at			Average Hourly Earnings Reported at		
	Jan. 1 1951	Dec. 1 1950	Jan. 1 1950	Jan. 1 1951	Dec. 1 1950	Jan. 1 1950
	no.	no.	no.	\$	\$	\$
NOVA SCOTIA - Manufacturing	38.4	43.0	38.7	96.2	91.7	94.7
Animal products - edible	34.5	42.5	33.9	74.6	77.3	70.8
Wood products	36.6	42.1	39.7	61.2	61.6	60.7
Textiles - all branches	39.5	43.5	35.6	70.8	69.0	66.7
Iron and steel	39.2	41.9	39.8	112.4	110.8	112.7
Crude, rolled & forged products	40.7	41.0	40.1	120.5	119.7	120.4
Steel shipbuilding	39.0	42.9	39.6	105.5	104.0	106.6
Mining - Coal	37.2	43.2	37.6	121.8	121.8	120.7
Construction - Building	31.6	36.3	30.2	94.0	94.2	88.8
- Highway	31.8	32.7	26.1	76.6	75.4	74.4
NEW BRUNSWICK - Manufacturing	42.3	45.4	41.7	98.1	97.1	92.0
Saw and planing mills	40.5	44.8	38.7	68.0	67.5	64.6
Pulp and paper mills	46.5	50.3	45.5	127.9	129.0	112.9
Iron and steel	40.4	44.7	41.8	111.0	110.6	108.0
Construction - Building	31.3	37.7	31.5	83.4	83.9	87.3
- Highway	35.0	34.0	32.7	73.3	75.1	73.9
QUEBEC - Manufacturing	41.6	45.0	41.3	97.7	96.4	91.2
Leather products	35.2	39.9	35.8	74.8	74.3	71.6
Leather boots and shoes	35.0	38.9	35.6	75.4	74.6	71.7
Wood products	43.2	48.4	43.6	76.9	76.6	73.2
Saw and planing mills	44.2	49.4	45.1	72.8	72.8	69.6
Plant products - edible	43.1	46.3	40.4	77.8	77.2	73.8
Pulp and paper products	45.7	48.2	43.9	116.2	116.0	105.9
Pulp and paper mills	48.4	51.0	46.3	121.3	121.7	109.3
Textiles - all branches	38.5	42.8	37.9	83.1	83.0	77.6
Cotton yarn and cloth	40.8	43.8	44.5	95.5	96.2	82.6
Synthetic silk and silk goods	44.0	48.4	38.8	85.6	85.6	79.1
Hosiery and knit goods	37.5	44.5	38.1	75.4	75.0	71.4
Garments & personal furnishings	33.9	38.6	32.0	75.1	75.5	74.7
Chemicals and allied products	43.4	44.9	45.0	99.8	98.6	90.3
Electrical apparatus	36.0	42.8	40.2	110.1	110.2	105.9
Iron and steel	43.7	46.2	42.8	110.8	109.9	105.7
Machinery other than vehicles	44.2	47.3	42.6	104.4	103.9	96.3
Railway rolling stock	43.8	44.2	43.9	118.5	117.3	116.5
Aeroplanes and parts	47.6	48.6	43.1	119.4	119.9	106.2
Steel shipbuilding	45.2	47.1	44.1	103.9	105.2	103.0
Non-ferrous metal products	44.9	46.1	44.8	110.0	104.3	100.1
Smelting and refining	47.6	46.3	47.6	121.1	113.9	110.0
Mining - Metallic ores (except coal)	44.8	48.1	44.4	113.1	111.9	103.9
- Non-metallic minerals	44.6	47.6	43.2	111.3	110.9	102.0
Street railways, cartage and storage	48.4	48.0	48.0	101.1	100.1	95.6
Construction - Building	33.7	39.4	35.1	110.6	109.9	102.1
- Highway	40.5	41.7	43.5	74.3	73.6	73.7
Services	44.3	44.6	44.0	63.1	62.8	60.1

Table 6.- Average Hours and Average Hourly Earnings of Wage-Earners in Ontario for Whom Data are Available at Jan. 1, 1951 with Comparative Figures at Dec. 1, 1950, and Jan. 1, 1950. (Continued)

Provinces and Industries	Average Hours Per Week Reported at			Average Hourly Earnings Reported at		
	Jan. 1 1951	Dec. 1 1950	Jan. 1 1950	Jan. 1 1951	Dec. 1 1950	Jan. 1 1950
	no.	no.	no.	¢	¢	¢
ONTARIO - Manufacturing	39.9	42.4	39.8	114.9	114.2	106.2
Animal products - edible	40.9	43.1	42.8	109.3	108.9	100.4
Meat products	39.8	42.6	42.1	117.6	117.2	108.7
Leather products	38.9	41.1	37.8	89.2	89.0	83.1
Leather boots and shoes	37.8	39.4	35.8	84.1	84.1	78.6
Wood products	40.1	43.7	39.5	89.9	89.8	84.1
Saw and planing mills	39.9	43.7	40.0	87.1	85.9	81.2
Furniture	40.4	44.1	39.7	93.5	94.3	88.1
Plant products - edible	40.1	42.7	38.4	88.1	86.7	81.3
Fruit and vegetable canning	37.7	40.8	36.1	85.5	78.5	82.1
Bread and bakery products	43.2	44.1	42.4	87.2	87.8	78.8
Pulp and paper mills	47.2	48.7	46.2	129.1	127.6	116.2
Paper products	40.2	43.2	40.6	98.5	99.5	90.9
Printing and publishing	39.1	40.7	39.3	127.6	126.8	118.1
Rubber products	37.9	41.6	39.6	126.3	122.6	112.5
Textiles - all branches	36.5	40.8	36.9	92.2	90.9	86.1
Cotton yarn and cloth	37.1	42.7	39.6	96.6	95.4	90.0
Woollen yarn and cloth	37.9	42.4	38.2	89.7	89.8	85.7
Hosiery and knit goods	36.3	40.5	35.7	85.0	85.1	79.1
Garments & personal furnishings	34.3	38.3	32.9	89.3	86.8	83.1
Chemicals and allied products	41.7	42.7	41.3	116.4	113.4	107.4
Drugs and medicines	38.1	39.9	38.9	94.2	92.5	85.6
Non-metallic mineral products ^{1/}	42.3	44.7	42.5	113.1	112.6	103.3
Electrical apparatus	38.9	41.6	39.9	120.1	120.6	112.7
Iron and steel	40.4	42.4	39.9	126.9	128.5	118.7
Crude, rolled & forged products	40.7	42.0	40.7	128.2	135.0	125.8
Machinery other than vehicles	40.6	43.0	40.9	119.8	120.4	110.3
Agricultural implements	37.4	39.7	38.5	133.3	134.1	124.6
Railway rolling stock	43.6	43.7	42.3	122.4	119.0	117.5
Automobile parts	41.3	42.4	39.1	129.2	128.5	114.6
Automobile mfg.	40.4	41.4	39.4	143.0	146.8	133.5
Steel shipbuilding	41.4	42.8	38.7	111.7	112.0	104.0
Iron & steel fabrication n.e.s.	40.0	43.3	40.4	115.7	119.3	109.3
Foundry & machine shop products	41.2	44.1	39.0	127.7	127.4	115.8
Sheet metal work	39.5	42.8	38.0	111.2	112.3	103.1
Non-ferrous metal products	40.3	43.0	42.0	121.2	118.4	111.5
Smelting and refining	41.7	42.7	45.9	136.8	128.3	122.5
Brass and copper mfg.	39.8	42.6	40.1	116.5	118.4	112.8
Mining - Metallic ores	42.6	44.7	43.0	129.7	125.6	119.8
Street railways, cartage & storage	44.2	45.7	43.6	114.8	111.9	107.1
Construction - Building	35.7	42.1	36.7	123.3	121.2	109.7
- Highway	39.1	42.8	39.4	99.0	98.4	93.0
Services	41.0	42.0	41.2	66.8	66.1	63.5
Hotels and restaurants	43.2	43.4	43.3	66.1	65.1	61.6

^{1/}See footnote 1 on page 8.

Table 6.- Average Hours and Average Hourly Earnings of Wage-Earners in Manitoba, Saskatchewan, Alberta and British Columbia for Whom Data are Available at Jan. 1, 1951, with Comparative Figures at Dec. 1, 1950 and Jan. 1, 1950. (Concluded)

Provinces and Industries	Average Hours Per Week Reported at			Average Hourly Earnings Reported at		
	Jan. 1 1951	Dec. 1 1950	Jan. 1 1950	Jan. 1 1951	Dec. 1 1950	Jan. 1 1950
	no.	no.	no.	¢	¢	¢
MANITOBA - Manufacturing	40.6	43.0	40.0	103.8	102.9	98.4
Meat products	37.1	40.7	37.9	123.2	123.0	115.9
Plant products - edible	45.1	43.9	40.6	86.1	84.4	83.3
Garments and personal furnishings	32.2	38.1	35.1	81.3	79.9	79.7
Iron and steel	42.7	44.2	42.2	110.7	110.2	105.3
Railway rolling stock	43.8	44.1	44.3	114.3	113.5	109.7
Construction - Building	35.4	42.2	32.2	116.2	114.9	111.3
- Highway	40.6	40.9	40.7	84.0	82.4	82.5
Services	42.2	42.9	40.3	67.5	67.5	64.9
SASKATCHEWAN - Manufacturing	42.2	41.8	41.3	110.6	108.7	103.7
Meat products	40.4	41.0	39.4	120.5	120.2	113.0
Construction - Building	32.8	36.6	32.6	107.7	104.7	103.4
- Highway	38.6	35.7	33.2	87.6	86.5	86.6
Services	41.6	43.0	42.0	68.2	68.1	63.8
ALBERTA - Manufacturing	40.7	42.1	40.2	109.0	108.1	102.0
Meat products	34.5	40.2	36.4	122.4	121.5	112.2
Plant products - edible	42.9	42.2	40.1	98.7	94.9	90.0
Railway rolling stock	44.8	44.7	45.5	112.3	111.5	107.8
Mining - Coal	31.8	35.5	32.1	150.7	148.5	148.2
Construction - Building	30.9	37.4	29.9	129.2	125.5	119.6
Services	42.8	43.6	42.8	72.0	71.7	68.6
BRITISH COLUMBIA - Manufacturing	36.0	38.8	34.4	130.8	128.7	120.9
Wood products	34.3	37.6	32.3	133.3	133.3	122.0
Saw and planing mills	34.4	37.6	32.4	135.0	135.1	123.5
Plant products - edible	33.5	38.4	34.6	101.6	93.2	97.0
Fruit and vegetable canning	26.7	37.8	28.8	85.9	81.6	83.4
Pulp and paper mills	44.3	45.0	38.3	137.8	137.5	130.3
Iron and steel	35.3	38.6	34.1	135.5	133.3	125.1
Steel shipbuilding	32.2	34.5	32.8	145.3	142.2	134.1
Non-ferrous metal products	39.9	40.9	39.4	140.2	133.8	129.9
Logging	32.9	35.8	35.5	172.7	171.3	149.6
Mining - Coal	29.0	35.2	32.3	139.6	140.1	139.6
- Metallic ores	39.2	41.5	38.3	139.7	135.8	129.8
Street railways, cartage and storage	38.6	40.6	39.0	120.2	120.5	114.0
Construction - Building	29.4	36.9	30.0	148.2	149.1	139.2
- Highway	36.9	37.5	34.7	117.5	118.9	114.7
Services	38.9	39.8	36.8	80.2	80.9	78.5

Table 7.- Average Hours Per Week and Average Hourly Earnings of Wage-Earners in Certain Cities for Whom Data are Available at Jan. 1, 1951, with Comparative Figures at Dec. 1, 1950 and Jan. 1, 1950.

Cities and Industries	Average Hours Per Week Reported at			Average Hourly Earnings Reported at		
	Jan. 1	Dec. 1	Jan. 1	Jan. 1	Dec. 1	Jan. 1
	1951	1950	1950	1951	1950	1950
	no.	no.	no.	\$	\$	\$
<u>Montreal</u> - Manufacturing	39.8	43.3	39.7	102.2	100.8	96.9
Leather products	35.2	40.5	35.3	80.1	79.2	76.9
Plant products - edible	43.0	45.9	40.5	80.7	80.4	76.2
Textiles - all branches	34.7	39.3	34.5	85.3	85.0	82.2
Tobacco	39.2	41.8	39.9	111.3	109.4	100.4
Electrical apparatus	35.7	42.2	40.1	113.8	113.9	108.0
Iron and steel	42.7	45.0	42.0	116.1	115.4	110.1
Street railways, cartage and storage	47.5	47.1	47.0	106.4	105.2	100.8
Building construction	30.9	37.4	33.7	119.6	119.3	110.3
Services	44.0	44.1	43.6	63.3	63.1	60.2
<u>Toronto</u> - Manufacturing	38.6	41.6	39.1	113.1	112.5	104.2
Plant products - edible	38.3	41.7	38.5	86.7	89.4	79.4
Paper products	39.2	42.1	40.9	98.6	100.4	90.7
Printing and publishing	38.5	39.7	38.4	136.8	134.7	126.8
Rubber products	39.3	40.9	38.1	137.9	131.4	119.8
Textiles - all branches	34.5	39.1	35.4	94.5	92.7	88.5
Chemicals and allied products	40.5	41.7	39.6	110.9	108.1	103.0
Electrical apparatus	38.9	41.8	39.9	117.1	117.2	107.9
Iron and steel	39.7	42.7	40.3	121.6	122.2	112.4
Non-ferrous metal products	38.3	42.7	39.3	111.1	112.3	107.5
Street railways, cartage and storage	42.0	43.8	42.1	120.9	116.8	113.7
Building construction	32.4	39.2	32.1	145.0	145.7	135.0
Services	40.7	41.2	40.7	70.5	70.5	68.3
<u>Hamilton</u> - Manufacturing	39.2	41.1	39.6	126.4	124.8	117.7
Textiles - all branches	37.5	39.6	35.7	93.5	92.0	87.6
Electrical apparatus	37.3	39.8	37.9	135.1	136.9	132.5
Iron and steel	39.7	40.9	40.2	137.6	136.0	128.1
Building construction	35.8	42.3	32.9	124.8	127.0	118.0
<u>Winnipeg</u> - Manufacturing	40.1	42.6	39.5	102.7	101.8	97.6
Animal products - edible	37.4	40.6	37.8	123.1	123.2	116.3
Plant products - edible	45.3	44.0	40.7	86.6	84.9	83.8
Textiles - all branches	33.5	38.7	35.0	80.6	79.5	78.6
Iron and steel	42.5	43.8	42.2	111.2	110.8	105.7
Street railways, cartage and storage	44.1	44.6	44.8	105.5	101.3	99.8
Building construction	31.7	38.4	32.9	123.4	119.8	113.2
Services	42.0	42.8	40.1	67.3	67.3	64.9
<u>Vancouver</u> - Manufacturing	34.7	37.6	33.2	128.7	126.6	117.7
Wood products	33.3	36.5	31.3	135.1	133.4	122.4
Iron and steel	33.9	37.6	31.2	138.3	135.3	127.1
Street railways, cartage and storage	38.7	40.4	39.0	120.3	120.7	114.6
Building construction	28.3	36.9	29.6	151.6	153.5	139.4
Services	39.0	39.3	36.3	80.5	82.2	79.5

Table 8.- Average Weekly Salaries and Wages and Average Weekly Wages of Hourly-Rated Wage-Earners as Reported in Manufacturing as a Whole, and in the Manufacture of Durable Goods and of Non-Durable Goods.

Week of	All Manufactures ^{1/}		Durable Manufactured Goods		Non-Durable Manufactured Goods	
	Average Weekly		Average Weekly		Average Weekly	
	Salaries & Wages	Wages	Salaries & Wages	Wages	Salaries & Wages	Wages
	\$	\$	\$	\$	\$	\$
*Jan. 1, 1945	30.11	27.72	32.77	30.61	27.05	24.06
*Jan. 1, 1946	29.32	25.87	31.30	28.01	27.57	23.88
*Jan. 1, 1947	32.23	29.07	34.40	31.35	30.29	26.44
*Jan. 1, 1948	36.15	33.17	38.31	35.77	34.14	30.48
*Jan. 1, 1949	42.12	39.46	45.23	42.97	39.19	35.90
Feb. 1	44.04	41.70	47.17	45.36	41.12	38.13
Mar. 1	44.27	41.97	47.43	45.49	41.30	38.26
Apr. 1	44.43	42.13	47.51	45.66	41.50	38.47
May 1	44.31	41.91	47.30	45.35	41.49	38.37
June 1	43.16	40.43	46.00	43.77	40.49	37.06
July 1	43.95	41.42	47.26	45.24	40.90	37.62
Aug. 1	43.90	41.40	46.90	44.84	41.15	37.99
Sept. 1	44.05	41.72	47.35	45.31	41.12	38.15
Oct. 1	44.72	42.40	48.20	46.35	41.63	38.68
Nov. 1	44.95	42.59	48.15	46.22	42.09	39.21
Dec. 1	45.23	42.90	48.62	46.74	42.21	39.25
*Jan. 1, 1950	43.42	40.34	46.61	44.05	40.52	36.79
Feb. 1	45.25	42.68	48.33	46.21	42.49	39.26
Mar. 1	45.68	43.10	48.94	46.77	42.74	39.57
Apr. 1	46.04	43.53	49.34	47.30	43.06	39.87
May 1	46.16	43.67	49.46	47.45	43.18	39.98
June 1	45.93	43.47	49.06	47.01	43.05	39.82
July 1	46.57	44.16	49.89	47.96	43.51	40.39
Aug. 1	46.59	44.29	49.87	48.04	43.53	40.43
Sept. 1 ^{2/}	46.09	43.74	48.73	46.85	43.65	40.66
Oct. 1	47.38	45.17	50.93	49.15	44.13	41.22
Nov. 1	48.00	45.75	51.57	49.65	44.70	41.93
Dec. 1	48.51	46.46	52.07	50.17	45.28	42.67
*Jan. 1, 1951	46.36	43.78	49.83	47.15	43.71	40.24

*See footnote on page 9. 1/Exclusive of electric light and power. 2/Railway dispute.

Table 9.- Average Weekly Wages of Hourly-Rated Wage-Earners Reported by Leading Manufacturing Establishments, by Provinces.

(The latest data are subject to revision).

<u>Week of</u>	<u>Canada</u>	<u>N.S.</u>	<u>N.B.</u>	<u>Que.</u>	<u>Ont.</u>	<u>Man.</u>	<u>Sask.</u>	<u>Alta.</u>	<u>B.C.</u>
	\$	\$	\$	\$	\$	\$	\$	\$	\$
*Jan. 1, 1945	27.72	28.69	25.10	26.74	27.90	27.28	26.08	29.55	31.13
*Jan. 1, 1946	25.87	26.37	26.35	24.45	25.97	27.17	27.78	28.50	29.46
*Jan. 1, 1947	29.07	26.91	28.67	27.33	30.40	29.61	31.18	30.25	31.62
*Jan. 1, 1948	33.17	31.36	31.72	30.97	34.12	33.30	34.68	34.24	36.78
*Jan. 1, 1949	39.46	35.51	37.24	37.35	41.03	38.08	40.25	39.82	41.28
Feb. 1	41.70	38.63	40.36	39.25	43.25	40.11	42.14	41.75	45.08
Mar. 1	41.97	38.24	40.22	39.34	43.87	40.53	42.44	42.40	44.32
Apr. 1	42.13	38.46	40.32	39.60	43.57	40.97	42.37	42.56	45.86
May 1	41.91	38.96	39.83	39.38	43.47	39.99	43.17	41.64	45.10
June 1	40.43	40.10	37.97	37.66	41.79	39.76	43.69	41.65	44.32
July 1	41.42	38.06	39.21	38.18	43.18	40.82	42.87	42.53	45.50
Aug. 1	41.40	38.52	39.02	38.66	42.89	40.80	43.18	41.27	44.72
Sept. 1	41.72	38.91	39.29	39.20	43.05	41.19	43.07	42.51	44.66
Oct. 1	42.40	39.50	40.22	40.00	43.93	41.34	43.62	42.54	45.00
Nov. 1	42.59	39.74	39.92	40.14	44.08	41.57	43.01	43.50	45.85
Dec. 1	42.90	38.66	40.77	40.32	44.48	42.08	43.65	43.43	46.13
*Jan. 1, 1950	40.34	36.65	38.36	37.67	42.27	39.36	42.83	41.00	41.59
Feb. 1	42.68	39.26	39.53	39.91	44.79	40.13	44.28	41.98	44.25
Mar. 1	43.10	39.57	40.95	40.18	44.83	42.15	45.12	43.90	46.49
Apr. 1	43.53	40.48	41.13	40.63	45.32	42.40	45.01	44.08	46.66
May 1	43.67	40.61	40.45	40.34	45.66	41.91	45.39	44.12	47.41
June 1	43.47	41.04	39.51	40.14	45.55	41.72	45.06	43.93	45.86
July 1	44.16	39.81	40.50	40.87	46.21	42.39	44.96	44.13	47.70
Aug. 1	44.29	39.81	41.09	41.05	46.44	42.09	43.22	42.62	47.42
Sept. 1 ^{1/}	43.74	39.04	39.55	40.87	45.86	38.73	42.51	40.58	47.82
Oct. 1	45.17	39.64	42.73	42.39	46.88	42.98	45.75	42.98	49.58
Nov. 1	45.75	39.73	42.16	42.84	47.78	43.29	46.33	45.35	49.38
Dec. 1	46.46	39.43	44.08	43.38	48.42	44.25	45.44	45.51	49.94
*Jan. 1, 1951	43.78	36.94	41.80	40.64	45.88	42.14	46.67	44.36	47.09

*See footnote on page 9. 1/Railway dispute.

Table 10.- Average Weekly Wages of Hourly-Rated Wage-Earners Employed
in Leading Manufacturing Establishments by Cities.

(The latest data are subject to revision).

<u>Week of</u>		<u>Montreal</u>	<u>Toronto</u>	<u>Hamilton</u>	<u>Windsor</u>	<u>Winnipeg</u>	<u>Vancouver</u>
		\$	\$	\$	\$	\$	\$
*Jan.	1, 1945	27.74	26.74	28.08	34.29	27.01	30.37
*Jan.	1, 1946	24.80	25.92	27.16	27.99	26.94	28.50
*Jan.	1, 1947	27.45	28.99	31.74	37.34	28.80	29.98
*Jan.	1, 1948	30.89	33.28	37.39	33.70	32.64	34.57
*Jan.	1, 1949	38.26	39.14	44.27	47.96	37.29	39.86
Feb.	1	39.75	41.63	46.85	49.78	39.35	43.43
Mar.	1	39.92	42.10	47.28	50.87	39.81	41.66
Apr.	1	40.46	42.15	46.80	50.33	40.15	44.16
May	1	40.04	42.23	47.82	50.25	39.24	43.61
June	1	38.30	40.26	45.68	44.50	38.83	42.90
July	1	39.05	41.49	46.62	52.04	39.88	44.23
Aug.	1	39.07	41.00	45.79	49.82	40.01	43.80
Sept.	1	39.89	41.45	46.53	49.79	40.61	43.54
Oct.	1	40.80	42.21	47.54	51.16	40.72	44.42
Nov.	1	41.12	42.62	46.60	51.03	40.90	44.34
Dec.	1	41.39	43.01	48.75	49.30	41.48	44.49
*Jan.	1, 1950	38.47	40.74	46.61	47.74	38.55	39.08
Feb.	1	40.50	43.24	48.49	51.39	39.22	43.11
Mar.	1	40.89	42.98	48.31	52.02	41.42	44.78
Apr.	1	41.62	43.80	48.63	53.84	41.66	45.09
May	1	41.23	44.13	49.16	53.75	41.12	45.95
June	1	40.56	43.32	50.87	53.87	40.97	44.26
July	1	41.45	44.22	49.25	57.46	41.47	46.75
Aug.	1	41.10	44.21	49.33	58.29	41.21	46.96
Sept.	1 ^{1/}	40.63	44.23	48.71	56.34	37.75	46.63
Oct.	1	42.88	45.46	50.26	54.03	42.16	48.67
Nov.	1	43.46	46.34	50.51	54.92	42.50	47.48
Dec.	1	43.65	46.80	51.29	59.68	43.37	47.60
*Jan.	1, 1951	40.68	43.66	49.55	54.19	41.18	44.66

*See footnote on page 9. 1/Railway dispute.

STATISTICS CANADA LIBRARY
BIBLIOTHÈQUE STATISTIQUE CANADA



1010512824

